

18,000 Readers

This newspaper has the largest circulation based on county population; it is a weekly publication in the U.S.

Volume No. 79

MOREHEAD, KENTUCKY, THURSDAY MORNING, AUGUST 16, 1962

Number Thirty-Three

# COP Members Of Rowan Fiscal Court Explain Position; Claim Johnson's Charges Not True

The three Republican members of Rowan County's Fiscal Court today said that former Democratic Magistrate Bridges Johnson and County Judge W. C. Flannery had misrepresented the facts and developments in administration of county affairs.

The two specific allegations to which the Republican magistrates took exception concerned the renovation of the county judge's residence in January, and the statement by Johnson last month when he returned from a vacation in Florida.

Flannery said in January that the "county judge's office is in a comfortable condition... a disgrace to the county."

The court had it repaired and decorated at a cost of around \$50,000. The judge by a three-to-one vote refused payment. Johnson, the Democrat, voted with Flannery, to pay the bill.

The Republican magistrates, Otis Caldwell, Fred Fultz, and Fred Fultz, explained their position in a newspaper statement today. They said that Johnson didn't pay the bill for repairs to the office because the county judge was in the building in just as bad a condition as when he was sheriff, county clerk, circuit clerk, county attorney, tax commissioner, etc.

"It was, and is, the plan of the Fiscal Court to renovate all the courthouses as soon as money permits."

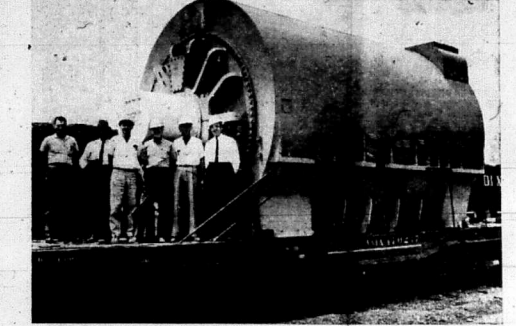
"We strongly feel that Judge Flannery should have investigated his own office without the same thing being done at the other offices. After all, they are of the county government and are of important too, and are a part of the county government. Further, some of these offices, like the county clerk, are used by the public more than the county judge's office."

Caldwell, Martin and Fultz said that Johnson had not been in the building when it was repaired. They said that Johnson had not been in the building when it was repaired.

# Rowan County News

10¢ On Newsstands

By MAIL — In Kentucky, One Year \$1.00; In Kentucky, One Year \$1.00; Outside Kentucky, One Year \$1.00; Outside Kentucky, Five Years \$5.00



21-TON GENERATOR FOR K. U. POWER UNIT ARRIVES—The 470,000-pound electric generator for the expansion of the E. W. Brown power plant at Morehead, Kentucky. It is shown upon its arrival at the Dix Dam plant site. It reached Dix Dam after a 26-day journey from Pittsburgh, Pa. The generator is a milestone in the construction of the 154,000 kilowatt coal-burning unit which will more than double the electric capacity of the Brown plant when it begins operation next June. The generator which is the largest in the K. U. system represents a million dollars of the cost of the \$20,000,000 expansion at the Brown plant.

## Co-op Names Officers At Morehead

Carl Brewer, Farmers, and Alvin Perkins, Clearfield, have been elected to the Southern States Advisory Board at the annual membership meeting, attended by 300, at Rowan County High.

William Littleton, RFD 3, and Mrs. Gordon Lewis, Smith, were named to the Advisory Committee. Mrs. Chadwell is chairman of the Farm-Home Committee while Mrs. Lewis was named Secretary.

The members selected W. A. Caudill, RFD 3, as delegate to the 26th annual Southern States stockholders meeting in Richmond, Va. on Oct. 25-26.

W. T. Garey, manager of Rowan Farmers Supply, gave a report of the department of Labor before activities in Europe on a tour he recently completed.

## Work Progressing On M'head Hospital

Inquiries by this newspaper today indicate that St. Claire Hospital building is well advanced. The December (or Thanksgiving) and the first patient admitted by St. Claire will initially have 40 beds, but Sisters of Notre Dame will soon have 100 beds. The building is being equipped and staffed with a health center.

A six weeks period from finish of construction until occupancy is being anticipated. The building is being equipped and staffed with a health center.

St. Claire will initially have 40 beds, but Sisters of Notre Dame will soon have 100 beds. The building is being equipped and staffed with a health center.

St. Claire will initially have 40 beds, but Sisters of Notre Dame will soon have 100 beds. The building is being equipped and staffed with a health center.

St. Claire will initially have 40 beds, but Sisters of Notre Dame will soon have 100 beds. The building is being equipped and staffed with a health center.

## Budget Hearings For Cave Run And Grayson Reservoirs Start Today

The U.S. House of Representatives today the Fiscal Appropriation Bill for 1963, which contains \$15,000,000 for the advanced engineering and design of the Cave Run Reservoir at the Rowan-Bath county line.

## Rowan School Opening Set September 6

Rowan County's rural and consolidated schools will open Thursday, Sept. 6, Supt. Clifford Cassidy has announced.

Cassidy said the formal start of classes will be preceded by teachers conferences at Rowan County High Tuesday and Wednesday, Sept. 4 and 5. This is termed the "In-Service" program, preceding opening of the schools.

It was also brought out today the number of children of school age in Rowan County has been dropping, not alarmingly but steadily, for the past few years.

This will cost the school system in equalization and other state funds.

Census figures indicate the population of Morehead has been steadily gaining, but rural sections are losing at a steady pace with many citizens seeking employment in the industrial area.

The superintendent said the complete teacher, and personnel list for publication. He said only a few changes had been made in teacher assignments.

There will be no changes in principals at the consolidated schools. They are all re-elected.

Harry C. Mayhew has been named Associate Director of Public Information at Morehead State College. President Adron Doran announced today.

Mayhew has served as a graduate assistant in Public Relations at Morehead during the past year and holds both the AB and MA degrees from Morehead State College. He will help coordinate the program of institutional interpretation and student publications and will serve as an instructor in journalism.

He has been sports editor, managing editor and editor of the Trail Blazer, the Morehead student newspaper and has worked as an Associated Press stringer and a staff writer for the Panhandle Herald.

Mayhew has been a participant in the Honors Program at Morehead, was named to Who's Who in American Colleges and Universities, and graduated with distinction. He was secretary and vice president of the Campus Club and member of the Cosmopolitan Club, Kappa Delta Phi, Literary Honor Society, Phi Kappa Phi, and the Council of Presidents.

He was born in Paintsville and is a member of the Beta Beta Beta Honor Society.

## These Cats Ran For Their Lives

Residents in the Upper Tyeart area of Carter County reported this week that seven feral cats took the hills when the owner's car wrecked on U.S. 125 on the out-of-state tourist road.

## Perkins Says Appropriations Are Certain

The U.S. House of Representatives today the Fiscal Appropriation Bill for 1963, which contains \$15,000,000 for the advanced engineering and design of the Cave Run Reservoir at the Rowan-Bath county line.

## Jesse Shelton Killed In Auto Wreck

Jesse Highway Shelton, 45, Morehead, was killed Tuesday afternoon when a new panel truck he was driving left K-1 between Grayson and Hitchens in Carter County.

The State Police Officer at Ashland, which conducted the investigation, said Shelton was crushed when the truck overturned on its side.

Shelton was employed by the State Police at Grayson and was on duty at the time of the accident. He was driving a 1961 Ford panel truck.

The accident happened at 2:40 p.m. Shelton was first taken to Stoval Hospital at Kings Daughters Hospital. He was later transferred to Ashland.

Shelton was a member of the State Police and was on duty at the time of the accident. He was driving a 1961 Ford panel truck.

Shelton was a member of the State Police and was on duty at the time of the accident. He was driving a 1961 Ford panel truck.

Shelton was a member of the State Police and was on duty at the time of the accident. He was driving a 1961 Ford panel truck.

Shelton was a member of the State Police and was on duty at the time of the accident. He was driving a 1961 Ford panel truck.

Shelton was a member of the State Police and was on duty at the time of the accident. He was driving a 1961 Ford panel truck.

## Old Ordinance On Bowling Rescinded

Morehead's Bowling Lanes have been operating illegally since they opened last year, but this was corrected today.

Sombody found that on July 3, 1961 Council passed an ordinance prohibiting bowling alleys from operating after 9:30 p.m. on Sundays.

Council today repealed the ordinance.

## Two Projects Await New Wage Scale

Two Rowan County government units are waiting the issuance of a new prevailing wage scale by the Department of Labor before construction projects.

The Board of Education wants to erect a 12 classroom consolidated school on North Fork of Triplet, immediately west of the TTI booster station and adjacent to the Hoggie cemetery on the north side of the highway.

The Board of Education wants to erect a 12 classroom consolidated school on North Fork of Triplet, immediately west of the TTI booster station and adjacent to the Hoggie cemetery on the north side of the highway.

The Board of Education wants to erect a 12 classroom consolidated school on North Fork of Triplet, immediately west of the TTI booster station and adjacent to the Hoggie cemetery on the north side of the highway.

The Board of Education wants to erect a 12 classroom consolidated school on North Fork of Triplet, immediately west of the TTI booster station and adjacent to the Hoggie cemetery on the north side of the highway.

The Board of Education wants to erect a 12 classroom consolidated school on North Fork of Triplet, immediately west of the TTI booster station and adjacent to the Hoggie cemetery on the north side of the highway.

## Mayhew Gets Promotion At M.S.C.

Harry C. Mayhew has been named Associate Director of Public Information at Morehead State College. President Adron Doran announced today.

Mayhew has served as a graduate assistant in Public Relations at Morehead during the past year and holds both the AB and MA degrees from Morehead State College. He will help coordinate the program of institutional interpretation and student publications and will serve as an instructor in journalism.

He has been sports editor, managing editor and editor of the Trail Blazer, the Morehead student newspaper and has worked as an Associated Press stringer and a staff writer for the Panhandle Herald.

Mayhew has been a participant in the Honors Program at Morehead, was named to Who's Who in American Colleges and Universities, and graduated with distinction. He was secretary and vice president of the Campus Club and member of the Cosmopolitan Club, Kappa Delta Phi, Literary Honor Society, Phi Kappa Phi, and the Council of Presidents.

He was born in Paintsville and is a member of the Beta Beta Beta Honor Society.

Mayhew has been a participant in the Honors Program at Morehead, was named to Who's Who in American Colleges and Universities, and graduated with distinction. He was secretary and vice president of the Campus Club and member of the Cosmopolitan Club, Kappa Delta Phi, Literary Honor Society, Phi Kappa Phi, and the Council of Presidents.

He was born in Paintsville and is a member of the Beta Beta Beta Honor Society.

## 5 Morehead Streets To Be Surfaced

Morehead's City Council today authorized for bids to resurface five streets. The estimated cost to be borne by adjacent property owners.

The streets are: 1st St. West, Wilson Avenue to Fleming Avenue; 2nd St. West from Main to Hargis; 3rd St. West from Main to Hargis; 4th St. West from Main to Hargis; 5th St. West from Main to Hargis.

## Death Comes To Arthur Johnson, 52

Funeral services for Arthur Johnson, 52, were conducted Friday afternoon at the Lexington Hotel. He was born in Lexington, Ky., and resided in Lexington, Ky.

He was born in Rowan County, Ky., in 1910. He was a member of the Lexington Hotel and was employed by the Lexington Hotel.

He was born in Rowan County, Ky., in 1910. He was a member of the Lexington Hotel and was employed by the Lexington Hotel.

He was born in Rowan County, Ky., in 1910. He was a member of the Lexington Hotel and was employed by the Lexington Hotel.

He was born in Rowan County, Ky., in 1910. He was a member of the Lexington Hotel and was employed by the Lexington Hotel.

He was born in Rowan County, Ky., in 1910. He was a member of the Lexington Hotel and was employed by the Lexington Hotel.

## Seek Speed-Up In Low Rent Housing

Morehead's Municipal Housing Commission has made a study to the regional offices of HHA at Atlanta for a two-month study in advertising and letting contracts.

Atlanta has formally approved a December advertising and letting study with a January letting and a late 1963 completion (and occupancy) date for the 30 housing units.

Prices Climbing — The cost of living has set a new record in June, and to higher prices for food and medical care. The government's consumer price index rose one-tenth of 1 percent in June. This means that it now costs \$100 to buy what \$10 would have bought in 1957-59.

## Stroke Is Fatal To Maxine Meadows

A cerebral hemorrhage took the life of Maxine Meadows, 47, early last Tuesday afternoon after she was struck by a stroke.

She had been suffering severe headaches for several days, but this had been termed a minor ailment.

She had been suffering severe headaches for several days, but this had been termed a minor ailment.

She had been suffering severe headaches for several days, but this had been termed a minor ailment.

She had been suffering severe headaches for several days, but this had been termed a minor ailment.



### Morehead Automobile Sticker Tags on Sale

By City Ordinance, each owner of an automobile (or truck) in Morehead must have a sticker tag by Sept. 1. These stickers are available at the office of the City Clerk.

The Cost Is \$10.00 for Each Car, or Other Motor Vehicle.

Please observe this law as police are instructed to strictly enforce it after the last day of August, 1962. Violators are subject to fine and penalty.

### POSITIONS OPEN

Position	Starting Salary
CLERK STENOGRAPHER	\$230.00 Month
LABORATORY TECHNOLOGIST, A.S.C.P.	436.00 Month
LABORATORY TECHNOLOGIST, A.S.C.P.	293.00 Month
REGISTERED NURSE	340.00 Month

For more information write or contact Mr. Eli, State TB Hospital, Ashland, Kentucky.

### Complete Ambulance Service Oxygen Equipped "Equipped to Serve You"

Member of Kentucky Funeral Director's Burial Association  
Authorized to Service  
Burial Insurance Contracts Issued By COMMONWEALTH LIFE INSURANCE CO.

### LANE FUNERAL HOME

Phone ST 4-4983

Morehead, Ky.

## MORE THAT'S NEW IN KENTUCKY '62 STATE FAIR LOUISVILLE SEPT. 7-15

SEPT. 7-8-9

### RCA CHAMPIONSHIP RODEO WITH TV BONAZA STARS

8:30 P.M. and 8:00 P.M. Sept. 7 and 8. 3:30 P.M. only Sept. 8. Boxes \$2.50. Reserved \$2.00. General Admission \$1.50. Children Under 12 yrs. half price.

### WORLD CHAMPIONSHIP HORSE SHOW SEPT. 10-15

Advance Ticket Sale Closes Sept. 9

### RENFRO VALLEY HOMECOMING SHOW DAILY, SEPT. 7-15

### OLSON SHOWS MIDWAY SEPT. 7-15

### ACRES OF EXCITING EXHIBITS

Championship livestock, poultry, agricultural and dairy machinery... hundreds of commercial and agricultural exhibits, 4-H and many, many others.

#### FREE FEATURES

- HEALTH-O-DRAMA
- TYPICAL RUSSIAN HOME
- BARRACK-AGES REVUE NIGHTLY
- BLUE GRASS BELLES NIGHTLY
- AND MANY MORE

#### SPECIAL "EARLY BIRD" OFFER

\$1.00 A LOAD 7 A.M. to 10 A.M.



TOP CALF—Sonny Utterback, Clearfield, is shown with his Holstein calf that won a blue ribbon at the Flemingsburg show. At left is Rowan Assistant County Agent Ronald Hislop.

## Sonny Utterback Wins Blue Ribbon At Cattle Show; Calf To Be Shown At Rowan Fair

By Ronald Hislop (Ass't. Rowan County Agent) Sonny Utterback of the Clearfield 4-H Club showed his dairy project at the district dairy show held at Flemingsburg Aug. 6. Sonny won a blue ribbon with his calf. This was quite an honor since the competition was very stiff.

Dezel Lee, Southworth of Georgetown was the Holstein senior calf winner while Donna Ray, Southworth was the junior champion Holstein winner.

Also attending the district show and watching Sonny do a fine job of showing were Mr. and Mrs. John Utterback. Sonny will be showing this calf in the Rowan County Fair this fall.

4-Hers Attend Annual Camp Thirty-three 4-H boys and girls attended 4-H Camp at Carter Caves.

GOOD CAMPERS—Among the six outstanding campers from Rowan County at the annual Carter Caves outing were, from left: Jeanie Sildom, Diana Caudill and Janie Sildom.

Caves July 30 to Aug. 3. Some of the activities were swimming, recreation of all kinds, classes in electricity, personal improvement, handicraft and safety.

Out of the 130 campers, 22 were chosen as star campers. Of these, six were from Rowan County: Greg Lowe, Diana Caudill, Patsy Egan, Kathy Oreire, Bobby Needham and Sandy Caudill.

Besides these six outstanding campers, the following won honorable mention: Jeanie Sildom, Jean Sildom, Nina Wilson, Jane Bellamy, Carlos Hill, Jimmie Williams, Steve Hargis, Ronnie Stevens, Mary Jane Hamilton, Judy Porter and Billy Jo Greene.

Five 4-Hers were on scholarship. Two boys, Billy Mocabee and Steve Hargis, Rowan County, won scholarships to the annual 4-H camp held at Carter Caves State Park.

HONORED—Billy Mocabee and Steve Hargis, Rowan County, won scholarships to the annual 4-H camp held at Carter Caves State Park.

The leaders attending were Mrs. Virginia Greene, Miss Cherry Porter and Ed Crisp. Other 4-H members attending camp were Garrett Plank, Terry Sue Reynolds, Charlotte Williams, Donna Cooper, Pamela Barker, Glenna Evans, Betty Howard, Sharlet Bellwell, Joyce, Swain, Freda Nickell, Patricia Kegley, Eva Jane Brown and Dean Porter.

## McCULLOCH BP-1 Mynhier Is Recognized As Marksman

Pfc. John C. Mynhier, 21, whose wife, Ruth, and mother, Mrs. Zona Mynhier, live on Route 4, Morehead, recently achieved recognition as a top Army marksman by qualifying for the expert-marksman badge during range training with the M-14 rifle in Germany.

Mynhier, a combat construction engineer in Company B of the 8th Infantry Division's 12th Engineer Battalion in Dextheim, entered the Army in September 1961, completed basic training at Fort Jackson, S.C., and arrived overseas last February.

He is a 1959 graduate of Rowan County High School.

## Purgation

(Continued from preceding page) T. A. Cline, Dortha E. Cline, Ellen Cline, Ada Cooper, Bettie L. Davis, Charlie Davis, Gladys Eldridge, Charles R. Hall, Anna Lee Hall, Preston Hall, Irene Orrick, Carl Shagas, Cloveta Tackett, Robert Milton Tackett, Mrs. George Van Hook, Ellen Wain, Emma Whit, Nelson Whit, Bettie T. Wormack, Robert E. Wormack, Susie Roberts, Edward W. Roberts, Lemard Roberts.

SEE IT TODAY... AT MONARCH Supply Store MOREHEAD, KENTUCKY

## Over Quarter Million Dollars Paid Rowan Countians During Year For Public Assistance

Rowan Countians received a total of \$275,835 in public assistance during the 1961-62 fiscal year from the Kentucky Department of Economic Security. Commissioner Earle V. Howell said.

Payments for the county's dependent children, newly aged, blind and disabled exceed the previous (1960-61) fiscal year total of \$271,461.

## Rowan County Agent Recites Tobacco Stripping Hints; Grasshoppers Are Troublesome

By Adrian M. Razor (Rowan Agricultural Agent) Many folks have already started topping tobacco and this advice probably isn't needed but, for those who haven't, the University of Kentucky recommendation is to let the field be three-fourths to top, and then top all plants for a more uniformly ripened crop.

Then, if you suck, and most people do, before cutting, leave the top suckers until you get ready to cut and then you can go through and move these with just one string.

By all means, let's make every resolution in 1962 year that we are going to let our tobacco get ripe.

Also, now is a good time to be laying in our cobs or, if we are going to use gas, installation should be made right away.

I believe we have one of the best crops we have ever had so let's don't ruin it between now and stripping time.

Grasshoppers Are Causing Trouble Some folks are having trouble with grasshoppers now and, if you are, a recommendation is to use diazinon, aldrin or heptachlor, or Sevin. Follow the recommended rates given by the companies.

Usually they can be controlled by spraying a border around the field but be sure not to spray where cattle or livestock are grazing.

Patronize Our Advertisers

## Urgo Time Limit On Wife's Alimony

A time limit should be applied to alimony, argues Superior Judge Rager Alton Pfaff of Los Angeles.

The cocktail lounges of America and with unhappy, lonely, frustrated, and alcoholic women. Pfaff told the American Bar Association's junior bar conference.

They've crushed an affluent husband out of a substantial lifetime annuity. The ex-husbands are left financially strapped for life.

As for the ex-wives Judge Pfaff observed: "Who otherwise would be emotionally stable and productive women are turned into tramps."

## Morgan Says This May Be The Problem

State Rep. Fred Morgan of Paducah said at Paducah this week he has identified a "problem" mentioned in time with his chances of running for lieutenant governor on former Gov. A. B. Chandler's ticket.

Morgan said he does not regard it as a problem. Chandler, when asked recently about the possibility of Morgan running with him in 1963, had replied: "Morgan has a problem."

Morgan said then he saw only one possible stumbling block the opposition to him of the former Sen. Gov. Earle Clements.

Morgan said the matter involved his employment by the Sperry-Hutchinson Co., a trading stamp firm.

He said he has discovered there may be people in the Chandler camp who would object to him running because of this situation.

Morgan said in 1958 he worked at Frankfort as a registered lobbyist for the firm, while at the same time he was a member of the legislature, but continued on the payroll while he was a member in the 1959 and '60 sessions.

His salary is \$10 a month. Morgan said no trading stamp legislation was voted upon in the sessions and if there had been he would have excused himself from voting. He said he did not regard his work — public relations consultant — as any conflict of interest.

Chandler, contacted at his home at Versailles, declined to say if Morgan's job was the problem to which he referred, saying: "You take his quote." He said there was no change in Morgan's status in regard to the ticket and no other possible candidate has come to the fore.

Never induce a person to make a promise that you know will not be kept.

## Livingood Wins Gates Tire Prize

The Gates Rubber Co., Denver, this week announced a Rowan County winner in the Gates Tire Jambooree national contest, sponsored locally by Midland Trill Garage.

Ralph Livingood, Rt. 1, won a six-tripoint radio.

When political parties seek votes they understand the process of getting them.

## Pleasant Valley Drive-In Theatre

U.S. 40 East Olive Hill FRIDAY, AUG. 17 BINGO tonight — Jackpot \$225 plus other cash prizes. — On the Screen Audrey Hepburn in "Breakfast at Tiffany's" (Color)

SAT., 3 Big Color Shows

Clara Walker in "Yellowstone Kelly" — PLUS — "Bachelor Flat" With Tuesday Weld and Richard Byner — AND — "Dinosaurs"

SUNDAY — OPEN HOUSE FREE SHOW, Everyone Invited. Robert Mitchum in "The Last Time I Saw Archie" — PLUS — "Black Sunday"

MONDAY — TUESDAY Bring Carload for \$1.05 — On the Screen — "Raisin' in the Sun" — PLUS — "Herod, the Great"

WED. - THURS. - FRI. John Wayne in "Comancheros" (Color)

STARTING SUNDAY, AUG. 16

"Ben Hur" Will be shown at the regular admission price of 85c. First theatre to show this movie at this low price. Children under 12 in cars admitted free.

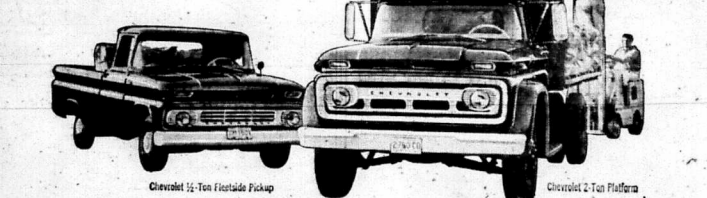
## Something you should think about if you're about to buy a truck:

If all trucks were built the same way, cost the same to keep up, were worth the same at trade-in... then probably the price tag would be your only concern. It can't be, of course, because some trucks have more quality than others. And marks of quality are the real keys to low cost.

Chevrolet trucks, for example, have double-wall construction, which gives bodies and cabs more strength. Cabs are insulated against heat, cold and noise. A big part of road shock, which shortens truck life, is damped out by Chevrolet's suspension system; it also makes riding in the truck a pleasure. Pickup bodies and cabs are separated to eliminate stress between them.

## CHEVROLET CHEVROLET TRUCKS

Quality trucks always cost less!



See your local authorized Chevrolet dealer

## MIDLAND TRAIL GARAGE

East Main Street Phone STute 4-5136 Morehead, Kentucky

# Rowan County News

Merged With The Independent (1945)  
"Over 18,000 Readers Each Issue"  
Based on county population this newspaper has the largest circulation of any weekly publication in the United States.

Published every Thursday at Morehead, Rowan County, Ky.  
Entered as Second Class Mailing Matter at Post Office, Morehead, Ky.

Advertising Rates Available On Request  
W. E. Crutcher, Publisher  
Mary J. Caudill, Business Manager  
Office Corner Wilson Ave and Sun Street  
Telephone, State 4-813

When requesting change of address be sure to include old address.

Subscription Rates		
	One Year	Two Five Years
In Kentucky	\$3.50	\$9.50 \$15.00
Outside Kentucky (including overseas)	\$4.00	7.50 17.50

No subscription taken for less than one year. All subscriptions payable in advance.  
None taken on telephone.

## The Editor's Pen

# Fiscal Court Places Library Referendum On November Ballot

It's official! Appearing on the November Rowan County ballot will be the proposal of a seven cent tax on each \$100 assessed to support the library and bookmobile. Proponents submitted the petition Tuesday to Fiscal Court and magistrates, complying with Kentucky Revised Statutes, ordered the referendum.

Supporters of the library and bookmobile plan school house meetings, etc., to acquaint the public with the bond proposal and explain the cost will be small to the average taxpayer. It is true the big gas transmission companies, TGT and Columbia, will fork over about 60 per cent of the tax if the bond issue is approved, with the rest of it more taxes than the rest of us more about "Medicare." If the gathering is opened to questions and answers...

**Are These Signs Of Prosperity?**  
We have been writing for months that Morehead's destiny is to become a small city instead of a county seat town, emphasizing sound reasons, i.e., growth of the college, geographical location, etc. Even with this conviction of growth and prosperity we are little confused sometimes about business undertakings.

**This Tax Will Soon Be Due**  
The city clerk's office at Morehead reported today the \$10 auto mobile (and truck) stickers have been placed on sale. Morehead residents must pay up by Sept. 1.

**Calls Came From Everywhere**  
If ever a business needed a complete listing it was the Rowan County News last week. Even though the Aug. 2 edition carried a page one story there would be no issue Aug. 9 (the first full week in August) as Thursday was a vacation, subscribers started calling Thursday and the phone keeps ringing.

**County Population Is Decreasing**  
We call this the era of the population explosion, and Morehead is growing faster than area towns. Last year the population of Rowan County is dropping a little each year. Example — the number of children in Rowan schools this year will be about 2,700, a drop from 2,900.

**Most Have Died Or Moved Away**  
Rowan County's Purgation Board has removed 260 names from the voting lists. (See story elsewhere in this issue.)

**Sign Up for League Bowling**  
There are still a few openings for men's and women's league teams. Sign up now, and be assured of participation. Anyone wanting to join a league team for the fall season should phone State 4-1132 or contact Manager Eugene Smither at the bowling lanes.

**Big "Roll-Off" Underway**  
Also starting this week is the big 20 game roll-off to see who will represent Morehead Lanes on "Big Three" bowling over WSAT-TV, Huntington.

**Morehead Lanes Are Now Open**  
The Morehead bowling lanes are open after being closed a week to get the lanes in finest shape to satisfy you, the customer. Come in, and bowl in air-conditioned comfort — practice up for the fall bowling season starting Sept. 10.

**Sign Up for League Bowling**  
There are still a few openings for men's and women's league teams. Sign up now, and be assured of participation. Anyone wanting to join a league team for the fall season should phone State 4-1132 or contact Manager Eugene Smither at the bowling lanes.

**Big "Roll-Off" Underway**  
Also starting this week is the big 20 game roll-off to see who will represent Morehead Lanes on "Big Three" bowling over WSAT-TV, Huntington.

**Morehead Lanes Are Now Open**  
The Morehead bowling lanes are open after being closed a week to get the lanes in finest shape to satisfy you, the customer. Come in, and bowl in air-conditioned comfort — practice up for the fall bowling season starting Sept. 10.

**Sign Up for League Bowling**  
There are still a few openings for men's and women's league teams. Sign up now, and be assured of participation. Anyone wanting to join a league team for the fall season should phone State 4-1132 or contact Manager Eugene Smither at the bowling lanes.

**Big "Roll-Off" Underway**  
Also starting this week is the big 20 game roll-off to see who will represent Morehead Lanes on "Big Three" bowling over WSAT-TV, Huntington.

**Morehead Lanes Are Now Open**  
The Morehead bowling lanes are open after being closed a week to get the lanes in finest shape to satisfy you, the customer. Come in, and bowl in air-conditioned comfort — practice up for the fall bowling season starting Sept. 10.

## LETTERS TO THE EDITOR

# Woman Fears Rowan May Be One-Party Political County

The Editor: Rowan would not want to live in a nation with a one-party system. Our country is made up of states and states are made up of counties. Would you want to live in a one-party county? How foolish the question must seem to a patriotic citizen like yourself, as you should be non-partisan since you are the only newspaper in the county. The political maneuvering has started. You don't have to put your ear to the ground to hear the high way equipment on the march and observe the pictures of the good looking young hopefuls who spend money (we presume their own) on trips to travel, labor and console Messrs. Ward and Combs into sending the taxpayers money for a full road, are we?

Again I think Rowan is on the way to a one-party county, since you stated in your newspaper last issue that 24 per cent of the people work for the government. When you consider how many work for the state, and the number the state supports, there aren't many ordinary taxpayers left who have to find means to earn their livelihood and pay taxes to support the state. Awaiting anxiously to see just how partisan your newspaper will be this fall, and remember we Republicans are subscribers too.

**Put Youth On The Road**  
The Editor: The Kentucky State Employment Office is speaculating a drive to put youth on a job in Rowan County. It is hoped by doing this drive that we can place our youth who have dropped out of school, the high school graduates and others in this area on jobs. In order to get this drive under way we need help from all segments of the community.

**Praises Morehead State College**  
The Editor: The Chicago newspapers rarely mention the great University of Chicago, Northwestern University and all the other colleges and sports pages. You are to be praised as a county seat newspaper for giving so much space to Morehead State College.

**Qualifications Of The Politician**  
The West Liberty Mayor Charles Beck advertised during the week that he was setting the qualifications: "male, age 30-45, experience preferred, must be married."

**Finishing Out**  
Deadline is nearing to register for the November general election. Congressman Carl D. Perkins will lead the fight this week in Washington for the Cave Run and Grapson Reservoir appropriations. He called this newspaper to say no stonking block is anticipated.

**County Population Is Decreasing**  
We call this the era of the population explosion, and Morehead is growing faster than area towns. Last year the population of Rowan County is dropping a little each year. Example — the number of children in Rowan schools this year will be about 2,700, a drop from 2,900.

**Most Have Died Or Moved Away**  
Rowan County's Purgation Board has removed 260 names from the voting lists. (See story elsewhere in this issue.)

**Sign Up for League Bowling**  
There are still a few openings for men's and women's league teams. Sign up now, and be assured of participation. Anyone wanting to join a league team for the fall season should phone State 4-1132 or contact Manager Eugene Smither at the bowling lanes.

**Big "Roll-Off" Underway**  
Also starting this week is the big 20 game roll-off to see who will represent Morehead Lanes on "Big Three" bowling over WSAT-TV, Huntington.

**Morehead Lanes Are Now Open**  
The Morehead bowling lanes are open after being closed a week to get the lanes in finest shape to satisfy you, the customer. Come in, and bowl in air-conditioned comfort — practice up for the fall bowling season starting Sept. 10.

**Sign Up for League Bowling**  
There are still a few openings for men's and women's league teams. Sign up now, and be assured of participation. Anyone wanting to join a league team for the fall season should phone State 4-1132 or contact Manager Eugene Smither at the bowling lanes.

**Big "Roll-Off" Underway**  
Also starting this week is the big 20 game roll-off to see who will represent Morehead Lanes on "Big Three" bowling over WSAT-TV, Huntington.

The News welcomes letters from its readers, particularly on subjects of general interest. The author must sign the letter and his name will be used. The publishers reserve the right to condense.

College, and other school activities. Morehead College is the life-blood, as you correctly stated, to your community, and the public schools the training ground for the future generation. When I was a little girl in Mason County we considered Morehead and Rowan County very backward, and the people not properly educated. I have changed my mind after reading your newspaper for several months. You have a wonderful newspaper and your people should be proud of their progress, including a new hospital.

It's wonderful to see a community grow like Morehead. Mrs. E. C. Cummins Homestead, Ill.

**Put Youth On The Road**  
The Editor: The Kentucky State Employment Office is speaculating a drive to put youth on a job in Rowan County. It is hoped by doing this drive that we can place our youth who have dropped out of school, the high school graduates and others in this area on jobs. In order to get this drive under way we need help from all segments of the community.

**Praises Morehead State College**  
The Editor: The Chicago newspapers rarely mention the great University of Chicago, Northwestern University and all the other colleges and sports pages. You are to be praised as a county seat newspaper for giving so much space to Morehead State College.

**Qualifications Of The Politician**  
The West Liberty Mayor Charles Beck advertised during the week that he was setting the qualifications: "male, age 30-45, experience preferred, must be married."

**Finishing Out**  
Deadline is nearing to register for the November general election. Congressman Carl D. Perkins will lead the fight this week in Washington for the Cave Run and Grapson Reservoir appropriations. He called this newspaper to say no stonking block is anticipated.

**County Population Is Decreasing**  
We call this the era of the population explosion, and Morehead is growing faster than area towns. Last year the population of Rowan County is dropping a little each year. Example — the number of children in Rowan schools this year will be about 2,700, a drop from 2,900.

**Most Have Died Or Moved Away**  
Rowan County's Purgation Board has removed 260 names from the voting lists. (See story elsewhere in this issue.)

**Sign Up for League Bowling**  
There are still a few openings for men's and women's league teams. Sign up now, and be assured of participation. Anyone wanting to join a league team for the fall season should phone State 4-1132 or contact Manager Eugene Smither at the bowling lanes.

**Big "Roll-Off" Underway**  
Also starting this week is the big 20 game roll-off to see who will represent Morehead Lanes on "Big Three" bowling over WSAT-TV, Huntington.

**Morehead Lanes Are Now Open**  
The Morehead bowling lanes are open after being closed a week to get the lanes in finest shape to satisfy you, the customer. Come in, and bowl in air-conditioned comfort — practice up for the fall bowling season starting Sept. 10.

**Sign Up for League Bowling**  
There are still a few openings for men's and women's league teams. Sign up now, and be assured of participation. Anyone wanting to join a league team for the fall season should phone State 4-1132 or contact Manager Eugene Smither at the bowling lanes.

**Big "Roll-Off" Underway**  
Also starting this week is the big 20 game roll-off to see who will represent Morehead Lanes on "Big Three" bowling over WSAT-TV, Huntington.

# 'Shell' Home Planned On MSC Campus

The Department of Finance has approved a bid of \$6,485 for a pre-cut "shell" for a one-story, three-bedroom faculty house to be erected at Morehead State College. The house, which will be rented to faculty members at the college, will be constructed by Houses and Duplexes, Inc., 4004 Ormond Road, Louisville.

No law enforcement officer should wink at the violation of a law, regardless of who happens to violate it for what reason. Patronize Our Advertisers

# Mrs. W. H. Rice Attends Meeting At University

Mrs. W. H. Rice, home economics teacher at the Beckhridge Training School has returned from attending the State Conference for home economics teachers held Aug. 12 at the University of Kentucky. The home economics meeting was held in conjunction with the first Kentucky Vocational Conference which began July 31 on the U.K. campus.

Theme for the home economics section, "Developing More Depth in Home Economics Programs," was presented by Miss Mary Lois Williamson, State Director of Home Economics Education. Mrs. Rice participated in the panel discussion on the topic, "How Kentucky is Meeting Some of the Challenges in Home-Making Education for Adults," also by Miss Williamson. She reported the workshop she attended at the University of Kentucky is just getting under way with "Home Economics Classes for Upper-Grade Level High School Students." The curriculum developed for this age group deals with problems of concern to the young adult.

**For Sale**

NEW 3-BEDROOM FRAME HOME with bath. On large lot about 1/2 mile East of Morehead on US 60. Only \$9,500.

— For Further Information Contact —

**C. ROGER LEWIS AGENCY**

331 Main St. — Phone ST 4-5333  
MOREHEAD, KENTUCKY

**STARVATION**

In the Land of Plenty

For years, gulls fly around St. Augustine, Florida have lived off the refuse thrown overboard from the shrimp fleet. But recently the fleet moved 500 miles down the coast.

Many gulls, unused to making a living as nature intended, starved to death. In our growing dependence upon government subsidy, we wonder if this might be a lesson. We would!

Your Best Security Comes From What You Save!

**The Citizens Bank**

"Grows With Us"

OPEN A SAVINGS ACCOUNT TODAY

Checking Accounts • Saving Accounts • Loans

Member Federal Deposit Insurance Corp

USE OUR NIGHT DEPOSITORY

**MOREHEAD LANES**

Are Now Open

The Morehead bowling lanes are open after being closed a week to get the lanes in finest shape to satisfy you, the customer. Come in, and bowl in air-conditioned comfort — practice up for the fall bowling season starting Sept. 10.

Sign Up for League Bowling

There are still a few openings for men's and women's league teams. Sign up now, and be assured of participation. Anyone wanting to join a league team for the fall season should phone State 4-1132 or contact Manager Eugene Smither at the bowling lanes.

Big "Roll-Off" Underway

Also starting this week is the big 20 game roll-off to see who will represent Morehead Lanes on "Big Three" bowling over WSAT-TV, Huntington.

Bowl the 20 games anyway you desire — two, three, four, etc., at a time. All games must be rolled in open bowling. Be sure to enter today as you must complete all 20 games by August 31.

**MOREHEAD LANES**

Opposite Jayne Stadium

E. Main St.

**STANDARD OIL**

**KENTUCKY'S MOST POPULAR FAMILY OF GASOLINES**

One popularity winner leads all other gasolines sold in Kentucky, year after year. It's the Standard family of gasolines. Three great gasolines offering you top performance, whatever your car's requirements:

**ECONOMY CROWN** is a new, lower-priced gasoline—designed for the many cars on the road that cannot take advantage of extra anti-knock quality. Supplies all the power such cars can use, at a saving.

**IMPROVED CROWN GASOLINE**—Users of regular grade gasoline will find a new gasoline value in Improved Crown Gasoline—now at an all-time high in quality. Moves your car up in performance while holding driving costs down.

**IMPROVED CROWN EXTRA**—The popular premium gasoline now at an all-time high in anti-knock quality—designed for those cars requiring the finest in performance characteristics.

**E. C. DART, Agent**  
Morehead, Kentucky

**STANDARD OIL COMPANY (KENTUCKY)**

### Liberty Bell Rings Once More

The Liberty Bell, silenced many years by its famous crack, was rung this week at Philadelphia to signal the first anniversary of the Berlin wall.

City Council President Paul Ortens used a eight-inch rubber mallet and pounded on the bell in Independence Hall for about two minutes.

Pictures and recordings of the event are scheduled to be shown here and in Europe in protest of the Berlin wall.

Authorities fear that if the Liberty Bell were struck in a more conventional manner it would be split.

Suspicious people are those who judge mankind by themselves.

Those who do not agree with our opinions are (b) dumber than we are.

PREPARE NOW for a lifetime profession. Barbers have also working conditions, steady employment, good pay. Consider LEXINGTON BARBER COLLEGE where you have an air conditioned school, all new equipment, and a well qualified instructor. For information come in or call 3206. 212 E. High St., Lexington.

### Reapportionment Case Facing Court Hearing

Circuit Judge Thomas F. McAllister of Grand Rapids, Mich., has been appointed chief judge of a special three-judge panel to hear Kentucky's reapportionment case.

The announcement came from Judge Shackelford Miller Jr., chief judge of the 6th Circuit Court of Appeals. He also named U.S. District Judge Henry L. Brooks of Louisville to the panel.

Miller said he expects to appoint another district judge shortly. McAllister will be available until Aug. 22.

The suit was filed by City of Louisville officials seeking to force Gov. Bert Conant to call a special legislative session for redrawing legislative districts.

Louisville and other cities would gain seats under such a move, but every 10 years under the state constitution, but last done in 1942.

Combs has asked a delay while the state carries out its own plans to solve the issue. Many motions have been filed but Miller said last week action must await appointment of the judge's panel.

### NO SHELTER PLAN

The House Appropriations Committee voted against President Kennedy's request for 568 million dollars to build new shelters.

The committee also recommended withdrawal for the limited funds previously allowed for shelters and a ban on all construction of shelters except where specifically authorized by Congress.

### Experiment Station Claims Radioactivity Reports About Milk Greatly Exaggerated

Cow's milk as a carrier of radioactivity from fallout has been erroneously over-emphasized in the last few years.

Actually, the dairy cow — the "foster mother of the human race" — still looking after the humans who depend on her. She is filtering out most of present-day radioactivity (which is far below danger levels anyway), and is still furnishing a highly nutritious food that helps (and will continue to help) humans resist absorption of these substances.

That's the gist of two separate articles recently issued by U.S. Agriculture Department staff members, A. W. Rudnick Jr., and W. S. LaGrange.

Rudnick points out: All foods are contaminated from fallout except those stored under shelter. When exposed foods such as leafy vegetables are eaten, man takes in the full dosage of radioactive elements contained in that particular food.

But if the cow eats that plant and man drinks the milk produced by that cow, man gets only 10 to 15 percent of the original contamination.

Here's why: Strontium 90, a radioactive material, is absorbed by the human body much the same as calcium, into the bones.

Milk also is much easier to test for radioactivity. But it is not as though they may have higher levels of radioactivity, do not meet of exacting requirements. So milk gets the publicity.

LaGrange points out that radiation has always been with us, and that fallout furnishes only a small fraction of it. And radioactivity levels are far below what is considered of even minimum danger to humans.

Milk researchers have already perfected a system by which strontium 90 (a chief fallout product of nuclear bombs in fallout debris) can be removed from milk. But this is not true of other foods, where removal will be much more difficult.

The building was designed by McLeroy, Tume and Clark Architects, Lexington, and it utilizes plastic laminated partitions and glass in the ultra modern design.

The main level will house the suite of offices for the President, the Dean of the College, the Dean of Graduate Studies, Business Affairs and the Registrar.

Located on the lower level will be the Dean of Students, the Associate Dean of Student-School Relations, Alumni Relations, Public Relations, In-Service office and reading room.

The building is designed so that additional levels may be added as more administrative space is needed. The current administration and classroom building will be renovated, providing additional classroom space and faculty offices.

Construction is expected to be completed by March. The president's suite will include a conference room, three offices, a reception area, a secretarial area and a filing room.

Included in the business affairs suite will be five offices, a large clerical area with service counters, a vault and storage area and space for a computing and machine room.

The registrar's suite includes an office, reception area, clerical area and a large ready storage area.

The Dean of Students and Associate Dean of Students will have a large secretarial area, with two additional offices for student personal services.

### Tobacco In Kentucky Is 'Spotty'

Directors of the Kentucky Burley Tobacco Growers Cooperative Association reported this week that the tobacco crop is "spotty" in many areas of the state due to insufficient rainfall, and that a small number of farmers have begun cutting in one or two areas.

Bruce Strader Jr. of Western Kentucky, said that the burley tobacco crop in Hart, Garrard, Metcalfe and Allen counties, were "pretty dry" and the crops in Spencer and Shelby counties were in need of rain.

Several directors reported that in one or two areas, a "small number" of farmers had begun cutting operations and some had started housing the tobacco.

The Ohio crop was reported as spotty, and good crops were reported in Indiana and Fleming County.

William Blackford said that the Fayette County crop will not weigh out as heavy as last year.

D. J. Williams, vice president of the KYTCA, reported that John M. Berry, crop president, is en route to the Soviet Union and will be located in Moscow from Aug. 11 to 28. He will then journey to Vienna, Rome, Düsseldorf, Strasbourg and London.

Executive Secretary W. I. Stanton reported the sale of 23 hogheads of tobacco, den and garret, at the Burley and Dark Leaf Export Association meeting from Sept. 30 to Oct. 2 in Asheville, N. C.

### Prisoners Behave Like Children

Prisoners acted up at the Genesee County Jail on Sheriff Thomas E. Bell said this week at Flint, Mich. he has placed 15 of them on a new diet.

Genesee County Jail on Sheriff Thomas E. Bell said this week at Flint, Mich. he has placed 15 of them on a new diet.

Genesee County Jail on Sheriff Thomas E. Bell said this week at Flint, Mich. he has placed 15 of them on a new diet.

Genesee County Jail on Sheriff Thomas E. Bell said this week at Flint, Mich. he has placed 15 of them on a new diet.

Genesee County Jail on Sheriff Thomas E. Bell said this week at Flint, Mich. he has placed 15 of them on a new diet.

Genesee County Jail on Sheriff Thomas E. Bell said this week at Flint, Mich. he has placed 15 of them on a new diet.

Genesee County Jail on Sheriff Thomas E. Bell said this week at Flint, Mich. he has placed 15 of them on a new diet.

Genesee County Jail on Sheriff Thomas E. Bell said this week at Flint, Mich. he has placed 15 of them on a new diet.

Genesee County Jail on Sheriff Thomas E. Bell said this week at Flint, Mich. he has placed 15 of them on a new diet.

# Whether You Want to Sell or Buy Real Estate

★ HOMES ★ FARMS ★ COMMERCIAL ★ AUCTIONS



For Sale Herb Christian Property

THE HERB CHRISTIAN PROPERTY, price reduced for quick sale. Business or residential property on U.S. 60, just outside the east city limits, with lot frontage of 200 feet extending back 145 feet. Two dwellings, plenty of young trees, good garden and dandy seven-room home on a nice knoll. New four-room home. Good for investment, for increase in value, a bargain.

Property That Is Certain to Increase in Value

### Other Homes Offered

SOMETHING NEW IN '62—Drive out and look this one over. One of the best homes in this vicinity... BRICK VENEER—One of Morehead's better homes of advanced ranch type construction of utility, beauty and comfort. Four bedrooms, two baths, kitchen, dining room, large garage. Nice lot located near school, churches and Main Street. Home has fireplace, porch and patio. Priced cheaper than you can build. \$14,500.00.

NEAR EAST CITY LIMITS—One and one-half story frame dwelling located just outside the east city limits on U.S. 60. Also has a cottage in the back and garden. Home has three bedrooms, hall and bath upstairs. It has hardwood floors, ample closet space, two porches and carport. Lot is approximately 75 x 145. Shaded rent for \$150.00 per month.

160-Acre Productive Farm A Good 160-acre farm just 12 miles out of town, with school bus and milk route right at the door. Has 30 acres of nice bottom land, good pasture. One six-room frame dwelling and one four-room frame dwelling. Has a stock barn and is an excellent buy at \$17,500.00.

12-Room Dwelling Has 12-Room Dwelling This 9+ acre farm is located near U.S. 60 about two miles from town. Has good twelve room dwelling in good shape on a nice lot, running water with bath, some bottom land, also some horse and tobacco base. Just the place for someone wanting near the college. A good place to live in country living with good roads, good schools and good churches. \$17,500.00.

Located in Good Spot 250-Acre farm adjacent to the City of Morehead located on what is known as Julius Branch with one dwelling of seven rooms and bath. Tobacco allotment is 7 and also has a number of acres of nice bottom land. This property will make many large, beautiful building lots. As soon as the surveys are completed home building lots will be for sale.

### Commercial Property for Sale

Office Building 2111; built, located on East Main Street. In good condition. It could be used for a barber shop, beauty shop or various types of offices. One of the best business locations. Price \$10,500.00.

Garage Building A cobble stone garage building 52 by 34 feet with one acre of land located on U.S. 60 in a nice area about a five minute drive from town. Building could be used for a store, garage, vegetable market or just any small business. Price \$6,000.00.

H. H. LACY REAL ESTATE A LIFETIME OF EXPERIENCE IN FINANCING AND REAL ESTATE TRANSACTIONS GLADYS M. LACY - Salesman - MOREHEAD, KENTUCKY

## A Few Examples of the Low Prices at Edd's, Inc.

<b>INSULATION</b> 24 Inch 1,000 Sq. Ft. \$54.00	<b>WOOD WINDOWS</b> 20" x 14" \$15.75	<b>Outside White PAINT</b> First Grade \$5.95
<b>SHEET ROCK</b> 1/2 Inch \$1.60 Sheet	<b>RED OAK FLOORING</b> Clear Per Thousand Board Feet \$225	<b>Any Length SHEATHING</b> 1" x 12" \$95.00 Per M
<b>PORTLAND CEMENT</b> Per Bag \$1.40	<b>215-lb. MASONRY SHINGLES</b> Per Square \$6.95	<b>MASONRY CEMENT</b> Per Bag \$1.45

All Purpose Joint Mix 25-lb. Bag \$1.95

One Purchase Will Convince You... A few minutes spent at Edd's just shopping around and comparing prices will be worth your time. You'll be glad you stopped. See the friendly manager Ervorn Binion, or his assistant Jim White at Edd's for the very best prices and avoid the long haul of buying out of town.

Home of the Real Big Savings EDD'S, INC. Incorporated STate 4-1108 Morehead, Ky.

### Contract For Administration Building Let

A contract for \$404,912 has been let for construction of a new administration building at Morehead State College. Present Mayor Doran announced this week.

The Dawson Evans Construction Company, Cincinnati, has been awarded the contract and construction will get underway within 10 days.

Financed with state capital construction funds, the structure is a split level design with the top level facing College Boulevard and the two-level facing College Street.

The building was designed by McLeroy, Tume and Clark Architects, Lexington, and it utilizes plastic laminated partitions and glass in the ultra modern design.

The main level will house the suite of offices for the President, the Dean of the College, the Dean of Graduate Studies, Business Affairs and the Registrar.

Located on the lower level will be the Dean of Students, the Associate Dean of Student-School Relations, Alumni Relations, Public Relations, In-Service office and reading room.

The building is designed so that additional levels may be added as more administrative space is needed. The current administration and classroom building will be renovated, providing additional classroom space and faculty offices.

Construction is expected to be completed by March. The president's suite will include a conference room, three offices, a reception area, a secretarial area and a filing room.

Included in the business affairs suite will be five offices, a large clerical area with service counters, a vault and storage area and space for a computing and machine room.

The registrar's suite includes an office, reception area, clerical area and a large ready storage area.

The Dean of Students and Associate Dean of Students will have a large secretarial area, with two additional offices for student personal services.

### TONIGHT - FRI. AND SAT. 2 Big Hits 2

CHAKERES TRAIL MOREHEAD, KY. A1A CONDITIONED

EDGAR ALLAN POE'S TALES OF TERROR - COLOR

VINCENT PRICE - PETER LORE BASIL BATHORNE - DEBRA PAGE

PLUS CHILLING HORROR

STARTING SUNDAY THIS IS THE BIG ONE!

TWO GREAT STARS TOGETHER FOR THE FIRST TIME!

JAMES STEWART JOHN WAYNE

JOHN FORD

The Man Who Shot Liberty Valance

JOHN FORD



### Morehead Eagles Schedule 9 Football Games, But Only 3 Will Be On Home Field

The team years may be over for Coach Guy Penny and the Eagles of Morehead State College as an air of optimism prevails on the campus over the chances of the Blue and Gold gridlers this fall.

Morehead lost most of its games last year by slim margins and on errors that led to crucial scores by the opponents. These blunders may not be so prevalent on the Morehead squad this year. Additionally, Penny has a right sharp, and highly recommended, band of Freshmen.

The Eagles will play nine games. However, only three will be played at Jayce Stadium in Morehead, the other six away from home.

Marshall (of Huntington, W. Va.) will meet Morehead on a neutral field—at Ashland.

The schedule, with all home games starting at 2 p.m. except homecoming (Austin Peay Oct. 15) with the kick-off slated at 2:30.

Sept. 25—Middle Tennessee at Murfreesboro, Tenn.

Sept. 29—Tennessee Tech at Morehead.

### Franklin Church Pastor Sued For Damages

Damage action for recovery of \$5,026.60 from the pastor of a church stemming from an accident last January was filed in Franklin Circuit Court in Frankfort this week.

Leslie B. Graves, resident of the area where the accident occurred, charged he fell Jan. 22 at the Bethel Baptist Church premises on the Denton Road, suffered broken bones in his left hand, together with contusions and abrasions.

He asks \$5,000 in general damages against the Rev. Otto Spangler, pastor of the church, together with \$532.60 for time lost from work plus hospital expenses of \$75.

Basin of the suit against the pastor is that he had charge of the church premises, and that he negligently and carelessly caused these premises to be dangerous and hazardous to persons employing customary routes of ingress and egress to the church.

### U.S. MISSILES IN BRITAIN

United States missiles will take over Communist targets now assigned to 60 British-manned Thor rockets after they are taken off their pads. Informants said "the basis of the British action was financial." They suggested the money Britain saves in this way may be used to strengthen her conventional forces—including those assigned to NATO—and said this meets with United States approval.

Take care of your health and your health may take care of you.

There are borrowers who have the idea that all loans run for life.

### DiMaggio Pays Visit To Tomb Of Marilyn

Hundreds of mourners, including Joe DiMaggio, have visited Marilyn Monroe's crypt in Westwood Memorial Park since her entombment there Wednesday.

Guy R. Hockett, managing director, said "DiMaggio said his final goodbye Friday. He came over to the office to check over the lower cases and read the hundreds of telegrams.

"When he left the office there were about 18 or 20 people in front of the crypt. I guess I can't say goodbye now," he said dejectedly.

"I told him to wait a moment. I walked over to the people and explained that Mr. DiMaggio wanted a moment or two alone at his former wife's crypt.

"The people all were very nice. They walked away and let Mr. DiMaggio have his moments alone in front of the crypt."

Shop The Classified Ads

### Mother, Who Killed Child, Committed

A 24-year-old Fleming County mother accused of slaying her 21-month-old son has been committed to Eastern State Hospital at Lexington as a permanent patient.

The commitment of Mrs. Edna Ishmael was ordered by a jury composed of seven women and five men at a hearing conducted by County Judge Robert Stokely, Friday.

The order was on recommendation of doctors at the hospital, where Mrs. Ishmael had spent a Sunday observation period, and two local physicians.

Judge Stokely said Mrs. Ishmael earlier had been charged with murder in the slaying of her son. The child was killed with a moving machine sickle. He was found dead by his father, Demaree Ishmael, upon the father's return home the night of July 5 after a religious meeting.

The mother was found at the house the next day, claiming she had hid in the attic while officers searched for her.

Human beings waste a lot of time trying to appear important to others who know they are not important.

The great trouble about helping a man who asks assistance is that he will be back the next week for more help.

Once upon a time there was a man who remembered his friend and repaid a favor.

### Entire Park Work Force Laid Off

The entire work force hired to develop General Burnside Island into a state park has been suspended. Parks Commissioner Edward Fox said this week.

The action came after publication of reports of lack of progress on the project and criticism of the work crew.

Fox said he will go to the Pulaski County site Tuesday for a personal inspection.

More than 25 men were in the work crew. They were suspended indefinitely.

### Imperial Becomes Member Of All

Imperial Cleaners, Morehead, recently became a member of the American Institute of Laundering, Joliet, Ill., national trade association for research and educational center for the professional laundry industry.

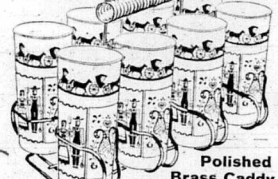
The institute is the fourth oldest and seventh largest trade association in the United States with a membership of nearly 3,000 laundries, suppliers, and equipment manufacturers in the United States and 41 foreign countries.

Patronize Our Advertisers



## FREE ICED TEA GLASS

when you buy 7 gallons of gasoline



Polished Brass Caddy

FREE with oil change & Lubrication

OFFER EXPIRES SEPTEMBER 30, 1962

At Ashland Oil Dealers displaying the "Free Iced Tea Glass" sign

Watch this newspaper for further description of

## AUCTION

to be held Saturday, September 15 at 10:00 A.M. Large dwelling and large lot will be offered for sale. Located near Williams-Nickell Oil Co. and at rear of Johnson Grocery, with alley running from Main Street to lot. This property suitable for commercial or residential use.

—SELLER—

Hattie (Mrs. Jim) Holbrook Estate

—Sale Will Be Conducted By—

C. ROGER LEWIS

### Plan Visitor Program In National Forest

Colonel R. P. Carroll, head of the biology department, Virginia Military Institute, and a naturalist of nationwide reputation, is working with Robert F. Collins, Supervisor of the Cumberland National Forest in launching a program of Visitor Information Services.

Colonel Carroll has been active in conservation education for many years. He has served at Ogeebay Park in Wheeling, W. Va., at the Virginia Outdoor Biological Laboratory near Mountain Lake, Va., and with West Virginia summer schools for conservation education. During the school year, he is in charge of the VMI biology department, where he has established an outstanding record in training pre-medical students.

Among the operations to be undertaken by Colonel Carroll, working in cooperation with local forest officers, are establishment of nature trails on which wild flowers, shrubs, and trees will be clearly identified, and preparation of guidebooks for self-conducted tours, so that school groups, sportsmen, and nature lovers can traverse selected areas of the forest and have the benefit of a professional commentary in the form

of a "do-it-yourself" guidebook. Colonel Carroll will also serve as a consultant to the forest supervisor in the development of demonstration areas and other media for increasing public interest and understanding of conservation problems.

National forests operate under a policy of multiple use, under which all of the resources are developed for public use and enjoyment. Supervisor Collins pointed out that many divergent interests have a legitimate place in the national forest program. Bird watchers, wild-flower enthusiasts, hunters, fishermen, and a wide range of people in recreation fields use the forest in pursuit of their hobbies. In addition, commercial uses, including the harvest of pulpwood and sawlogs, are permitted. All of these uses can be supported under proper multiple use management, and the Visitor Information Services program is designed to develop public understanding of the many inter-relationships which exist in natural resource production.

Headlines and color may fool readers, but do not make a news paper.

# ANNIVERSARY CELEBRATION

Ashland OIL PRODUCTS

This Friday and Saturday August 17 and 18

## Homer Adkins Ashland Service

Fleming Ave. at Flemingsburg Road - - - - - Morehead, Ky.

**FREE!**

King Size Carton PEPSI-COLA

With Purchase of 8 Gallons Gasoline (These 2 Days Only)

GOOD YEAR Brand new tires for your car

SAVE NOW ON NYLONS Popular Sizes On

## SALE

ALL-WEATHER "42" \$9.95

• NOT SECONDS • NOT RETREADS • 3-T NYLONS WITH TUFFSYN Goodyear's new long-mileage synthetic tread gives the "42" remarkable durability

Tubeless Only \$2 More No Money Down—Free Mounting

GOOD YEAR MORE PEOPLE RIDE ON GOOD YEAR TIRES THAN ON ANY OTHER KIND

Also Free (These 2 Days Only)

COTTON CANDY CARNIVAL FREE COTTON CANDY TO ALL KIDDIES

Be Sure to Get Your FREE Pepsi's and Cotton Candy on Friday and Saturday at

Homer Adkins Ashland Service

# FREE MEXICAN JUMPING BEANS

Here's a fun-time gift from Dr Pepper your whole family will enjoy—Imported Mexican Jumping Beans! Youngsters and adults alike will delight at the mysterious movements of the famous jumping beans! You'll find them in sealed packages on Dr Pepper cartons. Supply is limited so get several cartons at your favorite store today!



It's different...I like it!



RECC QUEEN—Mary Jo Rudd, Wolfe County, has been crowned Queen of the Licking Valley RECC. Besides being beautiful, Miss Rudd is a talented musician, a good cook, keeps house, can make a speech, milk a cow or drive a team. She is shown with Nancy Shackelford, member of the Eastern Kentucky Resource Development Project.

### 600 Registered In Post Summer Class

Over 600 students are registered in post-summer school classes and workshops at Morehead State College. President Adron Duran said last week.

Post-summer school classes started Aug. 6. Other August events are:

**MOREHEAD**

**DRIVE-IN Theaters**

**MOREHEAD, KENTUCKY**

**THURSDAY - FRIDAY**

August 16-17

**"Gone With the Wind"**

In Color

Starring Clark Gable and Vivian Leigh

Due to running time there will be one showing each night.

**SATURDAY**

August 18

**"3 Gun Features"**

**"Cinemascope - Color"**

Starring Van Heflin and Tab Hunter

PLUS

**"Thunder Road"**

Starring Robert Mitchum and Keely Smith

AND

**"Seven Women From Hell"**

In Cinemascope - Color

Starring Patricia Owens, Cesar Romero and Margia Dean

**SUNDAY - MONDAY**

August 19 - 20

**"Blue Hawaii"**

In Cinemascope - Color

Starring Elvis Presley, Joan Blackman and hundreds of Hawaiian beauties

**TUESDAY - WEDNESDAY**

August 21 - 22

**"The Errand Boy"**

Starring Jerry Lewis and Brian Donlevy

**THURSDAY AND FRIDAY**

August 22 - 24

**"The Roman Spring of Mrs. Stone"**

In Color

Starring Vivian Leigh, Warren Beatty and Jill St. John

**COMING SOON**

**"Come September"**

**"Battle At Bloody Beach"**

### \$500 In Cash Taken From Saweary Market

Approximately \$500 in cash and an estimated \$400 in merchandise was taken from Saweary Market last Thursday evening, Morehead city police officials said.

In addition, the culprits smashed sun glasses on the floor, sprayed the crowd with water and with sun-tan lotion and poured ink on valuable papers in the office, store manager Ken Snyder said.

The robbery was discovered early Friday morning when members of the Morehead Sanitation Dept. found the back door open. They immediately summoned Morehead police.

Entry was gained by using a crow bar to force the door.

No arrests have been made in the case.

### Adult Clothing Class Meets At Clearfield

The adult class in clothing construction, "The Blouse Unit," held its fourth meeting in the Clearfield Grade School gymnasium Monday.

The lesson, "Construction Techniques," was taught by Mrs. Norma Mead.

Those present were: Mrs. James Anderson, Mrs. Volney Skaggs, Mrs. Henry Johnson, Mrs. Ivan Reynolds, Mrs. Buck Brown, Mrs. Walter Skaggs, Mrs. Frank Moreland, Mrs. Dorothy Hunter, Mrs. Ira Skaggs, Mrs. Carl Johnson, Miss Fatty Johnson, Miss Anna Skaggs and Miss Diane Brown.

The next lesson will continue with "Construction Techniques" and will be Monday, Aug. 20, and the concluding lesson, "Finishing Details," will be held Thursday, Aug. 23, at 7 o'clock in the Clearfield Grade School gym.

The lessons begin at 7 p.m.

### Stroke

(Continued from Page 1)

ed the Morehead Roller Rink.

Mrs. Meadows confided recently to friends that she planned an expansion of business enterprises. She owned considerable rental property, both commercial and residential.

Friends said she left a will which she compiled shortly after her father's death—but this has not been filed for probate at the court house.

Her husband was ill of pneumonia at the time of the stroke, and has not fully recovered.

Among Mrs. Meadows' contributions to the community was her work in raising funds for muscular dystrophy. She successfully headed off this drive several years.

She was also active in the Morehead Woman's Club, heading many important committees and functions.

Like her father she was interested in the rural section of the county, and farming, owning several of Rowan's best and largest farms. She served as secretary of the Rowan County Farm Bureau.

At the time of her death Mrs. Meadows was completing plans for the annual 4-H Beauty Queen contest at the Rowan County Fair.

Mrs. Meadows' death came at a time when she was apparently in excellent health. It was also unexpected since longevity is so respected on both sides of her parents.

Besides her husband she leaves many aunts, uncles, cousins and other relatives.

Rev. Thomas Dittie officiated at the funeral while Stucky McElroy or Funeral Home cared for arrangements.

The casket bearers were: Norman Pant, Glenn Fravel, Parra Martindale, William H. Layne, Ernest Jayne and Alpha Hutchinson. The church was bedecked with hundreds of floral offerings, many from other states.

Mrs. Meadows was born on Sept. 25, 1914 at Morehead, and made her home at Morehead all most all her life.

Sponsored by the Southern Association of Colleges and Secondary Schools, the Superior and Talented Student Workshop offers no credit.

**Two Projects**

(Continued from Page 1)

head State College require highly skilled labor not available in the Morehead region.

No credit is given for the session.

The "General Adult Education Workshop," which offers two semester hours credit, will emphasize the techniques of teaching adults and the use of instructional materials.

Also offering two hours credit, the Conference on the Improvement of Instruction in Language Arts will teach the use of materials in teaching, including remedial reading.

The Kentucky Distance Institute offers one hour graduate or undergraduate credit in physical education.

Sponsored by the Southern Association of Colleges and Secondary Schools, the Superior and Talented Student Workshop offers no credit.

### Jesse Shelton

(Continued from Page 1)

Company and engaged primarily in secondary highway work in this area of Kentucky. Some of their contracts were sizable, and the partnership successful.

Mr. Shelton was a former State Representative from the district encompassed of Elliott and Lawrence counties.

He and his family moved to Morehead several years ago and made their home east on U.S. 60 (RFD 2).

He was born in Elliott County, Jan. 19, 1917, son of Mr. and Mrs. Nora (Pennington) Shelton, both of whom survive.

Mr. Shelton married Thelma Tipple in 1947. He leaves his wife, a daughter, Rita, 12, and stepson, Billy.

Other immediate survivors include a brother, Erast, Shelton; a sister, Mrs. Foster, sister, Mrs. Jo Ann Dickerson, Bruford.

**Clyde Roberts Is On Montrose**

Clyde Roberts, Bremen apprentice, U.S.N., son of Mr. and Mrs. Lloyd Roberts of Morehead, is on U.S.S. Montrose operating in the Western Pacific as a unit of the Seventh Fleet.

During the cruise, the ship will visit ports in the Philippines, Japan and Hong Kong.

# COME, SEE, COMPARE, BUY AND SAVE



### Best Quality Best Price

## COMPARE ANYWHERE

SIZE AND GRADE	PER 4'x8' PC.
1/2"x4"x8' A.D. Interior	\$2.58
3/4"x4"x8' A.D. Interior	3.73
1/2"x4"x8' A.D. Interior	4.72
3/4"x4"x8' A.D. Interior	6.15
1/2"x4"x8' A.A. Interior	7.46
3/4"x4"x8' A.C. Exterior	2.89
1/2"x4"x8' A.C. Exterior	3.91
3/4"x4"x8' A.C. Exterior	5.14
1/2"x4"x8' C.D. Interior	2.43
3/4"x4"x8' C.D. Interior	3.55
1/2"x4"x8' C.D. Interior	3.99
3/4"x4"x8' C.D. Plugged & Touch Sanded	4.52
1/2"x4"x8' Knotty Pine	7.25
3/4"x4"x8' Knotty Pine	13.20
1/2"x4"x8' Birch Vgrooved	8.45
3/4"x4"x8' Birch	13.85

## Pre-Finished PLYWOOD PANELING



Beautifully finished, random scored 4' x 8' sheets makes this plywood easy to install on any wall. Ideal for home, office or business.

RANDOM SCORED	THICK VENEER
1/4" PLYWOOD	1/4" PLYWOOD
Per 4' x 8' Sheet	
Lauan \$ 4.99	
Cherrytone 5.18	
Saharah Fruitwood 6.33	
Tawny Birch 6.70	
Western Cedar 6.70	
Knotty Pine 6.76	
American Cherry 11.32	

So easy to install, you can do it!

## 3-Pc. BATHROOM SET



★ 5-Ft. White Porcelain Tub  
★ 20" x 17" China Lavatory  
★ Closet Combination

Made by one of America's leading manufacturers of quality plumbing fixtures.

**\$65.95**

## 3-Pc. BATHROOM SET

CAST IRON IN BEAUTIFUL COLOR

GREEN BLUE CORAL TAN

**\$94.47**

★ 5-Ft. Cast Iron Tub  
★ 18" x 20" Cast Iron Vanity Lavatory  
★ Closet Combination

This beautiful bathroom set will enhance the beauty of any home, regardless of size or price.

## HOTPOINT AIR CONDITIONERS

13,000 B.T.U. N.E.M.A. Certified

**\$229.95**

16,300 B.T.U. N.E.M.A. Certified

**\$269.95**

Easy Terms and 1 Year FREE Service on All Major Hotpoint Appliances Purchased from

# VARINA

Per M. Bd. Ft.

Barrett's 210-lb. ASPHALT SHINGLES

**\$5.73** Per Square

15 and 30 lb. Builders

**FELT \$1.99** Per Roll

**NAILS**

8-10-16-20d Common Nails **\$8.99** per 100 lb. Keg

	Per 100-lb. Keg
1 1/2" Galvanized Roofing Nails	\$17.63
Case Hardened Flooring Nails	20.46
8d Finishing Nails	16.12
8d Cement Coated Nails	10.62
1 1/2" Dry Wall Nails	10.06

Many other sizes and kinds of nails, to fill most any need at prices any one can afford.

## KILN DRIED WEST COAST LUMBER

UTILITY & BTR. — GRADE STAMPED — ALL LENGTHS	
2"x 4"	Per M. Bd. Ft. \$89.00
2"x 6"	Per M. Bd. Ft. 87.20
2"x 8"	Per M. Bd. Ft. 87.20
2"x 10"	Per M. Bd. Ft. 87.20

CONST. & BTR. — GRADE STAMPED ALL LENGTHS	
2"x 4"	Per M. Bd. Ft. \$107.00
2"x 6"	Per M. Bd. Ft. 114.50
2"x 8"	Per M. Bd. Ft. 115.50
2"x 10"	Per M. Bd. Ft. 118.00
2"x 12"	Per M. Bd. Ft. 120.00
4"x 4" P.A.D.	Per M. Bd. Ft. 124.00

## FOLDING STAIRS

A VARINA SPECIAL

**\$14.95**

Quality constructed — R.S.O. 25 1/2" x 34". Take advantage of attic storage space — for home or office.

## Imp. Sheathing

For fast, dependable construction impregnated throughout with asphalt.

**\$43.75** Per M. Ft.

6" x 8" Hemlock BEVELED SIDING **\$114.00** Per M. Bd. Ft.

C & Btr. Grade

2" x 4" STUDS **51¢** Each Precision Cut 7' 8 1/2"

1" x 12" Ponderosa Pine **SHELVING**

KILN DRIED EASY TO WORK READY TO FINISH **\$125.00** Per M. Bd. Ft.

**VARINA WHOLESALE**

BUILDERS SUPPLY CO.

WINCHESTER - LEXINGTON

Highway 60 Phone Winchester 744-2655



# Rowan County News

Morehead, Kentucky, Thursday Morning, August 16, 1962



**PRACTICE SAFETY**—Station Superintendent Eugene Amburgey, left, and W. C. McGee, Jr., Safety Award. The trophy, named for the president of Tennessee Gas Pipeline Company, was presented to employees of the company's Morehead compressor station for their outstanding safety record since 1948 — 500,000 man-hours worked without a lost-time accident.

**UNBEATABLE SAFETY RECORD**

## TGT Employees Work 14 Years Without An Accident

Employees of Tennessee Gas Pipeline Company's compressor station near Morehead have worked 14 years—500,000 man-hours—without a lost-time accident. Never since the company began compressor station operations in Rowan County in 1948 has one of its employees been absent from work because of an injury suffered on the job. No other of the 40 compressor stations, operated by Tennessee Gas Pipeline Company has had as many years of safe operation although three of the larger stations have recorded more than

a half a million man-hours without a lost-time accident. They were able to do so in a shorter period of time because they have larger crews. The Morehead station's outstanding safety record has been recognized by the presentation of two awards to Station Superintendent Eugene Amburgey, who accepted the trophies in behalf of the station's 20 employees. During a recent dinner for the employees at the Morehead College Student Union Building, the W. C. McGee, Jr., Safety Award

## Flue Cured Average Same As Last Year

The 1962 crop of cigarette tobacco began moving to market in the Georgia-Florida belt this week with indications that prices by grades will average out close to last season's record highs. Opening day grade averages were slightly off from a year ago and general averages more so because of lower quality in the early offerings. Observers remember, however, that after a booming 1961 start prices broke sharply and never quite got back to the early levels.

It looked like another \$160 million plus season for the two-state belt with its 28 markets. The gross total last year was \$122.83 million. The belt's season general price average was a banner \$38.88 a hundred.

The U.S. Department of Agriculture reported today's prices by grades mostly unchanged to slightly lower than 1961.

The practical top price was \$66, the same as on last year's opening. Some buyers paid a top of \$67 for selected baskets. The lowest price reported was \$10 for unsound nondescript.

Estimated general averages on several representative markets in the belt ranged from \$34 to \$59 a hundred pounds. Sales for the 1961 opening day grossed \$12,452, 318 pounds and returned an average of \$69.50 a hundred, a record high.

## Rowan Road Bids Set For August 24

Bids for a group of bituminous concrete surfacing projects in Rowan County will be received by the Highway Department on Aug. 24. Commissioner of Highways Henry Ward announced this week. The group will include 3.9 miles of KY 173 from KY 22 at Wagners Store to the Elliott County line; and 2.1 miles of KY 174 from U.S. 60 at Hayes to the Carter County line. Another Rowan project will begin at KY 801 and extend 4.1 miles to the northeast. This highway improvement is being financed entirely by the state road fund.

## All Areas Of Eastern Kentucky Benefit From \$900,000,000 Accelerated Works Measure

Action was expected this week by the House Rules Committee to clear a \$900,000,000 Accelerated Public Works bill for a vote on the Floor of the United States House of Representatives. "This represents the first step in clearing for the Floor major pieces of legislation of importance to the 7th Congressional District which have been pending before the Rules Committee for some time," said Congressman Carl D. Perkins. Perkins expressed the hope that favorable action by the Rules Committee on the Accelerated Public Works Bill would be followed by clearance of his Youth Conservation Corps and Adult Basic Education Bills which have been pending there since spring having already been approved by the House Education and Labor Committee.

The Public Works legislation is similar to a bill sponsored by Perkins, which together with Administration proposals were the subject of hearings conducted recently by the House Public Works Committee. Upon passage a large program would be authorized to construct roads, streets, sewer facilities, water works, public buildings, parks and other such public projects to provide employment in areas where unemployment is excessively high. For the current fiscal year the bill would authorize appropriations of \$900,000,000 to match state and local funds on these types of projects. During the Congressional hearings, Perkins emphasized the widespread need throughout the 7th District for public works improvements, particularly roads. On this point Perkins told the Committee: "Let me say and emphasize the 7th Congressional District of Kentucky has a crying need especially for roads and highways... Until a large scale public works program with emphasis on roads and streets is initiated in many communities of the 7th District, many of the commendable projects envisioned in the Area Redevelopment Program and the Manpower Resources Retraining legislation will be less effective and will produce economic betterment at a pace only too slow for our national good."

Under the terms of the bill, all areas of the 7th Congressional District would be eligible for projects. The bill provides in general that the project must meet several conditions including: (1) that it can be initiated or accelerated within a reasonably short period of time; (2) must meet an essential public need; (3) a substantial portion of the project can be completed within 12 months after initiation; (4) will contribute significantly toward reduction of local unemployment; (5) project must not be inconsistent with locally approved comprehensive plans whenever such plans exist.

Perkins pointed out that public works to be constructed under the new legislation would fill a gap not now being provided by the Area Redevelopment Act, "Public facilities constructed with ARA assistance," said Perkins, "must tie in with specific newly established or expanded industrial or commercial installations and therefore some areas are unable to obtain construction of basic public works even though they are extremely important to the ability of the community to expand." Upon clearance by the Rules Committee, the legislation will face a major test on the Floor where there is organized opposition to it. Perkins expressed, however, belief that the legislation will pass.

## Tree Planting In Rowan County Is Accelerated

Rowan County Forest Guard Raymond Caskey reports that land owners planted 115,500 forest tree seedlings to reforest 115.5 acres of idle land in Rowan County during the fall of 1961 and spring of 1962. Caskey states that the Kentucky Division of Forestry is now accepting orders for seedlings to be delivered for the fall planting season. Persons interested in obtaining forest tree seedlings should contact Caskey, Rt. 2, Morehead, or the Kentucky Division of Forestry, Box 355, Morehead.

## SPY SHIPS LEAVE PACIFIC

Four Russian instrument ships which spent a United States nuclear tests for weeks in the Pacific steamed away after the 200-mile high shot on July 9. It is believed that the high-altitude test of a hydrogen device over Johnston Island gave United States scientists and perhaps the Russians important information on the effect of such a multimode explosion on communications and radar. This information is considered vital in developing an anti-missile system.

FOR LOCAL or LONG DISTANCE  
**MOVING or HAULING**  
CALL  
**Blair Transfer & Storage**  
(Formerly Calvert Bros. Transfer)  
Cargo Insurance  
Phone State 4-5903 MOREHEAD, KY.

**MORE THAT'S NEW IN KENTUCKY '62**  
**STATE FAIR LOUISVILLE SEPT. 7-15**  
World Championship RODEO with TV "Bonanza" stars September 7-9  
World Championship HORSE SHOW September 10-15  
Big RENFRO VALLEY HOMEOWN SHOW Daily September 7-15  
**ACRES OF EXHIBITS**  
• Championship Livestock • Farm machinery  
• Commercial exhibits • Typical Kentucky Home  
• 4-H, and many, many others.  
**OLSON SHOWS MIDWAY**  
Health-Drama • "Kentucky's Health... Future"  
**Bring the Family Early!**  
Admission only \$1.00 a car-bus load  
Between 7-10 A.M. Every Day

**RUFFY TWINS**  
**Wolfford Insurance Agency**  
Phone State 4-1494  
George Cavdill Bldg. Morehead, Ky.

# 5 STEPS to FIVE TONS

with Southern States Certified ALFALFA

1. Lime to pH 7.0, take a soil test, fertilize liberally.
2. Inoculate, prepare a good seed-bed, seed carefully.
3. Protect your stand from weeds and insects.
4. Cut at the right stage. Minimize your field and storage losses.
5. Plant the best seed... Southern States Certified Seed. It's winter-hardy, high in germination and purity, adapted, true to variety, pre-tested and guaranteed.

See your Southern States Cooperative Agency now

"My husband insists on the best for our family and that's why we heat water ELECTRICALLY!"

There're lots of ways to heat water — but there's only one way to get all the hot water you want without worrying and wondering without watching — without turning up and down — or off and on — to get it with a feeling of confidence and complete safety. And that's to heat water electrically.

Sure we could get along with a lot less than electric water heating. Save some money besides. But we would pay a pretty high price in inconvenience. Would it be worth it?

Not if you insist on the best for your family — not if you feel they deserve the best that money can buy. Of course, there are other ways you could spend the money — but there is no better way — not if you want first-class living for your family — electric living. It's well worth the price.

Consult Your Dealer Or Our Offices On Tank Size Before Buying A Water Heater.

**KU** SYMBOL OF SERVICE  
**KENTUCKY UTILITIES COMPANY**  
An Investor-Owned Electric Company

# PERFECT PARTNERS



2-lb. Loaf **69¢**

## Velveeta

IGA Corn	Whole Kernel, Cream Style	303 Can	6 for	<b>88¢</b>
IGA Early June Peas		303 Can	5 for	<b>88¢</b>
IGA Fancy Applesauce		303 Can	7 for	<b>88¢</b>
IGA Ripe 'n Ragged Peaches		No. 2 1/2 Can	3 for	<b>88¢</b>



AND **YOU**

This week the ladies who push the carts will be able to take advantage of extra savings on our own IGA Brand products. Once you have tried these products, we are sure you will be more than satisfied with their fine quality. Check over the many features in this ad, from our large selection in every department throughout our store. Then, shop today at your friendly IGA.



**Kool Aid**  
All Flavors **6 for 19¢**



*Maxwell House*  
**INSTANT COFFEE**  
6-oz. Jar **69¢**



**WHAT TABLERITE MEANS TO YOU**

TABLERITE Beef is "Bought-Rite"...all U. S. Choice Grade, skillfully selected by highly specialized IGA beef selectors (just any "U. S. Choice" meat won't do). This is to assure you the flavor and tenderness that add up to the extra quality Tablerite is famous for.

Properly aged for still more tenderness, this exceptional meal is then "Trimmed-Rite" BEFORE weighing. You get MORE meat for your money, you get REAL value, you TASTE the difference!

Greer Peaches	No. 2 1/2 Can	4 for	<b>88¢</b>
IGA Frozen Lemonade	6-oz. Can	9 for	<b>88¢</b>
Gold Medal Flour	5-lb. Bag Plain and Self-Rising	<b>39¢</b>	
Doumak Marshmallows	1-lb. Bag	<b>19¢</b>	



## Sirloin Steak **88¢**

TableRite Tender lb. **88¢**

TABLERITE T-BONE STEAK	lb. 98¢
TABLERITE ROUND STEAK	lb. 68¢
MUCH MORE SLICED BACON	lb. 48¢
SMOKED JOWL BACON	lb. 28¢

**BISCUITS**  
TABLERITE — 8-oz. Can



**12 for 88¢**

**ALLEN'S IGA FOODLINER**

Main Street Morehead, Ky.

New Store Hours — Monday through Thursday 8 a.m. - 6 p.m.; Friday and Saturday 8 a.m. - 8 p.m.



**IGA FOOD MAGIC!**  
by Eddie Doucette

**SWISS STEAK WITH NOODLES**

Cut 2-3 lbs. Tablerite Round Steak into serving pieces. Rub with seasoned flour 1/2 cup flour, 1 tsp. salt, 1/2 tsp. pepper, 1/4 tsp. Marjoram pound well into meat. In heavy skillet heat 1/4 cup Tablerite vegetable oil and broil steak on both sides. Add medium onion, chopped, 1 clove garlic, minced, 1 green pepper, chopped, 1 can IGA tomatoes and 1/2 cup Consomme. Cover tightly, bring quickly to boil, reduce heat and simmer until tender, approximately 1 1/2-2 hours. Thicken gravy if desired, correct seasoning if necessary.

... for the lady who pushes the



New White Cobbler  
**Potatoes**  
10 lb. Bag **39¢**

WHITE SEEDLESS GRAPES	lb. 19¢
CRISP PASCAL CELERY	Large Stalk 15¢
GOLDEN FINGER CARROTS	10¢

# Sandwich Foods August Features

August is Sandwich Month—and you'll find many sandwich foods plentiful this month, according to Mrs. Letta Jasper, UK Extension specialist in consumer marketing.

Featured in August for sandwiches will be a wide array of cold meats, such as bolonja, salami, minced ham, summer sausage, jellied corn beef, pepperoni, pickle loaf, liver sausage, tongue loaf, and many other selections. You also can find eggs, cheese, fish, peanut butter, and combina-

tions of vegetables and nuts for sandwich mixtures.

Turkey is an August plentiful, so you can plan menus around turkey sandwiches and salads, as well as the many regular ways to serve this versatile bird. Broiler-fryers and cans will continue in good supply, with prices near July averages.

All cuts of beef are in good supply. Mrs. Jasper says, "Chuck steaks, round steaks and ground beef will offer the most everyday economy. Since summer demands are heavy for steaks from the loin and rib sections and for top round, prices are somewhat higher on these cuts. Although pork prices increase seasonally, in summer, prices on ham and bacon show less increase than other pork cuts.

Fresh peaches, cantaloupe and other melons, summer apples, avocados, grapefruit, blueberries, lemons, plums, and peaches are the fruits that are in good supply during August.

Tomatoes, snap beans, corn, cucumbers, cabbage, peppers, eggplant, squash, and kohlrabi potatoes from local sources are at their peak of supply this month. You'll also find good prices on celery, carrots, lettuce, radishes, and green beans.

Fresh fish supplies are heavier in August too. Mrs. Jasper points out Whitefish, catfish, cod, flounder, fish sticks and portion fish, perch, clams, and scallops are the more economical choices.

Mr. Farmer . . .

Mr. Woodcutter . . .

YOUR CHANCE FOR EXTRA SPOT CASH INCOME

Kingsford Co.

The world's largest charcoal manufacturer and processor.

Needs Cord Wood

At its three plants — two at Healdman in Rowan County and the other at Hayward in Carter County.

Premium For Heavy Wood

Effective immediately we will pay \$2.50 per ton for round or split wood . . . this is the type of wood available on every farm.

Species

Beech, hickory, oak and maple are the woods we buy. Of course, we buy slabs and scrap woods, but all wood must come from sound trees

Size

All sticks must be at least two inches in diameter at small end and no thicker than eight inches. Length should be as near as 48 inches as possible.

Payment On Delivery

This is your opportunity to make many hundreds of extra dollars. Full payment is made on delivery at any of our three plants. No waiting for your money.

Kingsford Co.

State 4-727 P.O. Box 138 MOREHEAD, KY.

Phone or write Kingsford at the above address for full information. Or, bring your wood to us at either of our three plants and we will buy it.

# Farm-City Week Set In Kentucky

The week of Nov. 16-22 has been proclaimed Farm-City Week by President John F. Kennedy and plans are now under way for Kentucky's observance of the event.

State Conservation Commissioner Mattiek chairman of the Kentucky Farm-City Committee, said a kick-off meeting to bring to the attention of the citizens of Kentucky the importance of better farm-city relations will be held Sept. 10 in the ballroom of Freedom Hall at the State Fair and Exposition Center, Louisville, during the Kentucky State Fair.

James C. Bowling, director of public relations for Philip Morris, Inc., New York City, one of the principal speakers at the noon luncheon meeting, will discuss the interdependence of business and agriculture.

Bowling, a native Kentuckian, attended the University of Kentucky and graduated from the University of Louisville in 1951. In addition to his duties with Philip Morris, he has been public relations chairman of the Tobacco Institute since February 1960. This committee is made up of public relations officials of all the tobacco companies and their agencies.

Bowling, in a native Kentuckian, attended the University of Kentucky and graduated from the University of Louisville in 1951. In addition to his duties with Philip Morris, he has been public relations chairman of the Tobacco Institute since February 1960. This committee is made up of public relations officials of all the tobacco companies and their agencies.

Mattiek declared that "it is important that all groups — labor, business, industry and all consumers — join in the observance of Farm-City Week along with all farm groups to help promote a feeling of fellowship between the city resident and the rural dweller. In a state that is still two-thirds rural and with about the same number of people living on farms as in the cities, it is most important for both groups to work together as a team. We hope that everyone interested in the Farm-City movement will attend this luncheon meeting."

# State Chartered Banks Record Asset Increase

Kentucky's state-chartered banks showed an increase of 8.6 per cent or \$127,721,611 in total resources on June 30, compared with the same date last year.

The 1962 total is \$1,539,285,200, contrasted with \$1,416,812,042 for 1961.

State Banking Commissioner H. A. Rogers, who released the figures, said that the increases demonstrate a general improvement in Kentucky's economy. He added that the rises also show that Kentucky's 266 state-chartered banks are doing a "splendid job."

The test of your advertising, Mr. Merchant, is the business it brings to you, not what an advertising man might say it will bring.



SENATOR'S GEAR . . . Linda Reed studies before going underwater at Florida's Silver Springs for a look at the strange world below. She is a student at Florida State University.

# Farmers Must Keep Records About S. S.

Farmers must keep a record of their farm workers, advises Thomas B. Thompson, manager of the Ashland District Social Security Office.

Thompson points out that farmers must report and pay taxes if a worker earns \$150 or more in cash wages in a year, or if a worker works on 30 days or more during the year for any amount of cash paid on a time basis (hour, day, week). The employer tax and the employee tax are each 3 1/2 per cent, for a total of 6 1/2 per cent of wages. These earnings are reported on Internal Revenue Form 943. The report is due by Jan. 31 of the year following the year in which the wages are paid.

To obtain the proper forms, and an employer's number, farmers must complete a Form SS-4. These can be obtained from the nearest District Director of Internal Revenue, or the social security office.

If you desire more information, you should contact your social security district office at 411 10th Street, Ashland.

Hank Suberland, field representative of the Ashland office, will be in Morehead at the courthouse each Tuesday at 8:30 a.m. and will be glad to give you information concerning your social security.

The less you work the less you want to work.

# 100 YEARS AGO THIS WEEK

By Joe Jordan (Ky. Civil War Commission)

One hundred years ago this week a "sudden and extraordinary change in state policy" occurred in Kentucky. The neutrality, which was a phrase from Collins' "History of Kentucky" and refers to the resignation of Gov. Beriah Magoffin and his being succeeded by James F. Robinson.

Magoffin, a Southern sympathizer, had been elected in 1859 and thus was in office when the Civil War started. It was he who in response to a Washington call for troops from Kentucky, telegraphed the famous reply: "I say emphatically, Kentucky will furnish no troops for the wicked purpose of subduing her sister Southern states." A few days later a committee representing both political parties issued a statement in which it said of Kentucky and the federal government's demand for troops: "She has refused to comply with it. And in that refusal she has acted as becomes her."

We approve the response of the Executive of the Commonwealth.

Thus Gov. Magoffin at first had widespread popular support. The people later gave approval to his proclamation of neutrality, in which he warned both sides to keep their troops off Kentucky's soil. However, by August of 1862 the Union forces had a firm grip on the state, the military was controlling elections, the governor was helpless in the hands of a hostile legislature and was under pressure to get out.

Magoffin, whom even his enemies respected for his high principles, for some time had wished to be relieved of his empty title, but he resolved not to quit unless he could choose a moderate and fair Union man at his successor. The lieutenant governor had died. Under the Constitution then in force, the speaker of the state senate would fill a vacancy in the governor's office if one occurred. John F. Fisk, who was speaker, was not acceptable to Magoffin.

The legislature had been called into special session by the gov-

ernor. In accord with a plan that had been agreed upon, Fisk resigned as speaker. The senate chose as his successor James F. Robinson, a highly respected Union man who was acceptable to the governor. Magoffin then resigned; Robinson automatically became acting governor. Fisk was then re-elected to the speaker's post.

The new governor lived at Portledge, his plantation near Georgetown. He had been born in Scott County, son of a Revolutionary War officer, was a graduate of Transylvania University and a successful lawyer. Since he was to serve only the remainder of Magoffin's unexpired term, which would end in September of 1862, his administration would last only a little more than a year.

Adjutant General John W. Finnell reported that 41,700 Kentuckians had volunteered for service in the Union Army since the beginning of the war. No official figures on the number of Kentuckians in Confederate States service were available.

**TERMITES?**  
call Terminix!  
World's largest termite control organization!  
\$5000 GUARANTEE  
Against Future Termites Damage

**Car Lumber Co.**  
All Work Done by Terminix Co.  
For Further Information Call  
Phone State 4-5433  
Lexington, Ky.

# Average Veteran Of World War II Is 44 Years Old, Owns Home, And Has Three Children

Seventeen years ago, millions of G.I.s were "sweating it out" in fox holes, gun turrets and almost every conceivable place from Alaska to Australia. Our combat teams were poised for an invasion of Japan.

Then the war was over. The G.I.s started counting their "going home points," commenced planning just how to take up in civilian life where they left off. Could they carry the handicap of such a time back in the very prime of their young lives?

They could and they did.

The 17th anniversary of V-Day finds the average ex-G.I. of World War II—44 years old, married with three children, an annual income of just under \$6,000 and—if he purchased it under the G.I. Bill's home loan guaranty plan—living in a home costing \$14,500.



# People pay attention when you pay by check

Because checks symbolize financial maturity, they command attention and respect. Wonderful time-savers, too—don't make you wait for change. And they're safer than lovable cash!

Be smart — be modern — be prepared for contingencies, with a checking account here. Open one this month!

**PEOPLES BANK OF MOREHEAD**  
L.L.

**TREE!**  
Outdoor Gaslite when you install an Ashland Metered Gas System

This beautiful Arkla Gaslite gives you decorative outdoor lighting. Its soft, blue-white glow welcomes visitors, discourages prowlers. Every suburban home should have one.

Here's how you can get your gaslite without cost:

Just call the Ashland Oil bulk plant nearest you and arrange for installation of your Ashland Metered Gas System.

You'll receive this \$39.95 gaslite absolutely free. With your new metered gas system, you can enjoy the economy and convenience of modern gas for heating, cooking, water heating and clothes drying. There's only a nominal installation charge, plus a small monthly rental payment for the metered gas system.

Remember, you pay nothing until you start using the gas. We keep your tank filled . . . the gas you use is accurately measured by a meter. Your gas bill comes once a month only after you have used the gas. No big tank loads to pay for all at once.

Phone or write for details today. Free Gaslite offer expires August 15, 1962.

**ASHLAND OIL & REFINING COMPANY**  
U.S. 60 East • Box 21  
Morehead, Kentucky  
Phone: State 4-1188



YOUR DEALER'S GOT AUGUST BUYS

ON NEW CHEVROLETS

TO PLEASE EVERYBODY

(WELL...ALMOST EVERYBODY) CHEVROLET

Here's the best thing that's happened to make money to further their budgets—the lively low-cost Chevy II. It's not all kinds of room. And comes in 11 models, too—like the Nova 2-Door Sedan (second from top).

Want a roomy family car and a sporty driver's car for one low price? The rear-engine Corvair Monza (e.g., that Club Coupe, third from top) plays both roles to the hilt. Care to join the club—and get a buy, too?

JET-SMOOTH CHEVROLET CHEVY II NOVA CORVAIR MONZA

See the Jet-smooth Chevrolet, Chevy II and Corvair at your local authorized Chevrolet dealer's

# MIDLAND TRAIL GARAGE

East Main Street Phone STute 4-5136 Morehead, Kentucky

Biggest Shopping Event of 1962

# MARTIN'S

Morehead's  
Complete, Modern  
Friendly Department  
Store

These Prices Are Now in Effect!

• All Colors  
• All Designs



Boys' Long Sleeve  
**SPORT SHIRTS**

- Sizes 6 to 18
- Sanforized
- Ivy and Regular

**\$1.59**

**MEN'S SPORT SHIRTS** Small, Medium, Large, Long Sleeves **\$2.98**

Boys' Short Sleeve  
**SPORT SHIRTS**

For Back  
to School  
Sizes 6 to 18

— ONLY —

**79¢**



A Great Bargain in Polished Cotton Quilted  
**BEDSPREADS**

- Solids and Plaids
- Assorted Colors
- Full and Twin Size

Regular Price \$10.95. During This Sale Only

**\$5.99**

Sale Starts Thursday — These Prices in Effect for 10 Big Days — This Back-to-School

Ladies' Roll-Up Sleeve  
**BLOUSES**

Sizes 32 - 38

**77¢**

Ladies' Corduroy and Random Cord  
**Capri Pants**

- Assorted Colors
- Sizes 10 - 20

**\$1.98**

SPECIAL  
PURCHASE  
FOR THIS  
GRAND OPENING

- Gabardine  
Shell

Buy, Starting  
Thursday, and Save

Quilt-Lin

**Car**

Sizes 3 to 6

**\$2.98**

Sale Starts Thursday — These Prices in Effect for 10 Big Days — This Back-to-School

Nylon  
**DUSTERS**

- By Allendale
- Pastel Shades
- Sizes 10 - 18

**\$1.98**

Girls' Back-to-School  
**DRESSES**

- Large Selection
- All Sizes

**\$2.98 TO \$5.95**

Sleepcraft  
**QUALITY BLANKETS**

90% RAYON — 10% NYLON

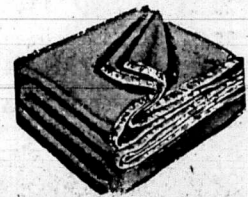
New Sleepcraft Nap for  
Extra Warmth

- Machine Washable
- Non - Allergenic
- Plaids
- Solids

SIZE 72 X 90

— ONLY —

**\$2.99**



Sale Starts Thursday — These Prices in Effect for 10 Big Days — This Back-to-School

Full  
Fashioned

**SWEATERS**

By  
Aileen

For the  
College Girl

We Bought Especially  
for This Event

Nationally  
Advertised

- Cardigans
- Novelty Trim
- Fur Blend

- Pullovers
- Orlon
- Machine Washable



STAYS SOFT  
AND LUXURIOUS

GIRLS' BACK-TO-SCHOOL  
**SWEATERS**

Sizes 7 to 14

**\$1.98**

For This Event Only  
Men's Hi and Lo Back Bib

**OVERALLS**

- 100% Sanforized
- Blue Denim

Compare  
This Price  
Anywhere

**\$2.66**

# Back to School

# SALE

Boys' Winston

## T-SHIRTS

Reduced for Back-to-School

**3 for \$1.69**

**KNIT BRIEFS** Sizes 4-16 **3 Prs. \$1.69**

Check These Tremendous Bargains At Martin's

80 Square Print . . . 4 Yds. \$1.00 <small>New Fall Patterns</small>	Skirt Lengths . . . \$1.33 <small>With Zipper</small>	Sport Shirts . . . \$1.59 <small>Boys' Long Sleeve - Sizes 6 - 18</small>
Jeans and Slacks . . . \$1.66 <small>Boys' Western - Regular \$2.49</small>	Batting . . . 39c <small>Mountain Mist</small>	Ladies' Blouses . . . 77c <small>Sizes 22 - 38 - Roll-Up Sleeve</small>
Brown Muslin . . . 5 Yards 97c <small>LL - Limit 10 Yds. to Customer</small>	Cannon Sheets . . . \$1.79 <small>Type 128 - Size 81 x 99</small>	Nylon Dusters . . . \$1.98 <small>Allendale - Sizes 10 - 18</small>
Fall Gingham . . . Yd. 77c <small>All Colors, 45 Inches Wide</small>	Wash Cloths . . . 10 for \$1.00 <small>Cannon - First Quality</small>	Girls' Dresses . . . \$2.98 - \$5.95 <small>Large Selection for Back-to-School</small>
Girls' Sweaters . . . \$2.98 <small>Large Selection, Sizes 7 to 14</small>	Pillowcases . . . Pair 33c <small>Cannon - White Muslin</small>	Blankets . . . \$2.99 <small>90% Nylon, 10% Rayon - Size 72 x 90</small>
		Overalls . . . \$2.66 <small>1st Quality - 100% Sanforized</small>

School Bargain Event Ends at Store Closing Time on Saturday of Next Week

Lined With Hood

## Coats

ALL COLORS  
Sizes 7 to 14  
**\$3.98**



Girls'

## Capri Pants

Ideal for Back-to-School  
3 to 6x and 7 to 14

— Reduced to —  
**\$1.49 And \$1.98**

Cotton House

## DRESSES

We Have Only 50 of These  
Going on Sale Thursday

• Sizes 10 - 12 and 12 1/2 - 24 1/2

Your  
Choice

**\$1.00**

School Bargain Event Ends at Store Closing Time on Saturday of Next Week

## Bath Towels

- Large Thirsty Cannon
- Size 20 x 49
- Buy Many and Save

**3 FOR 97¢**

## Boys' WRANGLERS

- 13 3/4 Ounce Blue Denim
- Sizes 4 - 16 and 1 - 6

**\$2.49**

Slims and Huskies . . . \$2.98  
MEN'S 13 3/4-OZ. BLUE DENIM  
**WRANGLERS** Sizes 29 - 38 **\$2.98**

## Boys' Hi-Top Work Shoes

For Back-to-School  
No Rip Back

Sizes 8 - 3 **\$3.98**  
Sizes 3 1/2 - 6 **\$4.98**

School Bargain Event Ends at Store Closing Time on Saturday of Next Week

Real Special Starting Thursday

Ladies' Ban Lon

## SWEATERS

- Sizes 34 - 40
- Assorted Colors
- Washable

**\$3.98**



Special Only During This Sale Starting Thursday

on All New Fall and Winter  
**LADIES' AND GIRLS' COATS  
AND SUITS BY BETTY ROSE**

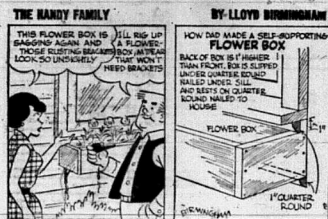
Fur Trims

- Fox
- Mink
- Raccoon

Untrimmed

- Tweeds
- Plaids
- Plush Fabrics





### Bureau Says Tax Cut Is Monkeyshine

By J. E. Stanford  
(Ky. Farm Bureau Fed.)  
The average farm Bureau member, like most everyone else, would thoroughly enjoy a good healthy tax cut if it really put some money in the taxpayer's pocket. But the proposed tax cut being widely discussed at present is a piece of monkeyshine business designed to put money in one pocket of the taxpayer while taking an equal amount or more out of another pocket to add to the huge ever-increasing national financial deficit.

The president appears inclined to ask for a cut of about \$7 billion—if he acts at all. This means a reduction of federal taxes in one form or another, which must be added to the federal deficit (not national debt), which would bring the 1963 government deficit to some \$12 or \$13 billion dollars. It is for the president will not push for the so-called tax reduction before early next year unless the pressure gets tremendously strong. The bulk of the pressure now is coming from a large group of labor leaders and politicians, both Democrat and Republican.

A fair and workable tax cut plan that would put some money in the taxpayers' pocket—instead of swapping dollars—would be one that would reduce government expenditures by as much as tax reduction amounts to. This would afford a sizable reduction in taxes and not necessitate an increase in the burdensome national deficit. A seven-billion-dollar reduction in federal spending per year could be had without endangering any needed government function or service. This view is shared in Congress by many members of both political parties.

It is common knowledge to most of us who have given a fair amount of study to the matter that a large amount of federal money has been wasted during the past 20 to 25 years. Much of this has been on pretty large projects that were and are of small importance to the nation and which have been lost through inefficient handling, a great deal through a great maze of red tape and billions through use of the "pork barrel." Plenty of places can be found to save plenty for a healthy and much needed tax cut—but getting it done won't be easy.



FINE FISHING awaits the sportsman at Lake Cumberland State Park in south-central Kentucky. Largemouth and smallmouth bass, walleye, striped bass, rockfish, crappie, bluegill, channel cats and rough fish of various species are taken from the 105-mile-long Lake Cumberland. Rainbow trout are taken below the Creek Dam which creates Lake "Island. A new Lodge nest" high on a wooded peninsula overlooking the lake will open in July with 24 guest rooms. Comfortable vacation cottages are also available, as are tent and trailer camping areas with a complete central service building. Lake Cumberland State Park is located off U.S. 127 approximately 10 miles from Jamestown, Ky.

### Grave Of Oldest Settler In Greenup

The grave of the first settler born west of the Alleghenies is at Old Town, Ky., and will soon be suitably marked, according to the Historical Sites and Shrines Committee of the Kentucky Historical Society.

The settler to be honored, Mrs. Lucy Virgin Downs, was born near Uniontown, Pa. in 1759 but is buried in Old Town, Greenup County, where she lived for about 40 years. She died there in 1847. The late Miss Jennie Oeston of Cincinnati, a fifth generation descendant of Mrs. Downs, is responsible for interest in the grave. Miss Oeston last year left a bequest of \$5,000 to mark the grave of her great-great-great-grandmother.

Kentucky poet-novelist Jesse Stuart of Greenup, who heads the committee to mark the grave, said plans call for a new gravestone, highway markers to attract motorists to the Old Town cemetery and landscaping and other improvements on the cemetery entrance.

**STATE FARM INSURANCE**

FOR INSURANCE CALL

**Clyde H. Smith**  
Agent  
— Phone 244-595 —  
Opposite First Baptist Church  
Morehead, Kentucky  
State Farm Mutual Automobile Insurance Co.  
State Farm Life Insurance Co.  
State Farm Fire and Casualty Co.  
Home Office—Bloomington, Ill.

### Versailles To Get A New Factory Plant

Elwood N. Hollenbach, president of Eastlake Screw Products, Inc., Greenfield, Ind., has informed U. S. Gov. Wilson W. Wyatt, chairman of the State Economic Development Commission, of his company's plans to locate a new manufacturing plant in Versailles.

Employment at the new facility will be five to ten persons initially and may later go as high as 40 to 50. The company will begin operations immediately in a leased building, where it will manufacture automatic screw machine products. Hollenbach said his company now has an option on a tract of land selected as the site for a manufacturing plant of approximately 10,000 square feet, with a possibility of future expansion.

## Shell dealers suggest 7 things to tell your son when he first borrows the family car

**1 Don't take other drivers for granted.**  
They sometimes do unexpected things. In the U.S. in 1960, they ran into stationary objects more than 150,000 times.

So don't be too optimistic. Cars backing out of parking spaces do sometimes back out blindly. Cars coming from the other direction might swing into your lane—especially on hills and curves.

Your best protection is to drive defensively. The only driver you can really be sure of is yourself.

**2 If the car won't start, there are a number of simple things worth trying.** Use the starter in short bursts. Press accelerator to the floor once, then hold it there while you try starter.

With manual shift, keep clutch pedal all the way down. With automatic transmission, jiggle lever to make sure it's in neutral.

*Note from Shell:* We recently published an advertisement with 7 simple starting tips. For a free copy, write to the Shell Oil Company, P.O. Box 272, New York 46, N.Y.

**3 Courtesy is contagious**—and adds to everyone's driving pleasure and safety. Nobody ever cured a traffic jam by losing his temper. If you can keep your sense of humor and wait your turn, everyone will probably get where he's going sooner. Including you.

Another suggestion: It takes only seconds to let someone enter the roadway ahead of you, but it can save the other driver minutes. Just remember to signal the car behind that you're slowing down or about to stop.

**4 Cars respond to good care.** Have the oil, battery and water checked every time you stop for gasoline.

When you're driving, listen for unusual mechanical sounds. If you hear one, have it checked right away. It could save a big repair bill later on.

On rough roads, take it easy—tires are tough, but they are destructible.

*Note:* For a free copy of Shell's 12-page booklet, "44 ways to make your car last longer," write to the Shell Oil Company, P.O. Box 272, New York 46, N.Y.



Many a young man first borrows the family car for a summer dash. On this page, your local Shell dealer offers some driving tips that can be useful to him all his life.

**5 Remember what you learned to get your driver's license, and you'll be a better driver.** Eight out of ten car accidents stem from improper driving practices—such as speeding, failing to yield right-of-way and following the other cars too closely.

Truck drivers and other professionals have very few of these accidents—mile for mile, about one-quarter as many as other drivers. The professionals know the rules of good driving—and obey them.

**6 If you're going to be late, call home.** And if car trouble is the reason, call the nearest Service station, too.

Park off the traffic lanes and wait in the car until help arrives—with the hood up to show you're disabled. Making repairs close to a busy road can be dangerous.

*Note from Shell:* Over 12,000 of our dealers go to special training schools each year. There, they learn how to spot trouble in a hurry. A Shell dealer can be helpful to you in almost any emergency.

**7 Have a good time.** So far, almost everything you've heard about cars has to do with safety. Now you're about to find out what a



Drive in where you see this shell—for Super Shell, the gasoline with 9 ingredients for top performance

### Labor Board To Be Headed By Carl Cabe

Dr. Carl Cabe, associate professor of economics at the University of Kentucky, has been appointed as the state's new commissioner of labor by Gov. Bert T. Combs.

He takes over the responsibilities of the office vacated by Owen L. Kerth, Federal Governor Combs said Kerth will remain in Frankfort for a few weeks as special consultant to Dr. Cabe until the commissioner becomes familiar with his duties.

Dr. Cabe, an expert in the fields of labor economics, wages, collective bargaining and labor laws, has obtained a leave of absence from the University of Kentucky to accept the post in state government.

A native of Elberta, Tex., Dr. Cabe, 43, attended North Texas State College and the University of Illinois, where he received the A.B. degree in 1944 and the Ph.D. degree in 1952.

His teaching career brought him to the University of Kentucky in 1958. While at Lexington he has served as coordinator for the Kentucky AFL-CIO State Labor School and coordinator for the annual Personnel Conference of the Ky-Tenn-Ohio Valley Personnel Relations Conference.

He is a member of the National Panel of the American Arbitration Association and a member of the Louisville Labor Management Committee. He is married, has two children, and lives at 305 Malabar Rd., Lexington.

### EXPERT WATCH REPAIR AT LOW COST!

Expert craftsmen will restore your watch to its running condition and appearance. Come in... compare our low prices and expert work. We are featuring the entire Speidel line of ladies' and men's watches/bands, including the sensational new Telex-O-Tex designs in a wide variety of styles and prices.

**Dr. D. Day**  
And Son  
West Main — Morehead, Ky.



### FOR YOUR FAMILY'S SAKE CHOOSE



**Blue Cross-Blue Shield** have never cancelled membership because of age, health, or retirement or when a chronic or incurable condition developed.

Dependents of accepted members (including widows and widowers) may continue their protection.

Blue Cross pays the hospital direct for services members receive. Many of these services are PAID IN FULL. Members have no loss of accumulated benefits.

**Blue Shield** pays your doctor direct, according to an approved schedule of benefits.

**MAIL THIS HANDY COUPON TODAY**

BLUE CROSS-BLUE SHIELD  
2100 Bankers Bldg.  
Louisville 5, Ky.

Please send me information and an application for Blue Cross and Blue Shield.

NAME \_\_\_\_\_  
ADDRESS \_\_\_\_\_  
CITY \_\_\_\_\_ STATE \_\_\_\_\_

Name of company where employed \_\_\_\_\_

**FARM BUREAU MEMBERS SEE YOUR FARM BUREAU AGENT**



Everything we ever wished in our LAND BANK LOAN

Federal Land Bank Association

Callieburg, Ky. Phone 797-5231
Mrs. Irene Cline
Salisbury, Ky.
Phone FRidley 9-033
Residence SHarwood 3-7555,
West Liberty, Ky.

Farm Bureau Proposes That Each Kentucky County Have At Least One Representative

The executive committee of the Kentucky Farm Bureau Federation announced this week that the organization favors a change in the state constitution prior to re-apportionment of both houses by population only would not be in the best interest of the people in Kentucky.
Citing recent action by the Federal Board of Directors, St. Clair pointed out that any reapportioning of the General Assembly should be predicated upon many factors.

including geographical location and specific interests of the people.
At a recent meeting of the organization's Board in Louisville, Federation directors suggested as a possible method of reapportioning that each county in Kentucky be represented by one elected representative and that the Senate be reapportioned on the basis of population.
Referring to the Constitution of the United States, St. Clair said, "The principle Farm Bureau suggests has proved over the years to be a stable form of government, representing area and population fairly."
Representation in the U.S. House of Representatives is based "on population, but the Senate is composed of two individuals from each state."
At Kentucky Farm Bureau's annual convention in Lexington last fall, the voting delegates called for continued adequate representation for the rural areas in Kentucky's General Assembly.
Any proposal to change present legislative districts must take this into account," St. Clair said.

Doctors In State Had Thalidomide

Forty doctors in Kentucky received samples of the drug thalidomide. But there have been no reports of ill results in the state, a State Health Department official said at a news conference this week.
Thalidomide has been blamed for causing thousands of babies in Europe to be born deformed, after their mothers took the tranquilizer while pregnant.
Shelby Johnson, director of the Division of Food and Drug, said an investigation "still was going on and that not all the doctors who received the drug have been contacted."
The U.S. Food and Drug Administration released figures on distribution of the drug, listing the number doctors in Kentucky who got thalidomide.
Theodore Maravaglia, director of the FDA office at Cincinnati, said the investigation had not uncovered any instance where the drug was given to pregnant women in Kentucky. He also said no Kentucky case of deformity has been reported because a mother took the drug during pregnancy.
The FDA said 30 Indiana doctors received the drug. The State Health Department there is investigating to see if any still have it.

Ringos Mills News

By Opal Denton
Mr. and Mrs. John Yarber and son of Edinburg, Ind., arrived Tuesday for a visit with their parents, Mr. and Mrs. Shelton Vise and her brothers, Olin, Johnny and William Vise and their families.
Mrs. Lela Rust and Mrs. Etta Zimmerman of Florida, visited Monday with Mrs. Betty Filson and daughter, Tammy.
Miss Millie Smith of Pine Ridge, was the guest last week of Miss Pamela Plank.
Mr. and Mrs. Smith Newman and Mrs. Nellie Hunt visited Monday with Timmy Edridge who is a patient in Hayswood Hospital, Mayville.
Mr. and Mrs. Tommy Lambert and son, Glean of Lexington, spent the week end with his mother, Mrs. Alma Lambert who accompanied them home Sunday for a few days' visit.
Mrs. Ella Rawlins, Mr. and Mrs. Hinton Maxey, Mrs. Laton Sneed and daughter, Judy and Harold Dean Sorell have returned home after a three weeks' vacation trip through the West. They spent a week visiting Mr. and Mrs. Wayne Maxey at Seattle, Wash. where they also attended the World's Fair.



SUPPORT UK—University of Kentucky alumni launched a centennial endowment fund for the university at a Wednesday night dinner given by Gae and Mrs. Bert Combs at the Executive Residence in Frankfort. Alumni discussing the new program are (from left) Mrs. C. K. Combs and Mr. Combs of Ashland; Mrs. Roger Caudill of Morehead; Governor Combs, who heads the Alumni '25' Fund; U. K. President Frank Dicksey; and Mr. Roger Caudill of Morehead.

Leroy Hodges
ALL TYPES DOZER WORK
PONDS - ROADS - DITCHES - CLEARING
Phone State 45760
Route 1 Morehead, Kentucky

LOOK
Now that winter is coming you will be living in the home more, so why not fix up that old furniture with that good leatherette upholstery from Last Chance Discount House on Flemingsburg Road? We now have all the beautiful colors and this will be the last until next year. It is going at about one-fourth the regular retail price and will never chip, crack, fade or peel and wears like iron. So, hurry to Last Chance where you can get live bait and fishing supplies, souvenirs and gifts from all over the world, beautiful bedspreads, house coats and Mexican jackets. We have just received a shipment of new drapes, curtains and table cloths (plastic) at below wholesale prices. They will go this week end at these prices, so drive out where parking is no problem, there is plenty of cold drinks and your favorite brands of cigarettes are only 25c, tax paid.
We are open seven days each week from early morning until late at night.
Last Chance
Flemingsburg Road (2 miles from Morehead)
PHONE STATE 4-5057
"Remember Our Live Bait Does the Twist!"

Unemployment Insurance Hike Coming

Changes in workmen's compensation insurance rates reflecting the increased benefits enacted by the 1962 General Assembly and the adverse experience of insurance underwriters went into effect Aug. 1 for new and renewed policies, Kentucky Insurance Commissioner W. T. Hockemush said.

About 80 per cent of industry classifications (excluding underground coal mines) covered by workmen's compensation will feel rate increases averaging 5.2 per cent. The remaining 20 per cent will pay lower rates than at present.

A more substantial increase was approved for underground coal mines. Large mines will pay premiums of 27.5 per cent more and premiums for small mines will be increased 11.1 per cent.

While the increased coal mine rates include increased benefits, they also reflect severe claims losses suffered in the coal mining business, Hockemush said. Insurance companies have reported underwriting losses in this classification for seven of the last 10 years. During the most recent 18-month period for which figures are available, such companies lost \$1,289,000 on coal mine compensation business. There is evidence, he noted, that this trend is continuing.

Monkeys are not the only monkeys that eat peanuts.

DRUG CONTROL

President Kennedy promises stiffer government controls to avert drug tragedies and urges every woman in the country to guard against taking thalidomide. Kennedy praised the Food and Drug Administration and said "we ought to be tougher" in regulating distribution of drugs to doctors for experimental use and suggested this could be done without further legislation.

In Phoenix, television star Sherry Finlayson sought to get around Arizona's ban on abortion by having a court declare a miscarriage necessary to save her life. She took thalidomide and fears her baby will be born deformed.

In Washington, the Food and Drug Administration said supplies of the drug have been distributed in the past to doctors in 38 states and the District of Columbia. It did not disclose the names of the doctors who received thalidomide.

In Phoenix, television star Sherry Finlayson sought to get around Arizona's ban on abortion by having a court declare a miscarriage necessary to save her life. She took thalidomide and fears her baby will be born deformed.

"Savigest Days" Sale
Rambler's record sales mean record savings for you
Rambler American—Unchallenged Economy King. Ramblers have delivered most miles per gallon of all cars in the U.S. economy runs full tank in room. America's lowest price to boot! FROM \$4034\*
Rambler Classic—More headroom than any other U.S. car. The car with the Best of Both: big car room, performance, compact-car economy, handling, room for six, footrest! \$4370\*
250 HP Rambler Ambassador V-8—Most luxurious, finest performing Rambler of all. Spectacular comfort, FROM \$5266\*
RAMBLER American Motors—Dedicated to Excellence

"A room just isn't without a color phone"
Nothing fits more beautifully into the scheme of things than a phone in color. In fact, a color phone always has nice things to say about you and your room. If you haven't made this happy discovery, may we induce you to drop around and select a phone in the color of your choice? We have them in a variety of interesting decorator colors.
GENERAL TELEPHONE
America's Largest Independent Telephone System

He adds to the fun of the great outdoors... THE FRIENDLY MAN WITH THE BETTER BRAND

He's your Good Neighbor Ashland Oil Dealer. Thoughtful, Obliging. Taking pleasure in each little extra service that may help to relax or refresh you. Eager to provide the kind of thoughtful, thorough service that makes for greater satisfaction. This is the friendly man with the better brand—the man who makes summer driving more fun. Drive in. Meet him. And try his top-quality Ashland Oil products. Like Valvoline All-Climate Motor Oil, World's First—World's Finest. And Ashland A-Plus Gasoline that gives you more power and better performance. Stop in soon at the sign of Good Neighbor Service.
ASHLAND OIL & REFINING COMPANY
Ashland, Kentucky
Ashland OIL PRODUCTS

### Planned Savings for College Program a Necessity

Factually speaking, those with the best education will have the greatest opportunity for success in the years to come. Will your youngsters have that opportunity? They will if you begin a planned program of savings for future educational needs at our Association.

#### 4% CURRENT DIVIDENDS

SAVINGS ACCOUNTS INSURED UP TO \$10,000 BY THE FEDERAL SAVINGS AND LOAN INSURANCE CORPORATION

**Mt. Sterling Federal Savings & Loan Assn.**

43 W. MAIN ST. PHONE 140 MT. STERLING, KY.

## AUTO PARTS

### NEW AND USED

— 500 CARS FROM WHICH TO CHOOSE —  
NEW ROCKER PANELS — BODY PLASTIC RECHROMED BUMPER — NEW TAIL LIGHT LENSES — REBUILT GENERATORS, STARTERS AND BATTERIES.

IF YOU NEED A PART, CALL US

Why not trade with Earl Whisman? Most Everyone else does.

RAY GOODPASTER, Parts Manager

### WHISMAN AUTO SALES

Phone 392 J Mt. Sterling, Ky.

"Located in Downtown Hope, Ky."

## OXYGEN EQUIPPED AMBULANCE SERVICE

Authorized to Service Burial Contracts Issued by Commonwealth Life Insurance Company

LICENSED BEAUTICIAN LADY ATTENDANT

### STUCKY & McBRAYER FUNERAL HOME

Owned and Operated by

Meredith M. Stucky and J. Earl McBrayer  
PHONE 5T 4434 MOREHEAD, KY.

## Forestry Camp To Be Near Pineville

Kentucky Ridge State Forest, near Pineville, has been selected as the site for a Kentucky Department of Corrections Forestry Camp, the first of its kind in Kentucky. It has been announced by Corrections Commissioner Carlos (Oakley) O. Matlock.

The two officials said this 12-acre site was selected on the basis of suitability and because of favorable public response in the area. Four other state forests — in Harlan, Bullitt, Floyd and Hopkins counties — had been considered.

Harold Black, director of the Division of Institutions in the Department of Corrections, said about 40 men will be transferred from the Kentucky State Reformatory at LaGrange as soon as facilities are provided.

Gene L. Butcher, director of the Conservation Department's Division of Forestry, said the men will be used in fighting forest fires, building forest trails, cutting fire breaks, planting seedlings, reducing fire hazards and otherwise improving the forests. Camp buildings will consist of six Quonset hut-type structures.

The state expects the camp to be in operation within 60 days. It will be located in the remote area of Bell County in a remote part of the Kentucky Ridge State Forest. The men will remain under custody at all times, Black said.

Calling this a forward move in Kentucky, Black said the project is modeled after a successful program in California, which now has 21 such camps.

Black quoted California's Gov. Edmund G. Brown as saying of the California program: "The conservation program . . . combines protection and development of our great natural resources with the rehabilitation of men — with a savings to taxpayers. It is a fine, noble, an essential thing to save our forests. It is an even nobler thing to conserve the greatest of all resources — human beings. By this program we are doing both."

Black said the action on the forestry camp is in accord with a recommendation made by the National Council on Crime and Delinquency in a recent study of Kentucky's correctional system. The survey, he said, was financed at a cost of \$8,500 by the Kentucky Committee on Correctional Research, a private group.

State officials selected the Kentucky Ridge Forest after receiving communications from officials and organizations in the area who favor the camp. There were a few dissenters to having the site selected, but the vast majority wanted the camp and recognized that the location of a state facility there will be of economic benefit to the area, Butcher said.

"Local organizations asking for the camp for Kentucky Ridge Forest recognized that the economic benefit to the community from the camp will include supplies bought locally and, most important, the expanding of the quality and quantity of saw-mill timber from the forests," Butcher said. "Mills operated commercially in the area, using mostly trees from Kentucky Ridge Forest, now employ some 45 men."

Black explained the basic purpose of the camp is the rehabilitation of prisoners but added that it is also economical to put these men in such camps, which can be constructed at nominal cost as compared to about \$10,000 per cell it would cost to construct more buildings in penal institutions which will be needed in Kentucky.

He emphasized that prisoners selected from LaGrange for the camp will be carefully screened and that none with a violence potential will be included. The men going to the camp will volunteer and then have to earn the opportunity to go, he added.

Black explained that the inmates who will go to the forestry camp will be the "same carefully-screened type who work on the grounds at Hazelwood Tuberculosis Hospital, at the Kentucky Children's Home and on the Reformatory farm, outside prison walls."

"No man will be eligible to go to the camp before having worked at least three months on an outside detail," the corrections official said.

Butcher, whose Division of Forestry is cooperating in the project,

outlined the advantages to Kentucky and to the area from the camp. He said he now has three foresters in the 12,000-acre woods — all his budget allows for the area. The additional men will help plant other trees, improve the forest for better timber by accepted forestry practices and serve as emergency fire-fighters.

"The men will do work in the forest that would not otherwise be done," Butcher added.

The estimated operating budget for the new camp will be \$60,000 and personnel. The money will come from the Reformatory budget and from the Governor's Contingency Fund.

A nominal amount for putting up the proposed six Quonset hut-type buildings and related minor construction will come from the state's Capital Construction Fund. Butcher said the Quonset huts are given to Kentucky free of cost by the federal government through its surplus property distribution.

Black, who said the six correctional officers in charge of the camp will be selected on the basis of experience and proved ability, said these states now have such a program: California, Pennsylvania, Wisconsin, Ohio, Illinois, Washington, Michigan and Alaska, which is just now starting its program.

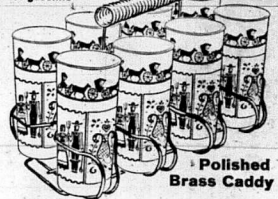


EN ROUTE—Airmen of the Kentucky Air National Guard board C-119 "Flying Boxcars" in Louisville en route to their summer camp training at Phelps Collins Air National Base, Alpena, Mich. More than 750 Kentucky air national guardsmen of the 122nd Tactical Reconnaissance wing joined fellow airmen from Nevada, Arkansas and Kansas for two weeks training Aug. 5-18.

**Ashland OIL PRODUCTS** **GOOD NEIGHBOR DAYS**

## FREE ICED TEA GLASS

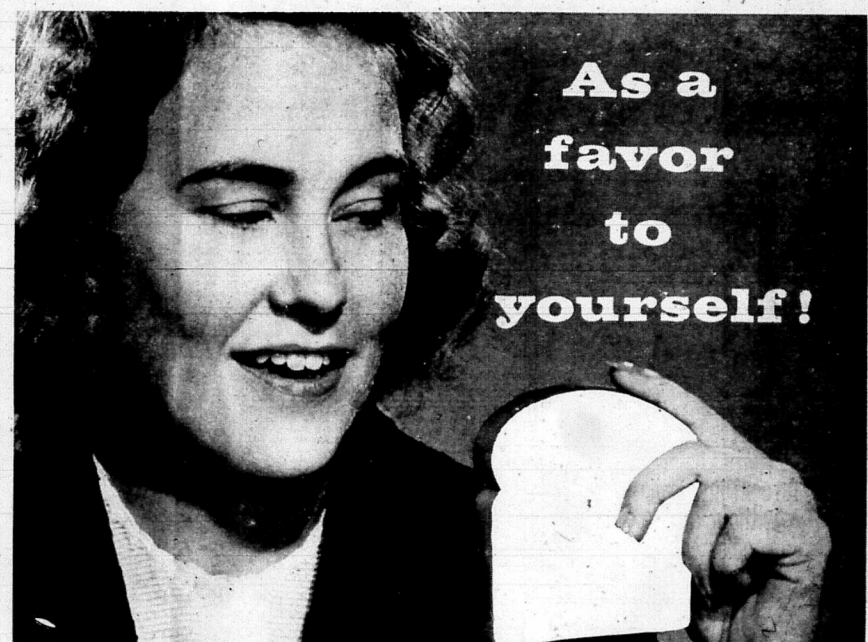
when you buy 7 gallons of gasoline



Polished Brass Caddy

FREE with oil change & Lubrication OFFER EXPIRES SEPTEMBER 30, 1962

At Ashland Oil Dealers displaying the "Free Iced Tea Glass" sign



As a favor to yourself!

## Make this simple TEST - make your next 5 loaves Heiner's

We are so convinced you'll never want to go back to other brands once you've given Heiner's Beater-Whipped white bread a fair trial, that we're asking you to make this simple test as a favor to your family and yourself — make your next 5 loaves Heiner's.

You'll find that Heiner's refreshingly different, finer flavor and better taste have a way of growing on you — that once you've tried Heiner's for a week or two, you'll never be satisfied with less — for taste or texture, whether made by the old process or the new small-batch process.\*

You'll agree, along with thousands of other new Heiner's users, that Heiner's really is the best in bread — that Heiner's really does bring out the best in you and your whole family. Make your next 5 loaves Heiner's — see for yourself.



IT BRINGS OUT THE BEST IN YOU!  
**Heiner's**  
"THE ORIGINAL" **BEATER WHIPPED**

NOW AVAILABLE IN **MOREHEAD AND VICINITY**

Look for the wrapper with the red & white stripes!

**SUPER BUYS YOUR V STORE**

**COLGATE TOOTH PASTE**  
69¢ SIZE 47¢  
TREMENDOUS SAVINGS

**2 QT. FOOD MILL**  
\$194  
REG. 2.98  
MASHES and STRAINS Vegetables and Fruits for Canning and Freezing

**1000 SACCHARIN TABLETS**  
1/4 GRAIN SUPER BUY 27¢  
BOTTLE 1000

**GIRLS Shirties PANTIES**  
MADE OF WONDERLEND eiderlon FABRIC  
33¢  
REG. 49c  
Size 2 thru 14

**McBRAYER - PIERCE CO. VARIETY STORE**  
Main Street Morehead, Kentucky



When you need ROAD SERVICE or TIRES...or a TAXI...find them fast in the **YELLOW PAGES** of your Telephone Directory.