

12,000 Readers
This and every edition of the Rowan County News has over 12,000 readers.

Rowan County News

10¢
On Newsstands
By Mail
In Kentucky, One Year \$2.00
In Kentucky, Two Years \$3.50
Outside Kentucky, One Year \$2.50
Outside Kentucky, Two Years \$4.00

Volume No. 78

MOREHEAD, KENTUCKY, THURSDAY MORNING, MARCH 30, 1961

National Editorial Association Member

Number Thirteen

Officials Are Exonerated By Grand Jury

The March Rowan County grand jury in its final report, said that charges against public officials made by a Tolliver Addition resident in a recent letter to the Rowan County News are without basis and not supported by facts. They were able to exonerate.

Chandler To Support Hart For House

Barring last minute filing, either Ray Bailey, Owingville, or Charles Ray should get moving upward in the April-June quarter, and recovery should be under way by late summer.

The filing deadline was midnight yesterday, and that was the last day who has registered their names with the Secretary of State.

Both are Democrats. The district, itself, is heavily Democratic, and no Republican has won this office for the past 30 years.

Deadline to file for county and city offices of record expires April 8. But the final date that candidates running in more than one county may vote is May 1.

Meanwhile, former Gov. A. B. Chandler told friends at the \$50-a-plate Democratic dinner in Louisville Saturday he would support Hart.

Thus the Representative's race may become a showdown between the forces of Chandler, Harry Lee Waterfield, Joseph Leary, etc., arrayed against the State Administrator, former Gov. Bert Combs. However, the Governor has given no indication he will take a hand in the 7th district race.

Recession Appears To Have Ended

The Kennedy administration believes the recession has about reached bottom. Budget Director David E. Bell said this week.

Bell told the Senate House Economic Committee that the economy should start moving toward recovery by the end of the year.

He said the Senate House Economic Committee that the economy should start moving toward recovery by the end of the year.

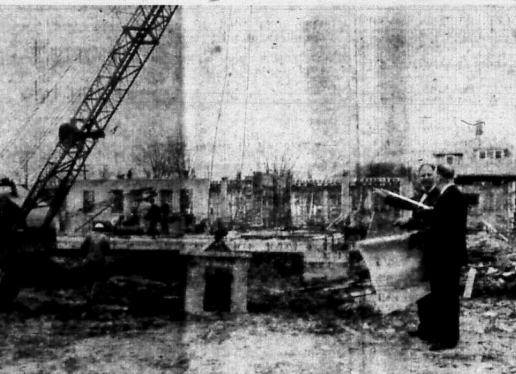
He said the Senate House Economic Committee that the economy should start moving toward recovery by the end of the year.

He said the Senate House Economic Committee that the economy should start moving toward recovery by the end of the year.

He said the Senate House Economic Committee that the economy should start moving toward recovery by the end of the year.

He said the Senate House Economic Committee that the economy should start moving toward recovery by the end of the year.

He said the Senate House Economic Committee that the economy should start moving toward recovery by the end of the year.



Dr. Adron Doran, Morehead State College president, points to feature of \$1,425,000 classroom building under construction. Lieutenant Governor Wyatt is shown with President Doran. A 106-room annex to East Men's hall is also under construction. Wyatt, in a speech Thursday, praised Doran as one of the nation's leading educators. Morehead College will have eight buildings, costing \$40 million, under construction this year as the college fast heads toward the 'University' classification.

seek reelection in 1964, following the death of his wife in 1963.

Mr. Day served as County Clerk two terms from Jan. 1, 1946 to Jan. 1, 1954. He did not

Bun Day Enters County Judge Race

One of Rowan County's most widely known citizens, a former public official, Bernard (Bun) Day today announced his candidacy for County Judge on the Republican ticket.

Mr. Day served as County Clerk two terms from Jan. 1, 1946 to Jan. 1, 1954. He did not

seek reelection in 1964, following the death of his wife in 1963.

Mr. Day served as County Clerk two terms from Jan. 1, 1946 to Jan. 1, 1954. He did not

seek reelection in 1964, following the death of his wife in 1963.

Mr. Day served as County Clerk two terms from Jan. 1, 1946 to Jan. 1, 1954. He did not

Beautification Of County Ass'n. Plan

Evening minded citizens Tuesday evening formed the Morehead-Rowan County Beautification Association, elected officers and made plans for this spring, summer and fall.

The group will work with the National Beautification League and the Keep Kentucky Green organization.

Mayor William H. Layne was elected Chairman; County Judge Carl Jones, Vice-Chairman; and Mary Alice Jayne, Secretary-Treasurer.

The Association is urging all citizens to attend its next meeting in the Agriculture Classroom of Lappan Hall Tuesday at 7:30 p. m.

A month long city-county cleanup starting April 15 and ending May 15. (These are the same dates as the state and national cleanup months.)

Instead of a one week cleanup, the Association has decided to spread the cleanup over a longer period.

Flower, tree and shrub plantings, etc., on public thoroughfares.

Cooperation with the Health Department to enforce public laws.

Transfer Four More Rowan Engineers

Kentucky Highway Commissioner Henry Ward today made further changes in the engineering staff at Morehead, transferring four of the nine from the resident engineers office to Lexington.

The transfers are headed by the two top men in the office at Morehead: John A. Duncan and Royal Brown who have been Resident Engineer and Assistant Resident Engineer, respectively, since 1950.

Others transferred to Lexington are Ralph Miller and C. W. Bailey, both Roadmen.

Remain at the Morehead office are Roy Tolliver, Roy M. Turner, Ray Jon, O. A. Caudill and James H. Moore.

Francis C. Caudill, Judge Henry Meigs today said he would examine proxies on the proposal to build a highway office at Flemingsburg, Ky., this morning.

He said the office would be in charge hereafter but employees would remain at the office in this respect, but Judge Meigs ruled in favor of Leary.

On March 1, Ward merged the two engineering offices at Morehead and moved the office from employees, to files and paper clips, to Flemingsburg. The office was carried away in a moving van.

Meanwhile, Morehead banks and civic interests have filed suit blocking the use of \$408,000 bond money earmarked for a district highway office about three miles east of the city on U.S. 60.

Mr. And Mrs. Bob Day Of Morehead Breed Race Horses; Mr. Busher Colt Foaled Sunday

After the name of the winner of the 1964 Kentucky Derby that could appear - Breeder, Bob and Laverne Day, Morehead, Ky.

Field Representative To Assist Veterans

Roy M. Cain, contact representative of the Kentucky Disabled Ex-Servicemen's Board will be in the Kentucky Employment Office in Morehead, Wednesday, April 5.

Will Be Occupied By Thanksgiving Of This Year

The Citizens Bank, Morehead, today broke ground for its new bank building, a 40 by 60 structure, on Main Street, opposite the present headquarters of the financial institution.

Ground Broken For Citizens Bank Building

The structure of brick, steel and masonry, with light blue imported granite, is being built on the south 7,200-foot (3600) on the main floor and an equal amount in the new bank building.

Expect White Bass Run During Week

The white bass run at Dix River will begin this week, the State Department of Fish and Wildlife Resources announced.

Alfred Day, Champion Walker, Dies

A Morehead, Alfred Clark Day, 67, whom friends say must have been a champion walker, died of a heart attack at his home in Lexington, Ky., Saturday.

Mr. Day was born in Rowan County, Ky., in 1893, son of the late Sanford and Rosetta (Donahue) Day.

He was known to almost every resident, being nicknamed 'Cool'. Mr. Day seldom stayed long in one place, and covered miles on foot practically every day.

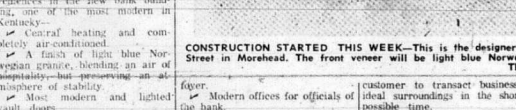
Immediate survivors are a sister, Mrs. Della McClure, Morehead, and several cousins, including Roy and James Donahue and Polly Oakley, Ripley.

The funeral and burial was Saturday at Paragon.

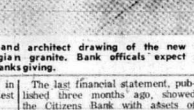
Mr. Day was a conversationalist besides a frequent visitor to most sections of this part of Kentucky.

Conservation officers checked 23 fishermen Monday afternoon at Dix River. They found 29 fish each, weighing up to 1.5 lbs.

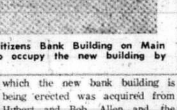
Charles McClure, of Livingston, had the best catch for the day with 43 lbs.



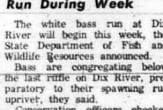
CONSTRUCTION STARTED THIS WEEK—This is the designer and architect drawing of the new Citizens Bank Building on Main Street in Morehead. The front veneer will be light blue Norwegian granite. Bank officials expect to occupy the new building by Thanksgiving.



The last financial statement published three months ago, showed the Citizens Bank with assets of \$5,094,750.94 or 25 times as great as in the middle 30's.



The new Citizens Bank building was designed by L. R. Dunn and Company, Louisville, specialists in structures of this type for 21 years.



The valuable Main Street site on customer to transact business in ideal surroundings in the shortest possible time.

Modern offices for officials of the bank in which holders of stock may secure their certificates from safe-deposit boxes and extract interest coupons in privacy.

Conference and meeting room.

Seven teller windows with receiving and note tellers on opposite sides of the central business

customer to transact business in ideal surroundings in the shortest possible time.

The valuable Main Street site on

CLASSIFIED ADS

No Classified Ads Accepted After 2 P. M. Tuesday... Per word each subsequent insertion...

Subscription Rates: One Year Two Years Five Years... In Kentucky \$3.00 \$6.00 \$14.00

FOR SALE: GOOD TOP SOIL and gravel for sale... BAKE SALE: Saturday, Apr. 1, beginning at 8 a. m. at Monarch Supply Store...

FOR SALE: 35 Acre tobacco base, house and barn... FARM FOR SALE: 61 Acre farm with 53 tobacco base...

REAL ESTATE: Buy, Sell or Mortgage... Alpha Hutchinson... See Our Sales List For A HOME BUSINESS PROPERTY...

KIRBY VACUUM: Kirby upright vacuum cleaner in A-1 condition... ELECTROLUX CLEANER: Electrolux vacuum cleaner (90 model) with throw away paper bags...

MONUMENTS: For best material at lowest cost... J. A. LEWIS... R.F.D. 5, Morehead, Ky. Phone ST 4-5354

USED CARS: '59 FORD 4-DOOR V4... '57 CHEVROLET V4, 2-DOOR... '56 CHEVROLET CONVERTIBLE... '56 OLDSMOBILE 86, 2-DOOR SEDAN... '56 OLDSMOBILE 96, 4-DOOR SEDAN... '52 CHEVROLET 4-DOOR SEDAN... '52 FORD 2-DOOR SEDAN... '50 CHEVROLET 4-DOOR SEDAN

USED TRUCKS: '54 CHEVROLET 1/2-TON PICKUP... '53 CHEVROLET 1/2-TON PICKUP... '52 CHEVROLET 1/2-TON STAKE... '52 CHEVROLET 1 1/2-TON FLAT... '51 DODGE 1/2-TON PICKUP

FOR QUICK ACTION! List Your Property With EARL BLAIR, Real Estate Broker... Licensed ★ Qualified ★ Bonded ★ Prompt Service ★ Reliable ★ Financing Arrangements

Rowan County Realty Agency 613 W. Main St. Morehead, Ky. Phone ST 4-5903

Charge It, Ed! Illustration of a man and woman talking.

The Citizens Bank "Grow With Us" Main St. Phone ST 44196 Morehead, Ky. OPEN A SAVINGS ACCOUNT TODAY "USE OUR PARKING LOT" Checking Accounts • Saving Accounts • Loans Member Federal Deposit Insurance Corp. USE OUR NIGHT DEPOSITORY

Midland Trail Garage "Pioneers in Rowan County Transportation"

ACCURATE WATCH REPAIR Let our skilled technician repair your watch in the accurate time-keeping at a small cost. For dependable watch repair come to Wils Jewels (formerly J. A. Bays Jewelry Store) or phone ST 4-6114.

MANAGER WANTED Cort Cosmetics, Inc. has opening for woman with direct home sales experience in Morehead or in surrounding counties. This is an opportunity for some woman who feels she has never had a true chance to demonstrate her ability. This is a full time managerial position. Car necessary. For interview write or wire W. G. Lukes, 801 Glendale Lane, Nashville 4, Tennessee. C-13

FOR RENT Furnished apartments. Call ST 4-6213

FOR RENT Two-bedroom house. Call ST 4-6803 after 5 p. m. C-17

HOUSE FOR RENT See or call D. C. Caudill, phones ST 4-6509 or ST 4-5657. C-15

FOR RENT See or call D. C. Caudill, phones ST 4-6509 or ST 4-5657. C-15

FOR RENT See or call D. C. Caudill, phones ST 4-6509 or ST 4-5657. C-15

FOR RENT See or call D. C. Caudill, phones ST 4-6509 or ST 4-5657. C-15

FOR RENT See or call D. C. Caudill, phones ST 4-6509 or ST 4-5657. C-15

FOR RENT See or call D. C. Caudill, phones ST 4-6509 or ST 4-5657. C-15

FOR RENT See or call D. C. Caudill, phones ST 4-6509 or ST 4-5657. C-15

FOR RENT See or call D. C. Caudill, phones ST 4-6509 or ST 4-5657. C-15

FOR RENT See or call D. C. Caudill, phones ST 4-6509 or ST 4-5657. C-15

FOR RENT See or call D. C. Caudill, phones ST 4-6509 or ST 4-5657. C-15

FOR RENT See or call D. C. Caudill, phones ST 4-6509 or ST 4-5657. C-15

FOR RENT See or call D. C. Caudill, phones ST 4-6509 or ST 4-5657. C-15

FOR RENT See or call D. C. Caudill, phones ST 4-6509 or ST 4-5657. C-15

FOR RENT See or call D. C. Caudill, phones ST 4-6509 or ST 4-5657. C-15

FOR RENT See or call D. C. Caudill, phones ST 4-6509 or ST 4-5657. C-15

FOR RENT See or call D. C. Caudill, phones ST 4-6509 or ST 4-5657. C-15

FOR RENT See or call D. C. Caudill, phones ST 4-6509 or ST 4-5657. C-15

FOR RENT See or call D. C. Caudill, phones ST 4-6509 or ST 4-5657. C-15

FOR RENT See or call D. C. Caudill, phones ST 4-6509 or ST 4-5657. C-15

FOR RENT See or call D. C. Caudill, phones ST 4-6509 or ST 4-5657. C-15

FOR RENT See or call D. C. Caudill, phones ST 4-6509 or ST 4-5657. C-15

FOR RENT See or call D. C. Caudill, phones ST 4-6509 or ST 4-5657. C-15

FOR RENT See or call D. C. Caudill, phones ST 4-6509 or ST 4-5657. C-15

FOR RENT See or call D. C. Caudill, phones ST 4-6509 or ST 4-5657. C-15

POLITICAL ANNOUNCEMENTS (Primary Election Tuesday, May 22, 1961) Democratic Party

FOR REPRESENTATIVE (Both and Rowan Counties) Ray Bailey Charles M. Hart

FOR COUNTY JUDGE Y. C. Flannery Sam L. Green J. H. (Harve) Keyleg Jesse McDaniel

FOR SHERIFF Emmitt Stanton Ora Fraley Carl Johnson Carl Jones W. M. (Ac) Nickell Lewis Sparks, Jr.

FOR COUNTY CLERK Fred Caudill

FOR JAILER Jess Adkins Edward W. Alderman Belva G. Branham Mrs. Ma G. Stanley Hall Frank Kendall Harper Alvin Jones Rube Thomas

FOR TAX COMMISSIONER Juanita Wilson

FOR CORNER Ralph Ellis Carl V. Fraley

FOR MAGISTRATE (1st District - Court House, Clearfield, Dry Creek, Wagner, North Morehead, Koldburn, City Hall, and W. Morehead precincts) Brighde Johnson

FOR MAGISTRATE (2nd District - Lower Farmers, Jersey, Upper Farmers, McKenna precincts) John M. "Pete" Jones

FOR MAGISTRATE (4th District - Little Brushy, Pine Grove, Cranston, Plank, Big Brushy precincts) Clyde A. Lingo James H. (Tommy) White

THELMA'S NURSERY Will be open beginning Monday, Apr. 3, 6 p. m. to 6 p. m. week days. Nights and week ends open by appointment only. Phone ST 4-5426

CARE OF THANKS We take this means to express our deepest thanks and appreciation to all those who assisted in my way during the short illness and at the time of death of our husband and father, Fred Smith Stucky-McBryer Funeral Home, the pallbearers and the many who sent flowers and cards and for their numerous acts of kindness. Your good deeds will be long remembered by the Owens family. C-13

BE SURE OF SAFE DRINKING WATER with an automatic chlorinator. Purifies water from ponds, wells and stops red strains and corrosion in pipes. Glass lined hot water tanks. 28-gal. tank \$79 installed. 40-gal. \$89 installed. See or call C. L. Landreth, phone ST 4-6663. Morehead, Ky. C-17

SMALL PIANO Used. Excellent condition. Will be guaranteed to new purchaser for 90 days. Monthly payments may be arranged to responsible party. Can be seen in Rowan County Write Used Piano P. O. Box 64, Henry Clay Station, Lexington, Ky. C-13

EXECUTRIX'S NOTICE All persons having claims against the estate of Ross C. Anderson, deceased, are requested to prove same as required by law and file same with us at once, and all persons indebted to the said decedent will please call and settle said debts. Mary T. Anderson, Executrix Lester Hogge, Attorney C-13

Administrator's Notice Notice is hereby given to all persons having claims against the estate of the late Theophilus Barker to please present same duly proved as required by law, and all persons indebted to said estate will please call and settle same with the undersigned administrator. William H. Litton, Administrator Box 226 Morehead, Ky. C-15

MARIETTA-SHOS Leading manufacturer of silos since 1910. Contact or write Sammie Donohew, RFD 3, Oviingsville, Ky. C-17

Nations, like individuals, cannot escape the facts of their existence. They may delay decisions, but sooner or later, fate overtakes them. Shop the Classified Ads.

FOR LOCAL or LONG DISTANCE MOVING or HAULING CALL

Calvert Bros. Transfer WILLARD AND OSCAR CALVERT, Owners WE CARRY CARGO INSURANCE Day Phone ST 4-4791 - Night Phone ST 6-3292 - Morehead, Ky.

"Equipped To Serve You" Member of Kentucky Funeral Director's Burial Association

Authorized To Service - Burial Insurance Contracts Issued By Commonwealth Life Ins. Co.

Complete Ambulance Service Oxygen Equipped LANE FUNERAL HOME PHONE ST 4-1983 MOREHEAD, KY.

ABSOLUTE AUCTION SATURDAY, APRIL 8 2:00 P. M.

3-Room Frame Dwelling on good corner lot in Thomas Addition of Morehead. Garden space, close to grade school and new Rowan County High School.

This property is being sold to settle the estate of the late Mrs. Addie Martin. Terms: 10% Day of Sale. Balance on delivery of deed.

Sale Conducted By C. Roger Lewis Agency Phone ST 4-5333 - Morehead, Ky. C. ROGER LEWIS, Auctioneer

NO FOOLING ABOUT THESE VALUES

3-BEDROOM FRAME dwelling with fireplace, hardwood floors, enclosed paneled porch, garage. In Thomas Addition on large lot close to grade and high schools. Has existing GI direct loan. "C" Roger for price.

3-BEDROOM BRICK in Mabry Subdivision on a very beautiful lot with large shade trees. Two fireplaces, hardwood floors, birch cabinets, 2 1/2 baths, cedar lined closets, baseboard hot water heat, radio controlled garage door, patio. Shown by appointment only.

7-ROOM FRAME dwelling, one of the finest homes in vicinity. Has two fireplaces, large family room with ceramic tile floor and cherry paneling, central heating, plenty cabinet space, garage, patio, outdoor grill. Shown by appointment only.

6-ROOM DWELLING with bath. 3-room cottage with half bath. At 12 1/2 East Main Street. Full price for both, if sold quickly, is \$4,500.

We have very few farms for sale left, but here is a good one for the money. Five miles from Farmers on Lower Licking Road. 86 Acres, with 87 acre tobacco base. 5-room frame dwelling, new barn, good well. Priced at only \$5,000 if sold within next two weeks.

Business Property LARGE BRICK business building on Main Street in Morehead. Is bringing in approximately 10% per year of investment. RESTAURANT - Very nice restaurant with good equipment. Located in Morehead. Priced so you can make money if you want to work. C. Roger for further information.

MOTEL AND RESTAURANT - On US 60 not far from Morehead. A good investment and priced for quick sale. Shown by appointment only. LARGE FRAME dwelling that has two complete apartments - 5 rooms in one, 4 rooms in the other - full basement, gas forced air furnace, concrete block building with two 3-room apartments on second floor, garage on first floor; large lot. Equipped to park 6-8 cars. Call or write at West Main Street in Morehead. C. Roger for price and terms.

We have many other businesses for sale that we are not authorized to advertise. C. Roger Lewis Agency FIA Long Term Loans Bonded and Licensed Real Estate Broker Morehead, Ky. Phone ST 4-5333 REAL ESTATE AND INSURANCE

Ray Bailey Recites Election Platform

To the citizens of Both and Rowan Counties: At this time I wish to give you a more detailed statement and some of the reasons I seek the office of State Representative from this district.

I was born in Preston, Ky., son of Mr. and Mrs. Walter J. Bailey. I served three years in the U.S. Navy in the South Pacific during World War II. I have operated a garage in Owensville for the past 15 years. I belong to the Church of God, W.P.M. and am a member of the Owensville Jaycees.

Being the father of three school children, I know that their future opportunities are largely dependent upon the education they receive. I am vitally interested in our primary high schools and colleges. I feel that there should be a broader and expanded curriculum in our secondary schools in order that the students should be adequately prepared for college work. I am a great devotee concerned about our rural general education that I am about the next election. The 7th Legislative District in Morehead State College, one of the finest institutions of higher learning in our area, has located here. It is fortunate for us and all farmers which will benefit this college and shall see my influence to help the college in any way possible.

Being a business man myself and knowing the economic conditions of this locality, if elected I would do all in my power to secure new industries in this district. It is fortunate for us and all farmers which will benefit this college and shall see my influence to help the college in any way possible.

Being a business man myself and knowing the economic conditions of this locality, if elected I would do all in my power to secure new industries in this district. It is fortunate for us and all farmers which will benefit this college and shall see my influence to help the college in any way possible.

Having been born and reared in Bath, Kentucky, I realize that our economy is based on the farm, home and I pledge to support any and all legislation for the advancement and benefit of any farm families. The University of Kentucky has commenced an expanded research program in agriculture and I shall wholeheartedly support this new research and development center for agriculture.

My father earned his living working for the C&O Railway Company and as such was connected with

FOR SALE From The Holbrook Estate BUILDING LOTS FAVORABLE PRICES

Now offered some of the finest lots in all of Kentucky... and at a price that will make you money... They're bound to increase in value.

This property is next to Morehead State College, and can be seen by appointment.

Long term, loans available for new homes on this property as it meets all FHA specifications. However, homes that are constructed must be modern as no sub-standard housing is permitted. Call or see H. H. Lacy for full details.

H. H. Lacy Real Estate And Development Company Member Lexington Association of Residential Appraisers Licensed and Bonded Real Estate Broker MOREHEAD, KENTUCKY

County Agent Urges Farmers To Apply For Tax Refund; Warns Against Itinerants

By Adrian M. Razor
(County Agricultural Agent)

This is the last call for sign-up on gasoline tax refund. If you have not already done so, you only have till Friday night to file for your state tax refund on gasoline used on the farm. It is important that your return be post-marked not later than midnight, March 31. We have the forms in the office if you need them. Taxes are figured at the rate of 7 cents per gallon of gas used in farm tractors and other engines.

Be Wary Who Does Your Painting

It is the season that we have a lot of our state people going through the county soliciting custom spraying work on barn roofs and other buildings. Some of our rural people have been victims of users of inferior paint and otherwise "taken" for considerable amounts of money. The Kentucky Legislature at its last session passed a law that all out of state operators of paint spray equipment must be bonded to operate in Kentucky. Also, their trucks have to be licensed with Kentucky tags to operate in the state as I understand it. Before you deal with anyone on a job of this kind, let me suggest that you see if they do have Kentucky tags and be sure they are bonded. Any violation should be reported to local authorities.

KEEP IT FIT... KEEP IT FRILLY... with



LUSTRE SHEEN
quality controlled cleaning

And fit is especially important in a party gown... our exclusive LUSTRE SHEEN using process is exact... restores every dress to original size. LUSTRE SHEEN is gentle... imparts new beauty and color to most delicate fabrics. Picks up frills, ruffles and bows.

Imperial Cleaners
Phone 5TAE 4-8184
MOREHEAD, KY.



PROGRESS—It has taken years but Clearfield has one of the best libraries of any school its size of the area. Officers of the Clearfield PTA which has helped stock the library are shown. From left: Mrs. Martha Lambert, PTA Vice-President; Mrs. Virginia Reynolds, President; Mrs. Lurlene Alfrey, Treasurer; and Mrs. Glenna Workman, Secretary. The PTA contributed \$600 for books and is converting a girls locker room to library use.



THEY BENEFIT—Clearfield school students, like those shown above with PTA President Virginia Reynolds, use the library extensively every day. The Clearfield PTA is in line for some kind of award as records show the group has contributed \$2,666 to the school, raised by eight potluck dinners, spring carnivals, etc. Among the PTA purchases are: Swing sets and slides \$500; venetian shades for the entire school \$1,000; two water coolers \$200; 150 folding chairs \$350; tape recorder \$159; flag pole \$75; landscaping and seeding \$600; and library books \$600.

Speakers Win Honors, Trophy At Speech Meet

Lynn Crawford of Morehead State College placed third in the finale for Oral Interpretation in the February Speech Event at Wisconsin State, Eau Claire, Wisconsin, Feb. 17. Entrants in this group included John Adams and Lane Corvey.

Again, at Lexington at the University of Kentucky, March 17 and 18, a Morehead entrant brought home a trophy. Members of the group participating were Lynn Crawford, George Harwood, Linda Hall, Lane Corvey, Pat Hall.

Debutants Dan Graves, Jim Cox, (recitative), and Dave Saxton, and Jim Thomas, (affirmative), took part in the Debate Tournament at the University of Kentucky, Pat Hall, one of the discussion team, carried off second place honors at this event.

Mrs. Huffman To Have Two Recitals

On Monday evening, April 3, piano and organ students of Mrs. Keith Huffman will present two recitals at Baird Music Building. Students appearing on the first program at 7:00 will be Sherry Binson, Debbie Binson, Delta Brann, Bertie Nell Begley, Pam Caudill, Ann Huffman, Jackie Powell, Ruth Anne Frasier, Girge Kay Stucky, Vicki Frasier, Pamela Hill, Dianne Hall, Debbie Williams and Carol Wertz.

Those playing on the second program which begins at 8:00 are Gail Bishop, Bobby Combs, Peter Pubright, Elaine Fowler, Marsha Ferguson, Billie Jo Greene, Terry Holby, Rhonda Hill, Eddie Holbrook, Barbara James, Dennis Ditto, Charlie Blair and Carlos Hill.

Both recitals are open to the public.

JFK ASKS LATIN AID

President Kennedy has urged Congress to provide \$200,000,000 as the first step in aid to Latin America. He said there is "grave and imminent" danger that desperate peoples will turn to communism or other forms of tyranny "if help is not forthcoming. He wants the Latin American countries to join with the U.S. in a massive drive to improve living conditions and thereby help curb "tyranny from a hemisphere in which it has no rightful place."

The trouble with most public speakers is that they have nothing to say.

When people fight over religion, it is a good sign that there isn't much of it.

Anderson Paintings Accepted For Exhibit In Art Show

James Anderson of Morehead will have paintings on exhibit in Louisville soon.

Recently in the Sunday edition of the Courier-Journal, an article appeared on the 1961 Louisville Art Center annual Exhibition that is to be held April 1 through April 30 at the Speed Museum.

This exhibition is for the benefit of Kentucky and Southern Indiana artists and should offer a wide range of talent, for people interested in art by artists of this region.

Anderson, member of the Morehead State College Art Department submitted his work to the Art Center Association of Louisville to have it considered.

Two of his works, Gestalten, a painting, and Seagulls, a silkscreen print, were accepted for the exhibition.

The nation's Capital is the only major American city where Negroes form a majority of the population, the Census Bureau said. The agency said preliminary data from the 1960 census show that 41,737, or 33.9 per cent of Washington's 763,956 residents are Negroes. New York City has the largest number of Negroes, 1,067,501, or 14 per cent of the total population of 7,781,964. Ranking after New York were Chicago, Philadelphia, Detroit, Washington, Los Angeles and Baltimore.

easter

GREETINGS

May all the joys of this happy season be yours.

PEOPLES BANK OF MOREHEAD

From... **GOLDE'S** IN MOREHEAD

Be The Best Dressed Person In The Easter Parade.

Girls' Patent Leather **SLIPPERS**
All Sizes **\$2.98**

The Loveliest **DRESSES**
In The Easter Parade
● Hundreds To Choose From
Prices Start At **\$5.95**

Ladies **SUITS** **\$7.95 up**

Arrow **SHIRTS**
There's no shirt that looks so well, lasts so long, and bears its own mark of distinction. At Golde's **\$4.50**
MEN'S SPORT COATS, summer weight and wool. Any man will love these. Hundreds to choose from. Prices start at **\$8.95**

Men's **DRESS SHOES**
Golde's has one of the largest shoe departments in Eastern Kentucky. Large selection of spring, men's dress shoes.
Prices Start At **\$5.95**

BEDSPREADS Easter Special, starting today at Golde's. Chenille, full size. White and assorted colors **2 for \$5.00**

<p>Little Girls' SUITS ● Sizes 4 to 14 Spring Styles — From — \$6.95</p>	<p>Ladies' Ship 'n Shore BLOUSES ● They're Lovely... ● All New Shipments — Special Price — \$2.98 - \$3.98</p>	<p>Ladies' Dress SHOES ● White, Pastels Easter Styles — From — \$2.98</p>	<p>Seamless Nylon HOSE ● Spring Shades ● All Sizes — Priced Down — \$1.00</p>	<p>22x24 Chenille Throw RUGS ● All Colors Sparkling New — Buy Several — \$1.00</p>
<p>Men's DRESS PANTS ● Latest Spring & Summer Styles ● By Hagar \$7.95 ● Wembley Ties</p>	<p>Ladies' Street DUSTERS ● Large Assortment ● All Colors Prices Start At \$10.95 LITTLE GIRLS' DUSTERS ● Sizes 4 to 14 \$7.95</p>	<p>Golde's Department Store Main, Opposite Post Office Morehead, Ky.</p>		

Dr. O'Gon Gives Keynote Human Relations Address

"The Eyes Of The World Are Upon Us" Is Speech Topic; Also Gives Evening Talk

By ARLENE SHADCH
The annual high school interdenominational Human Relations week held this week, sponsored by Morehead State College and the National Conference of Christians and Jews, The day activities began at 10 a.m. at an assembly in the Union Auditorium, Arlene O'Gon, president of the Cosmopolitan Club, presiding.

This week has been designated "Human Relations Week" on campus.

Dr. Arlene O'Gon, president of Morehead State College opened the program with a welcoming speech to those high school students participating in the conference.

The keynote address was given by Dr. Edward G. Olson, associate director of the National Conference of Christians and Jews in Chicago and Northern Illinois since 1951. His topic was entitled, "The Eyes of the World are Upon Us". Following his speech discussion groups were formed.

Religious Emphasis Week on the Morehead State College campus, Monday, will feature a dramatic presentation of the life of Jesus Christ, with 150 participants from 30 high schools in Kentucky, Ohio and Virginia.

T. B. "Scotty" Cowan, minister of the Union Church in Berea, will be the featured speaker at Thursday's 7:45 convocation and a religious drama will be presented in the Bufile Auditorium Thursday evening at 7:30.

Dr. Edward G. Olson, director of the National Conference of Christians and Jews in Chicago and Northern Illinois since 1951, will be the featured speaker at the conference summary reports at 3:30 p. m. Mrs. Virginia Coffey, Mayor's Friendly Relations Committee, Cincinnati, O., delivered the conference summary at 5:30 p. m. Dr. Olson speaking on "Why We Behave Like People."

The conference was adjourned at 7 p. m.

Conference consultants were: Dr. Edward G. Olson, director of the National Conference of Christians and Jews in Chicago and Northern Illinois since 1951, Mrs. Virginia Coffey, Mayor's Friendly Relations Committee, Cincinnati, O., Malcolm B. Chandler, Director of the Cincinnati, O., and Mrs. Arlene O'Gon, president of the Cosmopolitan Club, Morehead.

A special session of the club attended the conference and participated in the discussion groups.

Public Is Taking To The Outdoors

By Joe Mauk
Conservationists and the general public are becoming more aware of the need for outdoor "breathing space," have every reason to pause and breathe in the tranquility enacted by Congress 50 years ago the first of this month.

This legislation, known as the Weeks Law, resulted in the purchase of millions of acres of land for National Forests in the eastern United States. Rich in forest and wildlife resources, important for water control and flood prevention, and for recreation, these lands extend through the Appalachian Mountains from Maine to Georgia and reach westward to the Great Plains. Our own Cumberland National Forest is located within this area. The National forests are administered by the Forest Service of the Department of Agriculture.

Interest in establishment of public forest reservations in the Eastern Kentucky area developed as early as 1880 and reached fruition on March 1, 1911, when President Taft approved an act named after his sponsor, Congressman John W. Weeks of Massachusetts. The law authorized the purchase of land for National Forests on the headwaters of navigable streams in the Western Forest Reserve area about 1890.

The W. E. Smedley tract, located on East Clack Mountain road, is one of the largest tracts of land in the area.

Persons are available to organizations and groups in this area which seek self-improvement and improvement of the underdeveloped regions in which they live.

What noted that President Doran is keenly interested in regional affairs and is an active member of the National Regional Development Commission.

The speaker said, "has developed into a very important economic planning program which will put the region in shape to attract new business concerns, and provides employment for many of our citizens in this economically important section of the state."

Morehead State noted that a four-tower school. Its students are being trained to accept the responsibilities of modern-day life beyond the campus. Its facilities date from the past six years.

Dr. Olson's address was given by Dr. Edward G. Olson, associate director of the National Conference of Christians and Jews in Chicago and Northern Illinois since 1951.

Following his speech discussion groups were formed.

Religious Emphasis Week on the Morehead State College campus, Monday, will feature a dramatic presentation of the life of Jesus Christ, with 150 participants from 30 high schools in Kentucky, Ohio and Virginia.

T. B. "Scotty" Cowan, minister of the Union Church in Berea, will be the featured speaker at Thursday's 7:45 convocation and a religious drama will be presented in the Bufile Auditorium Thursday evening at 7:30.

Dr. Edward G. Olson, director of the National Conference of Christians and Jews in Chicago and Northern Illinois since 1951, will be the featured speaker at the conference summary reports at 3:30 p. m. Mrs. Virginia Coffey, Mayor's Friendly Relations Committee, Cincinnati, O., delivered the conference summary at 5:30 p. m. Dr. Olson speaking on "Why We Behave Like People."

The conference was adjourned at 7 p. m.

Conference consultants were: Dr. Edward G. Olson, director of the National Conference of Christians and Jews in Chicago and Northern Illinois since 1951, Mrs. Virginia Coffey, Mayor's Friendly Relations Committee, Cincinnati, O., Malcolm B. Chandler, Director of the Cincinnati, O., and Mrs. Arlene O'Gon, president of the Cosmopolitan Club, Morehead.

A special session of the club attended the conference and participated in the discussion groups.

TV Scored By National Labor Unions

The AFL-CIO accused television broadcast this week of neglecting educational programs while leading their channels with "gun-slincers, private eyes and soap operas."

The criticism was voiced by AFL-CIO legislative director, J. Biemler. He said the federation advocates federal grants to encourage educational TV to counter the commercial output.

He said TV programs should offer viewers about history, economics, news, foreign affairs and other complex issues if American voters are to make intelligent choices.

Biemler said educational television should not be at least part of this job.

"It seems apparent that the commercial television industry can or will not provide an adequate number of programs in this need," he said. "Commercial channels are loaded with gun-slincers, private eyes and soap operas, none of which, to put it mildly, have much educational value."

The AFL-CIO position was spelled out in a letter from Biemler to the director of a four-hour plan based on the depressed area. This is designed to improve the economy of certain areas with Eastern Kentucky by developing transportation, soil and water conservation and educational facilities to point where our economy may become more diversified by the establishment of new industries.

The second phase is more immediate. The 1958 depression which resulted in unemployment figures of more than 4 1/2 million appeared to have ended in 1959, but unemployment remained to top below 3 million mark. The effect of this widespread unemployment began to show in early 1960 when business began a gradual decline. Early in 1961 the unemployment figure stood at 5 million mark and is now approaching 6 million. It has become necessary to take action for immediate relief of this condition. The House has passed bills providing for extended unemployment insurance and the establishment of state programs for aid to the children of unemployed workers on the same basis as now provided for the children of deceased and disabled workers.

The program for dependent children will be jointly financed by the states and Federal government with the Federal government providing approximately 75% of the cost in the state of Kentucky. It is estimated that 18,000 children of unemployed parents in Kentucky will be eligible for this program.

I have introduced a bill to establish a Youth Conservation Corps. This bill is receiving enthusiastic support from many of our constituents. It is an excellent chance for the passage of some type of legislation based on my own constituents. The Senate Humphreys bill will not only be a first step for the unemployed youngsters but will also provide a program of lasting benefit for our forests and parks in Eastern Kentucky. Along with these programs, we must liberate the veteran home loan program in order to make it effective in rural areas.

Additional legislation to provide a sound, conservation plan for the federal lands, the speaker said, which are reaching the age where the increase in population is being prohibited. I have also introduced a bill to provide a supplement to the unemployment relief program which will be jointly financed by the states and Federal government.

Today's areas including Hawaii and Alaska have efficient forestry organizations for the purpose of protecting forest lands from fire and existing land owners in better management of forest land resources. More than 50 million acres of forest land are intensely protected from fire compared with 60 million acres when the National Forest Service was established in 1891.

The Forest Service, cooperating with the states concerned, is planning a program to establish a permanent system in localities prominently associated with the early days of the land.

Persons are available to organizations and groups in this area which seek self-improvement and improvement of the underdeveloped regions in which they live.

What noted that President Doran is keenly interested in regional affairs and is an active member of the National Regional Development Commission.

The speaker said, "has developed into a very important economic planning program which will put the region in shape to attract new business concerns, and provides employment for many of our citizens in this economically important section of the state."

Morehead State noted that a four-tower school. Its students are being trained to accept the responsibilities of modern-day life beyond the campus. Its facilities date from the past six years.

Dr. Olson's address was given by Dr. Edward G. Olson, associate director of the National Conference of Christians and Jews in Chicago and Northern Illinois since 1951.

Following his speech discussion groups were formed.

Religious Emphasis Week on the Morehead State College campus, Monday, will feature a dramatic presentation of the life of Jesus Christ, with 150 participants from 30 high schools in Kentucky, Ohio and Virginia.

T. B. "Scotty" Cowan, minister of the Union Church in Berea, will be the featured speaker at Thursday's 7:45 convocation and a religious drama will be presented in the Bufile Auditorium Thursday evening at 7:30.

Dr. Edward G. Olson, director of the National Conference of Christians and Jews in Chicago and Northern Illinois since 1951, will be the featured speaker at the conference summary reports at 3:30 p. m. Mrs. Virginia Coffey, Mayor's Friendly Relations Committee, Cincinnati, O., delivered the conference summary at 5:30 p. m. Dr. Olson speaking on "Why We Behave Like People."

The conference was adjourned at 7 p. m.

Conference consultants were: Dr. Edward G. Olson, director of the National Conference of Christians and Jews in Chicago and Northern Illinois since 1951, Mrs. Virginia Coffey, Mayor's Friendly Relations Committee, Cincinnati, O., Malcolm B. Chandler, Director of the Cincinnati, O., and Mrs. Arlene O'Gon, president of the Cosmopolitan Club, Morehead.

A special session of the club attended the conference and participated in the discussion groups.

EASTER HATS?



LETTERS TO THE EDITOR

Perkins Introduces Measure To Assist Depressed Areas

The Editor: The New Frontier program may be considered as consisting of two plans. The first is a long-term plan based on the depressed area. This is designed to improve the economy of certain areas with Eastern Kentucky by developing transportation, soil and water conservation and educational facilities to point where our economy may become more diversified by the establishment of new industries.

The second phase is more immediate. The 1958 depression which resulted in unemployment figures of more than 4 1/2 million appeared to have ended in 1959, but unemployment remained to top below 3 million mark. The effect of this widespread unemployment began to show in early 1960 when business began a gradual decline. Early in 1961 the unemployment figure stood at 5 million mark and is now approaching 6 million. It has become necessary to take action for immediate relief of this condition. The House has passed bills providing for extended unemployment insurance and the establishment of state programs for aid to the children of unemployed workers on the same basis as now provided for the children of deceased and disabled workers.

The program for dependent children will be jointly financed by the states and Federal government with the Federal government providing approximately 75% of the cost in the state of Kentucky. It is estimated that 18,000 children of unemployed parents in Kentucky will be eligible for this program.

I have introduced a bill to establish a Youth Conservation Corps. This bill is receiving enthusiastic support from many of our constituents. It is an excellent chance for the passage of some type of legislation based on my own constituents. The Senate Humphreys bill will not only be a first step for the unemployed youngsters but will also provide a program of lasting benefit for our forests and parks in Eastern Kentucky. Along with these programs, we must liberate the veteran home loan program in order to make it effective in rural areas.

Additional legislation to provide a sound, conservation plan for the federal lands, the speaker said, which are reaching the age where the increase in population is being prohibited. I have also introduced a bill to provide a supplement to the unemployment relief program which will be jointly financed by the states and Federal government.

Today's areas including Hawaii and Alaska have efficient forestry organizations for the purpose of protecting forest lands from fire and existing land owners in better management of forest land resources. More than 50 million acres of forest land are intensely protected from fire compared with 60 million acres when the National Forest Service was established in 1891.

The Forest Service, cooperating with the states concerned, is planning a program to establish a permanent system in localities prominently associated with the early days of the land.

Persons are available to organizations and groups in this area which seek self-improvement and improvement of the underdeveloped regions in which they live.

What noted that President Doran is keenly interested in regional affairs and is an active member of the National Regional Development Commission.

The speaker said, "has developed into a very important economic planning program which will put the region in shape to attract new business concerns, and provides employment for many of our citizens in this economically important section of the state."

Morehead State noted that a four-tower school. Its students are being trained to accept the responsibilities of modern-day life beyond the campus. Its facilities date from the past six years.

Dr. Olson's address was given by Dr. Edward G. Olson, associate director of the National Conference of Christians and Jews in Chicago and Northern Illinois since 1951.

Following his speech discussion groups were formed.

Religious Emphasis Week on the Morehead State College campus, Monday, will feature a dramatic presentation of the life of Jesus Christ, with 150 participants from 30 high schools in Kentucky, Ohio and Virginia.

T. B. "Scotty" Cowan, minister of the Union Church in Berea, will be the featured speaker at Thursday's 7:45 convocation and a religious drama will be presented in the Bufile Auditorium Thursday evening at 7:30.

Dr. Edward G. Olson, director of the National Conference of Christians and Jews in Chicago and Northern Illinois since 1951, will be the featured speaker at the conference summary reports at 3:30 p. m. Mrs. Virginia Coffey, Mayor's Friendly Relations Committee, Cincinnati, O., delivered the conference summary at 5:30 p. m. Dr. Olson speaking on "Why We Behave Like People."

The conference was adjourned at 7 p. m.

Conference consultants were: Dr. Edward G. Olson, director of the National Conference of Christians and Jews in Chicago and Northern Illinois since 1951, Mrs. Virginia Coffey, Mayor's Friendly Relations Committee, Cincinnati, O., Malcolm B. Chandler, Director of the Cincinnati, O., and Mrs. Arlene O'Gon, president of the Cosmopolitan Club, Morehead.

The Editor's Pen Most Communities Our Size Need More Indians, Less Chiefs

County Agent Adrian Razor warns again of the danger of hickory trees. This, of course is a racket. Recently we saw them mix their cheap paint, half and half, with gasoline.

Razor probably knows by now what this Editor has recognized a long time. J. T. Barman classified it, "there's one born every minute" and we believe it was J. Edgar Hoover who said only the learned steer clear of a good confidence game. Most of the people who read this are suckers for a fast buck.

The farmer who employs these expenses, it is no more to blame (probably less since it is his own money) than local organizations (there are a few) who are over-organized communities who fall for the gimmick of bringing in outside players, selling them on the spot. They end up with all the money going out of town. Yet these same players, selling on the spot, have reminded them that the Gullible is the proper word.

This is all of holes and all we read is an East Kentucky toll road, 32 miles of high class roads in 12 miles of hills, two bridges, no Louisville.

Policy making is woken but it doesn't count for much when our roads are full of holes and all we read is an East Kentucky toll road, 32 miles of high class roads in 12 miles of hills, two bridges, no Louisville.

Is Kennedy's New Frontier Responsible? Last week we wrote that Democrats in Rowan County outstripped Republicans since November by eight to one and 18 year olds (and voters) were outstripping locally about 15 to one in the Dem's. The registration reveals that the past four years Democrats in Rowan have gained almost 1,200 and probably have a net margin of 1,800 over the Rep's.

The pattern in this county appears statewide. For example, the registration vote in Montgomery County Democrats 77, Republicans 6. In normally Republican Fayette the Democrats outstripped their opponents by seven to one and it was about the same in populous

Four-Five Only ago we wrote, in best, about our friend, J. M. Clark, who said that each year he had the deep South. Several readers asked us to report the tale.

Mrs. Virginia Coffey, Mayor's Friendly Relations Committee, Cincinnati, O., delivered the conference summary at 5:30 p. m. Dr. Olson speaking on "Why We Behave Like People."

The conference was adjourned at 7 p. m.

Conference consultants were: Dr. Edward G. Olson, director of the National Conference of Christians and Jews in Chicago and Northern Illinois since 1951, Mrs. Virginia Coffey, Mayor's Friendly Relations Committee, Cincinnati, O., Malcolm B. Chandler, Director of the Cincinnati, O., and Mrs. Arlene O'Gon, president of the Cosmopolitan Club, Morehead.

A special session of the club attended the conference and participated in the discussion groups.

Dr. Olson's address was given by Dr. Edward G. Olson, associate director of the National Conference of Christians and Jews in Chicago and Northern Illinois since 1951.

Following his speech discussion groups were formed.

Religious Emphasis Week on the Morehead State College campus, Monday, will feature a dramatic presentation of the life of Jesus Christ, with 150 participants from 30 high schools in Kentucky, Ohio and Virginia.

T. B. "Scotty" Cowan, minister of the Union Church in Berea, will be the featured speaker at Thursday's 7:45 convocation and a religious drama will be presented in the Bufile Auditorium Thursday evening at 7:30.

Dr. Edward G. Olson, director of the National Conference of Christians and Jews in Chicago and Northern Illinois since 1951, will be the featured speaker at the conference summary reports at 3:30 p. m. Mrs. Virginia Coffey, Mayor's Friendly Relations Committee, Cincinnati, O., delivered the conference summary at 5:30 p. m. Dr. Olson speaking on "Why We Behave Like People."

The conference was adjourned at 7 p. m.

Conference consultants were: Dr. Edward G. Olson, director of the National Conference of Christians and Jews in Chicago and Northern Illinois since 1951, Mrs. Virginia Coffey, Mayor's Friendly Relations Committee, Cincinnati, O., Malcolm B. Chandler, Director of the Cincinnati, O., and Mrs. Arlene O'Gon, president of the Cosmopolitan Club, Morehead.

A special session of the club attended the conference and participated in the discussion groups.

Dr. Olson's address was given by Dr. Edward G. Olson, associate director of the National Conference of Christians and Jews in Chicago and Northern Illinois since 1951.

Following his speech discussion groups were formed.

Religious Emphasis Week on the Morehead State College campus, Monday, will feature a dramatic presentation of the life of Jesus Christ, with 150 participants from 30 high schools in Kentucky, Ohio and Virginia.

T. B. "Scotty" Cowan, minister of the Union Church in Berea, will be the featured speaker at Thursday's 7:45 convocation and a religious drama will be presented in the Bufile Auditorium Thursday evening at 7:30.

Dr. Edward G. Olson, director of the National Conference of Christians and Jews in Chicago and Northern Illinois since 1951, will be the featured speaker at the conference summary reports at 3:30 p. m. Mrs. Virginia Coffey, Mayor's Friendly Relations Committee, Cincinnati, O., delivered the conference summary at 5:30 p. m. Dr. Olson speaking on "Why We Behave Like People."

The conference was adjourned at 7 p. m.

Letters —

Continued from Preceding Page... loss of parking meter revenue of about \$200 per month...

moves to its new location we will have to build a considerable amount of new sidewalks along the route the children must travel...

Blevins Recites His Platform For Jailer

Everett Blevins, Republican candidate for Rowan County Jailer, today issued a statement that if elected, "I will do my best to treat all persons in my custody as if they were children of mine..."



Everett Blevins

Child's Mental Health Topic Of P. T. A. Discussion

"Your Child's Mental Health" was the program theme presented March 27 at Morehead Grade School Auditorium when the Morehead P.T.A. met in regular session...

Matthew Young Is Commerce Teacher At MSC

Matthew P. Young has filled the vacancy in the Commerce Department left by the sudden death of Ross Anderson who held this position at Morehead State College for a score of years...

Henry Clay Speech Contest To Be Held At Breck In May

Mr. Z. Brent Fry has announced the annual Henry Clay Speaking Contest will be held around the first week in May at Morehead State College. Announcement of an exact date will be made in the near future...

MID-STATE SANITATION. Cesspools, septic tanks and outdoor toilets cleaned. FREE ESTIMATES. Phone ORchard 4-4928. SALT LICK, KENTUCKY

Editor's Pen— (Continued From Preceding Page) only 32 per cent (plus repair charges and lawyers) would dis-

some of you it will be because of the time element and not because of my desire to meet and discuss my attitude with you.

ENVOY TO JAPAN Edwin C. Reischer, a Harvard professor who in the past has criticized United States policy in Asia, is President Kennedy's choice for Ambassador to Japan.

While a student at Eastern State College, Young was an active member of the Sigma Pi social fraternity and is now a member of the Omicron Sigma in Lexington and a member of the United Business Education Association.

THE CHURCH OF CHRIST Meets At 225 Second Street Morehead, Kentucky. Sunday School 10:00 A.M., Sunday Worship 11:00 A.M., Sunday Evenings 7:00, Wednesday Evenings 7:30. DON FLATT, Minister. Hear "The Voice of Truth" over WMOR each Wed.—7:15 a.m.

LAYNE'S In Morehead. Where Budget-Wise, Value-Wise, Fashion-Wise Milady and Well-Groomed Gentlemen Shop. And, as in years past, the best dressed people in the Parade will be customers of Layne's in Morehead for here is a store that plans months in advance...

Men's Suits, Sportswear, NUNN BUSH SHOES, Cameo stockings. They're subtly color-keyed to the new colors of Spring fashion! And these famous Cameo nylon won't wrinkle, won't crackle... even if you parade for hours, walk and walk, block after block! Proportioned, sized, seamed and seamless. \$1.35 and \$1.50. LAYNE'S McKinney Building Morehead, Ky.

Hot piston test reveals the ash-free secret of Shell X-100 Premium. A simulated piston is heated and a few drops of conventional multi-grade motor oil dropped on it. As the picture on left shows, this oil leaves a deposit of additive ash. When the test is repeated, as at right, with Shell X-100 Premium, all the oil vaporizes. It leaves no additive ash.

BREAKTHROUGH! Suddenly Shell makes every other motor oil obsolete —with a revolutionary new formula which fights the five internal troubles that can shorten engine life. Shell's research reveals five common internal troubles that can shorten the life of your car. All five work silently and unseen. These troubles are additive ash, crankcase dirt, temperature changes, engine acid and cooling system leaks. Read how new Shell X-100, Premium fights all five internal troubles. Today, every Shell dealer in America has new Shell X-100 Premium Motor Oil ready for your Spring oil change. New Shell X-100 Premium is a genuine breakthrough because it is the only motor oil available that protects your car simultaneously against these five internal troubles that can shorten engine life.

WELCOME HIGH SCHOOL GRADS

2,500 Seniors Are Expected

Approximately 2,500 high school seniors are expected to attend two annual Senior Days this year at Morehead State College.

STATE FARM INSURANCE logo and contact information for Clyde H. Smith, Agent.

FOR INSURANCE CALL CLYDE H. SMITH, Agent - Phone ST 4456

Opposite First Baptist Church Morehead, Ky.

Blue Cross Mutual Automobile Insurance Co. Blue Cross Life Insurance Co. Blue Cross Fire and Marine Insurance Co.

Home Office - Bloomington, Illinois

OXYGEN EQUIPPED AMBULANCE SERVICE advertisement with contact info for Meredith M. Stucky and J. Earl McBrayer.

Advertisement for a clock or timer device with a picture of the product.

Advertisement for a kitchen electric range with a picture of the appliance.

Claig Sprout

SAYS ...

Dear Mister Editor: My old lady went to town yesterday and got her a new hat for Easter Sunday and she ain't done nothing today but try to decide if it's loova better in the one she wore last Easter.

I thank wimmen spend half their time trying to decide what to wear and, if you ask me, it's them decisions that finally get 'em in the end. I recollect about the feller that went crazy on his job of sorting out the MSC music department.

Lunch will be served in the college cafeteria for half of the visiting seniors while the other half attends a dance in Button Auditorium.

Each visiting senior will be assigned an academic interest group conducted by a campus professor and will discuss topics of interest to high school seniors.

WANT A FLORIST? See the YELLOW PAGES

Annual Sophomore Test Scheduled For April 18. All second semester sophomores of Morehead State College should report to Button Auditorium on April 18 at 8 a. m. to take the annual sophomore test.

Shop The Classified Ads. POWERFUL NEW PULPWOOD SAW McCULLOCH ONE/60 with plunge-bow

Advertisement for a kitchen electric range with a picture of the appliance.

Service Board Has Advice For Rowan Seniors

Junior and senior high school boys in Rowan County will be getting some good advice from their local Selective Service Board in the near future.

A new statewide information program about Selective Service is being put into immediate effect in Kentucky, Butler said.

The information program was proposed by Col. Everette S. Stephenson, chairman of Selective Service, after Sgt. Butler discussed the high rates of Kentucky (33 per cent in 1960) who fail the educational and intelligence tests of the Selective Service System.

Col. Stephenson said, "We plan to encourage young men to stay in school and complete their education before entering a branch of the service. They can also enter an industrial or technical occupation and we can defer them from military service."

School superintendents are being asked to invite members of local boards to speak to the male students of the junior and senior class in every Kentucky high school.

In addition, guidance counselors are being provided to advise the boys, and letters of explanation will be sent to parents of all boys approaching their 18th birthday, explaining the requirements of Selective Service re-enlistment.

Student deferment is encouraged by the State Selective Service System in all cases where the student maintains acceptable grades. Teachers are also strongly considered for deferment.

It is up to the fault-finder to do good at somebody else's expense. Reformers are always willing to do good at somebody else's expense.

MONUMENTS all sizes and colors See, Write or Call Us W. A. PORTER Rt. 1, Olive Hill, Ky. Phone FA 6-3518

Hospital-Surgical Protection? Most Kentucky Families THINK FIRST of BLUE CROSS FOR HOSPITAL CARE and BLUE SHIELD FOR SURGICAL BENEFITS. Includes coupon for mail.

now it's Pepsi for those who think young. Today people of all ages go all out for fun. We're living young. This is the life for Pepsi—light, bracing, clean-tasting Pepsi-Cola. At stores, fountains, say "Pepsi, please"

**— SPECIAL —
FRIDAY & SATURDAY
MAR. 31 - APR. 1
Spring Tune Up**

Including installation of points, plugs, condenser
Average 8-Cylinder Car \$13.95

Average 6-Cylinder Car \$11.95

STANDARD OIL PRODUCTS ROAD SERVICE

DON TACKETT'S GARAGE

(Formerly Litton Bros. Garage)
1 Miles North of Morehead on Ky. 22 at intersection of Flem. Insburg and Sharkey roads.
Phone 5Tate 4-5319
MOREHEAD, KY.

Grand Jury —

(Continued From Page 1)
ficials named in the letter and the former grand jurys and that the writing of the letter and the publication of same was unjust to those parties concerned.

"We have further questioned representatives of the State Auditor's office concerning the keeping of the officers' records in this county and based upon their testimony and our own findings, it is our conclusion that the records in this county are maintained properly.

"It is recommended that the door leading into the rear of the court house be changed so as to allow the door to swing to the outside of the building in conformity with the State Fire regulations.

"It is strongly urged that the jail be re-wired for electrical outlets so as to be made safe and that the sanitation system be repaired and altered and put in workable condition with the control of the water supply to be placed within the jailer's residence or outside the confines of the jail. It is our belief that these repairs and improvements to the jail could be made at nominal cost. The wiring with mass at 11:30.

"The Fiscal Court and other officials are to be commended for the work they have done on the exterior of the courthouse which has made the building more durable and better in appearance. It is suggested this work continue on

the inside as the county funds permit. "Due to the absence of witnesses we were unable to consider the cases of the Commonwealth of Kentucky vs. Charles Fraley and Commonwealth of Kentucky vs. Owen Johnson and now refer both of these cases to the next grand jury for their further consideration.

Easter Services —

(Continued From Page 1)
Nest. Arrangements committee: Ethel Patton, Mrs. C. B. Daugherty, Mrs. N. C. Marsh and Mrs. Lester Hogue. Sunday School and church services at regular time.

CATHOLIC — Holy Week services (Thursday) afternoon at 4:45. Then started Monday at Chapel of Infant Jesus, Battalion Ave., with Stations at the Cross, Mass. said by Rev. Thomas Herlihy, followed by Rosary. Devotion will be this again Father Herlihy will say the Mass. Holy Communion distributed at all Masses. Father Herlihy is scheduled at Flemingsburg Good Friday. On Easter Sunday High Mass will be sung by the Girls Choir, confessions at 11 a. m., with Mass at 11:30.

CLEARFIELD, First Church of God Tabernacle — Revival has been in progress this week, conducted by Guest Minister W. D. Wooley and Pastor Ramah Johnson. Regular services Easter Sunday with a play, "The First Easter" scheduled at 7 o'clock Sunday evening.

1st CHURCH OF GOD — The canata, "Hallelujah, What A Savior!" will be presented at the Main Auditorium, Second and Harris Avenues, at 7:30 Sunday evening. The canata, arranged by John W.

Peterson, will be directed by Mrs. Joyce Hall. Soloists include Rev. John W. Conley, Fred Fraley and Julie Severy. In connection with Easter Sunday School and Worship Sunday morning the church will have its annual Easter Missions offering. This is presented in Church of God congregations throughout the world on this day.

Beautification —

(Continued From Page 1)
J. O. Botts, Haldeman, and Mrs. R. C. Roberts, Sharkey.

The following committees were named: Publicity—Joe Mauk, Chairman; Wm. Whizaker, Jr. and W. E. Crutcher.

Finance—Hobart Lacy, Chairman; Austin Alfrey, Glenn Fraley, Robert Stokes and Marit Bowne. Contest—Wm. Oasley, Chairman; Roger Casdill.

City Government Co-ordinator—Clayton Perkins, Chairman; Jack Landreth and Clyde Bruce. Street and Highway—Clay Snedgar, Chairman; Herb Christian and Russell Barker.

Rural Beautification—Prof. H. C. Huggan, Chairman; Janet Boyd, Adrian Razor and Clay Banks.

Church — Ted Greene, Chairman; J. B. Calvert, Jr.; Dr. Louise Casdill, Dr. Byron Westz and Dr. J. K.

Smith. Retail Stores — C. B. Cornett, Chairman; Paul J. Reynolds and Elva Barker. Vacant Lots—Callis Coyle, Chairman; Sam Green, Howard Jones and Edell Greene. Special Project—W. D. Patton, Chairman; F. A. Ravenscroft, Mrs. Harold Rose and Mrs. Oscar Oliver.

Chandler —

(Continued From Page 1)
8 deadline. Thirty-three had entered on the Democratic and Republican tickets as of Monday.

The primary, expected to attract a record vote, is Tuesday, May 21.

HODGES EXPECTS UPTURN
Secretary of Commerce Luther H. Hodges said, "I think we've hit the bottom" of the recession, and the economy could start to move upward. Hodges said he had no official statistics yet to back his statement that the recession had hit bottom. "There are certain indications, part of it born of hope, part of it born of natural optimism. Generally speaking, I think there's a better spirit and a general feeling that things are going our way and are going to get better soon."

We know that the less one knows, the easier one forms an opinion.

Homemakers Provide Heart Clinic Food

By Janet Boyd
The Rowan County Homemakers, as part of their Citizenship Program, furnished free sandwiches for the doctors, nurses and children at the Heart Clinic. The Clinic was held at the Health Center March 17, 1941. Those helping prepare the sandwiches were Mrs. Charles Apel, Mrs. Clara Robinson from the Morehead Night Homemakers Club, and Mrs. Lila Chadwell from the Progressive Homemakers Club.

"Making a list of the things to be done, then organizing them in a logical way, is a good starting point to be followed by assembling the needed tools and equipment."

Wear comfortable clothing and shoes, do the hardest work early in the day and rest occasionally. Here are some cleaning hints:

1. Use an upward lifting motion in dusting walls, as cobwebs streak walls if they are pulled downward.
2. In washing walls, use a dry sponge, or a cleaner recommended by a reliable paint dealer, do the ceiling first, then start low on the wall and work upward to avoid streaking.
3. One tablespoon of ammonia to a quart of warm water, for washing windows will give them sparkle. For the exterior of windows, use vinegar in place of ammonia to remove the stickiness from falling leaves or other foliage.

Don't Take Chances Firestone
The Life You Lose May Be Your Own

WINTER SAFETY SERVICE FOR ONLY

- 1 Pull front wheels, inspect brake linings and drums.
- 2 Check gross axle, wheel cylinders for leakage.
- 3 Clean, inspect, repack front bearings.
- 4 Add brake fluid if necessary.
- 5 Adjust brakes on all four wheels for "full pedal" braking.

\$119
Any American Made Car

MOREHEAD HOME & AUTO SUPPLY COMPANY
"Firestone Headquarters"



Time for spring planting . . . for the actual work on that lawn or garden you've planned all winter . . . time for repairing big machinery like tractors, or little machinery like lawn mowers. You'll find everything you need whether it be seed, fertilizer, new equipment, paint, or repair parts at the Monarch.

Here's The Answer

Look around, neighbor . . . you'll find the answer. The REAL SMART man or woman goes to the Monarch because they know that here is quality . . . here are a complete repair and service departments . . . every item, small or large, is exactly as represented with the full guarantee of a reliable firm. Built on integrity, and thriving on the confidence of the people who know.

- Poultry Netting, Any Width
- Lawn Seed and Field Seed
- Pipe Covering and Heat Tapes
- Fairbanks - Morse Pumps Installed
- Tobacco Seed and Tobacco Canvas
- Bedrench For Tobacco Beds
- Gates V-Belts, Any Size
- Glass, All Kinds, Cut Any Size
- Keys Made For All Locks
- Log Chains, All Sizes, Cut Any Length
- Home Electric Light Fixtures
- Complete Stock House Wiring Materials
- Reconditioned Used Tractor & Plow — \$295.00
- Used Tractor & Plow — \$495.00
- One Used Tractor — \$295.00
- Coal & Wood Range Stoves
- Calf Buckets — Everything For Dairy
- Straight, Step, Extension Ladders
- Copper Tubing, Complete Line Fittings
- Furnace Pipe and Elbows — 6" to 12"
- Soil Pipe & Fittings
- Galvanized Flat Sheets, 28, 26, 24 Gauge
- Barndoor Track and Hangers
- Round, Flat & Angle Irons
- Chrome Trim For Kitchen Cabinets
- Cabinet Hardware Of All Kinds
- Furnace Filters — Repair Service
- Dst Mops, Wet Mops, Brooms, etc.
- Furniture Polish & House Cleaning Supplies
- Quality Behind Every Item At Monarch

MONARCH SUPPLY STORE
"One Of The Most Complete Hardware Stores In All Of Kentucky"
MAIN STREET IN MOREHEAD



MARTIN'S DEPARTMENT STORE
Morehead, Ky.

an elastic bra that lasts up to 3 times longer than an ordinary cotton bra
with new stretch-ever elastic \$3.95

It's amazing! New Stretch-ever elastic keeps its life month after month. It can be machine washed—even bleached . . . it won't pucker or stretch out like ordinary elastic. Now every woman can enjoy the Heavenly Comfort of a Playtex Living Bra, because it lasts so long that it is actually thrifter than an ordinary cotton bra!

Now available in nylon or new cotton-Dacron® cups. White 32A to 42C \$3.95. "D" sizes \$4.95.