

12,000 Readers

This and every edition of the Rowan County News has over 12,000 readers.

Volume No. 75

Fiscal Court And County Judge Fail To See Eye To Eye

Magistrates Take Over Program

A slowly widening rift between Rowan County Judge Carl Jones and members of the Fiscal Court broke open Tuesday with the county road work, the apparent crux of the difference.

The court also took away the 500 per month that Sheriff Sam Green has been receiving for automobile expenses, and dismissed the road foreman in a session couched with a noticeable undercurrent of feeling.

The morning long meeting was climaxed when Judge Jones reported that he was turning all road work over to the magistrates and they should supervise it in their respective districts. Ordinarily the county judge supervises the program.

The actions came in five motions, and members of the court voted unanimously on all of them. Members are Herb Christian, Otis Caldwell, Charlie Adkins and Clyde Litton.

The legal fireworks started with a motion by Caldwell, seconded by Adkins, that "hereafter no road material can be purchased unless brought before the entire court, except in an emergency, and when an emergency exists if the amount is less than \$25 the purchase can be made by the county judge with the consent of the magistrate of the district in which it is to be spent, and if the amount exceeds \$25, for an emergency purchase, the county judge must have approval from two magistrates."

Heretofore the county judge has made such purchases and payment must be approved by (Continued on last page, this section)



REGENT—Gov. A. B. Chandler has appointed Bruce Walters, Pikeville, on the Board of Regents of Morehead State College. Walters is a former Morehead student and is in the automobile, real estate and mining business.

Tackett's 3 Day Old Son Is Claimed

Donald Elwood Tackett, three-day old infant son of Elwood and Dorothy Wilburn Tackett, died early Monday morning.

Funeral services were conducted by Rev. Carl Fraley at grave side in Caudill cemetery at Cranston.

Besides his parents the child leaves three sisters, Barbara, Caroline and Ella Louise, all at home.

Lane Funeral Home cared for arrangements.

No Major Labor Day Accidents Reported

Despite what State Police estimated to be possibly the heaviest traffic in history there was not a major highway accident in Rowan County over Labor Day weekend.

Expect More Than 1,500 At Morehead

President Says Fall Enrollment Will Be Highest In History

Morehead State College will open its fall semester with the largest enrollment in the school's 35 year history.

Dr. Adron Doran said today that over 1,500 students are expected. The previous high enrollment was 1,400.

Fall registration activities begin with enrollment of part-time students on Saturday, Sept. 13. This registration includes those students who will be taking Saturday and night classes.

Freshman orientation begins on Monday, Sept. 15. All freshmen should be on campus at the first session at 9 a. m. Monday.

Freshman registration is on Wednesday, Sept. 17, followed by registration of upperclassmen on Thursday, Sept. 18. Classes begin on Friday.

HARMONY PREVAILS AT FRANKFORT MEETING

Morehead Attorney George Cline Leaves Race As Nominee For Appellate Judge



HARMONY PREVAILS—After an agreement was reached Friday in the offices of Attorney Joseph J. Leary at Frankfort, Appellate Judge James Miliken, Cold Springs, left, and Attorney George I. Cline, Morehead, shake hands. Cline withdrew as Miliken's opponent in the center is Mr. Leary, one of Kentucky's most powerful lawyers. Cline said he could not ask Republican candidates to make an all out effort for him, inasmuch as he could not do the same thing for them in the November general election. However, it was apparent that the Morehead lawyer is in major consideration for any key position in the Commonwealth to which he may aspire.

Morehead Attorney George I. Cline withdrew Friday from the race for Judge of the Kentucky Court of Appeals from the 6th Appellate District, apparently in center is Mr. Leary, one of Kentucky's most powerful lawyers. Cline said he could not ask Republican candidates to make an all out effort for him, inasmuch as he could not do the same thing for them in the November general election. However, it was apparent that the Morehead lawyer is in major consideration for any key position in the Commonwealth to which he may aspire.

Ryle Says Probation Plan Works

Former M'head Pastor Explains Program To Local Kiwanis Club

Kentucky's Supervisor of Probation and Parole, who has been receiving nationwide acclaim for a new and modern appraisal of penal institution inmates returned to Morehead Tuesday for an address before the Kiwanis Club.

Elmore Ryle, former pastor of the Morehead Christian Church, told Kiwanians that 85 to 90 per cent of those placed on probation make proper adjustments and Kentucky's new approach to the problem will save the state millions of dollars.

Under Ryle's guidance the number of paroles granted in Kentucky has almost tripled but parole violations, percentage wise, have fallen sharply.

Rev. Ryle declared that four essentials make a good parole program: 1. Careful and intelligent selection on the part of the three member parole board; 2. Accurate investigations of the social and criminal history prior to parole; 3. Adequate placement and employment; and 4. Intelligent, friendly and careful supervision after release.

"The cost to the state maintaining a person in a reformatory for a year approximately \$200," Ryle said. "However, the cost of maintaining one person on a parole institution for the same length of time is approximately \$120."

He pointed out that probation is generally reserved for the young offender or the first offender.

Rev. Ryle left Morehead in 1930 to assume the pastorate of the (Continued on Back Page, This Section)

State Options Property Near Morehead For District Engineering Office And State Police Barracks; Oates Makes Announcement



BIG DAY FOR MOREHEAD—The Moreheadians in this picture went to Frankfort Friday to deliver options on property which Kentucky intends to purchase for an area zone engineering office and district State Police barracks, the first major step in almost three years planning. Seated, from left: W. E. Crutcher, Carl O. Yochum, George I. Cline, Otto P. Carr, State Police Commissioner Don Sturgill, Finance Commissioner Orba Traylor. The picture was taken in the Lt.-Governor's office at the Capitol.

Roadside Park May Also Be Developed

The State of Kentucky announced today it had taken option on 25 acres of land, about two miles east of Morehead on U.S. 60, with the intention to construct an area engineering office, district State Police barracks and perhaps other physical facilities in a long range program.

Details of the option, with intention to purchase as soon as title is clarified, were recited by Highway Commissioner Ward J. Oates, He, and Deputy Police Commissioner Ted Bassett, were in Morehead last week ironing out preliminary problems and selecting the site.

The property belongs to the infant children of Nick Truitt and adjoins the commonly known Pine Thicket, about three acres, which the state already owns.

Plans have been tentatively agreed on to run water and gas from Morehead and lease property. This will probably open up this entire area, adjacent to U.S. 60, to a bonded building, enhancing the value of all property in the Road area.

Waterford Mills

Oates and State Police Commissioner Don Sturgill worked with a local committee setting up the option. The committee is composed of businessmen W. E. Crutcher, C. P. Caudill and C. B. Dougherty, lumber dealer and City Commissioner Otto Carr, Mayor William H. Layne, and member of Commerce President W. E. Grutcher. The options were delivered to Oates Thursday in the office of Lt.-Governor Harry Lee Waterfield, who also recommended the project.

The committee and District Engineer Carl O. Yochum have been conferring with Frankfort officials for the past two years in the planning. Many prospective sites were offered and appraised.

Expansion Probable

The Rowan County committee had Oates' announcement as "probably the greatest thing that has happened to Morehead since establishment of Morehead State College."

There is basic reason for their optimism. Purchase of the land for the engineering and barracks establishment of the Northeastern Kentucky State Police barracks in Morehead, but the city will become the ever-growing working site for major highway activities in all parts of Kentucky, extending east to Pike County.

Enhancing the value of the estate, the expansion of the certain expanded highway program, including the interstate, will probably be completed.

Highway officials estimate that more than 400 persons will be employed through the Morehead office.

Oates Enthusiastic

Commissioner Oates looked over available land and personally selected the Truitt property. He was enthusiastic about the future possibilities when he met with the Morehead committee.

Oates pointed out that this ties into the highway program property which the state purchased nearly 20 years ago, with the objective of a bonded highway program.

The Commissioner said that he visualized the construction program as follows:

1. Build the engineering office where the pines now stand, leaving the stand here of the state trees as possible;
 2. Erect the State Police barracks on the east end, adjacent to the home of Bobby Stamper;
 3. Create a roadside park near the state land here and adjacent to the highway;
 4. Landscape the some 25 acres of hill land in the rear and build a picnic and picnic tables in the forest;
 5. Leave the space open between the east end and the park for future development and expansion.
- Oates has about 1,450 feet fronting U.S. 60 runs close to the hill on the east end, but this could be developed considerably with bulldozers, Commissioner Oates said.
- The road was a black-top project by 12 to 14 to 16 to 18 to 20 to 22 to 24 to 26 to 28 to 30 to 32 to 34 to 36 to 38 to 40 to 42 to 44 to 46 to 48 to 50 to 52 to 54 to 56 to 58 to 60 to 62 to 64 to 66 to 68 to 70 to 72 to 74 to 76 to 78 to 80 to 82 to 84 to 86 to 88 to 90 to 92 to 94 to 96 to 98 to 100.
- Long range plans call for a second surfacing of this to being the highway approved for Secondary Federal Aid, up to standard.
- (Continued on last page, this section)

3,000 Enroll In Rowan County Schools

Supt. Clifford Cassidy estimated enrollment in Rowan County consolidated and rural schools, which opened Wednesday, at 3,000.

The schools started for a nine month term following a teachers meeting in Morehead Tuesday.

Rowan, Fleming Officials Conduct Raid Near Sharkey

Several persons were arrested after a raid on a gambling and bootlegging establishment in Fleming County near Sharkey Saturday night at 11:00 p. m., according to Rowan Sheriff Sam Green.

Sheriff Green said several others escaped arrest by jumping out windows and leaving through a back entrance to the building. Among those arrested were two juveniles that were returned in custody of Sheriff Roberts.

The establishment was operated by Johnny Kurl.

In addition to Sheriff Green, Deputy Sheriff Chester Robinson, State Police troopers and Fleming County officials participated in the raid.

ALASKA APPROVES

Enthusiastic Alaskans have snapped up the offer of statehood for a state approximately \$200 million, the Union its largest state and the first addition in 48 years.

ORDERS SAFETY

In Frankfort this week, Dr. Robert R. Martin, superintendent of state schools, ordered full compliance with safety laws applying to the transportation of students.

HAS TRIPLETS

Triplets, two sons and a daughter, were born Sunday to Mr. and Mrs. Palmer Conk, Irvine, Route 2, Ky.

Six Face Trial On Local Option Counts Monday

Five men and a woman will face trial Monday in Rowan County Court on violations of local option laws.

Answering to charges of possession of illegal alcohol for "Reverend" Maggie Hunter, 41, Cecil Bledin, 28, William Everett Adkins, 48, Willis Moore, 40, and Junior Stewart Corbidge Stewart will answer to a charge of transporting alcoholic beverages in local option territory.

Their trial was originally scheduled for Aug. 4.

Roberts Rites Conducted On Sunday

Death Came Thursday At St. Joseph Hospital In Lexington

Funeral services were conducted Sunday afternoon at 3 o'clock in Soldier Church of God for John R. Roberts, 66, who passed away Thursday at St. Joseph Hospital in Lexington.

Mr. Roberts, son of the late James and Millie (Hunters) Roberts, was born in Elliott County April 18, 1862.

In early life he married Lena Hiler and they became the parents of two children, both of whom survive.

Mr. Roberts and his wife, Mrs. Roberta, Morehead, Kentucky, were the parents of several children, all of whom survive.

Mr. Roberts was in Clay cemetery in Elliott County with graveside rites by the Masonic Lodge of Sandy Hook. The lodge was assisted by members from the Morehead, Soldier and Olive Hill chapters, all close friends of Mr. Roberts.

Interment was in Clay cemetery in Elliott County with graveside rites by the Masonic Lodge of Sandy Hook. The lodge was assisted by members from the Morehead, Soldier and Olive Hill chapters, all close friends of Mr. Roberts.

Funeral services were conducted Sunday afternoon at 3 o'clock in Soldier Church of God for John R. Roberts, 66, who passed away Thursday at St. Joseph Hospital in Lexington.

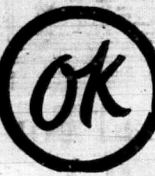
Funeral services were conducted Sunday afternoon at 3 o'clock in Soldier Church of God for John R. Roberts, 66, who passed away Thursday at St. Joseph Hospital in Lexington.

Vanceburg-M'head Letting Set Sept. 23

Plans call for Class C of the Union surface cost of the Rowan County portion has been estimated at something like \$25,000.

The road is one that has been long sought by the Morehead Chamber of Commerce and it would open an entire new section of Northeastern Rowan County and Southeastern Lewis County.

The road was a black-top project by 12 to 14 to 16 to 18 to 20 to 22 to 24 to 26 to 28 to 30 to 32 to 34 to 36 to 38 to 40 to 42 to 44 to 46 to 48 to 50 to 52 to 54 to 56 to 58 to 60 to 62 to 64 to 66 to 68 to 70 to 72 to 74 to 76 to 78 to 80 to 82 to 84 to 86 to 88 to 90 to 92 to 94 to 96 to 98 to 100.



A Good Deal Depends On Your Dealer

USED CARS AND TRUCK BARGAINS

EASY GMAC TERMS... If you're looking for a good OK Used Car or Truck...

USED CARS

'56 CHEVROLET 4-DOOR STATION WAGON

'56 CHEVROLET 210 2-DOOR

'56 PACKARD HARD TOP

'55 FORD STATION WAGON

'54 CHEVROLET DEL RAY COUPE

'54 PLYMOUTH 2-DOOR

'53 BUICK 4-DOOR, ALL POWER

'53 CHEVROLET 4-DOOR SEDAN

'53 PLYMOUTH 4-DOOR

'52 CHEVROLET DELUXE COUPE

'51 FORD V-8 2-DOOR

'57 FORD PICKUP 4-TON 4-SPEED TRANS.

'56 CHEVROLET CAMEO CARRIER

'55 CHEVROLET 3-TON FLAT

'54 CHEVROLET 3-TON FLAT

'53 DODGE 4-TON PICKUP

'52 CHEVROLET 3-TON WITH DUMP BED

'46 CHEVROLET 1 1/2-TON FLAT

All Used Cars Are Checked For Alignment On The New 'John Bean' Visualizer!

Midland Trail Garage

"Pioneers In Rowan County Transportation"

— Phone 150 —

Morehead, Kentucky

CLASSIFIED ADS

No Classified Ads Accepted After 5 P. M. Tuesday... Per word first insertion...

FOR SALE Five-room house, bath, garage on Flemingsburg Road...

FERTILIZER Five salvage fertilizer for sale at stock pile of 2 miles above main...

FARM FOR SALE 127 Acres with extra good home and barn...

PIANO BARGAINS - All styles and finishes. For the best prices...

CRANE Gas-tanked gas hot water tanks. 10 Year guarantee.

C. L. Landreth Plumbing Shop Bishop Avenue

FOR SALE Modern meat case, also a car. See Robert Johnson...

If You Want To Buy-Sell or Mortgage REAL ESTATE

See Our Sales List For A HOME BUSINESS PROPERTY FARM

Authorized Mortgage-Loan Broker for The Prudential Insurance Company of America

GOOD TOP SOIL and gravel for sale. Ray L. White, phone 291.

SINGER SEWING MACHINES Repossessed in eastern area. Save up to \$100.00.

ACCURATE WATCH REPAIR Let our skilled technician restore your watch to accurate time.

RAGS WANTED Clean cotton rags, No overalls, blankets, rags or silks.

COAL HAULING See Marshall Lawson, RFD 1, Morehead, Ky.

PRIVATE PIANO INSTRUCTION Mrs. Helen High, 125 Wilson Avenue.

HELP WANTED Man and Woman to take over route of established customers.

'53 DODGE 4-TON PICKUP

'52 CHEVROLET 3-TON WITH DUMP BED

'46 CHEVROLET 1 1/2-TON FLAT

All Used Cars Are Checked For Alignment On The New 'John Bean' Visualizer!

Midland Trail Garage

"Pioneers In Rowan County Transportation"

— Phone 150 —

Morehead, Kentucky

WANTED Middle aged man to build fence and cut bushes. Room 312 board. Must be sober. Write Ernest W. Mers, New Richmond, Ohio.

APARTMENT FOR RENT Four rooms and bath. Unfurnished. Russ Brown, phone 500-J or 156.

Notice Morehead TV Cable, Inc. office corner Main Street and Hargis Avenue.

Administrator's Notice The undersigned has been appointed Administrator of the estates of Tom Cumditt...

IN MEMORIAM In memory of high English fave, a judgment rendered...

ORDINANCE ORDINANCE TO MAKE A PORTION OF COLLEGE BOULEVARD AND COLLEGE STREET ONE WAY ONEZ.

BE IT ORDAINED BY THE BOARD OF CITY COMMISSIONERS AS FOLLOWS: Section 1. That on and after September 6, 1958, College Boulevard will become a one-way street...

Section 2. That on and after September 6, 1958, College Street shall be changed to a one way street east to west...

Section 3. Any person violating any of the provisions of section one and section two of this Ordinance, shall upon conviction, be fined not less than \$5.00 nor more than \$20.00.

Section 4. All ordinances or sections thereof in conflict herewith, are hereby repealed to the extent of and only to the extent of such conflict.

Passed and adopted by the Board of City Commissioners, this 2nd day of September, 1958. William H. Layne Mayor

Attest: Mrs. I. C. Blair City Clerk

Ringos Mills News By Orel Denton Cousins, Mrs. and Mrs. Sam Skags were Mr. and Mrs. Clawson Bowman and family of California...



THIS CAR IN VIOLATION-Effective with the publication of a City ordinance...

Improvement In Squirrel Hunting Is Anticipated Kentucky squirrel hunters are having a rough time, but prospects should pick up in the next few weeks.

That's the gist of a special report released today by Game Biologist Harold Barber, West Liberty leader of Kentucky's squirrel research project for the Division of Game.

Barber, compiling early reports from wildlife biologists across the state, said hunting was fairly poor in eastern Kentucky...

Barber said early season hunting is always slow and that the most successful hunting occurs when squirrels reach a peak of activity-usually during late August in western and central Kentucky...

regular weekly activity during the squirrel season. Working in every county in the state, they compile information used in determining population trends and health conditions...

Barber, leader of the squirrel research project for the past eight years, is collecting running information on this year's season from those reports.

The state's wildlife biologists now are in the field conducting squirrel hunter's bag checks...

Eight Beef Shows Planned In Kentucky

The second of eight district beef shows sponsored by the Kentucky Department of Agriculture will be at Murray Oct. 6.

The shows are open to Future Farmers of America and 4-H club youth. Agriculture Commission and white for commercial.

Mayville, Oct. 8; Owensboro, Oct. 11; London, Oct. 15; Glasgow, Oct. 22; Lexington, Nov. 6; and Hopkinsville, Nov. 14.

The Danish system of judging will be used, which means that blue ribbons will be awarded to calves meeting the official grade specifications for U.S. prime or choice red ribbons for U.S. good, stoner Ben Butler said \$7,500 has been allocated for premiums.

Other shows are scheduled at a dangerous as a bender.

FOR SALE

Three rental houses, all on one lot. Located on Second Street. Excellent investment for some one with the time to look after them. Will sell cheap.

Five-room house with finished half-basement and garage apartment. Extra large lot. Located on Lyons Avenue close to post office, church, grocery stores, picture show. In other words, a little over one block from downtown and yet far enough away to escape the downtown noise. Real nice.

House with six rooms and bath on Hargis Avenue. A good place to live.

Thriveing general store, including fixtures and building, about six miles from town on US 60, with about an acre of land.

Nice restaurant on the outskirts of Morehead on US 60. 100 acre farm at Dew Drop in Elliott County. 48 Hunderths acre tobacco base, dwelling house, barn and other buildings.

Fifty-acre farm in Fleming County near Ringos Mills. Building lots.

We have a buyer for a farm of about 100 acres. This farm must have sufficient grass for 40 or 50 head of cattle and tractor land. Buyer will pay a good price.

LYLE C. TACKETT Real Estate Broker FLEMINGSBURG ROAD PHONE 846

ABSOLUTE AUCTION

To Settle The Bert Pelphrey Estate

SMALL Well Located FARM Near Morehead

This farm is on Christy Creek Road (Ky. 32) a high standard, modern highway only 4 miles from Morehead in 10 minutes driving time.

SAT., SEPT. 6 1:00 P. M. (CST)

To Be Sold At High Dollar

Has Six Room Frame Residence

This is one of the best located farms we have ever sold. It was formerly rented by the late Willis Mocabee.

In addition to the six room-house, this farm has good grape arbor, apple trees, etc.

If you want a desirable place near town, on excellent road, which permits garden, truck farming, etc. this is your opportunity.

—SALE CONDUCTED BY— CURT Z. BRUCE REAL ESTATE AGENCY MOREHEAD, KENTUCKY

EXCELLENT FOR HOME OR AS AN INVESTMENT

MAY BE INSPECTED ANYTIME BEFORE SALE

O. K. (Bud) Hamilton, Winchester, Kentucky — Auctioneer

Marriage Licenses

Marie Stamper, 17, both of Route 1, Morehead.
Ronald J. Hamilton, 21, Elliottville and Joan Ann Hubbard, 17, Route 1, Morehead.
Bronson Black, 21, trucker, James and Eliza Howard, 20, Hinkle 3, Morehead.
Carol Johnson, 50, laborer, Bangor and Mettie Charles, 55, Farmer and Alice Farmers.

Buy Your Home, Farm, or Business NOW! Check our listings for the finest property available!

— HOMES —

- 2-STORY FRAME DWELLING and good big lot fronting on Main Street in Morehead 120 feet. Good to sell. Lot close to church, school and stores. Priced to sell. Lot worth the asking price.
- 4-BEDROOM FRAME DWELLING with basement located at 410 Flemingsburg Road, right here in Morehead. Good lot with garage. Priced for quick sale.
- 3-BEDROOM FRAME, with garage attached, just outside the city limits of Morehead. 3 modern sub-divisions. Good big lot, 70 feet front and extending back 400 feet. All city utilities with nice big fireplace, modern kitchen and a lot of trimmings. Priced for quick sale—can assume a F.H.A. loan after small down payment.
- 3-BEDROOM FRAME, a good buy for someone. Modern in all respects—kitchen with built-in oven and range top. Located approximately 1/2 mile East of Morehead on U. S. Highway 60. Can assume F.H.A. Loan after small down payment.
- 4-ROOM FRAME DWELLING—West of city limits of Morehead, about 1/4 mile on U. S. Highway 60—Good dug well, excellent garden spot, fronting on U. S. Highway 60 approximately 186 feet. 3 acres of ground. This is a good buy for someone wanting a home and a business location.
- 5-ROOM FRAME DWELLING on black-top road leading from Clearfield, Kentucky, on Morgan Park Road, near the First Church of God Tabernacle at Clearfield. Store building also on a good big lot—store building could be converted into an apartment for rental. In fact, it is already set up for one. If even it would not want a store. A good buy for someone.
- 4-ROOM AND BATH—just off Flemingsburg Road right here in the heart of town—Lot 75 feet by 30 feet. Modern 3 1/2 bathrooms—Baked-in aluminum savings, hardwood floors. Priced for a quick sale. Very small down payment and you can assume G. I. Loan with payments of \$26.90 per month including year taxes and insurance. This is a real buy and a good deal.
- 4-ROOM FRAME AND BATH including three bedrooms located in Allie Young Addition to Morehead, fronting on street 125 feet and extending back 140 feet. Also 1 1/2 acres of land near this property for sale with or by itself including excellent garden and truck patches. Priced for quick sale.
- BRAND NEW BRICK DWELLING, three bedrooms, living and dining room together, kitchen with dining room, utility room and garage attached, with separate plastic tile and the hall. Modern brick kitchen. On good lot approximately 6 to 7 miles North of Morehead. Has a fine view. If you are desiring the best, don't miss this. Good price for quick sale.
- 5-ROOM FRAME DWELLING, three bedrooms on Water Street here in Morehead. House has hot water but no bath. This is priced cheap for a quick sale. If interested don't miss this.
- 4-ROOM AND BATH in Thomas Addition, close to new Graded School building and Morehead-Rowan County Health Center. This property is priced for a good quick sale. Don't miss this. If interested in something good.
- 3-BEDROOM, BRICK—Living room, dining room, kitchen, utility and bath—modern in all respects. Approximately 1/2 mile from city limits of Morehead, on Flemingsburg Road. All built-in cabinets in kitchen, plastic tile bath, plastic all way to ceiling, all wool carpet, wall to wall on dining and living room and hall. Carpet attached. On good big lot, 80 feet front and extending back 316 feet. A good buy for anyone desiring the best. Don't overlook this.

FARMS —

- BABY FARM located approximately 6 miles East of Morehead on U. S. Highway 60, consisting of 10 acres, approximately. Two-story house with nine rooms, part basement, earnings, fireplace, modern, with bath. Good spot to locate a business and raise truck patch gardens for sale in town.
- GOOD LOWER LICKING RIVER FARM, 84 acres approximately 35 acres tillable; balance hill land. Two-story five-room dwelling, chicken house, good barn and smokehouse. Fireplace in house. 32 Acres tobacco base. Priced for sale.
- 112 ACRES FARM located off State Highway 32 approximately 5 miles North of Morehead. 40 Acres of land tillable—at least 400 acres can be cleaned up and tilled. Modern 5 room frame dwelling with full basements—good pond—bath in house. 5 Acres tobacco base. Farm located on good gravel road. Phone service and electricity—electricity in barn and stringing room. Good corn crib 24x24. Priced to sell with crop or without crop. If interested in a good producing farm, see this one.
- APPROXIMATELY 40 ACRES of land located across the creek here from Morehead, Kentucky—16 to 18 acres tillable. 5 Acres tobacco base, no buildings. This is a good buy and where a lot of people are speculating on its worth being enhanced soon. If interested see this farm.
- 130 ACRES within two miles of Morehead. 4 Mile off State Highway 32 toward Flemingsburg, Kentucky. 3 Acres tobacco base. 3-Room box-frame dwelling, part barn, 6 Acres of land being cultivated now. There has been some 30 acres under cultivation. This is priced to sell cheap you would think you stole it. If interested in a farm close don't miss this.

— BUSINESS PROPERTY —

JOHNSON'S BOARDING HOUSE PROPERTY NOW FOR SALE —Consisting of the boarding house proper, beauty shop building, 5-rooms and bath, frame frame dwelling along with a 3-acre frame dwelling at front, on Carey Avenue 106 feet and extends back 90 feet. All property rented and bringing in nice rents. This is a home. This is a home. This is a home. Not afraid of a little work. Contact us or the owner for price.

— BUSINESS PROPERTY —

Other properties for sale that I am not at liberty to advertise along with restaurants, dry good stores, etc. If interested in businesses, let us know, we have them for you.

ALPHA HUTCHINSON
REAL ESTATE AGENCY
Licensed and Bonded Real Estate Broker
Authorized Mortgage Loan Broker For The Prudential Insurance Company of America
PHONE 761 or 141 MOREHEAD, KY

World Wide Building Dam Program Noted

A boom in dam building around the world is changing the face of every continent. Waters caught in more than 25 million acres. The world is changing the face of every continent. Waters caught in more than 25 million acres. The world is changing the face of every continent. Waters caught in more than 25 million acres.

Modern Temples
Nowhere is there more emphasis on hydroelectric projects than in Asia, which must feed ever-increasing populations.

Integration Adds To GOP Worries
President Eisenhower apparently has added to the burden of Republican congressional candidates in 10 critical states his go-shower views on racial integration.

SAVE BY PAYING YOUR TAXES NOW!

A two percent discount is allowed on all county, school and state taxes if paid before November 1.

The tax bills are ready at my office and you may pay your taxes now and save.

SAM L. GREEN,
Sheriff, Rowan County

FRIDAY - SATURDAY

"Going Steady" "Fort Massacre"
With Melly Bee and Allyn Reed, Jr. With Joel McCracken and Forrest Tucker

3 DAYS OF LAUGHTER STARTING
KIDNAP OF THE TRAIL
CHAKERS MILLS
MOREHEAD, KY

IMITATION GENERAL
GLENN FORD
Red Tains BUTTONS-ELG
WITH DEAN JONES

PLUS COLOR CARTOON AND UNIVERSAL NEWS
Wednesday & Thursday

2 BLAST AND SHOCK HITS!
GUNMEN ON THE LOOSE
BABY FACE KILLERS

Olive Hill Street Will Be Constructed

Joint Announcement Issued By Chandler, Highway Commissioner

Highway Commissioner Ward announced this morning that contracts would be let Oct. 17 for construction of the new Highway 68 through Olive Hill. Total cost of the project has been estimated at \$2,210,000, including \$544,000 for right-of-way.

Gov. A. M. Chandler and Highway Commissioner Ward announced Friday the contemplated relocation of U.S. 68 through the heart of Olive Hill will be carried out.

James W. Martin, former highway commissioner, postponed the project Feb. 28 and insisted to seek a route around the city because of prices some property owners asked for rights of way.

State buyers quickly bought 80 parcels of right-of-way for \$300,200. Owners of 40 other parcels balked. Ashland Realty Board appraisers valued them at \$207,513. But a commission named by County Judge Joe Johnson set the value at \$480,300, and compromise efforts failed.

His Jalopy Proved Doubly Expensive
Jim Thornton, a British sailor, appeared in court at Gallatin, England accused of driving a car with flapping fenders, defective steering, bad brakes and without insurance or a driver's license.

CHAKERS MILLS THEATRE
Morehead, Ky
Friday - Saturday
"HELL ON DEVIL'S ISLAND"
Helmie Dantine
ALSO
BRANDON CLIFF
MARTIN the Young Lions
CINEMASCOPE

Sunday - Monday
"DAY OF THE BADMEN"
Starring — Fred MacMurray and Jean Weldon
PLUS
"SEA WIFE"
With — Jean Collins and Richard Burton

Deed Transfers

Deed transfers in the office of Rowan County Clerk Ottis W. Eiam from Aug. 27 through Sept. 3.
Alex and Reba Coleman, to Orville Fultr, one-fourth acre on Sea Branch.
Bill and Vesta McKenzie to Bill and Lorene Charles, property on Morgan Park.
William J. and Emma Sample to D. H. Hildan, Jr., land in Minnie Thomas Addition.
William H. and Elizabeth Layne to Jack Landreth, two lots in Clearfield.
Bill and Lorene Wright to Charlie and Pully Wright, property on Morgan Park.
W. S. Allen to Opal Allen, property on Main Street.
Iris and Myrtle Kidd to Orville Fultr, property on Sea Branch.

If anyone asks whether you want to hear his "honest opinion" on a question of dispute in which you are involved, tell him "No." Keep his friendship.

PUBLIC SALE
In order to settle the estate of A. R. Porter, Deceased, and pursuant to the powers vested in me, as Attorney-In-Fact for the heirs of A. R. Porter, I will, on
SATURDAY, SEPTEMBER 6
10:00 A. M. (CST)

Sell at Public Auction to the highest and best bidder and in the order listed, beginning upon the home premises of the late A. R. Porter, situated on State Highway No. 60 just outside the corporate limits of Morehead, Kentucky, and opposite the new Morehead Tobacco Warehouse, the following properties:

I. REAL ESTATE
A modern, 5-room, frame house with complete bath, a full basement, City water, Furnace and large hot water heater.
A large Garage which has a modern, 4-room Apartment built over same with full bath, Hotpoint Water Heater and City Water.
Also, a Concrete Block Store Building with City Water.
All of these buildings are situated upon a lot 125'x165' and in a very desirable commercial and residential site.

II. REAL ESTATE
Immediately after the Sale of the above property, we will proceed to Farmers, Kentucky and there sell the following property, viz:
A 4-room, frame house, electrically wired.

PERSONAL PROPERTY

Terms of Sale
Real Estate 30% day of sale and balance when deed is made in premises on or before the 1st day of November, 1938.
The above building is under Landlord-Tenant Lease and there is now being conducted upon said premises a general Grocery Store. The Purchaser of same will assume Landlord-Tenant Lease and benefits of rental when Deed is made and delivered to said premises.
Personal Property: Cash.
The store building and premises on State Route No. 60, just outside of Morehead, are premises with a great future and anyone invested in a growing business will want to inspect same.
Roy Williams, Auctioneer
Lester Hodge, Lloyd A. MacDonald — Attorneys
Ethan Hurst, Administrator Of The Estate Of A. R. Porter
Ethan Hurst, Attorney-In-Fact For The Heirs At Law Of A. R. Porter, Deceased

Offered For Sale . . .



DRIVE-IN RESTAURANT

LOCATED
8 MILES NORTH OF MOREHEAD
ON FLEMINGSBURG ROAD

MODERN DRIVE-IN RESTAURANT with living quarters consisting of 4 rooms in the basement. Restaurant has almost new equipment including two complete kitchens.

This Drive-In Restaurant is located on approximately 3 1/2 acres of land fronting approximately 692 feet on State Highway No. 32, one of the heaviest-traveled roads in Eastern Kentucky.

All this Drive-In needs is management and the opportunities are unlimited. You would have plenty of room for a large motel, service station or both.

— We Invite You To Go Out And Take A Look —
— CONTACT EITHER OF US —
LYLE C. TACKETT - ALPHA HUTCHINSON
REAL ESTATE BROKERS
PHONES 846 OR 761 MOREHEAD, KENTUCKY

First 1936 Model Automobiles Will Soon Be On Display

It's almost time for the 1936 models of the various American automobiles to hit the news and advertising pages again. This year a big change is supposed to have been made by most of the producers.

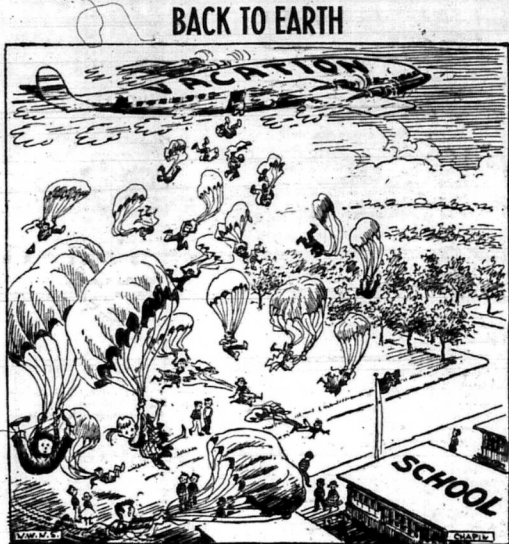
In a few days of weeks, during September the first 1936 models will become available (comparatively early) and the introductory will continue until November.

September Rich In History

The morrow was a bright September morn: The earth was beautiful as if new-born: There was that nameless splendor everywhere.

Cool Nights Are Wonderful

The end of the summer is near, the first leaves are beginning to turn, and occasionally, even if it is imagination, a rustle through the trees or a breeze seems to be a little cooler these days.



BACK TO EARTH

THE EDITOR'S PEN Editor Misses Out On The Picture We Would Like To Print

This newspaper and the metropolitan press missed out on the picture in the yearling Fryer case which the News Editor was present but minus a camera.

Claig Sprout

DEAR MISTER EDITOR: Well, Labor Day has come and went for another year. That's the day all the city kids try to get out of town and visit in the country.

State Fair Improved This Year

Kentucky's State Fair, scheduled to open in Louisville Sept. 4, is reported not to interest the farmers and the soon-to-be farmers of the state this year as never before.

Television Brings Sport To Many

The television schedule of college football is not what some fans would like it to be. It does offer the shut-in, the bedridden and the poor man gridiron fan from September 20 through December 6th, and after that the traditional "howl" games.

Alcoholism Gets Attention Of State

By J. Collis Kings Executive Director Kentucky Commission On Alcoholism The first tax supported program on alcoholism was established in Connecticut in 1944. Since then, more than 30 states have established by law alcoholic commissions.

The Rowan County News

Merged With The Independent (1945). Published every Thursday at Morehead, Rowan County, Ky. Entered as Second Class Mailing Matter at Post Office, Morehead, Ky. Advertising Rates Available On Request. W. E. Crutcher, Publisher. Office Corner Wilson Ave. and Sun Street Telephone 261.

When You Need A Loan

When you need a loan for any purpose, call on the Loan Co. We have the money to help you. Our rates are low and our service is prompt. We are located at 123 Main Street, Morehead, Ky.

Clag Sprout

entire 80 days, which ought to give me well over into November when the weather is cool naturally and it's about too late to work anyway. I have written my Congressman for a copy of that law, I can read it to my old lady.

State Fair Improved This Year

Kentucky's State Fair, scheduled to open in Louisville Sept. 4, is reported not to interest the farmers and the soon-to-be farmers of the state this year as never before.

When You Need A Loan

When you need a loan for any purpose, call on the Loan Co. We have the money to help you. Our rates are low and our service is prompt. We are located at 123 Main Street, Morehead, Ky.

When You Need A Loan

When you need a loan for any purpose, call on the Loan Co. We have the money to help you. Our rates are low and our service is prompt. We are located at 123 Main Street, Morehead, Ky.

He Knows How To Handle His Money

The Governor is known by his friends as being a good manager of his money, a trait that we could somehow never cultivate.

The Mark Of

While we were in Frankfort last week we dropped around to the bank to see the Governor's Executive Secretary, invited. This didn't take much urging.

Bits Of Little But Big Things

We've spent most of our space about the State Capital. You must admit it's unusual because this Editor has always said that a story about Farmer Jones saw having a litter of eight pigs is bigger news to our readers than a story about a cat.

When You Need A Loan

When you need a loan for any purpose, call on the Loan Co. We have the money to help you. Our rates are low and our service is prompt. We are located at 123 Main Street, Morehead, Ky.

When You Need A Loan

When you need a loan for any purpose, call on the Loan Co. We have the money to help you. Our rates are low and our service is prompt. We are located at 123 Main Street, Morehead, Ky.

When You Need A Loan

When you need a loan for any purpose, call on the Loan Co. We have the money to help you. Our rates are low and our service is prompt. We are located at 123 Main Street, Morehead, Ky.

When You Need A Loan

When you need a loan for any purpose, call on the Loan Co. We have the money to help you. Our rates are low and our service is prompt. We are located at 123 Main Street, Morehead, Ky.

When You Need A Loan

When you need a loan for any purpose, call on the Loan Co. We have the money to help you. Our rates are low and our service is prompt. We are located at 123 Main Street, Morehead, Ky.

When You Need A Loan

When you need a loan for any purpose, call on the Loan Co. We have the money to help you. Our rates are low and our service is prompt. We are located at 123 Main Street, Morehead, Ky.

Advertisement for 'LOANS AUTO-HOUSEHOLD SALARY' with an illustration of a man and a woman. The man is holding a check and the woman is smiling. The text says 'When you need a loan for any purpose, call on the Loan Co. We have the money to help you. Our rates are low and our service is prompt. We are located at 123 Main Street, Morehead, Ky.'

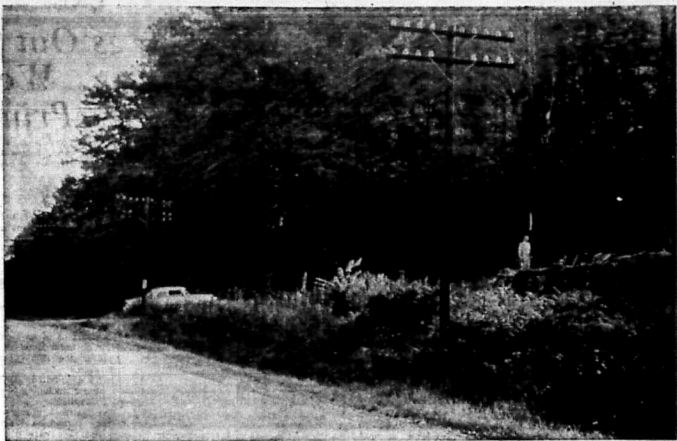
Subscription Rates: One Year, \$3.00; Six Months, \$2.00; Three Months, \$1.00. (No subscription taken for less than one year.)

When you need a loan for any purpose, call on the Loan Co. We have the money to help you. Our rates are low and our service is prompt. We are located at 123 Main Street, Morehead, Ky.

When you need a loan for any purpose, call on the Loan Co. We have the money to help you. Our rates are low and our service is prompt. We are located at 123 Main Street, Morehead, Ky.

When you need a loan for any purpose, call on the Loan Co. We have the money to help you. Our rates are low and our service is prompt. We are located at 123 Main Street, Morehead, Ky.

When you need a loan for any purpose, call on the Loan Co. We have the money to help you. Our rates are low and our service is prompt. We are located at 123 Main Street, Morehead, Ky.



MISTER, SPARE THAT TREE—This is the commonly called Pine Ticker, about three miles east of Morehead, where the State Highway Department hopes to construct a one engineering office. Commissioner Ward Gates, a nature lover, told a Morehead delegation: "If I am Highway Commissioner when construction starts I intend to come here and personally mark the tree to be cut . . . I want to leave every one of these pines I can!" State Police trucks and a park will be erected at the east end of the property, not shown, which fronts 450 feet on U. S. 46. (Other pictures and story on page one).

BACK to SCHOOL

COATS SHOES UNDERWEAR SHIRTS SOCKS

SALE at GOLDE'S

IS IN FULL SWING!

BARGAINS GALORE
PRICES REDUCED IN EVERY DEPARTMENT

36 HOURS CONTINUOUS SALE!

Beginning at 8:00 A. M. Friday and Ending 3:00 P. M. Saturday
Each and every hour prices will get hotter! You can shop Golde's any time during the 36 continuous hours they will remain open beginning Friday and ending Saturday. For best selections shop early . . . Your One-Stop-Save Center.

Here Are A Few Of The Hot Items You'll Find At Golde's During This Week!

Ladies' Late Summer and Early Fall

DRESSES

Just right for September wear.

Values To \$6.95
\$8.95
\$10.95

Priced To Sell For \$100

Ladies' Full Swing

COTTON SKIRTS

- Wash 'N Wear
- Plaids and Plains
- Reg. \$5.95

Wash 'N Wear

PRINT

Reg. 59¢ Yard

29¢

yard

Boys' 13 3/4 Ounce

WESTERN JEANS

Sizes 6 to 12

• Sizes 6 to 16 \$198

• On Sale For Only

Boys' 10 Ounce

JEANS

Sizes 6 to 12

Men's 13 3/4 Ounce Western

JEANS

\$100
\$279

EXTRA SPECIAL AT GOLDE'S

Thursday - Friday - Saturday

Ladies' Slip-On Style Ban-Lon

SWEATERS

A Beautiful Assortment Of Colors To Choose From!

LADIES' NYLON HOSE 39¢ pr.

Come in and check our complete line of Plaid Goss. We have Outing in White, Pink, Blue, Fancy and Dark colors for quilt lining.

Use Our Convenient Lay-A-Way Plan!

\$750

OFF ON ANY COAT in the store that's priced \$29.50 or more. All you have to do is pay us \$5.00 down and we'll credit you with \$12.50 on a new Fall or Winter Coat. Now is the time to save . . . better hurry and get your choice of these coats!

36 HOURS

With Special Bargains Every Hour! Beginning This Friday!

GOLDE'S DEPT. STORE

Main Street Morehead, Ky.

MOREHEAD Drive-In Theatre

SATURDAY, SEPT. 4
3 Big Features —

EPIC BATTLE FOR SURVIVAL

AUDIE MURPHY

THE GUNS OF FORT PETTICOAT

TECHNICOLOR

PLUS "Jumping Jacks"

Starring Dean Martin and Jerry Lewis

BEYOND MOREHEAD

SUNDAY & MONDAY
SEPTEMBER 7 & 8

WANT MORE? **LANCASTER DOUGLAS**

HAL WALLIS

GUNFIGHT AT THE O. K. CORRAL

TECHNICOLOR

TUESDAY & WEDNESDAY
SEPTEMBER 9 & 10

THE FAR COUNTRY

LOOK! LOOK! LOOK! What is Being Given Away

WEDNESDAY, SEPT. 10
A GENUINE

ENGLISH BIKE

WITH ALL THE EXTRAS! You must be present to win!

WEDNESDAY IS BUCK NIGHT
Car Load For \$1.00

THURSDAY & FRIDAY
SEPTEMBER 11 & 12

"The Man Who Knew Too Much"

In VistaVision and Technicolor
Starring James Stewart and Doris Day

Eagles To Open Grid Schedule With VMI

Paul Adams' Morehead Eagles football team will open its 1936 season Saturday, Sept. 20 against Virginia Military Institute at Lexington, Va. This will be the first time the two schools have met in any sport.

The Blue and Gold has nine opponents, six of them in the Ohio Valley Conference.

One oddity of the schedule is that the homecoming game this year will be at night with West Virginia Tech as the opponent.

Ninety-nine hopefuls reported to Adams at Monday's opening practice, but the number had been reduced yesterday to 76. The final squad will consist of about 35 players.

Eagles Are Holding 3 Practices Daily

Ninety-nine candidates reported to Coach Paul Adams Monday morning as the Morehead Eagles opened drills for the 1936 football season.

Adams and his assistant, Jerry Wing, began immediate contact work in going through the Blue and Gold's opener against tough Virginia Military Institute in less than three weeks.

The original squad of 99 has now been trimmed to around 30 with the first cut yesterday at noon.

Adams hopes to have the squad down to a workable 40 by the end of the week.

Practice sessions were cut to two a day today with sessions slated at 9:30 and 2:00. Heavy contact work is scheduled from now on as the young Eagles prep for their Sept. 20 opener.

Twenty-five returnees from last year's squad, along with transfer Paul Warriner, were among the group which was on hand for the opening sessions.

Heading the list of prospects are second team all-OVC performers, guard John Plybon, tackle Wayne Chapman, and quarterback Tom Sims. Other members of last season's starting lineup who are back are ends Bert Dixon and Bob Igo, tackle Doug Moore, and utility back Bobby Kinser.

The Eagles held three-a-day sessions as they began preparation for the toughest schedule they have tackled in many years.

Following VMI will come Mar-

Editor's Pen—

(Continued From Preceding Page)

Magistrate set their own pay almost as high as Judge Otto Ingram receives. This hasn't happened, and probably won't in Rowan but there is a definite rift between the court and Judge Carl Jones and Sheriff Sam Green. The issues are more bitter and deep seated than most think . . . If you get 12 points and lose your driver's license—you're in for further embarrassment. The names of all who have their permits revoked will be released to the newspapers . . . we wish Rowan County was the pioneer to do what Mason County did last week. Mason dropped its relief commodities program, but there are still about 1,000 in Rowan County who line up for their dried milk, cheese, rice, butter, etc. for the official figures are in—the Kentucky Department of Revenue says that Rowan County ranks 119th in Kentucky in property assessments and that local real estate is being put on the tax books at only 18 percent of true market value. Only Maguffin is lower. We're preparing a lengthy, and detailed, article on this which you'll soon read . . . by far the best story in this issue of the News is the short item that Rowan County had no fatalities and not a major highway accident over Labor Day week end . . . If you'll read page one carefully you'll note that the roadside park which local women's clubs have been hoping and praying for these many years, but never achieved because no one would give enough land, may soon become a reality. And, it'll probably be a lot bigger and a lot nicer than the wonderful ladies hoped for.

INVESTIGATION NOT OVER

Sen. John L. McClellan (D-Ark) said this week his Senate Rackets Committee will need another year to finish its investigation of corrupt deals implicating union officials, employers and gangsters.

West Liberty Hotel Sells For \$27,100

The Cole Hotel in West Liberty was bid for \$27,100 when offered for sale at public auction by Mr. and Mrs. Ray Johnson.

The property was bid in by H. B. Horton of Ashland for the Associated Companies of Ashland and Portsmouth.

LOCK SEEMS ASSURED

Restoration of Lock No. 3 in the Big Sandy River at Louisa, which will assure an adequate water supply for the Louisa-Fort Gay, W. Va., area moved a step closer Monday of this week as representatives of the states, counties and cities affected met in Charleston, W. Va., and signed an agreement under the terms of which they will take over title and maintenance of the lock and dam property after restoration is completed by the federal government.

Clinton Mullins Honored At Eustis

Army Pvt. Clinton Mullins, 19, son of Mrs. Elsie Mullins, Route 1, Clearfield, recently was named Enlisted Aide for a Day to the commander of the 48th Transportation Group at Fort Eustis, Va.

Mullins entered the Army in January of this year and received basic combat training at Fort Knox. In civilian life he attended high school in McBowell and was engaged in farming.

69¢

HOMELITE

MEM

For All Outdoors . . .

Best Chain Saw

Homer Gregory Lumber Co.

West Main Street
Morehead, Ky.



Over 16 Million Females Have Jobs

There are 32 times as many big drop over the half century as there were in granularities now as the number of male breadwinners and their counterparts has dropped in half. Thousands of men and women both work at such new-fashioned occupations as operating radios and piloting airplanes, where none did a half century ago.

The Census Bureau put out these statistics in a Labor Day release. It said the occupational trends of Americans between 1900 and 1950 have undergone a striking change.

The ratio of the number of people working to the total population remained about the same—very nearly 50 million persons were listed as having occupations in 1950, out of a national population of 151 millions, compared with 20 million workers at the turn of the century, when the population was half as large.

The total of mass workers climbed from 21 to 42½ million over this period. But the number of females earning a living jumped more than three fold, from 2,519,297 to 16,445,105.

In 1900 the numbers of unskilled workers (15 millions) and skilled workers were about equal, and much larger than the number of skilled craftsmen. In 1950 the unskilled were outnumbered 3 to 1 by the semi-skilled (12 million) and by better workers 2 to 1 by the skilled (8½ million).

While the number of manual workers and service workers doubled along with the population, the white collar total quadrupled. The only major occupation to show

Government Tax Bite In State \$75 Million

Kentucky taxpayers will be asked for an increase of \$75,000,000 as its share of the cost of Federal spending in the fiscal year 1959, the Kentucky Chamber of Commerce estimated this week in reviewing the spending action of the Administration and Congress during the past session.

The Chamber noted that Federal spending will rise in the fiscal year 1959 by about \$7 billion over the 1958 total of \$71.9 billion according to latest official estimates.

Calculating that Kentucky taxpayers bear 1.08 per cent of total Federal taxes, the Chamber applied this figure to the \$7 billion increase to arrive at the \$75,000,000 additional cost to Kentucky.

Harper Gatton, Louisville, Executive Vice President of the State Chamber declared, "The burden of this additional cost cannot be

Adrian Razor On Program At Louisville

Kentucky's county agents and home demonstration agents, long a source of information for Kentucky citizens, take on an added role at the Kentucky State Fair.

S. C. Bohanan, chairman of the State County Agents and Miss Viola Hansen, chairman of the home demonstration agents, said this week that the men and women agents would make special information booths at the Kentucky State Fair, in Louisville, Sept. 4-13 inclusive.

Eight booths have been set up, said for the pilot project, the first time the Kentucky Agricultural Extension Service has made its services available in such a fashion at the State Fair.

Agents will man a main information booth at the principal entrance to the fair grounds; and booths at the University of Ken-

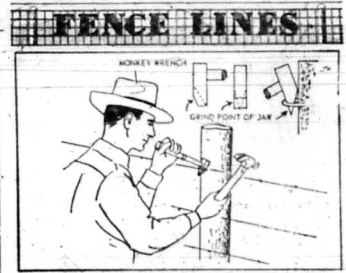
DAMAGED SEISMOGRAPHS

Sensitive Japanese seismographs have been damaged by strong shock waves from near Mindanao Island in the Philippines. A spokesman for the Japanese National Observatory said the earthquake's epicenter was located near Mindanao Island and estimated that damage there would be "extensive."

ROCKET TO STOP MISSILE

A new rocket will be able to destroy any approaching ballistic missile, says an Army general.

Gen. Arthur O. Trudeau, chief of the Army's Research and Development section, said the new rocket will be the Nike Zeus with a speed ten times greater than any of today's aircraft.



STAPLE PULLER—Monkey wrench with movable jaw broken need not be discarded. It can be converted into staple puller by removing broken jaw and grinding head of other jaw to a beveled point.

Women Robots Becoming Numerous

of every banking institution, law enforcement agency, and community of the nation," Hoover wrote. "Only by a campaign of continuous and coordinated effort to reduce the spiraling trend in the serious crime of bank robbery."

A cause of particular concern, Hoover said, is a trend of both men and women venturing into bank robbery as a one-shot solution to personal financial problems.

AF MAN RISKS LIFE

An Air Force sergeant defied death recently at Mitchell Air Force Base, N. Y., while repairing a jammed nose wheel on a cargo plane as it hovered 2,000 feet over the base landing field. Thanks to Staff Sgt. Oscar Powell, 25, of Freeport, N. Y., the big C-119 plane made a perfect landing.

OFFER TO BAN A-WEAPONS

Nikita Khrushchev has repeated the Soviet Union offer to guarantee not to use atomic weapons under any circumstances if the United States and Britain will also do so.

Love increases with time among those who avoid the fates of selfishness.



The Old One-Two ...

Or How To Hit A Guy When His Guard Is Down

1. Sell something that will make his children happier, healthier or wiser.
2. Tell him about what you are selling when he is relaxed and interested and has the free time to come to a decision.*

In Short, Advertise To Him In Your Newspaper

* When a man is busy driving a car or watching a TV program he hasn't got the free time to come to a decision. When he is reading his local newspaper he has.

Newspaper Advertisers Buy What They Want And When They Want It.

This newspaper does not ask advertisers to sign long-term contracts whereby you have to purchase space when you least need it. Instead, you buy what advertising you want—when you want it—with timing that will bring more dollars into your cash register—and at prices you can afford to pay.

The Publishers realize they could sky-rocket usage with high pressure salesmanship, but it is our policy to never oversell an advertiser... never take up his valuable time by trying to induce him to subscribe himself weekly or monthly in advance... never to sell him long-term space which he doesn't know whether he will need and whether it fits his budget.

— This Is Your Newspaper —

ROWAN COUNTY NEWS

You Can Take The Advantage Of What Others Have Spent Millions To Learn

Millions upon millions of dollars have been spent in advertising research by the major companies of the United States. They have all come up with the same decision—there's nothing that compares dollar for dollar, with newspaper advertising. Observe where America's big and successful corporations spend the major part of their advertising money.

It is particularly true that newspaper advertising has no equal for the home-town advertiser, whether he be big or little. For here, he reaches with the printed word 50 percent of the purchasing power of his trade area, at comparatively small cost.

Your weary newspaper is not cast aside. It is a valued household possession until the next issue arrives. The newspaper—and your advertising—remains read by every member of the family and often loaned to others.

Newspapers are not free. The subscribers pay for them. And, when a person purchases something it is because they want that product—they have faith in it. Your advertisement in this newspaper carries its own label of prestige. Circulation of newspapers is added—your guarantee of advertising coverage and results.

Yes, when you place your advertising in your newspaper you're getting the best. And, of course, you purchase what space you want—when you want it—and, with no long term contract, will cost you money, and eat into your future operating budget.

Be Smart With Your Advertising Dollar

Don't succumb to fancy talk and high pressure with your advertising dollar. CHECK THE RESULTS.

AMERICANA Cities To See

Biloxi, Mississippi's Vacation Spot

Highway and Beach—Biloxi, Miss.

RISING above the clear white sands of the nation's longest "man-made" beach, the century old lighthouse at Biloxi, Mississippi is an historic landmark well known to visitors from all over the country.

Biloxi, the oldest French city in the United States and once capital of the Louisiana Purchase Territory, was settled in 1699 by Pierre deMoyné d'Iberville for King Louis XIV. Eight flags have flown over this deep-water city on a peninsula of the Gulf of Mexico. d'Iberville met the Biloxi Indians on his arrival on the front of Gulf Beach. Even though located on the Gulf of Mexico, the Biloxi Indians were members of the Sioux family and Biloxi, in Indian language, signifies, "The First People."

Modern-day Biloxi is a year-round vacation city, with luxurious hotels and motels. It is also a military town, the site of Kessler Air Force Base, "The Training Center of the Air Force."

Population-wise, Biloxi is growing rapidly. The city, which has had over 57,000 population, has shown a gain of 114.2 per cent since 1940.

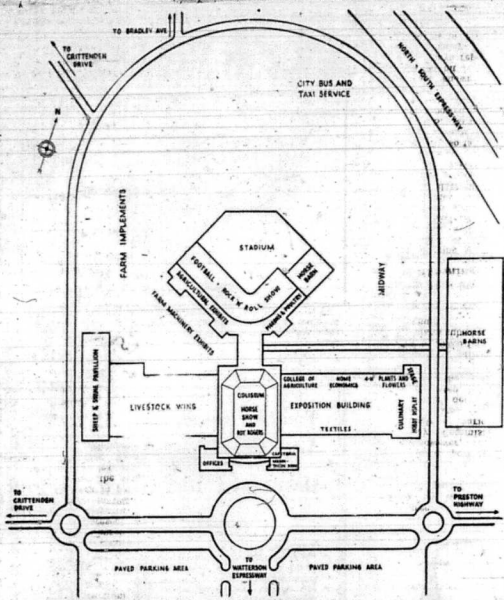
MODERN BEACH

Today a modern, four-lane highway follows the Biloxi shore line, only a few feet away from the 2½-mile sand beach which extends from the Bay of Biloxi to Bay St. Louis.

The blue waters of the Gulf are not only a playground for beach enthusiasts and fishermen but as well an important factor in Biloxi's economy. The city is the largest shrimp and oyster port in the world. Local fisheries operate more than 900 boats and employ 12,000 people.

Historic spots

Interesting to Biloxi's many visitors are such historic spots as "Beauvoir," last home of Jefferson Davis, President of the Confederacy; and Ship Island, 12 miles out in the Gulf, the harbor for French exploration and settlement from 1699 to 1783. During the War Between the States, Fort Massachusetts, completed by the Federal Government, was used as a prison under General Butler. Biloxi Lighthouse was erected in 1848 and painted black at the time of Lincoln's assassination to show the people's resentment and feeling against the English sea.



YOU SHOULD CLIP THIS—Planning to attend Kentucky's State Fair at Louisville which opens today and continues through next week? If so, it is a good idea to clip the above easy-to-read map of the Fairgrounds Exposition Center at Louisville, one of the most expansive and finest in the world. Here's another tip—If you stay at a downtown Louisville hotel it is probably better to park your car and catch a bus to the Fairgrounds. Buses will operate at five to 30 minute intervals.

Indian Academy Was Founded In Kentucky

Shortly after 1800, chiefs of the Blue Spring Farm, Ky., were encouraged by their Great Cousins in Scottsboro, Tenn., to send their sons to the school in Washington in 1825 by the Choctaw, young braves were taught law, agriculture and mechanics as well as the English language. The school in Washington, D. C., was established in 1825 by the Choctaw, young braves were taught law, agriculture and mechanics as well as the English language. The school in Washington, D. C., was established in 1825 by the Choctaw, young braves were taught law, agriculture and mechanics as well as the English language.

most noted health resorts in Kentucky. By October, 1820, discussion arose among the Indian agents, prompted by Colonel Johnson's political opponents. This resulted in a Congressional inquiry into the academy. Although cleared of all charges of mismanagement, Johnson began to lose prestige with the Indians. The student body declined rapidly from its peak of 200 and the Choctaws voted to send no more boys to the school. After struggling with only a minimum of students for several years, the school finally closed its door in 1844. While the academy did not meet expectations of the Indians, the fact that it prospered for nearly a decade and a half is a tribute to the energy of Colonel Johnson, who later became Vice President of the United States.



TWO SEPARATE WORLDS . . . This shattered bridge separates East and West Germany. It was dynamited by German troops in the last days of WWII.

Fiscal Court

(Continued From Page 1, This Section)
The court, obviously displeased with several courtroom matters, adopted the motion of Christian, seconded by Caldwell, to discontinue Sheriff Green's hearing and automobile expenses. In a third action the court laid off Ivan Reynolds as road foreman. The job pays \$200 a month. No successor was employed. The court, which had probably been meeting informally before the official session Tuesday, ordered that county road equipment—grader, shovel, etc.—remain in one district, without moving, for at least 10 days at a time, unless there is an emergency. Sheriff Green told County Attorney Austin Alfrey that he couldn't understand why the county should do away with the expense account for use of his car since this has been the practice for the past 12 years, and other sheriffs have received this. Green's remarks to Alfrey were somewhat pointed. Alfrey advised with the magistrates during the session. Not too many words were exchanged at the regular monthly meeting, but the drastic orders, and the unanimous vote of the magistrates, speak for themselves. A perusal of Fiscal Court records shows that prior to Green's term each sheriff submitted a monthly bill for expenses in operating his car. These bills, during the terms of Sheriff Jones, Chester Lewis and Green (who served in the office from 1946-50) exceeded \$100 a month.

George Cline

(Continued From Page 1, This Section)
The Republican nominee I am indeed grateful to all the people who voted for me, in a district that contained many counties where I had little or no acquaintance, and I am especially proud of the fact that my Republican friends nominated me on their ticket. "Looking over the situation now, it seems as if I would be placing some of my close Democratic friends, who now hold or have recently held important party offices in their counties or districts, in a most embarrassing position to ask them to continue their support in my race as the Republican nominee while their official allegiance demands that they support the nominee of their party. A large number of such persons were active in and led the fight for me in the primary race. The fact also remains that I am still a Democrat, and it is unfair for me to ask support of the Republican candidates for other offices, of whom I am running in November, to help me to get support from their party when I could not do so much for them. It is very distasteful for me to quit a fight, before it is finished, but when it involves so many good people of both political parties, I feel that my personal ambitions and desires should be subordinated to what appears to be the best interests of the large number of people involved. This situation has been brought to my attention most forcefully by the great amount of attention that is being focused upon the gubernatorial primary battle that is now in full swing for next year's election. The cost of carrying on a successful campaign under all the attendant circumstances would far exceed the legal limits set up by law for this office. I am not financially able to conduct such a costly race and my conscience would not permit me to do so if I were otherwise able. "As a candidate for Judge of the Court of Appeals, I often stated

that it had long been my ambition to hold this high office. I am sure it is the ambition of most lawyers. I had no quarrel with the Court or any of its members. In my opinion Judge Milliken is an honorable man, as evidenced by the large vote he received in his home county of Campbell. I ask that my friends support him with a vote of confidence. After much deliberation, I have made the decision to withdraw as a candidate for Judge of the Court of Appeals on the Republican ticket."

State Options

(Continued From Page 1, This Section)
The Commissioner did not say when he hoped to let a contract for the engineering building. He said it would be expedited as rapidly as funds permitted. Another consideration in Oates' decision to buy the Trkula property is the contemplated location of the Interstate Highway. Federal Engineer J. C. Cobb has apparently ruled out the possibility of the interstate going up the North Fork of Triplet Valley because of many huge transmission gas lines in the area. It will probably be located south of Morehead, bringing the engineering office and the police barracks close to the super highway. Oates told the delegation from Morehead that he hoped to clean up the property after purchase was consummated. Most of it is an eyesore at the time, with one small double and piles of saw dust left from recent pallet construction. Decision to purchase the property and locate the offices at Morehead dates back to the 1955 gubernatorial campaign of Governor Chandler. It was agreed between Chandler and one of his aides, who lives at Morehead, and traveled with the Governor, that the engineering and police offices at Morehead would be made permanent and expanded. However, changes in the Highway Commission and apparatus of various sites, resulted in unusual delay. Commissioner Oates' decision is the first concrete step toward consummation of the considerable project. The engineering office will be about 15,000 to 20,000 floor feet according to plans submitted a year ago by Yochum.

Fall VALUE Event

SHOP MARTIN'S DURING THEIR . . .
36 HOUR SALE
Martin's 36 HOUR CONTINUOUS SALE begins Friday at 8:00 A. M. and ends Saturday at 8:00 P. M. Prices in this ad are effective today (Thursday).

NEW
FLATS
— For Women —
\$2.98 - \$3.95 pr.

Boys' White
BASKETBALL SHOES
• Cushioned Insole
• Sizes 8 1/2 to 6
• A Real School Value
\$2.98 pr.

Children's
OXFORDS
— SIZES 8 1/2 TO 3 —
\$2.98 pr.

Men's
WORK SHOES
• Braded • Water Welt Around Sole
• No-Tear Back • Stitched
\$4.95

Boys'
WORK SHOES
• Sizes 11 to 6 • Same Style As Men's
\$3.95 pr.

80 SQUARE PRINT
Martin's has new selections to choose from.
• First Quality
• Washable
4 Yards \$1.00

SAVE NOW

BLANKETS
• 5% Wool • Double
• 2 1/2 Inch Satin Binding
\$2.98 pair

ALSO IN STOCK
10% Orlon Blankets, 72 x 90 **\$8.98 pr.**
Electric Blankets, Have Two Years Guarantee, Fire Proof, Completely Washable **\$19.98**

New Fall Fashions

See Martin's Selection Of New Fall Dresses And Coats

They're In Now . . . See Them Today At Martin's.

MEN'S FLANNEL SHIRTS \$1.98
Purchased for this big event! (This is an American-made shirt)

PILLOWS
FOAM RUBBER **\$3.95**
DACRON Completely Washable **\$3.95**

Wool and Nylon
PIECE GOODS \$1.98 yard
14 and 42 inches wide, this material is washable and is first quality. ONE YARD WILL MAKE A SKIRT!

MARTIN'S DEPARTMENT STORE
MAIN STREET MOREHEAD, KY.

Ryle Says

(Continued From Page 1, This Section)
Stanford Christian Church. He was appointed to his present position in the Welfare Department by Governor Chandler in 1956. Rev. Ryle's work in parole and probation has been the subject of many printed articles, and other states are surveying Kentucky's new success and techniques in this field.

Make every vacation day count . . . Visit Kentucky State Parks this fall . . . Reservations available at

- ★ Pine Mt. State Park, Pineville
- ★ Carter Caves State Park, Olive Hill
- ★ Natural Bridge State Park, Slade
- ★ General Butler State Park, Carrollton
- ★ Pennyrile State Park, Dawson Springs

...and other parks...

Fishing...Boating...Riding...Golf...Hiking
Fall is one of Kentucky's most beautiful seasons. We invite you to enjoy it in one of the five state parks.

Mrs. Ben Kigore, Director of Parks

Rowan County News

Morehead, Kentucky, Thursday Morning, September 4, 1958

HE LEARNED THE HARD WAY

Appliance Salesman Is Jailed As Irate Housewife Complains

A Lexington appliance salesman learned last week at Station, Ky. that when a woman refuses to buy his products it only makes matters worse to curse and insult her.

Joe Swift, 36, who told officers that he sells vacuum cleaners and sewing machines for the Atlas Company, Lexington, learned that lesson to the tune of \$85 levied against him in fines and court costs in county court.

Swift entered a plea of guilty to two separate charges of breach of the peace brought by two Clay City housewives and was fined \$25 and costs, a total of \$42.50 on each count.

He paid one fine and was placed in the county jail in lieu of payment of the second fine.

The first charge was brought by Mrs. Eva Pfeiffer who accused Swift of using loud, profane and insulting language in her home Thursday afternoon when she refused to buy a vacuum cleaner.

When the hearing on that charge

was completed, a second was brought by Mrs. Ruth Catron who accused the husky salesman of using loud, profane and abusive language in her home at Clay City when she did not buy a vacuum cleaner from him.

Officers said complaints were heard from other Clay City residents concerning the salesman's behavior in their homes Thursday and Friday but no warrants had been obtained by them.

After paying the first fine imposed on him, Swift sobbed and pleaded with Mrs. Catron to dismiss her charge against him.

promising her and court officials that he would leave the county immediately if they would not have operators' licenses.

A second salesman accompanying Swift, identified as Charles King, who was not indicted, One of the women in whose home the pair visited told Swift that Newton begged Swift to stop his strange behavior.

When asked by County Judge Edwin C. Hays if he had said anything to the women, Swift replied that he didn't know that he had insulted them but guessed that he used too much pressure in attempting to sell his products.

1880 More Rowan Counties Will Receive Benefits Under Social Security Amendment

The Social Security Administration amendments of 1958 will provide increased monthly payments to about 1880 people in Rowan County beginning with the checks which are due early in February 1959, according to Robert A. Flynn, social security district manager in Ashland. The amount of the increase will be about seven per cent, although the increase in some checks will be slightly more than seven per cent and will be slightly less than seven per cent in some others.

People who are already getting social security payments do not need to apply for the increase. It will be automatically added to the checks for January, which will be mailed out early in February.

Under other changes made by new law, social security benefits will be payable to a number of people not previously eligible for payments. They must however, apply to their social security offices before payments can start. Among the groups not eligible because of the amendments are:

- Dependents of people who are 50 years of age or now getting disability insurance benefits (children under 18 or disabled, a wife of any age who has a child in her care who is entitled to benefits; a wife 62 or over, or a dependent

husband 65 or over).

Disabled people 50 or over who could be entitled to benefits under the old law because they did not have as much as 1½ years of work in the three years before they were disabled. (A total of at least five years of work under the new law is required.)

Dependent parents whose son or daughter died after 1959 and who could be entitled to benefits under the old law because the son or daughter left a widow, widower, or 50%.

Adopted children whose adopting parent began receiving retirement benefits less than three years after the adoption. (In many cases this provision will also make possible payments to the mother of the adopted child.)

A person receiving benefits who marries another person also receiving benefits can continue to receive monthly checks, or can become eligible as a dependent on the new husband or wife without waiting three years.

Some people in situations similar to those mentioned above may have applied for benefits in the past and been notified that they were not qualified for payments. These people should get in touch with their social security district offices promptly about filing new applications, Flynn noted.

Disabled workers whose social security disability benefits were reduced or were not payable because they received workmen's compensation or other Federal disability payments will begin to receive the full amount of their social security disability payments. (These people do not have to file applications.) Their social security checks will be started automatically with checks mailed out early in September.

Under the amendments it is easier for certain employees of non-profit organizations and state and local governments to be brought under the law.

There is a slight change in the rules on how much a social security beneficiary may earn and still get social security benefits and payments. Under a new provision a person's social security benefit will not be withheld for any month which he neither worked in his own business nor earned over \$100 in wages.

Beginning Jan. 1, 1959, the social security tax rate for employers and employees will be 2½ per cent each. The rate for self-employed people will be 3½ per cent. These rates are scheduled to increase every three years until they reach 4½ per cent for employee and employers and 6½ per cent for self-employed people in 1969.

Starting with 1959 the first \$4,800 of earnings in a year will be taxed at the new rate and will count toward social security benefits.

The Ashland social security office is at 411 19th Street and is open from Monday thru Friday (except national holidays) 9 a. m. to 5 p. m.

Flynn emphasized that it is not necessary for people already receiving monthly payments to apply for the automatic increase. It will be added to the January checks, which will be delivered early in February.

Inquires about the automatic increase will slow down our effort to start payments promptly to the people who can now get payments for the first time," he said.

AMERICAN HEALTH INSURANCE CORP.
Hospital & Surgical Expense Protection
Your Local Representative

Harold Bellamy
Chokers Building
Morehead, Kentucky
Office Phone 395-J-Horse
Phone 279

Quickest Way Back Behind The Wheel
STATE FARM SPEED IN HANDLING CLAIMS

If you have an accident, you can count on State Farm's fast claim service to get you back behind the wheel in a hurry. This is the kind of service you have a right to expect, and the kind of service you always get from State Farm Mutual and your State Farm agent.

Clyde H. Smith
Phone 254
Morehead, Ky.
314 First National Building
Main Office - Shreveport, La.

ALWAYS FRESH Always Delicious
Bread, cakes, pastries... fresh from the oven to you. And you've never tasted anything more delectable in your whole life! For the finest baked goods, it's **Clary Ann Bakery**. We bake special and fancy cakes on your order.

CLARY ANN BAKERY
123 W. Main Street Morehead, Ky.

a message to our TEACHERS
As You Resume Your Important Work, May Your Difficulties Be Few and Your Satisfaction Many!

Whenever banking facilities can help you, we shall welcome the opportunity to be of service.

PEOPLES BANK OF MOREHEAD

Road Blocks Net Many Violators

Safety Commissioner Don Sturgill said this week nearly half of those arrested at road blocks set up by State Police early this month did not have operators' licenses.

Sturgill said 134 persons were arrested on 20 roadblocks from Aug. 10 through Aug. 16. Of that total, 63 had no licenses, he said.

The next largest number of arrests came because of defective brakes—25. Driving while intoxicated and public drunkenness accounted for eight arrests each, Sturgill added.

"Other violations ranged from insufficient headlights to improper equipment."

Warnings were issued to 400 motorists.

Combs Says Its Become A Two Man Battle

Bert T. Combs asserted Thursday the race for the Democratic nomination for governor in 1959 already has become a two-man race.

He didn't amplify the statement. But he and other speakers at a Young Democrats for Combs luncheon made it clear he meant the race is between Combs and Lt. Gov. Harry Lee Waterfield.

Other announced candidates are Wilson Wyatt and Hubert Carpenter, both of Louisville. There have been proposals that Combs and Wyatt join forces.

Supt. of Public Instruction Robert R. Martin, Combs' campaign chairman, told the audience of about 500:

"There is a groundswell of Bert Combs from one end of this State to the other. It is just so much man race. There is no three-man race, and those who would make it one are coming to naught day by day."

Tackett Completes Education Requirements

Donovan Tilden Tackett, Construction Man, U.S. son of Mr. and Mrs. Herbert Tackett, of Morehead, Ky., has successfully completed the United States Armed Forces Institute tests of General Education Development. He is a high school diploma holder.

Tackett, who entered the Naval Service on February 6, 1957 received his recruit training at Ft. U. S. Naval Training Center, Bainbridge, Maryland. He is now serving with U. S. Naval Mobile Construction Battalion ONE.

Before entering the Navy he attended Morehead High School, Morehead, and was employed by Curt Motor Sales.

Rowan Farm Field Trials Being Held

SCS Making Study To Adapt Research For Local Conditions

By John D. Alexander

Denis Colon, area agronomist of the Soil Conservation Service and I spent a day last week touring the field trials in Rowan County being studied by the SCS to adapt research data to local conditions.

These field trials being conducted by local farmers consist of plow planting corn, fescue in corn for cover crop, and fertilizer placement in corn.

Plow planting in corn consists of plowing land and planting the corn in the tractor tracks without any additional seedbed preparation.

Keneth Greiner, Robert Alley, Elmer Skeens, Owen Skeens and Elden Skeens planned the field trials. High water and wet weather partially destroyed the corn crop on some of these trials, however, they show a great deal of promise on the fields that are not affected by the wet weather.

Robert Alley cultivated his corn one time and sprayed one time. He has an outstanding corn crop.

This trial is expected to save labor and cost of planting and cultivating. Plow planting also conserves moisture and prevents erosion.

Fescue in corn for cover crop is being tried by Owen Skeens, Delmer Paddett, Earl Moore, Robert Alley and Elmer Skeens. Good stands have been obtained on these seedings and the growth is good. The results on this field trial looks very promising.

This trial consists of seeding fescue at the last cultivation of corn for a cover crop. Fescue is being tried on land that is being cultivated. Plow planting also conserves moisture and fescue will withstand overuse.

Fescue for cover will help control erosion, increase the organic matter and structure of the soil. It will also increase the water holding capacity and fertilizer holding capacity of the soil.

Fertilizer placement on corn is being done by Walter Ginkens and Earl Moore.

Farmers have been having difficulty in getting a stand of corn where heavy applications of fertilizer have been drilled in the row. Fertilizer placement consists of drilling the fertilizer with a drill that will place the fertilizer to the side of the row and below the depth of the seed. This makes it possible to use heavy applications of fertilizer without damaging the germination of the seed. This field trial has shown excellent results.

Farmers that are producing corn and have one of these problems should discuss it with one of the above mentioned people and look at the field trial to determine adaptability to their own farm.

Library Building Planned At College

Work will start late this month on a library building for Kentucky State College, Frankfort, according to Orva F. Traylor, commissioner of the State Finance Department.

Lewis C. Bell, director of the State Division of Purchases, said bids for the project will be opened Sept. 19. Estimated cost of the one-story brick building is \$226,000, Bell said.

Obermuth & Livingston, Frankfort, was the architect for the building which will have outside dimensions of 120 feet by 65 feet. Completion date is expected to be 360 calendar days after ground-breaking ceremonies, Bell said.

Linnie Johnson Completes Training

Army Pvt. Linnie B. Johnson, whose wife, Betty, lives at 24 B. Thomas Addition, Morehead, recently completed eight weeks of basic combat training under the Reserve Forces Act program at Fort Knox, Ky.

Johnson is a student at Morehead High School. He is the son of Mr. and Mrs. S. R. Johnson, Route 1, Morehead.

Chandler May Call Assembly In Session

Gov. A. B. Chandler reiterated Monday he favors a special session of the legislature to extend jobless benefits if a majority of the lawmakers indicate they favor the move.

Chandler's statement at a Labor Day gathering in Pikeville brought a charge by gubernatorial candidate Bert T. Combs that Combs was among several thousand persons attending the observance sponsored by District 30 of the United Mine Workers of America.

He did not speak but after Chandler's speech Combs issued a statement asserting that if the governor actually is interested in the working man he will "quit stalling and call a special session of the legislature."

In his speech, Chandler said Combs favors a state sales tax, Combs replied, "Happy has passed enough new taxes to last a lifetime."

Chandler defeated Combs in the 1953 nomination and is back in Lt. Gov. Harry Lee Waterfield in the 1959 primary.

The Light refreshment

"Buy Pepsi by the Carton"

Franchised Bottler—Pepsi-Cola Bottling Company of Ripley, Ohio.
Chas. H. Arnold, Distributor Chas. H. Crisp, Manager

BACK-TO-SCHOOL

We Invite You To Stop At Our Lunch Counter!
We Serve Delicious Sandwiches, Cool, Refreshing Drinks.

- Pastel Fillers 25¢
- Composition Books 15¢-25¢-49¢
- Typing Paper 10¢-29¢-35¢ Pad
- Stenographer Note Books 15¢ & 25¢
- PLAIN OR RETURN ADDRESS Envelopes, Large Count 10¢
- Fountain Pens 29¢ to \$1.00
- Ink-Carter's 10¢-Skrrip . . . 19¢
- Pen & Pencil Sets 99¢ to \$1.49
- Dictionaries 49¢ to \$1.00
- Scotch Tape 10¢-15¢-25¢-39¢-59¢
- Rubber Bands 10¢

Headquarters For School Supplies

- White Paper
- School Scissors
- Compasses
- Protractors
- Rulers
- Erasers
- Mucilage
- Pencils
- Ink
- Art Gum
- Lunch Kits
- Thermos Bottles

And Many Other Items For School And Home!

Boys' Nylon Shirts For Those Hot, Fall Days. While They Last, 2 For \$1.00

Girls' Triple Cuff Anklets As Advertised In Life, Regular 5¢, Special, 2 Pairs \$7.50

Children's Triple Cuff Anklets, Regular 4¢, 2 Pairs \$1.00

— AND MANY OTHER BACK-TO-SCHOOL SPECIALS —

SPECIALS FROM GIBSON'S

LOOK! BALL POINT PENS While They Last 2 for 15¢	Blue Canvas BINDERS 59¢
FILLER PAPER 10¢-25¢-49¢-98¢	Imitation Canvas BINDERS 29¢ & 39¢
SCHOOL BAGS 98¢ & \$1.49	INK TABLETS 5¢ & 10¢
NYLON HOSE Regular 7¢ 2 prs. \$1.00	Boys' SPORT SHIRTS \$1.00 each
Ladies' Nylon PANTIES Sizes 5 & 7 59¢ pr.-3 for \$1.00	Girls' Nylonized PANTIES 49¢ or 3 prs. \$1.00
ZIPPER BINDER 98¢ to \$2.98	Combination Locks Reg. 69¢ 59¢
INDEX CARDS 10¢ & 25¢	CRAYONS 5¢ to 98¢

Gibson's 5¢ to \$1.00 Store
Main Street Morehead, Ky.

Kenneth Johnson At Quonset Base

Kenneth C. Johnson, airman apprentice, U.S.N., son of Mr. and Mrs. Joseph D. Johnson of Morehead, is serving with Carrier Air-temperarily based at the Naval Air Station, Quonset Point, R. I.

Primary mission of Squadron which flies the Douglas A-1H "Skyraider" is the early detection of hostile aircraft.

Saturday Sale Report At Flemingsburg

Hogs: Receipts 277—Packer, \$12.80; sows, \$11.50 to \$14; stock hogs, \$10 to \$21.70; sows and pigs, \$90; shoats, \$9.10 to \$17.50.

Cattle: Receipts 458—Steers, \$21.20 to \$23.10; heifers, \$18.90 to \$26.40; baby heifers, \$21.10 to \$30; culler cows, \$11.80 to \$14.70; fat cows, \$13.70 to \$18.60; springers, \$18.40 to \$22.90; stock steers, \$21.20 to \$24.90; stock heifers, \$18 to \$20.30; cows and calves, \$12.8 to \$28; stock bulls, \$18.90 to \$21.60; stockers, \$66 to \$120.

Sheep and Lambs: Receipts 256—Top ewes and wethers, \$22 to \$22.50; medium, \$20.35 to \$22; top ewes and lambs, \$19.65 to \$20.35; medium, \$18.65 to \$18.90; stock ewes, \$20.50 per head.

Calves: Receipts 193—Top veals, \$21; medium, \$20 to \$21.70; common and large, \$23 to \$31.

Total receipts 1,284.

Farm Storage Is Important Decision

Prospects for 1958 grain crops substantially larger than were expected earlier this year should cause farmers to re-examine their farm storage situation. Roy C. Gray, Chairman, Kentucky Agricultural Station, a national observation committee, said today.

With carryover stocks already predicted at record highs, the Department of Agriculture's latest crop report indicates that the available storage space may actually bulge with the beautiful crops soon to be harvested. Estimates include a 1958 wheat crop that will set a new record, a corn crop second only to the 1948 record, a spring sorghum crop three times average and second only to last year's record, record soybean and barley crops, a rye crop 52 percent above average, and an oats crop 4 percent above average.

The chairman points out that during the month between crop reports—July to August—prospects in most of the major grain crops increased by almost 350 million bushels. And this would not in grain sorghum and soybean crops, for which August predictions are the first available. These two crops are expected to total well over a billion bushels this year.

"Farmers should realize that the tremendous grain crops now in view create an immediate storage problem for them, not just for the Government," Mr. Gray declared. "Even though crops are covered by price-support loans or purchase agreements, the farmer must still provide storage for them. The storage problem does not become the

Government's responsibility unless and until the crop is delivered under the price-support program.

"It is not too late for farmers to consider adding an extra crib or bin to present farm facilities, to be sure they have a place to put their 1958 crops. Commodity Credit Corporation will help available producers. An inquiry at the County ASC office will bring all the details about the storage facility loan program."

The government will lend up to 90 percent of the cost of additional needed farm storage space. The loans can be paid off over a period of 5 years, with the first repayment becoming due a year after the loan is made.

State To Get \$797 Thousand For Education

Kentucky stands to receive \$797,000 in initial allotments under the new four-year, 900-million-dollar National Defense Education Act. The figures were announced this week.

President Eisenhower has not yet signed the recently passed legislation but it is expected to do so shortly. He has signed a separate bill which includes 40 million dollars to get the program started.

Under the program, 250 million dollars would be allocated over the four years for student loans, 60 million for guidance and testing in the search for able students, 300 million in matching grants to states for science equipment and administration, 18 million dollars for research and experiment on new methods of teaching, 32 million dollars for language centers and 20 million for foreign language training institutes. Other programs account for the remainder.

Kentucky Farm Facts

Looking Up. Only once in a while does a farmer get a two-way break—the combination of a good season and fair prices—but that seems to be the case on most Kentucky farms this year. With first-crop crops in the state in 1958 have been excellent—some of the best corn crops on record, wonderful pastures, excellent small grain and a good, although spotty, crop of tobacco. Coupled with this are the favorable prices of hogs and cattle, and as good or better than those of recent years. There is a few hard-ship cases, such as the wheat and bankers are feeling optimistic at this time.

Farmers May Get A Two Way Break—A Favorable Crop And Better Prices

What's good for agriculture is good for the cities too. In industry, agriculture spent \$14 billion dollars for industrial products and there is a large backlog of unfilled farm needs and wants which await only the income with which to buy. A few more seasons such as this would be a great stimulus for Kentucky's economy.

Pop Corn. Kentucky ranks third among the states in acres of pop corn grown in 1958 and this year has 24 per cent of the total U.S. acreage. Most of the production is centered around Murray where the processing of pop corn furnishes a lot of employment during the winter months.

— Call 71 —

For ICE, COAL & SWEEPING COMPOUND

Morehead Ice & Coal Co.

Phone 71 Morehead, Ky.

OXYGEN EQUIPPED AMBULANCE SERVICE

MEMBER — KENTUCKY FUNERAL DIRECTORS BURIAL ASSOCIATION

Authorizing To Service Burial Contracts Issued By Commonwealth Life Insurance Company.

LICENSED BEAUTICIAN LADY ATTENDANT

STUCKY & McBRAYER FUNERAL HOME

PHONE 68 — MOREHEAD, KY.

36 HOURS

Beginning 8:00 A. M. Friday—Ending 3:00 P. M. Saturday

FREEZERS REFRIGERATORS

11 Cu. Ft. \$199.95	8 Cu. Ft. \$179.95
13 Cu. Ft. \$289.95	10 Cu. Ft. \$199.95
18 Cu. Ft. \$369.95	

With Trade

1 Ton Thin Line

AIR CONDITIONER \$199.95 Plus Installation

AUTOMATIC WASHER With Filter Flo \$189.95 With Trade

30" GE RANGE \$179.95 With Trade

40" GE RANGE \$189.95 With Trade

See these and many other famous GE products during this Big 36 Hour Sale beginning Friday at 8:00 A. M.

MOREHEAD HOME & AUTO SUPPLY

MAIN STREET MOREHEAD, KY.

State's Plan To Try Juveniles Meets Approval

Kentucky's new policy of trying juvenile offenders in regular traffic courts instead of juvenile courts has attracted praise from several sources.

A new law effective June 19 transferred trials of drivers under 18 to courts that regularly try drivers over that age. Now the juveniles may be punished with fines and jail sentence for driving offenses in juvenile courts they usually equipped with only a warning or order to attend a safety lecture.

Favorable comments on the new Kentucky law were made at a recent meeting of juvenile court officials at Ft. Lauderdale, Fla., and at the Southeastern Regional Conference of the President's Committee for Traffic Safety at Miami.

Deputy State Commissioner of Public Safety James E. Bassett, returning from Miami, said many representatives of other states expressed the wish for a similar law.

Former Franklin County Judge John D. Darnell, chairman of the county judge committee which sponsored the law in the Legislature, said many delegates at the Ft. Lauderdale meeting commended the measure.

Safety Commissioner Don Sturgis described the law as "one of the best things we've done in our efforts to cut down the death rate" on highways.

He added that the new law already has shown a good effect on the driving of 16 and 17 year olds, making them realize that in a regular court they will be held accountable for reckless driving.

MONUMENTS
For best material at lowest cost
No job too big or too little
Call or Write
E. A. LEWIS
R. F. D. 4, Morehead, Ky.
Phone 527-J

THE CHURCH OF CHRIST

Meets At
225 Second Street
Morehead, Kentucky

Sunday Worship 9:30 and 10:15 A. M.
Sunday Evenings 7:30
Wednesday Evenings 7:00

DON FLATT, Minister

Hear "The Voice of Truth" over WMOH each Wed.—7:15 a. m.

HOMELITE

DIRECT DRIVE

NEW! CHAIN SAW

with FLOATING PLOW

- full 5 horsepower
- new low cost
- only 19 pounds

Here's new help for every farmer... the floating power of the new Homelite EZ direct drive chain saw that gives you more cutting for your dollar.

Its direct drive and full 5 horsepower give you peak performance with even less effort on your part. Because it weighs only 19 pounds, it goes anywhere with ease... cuts any wood from any position, up, down, right, left.

The it... feel its floating power in your own hands. Come in for a free demonstration tomorrow.

HOMER GREGORY LUMBER CO.
WEST MAIN STREET — MOREHEAD, KENTUCKY

Ex-Treasurer To Be Speaker At Women's Fete

Mrs. Georgia Clark Gray, former U. S. Treasurer, Washington, will be the speaker at the dinner meeting of the Woman's Democratic Club of Kentucky during the annual convention in the Kentucky Hotel, Louisville, Oct. 3 and 4.

Mrs. Falconer Powell, president, announced plans were completed for the state convention at the recent session of executive board of directors meeting in Lexington.

There will be selection of first vice-president, third vice-president recording secretary and member at large from the state at the October meeting. Mrs. Powell said.

The Louisville club with Mrs. Art Wilkerson president will be official hosts for the convention.

Twenty-five directors from every district will be the first and eighth attended the Lexington business session.

Minorities which howl about tolerance rarely exhibit tolerance.

TERMITES

KILL THEM Yourself with AER-100-IT TERMITE CONTROL

For best material at lowest cost
No job too big or too little
Call or Write
E. A. LEWIS
R. F. D. 4, Morehead, Ky.
Phone 527-J

A New Ford Tractor Model 641

The above tractor will be awarded to a member of a Kentucky Farm Bureau family who attends the Kentucky State Fair on Farm Bureau Day—September 10—and properly registers for prizes.

If the winner of the 641 Ford Tractor has registered with an authorized Ford Tractor dealer, he will be awarded a new Ford Two Bottom Moldboard Plow.

Register here and at the Fair
September 10th
Win a New Ford Tractor and Plow

MONARCH

SUPPLY STORE

MOREHEAD, KY.

The Bold Proposal

By Allen Wisert

BERNICE MANNING was not a girl to harbor resentments, yet upon opening the door to her inner office that particular morning, a premonition unfolded her, encountering an unseen event. Glancing over the interior she found all the order everything was in its proper place, even until her employer, Mr. Edmond Rutherford, Sr. He was seated, majestic like, behind his ponderous desk, going over and separating letters and documents as was his usual established custom. Still, "Something" dominated, whether it be good or evil Bernice was unable to determine.

Edmond, her boss, she sat at the typewriter, her desk was piled high with copy. Nothing unusual that she was best by, so much so, seldom did she allow herself time for a coffee-break. Still, there was that "something" whatever it was, bearing down with excessive pressure as the moments passed.

For no accountable reason she raised her eyes, and they met Mr. Rutherford's, kindly. He was staring at her. His gaze was firm, deliberate, possessing a weird conviction. Bernice wondered:

"Now, what have I done?"

The desired information wasn't long in arriving. Instead of requesting that she approach him, he arose and stepped to the side of her desk, placing both hands atop it, something he had never done before. Then, leaning slightly toward her, said:

"Miss Manning, may I propose, and I consider it somewhat rude, a question?"

Mr. Rutherford, Sr. had lost his life several months before. He was war beginning to adjust to the situation although his only consolation was his son, Edmond. It never had Mr. Rutherford criticized her work, thought Bernice. She was a neat and efficient secretary, but human, and not on the verge of being "discharged."

"Most assuredly not," replied Mr. Rutherford. He straightened his back, smiling. "You are single, of course?"

"Yes, I have lived in that condition for twenty years. Upon entering my application a year ago, that item was mentioned."

"Mr. Rutherford stroked his chin, a gesture he applied to that feature whenever delving into a serious subject. He continued: "Here is my question: have you ever considered marriage?"

"It was Bernice's time to smile. "I am a woman."

"A most pleasing reply, it affords me the courage. May I make so bold as to propose?"

"That 'Something' has arrived," said Bernice, her face crimson. "Curiously, only this morning I glanced over the 'Hole-Wanted Female' column. Smith, Smith Smith needs a secretary. I'll contact them immediately."

"One moment, my dear. You are not thinking of resigning, are you?"

"When an employer refuses the request of an employer, she may as well seek another position."

"How is it possible to refuse, my dear, when you haven't the remotest idea of my proposal?"

"I have, I have, the criminal was fading. "A bold proposal is the same the world over. Mr. Rutherford, you are old enough to become my father."

For a moment, Edmond Rutherford, Sr. looked at Bernice, then grasping her throat and placing his hand to his forehead. Never had Bernice heard him laugh heartily.

"My dear child," he said, controlling himself. "It was merely thinking of you and my son. That boy needs a guiding light, and for the past month it has dawned upon me that you are carrying that lantern."

"Mr. Rutherford, the light has been flickering. Edmond, Sr. said, I have been waiting an opportune time to ask your blessing."

Name Edwards To Safety Position

State Police Lt. Jud Edwards has been appointed national safety chairman of the United States Junior Chamber of Commerce.

Patronize Our Advertisers

GUARANTEED TERMITE PROTECTION

World's largest termite control service KY. TERMINIX COMPANY For information call Carr Lumber Co. — Phone 6 Morehead, Ky.

Coffee Roadblock Proves Successful

A coffee roadblock to get tired motorists off the road for a little while, saved lives on busy U.S. 60 over the long Labor Day weekend.

Townsperson in Moriarty, New Mexico at the same time were giving their community a reputation for friendliness.

climbed out to stand by a long table. After they had been there a few minutes, officials said the travelers would warm up toward each other and start comparing travel notes.

Object is to get unsafe drivers off the road and to give a brief rest stop to those who might become sleepy.

IT'S GREEK TO THEM Nicky, a two-year-old Greek orphan has arrived from Athens to become the adopted son of Mr. and Mrs. Stephen Taylor, Dallas, Texas.

THE BAFFLES By Mahoney



Shop The Ads In The Rowan County News

School Events Are Feature Of Fair

Special events will be a feature of this year's Kentucky State Fair, Sept. 4-12, in Louisville.

Sept. 4-5: St. Xavier vs. Nashville football game. Sept. 5: High School Band Festival. Indiana University Chorus. 4-11: Show Shelbyville vs. Elizabethton football game.

SEADRAGON READY

The Seadragon, America's fourth atomic submarine of the Skate class, was launched recently at Portsmouth, N. H.

'Equipped To Serve You' Member of Kentucky Funeral Director's Burial Association. Authorized To Service. Burial Insurance Contracts Issued By Commonwealth Life Ins. Co. Complete Ambulance Service Oxygen Equipped. LANE FUNERAL HOME PHONE 91 MOREHEAD, KY.

Southern States BIG 35th Anniversary SALE Sept. 5-13. SOUTHERN STATES COOPERATIVE OF SERVICE TO FARMERS. 35 YEARS OF SERVICE TO FARMERS.

ITEMS AVAILABLE AT THESE PRICES ONLY AS LONG AS SUPPLY LASTS

1 Case 12M (10W-30) Motor Oil. 24 cans. One oil for all purposes, season, temperature, increase gas mileage by 12%... Regular Price \$8.80 SALE PRICE \$7.20

5 Gal. Roof Coating with Asbestos Fiber. Restores weathered roll roofing. Stops leaks. Won't run in heat, cracks in cold. Regular Price \$2.09 SALE PRICE \$2.09

S. S. Dry Charge Battery (1C190). Acid added when you buy it—you get 100% power, long life. Fits most popular cars. 45 plates. 24 mo. guarantee. Regular Price \$15.10 plus old battery SALE PRICE \$11.95

Unico Permanent Anti-Freeze. All winter protection. Won't boil out. Rust inhibitor protects motor, radiator. Practically odorless. Regular Price \$2.35 Gal. SALE PRICE \$1.85 Gal.

Scrub Tub (No. 4). 3 1/2 gal. steel. Not polished after forming. Heavy wire bail. Regular Price \$16.45 SALE PRICE \$13.84

3/4" Plastic Pipe Warfarin Ready-To-Use Pellets. 75 lbs. pressure 100% virgin polyethylene. Light, flexible, easy to install. Long life. Not hurt by freezing. Regular Price 10c Per Ft. SALE PRICE 7c Per Ft.

Wipe out rats and mice. 1 1/4 lb. can. Regular Price \$1.00 SALE PRICE 65c

UNICO Hand Seed Sower. Double feed assures uniform flow of seed. Automatic adjustment stops or starts seed flow instantly. Adjustable shoulder strap. Triple gears. Regular Price \$4.25 SALE PRICE \$3.25

Rocket Fence Controller (Model 2-4C7). 115 V. A.C. Control other gate systems. Power for bracket control and weed cutting through 1/2" diameter wire. Regular Price \$23.95 SALE PRICE \$17.60

12 Oz. Tarpaulin (10 Ft. x 12 Ft.). Top grade, sturdy woven top. Two duck-ribbed reinforced reinforced valves. Ready for many home jobs. Best material at this low price. Regular Price \$14.40 SALE PRICE \$10.80

Hand Saw (No. 2600A). 26" straight back. Heat treated steel blade. Regular Price \$3.15 SALE PRICE \$1.99

3 1/2 Lb. Single Bit Axe. "Tiger" brand. Full polished red poll with gold trim and No. 1 weatherproof handle. Regular Price \$4.40 SALE PRICE \$3.25

Aluminum Grain Scoop (No. DA12G). 2 1/2" D handle. 3" to 4" high. Heavy steel. Handles big loads easily. No sparring. 10 gauge aluminum alloy. Regular Price \$9.25 SALE PRICE \$6.90

Unico 21.4 Cu. Ft. Chest Freezer. Model CF-4217. 29.50 Down Low Monthly Payments. Over 14 ton capacity. Warning light. Interior light. 2 baskets. 2 drawers. Non-sweating cabinet. 2 aluminum liners. Fast freeze action. 1 year warranty. Only 2 temperature controls. Removable safety lock. Regular Price \$419.95 SALE PRICE \$295.00

12 Ft. ALCOA Aluminum Gate. Guaranteed for life against sagging, warping. Can't rot or rust. Light, easy to hang or move. Beveled edges for greater strength. Rounded surface prevents scratching livestock. Extra strong, corrosion resistant panels. Complete with fittings. Regular Price \$48.00 SALE PRICE \$38.50

Deep Well Jet Pump (Model HLC). Ball bearing heavy duty motor lubricated for life—never needs attention. Complete with jet, 42 gal. tank, foot valve, strainer, air volume control, 1/2 H.P. motor. For depths to 120 ft. Regular Price \$168.30 SALE PRICE \$108.95 \$10.90 Down Low Monthly Payments

Shallow Well Jet Pump (Model HNB12H). Ball bearing heavy duty motor lubricated for life—never needs attention. Complete with built in jet, 12 gal. tank, air volume control, pressure switch, 1" foot valve, 1/2 H.P. motor. For depths to 25 ft. Regular Price \$123.48 SALE PRICE \$81.50

Unico Redi-Grip Tubed Tire 4 Ply Back. "All year" passenger tire with greater traction on wet and off-highway. Heavy tread grip in snow, mud, sleet, sand. Wider tread puts more rubber on road. Quiet running—no rumble. Unconditionally guaranteed for life at least. Regular Price \$22.65 plus tax SALE PRICE \$15.95 plus tax Regular Price \$25.15 plus tax SALE PRICE \$16.95 plus tax

ROWAN FARMERS SUPPLY YOUR SOUTHERN STATES COOPERATIVE SERVICE AGENCY W. T. "Bill" Garey, Mgr. Morehead, Ky.

Ramblin' Thru Willibo

Herbert Lutes, Surrounded By Pretty Nurses, Stays In Hospital Only Two Days

By Glenn Motion
Herbert Lutes went down to Lexington to a hospital and got his pendectomy cut off last week. His pendectomy had been a bothering him for quite some time at spells and the doctor told him that he had better get him an operation. Herbert didn't stay down there in the hospital but two days. Don't know whether Herbert just preferred to be home under his woman's care or his woman preferred to have him home under her care instead of down there among them pretty nurses.

George Lee Drexton has come out to Cincinnati, O. to get him an operation at the Veterans Hospital. George L. may just get him two or three while he is out there since he needs them and it is better for out to Cincinnati one can't go just anytime.

Tommy day Herbert Lutes was a driving up the big road and just as he got near Doad Spencer's place of business, he seen a big dog laying right in the big road and this dog looked to be dead as a hammer. Herbert decided to just straddle the dead animal and not run over it. He straddled it. It weren't dead. You never heard such a noise put up as come out of that dog whenever it was woke up so suddenly. No doubt this scared Herbert just about as much as the dog and that is why his pendectomy acted up.

I told Bill Kibers' best Nello Thomas a cooking a plow point in his beans instead of meat and how he said he had another plow point but he had loaned at 40 Lige Gibson to cook in his beans. But Bill told me that it weren't so about Nello a loaning that extra plow point to Lige Gibson. He told me that Walter Judd stole it to cook in his beans. Now I don't know whether he did or not.

People got to talking as to how beans alias tasted better whenever they was cooked in them old fashioned black cast kettles. Seems like everybody agreed that they actually tasted better and that cooking them on a modern gas or electric stove made an improvement in their taste too.

Ted Bradley didn't seem to think that the kettle and the heat had very much to do with the taste of the beans back there in them years. He said, "They just had more meat to put in them than they have now."

We guess Ted had something there, don't you?

Been a mighty lot of roas'n year here eat round here these past few weeks, but Corsey Gabbard 'lows as to how roas'n year corn is pizzen and dangerous to eat.

Russians Say Dogs Fared Oleh

The Russians said Friday night they shot two dogs 281 miles into space aboard a small stage rocket and brought them back alive and in good shape. Tass announced the rocket was launched Aug. 27 from a spot in the heart of the European area of the U.S.S.R. and landed just where scientists meant it to.

Give Contracts For 600 Miles Of Roads

Contracts providing for approximately 600 miles of Kentucky road improvements have been awarded recently, the State Highway Department announces. Money value of the contracts totaled \$6,094,556, the department said. These awards, announced Aug. 22 and 25, raised to \$38,763,352 the total value of contracts awarded in 1952. The total for the entire year of 1957 had approximated \$44,000,000.

The department received bids Aug. 22 on 41 proposed contracts involving an additional 120 miles of improvements, also mainly surfacing. It has called for bids to be opened Sept. 5 on 26 proposed contracts for about 155 miles of improvements. Since July 1, start of this fiscal year, the department has called for bids on approximately 2,035 miles of road improvements, mostly involving black-top paving and resurfacing of rural roads, although there were several four-lane highway projects also involved.

FOR LOCAL or LONG DISTANCE MOVING or HAULING CALL Calvert Bros. Transfer WE CARRY CARGO INSURANCE Day Phone 2 - Night Phone 775 - Morehead, Ky. WILLARD AND OSCAR CALVERT, Owners

IGA TABLERITE MEATS MEAN Value Rite TOO! Tender, Delicious, TableRite

Chuck Roast Blade Cut 49¢ lb.



Hi Neighbor! IGA TABLERITE MEATS are so outstanding in VALUE that you will always be Rite with your TABLERITE selection. Trimmings as only IGA will trim them... trimmed of all excess fat and bone to give you more edible meat for your money.

BACON IGA TableRite Sliced 59¢ lb. SMOKED HAMS Whole or Half 59¢ lb. PORK LIVER Sliced 29¢ lb. SMOKED JOWL 29¢ lb.

TableRite Standing Rib Roast "The King of Roasts" 79¢ lb.

LOOK AT THESE BIG BUYS!

CAKE MIXES Swans Down Yellow White B. Scotch D. Food 4 for \$1 BLUE BONNET MARGARINE 5 lbs. \$1 GOLD MEDAL FLOUR 5 lb. Bag 53¢

TOMATO KETCHUP Heinz "The World's Most Famous Flavor." 14 oz. Bottle 19¢

HEINZ BABY FOOD STRAINED 6 for 57¢ PET INSTANT DRY MILK 12 qts. 91¢

GREER PEACHES Freestone In Heavy Syrup No. 2 1/2 Can 19¢

POST TENS TRAY PACK 37¢ AUNT JEMIMA PANCAKE MIX BUTTERMILK 18 OZ. 19¢

MOTHER'S OATS QUICK AND REGULAR-18 OZ. 19¢ BISQUICK LARGE 40 OZ. 43¢

Chase & Sanborn INSTANT COFFEE With Coupon Below 6 oz. Jar 79¢ This Offer Expires Sat., Sept. 6th

WORTH 15¢ ON PURCHASE OF LARGE JAR OF INSTANT CHASE & SANBORN COFFEE. This Offer Expires Saturday, Sept. 6th 1952

Potatoes No. 1 Cobblers 10 lb. Bag 39¢ NEW CABBAGE lb. 5¢

ALLEN'S IGA FOODLINER MAIN STREET MOREHEAD, KY. YOU GET MORE AT... IGA BUILDERS OF YOUR COMMUNITY FIG BARS Dixie Belle 2 lb. Box 39¢

Shop Your UVR Store For Surprise Special Daily A FRIENDLY PLACE TO SHOP MIX and MATCH Famous EKO Brand Heavy Gauge Aluminum Ware 1¢ Sale Muffin Pan-Reg. Price \$1.09 Cookie Sheet-Reg. Price \$1.09 Open Roasting Pan-Reg. Price \$1.09 Broiler Set with Grill-Reg. Price 98¢ Oblong Biscuit Pan-Reg. Price 89¢ YOUR CHOICE OF ABOVE ITEMS 99¢ with EXTRA one for 1¢ Knife Blade Reg Price Pie Pan 39¢ With EXTRA One For 1¢ This Is A Special Buy COME IN AND MIX EM UP WHILE STOCK LASTS McBRAYER-PIERCE VARIETY STORE Main Street Morehead, Kentucky