

# Regents Attempt Revision Of Norfleet Agreement

## Norfleet Threatens Legal Action If Terms Of 'Contract' Not Met

By DAVID CL. BAUER  
Editor in Chief

The Morehead State University Board of Regents (BOR) is continuing its attempts to negotiate with former President Morris L. Norfleet for the purpose of revising an agreement that would give Norfleet the same salary he was making as president during his first year away from that position. Norfleet, however, has hired the Louisville law firm of Wyatt, Tarrant and Combs in his attempt to direct the board to honor the original pact.

The agreement between the board and Norfleet dates back to June 27, 1984, when the board, meeting in regular session, accepted a motion that they accept an Executive Committee's recommendation to hire Norfleet for one year at his present \$72,000 salary and also grant him three one-year extensions at a salary of \$5,500 per year for nine months

during each of the three calendar years. Norfleet would serve this time in the position of chancellor of Corporate Relations.

The pact also provided Norfleet with more than \$18,000 for office supplies, transportation and housing, and a sabbatical leave for the first year.

The vote on the motion passed, but did draw comment from Regent member Judge James M. Richardson. "I am going to vote 'aye' because I believe it is necessary that this board not be split again unless it is a fundamental issue. It is my motion that the present president was going to be hired for a two-year contract at \$50,000 a year as a vice president for Fund Raising. I can accept the word 'chancellor' if that is more palatable to him," Richardson said. "The figure that he is now drawing I realize is important to him and to his future. But I realize also that that

money is important to this university and to those other employees whom we are not able to give but a two-percent raise when we want to give them a five percent raise." Richardson explained that his reason for voting yes on the motion was to back the Executive Committee, something he said was "absolutely essential."

On the same date that the motion was accepted dealing with Norfleet's contract, an "appointment contract" was signed by Norfleet and BOR Chairman Robert M. Duncan. The contract appointed Norfleet into the chancellor position.

The \$72,000 agreement with Norfleet sparked considerable controversy and harsh criticism from sources throughout the state, including the *Lexington Herald-Leader* newspaper, which referred to the salary as "a golden parachute."

During a meeting of July 24, Norfleet appeared before the board and offered to revise his original

agreement. Norfleet's proposed revision would have given him a 10-month, instead of a one-year, contract at the same monthly rate offered to him by the regents. This would have lowered his salary for the first year by \$12,000. The compromise also would have eliminated his housing and housing allowance during the first year.

According to Norfleet, the request for a change in the \$72,000 agreement was made "due to circumstances which have arisen and in order to do what I think is best for the university." The regents, however, rejected his proposal by a six to four vote, and instead decided to attempt further negotiations for the purpose of a "downward revision" of the original pact. On July 26, Chairman Duncan named a three-member committee, composed of Walter Carr of Morehead, Student Board Michael Fox of Olive Hill and Dr. Forrest Skaggs of Lynch, to seek

the revision. The regents, further, decided to place a freeze on payments of salary or sabbatical leave to Norfleet until a "re negotiated employment contract" has been executed by the parties.

In a letter dated August 1, addressed to the BOR through Chairman Duncan, Pitt notified the board that Norfleet had retained the firm's services and that in order to implement Norfleet's contract, several steps had to be taken. The first called for the immediate payment of the first part of Norfleet's first-year salary as originally decided upon by the board in its June meeting. Through the letter, Norfleet withdrew earlier considerations to lower his yearly salary for the first year of his employment.

The letter further stated that Norfleet should be provided all fringe benefits afforded to faculty and staff members, would be given office space, equipment, supplies, and a secretary and that he be provided with an automobile. He also stipulated that any costs incurred by Norfleet in accordance with his position would be reimbursed.

The letter requested response from the regents before August 10 for "appropriate steps would be taken to en-

force the contract."

On August 9, the regents met for the three-member negotiating committee had completed a proposal to Norfleet. The proposal offered Norfleet a three-year contract for \$50,000 a year and the title of special assistant to the president for research. Norfleet, through Lawyer Pitt, rejected this offer and offered a counterproposal.

Norfleet's counterproposal was the subject of a nearly two and one-half hour executive session during the board's most recent meeting on August 31. Chairman Duncan would not reveal the details of Norfleet's counterproposal, but said that the regents "neither accepted nor rejected" the offer.

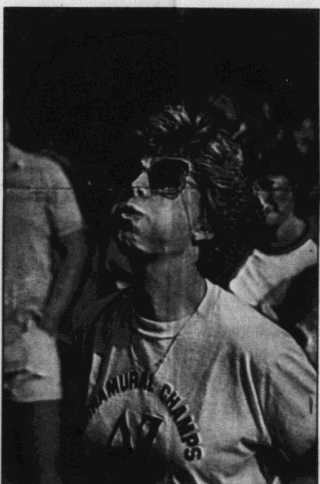
During the meeting of August 31, the regents voted to ask Norfleet and his attorney to meet with the board in order to resolve the agreement dispute.

"I hope that reasonable people are available to resolve disputes in this manner without going into litigation," Chairman Duncan commented after the BOR meeting.

## Busting Loose

West Liberty senior Vandereine Howard, at right, shows her seed spitting technique at the annual Lambda Chi Alpha Watermelon Bust. Howard won the seed spitting division. Pictured below is Mike Richie, Jackson senior, showing his style in the watermelon eating contest also part of the Watermelon Bust held on the Laughlin Health Building Lawn.

Photo by Mike Hanson



## SA / Senate Election Held Yesterday

### First SA Meeting Tonight

By ROBIN ANN COX  
Staff Writer

ADUC:

The Morehead State University Student Association elections for the 1984-85 school year were held yesterday on the first floor of the Adron Doran University Center (ADUC).

The new Freshman Representatives are Alan J. Dargatzis, Blaine Holtkamp, Susanne Jones, Stan L. Jordan, Mylinda Michels and Greg C. Priddy. The three sophomore representatives are Patti Fulmer, Jon Harris, Todd Kitchen and Todd Stewart.

The Student Association will hold their first meeting at 6:00 p.m. It will be in the Riggle Room located on the third floor of ADUC.

Also held yesterday, next to the SA elections booth, were the University Senate Elections for the 1984-85 academic year.

Lee Blackaby will represent the School of Education and Brent Sparks will represent the School of Social Sciences. The School of Sciences and Mathematics representatives are Dr. Norman Friley, Jr. and Dr. Robert Johnson will represent the School of Applied Sciences and Technology. The School of Business representatives are Steve Burchett and Ross Blankenship. The two at-large representatives (which are voted on by the entire student body) are Steve Burchett and Ross Blankenship.

## Dr. Reinhard Says Administration Changes Needed

By STEPHEN QUILEN  
and JEFF SPRADLING  
Staff Writers

much bureaucracy as possible," said Reinhard. "And will eliminate about \$200,000 in MSU's budget. In the past, MSU's administration resembled that of a state government."

Personal changes which have been made since Reinhard began his term of office are:

Dr. Walter Emge, vice president for Academic Affairs, has been reassigned to a full-time teaching assignment. Emge is a professor of philosophy.

Bufford Crager, vice president for Academic Affairs, has been reassigned to a full-time teaching assignment. Crager holds the rank of assistant professor in the School of Education.

Philip W. Conn, vice president for University and Regional Services, has been reassigned as special assistant to the president for at least three months, effective about Oct. 1. Afterwards he will assume a post as a full-time faculty member. Conn holds the rank of associate professor of sociology.

John Graham, vice president for Fiscal Affairs, has been reassigned to a full-time teaching position.

## Academy of Arts Extending Registration

The Academy of Arts is extending registration for its private instruction through Sept. 14. The Academy, sponsored by Morehead State University and several regional education centers, offers private instruction in music, art, dance and theatre in Morehead and throughout Eastern Kentucky.

For a complete list of courses available, contact the Academy.

Deans of three schools have been reassigned to full-time teaching positions. They are:

Dr. Reginald Back, dean of Graduate Programs, to a full-time teaching position in education.

Dr. Charles Payne, dean of the School of Sciences and Mathematics, to a full-time teaching position in chemistry.

Dr. Alban Wheeler, dean of the School of Social Studies, to a full-time teaching position in sociology.

These reassignments do not affect their salaries under their current contracts. Reinhard said the contracts of these administrators were good for this fiscal year and stipulated that they could be reassigned to another position.

Names were varied as acting vice presidents were Dr. William M. Whitaker as vice president for Academic Affairs, Dr. Stephen S. Taylor as vice president for Student Development and Porter Dudley as vice president for Administrative and Fiscal Services.

A nationwide search was announced in the Aug. 29 issue of the *Chronicle of Higher Education* for the three vice presidential positions.

Those persons named as acting vice presidents will receive a \$3,000 an-

Continued on page six

## Officials Install Signs At Intersections

By ERIC HICKMAN  
Staff Writer

The Division of Safety and Security, in an attempt to slow down traffic at the intersections of Ballard Avenue and Third Street, and Kentucky Boulevard and University Street, installed three traffic signs during the last week of August.

Before the stop signs were installed, vehicles often had to yield to pedestrians at the three affected intersections. Now, all vehicles must stop, regardless of whether or not the intersection is clear.

Very Much Secretary of the Division of Safety and Security, said the signs were placed at the intersections primarily for a safety factor.

"The area (around the three intersections) is congestive, especially around noon. We're trying to prevent an accident or injury," he said.

Reactions from students and staff members varied as acting vice presidents. "I think that they needed to be put there," said Vicki Woodward, a junior from Jenkins.

Autumn Grubbs-Sweetman, a television producer with MSU's Division of Media Services, also said the signs were needed. "I think it provides a safer crossing for students," she said.

"It's a hindrance to upperclassmen and alumni," said Timothy Young, a senior from Louisville. "They're used to going straight through."

Citations are not yet being issued to drivers that do not stop at the intersections. However, if issued, all drivers are given an adequate amount of time to get used to the signs. After this period, however, drivers cited will be charged with disregarding a stop sign, and will be fined \$25.00. All vehicles must be fined by the district judge.

## \$350 Taken

## Police Investigating ADUC Theft

By PAM HARRILL  
Staff Writer

Approximately \$350 was stolen from Jack Hemson's office at the Adron Doran University Center (ADUC) two weeks ago between the hours of 11 p.m. Wednesday night and 8 a.m. Thursday morning.

Gary Messer, director of the Division of Safety and Security, said the office showed no signs of forced entry and there was no possibility used to gain entrance to the office.

Jack Hemson, director of ADUC, said the theft was clear, where they were 11 p.m. Wednesday night and when

Continued on page two

## Inside

- Three Graduation Dates Approved ..... 2
- Lengthy commencement 'a thing of the past'
- Dolson Creates Original In 'Mirage' ..... 5
- Graduate student planning now for the future
- Marshall Downs MSU 40-6 in Weekend Game ..... 8
- Football Eagles looking for weekend win Saturday
- Art Exhibit Has Something For Everyone ..... 9
- Exhibits Exciting / Appealing

## Homecoming Queen Nominations Being Accepted

By STEPHEN QUILLLEN  
Staff Writer

Homecoming Queen is 4:30 p.m. on Tuesday, Sept. 18.

Candidates must be upperclass women with 30 or more hours. They must also have a cumulative grade point average of 2.0 or better and be in good standing with the University. Campus organizations are able to make two nominations for homecoming queen. Their first choice will be placed on the ballot unless the nominee has been nominated first by another organiza-

tion, in which case the organization's second choice will be placed on the ballot.

Students will vote for homecoming queen during the week of festivities before the Homecoming Dance Friday, Oct. 14, during which the coronation will take place.

The candidate who receives the greatest number of votes will be Morehead State's 1984 Homecoming Queen. The next 10 candidates who receive the greatest number of votes

will be members of the homecoming court.

The new homecoming queen will receive a silver Revere bowl, and each member on the homecoming court will receive a neckchain and a charm which will commemorate being a member of the homecoming court.

The new homecoming queens will have the opportunity to attend and participate in the Mountain Laurel Festival in Pineville this summer. The Student Association pays the way for

the homecoming queen and her escort. Participation in the Mountain Laurel Festival is decided by the homecoming queen herself. If she chooses not to go, the runner-up will be asked to participate in the festival.

The Mountain Laurel Festival is a competition in which MSU's homecoming queens will compete with homecoming queens from other universities. The contestants are judged on their social graces and etiquette, rather than beauty or talent.

The deadline for nominations for the 1984 Morehead State University

### JIMBO'S BIG BOY

Jimbo's SPECIAL Sept. 12-15  
Chuckwagon, fries, stew \$1.77  
1-64 Interchange



Vista-Master Charge-American Express



Air Conditioned - Cable TV  
Room Phone  
Fax (606) 783-1555  
1-64 & Rt. 32  
Morehead, KY 40351

### Police Investigating Theft

Continued from page one

The office was opened on Thursday morning the money was missing. Henson also said the thief was possibly someone who has worked for them in the past or who is currently working for the office. Henson also said the thief had passed through "three locked doors and a locked filing cabinet" to get to the money.

There are no suspects in the case but a series of polygraph (lie detector) tests are being given. Lloyd Oakley, the investigating officer, said a similar incident occurred early last May before the end of the 1984 spring semester.

### LOOKING BACK

One year ago  
Due to what officials called a "lack of interest" on the part of student organizations, the Homecoming parade for MSU was suspended. Musical group Air Supply was forced to postpone a concert at MSU just hours before the show was scheduled to begin after singer Russell Hitchcock developed a case of laryngitis.

Five years ago  
New residence hall construction hours became effective this week. The regulations provided for 18 hours of visitation per week in upperclassmen halls, and 10 hours per week in freshman halls.



Photo: Mike Hannon

### Time Out

Tony Snedgar, freshman from Mt. Sterling, undecided major, takes a break from his hectic moving day in front of Carmel Hall. Students moved back in the dorms on Saturday, August 18 and Sunday, August 19 in order to register for classes the following Monday. Classes resumed August 22.

## Committee Approves Three Yearly Graduation Dates

### Lengthy Graduation 'A Thing Of The Past'

By DEBBIE POWELL  
Managing Editor

"The lengthy May graduation at Morehead State University is a thing of the past, according to Executive Assistant to the President Richard Baxter.

Gene Raviner, registrar, is chairman of the committee which is work-

ing on plans for three graduations to be held at Morehead State. The first of the three will be Dec. 15 at 1:30 p.m.

In the past, December and August graduations were given their diploma by mail. The student would return to Morehead in May to participate in the actual commencement. The exercises lasted about two to three hours.

### Bigham Becomes Acting Dean

Dr. Wanda Bigham, the director of Morehead State University's Office of Instructional Systems, has been named the acting dean of Graduate Programs at MSU.

Dr. Bigham was named dean following the recent resignation of former dean Dr. Keesha Back to teaching position in the School of Education. She holds a doctorate degree in education from the University of Kentucky, masters' degrees in music and education from MSU and a bachelor's degree in music from Murray State University. She has been at MSU since 1972.

### Police Reports

Arrests - Summons Issued  
Morehead State University, Police

August  
Seven Himes, 18, of Rt. 1, Box 4168, Ashland, was arrested at 4:10 a.m. Tuesday, Aug. 21, at Regents Hall. He was charged with public intoxication and was lodged in the Rowan County jail.

Anthony Swamy, 20, of 147 Fleming Ave., Morehead, was cited at 7:03 p.m., Wednesday, Aug. 22, on University Blvd. He was summoned for driving on a revoked - suspended license.

William Stone, 20, no address available, was arrested at 11:20 p.m., Thursday, Aug. 23, at Vaughan Drive. He was charged with driving under the influence of an intoxicant and was lodged at the Rowan County jail.

Clark Cramer, 19, of 410 Butler Hall, was arrested at 11 p.m., Thursday, Aug. 23. He was lodged in the Rowan County jail.

Jose Haven, 31, of trailer 27, Rt. 32, Morehead, was arrested at 1:30 a.m., Thursday, Aug. 23, at the Rt. 32 trailer park. He was charged with public intoxication and was lodged at the Rowan County jail.

Cecil Carter, 27, of P.O. Box 562, Morehead, was arrested at 12:18 a.m., Tuesday, Aug. 28, at First Street. He was lodged in the Rowan County jail.

(Continued on page six)

## Stepping Stone Farm

Offers facilities for the discriminating horseperson:

- \*Only nine miles from Morehead and M.S.U. Farm
- \*Large airy stalls, cleaned daily
- \*Complete individual care provided on 24 hour basis
- \*Professional Veterinary and Farrier services
- \*Turn-out facilities with plank fence
- \*Outside exercise ring, inside riding alley 16'x200'
- \*Tack room, restroom, lounge
- \*Separate tie stalls
- \*Wash stall with hot water and mechanical vacuum
- \*Large riding area includes trails, fields and timber
- \*Quality name-brand feed
- \*Personal instruction at no extra cost
- \*Horse transportation at low rates
- \*Liability insurance
- \*Security
- \*References
- \*No smoking or alcoholic beverages permitted at barn

Contact: Reds Harris, barn manager (606) 876-3281

**Longest Walking-On-Hands**  
In 1902, Johnnie Huggins of Autio walked on his hands from Vienna to Paris in 52 days 12-hour shifts covering a distance of 670 miles.  
AT&T long distance wire hands down when it comes to immediate credit for incomplete calls and wrong numbers.

**The long distance winners.**

**Longest Bicycle Race**  
The longest one-day "massed start" race is the 551-620 km (342-386 miles) Bordeaux-Paris even in 1981.  
Herbert von Sponner averaged 47.86 mph (29.12 mph) covering 344.5 km (213.4 miles) in 13 hr. 35 min. 16 sec.  
AT&T long distance lets the good times roll for you too...with discounts of up to 60% every day.

Nobody can match AT&T for savings and service:  
• 40% discounts evenings, 40% discounts nights and weekends.  
• Immediate credit for incomplete calls and wrong numbers.  
• Calls from anywhere to anywhere, anytime.  
• 24-hour operator assistance.  
• Quality that sounds as close as next door.  
It's a winning combination. Why settle for less?

For details on exciting new plans—ideal for students—visit the display in the MSU Store.

**AT&T**

**FREE T-SHIRT**  
The longest one-day "massed start" race is the 551-620 km (342-386 miles) Bordeaux-Paris even in 1981.

**30 Minutes or Free!**

\$4.95 per day of service...one price for all service...no matter how long it takes to get you home.

Call us.  
Offer good at:  
123 West Main Street  
**784-8977**

\$6.95 per day of service...one price for all service...no matter how long it takes to get you home.

**DOMINO'S PIZZA**

Call us.  
Offer good at:  
123 West Main Street  
**784-8977**

\$6.95 per day of service...one price for all service...no matter how long it takes to get you home.

## Sigma Phi Epsilon Fraternity



### Calendar of Events

Thursday, Sept. 13-Sig Ep Kay Day Kidnap Party  
9 p.m.-77 J.C. Farm  
\$2.00 tickets sold at ADUC

Saturday, Sept. 15-Car Wash at Druher's  
10 a.m.-1 p.m. and 4 p.m.-6 p.m.  
\*MSU v. James Madison 2 p.m.  
Join the Sig Eps in supporting  
Eagle Football!

Fraternities are places to have a good time, but they are also places to grow. You are probably hoping college has more to offer than just classes, tests and essays. We at Sigma Phi Epsilon want to help you find a healthy balance between school work and your social life. We guarantee we can help you realize your potential in both areas.

When considering fraternities,  
THINK Sigma Phi Epsilon

## ADUC Cafeteria To Close On Weekends

By DEBBIE POWELL  
Managing Editor

Morehead State University's weekend food service program will be

limited to Alumni cafeteria and grill and Adron Doran University Center grill beginning this weekend, according to Porter Dailey, vice president of Fiscal Affairs.

According to Dailey a committee

reviewed the food service operations at Alumni cafeteria and the ADUC cafeteria because the program lost money last year. The committee has been reviewing and studying programs since July 1. Dailey said the committee hopes to make changes in the program so it will break even this year.

Although this new policy will be effective this weekend, the ADUC cafeteria will be open because of Parents Weekend. Dailey said such events will be a deciding factor in the closing of ADUC cafeteria. He said he hopes to post an agenda of weekends the cafeteria will be open.

Approximately 219 students participate in the seven-day meal plan which includes weekend meals. Most of the students eat at Alumni cafeteria because of the location.

This semester both the five-day meal plan and the seven-day meal plan are valid at both the Alumni cafeteria and the ADUC cafeteria. However, Dailey said the university cannot operate both on the weekend, and the committee decided Alumni cafeteria will be more useful to the students.

Under the new plan, the cafeteria at ADUC will close at 12 p.m. on Friday, will not be open Saturday or Sunday and will reopen at 7 a.m. Monday morning.

Dailey said the committee will continue to review the food service program. He said he feels the closing of ADUC cafeteria on weekends "will not be much of a change because most students eat at Alumni cafeteria on the weekend."

Thursday, Sept. 13  
LUNCH: ADUC: Soup and Sandwich or Cold  
Soup with Gravy or Chicken Pot Pie, Mashed  
Potatoes, Beans, Brussels, ALLMONI  
ALLMONI: Soup and Sandwich or Cold  
Soup with Gravy or Chicken Pot Pie, Mashed  
Potatoes, Beans, Brussels, Creamed  
Sole Corn.  
LUNCH: ADUC: Tuna Pot Pie, Pork  
Casserole, O'Brien, Green Beans, Cream Potatoes,  
ALLMONI: Chicken and Rice Casserole or Beef  
Nuggets, Mashed Potatoes, Green Beans, Cream  
Potatoes.

Friday, Sept. 14  
LUNCH: ADUC: Soup and Sandwich or Fish  
or Potatoes, ADUC: Cold Sandwich, Potatoes, Pasta  
and Casserole, ALLMONI: Soup and  
Sandwich or Fish or Cold Soup, Steak  
Fries, Green Beans, Macaroni and Tomatoes.  
SUPPER: ADUC: Cold, ALLMONI: Tuna  
Noodle Casserole or Hamburger Steak  
with Mashed Potatoes, Green Beans, Mixed  
Vegetables, Hot Apple Sauce.

Saturday, Sept. 15  
LUNCH: ADUC: Soup and Sandwich or Chicken  
Lasagna or Tuna or BBQ Pork Casserole,  
Mashed Potatoes, Lima Beans, Glazed Carrots,  
ALLMONI: Soup and Sandwich or Pork Casserole  
or Meat Loaf, Cheese Potatoes, Green Beans,  
Whole Kernel Corn.  
SUPPER: ADUC: Cold, ALLMONI: 8 or 10  
Hot Burgers, Mashed Potatoes, Brussels.

Sunday, Sept. 16  
LUNCH: ADUC: Soup and Sandwich or Roast  
Beef or Chicken Pot Pie, Mashed Potatoes,  
Brussels, Creamed Potatoes, Green Beans,  
SUPPER: ADUC: Cold, ALLMONI: Beef  
Casserole or Spaghetti, Mashed Potatoes, Pasta  
and Casserole.

Monday, Sept. 17  
LUNCH: ADUC: Soup and Sandwich or Beef  
or Ham or the Tuna Steaks, Mashed Potatoes,  
Pasta, Casserole, ALLMONI: Soup and Sand-  
wich or Roast Pork Chops or Chicken and Beef  
Casserole, Mashed Potatoes, Pasta, Beans,  
Green Beans, Macaroni and Tomatoes.

SUPPER: ADUC: Fried Chicken or Beef Pot  
Pie, Baked Potatoes, Green Beans, Whole  
Kernel Corn, ALLMONI: Roast Beef or Creamed  
Ham or Beans, Tasty Taters, Brussels, Cream  
Potatoes.

Tuesday, Sept. 18  
LUNCH: ADUC: Soup and Sandwich or Beef  
or Ham or the Tuna Steaks, Mashed Potatoes,  
Pasta, Casserole, ALLMONI: Soup and Sand-  
wich or Roast Pork Chops or Chicken and Beef  
Casserole, Mashed Potatoes, Pasta, Beans,  
Green Beans, Macaroni and Tomatoes.

SUPPER: ADUC: Beef Chops or Beef Pot  
Pie, Baked Potatoes, Green Beans, Whole  
Kernel Corn, ALLMONI: Roast Beef or Creamed  
Ham or Beans, Tasty Taters, Brussels, Cream  
Potatoes.

# \$3 OFF ANY LARGE PIZZA!

Ohh, the aroma of sauce, spices, herbs and bubbly melting cheese. Aaahh, the savings! Just bring the coupon and take your choice: \$3 off large size, \$2 off medium.

Includes our special Pizza Hut® Pan Pizza. You get more Mmmmmmm! for the money than ever before. Eat here or carry out, but don't miss out. Hurry before this offer expires!



**\$3 OFF**

Use this coupon when you order a large pizza at any participating location. Valid only on pizzas ordered at participating locations. Expires 9/30/84.

**How About This?**

**Pizza Hut®**

Offer good only at Pizza Hut of Morehead, 333 Flemmingburg Road

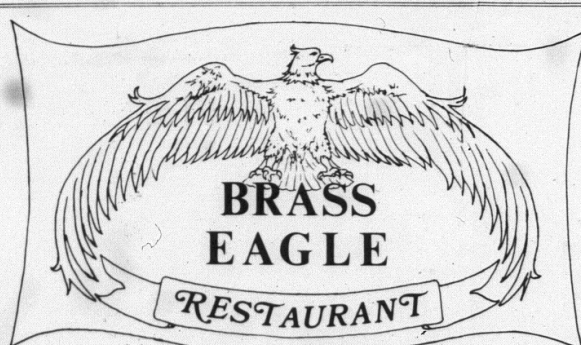
**\$3 OFF**

### MENUS

Wednesday, Sept. 12  
SUPPER: ADUC: Cold and Beef Pot Pie, Chops  
or Beef and Noodle Casserole, Mashed Potatoes,  
Browned Potatoes, Fried Apples, ALLMONI: Baked  
Chicken or BBQ Spiced Ribs, Mashed Potatoes,  
Spaghetti, Green Beans, Cream Potatoes.

**"HAPPY HOUR"**  
MON.-SAT. 3 P.M. UNTIL  
6 P.M.

**"COLLEGIATE  
LADIES NIGHT"**  
EVERY TUES. NIGHT 9  
P.M. UNTIL 12 MIDNIGHT



Try our different varieties of wines  
We proudly pour "8 HOUSE WINES."

## BEER

Draft Beer	IMPORT	Bottles
Coors	Moosehead	Strohs
Bud Light	St. Pauli Girl	Coors Light
Little Kings		Budwieser
Michelob		Miller Lite

\*TRY OUR APPETIZERS  
\*NO RESERVATIONS NEEDED

All wines served by the glass, half  
liter, or liter. Except for Asti  
Spumante, which is served by the  
bottle.

A BAR DESIGNED WITH  
"MSU STUDENTS" IN MIND



David C.L. Bauer  
Editor in Chief

Debbie Powell  
Managing Editor

Kimberly D. Moore  
Acting Editorial Page Editor

Page 4

Sept. 12, 1984

## Reinhard changes the university's tide

A metamorphosis is taking place at Morehead State University.

Like the excitement of a birth, there is excitement on campus. Its physical appearance is getting a face-lift. Now we can sit on benches that are not broken, splintered and weathered. Campus cleanup, fresh paint jobs, shrubbery replacing fences, and a spruced-up football stadium may seem trivial to

some, but they reflect a pride and spirit that is contagious.

Direct communication with the president is a new experience for many of us. Never before would we have dreamed of stepping onto the president's lawn, much less eat a bowl of ice cream with him, or sit beside him in the ADUC grill during a student talent show, or dance with him in the street.

Sure, these changes may not be earthshattering in terms of administrative housecleaning or educational upgrading at MSU, but we students see it as a start — a symbol of what is ahead.

Dr. Reinhard, you're off to a great running start. Keep up the pace. We notice.



There is no trouble in overflow parking for the student who comes prepared.

## Parking lot requires more work

Several changes in administration and additions have been made at Morehead State University during the summer and President Herb F. Reinhard says the university will be undergoing further changes.

Hopelully the addition of the new parking lot between Nunn and Waterfield Hall is not completed.

Adding new parking lots to facilitate student parking was certainly a wise decision. However, the new lot between Nunn and Waterfield halls definitely needed more planning.

The new student lot was installed during the summer and supposedly will park 20 cars for "Female Students Only."

The lot is supposed to provide female students with access to their residence halls. However, no special stickers were issued to females allowing them to park in this

designated lot. This poses the problem of distinguishing which sex owns the parked cars.

Students' cars are not painted pink or blue according to their sex.

This particular lot allows females parking there a shorter walk through the woods to their hall if they can get their cars to pull the steep gravel incline to get to the lot and if they can see by the dim light during the evening hours.

The lot does have possibilities if some parking necessities such as spacing lines are added.

All universities are concerned with the students safety, especially in the area of adequate campus lighting. This parking area is not adequately lit and could be a perfect site for vandalism or worse.

A university official said no further plans have been made for the lot or the parking situation as a whole. According to the official, MSU has "no real big parking problems."

We at The Trail Blazer, however, think that better lighting and defined space markers at the Waterfield / Nunn Hall lot need to be implemented. Doing this statement can be accepted.

## Weekend excitement depends on YOU!

The lack of excitement is not unusual during the weekends at Morehead State University. The fact that this is a suitcase college is well known. It is time to change Morehead State University's image and make it a reputable college to come and enjoy college life for four or more years. This can not be accomplished by the city and administration

alone, but needs the help of the students also. Most students live within a reasonable driving distance, therefore students are more inclined to go home or someplace else to have a good time.

Many suggestions have been made to draw more students to stay on the

weekends, but none can be carried out by the administration alone. If the students want more nightlife they must help create nightlife themselves, instead of going somewhere else and saying that Morehead doesn't have what the students need. In reality, it takes more than one to create a good time.



## The Norfleet saga: a bitter catastrophe

Troubled times aren't new at Morehead State University, especially under former President Dr. Morris L. Norfleet. Well, nothing has changed concerning Norfleet; he's still trouble for the university.

Controversy has surrounded Norfleet from the time he took the presidency. It seems Norfleet played favoritism politics concerning the faculty and students with demotions / firings and parking lines (respectively). Of course, all of the controversial incidents were "done in the best interest of the university."

Surely Norfleet and the Board of Regents understood

the financial and reputational situations the university has faced in the past seven and one-half years. Then they ed upon misery when they gave Norfleet a contract worth \$72,000 for a sabbatical leave a year, along with other fringe benefits. This does not sound as though it was done in the best interest of the university, but in greed.

The renegotiation of Norfleet's contract and threat of a lawsuit from Norfleet has brought nothing but plenty of bad publicity and hard feelings. As though the university didn't have enough of that already. Considering all of the facts and occurrences surround-

ing the facts, it seems that the former president doesn't really care about the university's reputation nor financial standing as long as he gets his "fair" share. This point, in fact, isn't one to be argued, but dealt with accordingly. Use one of Norfleet's old tactics, or in other words, handle the Norfleet situation in a manner that will contribute to the overall improvement of the University: place Norfleet in a position in which he has no connection with Morehead State.

Thanks MSU! Through your help and support, you prove this area has heart.

## READERS' VIEWS

Dear Editor:

On August 29, 1984, a dance sponsored by Wilson and Waterfield Hall was held in the Student Drill Room. Donations were also taken for United Central Palcy of Kentucky.

Once again, the students of Morehead State University have shown their care and have a willingness to help a charitable cause. I am serving as chairman of United Central Palcy of Kentucky in this area. As I begin work for our 1984-'85 fund raising campaign, I am always looking for people and organizations that are willing to help by planning events and coordinating activities.

I appreciate the help of Jerry Gore and Dallas Sammons and the Hall Council of Wilson and Waterfield Halls. Through their assistance, the event would not have been possible. Last year, MSU students and organizations that are willing to help by planning events and coordinating activities.

This year, I hope to work with many groups on campus and in the community to plan other events to make this year's campaign the best ever. I encourage individuals and groups that are interested to call me at 783-3729.

Thanks MSU! Through your help and support, you prove this area has heart.

Tom Franz  
414 Wilson Hall

## Submit letters to editor

The Trail Blazer encourages readers to submit letters for publication expressing their view on issues that affect the university and surrounding community. Letters sent to the editor should follow these guidelines:

Letters should be addressed to the editor in chief. All letters must contain the writer's name, address and phone number for verification.

Letters must contain the writer's signature. Letters with a photocopy or an illegible signature will not be accepted. For reasons of clarity, it is best to print or type your name under the signature.

Letters are subject to editing for grammar, spelling, punctuation and errors of fact. The editor in chief will have the right to respond to letters and will also reserve the right to reject any letter deemed libelous or in poor taste. The editor in chief will also reserve the right to reject any letter.

Letters should average a 250 word maximum (approximately one and one-quarter typed pages). Letters should be addressed to: Editor in Chief, The Trail Blazer, UPO Box 1022, Morehead State University, Morehead, Ky. 40301, or may be delivered in person to Allie Young Hall, room 321.

## The Trail Blazer Morehead State University

### EXECUTIVE STAFF

David C.L. Bauer  
Editor in Chief

Debbie Powell  
Managing Editor

Kimberly Moore  
Acting Editorial Page Editor

Mark Phillips  
Advertising Manager

Sharon Layne  
Business Manager

SECTION EDITORS

Lee Blackley  
Copy Editor

Wanda Buchanan  
Features Editor

Gale Conner  
Production Manager

Mike Henson  
Photo Editor

Lee Blackley  
Entertainment Editor

EDITORIAL BOARD

David C.L. Bauer, Lee Blackley, Tracie Buchanan, Wanda Buchanan, Mike Henson, Lee Kincaid, Kim Moore, Mark Phillips, Debbie Powell, Sharon Layne, Connie Thompson.

STAFF WRITERS

Tracie Buchanan, Lee Kincaid, Nalin Cox, Deanna Davis, Lee Ennis, Brian Fain, Pam Harris, Eric Hinkley, Gary Hinson, Gary Kelly, Howard McClain, Mark McGuff, Barb Nichols, Kim Thompson, Steve Parris, Larry Robinson, James Stone, Jeff Strickland, Don Wright, Yvette Zimmerman.

### PHOTOGRAPHERS

Debbie Black, Lee Blackley, Kevin Gault, Vincent Green, Mike Henson, Greg Thompson.

### ART STAFF

Greg Thompson, Jeff Stone, Gary Venable.

### ADVERTISING STAFF

Ellen Brown, Dale Conner, Dana Graham, Vincent Howard, Sharon Layne, Lee Layne, James Stone, Jeff Strickland, Don Wright, Yvette Zimmerman.

### PUBLIC RELATIONS

Steve Parris, Larry Robinson, James Stone, Jeff Strickland, Don Wright, Yvette Zimmerman.

The Trail Blazer is an official student publication of Morehead State University under the direction of the Board of Student Publications, constituted as a laboratory for journalism students, operated as a non-profit publication and entered in third class mail at the post office in Morehead, KY (Permit No. 55), under an Act of Congress dated March 3, 1973.

The newspaper is distributed free to the campus community. Individuals wishing a mail order subscription should send \$5 to The Trail Blazer, UPO Box 1022, MSU, Morehead, Ky.

The Trail Blazer is published each week during the semester. Fall or, mislabeled advertising rates are reported to the newspaper office, 321 Allie Young Hall, (606) 833-2697, or the advertising office, 328 Allie Young Hall, 783-2696.





Happy Birthday Dr. Reinhard:

May you have many more and may they be celebrated at Morehead State University.

JIMBO'S BIG BOY

Jimbo's SPECIAL Sept. 12-15  
Tenderloin Sandwich  
1.64 Interchange

Morehead State Permits Students To Paint Their Rooms

By STEPHEN QUILLEN  
Staff Writer

Many students this semester will find out they can finally do something about the 'dull' walls in their residence hall rooms. Rather than go out and buy enough posters

to cover every inch of their walls they are now able to paint their own rooms.

Students who wish to paint their rooms only have to confer with their residence hall director, complete the room owner forms required, follow the instructions and pay a \$2 deposit.

All roommates must sign the "Student Room Painting Agreement" which acknowledges all residents in the room agree to the wall color chosen and agree to do the work.

With the \$2 deposit the student will be able to pick up the supplies needed at the W. H. Rice Maintenance and Operations Building. MSU supplies the paint, a brush, a roller, a tray and a drop cloth.

The student will need to provide roommates tape and newspaper to help cover objects. The student may also be required to pay the cost of additional paint beyond the given amount designated for the approved area.

After the painting agreement is approved, all work must be completed within one week. The student agrees to pay promptly the replacement cost of equipment and supplies loaned by the university not returned at the time the job is completed or if supplies and equipment are returned in unsatisfactory condition.

Only good to high quality interior flat wall finish latex paint will be used and students will be able to choose from eight different colors: off white, beige, peach, pink, blue, yellow, lavender and green.

After the room has been painted, the residence hall director will inspect the room to see if it meets the satisfactory and within guidelines.

The only areas which are permitted to be painted by the students are the ones previously painted. No wood work, windows, glass wall plates, bulletin boards or formula tops will be painted. Only areas which students will not be allowed to paint include the ceiling and the doors.

Police Reports

Continued from page two

County Jail.

William Stigall, 23, of 12 Humphrey Hall, was arrested at 11:30 p.m., Sunday, Sept. 2, at Humphrey Hall. He was charged with public intoxication and was lodged at the Rowan County Jail.

William Hendrix, 24, of Rt. 2 Box 187, Flemingsburg, was arrested at 12:40 a.m., Thursday, Sept. 6, on University Street. He was charged with driving under the influence of an intoxicant and operating on a revoked/suspended license and was lodged in the Rowan County Jail.

Gary Grannis, 34, of Rt. 3 Box 241, Flemingsburg, was arrested at 12:40 a.m., Thursday, Sept. 6, on University Street. He was charged with public intoxication and was lodged in the Rowan County Jail.

Alan S. OHL, 21, of 304 Carmel Hall, was cited at 1:58 a.m., Saturday, Sept. 8, on University Blvd. He was summoned for driving without an operator's license.

Morehead City Police

Tim Roca, 18, of 219 Wilson Hall, was arrested and charged with shoplifting a bottle of whiskey from Freight Station Liquors. He was lodged at the Rowan County Jail.

John William Hatfield, 22, of 513 Carmel Hall, was arrested at 1:55 p.m., Saturday, Sept. 8 at Allen's IGA East. He was charged with shoplifting and was lodged in the Rowan County Jail.

Faculty, Staff Pay Delinquent Parking Fines

By TRACEY BUCHANAN  
Staff Writer

Delinquent parking tickets incurred by Morehead State University's faculty and staff since 1977 are now being paid. According to Gary Messer, director of the Division of Safety and Security, approximately \$1000 in the back files have already been paid with approximately \$650 still delinquent.

One of the problems encountered in trying to collect these fines is that 47 of the people who owe for the fines are no longer at the university.

Funding For Hall Not Yet Approved By State

Renovation of Fields Hall has been authorized under the 1984-86 university budget, but no funds have been specifically allocated for the project because university did not receive state funding for the project.

Dr. Reinhard Discusses MSU Personnel Changes

Continued from page one

real increase in salary in addition to their normal salaries. They will also retain their current titles as well as their salaries.

"Many decisions which have been made about the university have not been made in the best interest of the university," Reinhard said. "They have been made out of personal taste."

The full scope of Reinhard's restructuring plan will not go into operation until Oct. 1. The plan was announced this past August at a meeting of all university employees.

"Every single faculty and staff member including the janitor on campus have input on the restructuring of the administration," said Reinhard.

Features of the plan include three, instead of four, vice presidents and a reduction in the number of academic deans from seven to four through the conversion of six academic schools into two colleges and one school.

Reinhard also said that he would

like to institute an annual evaluation of faculty and staff which will be started next year.

"Apathy was a big problem which stemmed from a long lack of leadership," Reinhard said. "It looked like nobody cared about what the university looked like."

Acting Vice President Porter Daley reassigned Glenn Boddy from his position as director of the physical plant to engineering pre position in the division. Joe Planck was named acting director of the physical plant. In addition, Sherman Murphy, groundsman supervisor, was reassigned as a groundsman.

In a faculty/staff address made shortly before Boddy's reassignment Reinhard said, "Our campus has not been well-maintained."

"People will make the difference," Reinhard said. "I came to build a quality university and we will have to fight a far under many many to get things really going and I'm really optimistic about the future."

1984 COLLEGE NEWSPAPER CREATIVE ADVERTISING COMPETITION NATIONAL WINNING ENTRY

Your car says a lot about you

And Dodge Daytona Turbo-Z says all the right things.

Image is important. But it doesn't have to be expensive.

Look at the Dodge Daytona Turbo-Z. It's the most powerful car in its class. And it's the most beautiful.

Dodge Daytona Turbo-Z. 200-hp. 2.6-liter turbo engine. 5-speed manual transmission. 4-wheel disc brakes. 160 mph top speed.

Look at the Dodge Daytona Turbo-Z. It's the most powerful car in its class. And it's the most beautiful.

Dodge Daytona Turbo-Z. 200-hp. 2.6-liter turbo engine. 5-speed manual transmission. 4-wheel disc brakes. 160 mph top speed.

Look at the Dodge Daytona Turbo-Z. It's the most powerful car in its class. And it's the most beautiful.

Dodge Daytona Turbo-Z. 200-hp. 2.6-liter turbo engine. 5-speed manual transmission. 4-wheel disc brakes. 160 mph top speed.

Look at the Dodge Daytona Turbo-Z. It's the most powerful car in its class. And it's the most beautiful.

Dodge Daytona Turbo-Z. 200-hp. 2.6-liter turbo engine. 5-speed manual transmission. 4-wheel disc brakes. 160 mph top speed.

Look at the Dodge Daytona Turbo-Z. It's the most powerful car in its class. And it's the most beautiful.

Dodge Daytona Turbo-Z. 200-hp. 2.6-liter turbo engine. 5-speed manual transmission. 4-wheel disc brakes. 160 mph top speed.

Look at the Dodge Daytona Turbo-Z. It's the most powerful car in its class. And it's the most beautiful.

Dodge Daytona Turbo-Z. 200-hp. 2.6-liter turbo engine. 5-speed manual transmission. 4-wheel disc brakes. 160 mph top speed.

Look at the Dodge Daytona Turbo-Z. It's the most powerful car in its class. And it's the most beautiful.

Dodge Daytona Turbo-Z. 200-hp. 2.6-liter turbo engine. 5-speed manual transmission. 4-wheel disc brakes. 160 mph top speed.

Look at the Dodge Daytona Turbo-Z. It's the most powerful car in its class. And it's the most beautiful.

Dodge Daytona Turbo-Z. 200-hp. 2.6-liter turbo engine. 5-speed manual transmission. 4-wheel disc brakes. 160 mph top speed.

Look at the Dodge Daytona Turbo-Z. It's the most powerful car in its class. And it's the most beautiful.

Dodge Daytona Turbo-Z. 200-hp. 2.6-liter turbo engine. 5-speed manual transmission. 4-wheel disc brakes. 160 mph top speed.

Look at the Dodge Daytona Turbo-Z. It's the most powerful car in its class. And it's the most beautiful.

Dodge Daytona Turbo-Z. 200-hp. 2.6-liter turbo engine. 5-speed manual transmission. 4-wheel disc brakes. 160 mph top speed.

Look at the Dodge Daytona Turbo-Z. It's the most powerful car in its class. And it's the most beautiful.

Dodge Daytona Turbo-Z. 200-hp. 2.6-liter turbo engine. 5-speed manual transmission. 4-wheel disc brakes. 160 mph top speed.

Look at the Dodge Daytona Turbo-Z. It's the most powerful car in its class. And it's the most beautiful.

Dodge Daytona Turbo-Z. 200-hp. 2.6-liter turbo engine. 5-speed manual transmission. 4-wheel disc brakes. 160 mph top speed.

Look at the Dodge Daytona Turbo-Z. It's the most powerful car in its class. And it's the most beautiful.

Dodge Daytona Turbo-Z. 200-hp. 2.6-liter turbo engine. 5-speed manual transmission. 4-wheel disc brakes. 160 mph top speed.

Look at the Dodge Daytona Turbo-Z. It's the most powerful car in its class. And it's the most beautiful.

Dodge Daytona Turbo-Z. 200-hp. 2.6-liter turbo engine. 5-speed manual transmission. 4-wheel disc brakes. 160 mph top speed.

Look at the Dodge Daytona Turbo-Z. It's the most powerful car in its class. And it's the most beautiful.

Dodge Daytona Turbo-Z. 200-hp. 2.6-liter turbo engine. 5-speed manual transmission. 4-wheel disc brakes. 160 mph top speed.

Look at the Dodge Daytona Turbo-Z. It's the most powerful car in its class. And it's the most beautiful.

Dodge Daytona Turbo-Z. 200-hp. 2.6-liter turbo engine. 5-speed manual transmission. 4-wheel disc brakes. 160 mph top speed.

Look at the Dodge Daytona Turbo-Z. It's the most powerful car in its class. And it's the most beautiful.

Dodge Daytona Turbo-Z. 200-hp. 2.6-liter turbo engine. 5-speed manual transmission. 4-wheel disc brakes. 160 mph top speed.

Look at the Dodge Daytona Turbo-Z. It's the most powerful car in its class. And it's the most beautiful.

Dodge Daytona Turbo-Z. 200-hp. 2.6-liter turbo engine. 5-speed manual transmission. 4-wheel disc brakes. 160 mph top speed.

Look at the Dodge Daytona Turbo-Z. It's the most powerful car in its class. And it's the most beautiful.

Dodge Daytona Turbo-Z. 200-hp. 2.6-liter turbo engine. 5-speed manual transmission. 4-wheel disc brakes. 160 mph top speed.

Look at the Dodge Daytona Turbo-Z. It's the most powerful car in its class. And it's the most beautiful.

Dodge Daytona Turbo-Z. 200-hp. 2.6-liter turbo engine. 5-speed manual transmission. 4-wheel disc brakes. 160 mph top speed.

Look at the Dodge Daytona Turbo-Z. It's the most powerful car in its class. And it's the most beautiful.

Dodge Daytona Turbo-Z. 200-hp. 2.6-liter turbo engine. 5-speed manual transmission. 4-wheel disc brakes. 160 mph top speed.

Look at the Dodge Daytona Turbo-Z. It's the most powerful car in its class. And it's the most beautiful.

Dodge Daytona Turbo-Z. 200-hp. 2.6-liter turbo engine. 5-speed manual transmission. 4-wheel disc brakes. 160 mph top speed.

Get down to business faster. With the BA-35.

If there's one thing business students have always needed, this is it: an affordable, business-oriented calculator. The Texas Instruments BA-35, the Student Business Analyst.

Its built-in business formulas let you perform complicated finance, accounting and statistical functions—the ones that usually require a lot of time and a stack of reference books, to help you get the most out of calculator and classroom.

calculations, amortizations and balloon payments. The BA-35 means you spend less time calculating, and more time learning. One keystroke takes the place of many.

The calculator is just part of the package. You also get a book that follows most business courses: the Business Analyst Guidebook. Business professors helped us write it, to help you get the most out of calculator and classroom.

A powerful combination. Think business. With the BA-35 Student Business Analyst.

TEXAS INSTRUMENTS  
Creating useful products and services for you.

Extended Wear Contacts

including NEW Permaflex by Permalogs (sphericals only)

\$195.00 Are you now a daily lens wearer? Get refit\* for this special price

\$239.00 Complete extended wear contact lens fitting\* for new contact wearers.

\*All extended wear contact lens fits include an exam and contact fitting by Dr. McHugh, one pair of extended wear contacts, care kit, instruction on wear and care, and 4 months follow-up care.

Dr. Thomas McHugh  
Optometrist

137 E. First St.  
Morehead, Ky.

783-1575

Your Nike headquarters in Morehead

## The World of Shoes



Trademore Shopping Center  
Open 10 a.m. - 9 p.m.  
Monday-Saturday  
1 p.m. - 5 p.m. Sunday

Robert E. Sexton M.D.

- General Family Practice -



Monday Thru Saturday  
Same Day Appointments  
With Morning Call-In

784-7551

Back to School

SPECIAL

1.00 COUPON 1.00  
Good at House of Roffler  
on ANY service or product purchase  
Good only at Flemingsburg Rd.  
1.00 Expires Nov. 1st. 1.00

House of Roffler  
145 Flemingsburg Rd.  
784-6843

"The Hair Improvement Co."



www.hairimprovement.com



FAST, FRIENDLY, SERVICE

\$2.00 off  
any large pizza

Regular or  
pan pizza

Morehead only

One FREE litre  
soft drink with  
purchase of  
medium pizza

Expires 10-31-84

WIDE SCREEN TV

Hours: Monday - Thursday, 11:00 to 12:00  
Friday - Saturday, 11:00 - 1:00  
Sunday, 11:00 - 11:00

LUNCH SPECIALS  
Monday - Friday

DELIVERY AVAILABLE

Call for details  
Trademore Shopping Center

784-6424

## IFC and Panhellenic Councils Receive House To Be Used As New Office

By SEAN P. KELLY  
Staff Writer

Morehead State University President Herb F. Reinhard, in a surprise meeting he called for fraternity and sorority members at Nunn Hall Thursday, told the 40-50 people present that his administration "will try to help you if you try to help yourselves."

He then added, "Let's go see your new home," and proceeded to lead the group to a three-story university-owned house overlooking Nunn Hall — the new office of the Interfraternity and Panhellenic Councils.

The announcement, which surprised most of those gathered at the meeting, was the result of discussion at a reception Reinhard held for leaders in MSU's Greek system last week.

The house will be officially turned over to the IFC-Panhellenic Councils in a dedication ceremony this Friday at 4 p.m.

Panhellenic Council president Deedie Center said the IFC and Panhellenic Council have had an office since moving out of ADUC several years ago. The problem, she said, was brought up in general discussion with Reinhard.

"We needed a communication point" for the Greek system, Center said, adding that both councils have operated out of several administration offices after the move from ADUC.

IFC president Devon James said at the reception, "We only asked for an office."

During the tour of the house, Reinhard said that he had decided 40 minutes after the reception to give the IFC-Panhellenic Council the house. He added that his wife Nancy suggested giving the councils the house. The house had in the past served as home to several MSU administrators, and was last used as housing for the scholar-in-residence program which was discontinued several years ago.

Center said the house could be used for rush parties, but a full discussion has not yet been held by the IFC-Panhellenic councils to determine the limitations on its use.

Reinhard's announcement surprised many of those present at the Thursday Nunn Hall meeting, including Center and James.

"It was shocked," she said, "It was great." She added that the fraternities and sororities had already received "an extra boost" from Reinhard, and receiving the house "is the icing on the cake. It's good to know we have him on our side."

James said, "I was in awe." When the announcement was made, "We had just discussed it with Dr. Reinhard the night before. We had no idea" Reinhard would make the announcement, he said. "My mouth dropped open."

Reinhard said at the house Thursday that leaders in the Greek system said they had not received much sup-

port from the past administration.

"We can't help them with everything. But when we can help them, we want it to be the best it can be," he added.

James said he agreed with Reinhard's statement concerning past administrative support, saying that, "They supported very little at all. We were there. If we didn't create problems, everything was all right."

Center, however, said the Panhellenic Council members had problems with the previous administration.

James said new furniture for the house is being moved in this week and will be paid for by university funds.

Porter Dailly, director of Budgets,

## Cheerleading Squad Receives Four Superior Ratings At Camp



Photo: Kevin Gandy

The MSU cheerleaders are as follows: Karen Sparks, sophomore from Morehead; Mike Ehrhart, junior from Carroll, Ohio; Gina Brown, junior from Morehead; Scott Stober, senior from Bethel, Ohio; Stephanie Dunaway, junior from Morehead; Scott Gooker, sophomore from Ashland; Rhonda Grant, sophomore from Danville; Steve Cyrus, senior from Ashland; Vicki Taylor, senior Fairfield, Ohio and Buddy Logan, senior from Ashland.

By YVETTE ZIMMERMAN  
Staff Writer

The Morehead State University cheerleading squad won four superior ratings at a National Cheerleading Association camp this past summer. The camp was held at the University of Tennessee on Aug. 13-17.

Seventy-six different squads from all over the country attended the camp and were evaluated on one of their school cheers and a cheer taught to them at the camp. They were judge-

d on such qualities as sharpness of motion, voice projection, enthusiasm and gymnastics.

The National Cheerleading Association, one of the largest cheerleading organizations in the world sponsored the camp. This was the first year Morehead State's squad attended a NCA camp.

The MSU cheerleaders competed against ten other squads. These squads represented such universities as Michigan State, Ball State, and the University of Miami in Florida.

## Parking Stickers; Fines Raised

By JANIE BOWLING  
Staff Writer

Morehead State University's Division of Safety and Security issued 1,501 Zone 3 decals for the 1,135 available "S" parking spaces at Morehead State.

With 324 available Zone 1 spaces, only 30 decals have been issued. Zone 1 includes graduate assistants who reside off campus and full-time staff members who reside off campus whose spouses are students.

Overall, for the 2,365 parking spaces available for student automobiles (including Zone 4 for overflow), 2,494 stickers have been issued this semester at \$15 each.

Director of the Division of Safety and Security Gary Messer said some students buy stickers for more than one car, and in the case of commuters, where 713 decals were sold for the 328 available spaces, students schedules varied enough so the lots would accommodate them.

Messer said the price of the decals

was raised because of increases in the cost of the decals themselves, upkeep of the lots and leasing the computer lots.

In 1983-84, \$67,000 was collected for both student and faculty-staff fines. This fall the fines were increased to \$10 each.

Fines last year were \$1 for the first violation for parking out of the zone issued for the car, \$2 for the second, with a maximum of \$5. Messer said the increase in fines was necessary because the previous system "didn't seem to deter people from parking out of their zones." He added the varying fines of the old system were difficult to process and present fines were reduced to 50 percent if paid within 72 hours (with the exception of unregistered vehicles).

Violations carrying the \$10 fine are unregistered vehicle; double parking; parking in an improper zone, reserved space, fire zone, handicapped space, yellow zone, or on a crosswalk, sidewalk, or lawn; moving a barricade or cone; improper display of a decal; expired meter; backing into a space; and blocking a driveway.

DUSTIN

HOFFMAN

Kramer

vs.

Kramer

7 and 9:15 p.m.

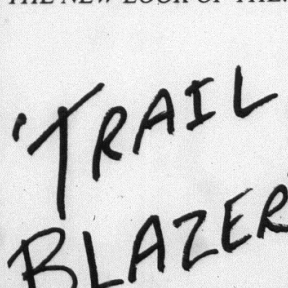
Button Auditorium

\$1.00 per person

sponsored by Program Council



## THE NEW LOOK OF THE:



This is just the beginning!



## BOONE'S RESTURANT

## BREAKFAST SPECIALS

428 W. Main St.  
Open Mon thru Fri.  
5 am to 2 pm  
Home Cooked Meals  
Daily Lunch Specials  
Home of the FAMOUS  
White Lily Flour  
Biscuits

- 1) 2 Lg. Eggs, Toast,  
Hash Browns
- 2) Pancakes, 1 Strip Bacon  
or 2 sausage patties
- 3) 2 Lg. Eggs, Biscuits and  
Gravy

## MOREHEAD DRIVE-IN

## MOVIES:

"Tightrope" rated R  
"Road Warrior" rated R

Fri. 14th, Sat. 15th, Sun. 16th  
Adult admission \$2.50, Children under 10 free

MOVIES START AT DUSK



Charlie's  
Dining Room

Tue. is Mexican  
Fiesta Day

"The Best Food In Town,  
And The Louisest Service"

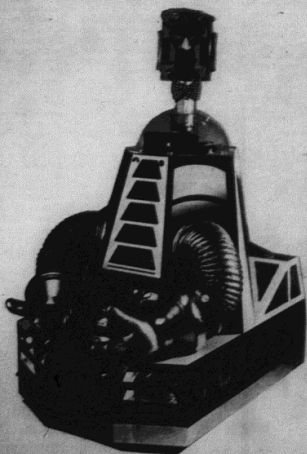
783-1444

COMING SOON...

## FUBAR

FUTURISTIC URANIUM BIO ATOMIC ROBOT

Look for FUBAR at the game on Saturday, just  
to dance to his music, and listen to his words of  
wit.



sponsored by your Program Council.

## Marshall Downs MSU 40 - 6 In Weekend Game

Team Looking For Saturday Victory

By LORI KINCAID  
Sports Editor

After a 31-0 victory over the Tigers of Georgetown College at Jayne Stadium in the first game under new Head Coach Bill Baldrige, the Eagles suffered a grueling 40-6 loss at the hands of the Thundering Herd of Marshall University Saturday at Fairfield Stadium in Huntington, W. Va.

Marshall, which went to 2-0, made their first touchdown halfway through the first quarter with a 66 yard pass from quarterback Carl Fodor to Brian Swisher.

The Eagles recovered a fumble late in the first quarter but could not turn it into a touchdown, leaving the score at the end of the first quarter 7-0.

The second quarter saw the Eagles make two costly turnovers which resulted in 13 points for the Thundering Herd. The half ended with Marshall leading 23-0.

After another 10 points by the Herd, Eagle quarterback Mike Hanlin hit Tom Buzynski from two yards out on the last play of the third quarter to give MSU their only points of the game.

With 11:47 remaining in the game, a Marshall punt which was touched by an MSU player was turned into MU's fifth touchdown a minute later as Fodor ran two yards into the end-zone.

Fodor set a new Marshall passing record with 315 total yards, while the Eagle quarterbacks only threw the ball for 121 yards.

"I don't think anyone expects to go out there and lose 40-6," Mike Hanlin, senior physical education major from St. Mary's, W. Va., and Eagle quarterback, said. "I thought we were well prepared. We didn't create any big plays. It was just one of those nights."

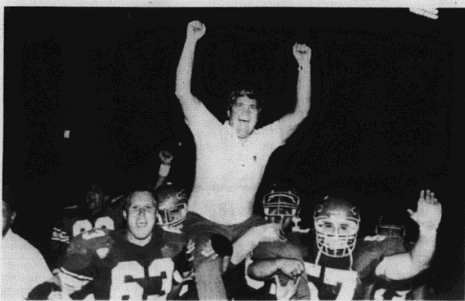


Photo: Kevin Giddy

Head coach Bill Baldrige is hoisted onto the shoulders of his players after their 31-0 victory over Georgetown.

The Eagles are preparing for their third opponent of the season this Saturday at Jayne Stadium.

The Ducks of James Madison have been defeated in both of their previous games and the fact that it is Parents' Weekend can't hurt the Eagles' chances for victory.

"Our players were disappointed with the loss to Marshall, but they took it in stride," Head Coach Bill Baldrige said. "We will get them back up and ready to play this week."

James Madison has played two tough teams in Richmond and Delaware, and we hope with our home crowd behind us that we can hand them their third straight loss. We've got to win this one."

## 1984 Morehead State Football

Game	Opponent	Score
1	Georgetown	31-0
2	Marshall	40-6
3	James Madison	
4	Delaware	
5	Richmond	
6	NC State	
7	Ohio Valley	
8	Wetberly	

## Lady Eagles Defeat Kent In Season Opener

By DINA PIERCE  
Staff Writer

The Morehead State University women's volleyball team competed in a round-robin tournament Saturday, Sept. 8, at Manual High School in Louisville. The Eagles came away with a split of their two matches.

The Eagles defeated Kent State University, 16-14, 15-11, 11-15, 15-9, but lost to the University of Louisville, 15-5, 15-9, 15-8.

U of L won the tournament defeating both MSU and Butler University.

Lady Eagle Head Coach Jim McCellan, in his fourth year at the helm, was recently named to the NCAA South Region Advisory Committee.

The committee ranks teams for selection of national polls. McCellan, who sports an impressive 92-67 record at MSU, has also served as the chairperson for the Ohio Valley Conference Coach's Committee.

The team plays host next Thursday to Xavier University in Wetherby Gymnasium at 7:30 p.m.

## NOW OPEN...

## MUSIC MACHINE

Records, tapes, accessories, t-shirts,  
posters, sheet music, & songbooks.

COME BY AND SEE US

10-9 Mon.-Sat. 1-5 Sun.

TRADEMORE

Hardee's  
Open 24 Hours

It's All Here at Hardee's  
All Around the Clock.

24 hours. On wheels. Right through there's someone up at Hardee's  
cooking just for you. Stop by your nearby 24 hour Hardee's any time.  
Call 800-451-2424



# STUDENTS!

Get carded for  
savings at Revco

GET AN EXTRA 10% OFF  
WITH YOUR STUDENT I.D. CARD

## FREE WATCH



Receive a 5 function  
digital quartz watch  
with every purchase  
of \$15 or more!



 <b>Bausch &amp; Lomb Saline Solution</b> Regular or For Sensitive Eyes 16.7 fl. oz. Your Choice Get it for less everyday <b>\$3.69</b>	 <b>Centrum Multi-Vitamins</b> 30 FREE WITH 100 100 + 30 FREE Get it for less everyday <b>\$8.89</b>	 <b>Mead Theme Books</b> 180 pgs. + 8 subject 8" x 10 1/2" or 150 pgs. + 5 subject 8 1/2" x 11" Your Choice Get it for less everyday <b>99¢</b>	 <b>Coffeeco Coffee Packets</b> Assorted shades 1.3 oz. Get it for less everyday <b>39¢</b>	 <b>Cover Girl Nail Sticks</b> Assorted shades Get it for less everyday <b>\$1.35</b>	 <b>Cutex Nail Polish Remover</b> 4 fl. oz. Regular or Lemish Your Choice Get it for less everyday <b>99¢</b>
 <b>Jovan Musk Oil Spray Cologne</b> 5 fl. oz. Get it for less everyday <b>\$7.43</b>	 <b>Desk Lamp With Fluorescent Light Or Swing Arm Lamp</b> Get it for less everyday <b>\$9.99</b>	 <b>Rolling Hills Shampoo Or Conditioner</b> 16 fl. oz. Assorted formulas Get it for less everyday <b>99¢</b>	 <b>Mr. Coffee Coffee Maker</b> Makes 10 cups Automatic drip Get it for less everyday <b>\$19.99</b>	 <b>Revco Dry Roasted Peanuts</b> 1.6 oz. Get it for less everyday <b>\$1.89</b>	 <b>Lysol Deodoriser Cleaner</b> 4 fl. oz. Get it for less everyday <b>\$1.29</b>
 <b>Flexible Poly Binder</b> 14" Get it for less everyday <b>\$1.29</b>	 <b>Cetron Tri-Pac Cassette Tape</b> C90 Get it for less everyday <b>\$1.59</b>	 <b>Scripto Mechanical Pencil</b> Yellow Get it for less everyday <b>34¢</b>	 <b>Mead Brief Folder With Pockets</b> Get it for less everyday <b>39¢</b>	 <b>Mead Steno Notebook</b> 80 pages Get it for less everyday <b>69¢</b>	 <b>Crest Toothpaste</b> Regular, Mint Green or Gel Blue 4.6 oz. Your Choice Get it for less everyday <b>\$1.45</b>

**MOREHEAD**  
208 Morehead Plaza  
783-1581

\*ONLY M.S.U. STUDENT I.D.S.  
QUALIFY FOR 10% DISCOUNT

DISCOUNT DOES NOT APPLY TO  
ALCOHOL, TOBACCO PRODUCTS, FILM  
PRODUCTS, MAGAZINES OR SOFT DRINKS.

Items available while quantities last.

**Revco**  
DISCOUNT DRUG™