

# The Morehead News

©Kentucky Publishing Company  
1980/09/20

FRIDAY MORNING, SEPTEMBER 19, 1980, MOREHEAD, KY

25 Cents

VOL. 97, NO. 76

ONE SECTION — 20 PAGES

## Harvest Festival Underway

Between 40,000 and 50,000 people should be pouring into Morehead this weekend as the fourth annual Harvest Festival starts today at 10 a.m. with the opening of booths and flea markets.

Publicity Chairman Keith Johnston said this year's event is more organized and has more citizen involvement than ever before.

"Everyone in the community is involved in some way," he said.

Despite lulls in advertising being cut 50 percent — down to \$3,350 — the Downtown Merchants and Trademore Merchants Associations, sponsors of the festival, have had advertising on one television channel and seven radio stations. Trademore Merchants have also passed around leaflets announcing the Harvest Festival to participants at other festivals in the state.

Johnston described the three days of festivities as not a money-making venture but as publicity for the city. A meeting for Sept. 29 has been set for discussion of the development of the event and Johnston says the public can expect Harvest Festival fund-raisers to be held throughout the festival.

One major change in the scheduling of events is the tug of war at 6 p.m. Friday between Trademore and downtown merchants. The tug of war will be held at Triplett Creek in city park, the event has been moved to Allen's IGA West.

The move does not mean the loser will not end up in water; a trench is being dug at the new site and sources say it will be filled with mud and water.

Lt. Gov. Martha Layne Collins will fly into Farmers Airport Saturday morning to be Grand Marshall in the 10 a.m. parade. She will leave immediately



The big tent, which will house booths for various arts and craft vendors, were pitched this week on the Citizens Band lot in downtown Morehead in preparation for the fourth annual Morehead-Rowan County Harvest Festival now underway. Above, volunteers from the Morehead Treatment Center helped with the construction of booth dividers. (Staff photo by Joe Lamb)

after the parade to attend a University of Kentucky function.

The parade promises to be Morehead's largest ever, with one feature being Ronald McDonald on the Fraternal Order of Police float. Floats will be competing for prizes.

One event that has already had prizes awarded is the state-normed Quilt and Afghan show and contest. Entries are displayed in 50 downtown windows and ribbons have been awarded to the best agents, quilters and teachers who served as judges Wednesday.

Winners are:

Hand quilted piece — 1st - Jeri Taylor, Morehead, Broken Star in Blair House Gallery; 2nd - Hildreth Maggard, Morehead, Bear Claw in McBryer's; 3rd - Elva McGraw, Morehead, Postage Stamp in Big Store Clothing; Honorable Mention - Susan Aber, Morehead, Log Cabin in Blair House Gallery; and Mrs. Jesse Rogers, Shelbyville, Grandmother's Fan in University Cinema.

Machine quilting — 1st - Patty Williams, Maysville, possetta at

Layne's Men Store; 2nd - Juanita Moore, Morehead, Holly Hock, Tri-State Distributors; 3rd - Nola Faulkner, Flemingsburg, Dresden Doll, Keaton's Wallpaper and Paint; Honorable Mention - Juanita Moore, Morehead, possetta, Tri-State Distributing; and Jennifer Goff, Morehead, Ohio Rose, Levee's Thom McAn; Tammy Filson, Hillsboro, maple leaf, Professional, Really.

Machine quilted — 1st - Dorothy Dehart, Morehead, Noysey in Morehead Furniture & Appliances; 2nd

(Continued on page two)

## Man Charged With 21 Counts Of Sexual Abuse

A 52-year-old Morehead man was indicted Thursday morning on 20 felonies and 1 misdemeanor, listed as attempted rape in the first degree, sodomy in the first, second and third degrees, sexual abuse in the first degree and attempted sodomy in the third degree.

All the acts allegedly occurred against ten juveniles as young as 6 years old, living in the city of Morehead.

Police arrested James Albert Williams, 802 Clearfield Street, Monday afternoon after a weekend long investigation by Officer Scott Barker and Auxiliary Officer Larry Whitt. The investigation started Saturday morning after, according to Barker, he received an anonymous complaint from an adult.

Barker, working with Lt. Det. Bob Wright and Dennis Human and Jane Burchett of the Kentucky Department for Human Resources, conducted interviews Monday through Wednesday with 25 people, both victims and witnesses.

"It's gone further than we expected at first as far as the number of abuses," said Chief of Police Fred Barnsdale. The grand jury indictment against Williams charges that the incidents occurred as early as the summer of 1978.

Two counts of attempted rape in the first degree are listed, one involving an 11 year old girl allegedly occurring this month and the other, a 10 year old girl during the summer of 1979.

First degree sodomy charges say (Continued on page two)

## Morehead Councilman Charged With Threatening Recreation Commissioner

A complaint alleging menacing and terrorist threatening has been issued by a member of the Morehead Recreation Commission against a member of City Council.

Morehead Councilman John Will Holbrook Jr. is accused of menacing and threatening Woodrow Barber, of Lakeside Heights, a member of the Morehead Recreation Commission and chairman of the Morehead-Rowan County Joint Planning Commission.

Barber obtained a summons against Holbrook Tuesday afternoon after the councilman allegedly hit and threatened Barber in an incident at

Morehead City Park about 9:30 a.m. Tuesday morning.

Holbrook refused to comment on the allegations but Barber said the incident took place during a dispute over work on an undeveloped area of City Park and that Barber's account, by and by Ray Hudak, of the Rowan County Soil Conservation Service, were stating an area for the installation of a drainage tile and agreeing to help stop an erosion problem.

Barber said Holbrook came to the site "ranting, raving and shouting obscenities" at him. (Continued on page two)

## Agencies To Begin Setting Tax Rates

Several of the local taxing districts have now received their tax rate certificates from the state and are expected to begin setting their rates.

City Council and the County School Board were to have met last night to set their new rates and other taxing districts are expected to follow suit shortly.

Mayor Crayton Jackson said Tuesday he will recommend the city adopt a tax rate of 22.6 cents per \$100. That figure, if approved by council, would represent a 4.9 cents reduction over last year's rate of 27.5 cents and would bring in the same amount of revenue, \$176,328.

Under House Bill 44, passed during the special session of the Kentucky legislature in 1979, taxing districts cannot levy a rate which produces more than four percent in additional revenue, exclusive of new property growth, without the rate being subject to voter recall.

The state supplies taxing districts with three options in setting the rate: the compensating tax rate; a rate which produces exactly four percent in additional revenue; and a maximum rate levied. Both of the latter require a public hearing and are subject to recall.

For example, the city was supplied with three options of 23.5 cents for the four percent increase and a maximum of 27.5 cents. Those rates would have brought in \$183,350 and \$214,559, respectively.

The School Board has received figures of 6.4 cents, 6.6 cents and 8 cents in the general fund as well as rates of 10.2 cents, 10.6 cents and 12.9 cents in the special voted tax.

Kenneth Bland, assistant superintendent and board of education treasurer, held open the possibility that board members might just discuss the tax rate and take no action on setting it during their meeting last night.

The School Board, apparently facing a bleak financial picture due to state cutbacks in revenue, might want to set its tax in excess of the compensating rate which would total 16.6 cents.

Board Chairman Eugene White said

Wednesday, "I'm not sure what we'll do. It's a blue situation."

But White said that the difference between the compensating tax rate and the maximum rate of 20.9 cents would be \$3.20 for an individual with property valued at \$100,000.

That difference would only bring in \$70,000 in additional revenue, White said, but would give the system additional bonding capacity of \$500,000. In the beginning, he said, bonds for the new high school were expected to be sold at 6.5 percent interest; now the rate is 8 percent.

White said and Superintendent John Brock had been discussing the tax rate and that he doesn't believe voters, after approving a utility tax in 1979, would go along with a tax increase this year.

The compensating tax rate could generate as much as \$361,252 if all tax bills were paid, while the maximum rate could bring in as much as \$454,629. If the board goes with either the four percent increase or the maximum rate, it must hold a public hearing and the rate will be subject to voter recall.

Last year the board was forced to go with the compensating tax rate when a petition for recall was filed after the school system went for the higher rate.

The rates finally adopted last year were 7.4 cents in the general fund and 11.4 cents in the special voted tax for a total of 19.3 cents. The state already has set its tax rate for the year at 24.1 cents per \$100 of valuation, compared with 27.9 cents last year.

Of the other three taxing districts—

Fiscal Court, health board and library board—only the library had not received its certification from the state as of Wednesday afternoon.

The county's compensating tax rate was certified at 7.5 cents, compared with 8.7 cents levied last year. Fiscal Court can set the rate at either 7.5 cents, 7.8 cents to provide a four percent increase or the maximum, 8.7 cents.

Those rates could generate from \$18,217 at the lowest and \$189,331 at the highest.

Librarian Frankie Calvert said Wednesday she has not received a certification from the state. The library tax was four cents last year.

The county judge's office received the certification for the health board Wednesday but it is not clear if the rates are applicable or not. Last year, the attorney general's office said health districts were exempt from HB 44 but Hume, director of the division for local support systems in the Department for Human Resources told *The Morehead News* he was unaware of that. He said he would have to check it out.

Last year, controversy over the tax delayed tax bills for a couple of months. The rates carried to the board were: 3.5, 3.6 and 4 cents, producing \$76,168, \$78,344 and \$87,049.

Although tax rates in general are expected to be lower than they were last year, few property owners will end up paying lower taxes because of increased property assessments.

Those people who experienced no increase or a small increase in their

real-estate assessments may have a reduction in their tax bills but many others, who had large increases in assessments, will end up paying higher tax bills.

Part of the reason so many property owners have large increases in their assessments, according to Property Valuation Administrator Bill Porter, is the state requirement that the county's overall assessment represent at least 95 percent of fair market value of property in the county. In order to arrive at that figure, many individual property owners had to have their property valuations increased to more closely reflect true market value.

A group of 66 PVAs across the state, including Porter, have sued state Revenue Commissioner Robert Alphin challenging the 95 percent requirement and the method used to calculate it.

Porter and the others claim the 95 percent level leaves too little margin for error. He notes that even the best real estate appraisers claim to come no closer than 10 percent of fair market value.

But despite all that, Porter says his conscience is clear and he believes his assessments are fair and represent full market value.

Porter says his assessments "were barely enough" to reach the level demanded by Alphin's office.

And he says the fact there were only four appeals indicates the assessments were fair. All four of those appeals were denied by the local board.

Porter says the state requirement that assessments average 95 percent of fair (Continued on page two)



## Martindale Construction Has Started

Kinder Construction Company of Morehead Thursday began work on the renovation of the controversial Martindale Building project.

County Attorney John Cox said Thursday that everything is going on the project and that the only thing left to do for release of the remaining \$1 million in financing is for the county to adopt a financing plan.

Cox said a mortgage to the lending company, First Municipal Lending Corporation, has been signed and recorded and the money to pay Elizabeth Martindale the remainder owed has been released.

"I hope to have everything ready to pay her Monday," Cox said. Meanwhile, a threat by attorney Terry Anderson to file suit seeking an injunction to stop the project has not materialized. As of Thursday, no action had been filed in Rowan Circuit Court.

"I don't think they're Anderson and the group opposed to the project will do anything," Cox said. Cox said he expected the magistrate to let a one-quarter of one percent payroll tax to cover the cost of the \$1 million loan during the next regular Fiscal Court meeting, Oct. 2.

The magistrates are expected to levy a one-quarter of one percent payroll tax to cover the cost of the \$1 million loan during the next regular Fiscal Court meeting, Oct. 2.

County Judge Executive W.C. Flannery, one of the strong proponents of the renovation, released a copy of a letter to Mayor Eugene White, plant manager at Browning Manufacturing.

Cling said in that letter, addressed to the magistrates, "As you are well aware, the economic conditions now facing our country makes the uncertainties of continued employment and financial stability questionable in the minds of everyone. During your recent consideration of the Fiscal Court facilities question, nearly everyone of our employees has voiced their opposition to any/tax which may be levied on them."

"They just say as businesses, must be concerned when profits are eroded and purchases or expansion plans must be delayed or cancelled."

"Gentlemen, may we ask you to seriously consider the adverse effect that additional taxes of any degree could have upon both individuals and businesses in this area. Perhaps some (Continued on page two)

## Inside

- Ambulance Runs ..... p.4
- Classifieds ..... p.14-16
- Courthouse News ..... p.3
- Deaths ..... p.5
- Editorial ..... p.18
- Extension News ..... p.4
- School Page ..... p.8
- Society ..... p.6,7
- Sports ..... p.12,13

## Mystery Still Surrounds Plane Crash

Questions are still being asked about the circumstances surrounding the crash of a light airplane Sunday at the Rowan County Airport near Farmers. But there appear to be few answers.

One of the questions yet to be answered is the identity of two passengers—a man and a woman—who were in the plane, piloted by David Wilson, of Lexington, when it went down at the west end of the airport runway while taking off about 9 p.m.

Neither of the passengers could be located after the crash and are believed to have taken away by automobile soon after the wreck.

Wilson, who appeared to be shaken up but not seriously injured in the crash which demolished the plane, disappeared shortly after refusing transportation to the hospital by an ambulance on the scene.

State police Det. David Mirus, who is heading up the local investigation, said Wednesday he has not been able to locate Wilson. He said he has run into a series of dead ends.

Mirus said he has learned the plane, a Cherokee 140 was registered to Wilson, who has only his student pilot's license. Another man, Billy Knight, of Morehead, said Monday he was a part owner of the aircraft.

Federal Aviation Administration officials visited the crash site Monday but Mirus said FAA had no further jurisdiction in the matter. The most that could be done, Mirus said, would be for the FAA to revoke Wilson's student license. But the detective said Wilson could reply for it later.

Mirus said he did not believe the plane was insured.

The detective said he has been unable to locate the two passengers, who were said to have been injured, even though he has contacted hospitals from Lexington to Ashland. Mirus was attempting to contact hospitals in Louisville Wednesday.

Wilson, said to be in his late 20s, first denied there were any passengers in the plane when it crashed Sunday. But

statements from airport manager Harry Hosack and another eye witness confirmed there were at least two other people in the plane when it took off.

Officials from the Rowan County and Bath County Disaster and Emergency Services units, the state police, the Rowan sheriff's office and the Morehead Volunteer Fire Department searched the area for about two hours Sunday night before being advised by state police to call off the search.

Knight arrived at the airport about 8:30 p.m. Monday morning and, in a conversation with Hosack, said the two passengers were "okay."

Knight did not reveal how he knew that or the identity of the victims. Hosack said he saw the plane go down shortly after it took off at 9:06 p.m. He said the plane started dropping and then made a 90-degree bank to the left. The plane crashed through a fence row and trees at the end of the airport runway. Both wings were torn from it and the passenger compartment was crushed.

## Sounding Out

Rowan County's Marching Vikings brought home first place honors from the Huntington-Vinson Marching Band contest held in West Virginia Tuesday. The 60 piece band competed with eight schools from two states in their class rating, based on size. Individual awards went to Debbie Lafferty, best drum major; Nadine Phillips, best soloist, best flags and best drum major; and the second place band was from West Virginia. The band placed first in the Class AA Division at the Bath County Marching Band Festival Saturday. Bruce Scott Dobler delivers a trombone solo at Bath County. (Staff photo by Alice Akin)

# Harvest Festival —

(Continued from page one)

Carrie Estep, Morehead, Crossroads in Mae's Ceramics; 3rd - Elsie Moore, Morehead Nonesuch in Big Store Clothing.

Baby or Crib Quilts — 1st - Brian Hitch, Flemingsburg, Bunny applique in Atkinson's Florist; 2nd - Holly Jo Bumgardner, Morehead, Kittens in Stueky's Beauty Shop; 3rd - Juanita McClurg, Rabbit in Stephen's.

Herbloom — 1st - Gertie Sorrell, Hillsboro, Double Wedding Ring in Hobbs'; 2nd - Gwendolyn Kidd, Morehead, Postage Stamp in Martin's; 3rd - Winford Crashtwaite, Morehead, Improved Nine-Patch in Morehead Furniture & Appliances, Honorable Mention - Margaret Morris, Morehead, Cross and Cross in Wise Fashions, and Dexter Stinson, Morehead, Diamond Flower Garden in Bishop's Drug Store.

Novelty — 1st - Terry Cornett, Morehead, Cathedral Window in Martin's;

2nd - Shirley Gilliam, Morehead, Friendship Quilt in Atkinson's Florist; 3rd - Mamie Cagdill, Morehead, Painted Flowers in Montgomery's Ward; Honorable Mention - Marion Rowland, Ezel, Briar Stitched Crazy Quilt in the store where Jim & James Shop used to be.

Kits — 1st - Sue Wells, Morehead, Rose Cross-stitch in Martin's; 2nd - Christine Crisp, Morehead, Tree of Life in Peiphey's; 3rd - Christine Crisp, Morehead, Calico Daisy in Peiphey's; Honorable Mention - Dorra Utterback, Flemingsburg, Dogwood Applique in Larry's Rock 'n' Read.

Alghans — 1st - Carrie Crouch, Salt Lick, Navajo in Classic Casuals; 2nd - Celia Wells, Morehead, Flower Garden in Dogwood Tree; 3rd - Donna Hitch, Flemingsburg, Shell in Atkinson's Florist; Honorable Mention - Anna Mae Riggie, Morehead, Knitted Afghan in New Image Hair.



Festival Time

One of the unique displays of quilts this weekend in Morehead is this arrangement at Beneficial in West Morehead. The window dressing was created by Libby Caudill and Suzanne Skages employees of the lending company. (Staff photo by Joe Lamb)

# Councilman —

(Continued from page one)

asked him what he was doing and then grabbed him by the shirt collar, shook him and took a swing at him. Pointing to a nick on his chin, Barber said Holbrook hit him.

Barber said that Holbrook then threatened to "beat hell out of you (Barber) before the week's over if you get a warrant."

Barber said he thought the matter over for several hours before deciding to press charges. "I was thinking I'd be neglecting my duty if I didn't (swear out a complaint)."

Asked if he had done anything which might have caused the action from Holbrook, Barber said: "If I did, I didn't know it. It was completely unprovoked."

According to Barber and Mayor Crayton Jackson, the work at the park was authorized by the mayor. Barber said he and Hudak were preparing the area for city crews to come in and complete the work Wednesday. Mayor Jackson indicated that the dispute may have had something to do with Holbrook's misunderstanding of new

powers granted to the mayors of fourth class cities under new legislation passed this year.

Holbrook, who is the council representative to the recreation commission, has sometimes been at odds with the mayor over his power.

Barber, 68, says he has been a member of the recreation commission since it was informed in 1968. He says he has worked "congenially" with Holbrook since his appointment to the commission and worked with him for two years "in very fine fashion."

Barber retired from Morehead State University in 1976 and says he has donated a great deal of time and money to the park. He says he has spent more than \$1,000 from his own pocket on the park. The work, being done Tuesday was on a volunteer basis.

Barber said he wanted it noted that he was talking to the newspaper about the incident "reluctantly and hesitatingly." Once charges had been filed in the matter, it became a matter of public record.

The charges are believed to be misdemeanors.

# Norfleet, Graham Papers Expected At Regents Meeting

Position papers from Morehead State University President Morris Norfleet and John Graham, vice president for fiscal affairs, are expected to be presented to members of the MSU Board of Regents when they convene

tonight (Friday) at 6:30 p.m. in the Riggle Room of the Adron Doran University Center.

It was suggested by the regents August 16 that Norfleet and Graham submit the papers as a means of

"telling their side of the story" concerning allegations of financial misconduct by university officials contained in a state attorney general's report made public August 8.

That report, which followed a request for an investigation by the wife of William Ewers, former MSU purchasing director and director of food services who resigned the job in November 1979 after admitting in a letter to the regents that he had "improperly handled" university funds, identified areas of questionable

practices regarding the use of MSU equipment, material and personnel.

The attorney general's report also noted that some employees of the university had avoided paying sales tax and enjoyed discounts on items purchased through a special account established.

A report by President Norfleet on a set of recommendations made by the regents as a result of the attorney general's report is also expected during the meeting tonight.

# ALUMINUM SHEETS

(Used Printing Plates)

Size 23 x 35. These large sheets are ideal for skirting mobile homes, lining corn bins, garages, dog houses, window boxes, rat and mouseproofing, fixing leaky roofs and you could think of much more. Easily cut with tin snips or heavy shears. One sheet covers over 5 sq. ft. A bundle will cover over 100 sq. ft.

- 1 Bundle - \$8.00
  - 2 Bundles - \$13.00
  - 3 Bundles - \$18.00
  - 4 Bundles - \$23.00
- 20 Sheets Per Bundle
- 722 W. First St. **The Morehead News** Morehead, Ky.

# Taxes To Be Set —

(Continued from page one)

market value, many of the state's 120 counties were late in getting their assessment levels approved by the state, meaning the state was late in setting its tax rate.

In turn, that delay has prevented local taxing districts from being able to establish their rates.

It is likely the entire tax calendar will be extended because of the delay.

Ordinarily, tax bills are in the mail by the middle of September with a two percent discount offered for payment prior to Oct. 31.

Mayor Jackson said Tuesday that council may extend that deadline.

Assistant City Clerk Brenda Kashi said tax bills should be in the mail within two or three weeks after council sets the rate.

County Court Clerk Jean Bailey says county tax bills are ready to be printed as soon as the rates are certified to her and she can inform the compiler company which prints them.

According to Porter, just under 9,000 tax bills—including those for personal property such as boats and cars—should be sent out this year.

The total certification level in the county this year is \$202,515,319, compared with \$186,907,020 in 1979.

# Violent Confrontation Ends Without Gunfire

JEFFERSONVILLE — A one-hour confrontation Wednesday afternoon in this Montgomery County community ended without serious injury when state police managed to apprehend a man who had barricaded himself in his home along with his wife and two young children.

Clyde Stalker, 36, was taken to the Fayette County Detention Center where he was held on charges of wanton endangerment and assault following the incident.

According to Capt. L.T. Owen, of the Morehead post of the state police, his county got a call from the Montgomery Sheriff's office Wednesday afternoon that a man was beating his wife and had two children inside his house.

Trooper Charlie Daniels, the first state police officer to arrive on the scene, said the man pulled a rifle on him when he approached the house. Trooper Daniels was forced to back

away and call the post for assistance.

Dets. William Harmon and Nelson Hutton arrived on the scene and attempted to coax the man from the house. According to Capt. Owen, the officers were able to talk with the man and get him to put down his rifle.

When the officers got close enough, the jumped Stalker and managed to handcuff him. The man reportedly resisted arrest, kicking Det. Harmon in the face. Capt. Owen said that Harmon was bruised but not seriously injured.

Stalker was first taken to Mary Chiles Hospital but was taken to the Montgomery County Jail when he refused treatment. Stalker's wife later transferred to the Fayette Detention Center in Lexington which has hospital facilities.

Capt. Owen said neither Mrs. Stalker nor the two children were injured.

No shots were fired during the incident.

# County Can't Charge City For Prisoners

In June, Rowan Fiscal Court approved an ordinance requiring the city of Morehead to pay five dollars for prisoners who were arrested in the city limits and lodged in the Rowan County Jail.

The motion, which passed on a four-to-one vote, directed the county to bill the city five dollars per day for "city prisoners" lodged in the county jail to defray the expense and cost of maintaining, and operating the jail. City prisoners were identified as "anyone arrested in the city limits, regardless of arresting officer."

Today, more than three months after the ordinance was adopted, the city has yet to receive its first bill from the county for prisoners. And the state attorney general's office has issued an opinion saying the imposition of the fee by the county is not proper.

Assistant Attorney General Thomas R. Emerson wrote in that opinion, "A county cannot require a city within its borders to pay a jail maintenance fee, which is in addition to the dieting fee allowed the county jailer."

The city is required to pay the jailer \$6.75 for prisoners arrested for violating a city ordinance; according to Emerson. He pointed out, however, that the majority of prisoners are arrested for violating state offenses and it is rare for a person to be lodged for violating only a city offense.

In a telephone interview this week,

Emerson said the fact that a person is arrested in the city limits does not make him a city prisoner. "It depends upon the offense," he said.

"The maintenance of a county jail is the county's responsibility and cities do not have the responsibility of maintaining a city jail or assisting in maintaining a county jail," Emerson wrote in the opinion, which was requested by Judge/executive W.C. Flannery.

Emerson noted, however, if a county houses prisoners from another county, it may charge a reasonable amount, in addition to the dieting fee, for housing out-of-county prisoners.

It was Flannery who introduced the ordinance in June setting forth the fee.

At that time, County Attorney John Cox told the court members they were wasting their time. Cox indicated then the county may be setting itself up for a lawsuit.

According to Jailer Roger Thomas, the judge's office has never requested information or figures as to the number of people arrested in the city for billing purposes.

And information from City Hall is that no bills have been received from the county since the ordinance was adopted June 5.

The action to charge the city for prisoners arrested and held by Morehead City Council to charge residents of the county for rural fire calls.

# Man Charged —

(Continued from page one)

Williams was with an 11 year old girl this month and a 6 year old girl twice during the summer of 1978. A total of six counts involve the 11 year old boy. Five of those incidents were said to have occurred the summer of 1978 and one December 1978.

The one charge of sodomy in a second-degree lists in ancient with a 13 year old "child" (sex not listed) said to have occurred August 1980.

Sodomy in a 13 year old child charges involve a 15 year old child in August and September of 1980 and twice the summer of 1980. Three counts under that same charge involve a mentally defective or mentally incapacitated person, the incidents allegedly occurring the summer of 1978.

An attempted sodomy in the third

degree charge says Williams was involved with a 14 year old child in August of 1980.

The sexual abuse in the first degree charge states Williams contacted a 9 year old boy to sexual contact during the summer of 1980.

Williams was at his home at the time of the arrest and was taken to the Rowan County Jail.

At press time Thursday, Chief Barnsdale was attempting to have Williams removed from that facility for security reasons. Williams was lodged there under \$5,000 full cash bond. No date for arraignment had been set.

Barnsdale said Lt. Det. Wright is continuing the investigation and could bring additional charges.

Other grand jury indictments were not available at press time.

## Shop Sharp

SHOP THESE MONEY-SAVING FOOD VALUES!

- Fresh Rib Stew ..... lb. **89¢**
- Fresh T-Bone Steak ..... lb. **\$2.98**
- Fresh Chuck Steak ..... lb. **\$1.29**
- Fresh Chuck Roast ..... lb. **\$1.29**
- Fresh Pork Steaks ..... lb. **99¢**
- Fresh Ham Steaks ..... lb. **\$1.09**
- Fresh Pork Sausage ..... lb. **99¢**
- Charmin Tissue ..... 4 roll pkg. **99¢**
- Rinsol Detergent ..... box **\$1.19**
- Delmonte Corn ..... #303 **3/99¢**
- Teen Queen Sweet Peas ..... #303 **3/88¢**
- Flov-O-Rich Milk 1% ..... Gal. **\$1.75**
- Flov-O-Rich Biscuits ..... **6/99¢**
- Betsy Ross Bread ..... 16 oz. loaf **4/\$1.00**
- RC Drinks ..... 16 oz. Bottles (Plus Deposit) **8/\$1.39**

## PEGGO'S GROCERY

Flemingsburg Rd. Morehead, Ky.

## MARY JANE'S COUNTRY KITCHEN

Friday Night Special Sept. 19

All The Spaghetti You Can Eat **\$2.95**

Includes, Spaghetti, Bread and Butter, Salad Bar

Friday-Saturday-Sunday Sept. 19-20-21

Rib Steak **\$4.50**

Baked Potato or Fries, Bread and Butter, Salad Bar.

T-Bone Steak **\$5.50**

Baked Potato or Fries, Bread and Butter, Salad Bar.

Wednesday Night Special Sept. 24

Beef Stew **\$1.95**

All the Beef Stew you can eat, bread and butter

## Martindale —

(Continued from page one)

corners could be cut or concessions made, just as most businesses are doing today to eliminate the extra financial need.

---

### The Morehead News

Over 20,000 Readers Each Issue

Published every Tuesday and Friday at Morehead, Rowan County, Ky. 40351

Entered as Second Class Mailing Matter at Post Office, Morehead, Kentucky 40351

Ronald Caudill ..... Exec. Vice President  
Betty Caudill ..... Vice President  
Joe Lamb ..... Managing Editor  
Jill Eldridge ..... Office Manager

Morehead News Office — 722 West First St.  
Telephone 784-4116 (Area Code 606)  
When requesting change of address, be sure to include old address.

**SUBSCRIPTION RATES —**

One year in Rowan, Boone, Mingo, Mercer, Carroll, Lincoln and Fleming Counties ..... \$12.50  
One year in other counties ..... \$18.50  
One year outside Kentucky ..... \$25.00  
One year outside USA ..... \$45.00  
(Prices include Kentucky Sales Tax)

No subscription taken for less than one year.

POSTMASTER: Please Send Form 3576 To — THE MOREHEAD NEWS — 722 W. First St. — Morehead, Ky. 40351 — Publication No. US9362060

Advertiser should check that ad the first time it runs. The Morehead News shall not be liable for failure to publish an ad or for a typographic error or error in duplication except the actual cost of the ad for the first insertion. Adjustment for errors in the cost of that portion of the ad which is the error occurred.

## We're Playing Santa In September and You Pocket The Savings!

# 20% Off On All Christmas Layaways

Now Thru October 4

## Place Special Orders Now

### T&E The House of Confidence Jewelry

Open 10 A.M. Monday - Saturday

IN HECK'S MOREHEAD CENTER, MOREHEAD, KY  
164 Off Flemingsburg Road Behind Holiday Inn  
Locally Owned And Operated by Usadell Eldridge



Deaths

Claude Hester

FLEMINGSBURG — Claude Hester, 86, of Rt. 1, Wallingford, died Monday, Sept. 15, after a brief illness. He was a retired landowner and farmer. His wife, Ethel Gully Hester, survives. Services were Thursday, Sept. 18, at Pervelina Church of Christ. Denton Funeral Home was in charge of arrangements.

Virgil Caudell

SALT LICK — Virgil Edwin Caudell, 33, surveyor for the Litton Engineering Co. and husband of Judy Robinson Caudell, died Tuesday, Sept. 16, of an apparent heart attack. Services are at 2 p.m. today, Friday, Sept. 19, at Salt Lick Church of God. Powell-Denton Funeral Home is in charge of arrangements.

Gleen Allen Messer

OLIVE HILL — Gleen Allen Messer, 39, of Las Vegas, Nev., formerly of Olive Hill, died Sept. 12. Survivors include his wife, Coralee Rose Messer; four sons, David, Doug, Chuck and Matthew Messer, all at home; his mother, Blanche Messer, Mansfield, Ohio. Also, five sisters, Shirley Hedgie, Morehead; Betty Kegley, Deland, Fla.; and Phyllis Underwood, Margaret Bishop and Juanita Everman, all of Mansfield, Ohio; a brother, Charles Messer Jr., Mansfield. His father, Harry Messer, and two brothers, Ralph and Jack Messer, and a sister, Inez Rogers, preceded him in death. Services will be conducted at 2:30 p.m. today at Wappner Funeral Home in Mansfield.

Magician To Be Here For 25th Year

A Silver Anniversary of magic, hypnosis, humor and mental telepathy will be celebrated when Preston the Magician and miracleist makes his 25th annual appearance at Morehead State University on Thursday, Oct. 16.

Preston has mystified and satisfied audiences of all ages across the nation and overseas with his skill, personality and showmanship.

Sponsored by MSU's Program Council in Butson auditorium, the 7 p.m. family entertainment show is free and open to the public.

Lower Pork Prices Predicted

Consumers should expect a reduction in pork prices at the supermarket in the next few weeks, according to two Extension economists in the University of Kentucky College of Agriculture.

Basis for the predicted decline for pork stems from an increase in hog slaughter in recent weeks. "With supply up, the price of hogs has decreased \$6 per cwt. in the last two weeks and is expected to continue the downward trend," said Kim Anderson and Lee Meyer.

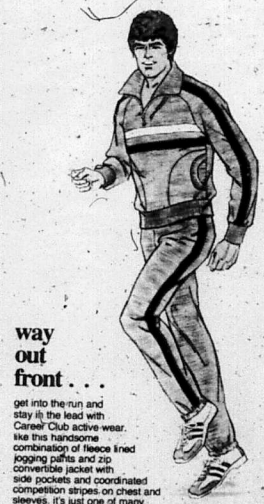
A decrease in pork prices is expected to follow the usual seasonal pattern of prices peaking in July or August and then declining into November, say the specialists. Anderson said that retail prices usually follow farm level prices by two to six weeks.

The specialists are predicting lower consumer prices on into December. "Since the number of pigs born in the March-May period was one percent larger than the year before, prices this fall and early winter should decrease as this larger number of hogs goes to slaughter," said the economists.

However, late this year, the specialists foresee an increase in consumer pork prices due to hog producers cutting back production. "Market analysts believe that the USDA's September Hogs and Pigs Report will show a four percent reduction in hog members," said Meyer. He added that if this is confirmed, you can expect rising hog and pork prices through the first half of 1981.

The specialists had this to say about poultry, egg and beef prices: "Recent USDA reports indicate broiler placements increased two million birds and egg settings climbed 1.2 million over the previous week. This is the first increase in birds and egg placements since late spring. The economists said that these increases indicate that broiler and egg prices should rise to a peak in the next six to eight weeks. Meyer said beef prices are expected to remain stable for the next few weeks. "However, over the long run, beef prices should exhibit a gentle upward trend," he added.

CAREER CLUB ACTIVE WEAR



way out front...

get into the run and stay in the lead with Career Club active wear. Like this handsome combination of fleece lined jogging pants and zip convertible jacket with side pockets and coordinated competition stripes on chest and sleeves. It's just one of many related separates. Select your coordinated set today!

Stephen's Morehead's ONLY Super Store



On Howard Knob Mountain, near Boone, N.C., the world's largest wind turbine makes electricity for 500 homes. Mounted on top of a 140-foot tower, the turbine's 100-foot-long propellers start to turn whenever the wind in the area reaches 11 miles an hour.

Mold cheese on cheese — even on those you don't like mold. To prevent mold, wrap cheese in a cloth dampened with salt water before refrigerating.

YOUR FAMILY... Would they know what to do?

When it comes, the ultimate sorrow is almost always unexpected. To avoid confusion and needless worry later, Northcutt & Son offers a prearrangement plan that provides a complete record of your wishes for future guidance. But to be effective, the details should be recorded now. Call on us.



Northcutt & Son Home For Funerals MOREHEAD, KY. PHONE: 624-6491 Call Collect

FISHING REPORT

FRANKFORT, Ky. (Sept. 15) — Water temperatures in Kentucky's major lakes remain in the low 80s and fishing continues generally fair. The lake-by-lake rundown, according to the Department of Fish and Wildlife Resources.

Cave Run: Black bass fair at night on artificial nightcrawlers and live crawfish off deep points; musky fair casting medium deep runners in the upper part of the lake and trolling over the main channels. Clear, falling at 1 foot below pool and 82.

Herrington: Black bass fair at night on artificial nightcrawlers; white bass good in the jumps early morning and late afternoon on plunker-fly combinations; clear, stable at 5 feet below pool and 81.

Green: Black bass good at night over dropoffs on crank baits; bluegill good over submerged cover and stump beds; clear, falling slowly at 2 1/2 feet below pool and 78.

Dale Hollow: Black bass fair at night on artificial nightcrawlers on deep banks and weed beds; walleye fair trolling deep runners on mud flats; clear, falling slowly at 5 feet below pool and 82.

Kentucky: Black bass fair to good on artificial worms and spinner baits; crappie slow to fair over submerged cover, 10-12 feet deep, below the dam, catfish slow to fair; clear, stable at 3 feet below pool and 80.

Barkley: Black bass slow early morning and late afternoon on artificial nightcrawlers and crank baits; crappie slow over submerged cover, below the dam, catfish excellent on cutbaits and minnows; crappie fair on jigs and minnows; clear, falling slowly at 2 feet below pool and 82.

Nolin: Black bass fair on crank baits and live crawfish over rocky points; crappie slow over fallen treetops; clear, stable at 1 foot below pool and 82. Barkley: Black bass good on artificial nightcrawlers and crank baits early morning and late afternoon; bluegill good, but small; white bass slow trolling; clear, falling slowly at summer pool and 80.

Cumberland: Black bass, white bass, walleye and rockfish fair by trolling deep runners across points of main lake; black bass fair in upper section on spinners, artificial nightcrawlers and live crawfish off points; crappie fair drifting deep covers off the main lake, 20-25 feet deep, in lower section, and 8-12 feet deep on small minnows in upper lake, below the dam, trout good, some limits, in early morning; clear, stable at 35 feet below the timberline and 81.

Backhorn: Black bass fair on surface lures and spinner baits; bluegill good; clear, stable at summer pool and 81.

Grayson: Bluegill fair in inlets and bays; black fair on artificial nightcrawlers; clear, stable at 1 1/2 feet below pool and 83.

Laurel: Black bass slow on artificial nightcrawlers in stickups; bluegill fair; trout fair at night; clear, falling slowly at 15 feet below pool and 80.

Fishtrap: Crappie slow in stickups; catfish slow; below dam, trout fair; clear, stable at 2 feet above summer pool and 82.

Dewey: Crappie slow over treetops and stickups; catfish slow on cutbait; clear, to murky; stable at pool and 80.

Rough River: Black bass slow on plastic worms and crank baits; crappie slow; clear, falling at 4 feet below pool and 80.

CONSUMER CHECKLIST



SAVING WATER The average American uses ten to twelve gallons of water per day in the sink. Half this water can easily be saved through the use of an inexpensive water saving aerator. When gear usage is cut, energy usage is trimmed back, too.



Quality and Service LARGE SELECTION "Here On Our Lot" TO CHOOSE FROM CHECK OUR PRICES Cox Monument Co. Just over two miles on 60 Highway East MOREHEAD KENTUCKY

Personal Advise From CPAs ...

Retirement Planning Begins At 40.

People often don't plan for retirement until they reach 55. But then it's too late to do it right. According to the Kentucky Society of CPAs, you should begin arranging for retirement while you're still in your forties — when there's time to build an adequate retirement income.

You will probably need 60 to 70 percent of your last working year's income for comfortable retirement. So, if you are now 40 and earning \$20,000, you'll need an annual retirement income of something like \$45,000 in 25 years.

The first step in retirement planning is setting goals. Ask yourself how you'd like to spend those years. Where will you live? Is a retirement community, a condominium, your present home? How much income will you need if you want to travel? Would you or your spouse work part-time?

Begin by projecting a budget, based on your living plans. Add up any retirement income already in the works, such as social security, employer pension, annuity payments, interest or dividends from investments you plan to keep. Compare this total with your probable expenses.

There will probably be a gap to fill, so now is the time to plan to build a cash pool for use as retirement income. For instance, if you can accumulate a cash pool of \$50,000 over the next 25 years and invest it at 10 percent, you will be able to withdraw 10 percent a year — \$5,000 — indefinitely. If the money is invested at 6 percent, an annual withdrawal of \$5,000 will deplete the fund in 16 years. Are there any investments you can sell at retirement? What about proceeds from the sale of your home (at 55 you are exempt from up to \$100,000 gain on the sale)? You may want to cash in your life insurance at retirement and use the money if you have no dependents or if your spouse will not have enough income if you die.

Your ability to calculate the cash you'll need at retirement and to secure it while you're still at the peak of your earning power as CPAs, is the key to good retirement planning.

If you are not covered by a pension plan where you work, then an Individual Retirement Account (IRA) will provide a good tax benefit for you now, and a solid retirement fund for the future. That money will not be taxed until you use it and you may then be in a lower income tax bracket. If you are 40 when you start an IRA plan with an interest rate of 7 1/2 percent, and you contribute \$1,500 every year, you will have contributed \$37,500 at the end of 25 years — but the fund will be worth \$121,694. This calculation is based on an annual contribution made in January of each year. If you wait until December, the total will be \$112,450. That's a difference of more than \$9,000 — simply based on careful planning, CPAs say.

If you work for a corporation or government with a pension plan, you may be provided with 30 to 50 percent of your working income at retirement. Here's an example of an average non-contributory pension plan. Let's say you are 40 and earning \$20,000 a year, you plan to retire at 65. In the next 25 years, if your income increases modestly, you may be earning \$60,000 before you retire. Your benefit may be based on your "high" earnings, usually the average of the last five years of employment — or about \$61,000. If your pension plan "integrates" with social security, your annual retirement income will be \$24,000 — or \$2,000 a month. This is about 40 percent of your pre-retirement income. In addition, you will get your social security benefits.

Contributory company pension plans have the advantage of allowing you to take accumulated contributions plus interest earnings with you if you leave your job. If you do that, CPAs say, put that pension money into a Rollover IRA within 60 days — or the opportunity will be lost.

DOT To Pick District Managers

FRANKFORT, Ky. — By executive order, Gov. Jerry Brown Jr. has established the position of district manager in each of the Department of Transportation's 12 district highway divisions. The district manager will have the responsibilities of administering approved highway programs, supervising the planning, design, construction and maintenance of state highways, and coordinating projects with the Bureau of Highways.

District managers will be appointed by the secretary of the Department of Transportation. The secretary may also designate assistant district managers, who will have such duties as are assigned to them by the secretary of Transportation, the commissioner of the Bureau of Highways or the district manager.

Until 1792, Kentucky was the western part of Virginia, which was the first of the original 13 colonies to import horses. The first horses arrived in 1699, just two years after the landing of settlers at Jamestown. Families that winter killed both horses and settlers.

There are insurance plans such as deferred or immediate-pay annuities which provide lifetime income at retirement. Interest rates on deferred annuities tend to be low, so saving this way over the years is usually not as prudent as saving or investing your funds at higher rates.

You can buy an immediate-pay annuity for a lump sum when you retire, and the insurance company will guarantee you a specified monthly income for life. This type of annuity makes sense if you're worried that your capital won't see you through your old age, or if you come from a long-lived family.

At retirement, you could also consider a "reverse annuity" obtained by borrowing against the value of your house. With your property as collateral, you receive a series of monthly loans for 10 to 15 years, depending upon life expectancy.

Review your retirement plans as your life situation and earnings change. CPAs advise. With social security, and pension or IRA as a base, adjust your savings or investments as necessary. Working with the magic of compounding and consistent saving, money will grow rapidly in 25 years. A single investment of \$10,000 earning eight percent annually, will more than double in only 10 years.

Keeping this in mind, now, while you're young, can mean that retirement years truly can be the best years of your life.



We are Pledged TO CONDUCT WITH DIGNITY THE FINAL TRIBUTE



Mindful of Every Detail Professional services, transportation, arrangement of music and floral tributes, countless other important details handled quietly, competently. Serving Morehead and Rowan County For Over 40 Years Member Of Ky. Funeral Director Burial Association LANE-STUCKY-BACK FUNERAL HOME Morehead, Ky. 784-4134

HARVEST FESTIVAL SALE Friday, Saturday & Sunday - Sept. 19, 20, 21 NEW STORE HOURS: Mon.-Sat. 8-8; Sun. 12-6

GIGANTIC 20% OFF SHOE SALE!

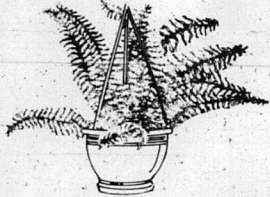
Advertisement for shoe sale with various categories and discounts: Men's Hiking Boots - 54"-59" 20% Off; Women's/Boy's Hiking Boots - 48" 20% Off; Men's Work Boots / Men's Cowboy Boots 20% Off; Men's/Women's/Children's Casual Shoes 20% Off; Men's/Women's/Children's Dress Shoes 20% Off; Women's Purses 20% Off. Special Time: \$3.00, \$5.00, \$10.00. LEVEE'S Thom McAn Shoes 108 E. Main St. Morehead, Ky. "High Quality Shoes At Prices YOU Can Afford"



**Roses Really Does Save You More Daily!**

OPEN DAILY 9:00 A.M. TO 9:00 P.M.  
SUNDAY 12-6

# INDOOR PLANT SALE

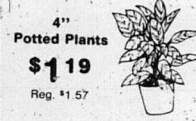


**10" Hanging Fern**  
**\$4.99**  
Reg. \$5.88

Lightweight plastic planters with detachable tray. Plant a basket here and there - create a friendly room! With wire hanger.



**6" Clay Pot with Plants**  
**\$3.99**  
Reg. \$4.57



**4" Potted Plants**  
**\$1.19**  
Reg. \$1.57

**Assortment of House Plants**  
**2/\$1.00**  
Reg. 77¢



**4" Potted Plants**  
**\$2.29**  
Reg. \$2.99



**4" Plants with Pots**  
**\$1.09**  
Reg. \$1.47

JOES PLANT SPIKES — 77¢

24 BEAUTIFUL DECORATOR PATTERNS



**DECORATE WITH A FLAIR!**  
**\$3.47**  
Per package of 15 squares  
Reg. \$4.97



**Flair Squares**  
prepasted wallcovering

- Easy to use 12 in. squares
- No special tools needed
- Won't shrink or tear

# KAL KAN

## DOG & CAT FOOD



**3/79¢**

14 oz.  
Reg. 37¢



**5/\$1.00**

6 1/2 oz.  
Reg. 47¢

- DOG FOOD VARIETIES ARE - Chunky Beef Dinner; Meat Stew, Liver and Beef, Chicken Dinner, Meattime, and Beef w/Egg, Bacon and Cheese.
- CAT FOOD VARIETIES ARE - Tuna Platter, Seaside Supper, Liver and Beef Dinner, Simmered Supper, Kitty Stew, Tuna N' Chicken Platter, Bits O Beef, Meattime.

News Report From . . .

### Rowan County Extension Office

Paul W. Mills      Timothy A. Ramsey      Martha Huntsman

By PAUL MILLS

**4-H Club Re-Organization**  
4-H Clubs, which have been re-organized for the year 1980-81 are: four 4-H Clubs at Elliottville School; four 4-H Clubs at Farmers School; Rowan County High School Teen Club; and three clubs at University Breckinridge. Three senior 4-H Clubs at Morehead Grade School will be organized during the week of Sept. 22.  
The remaining 21 4-H Clubs will be re-organized during the month of October making a total of 35.  
The enrollment in each of the clubs ranges from 20 to 40.  
Both adult and teen 4-H Club leaders are still needed to serve as project and club leaders. Anyone interested should contact Paul Mills, county agent for 4-H, by calling 784-5457 or 784-9316.

Club will need to contact Paul Mills.

The classes will get underway during the month of October. Carol Ann Thomas and Teresa Rensch will be the head leaders for the clubs.  
4-H Booth At Harvest Festival  
The Rowan County 4-H Council will be sponsoring a Foods Booth at the Harvest Festival to be held this weekend in Morehead. The booth will be located downtown near the large exhibit tent and will be selling barbecue sandwiches, hot dogs and coke.  
Money made from this project will be used to sponsor the many 4-H activities and events that will be held in Rowan County during the coming year. Stop by and support the 4-H County booth. Your business will be appreciated.

### Vet Science and Horse Club

Boys and girls who are interested in enrolling in the Horse and Vet Science

## Ambulance Runs

Sept. 13, 1980  
Pearl Clark, Life Care Center, taken from the Center to St. Claire, transfer. Squad - Steve Young, Todd Stewart.  
Anna Lee Hardin, Salt Lick, taken from St. Claire to U.K. Medical Center, emergency transfer. Squad - Steve Young, Todd Stewart.  
Phyllis Cook, Winter Haven, Fla., taken from Jayne Stadium to St. Claire, emergency. Squad - Gary Clark, Todd Stewart.

Sept. 15, 1980  
Nannie Coyle, Morehead, taken from home to St. Claire, transfer. Squad - Hank Hall, Geneva Hall.  
Walter Hardin, Life Care Center, taken from Cave Run Clinic to the Center, transfer. Squad - Mike Baber, Kathelene Pelfrey.  
Jerome F. Johnson, Elliottville, taken from Elliottville Grade School to St. Claire, emergency. Squad - Denver Mabry, James Nicker.

## Voter Registration Booths Will Be Set Up In Town This Weekend

The League of Women Voters, along with several other local organizations, will be actively registering people to vote during the Harvest Festival this weekend.

Several booths will be set up around town for people to register who have never registered before, moved, changed their name, not voted in four years, or if they have changed their party affiliation.

Governor John Y. Brown, Jr. has proclaimed September 15-20 as Voter Registration Week, saying, "I urge all citizens who are eighteen or who will be eighteen by election day, and those who are not correctly registered, to register with their county clerk before October 7, and furthermore encourage all registered voters to vote on November 4 because your vote does make a difference."

## Fresh Fruit & Vegetable Stand

U.S. 60 East

### Why Pay More?



Red Delicious Apples  
**\$3.95 A D**  
**\$4.95 Per Bushel**

Family Owned, Family Operated  
With Family Prices

Open 8 a.m. til 8 p.m. daily; Sunday 9 a.m. til 8 p.m.

Owned by Elijah Cox

A 26-Week, \$10,000 or More

## Money Market Certificate

11.125%

Annual Rate of Earning

(Rate Effective Sept. 18 Thru Sept. 24)

30 Month Small Saver Certificate Rate  
**11.30%** Good Thru Oct. 1, 1980

Rate Could Change Weekly — Call For Latest Quotation

We Have A Savings Account To Fit Your Needs . . .

PASSBOOK SAVINGS 5 1/2%

CERTIFICATE RATES

Maturity	Minimum	Certificate Rate
1 Year	\$1,000	6 1/2%
2 Year	\$1,000	6 1/2%
3 Year	\$1,000	6 1/2%
4 Year	\$1,000	7 1/2%
6 Year	\$1,000	7 1/2%
8 Year	\$1,000	8 %

For The Correct Time and Temperature 24 Hours A Day,  
DIAL 783-1400

## FIRST FEDERAL SAVINGS & LOAN ASSOCIATION



Main Street

Phone: 784-4187

Morehead, Ky.





Rowan County

SEEK TO WED

William Stamper, 68, Morehead, retired to Stella Whitt, 59, Farmers, retired.
Winston Swim, 22, Morehead, Browning Manufacturing to Sherry J. Jent, 18, Morehead, Krogers, (37)

SUITS FILED

Bernice Maxine Stamper Mauk vs. Joe J. Mauk, petition for dissolution of marriage.
Janet Sue Ziegler Fultz vs. Van Terrence Fultz, petition for dissolution

of marriage
Kentucky Publishing Co. vs. Ashland Chrysler — Plymouth
Commercial Credit Corp. vs. Bobby and Diana Offill.
Kentucky Electrical Supply Corp. vs. Lonnie and Hester Gregory.
Interstate Securities (ISC Financial House, Inc.) vs. Bradley and Connie Collins.

DISTRICT COURT

Michael R. Baugh, insufficient number of personal flotation devices, \$15 plus costs.
Howard Douglas Howard, failure to operate boat at idle speed, \$15 plus costs.

Courthouse NEWS

Robert Meridith Templeton, failure to operate boat at idle speed, \$15 plus costs.
James Norman Ferrell, failure to operate boat at idle speed, \$15 plus costs.
Edward Jackson Humphrey, failure to register motorboat in current year, dismissed.
Phillip Razor, drinking beer while sitting in truck, \$30.
Alvin E. Brumley, no life jackets or cushions, \$20 plus costs.

Jeffrey Eugene Jordan, expired insurance sticker, produced.
Thelma Sparks, no operators license, \$10 plus costs.
Michael R. Fitzpatrick, no insurance sticker on vehicle, produced.
Roy Joe Day, following another vehicle too closely, \$19 plus costs.
Roy Joe Day, no insurance sticker on vehicle, produced.
Ronnie Murphy, riding on bow of boat, \$15 plus costs.
Clyde E. Grizzell, three persons on boat and two life jackets, \$15 plus costs.

intoxication, \$25 plus costs.
Elmer Ray Bowling, drunk pedestrian, \$25 plus costs.
Freddie Conn, drunk pedestrian, \$30 plus costs.
Marvin Ray Ratliff, public intoxication, \$25 plus costs.
Gordon B. Hardin, public intoxication, \$25 plus costs.
Steven Elwood Gilliam, drunk pedestrian, \$25 plus costs.
Jackie L. Bowling, drunk pedestrian, \$25 plus costs.
Steven E. Gilliam, resisting arrest, dismissed.
Cecil L. Carter, public intoxication, \$25 plus costs.
James B. McClurg, public intoxication, \$25 plus costs.
Richard C. Goodman, harassment.

two counts, dismissed at request of complaining witness.
Richard Craig Goodman, assault in third degree, dismissed at request of complaining witness.
Richard Craig Goodman, terroristic threatening, dismissed at request of complaining witness.
Roy Patrick Carr, driving under influence, completed alternate school, amended to improper muffler, \$100 plus costs.

Clarification

The Carolyn Howard recently listed in Rowan District Court News for theft by deception is not Carolyn H. Howard of Clearfield, an employee of General Telephone.

Come See Our Beautiful Garden Mums LITTON & SONS GREEN HOUSES AND NURSERY Landscaping Specialists Flemingsburg Road Morehead, Ky. Phone 784-5323

Fish & More SPECIAL \$1.99 2 Crispy Fish Fillets Golden Fries Fresh Cole Slaw Crunchy Hushpuppies Long John Silvers SEAFOOD SHOPPES Good thru Sept. 30 243 Flemingsburg Rd.

RENEW YOUR SUBSCRIPTION

Victor L. Lowe, no insurance or proof, dismissed.
Charles Walling, theft by deception, seven counts, \$100 plus costs each, in jail in lieu of fine and costs.
Michael Elliott, Howard, criminal littering, \$100 plus costs.
John G. Burns, III, no operators license, produced.
Shelia Wynn, public intoxication, \$25 plus costs.
Ronald G. Adams, failure to maintain insurance, \$30 plus costs.
James M. Burkes, no insurance sticker, produced.
Phillip E. Kiser, driving on a revoked license, \$50 merge costs.
Johnny E. Kiser, driving under the influence, \$250 plus costs.
Johnny Waddell, trafficking in controlled substance, three counts, bound over to grand jury.
Dave Pugh, trafficking in controlled substance, bound over to grand jury.
Shannon Scott Bailey, no operators license, produced.
Kerry Edge Whitman, drinking on highway, dismissed.
William Meredith, assault in second degree, bound to grand jury.
Billy McClarahan, no registration plates, produced.
William K. Carroll, no insurance or proof, produced.
Gary A. James, no insurance or proof, produced.
David B. Carroll, no insurance or proof, produced.
Ronnie Darrel Lovely, driving under the influence, to attend alternate school.
Robert Snowdon Isaac Jr., public

PHILCO SHARP HITACHI GENERAL ELECTRIC CROSLEY SPEED QUEEN MOREHEAD FURNITURE & APPLIANCES Famous Name Brands Dining Room & Bedroom Smith Bros. Den Groups Bush Line Janney of Thomasville Harrison Bros. Oakwood Morehead Furniture & Appliances 206 W. Main St. Phone: 784-4151 Morehead, Ky. NEW STORE HOURS: 9 a.m.-5 p.m. Mon.-Sat.

THE OLD FARMER'S ALMANAC

SEPT. 22-28, 1980 Sunsets glow, then dark clouds blow. Dan'l Boone went west Sept. 25, 1773. Full moon Sept. 24. Average length of days for the week 11 hours, 59 minutes. First hearing aid patented Sept. 23, 1879. Woodchucks begin hibernation. Country fairs abound now. Modesty is a virtue, bashfulness a vice. Ask the Old Farmer: What is the origin of the word 'doughnut'? I have heard they were first made with a hole so a sea captain could hang them on the spokes of his helm. S.G. Nashua, N.H. The original doughnut was called 'dough-knot' because women rolled the dough into a Home Hint: A marble placed in the bottom of a double boiler will rattle and let you know when the water gets too low. OLD FARMER'S WEATHER FORECASTS New England: Rainy and cold at week's start; then clearing and warmer middle of week; through weekend. Greater New York-New Jersey: Beginning of week brings showers, cool temperatures; then clearing and pleasant through week's end. Middle Atlantic Coastal: Rainy and cold, then clearing and cool midweek; weekend is clear and mild. Piedmont & Southeast Coastal: Partly cloudy and cool, showers west, rain southeast through midweek; clear and pleasant for weekend. Florida: Rain central and north, cloudy south to start; then showers, warmer temperatures by week's end. Upstate New York-Toronto & Montreal: Week starts with showers, cool temperatures; then clear and warm, showers west and north for weekend. Greater Ohio Valley: Showers east start the week; then clearing and hot, weekend is rainy and cold. Deep South: Showers, warmer at week's start; sunny and hot middle of week; week ends with showers, heavy north. Chicago & Southern Great Lakes: Cloudy and cold, few showers, then clearing and hot; weekend is rainy and cold. Northern Great Plains-Great Lakes: Week starts sunny and hot, showers west; rain moving east through weekend. Central Great Plains: Seasonal, then hot, at week's start; midweek through weekend is rainy east, showers northwest. Texas-Oklahoma: Showers changing to clear skies and warm temperatures beginning offweek; by weekend, showers central and east. Rocky Mountain: Showers, turning cold central and north, throughout week and weekend. Southwest Desert: Week begins sunny and warm; showers midweek; clear and hot for week's end. Pacific Northwest: Cloudy and cool, showers, beginning of week; sunny, cool then seasonal, middle through end of week. California: Week begins cloudy and cool; then clear and hot midweek through weekend.

Say "I love you" for \$699. (The 1/2 carat way) 1/2 carat diamond pendant Reg. \$995 1/2 carat of diamond earrings Reg. \$875 Ladies 1/2 carat solitaire ring Reg. \$395 Gentlemen's ring with 1/2 carat of diamonds Reg. \$995 Ladies dinner ring with 1/2 carat of diamonds Reg. \$895 Bridal set with 1/2 carat of diamonds Reg. \$895 Diamonds are a special way to tell somebody you care. And now, you can give one of these magnificent pieces of jewelry set with a full 1/2 carat of diamonds for a price that's special, too. Each available in 14K white or yellow gold. Lay away your choice now for Christmas giving.

LeRoy's Jewelers

Allen's IGA Foodliners STORE HOURS: Daily 8 a.m. To 10 p.m. Sunday 10 a.m. To 8 p.m.

Phone:  
784-4116

Society

DEADLINES:

3:00 P.M. Wednesday,  
For Friday Edition

5:00 P.M. Friday,  
For Tuesday Edition

PAGE 6

THE MOREHEAD NEWS - MOREHEAD, KY

FRIDAY, MORNING, SEPTEMBER 19, 1980

## Double Ring Ceremony Unites Mitchell-Back

Miss Darlene Kaye Mitchell, daughter of Mr. and Mrs. Kendall E. Mitchell of Ewing, became the bride of Thomas Lee Back, son of Dr. and Mrs. Reedus Back of Morehead.

The Ewing Christian Church was the setting for the double-ring ceremony, officiated by the Rev. Mary Lake, minister of the church, and the Rev. R.D. Baker of the First Baptist Church in Morehead.

A program of wedding music was presented by Miss Robin Warner and Paul Barker, students at Morehead State University.

The bride, given in marriage by her father, wore a white polyester gown featuring high neckline, sheer yoke trimmed with Point D'esprit lace, seed pearls and schiffie embroidery and long bishop sleeves.

Her soft flowing skirt terminated into a chapel-length train. A small band covered with lace and seed pearls held her walking-length illusion Mantilla veil trimmed in lace to match her gown. She carried a cascade of lavender and pink silk lilies, Lily of the Valley and ivy with lavender streamers.

The matron of honor, Mrs. Pamela Faye Crawford, sister of the bride, wore a lavender knit, sleeveless gown featuring a round neckline with a floral capelet of chiffon trimmed in white lace.

She carried three long-stemmed white silk roses with lavender streamers. A hairpiece of baby's breath completed the outfit.

Miss Brenda Plummer, Miss Carol

Jean Overley and Miss Jeanie Marie Mitchell, sister of the bride, served as bridesmaids. They wore gowns identical to that of the matron of honor. Each wore a hairpiece of baby's breath and carried a single long-stemmed white silk rose with lavender ribbon.

Miss Veronica Mattox served as flower girl. Miss Linda Art served at the guest register and Miss Teresa Fryman distributed programs.

Bestman was Joseph Reed Back, brother of the groom. Ushers were Tony Nelson Phillips, Bobby Hamilton, Timothy Wayne Back, all of Morehead.

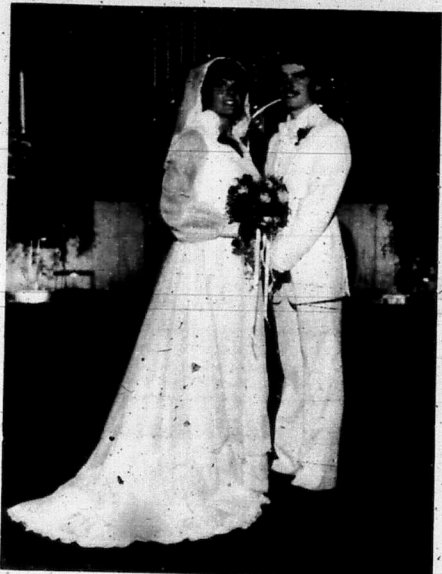
Master Darin Burton was ringbearer. For her daughter's wedding, Mrs. Mitchell wore a floor-length gown of rose polyester with white accessories. Mrs. Back wore a peach floor-length gown. Each wore a corsage of white silk roses.

Following the ceremony, a reception was held in the fellowship hall of the church.

The bride's table was centered with a three-tiered wedding cake, decorated with lavender roses and Lily of the Valley. A bride and groom topped the cake.

Two matching small cakes were on each side. Floral arrangements of lavender, pink and white mums encircled a crystal candelabra.

Assisting at the table were Miss Donna Jane Gully, Teresa Lynn Fryman and Miss Zenith Humphries. Immediately following the reception, the couple traveled to Gatlinburg. They reside in Morehead and attend Morehead State University.



Mr. and Mrs. Billy Joe Winkleman

Mr. and Mrs. Thomas Lee Back

## November Wedding Planned

Mr. and Mrs. Harold Ellington announce the engagement of their daughter, Leigh Ann, to Glenn Robinson Ramey, son of Dr. and Mrs. Carl Victor Ramey.

Miss Ellington is a graduate of the Morehead State University nursing program and is employed as a registered nurse at St. Claire Medical Center.

Mr. Ramey is serving in the US Navy in the field of nuclear propulsion and the engineering while stationed aboard the USS Enterprise in Bremerton, Washington.

A November wedding is planned.



Leigh Ann Ellington

## Morehead Night Homemakers Hold Meeting

Morehead Night Homemakers met for the September meeting at the home of Mrs. W.H. Rice on Monday, Sept. 15 at 7 p.m.

Grace Crosthwaite, secretary, presided as President Mae Fraley has moved to Lexington.

"Smoke Detectors, Fire Extinguishers," and "Home Safety is No Accident" were the lessons given by Grace Crosthwaite.

She also gave the devotion, "If I Just

Had The Time"

Mrs. Dudley Caudill will host the October meeting Monday, Oct. 20. "Assist the Most Nutrition for your Food Dollar" will be the lesson.

Members attending the September meeting were Mrs. Olive Caudill, Mrs. Anne Penix, Mrs. Bea Patton, Mrs. Mayme Wiley, Mrs. Ida Sheets, Miss Grace Crosthwaite and hostess Mrs. W.H. Rice.

## Country Club Homemakers Met Sept. 15

Country Club Homemakers met Monday, Sept. 15 at the home of Beverly Christy on Cranston Road.

Mrs. Christy lead the lesson on Home Safety.

Other members present were Pat Porter, Opal Eldridge, Charlotte Dowdy and Debby L. Porter.

Next month's meeting will be Monday, Oct. 13 at 7 p.m. at the home of JoAnne McVey on Rock Fork Road.

New members from the Cranston and

Rock Fork areas are welcome. If interested in joining, call 784-6829.

## Anderson-Winkleman Marry By Candlelight

Jacqueline Trina Anderson, daughter of Mr. and Mrs. Dallas Anderson of Morehead, and Billy Joe Winkleman of Morehead, were united in marriage Saturday, Aug. 16 in an evening candlelight service.

Performing the double ring ceremony was the Rev. Frank Fultz, minister of the First Church of God in Morehead.

Preceding the wedding, *The Rose* was played by pianist Miss Leigh Ann Ellington and was sung by Miss Melissa McBrayer and Miss Leslie McBrayer. During the ceremony, *Wedding Song* was sung by Brian McBrayer, with guitar accompaniment by Steve Fultz. Singing *The Lord's Prayer* was Mrs. George Ann McBrayer, accompanied by Miss Ellington.

The bride, given in marriage by her father, wore a gown of ivory satin and lace. The dress had a sweetheart neck, empire waist, and chapel length train edged with white lace ruffles.

Jacqueline carried a bouquet of pink and red roses with white satin streamers.

Miss Renita Tackett, cousin of the bride, served as maid of honor. She wore a pale blue gown with lace overlay. Renita carried a bouquet of roses and carnations with blue satin streamers.

Bridesmaids were Mrs. Libby Adkins, Miss Marcia Anderson, cousin of the bride, Miss Sherry Caudill, cousin of the bride, and Miss Brenda

Winkleman, sister of the groom. They wore pale blue dresses with matching overlays, and carried bouquets of roses and carnations with blue satin streamers.

Roger Fouch, cousin of the groom, served as bestman. Groomsmen were Charlie Winkleman, brother of the groom and Randy Anderson, brother of the bride.

Attendants wore pale blue tuxedos with white satin trim and white shirts. The groom wore a white tuxedo with white satin trim.

Amy Walker, niece of the bride, was flower girl. She wore a pale blue gown with lace trimming and carried a basket of rose petals.

Richie Winkleman, nephew of the groom, served as ring bearer. He wore a pale blue tuxedo and carried a white satin heart-shaped pillow.

Miss Tammy Black and Miss Penny Wells presided at the guest book.

A candlelight reception at the church followed the wedding. A three tiered wedding cake decorated with blue satin wedding bells and colored fountains on each side was served by Mrs. Retha Winkleman, sister-in-law of the groom, Mrs. Betty Stewart, Mrs. Leonna Tackett, aunt of the bride, Mrs. Charlotte Walker, sister of the bride, and Mrs. Elizabeth Buttry, aunt of the bride.

Many out-of-town guests attended the wedding and reception. After a short honeymoon, the couple reside at Rt. 4, Morehead.

### OUR WEDDING REGISTRY Guide to good gifting

This Weeks  
Bridal Registry Includes

**Suzette Dalton**  
Bride Elect of Bill Redwine



Noritake Crystal



Formal China

Match Plates for Noritake China

**Sophia's Party Center**

Trademore Mall  
Phone 784-8756

### Fashions For Every Home

Including

- Custom Draperies
- Shower Curtains
- Placemats and Napkins
- Towels
- Kitchen and Bath Accessories
- Wallpaper
- Table Linens

Close Out on all Sheets In Stock

ELIMINATE THE GUESSWORK...CONSULT OUR

**Bridal Registry**

This Week's Bride To Be  
**Suzette Dalton**

Bride Elect of Bill Redwine

**Home Fashion Center**

Trademore Shopping Center Phone 784-9878

In The Holiday Inn  
Morehead, Ky.

**CATFISH**

Every Friday Night  
5-10 P.M.

Super Salad Buffet  
Tender Catfish, Choice of  
Potato

Only \$6.95

At The  
I-64 Interchange  
Morehead, Kentucky  
PH: 784-7591



The church was organized March 1, 1959 on Easting Ave. by Lloyd Dean, present pastor. The church has been located on West Main and moved to the basement church on Tolliver Ave. in 1969.



## Senior Citizens Corner

Senior Citizens held their annual five county picnic at the Cave Run Lake beach Saturday, Sept. 6. Approximately 300 people from Rowan, Montgomery, Menifee, Bath and

Morgan counties attended. A pot luck lunch was served, and music was provided by the Sweet Adelines, Roger Lewis and Friends, and Mr. and Mrs. Chuck Jones. Sybil

Clark of the Appalachian Development Center conducted games and there was boat riding.

The following helped with or contributed to picnic events:

Joe and Patty White, Ivan and Virginia Reynolds, J.C. and Marcia Jolly, Carl Jones, Bill Lane, Denny Northcutt, Bill Patrick, Herb Spradlin, Leonard McNeal, Sweet Adelines, Roger Lewis and friends, Mr. and Mrs. Chuck Jones,

Denver White, Eugene White, Don McKenzie Ford, Begleys, Krogers, IGA, Mullins Bestway, Spring Grove Dairy, Candy Withrow and McDonalds, Dr. Jack Wilson, Richie Newton and helpers from University, Breckinridge, Mrs. Suttle, Harold Tackett, and Roy Lee Crisp.

Planning the picnic were Darlene Keller, Senior Citizens activity director; Shirley Hamilton, Appalachian Development Center and Raymond Markwell, vice president of Senior Citizens.

### It's Sign Up Time For Bike-A-Thon

A camera, record albums and bike covers are a few of the prizes participants in the Cystic Fibrosis bike-athon can earn.

### Lions Honoring Local Citizens

Tonight two Rowan County citizens will be honored for outstanding community service at the 26th Annual Lions Club Achievement Awards Dinner.

Open to the public by reservation, the dinner will begin at 6:30 p.m. at the Red Room of the Adron Doran University Center.

Lion of the Year will be presented to a member of the club who has made outstanding contribution to Lionism.

Reservations can be made by calling Mrs. Cheri Waltz or Randy Wells at 784-4484 or 784-6659.

available at the First Baptist Church in Morehead, open Monday through Friday from 9 a.m. until 4 p.m.

Persons have sponsors sign the sheets, pledging a certain amount of money for each mile the cyclist travels.

Locally, the biker raising the most money for the campaign will win a camera. Second and third prizes are bike covers and fourth and fifth prizes are albums.

Anyone raising \$50 for cystic fibrosis receives a windbreaker from the national headquarters. Collecting \$25 earns a t-shirt.

Everyone participating in the bike-athon gets iron-ons.

Bikers will meet at the Baptist Church Sunday, Sept. 28 at 1:30 p.m. The track will be set around Morehead State University campus, and refreshments will be served.

David L. Adams is chairman of the Rowan County Chapter of Cystic Fibrosis Foundation. National Cystic Fibrosis Week is Sept. 21-27.

### McNeely Receives Award From FEMA

Albert Tim McNeely, of Morehead, is one of 11 Kentuckians who have been awarded Regional Certificates of Appreciation by the Federal Emergency Management Agency for services rendered to flood victims in Alabama and Mississippi earlier this year.

The certificates were awarded to McNeely and the others by Frank Newton, FEMA Region IV director.

McNeely participated as a member of FEMA's Region IV Disaster Response and Recovery Team.

FEMA, created from five former federal agencies, was established in April 1979 through an executive order of President Jimmy Carter.

FEMA is charged with planning and preparing for emergencies. The agency also aids recovery and helps lessen the effects of disasters and hazards, ranging from safety and protection in the home to nuclear attack.

McNeely is engineer and building inspector for the city of Morehead.

### Correction

Due to error, the name of the director of the Harvest Festival Queen pageant was incorrect in last issue's festival tabloid: Heading that project is John Lester.

Kentucky State Police records, show 61.6 percent of all accidents in 1979 occurred on straight and level roads.

for anything...for everything...WANT ADS

## Got new car plans?



See the Peoples Bank for an auto loan.



Peoples Bank Olive Hill

Member FDIC

## WISE Fashions

DOWNTOWN MOREHEAD

Special Events For Harvest Festival Week

Friday - 20% Off All Merchandise

SATURDAY:

Carole McDaniel will be in the store all day showing her new line of fall jewelry.

Also Watch For The "Wise Owl" On The Street With Surprises For Everyone



WISE Fashions

Order Now-  
**1981 Dated Merchandise**

- Appointment Books
- Wall Calendars • Desk Pads
- Desk Calendars

Hours - Monday thru Friday 8-5; Saturday 9-12 Noon

**Eagle Office Supply**

(Behind Cowden's)

722 West First St. Morehead, KY.

In Mt Sterling Call 498-6655

**784-7337**

In Grayson Call 474-5101

An American Tradition **Glidden**

**Spred Satin FACTORY SALE**



Our FAMOUS Latex Flat Wall Paint

- ★ Beautiful, flat finish
- ★ Scrubs clean, stays colorfast
- ★ Easy water clean-up

**\$8.99**  
GALLON  
Reg. \$11.00  
**SAVE \$2.01**

**Gene White Lumber Co.**

U.S. 60 East of Morehead  
Phone 784-5588

# School Page

## FFA Sowing Seeds At Sr. High

Future Farmers of America at Rowan County High are seeding 2.7 acres around the future Rowan County Senior High School site in a project that could take up to two years.

The community development project shows students the principles and fundamentals of community development and acquaints them with local, state and federal agencies that could assist in solving community problems.

The project was fully discussed by the FFA members and organized by a FFA committee. The committee suggested the supervision by Bill Patrick, FFA advisor and requested

horticulture students be responsible for completing the project.

Seeding was completed Sept. 8 on one track. All materials and equipment were supplied by the Rowan County Board of Education.



Rowan County FFA members seed a tract of land at the future senior high school site. The sowing project is expected to take up to two years to complete.



## Heavy Metal

"Burdened" with the load of trophies won at two marching band contests held this week in Huntington, W. Va. and Bath County are from left, Steve Rigby, junior high band director; Nadine Phillips, first place soloist at Huntington; Jant Wells, captain of the flag corps, winner of a first place trophy at Huntington; Phil Shepherd, high school band director, Debbie Lafferty, best drum major at Huntington; and Doug Rigby, section leader of percussion, winners of a first place trophy at Huntington.



## Warming Up

Several members of the Rowan County Marching Vikings were caught warming up for the Bath County

Marching Band Festival Saturday. Rowan placed first in Class AA Division. (Staff photo by Alice Akin)

## School Menu

### Rowan County

**Monday, September 22**  
Pizza, cole slaw, buttered corn, graham crackers w/marshmallow cream, milk.

**Tuesday, September 23**  
Hot dogs w/sauce on bun, pork and beans, cabbage salad, mixed fruit, milk.

**Wednesday, September 24**  
Pork choppettes, mashed potatoes, sliced tomatoes, green beans, hot rolls, butter, applesauce, milk.

**Thursday, September 25**  
Submarine sandwich on bun, lettuce and pickles, French fries, Jello w/fruit, milk.

**Friday, September 26**  
Italian spaghetti, green beans, layered salad, hot rolls, butter, ice cream, milk.

### Breckinridge

**Monday, September 22**  
Beef ravioli, mashed potatoes w/gravy, cole slaw, hot biscuits or cornbread, applesauce, choco or white milk.

**Tuesday, September 23**  
Grilled cheese or peanut butter sandwich, vegetable beef soup w/noodles, cornbread, pear, half, choice of milk.

**Wednesday, September 24**  
Hot dogs w/sauce, French fries, buttered peas w/onions, orange Jello w/orange segments, choice of milk.

**Thursday, September 25**  
Pork BBQ sandwich, cottage fries, cole slaw, marble cake and peaches, choice of milk.

**Friday, September 26**  
Hamburger on bun, pickles, mustard, onions, sliced tomatoes, onion rings, macaroni salad, choice of milk.

## Reds Add Announcer

CINCINNATI (UPI) — The Cincinnati Reds have added a third man in their radio broadcasting booth and regular announcer Marty Brennaman figures it's because he and veteran sidekick Joe Nuxhall have been too critical of Cincy players to suit Reds' President Dick Wagner.

The Reds surprised a lot of people — including Brennaman — by announcing just before Friday night's game against Los Angeles that local cable TV sports announcer Dick Carlson would join Brennaman and Nuxhall for this home-state.

"The Reds are experimenting with the use of a third announcer," club officials said.

"I don't believe they're doing this as an experiment, I don't believe that at all," said Brennaman, who said he was informed of the move less than three hours before taking the air Friday night.

"Dick Wagner is unhappy with our broadcasts. He thinks they are too critical of his ballclub."

Brennaman, since 1973 the main announcer on the mammoth Reds radio network — which includes 110 stations in seven states — said Wagner had told he and Nuxhall he thought the pair had been too tough on George Foster and Ray Knight on the air recently.

"I think Dick Wagner is trying to teach us a lesson," said Brennaman. "After seven years, I believe Joe and I deserve better than this."

Wagner had no immediate reaction to Brennaman's comments. Reds' broadcasting director Jim Winters labeled Brennaman's reasoning "not true and harsh."



## Anthropology Trip

The anthropology class at Rowan County High School recently took sifting screens and their newly acquired knowledge of the course material to a cliff overhang at Bangor. The class of 30 reported finding several artifacts. Mrs. Margaret Sue Morris is instructor.

## Junior League Football

### Registration Ends Tomorrow

Tomorrow is the last day to register for the 1980 Morehead Football Junior League, according to City Recreation Director Dan Stewart.

The start-of-season play has been pushed back a week because of the Harvest Festival. The league had originally planned to begin play Sunday, but will instead get underway Sept. 28. The four-team league will have two games each Sunday afternoon at Rowan County Field, with the opener starting at 2 p.m. and the second game being played shortly after the first ends.

Stewart says he expects each of the four clubs to wind up with about 20 players. A controlled draft will be held to place those who sign up before the deadline on rosters. Names of late entries will be drawn out of a hat for placement, according to Stewart.

In the last sixty years, over 325,000 blue whales have been slaughtered in the Antarctic. It is estimated that not more than 1,000 of these whales exist today.

## HARVEST DAYS HARVEST DAYS HARVEST DAYS HARVEST DAYS

## Reap A Big Harvest Of Values At Beckett's Garden and Craft Center

All Candle Making Supplies

**40% OFF**

Picture Frames  
Wood, Silver, Gold, Walnut, Oak

All Sizes **40% OFF**

Wood Whiskey Barrels

Many Other Selected Items With Discounts Of **25%-50%** **\$9.95** Reg. 12.99

Famous Woodworker, Woody Woodhouse, from Morgan County will be at Beckett's on Friday from 5-9 p.m. and Saturday from 9-9. He will custom make while you wait, personalized signs, plaques, carvings and other wood crafts.

Be Crafty - Shop At Beckett's Garden & Craft Center in Trademore

HARVEST DAYS HARVEST DAYS HARVEST DAYS HARVEST DAYS

## PIPELINE

### First Big New Wave Fest Pleases Fans in Canada

By BECKY LYNN

50,000 attended the *Heaven* concert last month in Toronto, Canada. The first giant new wave festival lost money for the promoters, but fans weren't disappointed as the bands were their only 1980 North American appearance and offered a few new tunes. Cadehallo even did three encores. Legal hassles prevented the event from being captured on film and recorded for a possible soundtrack.

\$75,000 worth of staging and equipment were destroyed by fans as Alex Cooper (belonging to a Canadian concert promoter) showed at a Canadian concert. According to his doctor, Cooper had an allergy attack that kept him from appearing.



The Donna Summer follow up to her *Upside Down* hit is *I'm Coming Out* — another winner for Motown Records.

Country artist, Lacey J. Dalton, will make her acting debut in the *Take This Job and Shove It* movie now being filmed in Dubuque, Iowa.

The *Jazz Singer*, a remake of an old motion picture, stars Neil Diamond. The soundtrack will be released in November and the film will premiere in December.

Another film to watch for is a British picture, *Breaking Girls*. The soundtrack is already available.

RYLUI, a San Francisco radio station, recently sponsored its second annual "Most Outrageous Stunt" contest. One of the finalists was a guy who drove across a bridge in a car made entirely of timber toys.

Aronimitch, vocalist Steve Tyler, was injured in a dirt bike accident. The result: two weeks in the hospital.

Yet another "tell all" book about Elvis Presley is being written. Albert Goldman will

have his version ready by next spring. Live LP to be out: *Barbarians*.

The Kansas City Royals want the *Oak Ridge Boys* to sing the national anthem at the opening game of the baseball playoffs.

Ned Nuzant gave 350 tickets to the children of unemployed auto workers for his Detroit concert.

David Pack of Ambrosia, has penned the *Inside Moves* theme song. Joe Puerta, also of Ambrosia, is writing a tune for the *Coast to Coast* film.

The *Robert Klein Hour* will premiere October 12th on syndicated radio.

Backstage at the *Grand Ole Opry*, a new 30-minute syndicated TV series, is being shown in 125 cities. Bill Anderson is the program's host.

Tom T. Hall is the new host of *Pop Goes the Country*, as the television show begins its 7th year.

Slim Whitman was quoted: "Of all the 60 albums I've released in 32 years, none has contained a song that couldn't be played in church."

Even the Donna Summer has officially changed record companies, her old label (Casablanca) has just released her *Walk Away Single* and a greatest hits package of 1977-1980, also titled *Walk Away*.

The promoted Patii Smith debut album, recently cut back to a single disk as missing of the tracks has begun in a the studio.

Now *How's You*, is the first single from Huey Lewis and

The News and their self-titled debut album. Huey is the group's lead vocalist.

No. 337

## Eagle Office Supply

(Behind Cowden's) 722 W. First St. Ph: 784-7337 Morehead, Ky.

## CHARTS This Week's Top Nat'l Recordings

### Top Twenty Pop Singles

This Week	Last Week	Title	Artist
1	1	ALL OUT OF LOVE	John Cougar
2	2	FAME	George Benson
3	3	GIVE ME THE NIGHT	George Benson
4	4	EMOTIONAL RESCUE	John Simon
5	5	UPSIDE DOWN	Donna Summer
6	6	LOOKIN' FOR LOVE	Charlie Rich
7	7	ANOTHER ONE BITES THE DUST	John Cougar
8	8	DRIVING MY LIFE AWAY	John Cougar
9	9	SAILING	Christopher Cross
10	10	I'M ALRIGHT	Sam Cooke
11	11	YOU'RE THE ONLY WOMAN	John Cougar
12	12	ONE IN A MILLION YOU ARE	John Cougar
13	13	YOU'LL ACCOMPANY ME	John Cougar
14	14	WEDDING BELL	John Cougar
15	15	NEED THE NIGHT	George Benson
16	16	REAGAN	Olivia Newton-John
17	17	WALK AWAY	Olivia Newton-John
18	18	ALL OVER THE WORLD	Electric Light Orchestra
19	19	ROCK ROSE HEARTS	Rhonda Durbin
20	20	DOON'T ASK ME WHY	Billy Joel

### Top Ten Pop Albums & Tapes

This Week	Last Week	Title	Artist
1	1	HOLD OUT	John Cougar
2	2	EMOTIONAL RESCUE	John Simon
3	3	THE GAME	John Cougar
4	4	UPSIDE DOWN	Donna Summer
5	5	SHAKA	John Cougar
6	6	GIVE ME THE NIGHT	George Benson
7	7	FAME	George Benson
8	8	KANADU	John Cougar
9	9	CLASS HOUSES	Billy Joel
10	10	JAMAJAMA	The Cars

### Top Five Songs at the Discos

This Week	Last Week	Title	Artist
1	1	GIVE ME THE NIGHT	George Benson
2	2	FAME	George Benson
3	3	LOOKIN' FOR LOVE	Charlie Rich
4	4	ANOTHER ONE BITES THE DUST	John Cougar
5	5	CAN'T FAKE THE FEELING	Tom Browne

### Top Five Jazz Albums

This Week	Last Week	Title	Artist
1	1	GIVE ME THE NIGHT	George Benson
2	2	ROAPOSTRY AND BLUES	John Cougar
3	3	LOVE APPROACH	Tom Browne
4	4	THE TIME	George Benson
5	5	BADETTI	George Washington Jr.

### Top Five R&B / Soul Singles

This Week	Last Week	Title	Artist
1	1	GIVE ME THE NIGHT	George Benson
2	2	LOOKIN' FOR LOVE	Charlie Rich
3	3	YOU'RE THE ONLY WOMAN	John Cougar
4	4	NEED THE NIGHT	George Benson
5	5	REAGAN	Olivia Newton-John

### Top Ten R&B / Soul Albums

This Week	Last Week	Title	Artist
1	1	GIVE ME THE NIGHT	George Benson
2	2	LOOKIN' FOR LOVE	Charlie Rich
3	3	YOU'RE THE ONLY WOMAN	John Cougar
4	4	NEED THE NIGHT	George Benson
5	5	REAGAN	Olivia Newton-John



# TEEN CENTER

Charlie Stephens  
Director

## Happenings

City Park  
781-8446



### Strong Arm Champs

Proudly sporting the t-shirts won in the "Strong Man" contest held at the Teen Center recently are at center, Billy Estes, winner and Jack Skinner, second place; and in the girls division Lisa Neace and Brenda Plank, first and second, respectively.



### Festival Crafts

As part of the Harvest Festival a variety of booths in downtown Morehead and Trademore Shopping Center will offer crafts such as these made by residents of the Morehead Treatment Center. Money from the sales of these items will go for such treats as camping trips, movies, or dining out.

# Gasohol May Change American Agriculture

WASHINGTON (UPI) — A new National Alcohol Fuels Commission study that argues gasohol production can be expanded greatly with little impact on food prices acknowledges that expansion could change American agriculture.

The study — prepared for the commission by Schmittler Associates, a consulting firm headed by former Agriculture Undersecretary John Schmittler — foresees a slowdown in expansion of soybean production and possibly a slowdown in agricultural export growth.

The major premise of the study is that domestic ethanol production from corn could be increased 25 to 30 times over current levels with little impact on food prices.

The study said production of 4 billion gallons of ethanol per year by 1990 would raise food prices no more than 6.5 percent over the entire decade, which is less than food prices rise every single year as a result of other factors.

[Ethanol, produced from corn or other sources, is mixed one part with nine parts unleaded gasoline to produce gasohol.]

Sen. Birch Bayh, D-Ind., chairman of the commission, said: "We can meet almost one-half of our unleaded gasoline need in 1990 with compressed gasohol without significant increases in consumer food prices and while continuing to export grain to developing nations."

The commission will report on alcohol fuel potential to President Carter and Congress later this year.

Critics of using corn to produce gasohol view the issue as a food versus fuel choice.

The study does not see it that way.

Kentucky's demonstrated coal resources are estimated at 64.3 billion tons — enough to supply the nation's needs for 400 years mined at the current production level.

Department for Human Resources social workers investigated 9,450 reports of child abuse in Kentucky between July 1, 1979, and June 30, 1980. The number of reports increased 15 percent over 1978-79 statistics.

**Easy To Clean**  
A comb and brush are easiest to clean by lathering the brush with detergent, soap or shampoo. Run the comb through the brush several times. Rinse both under warm water and dry on a towel.

Extracting alcohol from corn produces byproducts like corn gluten feed or meal and distillers' dried grains. Alcohol is the carbohydrate of corn. Protein, the more valuable part of corn, remains in the feed byproducts.

There is great potential to use the products as protein supplements for livestock feeding in the United States and to export them, the study said.

Corn by-products could take 13.5 percent of the U.S. protein market in a decade. The rest of the market would be supplied by meat from soybeans and other oilseeds.

Foreign demand for the byproducts is expected to rise in developed nations with large meat consumption like Japan and Western Europe.

Projections of the impact on soybean production show "the net impact of a projected 1 billion-gallon level of ethanol production on U.S. soybean acreage will be to maintain plantings near the 1978-79 and 1979-80 levels by the mid-1980s," the study said.

Although the study indicated that producing ethanol from corn would permit continued American farm exports, including corn by-products, it said that the U.S. export goal of convincing foreigners that the United States is a dependable supplier "may need to be altered."

It said, "Both the rising overall demand for grain and the diversification of grain-uses in the U.S. as ethanol and corn sweetener production expand increase the probability in any year that the U.S. will utilize some degree of export restraint."

It is theoretically possible that demand for corn could force a limit on exports to sustain ethanol production and restrain food-price hikes, the study said. Thus, the possibility should be debated in the early part of this decade, it said.

Alcohol production is unlikely to have a direct impact on food aid, which is mostly wheat and rice, unless farmers shifted from those crops to corn.

"Such potential competition could also be offset by expanding land in corn, by increasing the area under irrigation, or by limiting exports to richer countries," the study said.

Businesses that build large plants for alcohol production will want assurances of stable corn supplies.

"It may be especially important to have some assurance that reserve grain will be generally available at prices low enough to produce ethanol profitably given the prices of gasoline and alternative fuels that are expected to prevail in the 1980s," the study said.

That objective could be achieved if the American grain reserve is large. If other nations have reserves, if gasoline prices are quite high so the price of corn is less important, or if the government

is willing to limit exports or sell government corn stocks at pre-announced prices based on gasoline prices, the study said.

Some of the warnings are just warnings because the study assumes that corn would be the only feedstock used for alcohol fuel. Actually, it is expected that in a number of years, breakthroughs will permit economic use of wastes and cellulose for alcohol production.

## For Your Look . . . Whether it be Town or Country,



Visit

*Clothier for Men*

Trademore Shopping Center  
Morehead, Ky. 783-1251

Visit Our Harvest Festival Sidewalk Sale Fri., Sat., & Sun.

## Come and see Ronald McDonald!

See Ronald McDonald, live at McDonald's® on Saturday, September 20, between the hours of 1:00 and 3:00 p.m.

There's going to be a one-ring circus at your favorite McDonald's® restaurant soon. Because Ronald McDonald is going to visit - in person.

Everybody's invited, so bring the whole gang. And be prepared for lots of fun.

Stop in. Let your kids clown around with America's favorite clown.

Nobody can do it like McDonald's can.



State Route 32 and Hospital Road Morehead, Ky.

"I saw you on TV."



# WHEN THE LIGHT IS FLASHING, CITIZENS-DEPOSIT IS CASHING!

MAIN OFFICE		VANCEBURG PHONE (606)798-3001	COURT STREET OFFICE	
MAIN LOBBY AND LOAN DEPT. LOBBY	WALK-UP		LOBBY	DRIVE-IN
9:00 AM - 5:00 PM	8:00 AM - 6:00 PM	MONDAY	8:00 AM - 5:00 PM	8:00 AM - 5:00 PM
9:00 AM - 5:00 PM	8:00 AM - 6:00 PM	TUESDAY	8:00 AM - 5:00 PM	8:00 AM - 5:00 PM
CLOSED	8:30 AM - 3:00 PM	WEDNESDAY	8:00 AM - 5:00 PM	8:00 AM - 5:00 PM
9:00 AM - 5:00 PM	8:00 AM - 6:00 PM	THURSDAY	8:00 AM - 5:00 PM	8:00 AM - 5:00 PM
9:00 AM - 5:00 PM	8:00 AM - 6:00 PM	FRIDAY	8:00 AM - 5:00 PM	8:00 AM - 6:00 PM
9:00 AM - 5:00 PM	8:00 AM - 6:00 PM	SATURDAY	8:00 AM - 5:00 PM	8:00 AM - 5:00 PM

LOBBY	GARRISON (606)767-2138	DRIVE-IN	LOBBY	TOLLESBORO (606)798-6111	DRIVE-IN
9:00 AM - 5:00 PM	8:00 AM - 5:00 PM	MONDAY	9:00 AM - 5:00 PM	8:00 AM - 5:00 PM	8:00 AM - 5:00 PM
9:00 AM - 5:00 PM	8:00 AM - 5:00 PM	TUESDAY	9:00 AM - 5:00 PM	8:00 AM - 5:00 PM	8:00 AM - 5:00 PM
CLOSED	8:00 AM - 4:00 PM	WEDNESDAY	CLOSED	8:00 AM - 4:00 PM	8:00 AM - 4:00 PM
9:00 AM - 5:00 PM	8:00 AM - 5:00 PM	THURSDAY	9:00 AM - 5:00 PM	8:00 AM - 5:00 PM	8:00 AM - 5:00 PM
9:00 AM - 5:00 PM	8:00 AM - 6:00 PM	FRIDAY	9:00 AM - 6:00 PM	8:00 AM - 6:00 PM	8:00 AM - 6:00 PM
9:00 AM - 5:00 PM	8:00 AM - 5:00 PM	SATURDAY	9:00 AM - 4:00 PM	8:00 AM - 5:00 PM	8:00 AM - 5:00 PM

"We Provide Customer Hours Not Banker Hours"

## Citizens-Deposit Bank

"The Bank For Your Money"

MEMBER F.D.I.C.

# Eagle Office Supply Expands Sales Staff



Indonesia's 13,000 islands form the largest archipelago in the world, the National Geographic Society says.

Great riches have sold more men than they have bought. —Francis Bacon

Eagle Office Supply, a division of Kentucky Publishing Company, has increased its sales staff due to increased volume in the business which opened in the spring of 1979. Two new sales people have been added to the staff of the office-supply people associated with it.

The newest additions to the staff are Becky Hixon and Ron Cornett. Hixon, the newest employee, is a graduate of the Iowa State University School of Journalism. She was most recently employed by the Ames Daily Tribune before moving to Morehead.

Becky and her husband, Stan, running back coach with the Morehead State University football team, reside at Gilley Apartments.

Cornett, a graduate of Rowan County High School, attended Morehead State and was previously employed at the Morehead Save Mart.

Ron, who is single, is the son of Cecil and Shirley Cornett. He lives at Rt. 4, Morehead. He played three years on the American Legion baseball team.

The two join Bill Wells, manager of Eagle Office Supply, and Eugene Dehart, who has been employed by the office supply store for about one year.

Wells, who also serves as business manager of Kentucky Publishing Company, has been with the firm for about three years. A graduate of Rowan



Becky Hixon

Ron Cornett



Bill Wells

Eugene Dehart

County High School, Wells attended the Chicago Conservatory of Music. He returned to Morehead three years ago from Chicago, Ill. where he was employed as an assistant to the treasurer of Knox & Schneider. He is the son of Forrest and Ruby Wells of Morehead.

Wells is single and lives in Morehead. Dehart, a Rowan High School graduate, graduated from Ashland Business College. He was previously employed by Kentucky Fried Chicken in Morehead.

Dehart is the son of James Dehart.

Haldeman, and Clona Dehart, Antigo, Wis. He and his wife, the former Sherri Gardner, reside at Haldeman. Eagle Office Supply, located at 722 West First Street, carries a complete line of office supplies, business machines and office furniture.

## We Pay Cash For Your Gold And Silver

Buying U.S. Silver Coins

Pre 1936 silver dollars in extra fine condition	\$13.00	1964 and before quarters	\$2.50
1964 and before half dollars	\$5.50	1964 and before dimes	\$1.00
1965-1970 half dollars	\$1.75	1942-1945 nickels	\$6

Prices Subject to Market Fluctuation

### Also Wanted - Class Rings

**Gaskey's Wholesale Auto Parts**  
U.S. 60 East Morehead  
Phone 784-4242

Especially Needed  
Class Rings • Gold Scrap • Gold Coins • 10K-14K-18K • Dental

TOP PRICES PAID

Classified Advertising "Over A 100 Times To Buy"  
Call Today 784-6868

Enjoy **PIZZA** at **Sir PIZZA CLARA'S**

Trademore Shopping Center  
Morehead, Ky.  
Phone 784-6424

## 'Language Arts Update' Conference Set At MSU

Morehead State University's department of Languages and Literature will host a "Language Arts Update" conference for Kentucky teachers on Friday, Sept. 19.

Keynote speaker for the conference will be Dr. James E. Davis, Chairman of the Department of English at Ohio University.

The morning program will be highlighted by discussion with Dr. Debra Johnson and Dr. Clyde Caudill, directors of testing from Frankfort. Afternoon sessions will include discussion groups on problems and trends in teaching and testing.

The program is scheduled to begin at 9 a.m. in Reed Hall Auditorium.

Dr. Charles Peltrey, Head, Department of Languages and Literature at MSU, is conference coordinator.

**WE PUT YOU FIRST ON MICHELIN**

GAUDILL TIRE CO.  
Eastern Ky.'s Most Modern Tire Dealer  
MOREHEAD, KY

Everyone Loves an Early Santa... We Have 13 Christmas Card Catalogs

Color Photo Christmas Cards by Stylart

Available Thru Eagle Office Supply

Large selection of General & Professional Designs  
Featuring: Century, Grant, Stylart, Carlson Craft, NuArt, Globe, Regency, Masterpiece Studios, Burgoyne.

Also **FREE ENVELOPE IMPRINTING**

Your return address printed free when you order your Christmas Cards printed with your name by September 30th.

Hours - Monday thru Friday 8-5; Saturday 9-12 Noon

# Eagle Office Supply

(Behind Cowden's)  
722 West First St. Morehead, KY.

In Mt. Sterling Call 498-6655 **784-7337**

In Grayson Call 474-5101

## INVENTORY REDUCTION SALE

SAVINGS UP TO **75% OFF**

#507 WEEDER Reg. \$59.95 **SALE PRICE \$24.95**

25" ADMIRAL COLOR TV Reg. \$629.95 **SALE PRICE \$499.95**

HOMELITE 16" SUPER E-Z CHAIN SAW Reg. \$269.95 **SALE PRICE \$239.95**

All Scotts Products 40% OFF

Scotts Turf Builder	15,000 sq. ft. bag	Reg. \$29.95	Now \$17.97
Scotts Turf Builder	10,000 Sq. Ft. Bag	Reg. \$20.95	Now \$12.57
Scotts Turf Builder	Plus 2 10,000 Sq. Ft. Bag	Reg. \$27.95	Now \$16.77
Model No. 5033 Hooded Grill		Reg. \$39.49	Now \$19.95
Model KST 4300 K&S Weedeater	w/electric Rotisserie	Reg. \$59.95	Now \$29.95
Mr. Neat Trash Bags	50 count	Reg. \$2.99	Now \$1.99
19 Pc. Metric 1/4-3/4 Driver Socket Set		Reg. \$23.99	Now \$10.99
Wallrite Decorated Wall Paper	350 sq. ft.	Reg. \$5.95	Now 99¢
Padco Painting Kits		Reg. \$9.29	Now \$4.65
Plant Stands		Reg. \$12.12	Now \$4.95
Model GG910 Gas Grill		Reg. \$81.95	Now \$49.95
Black & Decker #7531 2-speed Jig Saw Kit		Reg. \$31.29	Now \$12.99
Rockwell Bench Saw 9" w/stand-Motor		Reg. \$182.99	Now \$159.95

WHILE QUANTITIES LAST

**NO RAIN CHECKS**

**Trademore S&T Hardware And Appliance**  
Trademore Center I-64 Interchange  
Open Daily 9 a.m. to 9 p.m. Sun. 1 p.m. to 6 p.m.  
784-6428 Morehead, Ky.





**Quilted Memento**

Judges at the Harvest Festival Quilt and Afghan contest were surprised with these gifts. From left, Dr. Bill Booth, head of the Morehead State University Department of Art and Martha Huntsman, Rowan County

Extension Agent for Home Economics receive their quilted wall hangings from Janet Batchner, contest chairman. (Staff photo by Kathy Parlin)

## Land Bank Lowers Interest Rate

The Federal Land Bank of Louisville has reduced its interest rate from 11 percent to 10 percent, according to an announcement by Roy Fritz, Manager of the Federal Land Bank Association of Northeast Kentucky.

In addition to reducing the interest rate on new farm loans, the bank has also lowered its interest rate on rural home loans and farm-related business loans from 11.5 percent to 10.5 percent. The interest rate on existing variable rate loans closed prior to Sept. 1, will be reduced as follows: Farm loans with billing rates higher than 10 percent will be reduced to 10 percent and rural home loans and farm-related business loans with billing rates higher than 10.5 percent will be reduced to 10.5 percent.

According to Federal Land Bank of Louisville President, R.C. Schlader, the

reduction in the Bank's interest rate was made possible because of the recent sharp decline in the market interest rates since mid-March and the lifting of credit restraints imposed by the Federal Reserve Board. Schlader added that the Bank's loan fee was reduced in June from six percent to two percent on the first \$300,000 of new money on all loans closed on or after June 18, 1980.

The Federal Land Bank Association of Northeast Kentucky services over 1,000 loans in 26 counties in Northeast Kentucky with an outstanding loan volume of near \$38 million.

The branch office at Morehead services the loans in Breathitt, Carter, Elliott, Knott, Lee, Letcher, Magoffin, Menifee, Morgan, Owsley, Perry, Rowan and Wolfe counties.

The Land Bank makes long-term loans to farmers and on rural residences secured by first mortgages. For further information contact C. Calvin Cline, Branch Manager.

## Morehead Art Guild Has Display

Paintings, prints, and various other works from more than 20 artists will be on display during the Harvest Festival at Trademore Shopping Center.

The Morehead Art Guild will be displaying arts and crafts from its members during all three days of the Harvest Festival in a vacant building on the Kroger side of the shopping center.

All the works are by local artists. Two prints — of the Hillsboro Bridge and an old Rowan County henplace — by Christine Barker, president of the art guild, will be given away during the

Harvest Festival. A drawing for the signed and numbered prints will be held Saturday at 8 p.m. in the display room.

Tickets may be obtained at various locations during the festival.

Barker said that most of the works on display will be for sale. In addition, she said that the art display will feature a place for visitors to sit and relax while they drink free coffee.

## UK Hospital Opens Four Neonatal Units

LEXINGTON — Four new neonatal intensive care beds have been opened at the University of Kentucky Hospital. Officials at UK's Albert B. Chandler Medical Center say the additional beds, bringing to 35 the number of neonatal beds now operational.

Another four beds, officials said, will be activated as soon as a qualified nursing staff is recruited. When these four beds are made operational, UK will have room for 39 infants in its neonatal intensive care section.

In addition, construction has begun on a new neonatal intensive care unit at the UK hospital. The new unit will replace present facilities and consolidate into one area in the east wing of the hospital's fourth floor all neonatal care. When the unit is completed, in about a year, it will increase UK's neonatal bed capacity to 45.

A \$1.1 million contract for the work was recently awarded to the Lexington firm of White and Conleton.

The lieutenant governor's mansion, built in 1978, is the oldest executive mansion in the United States still in use. Thirty-nine governors lived in this historic house until the new governor's mansion was built in 1914. During this period it was visited by seven U.S. presidents.

**At the Peoples Bank, earn a little interest in a hurry or a lot more interest in a little more time.**

6 months \*10,000.00 Certificate of Deposit

**Rate 11.125%**

Effective Sept. 18 Thru Sept. 24

Federal Regulations Require Substantial Interest Penalty On Early Withdrawal on Savings Certificates

\*Member F.D.I.C.

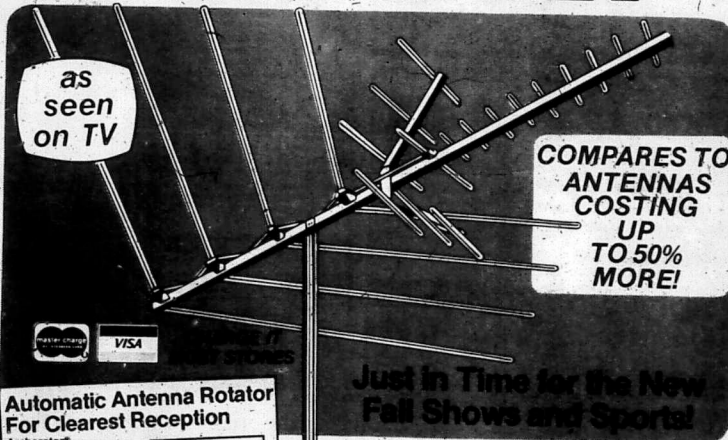


**Peoples Bank Olive Hill**

**Radio Shack**

America's Largest Antenna Manufacturer

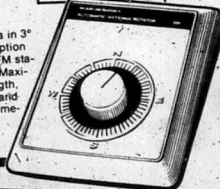
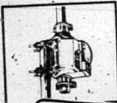
**SUPERCOLOR TV ANTENNA SPECIAL!**



Automatic Antenna Rotator For Clearest Reception Archerator®

ONLY **59<sup>95</sup>**

Turns your antenna in 3° steps for best reception from every TV or FM station within range. Maximizes signal strength, minimizes ghosts and interference. Lifetime-lubricated motor. Requires 3-wire cable. 15-1224



Just in Time for Fall Shows and Sports!

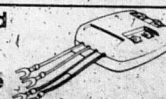
**NOW ONLY 21<sup>88</sup>**

Replace your worn-out antenna now and see all the excitement you've been missing! 60° wide-swept elements capture all the available signal on every channel and pull in stronger FM radio signals, too! Factory-preassembled — just snap open the elements. Gold-Alodized® finish fights corrosion. 15-1700

Signal Splitter Included

Separates UHF/VHF/FM signals at the set. Only one download required.

**3<sup>99</sup> Value**

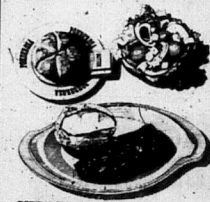


Check Your Phone Book for the **Radio Shack** Store or Dealer Nearest You

Trademore Shopping Center 784-8513

A DIVISION OF TANCY CORPORATION PRICES MAY VARY SLIGHTLY. © STORES

**TWO CAN DINE FOR \$5.99**



SIRLOIN STRIP



SIRLOIN STRIP

COUPON  
**SAVE \$2.19 ON TWO #1 SIRLOIN DINNERS.**

From September 22 through September 26 enjoy our #1 sirloin dinner at this great sale price. You'll get a baked potato, a roll with butter and unlimited salad with each dinner (beverage and dessert not included). Only one coupon allowed per couple. Not redeemable for cash. Void where prohibited.

**PONDEROSA STEAKHOUSE**  
CUT OUT THIS COUPON

**NOW UNDER NEW MANAGEMENT**

# Morehead Grade Football Is Expected To Be Class Of The County

By MARK PERKINS  
Sports Editor

Clearfield own victories over Morehead, with both of those losses coming in the 1978 season.

In 1977 Morehead went 10-0 with a group headed by Bill Brock. The school slipped to 5-2 the following season before bouncing back into championship form last year with a 6-0 record.

Gartin attributes much of the success of his team in recent years to the Junior Football Program (formally Pee-Wee), which is sponsored by the city's Recreation Department.

"This school is really getting the benefits of the Pee-Wee program. I'd say half of the players on my team played Pee-Wee ball and they all entered grade school football knowing some of the basic fundamentals of the game and it really helps. Kids in this area in the past haven't had the opportunity to play much organized football," Gartin said.

Practice began for the 35 players (22 eighth and 13 seventh graders) on August 13, the second day of school.

In the beginning Gartin put his squad through all sorts of conditioning and agility drills

designed to improve all aspects of their skills. "For example I put them through footwork drills and wind sprints," Gartin said.

Gartin is quick to point out that he doesn't have a large team and thus doesn't plan to roll over teams, but rather beat them with quickness and intelligence.

For the first week of practice the team went through the plays without pads. Morehead uses the 1 and power I formation with a lot of motion.

Because his team is so deep in talent, Gartin is able to pretty much balance his practice squads and allow everyone to get in plenty of game action.

Because Gartin has such an experienced team, especially in the backfield, he is able to devote special attention during practice to his offensive and defensive line. A luxury other grade school coaches simply don't have.

"I'm able to work with the linemen on their sweeps, and let our defensive people play off two blockers before making a tackle, and that practice really pays off," Gartin said.

Just like the high school varsity team, all of the grade school's games are video taped. After each game the team gathers in Gartin's room to view the tapes and usually learns from their mistakes.

"Watching the tapes really helps us out," Gartin said. He went on to explain, "For example it is easy to identify lack of pursuit on Brock and to point out when the offensive line isn't doing its job."

"The kids know that when they are watching the tapes they shouldn't see any helmets fly up on the line because that means they aren't blocking the right way. I really believe that kids block better so as not to be embarrassed the next day on tape in front of their teammates," Gartin said.

Morehead runs a basic 32 type defense. "Our defense is based on quickness, we try to beat people to the punch. We try to penetrate with our defensive line. If you get in the other teams backfield you will

play off them."

## Rowan County Junior High Football Schedule

Sept. 9	Clearfield (28-0)	Home
Sept. 16	Tilden Hogge (28-0)	Home
Sept. 23	Tilden Hogge	Home
Sept. 24	Bath Co.	Away (BCHS)
Sept. 28	Salt Lick	Away (BCHS)
Oct. 7	Farmers	Home
Oct. 9	Bethel	Away (BCHS)

Playoffs:  
All Star Game

Note: Schedule is not complete. West and East Carter may be added.

cause trouble," according to Gartin.

So far in this brief season the Morehead defense has accounted for five fumble recoveries and an interception by John Carter.

Morehead hasn't thrown much this season, they haven't had a need to. After a game and a half, the young Vikings have run with the ball 44 times for 463 yards, or 10.5 yards per attempt.

Leading the way in the rushing department is tailback Andy Thompson with 191 yards on 17 attempts, or 11.2 yards per clip.

Wingback, Steve Back has racked up 140 yards on just six carries, or 23.3 per attempt. Other leaders are fullback Danny May, playing his third year because of being held back a grade. May had 50 yards on eight carries, and Larry Early has 42 yards on two carries.

So far this season no team has been able to move the ball very far against Morehead. Gartin admits that his defense is ahead of the offense. "Like any other sport, if your defense doesn't give up any points you're in good shape," Gartin said.

Six players on the Morehead team start on both offense and defense.

Thompson, in addition to tailback, plays linebacker. Quarterback Cameron Kenny doubles as a linebacker. Tight end Jimmy Livingood also plays linebacker. Billy Muse plays both offensive guard and nose guard. Danny May plays fullback and defensive end, and Steve Back plays wingback and safety.

Barring any key injuries on defense, the Morehead Grade School football team should continue to enjoy a shut out season.

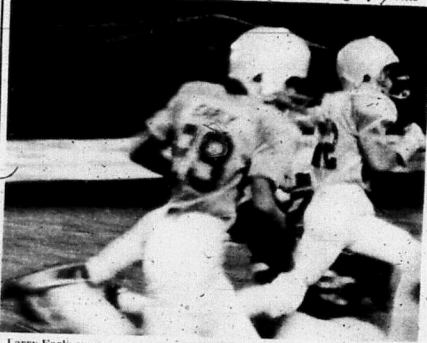
While the Morehead Grade School Junior High football team is generally thought to be the class of the county this season, coach Gary Gartin is much more modest in his assessment of the squad.

"At this point in the season we aren't as good as everybody says we are. We have just played a game and a half and that's not much football," Gartin said.

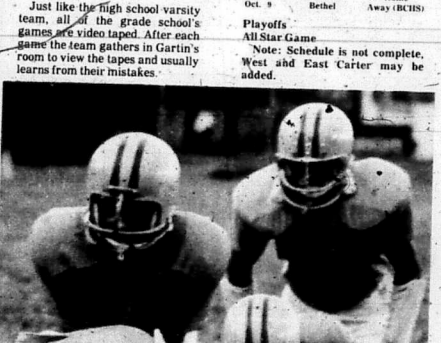
Morehead's first game was called because of lighting as the Vikings led Clearfield 28-0, and last Tuesday's contest, with Tilden Hogge was shortened to just 24 minutes with Morehead winning, 30-0.

Gartin admits he's fortunate in that he has seven starters from last year's undefeated season returning. "That means I've got seven kids who don't believe they can lose, and that really gives us a positive attitude," Gartin said.

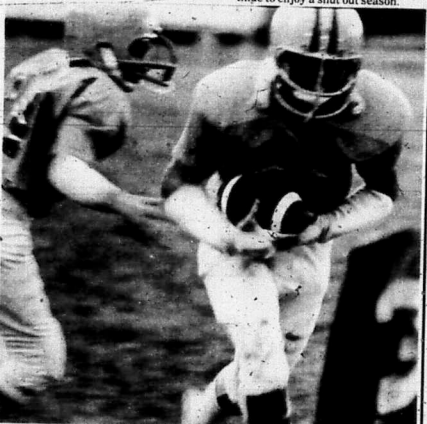
Two games into his fourth season as coach of the grade school team, Gartin sports an incredible 25-2 record, including two perfect seasons. Only Tilden Hogge and



Larry Early runs a sweep around right end last Tuesday night for Morehead Grade against Clearfield. The Vikings won, 30-0.



Morehead Grade School quarterback Cameron Kenny calls out the signals Tuesday against Clearfield. In the backfield is Andy Thompson, 32.



Andy Thompson scored two touchdowns for Morehead Grade Tuesday night against Clearfield. On the season Thompson, a tailback, has gained 191 yards, 11.2 per carry.

## Grade School Football

# Morehead Easily Defeats Tilden Hogge

## Clearfield Gets First Win

By KURT PICKERING  
Sports Staff Writer

Tuesday's pair of football games in the Rowan County Grade School League yielded a squeaker and a stomper.

In the early game, the Clearfield Devils evened their league and overall record at 1-1, by nosing out Haldeman-Elliottville, a club formed when those two grade schools pooled their players after each was unable to field a full team. Before the game, we asked an H/E coach what they were going to do about the nickname, he said, "Haldeman was Leopards, Elliottville was Lions. I guess we should go with Cats."

The newly-dubbed Cats played the Devils to a scoreless standoff in the first half. Neither team so much as mounted a major threat, the closest thing to that being a 35-yard Cat run to the Devil-22 that was called back on a clipping penalty.

H/E broke the scoring ice with 3:44 left in the third quarter. Jackie Smith snared a pass from Dwayne-May at about midfield and outran three Devils to the goal line, the play covering 63 yards overall. On the conversion attempt, another pass attempt fell incomplete. The Cats led 6-0, but the missed conversion would cost them the game.

With 1:18 left in the final frame, Clearfield's Eddie Oiler capped a long drive with a 16-yard touchdown jaunt to tie it. On the conversion, it was Oiler again and Clearfield took an 8-6 lead. Neither team threatened seriously again.

In the second game of the evening, the Morehead Vikings ran their record to 2-0 and scored their second straight shutout, 30-0. The Mustangs are 0-2 in league play, and they dropped a non-

league decision to Salt Lick 22-6 September 11.

In the Morehead victory, the Vikings ramblled off time-consuming touchdown drivers on their first two possessions. Andy Thompson did the honors on the first one with 2:09 left in the first quarter, scoring from a yard out and

then adding the extra points. With 4:17 left in the half, it was Thompson again on an 8-yard run. Steve Back hit Cameron Kenney with a pass for the conversion that made it 16-0.

The Vikings found time to score once more in the half, inheriting the ball on downs with just over a minute and a half left. By the time the clock had ticked down to 22 seconds, Larry Early swept around right end for 45 yards and another TD. David Morris carried the conversion over, and it was 24-0 at half-time.

Morris scored again with 5:58 left in the game, picking up the TD from two yards out. The run failed, and the final was 30-0.

The next league action will be Tuesday at Rowan County Field. The six o'clock game sends Clearfield against Farmers, immediately followed by Haldeman/Elliottville versus Morehead.

## Schedule

Sept. 23	Clearfield vs. Farmers	Haldeman-Elliottville vs. Morehead
Sept. 30	Haldeman-Elliottville vs. Farmers	Clearfield vs. Tilden Hogge
Oct. 7	Haldeman-Elliottville vs. Tilden Hogge	Farmers vs. Morehead

The Morehead News

# SPORTS

**Autowize**  
THE PARTS PLACE  
MORÉHEAD — 130 S. Wilson Avenue  
784-8651

**WIN FREE GAS**

**MONROE**  
FALL BATTERY SALE  
GROUP 24 or 24F  
As low as **35.55**  
EXCHANGE  
Similar savings on other ratings

**BEST SHOCK SALE**

**MONRO-MATIC**  
Reg. \$19.95 Mfr's. Suggested List.  
**NOW ONLY 11.88**  
EACH

**AC AIR FILTERS**  
NOW ON SALE!

**AC AIR FILTER**  
Designed to include an oil-coated paper element to trap more dirt holding capacity.

**40% off**  
MFR'S SUGGESTED LIST  
THANKS, AC

WHEN YOU WANT TO KNOW ASK THE PARTS PRO

**Imperial CLEANERS**

MOREHEAD'S ONLY COMPLETE LAUNDRY... ONE DAY SERVICE

**784-4104**

155 E. 1st MOREHEAD, KY.  
Around The Corner From The Library

Pick Up And Delivery Service In Morehead, Rowan Co., Bath Co., Fleming Co., Montgomery Co.

OPEN  
Mon.-Fri. 5 a.m. to 5 p.m.  
Sat. 5 a.m. to 12 Noon

**MONTGOMERY WARD** PRE OCTOBER

**TRUCKLOAD APPLIANCE SALE**  
September 19-30

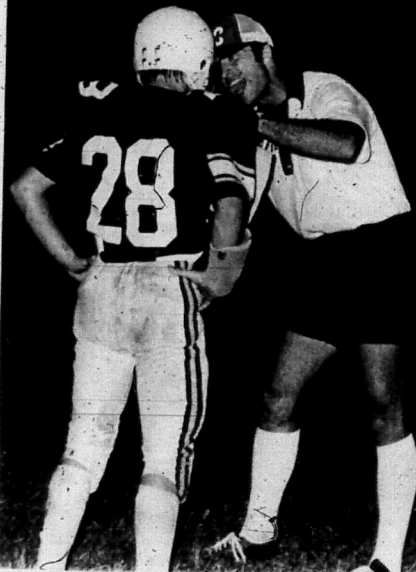
Tremendous sale values on Refrigerators, Freezers, Microwaves, Ranges, Washers, Dryers, Dishwashers, TV's, and Stereos. Gift Certificates from \$5 - \$40 given with all appliance purchases.

Montgomery Ward  
315 W. Main Street  
Morehead, Ky.

Phone 784-7581 INDEPENDENTLY OWNED AND OPERATED



# Akron-Western Clash Headlines OVC Schedule



Rowan County football coach Ray Graham issues instructions to Bill Brock last Friday night as the Vikings hosted Montgomery County. Rowan County played Lewis County yesterday afternoon.

Five games make up the Ohio Valley Conference football slate for this week-end with the highlight game being the Akron-Western Kentucky matchup at the Rubber Bowl in Akron, Ohio. An important non-conference battle has Murray State facing Division I-A foe Louisville in Louisville.

The rest of the schedule for the week has Austin Peay hosting James Madison in the Governors' home opener, Eastern Kentucky at home against Youngstown State, and Tennessee Tech looking for its second straight win on the road against Northeast Missouri. Middle Tennessee and Morehead State are off this week.

Now a look at the matchups:

### Western Kentucky (2-0, 0-0)

At Akron (2-0, 1-0)

Both teams have been impressive in their first two outings this season and square off in what is already shaping up as a key early-season OVC battle. Akron is currently on top of the OVC standings after its 21-10 win over Eastern Kentucky last week and opened up the season with a 21-7 win over Northeast Missouri. Western Kentucky is unbeaten in two non-league outings having downed Evansville 40-18 and Kentucky State 20-8. An aerial show could be the order of the day. Western Kentucky quarterback John Hall has tossed five touchdowns passes in his first two games, two to tight end Ricky Gwinn. Akron signal caller Tom Freeman has four TD passes in his first two games with three of them having been caught by Pat Snow. Both teams have solid ground games. Akron will have Dennis Brumfield, who carried the ball an OVC record 44 times for 186 yards against Eastern Kentucky. Western Kentucky's top ground threat is tailback Nate Jones who averages better than six yards per carry. WKU's Hall will have to be wary of an Akron secondary that has intercepted nine passes in two games, three by Keith Anderson. The Hilltopper secondary has intercepted six passes, two by Reginald Johnson. It has been since 1971 that an Akron team has won its first three games of the season and since 1975 for Western Kentucky, a year in which it advanced to the Division II championship game. The Zips hold a 4-0-2 series lead over Western with the last meeting coming in 1978 and Akron winning 26-21.

### Murray State (2-0)

At Louisville (0-2)

Murray State comes into the contest on the heels of a 24-6 win over 1973 Division II national runner-up Youngstown State while Louisville is reeling from back-to-back losses to Miami and 10th ranked Florida State, the latter by a 52-0 margin. For the Racers against Youngstown, it was once again the defense that was the star of the show. Defensive end Lamar Williams recovered a blocked punt for one touchdown and defensive back Lindsey Hudspeith had a 36-yard interception return for another. Murray State QB Gino Gibbs has had a touchdown pass in each of the first two games of the season. The Murray defense has always been tough against the rush, and has not allowed a touchdown to be scored against it all season, which could be trouble for Louisville. The Cardinals have managed only two yards rushing total in the first two games. Louisville coach Bob Weber is in his first year at the school and has been faced with having to replace seven defensive starters, including All-America line backer Otis Wilson. Eddie Johnson has taken over Wilson's spot. The Cardinals' aerial game is led by wide receiver Kenny Robinson (16 catches, 299 yds in '79) while Greg Hickman (648 yds, 4 TDs) is the top returning ball carrier. This is the 13th meeting of the two schools with Louisville holding a 7-5-0 edge. They have not played since 1959 when Louisville won 12-6. However in 1932, when the two teams met for only the second time, Murray State scored one of the most lopsided victories in college football history as it defeated Louisville 105-0.

### Youngstown State (0-1)

At Eastern Kentucky (1-1)

Each of these teams was a participant in post season playoff action last year, Eastern Kentucky winning the I-AA national championship and the Penguins of Youngstown State finishing second in the Division II championship. This year, however, through two games, Eastern Kentucky has not displayed offensive consistency. The

### Striders Complete In Two Weekend Races

Several members of the Morehead Striders attended races last week. The Menifee County Lions Club 3.1 mile race was held on Saturday, September 13.

Six Club members participated in that race. Judy Craft won her age division, 31 and over. Dan Lindsey placed second in his division, 20-30. Paul Hoffman placed 1st in his division, 31 and over. Also participating were Ben Ryan and Gary and Ann Silken. The Ryan track team also competed in the race and Wendy Carpenter and Mike Wilson finished first in their age groups respectively.

That same day, four members of the Club attended the Huntington Herald Dispatch Race. In this six mile event, Ben Tackett finished second in his age group, 40-49. Palmer Adams, Paul Hoffman and Roy Wright also finished the race.

Colonels led Kentucky State in the season opener 13-0 before coming from behind to win 24-21 and last week led Akron 10-0 before losing 21-10. EKV kicker David Torres is one field goal shy of tying the I-AA record for consecutive field goals as he has kicked nine straight. Gerald Robinson of Middle Tennessee holds the record at 10. The Colonel strength was supposed to be on offense, but they have managed only 391 yards in two games. A rebuilt defense has allowed 562 yards. Eastern tailback Alvin Miller did have a 51 yard touchdown run in the Akron game. Youngstown State found the going rough against the Murray State defense in its season opener last week having a punt blocked and recovered for one score and having a pass intercepted and returned for another touchdown. Running back Bobby Robson was held to 67 yards in 25 carries. The lone bright spot for the Penguins was kicker Paul McFadden who kicked a school-record 54 yard field goal and later added a 52 yard effort. Eastern Kentucky leads this series 5-3-0 but lost the last meeting 12-6, in 1968.

### Tennessee Tech (1-0)

At Northeast Missouri (0-1)

Tennessee Tech opened up its season at home last week with a 26-10 win over Western Carolina. The Golden Eagles tallied 307 yards in total offense as quarterback James Aaron, playing his first game at Tech, passed for 142 yards and a touchdown and running back Reggie Bazel rushed for 100 yards and a score. Senior kicker Wayne Andersen kicked an OVC-record four field goals in the contest. The golden Eagle defense limited Western Kentucky to 85 yards rushing in the game and forced five fumbles. Northeast Missouri opened its season two weeks ago against another OVC team, Akron, and lost on the road 31-7. In that contest, the Bulldogs actually outgained Akron 310-286, but turned the ball over eight times, six on interceptions. Quarterback Greg Dolance passed for 229 yards in the game, but the ground game could only manage 71 yards. Second year coach Bruce Craddock has 24 lettermen returning from last year's 4-7 squad. Northeast Missouri is a member of NCAA Division II and competes in the Missouri Intercollegiate Conference. This is the first meeting ever of the two schools on the football field.

### James Madison (0-2)

At Austin Peay (0-1)

This game will be the home opener

for Austin Peay which opened up the season last week at UT-Martin, losing 24-20. Governor quarterback Sonny Defilippis passed for 200 yards and a pair of touchdowns in the game but suffered a couple of interceptions. Defilippis' favorite targets are Andy McCollum, the OVC's top pass catcher with six to his credit, and senior Steve Pathoff who gathered in four receptions totaling 107 yards in the UT-Martin

game. Defilippis is the OVC individual total offense leader. The Governor secondary, which has been hit by injuries, gave up two touchdowns last week. James Madison dropped 21-18 decision to Morehead State last week and was defeated by Appalachian State in its opener two weeks ago. Austin Peay won last year's contest between the two teams 10-6, which is the only previous meeting.

## Tennis Team Wins First Two Matches

Morehead State University's Lady Eagles opened the 1980 tennis schedule on winning notes with a 2-4 win over Western Kentucky and a 7-2 decision over West Virginia University.

Against WKU, singles winners for MSU included Allison Hill, Briston England sophomore, at No. 2; Jennie Circle, Springfield, Ohio junior, at No. 5; and Liz Oosthuizen, Kitwe, Zambia junior, at No. 6.

MSU's No. 2 and No. 3 doubles teams of Hill-Circle and Oosthuizen-Miriam Hard, Westerville, Ohio, posted wins while the Lady Eagles' No. 1 duo of Piana Moffitt, Dawlish, England junior and Kerstin Wictorin, Stockholm, Sweden freshman, lost by forfeit.

Moffitt, Hill, Circle and Oosthuizen claimed singles wins against WVU while Moffitt-Oosthuizen, Hill-Circle and Wictorin-Hard won in doubles.

"Beating Western Kentucky was a great victory for our morale," said MSU Coach Beverly Mayhew. "Western won the Ohio Valley Conference two years ago and we were last,

so this win was very good for us."

MSU, now 2-0 on the season, will host the University of Charleston on Friday, Sept. 19. Action begins at 2 p.m.

## Volleyball Team

### Opens With Victory

The Morehead State University Lady Eagles opened the 1980 volleyball season by easily defeating Midway College then fell to Eastern Kentucky University in a seesaw match.

MSU downed Midway 15-3 and 15-0 before battling EKV in five games.

EKV opened the match with a 15-9 win, but the Lady Eagles came back to take 15-9 and 15-13 wins. MSU fell in the final two games 15-5 and 15-8.

"Our competition and enthusiasm were both excellent, but we found several weaknesses in our overall game," said MSU Coach Laradean Brown.

The Lady Eagles, now 1-1 on the season, travel to Cookeville, Tenn. for the Ohio Valley Conference Invitational on Sept. 19 and 20.

**UNIVERSITY CINEMA**  
Established 1927

**HELD OVER**  
2nd FURRY WEEK

Week Nights  
7:30-9:30 pm  
Saturday-Sunday  
2:00-4:00-6:00  
8:00 and 10:00 pm

**The Bandit, Frog and Justice**  
are at it again in the all new adventures of...

**SMOKEY THE BEAR BANDIT II**

**ADULTS 200**  
FIRST HOUR SAT-SUN

BURT REYNOLDS - JACKIE GLEASON - JERRY REED - DON DELUSSI - SALLY FIELD  
A BARBARA MOORE ENGLISH PRODUCTION  
PAUL WILLIAMS - PAT MCCORMICK - SMOKEY AND THE BANDIT II  
KERRY BELTON - BROCK MATES - MICHAEL KANE  
SHIRLEY GIBBETT - JERRY MOULDER - HARVEY KALFON  
PG PARENTAL GUIDANCE SUGGESTED - SEE NOTES  
© 1979 UNIVERSAL PICTURES

WE ARE

BUYING GOLD

14K and 10K

**Come In and Get Our Price Today**

**Any and All Scrap Gold**

**T&E**  
The House of Confidence  
Jewelry

Shop with Unadell for all your jewelry and gift needs.  
Open 10:00 A.M.-8 P.M. Monday-Saturday.  
IN HECK'S MOREHEAD CENTER, MOREHEAD, KY.

1-64, Off Flemingsburg Road Behind Holiday Inn  
"T&E Jewelry is Morehead's ONLY quality locally owned & operated jewelry store"

Buying Gold & Silver

SCRAP OR COIN

**U.S. SILVER COINS THRU 1964**

**DIMES QUARTERS HALVES THRU 1964 HALVES 65 THRU 69 SILVER DOLLARS**

UP TO \$125 CLASS RINGS

**SILVER COINS**..... per dollar

**SILVER DOLLARS**..... (Fine or better) Each

**KENNEDY HALVES (1965-69)**..... per dollar

**\$12.00**

**\$16.00**

**\$3.50**

**We will pay the same or higher than anyone in town this week. Anything gold wanted: Class Rings, Chains, Pocket Watches, Tie Tacks, Wrist Watches, Bracelets, Earrings, Wedding Bands, Charm Bracelets, Pins and Gold Coins - We Buy Unmarked Gold, Free Testing. SEE US AT**

UNIVERSITY LODGE

Conference Room No. 27 9:00 a.m. - 7:00 p.m.

CAESAR'S CREEK

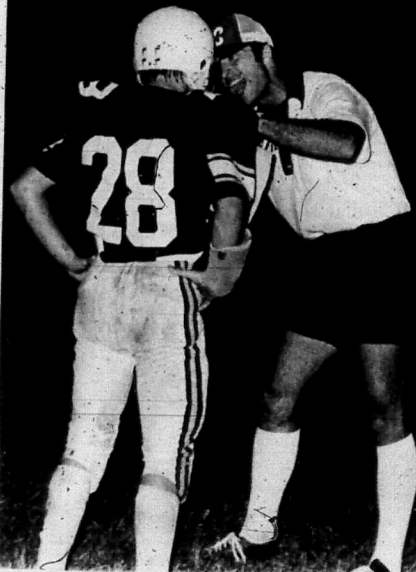
GOLD and SILVER EXCHANGE

Wilmington, Ohio

We Sell Direct To The Refinery  
We Can Pay More Than Anyone Else In This Area

NOTICE: You Must Be 18 Years Old And Have Valid Identification

# Akron-Western Clash Headlines OVC Schedule



Rowan County football coach Ray Graham issues instructions to Bill Brock last Friday night as the Vikings hosted Montgomery County. Rowan County played Lewis County yesterday afternoon.

Five games make up the Ohio Valley Conference football slate for this week-end with the highlight game being the Akron-Western Kentucky matchup at the Rubber Bowl in Akron, Ohio. An important non-conference battle has Murray State facing Division I-A foe Louisville in Louisville.

The rest of the schedule for the week has Austin Peay hosting James Madison in the Governors' home opener, Eastern Kentucky at home against Youngstown State, and Tennessee Tech looking for its second straight win on the road against Northeast Missouri. Middle Tennessee and Morehead State are off this week.

Now a look at the matchups:

### Western Kentucky (2-0, 0-0)

At Akron (2-0, 1-0)

Both teams have been impressive in their first two outings this season and square off in what is already shaping up as a key early-season OVC battle. Akron is currently on top of the OVC standings after its 21-10 win over Eastern Kentucky last week and opened up the season with a 21-7 win over Northeast Missouri. Western Kentucky is unbeaten in two non-league outings having downed Evansville 40-18 and Kentucky State 20-8. An aerial show could be the order of the day. Western Kentucky quarterback John Hall has tossed five touchdowns passes in his first two games, two to tight end Ricky Gwinn. Akron signal caller Tom Freeman has four TD passes in his first two games with three of them having been caught by Pat Snow. Both teams have solid ground games. Akron will have Dennis Brumfield, who carried the ball an OVC record 44 times for 186 yards against Eastern Kentucky. Western Kentucky's top ground threat is tailback Nate Jones who averages better than six yards per carry. WKU's Hall will have to be wary of an Akron secondary that has intercepted nine passes in two games, three by Keith Anderson. The Hilltopper secondary has intercepted six passes, two by Reginald Johnson. It has been since 1971 that an Akron team has won its first three games of the season and since 1975 for Western Kentucky, a year in which it advanced to the Division II championship game. The Zips hold a 4-0-2 series lead over Western with the last meeting coming in 1978 and Akron winning 26-21.

### Murray State (2-0)

At Louisville (0-2)

Murray State comes into the contest on the heels of a 24-6 win over 1973 Division II national runner-up Youngstown State while Louisville is reeling from back-to-back losses to Miami and 10th ranked Florida State, the latter by a 52-0 margin. For the Racers against Youngstown, it was once again the defense that was the star of the show. Defensive end Lamar Williams recovered a blocked punt for one touchdown and defensive back Lindsey Hudspeith had a 36-yard interception return for another. Murray State QB Gino Gibbs has had a touchdown pass in each of the first two games of the season. The Murray defense has always been tough against the rush, and has not allowed a touchdown to be scored against it all season, which could be trouble for Louisville. The Cardinals have managed only two yards rushing total in the first two games. Louisville coach Bob Weber is in his first year at the school and has been faced with having to replace seven defensive starters, including All-America linebacker Otis Wilson. Eddie Johnson has taken over Wilson's spot. The Cardinals' aerial game is led by wide receiver Kenny Robinson (16 catches, 299 yds in '79) while Greg Hickman (648 yds, 4 TDs) is the top returning ball carrier. This is the 13th meeting of the two schools with Louisville holding a 75-0 edge. They have not played since 1959 when Louisville won 12-6. However in 1932, when the two teams met for only the second time, Murray State scored one of the most lopsided victories in college football history as it defeated Louisville 105-0.

### Youngstown State (0-1)

At Eastern Kentucky (1-1)

Each of these teams was a participant in post season playoff action last year, Eastern Kentucky winning the I-AA national championship and the Penguins of Youngstown State finishing second in the Division II championship. This year, however, through two games, Eastern Kentucky has not displayed offensive consistency. The

### Striders Complete In Two Weekend Races

Several members of the Morehead Striders attended races last week. The Menifee County Lions Club 3.1 mile race was held on Saturday, September 13.

Six Club members participated in that race. Judy Craft won her age division, 31 and over. Dan Lindsey placed second in his division, 20-30. Paul Hoffman placed 1st in his division, 31 and over. Also participating were Ben Ryan and Gary and Ann Silken. The Ryan track team also competed in the race and Wendy Carpenter and Mike Wilson finished first in their age groups respectively.

That same day, four members of the Club attended the Huntington Herald Dispatch Race. In this six mile event, Ben Tackett finished second in his age group, 40-49. Palmer Adams, Paul Hoffman and Roy Wright also finished the race.

Colonels led Kentucky State in the season opener 13-0 before coming from behind to win 24-21 and last week led Akron 10-0 before losing 21-10. EKV kicker David Torres is one field goal shy of tying the I-AA record for consecutive field goals as he has kicked nine straight. Gerald Robinson of Middle Tennessee holds the record at 10. The Colonel strength was supposed to be on offense, but they have managed only 391 yards in two games. A rebuilt defense has allowed 562 yards. Eastern tailback Alvin Miller did have a 51 yard touchdown run in the Akron game. Youngstown State found the going rough against the Murray State defense in its season opener last week having a punt blocked and recovered for one score and having a pass intercepted and returned for another touchdown. Running back Bobby Robson was held to 67 yards in 25 carries. The lone bright spot for the Penguins was kicker Paul McFadden who kicked a school-record 54 yard field goal and later added a 52 yard effort. Eastern Kentucky leads this series 5-3-0 but lost the last meeting 12-6, in 1968.

### Tennessee Tech (1-0)

At Northeast Missouri (0-1)

Tennessee Tech opened up its season at home last week with a 26-10 win over Western Carolina. The Golden Eagles tallied 307 yards in total offense as quarterback James Aaron, playing his first game at Tech, passed for 142 yards and a touchdown and running back Reggie Bazel rushed for 100 yards and a score. Senior kicker Wayne Andersen kicked an OVC-record four field goals in the contest. The golden Eagle defense limited Western Kentucky to 85 yards rushing in the game and forced five fumbles. Northeast Missouri opened its season two weeks ago against another OVC team, Akron, and lost on the road 31-7. In that contest, the Bulldogs actually outgained Akron 310-286, but turned the ball over eight times, six on interceptions. Quarterback Greg Dolance passed for 229 yards in the game, but the ground game could only manage 71 yards. Second year coach Bruce Craddock has 24 lettermen returning from last year's 4-7 squad. Northeast Missouri is a member of NCAA Division II and competes in the Missouri Intercollegiate Conference. This is the first meeting ever of the two schools on the football field.

### James Madison (0-2)

At Austin Peay (0-1)

This game will be the home opener

for Austin Peay which opened up the season last week at UT-Martin, losing 24-20. Governor quarterback Sonny Defilippis passed for 200 yards and a pair of touchdowns in the game but suffered a couple of interceptions. Defilippis' favorite targets are Andy McCollum, the OVC's top pass catcher with six to his credit, and senior Steve Pathoff who gathered in four receptions totaling 107 yards in the UT-Martin

game. Defilippis is the OVC individual total offense leader. The Governor's secondary, which has been hit by injuries, gave up two touchdowns last week. James Madison dropped 21-18 decision to Morehead State last week and was defeated by Appalachian State in its opener two weeks ago. Austin Peay won last year's contest between the two teams 10-6, which is the only previous meeting.

## Tennis Team Wins First Two Matches

Morehead State University's Lady Eagles opened the 1980 tennis schedule on winning notes with a 5-4 win over Western Kentucky and a 7-2 decision over West Virginia University.

so this win was very good for us." MSU, now 2-0 on the season, will host the University of Charleston on Friday, Sept. 19. Action begins at 2 p.m.

Against WKU, singles winners for MSU included Allison Hill, Briston, England sophomore, at No. 2; Jennie Circle, Springfield, Ohio junior, at No. 5; and Liz Oosthuizen, Kitwe, Zambia junior, at No. 6.

MSU's No. 2 and No. 3 doubles teams of Hill-Circle and Oosthuizen-Miriam Hard, Westerville, Ohio, posted wins while the Lady Eagles' No. 1 duo of Piana Moffitt, Dawlish, England junior and Kerstin Wictorin, Stockholm, Sweden freshman, lost by forfeit.

Moffitt, Hill, Circle and Oosthuizen claimed singles wins against WVU while Moffitt-Oosthuizen, Hill-Circle and Wictorin-Hard won in doubles.

"Beating Western Kentucky was a great victory for our morale," said MSU Coach Beverly Mayhew. "Western won the Ohio Valley Conference two years ago and we were last,

## Volleyball Team

### Opens With Victory

The Morehead State University Lady Eagles opened the 1980 volleyball season by easily defeating Midway College then fell to Eastern Kentucky University in a seesaw match.

MSU downed Midway 15-3 and 15-0 before battling EKV in five games.

EKV opened the match with a 15-9 win, but the Lady Eagles came back to take 15-9 and 15-13 wins. MSU fell in the final two games 15-5 and 15-8.

"Our competition and enthusiasm were both excellent, but we found several weaknesses in our overall game," said MSU Coach Laradean Brown.

The Lady Eagles, now 1-1 on the season, travel to Cookeville, Tenn. for the Ohio Valley Conference Invitational on Sept. 19 and 20.



**UNIVERSITY CINEMA**  
Established 1927

**HELD OVER**  
2nd FURRY WEEK

Week Nights  
7:30-9:30 pm  
Saturday-Sunday  
2:00-4:00-6:00  
8:00 and 10:00 pm

**The Bandit, Frog and Justice**  
are at it again in the all new adventures of...



ADULTS \$2.00  
FIRST HOUR  
SAT-SUN

BURT REYNOLDS - JACKIE GLEASON - JERRY REED - DON DELUISE - SALLY FIELD - A BARBARA MOORE ENGLISH - SMOKEY AND THE BANDIT II - PAUL WILLIAMS - PAT MCDONOUGH - KERRY BELTON - BROCK HATES - MICHAEL KANE - SHIRLEY GIBBETT - HARRY MOYSE - HANNELORE KAAS - HANNELORE KAAS - HANNELORE KAAS - HANNELORE KAAS

WE ARE

# BUYING GOLD

14K and 10K

Come In and Get Our Price Today Any and All Scrap Gold



**T&E**  
The House of Confidence  
Jewelry


Shop with Unadell for all your jewelry and gift needs. Open 10:00 A.M.-8 P.M. Monday-Saturday.

INHECK'S MOREHEAD CENTER, MOREHEAD, KY

1-64, Off Flemingsburg Road Behind Holiday Inn

"T&E Jewelry is Morehead's ONLY quality locally owned & operated jewelry store"

## Buying Gold & Silver SCRAP OR COIN




**U.S. SILVER COINS THRU 1964**

**DIMES QUARTERS HALVES THRU 1964 HALVES 65 THRU 69 SILVER DOLLARS**

**UP TO \$125 CLASS RINGS**

**SILVER COINS** ..... per dollar **\$12.00**

**SILVER DOLLARS**..... (Fine or better) Each **\$16.00**

**KENNEDY HALVES (1965-69)** ..... per dollar **\$3.50**

We will pay the same or higher than anyone in town this week. Anything gold wanted: Class Rings, Chains, Pocket Watches, Tie Tacks, Wrist Watches, Bracelets, Earrings, Wedding Bands, Charm Bracelets, Pins and Gold Coins - We Buy Unmarked Gold, Free Testing. SEE US AT

## UNIVERSITY LODGE

Conference Room No. 27 9:00 a.m. - 7:00 p.m.

### CAESAR'S CREEK

## GOLD and SILVER EXCHANGE

Wilmington, Ohio

We Sell Direct To The Refinery  
We Can Pay More Than Anyone Else In This Area

NOTICE: You Must Be 18 Years Old And Have Valid Identification



# Classified Advertising "Over A 1001 Things To Buy"

Call Today 784-6868

### MAIL SUBSCRIPTIONS

One year of *Morehead News*, *Morehead Magazine*, *Elbert*, *Country News* and *Farming Columns*.  
 The price of 12 issues is \$19.50.  
 One year outside of USA \$25.00.  
 (No subscription accepted for less than one year.)  
 When your subscription expires notification will be mailed on your 12th issue. You will be mailed a renewal notice the month of expiration. All are processed on expiration date, unless renewed.

**The Morehead News**  
 722-730 West First Street  
 Morehead, Kentucky 40351

### CLASSIFIED ADVERTISING RATES

**Tuesday edition**  
 Deadline Friday 5:00 P.M.  
**Friday Edition**  
 Deadline 12:00 Noon Wednesday

20 words or less, each insertion \$2.50  
 Each additional word over 20 \$1.50  
 Display classified advertising, column (11 em) inch \$2.31

Entered as Second Class Mailing Matter at Post Office: Morehead, Ky.

All Yard Sales, Garage Sales, Carport Sales, Porch Sales, Church Sales, Etc. must be pre-paid by deadline.

### 052 Furniture

We buy direct to pass on greater savings: Warehouse Furniture Sales on Flemingsburg Rd., Approx. 3 miles north 184, Morehead. Open: Mon-Thurs. 5 p.m.-8 p.m., Fri. 11 a.m.-7 p.m., Sat. 9 a.m.-3 p.m., Sun. 1 p.m.-5 p.m.

FOR SALE: Ethan Allen Sofa 76" brown and peach and Ethan Allen wing chair, peach. \$500. Retail \$1,000. 784-8396. c-7TF

### 053 Pianos

FOR SALE: Baldwin, Wurlitzer, and others. Honest values. No "Balance Due" gimmicks. Easiest payments. Zurich Music Co., 325-14th Street, Ashland, Ky. c-7TF

### 055 Farm Machinery

FOR SALE: Gehl grinder mixer, 532 Ford baler excellent condition, 2688 Holland baler, good condition, gravel flow grain bed, hay and grain elevator, 70 model cab over GMC tractor, 120 flat bed, and other farm equipment. 784-7165. c-76F

### 056 Miscellaneous

\$45,000 guaranteed in less than 5 weeks. For more information send \$1.00 for postage and handling to Jewell Johnson, P.O. Box 324, Morehead, Ky. 40351. c-76F

## Classified Index

<b>Agencies</b>	<b>065 Notices</b>	<b>090 Services</b>
001 Insurance Agencies	065 Legal Notice	120 Business Services
002 Employment Agencies	066 Public Notice	121 Church Services
	067 Meeting Notice	122 Day-Care Nursery
	068 Lost & Found	123 Professional Services
<b>Announcements</b>		124 Carpet Cleaning
010 Card of Thanks		125 Barber/Sharing
011 Memorial		
012 Personal		
<b>Animals</b>		
020 Pets For Sale		
021 Livestock For Sale		
022 Pet Care		
<b>Auction</b>		
030 Furniture Auction		
031 Public Auction		
<b>Employment</b>		
040 Business Opportunity		
041 Help Wanted		
042 Employment Wanted		
<b>Merchandise</b>		
051 Antiques		
052 Furniture		
053 Pianos		
054 Air Conditioners		
055 Farm Machinery		
056 Miscellaneous		
<b>Announcements</b>		
010 Card of Thanks		
<b>031 Public Auction</b>		
PLANNING TO SELL: Why not sell the auction way? Contact Kenny Whit, Auctioneer, at 783-1242. c1-F		
<b>040 Business Opportunities</b>		
Address-Mail Commission circulars at home! Be flooded with offers! Offer details rush stamped address envelope & 25 cents service fee Cindy Brown, Dept. M, 209 Nunn Hall, MSU, Morehead, KY 40351. p-76F		
<b>041 Help Wanted</b>		
WANTED: Experienced Sawyer for automatic sawmill. Call 784-9901 or 784-4675 or 784-8825. c1-F		
<b>051 Antiques</b>		
FOR SALE: Antique Oak Dining Room furniture, round table with 3 leaves and 6 chairs, sideboard with half moon mirror, corner cupboard. Excellent condition. 784-9231. c-76F		

### 052 Furniture

FOR SALE: Ethan Allen Sofa 76" brown and peach and Ethan Allen wing chair, peach. \$500. Retail \$1,000. 784-8396. c-7TF

### 053 Pianos

FOR SALE: Baldwin, Wurlitzer, and others. Honest values. No "Balance Due" gimmicks. Easiest payments. Zurich Music Co., 325-14th Street, Ashland, Ky. c-7TF

### 055 Farm Machinery

FOR SALE: Gehl grinder mixer, 532 Ford baler excellent condition, 2688 Holland baler, good condition, gravel flow grain bed, hay and grain elevator, 70 model cab over GMC tractor, 120 flat bed, and other farm equipment. 784-7165. c-76F

### 056 Miscellaneous

\$45,000 guaranteed in less than 5 weeks. For more information send \$1.00 for postage and handling to Jewell Johnson, P.O. Box 324, Morehead, Ky. 40351. c-76F

### 056 Miscellaneous

\$45,000 guaranteed in less than 5 weeks. For more information send \$1.00 for postage and handling to Jewell Johnson, P.O. Box 324, Morehead, Ky. 40351. c-76F

### 056 Miscellaneous

\$45,000 guaranteed in less than 5 weeks. For more information send \$1.00 for postage and handling to Jewell Johnson, P.O. Box 324, Morehead, Ky. 40351. c-76F

### 056 Miscellaneous

\$45,000 guaranteed in less than 5 weeks. For more information send \$1.00 for postage and handling to Jewell Johnson, P.O. Box 324, Morehead, Ky. 40351. c-76F

### 056 Miscellaneous

\$45,000 guaranteed in less than 5 weeks. For more information send \$1.00 for postage and handling to Jewell Johnson, P.O. Box 324, Morehead, Ky. 40351. c-76F

### 056 Miscellaneous

\$45,000 guaranteed in less than 5 weeks. For more information send \$1.00 for postage and handling to Jewell Johnson, P.O. Box 324, Morehead, Ky. 40351. c-76F

### 056 Miscellaneous

\$45,000 guaranteed in less than 5 weeks. For more information send \$1.00 for postage and handling to Jewell Johnson, P.O. Box 324, Morehead, Ky. 40351. c-76F

### 056 Miscellaneous

\$45,000 guaranteed in less than 5 weeks. For more information send \$1.00 for postage and handling to Jewell Johnson, P.O. Box 324, Morehead, Ky. 40351. c-76F

### 056 Miscellaneous

\$45,000 guaranteed in less than 5 weeks. For more information send \$1.00 for postage and handling to Jewell Johnson, P.O. Box 324, Morehead, Ky. 40351. c-76F

### 056 Miscellaneous

\$45,000 guaranteed in less than 5 weeks. For more information send \$1.00 for postage and handling to Jewell Johnson, P.O. Box 324, Morehead, Ky. 40351. c-76F

### 056 Miscellaneous

\$45,000 guaranteed in less than 5 weeks. For more information send \$1.00 for postage and handling to Jewell Johnson, P.O. Box 324, Morehead, Ky. 40351. c-76F

### 056 Miscellaneous

\$45,000 guaranteed in less than 5 weeks. For more information send \$1.00 for postage and handling to Jewell Johnson, P.O. Box 324, Morehead, Ky. 40351. c-76F

### 056 Miscellaneous

\$45,000 guaranteed in less than 5 weeks. For more information send \$1.00 for postage and handling to Jewell Johnson, P.O. Box 324, Morehead, Ky. 40351. c-76F

### 056 Miscellaneous

\$45,000 guaranteed in less than 5 weeks. For more information send \$1.00 for postage and handling to Jewell Johnson, P.O. Box 324, Morehead, Ky. 40351. c-76F

### 056 Miscellaneous

\$45,000 guaranteed in less than 5 weeks. For more information send \$1.00 for postage and handling to Jewell Johnson, P.O. Box 324, Morehead, Ky. 40351. c-76F

### 056 Miscellaneous

\$45,000 guaranteed in less than 5 weeks. For more information send \$1.00 for postage and handling to Jewell Johnson, P.O. Box 324, Morehead, Ky. 40351. c-76F

### 056 Miscellaneous

\$45,000 guaranteed in less than 5 weeks. For more information send \$1.00 for postage and handling to Jewell Johnson, P.O. Box 324, Morehead, Ky. 40351. c-76F

### 056 Miscellaneous

\$45,000 guaranteed in less than 5 weeks. For more information send \$1.00 for postage and handling to Jewell Johnson, P.O. Box 324, Morehead, Ky. 40351. c-76F

### 056 Miscellaneous

\$45,000 guaranteed in less than 5 weeks. For more information send \$1.00 for postage and handling to Jewell Johnson, P.O. Box 324, Morehead, Ky. 40351. c-76F

### 056 Miscellaneous

\$45,000 guaranteed in less than 5 weeks. For more information send \$1.00 for postage and handling to Jewell Johnson, P.O. Box 324, Morehead, Ky. 40351. c-76F

### 056 Miscellaneous

\$45,000 guaranteed in less than 5 weeks. For more information send \$1.00 for postage and handling to Jewell Johnson, P.O. Box 324, Morehead, Ky. 40351. c-76F

### 010 Card of Thanks

NOTE OF THANKS  
 On behalf of the 7860 Parents Weekend Committee, we want to thank every person who helped to make Parents Weekend at MSU very successful.

A special thanks goes to the following groups/organizations:  
 MSU Campus Ministers Association, Morehead Ministerial Association, Morehead Churches, Downtown Merchants Association, Trademore Merchants Association, MSU Quarterback Club, Kentucky Utilities, The Morehead News, Trail Blazer, WMKY, WMOR, MSU TV-12, Morehead City Police, MSU Safety and Security, MSU Student Association, MSU Student Organizations, MSU Residence Hall Councils, MSU Program Council.

Each committee member worked in their area and with their people to make this weekend very meaningful to all who participated. We are confident the parents who were our guests this weekend are pleased to have their son/daughter a part of the Morehead Community.

Burford Craiger  
 Ronald Hart  
 Co-chairmen  
 1980 Parents Weekend Committee  
 Morehead State University  
 c-76F

### 021 Livestock For Sale

DAIRY CATTLE FOR SALE: Will sell 17 New York Halsteins Sept. 26 at Maysville Stockyards. Age 30 months. For further information call 683-4381. c-78TF

### 030 Furniture Auction

FURNITURE AUCTION: Every first and third Saturday at 7:30 p.m. Keeton Furniture Company West Main, Morehead, Ky. Phone 784-4988. c1-F

### 040 Business Opportunities

Address-Mail Commission circulars at home! Be flooded with offers! Offer details rush stamped address envelope & 25 cents service fee Cindy Brown, Dept. M, 209 Nunn Hall, MSU, Morehead, KY 40351. p-76F

### 041 Help Wanted

WANTED: Experienced Sawyer for automatic sawmill. Call 784-9901 or 784-4675 or 784-8825. c1-F

### 042 Employment Wanted

DISTRICT SALES MANAGER: Expanding publishing co. will hire 1 person to manage 12 county area. This person must be an excellent sales person. Preferably with business sales or intangible sales experience. Must be neat, honest, aggressive, able to hire, train, motivate. We will consider training a college business journalism or communications major. Earnings to \$30,000 first year for right person. Send resume to County Map Service, P.O. Box 12661, Lexington, Ky. 40580. c-76TF

### 043 Real Estate

Burger Queen is looking for intelligent person as an assistant manager. Salary negotiable. Apply in person at Burger Queen on Flemingsburg Road or at Bureau for Manpower Services. c-77TF

### 044 Real Estate

FOR SALE: Antique Oak Dining Room furniture, round table with 3 leaves and 6 chairs, sideboard with half moon mirror, corner cupboard. Excellent condition. 784-9231. c-76F

### 045 Real Estate

The oldest resort parks are Pine Mountain and Natural Bridge dating back to 1926. Jefferson Davis Monument State Shrine was completed in 1924.

### 052 Furniture

We buy direct to pass on greater savings: Warehouse Furniture Sales on Flemingsburg Rd., Approx. 3 miles north 184, Morehead. Open: Mon-Thurs. 5 p.m.-8 p.m., Fri. 11 a.m.-7 p.m., Sat. 9 a.m.-3 p.m., Sun. 1 p.m.-5 p.m.

### 053 Pianos

FOR SALE: Baldwin, Wurlitzer, and others. Honest values. No "Balance Due" gimmicks. Easiest payments. Zurich Music Co., 325-14th Street, Ashland, Ky. c-7TF

### 055 Farm Machinery

FOR SALE: Gehl grinder mixer, 532 Ford baler excellent condition, 2688 Holland baler, good condition, gravel flow grain bed, hay and grain elevator, 70 model cab over GMC tractor, 120 flat bed, and other farm equipment. 784-7165. c-76F

### 056 Miscellaneous

\$45,000 guaranteed in less than 5 weeks. For more information send \$1.00 for postage and handling to Jewell Johnson, P.O. Box 324, Morehead, Ky. 40351. c-76F

### 056 Miscellaneous

\$45,000 guaranteed in less than 5 weeks. For more information send \$1.00 for postage and handling to Jewell Johnson, P.O. Box 324, Morehead, Ky. 40351. c-76F

### 056 Miscellaneous

\$45,000 guaranteed in less than 5 weeks. For more information send \$1.00 for postage and handling to Jewell Johnson, P.O. Box 324, Morehead, Ky. 40351. c-76F

### 056 Miscellaneous

\$45,000 guaranteed in less than 5 weeks. For more information send \$1.00 for postage and handling to Jewell Johnson, P.O. Box 324, Morehead, Ky. 40351. c-76F

### 056 Miscellaneous

\$45,000 guaranteed in less than 5 weeks. For more information send \$1.00 for postage and handling to Jewell Johnson, P.O. Box 324, Morehead, Ky. 40351. c-76F

### 056 Miscellaneous

\$45,000 guaranteed in less than 5 weeks. For more information send \$1.00 for postage and handling to Jewell Johnson, P.O. Box 324, Morehead, Ky. 40351. c-76F

### 056 Miscellaneous

\$45,000 guaranteed in less than 5 weeks. For more information send \$1.00 for postage and handling to Jewell Johnson, P.O. Box 324, Morehead, Ky. 40351. c-76F

### 056 Miscellaneous

\$45,000 guaranteed in less than 5 weeks. For more information send \$1.00 for postage and handling to Jewell Johnson, P.O. Box 324, Morehead, Ky. 40351. c-76F

### 056 Miscellaneous

\$45,000 guaranteed in less than 5 weeks. For more information send \$1.00 for postage and handling to Jewell Johnson, P.O. Box 324, Morehead, Ky. 40351. c-76F

### 056 Miscellaneous

\$45,000 guaranteed in less than 5 weeks. For more information send \$1.00 for postage and handling to Jewell Johnson, P.O. Box 324, Morehead, Ky. 40351. c-76F

### 056 Miscellaneous

\$45,000 guaranteed in less than 5 weeks. For more information send \$1.00 for postage and handling to Jewell Johnson, P.O. Box 324, Morehead, Ky. 40351. c-76F

### 056 Miscellaneous

\$45,000 guaranteed in less than 5 weeks. For more information send \$1.00 for postage and handling to Jewell Johnson, P.O. Box 324, Morehead, Ky. 40351. c-76F

### 056 Miscellaneous

\$45,000 guaranteed in less than 5 weeks. For more information send \$1.00 for postage and handling to Jewell Johnson, P.O. Box 324, Morehead, Ky. 40351. c-76F

Shop The Classified Ads

# Classified Advertising

"Over  
A 1001

Things  
To Bu

Call Today 784-6868

### 099 Mobile Home For Rent

FOR RENT: 2 bedroom mobile home. Completely furnished. Utilities paid \$265 per month. Students preferred. 784-5300. ctf-TF

FOR RENT: Nice 1 bedroom trailer on large private lot in town. \$125 plus utilities. \$50 damage deposit. 784-6959. c-76TF

MOBILE HOME FOR RENT: 2 bedroom. Tolliver Addition. No children. No pets. 784-5851. ctf-TF

FOR RENT: 2 bedroom trailer on private lot, furnished or unfurnished. 784-6776. c-76TF

FOR RENT: 2 bedroom trailer. Furnished. Utilities paid. Binton's Mobile Home Park, U.S. 60 East. Phone 784-4792. c-76F

FOR RENT: 12 X 50 trailer. 2 miles West of Morehead on U.S. 60. 784-5978. c-78F

### 101 Mobile Home Lots

Two trailer parking spaces for rent. Call 784-4848. ctf-F

### 102 Want To Rent

WANT TO RENT: Country farm house. 2-3 bedroom, with land for garden. Within 15 miles of Morehead. Call 1-683-2904. ctf-TF

### Services

### 120 Business Services

Carpenter work and cabinet work. Call P.M. (Pat) Johnston, at 784-5986 or 784-4848. ctf-F

Steve Hatchell Will Service for oil well or water wells. Drilled or cleaned. Call 286-2567 or 738-6121. c-79TF

QUICK PRINTING now available in the Morehead area. Sale flyers, resumes, announcements, etc. Any quality accepted. Usually one day service. B&T QUICKPRINT. Trademore Center, Morehead, 784-6048. ctf-F

1&S Electrical Repair. Television and stereo repair. All makes and models repaired. Call 784-8088, 115 N. Wilson Ave., Morehead, KY 40351. c-78TF

### 122 Day Care Nursery

Daytime child care. Sherwood Forest. Reasonable rates. Ages 2-5 yrs. Call 784-9400. ctf-TF

Mama Mick's Day Care Center. Located in Pine Hills. Phone 784-7284. Monday-Friday. Daily schedules, daily lunches, daily naps, recreational facilities (inside and out). Hours: 7 a.m.-5 p.m. State approved and licensed. c-81TF

Childrens Corner Day Care Center are accepting children from ages 2-7. Call 784-4659. c-76TF

Martha Lowe has day care center on Christy Creek. Have opening for 1 or 2 more children. 784-4820. c-77TF

### 123 Professional Services

UNWANTED HAIR removed by re-moivation (the no-needle method). Completely painless and safe. Call Stucky's Beauty Salon for appointment. Downtown Morehead 784-4885, 784-9844 or Trademore Center 784-8961, 784-9811. ctf-TF

### 124 Carpet Cleaning

CARPET STEAM CLEANED: Any one room and hall...\$24.95. Any two rooms and hall...\$34.95. Furniture cleaning available. Thrifty Carpet Cleaning Company, 784-9648, Morehead, Kentucky. ctf-F

HOLBROOK STEAM CARPET CLEANING: Cleans your carpet and furniture like new. FREE ESTIMATE. Call anytime 784-5215, 784-4104 or 784-8296. ctf-F

### 125 Baby Sitting

LPN will keep up to 2 children in home. Can give reference. Will keep Mon.-Fri. Pleasant Village. Will serve breakfast, lunch and snacks. 783-1128. c-76TF

"Nothing is particularly hard if you divide it into small jobs." Henry Ford

### Transportation

### 130 Boats For Sale

15' D.I. Invader runabout. Tri-hull. 85 HP. Evinrude 784-8479 or 784-5274. c-79TF

FOR SALE: Bass Boat 1974 Ensign with 1977 Mercury 90HP motor. Float control trolling motor. \$1,800. 498-5657. c-76TF

### 131 Motorcycles

FOR SALE: 1976 Kawasaki Motorcycle 175 Street or trail. 1200 miles. Was bought new \$750.00. Call Dave Conley 784-7027. c-76TF

FOR SALE: 1980 Suzuki GS450. 600 miles. \$1,500. 784-6014. p-77TF

### 133 Used Cars

\*CASKEY USED CARS. U.S. 60 E. Phone 784-4213. Low down payment, on the lot financing. ctf-TF

FOR SALE: 1975 VW Dasher Station Wagon. Automatic, air, 40,000 miles, new radial tires. Excellent condition. \$3,200. 784-7521 or 784-8089 after 5 p.m. ctf-TF

FOR SALE: 1969 Chevrolet Malibu 307 engine with headers. Good condition. 784-9353 or 784-8821. c-77TF

CAR FOR SALE: 1976 Monie Carlo, automatic, air, power steering - brakes, AM-FM 8 track. Call 783-1020. c-77TF

FOR SALE: 1974 Camero Type LT, 45,000 miles, V8, great shape. \$1,850. Call 784-8591. c-76F

### 134 Used Trucks

FOR SALE: A complete truck housing. 18,500 with air brakes. Contact Kenneth Harris, Flat Fork in Carter Co. c-77TF

### Yard Sale

### 142 Garage Sales

GARAGE SALE: Friday and Saturday, 9-5, 144 Flemingsburg Rd., Atkinson Florist. Clothing, dishes, books, misc. items. p-76F

### 144 Miscellaneous Sales

YARD SALE: LOOK - one of the biggest - antiques, depression glass, lamps, salt & peppers, clothes, tools and many other items to choose from. Sept. 18th, 19th, 20th, 9 to 5, NEXT TO LARRY'S BOAT SALES, West Main, Hwy 60. Morehead. Phone 784-9378, 784-6132. p-76TF

YARD SALE: Depression glass, Avon and Avon bottles, old tools, lanterns, furniture, iron skillets, misc, etc. Start 8-7 Thur., Fri. and Sat. 137 First Street. p-76F

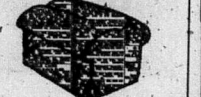
2 FAMILY YARD SALE: 8-6, Fri., Sat. and Sun. 310 Bays Ave. Clothes, skates, toys, and many misc. p-76F

YARD SALE: Saturday in front of T&E Jewelry Store in Heck's Center, Morehead. Four families included. Lots of clothing, shoes, purses, jewelry, household items. Sale begins at noon and ends at 6 p.m. nc-76F

AFTER THE PARADE: March on down to 302 East 2nd St., Yellow house behind Norge Village. Sat. Sept. 20, 11-5. Many toys, like new, sleeping bags, household items. If rain, same time Sept. 27. p-76F

Open your own retail apparel shop. Offer the widest selection of jeans, denim and sportswear. \$14,990.00. Includes everything you need to get started. Also, Complete Store! Open in an hour. 2 weeks anywhere in U.S.A. (also infants and children shops). Call BUE TOLL FREE 1-800-674-7700. p-97F

Just a little dough can make you a lot of bread in the WANT ADS



### Upstairs Remodeled OFFICE SPACE FOR RENT

150 1/2 East Main  
Call 784-4446 ctf-TF

### WANTED

We will buy junk automobile batteries. We Pay \$300 each

Caskeys Auto Parts  
U.S. 60 East, Morehead, Ky. 784-4213

### CASH PAID FOR ALUMINUM CANS AND ALL OTHER ALUMINUM

such as cookware, siding, engine pistons and transmission cases. A magnet or load stone will not stick to aluminum. We are currently paying 20¢ a lb. We also buy all grades of copper, junk batteries, lead, brass, stainless steel, zinc and reconditionable 55 gal. steel drum. Buyer will be on Apollo Oil Co. lot. Mt. Sterling Lot, next to Maloney's. 5 1/2 days a week  
498-5812 or 498-6789

PARTIALLY FINISHED HOME - 3 bed rooms split foyer, large one car garage, heat pump, more or less one acre lot. Two full baths. Anderson windows. Privacy. Call Woodie, Low 50's. Unique cinder exterior. No. 142

ENJOY SPACE Enjoy this home. 3 bedroom 2 1/2 baths, fireplace, plus much more. Double car garage. Nice in every way. No. 144

Less than 5 minutes from Morehead, three houses in good condition, buy one, two or three. Call Wannie for details 784-8673. #141

Sit by the poolside and enjoy the privacy of your fenced-in entertainment area. 4 bedrooms, 3 baths, living room, dining room, family room, 2 fireplaces, heat pump, maid's or guest quarters, on approx. 2 1/2 acres. Only 12 minutes from town. Call Mary at 784-6900. No. 137

MINIATURE FARM Approximately six acres only five miles from Morehead and 7 minutes from Cave Run Lake. Mobile home lot a possibility in area separated from residence. Call John No. 127

Good opportunity property, 1/2 mile from Morehead on U.S. 60, house and mobile home with good sized lot. Owner will land contract. Call Wannie 784-8673. No. 138

Nice house in Farmers on 1.36 acres near river. Many good features, reasonably priced. Call Wannie 784-8673. No. 139

### PROFESSIONAL REALTY & AUCTION SERVICE

784-6766 Steve Barker - Broker/Salesman 784-6766  
784-6766 Apprentice Auctioneer

"Woodie" Hamilton, Salesman 784-6354  
Mary Levey, Salesperson 784-9900

John Razer, Salesman 784-6511  
Wannie Randall, Salesperson 784-8673

Doel Hafer, Broker-Auctioneer

### ROBERT LEWIS AGENCY, INC. - R

INSURANCE REAL ESTATE AUCTIONS APPRAISALS  
784-4168 Morehead, Ky.

COPPER HOLLOW - Enjoy fine country living on your own 3 acre estate... Quality built home with loads of added features, such as beamed ceilings, wood plank floors, office and much more. Truly a gracious home you can be proud of. \$92,500.

MAIN STREET - Stately ten room brick home and four small frame houses located in center of downtown area. Main dwelling has unlimited possibilities as either residence, business or both. Plenty of parking area and ideal for walk-in traffic. A once in a lifetime opportunity. Call for more information.

CRESTVIEW LANE - Convenient location plus plenty of room for a large family. 5 bedrooms, with 2 in the full finished basement, which would be perfect for teenagers. 2 fireplaces, carport and many other extras. 2698 sq. ft. of living area for only \$69,500.

OKDALE SUBDIVISION - Well built three-bedroom brick with two full baths, 2-car garage and 1/2 acre lot. This house has been cared for and is ready for you to move in. A real friendly neighborhood and only a short drive from town. Asking \$81,500.

### Business and Professional DIRECTORY

Reliable, Dependable Businesses and Services in This Area.

List the Name Of Your Firm In The Directory Call 784-8868 Today.

James Plumbing and Heating  
Commercial and Plumbing and Heating or Repair Service  
Call 784-9875 ctf-TF

Peoples Bank  
Olive Hill  
886-4423

Imperial Cleaners  
Pick Up & Delivery  
Mon.-Sat. - 5 a.m.-5 p.m.  
Phone 784-4104  
One Day Service  
Uniform Rental "Linen Service"

Morehead Printing Service  
Complete Printing Facilities  
For All Your Needs  
Phone 784-4116  
722 W. First St.  
(A Division Of The Morehead News Inc.)

### WAREHOUSE FURNITURE SALE

Brand Names in Furniture At Discount Prices!

Recliners ..... Starting At \$89.00

Three-Piece Living Room Suites Starting At \$299.00

Solid Wood Gun Cabinets ... Oak or Pine \$219.00

Air Conditioner ..... Cools 3 to 4 Rooms \$377.00

Microwave Ovens ..... From \$349.00

Chest Freezer ..... 25 Cu. Ft. \$449.00

FINANCING AVAILABLE AT BANK RATES:

IF YOU NEED FURNITURE FOR YOUR HOME COME TO

### WAREHOUSE FURNITURE SALES

FOR BIG SAVINGS

Located At Kinders Storage Center 3 Miles North of I-64 on Morehead - Flemingsburg Road

OPEN WEEKENDS ONLY

Mon. thru Thurs. 5-8 Fri. 11-7 Sat. 9-3 Sun. 1-5

For Appointment See or Call Paul Fyffe, Sales Mgr.  
Phone 784-8817

### Storage Buildings

Wood storage buildings by Cooper Homes, Inc. sizes from 6x8 up to 8x20 will store and roof to match your existing house. To qualified buyers financing available. Will deliver and set up ready for use free within 25 miles radius. Call 784-8036.

### Building Materials

- Preway Fireplace and accessories now featuring money saving energy mizer fireplace.
- Stanley metal clad entry systems - completely assembled; all sizes & styles.
- Scheirick Kitchen Cabinets
- Power roof ventilators varipitch adjustable louvers
- Plywood sheets 4x8 exterior and interior; 3/4 partial board; 3/8 Rev. BB Exterior Siding
- Rollyson aluminum windows & patio doors; mill, white, or bronze finish.
- Crestline wood windows
- Kwik set and Harloc Locks
- Cuprinol stains & wood preservatives
- Lumber and building materials
- Pressure Treated Decking Material-Sizes 4x4's, 2x6's, 2x8's; Excellent for patios and porches.

See-

### COOPER HOMES Inc.

LOCATED Financing Available  
1/4 Mile Off I-64 on Flemingsburg Rd. Phone 784-80  
Morehead, Ky.

WE'RE OPEN: Mon.-Fri. 7 a.m.-5 p.m.  
Sat. 9 a.m.-5 p.m.





### Consumer Comments

This column is written by Steven L. Beshear, Attorney General of Kentucky. Any reader having questions (or complaints) should write to Mr. Beshear at Frankfort, Ky.

Attorney General Steve Beshear says Kentuckians apparently are not taking advantage of their rights as credit card shoppers.

Federal law allows consumers who shop with credit cards to stop payments for defective merchandise or poorly performed services. However, according to industry spokesmen, consumers rarely exercise this right.

The federal law involved, the Fair Credit Billing Act, states that merchants who have purchased defective merchandise or services may have the right to have charges for those goods or services removed from their credit card bill if they have made a good faith effort to return the items or if they have given the merchant an opportunity to resolve the problem.

A consumer who wants to cancel such a charge may do so by writing the

company which issued his or her card explaining the problem. This notice must reach the creditor within 60 days after the consumer received his credit card bill.

Consumers who shop with bank credit cards, such as MasterCard or Visa, also have the right to cancel charges for defective goods or services. However, certain conditions must first be met. In addition to requiring the consumer to try to work things out with the merchant before removing the charge, the law pertaining to bank cards limits a consumer's right to cancellation to those purchases made either in his or her home state or within 100 miles of his or her home. Only purchases for more than \$50 may be cancelled when bank issued credit cards are used.

If you wish to cancel a charge for defective goods or services purchased with your bank credit card and you have attempted to correct the problem without success, you should write the bank which issued your card. The charge will then be removed from your account and charged back to the merchant's bank.

After a charge has been removed from your account, you may be recharged for that purchase if the merchant sends a notice to your credit card issuer stating that the problem with the purchase has been resolved. If you have been recharged for such a purchase, a notice of the recharge will be sent to you in your monthly statement.

If you maintain that the problem has not been satisfactorily resolved, you may have the charge removed again by contacting the company or bank which issued your card. Check your statements to make sure that your bill has been adjusted correctly.

Removing a charge from your credit card bill does not prevent a merchant from trying to collect a debt in other ways. A merchant may file suit against you for the amount of the purchase. If a merchant files suit against you for payment of a credit card debt, you may want to check with a lawyer to make sure you are on sound legal footing.

Remember, the best way to deal with consumer problems is to prevent them from occurring by knowing and exercising your consumer rights. The right to return credit card charges for defective goods or services is only one such right.



Complete Mural

Residents at the Morehead Treatment Center recently completed a wall mural in the foyer of the center. Morehead State University Art Student Mack Martin of Wayland sketched the scene and the girls painted, using techniques Martin taught them in art classes.

## Cancer Hopeline

Hogge Building  
First Floor  
120 Normal Avenue  
Morehead, Kentucky 40351  
(606) 784-6458

Q. I know it's important to have a regular Pap smear to check for cervical cancer. What did my doctor mean when he told me my last one was Class 2?

A. When a smear is returned from the lab, the results are classified more or less as follows:

- Class 1. Negative. The smear was normal.
- Class 2. Atypical cells present. Garden variety vaginal infections such as trichomoniasis or monilia can cause a Class 2 diagnosis, as could cervicitis, an inflammation of the uterine lining sometimes caused by IUDs. Class 2 may also indicate a woman has an early, very mild dysplasia (cluster of abnormal cells). A Class 2 diagnosis is not cause for alarm.
- Class 3. Abnormal cells consistent with dysplasia. This means a woman

has a premalignant cell growth, a cancer forerunner which has progressed from mild to severe but has not yet been carcinoma in situ (early cancer is localized form).

Class 4. The smear containing abnormal cells consistent with carcinoma in situ (localized carcinoma). A woman may have severe dysplasia that is not malignant at all, or she might have cancerous cells confined to one small area.

Class 5. Positive for malignancy. This means that the Pap smear contains cells which are suggestive of carcinoma (a form of cancer which arises in the tissues that cover or line such organs of the body as the uterus, etc.).

For further information about the Pap smear, or for answers to your other cancer questions, call the Hopeline's toll free number (1-800-432-9321) or write us at 915 S. Limestone St., Lexington, KY 40536.

Israel Boone, son of Daniel Boone, was killed in the Battle of Blue Licks, August 19, 1782.

## Fall Fishing Rodeo Now Underway At Dale Hollow

When it's roundup time at Kentucky's Dale Hollow Lake, water cowboys will be tackling record-size fish instead of bucking broncos in the Third Annual Fall Fishing Rodeo, Sept. 15-Oct. 31.

Dale Hollow Lake, straddling the Kentucky-Tennessee border, offers a scenic backdrop for weekend anglers to challenge their skills against sly small-mouth bass or wily catfish hiding in the 30,000 acres of quiet lake waters. Record fish have been taken in this lake, including the world record for smallmouth bass at 11 pounds 15 ounces in 1965. Last year's rodeo drew fishermen from eight states, all trying to break those previous records.

The 1980 rodeo is sponsored by eleven resort marina operators along the 620 miles of shoreline of Dale Hollow. They will award 52 prizes weekly to winners who snag the largest fish in nine categories.

The contest is free and open to all fishermen, fisherman, and fisher-children who register for the rodeo at one of the eleven resorts and stay, in a cottage, a campground or on a rented houseboat.

Information about the rodeo and participating resort marinas can be obtained by writing the Contest Secretary c/o Resource Manager's office, Celina, TN 38551, (615) 243-3136.

## REVIVAL

3 Services

Friday Night

Saturday Night

Sunday Morning



Evangelist Clifford Hutchinson

### Back Home

Clifford Hutchinson will be with the Reverend Cecil Ison and his congregation Friday Night, Saturday Night and Sunday Morning at the

### EAST END CHURCH OF GOD

Let's make this three big services with your hometown boy, Cliff Hutchinson.

Special Singing For All Three Services

Rev. Cecil Ison, Pastor

**Morehead DRIVE-IN THEATRE**  
Morehead, Ky.

Fri.-Sat.  
Sept. 19-20  
"Shape of Things to Come"  
In Color - Rated "PG"  
Jack Palance

ALSO  
"Stranger & The Gunfighter"  
In Color - Rated "PG"  
Lee Van Cleef

Sun. thru Wed.  
Sept. 21-22-23-24  
"Used Cars"  
In Color - Rated "R"  
Kurt Russell

ALSO  
"Hot Stuff"  
In Color - Rated "PG"  
Jerry Reed

Charlie's Carpets is having a special **CARPET SALE**

on West Point Pepperell Brand Carpets including Avenger-Inspiration-Sunliner-Epitome

**GREAT CARPET BUY**

Sunliner and G.F.I. Matrix Pad with life of the house guarantee

**\$1895** FROM INSTALLED

Carpet From \$2.95 sq. yd.

**DURING THIS SALE.**

NEW HOURS DURING SALE.  
Mon.-Fri. 8-6  
Saturday 8-5

Also at Charlie's Carpets Register now for two free tickets to the **UK—Bowling Green game Sept. 27!**

Drawing to be held Wed. Sept. 24  
You Need Not Be Present To Win

**Charlie's Carpets Inc.**  
1/4 mile north of Trademore on Ky 32  
Morehead Phone 784-5242

**EUREKA**

HARVEST FESTIVAL SPECIAL

Upright with **Vibra-Cremer II**

**BONUS OFFER!**  
12" Deluxe 4-pc tool set included!

**\$8995** MODEL 1462

Sug. Reg. w/Tool \$124.00

- Wide upright height and top filling out bag
- Disposable dust bag has huge 600 cu. in. capacity
- Four easy roll wheels can't snag floors. Wide easily over door pile rug.
- Low profile enables cleaning to hard-to-reach areas.

**MOREHEAD FURNITURE & APPLIANCE**  
206 W. Main St.  
Morehead, Ky.  
Phone 784-4181

**GARAGE SALE**

AS ADVERTISED IN THE MOREHEAD NEWS

**Our Free "GARAGE SALE" Sign Will Help You Draw a Crowd**

There's no better way to attract a crowd to your garage sale than The Morehead News "one-two" advertising punch!

1. advertise your garage sale in the Morehead News classifieds to let everyone in town know about your sale.
2. place our attention-getting "GARAGE SALE" sign—free with the purchase of a classified ad—at strategic locations in your neighborhood.

Call in your ad today, then drop by our office to pick up your free "GARAGE SALE" sign... and good luck with your sale.

Telephone 784-6868  
Put Our Classifieds to Work for You

**The Morehead News**



# The Morehead News

S. C. Van Curen

## Agree Or Not . . .

EDITORIAL AND OPINION PAGE

Published By The Morehead News, Inc., 722-30 West First Street  
Morehead, Ky. 40351

Ronald J. Caudill  
Executive Vice President

Betty L. Caudill  
Vice President

Joe Lamb  
Managing Editor

PAGE 18

FRIDAY MORNING, SEPTEMBER 19, 1980

## A Group Effort

It's Harvest Festival time again in Morehead. And, ready or not, the crowds will be here this weekend.

Earlier this year, it appeared likely there would be no fourth annual Harvest Festival; but thanks to a concerted effort by a group of concerned individuals and businesses, the event is now a reality.

No one is saying that everything went smoothly or that there were no problems, but the result is that the festival is being staged and we have those people, who so generously

donated their time and energy in the planning and organization of the Harvest festival, to thank for it.

What is left for those of us who were not involved in planning and organizing the activities is to put our best faces forward and show our visitors how welcome they are and how fine our community is.

Part of the work for this weekend's Harvest Festival has just begun. For it to be really successful, the group effort must continue.

## Physician Glut?

A new study charges that there will be a glut of physicians in the United States and recommends a reduction in medical school admissions and in the number of foreign medical practitioners allowed into the country.

By whose standards is there a glut? Surely there is no glut by the standards of a patient who waits 90 minutes in an outer office to get medical treatment, or had to make an appointment six weeks in advance.

There is only a glut if one hopes to see the continued escalation of medical charges made possible by too little competition.

There probably is maldistribution among the specialties, as the federal government panel's study maintains, but it seems unlikely that there are, or will be, too many practitioners in any medical specialty. Are any competent medical men finding insufficient work to make a decent living? Is there a vicious struggle to grab patients from one another?

More physicians means more choice for the public and more incentives for those who practice medicine to keep their skills honed and their knowledge current.

## Auto Controls

Ford has unveiled its new "world car," and a good little car it seems, too. One cannot help wondering, though, if Ford would ever have built it if two years ago Ford had gotten the protection from foreign competition it is now seeking.

The Ford Escort/Mercury Lynx reportedly were designed practically from scratch to meet today's needs. They offer front-wheel drive for good traction and extra room inside and get impressive mileage. Starting from the beginning to design a car is an expensive process; it is much cheaper for a company to adapt an existing model. Competition from efficient European and Japanese cars forced Ford to produce a more innovative car.

If Ford had been sheltered from that

competition, it is questionable that the new cars would have been created. Probably the company would have tried to get a few more years out of the old Pinto, though perhaps under a different name.

With a good car and its huge dealer network offering easy service and readily available parts, Ford ought to be able to sell a good many Ford Escorts and Mercury Lynxes.

The public has benefited from competition among automakers; it now has one more good option to consider. Had protective duties kept the foreign cars out, the public may have had neither good imported cars, nor good American small cars. Without the Fiats, Renaults, Toyotas and Volkswagens, there may have been no Escorts or Lynxes.

FRANKFORT — One piece of Gov. John Young Brown Jr.'s business promotion legislation has drawn criticism from the merchants in at least two Kentucky cities and more may be expected.

The legislation under criticism is House Bill 462 that permits local government entities to issue revenue bonds for the construction of business and industrial facilities.

A Tennessee development firm has proposed building shopping centers in Hopkinsville and Winchester with the K-Mart as one of its chief tenants in each city. (Merchants in Grayson are fighting a similar development.) The shopping centers would be financed with bond issues underwritten by both the cities and the bonds would be tax-free to the investors.

One of the key incentive features of the provisions of the legislation is that it exempts property taxes.

Merchants in both Hopkinsville and Winchester oppose the moves with the criticism that the cities are underwriting financing of competition, and that the property is tax-free.

This bill sailed through the legislature with little opposition although several amendments were proposed and some of these were adopted.

The final vote on the bill in the House was 58 to 19 and some of these were adopted.

There was no organized opposition to the legislation from business interests in the state according to Rayburn Watkins, executive director of Associated Industries of Kentucky, the chief organization that looks after private business interests in legislative sessions.

In a telephone interview last week, Watkins said AIK "had reservations about the measure but made no strong fight against nor did AIK endorse it." Watkins went on to explain that "it is bound to have two sides to the coin. The legislation affords competition for local business and local merchants don't like the idea of outsiders being financed by local bonds as competition."

Watkins said business interests before the legislature just overlooked the legislation. One item of legislation in the 1980 session that drew major attention from business interests was workers' compensation insurance.

One critic of House Bill 462 says cities should beware of promoters who might wish to use this type of financing. A corporation could be formed to develop a shopping center for instance. Heavy

administration costs during construction could be charged and the corporation could go bankrupt before it is completed. Nothing would be left for the city but the unfinished shopping center and the papers of a bankrupt corporation.

Usually, on developments of this magnitude, a separate corporation is formed for each shopping center.

Kentucky has had the experience of several shopping centers going bankrupt before construction has been completed.

Watkins warned that some local government entities could get into deep trouble unless extreme caution is used. "It (the legislation) certainly opens a Pandora's box," Watkins said.

The safeguard in most cases is that the developer has contracts for tenants

in the shopping center, or at least enough tenants to make it safe, before construction actually starts. Usually the developer must show this proof before the money is loaned or bonds sold.

A companion bill to HB 462 was passed as HB 464. This latter bill permits the Industrial Development Authority of Kentucky to issue \$2 million in tax free bonds to encourage industry to come to Kentucky.

The old Kentucky Industrial Finance Authority was created under the administration of Gov. Bert T. Combs. This authorizes the issuance of revenue bonds to construct buildings for new industry, but the contract with the industry binds them for a certain number of years rental which amortizes the debt for the building.

## Letters

The Editor:

The 1980 Kentucky Legislative Session passed several items that more clearly establishes the procedures for city governments to follow. To bring this information to the citizens of Morehead, I have developed the following summary:

(1) The executive authority is the elected mayor. (S.B.26, KRS-83A)

(2) All non-elected city officials shall be appointed by the executive authority. (KRS-83A.080)

(3) Each city may create the position of city administrative officer which shall be directly responsible to the executive authority of the city. (KRS-83A.090)

(4) The Mayor shall supervise all departments of city government and the conduct of all city officers and shall require each department to make reports to him required by ordinance or as he deems desirable. The mayor shall report to the council and to the public on conditions and needs of the city government not less than annually. (KRS-83A.120)

(5) Any delegation of the mayor's powers, duties, or responsibilities to subordinate officers and employees and any expression of official authority to fulfill executive functions shall be made by executive order. (KRS-83A.130-7)

(6) The mayor shall be the appointing authority with powers to appoint and remove city employees except as tenure and terms of employment are protected by statute, ordinance or contract. (KRS-83A.138-9)

(7) The legislative authority of the city shall be vested in an elected council of the city. The council shall not perform any executive functions except those functions assigned by statute. (KRS-83A.138-11)

(8) The council shall by ordinance establish all appointive officers and the duties and responsibilities of those officers and codes, rules, and regulation for public health, safety and welfare. (KRS-83A.138-12)

(9) The council shall have the right to investigate all activities of the city. (KRS-83A.138-13)

For further information, refer to chapter 235 (SB26) KRS-83A.010 to KRS-99.960.

Crayton Jackson,  
Mayor

The Editor:

By all means the city of Morehead should put a stop-and-go sign at the entrance to St. Claire Medical Center on busy KY 22 north.

When you get ready to leave the hospital you have to wait 10 or 15 minutes to get out. And it's worse when you are trying to turn left to get back into Morehead.

I pray they will put a stop-and-go sign up in the near future before someone gets killed trying to get out on busy 22 north.

Rev. Conner Corey  
P.O. Box 478  
Owingsville, KY

# 10.875%

## ON SIX-MONTH SAVINGS CERTIFICATES PURCHASED THE WEEK OF SEPT. 18 - SEPT. 24

We pay the highest annual rate on six month savings certificates purchased in minimums of \$10,000.

A 2½ Year Certificate Lets You Earn 11.05%  
Compounded Daily On A Minimum  
Investment Of \$500.00



### PEOPLES BANK of Morehead

MOREHEAD, KENTUCKY  
ESTABLISHED 1907



And at Peoples Bank of Morehead, you can receive your interest in a monthly income check.

We also pay the highest interest allowed by law on all of our Certificates of Deposit and our passbook Savings Account.

Come in and ask our friendly financial advisers for the best savings plan for you.

Federal regulations prohibit the compounding of interest during the term of deposit on these six-month savings certificates.

### All accounts insured up to \$100,000 by the Federal Deposit Insurance Corporation

Federal regulations require substantial interest penalties if funds are withdrawn prior to maturity.

## PEOPLES BANK of Morehead



I'm for nuclear power providing it's safe. If there's one thing I'd hate to see it's Kentucky Fried Kentucky.

### Letters Welcome

The Morehead News welcomes letters to the editor. We feel that this column provides our readers a viable and effective alternative to disseminate their views to the community.

Because of the opportunity for verification of this privilege, however, we must impose certain guidelines.

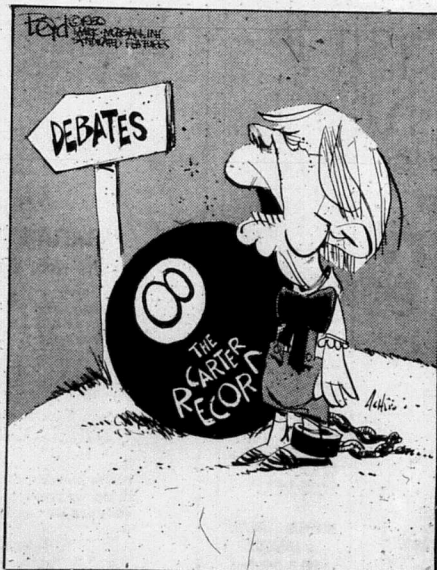
Letters must be signed, dated and contain the name and address of the writer. They should also contain a telephone number for verification.

Letters must be typed or written in clearly legible handwriting.

Letters must contain the writer's point of view on a legitimate topic, opinion or idea. Letters of a purely "Thank You" nature, and those with no other purpose other than to endorse a political candidate cannot be considered for publication.

The Morehead News reserves the right to edit all letters.

Address correspondence to: "Letters to the editor," The Morehead News, 722 West First Street, Morehead, KY 40351.



"If You Don't Play My Way...  
I'll Take My Ball And Chain And Go Home!"

# The Morehead News

S. C. Van Curon

## Agree Or Not . . .

EDITORIAL AND OPINION PAGE

Published By The Morehead News, Inc., 722-30 West First Street  
Morehead, Ky. 40351

Ronald J. Caudill  
Executive Vice President

Betty L. Caudill  
Vice President

Joe Lamb  
Managing Editor

PAGE 18

FRIDAY MORNING, SEPTEMBER 19, 1980

## A Group Effort

It's Harvest Festival time again in Morehead. And, ready or not, the crowds will be here this weekend.

Earlier this year, it appeared likely there would be no fourth annual Harvest Festival; but thanks to a concerted effort by a group of concerned individuals and businesses, the event is now a reality.

No one is saying that everything went smoothly or that there were no problems, but the result is that the festival is being staged and we have those people, who so generously

donated their time and energy in the planning and organization of the Harvest festival, to thank for it.

What is left for those of us who were not involved in planning and organizing the activities is to put our best faces forward and show our visitors how welcome they are and how fine our community is.

Part of the work for this weekend's Harvest Festival has just begun. For it to be really successful, the group effort must continue.

## Physician Glut?

A new study charges that there will be a glut of physicians in the United States and recommends a reduction in medical school admissions and in the number of foreign medical practitioners allowed into the country.

By whose standards is there a glut? Surely there is no glut by the standards of a patient who waits 90 minutes in an outer office to get medical treatment, or had to make an appointment six weeks in advance.

There is only a glut if one hopes to see the continued escalation of medical charges made possible by too little competition.

There probably is maldistribution among the specialties, as the federal government panel's study maintains, but it seems unlikely that there are, or will be, too many practitioners in any medical specialty. Are any competent medical men finding insufficient work to make a decent living? Is there a vicious struggle to grab patients from one another?

More physicians means more choice for the public and more incentives for those who practice medicine to keep their skills honed and their knowledge current.

## Auto Controls

Ford has unveiled its new "world car," and a good little car it seems, too. One cannot help wondering, though, if Ford would ever have built it if two years ago Ford had gotten the protection from foreign competition it is now seeking.

The Ford Escort/Mercury Lynx reportedly were designed practically from scratch to meet today's needs. They offer front-wheel drive for good traction and extra room inside and get impressive mileage. Starting from the beginning to design a car is an expensive process; it is much cheaper for a company to adapt an existing model. Competition from efficient European and Japanese cars forced Ford to produce a more innovative car.

If Ford had been sheltered from that

competition, it is questionable that the new cars would have been created. Probably the company would have tried to get a few more years out of the old Pinto, though perhaps under a different name.

With a god car and its huge dealer network offering easy service and readily available parts, Ford ought to be able to sell a good many Ford Escorts and Mercury Lynxes.

The public has benefited from competition among automakers; it now has one more good option to consider. Had protective duties kept the foreign cars out, the public may have had neither good imported cars, nor good American small cars. Without the Fiats, Renaults, Toyotas and Volkswagens, there may have been no Escorts or Lynxes.

FRANKFORT — One piece of Gov. John Young Brown, Jr.'s business promotion legislation has drawn criticism from the merchants in at least two Kentucky cities and more may be expected.

The legislation under criticism is House Bill 462 that permits local government entities to issue revenue bonds for the construction of business and industrial facilities.

A Tennessee development firm has proposed building shopping centers in Hopkinsville and Winchester with the K-Mart as one of its chief tenants in each city. (Merchants in Grayson are fighting a similar development.) The shopping centers would be financed with bond issues underwritten by both the cities and the bonds would be tax-free to the investors.

One of the key incentive features of the provisions of the legislation is that it exempts property taxes.

Merchants in both Hopkinsville and Winchester oppose the moves with the criticism that the cities are underwriting financing of competition, and that the property is tax-free.

This bill sailed through the legislature with little opposition although several amendments were proposed and some of these were adopted.

The final vote on the bill in the House was 58-19 and some of these were adopted.

There was no organized opposition to the legislation from business interests in the state according to Rayburn Watkins, executive director of Associated Industries of Kentucky, the chief organization that looks after private business interests in legislative sessions.

In a telephone interview last week, Watkins said AIK "had reservations about the measure but made no strong fight against it." He said AIK "did not endorse it." Watkins went on to explain that "it is bound to have two sides to the coin. The legislation affords competition for local business and local merchants don't like the idea of outsiders being financed by local bonds as competition."

Watkins said business interests before the legislature just overlooked the legislation. One item of legislation in the 1980 session that drew major attention from business interests was workers' compensation insurance.

One critic of House Bill 462 says cities should beware of promoters who might wish to use this type of financing. A corporation could be formed to develop a shopping center for instance. Heavy

administration costs during construction could be charged and the corporation could go bankrupt before it is completed. Nothing would be left for the city but the unfinished shopping center and the papers of a bankrupt corporation.

Usually, on developments of this magnitude, a separate corporation is formed for each shopping center.

Kentucky has had the experience of several shopping centers going bankrupt before construction has been completed.

Watkins warned that some local government entities could get into deep trouble unless extreme caution is used. "It (the legislation) certainly opens a Pandora's box," Watkins said.

The safeguard in most cases is that the developer has contracts for tenants

in the shopping center, or at least enough tenants to make it safe, before construction actually starts. Usually the developer must show this proof before the money is loaned or bonds sold.

A companion bill to HB 462 was passed as HB 464. This latter bill permits the Industrial Development Authority of Kentucky to issue \$2 million in tax free bonds to encourage industry to come to Kentucky.

The old Kentucky Industrial Finance Authority was created under the administration of Gov. Bert T. Combs. This authorizes the issuance of revenue bonds to construct buildings for new industry, but the contract with the industry binds them for a certain number of years rental which amortizes the debt for the building.

## Letters

The Editor:

The 1980 Kentucky Legislative Session passed several items that more clearly establish the procedures for city governments to follow. To bring this information to the citizens of Morehead, I have developed the following summary:

(1) The executive authority is the elected mayor. (SB26, KRS-83A)

(2) All non-elected city officials shall be appointed by the executive authority. (KRS-83A-080)

(3) Each city may create the position of city administrative officer which shall be directly responsible to the executive authority of the city. (KRS-83A-090)

(4) The Mayor shall supervise all departments of city government and the conduct of all city officers and shall require each department to make reports to him required by ordinance or as he deems desirable. The mayor shall report to the council and to the public on conditions and needs of the city government not less than annually. (KRS-83A-130)

(5) Any delegation of the mayor's powers, duties, or responsibilities to subordinate officers and employees and any expression of official authority to fulfill executive functions shall be made by executive order. (KRS-83A-130-7)

(6) The mayor shall be the appointing authority with powers to accept and remove city employees except as tenure and terms of employment are protected by statute, ordinance or contract. (KRS-83A-132-9)

(7) The legislative authority of the city shall be vested in an elected council of the city. The council shall not perform any executive functions except those functions assigned by statute. (KRS-83A-130-11)

(8) The council shall by ordinance establish all appointive officers and the duties and responsibilities of these officers and codes, rules, and regulation for public health, safety and welfare. (KRS-83A-130-12)

(9) The council shall have the right to investigate all activities of the city. (KRS-83A-130-13)

For further information, refer to chapter 225 (SB26) KRS-83A-010 to KRS-99-360.

Crayton Jackson  
Mayor

The Editor:

By all means the city of Morehead should put a stop-and-go sign at the entrance to St. Claire Medical Center on busy KY 32 north.

When you get ready to leave the hospital you have to wait 10 or 15 minutes to get out. And it's worse when you are trying to turn left to get back into Morehead.

I pray they will put a stop-and-go sign up in the near future before someone gets killed trying to get out on busy 32 north.

Rev. Conner Corey  
P.O. Box 478  
Owingsville, KY

# 10.875%

## ON SIX-MONTH SAVINGS CERTIFICATES PURCHASED THE WEEK OF SEPT. 18 - SEPT. 24

We pay the highest annual rate on six month savings certificates purchased in minimums of \$10,000.

### A 2½ Year Certificate Lets You Earn 11.05% Compounded Daily On A Minimum Investment Of \$500.00



FDIC

## PEOPLES BANK of Morehead

MOREHEAD, KENTUCKY  
ESTABLISHED 1907



And at Peoples Bank of Morehead, you can receive your interest in a monthly income check.

We also pay the highest interest allowed by law on all of our Certificates of Deposit and our passbook Savings Accounts.

Come in and ask our friendly financial advisers for the best savings plan for you.

Federal regulations prohibit the compounding of interest during the term of deposit on these six-month savings certificates.

## PEOPLES BANK of Morehead

### All accounts insured up to \$100,000 by the Federal Deposit Insurance Corporation

Federal regulations require substantial interest penalties if funds are withdrawn prior to maturity.



"I'm for nuclear power providing it's safe. If there's one thing I'd hate to see it's Kentucky Fried Kentucky."

## Letters Welcome

The Morehead News welcomes letters to the editor. We feel that this column provides our readers a viable and effective alternative to disseminate their views to the community.

Because of the opportunity for misuse of this privilege, however, we must impose certain guidelines:

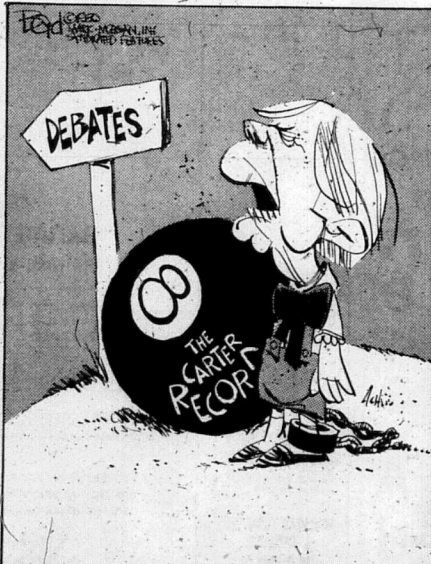
Letters must be signed, dated and contain the name and address of the writer. They should also contain a telephone number for verification.

Letters must be typed or written in clearly legible handwriting.

Letters must contain the writer's point of view on a legitimate topic, opinion or idea. Letters of a purely "Thank You" nature, and those with no other purpose other than to endorse a political candidate cannot be considered for publication.

The Morehead News reserves the right to edit all letters.

Address correspondence to: "Letters to the editor," The Morehead News, 722 West First Street, Morehead, KY 40351.



"If You Don't Play My Way... I'll Take My Ball And Chain And Go Home!"



# Dairy Production Exceeds Consumption

Milk production is increasing across the country, and the trend is causing concern down on the farm in terms of the prospects of lower prices received by producers.

Estimates of milk production are up 1.5 billion pounds for the 1980-81 marketing year, compared with the current year's total, according to Ken Olson, Extension dairy specialist in the University of Kentucky College of Agriculture.

The continuing trend of increased milk production is causing a buildup of

surplus stocks of dairy products which are covered by the government price support program.

"This is why dairymen are concerned," Olson said. "During next year, Congress must consider dairy legislation, and with increasing surplus, it will be difficult to maintain the current price support program."

Olson said that there are two things dairymen can do to meet the surplus challenges: (1) Support programs designed to expand market demand for milk and dairy products, and (2)

Decrease total production by culling low producing cows, which will improve the dairyman's profit.

"If your herd is not already enrolled in the Kentucky Dairy Herd Improvement program, contact your county Extension agent to find out how DHI can help you increase the profitability of your herd," advised Olson. "It will be difficult to maintain current profits if milk prices go lower while costs continue to rise."

Dairymen in DHI can identify cows producing at an unprofitable level so they can be culled. This management step will help the dairyman improve his herd profit and slow down the surplus buildup, which will tend to strengthen milk prices, according to the Extension specialist.

The DHI program also provides records which are valuable in making other management decisions such as selecting heifers for herd replacements and controlling mastitis through use of somatic cell counts.

## Bloodmobile To Be Here Sept. 25-26

The American Red Cross Bloodmobile will make a two-day visit to Morehead Sept. 25-26.

The bloodmobile's hours are from noon until 4 p.m. on Thursday and 10 a.m. until 4 p.m. on Friday.

Blood donations will be collected in the DHI room of the Button Auditorium. Appointments may be made by calling 783-2212 from 1 to 7 p.m. Sept. 22 through Sept. 24.

To eliminate parking problems, a shuttle will be running from the parking lot at Tristate Distributing to the auditorium.



**Agricultural Highlights:** Above normal temperatures and below normal rainfall continued in most of the Commonwealth. Nearly the entire week was favorable for fieldwork, with heat and humidity and some showers at mid-week the only limiting factors. Primary farm activities were cutting and housing tobacco, harvesting corn and late hay crops, filling silos, and seeding cover crops. Statewide soil moisture was reported 50 percent very short, 35 percent short, and 15 percent adequate.

**Tobacco:** Burley was 68 percent cut compared with 74 percent last year and the 5-year average of 70 percent. Percent of tobacco showing houseburn was reported at only 5 percent, and the severity was light in nearly all cases. In fact, several reporters commented that they hoped tobacco was not curing too fast. Yield as of September 1 was estimated at 2,650 pounds per acre with a lot of variation even within the same county, on the size of the crop. Several reporters commented that burley looked better since it was housed, but other comments indicated that blue mold damage was showing up more after the tobacco was in the barn. Cutting of dark types was about two-thirds complete. Yields were down sharply from a year ago and average on the dark fired tobacco was 10 percent complete.

**Corn:** Corn for grain harvest is 10 percent complete compared with 3 percent last year and the 5-year average of 5 percent. Corn harvest is moving along rapidly in the Purchase and also becoming very active in West Central Kentucky. Reporters indicated that 58 percent of the corn statewide is mature, which is well ahead of last year and average. Only about 5 percent of the crop remains in the dough stage, and this is mostly late planted acreage. Yields on corn are highly variable, but generally poor in the West and poor to fair in the West Central. The State estimated average at 68 bushels per acre is the lowest since 1970.

**Soybeans:** Soybeans are 6 percent mature, 20 percent shedding leaves, 36 percent with leaves turning yellow, and 38 percent of the average have leaves entirely green. A few early-soybean fields are being harvested.

## Stop Looking - It's All In The ADS



### You'll make fewer trips to the woodpile with a King wood heater.

Up to 12 hours without refueling! Up to 50% fuel savings!

Install a King Wood Heater of Automatic Wood Circulator and you'll rest easily and comfortably all night long. King airtight construction provides up to 12 hours of even heat on a single filling. And it's safe heat, too. You can be sure of that because King Circulators 8802-B and 9901-B are UL Listed!

Whisper worries with a King Automatic Circulator: Model 8802-B for wood; or Model 9901-B with duplex grates for either coal or wood. Features include thermostatic controls and a lifetime porcelain finish. See the King line at our showroom now. **LISTED**

8802-B Circulator ... **\$299.95** With Blower  
9901-B Circulator ... **\$325.66** With Blower

**SPECIAL!** Reg. \$259.95 **NOW \$149.95**

PLUS-10% DISCOUNT ON PIPE, ACCESSORIES AND AIRMAIT FLUES WITH PURCHASE OF STOVE!

REPLACEMENT PARTS AVAILABLE - ALL AT YOUR AUTHORIZED KING DEALER

**WHITE'S CLOVER FARM MKT.**  
Junction KY 377-KY 799  
Cranston Rd. Phone 784-7156

WELCOME BACK STUDENTS

**Y&T, Inc.**

**ALL JEANS \$12.00**

ALSO ON SALE  
**Accessories**  
INCLUDING 500 BELT BUCKLES

Open 10-6 Mon.-Sat. 220 E. Main St.

**-GREER REALTY-**

1/2 Acre Lots ..... **\$1,800**  
**WE'LL FINANCE!**

**NAPA** At work or play, NAPA means value.

**FAN BELT**

Dependable, long-lasting Modac fan belts available in sizes to fit most automobiles. Protect yourself against worn, loose belts. 301077A

come in to a NAPA store today

**Caskey's Wholesale Auto Parts**  
U.S. 60 East Morehead, Ky.  
Phone 784-4213

**we help keep America moving**

**Live Broadcast!**

**Morehead-Rowan Co. Harvest Festival**

Saturday, September 20  
9:00 a.m.-12 Noon  
1:30 p.m.-4:30 p.m.

**WMKY FM 90**  
MOREHEAD STATE UNIVERSITY

**ARTLEY'S Pre-Holiday Sale**

10 Days Only — Sale Ends Sept. 28

**20% OFF**

All Merchandise • Including Fall & Winter Unusual Savings Opportunity

—No Layaways— —No Refunds—

**artley**  
Just what you're looking for

TRADEMORE SHOPPING CENTER Morehead, Ky.

HOURS: Mon.-Sat. 10-9 Sun. 1-6

**WHITE'S CLOVER FARM MARKET**

**why pay more... food sale**

Bread	4-1 lb. loaves	\$1.00
Kohls		
Bologna	lb.	\$1.59
Tab, Coke, Sprite	6 pk. carton	\$1.69
Gordon's Potato Chips	5 kinds	79¢
Johnson's All-Star Ice Cream	1/2 gal.	\$1.49
Kahn's Crispy Bacon	lb.	9¢

AT  
**WHITE'S CLOVER FARM MARKET**  
Junction of Ky. 377 - Ky. 799  
Cranston Rd. 784-7156

**A Harvest Full of Values!**

Thru September, \$20 will **LAYAWAY** any item for Christmas!

**WATCHES**

14 Kt. Gold Serpentine Chains  
25% Off Sugg. Ret.

15" Ret. \$38 **\$28.50**  
18" Ret. \$45 **\$33.75**  
24" Ret. \$59 **\$44.25**

**All Bulovas**

Special Assortment **Seikos**

**\$26.99**

This full set includes 16 Teaspoons, 8 Soup Spoons, 8 Dinner Forks, 8 Salad Forks, 8 Dinner Knives, 1 Sugar Shell and 1 Butter Knife.

**Stainless "Old Lockport"**

**\$139.97**

This full set includes 16 Teaspoons, 8 Soup Spoons, 8 Dinner Forks, 8 Salad Forks, 8 Dinner Knives, 1 Sugar Shell and 1 Butter Knife.

**\$41.97**

**C. & H. RAUCH JEWELERS**

Allen Shopping Center Morehead  
Prices good thru Saturday  
Open Mon-Sat 9:30-5:30