

It is Profitable  
To Trade In  
Morehead

# Rowan

MERGED WITH THE MOREHEAD INDEPENDENT --- JANUARY 1945

MORHEAD—Site of  
Eastern Kentucky's  
Largest College

Number Thirty-Nine

Volume No. 69

MORHEAD, KENTUCKY, THURSDAY MORNING, SEPTEMBER 25, 1952

## Complete Plans For Annual Rowan Co. Youth Fair Program

### To Be Staged On Friday October 3.

Rowan County farm groups have completed plans for the annual Youth Fair and the program indicates this will be the outstanding event of this kind ever presented at Morehead.

Accord of this year's youth fair, to be held at the Morehead Graded School next Friday, October 3, is on the young men who are to join in a 4-club, Future Farmers and Veterans in the Adult Vocational Agriculture program playing leading parts.

Almost \$1,500 in prize money and awards will be distributed under the Danish system of judging.

The fair, however, has a lot more color than just exhibits. For example, there will be a parade with floats and thousands of school children at 10 o'clock Friday morning. The Morehead State College band will lead the parade which starts at the Graded School grounds. A total of \$125 will be given to schools in the parade, with Consolidated Schools and rural schools also into two judging groups. The prizes will be for floats, parade groups and banners.

For the first time, a Fair King and Queen will be crowned. The school is allowed one entry with the stipulation contestants must be under 14 years of age. The coronation is at 7:30 p. m., one of the closing events of the all-day fair.

The tractor driving contest is scheduled at 2 p. m. and will be a soap box derby at 3 o'clock. A band concert, preceding the parade and Queen coronation, is another added number.

Although the fair will be only one day, Fair President, Bishop said, "it will unquestionably be the biggest one day fair in Eastern Kentucky if not the entire state." He pointed out the premium lists that are large as counties offer for a three or four day fair.

It is thought are being distributed this week listing the entire program, along with business plans and progressive ideas which contributed funds to finance this year's fair.

### Cemetery At Elliottville Will Be Improved

Plans to clean and beautify the McBrayer cemetery located at the rear of Elliottville High School, were drafted at a meeting of the Cemetery Group Association Tuesday.

Prof. Henry C. Haggan and Henry Cline were guests and explained the formation and work of like cemetery groups.

This organization already has several members, but persons desiring to join or who have loved ones buried in the vicinity of Elliottville, have been urged to contact Mrs. Glenn Turner, Haldeman, Ky., secretary.

## Eagles Lose, Play E. Tennessee Next

Ellis Johnson and his Morehead State College Eagles leave tomorrow for Johnson City, Tenn., where they meet East Tennessee State on Saturday night game. Last year Morehead defeated East Tennessee 14-0 for the Eagles' only win.

After a disastrous first half in which Marshall made four touchdowns, Morehead came back in the third quarter and won their way to another game a fumble later Saturday night. It looked like the Eagles were getting back in the game when Marshall recovered, and aided by some breaks, erased the Kentuckians. The final count was Marshall 46, Morehead 14, but the game was called at halftime because of the rain.

The second Morehead touchdown was scored by the team on a spectacular 61-yard run on an interception by Co-captain Jim

## Buell Hogge, 45, Claimed In Hospital

Last Rites Are Said Tuesday For Widely Known Moreheadian

Funeral services for Buell Hogge, one of Morehead's best known citizens, will be held Tuesday afternoon at the Morehead Christian Church with burial in Brown cemetery.

Mr. Hogge, son of Rowan County pioneer citizens J. W. Hogge, a local merchant, and Lydia Hogge, was 45 years of age. Born at Morehead, he lived most of his life here, attending the Morehead grade and high schools and graduating from Morehead State College. He was an accomplished bookkeeper and accountant.

A veteran of World War II, Mr. Hogge served in the Pacific area.

He had been ill since Sunday, September 14, and came Saturday at the St. Joseph Hospital in Lexington where he was taken when his condition became critical.

Besides his parents he is survived by the following: Kathleen Powers Hogge; a daughter, Emma Rebecca; and a brother, Dr. Ernest Hogge, Lexington, D. C.

Rev. Miller Duncan conducted the funeral services while the American Legion conferred military honors at graveside. Lane Funeral Home was in charge of arrangements.

## Nora Alice Pelfrey White Is Claimed

Funeral Services Are Conducted Yesterday At Dry Creek Church

Nora Alice Pelfrey White (fondly known as Sister Nora) passed away Monday at her home in Rowan County.

Daughter of the late George W. and Mauda Caudill Pelfrey, she was born in Rowan County March 6, 1886 and was 56 years of age.

She was an active member of (Continued on Back Page, This Section)

## Bloodmobile Visit Set October 6

Red Cross Hopes To Meet Its Quota For This Time

The American Red Cross office at Morehead renewed its efforts this week to meet a quota of 125 pints when the bloodmobile comes to Rowan County.

Death came from injuries sustained in an auto-truck collision on Route 1 near Oldtown, Green County. He suffered multiple fractures and died 20 minutes after the accident occurred. The truck in which he was riding failed to make a curve, and collided with the car.

## Death Comes To W. M. Smith, 87 Year Old Citizen

Funeral services for Vernon Pelfrey, 19-year-old son of Ernest and Bertha Pelfrey, were conducted Saturday at the home of his parents on the Flemingsburg Road.

Vernon, born in Rowan County March 17, 1933, died in Greenup County. He was an employee of the Car-Lancaster Block Company, Raines Street, Morehead.

Death came from injuries sustained in an auto-truck collision on Route 1 near Oldtown, Green County. He suffered multiple fractures and died 20 minutes after the accident occurred. The truck in which he was riding failed to make a curve, and collided with the car.

## Heart Attack Is Fatal To J. W. Brown, 73

After residing at Craney his entire life, J. W. Brown moved to Ashland two years ago and was buried there. He died Sunday at the heart attack near his old home place.

Funeral services will be held Friday afternoon at 1 o'clock at the Lane Funeral Home in Morehead with interment in Brown cemetery.

### GOOD GARDNERS ALL—Most of the winners in Rowan County's Garden Contest appear in this picture taken when awards were made at Morehead. Reading from left, front row: Archie Best, Carl Bumgardner, Frank Corbett, A. C. Black, Roy Graham, Leland Hall, back row: Carl Bumgardner, Joe Malbran, Mrs. Letta Barber, Mrs. May Gardner, Mrs. Carl Bumgardner, Joe Malbran, Mrs. Letta Barber, Mrs. May Gardner, Mrs. Patricia Ann Lowe. Mrs. Graham won the first award.—See story on page three.



## Tempers Flare As Republicans Challenge Right Of 956 Rowan Countians To Vote In November

### GOP Answers Dems Allegation Of Unfairness

Rowan County's Republican committee answered the demagogues' contention that the challenge of voter registration was unfair "if only because the law was passed by the last democratic legislature and set out that 'it is not the intention of the republican party to disfranchise anyone'."

In a written statement handed the Rowan County News this morning the republican committee said "if any mistakes have been made they are honest ones" that a general cleaning of registration books is needed, that names appear on the books of people who have moved to other where and who are dead.

"The law is explicit," the republican statement said "and there can be none who will challenge that. We are trying to do in getting people off the registers. Nothing we are trying to do is getting people off the registers. Nothing we are trying to do is getting people off the registers. Nothing we are trying to do is getting people off the registers."

### Elections Held Sat. At Four Voting Places In Rowan County

Results of the PMA election Saturday in Rowan County are: Production and Marketing Administration office in Morehead, district office in Morehead; Elliottville—85 votes cast; C. O. Waddell, chairman, community member; Luther Jayne, first alternate; Earl E. Koenigberger, regular member; Clark E. Bristow, second alternate; Frank Corbett, Registrar; C. O. Waddell, alternate delegate.

Farmers—41 votes cast; Delbert Padgett, chairman, community committee; Ova Arnett, vice chairman; H. S. Johnson, regular member; W. A. Caudill, first alternate; Gordon Lewis, second alternate; Simon E. Eldridge, delegate; John C. Eldridge, alternate delegate.

### Death Comes To W. M. Smith, 87 Year Old Citizen

Death came Monday to W. M. Smith, 87-year-old retired employee of the Kentucky Firebrick Company at the home of his daughter, Mrs. Charlie Hall, Morehead.

Son of the late Dave and Polly Ann Smith, he was born in Johnson County February 2, 1865. In 1903 he started working for Kentucky Firebrick and remained in their employ for 35 years when he retired at the age of 70.

### Conduct Final Rites For Vernon Pelfrey, 19

Funeral services for Vernon Pelfrey, 19-year-old son of Ernest and Bertha Pelfrey, were conducted Saturday at the home of his parents on the Flemingsburg Road.

Vernon, born in Rowan County March 17, 1933, died in Greenup County. He was an employee of the Car-Lancaster Block Company, Raines Street, Morehead.

### Red Cross Hopes To Meet Its Quota For This Time

The American Red Cross office at Morehead renewed its efforts this week to meet a quota of 125 pints when the bloodmobile comes to Rowan County.

Death came from injuries sustained in an auto-truck collision on Route 1 near Oldtown, Green County. He suffered multiple fractures and died 20 minutes after the accident occurred. The truck in which he was riding failed to make a curve, and collided with the car.

### Heart Attack Is Fatal To J. W. Brown, 73

After residing at Craney his entire life, J. W. Brown moved to Ashland two years ago and was buried there. He died Sunday at the heart attack near his old home place.

Funeral services will be held Friday afternoon at 1 o'clock at the Lane Funeral Home in Morehead with interment in Brown cemetery.

## Tempers Flare As Republicans Challenge Right Of 956 Rowan Countians To Vote In November

### GOP Answers Dems Allegation Of Unfairness

Rowan County's Republican committee answered the demagogues' contention that the challenge of voter registration was unfair "if only because the law was passed by the last democratic legislature and set out that 'it is not the intention of the republican party to disfranchise anyone'."

In a written statement handed the Rowan County News this morning the republican committee said "if any mistakes have been made they are honest ones" that a general cleaning of registration books is needed, that names appear on the books of people who have moved to other where and who are dead.

### Elections Held Sat. At Four Voting Places In Rowan County

Results of the PMA election Saturday in Rowan County are: Production and Marketing Administration office in Morehead, district office in Morehead; Elliottville—85 votes cast; C. O. Waddell, chairman, community member; Luther Jayne, first alternate; Earl E. Koenigberger, regular member; Clark E. Bristow, second alternate; Frank Corbett, Registrar; C. O. Waddell, alternate delegate.

Farmers—41 votes cast; Delbert Padgett, chairman, community committee; Ova Arnett, vice chairman; H. S. Johnson, regular member; W. A. Caudill, first alternate; Gordon Lewis, second alternate; Simon E. Eldridge, delegate; John C. Eldridge, alternate delegate.

### Death Comes To W. M. Smith, 87 Year Old Citizen

Death came Monday to W. M. Smith, 87-year-old retired employee of the Kentucky Firebrick Company at the home of his daughter, Mrs. Charlie Hall, Morehead.

Son of the late Dave and Polly Ann Smith, he was born in Johnson County February 2, 1865. In 1903 he started working for Kentucky Firebrick and remained in their employ for 35 years when he retired at the age of 70.

### Conduct Final Rites For Vernon Pelfrey, 19

Funeral services for Vernon Pelfrey, 19-year-old son of Ernest and Bertha Pelfrey, were conducted Saturday at the home of his parents on the Flemingsburg Road.

Vernon, born in Rowan County March 17, 1933, died in Greenup County. He was an employee of the Car-Lancaster Block Company, Raines Street, Morehead.

### Red Cross Hopes To Meet Its Quota For This Time

The American Red Cross office at Morehead renewed its efforts this week to meet a quota of 125 pints when the bloodmobile comes to Rowan County.

Death came from injuries sustained in an auto-truck collision on Route 1 near Oldtown, Green County. He suffered multiple fractures and died 20 minutes after the accident occurred. The truck in which he was riding failed to make a curve, and collided with the car.

### Heart Attack Is Fatal To J. W. Brown, 73

After residing at Craney his entire life, J. W. Brown moved to Ashland two years ago and was buried there. He died Sunday at the heart attack near his old home place.

Funeral services will be held Friday afternoon at 1 o'clock at the Lane Funeral Home in Morehead with interment in Brown cemetery.

### TRACTOR CONTEST AT THE MOREHEAD HEATED CONTROVERSY AT THE MOREHEAD COURT HOUSE THIS WEEK

Dear Voter: September 19, 1952

You are hereby notified that the Republican Campaign Committee has challenged your right to vote and your name will be stricken from the registration books unless you appear before the board at the Court House in the City of Morehead, Kentucky on the 1st, 2nd or 3rd day of October, 1952, and show cause why your name should not be stricken.

Rowan County Purgation Board, Chairman J. W. Gevedon, Secretary Melvin Eldridge, Member D. H. Gevedon, Member



# R.F.D. 1 Woman Wins 1952 Garden Contest

## May Graham First; Bumgardner's 2nd

A woman on RFD 1, whose retired husband is unable to perform manual labor, is the 1952 garden champion of Rowan County.

She is Mrs. May Graham who was awarded first place this week. Judging was done by personal visits to the garden of each entrant by Rowan farm organizations assisted by University of Kentucky Experiment Station personnel.

Mrs. Graham is the wife of a retired railroad employee. She hired a neighbor to break the soil for her prize winning garden, but from then on she did just about all the work herself with a push plow and a hoe as her principal tools.

Perhaps one of the major reasons Mrs. Graham is Rowan County's number one gardener this year is that she planned her garden chart in February and carried it through to August. She followed successive plantings throughout the year, kept

her garden free of weeds and used accepted practices of spraying to prevent insects.

Mrs. Graham's garden was about half an acre. She also is fond of flowers and has many potted plants and blossoms in her yard "if just love to garden," she explains, which probably explains why she won out over all the other entries.

Second prize winner is Mrs. Carl Bumgardner of Sharkey who was assisted by her pretty 17-year-old daughter, Betty Jo. Unusual about her garden was that the plot of land used this year had not been in garden for 15 years. She says she liked the spirit of competition in the garden contest.

Mrs. Bumgardner has three children at home, all girls. She is active in Homemakers work and did an excellent job of canning fruits and vegetables. Her garden, like that of Mrs. Graham, is half an acre.

If it hadn't been for a hail storm the winner might have

### 'Good Gardener's' - Not 'Bumgardner's'

At one inspection of entries in Rowan County's garden contest the garden of Mr. and Mrs. Carl Bumgardner, RFD 1, was rated first, and one of the judges, sitting down his list, asked, "Who's the garden is this?"

"The Bumgardner's," Garden Contest Chairman a William Rouse replied.

"Should be 'Goodgardener's,'" the judge replied.

That judge's name is John S. Gardner, garden specialist from the University of Kentucky Experiment Station.

The Bumgardner's placed a close second for the annual garden award.

Ben Mr. and Mrs. Owen Skeens of Farmers. The hail ruined their one acre early garden, but they did such a good job with later plantings and cultivation the judges awarded them third place.

Mr. Skeens is a veteran of the last war, and he and Mrs. Skeens cooperated with a 4-H agent in the garden contest. He sought advice from local agricultural agencies in the planting and tending of the garden.

Judging of the 28 entries in the garden contest was made in June and early September and the winners announced at a meeting of the sponsoring group, the Rowan County Farmers Club.

In making the awards it was explained that the purpose of the garden contest was to increase production and provide better living and food for families.

William K. Rouse, chairman of the Garden Contest, recognized the following for their assistance and cooperation: Evelyn Sinclair, home demonstration agent; Adriaun Smith, agricultural extension agent; Bernard Mauer, state forester; H. C. Hagan, professor of agriculture, Morehead State College, and John S. Gardner, garden specialist from the Extension Service.

### 10 Judging Points For Garden Contest

Rowan County's garden contest was judged on the following 10 points, each counting one-tenth of the total score.

Size and location, in regard to size of family; general appearance; number and suitable amounts of varieties for family use; growing of adapted varieties; insect pest control; successive plantings for family requirements; cultivation and weed control; best use of garden space; and garden cover crop.

### Benjamin Fannin, Ex-Moreheadian, Dies In Indiana

A former Rowan and Elliott countyman, Benjamin F. Fannin, 75, died at his home in New Castle, Ind., September 14, three days after suffering a paralytic stroke.

Mr. Fannin, native of Morgan County and former Postmaster at Clayton, Ky., lived in Rowan County for several years before moving to New Castle in 1946. He was serving his second term as Justice of the Peace at New Castle.

He was a member of the First Baptist Church and active in Masonic circles, being a past master of the Masonic Lodge at Morehead.

A sister, Mrs. Nancy Jane Ferguson, Lincoln Park, Mich., passed away at Morehead in August while on a visit here.

### LITTLE CHIEF PONTIAC SAYS:

"Only a Craftsman"



Should Care for Your Pontiac!

(IN FACT, ONLY A PONTIAC FACTORY-TRAINED CRAFTSMAN)

Our mechanics attend Pontiac Factory Schools in this area, so they know the car inside and out. They have learned everything from Hydraulics to Hydro-Motion. They use equipment from every one of the Motor City plants to service your fine car, efficiently and well.

Alfrey Pontiac Co.

MOREHEAD, KY.

## Winners From All Parts Of County

Fourteen prizes were awarded to entrants in the 1952 Rowan County garden contest, the awards being contributed by Morehead merchants and farm agencies. There were 28 entries.

The prize winners:

1. May Graham, RFD 1, presented with garden spray contributed by Glenn Friscoy.
2. Carl Bumgardner, Tar Flat, \$5, Rowan Homemakers.

3. Owen Skeens, Cogswell, 4 pounds Mariate spray material, Bishop Drug.
4. Laura Barbour, Barbour Court, Morehead, garden rake and fork, Western Auto Store.
5. Patricia Ann Lowe, Morehead, three dozen fruit jars, Union Grocery Co.
6. Claude Curtis, Sharkey, sack fertilizer, Central Grocery.
7. W. A. Caudill, Sharkey, sack fertilizer, Hall's Feed Store.

8. Joe Malbrain, Tar Flat, garden duster, Rowan Farmers Supply.
9. Leland Hall, RFD 2, garden spade, Jack Helwig Hardware.
10. Archie Ison, Elliottville, potato digging fork, Firestone Store.
11. Frank Cornett, Elliottville, potato digging fork, Union Hardware.
12. Paul Reynolds, Bluestone, garden hoe, Big Store Furniture.
13. Roy Eldridge, Sharkey, garden hoe, Charles D. Holbrook.
14. A. C. Black, Tar Flat, garden hoe, Martindale Furniture.

Shop the Classified Ads.

Dramatically checked flared coat with solid accents. Bold ascot collar, gigantic pockets. In a novelty-patterned pure wool. Sizes 7 to 12.



As Advertised In Vogue

Wherever Jack Frost finds you this Winter, let him find you IN-SIDE one of these wonderful Jaunty Junior coats. Young, gay, dependable for day-in, day-out wear, they carry the label that's known coast-to-coast for quality and beauty! If it fits the time ... the place ... and you, it's Jaunty Junior!



fall fashion's cheerleader

Dotie Dodson K Juniors



Cheerleader... a compliment fetching and checked sweater dress of all wool jersey... with eye catching, color contrasting insets and novel button ornaments. Sizes 9 to 15.

### from Pelphrey's

In Morehead Home of The Nationally Advertised Brands

Men's Suits By Curlee Hyde Park

Dresses By L'Aiglon Joan Miller Mary Muffet

Ladies Coats & Suits By Jaunty Junior Lassie Junior Sportleigh Handmacher Season Skipper

Pelphrey's Is Bubbling Over With New Fall Fashions - SHOP EARLY - Use Our Convenient Lay-Away Plan

PELPHREYS One Of Eastern Kentucky's Better Stores Phone 98 Morehead Ky.

JUST ARRIVED! A NEW SHIPMENT OF RECORDS

"HERE IN MY HEART" "AUF WIEDERSEHN" "BUTCH-A-NIE" "HALF AS MUCH" "I'M YOURS" "WISH YOU WERE HERE" "DELICADO" "WALKIN' MY BABY BACK HOME"

78 & 45 R. P. M.

The Big 5c & 10c Store "The Friendly Store" Dwigth Pierce, Manager Morehead, Ky.

SHOP THE ADS IN THE ROWAN COUNTY NEWS

McGREGOR adds new fashion colors to the rugged action

Hamilton Suede Leather Blouse \$22.95

It's the classic, top performing suede favorite now in smart, new, never-before colored the selected imported leathers are crafted to a soft, supple luxury. Trimly tailored for easy wearing with knit Johnny collar, cuffs and waist and zipper closure.

Stylish for Smartness Tailored For Wear

New Curlee Suits for Fall meet every requirement of discriminating and well-groomed American men. They combine smartness of style with expert workmanship, and easy, comfortable fit and drape with lasting good looks. Equally important, you will find them tailored in a complete range of styles and sizes at prices that are surprisingly moderate.

CURLEE CLOTHES

Come in and see why we say: "For quality, fit, style and value, your natural choice is a Curlee Fall Suit."

CAREFUL WITH MONEY? TRY OUR FOOD BUS

|                                     |     |
|-------------------------------------|-----|
| CHILI SAUCE, Bennett                | 18c |
| SPAM                                | 48c |
| PEAS, Libby, 2 Sv.                  | 26c |
| APPLE SAUCE, Apple Pie Ridge, 2 for | 25c |
| KRAUT, Libby                        | 17c |
| TOMATOES, Old Reliable              | 25c |
| PRUNES, Sugar Ripe, Large           | 28c |
| PORK & BEANS, Van Camps             | 18c |
| WHEATIES                            | 16c |
| PEP, Kellogg                        | 16c |

|   |                            |
|---|----------------------------|
| BLUE JEAN Margarine 21c                           | LOG CABIN SYRUP 12 oz. 27c |
| CRUST QUICK, Betty Crocker                        | 17c                        |
| HOT ROLL MIX, Pillsbury                           | 28c                        |
| PAN CAKE MIX, Aunt Jemima                         | 18c                        |
| MARSHMALLOW CREME, I G A, Pints                   | 24c                        |
| STARLAC, Borden                                   | 41c                        |
| COFFEE, Sunny Morn                                | 77c                        |
| TOILET TISSUE, Dawn                               | 37c                        |
| SHORTENING, Snokream                              | 75c                        |
| ORANGE JUICE, Libby                               | 13c                        |
| BABY FOOD, Libby, 6 for Plastic Tumbler Free Deal | .60c                       |

Beef Ribs 49c Swifts Premium BACON 69c Pork Chops Shoulder Cuts 59c

HEAD LETTUCE 15c BANANAS 2 pounds 25c DELICIOUS APPLES 2 pounds 19c

ALLEN'S IGA Market Morehead, Ky.



### Democrats To Have Fish Fry And Speaking

Plans for a fish fry for Young Democrats at Woodland Park on October 4 and a speech by Senator Tom Underwood at the courthouse October 11 were drafted yesterday at the Democratic meeting in the courthouse.

Chairman Sam Green said the program is tentative inasmuch as confirmation on the Morehead speaking date will have to be obtained from state headquarters.

Young things sometimes take football too seriously, but they enjoy it.

Learn to laugh at yourself; sometimes you are preciously.

### Registrants May Still Volunteer

The station commander of the Morehead Recruiting Station announced today that selective service registrants who have been given pre-induction examination and who have not received induction notification may enlist voluntarily in the Army or Air Force indefinitely by abrogation of their service agreement.

Detailed information may be obtained by contacting T/Sgt. Deskins at the U. S. Army and U. S. Air Force Recruiting Station, located in the City Building, Morehead, telephone 172.

### Plank Chapel Revival

Rev. Otis Cox is the evangelist at a revival meeting now underway at the Plank Chapel Christian Church.

Services begin each evening at 6:30 and the revival continues through Sunday evening.

## ASCD Meet At Morehead Starts Today

### Registration Scheduled Tomorrow Morning In M'head College Library

Program for the annual convention of the Kentucky Association for Supervision and Curriculum Development (ASCD) starting today on the campus of Morehead State College was announced this morning by E. M. Norsworthy, Lexington, who is state president of the group.

The conference starts with a social hour this (Thursday) evening, plans having been made for folk dancing and group games in the college gymnasium.

Registration is at 8:30 o'clock Friday morning in the college library, with the opening session scheduled for 9:30. After the opening exercises the group will be addressed by Dr. Kimball Wiles of the University of Florida on the subject of "The Place of Supervision in the Improvement of the Instructional Program."

Friday afternoon the conference is divided into three groups for discussions. Dr. Wiles will lead Group A in discussing "Techniques of Supervision." Dr. Harold Drummond of George Peabody College will be the leader of Group B in considering "The Role of the Principal in Supervision." Group C will discuss "Cooperative Curriculum Research" under the leadership of Dr. J. Bernard Everett, ASCD's national research coordinator.

Conference participants will be honored at a tea given at the home of Morehead President Charles R. Spain from 3:30 to 5 p. m. tomorrow.

At 6:30 Friday evening the annual banquet will be held in the college dining room. Everett will address the group on "The Place of Research in Curriculum Development." After the address a puppet show will be presented by Prof. Thomas Young of the Morehead College art department.

The Saturday morning session will be addressed by Dr. Lyman Ginger, U.K. staff member and KEA president, on "Developing a United Profession in Kentucky." Dr. Robert L. Mills, state department of education, will speak on "Developing a Local Plan for Providing Better Schools for Kentucky's Children."

Some of our chronic sick people would get well, too, nobelness ever listened to their complaints.

## Farm, Home Program Is Adopted Here

### Applications Being Accepted At Rowan Extension Office

The Rowan County Extension Advisory Council, at its last meeting, accepted the Farm and Home Development Program which is sponsored by the Extension service of the College of Agriculture, Rowan County which is now one of 28 counties in the state having this program.

The objective of the farm and home program is to help the farm family make a long time program for the farm and home and carry it out year by year. The program should provide additional farm income, bring about more comfortable, healthful and enriched life on the farm, make more effective use of land, labor, capital and other resources. It also encourages the family to study and work together as a total farm and home unit. It also permits neighbors and others to see the value of long and short time specific and definite planning.

This program is available to any farm family in the country. The family should have available control of the farm and also be open minded, progressive, and have a desire to apply the latest information to the solution of their problems. The family should be interested in a long-time plan of farm and home improvement which may involve paying for a farm and raising children.

Many questions are asked about the procedure and facilities that are set up for the families that enroll in the program. They attend three all-day preliminary meetings to study the principles of farm and home planning, and to determine if they wish to continue as a demonstrator. Those who continue in the program do not obligate themselves for anything except to attend the first three meetings. After the third meeting the group is dismissed and those wishing to continue in the program will re-enroll. After attending the first three meetings, the family will know if they wish to continue in the program. Those enrolling for the second phase of the program attend six additional all-day meetings for the purpose of making out complete farm and home plans. These families then provide for the execution of the plans which were made at the six meetings and agree to the establishment of a partnership with the college of agriculture and home economics for the purpose of assisting to other families improved farm and home practices. In this program it is the family that makes and puts their plan into effect. The family decides what it wants to do, only

agrees to make a practical application of the recommendations of the college of agriculture and home economics to its farm and home.

More information about the program is available at the Extension office. The meetings probably will not start until late November, as the meetings are conducted when farm work is not pressing and there are several days between each meeting. Applications for participation in the program are accepted at any time.

### Street Paving Notice

All persons owning property on the following named streets or avenues within the City of Morehead, Kentucky: Allen Drive (Formerly Sibbie Avenue) and Gladstone Avenue, Knapp Avenue, West Sun Street, North Blair Avenue, Branham Avenue, Railroad Street, between Hargis Avenue and Fairbanks Avenue, Fifth Street, between Wilson and Bays Avenues will take notice that the street paving assessment provided in the Apportionment Ordinance, published on September 11, 1952, will be due for payment on or before October 11, 1952. Unless the said assessments are paid or payment is made for the installment payment plan on said date, a penalty of six per cent must be added to the bill. Payment should be made at the City Hall.

Mrs. I. C. Blair, City Clerk c-39.

### ORDINANCE

(Continued From Page 2)

WHEREAS, the Board of City Council believing it to be to the best interest and benefit of the property owners, the College and the City that said territory be assessed for street paving; and Be it therefore, ordained by the Board of City Council of the City of Morehead, Kentucky, as follows: That the Corporation Limits of the City of Morehead, Kentucky, shall be extended on the East side so as to include a small section of the territory lying adjacent to the present City Limits and the water supply and which is bounded and described as follows: Beginning as a set stone at a point in the present City Limits directly above the City Water

Reservoir, located on the Morehead State College Campus; thence running a northwesterly course to the Kentucky State Police Radio Tower, located on College Property; thence with the top of the ridge, a distance of about six miles, encompassing the entire water shed of Evans Branch, back to a point on top of the ridge; thence S. 32 W. 192 feet; thence S. 34 degrees 45' E. 945 feet to the intersection of the present City Limits, being the Old Northeast Corner of the College Athletic Field and in line with the Tennis Court Fence; thence following this same line

into what is known as the Shafter Addition N. 55 degrees 15' E., a distance of 145 feet; thence a straight line with the present fence of the Athletic Field, S. 34 degrees 45' E. a distance of 1177 feet to the center of Triplet Creek, said line crossing the Highway, U. S. 60, and the C&O Railway; thence S. 28 degrees, 11' E. a distance of 100 feet to Lett Creek, a distance of 978 feet to an intersection of the present City Limits line, the said line having a bearing of S. 30 degrees E. and being a straight line from the center line of U. S. Highway

U. S. 60; thence with the present City Limits, the same being the present Eastern and Northern boundary line, back to the place of beginning. This ordinance to become effective upon its passage, publication and approval of the Rowan Circuit Court as required by law. Passed, adopted and approved by the Board of City Council at its Regular Meeting held on September 2, 1952.

N. E. KENNARD Mayor Pro Tem  
Attest: Mrs. I. C. Blair, City Clerk c-39.

**- COMING SOON -**  
**MIGHTIEST OF MOTION PICTURES!**  
**THE GREATEST SHOW ON EARTH**  
WATCH FOR IT AT THE TRAIL

**FRIDAY AND SATURDAY**  
2 Big Hits  
Hit No. 1: Paul Henreid, Jeff Donnell in "RIFLE OF DAMASCUS"  
Hit No. 2: Johnny Weismuller in "FORBIDDEN LAND"  
STARTING **SUNDAY** at **CHAKERS TRAIL Theatre** MOREHEAD, KY.

He twirled a rope... and tossed a laugh... and caught the world's heart!  
**THE STORY OF WILL ROGERS**  
with **WILL ROGERS, JR. AND JANE WYMAN**  
as His Father and Mrs. Will Rogers  
WEDNESDAY AND THURSDAY  
Tyrone Power and Patricia Neal  
IN "DIPLOMATIC COURIER"

**FRIDAY & SATURDAY**  
2 BIG HITS  
No. 1: Pat O'Brien in "CRIMINAL LAWYER"  
No. 2: Charles Starrett in "KID FROM BROKEN GUN"

**CHAKERS TRAIL Theatre**  
SUNDAY - MONDAY  
The Screen's Epic Story of America's First Rebel!  
**ALLEGHENY UPRISING**  
with **CLAIRE TREVOR, JOHN WAYNE, GEORGE SANDERS, BRIAN DONLEY, WILFRID LAWSON, ROBERT BARRAT, DONN F. HAMILTON, MORONI OLSEN, EDDIE QUILLAN**  
— FEATURE TIME —  
1:30 - 3:30 - 5:30 - 7:30 - 9:30

Tues. - Wed. - Thurs.  
— 2 BIG HITS —  
— Hit One — Betty Grable in "MEET ME AFTER THE SHOW"  
— Hit Two — Abbott & Costello in "WHO DONE IT"

Keeton's Now In New Location  
West Main Street

We're proud of this new sign of an old and honored name  
OUR COMPLETE STOCK OF DEVOE PAINTS AND VARNISHES IS GOOD NEWS FOR YOU  
Trust by millions of property-owners who have realized full value from Devoe products over the years. Trusted by thousands of merchants whose business depends on satisfied customers. Yes, we've checked Devoe against the field—and we're proud to be able to offer you the benefits of the complete line of famous Devoe paints and brushes and varnishes!  
Come visit our new Devoe Paint Department today!  
WALLPAPER SALE  
On our opening days Friday and Saturday we're giving a fine special discount on all wallpaper. Hundreds of new patterns to choose from.

Keeton Wallpaper and Paint Store has moved to its new location on West Main Street, across from Bruce Motel. This central location enables us to serve you better. In connection with our opening this FRIDAY AND SATURDAY, September 26 - 27, Mr. and Mrs. H. M. Garvey, representatives and color stylists from Devoe and Reynolds Company, will be here to assist you. And there'll be free prizes of paint and wallpaper. We cordially invite you to inspect our new price list... and consult us on your fall wallpaper and paint needs.

Devoe has been a trusted name in paint since 1754. Trusted by experienced painters whose livelihood depends on a good job well done. Trust by millions of property-owners who have realized full value from Devoe products over the years. Trusted by thousands of merchants whose business depends on satisfied customers. Yes, we've checked Devoe against the field—and we're proud to be able to offer you the benefits of the complete line of famous Devoe paints and brushes and varnishes!  
Come visit our new Devoe Paint Department today!  
**KEETON**  
Wallpaper And Paint Store  
West Main Street - Across From Bruce Motel  
PHONE 23-E MOREHEAD, KY.

**Rugged**  
**Dodge Long Life Records**  
give you proof of Extra Value!  
When you invest in a new car, you have a right to expect proof that the value is built in to stay. You get that proof in a Dodge. Registration records prove that by a substantial margin, Dodge automobiles have longer life than the average car. Such engineering features as the extra-rugged double-channel frame and rubber-mounted Safety-Steel body make a Dodge stand up under all driving conditions. It's the best driving investment you can make today.  
Specifications and Equipment subject to change without notice.  
**Dodge**  
DEMONSTRATED DEPENDABILITY  
**Meadows Motor Company**  
— 2 CONVENIENT LOCATIONS IN MOREHEAD, KY. —  
W. Main St. (Main Office) Phone 360 East Main St., Phone 7

GRAND OPENING  
Free Prizes  
Friday & Saturday  
We're offering free prizes of wallpaper and paint on our opening days, Friday and Saturday. You are cordially invited and you don't have to buy anything.  
**KEETON**  
Wallpaper And Paint Store  
West Main Street - Across From Bruce Motel  
PHONE 23-E MOREHEAD, KY.



**FREE**                  **FREE**  
 Free tickets to first ten children bringing correct list of misspelled words on this page to Catherine Bach at the Midland Trail Hotel

# SHOOTING STARS

**Tiny Tot Popularity Contest**  
 (For children under 6 years)  
 Loving Cups Awarded Winners  
 See Pictures In Southern Belle Window

Sponsored By Farmers Rebekah Lodge

"THE FRIENDLY BANK"

**Peoples Bank Of Morehead**

MEMBER FEDERAL DEPOSIT INSURANCE CORP.

**ALFREY PONTIAC COMPANY**

AUTHORIZED SALES & SERVICE

PHONE 9112                  MOREHEAD, KY.

**Lane Insurance Agency**  
 GENERAL INSURANCE

CLARK B. LANE, OWNER  
 Located In Lane Funeral Home

Morehead                  Kentucky

**Stucky & Kegley**  
**Funeral Home**

AMBULANCE SERVICE

Morehead                  Phone 68

**Millard Moore's**  
**Service Station**

U. S. 60 EAST

**Rowan Motor Sales**

CARS    FORD    PARTS  
 TRUCKS    SERVICE

PHONE 18                  MOREHEAD

**Park & Eat Drive-In**  
**And Motel**

Formerly Hollands Now Under  
 New Management

DEFOREST TACKETT, MGR.

**Spring Grove Dairy**

GRADE A DAIRY PRODUCTS  
 QUALITY YOU CAN TASTE

PHONE 498

**Fannin Motor Sales**

DEPENDABLE CARS NEW OR USED

Phone 778 Or 705

See Me First To Buy, Sell or Trade  
 L. D. FANNIN                  MOREHEAD

COMPLIMENTS OF

**Golde's Dept. Store**

Phone 155

Home of Arrow Shirts, Stetson Hats  
 & Marylane Coats & Suits  
 C. E. HIBBARD, MGR.

**Cooper Service Station**

FLEMISBURG ROAD

PHONE 9121                  MOREHEAD

GOOD LUCK ON THIS  
 EXCELLENT PROGRAM

**J. A. Bays Jewelry Co.**

MOREHEAD - WEST LIBERTY

NEW LOCATION OF  
**Kecton's Wallpaper**  
**& Paint Store**

West Main St.

PHONE 33-R                  MOREHEAD

COMPLIMENTS OF

**Morehead Self-**  
**Service Grocery**

RAY LYTLE                  PHONE 25

**Jack Helwig Service Station**

PHONE 66  
 AND

**Kennard Hardware Company**

PHONE 111

**Meadows Motor Company**

DODGE AND PLYMOUTH

PERGUSEN TRACTORS & IMPLEMENTS  
 24 - HOUR WRECKER SERVICE

PHONE 366 OR 297

MOREHEAD, KY.

Under The Personal Direction Of Kathy Callum

**CAST**

Milton Berle  
 Fran Allison  
 Roy Acuff  
 Kate Smith  
 Fred Waring  
 Jonnie Wheatley  
 Jack Bailey  
 Singing Commercial

Norman Thomas  
 Elsie McShay  
 Roy Reynolds  
 George Ann Barker  
 Rev. M. L. Tate  
 Betty Jo Gevedon  
 Burr Cornette  
 H. K. Taylor

**JUBILEE SINGERS**

Pruda Gary - Alma Barber - Feaches Cecil - Esther Ellington - Edith Utter-  
 back - Nell Kashi - Mary Alice Jayne - Dorothy Dehart - Clyde Leach - Opal  
 Atkins - Vivian Young

**Chorus Girls & Studio Pages**

Barbara Hyden - Gall Crosthwaite - Edith Cox - Carolyn Tyler - Mary Ann  
 Anderson - Judith Sparkman - Janice Moore - Shirley Stewart - Ella Mae  
 Bocoak - Jean Adkins - Gloria Coleman - Mary Sue Lancaster - Loretta  
 Phillips - Greia Ann Brown - Donna Lewis - Betty Jean Green - Joyce Gullett  
 Shirley Mobley - Ginny Gilbert - Marcetta Flannery.

**SNOW WHITE SCENE**

Kenneth Johnson - Prince  
 Ann Reynolds - Snow White  
 Ginny Kay Stucky - Queen

7 Dwarfs  
 Lewis Kenny - Larry Lenora - Donny  
 Woodworth - Martha Bays - Susan Carr  
 Beverly Burns - Roy Winston Reynolds

**PRETTY BABIES**  
 Walter Carr - Ed Whitley - Paul J.  
 Reynolds - Kenneth Bays - Elijah Hogge

**LOCAL SPECIALITIES**  
 Jim Andy Caudill & Orchestra, Ramona  
 White, String Band and many other peo-  
 ple bring you a show you're sure to enjoy.

**ELAM GROCERY COMPANY**

WHOLESALE GROCERS

PHONE 143                  MOREHEAD, KY.

**Martindale Furniture & Hardware Co.**

Wishes The Rebekah Lodge Much Success  
 On This Worthwhile Project

**Rowan Farmers Supply**

FEED - SEED - FERTILIZERS  
 FARM SUPPLIES

PHONE 458-J                  MOREHEAD

**Central Grocery**  
**Company**

MILL ST. & RAILROAD

PHONE 407                  MOREHEAD

**Ashland Oil Products**

VALVOLINE & QUAKER  
 STATE MOTOR OILS

**Red Rose Dairy**

Grade "A" Dairy Products

PHONE 217

Morehead                  Kentucky

**Veterans Lumber Co.**

L. G. BISHOP

SHEET ROCK - WIDOWS - DOORS  
 FRAMES  
 Phone 755  
 PLUMBING SUPPLIES

COMPLIMENTS OF

**White Lumber Co.**

Anything In Lumber and Building  
 Supplies

Office Ph. 127                  Res. Ph. 709

**Satch's Pool &**  
**Lunch Room**

MOREHEAD, KENTUCKY

**Holbrook Pharmacy**  
 PRESCRIPTIONS

EAST MAIN STREET  
 PHONE 754                  MOREHEAD

**The Federated Store**

Morehead                  Kentucky

**Morehead Bottling Co.**

Morehead                  Kentucky

COMPLIMENTS OF  
**Model Laundry & Dry Cleaners**

- The Best For Service -

BEST OF LUCK

**The Democratic Party Of Rowan County**

**WILLIAMS - NICKELL OIL COMPANY**

Distributors Of Shell Products - Valvoline Motor Oil - Goodyear Tires

PHONE 16

Benefit: Home For Orphaned And Aged

**MIDLAND TRAIL GARAGE**

Sales          CHEVROLET          Service

MOREHEAD                  PHONE 150                  KENTUCKY

**MARTIN'S DEPT. STORES**

The Home Of Quality, Variety & Economy

PHONE 324                  MOREHEAD

**SHOP AND SAVE**  
 AT  
**ALLEN'S**  
**L. G. A. Market**

**W. T. Sistrunk & Co.**  
 I. G. A. SUPPLY DEPOT

LOW PRICES EVERYDAY  
 Serving Morehead For Over 40 Yrs.  
 LEXINGTON

**Tackett Service Station**

ASHLAND OIL PRODUCTS

KY. 32 & FLEMING AVE.  
 PHONE 308

**McHugh Towel**  
**Service**

PHONE 999  
 MAYSVILLE, KENTUCKY

COMPLIMENTS OF  
**Kentucky Utilities**

PHONE 108                  MOREHEAD

**Lee Clay**  
**Products Company**

CLEARFIELD, KY.

**Monarch Supply Store**

HARDWARE - PLUMBING SUPPLIES  
 ELECTRICAL SUPPLIES  
 FARM IMPLEMENTS & SEEDS

**C. E. Bishop**  
**Drug Company**

THE REXALL STORE  
 EST. 1896

**Calvert Garage**

HUDSON  
 Sales and Service

PHONE 2                  MOREHEAD

COMPLIMENTS OF  
**Union Grocery Co.**

PHONE 100                  MOREHEAD

**Carr Lumber Co.**

Lumber and Building  
 Materials  
 O. P. CARR, OWNER

PHONE 6                  MOREHEAD

**Homer Gregory & Co.**

LUMBER OF ALL KINDS  
 DOZER WORK & GRADING

PHONE 774                  MOREHEAD

"GROW WITH US"

**THE CITIZENS BANK**

MEMBER FEDERAL DEPOSIT INSURANCE CORP.

MOREHEAD                  KENTUCKY

PHONE 199                  DESOTO - PLYMOUTH                  MOREHEAD

See Us Always When You Want A New Or Used Car  
 Save Time And Money - If You Need To Buy Or Sell A Mouse Or Lot,  
 Give Us First Chance.

**CURT'S MOTOR SALES**

CURT HUTCHINSON, Your Friendly Dealer

**SEPTEMBER 25 & 26**

THURSDAY AND FRIDAY

**BRECKENRIDGE TRAINING**  
**SCHOOL AUDITORIUM**

CURTAIN TIME 8:15 P. M.

**ADULT ADMISSION**

50 & 30 (TAX) - \$1.00

**CHILDREN (12 & UNDER)**

25 & 10 (TAX) - 35

THE LAST SHIPMENT OF  
**COKE STOVES**  
TOBACCO DRYERS  
HAS ARRIVED!  
NOW ON SALE  
**\$10.50 While The Supply Lasts At-**  
**Bath Wood Products Co.**  
REAR OF OWINGSVILLE FARMER SUPPLY  
Owingsville, Kentucky  
PHONE 148

**Keeton Will Have Opening This Week**

The grand opening of Keeton's Paint and Wallpaper Store now at a new location will be Sept. 26-27, (Friday and Saturday). The new location is now on West Main Street opposite the Bruce Motel.

Mr. and Mrs. H. M. Garvey, representatives and color stylists of Devco and Reynolds Company, will be present to conduct demonstrations of Devco products. In addition to the demonstrations those registering at the opening will be eligible for free prizes.

Mr. and Mrs. Garvey will also give any advice to anyone who may be wishing to re-decorate their home or office. This advice will be given free of charge.

(Continued On Page 5)

**Salt Lick News**

By Leza Stephens

Miss Sue Hall, daughter of Mr. and Mrs. Sherman Hall, and Clifford Ford, son of Mr. and Mrs. Avery Ford, were married Saturday, Sept. 20. We wish the young couple many happy years of married life.

James and Milton Cassity of Xenia, O., and sons of the late James Cassity of this place, called on their brother, Jack Cassity, Saturday. Milton has just been discharged from the U. S. Army. Carl Willis of Detroit, Mich., spent from Friday night until Sunday afternoon with his parents, Mr. and Mrs. Floyd Willis, and other friends of relatives.

Several women of the Methodist Church spent a few days last week cleaning the inside and re-varnishing the floor of the church. There is much yet to be done, and they plan two or more work days this week. Any one interested who did not have the opportunity to work may help by other contributions.

The men of the community had another work day at the McClain cemetery, Saturday. They dug most of the fence post holes, but other days will be needed to finish the fencing. More help would be appreciated.

The Salt Lick PTA met Friday for their first meeting of the year. There were 24 members present. We need more parents. They plan a show and "Shooting Stars" to be put on some time in October. The cast will be composed of all home talent.

Mr. Conner Young of near Charleston, W. Va. called on a few old friends in Salt Lick, Saturday.

Edry Crouch, son of Mr. and Mrs. Banks Crouch left last Tuesday night on his return trip to Greenland.

Mr. and Mrs. Russell Reeves opened their home for a community prayer meeting last Wednesday night. The next meeting will be held at the home of Mr. and Mrs. Jim Uiterback. Several and Mrs. Uiterback will be attended from different churches. It might be the means of bringing all closer together. The Rev. James McAfee, who is also coach at the school here was leader last week.

Mr. and Mrs. Arnold Thornsburg have a new baby boy, Anthony, who was born last Saturday. He is their fourth child, and second son.

Ed and Mrs. Randolph Conn have a new baby girl who was born last Friday night at the Mary Childs Hospital. From the hospital they went to stay a few days with her parents, Mr. and Mrs. Edgar Staton at Preston.

The folks in Salt Lick were shocked Saturday morning by the sudden death of Mr. John Bond, Monday morning at 10 o'clock a short service consisting of song and prayer was held at the home here, after which the remains were taken to Olive Hill where the funeral was held in the Christian Church. Later

the same day the body was returned to Salt Lick and placed on the late evening train and shipped to New York for burial. His wife remains poorly and has almost lost her sight. To her we extend our sympathy.

**Nora Pelfrey -**

(Continued From Page 1)

the Regular Primitive Baptist Church.

Funeral services were conducted by Reverends Lindsey Caudill, Kelly Profit and Abbe Tackett at the Dry Fork Baptist Church yesterday (Wednesday) morning. Burial was in White cemetery.

Mrs. White is survived by her husband, Willie White and four children: Elmer of Springdale, O., Mrs. Edna Conn of Mason, O., Mrs. Esther Pultz of Morehead and Mrs. Eulene Coldiron, Cincinnati.

Other survivors include a brother, John Pelfrey, Mt. Healthy, O., and two sisters, Mrs. Oscar Johnson, Manville, O., and Mrs. Elaine Martin, Springdale, O.

Casket bearers were: Delmar White, Otis Roark, Chester Stanley, Dallas Johnson, Ray Johnson, Willie Porter, Fred Roark and Alva Johnson.

Lane Funeral Home cared for arrangements.

**Moreheadian Principal Of Cincinnati School**

James Turner, son of Mrs. Iva Evans of Morehead, has been appointed Principal of the Sycamore High School in Cincinnati, being elevated from the position of mathematics and physics instructor.

Mr. Turner received his Bachelor's and Master's degrees from Morehead State College. He is married and has a daughter, five years old and a son, three years of age.

**Rev. Smith To Speak At Cooper's Chapel**

Rev. Fred Smith will be the speaker at a county-wide one night revival to be held Saturday night, September 27, at Cooper's Chapel. Singing will be led by Curt Hutchinson. The public is invited to attend the meeting which will begin at 7:15.

**PAY CHECKS**

Americans made more money on a national average in 1951 than ever before. Earnings averaged \$1,584 for every man, woman and child in the nation, according to the Commerce Department. Income payments to individuals rose from \$218,000,000,000 in 1950 to \$243,000,000,000 in 1951, 220 per cent above the 1940 figure.

*Style to Spare*

**CAMPUS**  
KNIT WEAR

Letter man, sweater man, or man-about-town... Campus sportswear puts you out front in style! Here's a trio that's right down your alley for wearability, warmth and good looks. See all of our selection of handsome Campus knits right away!

Knit shirts (lots of styles) from \$6.00  
Gambadeiro front and knit back in this polo-cut lined jersey \$9.00  
Button-front coat sweater in wide variety of colors \$5.00

**GOLDE'S**  
DEPARTMENT STORE

**"STUDENTS"**

Take advantage of Golde's wonderful lay-away plan, for all your Fall needs. \$1.00 down holds up to \$50.00 in merchandise.

— SHOP THE ADS IN THE ROWAN COUNTY NEWS —

**Important Meeting "IKE" FOR PRESIDENT Thursday (Tonight) 7:30 P. M.**

Circuit Court Clerk's Office  
Courthouse, Morehead

Be sure to attend and bring an "Ike" Supporter with you.

**GET READY FOR**

Everything You Need At The Monarch

**STOVES**

For Better Tobacco Cure Use Fengi-San. Prevents Rust

**COKE STOVES**  
For Curing Tobacco

Don't take chances with your tobacco. The Monarch has the coke stove you'll need for curing. Priced at only **\$12.75**

**LARGE SERIES**

Monarch Supply provides complete heating, installation, maintenance and repair service. Included in our large stock...

- Heating Stoves
- Coal Heaters
- Coal and Wood Heaters
- Oil Burners
- Gas Heaters
- Electric Heaters
- Wood Tin-Heaters
- Stove Pipe
- Furnace Pipe
- Copper Tubing
- Portable Grates
- Stove Enamel
- Dampers
- Stove Polish
- Fire Screens
- Oil Cans in 1, 2 and 5 gallon sizes
- Gas Stove and Range Connections
- Copper Fittings
- Floor Registers
- Collars
- Coal Buckets
- Fire Shovels
- Fireplace Sets
- Stove Boards

**The Only Electric Pipe Cutter And Threader in Morehead for Custom Use**

Monarch is equipped with the only electric pipe cutter and fitter for custom use in Morehead to properly cut and thread your pipe. We also carry complete line of pipe and fittings.

Remember September Is The Best Month To Seed and Fertilize Your Lawn

Where the people of this section shop with confidence

**GAS FURNACES And All Fittings**

Thinking of changing over to a gas furnace. We have the furnace, all fittings and the installation service. Consult Us Today for Free Estimate.

Phone 76 **MONARCH** SUPPLY Store Morehead, KY.

**TV Set Owners! Don't Miss This Week End's Fun!**

**CALL US TODAY FOR SWIFT TV SERVICE**

No need to go without television enjoyment for days. Our swift pick-up, trained technicians and complete supply of all nationally known parts, insures rapid results... made almost before your favorite program has come.

**MAY'S**  
RADIO & TELEVISION REPAIR SERVICE

Phone 309-JX 811 West Main

**PARDON MY GUST!**

**POWER STEERING on the Roadmaster and Super.**

**ROADMASTER**  
CUSTOM BUILT BY BUICK

**B**ENEATH that big broad bonnet is the reason for this headline.

It's a four-barreled automatic carburetor—Airpower by name—which has a way of gulping in what the dictionary defines as "a sudden blast of wind" when extra power is needed.

And the way this gorgeous performer can step out as this occurs is something you'll always remember.

For ordinary driving, two barrels are all you need—and two barrels are all that are working. They give you an extra thrifty flow of fuel for round-town cruising.

When extra power is wanted in a hurry—the "reserves" swing into action—feeding extra fuel and extra air in an ever-thrifty mixture, which delivers the greatest horsepower in Buick history.

This is one of many distinctions that endear ROADMASTERS to fine-car owners.

It's a car as rich in finish as it is in power—a car of expansive room—restful silence—level in gait—beautifully responsive to your mood and will.

And it offers the effortless ease of Power Steering\* especially engineered by Buick to save your strength in parking and slow-motion maneuvers, and still let you feel a proud sense of command and a sure sense of control on the highway.

There's just one question we'd like to ask: When are you going to come in and enjoy the ride of your life?

Equipment, accessories, trim and models are subject to change without notice. \*Optional at extra cost on ROADMASTER and SUPER only.

WHEN BETTER AUTOMOBILES ARE BUILT BUICK WILL BUILD THEM

**BROWN MOTOR COMPANY**  
166 MAIN STREET MOREHEAD, KENTUCKY



# The Rowan County News

Morehead, Kentucky, Thursday Morning, September 25, 1952

## Burley Curing May Still Require Heat

While much of the season so far has been ideal for curing burley tobacco, there might be considerable periods yet when heat could be used to advantage in tobacco barns.

A new circular of the UK College of Agriculture deals with heating practices and equipment for curing burley. It is stated that burley is an air-cured tobacco and natural air-curing methods should be used whenever possible.

"However," it is noted, "during practically every curing season there is some time when it is necessary to use heat in order to maintain proper curing conditions in the barn.

"Heating should be resorted to whenever the average humidity in the barn during a 24-hour period can not be held within the limits of 65 to 70 per cent relative humidity. Heating done properly and when needed can greatly increase the value of a tobacco crop. Improper firing on the other hand, can lose money for the tobacco farmer."

The circular, written by John N. Krueger, discusses ventilation, heat distribution and fuel. These largely determine the quality of tobacco it is possible to cure.

Of course, curing is only one

process in the whole procedure of producing top tobacco. Good tobacco must go into the barn for high quality to come out. "In other words, the tobacco must be properly grown, harvested and housed," Krueger noted.

If tobacco remains in high case for more than 24 hours, then heat should be used in the barn to bring the tobacco down to the correct dryness for proper curing (a relative humidity of 65 to 70 per cent).

The primary purpose of firing is to control the humidity within the barn. But "firing in a properly filled burley barn during favorable curing weather is not necessary."

"Some heating may be necessary in very cold weather if there is danger of the uncured tobacco freezing, but extreme caution must be exercised under such conditions, since it is very easy to produce an atmosphere that is too dry for proper curing and green colors may be set in the tobacco."

The circular contains a lot of valuable information on curing burley, especially on the use of heat. Every tobacco grower should have a copy, which can be had from county agents.

## It Really Wouldn't Unlook Anything

Gen Dwight D. Eisenhower lost the key to Rock Island, Ill. It was a two-foot long wooden key presented to him on his arrival at the Quad Cities airport in Davenport.

Just before the Republican presidential nominee left by train to continue his whistle-stop campaign tour a member of the general's party told newsmen the key was missing. No theories were advanced as to what may have become of it.

## Accident Is Fatal To Man In Wolfe

**Harold Glenn Booth, 18, Lands In Creek, Dies From Drowning**

A Wolfe County youth was drowned and his two companions were seriously injured Sunday when the sedan in which they were riding left KY 15 highway about 10 miles east of Stanton and plunged into the Middle Fork creek.

Gene Tolson, 18, one of the injured, was thrown across the creek, a distance of about 120 feet. He landed in a heap of willow brush and then waded out. Raleigh Brewer, 19, from the car which had landed on its side in six feet of water.

The body of the drowned youth, Harold Glenn Booth, who would have been 18 years Tuesday, was not recovered until after a six-hour search.

The three youths were from Campton.

Investigating officials gave this version of the accident:

The car, owned and operated by Brewer, was traveling east on KY 15 when it left the road about 100 feet from where the highway crosses Middle Fork creek. The vehicle followed the ditch line along the highway for a distance of 100 feet before it overturned and plunged into the creek about 70 feet from the bank.

Officials stated that Tolson was thrown from the car as it overturned in the water. He was approximately 50 feet from where the car overturned. Tolson, who was injured but not knocked unconscious, then waded out to the car and helped rescue Brewer who was trapped inside.

## Underwood, Adlai On Same Program

### Official Democrat Opening At Shelbyville Deferred By Candidate

Sen. Thomas R. Underwood, Lexington, cancelled his scheduled campaign opening at Shelbyville tonight (Thursday) instead, it will be combined with Gov. Adlai Stevenson's visit to Louisville Saturday.

Democratic State Campaign Chairman Clyde Watson said the change was necessary because of the two-days-apart "conflict in dates."

Watson explained that Underwood, editor of the Lexington Herald, was scheduled to open the Democratic nominee for president, because he felt many people who could not attend both rallies would rather hear Stevenson.

Stevenson is to attend a barbecue at Vice President Alben W. Barkley's farm just outside Paducah Saturday and come to Louisville by plane. Barkley, a distant cousin of the governor, may accompany him.

### BULLET-PROOF VEST

A bullet-resisting vest has reduced casualties so much that it is now general issue for all combat Marines in the front lines in Korea, according to Rear Admiral Samuel P. Noyes, surgeon-general, just returned from an inspection trip around the world.

## Rayburn To Support Adlai In Texas

### House Speaker Lacks Support Of Regular State Delegations

Speaker of the House Sam Rayburn, standing alone, prepared this week to open the Stevenson-Sparkman campaign in Texas.

The strife-torn Texas Democratic party organization was not with him.

Wright Morrow of Houston resigned Saturday as national Democratic committee member from Texas. He gave no indication as to whether the timing of the above was deliberate or accidental.

Morrow's resignation completed all practical purposes a mass exodus of Texas Democrats from the national party fold that followed Democratic Presidential Nominee's Adlai E. Stevenson's stand in favor of federal control of the oil-rich tidelands.

The split left only Rayburn, grizzled veteran of many an intra-party fight, and U. S. Sen. Lyndon B. Johnson to muster backing for the Illinois governor in Texas.

Rayburn, who launched the national party's campaign in Texas Monday, said he would not comment on Morrow's resignation.

Morrow's resignation drew little more than a shrug of indifference from Gov. Allan Shivers. The governor himself urged Texas Democrats to vote for Dwight D. Eisenhower, the Republican presidential candidate, rather than for Stevenson and his running mate, Sen. Sparkman of Alabama, because of the tidelands issue.

Morrow, national committeeman since 1948 and longtime Shivers wheeler, said state Democratic convention policy laid down early this month at the annual Texas state convention in Dallas, made it impossible to consistently carry on the ordinary duties and obligations expected of me as Democratic national committeeman from Texas.

He referred to the convention's refusal to adhere to Texas law, which requires that Stevenson's name appear on the Democratic ballot.

After agreeing that Stevenson's name would be placed on the ballot, the convention then adopted a resolution calling on state officials to "vote for and actively campaign for" the GOP team of Eisenhower and Sen. Richard M. Nixon of California.

Lexington was the first capital of Kentucky. The seat of government was moved from there to Frankfort in 1793.

The first Thanksgiving Day proclamation in Kentucky was issued by Gov. Knott on September 26, 1864.

## Editors Think Underwood And Democrats Will Carry Blue Grass State By Slim Margin

Newspapers and radio stations in 42 of Kentucky's 120 counties believe Sen. Thomas R. Underwood would get a slight majority over John Sherman Cooper in the race for U. S. Senator if the election were held now.

No response was received from the remainder of the state in a survey conducted by the Associated Press.

Those who did give estimates of their vote sentiment in their areas figured Underwood, Lexington Democrat, would receive 51.4 per cent of the vote in the 42 countypublican, 48.6 per cent.

The state went Democratic by a plurality of 56,416 votes in the last senatorial election in November, 1950. Gov. Earle C. Clement, Democrat, defeated former Federal Judge Charles J. Dawson, Louisville Republican.

Many of the newsmen queried in the survey said it was too early to get a true comparison of the candidates' strength in their areas. They said many voters have not made up their minds—especially independent—and will not do so until the campaign progresses further.

No estimate was received from the Third Congressional district (Jefferson County) which is traditionally Democratic, were meager.

A Louisville newspaper editor who explained that it was too early to determine how the voters will cast their ballots Nov. 4 said: "Any person who tries to guess at this point what Jefferson County is likely to do in November is a plain damn fool."

The Paducah Star Democrat said it was too early to estimate a definite trend, but "on a purely partisan vote, it would be safe to say that the First District will go Democratic, as usual, but by perhaps a smaller majority than usual."

Newsmen participating in the survey saw Cooper as the Republicans' best vote-getter in the state. They estimated Gov. Dwight D. Eisenhower, the GOP presidential nominee, would get 47.4 per cent of the vote in the 42 counties.

The estimate of 51.4 per cent of the votes for Underwood is slightly under the 52.6 per cent predicted for Gov. Adlai E. Stevenson of Illinois, the Democratic presidential candidate.

Kentucky also elects eight U. S. representatives in November and the voting in these races could have a bearing on the outcome of the presidential and senatorial races.

The Mountain Advocate of Barbourville, in the traditionally Republican Eighth District, predicted Cooper would poll 65 per cent of the votes in Knox

County. It explained that Cooper is very popular in the mountains while Underwood is not so well known there.

The weekly Paintsville Herald estimated that 75 per cent of Johnson County's voters would go to Cooper. It explained that coal mining is the county's chief industry and many of the miners favor Frank D. Roosevelt in his campaigns for the presidency, but are favoring Eisenhower this year, which would help the Cooper cause.

The Kentucky Times-Star of Cincinnati predicted victory for Cooper in Kenton and Campbell counties due to his popularity in those areas. The paper predicted Stevenson would receive 52 per cent of the votes in Kenton County if the election were held now, but that the voting would be reserved in the Senate race, with Cooper receiving 52 per cent to Underwood's 48 per cent.

The Times-Star predicted both Eisenhower and Cooper would start happily from their home to attend St. Mary's Parochial school. They are (l. to r.): Thomas, Josh, Donald and Bruce. (Insetational)

## THREE Rs FOR FAMOUS FOURSOME



SINCE THEY'RE QUADRUPLETS, problems in addition should be a cinch for Baltimore's famous Hemm children who, now almost six years old, start happily from their home to attend St. Mary's Parochial school. They are (l. to r.): Thomas, Josh, Donald and Bruce. (Insetational)

## FAMILY WEALTH

According to a report of the Brookings Institution, the old saw that women own or control most of the nation's wealth is not so. In a study, it was disclosed that the family unit is the real owner of most property, since three-quarters of all adult men and women are married and that most property and investments are theirs, held in the name of the family as a whole.

The Paducah Star Democrat said it was too early to estimate a definite trend, but "on a purely partisan vote, it would be safe to say that the First District will go Democratic, as usual, but by perhaps a smaller majority than usual."

Newsmen participating in the survey saw Cooper as the Republicans' best vote-getter in the state. They estimated Gov. Dwight D. Eisenhower, the GOP presidential nominee, would get 47.4 per cent of the vote in the 42 counties.

The estimate of 51.4 per cent of the votes for Underwood is slightly under the 52.6 per cent predicted for Gov. Adlai E. Stevenson of Illinois, the Democratic presidential candidate.

Kentucky also elects eight U. S. representatives in November and the voting in these races could have a bearing on the outcome of the presidential and senatorial races.

The Mountain Advocate of Barbourville, in the traditionally Republican Eighth District, predicted Cooper would poll 65 per cent of the votes in Knox

you would doubtless note several crisis points where money in the bank is necessary to cushion a shock, or open the door to opportunity. Will you have that reserve when you need it? Start to build it now in a savings account at our bank.

## SINGER SEWING MACHINES

A Singer representative will be in your community Monday of each week. Kindly check us out on SINGER SEWING MACHINE CO., Main St., Winchester, KY.

- Name \_\_\_\_\_
- Address \_\_\_\_\_
- Direction of Rural \_\_\_\_\_
- WISH TO \_\_\_\_\_
- ( ) Have my sewing machine repaired.
  - ( ) Buy a new Singer.
  - ( ) Trade in my old machine.
  - ( ) See a Singer vacuum cleaner.
  - ( ) See a Singer hand cleaner.
  - ( ) Rent a Singer machine.
  - ( ) Enroll in a sewing course.

## Collision Damaged Cars Made New

It's really astounding how banged up, seemingly hopeless car fenders, doors and roofs come back to shape and look new when our body experts take over. When you need body work, be sure to see us before making a decision.

**Emergency Service Always Available**

Whether it's a dead battery—or something more serious, rely on us to the rescue, ANYTIME! Established rates assure you of reasonable cost for our service

The Midland Trail Garage is the Official AAA Garage in Morehead. Consult us for membership in the AAA.

— Autos Thrive on Our Service —

**Midland Trail Garage**

Phone 150 — Morehead, Ky.

**COMPLETE WRECKER SERVICE**

★ Boosts Crop Yields

★ Increases Soil Fertility

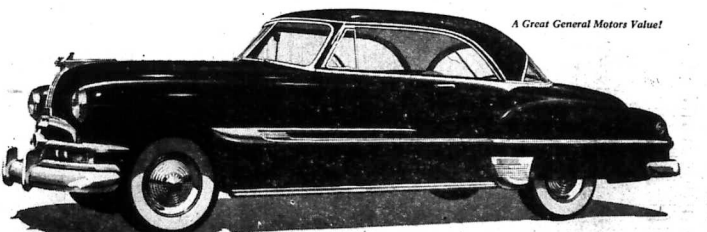
**W. P. BURCHETT**  
Route No. 2  
Morehead, Ky.

INTERNATIONAL MINERALS & CHEMICAL CORPORATION  
1000 North Dearborn, Chicago, Ill.

**PEOPLES BANK of MOREHEAD**

Established in 1907

## The Most Wonderful Wives of Your Life!



**More Go!**

**Less Gas!**

**Drive it Yourself!**

The most wonderful miles of your life start the minute you get behind the wheel of a new Pontiac and drive yourself. Come on in any time, it's a pleasure for us to introduce you to this great new performer.

Get all the wonderful things you want in a car—including low price! The perfect way to get this done is to come in and look at the great new Dual-Range Pontiac, then get behind the wheel and drive it yourself. You'll see what we mean!

Pontiac is big, distinctive and famous for dependability. Pontiac gives you spectacular Dual-Range performance — to match your power to traffic or to the open road, automatically!

And what economy this car will show! In Cruising Range, engine revolutions are cut 30 per cent — for more go on less gas!

*Optional at extra cost.*

**Dollar for Dollar you can't beat a Pontiac**

WATCH THE TV FOOTBALL GAME OF THE WEEK EVERY SATURDAY ON NBC TELEVISION—STAY TUNED FOR HERMAN NICHTMAN'S PONTIAC SHOW AFTER EVERY GAME

**ALFREY PONTIAC COMPANY**

WEST MAIN STREET MOREHEAD, KENTUCKY

Will Form Break PTA Next Tuesday

A Parent-Teacher organization will be formed Tuesday evening (September 30) at Breckinridge Training School...

'Little Harry' Gets Own Self In Trouble

To look at Harry the Nipper, you would never think that all the postmen in New York would like to cut his throat...

of money, so Harry is by no means what you would call a rich man. Many years ago, Harry perfected a remarkable metal roller...

New Rent Director



PICTURED at his desk in Washington is James M. Henderson, of Dandergate, Tex., general manager of the Economic Stabilization Agency...

Make Bad Guess On Ethel Barrymore

The Internal Revenue Bureau made over \$20,000 worth of bad guess back in 1947 that Ethel Barrymore was washed up as an actress. That was when the bureau accepted a \$7,500 compromise on an income tax claim of \$18,650.35...

DR. L. C. LONG Optometrist TUESDAY & WEDNESDAY Sample Building Phone 820 MORREHEAD, KY.

Lane Funeral Home Phone 91 - Morehead, Ky. To Quietly Serve You... when a beloved member of the family crosses the great divide...

It was hardly his most successful invention, though. It cost about nine or 10 bucks for one of these rulers and they were so fragile they often broke in the middle of deceiving coin boxes. Quite often a friend would get half the toll to London rung up and then have a rake break...

Top Veals Bring \$32.10 Saturday At Flemingsburg

Packer hogs brought \$19.40 and top veals \$32.10 at Saturday's sale, Flemingsburg Stockyards. The full report: Hogs: Packers \$19.40; sows, \$14 to \$15.50; fat cows, \$15 to \$18; sows and pigs, \$4 to \$6.90; shreds, \$3 to \$15.

KATYDID DONE DID IT Jack Frost Pretty Soon Thought, 'Bout Kolt? - CALL 71 - Morehead Ice & Coal Co.

FOR LOCAL OR LONG DISTANCE MOVING OR HAULING - CALL - Calvert Bros. Transfer We Carry Cargo Insurance Day Phone 2 - Night Phone 725 - Morehead, Ky. WILLARD AND OSCAR CALVERT, Owners

Farm Values In Nation Are Up Farm values and investments have been rising at a rapid clip, says the Department of Agriculture. For instance, a typical corn-belt farm worth \$15,500 plus \$5,000 for equipment in 1940 would now be valued at around \$67,000.

HIGHWAY CONCRETE PIPE For Stock Salting or Storage Bins SEE Veterans Lumber Company Dealer For Highway Concrete Pipe, Inc. Levee Road P. O. Box 403 Phones 58-1264 Mt. Sterling, Kentucky

Some of the best things in life Come out of your pass book... if you save regularly at the Citizens Bank. Come in. 'Grow with us' The Citizens Bank Member F. D. I. C. Morehead, Ky.

Some of the finest clay beds in the world are found in Kentucky. This resource is mined and turned into fire bricks, tile, and ceramic products at plants in Ashland, Hichins, Grab, Olive Hill, Clearfield, Mayfield, and Haideman, to mention a few. INNER-TONE MEDICINE REAL RELIEF FOR STOMACH SUFFERERS One man recently took INNER-TONE three days and said afterwards that he never would believe that INNER-TONE could help so much.

GET EXTRA PROFIT EVERY TRIP - up to 1,200 pounds more! THIS new GMC 145 H.P. Highway Tractor - the 472-30, will pack more payload and profit into 45,000 pounds of gross capacity than any similarly equipped middleweight built.

'AVOID THE RUSH' NOW Is The Time, to have your Radiator Serviced for winter... We now have in our employment one of the best radiator men in the state of Kentucky. We have a combined experience of fifty years in the radiator business. MAY'S RADIATOR SHOP Phone 389-K Morehead, Ky. 811 W. Main

GMC NEW 470 SERIES HIGHWAY TRACTOR - gasoline-powered by the revolutionary new GMC "302" valve-in-head engine, most powerful for its weight in truck history! Record 7.2 high compression! BROWN MOTOR COMPANY 166 MAIN STREET MOREHEAD, KENTUCKY You'll do better on a used truck with your GMC dealer

**Wolfford**  
INSURANCE AGENCY  
Phone 219  
Insurance of All Types  
See us especially for your  
car insurance.

**MONUMENTS**  
All Styles, Sizes  
For first class job at right  
prices, see or write  
**W. A. PORTER**  
Elliottville, Ky.

**LENNOX**  
the  
Shallow  
Depth  
Floor  
Furnace  
Only 26 inches  
high! No pit,  
no excavations, no  
cellar house to install or service  
this full-comfort floor furnace!  
Safe, silent and efficient. Call  
for information today!

**ROWAN COUNTY HEATING  
& PLUMBING CO.**  
Phone 832-1 W. Main St.

"Easy Terms"

**CHOKED with GAS?**  
Stomach  
**THANK HEAVENS!** Most attacks are just acid  
indigestion. When it strikes, take Well-man  
tablets. They contain the fastest-acting  
medicines known to doctors for the relief of  
heartburn, gas and similar distress. Try

**BACKACHE?**  
It may be a simple  
ache or a serious  
illness. If you  
suffer from  
backache, try  
Backache-Relief  
tablets. They  
contain the  
fastest-acting  
medicines known  
to doctors for  
the relief of  
backache. Try  
Backache-Relief  
tablets today!

**ASTHMA**  
Don't let a coughing, wheezing, gasping  
attack of asthmalike trouble ruin your  
life. Try Asthma-Relief tablets. They  
contain the fastest-acting medicines  
known to doctors for the relief of  
asthma. Try Asthma-Relief tablets  
today!

**SORE PILES**  
Don't let sore, itchy, burning, swollen  
piles ruin your life. Try Pile-Relief  
tablets. They contain the fastest-acting  
medicines known to doctors for the  
relief of sore piles. Try Pile-Relief  
tablets today!

"Suffered 7 years  
-then I found Pazo  
brings amazing relief!"  
says Mr. W. W. Lee, Los Angeles, Calif.  
Speed amazing relief from misery of  
sore piles, with soothing Pazo! Act  
to relieve pain, itching, swelling—soothe  
inflamed tissues—lubricate dried  
out parts—help prevent cracking, sore-  
ness—reduce swelling—relieve itching—  
bring relief from pain, burning and  
itching—soothe inflamed tissues—  
relieve sore piles. Get Pazo! Pazo  
CHINARINOL costs only \$1.00 at drug-  
stores. For better sleep tonight and  
a brighter tomorrow.

**ENJOY ULTIMATE SHAVING  
EASE AND CONVENIENCE**  
**Gillette**  
Super-Speed RAZOR  
WITH BLUE BLADE  
DISPENSING AND  
STYRENE CASE  
**\$1.00**

**Pains, distress of "those days" stopped  
or amazingly relieved  
in 3 out of 4 cases  
in doctors' tests!**  
Here's wonderful news for  
women and girls—each  
month—suffer the tortures of  
"bad days" of functionally-  
caused menstrual cramps and  
pain—headaches, backaches,  
and those "no-good," dragged-  
out feelings.  
It's news about a medicine  
famous for relieving such suf-  
fering!  
Here is the exciting news:  
Lidia E. Pinkham's Vegetable  
Compound—gave complete or  
striking relief of such distress  
in an average of 3 out of 4  
of the cases in doctors' tests!  
Scientifically Modern Action  
Yes! Lidia Pinkham's has  
been proved to be scientifically  
modern in action!  
This news will not surprise  
the thousands of women and  
girls who take Lidia Pinkham's  
regularly and know the relief it  
can bring.  
And it should encourage you  
(if you're not taking Lidia  
Compound) to see if your ex-  
perience doesn't match theirs  
... to see if you, too, don't avoid

# School People To Cooperate In Program

### State Fair Aims At Plan To Prevent 'Hot Rod' Accidents

Every high school principal of Kentucky will receive a deserved salute from the citizens of the state when he affiliates his school with Tomorrow's Travelers. This affiliation means his school will teach life saving on the highways through the medium of the correct attitudes of driving in our teen-age boys and girls.

Tomorrow's Travelers is brand new and a positive approach to the solution of "Hot Rod" accidents, which cause heartache in our homes and take a heavy toll on teen-age lives every year. Sponsored by the Kentucky State Fair Board, which is financing an annual budget of \$3,000, the idea is the brain child of Thomas A. Ballantine, a member of the State Fair Board and one of Kentucky's truly great civic leaders.

Tomorrow's Travelers has been simmering on a low fire for almost three years. Ballantine continually observed that young men and women, who are most likely like gentlemen, and a courteous under ordinary conditions, must be taught "Men-of-the-Highway" when seated behind the wheels of high-powered cars. Also observing that as one highway tragedy followed another, we adults cried out for a program aimed at solving the problem.

Tom decided to do something about it. This year his program aimed at the Kentucky State Fair Board has come forward with sponsorship of this program aimed at solving lives.

The walls of our educational institutions, these certificated, constant reminders that the facilities of our schools are resolved to do all in their power to see that "Hot Rod" drivers are retrained by safe, courteous Travelers of Tomorrow.

1. Principals write immediately to Tomorrow's Travelers, Kentucky State Fair, Louisville, Ky., requesting their school receive their certificate and a package of application cards for the students.

2. Schools now plan a chapel program to explain the project to the students.

3. Application cards are issued to the students. As soon as students memorize the Honor Code of the Road appearing on the back, their applications are mailed to Tomorrow's Travelers.

4. As soon as Tomorrow's Travelers receives an application card, that boy or girl is sent his membership card and an attractive sticker for the car's windshield direct from headquarters of the State Fair.

5. School contests are held the first Monday in February. Winners receive handsome blue ribbons.

6. School contests are held the second Friday in March, and winners in the 16 regional winners progress to the State Finals at the Kentucky State Fair in 1953. The district and regional contests will be held at the same locations as the high school/basketball tournaments.

Beeswax handsome awards, which Tomorrow's Travelers are encouraging local organizations to supply the Kentucky State Fair Board is providing \$50 prizes for these contests with the State champion brand new car—his or her choice of a Ford, Plymouth, or Chevrolet.

When schools enroll, many things are made possible for young people, but most of all, service is rendered by teaching life saving on the highways.

9. Member schools cooperate by providing around at half-time of athletic contests the following:

"Our student members of Tomorrow's Travelers hope you are enjoying the game. As you return home, drive safely. Tomorrow's Travelers will help you make the highways safe. We know you will help."

The Goal: Saving young lives and insuring the lives of all by replacing "Hot Rods" with safety-conscious, educated young drivers.

# KOREAN WAR JET ACES HAVE A GET-TOGETHER



**IN DETROIT for the Air Force's sixth annual convention are nine jet aces of the Korean war. They are (from l. to r.): Maj. Winton Marshall, Capt. Ralph Gibson, Maj. James Jabara, Capt. Richard Becker and Capt. Robert Lathaw. In rear (l. to r.): Lt. James H. Kaster, Capt. Ivan C. Kinchelo, Capt. Robert Moore and Maj. William Winzler. The convention coincides with the International Aviation Exposition.**

# Robot Planes Being Used In Korea

A U. S. Naval officer said Thursday that hundreds of robot planes are available for a great bombing attack on Korea and that, some day, they conceivably could hit any world target with an A-bomb.

Shortly after Washington released the electrifying news that the robot planes already had smashed some Korean targets, the Navy in Tokyo gave more details of this push-button weapon of war.

AP Photographer Fred Waters, who wrote the first dispatch of a robot launching from the carrier Boxer Sept. 1, said four to six of them had been sent hurtling on the Communists. Navy sources said others probably had been launched since Waters' report.

Lt. Comdr. Lawrence A. Kurtz, director of the guided missile program in Korea, kept current operations a closely-guarded secret. But he did tell a press conference that so far, 1,800 obsolete robots—with electronic equipment—that can be launched from the ground or from carriers and directed to their target with a heavy bomb load by control planes.

# Says GOP Steals The 'Graft' Issue

Democratic Vice Presidential Nominee Sen. John Sparkman of Alabama admitted reluctantly at Cleveland this week the Republicans have taken the graft and corruption issue from his party in the current campaign.

Though not mentioning by name his GOP vice presidential opponent, Sen. Richard Nixon of California, whose \$18,235 ex-cess fund has brought him under fire, Sparkman told a Cuyahoga County (Cleveland) Democratic rally that "the Republicans have taken the subject of graft and corruption away from us. There's no sense in us talking about it when they show they're such experts at it."

Cleveland's Mayor Thomas Burke introduced Sparkman as

the candidate "Adlai Stevenson (Democratic presidential nominee) won't have to apologize for ..."

Partisans are responsible for much of the progress of the world and for most of its headaches.

**Eyeglasses Spell  
Better Grades**

Specialist of "badness" address also a specialist in number of prescribes your glasses for no other reason than **POOR STUDENT!** If you don't "take school," make sure he's not having eye trouble.

**ONE DAY SERVICE**

**Dr. J. M. Fine, Optometrist**  
Specializing in Eye Examinations and Fitting Glasses  
1607 Winchester Ave. Phone 115 Ashland, Ky.

**Read This Please** **BARGOONS!** **Read Carefully**

**For New or Used Cars or Trucks**

For new or used cars or trucks, we guarantee to save you time and money, if you see us first, if we don't have it we will get it for you.

*We also play around with real estate.*

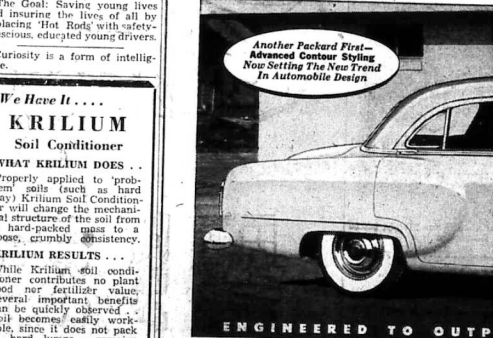
If you have houses, lots or farms to sell see us. We don't sell it for you, we buy it, and pass it on to our friends for a nice profit. "We don't fool around, see us for business," if you are buying or selling.

**Your Friendly Dealer**  
**Curt Hutchinson**  
at Curt's Motor Sales

**Hurry!** **Hurry!**

# Growing Demand Protects Your New-Car Investment!

# BIG SWING TO PACKARD'S ADVANCED CONTOUR STYLING BRINGS RECORD RESALE VALUE!



**ENGINEERED TO OUTPERFORM—BUILT TO OUTLAST THEM ALL!**

**Another Packard First—Advanced Contour Styling, Now Setting The New Trend In Automobile Design!**

**When Adding Up** things you want in your next car, remember that Packard's higher resale value is the best protection for the future of your investment!

**Dollar-wise buyers everywhere** are switching to Packard because its advanced contour styling and big-car luxury at medium-car cost make it America's best motorcar buy. And this ever-growing demand creates an extra plus in Packard's higher resale value!

**Proof is established by latest records** in the Official Used-Car Guide of the National Automobile Dealers Assoc., which show '51 Packards bring up to hundreds of dollars more than other cars of comparable original cost!

**Packard alone offers Ultramatic**, the smoothest, most dependable automatic drive; the Packard Thunderbolt Engine, the world's highest-compression eight, and proved factoring Packard Power Brakes for quicker, easier stops.

**Before paying \$2500 for a car**, see Packard—your best buy today and your best car investment for the future. "Built like a Packard" means built to last!

**ASK THE MAN WHO OWNS ONE**

**LEWIS GARAGE**  
Morehead Floral Co.  
Morehead, Ky. Phone 53-R

**Lighter...  
Faster...  
Tougher**

**It's the NEW  
HOMELITE  
Chain Saw**  
Weight Blade or Saw—24"

27 lbs.—4 H.P.  
More Power  
Per Pound  
Than Any Other Saw

**HOMER GREGORY & Co.**  
Phone 774  
West End Morehead, Ky.

**How Lidia Pinkham's works**  
It has 8 "compounds" and absorbs the contractions (see the chart) that cause menstrual pain, cramps, other distress.

the nervousness and tension, weakness, irritability—and pain—so often associated with "those days."

Remember Lidia Pinkham's, too! If you're suffering the "Hot Rod" and other functionally-caused distress of "those days"...

Get Lidia Pinkham's Compound or new, improved Tablets with added Iron (see only \$5.00). Start taking Lidia Pinkham's today!

# Annual Rowan County Youth Fair Morehead Graded School-Friday, Oct. 3

## PROGRAM OF EVENTS ANNUAL ROWAN COUNTY YOUTH FAIR FRIDAY, OCTOBER 3, 1952

10:00 a. m. — School Parade. Parade starts at Morehead Graded School.  
1:00 p. m. — Livestock Judging.  
1:30 p. m. — Athletic Events.  
2:00 p. m. — High School Band Concert.  
3:00 p. m. — Tractor Contest.  
3:30 p. m. — Soap Box Derby.  
7:00 p. m. — Morehead College Band Concert.  
7:30 p. m. — Crowning School King and Queen.  
(All Events at Graded School Building and Grounds on Flemingsburg Road, Morehead, Ky.)

### General Rules READ CAREFULLY

All exhibits should be in by 6:00 o'clock P. M. Thursday, October 2 and be removed by 10:30 A. M., Saturday, October 4. Only project work done during the past year may be shown in the 4-H exhibits.  
The Danish system of judging will be used. Premium money will be distributed according to the entry ratings in each department. Excellent will earn blue ribbons; good, red ribbons; and fair, white ribbons.  
Livestock, swine, poultry, and rabbits must be entered by 10:00 A. M. Friday. Livestock show starts at 1:30 P. M. Friday. The Fair management will interpret all rules and will

### OFFICERS of the 1952 ROWAN COUNTY YOUTH FAIR

ROBERT S. BISHOP ..... Fair Manager  
ERNA THOMPSON ..... Finance Chairman  
JOHN D. ALEXANDER ..... Secretary  
W. H. RICE ..... Construction Chairman  
MILLER DUNGAN ..... Catalogue Chairman  
GLENNIS FRALEY & ORVILLE CAUDILL ..... Livestock Superintendent  
LELAND HALL ..... Poultry Superintendent  
LEWIS HIGGINS ..... Grounds Superintendent  
RAY WETHINGTON ..... Swine Department

### Department Heads

Mrs. W. H. Rice ..... FHA  
Adrian Razor ..... 4-H Boys  
Mrs. Evelyn Sinclair ..... 4-H Girls  
William K. Rouse ..... Tractor Contest  
Clayton Turner and Herbert Webb ..... Adult Vocational Agriculture  
Telford Gevedon ..... Athletic Events  
Virginia Greene and Calvin Hunt ..... Parade and Floats

### Directors

John D. Alexander, Secretary  
Bob Bishop, Fair Manager  
Orville Caudill  
Mrs. Eunice Cecil  
W. E. Crutcher  
Miller Dungan  
Glennia Fraley  
Bill Garey  
Telford Gevedon  
Virginia Greene  
Leland Hall  
Clayton Turner  
H. C. Hagan  
George Nietzold  
Low Higgins  
Bob Laughlin  
Bernie Maurer  
Adrian Razor  
W. H. Rice  
Mrs. W. H. Rice  
Bill Rouse  
Carl Sinclair  
Mrs. Carl Sinclair  
Marvin Tate  
Ernie Thompson  
Clayton Turner  
Mrs. Zell Walter  
Herbert Webb

### Future Homemakers of America F. H. A. EXHIBITS

Mrs. W. H. Rice, Department Head

- Class 1 — SUMMER PROJECTS ..... \$15.00 for class  
Ring 1A — All project entries will receive the rating of either first, second or third. The money for each rating will be distributed equally among the winners.  
Class 2 — CLASS NOTEBOOK ..... \$8.00 for class  
Ring 2A — First Year Home Economics  
Ring 2B — Second Year Home Economics  
Ring 2C — Third Year Home Economics  
Class 3 — FOOD PRESERVATION ..... \$6.00 for class  
Ring 3A — Apples  
Ring 3B — Blackberries  
Ring 3C — Peaches  
Ring 3D — Tomatoes  
Ring 3E — Tomato Juice  
Ring 3F — Green Beans  
Ring 3G — Apples  
Ring 3H — Peppers  
Ring 3I — Jellies  
Ring 3J — Preserves  
Ring 3K — Jams  
Ring 3L — Pickles  
Ring 11A — Beets  
Ring 11B — Peppers  
Ring 11C — Jellies  
Ring 11D — Preserves  
Ring 11E — Jams  
Ring 11F — Pickles  
Class 4 — COOKING AND BAKING ..... \$8.00 for class  
Ring 1A — Cakes  
Ring 1B — Cookies  
Ring 1C — Cup Cakes  
Ring 1D — White Cake  
Ring 1E — Chocolate Cake  
Ring 22A — Plate Candy  
Ring 22B — Plate Six Biscuits  
Ring 24A — Plate Muffins  
Ring 25A — Plate Cornbread  
Class 5 — CLOTHING ..... \$8.00 for class  
Ring 26A — Accessories  
Ring 27A — Cotton Dress  
Ring 28A — Dress-Up Dress  
Ring 29A — Plaid Garment  
Ring 31A — Blouse  
Ring 32A — Apron  
Class 6 — FLOWER ARRANGEMENT ..... \$5.00 for class  
Ring 33A — Informal Arrangement  
Ring 34A — Formal Arrangement  
Ring 35A — Novelty Arrangement  
Ring 36A — Wild Flower Arrangement  
Ring 37A — Corsage  
Class 7 — CHILD CARE ..... \$2.00 for class  
Ring 38A — Child's Homemade Toy  
Ring 39A — Baby Sitter's Kit  
Class 8 — HANDICRAFT ..... \$2.00 for class  
Ring 40A — Jewelry Millers  
Ring 41A — Wooden Handicraft  
Ring 42A — Metal Handicraft  
Ring 43A — Misc. Handicraft

### 4-H CLUB EXHIBITS

Mrs. Carl Sinclair, Adrian Razor  
Department Heads

- Class 1 — CANNING ..... Prize Money, \$25.00  
Ring 1B — Quart Peas  
Ring 2B — Quart Peas  
Ring 3B — Quart Berries  
Ring 4B — Quart Apples  
Ring 5B — Quart Apples  
Ring 6B — Quart Beans  
Ring 7B — Quart Carrots  
Ring 8B — Quart Tomatoes  
Ring 9B — Quart Kraut  
Ring 10B — Quart Tomato Juice  
Ring 11B — Quart Peas  
Ring 12B — Jar Pickles  
Ring 13B — Jar Jelly  
Ring 14B — Jar Preserves  
Ring 15B — Jar Jam  
Ring 16B — Quart Corn  
Ring 17B — Soup Mixture  
Class 2 — FOODS DEPARTMENT ..... Prize Money, \$20.00  
Ring 18B — Angel Food Cake  
Ring 19B — Butter Cakes  
Ring 20B — Pie  
Ring 21B — Six Corn Sticks  
Ring 22B — Six Cookies  
Ring 23B — Six Pieces Candy  
Ring 24B — Six Rolls  
Class 3 — CLOTHING DEPARTMENT ..... Prize Money, \$20.00  
Ring 25B — Sewing Box  
Ring 26B — Tea Towel  
Ring 27B — Pot Holder  
Ring 28B — Apron  
Ring 29B — Cotton Dress  
Ring 30B — Pajamas  
Ring 31B — House Coat  
Ring 32B — Household Linens



- Class 4 — BEST GIRLS RECORD ..... Prize Money, \$10.00  
Ring 33B — Entry Number for This Class  
Class 5 — SECRETARY'S BOOK ..... Prize Money, \$10.00  
Ring 34B — Entry Number for This Class  
Class 6 — CLUB WINNERS ..... Prize Money, \$10.00  
4-H Club with the highest number of ribbons won at this fair, including livestock will receive this award.  
Class 7 — HANDICRAFT ..... Prize Money, \$10.00  
Ring 35B — Boys and Girls Handicraft  
Class 8 — 4-H FIELD AND GARDEN DEPT. .... Prize Money, \$30.00  
Ring 36B — Six Irish Potatoes  
Ring 37B — Six Peppers  
Ring 38B — Six Sweet Potatoes  
Ring 39B — Cucumber  
Ring 40B — Boy's Record Book  
Ring 41B — Pumpkin  
Ring 42B — Three Stalks Tobacco  
Ring 43B — Ten Ears White Corn  
Ring 44B — Ten Ears Yellow Corn  
Ring 45B — Six Onions

### Future Farmers of America

### F. F. A. EXHIBITS

Carl Sinclair, Department Head

- Class 1 — DEPARTMENT C ..... Prize Money, \$36.50  
Ring 1C — Project Record Book  
Ring 2C — Three Stalks Tobacco  
Ring 3C — 10 Ears Yellow Corn  
Ring 4C — Six Onions  
Ring 5C — Class Notebook  
Ring 6C — Bunch Legume Hay  
Ring 7C — Six Irish Potatoes  
Ring 8C — Pumpkin  
Ring 9C — Project Plans  
Ring 10C — 10 Ears White Corn  
Ring 11C — Six Sweet Potatoes  
Ring 12C — Cucumber  
Ring 13C — Shop Project (Wood or Metal)



### Combined F.F.A. and 4-H Livestock Show

Glennis Fraley and Orville Caudill  
Department Heads

- Class 1 — SWINE SHOW ..... Prize Money, \$20.00  
Ring 1D — Best of any breed. Entries should weigh at least 60 pounds.  
Class 2 — BABY BEEF SHOW ..... Prize Money, \$35.50  
Ring 2D — Best Baby Beef. Each member must show his calf and it must be halter broke.  
Class 3 — JUNIOR DAIRY SHOW ..... Prize Money, \$75.00  
Ring 3D — Purebred or Grade Heifer, under 9 months of age.  
Ring 4D — Purebred or Grade Heifer, over 9 months of age and less than 21 months.  
Ring 5D — Purebred or Grade, any age. Each member must show his entry and it must be halter broke.  
Class 4 — POULTRY SHOW (Pen 10 Pullets) ..... Prize Money, \$25.00  
Ring 6D — Banded Rocks  
Ring 7D — White Rocks  
Ring 8D — New Hampshire Reds  
Ring 9D — Best Pen, any breed.  
Class 5 — RABBIT SHOW ..... Prize Money, \$10.00  
Ring 10D — Best Pen of 3 Rabbits, any breed.  
Ring 11D — Best Breeding Rabbit, any breed.  
Class 6 — TRACTOR DRIVING CONTEST ..... Prize Money, \$17.50  
Ring 12D — Best FFA or 4-H Tractor Driver.

### Adult Livestock Agriculture EXHIBITS

Clayton Turner—Herbert Webb  
Department Heads

- This Department will be limited to enrollees of the Institutional or Farm Training Program for Veterans.  
Class 1 — CROPS AND GARDENS ..... Prize Money, \$26.00  
Ring 1E — Best Six Stalks of Tobacco  
Ring 2E — Best 10 Ears White Corn  
Ring 3E — Best 10 Ears Yellow Corn  
Ring 4E — Best Bunch Legume Hay  
Class 2 — FOOD FOR HOME USE ..... Prize Money, \$26.00  
Ring 5E — Best Display of Food for Home Use  
Class 3 — CATTLE, BEEF AND DAIRY ..... Prize Money, \$60.00  
Ring 7E — Best Baby Beef, 9 to 12 months old  
Ring 8E — Best Dairy Heifer, 1 to 2 years old  
Ring 9E — Best Dairy Heifer or Cow, over 2 years old  
Class 4 — HOGS ..... Prize Money, \$20.00  
Ring 10E — Best Boar, any breed  
Ring 11E — Best Gilt, any breed  
Ring 12E — Best Sow, any breed  
Class 5 — POULTRY ..... Prize Money, \$20.00  
Class 13E — Best Pen New Hampshire Reds  
Class 14E — Best Pen White Rocks

### Boys Athletic Events

Telford Gevedon,  
Department Head

- Event—  
75 Yard Dash, 12 years and under ..... 1.00  
100 Yard Dash, 13 years and over ..... 1.00  
Softball Throwing, for distance, 13 yrs. and over ..... 1.00  
Softball Throwing, for distance, 14 yrs. and over ..... 1.00  
Broad Standing Jump, 13 years and under ..... 1.00  
Broad Standing Jump, 14 years and over ..... 1.00  
Sack Race, 12 years and under ..... 1.00  
Sack Race, 13 years and over ..... 1.00  
Shoe Scramble, 12 years and under ..... 1.00

### Athletic Events For Girls



- Event—  
50 Yard Dash, 13 years and under ..... 1.00  
50 Yard Dash, 14 years and over ..... 1.00  
Softball Throwing, for distance, 13 yrs. and under ..... 1.00  
Softball Throwing, for distance, 14 yrs. and over ..... 1.00  
Sack Race, 12 years and under ..... 1.00  
Sack Race, 13 years and over ..... 1.00  
Shoe Scramble, 12 years and under ..... 1.00  
Shoe Scramble, 13 years and over ..... 1.00

### Parade Awards To Consolidated Schools and Rural Schools



- Virginia Greene and Calvin Hunt,  
Directors of Parade and Floats  
(Parade Starts 10:30 a. m. at the  
Morehead Graded School)
- Rural Schools ..... Consolidated Schools
- Float  
1st Prize ..... \$12.00  
2nd Prize ..... 8.00  
3rd Prize ..... 5.00
- Parade Group  
1st Prize ..... \$12.00  
2nd Prize ..... 8.00  
3rd Prize ..... 5.00
- Banner  
1st Prize ..... \$6.00  
2nd Prize ..... 4.00  
3rd Prize ..... 2.50

### Soap Box Derby

3:00 o'clock Friday Afternoon  
(Sponsored by Morehead Lions Club)

- 1st Prize ..... \$8.00  
2nd Prize ..... \$4.00  
3rd Prize ..... \$3.00

### King and Queen Coronation

The School KING AND QUEEN of the 1952 Youth Fair will be crowned, with appropriate ceremonies, at 7:30 P. M. Each school entitled to enter one candidate for King and one for Queen. Candidates must be over 14 years of age.

For a resume of all Fair Events and full information consult The Rowan County News, 'Your Newspaper'. This newspaper, which has over 18,000 readers every issue, will give complete coverage of the Youth Fair.

## Western Auto Associate Store Presents Its Annual Babies and Children Photo Contest

EVERYONE WELCOME  
Children up to 13 years of age eligible

# \$500.00 CASH PRIZES

Winners to be Judged on Personality and Expression Only

FIRST PRIZE ..... \$250 IN CASH  
SECOND PRIZE ..... \$100 IN CASH  
THIRD PRIZE ..... \$50 IN CASH  
10 Additional Prizes Totaling ..... \$100 IN CASH

Entry Blank and Rules Given at Time of Sitting

ENTRY FEE 79¢ PER CHILD  
No Other Charges

ONE PICTURE GIVEN EACH ENTRANT  
REMEMBER this is not a beauty contest. Only personality and expression will be judged. Your child has as good a chance as any to win.  
FULL SET OF PROOFS SHOWN  
A well-known child photographer will be on hand so don't miss being there.

ONE DAY ONLY  
Saturday, Sept. 27, 1952  
Hours 10 a. m. to 7 p. m.

WESTERN AUTO ASSOCIATE STORE  
Morehead, Kentucky

Prepare your home for winter living now!

Winter living means *home* living—reading, entertaining, studying, working on hobbies. It means more light, perhaps added lamps and fixtures. Better light will bring you greater eye comfort for reading, studying, and other household tasks.

Check your living room for empty sockets and undersized bulbs. Fix a study nook for your teen-ager, and watch his interest in homework pop. Make sure he has plenty of light. Light is cheap; eyes are precious. Use proper size bulbs.

... but a woman's work is never done." Particularly in the kitchen the housewife deserves the best in lighting. Add those convenient lights at cabinets, range, and sink. Kitchen-tired eyes make listless housewives.

Fill all your empty sockets now, and be sure to keep plenty of spare bulbs on hand. Get ready for winter living in your home. See your dealer today.

## KENTUCKY UTILITIES COMPANY

Electricity is Today's Biggest Bargain

FREE—A guide to better lighting. For better lighting from your present lamps and fixtures, ask for our booklet, "See Your Home in a New Light." 22 recipes for better lighting. Get it at our nearest office.