

The Morehead News

© Kentucky Publishing Company
dba/The Morehead News

USPS 582-600

ONE SECTION, 20 PAGES

FRIDAY MORNING, NOVEMBER 2, 1979, MOREHEAD, KY

VOL. 96 NO. 88

Education Committee Cites Need For Vo-Tech Facility In Morehead

The Regional Advisory Committee for Vocational Education Region Nine in the Buffalo Trace and Gateway Area Development Districts has developed a long-range plan, which indicates the need for a state vocational-technical school to serve post-secondary students. The committee has recommended that this institution be constructed in the Morehead area to serve post-secondary students in the 10 county area.

There does not exist, at the present time, a vocational-technical school in Region Nine. However, the other 13 vocational regions in the state have one or more state vocational-technical schools to serve post-secondary students.

The committee pointed out that Region Nine has only three daytime programs to serve post-secondary students, and two of these programs are CETA-funded, which lapses at the end of the one-year funding cycle. At

the present time needs for post-secondary programs in nine programs areas are being met by utilizing the shops and classrooms at the four area vocational education centers located in Maysville, Mt. Sterling, West Liberty, and Morehead during the late afternoon and evening hours. Post-secondary programs run from 3 p.m. until 11 p.m. at night. Also, classes are being held in HUD surplus trailers and rented homes and garages within the region, the committee noted.

A student population of 1,046 high school graduates that did not elect to go to college and 619 high school dropouts during the 1978-79 school year are available for post-secondary programs in vocational education. In addition to this number, vast numbers of untrained individuals exist within the region because they have had little or no opportunity for post-secondary education programs throughout the past. Also, 42 percent of the people in

Region Nine have less than an eighth grade education and are really not employable at a skill level without vocational training, committee members said.

Many program areas are not available to students for training that industry has indicated a need for within the region, the committee added. Among these are, notably, machine shop, tool and die design, electronics, diesel and truck mechanics, plumbing, masonry, sheet metal, and radio and TV.

"The facts tend to point out a need for the continued planning and construction of a state vocational-technical school in the Morehead area to meet the needs for post-secondary training in Region Nine. Unless this facility can be constructed and programs implemented within the next few years, industrial growth and business opportunities will be severely limited," a spokesman said.



Spirits were out in force Wednesday night in Morehead and Rowan County. One of the more frightful displays in the area was this one on McBrayer Road at which spirits

beckoned visitors. The display was the creative work of Nancy Conn, Helen Eldridge and their children. (Staff photo by Joe Lamb)

Open Invitation

Good Turnout Expected Tuesday

County Court Clerk Jean Bailey says she is expecting a "good turnout" for Tuesday's election, basing her prediction on the fact that both the city council race and the utility tax question appear on the ballot.

Polls will open at 6 a.m. and close at 6 p.m. Persons who have not exercised their right to vote for the past four years can expect to find their name purged from the registration list.

Bailey encourages voters with any questions concerning where they vote or if they can vote to contact her office.

Tabulation of absentee ballots will begin at 3 p.m., and is expected to be double the work this year due to the utility tax question. Absentee ballots mailed prior to Oct. 29 did not include the question and additional forms had to be sent.

Last year, election results were

Fiscal Court Hires A New Dog Warden

By JOE LAMB

After several months without the service, Rowan County now has a new dog warden. Brooks Karrick, 34, of Rock Park, a janitor at Morehead State University and a minister, was hired by Fiscal Court yesterday morning as the new dog warden and as Courthouse custodian.

Brooks was hired immediately on a 30-day agreement until a contract can be drafted. For that period he will be paid \$250 per week and must pay for food, transportation, disposal and inoculation for the dogs out of that.

Several of the magistrates expressed a desire to draft a full-time contract which would provide a weekly salary and pay other expenses out of county funds. Calvin Lytle made the suggestion because he said, "When you're spending your own money, you'll tend to cut corners."

Former Dog Warden Carl Mullen, who resigned amid controversy in July, had to pay for all his supplies out of a monthly salary of \$900.

The action of the court followed a presentation by residents of Park Hills who had a petition with 27 signatures, asking that something be done to correct the dog problem. A five year old boy had been bitten by a dog there last Monday.

Fire Protection

At the request of City Administrator Dave Evans, the county also agreed to pay \$3,000 to the Morehead Volunteer Fire Department for rural fire protection. In past years, the county had paid the city \$5,000 per year. This year, however, the county had allocated \$2,000 of that fund to the 377 Volunteer Fire Department.

Lemuel Black said he felt it "is our duty to help the city—they help us."

Evans had submitted figures which showed that 64 calls had been made in the county as of Oct. 22. Figured at \$8 per hour for each call with seven men responding, that represented a cost of about \$5,024.

Evans said that the city would like to have \$5,000 but would take what it could get.

Hydrants For Farmers

In a somewhat related matter, the court approved a recommendation of Lytle that the county spend \$1,000 toward the installation of three fire hydrants in the Farmers community.

Lytle said that the hydrants would cost about \$1,500 each, installed. He said that Gateway Area Development District would fund about \$3,000 and that the people in Farmers had raised about \$300. In addition, he said that the county school system would donate some money to the project.

The hydrants would be connected to a six-inch main running through Farmers and owned by the Morehead Utility Plant Board.

Also at Farmers, the court delayed action on a request for funding by the Rowan County Air Board. The magistrates agreed to take under advisement a request by Treasurer Steve Watts that the county allocate \$5,000 for maintenance.

Watts and other members of the Air Board said that great strides were being made in improvements at the airport near Farmers and that most of that was accomplished with volunteers.

The court also approved a retroactive motion to pay Judge/Executive W.C. Flannery's wife for her work as a

(Continued On Page Two)

Health Board Can Tax Four Cents After All

It now appears that the Rowan County Health Board can set its tax rate at four cents per \$100 of assessed valuation of property after all.

The state Attorney General's Office, in an opinion issued to County Clerk Jean Bailey, said Tuesday that it had erred in issuing an original opinion which said that the district must follow the guidelines of House Bill 44 and use a compensating tax rate based on three cents, the rate the board levied last year.

The confusing situation has left Bailey in a quandry as far as having tax bills printed for 1979 and has prevented several departments from collecting much-needed revenue.

The problems began when the health board, thinking that it had to follow HB

44, announced that it intended to set the rate at four cents but failed to advertise the move properly. The board advertised that it was setting the rate at 4 mills or four-tenths cent rather than 40.

It then attempted to reverse itself and set the rate at 3.6 cents as certified by the state department for Human Resources. That department erred, however, because it thought that the health department had been levying four cents instead of three.

Bailey then sought the Attorney General's opinion which said that the compensating tax rate must be based on three cents because the health board had failed to have the levy changed.

That left the health board with no option but to set the rate at the new

compensating rate of 2.7 cents which would have left it without funds for the coming year.

The health board was ready to set the rate at that Monday night but decided to wait until last night (Thursday) when all the board members could be present.

The board was expected to adopt the rate of four cents last night during that meeting.

In the opinion, Joseph R. Johnson, assistant attorney general, said that he had "overlooked a 'sleeper' found in KRS 212.755(2) which exempts public health taxing districts from the provisions of the compensating tax rate." House Bill 44, therefore, is not applicable to the county health department.

Morehead Among Lowest

October Food Prices Decline

Prices for most staple food items continued to hold steady in Kentucky supermarkets during October, countering the steep inflationary trend evident in many other sectors of the economy.

An October marketbasket survey in 26 Kentucky communities showed that 40 selected food items cost an average of \$31.36, up just over 1 percent from the September figure, but still 1.5 percent below July's average.

The survey was conducted by volunteer reporters, under the coordination of the Kentucky Farm Bureau Women's Advisory Committee.

Moderate price declines during the July-October period in most of the 13 cuts of beef, pork and poultry countered increases in some daily products, vegetables and processed items. Price

movement since September was mixed, reflecting the overall stability in food costs.

By comparison, farm prices on most important Kentucky crops showed marked declines during the four months since July. Corn, the only garner, was up 7.2 percent, while average prices for wheat, soybeans, hogs and beef cattle had dropped from 2 to 10 percent, while average prices for wheat, soybeans, hogs and beef cattle had dropped from 2 to 7 percent.

Kentucky Farm Bureau Women's Director Marsha Herndon noted that the survey focuses on staple food products, and by products of farm crops produced in Kentucky. She said the lack of most highly processed food items, plus household goods and other non-food products purchased in super-

markets, may present cost figures that vary from federal consumer price reports.

"Most price increases in the supermarket right now are being experienced in the highly processed food area, like pre-cooked items, processed blends and the like," Herndon said. "These prices reflect higher labor, processing and transportation costs, which are over-riding the effect of lower farm prices."

Marketbasket averages in the 26 survey locations ranged from a low of \$47.69 in Shelbyville to Mt. Vernon's high mark of \$54.81. Other local marketbasket averages were Hopkinsville, 48.26; Morehead, 48.36; Seabree 48.53; Owensboro, 48.65; Elizabethtown, 48.85; Glasgow, 49.74; Salsberyville, 48.85.

Inside

- Ambulance Runs . . . P.11
- Classifieds . . . P.4,5,6,7
- Courthouse News . . . P.10
- Deaths . . . P.17
- District Court . . . P.10
- Editorial . . . P.18
- Extension News . . . P.19
- School Page . . . P.15
- Society . . . P.9
- Sports . . . P.12,13

fresh from the donut mill

WORLD'S LARGEST DONUT MILL

SAFETY FIRST, INC. COLUMBUS, OH

JIM BAY HARRIS

A new sign went up Wednesday at Day's Recalls on West Main Street in Morehead adding the finishing touch for remodeling of the store which has been underway for a month. The interior has been repainted and revamped and additional shelving installed. The exterior front has a new vinyl facing. (Staff photo by Joe Lamb)

State Aid For Elderly Would Offset Utility Tax, Says Brock

By MARK PERKINS
Staff Writer

Opponents of the county School Board's utility tax, which would increase the county question in the voting booths Tuesday, argue that the extra burden will be too much for senior citizens and people living on fixed incomes.

Wednesday morning school Superintendent John Brock informed the Chamber of Commerce about funds available through the state that have been allocated to assist the elderly and handicapped with utility bills.

In 1978 the General Assembly allocated \$10 million to the energy cost assistance program. Grants totaling \$5 million were to be distributed last winter, leaving \$5 million for this winter. Because the number of applicants was lower than expected, last year's grants totaled less than \$2 million. The unclaimed \$3 million would be added to this year's allocation for a

total of \$8 million in fuel assistance.

Jim Butler Wanke, from the Gateway ADD office, is already preparing to get the word out with regard to how one makes application for relief. Wanke said that Gateway plans open meetings in the county during which senior citizens can sign up for aid toward their utility bills. Meetings are planned for November using county schools.

Applicants for the program do not have to be destitute or face utility cutoff, according to the state Department for Human Resources, the agency that administers the program. Regulations require that applicants be at least 62 years old, or blind or handicapped and receiving Supplemental Security or Medicaid benefits.

Human Resources Secretary J.E. DeShaper stresses that the state program differs from a federal assistance program soon to be announced with the same initials. The federal Energy Crisis Assistance Program is designed to aid low income people of

any age who are in crisis situations.

During the meeting, Brock pointed out that the levels of aid in the state program more than doubled over last year, depending on the size of household and amount of income. The maximum \$200 will be granted to persons with total gross household incomes at or below 75 percent of the poverty level, while the lowest aid level, \$100, will go to those with incomes at or below 125 percent of the poverty level. Persons with incomes at or below 100 percent of the poverty level will receive \$150.

Another important change in this year's program raises the amount of savings and checking funds the applicant is allowed to have and still qualify for the program.

Last year that amount varied according to the number of people in a household, with a maximum of \$3,100 in assets for a family of four. This year's maximum is \$5,000 for all households.

(Continued On Page Two)

The Morehead News

© Kentucky Publishing Company
dba/The Morehead News

USPS 582-600

ONE SECTION, 20 PAGES

FRIDAY MORNING, NOVEMBER 2, 1979, MOREHEAD, KY

VOL. 96 NO. 88

Education Committee Cites Need For Vo-Tech Facility In Morehead

The Regional Advisory Committee for Vocational Education Region Nine in the Buffalo Trace and Gateway Area Development Districts has developed a long-range plan, which indicates the need for a state vocational-technical school to serve post-secondary students. The committee has recommended that this institution be constructed in the Morehead area to serve post-secondary students in the 10 county area.

There does not exist, at the present time, a vocational-technical school in Region Nine. However, the other 13 vocational regions in the state have one or more state vocational-technical schools to serve post-secondary students.

The committee pointed out that Region Nine has only three daytime programs to serve post-secondary students, and two of these programs are CETA-funded, which lapses at the end of the one-year funding cycle. At

the present time needs for post-secondary programs in nine programs areas are being met by utilizing the shops and classrooms at the four area vocational education centers located in Maysville, Mt. Sterling, West Liberty, and Morehead during the late afternoon and evening hours. Post-secondary programs run from 3 p.m. until 11 p.m. at night. Also, classes are being held in HUD surplus trailers and rented homes and garages within the region, the committee noted.

A student population of 1,046 high school graduates that did not elect to go to college and 619 high school dropouts during the 1978-79 school year are available for post-secondary programs in vocational education. In addition to this number, vast numbers of untrained individuals exist within the region because they have had little or no opportunity for post-secondary education programs throughout the past. Also, 42 percent of the people in

Region Nine have less than an eighth grade education and are really not employable at a skill level without vocational training, committee members said.

Many program areas are not available to students for training that industry has indicated a need for within the region, the committee added. Among these are, notably, machine shop, tool and die design, electronics, diesel and truck mechanics, plumbing, masonry, sheet metal, and radio and TV.

"The facts tend to point out a need for the continued planning and construction of a state vocational-technical school in the Morehead area to meet the needs for post-secondary training in Region Nine. Unless this facility can be constructed and programs implemented within the next few years, industrial growth and business opportunities will be severely limited," a spokesman said.



Spirts were out in force Wednesday night in Morehead and Rowan County. One of the more frightful displays in the area was this one on McBrayer Road at which spirits beckoned visitors. The display was the creative work of Nancy Conn, Helen Eldridge and their children. (Staff photo by Joe Lamb)

Good Turnout Expected Tuesday

County Court Clerk Jean Bailey says she is expecting a "good turnout" for Tuesday's election, basing her prediction on the fact that both the city council race and the utility tax question appear on the ballot.

Polls will open at 6 a.m. and close at 6 p.m. Persons who have not exercised their right to vote for the past four years can expect to find their name purged from the registration list.

Bailey encourages voters with any questions concerning where they vote or if they can vote to contact her office.

Tabulation of absentee ballots will begin at 3 p.m., and is expected to be double the work this year due to the utility tax question. Absentee ballots mailed prior to Oct. 29 did not include the question and additional forms had to be sent.

Last year, election results were

Fiscal Court Hires A New Dog Warden

By JOE LAMB

After several months without the service, Rowan County now has a new dog warden. Brooks Karrick, 34, of Rock Park, a janitor at Morehead State University and a minister, was hired by Fiscal Court yesterday morning as the new dog warden and as Courthouse custodian.

Brooks was hired immediately on a 30-day agreement until a contract can be drafted. For that period he will be paid \$250 per week and must pay for food, transportation, disposal and inoculation for the dogs out of that.

Several of the magistrates expressed a desire to draft a full-time contract which would provide a weekly salary and pay other expenses out of county funds. Calvin Lytle made the suggestion because he said, "When you're spending your own money, you'll tend to cut corners."

Former Dog Warden Carl Mullen, who resigned amid controversy in July, had to pay for all his supplies out of a monthly salary of \$900.

The action of the court followed a presentation by residents of Park Hills who had a petition with 27 signatures, asking that something be done to correct the dog problem. A five year old boy had been bitten by a dog there last Monday.

Fire Protection

At the request of City Administrator Dave Evans, the county also agreed to pay \$3,000 to the Morehead Volunteer Fire Department for rural fire protection. In past years, the county had paid the city \$5,000 per year. This year, however, the county had allocated \$2,000 of that fund to the 377 Volunteer Fire Department.

Lemuel Black said he felt it "is our duty to help the city—they help us."

Evans had submitted figures which showed that 64 calls had been made in the county as of Oct. 22. Figured at \$8 per hour for each call with seven men responding, that represented a cost of about \$5,024.

Evans said that the city would like to have \$5,000 but would take what it could get.

Hydrants For Farmers

In a somewhat related matter, the court approved a recommendation of Lytle that the county spend \$1,000 toward the installation of three fire hydrants in the Farmers community.

Lytle said that the hydrants would cost about \$1,500 each, installed. He said that Gateway Area Development District would fund about \$3,000 and that the people in Farmers had raised about \$300. In addition, he said that the county school system would donate some money to the project.

The hydrants would be connected to a six-inch main running through Farmers and owned by the Morehead Utility Plant Board.

Also at Farmers, the court delayed action on a request for funding by the Rowan County Air Board. The magistrates agreed to take under advisement a request by Treasurer Steve Watts that the county allocate \$5,000 for maintenance.

Watts and other members of the Air Board said that great strides were being made in improvements at the airport near Farmers and that most of that was accomplished with volunteers.

The court also approved a retroactive motion to pay Judge/Executive W.C. Flannery's wife for her work as a

(Continued On Page Two)

Open Invitation

Spirts were out in force Wednesday night in Morehead and Rowan County. One of the more frightful displays in the area was this one on McBrayer Road at which spirits

Health Board Can Tax Four Cents After All

It now appears that the Rowan County Health Board can set its tax rate at four cents per \$100 of assessed valuation of property after all.

The state Attorney General's Office, in an opinion issued to County Clerk Jean Bailey, said Tuesday that it had erred in issuing an original opinion which said that the district must follow the guidelines of House Bill 44 and use a compensating tax rate based on three cents, the rate the board levied last year.

The confusing situation has left Bailey in a quandry as far as having tax bills printed for 1979 and has prevented several departments from collecting much-needed revenue.

The problems began when the health board, thinking that it had to follow HB

44, announced that it intended to set the rates at four cents but failed to advertise the move properly. The board advised that it was setting the rate at 4 mills or four-tenths cent rather than 40.

It then attempted to reverse itself and set the rate at 3.6 cents as certified by the state department for Human Resources. That department erred, however, because it thought that the health department had been levying four cents instead of three.

Bailey then sought the Attorney General's opinion which said that the compensating tax rate must be based on three cents because the health board had failed to have the levy changed.

That left the health board with no option but to set the rate at the new

compensating rate of 2.7 cents which would have left it without funds for the coming year.

The health board was ready to set the rate at that Monday night but decided to wait until last night (Thursday) when all the board members could be present.

The board was expected to adopt the rate of four cents last night during that meeting.

In the opinion, Joseph R. Johnson, assistant attorney general, said that he had "overlooked a 'sleeper' found in KRS 212.755-2" which exempts public health taxing districts from the provisions of the compensating tax rate. House Bill 44, therefore, is not applicable to the county health department.

Morehead Among Lowest

October Food Prices Decline

Prices for most staple food items continued to hold steady in Kentucky supermarkets during October, countering the steep inflationary trend evident in many other sectors of the economy.

An October marketbasket survey in 26 Kentucky communities showed that 40 selected food items cost an average of \$31.36, up just over 1 percent from the September figure, but still 1.5 percent below July's average.

The survey was conducted by volunteer reporters, under the coordination of the Kentucky Farm Bureau Women's Advisory Committee.

Moderate price declines during the July-October period in most of the 13 cuts of beef, pork and poultry countered increases in some daily products, vegetables and processed items. Price

movement since September was mixed, reflecting the overall stability in food costs.

By comparison, farm prices on most important Kentucky crops showed marked declines during the four months since July. Corn, the only garner, was up 7.2 percent, while average prices for wheat, soybeans, hogs and beef cattle had dropped from 2 to 10 percent, while average prices for wheat, soybeans, hogs and beef cattle had dropped from 2 to 7 percent.

Kentucky Farm Bureau Women's Director Marsha Herndon noted that the survey focuses on staple food products, and by products of farm crops produced in Kentucky. She said the lack of most highly processed food items, plus household goods and other non-food products purchased in super-

markets, may present cost figures that vary from federal consumer price reports.

"Most price increases in the supermarket right now are being experienced in the highly processed food area, like pre-cooked items, processed blends and the like," Herndon said. "These prices reflect higher labor, processing and transportation costs, which are over-riding the effect of lower farm prices."

Marketbasket averages in the 26 survey locations ranged from a low of \$47.69 in Shelbyville to Mt. Vernon's high mark of \$54.81. Other local marketbasket averages were Hopkinsville, 48.26; Morehead, 48.36; Sebree 48.53; Owensboro, 48.65; Elizabethtown, 48.85; Glasgow, 49.74; Salsberyville,

(Continued On Page Two)

State Aid For Elderly Would Offset Utility Tax, Says Brock

By MARK PERKINS
Staff Writer

Opponents of the county School Board's utility tax, which would increase the county question in the voting booths Tuesday, argue that the extra burden will be too much for senior citizens and people living on fixed incomes.

Wednesday morning school Superintendent John Brock informed the Chamber of Commerce about funds available through the state that have been allocated to assist the elderly and handicapped with utility bills.

In 1978 the General Assembly allocated \$10 million to the energy cost assistance program. Grants totaling \$5 million were to be distributed last winter, leaving \$5 million for this winter. Because the number of applicants was lower than expected, last year's grants totaled less than \$2 million. The unclaimed \$3 million would be added to this year's allocation for a

total of \$8 million in fuel assistance.

Jim Butler Wanke, from the Gateway ADD office, is already preparing to get the word out with regard to how one makes application for relief. Wanke said that Gateway plans open meetings in the county during which senior citizens can sign up for aid toward their utility bills. Meetings are planned for November using county schools.

Applicants for the program do not have to be destitute or face utility cutoff, according to the state Department for Human Resources, the agency that administers the program. Regulations require that applicants be at least 62 years old, or blind or handicapped and receiving Supplemental Security or Medicaid benefits.

Human Resources Secretary J.E. DeShaper stresses that the state program differs from a federal assistance program soon to be announced with the same initials. The federal Energy Crisis Assistance Program is designed to aid low income people of

any age who are in crisis situations.

During the meeting, Brock pointed out that the levels of aid in the state program more than doubled over last year, depending on the size of household and amount of income. The maximum \$200 will be granted to persons with total gross household incomes at or below 75 percent of the poverty level, while the lowest aid level, \$100, will go to those with incomes at or below 125 percent of the poverty level. Persons with incomes at or below 100 percent of the poverty level will receive \$150.

Another important change in this year's program raises the amount of savings and checking funds the applicant is allowed to have and still qualify for the program.

Last year that amount varied according to the number of people in a household, with a maximum of \$3,100 in assets for a family of four. This year's maximum is \$5,000 for all households.

(Continued On Page Two)

Inside

- Ambulance Runs . . . P.11
- Classifieds . . . P.4,5,6,7
- Courthouse News . . . P.10
- Deaths . . . P.17
- District Court . . . P.10
- Editorial . . . P.18
- Extension News . . . P.19
- School Page . . . P.15
- Society . . . P.9
- Sports . . . P.12,13

fresh from the donut mill

WORLD'S LARGEST DONUT MILL

SAFETY FIRST, INC. COLUMBUS, OH

JIM DAV HARRIS II

Finishing Touch

A new sign went up Wednesday at Day's Recalls on West Main Street in Morehead adding the finishing touch for remodeling of the store which has been underway for a month. The interior has been repainted and revamped and additional shelving installed. The exterior front has a new vinyl facing. (Staff photo by Joe Lamb)

Fiscal Court —

Continued From Page One... secretary from January 1978 to June 1978. The salary for the job is to be \$53,75 per month...

The court also authorized expenditures for renovating a portion of the upstairs at the Courthouse for use by the county extension offices.

The cost of the project which will include a new door on the stairwell, painting and wiring is estimated to be about \$1,000.

Although the court was still to meet in its afternoon session, the morning meeting Thursday showed none of the signs of conflict and problems which had surfaced at previous meetings.

State Aid —

Continued From Page One

DeShazer considers public education the key to the program's success this year. The bureau has scheduled 10 workshops during October and November to explain the program to community and industrial leaders...

Brock explained to the citizens at the meeting a little about the history of how the utility tax issue rose, and why the board thought it would be the fairest kind of tax revenue. He pointed out that the money will not only be used to help construct a badly needed new high school, but a new bus garage, major repairs to each elementary school and to renovate the present high school for a middle school.

"If this passes, the board has said that at least \$25,000 will be committed to go for repairs to each elementary school, and fathers and parents in those communities will set the priorities," Brock said.

The utility tax amounts to a three percent levy on the gross receipts derived from telephone, electricity, water and natural gas. (Sewage charges are not included.)

For a household which has a \$83.00 utility bill, the additional cost would be \$1.89. An information sheet was passed out which explained that the additional costs figures out to be slightly more than six cents per day.

Boyd Judgement Deal With Same Problems, Says Cox

In his monthly report, County Attorney John Cox has advised members of Fiscal Court that questions raised regarding the operation of the county CETA program were answered in Boyd Circuit Court earlier this year in an opinion and judgment sought by Boyd Fiscal Court.

A declaratory judgment rendered by Circuit Judge Charles Smette dealt with almost the same issues raised by members of Rowan Fiscal Court as regards administration of the CETA program.

Problems regarding the administration of the program recently developed because of conflict over whether Judge/Executive W.C. Flannery or a board of directors appointed by Fiscal Court and City Council was in charge of the city/county ambulance service.

Last year, the Fiscal Court had appointed Magistrate Paul Ousley to sign and execute documents for the ambulance service. Later, Flannery reduced that authority and finally issued an executive order, when the ambulance board question arose, which removed Ousley from that authority.

The Boyd Circuit Court, rendered in January of 1979, says, "The county judge/executive can manage the program but he must have the approval of the Fiscal Court."

The Boyd Fiscal Court had named two commissioners as administrators of the CETA program in January of 1978 but in December 1978, the county judge/executive issued an executive order voiding all actions regarding the commissioners from that authority.

"This act is illegal and is null and void," he added, that the statutes require that the judge/executive in the administration of the CETA program, seek the approval of any action taken by him from the Fiscal Court.

In addition to the CETA questions, the Boyd Circuit Court order also dealt with other conflicts being faced by the Rowan Fiscal Court.

The Boyd Fiscal Court asked the Circuit Court this question: "Does the county judge/executive administrative control of the road department to the exclusion of other members of the Fiscal Court, particularly as to the assignment of work to be done, hiring and discharging of employees, and promotion and demotion of persons?"

Judge Smette responded that the county judge/executive has the authority to operate the road program but he cannot hire, fire or discharge, promote or demote any personnel without the approval of the Fiscal Court. The judge said, "It appears the legislators did not usurp the powers of the county judge/executive but require him to cooperate and operate the county jointly with the members of the Fiscal Court."

Also in his report, which Cox said he planned to issue each month during the regular Fiscal Court meeting, the county attorney said that his office has collected \$10,946 in delinquent 1978 taxes.

The report reminded magistrates that they need to approve, disapprove or amend an Administrative Code presented by Deputy Judge Terry Anderson before he take action to file a declaratory suit in circuit court regarding the code as directed by the magistrates.

In addition, Cox's report said that the Fiscal Court should either approve by order the payment of county money to Mrs. W.C. Flannery or request the recipient to repay the money to the county treasurer.

The money apparently was paid to Mrs. Flannery when she worked as a secretary for the judge/executive. Cox said, "This money was paid out of the treasury without Fiscal Court's approval and remedial action should be taken."

Cox also advised in the report that the deed of conveyance has been prepared in regard to a transaction with Gary Moore for the construction of a road and bridge across land he owns.

Turnout —

Continued From Page One

known by 7:30 p.m. Unless the absolute ballots about to prove some problem, precinct tallies are expected by that same time this year, Bailey said.

Encouraging citizens to vote, Bailey said that the cost of an election to taxpayers is the same whether few or many vote, so if the right is not exercised, "then you're losing money."

40 Windows Broken At Haldeman

Vandals shattered 40 windows at Haldeman Elementary School, Wednesday night marring an otherwise quiet Halloween night for local police authorities.

Principal Jack Roberts said Kentucky State Police notified him of the vandalism about 11:30 p.m.

"I really don't think this was a Halloween prank," said Roberts, "I think it was sheer vandalism."

The damage has not been estimated. With exception of the school vandalism, state police reported no other major damage in the area during Halloween.

Morehead Police Chief Mike Hall said Halloween "went without a catch" for the most part with only minor incidents of window smashing and egg throwing reported.

"There were no reports of injuries or candy filled with drugs or pins," said Chief Hall.

"Everything went off pretty smoothly," he added.

Food Prices —

Continued From Page One

50.49; Paducah, \$5.80; Cynthiana, \$1.27. Georgetown and Danville, \$1.59; Nicholasville, \$1.93; Monticello, \$1.94; Lexington, \$2.21; Murray and Louisville-Jefferson County, \$2.22; Mt. Olive, \$2.26; Stanford, \$2.28; London, \$2.79; Kott County, \$3.11; Fulton, \$3.16; Greenvale, \$3.24; Brooksville, \$3.43; and Frankfort, \$3.72.

October Marketbasket Survey

Table with columns: Item, July, Sept., Oct., Avg. Price, Price, Price, Avg. Price. Lists various food items like Ground Beef, Rib Eye Steak, Pork Roast, etc.

Forest Service Announces Recreation Closing Dates

With the arrival of autumn and cooler weather, field personnel on the Daniel Boone National Forest are preparing recreation sites and areas for seasonal closing.

A number of areas will remain open year-round, however, for use and enjoyment by forest visitors. Most of those closing for the winter will do so at the end of October, although a few will remain open until later in the year.

Enrollments in the forest's manpower programs, including the Youth Conservation Corps, the Young Adult Conservation Corps, and the Older Americans and the Job Corps, rehabilitated a number of areas and maintained others during the year and this permitted the Forest Service to keep them open longer than normal.

Dates for the reopening of the recreation areas and dates of operation:

Table with columns: Area, County, Season, Closing Date. Lists various recreation areas like Morehead Ranger District, Rowan County, etc.

Table with columns: Area, County, Season, Closing Date. Lists areas like Boat Ramp, Longbow, etc.

Station Ranger District - District Ranger Clarence Moore, Highway 15, Stanton, Kentucky 40380, Phone 606/657-2652.

Although most of the developed recreation areas will be closed during the winter, most of the 961,000 acres of the Daniel Boone National Forest are open year-round for various types of dispersed recreation use.

This includes primitive camping, hunting (in season), fishing, nature study, cross country skiing, sightseeing, gathering forest products (nuts, berries, firewood) and hiking on the various trails including the Shallowater Trace and Red River Gorge National Recreation Trails.

Persons desiring more information about recreation opportunities on the Daniel Boone National Forest can write to any of the ranger districts listed or to the Forest Supervisor, 100 Vault Road, Winchester, 40391.

Woman Charged With Sex Abuse

LOUISVILLE, Ky. (UPH) — A woman has been placed on probation after pleading guilty to a charge of having sex with a 14-year-old boy. The case reportedly was the first in Kentucky involving a woman charged with sexual abuse of a male.

The woman, Vicki Lynn Tingle, 24, of Louisville, was sentenced to one year in jail Tuesday but Jefferson Circuit Judge George H. Kunzman suspended the sentence and placed her on probation because she served 103 days in jail awaiting sentencing.

She was arrested on a statutory rape charge for allegedly having sex with the boy in an automobile on the grounds of a public school on Oct. 10, 1977. The charge was later reduced to a count of sexual abuse.

The judge said he believed it was the first case in Kentucky of a woman being charged with sexually abusing a male.

Man Arrested In Raid At Farmers Home

A 60-year-old Farmers man was arrested Wednesday at his home and charged with a sale of contraband cigarettes without a state tax affixed.

Demel Whitt was arrested approximately 5 p.m. by Morehead City Detective James Pelfrey and Federal Alcohol, Tobacco and Firearms (ATF) Agents Joe Myers, Rowan Sheriff Jim Nickell accompanied the officers on the raid.

Whitt will appear in District Court Friday on the state charge with posted federal charges pending.

He was cited and released on his own recognizance by District Judge James Kay because of poor health.

Authorities confiscated 980 cartons of cigarettes in the raid, according to Morehead Police Chief Mike Hall.

Large advertisement for 'Welcome Kentucky Weekly Newspaper Association' featuring a ladder with various items on rungs like 'MEDICAL FACILITY', 'CAVE RUN LAKE', 'SEWAGE SYSTEM', 'CITY RECREATION', 'REGIONAL UNIVERSITY', 'PUBLIC EDUCATION', and 'HELP PUBLIC EDUCATION CLIMB TO THE TOP!'. Includes a 'VOTE YES ON THE COUNTY QUESTION' slogan.

Advertisement for 'The Morehead News' with contact information, subscription rates, and a note about advertising rates.

Advertisement for 'COUPON SPECIAL SAVE GAS' featuring a 10% off coupon for tuning up a car before winter.

Advertisement for 'Caskey Wholesale Auto Parts' with a phone number and slogan 'we help keep America moving'.

Advertisement for 'Ohio Valley Stove' specializing in fine quality American and European wood burning stoves, listing various models and contact information.

Another DC-10 Crashes

MEXICO CITY UPI — A Western airlines DC-10 from Los Angeles with 90 persons aboard crashed and burned in fog on landing at Mexico City airport today and airport officials said most of those aboard were killed.

Immediate reports of the death toll were conflicting. Luis Pasquel, Western's Mexico City manager, told UPI there were at least 15 survivors, so as many as 75 may have died.

Reporters at the airport said 56 bodies had been recovered.

A survivor who identified herself only as Pandora Dickinson told Mexican television that before the crash, "There were flames" and people were screaming "Oh my God, Oh my God."

Airport workers did not report seeing flames before the crash.

Survivors, some in critical condition, were rushed to nearby hospitals.

Witnesses said the plane, which reportedly carried 13 crew members and 77 passengers, hit an airport service building after landing, spun 180

degrees and broke up, scattering pieces as far as 500 yards. The major section of the plane exploded into a fireball that could be seen 10 blocks away, airport workers said.

Most of the survivors were in a 20-foot tail section that hit a concrete hangar and did not catch fire.

The plane landed at 5:56 a.m. EST. Normally, Benito Juarez airport is closed until 6 a.m. because it lies in a valley about two miles from downtown Mexico City and often is shrouded by fog. Officials said it was foggy at the time of the landing.

Today's was the fourth fatal crash involving the McDonnell Douglas DC-10 aircraft. The Federal Aviation Administration grounded all U.S. DC-10s June 6 as a result of a crash at Chicago's O'Hare Airport May 25.

In that crash, an American airlines plane lost an engine and 273 people were killed — the worst air crash in U.S. history.

The grounding was lifted July 13.

Louisville Livestock

October 31, 1979

LOUISVILLE, Ky. (UPI) — Estimated receipts cattle and calves—1600. Feeders: 50 percent. Terminal and auction sales to 10:45 a.m. slaughter steers and heifers—unsalted; slaughter cows steady to weak; bulls steady; calves and vealers 3.00-5.00 lower; feeders steady with Tuesday's close 1.00 lower. Slaughter cows—commercial 2-4 41.50-45.00; utility 1-3 43.00-48.50, few high dressing up to 50.25; cutter 1-2 41.50-46.00; canner and cutter under 800 lbs 36.50-41.50, slaughter bulls—yield grade 1-2 1100-1515 lbs indicating 76-80 carcass-boning percent 57.00-62.75; individual 1640 lbs indicating 81 percent 68.00; yield grade 2 1000-1420 lbs indicating 72-77 percent 50.50-56.00. Slaughter calves and vealers—choice 170-280 lb vealers 70.00-85.00; few choice 300-385 lb calves 60.00-65.00. Feeders—steers: medium frame 1 250-300 lbs 87.00-91.50; 300-400 lbs 79.00-88.50; 400-500 lbs 78.00-86.75; 500-600 lbs 75.00-83.00, medium frame 2 300-500 lbs 70.00-79.00; 500-700 lbs 65.00-75.00. Large frame 2 mostly holsteins 400-700 lbs 61.00-70.00; 700-1085 lbs 54.00-61.50. Heifers: medium frame 1 300-500 lbs mostly 64.00-73.00, few 300-330 lbs 76.00-77.50; 500-650 lbs 63.00-73.50, medium frame 2 350-600 lbs 60.00-64.00.

Hogs—2000 (includes 1200 feeder pigs) hogs selling at auction sales to 11:00 a.m. Barrows and gilts: steady to firm. U.S. 1-2 210-245 lbs 35.45-35.75 2 200-250 lbs 35.00-35.45 2-3 220-250 lbs 34.00-35.00; 3 250-275 lbs 32.25-34.00, few 280-305 lbs 32.25-33.40; sows: 1.00-2.00 higher. U.S. 1-2 300-400 lbs 28.00-29.00; 400-450 lbs 28.00-30.00; 450-500 lbs 30.00-31.50 500-630 lbs 31.00-32.50; few 2-3 300-500 lbs 28.00-28.00. Boars: over 300 lbs 26.25-27.25. Sheep: 25. Not enough on offer for accurate price test. Slaughter lambs—small package good 77 lbs 55.00.

Bull Stolen

Ray Hogge of Morehead has reported to state police the theft of a bull from his farm.

Hogge told police that the 1,200 pound red and white face bull was taken sometime before Monday. Police are investigating.

"Wisdom is to the soul what health is to the body."
La Rochefoucauld
"I do not like work even when another person does it."
Mark Twain

The walrus got its name from the Swedish *hvalros*, "whale-horse."
"If one has to submit, it is wistful to get to do so with the best grace possible."
Winston Churchill



Our Christmas Club Checks Are In The Mail!

Thousands of dollars have just gone out to members of our 1979 Christmas Club & we hope that some of them were delivered to your home. It will mean happier holidays for everyone.

1980 Club Will Start Nov. 5th

Open your Club & receive a beautiful Courier & Ives Tray. These trays can be used for serving purposes or be hung as a decorative item.

"Grow With Us"

THE CITIZENS BANK



Main Office
114 W. Main Street
Phone 783-4188
Morehead's Only 24 Hour Bank

Morehead, Ky.



Carroll Browning Daugherty Branch
Trademore Shopping Center
Phone 783-1596

Everybody's Bank in a great big way

Super Supper Specials!

5 - 10 p.m.

Different Special Every Nite — 7 days a week

Bring The Whole Family!

the **WINDMILL** RESTAURANT

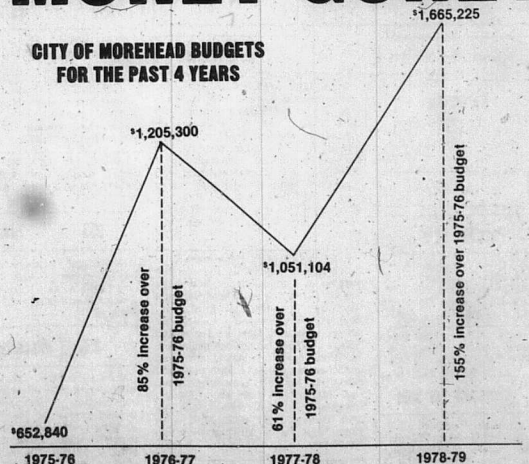
1-64 Interchange Morehead, Ky.

OPEN 24 HOURS

WHERE HAS YOUR MONEY GONE?

- In 1976, the City Council adopted a City budget of \$1,205,300. This was an increase of \$552,450, or almost 85% over the previous year. This budget appropriated \$568,950 for the "Department of Administration and Finance," of which \$38,000 was for "Personal Services," \$260,400 was for "Contract Services," and \$114,950 was for "Other Expenses." Roy Anderson, Randall Wells and Marvin Moore were members of the City Council when this budget was adopted. They are running again for City Council!!!
- The 1977-78 budget, adopted by the same City Council in an election year, was decreased by about 13%, but it was still a 61% increase over the 1975-76 budget. This budget included \$460,336 for "Administration and Finance". Of this amount, \$67,750 (an increase of 78% over the previous year) was for "Personal Services," and \$188,166 (an increase of 64% over the previous year) was for "Other Expenses".
- The 1978-79 City budget, adopted by the present City Council, was a whopping \$1,665,225! This is an increase of 155% over the 1975-76 budget and an increase of 58% over the 1977-78 budget. In this budget, "Administration and Finance" got \$970,990 (an increase of 111% over the previous year. This budget was adopted on motion of Jack Roe, seconded by John Will Holbrook, Jr. Roe and Holbrook voted for this budget. They are running for another term on City Council!!!
- The City budget for 1978-79 being over 2 1/2 times the City budget for 1975-76, even allowing for inflation, City services today should be at least twice as good as then... but, have they improved that much? We don't think so. If Roy Anderson, John Will Holbrook, Jr., Marvin Moore, Jack Roe and Randall Wells are elected to City Council and continue to support increased budgets at the same rate they have in the past, the city budget two years from now may be over \$4,000,000 or \$400 per year for every man, woman and child in Morehead. If that happens, let's all hope services improve more than they have in the last 3 years and that we can pay our taxes!!!
- There was a "General Fund Carry-Over" of \$125,000 in the 1977-78 budget and of \$165,000 in the 1978-79 budget and \$250,000 in the 1979-80 budget. Why should the city collect this much more money than it spends? If the city has surplus funds, taxes should be cut!!!

CITY OF MOREHEAD BUDGETS FOR THE PAST 4 YEARS



It's Time For A Change!

Vote For CITIZENS TICKET for MOREHEAD City Council



Dave Abner



Bill Layne



Margaret Ferguson



Don Blair



Bobby Lyons



Bob Adams

Paid For by Citizens Ticket, Dave Abner, Treasurer

Classified Advertising

Call Today 784-6868

100 Things To Buy

066 Public Notice

PUBLIC NOTICE

ADVERTISEMENT FOR BIDS

Separate sealed bids for general construction for a Community Center will be received by the Morehead City Council Monday, Nov. 12, 1979 at the office of the Mayor until 2 P.M. EST, and then at said office publicly opened and read aloud.

Contract Documents may be examined at the following places:

City Administrator's Office,
Wichman & Sallee, 462 East High Street, Lex., Ky. 40568.

W. F. Dodge Corporation, 160 More Drive, Lex., Ky.
Bluegrass Chapter AGCA, 1019 Georgetown Rd., Lex., Ky.
Copies may be obtained at the office of Wichman and Sallee located at 462 East High Street, Lex., Ky. upon deposit of \$30.00 for each set. c-89TF

Real Estate

086 Farms For Sale

FARM FOR SALE: Morgan County, near Cave Run Lake. 234 acres, new home, three bedrooms, two barns, five wells, and pond. 4,000 lb. tobacco base. Call 743-4802 or 743-7189. c-90TF

FOR SALE: Farm, 70 acres, tobacco base 1,947 lbs. 40 acres in grass, rest in timber. Six room house, four bent tobacco barn, and out building. Twelve miles from Morehead on highway 158. Call 576-2316.

FOR SALE: 24 acres with house and barn. 1700 lb tobacco base. Will sell finance. Call 784-6509 after 5 p.m. ctf-TF

087 Homes For Sale

FOR SALE: 1.25 acre lot with two houses! One is two-story brick, electric or gas heat. Other dwelling is 5-room frame - rents for approximately \$125 per mo. 2-room utility building. City water. Located on KY 174 at Lawton, 4 p.m. from Olive Hill. Call 286-4037 after 6 p.m. or 784-6447 during day. Also, 4 lots for sale in Eastwood/Addition of Olive Hill. c-86TF/nc-88TF

HOUSE FOR SALE: Three bedrooms, 1 1/2 baths, large eat-in kitchen, family-living room combination, utility room, carport, large lot. Pine Hills. To be sold by owner. Call 286-4022, or after 5 p.m. 286-2438. c-91TF

088 Lots For Sale

FOR SALE: Four lots on U.S. 60 east of Morehead. Cobblestone building in one corner. Rural water. Call 784-7201. p-87TF/nc-89TF

089 Mobile Homes

FOR SALE: 1973 Marietta 12 x 25, two bedrooms, good condition, new carpeting, air conditioned, awning, underpinning, all electric. Call 784-8834. p-88TF

FOR SALE: 1968 Skyline mobile home, 12 x 50, two bedrooms. Call 784-8559. c-90TF

Rentals

FOR RENT: Furnished apartment. No pets. Married couples only. 138 W. Raine Street. Call 784-7968. p-87TF/nc-89TF

FOR RENT: One bedroom furnished apartment. Working person or couple preferred. No pets. Call 784-5011. c-88TF

UNFURNISHED APARTMENT FOR RENT: 2 bedroom, refrigerator, stove and dishwasher furnished. Deposit required. Available immediately. After 5 p.m. call 784-6483. ctf-TF

097 Homes For Rent

FOR RENT: Three bedroom brick with two baths, fireplace in family room, built-in kitchen, double car garage, nice in every way. References required. \$300 per month. Professional Realty and Auction Service. 784-4768.

HOUSE FOR RENT: Three bedroom stone with two baths, fireplace, two car garage, and hot water heat. Located on Flemingsburg Road. Call 784-4697 after 5 p.m. c-86TF/nc-88TF

097 Homes For Rent

FOR RENT: Three bedroom brick home. Furnished or unfurnished. No pets, couples preferred. Call 784-6305 after 6 p.m. p-88TF

HOUSE FOR RENT: Forest Hills. Three bedroom brick. Available now. Call (502) 225-2277 after 6 p.m. ctf-TF

FOR RENT: Three bedroom, partially furnished house. \$175 per month. Deposit required. No pets. Call 784-6387 between 5-10 p.m. p-91TF

HOUSE FOR LEASE: With option to buy with the first twelve month lease payments applied to down payment of house. Call 784-8038 from 8 to 5 and 784-6376 after 5. ctf-TF

099 Mobile Home For Rent

FOR RENT: Two bedroom trailer. Located on 217 S. Blair St. Married or working couple no children, and no pets. Call 784-4115. ctf-TF

101 Mobile Home Lots

HOUSE TRAILER SPACES FOR RENT: City water, and sewage furnished. \$50 per month. Large spaces. Rt. 801 below dam. Call 784-7981 on 784-5300. ctf-TF

FOR RENT: Mobile home parking space. Blacktop streets, concrete pads, near MSU. Call 784-7209. ctf-TF

102 Want To Rent

WANTED: Two car garage with heat. Call Russ or Dan at 784-9252 before 5 p.m. c-86TF/nc-88TF

120 Business Services

FURNITURE AUCTION— Every first and third Saturday night, Keston Furniture Company, West Main, Morehead, Ky. Phone 784-4988. ctf-TF

INSULATION— Walls and attic, call for free estimates. 784-8594 after 5:00 p.m. Morehead, Ky. ctf-TF

ELECTRICAL WORK DONE: Residential and commercial. Also industrial. Remodeling and service charges. Call 784-6855. ctf-TF

FIREPLACES: Block, brick, stone, or concrete work of any type. Reasonably priced. Small jobs welcomed. Call 784-8231 after 6. c-91TF

If your car needs a touch up or a complete paint job at affordable prices, come to Wayne's Body Shop, Porter Creek Road at intersection 504 and 935 near Elliottville. c-88TF

Will do backhoe work and will haul creek gravel and field dirt. Call 784-5415. c-91TF

Day or night markers, mailbox posts, etc. Magnetic signs for cars and trucks. Metal school security cards, CB-ID cards. Belt buckles that hold silver dollars, also others. 14 x 14 tarpaulin. Call 784-5119. ctf-TF

Is your home winterized? Don't wait. Call 784-4413 for free estimates. c-88TF

NEED A WELL? If so call Keeton's Well Drilling. 784-5921. ctf-TF

122 Day Care Nursery

MARTHA LOWE'S DAY CARE CENTER: From 6:30 a.m. to 5 p.m. Two hot meals and snack per day. Have opening for two or three children. 784-4820. c-88TF

123 Professional Services

UNWANTED HAIR removed by renovation (the no-needle method) completely painless and safe. Call Stucky's Beauty Salon for appointment. Downtown Morehead. 784-4885, 784-8044 or Tru-demore Center 784-8661, 784-8611. ctf-TF

Will do complete tree and evergreen training, spraying, fertilizing, and lawn maintenance. 22 years experience, licensed, bonded, and fully insured. Beckett's Garden & Craft Center, Trademore Shopping Center. Phone 784-6134. ctf-TF

ATTORNEY'S OAKLEY & ANDERSON LAW OFFICES: We offer representation of workmans compensation and personal injury cases. No attorney fees unless recovery on your claim. Farmers, Ky Office, 784-8648, open/Tuesday only. Lexington, Ky Office, call person to person, 0-254-4536. ctf-TF

124 Carpet Cleaning

HOLBROOK STEAM CARPET CLEANING— Cleans your carpet and your furniture like new. FREE ESTIMATES. Call anytime 784-8215 Morehead, KY. ctf-TF

CARPET STEAM CLEANED: Any one room and hall... \$24.95. Any two rooms and hall... \$34.95. Furniture cleaning available. THRIFTY CARPET CLEANING COMPANY, 784-8648, Morehead, Kentucky. ctf-TF

COMMERCIAL CARPET CLEANERS— Morehead, Kentucky. Modern steam extraction method cleaned by professionals. Seven years experience, all work guaranteed. Call 784-8413 for free estimates. ctf-TF

Services

125 Baby Sitting

Will babysit in my home. Age two and up. Call 784-7071. c-94TF

Transportation

WANTED: Someone to babysit with infant. Four days per week, light house-keeping duties. Excellent references required. Call 784-4592 or 783-1051. c-88TF

131 Motorcycles

FOR SALE: 1975 Yamaha 500, 6,000 miles. Clean, with windshield. \$850. See Chuck Praier. ctf-TF

133 Used Cars

CASKEY USED CARS— US 60 E. Phone 784-4213, Low down payment on the lot financing. ctf-TF

FOR SALE: 1976 Buick LaSabre, 4 door, maroon, 41,000 miles. \$2900. Call 784-9544. p-89TF

FOR SALE: 1978 Olds Cutlass Brougham, 2-door, power windows, power steering, tilt wheel, AM-FM and tape, 400 velour seats. Call 784-9566. ctf-TF

137 4-Wheel Drives

FOR SALE: '75 Ford four-wheel drive, 3/4 ton, 360 engine. Call 784-5213 anytime, 286-9368 after 6 p.m. ctf-TF

Yard Sale

FIVE FAMILY YARD SALE: Pine Hills, watch for signs from Rt. 32. Friday and Saturday, November 2 and 3rd, from 10 A.M. to 4 P.M. Clothing and miscellaneous items. p-88TF

TWO FAMILY YARD SALE: Friday, November 2nd, beginning at 8:30 A.M. 633 W. Sun Street. Baby beds, depression glass, dishes, furniture, and many items. p-88TF

FOUR FAMILY YARD SALE: November 2 and 3. Clothing, dishes, and what-nots. 784-5419. Farmers-Sharkey Road, Fannie Blankenship's. p-86TF

142 Garage Sales

GARAGE SALE: Lakewood Hts. Friday 10-5, and Saturday 10-3. Children and adult clothing, Christmas items, two new coats size 22-24, other large size items available. 784-5973. p-88TF

GARAGE SALE: Saturday, November 3rd, 9 till 5. Pine Hills Subdivision. Lots of dishes, furniture, clothing, and other items. p-88TF

THREE FAMILY GARAGE SALE: Friday and Saturday, November 2 and 3. Dishes, boy's clothes, furniture, bicycle, and other items. On Rt. 32, 6 miles south of Morehead. 784-5562. p-88TF

GARAGE SALE: Saturday, November 3rd, from 9 A.M. to 4 P.M. Wayne White, Clearfield. Odds and ends of furniture, good heavy coats and clothing for winter. p-88TF

THREE FAMILY GARAGE SALE: Rain or shine. Friday and Saturday, till noon. November 2 and 3. Four ladder-back chairs, baby car seat, stroller, clothes, Avon bottles, dishes, storm windows, doors, drapes, spreads, box-spring and mattress. First house past Lilton's Greenhouse on Flemingsburg Road. c-88TF

144 Miscellaneous Sales

Another Big Rummage Sale: November 1-2-3. In good warm building across street from Farmers School. Different stuff from last sale. Large Avon bottle collection, 2 gas heaters, lots of glassware and what-nots, furniture, clothes, books, large doll, antiques, good sweeper, and much more. Call Faye Meade 784-8737 or Thelma Blair 784-5903. p-88TF

In Stock - Selection Of Christmas Cards 50% OFF

REG. PRICE

Also Some Christmas Wrap Only 50% Per Roll

Eagle Office Supply

784-7337

722 W. First Street - Morehead News Bldg. (Behind Cowens)

APPLES

Red Delicious & Wine Sap \$3.00 to \$5.00 per bushel

Have finished picking. Do not delay we are selling out.

GILBERTS ORCHARDS

3 Miles West of Elliottville

784-9263 c88TF/nc88TF

FEELING BEAUTIFUL?

You will as soon as you try "Simplex". Stanley Home Products proudly announces a beautiful new cosmetic line. If you live in or around Morehead area and would like to earn extra cash selling this line,

Please call 784-5849, for more information. ctf-TF

WANTED Junk Batteries \$4.50 Each

Gaskey Auto Parts

US 80 East

784-4213 c93TF

MUST SELL

Immediate delivery. Liquidation of all new all steel buildings.

40' x 72' x 14.52' 46' per sq. ft. \$8

60' x 108' x 14.52' 38' per sq. ft. \$8

Call toll-free 1-800-874-3330 Century Steel Buildings

Planet Earth

Circling the Sun at an average distance of 93 million miles, the Earth is the Universe's fifth largest planet. The Earth's surface area encompasses about 197 million square miles - approximately three-fourths of which is water.

HOUSE FOR SALE

\$27,500.00

Out of 24 homes we purchased in the Holton Subdivision approximately one year ago, we still own three, 2 leased (not for sale). The one left, we will sell for \$5,000 down, 15 years on the balance - no closing costs - 5 minutes closing time. OR we will lease this to a real invest couple for \$250 per month. Call us at once.

CURT HUTCHINSON

784-4806 c93TF

Business and Professional DIRECTORY

Reliable, Dependable Businesses and Services In This Area.

List The Name Of Your Firm In The Directory Call 784-6868 Today.

If you would like to include your business in this Directory Phone 784-6868

Front End Alignment *148* (on most American Cars) Frame Work **STANLEY'S** 34-6691 Main St. Morehead, Ky.

Need A New Home? CALL COOPER HOMES & YOU'll find what you're looking for. 784-8036 After 5 p.m. 784-6376 ctf-TF

Morehead Printing Service Complete Printing Facilities For All Your Needs **Phone 784-4116** 722 W. First St. (A Division of The Morehead News Co.)

Heating-Air Conditioning Refrigeration **Bee Service Co.** Commercial-Industrial Phone 784-5745 Morehead R. Edwards, Jr. 8-12 Sat. 784-6848

Health, Life, Health, Property & Casualty Alpha M. Hutchinson-784-5305 Phone 784-4196

CHARLIE'S CARPET 1 1/2 Mile Off I-64 Large Selection Of Carpet In Stock Arranging & Congruum 8-5 Mon.-Fri. 8-12 Sat. Morehead, Ky. **Charlie Ginter 784-5242** ctf-TF

Bill Henderson, Inc. Furnaces Heat Pumps Air Conditioners US 80 East Morehead, Ky. Phone 784-5198 Home 286-5239

Business and Directory Advertising for our Community Call 784-6868

Fannie Bros. Gulf 24 Hour Wrecker Service Tune Up & Brake Work 2 Locations Interstate 238 W. Main 784-9066 Morehead, Ky. 784-5011

WALL PAPERING EAGLE OFFICE SUPPLY "Great Deals" "Finest" "Falls" "The Job You Deserve" Phone 784-7337 ASK FOR: MR. ARMSTRONG OR MRS. CAUDILL ctf-TF

ON FLEMINGSBURG ROAD. Beautiful three bedroom Bedford stone home with fireplace. Nice eat-in kitchen, all hardwood floors. Neat as a pin. Large garage with fireplace and shower, can be used for garage, workshop, or to entertain in. Nice 28x18 barn suitable for all most any use. All this on 2.9 acres three miles from town. Many extras \$55,000. (606) 784-8134

Nutritious Vegetables Don't discard any usable liquids or leftover bits of vegetables - they're rich in nutrients. Put them in salads, dips or sandwich fillings; make a vegetable souffle or omelet; or, use them in a stock, soup or stew.

DALE BOTTS REALTY & AUCTION SERVICE Dale Botts, Realtor/Auctioneer Hidden Valley Morehead, KY

INTERNATIONAL CLINICAL LABORATORIE' OF KENTUCKY

NEEDED IMMEDIATELY - Medical Technologist for hospital in Maysville, Kentucky. Salary negotiable, moving expenses paid.

Send resume or apply in person to:

PERSONNEL DEPARTMENT
Professional Arts Building
135 East Maxwell Street, Suite 310
P.O. Box 11750
Lexington, Kentucky 40577
(606) 255-3676
Equal Opportunity Employer M/F c93TF

Small Ads... Big Results! CLASSIFIED ADS!

Phone: 784-6868

18 1/2 ACRES AND FRAME HOUSE

ABSOLUTE AUCTION

SATURDAY, November 3rd - 10:30 A.M.

- 48 1/2 Acres
- Drilled Well
- Pond
- 11 Acres Tillable
- 1988 Sq. Ft.
- Three Bedrooms
- L.P. Gas
- Fireplace

AUCTIONEERS NOTE: If you've been looking for a good small farm... look no further. With a good house, plenty of water and tillable land, you can't afford to pass up this opportunity.

LOCATION: 2 miles off Ky. 377 on Rock Fork Rd. Take Ky. 32 North to Ky. 377 and watch for the signs. Located 10 miles from city limits.

OWNER: Robert B. Karrick.

C. ROGER LEWIS

C. ROGER LEWIS BROKER/AUCTIONEER
STEVE LEWIS BROKER/SALESMAN AND AUCTIONEER
MARK LEWIS BROKER/SALESMAN AND APPRAISER/AUCTIONEER

121 WEST MAIN, MOREHEAD, KY 40351

PROFESSIONAL REALTY & AUCTION SERVICE

Steve Barker
Manager/Broker/Salesman

784-6766

Gary Himes, Don Hafer, Realtors, Morehead, Ky. Office Hours: Mon.-Fri. 9 a.m.-6:30 p.m. Wed. & Sat. 9 a.m.-Noon

121 West Main, Morehead, Ky. 40351

OWNER FINANCING AT 8%

CONTRACT PENDING

Beautiful 2 bed home with 1080 square feet of living space. 2 1/2 baths, living room, built-in kitchen, dining room, fireplace & basement. Low utility bills, central air, year-round pool, large house completely new. 1/2 acre lot, sun deck. 50%.

MAKE OFFER

3 room house located 7 miles East of Morehead on U.S. 60. Color exterior, Ben Franklin stove, outside storage & more. Call Wootte 784-6354.

BUY NOW WHILE PRICE IS LOW

KING SIZE COMFORT

Home located on Oakdale Subdivision. 3 bedrooms, 2 1/2 baths, living room, built-in kitchen, dining room, fireplace & basement. Low utility bills, central air, year-round pool, large house completely new. 1/2 acre lot, sun deck. 50%.

ONE OF MOREHEAD'S MOST UNUSUAL HOMES

Located on large estate, corner artificially planned. Each tree and shrub thoughtfully planted. All of this nicely arranged on immaculate three bedroom home. Separate dining room, kitchen, family room with fireplace, two full baths, and much, much more. All legal! appointment.

CONTRACT PENDING

Beautiful 3 bedroom ranch style home setting on 6 rolling acres. 1344 square feet of living space. Full finished walk-out garage detached from house. Nice large back yard. Charming kitchen, living room with fireplace and sun room. Extremely close to the University. Price reduced.

TWO HOUSES CLEARLY! Both ready to move into. Large lot. Good investment. 724,000.

BOWMILLS BLY! Get this five room home on 7 1/2 lot for only \$15,000. Two bedrooms, full bath, kitchen and living room. Excellent! Buy! Currently rented. Call Wootte Hamilton 784-6354.

EXCEPTIONALLY SMART

What a home! Located with a convenient location. This home will suit your needs. Over 2700 square feet. Five large bedrooms with some with enclaves. Full finished walk-out garage detached from house. Nice large back yard. Charming kitchen, living room with fireplace and sun room. Extremely close to the University. Price reduced.

SUPER HOT SPECIAL

2 1/2 bedroom 1 1/2 bath home with full finished walk-out garage detached from house. Nice large back yard. Charming kitchen, living room with fireplace and sun room. Extremely close to the University. Price reduced.

A CRACKLING FIRE AND FLICKERING SHADOWS

Separate this gem from other homes. Over 2600 square feet of living space. One and a half acres. Four large bedrooms, full bath, sun room, living room, dining room, kitchen, fireplace, walk-out garage detached from house. Nice large back yard. Charming kitchen, living room with fireplace and sun room. Extremely close to the University. Price reduced.

AN ENDURING OLDER HOME GRACIOUSLY REMODEL! Step into this home's embrace and immediately you'll appreciate the quality. High ceilings, hardwood floors, built-in kitchen, full bath, living room, dining room, fireplace, walk-out garage detached from house. Nice large back yard. Charming kitchen, living room with fireplace and sun room. Extremely close to the University. Price reduced.

48 acres of prime land on Trussell Road. 2000 sq. ft. 2 1/2 bedroom house available. Call for more info. Call Wootte 784-6354.

Whitaker Realty Brokerage • Auctions • Appraisals Property Management



DON'T OVERLOOK THIS ONE! 3 bedrooms, 2 baths, living room, family room with fireplace, large eat-in kitchen, garage with workshop, intercom throughout, central heat & air, patio and all appliances. Immediate possession, ready to move into at just \$55,500.00 Call Phil at 784-4141 or 784-6526.

Under construction - 3 bedroom brick home, full basement, 2 1/2 baths, living room, kitchen & dining combined, family room, double car garage, on large lot approx. 1 acre, house ready for occupancy, 30 days. See this one - Cranston Road, near Johnson Church. Buy now - choose your own colors. \$62,500.

For the large family this is two floors-plus finished basement-five bedrooms-2 1/2 baths-2 family rooms-sunken living room-dining room-central heat and air-on three city lots-3900 square feet of house-figure your square foot cost-less than \$25.00 including the price of the lots-electricity heated but gas meter if you prefer city gas-Where else can you find this for \$95,000.

Three bedroom-kitchen, dining area, living room-family room, double car garage, two baths and utility room-large acre lot-porch on both levels-Country living at its best-located in new development-159,500.

Several one acre and up building lots in Big Elm Subdivision-buy now-build at your own leisure.

Development land - 64 acres on Kentucky 32, two miles from city limits-some level, some rolling and some wooded-good investment property-owner will finance at 8 1/2 % for 5 years-within sight of where the new high school building will be-room for 100 or more houses-buy now as investment-develop later.

NEW LISTING-38.8 acres of land on Bull Fork with 4 Bent Tobacco barn-3000 feet of road frontage-Call Phil Blake on this at 784-6526 after 5 p.m. We can't sell what if we don't have them-we need listings... call any of our people-we will be glad to work with you.

Phone 784-5206 or 784-8883

Wm. M. Whitaker, Jr. Broker

- Willard McIntosh, Assoc. Broker 784-6848
- Roger Keeton, Salesman 784-8270
- Doris Lewis, Salesperson 784-7007
- Phil Blake, Salesman 784-6526
- Steve Goldberg, Salesman 784-6717
- Glenda Jackson, Salesperson 784-6993

TWO BEDROOM FRAME HOUSE

PUBLIC AUCTION

Saturday, November 10th, 10:30 a.m.

Natural Gas Heat
Convenient Location

50'x90' Lot
Two Bedrooms
Utility Room

"This property has excellent rental potential being so close to the University and the demand for rentals is increasing every day. So get in while you can."

LOCATED AT 1055 TOLLIVER RD. WITHIN WALKING DISTANCE OF M.S.U.

OWNER: Willie Anderson

TRACTORS - FARM EQUIPMENT TOOLS - SADDLES & BRIDLES - MISC.

ESTATE AUCTION

SAT, NOV. 10th-1:00 p.m.

"Take A Look At This!"

- '65 Ford 2000 Tractor
- '68 Ford Tractor
- Ford F 1000
- Ford F 1000 with 4000 Series
- '71 Pull type disc harrow
- Chaff cutter for 3 pt hitch
- Boom for 3 pt hitch
- S.H.P. Blade Mill
- Grinder Blade
- Scissors or Scraper for 3 pt hitch
- Lawn Mower
- Mulcher Saddle
- Small Cutback Saddle
- Burner-Vista Saddle
- 2 Cotton gin saddles
- 2 2 bottom 14" Frames
- Mechanical Tobacco Sifter
- '78 New Tobacco Sifts
- New Howard 7' Mower: 3 pt hitch
- New Howard 7' Mower: 3 pt hitch
- 2 4 wheel wagons
- 2 wheel trailer
- 2 Horse drawn hay racks
- 2 Horse drawn plows
- Horse drawn cultivator
- 2 Hog Feeders
- 12 Ton Hydraulic Jack
- Harness, several good harness
- Bridles, Pads, Halters, Leads
- Tanning bins
- Truck box, Toss Trunks
- 2 Cotton gin saddles
- Irrigation system
- Honolulu 4500 Chainsaw
- Honolulu E230 Chainsaw
- Heavy Duty Scales
- No Drill
- Carpenter squares
- Grease gun & Vice
- Pipe Wrenches
- Fuel Pump with barrel
- Fuel Tank
- Chains & Sprockets
- Sledge Hammer & Axes
- Several good hand tools
- Other Miscellaneous items

LOCATION: Sale will be conducted at the Dillion Farm on U.S. 60 East, near the intersection of Ky. 32 (Rodburn), Morehead, Kentucky.

OWNER: B.C. "Curt" Dillon Estate TERMS: Cash Day Of Sale.

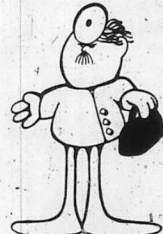
C. ROGER LEWIS

C. ROGER LEWIS BROKER/AUCTIONEER
STEVE LEWIS BROKER/SALESMAN AND AUCTIONEER
MARK LEWIS BROKER/SALESMAN AND APPRAISER/AUCTIONEER

121 WEST MAIN, MOREHEAD, KY 40351

WE MAKE HOUSE CALLS

104 Visits For \$12.50



(That's less than 11¢ an issue)

Call Today For Your Subscription To

The Morehead News

784-4116 722 W. First St. Morehead, Ky.

This Gracious home on the MSU Campus has possibilities galore!!



Truly a quality home in every way. In addition to 4 bedrooms, there's an unfinished attic, den, dining room, basement, sun porch, 2 car garage & much more. A residence the discriminating buyer can be proud of. If high interest rate is a problem, call us, we have the solution. Reduced to sell at \$85,000.

C. Roger Lewis Agency, Inc.
INSURANCE-REAL ESTATE AUCTIONS-APPRAISALS
784-4168 Morehead, Ky.

LITTON FORD

USED CARS AND TRUCKS

SPECIALS

	WAS	NOW
74 Chev 4 dr., green	\$2195	\$1895
73 Ford sw, lt blue	\$1595	\$1095
74 Chev. ht., brn, 2 dr.	\$2295	\$1995
73 Chev. ht., gm, 2 dr.	\$1795	\$1595
74 Chev. ht., tan, 2 dr.	\$2295	\$1995
76 Mt. Carlo brown, 2 dr.	\$3495	\$3200
75 G/T Torino copper, 4 dr.	\$2195	\$1995
74 Co. Sq. blue	\$2195	\$1795
76 Ltd. 4 dr., copper	\$2795	\$2395
75 Cougar XR7 white	\$2895	\$2495
75 Merc 4 dr., lt blue	\$2695	\$2495
74 Chev. white bi-level	\$2395	\$2195
77 Chev. Impala white, 4 dr.	\$3795	\$3500
75 Ply 4 dr., tan	\$2495	\$2195
72 Pontiac ht. brown	\$895	\$695
73 Maverick Grabber white	\$1595	\$1395
74 Maverick 4 dr., green	\$1895	\$1695
75 Elite white/red, 2 dr.	\$3195	\$2995
73 Gran Torino 4 dr., green	\$1495	\$1295
78 Fairmont copper, 2 dr.	\$3695	\$3300
75 Maverick 4 dr., green	\$2395	\$2195
79 T-Bird dove grey	\$6995	\$6500
73 Gal 500 4 dr., green	\$1295	\$1095
78 LTD 4 dr., dove grey	\$4595	\$4200
77 Mt. Carlo tan/brn	\$4195	\$3800
76 Pinto 2 dr., blue	\$1895	\$1695
75 LTD 2 dr. bronze	\$2695	\$2395
75 Mustang ht maroon	\$2395	\$2195
77 Mt. Carlo red T-Top	\$4395	\$4000
73 Dodge Dod. green, 2 dr.	\$1095	\$900
76 Ford F-250 blue/white	\$3695	\$3400
75 Chev. 3/4 Beige	\$2995	\$2700
74 Blazer gold	\$3695	\$3200
79 F-350 red 5th wheel	\$6900	\$6700
79 Cattle Trailer White	\$6000	\$5500
75 Chev blue/white	\$2895	\$2395
73 F-100 green V-8, std.	\$1195	\$1000
71 F-250 red C&C	\$1195	\$1050
74 F-100 blue exp. A	\$2495	\$2300
79 F-100 tan Custom	\$3895	\$3600
79 F-250 white Custom	\$5695	\$5400
79 F-150 4x4 Copper	\$6795	\$6500
79 F-100 XLT green	\$2895	\$2500
78 F-100 orange	\$2895	\$2500
78 F-100 XLT brn/sand	\$4895	\$4500
74 Econ. Van red	\$3195	\$2900
79 F-100 XLT maroon	\$5295	\$5000

See Art Litton At Litton Ford In Flemingsburg, Ky.

State Waste Sites May Be Used For Housing

FRANKFORT — Waste sites filled with excavated materials from highway construction projects in Kentucky Appalachia may be utilized for housing, commercial or industrial sites under an agreement which has just been approved by two states agencies.

A memorandum of understanding signed by William Short, secretary of the Development Cabinet, and Calvin Grayson, secretary of the Department of Transportation, provides for acquisition by the cabinet of sites

available for development after they have been filled with waste materials and are no longer needed by the Transportation Department.

Short said the agreement will help meet a critical need for level sites suitable for housing or other development in the rugged terrain of the state's Appalachian region.

Through this cooperative effort, lands acquired for highway waste disposal can be developed to their fullest potential to serve the people of the region, he said.



Kentucky Crop Weather

Agricultural News — Near normal Autumn temperatures were conducive for continued corn and soybean harvest. This past week transportation and storage capacity became more of a limiting factor on harvesting progress than weather. Many facilities are becoming full and cannot take more corn and soybeans for storage. Light showers early in the week hampered some field work but 5-2 days were still considered favorable. Soil moisture was reported 82 percent adequate, 16 percent surplus and 2 percent short. Most of the surplus moisture was concentrated in Central Kentucky.

Corn harvest advanced to 66 percent complete compared with last year's 74 percent and the average of 82 percent. Most farmers indicate high yields (many in the 120-150 range) of good quality corn. Stalk rot has been indicated in some of the corn not yet harvested and harvesting losses may be high on some of the late acreage.

Soybean harvest made impressive gains this week. The 58 percent harvested to date compares to 29 percent reported harvested last week. This pace is behind last year's 65 percent but ahead of the average at 54 percent complete. A hard freeze, killing weeds would be welcome to soybean harvesters.

Tobacco stripping is 16 percent complete, slightly ahead of last year's 11 percent and the average of 15 percent. Although tobacco quality has generally been reported satisfactory, most reporters are indicating light weight with very little body. Some houseburn has been reported, but is not excessive.

Wheat seeding is lagging behind normal with only 58 percent complete. Of the already seeded wheat, 81 percent has soil moisture sufficient for germination without additional rain. The abundance of rainfall this fall has contributed to excellent pasture conditions. Cattle and sheep are receiving 90 percent of their roughage requirements from pasture. Local hay supplies are indicated 88 percent adequate for winter feeding statewide.

Weather Week Ending P.M. Sunday, October 28, 1979: Kentucky's weather took a sharp turn early in the week as a strong cold front dropped temperatures some 20 degrees. Cool high pressure dominated the State's weather through the remainder of the period. Rain fell averaged 1/2 to 1 inch with most of that occurring early in the week. Temperatures varied widely but averaged near normal with a widespread frost or freeze reported statewide by week's end.



AT AUCTION

November 10, 1979 at 10:00 a.m.
ROSA TACKETT ESTATE

1 10-cu. ft. freezer, 1 refrigerator, 1 table and 4 chairs, 1 wringer washer, 1 dryer, 1 kitchen cabinet, 1 iron' black and white TV, 1 radio, 1 living room suite, 1 vacuum cleaner, 2 iron' beds, 1 wood bed, several odd chairs, 1 electric sewing machine, 1 treadle sewing machine, some odd tables, 1 electric range, 1 5-room gas heater, 1 coal stove, some antiques, and many other items too numerous to mention.

Off Ky. 377 on Clear Fork Road in Cranston. 1st house on the left.
WALTER LITTLETON, Auctioneer

8x10 Color 8x10

PORTRAITS

BIRTH TO 5 YEARS
FREE Mr. & Miss
1980 Chosen
\$100.00 gift certificate
\$50.00 Each Families
FREE

DATES — Nov. 8th-9th-10th
DAYS — Thurs-Fri-Sat
HOURS — 11 a.m. til 7 p.m.

- One special per family
- Extra portraits .35 each
- Groups 1.00 per person
- Satisfaction Guaranteed
- Over 5 years \$3.95
- Portraits must be picked up by Parent
- No Costumes or Uniforms

CAROUSEL

Trademark Shopping Center, Morehead, KY

Doyle Mobile Homes

Offers you, Five (5) Acres of Mobile Homes to choose from!

Quality Such As
Harris, Windsor, Duke, Lincoln Park, Weston, Nashua, Blitmore, Barron, Braedler, Hamilton & Liberty.

Double Wides
6 to 8 on display, including one true modular. All travel lugs and shims included.

SAVE! Where you get discount prices from one of KY's largest selections.

We have our own set up on 12, 14x8 & double.

We Buy And Sell Used Homes
Financing at a lower rate. Free delivery and block up.

We service what we sell...
Open Mon thru Fri. 8 to 6 Sat. 8 to 5

Inspection only on Sunday, No Sunday Sale. In, mail box we will contact you later.

Doyle Mobile Homes, Inc.
Route 11N
Flemingsburg, Ky.
Ph. 606-845-8601 or 845-0301

Think Small... save Big

ON THESE USED CAR BEAUTIES!

If you are interested in buying or selling a car or truck...
VISIT JOHN TODAY!

John Dickerson Auto Sales

519 Morgan Fork Road 1 Mile From Morehead
Phone 784-5979

Area Unemployment Rate Is Higher In September

The rate of unemployment in Rowan County jumped from 4.0 percent in August to 5.2 percent in September but remained "the lowest in the area, according to figures released this week by the state Department for Human Resources.

The increase was higher than the average for the eastern Kentucky area, in general which saw its unemployment rate climb two-tenths percent from 6.9 to 7.1 percent. The number of unemployed rose from 20,932 in August to 21,991 in September in the 32-county eastern Kentucky area.

Menifee County led the state in the percentage of unemployed with 17.2 percent of its labor force out of work. That figure was a dramatic jump of 10 percent from August when the rate was 7.2 percent.

All the surrounding counties also recorded increases in their unemployment rate with Rowan County having the lowest figure. Bath County's unemployment rate rose from 6.0 percent to 12.9 percent; Montgomery went from 5.2 to 12.8; Carter went from 8.2 to 8.3;

Wolfe went from 6.7 to 7.5; Morgan went from 6.5 to 7.1; Elliott climbed from 5.5 to 6.2; and Fleming went from 5.4 to 5.8 percent.

According to Robert MacDonald, chief labor market analyst for the department, the increase was due primarily to layoffs in the area.

Kentucky's overall unemployment rate dropped from 5.6 percent in August to 5.3 percent in September. The national unemployment rate was 6 percent in September.

Lyon County, in the western part of the state, had the lowest rate of unemployment with a rate of 2.4 percent. In eastern Kentucky, coal-rich Martin County had the lowest rate of unemployment with 3.7 percent.

REMEMBER THE NAME DELTA!!

74 Chevy Impala 2 dr.	1975.00	1495.00
74 Chevy Impala 4 dr.	1895.00	1395.00
72 Dodge Van	1495.00	1295.00
75 T-Bird loaded	4000.00	3495.00
76 Grand Prix		SAVE
73 Plymouth Fury II	900.00	695.00
72 Torino 4 dr.	895.00	695.00
78 Cougar XR7		SAVE
68 Riviera Buick		SAVE 1250.00
72 Chevy Impala 2 dr.		895.00

AND
Kach-All Portable Buildings, Ranging From Sizes 6x10 Up To Garage Type, 12x40. These Buildings Are Complete With Electric, Storm Windows, And Heavy Duty Flooring.

On Spot Financing
REMEMBER THE NAME DELTA Auto and Kach-All Building Sales
East of the Morehead Tobacco Warehouse
(Come See And Save!!) 784-5473

C. Roger Lewis Agency, Inc.

INSURANCE-REAL ESTATE AUCTIONS-APPRAISALS

REALTOR REALTOR

Auction - Nov. 10, 10:30 a.m.

REDUCED TO SELL NOW! The time to grab a bargain in Jackson Heights. Beautiful and secluded set only minutes from town. Three bedroom brick with extra lot, 1 1/2 baths, fireplace, dining room and terrace. Immaculate condition and reduced to \$47,000. Call Steve.

EXCELLENT RENTAL POTENTIAL for this two bedroom house on Taylor Rd. The demand for rental property is increasing every day and you can't get away with this one.

SMALL CITY IN STYLE... describes this elegant efficient farm-housed located only minutes from town in Copperridge Hollow. Crafted with a heart, this would exceed any of your dreams, your best living bills will be unacceptably low. Can be seen anytime you desire. Priced at \$66,500. Or make an offer.

RANCH STYLE BRICK located in Lakewood and situated on a beautiful subdivided lot. The home is in excellent condition and has many nice features. Before you buy, please let us show you and would make a nice fall home. Large lot has a nice garden spot and best of all... a great view. Priced at \$118,500. Call Mike for an appointment.

QUALITY AND CARE is evident in this four bedroom split level home in Lakewood Heights. See an electric bill with the new gas boiler! "Back to the future" family room. Three 1/2 baths, one car garage, separate dining room, utility room and "recroom" system. All today's preferred items. A lot a bargain at \$61,500.

DUPLEX POSSIBILITIES with this large home house located directly on the HWY 60 bypass. For the size and location, this property is well worth the money of \$44,500. Don't pass up this without taking a look at it!

THREE BEDROOM FRAME "HOUSE" located on First St. Within walking distance of town, this would make an ideal rental investment. Write a note with you could make a big difference. Asking \$27,500, but will entertain any offer.

SPACIOUS BRICK RANCH on one level with over 2000 square feet. Excellent floor plan includes family room, dining room, 3 bedrooms, utility room, 2 car garage, central vacuum system and beautiful fireplace. This quality built home is located on one acre. Includes from town... 74,900.

ECONOMICAL two bedroom frame house located on Morgan Fork. Remodeled exterior. This home is very easy to heat and would make a nice fall home. Large lot has a nice garden spot and best of all... a great view. Priced at \$42,500. Call Mike for an appointment.

Steve Lewis, Broker Salesman Auctioneer
784-4168, 784-9591

Lynne Pack, Salesperson
784-6463

R.S. Everett, Salesman
784-1961

Irene Eppelhart Endoparker, Salesperson
784-5586

784-4168

Larry C. Breeze REAL ESTATE AGENCY

SALES PEOPLE
Joe Mauk 784-4412
Reuel Buchanan 784-6264
Carol Johnson 784-5882 after 5
Mary Levese 784-8447

Larry Breeze, Broker
784-7676, 784-9757

BEAUTIFUL VIEW
Nice brick home in Pine Hills. Approximately 2200 square feet on large lot. Four bedrooms, kitchen, living and family room. Carpet, beautiful view. Call Joe Mauk at 784-4412 for viewing.

FOREST HILLS
FOREST HILLS 5 bedroom brick, 2 1/2 baths, kitchen, breakfast room, living room, formal dining room, family room with fireplace, 2 car garage, full basement, acre lot, entry foyer, large rear deck with 3 exits, 1 year old. Take a look.

ONE HOUSE LEFT IN LAKEVIEW HEIGHTS
NICE HOUSE AND LOT-3 large bedrooms, 2 full baths, living room, dining area, nice kitchen with lot of cabinets, family room and terrace. See this one today. 9 1/2% down for qualified buyer.

WHIPPOORVIL VALLEY—COPPERAS HOLLOW
Just completed in Whippoorvil Valley... 3 bedrooms, living room, dining room, family room, kitchen with all built in, nice tile floor with stone fireplace, one lot, one lot, 1200 square feet on one floor. Call for appointment.

CONDONAL SUBDIVISION 3 bedrooms in Oakdale, 2 full baths, full basement. 2 fireplace. Call for appointment. See Mary.

ROCK FORD—Approximately 9 miles from Morehead, 1700 sq. ft., full basement, 3 or 5 bedrooms, family room with Bar, Franklin stove, on black top road, little less than an acre lot partially wooded. Priced to sell—owner transferred. Call Joe Mauk 784-4412.

JUST OFF KY 372... approximately 2 miles from Morehead 3 bedrooms brick, living room, dining room, kitchen with all built in, nice tile floor with stone fireplace, one lot, one lot, 1200 square feet on one floor. Call for appointment.

UNDER \$50,000
1 acre plus wooded lot, 1500 square feet, plus one car garage with workshop. 3 beds, one in front, one on the rear, and one off bedroom, 3 bedrooms, 2 baths, kitchen, living room, dining room, fireplace. Priced under \$50,000. 9 1/2% interest rate to qualified buyer.

INCOME PROPERTY IN TOWN
Nice three bedroom home located on Center Street. Excellent floor plan includes living room, dining room, including a second fireplace. 2 mobile homes, and another house in rear. Net over \$5000 monthly income. If you want a nice home with income property for the price of one, call Joe and take a look. 784-4412.

3 BEDROOM HOUSE with living room, dining room, kitchen, family room, full basement, three fireplaces, hardwood on first floor, stone windows and front and back porch. Approximately 2 acre lot, 10 miles from town in Saddle, Ky. Call Mary Levese to be qualified buyer.

LOOKING FOR A LITTLE HOME? Call on this one! A beautiful lot in Hill 10 area. Subdivision just about 1/2 miles West of Morehead.

Have a nice building lot in Geneva White Bud! Also, level lots available in Forest Hills Subdivision. Call Joe Mauk, 784-4412. He needs to sell.

123 ACRES... Located off Holly Fork on Campbell Road in Rowan County. Approximately 12 miles in. A nice 1400 sq. ft. stone house, 2 acres, 40-60 year, lots of good timber. Call Joe Mauk for appointment.

8 1/2% - 9 1/2% Interest To Qualified Buyers

Area Health Board System To Meet Here

The executive board of the Buffalo Trace Gateway area Health Education System (AHES) will meet Thursday, Nov. 29, at 7:30 p.m. in the Riggle Room of Adron Doran University Center on the Morehead State University Campus.

Harry M. Snyder, executive director of the Council on Higher Education, will speak to the group and participate in discussion concerning the AHES and other matters regarding higher education in the state.

"This meeting is extremely important for everyone who has an interest in the future of AHES," says Frank Hammond, regional coordinator.

The first regular air mail service for civilian mail in the United States started in 1918.

"Nature is in earnest when she makes a woman." Oliver Wendell Holmes, Sr.

Enforcement Officers Issued 3,149 Citations In September

FRANKFORT — State highway enforcement officers issued 3,149 citations in September compared with 2,215 issued in September 1978, according to Department of Transportation figures.

The division's 85 inspectors are responsible for policing truck and other commercial traffic on Kentucky's highways.

Leading the list of the September violations were those issued for failure to comply with financial regulations set by the state. Of the 1,889 citations in this category, many were issued for missing cab cards. The cards are required to show that a truck owner has paid state fuel taxes, is licensed and has authority to operate in a particular area.

Overweight truck citations ranked second among those issued with 366 citations issued to coal trucks and 395 issued to all others. Boyd County led the list with 152 citations, followed by Shelby, Pike, Floyd and Laurel counties.

According to Col. Dick Horn, highway

enforcement director, the increase in the number of citations issued from September 1978 stems from an increased work force. "We increased the staff in May 1978," Horn said. "Since it takes nearly two years to gain the desired effect following the training process, we are just now realizing the benefits of additional people."

According to Horn, the additional personnel allows the highway enforcement officers to increase patrols and the number of trucks that can be checked. Horn added that 19 additional people are in training at the present time and should be added to the work force by January 1980.

Garlic and onions figured strongly in the ancient Egyptians diet. It is said that a daily ration of the two gave workers the strength to build the great Pyramids and tombs of the Pharaohs.

Start Your Christmas List Now

Remember her best friends—Diamonds ... and SAVE!
Sparkling diamonds and gold... in 3 exciting styles she'll love!

- A. Dainty cluster, reg. \$90 **\$59**
- B. Round cluster, reg. \$150 **\$99**
- C. Square cluster, reg. \$295 **\$199**

Prices good through December 15... 60-day money back guarantee on all diamonds... 4 ways to buy: Cash, charge, bank card, layaway. Illustrations enlarged.

LAYAWAY NOW!

LeRoy's Jewelers Trademore 784-6614



Clowning Around

Beneficial Finance Company employees got into the swing of Halloween Wednesday and traded their work clothes for these costumes. They attracted quite a bit of attention in downtown Morehead as horns honked and strangers waved at the curious trio. From left are Suzanne Skaggs, Steve Simpson and Libby Caudill in front of their office on West Main Street. (Staff Photo by Alice Akin)

Special Buys!

Large Black Rocker	\$159.95 ea.
Small Rockers	\$99.95
Floor Lamps	\$69.95
Large 2 Door Chest	\$99.00
Child's Recliner	\$69.95
2 Cherry Tables	\$119.95
<small>(Queen Anne) Slightly Scratched</small>	
1 Drop Leaf Cherry Coffee Table	\$119.95
<small>Slightly Scratched</small>	
1 Set 3 Pc. Oak End Tables	\$299.95
<small>& Coffee Table With Brass Trim</small>	
Big Square Bamboo Coffee Table	\$149.95
2 Oak Night Stands	\$99 ea.

Trademore Furniture

"Save More At Trademore"

784-6901 Trademore Center Morehead, Ky.

HELP YOUR SCHOOLS on the County Question

Vote YES!!!

This question will be the last item on the ballot. It will be located in the lower right corner.

Think positively about this question. Our kids are worth the 3%. Let's show them we care.

DON'T FORGET THE KIDS
Vote YES
on the County Question.

YES NO

IF SAVINGS ARE IMPORTANT TO YOU... SHOP WITH US FIRST!

ELECTRIC PERCOLATOR
SUNBEAM - 12 CUP AUTOMATIC
Low silhouette style. Twist lock safety top, stays put when pouring. Flip up basket. Keeps coffee sizzling hot automatically. Stay cool black handle and base. Capacity, 4 to 12 cups. (502) 112 No. 15-40.
Reg. \$15.85 **SALE \$10⁹⁹**

Economy Studs

99¢ EA.

1/2" CDX Plywood

Reg. \$10.99
SALE \$9⁹⁵

R-11 Kraft Faced
15" Wide x 70 1/2" Long

FIBERGLAS \$10⁹⁹ Roll

★ **REMINGTON** ★
14" MIGHTY MITE

Gasoline chain saw with powerful, smooth running motor. Grouped operating controls for easy fingertip operation. 015-685/69944

Reg. \$169.95
\$89⁹⁵

S&T STORES Trademore S&T Hardware And Appliance

784-6425 Morehead, Ky. Trademore Center 104 Interchange

Phone:
784-4116

Society

DEADLINES:
3:00 P.M. Wednesday,
For Friday Edition
5:00 P.M. Friday,
For Tuesday Edition

FRIDAY MORNING, NOVEMBER 2, 1979

THE MOREHEAD NEWS—MOREHEAD, KY

PAGE 9

Personals

Mr. and Mrs. Robert Matthews of Wilmington, N.C. and Mr. and Mrs. Cecil D. King of Pensville, N.J. were house guests last week of Mr. and Mrs. Nelson Caudill. They were here for the wedding of their son and nephew, Robert Matthews Jr., and Kathy C. Williams.

Mrs. Walter Mitchell and daughter, Susan, attended a 50th wedding anniversary dinner Sunday in honor of Mr. and Mrs. Collie Harmon of Haines City Fla., at the home of Mrs. Harmon's sister, Mrs. Ray Gates, of New Hope, Ohio.

Mr. and Mrs. George Morrison of Oakdale Subdivision celebrated their 16th wedding anniversary Friday, October 26. The couple had dinner alone by candlelight and Mr. Morrison gave his wife a diamond necklace.

The Morehead Women's Club made a trip to Spindletop in Lexington for lunch last Saturday and then travelled to the Kentucky Horse Park for a tour. While at Spindletop, the members were given a brief lecture and tour of the home by Mrs. William H. Baldwin, who is the GEWC elections chairman.

Bob Allen was the driver for the group which included: Betty Allen, Joyce Barber, Vera Lane, Frances Laughlin, Cbe Calvert, Mabel Barber, Lola Bell Blair, Sara Dull, Vesta Martin, Dottie Stanley, Merle Allen, Unice Cecil and Mary Alfrey.

Mr. and Mrs. Edward Amburgey of Richmond, Virginia visited this past week with his mother Mrs. Emmor burgey of Hays Crossing.

Mrs. Vonnie Creeth Blevins of Olive Hill was a recent guest of Mrs. Nancy Cline and Mr. and Mrs. Lloyd Dean.

Representing the Morehead United Pentecostal Church in Greenup County at a monthly Fellowship meeting were Mrs. Pastor and Mrs. Lloyd Dean, Mrs. Eliza Plank, Miss Linda Leach, Mr. and Mrs. James Blackford, Miss Deanna Rice, Mrs. Doris Rice and Miss Carol Blackford.



Honored By Board

John Uterback (left) of Fleming County was recently honored at a luncheon at Morehead Holiday Inn by the board of directors of the Huntington Interstate Milk Producers Association. Uterback served on the board for eight years and is being replaced by another Fleming Countian, Maxine Campbell, the first woman to serve on the board in the association's history. George Wallace (center) is manager of the association which is comprised of dairy farmers in Eastern Kentucky, Southern Ohio and Southwest W. Va. (Staff Photo by Alice Akis)



Frank McCracken Named Vice President AR Hospitals

Frank C. McCracken, assistant administrator of St. Claire Medical Center in Morehead, has been named assistant vice president of Appalachian Regional Hospitals, according to William E. Williamson, ARH Vice President for Fiscal Services. McCracken, 34, was employed by

ARH from 1972 to 1976 and went from assistant controller to director of budget during that time. In 1976, he accepted a position with Forbes Health System in Pittsburgh. Earlier this year, McCracken was named to his position at St. Claire. He will assume his duties at ARH in Lexington on November 5, 1979.

"We are pleased that Frank has decided to return — he was and will, once again, be a valuable employee. The strength of his education and experience is conveyed through a warm personality," said Williamson.

A graduate of the University of Kentucky, McCracken received his B.S. in Accounting in 1967. At that time, he became supervisor of audits and tax return reviews for Ernst and Ernst (now Ernst and Whinney) in Lexington.

He is a member of the Kentucky Society of Certified Public Accountants and the American Institute of Certified Public Accountants. He is also involved with the Hospital Financial Management Association.

McCracken and his wife, Sue, have one daughter, Nancy, age 9.

ARH is a system of 10 hospitals and related facilities located in Kentucky, Virginia and West Virginia. ARH Central Office is located in Lexington. "I have always liked the system concept. It's going to be tough to leave Morehead and St. Claire, but I'm looking forward to working with the system again," said McCracken.

Delta Gamma To Have Party

Morehead State University chapter of Delta Gamma sorority will hold its annual Christmas Party on Friday, Dec. 7 at the Marriott Inn in Clarksville, Ind.

A buffet dinner will be served, at 7 p.m., with a dance immediately following.

Deadline for dinner reservations is Thursday, Nov. 15. Additional information is available from Gale Horney, 306 Nunn Hall, MSU, Morehead, KY 40351 or by calling 606/783-3905.

Alpha Delta Pi

Alpha Delta Pi Sorority announces its first annual State Day will be Saturday, Nov. 10 at the Executive Inn in Louisville. Activities will begin at 9:30 a.m.

Activities and alumni should contact Leslie Land, 224 Breckinridge Square, Louisville 40220 for registration and additional information.

University Professors Have Works Published

Two Morehead State University professors have recently had articles published.

Dr. Sue Luckey, professor of business education, had two articles published.

An article entitled "What Classroom Facilities are Needed for a Simulated

Model Office Education Program", appeared in the Beta Omicron Chapter Yearbook, and an article entitled "The Teacher — Key Element in Simulated Office Education", was published in the October issue of "Business Education Forum".

A native of North Carolina, Dr. Luckey received her doctorate from Southern Illinois University.

She has received national recognition including "Outstanding Educator in America", "World Who's Who of Women in Education", and "Outstanding Personalities of the South".

Dr. Luckey is also sponsor of the MSU Chapter of Cardinal Key National Honor Society and chairman of the MSU Concert and Lecture series Committee.

Dr. John Kleber, professor of history, had a book review published.

The review, "The Victorian Flight: Russell Conwell and the Crisis of

Bridge Winners

Winners of the Morehead Duplicate Bridge Club game Oct. 19 were first, Harry Meecham, M. Olivet, and Rick Cornett; second, Susanne Blair and Paul Blair; and third, Bill Davis and Bob Lindahl.

KSALPN

The November meeting of the KSALPN District 4 Unit 2 will be held in the meeting room of the Rowan County Public Library.

Guest speaker will be Mrs. Thelma Hannah, state president of KSALPN. She will answer questions on legislation effecting LPNs which may be enacted, and CEU's required for license renewal.

All LPN's and students are invited to attend.

American Individualism", appeared in "The Journal of American History".

Dr. Kleber, a native of Louisville, received his doctorate in history from the University of Kentucky in 1968.

He is a member of the American Historical Association, the Organization of American Historians and the Southern Historical Association.

Gourmet Corner

Sauer Kraut
By INITA SPARKMAN



3 qts. water
1 pt. vinegar
1 cup salt

1 Tbl. alum
1 cup sugar
chopped cabbage

Heat water, vinegar, salt, alum and sugar to boiling. Pour over cabbage that has been chopped and put into hot sterilized jars. Let set 3-4 weeks before using.

Taken from Favorite Recipes, compiled by the Youth Fellowship of the First Church of God. Cookbooks from which recipes for this column are taken still are available by contacting the church at 784-4317. They are \$5 each.

Women Named Area Outstanding

The Board of Advisors for the Outstanding Young Women of America Awards Program announced today the women selected for inclusion in the 1979 edition of Outstanding Young Women of America.

The Outstanding Young women of America Program is designed to honor and encourage exceptional young women between the ages of 21 and 36 who have distinguished themselves in their homes, their professions and their communities.

Serving as chairman of the program's Advisory Board is Mrs. Dexter Otis Arnold, honorary president of the General Federation of Women's Clubs.

The women listed, along with approximately 15,000 fellow Outstanding Young Women of America from across the United States, will be presented in the prestigious annual awards volume.

In addition, they are now being considered for one of the fifty-one state awards to be presented to those women who have made the most noteworthy contributions in their individual states. From these fifty-one state winners, the Ten Outstanding Young Women of

America will be chosen. The ten national winners will then be honored at the annual awards luncheon to be held this fall in Washington.

Outstanding Young Women of America from this area are: from Morehead, Betty Daniel Cates, Carol F. Holt, Catherine Louise Peterjohn, Vicki Collier Rice, Kathryn Cruse, Jacqueline Sara Goldberg, Nancy Diane High, Linda R. Pennington and Cella Evangelina Pizarro.

Terry Moran Burchett, Mt. Sterling; Mary Jo Hatton, Frenchburg; Deborah Sue Parsons, Sandy Hook and Ruby Gail Clark, Lovely.

Historian Club To Meet Nov. 5

The Historian Club will meet at 7 p.m. Monday, Nov. 5 at the Rowan County Public Library.

The program will be conducted by Mr. and Mrs. Bill Garey and Miss Grace Crosswhite and will concern the changes that have come about in Rowan County and Morehead over the past years. The public is invited.

CLIP CLIP

Clip Any One Of These Coupons To Get Great Eyewear Savings For The Whole Family.

BAUSCH & LOMB ELECTRICAL THERMAL CARE KIT FOR SOFT CONTACT LENSES
\$29.95

If you use one of the old electric thermal care units or if you are buying new soft contacts, you'll want to take advantage of this great offer. The care free care kit from Bausch & Lomb.

Not subject to further discount. Offer expires January 31, 1980.

50% OFF LENS TINTING
SAVE \$4. TO \$6.00

When you buy your new glasses, go with the high fashion look of tinted lenses or lenses darkened for sunglasses and save 50% on the tinting cost with this coupon.

*Not subject to further discount. Offer Expires January 31, 1980. *CR-39 plastic lenses only.*

50% OFF SUNGLASSES

Save 50% on selected sunglasses. Protect your eyes from sun and snow glare, while saving on quality sunglasses from the eye-wear professionals.

*Not subject to further discount. Excludes Bausch & Lomb Collections. Offer expires January 31, 1980. *Non-prescription lenses only.*

1/3 TO 1/2 OFF ALL FRAMES

Save up to 1/2 on our finest quality frames. You'll save money on names like American Optical, Bausch & Lomb and other quality manufacturers as well as designer names like Anne Klein, Vera or Oleg Cassini.

Not subject to further discount. Offer Expires January 31, 1980.

Trademore Shopping Cntr., Morehead 784-6609

Monfried Optical

THE EYEWEAR PROFESSIONALS

The Front Porch RESTAURANT

At The I-64 Interchange Morehead, Kentucky PH: 784-7591

In The Holiday Inn Morehead, Ky. Sunday Brunch — 11 til 3 —

A delightful buffet of your favorite breakfast items to fresh fruits, salads, vegetables and your favorite meats, including:

Roast Beef Carved At The Line

ADULTS \$5.50
CHILDREN \$3.25

At The I-64 Interchange Morehead, Kentucky PH: 784-7591

Small, Sporty Car Sales Are Up

DETROIT (UPI)—The automobile, a stable group of fuel-conscious U.S. consumers has reaffirmed, is more than mere transportation.

Frightened by gasoline shortages this spring, car buyers switched to smaller, more fuel-efficient cars in unexpected numbers for the remainder of the 1979 model year.

But they didn't become that all-fired practical.

If small was good, small and sporty was even better.

Between January and September, total car sales in the United States, including imports, reached 8,238,000 units, down 4 percent from the same period in 1978.

But the small car market—made up of subcompact, compact, and small-sporty segments—was up 15 percent. The small-sporty lines, with 1.15

million sales, were up 28 percent—the largest market segment gain of the year.

As automakers have always known, many people want frills and image in a car, even if gasoline supplies seem to dictate that it be a small car.

"Many buyers want more than a bare-bones small car," said Gordon B. MacKenzie, vice president for sales operations at Ford Motor Co.

"They want styling and image as well as operating economy. These buyers gravitate to the small-sporty lines," he said.

Exactly what makes up that market segment is difficult to define, although usually easy to recognize. Small-sporty lines normally are distinguished by exterior design, trim interior appointments and engine size from the basic Pinto-Chevette-Horizon subcompact platforms.

"The small-sporty market, with more than 25 car lines available, is one of the most competitive and diverse in the industry," MacKenzie said.

Ford made inroads in that market in 1979 with its redesigned Mustang and Capri models, but all of the Big Three U.S. automakers and the major importers are represented on the top 10 in sporty sales.

The Mustang, seemingly reverting to the form that made it an auto industry phenomenon when introduced in 1965, held the top spot with 237,000 sales between January and September.

The other top sellers were Chevrolet Camaro, 166,800; Toyota Celica, 138,600; Pontiac Firebird, 121,000; Mercury Capri, 72,200; Datsun 280Z-ZX, 56,000; Plymouth Horizon TC3, 46,600; Dodge Omni 024, 42,900; Mazda RX7, 42,500, and Honda Prelude, 36,500.

Under heavy foreign competition and government mandate to produce more fuel-efficient cars, U.S. automakers are tooling to retain the sporty segment without the huge, powerful engines that made them attractive in the past.

Firebird, for instance, was introduced in 1967 with an engine line that included a four different high-horsepower V-8 engine options.

For 1980, none of these engines is available, but we are committed to maintain the high level of performance associated with the Firebird and still meet stringent regulations on emissions and fuel economy as well as market demand for efficient," said Robert C. Stempel, general manager of the Pontiac Division of General Motors Corp.

"In effect, we are committed to do more with less," he said.



Receives Award

Mary A. McGarey recently received a cash award and certificate in recognition for her outstanding performance of official duties as county office assistant in the Farmers Home Administration. Presenting the award is Tom Fern, FHA district director. The award was approved by State Director William Burnette. (Staff Photo by Alice Akin)



Rowan County SUITS FILED

James T. Caudill, Jr. vs. Jeralyn Sue Caudill, petition for dissolution of marriage.

Pamela Karen Clark vs. Rex Allen Clark, petition for dissolution of marriage.

Beneficial Finance Company of Ky vs. Lawrence and Linda S. Pennington.

Carolyn S. Myrnhier vs. Richard Dale Myrnhier, petition for dissolution of marriage.

Shirley Faye Bartrum vs. Gary Michael Bartrum, petition for dissolution of marriage.

Patricia Louise Blevins vs. Larry Rayburn Blevins, petition for dissolution of marriage.

Commonwealth of Ky. Department of Transportation vs. Richard Ellington.

There will be no deeds recorded or marriage license news until next week. This week the office of county clerk is preparing for the Nov. 6 election.

In District Court

Rowan County

Notice

The Robert Adams listed in Tuesday's and today's District Court News is not the Robert "Bob" Adams who is a candidate for City Council and lives on Triplett Street.

Speeding - Janetta Kay Burge, dismissed; Daniel Ralph Corey, \$28 plus costs;

Theft by Deception - Nancy Curtis, \$100 plus costs; Robert Adams, two counts, dismissed; Betty Hartgrove, \$100 plus costs;

Public Intoxication - David E. Richards, \$25 plus costs; Daniel Howard, 30 days in jail, probated to SID for life period.

Driving Under the Influence - Carl E. Brown, \$100 plus costs; Ronnie Wagner, \$250 plus costs; James A. Rankin, \$100 plus costs;

No Insurance Sticker on Vehicle - Randall Berger, produced insurance, \$5 docket fee;

Theft of Property - Sue Fraley, also known as Sue Lake, \$25 plus costs;

No Operators License - Ronnie Wagner, \$50 plus costs;

Drunk in a Public Place - Danny W. Jones, \$25-plus costs.

On The Wagon

According to the Guinness Book of World Records, the longest-lasting imposition of prohibition against consumption of alcoholic beverages has been 26 years in Iceland (1908-1934). Other significant prohibitions include Russia (1914-1924) and the United States (1920-1933).

KET To Provide Election Coverage

KET will provide comprehensive election night coverage of all statewide, legislative and selected local races, Tuesday, Nov. 6 at 9 p.m. in a special three-hour edition of "Election '79."

Newsmen Al Smith, host of "Comment on Kentucky," will be joined by three other journalists to report election returns and comment on the results.

In addition, Smith will conduct telephone interviews with political analysts across the state to provide local insight on the various races.

"This is the first time KET has provided extensive election night coverage," said Sid Webb, KET director of production. "We feel that this service is especially important since much of the state does not have access to television coverage of elections returns except through KET."

"Most of Kentucky is served by television stations outside the state, and these stations will not be following the elections in Kentucky very closely," Webb noted.

KET has arranged for high school history and journalism students and teachers to tabulate and report election returns from local precincts.

What has 2 wings, pepperoni and is flying to Morehead?

ATTENTION AMERICAN CITIZENS

Only 60% of those eligible are registered to vote, and incredibly, only one third of these bother to vote at all. This means that all of us must suffer under the legislation enacted by a Congress elected by just one fifth of the eligible voters. This small percentage is made up mostly of voters with radical or special interests. Any special interest is always detrimental to the majority.

Participation in the political process is one act of patriotism that must be restored in America, or we will lose all freedoms. We have already lost some freedoms, and many others are under attack. We are alarmed.

If you need FREE transportation to and from the polls on Election Day, call 784-9082.

Sponsored by Post 126, The American Legion

TAKE-IT-AWAY CHICKEN SPECIAL.

One whole pint of creamy cole slaw. Ours is extra good, because we make it from scratch.

Four delicious dinner rolls.

Giant 32-oz serving of Coke. So big it comes in a carton, without any ice. That way when you get it home it's still fresh—not watered down.

8 pieces of chicken. We start with fresh chicken, then cook it up plump and tender.

12 of our unique Tater-bits—big wedges of potatoes, breaded and then deep fried. Different and delicious!

A BIG \$2.80 SAVING. ONLY \$4.95.

For a limited time only, your gang can enjoy our eight-piece Take-It-Away chicken dinner, a \$7.75 value, for just \$4.95. That's a great big \$2.80 saving, so come on in right now and take advantage of this delicious deal we've cooked up for you. Of course, you can also eat our Take-It-Away Special inside with us.

SOMETHING BIG COOKING AT BURGER QUEEN. DON'T LET THE NAME FOOL YOU.

125 Flemingsburg Rd. Trademore Shopping Center

TIME IS RUNNING AWAY Open an IRA

You Qualify if this card is your only retirement program

It's Called An Individual Retirement Account IRA

Do it yourself, interest earning, tax-deferred way to make yourself a lot richer when you retire.

An IRA is a terrific deal for anyone who doesn't participate in a qualified pension plan. Deposit any amount up to \$1500.00 # 10% of your earned income, whichever is less, and you'll have \$1000.00 by depositing before you file your 1978 tax return, you can deduct the amount from your gross income. Actually, you won't have to pay any income taxes on deposits, or on the interest they earn, until you start making withdrawals when you retire.

Your deposit into an IRA will yield 8.25% annually from 8% interest. And, over the years you can build your IRA return to \$150,000.00.

Ask about our special RETIREMENT PLANS for individuals and self-employed persons.

Citizens-Deposit Bank

The Bank for Your Money

AT 10 400-2nd Street, Suite 100, Morehead, KY 40341. Tel: 784-9111

1015 11th Street, Suite 100, Morehead, KY 40341. Tel: 784-9111

1015 11th Street, Suite 100, Morehead, KY 40341. Tel: 784-9111

Energy Poster Winners Announced

Winners of the Rowan County Energy Poster for the fourth, fifth, and sixth grade students were recently announced.

They were Jeremy Egleson, fourth grade, and Paula Davidson, fifth grade, both of Farmers Elementary School, and Kelly Helton, sixth grade student at University Breckinridge.

The poster contest was conducted by the Department of Energy in Frankfort in cooperation with Rowan County Elementary Schools, University Breckinridge and the Rowan County Extension Service, E.H.



Jeremy Egleson Paula Davidson

both of University Breckinridge, and Kelly Fultz, sixth grade student at Farmers.



Kelly Helton

**Fri.-Sat.-Sun.
November 2-3-4**

"Godzilla on Monster Island"

—ALSO—
SEE KARATE AT ITS BEST

"The Thunder Kick"

in color, Rated "R"

MOREHEAD DRIVE-IN THEATRE

Morehead, Ky.

The winning posters are now being judged on the state level.

The state judging committee will select four posters from each grade level throughout the state. The twelve winning posters will be framed and placed in the Rotunda of the Capitol Building during Kentucky Energy Awareness Week Nov. 11-17.

Other students from Rowan County receiving honorable mention were Todd Scott, fourth grade, and Brad Ross,

Construction Site Is Burglarized

WEST LIBERTY — State police at Morehead are investigating the burglary of a construction site in West Liberty early Tuesday morning.

Police report that an air compressor and several attachments, valued at about \$1,800, were taken from Hall Construction Corporation of Louisville from a construction site across from the West Liberty City Park.

The theft is believed to have occurred between 6 a.m. and 6:30 a.m. A red, 1968 or 69 Ford pickup truck was seen leaving the site about that time.

Pharmacy Seminar

A three-hour seminar on "Antidepressant Therapy" will be presented by Dr. Ann Amerson of the University of Kentucky College of Pharmacy at 7 p.m. on Thursday, Nov. 15, at Ashland Community College.

Seminar content consists of an overview of the use of antidepressant drugs in community practice.

The seminar, which will be in Room 205, carries a \$15 fee and offers 0.3 Continuing education unit credit.

For more information, contact Jennifer Allen, continuing education director for pharmacy, at (606) 257-2670.

Ambulance Ruins

EMERGENCY ONLY

784-6435

OFFICE ONLY

784-6435

784-6433

Oct. 25, 1979
Ruth Lawson, Olive Hill, taken from St. Claire to the Barrdollar Mini-Home, transfer. Squad - Hank Hall, Mindy Lashbrooke.

Jack Howard, Clearfield, taken from St. Claire to the V.A. Hospital, Huntington, emergency. Squad - T.E. Slocum, Mark Padgett.

Mary Hurt, Huntington, taken from St. Claire to St. Mary's, emergency. Squad - T.E. Slocum, Mark Padgett.

Oct. 28, 1979
Wilson Earlywine, Morehead, taken from home to St. Claire, urgent. Squad - Dean Martin, Fred Claridge.

Vernon Cassity, Morehead, taken from Ky. 519 to St. Claire, emergency. Squad - Perry Prather, Dean Martin.

Oct. 29, 1979
Billy Joe McClone, Morehead, taken from St. Claire to U.K. Medical Center. Squad - Dean Martin, David E. Broderick.

Oct. 29, 1979
David Jennings, Morehead, taken from Dry Creek to St. Claire, transfer. Squad - Hank Hall, Mindy Lashbrooke.

Nora Hamm, Morehead, taken from U.K. Medical Center to the Life Care Center. Squad - Clayton Stampler, Geneva Hall.

Oct. 29, 1979
Bessie Jones, Morehead, taken from Ky. 32 to the Cave Run Clinic, transfer. Squad - Hank Hall, Clayton Stampler.

Oct. 31, 1979
Johnny Salyers, Cansy, taken from St. Claire to home, transfer. Squad - Hank Hall, Kathelene Pfeiffer.

Maude Clay, Morehead, taken from Morehead to St. Claire, urgent. Squad - Robert O. Olsen, Robinson C. Davis.

Wilson Earlywine, Morehead, taken from home to St. Claire. Squad - Clayton Stampler, Geneva Hall.
Fred Perry, Morehead, taken from home to St. Claire, transfer. Squad - Hank Hall, Mindy Lashbrooke.

The Swiss Alpenhorn, made of hollowed wood sections, sometimes measures up to 12 feet long.

What has 2 wings, mozzarella and is flying to Morehead?

STARTS TONIGHT

UNIVERSITY CINEMA

WEEK NIGHTS
7:30 - 9:30 P.M.
SATURDAY - SUNDAY
2:00 - 4:00 - 8:00
8:00 AND 10:00 P.M.

A temptingly tasteful comedy for adults who can count.

BLAKE EDWARDS
"10"
DUDLEY MOORE JULIE ANDREWS BO DEREK

ADULTS \$2.00
BEST HOUR \$1.00

HERE'S A BEAUTY — Bo Derek makes her screen debut in Blake Edwards' "10" in the role of the perfect young girl (on a scale of 1-10). Capturing her affections is the goal of a successful composer who is intimidated by the fact that she is on her honeymoon. The new film, an Orion Pictures release through Warner Bros., stars Dudley Moore and Julie Andrews. It was written and directed by Blake Edwards, who also co-produced with Tony Adams, it opens tonight at the University Cinema Theatre.

Now You Can Put Yourself in This Picture

Imagine. Your family in a new home...a first home...a dream home. One that has a play-yard for the children...a real laundry room...a wood burning fireplace. Ahh. You think it won't ever happen? We think it could! Come and talk to us. We'll give you all the facts about our Mortgage Loans.

FIRST FEDERAL SAVINGS & LOAN ASSOCIATION

Main Street Phone: 784-4187 Morehead, Ky.

ESLIC **LENDER**

Utility Tax Information

The Rowan County School Board has proposed the levy of a three percent utility tax. This is three percent of the gross receipts derived from telephone, electricity, water and natural gas. (Sewage charges are not included).

EXAMPLES OF MONTHLY COST

An \$8.00 water bill will cost 24 cents	less than one cent per day
A \$15.00 phone bill will cost 45 cents	less than two cents per day
A \$40.00 gas and/or electric bill will cost \$1.20	four cents per day
\$63.00 per month	

If your total cost of utilities is \$63.00 per month, as listed above, the total cost of this tax would be \$1.89.

In terms of what this amount will buy, you will need to sacrifice **ONLY ONE** of the following.

- One Coca-Cola every fifth day; or
- One 50¢ package of cigarettes per week; or
- One 25¢ candy bar every fourth day; or
- One 50¢ milk shake each week.

These Funds Will Be Used For The Construction Of:

- A New High School
- A New Bus Garage.
- Major Repairs To Each Elementary School.
- Renovate Present High School For A Middle School.

3% Vote YES on the County Question

Vote YES

Vote For Our Citizens For Improved Schools, Dean Center, Trees.



1979 Rowan County Volleyball Champions

The girls volleyball team at Elliottville won the county championship recently by defeating Tilton Hojge, Farmers and Haldeman. Scores from the championship game were 16-14, 16-15 and 15-12. Here is the squad, first row, left to right, Norma Dillion, Rhonda Catron,

Tammy Goodan, Brenda Bowman, Carolyn Love, Paula Barnett, Charlotte Woodrow, and Rhonda Trent. Second row, Cendy Moore, Karen Thomas, Connie Johnson, Ella Trent, Tammy Ison, Joann Kidd, Lisa Wilson, Sanya Hamilton, Jeanetta Caudill, and coach W.G. Bailey.

Vikings Tangle With Fleming County Again Tonight

Tonight they will be at it again. For the second Friday in a row the Rowan County Vikings (7-3) will meet the Fleming County Panthers (10-1), in a football contest.

In the final regular season game for each school last Friday, Fleming County won 7-0. Both schools had a rough time establishing any kind of offensive attack.

This week the game site will move to Fleming County for the first round playoff game.

Both coaches feel their will be more offense in the contest tonight. "I don't think anyone will bust the game open, but we have both been noted this season for our offense. I think it will still be close," Fleming County coach Ted Purrell said.

Against Rowan County last Friday, Bubby Lewis, who has gained over 2,000 yards in 11 games this season for the Panthers didn't run outside much. This week the junior with lots of speed is expected to make more dashes for the outside.

"I hope we have another clean game," Viking coach Ken Howard said. The coach went on to say that he noticed the players helping each other off the ground in the film, and he hopes the same attitude exists tonight. A glance at the Fleming County

Rowan Results

Greenup Co. (4-A)	6-10
Bath Co. (AA)	25-22
Montgomery (AAA)	6-28
Lewis Co. (AA)	60-26
Est Carter (AA)	12-6
Henry County (AA)	48-4
Piscesville (AA)	13-4
Mason Co. (AA)	36-6
West Carter (AA)	46-10
Fleming Co. (AA)	0-7
Total Points Scored—255 Avg. 28	
Total Points Allowed—101 Avg. 10.1	

Fleming Results

Nicholas Co. (A)	19-0
West Carter (AA)	14-8
Henry Co. (AA)	57-6
Mason Co. (AA)	47-4
Bath Co. (AA)	32-6
Bourbon Co. (AAA)	6-18
Lewis Co. (AA)	27-0
East Carter (AA)	27-0
Carroll Co. (AA)	26-0
Maysville (A)	26-0
Total Points Scored—289 Avg. 26.2	
Total Points Allowed—45 Avg. 4	

results from this season shows six shutouts, but six of those came at the hands of class A schools. The Panther defense is just allowing four points over the 11 game season. Fleming County has been scoring an average of 45 points per contest.

Fleming County played just one school with a larger enrollment, class AAA county Bourbon County, where they suffered their only playoff one class school, Pineville. Rowan County tackled class AAA power Greenup Co. in the season opener, losing by just four points, 16-6. Other than the Fleming County loss last week, the only other loss for the Vikings came against AAA school Montgomery Co.

Rowan County and Fleming County played six common opponents in the regular season, West Carter, Henry County, Mason County, Bath County, Lewis County, and East Carter. Each won all six. Fleming County outscored

(Continued on next page)

10th Ranked Morehead Eagles Host Akron

The Morehead State football team, which has already won more contests this year than the last two seasons combined, will host Akron tomorrow afternoon at 1:30.

The Eagles are tied for 10th place in the latest ACAA division I-AA poll, and have allowed just three points in their last four games. That's a rather incredible accomplishment for a team that

was picked by the coaches in the OVC to finish last in the conference.

Although both schools are members of the Ohio Valley Conference, the game will not count in the league standings because the two schools are not eligible for the league title until the 1980 season.

Morehead State has been relying on its defense all season. The Eagles have returned six interceptions to Justin Peay, UT-Martin and Western Kentucky, while playing to a 3-3 tie with Tennessee Tech. The defense has not given up more than one touchdown in any game except the Murray State contest, the lone defeat for coach Tom Lichtenburg.

The Eagles are in the running for the conference title, but Murray and Eastern must lose their remaining conference games for that to happen. At any rate, Morehead has assured itself of the first winning season in the past six years. Kicker Nick Rapier has provided all the scoring the last two weeks.

Akron defeated Northern Michigan 45-21 last week and Wilkins is the top rusher on the club, averaging 108 yards per game, and quarterback Bob Maxwell has thrown for 86 yards and 10 touchdowns, with five going to James White.

This week's Eagle statistics show the Morehead defense allowing just 6.9 points per contest, but the offense has averaged just 10.3 points per game. In the OVC has a better defense statistically than Morehead, MSU is allowing 26.3 yards per game, while Murray is allowing 24.3.

John Christopher, who has been a key to the Eagles success this season is leading the OVC with a 42.2 punting average.

University Breckinridge Boys Basketball Schedule

Nov. 1-2	Foot Hills Teen	Elliott Co.
Nov. 8 Thurs.	Hazel Green	Home
Nov. 10 Sat.	Home	Home
Nov. 13 Tues.	West Carter	Home
Nov. 15 Thurs.	East Carter	Home
Nov. 20 Tues.	Toloboro	Away
Nov. 27 Tues.	Menifee Co.	Home
Nov. 30 Fri.	Elliott Co.	Home
Dec. 1 Thurs.	Home	Home
Dec. 4 Thurs.	E.K.C.	Home
Dec. 11 Tues.	Menifee Co.	Away
Dec. 14 Thurs.	West Carter	Away
Jan. 4 Sat.	East Carter	Away
Jan. 5 Sat.	Magoffin Co.	Away
Jan. 11 Fri.	East Carter	Away
Jan. 18 Tues.	Lewis Co.	Home
Jan. 18 Tues.	Morgan Co.	Home
Jan. 25 Tues.	West Carter	Away
Jan. 29 Tues.	S. Patrick	Home
Feb. 1 Fri.	Hazel Green	Away
Feb. 5 Tues.	Mason Co.	Away
Feb. 8 Fri.	Lexington Sayre	Home
Feb. 9 Sat.	Lawrence Co.	Home
Feb. 15 Fri.	Russell	Home
Feb. 16 Sat.	Paintsville	Home
Feb. 20 Tues.	Fairview	Away
Feb. 22 Fri.	Morgan Co.	Away
Feb. 23 Mon.	Riverside	Away
Feb. 28 Tues.	Hazel Green	Home
Feb. 29 Fri.	Dayton	Away

Breckinridge Girls Basketball Schedule

Nov. 1-3	Foot Hills Teen	Elliott Co.
Nov. 8 Fri.	Elliott Co.	Home
Nov. 12 Mon.	West Carter	Away
Nov. 15 Thurs.	Powell Co.	Away
Nov. 17 Sat.	Johnson Cent.	Home
Nov. 19 Mon.	Raceland	Away
Nov. 20 Tues.	Lewis Co.	Home
Nov. 23 Mon.	East Carter	Home
Nov. 29 Thurs.	Montgomery Co.	Home
Dec. 4 Thurs.	E.K.C.	Home
Dec. 10 Mon.	Menifee Co.	Home
Dec. 12 Wed.	Elliott Co.	Away
Dec. 13 Thurs.	Fleming Co.	Away
Dec. 17 Mon.	West Carter	Home
Dec. 20 Thurs.	Powell Co.	Home
Jan. 4 Sat.	Ashland	Home
Jan. 12 Sat.	Jenkins	Home
Jan. 14 Mon.	Holy Family	Away
Jan. 21 Mon.	Holy Family	Away
Jan. 28 Thurs.	Magoffin Co.	Home
Jan. 31 Thurs.	Fleming Co.	Home
Feb. 4 Mon.	Magoffin Co.	Away
Feb. 14 Thurs.	Russell	Home
Feb. 18 Mon.	Lewis Co.	Home
Feb. 22 Fri.	Richwood	Away
Feb. 23 Sat.	Richwood Model	Away
Feb. 28 Thurs.	Fairview	Away

Breckinridge Loses First Basketball Game, 60-42

Elliott County defeated University Breckinridge, 60-42 in the first game of the Foothills tournament, which was the season opener for both schools.

Wayne Allen led the Eagles with 14 points, Darold Bailey tossed in 13.

Breck shot just 37% from the field, which won't win many ball games. "Our shooting was off and we took just 46 shots, we aren't going to win many ball games with a percentage like that and just 46 shots," coach Dienzel Dennis said Wednesday.

According to Dennis both teams were nervous at the outset. "The ball went down each end three or four times before we finally scored. We were down by just four at the half. I thought we played well during the half," Dennis said.

The coach went on to say, "We played

with them until Joe Magrane fouled out in the third quarter, which left us with a small team, and we lost because we weren't able to stay with them on the boards. Our rebounding was alright in the first half, but their size and strength overpowered us in the second half."

Breck is a 2-1-3 zone defense, which Dennis describes as "effective" in the first half. "One thing that pleased me was the fact that we had just 11 turnovers, that's a great improvement over last season," Dennis said.

Even with Magrane sitting on the bench the second half, Elliott out-rebounded Breck just 34-31. Elliott County shot 45.9% from the field. Breck was eight out of 13 from the foul line, while Elliott County connected on 10 out of 19 shots from the charity line.

Breck's next game is Thursday November at home.

Wilson Is Regional Cross Country Champion

Wilson Wilson, University Breckinridge's star freshman, led his team to a second place finish in the regional cross country meet. The second place finish qualifies Breck to go to the state meet for the fifth consecutive year.

The battle for the individual crown became a two man race between Menifee County's Bryan Blankenship and Breck's Wilson. At the starter's gun Wilson took the lead and applied a

steady, fast pace to pull slightly away from Blankenship at about a mile and a half. At that point Blankenship dropped out of the race due to a foot problem, leaving Wilson ahead of his next competitor by about one-fourth of a mile.

By not finishing the race, Blankenship will not be eligible for tomorrow's state meet at the Kentucky Horse Park. In winning the race, Wilson broke the OVC record which was held by Blankenship.

Lack Of Competition Hurt Rowan In State Volleyball Tourney

The Rowan County girls volleyball team lost their bid for a state title last weekend in Lexington.

Jeanette Banks said just that her team ran into some very stiff competition, and the scores from the Vikings

contest indicate the coach was right. Rowan County lost to Villa Madonna 1-15, Highlands 1-15, 11-13 and to Mercy Academy 11-15, 15-12 and 11-15.

Banks pointed out that five out of the eight schools that reached the state tournament were private, and some all girls. "Those people have a different lifestyle, and they learn early the importance to excel. They also put much more emphasis on sports, not just volleyball. It's sort of a status symbol," Banks said.

Rowan County entered the tournament undefeated, but the record is misleading. Most of the victories came from University Breckinridge and Montgomery County. The Vikings didn't play a school with any volleyball tradition, that exists in Northern Kentucky.

Apparently there isn't enough money budgeted for volleyball at Rowan County to play competitive school like Highlands, which is what it takes to field a successful team in any high school sport.

Banks said one problem is those schools in Northern Kentucky, with the volleyball tradition, schedule games a year in advance. "We have to play schools of the caliber to be successful," the coach said.

This was the first year that a state volleyball tournament as well as four regional tournaments were sanctioned by the Kentucky High School Athletic Association.

Notre Dame Academy won the state tournament by defeating Our Lady of Providence, 12-15, 15-12 and 15-13. Thirty-nine teams participated in the regional tournaments this year, and according to a KHSAA official, at least 53 teams have expressed an interest in entering a regional tournament in 1980.

Some good news resulted from the state tournament for Viking volleyball fans. Tammy Collins was named to the all-tournament team. Collins and teammate Kay Rogers were being scouted by the coach of Eastern's volleyball team, according to Banks.

The Morehead News

Sports

MSU Women Win Tennessee Tournament

It was quite a profitable weekend for Morehead State University's women's volleyball team.

The Lady Eagles cashed in for six wins, without a loss, while winning the Tennessee Tech Tournament Championship.

"We played well the entire tournament and we'll need that kind of consistency to do well in the state

THE OLD FARMER'S ALMANAC

NOV. 5-11, 1979

Anticipate precipitation.

Stock up on candles for possible power blackouts... General deGaulle died Nov. 9, 1970... Last quarter of the moon Nov. 11... Average length of days for the week, 10 hours, 2 minutes... First intercollegiate football game Rutgers 6, Princeton 4, Nov. 6, 1869... There was never a good knife made of bad steel.

Ask the Old Farmer: Ever since I can remember I have been told there are no two snowflakes alike. Do you believe it can possibly be true? A.C. Providence, R.I.

We have looked, and we figure that not even one is alike.

Home Hints: Cut cake evenly by dipping your knife into boiling water and using it wet.

OLD FARMER'S WEATHER FORECASTS

New England: Rain, heavy snow north, throughout week.

Greater New York-New Jersey: Showers, flurries inland, and cool to start; then warmer, with rain through end of week.

Middle Atlantic Coastal: Week starts partly cloudy with showers; warming midweek; weekend rains rain.

Piedmont & Southeast Coastal: Partly cloudy and cool to begin; warmer midweek, then rain and cool by week's end.

Florida: Week begins sunny and hot, showers south; cool, with rain for weekend.

Upstate N.Y.-Toronto & Montreal: Rain begins the week; then snowstorm midweek, and clearing by end of week.

Greater Ohio Valley: Week starts warm, with rain; snow by midweek, and cold through week's end.

Deep South: Clear and warm to begin; then rain midweek through weekend.

Chicago & Southern Great Lakes: Week begins cloudy and cold; continued cold, sunny, middle to end of week.

Northern Great Plains-Great Lakes: Rain to begin week, changing to snow; cold throughout week and weekend.

Central Great Plains: Rain, snow northeast, to begin; rest of week sunny and cold, snow north.

Texas-Oklahoma: Week starts cloudy, showers east, then warm; cold wave midweek; weekend sunny, west, rains east.

Rocky Mountain: Rain, changing to snow first of week; snow throughout rest of week and weekend.

Southwest Desert: Cloudy and cool with showers, mid east, to start; clear and cold, warming south, by end of week.

Pacific Northwest: Week begins clear and cold; then rainy and mild midweek through week's end.

California: Week starts with rain, snow High Sierras, cool north and mild south; sunny and cool through weekend.

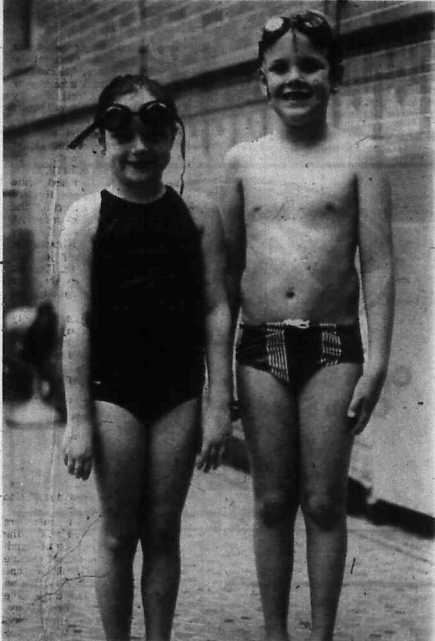
Allen's IGA Foodliners

IGA Foodliners

Morehead, Kentucky

Swim Club Competes In Gold Vault Meet

Phone 784-6868 For Ads With Big Results



Molly Hood, left and David Henson, right combined for nine first place finishes last weekend in the Gold Vault Tournament held at Ft. Knox, Kentucky. The two are members of the Morehead Swim Club.

The Morehead Swim Club competed last weekend in the Gold Vault Halloween Meet at Ft. Knox, Ky. Four other teams were there, including teams from Lexington, Louisville, and Elizabethtown.

The Morehead team claimed 13 first place ribbons, seven seconds, five thirds, four fifth places and three sixth place ribbons.

Girls Six and Under

Marry Allen, sixth 25 meter backstroke, and sixth in the 25 meter free style.

Molly Hood, first place 50 meter free, first place 25 meter backstroke, first place 100 meter 1m, first place in the 25 meter free, third place in the 100 meter medley relay and fifth place in the 100 meter free relay.

Andrea Wright second place in the 25 meter fly, second in the 50 meter free, and second in the 25 meter free.

Boys Six and Under

David Henson, first in the 50 meter free, first in the 25 meter back, first in the 25 meter fly and third in the 100 meter medley relay for eight and under.

Girls Eight and Under

Amy Hood sixth in the 25 meter breast, first in the 25 meter back, third in the 100 meter relay, second in the 25 meter fly, and fifth in the 100 meter free relay.

Christy Lee, third in the 100 meter relay, fifth in the fly and fifth in the 25 meter free relay.

Stephanie Wright, fifth in the 100 meter free relay, third in the 100 meter medley and third in the 25 meter fly.

Boys Eight and Under

Jim Allen, first in the 100 meter medley relay, fifth in the 25 meter fly, first in the 25 meter backstroke and fifth in the 100 meter free relay.

Dan Hamilton, fifth in the 100 meter free relay, third in the 25 meter backstroke, and first in the 100 meter medley relay.

Gary Johnston, first in the 100 meter medley relay, second in the 50 meter breast, and first in the 25 meter breast.

Tom Lichtenberg, fifth in the 100 meter free relay, first in the 100 meter medley relay and second in the 25 meter fly.

Brandon McCaffery, third in the 100 meter medley relay.

Shannon Spears, fifth in the 100 meter free relay, third in the 25 meter fly, and third in the 100 meter relay.

Stephen Thomas, third in the 100 meter medley relay, and second in the 25 meter breast.

Football

(Continued from preceding page)
the six by 184 points, 204-20. The Panthers averaged 34 points, while allowing just 3.3.

The Vikings outscored the six by 177 points, 227-50, averaging 37.8, while the defense allowed 8.3.

Mommy, What Is My Education Worth?

The 3% utilities tax will help bring our outdated schools into the conditions needed for the 80s.
Our children are depending on your support. Vote YES on the County Question.

Vote YES on the County Question

Paid for by the Citizens for Improved Schools, Dean Carter, Treasurer

Fall Special

IDEAL FOR LIGHT INDUSTRIAL & FARMING
Complete Construction Services Available

Aztec Of Kentucky

5 miles from Trademore Center on U.S. Rt. 32 North

For immediate response, call
Phone 606-783-1516
Rt. 3 Box 500
Morehead, Ky. 40351

WALLPAPERING EAGLE OFFICE SUPPLY

REMODELING YOUR OFFICE, BUSINESS OR CONSTRUCTING A NEW FACILITY? CALL A TRAINED EXPERT FOR FREE ESTIMATES ON HANGING YOUR WALL COVERING, AND INTERIOR PAINTING

- GRASS CLOTH •
- VINYL •
- FOILS •
- PAINTING •

"NO JOB TOO DIFFICULT"

Phone 784-7337

**ASK FOR:
Mr. Armstrong
or
Mrs. Caudill**

Locally Phone 288-4301 Olive Hill; 474-9101 Grayson;
or 473-6857 Greenup

—ADVICE ALSO AVAILABLE ON COLOR COORDINATING—

SUNDAY FAMILY SPECIAL

**THIS SUNDAY
2-PIECE CHICKEN DINNER
JUST \$1.29.**

This Sunday is Family Day at Burger Queen. Just for the occasion, We've cooked up a budget-saving deal on our regular \$1.69 2-piece chicken dinner: Only \$1.29 for 2 pieces of plump, tender chicken; plus creamy cole slaw, a delicious dinner roll and 3 of our unique Taters — big wedges of potatoes breaded and then deep fried.

When it comes to taking the whole

family out, you can always be sure there will be something for everybody — from complete fish dinners to all kinds of burgers. And at our low prices, everything is a delicious bargain. So this Sunday, come on into Burger Queen for Family Day. It's a great way to give Mom a break and the kids a treat — without eating up your budget. We're looking forward to seeing your whole gang this Sunday

SOMETHING BIG'S COOKING AT BURGER QUEEN. DON'T LET THE NAME FOOL YOU.

Trademore Shopping Center
Morehead, Ky.

125 Flemingsburg Road
Morehead, Ky.



Breck Homecoming Is Next Week

The student Council at University Breckinridge is sponsoring events for homecoming Nov. 5-10.

On Monday, Mark Lewis will be the auctioneer, selling student slaves to their classmates.

The Most Valuable Player awards will be presented Thursday to four players by their team mates for fall sports including soccer, volleyball and boys and girls cross country.

Also on Thursday, at 9:30 a.m., nine senior girls chosen for the Homecoming court will participate in a talent show to determine who will be selected by the student body as Homecoming Queen.

The winner will be crowned at half time of the Breck-Riverside game on Saturday, Nov. 10, at Wetherby Field House.

Members of the court are Kim Altman, Leith Clough, Debbie Cox, Liz

Day, Tammy Dennis, Alison Fisher, Sandy Spears, Susan West and Diane Wilson.

The queen candidates will be attended by seventh graders Ingrid Dehner, and Jenny Barker; eighth graders Melissa Gardner and Missi Derfield; ninth graders, Nicole DuBar and Deanna Boyd; 10th graders, Lara Fannin and, Mona Sabie, and 11th graders Linda Thompson and Stacey Beane.

Following the game, students and alumni will dance to the music of "Mexus" in the Crager Ballroom of ADUC from 9 p.m. to midnight.

Tickets are \$1.75 per person and are available from the school office or any student council member. None will be sold at the door. Kyle Crager is ticket committee chairman.



Courthouse Visitors

Third graders in Mrs. Marie McKenzie's class at Tildon Hogge Elementary School recently paid a visit to the Rowan County Courthouse. Pictured here in front of a voting machine are Cindy Pelphrey and Dean Parker. (Staff Photo by Mark Perkins)

Read-a-thon Will Benefit The Retarded

November is Read-a-thon month for Rowan County. Pledge forms are being distributed to grade schools throughout the county and soon children will be seeking sponsors who will agree to donate specified amounts to the Kentucky Association for Retarded Citizens (KARC) for each book read.

Read-a-thon is an annual fund-raising effort of KARC and is sponsored locally by the Morehead Woman's Club. It is a combined effort to promote better reading habits while raising money for the benefit of Kentucky's mentally retarded citizens.

This year George Foster of the Cincinnati Reds is the honorary chairman for Read-a-thon. All children who participate will receive an autographed picture of George Foster. In addition, those who raise \$25 or more will receive T-shirts. There are statewide awards including savings bonds, a stereo, record albums, and walkie-talkies for the top money-raisers.

Last year the childre of Rowan County collected over \$1,174 through Read-a-thon. The Morehead Woman's Club asks the citizens of Rowan County to help us meet our goal of \$1,500. Civic organizations and church groups are encouraged to sponsor a child.

The following people may be contacted for further information: Mrs. Jules DuBar, Read-a-thon coordinator; Mrs. Robert Allen, Morehead Grade School; Mrs. Fred Busroe, Tildon Hogge; Mrs. Glenn Johnston, Haldeman; Mrs. Ollie Barker, Farmers; Mrs. Eugene Martin, University Breckinridge; Mrs. James Quisenberry, Clearfield; and Mrs. Ralph Cassidy, Elliottville.

All contributions to KARC are tax deductible.

Farmers 4-H Holds Meeting

The Farmers Elementary School 4-H club met Oct. 18.

Diana James, president, called the meeting to order and the pledge to the American flag was led by Karen Dehart.

Susan Barker led the pledge to the 4-H flag.

The monthly program was presented on "How to save Energy".

In other business, members received project books and chose the club name "Funky 4-Hers".

Cindy Lawson was elected song leader.

The club participated in the Great Clean-Up.

School Menus

Occasionally, delivery of incorrect food items to the school will necessitate changes in menus. A half-pint of milk is served with each lunch.

Rowan County

Monday, Nov. 5
Pizza, cole slaw, buttered corn, carrot cake.

Tuesday, Nov. 6
Election.

Wednesday, Nov. 7
Chicken with noodles or dumplings, sliced tomatoes, mashed potatoes, green beans, hot biscuits, apple sauce.

Thursday, Nov. 8
Hamburger, potato salad, sliced tomatoes, onions and pickles, bun, apple crisp.

Friday, Nov. 9
Chili with beans, peanut butter sandwich, mixed fruit, white bread and crackers.

Breckinridge

Monday, Nov. 5
Hot dogs (two if desired), with mustard, relish, and chopped onions, potato chips, buttered peas and onions, chocolate cake, peaches, milk.

Tuesday, Nov. 6
Pizza, garden salad, green beans, fresh apple half, chocolate oatmeal cookies, milk.

Wednesday, Nov. 7
BBQ beef sandwich, french fries, buttered corn, pineapples, milk.

Thursday, Nov. 8
Turkey and dressing, mashed potatoes and gravy, mixed vegetables, hot biscuits and butter, fresh bananas, milk.

Friday, Nov. 9
Fish sandwich, french fries, cole slaw, banana pudding, milk.

Volcanoes Formed
Volcanoes are formed by the eruption of magma, which is extruded from the mantle to solidify and build a mountain (called the cone because of its shape), with a hollow summit, the crater.



Farmers Elementary Spooks

Third graders in Mary Lou Forman's room at Farmers Elementary School came to school all decked out in various costumes Wednesday in celebration of Halloween. The school's Fall Festival will be held from

6:30 to 9:30 p.m. today in the school gym. Features include a country store, auction and games. Admission is 10 cents (Staff photo by Alice Akin)

Breck Events

Friday, Nov. 2 — Jr. KYA, Louisville; Foothills Tournament.

Saturday, Nov. 3 — Jr. KYA, Louisville; Cross Country State Meet, Lexington; Basketball, Foothills Tournament.

Monday, Nov. 5 — Student Council Slave Sale; One act plays, evening performance.

Tuesday, Nov. 6 — One act plays, evening performance.

Wednesday, Nov. 7 — One act plays; evening performance. Thursday, Nov. 8 — Student Council Talent Show; World of Technology for juniors and seniors, 10:30 a.m. - 1 p.m.; boys basketball vs Hazel Green, 6:30 p.m.

Friday, Nov. 9 — Girls basketball vs Elliott County, home, 8 p.m.; Thespians, Georgetown.

Saturday, Nov. 10 — Thespians, Georgetown; boys' basketball vs Riverside, 5:30 p.m.; Homecoming Dance, Crager Room, 9 p.m. to midnight, \$1.75 per person.

George Washington's hobbies included designing furniture, collecting tea and dabbling in astronomy.

The Sound Shoppe, Inc.

AUDIO-ELECTRONICS CENTER
TRADEMORE SHOPPING CENTER
2474 E. 10th

Audio Is Our Business

Sounds Your Wallet Will Love

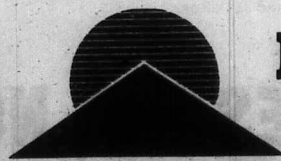
The Peoples Bank has people hours

Main Lobby
9-5
Monday thru Saturday

Drive-up window
8-6
Monday thru Friday

Drive-up window
8-5
Saturday

We're open when you need us.



Peoples Bank
Olive Hill

Member FDIC

Sponsored by:

Morehead Woman's Club **Rowan County Association For RETARDED CITIZENS**



Support your Association for Retarded Citizens. Your dollars will help Day Care Centers, Research, Prevention Programs, Diagnostic Services, Special Education Classes, Employment Training, Sheltered Workshops, and Recreation.

you don't have to be a bookworm to win

I will support a student and contribute \$..... per book read

NAME _____
Address _____

Return to:

Susan DuBar, Lakeview Heights

Morehead, Ky.

Public Service Announcement Presented by The Morehead News

VOTE DEMOCRATIC



FOR KENTUCKY CONSTITUTION OFFICES — From left, Alben Barkley III for Commissioner of Agriculture, Raymond Barber for State Superintendent of Public Instruction, Frances Jones Mills for Secretary of State, Steve Beshear for Attorney General, John Y. Brown Jr., for Governor, Martha Layne Collins for Lieutenant Governor, Dr. James Graham for Auditor of Public Accounts and Drexell Davis for State Treasurer.



Woodrow Stamper

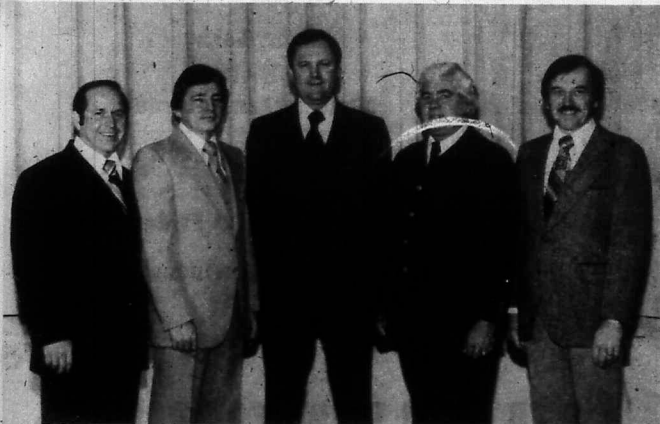


Pete Worthington

Not Pictured

Woody May

Truman Dehner



FOR MOREHEAD CITY COUNCIL — From left, Randy Wells, Marvin Moore, John Holbrook Jr., Roy Anderson and Jack Roe.



Jack Fraley

<p>1st TURN SWITCH RIGHT TO CLOSE CURTAINS 2nd MARK YOUR BALLOT AND LEAVE MARKS SHOWING →</p> <p>WARNING—YOUR MARKS MUST BE SHOWING FOR VOTE TO REGISTER 3rd TURN SWITCH LEFT</p>		<p>Column 1</p> <p>DEMOCRATIC PARTY</p> <p>GENERAL ELECTION NOVEMBER 6, 1979</p>
<p>Governor Vote for One</p>	<p>John Y. BROWN, JR. Lexington, Ky. <input checked="" type="checkbox"/></p>	
<p>Lieutenant Governor Vote for One</p>	<p>Martha Layne COLLINS Versailles, Ky. <input checked="" type="checkbox"/></p>	
<p>Secretary of State Vote for One</p>	<p>Frances Jones MILLS Crest, Ky. <input checked="" type="checkbox"/></p>	
<p>Attorney General Vote for One</p>	<p>Steven L. BESHEAR Lexington, Ky. <input checked="" type="checkbox"/></p>	
<p>Auditor of Public Accounts Vote for One</p>	<p>Dr. James B. GRAHAM Madison, Ky. <input checked="" type="checkbox"/></p>	
<p>State Treasurer Vote for One</p>	<p>Drexell "Drex" DAVIS Frankfort, Ky. <input checked="" type="checkbox"/></p>	
<p>Superintendent of Public Instruction Vote for One</p>	<p>Raymond H. BARBER Lexington, Ky. <input checked="" type="checkbox"/></p>	
<p>Commissioner of Agriculture Vote for One</p>	<p>Alben W. BARKLEY, III Madison, Ky. <input checked="" type="checkbox"/></p>	
<p>Railroad Commissioner 1st Railroad Dist. Vote for One</p>	<p>Jimmy "Gabe" TURNER Crest, Ky. <input checked="" type="checkbox"/></p>	
<p>State Senator 27th Senatorial Dist. Vote for One</p>	<p>Woodrow STAMPER West Liberty, Ky. <input checked="" type="checkbox"/></p>	
<p>State Representative 11th Representative Dist. Vote for One</p>	<p>Woody MAY West Liberty, Ky. <input checked="" type="checkbox"/></p>	
<p>Commonwealth Attorney 21st Judicial Dist. (Unexpired Term) Vote for One</p>	<p>Truman L. DEHNER Morehead, Ky. <input checked="" type="checkbox"/></p>	
<p>City Council</p> <p>City of Morehead</p> <p>(Vote for 6)</p>		<p>Randy L. WELLS <input checked="" type="checkbox"/></p> <p>John W. HOLBROOK, JR. <input checked="" type="checkbox"/></p> <p>Jack ROE <input checked="" type="checkbox"/></p> <p>Roy ANDERSON <input checked="" type="checkbox"/></p> <p>Jack FRALEY <input checked="" type="checkbox"/></p> <p>Marvin MOORE <input checked="" type="checkbox"/></p>

ROWAN CO. - 11ST - MOREHEAD

Any person needing a ride to the polls phone

784-6446 or 784-8457

ON TUESDAY, NOVEMBER 6th

The Side Door To Reopen Nov. 19

MT. STERLING — "The Side Door" Restaurant, located in the old Montgomery Hotel Building in Mt. Sterling, will open its doors again, Nov. 19, after months of inoperation. Under new management, "The Side Door" will be owned and operated by Bertie L. Bottomley, of Mt. Sterling. The restaurant name and decor will remain the same but the menu and atmosphere will be different. "I'll have a completely different menu. We want a family style restaurant and no beer or wine will be served," Bottomley said. "The Side Door" will be open seven

days a week, between 6 a.m. and 9 p.m. The specialty will be fried chicken and fish with a home cooked special daily. Bottomley has had some experience in the restaurant business and will be helped by her son, Mark Dawson. "Years ago I ran a restaurant, I love it and I've always wanted one," Bottomley added.

*Mother Nature
While Mother Nature didn't make us perfect, she did the next best thing she made us blind to our faults.*

Deaths

Frank Owens

MOREHEAD — Frank Owens, 62, of Beaver Creek Township, Ohio, died Sunday, Oct. 28, at the Miami Valley Hospital in Dayton, Ohio, after an extended illness. A native of Rowan County, Mr. Owens was the son of the late Sim an Vica Littletown Owens. Survivors are his wife, Mrs. Eva Roberts Owens; four brothers, Buddie Owens and Melvin Owens, both of Clearfield, and Jess and Victor Owens, both of Mansfield, Ohio, and a sister, Mrs. Bessie Shuemate, also of Mansfield.

Graveside rites were conducted Thursday, Nov. 1, at the Clearfield Cemetery with the Rev. Sally B. Collins and the Rev. Vernon B. Collins officiating. Northcutt and Son Home for Funerals was in charge of arrangements.

Virgil Lawson

FRENCHBURG — Virgil Lawson, 60, husband of Edna Lawson, died Tuesday, Oct. 30. Services will be at 2 p.m. Friday at the Eastin-Richey Funeral Home.

Elgan Whitton

OWINGSVILLE — Elgan "Eck" Whitton, 71, died Monday, Oct. 29, in Mt. Sterling. Services were Wednesday, Oct. 31, at Keal Funeral Home.

Hazel Henry

WEST LIBERTY — Hazel Easterling Henry, of Index, wife of the late Willie Henry, died Wednesday, Oct. 31. Services will be at 2 p.m. Friday at the Broadway First Church of God. Herald and Stewart Funeral Home is in charge of arrangements.

Hattie Keeton

WEST LIBERTY — Hattie Williams Keeton, 81, wife of Dorse R. Keeton, died Wednesday, Oct. 31. Services will be at 11 a.m. Friday at the First Christian Church. Potter Funeral Home is in charge of arrangements.

WANT ADS! • 784-6868

"Fall Fishing Seminar"

**Larry's Marine
November 3rd and 4th
featuring**

Jim Rogers from Rogers Lure Co. Also - Ron Shearer from Hopkinsville, Ky.

**Saturday 9:00 a.m.
2:00 p.m.
Sunday 2:00 p.m.**

Dave Johnson, Factory Representative of Lowrance Depth Finder and others demonstrating their 1980 products.

Representative from Ky. Dept. of Fish & Wildlife, Division of Water Safety..

Door prizes will be given away. Free refreshments served

Come and Enjoy

LARRY'S Marine and Recreation Center, Inc.



**Northcutt & Son
Home For Funerals.**


MOREHEAD, KY. PHONE (606)784-6491

I would like to take the opportunity to tell the people of Morehead, that I am a Candidate for City Council.

I feel like with my past two years experience as a member of Morehead's City Council, I have gained a knowledge of the needs of our city, and with this knowledge, I sincerely hope to be able to serve the people of Morehead.

I will as I have always done in the past, try to make decisions that will be honest, impartial and fair to everyone. Your vote and support is very much appreciated.

Paid for by the Candidate
JACK FRALEY
Morehead City Council



Rings

SILVER

CHINA

Pewter

Sparkling Crystal

BRACELETS

BRIDAL GIFTS

GLASSWARE

DIAMOND EARRINGS

TRAY SALES

FOR THE BRIDE

WATCHES

SALE

Everything in the store

60%

212 E. Main Street
Across from the Courthouse
Morehead, Ky.

Open 9 til 5 Monday thru Saturday

C&H Rauch, Inc. has purchased the original inventory from Deane's Jewelers and is conducting a 60% off sale at the above location.

The Morehead News

EDITORIAL AND OPINION PAGE

Published By The Morehead News, Inc., 722-30 West First Street
Morehead, Ky. 40351

Ronald J. Caudill
Executive Vice President
General Manager

Betty L. Caudill
Managing Editor

Joe Lamb
Editor

William T. Wells
Business Manager

PAGE 18

FRIDAY MORNING, NOVEMBER 2, 1979

It Really Does Matter

Next Tuesday, choices will be made which could very well affect the rest of our lives. It is just fascinating to think that we can have a hand in deciding what those choices will be.

Just as fascinating, however, is the realization that so many people will ignore that opportunity and choose not to be a part of the process to name a new governor, new state officials, a City Council or decide if we want a new tax to build a high school.

To think that our vote does not matter is "pure hogwash." The question of the utility tax may just be a runaway, but some people have predicted that it will be "squeaky close" — so close that one or two votes could very easily decide if it will pass.

And it is not unusual for a City Council member to be elected by a 10 or 20 vote margin. So by any stretch of the imagination, your vote, my vote, our votes count.

Enough Is Enough

For several months people throughout this county have been complaining about the dog problem — but to no avail.

For most people the dogs are nothing more than a simple nuisance — tearing up yards, spilling garbage and barking all night long — but for a few they can be a deadly nemesis.

Take five year old Kevin Hanshel, for example. Last Monday morning he discovered the hard way that dogs are not always man's or even boy's best friend.

Kevin was attacked by a dog while staying with a baby sitter in Park Hills. Fortunately, the injuries were not too severe, but Kevin did have a huge gash cut in his hand and had to go to the doctor.

His aunt, Virginia Curtis, said that she called the state police to come as soon as Kevin was bitten. She says she was told all they could do was catch the dog, but they didn't offer. She tried reaching the sheriff but only got a hold of his secretary who advised her to call the district judge or the county attorney. She called the Morehead City Police who put her in touch with the county.

County Judge/Executive W.C. Flannery, she says, told her his hands were tied and that he couldn't do anything. She did say that he has recommended that Fiscal Court hire someone for the position of dog warden but the court has not done so.

Mrs. Curtis did manage to locate the dog and tie it up and later called the Gateway District Health Department, so that it could take action in case the dog had rabies. She was told Monday that someone would be over but as of Wednesday afternoon, no one had come.

Eventually, a neighbor in Park Hills agreed to look after the dog for the next 10 days to see if it did develop or show signs of rabies.

As one can see, this situation was traumatic for Mrs. Curtis and Kevin's mother. It was a classic case of buck passing and could very easily have resulted in the need for Kevin to undergo painful rabies shots.

We are glad that the political bickering over



Try telling 5-year-old Kevin Hanshel that the county does not have a serious dog problem. Kevin's hand was injured Monday when he was attacked by a stray dog.

the hiring of a dog warden has stopped and that one has started to work. There has been no doubt that it is a county responsibility.

Of course, it is unlikely that a dog warden could have prevented Kevin from being bitten but it could have at least given his parents somebody to turn to in such a situation.

In time, Kevin's hand will heal and it is doubtful that he has been exposed to rabies. But had it not been for some lucky circumstances things could have been very, very different.

Veterans Day

November 11 is Veteran's Day. In many places little remains of the feeling — a combination of the Fourth of July and Memorial Day — that once pervaded the occasion. In many communities it passes almost unnoticed as far as official observances are concerned.

Why this lack of interest, when there are more veterans in the country than there ever have been before? Probably that is the reason. So many Americans have experienced military service that they really don't see anything special about it.

About 40 percent of the population belongs to a family with at least one veteran. There are 23 million veterans of all wars living in the

United States today, and about 40 million have served in the armed forces in wars from the Revolution to Vietnam.

Many lost their lives and many others were seriously disabled. But the nation has not been ungrateful. The United States has provided unique benefits for its veterans.

So, while oratory and emotional one-day-a-year observances may have gone out of fashion, the nation is expressing its appreciation to the men and women who served in the armed forces on a continuing, day-by-day basis of material assistance on a scale unequalled elsewhere.

Letters To The Editor

The Editor:

I am one who is not ashamed or afraid to say that I do not need a new high school building and I do not need the utility tax.

It is said that the present high school building is too crowded. Well, why do they keep the eighth grades there, and why did they move one of the seventh grade classes from the Morehead Grade to the high school this year? This made the Morehead Grade have less this year than they had last year. Is the public being misled?

If classrooms are needed so badly, why try to spend millions rather than use the rooms that are being rented in the kindergarten building? Why rent these rooms for a measly amount and also pay for keeping them swept and cleaned? It cannot be said that transportation is too much because students are taken to the new property to practice ball playing.

I can also substantiate the "undercrowdedness" from records of the State Department of Education, Superintendent of Public Instruction, Frankfort, Kentucky. The 1978-79 school year figures clearly point out that our classrooms are not overcrowded. Not a single Rowan County school has a student-teacher ratio that is as large as the State requires for the Minimum Foundation support (which is 27). The information below was copied from one of their bulletins.

School	Students	Teachers	Teacher For Each
Farmers	172	11.5	14.54
Haldeman	198	12.0	16.5
Clearfield	287	14.9	17.92
Tildon Hogge	245	16.7	20.66
Elliotville	263	12.1	21.74
Morehead Grade 794*	32.6	24.36	
High School	854	42.0	21.2

And if the figures quoted in your paper this year are correct, there are 94 fewer students in the Rowan County Schools this year than there were last year. According to your figures there was a decrease in the number of students at Farmers, Elliotville, Tildon Hogge and Morehead Grade.

Now for the UTILITY TAX — This small increase in what a worker does not get to take home may be the proverbial straw that breaks the camel's back for some who consider sacrificing milk, bread, beans, and potatoes rather than sacrificing the luxuries mentioned by the Board of Education, namely cigarettes, cokes, candy and milk shakes.

What may be a small amount for a teacher who makes \$15,000 to \$38,000 a year could be a large amount for the worker, making \$3.60 per hour. Those who advocate the tax say it will not hurt the senior citizen because our Government will help pay it. It seems that the school is wanting to take from the senior citizen that which our government thinks they need. The government gives them some money — the School Boards take it away. This seems like taking milk candy from a baby.

REMEMBER this tax goes on for years: Will our Government always have the money to help us pay this tax? Will it help our children and our grandchildren pay the tax?

VOTERS, do you remember the 1930's? Do you remember the "bread-lines" and the "soup kitchens"? I remember the "soup kitchens" but not the "bread lines." I also remember the times when we at home had no bread at all in the home. Have we not learned from History or from Economics, or even from the Bible? Do we think it is impossible to kill the goose which lays the golden egg. I beg you as a Christian to consider yourself as your brother's keeper. Do not vote a tax on our children and grandchildren so we can build a building to keep up with the Joneses. You with children, ask yourself this question: Where do the children of these people asking for a tax live? How many members of the Board of Education have grown-up children still living in Rowan County? Do I have children and grandchildren living in Rowan County.

Lake Cornett Cooper
134 College View Ct.
Morehead

The Editor:
My wife and I are retired and (live) on a fixed income. However, we support the three percent utility tax.

Our reasons? We have grandchildren being educated in Rowan County. We want them and the youth of our county to have every opportunity to get a good education.

Mr. and Mrs. Roy H. Cassidy
Clearfield, KY

The Editor:

We would like to urge the support of all Rowan County voters for the three percent utility tax on the Nov. 6 ballot.

The School Board and administration have spent a great deal of time and have considered input from many sources in arriving at the proposed utility tax as the most equitable method of funding for the new high school and renovation of existing facilities.

We feel this proposal will spread the financing of this much-needed construction to all areas of the county and, therefore, will not unfairly burden any certain group. We hope you (the voters) will vote in favor of the three percent utility tax next Tuesday.

Ron and Mary Ann Mason

The Editor:

Thank you for issuing the invitation to your readers to write concerning the County Tax Issue for our schools.

As a teacher in the Rowan County School system, I am faced daily with the importance of our students' academic welfare.

The children who are enrolled in our schools will be the ultimate winners or losers in this issue. If we remember this basic fact there can be no question as to the outcome of this election. Let's make them winners!

The students give us their best and ask little in return. Isn't it only fair that the best is given to them as well?

Even if you (the voters) have no children in this system, please think of Rowan County's future. Tomorrow lies in the hands of today's students.

It will cost us so little to make such a big difference in their lives. Our school system has come a long way. Please help us continue to grow. Vote yes on the county school tax issue.

Sincerely,
Beverly James
Morehead

The Editor:

A good school system is essential for the growth and progress of Rowan County. Morehead has much to offer and our children deserve as good a facility as surrounding counties.

We are fortunate to have a great university in our community as well as one of the finest medical facilities, a recreation park and many other worthwhile additions. Therefore, to add a good Rowan County school system will be a great asset for now and the future growth of the community. We are glad to add our support to this worthwhile project.

Don W. Caudill
Vice President
Peoples Bank
of Morehead

The Editor:

I am an employee of Morehead State University, have lived in Rowan County for nine years, have two children enrolled at University Heights and am very much in support of the utility tax.

With the county serving host to a growing university, a new hospital, new shopping facilities, excellent summer recreational programs, and many, many other progressive endeavors, I believe it would be a shame to put our foot on the progress of education for the children in this county. Easily, we could say, let's not vote in the tax now and wait two or three years, but by then, costs will double and we won't be able to build half of what we can get now for the same money.

In the nine years that we've lived in this county, I've witnessed tremendous growth in the strength of the Rowan County School System and a hard working staff. We could have an administration that doesn't care, but they do!

In order for this growth to culminate and for the schools to become the quality that the children deserve, schools that they want to attend; and that we can all be proud of, we must pass the utility tax to meet this need.

Sharon Moore
1129 North Wilson Ave.
Morehead, KY 40351

The Editor:

One of my major concerns today is providing a safe, adequate, secure future for my two children. Among the hours I spend balancing the family budget, cleaning house, and buying the weekly groceries, I have to spend a number of hours

About The Tax

making sure opportunities for good, well-directed learning activities are being taken advantage of for my children.

I am glad to be a supporter of the utilities levy that the Rowan County Board of Education has enacted. I'm in favor of all the rewards that a new high school and repairs of our elementary schools will bring to the children of Rowan County.

This new, much-needed facility will alleviate the over-crowded conditions we now have at our existing school buildings. My common sense tells me that only positive rewards will be gained by the small — very small — sacrifice needed to finance the construction of a new high school, bus garage and repairs of the elementary schools.

I personally can't afford to pass up a chance to give my children better schools in which to learn. CAN YOU (other voters)?

Mrs. Sandy Knipp
Rt. 6 Box 416
Morehead, Ky

The Editor:

The passage of the utility tax in the forthcoming election would be of the utmost importance to all local citizens who are concerned with the education of our children and the progress of Rowan County.

No one can dispute the fairness of utility tax as a means of raising needed revenue. This money will not only make it possible to complete our new high school and build a new bus garage but it will also allow us to update our elementary schools which are greatly in need of renovation.

If we are to progress in Rowan County the needs of our children must receive top priority. Let's invest in the future of our children and vote "YES" November 6th.

Wanda Barker
Lakeview Heights
Morehead

The Editor:

I would like to state that I feel the utility tax is the most fair tax Rowan County could levy. I have attended several of the meetings concerning the tax levy and I feel that all persons in Rowan County who are concerned about the future of the children in Rowan County, should go out and vote "yes" for the tax on November 6.

Sheila Dawson
Farmers School
PTA President

The Editor:

I am a parent who wants the best education possible for her children. Three dollars a month seems a small price to pay for that education.

I am also an elementary teacher. The tax is for a high school but will make it possible for our younger children to be in less-crowded classrooms. It would be nice to know I could send my students on to a well-equipped and complete high school.

I don't see how anyone could oppose educating our children in the best possible facility. My family and I whole-heartedly support the utility tax.

Mrs. Patricia Binion
Clearfield, KY

The Editor:

Next Tuesday, Nov. 6, the citizens of Rowan County will be voting for candidates seeking various local and state offices; however, I personally feel that the most important decision to be made for our county is not necessarily the election of a particular candidate, but for an issue — one which will affect every child in the county for many years to come.

I am referring to the "County Question," which requires a simple yes or no vote to determine whether or not we as parents, teachers, and citizens are willing to accept our long overdue responsibility for the educational facilities our students need and deserve.

Rowan County High School was constructed in 1961 to serve a maximum of 600 students, with the idea of converting to a middle school at such a time when it exceeded capacity; then building a new high school which would accommodate the needs of a growing community for my two children.

This time went by several years ago as our current enrollment now exceeds the 900 mark. This means (Continued on next page)

the SOVEREIGN STATE OF AFFAIRS

BOYD & WOOD

I HEAR THAT GOV. BROWN WAS HIT WITH A LEMON-COCOONUT PIE

YES! IT WAS A SAD COMMENTARY ON "AMERICAN POLITICS"

IT WAS ALSO A SAD WASTE OF A PERFECTLY GOOD LEMON-COCOONUT PIE

THAT'S WHAT I WAS TALKING ABOUT



Letters

(Continued from preceding page)
that we do not have enough classrooms, class size for ideal learning is too large and we cannot include new students in the curriculum our students need and want.
I am just as opposed to excessive taxation as anyone, but truly feel that this particular tax is one which will not "hurt" that badly. It is also a tax for which the benefits will be recognized at the local level; more so than any other tax dollars spent.

Please don't let yourself oppose this tax, one whereby you have a direct vote, as a means of protest against the taxes imposed by our state and federal governments for which your individual opinion counts very little, if at all. We are talking here about the educational needs of your children, grandchildren, nieces, nephews, cousins, and friends, which should make a big difference in your decision.
Statistics show that 65 percent of our high school students will not attend a college or university;

therefore, their entire educational background could depend solely upon the county school system.
As taxpayers, we help provide that portion of the remaining 35 percent of students who attend state colleges and universities with the optimum in facilities, equipment and instruction.
Shouldn't we be willing to do as much, if not more, for those who rely entirely on their high school program as preparation for their adult roles in the community.
If you need to reason with

yourself about where the money will come from to pay the additional tax spend a little less on those things which are not nearly as important to your child as his or her education. Maybe you could even look at it as part of birthday or Christmas gifts. The lasting effects will be much greater.
Join me in the support of the "County Question" on the Nov. 6 election ballot and vote "yes" — it's like voting for a child.
Jeannette Fannin
Morehead

Kennedy Risks Bitter Fight

WASHINGTON (UPI) — Vice President Walter Mondale says Sen. Edward Kennedy, by challenging President Carter without good reason, risks a "bitter" and "poisonous" battle that could kill chances for a Democratic victory in the 1980 election.
"I believe that Ted is going to have a hard time making the case that there is some fundamental issue that justifies opposing this president," Mondale said Tuesday.
Mondale's comments, made to a small group of reporters, were published by the Washington Post. A spokesman in the vice president's office confirmed the accuracy of the quotations used in the newspaper's story.
Mondale told the reporters at a luncheon meeting he has been through a number of party fights and has never seen one that proved helpful.
"The real danger is that it will be so bitter, so poisonous to the Democratic Party that no Democrat can win," he said.

Save!
On over stocked & discontinued light fixtures and bath cabinets.
Wednesday, Oct. 31 thru Saturday, Nov. 3
Track Light — Bathroom Lights
— Discontinued Chandeliers —
Drum Lights — Swag Light Kits
Nutmeg Side Lights — Outside Post Lights
Nutmeg Bath Cabinets
Nutmeg Door Chimes
This sale is on our overstocked and discontinued lightcraft & Nutmeg fixtures only. ALL SALES FINAL.
Perks, Inc.
I-64 Connector Road
Morehead, Ky. Phone 784-7721
See Perk's for all your Plumbing · Heating · Electrical · Kitchen and Appliance needs.

News Report From . . .

Rowan County Extension Office

Adrian M. Razor Martha Huntsman Paul W. Mills
County Extension Agents

Pumpkins
To children, pumpkins are just for jack-o'-lanterns. But have you considered serving pumpkin as a vegetable for dinner or preserving it for use later in pies, breads or puddings?
Pumpkins are an excellent source of Vitamin A. Like some leafy, green vegetables, pumpkin is also a good source of potassium.
When purchasing pumpkins, look for a good orange-golden color, a hard rind, and a fruit that is heavy in relation to size.

Peel pumpkin and remove seeds. Cut in very thick chunks (about 1/2 inch cubes). Slice sections, remove seeds, but leave rind on. Put pumpkin and lemon together in preserving kettle. For every cup of pumpkin, add 1/4 cup sugar and pinch of salt. Let stand overnight. In morning, boil slowly until pumpkin is tender. Pour into sterilized half-pint jars to within 1/2". Put on cap, screw band firmly tight and process 5 minutes in boiling water bath.

To can pumpkin for use later as pie filling, follow these directions:
Cut in medium pieces. Remove peel. Steam, boil or bake until tender. To steam, add little or no water. To boil, add only enough water to cover. Put pumpkin and liquid from precooking through a food mill or strainer. Spice may be added. Simmer until heated through, stirring often to prevent sticking. Pack loosely while hot into jars within 1/2 inch of top. Put on cap, screwing band firmly tight.
Process: pints - 60 minutes; quarts - 80 minutes; 10 pounds pressure.

Try this recipe for a nutritious snack:
Roasted Pumpkin Seeds
Wash seeds and get rid of stringy debris. Drain. Pour boiling water over seeds. This makes seeds easier to shell after roasting. Let drain and spread on cookie sheet. Sprinkle with salt. Roast in 350 degree F oven for 20 to 30 minutes until seeds begin to look toasted.
To freeze pumpkin, wash, cut in pieces and remove seeds. Cook until soft and remove rind. Put pulp through strainer. Cool by placing pan containing puree occasionally to hasten chilling. Put in containers and freeze.

Pumpkin Preserves
4 pounds pumpkin sugar
2 lemons pinch salt

To Say "Thanks!" For Making Our First Year A Success, We Want To Give You The Birthday Presents.

Register for two \$50.00 Shopping Spree To Be Given Away Saturday, November 17th.
CAROUSEL
VISA Trademore Shopping Center, Morehead, KY

THIS CAN BECOME A REALITY WITH YOUR HELP
• A New High School
• Major Repairs to Each Elementary School
• A Renovated Middle School
Vote "YES"
3%
on the County Question
Paid for by the Citizens for Improved Schools, Dean Carter, Treasurer

PIPELINE

Beatles Sue Dick Clark And ABC over TV Special

NATIONAL POP MUSIC SCENE
By BECKY LYNN
Apple Corp., a holding company for the Beatles, is filing suit against Dick Clark and the American Broadcasting Co. to prevent them from using the names of group members John Lennon, Paul McCartney, George Harrison and Ringo Starr, or using any Beatles indicators on the ABC-TV special *Birth of the Beatles*. The show is set to air November 23rd despite the injunction and \$140 million in general and punitive damages.
Doris on the Farm, the Little Feet elpee, will be issued soon. The recording was in progress prior to Lowell George's death. Ray Thompson is working in the rest of the band to finish the disk.
'60s British rocker, Cliff

Barbara Mandrell, who recently won the Country Music Association's Female Vocalist of the Year Award, is rumored to star in a movie with Peter Fonda.
Jane Fonda will appear in a film with Dolly Parton and Lily Tomlin. The picture, *Nine to Five*, is the story of three secretaries.
ABBA has filmed more than 20 hours of its American tour and plans to shoot more footage in London where the action will be edited into a movie. ABBA Live in Concert, Network TV may pick up this feature.
Mac Bundy and Joe Stimpert, country's hottest new musical duet have begun a major concert tour throughout the U.S.
Tanya Tucker compiled in a jeep race in Riverside, California with other celebrities. CBS-TV will air the event sometime later this year.
Presidential candidate and Eagles' guitarist, Jim Walsh, says it is elected he plans to name the nation's capital, Washington.
In Kirkwood, Miss., high school students were surprised by an unexpected concert from The Beaches. After the performance, members of the group strolled through the halls and talked with students.
Peter Franpton was given his own personalized Navy football jersey after he played at the Naval Academy prior to their homecoming game against the Air Force.

Richard is back with a new album, *We Don't Talk Anymore*. The title is already number one in England, Ireland, Belgium, Germany and Holland.
Pablo Cruise has released the single *Heart You Tonight* from their forthcoming *Part of the Game* album.
In the recording studio: Foco, Robert John, The Babys, Willie Nelson, Andy Williams (doing some country tracks) and the Average White Band.
NEW TALENT
The first recording of
Michelle Mackler (singing Paul Anka material) was released in the U.S. (last week) from England. Michelle is one of Europe's top female vocalists.

CHARTS This Week's Top Nat'l Recordings

Top Twenty Pop Singles			Top Ten Country Singles		
Rank	Artist	Label	Rank	Artist	Label
1	RISE	Capitol	1	ALL THE GOLD IN CALIFORNIA	Meridian
2	HERB ALBERT	Meridian	2	LOVE GARDEN	Meridian
3	POP MIDGE	Meridian	3	WALKED DOWN MY LIFE	Meridian
4	DON'T STOP 'TIL YOU GET THROUGH	Meridian	4	SHADES OF GREEN	Meridian
5	EVERYBODY'S TONIGHT	Meridian	5	CRYSTAL BALL	Meridian
6	YOU DECORATED MY LIFE	Meridian	6	DOES ANYBODY JUST WHISTLE	Meridian
7	FIELDWORK	Meridian	7	SWEET SUMMER LOVER	Meridian
8	STYLISH	Meridian	8	GREAT WALLS OF FIRE	Meridian
9	COMING HOME	Meridian	9	SHOULD I COME HOME	Meridian
10	BEFORE ANY TIME	Meridian	10	BEFORE ANY TIME	Meridian
11	PLEASE DON'T GO	Meridian	11	POOLED UP SWEET	Meridian
12	MY SHARON	Meridian	12	COMING HOME	Meridian
13	MY SHARON	Meridian	13	COMING HOME	Meridian
14	I'LL NEVER LOVE THIS WAY AGAIN	Meridian	14	COMING HOME	Meridian
15	DOOR ON THE FARM	Meridian	15	COMING HOME	Meridian
16	THE KINGS	Meridian	16	COMING HOME	Meridian
17	LOVE, TONIGHT, SOBEREIGN	Meridian	17	COMING HOME	Meridian
18	ROBERT JOHN	Meridian	18	COMING HOME	Meridian
19	RECENT ONE	Meridian	19	COMING HOME	Meridian
20	FOREVER	Meridian	20	COMING HOME	Meridian
21	HOLD ON	Meridian	21	COMING HOME	Meridian
22	SHIPS	Meridian	22	COMING HOME	Meridian
23	WE DON'T TALK ANYMORE	Meridian	23	COMING HOME	Meridian
24	THE LONG RUN	Meridian	24	COMING HOME	Meridian
25	IN THROUGH THE OUT DOOR	Meridian	25	COMING HOME	Meridian
26	CORNERSTONE	Meridian	26	COMING HOME	Meridian
27	HEAD GAMES	Meridian	27	COMING HOME	Meridian
28	DEAR PABLO	Meridian	28	COMING HOME	Meridian
29	CONFESSIONS	Meridian	29	COMING HOME	Meridian
30	OFF THE WALL	Meridian	30	COMING HOME	Meridian
31	GET THE RACKET	Meridian	31	COMING HOME	Meridian
32	THE KNACK	Meridian	32	COMING HOME	Meridian
33	THE KNACK	Meridian	33	COMING HOME	Meridian
34	THE KNACK	Meridian	34	COMING HOME	Meridian
35	THE KNACK	Meridian	35	COMING HOME	Meridian
36	THE KNACK	Meridian	36	COMING HOME	Meridian
37	THE KNACK	Meridian	37	COMING HOME	Meridian
38	THE KNACK	Meridian	38	COMING HOME	Meridian
39	THE KNACK	Meridian	39	COMING HOME	Meridian
40	THE KNACK	Meridian	40	COMING HOME	Meridian
41	THE KNACK	Meridian	41	COMING HOME	Meridian
42	THE KNACK	Meridian	42	COMING HOME	Meridian
43	THE KNACK	Meridian	43	COMING HOME	Meridian
44	THE KNACK	Meridian	44	COMING HOME	Meridian
45	THE KNACK	Meridian	45	COMING HOME	Meridian
46	THE KNACK	Meridian	46	COMING HOME	Meridian
47	THE KNACK	Meridian	47	COMING HOME	Meridian
48	THE KNACK	Meridian	48	COMING HOME	Meridian
49	THE KNACK	Meridian	49	COMING HOME	Meridian
50	THE KNACK	Meridian	50	COMING HOME	Meridian

Judy's Pre-Holiday Inventory Clear Out Sale!

MISSES SPORTS WEAR

Jantzen Sportswear Sale

Our Entire Inventory of beautiful fall Jantzen Coordinates Sizes 8-20

30% OFF

BODIN Fall Coordinates

In 100% Polyester Cord Colors: Black, Winter White, Solid; Sizes 10-18
Reg. \$22 to \$40⁰⁰

\$11⁹⁹ to \$19⁹⁹

**EXTRA SPECIAL ODDS N' ENDS
JACKETS — PANTS — SKIRTS
VALUES TO \$30⁰⁰**

\$5⁰⁰

PANT COAT SALE

Reg. \$43⁰⁰ to \$52⁰⁰

\$28⁹⁹

Blouse and Skirt SALE

Sizes 6-20
From 4 Famous Makers
Reg. \$19⁰⁰ to \$30⁰⁰

\$7⁹⁹ to \$10⁹⁹

**Bradley Fall Coordinates
JACKETS — PANTS — SKIRTS — BLOUSES
Solids & Plaids**

30% OFF

Fashion Skirt Sale

Wool Plaids & Solids
Reg. \$20⁰⁰ to \$25⁰⁰

\$8⁹⁹ to \$15⁹⁹

JUNIOR SHOP

Pandora Fall Coordinates

Rose & Rust
Pants, Jackets, Skirts, Shirts, Sweaters
Reg. \$19⁰⁰ to \$45⁰⁰

Sale 1/2 OFF

Fall Separate Slack Sale

In Polyester Gabordine, Assorted fall colors. Sizes 5-15

\$7⁹⁹ - \$13⁹⁹

Cowl & Turtleneck Sweaters

Reg. \$14⁹⁹ - \$16⁰⁰ Sale **\$6⁹⁹**

All Pandora Fall Coordinates ALL GROUPS

Sale 30% OFF

Bobbie Brooks Fall Coordinate

In Burgundy & Navy

Sale 30% OFF

Fall Sweater Sale

Reg. \$14⁰⁰ to \$28⁰⁰ Sale **\$6⁹⁹ - \$9⁹⁹**

SKIRT SALE

Solids & Plaids, Reg. \$21⁰⁰ to \$26⁰⁰
Wide Assortment... Colors & Styles

\$8⁹⁹ to \$15⁹⁹

LARGE SIZES

Denim Skirts

Sizes 36 to 48. Reg. \$21⁰⁰

Sale \$12⁹⁹

Polyester Woven Stretch - Zip Front Pants

Sizes 30-40. Fall Colors. Reg. \$20⁰⁰

Sale \$13⁹⁹

Poly-Pull-On Basic Pants

Sizes 30-40. Broken sizes and colors
Reg. \$14⁰⁰ to \$16⁰⁰

Sale \$9⁹⁹

ODDS N ENDS

Values to \$35⁰⁰

Sale \$5⁰⁰

Large Sizes Blouse & Shirt Sale

Sale 30% OFF

GIRLS 7-14

Tulip Tops

Sizes S-M-L. Reg. \$9⁰⁰ to \$11⁰⁰
Many Sizes To Choose From

Sale \$6⁴⁹ - \$6⁹⁹

All Fall Health-Tex

Sizes 7-14

Sale 20% OFF

Poly/Gab Slacks

Reg. \$13⁰⁰

Sale \$9⁹⁹

Girl's Ribbed Turtle Neck Sweaters

Sizes S-M-L. Colors off white, navy, gold, red, and hunter
Reg. \$8⁰⁰

Sale \$5⁹⁹

Harbor Belle Knit Coordinates

Sizes 7-14. Reg. \$14⁰⁰ to \$16⁰⁰

30% OFF

GIRLS 4-6X

All Girls Sizes 4-6X Health-Tex

20% OFF

Tulip Tops

Reg. \$7²⁵ - \$9⁰⁰

Sale \$5⁵⁰ - \$6⁴⁹

MEN'S DEPT.

Men's Campus Sweaters

Reg. \$16⁰⁰ to \$36⁰⁰
Wide Variety of Styles

New \$11⁹⁹ To \$16⁹⁹

Men's "Wright" 100% Cotton Brushed Jeans

Reg. \$17⁰⁰ - \$18⁰⁰

Sale \$9⁹⁹

Men's Acrylic Zip Front Sweat Shirts

Reg. \$13⁰⁰

\$8⁹⁹

MEN'S DEPT.

Men's Van Huesen Plain Flannel Shirts

In Sizes XXL. Reg. \$16⁰⁰

Sale \$10⁹⁹

Men's Beau Brummer Dress & Sport Shirt Sale

Reg. \$12⁰⁰ to \$16⁰⁰

Sale \$8⁹⁹

Men's Sport Coat Sale

Solids & Plaids. Reg. \$60⁰⁰ to \$65⁰⁰

Sale \$24⁹⁹ to \$34⁹⁹

BOY'S SIZES 8-20

Rob Roy Fall Knit Shirts

Sizes 8-20. Reg. \$6⁰⁰ to \$9⁰⁰

\$5⁴⁹

Boys' Farrah 100% Cotton Denim

Sizes 8-20. Reg. \$13⁰⁰

Sale \$10⁹⁹

Boys' Wrangler Knit Shirts

Reg. \$7⁰⁰ to \$9⁰⁰

\$5⁹⁹

Boys' Poly Cotton Twill Denim

Reg. \$14⁰⁰

Sale \$10⁹⁹

BOYS SIZES 4-7

Farrah

100% cotton denim. Reg. \$10⁰⁰

Sale \$9⁴⁵

Rob Roy Knit Shirts

Sizes 4-7. Reg. \$5⁰⁰ to \$6⁰⁰

\$4⁴⁹

Boys' Wrangler Fall Knits

Reg. \$7⁰⁰ to \$8⁰⁰

\$5⁹⁹

Farrah Poly/Cotton Twill Jeans

Reg. \$12⁰⁰

\$8⁹⁹

BOYS TODDLERS

Rob Roy Knit Shirts

Reg. \$5⁰⁰ to \$5⁰⁰

\$3⁹⁹

Boys Toddler

Fall Health-Tex

Sale 20%