

Morehead Community News

MERGED WITH THE MOREHEAD INDEPENDENT - - - - - JANUARY 1946

MOREHEAD, KENTUCKY, THURSDAY MORNING, APRIL 26, 1951

PRICE OF \$20 TO \$100 FOR CIRCULARS
TRAINING OF MILITARY BOOKS, NEWS,
PAPERS OR PERIODICALS
PUBLIC LIBRARIES
Dreaded Cancer!
Give Generously!

Flight Th... Mobile X-Ray
Unit Here Thursday
And Friday

Volume No. 68

Underpass At Hayes Crossing Is Advocated

Farm Bureau Calls For Construction As Safety Move

The Rowan County Farm Bureau has gone on record taking as its main project this year, the construction of an underpass at Hayes Crossing.

Last Rites Said For Elderly Clearfield Woman

Death claimed Mrs. Lou R. Ransome, Clearfield, Tennessee, following a short illness. She was 72.

Polio Cases In Kentucky Are On Decline

Only 11 Have Reported This Year For New Low Mark

Infantile paralysis cases in Kentucky this year are considerably fewer than the number at the end of the previous year, it was revealed this week by Howard C. Orr, executive director of the Kentucky Chapter, National Foundation for Infantile Paralysis.

Elizabeth Room Dies In Lexington

Served 20 Years In Breckinridge Training School

Death came Friday to Elizabeth Room, long time instructor at Breckinridge Training School and a familiar figure in Morehead.

The Lane Funeral Home was in charge of arrangements.

Children's Photo Proofs Being Shown Today

Parents who had their children's pictures taken for the annual Citizens of Tomorrow supplement to appear soon in the Rowan County News should call at the Highway 100 Trail Hotel today (Thursday) to select the proofs they desire.

39 On Honor Roll Of Grade School Here

Roberta Hosack And Bessie June Norris Cited For Good Work

Thirty-nine students are included on the Morehead Grade School honor roll released this week by school officials.

Trail Theatre Scene Of WLW Contest Finals

The Trail Theatre, Morehead, will be the scene of the Regional Finals in the W. L. W. contest, William Robinson, vice president of the station announced.

Homemakers At Poplar Groves Meet

The Poplar Grove Homemakers Chapter met at the home of Mrs. Mildred Lambert on Apr. 24.

Group Win For Second Year Unprecedented

The Rowan County chapter of Future Farmers of America is the top unit of its kind in Eastern Kentucky.

City Goes On "Fast Time" Monday Morning

The city of Morehead goes on Daylight Saving Time, effective Monday, by virtue of a recent act of Congress.

Ask Joint Chiefs Of Staff To Answer Claim Made By MacArthur On Eastern Issue

Gen. Douglas MacArthur

Gen. Douglas MacArthur, chief of staff of the Joint Chiefs of Staff, has a controversial statement which has been shared in Congress this week for a policy showdown with the military high command.

From Democrat as well as Republican lawmakers came demands that the joint chiefs of staff answer quickly whether they agree -- from a military standpoint -- with the statement.

MacArthur's policy is a four-point plan for the Pacific theater, including the use of atomic bombs, which has been shared in the past by military men, including our own Joint Chiefs of Staff.

The reply did not directly refute that declaration, Clayton Frischie, chief public relations man of the Defense Department, said he has been authorized by the White House to say President Truman's action in firing MacArthur was based on the unanimous recommendation of the joint chiefs of staff.

Rowan FFA Chapter Wins District Award

Group Win For Second Year Unprecedented

Entering into Eastern Kentucky District contest Saturday at West Liberty the Rowan County chapter took a first place trophy over 24 other chapters and was rated a "gold emblem" unit, tops in that line.

WIELDS BRUSH WITH MOUTH

... Allen Latta, Empire, Ore., paralytic from stroke, had, developed talent for oil painting and coloring ceramic figures by holding brush between teeth.

Death Claims Ora James, 66, Sunday

Prominent Farmer And Board of Education Member Ill Long Time

Funeral services for Ora James, prominent Rowan County farmer and former member of the Rowan County Board of Education, were held Tuesday at the Morehead Baptist Church. He was 66.

Tate, Green And Crowthwait To Name Two Youths

82 Rowan Counties At Morehead College

Rowan County has 82 students enrolled at Morehead State College.

Price Control Explained To Merchants

More Than 50 Hear Durgan Discus Regulation

Price control regulation over their businesses were explained by Tom Durgan, business analyst in the Price Division in the Kentucky State Office at Louisville, to more than 50 merchants at a meeting held at the Morehead Baptist Church.

Radjunas, Caudill Team Holds Lead In Bridge Tourney

Stanley Radjunas and Roger Caudill were in the lead in the bridge tournament held Wednesday at the Morehead State Hotel.

Clinic Serves Rowan, Morgan And Menifee

An orthopedic clinic for children from Rowan, Menifee and Morgan counties will be held Wednesday, May 2, from 8:30 a. m. to 12 noon at the United Presbyterian Church of Frenchburg, the Kentucky Crippled Children Commission announced.

Cancer Fund Drive Ends This Week

Rowan County's annual drive for funds with which to combat cancer ends this week. Mrs. O. M. Eason, chairman of the committee, said today, and all persons who have not contributed are urged to do so.

Pet. Samuel Netherly Stationed In Korea

Pvt. Samuel V. Netherly, son of P. and Mrs. Delmar Netherly of Smith, has joined the 3rd Infantry Division in Korea and has been assigned to Company C of the 7th Infantry Regiment.

Morehead's Board To Pick Chief May 10

Four Men Considered, Hodgkin Announced

The board of regents of Morehead State College will meet May 10 to elect a new president for the year 1951-52. A consensus was existed since the death of Dr. W. J. Baird.

Price Control Explained To Merchants

Price control regulation over their businesses were explained by Tom Durgan, business analyst in the Price Division in the Kentucky State Office at Louisville, to more than 50 merchants at a meeting held at the Morehead Baptist Church.

Radjunas, Caudill Team Holds Lead In Bridge Tourney

Stanley Radjunas and Roger Caudill were in the lead in the bridge tournament held Wednesday at the Morehead State Hotel.

Clinic Serves Rowan, Morgan And Menifee

An orthopedic clinic for children from Rowan, Menifee and Morgan counties will be held Wednesday, May 2, from 8:30 a. m. to 12 noon at the United Presbyterian Church of Frenchburg, the Kentucky Crippled Children Commission announced.

Cancer Fund Drive Ends This Week

Rowan County's annual drive for funds with which to combat cancer ends this week. Mrs. O. M. Eason, chairman of the committee, said today, and all persons who have not contributed are urged to do so.

Pet. Samuel Netherly Stationed In Korea

Pvt. Samuel V. Netherly, son of P. and Mrs. Delmar Netherly of Smith, has joined the 3rd Infantry Division in Korea and has been assigned to Company C of the 7th Infantry Regiment.

Morehead's Board To Pick Chief May 10

Four Men Considered, Hodgkin Announced

The board of regents of Morehead State College will meet May 10 to elect a new president for the year 1951-52. A consensus was existed since the death of Dr. W. J. Baird.

Price Control Explained To Merchants

Price control regulation over their businesses were explained by Tom Durgan, business analyst in the Price Division in the Kentucky State Office at Louisville, to more than 50 merchants at a meeting held at the Morehead Baptist Church.

Radjunas, Caudill Team Holds Lead In Bridge Tourney

Stanley Radjunas and Roger Caudill were in the lead in the bridge tournament held Wednesday at the Morehead State Hotel.

Clinic Serves Rowan, Morgan And Menifee

An orthopedic clinic for children from Rowan, Menifee and Morgan counties will be held Wednesday, May 2, from 8:30 a. m. to 12 noon at the United Presbyterian Church of Frenchburg, the Kentucky Crippled Children Commission announced.

Cancer Fund Drive Ends This Week

Rowan County's annual drive for funds with which to combat cancer ends this week. Mrs. O. M. Eason, chairman of the committee, said today, and all persons who have not contributed are urged to do so.

Pet. Samuel Netherly Stationed In Korea

Pvt. Samuel V. Netherly, son of P. and Mrs. Delmar Netherly of Smith, has joined the 3rd Infantry Division in Korea and has been assigned to Company C of the 7th Infantry Regiment.

WILLIAM JOHNSON (left), Kentucky Utilities Company farm service advisor, is shown presenting representatives of 15 FFA chapters with cash awards for carrying top "gold emblem" ratings at the Eastern Kentucky District Fair at West Liberty. The picnic company sponsor at the Eastern Kentucky District Fair was the Rowan County chapter. Standing with Johnson are, left to right: Bennett Stone, Wolfe County; Paul Wilby, Boyd County; and George Boyd, of Owsley County. A seventh "gold emblem" chapter, McKell, was not present for the picture.

KENTUCKY BABY CHICKS
 AS BREEDERS - FOCUS ON THE FUTURE
 JOHN W. BROWN, President
 H. G. BROWN, Secretary
 R. L. BROWN, Treasurer
 J. H. BROWN, 1st. Vice President
 W. H. BROWN, 2nd. Vice President
 W. W. BROWN, 3rd. Vice President
 W. B. BROWN, 4th. Vice President
 W. J. BROWN, 5th. Vice President
 W. C. BROWN, 6th. Vice President
 W. K. BROWN, 7th. Vice President
 W. L. BROWN, 8th. Vice President
 W. M. BROWN, 9th. Vice President
 W. D. BROWN, 10th. Vice President
 W. W. BROWN, 11th. Vice President
 W. J. BROWN, 12th. Vice President
 W. C. BROWN, 13th. Vice President
 W. K. BROWN, 14th. Vice President
 W. L. BROWN, 15th. Vice President
 W. M. BROWN, 16th. Vice President
 W. D. BROWN, 17th. Vice President
 W. W. BROWN, 18th. Vice President
 W. J. BROWN, 19th. Vice President
 W. C. BROWN, 20th. Vice President

WASH IT! SCRUB IT!
 You can't mar its matchless beauty!



Super Kem-Tone
 Delux Wall Paint
\$1.59 QUART \$1.98 GALLON
Guaranteed Washable!
 *Tests have shown that Super Kem-Tone will withstand repeated washing with useful household cleaners without impairing its beauty.



McBryer Furniture Store
 Phone 180 Morehead, Ky.

Kentucky Academy Of Science To Hold Spring Meeting At MSC

Lectures, Tours And Social Events To Feature 2-Day Meet

The Kentucky Academy of Science will hold its spring meeting on the Morehead State College campus, April 27, 28 and 29. Mr. Landberg will be the guest speaker on Friday evening at the spring meeting of the Kentucky Academy of Science to be held at Morehead State College, Morehead, Friday and Saturday, April 27 and 28. Mr. Landberg will speak on "Related Problems of Water Supply and Sewage Disposal."

The address of welcome will be made by Dean and Acting President Warren C. Lippin of Morehead State College, and Mr. Landberg will be introduced by Mr. John Palmer of the Lee Clay Products Company of Morehead. Mr. Tom Young of the Morehead State College faculty will give an illustrated lecture Friday evening on "The Science of Color as Seen by the Physicist and the Artist."

The academy meetings will be presided over by Dr. E. B. Penrod, College of Engineering of the University of Kentucky, president of the Academy. The members of the Academy include: biologists, bacteriologists, chemists, dentists, nurses, technicians, numerous others from commercial and industrial organizations throughout the State.

The Friday evening dinner meeting is open to the general public but reservations must be made for the dinner by Friday noon.

The Saturday morning program will be devoted to field trips and visits in industrial plants.

1-9:00-10:00 P. M.—Registration in Science Hall.
 2-9:00-10:00 P. M.—Light refreshments will be served to registered guests in the Home Economics department.
 2-9:00-4:00 P. M.—Student conducted tours of the Morehead State College campus.
 2-9:30-5:00 P. M.—Trip through the Forest Products Company.
 4-3:00-5:00 P. M.—General meeting of the Kentucky Academy in the College Cafeteria, Professor E. B. Penrod, president of the Kentucky Academy, presiding.
 7-7:15-7:30 P. M.—Welcome to Morehead State College by Dr. Warren C. Lippin, dean and acting president.
 7-7:30-8:00 P. M.—Address, "Related Problems of Water Supply and Sewage Disposal," by Mr. Herman F. Landberg, partner in Chester Engineers, Pittsburgh, Pa.
 8-8:00-8:30 P. M.—The Science of Color as seen by the Physicist and the Artist, illustrated talk by Tom Young of the Morehead College Art Department.
 9-9:00-12:00 P. M.—Midnight social and dance in the auditorium.

The calendar for Saturday, April 29, provides for the following:
 1. Lee Clay Product trip
 2. Inspection of the General Refractories at Olive Hill
 3. Trip through the Carter Cave State Park
 4. Bird walk
 5. Forestry-Soil conservation

Eagles Intra-Squad Football Game Thrills Big Crowd

The Morehead State College "Eagles" exciting intra-squad football game which was held at the Jayne Memorial Stadium Friday, April 20, at 7:30 p. m., attracted a large attendance from Morehead State College, plus a huge throng of townspeople.

The game was hard fought all the way, and very interesting. Fans expressed their emotions by cheering their favorite team with heavy applauding. The game got underway with Coach Ellis Johnson calling the plays, and Ed Mudd and Jerry Wing refracting. The blue team was first to score, with a beautiful touchdown by Sam Stith. "Izzy" Porter kicked for the extra point and failed to make it. The blue team now lead 6-0 and then the golden Eagles offensive began rolling along very smoothly with Dave Adams going for a touchdown. Adams scoring now tied the game 6-6 and the crowd went wild. Porter, who was allowed to kick for both sides kicked for the extra point, and his kick was no good. The game remained tied 6-6. After this play the blue team started their offensive rolling. Ed Reed got possession of the ball on the 36 yard line and ran for a touchdown across the goal line.

Free! 1 pr. 51 gauge, 15 denier Nylon Hose to the first 50 customers who make a \$5.00 purchase or more! Free!

After this time was running out and neither team was able to score and the game ended with the blue team winning 12-6.
 Look before you leap and then, don't leap.
 Careful drivers never know when they save their own lives.



FREE! 1 pr. 51 gauge, 15 denier Nylon Hose to the first 50 customers who make a \$5.00 purchase or more!
FREE!

SPOTLIGHT OF BARGAINS
 At Morehead's Leading Store

GOLDE'S SALE STARTS THUR., Apr. 26

Men's All Wool Suits
 In the Best of Styles
 Values up to \$45.00
\$12.95 & \$32.50

Costume Jewelry
 1/2 PRICE - plus tax

Men's Sport Anklets
 4 prs. \$1.00

Chambray SHIRTS
\$1.19

Buy Here and Save
 For This Sale Only

SPORT SHIRTS
 While They Last
98¢

Men's T-Shirts
 Best Buy
44¢

BATH TOWELS
 3 for \$1.00

Ladies' SHOES & Sandals
 All Colors - FROM - \$1 and up

FOR THE FAMILY Shoes

Golde's SALE STARTS THUR., Apr. 26
 C. E. HIBBARD - Manager

FOR LOCAL OR LONG DISTANCE MOVING OR HAULING
 CALL
CURT'S TRANSFER
 We Carry Cargo Insurance
 Day Phone 2 - Night Phone 725 - Morehead, Ky.
 WILLARD AND OSCAR CALVERT, Owners

Underground limestone caverns operated by the State Park may be visited by those who wish. The undeveloped Bat Cave is easily accessible and is a point of interest for naturalists throughout this area and from other states. Thousands of bats may be observed in the low ceiling of this cave. The region also shows an interesting flora. Dr. Roger Barbour of the University of Kentucky will lead trip into Bat Cave. Trip leaves Olive Hill (following General Refractories trip) at 10:30 a. m. Saturday. One section of this trip will leave Morehead at 8 a. m.

Bird Walk—This area abounds in a great variety of field and woodland bird life. Those interested should bring their own binoculars, since only a few pairs are available. Time of trip to be announced Friday evening.
 Forestry-Soil Conservation Trip—This trip will show effects of improper land use followed by floods, erosion, and silt; supervised cutting and undisturbed forest cutting; and the conditions that make possible a "ghost town." The trip will also demonstrate methods of selective timber cutting with full use of the forestry from the differences resulting from a well-planned reforestation program and none at all, and the influence of forestry practices upon proper and improper methods of water and land use on farms. Forest fire prevention methods will be demonstrated.
 This trip will leave Morehead at 8 a. m. and return about 11 a. m. and will be under the guidance of the United States Forest Service personnel. Free bus transportation will be provided.
 The real art of living includes the art of loafing.
 He who lives at high tension usually blows a fuse.

Hibbard AT Golde's AND SAVE

EXTRA SPECIAL for THURSDAY, FRIDAY & SATURDAY ONLY!
 Other Sheets for only \$1.98
 PILLOW CASES 3tc

CANNON SHEETS
\$2.99
 PILLOW CASES 12c

BIRDBEYE DIAPERS
 12 To Package
\$2.69

CHILDREN'S Print Dresses
 Sizes 1 to 6X
89c

Men's T-Shirts
44¢

Extra Special!
 ONE TABLE OF Rayon Silk and Jersey Material
 Values up to \$138 yard
Only 79c yd.

RAYON AND SATIN GOWNS
 \$2.98 Values
Only \$1.79

LADE'S PANTIES
 4 pair \$1.00

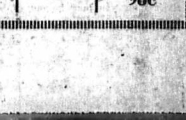
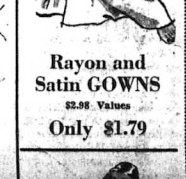
CHILDREN'S PANTIES
 5 pair \$1.00

Ladies' PURSES
 Special - \$1.98

FAST COLOR PRINTS
 25c & 39c yard

Lace Curtains
98c

Plastic Curtains
94c



NOW IT'S UP TO US

ROWAN COUNTY NEWS

Published Every Thursday at Morehead, Rowan County, Ky.

Merged With The Independent (1948)

Entered as Second Class Mailing Matter at Postoffice, Morehead, Ky.

W. E. CRUTCHER - E. D. THOMPSON

Office Corner Wilson Ave. and Sun Street

SUBSCRIPTION RATES One Year, in Kentucky \$3.00

The fundamentals of justice are that no one should suffer wrong, and that public good be served - Clero.

It Seems That Laws On Large Trucks Already Exceed Enough

A drive is now underway to stampede the states into permitting the use of their highways by trucks larger and heavier than those allowed by present laws.

Not Everything The Truth About This Truth Serum

Nearly everybody has heard about the "truth serum," which was supposed to make those admitting to the fact tell the truth.

A High Rate Of Stomach Ulcers In United States

Dr. J. R. Heller, Jr., director of the National Cancer Institute, says that 38,000 Americans will develop stomach cancer within a year.

Dise Predictions On What Will Happen To The World

Bertrand Russell, nearly seventy-nine, who received the Nobel Prize for Literature last year, prophesies that before the end of the present century "unless something unforeseeable occurs," one of three possibilities will occur.

Heaven may forgive your sins, but your nervous system won't.

Most folks make more enemies by what they say than friends by what they do.

When you buy your spring hat, ladies, be sure to use your head.

America's great need is for more men who have cool heads and fewer men who have hot feet.

The Press Remains Our Most Important Safeguard

"No dictator can get along with an independent press," writes the Los Angeles Times. This observation was prompted by what happened to La Prensa of Buenos Aires.

The press of Argentina, with a single exception, is now wholly controlled by the government. There will be no dissenting voice, no matter what the dictator does.

Big Business 'Legally' Circumvents U. S. Tax Structure

It is time for the people of this country to understand just what a bonanza the tax-exemption can be to a big corporation, investing millions in expansion programs declared to be for the defense emergency.

A Solution To Derivation Of Phrase "Lynch Law" Is Lacking

By Lee Stewart

The origin of the phrase "lynch law" has long been a subject for speculation, but many reasons have been offered for its use.

Heaven may forgive your sins, but your nervous system won't.



THE SUNDAY SCHOOL LESSON

Joshua, Born In Egypt, Attained Prominence During 40 Years Of Wandering In Wilderness; His Book Is Largely Military Campaign Accounts

International Sunday School Lesson for April 20th, 1951. Memory Section: "Be strong and of good courage; be not dismayed, neither be thou frightened, for Jehovah thy God is with thee, thy righteousnesser thou goest."

REMINISCING WITH LEE STEWART

The origin of the phrase "lynch law" has long been a subject for speculation, but many reasons have been offered for its use.

ORLEANS'S OBSERVATIONS

World-Wide Affairs

There's so much happening in the world to distract our attention that it's a little difficult to settle down to home-grown politics.

Small, Far-Flung Homes Constitute Great Part Of America

There is a great fascination in the little homes, scattered all across the rural countryside. There is nothing so spectacular about them, nor mark of any particular beauty or careful landscaping.

upon miles of their strings of trees, while in the city, window after window, bright lights illumine a city of people, busy getting ready to enjoy life.

Kentucky Science Students Make Trip To Morehead Fire Tower

The Junior Kentucky Academy of Science included a trip to the Morehead fire tower during their meeting of last week-end.

Golden Cleans

Good clothes open all doors.

Fog Income Rise

RUTH TAYLOR OBSERVES

Small, Far-Flung Homes Constitute Great Part Of America



"A Car With A Good Heater? Men, You ARE In Luck - I've Got Just What You're Looking For!"

Rowan County News

Morehead, Kentucky, Thursday Morning, April 26, 1951

Morehead Enrollment Reaches 651 With Registration Of 85 Students For Short Term

MSC Continues To Grow Despite World Situation

Final enrollment figures revealed that 85 teacher-students were added to the present enrollment at MSC, bringing the total number of students up to 651. It is interesting to notice that this year taking into

consideration the present situation there were many more women students to register than there were men. The contrary has been true for the last several years.

From Michigan to Florida and East of the Mississippi, there are sixteen states represented at MSC. Thirty-eight of Kentucky's 122 counties are also represented, with Rowan, Carter, Johnson,

Marshall Beats Eagles 1-0 In Ten Innings

A pitcher duel that went 10 innings at Huntington Saturday, ended with Marshall the victor 1 to 0 over Morehead State College in an Ohio Valley Conference baseball game.

Marshall pitchers Paul Baker and Irv Spencer, hurling for the losers, each gave up tight hits.

The difference came in the two of the tenth when, with two out and the bases full, first baseman Milan Zozan singled, scoring Baker, the pitcher.

Baker struck out six and walked one.

Morehead - 000 000 0-0 8 0
Marshall - 000 000 1-0 1
Spencer and Hauch; Baker and Wheeler.

Many Cities In State Adopt Faster Time

Morehead Among Those Moving Clocks Up One Hour This Sunday

Most all Central Kentucky cities, including Morehead, will go on daylight saving time next Sunday.

The faster time, which will be effective through September, has been voted by the Morehead city council. Whether Rowan County will adopt it is a decision to be made by the Fiscal Court, but last year many county seat towns adopted the faster time while the rural section of the county kept their watches the same.

Not all the communities that last year have been heard from, but in general it is expected that most cities within commuting radius of Louisville, Lexington and Frankfort will join these cities in setting their clocks forward April 29. They will revert to Central Standard Time, in most cases, Sept. 23.

Exhibit To Feature Works of Two MSC Seniors

Floyd, Magoffin and Bath counties in the lead.

That Morehead continues to grow despite the low-hanging war clouds may, in part, be attributed to the personal interest the faculty manifests toward their students; and in the up-to-the-minute library that contains the latest books and periodicals enabling the student body to keep abreast of the times.

An art exhibit containing the works of two senior art majors, Nell Haman and Josephine Oehorn, will be on display in the Art Gallery at Morehead State College from May 11, until May 18.

The exhibit will contain the works of the two girls from their freshman year till present. Pencil sketches, oil paintings, and watercolor will be some of the many mediums that will be on display.

The art exhibit which is the first of its kind at Morehead, will be carried out in the future with all graduating art majors. Miss Hamilton and Mrs. Oehorn will graduate in June with Bachelor of Science degrees, and an area of concentration in art.

Advertising is one way to make business pay better and sell newspapers.

Teen-ager Problems Are Discussed At Meet

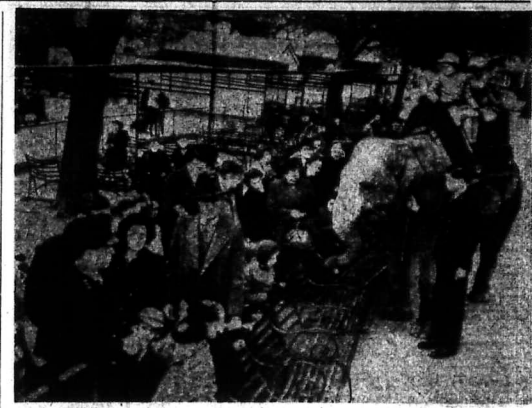
How schools can help parents solve critical war-produced problems of teen-agers and young women received primary attention at the biennial convention of the California Association of Deans of Women, held recently at Santa Barbara College, Santa Barbara, Calif.

One hundred and fifty women from throughout the state assembled at Santa Barbara College searching for methods to re-establish balance in the mental outlook of girls from high school through college.

Their reports indicated that women, as well as men, have been greatly disturbed by war influences.

Increasing job opportunities, hasty marriages, and an unsettled emotional outlook were most prominently mentioned as problems interfering with educational progress, according to Dr. Temple Allison, dean of women at San Bernardino Valley College.

For the first time this year, the women deans utilized group dynamics in their convention program, dividing into small "buzz sessions" to scrutinize instantly specific problems.



LONDON IN THE SPRING . . . Before spring has passed London, one thing is certain—the reappearance of Zumbo with a load of children at the London Zoo. The big elephant takes the youngsters riding around the zoo, stopping here and there for a handout, as he is doing here.

WRA of MSC Takes Part In Play Day

Morehead Girls Play Basketball And Volley Ball

The Women's Recreational Association of Morehead State College went to Lexington Saturday April 17 for the annual play-day of the KAFCW, held at the University.

Events of the day included basketball, volleyball, badminton and bowling. The MSC girls participated only in basketball and volleyball. The basketball games were played in the Memorial Coliseum.

The MSC girls played Eastern in both basketball and volleyball.

The girls represented the school very well even though they were defeated in both games.

The play-day delegates were honored by getting their lunch served in the football room of the Student Union Building.

A meeting of the Kentucky Athletic Federation of College Women was held during lunch hour. Joan Kagle, vice-president of the KAFCW and Alice Williams were MSC delegates to this meeting.

The other schools represented were: University of Kentucky, University of Cincinnati, Berea, Midway, Georgetown, Transylvania, Kentucky Wesleyan and Eastern.

The girls who attended this meeting from MSC were: Joan Kagle, Alice Williams, Betty Hambrick, Betty Fanning, Ruth Enk, Francis Savage, Ann Wright, Corrie Phillips, Lili Reed, Mary Murphy.

The sponsor of the WRA is Miss Ruth Wilde.

Exhibit Of Famous Prints In Art Gallery

Collection From Univ. Of Louisville To Be On Exhibit For Two Weeks

An outstanding exhibit of original fine art prints from the University of Louisville will be on display in the Art Gallery at Morehead State College starting April 24, and lasting two weeks, till March 8.

The exhibit of prints will consist of woodcuts, wood engravings, aquatints, monotypes, lithographs, etchings and many other media of the graphic arts, by such famous artists as Matisse, Rouault, Durer, Daumier, Mery-

on, Pennell, Feininger, Toulouse-Lautrec and many others.

The exhibit, loaned to the Art Department by the University of Louisville, will be here for a two week period! The prints are works by the greatest artists from the University's private collection. The University's collection is known to be one of the finest in the U. S.

Shop The Ads

Guttering AND Downspouting

Free Estimates — Work Guaranteed —

C. M. Perkins

Allen Addition
PHONE 935-M

CHECKING THE PULSE OF YOUR COMMUNITY

Business, homes, personal and public property, individuals... they're all protected by the wide experience of this bank.

We are ever conscious of new policies, for business and the individual alike which indicate the need for sound financial counsel and banking facilities that keep pace with modern trends.

Consult us for financial personal advice as you would your doctor or lawyer, relieving you of worry and responsibility.



This bank will be closed each Wednesday afternoon beginning 1st Wednesday in May and continuing through September.

PEOPLES BANK of MOREHEAD

Established in 1907



MC Orchestra Conductor Was Student Here

Keith Huffman Has Had Varied And Interesting Career In Music

Through the efforts of Mr. Keith Huffman, MSC violin instructor, the college orchestra has been revived after a recess of ten years. Mr. Huffman played in the last orchestra which was under the direction of Keith Davis. He is now conductor and after four years of work since he has been back in Morehead he has managed to re-organize the orchestra.

Mr. Huffman began his musical career when he started taking violin lessons at the age of seven years. At this time he was living in Ohio. He then moved to Marion, Ohio where he continued his violin study for the next twelve years. He studied two years at Marion College and two years at Morehead. He spent four years in the army, during three of which he served as an army band leader in Maine and Newfoundland. Mr. Huffman received his Master of Arts degree from University of Iowa.

In the fall of 1938 he traveled with the Kroll Symphony Orchestra of Chicago in which he played violin. This organization traveled about 10,000 miles through 15 southern states and presented about 125 concerts. During this time Mr. Huffman acted as chauffeur for Mr. Kroll. From this job he suffered many unusual and amusing experiences.

There was a concert scheduled for Thanksgiving Day and Mr. Kroll's chauffeur had to drive his car for him. Poor Mr. Huffman managed to get off on the wrong road and so much time was lost that he finally ended eating a bowl of chilis for his Thanksgiving Day dinner. He was also fired when Mr. Kroll's temper subsided he was allowed to stay on with the company.

While he was in the army he was a student at the army school of music. He was in a class of 75 selected by competitive examinations from 600 applications. Some prominent people in this group were the present conductor of the Indianapolis symphony, obolst from Radio City, head of the Juillard school of music in New York and the present conductor of the Cincinnati Symphony.

There was a male chorus organized which sang for President Roosevelt.

Recent trials have convinced us that there are slunks willing to betray this country.

"I haul 5-ton of rock for 34¢ a mile!"

"My Ford F-6 gives me more miles per gallon than any other truck I ever owned. It's easy handling in traffic, off-the-road, and in the hills saves time and money, too."

H. HOSTETTER, "GURRY" Operator

"15 ton loads for less than 4¢ a mile."

"We know Ford Trucks were economical, but until we kept accurate records in the Ford Economy Run, we never realized how really LITTLE they cost to run."

LARRY KING, "Lumberman"

These days rising expenses bite deeper and deeper into earnings. But truck running cost is one thing that can be cut. The 50-million-mile Ford Economy Run shows clearly how little it costs to run Ford Trucks. The reports shown on this page are typical of those sent in by over 5,000 drivers who participated.

FORD TRUCKING COSTS LESS

because Ford Trucks Last Longer

Use latest registration data on 7,318,000 trucks. His insurance reports prove Ford Trucks last longer.

The new Ford F-1 Pickup. The Best's Truck in America's Top Economy Value.

This 1951 Ford F-6, the Ford's biggest seller in the heavy-duty field.

"2 1/4¢ runs my truck a mile!"

"You can't beat my Ford Pickup for gas and oil economy. In 8 months I drove 4,870 miles, made 2,772 stops. Cost for gas, oil, maintenance and repairs totaled \$104.06."

EDWARD V. BROOKS, Plumbing Contractor

"23¢ to haul 3200 lbs. 10 miles."

"Ford's Economy Run showed me how little it costs to run a Ford Truck. My F-6 travelled 5,778 miles in 8 months, and I spent \$135.68 for gas, oil, and maintenance—or only 2.34¢ a mile."

ALEX FORSHAGE, Stevedores

Wells Motor Company

West Main Street Phone 18 Morehead, Ky.

Yes Sir... Auto Service Is Our Business!

That's right! When you drive up here for gas or oil, you can expect five minutes of important inspection service on your car, without any charge whatsoever.

YEP! LIKE FLOATING ON AIR...

That's what it feels like when you've just replaced a pair of worn shock absorbers with new ones from our garage.

— DRIVE UP FOR SERVICE —

By purchasing your fuel here, you are assured that auto service experts are keeping a watchful eye on important automotive check points. We inspect tires, radiator, battery and crankcase each time you drive up. When you drive in for a car wash or lubrication job, you get fast, efficient service every time. Yes sir, we give you SERVICE because we know that service will keep you coming back! DRIVE UP TODAY!

— Autos Thrive on Our Service —

Midland Trail Garage

Phone 150 • Morehead, Ky.

COMPLETE WRECKER SERVICE

WHICH IS MORE CONVINCING TO YOU ...PROMISES OR PERFORMANCE?



Proved dependability that makes them the MOST POPULAR Motor-fuels

MOTORS, being unable to read, are unimpressed by the claims being made for some gasolines these days. They can perform only on the quality that is actually in the gasoline.

The engines in most of the new model cars require higher anti-knock motor fuel than heretofore. To meet this need, Crown and Crown Extra Gasolines have additional anti knock power. Along with higher octane, they also possess other essential qualities. . . . They are made in seasonal grades, assuring thorough vaporization, and protecting against vapor-lock, and contain a special solvent to minimize gum deposits.

We have never found it necessary to make exaggerated claims for Crown and Crown Extra. We sell them for exactly what they are. . . . dependable motor fuels possessing the all-round qualities which make them leaders in their respective fields.

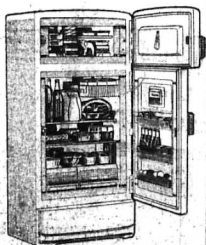
N. E. Kennard, Agt.
Phone 198 - Morehead, Ky

STANDARD OIL COMPANY (KENTUCKY)

NEW 1951 MODELS

Hotpoint Electrical Appliances

.. COMPLETE LINE ..



Hotpoint Refrigerators

Compare quality performance and prices. See why Hotpoint Refrigerators mean greater value to you . . .

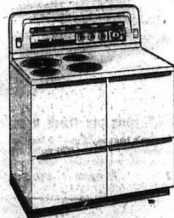
\$209.95 and up

Hotpoint Electric Ranges

Push-Button cooking is here! Completely automatic!

\$209.95 and up

— MINIMUM TERMS —



MARTINDALE FURNITURE & HARDWARE CO.

MAIN STREET

PHONE 159

MOREHEAD, KY.

Republicans React Angrily To Alleged Attempts By Democrats To Discredit Gen. MacArthur

Republicans cried Saturday that the Truman administration was trying to "discredit" Gen. Douglas MacArthur at the historic split over Far East policy headed toward a congressional airing.

Backers of the deposed Far East commander reacted angrily after reading a Washington dispatch in the New York Times. This dealt with President Truman's conference with MacArthur last October on Wake Island.

It said that according to administration records made at the time of the parley, MacArthur: 1. Was so confident of victory in Korea that he offered what he deemed his best troops, the U. S. 8th Division, for service in Europe.

2. Apologized for embarrassing President Truman on the issue of Formosa, big island off the Chinese coast.

3. Predicted the Chinese Communists would not enter the Korean conflict.

Several members of Congress took the view the administration had "leaked" one-sided information to show the general in the wrong.

Rep. Martin of Massachusetts House Republican leader, said administration groups are trying to "smear" MacArthur but "they won't get away with it."

Another embittered supporter of MacArthur, Republican Senator Capehart of Indiana, told newsmen he believed President Truman, himself, was responsible for the "leak."

Without taking sides in the Truman-MacArthur row, Senator Russell (D-Ga.) said the Senate Armed Services Committee will demand "all available documents" in an investigation to be opened soon. As committee chairman, Russell will preside at the hearings.

The investigation, senators said, will delve deep into the events preceding President Truman's dismissal of MacArthur as Far East commander.

MacArthur wanted stronger measures against Red China—bombing of Red air bases in Manchuria, a blockade of the China coast, and aid to enable the Nationalist Generalissimo Chiang Kai-shek to lead his forces from Formosa in an attack on the Red Chinese mainland.

The Truman policy is to confine the war to Korea and try to make an acceptable peace. The President has said the MacArthur policies carried a grave risk of World War III, but MacArthur strongly discounts any such possibility.

Reverberations continued to be heard from the general's remark that in the past the nation's highest military authority, the Joint Chiefs of Staff, agreed with his

view. The Defense Department announced late yesterday it will present to the congressional investigators "an analysis of the basic differences which exist between the Joint Chiefs and MacArthur."

This put the Defense Department on record that such differences do exist. Other administration officials passed the word meantime that a study of the huge file of messages between MacArthur and the Joint Chiefs indicated:

1. The record gave considerable support to MacArthur's argument that certain of his key views on what to do about Red China were shared by the Joint Chiefs "from a military standpoint."

2. That taking into account broad political as well as military considerations, the Joint Chiefs supported the President instead of MacArthur.

As for what MacArthur said to the President when they met on Wake, an aide to the general declared in New York that no stenographic notes were taken.

The aide, Maj. Gen. Courtney Whitney, added that nobody had any idea at that time that the Chinese Red command had decided to plunge into the Korean struggle.

On Thursday he will go to Chicago to spend the day and night, and on Friday will attend a welcome celebration in his home town of Milwaukee.

The man who fired him, President Truman, had nothing to say for the time being. He was on a yacht cruise in Chesapeake Bay.

Hybrid Chickens
Results of research at experiment stations in twelve North Central states "indicate that it may be possible to develop hybrid lines of poultry which will greatly expand the productivity and efficiency of the poultry industry in much the same manner that hybrid corn has increased total corn production in the United States," according to E. C. Hitting, acting chief of the Agriculture Department's experiment stations.

Publicity is usually the result of some work by the recipient.

Calendar Changes

The following changes have recently been made in the club calendar.

The Wesley Club meeting is on Sunday of the first week of the month instead of on Tuesday of the fourth week.

The Beta Chi Gamma has changed its meeting dates from the second and fourth Tuesday of each month to the first and third Tuesdays.

The F. T. A. meeting which has been held the third Monday of the month in Alice Young Hall will now be held the first Tuesday of each month.

The Open Forum meetings will be on the second and fourth Thursday instead of the first and third Thursday of each month.

The Home Economics Club has changed their meeting night from Wednesday to Thursday.

Typing News Publishes Article By MSC Teacher

The spring issue of the Typing News published by the South-Western Publishing Company for teachers and students of typewriting contains an article on "Supplementary Aids in Teaching Typewriting," by Miss Alice Cox of Morehead State College.

The Typewriting News which is read by practically all teachers—college, high school, and business school, is one of the most widely circulated of any of the professional bulletins for commercial teachers.

The purpose of Typewriting News is to give typewriting teachers an opportunity to express their ideas in regard to methods and techniques in teaching typewriting. It is designed to assist teachers as well as students who are preparing to teach.

Miss Cox has been in charge of the typing class at Morehead State College since 1948 and has acted as critic teacher for students doing practice teaching in commerce.

The world has too many people who worship totem poles, if you know what we mean.

The Soviet plan to reduce armaments would look better if Russia demonstrated some faith in the process.



HOMER IS HOLLOW LOG . . . Mr. and Mrs. William Bert, St. Louis, made home in a hollow log during worst part of winter. The little couple was taken to a St. Louis hospital from their cottage on bank of Missouri river.

PERSONAL FINANCING

SHE HAS CREDIT HERE...
and so have many other local folks who need to borrow money at times.

PERSONAL LOANS
for every worthwhile purpose

Come in and talk it over.
We Can Loan You Up To \$300 on Your
AUTO, FURNITURE, OR
OTHER PERSONAL PROPERTY

— and you can take up to 20 months to repay —

Mt. Sterling Finance Co.

Phone 1041 18 E. Main Street Mt. Sterling, Ky.

Heavy-Duty Engineered...

NEW MEDIUM-DUTY trucks
with a reserve of heavy-duty STAMINA

These medium-duty Internationals give you lower operating and maintenance costs, longer truck life—because every part is heavy-duty engineered for the traditional stamina that has kept Internationals first in heavy-duty truck sales for 18 straight years.

P. S. Right along with this extra truck stamina you get a brand new kind of comfort and ease of handling. But get the facts for yourself—call or come in for a demonstration, soon.

LEWIS GARAGE

EAST ON U. S. 60 PHONE 53-F1 MOREHEAD, KY.

All new, all proved—*Heavy-Duty Engineered* to save you money

INTERNATIONAL TRUCKS

'We Must Stay Prepared,' Is Advice Of Barkley In Address Before \$50-A-Plate Dinner

The United States "must remain prepared and must not become isolated from our friends in the rest of the world," Vice President Alben W. Barkley declared at Louisville Saturday night.

He addressed approximately 700 Kentucky Democrats at the annual Jefferson-Jackson Day dinner after flying from Grand Rapids, Mich., where he attended the funeral of Sen. Arthur Vandenberg.

"This nation seeks security for itself and for others," Barkley said. "It can do so only through the cooperation of other free peoples."

He pointed out that the national administration has spent the last six years seeking peace and

prosperity, adding that six years ago "no one would have dreamed that one of our allies would have made it so difficult to obtain peace."

The vice president said Russia has forced this country to remain prepared and that the friendship of "other free peoples" is needed to give the world the peace it seeks.

He made no mention of the foreign policy controversy which led to the firing of Gen. Douglas MacArthur as commander of the U. S. and United Nations forces in Korea by President Truman.

Earlier, Democrats in Louisville for the dinner predicted their party would win next fall's election, at which a governor and other state officials will be chosen.



SALES STUNT . . . Babbscum company distributes product in wrappers instructing purchasers to proper haired of Reds, reading "Help Fight the Red Menace."

Some 50 persons attended a meeting of the state central executive committee which preceded the dinner. U. S. Senator Earle C. Clements said the attendance at the committee meeting was the finest in a long time.

Baseball Commissioner A. B. "Happy" Chandler, a former Kentucky governor and senator, sent a last-minute notice that he would not attend the \$50-a-plate dinner. It was announced previously that he would attend.

Robert W. Humphreys of Frankfort, chairman of the central executive committee, predicted victory for the Democrats next fall. He urged members to "stop this foolish business of apologizing for the Democratic party."

"Proclaim the party," he said. "We're going to sweep the state this year with the biggest margins we've ever had."

Thomas R. Underwood of Lexington, Kentucky's newest U. S. senator, advised: "Don't get scared or start backing off about any election, because we've just had one in the Sixth District and came out all right."

Democrat John C. Watts of Nicholasville defeated Republican Otis C. Thomas of Liberty in last Saturday's special election in the Sixth District to elect a

successor to Underwood in the U. S. House of Representatives. The vacancy was created by Underwood's appointment to the Senate to succeed the late Virgil M. Chapman, Paris Democrat.

Mrs. Betty Ashcraft of Louisville, receptionist at state Democratic headquarters, was elected temporary secretary of the central executive committee to succeed Gov. Lawrence Wetherby, who resigned after taking over the governorship last fall when Clements went to the Senate.

Mrs. Ashcraft will serve until the next committee meeting, which probably will be held after the August primary.

The committee approved the names of five Democrats from which Wetherby will select one to serve on the state election commission. They are William Hughes, Union County; J. Lyter Donaldson, Carroll County; Bernard Coughlin, Mason County; Clarence Broadbent, Trigg County; and Herbert Smith, Harlan County.

The Democratic Women's Clubs of Kentucky selected Owensboro as the site of their convention in October.



TID-BIT FOR FATHER . . . Gen. Carl Spaatz is fed a piece of wedding cake by daughter Carlis, who was married in Washington, D.C., to Francis Thomas, Jr. Reifred, Spaatz was formerly staff force chief of staff.

WOLVERINE WORK SHOE
Made of Genuine Horsehide
\$5.98 pair

Ladies' SELBY and HUG-TITE SHOES, none better, \$5.00 to \$7.95
Children's GREAT SCOTT SHOES Horsehide bottoms, \$2.95 to \$4.50
Ladies' LONG SLEEVE DRESSES . . . \$4.98

THE BIG STORE
Save on Railroad St.

Buy Your Furnace Now!
- Reduced Price -
Large Supply on Hand—Can Install Them at Once!

— Also See Our Line Of —
BATH FIXTURES - WATER HEATERS - SINKS

Pureair Kitchen Unit

MOREHEAD PLUMBING & ELECTRIC SHOP
ORA L. CLINE, Owner
125 Fairbanks Ave. Morehead, Ky.
Phone 128

Here Is The Pre-Shrunk Line . . .

Official Count Gives Watts A 5,491 Majority

John C. Watts, Nicholasville Democrat, won the Sixth district special congressional election by 5,491 votes.

The official total announced by Secretary of State George Glenn Hatcher, when Owen County finally got its report in, gave Watts 28,559 votes to 23,108 for Republican Otis C. Thomas, Liberty.

Appellate Court Clerk Charles K. O'Connell, chairman of the State Election Commission, said he would call a meeting of the commission Monday to certify Watts' election so he can take his seat in Congress. He replaces Thomas R. Underwood, now United States senator.

If you think society is all right and that the world is perfect in its ways, you should be against any suggestion of reform.

Good advice: Losers should never bet.

Clyde Bruce Furniture Co.
Fairbanks Ave. Morehead, Ky.

- Visit The -
Spring Grove Dairy Bar

Try Our Delicious Milk Shakes, Malted Milks, Ice Cream and Sundaes

MILK — CREAM — COTTAGE CHEESE
BUTTER — WHIPPING CREAM

— Our Dairy Products Can't Be Beat —

Spring Grove Dairy
Phone 498
Across From Jayne Stadium Morehead, Ky.



KEEP YOUR CAR IN TRIM TOO!

Ashland

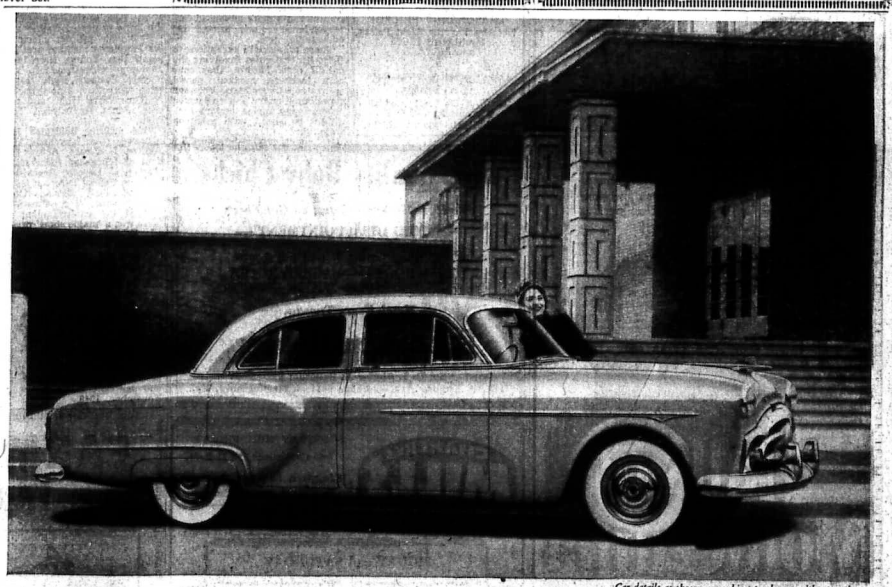
SEASON-RIGHT SERVICE, SEASON-RIGHT GASOLINE

Drive in now for your Ashland dealer's 7-point service for warm-weather motoring. Fill up with Ashland Flying Octanes, the high-octane, catalytic gasoline that provides thrilling extra power and a smoother, more economical ride.

CHANGE TO SEASON-RIGHT **VALVOLINE** 100% PENNSYLVANIA MOTOR OIL

ASHLAND OIL & REFINING COMPANY

Phone 692 — RUSSELL MEADOWS, Agent — Morehead, Ky.
N. F. Arrington, Farmers — Brown Motor Co., Morehead — Orville C. Caudill, Rowan Co.
Oral Curtis, Bartley — Curtis Fanning, Morehead — Hays & Stevens, Sandy Hook
Wells Motor Co., Morehead — W. B. Johnson, Farmers — Lester Kesley, Morehead, U. S. 50
John W. Jones, Bluestone
John P. Lewis, Isonville — Dell Adkins, U. S. 50
John P. Lewis, Morehead — John Piggan, Morehead — Ernest Hair, Christy Creek



To every woman under 5-feet-5!

Packard, as you already know, has provided generously for today's giants . . .

(Examples: Seats as wide as the car is high. Enough headroom for a 6-footer wearing a cowboy hat. Largest trunk of any sedan on the road.)

Now, let's see a few typical examples of what Packard has done for the not-so-tall folks, in America's newest, new car . . .

Wonderful new outlook: Packard's new kind of low-level hood gives you real "close-up safety vision" . . . let's you see both front fenders, for safer passing, dent-free parking. New one-piece windshield gives you a clear panoramic view.

Tops in handling ease, too—because Packard (and Packard alone) gives you Ultramatic Drive . . . with a combination of smoothness, quietness, flexibility, and positive control no other drive can match. And steering ease? Here's a car that actually handles, in traffic, with as little effort as it takes to turn a door knob in your home! Come drive it!

It's more than a car—it's a **PACKARD** ASK THE MAN WHO OWNS ONE

LEWIS GARAGE
EAST ON U. S. 60 PHONE 58-F1 MOREHEAD, KY.



Each of us a time has been allotted. We do our work, build our love and then continue on to other days and other worlds.

Lane Funeral Home
Phone 91 - Morehead, Ky.

Freshmen Vs. Prospects To Play Here

Coaches To Scout New Basketball Talent Among Players

Morehead's Freshman Basketball Team will extend a warm welcome to several basketball prospects from various high schools. On May 5 and 6, these high school prospects will play against the Eagles freshman team. Morehead's coaches will observe the game very closely in order to discover players among the visitors who show outstanding ability in offensive or defensive positions.

It is hoped the coaches will find some good prospects who can be added to the Eagles team next season.

Morehead's freshman team has improved very rapidly this year, and the game between the two teams has all the prospects of being a very interesting one.

Now that the army test system has been made official, it is possible that Morehead will lose fewer players in the draft, and if some good players are discovered that will strengthen Morehead's team, and if they come to Morehead next season, maybe they can stay on the team and not worry about the draft.

This time of the year people get a few opportunities to see a basketball game. Everyone is invited to see this contest, and it is hoped that a large crowd will gather at the gymnasium to see these boys play Friday night, and Saturday morning. The visitors will depart sometime Saturday.

The millennium will approach when principles outweigh profits and politics.

No matter how criminal they are, they always stand on their constitutional rights.

USED AUTO PARTS
Guaranteed rebuilt. Generators and radiators. Used tires and truck tires.

REASONABLY PRICED!
We Also Pay the Right Prices for SCRAP IRON and METALS

WASSON & JESSEE AUTO PARTS
On U. S. 60, 1/2 mile east of Morehead - RFD #2
Phone 545M - Morehead, Ky.

Pike Man, 104 Years Old, Claimed

Squire David Coleman, said by his family to have been 104 years old, died this week at the home of a daughter in Regina, 10 miles southeast of Pikeville. Coleman came to Pike County at the age of 20 from Missouri, where he claimed his father had been employed by James and Frank James.

He shook hands with Jesse, Coleman insisted, just before he left to die in Kentucky. Until the last days of his life, Coleman continued to maintain that Jesse James was alive somewhere.

The elderly retired farmer frequently related incidents in which he said he and the James brothers were involved.

He has three children, 38 grandchildren, 110 great-grandchildren, and 20 great-great-grandchildren.

Cut-Off Date For G.I. Bill Is July 25

The G. I. Bill states that a veteran's course of education or training shall be initiated not later than four years after the date of his discharge or the termination of his military service, whichever is the later. Termination of the war was established as July 25, 1947, therefore World War II veterans discharged on or before July 25, 1947 must begin their training by July 25, 1951.

Thus the majority of eligible veterans have only about 3 months in which to complete all arrangements, obtain their authorization from the VA to take the desired course and actually be in training by the cut-off date.

Generally speaking, once he completes a course after July 25, 1951, or if he voluntarily stops his training after that date he will be through. Also, it will be extremely difficult to change from one course to another. A change of course will be made only for the most cogent reasons.

Veterans taking correspondence courses under the G. I. Bill will not be permitted to transfer to classroom courses after the cut-off date. He may, however, continue in a more advanced correspondence course toward his educational goal.

There are certain exceptions to these general rules involving the cut-off date. Mainly, they concern teachers, medical, dental and osteopath students. Veterans completing under a graduate course may under certain conditions go ahead with graduate training.

3 Clubs Get Ratings Of 'Superior'

Annual Kentucky Junior Science Convention Held At Morehead

By Patty Crutcher

Three Kentucky high schools gained ratings of superior with their exhibits at the annual State Junior Science convention which closed Saturday evening on the campus of Morehead State College.

The 'superior' ratings, highest that can be conferred, went to Shortown High School, Business Science Club; Bardstown John Fitch Science Club; and Valley High Science Club.

The Atherton exhibit traced the many processes used in making hundreds of products from coal, Kentucky's major mineral.

In achieving a top rating the Bardstown club divided its exhibits into four parts: map of the results of field trips; paper- mache of land conservation; butterfly and insect exhibit; and rock, coral and shell display.

Perhaps the most unusual exhibit was that from Valley, called the "tree of life." It showed social and natural history of the world and displayed many wild animals from fish to snakes and raccoons.

DeAnna high school class in Kentucky entered exhibits which were displayed in the gymnasium of Morehead State College. In keeping with policy of the state meeting, exhibits of the host school, Morehead High and Breckinridge Training, were not judged.

Dr. Anna A. Schieff, founder of the Kentucky Science Clubs, presided. She was assisted by Miss Hazel Nollan of the Breckinridge Science department. This was the seventeenth annual State Junior Science convention. Site of next year's meeting will be announced later.

Among the tours offered the visiting junior scientists was through the Cumberland National Forest and the towers which are manned at this time of the year to detect any fire in the large protected timber areas.

New state officers elected at the Morehead meeting are: President, Don Young, Breckinridge Training; vice-president, Victor Wicker, Eastern High, Middle-High; secretary, Jim Quisenberry, Owensboro High; and treasurer, Janet Harkeford, Model High.

The visiting delegates heard addresses from Mayor William H. Layne; Acting President of Morehead State College Warren C. Lepp; Breckinridge Training School Director Monroe Wicker; and Rowan County School, Supt. Ted Croftswait. One of the entertainment features was a "magic show" presented by Tom Young of the Morehead College staff and appearance of personnel from the Morehead College department of music, tumbling acts and hand twirlers.

Farm Land Value
Farm-land values reached a new high in November, 1950, according to statistics of the Agriculture Department. After a downward trend during 1949, farm-land values started to rise in 1950 and in November were one per cent above the peak of November, 1949.

Increased Beef Production Seen By Ag Department

A moderate increase in beef production, in prospect for this year, will be concentrated in the second half of the year when supplies of both feed and grass cattle should be larger than a year ago, the USDA reports.

Marketing of hogs from last fall's pig crop are increasing seasonally and should reach a peak in May. The pig crop last fall was about nine per cent larger than in 1949.

For this year as a whole, the department says there will be a moderate increase in meat supplies, with most of the increase in pork.

Fraleys Department Store

LUTHER FRALEY, Manager

Main and Fairbanks Morehead, Ky.

MEN'S WORK PANTS \$2.98 - \$4.98
MEN'S WORK SHIRTS 1.50 - 3.29
MEN'S SPORT SHOES 2.98 - 7.98
MEN'S SPORT SHIRTS 3.99 - 5.98
MEN'S DRESS PANTS 5.98 - 8.25
LADIES' SKIRTS 2.98 - 5.98
LADIES' DRESSES 1.98 - 10.98

— We Clothe the Entire Family —

— OUR —

April Shower Sale

IS IN FULL SWING!

Will Continue Through Saturday, April 28th. Come in and get your share of bargains before our stock is depleted.

BIG 5c & 10c STORE
Dwight Pierce, Manager
"The Friendly Store" Morehead, Ky.

LAST TIMES TONIGHT — "MR. MUSIC"

FRIDAY AND SATURDAY
— 2 OUTSTANDING HITS —

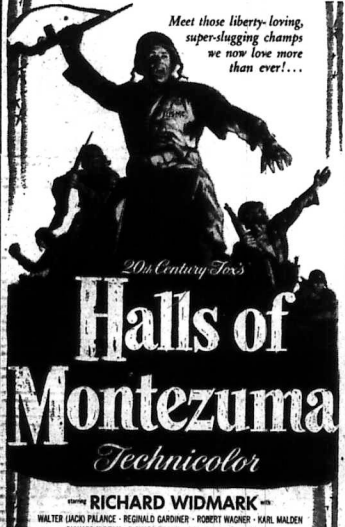
BOWEY BOYS — in "GHOST CHASERS"
TIM HOLT in "BORDER TREASURE"

CHAKERS TRAIL
THEATRE
MOREHEAD, KY.

SUNDAY and MONDAY

2 THRILL-PACKED DAYS!

Meet those liberty-loving, super-slugging champs we now love more than ever!...



Halls of Montezuma
Technicolor

— RICHARD WIDMARK —
WALTER JACK FRANGE - REGINALD GARDNER - ROBERT WAGNER - KARL MALDEN
RICHARD HUTTON - RICHARD ROOSE - GIP HOWER - DON HICK

SUNDAY FEATURE AT 1:30 - 3:05 - 5:15 - 7:25 - 9:30

LOOK - - LOOK - - LOOK

TUESDAY, MAY 1ST — ONE DAY ONLY

— ON STAGE —
WLW Star Search Regional Finals
Come and Root Your Favorite Act to Fame and Stardom!

— ON THE SCREEN —
"MY TRUE STORY"
— Starring —
HELEN WALKER and WILLARD PARKER

— WEDNESDAY and THURSDAY —
"ROCKY MOUNTAIN"
— Starring —
Erroll Flynn and Patricia Wynore

Fine Quality Baby Chicks

We Have Them — You Can Get Them —
— AVOID DISAPPOINTMENT —

Place Your Order With Us Now for
**WHITE ROCKS — BARRED ROCKS
NEW HAMPSHIRE or WHITE LEGHORN**

— Hatch Every Tuesday —

E. K. Owens Hatchery
Ky.-U. S. Approved; Pullorum Passed
119 Mt. Sterling Ave. — Phone 6611 — Flemingsburg, Ky.

CHAKERS MILLS
THEATRE
MOREHEAD, KY.

MONDAY THRU FRIDAY
2:45 Continuous Thru 11 P. M.

Saturdays, Sundays, Holidays
12:45 P. M. and Continuous
MS-2358

FRIDAY and SATURDAY

"DESTINATION BIG HOUSE"
RIDERS OF PONY EXPRESS"
Dorothy Patrick Ken Curtis

• Sunday and Monday •

FIRST RUN
ACTION PACKED DRAMA
MEN OF IRON... WOMEN OF FIRE

COLUMBIA PICTURES presents
RANDOLPH SCOTT
JANIS CARTER
GORDON... THE THUNDER... THE ROCKS... THE HARBOR

ADDED JOYS — CARTOON AND ALL STAR COMEDY

Tuesday - Wednesday - Thursday
— 2 BIG HITS —

BOB HOPE — in — "THE PALEFACE"
ALAN LADD in "CHICAGO DEADLINE"

FARM AND HOME SUPPLIES

FROM THE MONARCH SUPPLY STORE

Mall Chain Saw \$325.00 and up

Mitchell Room Air Conditioner

Electric and Pedal Type SEWING MACHINES

Extension Window Screens and Door Screens

Cole Corn Drillers - - - \$39.95

Jacobsen Power Mowers
Rotary and Reel Type

DILL AND MCGUIRE
Push-Type Lawn Mowers
16-Inch - - - \$17.50

POULTRY NETTING
All Widths —

SCREEN WIRE
All Widths —

CHOREMASTER
Garden Tractor
Complete With Implements
\$189.50

MONARCH SUPPLY Store
Morehead, KY.