

If It's O.
A Morehead Store Will
Probably Have It

Volume No. 64

Rowan County News

MERGED WITH THE MOREHEAD INDEPENDENT. - JANUARY, 1945

MOREHEAD, KENTUCKY, THURSDAY, MAY 29, 1947

Morehead Horse Show—
Jayne Stadium—
June 26, 27

Number Twenty-Two

Program For Horse Show Enlarged

\$2,500 In Prize
Money To Be Awarded
At Two Night Events

The program for the Morehead Horse Show, on which printing started this week, will be as large as many of the largest shows of this type in the nation.

The program, carrying full details of the two night show to be held June 26 and 27, will be 52 pages and printed on a high grade enamel paper. It is twice as large as last year's book.

Show manager C. Z. Bruce announced that the committee expects to have more horses of a higher type at this year's performance. Twenty-six classes will be shown while the prize money has been raised to \$2,500.

Principal stakes will be the \$1,000 1-gaited stake carrying \$500 in prize money, the W. H. May 3-gaited stake for \$300, the Max Biederman and Claude Brown \$300 walking stake, and the \$150 W. R. Shaffer fine harness stake.

The show will be held at Jayne Memorial Stadium. The performances are to start at 8 o'clock. Profits this year will go toward paying for lights which have been donated for light football to Morehead College.

Junior 4-H Club Is Organized At Haldeman

The Haldeman Junior 4-H Club, consisting of fourth and fifth grade pupils, was organized at the school Wednesday, May 21, by Mrs. Evelyn Sinclair, home agent, and Arthur Haldeman, county agent. Officers elected were:

Junior Stinson, president; Reba Howard, vice president; Bobby Ray Oney, secretary-treasurer; Kenneth Howard, song leader, and Shirley Crum, reporter. Enrollment cards were filled out and members selected their projects to be carried out during the year. After playing a game the meeting was adjourned.

Mr. Razer met with the boys of the Farmers 4-H Club Friday, May 23, at 11 a. m. Following a discussion of project work, he gave a seed potato cutting demonstration. The meeting was then adjourned until the regular meeting date, which will be held at the school.

J. J. Thomas Files Papers For Reelection

State Senator J. J. Thomas of Owingsville filed today for the Democratic nomination in the 27th District. He has represented this Senatorial District composed of Rowan, Bath, Mason, Fleming, Menifee, Powell and Wolfe counties since 1940.

Dr. O. M. Lyon, Morehead, had previously filed for the Democratic nomination for the same post.

To date no one has filed on either the Republican or Democratic tickets for representative from the Rowan-Bath counties district.

Grayson Rules Favorite In District Meet

Prichard High of Grayson rules favorite for the district high school basketball tournament at the tournament to be held at Jayne Memorial Stadium in Morehead Friday and Saturday.

Other teams that will compete here are Vanceburg, Olive Hill, Morehead, Sharpshooter, Bethel and Owingsville. The Breckinridge Training School does not have a team this year.

Games will be played all during the day both Friday and Saturday.

The regional meet will also be held in Morehead on June 6 and 7. Competing teams in the regional will be district winners here and at Painsville, Ashland and Prestonsburg.

Williams Enters G.O.P. Race; W. H. May Announces

Williams Enters
G.O.P. Race; W. H.
May Announces

Williams Enters
G.O.P. Race; W. H.
May Announces

Williams Enters
G.O.P. Race; W. H.
May Announces

Williams Enters
G.O.P. Race; W. H.
May Announces

Williams Enters
G.O.P. Race; W. H.
May Announces

Williams Enters
G.O.P. Race; W. H.
May Announces

Williams Enters
G.O.P. Race; W. H.
May Announces

Williams Enters
G.O.P. Race; W. H.
May Announces

Williams Enters
G.O.P. Race; W. H.
May Announces

Williams Enters
G.O.P. Race; W. H.
May Announces

Williams Enters
G.O.P. Race; W. H.
May Announces

Williams Enters
G.O.P. Race; W. H.
May Announces

Williams Enters
G.O.P. Race; W. H.
May Announces

Williams Enters
G.O.P. Race; W. H.
May Announces

Williams Enters
G.O.P. Race; W. H.
May Announces

Williams Enters
G.O.P. Race; W. H.
May Announces

Williams Enters
G.O.P. Race; W. H.
May Announces

Williams Enters
G.O.P. Race; W. H.
May Announces

Williams Enters
G.O.P. Race; W. H.
May Announces

Williams Enters
G.O.P. Race; W. H.
May Announces

Williams Enters
G.O.P. Race; W. H.
May Announces

Williams Enters
G.O.P. Race; W. H.
May Announces

Williams Enters
G.O.P. Race; W. H.
May Announces

Williams Enters
G.O.P. Race; W. H.
May Announces

Williams Enters
G.O.P. Race; W. H.
May Announces

Williams Enters
G.O.P. Race; W. H.
May Announces

Williams Enters
G.O.P. Race; W. H.
May Announces

Williams Enters
G.O.P. Race; W. H.
May Announces

Williams Enters
G.O.P. Race; W. H.
May Announces

Williams Enters
G.O.P. Race; W. H.
May Announces

Williams Enters
G.O.P. Race; W. H.
May Announces

Williams Enters
G.O.P. Race; W. H.
May Announces

Williams Enters
G.O.P. Race; W. H.
May Announces

Williams Enters
G.O.P. Race; W. H.
May Announces

Williams Enters
G.O.P. Race; W. H.
May Announces

Williams Enters
G.O.P. Race; W. H.
May Announces

Williams Enters
G.O.P. Race; W. H.
May Announces

Williams Enters
G.O.P. Race; W. H.
May Announces

Williams Enters
G.O.P. Race; W. H.
May Announces

Williams Enters
G.O.P. Race; W. H.
May Announces

Williams Enters
G.O.P. Race; W. H.
May Announces

Williams Enters
G.O.P. Race; W. H.
May Announces

Williams Enters
G.O.P. Race; W. H.
May Announces

Williams Enters
G.O.P. Race; W. H.
May Announces

Williams Enters
G.O.P. Race; W. H.
May Announces

Williams Enters
G.O.P. Race; W. H.
May Announces

Williams Enters
G.O.P. Race; W. H.
May Announces

Williams Enters
G.O.P. Race; W. H.
May Announces

Williams Enters
G.O.P. Race; W. H.
May Announces

Williams Enters
G.O.P. Race; W. H.
May Announces

Williams Enters
G.O.P. Race; W. H.
May Announces

Williams Enters
G.O.P. Race; W. H.
May Announces

Williams Enters
G.O.P. Race; W. H.
May Announces

Williams Enters
G.O.P. Race; W. H.
May Announces

Williams Enters
G.O.P. Race; W. H.
May Announces

Williams Enters
G.O.P. Race; W. H.
May Announces

Williams Enters
G.O.P. Race; W. H.
May Announces

Williams Enters
G.O.P. Race; W. H.
May Announces

Williams Enters
G.O.P. Race; W. H.
May Announces

Williams Enters
G.O.P. Race; W. H.
May Announces

Williams Enters
G.O.P. Race; W. H.
May Announces

Williams Enters
G.O.P. Race; W. H.
May Announces

Williams Enters
G.O.P. Race; W. H.
May Announces

Williams Enters
G.O.P. Race; W. H.
May Announces

Williams Enters
G.O.P. Race; W. H.
May Announces

Williams Enters
G.O.P. Race; W. H.
May Announces

Williams Enters
G.O.P. Race; W. H.
May Announces

Williams Enters
G.O.P. Race; W. H.
May Announces

Williams Enters
G.O.P. Race; W. H.
May Announces

Williams Enters
G.O.P. Race; W. H.
May Announces

Williams Enters
G.O.P. Race; W. H.
May Announces

Williams Enters
G.O.P. Race; W. H.
May Announces

Williams Enters
G.O.P. Race; W. H.
May Announces

Williams Enters
G.O.P. Race; W. H.
May Announces

Williams Enters
G.O.P. Race; W. H.
May Announces

Williams Enters
G.O.P. Race; W. H.
May Announces

Williams Enters
G.O.P. Race; W. H.
May Announces

Williams Enters
G.O.P. Race; W. H.
May Announces

Williams Enters
G.O.P. Race; W. H.
May Announces

Williams Enters
G.O.P. Race; W. H.
May Announces

Williams Enters
G.O.P. Race; W. H.
May Announces

Williams Enters
G.O.P. Race; W. H.
May Announces

Williams Enters
G.O.P. Race; W. H.
May Announces

Williams Enters
G.O.P. Race; W. H.
May Announces

Williams Enters
G.O.P. Race; W. H.
May Announces

Williams Enters
G.O.P. Race; W. H.
May Announces

Williams Enters
G.O.P. Race; W. H.
May Announces

Williams Enters
G.O.P. Race; W. H.
May Announces

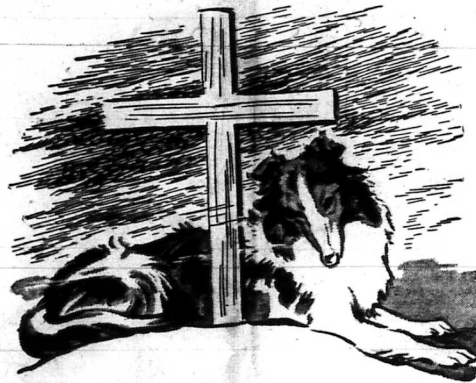
Williams Enters
G.O.P. Race; W. H.
May Announces

Williams Enters
G.O.P. Race; W. H.
May Announces

Williams Enters
G.O.P. Race; W. H.
May Announces

Williams Enters
G.O.P. Race; W. H.
May Announces

Williams Enters
G.O.P. Race; W. H.
May Announces



There is no forgetting

There is no forgetting those men . . . the young, eager men in khaki and blue . . . no forgetting either, those rows of crosses from Pearl Harbor to two Jims to Belgium. On this Memorial Day, as we honor those men, let us give more than flowers, tears, ceremony . . . let us rededicate ourselves to the preservation of the peace they bought so dearly.

In Memory of the Men of Eastern Kentucky
Who Died That We Might Live in Peace

Moore, Crosthwaite, Mrs. Jayne Head MSC Alumni

The Morehead Alumni, in annual session here today, went on record as asking Governor Simon Willis to include in any special session call legislation that would change the method of appointing Regent members at the four state teachers colleges and the University of Kentucky.

When Morehead was dropped from the Southern Association last December one of the principal complaints of the educators was the power granted Kentucky Governors to remove and appoint Regent members at will.

Gordon Moore, Prestonsburg, who is the present director of athletic publicity at the college, was elected president of the Morehead Alumni Association.

Fred Crosthwaite, superintendent of Rowan County schools, was named vice president and Mrs. LeGrande Jayne was re-elected secretary-treasurer.

The alumni and seniors were fettered at a banquet and dance Tuesday evening.

The group also voted to print an alumni newspaper four issues each year.

Gordon Moore
MSTC Alumni President

Missionaries To Visit Slaty Point And Haldeman

Beginning Sunday morning June 1 and going through Friday night missionaries representing the different phases of mission work being done by the Haldeman and Slaty Point Baptist Churches. These men of God have spent years and speak from on foreign fields, and will thrill those who hear them.

A sound movie film will be shown Sunday morning at the Haldeman Baptist Church depicting mission work as it is done in China and the same film will be shown at Little Branch School in the afternoon at 2 and at the Farmers Consolidated School Sunday night at 7.

The public is cordially invited to hear these missionaries of the cross who have brought literally from the ends of the earth and you may never have another such opportunity.

Flying School Near Farmers To Open In June

A flying school, established under the GI bill at Farmers, seven miles west of Morehead on U. S. 60 will be open by mid-June under the supervision of Creed Patrick of Morehead.

Mr. Patrick has been flying for three years, both in the service and in his private plane.

The new school will provide training through the commercial stage. The pay is like that for other GI training.

News Published Day Early This Week

Because there will be no mail service Friday, due to Memorial Day, the Rowan County News is being published this week a day early.

41 Graduate At Morehead Commencement

Seniors Head Address By Dr. Dwayne Orton Of New York.

"A Generation Looks Ahead" was the title of the commencement address delivered last night at Morehead College by Dr. Dwayne Orton, director of education of the International Business Machines Corporation of New York.

Degrees were conferred by President William Jesse Baird. The graduates:

Degree of Bachelor of Arts: Albin B. Vaznells.

Degree of Bachelor of Science in Home Economics: Sylvia Boggs Praier.

Degree of Bachelor of Science in Education: Denver Ball, James Clell Neace, John H. Preston, William Leonard Smith.

Degree of Bachelor of Arts in Education: Paul Hampton Adams, Lillian Tackett Arrand, Ivan E. Ball, James Caudill, Eugene Corley, Coney Cornett, Evelyn L. Durham, Cranston Dyer, Ethel Petherly, Monroe Fugate, Lottie Marie Fogarty, Harry Clinton Hatfield, Carroll Dwight Hawhee, Kathleen Hayes, Arthur F. Hobbs, Robert Lester Hogge, Aileen Hopkins, Quentin R. Howard, Bernice Hogsed Jackson, Crayton T. Jackson, Paris F. Johnson, Joseph Andrew Lustic, William James Mack, Owenegle Montgomery, Wilbur Hobart Rayburn, Pauline Davis Riddle, Thomas Berner Schoefford, Robert R. Sharpe, John William Shuey, John B. Tussey, Martha Alice Wellman, Ira P. Whitaker, Ward Williams, Dorsey V. Wilson.

Degree of Master of Arts in Education: Stanley E. Radjumas.

Sale Of East End Grocery Announced

Sale of the East End Grocery, opposite the Midland Trail Garage on Main Street by Mr. Moore and his son Isaac Moore and John Fouch and his son, Addison Fouch was announced this week. The new owners have already taken over management of the business.

The store has been operated for several months by Mr. and Mrs. Friley. They now plan to enter another business in Morehead.

New Parking Lane Put In Effect

Enforcement of a two-hour limit parking ordinance on Main Street from the Midland Trail Hotel corner to the courthouse, was started in Morehead yesterday. The two hour limit extends from 8 a. m. until 6 p. m.

New metal signs have been installed in this area advising motorists of the regulation.

Kentucky Vets Reinstate G. I. Insurance

Kentucky veterans of World War II have reinstated \$3,019,000 in G. I. insurance during the past three weeks, the Veterans Administration regional office announced here today.

Since February 3, when VA began its insurance information program, 6,238 state veterans have reinstated insurance totaling \$45,665,000.

Harry W. Farmer, manager, urged the 169,000 Kentucky veterans whose G. I. insurance has lapsed that almost any term policy may be reinstated by paying two monthly premiums and signing a statement that health is as good as at time of lapse. He said the "easy reinstatement" privilege expires August 1, 1947, thereafter a physical examination will be required unless reinstatement occurs within three months from the date on which policy lapsed.

"Although the veteran now is older and has greater insurance liability," Mr. Farmer said, "he may apply for reinstatement of term insurance at the premium rate which was in effect at time of lapse."

Veterans may obtain complete information at any VA office.

Stores To Close Wednesday Afternoons

Morehead Businesses
Will Not Be Open
Memorial Day

Morehead banks and the majority of local stores today announced they would close Memorial Day and each Wednesday afternoon, starting immediately, all during the summer.

The Wednesday afternoon closing, it was explained, is to give employees a half-holiday. It is in keeping with the usual practice here of closing a half day during the spring and summer months.

Business places that will close Memorial Day and on Wednesday afternoons are: Goldie's, Brammer Dept. Store; Blair's Dept. Store; Bruce's 5, 10 and 15; The Southern Bells, Nancy Lee Dress Shop, The Big Store, The Big 5 and 10 Store, A. B. McKinney, The Federated Store, The Style Shoppe, Bargain Store, McGraw Self-Service Grocery, IGA Grocery, Allen's Grocery, The Currier Grocery, Western Auto Association, East End Grocery Store, Johnson's Grocery, The Peoples Bank and the Citizens Bank.

Buza Gets One Year; Adams Case Continued

Convicted of selling property that he had mortgaged to the Citizens Bank in Morehead, Floyd Buza was given a one year sentence in Rowan Circuit Court.

The Citizens Bank alleged that Buza mortgaged automobiles to them and then took them to another state and sold them.

The case of Jack Adams, charged with manslaughter, was continued until the November term.

Adams was the driver of an automobile in which two of his companions were killed when it wrecked near Bluestone.

Morehead Self-Service Grocery Opens Saturday

The Morehead Self-Service Grocery, successor to the Regal Store, will have its formal opening in its new location in the McKinney Building Saturday morning.

The store, which carries complete lines of fresh fruits, vegetables, fresh meats, fish, canned goods and staple groceries, will operate on the self-service plan, according to its owner, Ray Lytle.

The new location is next door to the former Regal Store.

Morehead Skeet Club Scores

Sunday's scores: Tommy Caudill 24, Jim Layne 21, Immie Strater 18, Dr. U. V. Garred 16, Claude Kessler 16, Ed Strater 15, Howard Lewis 15, Harold Ellington 12, Dr. I. M. Garred 12, Dr. John Garred 9, Lewis 8, Sammy Johnson 6, W. E. Crutcher 4.

TRADE IS BARTER

Money has made people forget that trade is barter and that wealth is to be found in goods.

"We do wish to urge the peace officers to investigate the petty crimes and general lawlessness, including the disturbing of church in the North Fork section of the county. Numerous citizens have windows of their homes and we have returned in all cases in which we had sufficient information."

"Due to a recent attempt to break jail and for other reasons, it is recommended that the county build or construct some sort of a wall, or barrier in front of the county jail, to prevent prisoners from passing objects into the county jail, which might enable them to escape or cause harm to others."

"Knowing that it has been mentioned in numerous previous reports that the city jail is not fit for use and is unsafe, it is recommended that the city use the county jail to incarcerate all prisoners and windows of the city may get a fit jail. This should take effect immediately."

"We express our thanks to the County Attorney and the County Attorney for their cooperation and advice while we have been in session."

City Jail Scored Again By Rowan County Grand Jury

The Morehead City Jail, which has long been under fire, was scored again today in the final report of the Rowan County grand jury which recommended that Morehead use the county jail to incarcerate all prisoners until the city builds a fit jail.

The grand jury returned 15 true bills.

The complete report: "We, the Grand Jury, empaneled for the regular May 1947 term of the Rowan Circuit Court, report that we have been in session 4 days and that we have returned in open court 15 indictments. We have inquired of all reported violations of the law in the county and have returned true bills where same was warranted. Although we feel that there is considerable traffic in whiskey in the county which we are unable to make indictments on because of our lack of information, we feel that generally the county is freer from crime than it has been in many years and the law enforcement officers are to be commended."

"We have inspected the county buildings and found them to be clean and in an orderly condition and appear to be receiving

ROWAN COUNTY NEWS

MERGED WITH THE INDEPENDENT (1945)

PUBLISHED EVERY THURSDAY AT MOREHEAD, KENTUCKY

ENTERED AS SECOND CLASS MAILING MATTER AT THE POSTOFFICE, MOREHEAD, KY.

W. E. CRUTCHER - E. D. THOMPSON

EDITORS AND PUBLISHERS

OFFICE CORNER WILSON AVE. AND SUN STS. TELEPHONE 261

SUBSCRIPTION RATES

ONE YEAR, IN KENTUCKY, \$2.00; ONE YEAR (OUTSIDE KENTUCKY), \$2.50
 (NO DISCOUNTS ACCEPTED FOR LESS THAN ONE YEAR)
 DISPLAY ADVERTISING RATES RENDERED UPON REQUEST
 WHEN REQUESTING CHANGE OF ADDRESS BE SURE TO INCLUDE OLD ADDRESS

When you boost Morehead College
 You're Boosting Your Interests.

In The Foothills Of The Cumberlands

Moreheadians refer with pride to our slogan,
 "In the foothills of the Cumberlands."

Just what does this phrase embody?

It means that we live in a lovely garden where nature, in her soothing green of spring and summer and beautiful browns and reds of fall, beams upon us from every side.

It means a spot where the nights, gently slumbering in the soft breezes of our valleys, make our sleep peaceful and pleasant.

It means unpolluted streams, fed from the mountains, that alternately race across miniature rapids and then eddy in their clear beauty beneath the willow and birch.

It means forests that reach skyward, knowing that they will not be destroyed by rampaging fires because they have the protection of United States forest rangers.

In short, it means a place where man may live in serene loveliness and in peace. We should be thankful that we are blessed by having a stake in the foothills of the Cumberlands.

False Economy

Taxes should be reduced. But discretion is needed. In two instances at least it appears that the House Appropriations Committee is recommending cuts in the wrong places.

One is the slashing to \$1,400,000 of the two and a half million asked for advice of the U. S. Public Health Service for a mental health program including: Research into causes of mental illness; training of mental therapists; establishment in Washington of a hospital for treatment of mentally ill, and to serve as a national model.

The other cut is elimination of the radio program in 25 languages to 67 foreign countries, with particular regard for Russia, aimed at promoting international understanding and interpretation of the American way. Its cost, it is said, if continued 18 years, would equal that for the first half hour of the war it seeks to prevent.

Loud noises, will, of course, be heard from every group whose service appropriation is threatened. Its people hope the noises will avert the cut. Undoubtedly every service asks for more money than it needs and the appropriation can be trimmed accordingly. Proper trimming is one thing and cuts without cause another. Serious consideration is needed at this point.

Worthy Projects

The letting of bids for the removal of at least a part of the college boulevard and general improvements on this beautiful half-mile circular drive extending from the courthouse corner on Main Street to the Jayne Memorial Stadium comes as welcome news to all Moreheadians who are interested in the beauty and progress of our city.

Heavy trucks, forced on to the boulevard because of parking on the narrow strip on each side of the grass, has made this spot an eye-sore. The grass would not grow, and the plot was continually marked with heavy ruts and mud. The unsightliness of the boulevard from Main Street to Patton Avenue was more deplorable because it led to one of the most beautiful college campuses in the south.

The State Highway Department plans to shortly let bids on the re-routing of town branch. When this project is completed the west end of the city will be more beautiful and property owners there will greatly benefit in increased real estate values. The day is not far off when Morehead's business section will extend from city limit to city limit on Main Street.

The Horse Show

The two night programs on June 26 and 27 of the Morehead Horse Show, arranged by the Board of Trade, is more attractive this year than when the event was inaugurated last summer. The Horse Show committee is assured of better horses, and barring inclement weather, several thousand people will make their way to our city for this annual event.

Profits from the Horse Show will go toward paying for the new lighting system at Jayne Stadium which civic minded Moreheadians donated to Morehead College.

For two evenings of fine entertainment we recommend Morehead's Horse Show. It will compare favorably with shows held anywhere.

An Oklahoma Indian who claims to have lived 138 years, says it is no trick to grow old; anyone can do it if he has the time.

The best way to get your house-cleaning done, ladies, is to get your husband good and mad before sending him out to beat the carpet.

Our neighbor claims he always has the last word with his wife when he leaves in the morning. It probably is, "Oh, don't get up."

There will be a lot of accidents over the Memorial day week-end. Death never takes a holiday on the highways.

"One of the reasons our modern daughters are such live wires," says a writer, "is because they carry so little insulation."

We All Come Up From Slavery

A very wise man, when asked how he acquired his great understanding and friendship toward all peoples, said "We all come up from slavery." He did not need to say more, for in those few words he expressed the brotherhood of the bonds of common suffering.

Too often we strain so hard to see the distant rose-touched peaks ahead that we forget the distance we have already travelled. We resent the trail-blazers who are nearer the peaks, forgetting the even greater distance, through which they have struggled. We remember the bondage from which we come, and forget the shackles which hampered others.

We have all come up from slavery, whether it be from the chains of the Negro, the economic enslavement of the worker, the educational enslavement of the peasant, the shackles of serfdom, the ghetto of the Jews, or the legal enslavement of women. There is not one of us who has not had to travel the narrow road of slavery somewhere in the past.

We all come up from slavery. This is not a plea for the retention of things as they are. It is not even a plea for patience. It is an appeal for understanding, for a realization that we all have had to travel the same long road, even if centuries divide our paths; that we are all aspiring to the same peaks of freedom—not as groups, but as individuals; and that here under the faith that is the foundation of our republic, under the ideal that is democracy, we have the best opportunity in the world to climb to the heights to which we all aspire.

We all come up from slavery. But we must come up, and not merely away. We must climb, and, according to the dictionary, that means to ascend by personal effort. Others can hold out a helping hand, as the trail blazers made clear the path, but we have to climb for ourselves and by ourselves.

"We all come up from slavery."

Causes One-Third Of Deaths

"Chronic disease blights the life of every fifth American," declares Dr. A. P. Merrill, who declares that 1,000,000 Americans die each year from chronic diseases, which cause two-thirds of the annual civilian deaths.

Stressing the need for adequate hospital facilities for the chronic sick and using public health service surveys as a gauge, Dr. Merrill said that "a total of almost one billion working days a year were lost as a result of... disability from chronic illness." He believes that each day of disability means a loss to society of \$10, which means an annual economic loss of \$10,000,000,000.

Dr. Merrill called attention to a problem which concerns many Americans. He stresses the need for more hospital beds and for better medical care for chronic patients. There is a catch, however, in that many who suffer from chronic diseases are without the financial means to secure moderate medical care, much less the best medical facilities available.

It becomes increasingly plain that if the United States is to attempt the job of improving the health of the people of this country, as a whole, we must solve not only the question of medical treatment, but also the economic problem of how the patient can pay for what he or she needs.

Food For Peace

Unless food supplies for Germany arrive on schedule, declares General Lucius D. Clay, it will be impossible "to maintain the bread ration."

The food situation in the British and American zones of occupation seems to be serious, with the military government trying to make deals with nearby countries in order to relieve the shortages, especially of meat.

It is difficult for us in this country, with an ample supply of food, to understand the anxiety that beset a population which must receive its food from overseas. Interested statesmen in European countries are trying to increase the output of food in order to be more independent of outside assistance. The present crisis will be successfully solved only by the receipt of food from abroad.

The food situation is also bad in Asia. Representatives of sixteen countries recently met in Singapore to report a serious deficiency in rice and to predict seriously shortening supplies of Asia's staple foods in the next few months.

We call attention to the food situation in foreign countries because it is obviously impossible to have a normal world so long as millions of people subsist on a restricted diet. It might not be too much to say that until the population of the world regains their normal food supplies, there is little prospect for anything like stable peace, which alone will make possible the proper development of national economies.

June, the most beautiful month of the year, is just around the corner. Take it easy this week-end, and you'll enjoy it, too.

When those things that you've been wanting, somewhere fall to come your way; When the hours seem heart and brain wasted At the ending of the day; When you want to chuck the business And admit that you are through; Just remember, won't you stranger, There are those worse off than you!

SIMPLE, LITTLE THINGS

It's the little things we do and say That mean so much as we go our way. A kindly deed can lift a load From weary shoulders on the road, Or a gentle word, like summer rain, May soothe some heart and banish pain. What joy or sadness often brings From just the simple little things! —M. M.

A heap of this and that in the back yard is mighty poor advertising for a town hall way those empty tin cans before a family of rats move in.

Nature couldn't make us perfect, so she made us blind to our faults.

Memorial Day



(WNU Service)



CRACKER BARREL COMMENTS

BY WOODY HINTON

Attention, Farmers, Ky.: Uncle Sam Stampers

are not going into the zoo business, although one might have thought so Sunday morning. A road show truck wrecked smack dab in Uncle Sam's place Sunday morning.

To you, John Gunther: After reading the previews of your new book we are inclined to believe that you know just about as much about the mountain people of Kentucky as Jessie Stuart. Can't you and Jessie find some kind of decent job and leave us folks be?

To S. B. Muttons: Thanks for the pair of specks. John Palmer has nearly another hundred pairs now. Keep them coming, folks.

One of our farmers told me the other day that he had found dog so smart that it went into the smoke-house, got a piece of meat, and turned the button on the door when he came out. Not satisfied with this he proceeded to tell me that he had a mare that ate terrapins.

Bob Day of College View Motor Company thought he was getting into the new Oldsmobiles, but they turned out to be twin calves. He put them on his Fleming County farm.

Have You Heard?

After considerable figuring we discover that Morehead's new Main Street two-hour parking ordinance gives plenty of leeway to persons staying at local hotels overnight.

The law stipulates two-hour parking between the hours of 8 a. m. and 8 p. m. You can park your car at one minute after four o'clock in the afternoon, leave it all night and move it at one minute before 10 o'clock the next morning without violating the ordinance.

One of Kentucky's finest show horse farms is being developed in Rowan County by Claude Brown. The Rowan County News will shortly carry a feature story with pictures of the fine lay-out that Mr. Brown has out on the Flemingsburg road. If you are looking for a place to go on Sunday afternoon we recommend this farm.

Garland Collins, president of the Morehead Board of Trade,

was in fine style at the alumni banquet at the college Tuesday evening. He wore gold colored pants and matching shirt, a blue coat and blue and gold bow tie and gold socks to take honors as the best dressed man present. As you probably know the school colors are blue and gold.

He searched every store in Morehead for a pair of blue shoes but couldn't find any.

What Other Editors Have To Say

"HAPPY" SAYS JOHN Y. CAN "CRAWL UNDER BED"

We are all familiar with the trite but true saying, "Politics makes strange bedfellows." We found a striking example of this recently on the opening night of the Kitty Luncheon at Fulton.

We went down to see the ball game, and to say "howdy" to another Transylvania College man, "Happy" Chandler. The former U. S. Senator and Governor was there in his official capacity of baseball commissioner for the season's opener. That fellow really loves baseball, in fact all sports. And, mineral water, Senator Barkley once said he had never known a man who needed as much mineral water as "Happy"—he said that every time you picked up a paper you read of "Happy" at some watering place. Hot Springs, French Lick Springs, White Sulphur Springs, always seeking mineral water!

We couldn't resist joshing "Happy" about the support he is said to be giving Earle Clements in the current race for Governor. For there is an exceedingly strange angle in this race; "Happy" is now lined up right alongside the ancient arch-enemy, John Y. Brown. "Happy" or any other politician can forgive factional opponents, but Chandler has for several years given John Y. precedence over Judas Iscariot and even "Old Nick" himself. To top it all, even the babe in Kentucky politics know that no two politicians in the state are closer, personally and politically, than Earle Clements and John Y. Brown. It is said that neither has made any sort of important political move in years without first consulting the other and it is well known that they confer and consult regularly on political matters.

So, at Fulton the other night, we asked "Happy" if the more or less "undercover" support he is giving Clements at this time meant he was "crawling in bed" with John Y. Brown, and here was the exact words of "Happy" reply: "As far as I am concerned, John Y. can crawl under my bed."

Surely "Happy" Chandler isn't naive enough not to know that, if Clements should be nominated and elected, the hand of John Y. Brown would in all probability be the strongest around the Governor's chair. How Chandler must hate Waterfield, to be able to swallow John Y. if supporting Clements! Truly, this is indeed the exact words of "Happy" that does not bode well for the people of our Commonwealth. — Hickman County Gazette.

"Live slow, play slow," advises a popular maxim which evidently forgot current prices.

A case in court is not only expensive to both sides but it is a long-drawn-out affair.

THE RANGERS COLUMN

By Jack Hicks

Picknicking weather is here. From now till next frost man of us will enjoy an occasional outdoor lunch while we feast our eyes on the natural beauty of our forests. I want to mention a place many of you like might have journeyed to a favorite picnic spot just to find that someone had been there before. The place would be littered with paper, tin cans, watermelon rinds and other varieties of trash. I remember taking some very special guests to a forest grove along the Red River gorge beneath Sky Bridge. We were hungry and—

from the road the place looked like just the place to spread our lunch. When we got close at hand appetites were forgotten. Some party had picked chickens and scattered them all over the place. Two, and left all the refuse where they had eaten. Only a step or two to the river bank, yet they hadn't used it to get rid of the trash. Many of you have had like experiences. I used to think that only the "city slickers" people had never been out in the woods before and just didn't know any better would offend the sense of public decency this way. Now I know that so one in his right senses and with any sense of cleanliness and neatness wants to eat his meal where others have left their fifth and litter. Here is a situation, like so many others in this life of ours where practice of the Golden Rule works to everyone's benefit. "Do unto others as you would have them do unto you."

Last Friday the lookouts of the District, Fire Control Assistant Wilbur Rose and General District Assistant Mauk and myself with Assistant Supervisor Sipe for the first few years have taken on the technique of new of our National Forest boundary lines. During the month of June we plan to conduct a project in the counties of Rowan, Bath and Menifee.

This week Mauk, Rose, Lookout Fraley and I travel to London to attend a timber management training school. Various members of the Forest personnel will teach courses in field and classroom on the subjects of timber marking, timber estimating, timber stand improvement, and timber trespass prosecution. We will conduct the field work on the large Binder Brothers timber sale area where a large saw-

mill is now under way.

This will be something in the nature of a homecoming for your correspondent, for I once had the administration of the Sublimity Ranger District with headquarters at London.

Leland Hall has supplied the answer. I believe to a question that has bothered me for some time. I had wondered why plants of the orchid or ladyslipper family were so scarce in this part of the country. The flower lovers among you are well acquainted with the attractive and unusual blossoms, pink and yellow, of the two most common members of this family. Leland tells me the roots of these plants were widely collected at one time, dried and sold as herbs, just like ginseng. My knowledge of flowering plants is rather limited, but I can enjoy the experience of discovering once that there are beauties in some isolated spot.

Church Directory

FIRST CHURCH OF GOD
 Rev. B. W. Moore, Pastor

Sunday School 9:45 a.m.
 Morning worship 10:45 a.m.
 Christian Crusade 8:45 p.m.
 Sunday evening 7:30 p.m.
 Wednesday mid-week 7:30 p.m.

METHODIST CHURCH
 David Sagers, Pastor

Sunday School 9:45 a.m.
 Morning worship 10:45 a.m.
 Evening service 8:00 p.m.
 Wednesday Choir 8:45 p.m.
 Youth Fellowship 8:00 p.m.
 Wednesday mid-week 7:30 p.m.

HALEMAN CHURCH OF THE NAZARENE
 (Hires Crossing on U. S. 80)
 Rev. Ray Ketchum, Pastor

Sunday School 9:45 a.m.
 Morning worship 10:00 a.m.
 Morning worship 11:00 a.m.
 N. Y. P. S. 7:00 p.m.
 Evening service 7:30 p.m.

BAPTIST CHURCH
 Rev. R. H. Evans, Pastor

Sunday School 9:45 a.m.
 Morning worship 10:45 a.m.
 Evening service 7:30 p.m.
 Mid-week service 7:30 p.m.

CHRISTIAN CHURCH
 Rev. Elmore Ryle, Pastor

Sunday School 9:45 a.m.
 Morning worship 10:45 a.m.
 Morning worship 11:00 a.m.
 Evening service 7:00 p.m.

CHURCH OF THE INFANT JESUS
 202 Patton Ave.
 Rev. A. J. Smith, Pastor

Mass, every other Sun., 11 a.m.

EAST MAIN CHURCH OF GOD
 Rev. Ray L. White, Pastor

Sunday School 9:45 a.m.
 Morning worship 10:45 a.m.
 Sunday evening service 7:30 p.m.
 Sunday School 9:45 a.m.
 Worship services 10:45 a.m.

Political Announcements

The News is authorized to announce that:

DR. O. M. LYON

is a candidate for the Democratic nomination for State Senator from Bath, Rowan, Fleming, Mason, Menifee, Powell and Wolfe Counties.

The News is authorized to announce that:

JOHN J. WINN

is a candidate for Circuit Judge from the 21st judicial district composed of Rowan, Bath, Menifee and Montgomery Counties on both the Democrat and Republican tickets.

Opportunity Available For MP Duty

Certain enlistees in the Regular Army will be given opportunity for assignment to the Military Intelligence Service Language School, Ft. Belvoir, Chicago, Ill.

Eligible for three years are enlisted personnel in the Japanese language and certain technical subjects, and to train competent personnel in the Japanese language.

Certain graduates will be eligible for promotion up to grade 3 (TS or Staff Sergeant).

BEAUTIFYING HANDS

Women in the United States last year spent \$21,500,000 to beautify their hands, a jump of \$4,900,000 over the year preceding.

The increase is attributed to higher prices, as well as to the greater use of nail enamels and other beauty treatments.

FREE! BEAUTIFUL BUILDING LOT — A \$50.00 BILL
AND OTHER VALUABLE PRIZES **FREE!**

ABSOLUTE

AUCTION

— OF —

120 BEAUTIFUL BUILDING LOTS

In Morehead, Ky.

As agents for Mr. Alf Caskey, of Morehead, Kentucky, we are authorized by signed contract to sell at Absolute Auction, on —

Saturday, June 7

10:00 A. M.

The J. A. Allen Property — To Be Known As Caskey Sub-Division

36 Miles from Mt. Sterling — 18 Miles from Olive Hill —

35 Miles from West Liberty — 26 Miles from Flemingsburg

LUNCH SERVED ON GROUNDS — MUSIC BY LOCAL BAND

This property is located on Second Street, in the City of Morehead, and is known as the J. A. Allen property. These lots are situated in the best residential section of the city, and are all practically level and well drained. Each and everyone will make an ideal, beautiful home site. City water lines are located on the property, and fire hydrants are conveniently located for fire protection. Electricity and city gas is available to this sub-division.

This property is located in Morehead, the home of Morehead State Teachers College, the only four-year college in Eastern Kentucky, east of Lexington. It will also be the location of a new, modern, quarter-million dollar high school plant, now in the advanced planning stages, which will be constructed in the very near future.

In the past few years, Morehead has become one of the leading business and industrial towns in this section of the State, with two large refractories establishments and a large clay-tile factory located in the county, close to the city. These plants and other numerous enterprises in Morehead make unemployment here practically non-existent.

REMEMBER THIS LOCATION!

4 Blocks from College

2 Blocks from High School

2 Blocks from Business District

This property will be sold on easy terms if desired. Terms to be made known on the day of sale. For further information, see the owner, ALF CASKEY, or W. J. SAMPLE, Morehead, Kentucky.

Look This Property Over Before The Sale — COME — BID — BUY!

COL. RAY ROWLAND — Auctioneers — A. B. CECIL

ALF CASKEY, Owner

Rowland Auction Company

Hazel Green, Ky.

— Selling Agents —

Winchester, Ky.

'Motor Memories' of Henry Ford



The warmth of 59 years' friendship attests in this intimate, unpublished snapshot of Henry Ford and Eugene W. Lewis (right) Detroit banker-surgeon, taken at Richmond Hill, the Ford Georgia plantation. He appears in print in "Motor Memories" (Alfred, of Detroit, Inc.) Mr. Lewis' new book about automotive pioneers he knew so well. The sweater and skirt are of Mrs. Ford, "The Believer," who was constantly at his side "even unto the death" of Henry Ford April 7 at the age of 53 years.

DEEDS RECORDED

Deeds recorded during the past week in Rowan County: Joe and Anna Kelley to Allen Cline, 2 acres on East Fork of Triplett Creek.

Stella and S. E. Martt to Claris and Elmer Blevins, 2 acres on East Fork of Triplett.

Elmer and Betty Burton to Charles Burton, 100 acres on Licking River.

Duca Dillon to Martha Dillon, 40 acres on Craney Creek.

Allen and Henry Cox to Frank Ginter, Lots No. 13, 14, 15, 24, 25, 26 in Sunny Side Addition to Clearfield.

Harve and Flora Gully to L. G. Bishop, 2 tracts of land, both

on North Fork, 1 containing 50 acres and 1 containing 164 acres.

MARRIAGE LICENSES

Marriage licenses issued during the past week in Rowan County:

Johnnie Christian, 21, Morehead, to Jean Lewis, 18, Farmers.

AIR BASES

The War Department has announced that it will build at Mile 26 Alaska, a base to accommodate super-bombers of the Strategic Air Command, at a cost of \$3,125,000. The base is to balance a similar projected base in Maine.

**PROHIBITION
PAYS...
WHOM?**



Not everybody loses when Prohibition comes in.

The bootlegger profits. His business grows.

The gangster profits. He gets a job.

The grafter profits. His billfold bulges.

Even some honest folks prosper.

The merchant in the wet county gets a lot of business from citizens of "dry" counties—who prefer to shop away from home.

Who loses under Prohibition?

Bootleggers don't pay taxes, so you lose tax revenues.

Bootleggers sell to minors, so your children lose the protection offered by Legal Control.

Honest workers lose honest wages for honest work.

Legal Control—our present system—is your insurance policy against these losses. Let's keep Legal Control!

KENTUCKY BREWERS, DISTILLERS & DISTRIBUTORS

One of Kentucky's Valuable and Historical Industries

Few readers realize how much stuff the average newspaper prints as a public service feature.

White Top Cab

PHONE
9110

Anywhere - Anytime
New Clean Cabs

WANTED DEAD STOCK

We remove your dead stock promptly and Pay Telephone Charges!

For Prompt Service
phone
Morehead
Fertilizer Co.

Phone 106 Morehead, Ky.
C 14

John Fred Williams, state superintendent of public instruction and candidate for governor on the Republican ticket was visiting friends in Morehead Sunday and Monday. He was accompanied by Mrs. Williams.

Mrs. D. B. Cornette returned home Sunday from a three weeks visit with her daughter, Mrs. J. L. Boggess and family in Grayson.

Tom Vinson, state treasurer, was visiting friends in Morehead over the week-end.

It may sound strange to some business tycoons but you can't make men work by passing laws.

Kentucky Farm Bureau Insurance Co.

Blue Cross Hospitalization
Car, Truck Insurance

R. A. DECKER
Agent —
Life Insurance
Morehead, Ky.

SWING ZIP UNIFORM FROCK

Ideal for housewives, waitresses, clerks, maids and beauticians — In solid white and blue
\$2.98

4-Core White Satin Slips, ea. . . \$1.98
Men's Leather Lined Kangaroo Wide Last Shoes
A scarce item — \$9.98 pair

Reduced Pinafores, 2 to 6's . . . 98c
Nylon Hose, 51 and 54 gauge 89c to \$1.49 pair

THE BIG STORE

"Save on Railroad Street"

COMING TO MOREHEAD

One Night Only

SATURDAY, MAY-31st

In a Big Tent

BLAIR SHOW LOT



15 Big Time

Vodvil Acts

BETTY TUCKER

NOBLE SISTERS

Dick Collins & His

Melody Men

Dancing Darlings

Bro. Roscoe Comedy



Admission plus tax — Adults 50c — Children under 12 years 25c

DOORS OPEN 7:15 P. M. — SHOW STARTS 8:15 P. M.

Wildfire Is Damaging Rowan Tobacco Beds

Many of our farmers are reporting much damage to their plant beds this season from wildfire. Several farmers have reported blue mold in their beds, but upon examination of the beds it has been found that their trouble really was wildfire. I find that most farmers in the county this year who are having this trouble, neglected to spray with the blue-stone lime mixture when the plants' first leaves were forming. This should be required of all plant bed management programs, since this disease affects the plants both in the bed and after the plants are set in the field. Blue mold and wildfire are caused by two separate organisms; blue mold being caused by a mold; wildfire by bacteria.

Blue mold can be distinguished by looking for circular patches of yellow plants during dry weather or by looking for dead or yellow spots on the leaves of plants in wet weather. Also when plants are affected by blue mold, a gray, woolly growth of fungus can be found on the under side of some leaves.

Wildfire affects the leaves by causing them to yellow and dry up. Dealers in town have made every effort to obtain Formate for blue mold, but so far they have had practically no success. Of course the bluestone-time of yellow plants during dry weather has been easy to obtain, since most of our Farmers Supply stores carry these materials in stock.

Monday morning I noticed several farmers taking advantage of the "season" by hand setting tobacco. Let's hope everyone gets their plants out before blue mold hits this county too hard.

While visiting Roy Eldridge's farm last week I noticed that he has already put his pullets out on range. He has 250 pullets in a range shelter and they seem to be doing exceptionally well. Mr. Eldridge started out with 500 chicks and these pullets represent what was left after he culled out his roosters. He now has his roosters in his brooder house feeding them so he can get them on the market.

Mr. Eldridge is using the portable range shelter recommended by the Experiment Station, which can be pulled from one range to

another as he desires.

Cover Crops

Sam Litton has an unusually good cover crop that he is turning under, consisting of wheat, vetch, an alfalfa clover. Mr. Litton has limed and phosphated his ground and has, as a result, gotten very good growth in his cover crop this year. He says his only worry now is getting it turned under.

Sharkey

Born, May 22, to Mr. and Mrs. Roy Dehart, an eight pound daughter, Sandra Lane.

Mr. and Mrs. Jack Roberts and Mrs. Effie Filson entertained at their home Sunday Elbert Roberts and granddaughter, Miss Opal Maxey of Portsmouth, Ohio, Mrs. Vessie Crawford and Mrs. Bertha Kiskick.

Mr. and Mrs. Suddith Rawlings had for Sunday guests: Mrs. Geneva Alfrey and children and

Miss Mable Black of Detroit, Mich.; Miss Catherine Black and Omar Pierce.

Mr. and Mrs. Bernie Filson and children of Mayville, Mr. and Mrs. Elbert Dalton, son, Ray, and daughter, Willa Jane, spent the week-end with Mr. and Mrs. George Cooper and Mr. and Mrs. Cecil Skaggs at Ripley, Ohio.

Mr. and Mrs. Arlie Johnson and daughters, Wilma Jean, June and Judy Kay, spent Thursday

and Friday with Mr. and Mrs. Harve Kegley near Hillsboro, Ohio.

Mrs. Elmer Kiskick and Mrs. Bertha Kiskick were in Morehead Friday afternoon.

Mrs. Vessie Crawford and son, Gene, visited Mrs. Lou Smoot Sunday.

Dr. Harold Blair

— Dentist —

Phone 327

Consolidated Bldg. Ely.
Office Hours: 9 to 12 — 1 to 4:30

Price Reduction On Tires

Davis Tires

600x16 (4-ply) reduced to . 12.95

600x16 Super Safety . . . 13.95

(Above Prices Plus Tax)

Western Auto Associate Store

Home Owned by C. E. TURNER

Clip This

COUPON

Bring It to BLAIR'S and SAVE

COUPON

This Coupon Good For

\$1.00

On Any Article of \$5.00 or More
Purchased at Blair's Dept. Store on Saturday, May 31,
and Tuesday, June 3

— WATCH THIS NEWSPAPER EACH WEEK —

Saturdays and Tuesdays Are Coupon Days at

BLAIR'S DEPARTMENT STORE

ARTHUR BLAIR, Manager

Baby Chicks

We Have a Hatch Every Tuesday

Last Hatch June 3 — Come to See Us

FLEMINGSBURG HATCHERY

PHONE 168

"The Pioneer Hatchery of Fleming County"

U. S. Approved — Pullorum Controlled



Pull-Up

CHAIRS

and ROCKERS

8.95 to 59.50

Studio Couches . . 49.00 to 79.00

Big Store Furniture Co.

Railroad Street

Morehead, Ky.

SPECIAL PURCHASE SALE

HOT WEATHER

Wash Dresses

Sanforized Chambrays — Voiles — Piques

Glazed Chintz — Seersuckers — Prints — Dotted Swisses — Hanki-Lawns

Sizes 9 to 17 — 14 to 20 — 38 to 58 — 16½ to 24½

Save As Much As One - Half

Group 1

Values to 3.95

PRINTS, SUITINGS
SEERSUCKERS

All Sizes

1.98

Regular 5.95 and Better

Wash Frocks

3.98

You'll Have to See These

Special Groups

Sanforized

CHAMBRAYS

Values to 4.95

2.98

Sizes 44 to 58 Slightly Higher

Look at This — 200

Cotton Aprons

Regular 59c

29¢

Better

COTTONS

from our better racks

Reduced To

2.98

Values to 7.95

Just One or Two of a
Kind But All Sizes

4.98

We are sponsoring the \$75 Rowan County Walking Horse Class at the Horse Show—Get that old nag out of the plow and see if he'll walk—bring him in. You can win (maybe).

GOLDE'S

Lane

Funeral
Home

Morehead, Ky.

Phone 91

CALL

Yellow Cab

PHONE

74

Brammer Hotel Bldg.
FOREST WELLS, Manager



LIVING MUSIC
Best Clear Voice and
Best Like Notes and Tones
Guaranteed
Singers \$10.00

BOGGESS PET SHOP
353 Railroad Street



The memory of a
services performed for loved
ones in a fitting
manner, with reverence
and dignity, always lives in the
minds of bereaved families.

CLASSIFIED ADS

NOTICE
Again I offer my place for sale. 4-room house, smoke house, brick cellar, barn, new store house. Just in business and building good business. On a good road on Morgan Fork near Clearfield. 4 acres land, fenced in. Lights and water in house. Good place to raise chickens and also about 100 chickens to go with it. See or write Charles Wright, Clearfield, Ky. p-23

NOTICE
Dr. O. Boone Morgan is now located in Brammer Hotel, Call 448 for appointment. C-47-17

FOR SALE
One four-room house, and 1 unfurnished 3-room cabin at 118 Blair Ave. Priced for quick sale. Call 378 or see Marvin Wilson at Ideal Barber Shop. p-22

LEGAL NOTICE
Dora Cassity has filed her application in the office of the County Court Clerk of Rowan County, Kentucky, for a permit to operate a place of entertainment located at Farmers, Ky. c-22

2 BARGAINS In 2 Brand New Homes

I have for sale two brand new homes and lots on Blair Avenue.

4 Rooms

Bath, built-in kitchen sinks. All utilities, all conveniences.

PRICED ROCK-BOTTOM

For Quick Sale

AT \$4,000 EACH

Easy Terms — Pay Like Paying Rent

— See or Write —

Curt Hutchinson

Phone 199 or 283

Morehead, Ky.

LOST

Brown billfold. Contained important papers and some money. Notify the name and address in the pocketbook. Reward. p-23

FOR SALE OR TRADE

1936 Ford truck, motor perfect shape, 1 1/2-ton. Stake rack. Ora Dehart, Route 3, Christy Creek. p-22

Luster E. Blair

- Automobile Insurance
- Fire Insurance
- Casualty Insurance
- Life Insurance

Hospital Insurance For The Entire Family

Phone 198 — Morehead

AVAILABLE

Gas Floor Furnaces, Gas Conversion Burner, Hot Water Heaters, Cast Iron Lavatories and Tubs, Soil Pipe. See your plumber. C. L. Landreth. Phone 280F1.

ATHLETES FOOT GERM HOW TO KILL IT. In One Hour. If not pleased, your 50c back. Ask any druggist for this Strong fungicide, TE-OL. Made with 90 percent alcohol. It Penetrates. Reaches and kills MORE germs faster. Today at Battson's Drug. c-2

FOR SALE

Seven room, modern house, closed in porch. 2 acres ground. Suitable for business. On route 60, about 1 1/2 miles west of Morehead. Phone 4F1. J. B. Messer, 617 Main St., Morehead. c-17

FOR SALE

New 6-room home, with double garage and other outbuildings. Over 3 acres of good level ground. About 3 miles east of Morehead on U.S. 60. Priced right. See J. R. Harp. p-22

FOR SALE

Garden tractor, mounted on rubber with 1 1/2-horsepower, 4-cycle motor. Seven sets of attachments. Substantial saving. H. M. Shafer, 985 Wilson Ave. n.e., phone 474. c-17

WATER WELL DRILLING
We will drill your well. Work guaranteed. See, write or phone Link Pyffe Jr., phone 8912, Paintsville, Ky. p-22

CABINET WORK
For expert cabinet work, repairs, upholstering see Augustine DeBorde, Tolliver Addition. c-17

Will you be next to try *Charm-Tite Million Dollar Curler?*



For Your Next Home PERMANENT Wave insist on the NEW improved

Charm-Tite with "LOCK-TITE" curlers

No other home Curl Wave has the amazing "LOCK-TITE" Curler. It's a sensation wherever it goes. "Lock-Tite" curls in place, — can't possibly slip. An indestructible aluminum outer covered with rubber which rubs over the "LOCK-TITE" outer surface, — easy to use, confidence.

See a dealer where, or on Charm-Tite.

\$7.25

BATTSON'S

SAW MILLS

Immediate Delivery

Write or Call

LISTON MOTOR SALES

28 Miles West of Portsmouth on Route 73
PHONE PORTSMOUTH, SUB. 6629 OTWAY, OHIO

REAL ESTATE

NOW OFFERED FOR SALE

Two good 6-room houses, 3-10 acres of land at Clearfield.

A new 6-room house on U. S. 60 Highway, 3 miles east of Morehead.

Good 5-room house, 3 miles east of Morehead, on highway.

Eight-room house with bath, hardwood floors, double garage. One mile east of Morehead.

Two good restaurants. Doing good business.

Several good farms at good prices.

Two good building lots in Tolliver Addition.

If You Want To Buy or Sell See Caskey

Lester Caskey Realty Co.

At Caskey Restaurant on U. S. 60
Mile East of Morehead Phone 244F32

FOR SALE

One house, 6 rooms and bath. Has basement. Located on corner lot on Blair Street in Swift Addition. See Ralph Hall, Swift Addition. p-22

MONUMENTS

For best materials, work and price, write W. A. Porter, Ellettsville, Ky. c-24

EXECUTOR NOTICE

The undersigned, Executrix, under the Will of Rebecca Cecil, has this day filed in the office of the Clerk of the Rowan County Court, a full and complete settlement and will on the 7th day of July 1947, move the court for an order to confirm this settlement and to release her from further obligation herein. Minnie Caudill, Executrix under the Will of Rebecca Cecil. c-22

FOR RENT

Furnished room for rent, with cooking privileges. — Everett Frayle, 228 Daniel Ave. p-22

REGISTERED ANGUS CATTLE

For sale. Start a registered herd. We have some females for sale; cows with calves at their side; cows to first calves and open heifers. The best quality and breeding. Also some bulls ready for service. Prices right. McIntire & Shumacher, phones 257, 276 and 145-X, Flemingsburg, Ky. c-22

LEGAL NOTICE

Clint Cassity has filed his application in the office of the County Court Clerk of Rowan County, Kentucky, for a permit to operate a place of entertainment located on Triplet Avenue in Farmers, Ky. c-22

FOR RENT

Three-room cottage in Thomas Skaggs. Call 86F2 or see Earl Skaggs. p-23

Commonwealth of Kentucky DEPARTMENT OF HIGHWAYS NOTICE TO CONTRACTORS
Sealed bids will be received by the Department of Highways at its office, Frankfort, Kentucky, until 10:00 a. m., Central Standard Time, on the 8th day of June, 1947, at which time bids will be publicly opened and read for the improvement of:
Rowan County, SP 143-202—College Boulevard in Morehead, beginning at Main Street near the Court House and extending by

FOR SALE

One Coolerator icebox in A-1 condition. See Marvin Wilson or call 378. p-22

SALESMEN WANTED

Wanted at once — Rawleigh dealer in nearby West Bath County. 1,430 families. Products sold 25 years. Car essential. Write Rawleigh's, Dept. KYE-172-FA, Freeport, Ill. or see V. Reeder, East Main St., Morehead. p-22

GARDEN PLANTS FOR SALE

Peper, cabbage, sweet potatoes and tomato plants. Flower plants, petunia, zinnia and marigolds. See H. C. Black at his farm in Thomas Addition to Morehead. c-23

the college grounds to U. S. 60 approximately 200 feet east of the corporate limit of Morehead, a distance of 0.584 mile. Widening and high type surfacing. The attention of prospective bidders is called to the prequalification requirements and necessity for securing certificate of eligibility, the special provisions covering subletting or assigning the contract and the Department's

regulations which prohibit the issuance of proposals after 4:00 p. m. on the day preceding the opening of bids. Further information, bidding proposals, et cetera, will be furnished upon application to the Frankfort Office. The right is reserved to reject any and all bids. DEPARTMENT OF HIGHWAYS Frankfort, Kentucky May 14, 1947 c-22

ATTENTION LADIES!

Stardust Slips Are Back

Guaranteed For One Year

Only . . . 1.98

Also Three Numbers in Panties, only 69c

Brassieres 1.99

The Big 5 & 10c Store

"The Friendly Store"

BUILDING MATERIALS

Now Available at White Lumber Company

- Combination Storm and Screen Doors
- Paneled Doors
- Windows
- Creosote White Paint
- Flooring of All Kinds
- Quarter Round

Screens — Outside White Paint — Guttering — Cement Plaster — Rough and Dressed Lumber

White Lumber Co.

"Anything in Lumber"

Flemingsburg Road — Phone 232 — Morehead, Ky.



Bright Looks

Do Your Duty By Your Car
Give It Beauty Without Mar

People judge by appearance. We have everything you need to restore that brand-new look to your car, improve its driving performance.

Curts Motor Sales

Dealers For Buick — Plymouth — Federal Trucks
Phone 217

Morehead's

Banks and Stores
will be

CLOSED

On Memorial Day (May 30)
and every

Wednesday Afternoon

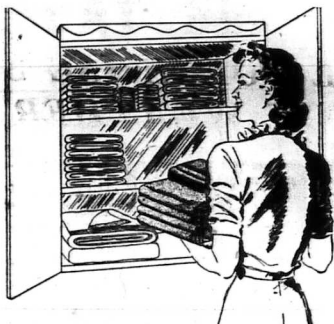
ALL SUMMER

The following stores will be closed Memorial Day and every Wednesday afternoon all summer—

- Sluss Bargain Store
- Morehead Self-Service Grocery
- IGA Grocery
- Allen's Meat Market
- Cut-Rate Grocery
- Western Auto Assoc. Store
- East End Grocery
- Johnson's Grocery
- The Peoples Bank
- The Citizens Bank
- Brammer Dept. Store
- Blair's Dept. Store
- Bruce's 5c, 10c & 25c Store
- The Southern Belle
- Nancy Lee Home Shop
- The Big Store
- The Big 5c and 10c Store
- A. B. McKimsey
- The Federated Store
- The Strie Shop
- Stanley's Dept. Store
- Goldie's

YOUR LAUNDRY PROBLEM SOLVED

Announcing
The
Opening
of



Morehead's New Laundry

An Addition To The

IMPERIAL CLEANERS

NEW — MODERN — COMPLETE

We are proud to announce the opening of this most complete and modern laundry in our new building. The machinery is the best obtainable . . . the cleaning materials used are the finest that can be bought.

Imperial has earned a reputation for the finest dry cleaning . . . now we offer equally as good laundry service. One stop now does it all . . . your dry cleaning and your laundry. One trial will convince you.

IMPERIAL CLEANERS

Dry Cleaners and Launderers

Phone 302

Member of
NATIONAL
ASSOCIATION
of Dryers
& Cleaners



Almost 19,000,000 men are under arms throughout the world and about forty nations are spending at least \$27,400,000,000 a year on armaments, which is about \$10,000,000,000 more than they spent on the eve of war in 1933, according to a world military survey conducted by The New York Times.

THE FACT IS

By GENERAL ELECTRIC



CAN GO 120 MILES PER HOUR!
NEW DIESEL ELECTRIC LOCOMOTIVE BUILT BY GENERAL ELECTRIC AND ALCO IS DESIGNED TO OPERATE **ONE MILLION MILES**
WITHOUT MAJOR OVERHAUL. LIKE THE FAMOUS B-29 BOMBERS, IT HAS A G-E TURBO-SUPERCHARGER.



FLUORESCENT LIGHTS HELP PLANT GROWTH!
CONTRIBUTE TO STURDY AND LUXURANT PLANT DEVELOPMENT. LAMPS LIKE THESE ARE ONE OF 10,000 DIFFERENT KINDS MADE BY GENERAL ELECTRIC FOR EVERY LIGHTING NEED.

WINS \$3000 FOR SUGGESTION!

66 EMPLOYEES HAVE BEEN AWARDED \$2,000,000 SINCE 1922 FOR WORKABLE IDEAS UNDER SUGGESTION SYSTEM.



GENERAL ELECTRIC

ICED TEA FOR TWO



Ballet stars, like other hard-working, time-pressed people, drink iced tea for a quick pick-up. Here, Alexandra Danilova, prima ballerina of the Ballet Russe de Monte Carlo, enjoys a glass of iced tea with her husband, Casimir Kerkira.

With Rowan County Farmers

Most Poultry Raisers Report Flocks Are Doing Well

By Adrian Razor
Rowan County Agent
Poultry
Most poultry raisers in the

county report very good luck with their chickens so far. Since their chickens are doing so well it is a good time for them to be thinking of summer range for their poultry. Since through this means chickens are enabled to obtain the necessary vitamins and minerals as well as quite a bit of their protein requirements. A good plan for the poultryman is to have four lots for range. In this way he can rotate his flock from one year to the other and will do much to control disease and parasites in the flock. A good plan is to use a lot for poultry range one year, cultivated crop the second year, small grain crop, followed by grass the third year, and meadow the fourth.

Bulgrass makes good range for poultry; especially if it contains white clover. Other variations are mixtures of orchard grass, red top, Lespedeza, or Ladino clover. Ladino clover has received much praise as a summer range.

The better poultrymen find it profitable to have range shelters for their flocks after they have moved them from the brooder house. These shelters are easily and cheaply built and plans are furnished by the Extension Department. They may be stationary or, preferably, built on runners so that they may be moved from range to range in accordance with the rotation plan. Plans for these shelters will be furnished upon request.

Lamb Tick Control
Some of the few sheep raisers in the county may be interested to know that D. D. T. will effectively control ticks on lambs and ewes. The wettable fifty per cent powder should be used at the rate of one pound per twenty-five gallons of water.

A power spray is recommended and the nozzle should be held close to the wool and moved back and forth around the head and ears.

A single application will kill all ticks, but it is recommended that the farmer include in the sheep program two sprays: one in the fall and another in the spring before lambing time. This prevents the spread of the ticks to the younger stock.

Crop Damaged
Recent frosts caused considerable damage to fruit and berry crops in the county. Peaches and apples growing in the valleys seem to have suffered worse.

The acre of strawberries on Ernest Clevenger's farm, that I was speaking of in a previous column, was among those crops hit. In spite of the frost, however, Mr. Clevenger estimates that he will get about a third of a crop this year.

Good Alfalfa
Mr. Raymond Hall, on North Fork, has a very good first of alfalfa this year. This is a three-

year old stand and from all indications he should get some good hay crops this year.

Mr. Hall, who bought a place recently upon his return from service, is remodeling his house and has installed running water, with bath, supplied from a spring located on the hill back of his house.

Open Drive To Secure Registrations

Veterans Organizations Seeks Full Vote In August Primary

The opening of a drive to urge all Kentucky voters to register before June 3rd, was announced Saturday by the Registration Committee of the Kentucky Association of Student Veterans Clubs.

Hoge Hockensmith, chairman of the committee, explained that June 3rd is the last day on which voters may register in order to vote in the coming elections.

"We believe that most voters have failed to register simply because they have not thought of it at a definite time. We plan to remind the voters as often as possible through newspapers, radios, and other mediums, that they must register right away if they are to vote."

The KASVC is interested in no party or candidate. Hockensmith said. The drive is to urge all people to register and vote regardless of how they vote.

Although members of the veterans group are interested in getting veterans to register, the request for registration is addressed to all citizens, Hockensmith added.

As a slogan to keynote the

drive, the committee has selected the phrase, "An army of voting citizens is our best defense."

Committee members stated that voters will be asked to support the drive by planning a definite time to register at their county clerk's office, and by reminding their friends to register.

The unfolding of truth is rarely assisted by men who know it all.

Wesley Elected Athletic Director of Fraternity

James P. Wesley, son of Mr. and Mrs. W. M. Wesley, Wilson avenue, has been elected athletic director of Delta Chi social fraternity at the University of Kentucky and will take office at the beginning of the fall quarter.

A graduate of Prichard High School, Grayson, Wesley is a freshman in the College of Commerce at the University.

CAR OWNERS

The Monarch Supply Store announces a special ten-day offer of extra liberal trade-in allowances on old tires when you purchase B. F. Goodrich Silvertowns . . . Make it a point today to stop at the Monarch and save on your new tire purchases.

Monarch Supply Store

Morehead, Kentucky

Yes - - -

MR. TRUMAN

You Can Count On Our Support to Halt Inflation

EFFECTIVE NOW

. . . and continuing indefinitely unless the manufacturer forces us to change them, the Collins Motor Company offer these

ROCK-BOTTOM PRICES

On These First-Grade — Lee and Dunlop — Fully Guaranteed Passenger and Truck

Tires - - - Tubes

	TIRES	TUBES
5.25 - 5.50 x 17	\$12.50	\$2.95
6.00 x 16	\$13.50	\$2.95
6.50 x 16	\$15.90	\$3.95
7.00 x 15	\$18.50	\$3.95
7.00 x 16	\$18.90	\$3.95
7.00 x 20 - 10-Ply	\$39.95	\$4.95
7.50 x 20 - 8-Ply	\$39.95	\$6.95
7.50 x 20 - 10-Ply	\$51.50	\$6.95
8.25 x 20 - 10-Ply	\$57.50	\$8.25
8.25 x 20 - 12-Ply	\$64.50	\$8.25
9.00 x 20 - 10-Ply	\$66.50	\$8.95
9.00 x 20 - 12-Ply	\$75.00	\$8.95
10.00 x 20 - 12-Ply	\$85.00	\$9.95
11.00 x 20 - 12-Ply	\$100.00	\$11.95

Collins Motor Co.

G. S. Collins, Gen. Mgr.

Lloyd Cassity, Asst. Mgr.

A Dependable Gift for Graduation



WITTNAUER
PRODUCT OF
Longines-Wittnauer

1 IS A GOOD WATCH a good investment? Yes, indeed, and particularly if it's a Wittenauer, distinguished member of the Longines-Wittnauer family of fine watches. Wittenauer watches are styled with good taste that is never outmoded; and they're powered with the dependable Wittenauer watch movement that's made well, to run right, and last for years and years. Wittenauer Watches from \$47.50. Prices include Federal Tax.

In conformity with the National Trend for reduced prices, this store has reduced prices on all merchandise from 10 to 20 per cent, with the exception of nationally priced merchandise.

DR. D. DAY & SON

159 W. Main St.

Morehead, Ky.

AGENCY FOR LONGINES-WITTNAUER WATCHES

COMPLETE AUCTION

— OF —

HOUSE AND LOT

Household and Personal Property

In Farmers, Ky.

By contract there will be offered for sale this dwelling and household and personal property on—

WEDNESDAY, JUNE 4

SALE STARTS AT 11:00 A. M.

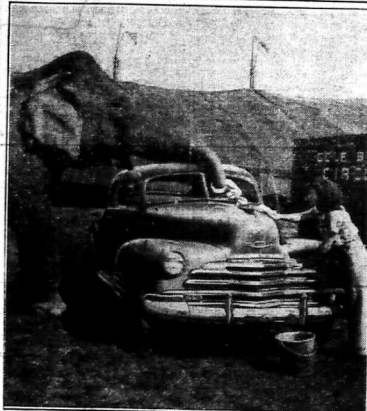
This is a six-room dwelling, in good condition. Fine cultivated garden. Good well. Located half block from Farmers School on U. S. 60. Convenient to bus station. This home is in a very desirable location and is convenient for anyone employed in or around Morehead. To inspect this home before the sale, contact the owner.

HOUSEHOLD FURNITURE—Among the household and personal items to be sold to the highest bidder at the same time are—Maytag washer, kitchen cabinet, Westinghouse Vacuum cleaner, porcelain top table, poster bed, set box-springs, utility cabinet, group chairs, lawn furniture, living room suite, large assortment of dishes and many other items too numerous to mention.

OTIS CARTER, Owner

WOODY HINTON, Auctioneer

One Trunk NOT Standard Equipment



Whatever the weatherman may say, indisputable proof that spring is truly here and summer is on the way comes from the ever-faithful circus, most reliable harbingers of fair weather to come. Sprucing up between showings, the circus maintains its lustre for young and old, and one way it's done is shown here. Pretty Kay Clarke gets elephantine assistance in keeping her new Chevrolet gleaming, as old Blanche, queen of the Cole Bros. Circus "possession pack of ponderous pachyderms," lends a hand . . . er, trunk.

Urge Vets To Reinstate Insurance

Discharged Men Make Mistake In Dropping Policies

The Veterans Administration today urged veterans who have National Service Life Insurance to give careful consideration to the settlement provisions of their policies.

Sam L. Gatrell of the VA office at Ashland, Ky., explained that the Insurance Act of 1946 opened a large field of new settlement options designed to provide for the various needs and circumstances of veterans' beneficiaries.

The new optional settlements arrange for lump sum payments to monthly installments during the life of the first beneficiary. Under the original law, the only settlements authorized were monthly income or annuity payments.

If death occurs before the insured veteran has selected one of the optional settlements, the insurance is paid in 36 monthly installments to his beneficiary. The beneficiary may elect to receive installments over a longer period. Under no circumstances, however, may a designated beneficiary receive a lump sum settlement unless the insured selected that type of option before he died.

One of the main advantages of the new settlement provisions, is that the veteran may now select a combination of payments. For instance, he may specify that a certain amount of his insurance be paid to the beneficiary in a lump sum at time of death and

that the remainder be paid in monthly installments over a given period or during the lifetime of his beneficiary.

When electing a settlement option for G.I. Insurance, the veteran should consider what his beneficiary's future circumstances may be.

Mr. Gatrell reminds veterans who have allowed G.I. term insurance to lapse they can now reinstate their policies with little cost and little effort.

No American citizen should be a partisan of any other country or cause, in brief, we need no hyphenated-citizens.

MOBILE RECRUITING UNIT TO BE HERE TUESDAY

A mobile recruiting unit from headquarters in Louisville will be in Morehead Tuesday, June 3, to aid recruiters here in seeking volunteers for enlistment in the Army. It was announced by M/Sgt. W. L. Burnett.

DISAPPOINTED THIEVES

Burglars who entered the office of a tea company in Oklahoma City, Oklahoma, and took a cash box from a filing cabinet were disappointed. The firm's money was hidden in a carton of tea.

CHANGE IN

Ownership and Management

— of the —

East End Grocery

The East End Grocery, located opposite the Midland Trail Garage, on Main Street has been sold to and is now under the management of C. P. Moore and Addison Fouch.

We Invite You . . .

Whether you're an old customer of the East End or not, drop in and see our store. We specialize in fresh fruits and vegetables, canned goods, staples . . . in fact, a complete line of groceries.

East End Grocery

C. P. Moore — Owners, Mgrs. — Addison Fouch

Phone 56 — Morehead, Ky.

The Morehead Self - Service Grocery

(Formerly The Regal Store)

It's
HERE



Formal Opening This Saturday

In Our New, Clean, Modern Room in the McKinney Building . . . Next Door to the Former Regal Store

The Self-Service Plan The Ideal Way To Shop

The modern method of grocery merchandising is the self-service plan. It is the plan that all housewives like . . . it insures you of getting just what you want . . . it means a saving in time. It is the convenient, sanitary method to shop.

Fresh Meats — Fresh Fruits and Vegetables — Cured Meats — Frozen Foods

Fish and Sea Foods — Canned Goods — Imperial Ice Cream

"A Complete, Modern Food Store"

Morehead Self-Service Grocery

Successor to The Regal Store

RAY LYTTLE, Manager

You Are Invited To Inspect Our New Store

Whether you're an old customer or not, won't you drop in and look over our new, modern store, and the sanitary methods we employ in displaying our merchandise. We assure you that you will find a most complete line of groceries and meats in our new store . . . and the prices are reasonable.

SOCIETY

Miss Hyden Becomes Bride of Mr. Sheffield

In the presence of a large group of relatives, friends and members of her class, Miss Jean Hyden became the bride of Mr. Emory Sheffield, in a simple but impressive ceremony at the Morehead Methodist Church on Friday, May 16, at nine o'clock p. m. Rev. David Sageser officiated.

The only decoration was an altar with a cross in the center and candles which furnished the light for the ceremony. Mrs. Sageser at the organ, furnished delightful music.

The bride chose for her wedding a floor length dress of white silk, the material of which

was sent to her by Mr. Sheffield while stationed in Japan. Her long veil was held in place by a wreath of tiny white flowers. She carried a handkerchief of blue lace. Her flowers were a corsage of American beauty roses. Her only attendant, Miss Thelma Ricketts wore a gown of pink satin and net and her flowers were also a corsage of roses.

Harry Stinson acted as best man for Mr. Sheffield.

Mrs. Sheffield is the daughter of Mr. and Mrs. Allen Hyden. She is a graduate of Breckinridge Training School of the class of this year. For the past year she has held the position as cashier at the Trail Theatre.

Mr. Sheffield is the son of Mr. and Mrs. W. R. Sheffield of New Castle, Ind. He attended New Castle High until his entrance into the Army, serving nineteen months overseas.

After graduation this week, they will leave for Anderson, Ind., where Mr. Sheffield is employed and where they will make their home.

Halls Announce Coming Marriage of Daughter

Mr. and Mrs. Leonard Hall of Haldeman, are announcing the coming marriage of their daughter, Miss Laura Hall to Charles Koski of Painesville, Ohio.

The wedding will take place June 1 at 2:00 o'clock at the East End Church of God. Rev. Ray White will perform the ceremony.

It will be an open church ceremony.

Mr. and Mrs. E. P. Hall and daughter, Mrs. Frances White spent Saturday in Lexington on business.

Miss Shafer Receives Honors At College

Barbara Shafer, daughter of Mr. and Mrs. Warren Shafer, student of Christian College at Columbia, Mo., has received many honors there this year. She has been elected to membership in the national honorary music sorority, Beta Beta Beta. She has also been elected president of the Saint Cecilia music club; president of the choral club; secretary of the Vesper choir and had membership in several other clubs. She sang soprano with the junior trio, which group did much social service work in Columbia.

Barbara is a graduate of Breckinridge Training School of the class of this year. She will be home on June 10th for summer vacation.

Mr. & Mrs. Elva Barker Are Parents of Daughter

Mr. and Mrs. Elva "Curly" Barker are welcoming a daughter born to them Thursday, May 22, at the Good Samaritan hospital in Lexington. The baby weighed six pounds and nine ounces and has been named Janet Kay. Mrs. Barker was the former Miss Virginia Cornett of the Hindman. Mr. Barker brought his family home Wednesday.

Sewing Bee Holds Meeting at Barber Home

The Sewing Bee met with Mrs. Jesse Barber and Mrs. Sue Rowland May 22, with 11 members present at the Barber home for a six o'clock dinner. The house was beautifully decorated in carnations.

Those present were: Mrs. A. B. McKinney, Mrs. Everett Randall, Mrs. Lindsay Caudill, Mrs. C. P. Caudill, Mrs. C. M. Lyon, Mrs. Cecil Fraley, Mrs. Mabel Alfrey, Mrs. John McKinney, Mrs. C. O. Leach and the hostess.

Mrs. Alvin Caudill was unable to attend because of illness. The next meeting will be June 5 at the home of Mrs. Cecil Fraley.

Inspection of O. E. S. Lodges Held at Olive Hill

Members of the Order of the Eastern Star of Morehead Lodge 227, West Liberty 360 and Olive Hill 290 were guests of the Olive Hill Chapter at Olive Hill Wednesday afternoon and night. Inspection was made by the Worthy Grand Matron, Mrs. Ethel McConnell of Lexington. Grand officers from Morehead were Mrs. Dorothy Holbrook, Associate Grand Matron and Mrs. Ann Penix who is Grand Representative. Preceding the inspection a banquet was enjoyed by all members.

Christian Missionary To Hold Rummage Sale

The members of the Christian Missionary Society will hold a rummage sale in the basement of the Christian Church on Saturday, June 7. The sale will open at 8 o'clock. Many items of clothing and household supplies will be included in the sale.

Mary Lou and Allen Hall of Grayton, returned home Tuesday after spending a few days with their grandparents, Mr. and Mrs. Ed Hall.

Former Resident Killed in West Virginia Car Wreck

Friends here have received word of the death of Mrs. Bertha McGlosson Bradley in Charleston, W. Va., on Friday, May 16. Mrs. Bradley was the wife of Harry C. Bradley. For many years they made their home in Morehead. She is a sister of Mrs. Arthur Bradley of Ashland.

Attend Brunch Honoring Grand Officers of O. E. S.

Mrs. John Will Holbrook, Mrs. A. L. Miller and Mrs. B. F. Penix went to Ashland Wednesday as guests at a brunch given by Mrs. Inez Browning, in honor of the grand officers of the O. E. S. in this district. The affair was held at the Ashland Country Club. Mrs. Browning is past Grand matron of the Kentucky Lodge.

Will Leave for Extended Trip Through South, June 1

Mrs. Eunice Cecil and Mrs. Ruby Wood expect to leave Sunday for an extended trip through the southern states. They will visit Georgia, Florida, Texas, and California. They will also spend some time in Mexico.

Homemakers to Meet At Webb, Gregory Homes

The Clearfield Homemakers Club will meet with Mrs. Muri Gregory at 2 o'clock on Tuesday, June 3. The Morehead Club will meet with Mrs. Herbert Webb on Thursday, June 5, at 2 p. m. A home canning demonstration will be given.

Mr. and Mrs. Bobbie Hogge left Thursday for their home in California, Mo. after a week's visit with his parents, Mr. and Mrs. Lester Hogge. Mr. Hogge received his A.B. degree from the college Wednesday night.

Dorothy Swimm and Nancy Proctor were in Ashland over the weekend, guests of Mr. and Mrs. I. F. Kash and daughter, Betty Jean.

Mr. and Mrs. Albert Hamilton and family were guests of Mrs. Jim Layne, Sunday.

Trail Theatre

Morehead, Ky.
SUNDAY - MONDAY
JUNE 1-2

"STALLION ROAD"
Zachary Scott, Alexis Smith

"ROUND HUNTERS"
TUES. - WED. - THURS.
JUNE 3-4-5

"BEGINNING OF THE END"
Brian Donley
Robert Walker
"Big Time Revue" and
"Goofy Gophers"

FRIDAY - SATURDAY
JUNE 6-7

"VIOLENCE"
And
"BETWEEN FIGHTING MEN"

No. 13 "Jack Armstrong"

"Market Boy"



Cleansing Tissues	2 boxes	25c
Ambassador Toilet Tissue	2 rolls	15c
Paper Plates	dozen	10c
Carnation Milk	2 tall cans	25c
White Villa Coffee	1-lb. bag	47c
Canova Coffee	1-lb. jar	44c
Red Bud Coffee	1-lb. jar	44c
Polar Bear Flour	25-lb. bag	1.95
Obelisk Flour	25-lb. bag	1.90

Allen's Meat Market

Phone 380

We Deliver

Mr. and Mrs. Ward Williams have as their guests this week, his mother, Mrs. Howard Williams and his aunt, Mrs. Cora Williams of Whitesburg who came to attend the graduation exercises at the college Wednesday night when Mr. Williams received his degree.

Mrs. Edward Bell and Mrs. George Hall spent the week-end in Detroit with their husbands. Dr. Bell is doing residence work at St. Mary's Hospital and Mr. Hall is a chemist with the Ethyl Corporation.

Sgt. James M. Layne Jr. and wife have been visiting their parents, Mr. and Mrs. Jim Layne and Mr. and Mrs. Albert Hamilton. They returned to Poughkeepsie, New Jersey on Monday.

Mr. and Mrs. Luther Skaggs and Miss Avenell Bowen returned to their home in East Chicago after spending two weeks with their parents, Mr. and Mrs. Willard Bowen in Haldeman and their sister, Mrs. Frank Kessler and Mr. Kessler.

Monday night, Mrs. John Will Holbrook, Mrs. B. F. Penix, Mrs. Maude Adams Ellington and Mrs. James Brammer attended the inspection of the Russell, Greenup

and Raceland O. E. S. chapters at Russell. A dinner was served at six o'clock by the Russell chapter.

Mrs. W. K. Kenney and Mrs. C. F. Fraley were in Louisville Monday, buying merchandise for the Sunshine Variety Store.

CAPTIVATING COOL COTTON

Perfect for summer days... these lovely cotton dresses will make you feel cool all over! Exotic mandarin collars with pert bow, short sleeves, handy pockets... smooth fitting, too!

New Dresses Arriving Daily

The Style Shoppe

Across from Regal Store on Fairbanks Ave.
Juanita C. Barker, Owner, Mgr. Ph. 46672

Memorial Day



The army of Grant and the army of Lee are together. And by their side from the battlefields of the world march the heroes of '98, 1918 and World War 2.

Though the years may roll by, the memory of their courage, their valor and their sacrifice will ever remain fresh and warm in our hearts.

This bank will not be open for business May 30th

"Grow With Us"

CITIZENS BANK

Member Federal Deposit Insurance Corporation
MOREHEAD, KENTUCKY

Mills Theatre

Morehead, Ky.
SUN. - MON. - TUES.
JUNE 1-2-3

"MY FAVORITE BRUNETTE"

Bob Hope - Dorothy Lamour
"Wilbur" - "Selling the Sun"

WEDNESDAY - THURSDAY
JUNE 4-5

"THAT WAY WITH WOMEN"

Sydney Greenstreet
Martha Vickers
"Deep Sea Fishing"
"Hot Water"

FRIDAY - SATURDAY
JUNE 6-7

(Double Feature)
"RAIDERS OF THE SOUTH"

— And —
"THREE ON A TICKET"

No. 18 "SON OF ZORRO"

DON'T FORGET TO REMEMBER



On this Memorial Day, each of us should set aside time in which to think of our Republic — of what we owe our country and all the gallant men and women who have protected it in the past so that we can enjoy our freedom today.

CLOSED ALL DAY MAY 30, 1947



Memorial Day

Is Tomorrow
We will accept orders as long as our supply of flowers last.



Phone
412-F-2

To be sure of delivery and the choicest cut and potted flowers place your Memorial Day orders now.

Flowers for All Occasions

Morehead Floral Co.

SUE ROWLAND, Owner

WANTED! THE OLDEST CHEVROLET TRUCK IN SERVICE TODAY!

The Chevrolet Motor Division is offering the reward of a new Chevrolet truck to the owner of the oldest Chevrolet truck in service today in the United States. The winner will be determined by the serial number on his old truck.

If you have an early-model Chev-

rolet truck still in use and licensed in 1947, obtain an entry blank and full details from the Midland Trail Garage, Morehead. It costs nothing to enter. The winner will be awarded any standard model Chevrolet truck he may choose from Chevrolet's new "Advance-Design" line.

For the oldest Chevrolet Truck, licensed in Rowan County for 1947 and in use, Midland Trail Garage offers as a prize, one genuine Chevrolet Truck Heater.

SEARCH ENDS JUNE 15, 1947
SO GET YOUR ENTRY BLANK --- NOW!

MIDLAND TRAIL GARAGE

Phone 150

Morehead Ky.

SECTION TWO

Rowan County News

Morehead, Kentucky, Thursday, May 29, 1947

High School Graduates May Get G. I. College Training

Members of this year's high school graduating classes still have an opportunity to get credits for a college education under the GI Bill of Rights if they enlist one day before Congress declares the War officially over, according to M/Sgt. W. L. Burnett, of the Army Recruiting Station here.

"This is one of the questions most frequently asked at the U. S. Army Recruiting Station," Sgt. Burnett said. "More than 1,000,000 young men are getting all or part of their higher education paid as a reward for their service in the Armed Forces. Thousands who never could have gotten college are getting their chance now and many thousands more want the same opportunity."

"But there is this difference: In order to qualify under the GI Bill of Rights now, you must enlist at least on day before Congress officially terminates the war. After he has served 90 days, he is guaranteed one year's higher education with \$500 tuition and \$65 per month paid for by the Government when his enlistment is over.

"In addition, he gets an additional month for every month he serves prior to the official end of the war.

"If Congress does not act to terminate the war officially before graduation time, high school seniors this year may earn some of the valuable benefits that approximately 100,000 of last year's classes are now earning.

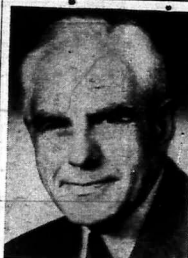
"1947 graduates," Sgt. Burnett said, "will be the first since 1940 who have not faced Selective Service. Their attitude toward military service will be entirely voluntary. But we believe that a great many of them will decide to help their Army meet its world-wide obligations by enlisting and getting the good pay, training, travel, and the opportunity to qualify for Officer Candidate School now available."

In order to maintain an Army of 1,070,000 men, according to a recent statement by General Eisenhower, the Army must continue to get about 30,000 volunteers every month.

The Army Recruiting Station in Morehead is located in the Postoffice lobby, open each Monday and Tuesday from 9 a. m. to 4 p. m.

Children often try the patience of their parents and vice versa.

If words were acts there would be no problems left to be solved.



BLASTS PROPOSAL . . . Earl O. Shreve, newly elected president of the U. S. chamber of commerce, took sharp issue with President Truman's "moral evasion" campaign to cut prices. He declared the people will not be "flooded by attempts to make business men scapegoats."

The banner of tolerance is often at the head of the parade of those who want more than tolerance.

News Classified Ads Pay

Many Rowan Farmers Use Contour Plan

Conservation Of Soil Held Important To Success

The Rowan County Soil Conservation District Supervisors are each interested in continuing the improvement of our farming program in this county, says Leland S. Hall, chairman of District Supervisors. We are on the march with better soil and water conservation practices. Present indications are that this growth will continue. Each year the number of farmers using contour cultivation on sloping land is increasing. Contour cultivation of row crops is a simple mechanical improved practice that is being rapidly adopted by farmers in this area. Experiments to date have shown that where contour cultivation is being practiced more water soaks into the soil, to provide the plant with more moisture necessary for high yields. There is less loss of the rainfall from runoff down the slopes causing rills and gully washing. The following are a few farmers from several communities who are using contour farming: Henry Eldridge, Claude Curtis, Elmer Kinder, Careless Curtis, Cecil Caudill, and N. E. Bays of the Sharkey community; Harvey McBrayer of Poplar Grove; Carl Bumgardner, Hayse Morehouse, Leland Hogge of Cranston; Clarence Redwine and Charles Egan of Big Brushy; Wilbur Phillips and D. B. Toler of Far Flat; Claude Ramey of Bangor; Charles Roe and G. W. Fraley of Elliottville; Jesse McDaniels of Hamm; Elmer Kinder of Little Brushy community says that the increased yields he gets pays for following the winding rows besides the saving of soil and water. This year he is contouring row crops on his own land, and also some fields rented from his neighbor, Carl Johnson.

The Soil Conservation Service has assisted this district by furnishing the equipment used, and the personnel to assist farmers in conservation work since the District was organized here.

News Classified Ads Pay



"BIG MUDDY" RUNS AMOK . . . Abnormal spring rains are causing floods in many parts of the country, inundating large tracts of land. Top panel shows the sandbagged levee of the Missouri river near Aldridge, Ill., before the rains came. Below, 36 hours later, the levee proves no barrier, the water breaking through to flood 2,000 acres of farm land.

McBRAYER'S TAXI
ANYWHERE - ANYTIME - COURTEOUS DRIVERS
PHONE 347

PLUMBING SUPPLIES

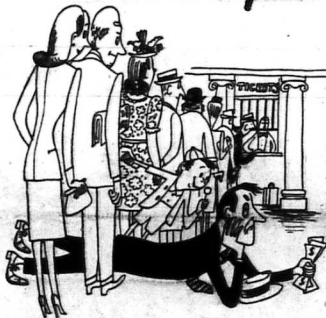
and Expert Installations and Repairs

- Electric Water Heaters -
- Parsons Pure-Air Units
- Automatic Gas Water Heaters
- Floor Furnaces

Open 7 A. M. to 5 P. M.

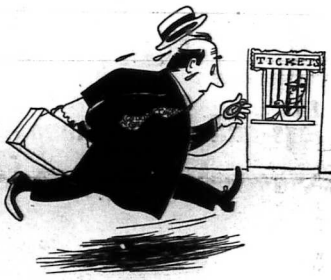
Morehead Plumbing & Electric Shop
Phone 12872 OBA CLINE, Owner Fairbanks Avenue

How C&O's "Pay-On-Train" service irons out your travel troubles



NO MORE TICKET LINE WAIT

No more standing in ticket lines for you or your secretary. No more hurried, harried trips for Mom when family travel is planned. Now C&O ticket-buying is as simple as A-B-C.



NO MORE LAST MINUTE RUSH

Gone is that annoying, last-minute scurry to pick up and pay for tickets before your train pulls out. Now you can order tickets by phone, climb aboard and get 'em on the train.



ALL YOU DO IS 'PHONE

Just phone for your space aboard any C&O through train. There's no charge for making the reservation. Give your credit card number or say you'll pay on train and you'll be told your car and space. Then get aboard—and go!



TICKETS DELIVERED TO YOUR SEAT

A passenger representative will bring your ticket right to your seat. Pay him then (or charge it to your C&O Lines Credit Card). On late night trains from Terminals, Pullman tickets may be picked up at the "check-in" desk.

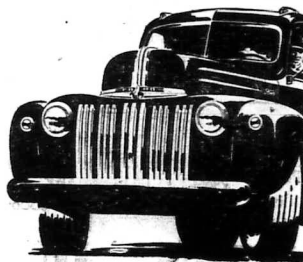
ABOUT PULLMAN TICKETS—Orders for Pullman space are subject to established cancellation rules—hence Pullman tickets must be picked up in advance unless you have a C&O Lines Credit Card to charge them to. (Apply for your Credit Card at any C&O, Nickel Plate or Pere Marquette office.)

It **PAYS** to wait because

FORD TRUCKS LAST LONGER!

Here's the proof!
Average Age **9** Years!

Complete 1946 Registration Figures are in! They tell you plenty about truck endurance. They show there are 1,584,966 Ford Trucks in use—more than any other make. They show that 44 out of every 100 of those Ford Trucks are already more than 10 years old! In fact, there are more Ford Trucks 14 years old and older than similar "veterans" of all other makes combined! That, you'll agree, is real, **eyewitness proof** of Ford Truck endurance. And that's why it **PAYS** to wait a bit for your new Ford Trucks.



While you're waiting . . .

for your new Ford Truck, we'll keep your present truck on the job with skilled, experienced, extra-fast service! We've got a good supply of replacement parts. And we use up-to-the-minute, factory-approved methods and special equipment for all service jobs. Make us your headquarters for real truck service!



Chesapeake & Ohio Railway

TERMINAL TOWER, CLEVELAND 1, OHIO

Collins Motor Company

G. S. Collins, Gen. Mgr.

Lloyd Cassity, Asst. Mgr.



WINS TITLE . . . Pauline Bett, Los Angeles, who defeated Doris Hart to win the women's single title in the national indoor tennis championship, held at New York City, a Miss Bett also holds the national outdoor tennis title.

Our two-year plan calls for a vegetable garden next year.

Boost Morehead College.

Need a LAXATIVE?



Sewing Machine Service
Repairing - Parts
All Makes
All Work Guaranteed
R. L. Richardson
Write, Call or See
Beulah Stewart
201 College Blvd.

Coxy Is Here!

Coxy is short for coccidiosis, the chick killer. It's likely to start around water fountains. Chickens pick it up and spread it, and you have an epidemic in the brooder house. In rainy weather, or when litter is damp, it spreads faster.

Control is the Dr. Hess treatment for coxy. Used in time, Control will help keep coccidiosis from getting started. If the disease gets a foothold, Control will help reduce losses.

Add Control to the feed—3 lbs. to 100 lbs. of mash. Costs 1/2¢ to 1¢ a chick. Keep it on hand.

C. E. BISHOP
DRUG COMPANY
Morehead, Ky.



CALE'S SUPPLY STORE
AMERICAN STANDARD
PLUMBING FIXTURES
Bath Tub, Lavatory Fixtures — Automatic Hot Water, Gas, Electric or Fuel Oil Units
Cales Supply
Bishop Avenue Phone 209 Marvin Cales, Mgr.



KENTUCKY ON THE MARCH
REVIEWS SLOWLY

Kentucky is probably the only state with two governmental agencies with the same general objectives that cooperate not at all.

For a good many years the State Department of Agriculture and the Kentucky Experiment Station have been cooperating no better than if one were in Iceland and the other in Little America.

The result right now is that our Agriculture Department is more than a name. Its appropriations have been curtailed for so long and so much of its work taken over by the Experiment Station that the general public, which includes most of the farming population, hardly knows it exists.

In reporting something the Committee for Kentucky's report on agriculture omitted, I am putting personal blame on nobody connected with either agency. Maybe all the work of the two agencies should have been consolidated and the Agriculture Department job taken over by the Experiment Station. That would have eliminated conflicting interests, particularly in pressure campaigns for funds every time the Legislature has to appropriate operating money.

Also it would have eliminated all the departmental jealousies that have helped to make cooperation next to impossible.

A state senator told me recently that he believed the two agencies could be made to function together, and that a majority in the General Assembly was in favor of whatever legislation that may be needed to get the best results.

If the two departments could not work together, they should be consolidated, perhaps with the Experiment Station taking over. The Experiment Station has one very important advantage. It is farther removed than the Department of Agriculture from the whims of politics, from changes in its higher personnel every four years.

The present set-up is bad. That we know. How to remedy it is something for a committee in the Assembly to find out and report upon, then for the Legislature to act upon. After enabling legislation is enacted, then it will be up to public officials of the right sort to do the rest. It can be done.

What makes school teachers teach?

Two things: love of the work and need of money.

And the schools of Kentucky cannot survive without both.

Pay has been hiked considerably in the last year but probably not enough to regain what has been lost through low pay in the last eight or ten years.

What I am driving at is that if we are to get the good teachers our schools need we must make the profession as attractive here as in other states.

The alarming drift away from the profession must not only be checked. It must be made to do a Phil Sheridan. A retreat must be turned into an offensive a forward march.

You may be interested in paragraphs quoted from a recent article in the Courier-Journal by its school editor, Lourena Eaton: "The normal turnover of teachers in the state is 1,400, and during the five years before the war, 1,000 beginning teachers were hired every year. This normal

quota has not been filled for the last seven years.

"It doesn't seem likely to happen; but let's say, for the sake of argument, that 500 beginning teachers will be certified in Kentucky this year. That leaves the state 500 short of its minimum requirements for this year alone. And it means that at least 500 will be added to the shortage of teachers which has been growing for seven years.

"As a result of this growing deficiency, Kentucky already has 5,229 emergency teachers.

That means that the state has 5,229 persons teaching school who aren't qualified to be regular teachers."

The situation calls for the best brains and well directed energy in every organization, every agency, state and local, interested in lifting elementary education up to a standard we will not have to apologize for. It will take all this to win back the school room personnel we have lost and are still losing.

BUILDING RESTRICTIONS

The Federal Government is expected to relax sharply some of the remaining controls over residential construction. National Housing Expediter Frank R. Creighton is expected to issue orders permitting the erection of many homes much larger than can be put up under present restrictions.

A total of 33,945,817 automobiles, buses and trucks, almost as many vehicles as were registered in 1941 were registered during 1946, which is a gain of nearly 3,300,000 over 1945. The all-time high number of registration was 34,472,145 in pre-war 1941.



MAN, NOT ELEMENTS, CAUSED THIS . . . It looks as if a cyclone had struck the Jim Munro home at Le Claire, Iowa. However, it was the landlord, not the elements, that caused this scene. The Munro family claims. They charge the landlord, Harold Olsen of Montpelier, Iowa, wrecked the summer kitchen of their home when they ignored an eviction notice. Similar happenings have been reported in other parts of the country by landlords anxious to gain possession of homes.

MOTOR VEHICLES

A total of 33,945,817 automobiles, buses and trucks, almost as many vehicles as were registered in 1941 were registered during 1946, which is a gain of nearly 3,300,000 over 1945. The all-time high number of registration was 34,472,145 in pre-war 1941.

SELF-SEALING TANK

The invention of a new self-sealing gasoline tank, which saves 40 percent in weight over those used in aircraft during the war, has been announced by the Navy. The new tank, described as a "distinct improvement," has been installed in the latest type naval aircraft.

WHITE HOUSE GUARDS

James C. Maloney, chief of the Secret Service, has disclosed that the Service is streamlining its protection of the White House and the President of the United States, having reduced its force by 85 men, on top of an earlier reduction that cut the small staff by about one-fifth when President Truman came into office. This reduction brings the agency, which is charged by law with the duty of guarding the President, down to "pre-Pearl Harbor levels" and cuts the total number of body guards to the lowest

number since the mid-Nineteen Thirties.

The House unanimously approved a resolution setting up a "coordinator of information," to assemble, analyze and digest certain data on legislation for the use of members.



Garden Plants For Sale
— Immediate Delivery —
Early Tomato and Cabbage Plants
In the near future we will have Pepper Plants, Sweet Potato Plants, Late Cabbage and Tomato Plants
BRADLEY'S GREENHOUSE
"Watch Us Grow"
Tippet Ave., Between 4th and 5th Streets

Why the Railroads Can't Afford NOT to Modernize!

A Dollars-and-cents Example That Will Interest Travelers, Labor and Investors

FOR a long time the C & O has been saying that America's railroads must modernize their passenger equipment—or forfeit a great opportunity.

In print and in private we have lampooned the "rolling tenements" that still pass for sleeping cars. We have stumped for modern streamlined trains to replace tired, creaking old day coaches. And over and over we have stated the conviction that, given attractive equipment and new comforts and services, the railroads could open the door on a new era of travel.

As an earnest of that conviction the C & O is replacing every old sleeping car, day coach and diner, on all our main lines, with modern streamlined cars. The orders have all been placed. If every railroad were doing as much, there would now be 21,000 new passenger cars on order instead of a mere 8000.

But Is It Practical?

The standpatners in the industry are still shaking their heads. And lately more reasonable people have been asking, "How can the large-scale replacement of old trains be practical?"

They point out that several of our largest systems had serious deficits in 1946. And everyone knows that the railroads are caught between rocketing costs and lagging rates. "How," they ask, "can such an industry afford large outlays for new equipment?"

The answer is that the railroads can't afford not to make these outlays. And here is a dollars-and-cents example:

The Investment That Is Fast Returning Its Cost

Last August one of the C & O lines, the Pere Marquette, installed two ultra-modern trains on its run between Detroit and Grand Rapids. These new daytime streamliners were the last word in passenger attractiveness.

Since they have been in operation the new trains have carried 86% more passengers than old trains carried over the same route during the same period of the previous year—when traffic was still swollen by war emergencies.

And here is the proof of the pudding: In less than 4 years, at the present rate, the



Which will it be—modernization or continued deficits?

increase in passenger receipts will equal the total cost of the trains!

Modern equipment is not a luxury that only a few fortunate systems, like the C & O, can afford. Even a bankrupt railroad can borrow money today to buy such equipment at 2% interest. Since that is the fact, it is almost incredible that less than 100 new passenger cars have been ordered this year!

Which Way Do We Go?

To investors, the labor brotherhoods and the traveling public, the C & O repeats its conviction—that our railroads face one of the most critical choices in their history.

If pessimist thinking, old-line practices and Toonerville equipment continue to be tolerated, then, regardless of rate relief, further deficits and bankruptcies are certain.

But, if, on the other hand, these liabilities are replaced by modern ideas and modern trains, our railroads can again be a credit to our country. They can also be a bulwark of our national defense, which, as every citizen knows, depends on a flourishing transportation system.

The Chesapeake and Ohio Lines

Terminal Tower, Cleveland 1, Ohio

SAFETY CONFERENCE
Attributing last year's lower traffic toll to activities resulting from first President's Highway Safety Conference, President

Truman has called a second conference for June 18, 19 and 20, in Washington.
News Classified Ads Pay!

SHEET ROCK

For Sale

4 x 8 Sheets

BOONE HOLLAN, JR.

Morehead, Kentucky

Sarah Anne's COOKING CLASS

Berries have long been a welcomed fruit and now that the season has arrived, they should be served often. All ripe fruits that can be eaten raw are valuable on account of their vitamin content. Thorough chilling of all berries which are served raw is important as this improves their natural flavor.

Berry Muffins

2-2 1/2 cups flour
4 teaspoons baking powder
1-3 cup sugar
1/2 teaspoon salt
1 cup milk
1/4 cup oleomargarine
1 egg beaten
1 cup berries
Sift and mix dry ingredients

into a mixing bowl. Add the milk gradually beating until smooth. Add the beaten egg, add melted shortening. Add the berries which have been slightly floured. Pour into greased muffin tins and bake in an oven 400 degrees for 25 minutes.

Frozen Strawberry Salad

1 tablespoon butter
3 egg yolks
3 tablespoons flour
1/2 cup sugar
1/2 cup lemon juice
2-3 cup milk
2 cups strawberries
1 cup whipped cream
Salt

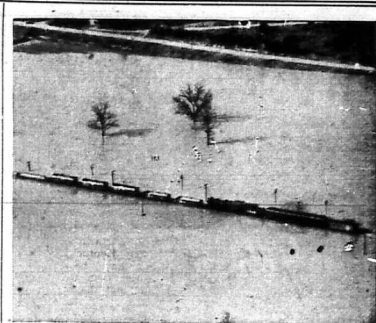
Melt the butter in a double boiler. Add flour, beaten egg

yolks, sugar and salt. Add the milk gradually and cook, stirring constantly until thick. Cool. Beat in the lemon juice and prepared berries. Fold in the whipped cream. Pour into tray and freeze. Serve on lettuce with fruit dressing. Garnish with whole berries.

Use large perfect strawberries. Wash and hull. Add orange juice to which a little chopped mint has been added. Sprinkle with powdered sugar. Serve in cocktail glasses, thoroughly chilled.

Huckleberry Bran Muffins

1/2 cup flour
3 teaspoons baking powder
1/4 teaspoon salt
1 cup bran
1 egg
1 1/2 tablespoons molasses
1-3 cup milk
1/2 cup huckleberries
1 tablespoon melted shortening
Mix and sift flour, baking powder and salt, mix in bran in a mixing bowl. Add the milk, beat



CAUGHT IN THE FLOODS... Flood waters of the Mississippi river stalled this Frisco railroad work train. Photo was made from a coast guard plane making an aerial survey of the flooded area. Other locations reported train and railway trucks under water, bringing about renewed demands upon congress for flood control.



Mr. W. D. Fishback, Woodford County farmer and stockman, demonstrates his automatic electric barley cooker for Farm Service Adviser, E. R. Murphy.



COWS ENJOY ELECTRIC COOKING, TOO

REDDY KLOWATT
Your Electric Servant



PUTTING weight on cattle is largely a matter of feeding them enough of what they want to eat. Getting them fat is one thing; getting them smooth, with the finish that puts blue ribbons on your stalls, and extra dollars in your pocket is something else again.

Barley has long been known as the stock feed that will "finish" prize winning cattle. Raw barley is hard, and difficult to digest. This automatically controlled, electric barley cooker prepares plenty of palatable food with little

trouble. Insulated, it keeps the food warm and fragrant until used.

E. R. Murphy, Director of K. U.'s Farm Service Department, is continuously searching for information on new methods and new equipment to pass on to the thousands of farmers in K.U.'s operating territory—methods and equipment that will help Kentucky farmers increase production, improve produce, and reduce costs and labor.

Kentucky Utilities Company doesn't believe its job is done simply with the delivery of dependable, low cost electricity. Farm Service Advisers, Home Service Advisers, Industrial and Commercial Engineers are available at no cost to every K.U. customer, so that maximum benefit can be obtained from K.U. service.

Whatever your electric problem, a phone call or a post card to your nearest K.U. office will bring you experienced assistance. These men and women put service in electric service.

well, add shortening, beaten egg. Add the huckleberries which have been lightly floured. Pour in greased muffin tin. Bake 25 minutes in an oven 400 degrees.

Blackberry Jelly

Clean and wash 2 quarts of blackberries. Cover with water. Boil until soft. Put in a jelly bag and drip. Measure the juice and add 3-4 cup sugar to 1 cup of juice. Boil until it jellies about 20 minutes. Pour into sterilized jars and seal.

Frozen Strawberry Whip

Into a large bowl place: 1 cup crushed strawberries 1/2 cup confectioners sugar 2 egg whites and 1 tablespoon lemon juice

Beat with a rotary beater until mixture is very stiff. Freeze. Cut into squares and serve.

Wolfford Insurance Agency

Phone 249-F-1
Insurance of all types
See us especially for your car insurance

UNCONTROLLED CHICKS from KENTUCKY HATCHERY
CHICKS - 12 or 15 weeks old. From the best of the state. Guaranteed. 12 or 15 weeks old. From the best of the state. Guaranteed. 12 or 15 weeks old. From the best of the state. Guaranteed.

UNDER 12

Triena is the mild, sunny, luscious mode especially for children under 12. Easy to take. Flavored with delicious pineapple. Prompt acting, reliable. For quick relief from annoying children's constipation, give TRIENA. Satisfaction guaranteed. Caution: use only as directed. 30c, large size, 50c.

Triena ALLIED DRUG PRODUCT CO. CHICAGO, ILL.

Order Your Chicks Now!

HATCHING TWICE WEEKLY

Our flocks did not have any reactors on last test.

BETTER LIABILITY - QUICK GROWTH

Baby Chicks - Started Chicks and One and Two Weeks Old.

Kentucky-U.S. Approved - Full-Crown Passed

MT. STERLING HATCHERY

East High Street

Mt. Sterling, Ky.

LO!

THE ICE MAN COMETH

When U Call

71

Morehead Ice & Coal Co.

— LET US HELP —

SAVE YOUR CAR

Personalized Service
by
Automotive Specialists



Come In Now

Midland Trail Garage

Morehead, Ky.

Phone 150

"It Will Pay You To Wait For A New Chevrolet"



KENTUCKY UTILITIES COMPANY

A Self-Supporting, Tax-Paying Service Organization

THE MORE YOU USE ME THE LOWER MY HOURLY WAGE

Sunday School Lesson

JUDAH'S UNSTEADY COURSE
International Sunday School Lesson for June 1, 1947

GOLDEN TEXT: "In quietness and in confidence shall be your strength."—Isaiah 38:15.
Lesson Text: II Kings 19:5-7; 32-37; 28:12-17

In our lesson for last week, we learned that Sargon, the Assyrian king, captured the Northern Kingdom and incorporated the Ten Tribes into his empire in 721 B. C. He lived only four years thereafter and his son, Sennacherib, ascended to the throne.

For more than a quarter of a century the Kingdom of Judah had been menaced by the Assyrians. Ahaz had done homage to the Assyrian king and his son, Hezekiah, who succeeded him, became almost a vassal of the great Assyrian Empire. Thus Hezekiah, at the age of only twenty-five, inherited not only a throne, but all the difficult problems connected with trying to protect a small nation from the imperialistic plans of larger and more powerful surrounding countries.

There is a strange parallel in the position in which Hezekiah found himself and the position of some of the smaller nations of the world today. Experience rather than wisdom, dictated that Judah enter into an alliance with a stronger power to protect itself against the growing encroachment of a neighboring power. Although the prophet Isaiah, warned vigorously against it, Hezekiah joined in a rebellion against the Assyrian overlordship in an attempt to throw off the annual tribute.

Sennacherib immediately sent his troops westward, and after conquering Phoenician towns, invaded Judah and blockaded Jerusalem, but did not take it. Seeing such a state of affairs as probable, Hezekiah had prepared for it by having a conduit for water built, and plans made within the city to withstand a long siege. After some time, Sennacherib withdrew without securing the chief prize of his enterprise, Judah, however, suffered greatly as a result of her

While Hezekiah was certainly not without fault, he has been placed at the very top among the kings of Judah after the fall of the monarchy. II Kings 18:3 declares of him, there was "after him, none like him among the kings of Judah, nor any that were before him." In the first month of his reign, he reversed the policy of his father Ahaz and "opened the doors of the house of the Lord." To his credit, he set out to restore the Mosaic forms of worship, removing every possible likeness to God from the places of worship. Even the brazen serpent, made by Moses, which the people had come to worship, was broken to pieces. He sent letters of invitation to all the tribes, north and south, to attend the official restoration of the historic liturgy of the Lord.

The boldness of his reformation was practically nullified by the fact that the whole movement tended to make worship an affair of the heart. Ceremonial religion extreme of human sacrifice, has never saved anyone. Zeal for God and his righteousness, not zeal for ritual, will give strength to meet the problems and perils of the day.

It is to Hezekiah's credit that he kept the prophet Isaiah close to him as his counselor, although he did not always heed the warnings of the man of God. Not only was Isaiah a man who had surrendered his life to God's call, he was a real statesman, with the courage to speak his convictions at all times and in all places, braving the wrath of kings, princes, priests and false prophets.

Having the utmost faith in God, Isaiah believed that while God would not save a sinning people for their own sakes, in spite of their sins, for grounds sufficient to him, God could and would overrule the evil designs of Jerusalem's enemies in order to further his purpose of bringing a Saviour to all the peoples of the earth. (Isa. 40:18-31.) Although living seven hundred



GARDEN CHAMPION . . . Wayne Delventhal, 15, Brighton, Colo., winner of national youth and high school gardening honors presented by the National Garden Institute in the "national green thumb" contest for best garden.

alliance with Egypt and Babylon and Isaiah was not slow in reminding the king and the people of their losses.

Years before the birth of Christ, Isaiah gave a picture of Jesus which constitutes the heart of the Old Testament.

All the weakness of Judah was offset by the faith of this one man. When king and people faced what seemed to be a choice between slavery and massacre, they turned to the man who had told of a God who was the true

refuge and strength of his people. Now Jerusalem learned from him that, in quietness and confidence in the power of God, they could find the way out of the deadly predicament into which they had been led by reliance on the power of man.

History Of Rowan FSA Is Rented

Organization In Morehead Serves Rowan, Carter, Elliott Counties

The services of the Farm Security Administration were made available in this area some years ago. In 1941, the Morehead Board of Trade through the County Fiscal Court made it possible for a county FSA office to be located in the county court house. This office is still in full force, although under a different name. It is now the Farmers Home Administration. This office serves the counties of Rowan, Carter and Elliott.

During the past year, the 79th Congress combined the duties of the Farm Security Administration and a portion of the Farm Credit Administration known as the Emergency Crop and Feed Loan into the Farmers Home

Administration. The functions of these two divisions now operate under the one head.

The duties of the Farmers Home Administration are to aid small farmers and veteran farmers through sound, technical farm and home planning and supervision, as well as with financial assistance to carry out the plans.

The planning and supervision on the farm under the direction of William K. Rouse, FSA Supervisor, consists of the adopting of improved and sound practices such as soil improvement, better crops, improved livestock breeding and selection, the production of feed on the farm, financial advice and general farm management.

The home planning and supervision, under the direction of Ruby C. Sasser, Home Supervisor, consists of a live-at-home program in all its phases. It includes the adoption of improved home management practices in the areas of health, nutrition, food preservation and storage, gardening, clothing, housing, furnishings and equipment, financial management, care of children, education and community interests.

It is the job of the Farmers Home Administration to take small farmers, young farmers and veteran farmers and help them to improve their farms or farming practices, their home and their financial standing, so that they will live comfortably, improve themselves, make better citizens, as well as make better customers for the merchants

and better risks for the local banker.

After a family stays in the program for five years, the Farmers Home Administration feels that he should be ready to "graduate" and provide room for other worthy farmers. This program has helped a total of 618 farmers in the three counties of Rowan, Carter and Elliott, since its beginning. At present there are only about 115 active families in these counties on the program. Several are expected to graduate from the program this year as some of the best farmers in the county. The others have graduated and gone to the local banks and other agencies for what help they needed.

SUGAR APPLICATION

Applications may be made by letter to branch offices of the Sugar Rationing Administration for sugar ration books for babies and persons newly discharged from the armed forces and to replace mutilated books, according to the Administration. In case of a lost or stolen book, a formal application is required on a new form.

TASK FORCE

"Task Force Furnace," a special Army Ground Forces unit, will test weapons this summer in the Arizona desert, near Yuma, where the temperature sometimes tops 125 degrees. The test is designed to find out how tanks, helicopters, guns, mines, radars and other equipment function in extreme desert conditions.



RETURN TO BERLIN . . . Dr. Richard L. Blum, the first rabbit of Berlin since before the war, has returned to the city of his birth and will live in U. S. quarters there. He escaped from Germany in 1938 at the height of Nazi persecution of the Jews.

BABIES

The Public Health Service has announced that some 973,000 babies were born in the United States during the first three months of 1947. This compares with 964,000 in the corresponding period of 1946. Deaths were figured at 388,000 about the same as in the first quarter of last year.

Education will help people but it is not the answer to every personal problem.

FREE \$50.00 BILL MANY OTHER CASH PRIZES FREE

BIG AUCTION

GRAYSON, KENTUCKY

25 Miles West of Ashland, Kentucky — 35 Miles South of Portsmouth, Ohio — 40 Miles West of Huntington, W. Va.

As Agents, we are selling for the owner, an admirable brick house located in the Prichard Addition in the city limits of Grayson. Also, large tract of land, subdivided into 30 choice building lots and several baby farms.

STARTING AT
10 A. M. — C.S.T.

SATURDAY, MAY 31

STARTING AT
10 A. M. — C.S.T.

Lunch Served On Grounds

Music By Local Band

This is a beautiful colonial style brick home with 8 spacious, well-arranged rooms, known as the Prichard home, located near Courthouse Square, South Side. A really beautiful and fine neighborhood. Has a picturesque setting, approximately 150 feet back from street on a big, level, well-kept plot of ground. A most desirable home on a marvelous home site—quiet, restful, cool—lovely shade trees. Has two porches for afternoon quiet and rest, and observation of nature's lovely scenery, overlooking the clean, beautiful, fast-growing city. Truly a great home you would be proud to own. Grayson, Kentucky, is on U. S. ROUTE 60, and the County Seat of Carter County—a grand place to live—has many fine homes, churches and schools.

The Beautiful Choice Building Lots Are Ideal Home Sites

They are located in the City Limits (Prichard Addition) with all city conveniences available and so arranged that each and every one will have a good street frontage.

ALL

BABY FARMS

of the above property will be sold to the best bid, one-half cash day of sale, balance EASY TERMS that will be announced day of sale.

These consist of some home sites and good grazing, cultivating and woodland.

WARRANTY TITLE and QUICK POSSESSION

IMMEDIATELY after the sale of the above property, we will move to the EAST END of the City—then we will offer at AUCTION SEVEN BRAND NEW HOMES, built of the best material . . . really beauties—so well arranged—lovely HARDWOOD FLOORS and WOODWORK—spacious, inviting rooms, charming new paper, tastefully decorated and very delightful inside and out—all on BIG LEVEL LOTS, 50 feet fronting U. S. 60, extending back approximately 250 feet—BEAUTIFUL LAWNS, with Shrubbery, plenty of room for good gardens. ELECTRIC IN and city water available. POSSESSION WHEN DEED IS EXECUTED. The owner, or agents, will be glad to show this property prior to sale. This is going to be a BIG SALE—A BIG DAY. Remember date—

SATURDAY, MAY 31

We want you to be there. You may rest assured it will be worth your while.

For Further INFORMATION CONTACT HOME REALTY COMPANY, LORDIER BUILDING, PHONE 1332, ASHLAND, KENTUCKY, or FINDLEY WOLF, GRAYSON, KENTUCKY

ROWLAND AUCTION COMPANY

Selling Agents

Winchester Kentucky

— Continuing —

2 FOR 1 SALE

Buy One New Tire at Factory List Price—
We Give You One Free!

We Continue This Sale to Become Better Acquainted With You
FACTORY REJECTS AT LOWER PRICES

Dealers: Now Is the Time to Stock Up!

CLAYTON RECAPPING CO.

W. MAIN ST. PHONE 133 MOREHEAD, KY.

Now—Easier than ever!

Toni HOME PERMANENT with PLASTIC CURLERS

Round . . . Ribbed . . .
Re-usable

New DeLuxe Kit with plastic curlers \$2

Roll up your hair in half the time! Toni Professional Plastic Curlers have 50% more curling surface; and they're ribbed (treaded) all over, to keep hair from slipping.

Save money every time you re-use your Toni Plastic Curlers. For a refill kit costs only \$1.00—contains everything but curlers.



Regular Kit with fiber curlers \$1.25

Refill Kit without curlers \$1.00
All prices plus tax

C. E. BISHOP DRUG CO.

The REXALL Store

Morehead, Ky.