

Morehead Is Host To 2,600 Students This Weekend

Regional Music Festival Draws 1,500 Participants

Over 1,500 high school students representing twenty-four Kentucky high schools will participate in the annual Kentucky Music Festival on the Morehead State campus April 6.

The performing bands will mark the end of the three-day music festival. Students performing instrumental solos and ensembles were judged Saturday, March 22, and all piano, vocal and chorus events

took place March 20. Besides the twenty-four bands that will perform on Saturday, 430 instrumental solos and ensembles, 100 vocal solos and ensembles, 75 piano solos and ensembles and 40 choruses have participated in the festival.

Among schools participating were: Boyd County, Cannonsburg Elementary, Cooper Elementary, Cat-

lettburg, Fairview, Holy Family, Blazer, Putnam Jr. High, Coles Jr. High, South Shore, Wartland, McDowell Jr. High, Raceland, Russell, Bracken County, Breckinridge, Rowan County, Deming, Ezel, Morgan County, Louisa, Mt. Sterling, Montgomery County, Owensling, Consolidated, Sharpshurg, Mason County and Mayville.

Bands performing on Saturday will represent: Breckinridge Training, Owensling, Bracken Co., Fairview, Mt. Sterling, Nicholas Co., Prichard, Raceland, Boyd Co., Morgan Co., Carlisle and Sharpshurg.

Others from: Rowan Co., Mayville, McKell, Louisa, Wartland, Coles Jr. High, Mayville Jr., McDowell Jr., Putnam Jr., Russell and Blazer. Keith M. Huffman, coordinator for the music festival, is a member of the Morehead State College music faculty.

Instrumental Ratings Bring 132 Superiors

Eighty-five soloists and 47 instrumental groups received superior ratings at the annual Kentucky Music Festival at Morehead State College March 22-23.

More than 500 students participated. Piano, vocal and chorus competition was held Saturday and band competition is set for Saturday, April 6.

Receiving superior ratings were: BB clarinet — Mary Baber, Mayville; Charlotte Case, Mayville; Elizabeth Clay, Nicholas County; Steve Dean, Bracken County; Carolyn Galloway, Ashland; Susan Mosser, Ashland; Charles Snodgrass, Ashland; Karen Brode, Bracken County; Martha Anderson, Carlisle; Brenda Barney, Ashland; Carol Kiser, Ashland; Jean McVannahan, Nicholas County; Yvonda Moore, Louisa; Linda Ritchie, Nicholas County; Alice Robbins, Mayville; Joe Shagge, Ashland, and Nancy Johnston, Russell.

BB bass clarinet — Judy Naugle, Mayville, and Judy Hudgins, Mayville.

Tenor saxophone — Deborah Fos-

son, Ashland; Ann Thompson, Mayville; Nina Denton, Fleming County; Don McCall, Boyd County.

Baritone saxophone — Johnny Guisaki, Mt. Sterling, and Calvin Hunt, Montgomery County.

The Loud Bassoon Bassoon — Shirley Mefford, Mayville.

EB soprano clarinet — Betty Stephenson, Raceland; Judy Caswell, Nicholas County; Diana Reynolds, McDowell, and Ramona Brothers, Mayville.

EB alto clarinet — Sharon Brice, Ashland; Polly Payne, Ashland; Shirley McCall, Boyd County; Margie Stanley, Ashland, and Judy Lehee, Fairview.

EB alto saxophone — Thomas Bowne, Morehead; A. Bourke, Owensling; Jim Canfield, Ashland; Geneva Dyard, Ashland, and Larry Creech, Fairview.

Oboe — Francine Smoot, Ashland, and Ava Yancey, Ashland.

Flute trios — Mayville No. 1 and Mayville No. 2.

Flute solos — Beth Anderson, Mayville.

—Turn to last page



MUSIC FESTIVAL PARTICIPANTS—Performing in last Saturday's session of the Regional Music Festival, which was attended by students in piano, vocal or chorus events, were (l to r): Linda Carr, Louisa; Mrs. Smith Armstrong, sponsor from Louisa High School; Martin Huffman, coordinator of the festival and Frieda Wellman and Susan White, Louisa.

Speech Festival Trophy Is Won By Mason County High School

Over 200 high school students participated in the annual North American Speech Festival Regional High School Speech Festival held on the Morehead State College campus March 22-23.

Fifty-five of the 200 students received a superior rating, which entitles them to participate in the speech festival held in Lexington at the University of Kentucky April 5-6.

Mason County High School received the trophy for having the most first-place winners among high schools with a total of 41 first-place winners.

Miss Sue Osmond from St. Patrick's, Lexington, was selected as this area's top prospect to obtain an award of notable achievement in the superior ratings of the coming state meet. Aiding her in the public speaking contest at Lexington will be the following three persons from this area: G. W. Mitchell of Nicholas County, Don Nide of Mason County and Ralph Wesley of Fleming County.

Representing this region in the annual branch of the State High School Speech Festival will be the following persons as they are listed in their specific groups:

Discussion — Becky Haddix of Rowan County; John Sharp, Nicholas County; Dan Smith, Nicholas County, and Hannah Stone, Paul Blazer.

Dramatic Reading — Frank Browning, Fleming County; Elsie Cullard, Rowan County, and Larry Kegley, Rowan County.

Serious Monologue — Karen Denton, Mayville.

Humorous Monologue — Amanda Ballingall, Deming; Barbara Davis and Carolyn Purcell, Fleming County; Sharon Poe and Martha Ross, Mason County; Milton Stanford, Tolleboro, and Dave Wag-

ner, Nicholas County.

Expository Prose — Brenda Day, Mayville; Nancy Franklin and Wanda Holliday, Paul Blazer; Charlie Lansford and Sharon Royle, Fleming County, and Ronald Richardson, Rowan County.

Radio Speaking — Dick Hughes, Nicholas County; Bob Humphries, Mason County; Ron Murray, Deming; Bill Newell, Mason County; and Sally Wilson, Deming.

Oratory — Carol Colgan, Fleming County; Ron Craft, Nicholas County, and Judy Mitchell, Nicholas County.

Extemporaneous Speaking — Wanda Newell, Paul Blazer; Dave Richardson, Rowan County; Dan Smith, Nicholas County, and June Wilson, Mason County.

Poetry Reading — Sharon Barrow and Barbara Parmalee, Paul Blazer; Jim Barry, Mason County; Marion McRoberts, Mayville, and Camille Williams, Breckinridge.

The Junior High expository prose was won by Miles Reed of Putnam and the co-winners of the junior high poetry reading were Gordon Jones of Woodliffe and Diana Williams, Putnam.

Annual Future Farmers Of America Day Brings Representatives From 25 Chapters

The annual Future Farmers of America Day for the Eastern Kentucky district will bring over 850 participants to host Morehead State College Saturday, April 6.

Twenty-five FFA chapters and their guests will assemble in Button Auditorium at 9:30 a.m. for exercises conducted by the Eastern Kentucky Federation of Future Farmers of America officers. The welcoming address will be given by Dr. Adron Doran, president of Morehead State College.

Contests and activities will begin at 10:30 a.m. and are scheduled throughout the day. Entries will compete in public speaking, impromptu speaking, chapter meetings procedure, creed contests and music contests.

The students and their parents will go to a conducted tour of Morehead State College campus at 1 p.m.

FFA Day will conclude in Button Auditorium in the late afternoon with the presentation of cups, ribbons and other honors won by members throughout the day. Chapter "sweethearts" will be crowned at this session.

Judging of records of productive enterprise projects will begin the week prior to FFA Day. The records will be displayed with awards in Lappin Hall throughout the following Saturday.

The MSC Agriculture Club will act as hosts for the participants and will guide them on the campus tour.

It is indeed a pleasure to have the Future Farmers of America choose our campus for their annual activities in this region," President Doran said.

Future Farmers of America Day is coordinated throughout the Eastern Kentucky District by D. E. Bayless, district supervisor of vocational agriculture in the State Department of Education.

The Division of Applied Arts is the coordinator of the program at the college. And, Dr. Nelson Grot, chairman of the Division of Applied Arts, stated that all participants should bring their parents and friends to the program as all visitors would be welcome.

Chapter sponsors are: Paul Preston and Charles E. Taylor, Owensville; Louis G. Bennett, Sharpshurg; Dempsey Bailey, Boyd County; Junior Poling, Prichard; John H. Vansant and Donald F. Wagner, Sandy Hook; Roy Giehl, Jr. and L. C. Skaggs, Fleming County; Eugene Stanley, Betsy Lays; Roy Demmy, Maytown; William L. Well, Prestonsburg; Chancos Calhoun, McKell;

James L. Reed, Flat Gap and Clarence Meek, Meade Memorial. Others are: J. Lynn See and Bronelle Skaggs, Old Springs; Fred Arrington, Louisa; David Lykins, Lewis County; Lawrence W. Tandy, Tolleboro; Luther Rice, Salsville; Fred Chumler, Jr. and C. Calvin Walker, Mason County; Charles Williams, Meador County; Richard Jett, Ezel; Paul Williams, Morgan County; James W. Hsie and Glen D. McDowell, Johns Creek; Walter E. Ellison, Virgie and Clay Banks and Arvil Crase, Rowan County.

Adult program leaders are: Lonnie Clegg, Sandy Hook and Joe Jarrell, Louisa.

Student Librarians Association To Meet On Campus April 5

Over 250 members of the Eastern Kentucky Student Librarians Association and the Eastern Kentucky Education Association Department of School Librarians are expected at the EKSLA meeting, which will be held on the Morehead State College campus Friday, April 5.

The program will start Friday morning in Button Auditorium with a welcoming address by President Adron Doran. Following Dr. Doran's address, George Ort, president of the Art Guild Bldg. in Cincinnati, O., will speak to the group and show a film on "The Art That Binds".

Following a luncheon in the Doran Student House, Jonnie Conkol, a Morehead State College alumna, will give several readings before the group. A business meeting will end the day's activities.

Officers of the Eastern Kentucky Student Librarians Association are: Goddard Preston, Old Springs, president; Jackie Maconochie, Fleming County High, vice president; E. Caldwell, Boyd County High, secretary and treasurer; Judy Rogers, Nicholas County High, president-elect; Hamilton, Catlettburg, parliamentarian; Sharlott Dixon, Mason County High, chaplain and Miss Garcia Preston, Old Springs, sponsor.

Mrs. Georgia M. Muncey, Mulberry, is chairman of the EKSLA Department of School Librarians and Miss Opal Belcher, Elkhorn City, is secretary.

The EKSLA was formed at Morehead State College in April, 1957.

Students and residents of the community are invited and encouraged to attend as these special planned services as possible for them.

It is chairman in charge of Religious Emphasis Week is composed of campus religious groups. They are: Grace Hall, Presbyterian, Warner Fellowship, Patty Jo McKinnon, Baptist, Student Union; Fred Burns, Baptist Union; Paul Roth, Wesleyan Fellowship; and David Maude, Presbyterian Youth Fellowship.

Grace Hall summed up the feeling of the group by saying: "We hope that more students will participate, which will make this a Religious Emphasis Week."

Varied Schedule Will Highlight Religious Emphasis Week

Religious Emphasis Week, long a meaningful tradition at Morehead State College, will be held on the campus the week of April 8 through 11.

The week's activities sponsored by the Council of Presidents of the college has been planned by a joint committee of presidents of the religious organizations on campus.

Highlighting the services held during the week will be a progressive dinner on Tuesday, beginning at 5:30. Each church group on campus will be responsible for a phase of this dinner which is open to all students.

To Present Daily Devotions Throughout the week, each day at 12:30, the religious organizations represented on campus will alternate the reading of the Lord's Prayer in Button Auditorium. The clubs have invited guest speakers from the surrounding churches to give the devotionals Monday through Thursday.

On Thursday, a lakeside service is planned at the college lake at 7:30 to culminate the week's activities.

Following a luncheon in the Doran Student House, Jonnie Conkol, a Morehead State College alumna, will give several readings before the group. A business meeting will end the day's activities.

Following a luncheon in the Doran Student House, Jonnie Conkol, a Morehead State College alumna, will give several readings before the group. A business meeting will end the day's activities.

Following a luncheon in the Doran Student House, Jonnie Conkol, a Morehead State College alumna, will give several readings before the group. A business meeting will end the day's activities.

Following a luncheon in the Doran Student House, Jonnie Conkol, a Morehead State College alumna, will give several readings before the group. A business meeting will end the day's activities.

Following a luncheon in the Doran Student House, Jonnie Conkol, a Morehead State College alumna, will give several readings before the group. A business meeting will end the day's activities.

CENTRAL KENTUCKY PHILHARMONIC

Civic Celebrity Series Program Scheduled Tonight In Button

The Northeast Kentucky Civic Celebrity Series will present the Central Kentucky Philharmonic on April 2 at the Morehead State College campus.

The orchestra, under the direction of Robert King, will present an evening of symphonic music beginning at 8 p.m. in Button Auditorium.

Made up of faculty and students from colleges and high schools in central and eastern Kentucky, the Central Kentucky Philharmonic will feature pianist Robert Mumper in the Morehead concert.

Mumper, a member of the Morehead music faculty, will perform Beethoven's Piano Concerto for Orchestra, No. 5, The Emperor.

Morehead State College has six PRIZES M.S.C.

Ned Breathitt Talks At Convocation

Edward T. "Ned" Breathitt, candidate for the Democratic nomination for governor, spoke at a convocation, March 29.

He was contacted by the Open Forum Club to speak on the campus, as were the other gubernatorial candidates. At present, former Governor A. B. Chandler has not responded to two letters sent to his headquarters requesting that he appear on campus.

Students participating in the convocation are: Pat Bartlett, Shirley Bell, Fremont Besmer, Gary Billups, Vay Bonarocsky, Robert Brown, Central Kentucky Philharmonic, Claude Caliguri, Joseph Cersommo, Rosylene Chaffin, Glenn Chaffin, Laura Clayton, Thomas Fullerton, Catherine Georges, Carol Gilmore, Thomas Hamrick, Sarah Heisey, Stephen Holburn, Barbara Hozgatz, Sue Irvin, Donovan Johnson, Edward DeMar, Edwin Kurth, Dennis Lay, Martha Lewis, Donna Lohmeier, Donna McClain, Jean McFarland, Anna Lou Nelson, Mary Casey, John Pfeiffer, David Phillips, Charles Ruff, Fred Sloan, and John Turner.

James Underwood, Bobbie Webb and Joe Wells.

From the music faculty are John Stetler, Alex Lesauere, James Pest, and Fremont Besmer while two students, Gene Browning and Robert Marshall, perform with the Philharmonic.

The concert is open only to members of the Northeast Kentucky Civic Celebrity Series and students of Morehead State College.

Following convocation, Breathitt will address a question-and-answer session for students who have been unable to ask their questions at the convocation program.

Following convocation, Breathitt will address a question-and-answer session for students who have been unable to ask their questions at the convocation program.

Following convocation, Breathitt will address a question-and-answer session for students who have been unable to ask their questions at the convocation program.

Following convocation, Breathitt will address a question-and-answer session for students who have been unable to ask their questions at the convocation program.

Following convocation, Breathitt will address a question-and-answer session for students who have been unable to ask their questions at the convocation program.

Following convocation, Breathitt will address a question-and-answer session for students who have been unable to ask their questions at the convocation program.

KING MIDAS—Wallace Justice and Elsie Caudill will appear in the Children's Theatre Production of "King Midas." The Morehead Women's Club and the College Theatre are sponsoring the production and proceeds will go to the Women's Club Scholarship Fund.

IN BUTTON AUDITORIUM

Woman's Club, M'head Theatre Present 'King Midas' Apr. 3-4

By Josh Lovelace

Trail Blazer Drama Editor

The Morehead Women's Club and the Morehead State College Theatre are presenting a Children's Theatre Production of "King Midas" on April 3 and 4 in Button Auditorium. All proceeds from the production are for the Women's Club Scholarship fund for Morehead College students.

Performances for the production are scheduled at 1:30 each evening. Tickets are on sale in the Speech Office or tickets may be obtained evening. Prices for this production from the Morehead Women's Club

Concert Choir To Begin Tour In Mayville

The MSC annual spring concert choir tour will be held on April 8, 9, and 10.

On Monday, April 8, the choir will be performing in Mayville. The choir will visit three high schools in Louisville on Tuesday and Wednesday where they will complete their tour in Lexington where they will give three different performances.

Mr. James R. Beane is the conductor of the concert choir. Students participating in the tour are: Bartlett, Shirley Bell, Fremont Besmer, Gary Billups, Vay Bonarocsky, Robert Brown, Central Kentucky Philharmonic, Claude Caliguri, Joseph Cersommo, Rosylene Chaffin, Glenn Chaffin, Laura Clayton, Thomas Fullerton, Catherine Georges, Carol Gilmore, Thomas Hamrick, Sarah Heisey, Stephen Holburn, Barbara Hozgatz, Sue Irvin, Donovan Johnson, Edward DeMar, Edwin Kurth, Dennis Lay, Martha Lewis, Donna Lohmeier, Donna McClain, Jean McFarland, Anna Lou Nelson, Mary Casey, John Pfeiffer, David Phillips, Charles Ruff, Fred Sloan, and John Turner.

James Underwood, Bobbie Webb and Joe Wells.

Ned Breathitt Talks At Convocation

Edward T. "Ned" Breathitt, candidate for the Democratic nomination for governor, spoke at a convocation, March 29.

He was contacted by the Open Forum Club to speak on the campus, as were the other gubernatorial candidates. At present, former Governor A. B. Chandler has not responded to two letters sent to his headquarters requesting that he appear on campus.

Students participating in the convocation are: Pat Bartlett, Shirley Bell, Fremont Besmer, Gary Billups, Vay Bonarocsky, Robert Brown, Central Kentucky Philharmonic, Claude Caliguri, Joseph Cersommo, Rosylene Chaffin, Glenn Chaffin, Laura Clayton, Thomas Fullerton, Catherine Georges, Carol Gilmore, Thomas Hamrick, Sarah Heisey, Stephen Holburn, Barbara Hozgatz, Sue Irvin, Donovan Johnson, Edward DeMar, Edwin Kurth, Dennis Lay, Martha Lewis, Donna Lohmeier, Donna McClain, Jean McFarland, Anna Lou Nelson, Mary Casey, John Pfeiffer, David Phillips, Charles Ruff, Fred Sloan, and John Turner.

James Underwood, Bobbie Webb and Joe Wells.



SPEAKS IN CONVOCATION—Edward T. Breathitt, candidate for Governor in the May 28 Democratic primary, (center) is pictured here with the members of the Open Forum Club after speaking at the March 29 convocation at Morehead State College. Breathitt was contacted by the Open Forum Club, as were the other gubernatorial candidates, to speak at the college so students could meet the candidates of the coming election.

New Library Regulations Will Affect All Morehead Students

New library regulations will go into effect when we return from spring vacation. Every student will be involved and should be aware of the changes in the present library rules.

Times change and the college is growing. The needs of students in the use of library materials is increasing rapidly. The problem of making available all of the material necessary for student use is tremendous.

Now consider what happens when one student out of a group fails to return borrowed material on time. The library must then take time to check for the materials, records of the temporary loss must be kept and ultimately, if the item never comes in, the registrar's office must be notified. All of this takes time. Time so used is not available for the necessary work of actually operating the library.

If every student would only understand how important it is to return books on time he would do so. Library fines are used to urge students to return items on time. Still, this is not effective.

In considering the problem, the library committee, after consulting the student council, decided to change the fine system. Instead of the two cents a day plan that has been in effect for many years, a higher fee has been set. Each book will now cost the student twenty-five

cents for the first day over due. Each extra day will cost five cents. The purpose is not to raise money. In fact, if no fine is ever levied because every student returns the books on time, the plan will be a complete success. In this way every student will have materials available in the library.

A book return will be placed in the door area on the first floor for night returns.

Before spring vacation all over due books must be in. Two "FREE DAYS" have been set up. On April 11 and 12 no fines will be placed on any over due books. Bring them in; there will be no fine. After spring vacation, the new regulations will go into effect.

Additional information on the new regulations include what happens to books that are permanently lost. Come to the library immediately and prepare to make restitution. If you fail to appear, the fine will continue to climb to five dollars. This is not to be considered the cost of the book.

The new regulations have been thought through carefully by the library committee and the student council, but real success will depend on the thorough cooperation of every student. In operation every student should benefit by better library service, and the materials should be in the library when needed.

Religious Emphasis Week Could Help Bring Better Understanding Of Life

The annual Religious Emphasis Week will be held on the Morehead State College campus the week of April 7-13, 1963. Students and faculty members should take this opportunity to deepen their religious and ethical understanding.

Throughout the years at Morehead State College, Religious Emphasis Week has been a period of intense political awareness as to the importance of religious understanding and the understanding of self in relation to one's God concept and to one's fellow man.

It is to the advantage of the student to take

part in the activities of the week in order to more fully understand himself and his obligation to the society of which he is a part.

The various meetings planned in connection with Religious Emphasis Week have been oriented toward the student in mind. The sincere and searching attitude of the student's intelligence has been thoughtfully considered, and it is this attitude that the week's messages will be directed.

No better time will be found throughout the college year for a person to take the time to examine his own philosophy of life. Mid-term tests will be given, and students should have more free time than usual. The Trail Blazer staff feels that some of this extra time should be spent in contemplation of one's views of life.

College life presents students with many new experiences and ideas. Sometimes these experiences and ideas tend to question their own views of the world around them. Religious Emphasis Week will be the time to set aside a few hours to contemplate these ideas.

Open Forum Club Earns Commendation

Once again the Open Forum Club of Morehead State College has made another successful endeavor to acquaint the campus with the present political issues. Thursday's convocation with gubernatorial candidate, Edward "Ned" Breathitt and the luncheon which followed proved interesting and informative to young voters seeking to substantiate their choice in the coming primary and general elections.

The Open Forum Club and Morehead State College has extended invitations to all candidates and welcomes their appearance before the student body. This, they feel, is the best way students may avail themselves of the opportunity to meet the candidates and hear their platforms. The Open Forum Club, although it has not received replies from some of the candidates, hopes that the applicants for office will make themselves available to the students of Morehead State College.

This year's Open Forum Club has extended itself in providing excellent political speakers for Morehead's all-student convocations. The Trail Blazer wishes to express the worth of these experiences and hopes that they will continue in the future. Only through an informed populace can good government achieve its highest purpose.

The Student Council Has Shown Way To Increase On-Campus Entertainment

Although last Tuesday's concert didn't measure up to the highest in entertainment standards and good taste, the Student Council is certainly due a large measure of praise for their efforts in bringing the Four Preps to the Morehead State College campus. The council set an important "first" in that this was the first time a campus student organization had undertaken a project of this magnitude.

Many students voiced dissatisfaction in the performance given by the entertainers. We feel that their program in many instances bordered on the obscene and reflected poor taste in presentation. However, some of their vocal selections did reflect their professional character and led many to feel that their dollar was well spent.

Had the program been a complete flop, as far as entertainment is concerned, it would have still held a great deal of importance. Morehead students should have been willing to cooperate with campus organizations in a program of this kind. As student council president Eugene West said, "You have shown your interest in these programs so there will be more in the future."

Campus Visitors Welcome

The Trail Blazer staff wants to take this opportunity to welcome the many visitors who will be on the Morehead State College campus this weekend.

Over 1,500 music festival participants and 800 Future Farmers of America members will be on the campus April 6. We look forward to their arrival and wish them a pleasant stay with us.

Martin Hoffman and the Division of Fine Arts have prepared for the music festival students, and Dr. Nelson Grote and the Division of Applied Arts have coordinated the program for the FFA Day activities.

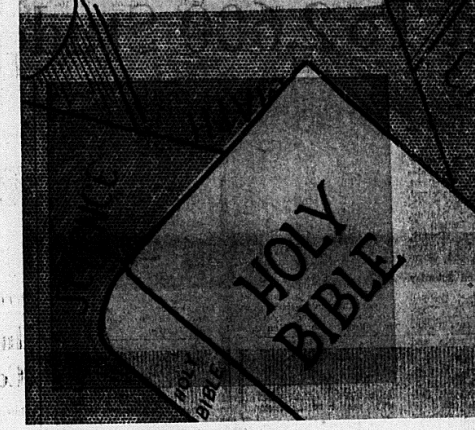
To these students and other visitors, we extend our greetings and welcome to Morehead State College.

financial standpoint, the program was a success. Other campus organizations should take notice of this in the future and endeavor to sponsor other groups of national acclaim in concerts here. It has been successfully done so, so let us try again.

The secret of the council's success seems to have been their cohesiveness. Each member was assigned 100 tickets to sell and a time to work in the ticket booth in the student house. Each member cooperated, so the program was a success. Surely some of our so-called campus "fraternal brotherhoods" could not have this or that. The student council has shown that with cooperation, the student body can take the initiative and provide some things for itself. Students now realize that they can do something about having a more varied entertainment calendar.

Through the student council's action, Morehead students should feel themselves "in" this. This is a trend that should continue.

Religious Emphasis Week THIS IS THE WEEK FOR RESEARCH



THE HISTORY OF EASTER

Easter Is Most Ancient And Important Christian Festival

To the earliest Christians, Easter... not Christ-mas, the all-important holiday. Relatively little notice was taken of the anniversary of Christ's birth; as far as the Christians are concerned, Jesus came into the world to die, not to live. His birth had little importance. Therefore, Easter is considered the most ancient and most important festival of the Christian year.

One source, the Jewish Encyclopedia, has traced the history of the festival. It is a fixed date for Easter. Early Christians celebrated Easter at the same time as the Jews. However, the Jews celebrated it on the 14th day of the month of Nisan (first month of the Jewish religious calendar), which corresponds to the month of April in the Gregorian calendar.

The Jewish calendar consisted of 12 lunar months, or 354 days, with periodically an extra month inserted to bring it in line with the solar calendar. So the date of the new Christian festival, like that of the Passover, shifted from year to year in relation to the Julian calendar, then used by the Romans. Consequently Easter has remained a movable date, falling anywhere between March 22 and April 25, which is the first Sunday after the full moon following the vernal equinox.

Gregorian correction of the calendar in 1582 introduced still further discrepancies. Throughout Western Christendom the corrected calendar had been in use since 1582. However, in the East the old Julian calendar was still in use. This meant that the first Sunday after the full moon following the vernal equinox was not the same as in the West. The result was that the date of Easter varied from year to year in relation to the Julian calendar, then used by the Romans. Consequently Easter has remained a movable date, falling anywhere between March 22 and April 25, which is the first Sunday after the full moon following the vernal equinox.

Dr. Oswald Hoffman, noted theologian whose weekly addresses on "The Lutheran Hour" are heard by more than ten million people around the world, recently told his listeners: "No one denies that something happened at His tomb on the third morning after the events attending His crucifixion. Don't let anyone tell you that there are various points of view regarding what actually did happen. There are only two. Either you dismiss the whole account as a colossal attempt to deceive the world, or you accept it as history, the factual record of what actually occurred."

Quotes First Epistle Of Paul

"You can have complete confidence that the story is really true." Dr. Hoffman explains. "The Bible is the word of God. The exact date is this one. The great historians, Thucydides, separated fact from fiction by seeking out eyewitnesses in his account of the struggle between Athens and Sparta in the Peloponnesian War. Though it is really a secondary source, based upon the witness of others in the history of Thucydides is today regarded as the first great model of objective reporting. In the case of our Lord's resurrection, the story was written by the eyewitnesses themselves. This is primary source material of the highest credibility, written by men who had never had any idea before that first Easter morning of spending their whole lives telling a story like this one."

Story by North American Press Syndicate, Inc.

Cuba Is Reminder Of Red Threat Existing In Western Hemisphere

By DAVID HENDERSON
Trail Blazer

The serious threat of Communism still looms in the Western Hemisphere, using Cuba for its base of operations.

The past week there have been charges and counter-charges between the United States and Red Cuba over alleged extrajudicial killings and the seizure of Cuban ships and aircraft. The United States has accused Cuba of firing on U.S. ships.

Cuba, and how much the United States should contribute to Central America's economy.

Ever since Fidel Castro seized power in Cuba the Central American nations have been aware of this hemisphere. For the most part these nations are pro-American and have been very helpful in the training base for the Bay of Pigs invasion. Several of the Presidents of these nations advocate immediate invasion of Cuba. This is not President Kennedy's policy.

Mr. Kennedy has given the Latin American nations the Alliance for Progress Program to help them develop. He has put the American emphasis in these six nations. He put the rights of each nation to govern itself, free from the rule of dictation, and build its economy and society "in any fashion consistent with the will of its people."

The right of each individual citizen to freedom in politics, speech, and worship.

The right of each nation to justice, which "may often mean that ancient institutions which serve merely to perpetuate the privileges of a fortunate few will be ended."

The right of every nation "to pursue a course of rapid economic progress which modern knowledge and technology have made possible."

The outcome of the meeting in Costa Rica, it seems, was successful. Mr. Kennedy said that the Central American nations follow the Alliance for Progress Program, it will be an "illustration of the capacity of free men to achieve a profound peaceful revolution on behalf of economic progress and social justice."

Mr. Kennedy said that the Central American nations follow the Alliance for Progress Program, it will be an "illustration of the capacity of free men to achieve a profound peaceful revolution on behalf of economic progress and social justice."

Taxes, College Tuition Are Discussed In 88th Congress

By WINFRED L. GOODWIN
Director, Southern Regional Education Board

Taxes and college tuition have become uneasy bedfellows during the first two months of talking in the 88th Congress.

Since January, more than 88 bills have been introduced in Congress which would allow credits, deductions or exemptions from federal income taxes according to the amount spent on tuition for educational institutions.

Some of these bills have been offered by Southern Congressmen. All of them are proving to be of interest to Southern educators and parents.

The tax-tuition plans can be divided into three general kinds, but basically they mean that a family would get a tax allowance if it pays a given percentage of tuition and fees as a direct credit against the federal income tax he owes.

1. "Tax Credits" bills would let a taxpayer apply a given percentage of tuition and fees as a direct credit against the federal income tax he owes.

2. "Tax deductions" bills would let the taxpayer deduct the cost of tuition and fees from his gross income, meaning a lower amount of reported income to be taxed.

3. "Tax exemption" bills would give the taxpayer additional "exemptions" for dependent children, students, in amounts ranging from \$600 to \$1,200.

Opponents of the tax plans point out that these plans wouldn't help those who need it most—the low income families who pay little or no income taxes and for whom college is financially out of reach.

Representatives argue that these tax plans would encourage many institutions to raise their tuition. The tax plans would feel that the government is actually forcing the bill, they can raise their tuition more nearly to the cost of educating a young person.

The objection is that these tax plans would approve from the Congress, an elected representative of the people, would encourage many institutions to raise their tuition. The tax plans would feel that the government is actually forcing the bill, they can raise their tuition more nearly to the cost of educating a young person.

These proposals, on the other hand, are a way to lighten the financial burden of sending a child to college. Under the plan from the Treasury Department and from the House of Representatives, colleges and universities who claim there are serious liabilities to such plans would have to visit to Congressmen. It is likely that the 88 "tax deduction" bills introduced in Congress, there are apparently too many questions about the plans to stand up against the opposition of organized education groups, the Treasury Department and others.

STUDENTS OF THE ISSUE

Donna Lohmeyer
Allen Gordon

Donna Lohmeyer and Allen Gordon have been selected as this week's Students of the Issue.

Lohmeyer is a senior from Ludlow and is majoring in voice at the MSU. Gordon is a senior from Lexington and is majoring in biology. His home is in Paris, Ky.

He is a member of the Mystic Club, Beta Chi Gamma and ACSI. He was also an acrobatic cheerleader at football and basketball games at Morehead during the 1961-62 school year.

This spring, Gordon is doing his student teaching at Breckinridge Training School.

Donna Lohmeyer
Allen Gordon

Donna Lohmeyer and Allen Gordon have been selected as this week's Students of the Issue.

Lohmeyer is a senior from Ludlow and is majoring in voice at the MSU. Gordon is a senior from Lexington and is majoring in biology. His home is in Paris, Ky.

He is a member of the Mystic Club, Beta Chi Gamma and ACSI. He was also an acrobatic cheerleader at football and basketball games at Morehead during the 1961-62 school year.

This spring, Gordon is doing his student teaching at Breckinridge Training School.

Social Hi-Lights

At last winter seems to be over and spring is here bringing various social activities with it.

Last Tuesday night, the Four Preps Student Council was responsible for bringing this group to campus and because of the obvious interest, it may be possible to have such a group again.

Also coming up next month is a spring carnival sponsored by the CAPA. The exact date is Thursday, April 25. Approximately 25 clubs will participate in this carnival, which is the first of its kind to be held on our campus. Booths will be set up in the Auditorium where each club will conduct their particular project. A "King of the Garter" will be crowned at the end of the evening. This "King" will have been chosen by votes (with money) on the pulchritude (?) of his legs.

Scottie Bush and Jim Cable. Patty Thomas and Sam Carlton. Engagements: Patsy Kinney to James Meade. Helen Leon to Douglas Cannon.

The Trail Blazer

"The greatest state is Morehead State"

Official newspaper of Morehead State College, published bi-weekly except on vacations and holidays, and once each summer session. Entered as second class mail at the Post Office at Morehead, Kentucky, May 19, 1950. Post Office No. 100. Subscription price 50 cents per semester in advance.

— STAFF —

Editor: Roger Dixon
Associate Editor: Charles Richardson
Managing Editor: Judy Henke
Business Manager: Edna Bales
Sports Editor: Dave Vance
Fashion Editor: Kenneth Prater
Social Editor: Anna Cardell
Student Council Reporter: Donna Alexander
Drama Editor: Pat O'Rourke
Photographer: Josh Lovelace
Van Roger Cottogim

— REPORTERS —

Bill Herbert, Ed Combs, John Hawn, Colleen McClanahan, Ginny Higgins, Dean Howe, Clara Caldwell, Mary Dunne, Thomas Alford, Phyllis Mese, John DeBourbon, Jim Payton, Tim Taylor, Carolyn Dixon, and John Johnson.

BUILDINGS ARE GOING "UP"

Morehead State College Adds Skyline Against Kentucky Hills

Rarely does one speak of a "skyline" in a city of 4,000, but the residents of Morehead are an exception.

And rightly so, as this rapidly growing Eastern Kentucky city has a dazzling skyline set against the foothills of the Cumberland Mountain Chain.

The skyline isn't one of office buildings but one of college dormitories and classroom buildings at rapidly growing Morehead State College where the enrollment has more than quadrupled during the past seven years.

With a campus encircled by the City of Morehead and the Cumberland foothills, college officials are being forced to go "up in the air" with buildings.

One of the most recently completed was the \$1,225,000, four-story classroom building which towers over adjacent structures.

It is matched by a four-story, 402-man dormitory which was completed in 1960.

Both will be overshadowed soon with the completion of the magnificent new six-story Mignon Hall, a women's residence hall housing 300.

Dr. Adron Doran, Morehead's energetic president who has guided the building program, says, "We are rapidly running out of land

and the extremely high prices being placed on property adjoining the campus is forcing us to go to multi-story residence halls and classroom buildings."

Dormitories 12 Stories High
He added, "Our master plan calls for dormitories ranging up to 12 stories and we now feel that with wise utilization of space the present campus will be adequate for many years."

Mignon Hall, named after Mrs. Doran, is a prime example of well-planned use of the hillside behind the present gently-sloping campus. The six-story structure is designed in a semi-circular fashion around the hillside.

It rises far above nearby buildings and will be seen for miles. Cnells are housed in suites for four with a study room, a bedroom and private bath.

Another six-story women's residence hall designed similar to Mignon Hall is expected to be under construction before the end of the year. It will also be built in a semi-circular fashion around the hillside overlooking the main campus.

But women students aren't receiving all of the attention when it comes to new residence halls. The building program, says, "We are rapidly running out of land

the 212-man Butler Hall and the ultra-modern 211-man Wilson Hall.

Another men's residence hall is now under construction.

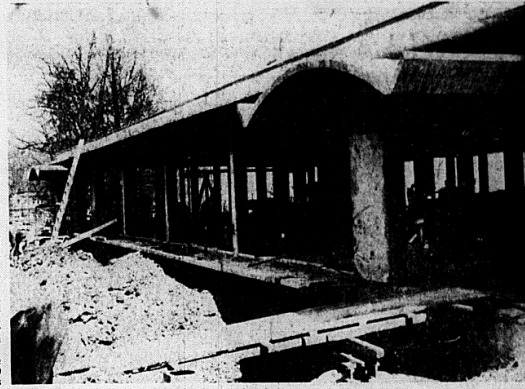
Married students and faculty housing is also being expanded. An 18-unit addition to the 100-unit Lakewood Terrace married housing project is under construction, while two new faculty houses are currently under construction.

Classroom construction includes the \$905,000 home economics and industrial arts building. This air-conditioned building is the ultimate in design and contains the most modern equipment available.

Also under construction is a three-story addition to the Baird Music Hall at a cost of \$408,000. It will more than double the floor space in the Music Hall which was dedicated in 1954.

The only new building not of the skyward variety is the \$225,000 administration building which is presently under construction. Housing all of the administrative offices, this building will be a two-level structure designed for the addition of more levels in future years.

So while other campuses are spreading out, the acres Morehead State College campus is going skyward giving this rapidly growing city an Eastern Kentucky a real "skyline."



Administration Building

NEW MOREHEAD BUILDING—Construction on the \$404,347 administration building at Morehead State College is expected to be completed sometime in late spring. Work on the new building has been progressing rapidly with the return of clear weather to the Morehead area.

INTERNATIONALE '63

International Students Present Cosmopolitan Club Program

Internationale '63, a program by the international students of the Cosmopolitan Club, was given on March 12 in the Little Theatre. Taha Sable served as master of ceremonies for the program. Peshkepour Assar and Abbas Salamat presented three songs from Iran, "Golden Hand," "May Be You'll Come," and "Lost Love." Assar played a drum accompanying some of the songs while Salamat sang.

Readings from famous Spanish poets were read in the native tongue and then translated into English by Aldo Boch, Helen Anastopoulos sang "Some-where is My Love" and "Children of Peace" (on which the song "Never on Sunday was based), songs in Greek.

From Thailand came the Egg Game and a boxing ceremony. Pravidha Abhigantaphand, Kiahard, Ingkavet and Jayant Tullayadhan sang a school cheer song, "The Rain," and "Loy Kia Tung."

Music from Iraq, "The Night" and "Sister My Love," was presented by Taha Sable.

An Iranian game was directed by Peshkepour Assar.

The program was concluded by the group singing "The More You Get Together."

After the program, a variety of objects from the represented countries was displayed for the public. Dr. Lilalyke Akers, sponsor of the Cosmopolitan Club, was the director of the program.

All of the male participants are freshmen students at MSC. Helen is a junior student and transferred to MSC from Midway Junior College. She is a native of Pyrgos, Greece.

Sable is a resident of Baghdad, Iraq. From Bangkok, Thailand came Jayant Tullayadhan, Kiahard, Ingkavet, and Pravidha Abhigantaphand. Aldo Boch lives in Tocopilla, Chile. Children of Iraq are Peshkepour Assar from Tehran and Abbas Salamat from Athens.

MARCH 23

High School Seniors Compete For Scholastic Scholarships

High school seniors from throughout Kentucky were on the Morehead State College campus March 22 to compete for outstanding scholastic scholarships.

Tests in 12 fields were given the seniors, and those scoring highest on the tests will receive scholastic scholarships, which will be subject to renewal provided a high level of achievement is maintained at Morehead State College.

The tests included the areas of chemistry, biology, physics, mathematics, earth science, English, French, Latin, Spanish, German, American government and American history.

Morehead faculty members administered the tests under the direction of Mrs. Hazel Whitaker, Director of Testing Services.

The standardized tests were given in Lippin Hall and the new classroom building.

Dr. Adron Doran, president of Morehead State College, said, "We feel that as a result of these highly competitive tests we will encourage scholarship among the youngsters of Kentucky in the areas of science, mathematics, languages, American government and American history."

He added, "We also feel that the outstanding youngsters who receive scholarships will add greatly to the overall strength of our academic programs at Morehead State College."

Crippled Children's Society Will Hold Style Show April 9

The Rowan County Crippled Children's Society will hold its annual style show entitled "Easter Premiere" in the Baird Music Hall on Tuesday, April 9 at 7:30 p.m.

Mrs. Adron Doran, initiator of the event, along with Mrs. John Allen, Mrs. Nelson Grote, Mrs. John Duncan, Mrs. Rex Chaney, Mrs. Michael Dudley, Mrs. Janice Coomer Smith and Miss June Martin compose the planning committee for the show.

Models will include both townspeople and college students. Miss Nancy Patrick, MSC sophomore, will provide background piano music and Mrs. John Chaney, MSC senior, will narrate the event.

Mrs. Sue Salver will provide special vocal music.

All proceeds of the event will go to the Crippled Children's Drive.

Tickets are \$1 and may be purchased from a committee member or at the door. Children under 12 will be admitted free of charge.

TRAIL BLAZER MEETING

There will be a meeting of the Trail Blazer staff on Thursday, April 11, in the Audio-Visual Aids Room of the Doran Student Union (unless otherwise notified) at 4 p.m.



INTERNATIONALE '63 PARTICIPANTS—International students who performed at the first Internationale Program which was sponsored by the Cosmopolitan Club are (l to r): Taha Sable, Jayant Tullayadhan, Pravidha Abhigantaphand, Helen Anastopoulos, Kiahard Ingkavet, Aldo Boch, Peshkepour Assar and Abbas Salamat.

The EAGLE EYE

By JONNIE CONKEL
Trail Blazer Fashion Editor

It's Spring, it's Spring, it's Spring, that wonderful season when a young man's fancies lightly turn toward thoughts of love, when winter turns into Spring, rain becomes sunshine, and children move their bicycles out of doors. e. c.ummings summarizes Spring in the following manner:

In just spring
luscious the little
lame baloonman
whistles far and wee
and eddie and bill
come running from marbles and pira-
cies and it's
spring when the world is puddle-wonderful
the queerest old baloonman whistles
far and wee
and betsy and isabel
come dancing from hop-scotch and jump-rope and it's
spring and the goatfooted
haloonman far
and wee

Spring, spring, spring, and couples stroll hand-in-hand along the tree-lined boulevard of MSC.

Spring has sprung for the girls of Mignon Hall, but the young ladies in Mignon Hall have to leave their comfortable suites.

After a poll of Mignon Hall residents, I came up with the following reasons as to why the girls don't want to leave their suites.

One girl said, "I feel as though it is my home, I feel like a working girl with my own apartment." Another girl stated, "The price is hard to believe—I can actually study and not be bothered at all." "Mignon Hall," said another girl, "is like a college girl's dream come true."

Other comments range from "the sun-deck is wonderful," "I view it out of this world," the tub is just like something out of Better Homes and Gardens," "the elevator is saving on shoe repair bills," to "what did we do before." "Well, really," replies another girl, "I just don't know."

MSC is alive with action—the football squad has been practicing daily, the swimming team is out of the water, the basketball team is all ready for another season, and in every senior's heart there is that feeling of "only nine more weeks of classes and then I'm on my own."

The winning MSC debate team is off to Nashville, Tennessee, to try and bring home another winning trophy. Good luck team! Tuesday, the Central Philharmonic Orchestra will be on the MSC campus. Hope to see you all at the concert.

King Midas under the direction of Noel Onicy will be presented Wednesday and Thursday of this week.

The CAFA Tridents are planning a Spring Carnival, April 23. Come one—come all to watch a multitude of fun loving fun, fun, fun. The women's basketball team is off to Eastern. Good luck team.

THOUGHT FOR THE WEEK

Once betrayed a man is wary. If he is too wary he cannot forgive. Then, everything is lost to him.

CANDLES FOR ALL OCCASIONS—The Reverend Charles Brooks, a local minister, is shown here with some of the many candles he has made during the year. He started the hobby 20 years ago and has since acquired a reputation as an excellent candlemaker.

STARTED 20 YEARS AGO

Local Minister Has Acquired Reputation As A Candlemaker

By Clara Campbell
Trail Blazer Society Editor
The Reverend Charles Brooks, a local minister, has acquired over the past few years, the highly respected reputation as an excellent candlemaker for his own and sometimes profit in the Morehead area.

It all began 20 years ago at Christmas time. Using cheap wax, such as that left over from wedding and birthday sort of mold form.

From his first candles, from those summer beginnings, he turned to seasonal candles into a hobby, which he has now turned into a business.

He has made several large commercial houses on the West Coast seeking information and materials.

Gradually he began to invest in complex molds and ornate decorations, thus discarding milk cartons and detergent bottles, which he suggested for the beginning candle maker.

Dear Ann Slanders

(With Apologies To Ann Landers)

Dear Ann—

An acquaintance of mine comes to me with all of his problems. He is just the kind of fellow I always bark for advice. Sometimes it gets pretty monotonous especially when I am busy. I have troubles of my own, so is there any way that I can get this person to stand on his own two feet?

Seal Trainer
Dear Seal Trainer—

If you have trained him properly, he could probably get a job in the Cincinnati Zoo, where he would have to stand on his own two flippers. No barks, no bites, no fish!

Ann
Dear Ann—

This friend of mine is always telling me one thing and doing another. I call this deceitful lying, the only thing changing her mind. Nobody could have a mind like that, could they?

Naive
Dear Naive—

I hope you are changing her mind that she is the kind of person who never believe her. When in doubt, doubt the person you are dealing with.

Ann
Dear Ann—

Several of my profs are giving me a hard time because I can never answer questions in class. I get clam up and act shy. Boy, do they get irritated. Actually I am very outgoing when I am in the company of others. What can I do to get out of this?

Clam Mouth
Dear Clam—

Don't try to classes anymore; however, if that doesn't work, you can write to me for a free booklet that I wrote myself entitled, "How to Speak with Ease in the Classroom to Professors Who Don't Understand You." It is one of my better pieces of literary work.

Ann
A woman's idea of keeping a secret is refusing to tell who told it to her.—Gerald K. Young, Blacksburg (La.) Excelsior.

"Text: Changing the subject without changing your mind."—Clarence Achill, Oklahoma City (Okla.) Live Stock News.

Monarch Supply Store

Supply Company
Our Business Is To Supply Your Needs

A Full Line Of Supplies For

- HOUSEWARE
- PLUMBING
- APPLIANCES
- HEATING
- SPORTING GOODS
- FARMING TOOLS
- SAW MILLS

A Complete Hardware
West Main Street
Morehead, Kentucky



IN THE COLLEGE BRAND ROUND-UP

PRIZE:
1ST PRIZE: Beautiful 17" Portable Television by Admiral
2ND PRIZE: Portable Stereophonic Record Player by Admiral

— DISPLAYED IN COLLEGE BOOKSTORE —

WHO WINS: Prize will be awarded to any Group, Fraternity, or Individual who qualifies and has the highest number of points.

RULES:
1. Contest open to students of Morehead State College only.

2. Each empty package submitted on Marlboro, Parliament or Alpine will have a value of 5 points. Each empty package submitted on Philip Morris Regular or Commander will have a value of 10 points.

3. The contest will run from Feb. 18 to Friday noon, April 5, 1963.

4. No entries will be accepted after closing time. Empty packages must be submitted in bundles of 100 packs separating 5 and 10 point packages to the Public Relations office of Morehead State College.

Get on the BRANDWAGON...it's lots of fun!



WELCOME STUDENTS AND TEACHERS

For Big Business
Or
Little Business
It's Good Business
to Choose
The Citizens Bank
Member Federal Deposit Insurance Corp.



GUBERNATORIAL CANDIDATE SPEAKS—Edward T. Breathitt, "candidate for Governor in the May 28 Democratic primary," is shown here as he was talking to the Morehead State College student body at Convocation March 28. Also pictured is Gus Robertson, president of the Open Forum Club.

One Hundred Sixty-Nine Seniors Enrolled As Student Teachers

One hundred sixty-nine student teachers are being prepared for certification in secondary and elementary education at 25 off-campus student teaching centers and at Breckinridge Training School. Secondary education claims the larger number with 128 in this area, while 41 are enrolled in elementary education.

Student teachers represent 14 major areas this semester: chemistry-1, biology-1, art, speech and drama-1, Latin-2, industrial arts-4, mathematics-5, home economics-3, commerce-12, music-13, English-26, social studies-28, physical education: girls-10, boys-19, and elementary education-44.

A larger percentage of the student teachers are receiving training at off-campus student teaching centers this semester. The preparation of teachers in off-campus centers is a cooperative effort between the local school system and Morehead State College.

Some 96 supervising teachers are assisting the student teachers during their internship period. These highly qualified supervising teachers play a major role in the teacher preparation program at Morehead State College.

The student teachers assigned to each school are:

Ashtand Schools—Scotty Fugate, Kenneth Baldridge, Alfred Browning, Jack Calhoun, Robert Leupold, Jan R. Wells, Jane Graham, Marjorie Kagle, Kenneth Kinghorn, and Robert Brown.

Boyd County—Cecil Hewitt, Larry Auerwald, Gloria Mobley, and Madeline Crisp.

Breckinridge Laboratory School—Beverly Brown, Don Stinson, Gwendolyn Mullins, Olie Maddix, Charlene Adkins, John Ellison, Nancy Buxtelier, Mary Cox.

Clearfield—Bess Dutton and Virginia Reynolds.

Elliotville—Wanda Conn, Evelyn Barker, and Raymond Conn.

Fairview Independent—Donna Alexander and Larry Boggs.

Flemingburg—Narcissus Smith, Sue Bodenheimer, James Combs, Mary Sue Barlow, Pamela Dalton, Paul Fields, Stephen Barnett, and Vinetta Martin.

Mason County—Charles Bailey, Nelson Doyle, Donna Lohmeyer, Bobbie Webb, Ann Schaffner, Alma Roberson, Lloyd Meyers, Robert Sline, Nadine Naugle, and Linda Hildebrandt.

Mayesville—Jack Cline, Bertie Wallin, Winder Kelley, Geraldine Bromley, Mavis Montgomery, Betty Lewis, Raymond Fetter, and Jim Roberts.

Montgomery County—Janet C. Smith, Nicholas Wolf, Palmer Mann, Cox, Virginia Mabry.

Mt. Sterling Elementary—Phyllis Clark, Margaret Gwenda, and Barbara Siva.

Oliver Hill—John Scallies, Ed Gabbard, Bill Mitchell, William Thompson, Linda Dameron, and Alonzo Mills.

Quinville—Thomas Salver, Harold Gibbs, Herbert Ramey, Connie Lee Coffee, Delores Hastings, David Porter, Virginia Klaren, Ann Hawkins, Tommie Fern, and Charles Moore.

Painville—Hubert Collins, Jack Polphry, Edwin Honeycutt, William Cline, Sue Ann Whitaker, Juanita Moore, Ruie Spruick.

Paris—Karis Galloway, Nancy Vance, Kay Mers, Emma Harvey, Jan Kneplshild, Thomas Holwitz, Gene Hemminger.

Prestonsburg—Ned Bush, Paul Williams, and Freeda Tackett.

Rowan County—Judy Ann Trusty, Gene Wilson, Delmer Ockey, Joan Edwards, and Larry Cummins.

Shelby—Kier, Marietta Sturgill, Larry Jones, Lee Roy Massey, Esta McKenzie, Jackson Banks, Judith Henke, Janice Long, Sandra Hall, Jan Kenrick, Anna Gail Henry, Steven Grace, Carolyn Cox, Charlene Atkins, Delmas Bolen, Lillian Williams, Merwin McCane, Katharine Rogers, Carl Baldridge, and Cylda Brashers.

Russell—Charles Mays, Stanley Smith, Tom Haze, Dave Applegate, and Dale Dehart.

Sandy Hook—Harold Reynolds.

Salt Lick—Dale Brown, Nancy Horst, Jan Perry, John Sperry, Jesse Atkins.

West Liberty—Mary Pieratt, Wilma Rowland, Jeannette Salmon, Barry Martin, Samuel Kovach.

Wright—Charles Gwenda, Wright and Daisy Lancaster.



SPANISH BANQUET—Pictured above are some of the Morehead State College Spanish students who attended the annual Spanish banquet March 21. The students dressed as famous characters of Spanish literature, art and history, and they ate some of the traditional dishes of Spain, prepared by the Special Problems Class of the home economics department.

Instrumental Ratings --

(Continued from page one)

Sterling: Hawley Cricht, Bracken County; Mary Gaiskitt, Mt. Sterling; Stephen Banks, Banks, Judith Henke, Janice Long, Sandra Hall, Jan Kenrick, Anna Gail Henry, Steven Grace, Carolyn Cox, Charlene Atkins, Delmas Bolen, Lillian Williams, Merwin McCane, Katharine Rogers, Carl Baldridge, and Cylda Brashers.

Russell: Charles Mays, Stanley Smith, Tom Haze, Dave Applegate, and Dale Dehart.

Salt Lick: Harold Reynolds.

Salt Hook: Dale Brown, Nancy Horst, Jan Perry, John Sperry, Jesse Atkins.

West Liberty: Mary Pieratt, Wilma Rowland, Jeannette Salmon, Barry Martin, Samuel Kovach.

Wright: Charles Gwenda, Wright and Daisy Lancaster.

land: Jeffrey Jones, Cooper Elementary; Scotty Poe, Mayesville; Ronnie Young, Cannonsburg Elementary, and Larry Cummins, Boyd County.

Brass quintets—Mayesville and Rowland.

Miscellaneous brass duets—Coles Junior, Putnam Junior and Russell.

Woodwind quintets—Mayesville. Saxophone quartets—Morgan County, Blazer and Mayesville.

TOP VALUES

For Top Values in Food and Savings Buy at ALLEN'S IGA Foodliner

"Snow, snow go away. We've had enough of you today! Spring has sprung. The grass has turned. I wonder where the birds are?"

Now which one of these poems would be appropriate? Well, either one could be, it all depends on the weather!

In December, Cornelia Otis Skinner said, "When you're in Kentucky, you don't like the weather, just wait a minute... it'll change."

This statement has now been proven. During the week of March 17-22, the "Four Seasons" made an appearance on the Morehead State College campus. Monday morning the sun was shining brightly and the students were wearing summer clothes. There was even talk of going on a picnic and swimming pools!

Lightweight jackets and sweaters were worn Tuesday because it was a little cooler, but could still be called late summer or spring weather.

Wednesday could have been classified as fall, if there had been pretty leaves on the trees. It was much cooler... overnight the temperature dropped to degrees.

But, what the weather was like Thursday? Right, it snowed!

You know what it's a good idea to keep all your clothes here at school because... the weather can change... if you'll wait a minute!

BEULAH FONTAINE SPEAKS TO S.N.E.A.

The S.N.E.A. had Mrs. Beulah Fontaine, Consultant for Professional Services of Kentucky Education Association, as their speaker for the meeting on March 21.

Morehead State College's S.N.E.A. also had representatives at the Joint Convention of Student Groups—K.F.T.A. and K.S.E.A.—March 20. This delegate assembly meeting was held at Transylvania College. The meeting was devoted to work sessions and election of state officers. The keynote speaker, Miss Mary Tisue, Consultant for local associations of N.E.A., had "Parade of Education" as her theme.

PAT'S POOL ROOM and Lunch Counter

— Open —
7:30 a.m. to 1:00 p.m.
Six Days A Week
Main Street Morehead, Ky.

MIDLAND TRAIL GARAGE

Servicing Your Chevrolet for 30 Years

For Economical Transportation

CHEVROLET

Sales Service

PHONE ST 4-5136
Morehead, Kentucky

Morehead Experiences A Year Of Weather In A Single Week

Dr. Milton Heald

The Science and Mathematics Department, as a participant in the AGI visiting Geological Scientist Program for 1963, has announced that Dr. Milton A. Heald, professor of geology at West Virginia University, will be visiting Morehead campus April 10-11.

Dr. Heald has taught at three National Science Foundation Summer Institutes at West Virginia University, and at graduate summer school for teachers at Wesleyan University. He was the director of the Earth Science Program at Wesleyan's National Science Foundation Program for High School Students in the summer of 1962. Dr. Heald is currently active in research and is the author of a paper to be published soon in "Geologic Terminology and the Elementary Student."

Dr. Heald will speak on "Radioactive Dating Methods" at 3 o'clock Wednesday afternoon, April 10, in Room 305 of Lapping Hall. He will also deliver a lecture on "Volcanism and the Earth's Interior." Wednesday evening at 8 o'clock in Room 101 of Lapping Hall there will also be a 15 minute movie following the evening lecture on the 1959-1960 eruption of Kilauea, a volcano in the Hawaiian Islands which has received many international awards for excellence.

"All interested faculty members, students, and public are urged to attend both of these outstanding lectures," said James R. Chaplin, instructor of geology.

"A great many people are already working a four-day week. It just takes them five or six days to do it." — Ray Winans, West Springfield (Mass.) Record.

Geologist To Speak At College Apr. 10-11

Annual Senior Days Scheduled At ISC For April 26, May 4

The annual High School Senior Days will be held on the Morehead State College campus April 26 and May 4.

Following a period of registration and visitation in the field-house from 8:30 to 10 a.m., there will be a general assembly of the high school groups. Roger L. Williams, dean of students, will preside at this initial meeting.

Prior to the official start of the assembly meeting, a tumbling team will perform from 9:30 until 9:45. At that time Mrs. Adron Doran will be featured in the program and will play selected organ melodies until 10:00.

Dr. Adron Doran, president of Morehead State College, will officially greet the seniors and their sponsors. Following this welcoming address, two Morehead students will speak on the social and recreation activities and the religious activities on campus.

The Morehead State College Concert Choir, under the direction of James R. Beane, and the college band, directed by William Sweeney, will present a variety of music for the seniors.

At 10:30 the visiting seniors will then be classified into academic interest groups. After selecting their groups, these students will meet with administrators and professors in charge of the respective groups.

Listed below are the designated divisions and the individuals in charge of each group: Applied Arts, Grote, chairman; Agriculture, Haggen; Commerce, Sharpe; Home Economics, Bolen; Industrial Arts, Mays. Fine Arts, Duncan,

Annual Senior Days Scheduled At ISC For April 26, May 4

chairman; Art, Young; Dramatics and Speech, Bangham, Smith and Stein; Music, Duncan; Health, Psychology, Education, and Philosophy, Haggen; Languages and Literature, Herold, chairman; Languages and Literature, Boswell, chairman; English, Boswell; Foreign Languages, Moore; Library Science, Chapman and Williams; Science and Mathematics, Owsley, chairman; Radio, chairman; Teacher Education, Stewart, chairman; Elementary Education, Graves;

Pre-Professional Program
Kurfue: Pre-Engineering, Jenkins and Lynd; Pre-Law, Akers; Pre-Medicine, Haggen; Pre-Veterinary, Haggen; Medical Technology, Barber, and Nursing, Lake.

The undecided group, those uncertain about attending college or

academic interests, will meet with Dr. Doran and Mr. Wicker in the South Section of the Fieldhouse.

Following the meeting to their special academic interest groups, the students will assemble in Butten Auditorium at 11:30. The Hall and the Craftsman will perform at that time until 12:10 p.m. The seniors will then go to the cafeteria in the Doran Student House for lunch.

After lunch the seniors will have an opportunity to tour the campus and the dormitories. They may also have advantage of the gymnasium and swimming pool.

Climaxing the annual event will be an informal refreshment period in the recreation room of the Doran Student House at 2 p.m. The entire program is scheduled according to Eastern Standard Time.

A Message From President Doran

I would personally like to welcome you to the campus of Morehead State College.

Located in the area where the Bluegrass meets the mountains, Morehead State College is your college. It is an institution of higher learning for the people of this area — an area of which you are a part.

We hope that during your stay on the campus today, you will get to know more about our students, teachers, physical facilities, program of studies, and will be impressed by the friendly spirit which prevails in all of our relationships.

We would like to invite you to return to our campus next fall to follow the student body into the Morehead State College experience. It is our sincere desire that you enjoy your visit with us today.

DR. ADRON DORAN

Clayton's Men Shop

For the full line in men's clothing be sure to visit CLAYTON'S.

Open Mon. - Fri. 9 - 6 — Sat. 8 - 8
EAST MAIN MOREHEAD, KY.

Delicious Food - Friendly Service

VISIT THE
CAMPUS RESTAURANT

In Its New Location Across from the Courthouse on East Main

To Serve You Even Better

MOREHEAD ROLLER RINK

Announces
New Daily Schedule

SUNDAY — 2:00 to 5:00 and 7:00 to 9:30
MONDAY — Party And Special Events (Only)
TUESDAY — 7:00 to 9:30
WEDNESDAY — 7:00 to 9:30
THURSDAY — Party And Special Events (Only)
FRIDAY — 7:00 to 9:30 and 10:00 to 12:00
SATURDAY — 2:00 to 5:00 — 7:00 to 9:30 and 10:00 to 12:00
(ADMISSION 50¢ — SKATE RENTAL 25¢)
Open Tuesday one hour early for beginners — no extra charge.
ARE YOU OVER 50 YEARS OF AGE? — Then you can skate FREE on Tuesdays at Morehead Roller Rink.

Skating Is The Finest Recreation

(And So Economical For All The Family)

Prices are reasonable and arrangements are flexible enough you will most need. If it's a fund raising party, a have-a-fun-get-together, BIRTHDAYS, SCHOOLS, CHURCHES, SCOUTS, CLUBS, SOCIAL ORGANIZATIONS AND RECREATION CLUBS.

\$30.00 For 40 or less, after the first 60 tickets are sold at 50¢ each, your treasury will receive a 25¢ refund on each 50¢ ticket. Show skate rental, 25¢ per pair.

\$20.00 For 40 or less, your treasury makes 25¢ each on all over 40 tickets sold. Show skate rental, 25¢ per pair.

50¢ for 40 or less, 30¢ each for all over 40 — shoe skates furnished.

DAYTIME 2 HOUR PARTY
NIGHT PARTIES 2½ HOURS
Monday and Thursday Night
LATE PARTIES A NIGHT
10 P.M. - Till Midnight

Also special rates for groups attending regular sessions at night.

We will furnish tickets for your advance ticket sales, posters for your bulletin board and also illustrations for your club or school bulletin.

MOREHEAD ROLLER RINK

Opposite Jayne Stadium — June Flannery, Mgr.

PROFESSIONAL DAY HELD MARCH 19

The third annual Professional Day, sponsored by the Kentucky Education Association, was held on the Morehead State College campus March 19.

Dr. Roy Edell, associate secretary of the National Commission on Teacher Education, was the keynote speaker for the conference, which was attended by approximately 240 seniors.

PARIS... for study's sake

The Paris Honors Program, A Morehead State College program for superior juniors and a few excellent sophomores, offers a full liberal arts curriculum under French instruction in the University of Paris.

Students who are accepted into the program will receive a stipend of \$2,475, intermediate French and at least 6 semester hours.

Other programs in Vienna and Freiburg, Germany, are also available. For more information on all programs, write to the Paris Honors Program, Morehead State College, P.O. Box 100, Morehead, Ky. 40348.

The Institute of European Studies

101 E. Walnut Drive • Chicago 1, Ill.