

The Trail Blazer

MOREHEAD STATE COLLEGE, MOREHEAD, KY., TUESDAY, MARCH 27, 1962

Welcome To Morehead
FFA DAY PARTICIPANTS,
Regional Music Festival Entries

VOL. XXX

Number Eleven

Campus Host To 3,000 Students This Weekend

Annual Regional Music Festival To Draw 2,000 High School Students

Over 2,000 high school students will participate in the annual Regional Music Festival on the Morehead State College campus March 29, 30, 31, President Adron Doran announced today.

Piano and junior high school chorus events will be held March 29, followed by all vocal and senior high school chorus performances on March 30. Bands will perform on March 31.

All instrumental solos and ensembles will participate in a second contest scheduled for April 14.

Thirty-one high schools will be represented at the festival which has 2,282 student entries. Schools participating are: Ashland, Boyd County, Bracken County, Breckinridge Training School, Carlisle, Carter, Catlettsburg, Coles Junior High School, Fairview, John G. Poe School, Fleming County, Greenup, Holy Family, Louisville, Mason County, Mayville, McDowell Junior High School and McKel.

Others are: Montgomery County, Mt. Sterling, Nicholas County, Orangeburg, Owsingville, Pritchard, Putnam Junior High School, Raceland, Rowan County, Russell, Sharpshurg, Washington and Wurtland.

Keith M. Huffman of the Morehead music faculty is coordinator for the festival.

Judges for March 29 to 31 are: Pianos—John Chrisman, Berea

College; Howard Karp, U. of K.; Vocal—Rolf Hovey, Berea College; Ohm Paul, Western Ky. St. Col.; John Creighton, Marshall U.; Wayne Huffman, Marion, Ind.; Band—Wayne Johnson, Georgetown, Col.; Robert Roden, Independence, Ky.; Walter Hall, Lexington, Ky.; Kenneth Large, Florence St. Co. (Ala.); F. C. McClure, Florence, Ala.; Joseph T. Smith, Mid-Tenn. St. Col., Murfreesboro.

AWARDED CERTIFICATE

Dr. Doran Honored By Forest Industries

Dr. Adron Doran has been awarded a "Certificate of Appreciation" by the Kentucky Forest Industries Committee for his activities in the field of forestry education.

"Forest industries throughout the state have appreciated your leadership in promoting the study of forestry as a career by young Kentuckians," said John I. Anderson as he awarded the "Certificate" in Dr. Doran's office. Anderson serves as secretary of the Kentucky Forest Industries Committee and presented the award in behalf of the Committee.

"The system of two-year pre-forestry courses now being taught to prepare students for entry into North Carolina State College, initiated by you, has enabled youth of our state to secure a degree in forestry without the expense of building a forestry school here," Anderson added. Under the program initiated by Dr. Doran, Kentucky students take two years of prescribed pre-forestry work in college and then transfer to North Carolina State to complete the requirements for a forestry degree in two more years without loss of credit.

Dr. Doran has appeared on the program of the Kentucky Forest Industries Committee and as a speaker one of the group's Tree Farm dedication ceremonies near Grayson where tribute was paid to private woodland owners for their practice of forestry on tax-paying lands.



WINNING SENIOR HIGH SCHOOL—Z. Brent Fry, coordinator of the Morehead Regional Speech Festival, presents rotating trophy to Ashland Speech Sponsor Sue Keyser. Ashland won the senior high division with 61 points.

Regional Speech Festival Trophy Awarded Ashland

Mason County Wins Runner-Up Cup; Three-way Tie Among Mayville, Orangeburg And Putnam Counties

Around 300 students from 21 schools participated in the Morehead Regional Speech Festival last Friday and Saturday on campus.

Ashland High School received a rotating gavel trophy as first place winners among senior high schools with 61 points. A runner-up trophy went to Mason County High school with a total of 59 points.

A three-way tie among Mayville, Orangeburg and Putnam counties. St. Patrick's Tolleboro a d

Annual Future Farmers of America Day for the Eastern Kentucky district will bring around 1,000 participants to host Morehead State College Saturday, March 31, President Adron Doran has announced.

Twenty-five FFA chapters and their guests will assemble in Button Auditorium at 10 a.m. for exercises conducted by the Eastern Kentucky Federation of FFA officers.

Contests and activities are scheduled for 11 a.m. in Lippin Hall. Entries will compete in public speaking, impromptu speaking, chapter meetings procedure and creed contests.

Simultaneously there will be a music contest in Button Auditorium consisting of individual and group competition from representatives of participating chapters.

FFA Day will conclude in Button Auditorium at the late afternoon with the presentation of cups, ribbons and other honors won by

members throughout the day. Chapter "Sweethearts" will be recognized at this session.

Judging of records of productive enterprise projects will begin Wednesday, March 28. The records will be displayed with awards in Lippin Hall throughout the following Saturday.

"It is indeed a pleasure to have the Future Farmers of America choose our campus for their annual activities in this region,"

President Doran said. FFA Day is co-ordinated through out the Eastern Kentucky District by D. E. Bayless, district supervisor of vocational agriculture in the State Department of Education. The Division of Applied Arts is co-ordinator of the program at the college.

Chapter sponsors are: Paul Preston, Owsingville; L. S. Stages, Sharpshurg; Charles E. Taylor, Owsingville; Dempsey Bailey, Boyd Co.; Junior Poling, Pritchard; John H. Vanant, Sandy Hook; Donald F. Wagoner, Sandy Hook; Roy Gleahs, Jr., Fleming Co.; Gene E. Seiver, Fleming Co.; Eugene Stanley, Betsy Layne; Roy Denney, Maytown; Chondos Calhoun, McKel; Robert Hays, Wurtland; James L. Reed, Flat Gap; Clarence Meek, Meade Memorial; Bronnelle Skaggs, O. Springs; J. Lynn See, Oil Springs; C. W. Wells, Louisa; David Lykins, Lewis Co.

Lawrence W. Tandy, Tolleboro; Luther Rice, Saltersville; Fred Chamber, Jr., Mason Co.; Charles Wills, Menifee Co.; Richard Jett, Ezel; Paul Williams, Morgan Co.; Glen D. McElwain, Johns Creek; Walter E. Ellison, Virgie; Clay Banks, Rowan Co.; and Arvil Crase, Rowan Co.

Eastern Kentucky Federation of FFA officers are: Clarence A. Adkins, president, Sandy Hook High; Donald Stafford, vice-president, Lewis Co.; Byron Thompson, secretary, Louisa High; Buford Meadows, treasurer, Saltersville High; Donny Boyd, reporter, Rowan County High; Andy Hammond, sentinel, Grayson High.



Ann Sandifer

Ann Sandifer To Be State 4-H Representative Campus Club 'Little 500' Bike Race Set

Ann Sandifer, a sophomore at Morehead, has recently been elected to represent Kentucky at the Jackson Mill Leadership Development Conference for 4-H members and leaders held each year in Jackson Mill, Va.

Miss Sandifer is also first girl alternate delegate to the National 4-H Club Conference to be held in Washington, D. C.

She has been a delegate to the National 4-H Club Congress in Chicago and has served as a representative of the Kentucky 4-H Council at Camp Minnawana.

In addition to 4-H activities, Miss Sandifer has been active in campus activities and organizations. She is a member of the Comopolitan Club and is a contributor in Allie Young Hall.

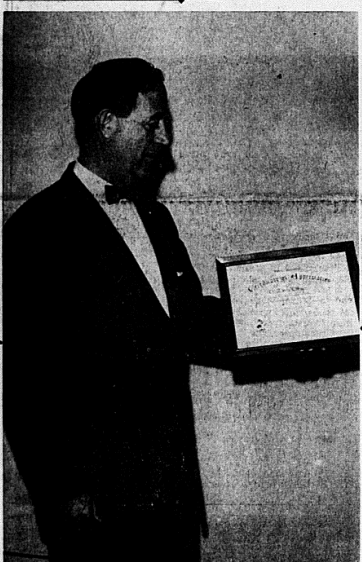
She is the daughter of Mr. and Mrs. Herbert Sandifer of Brookville.

Spring has sprung and racing enthusiasts start preparing for the annual season classes. Louisville has the Kentucky Derby, Indianapolis has the Memorial Day 500, and Morehead State College plans soon to the Campus Club's "Little

This year's 4th annual bicycle relay race will be held on Saturday, May 5. Teams are already being formed, securing their two-wheel speedsters by any means possible.

The boys division of the race will consist of 40 laps around College Boulevard, starting and ending at the Campus Club.

See CAMPUS CLUB, Page Eight



PRESIDENT HONORED—Dr. Adron Doran looks at a certificate of appreciation presented to him last week by the Forest Industries for his continued interest and support of forestry leadership.

\$285,065 LOANED

Student Loan Program Has Aided 410 At MSC

One of the most interesting reports to be issued on the Morehead State College campus in recent days came from the Dean of Students office this week. It concerned the number of students which have been awarded through the National Defense Student Loan Program.

Many people were surprised to learn that \$285,065 has been borrowed from the Dean by Morehead students since the program was gotten under way in 1959.

Roger L. Wilson, Dean of Students, said that the program was gotten under way in 1959.

Dr. Doran will confer degrees to candidates at graduation ceremonies in the Fieldhouse. Two hundred twenty-five degrees last June and approximately 300 graduates will be awarded degrees this spring.

Cooper, Kentucky's senior senator, commended Morehead State College for "advancing the physical growth and insisting on high standards and quality education" in accepting the commencement address invitation.

"We are fortunate to secure Senator Cooper for our spring commencement. He is one of the great Kentuckians of our day," said President Doran.

Senator John Sherman Cooper will deliver the 20th annual Morehead State College commencement address about evening of May 31, President Adron Doran announced today.

Dr. Doran will confer degrees to candidates at graduation ceremonies in the Fieldhouse. Two hundred twenty-five degrees last June and approximately 300 graduates will be awarded degrees this spring.

Cooper, Kentucky's senior senator, commended Morehead State College for "advancing the physical growth and insisting on high standards and quality education" in accepting the commencement address invitation.

"We are fortunate to secure Senator Cooper for our spring commencement. He is one of the great Kentuckians of our day," said President Doran.

Karrich Gets Forest Group's 4th Scholarship

Joseph Allen Karrich, Morehead State College sophomore from Salt Lick, has been awarded his fourth 500 scholarship check by the Kentucky Forest Industries Committee.

Karrich, one of the pioneering pre-forestry students at Morehead, lives with his wife at 607 West Main Street, Morehead.

The Kentucky Forest Industries Committee has awarded his scholarships for the past three years on the basis of interest in the study of technical forestry and his scholastic record. Gerald Mauk, Morehead, received a similar scholarship three years ago and is now enrolled at North Carolina State College.

"Forest Industries of Kentucky are looking to you and other young men," said Kentucky FIC Secretary See KARRICH GETS, Page Eight

Morehead State College is host to the 1962 Kentucky Intercollegiate Forensics Conference on March 30 and 31 in the New Classroom Building.

Schools expected to attend the activities include: University of Kentucky, Georgetown College, Kentucky State College, Berea College, Ashbury College, Western Kentucky State College, Eastern Kentucky State College, Centre College and Morehead State College.

Competition in Oral Interpretation, Debate, Discussion and Legislative Assembly will be held during the conference.

Judges for the oratorical contest on Friday, March 29 will be: Professor Victor M. Powell, Chairman of the Speech Department of Washburn College; Professor Paul H. Boase, Chairman of the Speech Department at Oberlin College; and Professor J. H. Henning, Chairman of Speech, West Virginia University. The oratorical contest will be divided into 24

divisions with the women's division meeting from 3:00 to 5:30 and the men's division from 7:00 to 9:30 on Friday.

Z. Brent Fry, Coordinator of Speech at Morehead said, "The winner of the oratorical contest will represent Company are a Courier case and a Lady Susan Dreyer. The most valuable disquiet and legislator will receive a clock radio."

Awards for the winners will include: trophies for each of the 1st, 2nd, 3rd place winners and the school with 1st place will receive a trophy. Other awards will be donated by the Ashland Oil and Refining Company are a Courier case and a Lady Susan Dreyer. The most valuable disquiet and legislator will receive a clock radio."

Awards for the winners will include: trophies for each of the 1st, 2nd, 3rd place winners and the school with 1st place will receive a trophy. Other awards will be donated by the Ashland Oil and Refining Company are a Courier case and a Lady Susan Dreyer. The most valuable disquiet and legislator will receive a clock radio."

Awards for the winners will include: trophies for each of the 1st, 2nd, 3rd place winners and the school with 1st place will receive a trophy. Other awards will be donated by the Ashland Oil and Refining Company are a Courier case and a Lady Susan Dreyer. The most valuable disquiet and legislator will receive a clock radio."

Awards for the winners will include: trophies for each of the 1st, 2nd, 3rd place winners and the school with 1st place will receive a trophy. Other awards will be donated by the Ashland Oil and Refining Company are a Courier case and a Lady Susan Dreyer. The most valuable disquiet and legislator will receive a clock radio."

Awards for the winners will include: trophies for each of the 1st, 2nd, 3rd place winners and the school with 1st place will receive a trophy. Other awards will be donated by the Ashland Oil and Refining Company are a Courier case and a Lady Susan Dreyer. The most valuable disquiet and legislator will receive a clock radio."

Awards for the winners will include: trophies for each of the 1st, 2nd, 3rd place winners and the school with 1st place will receive a trophy. Other awards will be donated by the Ashland Oil and Refining Company are a Courier case and a Lady Susan Dreyer. The most valuable disquiet and legislator will receive a clock radio."

Awards for the winners will include: trophies for each of the 1st, 2nd, 3rd place winners and the school with 1st place will receive a trophy. Other awards will be donated by the Ashland Oil and Refining Company are a Courier case and a Lady Susan Dreyer. The most valuable disquiet and legislator will receive a clock radio."

Awards for the winners will include: trophies for each of the 1st, 2nd, 3rd place winners and the school with 1st place will receive a trophy. Other awards will be donated by the Ashland Oil and Refining Company are a Courier case and a Lady Susan Dreyer. The most valuable disquiet and legislator will receive a clock radio."

Awards for the winners will include: trophies for each of the 1st, 2nd, 3rd place winners and the school with 1st place will receive a trophy. Other awards will be donated by the Ashland Oil and Refining Company are a Courier case and a Lady Susan Dreyer. The most valuable disquiet and legislator will receive a clock radio."

Awards for the winners will include: trophies for each of the 1st, 2nd, 3rd place winners and the school with 1st place will receive a trophy. Other awards will be donated by the Ashland Oil and Refining Company are a Courier case and a Lady Susan Dreyer. The most valuable disquiet and legislator will receive a clock radio."

Awards for the winners will include: trophies for each of the 1st, 2nd, 3rd place winners and the school with 1st place will receive a trophy. Other awards will be donated by the Ashland Oil and Refining Company are a Courier case and a Lady Susan Dreyer. The most valuable disquiet and legislator will receive a clock radio."

Awards for the winners will include: trophies for each of the 1st, 2nd, 3rd place winners and the school with 1st place will receive a trophy. Other awards will be donated by the Ashland Oil and Refining Company are a Courier case and a Lady Susan Dreyer. The most valuable disquiet and legislator will receive a clock radio."

Awards for the winners will include: trophies for each of the 1st, 2nd, 3rd place winners and the school with 1st place will receive a trophy. Other awards will be donated by the Ashland Oil and Refining Company are a Courier case and a Lady Susan Dreyer. The most valuable disquiet and legislator will receive a clock radio."

Awards for the winners will include: trophies for each of the 1st, 2nd, 3rd place winners and the school with 1st place will receive a trophy. Other awards will be donated by the Ashland Oil and Refining Company are a Courier case and a Lady Susan Dreyer. The most valuable disquiet and legislator will receive a clock radio."

Awards for the winners will include: trophies for each of the 1st, 2nd, 3rd place winners and the school with 1st place will receive a trophy. Other awards will be donated by the Ashland Oil and Refining Company are a Courier case and a Lady Susan Dreyer. The most valuable disquiet and legislator will receive a clock radio."

Awards for the winners will include: trophies for each of the 1st, 2nd, 3rd place winners and the school with 1st place will receive a trophy. Other awards will be donated by the Ashland Oil and Refining Company are a Courier case and a Lady Susan Dreyer. The most valuable disquiet and legislator will receive a clock radio."

Awards for the winners will include: trophies for each of the 1st, 2nd, 3rd place winners and the school with 1st place will receive a trophy. Other awards will be donated by the Ashland Oil and Refining Company are a Courier case and a Lady Susan Dreyer. The most valuable disquiet and legislator will receive a clock radio."

Awards for the winners will include: trophies for each of the 1st, 2nd, 3rd place winners and the school with 1st place will receive a trophy. Other awards will be donated by the Ashland Oil and Refining Company are a Courier case and a Lady Susan Dreyer. The most valuable disquiet and legislator will receive a clock radio."

SECOND SHOW PROPOSED

Student Council Talent Show To Be April 24 In Button

Francis Bacon, British essayist and philosopher, stated that too much study was sloth, and in full agreement with this the student council will present their annual Student Council Talent Show April 24.

The show which is designed to make money for the council with which it pays for its many projects, is also set to entertain one and all and thereby provide a pleasant relief from the drudgery of studies.

Student talent from all over the nation will be displayed as students will perform skills, dances, singing, play musical instruments and perform other various forms of entertainment.

Dick Robinson, president of the student council, said, "The show is consistently one of the best liked of all programs which are presented at MSC."

Rehearsals Held

There will be a series of rehearsals held before the show for the first time this year, stated President Robinson, and these will allow the auditing committee to space the acts in the best way possible.

"Students who are to participate in the show," said Stewart Shaffer, auditioning committee chairman, "are to meet in Button Auditorium four different times before the show takes place—March 27, and April 16, 18, and 22."

The meeting on March 27 will only be a short one as the committee wishes to get a list of the acts which are going to be in the show and tell the participants what is to be expected at rehearsals.

The rehearsal on the 23rd will be a full dress one, and the acts will appear in order which they will on the 24th.

"We are anxious for the new move to have rehearsals before the show See SECOND SHOW, Page Eight

Awards for the winners will include: trophies for each of the 1st, 2nd, 3rd place winners and the school with 1st place will receive a trophy. Other awards will be donated by the Ashland Oil and Refining Company are a Courier case and a Lady Susan Dreyer. The most valuable disquiet and legislator will receive a clock radio."

Awards for the winners will include: trophies for each of the 1st, 2nd, 3rd place winners and the school with 1st place will receive a trophy. Other awards will be donated by the Ashland Oil and Refining Company are a Courier case and a Lady Susan Dreyer. The most valuable disquiet and legislator will receive a clock radio."

Awards for the winners will include: trophies for each of the 1st, 2nd, 3rd place winners and the school with 1st place will receive a trophy. Other awards will be donated by the Ashland Oil and Refining Company are a Courier case and a Lady Susan Dreyer. The most valuable disquiet and legislator will receive a clock radio."

Awards for the winners will include: trophies for each of the 1st, 2nd, 3rd place winners and the school with 1st place will receive a trophy. Other awards will be donated by the Ashland Oil and Refining Company are a Courier case and a Lady Susan Dreyer. The most valuable disquiet and legislator will receive a clock radio."

Awards for the winners will include: trophies for each of the 1st, 2nd, 3rd place winners and the school with 1st place will receive a trophy. Other awards will be donated by the Ashland Oil and Refining Company are a Courier case and a Lady Susan Dreyer. The most valuable disquiet and legislator will receive a clock radio."

Awards for the winners will include: trophies for each of the 1st, 2nd, 3rd place winners and the school with 1st place will receive a trophy. Other awards will be donated by the Ashland Oil and Refining Company are a Courier case and a Lady Susan Dreyer. The most valuable disquiet and legislator will receive a clock radio."

Awards for the winners will include: trophies for each of the 1st, 2nd, 3rd place winners and the school with 1st place will receive a trophy. Other awards will be donated by the Ashland Oil and Refining Company are a Courier case and a Lady Susan Dreyer. The most valuable disquiet and legislator will receive a clock radio."

Awards for the winners will include: trophies for each of the 1st, 2nd, 3rd place winners and the school with 1st place will receive a trophy. Other awards will be donated by the Ashland Oil and Refining Company are a Courier case and a Lady Susan Dreyer. The most valuable disquiet and legislator will receive a clock radio."

Awards for the winners will include: trophies for each of the 1st, 2nd, 3rd place winners and the school with 1st place will receive a trophy. Other awards will be donated by the Ashland Oil and Refining Company are a Courier case and a Lady Susan Dreyer. The most valuable disquiet and legislator will receive a clock radio."

Awards for the winners will include: trophies for each of the 1st, 2nd, 3rd place winners and the school with 1st place will receive a trophy. Other awards will be donated by the Ashland Oil and Refining Company are a Courier case and a Lady Susan Dreyer. The most valuable disquiet and legislator will receive a clock radio."

Awards for the winners will include: trophies for each of the 1st, 2nd, 3rd place winners and the school with 1st place will receive a trophy. Other awards will be donated by the Ashland Oil and Refining Company are a Courier case and a Lady Susan Dreyer. The most valuable disquiet and legislator will receive a clock radio."

Awards for the winners will include: trophies for each of the 1st, 2nd, 3rd place winners and the school with 1st place will receive a trophy. Other awards will be donated by the Ashland Oil and Refining Company are a Courier case and a Lady Susan Dreyer. The most valuable disquiet and legislator will receive a clock radio."

Awards for the winners will include: trophies for each of the 1st, 2nd, 3rd place winners and the school with 1st place will receive a trophy. Other awards will be donated by the Ashland Oil and Refining Company are a Courier case and a Lady Susan Dreyer. The most valuable disquiet and legislator will receive a clock radio."

Awards for the winners will include: trophies for each of the 1st, 2nd, 3rd place winners and the school with 1st place will receive a trophy. Other awards will be donated by the Ashland Oil and Refining Company are a Courier case and a Lady Susan Dreyer. The most valuable disquiet and legislator will receive a clock radio."

Awards for the winners will include: trophies for each of the 1st, 2nd, 3rd place winners and the school with 1st place will receive a trophy. Other awards will be donated by the Ashland Oil and Refining Company are a Courier case and a Lady Susan Dreyer. The most valuable disquiet and legislator will receive a clock radio."

Awards for the winners will include: trophies for each of the 1st, 2nd, 3rd place winners and the school with 1st place will receive a trophy. Other awards will be donated by the Ashland Oil and Refining Company are a Courier case and a Lady Susan Dreyer. The most valuable disquiet and legislator will receive a clock radio."

Awards for the winners will include: trophies for each of the 1st, 2nd, 3rd place winners and the school with 1st place will receive a trophy. Other awards will be donated by the Ashland Oil and Refining Company are a Courier case and a Lady Susan Dreyer. The most valuable disquiet and legislator will receive a clock radio."



TALENT SHOW SOUND—It appears that pretty Corale Porter, a freshman from South Shore, is talent show band member in Irish attire.

Good Taste, Not Dictation Is Policy Of Deans Toward Lovers On Campus

Castro and rebellious Cuba has nothing on Morehead State College from all appearances, it seems as if the administration has only to mention setting up new criteria for bettering the college and improving the general atmosphere at MSC, when some students start preparing to single arms into the dorms and start a general insurrection against the leaders of the college.

These same students are ready to condemn a group of people for doing something, when they aren't even sure just what was done. None of the rumor carriers have even bothered to check into the situation with the deans or the housemothers; they have only judged and commented.

Recently a suggestion was made to the housemothers concerning the conduct of young couples kissing during the daytime in front of the dormitories at night. No set rules or punishments were set, and all that was asked was that the housemothers request that the girls be discreet.

Such a suggestion is not only perfectly permissible anywhere in the United States, but extremely wise. For, while the boy in America is allowed a great deal of freedom in his conduct, the girl is definitely limited. A torrid

love scene is out of place in the front of a dormitory, or anywhere in public for that matter, and any girl who is observed in such a scene is almost immediately fitted into the lowly stereotype of a 'cheap woman.'

Since these suggestions have been made, however, there has been rumor on top of rumor circulating around the campus.

Tales have been started which say that punishment for being caught kissing on the boulevard in front of the dorms would consist of such items as being camped, fined, sent home, and even arrested. Such rules are not and have never been in effect.

To even contemplate such rules would be extremely foolish and uncharacteristic. Foolishly harsh in several ways which are too obvious to even warrant mentioning, and the administrative staff of Morehead are far from being stupid — if they were, they would not be working for a state institution such as MSC.

Ambassadors To Sunshine State

Now is the time for college students from all over the United States, including Morehead, to make the annual trek to Fort Lauderdale, Florida. "We're going" and "Do you have a car?" are questions echoing in many dormitory corridors.

Fort Lauderdale, we understand, has gone all out to welcome the students this year. It is providing new attractions as entertainment, food, plenty, and a prediction for pleasant, unobscured weather. What more can you ask?

However, some students will want to kick their heels by lazing in full bedazzlement of their conduct and demonstration against authority. Don't forget that we students are Kentucky's good will ambassadors to Florida in the same way that the Peace Corps members represent the United States in other countries. Young people are the best advertisement for their country, state and school. Or by their behavior they can show a lack of parental training, correct training, and school training.

Here then is a chance for Morehead's representatives to Florida to be exemplary in their conduct, manners, speech and dress so that students next spring will find the "welcome mat" out for them.

Enough said — Let's have a safe trip, enjoy ourselves, and look in plenty of Florida sun in order to withstand the rigors of the rest of the term.

Regent's Sentiments Our Own

Action by our Board of Regents to deem residence halls for the First Lady, the Dean of Students and the State Superintendent of Public Instruction is a token of appreciation for the individuals' contribution in building a greater Morehead State College.

Mignon Doran, of our President, has been honored by the naming of Mignon Hall, the beautiful "skycraper" women's residence hall now under construction. She has played an integral role in Morehead's program of development.

Dean Roger L. Wilson's service as director of student housing and dedication to Morehead provided the Board of Regents with the opportunity to honor under construction Wilson Hall.

Wendell Butler has done much for the advancement of Morehead State College as Superintendent of Public Instruction.

We congratulate the three whose efforts for our welfare have been numerous.

Campus Visitors Welcome

We of the staff take this opportunity to welcome the many visitors who will be on our campus this week.

About a thousand Future Farmers of America members and two thousand music festival participants will be here this week end. We look forward to their arrival and wish them a pleasant stay with us.

Dr. Nelson Grote and his Division of Applied Arts have well prepared for the FFA Day Cowen, the skeptical, older brother. The same might be said of Martin Huffman and the Division of Fine Arts for the Music Festival.

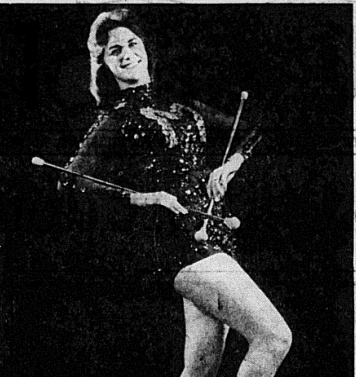
To these and other visitors we extend our heartiest greetings and welcome.

The Trail Blazer

"The greatest state is Morehead State"

Official newspaper of Morehead State College, published bi-weekly except on vacations and holidays, and each summer session. Entered as second class mail at the Post Office at Morehead, Kentucky, under act of Congress of March 3, 1879. Subscription price \$5 cents per month in advance.

- STAFF
- Editor-in-Chief: Keith Mayhew
 - Business Manager: Roger Dixon
 - Editor: Josh Lovelace
 - Editor: Ray Allen
 - Editor: Charles Lee
 - Editor: Lee Mueller
 - Editor: Karen Hutchinson and Judy Henke
 - Editor: Barbara Anglin
 - Editor: Sandra White and Thelma Barker
 - Editor: William Randolph Wurff
 - Editor: Jim Edwards
- REPORTERS
- Phyllis Galt (Society), Ann Walker (News), Colleen McClanahan (Feature), Phil Vogelph (Sports), Diana Davis (Feature), Robert Starr (Columns), Dave Vance (General) and Jerry Hays (General).



Trail Blazer Editor Represents Community News At Fort Chaffee

By Harry Mayhew

When Shakespeare wrote "All's well that ends well" he very accurately described the sentiments of Company 1, 400th Regiment of the 100th Division at Fort Chaffee, Arkansas.

The company, composed of some 31 men stationed at the Morehead State Unit before call to active duty, feel that if they could be given a release date and return home all would "see" it.

About 40 newsmen arrived at Fort Chaffee last week for a three-day visit to the town units of the 100th Division. The visit, dubbed "Operation Come-See," provided an opportunity for community newspapers to visit the reserve unit in their home-towns on active duty at Chaffee, to meet these units, and to report first hand their comments and sentiments.

All is not "peaches and cream" with these men. However, the morale of the troops is extremely high if this definition of morale by Brig. Gen. Benjamin J. Butler of Lexington is accepted: "Morale is contenting ourselves to a job which must be done — it does not mean we must be satisfied."

The troops are, of course, not satisfied, but they are contented. They are contented with a remarkable pride and patriotism and have performed a job well done.

MARCH 1962

SUN	MON	TUE	WED	THU	FRI	SAT
				1	2	3
4	5	6	7	8	9	10
11	12	13	14	15	16	17
18	19	20	21	22	23	24
25	26	27	28	29	30	31

CALENDAR GIRL—Beautiful Janis Coomer of Ludlow is the Trail Blazer Calendar Girl for this issue. Janis is a senior at MSC. She models the costume worn at band performances where she performs an entertaining band and dance routine.

WELL PLANNED PRODUCTION

The Rainmaker's Opening Night Called Successful

An attentive audience packed Button Auditorium Thursday, Mar. 15, as the Morehead Theater presented The Rainmaker by N. Rich and Nash.

A number of high school students from in and around Morehead as well as Morehead students, faculty and administration members were on hand to promote a successful opening night. The director, Mary L. Smith, did an excellent job as a supporting actor.

There is little doubt that the performance was the product of know-how and long hours of practice. Nor is there any doubt that the director, Mary L. Smith, did an extra-ordinary job in directing the play. The cast, consisting of 12 actors, certainly, she deserves credit for making this exceptionally good play enjoyable to all.

During the darkness between scenes and acts, recorded music substituted for the absence of action. (The curtains could not be closed, due to the construction of the set.)

The cast performed with such ease that the audience was spell-bound and applauded appreciatively.

The play was well cast and everyone did a splendid job. Louis Cowen, the skeptical, older brother, did a side-splitting performance with his drawing, sarcastic humor.

Dick Arinsberg who portrayed the rainmaker, gave a memorable performance with his characterization as a dramatist.

When the ensemble appeared in the play, the group plays with the homogeneity of tone and unity of rhythmic impact associated with the finest of string quartets."

I Music, an Italian ensemble presented in concert here last Tuesday evening, was very well received by the student body.

Morehead students and others attending showed their fondness for the group with a standing ovation and continued applause.

When the ensemble appeared in Louisville for the first time, William Moore, Music Editor of the Courier-Journal had to say: "With each player directly responsible for his own contribution to the ensemble, the group plays with the homogeneity of tone and unity of rhythmic impact associated with the finest of string quartets."

WELCOME



Trail Blazer Editor Represents Community News At Fort Chaffee

When Shakespeare wrote "All's well that ends well" he very accurately described the sentiments of Company 1, 400th Regiment of the 100th Division at Fort Chaffee, Arkansas.

The company, composed of some 31 men stationed at the Morehead State Unit before call to active duty, feel that if they could be given a release date and return home all would "see" it.

About 40 newsmen arrived at Fort Chaffee last week for a three-day visit to the town units of the 100th Division. The visit, dubbed "Operation Come-See," provided an opportunity for community newspapers to visit the reserve unit in their home-towns on active duty at Chaffee, to meet these units, and to report first hand their comments and sentiments.

All is not "peaches and cream" with these men. However, the morale of the troops is extremely high if this definition of morale by Brig. Gen. Benjamin J. Butler of Lexington is accepted: "Morale is contenting ourselves to a job which must be done — it does not mean we must be satisfied."

The troops are, of course, not satisfied, but they are contented. They are contented with a remarkable pride and patriotism and have performed a job well done.

After training over 15,000 recruits and watching the draft of the men, the men of the 100th Division have been met and are eager to return to their homes and obligations in Kentucky.

Many of the group would like to return to school. For example, Kelly, Company A, Winchester, hopes to return to Morehead State College for summer school.

There is no such thing as a 40-hour week for the men of the 100th Division. It is more like 100-hour week. But there is an all-out effort being put into the training of the recruits to the best of their ability — which is remarkable.

Most of the trainees get shipping orders overseas after training. Some are going to Korea and other troubled spots on the globe, but most spending active duty in Germany.

Sgt. Volney L. Skaggs of Clearfield, a veteran of World War II, said the men have accomplished a mission in training and operations, all without discontent.

"But there is a growing unrest," he admits, "among the trainees for some indication for a release date." The factor of not knowing and not being able to plan for the future is unequalled, for most feel.

In contrast to remarkable accomplishment on the job and a tremendous show of pride and patriotism, a number of common grievances prevail at Ft. Chaffee. Among these include:

- 1. The soldiers are being deprived of post commences because of politics and there is no pay for separate releases because of the absence of the commissary.
- 2. The price of gasoline at the post gas station is much higher than town prices in relation to other posts.
- 3. Rent of post are often too high for the quality of dwelling, but the price must be paid out of pocket.
- 4. The government is using the soldiers as a "sack of commodity" for the shipping to Arkansas to inject revenue into the area.
- 5. There are numerous cases where individuals should be released because of hardships due to health and other reasons, but who are retained the division will have a good record when the job is finished.
- 6. Many soldiers are on special assignment doing jobs of their own choice, yet they are not paid as regular officers. There are numerous cases of privates doing the job of sergeants, and sergeants doing the job of privates.
- 7. The men of Company 1, and indeed the entire division, paint a rosy picture of their conditions, but they go ahead without

from the first drill exercises to advanced combat training. "Send us your boy and we'll return you your man" has become a slogan, at times to the amusement of the press.

A more intimate view of the drill training when in the field with the men, was given by Sgt. Gray. The most awesome part of the training at Chaffee is the "aggressor" problem — was observed by this reporter with Sgt. Gray, Sgt. Barker, Sgt. Nelson, and Sgt. J. A. Gray.

Trainees are given a "sack" as a raw pupil or carter and turned loose into the night with a certain point to reach. A group of "aggressors" are on hand to capture the trainee and transport them to prisoners of war camp.

Sgt. Nelson, stationed at the friendly outpost, and Sgt. Gray, an aggressor, were both boys on opposite sides while Sgt. Barker participated as a "neutral" to aid the homespun training.

Members of Company 1 include: Capt. Glen R. McCormack, Flemingsburg; Lt. Henry T. Hinkle, St. Albans, W.Va.; 1st Lt. David W. Jones, Nitro, W.Va.; John M. Huffman, Paducah, Ky.; Sgt. Elva C. Barker, Morehead; Sgt. Volney L. Skaggs, Clearfield, Pa.; Sgt. J. A. Gray, Morehead; Sgt. Jimmie Constance, Morehead; Sgt. Ovan R. Gault, Morehead; Sgt. James E. Gray, Flemingsburg; Sgt. Jessie Bradley, Morehead; Sgt. Robert B. Johnson, Smith's Fork, Ky.; Sgt. Marvin Starnes, Morehead; Sgt. Marvin E. Starnes, Morehead; Sgt. Arthur C. Elliottville, SP/4 Marcus C. Easton, Morehead; Sgt. James P. Ison, Bradley, Morehead; Sgt. James C. Wells, Morehead; Sgt. Robert L. Wells, Sandy Hook, Sp/4 Albert H. Bradley, Morehead; Sgt. Charles E. Bishop, Morehead; SP/4 John W. Gullett, Morehead; Sgt. Charles E. Bishop, Morehead; Pvt. Ronald E. Brooks, Morehead; Pvt. Donald E. Litton, Morehead; and Sgt. Wayne E. Moore, Morehead.

Captain and Mrs. Ova Bradley, formerly of Morehead, were at Chaffee for the trip. Captain Bradley is stationed there as a member of the press.

Dear Ann Slanders

(With Apologies To Ann Landers)

Dear Ann,

I am in dire trouble. I'm 6'11", tall, weigh 349 pounds, and I have one blue eye and one brown eye. My right arm is 6" shorter than my left one; I am humpbacked and I have a bad cold. I don't come near me, and so you see I don't really have any friends at all, but I have a few. I have a few friends, and the problem is how can I be nice to my friends? I don't want to be mean to me to be nice to me.

Wondering

Dear Wondering,

Try using a popular brand of toothpaste with a lot of toothpaste, phenol, fluoristan, and most of all, gargle. If that doesn't work, buy a gas mask.

Ann

Dear Ann,

Of my many problems one seems to stand out among the rest. It is my Aunt Hattie from Cincinnati who is presenting the problem. She wants to come to visit me, but I don't want her to. I wouldn't mind, but she insists on "acting like the kids."

She is a very old woman with many old maid ways and when she tries to twist, act crazy, or drink just like the rest of us, she really embarrasses me. All my friends laugh and make fun of her. Sometimes I don't want to be around her, but she is very sensitive and I do not want to hurt her. I don't want to be mean to her, but I am her only heir.

Please answer as soon as possible very, very soon.

Sincerely,

Nice Nice

Dear Nice,

Stay out of the good side of hit and suggest that she improve her appearance so as to look younger; maybe she has a few more socks, sweaters, and skirts. Then when she acts like a stupid idiot, she will look like one, too.

Ann

Dear Ann,

I'm very upset over an event that happened last night. John, my fiance, and I were sitting in his car (yes, just sitting) talking, and I heard a peculiar click as if the car had been hit. I was so scared I took pictures in the dark. Do I have anything to be worried about?

Yours truly,

Worried (?)

Dear Worried (?),

I don't know, do you try to understand what I mean? I have a camera with an infra-red bulb. This will enable him to take pictures in the dark without your knowledge. Since you were just talking you should be alright.

Ann

Send all problems to: Ann Slanders, Box 79, Morehead State College.

Dean's List Includes 336 Underclassmen For Fall

Three hundred thirty-six Morehead State College undergraduates earned 12 hours or more made the first semester Dean's List.

"We are extremely proud of all the students who made such outstanding records during the first semester," said President Aaron Doran.

"Their records indicate a very high level of achievement and we are confident their parents and friends share with us our heartfelt congratulations."

Those students making perfect standing of 4.0 are John Edward Adams, Barbara E. Anglin, Mary Helen Birch, Patricia L. Clay, Robert D. Friley, Sandra Nylas, D. B. Olson, Wanda Pease East, Bernice Virgin, Faye Weckel, Wanda F. Barker, Kerry, Emma Lou Gullett and Dudley Cotten Melton.

Other students making the Dean's List and their standings are:

Bernard Affinto, 3.63; Donna K. Alexander, 3.83; Gene A. Alfrey, 3.53; Kenny C. Ambrose, 3.16; Betty S. Amburg, 3.23; Betty Malone Amos, 3.61; Gariand L. Araceti, 3.06; Ronald M. Bach, 3.53; Patricia F. Bach, 3.06; Robert F. Bailey, 3.60; Joan C. Bailey, 3.14; Judy C. Bailey, 3.64; Sharon L. Preston Bailey, 3.64; Barbara B. Baker, 3.47; G. Baker, 3.19; Ottolenna T. Baldwin, 3.58;

Joan Halecomb, 3.00; Grace Ann Hall, 3.97; Rudolph S. Hall, 3.80; Hester R. Harding, 3.21; Veronica L. Harmon, 3.29; Mari-Lou H. Hart, 3.11; Gary Duane Hart, 3.08; Anna C. Hawkins, 3.71; Robert G. Hay, 3.67; Matt D. Hayes, 3.53; Arlene Heisterbrand, 3.00; Cecil H. Hewlett, 3.00; Harold W. Hill, 3.00; James H. Hill, 3.00; Nana W. Lynne Hinton, 3.67; Carol L. Hockley, 3.27; Barbara Hogatt, 3.57; Wanda S. Holbrook, 3.88; Virginia A. Holmes, 3.40; Jean D. Holton, 3.03; Sammie L. Holtzclaw, 3.07; Sarah E. James, 3.00; Janice E. Houck, 3.12; Marjorie M. Howard, 3.44; Morine Howard, 3.00;

Katherine M. Howdeshell, 3.14; Sandra L. Howell, 3.55; Terri L. Hubbard, 3.31; E. B. Huggins, 3.16; Kay A. Irvin, 3.33; Sue G. Irvin, 3.24; Eunice L. Ison, 3.53; Olin D. Jackson, 3.07; Sarah E. James, 3.00; Martha F. Jaquay, 3.24; John J. Jester, 3.22; James R. Johnson, 3.52; Joseph A. Karkick, 3.17; Paul D. Keesee, 3.00; Donald Hoffman, 3.31; Harry G. Kegley, 3.24; Eva M. Kelly, 3.00; Gary L. Kinnam, 3.06; Shannon Kiser, 3.02; Joseph Knauer, 3.55; Roberta Fisher Knox, 3.00; Gerald Kohls, 3.49; Paul C. Kroth, 3.53; June W. Lebus, 3.47; Bessie M. Lewis, 3.07; Christine M. Lepp, 3.26; Robert J. Leopold, 3.06;

Jackie L. Lewis, 3.48; Martha J. Lewis, 3.15; Rebekah A. Lewis, 3.00; Nancy Reed Littoral, 3.44; Janet Patrick, 3.44; Bobby G. Lucas, 3.03;

Virginia L. Mabry, 3.09; Garnetta L. Maggard, 3.40; Patricia M. Maggard, 3.40; James D. Mann, 3.53; Steve B. Marks, 3.27; Betty Y. Marshall, 3.21; Barbara C. Martin, 3.59; June E. Martin, 3.00; Bobby L. Mason, 3.00; Charles E. May, 3.17; Phyllis G. Mayo, 3.00; Donna Farland, 3.50; Larry N. McGee, 3.38; Michael F. McGee, 3.00; Mary E. McIntosh, 3.00; Georgia A. McIntyre, 3.39; Loretta W. McKenzie, 3.57; Patricia J. McKinnis, 3.25; Harold J. McNamara, 3.06;

Peggy McNeely, 3.14; George F. McNeely, 3.35; Charles E. Miller, 3.78; Mary W. Mills, 3.00; L. Mavis Montgomery, 3.06; James E. Moore, 3.00; Marilyn Moore, 3.44; Roberta Mullins, 3.00; Lloyd L. Mox, 3.15; Carolyn N. Naugle, 3.06; Glenn N. Nees, 3.38; Phillip D. Newsom, 3.09; Virginia L. Niles, 3.44; Gordon Nolen, 3.29; James A. Newsom, 3.60; James L. Newsom, 3.00; Lynn N. Nye, 3.15; Kenneth R. Osborne, 3.07; Pamela Perry Osborne, 3.14;

Betty Jean Paack, 3.11; Wanda J. Patton, 3.14; Ruth Carole Peyer, 3.28; John W. Pfleger, 3.00; Betty Jo Phelps, 3.48; Dixie Ann Phillips, 3.18; Mary Ann Picklesimer, 3.27; Mary Stampfer Pierat, 3.00; Ronald E. Pierce, 3.63; Ira B. Potter, 3.18; Sandra K. Prater, 3.00; Jack M. Prichard, 3.29; James J. Prichard, 3.00; Judith A. Prichard, 3.00; Lorna L. Ragan, 3.38; Charles E. Rath, 3.15; Dolores L. Rawlings, 3.05; Lawrence J. Richards, 3.00; Robert R. Richardson, 3.27; Nancy K. Roberts, 3.18; Nancy L. Roberts, 3.15; Richard L. Robin, 3.14; Alma Faye Rose, 3.53; Doris Linda Rose, 3.21;

Elizabeth A. Rose, 3.00; Lawrence E. Rosenweber, 3.54; Kent Rowland, 3.42; Ronald G. Rucker, 3.25; Darryl Sagraves, 3.27; Shirley L. Sagraves, 3.19; Joyce Harris Saxton, 3.60; John A. Scallie, 3.00; Steve F. Schaffer, 3.63; James J. Schweitzer, 3.00; Victor T. Scott, 3.15; Jo Anne Selzer, 3.00; Bill D. Shaw, 3.39; Rosemary Brown Shook, 3.35; Barbara C. Siener, 3.00; Barbara S. Sivas, 3.17; Joel P. Slaughter, 3.00; Judith Phillips Slaughter, 3.00; Joann Stone, 3.55; Allan B. Smith, 3.00; Lena D. Smith, 3.00; Michael B. Smith, 3.76; Thomas D. Smith, 3.30; Judith C. Snelgater, 3.00;

Brenda J. Snellings, 3.33; Peter J. Spadaro, 3.50; William A. Sparker, 3.41; Yvonne Sperry, 3.23; Joan K. Sperry, 3.00; Kenneth N. Stalon, 3.21; Joseph G. Stearns, 3.59; James M. Stegall, 3.65; Barbara Gayle Stephens, 3.21; Judith A. Stephens, 3.48; Darrell B. Stephenson, 3.18; Donald A. Stephens, 3.00; Larry W. Stephens, 3.11; Regina L. Swope, 3.07; Sharon E. Tarter, 3.00; Gloria M. Taylor, 3.53; James H. Thomas, 3.76; Patricia E. Thompson, 3.75; Patricia N. Tisdale, 3.17; Henrietta Tolliver, 3.79; Gene Tripplet, 3.25; Albert B. Truitt, 3.53; Judy A. Trusty, 3.50; Patricia Audell Tucker, 3.80; Polly H. Tucker, 3.06;

Cassie A. Turner, 3.35; Dolores M. Tyler, 3.16; Vernon L. Ulrich, 3.19; Sandra Oppenheimer Van Hoose, 3.00; Brenda Swingley Vergne, 3.33; Larry G. Vincent, 3.07; Gloria Joan Walje, 3.00; Bertie A. Wallin, 3.00; Bonetta S. Walters, 3.06; Carolyn S. Watson, 3.47; M. Ruth Weaver, 3.86; Bobbie F. Webb, 3.11; Phillip G. Webb, 3.00; Eula Katherine Wells, 3.19; Sue Shaddock Wells, 3.39; Robert N. West, 3.50; Allen D. Westerfield, 3.00; Kay F. Wheeler, 3.26; Troy W. Wheeler, 3.50; William M. Whitaker, 3.28; Edward M. White, 3.15; Robin G. Whitcomb, 3.85; Barbara M. Whitt, 3.00; Jackie R. Wicker, 3.35; Terry M. Wicker, 3.07; Twyla J. Wicker, 3.00; Joseph W. Wynn, 3.17; Linda Varrington, 3.00; J. Camden Young, 3.49.

neith N. Stalon, 3.21; Joseph G. Stearns, 3.59; James M. Stegall, 3.65; Barbara Gayle Stephens, 3.21; Judith A. Stephens, 3.48; Darrell B. Stephenson, 3.18; Donald A. Stephens, 3.00; Larry W. Stephens, 3.11; Regina L. Swope, 3.07; Sharon E. Tarter, 3.00; Gloria M. Taylor, 3.53; James H. Thomas, 3.76; Patricia E. Thompson, 3.75; Patricia N. Tisdale, 3.17; Henrietta Tolliver, 3.79; Gene Tripplet, 3.25; Albert B. Truitt, 3.53; Judy A. Trusty, 3.50; Patricia Audell Tucker, 3.80; Polly H. Tucker, 3.06;

Cassie A. Turner, 3.35; Dolores M. Tyler, 3.16; Vernon L. Ulrich, 3.19; Sandra Oppenheimer Van Hoose, 3.00; Brenda Swingley Vergne, 3.33; Larry G. Vincent, 3.07; Gloria Joan Walje, 3.00; Bertie A. Wallin, 3.00; Bonetta S. Walters, 3.06; Carolyn S. Watson, 3.47; M. Ruth Weaver, 3.86; Bobbie F. Webb, 3.11; Phillip G. Webb, 3.00; Eula Katherine Wells, 3.19; Sue Shaddock Wells, 3.39; Robert N. West, 3.50; Allen D. Westerfield, 3.00; Kay F. Wheeler, 3.26; Troy W. Wheeler, 3.50; William M. Whitaker, 3.28; Edward M. White, 3.15; Robin G. Whitcomb, 3.85; Barbara M. Whitt, 3.00; Jackie R. Wicker, 3.35; Terry M. Wicker, 3.07; Twyla J. Wicker, 3.00; Joseph W. Wynn, 3.17; Linda Varrington, 3.00; J. Camden Young, 3.49.

neith N. Stalon, 3.21; Joseph G. Stearns, 3.59; James M. Stegall, 3.65; Barbara Gayle Stephens, 3.21; Judith A. Stephens, 3.48; Darrell B. Stephenson, 3.18; Donald A. Stephens, 3.00; Larry W. Stephens, 3.11; Regina L. Swope, 3.07; Sharon E. Tarter, 3.00; Gloria M. Taylor, 3.53; James H. Thomas, 3.76; Patricia E. Thompson, 3.75; Patricia N. Tisdale, 3.17; Henrietta Tolliver, 3.79; Gene Tripplet, 3.25; Albert B. Truitt, 3.53; Judy A. Trusty, 3.50; Patricia Audell Tucker, 3.80; Polly H. Tucker, 3.06;

Cassie A. Turner, 3.35; Dolores M. Tyler, 3.16; Vernon L. Ulrich, 3.19; Sandra Oppenheimer Van Hoose, 3.00; Brenda Swingley Vergne, 3.33; Larry G. Vincent, 3.07; Gloria Joan Walje, 3.00; Bertie A. Wallin, 3.00; Bonetta S. Walters, 3.06; Carolyn S. Watson, 3.47; M. Ruth Weaver, 3.86; Bobbie F. Webb, 3.11; Phillip G. Webb, 3.00; Eula Katherine Wells, 3.19; Sue Shaddock Wells, 3.39; Robert N. West, 3.50; Allen D. Westerfield, 3.00; Kay F. Wheeler, 3.26; Troy W. Wheeler, 3.50; William M. Whitaker, 3.28; Edward M. White, 3.15; Robin G. Whitcomb, 3.85; Barbara M. Whitt, 3.00; Jackie R. Wicker, 3.35; Terry M. Wicker, 3.07; Twyla J. Wicker, 3.00; Joseph W. Wynn, 3.17; Linda Varrington, 3.00; J. Camden Young, 3.49.

neith N. Stalon, 3.21; Joseph G. Stearns, 3.59; James M. Stegall, 3.65; Barbara Gayle Stephens, 3.21; Judith A. Stephens, 3.48; Darrell B. Stephenson, 3.18; Donald A. Stephens, 3.00; Larry W. Stephens, 3.11; Regina L. Swope, 3.07; Sharon E. Tarter, 3.00; Gloria M. Taylor, 3.53; James H. Thomas, 3.76; Patricia E. Thompson, 3.75; Patricia N. Tisdale, 3.17; Henrietta Tolliver, 3.79; Gene Tripplet, 3.25; Albert B. Truitt, 3.53; Judy A. Trusty, 3.50; Patricia Audell Tucker, 3.80; Polly H. Tucker, 3.06;

Cassie A. Turner, 3.35; Dolores M. Tyler, 3.16; Vernon L. Ulrich, 3.19; Sandra Oppenheimer Van Hoose, 3.00; Brenda Swingley Vergne, 3.33; Larry G. Vincent, 3.07; Gloria Joan Walje, 3.00; Bertie A. Wallin, 3.00; Bonetta S. Walters, 3.06; Carolyn S. Watson, 3.47; M. Ruth Weaver, 3.86; Bobbie F. Webb, 3.11; Phillip G. Webb, 3.00; Eula Katherine Wells, 3.19; Sue Shaddock Wells, 3.39; Robert N. West, 3.50; Allen D. Westerfield, 3.00; Kay F. Wheeler, 3.26; Troy W. Wheeler, 3.50; William M. Whitaker, 3.28; Edward M. White, 3.15; Robin G. Whitcomb, 3.85; Barbara M. Whitt, 3.00; Jackie R. Wicker, 3.35; Terry M. Wicker, 3.07; Twyla J. Wicker, 3.00; Joseph W. Wynn, 3.17; Linda Varrington, 3.00; J. Camden Young, 3.49.

neith N. Stalon, 3.21; Joseph G. Stearns, 3.59; James M. Stegall, 3.65; Barbara Gayle Stephens, 3.21; Judith A. Stephens, 3.48; Darrell B. Stephenson, 3.18; Donald A. Stephens, 3.00; Larry W. Stephens, 3.11; Regina L. Swope, 3.07; Sharon E. Tarter, 3.00; Gloria M. Taylor, 3.53; James H. Thomas, 3.76; Patricia E. Thompson, 3.75; Patricia N. Tisdale, 3.17; Henrietta Tolliver, 3.79; Gene Tripplet, 3.25; Albert B. Truitt, 3.53; Judy A. Trusty, 3.50; Patricia Audell Tucker, 3.80; Polly H. Tucker, 3.06;

Cassie A. Turner, 3.35; Dolores M. Tyler, 3.16; Vernon L. Ulrich, 3.19; Sandra Oppenheimer Van Hoose, 3.00; Brenda Swingley Vergne, 3.33; Larry G. Vincent, 3.07; Gloria Joan Walje, 3.00; Bertie A. Wallin, 3.00; Bonetta S. Walters, 3.06; Carolyn S. Watson, 3.47; M. Ruth Weaver, 3.86; Bobbie F. Webb, 3.11; Phillip G. Webb, 3.00; Eula Katherine Wells, 3.19; Sue Shaddock Wells, 3.39; Robert N. West, 3.50; Allen D. Westerfield, 3.00; Kay F. Wheeler, 3.26; Troy W. Wheeler, 3.50; William M. Whitaker, 3.28; Edward M. White, 3.15; Robin G. Whitcomb, 3.85; Barbara M. Whitt, 3.00; Jackie R. Wicker, 3.35; Terry M. Wicker, 3.07; Twyla J. Wicker, 3.00; Joseph W. Wynn, 3.17; Linda Varrington, 3.00; J. Camden Young, 3.49.

neith N. Stalon, 3.21; Joseph G. Stearns, 3.59; James M. Stegall, 3.65; Barbara Gayle Stephens, 3.21; Judith A. Stephens, 3.48; Darrell B. Stephenson, 3.18; Donald A. Stephens, 3.00; Larry W. Stephens, 3.11; Regina L. Swope, 3.07; Sharon E. Tarter, 3.00; Gloria M. Taylor, 3.53; James H. Thomas, 3.76; Patricia E. Thompson, 3.75; Patricia N. Tisdale, 3.17; Henrietta Tolliver, 3.79; Gene Tripplet, 3.25; Albert B. Truitt, 3.53; Judy A. Trusty, 3.50; Patricia Audell Tucker, 3.80; Polly H. Tucker, 3.06;

Cassie A. Turner, 3.35; Dolores M. Tyler, 3.16; Vernon L. Ulrich, 3.19; Sandra Oppenheimer Van Hoose, 3.00; Brenda Swingley Vergne, 3.33; Larry G. Vincent, 3.07; Gloria Joan Walje, 3.00; Bertie A. Wallin, 3.00; Bonetta S. Walters, 3.06; Carolyn S. Watson, 3.47; M. Ruth Weaver, 3.86; Bobbie F. Webb, 3.11; Phillip G. Webb, 3.00; Eula Katherine Wells, 3.19; Sue Shaddock Wells, 3.39; Robert N. West, 3.50; Allen D. Westerfield, 3.00; Kay F. Wheeler, 3.26; Troy W. Wheeler, 3.50; William M. Whitaker, 3.28; Edward M. White, 3.15; Robin G. Whitcomb, 3.85; Barbara M. Whitt, 3.00; Jackie R. Wicker, 3.35; Terry M. Wicker, 3.07; Twyla J. Wicker, 3.00; Joseph W. Wynn, 3.17; Linda Varrington, 3.00; J. Camden Young, 3.49.

neith N. Stalon, 3.21; Joseph G. Stearns, 3.59; James M. Stegall, 3.65; Barbara Gayle Stephens, 3.21; Judith A. Stephens, 3.48; Darrell B. Stephenson, 3.18; Donald A. Stephens, 3.00; Larry W. Stephens, 3.11; Regina L. Swope, 3.07; Sharon E. Tarter, 3.00; Gloria M. Taylor, 3.53; James H. Thomas, 3.76; Patricia E. Thompson, 3.75; Patricia N. Tisdale, 3.17; Henrietta Tolliver, 3.79; Gene Tripplet, 3.25; Albert B. Truitt, 3.53; Judy A. Trusty, 3.50; Patricia Audell Tucker, 3.80; Polly H. Tucker, 3.06;

Cassie A. Turner, 3.35; Dolores M. Tyler, 3.16; Vernon L. Ulrich, 3.19; Sandra Oppenheimer Van Hoose, 3.00; Brenda Swingley Vergne, 3.33; Larry G. Vincent, 3.07; Gloria Joan Walje, 3.00; Bertie A. Wallin, 3.00; Bonetta S. Walters, 3.06; Carolyn S. Watson, 3.47; M. Ruth Weaver, 3.86; Bobbie F. Webb, 3.11; Phillip G. Webb, 3.00; Eula Katherine Wells, 3.19; Sue Shaddock Wells, 3.39; Robert N. West, 3.50; Allen D. Westerfield, 3.00; Kay F. Wheeler, 3.26; Troy W. Wheeler, 3.50; William M. Whitaker, 3.28; Edward M. White, 3.15; Robin G. Whitcomb, 3.85; Barbara M. Whitt, 3.00; Jackie R. Wicker, 3.35; Terry M. Wicker, 3.07; Twyla J. Wicker, 3.00; Joseph W. Wynn, 3.17; Linda Varrington, 3.00; J. Camden Young, 3.49.

neith N. Stalon, 3.21; Joseph G. Stearns, 3.59; James M. Stegall, 3.65; Barbara Gayle Stephens, 3.21; Judith A. Stephens, 3.48; Darrell B. Stephenson, 3.18; Donald A. Stephens, 3.00; Larry W. Stephens, 3.11; Regina L. Swope, 3.07; Sharon E. Tarter, 3.00; Gloria M. Taylor, 3.53; James H. Thomas, 3.76; Patricia E. Thompson, 3.75; Patricia N. Tisdale, 3.17; Henrietta Tolliver, 3.79; Gene Tripplet, 3.25; Albert B. Truitt, 3.53; Judy A. Trusty, 3.50; Patricia Audell Tucker, 3.80; Polly H. Tucker, 3.06;

Cassie A. Turner, 3.35; Dolores M. Tyler, 3.16; Vernon L. Ulrich, 3.19; Sandra Oppenheimer Van Hoose, 3.00; Brenda Swingley Vergne, 3.33; Larry G. Vincent, 3.07; Gloria Joan Walje, 3.00; Bertie A. Wallin, 3.00; Bonetta S. Walters, 3.06; Carolyn S. Watson, 3.47; M. Ruth Weaver, 3.86; Bobbie F. Webb, 3.11; Phillip G. Webb, 3.00; Eula Katherine Wells, 3.19; Sue Shaddock Wells, 3.39; Robert N. West, 3.50; Allen D. Westerfield, 3.00; Kay F. Wheeler, 3.26; Troy W. Wheeler, 3.50; William M. Whitaker, 3.28; Edward M. White, 3.15; Robin G. Whitcomb, 3.85; Barbara M. Whitt, 3.00; Jackie R. Wicker, 3.35; Terry M. Wicker, 3.07; Twyla J. Wicker, 3.00; Joseph W. Wynn, 3.17; Linda Varrington, 3.00; J. Camden Young, 3.49.

neith N. Stalon, 3.21; Joseph G. Stearns, 3.59; James M. Stegall, 3.65; Barbara Gayle Stephens, 3.21; Judith A. Stephens, 3.48; Darrell B. Stephenson, 3.18; Donald A. Stephens, 3.00; Larry W. Stephens, 3.11; Regina L. Swope, 3.07; Sharon E. Tarter, 3.00; Gloria M. Taylor, 3.53; James H. Thomas, 3.76; Patricia E. Thompson, 3.75; Patricia N. Tisdale, 3.17; Henrietta Tolliver, 3.79; Gene Tripplet, 3.25; Albert B. Truitt, 3.53; Judy A. Trusty, 3.50; Patricia Audell Tucker, 3.80; Polly H. Tucker, 3.06;

Cassie A. Turner, 3.35; Dolores M. Tyler, 3.16; Vernon L. Ulrich, 3.19; Sandra Oppenheimer Van Hoose, 3.00; Brenda Swingley Vergne, 3.33; Larry G. Vincent, 3.07; Gloria Joan Walje, 3.00; Bertie A. Wallin, 3.00; Bonetta S. Walters, 3.06; Carolyn S. Watson, 3.47; M. Ruth Weaver, 3.86; Bobbie F. Webb, 3.11; Phillip G. Webb, 3.00; Eula Katherine Wells, 3.19; Sue Shaddock Wells, 3.39; Robert N. West, 3.50; Allen D. Westerfield, 3.00; Kay F. Wheeler, 3.26; Troy W. Wheeler, 3.50; William M. Whitaker, 3.28; Edward M. White, 3.15; Robin G. Whitcomb, 3.85; Barbara M. Whitt, 3.00; Jackie R. Wicker, 3.35; Terry M. Wicker, 3.07; Twyla J. Wicker, 3.00; Joseph W. Wynn, 3.17; Linda Varrington, 3.00; J. Camden Young, 3.49.

neith N. Stalon, 3.21; Joseph G. Stearns, 3.59; James M. Stegall, 3.65; Barbara Gayle Stephens, 3.21; Judith A. Stephens, 3.48; Darrell B. Stephenson, 3.18; Donald A. Stephens, 3.00; Larry W. Stephens, 3.11; Regina L. Swope, 3.07; Sharon E. Tarter, 3.00; Gloria M. Taylor, 3.53; James H. Thomas, 3.76; Patricia E. Thompson, 3.75; Patricia N. Tisdale, 3.17; Henrietta Tolliver, 3.79; Gene Tripplet, 3.25; Albert B. Truitt, 3.53; Judy A. Trusty, 3.50; Patricia Audell Tucker, 3.80; Polly H. Tucker, 3.06;

Cassie A. Turner, 3.35; Dolores M. Tyler, 3.16; Vernon L. Ulrich, 3.19; Sandra Oppenheimer Van Hoose, 3.00; Brenda Swingley Vergne, 3.33; Larry G. Vincent, 3.07; Gloria Joan Walje, 3.00; Bertie A. Wallin, 3.00; Bonetta S. Walters, 3.06; Carolyn S. Watson, 3.47; M. Ruth Weaver, 3.86; Bobbie F. Webb, 3.11; Phillip G. Webb, 3.00; Eula Katherine Wells, 3.19; Sue Shaddock Wells, 3.39; Robert N. West, 3.50; Allen D. Westerfield, 3.00; Kay F. Wheeler, 3.26; Troy W. Wheeler, 3.50; William M. Whitaker, 3.28; Edward M. White, 3.15; Robin G. Whitcomb, 3.85; Barbara M. Whitt, 3.00; Jackie R. Wicker, 3.35; Terry M. Wicker, 3.07; Twyla J. Wicker, 3.00; Joseph W. Wynn, 3.17; Linda Varrington, 3.00; J. Camden Young, 3.49.

neith N. Stalon, 3.21; Joseph G. Stearns, 3.59; James M. Stegall, 3.65; Barbara Gayle Stephens, 3.21; Judith A. Stephens, 3.48; Darrell B. Stephenson, 3.18; Donald A. Stephens, 3.00; Larry W. Stephens, 3.11; Regina L. Swope, 3.07; Sharon E. Tarter, 3.00; Gloria M. Taylor, 3.53; James H. Thomas, 3.76; Patricia E. Thompson, 3.75; Patricia N. Tisdale, 3.17; Henrietta Tolliver, 3.79; Gene Tripplet, 3.25; Albert B. Truitt, 3.53; Judy A. Trusty, 3.50; Patricia Audell Tucker, 3.80; Polly H. Tucker, 3.06;

Cassie A. Turner, 3.35; Dolores M. Tyler, 3.16; Vernon L. Ulrich, 3.19; Sandra Oppenheimer Van Hoose, 3.00; Brenda Swingley Vergne, 3.33; Larry G. Vincent, 3.07; Gloria Joan Walje, 3.00; Bertie A. Wallin, 3.00; Bonetta S. Walters, 3.06; Carolyn S. Watson, 3.47; M. Ruth Weaver, 3.86; Bobbie F. Webb, 3.11; Phillip G. Webb, 3.00; Eula Katherine Wells, 3.19; Sue Shaddock Wells, 3.39; Robert N. West, 3.50; Allen D. Westerfield, 3.00; Kay F. Wheeler, 3.26; Troy W. Wheeler, 3.50; William M. Whitaker, 3.28; Edward M. White, 3.15; Robin G. Whitcomb, 3.85; Barbara M. Whitt, 3.00; Jackie R. Wicker, 3.35; Terry M. Wicker, 3.07; Twyla J. Wicker, 3.00; Joseph W. Wynn, 3.17; Linda Varrington, 3.00; J. Camden Young, 3.49.

neith N. Stalon, 3.21; Joseph G. Stearns, 3.59; James M. Stegall, 3.65; Barbara Gayle Stephens, 3.21; Judith A. Stephens, 3.48; Darrell B. Stephenson, 3.18; Donald A. Stephens, 3.00; Larry W. Stephens, 3.11; Regina L. Swope, 3.07; Sharon E. Tarter, 3.00; Gloria M. Taylor, 3.53; James H. Thomas, 3.76; Patricia E. Thompson, 3.75; Patricia N. Tisdale, 3.17; Henrietta Tolliver, 3.79; Gene Tripplet, 3.25; Albert B. Truitt, 3.53; Judy A. Trusty, 3.50; Patricia Audell Tucker, 3.80; Polly H. Tucker, 3.06;

Cassie A. Turner, 3.35; Dolores M. Tyler, 3.16; Vernon L. Ulrich, 3.19; Sandra Oppenheimer Van Hoose, 3.00; Brenda Swingley Vergne, 3.33; Larry G. Vincent, 3.07; Gloria Joan Walje, 3.00; Bertie A. Wallin, 3.00; Bonetta S. Walters, 3.06; Carolyn S. Watson, 3.47; M. Ruth Weaver, 3.86; Bobbie F. Webb, 3.11; Phillip G. Webb, 3.00; Eula Katherine Wells, 3.19; Sue Shaddock Wells, 3.39; Robert N. West, 3.50; Allen D. Westerfield, 3.00; Kay F. Wheeler, 3.26; Troy W. Wheeler, 3.50; William M. Whitaker, 3.28; Edward M. White, 3.15; Robin G. Whitcomb, 3.85; Barbara M. Whitt, 3.00; Jackie R. Wicker, 3.35; Terry M. Wicker, 3.07; Twyla J. Wicker, 3.00; Joseph W. Wynn, 3.17; Linda Varrington, 3.00; J. Camden Young, 3.49.

neith N. Stalon, 3.21; Joseph G. Stearns, 3.59; James M. Stegall, 3.65; Barbara Gayle Stephens, 3.21; Judith A. Stephens, 3.48; Darrell B. Stephenson, 3.18; Donald A. Stephens, 3.00; Larry W. Stephens, 3.11; Regina L. Swope, 3.07; Sharon E. Tarter, 3.00; Gloria M. Taylor, 3.53; James H. Thomas, 3.76; Patricia E. Thompson, 3.75; Patricia N. Tisdale, 3.17; Henrietta Tolliver, 3.79; Gene Tripplet, 3.25; Albert B. Truitt, 3.53; Judy A. Trusty, 3.50; Patricia Audell Tucker, 3.80; Polly H. Tucker, 3.06;

Cassie A. Turner, 3.35; Dolores M. Tyler, 3.16; Vernon L. Ulrich, 3.19; Sandra Oppenheimer Van Hoose, 3.00; Brenda Swingley Vergne, 3.33; Larry G. Vincent, 3.07; Gloria Joan Walje, 3.00; Bertie A. Wallin, 3.00; Bonetta S. Walters, 3.06; Carolyn S. Watson, 3.47; M. Ruth Weaver, 3.86; Bobbie F. Webb, 3.11; Phillip G. Webb, 3.00; Eula Katherine Wells, 3.19; Sue Shaddock Wells, 3.39; Robert N. West, 3.50; Allen D. Westerfield, 3.00; Kay F. Wheeler, 3.26; Troy W. Wheeler, 3.50; William M. Whitaker, 3.28; Edward M. White, 3.15; Robin G. Whitcomb, 3.85; Barbara M. Whitt, 3.00; Jackie R. Wicker, 3.35; Terry M. Wicker, 3.07; Twyla J. Wicker, 3.00; Joseph W. Wynn, 3.17; Linda Varrington, 3.00; J. Camden Young, 3.49.

neith N. Stalon, 3.21; Joseph G. Stearns, 3.59; James M. Stegall, 3.65; Barbara Gayle Stephens, 3.21; Judith A. Stephens, 3.48; Darrell B. Stephenson, 3.18; Donald A. Stephens, 3.00; Larry W. Stephens, 3.11; Regina L. Swope, 3.07; Sharon E. Tarter, 3.00; Gloria M. Taylor, 3.53; James H. Thomas, 3.76; Patricia E. Thompson, 3.75; Patricia N. Tisdale, 3.17; Henrietta Tolliver, 3.79; Gene Tripplet, 3.25; Albert B. Truitt, 3.53; Judy A. Trusty, 3.50; Patricia Audell Tucker, 3.80; Polly H. Tucker, 3.06;

Cassie A. Turner, 3.35; Dolores M. Tyler, 3.16; Vernon L. Ulrich, 3.19; Sandra Oppenheimer Van Hoose, 3.00; Brenda Swingley Vergne, 3.33; Larry G. Vincent, 3.07; Gloria Joan Walje, 3.00; Bertie A. Wallin, 3.00; Bonetta S. Walters, 3.06; Carolyn S. Watson, 3.47; M. Ruth Weaver, 3.86; Bobbie F. Webb, 3.11; Phillip G. Webb, 3.00; Eula Katherine Wells, 3.19; Sue Shaddock Wells, 3.39; Robert N. West, 3.50; Allen D. Westerfield, 3.00; Kay F. Wheeler, 3.26; Troy W. Wheeler, 3.50; William M. Whitaker, 3.28; Edward M. White, 3.15; Robin G. Whitcomb, 3.85; Barbara M. Whitt, 3.00; Jackie R. Wicker, 3.35; Terry M. Wicker, 3.07; Twyla J. Wicker, 3.00; Joseph W. Wynn, 3.17; Linda Varrington, 3.00; J. Camden Young, 3.49.

neith N. Stalon, 3.21; Joseph G. Stearns, 3.59; James M. Stegall, 3.65; Barbara Gayle Stephens, 3.21; Judith A. Stephens, 3.48; Darrell B. Stephenson, 3.18; Donald A. Stephens, 3.00; Larry W. Stephens, 3.11; Regina L. Swope, 3.07; Sharon E. Tarter, 3.00; Gloria M. Taylor, 3.53; James H. Thomas, 3.76; Patricia E. Thompson, 3.75; Patricia N. Tisdale, 3.17; Henrietta Tolliver, 3.79; Gene Tripplet, 3.25; Albert B. Truitt, 3.53; Judy A. Trusty, 3.50; Patricia Audell Tucker, 3.80; Polly H. Tucker, 3.06;

Cassie A. Turner, 3.35; Dolores M. Tyler, 3.16; Vernon L. Ulrich, 3.19; Sandra Oppenheimer Van Hoose, 3.00; Brenda Swingley Vergne, 3.33; Larry G. Vincent, 3.07; Gloria Joan Walje, 3.00; Bertie A. Wallin, 3.00; Bonetta S. Walters, 3.06; Carolyn S. Watson, 3.47; M. Ruth Weaver, 3.86; Bobbie F. Webb, 3.11; Phillip G. Webb, 3.00; Eula Katherine Wells, 3.19; Sue Shaddock Wells, 3.39; Robert N. West, 3.50; Allen D. Westerfield, 3.00; Kay F. Wheeler, 3.26; Troy W. Wheeler, 3.50; William M. Whitaker, 3.28; Edward M. White, 3.15; Robin G. Whitcomb, 3.85; Barbara M. Whitt, 3.00; Jackie R. Wicker, 3.35; Terry M. Wicker, 3.07; Twyla J. Wicker

Classroom Building Provides Ultra-Modern Facilities

Audiometric Enclosure Unit



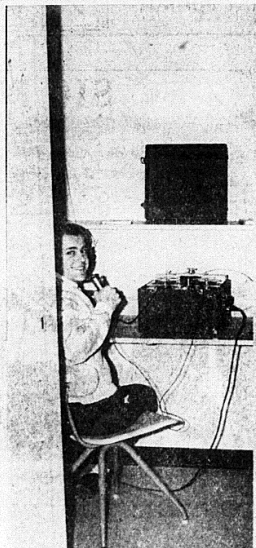
NEW EDUCATIONAL AIDS—Brent Fry of the speech department sits in the audiometric enclosure while Mrs. Christine Caudill checks his hearing. The enclosure and audiometer are only two of the many new special educational aids which have been added in the special education department at Morehead State College.

Foreign Languages Staff



LANGUAGE STAFF—A recent meeting of the language staff in the office of Latin Instructor Ethel Moore at left brought a discussion of comparative literature. Above are (l to r): Ethel Moore, Sonya Barreiro, Spanish instructor; Dr. K. Rockwell, German instructor; and Mr. Rogers, French instructor.

Soundproof Booths



USING THE NEW LANGUAGE LAB is a unique experience for Jimmy Cox and should prove to be very helpful to numerous language students.

PICTURE PAGE

The ultra-modern classroom building occupied for the first time this semester is the picture page topic of the issue.

Housing languages and literature, commerce, health, physical education, recreation, speech and dramatic arts, and special education, the new classroom building offers the most modern facilities available in the state.

Picture stories on the page are only a few of the many contained in the spacious four story structure. Others will follow in a series.

Educational Aids Unit Added At MSC

A special educational aids unit has been installed in the new classroom building on the west end of the Morehead State College campus.

Mrs. Christine Caudill, head of the special education department, said the equipment given her was a first at Morehead and was virtually unknown throughout the state.

"Only a few colleges and larger towns in Kentucky have all of the equipment which we are privileged to possess here at Morehead," said Caudill.

Foremost among the new aids which were added is an audiometer and an audiometric enclosure. The audiometer is a device which is used to test hearing and the audiometric enclosure is where the subject will be during the testing process.

"This device is invaluable," said Caudill, "for with it we can not only help students at Morehead detect any hearing loss, but we can demonstrate to prospective teachers how the catching of hearing defects early will aid students in their future education."

Students with speech defects will also benefit from the new unit as speech failures are generally connected with a loss of hearing. The audiometer will help detect the hearing loss, and through future therapy the speech and hearing problems can both be corrected.

Other equipment which has been added to the special aids department is a record player, which has 16 listening stations; a slide projector, an amplifier and classroom speaker, which is set up so students can listen to speech therapy in progress; a tape recorder, a new dual-channel tape recorder, and a portable audiometer, which is used for demonstrating to teachers in the classroom how to check an entire class in a short time for hearing defects.

The special aids department has five rooms of its own in the new building, which is a "marvelous improvement over the arrangement which we had in the Administration Building, where we could use an empty classroom for tests and counseling purposes," said Caudill.

The rooms consist of a library, which is open to all students who desire information in the field of special educational aids for the exceptional student; a main office, a testing room where the audiometer is located, a reading room where speech defects are worked with, and a classroom for instruction in the field of speech and hearing.

The hearing room and the reading room have caused the most curiosity among the students, as the audiometric enclosure has been called everything from a Deepfreeze to a gas chamber, and numerous jokes have been made concerning the couch in the reading room.

"The enclosure is for silence during the test," said Caudill, "and the couch is used for relaxation during the preliminary therapy for speech defects as correct breathing and complete relaxation are essentials."

Caudill also stated that the department will test the hearing of any student who feels that he needs it. The test, which would be set up by appointment, would require only a few minutes of the student's time. If the test were conducted by a doctor, it would be extremely expensive, but the college offers it to the students as a free service.

"There is one thing which I would like to clear up, however, and that is the definition of the word exceptional," said Caudill. "In education, exceptional means any student who deviates from the norm in any way — from the student with a defect to the gifted student."

Speech Office Staff



STUDENT WORKERS—Members of the student staff in the speech department perform routine chores. Modern equipment has been installed in each of the classroom offices.

Commerce Division Meeting



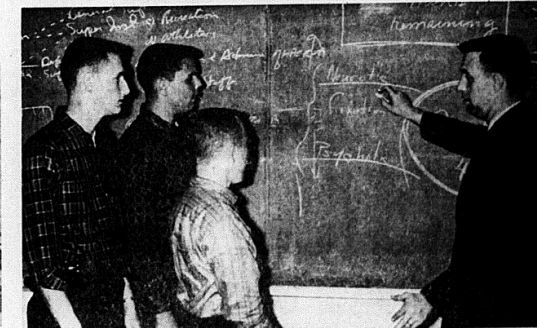
COMMERCE RECEPTION ROOM—A recent staff meeting in the reception room of the commerce division included (l to r): Edith Conyers, Dr. Hollie Sharpe, Alex Coyners, and Charles Apel.

Conference Room In Use



CONFERENCE ROOM in the classroom building provides a worthwhile and needed facility. In a discussion are (l to r): Dr. George Boswell, chairman of the Division of Languages and Literature, Dr. J. E. Duncan, chairman of the Division of Fine Arts, and Z. Brent Fry of the Speech Department.

Individualized Instruction



INDIVIDUALIZED INSTRUCTION—Dr. Chad Stewart explains mental disorders to a group of interested physical education students. Ample blackboard space in the new building gives greater opportunity for the illustration of factual material.

Faculty Offices



SMILES IN THEIR FACES reflect the delight Gabriel Banks and Lorraine Day find in their new offices in the classroom building. The new offices, accommodating each faculty member, give added space and convenience to instructors.

The Eagle Nest

By LEE MUELLER

Spring is in the air, birds are singing, snakes are crawling and lovers are having their heart-wrung affections stifled by all sorts of foul rumors circulating around — which leaves only baseball — and baseball we have aplenty.

Yes sir, around here when spring makes the scene, the young men turn their attention, not to that stupid diversion called love, but to our beloved national pastime.

Head Coach Rex Chaney has planned an ambitious 27-game road this year, one of the roughest ever attempted by an MSC team. The schedule includes a week-long trip into Alabama with three games against Howard College and one against St. Bernard. Also on the schedule are eight Ohio Valley Conference games and home encounters with Ohio University, Xavier, Marshall, Villa Madonna and Cumberland.

Chaney has six starters back from last year's team which held the co-championship of the eastern division of the OVC. Stan Morgan and Lester Stewart lead these returnees. Morgan, whose talent no one particularly noticed until he had been named to an All-American team, is a slick-fiddling second baseman who thumped the ball at a .440 clip for the year. Stewart, a local boy, was named to the all-OVC team with Morgan. The hard-hitting third-sacker hit .350, drove in 21 runs and smashed out four round-trippers last season.

Freshman Dennis Doyle, Donnie Stewart (Lester's brother), Harold Sargent, Joe Campbell and Vic Petty are high school standouts who are expected to give last year's regulars a tough time in their respective positions.

Jack Radar, Tom Ellis, Eldon Seccrest and Ray Allen played full time last year.

TENNIS TOPICS

MSC's tennis team makes its premier performances with the University of Kentucky net crew at 2:00 p.m.

This year's unit is rather green, but Coach Chad Stewart feels that by no means his team should be holding their own against all competition.

Jim Rose, Tom Browne and Tommy Ball, whose eligibility is questionable, are the only returning lettermen. For most of the newcomers seems to be Danny Burke, a freshman from Hicksville, N. Y.

ALL-OVC

For the second consecutive time, Morehead's Granville Williams has been selected unanimously to the all-Ohio Valley Conference basketball team.

He and Western's hot-shotting Bobby Rascoe put first team votes from all of the OVC college coaches to head this year's team. Also named were Murray's Jim Jennings, Tennessee Tech's Tom McKinney and Western's Harry Todd.

Granville Williams missed the first five by a narrow 180-140 tally to the Hilltoppers' Todd. The big 6-8 senior topped the second team which was composed of Eastern's Jim Wink and Larry Parks, East Tennessee's Willie Malone and Western's Jim Durrell. Morehead's Norman Pokley and Tom Ellis were named to honorable mention slots.

NET SERVICES

Following up the above OVC choices, did you know that little G. Williams is the best free throw shooter in the history of the OVC. . . he averaged .847 from the charity line during his entire career, hitting on 343 of 406 attempts. . . wrestling is over for the year. . . if you haven't gotten your share of tumbles yet, trot on down to the Danish acrobat's show on March 29. . . lust-type entertainment for our ordinary-type people. . . golf coach Jack Merrell opens his 1962 season this Friday. . . Charlie Traxel, John Galloway and Company will oppose Cumberland at the local course. . . spring sports time always means track time. . . Earl Bendley is just dusting off his previous free relays from last year. . . Marshall Banks, Howard Murphy, Jim Scobee. . . the distance-advocates will have to be content with a host of freshmen. . . who reputedly aren't too bad for freshmen. . . concerning the long, hot UK-OSU game. . . Lucas ain't Baylor and State ain't Seattle. . . but in true die-hard fashion. . . this ain't next year. . . not just to aid this year's power-laden team in run-production, especially left-hand hitters. . . only a few years back, pitchers were talking of having the field fence taken down. . . baseball is getting more like basketball everyday. . . defended is what you got when you don't have an offense. . . when you got an offense, who needs it? . . . if the baseball team can get the school's support in procuring funds for the building of such boundaries, we predict that MSC's statistics will all take a leap. . . up. . . home-runs. . . RBIs. . . etc. . . congrats to Western's Ed Diddle, Sr., OVC Coach of the Year. . . all five Western teams started the first three teams in a . . . picks. . . oh yes, it just seems to be Western's year. . . they won a state BSU tournament last week. . . beat MSC in the final. . . Morehead finally beat Eastern in its run, though. . . the BSUers clobbered the Eastern chapter in the first round. . .

JOKE?

Gil Dodd's, the "Flying Parson," was an ordained minister while he was making track history as one of America's greatest distance runners. . . right after he had won another sensational record-breaking mile, he was buttonholed by a scribe who pressed him for a statement on his victory.

"The Lord ran with me tonight," explained the Flying Parson modestly.

"And what happened to you?" the reporter asked the highly-touted runner who had been badly beaten by Dodd.

"What do you think?" snapped Dodd's beaten rival. "I had to run alone!"

SPRING FOOTBALL

Head Football Coach Guy Penny is sure having his troubles during spring practice, or rather what should be spring practice. As things break, he might as well try to drill his team in the middle of an Alaskan snow-storm. Rain, sleet, mud, cold, etc. . . have all played a big part in bogging down practice sessions. . . it would seem that someone would make provisions for this kind of weather. . . say lengthen spring drills. . . have make-up dates possible when practice is impossible.

A REAL STAR

Merrell Named Sunnybrook Pro

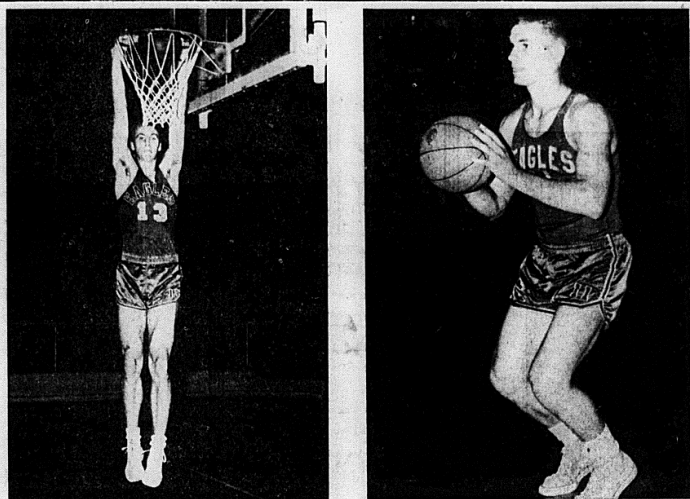
Jack Merrell, former Tennessee Tech golfer, has been named professional at the Sunnybrook Golf Course, Morehead.

Merrell, a native of Brevard, N. C. and a 1960 graduate of State Brevard High School, was a Tennessee Tech captain in 1961. He previously played on the Mary Hill Junior College squad where he was also captain in his sophomore season. That year he won the Western North Carolina Junior college individual championship.

The new golfer professional is a veteran golfer at the young age of 24, having worked six years with his uncle, Hans Merrell, at the Akron, Ohio course. He participated in the Akron District Golf Association while an amateur.

During his junior year at Tennessee Tech, Merrell was a member of the Golden Eagle team which participated in the South-

Trail Blazer Sports Editor
Sports Editor
Sports Writer
Sports Writer
Sports Writer



Granville Williams . . . All-OVC Guard

Ed Noe . . . All-OVC Center

Granville Williams And Bobby Rascoe Head All-Ohio Valley Conference Balloting

Bobby Rascoe of champion Western Kentucky and Granville Williams of Morehead were named unanimously to the 1962-63 All-OVC basketball team selected by the league's coaches.

Also named to the first five were Murray's Jim Jennings, Tennessee Tech's Tom McKinney and Western's Harry Todd.

Williams and Rascoe waged a torrid scoring duel for conference leadership, with Williams averaging 26.0 for the season while Rascoe took a 25.6 mark into NCAA firing. Both eclipsed a number of school marks. Jennings led the loop in rebounding with a 17.2 average and finished third in scoring with 20.5, third best in Murray's history. McKinney was the conference's No. 4 scorer with a 19.0 mark. Todd averaged a steady 11.8 and took the least number of shots of any Hilltopper starter. McKinney and Todd also ranked with the league's top rebounders, grabbing 10.6 and 12.5, respectively.

All five first team selections hit considerably better than 400 per cent from the field, with Rascoe's 598 heading the loop. Todd shot .477, Jennings .445, Williams .442 and McKinney .427.

One of the nation's most accurate free throw shooters, Williams won loop honors in this department with a percentage of .863. Rascoe was next with 793 while Todd posted 722.

Worth noting is the fact that all five starters on Western's championship team won spots on the first three all-conference teams. All averaged in double figures for the season.

Williams, Rascoe, Todd and McKinney were starters on their respective clubs for three years.

The first five averages just slightly better than 6-4 in height

Balloting was conducted at the close of seasonal play without recourse to position, and points were awarded as follows: 30 points for a first team vote, 20 for second and 10 for third.

1962 ALL-OVC TEAM

Bobby Rascoe, Western; Granville Williams, Morehead; Jim Jennings, Murray; Tom McKinney, Tenn. Tech; Harry Todd, Western.

SECOND FIVE

Ed Noe, Morehead; Jim Wink, Eastern; Willie Malone, East

Tenn.; Larry Parks, Eastern; Darel Carrier, Western.

THIRD FIVE
Paul Holland, Middle Tenn.; Jim Dunn, Western; Mal Roberts, East Tenn.; Ray Gardner, Eastern; Ron Greene, Murray; Ron Pickett, Eastern; Bobby Jackson, Western.

HONORABLE MENTION
Norm Pokley, Morehead; Rich Papes, Tom Rychener and Don Gorin, all of Tennessee Tech; Bennett Jent, Middle Tennessee; Herman Smith, Eastern; Tom Ellis, Morehead.

MSC Baseball Team Faces Cumberland

Morehead State College's baseball team will open its season against Cumberland College this Thursday at the Eagles home field.

The highly-touted Eagles will probably go with either Bob Houston or Gale Combs on the mound with Ed Haslock doing the catching. Houston is a returnee from last year's fine team while Combs did not play last year, but saw action the year before.

Coach Rex Chaney will start hard-hitter Jack Radar, who hit .333 for the Eagles last season, at first base; all-American second baseman Stan Morgan will try to prove that he is not just a one-year wonder. He hit a terrific .448 last year. Shortstop is a dual between basketballer Dennis Doyle and slick-fielding Terry West.

The same holds true with the third base position as freshman Vic Petty is giving all-OVC performer Lester Stewart all he can handle in their fight for the hot corner position.

In the outfield, things are pretty well pat. Tom Ellis, who hit .310 last season, will go in right field with Ray Allen, a .277 swinger in center field. Left field is a question mark between freshman Joe Campbell and another basketballer, big Norman Pokley.

Chaney feels that the rugged field conditions and unfavorable weather conditions may slow his team's progress for a while, but that his team should hit their stride before their first Ohio Valley Conference encounter, against Eastern on April 21.

One new addition to the field which Chaney hopes will aid his slugger is a new fence around the outfield which is being donated to the baseball team by the Mystic Club. There is no boundary in right or center field except the MSC Fieldhouse, which is 100 feet and too high for home runs taps.

Eagle Linksmen Open Against Cumberland

Morehead's golf team will open its 1962 season against Cumberland College this Thursday at the Sunnybrook Golf Course.

The linksmen, tutored by newly-named Jack Merrell, will probably go with Charlie Traxel, top teen-ager on last year's team; John Galloway, a Paris extract, and two more members to be chosen from Henry Schutte, Gary Fitzwater, Dennis Wick, Ron Sallie, Dave Derrick, Doug Edgar, Tim Heller and Roy Cline.

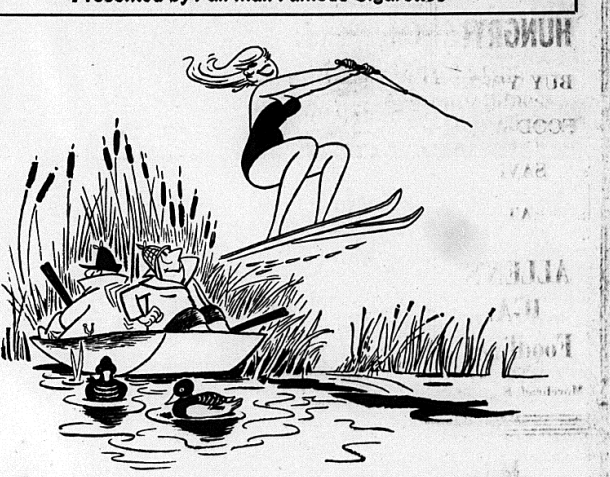
Coach Merrell is highly optimistic about the fortunes of his rather inexperienced outfit. "I think that we should be capable of winning at least fifty per cent of our meets and, barring unforeseen conflicts, should do much better in the OVC meet this year," said Merrell.

Last year MSC's golf crew, under Mike Dudley, finished last in the conference. It would seem in Merrell's case there is no place to go but up.

FEMALE PHENOM—Sharon Decker (above), who just won't concede that the sports world is a man's world, is presently running with the track team. Sharon, who is wearing her Dairy Cottage leotard, played shortstop for the team which won the women's world's slush-pitch softball championship last year in Glenview, Ill. She also played volleyball and football in high school.

Girl Watcher's Guide

Presented by Pall Mall Famous Cigarettes



The nudge is permitted when a beautiful girl is sighted in an unusual place or at an unusual time.

LESSON 3 - Concerning self-control

Although we believe that girl watching has it all over bird watching, we feel that these two hobbies do share one important characteristic. They are both *gentle*. They both respect the rights of the watched. A girl watcher who asks a beautiful stranger for her name and phone number is like a bird watcher who steals eggs. (If the

stranger happens to have a pack of Pall Mall Famous Cigarettes, and you're dying for a good, natural smoke, you may break this rule.) Normally, the girl watcher's pleasure is warm, quiet and internal. However, there are cases when a discovery is so dazzling it must be shared. Such a case is illustrated above.



Pall Mall's natural mildness is so good to your taste!

So smooth, so satisfying, so downright smokeable!

This ad based on the book, "The Girl Watcher's Guide," Text: Copyright by Donald J. Sauer. Drawings Copyright by Edson Deakin. Reprinted by permission of Harper & Brothers.

NEW GOLF COACH—Jack Merrell, Morehead's new golf coach, is shown above. Merrell is a transfer from Tennessee Tech. He was one of the top golfers in the OVC last year. He will also serve as pro to the Sunnybrook Golf Club.

Animals Win Intramural Basketball Crown, Syndicate Second; All-Stars Play Tomorrow

Jackasses Are Good Basketball Players — And Vice-Versa

the head of one of the stubborn
critters, forgot to put his hands
out to break his fall, and, through

Many men will disregard
The girl who wears a leotard.

Organizational Meeting Held French Club

This micrograph shows the interface between the epoxy resin and the carbon fiber reinforcement. The carbon fiber is visible as a dark, textured region on the left, and the epoxy resin is the lighter, more uniform region on the right. The interface appears to be a thin, dark line, indicating a strong bond between the two materials.

Guy Penny Signs 2 Florida Boys For Grid

The two All-Southwest Florida Conference football players have signed grants-in-aid to Morehead State University. Each coach Penny has announced.

The two, both students at Abundant Senior High School, are Kenneth Howard, 62, 155-pound running back, and a wide receiver who can run the 100-yard dash in 16 seconds, was an All-Southwest Florida Conference track choice at the state football meet.

Howard and Howard were two-letter winners at Florida school.

In signing the two stars, Penny indicated they were highly touted performers and praised the work of Morehead alumni in attracting them to the Kentucky college. Wayne Chapman, A.S.W.F.C. Conference president, said Howard in 1957, '58 and '59, assistant coach at Abundant, and Larry Workman, former Eastern Kentucky coach, the '40's, principal of the school.

The next meeting was scheduled for Thursday, March 8.

Club Goes To Lexington

Le Cercle Français accepted an invitation from the l'Alliance Française of Lexington to take a "Tour Photographique" of the Falls on Sunday, Feb. 18.

Dr. Jane Haselden showed a fewures she had taken during a recent tour of France. Dr. Haselden teaches in the department of Modern Foreign Languages at the University of Kentucky.

Attending from Morehead are members of the French club, the Teachers Club. Those present were Gal King, Harry Kegley, Roy Reice, Janice Long, Grace H. Bonnie Webb, Dr. Kiffin Rockwell, Junior Year Abroad, and Fred and Prof. Thomas F. Rogers.

"Women dress to please themselves," says a woman's magazine. Yes, and almost any husband will tell you that they take a new woman's dress to the store to own sweet time in doing so.

Poor Uncle Josh, he will miss it. . . . He had weak hands and danced the Twist.

'Monsoon' Season Hits Morehead

"A rain a day keeps the sunshine away."
Raincoats and umbrellas have been the order of day this month as the monsoon stays on. Morehead had gallons and gallons of H₂O.
The day has passed by without a little perspiration—just enough to keep the ground muddy and shoes wet. The sky has been a solid, heavy gray, putting students within easy reach of the big black umbrellas which have been used heavily.
Funny as it may seem, the deluge hasn't been as heavy as it was in past years. The average rainfall for the month of May in County is 4.53 inches, and we've had only 1.55 inches—a bit below the normal. Steady day after day drizzle has been the order of the day.
When asked how much rain he thought had fallen this month, one student said, "I don't know, but it's been 4 inches. Others gave between 2 and 3.50 inches and one believing us when we said it was 1.55 inches." Henry Haggan's was serious.
"There is one in agreement," he said. "I don't know anything better. All will be well when the sun decides to stay a while, drys to get a little better. I hope it will."

**Monarch
Supply
Store**

***A Complete Hardware
Supply Company***
**Our Business Is To
Supply Your Needs**

**A Full Line Of
Supplies For**

- **HOUSEWARE**
- **PLUMBING**
- **APPLIANCES**
- **HEATING**
- **SPORTING
GOODS**
- **FARMING
TOOLS**
- **CAN-MILLS**

West Main Street
Morehead, Kentucky

How would you forecast your next few years?

Today, the young man planning his life realizes as never before that in today's world his *own* future is tied inevitably to America's future. How can he serve *both*?

Many college graduates, both men and women, are finding a rewarding answer on the Aerospace Team — as officers in the U.S. Air Force. Here is a career that is compelling in its challenge and opportunity. And it is a way of life

that holds the unsurpassed satisfactions that come with service to country.

As a college student, how can you become an Air Force Officer?

If you have not completed Air Force ROTC, Officer Training School provides an opportunity to qualify for a variety of vitally needed jobs in the Aerospace Age. A graduate of this three-month course earns a commission as a second lieutenant. Also open to college men is the Navigator Training program.

For full information — including the chance to obtain graduate degrees at Air Force expense — see the Air Force Selection Team when it visits your college. Or write: Officer Career Information, Dept. SC23, Box 805, New York 1, N.Y.

U.S. Air Force

FOR AMERICA'S FUTURE AND YOUR OWN...JOIN THE AEROSPACE TEAM.

SIX SOPHOMORES, THREE JUNIORS

Campus Club Selects Nine In Spring Pledge Class

By Charles Richardson

Morehead State College's oldest organization, the Campus Club, has selected six sophomores and three juniors to pledge for the spring semester.

Tom Robinson, Campus Club president, states that, "we feel that this is a very fine method of membership in the organization, which is based upon scholarship, leadership, and character. Membership is gained through petition by letter and acceptance by vote of the active members."

No restrictions are among this spring's pledge class, which consists of three Ohioans, two Pennsylvanians, and one each from Virginia, Florida, New York, and Maine.

Presented in the Campus Club pledge class are: William Hamm, junior from Mansfield, Ohio, is majoring in English and physical education; Miller was active in athletics in high school and has participated in intercollegiate golf.

Don Shumaker is a junior physical education major from Delta, Ohio. Shumaker participated in all high school sports and has been a member of the Eagle basketball team.

Gaston Brown is a sophomore transfer student from the University of Maryland. Brown is from Gary, West Virginia and is majoring in commerce. He is high school member of B.Y. Honor Society, and president of the student council.

Richard Belaire is a sophomore history major from Lewiston, Maine. Belaire played basketball while at Lewiston High.

Danny Rivard is a sophomore physical education major from Westbury, New York. Baseball, basketball, and football were Rivard's principal activities in high school.

Terry West is a sophomore transfer from Shippensburg State College, a resident of Fayetteville, Pennsylvania. West is majoring in physical education.

No restrictions are among this spring's pledge class, which consists of three Ohioans, two Pennsylvanians, and one each from Virginia, Florida, New York, and Maine.

Presented in the Campus Club pledge class are: William Hamm, junior from Mansfield, Ohio, is majoring in English and physical education; Miller was active in athletics in high school and has participated in intercollegiate golf.

Don Shumaker is a junior physical education major from Delta, Ohio. Shumaker participated in all high school sports and has been a member of the Eagle basketball team.

Gaston Brown is a sophomore transfer student from the University of Maryland. Brown is from Gary, West Virginia and is majoring in commerce. He is high school member of B.Y. Honor Society, and president of the student council.

Richard Belaire is a sophomore history major from Lewiston, Maine. Belaire played basketball while at Lewiston High.

Danny Rivard is a sophomore physical education major from Westbury, New York. Baseball, basketball, and football were Rivard's principal activities in high school.

Terry West is a sophomore transfer from Shippensburg State College, a resident of Fayetteville, Pennsylvania. West is majoring in physical education.

No restrictions are among this spring's pledge class, which consists of three Ohioans, two Pennsylvanians, and one each from Virginia, Florida, New York, and Maine.

Presented in the Campus Club pledge class are: William Hamm, junior from Mansfield, Ohio, is majoring in English and physical education; Miller was active in athletics in high school and has participated in intercollegiate golf.

Don Shumaker is a junior physical education major from Delta, Ohio. Shumaker participated in all high school sports and has been a member of the Eagle basketball team.

Gaston Brown is a sophomore transfer student from the University of Maryland. Brown is from Gary, West Virginia and is majoring in commerce. He is high school member of B.Y. Honor Society, and president of the student council.

Richard Belaire is a sophomore history major from Lewiston, Maine. Belaire played basketball while at Lewiston High.

Danny Rivard is a sophomore physical education major from Westbury, New York. Baseball, basketball, and football were Rivard's principal activities in high school.

Terry West is a sophomore transfer from Shippensburg State College, a resident of Fayetteville, Pennsylvania. West is majoring in physical education.

No restrictions are among this spring's pledge class, which consists of three Ohioans, two Pennsylvanians, and one each from Virginia, Florida, New York, and Maine.

Presented in the Campus Club pledge class are: William Hamm, junior from Mansfield, Ohio, is majoring in English and physical education; Miller was active in athletics in high school and has participated in intercollegiate golf.

Don Shumaker is a junior physical education major from Delta, Ohio. Shumaker participated in all high school sports and has been a member of the Eagle basketball team.

Gaston Brown is a sophomore transfer student from the University of Maryland. Brown is from Gary, West Virginia and is majoring in commerce. He is high school member of B.Y. Honor Society, and president of the student council.

Richard Belaire is a sophomore history major from Lewiston, Maine. Belaire played basketball while at Lewiston High.

Danny Rivard is a sophomore physical education major from Westbury, New York. Baseball, basketball, and football were Rivard's principal activities in high school.

Terry West is a sophomore transfer from Shippensburg State College, a resident of Fayetteville, Pennsylvania. West is majoring in physical education.

No restrictions are among this spring's pledge class, which consists of three Ohioans, two Pennsylvanians, and one each from Virginia, Florida, New York, and Maine.

Presented in the Campus Club pledge class are: William Hamm, junior from Mansfield, Ohio, is majoring in English and physical education; Miller was active in athletics in high school and has participated in intercollegiate golf.

Don Shumaker is a junior physical education major from Delta, Ohio. Shumaker participated in all high school sports and has been a member of the Eagle basketball team.

Gaston Brown is a sophomore transfer student from the University of Maryland. Brown is from Gary, West Virginia and is majoring in commerce. He is high school member of B.Y. Honor Society, and president of the student council.

Richard Belaire is a sophomore history major from Lewiston, Maine. Belaire played basketball while at Lewiston High.

Danny Rivard is a sophomore physical education major from Westbury, New York. Baseball, basketball, and football were Rivard's principal activities in high school.

Terry West is a sophomore transfer from Shippensburg State College, a resident of Fayetteville, Pennsylvania. West is majoring in physical education.

RUN BOSSY, RUN—Pictured above is a cow who, having escaped from her owner, decided to take a short cut to freedom across the Morehead State College campus. It is shown in the photograph is her master, who patiently walked along until she decided to go back home to rest and a good meal.

Applications For Two New Dormitories Costing \$1,500,000 Filed By Morehead

Morehead State College has filed an application with the Federal Housing and Home Finance Agency for \$1,500,000 to construct two new dormitories, President Adron Doran announced today.

Dr. Doran said construction is expected to get underway this summer on the dormitories—one 100-room women's dormitory and the other a 100-room men's dormitory.

Both will be four-story structures housing 200 students. The women's dormitory will be located adjacent to the six-story Mignon Hall now under construction while the men's dormitory will be located next to the 200-man Wilson Hall presently under construction.

The two dormitories will be the fifth and sixth residence halls to be constructed on the Morehead campus within the past three years.

Both dormitories are located in residence hall quadrangles on the dormitory rental fees.

Dr. Doran said construction is expected to get underway this summer on the dormitories—one 100-room women's dormitory and the other a 100-room men's dormitory.

Both will be four-story structures housing 200 students. The women's dormitory will be located adjacent to the six-story Mignon Hall now under construction while the men's dormitory will be located next to the 200-man Wilson Hall presently under construction.

The two dormitories will be the fifth and sixth residence halls to be constructed on the Morehead campus within the past three years.

Both dormitories are located in residence hall quadrangles on the dormitory rental fees.

Dr. Doran said construction is expected to get underway this summer on the dormitories—one 100-room women's dormitory and the other a 100-room men's dormitory.

Both will be four-story structures housing 200 students. The women's dormitory will be located adjacent to the six-story Mignon Hall now under construction while the men's dormitory will be located next to the 200-man Wilson Hall presently under construction.

The two dormitories will be the fifth and sixth residence halls to be constructed on the Morehead campus within the past three years.

Both dormitories are located in residence hall quadrangles on the dormitory rental fees.

Dr. Doran said construction is expected to get underway this summer on the dormitories—one 100-room women's dormitory and the other a 100-room men's dormitory.

Both will be four-story structures housing 200 students. The women's dormitory will be located adjacent to the six-story Mignon Hall now under construction while the men's dormitory will be located next to the 200-man Wilson Hall presently under construction.

The two dormitories will be the fifth and sixth residence halls to be constructed on the Morehead campus within the past three years.

Both dormitories are located in residence hall quadrangles on the dormitory rental fees.

Dr. Doran said construction is expected to get underway this summer on the dormitories—one 100-room women's dormitory and the other a 100-room men's dormitory.

Both will be four-story structures housing 200 students. The women's dormitory will be located adjacent to the six-story Mignon Hall now under construction while the men's dormitory will be located next to the 200-man Wilson Hall presently under construction.

The two dormitories will be the fifth and sixth residence halls to be constructed on the Morehead campus within the past three years.

Both dormitories are located in residence hall quadrangles on the dormitory rental fees.

Dr. Doran said construction is expected to get underway this summer on the dormitories—one 100-room women's dormitory and the other a 100-room men's dormitory.

Both will be four-story structures housing 200 students. The women's dormitory will be located adjacent to the six-story Mignon Hall now under construction while the men's dormitory will be located next to the 200-man Wilson Hall presently under construction.

The two dormitories will be the fifth and sixth residence halls to be constructed on the Morehead campus within the past three years.

Both dormitories are located in residence hall quadrangles on the dormitory rental fees.

Dr. Doran said construction is expected to get underway this summer on the dormitories—one 100-room women's dormitory and the other a 100-room men's dormitory.

Both will be four-story structures housing 200 students. The women's dormitory will be located adjacent to the six-story Mignon Hall now under construction while the men's dormitory will be located next to the 200-man Wilson Hall presently under construction.

The two dormitories will be the fifth and sixth residence halls to be constructed on the Morehead campus within the past three years.

Both dormitories are located in residence hall quadrangles on the dormitory rental fees.

Dr. Doran said construction is expected to get underway this summer on the dormitories—one 100-room women's dormitory and the other a 100-room men's dormitory.

Both will be four-story structures housing 200 students. The women's dormitory will be located adjacent to the six-story Mignon Hall now under construction while the men's dormitory will be located next to the 200-man Wilson Hall presently under construction.

The two dormitories will be the fifth and sixth residence halls to be constructed on the Morehead campus within the past three years.

Both dormitories are located in residence hall quadrangles on the dormitory rental fees.

Dr. Doran said construction is expected to get underway this summer on the dormitories—one 100-room women's dormitory and the other a 100-room men's dormitory.

Adult Program At Breck Successful

Two adult programs have been offered in the clothing area as part of the total home economics program at Breckinridge Training School. The lessons were planned cooperatively by members of an advisory council, student teachers and Mrs. W. H. Rice, the home economics teacher. The first series of lessons was held in January, with the beginning in fashion sewing techniques. The second series of lessons was held in February, with the beginning in dressmaking.

Members of the class are: Mrs. Dale Ebredeen, Mrs. Barbara Jones, Mrs. Lydia Arnett, Phyllis Roberts, Pauline Tomlinson, Rosalee Mayo, Lenore Shipley, Lucille Mayhall, Stellaras Stewart, Mrs. Tommy Caudill, Suzanne Boggs, Geraldine Nymber, Josephine Toliver, Mrs. Phyllis Haight, Mrs. Bill Calhoun, Mrs. Clara Robinson, Mrs. Ida M. Sheets, Mrs. E. C. Mayo, and Mrs. Mae Fralley.

Advisory Committee members are: Mrs. Nelson Grode, Mrs. Walter Carr, Mrs. Monroe Wicker, Mrs. Frank Mangum, Mrs. Jack Kelly, Mrs. Holly Croshaw, and Mrs. Tommy Caudill.

Students teachers who have assisted are: Mrs. Eloise Foster and Miss Patty Litton.

The last date for enrolling in the class is March 15. Anyone interested is invited to attend this meeting. For information, regarding supplies needed call Extension 52, Morehead State College.

His skill as a teacher has paralleled his career as an artist. Nine major symphonic orchestras have boasted that they have had him in their ensembles. Mr. Bell is presently a member of the faculties of the New York University, Columbia University Teacher's College, and the Manhattan School of Music.

The "Concerto for Tuba" written by the late Vaughn Williams was given its American premier a few years ago in New York City with Mr. Bell as soloist.

His skill as a teacher has paralleled his career as an artist. Nine major symphonic orchestras have boasted that they have had him in their ensembles. Mr. Bell is presently a member of the faculties of the New York University, Columbia University Teacher's College, and the Manhattan School of Music.

The "Concerto for Tuba" written by the late Vaughn Williams was given its American premier a few years ago in New York City with Mr. Bell as soloist.

His skill as a teacher has paralleled his career as an artist. Nine major symphonic orchestras have boasted that they have had him in their ensembles. Mr. Bell is presently a member of the faculties of the New York University, Columbia University Teacher's College, and the Manhattan School of Music.

The "Concerto for Tuba" written by the late Vaughn Williams was given its American premier a few years ago in New York City with Mr. Bell as soloist.

His skill as a teacher has paralleled his career as an artist. Nine major symphonic orchestras have boasted that they have had him in their ensembles. Mr. Bell is presently a member of the faculties of the New York University, Columbia University Teacher's College, and the Manhattan School of Music.

The "Concerto for Tuba" written by the late Vaughn Williams was given its American premier a few years ago in New York City with Mr. Bell as soloist.

His skill as a teacher has paralleled his career as an artist. Nine major symphonic orchestras have boasted that they have had him in their ensembles. Mr. Bell is presently a member of the faculties of the New York University, Columbia University Teacher's College, and the Manhattan School of Music.

The "Concerto for Tuba" written by the late Vaughn Williams was given its American premier a few years ago in New York City with Mr. Bell as soloist.

His skill as a teacher has paralleled his career as an artist. Nine major symphonic orchestras have boasted that they have had him in their ensembles. Mr. Bell is presently a member of the faculties of the New York University, Columbia University Teacher's College, and the Manhattan School of Music.

The "Concerto for Tuba" written by the late Vaughn Williams was given its American premier a few years ago in New York City with Mr. Bell as soloist.

His skill as a teacher has paralleled his career as an artist. Nine major symphonic orchestras have boasted that they have had him in their ensembles. Mr. Bell is presently a member of the faculties of the New York University, Columbia University Teacher's College, and the Manhattan School of Music.

The "Concerto for Tuba" written by the late Vaughn Williams was given its American premier a few years ago in New York City with Mr. Bell as soloist.

His skill as a teacher has paralleled his career as an artist. Nine major symphonic orchestras have boasted that they have had him in their ensembles. Mr. Bell is presently a member of the faculties of the New York University, Columbia University Teacher's College, and the Manhattan School of Music.

The "Concerto for Tuba" written by the late Vaughn Williams was given its American premier a few years ago in New York City with Mr. Bell as soloist.

His skill as a teacher has paralleled his career as an artist. Nine major symphonic orchestras have boasted that they have had him in their ensembles. Mr. Bell is presently a member of the faculties of the New York University, Columbia University Teacher's College, and the Manhattan School of Music.

The "Concerto for Tuba" written by the late Vaughn Williams was given its American premier a few years ago in New York City with Mr. Bell as soloist.

Spring Enrollment Is 2,809; 66 Ky. Counties Represented

The official spring enrollment has been set at 2,809 students, President Adron Doran said today. Dr. Doran said that the spring term has a 14 per cent increase over the same semester last year. The enrollment represents 66 counties in Kentucky besides 25 states and 4 foreign countries.

The spring semester began Jan. 21 and will end June 2. Spring vacation is March 30 and classes resume on April 2.

A breakdown of the enrollment is as follows:

Adair, 2; Anderson, 2; Balfanz, 1; Barren, 1; Bath, 74; Bell, 4; Boone, 7; Bourbon, 14; Boyd, 127; Boyle, 1; Bracken, 20; Breathitt, 5; Campbell, 22; Carter, 166; Christian, 1; Clark, 7; Clinton, 13; Cumberland, 2; Davies, 1; Elliott, 6; Estill, 3; Fayette, 22; Fleming, 1; Floyd, 155; Franklin, 14; Grant, 4; Graves, 3; Greene, 2; Grepp, 117; Har-

lan, 17; Hart, 1; Harrison, 9; Henry, 3; Jefferson, 49; Johnson, 84; Jessamine, 2; Kenton, 15; Knott, 20; Laurel, 2; Lawrence, 60; Lee, 3; Letcher, 64; Lewis, 82; Logan, 1; Madison, 1; Magoffin, 55; Martin, 55; Mason, 73; Menifee, 25.

Montgomery, 52; Morgan, 101; Nelson, 2; Nicholas, 2; Pendleton, 11; Perry, 40; Pike, 52; Powell, 52; Robertson, 15; Rockcastle, 2; Rowan, 20; Scott, 1; Shelby, 2; Union, 2; Whitley, 2; Wolfe, 25; and Woodford, 1.

Out of state students: Alabama, 2; Arkansas, 2; California, 4; Connecticut, 10; Delaware, 1; Florida, 9; Georgia, 8; Illinois, 1; Indiana, 35; Maine, 3; Maryland, 1; Massachusetts, 5; Michigan, 18; North Carolina, 1; New York, 89; New Jersey, 22; Ohio, 35; Oklahoma, 1; Rhode Island, 2; South Carolina, 1; Tennessee, 10; Texas, 1; Virginia, 25; West Virginia, 23; Wisconsin, 1; Wyoming, 1.

Foreign countries: Brazil, 1; Iran, 3; Norway, 1; Turkey, 1.

"Tasting of Flora and the country-green, Dances and Provencal song, and sun-burnt mirth."

So said John Keats in his famous "Ode to a Nightingale," and such noble sentiments can also be found building on the Morehead State College campus just about this time of year.

Voices might just say that anyone who could conceive a sun-burnt anything at the present time with the temperature just a little above 60 degrees K was a first class candidate for the well known institution on Fourth Street in Lexington.

However, for the dreamer and the idealist, what is the motivating force which often brings about these inner thoughts of love and country? What is this little stimulus which brings about a poetic and Keats, along with cynical and verbal slammers?

Why, everyone knows what the first sign of spring is, and this messenger of nature has already been spotted feeding and setting up residence on the Morehead campus in front of Field's Hall—the first Robin, stimuli delux!

However, for the dreamer and the idealist, what is the motivating force which often brings about these inner thoughts of love and country? What is this little stimulus which brings about a poetic and Keats, along with cynical and verbal slammers?

Why, everyone knows what the first sign of spring is, and this messenger of nature has already been spotted feeding and setting up residence on the Morehead campus in front of Field's Hall—the first Robin, stimuli delux!

However, for the dreamer and the idealist, what is the motivating force which often brings about these inner thoughts of love and country? What is this little stimulus which brings about a poetic and Keats, along with cynical and verbal slammers?

Why, everyone knows what the first sign of spring is, and this messenger of nature has already been spotted feeding and setting up residence on the Morehead campus in front of Field's Hall—the first Robin, stimuli delux!

However, for the dreamer and the idealist, what is the motivating force which often brings about these inner thoughts of love and country? What is this little stimulus which brings about a poetic and Keats, along with cynical and verbal slammers?

Why, everyone knows what the first sign of spring is, and this messenger of nature has already been spotted feeding and setting up residence on the Morehead campus in front of Field's Hall—the first Robin, stimuli delux!

However, for the dreamer and the idealist, what is the motivating force which often brings about these inner thoughts of love and country? What is this little stimulus which brings about a poetic and Keats, along with cynical and verbal slammers?

Why, everyone knows what the first sign of spring is, and this messenger of nature has already been spotted feeding and setting up residence on the Morehead campus in front of Field's Hall—the first Robin, stimuli delux!

However, for the dreamer and the idealist, what is the motivating force which often brings about these inner thoughts of love and country? What is this little stimulus which brings about a poetic and Keats, along with cynical and verbal slammers?

Why, everyone knows what the first sign of spring is, and this messenger of nature has already been spotted feeding and setting up residence on the Morehead campus in front of Field's Hall—the first Robin, stimuli delux!

However, for the dreamer and the idealist, what is the motivating force which often brings about these inner thoughts of love and country? What is this little stimulus which brings about a poetic and Keats, along with cynical and verbal slammers?

Why, everyone knows what the first sign of spring is, and this messenger of nature has already been spotted feeding and setting up residence on the Morehead campus in front of Field's Hall—the first Robin, stimuli delux!

However, for the dreamer and the idealist, what is the motivating force which often brings about these inner thoughts of love and country? What is this little stimulus which brings about a poetic and Keats, along with cynical and verbal slammers?

Why, everyone knows what the first sign of spring is, and this messenger of nature has already been spotted feeding and setting up residence on the Morehead campus in front of Field's Hall—the first Robin, stimuli delux!

However, for the dreamer and the idealist, what is the motivating force which often brings about these inner thoughts of love and country? What is this little stimulus which brings about a poetic and Keats, along with cynical and verbal slammers?

Why, everyone knows what the first sign of spring is, and this messenger of nature has already been spotted feeding and setting up residence on the Morehead campus in front of Field's Hall—the first Robin, stimuli delux!

However, for the dreamer and the idealist, what is the motivating force which often brings about these inner thoughts of love and country? What is this little stimulus which brings about a poetic and Keats, along with cynical and verbal slammers?

Why, everyone knows what the first sign of spring is, and this messenger of nature has already been spotted feeding and setting up residence on the Morehead campus in front of Field's Hall—the first Robin, stimuli delux!

However, for the dreamer and the idealist, what is the motivating force which often brings about these inner thoughts of love and country? What is this little stimulus which brings about a poetic and Keats, along with cynical and verbal slammers?

Why, everyone knows what the first sign of spring is, and this messenger of nature has already been spotted feeding and setting up residence on the Morehead campus in front of Field's Hall—the first Robin, stimuli delux!

However, for the dreamer and the idealist, what is the motivating force which often brings about these inner thoughts of love and country? What is this little stimulus which brings about a poetic and Keats, along with cynical and verbal slammers?

Why, everyone knows what the first sign of spring is, and this messenger of nature has already been spotted feeding and setting up residence on the Morehead campus in front of Field's Hall—the first Robin, stimuli delux!

However, for the dreamer and the idealist, what is the motivating force which often brings about these inner thoughts of love and country? What is this little stimulus which brings about a poetic and Keats, along with cynical and verbal slammers?

Campus Club —

(Continued From Page 1)

ing at the Student House. Each member of the four-man teams races 10 laps, once every four time around.

Girls have it easier, and make only 18 laps around the island, changing riders every half lap.

Tom Robinson, Campus Club president, will be awarded this year to each member of the winning team, their names will be placed on a plaque in the Student House together with the previous winners.

Last year's winners were Vaughn Caudill, Gene Archibald, Mac Calhoun, and Hugh Black.

Anyone interested in entering this race can get further details from any Campus Club member. A small entrance fee is being charged.

Considering the enormous and increasing debt wrought by wealth, it's beginning to cost more than we can well afford, but probably not more than it's worth as having to do without it would likely bring on a number of pressing problems.

Considering the enormous and increasing debt wrought by wealth, it's beginning to cost more than we can well afford, but probably not more than it's worth as having to do without it would likely bring on a number of pressing problems.

Considering the enormous and increasing debt wrought by wealth, it's beginning to cost more than we can well afford, but probably not more than it's worth as having to do without it would likely bring on a number of pressing problems.

Considering the enormous and increasing debt wrought by wealth, it's beginning to cost more than we can well afford, but probably not more than it's worth as having to do without it would likely bring on a number of pressing problems.

Considering the enormous and increasing debt wrought by wealth, it's beginning to cost more than we can well afford, but probably not more than it's worth as having to do without it would likely bring on a number of pressing problems.

Considering the enormous and increasing debt wrought by wealth, it's beginning to cost more than we can well afford, but probably not more than it's worth as having to do without it would likely bring on a number of pressing problems.

Considering the enormous and increasing debt wrought by wealth, it's beginning to cost more than we can well afford, but probably not more than it's worth as having to do without it would likely bring on a number of pressing problems.

Considering the enormous and increasing debt wrought by wealth, it's beginning to cost more than we can well afford, but probably not more than it's worth as having to do without it would likely bring on a number of pressing problems.

Considering the enormous and increasing debt wrought by wealth, it's beginning to cost more than we can well afford, but probably not more than it's worth as having to do without it would likely bring on a number of pressing problems.

Considering the enormous and increasing debt wrought by wealth, it's beginning to cost more than we can well afford, but probably not more than it's worth as having to do without it would likely bring on a number of pressing problems.

Considering the enormous and increasing debt wrought by wealth, it's beginning to cost more than we can well afford, but probably not more than it's worth as having to do without it would likely bring on a number of pressing problems.

Annual Senior Tests Scheduled April 18

The annual senior tests will be given April 18 in Button Auditorium from 7:45 a.m. to 12:45 p.m.

All seniors who are taking college hours at the present time are required to take the tests.

Dr. Ben Patton, head of the testing department at Morehead State College. "Also these tests will be of great value for future counseling and vocational purposes."

Dr. Patton also stated that the seniors taking the tests will be excused from all classes during the testing period.

The