

SEE THE TALENT  
SHOW TONIGHT  
IN BUTTON

# The Mailer

MOREHEAD STATE COLLEGE, MOREHEAD, KY., TUESDAY, FEBRUARY 23, 1960

ARCH LACEFIELD TO  
PERFORM AT  
VETS FORMAL DANCE

Number Nine

## Frenchmen Give Concert Of Varied Songs Thursday

The Northeastern Civic  
Leisure Concert Series will present  
Varel and Bailly with their Chan-  
celors de Paris this Thursday  
evening at 7:30.

This concert, which will be held  
in Button Auditorium, will be  
made up of songs of folk music  
and popular songs.

According to several critics  
this group is rated in  
France as the best of the singing  
writing teams that they have.  
They have been hailed as one of  
the favorite singing groups in all  
Europe.

Their tone balance and original-  
ity of presentation charms the  
audience and has been a major  
factor in the re-engageability of  
this outstanding group receives.

The group is composed of Andre  
Varel and Charley Bailly along  
with six more top notch vocal  
musicians.

These eight brilliant French-  
men, currently bounding in and  
out of America's smartest hotels  
and supper clubs, have an air  
about them so seldom seen these  
days—they look happy. They ap-  
pear to enjoy what they are do-  
ing more than anything else in the  
world.

What they do is sing; and  
whether they sing a nostalgic  
ballad about cherry-blossoms or  
"Le Temps des Cerises" or  
carrot melodically with a stuffed  
dummy of the Charleston era  
("La Grande Coco"), their en-  
thusiasm is so contagious that  
for 45 minutes even the food-  
conscious patrons at the dinner  
stop eating and hang on every  
note.

A meticulous company re-  
sponsible for this happy state of  
affairs is made up of Andre  
Varel and Charley Bailly, who are  
probably France's top singing  
team, and the six members  
of Les Chanteurs de Paris who  
are all graduates of the  
children's chorus "The Little  
Singers of Paris". (Les Chan-  
teurs are not to be confused with  
another famous but more conven-  
tional French singing group, Les  
Compagnons de la Chanson.)

World or Heart? The group  
to the supposedly immutable laws  
of American show business, this  
sort of vocal attraction has no  
right to be such a hit. For most  
of the songs are in French, and  
many of the tunes are unfamiliar.  
But when Varel and Bailly came  
to the U. S. for the first time dur-  
ing the 1955-57 season, six weeks  
of looking stretched into six  
months, and in last season's tour  
of the United States, Canada, and  
the Caribbean, they completed  
eight months of concert, cabaret,  
and television work.

The pair met in North Africa  
during World War II. Varel was  
a practicing dentist with a pas-  
sion for writing poetry. Bailly  
was a promising young composer  
and pianist. They entertained for  
the Free French, and after the war  
stuck with their new song-  
writing careers. When not busy  
writing material for themselves  
they have created songs for such  
French stars as Edith Piaf,  
Jacqueline, and Jacqueline Fran-  
coise. Generally, Varel and Bailly  
text first, because the team firm-  
ly believes that "there can be no  
songs without subjects."

At 36, Bailly, with his crew-cut  
head, still looks like a bespect-  
acled French college boy. Varel  
is a dark, dapper 39, who thinks  
that their warm reception is due  
(Continued On Page 6)



VAREL AND BAILLY, France's top song-writing team, and their  
choir of six male voices—"Les Chanteurs de Paris"—  
are shown here. The internationally famous duo, whose num-  
berous hits are part of the permanent repertoire of such singers as  
Lena Horne, Edith Piaf, Jacqueline Françoise, Genevieve,  
and many others, return to the United States as the result of their  
sensational success in major North American night clubs, on tele-  
vision and in their joyous coast-to-coast concert tours. They will  
present a new program of songs, ballads and vignettes during this  
third transcontinental and Canadian tour.

## "Education In Russia" Is Topic Of Professor Wirth

By Pam Dalton  
Dr. Fremont P. Wirth, who is  
nationally known in the field of  
history, from Peabody Teachers  
College, Nashville, Tennessee,  
will speak in chapel on "Educa-  
tion in Russia" on March 3rd.  
Dr. Wirth will meet with vari-  
ous history and political science  
classes and will be on campus  
all day.

His information on "Education  
in Russia" is mostly from self  
experience. He has traveled wide-  
ly, having gone to Europe three  
times to serve as consultant or  
advisor in education, and having  
visited there three other times as  
a tourist.

He also has been to Canada,  
Mexico, and Egypt, and he visit-  
ed Russian schools in August and  
September, 1959, as a repre-  
sentative of Peabody and the Com-  
parative Education Society.  
Dr. Wirth has been in demand

### Morehead Graduate Is Newest House Member

Cordell Hull Martin, a 1959  
graduate of Morehead State Col-  
lege, is the newest member of  
the Kentucky House of Repre-  
sentatives.

Martin, a distant relative of  
Governor Combs, is the new Repre-  
sentative from Knott and Ma-  
dison Counties, replacing "Banjo  
Bill" Cornette who died recently.  
Martin was named to the seat in  
a special election.

He received the AB degree in  
Education from Morehead with  
30 hours in English and 24 hours  
in history and was active in  
numerous campus organizations.

Cornette, who was known far  
and wide for his banjo playing,  
was the father of Mrs. Lake  
Cooper, Assistant Professor of  
Mathematics.

as a speaker especially since his  
Russian visit, having made ap-  
proximately 100 talks at his  
observations of schools in Mos-  
cow, Leningrad, Kiev, and also  
Tashkent in Central Asia.

A number of many professional  
organizations, Dr. Wirth is cur-  
rent president of the National Coun-  
cil for Social Studies.

He is especially well known as  
the author of history texts, in-  
cluding the widely-used high school  
"The Development of America" and also "The  
United States History", both re-  
vised annually. He is the co-  
author with Peabody's Dr. Jas.  
Aller of "This Government of  
Ours".

## 274 On Dean's List For First Semester Here

A total of 274 Morehead stu-  
dents made the Dean's list of the  
first semester of this year. The  
list was compiled from the number  
of undergraduate students  
carrying 12 hours or more.

Out of the 274 students who  
earned a standing of at least "B",  
20 made a perfect standing of  
4.0. These students are: Barbara  
Anglin, Gary Branson, Jennifer  
Clay, James Farrell, Robert Fra-  
ley, Anna Gayhart, Betty Green,  
Linda Gross, Glenna Hamilton,  
Georgia McIntyre, Roger Meade,  
Sandra Nylas, Wanda Peace,  
Patty Robinson, Eleanor Saunders,  
and Steve Schafer.

Other honor students and their  
standings are as follows:  
Adams, John E., 3.81; Adams,  
(Continued On Page 6)

## Council Talent Show Set For This Evening

A super spectacular will be  
presented tonight at 7:30 in But-  
ton Auditorium by the Student  
Council. The occasion is a talent  
show.

"The show is scheduled to fea-  
ture the cream of MSC perform-  
ers and includes almost all talent  
known and loved by the student  
body," says Assistant Director,  
Gary North.

"No one would want to miss  
this program," says Bill Hampton,  
Director, "because there is going to be every type  
of talent imaginable represented  
which will range from Holly Perat  
and the Mountain Shufflers who  
will do a square dancing routine  
to rocking "Blue Monday" to so-  
phisticated "Moonlight in Ver-  
mont".

Hall Will Direct Lighting  
J. B. Hall will direct the light-  
ing for the entire program which  
will make use of almost every  
color in the rainbow.

As the lighting is dimmed, M.C.  
Johnny Duncan will introduce  
rock 'n' roller Gary Link who will  
do a fast number along with  
other members of his band.

"Singing the Blues" will be  
Linda Arrington and Art Shapland  
who will sing "Crazy Blues".

Paul Blair, Nancy Patrick,  
Larry Fanning, and Lela Clayton  
will sing as the "Breck Domin-  
aires". Don Polly follows with  
"Movin' On".

"Movin' On" will be sung next  
by Charles Dotson and Andrew  
Martin who will provide their own  
guitar music. John Lovelace will  
follow with "True Love".

A vocal by the Six Stars, com-  
posed of Jo Nell Adams, Betty  
Higgins, Carol Hall, Roberta  
Flaher, Carolyn Bowles and Judy  
Hacker, precedes a performance  
by the Campus Satellites who will  
sing "The Twist".

A solo dance by Holly Perat  
will be followed by a square dance  
by Perat and the Mountain  
Shufflers. Nancy Carl Pander  
will change the tempo with "My  
Funny Valentine".

The program in its entirety will  
run approximately two and a half  
hours. The admission is only 25¢.  
Johnny Duncan, disc jockey at  
local station, WJMR, will close the  
program.

Ronny Wright with "You Win  
Again" and the Satellites singing  
"Be Lovin' to Me" will close the  
program.

The program in its entirety will  
run approximately two and a half  
hours. The admission is only 25¢.  
Johnny Duncan, disc jockey at  
local station, WJMR, will close the  
program.

Ronny Wright with "You Win  
Again" and the Satellites singing  
"Be Lovin' to Me" will close the  
program.

The program in its entirety will  
run approximately two and a half  
hours. The admission is only 25¢.  
Johnny Duncan, disc jockey at  
local station, WJMR, will close the  
program.

Ronny Wright with "You Win  
Again" and the Satellites singing  
"Be Lovin' to Me" will close the  
program.

The program in its entirety will  
run approximately two and a half  
hours. The admission is only 25¢.  
Johnny Duncan, disc jockey at  
local station, WJMR, will close the  
program.

Ronny Wright with "You Win  
Again" and the Satellites singing  
"Be Lovin' to Me" will close the  
program.

The program in its entirety will  
run approximately two and a half  
hours. The admission is only 25¢.  
Johnny Duncan, disc jockey at  
local station, WJMR, will close the  
program.

The Freshman Quartet, com-  
posed of Linda Arrington, Pam  
Dalton, Louise Fryman, and Jerry  
Hartwig, will follow as a talent  
show.

"Tango of the Drums".  
Jerry Hartwig will sing "This  
Old House" next, with a vocal by  
Donna Jean Lohmeier following.  
The Jerry Link Combo will make  
their second appearance of the  
evening before an intermission of  
great music by "Jim Bob"  
Fagat.

Novelty Will Be Featured  
A novelty by a group called the  
Novelty Sisters will sing "What  
About Us?" and will feature  
Nancy Fanning, Karen McCurdy,  
and Sue Phum.

"Guitar Boogie" by Charles  
Dotson and Andy Martin, guitar-  
ist, "Buck Street Blues" by  
Louise Fryman, and rocking "Blue  
Monday" by Ronny Wright will  
follow.

A pantomime by Jim Nors-  
worthy will precede an instrum-  
ental by the Blue Barker Quintet,  
made up of members Ron Barker,  
Melvin Kunkle, Charles Williams,  
Deloria Reynolds and Linda  
Arrington will then sing "My  
Happiest" followed by a dance  
by J. W. Beascher and Gretia  
Bo Todd.

Don Polly To Sing  
"Only You Know Your Polly."  
"Moonlight in Vermont" by Pol-  
ly Wilson. "Saint Louis Blues" by  
Nancy "Saint and Steve Rous-  
ing" and "I'm a Comedy Act" by  
Jim Scoobe and Dick Robinson  
will follow.

The Indianapolis Five  
Hundred!"  
Ronny Wright with "You Win  
Again" and the Satellites singing  
"Be Lovin' to Me" will close the  
program.

The program in its entirety will  
run approximately two and a half  
hours. The admission is only 25¢.  
Johnny Duncan, disc jockey at  
local station, WJMR, will close the  
program.

Ronny Wright with "You Win  
Again" and the Satellites singing  
"Be Lovin' to Me" will close the  
program.

The program in its entirety will  
run approximately two and a half  
hours. The admission is only 25¢.  
Johnny Duncan, disc jockey at  
local station, WJMR, will close the  
program.

Ronny Wright with "You Win  
Again" and the Satellites singing  
"Be Lovin' to Me" will close the  
program.

The program in its entirety will  
run approximately two and a half  
hours. The admission is only 25¢.  
Johnny Duncan, disc jockey at  
local station, WJMR, will close the  
program.

Ronny Wright with "You Win  
Again" and the Satellites singing  
"Be Lovin' to Me" will close the  
program.

The program in its entirety will  
run approximately two and a half  
hours. The admission is only 25¢.  
Johnny Duncan, disc jockey at  
local station, WJMR, will close the  
program.

Ronny Wright with "You Win  
Again" and the Satellites singing  
"Be Lovin' to Me" will close the  
program.

The program in its entirety will  
run approximately two and a half  
hours. The admission is only 25¢.  
Johnny Duncan, disc jockey at  
local station, WJMR, will close the  
program.

Ronny Wright with "You Win  
Again" and the Satellites singing  
"Be Lovin' to Me" will close the  
program.

The program in its entirety will  
run approximately two and a half  
hours. The admission is only 25¢.  
Johnny Duncan, disc jockey at  
local station, WJMR, will close the  
program.

Ronny Wright with "You Win  
Again" and the Satellites singing  
"Be Lovin' to Me" will close the  
program.

The program in its entirety will  
run approximately two and a half  
hours. The admission is only 25¢.  
Johnny Duncan, disc jockey at  
local station, WJMR, will close the  
program.

## 200 High School Students To Attend MS Band Clinic

Students from 50 high schools  
will attend the third annual More-  
head State College Band Clinic  
on February 26, 27 and 28. Presi-  
dent Adron Doran announced to-  
day.

Over 200 students have been  
selected from 720 applicants for  
the three-day clinic which will  
feature four of the nation's lead-  
ing clinicians.

The guest clinicians will in-  
struct individuals and hold semi-  
nars in French horn, flute, saxo-  
phone, oboe, bassoon, clarinet,  
cornet and a percussion instru-  
ment.

Guest clinicians include: Dr.  
Lucien Galliet, eminent compos-  
er, arranger and conductor from  
Kenosha, Wisconsin; Fred Henke,  
the only American to ever win  
the first prize in saxophone at  
the Paris National Conservatory  
of Music, from Milwaukee, Wis-  
consin; Charles Simons, percus-  
sionist from Murray, Ky., and  
Max Pottag, Chicago, America's  
foremost exponent of the French  
horn.

Pottag will direct a French  
horn clinic with 50 students of  
the French horn from 28 high  
schools.

Special features of the Clinic  
include concerts on Saturday  
evening, Feb. 27, and Sunday  
afternoon, Feb. 28. The Morehead  
State College Symphony Band  
will present a concert Saturday  
evening at 8:00 with Galliet as  
guest conductor and Hamko as  
saxophone soloist.

On Sunday afternoon at 3:00,  
the 50-piece French horn en-  
semble will present a concert  
under the direction of Pottag and  
the 130-piece Clinic band will per-  
form in concert.

Fred J. Marzan, director of  
the Morehead bands, is director  
of the Clinic. Other members of  
the Morehead music faculty are  
assisting during the Clinic.

Also being held in conjunction  
with the Clinic is a band direc-  
tors sight reading band. Twenty  
high school band directors will  
participate and perform in con-  
cert for the 200 Clinic partici-  
pants.

High schools represented at the  
Clinic include: Ansonia, Ohio;  
Ashland; Bourbon County; Bur-  
ton, Va.; Camargo-Montgomery  
County, Chesapeake, Ohio; Cin-  
cin; Crum; W. Va.; Dayton;  
East High School; Solvotville,  
Ohio; Fleming-More; Great Con-  
solidated Schools; Greenup; Jen-  
kens; LaRue County; Lee County;  
Lonsdale; Main; Madison;  
Central; Manchester; Ohio;  
Mayville and McDowell.

Students from the following  
schools are attending: McKeesport,  
Pa.; North Allegheny, Penn.;  
Paintsville, Ohio; Paintsville,  
Ohio; Paris; Raceland; Rut-  
land, Ohio; Salsburgville; Saw-  
nee High School; Caydon, Ohio.  
(Continued On Page 6)

Orders for the Official College Rings and pins are being taken  
now through the 23rd of February. The rings may be ordered in  
full or place a deposit of \$5.00. Men's rings cost \$25.00 and pins are  
\$14.00. Women's rings are \$22.00 and pins are \$12.00. The semester  
you desire to place your order at a later date.

Orders for the Official College Rings and pins are being taken  
now through the 23rd of February. The rings may be ordered in  
full or place a deposit of \$5.00. Men's rings cost \$25.00 and pins are  
\$14.00. Women's rings are \$22.00 and pins are \$12.00. The semester  
you desire to place your order at a later date.

Orders for the Official College Rings and pins are being taken  
now through the 23rd of February. The rings may be ordered in  
full or place a deposit of \$5.00. Men's rings cost \$25.00 and pins are  
\$14.00. Women's rings are \$22.00 and pins are \$12.00. The semester  
you desire to place your order at a later date.

Orders for the Official College Rings and pins are being taken  
now through the 23rd of February. The rings may be ordered in  
full or place a deposit of \$5.00. Men's rings cost \$25.00 and pins are  
\$14.00. Women's rings are \$22.00 and pins are \$12.00. The semester  
you desire to place your order at a later date.

Orders for the Official College Rings and pins are being taken  
now through the 23rd of February. The rings may be ordered in  
full or place a deposit of \$5.00. Men's rings cost \$25.00 and pins are  
\$14.00. Women's rings are \$22.00 and pins are \$12.00. The semester  
you desire to place your order at a later date.

Orders for the Official College Rings and pins are being taken  
now through the 23rd of February. The rings may be ordered in  
full or place a deposit of \$5.00. Men's rings cost \$25.00 and pins are  
\$14.00. Women's rings are \$22.00 and pins are \$12.00. The semester  
you desire to place your order at a later date.

Orders for the Official College Rings and pins are being taken  
now through the 23rd of February. The rings may be ordered in  
full or place a deposit of \$5.00. Men's rings cost \$25.00 and pins are  
\$14.00. Women's rings are \$22.00 and pins are \$12.00. The semester  
you desire to place your order at a later date.

Orders for the Official College Rings and pins are being taken  
now through the 23rd of February. The rings may be ordered in  
full or place a deposit of \$5.00. Men's rings cost \$25.00 and pins are  
\$14.00. Women's rings are \$22.00 and pins are \$12.00. The semester  
you desire to place your order at a later date.

Orders for the Official College Rings and pins are being taken  
now through the 23rd of February. The rings may be ordered in  
full or place a deposit of \$5.00. Men's rings cost \$25.00 and pins are  
\$14.00. Women's rings are \$22.00 and pins are \$12.00. The semester  
you desire to place your order at a later date.

Orders for the Official College Rings and pins are being taken  
now through the 23rd of February. The rings may be ordered in  
full or place a deposit of \$5.00. Men's rings cost \$25.00 and pins are  
\$14.00. Women's rings are \$22.00 and pins are \$12.00. The semester  
you desire to place your order at a later date.

Orders for the Official College Rings and pins are being taken  
now through the 23rd of February. The rings may be ordered in  
full or place a deposit of \$5.00. Men's rings cost \$25.00 and pins are  
\$14.00. Women's rings are \$22.00 and pins are \$12.00. The semester  
you desire to place your order at a later date.

Orders for the Official College Rings and pins are being taken  
now through the 23rd of February. The rings may be ordered in  
full or place a deposit of \$5.00. Men's rings cost \$25.00 and pins are  
\$14.00. Women's rings are \$22.00 and pins are \$12.00. The semester  
you desire to place your order at a later date.

Orders for the Official College Rings and pins are being taken  
now through the 23rd of February. The rings may be ordered in  
full or place a deposit of \$5.00. Men's rings cost \$25.00 and pins are  
\$14.00. Women's rings are \$22.00 and pins are \$12.00. The semester  
you desire to place your order at a later date.

Orders for the Official College Rings and pins are being taken  
now through the 23rd of February. The rings may be ordered in  
full or place a deposit of \$5.00. Men's rings cost \$25.00 and pins are  
\$14.00. Women's rings are \$22.00 and pins are \$12.00. The semester  
you desire to place your order at a later date.

Orders for the Official College Rings and pins are being taken  
now through the 23rd of February. The rings may be ordered in  
full or place a deposit of \$5.00. Men's rings cost \$25.00 and pins are  
\$14.00. Women's rings are \$22.00 and pins are \$12.00. The semester  
you desire to place your order at a later date.

The guest clinicians will in-  
struct individuals and hold semi-  
nars in French horn, flute, saxo-  
phone, oboe, bassoon, clarinet,  
cornet and a percussion instru-  
ment.

Guest clinicians include: Dr.  
Lucien Galliet, eminent compos-  
er, arranger and conductor from  
Kenosha, Wisconsin; Fred Henke,  
the only American to ever win  
the first prize in saxophone at  
the Paris National Conservatory  
of Music, from Milwaukee, Wis-  
consin; Charles Simons, percus-  
sionist from Murray, Ky., and  
Max Pottag, Chicago, America's  
foremost exponent of the French  
horn.

Pottag will direct a French  
horn clinic with 50 students of  
the French horn from 28 high  
schools.

Special features of the Clinic  
include concerts on Saturday  
evening, Feb. 27, and Sunday  
afternoon, Feb. 28. The Morehead  
State College Symphony Band  
will present a concert Saturday  
evening at 8:00 with Galliet as  
guest conductor and Hamko as  
saxophone soloist.

On Sunday afternoon at 3:00,  
the 50-piece French horn en-  
semble will present a concert  
under the direction of Pottag and  
the 130-piece Clinic band will per-  
form in concert.

Fred J. Marzan, director of  
the Morehead bands, is director  
of the Clinic. Other members of  
the Morehead music faculty are  
assisting during the Clinic.

Also being held in conjunction  
with the Clinic is a band direc-  
tors sight reading band. Twenty  
high school band directors will  
participate and perform in con-  
cert for the 200 Clinic partici-  
pants.

High schools represented at the  
Clinic include: Ansonia, Ohio;  
Ashland; Bourbon County; Bur-  
ton, Va.; Camargo-Montgomery  
County, Chesapeake, Ohio; Cin-  
cin; Crum; W. Va.; Dayton;  
East High School; Solvotville,  
Ohio; Fleming-More; Great Con-  
solidated Schools; Greenup; Jen-  
kens; LaRue County; Lee County;  
Lonsdale; Main; Madison;  
Central; Manchester; Ohio;  
Mayville and McDowell.

Students from the following  
schools are attending: McKeesport,  
Pa.; North Allegheny, Penn.;  
Paintsville, Ohio; Paintsville,  
Ohio; Paris; Raceland; Rut-  
land, Ohio; Salsburgville; Saw-  
nee High School; Caydon, Ohio.  
(Continued On Page 6)

Orders for the Official College Rings and pins are being taken  
now through the 23rd of February. The rings may be ordered in  
full or place a deposit of \$5.00. Men's rings cost \$25.00 and pins are  
\$14.00. Women's rings are \$22.00 and pins are \$12.00. The semester  
you desire to place your order at a later date.

Orders for the Official College Rings and pins are being taken  
now through the 23rd of February. The rings may be ordered in  
full or place a deposit of \$5.00. Men's rings cost \$25.00 and pins are  
\$14.00. Women's rings are \$22.00 and pins are \$12.00. The semester  
you desire to place your order at a later date.

Orders for the Official College Rings and pins are being taken  
now through the 23rd of February. The rings may be ordered in  
full or place a deposit of \$5.00. Men's rings cost \$25.00 and pins are  
\$14.00. Women's rings are \$22.00 and pins are \$12.00. The semester  
you desire to place your order at a later date.

Orders for the Official College Rings and pins are being taken  
now through the 23rd of February. The rings may be ordered in  
full or place a deposit of \$5.00. Men's rings cost \$25.00 and pins are  
\$14.00. Women's rings are \$22.00 and pins are \$12.00. The semester  
you desire to place your order at a later date.

Orders for the Official College Rings and pins are being taken  
now through the 23rd of February. The rings may be ordered in  
full or place a deposit of \$5.00. Men's rings cost \$25.00 and pins are  
\$14.00. Women's rings are \$22.00 and pins are \$12.00. The semester  
you desire to place your order at a later date.

Orders for the Official College Rings and pins are being taken  
now through the 23rd of February. The rings may be ordered in  
full or place a deposit of \$5.00. Men's rings cost \$25.00 and pins are  
\$14.00. Women's rings are \$22.00 and pins are \$12.00. The semester  
you desire to place your order at a later date.

Orders for the Official College Rings and pins are being taken  
now through the 23rd of February. The rings may be ordered in  
full or place a deposit of \$5.00. Men's rings cost \$25.00 and pins are  
\$14.00. Women's rings are \$22.00 and pins are \$12.00. The semester  
you desire to place your order at a later date.

Orders for the Official College Rings and pins are being taken  
now through the 23rd of February. The rings may be ordered in  
full or place a deposit of \$5.00. Men's rings cost \$25.00 and pins are  
\$14.00. Women's rings are \$22.00 and pins are \$12.00. The semester  
you desire to place your order at a later date.

Orders for the Official College Rings and pins are being taken  
now through the 23rd of February. The rings may be ordered in  
full or place a deposit of \$5.00. Men's rings cost \$25.00 and pins are  
\$14.00. Women's rings are \$22.00 and pins are \$12.00. The semester  
you desire to place your order at a later date.

Orders for the Official College Rings and pins are being taken  
now through the 23rd of February. The rings may be ordered in  
full or place a deposit of \$5.00. Men's rings cost \$25.00 and pins are  
\$14.00. Women's rings are \$22.00 and pins are \$12.00. The semester  
you desire to place your order at a later date.

Orders for the Official College Rings and pins are being taken  
now through the 23rd of February. The rings may be ordered in  
full or place a deposit of \$5.00. Men's rings cost \$25.00 and pins are  
\$14.00. Women's rings are \$22.00 and pins are \$12.00. The semester  
you desire to place your order at a later date.

Orders for the Official College Rings and pins are being taken  
now through the 23rd of February. The rings may be ordered in  
full or place a deposit of \$5.00. Men's rings cost \$25.00 and pins are  
\$14.00. Women's rings are \$22.00 and pins are \$12.00. The semester  
you desire to place your order at a later date.

Orders for the Official College Rings and pins are being taken  
now through the 23rd of February. The rings may be ordered in  
full or place a deposit of \$5.00. Men's rings cost \$25.00 and pins are  
\$14.00. Women's rings are \$22.00 and pins are \$12.00. The semester  
you desire to place your order at a later date.

Orders for the Official College Rings and pins are being taken  
now through the 23rd of February. The rings may be ordered in  
full or place a deposit of \$5.00. Men's rings cost \$25.00 and pins are  
\$14.00. Women's rings are \$22.00 and pins are \$12.00. The semester  
you desire to place your order at a later date.

Orders for the Official College Rings and pins are being taken  
now through the 23rd of February. The rings may be ordered in  
full or place a deposit of \$5.00. Men's rings cost \$25.00 and pins are  
\$14.00. Women's rings are \$22.00 and pins are \$12.00. The semester  
you desire to place your order at a later date.

Orders for the Official College Rings and pins are being taken  
now through the 23rd of February. The rings may be ordered in  
full or place a deposit of \$5.00. Men's rings cost \$25.00 and pins are  
\$14.00. Women's rings are \$22.00 and pins are \$12.00. The semester  
you desire to place your order at a later date.

Orders for the Official College Rings and pins are being taken  
now through the 23rd of February. The rings may be ordered in  
full or place a deposit of \$5.00. Men's rings cost \$25.00 and pins are  
\$14.00. Women's rings are \$22.00 and pins are \$12.00. The semester  
you desire to place your order at a later date.

The guest clinicians will in-  
struct individuals and hold semi-  
nars in French horn, flute,

## Government Loans Go To Deserving Students

To be eligible for a government loan, students must have an academic standing of "B" in all completed college work, and be able to help themselves financially through part time jobs. Then one year after the borrower ceases his full time study in college, repayment of the loan must begin with a payment of three per cent interest per year on the unpaid balance of the loan. Up to one-half of any loan plus the interest is cancelled for the borrower's service as a teacher in the school system of America.

We are sure that you will agree with us in saying that the government has indeed provided a very fine plan for aiding students to get through school. But we feel that the persons

deserving even more commendation are the students who make the sacrifice of spare time in working and allow themselves to become indebted just so that they can continue in their education.

It's not just "any" student who can get these loans. As was stated before, there are requirements. High requirements in order to be eligible for this assistance. So we feel that it is the better calibre student who receives help.

May we say that these students are deserving not only of the financial assistance they receive, but they are certainly deserving of the little praise that we can give them by saying "good work!"

## Libraries Can Be Fun! Could Students Give Chapel Program?

"Ah, might as well head back to the dorm and take a nap. There sure isn't anything else to do around here."

Does that sound just a little familiar to the students of Morehead? It should. They say it often enough. We're here to contradict the people who there is nothing to do at Morehead. For instance, we have a library.

We realize of course that it is "boring and tedious" for some students to spend hours in the library, but we would just like to point out some of the things one could do in that big stone building located between Allie Young and Fields Halls.

Of course, there are all the informational things such as the dictionary, encyclopedias, compasses, if that is the type of entertainment you prefer.

There is a reading room and this (we feel) is where the real fun is. Well over thirty magazines are subscribed to by the library purely for enjoyable reading. Everything from the American Heritage, to Life, to The Reporter, to Sports Illustrated to Time is located in this room. Surely, something should strike the heart of a bored student.

In the far end of the reading room is something else that might possibly interest students. There is a rack containing over twenty different county newspapers, any one of which might be from the home town of the "bored" student. By stopping in the library about once a week one could find out all of the home town news. This is especially nice if you have "parents who don't write often."

And that's not all! When you feel like you just stand another minute of the mad chaos of campus life you can sneak away to the reading room and listen to music that soothes your frayed nerves. There is a record player with top quality and many enjoyable albums to entertain the "bored" student.

For the kind of enjoyment that brings out the laughter of your soul, you could spend some time looking through the old issues of The Trail Blazer. Not that they themselves are so funny, but when you get back into the '30's there are some interesting ads.

We could go on, and on, but we think you understand what we're trying to say. Especially, it's this. There is no reason for anyone to be bored on this campus . . . at least not with the fine library and other facilities that we have.

## Editorial Comments

By Pat Spencer  
Trail Blazer Editor

Something very interesting happened to the editor of this paper too late to mention in the last column so I'll just bring it up for this issue. A letter . . . an anonymous letter at that . . . came to Box 316 concerning the matter of cheating on campus. Somehow I got the impression from the letter that The Trail Blazer should be considered "clickety" if the letter wasn't printed. To those persons who magnanimously, but anonymously, cast their pearls among the swine of the T. B. staff may we pose this query "Aren't the thieves calling the liars dishonest?"

Let's get on a more pleasant subject shall we? Must thank Jim Riley (especially) Harry Mayhew, and "Kingfish" Stevens for helping The Trail Blazer off in high style. Hope some of you can get down in the basement of Allie Young and look over our "dream come true." The fellows did an extraordinarily good job on everything.

Something exciting happened on the campus last week and we'll bet you all didn't even know about it. Counterfeit money was passed in the grill. Like so many things in this big wide world, you just can't tell the real from the phoney. Or is it just that we live so fast that we don't take time to distinguish between the two?

You know if I had ever had any money to loan and those persons I had loaned the money to suddenly decided to pay me back (last week in particular) we think I would have prompt-

ly rubbed to the bank and had it checked for authenticity. On second thought, considering the sinful amount of snow that fell, I would have just passed it on.

Hey, what ever happened to that editorial idea of having a hobby show as a different campus activity? Seems like somebody ought to resurrect the Band Clinic issue holes are being worn in the socks of local "tricksters."

It is becoming increasingly easy to become a well read student. All one has to do is make sure he hits the movies about twice a week. For example . . . "The Scapengoat, A Summer Place, Cash Money, Some Game Running, I'll Cry Tomorrow, Guns With the Wind" . . . and so on. This indeed a pity that script writers have come on the scene, because one never knows for sure how the book ended.

Have decided that a wagging tongue, not more, the root of all evil. Voltaire said something that would apply to this subject—in the case of news (or for our purposes, gossip) it should always wait for the sacrament of confirmation." Need I say more?

By the way, do you realize that it is only about 50 days until spring-vacation? Maybe but I for one am looking forward to seeing that 50th day to roll around. And do you know what else? It's only about \$55 until school is out completely . . . for this year, I mean.



Now, As I Was Saying . . .

## Campus Increased Enrollment Causes Writings Professional Semester Plan

MENTAL BLOCKS

By John White

Since man as a whole is a basically lazy creature, it has been inevitable that man would become highly specialized in the art of providing and using escape-goats. In all probability one of the first escapegoats used by man in his efforts to escape work was a complicated economic system in which he could trade his labor for a more efficient and less suspicious escapegoat.

This brought about the age of the common cold. Always before it has been merely a minor nuisance, but now a use for the cold has been found. The usefulness of the cold can be seen quite often in the form of empty seats in college classrooms, empty office desks, and countless other situations.

At this point in the development of the escapegoat, only one thing was needed to rescue man from the terrible fate of hard work—a escapegoat which would prevent one from attaining efficiency in difficult tasks. At last, man has triumphed. The escapegoat has a new member added to its family. This new member should be one of man's proudest achievements—certainly it is one of the most subtle. It is the mental block which has saved man many hours of work in the past few years. It has been equally

The mental block originated in the plush offices of countless psychiatrists, who found it to be the answer to a large number of mental deficiencies in certain intellectual fields. This news was spread by the radio and the press in long! In practically no time the mental block had come into its own in the lives of many students. It was released in publications of contemporary intellectual and psychological problems. Through these mediums everyone has become thoroughly conversant with this highly efficient escapegoat.

Now, when a college student is stumped in some particular field of study, he need not trace him self for long hours of laborious concentration. He now can simply take a mental block and place it in his mind. He can then tell his teachers that he has an awful mental block. Some students will even accuse the art of letting the teachers discover a for themselves, creating the escapegoat, without a detectable spot or blemish.

## Song Of Soap And Bubbles

He: "May I hold you palmolive?"  
She: "Not on your lifebooby."  
He: But sweetheart I'd lava you more than any cutiecream in the land!  
She: "Babo, you don't bring any joy into my life."  
He: "Honey, I woodbury my face in your golden tresses."  
She: "I don't want to be tide laved in just want to be feeling the wind."  
He: "I know my lux aren't too hot, but I can carry with me the ponds."  
She: "I svan you dux things in a breeze."

There have been numerous questions about the professional semester from students who do not understand it. In the following article the questions most frequently asked have been answered as well as most other information which is necessary for a thorough understanding of the plan.

Last year the Education Department of Morehead State College initiated a somewhat unique curriculum organization for teachers known as the Professional Semester.

It is believed that other teaching institutions in some of the other states have a plan similar but not identical to it. The idea back of the plan is to integrate as nearly as possible the professional courses most directly related to teaching with the student's actual student teaching experiences. Too often students have taken fundamentals and techniques of teaching and years later have returned to take their student teaching at the college campus, thereby having forgotten much that was learned regarding teaching techniques and recommended procedures.

This plan permits students to take a full semester of work, all of which is immediately and directly related to the student teaching experience which he is doing. It all becomes more meaningful to the student when done in this manner.

During one of the semesters of his senior year, the student registers for the Professional Semester. This is a 15-hour block of work, including Fundamentals of Secondary or Elementary Education (4 hours), Human Growth & Development II (3 hours), and Student Teaching (8 hours).

During the past two semesters these students spent a total of eight weeks in the Professional Semester. This semester the enrollment is 74. The group is divided into two sections for actual class work. Group A is taught by Lawrence R. Stewart, Coordinator of Secondary Education, and Group B is taught by Dr. Zell S. Walter, Head of the Education Department.

These groups are alternated so that one group attends class two hours a day and makes observations during the other group's observations for a period of four weeks and the other group does actual student teaching for this period. The groups are alternated each month, and each group does a total of eight weeks of student teaching and eight weeks of class work and observations during the semester.

The college teachers assigned the responsibility of teaching these students spend a great deal of time observing them in their student teaching situations as possible when not in class in the classroom. This amounts to a four-week period when the students are solely engaged in student teaching.

The first week of the semester is used by the student in getting

Editor's Note:

supervising teacher assignments, reading and planning teaching activities. The last of the semester is used by the college and the supervising teachers of the Training School or off-campus supervising teachers in evaluating the work done by these students both in their class work and in their student teaching assignments.

The demand for student teaching has grown so rapidly in recent years that off-campus centers for student teaching are being organized. Besides the Rowan County schools and Breckinridge Training School, students are doing home economics student teaching at Sandy Hook and Prestonsburg. This semester for the first time, a number of students are doing their student teaching in the Ashland schools. Other off-campus centers will be organized as the need arises.



Editor, Trail Blazer:

The complimentary editorial regarding the work in the Registrar's Office was appreciated by all the staff. We seldom get compliments. When we refuse to give grade cards to anyone other than the students concerned, or when we refuse to admit students to the rooms when we perceive that the records are kept, or when we refuse to give grades over the telephone, by the way, we are not so busy as that these policies are followed in order to protect the records of the students.

We try to be efficient and courteous to all. Some times we get unreasonable requests. As you know, we are always swamped with work at the close of a term and at the beginning of a term. We can't be of greater service to the students if they would bring their problems to us when we are not so busy with regular routine work that has to be completed.

We appreciate your editorial very much.

Sincerely yours,  
Lousia A. Fair  
Registrar

## Trail Blazer Staff Extends Sympathy

The Trail Blazer staff would like to extend our sincere sympathy to Mrs. Adron Doran, Mrs. W. P. Covington, III, and Mrs. Jess Mays and their families for recent deaths of members of their immediate families.

Ralph McClain, brother of Mrs. Doran and resident of Mayfield, succumbed after a period of illness with Asian flu.

Robert S. Cooke, father of Catherine Covington and a native of Portsmouth, Va., suffered from a heart attack.

Robert S. McCray, of Barboursville, father of Mrs. Mays, was accident of a recent train accident.

The Men's Dormitory will be ready by the fall term to relieve the overcrowded conditions.

## Along The Boulevard With

## Happy Mayhew

Morehead State College has some pretty girls enrolled according to Mr. and Mrs. Carl Sinclair, Extensions Agents in Morgan County.

The 1955 4-H Queen was selected for the county on beauty and personality. Previous to this, each year the 4-H Queen was selected on the amount of money she could collect.

It is very unusual for the 4-H Queens since 1955 are now all enrolled at Morehead State College. The 1955 Queen was Barbara Stamper, West Virginia State 4-H Queen, 1957 was Patricia Rose, 1959 was Janice Carkey and the 1958 Queen was Scotty Burton who is a junior at Morgan County High School.

Each year a large crowd attends the crowning of the 4-H King and Queen which is held in connection with the Annual Style Show of the Morgan County 4-H girls enrolled in 4-H sewing projects.

Mrs. Mayo, instructor of math, barely escaped in a most unusual way what could have been a serious injury last week when a battery exploded which was being charged in Room 208 of Laffin Hall.

A piece of sink shot from the exploding battery and struck her in the back, but luckily hit in the center of a leather vest she was wearing. However, approximately one-eighth of an inch penetrated beyond her clothing, but the cut was minor.

The formal Vets Club dance is featuring Bobby Martin and his band. The last member of the group, Arch Laffey, who taught French here last year and is presently teaching at U. K. is quite an entertaining character. Arch has an unusual hobby—he is an amateur weight-lifter.

COMING UP IN THE WORLD—A Baylor University student writes: "I'll have to visit into the Eastern Kentucky Mountains some of these days and visit Morehead State College which seems to be the up and coming college in Kentucky."

Students of political science in . . . reported a unique fact about their instructor, Dr. Clifford Rader. It seems that he does not like to walk along the blackboard to complete a sentence, he just starts writing with his left hand, switches to his right, and writes on.

There are some appreciative and courteous students on campus, a physical education professor says. He lacked a sign on the door of his office which stated: "There are no pests in this office tonight." The following day he found this comment printed at the bottom of his informative note: "THANK YOU!" Courteous?

DID YOU KNOW

That the College Boulevard at one time had an island in the center which went beyond Laffin Hall?

The Student Council's Talent Show tonight will be two and a half hours of the best student talent seen in these mountains since way back when?

MSC Band Director Fred Maran has been invited to judge the senior bands of Virginia on April 12.

It has been reported that some students have secretly been working out by bicycles?

QUICK QUOTES

Varied comments were made by Freshmen and Sophomores who attend convocation when asked what type program they would like to see presented the second semester:

"I think it would be interesting, entertaining, and helpful" said Barbara Allen, Freshman from Iaeger, "to have a group of students participate in a panel discussion concerning the importance of interest to MSC students, particularly Freshmen and Sophomores."

Kieth Brooks, who hails from the Hooper State and has traveled extensively over Europe while serving in the Armed Forces, would like to see periodic showings of scenic movies, especially of our two new states, Alaska and Hawaii.

"It seems that with the abundance of talent in the student body," says Paul Bevin, Sophomore from Prestonsburg, "there would be more programs which would present this talent to the students."

THOUGHT OF THE WEEK

Although my typewriter is not a new model, it works quite well, except for one of the keys. When you find that your service are not needed in campus activities because you are not a key man, remember my typewriter and realize that you have a "key" role to play in keeping an organization in proper working order.



"We'd We Park That Car, Joe?"

## The Trail Blazer

Official newspaper of Morehead State College, published bi-weekly except on vacations and holidays, and each summer session. Entered as second class mail at the Post Office at Morehead, Kentucky, under act of Congress of March 3, 1879. Subscription price 30 cents per semester in advance.

STAFF

Editor: Pat Spencer  
Managing Editor: Harry Mayhew  
Sports Editor: George Stevens  
Co-Ed Editor: Arlene Saxton  
Music Editor: Julie Wilson  
Feature Editor: Josh Lovelace  
Assistant Editor: David Masters  
Advertising Manager: Darrell Lamborn  
Editorial Cartoonist: Jim Riley  
Sports Cartoonist: Jack Rader  
Secretary: Zina Hamrick  
Foreign Correspondent: William Randolph Hurst  
Sports Writers: Karen Hutchinson, Lee Mueller  
Reporters: Ray Allen  
Barbara Anglin, Virginia Gaines, Pam Dalton and Jane Beam  
Typists and Proofreaders: Judy Kinney and Bob Larimore  
Advisors: Roy Hornbeck and B. J. Hall



## Social Sidelites

By ARLENE SHADRACH

### Engagements

Miss Sandra Johnson to Mr. Tom Hichman of Middletown.  
Miss Roberta Allen to Mr. Clarence Dodson of Pike Co.  
Miss Diana Wengert to Mr. Steve Crumley of Maryland.  
Miss Ebehele Frazier to Mr. J. Thomas P. Quince.  
Miss Rene Applegate to Mr. J. R. Thomas.

Miss Ann Williams to Mr. Doug Hayes—Feb. 13.

Miss Thelma Roberts (former MSC student) to Mr. Robert Speers.

**Looking Ahead**—  
Returning with the robes, the easy elegance of the lightly bloused line that suits the effortless mood of American fashion.

The white collar comes out every spring without fail. This year, two new things about it: the collar itself is bigger than ever, and its whiteness looks new, against navy, or beige than the traditional navy.

Most flattering and wearable of the slender rash of tunics: the long, slender-overlaid that goes over the shoulders of the way.

In style, the puffed tunic for the winter, the collar itself is bigger than ever, and its whiteness looks new, against navy, or beige than the traditional navy.

The look for spring is pale, pale, pale. White-pale, beige-pale, pastel—everything is lighter and airy.

This new color spectrum calls for a new kind of color. It is a color you have never seen before, a color that only dark colors can be smart. First, become accustomed to all the new lightness. Let your eyes appreciate the fresh beauty of pale fabrics.

An overall frosting of white; practically all fabrics are affected. The new wave of solid white rushing in for summer.

Keep all the beautiful new things in sight. The new wave of solid white rushing in for summer.

Full skirts promise a prettier, more feminine summer. You can wear the "flares" and the "puffed" skirts, a dress or skirt and blouse to make you look bandbox-crisp and fresh as a flower.

**Features in Fashion:**  
Never Underestimate the importance of accessorizing.

Mrs. Doran Doran produced a booklet some time ago entitled, "A woman and her clothes," from this booklet, you can learn how Mrs. Doran feels about accessorizing.

1. Hats should be the added touch that makes you feel complete in education.

Full skirts promise a prettier, more feminine summer. You can wear the "flares" and the "puffed" skirts, a dress or skirt and blouse to make you look bandbox-crisp and fresh as a flower.

**Features in Fashion:**  
Never Underestimate the importance of accessorizing.

Mrs. Doran Doran produced a booklet some time ago entitled, "A woman and her clothes," from this booklet, you can learn how Mrs. Doran feels about accessorizing.

1. Hats should be the added touch that makes you feel complete in education.

## Miss Cheatham Shows That Women Can (And Do) Excel

By David Masters  
People often speak of the superiority of men and completely disregard women or tend to disparage their contributions. Yet women have proven themselves capable of competing with men in many fields and they very often excel in science, medicine, mathematics and other areas that man considers their own private domain.

To cite a specific example concerning women's contributions let us take Miss Nell Cheatham, Assistant Professor of Science and Mathematics. She is a woman who as well indicated through her teaching career the ability and ambition that can lead to success in education.

Formerly a teacher in the Clark County schools, she is now a teaching fellow at the University of Kentucky.

Some of the courses she teaches here demonstrate her ability and knowledge. General Zoology, Botany and Physiology, Business Statistics, Introduction to Biological Science, Algebra, a few of the courses on her varied schedule.

Concerning the National Science Fellowship, the selection was made on the basis of academic record, professional activity, and

competence. Only persons who have demonstrated ability and special aptitude for science teaching and advanced teaching were eligible.

As Dr. Doran added, "Miss Cheatham has demonstrated outstanding competence as an Assistant Professor of Science and Mathematics and she certainly deserves the National Science Fellowship."

When she leaves in June to work on her Ph.D. it will be another step forward for a woman who has made education her livelihood and has demonstrated that being a woman need not be a handicap that some people seem to think.

Miss Nell Cheatham is the main center and desire seen of them in abundance.

When she leaves in June to work on her Ph.D. it will be another step forward for a woman who has made education her livelihood and has demonstrated that being a woman need not be a handicap that some people seem to think.

CO-ED OF THE WEEK

## On The Spot

### In The Spotlight

By Layne Corvey  
With the "Kids" now in wraps... the wonderful Russian unit returned... and the set "struck"... all is very definitely not quiet in the Drama Department in Thompson Hall. The next show is on its way... dates are exactly definite... APRIL is the time and a MUSIC-AL is the presentation. The Drama Department and the Music Department will work together on BABES IN TOYLAND... when this hit the campus... physical education with minors ready to be underway. Check with Mr. Covington, Drama, or Mr. Bean, Music... get in on the fun! There is a cast of 50 and a million exciting, sparkling preparations you can be a part of.

Unfortunately, Mr. Cole of the AFL CIO, Louisville, who was scheduled to be a guest speaker at the Forensic meeting last week was involved in an automobile accident and could not attend... however he's fine and will be able to meet a later date.

Incidentally, watch for announcement of the Forensic meeting that will feature as guest speaker Bob Johnson of WSAX, Huntington. This is one that everyone will be interested in attending. He will talk about TV program... and give an outline of courses that people should take who are

## Fugate Relates Hawaiian Experiences In Convocation

By Pamela Dalton  
A delightful, imaginary excursion was taken by the college students attending convocation last week during "Jim Bob's" Fugate's visit to Hawaii last summer.

During his ten weeks' stay in this newly admitted state that the "Almighty" took a little extra time to create, in Jim Bob's estimation, he visited four of the six islands.

His shoes captured scenes of the daily life, customs, which included the dress, foods, vocations, and religions of the islands, and the immense beauty of Hawaii.

He remarked that his plate was generally left with about the same amount of food on it at the end of a meal as it had at the beginning of the meal. From his observation of the religions there, he found that fifty per cent of the population are Buddhists, Catholics run second on the list, thus leaving a small percentage of the people belonging to Protestant faiths.

All religions of the world are represented there, and Jim Bob gained new friends who belonged to many of these various faiths.

Jim Bob's report made the students wish for a vacation to the U. S.'s fifteenth state, so that each of them could see the sights of Hawaii that he did.

## Ken Muse Named Chemical Executive

Kenneth N. Muse, class of '52, has been named Assistant Technical Director of a new polyethylene film plant in Findlay, O.

The Dow Chemical Company has purchased an industrial plant there which will be converted for the manufacture of polyethylene film.

Muse was employed as a synthetic rubber chemist and supervisor for the Phillips Petroleum Company from 1947 to 1952 at their plant near Borger, Texas.

He joined the Dow Chemical Company in 1952 and has held a supervisory position in their polyethylene production facilities near Freeport, Texas.

Muse is married to the former Edna Doyle. They have three children, Ted, Peggy Lynn and Lee Ann. They are currently residing at 233 E. Lynn.

Mary (Skip) Jamerson, class of '52, is teaching in the Denver Public Schools, Denver, Colo.

Unaeda Fern Watts, class of '52, is a teacher in the Knott County schools, Hindman.

Anna Louise (Davenport) East, class of '53, is private piano teacher in Frankfort, She and her husband, Tom, class of '53, have four children, Patricia Anne, age four.

Christine Wells, class of '57, is now in her fourteenth year as a teacher in the Lawrence County school system, Louisa.

Evelyn Davidson, class of '54, is a second grade teacher in Hard.

Anna Lois Richie, class of '59, is teaching in the Knott County schools, Hindman.

Shelly Ray Amburg, class of '52, is teaching industrial arts in the Mississippi Valley School, Union City, Ind.

Marion B. McDonald, class of '46, is teaching in Center-Grade School in Mayville.

Grundy Va. Hall, class of '59, is teaching the first grade in the Lewis County schools, Vanceburg.

Betty Jane Hambrick, class of '54, is an elementary school teacher in Columbia City Schools, Columbia, S. C.

Her husband, Walter, class of '46, M.A. in '51, is assistant basketball coach and chief teacher in the University of South Carolina.

Mary Carolyn (Gavendon) White, class of '51, is now living at 1112 Echo Drive, Santa Bernardino, California. She and her husband, James, have one child, James D.

Reslie L. Allen, class of '53, M.A. in '58, is currently serving as principal and coordinator for the Board of Education, Parma, Mich.

Billy H. Hensley, class of '57, is teaching in DeLand, Fla. He and his wife, Geneva, have one son, David, age four.

ASSISTANT DIRECTOR—Ken Muse, former student at Morehead State College, has been named by Dow Chemical Company to serve as Assistant Technical Director of a plant in Findlay, Ohio.

Arville Short, class of '42, is a mining engineer at Meally, Johnson County, Mo. He and his wife, Maude, have four children.

Maxine B. Denton, class of '59, is teaching in the Fleming County schools, Flemingburg. She and her husband, Ashton, class of '59, have two children.

Walter C. Makro, class of '56, is an army musician at Fort Benning, Ga. Before entering the school in Xenia, O. He and his wife, Maude, have four children.

Mervil B. White, class of '50, M.A. in '58, is principal of a school in Xenia, O. He and his wife, Maude, have four children.

Fay Stone, class of '49, M.A. in '50, is a teacher in the Buchanan County school system, Grundy Va. Hall, class of '59, is teaching the first grade in the Lewis County schools, Vanceburg.

Betty Jane Hambrick, class of '54, is an elementary school teacher in Columbia City Schools, Columbia, S. C.

Her husband, Walter, class of '46, M.A. in '51, is assistant basketball coach and chief teacher in the University of South Carolina.

Mary Carolyn (Gavendon) White, class of '51, is now living at 1112 Echo Drive, Santa Bernardino, California. She and her husband, James, have one child, James D.

Reslie L. Allen, class of '53, M.A. in '58, is currently serving as principal and coordinator for the Board of Education, Parma, Mich.

Billy H. Hensley, class of '57, is teaching in DeLand, Fla. He and his wife, Geneva, have one son, David, age four.

Ernestine H. Rice, class of '50, is teaching at Oil Springs. She and her husband, Carl, have two children, Patricia, age 22, and Philip, age 19.

Where else could you meet Shelly Ray Amburg, class of '52, and Melville for just 25 cents except in the Literary Arts Club. There are also books worth reading, but that's more fun to see on the screen!

## "Avie" Is Favorite Gal In Public Relations Office At Morehead

By Josh Lovelace, Jr.  
"Ring — — — Public Relations Office, — — — No, he isn't, but this is Avaleen Cooke, — — — could I help you?"

If a person called the Public Relations Office, they would be greeted by the charming and warm voice of Avaleen Cooke, secretary in the department.

Avaleen is not only secretary, but also mother and wife. She is married to George Cooke, baseball coach at Morehead State College. She has two children, Rory, and notorious little Stevie, idol of Thompson Hall. Avaleen and her family lived in Thompson Hall last year while her husband was director of the dormitory.

"Josh, are you going to work today?" — — — Steve, you and Gary run the memo, Roberts, you and Mary can help me."



... Cooke called valuable secretary.

these are some of the usual daily comments that she makes to set the Public Relations Office into operation for the day.

Before coming to Morehead, she lived in Alaska while George was in the Army. She was born in Russell and graduated from Wurtland High School as one of the top ten students. "Avie," as she is better known, is the daughter of Mr. and Mrs. William Bayes of Wurtland, Alaska.

Among her hobbies, she likes to sew, dance, and enjoys Early American furniture and pretty clothes.

Roy Hamrick, Director of Public Relations, said concerning Avaleen, "She does a wonderful job in a most demanding position. Her concern, devotion and dedicated attitude to her job are certainly an inspiration to her co-workers and to the students who have grown so fond of her."

## Children's Concert To Be Presented

By Virginia Gaines  
Last Thursday, the Morehead State College Symphony Band, under the direction of Fred J. Marzan presented a children's concert to the elementary school children of Breckinridge Training School.

In addition to playing various "light classical" numbers which held a high degree of interest for the students, demonstrations of several band instruments, and a discussion of the things to notice when listening to a band were introduced to the group.

This is the third year in which such a concert of this type has been presented as an integral part of the school's music education program, and each year its excellence has been acclaimed with increasing enthusiasm by the student body.

Building To Be One Of Finest In South

By Virginia Gaines  
Morehead State College will soon have one of the finest maintenance buildings in the South. The right end of the building will be utilized by W. H. Rice and his maintenance crew with the left end of the building.

The unique middle section will enhance users to keep all of the heavy equipment out of the weather. The dome will be self-supporting with a reflecting plastic and there will be ample parking space and work areas around the building.

A carpenter's shop, paint room, drawing room, mechanical shop, automotive shop, bin storage, bulk storage and electrical shop are features of the structure.

## BSU News

This week of the 21-23 BSU will be observing their annual "Dedicated Vocations Week." Noonday services will be held at the B.S.U. Center. Outstanding men and women from around Morehead will speak at these devotions.

On Sunday night, February 28, the young people will be in charge of the services at the church which will be the climax of this week's program.

## M'head Players Tenth Annual Hear Records Drama Clinic Held Here

By Zina Hamrick  
The tenth annual Morehead Regional High School Drama Festival was held in Butler Auditorium Saturday, February 13, 1960.

Five schools attended the drama festival. They were Rowan County High School, Morehead; Jackson City High School, Jackson; Breckinridge Training School, Morehead; Highlands High School, Ft. Thomas; and Homes High School, Covington.

Rowan County and Homes High performed superior rating for their performances, "Ice Bound" was the title of the play given by Rowan County while Homes High School won their rating on the play "White Dove".

The superior winners will participate in the State Drama Festival.

The guest judge was Willard Friedman of Marietta College, Marietta, Ohio.

Following the program a short business meeting was held during which Arrowood appointed committees for the Bohemian Ball and the Circus Europe.

Scheduled for the March meeting of the Players will be the presentation of a one act play by Gary Eldridge.

## Have a real cigarette—have a CAMEL

Jack and Mary Lambie  
WEST COAST AIRPLANE ENTHUSIASTS

**CAMEL**  
CHOICE QUALITY

TURKISH & DOMESTIC BLEND CIGARETTES

The best tobacco makes the best smoke!

# LOOKING THROUGH

## The Eagle Eye

by GEORGE STEVENS  
Trail Blazer Sports Editor

The winds blew and the snow fell, blanketing the greens of the Memorial Stadium as the 1960 Spring football season was called off as the tiny blizzard dumped a foot of snow on Morehead State College.

With the recruiting program in full swing, head coach Guy Penny is laying the ground work for next year's gridiron season. Head football coach Guy Penny has toured the South, signing prospective high school graduates and junior college graduates.

With the return of most of last year's starting lineup and reserve strength added by freshmen and transfers, the football outlook is taking on an improve form in comparison to recent years.

**ONE OF THE NATION'S BEST**  
Senior guard Herb Triplett, who has been heralded by newspapers throughout the Ohio Valley Conference region, is beginning to attract national prominence among basketball authorities throughout the Nation.

Triplett, one of the few high school basketball stars to gain All-State in two states, Kentucky and Ohio, is 24th in America in major college scoring. The line flash has been sizzling the fieldhouse nets for an average of 21.4 points per game.

Triplett's best performance of the season came in the overtime Murray encounter as the hot shooting basketballman poured in 39 points before the finale.

**OHIO VALLEY CONFERENCE STATISTICS**  
Although the ailing Morehead State College basketball team has been ridden with injuries and inexperience, three of the Eagles' players are rated among the conference's leading scorers.

All-OVC candidate Herb Triplett is currently ranked fourth in conference play, behind Ed Tennessee's Tom Chilton, Tennessee Tech's Jimmy Hagan and Middle Tennessee's Bob Burden. Trip has appeared in 16 games this season and has accounted for 336 points.

Forward Freddie Thompson has pushed up to the number eight spot in conference scoring. He has appeared in 16 games and has scored 221 points in 14 appearances for an average of 15.8 points per game.

Guard Mickey Morgan is currently ranked 11th in the league as the Eagles' leading scorer. Morgan has appeared in 16 games, hitting for 41.3 percent from the field. Morgan has made 16 appearances thus far in the season, scoring a total of 221 points.

**FOOTBALL THEME SONG**  
"Dashing through the snow, with a pigskin in my hand  
On the gridiron we go, till we cannot stand"  
by Raymond Allen Hutchison.

**QUESTION OF THE WEEK**  
Is it true that a bicycle team has been working out incognito on the boulevard for an upcoming endurance test?

**NEW EXTRA-MURAL PROGRAM ARRANGED**  
The Morehead State College intramural department has made plans for intercollegiate basketball participation on the intramural level. Coach "Buddy" Long and Dr. Zeffa Herold have set up an extensive intramural program for the 1959-60 season.

The extra-mural program will enable the championship teams of intramural play to engage in matches with Marshall College and ARMO.

The intramural program certainly has been an improvement over last season and we of the sports staff of The Trail Blazer would like to commend those responsible for its organization and administration.

The two home extra-mural games, which will be held here February 26 and March 5 at 7:30 p.m., should provide an interesting exhibition for the student body. Mark your calendar—it should be worth seeing.

**ROUNDREBBERS RETURN**  
Two of the finest prospects from last season's freshman basketball squad have made their return to the team. They are currently working with the varsity squad. Towering center Doug Cundiff, highly ranked in the Kentucky All-State poll, and forward Tom "Big Red" Dings are in the process of becoming eligible for Ohio Valley Conference play next fall.

**BASKETBALL MEETING**  
Head basketball coach George Cooke has announced that basketball practice will get underway soon in preparation for the 1960 season. Wednesday afternoon, at 3:30 p.m., there will be a general meeting at which time players who wish to try out for next year's squad will be given information concerning the date that practice will get underway. The team will be broken up into positions and given assignments for the season.

If you are interested in this meeting and trying out for the basketball team, DON'T FORGET TO ATTEND.

**DEATON SERVES LAST SEASON AS MANAGER**  
By George Stevens

A little man with a big job will be an integral part of the coaching staff of the Eagles. J. P. Deaton who is currently serving his last year as manager of the Morehead State College basketball team.

The affable Deaton has been a member of the coaching staff for the past three seasons and is a constant companion of his towering coach, George Cooke. Deaton has been with the team since his high school days in Canaan, Ky., and attended Bradley County High School.

Holding down a guard position, Deaton lettered three years and played all the way with the well known Doug Cundiff, who is currently enrolled at Morehead.

"Being a manager of a college basketball team quite an interesting job," Deaton said, "I have had many varied and unusual experiences while working with the Eagles."

"One time, and I'll never forget it, I, J. P., was traveling to Murfreesboro, Tenn., to play Middle Tennessee in a big Ohio Valley Conference game. Everything was going fine; we ate dinner and went over to the gym and started to get ready for the game. I reached over to get the warm up basketballs and they weren't there. I had left them back in the fieldhouse. Coach Loughlin, after hearing this, borrowed some balls from Middle Tennessee and the situation turned out to be most embarrassing."

As manager of the team, Deaton tours with the Eagles. He accompanied the squad to Philadelphia and recalled seeing some very interesting historical places.

"While in Philadelphia," said Deaton, "we saw the Liberty Bell, Independence square, the first cobblestone street, and Betts



**ATTEMPTED BLOCK!**—Ed Noe, 4'9" center for the Morehead State College Eagles goes up in an attempt to block a shot by an unidentified Western player. Awaiting the outcome is (34) Hickey Thompson and (14) Acie Hall. Western won their first game in the new fieldhouse, 65-72.

## Snow Delays Spring Football Practice

By Law Mueller  
While most fans are giving their attention to the eagle sport of basketball, some of the interest at Morehead State College has shifted to the gridiron where Coach Guy Penny is recruiting prospective warriors through their pace in the annual spring football practice.

Delayed in maneuvers by heavy snowfall, Coach Penny is beginning to unlimber some of his "old pros" and several sparkling newcomers. Heading the list of returnees are second and third All-OVC performers, Buddy Fields and Tom Scott, both of whom are expected to be outstanding on the gridiron.

Fields, a 5'8" junior, was the Eagles' leading ground gainer last year as he led the picking 363 yards from his halfback slot. He was second in total offense only to strong-armed Hickey Schutte, who, combined with his passing yardage which totaled 435, ran up a total of 673 yards. Fields also pointed for the Eagles, averaging 63.3 yards per kick.

Returning center, Tom Scott, will be the mainstay of the Eagles' forward wall. The 6'11" 200 pound line-buster, along with Joe Tackett, Bruce Howard, Tony Gast, and two transfers, offer the greatest amount of seniority to the front line. Scott made the third team All-OVC last year after being placed on the first squad his freshman year.

Behind this trio come even more experienced hands in the persons of Buford Granger, Jim Hastings, and many freshmen who will have a year's experience under their belts. A total of 38 players in all are taking part in this session of "toll and tussle" football practice.

## Penny Signs Football Prospects For 1960

Head Coach Guy Penny has been hitting the recruiting trails recently and has come up with some fine prospects for the 1960 gridiron season.

Junior college transfers are among some of the new faces on campus and will begin working out this spring in the annual pre-season practice.

From Middle Georgia College, two linemen and a back have signed grants-in-aid for the 1960 season.

Interior line strength will be aided by transfers Delmar Garner and Fred Hill of Middle Georgia. Garner, who has been at Wheelersville, Ga., is a rugged 195 lb. guard. The guard position will be strengthened by Tommy Swain Swain, a 170-lb. halfback of Bushnell, Ala., and a transfer from Middle Georgia.

Transfer Paul Brumby has come along a way to play football at Morehead State. Brumby, a senior at Boise Junior College in Boise, Idaho, Brumby is one of the pre-season picks to fill the gap at the guard position. Brumby will fully evaluate the 1960-pounder this spring.

A parade of freshmen prospects have been awarded scholarships for the upcoming pre-season season. Hailing from Middletown, Conn., lineman Roy Lucas will be vying for the linemen at the end post.

From the deep South, two freshmen have signed on the dotted line for Morehead. Freshmen tight end, Walter, and Ken Martin, a 220-lb. tackle from Tifton, Ga., will be scrapping for starting berths this spring. In the backfield, William Higgins of Greenville, Ala., will be added to the Eagles' list of quarterbacks.

With the return of 15 lettermen from last season's squad, Coach Guy Penny is avidly recruiting new players to strengthen the team. Coach Loughlin has been endowed with a potential championship club next year, what with the fruitful supply of talented freshmen that he has secured.

Coach Loughlin has been endowed with a potential championship club next year, what with the fruitful supply of talented freshmen that he has secured.

Coach Loughlin has been endowed with a potential championship club next year, what with the fruitful supply of talented freshmen that he has secured.

Coach Loughlin has been endowed with a potential championship club next year, what with the fruitful supply of talented freshmen that he has secured.

Coach Loughlin has been endowed with a potential championship club next year, what with the fruitful supply of talented freshmen that he has secured.

Coach Loughlin has been endowed with a potential championship club next year, what with the fruitful supply of talented freshmen that he has secured.

Coach Loughlin has been endowed with a potential championship club next year, what with the fruitful supply of talented freshmen that he has secured.

Coach Loughlin has been endowed with a potential championship club next year, what with the fruitful supply of talented freshmen that he has secured.

Coach Loughlin has been endowed with a potential championship club next year, what with the fruitful supply of talented freshmen that he has secured.

Coach Loughlin has been endowed with a potential championship club next year, what with the fruitful supply of talented freshmen that he has secured.

## Sport Shots

By Lee Mueller  
A leading star in Coach Bob Loughlin's crew of top-notch flying Eagles is fleet forward, Arthur "Goose" Cole.

Unimpressive in early season trials, Cole has been slowly, but surely developing into the roll he was slated to fill after his first two years here, that is, to fill in as a forward shot which has been rather weak point in Coach Loughlin's rolling offense thus far this season.

"Goose", who is on occasion a prolific scorer, was one of the states highest scorers during his day at Camarillo High School. His paramount point production was a phenomenal 66 points in one game during his last campaign in high school. This mark was surpassed only once in that year, by Bob Shattuck of Lane Jack who racked up 83.

It's down the stretch, and it looks as though it may be a photo finish for the winner of this tournament. The winner will become champion of the first intramural Ping Pong Tournament. Look for the results of the tournament in the next edition of the Trail Blazer.

**FLEET FORWARD**—Arthur "Goose" Cole, has been outstanding in a number of games this season.

A sparkling performance in the last encounter with the Maroons of Gary Allertown, Cole, who has been outstanding in a number of games this season.

A rugged rebounder, Goose has been assisting Ed Noe in the rebounding chores this year even though he saw limited action in the first part of the season.

Goose majors in Physical Education and plans upon a coaching career when he leaves the Morehead campus.

Cole, along with a host of others, down as possible members of the team, will be competing for the top position in the team.

Personally, we prefer for the goater type of women to go get somebody else.

# Western Downs MSC 85-72 In Fieldhouse

## Long Releases Program For Extramurals

By Ray Allen  
Coach Long, director of Morehead intramurals, revealed plans for extramural activity.

Coach Long has announced that Morehead shall participate in extramural basketball with other college teams. Games scheduled with other colleges at the present will pit Morehead extramural basketball against Marshall College and Armo extramural squads.

The two Morehead extramural teams will be the winners of the intramural tournament and the all stars of the three intramural basketball leagues. The all stars will be selected by the captains of all the intramural basketball teams.

Other colleges have been contacted for extramural games and the schedule will be posted at a later date. Morehead's present extramural schedule is Marshall at Morehead Feb. 26 at 7:30.

Armo at Morehead March 1, 8:00.  
Morehead at Marshall March 4, 7:30.  
Morehead at Armo.

## MSC Ping Pong Tournament Now Underway

By Ray Allen  
Morehead's Intramural Ping Pong Tournament enters its quarter finals this week.

Tommy Miller, Arthur Crow, and Bill Miller have reached the quarter finals of the table tennis tournament which is being held at the present.

It's down the stretch, and it looks as though it may be a photo finish for the winner of this tournament. The winner will become champion of the first intramural Ping Pong Tournament. Look for the results of the tournament in the next edition of the Trail Blazer.

**WEBER LEADS**  
MSC Bowling In Tournament

By Ray Allen  
Morehead State's bowling team has entered the National Bowling Tournament.

Morehead's Intramural Department released the statement that it has entered the bowling team, under the direction of the 1959 National Intercollegiate Bowling Tournament to be played Feb. 17-24. The team made their first trip to Lexington Bowling Lanes on Feb. 6, for the purpose of securing a score among the top five scorers in the tournament.

Members of the team are Captain Harry Weber, Ed DeBane, Gary Allertown, and Dave Hickey. Weber and Gary Allertown were high point series men with 657 and 572 respectively. The grand total of three games for the team was a healthy 2066.

Life would be simpler if the people on the earth were sincere

## By Karen Hutchinson

The Hilltoppers of Western State College invaded the home hard-wood of the Morehead Eagles and won 85-72 in an Ohio Valley Conference tilt.

The Eagles took the lead early in the first half when forward Hickey Thompson made the nets switch with two free throws. After 4:35 of play with the Eagles in the lead, Rascoe pushed Western ahead 7-6 with a shot from the charity line.

The Toppers remained in the lead the rest of the game. The Eagles' biggest threat of the game came when Mickey Morgan tipped the nets with a field goal which brought the score to a 61-50 tie with 7:30 left in the game. But the Hilltoppers surged on ahead to win this OVC contest 85-72.

Senior guard, Herb Triplett, and sophomore center, Ed Noe, displayed dazzling performances in the second half. Triplett racked up 25 points during the game, holding 15 in the second half.

Center Charlie Osborne, of the Hilltoppers, was the leading scorer of the game hitting the nets for 25 points, bagging 15 in the first half and 10 in the second. Bobby Rascoe followed with 18 points.

Towering 6'9 Noe from Mt. Clemens, Mich., and 6'4 Acie Hall both rugged rebounders, old the boards, respectively.

Osborne snagged 12 rebounds from the backboards for the Big Red of Coach Ed Diddle.

Morehead had a trio of players headed for the showers after the Eagles committed 23 personal fouls during the evening.

Western took advantage of the free throws, fouling in 29 out of 37, while Morehead bagged 16 out of 23.

holding 15 in the second half Noe, held to only two points in the first half, bagged five foul shots and two charity shots in the second half, racking up 12 points.

Hickey Thompson, 5-11 forward, was the third leading scorer for the Eagles with 12 points.

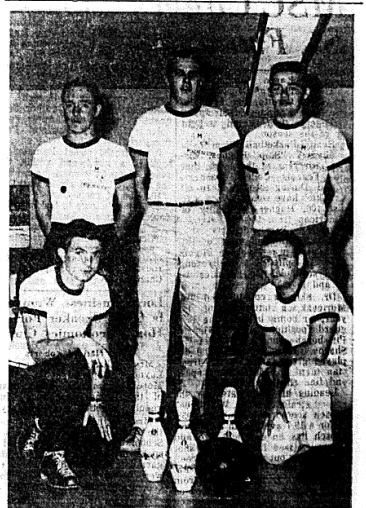
Center Charlie Osborne, of the Hilltoppers, was the leading scorer of the game hitting the nets for 25 points, bagging 15 in the first half and 10 in the second. Bobby Rascoe followed with 18 points.

Towering 6'9 Noe from Mt. Clemens, Mich., and 6'4 Acie Hall both rugged rebounders, old the boards, respectively.

Osborne snagged 12 rebounds from the backboards for the Big Red of Coach Ed Diddle.

Morehead had a trio of players headed for the showers after the Eagles committed 23 personal fouls during the evening.

Western took advantage of the free throws, fouling in 29 out of 37, while Morehead bagged 16 out of 23.



**ENTER BOWLING TOURNAMENT**—These young pinmen are participating in the Collegiate Bowling Tournament in Lexington, Ky. From left to right are: Bill Shattuck, Harry Weber, Dave Hickey, and Arthur Crow. The team's phenomenal 657 series is their first.

## Four Teams Lead Intramural Play

By Ray Allen  
Undeclared Angelo Flukes, and River Rats lead Blue, Gold, and Eagle leagues respectively with only one week of action remaining in intramural basketball.

Floyd Co. and the Angels have gained tournament birth as both teams have clinched first and second places in the Blue League.

In the Gold League things just haven't been settled yet. The Flukes, Monies, Free Staters, and Big Dongs are battling, both to and north, right down to the finish for birth in the intramural tournament.

In the Eagle League things just haven't been settled yet. The Flukes, Monies, Free Staters, and Big Dongs are battling, both to and north, right down to the finish for birth in the intramural tournament.

Each league has placed a top scorer in the scoring column. Five scorers in intramural basketball. Scott of the River Rats leads the scoring parade with a hefty 20.7 average. Wright of the Flukes is pressing Scott for top honors with a respectable 19.5 average. Holding down the third position we find Edwards of the TARS with an even 18 points per game output. Williamson of the Big Dongs is closing in on Ed Tars with a 17.8 average. Floyd County's Howard has compiled a 14.1 average per game, placing him fourth in the scoring column.

In last week's action in the Blue League the league leading Angels received a score among the top five scorers in intramural basketball. Scott of the River Rats leads the scoring parade with a hefty 20.7 average. Wright of the Flukes is pressing Scott for top honors with a respectable 19.5 average. Holding down the third position we find Edwards of the TARS with an even 18 points per game output. Williamson of the Big Dongs is closing in on Ed Tars with a 17.8 average. Floyd County's Howard has compiled a 14.1 average per game, placing him fourth in the scoring column.

In last week's action in the Blue League the league leading Angels received a score among the top five scorers in intramural basketball. Scott of the River Rats leads the scoring parade with a hefty 20.7 average. Wright of the Flukes is pressing Scott for top honors with a respectable 19.5 average. Holding down the third position we find Edwards of the TARS with an even 18 points per game output. Williamson of the Big Dongs is closing in on Ed Tars with a 17.8 average. Floyd County's Howard has compiled a 14.1 average per game, placing him fourth in the scoring column.

In last week's action in the Blue League the league leading Angels received a score among the top five scorers in intramural basketball. Scott of the River Rats leads the scoring parade with a hefty 20.7 average. Wright of the Flukes is pressing Scott for top honors with a respectable 19.5 average. Holding down the third position we find Edwards of the TARS with an even 18 points per game output. Williamson of the Big Dongs is closing in on Ed Tars with a 17.8 average. Floyd County's Howard has compiled a 14.1 average per game, placing him fourth in the scoring column.

In last week's action in the Blue League the league leading Angels received a score among the top five scorers in intramural basketball. Scott of the River Rats leads the scoring parade with a hefty 20.7 average. Wright of the Flukes is pressing Scott for top honors with a respectable 19.5 average. Holding down the third position we find Edwards of the TARS with an even 18 points per game output. Williamson of the Big Dongs is closing in on Ed Tars with a 17.8 average. Floyd County's Howard has compiled a 14.1 average per game, placing him fourth in the scoring column.

In last week's action in the Blue League the league leading Angels received a score among the top five scorers in intramural basketball. Scott of the River Rats leads the scoring parade with a hefty 20.7 average. Wright of the Flukes is pressing Scott for top honors with a respectable 19.5 average. Holding down the third position we find Edwards of the TARS with an even 18 points per game output. Williamson of the Big Dongs is closing in on Ed Tars with a 17.8 average. Floyd County's Howard has compiled a 14.1 average per game, placing him fourth in the scoring column.

In last week's action in the Blue League the league leading Angels received a score among the top five scorers in intramural basketball. Scott of the River Rats leads the scoring parade with a hefty 20.7 average. Wright of the Flukes is pressing Scott for top honors with a respectable 19.5 average. Holding down the third position we find Edwards of the TARS with an even 18 points per game output. Williamson of the Big Dongs is closing in on Ed Tars with a 17.8 average. Floyd County's Howard has compiled a 14.1 average per game, placing him fourth in the scoring column.

In last week's action in the Blue League the league leading Angels received a score among the top five scorers in intramural basketball. Scott of the River Rats leads the scoring parade with a hefty 20.7 average. Wright of the Flukes is pressing Scott for top honors with a respectable 19.5 average. Holding down the third position we find Edwards of the TARS with an even 18 points per game output. Williamson of the Big Dongs is closing in on Ed Tars with a 17.8 average. Floyd County's Howard has compiled a 14.1 average per game, placing him fourth in the scoring column.



**MOST VALUABLE PLAYERS**—Buddy Fields, Coach Guy Penny, and Wayne Chapman are shown here as they received their respective awards from the Veterans' Field House. Fields was voted the Outstanding Back of the 1959 Morehead State College Eagles gridiers while Chapman was voted Outstanding Lineman and Most Valuable Player.

the Vallette Angel says...

**SELLING PERFUME IS AN EASY WAY TO EARN EXTRA MONEY—FUN TOO!**







**CONCERT CHOIR**—Above are members of the Concert Choir which consists of thirty-four Morehead State College students. The group is seen rehearsing, with James R. Beane directing. They are currently practicing a number of Hindemith numbers, Robert Shaw Choral Series, and spiritual selections.

### 274 On —

(Continued From Page 1)

Martha M., 3.22; Adams, Nina O., 3.23; Adkins, Virginia, 3.20; Adkins, Brown, 3.20; Alley, Charles C., 3.20; Amburgey, Glenn C., 3.14; Amburgey, Jerry, 3.20; Anglin, Barbara E., 4.00; Applegate, Carolyn, 3.20; Arnett, Michael G., 3.21; Arnett, John A., 3.20; Arnett, Patrick, 3.21; Auxier, Peggy A., 3.00; Bailey, John S., 3.00; Bailey, William G., 3.00; Baker, Robert L., 3.00; Baker, Robert N., 3.00; Baldrige, Kenneth, 3.15; Baldridge, Robert, 3.15; Baldridge, William B., 3.00; Barker, Anna, 3.00; Barker, Thomas, 3.18; Barrett, Robert C., 3.00; Bartlett, Patricia, 3.21; Behmer, Thomas A., 3.04; Belcher, Shirley A., 3.13; Bentley, Robert T., 3.00; Birch, Mary Helen, 3.21; Blair, Donald, 3.00; Blair, Paul T., 3.23; Bolton, Mary H., 3.23; Bolton, Robert, 3.23; Bradley, Leo H., 3.27; Brannon, Gary V., 4.00; Bremley, Geraldine, 3.20; Brooks, Keith A., 3.00; Brown, Rosemary, 3.26; Brown, Rita, 3.25; Bush, Anna A., 3.23; Butler, Wm. L., 3.14; Cain, Frances, 3.20; Caligaris, Clyde J., 3.20; Cameron, David W., 3.00; Carter, Franklin B., 3.20; Carter, William, 3.27; Catron, Dudley A., 3.20; Caudill, C. Dale, 3.20; Caudill, Patricia A., 3.20; Caudill, Laura R., 3.00; Christian, Jimmy, 3.20; Cline, Jennifer G., 4.00; Clippard, Charles W., 3.20; Clayton, Zola A., 3.21; Davis, Hazel K., 3.40; Davis, Jane Y., 3.20; Davis, Linda S., 3.20; Dawson, Robert J., 3.20; Day, Reda C., 3.00; Day, Wanda J., 3.23; Dean, Betty Rudd, 3.20; DeBord, Burnell L., 3.20; Dehart, Sara M., 3.00; Delong, Larry K., 3.00; Dotson, James Hugh, 3.07; Doyle, Marion G., 3.00; Doyle, Orville J., 3.15; Duncan, Gretta B., 3.23; Ellington, Arye E., 3.20; Evans, Norma J., 3.21; Evans, Lynn S., 3.24; Falls, Harold B., 3.11; Farrell, James R., 4.00; Fawcett, William E., 3.00; Fekko, Harlan, 3.00; Fields, Iris Gayle, 3.27; Fields, Vivian R., 3.15; Folmer, Barbara, 3.28; Fraley, Robert D., 4.00; Frye, Martha L., 3.17; Fugate, Wilma Conley, 3.24; Fulton, Linda L., 3.20; Gaines, Virginia, 3.20; Gallaher, Patricia A., 3.13; Gayhart, Anna Jean, 4.00; Gearhart, Ronald L., 3.20; George, Rita Ann, 3.20; Gill, Robert, 3.12; Goodpastor, Emory V., 3.13; Gory, June D., 3.21; Green, Betty J., 4.00; Greene, Margie, 3.00; Grimes, Billy A., 3.00; Gross, James, 3.00; Gullett, Emma L., 3.22; Hall, Bobby, 3.00; Hall, Clifton, 3.75; Hamilton, Glenna B., 3.00; Hamilton, Kenneth, 3.07; Hamilton, Paula D., 3.00; Hammett, Janet M., 3.20; Harp, Clara J., 3.25; Harrington, Jean, 3.14; Harris, William R., 3.00; Harwood, James L., 3.20; Haves, Billy R., 3.20; Hayes, Gary P., 3.23; Hazen, George, 3.00; Helphington, Frances, 3.20; Hicks, Calla H., 3.13; Hinton, Nancy L., 3.23; Hix, Brook, William H., 3.07; Horton, Joel T., 3.00; Horton, R. June, 3.00; Howard, Daniel B., 3.27; Howard, Sarah L., 3.00; Hughes, Gene Paul, 3.20; Irvin, Key A., 3.20; Jester, John A., 3.14; Johnston, Joyce Sue, 3.19; Johnston, Sandra L., 3.00; Jones, George R., 3.20; Jones, Vivian F., 3.00; Jordan, David R., 3.18; Keach, M. Maxine, 3.27; Kelley, Helen R., 3.27; Kelly, Judith C., 3.00; Kendrick, Jane E., 3.21; King, George D., 3.20; King, William E., 3.00; Lewis, Donald L., 3.22; Lewis, Paul R., 3.23; Lilly, Emma E., 3.23; Link, Gary S., 3.23; Litton, Patty L., 3.23; Mabry, Janice R., 3.00; Mabry, Virginia L., 3.23; Maggard, Garnetta, 3.00; Manley, Betty D., 3.00; Martin, Aime, 3.25; Masters, David W., 3.00; May, Darlene, 3.25; McCann, M. Darlene, 3.25; McHenry, Georgia, 4.00; McKenney, Lavette, 3.23; McKenney, Earl E., 3.25; McNew, Peggy F., 3.13; Meyer, Roger C., 4.00; Meyer, Joan K., 3.27; Miller, Artye, 4.00; Miller, Shumme, 4.00; Moore, Carroll D., 3.17; Moore, Rosemary, 3.24; Morrell, William E., 3.20; Mullins, Doris A., 3.11; Murphy, Bernard, 3.23; Myer, Paul Jr., 3.25; Myers, Barbara A., 3.21; Naugle, Carolyn Ann, 3.21; Newman, Charles J., 3.13; Nielsen, George W., 3.06; Norworthy, James, 3.00; Nyilas, Sandra J., 4.00; Oberley, Patricia, 3.24; Oney, Ernestine, 3.00; Oppenheimer, Sandra, 3.00; Osborn, Kenneth R., 3.23; Osley, E. Gail, 3.24; Peace, Wanda H., 4.00; Pease, Mary Helen, 3.00; Pierati, Mary Stapp, 3.20; Plummer, Sue Ann, 3.24; Pockley, Norman J., 3.13; Puckett, Fern M., 3.20; Puckett, Robert, 3.20; Rannels, Richard, 3.00; Rawlings, Delores L., 3.23; Ray, Audrey B., 3.27; Richardson, Charles R., 3.04; Ricketts, Mary L., 3.19; Rivers, Orbie K., 3.20; Roberts, Sue, 4.00; Robinson, Patty M., 3.00; Robinson, Richard P., 3.23; Rogers, Bonnie L., 3.00; Rolph, Arlene, Gregory, 3.00; Rolph, Charles W., 3.20; Rose, Dixie, 3.20; Rowland, Kent, 3.18; Rucker, Ronald G., 3.20; Sallee, Claude Jr., 3.20; Salyer, Gail, 3.19; Salyer, Joyce, 3.20; Schaefer, Eleanor, 4.00; Schaefer, Steve, 4.00; Schaefer, Bonnie L., 3.27; Shaffer, Harry R., 3.13; Sims, Thomas M., 3.00; Silva, Barbara, 3.00; Sizemore, Delores L., 3.25; Slater, Richard G., 3.00; Smart, Robert, 3.20; Smith, Robert David, 3.12; Sowards, Iris L., 4.00; Spaulding, Joyce B., 4.00; Stagers, Noel D., 3.24; Stamper, Barbara J., 3.27; Stanley, P. Gayle, 3.29; Stevens, William R., 3.00; Stiefen, Erma, George, 3.00; Stepp, Carmel, 4.00; Stepp, ewis J., 3.27; Stevens, William Craig, 3.00; Stewart, Rodney Joe, 3.00; Story, James L., 3.00; Story, Janice P., 3.20; Peter L., 3.22; Sturgell, Marietta, 3.00; Svec, William J., 3.25; Tackett, Esta P., 3.20; Tuller, Joyce A., 3.24; Taylor, Gloria, 3.20; Taylor, Rose Shivel, 3.27; Teruhahen, Robert E., 3.23; Thomas, James H., 3.07; Tolliver, Sabrina, 3.00; Truitt, Albert B., 3.00; Trusty, Judy A., 3.24; Vencill, Ruby L., 3.25; Venters, Nagatha, 3.00; Virgin, Bernice R., 3.25; Wade, H. Wayne, 3.00; Wagner, Ella Sue, 3.41; Walker, Mary Ann, 3.21; Walters, Dennis C., 3.00; Ward, Sonia A., 3.00; Warrenner, E. Paul, 3.17; Warren, Anna M., 3.00; Watson, Carolyn S., 3.20; Webb, Bobbie Frances, 3.00; Wells, Betty Jo, 4.00; Wells, Randall L., 3.07; Wheeler, Kay F., 3.00; Wheeler, Nancy R., 3.20; White, John E., 3.21; Whiteley, James G., 3.18; Whit, Glenn S., 3.00; Wicker, Terry, 3.23; Wiseman, Marilyn R., 3.27; Wood, Helen Ruth, 3.28; Woods, Judith C., 3.10; Yonts, Patricia C., 3.22; Youngblood, B. Aretta, 4.00.

**M.S.C. STUDENTS**

**SAVE UP TO 4¢ A GALLON . . .**

**WITH NO LOSS IN HORSEPOWER**

**Fill up at SUN'S Miracle Pump**

**6 BLENDS Custom Blended To Fit Your Car Exactly!**

**6 PRICES**

**MOREHEAD SUNCOCO SERVICE**

**MIDLAND TRAIL GARAGE**

**Servicing Your Chevrolet For 28 Years**

**For Economical Transportation**

**CHEVROLET**

**Sales Service**

**PHONE ST 45136**

**Morehead, Kentucky**

## Rehearsals For Hi Notes In Music . . . Concert Choir Get Underway

By JUDIE WILSON

By Barbara Ellen Anglin  
The Concert Choir is in full swing again this semester with rehearsals.

James R. Beane, director of the choir, announced that several new members have been added and that all but one of last semester's group are back with the choir.

This semester the choir consists of thirty-four members. In the Soprano section are Barbara Anglin, Carolyn Applegate, Beverly Bowling, Sarah Coleman, Louise Fryman, Rosemary Honaker, Donna Lohmeyer and Joan Moore. Singing in the Alto section are Mary Anderson, Ruth Bertram, Betty Cudill, Nancy Carroll Fannin, Joann Myers, Gayle Stanley, Bobbie Webb and Marilyn Wiseman.

The four tenors are Ronald Barker, Louis Cowen, Joe Scherer, Steve Marrs, Jim Morgan, Demaree Todd, Randall Wells and Richard Williams.

The Bass section consists of Robert Kelly, Fred Fraley, Forrest Kelly, Gary Lewis, Gary Link, Frank Pasquerella, George Robinson, Art Shapland, Bill Svec and Edson Yetter.

The choir plans to give performances in various churches and will also perform at high school groups during their rehearsal sessions. This spring the group plans to go to the States where they are presently working on include some of the Robert Shaw Choral Series, spirituals, several Hindemith numbers and other choral selections.

**T. B. ISSUES PLEA**  
With the increased number of pages in the Trail Blazer there will be an increased amount of work for the staffers. That is unless there are students who would like to contribute. In this case, the word load on every one would be lessened and it would be fun.

Anyone wishing to join the staff should edit or copy for the Blazer, in the Public Relations Department.

**Concert**  
(Continued From Page 1)  
to the fact that "our sincerity speaks for us. It's not the words," he emphasized last week with "classic passion." We sing from the heart."

L-Picks of the Week  
On the Capitol label . . .  
"VIVA KENTON!", a blend of standards and Kenton originals.  
"BALLADS FOR NIGHT PEOPLE", by John Christy.  
"VOICES AND BRASS", which teams the Four Freshmen and Kenton alumnus Pete Rugolo.  
"ONLY THE LONELY", by the one and only Frank Sinatra.  
"HERE WE GO AGAIN", the Kingston Trio.  
On the M-G-M label . . .  
"SHORTY RODGERS MEETS TARZAN", several Tarzan movies.  
On the Columbia label . . .  
"CONIFF MEETS BUTTERFIELD", an unusual blending of Ray Conniff and Billy Butterfield.  
"HEAVENLY", Johnny Mathis.

**JAZZ**  
Jazz, of all music (and it's composed with the same skill and devotion as any other work of art), suffers from the worst public relations. It seems to go with murdered English "Cool Cat", "Daddy-O", etc. But jazz isn't silly, in spite of silly words. It's music times to woe them . . . or, warm, and Jelly Roll Morton's piano is already a classic. Others like it cool (and/or progressive or modern) or, simply, more formal and Theonious Monk, the composer-arranger-leader- pianist, is no slouch.

The composer knows the fatherhood relationship is between Dixieland and modern. If you're a dyed-in-the-rag-time, the next step is the more subtle harmonies and syncopation of modern jazz; and early Mortons, Armstrongs, and Ellingtons, all you've learned the old-timey, it's a bit of jazz in all of us.

Two people so deeply in love . . . two people who could not marry . . . sounds like pure fiction but yet it is the true story of Richard Egan and Dorothy McGuire but the stars were the current Hollywood crop. The roles of the two were very adequately played by Deborah Kerr as Shielah Graham and Gregory Peck as the tempestuous F. Scott Fitzgerald, prolific American novelist of the Roaring Twenties.

Another good movie is gone but not soon to be forgotten . . . "A Summer Place", starring the beautiful teen-age star, Sandra Dee and a new Hollywood personality, Troy Donahue. The picture billed the stars as Richard Egan and Dorothy McGuire but the stars were the junior players in a drama of exploding, youthful emotions. I feel sure that most of us saw it because seats were pretty hard to find at any time in the theatre.

One of the songs playing on the juke boxes everywhere now is the apparent successor to the big hit "Black Knight". It is similarly titled "Jack The Ripper" and is from a movie of the same name. The story is from the files of Scotland Yard and listed to this day on their records as unsolved. The diabolical methods of Jack The Ripper caused many English ladies to walk fearfully for years as through the thick London fog this cat was lurking and looking for Mary Clarke. The theme music is chilling too, from the pen of Jimmy McHugh and Pete Rugolo with lyrics by the redoubtable Steve Allen. "Jack The Ripper" will be in Morehead BEF, 28-29 and MARCH 1.

Following "Jack The Ripper" will be, well, didn't you just know it . . . the inimitable B. B. King, yes, Brigitte Bardot in "The Girl In The Bikini" . . . Must I say more? See you there fellows. Don't crowd.



**KPA CONVENTION**—Ray Hornback (left), Director of Public Relations at Morehead State College, is shown here with a former professor at the University of Kentucky and two former classmates while attending the Kentucky Press Association Convention recently. Shown with Hornback are: Dr. Niel Plummer, Head of the UK School of Journalism and recipient of the outstanding KPA member award; Tom Preston, Publisher of the Cynthiana Log-Cabin and Democrat and Frank Strunk, Editor of the Rural Kentuckian.

**Crescendo Club News**  
By Zina Henrick  
The Crescendo Club recently elected their officers for the 1960 year.  
The officers were chosen by club voting of various members.  
The new president for 1960 is Forrest Kelly; vice-president, David Cameron; correspondent, Mary Cameron; secretary, Mary Cameron; and secretary-treasurer, Marilyn Wiseman.

**200 High —**  
(Continued From Page 1)  
South Point, Ohio; Vinton, Huntington, W. Va.; Wabasha High School, Mason, W. Va.; Wheelwright, Whitesburg and Wheeland.  
Also represented are: Lewis County, Danville, Pritchard, Beattyville; Baysville, Ohio; Fairview, Mason, W. Va.; Sciotoville, Ohio; South Shore; Williamstown; Bryan Station; Lexington Lafayette; and Norton, Va.

## FOR BIG BUSINESS OR LITTLE BUSINESS IT'S GOOD BUSINESS

To Choose

## The Citizens Bank

Member Federal Deposit Insurance Corp.

**HUNGRY?**

**BUY YOUR FOOD AND SAVE AT ALLEN'S IGA Foodliner**

**Morehead, Kentucky**

**Monarch Supply Store**

**A Complete Hardware Supply Company**

**Our Business Is To Supply Your Needs**

**A Full Line Of Supplies For**

- HOUSEWARE
- PLUMBING
- APPLIANCES
- HEATING
- FARMING TOOLS
- SAW MILLS

**West Main Street Morehead, Kentucky**

**Jerry's Fat Boy Says, "Have A Delicious Fat Boy"**

**"Boy, They're Good!"**

**JERRY'S DRIVE-IN RESTAURANT**

**On US 60 Opposite The Stadium**