

# News

Media Relations

[www.moreheadstate.edu](http://www.moreheadstate.edu)

Morehead State University

UPO Box 1100

Morehead, KY 40351-1689

(606) 783-2030

July 13, 2009

FOR IMMEDIATE RELEASE

PAINTSVILLE, Ky.---According to Amanda Hale, "she would not have known where to start" had it not been for the Morehead State University's East Kentucky Small Business Development Center in Paintsville.

It was with the help of the Paintsville SBDC, her dream of owning her own gymnastics and dance business became a reality.

Hale had been teaching classes at an area gym for more than eight years when she and a close friend, Amy Ellison, decided to open their own gymnastics and dance business.

Hale met with Mike Morley at the Paintsville SBDC, located in the Highlands Entrepreneur Center, in October 2008. Morley helped Hale establish a thorough business plan and offered sound business advice which allowed her to make an informed decision concerning her desire to open her own business.

XTREME Tumble and Party received its start-up financing from Community Trust Bank in February of 2009 and opened its doors on March 1. This new business created three full-time positions.

At this time, the company has more than 100 students enjoying their services and instruction. XTREME Tumble and Party offers gymnastic classes from ages 18 months to advanced levels along with Jeslyn Performing Arts, of Huntington, W. Va., which include hip hop classes on-site. Also offered are Zumba (aerobic dance) for all ages with three certified instructors and three competition all-star gymnastic teams.

Inflatable parties (on-site or for delivery to your home) are available.

XTREME Tumble and Party is located off U.S. 23 next to the new Super Walmart in Louisa. Additional information is available by calling (606) 638-3224 or e-mail at [www.x-tremetumbleandparty.com](http://www.x-tremetumbleandparty.com).

####

ajb

# News

Media Relations

[www.moreheadstate.edu](http://www.moreheadstate.edu)

Morehead State University

UPO Box 1100

Morehead, KY 40351-1689

(606) 783-2030

July 13, 2009

FOR IMMEDIATE RELEASE

MOREHEAD, Ky.---Although Holocaust survivors were free men and women after the end of World War II (many survivors were not in camps during the war), they faced the daunting prospect of relocating and rebuilding their lives, often without their families and original homes. Approximately 140,000 survivors emigrated to the United States, mostly settling in urban areas like New York City that offered the support of large Jewish communities. However, some survivors chose to re-establish their homes in the quiet hills and growing towns of Kentucky.

In "This Is Home Now: Kentucky's Holocaust Survivors Speak," Arwen Donahue and photographer Rebecca Gayle Howell, an MSU instructor of creative writing in the Department of Literature, Linguistics and Writing, create intimate portraits of these survivors through a combination of moving photographs and poignant oral histories. Most of the individuals included in this volume spent the entire duration of the war in Nazi-controlled Germany, and now reside in different locations around the Commonwealth. The volume focuses on the experiences of Holocaust survivors residing in Kentucky as they worked to integrate into new communities while dealing with the emotional effects of their war-time experiences.

"The documentary process, whether it involves images or words or both, is essentially a process of narrative. And narrative is a process of history. Whose story gets told and from whose perspective? Whose self gets seen? It was such a privilege to be a part of this project because I feel that the collaboration wasn't just between Arwen and I, as artists, but between us and our subjects: the survivors themselves," said Howell.

This book developed from a presentation at the Lexington History Museum in May 2005, where visitors observed black and white portraits of Holocaust survivors shown in combination with excerpts from interviews conducted by Donahue. The volume itself is the latest installment of the Kentucky Remembered: An Oral History Series, which documents the state's past through collections of oral narratives addressing specific historical subjects.

Donahue presents each participant's responses in interview form, remaining true to the language and manner in which each history was told. Due to the emotional burden that comes with recounting such atrocities, many of the participants did not regularly discuss their experiences, but felt compelled to raise Holocaust awareness and contribute to the education of Kentuckians.

(MORE)

Howell ---This Is Home Now  
2-2-2-2

In the collection, Oscar Haber, a native of Poland, recounts his experiences as he and his wife passed as non-Jewish Poles under false papers during the war as well as his subsequent life in Lexington. Abe Jakubowicz, another native of Poland, was imprisoned in several concentration camps and escaped death numerous times. He now lives in Louisville.

He willingly speaks about his experiences to help educate people about the Holocaust. The interviewees not only discuss the war, but they also give insight into the unique struggles presented by being Holocaust survivors in Southern communities.

The interviews reveal more than just a historical tragedy by deepening our understanding of these individuals who shape Kentucky communities. "This Is Home Now" is the first book to focus on the postwar lives of Holocaust survivors in this region. In telling these remarkable individuals' stories, the collection gives readers a view into an important and under-represented aspect of Jewish life in the South.

Additional information is available from Howell by calling (606) 783-2738 or by e-mailing to [r.howell@moreheadstate.edu](mailto:r.howell@moreheadstate.edu)

####

ajb

# News

91A3

Media Relations

[www.moreheadstate.edu](http://www.moreheadstate.edu)

Morehead State University

UPO Box 1100

Morehead, KY 40351-1689

(606) 783-2030

July 14, 2009

FOR IMMEDIATE RELEASE

MOREHEAD, Ky.---Secretary of Labor Hilda L. Solis has announced that IRAPP (Institute for Regional Analysis and Public Policy), Morehead State University's program of distinction and part of the new College of Business and Public Affairs, has been chosen to receive funding for a YouthBuild award. The full amount of the award is expected to be just over a million dollars.

"President Obama and I are delighted to be able to increase funding for this promising program, which does so much for youth and their communities," said Secretary Solis. "The YouthBuild program not only assists young people in obtaining education and skills, but also gives them a sense of accomplishment and empowers them as they give back to their communities."

The College of Business and Public Affairs' YouthBuild program is specifically geared to help encourage Rowan County and surrounding youths between 18-24 who dropped out of high school to further their education and attain a GED while also gaining valuable construction skills. Participants also engage in leadership and civic activities that bring both personal and public benefits, and YouthBuild participants get opportunities to meet and talk with local leaders and have even been selected to serve on local committees and boards.

"YouthBuild offers an opportunity and a second chance for a population that is often neglected or forgotten about," said Dr. David Rudy, associate dean for the College of Business and Public Affairs. "This is an opportunity for us to make a critical difference with those who are just asking for a little bit of help to climb the ladder."

The YouthBuild Program partners with various community groups, including Habitat for Humanity, Frontier Housing, and Doves to participate in the construction and/or rehabilitation of low-income housing in the Morehead area. A YouthBuild Advisory Board, made up of members of the community with expertise of local help services, economy and job market, also helps guide the program and steer its participants to success.

"The goal of the Department of Labor's YouthBuild program ties in very well with our mission at the College of Business and Public Affairs," said David Sloan, director of applied research at IRAPP. "We are both concerned with creating better opportunities for people and enhancing the economic vitality of our region. When Mike Hail worked at UNC Greensboro, he brought YouthBuild to that campus and saw the positive impact it had on that community; so when he came to MSU, he encouraged us to bring it here. It has worked out well."

Additional information is available by calling Loretta Carroll Stewart, director, (606) 783-9407 or David Sloan (606) 783-5441.

####

# News

Media Relations

[www.moreheadstate.edu](http://www.moreheadstate.edu)

Morehead State University

UPO Box 1100

Morehead, KY 40351-1689

(606) 783-2030

July 14, 2009

FOR IMMEDIATE RELEASE

MOREHEAD, Ky.---Morehead State University's Toni Hobbs, creative director, has been named to the board of the Kentucky Fairness Alliance.

"We are excited about Toni joining our Board and look forward to the insights and expertise she brings to the table," said Travis Myles, KFA board chairperson.

Hobbs has been instrumental in developing a mentoring program for underrepresented students and is a founding member and current adviser of ALLYance.

The ALLYance is an advocacy student organization that promotes education, awareness and support for gay, lesbian, bisexual and transgender students and their allies at Morehead State.

She also has served as an instructor and/or lecturer for MSU 101 for Art Majors, Upward Bound, Kentucky Governor's Scholars Program, Dataseam and continuing education courses.

"I am honored to be a member of the KFA board," said Hobbs. "Diversity is one of MSU's core values. It is very important for MSU and our community. I am also happy that the MSU Board of Regents recently passed a resolution on diversity."

Hobbs has been active on campus and in the community as a member of the Morehead Tomorrow Board, the Clack Mountain Festival (arts & music) Executive Committee, the President's Diversity Council, and Kentucky Guild of Artists & Craftsmen Board of Directors.

She was recognized in 2008 as a member of the President's Leadership Academy. In her spare time, she operates a freelance design and Web business ([missprime.com](http://missprime.com)). She also enjoys cooking, obsessively collecting music, mastering video games, and exhibiting her artwork nationally.

Additional information is available by calling Hobbs at (606) 783-2225 or e-mailing to [t.hobbs@moreheadstate.edu](mailto:t.hobbs@moreheadstate.edu).

####

ajb

# News

Media Relations

[www.moreheadstate.edu](http://www.moreheadstate.edu)

Morehead State University

UPO Box 1100

Morehead, KY 40351-1689

(606) 783-2030

July 15, 2009

FOR IMMEDIATE RELEASE

MOREHEAD, Ky.---A \$750,000 grant from the Appalachian Regional Commission and \$347,000 in institutional matching funds means that Morehead State University has nearly \$1.1 million in equipment funds for its newly-completed space science support facility.

The grant, originally announced on June 11 by Gov. Steve Beshear at the ribboncutting ceremony, has been finalized by the Department for Local Government in Frankfort and the ARC in Washington.

"We are deeply grateful to Gov. Beshear and to Peggy Satterly and Matt Sawyers in his office for their support of our grant application to make sure our students in this high technology program have the equipment they need to succeed," said MSU President Wayne D. Andrews.

It is anticipated that, within two years, more than 1,300 students will be enrolled in classes in the new facility, including 140 students with majors in space science and astrophysics.

In 1992, Morehead State University obtained a grant from the National Science Foundation to build a 13.25-meter telescope and start a space science program. During the next 15 years, with grants from NASA, the Kentucky Science and Engineering Foundation, and other sources, the program was able to obtain a 21-meter space tracking antenna and radio telescope; attract a nationally-known faculty; and grow the program to the point that 28 declared majors were on board in 2008.

MSU received \$15.6 million in state funding to construct the new 45,000-square foot, state-of-the-art building to provide instructional and research support for space science starting this fall.

####

kk

# News

91A3  
Media Relations[www.moreheadstate.edu](http://www.moreheadstate.edu)

Morehead State University

UPO Box 1100

Morehead, KY 40351-1689

(606) 783-2030

July 15, 2009

FOR IMMEDIATE RELEASE

MOREHEAD, Ky.--- Time to rosin up that bow and get ready for some good foot stomping action as Morehead Old Time Music Association presents its fourth annual "Morehead Old Time Fiddlers Convention."

The event will be held on Friday and Saturday, July 24 and 25, at the 70-plus acre Daniel Boone Jaycee's Farm just east of Morehead. Gates open Friday at 10 a.m.

The first day will be "Art Stamper Day" as the convention will honor the legacy of the late Kentucky fiddler. The Knott County native is a member of the Bluegrass Hall of Fame and performed with the Stanley Brothers and Bill Monroe's Blue Grass Boys.

Stamper also played and taught the Appalachian fiddle style he learned from his father, Hiram.

One of the highlights of the first day will be the old-time fiddler contest at 6 p.m. Performing at the Art Stamper Day will be Clack Mountain String Band at 8 p.m. and Red State Ramblers at 9 p.m.

Contests for youth fiddle and banjo, old time banjo, flat-foot dance, dulcimer and string band are slated for Saturday. Cash prizes will be awarded. The evening concert will feature Mac Traynham and Shay Garriock and the winners of the Traditional String Band contest.

To add to the fun, various workshops and family activities are scheduled throughout the weekend. Along with a lot of jamming, there will be square dancing.

Cost of admission is \$15 for Friday, \$15 for Saturday, or \$25 for the entire weekend. Primitive camping (no hook-ups or electricity) is included with a weekend pass and children 11 and under will receive free admission.

Helping with the event are: Morehead State University's Kentucky Center for Traditional Music, City of Morehead and the Daniel Boone Jaycees.

Additional information is available by calling Brett Ratliff at (606) 356-3315 or visiting the Morehead Old Time Fiddlers Convention Web site at [www.moreoldtime.com](http://www.moreoldtime.com).

####

ajb

# News

Media Relations

[www.moreheadstate.edu](http://www.moreheadstate.edu)

Morehead State University

UPO Box 1100

Morehead, KY 40351-1689

(606) 783-2030

July 15, 2009

FOR IMMEDIATE RELEASE

MOREHEAD, Ky.---Morehead State University has announced that James Dunn of **Hazel Green** is among those students receiving an Alumni Scholarship for the 2009-10 school year.

Dunn, a graduate of Morgan County High School, is the son of Diana Smith.

To be eligible for an Alumni Scholarship, at least one of the student's parents, grandparents or their spouse must be an active member of the MSU Alumni Association. Valued at \$1,000 per year, an Alumni Scholarship is renewable for up to three years if the recipient maintains the required grade point average.

Applications and information on scholarship programs at MSU are available on the Web at [www.moreheadstate.edu/scholarships](http://www.moreheadstate.edu/scholarships) or by calling toll-free at 1-800-585-6781.

####

tse

NO PHOTO



# News

Media Relations

[www.moreheadstate.edu](http://www.moreheadstate.edu)

Morehead State University

UPO Box 1100

Morehead, KY 40351-1689

(606) 783-2030

July 15, 2009

FOR IMMEDIATE RELEASE

MOREHEAD, Ky.---Morehead State University has announced that Susan Hobbs of **Leeco** is among those students receiving a Commonwealth Scholarship for the 2009-10 school year.

Hobbs, a graduate of Lee County High School, is the daughter of Susan and Monte Hobbs. She was a Kentucky Governor's Scholar, salutatorian of her graduating class and a member of the Class of Kentucky in 2007. This year, she was honored as a Lee County Soil Conservation essay winner and a scholarship recipient. She also was named to the 2009 All-District Team for volleyball, basketball and softball.

To be eligible for a Commonwealth Scholarship at MSU, a student must have superior grades and ACT test scores. Valued at full in-state tuition, a Commonwealth Scholarship is renewable for up to three years if the recipient maintains the required grade point average.

Applications and information on scholarship programs at MSU are available on the Web at [www.moreheadstate.edu/scholarships](http://www.moreheadstate.edu/scholarships) or by calling toll-free at 1-800-585-6781.

####

tse



# News

Media Relations

[www.moreheadstate.edu](http://www.moreheadstate.edu)

Morehead State University

UPO Box 1100

Morehead, KY 40351-1689

(606) 783-2030

July 15, 2009

FOR IMMEDIATE RELEASE

MOREHEAD, Ky.---Morehead State University has announced that Savannah Cable of **Campton**, is among those students receiving a Commonwealth Scholarship for the 2009-10 school year.

Cable, the daughter of Sue Anna Cable, is a graduate of Wolfe County High School. She was a member of the Beta Club, Future Farmers of America and Family, Career and Community Leaders of America.

To be eligible for a Commonwealth Scholarship at MSU, a student must have superior grades and ACT test scores. Valued at full in-state tuition, a Commonwealth Scholarship is renewable for up to three years if the recipient maintains the required grade point average.

Applications and information on scholarship programs at MSU are available on the Web at [www.moreheadstate.edu/scholarships](http://www.moreheadstate.edu/scholarships) or by calling toll-free at 1-800-585-6781.

####

tse



# News

Media Relations

[www.moreheadstate.edu](http://www.moreheadstate.edu)

Morehead State University

UPO Box 1100

Morehead, KY 40351-1689

(606) 783-2030

July 15, 2009

FOR IMMEDIATE RELEASE

MOREHEAD, Ky.---Morehead State University has announced that two Springboro (Ohio) High School graduates, Eric Damian and Gianni Maione, both of **Springboro**, are among those students receiving a Presidential Scholarship for the 2009-10 school year.

Damian is the son of Lee Ann Damian. He was a member of the National Honor Society and listed on the Principal's List and the Honor Roll. Named to the All-GWOC First Team in football, he received the Anthony Munoz Ohio Division I Offensive Lineman of the Year Award and was named the 2008 Springboro Football M.V.P.

Maione is the son of Paul and Suzie Maione. He was listed on University of Dayton Dean's Lists where he was enrolled as a post secondary student and received the President's Education Award for Outstanding Academic Excellence.

To be eligible for the Presidential Scholarship at MSU, a student must have outstanding grades and ACT test scores. Valued at full in-state tuition and on-campus housing for most recipients, a Presidential Scholarship is renewable for up to three years if the recipient maintains the required grade point average.

Applications and information on scholarship programs at MSU are available on the Web at [www.moreheadstate.edu/scholarships](http://www.moreheadstate.edu/scholarships) or by calling toll-free at 1-800-585-6781.

####

tse



Eric Damian



Gianni Maione

MSU is an affirmative action, equal opportunity, educational institution.

# News

Media Relations

[www.moreheadstate.edu](http://www.moreheadstate.edu)

Morehead State University

UPO Box 1100

Morehead, KY 40351-1689

(606) 783-2030

July 15, 2009

FOR IMMEDIATE RELEASE

MOREHEAD, Ky.---Morehead State University has announced that Kayla Adkins of **Bedford** is among those students receiving a Commonwealth Scholarship for the 2009-10 school year.

Adkins, the daughter of John and Angela Adkins, is a graduate of Trimble County High School. A Kentucky Governor's Scholar, she was listed on the honor roll.

To be eligible for a Commonwealth Scholarship at MSU, a student must have superior grades and ACT test scores. Valued at full in-state tuition, a Commonwealth Scholarship is renewable for up to three years if the recipient maintains the required grade point average.

Applications and information on scholarship programs at MSU are available on the Web at [www.moreheadstate.edu/scholarships](http://www.moreheadstate.edu/scholarships) or by calling toll-free at 1-800-585-6781.

####

tse

NO PHOTO

# News

Media Relations

[www.moreheadstate.edu](http://www.moreheadstate.edu)

Morehead State University

UPO Box 1100

Morehead, KY 40351-1689

(606) 783-2030

July 15, 2009

FOR IMMEDIATE RELEASE

MOREHEAD, Ky.---Morehead State University has announced that Tara Scholl of **Waddy** is among those students receiving a Commonwealth Scholarship for the 2009-10 school year.

Scholl, a graduate of Shelby County High School, is the daughter of Noel and Julie Scholl. During high school, she ranked in top 10 percent of her class and was a member of the National Honor Society, the Beta Club and All-State Choral. In her free time, she was a dance instructor at Shelby Christian Church.

To be eligible for a Commonwealth Scholarship at MSU, a student must have superior grades and ACT test scores. Valued at full in-state tuition, a Commonwealth Scholarship is renewable for up to three years if the recipient maintains the required grade point average.

Applications and information on scholarship programs at MSU are available on the Web at [www.moreheadstate.edu/scholarships](http://www.moreheadstate.edu/scholarships) or by calling toll-free at 1-800-585-6781.

####

tse



# News

---

Media Relations

[www.moreheadstate.edu](http://www.moreheadstate.edu)

---

Morehead State University

UPO Box 1100

Morehead, KY 40351-1689

(606) 783-2030

July 15, 2009

FOR IMMEDIATE RELEASE

MOREHEAD, Ky.---Morehead State University has announced that Megan Hawley of **Shelbyville** is among those students receiving a Presidential Scholarship for the 2009-10 school year.

Hawley, the daughter of Tina Hawley, is a graduate of Shelby County High School. She received a High Distinction Award and earned distinguished and proficient scores on CATS testing. She did missionary work in Mississippi and Louisiana, served as fundraiser coordinator for the Drama Club and participated in Kentucky Theatre Association competition where she received the All-State Cast Award.

To be eligible for the Presidential Scholarship at MSU, a student must have outstanding grades and ACT test scores. Valued at full in-state tuition and on-campus housing for most recipients, a Presidential Scholarship is renewable for up to three years if the recipient maintains the required grade point average.

Applications and information on scholarship programs at MSU are available on the Web at [www.moreheadstate.edu/scholarships](http://www.moreheadstate.edu/scholarships) or by calling toll-free at 1-800-585-6781.

####

tse

NO PHOTO

# News

91A3

Media Relations

[www.moreheadstate.edu](http://www.moreheadstate.edu)

Morehead State University

UPO Box 1100

Morehead, KY 40351-1689

(606) 783-2030

July 15, 2009

FOR IMMEDIATE RELEASE

MOREHEAD, Ky.---Morehead State University has announced that Kristin Boyd of **Owingsville** is among those students receiving a Diversity Scholarship for the 2009-10 school year.

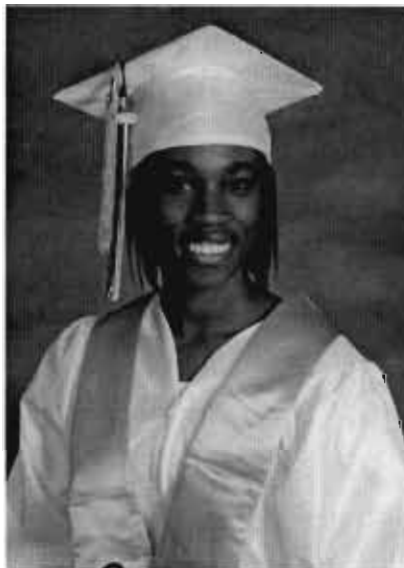
Boyd, a Bath County High School graduate, is the daughter of Gary Boyd. During her high school career, she was named to the honor roll each year, played on the basketball team and was a member of the Beta Club. In her free time, she participated in community service.

To be eligible for the Diversity Scholarship, the student must have an ethnic background, be a legal resident of Kentucky, and have an ACT composite score of 18. The award is valued at \$1,000 per year.

Applications and information on scholarship programs at MSU are available on the Web at [www.moreheadstate.edu/scholarships](http://www.moreheadstate.edu/scholarships) or by calling toll-free at 1-800-585-6781.

####

tse



# News

Media Relations

[www.moreheadstate.edu](http://www.moreheadstate.edu)

Morehead State University

UPO Box 1100

Morehead, KY 40351-1689

(606) 783-2030

July 15, 2009

FOR IMMEDIATE RELEASE

MOREHEAD, Ky.---Morehead State University has announced that Hannah Conn of **Salt Lick** is among those students receiving a Commonwealth Scholarship and the Valedictorian Scholarship for the 2009-10 school year.

Conn, a Bath County High School graduate, was a member of the Beta club, Work Ethics Seal Program and the photography club. She is the daughter of Jeffrey and Barbara Conn.

To be eligible for a Commonwealth Scholarship at MSU, a student must have superior grades and ACT test scores. Valued at full in-state tuition, a Commonwealth Scholarship is renewable for up to three years if the recipient maintains the required grade point average.

The Valedictorian Scholarship is valued at \$1,000 for one year following high school graduation.

Applications and information on scholarship programs at MSU are available on the Web at [www.moreheadstate.edu/scholarships](http://www.moreheadstate.edu/scholarships) or by calling toll-free at 1-800-585-6781.

####

tse





# News

Media Relations

[www.moreheadstate.edu](http://www.moreheadstate.edu)

Morehead State University

UPO Box 1100

Morehead, KY 40351-1689

(606) 783-2030

July 15, 2009

FOR IMMEDIATE RELEASE

MOREHEAD, Ky.---Morehead State University has announced that Brittany Hamilton of **Olympia** is among those students receiving a Valedictorian Scholarship and a Work Ethic Seal Scholarship for the 2009-10 school year.

Hamilton is the daughter of Mary Marksberry. She was named the valedictorian of her graduating class and a Beta Club member. She received the Class of 2009 Top 10% Award and a College Bound Diploma.

The Valedictorian Scholarship is valued at \$1,000 for one year following high school graduation.

To be eligible for the Work Ethic Seal Program Scholarship, a student must be a participant of the Work Ethic Seal Program and a resident of Bath, Menifee or Montgomery county. The student also must have a minimum 3.2 high school GPA.

Applications and information on scholarship programs at MSU are available on the Web at [www.moreheadstate.edu/scholarships](http://www.moreheadstate.edu/scholarships) or by calling toll-free at 1-800-585-6781.

####

tse

NO PHOTO

# News

Media Relations

[www.moreheadstate.edu](http://www.moreheadstate.edu)

Morehead State University

UPO Box 1100

Morehead, KY 40351-1689

(606) 783-2030

July 15, 2009

FOR IMMEDIATE RELEASE

MOREHEAD, Ky.---Morehead State University has announced that Brandi Terrell of **Sharpsburg** is among those students receiving a Valedictorian Scholarship for the 2009-10 school year.

Terrell, the daughter of Danny and Amanda Terrell, is a Bath County High School graduate. She was a member of the Beta Club, Upward Bound and Future Business Leaders of America. Terrell participated in community service as a Beta club member, tutored middle school students and babysat children.

The Valedictorian Scholarship is valued at \$1,000 for one year following high school graduation.

Applications and information on scholarship programs at MSU are available on the Web at [www.moreheadstate.edu/scholarships](http://www.moreheadstate.edu/scholarships) or by calling toll-free at 1-800-585-6781.

####

tse



# News

Media Relations

[www.moreheadstate.edu](http://www.moreheadstate.edu)

Morehead State University

UPO Box 1100

Morehead, KY 40351-1689

(606) 783-2030

July 15, 2009

FOR IMMEDIATE RELEASE

MOREHEAD, Ky.---Morehead State University has announced that Sara Whitt of **Salt Lick** received the Presidential Scholarship, Alumni Scholarship and the Valedictorian Scholarship for the 2009-10 school year.

Whitt is the daughter of Gregg and Wendy Whitt and a Rowan County Senior High School graduate. She was valedictorian of her graduating class, HOBY representative and an academic team member. Whitt volunteered her time with Camp Smile and served as a Youth Unite Officer.

To be eligible for the Presidential Scholarship at MSU, a student must have outstanding grades and ACT test scores. Valued at full in-state tuition and on-campus housing for most recipients, a Presidential Scholarship is renewable for up to three years if the recipient maintains the required grade point average.

To be eligible for an Alumni Scholarship, at least one of the student's parents, grandparents or their spouse must be an active member of the MSU Alumni Association. Valued at \$1,000 per year, an Alumni Scholarship is renewable for up to three years if the recipient maintains the required grade point average.

The Valedictorian Scholarship is valued at \$1,000 for one year following high school graduation.

Applications and information on scholarship programs at MSU are available on the Web at [www.moreheadstate.edu/scholarships](http://www.moreheadstate.edu/scholarships) or by calling toll-free at 1-800-585-6781.

####

tse



# News

Media Relations

[www.moreheadstate.edu](http://www.moreheadstate.edu)

Morehead State University

UPO Box 1100

Morehead, KY 40351-1689

(606) 783-2030

July 15, 2009

FOR IMMEDIATE RELEASE

MOREHEAD, Ky.---Morehead State University has announced that Alexandria Collis of **Paris** is among those students receiving a Commonwealth Scholarship for the 2009-10 school year.

Collis, the daughter of Patrick and Sandee Collis, is a Bourbon County High School graduate. During high school, she was a member of the National Honor Society, a varsity cheerleader and the school newspaper editor-in-chief. Collis was honored as the KAPOs 40<sup>th</sup> District Outstanding Cheerleader and received the Just Keep Dreaming Scholarship. She also was a DAR good citizen.

To be eligible for a Commonwealth Scholarship at MSU, a student must have superior grades and ACT test scores. Valued at full in-state tuition, a Commonwealth Scholarship is renewable for up to three years if the recipient maintains the required grade point average.

Applications and information on scholarship programs at MSU are available on the Web at [www.moreheadstate.edu/scholarships](http://www.moreheadstate.edu/scholarships) or by calling toll-free at 1-800-585-6781.

####

tse



# News

Media Relations

[www.moreheadstate.edu](http://www.moreheadstate.edu)

Morehead State University

UPO Box 1100

Morehead, KY 40351-1689

(606) 783-2030

July 15, 2009

FOR IMMEDIATE RELEASE

MOREHEAD, Ky.---Morehead State University has announced that Jordan Holt of **Ashland** is among those students receiving a Residence Hall Grant for the 2009-10 school year.

Holt is the son of James and Geraldine Holt. During high school, he participated in the marching band and the ROTC program.

The Residence Hall Grant allows the student to live in a University residence hall during the coming year.

Applications and information on scholarship programs at MSU are available on the Web at [www.moreheadstate.edu/scholarships](http://www.moreheadstate.edu/scholarships) or by calling toll-free at 1-800-585-6781.

####

tse

NO PHOTO

# News

Media Relations

[www.moreheadstate.edu](http://www.moreheadstate.edu)

Morehead State University

UPO Box 1100

Morehead, KY 40351-1689

(606) 783-2030

July 15, 2009

FOR IMMEDIATE RELEASE

MOREHEAD, Ky.---Morehead State University has announced that Krysten Ott is among those students receiving the Commonwealth Scholarship and the Dean's Scholarship for the 2009-10 school year.

Ott, of **Ashland**, is the daughter of William and Sandy Ott and a Paul G. Blazer High School graduate. She was a member of the International Thespian Society and the academic team. She was also the secretary for the National Honor Society. In her free time, she participated in eight Backstage Players productions and took part in two youth mission trips to Mexico and South Central Kentucky as a member of the Wildwood First Church of God youth group.

To be eligible for a Commonwealth Scholarship at MSU, a student must have superior grades and ACT test scores. Valued at full in-state tuition, a Commonwealth Scholarship is renewable for up to three years if the recipient maintains the required grade point average.

The College of Education Dean's Scholarship is awarded to those with select majors in a field where there is a shortage of students. Preference is given to students in MSU's service region and those who have financial need.

Applications and information on scholarship programs at MSU are available on the Web at [www.moreheadstate.edu/scholarships](http://www.moreheadstate.edu/scholarships) or by calling toll-free at 1-800-585-6781.

####

tse

NO PHOTO

# News

Media Relations

[www.moreheadstate.edu](http://www.moreheadstate.edu)

Morehead State University

UPO Box 1100

Morehead, KY 40351-1689

(606) 783-2030

July 15, 2009

FOR IMMEDIATE RELEASE

MOREHEAD, Ky.---Morehead State University has announced that Christian Sloan is among those students receiving an Alumni Scholarship for the 2009-10 school year.

Sloan is the son of Frank Sloan of **Ashland**. During high school, he was a member of the National Honor Society, Spanish Honor Society and the Beta club. He served as a King's Daughters Medical Center youth volunteer, a Fairview Baptist Church youth missionary and was on the Paramount Arts Center Youth Council.

To be eligible for an Alumni Scholarship, at least one of the student's parents, grandparents or their spouse must be an active member of the MSU Alumni Association. Valued at \$1,000 per year, an Alumni Scholarship is renewable for up to three years if the recipient maintains the required grade point average.

Applications and information on scholarship programs at MSU are available on the Web at [www.moreheadstate.edu/scholarships](http://www.moreheadstate.edu/scholarships) or by calling toll-free at 1-800-585-6781.

####

tse

NO PHOTO

# News

Media Relations

[www.moreheadstate.edu](http://www.moreheadstate.edu)

Morehead State University

UPO Box 1100

Morehead, KY 40351-1689

(606) 783-2030

July 15, 2009

FOR IMMEDIATE RELEASE

MOREHEAD, Ky.---Morehead State University has announced that Justin Bach of **Rousseau** is among those students receiving a Presidential Scholarship and a Valedictorian Scholarship for the 2009-10 school year.

Bach, the son of Lloyd and Kaye Bach, is a Breathitt County High School graduate. He was a member of the National Honor Society where he served as treasurer and a member of the academic team where he was regional runner-up in math. Listed in Who's Who Among American High School Students for math and science, he was prom king and student council vice president.

To be eligible for the Presidential Scholarship at MSU, a student must have outstanding grades and ACT test scores. Valued at full in-state tuition and on-campus housing for most recipients, a Presidential Scholarship is renewable for up to three years if the recipient maintains the required grade point average.

The Valedictorian Scholarship is valued at \$1,000 for one year following high school graduation.

Applications and information on scholarship programs at MSU are available on the Web at [www.moreheadstate.edu/scholarships](http://www.moreheadstate.edu/scholarships) or by calling toll-free at 1-800-585-6781.

####

tse





# News

Media Relations

[www.moreheadstate.edu](http://www.moreheadstate.edu)

Morehead State University

UPO Box 1100

Morehead, KY 40351-1689

(606) 783-2030

July 15, 2009

FOR IMMEDIATE RELEASE

MOREHEAD, Ky.---Morehead State University has announced that Scott Bailey of **Jackson** is among those students receiving an Alumni Scholarship for the 2009-10 school year.

Bailey, the son of Connie and Michael Bailey, is a Breathitt County High School graduate. He was listed on the Honor Roll and was a member of the National Honor Society. In his free time, he participated in the Jr. Red Cross and the Entrepreneurial Leadership Institute.

To be eligible for an Alumni Scholarship, at least one of the student's parents, grandparents or their spouse must be an active member of the MSU Alumni Association. Valued at \$1,000 per year, an Alumni Scholarship is renewable for up to three years if the recipient maintains the required grade point average.

Applications and information on scholarship programs at MSU are available on the Web at [www.moreheadstate.edu/scholarships](http://www.moreheadstate.edu/scholarships) or by calling toll-free at 1-800-585-6781.

####

tse



# News

Media Relations

[www.moreheadstate.edu](http://www.moreheadstate.edu)

Morehead State University

UPO Box 1100

Morehead, KY 40351-1689

(606) 783-2030

July 15, 2009

FOR IMMEDIATE RELEASE

MOREHEAD, Ky.---Morehead State University has announced that Jennifer White of **Lost Creek** is among those students receiving a Presidential Scholarship for the 2009-10 school year.

White, a graduate of Breathitt County High School, is the daughter of J.D. and Christine White. She was a member of the Kentucky Governor's Scholars program, the National Honor Society and the 4-H club. She was also the 2008-09 Breathitt County High School Future Farmers of America president. White was crowned the 1<sup>st</sup> Annual Miss Breathitt County and the 2008 1<sup>st</sup> runner-up Honey Queen.

To be eligible for the Presidential Scholarship at MSU, a student must have outstanding grades and ACT test scores. Valued at full in-state tuition and on-campus housing for most recipients, a Presidential Scholarship is renewable for up to three years if the recipient maintains the required grade point average.

Applications and information on scholarship programs at MSU are available on the Web at [www.moreheadstate.edu/scholarships](http://www.moreheadstate.edu/scholarships) or by calling toll-free at 1-800-585-6781.

####

tse



# News

Media Relations

[www.moreheadstate.edu](http://www.moreheadstate.edu)

Morehead State University

UPO Box 1100

Morehead, KY 40351-1689

(606) 783-2030

July 15, 2009

FOR IMMEDIATE RELEASE

MOREHEAD, Ky.---Morehead State University has announced that Adam Herth of **Mt. Washington** is among those students receiving a Presidential Scholarship and a Valedictorian Scholarship for the 2009-10 school year.

Herth, the son of Paul and Joyce Herth, was a member of the Kentucky Governor's Scholars Program, Future Business Leaders of America, where he was awarded 1<sup>st</sup> place in the state competition for digital video production and was a member of the varsity football team, where he served as captain. The 2009 Basketball Homecoming King, Herth was Profiled in First Honors, a Business First Publication.

To be eligible for the Presidential Scholarship at MSU, a student must have outstanding grades and ACT test scores. Valued at full in-state tuition and housing for most recipients, a Presidential Scholarship is renewable for up to three years if the recipient maintains the required grade point average.

The Valedictorian Scholarship is valued at \$1,000 for one year following high school graduation.

Applications and information on scholarship programs at MSU are available on the Web at [www.moreheadstate.edu/scholarships](http://www.moreheadstate.edu/scholarships) or by calling toll-free at 1-800-585-6781.

####

tse



# News

Media Relations

[www.moreheadstate.edu](http://www.moreheadstate.edu)

Morehead State University

UPO Box 1100

Morehead, KY 40351-1689

(606) 783-2030

July 15, 2009

FOR IMMEDIATE RELEASE

MOREHEAD, Ky.---Morehead State University has announced that Victoria Davis of **Monroe, Ohio**, is among those students receiving a Black Achiever Scholarship for the 2009-10 school year.

Davis, the daughter of Gloria Campbell, is a Monroe High School graduate. She was a participant of Post Secondary Enrollment Options, a member of YMCA Black Achievers and Young Life. She volunteered at the local homeless shelter.

To be eligible for the Black Achievers Scholarship, the student must have completed the Black Achievers Program in the Lexington and Louisville areas with a minimum ACT score of 18 and at least a 400 admission index; must maintain a 2.75 cumulative GPA and continuous full-time enrollment and residency in University housing for renewal. The award is valued at the cost of full tuition.

Applications and information on scholarship programs at MSU are available on the Web at [www.moreheadstate.edu/scholarships](http://www.moreheadstate.edu/scholarships) or by calling toll-free at 1-800-585-6781.

####

tse

# News

Media Relations

[www.moreheadstate.edu](http://www.moreheadstate.edu)

Morehead State University

UPO Box 1100

Morehead, KY 40351-1689

(606) 783-2030

July 15, 2009

FOR IMMEDIATE RELEASE

MOREHEAD, Ky.---Morehead State University has announced that two Carter County students are among those receiving a Commonwealth Scholarship for the 2009-10 school year.

Briana Buckler, a West Carter High School graduate, was named a Carter County Distinguished Scholar, salutatorian of her graduating class and was listed in Who's Who Among All-American Scholars. Buckler is the daughter of Eric and Sherry Buckler of **Grayson**.

Katlyn Menix, the daughter of Jeff and Sonya Hay of **Grayson**, is a graduate of East Carter High School. She participated in the Kentucky Governor's Scholars Program and served as a Commonwealth Ambassador and a Kentucky Association of Academic Competition Official. Menix received the Kentucky House of Representative Academic Achievement Award and the King's Daughters Teen Volunteer Award. In her free time, she volunteered with Relay for Life.

To be eligible for a Commonwealth Scholarship at MSU, a student must have superior grades and ACT test scores. Valued at full in-state tuition, a Commonwealth Scholarship is renewable for up to three years if the recipient maintains the required grade point average.

Applications and information on scholarship programs at MSU are available on the Web at [www.moreheadstate.edu/scholarships](http://www.moreheadstate.edu/scholarships) or by calling toll-free at 1-800-585-6781.

####

tse

NO PHOTO FOR BUCKLER

NO PHOTO FOR MENIX

# News

Media Relations

[www.moreheadstate.edu](http://www.moreheadstate.edu)

Morehead State University

UPO Box 1100

Morehead, KY 40351-1689

(606) 783-2030

July 15, 2009

FOR IMMEDIATE RELEASE

MOREHEAD, Ky.---Morehead State University has announced that West Carter High School graduate Stephanie Burns is among those students receiving an Residence Hall Grant for the 2009-10 school year.

Burns is the daughter of William and Susan Burns of **Olive Hill**. A cheerleader, she was a member of the Beta Club and MSU Talent Search. In her free time, she was an elementary school cheerleading coach, a member of a Relay for Life team and donated blood with the American Red Cross.

The Residence Hall Grant allows the student to live in a University residence hall during the coming year.

Applications and information on scholarship programs at MSU are available on the Web at [www.moreheadstate.edu/scholarships](http://www.moreheadstate.edu/scholarships) or by calling toll-free at 1-800-585-6781.

####

tse

NO PHOTO

# News

Media Relations

[www.moreheadstate.edu](http://www.moreheadstate.edu)

Morehead State University

UPO Box 1100

Morehead, KY 40351-1689

(606) 783-2030

July 15, 2009

FOR IMMEDIATE RELEASE

MOREHEAD, Ky.---Morehead State University has announced that Elliott County High School graduate Leiah Ison is among those students receiving a Residence Hall Grant for the 2009-10 school year.

Ison, the daughter of Donald and Glinda Ison of **Olive Hill**, was named the Most Improved Overall Student, listed in Who's Who Among American High School Students and a 1<sup>st</sup> Advisor of Future Farmers of America. She was a part of the first full length production of ECHS, "Still Live With IRIS," and is a member of Watson Baptist Church Youth Group Enterprise.

The Residence Hall Grant allows the student to live in a University residence hall during the coming year.

Applications and information on scholarship programs at MSU are available on the Web at [www.moreheadstate.edu/scholarships](http://www.moreheadstate.edu/scholarships) or by calling toll-free at 1-800-585-6781.

####

tse



# News

Media Relations

[www.moreheadstate.edu](http://www.moreheadstate.edu)

Morehead State University

UPO Box 1100

Morehead, KY 40351-1689

(606) 783-2030

July 15, 2009

FOR IMMEDIATE RELEASE

MOREHEAD, Ky.---Morehead State University has announced that an East Carter High School graduate, Brittany Dearfield, is among those students receiving a Commonwealth Scholarship and a Residence Hall Grant for the 2009-10 school year.

Dearfield is the daughter of Tommy and Lori Dearfield of **Grayson**. She was a member of Kentucky Governor's Scholars Program and a Commonwealth Education Ambassador. During high school, she was played on the varsity basketball team, named the All-EKC Conference Player twice and received Honorable Mention All-Area in basketball.

She also received a 16<sup>th</sup> Regional Basketball Tournament Scholarship.

To be eligible for a Commonwealth Scholarship at MSU, a student must have superior grades and ACT test scores. Valued at full in-state tuition, a Commonwealth Scholarship is renewable for up to three years if the recipient maintains the required grade point average.

The Residence Hall Grant allows the student to live in a University residence hall during the coming year.

Applications and information on scholarship programs at MSU are available on the Web at [www.moreheadstate.edu/scholarships](http://www.moreheadstate.edu/scholarships) or by calling toll-free at 1-800-585-6781.

####

tse





# News

Media Relations

[www.moreheadstate.edu](http://www.moreheadstate.edu)

Morehead State University

UPO Box 1100

Morehead, KY 40351-1689

(606) 783-2030

July 15, 2009

FOR IMMEDIATE RELEASE

MOREHEAD, Ky.---Morehead State University has announced that Megan Dennis of **Olive Hill** is among those students receiving a Presidential Scholarship and an Alumni Scholarship for the 2009-10 school year.

Dennis, an Elliott County High School graduate, was a member of the Kentucky Governor's Scholar program, was named a Commonwealth Ambassador and a 2008 PEPP member. Dennis was on the co-ed varsity cheerleading squad for four years and the softball team for two years. During her free time, she volunteered with Relay for Life, participated in food, coat and hat drives, and coached cheerleading for elementary students.

To be eligible for the Presidential Scholarship at MSU, a student must have outstanding grades and ACT test scores. Valued at full in-state tuition and on-campus housing for most recipients, a Presidential Scholarship is renewable for up to three years if the recipient maintains the required grade point average.

To be eligible for an Alumni Scholarship, at least one of the student's parents, grandparents or their spouse must be an active member of the MSU Alumni Association. Valued at \$1,000 per year, an Alumni Scholarship is renewable for up to three years if the recipient maintains the required grade point average.

Applications and information on scholarship programs at MSU are available on the Web at [www.moreheadstate.edu/scholarships](http://www.moreheadstate.edu/scholarships) or by calling toll-free at 1-800-585-6781.

####

tse



MSU is an affirmative action, equal opportunity, educational institution.

# News

Media Relations

[www.moreheadstate.edu](http://www.moreheadstate.edu)

Morehead State University

UPO Box 1100

Morehead, KY 40351-1689

(606) 783-2030

July 15, 2009

FOR IMMEDIATE RELEASE

MOREHEAD, Ky.---Morehead State University has announced that Jerrah Stark of **Olive Hill** is among those students receiving an Alumni Scholarship and a Valedictorian Scholarship for the 2009-10 school year.

Stark, the daughter of Jeff and Jenny Stark, is a West Carter High School graduate. She was president of her senior class, the Beta Club the Comet Bank; and vice president of Future Business Leaders of America. Listed in Who's Who Among American High School Scholars, she was named a distinguished scholar for three years.

To be eligible for an Alumni Scholarship, at least one of the student's parents, grandparents or their spouse must be an active member of the MSU Alumni Association. Valued at \$1,000 per year, an Alumni Scholarship is renewable for up to three years if the recipient maintains the required grade point average.

The Valedictorian Scholarship is valued at \$1,000 for one year following high school graduation.

Applications and information on scholarship programs at MSU are available on the Web at [www.moreheadstate.edu/scholarships](http://www.moreheadstate.edu/scholarships) or by calling toll-free at 1-800-585-6781.

####

tse



# News

Media Relations

[www.moreheadstate.edu](http://www.moreheadstate.edu)

Morehead State University

UPO Box 1100

Morehead, KY 40351-1689

(606) 783-2030

July 15, 2009

FOR IMMEDIATE RELEASE

MOREHEAD, Ky.---Morehead State University has announced that Jesse Webb-Greenhill of **Olive Hill** is among those students receiving an Alumni Scholarship for the 2009-10 school year.

Webb-Greenhill, a West Carter High School graduate, was the senior captain for the football team, where he played four years. He also was a member of the track and field team for three years and the Spanish club. A member of the Church of Nazarene, he participated in Nazarene Youth International and did volunteer work in Mississippi. He is the son of Joe and Gabria Sexton and Thomas and Mary Greenhill.

To be eligible for a Commonwealth Scholarship at MSU, a student must have superior grades and ACT test scores. Valued at full in-state tuition, a Commonwealth Scholarship is renewable for up to three years if the recipient maintains the required grade point average.

Applications and information on scholarship programs at MSU are available on the Web at [www.moreheadstate.edu/scholarships](http://www.moreheadstate.edu/scholarships) or by calling toll-free at 1-800-585-6781.

####

tse



# News

Media Relations

[www.moreheadstate.edu](http://www.moreheadstate.edu)

Morehead State University

UPO Box 1100

Morehead, KY 40351-1689

(606) 783-2030

July 15, 2009

FOR IMMEDIATE RELEASE

MOREHEAD, Ky.---Morehead State University has announced that Autumn Baker of **Bethel, Ohio** is among those students receiving a Presidential Scholarship and a Dean's Scholarship for the 2009-10 school year.

Baker, a Bethel-Tate High School graduate, was a member of the National Honor Society and the Bethel Beefers and Sheepers 4-H club. She received an Award of Merit and graduated with honors in the top ten percent of her class. A Girl Scouts Gold Award recipient, Baker also received the Mayerson Service-Learning Award. She is the daughter of Duke and Tammy Baker.

To be eligible for the Presidential Scholarship at MSU, a student must have outstanding grades and ACT test scores. Valued at full in-state tuition and on-campus housing for most recipients, a Presidential Scholarship is renewable for up to three years if the recipient maintains the required grade point average.

The College of Education Dean's Scholarship is awarded to those with select majors in a field where there is a shortage of students. Preference is given to students in MSU's service region and those who have financial need.

Applications and information on scholarship programs at MSU are available on the Web at [www.moreheadstate.edu/scholarships](http://www.moreheadstate.edu/scholarships) or by calling toll-free at 1-800-585-6781.

####

tse



# News

Media Relations

[www.moreheadstate.edu](http://www.moreheadstate.edu)

Morehead State University

UPO Box 1100

Morehead, KY 40351-1689

(606) 783-2030

July 15, 2009

FOR IMMEDIATE RELEASE

MOREHEAD, Ky.---Morehead State University has announced that Dominique Goodwin of **Cleveland, Ohio** is among those students receiving a Dean's Scholarship and a Minority Teacher Education Scholarship for the 2009-10 school year.

Goodwin, a St. Edward High School graduate, was listed on the honor roll for three years, nominated for Man of The Year Award and received Alphaport Engineering Design Award. He volunteered his time with Habitat for Humanity, the local basketball team and helped with the St. Edward football camps. He is the son of Alisa Goodwin.

The College of Education Dean's Scholarship is awarded to those with select majors in a field where there is a shortage of students. Preference is given to students in MSU's service region and those who have financial need.

To be eligible for the Minority Teacher Education Scholarship, the recipient must have an ethnic background and a minimum high school GPA of 2.5 and ACT of 18, and an interest in teaching. The award is valued at \$1,000.

Applications and information on scholarship programs at MSU are available on the Web at [www.moreheadstate.edu/scholarships](http://www.moreheadstate.edu/scholarships) or by calling toll-free at 1-800-585-6781.

####

tse

NO PHOTO

# News

Media Relations

[www.moreheadstate.edu](http://www.moreheadstate.edu)

Morehead State University

UPO Box 1100

Morehead, KY 40351-1689

(606) 783-2030

July 15, 2009

FOR IMMEDIATE RELEASE

MOREHEAD, Ky.---Morehead State University has announced that Jacklyn Carder of **Utica** is among those students receiving a Commonwealth Scholarship for the 2009-10 school year.

Carder, a graduate of Apollo High School, is the daughter of Susan and Kim Carder. She was a student council member for four years, a National Honor Society member and named a 2007 UK Class of Kentucky recipient. She volunteered at Wendell Foster's Campus for Developmental Disabilities where she holds the distinction of being the longest non-board member volunteer.

To be eligible for a Commonwealth Scholarship at MSU, a student must have superior grades and ACT test scores. Valued at full in-state tuition, a Commonwealth Scholarship is renewable for up to three years if the recipient maintains the required grade point average.

Applications and information on scholarship programs at MSU are available on the Web at [www.moreheadstate.edu/scholarships](http://www.moreheadstate.edu/scholarships) or by calling toll-free at 1-800-585-6781.

####

tse



# News

Media Relations

[www.moreheadstate.edu](http://www.moreheadstate.edu)

Morehead State University

UPO Box 1100

Morehead, KY 40351-1689

(606) 783-2030

July 15, 2009

FOR IMMEDIATE RELEASE

MOREHEAD, Ky.---Morehead State University has announced that Infinite Possibilities Christian Academy graduate Chelsea Smith of **Sandy Hook** is among those students receiving a Valedictorian Scholarship for the 2009-10 school year.

Smith is the daughter of Mary Ann Ison. During high school, she was a member in the school choir and the drama team. An honor student, she was a Samaritan's Purse Volunteer and sang at the nursing home.

The Valedictorian Scholarship is valued at \$1,000 for one year following high school graduation.

Applications and information on scholarship programs at MSU are available on the Web at [www.moreheadstate.edu/scholarships](http://www.moreheadstate.edu/scholarships) or by calling toll-free at 1-800-585-6781.

####

tse



# News

Media Relations

[www.moreheadstate.edu](http://www.moreheadstate.edu)

Morehead State University

UPO Box 1100

Morehead, KY 40351-1689

(606) 783-2030

July 15, 2009

FOR IMMEDIATE RELEASE

MOREHEAD, Ky.---Morehead State University has announced that Alexa Emmons of **Flemingsburg** is among those students receiving a Presidential Scholarship and an Alumni Scholarship for the 2009-10 school year.

Emmons, a Fleming County High School graduate, is the daughter of Greg and Pam Emmons. She was a member of the Kentucky Governor's Scholars Program and president of Family, Career and Community Leaders of America. Named Miss Fleming Countian, she volunteered during the drug house odyssey, community reading festival, the community health festival and the community literacy project.

To be eligible for the Presidential Scholarship at MSU, a student must have outstanding grades and ACT test scores. Valued at full in-state tuition and on-campus housing for most recipients, a Presidential Scholarship is renewable for up to three years if the recipient maintains the required grade point average.

To be eligible for an Alumni Scholarship, at least one of the student's parents, grandparents or their spouse must be an active member of the MSU Alumni Association. Valued at \$1,000 per year, an Alumni Scholarship is renewable for up to three years if the recipient maintains the required grade point average.

Applications and information on scholarship programs at MSU are available on the Web at [www.moreheadstate.edu/scholarships](http://www.moreheadstate.edu/scholarships) or by calling toll-free at 1-800-585-6781.

####

tse



MSU is an affirmative action, equal opportunity, educational institution.



# News

Media Relations

[www.moreheadstate.edu](http://www.moreheadstate.edu)

Morehead State University

UPO Box 1100

Morehead, KY 40351-1689

(606) 783-2030

July 15, 2009

FOR IMMEDIATE RELEASE

MOREHEAD, Ky.---Morehead State University has announced that Daniel Harmon of **Flemingsburg** is among those students receiving a Commonwealth Scholarship for the 2009-10 school year.

Harmon, a Fleming County High School graduate, is the son of Keith and Missy Harmon. He was named the student of the year in honors algebra I, II and geometry. During high school, he played baseball for three years along with football and basketball for two years.

To be eligible for a Commonwealth Scholarship at MSU, a student must have superior grades and ACT test scores. Valued at full in-state tuition, a Commonwealth Scholarship is renewable for up to three years if the recipient maintains the required grade point average.

Applications and information on scholarship programs at MSU are available on the Web at [www.moreheadstate.edu/scholarships](http://www.moreheadstate.edu/scholarships) or by calling toll-free at 1-800-585-6781.

####

tse



# News

Media Relations

[www.moreheadstate.edu](http://www.moreheadstate.edu)

Morehead State University

UPO Box 1100

Morehead, KY 40351-1689

(606) 783-2030

July 15, 2009

FOR IMMEDIATE RELEASE

MOREHEAD, Ky.---Morehead State University has announced that Michelle Workman of **Wallingford** is among those students receiving a Presidential Scholarship for the 2009-10 school year.

Workman served as co-captain of the academic team and received first place honors in language arts during the Governor's Cup District Regional competition. In her free time, she coached an elementary academic team, served as vice president for a church youth group and volunteered with the Muses Mill Fire Department fundraiser. She is the daughter of Mike and Carol Workman.

To be eligible for the Presidential Scholarship at MSU, a student must have outstanding grades and ACT test scores. Valued at full in-state tuition and on-campus housing for most recipients, a Presidential Scholarship is renewable for up to three years if the recipient maintains the required grade point average.

Applications and information on scholarship programs at MSU are available on the Web at [www.moreheadstate.edu/scholarships](http://www.moreheadstate.edu/scholarships) or by calling toll-free at 1-800-585-6781.

####

tse



# News

Media Relations

[www.moreheadstate.edu](http://www.moreheadstate.edu)

Morehead State University

UPO Box 1100

Morehead, KY 40351-1689

(606) 783-2030

July 15, 2009

FOR IMMEDIATE RELEASE

MOREHEAD, Ky.---Morehead State University has announced that Travis Burgess of **Stanville** and Trista Damron of **Allen** are among those students receiving a Commonwealth Scholarship for the 2009-10 school year.

Burgess, a Pike County Central High School graduate, is the son of Cindy and Tony Burgess. He was a member of the National Honor Society, Fellowship of Christian Athletes and the Beta Club. During high school, Burgess played with the Pike County Central Band and the Pikeville College Band. He volunteered with World Changers and Habitat for Humanity Build.

Damron, the daughter of Ken and Teresa Damron, is a South Floyd High School graduate. She was salutatorian of her class, listed in Who's Who Among High School Students and named on the honor roll for all 12 years of school. A Beta Club member, she volunteered at the Beaver Creek Animal Clinic and served as a peer tutor.

To be eligible for a Commonwealth Scholarship at MSU, a student must have superior grades and ACT test scores. Valued at full in-state tuition, a Commonwealth Scholarship is renewable for up to three years if the recipient maintains the required grade point average.

Applications and information on scholarship programs at MSU are available on the Web at [www.moreheadstate.edu/scholarships](http://www.moreheadstate.edu/scholarships) or by calling toll-free at 1-800-585-6781.

####

tse

NO PHOTO FOR BURGESS

NO PHOTO FOR DAMRON

# News

Media Relations

[www.moreheadstate.edu](http://www.moreheadstate.edu)

Morehead State University

UPO Box 1100

Morehead, KY 40351-1689

(606) 783-2030

July 15, 2009

FOR IMMEDIATE RELEASE

MOREHEAD, Ky.---Morehead State University has announced that James Meade of **Harold** is among those students receiving a Presidential Scholarship and an Alumni Scholarship for the 2009-10 school year.

Meade, a Pike County Central High School graduate, was a member of the National Honor Society and the Beta Club. He volunteered his time as a Sunday school teacher with the Lower Toler Church of Christ. Meade is the son of James and Stacy Meade.

To be eligible for the Presidential Scholarship at MSU, a student must have outstanding grades and ACT test scores. Valued at full in-state tuition and on-campus housing for most recipients, a Presidential Scholarship is renewable for up to three years if the recipient maintains the required grade point average.

To be eligible for an Alumni Scholarship, at least one of the student's parents, grandparents or their spouse must be an active member of the MSU Alumni Association. Valued at \$1,000 per year, an Alumni Scholarship is renewable for up to three years if the recipient maintains the required grade point average.

Applications and information on scholarship programs at MSU are available on the Web at [www.moreheadstate.edu/scholarships](http://www.moreheadstate.edu/scholarships) or by calling toll-free at 1-800-585-6781.

####

tse



# News

Media Relations

[www.moreheadstate.edu](http://www.moreheadstate.edu)

Morehead State University

UPO Box 1100

Morehead, KY 40351-1689

(606) 783-2030

July 15, 2009

FOR IMMEDIATE RELEASE

MOREHEAD, Ky.---Morehead State University has announced that James Tackett of **Hi Hat** is among those students receiving a Presidential Scholarship for the 2009-10 school year.

Tackett, the son of James and Lisa Tackett, is a Betsy Layne High School graduate. A 2008 Kentucky Governor's Scholar, he attended University of Kentucky's Best Summer Engineering Program and Marshall University's Engineering Program. Tackett volunteered his time as treasurer for Pine Grove Baptist Youth, assisted with sponsoring a child through World Vision and was a member of Floyd County Youth Leadership.

To be eligible for the Presidential Scholarship at MSU, a student must have outstanding grades and ACT test scores. Valued at full in-state tuition and on-campus housing for most recipients, a Presidential Scholarship is renewable for up to three years if the recipient maintains the required grade point average.

Applications and information on scholarship programs at MSU are available on the Web at [www.moreheadstate.edu/scholarships](http://www.moreheadstate.edu/scholarships) or by calling toll-free at 1-800-585-6781.

####

tse



# News

Media Relations

[www.moreheadstate.edu](http://www.moreheadstate.edu)

Morehead State University

UPO Box 1100

Morehead, KY 40351-1689

(606) 783-2030

July 15, 2009

FOR IMMEDIATE RELEASE

MOREHEAD, Ky.---Morehead State University has announced that Emily Johnson of **Williamstown** is among those students receiving a Commonwealth Scholarship for the 2009-10 school year.

Johnson, the daughter of Don and Ava Johnson, is a Grant County High School graduate. She was a member of the National Honor Society and Young Professional Organization. In high school, she served as the yearbook editor. A member of Lystra Church of Christ Youth Group, she volunteered her time with Relay for Life.

To be eligible for a Commonwealth Scholarship at MSU, a student must have superior grades and ACT test scores. Valued at full in-state tuition, a Commonwealth Scholarship is renewable for up to three years if the recipient maintains the required grade point average.

Applications and information on scholarship programs at MSU are available on the Web at [www.moreheadstate.edu/scholarships](http://www.moreheadstate.edu/scholarships) or by calling toll-free at 1-800-585-6781.

####

tse

NO PHOTO

# News

Media Relations

[www.moreheadstate.edu](http://www.moreheadstate.edu)

Morehead State University

UPO Box 1100

Morehead, KY 40351-1689

(606) 783-2030

July 15, 2009

FOR IMMEDIATE RELEASE

MOREHEAD, Ky.---Morehead State University has announced that Anthony Sarcione of **Williamstown** is among those students receiving a Commonwealth Scholarship and a Valedictorian Scholarship for the 2009-10 school year.

Sarcione, a Williamstown High School graduate, was a member of the Kentucky Governor's Scholars program, the National Honor Society and the Beta Club. Ranked number one in his graduating class, he was president of student council.

To be eligible for a Commonwealth Scholarship at MSU, a student must have superior grades and ACT test scores. Valued at full in-state tuition, a Commonwealth Scholarship is renewable for up to three years if the recipient maintains the required grade point average.

The Valedictorian Scholarship is valued at \$1,000 for one year following high school graduation.

Applications and information on scholarship programs at MSU are available on the Web at [www.moreheadstate.edu/scholarships](http://www.moreheadstate.edu/scholarships) or by calling toll-free at 1-800-585-6781.

####

tse



# News

Media Relations

[www.moreheadstate.edu](http://www.moreheadstate.edu)

Morehead State University

UPO Box 1100

Morehead, KY 40351-1689

(606) 783-2030

July 15, 2009

FOR IMMEDIATE RELEASE

MOREHEAD, Ky.---Morehead State University has announced that Kierston Eastham of **Greenup** is among those students receiving a Presidential Scholarship for the 2009-10 school year.

Eastham, a Greenup County High School graduate, is the daughter of Todd and Angie Eastham. She was a 2008 Kentucky Governor's Scholar, a member of the Beta Club and Future Business Leaders of America. Eastham is involved with Greenup Christian Church Youth Group and Youth Leadership of Boyd and Greenup counties.

To be eligible for the Presidential Scholarship at MSU, a student must have outstanding grades and ACT test scores. Valued at full in-state tuition and on-campus housing for most recipients, a Presidential Scholarship is renewable for up to three years if the recipient maintains the required grade point average.

Applications and information on scholarship programs at MSU are available on the Web at [www.moreheadstate.edu/scholarships](http://www.moreheadstate.edu/scholarships) or by calling toll-free at 1-800-585-6781.

####

tse





# News

Media Relations

[www.moreheadstate.edu](http://www.moreheadstate.edu)

Morehead State University

UPO Box 1100

Morehead, KY 40351-1689

(606) 783-2030

July 15, 2009

FOR IMMEDIATE RELEASE

MOREHEAD, Ky.---Morehead State University has announced that Daniel Feltrop of **Flatwoods** is among those students receiving an Alumni Scholarship for the 2009-10 school year.

Feltrop, the son of Danny and Dawn Feltrop, is a Russell High School graduate. He was a member of the Beta Club and Fellowship of Christian Athletes. A varsity baseball player, Feltrop volunteered with Red Ribbon, Jump Start and a youth ministry team.

To be eligible for an Alumni Scholarship, at least one of the student's parents, grandparents or their spouse must be an active member of the MSU Alumni Association. Valued at \$1,000 per year, an Alumni Scholarship is renewable for up to three years if the recipient maintains the required grade point average.

Applications and information on scholarship programs at MSU are available on the Web at [www.moreheadstate.edu/scholarships](http://www.moreheadstate.edu/scholarships) or by calling toll-free at 1-800-585-6781.

####

tse

NO PHOTO

# News

Media Relations

[www.moreheadstate.edu](http://www.moreheadstate.edu)

Morehead State University

UPO Box 1100

Morehead, KY 40351-1689

(606) 783-2030

July 15, 2009

FOR IMMEDIATE RELEASE

MOREHEAD, Ky.---Morehead State University has announced that two Greenup County High School graduates are among those students receiving a Commonwealth Scholarship for the 2009-10 school year.

Jason McGinnis is the son of Matthew and Darlene McGinnis of **South Shore**. McGinnis was a member of the Beta Club, listed on the honor roll and graduated with honors of highest distinction. In his free time, he volunteers at a local hospital and enjoys camping.

Ashley Wright, of **Greenup**, is the daughter of Neil and Renee Wright. She was a 2008 Kentucky Governor's Scholar, a 2007 Pikeville PEPP Scholar and a member of the Beta Club. She devoted her time with the River Cities Dance Company, volunteering with King's Daughters Medical Center and the Greenup Fire Department Women's Auxiliary Club.

To be eligible for a Commonwealth Scholarship at MSU, a student must have superior grades and ACT test scores. Valued at full in-state tuition, a Commonwealth Scholarship is renewable for up to three years if the recipient maintains the required grade point average.

Applications and information on scholarship programs at MSU are available on the Web at [www.moreheadstate.edu/scholarships](http://www.moreheadstate.edu/scholarships) or by calling toll-free at 1-800-585-6781.

####

tse



Jason McGinnis



Ashley Wright

# News

Media Relations

[www.moreheadstate.edu](http://www.moreheadstate.edu)

Morehead State University

UPO Box 1100

Morehead, KY 40351-1689

(606) 783-2030

July 15, 2009.

FOR IMMEDIATE RELEASE

MOREHEAD, Ky.---Morehead State University has announced that Sarah Steele of **Greenup** is among those students receiving a Commonwealth Scholarship for the 2009-10 school year.

Steele, a graduate of Rose Hill Christian School, is the daughter of Michael and Tammy Steele. In high school, she received the Prudential Leadership Award, Ashland Elks Teenager of the Month Award and was honored with a Senior Salute. Steele volunteered her time with King's Daughters Medical Center, Our Lady of Bellefonte Hospital and Seedline Ministry.

To be eligible for a Commonwealth Scholarship at MSU, a student must have superior grades and ACT test scores. Valued at full in-state tuition, a Commonwealth Scholarship is renewable for up to three years if the recipient maintains the required grade point average.

Applications and information on scholarship programs at MSU are available on the Web at [www.moreheadstate.edu/scholarships](http://www.moreheadstate.edu/scholarships) or by calling toll-free at 1-800-585-6781.

####

tse



# News

Media Relations

[www.moreheadstate.edu](http://www.moreheadstate.edu)

Morehead State University

UPO Box 1100

Morehead, KY 40351-1689

(606) 783-2030

July 15, 2009

FOR IMMEDIATE RELEASE

MOREHEAD, Ky.---Morehead State University has announced that Caitlin Timberlake of **Elizabethtown** is among those students receiving a Commonwealth Scholarship for the 2009-10 school year.

Timberlake, a Central Hardin High School graduate, is daughter of Cynthia French. A Lincoln Trail Youth Salute, she was a Bruin Scholar and was listed on the honor roll. Timberlake is a St. John Catholic Church member and volunteer.

To be eligible for a Commonwealth Scholarship at MSU, a student must have superior grades and ACT test scores. Valued at full in-state tuition, a Commonwealth Scholarship is renewable for up to three years if the recipient maintains the required grade point average.

Applications and information on scholarship programs at MSU are available on the Web at [www.moreheadstate.edu/scholarships](http://www.moreheadstate.edu/scholarships) or by calling toll-free at 1-800-585-6781.

####

tse

NO PHOTO

# News

Media Relations

[www.moreheadstate.edu](http://www.moreheadstate.edu)

Morehead State University

UPO Box 1100

Morehead, KY 40351-1689

(606) 783-2030

July 15, 2009

FOR IMMEDIATE RELEASE

MOREHEAD, Ky.---Morehead State University has announced that Jennifer Wells of **Cynthiana** is among those students receiving a Commonwealth Scholarship for the 2009-10 school year.

Wells, the daughter of Jim and Ann Wells, is a Harrison County High School graduate. She is a Kentucky Governor's Scholars Program alumnus, valedictorian of her class, a Toyota Engineering and Motor Associate Scholarship recipient and was named to the University of Kentucky Department of Agriculture Dean's List. An East Seventh Street Center volunteer, she also devoted her time to the University of Kentucky Civic Engagement Living and Learning Community.

To be eligible for a Commonwealth Scholarship at MSU, a student must have superior grades and ACT test scores. Valued at full in-state tuition, a Commonwealth Scholarship is renewable for up to three years if the recipient maintains the required grade point average.

Applications and information on scholarship programs at MSU are available on the Web at [www.moreheadstate.edu/scholarships](http://www.moreheadstate.edu/scholarships) or by calling toll-free at 1-800-585-6781.

####

tse



# News

Media Relations

[www.moreheadstate.edu](http://www.moreheadstate.edu)

Morehead State University

UPO Box 1100

Morehead, KY 40351-1689

(606) 783-2030

July 15, 2009

FOR IMMEDIATE RELEASE

MOREHEAD, Ky.---Morehead State University has announced that Andrew McGurk of **Prospect** is among those students receiving a Presidential Scholarship for the 2009-10 school year.

McGurk, the son of Tim and Susan McGurk, is a Trinity High School graduate. He was a graduate of the Governor's School for the Arts in architecture and a four-year member of the cross country team, the 2007 state champions. McGurk volunteered with Gilda's Club and with special needs children in Jefferson County.

To be eligible for the Presidential Scholarship at MSU, a student must have outstanding grades and ACT test scores. Valued at full in-state tuition and on-campus housing for most recipients, a Presidential Scholarship is renewable for up to three years if the recipient maintains the required grade point average.

Applications and information on scholarship programs at MSU are available on the Web at [www.moreheadstate.edu/scholarships](http://www.moreheadstate.edu/scholarships) or by calling toll-free at 1-800-585-6781.

####

tse



# News

Media Relations

[www.moreheadstate.edu](http://www.moreheadstate.edu)

Morehead State University

UPO Box 1100

Morehead, KY 40351-1689

(606) 783-2030

July 15, 2009

FOR IMMEDIATE RELEASE

MOREHEAD, Ky.---Morehead State University has announced that Ashley Hall of **Hager Hill** is among those students receiving a Presidential Scholarship and a Valedictorian Scholarship for the 2009-10 school year.

Hall, the daughter of Terina and Chris Caudill, is a Johnson Central High School graduate. She was listed on the National Honor Roll, a member of the All-State Choir and the Fellowship of Christian Athletes. In her free time, she was involved with the Kentucky Opry Junior Jamboree, the Kentucky Opry Performing Arts and the Salyersville FBC Youth Group, where she serves as an officer.

To be eligible for the Presidential Scholarship at MSU, a student must have outstanding grades and ACT test scores. Valued at full in-state tuition and on-campus housing for most recipients, a Presidential Scholarship is renewable for up to three years if the recipient maintains the required grade point average.

The Valedictorian Scholarship is valued at \$1,000 for one year following high school graduation.

Applications and information on scholarship programs at MSU are available on the Web at [www.moreheadstate.edu/scholarships](http://www.moreheadstate.edu/scholarships) or by calling toll-free at 1-800-585-6781.

####

tse



# News

Media Relations

[www.moreheadstate.edu](http://www.moreheadstate.edu)

Morehead State University

UPO Box 1100

Morehead, KY 40351-1689

(606) 783-2030

July 15, 2009

FOR IMMEDIATE RELEASE

MOREHEAD, Ky.---Morehead State University has announced that Ronnie Parker of **Flat Gap** is among those students receiving a Presidential Scholarship for the 2009-10 school year.

Parker, the son of Ronnie and Pamela Parker, is a Johnson Central High School graduate. He received high scores on the Advanced Placement U.S. history exam, awarded the WYMT-TV Mountain Classic Scholarship and received the Woodman of the World Proficiency in American History Award. He is a preacher in the United Association of United Baptist and participated in Fellowship of Christian Athletes activities.

To be eligible for the Presidential Scholarship at MSU, a student must have outstanding grades and ACT test scores. Valued at full in-state tuition and on-campus housing for most recipients, a Presidential Scholarship is renewable for up to three years if the recipient maintains the required grade point average.

Applications and information on scholarship programs at MSU are available on the Web at [www.moreheadstate.edu/scholarships](http://www.moreheadstate.edu/scholarships) or by calling toll-free at 1-800-585-6781.

####

tse





# News

Media Relations

[www.moreheadstate.edu](http://www.moreheadstate.edu)

Morehead State University

UPO Box 1100

Morehead, KY 40351-1689

(606) 783-2030

July 15, 2009

FOR IMMEDIATE RELEASE

MOREHEAD, Ky.---Morehead State University has announced that Joseph Whitaker of **Thelma** is among those students receiving a Presidential Scholarship, an Alumni Scholarship and a Valedictorian Scholarship for the 2009-10 school year.

Whitaker, the son of Steve Whitaker, is a Johnson Central High School graduate. He was a member of the 2008 Kentucky Governor's Scholars program. The valedictorian of his graduating class, Whitaker was recognized as the September Kentucky High School Game Night Student Athlete of the Month. He volunteered his time with the Key Club during community clean-up projects and local basketball and golf camps for children.

To be eligible for the Presidential Scholarship at MSU, a student must have outstanding grades and ACT test scores. Valued at full in-state tuition and on-campus housing for most recipients, a Presidential Scholarship is renewable for up to three years if the recipient maintains the required grade point average.

To be eligible for an Alumni Scholarship, at least one of the student's parents, grandparents or their spouse must be an active member of the MSU Alumni Association. Valued at \$1,000 per year, an Alumni Scholarship is renewable for up to three years if the recipient maintains the required grade point average.

The Valedictorian Scholarship is valued at \$1,000 for one year following high school graduation.

Applications and information on scholarship programs at MSU are available on the Web at [www.moreheadstate.edu/scholarships](http://www.moreheadstate.edu/scholarships) or by calling toll-free at 1-800-585-6781.

####

tse

NO PHOTO

# News

Media Relations

[www.moreheadstate.edu](http://www.moreheadstate.edu)

Morehead State University

UPO Box 1100

Morehead, KY 40351-1689

(606) 783-2030

July 15, 2009

FOR IMMEDIATE RELEASE

MOREHEAD, Ky.---Morehead State University has announced that Emma Muntis of **Crestview Hills** is among those students receiving a Presidential Scholarship for the 2009-10 school year.

Muntis, the daughter of Robert Muntis, is a Dixie Heights High School graduate. She was a member of the National Honor Society, listed on the All A Honor Roll and served as captain of the swim team.

To be eligible for the Presidential Scholarship at MSU, a student must have outstanding grades and ACT test scores. Valued at full in-state tuition and on-campus housing for most recipients, a Presidential Scholarship is renewable for up to three years if the recipient maintains the required grade point average.

Applications and information on scholarship programs at MSU are available on the Web at [www.moreheadstate.edu/scholarships](http://www.moreheadstate.edu/scholarships) or by calling toll-free at 1-800-585-6781.

####

tse



# News

Media Relations

[www.moreheadstate.edu](http://www.moreheadstate.edu)

Morehead State University

UPO Box 1100

Morehead, KY 40351-1689

(606) 783-2030

July 15, 2009

FOR IMMEDIATE RELEASE

MOREHEAD, Ky.---Morehead State University has announced that Ashley Molitor of **Erlanger** is among those students receiving a Commonwealth Scholarship for the 2009-10 school year.

Molitor, the daughter of Mark and Lynee Molitor, is a graduate of Lloyd Memorial High School. She was a member of the National Honor Society, graduated in the top 10 percent of her class and was listed on the honor roll. A Remke student achiever, she was a senior mentor.

To be eligible for the Presidential Scholarship at MSU, a student must have outstanding grades and ACT test scores. Valued at full in-state tuition and housing for most recipients, a Presidential Scholarship is renewable for up to three years if the recipient maintains the required grade point average.

Applications and information on scholarship programs at MSU are available on the Web at [www.moreheadstate.edu/scholarships](http://www.moreheadstate.edu/scholarships) or by calling toll-free at 1-800-585-6781.

####

tse

NO PHOTO

# News

Media Relations

[www.moreheadstate.edu](http://www.moreheadstate.edu)

Morehead State University

UPO Box 1100

Morehead, KY 40351-1689

(606) 783-2030

July 15, 2009

FOR IMMEDIATE RELEASE

MOREHEAD, Ky.---Morehead State University has announced Hannah Wagner of **Covington** is among those students receiving a Commonwealth Scholarship for the 2009-10 school year.

Wagner, a graduate of Scott High School, is the daughter of Chas and Faith Wagner. She was on the Dean's List, a member of the National Honor Society and named to the Academic All State for volleyball. Wagner was a volunteer with St. Elizabeth Medical Center.

To be eligible for a Commonwealth Scholarship at MSU, a student must have superior grades and ACT test scores. Valued at full in-state tuition, a Commonwealth Scholarship is renewable for up to three years if the recipient maintains the required grade point average.

Applications and information on scholarship programs at MSU are available on the Web at [www.moreheadstate.edu/scholarships](http://www.moreheadstate.edu/scholarships) or by calling toll-free at 1-800-585-6781.

####

tse



# News

Media Relations

[www.moreheadstate.edu](http://www.moreheadstate.edu)

Morehead State University

UPO Box 1100

Morehead, KY 40351-1689

(606) 783-2030

July 15, 2009

FOR IMMEDIATE RELEASE

MOREHEAD, Ky.---Morehead State University has announced that Justin Hall of **Raven** is among those students receiving a Presidential Scholarship for the 2009-10 school year.

Hall, the son of Bryson and Pamela Hall, is a June Buchanan School graduate.

To be eligible for the Presidential Scholarship at MSU, a student must have outstanding grades and ACT test scores. Valued at full in-state tuition and on-campus housing for most recipients, a Presidential Scholarship is renewable for up to three years if the recipient maintains the required grade point average.

Applications and information on scholarship programs at MSU are available on the Web at [www.moreheadstate.edu/scholarships](http://www.moreheadstate.edu/scholarships) or by calling toll-free at 1-800-585-6781.

####

tse



# News

Media Relations

[www.moreheadstate.edu](http://www.moreheadstate.edu)

Morehead State University

UPO Box 1100

Morehead, KY 40351-1689

(606) 783-2030

July 15, 2009

FOR IMMEDIATE RELEASE

MOREHEAD, Ky.---Morehead State University has announced that Lisa Stone of **London** is among those students receiving a Presidential Scholarship for the 2009-10 school year.

Stone, the daughter of Jerry and Oriko Adams, is a South Laurel High School graduate. She received honors for Outstanding Academic Achievement in algebra II, a certificate of Achievement in algebra I and a certificate of Excellence of intergrated social studies I. She devoted her time working with Marymount Hospital, volunteered during the Sublimity Fall Festival and with the Governor's School for the Arts.

To be eligible for the Presidential Scholarship at MSU, a student must have outstanding grades and ACT test scores. Valued at full in-state tuition and on-campus housing for most recipients, a Presidential Scholarship is renewable for up to three years if the recipient maintains the required grade point average.

Applications and information on scholarship programs at MSU are available on the Web at [www.moreheadstate.edu/scholarships](http://www.moreheadstate.edu/scholarships) or by calling toll-free at 1-800-585-6781.

####

tse



# News

Media Relations

[www.moreheadstate.edu](http://www.moreheadstate.edu)

Morehead State University

UPO Box 1100

Morehead, KY 40351-1689

(606) 783-2030

July 15, 2009

FOR IMMEDIATE RELEASE

MOREHEAD, Ky.---Morehead State University has announced that Sarah Beckelheimer of **Louisa** is among those students receiving an Alumni Scholarship for the 2009-10 school year.

Beckelhemier, the daughter of Janet and Greg Beckelheimer, is a Lawrence County High School graduate. She was a member of the academic team, school band and the honors choir.

To be eligible for an Alumni Scholarship, at least one of the student's parents, grandparents or their spouse must be an active member of the MSU Alumni Association. Valued at \$1,000 per year, an Alumni Scholarship is renewable for up to three years if the recipient maintains the required grade point average.

Applications and information on scholarship programs at MSU are available on the Web at [www.moreheadstate.edu/scholarships](http://www.moreheadstate.edu/scholarships) or by calling toll-free at 1-800-585-6781.

####

tse



# News

Media Relations

[www.moreheadstate.edu](http://www.moreheadstate.edu)

Morehead State University

UPO Box 1100

Morehead, KY 40351-1689

(606) 783-2030

July 15, 2009

FOR IMMEDIATE RELEASE

MOREHEAD, Ky.---Morehead State University has announced that Kayla Keeton of **Louisa** is among those students receiving a Commonwealth Scholarship for the 2009-10 school year.

Keeton, the daughter of Sherry and Jeff May, is a Lawrence County High School graduate. She was a member of the National Honor Society, participated in Senior Salute and Class of Kentucky. Keeton volunteered her time doing mission work and disaster relief with First Baptist Youth and helped at the local food bank.

To be eligible for a Commonwealth Scholarship at MSU, a student must have superior grades and ACT test scores. Valued at full in-state tuition, a Commonwealth Scholarship is renewable for up to three years if the recipient maintains the required grade point average.

Applications and information on scholarship programs at MSU are available on the Web at [www.moreheadstate.edu/scholarships](http://www.moreheadstate.edu/scholarships) or by calling toll-free at 1-800-585-6781.

####

tse





# News

Media Relations

[www.moreheadstate.edu](http://www.moreheadstate.edu)

Morehead State University

UPO Box 1100

Morehead, KY 40351-1689

(606) 783-2030

July 15, 2009

FOR IMMEDIATE RELEASE

MOREHEAD, Ky.---Morehead State University has announced that Mary Adams of **Isom** is among those students receiving a Presidential Scholarship and an Alumni Scholarship for the 2009-10 school year.

Adams, the daughter of Dickie and Dianne Adams, is a Letcher County Central High School graduate.

To be eligible for the Presidential Scholarship at MSU, a student must have outstanding grades and ACT test scores. Valued at full in-state tuition and on-campus housing for most recipients, a Presidential Scholarship is renewable for up to three years if the recipient maintains the required grade point average.

To be eligible for an Alumni Scholarship, at least one of the student's parents, grandparents or their spouse must be an active member of the MSU Alumni Association. Valued at \$1,000 per year, an Alumni Scholarship is renewable for up to three years if the recipient maintains the required grade point average.

Applications and information on scholarship programs at MSU are available on the Web at [www.moreheadstate.edu/scholarships](http://www.moreheadstate.edu/scholarships) or by calling toll-free at 1-800-585-6781.

####

tse

NO PHOTO

# News

Media Relations

[www.moreheadstate.edu](http://www.moreheadstate.edu)

Morehead State University

UPO Box 1100

Morehead, KY 40351-1689

(606) 783-2030

July 15, 2009

FOR IMMEDIATE RELEASE

MOREHEAD, Ky.---Morehead State University has announced that Kayla Burton of **Whitesburg**, is among those students receiving a Commonwealth Scholarship and an Alumni Scholarship for the 2009-10 school year.

Burton, the daughter of Michael and Heather Burton, is a Letcher County High School graduate. She was listed on the honor roll, named in the top 10 percent of her graduating class and served on the principal's student advisory team. Burton played on the softball and cross country teams, and was a member of the Pride Club and Interact Club.

To be eligible for a Commonwealth Scholarship at MSU, a student must have superior grades and ACT test scores. Valued at full in-state tuition, a Commonwealth Scholarship is renewable for up to three years if the recipient maintains the required grade point average.

To be eligible for an Alumni Scholarship, at least one of the student's parents, grandparents or their spouse must be an active member of the MSU Alumni Association. Valued at \$1,000 per year, an Alumni Scholarship is renewable for up to three years if the recipient maintains the required grade point average.

Applications and information on scholarship programs at MSU are available on the Web at [www.moreheadstate.edu/scholarships](http://www.moreheadstate.edu/scholarships) or by calling toll-free at 1-800-585-6781.

####

tse

NO PHOTO

# News

---

Media Relations

[www.moreheadstate.edu](http://www.moreheadstate.edu)

---

Morehead State University

UPO Box 1100

Morehead, KY 40351-1689

(606) 783-2030

July 15, 2009

FOR IMMEDIATE RELEASE

MOREHEAD, Ky.---Morehead State University has announced that Emily Hawkins of **Neon** is among those students receiving an Alumni Scholarship for the 2009-10 school year.

Hawkins, a Letcher County Central High School graduate, is the daughter of Jeff and Cheryl Hawkins. She received distinguished marks on CATS assessment, named a Rogers Scholar and received a Commerce Scholarship. Her activities included being a member of the dance team, a Teen Leader for PSI and a peer mediator.

To be eligible for an Alumni Scholarship, at least one of the student's parents, grandparents or their spouse must be an active member of the MSU Alumni Association. Valued at \$1,000 per year, an Alumni Scholarship is renewable for up to three years if the recipient maintains the required grade point average.

Applications and information on scholarship programs at MSU are available on the Web at [www.moreheadstate.edu/scholarships](http://www.moreheadstate.edu/scholarships) or by calling toll-free at 1-800-585-6781.

####

tse

NO PHOTO

# News

Media Relations

[www.moreheadstate.edu](http://www.moreheadstate.edu)

Morehead State University

UPO Box 1100

Morehead, KY 40351-1689

(606) 783-2030

July 15, 2009

FOR IMMEDIATE RELEASE

MOREHEAD, Ky.---Morehead State University has announced that three Lewis County students are among those receiving a Residence Hall Grant for the 2009-10 school year.

Michelle Bloomfield, of **Garrison**, is the daughter of Robert and Lucinda Bloomfield. A graduate of Lewis County High School, she was listed in Who's Who Among American High School Students and participated in the drama department. Bloomfield was a member of the Fellowship of Christian Athletes and the Quincy Church of Christ Youth Group.

Ammon Cooper, of **Vanceburg**, is a Lewis County High School graduate. He was salutatorian of his graduating class, a member of the Beta Club and served on the prom committee. In his free time, he volunteered at a church bake sale and chili dinner. He is the son of Donald and Shelia Cooper.

Bradley Doyle, of **Tollesboro**, the son of Tim and Carolyn Doyle, is a Fleming County High School graduate. He was the co-president of Future Educators Association and participated in the Gifted and Talented program. Doyle was a member of the all-district soccer team, the leading scorer of the FCHS soccer team and was involved in the youth drama team's production of Faith Walk.

The Residence Hall Grant allows the student to live in a University residence hall during the coming year.

Applications and information on scholarship programs at MSU are available on the Web at [www.moreheadstate.edu/scholarships](http://www.moreheadstate.edu/scholarships) or by calling toll-free at 1-800-585-6781.

####

tse



Michelle Bloomfield



Ammon Cooper



Bradley Doyle

# News

Media Relations

[www.moreheadstate.edu](http://www.moreheadstate.edu)

Morehead State University

UPO Box 1100

Morehead, KY 40351-1689

(606) 783-2030

July 15, 2009

FOR IMMEDIATE RELEASE

MOREHEAD, Ky.---Morehead State University has announced that Paige Doyle of **Tollesboro** is among those students receiving a Presidential Scholarship and an Alumni Scholarship for the 2009-10 school year.

Doyle, the daughter of Penny and Larry Doyle, is a graduate of Rowan County Senior High School. She was a 2008 Kentucky Governor's Scholar and a member of the National Society of High School Scholars. A cheerleader, she was a member of the Beta Club and the student YMCA.

To be eligible for the Presidential Scholarship at MSU, a student must have outstanding grades and ACT test scores. Valued at full in-state tuition and on-campus housing for most recipients, a Presidential Scholarship is renewable for up to three years if the recipient maintains the required grade point average.

To be eligible for an Alumni Scholarship, at least one of the student's parents, grandparents or their spouse must be an active member of the MSU Alumni Association. Valued at \$1,000 per year, an Alumni Scholarship is renewable for up to three years if the recipient maintains the required grade point average.

Applications and information on scholarship programs at MSU are available on the Web at [www.moreheadstate.edu/scholarships](http://www.moreheadstate.edu/scholarships) or by calling toll-free at 1-800-585-6781.

####

tse



MSU is an affirmative action, equal opportunity, educational institution.

# News

Media Relations

[www.moreheadstate.edu](http://www.moreheadstate.edu)

Morehead State University

UPO Box 1100

Morehead, KY 40351-1689

(606) 783-2030

July 15, 2009

FOR IMMEDIATE RELEASE

MOREHEAD, Ky.---Morehead State University has announced that Lindsey Carty of **Salyersville** is among those students receiving a Commonwealth Scholarship for the 2009-10 school year.

Carty, a graduate of Magoffin County High School, is the daughter of Glenda and Kenny Carty. The class president, she was a member of the Beta Club and the Student Leadership Program.

To be eligible for a Commonwealth Scholarship at MSU, a student must have superior grades and ACT test scores. Valued at full in-state tuition, a Commonwealth Scholarship is renewable for up to three years if the recipient maintains the required grade point average.

Applications and information on scholarship programs at MSU are available on the Web at [www.moreheadstate.edu/scholarships](http://www.moreheadstate.edu/scholarships) or by calling toll-free at 1-800-585-6781.

####

tse



# News

Media Relations

[www.moreheadstate.edu](http://www.moreheadstate.edu)

Morehead State University

UPO Box 1100

Morehead, KY 40351-1689

(606) 783-2030

July 15, 2009

FOR IMMEDIATE RELEASE

MOREHEAD, Ky.---Morehead State University has announced that two graduates of Magoffin County High School, Wesley Miller and Ryan Sparks both of **Salyersville**, are among those students receiving a Presidential Scholarship and an Alumni Scholarship for the 2009-10 school year.

Sparks is the son of Russell and Cathy Sparks. He participated in the Kentucky Governor's Scholar Program, named a HOBY Scholar and was a teen leader for Postponing Sexual Involvement. President of the 4-H Teen Club, he was the youth president of Prated United Methodist Church, a volunteer for 4-H camp and a counselor of Camp Lewis Bible Camp.

Miller is the son of Raymond and Theresa Miller. He was a Kentucky Governor's Scholar and was listed in Who's Who Among American High School Students. Miller was a member of the 15<sup>th</sup> Region Junior All-Star Baseball Team and 57<sup>th</sup> District All-Tournament Baseball Team. A Hurricane Katrina relief volunteer, he also is a Daughters of A.R. War Good Citizen.

To be eligible for the Presidential Scholarship at MSU, a student must have outstanding grades and ACT test scores. Valued at full in-state tuition and housing for most recipients, a Presidential Scholarship is renewable for up to three years if the recipient maintains the required grade point average.

To be eligible for an Alumni Scholarship, at least one of the student's parents, grandparents or their spouse must be an active member of the MSU Alumni Association. Valued at \$1,000 per year, an Alumni Scholarship is renewable for up to three years if the recipient maintains the required grade point average.

Applications and information on scholarship programs at MSU are available on the Web at [www.moreheadstate.edu/scholarships](http://www.moreheadstate.edu/scholarships) or by calling toll-free at 1-800-585-6781.

####

tse



Wesley Miller

NO PHOTO FOR SPARKS

# News

Media Relations

[www.moreheadstate.edu](http://www.moreheadstate.edu)

Morehead State University

UPO Box 1100

Morehead, KY 40351-1689

(606) 783-2030

July 15, 2009

FOR IMMEDIATE RELEASE

MOREHEAD, Ky.---Morehead State University has announced that Mandela Rice of **Maysville** is among those students receiving a Diversity Scholarship for the 2009-10 school year.

Rice, the son of Rosezetta Routt, is a Mason County High School graduate. During his four years of high school, he was a student in advance placement and honors classes. A member of the Youth NAACP Committee, he volunteered in the Community Christmas at Maysville Community and Technical College and the Buffalo Trace Marathon.

To be eligible for the Diversity Scholarship, the student must have an ethnic background, be a legal resident of Kentucky, and have an ACT composite score of 18. The award is valued at \$1,000 per year.

Applications and information on scholarship programs at MSU are available on the Web at [www.moreheadstate.edu/scholarships](http://www.moreheadstate.edu/scholarships) or by calling toll-free at 1-800-585-6781.

####

tse

NO PHOTO



# News

Media Relations

[www.moreheadstate.edu](http://www.moreheadstate.edu)

Morehead State University

UPO Box 1100

Morehead, KY 40351-1689

(606) 783-2030

July 15, 2009

FOR IMMEDIATE RELEASE

MOREHEAD, Ky.---Morehead State University has announced that Laura Wenz of **Dover** is among those students receiving a Presidential Scholarship and a Department of Music Scholarship for the 2009-10 school year.

Wenz, the daughter of Chuck and Leigh Wenz, is a St. Patrick's High School graduate. She was a member of the National Honor Society.

To be eligible for the Presidential Scholarship at MSU, a student must have outstanding grades and ACT test scores. Valued at full in-state tuition and on-campus housing for most recipients, a Presidential Scholarship is renewable for up to three years if the recipient maintains the required grade point average.

To receive a scholarship for the Department of Music, students are selected by audition. Recipients must maintain a cumulative GPA of 3.0 in music.

Applications and information on scholarship programs at MSU are available on the Web at [www.moreheadstate.edu/scholarships](http://www.moreheadstate.edu/scholarships) or by calling toll-free at 1-800-585-6781.

####

tse



# News

Media Relations

[www.moreheadstate.edu](http://www.moreheadstate.edu)

Morehead State University

UPO Box 1100

Morehead, KY 40351-1689

(606) 783-2030

July 15, 2009

FOR IMMEDIATE RELEASE

MOREHEAD, Ky.---Morehead State University has announced that Timothy Smallwood of **Frenchburg** is among those students receiving a Commonwealth Scholarship and a Valedictorian Scholarship for the 2009-10 school year.

Smallwood, the son of Rickie and Nancy Smallwood, is a Menifee County High School graduate. He won the first place National Title for Future Educators Association, was named valedictorian of his graduating class and was listed on the National Honor Roll. In his free time, he played piano for his church.

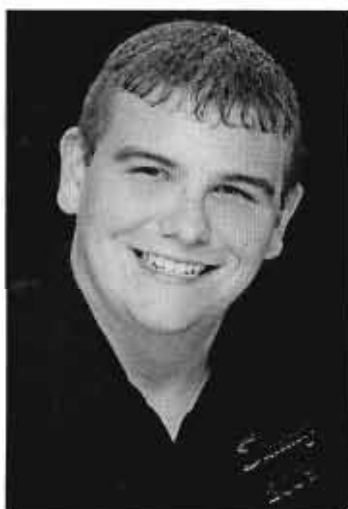
To be eligible for a Commonwealth Scholarship at MSU, a student must have superior grades and ACT test scores. Valued at full in-state tuition, a Commonwealth Scholarship is renewable for up to three years if the recipient maintains the required grade point average.

The Valedictorian Scholarship is valued at \$1,000 for one year following high school graduation.

Applications and information on scholarship programs at MSU are available on the Web at [www.moreheadstate.edu/scholarships](http://www.moreheadstate.edu/scholarships) or by calling toll-free at 1-800-585-6781.

####

tse



# News

Media Relations

[www.moreheadstate.edu](http://www.moreheadstate.edu)

Morehead State University

UPO Box 1100

Morehead, KY 40351-1689

(606) 783-2030

July 15, 2009

FOR IMMEDIATE RELEASE

MOREHEAD, Ky.---Morehead State University has announced that Gregory Kline of **Mt. Sterling** is among those students receiving a Commonwealth Scholarship for the 2009-10 school year.

Kline, the son of Greg and Shanell Kline, is a Montgomery County High School graduate. He was inducted into the National Honor Society, a member of the Beta Club and graduated in the top 25 of his class. He attended Kentucky Governor's School for the Arts in 2008, was a member of the All-State Symphonic Band where he served as 1<sup>st</sup> Chair Euphonium, and attended Western International Band Clinic in Seattle.

To be eligible for a Commonwealth Scholarship at MSU, a student must have superior grades and ACT test scores. Valued at full in-state tuition, a Commonwealth Scholarship is renewable for up to three years if the recipient maintains the required grade point average.

Applications and information on scholarship programs at MSU are available on the Web at [www.moreheadstate.edu/scholarships](http://www.moreheadstate.edu/scholarships) or by calling toll-free at 1-800-585-6781.

####

tse



# News

Media Relations

[www.moreheadstate.edu](http://www.moreheadstate.edu)

Morehead State University

UPO Box 1100

Morehead, KY 40351-1689

(606) 783-2030

July 15, 2009

FOR IMMEDIATE RELEASE

MOREHEAD, Ky.---Morehead State University has announced that Keesha Stacy of **Jeffersonville** is among those students receiving a Commonwealth Scholarship and a Valedictorian Scholarship for the 2009-10 school year.

Stacy, the daughter of Helen and Ronnie Willoughby, is a Bath County High School graduate. She was a Kentucky Governor's Scholar, named to the honor roll all four years of high school and received a Presidential Academic Award. A senior Beta Club member, she volunteered at a local daycare and participated in Upward Bound.

To be eligible for a Commonwealth Scholarship at MSU, a student must have superior grades and ACT test scores. Valued at full in-state tuition, a Commonwealth Scholarship is renewable for up to three years if the recipient maintains the required grade point average.

The Valedictorian Scholarship is valued at \$1,000 for one year following high school graduation.

Applications and information on scholarship programs at MSU are available on the Web at [www.moreheadstate.edu/scholarships](http://www.moreheadstate.edu/scholarships) or by calling toll-free at 1-800-585-6781.

####

tse



# News

Media Relations

[www.moreheadstate.edu](http://www.moreheadstate.edu)

Morehead State University

UPO Box 1100

Morehead, KY 40351-1689

(606) 783-2030

July 15, 2009

FOR IMMEDIATE RELEASE

MOREHEAD, Ky.---Morehead State University has announced that Amanda Adkins of **West Liberty** is among those students receiving an Alumni Scholarship for the 2009-10 school year.

Adkins, the daughter of Jeff and Frankie Adkins, is a Morgan County High School graduate. She was a member of the National Honor Society and participated with the Juniorettes.

To be eligible for an Alumni Scholarship, at least one of the student's parents, grandparents or their spouse must be an active member of the MSU Alumni Association. Valued at \$1,000 per year, an Alumni Scholarship is renewable for up to three years if the recipient maintains the required grade point average.

Applications and information on scholarship programs at MSU are available on the Web at [www.moreheadstate.edu/scholarships](http://www.moreheadstate.edu/scholarships) or by calling toll-free at 1-800-585-6781.

####

tse



# News

Media Relations

[www.moreheadstate.edu](http://www.moreheadstate.edu)

Morehead State University

UPO Box 1100

Morehead, KY 40351-1689

(606) 783-2030

July 15, 2009

FOR IMMEDIATE RELEASE

MOREHEAD, Ky.---Morehead State University has announced that Tyler Adkins of **Ezel** is among those students receiving an Alumni Scholarship and a Valedictorian Scholarship for the 2009-10 school year.

Adkins, the son of Carla Cele, is a Morgan County High School graduate. He was a member of KHSAA 1<sup>st</sup> Team Academic All State and listed in Who's Who Among American High School Students. Tyler was a four-year member of the basketball, baseball and varsity golf teams. He received awards for Advance Placement in calculus, geometry and English, along with receiving the Morgan County Citizenship Award. In his free time, he volunteered with Co-Op Physical Therapy Volunteer Service and the PRIDE Community Garbage Pick-Up.

To be eligible for an Alumni Scholarship, at least one of the student's parents, grandparents or their spouse must be an active member of the MSU Alumni Association. Valued at \$1,000 per year, an Alumni Scholarship is renewable for up to three years if the recipient maintains the required grade point average.

The Valedictorian Scholarship is valued at \$1,000 for one year following high school graduation.

Applications and information on scholarship programs at MSU are available on the Web at [www.moreheadstate.edu/scholarships](http://www.moreheadstate.edu/scholarships) or by calling toll-free at 1-800-585-6781.

####

tse



MSU is an affirmative action, equal opportunity, educational institution.

# News

Media Relations

[www.moreheadstate.edu](http://www.moreheadstate.edu)

Morehead State University

UPO Box 1100

Morehead, KY 40351-1689

(606) 783-2030

July 15, 2009

FOR IMMEDIATE RELEASE

MOREHEAD, Ky.---Morehead State University has announced that Christian Cravens of **Grassy Creek** is among those students receiving a Presidential Scholarship for the 2009-10 school year.

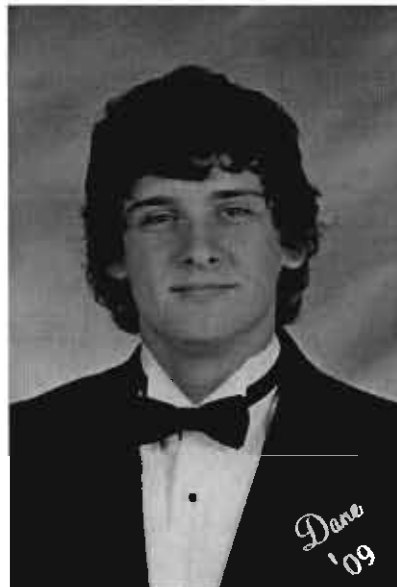
Cravens, the son of Gene and Cheryl Cravens, is a Morgan County High School graduate.

To be eligible for the Presidential Scholarship at MSU, a student must have outstanding grades and ACT test scores. Valued at full in-state tuition and on-campus housing for most recipients, a Presidential Scholarship is renewable for up to three years if the recipient maintains the required grade point average.

Applications and information on scholarship programs at MSU are available on the Web at [www.moreheadstate.edu/scholarships](http://www.moreheadstate.edu/scholarships) or by calling toll-free at 1-800-585-6781.

####

tse



# News

Media Relations

[www.moreheadstate.edu](http://www.moreheadstate.edu)

Morehead State University

UPO Box 1100

Morehead, KY 40351-1689

(606) 783-2030

July 15, 2009

FOR IMMEDIATE RELEASE

MOREHEAD, Ky.---Morehead State University has announced that Colby Jones of **West Liberty** is among those students receiving a Presidential Scholarship and an Alumni Scholarship for the 2009-10 school year.

Jones, the son of Glenn and Joyce Jones, is a Morgan County High School graduate. He is a member of the National Honor Society, the Morgan County Science Olympiads and president of EKTEA Regional. In his free time, he participated in several Relay for Life events, Rowan County Repair Affair and the Morgan County Summer School "Get Active" Program.

To be eligible for the Presidential Scholarship at MSU, a student must have outstanding grades and ACT test scores. Valued at full in-state tuition and on-campus housing for most recipients, a Presidential Scholarship is renewable for up to three years if the recipient maintains the required grade point average.

To be eligible for an Alumni Scholarship, at least one of the student's parents, grandparents or their spouse must be an active member of the MSU Alumni Association. Valued at \$1,000 per year, an Alumni Scholarship is renewable for up to three years if the recipient maintains the required grade point average.

Applications and information on scholarship programs at MSU are available on the Web at [www.moreheadstate.edu/scholarships](http://www.moreheadstate.edu/scholarships) or by calling toll-free at 1-800-585-6781.

####

tse





# News

Media Relations

[www.moreheadstate.edu](http://www.moreheadstate.edu)

Morehead State University

UPO Box 1100

Morehead, KY 40351-1689

(606) 783-2030

July 15, 2009

FOR IMMEDIATE RELEASE

MOREHEAD, Ky.---Morehead State University has announced that Jennifer Marcum of **Carlisle** is among those students receiving a Valedictorian Scholarship for the 2009-10 school year.

Marcum, the daughter of Billy Marcum and Betty Jo Booth, is a Nicholas County High School graduate. She is a member of the National Honor Society, listed in Who's Who Among American High School Students and was a Kentucky Governor's Scholars program nominee. A National American Miss Runner-up, she organized a diabetes walk and volunteered during Red Ribbon Week.

The Valedictorian Scholarship is valued at \$1,000 for one year following high school graduation.

Applications and information on scholarship programs at MSU are available on the Web at [www.moreheadstate.edu/scholarships](http://www.moreheadstate.edu/scholarships) or by calling toll-free at 1-800-585-6781.

####

tse



# News

Media Relations

[www.moreheadstate.edu](http://www.moreheadstate.edu)

Morehead State University

UPO Box 1100

Morehead, KY 40351-1689

(606) 783-2030

July 15, 2009

FOR IMMEDIATE RELEASE

MOREHEAD, Ky.---Morehead State University has announced that Lauren Jones of **Falmouth** is among those students receiving a Presidential Scholarship for the 2009-10 school year.

Jones, the daughter of Paula Jones, is a Pendleton County High School graduate. She was a Centre Fellow nominee, received a cheerleading academic award all four years and ranked in the top ten percent of her graduating class. She volunteered her time with Relay for Life, vacation bible school and a church carnival.

To be eligible for the Presidential Scholarship at MSU, a student must have outstanding grades and ACT test scores. Valued at full in-state tuition and on-campus housing for most recipients, a Presidential Scholarship is renewable for up to three years if the recipient maintains the required grade point average.

Applications and information on scholarship programs at MSU are available on the Web at [www.moreheadstate.edu/scholarships](http://www.moreheadstate.edu/scholarships) or by calling toll-free at 1-800-585-6781.

####

tse



# News

Media Relations

[www.moreheadstate.edu](http://www.moreheadstate.edu)

Morehead State University

UPO Box 1100

Morehead, KY 40351-1689

(606) 783-2030

July 15, 2009

FOR IMMEDIATE RELEASE

MOREHEAD, Ky.---Morehead State University has announced that Mackenzie Bentley of **Pikeville** is among those students receiving a Presidential Scholarship for the 2009-10 school year.

Bentley, the daughter of Greg and Kitty Bentley, is a Pike County High School graduate. She was a Kentucky Governor's Scholar and a member of the National Honor Society. A varsity cheerleader, she was a member of the student council.

To be eligible for the Presidential Scholarship at MSU, a student must have outstanding grades and ACT test scores. Valued at full in-state tuition and on-campus housing for most recipients, a Presidential Scholarship is renewable for up to three years if the recipient maintains the required grade point average.

Applications and information on scholarship programs at MSU are available on the Web at [www.moreheadstate.edu/scholarships](http://www.moreheadstate.edu/scholarships) or by calling toll-free at 1-800-585-6781.

####

tse



# News

Media Relations

[www.moreheadstate.edu](http://www.moreheadstate.edu)

Morehead State University

UPO Box 1100

Morehead, KY 40351-1689

(606) 783-2030

July 15, 2009

FOR IMMEDIATE RELEASE

MOREHEAD, Ky.---Morehead State University has announced that Abigail Coleman of **Pikeville** is among those students receiving an Alumni Scholarship for the 2009-10 school year.

Coleman, the daughter of John Coleman, is a Pike County Central High School graduate. She was a member of the National Honor Society, named to the Academic All-State 1<sup>st</sup> Team and received a 59<sup>th</sup> District Academic Award. In her free time, she volunteered with Habitat for Humanity, the HOPE Foundation and Cold Hands, Warm Hearts Operation.

To be eligible for an Alumni Scholarship, at least one of the student's parents, grandparents or their spouse must be an active member of the MSU Alumni Association. Valued at \$1,000 per year, an Alumni Scholarship is renewable for up to three years if the recipient maintains the required grade point average.

Applications and information on scholarship programs at MSU are available on the Web at [www.moreheadstate.edu/scholarships](http://www.moreheadstate.edu/scholarships) or by calling toll-free at 1-800-585-6781.

####

tse

NO PHOTO

# News

Media Relations

[www.moreheadstate.edu](http://www.moreheadstate.edu)

Morehead State University

UPO Box 1100

Morehead, KY 40351-1689

(606) 783-2030

July 15, 2009

FOR IMMEDIATE RELEASE

MOREHEAD, Ky.---Morehead State University has announced that Jacob Maynard of **Pikeville** is among those students receiving a Commonwealth and an Alumni Scholarship for the 2009-10 school year.

Maynard, a Pike County Central High School student, is the son of Jane and Kevin Maynard. He was a member of the National Honor Society, listed in Who's Who Among American High School Students and Who's Who in Journalism for 2008-09.

To be eligible for a Commonwealth Scholarship at MSU, a student must have superior grades and ACT test scores. Valued at full in-state tuition, a Commonwealth Scholarship is renewable for up to three years if the recipient maintains the required grade point average.

To be eligible for an Alumni Scholarship, at least one of the student's parents, grandparents or their spouse must be an active member of the MSU Alumni Association. Valued at \$1,000 per year, an Alumni Scholarship is renewable for up to three years if the recipient maintains the required grade point average.

Applications and information on scholarship programs at MSU are available on the Web at [www.moreheadstate.edu/scholarships](http://www.moreheadstate.edu/scholarships) or by calling toll-free at 1-800-585-6781.

####

tse



# News

Media Relations

[www.moreheadstate.edu](http://www.moreheadstate.edu)

Morehead State University

UPO Box 1100

Morehead, KY 40351-1689

(606) 783-2030

July 15, 2009

FOR IMMEDIATE RELEASE

MOREHEAD, Ky.---Morehead State University has announced that Jonathan Conley of **Stanton** is among those students receiving a Presidential Scholarship for the 2009-10 school year.

Conley, a Powell County High School graduate, is the son of Aleta and Doyle McFarland and the late Robert Shane Conley. He was a Kentucky Governor's Scholar, All-American Scholar and was listed on the National Honor Roll. In his free time, he was the youth leader at Mill Knob Baptist Church, a volunteer leader and a youth church volunteer at Stanton Nursing Center.

To be eligible for the Presidential Scholarship at MSU, a student must have outstanding grades and ACT test scores. Valued at full in-state tuition and on-campus housing for most recipients, a Presidential Scholarship is renewable for up to three years if the recipient maintains the required grade point average.

Applications and information on scholarship programs at MSU are available on the Web at [www.moreheadstate.edu/scholarships](http://www.moreheadstate.edu/scholarships) or by calling toll-free at 1-800-585-6781.

####

tse



# News

Media Relations

[www.moreheadstate.edu](http://www.moreheadstate.edu)

Morehead State University

UPO Box 1100

Morehead, KY 40351-1689

(606) 783-2030

July 15, 2009

FOR IMMEDIATE RELEASE

MOREHEAD, Ky.---Morehead State University has announced that April Rogers of **Stanton** is among those students receiving a Valedictorian Scholarship for the 2009-10 school year.

Rogers, the daughter of Ray and Maggie Rogers, is a Powell County High School graduate. She was valedictorian of her graduating class, a member of HOSA and the Spanish Club. Rogers participated in in the House of Representatives Page for a Day program.

The Valedictorian Scholarship is valued at \$1,000 for one year following high school graduation.

Applications and information on scholarship programs at MSU are available on the Web at [www.moreheadstate.edu/scholarships](http://www.moreheadstate.edu/scholarships) or by calling toll-free at 1-800-585-6781.

####

tse



# News

Media Relations

[www.moreheadstate.edu](http://www.moreheadstate.edu)

Morehead State University

UPO Box 1100

Morehead, KY 40351-1689

(606) 783-2030

July 15, 2009

FOR IMMEDIATE RELEASE

MOREHEAD, Ky.---Morehead State University has announced that two Southwestern High School graduates, Bradley Roberts of **Nancy** and Sara Volpi of **Somerset**, are among those students receiving a Commonwealth Scholarship for the 2009-10 school year.

Roberts is the son of Garnet and Sarah Roberts. He was a member of the National Honor Society, the KSHEAA Academic All-State Team, listed on the Faculty's Who's Who and a member of Society of Character. In his free time, he helped with the kid's ministry at Oak Hill Baptist Church and raised money for Vapor Sports Ministry, located in Kenya.

Volpi is the daughter of Joseph and Rhonda Volpi. She was valedictorian of her graduating class, listed on Somerset Community College Dean's List in 2008 and participated in Honor's Night at SCC. A member of First Farmers Bank Hall of Fame, she received a Rotary Club Character Scholarship and was inducted into the Society of Character in 2007.

To be eligible for a Commonwealth Scholarship at MSU, a student must have superior grades and ACT test scores. Valued at full in-state tuition, a Commonwealth Scholarship is renewable for up to three years if the recipient maintains the required grade point average.

Applications and information on scholarship programs at MSU are available on the Web at [www.moreheadstate.edu/scholarships](http://www.moreheadstate.edu/scholarships) or by calling toll-free at 1-800-585-6781.

####

tse



Bradley Roberts



Sara Volpi



# News

Media Relations

[www.moreheadstate.edu](http://www.moreheadstate.edu)

Morehead State University

UPO Box 1100

Morehead, KY 40351-1689

(606) 783-2030

July 15, 2009

FOR IMMEDIATE RELEASE

MOREHEAD, Ky.---Morehead State University has announced that Tyler Blair of **Somerset** is among those students receiving a Presidential Scholarship and an Alumni Scholarship for the 2009-10 school year.

Blair, a Southwestern High School graduate, is the son of Cathi and the late Keith Blair. He was a 2008 Kentucky Governor's Scholar, a member of the National Honor Society and a two-time recipient of the Society of Chamber Award. A member of the varsity baseball and golf teams, he played with the band No Tale Lights and was a member of St. Mildreds Youth Group.

To be eligible for the Presidential Scholarship at MSU, a student must have outstanding grades and ACT test scores. Valued at full in-state tuition and on-campus housing for most recipients, a Presidential Scholarship is renewable for up to three years if the recipient maintains the required grade point average.

To be eligible for an Alumni Scholarship, at least one of the student's parents, grandparents or their spouse must be an active member of the MSU Alumni Association. Valued at \$1,000 per year, an Alumni Scholarship is renewable for up to three years if the recipient maintains the required grade point average.

Applications and information on scholarship programs at MSU are available on the Web at [www.moreheadstate.edu/scholarships](http://www.moreheadstate.edu/scholarships) or by calling toll-free at 1-800-585-6781.

####

tse



MSU is an affirmative action, equal opportunity, educational institution.

# News

Media Relations

[www.moreheadstate.edu](http://www.moreheadstate.edu)

Morehead State University

UPO Box 1100

Morehead, KY 40351-1689

(606) 783-2030

July 15, 2009

FOR IMMEDIATE RELEASE

MOREHEAD, Ky.---Morehead State University has announced that Whitney Edmonson of **Frankfort, Ohio**, is among those students receiving a Presidential Scholarship for the 2009-10 school year.

Edmonson, an Adena Local School graduate, is the daughter of Brent and Karen Edmonson. She was salutatorian of her graduating class, class officer and editor of the school newspaper. A member of the marching band flag corp, she also was a member of the Quiz Bowl Team, the Drama Club and the Future Farmers of America Soil Judging Team. She went on a mission trip to Mississippi for Katrina relief, received a Better Business Integrity Award and Girl Scout Silver and Bronze awards.

To be eligible for the Presidential Scholarship at MSU, a student must have outstanding grades and ACT test scores. Valued at full in-state tuition and on-campus housing for most recipients, a Presidential Scholarship is renewable for up to three years if the recipient maintains the required grade point average.

Applications and information on scholarship programs at MSU are available on the Web at [www.moreheadstate.edu/scholarships](http://www.moreheadstate.edu/scholarships) or by calling toll-free at 1-800-585-6781.

####

tse



# News

Media Relations

[www.moreheadstate.edu](http://www.moreheadstate.edu)

Morehead State University

UPO Box 1100

Morehead, KY 40351-1689

(606) 783-2030

July 15, 2009

FOR IMMEDIATE RELEASE

MOREHEAD, Ky.---Morehead State University has announced that four Rowan County Senior High School graduates, Donald Lewis, Laura King, Shelby Fugett of **Morehead**, and Aaron Guy of **Clearfield**, are among those students receiving an Alumni Scholarship for the 2009-10 school year.

Lewis is the son of Don and Tonia Lewis. He was listed on the National Honor Roll, a member of the Beta Club and received a 2008 Rowan County Football Academic Award. He volunteered his time with Rowan County Special Olympics.

King, the daughter of John King, received English awards in 2007 and 2009. She is a Sunday School teacher at Cranston First Church of God which she has been attending for 15 years.

Fugett is the daughter of Rodney and Sandy Fugett. She was a varsity cheerleader and a member of Future Educators Association. In her free time, she volunteered with Kids College, a middle school Thanksgiving dinner and taught for an elementary cheerleading club.

Guy is the son of Greg and Michelle Guy. He was named to the Academic All-State Team for baseball, served on the band council and was a member of the Marching and Concert bands and the state finalist band. In his free time, he was media ministries coordinator and the drummer at Morehead Christ Way Church of God and volunteered at local food banks.

To be eligible for an Alumni Scholarship, at least one of the student's parents, grandparents or their spouse must be an active member of the MSU Alumni Association. Valued at \$1,000 per year, an Alumni Scholarship is renewable for up to three years if the recipient maintains the required grade point average.

Applications and information on scholarship programs at MSU are available on the Web at [www.moreheadstate.edu/scholarships](http://www.moreheadstate.edu/scholarships) or by calling toll-free at 1-800-585-6781.

####

tse



Donald Lewis

no photo for king



Shelby Fugett



Aaron Guy

# News

Media Relations

[www.moreheadstate.edu](http://www.moreheadstate.edu)

Morehead State University

UPO Box 1100

Morehead, KY 40351-1689

(606) 783-2030

July 15, 2009

FOR IMMEDIATE RELEASE

MOREHEAD, Ky.---Morehead State University has announced that Jonathan Adkins of **Morehead**, is among those students receiving an Alumni Scholarship for the 2009-10 school year.

Adkins, a Lakeside Christian Academy graduate, is the son of Jenny Adkins. Listed on the honor roll, he was named to the 2008 and 2009 KCAA All State Baseball Team and selected to play in the 2009 KCAA East/West All Star game. He is a member of Johnson First Church of God Youth Group and Post 126 American Legion Baseball Team, and worked two years as a lifeguard at Morehead City Park.

To be eligible for an Alumni Scholarship, at least one of the student's parents, grandparents or their spouse must be an active member of the MSU Alumni Association. Valued at \$1,000 per year, an Alumni Scholarship is renewable for up to three years if the recipient maintains the required grade point average.

Applications and information on scholarship programs at MSU are available on the Web at [www.moreheadstate.edu/scholarships](http://www.moreheadstate.edu/scholarships) or by calling toll-free at 1-800-585-6781.

####

tse



# News

Media Relations

[www.moreheadstate.edu](http://www.moreheadstate.edu)

Morehead State University

UPO Box 1100

Morehead, KY 40351-1689

(606) 783-2030

July 15, 2009

FOR IMMEDIATE RELEASE

MOREHEAD, Ky.---Morehead State University has announced that Amber Dillon of **Morehead** is among those students receiving a Commonwealth Scholarship for the 2009-10 school year.

Dillon, the daughter of James and Lori Dillon, is a graduate of Rowan County Senior High School.

To be eligible for a Commonwealth Scholarship at MSU, a student must have superior grades and ACT test scores. Valued at full in-state tuition, a Commonwealth Scholarship is renewable for up to three years if the recipient maintains the required grade point average.

Applications and information on scholarship programs at MSU are available on the Web at [www.moreheadstate.edu/scholarships](http://www.moreheadstate.edu/scholarships) or by calling toll-free at 1-800-585-6781.

####

tse



# News

Media Relations

[www.moreheadstate.edu](http://www.moreheadstate.edu)

Morehead State University

UPO Box 1100

Morehead, KY 40351-1689

(606) 783-2030

July 15, 2009

FOR IMMEDIATE RELEASE

MOREHEAD, Ky.---Morehead State University has announced that Logan Higginbotham of **Morehead** is among those students receiving a Valedictorian Scholarship for the 2009-10 school year.

Higginbotham, the son of Angela Higginbotham, is a graduate of Lakeside Christian Academy. He was valedictorian of his graduating class and a member of the Beta Club where he served as secretary. During high school, he completed an independent study in calculus and was crowned prom king.

The Valedictorian Scholarship is valued at \$1,000 for one year following high school graduation.

Applications and information on scholarship programs at MSU are available on the Web at [www.moreheadstate.edu/scholarships](http://www.moreheadstate.edu/scholarships) or by calling toll-free at 1-800-585-6781.

####

tse

NO PHOTO

# News

Media Relations

[www.moreheadstate.edu](http://www.moreheadstate.edu)

Morehead State University

UPO Box 1100

Morehead, KY 40351-1689

(606) 783-2030

July 15, 2009

FOR IMMEDIATE RELEASE

MOREHEAD, Ky.---Morehead State University has announced that Paige Barhorst and Sydney McClain of **Morehead** are among those students receiving a Presidential Scholarship and an Alumni Scholarship for the 2009-10 school year.

Barhorst, the daughter of Tod and Kelli Barhorst, is a graduate of Rowan County Senior High School. Listed on the honor roll for four years, she received an English award as a sophomore and junior and won an essay contest for her writing on women's rights. A varsity soccer captain, she was named to the All-Area Team and the All-District Team. In her free time she volunteered with Rowan County Youth Football.

McClain, a graduate of Rowan County Senior High School, is the daughter of Mona McClain. She is a Kentucky Governor's Scholar, a member of the Beta and Science clubs. President of Youth United, she was a member PALS Mentoring Program and crowned Miss Rowan County Senior High School.

To be eligible for a Commonwealth Scholarship at MSU, a student must have superior grades and ACT test scores. Valued at full in-state tuition, a Commonwealth Scholarship is renewable for up to three years if the recipient maintains the required grade point average.

Applications and information on scholarship programs at MSU are available on the Web at [www.moreheadstate.edu/scholarships](http://www.moreheadstate.edu/scholarships) or by calling toll-free at 1-800-585-6781.

####

tse



NO PHOTO FOR MCCLAIN

# News

91A3

Media Relations

[www.moreheadstate.edu](http://www.moreheadstate.edu)

Morehead State University

UPO Box 1100

Morehead, KY 40351-1689

(606) 783-2030

July 15, 2009

FOR IMMEDIATE RELEASE

MOREHEAD, Ky.---Morehead State University has announced that Frank Sanders of **South Portsmouth** is among those students receiving an Alumni Scholarship for the 2009-10 school year.

Sanders, a Greenup County High School graduate, is the son of Thomas and Judy Sanders. During high school, he was a member of the College Cadet Program, the marching band and played on the football team for four years. An Eagle Scout (Troop 98) participated in the Vigil Honor Order of the Arrow Honor Scouts and is a member of the First United Methodist Church.

To be eligible for an Alumni Scholarship, at least one of the student's parents, grandparents or their spouse must be an active member of the MSU Alumni Association. Valued at \$1,000 per year, an Alumni Scholarship is renewable for up to three years if the recipient maintains the required grade point average.

Applications and information on scholarship programs at MSU are available on the Web at [www.moreheadstate.edu/scholarships](http://www.moreheadstate.edu/scholarships) or by calling toll-free at 1-800-585-6781.

####

tse





# News

Media Relations

[www.moreheadstate.edu](http://www.moreheadstate.edu)

Morehead State University

UPO Box 1100

Morehead, KY 40351-1689

(606) 783-2030

July 16, 2009

FOR IMMEDIATE RELEASE

MOREHEAD, Ky.---Sen. Charlie Borders, a two-time Morehead State University graduate and chair of the Kentucky Senate Appropriations and Revenue Committee, resigned his seat Wednesday to become a member of the Kentucky Public Service Commission, effective immediately.

The Grayson Republican was midway through his fifth term after first being elected in 1990. His appointment to the PSC by Gov. Steve Beshear was announced at the same time.

"Sen. Borders served his university, his district, and the Commonwealth with distinction throughout his years in the Kentucky Senate," said Morehead State University President Wayne D. Andrews. "His unwavering support of this institution will always be remembered and appreciated. We wish him well in his new, important position."

Borders was among seven MSU graduates holding leadership positions in the Kentucky General Assembly. His 18th District includes Bracken, Carter, Greenup, Lewis, Mason and Robertson counties.

In recent years he helped secure the funding of several MSU projects, including the \$16.6 million Space Science facility, opened last month, and the \$30 million Center for Health, Education and Research, now under construction.

Rep. Robin Webb, D-Grayson, another MSU alumnus, has indicated she will seek Borders' now vacant seat in the Aug. 25 special election. Webb is first vice chair of the House Appropriations and Revenue Committee. Candidates for the remaining 18 months in Borders' unexpired term will be selected by Republican and Democratic leaders in the six counties.

Other MSU alumni in legislative leadership roles are Sen. Johnny Ray Turner, D-Drift, Senate minority caucus chair; House Majority Floor Leader Rocky Adkins, D-Sandy Hook; House Majority Whip John Will Stacy, D-West Liberty; House Education Committee Chair Carl Rollins, D-Midway, and House Transportation Committee Chair Hubert Collins, D-Wittensville.

####

# News

Media Relations

[www.moreheadstate.edu](http://www.moreheadstate.edu)

Morehead State University

UPO Box 1100

Morehead, KY 40351-1689

(606) 783-2030

July 16, 2009

FOR IMMEDIATE RELEASE

MOREHEAD, Ky.---The Department of Imaging Sciences' Diagnostic Medical Sonography Program at Morehead State University will offer free, two-dimensional fetal ultrasounds to expectant mothers this summer and fall.

The ultrasound examinations will be performed by appointment only on the fourth floor of Reed Hall in the University's sonography lab during Summer II and Fall semesters.

The scans are performed by senior level students who will be directly supervised by associate professor Marcia Cooper. She is certified in obstetrics and gynecology by the American Registry of Diagnostic Medical Sonographers. The fetal ultrasound scans provide students the experience they need for entering into the sonography workforce.

All volunteers will be asked to sign a consent form stating that the scans are "non-diagnostic" and are performed for educational purposes only. Participants are asked to bring a towel and a VHS tape or DVD to record the images, if desired.

Additional information and appointment times are available by calling MSU's Department of Imaging Sciences at (606) 783-2646.

####

ajb

# News

91A3

Media Relations

[www.moreheadstate.edu](http://www.moreheadstate.edu)

Morehead State University

UPO Box 1100

Morehead, KY 40351-1689

(606) 783-2030

July 17, 2009

FOR IMMEDIATE RELEASE

MOREHEAD, Ky.---Looking to continue or go back to college? There is still time to register for Fall Semester classes at Morehead State University.

Registration for Fall 2009 is available online at MSU's Web site ([www.moreheadstate.edu](http://www.moreheadstate.edu)). Students may view course offerings and complete the registration process through the Datatel WebAdvisor.

It may be accessed from the MSU home page's current student link, then by selecting online services and finally WebAdvisor from the Quick Login drop-down box. Classes for the summer and fall will be offered online and/or at the Morehead campus. The term runs from Monday, Aug. 17, through Friday, Dec. 11.

Registration can be made easier by planning ahead. Students are encouraged to meet with their academic adviser prior to registering, and then to register as early as possible while there is the best variety of classes available.

For those not yet enrolled who are considering attending MSU, there is still time to submit an application. Prospective students may call the Office of Enrollment Services at (606) 783-2000 or (800) 585-6781 opt #1 for admissions assistance.

Students also are able to view and pay their bill(s) online via WebAdvisor. Those who are registered for the fall term will receive a monthly electronic billing statement to keep them informed of their account status.

MSU's official means of delivering billing statements is e-mail. It is the student's responsibility to check their MSU assigned e-mail account on a regular basis. If you have questions or concerns about setting up an account, contact the Office of Information Technology at (606) 783-5000.

Although MSU no longer offers a deferred payment plan, students may take advantage of a different option to pay their bill at a later date, while at the same time, confirming that they will be attending classes.

(MORE)

Fall term begins Aug. 17  
2-2-2-2

If any student is unable to pay his or her full balance prior to the deadline, he or she may complete an online Statement of Intent, which explains payment requirements. The online statement must be completed by set deadlines to prevent a student's class schedule from being canceled. This also applies to any student who receives financial aid or scholarships, or whose college expenses are being paid by an outside agency. Students may access the Statement of Intent via WebAdvisor.

The pay-in-full or Statement of Intent deadline is Aug. 10 for Fall.

MSU offers online bachelor's degree "completer" programs designed primarily for graduates of the Kentucky Community & Technical College System (KCTCS). These programs are designed to allow KCTCS graduates to earn bachelor's degrees while continuing to meet work and family obligations and without traveling long distances. Courses are offered via the Internet and at the regional campuses, providing busy adults the opportunity to complete class work at a time and place convenient to them.

Textbooks for the classes are available from the University Bookstore, located in the Adron Doran University Center on the Morehead campus. Orders may be placed by calling (888) STORE-05 or via the Internet at [www.bookstore.moreheadstate.edu](http://www.bookstore.moreheadstate.edu). Purchases will be shipped to the address specified by the student.

Additional information is available by calling MSU at Ashland at (606) 327-1777 or (800) 648-5370; MSU at Jackson at (606) 666-2800 or (800) 729-5225; MSU at Mt. Sterling at (859) 499-0780 or (866) 870-0809; MSU at Prestonsburg at (606) 886-2405 or (800) 648-6372; MSU at West Liberty at (606) 743-1500 or (800) 648-5371; MSU's regional campus coordinator at (800) 585-6781, option #3; the Office of the Registrar at (606) 783-2008; or by calling the Office of Enrollment Services at (606) 783-2000.

####

## MSU EMPLOYEES HONORED FOR SERVICE

Several Morehead State University employees were honored for attaining milestones in their years of service with the University. MSU President Wayne D. Andrews congratulated each employee as he presented them with a service pin symbolic of the achievement. Among those participating in the ceremony were, front row from left: Dr. Wayne D. Andrews, Jim Fluty, 20; Jackie Thomas, 15; Teresa Johnson, 15; Carol Ford, 25; Anita Butler, 10; and Paige McDaniel, 10. Back row from left: Larry Estep, 20; Wendell Cox, 10; Joshua Ferguson, 5; Mindy Highley, 15; Willis Taylor, 10; and Darrell Smith, 15.

(MSU photo by Tim Holbrook)

7-17-09tse

MSU is an affirmative action, equal opportunity, educational institution.



# News

Media Relations

[www.moreheadstate.edu](http://www.moreheadstate.edu)

Morehead State University

UPO Box 1100

Morehead, KY 40351-1689

(606) 783-2030

July 20, 2009

FOR IMMEDIATE RELEASE

MOREHEAD, Ky.---U.S. Congressman Harold "Hal" Rogers (KY-05) announced that the House of Representatives has approved \$10 million for the Kentucky-based National Institute for Hometown Security (NIHS). With the collaboration of Kentucky universities and colleges, NIHS develops next generation security solutions at the behest of the U.S. Department of Homeland Security's Science and Technology Directorate.

Rogers secured this funding in H.R. 2892, the Homeland Security Appropriations Act of 2010.

Morehead State University is part of the consortium.

Other members are Eastern Kentucky University, the Kentucky Community and Technical College System, Kentucky State University, Murray State University, Northern Kentucky University, the University of Kentucky, the University of Louisville and Western Kentucky University.

Broadening the outreach to the statewide academic community, members of the Association of Independent Kentucky Colleges and Universities work with the consortium.

"Terrorism is a real threat and we need advanced research to ensure that our security risks and vulnerabilities are adequately addressed," said Rogers. "Investing in technology and research is critical to solving the challenges we face today and in the future. Protecting our country from terrorist attacks, preparing and responding to natural disaster, and hardening our infrastructure are all key to keeping America safe. Right here in Kentucky, NIHS and our renowned universities, are conducting this vital and important research."

The nonprofit NIHS performs a critical, partnering role with the Science and Technology Directorate of the U.S. Department of Homeland Security. The Directorate identifies the nation's security technology needs, and NIHS works with Kentucky's academic community to develop and commercialize solutions for use in the private sector.

The Kentucky Homeland Security University Consortium, founded in 2004 along with NIHS, provides the research assets for this initiative. H.R. 2892 has been referred to the U.S. Senate for further consideration. Through his role as a senior member of the Appropriations Committee, Rogers supports important initiatives for the Fifth Congressional District.

####

# News

Media Relations

[www.moreheadstate.edu](http://www.moreheadstate.edu)

Morehead State University

UPO Box 1100

Morehead, KY 40351-1689

(606) 783-2030

July 20, 2009

FOR IMMEDIATE RELEASE

MOREHEAD, Ky.---Morehead State University graduate Amanda Romito of Southgate has been named as a new member of Kentucky Campus Compact's AmeriCorps\*VISTA Program.

For her 12-month federal volunteer position, she will serve at University of Louisville through the Office of Civic Engagement, Leadership and Service.

A 2009 graduate of Morehead State University, Romito will assist the university in strengthening both academic and co-curricular service-learning. During her term of service, she will facilitate the Community Engagement Student Advisory Committee, coordinate a number of one-time volunteer opportunities, and work with partners to ensure a mutually beneficial community service experience for both the community and the students. She also will prepare several civic engagement resources to aid the university's students and faculty, as well as partner agencies.

Her term will extend from July 2009 to July 2010.

Kentucky Campus Compact (KyCC) is a statewide coalition of Kentucky college and university presidents and their institutions, both public and private. Its vision is to help higher education strengthen the Commonwealth's communities and improve the lives of Kentucky's citizens. Founded in 2005, KyCC includes 21 member institutions and is hosted on the campus of Northern Kentucky University in Highland Heights. The organization was awarded an AmeriCorps\*VISTA Program in 2006 by the Corporation for National and Community Service, a federal agency.

####

ajb

# News

Media Relations

[www.moreheadstate.edu](http://www.moreheadstate.edu)

Morehead State University

UPO Box 1100

Morehead, KY 40351-1689

(606) 783-2030

July 21, 2009

FOR IMMEDIATE RELEASE

MOREHEAD, Ky.---Funded by a grant through Morehead State University's Center for Regional Engagement, Kim Nettleton, instructor of education, and Dr. Sara Lindsey, assistant professor of education, spent the third week of July hosting "Super Summer Camp" for nearly 100 gifted and talented grade school and middle school students from Bath, Carter, Elliott, Fleming, Lewis, Menifee, Morgan, and Rowan counties.

There were also two students from Ohio and one from Indiana. Taught by area educators and MSU student volunteers, the weeklong camp featured eight workshops: Acting Out and Playtime, Art I, Art II, Edible Education, Hand Bell Choir, Inventing Ads, Let There be Light, and Not Your Average Greek Week.

Asked about the week's activities, Andrea Ruark from Fleming County said, "It's been fun!" Matthew McHenry of Bath County added, "It's pretty good. I enjoyed the hand bells and art. It's great to be in and I want to come to Super Summer Camp 2010."

For additional information on the Super Summer Camp, contact Nettleton at (606) 783-5483 or Dr. Lindsey at (606) 783-2837.

####

ajb



# News

MSU ARCHIVES  
91A3

Media Relations

www.moreheadstate.edu

Morehead State University

UPO Box 1100

Morehead, KY 40351-1689

(606) 783-2030

July 21, 2009

FOR IMMEDIATE RELEASE

MOREHEAD, Ky.---Joyce Brown LeMaster, professor emeritus at Morehead State University, died Monday, July 20, at the U.K. Medical Center in Lexington.

A two-time MSU graduate, she taught writing courses, American literature, and a course of her own design, Appalachian Writers, at MSU for 38 years.

She was an editor and book reviewer, and has presented papers at many professional conferences, including the American Culture Association, the Southern American Studies Association, and the Conference on Caribbean Studies.

She has held many leadership positions including president of the Morehead State University Alumni Association and MSU Woman's Club; Faculty Senator (elected to four three-year terms); and vice president of the Kentucky Mansions Preservation Association.

LeMaster was a member of the Morehead-Rowan County Chamber of Commerce, Board of the Kentucky Humanities Council; and was appointed to Morehead/ Rowan County Airport Board of Directors.

She was a member of Phi Delta Kappa and Phi Kappa Phi Honorary Fraternities, Delta Zeta Sorority, and the P.E.O. International Sisterhood.

In 1992, she was selected by her colleagues to receive the first Distinguished Faculty Service Award, one of the University's most prestigious awards. LeMaster also was a member of the MSU Alumni Hall of Fame.

She is survived by her husband, James C. LeMaster; one daughter, Jennifer Chaney Estill and husband Donnie, of Frankfort, and two grandchildren, Eric Justin Estill and Olivia Addison Estill.

Funeral services will be conducted 11 a.m. Friday, July 24, at Northcutt and Son Home for Funerals Memorial Chapel with the Rev. Tim Rhodes and the Rev. Greg Whitt officiating. Interment will follow in Brown Cemetery.

Visitation is from 3-9 p.m. on Thursday, July 23, at Northcutt and Son Home for Funerals.

####

ajb

91A3

# News

Media Relations

[www.moreheadstate.edu](http://www.moreheadstate.edu)

Morehead State University

UPO Box 1100

Morehead, KY 40351-1689

(606) 783-2030

July 22, 2009

FOR IMMEDIATE RELEASE

MOREHEAD, Ky.---Morehead State University Athletics had its four-year win streak snapped as the Ohio Valley Conference announced that Austin Peay State University won the 2009 OVC Institutional Academic Achievement Award.

The award is presented annually to the member institution with the greatest percentage of its student-athletes named to the OVC Commissioner's Honor Roll for that academic year.

MSU was second followed by Southern Illinois University Edwardsville and Eastern Illinois.

"We're extremely proud of the academic accomplishments of our student-athletes," said MSU Director of Athletics Brian Hutchinson. "We are disappointed to not win, but it is still a tribute to the efforts of the student-athletes, our coaches and our administration, especially Valerie Ousley, our athletic academic coordinator, and those who assist her in operating the Eagle Academic Success Center, supervise study halls and computer labs and monitor the academic progress of our student-athletes."

MSU has won the award a record 10 times.

A total of 14 student-athletes earned OVC Medals of Honor for perfect 4.0 grade point averages, 89 were named on the OVC Commissioner's Honor Roll, and four teams were awarded the OVC Team Academic Achievement Award for their sport.

The programs earning the Team Academic Achievement Award were baseball, soccer, women's tennis, and volleyball. It's the second straight year that volleyball and women's tennis have won the honor.

The student-athletes that were awarded a Medal of Honor include Matt Clark, baseball; Michael Brown, men's golf; Karolina Tunstig, women's golf; Jillian Birchmeier, Bethany Davidson, Lily Meisner, women's soccer; Brittany Scheer, softball; Heather Butt, women's tennis; Megan Arnold, Jaimie Howard, women's track and field; Katelyn Barbour, Kirstie Brangers, Holly Evans and Emma Keough, volleyball.

(MORE)

MSU's OVC Commissioner's Honor Roll winners are:

**Baseball** - Kellen Begeman, **North Vernon, Ind.**; Evan Bennett, **Winchester**; Tyler Bess, **Brooksville**; Michael Bottoms, **Harrodsburg**; Matthew Clark, **Cumberland**; Michael Fear, **Versailles, Ind.**; Jacob Helvey, **Lexington**; Hunter Hewitt, **Palmdale, Calif.**; Tyler Hieneman, **Greenup**; Drew Lee, **Mt. Sterling**; Quentin Morgan, **Hyden**; Eric Parker, **Louisa**; Travis Redmon, **Lexington**; Prentice Robertson, **Hopkinsville**; Kristopher Sipes, **Louisville**; Drew Williams, **Kevil**.

**Men's Basketball** - Cecil Brown, **Grand Rapids, Mich.**

**Women's Basketball** - Philnisha Lindsey, **Lexington**; Linda Dixon, **Radcliff**.

**Men's Cross Country** - Ryan Hudson, **LaGrange**.

**Women's Cross Country** - Liz Braunwart, **Taylor Mill**.

**Men's Golf** - Michael Brown, **Fairfield, Ohio**; Grant Hinton, **Elizabethtown**; Jeff Pierce, **Elizabethtown**; Dean Schneider, **West Union, Ohio**; Shawn Tipton, **Clay City**; Aaron Watkins, **Harlan**.

**Women's Golf** - Emma Jonsson, **Skarpang, Sweden**; Janelle Galloway, **Normal, Ill.**; Karolina Tunstig, **Skivarp, Sweden**.

**Rifle** - Kathleen Bush, **St. Clair, Mich.**; Shawn Holley, **Winchester, Va.**

**Soccer** - Erin Adams, **Beaver Dam**; Julie Arnold, **Whitehouse, Ohio**; Kimberly Beiting, **Taylor Mill**; Kaitlyn Blevins, **Paris**; Jillian Birchmeier, **Findlay, Ohio**; Kelly Busch, **Lexington**; Bethany Davidson, **Monroe, Ohio**; Abigail Doyle, **Bay Village, Ohio**; Micaela Hornstein, **Brownsburg, Ind.**; Hillary Johnson, **Park Hills**; Devan Jordan, **Westerville, Ohio**; Brittany Kiracofe, **Ottawa, Ohio**; Brittany MacLennan, **Troy, Mich.**; Lily Meisner, **Taos, N.M.**; Sarah Phillip, **Ashland, Ohio**; Lauren Seebach, **St. Louis, Mo.**; Shannon Smith, **Elizabethtown**; Lindsay Stefanini, **Aliquippa, Pa.**; Amie Weckenbrock, **Fort Wright**; Samantha Yocke, **Huntington, W.Va.**

**Softball** - Kayla Brill, **New Martinsville, W.Va.**; Bianca Cardenas, **Santa Ana, Calif.**; Sarah Funston, **Santa Claus, Ind.**; Brianna Jones, **Anaheim Hills, Calif.**; Brittany Scheer, **Paducah**; Samantha Woodall, **Dublin, Ohio**.

**Men's Tennis** - Greg Anderson, **Johannesburg, South Africa**; Dusan Milovanovic, **Budva, Montenegro**.

**Women's Tennis** - Madeleine Antero, **Santiago, Chile**; Heather Butt, **Middletown, Ohio**; Catherine Butts, **Normal, Ill.**; Lauren Delaney, **Indianapolis**; Alixandra Lakow, **Lexington**; Megan Rozboril, **Bloomington, Ill.**; Alexandra Rydberg, **Hollviken, Sweden**.

**Women's Track and Field**, Megan Arnold, **Ashland**; Liz Braunwart, **Taylor Mill**; Brittany Brown, **Sharpsville, Pa.**; Linda Dixon, **Radcliff**; Amanda Faust, **Blanchester, Ohio**; Kim Holder, **Somerset**; Jaimie Howard, **Leesburg, Ohio**; Stefanie Howard, **Morehead**.

**Men's Track and Field** - Josh Harris, **Dayton, Ohio**; Ryan Hudson, **LaGrange**; Pete Negron, **Shelbyville, Ind.**

**Volleyball** - Katelyn Barbour, **Florence**; Kirstie Brangers, **Louisville**; Caitlin Craven, **Louisville**; Ashley Doscher, **Frisco, Texas**; Leah Duncan, **Mansfield, Texas**; Holly Evans, **Blacklick, Ohio**; Emma Keough, **Batavia, Ohio**; Erin Peak, **Georgetown, Ind.**; Lindsey Ruddell, **Lexington**; Kristina Schoo, **Louisville**; Elizabeth Schuler, **Louisville**.

####

ajb

# News

Media Relations

[www.moreheadstate.edu](http://www.moreheadstate.edu)

Morehead State University

UPO Box 1100

Morehead, KY 40351-1689

(606) 783-2030

July 22, 2009

FOR IMMEDIATE RELEASE

MOREHEAD, Ky.---Morehead State University's Bobby Campbell, assistant professor of art, will present an installation of new experimental work at the Lexington Art League Project Space gallery.

The art will be on display from July 24 through Oct. 10 at the Project Space gallery in the Lexington Art League's Loudoun House at 209 Castlewood Drive in Lexington. The exhibit opening will take place during the Lexington Art League Fourth Friday event from 6 to 9 p.m. on July 24.

The exhibit, titled "Trailblaze," is the result of collaboration between Campbell and Jim Cogswell, professor of art of the University of Michigan.

Campbell and Cogswell combined diverse materials, ranging from graphic paper to paint to colored tape, to conjure a "creative cosmos." Coinciding with the 40 anniversary of the Apollo 11 lunar landing, the work evokes the spirit of exploring new worlds through the use of engaging abstract forms that resemble landscape, pathways and maps. Smaller, denser abstract "figures" journey with the viewer in traveling through the vibrant colors and shapes.

The Lexington Art League produces a wide range of cultural visual arts programming aimed at educating and engaging Central Kentucky in exploring thought-provoking contemporary art. The Project Space presents new media and installation work that is challenging in experimental in concept and execution.

The Loudoun House, including Project Space, is open Tuesday through Friday from 10 a.m. to 4 p.m. and Saturday from 1 to 4 p.m.

Additional information is available by contacting Campbell at (606) 783-2768 or e-mail at [rc.campbell@moreheadstate.edu](mailto:rc.campbell@moreheadstate.edu).

####

ajb

# News

91A3

Media Relations

[www.moreheadstate.edu](http://www.moreheadstate.edu)

Morehead State University

UPO Box 1100

Morehead, KY 40351-1689

(606) 783-2030

July 23, 2009

FOR IMMEDIATE RELEASE

WEST LIBERTY, Ky.---Morehead State University's Small Business Development Center will be host its 8th annual Regional Entrepreneur Conference in West Liberty on Tuesday, Sept. 22.

The daylong conference is designed to provide information and networking opportunities for small business owners, those desiring to start up their own businesses and for the community at-large.

This year's keynote speaker is John L. Herman Jr. Known just as "Herman," he is not just a business expert, but perhaps an accomplished expert. He has owned more than 20 companies and has consulted with more than 1,000 business owners. He is a former U.S. Air Force jet pilot, a successful entrepreneur and an author of two books. His positive, uplifting message motivates business owners, staff and individuals to find their future, and he gives them the tools they need for success.

There will be workshop sessions focusing on small business development and ownership. Various organizations and contacts will be present in which to engage in networking opportunities. This year's workshop sessions will include: SBA and financing options; entrepreneurial opportunities in energy-based industries; community-based programs supporting small businesses; and international trade and exporting.

This year's conference is being hosted by the MSU's Regional Enterprise Center.

Additional information or to register for the conference, you may contact Michael Rodriguez, SBDC consultant, at (606) 743-4005 or register online at [www.ksbdc.org](http://www.ksbdc.org).

You may also access the conference brochure online at [www.msurec.com](http://www.msurec.com) or at [www.moreheadstate.edu/sbdc](http://www.moreheadstate.edu/sbdc).

Training programs, sponsored or co-sponsored by SBDC, are available to all individuals without regard to race, color, sex, creed or national origin.

####

ajb

91A3

# News

Media Relations

[www.moreheadstate.edu](http://www.moreheadstate.edu)

Morehead State University

UPO Box 1100

Morehead, KY 40351-1689

(606) 783-2030

July 23, 2009

FOR IMMEDIATE RELEASE

MOREHEAD, Ky.---Morehead State University's Jason Dailey, systems and accounts manager at the University Bookstore, has accepted a volunteer position with the Campus Computer Resellers Alliance (CCRA). CCRA is a special interest group of the National Association of College Stores (NACS).

As a member of the CCRA Council, he will establish and help achieve the goals and objectives of the Alliance in order to support and strengthen the higher education technology resale channel and CCRA's 937 members.

As well as councilor, Dailey will continue to serve on the Conference Program Committee which formulates educational sessions for the yearly conference for the second of a three-year term. He serves as mentor for the state helping and mentoring peers in the college store retail environment with the resale of technology, as well as offering support and information about programs of CCRA.

He is a 2003 graduate of MSU with a Bachelor of Business Administration degree in Business Information Systems.

CCRA holds an annual conference and trade show and benefits members through education, information and business partnerships designed to increase technology reseller efficiencies.

For additional information about CCRA, visit the organization's Web site at [www.ccra.org](http://www.ccra.org) or call Julie Simonson, CCRA director, at (800) 622-7498, ext 2409.

Headquartered in Oberlin, Ohio, NACS is the professional trade association representing the \$11 billion collegiate retailing industry. NACS represents more than 3,000 collegiate retailers and about 1,000 associate members who supply books and other products to college stores.

Additional information is by contacting Dailey at (606) 783-2081 or by e-mail at [j.dailey@moreheadstate.edu](mailto:j.dailey@moreheadstate.edu).

####

# News

Media Relations

[www.moreheadstate.edu](http://www.moreheadstate.edu)

Morehead State University

UPO Box 1100

Morehead, KY 40351-1689

(606) 783-2030

July 24, 2009

FOR IMMEDIATE RELEASE

PAINTSVILLE, Ky.---Morehead State University's East Kentucky Small Business Development Center (SBDC) in Paintsville will host "Insurance Issues and Answers" on Tuesday, Aug. 25, from 5-7 p.m.

This workshop is for business owners and their employees. It will be held at the Kentucky Highlands Entrepreneur Center, 120 Scott Perry Drive, Paintsville.

"The workshop is designed to provide information on establishing retirement options for you and your employees, providing additional benefits to employees at no cost to the employer, protecting your business from the loss of a key partner or key employee and tax deductible retirement options for you the business owner and your employees," said Michelle Spriggs, SBDC consultant.

"This workshop also will answer questions such as are you insured? Do you have enough to cover your family and business obligations, as a business owner? Do you or your employees need insurance, but think you can't afford it? Do you want to find out about affordable insurance at no cost to you, the employer?"

Guest speakers will be Candi Gilley, Casey Lequire and Brandon Newsome, licensed life and health insurance agents for American General Life and Accident Insurance Company.

"This is an excellent opportunity for entrepreneurs to embark on understanding their insurance needs and their employees," Spriggs said.

The workshop is free for all participants; however, seating is limited and advance registration is recommended.

Training programs, sponsored or co-sponsored by SBDC, are available to all individuals without regard to race, color, sex, creed or national origin. Special arrangements will be made for those with disabilities if requested in advance.

For a list of upcoming events, you may visit the MSU SBDC Web site at [www.moreheadstate.edu/sbdc](http://www.moreheadstate.edu/sbdc).

Additional information and pre-registration are available by calling the Paintsville Small Business Development Center at (606) 788-6008.

####



# News

Media Relations

[www.moreheadstate.edu](http://www.moreheadstate.edu)

Morehead State University

UPO Box 1100

Morehead, KY 40351-1689

(606) 783-2030

July 24, 2009

FOR IMMEDIATE RELEASE

MOREHEAD, Ky.---Kentucky State Police, Prevent Child Abuse Kentucky (PCAK) and the Morehead-Rowan County Chamber of Commerce will present "Day With My Dad" Saturday, July 25.

The activities will be held at Morehead State University's Laughlin Health Building from 11 a.m. – 2 p.m. (rain or shine).

The Morehead KSP post has partnered with PCAK, MSU, the Morehead-Rowan County Chamber of Commerce, Slone's Signature Markets, Wal-Mart and Falcon Printing Services for the event.

"This event is not just for the families and children who have financial difficulties," said KSP Capt. Dwayne Depp. "It's for everyone who wants to support children."

The "Day With My Dad" will include inflatables, soccer, badminton, softball, basketball, football and a dunking booth. T-shirts will be given away and food (ice cream, hot dogs, hamburgers, chips and soft drinks) will be available.

MSU basketball coach Donnie Tyndall and football coach Matt Ballard will be in attendance.

"I look forward to coming out and meeting everyone," said Tyndall. "I think it is a great thing and if we (at MSU) can help, then it just makes it better."

Additional information is available by calling 1-800-CHILDREN or visit [www.pcaky.org](http://www.pcaky.org).

####

ajb

# News

Media Relations

[www.moreheadstate.edu](http://www.moreheadstate.edu)

Morehead State University

UPO Box 1100

Morehead, KY 40351-1689

(606) 783-2030

July 27, 2009

FOR IMMEDIATE RELEASE

MOREHEAD, Ky.---Morehead State University has hired Drew Dickerson as its new athletic media relations director. He will assume his new post, Monday, Aug. 3.

A native of Lexington, Dickerson joins the MSU staff after a brief stint as marketing coordinator at Nippon Pulse America Inc.

He spent five seasons as the sports information director at his alma mater, Radford University. Promoted after his first year to assistant athletic director, Dickerson overhauled and improved the RU athletic publicity efforts, including leading the development of a new state-of-the-art Web site.

He was successful in improving live coverage of Radford events through live stats, radio and video streaming and securing a spot on ESPN's top plays for a last-second half court basketball shot in 2005. He strengthened relationships with local, regional and national media and served as the media coordinator for several Big South Championships as well as the Virginia High School League Spring Jubilee, which Radford hosted.

Dickerson joined Highlander athletics after serving a similar role on Big South Conference staff for five years, first as director of public relations, then as assistant commissioner.

While at the Big South, Dickerson oversaw a tremendous growth of the Conference's public relations efforts. He was instrumental in the development and implementation of Big South's online presence, from a bold new Web site to an e-mail newsletter, which continues to reach hundreds of fans. He also spearheaded an increased visible presence, both in print and electronic media. He helped to syndicate the Big South Roundup, a weekly radio feature heard throughout North and South Carolina during the basketball season.

Dickerson also has worked as an assistant sports editor for the Hickory Daily Record and the Times Community Newspapers in Reston, Va., as a business editor. He began his career in journalism in Galax, Va., where he worked at The Gazette as sports editor for the tri-weekly newspaper.

(MORE)

Dickerson hired to lead athletic media relations  
2-2-2-2

He has been a member of several organizations, including the College Sports Information Directors of America (CoSIDA), the Basketball Writer's Association and the Virginia Sports Information Directors (VaSID).

Raised in Gaithersburg, Md., Dickerson received a Bachelor of Science degree in Media Studies from Radford in 1995.

A diehard Washington Redskins fan, he resides with his wife Susan and daughters Lauren and Megan.

Additional information is available by calling Dickerson at (606) 783-2500.

####

ajb



# News

Media Relations

[www.moreheadstate.edu](http://www.moreheadstate.edu)

Morehead State University

UPO Box 1100

Morehead, KY 40351-1689

(606) 783-2030

July 27, 2009

FOR IMMEDIATE RELEASE

MOREHEAD, Ky.--- Continuing education for animal control and law enforcement officials in the investigation of cruelty to livestock is now available in Kentucky. The Kentucky Horse Council (KHC) partnered with the Kentucky Cattlemen's Association (KCA) to develop a three-day training for investigators, which includes education on identifying neglect in horses and other equids, cattle, sheep, goats, and swine.

Conducted in partnership with Morehead State University, the course will be held at the Derrickson Agricultural Complex at the MSU Farm Aug. 12 - 14.

Guest instruction will be provided by an attorney specializing in equine law, an expert in Kentucky animal abuse statutes and faculty from MSU including Drs. Tammy Platt, assistant professor of animal science; Troy Wistuba, regional livestock specialist and associate professor; Philip Prater, professor of veterinary technology, and Judy Willard, associate professor of agriculture.

The hands-on course is a continuation of the Level I Equine Abuse Investigation Training taught regularly by KHC throughout the state. Prior Level I course attendees working in law enforcement and animal control may apply for admission to the Level II Livestock Neglect course.

"Educating those responsible for investigating livestock neglect improves the condition of horses and all livestock throughout the Commonwealth. Those who work in the industry and care for livestock on a daily basis, whether it be horses, cattle or otherwise, are best qualified to set standards and educate animal control officers and law enforcement officials," said Madelyn Millard, KHC Board President.

Attendees will learn how to handle, restrain, and transport a variety of livestock species through classroom and interactive sessions over the course of three days. In addition, they will learn how to body condition score, recognize and treat common ailments, recognize appropriate livestock housing and handling facilities, strategies for managing confiscated horses, and how to apply constitutional law to animals.

The cost to attend the three day training is \$75 per attendee. Limited scholarships for tuition are available. For additional information or to register, visit [kentuckyhorse.org](http://kentuckyhorse.org) or contact the Kentucky Horse Council at (859) 367-0509 or e-mail [info@kentuckyhorse.org](mailto:info@kentuckyhorse.org).

####

# News

91A3  
Media Relations[www.moreheadstate.edu](http://www.moreheadstate.edu)

Morehead State University

UPO Box 1100

Morehead, KY 40351-1689

(606) 783-2030

July 28, 2009

FOR IMMEDIATE RELEASE

MOREHEAD, Ky.---Morehead State University's Kentucky Folk Art Center will receive the Folk Heritage Award for its role in promoting Kentucky's self-taught visual artists and conserving their work.

The Kentucky Arts Council announced the 2009 recipients of the Governor's Awards in the Arts that will be honored by Gov. Steve Beshear at a public ceremony and celebration on Tuesday, Oct. 6, at 10 a.m. in the Capitol Rotunda in Frankfort.

"We are very pleased that Governor Beshear will be honoring these recipients," said Lori Meadows, executive director of the Kentucky Arts Council. "Their contributions and achievements demonstrate the power of the arts in our personal, social and civic lives."

The Governor's Awards in the Arts recipients are selected in nine different categories, with the Milner Award being the most prestigious and the first, which was established by the Kentucky Arts Council in 1978, and named in honor of the late B. Hudson Milner.

Other winners include:

Jerry E. Baker, arts leader and philanthropist of Bowling Green is the 2009 recipient of the Milner Award, which recognizes outstanding individual commitment to the arts and their role in the economy, community and culture of Kentucky.

George Clooney, actor, director, producer and screenwriter, born in Lexington, and part-time resident of Augusta, will receive the National Award in recognition of his artistic achievement reaching national and international acclaim.

Chilton Price, songwriter, of Louisville, will receive the Artist Award for her lifetime achievement in the arts.

Liquor Barn, Lexington and Louisville, will receive the Business Award for outstanding support of the arts and artists in Kentucky.

Janice Mason Art Museum, in Cadiz, will receive the Community Arts Award for significant contributions to Cadiz and the surrounding region.

(MORE)

KFAC wins Folk Heritage Award  
2-2-2-2

Harry Pickens, pianist, composer, community artist and teaching artist of Louisville, will receive the Education Award to recognize his significant contributions to education through the arts.

City of Maysville will receive the Government Award for its significant contributions to the arts through economic development efforts and support for arts organizations and arts events.

Judith Egerton, theater critic and arts writer, formerly with the Courier-Journal of Louisville, will receive the Media Award for her commitment to bringing the arts to the attention of the public.

The Kentucky Arts Council administers the Governor's Awards in the Arts selection process. Nominations are solicited from the public, reviewed by a selection committee and presented to the Governor for final approval.

The Kentucky Arts Council, the state arts agency, creates opportunities for Kentuckians to value, participate in and benefit from the arts. Kentucky Arts Council funding is provided by the Kentucky General Assembly and the National Endowment for the Arts.

The Kentucky Folk Art Center is a cultural, educational and economic development service of Morehead State University. The Center is open Monday-Saturday, 9 a.m. to 5 p.m. and Sunday, 1 - 5p.m.

####

ajb

# News

9/1/03

Media Relations

[www.moreheadstate.edu](http://www.moreheadstate.edu)

Morehead State University

UPO Box 1100

Morehead, KY 40351-1689

(606) 783-2030

July 28, 2009

FOR IMMEDIATE RELEASE

MOREHEAD, Ky.---Charles Holloway of Lexington has been named chief diversity officer at Morehead State University, effective Aug 3.

"We are pleased to have Charles join the Morehead State University family. He brings a great deal of experience and knowledge, perspective and enthusiasm to his position, and our efforts to enhance the diversity of the campus community will move forward under his leadership," said Dr. Karla Hughes, provost and vice president for academic affairs.

Holloway was selected after a national search.

He comes to MSU with more than 20 years of experience. Prior to accepting his new job, he was a global delivery project executive with IBM.

Among his other positions, Holloway worked as an IBM college recruiter and university liaison, chairperson for diversity network council and chairperson of YMCA Black Achievers scholarship program, and conference speaker for the Kentucky Council on Postsecondary Education.

"I look forward to working with the students, faculty, and staff of the Morehead State University family," said Holloway.

MSU's chief diversity officer develops and oversees programs, services and initiatives designed to enhance the recruitment and successful retention of students and/or faculty and staff from diverse and under-represented population groups. The individual also will serve as MSU's affirmative action officer and will hold primary responsibility and accountability for ensuring equal employment opportunity and non-discrimination in employment areas and for developing and implementing the campus' affirmative action program.

Holloway earned the Bachelor of Science in computer science and applied mathematics degree at Alcorn State University and Master of Business Administration degrees from Xavier University.

He is a member of Alpha Beta Lambda Chapter of Alpha Phi Alpha Fraternity, Inc., and the Kentucky Bluegrass Chapter of Project Management Institute. Holloway was named the 2008 North Lexington Family YMCA Volunteer of the Year.

Additional information is available by calling Holloway at (606) 783-2002.

####

# News

Media Relations

[www.moreheadstate.edu](http://www.moreheadstate.edu)

Morehead State University

UPO Box 1100 Morehead, KY 40351-1689

(606) 783-2030

July 28, 2009

FOR IMMEDIATE RELEASE

MOREHEAD, Ky.---Morehead State Public Radio has teamed-up with The Pioneer Playhouse in Danville for a summer filled with outdoor drama, comedy and theatre under the stars. To celebrate its 60th anniversary, The Pioneer Playhouse is currently offering several live shows.

Upcoming shows include "Girl Crazy" by Guy Bolton and John McGowan (now through Aug. 1), "Be My Baby" by Ken Ludwig (Aug. 4- 15) and "Worth The Weight" starring comedian Scott Hansen (Aug. 20-22).

Located in historic Danville, The Pioneer Playhouse is a 45-minute drive from Lexington. Camping, hotels and an assortment of family restaurants are available throughout the Danville area.

Founded in 1950 by Col. Eben C. Henson, The Pioneer Playhouse is the oldest outdoor theatre in Kentucky and instrumental in pioneering the outdoor theatre movement in the state and around the country. The unconventional, hand-built theatre serves a pre-show dinner and a live performance Tuesday through Saturday, every summer, come rain or shine (inside in case of rain).

Evening shows at The Pioneer Playhouse begin at 8:30 p.m. (dinner at 7:30 p.m.) and reservations are required by calling (859) 236-2747, toll free at 1-866-597-5297 or online at [www.pioneerplayhouse.com](http://www.pioneerplayhouse.com). Tickets are priced at \$27 adults for the dinner and show, \$14 for children under 12 and \$15 adults for the show only, \$8 for children under 12.

MSPR has a limited supply of 10 complimentary tickets. Each ticket is good for two (2) admissions for the Tuesday, Wednesday or Thursday theatre performances for the rest of the season. Reservations must be made in advance and tickets are good for the show only. Dinner tickets may be purchased separately for \$12 each.

To receive your free complimentary ticket good for two admissions, send an e-mail to MSPR at [wmky@moreheadstate.edu](mailto:wmky@moreheadstate.edu) with your first and last name, home mailing address and daytime phone number with "Pioneer Playhouse Tickets" in the subject line.

(MORE)



MSPR, The Pioneer Playhouse  
2-2-2-2

Official contest rules will be followed and other restrictions may be applied. Morehead State Public Radio employees and their families, MSPR Community Advisory Board members and associates of MSPR are not eligible for this contest.

Tickets will be mailed as entries are received. Winners will be notified by return e-mail and expect 2-3 days for delivery.

MSPR broadcasts 24 hours a day and the network includes WMKY (90.3 FM) in Morehead, WOCS (88.3 FM) Booneville and a translator (88.3 FM) in Inez.

Additional information is available by calling MSPR or (606) 783-2334.

####

ajb

# News

91A3

Media Relations

[www.moreheadstate.edu](http://www.moreheadstate.edu)

Morehead State University

UPO Box 1100

Morehead, KY 40351-1689

(606) 783-2030

July 29, 2009

FOR IMMEDIATE RELEASE

MOREHEAD, Ky.---More than 60 teachers from Floyd, Bath, Owsley, Morgan, Martin, Menifee, Magoffin and Johnson county school districts filled the Morehead State University Regional Enterprise Center recently learning the latest computer programs and getting specialized training on engaging techniques to improve student performance in math and science.

Both MSU's 21<sup>st</sup> Century Education Enterprise and Dataseam were conducting classes as part of their combined mission to engage more students in technology, math and science studies.

MSU's program is designed to help teachers introduce hands-on activities in science class, which will generate data that can be processed and analyzed in mathematics class. Modifications for special needs students are also being built into the program.

The summer session is a part of a yearlong integrated program for teachers that also will include an online community, curriculum, student testing and more embedded professional support for teachers.

"Success in math and science are critical for our students to compete for today's jobs," said Krista Barton, director for the 21<sup>st</sup> Century Education Enterprise. "I think the teachers really benefited from the Morehead State math and science professors that helped lead our sessions."

The computer training sessions were all part of a unique program run by Kentucky-based Dataseam, which places new computers in schools for everyday classroom use and then networks those same computers together so scientists can use the processing power to do important discovery work.

Teachers spent two days understanding how to create and share digital media that makes learning more interesting and relevant to today's students. Ultimately, students will be able to use many of new communication tools that businesses rely on today.

"People and companies use all types of new technology to communicate and get work done in our global economy," said Dataseam CEO Brian Gupton. "These teachers are creating individual class Web sites so they can share student work and communicate better with parents and the community. It is truly exciting to see this in action."

These teachers are some of the nearly 3,500 Kentucky teachers, administrators and technicians who participated in training workshops during the last three years with Morehead State and Dataseam. The organizations have been working together to help bring 21<sup>st</sup> century skills to Kentucky students.

####

# News

91A3  
Media Relations[www.moreheadstate.edu](http://www.moreheadstate.edu)

Morehead State University

UPO Box 1100

Morehead, KY 40351-1689

(606) 783-2030

July 29, 2009

FOR IMMEDIATE RELEASE

MOREHEAD, Ky.---Morehead State University's 2009 Advanced Placement Summer Institute (APSI) drew educators from Alabama, Georgia, Indiana, Kentucky, Maryland, North Carolina, New York, Ohio, Tennessee, Virginia, Wyoming and Germany.

The event, held July 13-17, allowed teachers the opportunity to obtain guidance in beginning an Advanced Placement course or to strengthen an existing one. The program included information on creative and effective teaching strategies for AP courses and practical classroom use of AP materials.

During their time at MSU, participants enrolled in one subject for the duration of the workshop. Twenty subjects were offered, including Biology, Calculus AB, Chemistry, English Language, English Literature, German Language, Physics B, Spanish Language, Statistics, and U.S. History.

Advanced Placement courses give high school students an opportunity to enhance their studies of interest by taking college-level courses and exams while still in high school. Students also have the opportunity to earn college credit through the AP exams.

MSU's Institute is provided through a partnership with The College Board, a national non-profit membership association dedicated to preparing, inspiring and connecting students to college. The Board provides educators with information, tools and strategies needed to build and strengthen their professional skills and techniques.

Additional information is available from Tina Stafford, distance education director, by sending a message to [t.stafford@moreheadstate.edu](mailto:t.stafford@moreheadstate.edu) or by calling (606) 783-2605 or (800) 585-6781, option 3.

####

ajb

# News

9/A3

Media Relations

[www.moreheadstate.edu](http://www.moreheadstate.edu)

Morehead State University

UPO Box 1100

Morehead, KY 40351-1689

(606) 783-2030

July 30, 2009

FOR IMMEDIATE RELEASE

MOREHEAD, Ky.---Elizabeth (Beth) DeBauche, director of Division I at the National Collegiate Athletic Association (NCAA), has been named commissioner of the Ohio Valley Conference.

DeBauche will begin her duties in mid-September.

"We are excited to have someone of the caliber of Beth DeBauche join the Ohio Valley Conference," said Dr. Robert Bell, president of Tennessee Technological University and chair of the OVC Board of Presidents. "She not only brings a wealth of experience from the NCAA, but she has also worked on campus and in the SEC office, covering all the bases. She is a truly outstanding find for the OVC."

DeBauche becomes the seventh full-time commissioner in the 61-year history of the OVC. She succeeds Dr. Jon A. Steinbrecher, who left in May to become commissioner of the Mid-American Conference.

DeBauche will be one of only five females to be the head of a Division I conference in 2009-10.

"I am both humbled and delighted to have been selected by the presidents as the commissioner of the Ohio Valley Conference, given its history of academic and athletic excellence," said DeBauche. "I am excited to have the opportunity to serve the presidents, administrators, faculty and student-athletes of the OVC and I am looking forward to a bright future for the conference."

Since Aug. 2002 DeBauche, along with the vice-president of Division I, has been responsible for coordinating Division I initiatives through the NCAA governance structure, as well as helping to manage the Division I agenda.

She received her Bachelor of Arts degree in history and government from Saint Mary's College (Ind.) and earned her Master's Degree in communications from Notre Dame. After completing the Concannon Program of International Law in London, England, DeBauche received her Juris Doctorate from the Notre Dame School of Law in 1988.

####

# News

9/A3

Media Relations

[www.moreheadstate.edu](http://www.moreheadstate.edu)

Morehead State University

UPO Box 1100

Morehead, KY 40351-1689

(606) 783-2030

July 30, 2009

FOR IMMEDIATE RELEASE

MOREHEAD, Ky.---Historic and cultural sites are on tap for the Morehead State University Retirees Association members in August.

Members will tour the Mary Todd Lincoln House and Headley-Whitney Museum in Lexington on Thursday, Aug. 20, with a reservation deadline of Aug. 13.

Vans will leave from the gravel lot across from the Academic-Athletic Center at 8:30 a.m. The group will tour the Lincoln home at 10 a.m. and then the museum at 1 p.m. Lunch will be in downtown Lexington, but is not included in the \$8 transportation fee.

Reservations may be made by calling Tami Jones, director of alumni and constituent relations, at (606) 783-2080 or by e-mail to [t.jones@moreheadstate.edu](mailto:t.jones@moreheadstate.edu).

####

ajb

# Tips

91A3

Media Relations

www.moreheadstate.edu

Morehead State University

UPO Box 1100

Morehead, KY 40351-1689

(606) 783-2030

## AUGUST HIGHLIGHTS AT MOREHEAD STATE UNIVERSITY

Aug. 1, KFAC exhibit: "Rhythm in Relief: The Works of Lavon Williams," Kentucky Folk Art Center, through Sept. 26, charge. Additional information: (606) 783-2204.

Aug. 14, Annual Block Party, free refreshments, face painting and corn toss, University Boulevard, 8 p.m., free. Additional information: (606) 783-2070.

Aug. 16, Performance: The Norman Magic Experience, Button Auditorium, 6:30 p.m., free. Additional information: (606) 783-2070.

Aug. 16, Ice Cream Social, free ice cream, photo key chains and music, Adron Doran University Center commons area, 8 p.m., free. Additional information: (606) 783-2070.

Aug. 17, Classes begin at all campus locations. Additional information: (606) 783-2008.

Aug. 19, Performance: Dale K Comedy Hypnotist, Button Auditorium, 7 p.m., free. Additional information: (606) 783-2070.

Aug. 21, Soccer: Eagles vs. Valparaiso University, Jayne Stadium, 7 p.m., free. Additional information: (606) 783-2589.

Aug. 23, Soccer: Eagles vs. Georgia State University, Jayne Stadium, 1 p.m., free. Additional information: (606) 783-2589.

Aug. 26, Exhibit: "The Shape of Things: Works by Mollie Oblinger, Analia Segal and Lori LaRusso," Claypool-Young Art Building; opening reception, 6-8 p.m., free. Additional information: (606) 783-2766.

Aug. 28, Volleyball: Eagles vs. James Madison University, Wetherby Gymnasium, 11 a.m., free. Additional information: (606) 783-2122.

Aug. 28, Volleyball: Eagles vs. University of Tennessee at Chattanooga, Wetherby Gymnasium, 7 p.m., free. Additional information: (606) 783-2122.

Aug. 29, Volleyball: Eagles vs. East Tennessee State University, Wetherby Gymnasium, 2 p.m., free. Additional information: (606) 783-2122.

####

7-30-09tse

# News

Media Relations

[www.moreheadstate.edu](http://www.moreheadstate.edu)

Morehead State University

UPO Box 1100

Morehead, KY 40351-1689

(606) 783-2030

July 31, 2009

FOR IMMEDIATE RELEASE

MOREHEAD, Ky.---U.S. Congressman Harold "Hal" Rogers (KY-05) announced that the Department of Health and Human Services (HHS), through the Office of National Institute of General Medical Sciences (NIGMS), has awarded Morehead State University a \$198,768 grant for cancer research.

The MSU research will focus on improved cancer prevention and drug treatments.

"Nearly every family has been impacted by cancer and the destruction and disruption it brings to the individuals and families coping with this dreaded disease. It knows no geographic or socio-economic boundaries," said Rogers.

"Aggressive prevention, drug testing, and treatment are key to fighting cancer. With continued research there is hope that one day we will be able to close the door on cancer and prevent the hardships it brings. I am pleased to see researchers and students at MSU take a leading role in this fight. This award is also a reminder that our higher education institutions can compete on a national scale in science and medicine and are doing advanced work to improve the lives of Kentuckians."

Morehead State University researchers will use this funding to study how bacteria respond to damaged DNA in hopes of finding answers to this complex disease. By studying the bacteria and DNA damage, scientists hope to find ways to better prevent and treat cancer. Per capita, Kentucky has one of the highest rates of cancer in the country. This year, according to the American Cancer Society, an estimated 24,060 individuals will be diagnosed with cancer in Kentucky.

The mission of NIGMS is to support research that increases understanding of life processes and lays the foundation for advances in disease diagnosis, treatment, and prevention. NIGMS-funded researchers seek to answer important scientific questions in a wide variety of fields. NIGMS also provides leadership training in the next generation of scientists and increasing the diversity of the scientific workforce to assure the vitality and continued productivity of the research enterprise.

Rogers works to obtain federal funding for projects across southern and eastern Kentucky in his role as a senior member of the House Appropriations Committee.

Dr. Janelle Hare, assistant professor of biology in MSU's Department of Biology and Chemistry, is the principal investigator. Additional information is available by calling her at (606) 783-2951 or by e-mail at [jm.hare@moreheadstate.edu](mailto:jm.hare@moreheadstate.edu).

####

# News

91A3

Media Relations

[www.moreheadstate.edu](http://www.moreheadstate.edu)

Morehead State University

UPO Box 1100

Morehead, KY 40351-1689

(606) 783-2030

July 31, 2009

FOR IMMEDIATE RELEASE

MOREHEAD, Ky.---Eastern Kentucky's own professional opera company, Highlands Light Opera, will hold auditions for an upcoming series of gala benefit concerts to be held in mid-September.

Experienced area singers are encouraged to bring excerpts from opera, operetta, and classic music theatre to perform at the auditions. Solos, duets and small ensemble numbers will be considered.

Auditions will be held on Monday, Aug. 17, and Wednesday, Aug. 19, from 3-4 p.m. and 6-8 p.m., and by appointment in the Baird Music Hall on the Morehead State University campus. An accompanist will be provided.

Highlands Light Opera was established in 2008, with a regional series of performances of the Gilbert and Sullivan operetta, "The Pirates of Penzance."

Highlands Light Opera is the first opera company to be established in central Appalachia. Its mission, according to founder and director, Dr. Roma Prindle, associate professor of music, is to function as a regional organization. Recognizing that there is an abundance of musical talent in this part of the country, efforts will be made to draw all personnel from eastern Kentucky, West Virginia, and southern Ohio.

"Many people in the region worked hard to make the venture a success. All the performers, orchestra and crew, many of whom were professional singers and musicians, donated their time, professional services, forgoing normal professional contracts," said Dr. Prindle. "Even more people in the region donated thousands of dollars to the new company, enabling Highlands Light Opera to get off the ground and become an established and respectable company."

Additional information is available by contacting Dr. Prindle at (606) 783-2481 or e-mail at [r.prindle@moreheadstate.edu](mailto:r.prindle@moreheadstate.edu).

####

ajb