

# News Items for 2013 - October

---

## Six join MSU Halls of Fame; James receives Founder Award

Created: 12/17/2013 10:51:00 AM

Created By: Andrew Blanton



Morehead State University's 2013 Homecoming Banquet was held Friday, Oct. 25, in the Crager Room of the Adron Doran University Center (ADUC).

**Click on name to watch Hall of Fame video.**

The 2013 Founders Award for University Service was presented to [Clyde I. James](#).

A native of Morehead, James is a graduate of Morehead High School and MSU. He received his master's degree in education student personnel administration with an emphasis in business from Indiana University.

James was employed by MSU for more than 27 years. In that time, he held numerous positions with the University, including residence hall director, faculty member, associate dean of students, Greek affairs advisor, and manager of the university center.

In addition to his impressive professional career, James has served on numerous committees throughout his tenure.

His dedication to Morehead State did not stop upon his retirement. He continues to serve the University as a goodwill ambassador. As a past president of the MSU Alumni Association, James frequently volunteers in efforts related to alumni and foundation interests.

Most recently, the University received more than \$25,000 to establish the Clyde I. James Scholarship Endowment, which will provide scholarships for future MSU students.

Inducted in the Alumni Hall of Fame was [David Blevins](#) (89), [Nathaniel Lee](#) (77), and [Gregory H. Wing](#) (76).

Blevins (89) came to MSU on a baseball scholarship and later earned a B.S. degree in environmental science. Now, he serves as a director level vice president of CH2M Hill, one of the largest environmental consultation firms in the United States. He has spent more than two decades working for numerous companies in both Kentucky and Michigan and has been involved in a variety of large-scale engineering and environmental projects.

Lee is the senior partner of Lee and Fairman, LLP, a law firm based in Indianapolis, Ind. He has litigated more than 150 jury trials, is active with various community organizations and boards, and serves as chairman of The Lee Foundation, a not-for-profit charitable organization which provides annual assistance to youth and families in the Greater Indianapolis and surrounding areas. The foundation's events, like its Halloween Drive-Through Candy Giveaway and Christmas Adopt-A-Family, have been held for the past 15 years and serviced thousands

of children and families.

Wing is currently a professor of trumpet at Morehead State University, along with being an in-demand clinician/guest artist and performer with the Horizon Brass Quintet. He is widely recognized as one of the nation's leading trumpet artists, having performed with a variety of notable jazz and classical music orchestras and alongside Frank Sinatra, Tony Bennett, Andrea Bocelli, Luciano Pavarotti, Natalie Cole and Tom Jones among others. He was the recipient of the 2010-11 Morehead State University Distinguished Teacher of the Year Award.

Inductees of the Athletic Hall of Fame were [Henry Akin](#), [Mike Brown](#) (63) and [Amy Almond Paul](#) (03).

Akin, originally from Troy, Mich., was a basketball standout during his time with the Eagles. In his two seasons (63-64 and 64-65) under Head Coach Bob Laughlin, he led MSU in rebounds and was second on the team in scoring. He also ranked in the OVC's top 10 for scoring, rebounding, field goal percentage and free throw accuracy both seasons. Akin played in the NBA for two seasons, first with the Knicks in 1966-67 and the following season with the Seattle Superonics. He later played in the American Basketball Association for the Kentucky Colonels for one season (1968-69).

Brown left his mark on MSU athletics both on and off the field. The Logan, Ohio, native played multiple positions for the Eagle football squad from 1959-62. His senior season, the year the Eagles were named co-champions of the OVC, he was a Second-Team All-OVC selection and was named both MSU's Most Valuable Player and the league's Most Outstanding Defensive Back.

Brown returned to serve as assistant coach from 1966-68 and helped guide MSU to its second league title in 1966. He would go on to serve 15 years as the faculty representative for athletics and chaired the MSU athletic committee for 10 years.

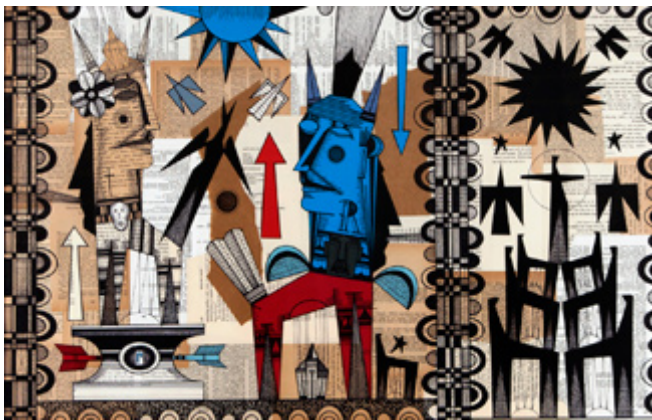
Paul was an outside hitter for the MSU volleyball team from 1999-2002. The Columbus, Ohio, native had standout seasons in 2001 and 2002. Both years, she was selected as an all-region honoree by the American Volleyball Coaches Association and was named the Ohio Valley Conference Player of the Year. Almond is ranked third in school history in career kills, sixth in both career hitting percentage and single-season kills and holds a freshman-class record for hitting percentage.

---

## 'A Night in Horse Country' slated for Oct. 17

Created: 9/30/2013 4:33:00 PM

Created By: Andrew Blanton



Morehead State University's [Kentucky Folk Art Center](#) will hold its annual "A Night in Horse Country" on Thursday, Oct. 17, at 6 p.m. at the Signature Club of Lansdowne in Lexington.

Tickets are \$50 per person and must be purchased in advance.

All funds generated from the event will go toward KFAC's collection acquisition fund.

"A Night in Horse Country is a great way for us to stay in touch with our many supporters in central Kentucky," said Matt Collinsworth, KFAC director. "However, we also use the proceeds from the event to support our collection acquisition fund. KFAC is only able to budget a few thousand dollars each year to acquire works for the collection. As we strive to keep significant pieces of Kentucky folk art in state, we need our friends help."

The event will feature folk art sales, live music by Brett Ratliff and John Haywood and Big Ugly, and a food and drink from Selma's Catering.

A Night in Horse Country is organized by Friends of Kentucky Folk Art Center. Kentucky Folk Art Center is a cultural, educational and economic development service of Morehead State University. The Center is open Monday-Saturday, 9 a.m. to 5 p.m.

Tickets can be purchased by calling KFAC at 606-783-2204 or emailing [t.stone@moreheadstate.edu](mailto:t.stone@moreheadstate.edu).

---

## Kappa Sigma Fraternity to host International Day of Service, Oct. 5

Created: 10/3/2013 10:19:00 AM

Created By: Andrew Blanton



More than 40 members of Morehead State University's Kappa Sigma Fraternity will volunteer their time to help local organizations, including Helping Hands and Christian Social Services, as part of the organization's International Day of Service, Saturday, Oct. 5.

Throughout the United States and Canada, thousands of college undergraduate and alumni members of Kappa Sigma will participate in the event, volunteering their time for service projects and philanthropic fundraisers to benefit hundreds of non-profit organizations within their local communities.

"The day of service is important to our chapter, because it is a unified effort by the Kappa Sigma organization to give back to the community," said Orrin Stivers, president of MSU's Kappa Sigma chapter. "Our community has been very supportive of our chapter over the years, and we are happy to give back any way we can."

The Day of Service was created as part of Kappa Sigma's "A Greater Cause" initiative, the international fraternity's ongoing commitment to promote volunteerism, citizenship and service to the community. Kappa Sigma held the first coordinated international day of service for any collegiate social fraternity in October 2012, as well as a Spring Day of Service in April of this year.

Since the launch of the A Greater Cause initiative in 2001, Kappa Sigma has achieved unprecedented levels of volunteerism and philanthropy among its members. During the 2012-13 academic year alone, Kappa Sigma contributed more than 600,000 volunteer service hours and donated nearly \$1.9 million collectively to those in need—a Fraternity record and the most ever for a collegiate social Greek organization in a single year.

---

## Siemens awards \$30 K to Department of Applied Engineering and Technology for developing an energy and sustainability laboratory

Created: 9/30/2013 4:37:00 PM

Created By: Andrew Blanton



Morehead State University's [Department of Applied Engineering and Technology](#) (AET) has been awarded an academic grant of \$30,000 from the Siemens Building Technologies Education Team to support the department's efforts in establishing a laboratory for energy systems and sustainability.

The award letter was sent from Siemens to President Wayne D. Andrews and Dr. Ahmad Zargari, AET chair, on Sept. 16.

The funds will be directed toward the acquisition of equipment for the lab section of the IET 352 Energy Systems and Sustainability course developed by Dr. Hans Chapman, assistant professor of design and manufacturing engineering technology.

The course was successfully offered in the summer of 2013. The Energy Sustainability Lab will initially focus on renewable energy technologies such as solar and wind energy, fuel cells and green building design.

According to Dr. Chapman, The department is deeply appreciative of the support from Tim Foster of the Siemens Infrastructure and Cities Building Technologies Division, also a member of the AET Department Advisory Board, MSU Building Maintenance Superintendent Todd Thacker, and MSU Energy Manager Bob Cooper, who played key roles in securing the award. The equipment will strongly enhance MSU's efforts in the teaching and training of students to have the relevant skills to effectively function in the emerging renewable energy workforce and thereby contribute to the economy of the region.

With this award, Siemens has further enhanced its partnership with MSU and the AET Department. Recently, the MSU Foundation received an in-kind software grant with a commercial value of two-hundred and \$9 million dollars from Siemens-PLM to develop the AET Department's System Design, Simulation, Modeling and Manufacturing (SDMSM) center.

Dr. Chapman holds a Ph.D. degree in Materials Science and Engineering. His research areas are alternative

renewable energy and advanced manufacturing. He is currently involved in research aimed at enhancing the energy resources in Eastern Kentucky.

Additional information is available by contacting Dr. Chapman at 606-783-2418.

---

## 'Bob G Family Fun and Fitness Day' set for Saturday

Created: 10/1/2013 2:17:00 PM

Created By: Andrew Blanton



The first "Bob G Family Fun and Fitness Day" will be held on the lawn of Morehead State University's Laughlin Health Building Saturday, Oct. 5, from 9 a.m. until noon with registration for a fun walk beginning at 8:30 a.m.

The event offers a variety of activity sessions and demonstrations, a health fair with screenings, and includes special guests Beaker and the men's/women's basketball teams. Both the walk for National Alliance on Mental Illness (NAMI) and family activities are free and open to the public, created in honor of MSU professor emeritus Dr. Robert (Bob) W. Grueninger by his community for his community.

Dr. Grueninger was a faculty member and chair of MSU's Department of Health, Physical Education and Sports Science until his retirement in 2005. After his retirement, he was a full time volunteer working as director of missions at Morehead United Methodist Church, president and co-founder of Sustainable Morehead, vice president of NAMI Morehead, curriculum chair for the Morehead Chapter of OLLI at UK, and as a member of various Rowan County Retired Teachers committees.

Saturday will be a day for Morehead and surrounding communities to celebrate his life and work in health and wellness.

The planning committee would like to thank University of Kentucky's Osher Lifelong Learning Institute and Cooperative Extension; National Alliance on Mental Illness Morehead; St. Claire Regional Medical Center, Embroidery Unlimited; MSU's Department of Health, Wellness and Human Performance, Center for Regional Engagement, Recreation and Wellness Center, Athletics, Office of Communications and Marketing, Department of Agriculture, and Student Association of Social Workers; Total Care Pharmacy; Rite Aid; The Citizens Bank; Morehead Community Federal Credit Union; Retired Senior Volunteer Program; Trophy Works; Pathways, Inc.; and Dr. Maria Alboszta.

Additional information is available by calling 606-783-2180.



## Intern, Employer and Faculty of the Year winners announced

Created: 10/1/2013 2:26:00 PM

Created By: Andrew Blanton



Morehead State University's Office of Career Services presented its outstanding internship awards Tuesday, Oct. 1, prior to the Career Fair.

The awards ceremony was held in the Commonwealth Room of Adron Doran University Center.

The 2013 Internship Student of the Year was awarded to Adam Lawrence, a senior university studies major from Aberdeen, Ohio. Lawrence served as part of a team to coordinate the Veterans Expo, a career and resource fair, that was held in Ashland.

"Adam performed job functions normally reserved for professional staff and routinely demonstrated the conscientiousness expected of a more experienced employee," wrote Retired Lt. Col. Max Ammons, MSU's director of military initiatives.

Lawrence was additionally nominated by Greta White, Disabled Veterans Outreach Program specialist and Louise Cooper, service-learning coordinator.

The Internship Faculty Member of the Year was awarded to Dr. William Green, a professor of government in the department of Regional Analysis. Dr. Green worked closely with five student interns who served in the Canadian Parliament. Green not only provided students the academic background for their internship, but helped raise funds for their living expenses (more than \$1,200 per student).

Dr. Stephen Lange, associate dean of the School of Public Affairs, stated, "He [Green] recruits students from multiple majors across campus to participate in the program, teaches them about Canadian politics, and works with them one-on-one to prepare them for the practicalities of their trip and work in Canada."

The Internship Employer of the Year was presented to the Paris Main Street Program, nominated by student Lindsay McCane.

She was supervised by Elisha Bowman, the director of the program. The Paris Main Street Program is a public/private partnership dedicated to the historic preservation of downtown Paris. As an intern, McCane learned about the administrative work behind historic preservation while at the same time enhancing her communication and networking skills. The level and varied nature of the professional experiences provided to her impressed the selection committee.

Dr. Janet McCoy, interim director of the Center for Leadership and Professional Development, and 2011-12 Internship Faculty of the Year, was the keynote speaker.

Additional information on becoming an intern or supervision one is available by calling 606-783-2233.

---

# Retiree Darrel Bloomfield dies

Created: 10/3/2013 11:48:00 AM

Created By: Andrew Blanton

---