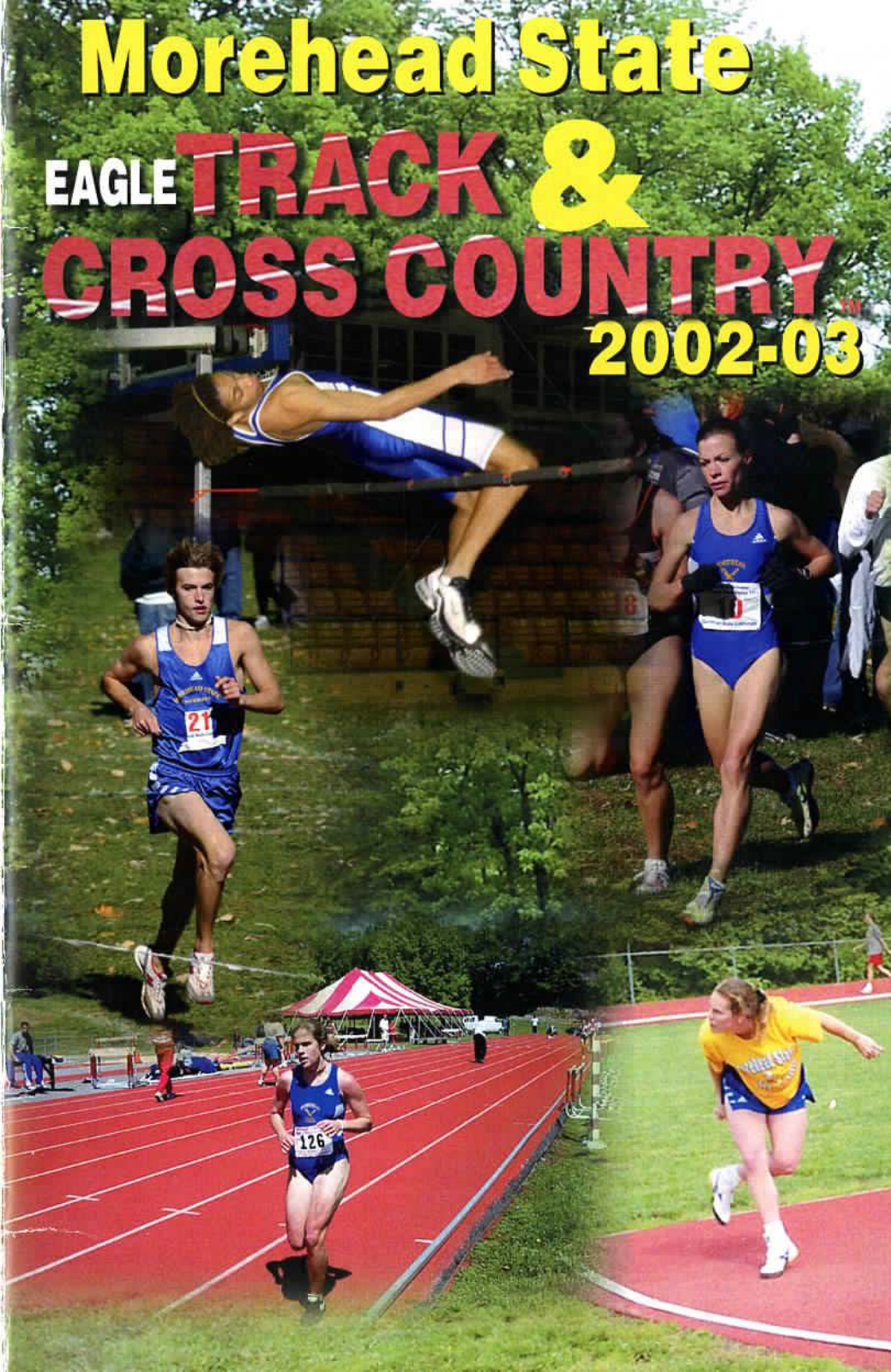


Morehead State

EAGLE TRACK & CROSS COUNTRY

2002-03



2002-03 MOREHEAD STATE MEN'S AND WOMEN'S TRACK & FIELD/CROSS COUNTRY ROSTERS

MEN

NAME	CL	EVENT	HT	EXP	HOMETOWN/PREVIOUS SCHOOL
Brett Allen	SO	distances	6-1	1L	Lexington, Ky./Dunbar
Josh Anderson	FR	middle distances	6-2	HS	Pikeville, Ky./Pikeville
Jerrold Arms	SO	middle distances	6-0	TR	Wellston, Ohio/Univ. of Rio Grande
Aaron Arnold	JR	distances	6-3	RS	Grayson, Ky./East Carter
Larry Atkins	JR	distances	5-11	2L	Huntington, W.Va./Huntington
Ben Boni	FR	sprints, hurdles	5-11	HS	Aliquippa, Pa./Hopewell
J.C. Chirgwin	SR	steeplechase	5-10	3L	Huntington, W.Va./Huntington
Todd Chisley	FR	sprints	5-10	HS	Georgetown, Ky./Scott County
James Clements	FR	distances	5-10	HS	Waddy, Ky./Shelby County
Justin Dillard	FR	throws	5-11	HS	London, Ohio/London
Hugh Denbow	FR	sprints	5-9	HS	Stone Mountain, Ga./Dunwoody
B.J. Gooch	SO	pole vault, sprints	6-0	RS	Stanford, Ky./Lincoln County
Brandon Gulley	JR	throws	6-1	2L	Flemingsburg, Ky./Fleming County
Joe Holbrook	JR	pole vault	6-2	2L	Morehead, Ky./Rowan County
Matt Holbrook	SR	distances	6-1	3L	Morehead, Ky./Rowan County
Patrick Hunley	FR	middle distances	5-11	HS	Morehead, Ky./Central Kitsap (Wash.)
Marcus Johnson	SO	sprints, jumps	6-1	RS	Louisville, Ky./Shawnee
Duane Morris	JR	throws	6-0	2L	Burlington Township, NJ/Burlington Township
Jason Ratliff	JR	hurdles, high jump	5-10	2L	Russell, Ky./Ashland CC
Adam Rubman	JR	middle distances	5-6	1L	Lakewood, N.J./Ocean County CC
Josh Sheets	FR	distances	5-8	HS	Greenwood, W.Va./Doddridge County

WOMEN

NAME	CL	EVENT	HT	EXP	HOMETOWN/PREVIOUS SCHOOL
Julie Armstrong	FR	hurdles, sprints	5-9	HS	Edgewood, Ky./St. Henry District
Kelly Austin	SR	distances	5-3	3L	Portsmouth, Ohio/Portsmouth
Erin Bowling	SO	throws	5-10	1L	Ashland, Ky./Boyd County
Alicia Brown	FR	distances	5-1	HS	Lucasville, Ohio/Valley
Nikki Collins	FR	throws	5-10	HS	Wurtland, Ky./Greenup County
Debbie Criss	JR	throws	6-1	2L	Ashland, Ky./Fairview
Taria Daughter	FR	middle distances	5-9	HS	Richmond, Ky./Madison Central
Samantha Hall	FR	distances	5-6	RS	Ludlow, Ky./Ludlow
Lauren Hatfield	FR	hurdles	5-4	HS	Seminole, Fla./Seminole
Natalie Lane	FR	high jump	5-7	HS	Russell, Ky./Russell
Bethany Lewis	SO	throws	5-4	1L	Memphis, Tenn./Bartlett
Karen Lutes	SR	distances	5-5	3L	Cynthiana, Ky./Harrison County
Shawna McCown	FR	middle distances	5-4	RS	Rush, Ky./Boyd County
Michelle Rupert	FR	throws	5-8	HS	Ashland, Ky./Blazer
Katie Scheben	JR	middle distances	5-10	2L	Burlington, Ky./Connor
Amanda Schilling	FR	distances	5-5	HS	Catlettsburg, Ky./Boyd County
Farrah Spellman	SO	middle distances	5-9	1L	Corbin, Ky./Corbin
Becca Stacey	JR	pole vault	5-5	2L	Ashland, Ky./Boyd County
Alessa Velez	SO	distances	5-2	1L	Cincinnati, Ohio, Kings

HEAD COACH:

ASSISTANT COACHES:

VOLUNTEER ASSISTANT COACH:

Dan Lindsey (Morehead State '77), 17th year
 Bob Stacey (Morehead State '73), 3rd year
 Frank Gilvin (Morehead State '96), 3rd year
 Paul Gilvin (Morehead State '02), 1st year

CONTENTS

Academic Awards	14
Athlete Profiles	7-13
Athletic Administration	3-4
Athletic Staff Directory	5
Athletic Support Staff	5
Coaching Staff	6
Facilities	14
Media Information	20
Morehead State University	2
Ohio Valley Conference	18
Ohio Valley Conference Sportsmanship Statement	19
Outlook	8
Past Champions	17
Records: MSU All-Time	16
Results: 2001-2002	15
Roster	ifc
Schedule	bc

MOREHEAD STATE UNIVERSITY QUICK FACTS

Location: Morehead, Ky.
Founded: 1887 **Enrollment:** 9,390
Nickname: Eagles **Colors:** Blue & Gold
Conference: Ohio Valley - NCAA Division I
President: Dr. Ronald G. Eaglin
VP for Student Life: Madonna Weathers
Director of Athletics: Chip Smith
Associate Director of Athletics: Brian Hutchinson
Assistant Director of Athletics: Jason Lerner
Senior Woman Administrator: Leslie Faber
Faculty Representative: Peggy Osborne
Compliance/Educational Services Director:
 Jim Wells
Head Athletic Trainer: Richard Fletcher, ATC
Sports Information Director: Randy Stacy
Office Phone: (606) 783-2500 - **FAX:** (606) 783-2550
Home Phone: (606) 784-2922
E-mail: r.stacy@moreheadstate.edu
Assistant SID: Brad Laux
Home Phone: (606) 780-9111
E-mail: b.laux@moreheadstate.edu
Graduate Assistant SID: Greg Dawkins
Home Phone: (606) 783-4676
E-mail: gmdawk01@moreheadstate.edu

2003 Eagle Track & Cross Country

ON THE COVER

This year's cover features (clockwise from top): sophomore Marcus Johnson, senior Kelly Austin, junior Debbie Criss, senior Karen Lutes and senior J.C. Chirgwin.

CREDITS

The 2003 Eagle Track and Field/Cross Country media guide was written and designed by Graduate Assistant Greg Dawkins and Secretary Specialist Brenda Fankell. Editorial assistance was provided by MSU University Marketing, SID Randy Stacy and assistant SID Brad Laux. Cover design by Trevor Griffith, Graphic Designer. Photography by MSU staff photographer Tim Holbrook. Printing by MSU Document Services.

EAGLES ONLINE!

To keep up with the Eagles, visit Morehead State Athletics on the World Wide Web. Point your browser to:

www.msueagles.com

MEN'S AND WOMEN'S TRACK AND FIELD/ CROSS COUNTRY QUICK FACTS

Head Coach: Dan Lindsey
Office Phone: (606) 783-2653
E-mail: d.lindsey@moreheadstate.edu
Assistant Coaches: Bob Stacey and Frank Gilvin
Letterwinners Returning/Lost:
 Men: 10/10 Women: 9/5
2001 Cross Country OVC Finish:
 Men: 4th Women: 4th
2002 Indoor Track and Field OVC Finish:
 Men: 6th Women: 6th
2002 Track and Field OVC Finish:
 Men: 6th Women: 6th



Morehead State University

Meeting the educational needs of East Kentucky while striving to constantly improve the quality of its public service, economic development and applied research programs are the primary objectives of Morehead State University.

Historically, the University traces its lineage to the Morehead Normal School, which opened its doors in 1887. The private school closed in the spring of 1922 when the Kentucky General Assembly established Morehead State Normal School. The state institution accepted its first students in the fall of 1923 and graduated its first class in 1927. Name changes occurred in 1926 when "and Teachers College" was added, again in 1930 when it was shortened to Morehead State Teachers College, again in 1948 when "Teachers" was dropped



and, finally, to university status in 1966. Twelve men, starting with Frank C. Button, have served as president. Dr. Ronald G. Eaglin assumed office as the 12th president on July 1, 1992.

Academically, the University offers 88 undergraduate degree programs, including 9 associate level degrees and 12 pre-professional programs in four colleges -- Business, Education, Humanities, and Science and Technology -- and 19 academic departments. There are 35 graduate degree programs plus 17 graduate level non-degree programs designed especially for professional educators. A post-master's level degree, education specialist with four specialty areas, and a joint doctoral program with the University of Kentucky are offered on the MSU campus.

Classes are conducted in Ashland, Jackson, Maysville, Pikeville, Prestonsburg, West Liberty, Whitesburg and other locations. Extended campus centers located in Ashland, Jackson, Prestonsburg and West Liberty are staffed with full-time directors. Additionally, the University offers a number of distance learning courses throughout the region via the Internet and interactive compressed video. Sixty-one percent of MSU's 340 full-time faculty members hold doctoral degrees.

Physically, the University is located in the foothills of the Daniel Boone National Forest in Rowan County. The nearly 500-acre main campus within the city limits of Morehead includes more than 50 major structures with a total replacement value of more than \$144 million. Beyond the city, the University's real estate holdings include the 320-acre Derrickson Agricultural complex and a nine-hole public golf course. The instructional plant includes 120 classrooms and 112 laboratories. Housing facilities include space for approximately 3,400 single students and 138 student families.

Fiscally, the University currently operates on an annual budget of \$92.1 million with about \$44.7 million provided by the state and

\$29.4 million coming from tuition and fees and other sources.

Additionally, grants and contracts from external sources for research, service and academic/student support projects generate more than \$10 million each year. Private donations to the University, mainly through the MSU Foundation Inc., have reached more than \$2 million.

Statistically, the University has awarded more than 51,000 degrees and currently has 1,049 full-time employees. Enrollment for fall 2001 was 9,027, with the student body representing 105 Kentucky counties, 43 states and 37 foreign countries. The University attracts more than 50,000 visitors annually and its economic impact, directly and indirectly, on the Morehead area is estimated at more than \$80 million yearly.

Administratively, the University is governed by an 11-member Board of Regents with eight citizens appointed by the governor and three seats held by elected faculty, staff and student representatives. Management of the institution is vested primarily in six divisions--Academic Affairs, Administration and Fiscal Services, Development, Student Life and University Relations, Planning and Technology--each headed by a vice president.

Athletically, the University sponsors 18 intercollegiate sports for men and women in accordance with the regulations of the Ohio Valley Conference, Pioneer Football League and Division I of the National Collegiate Athletic Association. MSU also supports an intramural program involving more than 20 team and individual sports.

Affirmative Action Statement

Morehead State University is committed to providing equal educational opportunities to all persons regardless of race, color, national origin, age, religion, sex, or disability in its educational programs, services, activities, employment policies, and admission of students to any program of study. In this regard the University conforms to all the laws, statutes, and regulations concerning equal employment opportunities and affirmative action. This includes: Title VI and Title VII of the Civil Rights Act of 1964, Title IX of the Education Amendments of 1972, Executive Orders 11246 and 11375, Equal Pay Act of 1963, Vietnam Era Veterans Readjustment Assistance Act of 1974, Age Discrimination in Employment Act of 1967, Sections 503 and 504 of the Rehabilitation Act of 1973, Americans with Disabilities Act of 1990, and Kentucky Revised Statutes 207.130 to 207.240. Vocational educational programs at Morehead State University supported by federal funds include industrial education, vocational agriculture, business education, home economics education and the associate degree program in nursing. Any inquiries should be addressed to: Francene L. Botts-Butler, Affirmative Action Officer, Morehead State University, 358 University Street, Morehead, KY 40351. Telephone: (606) 783-2085.

Dr. Ronald G. Eaglin, President



Dr. Ronald G. Eaglin, an outspoken proponent of student success strategies in college administration, has served since July 1, 1992, as the 12th president of Morehead State University.

A native of St. Louis, Mo., President Eaglin came to Kentucky from the chancellorship of Coastal South Carolina University in Conway, S.C. Previously, he was vice chancellor for academic affairs at the University of South Carolina at Spartanburg. Earlier, he was the southeast regional director of the American College Testing Program (ACT).

A former chair of Kentucky's Conference of University Presidents, Dr. Eaglin holds a bachelor's degree in biology and mathematics from Southeast Missouri State University, a master's degree in student personnel administration from Southern Illinois University and a doctoral degree in educational psychology from the University of Utah.

President Eaglin's expertise in student retention has been highlighted in a research report he wrote for the American Association of Colleges and Universities (AACU) on the role of campus chief executives in helping students be successful in college. Dr. Eaglin initiated a study of the teacher education program on the MSU campus that led to a review and improvement of the University's program.

Chip Smith, Athletic Director

Joseph C. (Chip) Smith Jr., became the eighth director of athletics at Morehead State University in August.

A highly organized professional with extensive knowledge in NCAA Division I athletic programs, Smith has nearly 20 years experience in athletics administration with a background in the internal and external workings of intercollegiate athletics.

Joining the ECU staff in 1999, Smith served as associate athletics director before being named director of the program in 2001. His financial expertise was responsible for saving the University more than \$100,000 by developing a strategy to bring marketing and sponsorship sales in-house and initiating an incentive program to encourage fundraising activities. He supervised the administrative and coaching staffs, created the position of assistant compliance coordinator as well as an assistant athletic director for development to strengthen student-athlete relations and fundraising efforts.

In addition, he was involved in the formation of a "P-16 + Regional Council" which is based at MSU and brings together representatives from the public and private colleges in the area, school superintendents, local government leaders, members of state agencies, and CEO's of regional businesses and industry.

The University's CEO has made presentations across the country on student retention and the role of the President in accomplishing this goal. Involved with numerous publications on this topic, he edited the book "Five Habits of Successful Students" published by the International Organization for Student Success.

Dr. Eaglin was a member of the AACU Board of Directors and had the distinction of representing two different institutions on the NCAA Presidents Commission. He currently serves on the NCAA Board of Directors for Division I and as president of the Ohio Valley Conference. His consulting work in student personnel and academic matters has taken him overseas to Cyprus, China and Ireland and to numerous campuses across the country.

President Eaglin is active in economic development matters in East Kentucky, serving presently by appointment of Gov. Paul Patton on the Kentucky Appalachian Commission and Education Pays Task Force. He is a member of the Board of Directors of the Morehead-Rowan County Chamber of Commerce.

Dr. Eaglin and his wife, Bonnie, have four adult children and five grandchildren.

Prior to ECU, Smith served both as an associate and as an assistant director of athletics at Virginia Military Institute in Lexington, Va. He was as an assistant athletic director for development at the University of North Carolina at Charlotte from 1984-1991 and athletic business and ticket manager from 1984-88.

A former high school teacher and coach, Smith is a member of the National Association of Collegiate Directors of Athletics and NCAA Certification Peer Review Teams. A former chapter adviser for Pi Kappa Alpha fraternity, he is a YMCA youth league coach and a past president of the Children's Network Inc., a community-owned and operated after-school center for at-risk children.

He is a graduate of the University of North Carolina at Chapel Hill where he earned a Bachelor's Degree in Education in 1978 and a Master's Degree in Athletic Administration in 1989. He received the first Distinguished Alumnus in Sports Administration Award from UNC.

A native of Siler City, N.C., Smith and his wife, Gale, have a daughter, Chesley, and a son, Cort.



Brian Hutchinson, Associate Athletic Director

Brian Hutchinson begins his third year as Associate Athletic Director. His duties will include managing day-to-day operations of the department, including overseeing the athletic training offices, managing the department's annual budget, and the sports administrator for football, volleyball, baseball and golf.

Hutchinson previously served as Development Director for two years, before assuming the post of Director of Development and Marketing. Prior to that, he served 18 months as a regional development officer for the University and six months as a staff assistant in the University's Office of Development and Alumni Relations. In the 2000-01 year, he served an internship with the Ohio Valley Conference office, assisting with the league's baseball championships and earned a master's degree in sports administration.



A 1996 cum laude graduate of Morehead State University, Hutchinson earned a Bachelor of Business Administration. During his senior year, the Louisa, Ky., native served as the Student Government Association President and was a student representative to the MSU Board of Regents. He has remained active in the alumni association of Sigma Alpha Epsilon and he holds memberships in NACDA and NACMA.

Hutchinson and his wife, Elizabeth, have one son, Benjamin and they reside in Morehead.

Leslie Faber, Senior Woman Administrator/Soccer Coach

Leslie Faber was named the athletic department's Senior Woman Administrator on July 1, 2000. In her role, Faber is actively involved providing input and oversight in the planning and development of budgets and long-range goals for the athletic department. Additionally, she will be involved in selected day-to-day operational functions, represent the athletics department at conference and national meetings, and serve as a key athletic representative on the committee charged with writing the 2001-2006 athletics long-range plan. She also serves as the chief administrator for Choices Grant CHAMPS/LifeSkills.

Faber has been a member of the Eagle athletic staff since February 1998. She has led the women's soccer program since its inception in the 1998-99 season.



Jason Lerner, Assistant Athletic Director

Jason Lerner became the Assistant Athletic Director at Morehead State University in October 2001.

He came to MSU after serving nearly two years as the Director of Sports Marketing at Georgia State University. While at GSU, he served as Director of Marketing for the 2001 NCAA Women's Tennis Championship and as Tournament Director for the Trans America Athletic Conference Men's Basketball Championships, both of which were held in Atlanta.

A native of Tallahassee, Fla., Lerner was a standout baseball player at Lincoln High School. He then became a four-year letter winner in baseball at Furman University, where he earned a bachelor's degree.

He earned a master's degree from the University of Georgia.

Prior to joining the staff at GSU, he served as a marketing assistant at the Peach Bowl.

Jason and his wife, Christine (Gavin), were married in October, 2002, and reside in Mt. Sterling.



Jim Wells, Compliance and Educational Services Director

Jim Wells, whose more than two decades of involvement with Morehead State University athletics range from serving as an undergraduate student manager of the Eagle baseball squad to serving as sports information director to coaching the Eagle softball team, is MSU's Compliance and Educational Services Director. He spent six years as Compliance Coordinator and five years as Academic/Athletic Counselor. Wells retired from full-time status on August 31, 2000 and is now serving on a part-time basis.

Wells has also served MSU as a publications assistant. Among his assignments was managing editor of MSU's alumni periodical, the Morehead STATEment. A two-time graduate of MSU, Wells is in charge of monitoring the University's compliance with NCAA and Ohio Valley Conference rules and legislation as well as the academic progress of Eagle athletes.



An avid golfer and former manager of the University golf course, Wells is a life-long resident of Morehead. He is single.

Athletic Support Staff



Jenny Duncan
Athletic Budget Specialist



Richard Fletcher, ATC
Head Athletic Trainer



Sherry Mays
Athletic Administration Specialist



Peggy Osborne
Faculty Representative

Athletic Staff Directory

(Area Code 606)

University Administration

Dr. Ronald G. Eaglin, President 783-2022

Athletic Administration

Chip Smith, Athletic Director 783-2089

Brian Hutchinson, Associate Athletic Director 783-2088

Jason Lerner, Assistant Athletic Director 783-2387

Leslie Faber, Senior Woman Admin. 783-2589

Jim Wells, Compliance and Educational Services Director 783-5136

Peggy Osborne, Faculty Representative 783-2755

Head Coaching Staff

Matt Ballard, Football 783-2020

Dr. Rex Chaney, Golf 783-2396

Leslie Faber, Soccer 783-2589

John Jarnagin, Head Baseball 783-2882

Laura Litter, Women's Basketball 783-2126

Dan Lindsey, Track and Cross Country 783-2653

Kyle Macy, Men's Basketball 783-2087

Walt Rybka, Rifle 783-2289

TBA, Volleyball 783-2122

Jennifer VanSickle, Softball 783-5283

David Vest, Tennis 783-5408

Athletic Training

Richard Fletcher, Head Athletic Trainer 783-2392

Jamey Carver, Assistant Athletic Trainer 783-2790

Sports Information

Randy Stacy, Director 783-2500

Brad Laux, Assistant Director 783-2500

Clerical Staff

Tammy Boyd, Football 783-2020

Jenny Duncan, Athletics 783-2088

Brenda Fankell, Sports Information 783-2500

Gloria Johnson, Men's Basketball 783-2087

Sandy Kitt, Women's Basketball 783-2126

Sherry Mays, Athletics 783-2089



Coaching Staff



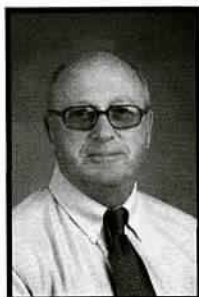
Dan Lindsey, Head Coach

Coach Dan Lindsey has led the Morehead State men's and women's track and cross country programs since 1986. In that time, he has earned three Ohio Valley Conference Coach of the Year honors, guided the men's team to cross country titles in 1987 and 1995, and the women's squad to the 2000 crown, plus coached 21 OVC Academic Medal of Honor recipients. In his 16 years at the helm, Lindsey's cross country teams have flourished, finishing in the top three a combined 14 times at the men's and women's OVC Championships.

The three OVC titles are among his proudest achievements. The 1988 championship was the school's first in that sport. In addition, he has coached dozens of all-conference performers and four team members to a total of six OVC Athlete of the Year awards.

Another highlight in his MSU coaching tenure is his teams' academic record. Several of his athletes have received academic honors, including 11 all-district selections in the last five years, two of whom have been named as All-Americans. His 1998 women's cross country team also earned Women's Intercollegiate Cross Country Coaches Association (WICCCA) Academic All-American Team honors.

He is married to Diana Lindsey, and the couple lives in Morehead with their two daughters, Miranda, a junior at MSU, and Megan.



Bob Stacey, Assistant Coach

Returning to the team for his second year is Bob Stacey, a former long-time coach at Boyd County High School. Stacey will again head up the track and field portion of the program. His primary responsibilities include assisting in recruiting and with team travel, and coaching the sprinters, hurdlers, jumpers, vaulters and throwers.

A decorated high school coach, Stacey spent 27 years at Boyd County, where he was a founder of the Kentucky Track and Cross Country Coaches Association (KTCCCA) and the Eastern Kentucky Track Coaches Association (EKTCA). He earned the highest honor by the KTCCCA in 1989, when it inducted him into its Hall of Fame.

A two-time graduate of Morehead State, Stacey spent one year with the Eagle swim team. He earned his bachelor's degree in health/physical education and math in 1973, and then his master's in health and physical education in 1983. He is married to Rebecca, a 1970 MSU graduate, and the couple has two children, including Becca, a member of the MSU cross country and track and field teams, and Rob. They live in Ashland, Ky.



Frank Gilvin, Assistant Coach

A former MSU standout, Frank Gilvin is back for his second year as an assistant with the Eagles and Lady Eagles. He primarily coaches the distance runners, and assists with team travel and recruiting. He also serves as the director of the MSU Cross Country Camp.

Gilvin ran both cross country and track for Morehead State for four seasons between 1991 to 1996, before graduating with a degree in business and humanities in 1996. The Morehead, Ky., resident earned all-conference honors in the 3000m steeplechase as a sophomore in 1994 and was an academic all-conference selection in 1994-95.

Gilvin is married to Tonya, and the couple has two young children, Trey and Austin.



Brett Allen

6-1, Sophomore

Lexington, Ky./Dunbar

Events: Distances, Cross Country



Josh Anderson

6-2, Freshman

Pikeville, Ky./Pikeville

Events: Middle Distances, Cross Country



Aaron Arnold

6-3, Junior

Grayson, Ky./East Carter

Events: Distances, Cross Country



Larry Atkins

5-11, Sophomore

Huntington, W.Va./Huntington

Events: Distances, Cross Country



Ben Boni

5-11, Freshman

Aliquippa, Pa./Hopewell

Events: Sprints, Hurdles



J.C. Chirgwin

5-10, Senior
Huntington, W. Va./Huntington
Events: Steeplechase, Cross Country



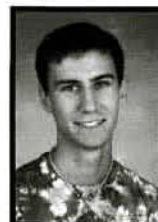
Joe Holbrook

6-2, Junior
Morehead, Ky./Rowan County
Event: Pole Vault



James Clements

5-10, Freshman
Waddy, Ky./Shelby County
Events: Distances, Cross Country



Matt Holbrook

6-1, Senior
Morehead, Ky./Rowan County
Events: Distances



Justin Dillard

5-11, Freshman
London, Ohio/London
Events: Throws



Patrick Hunley

5-11, Freshman
Morehead, Ky./Central Kitsap (Wash.)
Events: Middle Distances, Cross Country



B.J. Gooch

6-0, Sophomore
Stanford, Ky./Lincoln County
Events: Pole Vault, Sprints



Marcus Johnson

6-1, Sophomore
Louisville, Ky./Shawnee
Events: Sprints, Jumps



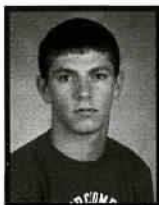
Brandon Gulley

2001-2002 Academic All-American (Third Team)
6-1, Junior
Flemingsburg, Ky./Fleming County
Events: Throws



Duane Morris

6-0, Junior
Burlington Township, NJ/Burlington Township
Events: Throws



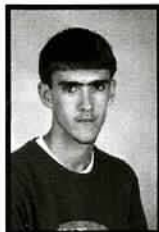
Jason Ratliff

5-10, Junior
Russell, Ky./Ashland CC
Events: Hurdles, High Jump



Adam Rubman

5-6, Junior
Lakewood, NJ/Ocean City CC
Events: Middle Distances, Cross Country



Josh Sheets

5-8, Freshman
Greenwood, W.Va./Doddridge County
Events: Distances, Cross Country



Julie Armstrong

5-9, Freshman
Edgewood, Ky./St. Henry District
Events: Hurdles, Sprints



Kelly Austin

5-3, Senior
Portsmouth, Ohio/Portsmouth
Events: Distances, Cross Country



Erin Bowling

5-10, Sophomore
Ashland, Ky./Boyd County
Events: Throws



Alicia Brown

6-2, Freshman
Pikeville, Ky./Pikeville
Events: Middle Distances, Cross Country



Nikki Collins

5-10, Freshman
Wurtland, Ky./Greenup County
Events: Throws



Debbie Criss

6-1, Junior
Ashland, Ky./Fairview
Events: Throws



Samantha Hall

5-6, Freshman
Ludlow, Ky./Ludlow
Events: Cross Country



Lauren Hatfield

5-4, Freshman
Seminole, Fla./Seminole
Events: Hurdles



Natalie Lane

5-7, Freshman
Russell, Ky./Russell
Events: High Jump



Bethany Lewis

5-4, Sophomore
Memphis, Tenn./Bartlett
Events: Throws



Karen Lutes

2001 OVC Cross Country Athlete of the Year
5-5, Senior
Cynthiana, Ky./Harrison County
Events: Distances, Cross Country



Shawna McCown

5-4, Freshman
Rush, Ky./Boyd County
Events: Middle Distances, Cross Country



Katie Scheben

5-10, Junior
Burlington, Ky./Connor
Events: Middle Distances, Cross Country



Amanda Schiling

5-5, Freshman
Catlettsburg, Ky./Boyd County
Events: Distances, Cross Country



Farrah Spellman

5-9, Sophomore
Corbin, Ky./Corbin
Events: Middle Distances, Cross Country



Becca Stacey

5-5, Junior
Ashland, Ky./Boyd County
Events: Pole Vault, Cross Country



Alessa Velez

5-2, Sophomore
Cincinnati, Ohio/Kings
Events: Distances, Cross Country

Athletic Facilities

Morehead State has at its disposal modern and well-equipped facilities for the use of its athletic teams. Included among these are Jayne Stadium, the Academic-Athletic Center, the George A. Sadler Tennis Courts, John "Sonny" Allen Field, Wetherby Gymnasium and the University Field (softball), to name a few. Among the facilities used for purposes other than competition is the Phil Simms Weight Training Facility, a building dedicated by the former Morehead State and new York Giants football star, which allows MSU student-athletes every opportunity to enhance their strength and conditioning. In addition, there is a spacious athletic training facility in Jayne Stadium complete with all of the resources needed to enhance the training of MSU student-athletes and allowing them to rehabilitate and recover from injuries quickly and safely.



Two other remote facilities are in the Academic-Athletic Center and Wetherby Gym. The MSU staff includes head athletic trainer Richard Fletcher, assistant trainer Jamey Carver, plus two graduate assistants and several student assistants, and the graduate assistants are certified. Also members of the MSU medical team are a group of highly-qualified doctors, including orthopedic surgeons, Dr. Tom Fossett, Dr. Pat Serey and Dr. James Rollins; Dr. Jim Bendixen, a dentist; and an optometrist, Dr. Thomas McHugh. In addition, the St. Claire Regional Medical Center, located in Morehead, utilizes a full-spectrum of medical services. In all, the Eagles have access to several specialists in all areas of potential need, providing them with the most modern medical attention available.

Athletic Training

The main athletic training room, a spacious and modern facility with four whirlpools, stairsteppers and exercise bicycles, is located in Jayne Stadium. Two other remote facilities are in the Academic-Athletic Center and Wetherby Gym. The MSU staff includes head athletic trainer Richard Fletcher, assistant trainer Jamey Carver, plus two graduate assistants and several student assistants, and the graduate assistants are certified. Also members of the MSU medical team are a group of highly-qualified

Academic Awards

2001-2002

Academic All-American

Third Team - Brandon Gulley

2001-2002 Academic All-District

Brandon Gulley

Brooks Rexroat

2001-2002 OVC

Commissioner's Honor Roll

Kelly Austin

Debbie Criss

Brandon Gulley*

Joe Holbrook

Tiffany Hornsby

Bethany Lewis

Mandy Maddox

Brooks Rexroat

Becca Stacey

* OVC Medal of Honor Recipient

Morehead State University

2001-2002 Results

Cross Country

Date	Meet	Men's Top Finisher	Women's Top Finisher	Teams' Results
9/1	A-J Special Invitational	Paul Gilvin (1st)	Karen Lutes (1st)	M - 1 of 6; W - 1 of 6
9/15	Old Timer's Classic	Paul Gilvin (2nd)	Karen Lutes (1st)	M - NTS; W - NTS
9/22	Miami (Ohio) Fall Classic	Larry Atkins (28th)	Karen Lutes (2nd)	M - 6 of 7; W - 7 of 7
10/6	Cardinal CC Classic	Paul Gilvin (2nd)	Karen Lutes (1st)	M - 2 of 5; W - 4 of 8
10/12	EKU Open (pre-OVC meet)	Paul Golvin (2nd)	Karen Lutes (1st)	M - 3 of 7; W - 2 of 6
10/19	Queen City Invitational	Adam Rubman (27th)	Karen Lutes (1st)	M - NTE; W - 4 of 5
10/27	OVC Championships	Paul Gilvin (2nd)	Karen Lutes (1st)	M - 4 of 9; W - 4 of 9
11/10	Southeast Region Champ.	Paul Gilvin (20th)	Karen Lutes (16th)	M - NTE; W - NTE
NTS - No Team Score		NTE - No Team Entry		

Indoor Track and Field

Date	Meet	Men's Top Finisher	Women's Top Finisher	Teams' Results
12/7	Wildcat Speed Meet	Jason Ratliff (3rd-high jump)	Katie Scheben (3rd-800m)	M - NTS; W - NTS
1/19	Cincinnati Open		Alessa Velez (3rd-5000m)	M - NTE; W - NTE
1/26	Smith Barney Invit.	*MSU with 4 (3rd-relay)	Kelly Austin (3rd-5000m)	M - NTS; W - NTS
2/1	Rod McCravy Invit.	Paul Gilvin (4th-3000m)	Karen Lutes (3rd-3000m)	M - NTS; W - NTS
2/8	Findlay Invitational	Dallas Robinson (1st- 200m)	Karen Lutes (1st-3000m/mile)	M - NTS; W - NTS
2/23	OVC Championships	Paul Gilvin (3rd - 3000m)	Karen Lutes (2nd - 5000m)	M - 6 of 9; W - 6 of 9
NTS - No Team Score		NTE - No Team Entry		*Chirgwin, Robinson, Rubman, Gilvin

Outdoor Track and Field

Date	Meet	Men's Top Finisher	Women's Top Finisher	Teams' Results
3/16	Ohio Invitational	Paul Gilvin (2nd - 5000m)	Debbie Criss (2nd - Javelin)	M 4 of 5; W 6 of 6
4/5	Duke Invitational	Paul Gilvin (13th-1500mDev.)	Karen Lutes (10th - 5000m)	M - NTS; W - NTS
4/6	Wilmington Invit.	D. Robinson (2nd - 100m/400m)	Debbie Criss (1st - Javelin)	M - 7 of 18; W - 10 of 15
4/11	Sam Ray Relays	Larry Atkins (9th - Steeplechase)	Karen Lutes (2nd - 10000m)	M - NTS; W - NTS
4/13	Cumberland College	B. Gulley (1st - Shot Put/Javelin)	Debbie Criss (2nd - Shot Put)	M - 4 of 14; W - 10 of 16
4/20	EKU Invitational	Joe Holbrook (1st - Pole Vault)	Karen Lutes (1st - 3000m)	M - NTS; W - NTS
4/27	Louisville Invitational	Larry Atkins (3rd - Steeplechase)	Karen Lutes (2nd - 5000m)	M - NTS; W - NTS
5/5	OVC Championships	Larry Atkins (3rd - Steeplechase)	K. Lutes (1st - 5000m/10000m)	M - 6 of 9; W - 6 of 9
NTS - No Team Score		NTE - No Team Entry		

All-Time MSU Records

Men's Records

Event	Name	Year	Time/Distance
100m	Bobby Jones	1975	10.21
200m	Bobby Jones	1976	20.60
400m	Jeff Washington	1979	46.28
800m	Kelvin Kelly	1973	1:50.3
1500m	Rich Shepherd	1991	3:51.7
Mile	Kelvin Kelly	1977	4:08.5
3000m	Mike Becraft	1975	8:23.6
5000m	Rich Shepherd	1992	14:48.6
10000m	Tony Teats	1998	30:54.52
110m Hurdles	Oscar Jones	1977	14.20
400m Hurdles	Mike Kelly	1974	51.20
Steeplechase	Jeff Faith	1998	9:17.38
Long Jump	Bobby Jones	1975	25'02.50"
Triple Jump	Terry Beckham	1972	50'09.50"
High Jump	Steve Scherzer	1977	6'10"
	Dave Parmley	1978	6'10"
Pole Vault	Harry Waddel	1975	16'06"
	Mark Richards	1977	16'06"
Shot Put	Mike Marksburly	1977	57'07.50"
Discus	Mike Marksburly	1973	166'08"
Javelin	Kerry Whitman	1976	233'03.50"

Women's Records

Event	Name	Year	Time/Distance
100m	Cindy Cunningham	1975	12.30
200m	Teresa Scott	1977	26.20
400m	Julie Rice	1975	57.30
800m	Barb Farris	1980	2:14.0
1500m	Susie Anderson	2000	4:37.57
Mile	Hopey Caudill	1981	4:58.7
3000m	Amy Beatty	1999	9:44.71
5000m	Amy Beatty	1999	16:54.31
10000m	Amy Beatty	1999	34:39.00
100m Hurdles	Mary Crockett	1980	15.00
400m Hurdles	Sharon Park	1975	57.30
Steeplechase	Kelly Austin	2001	11:39.0
Long Jump	Karen Jett	1977	18'02.25"
High Jump	Diane Villeneuve	1978	5'09"
Pole Vault	Becca Stacey	2002	8'00.00"
Shot Put	Deanna Patrick	1978	49'08.50"
Discus	Deanna Patrick	1978	142'05.00"
Hammer	Bethany Lewis	2002	79'11.00"
Javelin	Keri Camarogg	1977	150'08.50"

Past Champions

Past OVC Team Champions

1955 - Morehead State Men's Outdoor Team
 1956 - Morehead State Men's Outdoor Team
 1977 - Morehead State Men's Indoor Team
 1979 - Morehead State Women's Cross Country Team
 1988 - Morehead State Men's Cross Country Team
 1995 - Morehead State Men's Cross Country Team
 2000 - Morehead State Women's Cross Country Team

Past OVC Athletes of the Year

1975 - Bobby Jones (Men's Outdoor Track and Field)
 1978 - Jeff Washington (Men's Outdoor Track and Field)
 1996 - Jeff Faith (Men's Cross Country)
 1999 - Amy Beatty (Women's Indoor Track and Field)
 1999 - Amy Beatty (Women's Outdoor Track and Field)
 2000 - Karen Lutes (Women's Indoor T&F)
 2000 - Susie Anderson (Women's Cross Country)
 2001 - Karen Lutes (Women's Cross Country)

Past OVC Coaches of the Year

1975 - Buck Dawson (Men's Outdoor Track and Field)
 1988 - Dan Lindsey (Men's Cross Country)
 1995 - Dan Lindsey (Men's Cross Country)
 2000 - Dan Lindsey (Women's Cross Country)

Past OVC Individual Champions

1954 - Carl Deaton (Outdoor (M): Mile 4:36.2)
 1954 - Carl Deaton (Outdoor (M): 2-Mile 10:24.2)
 1954 - Steve Hamilton (Outdoor (M): Pole Vault 11'6"-tied)
 1955 - Ed Wells (Outdoor (M): 100-yard 10.10)
 1955 - Ed Wells (Outdoor (M): 200-yard 23.00)
 1955 - Joe Wheeler (Outdoor (M): 440-yard 51.10)
 1955 - Carl Deaton (Outdoor (M): 880-yard 2:01.3)
 1955 - Carl Deaton (Outdoor (M): Mile 4:31.8)
 1955 - Carl Deaton (Outdoor (M): 2-Mile 10:41.0)
 1955 - Steve Hamilton (Outdoor (M): Pole Vault 11'0")
 1956 - Dick Roberts (Outdoor (M): 100-yard 10.0)
 1956 - Dick Roberts (Outdoor (M): 200-yard 22.7)
 1956 - Carl Deaton (Outdoor (M): 880-yard 2:01.0)
 1956 - Carl Deaton (Outdoor (M): Mile 4:25.0)
 1956 - Kenny Thompson (Outdoor (M): High Jump 6'3")
 1957 - Kenny Thompson (Outdoor (M): High Jump 6'0"-tied)
 1957 - Paul Wheatley (Outdoor (M): 880-yard 1:57.3)
 1957 - Paul Wheatley (Outdoor (M): Mile 4:21.9)
 1960 - Marshall Banks (Outdoor (M): 200-yard 22.2)
 1960 - Ira Sloan (Outdoor (M): Mile 4:26.2)
 1960 - Ira Sloan (Outdoor (M): 2-Mile 10:00.0)
 1960 - Richard Fletcher (Outdoor (M): Javelin 193'8")
 1961 - Howard Murphy (Outdoor (M): 100-yard 9.8)
 1961 - Marshall Banks (Outdoor (M): 200-yard 22.0)
 1961 - Jeffrey Adiklis (Outdoor (M): Discus 133'7")
 1961 - Richard Fletcher (Outdoor (M): Javelin 202'5")

1962 - Marshall Banks (Outdoor (M): 100-yard 9.8)
 1962 - Marshall Banks (Outdoor (M): 200-yard 21.9)
 1962 - Norm Pokley (Outdoor (M): Javelin 181'8.5")
 1965 - Jeff Betts (Outdoor (M): 120-yard Hurdles 14.10)
 1965 - Tommy Gray (Outdoor (M): 200-yard 21.0)
 1975 - Oscar Jones (Outdoor (M): 200-yard 21.6)
 1975 - Bob Jones (Outdoor (M): Long Jump 25'2.5")
 1976 - Mark Richards (Outdoor (M): Pole Vault 15'4")
 1977 - Oscar Jones (Indoor (M): 60-yard Hurdles 7.10)
 1977 - Jeff Washington (Indoor (M): 440-yard 48.4)
 1977 - Morehead State (Indoor (M): Mile Relay 3:17.6)
 1977 - Bobby Jones (Indoor (M): Long Jump 25'0.25")
 1977 - Mark Richards (Indoor (M): Pole Vault 16'0")
 1977 - Jeff Washington (Outdoor (M): 440-yard 46.4)
 1977 - Mike Marksburly (Outdoor (M): Shot Put 57'7.5")
 1978 - Kerry Whitman (Outdoor (M): Javelin 210'0")
 1979 - Kerry Whitman (Outdoor (M): Javelin 224'11")
 1979 - Allana McCarthy (Outdoor (W): 3000m 9:54.7)
 1979 - Allana McCarthy (Outdoor (W): 5000m 17:34.8)
 1979 - Del Jean Ross (Outdoor (W): Shot Put 38'2")
 1980 - Jeff Washington (Outdoor (M): 440-yard 46.72)
 1980 - Kerry Whitman (Outdoor (M): Javelin 227'10")
 1980 - Karen Porter (Outdoor (W): 5000m 18:30.0)
 1981 - Paul Babbitts (Indoor (M): Pole Vault 15'4")
 1981 - Dave Wooley (Outdoor (M): Pole Vault 16'0")
 1991 - Richie Shepherd (Indoor (M): Mile 4:16.0)
 1991 - Ryan Bledson (O'door (M): 3000m-Steeplechase 10:18.8)
 1991 - Brian Binion (Outdoor (M): 5000m 16:31)
 1991 - George Kamphaus (Outdoor (M): 10000m 34:54.0)
 1992 - Brian Binion (Indoor (M): 3000m 8:43.4)
 1994 - Elsie Salmans (Outdoor (W): 10000m 42:34.0)
 1995 - Ole Heggheim (O'door (M): 3000m-Steeplechase 9:28.9)
 1996 - Ole Heggheim (O'door (M): 3000m-Steeplechase 9:25.9)
 1996 - Jeff Faith (Indoor (M): 5000m 15:05.9)
 1996 - Jeff Faith (Outdoor (M): 5000m 15:18.7)
 1996 - Jeff Faith (Outdoor (M): 10000m 31:52.8)
 1997 - Jeff Faith (Outdoor (M): 10000m 30:59.4)
 1998 - Tony Teats (Indoor (M): 5000m 14:51.1)
 1998 - Tony Teats (Outdoor (M): 10000m 30:54.5)
 1999 - Amy Beatty (Indoor (W): Mile 4:59.2)
 1999 - Amy Beatty (Indoor (W): 3000m 10:03.3)
 1999 - Amy Beatty (Indoor (W): 5000m 17:11.6)
 1999 - Amy Beatty (Outdoor (W): 5000m 17:27.1)
 1999 - Amy Beatty (Outdoor (W): 10000m 36:10.0)
 2000 - Karen Lutes (Indoor (W): 3000m 10:08.3)
 2000 - Karen Lutes (Indoor (W): 5000m 17:36.3)
 2000 - Karen Lutes (O'door (W): 10000m 38:30.2)
 2001 - Susie Anderson (Indoor (W): 3000m 10:26.9)
 2001 - Karen Lutes (Indoor (W): 5000m 17:59.0)
 2001 - Karen Lutes (O'door (W): 5000m 17:43.4)
 2001 - Karen Lutes (O'door (W): 10000m 38:59.6)
 2002 - Karen Lutes (O'door (W): 5000m 17:36.93)
 2002 - Karen Lutes (O'door (W): 10000m 37:44.4)



The Ohio Valley Conference

Entering its 55th year, the Ohio Valley Conference continues to build on the success that has made it the nation's eighth-oldest NCAA Division I conference.

The OVC's proud past dates back to 1948, but seeds for the new league were actually planted in 1941. It was then that Roy Stewart, the athletics director at Murray State, Charles (Turkey) Hughes, the athletics director at Eastern Kentucky, and Kelly Thompson, the public relations director at Western Kentucky, first broached the idea of forming a new conference. Discussions were put on hold by World War II, but reemerged Feb. 27-28, 1948 at the Kentucky Hotel in Louisville as the three original institutions combined with Morehead State, Louisville and Evansville to form the OVC.

In the 1950's, the OVC became a pioneer on a much more significant scale socially. During times of racial segregation, league member Morehead State became one of the first non-traditionally black mid-southern institutions to accept a black student. In 1958, Marshall Banks earned athletically-related aid at Morehead, which signed a second black athlete, Howard Murphy, a year later. (In 1961, Murphy earned football all-conference recognition at halfback.) With racial barriers broken, the rest of the institutions in the league began to provide educational and athletic opportunities to African-Americans. In 1955, the OVC became only the second six-member league nationally to earn an automatic bid to the prestigious NCAA Men's Basketball Tournament, which, at that time, was limited to only 24 participants. In the late 1970's, women's athletics began somewhat of a rebirth on the national scene as the NCAA began sponsoring and marketing women's sports. Recognizing the need to provide increased opportunities for female athletes, the OVC established women's championships in the sports of basketball, tennis and track in 1977, with cross country and volleyball added over the next four years. Those sports were initially governed by the Association of Intercollegiate Athletics for Women, but the overall strength of women's programs in the league was demonstrated by the automatic bids the OVC instantly received when the NCAA became the governing body in 1982.

Through the early years of the league, administrators wrestled with fan behavior due to the close proximity of the conference members and the intense rivalries which developed. Just as it did decades ago, the OVC took the leadership role on what has become a national issue. In 1995, the OVC implemented a first-of-its-kind "Sportsmanship Statement," a policy which promotes principles of fair play, ethical conduct and respect for one's opponent. The statement has become a model for others to follow across the nation, and has answered the challenge of the NCAA Presidents Commission to improve sportsmanship in collegiate athletics. Over its 52 years, OVC teams have garnered national championships and bowl games in football, along with national team or individual titles in the sports of rifle, cross country, track and golf. The OVC has also produced several Olympic athletes, while some of the greatest players in professional sports were educated at OVC institutions. The list includes former greats such as basketball's Clem Haskins (Western Kentucky) and two-sport star Steve Hamilton (Morehead State) to present-day standouts like basketball players Carlos Rogers (Tennessee State), Popeye Jones (Murray State) and Bubba Wells (Austin Peay), football players Tim Lester (Eastern Kentucky), Chris Watson (Eastern Illinois) and Brent Alexander (Tennessee State), baseball players Kirk Reuter (Murray State) and Willie Blair (Morehead State) and professional golfer Jeff Sluman (Tennessee Tech).

The playing field isn't the only place where OVC athletes are working hard. The league also recognizes excellence in the classroom. The prestigious OVC Academic Achievement Banner is awarded annually to the league school whose athletes produce the highest grade point average when compared to the general student body. Also, six Scholar-Athlete Awards are presented yearly to male and female athletes, while others are commended for their academic success by being Medal of Honor recipients or named to the Commissioner's Honor Roll. Additionally, the Steve Hamilton Sportsmanship Award, in honor of the former Morehead State student-athlete, coach and athletics director, is presented annually to a junior or senior student-athlete with significant athletic contributions who best exemplifies the characteristics of sportsmanship and citizenship.

The vision of leadership demonstrated by the founding fathers in 1948 remains alive today as the Ohio Valley Conference prepares for the future. One example is in regard to the current trend in collegiate athletics administration for increased involvement of university presidents in setting policies and making rules. The presidents of OVC institutions, however, have always governed the Conference, long before presidential governance became a national theme.

The OVC sponsors the following sports: baseball, basketball, cross country, football, golf, tennis and track for men, and basketball, cross country, golf, soccer, softball, tennis, track and volleyball for women. The OVC also sponsors the combined men's and women's sport of rifle. Over the last few years, the league has grown, not only in the number of athletics opportunities it is providing for students, but in terms of the number of institutions in the league. In the early 1990's, the league expanded by two members, adding Southeast Missouri State University and the University of Tennessee at Martin. The league grew again in 1996-97 with the addition of Eastern Illinois University. Other current representatives include charter members Eastern Kentucky University, Morehead State University and Murray State University, along with Austin Peay State University, Tennessee State University and Tennessee Technological University.

OVC Sportsmanship Statement

General. The Ohio Valley Conference is committed to establishing sportsmanship and developing healthy environments for competition. This conference wants to lead the way in abolishing the notion that it is desirable to create a "hostile" environment for intercollegiate athletic contests. Instead, we will strive to create "hospitable" environments. We believe that part of the role of education through sports is to teach our youth and our communities to conduct themselves with sportsmanship and respect for opponents.

In an effort to achieve this goal, the Conference has developed this statement which outlines the expectations of the various groups and individuals associated with our intercollegiate athletics program.

Administration. It is incumbent upon institutional administrators to create an environment of hospitality for visiting teams, particularly for those individuals at Conference institutions. OVC administrators must develop the attitude that the treatment of a visiting team and its fans will be in the same manner that they would want their teams to be treated.

The athletics director at the host institution must ensure that he or she, or someone else designated as game manager, approaches the coach of the opposing team at a spectator event in order to welcome that coach to the institution, provided an opportunity for the coach to address and concerns; indicate the location of the game manager in the arena or stadium and identify security personnel to ensure that the visiting team is protected from abuse from the home crowd and that security is in very close proximity to the visiting team's bench. Each institution must arrange its seating at spectator events so as to emphasize sportsmanship and minimize the harassment of the visiting team and its fans.

The athletics director must ensure that those who are employed by the university treat the opponents with fairness and respect. For example, public address announcers must be required to announce the contest in an evenhanded manner with equal excitement for both teams. The institution's chief executive officer and athletics director should review periodically with other athletics department staff members, coaches, student-athletes and spirit groups (cheerleaders and bands) precisely what is acceptable conduct, as set forth in this document.

Coaches. Coaches have the greatest amount of influence over whether the young people in their programs are taught and follow the high principles of sportsmanship. The OVC has been benefited by coaches who have risked losing a contest by removing student-athletes who have demonstrated disrespect for the opponents. This discipline measure educates that individual and his or her teammates about the importance of sportsmanship over participation and winning. This type of attitude and courage must be adopted by all OVC coaches. Administrators and coaches must pay special attention to their student-athletes' behavior and continually emphasize the need for sportsmanship and respect. Such education is needed to counteract the constant messages received by our young people from many professional athletes and others who demonstrate a lack of respect for opponents. This Conference and its coaches are committed to teach messages that are appropriate about sportsmanship.

Coaches also have the ability to influence the behavior of their fans. OVC coaches must take every opportunity when addressing the media, booster groups or other public forums to express the desire for fans to support their team at home contests, but not to abuse the visiting team. Coaches and administrators should stress that the participants in our athletics contests are young people who do not deserve to be mistreated by a hostile crowd.

Student-Athletes. Respect for the game in which the student-athlete participates also demands respect for the opponent. Student athletes at OVC institutions are expected to treat opponents with sportsmanship. There can be no

tolerance for taunting and baiting of opponents. OVC student-athletes must understand that they are perhaps the most visible representatives of their institutions. Also, their behavior is observed and emulated by many who are younger. OVC student-athletes must honor the responsibilities that accompany the privilege of representing our schools by behaving with dignity and class on and off the field.

Spirit Groups. Like our student-athletes, these groups are visible representatives of our universities. As such, we place high expectations on them for decent behavior. Cheerleaders, bands and other spirit groups are admitted to contests at the pleasure of our institutions to support their teams and assist in creating a fun atmosphere. They are not admitted in order to disrupt or confront the opponent and such behavior will not be tolerated. Their focus must be toward encouragement of their team and respect for the opposing team.

Officials. Officials who are assigned Conference contests must enforce the rules regarding sportsmanship, without tolerance for abuse. The only warning to participants and coaches regarding sportsmanship should come at the beginning of the contest. Once the contest begins, penalties (consequences), not warning, must be assessed for violations of unsportsmanlike conduct. Similar to the baseball policy of ejecting coaches for arguing balls and strikes, the Conference will require that officials eject any coach who protests unsportsmanlike conduct calls, provided such ejection is permissible to the rules of that sport.

Each official assigned by the OVC will be provided a card with the following statement which must be read to the captains and coaches of every contest prior to the beginning of the game: "The OVC requires officials to enforce all rules regarding unsportsmanlike conduct by coaches and players. There will not be any tolerance for negative statements or actions between opposing players, especially taunting and baiting. If such comments are heard, a penalty will be assessed immediately. If any coach protests an unsportsmanlike penalty, he or she will be ejected for the contest. We have been instructed not to issue warnings during the contests. It is strongly suggested that you remind your participants of this policy." Officials who do not follow this policy will be subject to suspension.

Commissioner. The commissioner is expected to enforce the unsportsmanlike conduct rules of the game and the Conference. He or she is authorized to assess penalties for improper behavior that is not detected or properly addressed during the contest. Institutions and their personnel are expected to fully cooperate with his or her effort to investigate possible improper behavior.

In the unfortunate event that an altercation occurs during a contest, all individuals who are on the bench are expected to remain there. It is incumbent upon the head coach to ensure that this occurs. The commissioner is directed to suspend automatically the head coach of a team whose bench personnel enter the field or court of play during an altercation, regardless of whether those individuals become involved in the altercation.

Fans. The Conference hopes and believes that the establishment of the principles outlined in this document will create a wholesome atmosphere that will attract more fans to our events. The fans attending our games must be reminded by the public address announcer of the expectations of sportsmanship and respect for both opponents.

We expect that all fans will act in an appropriate manner, and respect the opposition and the officials. We understand that occasionally there are individuals who attend games and abuse the opposition and officials. Those individuals may be dismissed from athletic events.

Concluding Statement. The Conference believes that the effort to meet the expectations outlined in this document will increase the attractiveness at our athletic events by creating a healthy environment for our competition.

MSU Sports Information

Randy Stacy Sports Information Director



Stacy begins his 16th season as sports information director after serving 16 months in the MSU Development Office.

Stacy, a 1977 graduate of Morehead State University, is the former assistant sports information director at the University of Kentucky. While at UK, Stacy was responsible for all media and

public relations for the men's basketball program as well as press row operations.

Stacy served as men's sports information director at MSU for a brief time in 1977 before assuming a full-time position at Tennessee Tech.

The native of Carr Creek, Ky., and graduate of Carr Creek High School (now Knott County Central), also served as a graduate assistant in the Office of Public Information and was a news and sports reporter at WMKY radio while at MSU.

Stacy is a member of College Sports Information Directors of America (CoSIDA), the Morehead Optimist Club and Elliottville Baptist Church. He is married to the former Jeanetta Caudill. They have two sons, Brad and Jared.

Brenda Fankell SID Secretary Specialist



Brenda is in her 17th year as secretary in the sports information office and assists with all facets of the department's operations.

She previously spent five years as secretary to former MSU athletic director G.E. "Sonny" Moran.

Fankell has four children, Melissa, Bill, J.R. and Rick, one stepson, Kendrick and four grandchildren, Jonathan,

Joshua, Jaclyn and Ashley. She and her husband, Kenny, reside in Olive Hill, Ky. with their two youngest sons.

Brad Laux, Assistant Sports Information Director



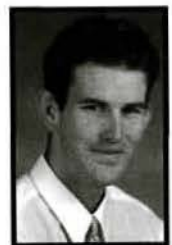
Laux is in his sixth year as MSU's assistant sports information director.

Prior to arriving at MSU, Laux, a native of Springfield, Va., spent three years as a graduate assistant at Tennessee and three years as an intern at George Mason.

He received his master's from UT in sports administration in 1998. He also worked at UNC Greensboro, where he graduated in 1992 with a Bachelor's Degree in Public Relations, and for the U.S. Taekwondo Union at the U.S. Olympic Training Center in Colorado Springs, Colorado.

Among his experiences include serving in SID capacities at the 1994 World Cup and the 1996 Olympic Games. Laux married the former Ginny Johnson. They reside in Clearfield, Ky.

Greg Dawkins SID Graduate Assistant



Greg Dawkins enters his first year as sports information graduate assistant after earning a Bachelor's Degree in Communications with an emphasis in Journalism from Morehead State University in December 2002.

As an undergraduate Dawkins worked for the University newspaper for three years, including two years as sports editor. He received MSU's Outstanding Student in Journalism Award in 2002 and was a Communication Department Scholarship recipient. His experience also includes internships with the MSU Sports Information Office and serving as a media relations assistant for the Fifth Third Bank Tennis Championships in Lexington, Ky.

A former student-athlete, Dawkins was a four-time letter winner with the Eagle tennis team. He represented the University at the 2001 NCAA Leadership Conference and served as a member of the Student Advisory Committee for three years. Dawkins was named Academic All-District IV Second Team as a senior and earned an OVC Academic Medal of Honor as a junior.

A native of Strathpine, Queensland, Australia, Dawkins attended Hendra Secondary College before enrolling at Morehead State.



2002-03 EAGLE TRACK & CROSS COUNTRY™

Cross Country

DAY	DATE	MEET	SITE	TIME
Sat.	Aug. 31	at A-J Special Invitational	Wilmore, Ky.	10 a.m.
Fri.	Sept. 20	at Queen City Invitational	Cincinnati, Ohio	4 p.m.
SAT.	SEPT. 28	MSU OPEN	MOREHEAD	10 A.M.
Sat.	Oct. 5	at Cardinal Cross Country Classic	Louisville, Ky.	10 a.m.
Fri.	Oct. 11	at Eastern Kentucky Open	Richmond, Ky.	4 p.m.
Sat.	Oct. 26	at Southeast Classic	Nashville, Tenn.	10 a.m.
SAT.	NOV. 2	OVC CHAMPIONSHIPS	MOREHEAD	10 A.M.
Sat.	Nov. 16	at Southeast Regionals	Greenville, N.C.	10 a.m.
Mon.	Nov. 25	at NCAA Championships	Terre Haute, Ind.	11 a.m.

Indoor Track and Field

DAY	DATE	MEET	SITE	TIME
Sat.	Jan. 25	at Stan Lyons Open	Indianapolis, Ind.	6 p.m.
Fri.-Sat.	Jan. 31-Feb. 1	at Niswonger Invitational	Johnson City, Tenn.	noon
Fri.-Sat.	Jan. 31-Feb. 1	at Alltel Classic	Findlay, Ohio	11:30 a.m.
Fri.-Sat.	Feb. 7-8	at Rod McCravy Memorial	Lexington, Ky.	5 p.m.
Fri.-Sat.	Feb. 28-Mar. 1	at OVC Championships	Charleston, Ill.	5 p.m.
Fri.-Sat.	Mar. 14-15	at NCAA Championships	Fayetteville, Ark.	noon

Outdoor Track and Field

DAY	DATE	MEET	SITE	TIME
Sat.	Mar. 8	at Centre College Invitational	Danville, Ky.	10 a.m.
Sat.	Mar. 15	at Early Bird Invitational	Athens, Ohio	11:30 a.m.
Fri.-Sat.	Apr. 4-5	at Duke Invitational	Durham, N.C.	4 p.m.
Fri.-Sat.	Apr. 4-5	at Wilmington Invitational	Wilmington, Ohio	11 a.m.
Fri.-Sat.	Apr. 11-12	at Sea Ray Relays	Knoxville, Tenn.	9 a.m.
Sat.	Apr. 12	at Cumberland College Invitational	Williamsburg, Ky.	9 a.m.
Fri.	Apr. 25	at Cardinal Open	Louisville, Ky.	3 p.m.
Fri.-Sat.	May 2-3	at OVC Championships	Nashville, Tenn.	1 p.m.
Sun.	May 11	at Billy Hayes Invitational	Bloomington, Ind.	11:45 a.m.
Fri.-Sat.	May 30-31	at NCAA Mideast Regionals	Columbus, Ohio	noon
Wed.-Sat.	June 11-14	at NCAA Championships	Sacramento, Calif.	4 p.m.

HOME MEETS IN BOLD CAPS

All times Eastern and subject to change