

# News Items for 2011 - February

---

## Black History Month events announced

1542

Created: 2/2/2011 1:07:00 PM

Created By: Andrew Blanton



During February, which is Black History Month, Morehead State University's Office of Multicultural Student Services will provide opportunities to educate everyone about black history and heritage.

A number of free activities have been planned.

Tuesday, Feb. 1 - Soul Food Dinner, 5:30- 6:30 p.m., Button Drill Room; Think Fast Trivia Game, 6:45 p.m., Button Drill Room.

Tuesday, Feb. 22 - Movie Night: The Great Debaters, featuring Denzel Washington, Adorn Doran University Center lobby; discussion will follow film.

Sunday, Feb. 27 - African-American Worship, Mark Logan, former NFL and UK football player, will discuss his journey through public schools in Fayette County to the University of Kentucky to the NFL and eventually to the pulpit., 10:45 a.m., First Baptist Church, 123 East Main Street; Triennial Gospel Extravaganza, 3:30- 5:30 p.m., First Baptist Church, 123 East Main Street.

Additional information on the activities is available by calling multicultural student services at (606) 783-2668.

## Nominations sought for small business awards

1544

Created: 2/2/2011 1:13:00 PM

Created By: April Nutter



Sharon Walters, right, associate professor of accounting, chats with Wesley Tudor Jr., a Morehead accounting major.

Morehead State University's Ashland Small Business Development Center honors and recognizes small businesses and advocates in three Northeast Kentucky counties of Boyd, Carter, and Greenup each year.

Nominations for the 2011 Northeast Kentucky Small Business Awards are currently being accepted.

The public is encouraged to nominate outstanding small business owners and/or advocates (individuals who deserve recognition for their efforts to promote the interest of small business).

Nominations will be accepted through Friday, March 4, will mark our 14th year for this wonderful program that sets aside a day in May to honor and celebrate local small business success," Kim Jenkins, event coordinator.

All nominees will be honored during an awards breakfast in May. One winner will be selected as the best in each category.

Jenkins also expressed the importance of event sponsors and financial contributors saying "we count on our sponsors to offset the expenses associated with the cost of the awards, printing, promotions, postage, breakfast and we offer a variety of benefits to our financial contributors."

To make a nomination or to learn about sponsorship opportunities, call (606) 329-8011 or visit [www.nekysba.com](http://www.nekysba.com).

## April Feb 2011 Test - Giving

1626

Created: 2/7/2011 9:45:00 AM

Created By: April Nutter



Praesent interdum arcu et neque fermentum sed vulputate nulla condimentum. Maecenas at est eget metus commodo dapibus a et nulla. Fusce purus elit, euismod ut congue ut, elementum at urna. Donec faucibus dignissim faucibus. Vestibulum est odio, facilisis nec sollicitudin eget, interdum aliquam dui. Fusce scelerisque sodales enim vel viverra. Nam consequat faucibus vulputate. In hac habitasse platea dictumst. Sed elit lacus, vehicula vel semper sed, vehicula vel lacus. Mauris mattis posuere neque quis dapibus. Morbi ante sem, fringilla id tempor non, malesuada ut est. Quisque ullamcorper faucibus tortor vitae sagittis.

Ut euismod, purus eget rhoncus tempus, quam nisi consectetur risus, eget pellentesque mauris ante id lorem. Etiam pellentesque purus ut purus mattis id bibendum eros tristique. Nam arcu enim, imperdiet faucibus tempus at, venenatis rhoncus risus. Nulla congue lobortis lectus, in laoreet diam aliquam quis. Nunc posuere odio ut leo rutrum aliquam fringilla nulla convallis. Morbi et augue massa, eu vestibulum nisi. Maecenas quis ante pellentesque ante porta luctus vitae nec nisl. Phasellus id nibh urna. Pellentesque scelerisque feugiat ligula sit amet rhoncus. Phasellus imperdiet imperdiet leo, id aliquam nulla pretium at. Quisque blandit sollicitudin volutpat. Pellentesque porta hendrerit lacus vel condimentum. In ut scelerisque sem.

---

## Retirees plan February event

1633

Created: 2/7/2011 1:07:00 PM

Created By: Andrew Blanton



The Morehead State University Retirees Association will visit two of the special collections rooms of MSU's Camden-Carroll Library on Thursday, Feb. 17.

After meeting in the library lobby at 2 p.m., members will be given a tour of the James Still and Jesse Stuart rooms.

The deadline to sign up for the tour is Tuesday, Feb. 15.

Additional information may be obtained or reservations made by calling (606) 783-2080 (tollfree 1-800-783-ALUM ) or by e-mail to [t.jones@moreheadstate.edu](mailto:t.jones@moreheadstate.edu).

---

## Black History Month events set

1634

Created: 2/7/2011 1:14:00 PM

Created By: Andrew Blanton



During February, which is Black History Month, Morehead State University's Office of Multicultural Student Services will provide opportunities to educate everyone about black history and heritage.

A number of free activities have been planned.

**Tuesday, Feb. 22** - Movie Night: The Great Debaters, featuring Denzel Washington, 7 - 9 p.m., Adorn Doran University Center lobby; discussion will follow film.

**Sunday, Feb. 27** - African-American Worship, Mark Logan, former NFL and UK football player, will discuss his journey through public schools in Fayette County to the University of Kentucky to the NFL and eventually to the pulpit., 10:45 a.m., First Baptist Church, 123 East Main Street; Triennial Gospel Extravaganza, 3:30- 5:30 p.m., First Baptist Church, 123 East Main Street.

Additional information on the activities is available by calling multicultural student services at (606) 783-2668.

---

## VITA offers free tax assistance

1636

Created: 2/7/2011 1:20:00 PM

Created By: Andrew Blanton



During this filing season, Volunteer Income Tax Assistance (VITA) will be available at no charge to Morehead State University students and eligible employees.

Through the University's Department of Accounting, Economics and Finance, in conjunction with the Internal Revenue Service, the tax return assistance will be offered on Tuesdays from 3-6 p.m. in 311 Combs Building on campus. It is free to students, and also to employees and members of the Morehead community with an annual income of \$49,000 or less.

No appointment is necessary. Taxpayers will be assisted on a first come, first-served basis, and no returns will be accepted for preparation after 5:30 p.m.

It will be necessary for taxpayers to bring with them documentation for any and all that apply:

- W-2(s);
- 1099(s);
- A copy of last year's return;
- Statements of other income;
- Information for deductions;
- Social Security cards for you, your spouse, and/or dependents;
- Proof of identification for yourself and/or spouse;
- Proof of account for direct deposit of refund (if desired) (voided check);
- Proof of tuition paid (regardless of source of funds) during 2010 for yourself, spouse, and/or dependents;
- Cost of books for 2010;

- Amount of scholarships and/or grants awarded in 2010;
- If eligible for first-time homebuyer credit, proof of purchase price of home.

For proof of tuition and scholarships/grants, you should bring a copy of your account for the calendar year of 2010. This can be printed from your MSU account Web page.

Additional information is available from Sharon Walters, associate professor of accounting, by calling (606) 783-2725, or by e-mailing [s.walters@moreheadstate.edu](mailto:s.walters@moreheadstate.edu).

---



## Eagle Excellence Award offers matching scholarship funds

1638

Created: 2/7/2011 1:24:00 PM

Created By: April Nutter



Morehead State University has announced a new scholarship program that will enable Kentucky first time freshmen to get “much more” from their Kentucky Education Excellence Scholarship (KEES) monies. The Eagle Excellence Award will begin in Fall 2011 and provide students the opportunity to double their earned KEES value.

“We are very excited to be able to offer this new award to Kentucky students who have worked hard in high school to earn valuable KEES money to attend college,” said MSU President Wayne D. Andrews.

“At MSU, we believe the KEES scholarship program established in 1998 by the General Assembly continues to be an excellent investment made by the Commonwealth to support Kentucky students and we are willing to match that investment by doubling the KEES award for qualifying students enrolling at Morehead State University. This new scholarship is an example of MSU’s strong commitment to maintaining access to higher education for all Kentucky students.”

Kentucky high school students can earn money for college through the Kentucky Educational Excellence Scholarship (KEES), which rewards students for good grades and ACT scores. Under current law, students earn a base award each year they earn at least a 2.5 GPA in high school and a bonus award if they score at least a 15 composite on their ACT before they graduate.

To be eligible for the Eagle Excellence Award, a student must be a legal resident of Kentucky; eligible for the Kentucky Education Excellence Scholarship (KEES) administered by the Kentucky Higher Education Assistance Authority (KHEAA); be unconditionally admitted for study at MSU; achieve at least a 21 ACT composite score or SAT combined score (math plus verbal) of 980 or higher prior by the start of classes. The scholarship may not be awarded in addition to other academic or athletic scholarships, except an MSU Alumni Scholarship.

A completed application packet, including application form, transcript and test scores, must be received by March 15. More information on the program can be found at [www2.moreheadstate.edu/keesmatch/](http://www2.moreheadstate.edu/keesmatch/).

Additional information is available by contacting the Office of Enrollment Services at (800) 585-6781.

## BFA in Creative Writing application deadline Feb. 18

1639

Created: 2/7/2011 1:26:00 PM

Created By: Andrew Blanton



Applications are now being taken for Morehead State University's Bachelor of Fine Arts in Creative Writing. The Department of English degree, which was established in 2009, combines the rigorous instruction of creative writing with an active creative writing community so that aspiring writers may develop their individual talents in an atmosphere that is both demanding and supportive.

Deadline for submission for the Fall 2011 semester is Friday, Feb. 18.

The program provides undergraduate students an opportunity to be taught through studio-oriented creative writing workshops in poetry, fiction and creative nonfiction by accomplished faculty members who are working writers.

Other successful writers come to campus as guest readers and lecturers. Students also are provided a solid foundation of literature courses and complete general education courses in the humanities, the natural and social sciences, and foreign languages.

Candidates for graduation complete a creative thesis and are required to participate in a public reading from their work.

Course work is supplemented by a number of extracurricular opportunities including The Creative Writing Symposium; Inscape (MSU's literary journal); The MSU Reading Series; the MSU Coffeehouse; and the Inscape Showcase.

Entry into the B.F.A. program is competitive and the standards for admission are high. Students must successfully complete ENG 100 Writing I and ENG 293 Introduction to Creative Writing. Additionally, an application, a 3-5 page introductory essay and a 10-page portfolio are required, and one letter of recommendation from someone familiar with their creative writing.

Applications are available at [www.morehead.edu/creativewriting](http://www.morehead.edu/creativewriting).

Students currently on MSU's campus may also pick up an application packet in the Department of English, 103 Combs Building.

Additional information on the program is available by contacting Crystal Wilkinson at (606) 783-9448 or at [c.wilkinson@moreheadstate.edu](mailto:c.wilkinson@moreheadstate.edu).

---

## Nominations sought for business awards

1641

Created: 2/7/2011 1:30:00 PM

Created By: Andrew Blanton



Morehead State University's Ashland Small Business Development Center honors and recognizes small businesses and advocates in three Northeast Kentucky counties of Boyd, Carter, and Greenup each year.

Nominations for the 2011 Northeast Kentucky Small Business Awards are currently being accepted.

The public is encouraged to nominate outstanding small business owners and/or advocates (individuals who deserve recognition for their efforts to promote the interest of small business).

Nominations will be accepted through Friday, March 4.

“2011 will mark our 14th year for this wonderful program that sets aside a day in May to honor and celebrate local small business success,” Kim Jenkins, event coordinator.

All nominees will be honored during an awards breakfast in May. One winner will be selected as the best in each category.

Jenkins also expressed the importance of event sponsors and financial contributors saying “we count on our sponsors to offset the expenses associated with the cost of the awards, printing, promotions, postage, breakfast and we offer a variety of benefits to our financial contributors.”

To make a nomination or to learn about sponsorship opportunities, call (606) 329-8011 or visit [www.nekysba.com](http://www.nekysba.com).

---

## Open House set for March 12

1648

Created: 2/7/2011 1:56:00 PM

Created By: Andrew Blanton



Morehead State University's Office of Enrollment Services will host its next Open House programs Saturday, March 12, from 9 a.m. until noon in the Adron Doran University Center on the Morehead campus.

According to enrollment services, the Open House events will be an excellent opportunity for students and families to discover why MSU has been named one of "America's Best Colleges" by U.S. News and World Report for the seventh year running.

University representatives will be available to meet students and their families, answer questions, lead campus tours and share information concerning college life.

"Our goal is to make it convenient to get answers to questions about starting college by bringing deans, department chairs and faculty from our academic programs, as well as staff from admissions, financial aid, housing and many more services together in one place," said Holly Pollock, assistant director of enrollment services.

Families will hear success stories about our graduates and learn some statistics that demonstrate the academic quality offered at MSU."

On one such measure of success, MSU graduates are consistently accepted into professional schools, including medical, dental and pharmacy programs, at rates well above state and national averages.

Students and families are encouraged to register for the Open House. To learn much more about this event or to complete an online registration card, you may visit [www2.moreheadstate.edu/openhouse](http://www2.moreheadstate.edu/openhouse).

Additional information is available by calling enrollment services at (606) 783-2000 or (800) 585-6781.

## MSUCorps to take part in Build-a-Bed project

1706

Created: 2/8/2011 1:48:00 PM

Created By: Andrew Blanton



MSUCorps has joined with other organizations to bring the Build-a-Bed project closer to home. The mission is to ensure that 50 children are guaranteed a proper place to sleep in their home.

To help achieve the goal, MSUCorps Build-a-Bed has partnered with outreach groups at Morehead State University which include Retired Senior Volunteer Program (RSVP), Adult Education and College Access, Center for Regional Engagement (CRE), Youth-Build, and Campus Compact VISTA members, as well as Gateway House and Frontier Housing.

The program targets a very specific and often neglected community, the working-poor. Many children are living in homes with not enough beds, or none at all. Homeless shelters and various nonprofits take care of the homeless, but those who have homes and not furniture rarely receive much focus for help. The Build-A-Bed's mission is to ensure that K-12 Kentucky children are guaranteed a proper place to sleep in their homes.

Donations are needed to complete its initiative. Participants can help by making a donation, sponsoring a bed, or volunteering.

The program serves 16 counties (Bracken, Mason, Lewis, Fleming, Greenup, Boyd, Lawrence, Rowan, Elliott, Bath, Morgan, Menifee, Carter, Montgomery, Bourbon, and Clark).

Additional information and applications (due March 15) are available at the [MSUCorps Build-a-Bed Web site](#).

---

# Simms named to Kentucky Pro Football HOF

1643

Created: 2/7/2011 1:34:00 PM

Created By: April Nutter



Former Morehead State University Eagle football player Phil Simms will be one of six to be inducted in the 2011 class of the Kentucky Pro Football Hall of Fame. The announcement was made Friday (Feb. 4) during a press conference in Lexington.

“Phil had a great career at Morehead State and a super professional career,” said Brian Hutchinson, director of intercollegiate athletics. “He has brought so much attention to this University and its football program. He is a great selection to the Kentucky Pro Football Hall of Fame.”

Simms may be the best known Eagle athletic alumnus.

A four-year letterman, Simms was the Ohio Valley Conference’s (OVC) Offensive Player of the Year in 1977, and finished his MSU career with 5,545 passing yards and 32 touchdowns.

After his playing days at Morehead State, he was the New York Giants' first selection (seventh overall) in the 1979 NFL Draft.

Simms enjoyed a 15-year NFL career and when retired held 19 team records.

As an All-Pro quarterback, he led the New York Giants to two Super Bowl titles. He completed 22 of 25 passes in Super Bowl XXI, defeating the Denver Broncos, 39-20, to give the Giants their first Super Bowl title and earning him MVP honors.

The Louisville Southern High School graduate established team marks for most passes completed and attempted for one game (40 completed, 62 attempted), season (286, 533) and career (2,576, 4,647), most career touchdown passes (199) and most 300-yard games in a career (21).

He was a Pro Bowl selection in 1985 and 1993 Pro Bowls and was the 1985 Pro Bowl MVP. He was named All-Pro in 1986.

His jersey number #11 was retired by the Giants in September 1994 and Simms was inducted into the Morehead State Athletic Hall of Fame in October 1995.

Simms joined CBS Sports in January 1998 as lead analyst for the CBS Television Network's coverage of the NFL. He also was a studio analyst and co-host for ESPN and lead NFL analyst for NBC Sports.

He and his wife, Diana, have three children, Christopher, Matthew and Deirdre.

Simms will be joined in the 2011 class by Kerry Rhodes of University of Louisville and the Arizona Cardinals; Ron Hill, Kentucky State University and the Dallas Cowboys; Dale Lindsey of Western Kentucky University and the Cleveland Browns; and Lou Michaels of the University of Kentucky and the Baltimore Colts.

The group also will honor George Blanda, who played 26 seasons of professional football, the most in the sport's history, and scored more points than anyone in history at the time of his retirement. Blanda was a quarterback and place kicker for the University of Kentucky under Paul "Bear" Bryant.

The ninth annual induction ceremony will take place June 24 at Lexington Opera House, 401 West Short Street.

Kentucky is the only state to have its own Pro Football Hall of Fame.

The purpose of the hall, which inducted its first class in 2003, is to appropriately honor persons that have brought recognition to the state of Kentucky, or have by their unusual successful service achieved accomplishment(s) on behalf of their school, or have by act or contribution distinguished themselves as an unusual former National Football League player, coach, referee, owner, management, etc., or supporter of Pro Football.

Additional information on the induction ceremony is available by calling (859) 276-3488.

---



## Meet MSU Days announced

1704

Created: 2/8/2011 1:35:00 PM

Created By: April Nutter



Morehead State University's Transition Center in the Office of Enrollment Services has announced four "[Meet MSU Days](#)" for prospective adult, transfer and veteran students interested in obtaining information on MSU.

Representatives will be present from key academic departments, financial aid and enrollment services. Information will also be available about 2+2 agreements (completer degrees), Kentucky Community and Technical College System transfer scholarships and online programs. Application fees will be waived for students attending these events.

The dates, times and locations of the programs are:

Thursday, March 3, Bluegrass CTC (Winchester Campus) 1-5 p.m.;

Thursday, March 17, Hazard Community and Technical College, First Federal Center, 10-5 p.m.;

Tuesday, March 22, Maysville Community and Technical College, Calvert Center Lobby, 1-5 p.m.;

Thursday, March 24, Southeast Kentucky Community and Technical College (Whitesburg Campus), Administration Building, 1-5 p.m.

MSU offers online bachelor's degree "completer" programs designed primarily for graduates of KCTCS. These programs are designed to allow KCTCS graduates to earn bachelor's degrees while continuing to meet work and family obligations and without traveling long distances.

MSU also offers courses at its five regional campuses (Ashland, Jackson, Mt. Sterling, Prestonsburg and West Liberty) and via the Internet, providing busy adults the opportunity to complete class work at a time and place convenient to them.

At each event, emphasis will be placed on a seamless transition from KCTCS to Morehead State University and no registration is necessary. Students bringing all official transcripts may be admitted provided they meet MSU admission requirements.

Additional information is available by contacting Jen Crisp, transfer senior enrollment services counselor, at 606-783-5421 or e-mail [j.crisp@moreheadstate.edu](mailto:j.crisp@moreheadstate.edu), or Jill McBride, adult learner coordinator/ project graduate and student veteran liaison, 606-783-2000 or e-mail [j.mcbride@moreheadstate.edu](mailto:j.mcbride@moreheadstate.edu).

---

## Trusty wins Met regional

1859

Created: 2/15/2011 1:01:00 PM

Created By: Andrew Blanton



Morehead State University's Andrea Trusty, a soprano, captured first prize in the Mid-South Regional Metropolitan Opera Competition on Saturday, Feb. 5, at the Germantown Performing Arts Center in Germantown, Tenn.

A 2004 MSU graduate, Trusty is a native of Ezel (Morgan County) and a lecturer in MSU's Department of Music, Theatre and Dance.

She is the daughter of Leila Trusty of Ezel and Bill Trusty of Mize.

After winning the Kentucky District auditions in November, Trusty claimed the top prize in the region. The Mid-South Region comprises the districts in Arkansas, Kentucky, Tennessee, Alabama and Mississippi.

A total of 16 singers -- eight sopranos, one mezzo-soprano, six baritones and one bass -- competed in the region. Trusty will now advance to the Metropolitan Opera Semifinals Concert in early March.

She will perform on the Metropolitan Opera Stage, where she will compete against 22 other singers. From those, six to eight will be chosen to sing with the Metropolitan Opera Orchestra in the Grand Finals Concert on March 13.

"I have waited so long for the opportunity to sing at the Metropolitan Opera. I've dreamed of this for a long time, and now it is finally happening. I'm very blessed," said Trusty.

As a student, she had the opportunity to perform several major operatic roles with MSU OperaWorks, including the title roles in Bizet's "Carmen," Gilbert and Sullivan's "Iolanthe," and the role of the mother in "Amahl and the Night Visitors." She was a Kentucky State and Mid-South Regional winner of the auditions of the National Association of Teachers of Singing.

She began vocal study as a student at Morgan County High School with Dr. Roma Prindle, associate professor, and continued to study with her until she graduated from MSU.

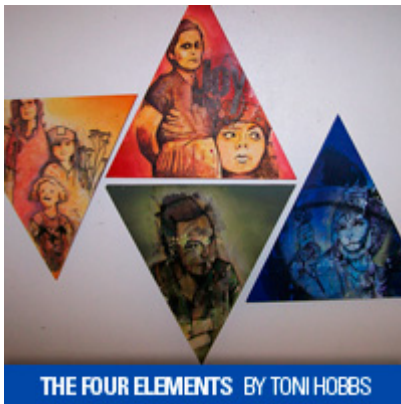
---

## Faculty art exhibition open through Feb. 24

1861

Created: 2/15/2011 1:10:00 PM

Created By: Andrew Blanton



The main gallery in the Claypool-Young Art Building at Morehead State University will host the “2011 Annual MSU Art and Design Faculty Exhibition,” through Thursday, Feb. 24.

The event showcases the artworks of faculty in the University’s Department of Art and Design. Reflecting the strength and diversity of the art department programs and instruction, the show features a wide range of media and techniques. Two dimensional paintings, drawings, prints, photography and mixed media pieces will be on display, as well as three -dimensional sculpture and functional ceramic works and textile product design.

The Claypool-Young art gallery is an educational resource of the art department and the university as a whole; the art faculty exhibition is an embodiment of the gallery’s mission. Both as a venue for instruction and as a means to exhibit their work to the university and community, the annual faculty exhibition is possibly the most anticipated annual exhibition at the gallery.

Participating faculty include: Luke William Achterberg, David Bartlett, Jenny Bell, Robert Franzini, Deeno A. Golding, Seth Green, Toni Hobbs, Bethany Kalk, Dongfeng Li, Elizabeth Mesa-Gaido, Gary Mesa-Gaido and Jennifer A. Reis.

A closing reception will be held on Wednesday, Feb. 23, from 6 - 8 p.m. with complimentary refreshments and live music. The reception is free and open to the public.

In association with the exhibition, there will be an Art Faculty Forum on Tuesday, Feb. 22 from 11:30 a.m. -12:30 p.m.

Exhibiting art instructors will be on hand to discuss their work, as well as field questions. There will be refreshments available, and the public is welcome.

The Claypool-Young art gallery features contemporary art for the Morehead State University community as well as the University’s service region. The gallery is open Monday through Friday, 8 a.m. to 4 p.m. or by appointment, and is free and open to the public.

Parking is available on Main Street, directly behind the art building, and across campus after 5 p.m.

Additional information is available by calling Reis, gallery director, at (606) 783-5446.



# Open House slated for March 12

1863

Created: 2/15/2011 1:19:00 PM

Created By: Andrew Blanton



Morehead State University's Office of Enrollment Services will host its next Open House programs Saturday, March 12, from 9 a.m. until noon in the Adron Doran University Center on the Morehead campus.

According to enrollment services, the Open House events will be an excellent opportunity for students and families to discover why MSU has been named one of "America's Best Colleges" by U.S. News and World Report for the seventh year running.

University representatives will be available to meet students and their families, answer questions, lead campus tours and share information concerning college life.

"Our goal is to make it convenient to get answers to questions about starting college by bringing deans, department chairs and faculty from our academic programs, as well as staff from admissions, financial aid, housing and many more services together in one place," said Holly Pollock, assistant director of enrollment services.

"Families will hear success stories about our graduates and learn some statistics that demonstrate the academic quality offered at MSU."

On one such measure of success, MSU graduates are consistently accepted into professional schools, including medical, dental and pharmacy programs, at rates well above state and national averages.

Students and families are encouraged to register for the Open House. To learn much more about this event or to complete an online registration card, you may visit [www.moreheadstate.edu/openhouse](http://www.moreheadstate.edu/openhouse).

Additional information is available by calling enrollment services at 606-783-2000 or 800-585-6781.





## Nominations wanted for small business awards

1864

Created: 2/15/2011 1:24:00 PM

Created By: April Nutter



Morehead State University's Ashland Small Business Development Center honors and recognizes small businesses and advocates in three Northeast Kentucky counties of Boyd, Carter, and Greenup each year.

Nominations for the 2011 Northeast Kentucky Small Business Awards are currently being accepted.

The public is encouraged to nominate outstanding small business owners and/or advocates (individuals who deserve recognition for their efforts to promote the interest of small business).

Nominations will be accepted through Friday, March 4.

“2011 will mark our 14th year for this wonderful program that sets aside a day in May to honor and celebrate local small business success,” Kim Jenkins, event coordinator.

All nominees will be honored during an awards breakfast in May. One winner will be selected as the best in each category.

Jenkins also expressed the importance of event sponsors and financial contributors saying “we count on our sponsors to offset the expenses associated with the cost of the awards, printing, promotions, postage, breakfast and we offer a variety of benefits to our financial contributors.”

To make a nomination or to learn about sponsorship opportunities, call (606) 329-8011 or visit [www.nekysba.com](http://www.nekysba.com).

## Fetal ultrasounds to be offered

1872

Created: 2/16/2011 1:04:00 PM

Created By: Andrew Blanton



The Department of Imaging Sciences' Diagnostic Medical Sonography Program at Morehead State University will offer free, two-dimensional fetal ultrasounds to expectant mothers.

The ultrasound examinations will be given through March 3, and be performed by appointment only on the fourth floor of the Center for Health, Education and Research, Room 402, in the University's sonography lab.

The scans are performed by senior level students who will be directly supervised by associate professor Marcia Cooper. She is certified in obstetrics and gynecology by the American Registry of Diagnostic Medical Sonographers. The fetal ultrasound scans provide students the experience they need for entering into the sonography workforce.

All volunteers will be asked to sign a consent form stating that the scans are "non-diagnostic" and are performed for educational purposes only. Participants are asked to bring a towel.

Additional information and appointment times are available by calling MSU's Department of Imaging Sciences at (606) 783-2646.

---

## SSC's Star Theater to offer public programs, Feb. 18-19

1874

Created: 2/16/2011 1:13:00 PM

Created By: Andrew Blanton



The Morehead State University Space Science Center's Star Theater will present the planetarium programs "Legend of the Night Sky: Perseus and Andromeda," a children's program, and "Expanded View" followed by Laser programs featuring "Laser Magic" and "Laseropolis" in February.

The Star Theater planetarium programs will be held on Friday, Feb. 18, with "Expanded View" at 7 p.m.; "Laser Magic" at 8:15 p.m.; and "Laseropolis" at 9 p.m. The programs continue on Saturday, Feb. 19, with afternoon showings of "Expanded View" at 1 p.m., "Legend of the Night Sky: Perseus and Andromeda," at 2:15 p.m., and "Expanded View" repeated at 3:30 p.m., and evening shows of "Laser Magic" at 8:15 p.m. and "Laseropolis" at 9 p.m.

Selected laser music shows can contain unedited language.

### Planetarium Programs:

- \$2-Adults
- \$1-Students and senior citizens (60-plus)
- Free-four and under (must sit in parent/guardian lap)

### Laser Programs:

- \$5-Adults
- \$4-Students and senior citizens (60-plus)
- Free-four and under (must sit in parent/guardian lap)

Seating is limited to 90 per program and tickets (cash only) for all shows are available at the door. No advance tickets or reservations are available.

Additional information is available by calling the Space Science Center's Star Theater at 606-783-9593 or visiting its website at [www.moreheadstate.edu/startheater](http://www.moreheadstate.edu/startheater).

## Upward Bound seeks instructors

1880

Created: 2/16/2011 2:20:00 PM

Created By: Andrew Blanton



The Upward Bound Programs at Morehead State University are seeking applications for instructors to teach in the summer component, June 6 - July 8. Creative, enthusiastic teachers are needed in mathematics, language arts, sciences, foreign languages, college/career planning, drama, dance, physical education, art, critical thinking, music, photography, psychology, crafts, and other elective areas. Instructors teach between nine and 15 hours per week, depending on subject. Applicants must have completed a bachelor's degree by June 1; teaching experience and/or experience working with teenagers is preferred. The deadline to apply is Feb. 23. Visit the website (<http://www.moreheadstate.edu/ub>) for application material or more information.

---

## Upward Bound programs seek RAs

1882

Created: 2/16/2011 2:24:00 PM

Created By: Andrew Blanton



The Upward Bound Programs at Morehead State University are seeking applications for residence hall supervisors for the summer component. The residence hall supervisor (RHS) is responsible for supervision of Upward Bound students (approximately 200 students) and Tutor Counselors (approximately 20 Tutor Counselors) during a six-week summer component (June 5 – July 14 - specific times TBA). RHSs will begin work on May 23, with orientation activities and planning. RHSs will live in the residence halls, assist students and TCs with residence life issues, and participate in a variety of activities with the students, including recreational and off-campus trips. Applicants must have completed a bachelor's degree by June 1. The deadline to apply is March 9. Visit the website (<http://www.moreheadstate.edu/ub>) for application material or more information.

---

# Faried breaks NCAA record

2038

Created: 2/21/2011 11:25:00 AM

Created By: Andrew Blanton



Morehead State University's Kenneth Faried, Newark, N.J., senior, broke Tim Duncan's modern-era NCAA Division I career rebounding record as Morehead State edged Indiana State 71-65 Saturday.

"He was a great college player. He's a great NBA player, all the MVPs, all the all-star appearances," Faried told the Associated Press in a telephone interview. "I really can't explain how excited I am about it."

Faried finished with 12 rebounds, giving him 1,576, six more than Duncan collected while at Wake Forest from 1994-97. He scored 17 points to lead the Eagles to their 21st win in 29 games.

The NCAA's modern era began after 1973, when freshmen were permitted to play.

Faried leads the nation at 14.2 rebounds per game.

He is averaging a team-high 17.5 points and 14.2 rebounds this season, a big reason why MSU's in the hunt for the Ohio Valley Conference title.

"I'm just so proud of Kenneth and what he's done," MSU coach Donnie Tyndall said. "I just think he's going to have a very lengthy NBA career and I look forward to watching him grow."

Others on the top five post-1973 rebounding list include Syracuse's Derrick Coleman (3rd, 1,537 rebounds), Drexel's Malik Rose (1,514) and Virginia's Ralph Sampson (1,511).

MSU travels to Murray State Thursday, Feb. 24, for a 9 p.m. game that will decide the Ohio Valley Conference regular season championship. The game will be televised on ESPNU.

## Mabry's presentation on discovered pulsar Feb. 28

2171

Created: 2/25/2011 11:17:00 AM

Created By: Andrew Blanton



We have all looked up at the sky at night and wondered about the stars, but it is something altogether different when you know that you were responsible for the discovery of one of those heavenly bodies. That must be exactly what Rowan County Senior High School junior Hannah Mabry is feeling now. On Jan. 20, she became the first student in the Commonwealth of Kentucky to be credited with discovering a pulsar.

Pulsars are spinning neutron stars that emit lighthouse beams of radio waves or light as they spin around. A neutron star is what is left after a massive star explodes at the end of its normal life. With no nuclear fuel left to produce energy to offset the stellar remnant's weight, its material is compressed to extreme densities. The pressure squeezes together most of its protons and electrons to form neutrons; hence, the name neutron star. One tablespoon of material from a pulsar would weigh 10 million tons -- as much as a supertanker.

Mabry's pulsar discovery is special because it is a millisecond pulsar, an even rarer kind of neutron star that spins nearly 1,000 times per second. These stars, many of which are billions of years old, are relatively new to the scientific world. The first one was discovered more than 40 years ago.

A presentation by Mabry will be held at the Space Science Center Star Theater at 6:30 p.m. on Monday, Feb. 28. The event is free and open to the public.

The daughter of Don and Belinda Mabry, she is a student in Jennifer Carter's Astronomy Pulsar Search class which is working on a project with the Pulsar Search Collaboratory (PSC), funded by the National Science Foundation. As part of the PSC, the students analyze real data to find pulsars. The PSC project, run by the National Radio Astronomy Observatory (NRAO) in Green Bank, W.Va., gives high school students access to data collected by the GBT--which is the largest steerable telescope (100 meters in diameter) on planet Earth.

The students pour through seemingly endless numbers of charts and graphs looking for evidence of pulsars in outer space. Encouraged by their teacher, the students have gone beyond class assignments, often spending their spare time sifting through data from the radio telescopes. The pulsar was discovered independently by Virginia students Alexander Snider and Casey Thompson, also part of the PSC. Several of the students, including Mabry, are receiving college credit for their work through the dual-credit program at Morehead State University.

When she received word from her teacher that she had discovered a pulsar candidate, her first word was "Really?" Once Carter had reassured her that the information was accurate, Mabry said, "I just began screaming and jumping up and down. I was so excited.



On the weekend of Jan. 22, Mabry and her family were invited to Green Bank, W.Va. where they toured the National Radio Astronomy Observatory's facility, getting to see the world's largest steerable radio telescope. She became a celebrity while at the observatory, giving interviews for West Virginia print and online media. Once the pulsar candidate was reported to NRAO, Project Director Rachel Rosen took a look and agreed with the students. A follow-up observing session was scheduled on the GBT. Snider and Mabry traveled to West Virginia to assist in the follow-up observations, and Thompson joined online. They had the opportunity to use the radio telescope to conduct follow-up observations on Mabry's pulsar. Seeing it on the screen for the first time, "It was beautiful!" was her reaction.

She plans on continuing her search through the heavens for additional pulsars, with help from her teacher. Mabry had nothing but praise for her teacher and the class. "Mrs. Carter makes this class not only fun, but she makes it real. It has been so amazing to be part of this project. I was looking at majoring in physics or medicine when I get to college, but because of Mrs. Carter and this class, I am now considering a career in astronomy." The Astronomy Pulsar Search is one of the new class offerings at Rowan County Senior High School that rose from the school's new trimester system. Penny Alderman, assistant principal of RCSHS, was almost as excited as Mabry. "This class has allowed these students to go beyond the 'traditional classroom' and explore new fields. Mrs. Carter has brought a host of new possibilities to our kids with this class, and with other class ideas that she is working on. When they talk about reaching for the stars, Mrs. Carter is actually making that possible for our students."

Faculty and staff at MSU's Space Science Center assisted Carter in developing the astronomy class. Students may elect to take the class for college credit as part of an innovative program allowing students to receive both high school and college credit simultaneously. The students use the 21M antenna for observations and to search for other astronomical phenomena

"This is a significant discovery," said Dr. Ben Malphrus, chair of the Department of Earth and Space Sciences. "Millisecond pulsars are excellent laboratories for general and special relativity theory as well as being interesting in an astrophysical sense as extreme stellar endpoints. This class of pulsars also has a practical application--because their spin rates are so precise, they are used as timekeeping standards to calibrate atomic clocks--for the Department of Defense and other agencies that require extreme time precision."

Involvement in the space program has had some interesting connections. Dr. Malphrus served as staff scientist at the NRAO prior to coming to MSU, and Carter served as a graduate student at the Space Science Center at Morehead State prior to working at RCSHS. Carter is a Morehead State University alumnus, having received her B.S. degree in physics and mathematics, a master's degree in engineering technology, and currently enrolled in the University's Master of Arts in Teaching program.

For additional information, contact Dr. Malphrus at 606-783-2381 or [b.malphrus@moreheadstate.edu](mailto:b.malphrus@moreheadstate.edu); Joel Pace, director of Adult and Early College Programs (regarding the dual credit program), at 606-783-2995 or [j.pace@moreheadstate.edu](mailto:j.pace@moreheadstate.edu); Carter at 606-784-8956 or [jennifer.carter@rowan.kyschools.us](mailto:jennifer.carter@rowan.kyschools.us); or Sue Ann Heatherly, National Radio Astronomy Observatory, Green Bank, W.Va., at 304-456-2209 or [sheather@nrao.edu](mailto:sheather@nrao.edu).



## 'This Great Nation' runs through May 28

1906

Created: 2/17/2011 3:47:00 PM

Created By: Andrew Blanton



Morehead State University's Kentucky Folk Art Center has announced the opening of its next exhibition, "This Great Nation Will Endure: Photographs of the Great Depression."

A reception will be held on Thursday, March 3, from 5-7 p.m. and will be on display at KFAC through May 28.

"This Great Nation" is on loan from the Franklin D. Roosevelt Presidential Library and Museum in Hyde Park, N.Y. This is the first time this display has visited Kentucky. The exhibition will present more than 150 iconic Farm Security Administration photographs from the 1930s.

For those born after the 1930s, the Great Depression is something that can be visualized only through photography and film. Certain images have come to define our view of that uncertain time: an anxious migrant mother with her three small children; a farmer and his sons struggling through a dust storm; a family of sharecroppers gathered outside their simple home. Reproduced repeatedly in books and films, these photographs are icons of an era. Remarkably, many of these familiar images were created by one small government agency established by Roosevelt, the Farm Security Administration (FSA). Between 1935 and 1943, FSA photographers produced nearly 80,000 pictures of life in Depression-era America.

This remains the largest documentary photography project ever undertaken. Founded to document rural poverty, the FSA photo unit later expanded to include small town and urban subjects.

"We're so excited to bring this exhibition to east Kentucky," said Adrian Swain, KFAC's artistic director. "These photographs are some of the most important and best known in American history and for good reason. Presenting This Great Nation in Morehead represents a singular cultural opportunity for our service region."

"I look forward to bringing students to this exhibition," said David Bartlett, a professor in MSU's Department of Art and Design. "These photographs stand at the heart of the medium. What attracts people about photographs is recorded brute reality rendered meaningful."

Kentucky Folk Art Center is a cultural, educational and economic development service of Morehead State University. The Center is open Monday-Saturday, 9 a.m. to 5 p.m. For more information, call 606-783-2204 or visit [www.kyfolkart.org](http://www.kyfolkart.org).

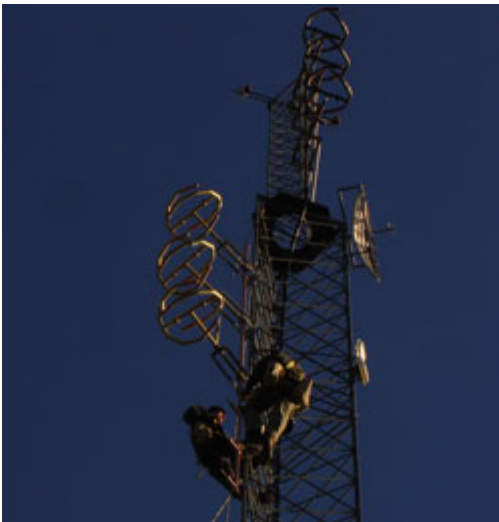
---

# WMKY has new auxiliary transmitter

1952

Created: 2/18/2011 2:38:00 PM

Created By: April Nutter



For many years, WMKY (90.3FM) relied on a back-up generator to provide power to its main transmitter during emergencies or power outage. That system worked did the job but after a few too many ice storms, which made access to the transmitter site nearly impossible, a new system needed to be developed.

WMKY, with cooperation from Gateway Radio Works Inc., (WIVY/WKCA) have installed a back-up auxiliary transmitter which will allow WMKY to keep broadcasting if its main transmitter should fail.

“This auxiliary transmitter gives us (WMKY) the ability to provide better service to our listeners in the communities we serve throughout the region,” said Paul Hitchcock, WMKY general manager. “This partnership between WMKY and Gateway Radio Works provides a better and more complete public service to the region.”

The auxiliary transmitter is located near WMKY’s main transmitter on Triangle Hill, one of the tallest points in Rowan County. The transition to the auxiliary transmitter will be instantaneous with minimal to no interruption

of service. The backup transmitter would operate until electricity service is restored or repairs can be made to the main transmitter.

“An auxiliary transmitter provides many more options than the generator system we had in place. That system was cumbersome and needed constant upkeep, so this opportunity came along at just the right time,” Hitchcock explained.

A three-year building permit for this project was granted by the Federal Communications Commission in 2007. Funds for the project were made possible through the reallocation of existing resources.

WMKY began operation on June 15, 1965, as East Kentucky’s first public radio station. The 10-watt signal covered the Rowan County area with programming from a studio located in the Combs Building at Morehead State University.

Now 45-years later, WMKY, with an effective radiated power of 50,000 watts, reaches more than 40 counties in Kentucky, Ohio and West Virginia. Since 2002, the MSPR signal has originated from the state-of-the-art studios located in 132 Breckinridge Hall.

WMKY at 90.3 FM serves as the flagship station for the Morehead State Public Radio network. In 2006, MSPR was recognized with the Media Award through the Kentucky Arts Council and the Governor’s Award in the Arts. In 2010, MSPR received a first place award from the Kentucky Associated Press for Best Newscast, Best Sports Reporting and Best web Site.

MSPR operates through the support of Morehead State University, the Corporation for Public Broadcasting, regional business underwriters and listener contributions.

Additional information is available by calling Hitchcock at 800-286-9659 or 606-783-2001; by e-mail at [tp.hitchc@moreheadstate.edu](mailto:tp.hitchc@moreheadstate.edu); or MSPR can be found online at [www.msradio.com](http://www.msradio.com). MSPR is also available on Facebook and Twitter.

---

## VITA offers tax assistance

1961

Created: 2/18/2011 4:06:00 PM

Created By: Andrew Blanton



During this filing season, Volunteer Income Tax Assistance (VITA) will be available at no charge to Morehead State University students and eligible employees.

Through the University's Department of Accounting, Economics and Finance, in conjunction with the Internal Revenue Service, the tax return assistance will be offered on Tuesdays from 3-6 p.m. in 311 Combs Building on campus. It is free to students, and also to employees and members of the Morehead community with an annual income of \$49,000 or less.

No appointment is necessary. Taxpayers will be assisted on a first come, first-served basis, and no returns will be accepted for preparation after 5:30 p.m.

It will be necessary for taxpayers to bring with them documentation for any and all that apply:

- W-2(s);
- 1099(s);
- A copy of last year's return;
- Statements of other income;
- Information for deductions;
- Social Security cards for you, your spouse, and/or dependents;
- Proof of identification for yourself and/or spouse;
- Proof of account for direct deposit of refund (if desired) (voided check);
- Proof of tuition paid (regardless of source of funds) during 2010 for yourself, spouse, and/or dependents;
- Cost of books for 2010;

- Amount of scholarships and/or grants awarded in 2010;
- If eligible for first-time homebuyer credit, proof of purchase price of home.

For proof of tuition and scholarships/grants, you should bring a copy of your account for the calendar year of 2010. This can be printed from your MSU account web page.

Additional information is available from Sharon Walters, associate professor of accounting, by calling (606) 783-2725, or by e-mailing [s.walters@moreheadstate.edu](mailto:s.walters@moreheadstate.edu).

---

## Bozeman passes Murphy to become all-time scorer

2053

Created: 2/21/2011 3:28:00 PM

Created By: Andrew Blanton



There is a new queen to the Morehead State University basketball court.

Chynna Bozeman, Reynoldsburg, Ohio, senior, became the all-time leading scorer in women's hoop history Thursday night at Murray State.

The reigning Ohio Valley Conference Play of the Year hit a 12-foot jumper with 12:43 in the first half to surpass Eagle legend Donna Murphy. Murphy is the only other 2,000 point scorer in MSU women's basketball history as she finished her career (1976-80) with 2,059 points. She finished with 22 points in a 70-69 win.

Bozeman became the second female basketball player to have her jersey retired – Murphy being the other one - after a Feb. 12 contest against Southeast Missouri State.

The 5-10 guard has set numerous MSU, Ohio Valley Conference and NCAA records during her Eagle career. She has started every game while at MSU (123) and has scored in double figures 103 times.

Bozeman has set MSU and OVC career records for three-pointers made and attempted and is the OVC active leader in points, rebounds, assists, steals and three-pointers made.

Morehead State will play Thursday, at 3 p.m., in the Ohio Valley Conference Tournament in Nashville.

## Spring Career Fair set for March 8

2077

Created: 2/22/2011 1:42:00 PM

Created By: Andrew Blanton



Are you a Morehead State University student, alum or community member and looking for full-time work, a part-time position, or an internship? Are you considering graduate school or would you like to get your name out to employers?

If so, the Spring Career Fair at MSU may be the opportunity for which you have been searching.

The fair will be held in the Crager Room on the second floor of the Adron Doran University Center from 10 a.m. to 1 p.m. on Tuesday, March 8. Employers from a variety of fields will be in attendance, including both the private and public sectors.

Participants should research the employers, come professionally dressed, and bring several copies of their resume.

Organizations may still register. If you are interested in targeting MSU students, alumni, or community members, you may call 606-783-2233 or register online at [www.moreheadstate.edu/career](http://www.moreheadstate.edu/career).

Employers who have registered to be on MSU's main campus include:

21st Mortgage Corp; ACS, a Xerox Company; Asbury University MSW program; Auditor of Public Accounts; Bellarmine University; Campbellsville University; Cintas; Citizens National Bank; Clark Regional Medical Center; Department for Income Support; Department of Environmental Protection/Division of Compliance Assistance; Eastern State Hospital; Enterprise Holdings; Federal Correctional Institution; Federal Medical Center; First Investors Corporation; Forever Communications;

Frito-Lay; Highlands Center for Autism; Insight Media; Jewish Hospital and St. Mary's HealthCare; Kentucky Staffing Solutions; Kentucky State Police; Mazak Corporation; Morehead State Public Radio; Morehead State University's AmeriCorps; MSU Camden-Carroll Library;

MSU Department of Communication, Media and Leadership Studies; MSU Enrollment Services; MSU Master of Public Administration Program; MSU Human Resources; Physician Assistant Program at MSU; MSU Small Business Development Centers; MSU Tutoring and Learning Center;



MSU Upward Bound Program; Northwestern Mutual Financial Network; Ohio Department of Youth Services; Our Lady of Bellefonte Hospital; Shawnee State University; Sherwin Williams; Social Security Administration; South Ohio Medical Center; SRG Global; St. Claire Regional Medical Center;

Stage Stores; SurePoint Lending; Total Quality Logistics (TQL); U.S. Army Recruiting; UK Health Profession Colleges; USDA APHIS, Vet Services; USDA-Rural Development; Verizon Cellular Sales; and Walgreens.

---

## Board of Regents work session set for Feb. 24

2079

Created: 2/22/2011 1:51:00 PM

Created By: Andrew Blanton



**EVENT:** Board of Regents Work Session

**DATE:** Thursday, Feb. 24, 2011

**TIME:** 9 a.m.

**SITE:** Heritage Room, Adron Doran University Center

During the work session, the Regents will discuss item(s) on the agenda and any other business that may come before them.

---

### Agenda

1. Ad Hoc Committee Report (BOR Bylaws) – Paul Goodpaster
  2. Budget Update – Beth Patrick
  3. CPE Strategic Plan – Beth Patrick
  4. MSU Diversity Plan – Charles Holloway
  5. Update on Strategic Enrollment Plan – Beth Patrick
  6. Legislative Update – Beth Patrick
  7. Comprehensive Capital Campaign – Jim Shaw/Mindy Highley
  8. BOR Retreat – Wayne Andrews
  9. Other Business
    - Quarterly BOR Meeting – 9 a.m., March 10, 2011
    - BOR Retreat – March 16-17, 2011
-

## Dennis, Little pass NACADA course

2081

Created: 2/22/2011 2:18:00 PM

Created By: Andrew Blanton



Morehead State University's Craig Dennis, provisional studies coordinator, and Patty Little, general studies adviser, recently participated and passed "Academic Success and the Student-Athlete," a course offered by the National Academic Advising Association (NACADA).

The goal is to provide an avenue for staff members who work campus-wide to receive training on the NCAA Division I and II rules and regulations, as well as to gain information on basic principles for advising students, with an emphasis on advising student-athletes and improving academic success.

The online class was developed for use by academic advisers, athletic counselors and other campus staff (both inside and outside athletics) responsible for student-athlete academic support and for eligibility certification.

The eight-week course was divided into four parts: foundation principles for academic advising and student-athletes; NCAA rules and regulations; principles of student-athlete success; and design and implementation of systems.

As part of the class, Dennis and Little created an academic advising brochure for student-athletes.

Additional information is available from Lora Pace, director of first year programs and academic services, at 606-783-5208.

# Teachers prepare to track Kentucky's first satellite

2085

Created: 2/22/2011 3:34:00 PM

Created By: Andrew Blanton



Teachers from across East Kentucky met at Morehead State University's Space Science Center on Saturday, Feb. 19, for training to support the launch and operation of KySat-1, Kentucky's first satellite.

The teachers who represented Fleming, Rowan, Johnson and Magoffin counties spent part of the morning becoming familiar with the KySat-1 satellite which was scheduled to launch on Wednesday, Feb. 23, but was canceled from the Vandenberg Air Force Base in Calif. It will now launch on Friday, Feb. 25.

Participants also received instruction in the setup and operation of the MSU Portable Satellite Ground Stations (PSGS) that were being loaned to them.

The PSGS were developed as part of an outreach program to encourage students to pursue careers in science, technology, engineering and mathematics-related fields and to support the Space Science program at Morehead State University and Kentucky Space. The PSGSs were developed through a grant received by MSU planetarium director Eric Thomas and funded by the Kentucky Space Grant Consortium. The PSGS consist of a hand-held amateur (ham) radio, a directional antenna and laptop computer (donated by MSU) plus the necessary cables to connect it all together. The kit is intended to be operated by a teacher and their students to monitor and download data from the KySat1 satellite or other satellites that transmit on the amateur radio bands as they passes overhead.

Among the teachers participating in the training were: Danny Blevins from the Johnson County Alternative School; Mike Burchett, Johnson County; Cindy Combs, Simons Middle School in Fleming County; Jennifer Carter, Hannah Mabry (student) and Debbie Howes, principal, from Rowan County Senior High School; and Vicky Howard, Herald Whitaker Middle School in Magoffin County. Also participating in the training session were MSU Space Science students Margaret Powell, Kyle Bradley, Luke Lim and Julia O'Brien. The session was led by MSU Space Science staff members Eric Thomas and Jeff Kruth with assistance from Bob Kroll and Michael Combs.

The KySat-1 satellite was built by students from the Kentucky Space Consortium that includes the University of Kentucky and Morehead State University Space Science students. The student team is a part of the Kentucky Space program which is sponsored by the Kentucky Science and Technology Corporation. Other Amateur Radio operators who would like to monitor KySat1 can find out more information at [www.kentuckyspace.com](http://www.kentuckyspace.com).

## Reverse Ekphrasis Project set for March 10

2091

Created: 2/22/2011 4:06:00 PM

Created By: Andrew Blanton



Morehead State University writers, visual artists and musicians will gather at 6 p.m. Thursday, March 10, to celebrate the 2010 Reverse Ekphrasis Project.

The event is sponsored by the B.F.A. degree in Creative Writing Program in the Department of English and the Department of Art and Design.

Writers will read from their work and the visual art created from poems and fiction excerpts will be on display in the Strider Gallery of the Claypool-Young Art Building.

Musicians who have created selections from poems and prose also will be performing. More than 20 artists are slotted to participate.

The event is free and open to the public. Refreshments will be served.

Additional information is available by contacting Crystal Wilkinson at [c.wilkinson@moreheadstate.edu](mailto:c.wilkinson@moreheadstate.edu) or Adam Wheeler at [aswheeler@moreheadstate.edu](mailto:aswheeler@moreheadstate.edu).

---

## 'Beyond Boundaries' set for Feb. 23-27

2138

Created: 2/24/2011 12:18:00 AM

Created By: Andrew Blanton



Morehead State University's Music, Theatre and Dance Department presents "Beyond Boundaries" in the Lucille Caudill Little Theatre Feb. 23-26 at 7:30 p.m. and a matinee show on Feb. 27 at 2 p.m.

MSU students will get in free with their student I.D. cards, adults are \$8 and senior citizens, non-MSU students, and children are \$4.

Beyond Boundaries consist of pieces by Natasha Davis, artistic director and principle choreographer, and Erica Gionfriddo, guest choreographer from Moving People Dance Company in Santa Fe, N.M., and student choreographers.

Beyond Boundaries is the third consecutive MSU dance concert produced by Davis whose previous works included In the Space Between and In M(y)nd's Eye.

"I chose the title Beyond Boundaries because that's exactly what we are doing this year; pushing the boundaries of dance. Everything from the choreography to the music is above and beyond anything you've seen," said Davis.

To make a reservation or for more information, contact MSU's Music, Theatre and Dance Box Office at 606-783-2170 or e-mail us at [mtddb@msu.moreheadstate.edu](mailto:mtddb@msu.moreheadstate.edu).

## Holiday to be speaker for SB1 Summit

**2205**

Created: 2/28/2011 1:40:00 PM

Created By: Andrew Blanton



Terry Holliday, Kentucky education commissioner, will be the guest speaker for the Senate Bill 1 Summit, March 2, in the Crager Room of the Adorn Doran University Center.

The professional development opportunity will start at 9 a.m. and is free and open to the campus community.

The SB1 Summit will be a professional development conference featuring Holliday's keynote address, a Kentucky Council on Postsecondary Education presentation on SB1 online training modules, as well as an afternoon of breakout sessions involving our campus community implementing SB1 initiatives.

It is being funded by the CPE SB 1 Professional Development Grant.

Additional information is available by calling Lisa Shemwell, project director, at 606-783-2103

---