

News

University Communications

Pauline Young, Director

www.moreheadstate.edu

Morehead State University

UPO Box 1100

Morehead, KY 40351-1689

(606) 783-2030

Feb. 2, 2004

FOR IMMEDIATE RELEASE

MOREHEAD, Ky.---Morehead State University's Office of Continuing Education is offering fun ways to get back into shape as spring approaches.

Are you ready for the beach? With spring break just a couple of months away, it is the time to tighten up those bodies! With the use of simple and effective exercises, Paul Jusay will make your best parts better and eliminate your problem areas.

Just a one-hour, two-day a week commitment is all it takes to transform that body, he says.

"Abs, buns, and thighs" will be offered Feb. 2 through March 11, on Mondays and Wednesdays from 6:45 - 7:45 p.m. at the Wellness Center on the MSU campus. The fee is \$45.

Imagine an exercise program that you look forward to, that engages you, and that leaves you refreshed and alert with a feeling of physical and mental well-being. The Pilates Method is an exercise system focused on improving flexibility and strength for the total body without building bulk.

The Pilates Method is not just exercise, it is a series of controlled movements engaging your body and mind, performed on specifically designed exercise apparatus and supervised by extensively trained teachers.

"Pilates" classes will be held Feb. 19 through April 8, on Thursdays from 5:30 - 6:30 p.m. in the Len Miller Room of the Academic-Athletic Center on the MSU campus. The fee is \$12.

Additional information and registration for both classes are available by calling the Office of Continuing Education at (606) 783-2875.

####

ajb

News

University Communications

Pauline Young, Director

www.moreheadstate.edu

Morehead State University

UPO Box 1100

Morehead, KY 40351-1689

(606) 783-2030

Feb. 2, 2004

FOR IMMEDIATE RELEASE

MOREHEAD, Ky.---Morehead State University's Office of Continuing Education will offer two dance classes in February.

"Ballet for Children" is available for those 5 - 8 years of age.

Instructor Gina Thompson will teach young boys and girls the art of ballet. She has taken dance classes since she was five years old and is "energized by the wonderful world of dance."

Classes will be held Feb. 2 through April 26, on Mondays, from 5 – 6 p.m. at the Laughlin Dance Studio on the MSU campus.

Thompson also will instruct "Jazz Dancing" classes, from Feb. 4 through April 28, on Wednesdays, from 5 -- 6 p.m. in the dance studio.

Participants will learn the rhythm patterns and movements of jazz. This high-energy workout is suggested for anyone 16 and over. If you are looking for a fun way to exercise and get in shape this is sure to meet your expectations.

The fee for either of the dance classes is \$35.

Additional information and registration are available by calling the Office of Continuing Education at (606) 783-2875.

####

ajb

News

University Communications

Pauline Young, Director

www.moreheadstate.edu

Morehead State University

UPO Box 1100

Morehead, KY 40351-1689

(606) 783-2030

Feb. 2, 2004

FOR IMMEDIATE RELEASE

MOREHEAD, Ky.---Morehead State University's Office of Continuing Education will offer a class in "Microsoft PowerPoint" in the coming weeks.

Participants will experience this versatile program through the use of the master slide, organizational charts, and advanced graphics. Make the most of your presentations with built-in multimedia tools that include hyperlinks, sound, video and action buttons as you get step-by-step instruction in this graphics program.

Learn to organize your presentation material into an outline and then take advantage of the built-in design features with layout and templates.

Classes will be held on consecutive Tuesdays, Feb. 3 – 24, from 6 - 8 p.m. in 312 Combs Building on the MSU campus. The fee is \$40.

Additional information and registration are available by calling the Office of Continuing Education at (606) 783-2875.

####

ajb

News

University Communications

Pauline Young, Director

www.moreheadstate.edu

Morehead State University

UPO Box 1100

Morehead, KY 40351-1689

(606) 783-2030

Feb. 2, 2004

FOR IMMEDIATE RELEASE

GRAYSON, Ky.---Join in the fun of learning Spanish! Whether you are a beginner, or already know a few words in the language, Steve Kouns can help you improve your skills.

This course teaches six easy steps you can use to glue Spanish words together into sentences. With the methods taught in this course, you'll be able to engage in conversational Spanish in no time. *¡Qué Bueno!*

Classes will be held Feb. 10 through March 30, on Tuesdays from 5:30 - 7:30 p.m. at Sts. John and Elizabeth Catholic Church in Grayson. The fee is \$50, plus the book, "Spanish in 10 Minutes a Day," that can be purchased from the instructor.

Additional information and registration are available by calling the Office of Continuing Education at (606) 783-2875.

####

ajb

Tips

University Communications

Pauline Young, Director

www.moreheadstate.edu

Morehead State University

UPO Box 1100

Morehead, KY 40351-1689

(606) 783-2030

HIGHLIGHTS AT MOREHEAD STATE UNIVERSITY

(Feb. 8-14)

Sunday, Feb. 8

Softball clinic, for students in grades 4-8, Wetherby Gymnasium and Laughlin Health Building, 1-6 p.m., charge. Additional information: (606) 783-5283.

Tuesday, Feb. 10

Video Exhibition Debut, Ocular Innovation Club, with video shorts, guest speaker Sonny Landham, actor, director and author, 302 Breckinridge Hall, 7 p.m., free. Additional information: (606) 783-4655.

Concert of classic American songs, featuring MSU music faculty Dr. Roma Prindle, Dr. Gordon Towell and Steven Snyder, Duncan Recital Hall, 8 p.m.; also 8 p.m. Feb. 17, MSU at West Liberty campus auditorium, free. Additional information: (606) 783-2481.

Wednesday, Feb. 11

SBDC workshop: "Personal Finances, Budgeting & Understanding Your Credit Report," MSU/Ashland Small Business Development Center at MSU at Ashland campus, 1 p.m., preregistration necessary, free. Additional information: (606) 329-8011.

Guest lecture: "The Mother Machine Revisited," with Barbara Katz Rothman, professor of sociology, City University of New York, Commonwealth Room, Adron Doran University Center, 6 p.m., free. Additional information: (606) 783-5288.

Thursday, Feb. 12

46th Annual Concert Band Clinic, for high school students, Baird Music Hall, 8 a.m., through Feb. 15, charge. Additional information: (606) 783-2486.

Basketball: Lady Eagles and Eagles vs. Jacksonville State, Academic-Athletic Center, 5:30 and 7:30 p.m., charge. Additional information: (606) 783-2087.

Friday, Feb. 13,

Board of Regents work session, Riggle Room, Adron Doran University Center, 9 a.m.. Additional information: (606) 783-2030.

Saturday, Feb. 14

SBDC workshop: "Starting a Photography Business and Copyrighting Your Photographs," Faith Presbyterian Church, Morehead, 10 a.m., preregistration necessary, free. Additional information: (606) 780-9440.

Basketball: Lady Eagles and Eagles vs. Samford, Academic-Athletic Center, 5:30 and 7:30 p.m., charge. Additional information: (606) 783-2087.

Due to early press deadlines, some listings are subject to change.

#####

2-2-04sas

MSU is an affirmative action equal opportunity educational institution.

News

University Communications

Pauline Young, Director

www.moreheadstate.edu

Morehead State University

UPO Box 1100

Morehead, KY 40351-1689

(606) 783-2030

Feb. 4, 2004

FOR IMMEDIATE RELEASE

MOREHEAD, Ky.---The Interdisciplinary Women's Studies Program at Morehead State University will feature a noted sociologist in its presentation as the third event in the 2003-04 Wilma E. Grote Lecture Series.

Dr. Barbara Katz Rothman, professor of sociology at the City University of New York, will lecture on "The Mother Machine Revisited" beginning at 6 p.m. on Wednesday, Feb. 11, in the Commonwealth Room of the Adron Doran University Center on the MSU campus.

Dr. Rothman's research specializes in issues of procreation, midwifery, new reproductive technologies and bioethics. Her numerous publications include "Laboring On" (forthcoming), "The Book of Life: A Personal and Ethical Guide to Race, Normality, and the Implications of the Human Genome Project" (2000), and "Recreating Motherhood: Ideology and Technology in a Patriarchal Society" (1989).

A former Fulbright Scholar in the Netherlands, she is the recipient of numerous honors and awards, including the Southern Sociological Society Award for the Promotion of Human Welfare. She has lectured for academic, medical and general audiences in the United States, Germany, the Netherlands, Canada, England, Austria and several other nations throughout the world.

Dr. Rothman's presentation is co-sponsored by MSU's Institute for Regional Analysis and Public Policy and the Department of Sociology, Social Work and Criminology. The lecture series is named for former MSU first lady Wilma E. Grote.

A reception will follow the lecture. The event is free and open to the public.

Additional information is available by calling Dr. Sylvia Henneberg, program director, at (606) 783-5288.

####

sas

News

University Communications

Pauline Young, Director

www.moreheadstate.edu

Morehead State University

UPO Box 1100

Morehead, KY 40351-1689

(606) 783-2030

Feb. 4, 2004

FOR IMMEDIATE RELEASE

MOREHEAD, Ky.---The Morehead State University Alumni Association will sponsor "Alumni Night" at the MSU vs. Samford basketball game on Saturday, Feb. 14.

The Lady Eagles and Eagles basketball teams will take on the Samford Bulldogs at 5:30 and 7:30 p.m., respectively, in Johnson Arena of the Academic-Athletic Center.

General admission tickets are available at a discounted price of \$5 through the alumni office. Additional information is available by calling (606) 783-2080 or (800) 783-ALUM (2586).

####

News

University Communications

Pauline Young, Director

www.moreheadstate.edu

Morehead State University

UPO Box 1100

Morehead, KY 40351-1689

(606) 783-2030

Feb. 4, 2004

FOR IMMEDIATE RELEASE

MOREHEAD, Ky.---High school students or anyone considering college in the near future will want to take advantage of a special Open House at Morehead State University on Saturday, Feb. 21.

From 10 a.m. until 1 p.m., MSU representatives will be on hand to answer questions that prospective students or their family members may have about the University. Faculty and staff will be available to discuss academic programs, financial aid, housing and other aspects of college life.

“Our ‘Open House’ events are a great opportunity to get a taste of what Morehead State is all about,” said Joel Pace, director of admissions. “We hope that their visit will convince students that our University is truly a wonderful place to live and learn.”

The day’s activities will begin with registration at Laughlin Health Building. Campus tours will allow participants to visit classroom buildings, residence halls, the athletics complex and other University facilities.

A second spring Open House session will be held on Saturday, March 13.

To complete the online registration card for either session, log on to www.moreheadstate.edu/units/admissions/openhouse.html. Additional information is available by calling the Office of Admissions at (606) 783-2000 or (800) 585-6781.

####

News

University Communications

Pauline Young, Director

www.moreheadstate.edu

Morehead State University

UPO Box 1100

Morehead, KY 40351-1689

(606) 783-2030

Feb. 4, 2004

FOR IMMEDIATE RELEASE

MOREHEAD, Ky.---Do you want to own and operate your own business, but you don't know how to get started?

Morehead State University's Small Business Development Center is offering a workshop to help potential business owners do just that.

A "Pre-Business Planning Workshop" will be held on Tuesday, Feb. 10, from 5:30 - 7:30 p.m. in 310 Combs Building on the campus. Participants will learn various business plan styles and how a business plan can assist them as an operating or financing tool.

Admission is free, but advance registration is necessary due to limited seating.

Training programs sponsored or co-sponsored by SBDC are available to all individuals without regard to race, color, sex, creed or national origin. Special arrangements for those with disabilities will be made if requested in advance.

Additional information and registration are available by calling (606) 783-2895.

####

News

University Communications

Pauline Young, Director

www.moreheadstate.edu

Morehead State University

UPO Box 1100

Morehead, KY 40351-1689

(606) 783-2030

Feb. 5, 2004

FOR IMMEDIATE RELEASE

MOREHEAD, Ky.---Morehead State University Police have issued a safety alert after an incident on the campus on Wednesday evening, Feb. 4.

The Police Department was notified by a female student that she was chased by a white male in the parking lots behind Regents and Wilson halls, at approximately 9 p.m.

The investigation is focusing on a white male, approximately six feet tall, medium build, wearing a dark hooded sweatshirt. He was driving a 2000 or 2001 full-sized blue Chevrolet pickup truck, with an extended cab.

All MSU students are encouraged to use caution when walking on the campus at night. University police will increase patrols in residential areas and parking lots.

The Morehead Police Department and the Kentucky State Police have been notified of the incident.

Anyone with information is urged to call the University Police at 783-2035 or 911 from a campus telephone.

####

News

University Communications

Pauline Young, Director

www.moreheadstate.edu

Morehead State University

UPO Box 1100

Morehead, KY 40351-1689

(606) 783-2030

Feb. 6, 2004

FOR IMMEDIATE RELEASE

MOREHEAD, Ky.---Morehead State University's Interdisciplinary Women's Studies Program will present the movie "Alien" as part of its film series.

The movie will be shown on Wednesday, Feb 18, at 6 p.m. in 111 Claypool-Young Art Building. A discussion will follow the screening and free pizza will be served.

"Alien," director Ridley Scott's 1979 science fiction/horror classic, features actress Sigourney Weaver in the role of action heroine Warrant Officer Ellen Ripley. Three sequels followed the hit movie: "Aliens," "Alien3" and "Alien Resurrection."

The event is free and open to all students, faculty, and staff.

Other films to be presented this semester in the series include "Bread and Roses" on Tuesday, March 2; and "Contact" on Monday, April 5, which will both be shown at 6 p.m. in 111 Claypool-Young.

Additional information is available by calling Dr. Sylvia Henneberg, director of women's studies, at (606) 783-5288.

####

sas

News

University Communications

Pauline Young, Director

www.moreheadstate.edu

Morehead State University

UPO Box 1100

Morehead, KY 40351-1689

(606) 783-2030

Feb. 6, 2004

FOR IMMEDIATE RELEASE

MOREHEAD, Ky.---Tips on starting a photography business and copyrighting your photographs will be the topic of a workshop presented by Morehead State University's Small Business Development Center on Saturday, Feb.14.

The event, co-sponsored by Photos in Common, will meet from 10 a.m. – noon at Faith Presbyterian Church, located at 430 Fraley Drive in Morehead.

Jason Boggs, SBDC general management consultant, will present the workshop. Participants will learn about many aspects of starting a new photography business including financial considerations, business selection and planning, loan sources, permits, licenses, advertising and marketing issues.

Because of limited seating, pre-registration is requested before Feb. 11. There is no charge for attending.

Registration for the workshop and additional information are available by calling (606) 783-2895 or (606) 780-9440.

####

ajb

News

University Communications

Pauline Young, Director

www.moreheadstate.edu

Morehead State University

UPO Box 1100

Morehead, KY 40351-1689

(606) 783-2030

Feb. 6, 2004

FOR IMMEDIATE RELEASE

OWINGSVILLE, Ky.---Do you want to own and operate your own business, but you don't know how to get started?

Morehead State University's Small Business Development Center, along with Owingsville/Bath County Chamber of Commerce, WKCA Radio and the Bath County News Outlook are offering a workshop to help potential entrepreneurs do just that.

A "Pre-Business Orientation Workshop" will be held on Tuesday, Feb. 17, from 6 - 8 p.m. in the Bath County Memorial Library meeting room. Participants will learn many aspects of starting a new business including financial considerations, business selection and planning, loan sources, permits, licenses, advertising and marketing issues.

Admission is free, but advance registration is necessary due to limited seating.

Training programs sponsored or co-sponsored by SBDC are available to all individuals without regard to race, color, sex, creed or national origin. Special arrangements will be made for those with disabilities if requested in advance.

Additional information and registration are available by calling (606) 783-2895.

####

ajb

News

University Communications

Pauline Young, Director

www.moreheadstate.edu

Morehead State University

UPO Box 1100

Morehead, KY 40351-1689

(606) 783-2030

Feb. 6, 2004

FOR IMMEDIATE RELEASE

MOREHEAD, Ky.---The Kentucky Folk Art Center (KFAC) and Morehead State University's Appalachian Heritage Program have announced the next installment of the speakers series "Appalachia: Yesterday and Today."

Dr. Royal Berglee, assistant professor of geography at Morehead State University, will present "The WalMartization of Eastern Kentucky" at the Kentucky Folk Art Center on Tuesday, Feb. 17, at 7 p.m.

The rise of big box retailers has had an enormous impact on the way we live, work, shop, and develop our communities. The establishment of a new Wal-Mart, Lowe's, Home Depot or Target store alters the many aspects of life within a community. As a geographer, Dr. Berglee has done significant research into how large corporate retailers, such as Wal-Mart, has changed the culture, economy and land use practices in Eastern Kentucky.

"I can't imagine a more timely presentation," said Matt Collinsworth, director of the Kentucky Folk Art Center. "The potential closing of Morehead's existing Wal-Mart store and the construction of a new super center have been on the minds of local citizens for several years. It's an issue of cultural, environmental, economic and political concern and debate for our community and for communities all over Eastern Kentucky."

"Beginning more than 20 years ago, big box stores began to sprout from strip-mined hilltops and roadside pastures throughout Central Appalachia," said Dr. John Ernst, director of MSU's Appalachian Heritage program. "Not only have these stores changed the way we shop, they've effected local economies, cultures and landscapes in some obvious and some very subtle ways."

Additional information is available by calling KFAC at (606) 783-2204. The Center, located at 102 West First Street in Morehead, is open Monday-Saturday, 9 a.m. to 5 p.m., and Sundays, 1-5 p.m.

####

MOREHEAD STATE UNIVERSITYTM

Safety Alert

Morehead State University Police are warning students to be aware after two separate incidents on the campus on Wednesday and Thursday evenings.

On Thursday evening at approximately 9:15 p.m., a female student reported that a Chevrolet pickup followed her when she left a residence hall parking lot to go to the library. Upon leaving the library a few minutes later, the truck continued to follow her as she traveled to her home on U.S. 60 West. The student had no contact with the driver even though the headlights were repeatedly flashed.

MSU Police are asking that anyone who experiences such an incident to call them immediately from the nearest telephone, their cell phone or one of the emergency call boxes on campus.

A safety alert was issued Thursday morning after a female student reported that she was chased by a white male in the parking lots behind Regents and Wilson halls, at approximately 9 p.m. on Wednesday evening.

From that report, the investigation is focusing on a white male, approximately six feet tall, medium build, wearing a dark hooded sweatshirt. He was driving a 2000 or 2001 full-sized black Chevrolet pickup truck, with an extended cab.

All MSU students are encouraged to use caution when walking on the campus at night. University police have increased patrols in residential areas and parking lots but urge everyone on campus to remain alert to their surroundings at all times.

The Morehead Police Department and the Kentucky State Police were notified of both incidents.

Anyone with any information should call the University Police at (606) 783-2035 or 911 from a campus telephone immediately.

[Click here to visit MSU Police Web site.](#)



[Back to In the News](#)



[CONTACT US](#)

[HOME](#)

© MOREHEAD STATE UNIVERSITY 2000

Media Advisory

University Communications

Pauline Young, Director

www.moreheadstate.edu

Morehead State University

UPO Box 1100

Morehead, KY 40351-1689

(606) 783-2030

EVENT: Board of Regents Work Session

DATE: Friday, Feb. 13, 2004

TIME: 9:30 a.m.

SITE: Kibbey Seminar Room, 109 Combs Classroom Building

Morehead State University's Board of Regents will hold a work session in the newly renovated Kibbey Seminar Room, formerly Kibbey Theatre area, where a ribbon cutting ceremony will be held.

On the agenda, two faculty members will discuss their recent sabbatical leaves. The Board will receive an update on the budget and a report on a review of the University's policies related to grant-supported supplemental compensation.

The Board also will discuss the development of an ethics code for the University.

#####

Media representatives planning on attending the session are asked to call the Office of University Communications before 4:30 p.m. on Thursday, Feb. 12, to ensure that sufficient support materials are available.

2-10-04py

News

University Communications

Pauline Young, Director

www.moreheadstate.edu

Morehead State University

UPO Box 1100

Morehead, KY 40351-1689

(606) 783-2030

Feb. 11, 2003

FOR IMMEDIATE RELEASE

MOREHEAD, Ky.---The Morehead State University Alumni Association, Inc., is accepting nominations for its most prestigious honor, the Hall of Fame Award.

“We are seeking to honor our most outstanding alumni,” said Tami Jones, director of alumni relations. “Candidates must have achieved excellence in their profession, or for community service, at the local, state or national level.”

Submissions will be accepted until Thursday, April 1.

To meet the criteria, the individual:

- must have graduated from MSU at least 10 years prior to the time of nomination;
- must be a responsible, respected citizen of good character in their communities and professions;
- must have remained in contact and shown support for Morehead State;
- must be in attendance to accept the award.

Nominations should include the name, address and graduation year of the nominee; reasons why this individual should be considered; honors and awards; and name and telephone number of the person making the nomination.

Materials may be sent to the Alumni Association, Morehead State University, Alumni Center, 150 University Boulevard, Morehead, KY 40351-1689.

Individuals will be inducted into the Alumni Hall of Fame on Friday, Oct. 22, during the 2004 Homecoming Weekend. Additional information is available by calling the Alumni Association (606) 783-2080 or (800) 783-ALUM (2586). The nomination form may be accessed at www.moreheadstate.edu/avportal/alumnihalloffame.html.

####

News

University Communications

Pauline Young, Director

www.moreheadstate.edu

Morehead State University

UPO Box 1100

Morehead, KY 40351-1689

(606) 783-2030

Feb. 11, 2004

FOR IMMEDIATE RELEASE

MOREHEAD, Ky.---Potential tutor counselors have until Friday, Feb. 20, to apply for a summer position with Morehead State University's Upward Bound Program.

Upward Bound is a federally funded educational opportunity program designed to assist identified high school students with academic potential to complete secondary school and pursue a higher education.

Each tutor-counselor (TC) will supervise approximately eight to 10 Upward Bound students from May 31 through July 16. TC's will live in a residence hall, assist instructors in classes and participate in a variety of student activities, including recreational and study group supervision during the six-week summer phase.

All MSU students, sophomore status or older with a grade point average of at least 2.5, are encouraged to apply for this summer employment opportunity. Some experience working with adolescents is preferred but not required. Successful applicants also will be asked to take a van-driving test administered by University personnel.

Interested applicants will be required to attend the Group Interview session scheduled for Saturday, Feb. 28. Applications are available in the Upward Bound office in 108 Waterfield Hall or from the Web at www.moreheadstate.edu/units/ub.

Additional information is available by calling Sharon Williams, counseling coordinator, at (606) 783-5191 or 1 (800)-5UPWARD (800-587-9273).

#####

Tips

University Communications

Pauline Young, Director

www.moreheadstate.edu

Morehead State University

UPO Box 1100

Morehead, KY 40351-1689

(606) 783-2030

HIGHLIGHTS AT MOREHEAD STATE UNIVERSITY

(Feb. 15-21)

Sunday, Feb. 15

Concert: MSU Honors Band, Wetherby Gymnasium, 1 p.m., charge. Additional information: (606) 783-2486.

Tuesday, Feb. 17

Softball: Eagles vs. Georgetown College, softball field, 3 p.m., free. Additional information: (606) 783-5283.

Lecture: "The WalMartization of Eastern Kentucky," by Dr. Royal Berglee, MSU assistant professor of geography, Kentucky Folk Art Center, 7 p.m., free. Additional information: (606) 783-2204.

Concert of classic American songs, featuring MSU music faculty Dr. Roma Prindle, Dr. Gordon Towell and Steven Snyder, MSU at West Liberty campus auditorium, 8 p.m., free. Additional information: (606) 783-2481.

Saturday, Feb. 21

Workshop: "Lucky's Sampler Quilting Workshop" by Susan Shie, Claypool-Young Art Building, 10 a.m. – 4 p.m., also Feb. 22, charge. Additional information: (606) 783-5446.

Admissions Open House, for prospective students, Laughlin Health Building, 10 a.m., also March 13. Additional information: (606) 783-2000 or (800) 585-6781.

Baseball: Eagles vs. Kentucky Wesleyan, Allen Field, 1 p.m., free. Additional information: (606) 783-2881.

Tennis: Eagles vs. Wright State, tennis courts, 3 p.m., free. Additional information: (606) 783-5408.

Due to early press deadlines, some listings are subject to change.

#####

2-10-04sas

Tips

University Communications

Pauline Young, Director

www.moreheadstate.edu

Morehead State University

UPO Box 1100

Morehead, KY 40351-1689

(606) 783-2030

MARCH HIGHLIGHTS AT MOREHEAD STATE UNIVERSITY

March 2, Concert: MSU Jazz Ensemble I, Duncan Recital Hall, 8 p.m., free. Additional information: (606) 783-2473.

March 3, Baseball: Eagles vs. Cedarville, Allen Field, 3 p.m., free. Additional information: (606) 783-2881.

March 3, Guest recital: DiMartino Osland Jazz Orchestra, Duncan Recital Hall, 7:30 p.m., free. Additional information: (606) 783-2473.

March 4, "Lost and Found, Again 2004," Adkins Gallery, Kentucky Folk Art Center, through May 23, charge. Opening reception: 6-8 p.m. Additional information: (606) 783-2204.

March 6, Rifle: Eagles in Bluegrass Games, Button Rifle Range, time TBA, through March 7. Additional information: (606) 783-2088.

March 7, Graduate lecture recital: Chris Reighley, euphonium, Duncan Recital Hall, 5 p.m., free. Additional information: (606) 783-2473.

March 9, Softball: Eagles vs. Wright State, softball field, 2 p.m., free. Additional information: (606) 783-5283.

March 10, Kentucky Art Education Association Annual Burley-Coal High School Art Exhibition and Competition, through March 17, main gallery, Claypool-Young Art Building. Additional information: (606) 783-5446.

March 11, Theatre production: "Pippin," Button Auditorium, 7:30 p.m., through March 13, charge. Additional information: (606) 783-2170.

March 12, Baseball: Eagles vs. Niagara, Allen Field, 3 p.m., also March 13, 1 p.m., and March 14, noon, free. Additional information: (606) 783-2881.

March 13, Admissions Open House, for prospective students, Laughlin Health Building, 10 a.m. Additional information: (606) 783-2000 or (800) 585-6781.

March 14, Junior recital: Nick Denham, saxophone, Duncan Rectial Hall, 3 p.m., free. Additional information: (606) 783-2473.

March 14, Sophomore recital: Kevin Norton, saxophone, Duncan Recital Hall, 5 p.m., free. Additional information: (606) 783-2473.

March 18, Founders Day, various locations on campus, TBA. Additional information: (606) 783-2030.

(MORE)

March 04 highlights
2-2-2-2-2

March 18, Concert: Jazz Ensemble II, Duncan Recital Hall, 8 p.m., free. Additional information: (606) 783-2473.

March 20, Eagle and Lady Eagle tennis vs. Austin Peay State University, Sadler Courts, 11 a.m., free. Additional information: (606) 783-5408.

March 22, Spring Break, no classes or office hours, through March 26. Additional information: (606) 783-2008.

March 26, "Americana Crossroads Live," featuring Fairfield Four, and Jim Lauderdale, Duncan Recital Hall, 7:30 p.m., charge. Additional information: (606) 783-2001.

March 28, Softball: Eagles vs. Tennessee State, softball field, 1 p.m., free. Additional information: (606) 783-5283.

March 30, Student recital: MSU Bass Trombones, Duncan Recital Hall, 8 p.m., free. Additional information: (606) 783-2473.

Due to early press deadlines, some listings are subject to change.

####

2-10-04sas

Tips

University Communications

Pauline Young, Director

www.moreheadstate.edu

Morehead State University

UPO Box 1100

Morehead, KY 40351-1689

(606) 783-2030

APRIL HIGHLIGHTS AT MOREHEAD STATE UNIVERSITY

April 1, Guest recital: John Bleuel, saxophone, and Linda Li-Bleuel, piano, Duncan Recital Hall, 8 p.m., free. Additional information: (606) 783-2473.

April 2, Tennis: Eagle and Lady Eagle vs. Tennessee State University, Sadler Courts, 11 a.m., free. Additional information: (606) 783-5408.

April 2, "Sound of Our Heritage," Button Auditorium, time TBA, free. Additional information: (606) 783-9001.

April 3, Intercollegiate Horse Show Association (IHSA) show, Derrickson Agricultural Complex main arena, 9 a.m., free. Additional information: (606) 783-2800.

April 3, Tennis: Eagle and Lady Eagle vs. Murray State University, Sadler Courts, 11 a.m., free. Additional information: (606) 783-5408.

April 4, Senior recital: Erin Hall, flute, Duncan Recital Hall, 1 p.m., free. Additional information: (606) 783-2473.

April 4, Senior recital: Stephanie Puckett, oboe, Duncan Recital Hall, 3 p.m., free. Additional information: (606) 783-2473.

April 4, Senior recital: Ed Reid, trumpet, Duncan Recital Hall, 5 p.m., free. Additional information: (606) 783-2473.

April 5, Sophomore student art exhibition, main gallery, Claypool-Young Art Building, through April 15; opening reception, April 7, 6-8 p.m., free. Additional information: (606) 783-5446.

April 6, Eagle and Lady Eagle tennis vs. Cumberland, Sadler Courts, 2:30 p.m., free. Additional information: (606) 783-5408.

April 6, Contemporary Music Ensemble/Adam Turner senior recital, Duncan Recital Hall, 8 p.m., free. Additional information: (606) 783-2473.

April 7, Softball: Eagles vs. University of Kentucky, softball field, 3 p.m., free. Additional information: (606) 783-5283.

April 8, Concert: Percussion Ensemble II, Duncan Recital Hall, 8 p.m., free. Additional information: (606) 783-2473.

April 9, Baseball: Eagles vs. University of Tennessee-Martin, Allen Field, 2 p.m.; also April 10, 1 p.m., free. Additional information: (606) 783-2881.

April 9, Equestrian Club Open Horse Show, Derrickson Agricultural Complex, main arena, 7 p.m., also April 10, 5 p.m., charge. Additional information: (606) 783-2800.

(MORE)

April 04 highlights
2-2-2-2-2

April 13, Theatre production: "Orpheus Descending," Lucille Little Theatre, 7:30 p.m., through April 17; also April 18, 2 p.m., charge. Additional information: (606) 783-2170.

April 13, Faculty recital: MSU Faculty Jazz Ensemble, Duncan Recital Hall, 8 p.m., free. Additional information: (606) 783-2473.

April 14, Graduate recital: Chris Reighley, trombone, Duncan Recital Hall, 8 p.m., free. Additional information: (606) 783-2473.

April 15, MSU Reading Series, featuring Julie Sloan and Carla Thomas, Kentucky Folk Art Center, 7 p.m., free. Additional information: (606) 783-2340.

April 15, Student recital, Craig Twedell, trumpet, and Kevin Lampson, bass, Duncan Recital Hall, 8 p.m., free. Additional information: (606) 783-2473.

April 16, Concert: MSU Jazz Clinic, Duncan Recital Hall, 5 p.m., free. Additional information: (606) 783-2473.

April 18, Senior recital: Kevin Akers, saxophone, Duncan Recital Hall, 3 p.m., free. Additional information: (606) 783-2473.

April 18, Senior recital, Aaron Payne, saxophone, Duncan Recital Hall, 5 p.m., free. Additional information: (606) 783-2473.

April 18, Concert Choir and Chamber Singers tour home concert, First Baptist Church, Morehead, 7:30 p.m., free. Additional information: (606) 783-2473.

April 20, Recital: Tuba/Euphonium and Horn Ensemble, Duncan Recital Hall, 8 p.m., free. Additional information: (606) 783-2473.

April 22, Recital: Trombone Choir and Trumpet Ensemble, Duncan Recital Hall, 8 p.m., free. Additional information: (606) 783-2473.

April 24, Baseball: Eagles vs. Jacksonville State, Allen Field, 2 p.m.; also April 25, 1 p.m., free. Additional information: (606) 783-2881.

April 25, Academic Awards Convocation, Button Auditorium, 2 p.m., free; reception to follow. Additional information: (606) 783-2807.

April 26, Research and Creative Productions Luncheon, Commonwealth Room, Adron Doran University Center, 11:30 a.m., ticket required. Additional information: (606) 783-2010.

April 26, Senior student art exhibition, main gallery, Claypool-Young Art Building, through May 6; opening reception, April 28, 6-8 p.m., free. Additional information: (606) 783-5446.

April 26, Concert: University Chorus, Duncan Recital Hall, 8 p.m., free. Additional information: (606) 783-2473.

(MORE)

April 04 highlights
3-3-3-3-3

April 27, Caudill College of Humanities Luncheon, Crager Room, Adron Doran University Center, 11:30 a.m., ticket required. Additional information: (606) 783-2650.

April 27, Baseball: Eagles vs. Marshall University, Allen Field, 6 p.m., free. Additional information: (606) 783-2881.

April 27, Concert: Opera Works, Duncan Recital Hall, 8 p.m., free. Additional information: (606) 783-2473.

April 28, College of Education Luncheon, Crager Room, Adron Doran University Center, 11:30 a.m., ticket required. Additional information: (606) 783-2040.

April 28, Big Band Concert, Duncan Recital Hall, 8 p.m., free. Additional information: (606) 783-2473.

April 29, College of Science and Technology Luncheon, Crager Room, Adron Doran University Center, 11:30 a.m., ticket required. Additional information: (606) 783-2023.

April 29, Softball: Eagles vs. Eastern Kentucky University, softball field, 3 p.m., free. Additional information: (606) 783-5283.

April 29, Phi Kappa Phi banquet, Crager Room, Adron Doran University Center, 7 p.m., by invitation/charge. Additional information: (606) 783-2005.

April 30, Concert: MSU Concert Band, Duncan Recital Hall, 8 p.m., free. Additional information: (606) 783-2473.

April 30, College of Business Honors/Scholarship Banquet, Crager Room, Adron Doran University Center, 6:30 p.m., ticket required. Additional information: (606) 783-2174.

April 30, "Americana Crossroads Live," Duncan Recital Hall, with Jeff Black, Chip Taylor and Carrie Rodriguez, 7:30 p.m.; charge. Additional information: (606) 783-2001.

Due to early press deadlines, some listings are subject to change.

#####

2-11-04sas

News

University Communications

Pauline Young, Director

www.moreheadstate.edu

Morehead State University

UPO Box 1100

Morehead, KY 40351-1689

(606) 783-2030

Feb. 13, 2004

FOR IMMEDIATE RELEASE

MOREHEAD, Ky.---A retired Morehead State University science professor, whose teaching and administrative career spanned nearly five decades, will receive MSU's 2004 Founders Day Award for University Service on Thursday, March 18.

The presentation will be made to Dr. John C. Philley, professor emeritus of geoscience and former executive vice president for academic affairs, during the Founders Day Awards Luncheon that begins at 11:30 a.m. in Wetherby Gymnasium. This event is part of the University's celebration of its 117th year of higher education in Rowan County and 82nd anniversary as a public institution.

Also during the luncheon program, members of the newly established MSU Visionary Society will be recognized as well as new Fellows, the faculty and staff fund raiser of the year and the donor of the year. Tickets for the meal, at \$10 per person, must be purchased by March 5 by calling the Office of Development at (606) 783-2033 or (877) 690-4483.

In the nominating materials, Dr. Philley was described as "hugely successful in working with the faculty because of his faculty experience and the respect they had for him. He has brought credit to the University."

Joining the faculty in 1960 as an instructor, Dr. Philley advanced through the ranks, serving as chair of the Department of Physical Sciences from 1974 to 1986 when he was named dean of MSU's former College of Arts and Sciences. He was the University's chief academic officer from 1990 until his retirement in 1997.

He has remained active since retiring and was instrumental in obtaining funds to create endowments for the University's geology program. Because of his efforts, he was named the Volunteer Fund Raiser of the Year by the Morehead State University Foundation in 2003 and has been appointed a trustee for the Foundation. He assisted in the development of the MSU Retirees Association and served as its first president.

(MORE)

Dr. Philley was instrumental in the establishment of a geology major at MSU and assisted in developing the University's Environmental Science major. He was involved with the state Science and Math Alliance which helped math and science teachers enrich their instruction techniques.

A certified professional geologist, he is the author or co-author of 35 articles and guidebooks in his field. He was active in the National Association of State Boards of Geologists and the Kentucky Board for the Registration of Professional Geologists. He held offices in the Geological Society of Kentucky, the American Institute of Professional Geologists and the Kentucky Academy of Science and was named the latter organization's "Outstanding Teacher in Science" at the college level.

An Indianola, Miss., native, Dr. Philley earned Ph.D. and M.S. degrees in geology from the University of Tennessee at Knoxville and the B.S. degree from Millsaps College in Jackson, Miss., in the same field.

He and his wife Betty, also an MSU retiree, enjoy visiting with their three children and six grandchildren and wintering at Orange Beach, Ala.

MSU will kick off its Founders Day activities with a retiree breakfast, beginning at 8:30 a.m. in Wetherby Gymnasium. President Ronald G. Eaglin will recognize those who are retiring at the end of the school year.

The public is invited to join the campus family at a Memorial Brick Service at 10:30 a.m. at the Little Bell Tower. Former MSU faculty and staff members will be remembered with the reading of the names and the tolling of the bell for each person and the commitment of a brick inscribed with each name and years of service.

Following the luncheon, a ceremony will be held in Breckinridge Hall to dedicate the Kozy Hamilton Costume Shop, Harlen Hamm Communication Suite and Thom Yancy Seminar Room, and in Ginger Hall for the Dr. Frank Osborne Research Lab.

Additional information on the Founders Day events is available by calling
(606) 783-2033.

####



News

University Communications

Pauline Young, Director

www.moreheadstate.edu

Morehead State University

UPO Box 1100

Morehead, KY 40351-1689

(606) 783-2030

Feb. 13, 2004

FOR IMMEDIATE RELEASE

MOREHEAD, Ky.---High school students or anyone considering college in the near future will want to take advantage of a special Open House at Morehead State University on Saturday, March 13.

From 10 a.m. until 1 p.m., MSU representatives will be on hand to answer questions that students or their family members may have about the University. Faculty and staff will discuss academic programs, financial aid, housing and other aspects of college life.

“Our ‘Open House’ events are a great opportunity to get a taste of what Morehead State is all about,” said Joel Pace, director of admissions. “We hope that their visit will convince students that our University is truly a wonderful place to live and learn.”

The day’s activities will begin with registration at Laughlin Health Building. Campus tours will provide students an opportunity to visit classroom buildings, residence halls, the athletics complex and other University facilities.

To complete the online registration card for either session, log on to www.moreheadstate.edu/units/admissions/openhouse.html. Additional information is available by calling the Office of Admissions at (606) 783-2000 or (800) 585-6781.

####

News

University Communications

Pauline Young, Director

www.moreheadstate.edu

Morehead State University

UPO Box 1100

Morehead, KY 40351-1689

(606) 783-2030

Feb. 13, 2004

FOR IMMEDIATE RELEASE

MOREHEAD, Ky.---The Kentucky Folk Art Center has announced the opening of an exhibit titled "Lost and Found Again, 2004" on Thursday, March 4, featuring new works by 22 self-taught Kentucky artists. The show runs through May 23.

The exhibit features works made from items not generally thought of as art objects. Who would make a connection between wild grapevines, bicycle gear controls, plastic dolls and old barn lumber? Or a flexible tailpipe, pink grapefruit membranes, remnants of blouses, barbed wire, paper maché, a tractor seat, metal milk box, and tongs and rocks.

The juried exhibit is the result of a statewide call for entries by KFAC seeking "art made from items or objects that once served some other purpose, from materials 'recycled' from some previous use, and/or natural objects gathered and assembled in unexpected, ingenious ways."

"Some of the most inventive art being produced today comes from these 'found' materials," said Adrian Swain, KFAC curator. "Many artists recycle items that they have gathered, or that other people have thrown away, and reinterpret them in entirely new ways. The result often has nothing at all to do with the original objects from which it was made."

Artists whose works are included in the show are: Guy Purcell of Ashland; Genevieve Wilson of Corinth; Lonnie and Twyla Money of East Bernstadt; Ronald and Jessie Cooper of Flemingsburg; Liz Davis of Hartford; Dennis Toadvine of Gravel Switch; Brent Collinsworth of Hazel Green; Lonnie Adkins of Midway; Minnie Adkins, Herman Peters and Rodney Boggs, all of Isonville; Amanda Whites of Louisa; Mary Craik, Hagan McGee, Zephra May-Miller, Yair Riback and Scott Scarboro, all of Louisville; Carita Bergelin and Walt Rybka of Morehead; Marie Braden of Soldier; Joyce Skaggs of Olive Hill; Bonita Skaggs-Parsons of Sandy Hook; Marjorie Sauer of Vanceburg; and Roxan Rigsby of Wellington.

The exhibition opens with a special reception on Thursday, March 4, from 6 - 8 p.m. The public is invited to attend this gathering and meet many of the artists.

Performing at the reception will be Monkey Boy, a Louisville-based band that utilizes instruments constructed out of found materials.

(MORE)

Artist/musician Scott Scarboro describes Monkey Boy's as "junkabilly music." Their most recent compact disc, "When Monkeys Fly," is a collection of "22 songs of death, love and space travel erupting from electrified angelic noise makers played by Scott Scarboro and a few other creative chimps along for the hay ride....," recorded at Jeeter-Tech Studios.

KFAC is a cultural, educational and economic development service of Morehead State University. Partial funding for "Lost and Found Again, 2004" has been provided by the Kentucky Arts Council, a state agency in the Education, Arts and Humanities Cabinet, with support from the National Endowment for the Arts.

Additional information is available from the Center's Web site at www.kyfolkart.org, or by calling (606) 783-2204. KFAC, located at 102 West First Street in Morehead, is open Monday-Saturday, 9 a.m. to 5 p.m., and Sunday, 1-5 p.m.

####

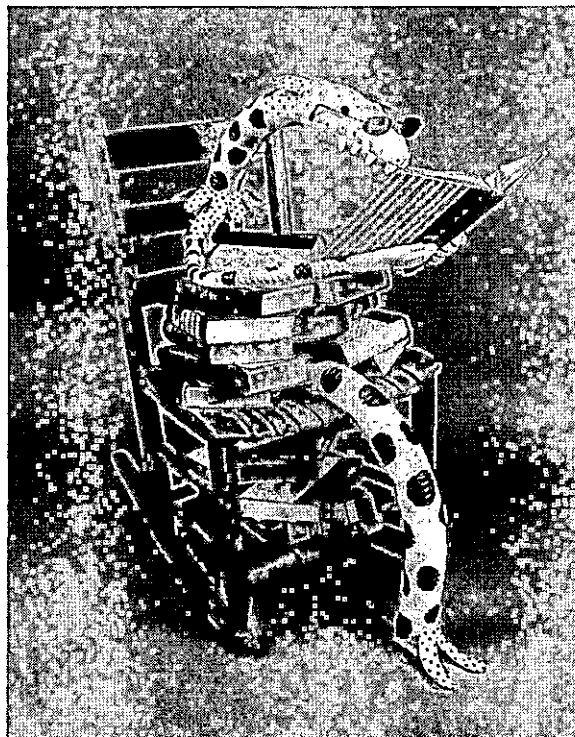
'LOST AND FOUND' EXHIBIT DISPLAYED AT MSU

Morehead State University's Kentucky Folk Art Center will host "Lost and Found Again, 2004," an exhibit by 22 self-taught Kentucky artists. Among the displayed items is "Bookworm" by Lonnie and Twyla Money of East Bernstadt. The work, completed in 2003, was made from a flexible tail pipe, old rocking chair, books and paint. Many of the artists will be on hand for the exhibit's opening reception on Thursday, March 4, beginning at 6 p.m. at the center. The event is free and open to the public. The exhibit runs through May 23 at the center, located at 102 West First Street in Morehead. Viewing hours are Monday through Saturday, 9 a.m. - 5 p.m.; and Sunday, 1 - 5 p.m. Additional information is available by calling (606) 783-2204 or on the Web at www.kyfolkart.org.

(MSU photo)

2-13-04

MSU is an affirmative action, equal opportunity educational institution.



News

University Communications

Pauline Young, Director

www.moreheadstate.edu

Morehead State University

UPO Box 1100

Morehead, KY 40351-1689

(606) 783-2030

Feb. 13, 2004

FOR IMMEDIATE RELEASE

MOREHEAD, Ky.---Guitar virtuoso David Grier will be the opening performer at the next edition of "Americana Crossroads Live" at Morehead State University on Friday, Feb. 27.

Grier, one of the foremost guitarists of his generation, will take the stage at 7:30 p.m. at Duncan Recital Hall in Baird Music Hall. His performance will be followed by an 8:30 p.m. set by acclaimed singing and songwriting duo Barry and Holly Tashian.

A versatile professional musician, Grier has recorded several albums on his own and is highly sought after as an instrumentalist for acoustic recordings. His talents can be heard on many successful Bluegrass albums, including the Grammy award-winning "True Life Blues: A Tribute to Bill Monroe," and "The Great Dobro Sessions." He has recorded with fellow greats Tim O'Brien, Dirk Powell and as one of the "superset" of musicians, Psychograss.

His "Hootenanny," "Lone Soldier" and "Panorama," prompted critics to label Grier as "a guitar genius," and a "monster of Bluegrass guitar." The albums highlight his mastery of numerous musical genres, including Bluegrass, Celtic and jazz. Grier's 2002 album, "I've Got the House to Myself," has been called "an introspective portrait of a guitarist who knows no limits in his art."

The Bluegrass music industry recognized Grier as one of its best when he was named the International Bluegrass Music Association's (IBMA) Guitarist of the Year in 1992, 1993 and 1995.

There will be a 15-minute intermission between Grier's and the Tashians' sets. The night's events will include drawings for free prizes. Doors open at 7 p.m. Morehead State Public Radio will record the concert to be broadcast at 8 p.m. on Friday, March 5.

Admission to "Americana Crossroads Live" is by season pass or \$3 per person and free for children 12 and under. Season passes for the entire 2004 schedule are available for \$30 and may be purchased at the concert, or weekdays from 9 a.m. to 4 p.m. at Morehead State Public Radio's campus office, located at 132 Breckinridge Hall.

The "Americana Crossroads Live" concert series is a presentation of MSPR and the Kentucky Center for Traditional Music. Toyota Motor Manufacturing of Georgetown is a corporate sponsor with additional sponsorship by KCTM, Kentucky Folk Art Center, Farmers Mercantile Boots and Shoes, Poppy Mountain Bluegrass Festival, Root-A-Baker's Bakery and Papa John's.

Additional information about the concert is available by calling MSPR at (800) 286-9659 or (606) 783-2001; or by logging on to MSPR's Web site at www.msradio.com.

sas

####



News

University Communications

Pauline Young, Director

www.moreheadstate.edu

Morehead State University

UPO Box 1100

Morehead, KY 40351-1689

(606) 783-2030

Feb. 16, 2004

FOR IMMEDIATE RELEASE

MOREHEAD, Ky.---A bill introduced last week in the Kentucky General Assembly would freeze tuition rates at current levels for two years at Morehead State and the state's other public postsecondary institutions.

House Bill 488, originally sponsored by nine lawmakers on Tuesday, quickly gained 14 other sponsors on its way to the House Education Committee on Wednesday. The bill requires that tuition rates in effect for the spring 2004 semester remain unchanged through spring 2006 and that summer tuition in 2004 and 2005 be locked in at 2003 rates.

President Ronald G. Eaglin told the MSU Board of Regents on Friday that passage of the bill would have "disastrous" consequences for the University in the wake of \$2.6 million in state budget cuts and the prospect of no increases in state funding for the next two years.

If state funding remains at continuation levels, a tuition increase would be the only option for MSU and other institutions to generate new revenue in the 2004-05 fiscal year to pay salary increases and meet higher costs of health insurance, utilities, retirement system contributions and other operating expenses.

If tuition rates are frozen, Dr. Eaglin predicted that the University would be forced to eliminate several full-time faculty and staff positions and make other "drastic" cuts in its operating budget, including a reduction in the number of classes offered each term, an increase in class sizes and a reduction in student financial aid and student services.

The Regents gave preliminary approval in November of a tuition increase ranging from six to nine percent for 2004-05. Final action will be taken this spring when the new operating budget is approved.

Another House bill was filed on the first day of the 2004 session to guarantee that tuition would not increase for a four-year period for new students enrolling at public institutions each fall semester. House Bill 35 was referred to the Education Committee.

####

Tips

University Communications

Pauline Young, Director

www.moreheadstate.edu

Morehead State University

UPO Box 1100

Morehead, KY 40351-1689

(606) 783-2030

HIGHLIGHTS AT MOREHEAD STATE UNIVERSITY

(Feb. 22-28)

Sunday, Feb. 22

Faculty recital, Dr. David Oyen, bassoon, Duncan Recital Hall, 3 p.m., free. Additional information: (606) 783-2473.

Tuesday, Feb. 24

Baseball: Eagles vs. Campbellsville, Allen Field, 3 p.m., free. Additional information: (606) 783-2881.

Concert: MSU Concert Choir, Chamber Singers, University Chorus, Duncan Recital Hall, 8 p.m., free. Additional information: (606) 783-2473.

Wednesday, Feb. 25

American Red Cross Blood Drive, Button Drill Room, 11 a.m. – 5 p.m., Additional information: (606) 783-5124.

Guest recital: James Bunte, saxophone, Duncan Recital Hall, 8 p.m., free. Additional information: (606) 783-2473.

Friday, Feb. 27

Baseball: Eagles vs. University of Toledo, Allen Field, 1 p.m., free; also Feb. 28-29. Additional information: (606) 783-2881.

“Americana Crossroads Live,” featuring Barry and Holly Tashian, and David Grier, Duncan Recital Hall, 7:30 p.m., charge. Additional information: (606) 783-2001.

Due to early press deadlines, some listings are subject to change.

#####

2-16-04sas

News

University Communications

Pauline Young, Director

www.moreheadstate.edu

Morehead State University

UPO Box 1100

Morehead, KY 40351-1689

(606) 783-2030

Feb. 17, 2004

FOR IMMEDIATE RELEASE

MOREHEAD, Ky.---Morehead State University's Board of Regents has honored former Lady Eagle basketball standout Travece Turner of Richmond, after she became the first MSU student-athlete to be selected as a state winner of the highly coveted NCAA Woman of the Year Award.

Turner was presented a resolution during the Regents regular quarterly meeting.

She played three years for the Lady Eagles and currently is pursuing her master's degree in sports administration, while serving as the women's basketball administrative assistant.

Turner earned her bachelor's degree from MSU in communications with an emphasis in advertising and public relations, graduating with a 3.71 grade point average. In her career, she received Second-Team Academic All-District IV honors for the 2002-03 year, and was named an Arthur Ashe Jr. Sports Scholar. In addition, she was honored as MSU's 2002-03 Outstanding Student in the Department of Communication and Theatre, which is awarded annually to one individual in each academic department.

Turner also was named to the OVC Commissioner's Honor Roll all three years at the University and earned a spot on the Dean's List during five semesters.

The NCAA chooses a single representative from each of the 50 states, plus the District of Columbia. The award recognizes "outstanding female student-athletes, who have excelled in academics, athletics and community leadership, and have completed their collegiate athletics eligibility." She was chosen out of a pool of a total of 340 student-athletes.

"Travece is an exceptional young woman and this special recognition reflects her commitment to excellence," said Chip Smith, MSU director of athletics. "It is gratifying that Travece was acknowledged for her accomplishments in and out of the athletic arena."

Turner earned First-Team All-Ohio Valley Conference honors as a senior, after being named to the Second Team in 2001-02 and honorable mention in 2000-01.

"It was a great honor not only to win the award but to be recognized by the board of regents," said Turner. "It was be something that I will never forget."

Turner is the daughter of Ken and Jennifer Turner, both graduates of Morehead State.

####

ajb

MSU BOARD HONORS STUDENT ATHLETE

Morehead State University's Board of Regents honored former Lady Eagle basketball standout Travece Turner of Richmond with a resolution, after she was selected the Kentucky state winner of the NCAA Woman of the Year Award. Turner was one of 50 state winners to compete for the award. Participating in the presentation were, from left, Chip Smith, MSU director of athletics; Laura Litter, Lady Eagle basketball coach; Turner; and Buckner Hinkle Jr. of Lexington, Regents chair.

(MSU photo by Tim Holbrook)

2-17-04ajb

MSU is an affirmative action, equal opportunity educational institution.



News

University Communications

Pauline Young, Director

www.moreheadstate.edu

Morehead State University

UPO Box 1100

Morehead, KY 40351-1689

(606) 783-2030

Feb. 17, 2004

FOR IMMEDIATE RELEASE

MOREHEAD, Ky.--- Morehead State University has received a \$1 million grant from the W. Paul and Lucille Caudill Little Foundation to establish an endowed faculty chair in theatre and to advance the creative arts in the public schools.

The \$1 million grant will be matched with state "Bucks for Brains" funds, adding a total of \$2 million to the University's endowment.

"We are pleased to have this opportunity to enhance theatre exposure and involvement for students throughout East Kentucky, while at the same time honoring wonderful friends of the University," said MSU President Ronald G. Eaglin.

The W. Paul and Lucille Caudill Little Endowed Chair in Theatre will enhance the University's theatre program founded by Mrs. Little. The "Theatre in the Schools" program will advance the creative arts in the public schools at a time when school districts are feeling economic pressure to cut related funding.

Lucille Caudill Little, a native of Morehead, brought energy and enthusiasm to her service as the first member of the theatre faculty at what is now Morehead State University. A talented performer in her own right, Mrs. Little gave up a promising career in musical theatre to become a professor on MSU's campus.

In later life, her passion for the performing arts and the encouragement of her husband, W. Paul Little, influenced her to become Kentucky's most dynamic and visionary patron of the arts.

In 1994, Mrs. Little funded a \$1 million endowment to support the visual and performing arts, the largest individual gift in the University's history. She provided another \$200,000 in 1996 to erect the Paul and Lucille Little Bell Tower in her husband's memory. Her most recent gift was nearly \$400,000 in 2000 to help endow a faculty chair in allied health sciences in memory of her sister, Dr. C. Louise Caudill, the founder of St. Claire Regional Medical Center in Morehead.

(MORE)

In recognition of Mrs. Little's philanthropy, her sister's lifelong work in health care, and the distinguished career of their father, D. B. Caudill, a former judge and banker, MSU honored the Caudill family in 1994 with the naming of its Caudill College of Humanities. Mrs. Little also received an honorary doctoral degree in 1997.

The state-of-the-art Lucille Caudill Little Theatre, in newly renovated Breckinridge Hall, was named in recognition of her commitment to the vital role of the arts in education and in our society. Mrs. Little died in 2002, just hours before the first public performance in her namesake theatre.

Upon learning of her death, President Eaglin remarked, "Lucille's generous heart and her love of education and the arts are a precious legacy for all who knew her or will benefit from her philanthropy. She is forever etched into the history and spirit of this University."

Through this \$1 million grant, Mrs. Little's generosity will continue to provide opportunities for broadening creative horizons for students throughout the region.

####

News

University Communications

Pauline Young, Director

www.moreheadstate.edu

Morehead State University

UPO Box 1100

Morehead, KY 40351-1689

(606) 783-2030

Feb. 17, 2004

FOR IMMEDIATE RELEASE

MOREHEAD, Ky.---The DiMartino/Osland Jazz Orchestra, or DOJO, will perform on the Morehead State University campus at 7:30 p.m. on Wednesday, March 3, in Duncan Recital Hall in Baird Music Hall

The concert is sponsored by the MSU Arts and Humanities Council. Admission is \$5.

DOJO has been delighting audiences all across the Bluegrass and the Midwest for more than a decade. Its debut recording "Off the Charts" with Sea Breeze records has been hailed by critics as a sterling example of how the big band can fit into the contemporary jazz scene without losing any of that unique sound which continues to send tingles up and down the spines of listeners.

The group is directed by virtuoso trumpeter Vince DiMartino, distinguished professor of trumpet at Centre College, and saxophonist Miles Osland, director of jazz studies and professor of saxophone at the University of Kentucky.

One of the world's most sought after trumpet performers and educators, DiMartino teaches trumpet, brass and jazz ensembles, and jazz history at Centre. Equally known as a jazz artist, he has been the lead and solo trumpet in the Lionel Hampton Band, the Chuck Mangione Band, the Clark Terry Band and The Eastman Arranger's Holiday Orchestra.

Osland has distinguished himself as an educator, recording and performing artist, author, arranger and composer. He has appeared throughout North and South America and Europe as a guest conductor, performer and clinician for Selmer Saxophones and Bay Woodwind mouthpieces.

The members of the orchestra are some of the finest professors and freelance musicians from Central Kentucky. The group includes

Saxophones: Larry Nelson, professor of saxophone/jazz studies at Eastern Kentucky University; Gordon Towell, MSU professor of jazz studies; David Anderson of Lexington, freelance musician and MSU retired professor of jazz studies; and Lisa Osland, professor of saxophone/director of saxophone ensembles at the University of Kentucky.

(MORE)

DOJO concert at MSU
2-2-2-2-2

Trumpets: Rich Byrd, professor of trumpet at Cumberland College; Mark Clodfelter, professor of trumpet at the University of Kentucky; Rick Cook of Frankfort, freelance musician; and Greg Wing, MSU professor of trumpet.

Trombones: David Henderson of Lexington, freelance musician; Jim Grubbs of Lexington, freelance musician; Jeanie Lee, MSU professor of trombone; Louis G. Bourgois III, professor of low brass/music history at Kentucky State University.

Rhythm: Raleigh Dailey, professor of jazz piano at the University of Kentucky; Danny Cecil of Lexington, freelance musician; and John Willmarth of Lexington, freelance musician.

The program will include several of DOJO's standard charts: "Aim For the Heart" by Armstrong; "Things Are Getting Better" by Adderley/McConnell; "Pussy Cat Dues" by Mingus/Dailey; "Quotient" by Baylock; "Love For Sale" by Baylock; "Basically Blues" by Wilson; "Late Shift Blues" by Weiner; "I'm Beginning to See the Light" by Rourke/Nestico; "Erica" and "Mean to Me" by Mantooth.

The program also will feature several charts written by renowned tenor saxophonist, Bob Mintzer, including "Timeless," "Having Some Fun," "Runferyerlife," "Easy Living," and "El Caborojeno" with Towell as the featured tenor saxophone soloist.

Additional information is available from MSU's Department of Music by calling (606) 783-2473.

####

News

University Communications

Pauline Young, Director

www.moreheadstate.edu

Morehead State University

UPO Box 1100

Morehead, KY 40351-1689

(606) 783-2030

Feb. 17, 2004

FOR IMMEDIATE RELEASE

MOREHEAD, Ky.---Chef James Quinn has cooked all over the world. He has cooked for royalty, government leaders and movie stars. Now, he is cooking for Morehead State University.

Quinn has joined MSU's Dining Services, provided by Aramark, to cook for the students, faculty and staff as well as the entire Morehead community.

As the new executive chef, Quinn has elevated the level of excellence and quality of the cuisine.

"What I am trying to do is build a team of culinary experts to serve the Morehead area. I am looking forward to bringing new ideas and flavors to this region," Quinn said. "I am excited to have the opportunity to work here at MSU. We are keeping the Kentucky influence and style of food, but we are adding a European influence for a little different taste."

"We are very glad to have Chef Quinn working with our team," said Steve Hoyng, MSU food service director. "Since coming to MSU last semester, his culinary expertise and experience has enhanced all the quality services we currently provide."

Quinn hails from London, England, where he earned a five-year culinary arts degree from Westminster College. In his London studies, he learned the art of ice carving and creating floral arrangements from vegetables. He specializes in saucier and flambé.

Among his experiences, Quinn has prepared food for Ross Perot and the former President George Bush in Bermuda. He also has cooked for Tom Cruise, Nicole Kidman and Michael Caine while working at the London Hilton.

After London, he moved to Germany and owned and operated a pub restaurant for six years. Since coming to the United States, Quinn has worked in several places including Lexington, Louisville and Cincinnati. Prior to coming to MSU, Quinn worked for Artemsia Restaurant in Louisville.

Additional information may be obtained by calling MSU's Dining Services at (606) 783-2017.

####

ajb

MSU is an affirmative action, equal opportunity educational institution.

News

University Communications

Pauline Young, Director

www.moreheadstate.edu

Morehead State University

UPO Box 1100

Morehead, KY 40351-1689

(606) 783-2030

Feb. 17, 2004

FOR IMMEDIATE RELEASE

MOREHEAD, Ky.---Chef James Quinn has cooked all over the world. He has cooked for royalty, government leaders and movie stars. Now, he is cooking for Morehead State University.

Quinn has joined MSU's Dining Services, provided by Aramark, to cook for the students, faculty and staff as well as the entire Morehead community.

As the new executive chef, Quinn has elevated the level of excellence and quality of the cuisine.

"What I am trying to do is build a team of culinary experts to serve the Morehead area. I am looking forward to bringing new ideas and flavors to this region," Quinn said. "I am excited to have the opportunity to work here at MSU. We are keeping the Kentucky influence and style of food, but we are adding a European influence for a little different taste."

"We are very glad to have Chef Quinn working with our team," said Steve Hoyng, MSU food service director. "Since coming to MSU last semester, his culinary expertise and experience has enhanced all the quality services we currently provide."

Quinn hails from London, England, where he earned a five-year culinary arts degree from Westminster College. In his London studies, he learned the art of ice carving and creating floral arrangements from vegetables. He specializes in saucier and flambé.

Among his experiences, Quinn has prepared food for Ross Perot and the former President George Bush in Bermuda. He also has cooked for Tom Cruise, Nicole Kidman and Michael Caine while working at the London Hilton.

After London, he moved to Germany and owned and operated a pub restaurant for six years. Since coming to the United States, Quinn has worked in several places including Lexington, Louisville and Cincinnati. Prior to coming to MSU, Quinn worked for Artemsia Restaurant in Louisville.

Additional information may be obtained by calling MSU's Dining Services at (606) 783-2017.

#####

ajb

MSU is an affirmative action, equal opportunity educational institution.

QUINN JOINS MSU DINING SERVICES

Chef James Quinn has cooked for royalty, government leaders and movie stars. Now, he is cooking for Morehead State University and the community. A native of London, England, Quinn has joined MSU's Dining Services, provided by Aramark, where he hopes to educate students about different culture techniques.

(MSU photo by Tim Holbrook)

2-13-04ajb

MSU is an affirmative action, equal opportunity educational institution.





7
for web
↓



News

University Communications

Pauline Young, Director

www.moreheadstate.edu

Morehead State University

UPO Box 1100

Morehead, KY 40351-1689

(606) 783-2030

Feb. 18, 2004

FOR IMMEDIATE RELEASE

MOREHEAD, Ky.---A technology-enhanced seminar room and much-needed office space for two academic units have been added to Morehead State University's facilities as the result of extensive renovation of a section of the Combs Building.

Construction was recently completed on the new Kibbey Seminar Room in the west wing of the building. The state-of-the-art multimedia classroom will soon include equipment for observation and filming capabilities. It has seating capacities of 60 as a lecture classroom and 24 as a seminar room.

The space previously was occupied by the old Kibbey Theatre which was eliminated in 2002 with the opening of the new Lucille Caudill Little Theatre and production rooms in Breckinridge Hall.

Elliott Contracting Inc. of Pikeville was the contractor for the \$809,304 project which also provided new offices for Institute for Regional Analysis and Public Policy (IRAPP) and the College of Business.

IRAPP faculty includes experts in the fields of geography, sociology and other academic disciplines who work to provide academic study, research and organized public service not only to MSU's service region, but throughout Appalachia.

"The facilities are spacious, roomy and high tech and will allow us to continue to do a lot of good work, not only in this community, but regionally as well," said Dr. David Rudy, dean of IRAPP. "It will be an appropriate place for us to welcome regional visitors to campus."

Dr. Rudy's staff members had been housed in part in the Lloyd Cassity Building and in various buildings across campus. He says the new space in Combs will help centralize operations by bringing nearly all IRAPP staff to the two buildings.

The space also includes the temporary home of Gov. Ernie Fletcher's regional office for Eastern Kentucky and faculty offices of the College of Business.

"The renovation project provided much needed additional office space for our faculty members," said Dr. Bob Albert, dean of the College of Business. "I wish the entire building could be renovated in such fashion."

(MORE)

Kibbey Seminar Room
2-2-2-2-2

The four-story structure also is home to classrooms, computer laboratories and other offices of the College of Business and the Department of English, Foreign Languages and Philosophy.

Built in 1962, the Combs Building was named for former Gov. Bert T. Combs. The Kibbey Theatre, dedicated in 1978, was named for Sam F. Kibbey, an attorney who served two terms on MSU's Board of Regents.

####

sas

KIBBEY SEMINAR ROOM OPENS

Kibbey Theatre in the Combs Building at Morehead State University has been renovated and renamed the Kibbey Seminar Room. The former theatre was named for the late Carter County native Sam F. Kibbey, an attorney and amateur actor who served two terms on the University's Board of Regents. Joining in the ribbon cutting ceremonies were, from left, MSU President Ronald G. Eaglin; Kibbey's daughter, Connie Kibbey of Morehead, counseling coordinator for MSU's Upward Bound Program, and Board chair Buckner Hinkle Jr. of Lexington.

(MSU photo by Tim Holbrook)

2-18-04

MSU is an affirmative action, equal opportunity educational institution.



News

University Communications

Pauline Young, Director

www.moreheadstate.edu

Morehead State University

UPO Box 1100

Morehead, KY 40351-1689

(606) 783-2030

Feb. 18, 2004

FOR IMMEDIATE RELEASE

MOREHEAD, Ky.---Morehead State University students Abigail Malik, Ashland junior, and Ben Manning, Bethel, Ohio, senior, will represent MSU's Department of Communication and Theatre at a symposium hosted by the New York Times on Friday, Feb. 20.

Malik is editor of the Trail Blazer while Manning is a producer at NewsCenter. The two will be joined on the trip by Joan Atkins, assistant professor of journalism and Trail Blazer adviser.

The event hosted by the New York Times will explore the role of the press in a democratic society.

The MSU trio will have a busy day. Beginning at 10 a.m., the conference will open with a discussion of the role of a newspaper in a democracy led by Bill Keller, executive editor of the Times.

Other scheduled speakers include:

Dana Canedy, writer of the article "Between the Lines, A Measure of Hurt" about tensions in the newsroom of the Akron Beacon Journal following their Pulitzer Prize winning series on race. Canedy was Miami bureau chief during the last presidential election and is currently assistant editor of the national desk.

Eric Lipton was a Pulitzer Prize winner for explanatory journalism in 1992. Since Sept. 11, 2001, Lipton has teamed with Jim Glanz, reporting on the aftermath.

Sheryl Wudunn, a Pulitzer Prize winning correspondent, and host of "Page One," that airs nightly on the Discovery Times Channel.

Charlotte Evans, administrative editor, who oversees all copy desks and is in charge of recruiting and hiring, and Gail Collins, editorial page editor, will interact with the group of students from across the country.

The American Democracy Project is a multi-campus initiative that seeks to create an intellectual and experiential understanding of civic engagement for undergraduates enrolled at institutions that are members of the American Association of State Colleges and Universities (AASCU). The three-year project, sponsored by AASCU in collaboration with The New York Times, will provide opportunities for participating campuses to engage in activities and projects designed to increase the number of undergraduate students that are committed to meaningful civic actions.

####

ajb

News

University Communications

Pauline Young, Director

www.moreheadstate.edu

Morehead State University

UPO Box 1100

Morehead, KY 40351-1689

(606) 783-2030

Feb. 18, 2004

FOR IMMEDIATE RELEASE

MOREHEAD, Ky.---The Morehead State University Choirs will present a concert on Tuesday, Feb. 24, at 8 p.m. in Duncan Recital Hall on the campus. There is no admission charge.

The program will feature the Concert Choir, Chamber Singers, University Chorus, Men's Chorus and Women's Chorus. The choirs are under the direction of Dr. Greg Detweiler, assistant professor of music, and Laura Bevins Wilson, instructor of music education.

The Men's Chorus will open the program with "If Music be the Food of Love" by David Dickau. Chamber Singers will follow with "Quant j'ai ouy le tabourin" by Claude Debussy, "Voices of Autumn" by Jackson Hill, "Birds Are Never Soaring Too High" by Lars-Erik Larsson, and "Woodpecker" by Stephen Chatman.

University Chorus will sing "Kyrie" from Mozart's Missa brevis in F. The Women's Chorus will continue the program with "Homeland" arranged by Z. Randall Stroope.

Concert Choir will close the concert with two motets and two folk songs from the British Isles. The motets are "Hear My Prayer, O Lord" by Henry Purcell, "Hodie Christus natus est" by Francis Poulenc. The two folk songs are the Irish "An Oiche" by arranged by Michael McGlynn, and the Scottish "I'll ay call in by yon town" arranged by Mack Wilberg.

Additional information is available from Dr. Detweiler by calling (606) 783-2480.

####

News

University Communications

Pauline Young, Director

www.moreheadstate.edu

Morehead State University

UPO Box 1100

Morehead, KY 40351-1689

(606) 783-2030

Feb. 19, 2004

FOR IMMEDIATE RELEASE

MOREHEAD, Ky.---Morehead State University's Office of Career Services will host the annual Spring Job Fair on Tuesday, March 2, from 10 a.m. to 1 p.m. in the Crager Room of the Adron Doran University Center (ADUC).

A variety of potential employers from both the private and the public sectors will be present to provide MSU students and alumni, as well as the general public with information regarding their respective businesses.

Companies and governmental agencies participating in the job fair include:

AFLAC of Morehead, American Express Financial Advisors of Louisville, Cintas Corporation of Ashland, Eastern Kentucky University Graduate School of Richmond, Eastern State Hospital of Lexington, Enterprise Rent-a-Car of Louisville, Environmental Solutions and Innovations, Inc. of Cincinnati, Family Dollar of Charlotte, N.C., Financial Institutions of Frankfort, 4-H Camps of Lexington, Girl Scouts Wilderness Road Council Camps of Lexington;

Governor's Office for Technology of Frankfort, Internal Revenue Service of Cincinnati, Ohio, Kalmbach Swine Management of Upper Sandusky, Ohio, Kentucky Higher Education Assistance Authority of Frankfort, Kentucky State Police of Frankfort, Lab Support of Louisville, Licking Valley C.A.P, Inc., of Flemingsburg;

Morehead State University Graduate School of Morehead, MSU Army ROTC of Morehead, National Youth Sports Program of Morehead, Naval Reserve Recruiting of Great Lakes, Ill., Presbyterian Child Welfare Agency of Buckhorn, Returned Peace Corps Volunteers of Morehead, Sara Lee Foods of Alexandria, Shadwell Farm of Lexington, Social Security Administration of Ashland, Southern Illinois University School of Law of Carbondale, Ill., St. Claire Regional Medical Center of Morehead, Teacher Recruitment Office of Morehead;

U.S. Army Recruiting of Nashville, Tenn., U.S. Department of Agriculture Rural Development of Lexington, Walgreen's of Deerfield, Ill. Walt Disney World of Lake Buena Vista, Fla., WKYT-TV of Lexington and YMCA Camp Piomingo of Brandenburg.

(MORE)

Also participating in the Spring Job Fair by Internet only through March 31 will be:
Camp Catherine Capers of West Pawlet, Vt., Camp Horizons of South Windham, Conn., Camp
Runioa of Raymond, Maine, Camp Waziyatah of E. Walpole, Mass., Charleston Alley Cats of
Charleston, W.Va., Flat Rock River YMCA Camps of St. Paul, Ind., Hidden Valley Camp of
Freedom, Maine, Jameson Camp of Indianapolis, Ind.;

Kentucky Center of Louisville, Kentucky River Community Care, Inc. of Hazard,
Lochearn Camp for Girls of Post Mills, Vt., Maranatha Bible and Missionary Conference of
Muskegon, Mich., Paramount's Kings Island of Kings Island, Ohio, Windridge Tennis Camps of
Jeffersonville, Vt., Six Flags Kentucky Kingdom Food Service Department of Louisville, Girl
Scout Council of the Nation's Capital of Washington, D.C.

All job seekers are encouraged to bring copies of their resume for distribution with the
various agencies. It is not necessary to make an appointment but everyone should be prepared
for an impromptu interview.

Additional information regarding the participating businesses can be accessed at the Job
Fair Web site at www.moreheadstate.edu/spring_jobfair, or by contacting Dr. Mike Hopper at
the Office of Career Services at 783-2233.

####

ajb

News

University Communications

Pauline Young, Director

www.moreheadstate.edu

Morehead State University

UPO Box 1100

Morehead, KY 40351-1689

(606) 783-2030

Feb. 19, 2004

FOR IMMEDIATE RELEASE

MOREHEAD, Ky.---Morehead State University's Interdisciplinary Women's Studies Program will host Dr. Janet Murray, professor of digital media at the Georgia Institute of Technology, on Tuesday, March 9, for a campus lecture.

Dr. Murray will present "New Media, New Genres, New Learning: Turning the Computer into an Expressive Medium" at 6 p.m. in Duncan Recital Hall in Baird Music Hall on the campus.

Her visit was arranged by the Women's Studies Program, along with MSU's Preparing Tomorrow's Teachers to Use Technology Program and the Department of English, Foreign Languages and Philosophy, as part of the Wilma E. Grote Lecture Series.

The event is free and open to the public. A reception will follow the lecture.

Author of "Hamlet on the Holodeck: The Future of Narrative in Cyberspace," she earned her Ph.D. degree in English from Harvard University. She taught humanities and led advanced interactive design projects at MIT before becoming the director of Georgia Tech's graduate program in Information Design and Technology and the director of the Laboratory for Advanced Computing Initiatives in 1999.

A member of Georgia Tech's interdisciplinary GVU Center, Dr. Murray's primary fields of interest is interactive narrative, story/games, interactive television and large-scale multimedia information spaces. Her projects have been funded by IBM, Apple Computer, the Annenberg-CPB Project, the Andrew W. Mellon Foundation and the National Endowment for the Humanities.

Dr. Murray was named a Trustee of the American Film Institute in 2000, where she participates as a mentor in the Enhanced TV Workshop. She is currently working on a textbook for MIT Press, titled "Inventing the Medium: A Principled Approach to Interactive Design."

Additional information is available by calling Dr. Sylvia Henneberg, director of the Interdisciplinary Women's Studies Program, at (606) 783-5288.

#####

jlc

News

University Communications

Pauline Young, Director

www.moreheadstate.edu

Morehead State University

UPO Box 1100

Morehead, KY 40351-1689

(606) 783-2030

Feb. 19, 2004

FOR IMMEDIATE RELEASE

MOREHEAD, Ky.---Morehead State University's Office of Continuing Education is offering a variety of classes in the upcoming weeks. Among those are:

“Genealogy Workshop” classes will be held on March 1 and 8, from 6 - 8 p.m. in 302 Combs Building. The fee is \$29. This course will teach you how to collect, record and maintain information as well as retrieve records about your ancestors from online sources using the Internet. The instructor, J.D. Reeder, an avid genealogist with more than 30 years experience, will demonstrate how to find valuable free vital statistics databases such as various types of local records.

“Microsoft Word Workshop” will enable students to learn the most frequently used features of this popular word processing program, including character and paragraph formatting, creating and revising documents, using auto correct, spell checker, thesaurus and printing. Maximize skills by learning how to import clip art, working with headers and footers, creating and formatting tables, sorting and calculating and mail merge. Classes will be held March 2, 9, 16 and 30 from 6 – 8 p.m. in 312 Combs. The fee is \$40.

A “Dulcimer Class” will be held March 2, 9, and 16 from 5:30 – 7:30 p.m. in conference room 3 of Waterfield Hall. The fee is \$40. This class offers the basics of dulcimer playing and techniques necessary to play several old time tunes. A limited number of dulcimers will be available for use in the class.

“Act-Prep Class” will help a student get prepared for the ACT. The course will analyze each of the test question areas with special consideration given to math and English. Classes will be held March 6 and 13 from 9 a.m. – 1 p.m. in conference room 3 of Waterfield Hall. The fee is \$59, which includes “Getting Into the ACT” test prep book.

Additional information and registration for any of the classes are available by calling the Office of Continuing Education at (606) 783-2875 or on the Web at www.moreheadstate.edu/units/ceu.

####

ajb

Feb. 19, 2004

FOR IMMEDIATE RELEASE

MOREHEAD, Ky.---“healingArt at the Carnegie,” an exhibit with ties to Morehead State University, is on display through March 6 at the Laurie S. Bottoms Gallery in the Carnegie Center for Literacy and Learning in Lexington.

An artists’ reception is slated for Friday, Feb. 20, from 5 to 8 p.m. at the Center, located in the Gratz Park Historic District at 251 West Second Street. The reception is being held in conjunction with the Lexington Arts and Cultural Council.

The philosophy that art can help heal the body and mind is the inspiration behind the exhibit which focuses on the ways in which art can be used for healing purposes, including therapeutic expressions of emotions, management of illness-induced stresses on patients and their families and prevention of burnout for medical professionals.

“healingArt” features the works of six artists and includes paintings, drawings, sculpture and stained glass, which serve as an outlet to reinforce positive thoughts that help heal, according to Joe Sartor of Morehead, MSU professor emeritus of art, and one of the participating artists.

“This is a way of expressing concern, grief, and finding a release or a way of coping with illness,” he said. “It also helps us think about the healing aspects of our environment.”

The other artists are: Karen Telford of Wellington, an MSU alumnus and former faculty member who was curator of the exhibit; Geraldine Lewis, a former MSU employee who earned her master’s degree from the University; Violet Vago of Salt Lick, a physical therapist who has studied art at MSU for several years;

Stanley Shifford of Emerald Isle, N.C., who earned a master’s degree from MSU and is currently pursuing a degree in communications; and Denise Fernandez, who earned a master’s degree from MSU, is a professor of art in her native Kuala Lumpur, Malaysia.

The Carnegie Center is open Monday – Thursday, 9 a.m.-7:30 p.m.; Friday, 9 a.m. – 5 p.m.; and Saturday, 10 a.m. – 2 p.m. There is no charge for viewing.

#####

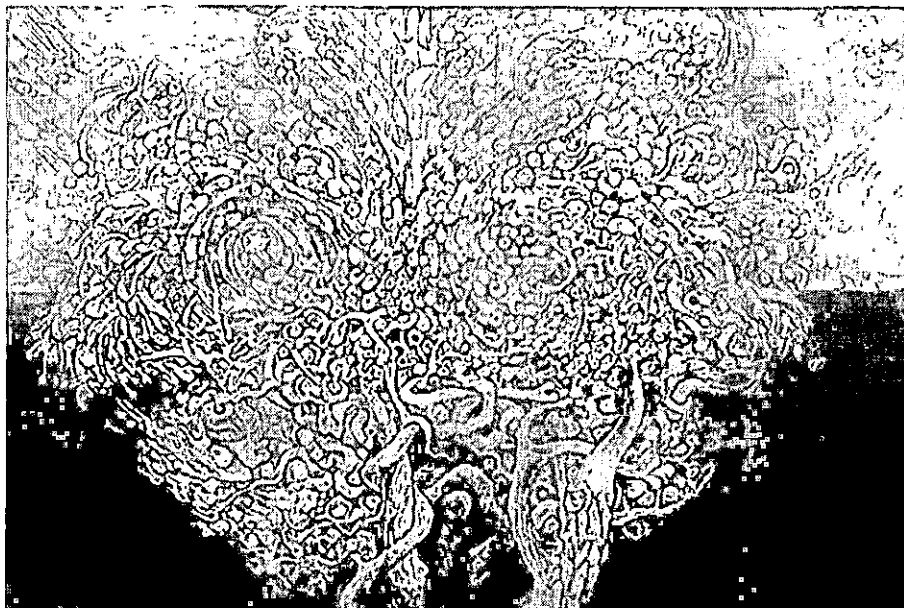
'HEALINGART' EXHIBIT AT LEXINGTON GALLERY

An exhibit of the works of six artists with ties to Morehead State University will be on display through March 6 at the Carnegie Center for Literacy and Learning in Lexington. The exhibit, titled "healingArt," features paintings, drawings and sculpture and stained glass and focuses on the ways in which art can be used for healing and therapeutic purposes. Included in the exhibit is "Open Heart," a painting by Joe Sartor, MSU professor emeritus of art. The gallery, located at 251 West Second Street, is open Monday through Thursday, 9 a.m.-7:30 p.m.; Friday, 9 a.m.-5 p.m.; and Saturday, 10 a.m.-2 p.m. There is no admission charge.

(MSU photo)

2-18-04

MSU is an affirmative action, equal opportunity educational institution.



News

University Communications

Pauline Young, Director

www.moreheadstate.edu

Morehead State University

UPO Box 1100

Morehead, KY 40351-1689

(606) 783-2030

Feb. 19, 2004

FOR IMMEDIATE RELEASE

MOREHEAD, Ky.---Several programs highlighting African American history will be held at Morehead State University during the last half of February, as part of the Black History Month. The activities are being sponsored by Alpha Kappa Alpha sorority, Iota Phi Theta, Black Student Coalition, National Pan-Hellenic Council and the Office of Multicultural Student Services/Multicultural Diversity Fund.

Black History Month events include:

Feb. 19, Worship Experience, Duncan Recital Hall, 7 p.m.; sponsored by Black Gospel Ensemble and Wildfire Ministries.

Feb. 21: "Hair Affair," Waterfield Hall laundry room, 8 a.m.-5 p.m.; sign-up at Multicultural Student Services House (MSSH), \$25 charge, various types of hairstyles for males and females.

Feb. 22: Thinkfast: Black History Game show; several rounds of questioning; team play, last team standing will win \$200; Adron Doran University Center, free to registered student organizations, 7-9 p.m.

Feb. 23-27: Black Student Coalition Retro Week, "Black in Time,":

Feb. 23: Movie Night: "Shaft," MSSH, 6 p.m., free. Refreshments will be available.

Feb. 24, Brotha/Sista Summit, Alumni Food Court, 5-7 p.m.

Feb. 25, Lecture: Jerry Gore, 111 Rader hall, 7 p.m., free.

Feb. 26: Black History Feud, grill, Adron Doran University Center, 6-8 p.m., free.

Feb. 29: Soul Food Dinner Contest, MSSH; dish must be delivered by 5 p.m. for judging; Contest runs from 5:30 – 7 p.m.; free, but either group or individual must provide a dish to be judged.

A complete calendar of events is available from Dr. Francene L. Botts-Butler, Multicultural Student Services director, at (606) 783-2668.

#####

News

University Communications

Pauline Young, Director

www.moreheadstate.edu

Morehead State University

UPO Box 1100

Morehead, KY 40351-1689

(606) 783-2030

Feb. 19, 2004

FOR IMMEDIATE RELEASE

MOREHEAD, Ky.---Award winning vocal duo Barry and Holly Tashian will perform at the "Americana Crossroads Live" concert at Morehead State University on Friday, Feb. 27.

In 1994 the Tashians received the National Association of Independents Record Distributors' Album of the Year award for their album "Straw into Gold." "Harmony," their latest album, was nominated for Bluegrass Album of the Year in 1998 by the Nashville Music Awards.

Barry Tashian first gained national attention with his rock group, Barry & The Remains. The group opened for The Beatles' North American tour, appeared on the Ed Sullivan Show and Hullabaloo and recorded an album on Epic Records when Barry was 19. He recently wrote a book about touring with the Beatles titled "Ticket to Ride: The Extraordinary Diary of The Beatles Last Tour."

In the 1960s and 1970s Barry recorded with country rock singer Gram Parsons on Gram's debut album "GP." He was a member of Emmylou Harris' Hot Band from 1980-1989 and recorded 10 albums with her during that period. He also has recorded with Charlie Louvin, Nanci Griffith, Iris DeMent, Suzy Bogguss and Delia Bell.

Holly, who studied classical music in her youth, took up the guitar and singing harmony with Barry after completing college and graduate studies. They have been performing for nearly three decades as duet singers, song writers and touring musicians.

The Tashians moved to Nashville in the early 1980s to pursue careers in songwriting and recording. "Home," one of Holly's first compositions, appeared on the Grammy nominated album by The Nashville Bluegrass Band. Other singers who have recorded songs by the Tashians include Ty England, The Lynn Morris Band, Kate Brislin & Jody Stecher, Daniel O'Donnell and Roland White.

The duo has performed at the Merle Watson Festival, Lincoln Center, Strawberry Music Festival, Wintergrass, Bethlehem Musik Festival, Swiss Alps Country Music Festival, and numerous European and Australian festivals. They have appeared on The Grand Ole Opry Live, American Music Shop, A Prairie Home Companion, World Café and E-Town Radio.

(MORE)

Americana Crossroads Live, Feb. 27
2-2-2-2-2

Barry and Holly Tashian will perform at 7:30 p.m. in Duncan Recital Hall within Baird Music Hall. Acoustic guitarist David Grier will follow them at 8:30 p.m. Doors open at 7 p.m.

Admission to "Americana Crossroads Live" is by season pass or \$3 per person and free for children 12 and under. Season passes for the entire 2004 schedule are available for \$30 and may be purchased at the concert, or weekdays from 9 a.m. to 4 p.m. at Morehead State Public Radio's campus office, located at 132 Breckinridge Hall.

The "Americana Crossroads Live" concert series is a presentation of MSPR and the Kentucky Center for Traditional Music. Toyota Motor Manufacturing of Georgetown is a corporate sponsor with additional sponsorship by KCTM, Kentucky Folk Art Center, Farmers Mercantile Boots and Shoes, Poppy Mountain Bluegrass Festival, Root-A-Baker's Bakery and Papa John's.

Additional information about the concert is available by calling MSPR at (800) 286-9659 or (606) 783-2001; or by logging on to MSPR's Web site at www.msuradio.com.

####

jlc



THE TASHIANS

News

University Communications

Pauline Young, Director

www.moreheadstate.edu

Morehead State University

UPO Box 1100

Morehead, KY 40351-1689

(606) 783-2030

Feb. 20, 2003

FOR IMMEDIATE RELEASE

MOREHEAD, Ky.---The Student Government Association (SGA) at Morehead State University has given a generous gift of \$750 to the Camden-Carroll Library for the purchase of two video cameras. The camcorders are available for circulation to students who need them for their classes or their work with campus organizations. The cameras may be checked out at the library's circulation desk on the first floor.

Students will be asked to sign an agreement to accept responsibility for the equipment if the camcorders are damaged, lost or stolen. They will be loaned for two-day periods, and may be renewed one time for an additional two days.

"The library is appreciative of SGA for making this service possible for our students," said Jennifer Little, head of access services.

Additional information is available by calling Little at (606) 783-5352; or the library's main office at (606) 783-2200.

#####

SGA AND CCL WORK TOGETHER FOR STUDENTS

Students at Morehead State University are getting some help with their class projects in the form of video cameras. The Student Government Association provided funds for the Camden-Carroll Library to purchase two camcorders. Students may check out the cameras for a two-day period and renew one time for an additional two days. Pam Vance, access services personnel specialist, discusses the procedure for checking out a camera with Wesley E. Dunn, Vanceburg sophomore.

(MSU photo by Tim Holbrook)

2-16-04

MSU is an affirmative action, equal opportunity educational institution.



News

University Communications

Pauline Young, Director

www.moreheadstate.edu

Morehead State University

UPO Box 1100

Morehead, KY 40351-1689

(606) 783-2030

Feb. 20, 2004

FOR IMMEDIATE RELEASE

MOREHEAD, Ky.---Morehead State Public Radio's annual Spring Fundraiser is almost here. This year's event will be held March 6-12.

Donations will allow MSPR to continue to grow as the University's voice in the region. During the fund driver, "Thank You" gifts, such as MSPR T-shirts, coffee mugs, umbrellas and windbreakers will be available for the various levels.

Persons making a pledge before Feb. 29 will be registered for a special drawing to win one of three prize packages to the Ohio Valley Conference's men's and women's basketball tournament. The tourney is set for March 5 and 6 at Nashville's Municipal Auditorium.

Included, along with tournament passes, will be three nights lodging at the Courtyard by Marriott (March 4-6) and a \$100 gift certificate from the MSU Bookstore.

The deadline to register for the OVC gift is Sunday, Feb. 29 and the drawing will be held March 1 at 9:30 a.m.

MSPR is the regional voice for National Public Radio (NPR) News, "Morning Edition," "Car Talk" and "A Prairie Home Companion." MSPR has local programming such as "Front Page" with Chuck Mraz, "Classical Music" with Greg Jenkins and Jones Franklin, "A Time For Tales" with Carolyn Franzini, "Bluegrass Diversion" with Sandy Knipp, "Nothin' But The Blues" with Paul Hitchcock, and "Americana Crossroads Live."

MSPR includes the flagship station WMKY (90.3 FM), WOCS (88.3 FM), and a translator (88.3 FM) in Inez.

The network recently returned to 100 percent power after suffering extensive damage during last winter's ice storm.

Supporters can make a pledge and register online at www.msuradio.com or contact MSPR at (800) 286-9659 or (606) 783-2001.

####

Feb. 20, 2004

FOR IMMEDIATE RELEASE

MOREHEAD, Ky.---John D. Hoskins of Morehead will soon enjoy the experience of a lifetime when he travels overseas, doing what he likes to do best: play music.

Hoskins is a member of Uncle Dave and The Trough Slopers, one of the seven featured acts invited to join The American Country Music Tour of Europe from March 4-May 1. During the eight weeks, there will be four shows per week with rehearsals in between on a tour that will cover 11 countries on the continent, from England to Turkey.

A programmer analyst II in the Office of Institutional Research and Computer Applications at Morehead State University, Hoskins will take leave from his job to participate in the tour. To prepare for the venture, he has been practicing alone on an almost daily basis, then returning to his native Hyden on weekends to practice with the band, unless the group has a scheduled performance.

While it may seem like a rigid schedule, Hoskins says that “music is all-consuming” for him. “It is hard to imagine not having music in my life,” he said.

Hoskins began playing music 14 years ago. He started out performing on the guitar in church. After getting an electric guitar, his music was more heavy metal and he did lots of jammin’ with his friends at Leslie County High School.

When his grandfather gave him a banjo, Hoskins would seek “Uncle Dave” Dougherty to teach him to play. “I have had an opportunity to learn from the best,” he says. After learning the banjo, he has picked up the fiddle and mandolin.

Dougherty had performed with some of the great musicians in the state, such as Bill Monroe and the Stonemans. So, when Uncle Dave needed a fiddler for his band, The Trough Slopers, Hoskins was asked to join the group, giving his debut performance on the MSU campus as part of the Americana Crossroads Live concert series.

As a member of the band since June 2002, Hoskins has played and sung harmony at some of the region’s best festivals, keeping him busy most weekends. The band has performed at Keeneland and in Bill Monroe’s hometown, as well as in New York and points in between.

(MORE)

Hoskins European Tour
2-2-2-2-2

"It has been a good experience," he said. "Sometimes we don't make much money but the food is good."

The group has released two compact discs: "Turnip Town" and "I'm Getting Happy" on which Hoskins played. He describes their music as "old-time and happy tunes that were part of traditional mountain music."

The band consists of Hoskins, fiddle; Shawn Webb of Hyden, guitar; Shilo Eldridge of Hazard, bass; and Uncle Dave of Smilax, banjo.

Hoskins has learned from some of the area's best musicians and is interested in all types of music. He enjoys listening to Bill Monroe, Ella Fitzgerald, the Beatles, hard rock, classical and rock.

While the overseas tour is exciting, he is not happy about leaving his family. He and his wife, LaRonda, are parents of two children: Cameron, 4, and Haleigh, 10 months. "I will be away from her on her first birthday," he says of his daughter.

After graduating from LCHS, the couple came to MSU to study. John, who enrolled on a guitar scholarship, received a Bachelor of Business Administration degree. LaRonda, who earned a bachelor's degree and is currently working on a master's degree, is a special education teacher at Tilden Hogge Elementary School.

####

John Hoskins



BAND HEADS FOR OVERSEAS TOUR

Uncle Dave and The Trough Slopers has been invited to perform in The American Country Music Tour of Europe, March 4-May 1. During the eight week tour, the band will perform four shows per week and travel through 11 countries. John D. Hoskins of Morehead, programmer analyst II in the Office of Institutional Research and Computer Applications at Morehead State University, will take a leave from his work to participate in the tour. A photo of the band includes, from left, former member Roy Tackett, guitar; Uncle Dave Dougherty of Smilax, banjo; Hoskins, fiddle; and Shilo Eldrige of Hazard, bass. The newest member of the group is Shawn Webb of Hyden, not in photograph. The band has played numerous festivals in the region.

(Publicity photo)

2-20-04

MSU is an affirmative action, equal opportunity educational institution.



News

University Communications

Pauline Young, Director

www.moreheadstate.edu

Morehead State University

UPO Box 1100

Morehead, KY 40351-1689

(606) 783-2030

Feb. 20, 2004

FOR IMMEDIATE RELEASE

MOREHEAD, Ky.---Morehead State University has announced that Jessica Lucas Hurt of Hazard was the recipient of the 2003-2004 Clifford R. and Addie R. Rader Memorial Scholarship.

The daughter of Steve and Deborah Lucas of Bulan, Hurt is a sophomore nursing major and a member of the Student Nurses Association.

After completing her bachelor's degree at MSU, she plans to continue her education by earning a master's degree and becoming a nurse practitioner.

The scholarship was established through a bequest by the estate of Addie R. Rader in honor of her mother, Mrs. Frank Ritter, and her husband, Dr. Clifford Rader. The namesake of MSU's Rader Hall, Dr. Rader was chair of the University's former Division of Social Sciences, now part of the Caudill College of Humanities.

To be eligible for the Clifford R. and Addie R. Rader Scholarship, the applicant must be a full-time student enrolled in MSU's pre-licensure and post-licensure Baccalaureate Nursing Program and maintain a cumulative grade point average of 3.0 on a 4.0 scale.

For additional information on the scholarship program or to make a donation, visit the Web site at www.moreheadstate.edu/units/development or call toll free at 1-877-690-GIVE (4483).



MSU is an affirmative action, equal opportunity educational institution.

News

University Communications

Pauline Young, Director

www.moreheadstate.edu

Morehead State University

UPO Box 1100

Morehead, KY 40351-1689

(606) 783-2030

Feb. 20, 2004

FOR IMMEDIATE RELEASE

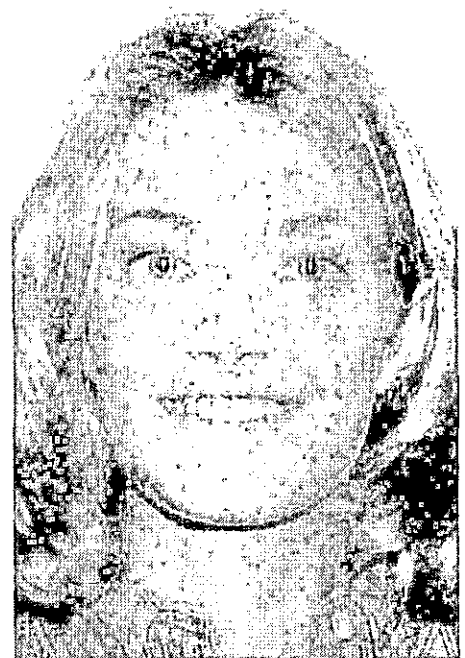
MOREHEAD, Ky.---Morehead State University has announced that Jamie N. Blair of Oil Springs was the recipient of the Greek Woman of the Year Scholarship and the Kentucky Mountain Laurel Queen Scholarship.

Blair, the daughter of James and Nancy Blair of Oil Springs, is a senior radiological sciences major.

She was the 2002 MSU Homecoming Queen and represented the University at the Mountain Laurel Festival where she was crowned Queen. President of the Student Activities Council, Blair is a member of Kappa Delta sorority, Student Government Association, Order of Omega, Gamma Beta Phi Honor Society and Students Pursuing Education in Computed Tomography (SPECT). She has been named to the Dean's List and National Deans List.

For additional information on the scholarship program or to make a donation, visit the Web site at www.moreheadstate.edu/units/development or call toll free at 1-877-690-GIVE (4483).

####



News

University Communications

Pauline Young, Director

www.moreheadstate.edu

Morehead State University

UPO Box 1100

Morehead, KY 40351-1689

(606) 783-2030

Feb. 20, 2004

FOR IMMEDIATE RELEASE

MOREHEAD, Ky.---Emily Spencer of Beattyville has been awarded the Clifford R. and Addie R. Rader Memorial Scholarship at Morehead State University for 2003-2004.

The daughter of Orvis and Gina Spencer of Beattyville, she is a graduate of Lee County High School.

Currently a third year student at MSU, Spencer is pursuing a nursing degree. She is a member of the Student Nursing Association.

Spencer has been named to the Dean's List four consecutive times. She plans to work toward a master's degree upon completion of the nursing program,

The scholarship was established through a bequest by the estate of Addie R. Rader in honor of her mother, Mrs. Frank Ritter, and her husband, Dr. Clifford Rader. The namesake of MSU's Rader Hall, Dr. Rader was chair of the University's former Division of Social Sciences, now part of the Caudill College of Humanities.

To be eligible for the Clifford R. and Addie R. Rader Scholarship, the applicant must be a full-time student enrolled in MSU's pre-licensure and post-licensure Baccalaureate Nursing Program and maintain a cumulative grade point average of 3.0 on a 4.0 scale.

For additional information on the scholarship program, visit the Web site at www.moreheadstate.edu/units/development or call toll-free (800) 690-6900 (4483).

####



News

University Communications

Pauline Young, Director

www.moreheadstate.edu

Morehead State University

UPO Box 1100

Morehead, KY 40351-1689

(606) 783-2030

Feb. 20, 2004

FOR IMMEDIATE RELEASE

MOREHEAD, Ky.---William Casey Shultz, a Morehead State University freshman, has been awarded the Clara Bascom Lane Scholarship for 2003-2004.

He is the son of Rodney and Lisa Shultz of Mt. Sterling. Active in the Student Government Association, he is listed in "Who's Who."

Shultz, an elementary education major, is a graduate of Montgomery County High School. He is involved in community plays, Big Brother/Big Sister and First Baptist Youth.

The Clara Bascom Lane Scholarship was established by the First Presbyterian Church of Mt Sterling on behalf of the friends and family of Clara Bascom Lane, an alumnus of Morehead State University.

To be eligible for this scholarship, the applicant must be a full-time student from Montgomery County and have high academic achievements and test scores.

For additional information on the scholarship program or to make a donation, visit the Web site at www.moreheadstate.edu/units/development or call toll free at 1-877-690-GIVE (4483).

####



MSU is an affirmative action, equal opportunity educational institution.

News

University Communications

Pauline Young, Director

www.moreheadstate.edu

Morehead State University

UPO Box 1100

Morehead, KY 40351-1689

(606) 783-2030

Feb. 23, 2004

FOR IMMEDIATE RELEASE

MOREHEAD, Ky.---Morehead State University has announced that Ryane Markwell of Morehead was the recipient of an E.O. Robinson Mountain Fund Scholarship for 2003-2004.

Markwell, the daughter of Danny and Jackie Markwell, is a junior nursing major. A graduate of Rowan County Senior High School, she is active in the Haldeman Volunteer Fire Department and the American Legion auxiliary.

To be eligible for this scholarship, the applicant must be a nursing major from one of these East Kentucky counties: Bell, Breathitt, Carter, Clay, Elliott, Estill, Floyd, Harlan, Jackson, Knott, Laurel, Lawrence, Menifee, Morgan, Owsley, Perry, Pike, Powell, Rockcastle, Rowan, Whitley and Wolfe.

For additional information on the scholarship program or to make a donation, visit the Web site at www.moreheadstate.edu/units/development or call toll free at 1-877-690-GIVE (4483).

####



News

University Communications

Pauline Young, Director

www.moreheadstate.edu

Morehead State University

UPO Box 1100

Morehead, KY 40351-1689

(606) 783-2030

Feb. 23, 2004

FOR IMMEDIATE RELEASE

MOREHEAD, Ky.---Morehead State University has announced that Linda Adkins of Ezel was the recipient of an E.O. Robinson Mountain Fund Scholarship for 2003-2004.

Adkins, a sophomore nursing major, is a volunteer fire fighter. She is a graduate of Morgan County High School.

To be eligible for this scholarship, the applicant must be a nursing major from one of these East Kentucky counties: Bell, Breathitt, Carter, Clay, Elliott, Estill, Floyd, Harlan, Jackson, Knott, Laurel, Lawrence, Menifee, Morgan, Owsley, Perry, Pike, Powell, Rockcastle, Rowan, Whitley and Wolfe.

For additional information on the scholarship program or to make a donation, visit the Website at www.moreheadstate.edu/units/development or call toll free at 1-877-690-GIVE (4483).

####

News

University Communications

Pauline Young, Director

www.moreheadstate.edu

Morehead State University

UPO Box 1100

Morehead, KY 40351-1689

(606) 783-2030

Feb. 23, 2004

FOR IMMEDIATE RELEASE

MOREHEAD, Ky.---Morehead State University has announced that Amy E. Hall of Frenchburg was a recipient of the E.O. Robinson Mountain Fund Scholarship for 2003-2004.

Hall, the daughter of James and Carolyn Hall of Frenchburg and granddaughter of Betty Thornsberry and the late Thomas Thornsberry of Hollybush, is a junior nursing major.

A graduate of Menifee County High School, she also received the Leadership Award from MSU. She was a 2001 All-American Scholar.

Hall is a substitute teacher, a member of the volunteer rescue squad, and the high school girls assistant soccer coach.

After graduation, she hopes to work in an emergency room at a local hospital.

To be eligible for this scholarship, the applicant must be a nursing major from one of these East Kentucky counties: Bell, Breathitt, Carter, Clay, Elliott, Estill, Floyd, Harlan, Jackson, Knott, Laurel, Lawrence, Menifee, Morgan, Owsley, Perry, Pike, Powell, Rockcastle, Rowan, Whitley and Wolfe.

For additional information on the scholarship program or to make a donation, visit the Web site at www.moreheadstate.edu/units/development or call toll free at 1-877-690-GIVE (4483).

####

News

University Communications

Pauline Young, Director

www.moreheadstate.edu

Morehead State University

UPO Box 1100

Morehead, KY 40351-1689

(606) 783-2030

Feb. 23, 2004

FOR IMMEDIATE RELEASE

MOREHEAD, Ky.---Morehead State University has announced that Amber Nicole Darnell of Mouthcard was the recipient of an E.O. Robinson Mountain Fund Scholarship for 2003-2004.

Darnell, the daughter of Gregory and Trula Darnell, is a senior nursing major. A graduate of Feds Creek High School, she also received a Regional Honors Scholarship from MSU.

She has been involved in the Community Health Fair and volunteers at community home.

To be eligible for this scholarship, the applicant must be a nursing major from one of these East Kentucky counties: Bell, Breathitt, Carter, Clay, Elliott, Estill, Floyd, Harlan, Jackson, Knott, Laurel, Lawrence, Menifee, Morgan, Owsley, Perry, Pike, Powell, Rockcastle, Rowan, Whitley and Wolfe.

For additional information on the scholarship program or to make a donation, visit the Web site at www.moreheadstate.edu/units/development or call toll free at 1-877-690-GIVE (4483).



News

University Communications

Pauline Young, Director

www.moreheadstate.edu

Morehead State University

UPO Box 1100

Morehead, KY 40351-1689

(606) 783-2030

Feb. 23, 2004

FOR IMMEDIATE RELEASE

MOREHEAD, Ky.---Morehead State University has announced that Shelley Stephens of Olive Hill was the recipient of an E.O. Robinson Mountain Fund Scholarship for 2003-2004.

Stephens, the daughter of Shirley and Paul Webb of Olive Hill and Ronnie Pennington of Grayson, is a sophomore nursing major.

A graduate of West Carter High School, Stephens was awarded the Regional Honors Scholarship from MSU.

She has been named to the Dean's List.

To be eligible for this scholarship, the applicant must be a nursing major from one of these east Kentucky counties: Bell, Breathitt, Carter, Clay, Elliott, Estill, Floyd, Harlan, Jackson, Knott, Laurel, Lawrence, Menifee, Morgan, Owsley, Perry, Pike, Powell, Rockcastle, Rowan, Whitley and Wolfe.

For additional information on the scholarship program or to make a donation, visit the Website at www.moreheadstate.edu/units/development or call toll free at 1-877-690-GIVE (4483).

####



News

University Communications

Pauline Young, Director

www.moreheadstate.edu

Morehead State University

UPO Box 1100

Morehead, KY 40351-1689

(606) 783-2030

Feb. 23, 2004

FOR IMMEDIATE RELEASE

MOREHEAD, Ky.---Morehead State University has announced that Ricky Aaron Lewis of Olive Hill was the recipient of the E.O. Robinson Mountain Fund Scholarship for 2003-2004.

Lewis, the son of Ricky Lewis and Cindy Richmond, both of Olive Hill, is a senior nursing major. He is a graduate of Elliott County High School.

A Dean's List student, Lewis is a member of Pi Kappa Phi fraternity and the Student Government Association. Listed in "Who's Who Among American College and Universities," he was an Adopt-A-Highway volunteer and active in Rowan County Christmas.

Upon graduation he plans to work as a registered nurse in East Kentucky.

To be eligible for this scholarship, the applicant must be a nursing major from one of the East Kentucky counties: Bell, Breathitt, Carter, Clay, Elliott, Estill, Floyd, Harlan, Jackson, Knott, Laurel, Lawrence, Menifee, Morgan, Owsley, Perry, Pike, Powell, Rockcastle, Rowan, Whitley and Wolfe.

For additional information on the scholarship program or to make a donation, visit the Web site at www.moreheadstate.edu/units/development or call toll free at 1-877-690-GIVE (4483).

#####

News

University Communications

Pauline Young, Director

www.moreheadstate.edu

Morehead State University

UPO Box 1100

Morehead, KY 40351-1689

(606) 783-2030

Feb. 23, 2004

FOR IMMEDIATE RELEASE

MOREHEAD, Ky.---Morehead State University has announced that Randy Jene' Martin of Adams was the recipient of an E.O. Robinson Mountain Fund Scholarship for 2003-2004.

Martin, the daughter of Randy and Evelyn Martin of Adams, is a junior nursing major. She is a graduate of Lawrence County High School.

To be eligible for this scholarship, the applicant must be a nursing major from one of these East Kentucky counties: Bell, Breathitt, Carter, Clay, Elliott, Estill, Floyd, Harlan, Jackson, Knott, Laurel, Lawrence, Menifee, Morgan, Owsley, Perry, Pike, Powell, Rockcastle, Rowan, Whitley and Wolfe.

For additional information on the scholarship program or to make a donation, visit the Website at www.moreheadstate.edu/units/development or call toll free at 1-877-690-GIVE (4483).

####



News

University Communications

Pauline Young, Director

www.moreheadstate.edu

Morehead State University

UPO Box 1100

Morehead, KY 40351-1689

(606) 783-2030

Feb. 23, 2004

FOR IMMEDIATE RELEASE

MOREHEAD, Ky.---Morehead State University has announced that Scarlet R. Ferguson of Ezel was the recipient of the E.O. Robinson Mountain Fund Scholarship for 2003-2004.

Ferguson, the daughter of Charles Edward and Pauline Strong of Campton is a sophomore nursing major. She is a graduate of Wolfe County High School.

She was named to the Dean's List in the 2003 spring semester.

Upon successfully completing the nursing program she would like to work in a trauma unit.

To be eligible for this scholarship, the applicant must be a nursing major from one of these East Kentucky counties: Bell, Breathitt, Carter, Clay, Elliott, Estill, Floyd, Harlan, Jackson, Knott, Laurel, Lawrence, Menifee, Morgan, Owsley, Perry, Pike, Powell, Rockcastle, Rowan, Whitley and Wolfe.

For additional information on the scholarship program or to make a donation, visit the Website at www.moreheadstate.edu/units/development or call toll free at 1-877-690-GIVE (4483).

####



MSU is an affirmative action, equal opportunity educational institution.

News

University Communications

Pauline Young, Director

www.moreheadstate.edu

Morehead State University

UPO Box 1100

Morehead, KY 40351-1689

(606) 783-2030

Feb. 24, 2004

FOR IMMEDIATE RELEASE

MOREHEAD, Ky.---The Taste of Home Cooking School of Greendale, Wis., is making a return visit to the Morehead State University campus.

The school, sponsored by Reiman Publishing, will present a two-hour cooking demonstration at MSU's Academic-Athletic Center on Tuesday, Sept. 14.

The University site was one of only 250 locations across the nation selected for the 2002 Taste of Home Cooking School program. "That program was well received by the entire community," said Tina Stafford, the University's coordinator for the event. "From what we learned at that event, this year's program should be even better."

The program will feature on-stage recipe demonstrations, the latest kitchen appliances, new food products and innovative cooking techniques, along with lots of prizes. Every attendee will receive a free full-color recipe collection that includes the dishes prepared on stage--plus more than 150 bonus recipes.

Reservations are now being accepted from vendors and community groups who wish to promote their businesses by reserving a display table in the AAC lobby. The cost is \$20 per table.

The Taste of Home Cooking School has hosted cooking demonstrations across the United States for more than 50 years. The program teaches easy, reliable recipes that are kitchen-tested by "Taste of Home," the largest-circulation cooking magazine in the world.

Other magazines printed by Reiman Publishing are "Crafting Traditions," "Country Woman," "Birds & Blooms," "Country," "Farm & Ranch Living," "Reminisce," "Country Discoveries," and "Light & Tasty."

Details on the cooking school will be forthcoming later this summer. Tickets will go on sale in late August. Additional information is available by calling Stafford at (606) 783-2605 or 783-2005.

####

Morehead State University

UPO Box 1100

Morehead, KY 40351-1689

(606) 783-2030

Feb. 24, 2004

FOR IMMEDIATE RELEASE

MOREHEAD, Ky.---Project Management is being called the premier job skill in the 21st century workplace.

Morehead State University's Office of Continuing Education will host a "Project Management" workshop on Thursday, April 8. The session will be held from 8:30 a.m. - 4:30 p.m. at the St. Claire Regional Medical Center in Morehead.

In today's demanding environment of fast change, tighter deadlines and smaller budgets it has placed a new emphasis on project management as a reliable process for organizing and getting work accomplished in a manner that insures the unique needs of customers are met, while valuable resources (money, time, and people) are efficiently utilized.

Whether the project is simple or complex - making things happen, getting results, dealing effectively with change, maximizing resources, and meeting deadlines are all the result of good project management.

This course is designed for those who are new to project management, as well as those who have had some experience managing projects. The tools and principles taught in this program are based on the Project Management Institute's standard – Project Management Body of Knowledge.

Instructor Bob Jewell founded the Omega Leadership Group in 1997 and has committed the second half of his career to teaching and inspiring a passion for excellence.

Jewell's extensive hands-on business and project management experience combined with his strong communication, facilitation, and presentation skills creates a dynamic atmosphere for learning.

His consulting and training work has earned the respect of clients such as Kroger, Lexmark, Cincinnati Bell, Mercy Health Partners, Provident Bank, Toyota, and National City Mortgage. He also is a presenter on the topic of project management with the executive education programs at the University of Kentucky, Kent State University, and Ohio State University.

Registration is \$295 per person for the event, which includes materials for the program, a continental break and lunch. The workshop is limited to 25 participants.

Additional information and registration are available by calling the Office of Continuing Education at (606) 783-2875.

####

News

University Communications

Pauline Young, Director

www.moreheadstate.edu

Morehead State University

UPO Box 1100

Morehead, KY 40351-1689

(606) 783-2030

Feb. 24, 2004

FOR IMMEDIATE RELEASE

MOREHEAD, Ky.---Another student from **Jessamine County** has been named to the Morehead State University Dean's List for the 2003 Fall Semester.

To be named to the list, a student must be enrolled on a full-time basis and achieve at least a 3.5 grade point average on a 4.0 scale, for the current semester.

The Dean's List included:

Amanda Sue Denny, Lexington.

#####

dt

Tips

University Communications

Pauline Young, Director

www.moreheadstate.edu

Morehead State University

UPO Box 1100

Morehead, KY 40351-1689

(606) 783-2030

HIGHLIGHTS AT MOREHEAD STATE UNIVERSITY

(Feb. 29-March 6)

Sunday, Feb. 29

Senior recital: Jessica Gast, oboe, Duncan Recital Hall, 1 p.m., free. Additional information: (606) 783-2473.

Baseball: Eagles vs. Toledo, Allen Field, 1 p.m., free. Additional information: (606) 783-2881.

Tuesday, March 2

Spring Job Fair, Crager Room, Adron Doran University Center, 10 a.m. – 1 p.m., free. Additional information: (606) 783-2233.

Concert: MSU Jazz Ensemble I, Duncan Recital Hall, 8 p.m., free. Additional information: (606) 783-2473.

Wednesday, March 3

Baseball: Eagles vs. Cedarville, Allen Field, 3 p.m., free. Additional information: (606) 783-2881.

Guest recital: DiMartino/Osland Jazz Orchestra, Duncan Recital Hall, 7:30 p.m., charge. Additional information: (606) 783-2473.

Thursday, March 4

“Lost and Found, Again 2004,” Adkins Gallery, Kentucky Folk Art Center, through May 23, charge. Opening reception: March 4, 6-8 p.m. Additional information: (606) 783-2204.

Saturday, March 6

Morehead State Public Radio Spring Fundraiser, through March 12. Additional information: (606) 783-2001; or (800) 286-9659.

Rifle: Eagles in Bluegrass Games, Button Rifle Range, 8 a.m., also March 7. Additional information: (606) 783-2088.

Due to early press deadlines, some listings are subject to change.

####

2-23-04sas

News

University Communications

Pauline Young, Director

www.moreheadstate.edu

Morehead State University

UPO Box 1100

Morehead, KY 40351-1689

(606) 783-2030

Feb. 24, 2004

FOR IMMEDIATE RELEASE

MOREHEAD, Ky.---The Kentucky Folk Art Center will present Louisville based band Monkey Boy on Thursday, March 4, from 6-8 p.m., in conjunction with the opening reception for KFAC's new exhibition, "Lost and Found Again, 2004."

Monkey Boy is led by Scott Scarboro, a multimedia artist and entertainer from Louisville who creates kinetic junk art and electrified homemade instruments. Scarboro has been creating music under the name Monkey Boy for the past 10 years.

The band mixes traditional jaw harps, slide guitar, dulcimer, stomp boxes, fiddle and drums with an odd assortment of contraptions made from electronic toys, coffee cans and other items. The band's newest compact disc is titled "When Monkeys Fly."

Monkey Boy has performed at numerous colleges, art galleries and art festivals, including the American Visionary Art Museum in Baltimore, the Art Institute in Chicago, and Finsterfest in Summersville, Ga.

Scarboro attributes his main source of inspiration to childhood memories of how his grandparents would often solve everyday problems in highly creative ways. The sight of his grandfather attaching a Falls City beer can to a mouth harp with wire, to remedy the lack of the teeth needed to play the instrument, changed his life forever.

"We're very excited about the exhibition and Monkey Boy's performance. This will be a showcase of strange and exciting art and music by some of our state's most creative artists," said Matt Collinsworth, KFAC's director.

"Lost And Found Again, 2004" will be displayed at the Kentucky Folk Art Center through May 23. The exhibition is sponsored in part by a grant from the Kentucky Arts Council.

KFAC is a cultural, educational and economic development service of Morehead State University. The center, located at 102 West First Street in Morehead, is open Monday-Saturday, 9 a.m. to 5 p.m., and Sundays, 1-5 p.m.

Additional information is available from the center's Web site at www.kyfolkart.org, or by calling (606) 783-2204.

####

MSU is an affirmative action, equal opportunity educational institution.



Morehead State University

UPO Box 1100

Morehead, KY 40351-1689

(606) 783-2030

Feb. 24, 2004

FOR IMMEDIATE RELEASE

MOREHEAD, Ky.---The Kentucky Folk Art Center (KFAC) and Morehead State University's Appalachian Heritage Program will host Kentucky author Linda Scott DeRosier at the next installment of the speakers series "Appalachia: Yesterday and Today." She will present "Looking Toward Home: A Creeker Sings of Life and Grace" in Duncan Recital Hall on Monday, March 8, at 7 p.m.,

Dr. DeRosier is the author of two books, "Creeker: A Woman's Journey" and "Songs of Life and Grace," both published by University of Kentucky Press. "Creeker" is a memoir, recounting the author's experiences growing up in rural Johnson County and how those experiences shaped her life. "Songs" tells the story of Dr. DeRosier's parents, including her family history going back into the 1800s.

In the early pages of "Creeker" she writes, "I want, at the outset, to differentiate between those Appalachians who grow up in the towns and those from rural areas - the creeks and the hollers. We tend to be lumped together by outsiders: demographers, bureaucrats who fund social programs, and academics who study the region... While the difference is pervasive, it goes largely unrecognized. In terms of expectations, a woman my age born in Paintsville, Kentucky - the county seat of my home county and the nearest town to Two-Mile - would be more likely to find similarity with a cohort born in Plainville, Wisconsin, or Carthage, Alabama - or any of a thousand little towns in the United States - than with me. This is a story from rural Appalachia... reported by a creeker." This understanding of and love for the life and culture of the rural mountains runs through both books and binds the pair closely together.

In addition to her writing, Dr. DeRosier is the former director of the Center for Research in Education and Psychology at Kentucky State University and director of The Institute for Appalachian Studies at East Tennessee State University. "Creeker" was a finalist for the Appalachian Writers' Book of the Year award in 2000, and "Songs of Life and Grace" was listed as Number 1 on the BookSense List of University Press Bestsellers in September. Since 1988, she has served as professor of psychology at Rocky Mountain College in Billings, Mont., where lives with her husband Arthur.

(MORE)

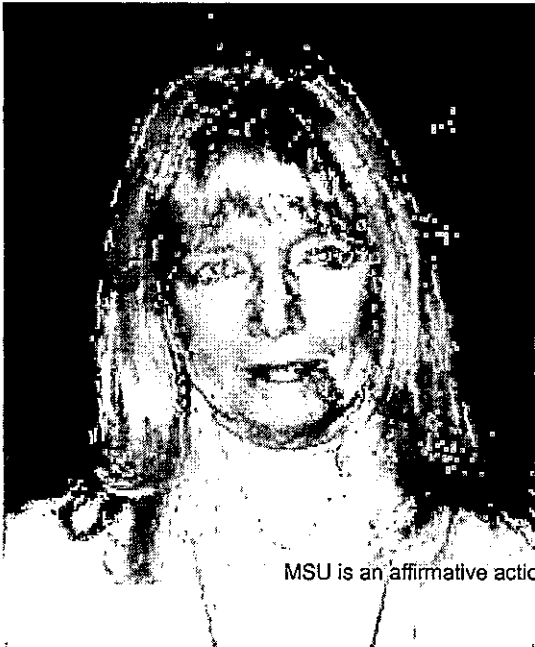
Campus speaker DeRosier
2-2-2-2-2

"This is some of the best, warmest and most insightful writing about Appalachia that I've had the pleasure of reading," said Dr. John Ernst, director of MSU's Appalachian Heritage Program. "Attending Linda Scott DeRosier's presentation will be a must for anyone interested in learning more about history and culture of the Kentucky mountains."

"As someone who grew up in one of the most rural area's of East Kentucky, when I read 'Creeker' it was like being struck by lightning," said Matt Collinsworth, KFAC director. "Dr. DeRosier gets it. She understands what it means to come from our region's rural communities, and she doesn't mince her words. It's very exciting to have her here in Morehead."

New speakers and dates will be announced as they are scheduled. Additional information is available by calling (606) 783-2204. KFAC, located at 102 West First Street in Morehead, is open Monday-Saturday, 9 a.m. to 5 p.m., and Sundays, 1-5 p.m.

####



MSU is an affirmative action, equal opportunity educational institution.

News

University Communications

Pauline Young, Director

www.moreheadstate.edu

Morehead State University

UPO Box 1100

Morehead, KY 40351-1689

(606) 783-2030

Feb. 24, 2003

FOR IMMEDIATE RELEASE

MOREHEAD, Ky.---A Morehead State University professor who has taught in the Department of Industrial Education and Technology for more than 30 years is preparing for two things: retirement and publication of his 10th book.

Dennis Karwatka is closing out his MSU teaching career at the end of the current semester while at the same time his latest textbook is arriving at schools. He co-authored "Introduction to Technology," which carries a 2005 copyright year and is published by the Glencoe Division of McGraw-Hill Publications. Dr. Alan Pierce, an educational consultant from New York, is co-author.

The book, aimed at a middle school-to-high school audience, is divided into seven major sections, including Nature of Technology, Engineering Design, Communication, Biotechnology, Manufacturing, Construction and Transportation.

The text incorporates the goals of the National Standards for Technological Literacy, which was recently established by the National Aeronautics and Space Administration in conjunction with the International Technology Education Association.

The book has elements of technical history, ethics and developing technologies. A more complete outline may be seen at www.glencoe.com/sec/catalog/linktech.html and then click on "New! Introduction to Technology © 2005."

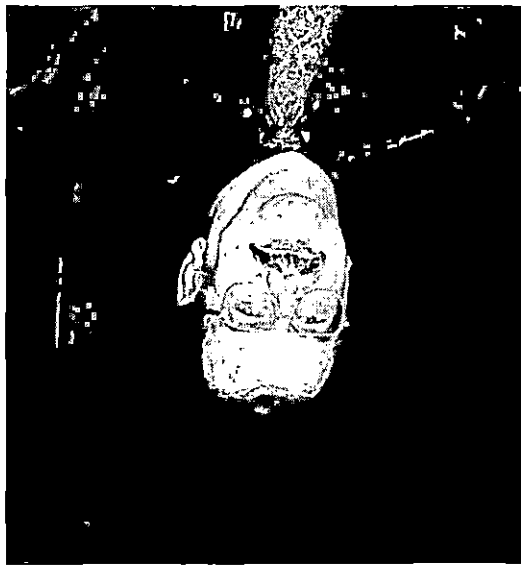
Since 1987, Karwatka has authored or co-authored five textbooks and five other books that dealt with aspect of technical history. One of the books, which he authored alone, "Technology's Past, More Heroes of Invention and Innovation" (1999, Prakken Publications), received an Outstanding Academic Title award from the American Library Association in 2001.

Karwatka, a Kentucky registered professional engineer with degrees in mechanical engineering and physics, said that a couple of highlights during his time in the IET Department included receiving the University's 1988 Distinguished Faculty Award, and seeing his daughter graduate from MSU in 1995.

Additional information is available by calling Karwatka at (606) 783-2416.

####

MSU is an affirmative action, equal opportunity educational institution.



News

University Communications

Pauline Young, Director

www.moreheadstate.edu

Morehead State University

UPO Box 1100

Morehead, KY 40351-1689

(606) 783-2030

Feb. 25, 2004

FOR IMMEDIATE RELEASE

MOREHEAD, Ky.---Morehead State University's Department of Art and the Interdisciplinary Women's Studies Program will present its first Women's History Month Exhibition.

The exhibit will run March 1-12 in the Strider Gallery of the Claypool -Young Art Building. The gallery is open 8 a.m. to 4 p.m. Monday through Friday.

Nineteen regional artists and 21 artworks were juried in the exhibit by the three-member Women's Studies advisory council: Dr. Ann Andaloro, assistant professor of communications; Dr. Emma Perkins, assistant professor of art; and Jennifer Reis, MSU's art gallery director.

A trio of Morehead artists captured the top prizes. Samantha Cuning, a senior, captured first prize and a \$250 purchase award for her drawing "Putting it Back Together." A second prize of \$100 was awarded to Amorina Stone, a sophomore, for her untitled painting while Nancy Sartor took third prize and \$75 for her quilted wall hanging "Yellow Head Pins."

A closing reception will be held on Friday, March 12, from 5 to 6:30 p.m. in the Strider Gallery. The public is invited to attend.

Additional information is available by calling Julie Gawne, assistant professor of art, at (606) 783-2768.

####

ajb

News

University Communications

Pauline Young, Director

www.moreheadstate.edu

Morehead State University

UPO Box 1100

Morehead, KY 40351-1689

(606) 783-2030

Feb. 25, 2004

FOR IMMEDIATE RELEASE

MOREHEAD, Ky.---The Community Outreach Partnership Center, established by Morehead State University's Institute for Regional Analysis and Public Policy, will host several seminars at the center in the coming months. Among them are:

"Defining Your Mission; Aligning Your Goals" will be presented by Louise Cooper, Gear-Up Project field coordinator, on Saturday, March 6, at 10 a.m.

"It's Not Greek Anymore: Organizations, Society, and the Individual" will be given by Dr. Michael Hail, assistant professor of political science, on Wednesday, March 10, at 2 p.m.

"Difficult People: Their Behavior, Your Response" presented by Ted Marshall, chair of the Department of Sociology, Social Work and Criminology, on Tuesday, April 20, at 6 p.m.

"Mining for Data: How to Access Free Local Data and Maps and Put Them to Use" taught by Zack Bortolot and Christine McMichael, assistant professors of geography, on Wednesday, April 28, at 6 p.m.

"Myth and Reality in Educational Reform and Accountability: A Researcher's Perspective" instructed by Dr. Edward Reeves, director of the Center for Educational Research and Leadership and professor of sociology, on Tuesday, June 1, at 10 a.m.

"Building Community and Regional Partnerships" presented by Dr. David Rudy, dean of the Institute for Regional Analysis and Public Policy and professor of sociology, on Tuesday, June 15, at 2 p.m.

The COPC, located at 168 East Main Street, is a joint initiative between the U.S. Department of Housing and Urban Development and MSU. Its purpose is to engage the resources of the university into shared partnerships with local community and government groups. These partnerships will be in the form of 13 projects that address five development areas: community organizing/planning, economic development/neighborhood revitalization, education, housing, and the environment.

COPC projects currently underway include a housing quality study, an historical preservation effort, an adult literacy workshop and various environmental projects.

The seminars are free and open to the public. Reservations are not necessary. Additional information is available by calling Loretta Carroll, COPC director, at (606) 783-5419 or Dr. Rudy at (606) 783-5420.

####

ajb

News

University Communications

Pauline Young, Director

www.moreheadstate.edu

Morehead State University

UPO Box 1100

Morehead, KY 40351-1689

(606) 783-2030

Feb. 27, 2004

FOR IMMEDIATE RELEASE

MOREHEAD, Ky.---Karisha Friley of Jackson, an elementary education major attending classes at Morehead State University at Jackson, has been awarded a \$185 scholarship to apply toward her testing fees for the teacher education program. The scholarship funds were provided by the Jackson Kiwanis Club to assist deserving students in taking the tests.

Dr. Jeff Edgens, director of the MSU at Jackson campus, praised the efforts of the Kiwanis Club, noting that academic scholarships to defray additional student costs are greatly appreciated. "Our teacher education students have numerous tests to take during the academic year and if they can get support to defray costs, it's always a good thing for the student," he said.

In awarding the check, James Stanley, president-elect for Jackson Kiwanis Club and marketing director at Kentucky Regional Medical Center, said: "Kiwanis raises funds to help the community and we're delighted we could provide this opportunity for Morehead State at Jackson students."

Friley is the first student to receive an award from the Kiwanis donation.

Currently an MSU senior, she earned an associate degree in human services from Hazard Community and Technical College. "I am very thankful for this scholarship. It will help me further my educational goals," she said.

She will complete the student teaching semester for her education degree in the fall semester.

####

JACKSON STUDENT RECEIVES SCHOLARSHIP

Karisha Friley, a Jackson senior elementary education major attending classes at the Morehead State University at Jackson campus, has been awarded a scholarship by the Jackson Kiwanis Club. At the presentation were, from left, Dr. Jeff Edgens, MSU at Jackson director; Friley; and James Stanley, president-elect of the Jackson Kiwanis Club and marketing director at Kentucky Regional Medical Center. Friley will apply the scholarship toward testing fees for the teacher education program.

2-27-04

MSU is an affirmative action, equal opportunity educational institution.



News

University Communications

Pauline Young, Director

www.moreheadstate.edu

Morehead State University

UPO Box 1100

Morehead, KY 40351-1689

(606) 783-2030

Feb. 27, 2004

FOR IMMEDIATE RELEASE

MOREHEAD, Ky.---Morehead and the Rowan County community are invited to join the celebration when Morehead State University observes Founders Day 2004 on Thursday, March 18.

"On this special day, we again will recognize and honor the efforts of those whose service has contributed to the realization of the dreams of our founders," said MSU President Ronald G. Eaglin. "The institution reflects the strong, enduring pride of those whose accomplishments and dedication created its rich heritage for more than a century of service."

MSU will celebrate 117 years of higher education in Rowan County and its 81st anniversary as a public institution with a day of festivities that includes a Memorial Brick Dedication, Founders Day Awards Luncheon and dedication of facilities in Breckinridge and Ginger halls.

The University will remember nearly two dozen departed faculty and staff members during the memorial brick ceremony that begins at 10:30 a.m. at the Little Bell Tower. The tolling of the bell will follow the reading of the names and years of service of the departed individuals.

A highlight of the day will be the presentation of the Founders Day Award for University Service to Dr. John C. Philley of Morehead during a luncheon ceremony, slated to begin at 11:30 a.m. in Wetherby Gymnasium.

During the luncheon program, 20 new members will be inducted into the Society of MSU Fellows and Dr. Robert L. Albert and Dr. J. Michael Seelig will be recognized as Faculty-Staff Fund Raisers of the Year. The W. Paul and Lucille Caudill Little Foundation will be recognized as the Donor of the Year for the \$1 million grant to establish an endowed faculty chair in theatre and to advance the creative arts in the public schools.

Among the new fellows are: Russell Dean of Lawrenceburg, Ind.; Joseph M. and Susan W. Gilman of Smyrna, Ga.; Zoe Ann Davis Brewer of Catlettsburg; Howard Chandler Jr. of Lexington, Joe and Sharon Hunsucker of Olive Hill, and Jonell Tobin of West Liberty;

W. Michael and Deanie Brown, Donna J. Corley, Steve and Darla Hunt, Dan and Anna Hyden, G. R. "Sonny" Jones, John and Peggy Osborne, and Bob and Susan Willenbrink, all of Morehead.

(MORE)

The Society of MSU Fellows is open to all supporters of the University who make a cash gift of at least \$1,000 to the MSU Foundation Inc. and pledge to renew the gift for an additional nine years, who make a personal gift of \$10,000 in cash or securities, or who donate personal property or real estate with an appraised value of at least \$12,500.

Dr. Albert, dean of the College of Business, assisted in spearheading efforts during the 2003 Annual Campus Giving Campaign. Under his reign as co-chair, the campaign was the most successful internal drive in the University's history, raising \$172,437 in cash and pledges from faculty, staff, retirees and students.

Actively involved in prospect cultivation and solicitation, Dr. Albert is currently in the process of securing gift commitments from his advisory board to establish a matching endowment to support the needs of the college.

Dr. Seelig, dean of the Caudill College of Humanities, has been an effective University volunteer and fund raiser for many years. He makes fund raising a priority in each of the departments in his college. Dr. Seelig was instrumental in starting the annual campaign six years ago and served as co-chair in 1998-99 and 1999-2000. He also has spearheaded a bronze sculpture fundraising project to benefit the Department of Art and the College of Education. In 2003, he generated nearly \$50,000 in private contributions and initiated the creation of the Regional Arts Appreciation Support Fund.

Also during the luncheon, a marker will be unveiled to honor the University's nine original faculty and staff members who had apartment buildings named for them in the Lakewood Terrace family housing area. Most of the structures have been razed.

MSU faculty and staff members in the 34 units that achieved 100 percent participation during the campus campaign will be recognized at the luncheon, along with the charter members of the newly-established Visionary Society.

Founders Day activities will conclude with a dedication for the Kozy Hamilton Costume Shop, Harlen Hamm Communication Suite and Thom Yancy Seminar Room in Breckinridge Hall, beginning at 2 p.m., and in Ginger Hall for the Dr. Frank H. Osborne Research Lab at 3 p.m.

Tickets to the awards luncheon, at \$10 each, must be purchased before **Friday, March 5**, by calling the Office of Development at (606) 783-2033 or (877) 690-4483. There is no admission charge for the other events.

####

News

University Communications

Pauline Young, Director

www.moreheadstate.edu

Morehead State University

UPO Box 1100

Morehead, KY 40351-1689

(606) 783-2030

Feb. 27, 2004

FOR IMMEDIATE RELEASE

MOREHEAD, Ky.---A new core of study added to Morehead State University's radiologic sciences programs will give students a competitive edge when they enter the job market after college.

Magnetic resonance imaging (MRI) courses have been added to the computed tomography option of the Department of Nursing and Allied Health Sciences' baccalaureate degree program in radiologic sciences.

"We revised the computed tomography (CT) program to extend into the fall, spring and the summer sessions for a 13-month program, to include education in MRI," said Barbara Dehner, coordinator of radiologic sciences.

Students in radiologic sciences begin by taking a year of general education and additional prerequisite courses prior to admission to the two-year radiologic technology associate degree program. Upon completion of their initial degree, they may select one of two advanced imaging options; either sonography or computed tomography/magnetic resonance imaging.

Once clinical experience and educational requirements are satisfied, students may sit for certification exams through the American Registry of Radiologic Technologists (radiography/CT/MRI) or the American Registry of Diagnostic Medical Sonography (for the sonography option).

Adding MRI courses and clinical experiences to the CT component should prove to be very beneficial for students, according to Dehner.

"This should help prepare them for future MRI certification testing," she said. "There are many career opportunities open for them due to shortages nationwide. We are seeing an advantage for technologists to be educated in more than one imaging modality."

Dehner added that another reason the MRI component was added to the CT option was "because there are some similarities between the two modalities."

She explained that computed tomography produces cross-sectional images of the body with the tissues and organs displayed separately, rather than the flat images on x-ray film. Magnetic resonance imaging uses radio frequency signals from protons in the body to form images of body structures. It does not use x-rays or any other form of radiation.

Additional information is available by calling Dehner at (606) 783-2646, or by logging onto MSU's Web site at www.moreheadstate.edu/colleges/science/nahs/radsciprogs.html.

####

sas

Morehead State University

UPO Box 1100

Morehead, KY 40351-1689

(606) 783-2030

Feb. 27, 2004

FOR IMMEDIATE RELEASE

MOREHEAD, Ky.---Not enough hours in the day? Is the job a little stressful?

Morehead State University's Small Business Development Center is giving potential or existing entrepreneurs an opportunity to learn how to improve time management skills and relieve stress in a pair of seminars on Thursday, March 11.

"Time Management for Business Professionals" will be held from 9-11 a.m. This workshop will focus on managing time through use of organizational tools. Participants will be introduced to "The 7 Habits of Highly Effective People" by Stephen Covey.

"Stress Reduction for Business Professionals" will be held from 1-3 p.m. This session will spotlight on cognitive aspects of stress as well as cognitive and behavioral stress reduction techniques.

The seminars will be held at the Kentucky Folk Art Center and instructed by Dan Collins, MSU staff psychologist. Admission for both workshops is \$20, but advance registration is necessary due to limited seating.

Training programs sponsored or co-sponsored by SBDC are available to all individuals without regard to race, color, sex, creed or national origin. Special arrangements for those with disabilities will be made if requested in advance.

Additional information and registration are available by calling (606) 783-2895 or (606) 784-6221.

####

ajb

News

University Communications

Pauline Young, Director

www.moreheadstate.edu

Morehead State University

UPO Box 1100

Morehead, KY 40351-1689

(606) 783-2030

Feb. 27, 2004

FOR IMMEDIATE RELEASE

MOREHEAD, Ky.---Blue Sky Manufacturing of Bath County was featured in the 2004 Small Business Showcase hosted by Kentucky's Small Business Development Centers, Feb. 11.

The event, which was held in Frankfort, highlighted KSBDC's efforts to improve Kentucky's economy as well as several of its successful clients.

Blue Sky Manufacturing received assistance from Morehead State University's SBDC which serves Bath, Bracken, Fleming, Lewis, Mason, Menifee, Montgomery, Morgan, Robertson and Rowan counties.

The Polksville company produces the "snow roller," a new kind of snow shovel.

"Small businesses are key to changing the face of our economy and this was a great opportunity for us to focus on the positive things that are happening across the Commonwealth," said KSBDC State Director Becky Naugle.

"We are very proud of our clients' accomplishments and are equally pleased at the influence our consultants have had on their success."

In the past five years, the MSU center has helped to create or save 181 jobs. Its clients received 53 loans totaling \$4,978,800 and helped to generate \$11,643,606 in sales.

KSBDC is a network of 15 centers dedicated to supporting and improving the Commonwealth's small business community. KSBDC's central office is located at the University of Kentucky's Gatton College of Business and Economics, and the entire network is supported by the U.S. Small Business Administration and various other educational and public institutions. Additional information about KSBDC is available at www.ksbdc.org or by calling (888) 475-SBDC.

Additional information on MSU's SBDC is available by calling Jason Boggs, center director, at (606) 783-2895.

####

ajb

News

University Communications

Pauline Young, Director

www.moreheadstate.edu

Morehead State University

UPO Box 1100

Morehead, KY 40351-1689

(606) 783-2030

Feb. 27, 2004

FOR IMMEDIATE RELEASE

MOREHEAD, Ky.---Morehead State University's Police Department, along with other law enforcement officers and agencies from across the state, were recognized for outstanding achievement at the 2003 Governor's Impaired Driving Enforcement Awards ceremony, held recently in Lexington.

MSU police officer Mark J. Stidam and former officer Richard Mayes were honored during the event. The MSU police force had 25 DUI arrests from Oct. 1, 2002, until Sept. 30, 2003. Stidam, of Morehead, and Mayes, of Sandy Hook, each had eight during the period.

Joe Whittle, general counsel to Lt. Gov. Stephen B. Pence, joined then-Kentucky State Police Commissioner Patrick N. Simpson, in presenting awards to 197 officers and 73 law enforcement agencies for their extraordinary efforts in reducing impaired driving. The award recipients are collectively responsible for approximately 30,000 impaired driving arrests during the past year.

"Impaired driving is still a critical problem, not only in Kentucky, but also throughout the United States," said Whittle. "Education and enforcement campaigns are vital components to keeping the public aware of the problems associated with drunk driving and also to help prevent it from happening. Your work at the local, state and national levels is to be commended. For the lives you've saved, we are most fortunate."

Stidam has been with the department for two years. Mayes recently left the force after two and a half years of service.

Additional information is available from the MSU Police Department by calling (606) 783-2035.

####

ajb

STIDAM HONORED FOR ACHIEVEMENT

Morehead State University police officer Mark J. Stidam, of Morehead, along with other law enforcement officers and agencies from across the state were recognized for outstanding achievement at the 2003 Governor's Impaired Driving Enforcement Awards in a recent ceremony in Lexington. Stidam, a veteran of two years on the MSU force, was among those honored during the event. The MSU police department had 25 DUI arrests from Oct. 1, 2002, until Sept. 30, 2003. Stidam and MSU former police officer Richard Mayes each had eight arrests during the period. Presenting the award to Stidam, left, was then Kentucky State Police Commissioner Patrick N. Simpson.

(KSP photo)

2-27-04ajb

MSU is an affirmative action, equal opportunity educational institution.



News

University Communications

Pauline Young, Director

www.moreheadstate.edu

Morehead State University

UPO Box 1100

Morehead, KY 40351-1689

(606) 783-2030

Feb. 27, 2004

FOR IMMEDIATE RELEASE

MOREHEAD, Ky.---Morehead State University's speech team captured second place among large schools at the Kentucky Forensic Association's State Speech Tournament, held at Murray State University on Feb. 20 and 21.

Alisha Andress, **Ft. Mitchell** senior, was named the state's female recipient of the Harlen Hamm Award. This award is presented annually to a male and female student in memory of Hamm, a longtime MSU faculty member. Student selection is based on dedication, sportsmanship, academic achievement and speech team participation. Winners are considered to be among the state's most outstanding students in the field of speech communication.

Andress' win marked the second straight year and third time overall that an MSU student had won this award.

"Alisha is most deserving of this high honor," said MSU head speech coach Lisa Shemwell. "She is a very talented young lady and a joy to coach each week."

Andress also received fourth place in after dinner speaking.

Other winners included Summer Copley, **Elkhorn City** sophomore, and Amanda Day, **Morehead** junior, who finished fourth in duo interpretation. Day also received fourth place in programmed oral interpretation. Copley took fifth place in poetry.

Tami Shannon, **Hillsboro, Ohio**, sophomore, fifth place in persuasive speaking;

Amy Aschenauer, **Ashland** junior, fifth place rhetorical criticism;

Other team members contributing to the second place team win included Liz Haynes, **Lexington** junior, and David Poff, **Science Hill** senior.

During the tournament, Shemwell delivered a presentation commemorating Hamm's contributions to Kentucky speech education and forensics. She was elected president of the Kentucky Forensic Association.

Additional information on the team's schedule is available from Shemwell by calling (606) 783-2103.

####

ajb

MSU SPEECH TEAM TAKES SECOND PLACE

Morehead State University's speech team captured second place among large schools at the Kentucky Forensic Association's State Speech Tournament, held at Murray State University on Feb. 20 and 21. Participants were, from left, Amy Ashchenauer, **Ashland** junior; David Poff, **Science Hill** senior; Alisha Andress, **Ft. Mitchell** senior; Amanda Day, **Morehead** junior; Summer Copley, **Elkhorn City** sophomore; Liz Haynes, **Lexington** junior, and Tami Shannon, **Hillsboro, Ohio**, sophomore. During the tournament, Andress was named the state's female recipient of the Harlen Hamm Award.

(MSU photo)

2-27-04ajb

MSU is an affirmative action, equal opportunity educational institution.

