

The Morehead News

For Each Copy **15¢**
Pay Cashier . . .

Mail Subscription Rates - in Kentucky, one year \$4.50; two years \$8.00; five years \$17.50. Outside Kentucky, including overseas - One year \$6.00; two years \$9.00; five years \$20.00. Save by renewing for five years.

Entered 2nd Class Mail Matter
At Post Office - Morehead, Ky.

IMPORTANT NUMBERS

Morehead Zip Code	40351
Telephone Area Code	606
Morehead Fire Department	784-5253
Morehead Police	784-5112
Saint Charles Medical Center	784-5112
Morehead State (All Branches)	784-4181
Morehead News (All Branches)	784-4116
Morehead News - Society Only	784-5445
Rowan County Sheriff	784-5445
P.O. Box	784-5111

Vol. 86

MOREHEAD, KENTUCKY, THURSDAY MORNING, JUNE 12, 1969

No. 24

Over 3,000 Expected At University

More than 3,000 persons are expected to enroll at Morehead State University this summer for two summer school sessions and 14 institutes, workshops and conferences.

The regular summer session opens Monday, June 16, with registration for seniors and graduate students during the morning at Laughlin Health Building. Juniors, sophomores and freshmen register the afternoon of June 16 and all day Tuesday, June 17.

Classes begin Wednesday, June 18, and close Friday, Aug. 8.

Costs for part-time students are \$9 per semester hour for Kentucky undergraduates and \$12 for in-state graduate students. Out-of-state undergraduates are assessed \$30 per semester hour and non-resident graduate students, \$40.

Fees for in-state, full-time undergraduates are \$60, excluding housing, books and laundry service. Full-time students classified as non-residents are charged \$185, based on the same exclusions.

The post summer session starts Monday, Aug. 18, and closes Wednesday, Aug. 27.

Nine special MSU programs with college credit are scheduled for the summer. They include:

- Communications Institute, June 15-28;
- Linguistics Institute, June 16-17;
- Instructional Media Workshop, June 22-25;
- Cumberland Forest Music Camp, July 13-26;
- Linguistics Institute II, July 12-Aug. 8;
- Library Institute, July 7-Aug. 12;
- Reading Seminar, Aug. 11-27; and
- Art Education Workshop, Aug. 11-27.

Cumberland Forest Music Camp will be remained during this year's session to "Daniel Boone Forest Music Camp" to coincide with the new name of the forest.

Five non-credit programs also are slated for the summer at Morehead State. They include:

- Health Start Orientation Workshop, June 9-11;
- Conference on the Movement of Guidance - Programming, June 24;
- Precision Drill Workshop, July 10-12;
- Conference on Evaluation of Educational Programs, July 4-6; and
- Folk Dances Institute, Aug. 10-16.

The fall semester at Morehead State University opens Saturday, Sept. 13.



Morehead Has Its Own (Boys and Girls) Floral Clock

The News photographer labeled this one of the best pictures of the year - Morehead's own floral clock at the annual spring elementary music concert by University through six graders the applause was generous and long. Brackinridge. The largest attendance of all time turned out for the musical program titled "Here's Kentucky".

featuring outstanding Kentuckians and noted Kentucky landmarks. When the above scene was unveiled of the one through six graders the applause was generous and long. Mrs. Oval Hall was the director.

Rowan Parents, Youth To Be In Tomorrow's Program

Rowan and area counties will be represented tomorrow (Friday) by parents, youth and young people's workers at a "generation gap" conclave on the campus of Morehead State University.

Rowan County has a considerable part in the program, open to the public in Alumni Towers.

After registration at 9:30 a.m. the program will open with the keynote address by Mrs. Libby Walthall of the Ashland Community College.

Extension Service Specialist in Parent Education and Child Development, will speak on "Changing Psychological Needs of Youth" at 10:30.

This will be followed by a panel of youth led by Mrs. Crystal Darter of the Kentucky Commission on Children and Youth. They will discuss "How Young People Look at Their Own Problems."

Rowan County youth on this panel will be Dewayne Barnett and Mike Mayhew. After lunch, Coach Bill Harrell of

Morehead State University will speak on "Religious and Moral Concerns of Today's Youth."

Rowan Library Officers Will Be Elected Tuesday

The community sponsors (Friends) of the Rowan County Public Library will meet next Tuesday (June 17) at 3:00 p.m. in the library on Main Street for the adoption of a Constitution and by-laws, and election of officers.

Miss Ione M. Chapman who has been serving as interim chairman emphasized the meeting is open to the public.

Rowan County citizens last year signed a petition in sufficient numbers to place a four cent tax on each \$100 assessment for the local library effort. This resulted in -

- * Almost immediate expansion of facilities and services of the Rowan County library and bookmobile.
- * Option or purchase of a site for a library building off Main Street.
- * Plans to make Morehead a regional library center for this part of Kentucky.

Proponents say Morehead is the logical location because of highways, Morehead State University and other advantages.

Tuesday's meeting is the mandatory step of the library corporation in proceeding with this immediate and long range expansion.

Mental Health Unit At Morehead May Soon Be Opened

People living in Kentucky's rural counties have greater access to community mental health centers than rural residents of any other state, says the National Institute of Mental Health, the federal agency that helps fund Kentucky's 17 operating centers.

Figures compiled by NIMH show Kentucky leading the nation with 88 percent of rural counties having mental health services available. North Dakota, with 63 percent, and Vermont, with 44 percent, rank next in the nation.

Three additional centers, covering 13 more rural Kentucky counties, are scheduled to open July 1 with headquarters at Mayville, Corbin and Harlan. Another at Morehead is scheduled to open Sept. 1.

Kentucky community mental health-retardation centers are operated by non-profit volunteer boards and receive technical and financial assistance from the state Department of

Continued On Next Page

Bids For Cave Run Project Advertised

Rowan Summer School, Head Start Open Next Monday

Head Start and Summer School starts next Monday in Rowan County and Supt. of Schools Clifford Cassidy today gave these details:

* Classes will be from 9:00 a.m. until 1:30 p.m. Monday through Friday; and from June 16 to Aug. 1.

* Summer school will be at Morehead Grade, attended by those given applications at the end of the regular term. Invitations to attend the summer school are based on the child's average achievement.

* Buses will operate on all main travel arteries, but children must be at road side by 7:30 a.m.

* Head Start will be conducted in each of the county's elementary schools: Morehead, Haldeman, Tildon Hogge, Farmers and Clearfield.

Head Start and summer school are subsidized with federal funds, and administered by the Rowan County Board of Education.

Reservoir Will Be Completed By December 1972

The U. S. Army Corps of Engineers, Louisville district, today had good news for the Upper Licking River valley with announcement that bids for the construction of Cave Run dam and spillway will be issued about June 20 and opened on or about July 31.

The spillway and dam, about three-quarters miles across, are the major contracts on the \$30 million project. Kentucky's fourth largest water impoundment.

Announcement of the bids was made by J. E. V. Wagner, Chief of the Technical Liaison Office, in a letter to the Morehead News.

The only other major contracts to be let will be road re-location, primarily Ky. 801 and Ky. 826 in Rowan and Bath counties. Several of the roads are already under construction, including a high bridge above the dam between Rowan and Bath counties.

Cave Run Reservoir is about 10 miles southwest of Morehead.

Open To Public In 1973

The successful bidder on the day and spillway will have 1,320 days to finish the job with penalty included for delay.

This means that the dam should be finished by December, 1972, and opened to the public the last of May, 1973.

The Corps of Engineers usually completes a large construction project like Cave Run by Dec. 1, and traditionally dedicates it on or about Memorial Day. This permits the lake to fill during the six winter and spring months.

The enormity of Cave Run Dam can best be gleaned from the bid specifications calling for about seven million cubic yards of land fill.

This is divided as follows: dam foundation, 350,000 cubic yards; borrow, three million cubic yards; channel, 150,000; spillway, 500,000; dam roadway, 95,000; impervious compacted, 2,500,000; random, 500,000; random rock, 300,000; and rip rap, 55,000. Pressure calls for an additional 24,000 cubic yards land fill.

Million Visitors Annually

Cave Run Reservoir was proposed 32 years ago, in 1937, but placed in status quo during World War II and the Korean War. The project, at once controversial, was revived in 1955, and accelerated in 1960 when Congress started making liberal appropriations for water

Continued On Next Page

Goode Replaces Wise As District Phone Manager

Earl A. Goode, General Telephone plant service supervisor at Ashland, has been named Morehead district manager. It was announced by the telephone company's eastern division manager William T. D. Witt.

In his new position which he will assume by July 1, Goode will manage all operations in the Morehead district

Morehead will get direct long distance dialing, and will install its 10,000th phone in 1972. - See Publisher's Pen on page 7.

including the Morehead, Olive Hill, Owingsville, Salt Lick, Sharpsburg, Tollesboro, Vanceburg, Ewing, Flemingburg, Garrison, and Hillsboro exchanges with nearly 15,000 telephones serving approximately 12,000 customers.

Goode joined the company in June 1962 following his graduation from Georgetown College where he received a degree in commerce. Starting as a staff assistant in the company's management training program, he later held positions in the general office and Elizabethtown district before his transfer to Ashland in 1965.

He and his wife Vickie will move to Morehead when housing arrangements are completed.

W. E. Wise, former Morehead district manager, was promoted to general commercial supervisor at the General Telephone general office at Lexington. He will be responsible for administering the company's commercial programs throughout the state which cover business offices and other customer related activities.

He and his family will relocate in Lexington.

Legend of Daniel Boone Will Again Be Portrayed

The Legend of Daniel Boone, Jan Hartman's outdoor historical drama, will open for its 4th season in the amphitheater at the General Theater at 8:30 p.m. (EDT), Friday, June 27. This season's cast of players features the names of performers returning to the Legend from previous seasons, as well as talented newcomers.

MOREHEAD MANAGER . . . Earl A. Goode was today named manager of the Morehead district of General Telephone Company of Kentucky. He replaces W. E. Wise who has been promoted to a policy position at the state headquarters in Lexington.

Two Contracts Let For Resurfacing Christy Creek Road

Governor Louie B. Nunn today announced that a contract has been awarded for two resurfacing projects on Ky. 32 (Christy Creek) in Rowan County.

The projects include 3.845 miles from 1-64 to the Elliott County Line, and 3.6 Fleming County Line.

The contract, for \$86,815.95, was awarded East Kentucky Paving Corporation, Grayson, Kentucky. Highway Commissioner Eugene Goetz said these projects will be completed this summer.

Eight Represent Rowan At State FHA Convention

Rowan County High is being represented at the 24th state meeting of the Kentucky Association of Future Farmers of America at Western Kentucky University, Bowling Green, by six FHA members and two advisors.

The meeting which opened Tuesday will adjourn this (Thursday) evening.

Rowan FHA delegates are - Deborah Brown, Donna Hall, Rita Swim, Sharon Johnson, Susan Razor and Theresa Roe. Rowan advisors at Bowling Green are Meri Allen and Jean Cline.

Theme of the meeting is "Future Homemakers Tempo For Teens."

Mental Group To Meet On Monday

The Cave Run Mental Health and Mental Retardation Commission will meet next Monday (June 16) at the Midland Trail Hotel in Mt. Sterling.

The facility, home-based at Morehead, serves Rowan, Bath, Morgan, Menifee and Montgomery counties. It is funded by federal and state funds.

The president is Bob Elliott, Manager Pine Crest Home, Morehead. Other officers: Susan Maresand - Alpha M. Hutchinson, Vice-Chairman; W. E. Crotcher, Treasurer; and Mrs. Judith Clough, Coordinator.



Water Lines To Serve 506 Rural Rowan County Homes

The Morehead News photographer caught this picture today as construction started on Rowan County's rural water system. Alderman Brothers, Inc., is working on the \$600,000 project, of which \$200,000 is a 40 year loan at five percent interest from Farmers Home

Administration. It is expected the water will be turned on by Christmas Day. The \$600 deposit has been authorized by 506 families. The other 400 will come from the Morehead Municipal Plant Board.

What Other Editors Say

Eastern, Morehead Move To Ease Friction Points

Louisville Courier-Journal

WHILE THEY HAVE NOT escaped wholly unscathed, Kentucky colleges have avoided most of the violent aspects of student dissent during recent months.

As we have heard ad nauseam in the past year or so, lack of communication between student and administration is a major cause of, or excuse for, campus revolt.

A Forward Morehead Step

Morehead took perhaps the most far-reaching step in establishing a new University Senate which includes 12 students, 12 administrators and 25 faculty members to act as liaison between faculty and administration, administration and regent, and as a medium through which both faculty and students can express policy decisions.

Eastern's new student policy statement does not go as far and will probably not accomplish as much. It does, however, spell out in fairly precise language the academic rights and obligations that the student must recognize, and it establishes a campus ombudsman to help the student not only in communicating with campus officials but with his general personal problems as a student.

Eastern did, on the other hand, take the unusual step of reducing compulsory ROTC training from two years to one. It is a good move, as well as a conciliatory one, though it is hard to see why the school did not go ahead and make the entire program voluntary while it was at it.



END OF AN ERA... This picture will be clipped and saved by many people who are conversant with the history of Morehead State University. The man, as most everybody in these parts will recognize, is W. H. (Honie) Rice who has been MSU Superintendent of Buildings and Grounds for 33 years.

picture, and this is the way Honie this week looked as he stood in front of the \$237,000 Maintenance Service Building named for him. Officially, Mr. Rice retired on June 30, but those who know him best realize that Honie will always be a part of the University because of his great love, dedication and devotion to the institution.

should no more be required to take military training if he objects than he should be denied by other students the opportunity to take such training if he wishes to. But it is to the best interests of both student and the military establishment to keep campus military training on a voluntary basis.

Bids Advertised

Recreation within the valley above the reservoir, all government owned land will probably be administered by Daniel Boone National Forest, plus a state park. Several marinas etc are planned. Cave Run is expected to attract more than a million visitors a year.

The valley above the dam is so free of chemicals and human waste disposal that test show Cave Run will propagate almost all kinds of fish, including trout.

THE VIRGINIAN... THURSDAY - FRIDAY... Jack Lemmon In... "A Time To Sing"...

"A Time To Sing"... Saturday Night... "The Checkered Flag"...

DANGER ROUTE... Jack of Diamonds... "The Great Race"...

JACK OF DIAMONDS... "The Great Race"...

PLUS LATE SHOW "The Checkered Flag"...

STARTS SUNDAY... "The Great Race"...

COMING WEDNESDAY... "The Great Race"...

KIRK DOUGLAS... "The Great Race"...

ELVIS PRESLEY... "The Great Race"...

from HISTORY'S SCRAPBOOK... American Marine... 11, 1918... The City of New York...

Defrosting time? ... or time for a new, no-frost electric refrigerator-freezer!



...or time for a new, no-frost electric refrigerator-freezer! You never need to fire your way out of an ice jam again—because new electric refrigerator-freezers are frost-free in both compartments!

THE FAMILY LAWYER... But Can You Patent it? ... Besides there the man, with soul dead...

THE FAMILY LAWYER... But Can You Patent it? ... Besides there the man, with soul dead. Who never to his wife hath said: "I've got a terrific idea for an invention."

MOREHEAD AREA Church News... Compiled weekly by the Morehead Ministerial Association. This column is available, without charge, to recognized churches.

FIRST BAPTIST - This week the Vacation Bible School is in progress and will close Friday noon with a picnic at Rockburn Park.

FIRST CHRISTIAN - On Sunday, June 22, we will have a church dinner immediately after worship services. At this time we will present the 1963-1970 budget and answer all questions concerning it.

METHODIST - The Kentucky Annual Conference of the Methodist Church will convene in Richmond, Kentucky on June 11 and will continue through June 15.

PENTECOSTAL - The Hays Crossing United Pentecostal Church widely known as the "Cobblestone Church in the Wood" is in the process of landscaping.

Weekly Meditation

You may often hear it said that this man or that one liked himself by his own bootstraps. Meaning of course that he was a self-made man. This statement is contradictory, as a person must be attached to some power greater than himself if he is to be lifted.

Mental Health

The centers offer inpatient, outpatient, partial hospitalization, 24-hour emergency and consultation and education services. Caseload of Kentucky centers is now about 12,000, the Department of Mental Health says, and is increasing more than 1,000 patients a month.

THAT'S MY SIZE... New Morehead State University basketball coach, Bill Harell has to look up at his newest basketball signee, Lavern Mann, a 6-8 1/2, 230-pounder who played last year at Somerset Community College.

GIVE YOUR FLOORS A LOOK OF LUXURY CARPETS... Ed Mabry Const. Co. PHONE 784-7575

SPECIAL BLUE CROSS and BLUE SHIELD ENROLLMENT CAMPAIGN... Morehead and Rowan County—June 16 thru 20... NOW AVAILABLE... GROUPS MAY BE FORMED WHERE 5 OR MORE PERSONS ARE EMPLOYED.

Students Then As Now Spoke Loud and Clear

DANVILLE, Ky. (UPI)—An indication that the nation's college students haven't really changed too much shows in an exhibit of historic items marking the 150th anniversary of Centennial College here.

Under the faculty decaolage section of a humorous catalogue published in 1954 were the following prohibitions:

"Thou shalt not drink whiskey.
Thou shalt not steal chickens in 1732.
Thou shalt not go into taverns or oyster saloons.
Thou shalt not kiss the girls or hug the babies.
Thou shalt not play cards.
Thou shalt not poster Prof. Snyder.
Thou shalt not pop fire-crackers.
Thou shalt not cut off calf-tails."

Charles Martel defeated the Saracens at the battle of Tours in 732.



Swim suits for males include four types this season. If shopping for one for Father's Day, you'll find mid-high or knee-length knitted trunks in printed cottons, denims and rugged twills; knitted checks somewhat shorter and topped with a broad belt; tank suits meant to be worn with a striped swim shirt; and the old faithful boxer trunks.



Viewing the signing are, from left, O. B. McDaniel of Lewis County High School is shown signing a baseball grant-in-aid with Morehead State University. The right-handed pitcher buffed seven non-hitters in his high school career while compiling a 27-2 won-loss record.

Diet Aid Helps Poor Families

BERKELEY, Calif. (UPI)—A pilot nutrition education effort is taking the University of California's Agriculture Extension program deep into poverty areas in both city and country.

The program, aided by federal funds, is designed to reach "hard to reach" poor families to help improve the nutritional quality and adequacy of individual and family diets within the economic means of the family.

The university has employed 350 women from disadvantaged areas as part-time aides. They have learned basic nutrition and teaching methods and are already teaching others in their own neighborhoods.

Shop the Classified Ads

MATINEE DAILY
Box Office
At 1:30 p.m.

NOW THRU TUESDAY UNBELIEVABLE JULIE!

ALL THE ROMANCES
ALL THE WILDNESS
ALL THE FUN

STAR!

ALL OF IT

NOW AT REGULAR PRICES!

A ROBERT WISE FILM JULIE ANDREWS™ THE STAR! RICHARD CRENNA

MICHAEL CRAIG DANIEL MASSEY SHOWS: 2:00 - 5:00 and 8:00 p.m.

wonderful ways to say...



DAD'S Something Special

20% OFF on all Suits - Sport Coats

Gifts of All Descriptions for Pop!

h.i.s.
3 DAYS ONLY
Thurs. - Fri. - Sat.

Sunday is HIS Day! So select one of the many H.I.S. gifts from the wide selections of Suits - Sport Coats, Jackets - Shirts - press-free Pants at Layne's.

Whether you choose the long or short sleeved version, its True-taped fit will keep him looking neat and trim... of course its press-free machine-stitch of good looking wear! A wealth of styling detail puts him at the top of the ladder... full handed, "Y" collar... top panic button... extra long tail. Long sleeves have Swa-style convertible cuffs. Be your own judge... choose from our wide selection of fabric suit colors, solids, stripes and checks. Watch him wear them proudly on Father's Day!

LAYNE'S
MAIN STREET MOREHEAD, KY.

Rowan Soil Conservation

Among the more serious conservation problems around the new suburban home are surplus water management and disturbed soils.

Land that may have had soil and water conservation problems when in its native state can well be plagued with them as it is converted to suburban uses.

Rain that once fell on open land now falls on roof tops, driveways, and paved streets. Even the best land can be jeopardized by uncontrolled water runoff. It can quickly rob areas of valuable surface soil, smother green lawns with silt deposits, flood homes and basements, and cut jagged scars in steep slopes and drainage ways.

To control runoff, be sure that the soil is shaped so that water drains off from the house and low areas are filled. Excess water from adjacent properties can be diverted away from the home by the construction of small diversions and terraces.

Erosion can be prevented by covering the ground as completely as possible with growing vegetation or with some substitute cover like mulch, burlap, flagstones, or gravel. Areas that must carry concentrated runoff need to be permanently paved or protected by special turfs, riprap, or other means.

Water runoff isn't all that's troublesome. During construction, the very nature of the soil around the home may have been changed drastically. The surface layer of the ideal soil has a deep layer of loamy, or crumbly, material on top that contains a rich mixture of decomposing organic matter.

But the surface soil in the average subdivision is usually less than ideal. The original soil may have been scraped off, or mixed with or buried under clayey subsoil when the land was excavated and graded. Tar paper, wood scraps, siding, brick, plaster, and other materials that limit plant growth are often found just under the surface of the soil.

When locating sites for shrubs and trees, it is a good idea to dig a much larger hole than necessary to check for buried debris. At the same time the soil can be checked for root penetration and permeability. Permeability can be determined by filling the hole with water. It should all disappear within 24 hours.

In some cases it may be necessary to refill the hole with good quality soil that is in good physical condition and is fertile or else responds well to fertilizer.

Soil can be improved by mixing peat moss, compost, or other organic material with it and by adding lime and fertilizer according to soil tests and the requirements of the plants. For example, azaleas need an acid soil and roses a fairly neutral one.

For additional water management information, contact the Soil Conservation District Office located in the McKinney Building.

Michael F. Adkins Receives Vietnam Front Assignment

Army Private First Class Michael F. Adkins, 20, son of Mr. and Mrs. Beccher Adkins, 315 Flemingsburg Road, Morehead, has been assigned as an infantryman with the Americal Division in Vietnam.

Any employment agency that'll put you in your place is in the Yellow Pages.

SAVE WITH STONE - SAVE WITH STONE - SAVE WITH STONE - SAVE WITH STONE - SAVE WITH STONE - SAVE WITH STONE - SAVE WITH STONE - SAVE WITH STONE - SAVE WITH STONE - SAVE WITH STONE

Seven Big Bonus Days

June 12 thru June 18

At Stone Pontiac - Buick GMC, Inc.

"The Little Profit Dealer"

U.S. 60 EAST MOREHEAD, KY.

Three Examples of Bonus Buys at Stone's

1969 Pontiac Custom S Tempest

- Four Door Hardtop
- V-8 Engine
- Automatic Transmission
- Two Tone Paint
- Radio

Sold New For \$3,784

STONE PRICE TODAY ONLY **\$2,895**

Has Been Driven Only 2,200 Miles

FREE GAS Plus - 50 Gallons Gasoline FREE

1968 GTO

- 400 Cubic Inch Engine
- Only 9,856 Miles

Don't Miss This Beauty for ONLY **\$2,595**

Plus 50-gals. Gasoline FREE

1968 Pontiac Firebird

- 2 Door Hardtop
- 6 Cylinder
- Automatic Transmission
- Radio
- Vinyl Top

ONLY **\$2,395**

Plus 50-gals. Gasoline FREE

These Cars All Carry Balance Of Factory Warranty

SAVE! SAVE!

Today On These Beautiful One-Owner Automobiles

Large Selection

30 Reconditioned Used Cars

this is true.

JOIN THE RECREATION ASSOCIATION

The Morehead-Rowan County Recreation Association is accepting memberships to make a recreation facility a reality in our community. If you are interested you can join now. Clip and return the coupon below. The membership fee is \$100.00. You may pay a minimum of \$25.00 now with the balance due by July 1. (After July 1 the membership fee will be \$175.00.)

Morehead-Rowan County Recreation Association
c/o Woodrow W. Barber, President
211 West 2nd St.

Please enroll our family as a member.
 I am interested but would like additional information.

Name _____
Address _____
Phone No. _____

The Morehead News

Formerly Rowan County News
"Over 18,000 Readers Each Issue"

Published every Thursday at Morehead, Rowan County, Ky. Entered as Second Class Mailing Matter at Post Office, Morehead, Kentucky 40351.

W. E. Crutcher Publisher
Ronald J. Casull General Manager
Mary J. Casull Business Manager

Office Fourth State Building, E. Main St., Phone 784-4116

When requesting change of address be sure to include old address.

—SUBSCRIPTION RATES—
One year in Kentucky 6.50
Two years in Kentucky 12.00
One year outside Kentucky (including overseas) 8.00
Two years outside Kentucky (including overseas) 15.00
Five years outside Kentucky (including overseas) 20.00
— Save By Renewing For 5 Years —

No subscription taken for less than one year. All subscriptions payable in advance. News accepted on telephone.

THANKS TO EVERYBODY

My Sincere and humble thanks to my loyal friends of Rowan County for their support at the recent primary Election, and my congratulations to Mr. Arnett.

I know how Arts and Letters must have felt after the Derby and President, however as Harry Truman so aptly put "If you can't stand the heat, stay out of the kitchen."

Thanks again, from the bottom of my heart.

True Mackey

MOREHEAD Educational Television

WKMR - Channel 38. All times are P.M. unless otherwise specified.

Monday, June 16 - 4:00 - Smart Sewing; "A" Line Shift; 4:30 - Misterog's Neighborhood; 5:00 - What's New; 5:30 - Friendly Giant; 5:45 - Friendly Giant; 6:00 - Focus on Glass Craftsmanship; 6:30 - French Chef; Sharp Show; 7:00 - Modern Supervision; 7:30 - NET Jazz; Joe Williams; 8:00 - NET Playhouse; Confrontation; 9:30 - Clapton; Still Time.

Tuesday, June 17 - 4:30 - Antiques; Collectible Furniture; 4:30 - Misterog's Neighborhood; 5:00 - What's New; 5:30 - Friendly Giant; 5:45 - Art Studio; 6:00 - Focus on Glass Craftsmanship; 6:30 - News in Perspective; 7:30 - Astronomy; The Moon; 8:00 - Book Beat; Vance Bourjaily; 8:30 - Folk Guitar; 9:00 - Conversation; Edw. Condon, physicist; 9:30 - French Chef; Sharp Show.

Wednesday, June 18 - 4:00 - Friendly Giant; 4:15 - Art Studio; 4:30 - Misterog's Neighborhood; 5:00 - What's New; 5:30 - Folk Guitar; 6:00 - Focus on Glass Craftsmanship; 6:30 - NET Jazz; Joe Williams; 7:00 - Street Reading; 7:30 - Antiques; Collectible Furniture; 8:00 - Decision; constitution in Action; 8:30 -

Farmers Will Have Its Own Community Development Plan

The Farmers Area Development Association will have its organizational meeting at the Farmers School Tuesday, June 17, at 6:00 p.m.

Everyone in the Farmers area is invited to come out and plan to make the Farmers community a more desirable place in which to live.

Spectrum: The Active Sun; 9:00 - NET Journal; Appalachia; Rich Land, Poor People.

Thursday, June 19 - 4:00 - Astronomy; The Moon; 4:30 - Misterog's Neighborhood; 5:00 - What's New; 5:30 - Music for Young People; Monday; 6:00 - Focus on Glass Craftsmanship; 6:30 - Conversation; Edw. Condon, physicist; 7:00 - Book Beat; Vance Bourjaily; 7:30 - Street Reading; "A" Line Shift; 8:00 - NET Festival; World of Henry Miller; 9:00 - Critique; Salomon.

Friday, June 20 - 4:00 - Modern Supervision; 4:30 - Misterog's Neighborhood; 5:00 - What's New; 5:30 - Spectrum; The Active Sun; 6:00 - Focus on Glass Craftsmanship; 6:30 - Travel; 7:00 - To Be Announced; 7:30 - Let's Take Pictures; 8:00 - Sounds of Summer (2 hours)



ON TOUR - These Rowan County Agriculture and Home Economics Leaders were recent guests of the Dean of the College of Agriculture for a tour of the experimental projects and facilities at the University of Kentucky. Front, from left: Mrs. Robert Alderman, Mrs. Eugene Brown and son, Daryl, Mrs. Milbroun Howard, Mrs. Genevieve Humphries, Mrs. Grace Crosswhite, Mrs. Otto Carr, Mrs. Mildred Wightman, Mrs. Carl Hutchinson, Rear - Robert Alley, Hobart Lacy, Kenneth Bland, Clayton Coldiron, Lowell Murray, and Adrian Riazor.

Take stock in America

Buy U.S. Savings Bonds & Freedom Shares

PLAY SAFE

With A Car From -

LARRY FANNIN CHEVROLET

701 N. Main Street, Morehead, Kentucky

PHONE 784-5136

FATHER'S DAY Specials

20% Discount on all Summer Suits and Sport Coats

h.i.s. ABBEY DUO

3 DAYS ONLY Thurs - Fri - Sat

Layne's

Main Street Morehead, Ky.

'Sole Surviving Son' Policy is Explained

WASHINGTON (ANF) - There is some misunderstanding about the assignment policy for "sole surviving sons."

A "sole surviving son" is defined as the only remaining son in a family whose, because of the hazards incident to military service, the father or mother or more sons or daughters have been killed; died as a result of wounds, accident or disease; are in a captured or missing-in-action status; or are permanently 100 per cent disabled.

These individuals are exempted from service in a combat zone upon their request or request of one of their parents. Exemption may be waived by the person concerned when such exemption was requested by a parent.

The "sole surviving son" policy does not apply to Regular Army officers nor to an only child or the last remaining son in a family where others have died for reasons not related to military service.

Additional details appear in AR 614-75.

Chowhound Test

CHICAGO (UPI) - To find out how much your dog should eat you should weigh him, a pet food manufacturer advises, and then determine if he's a worker or a sitter.

A "working" dog - a rabbit hound or a bird dog, for instance - weighing about 70-pounds, will require about the same caloric intake as a 150-pound man, according to the company. On the other hand, or dog, a 70-pound "sit-around-the-house" type needs only the calories required by a 120-pound woman.

SAVEWAY SUPER VALU

VerRay Tender U.S. CHOICE

CHUCK ROAST 59¢ lb.

Lean Tender Beef Stew 89¢ lb.

Semi-Boneless Rib Roast \$1.09 lb.

VerRay Tender U.S. Choice

BONELESS CHUCK ROAST 89¢ lb.

VerRay Tender U.S. Choice

ENGLISH OR SHOULDER ROAST 79¢ lb.

VerRay Tender U.S. CHOICE

RIB STEAK \$1.19 lb.

Hilberg Cooked

BREADED FISH STEAKS 10¢ 2.4 oz. size

Hilberg

CUBE BEEF 10¢ 2 oz. size

Eckrich

WIENERS 69¢ pkg.

Eckrich

SMOK-Y LINKS 85¢ 10 oz. pkg.

By The Piece

BOLOGNA 49¢

Light Meat

CHICKEN BREASTS 69¢

Dark Meat

CHICKEN THIGHS 69¢

4 to 5 lb. Snow Valley Brand

STEWING HENS 35¢ lb.

SHOP AT THE SIGN OF the friendly folks!

PLAY MINI BINGO

Each time you add Savings Super Value you will receive a free game piece which contains two "Mini Bingos" number spaces.

Join the Parade of Winners!

Last Week's Winners

Valry Huddleston - Mary Sargent - Suite Hinton - Mrs. Charles Chumby - Mrs. Frank Shelton - Sue Campbell - Baby Hat - Judy Wilson - Mrs. Ed Hoke - Pauline Brown - Rose Smith - Betty Perry - Bob Myers - Raymond Haver - Mrs. Raymond Haver - David Brewer - Geneva Humphries - Eva Rae Bates - Helen Brantley - Baby Kinder - Mrs. Vigil Workman - Sam Shuler - Edna Cooper - Mrs. Louis Egan - Betty Simpson - Deborah Brooks - Evelyn Simpson.

New Crop! California Long White POTATOES 10 lb. 79¢

Crisp Tender Home Grown

GREEN CABBAGE .25¢ 2 lb.

Good for Slicing

CUCUMBERS .25¢ 2 for

Ideal for Salads

GREEN PEPPERS .25¢ 2 for

Add Flavor to Salads

SUNKIST LEMONS .06¢ each

Red Ripe

SOUTHERN PEACHES .33¢ 69¢ 3 lb.

California Dark Red

CHERRIES .59¢ lb.

Bonnie Mae Sweetmilk or Buttermilk

Firestone INDY VICTORY SALE SAVINGS UP TO 58%

WHITE STRIPE TIRES

Original Equipment on many of America's finest new '69 cars

MANY CHEVY's, CORVAIRS, DARTS, FALCONS, VALLANTS* Size 6.00-13 4 for \$85 Plus \$1.82 per tire. Tax, license fee and a 10% service charge all your own.	MANY BARRACUDAS, CLASSICS, COMETS, F-85's, FALCONS, MUSTANGS, JAVELINS* Size 6.00-14 4 for \$90 Plus \$1.82 per tire. Tax, license fee and a 10% service charge all your own.	MANY CAMAROS, CHEVY's, CHEVELLES, COUGARS, FAIRLANES, REBELS* Size 7.35-16 4 for \$90 Plus \$1.82 per tire. Tax, license fee and a 10% service charge all your own.
SOME TEMPESTS, FORDS, STUDEBAKERS, RAMBLERS* Size 7.35-15 4 for \$90 Plus \$1.82 per tire. Tax, license fee and a 10% service charge all your own.	MANY AMBASSADORS, PLYMOUTHs, FORDs, CHEVROLETs, F-85's, DODGES* Size 7.35-14 4 for \$95 Plus \$1.82 per tire. Tax, license fee and a 10% service charge all your own.	SOME CORVETTES, FORDs, DODGES, PLYMOUTHs* Size 7.75-16 4 for \$95 Plus \$1.82 per tire. Tax, license fee and a 10% service charge all your own.
MANY CHEVROLETs, DODGES, TEMPESTS, PONTIACs, OLDSMOBILEs* Size 8.25-14 4 for \$100 Plus \$2.12 per tire. Tax, license fee and a 10% service charge all your own.	SOME FORDs, MERCURYs, PLYMOUTHs* Size 8.25-15 4 for \$100 Plus \$2.12 per tire. Tax, license fee and a 10% service charge all your own.	MANY BUICKs, CHRYSLERs, MERCURYs, T-BIRDS, OLDSMOBILEs* Size 8.50-16 4 for \$105 Plus \$2.12 per tire. Tax, license fee and a 10% service charge all your own.

*Let us help you pick the size for your make and model car!

Morehead Home & Auto

"Your Local Firestone Store"

Main Street Morehead, Ky.

Save Super Value Register Taxes and give 1% to your favorite charity...

SAVE 1%

One percent of gross value of Day's Grocery Store's Mail Store is available to charitable, school, PTAs, church groups or any registered charity in this area. All orders must be paid in advance. For more information contact: Day's Grocery Store, 701 N. Main Street, Morehead, Ky. 40351.

BISCUITS 5¢ tube

Kraft Midget

LONGHORN CHEESE .79¢ 1 lb.

Creamy Smooth

KRAFT VELVEETA \$1.09 2 lb. loaf

Flavorite

BUTTER 79¢ lb.

USDA Grade "A"

BONUS COUPON

GOURMET GLASSBAKE OVERWARE

CONTINENTAL

COFFEE CUPS 3 for 99¢ with coupon

Regular Price 40¢ each
Coupon good June 9 thru June 21, 1969.

COUPON WORTH 30¢

Toward the purchase of one

8" SQUARE CAKE DISH 99¢ with coupon & \$3.00 purchase

Regular Price \$1.29



Look No Further For That HOME LOAN

Let First Federal Play Santa With A Christmas Home Loan.

You Supply The Home We'll Supply The Cash

FIRST FEDERAL Savings and Loan Association of Morehead

Phone 784-6566 Morehead, Ky.
Open Monday thru Friday till 4 p.m.

"Get The Help You Need In Making That Dream Home Come True"



NEW MSU SIGNED . . . Morehead State University Head Football Coach Jake Hallum watches happily as Ed Helline, a Louisville quarterback, demonstrates his passing grip. Helline, a product of St. Xavier High School, recently signed a grant-in-aid to play football for Hallum's Eagles. A 5-10, 175-pounder, Helline is an exceptional passer, according to Hallum and Assistant Coach Larry Marmie who signed the 17-year-old signal caller. Hallum and his new quarterback are standing in front of the pressbox and west grandstand of Breathitt Sports Center Stadium.

Your . . . Social Security

By: Thomas B. Thompson — Ashland District Mgr. For Social Security information write: District Social Security Office, 1816 Carter Avenue — Ashland, Ky.; Phone 325-7666.

Is social security a good buy for the younger worker? Does he get his money's worth out of his social security insurance?

Yes, answers the age 24 widow with 3 children. Her husband was killed in an auto accident at age 26. She and the children receive \$247 each month from social security.

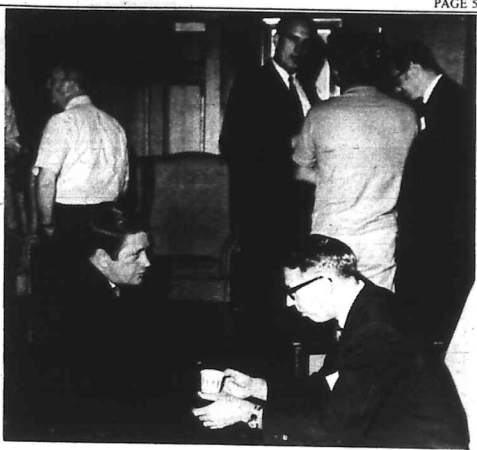
Yes, answers the age 28 disabled man who receives about \$2,800 a year from social security for himself, his wife and 3 children based on average earnings of about \$3,400 per year.

Yes, answers the young business man, because now with Medicare, he no longer has huge medical bills to pay for his sickly mother.

These are just three of thousands of cases paid every month under social security.

Social security is a dynamic changing program — changing to keep pace with our changing world.

As a young worker, keep yourself informed of the valuable protection you have under social security for yourself and your family. Call or write your nearest social security office and ask for the free booklet, Social Security Information for Young Families.



MENTAL HEALTH Dr. Morris Norflett, Vice President for Research and Development at Morehead State University talks with Dr. Dale Farabee of the State Department of Mental Health at the recent governor's conference for State College Education and State Government Officials. Dr. Norflett has been particularly active in organization of the regional Cave Run Mental Health and Mental Retardation Commission, home based at Morehead and serving Rowan, Bath, Morgan, Menifee and Montgomery counties. Psychiatrists and psychologists are being employed for regional center which has working agreements with St. Claire Medical Center and Morehead State University.

Mrs. Layne Attends Meet On Women's Organization

Mrs. William H. Layne, Morehead, attended the meeting of the Kentucky Commission on Women which met at Cumberland Falls State Park. Mrs. Layne is a member of the Commission, being appointed by Gov. Louie B. Nunn. "An Eye To The Future" was the two day conference theme.

The Commission has a two-pronged focus — Women in the Home; and Women in the World of Work.

For That Important Event When The Cake Has To Be Good



And For All Those Bridal Showers Let Us Do All The Baking.

Lt. LeMaster Assigned To Duty In Vietnam

Army First Lieutenant James C. LeMaster, son of Mr. and Mrs. Oakley D. LeMaster, Wilkinson, W. Va., has been assigned to Company C, 228th Assault Support Helicopter Battalion, 1st Cavalry Division (Airmobile) near An Khe, Vietnam, as an aviator.

His wife, Opal, lives at 841 N. Wilson Ave., Morehead, Ky.

Kentuckian Bakery

FOR THOSE SPECIAL OCCASION CAKES

Phone 784-7349

Main Street Morehead, Ky.

SAVEWAY SUPER VALU

FATHER'S DAY savings! FROM...

PURE CANE COLONIAL SUGAR
with \$5.00 purchase or more **5 lb. bag 39¢**

PEPSI BEATS THE OTHERS COLD!
PEPSI 16 oz. bottle **8¢** *Limit Please Plus Deposit

Flav-o-rite Fancy RICE
2 lb. pkg. **29¢**

Aunt Jane's PICKLES
16 Oz. Size Whole Sweet or Sweet Candied Chips . . **49¢**
Sweet Relish . . . **59¢**

Johnson & Johnson — Save 29¢ economy size
BAND-AIDS . . . **69¢**
Save 16¢
Solarcaine Lotion . . . **\$1.19**
Crank Proof **Trash Cans** . . . **\$2.49**
Creamy **Chocolate Drops** . . . **49¢**

Wagner's Grape or Orange Drink . . . 32 oz. bottle **25¢**
Super Valu Instant Coffee . . . 6 oz. jar **69¢**
Kool Pops 8 pak **31¢**
Flav-o-rite Caramel Pecan Rolls 10 oz. pkg. **35¢**

Kraft Regular Macaroni Dinners
7 1/2 oz. pkg. **19¢**

Jiffy Biscuit Mix 40 oz. pkg. **33¢**

White or Assorted WHITE CLOUD BATHROOM TISSUE
2 roll pkg. **25¢**

Paper Maid White Paper Plates 100 round pkg. **69¢**

Super Valu Laundry BLEACH
gallon **39¢**

Flav-o-rite Frozen Halves Strawberries
10 oz. pkg. **\$1**

Favorite POT PIES
6 for **\$1**

FLAV-O-RITE or MINUTE MAID Lemonade 8 oz. can **11¢**


TASTE-O-SEA COD or PERCH BREADED Fish Steaks 3-lb. pkg. **99¢**

VALUABLE COUPON
BIZ GIANT SIZE WITH COUPON 25 oz. pkg. **59¢**
Limit one coupon per each box purchase. This offer good thru June 16, 1969. Closed only at Super Valu Stores. CASH VALUE 1.00% OF ONE CENT. GOVT. REGULATIONS APPLY.

Mr. Clean Liquid Cleaner 28 oz. bottle **49¢**

With Bio-Enzyme 20¢ OFF BIZ Pre-Soak Laundry Detergent 25 oz. box **59¢**

Whether you Build or Remodel, Treat Them to Electric Heat



There's one way to get maximum value for your building dollars . . . install low-cost Electric Heat. You'll give your family total-comfort with ceiling-to-floor warmth. It is the clean, safe, modern way to heat your home.

Yet Electric Heat is so economical. No expensive chimneys or ductwork. See our heating experts to learn how easily Electric Heat can be added to your home.

EARN UP TO \$200.00 BONUS

Install Electric Heat and Central Air Conditioning to earn up to \$200.00 in special incentives. Contact our Member Services Department for details.

GRAYSON Rural Electric Connerative Corp.
Grayson, Kentucky 41143

USE COST CLASSIFIED ADVERTISING RATES

No Classified Ads Accepted After 12 o'clock Noon Today. Per word first insertion... 7c

ATTENTION - Due to the growth of the city of Morehead and Morehead State University, we are in constant need of good help...

NEED DRIVE GRAYELED with creek rock or white rock? Full dirt or top soil, creels cleaned and coal hauled. Also backhoe work.

FOR RENT - Two-bedroom unfurnished apartment, 1100b Manor, Phone 784-4550 or 784-5171. Show by appointment.

FOR RENT - Business rooms, office space, and apartment, Phone 784-4778.

FOR RENT - Mobile homes and furnished houses. Utilities paid. Call 784-7390.

TRAILER SPACE FOR RENT - Trailer parking, overnight camping area. We invite your inspection of this mobile home before you decide to locate.

FOR RENT - Nice 3-room apartment. Call 784-5021.

FOR SALE - 44x8 House trailer with 40x8 Cabana roof, Phone 784-7282.

WELCOME United Pentecostal Church Hays Crosing Pastor - Lloyd Dean Obey Acts 2:38

BABYSITTER - Would like to do babysitting in my home. Expensed. Call 784-5638.

PLEASE Call Chester Kiser Company, phone 784-5109, before contracting with any terms or conditions.

WOULD like to rent nice two or three-bedroom home in Morehead area. Can furnish references. Phone 784-9192.

FOR SALE - Tools, miscellaneous. Will do pump, lawn mower and appliance repair. L.H. Perdue, residence phone 784-7925.

FOR RENT - Two-room furnished apartment, 717 W. Main. Phone 784-4814.

TRIED PROVEN

FOR SALE - Eight acres, 7-room electric home with bath, 4 1/2 miles from Morehead. For information call 784-9131.

FOR SALE - Three-bedroom home on large lot, 63x200 feet. Located near high school and grade school. 544 West Sun St. or phone 784-5381.

FOR RENT - Trailer on private lot on Short Street, Swift Addition. Call John Bays after 5 p.m., phone 784-5221.

FOR RENT - Trailers. Two and three-bedrooms. All utilities paid. Near MSU. Phone 784-4874.

TRIPLE A ROOF CO. - All types of roofing work. Call collect 498-2725, Mt. Sterling, Ky.

HOUSE FOR SALE - Located Fernum, Ky. Four rooms, bath, utility room, natural gas and air. Phone 784-5683.

TRAILERS FOR RENT - One available near another one available June 8. Phone 784-5628, Deacon Morrison.

REDUCE side and feet with Gobeas tablets and E-Vap "water pills." C. E. Bishop Drug.

FOR RENT - Two 2-bedroom trailers furnished, utility bills paid. Phone 784-4531 or 784-9335.

WANT RED CARPET SERVICE? That's what you get when you schedule a move with A-1 Movers, Junie Pettit. Call now for an "On time" move!

MOREHEAD MOVERS Phone 784-7661 Member Of Ky. Household Goods Carriers Association.

NOTICE TO CREDITORS Notice is hereby given that Pearlie Lewis has been appointed Administratrix of the estate of Charles Oscar Lewis, deceased, and all persons having claims against said estate will please present same, properly proven, and all persons owing said estate will present same to either of the undersigned.

James E. Clay, Attorney Morehead, Ky. c-26 Pearlie Lewis, Administratrix, 216 Blair Avenue, Morehead, Ky.

FOR RENT - Three-room furnished apartment and 4-room house. Phone Juanita's Beauty Salon, day or night, 784-5022.

FOR SALE - House and lot at 239 Birn Tolliver Road. See Herman Brown at 918 Main Avenue or dial 784-6163.

FOR RENT - Efficiency apartment one block from University at 320 West Street. Air conditioned. Call 784-5387.

FOR SALE - Unfinished two-bedroom house, US 60 East, across from Casey Auto Parts. Long lot. \$3,900. Alfrey Realty, Mabel Alfrey, Realtor, phone 784-5986 and 784-9282.

NOTICE - The Old Hatch Burdette Cemetery has been cleaned off and all persons having places buried there may contribute to its upkeep by sending their contribution to Clarence Burdette, Rt. 4, Morehead, Ky. 40351.

Political Nominees

General Election - Tuesday November 4, 1969 REPUBLICAN PARTY FOR STATE REPRESENTATIVE 71st District - Bowen, Fleming, Robertson Counties Kenneth Bland FOR CIRCUIT COURT CLERK Richard Early FOR COUNTY JUDGE Ott Caldwell FOR SHERIFF Clayton Caldwell FOR JAILER Roy Plank FOR CORONER Calvin Ray Lyde FOR MAGISTRATE 2 - Upper Farmers, Lower Farmers, Thomas Addition, West Morehead Precincts. Virgil Richardson FOR MAGISTRATE 3 - Hogtown, Clearfield, City Hall Precincts. Hollie Stanger

FOR SALE - One apartment size gas cook stove, reasonable; one Empire gas furnace, forced air, 100,000 BTU, like new, reasonable. Phone 784-4825.

FOR SALE - Building site, about 1 1/2 acres. Just east of Rowan-Carter Counties line. Earl M. Ramo, Rt. 4, Box 180, Olive Hill, Ky. phone 295-2797.

SALES PERSONNEL - \$150 per week while training. No over-night travel, free pension plan and liberal group insurance. Send resume to H. S. Patton, P. O. Box 8125, Lexington, Ky. 40503.

FOR SUB-LEASE for summer. Furnished house two blocks from MSU. Utilities furnished, TV and automatic washer. 215 Bays Avenue, phone 784-5786.

FOR SALE - Used gas furnace, 100,000 BTU, duct work and registers. May be seen Friday night, Saturday or Sunday at 200 Flamingburg Road. Also electric water heater, bathroom fixtures, kitchen cabinets and sink.

ROOM FOR RENT - Private entrance, two blocks from MSU. Phone 784-5784.

FOR RENT - Two-bedroom trailers. No pets allowed. Phone 784-9351.

FOR SALE - 1964 New Moon 50x10, 2-bedroom trailer. Very clean. Call 784-4389 after 6 p.m.

FOR RENT - Two-bedrooms furnished apartment, one block from Morehead Grade School. Call 784-4852 or 784-4023.

FOR SALE - 1969 used mobile home, 2-bedroom, 12x50, furnished. Call 784-5607.

STAR METAL COMPANY We have Moved To A New Location On Route 377 East of Cranston, Ky. 1 1/2 Miles Above TGT Plant. Copper . . . lb. 44c Radiators . . . lb. 26c Aluminum . . . lb. 7c Batteries . . each \$1.25 Brass . . . lb. 14c

New Mobile Homes For Rent Inside City Limits 50x12 - 2 Bedrooms - Air Conditioned - See or Call - H. K. Taylor or Johnny Dickerson PHONE 784-4147

Political Nominees

General Election - Tuesday November 4, 1969 DEMOCRATIC PARTY FOR STATE REPRESENTATIVE 71st District - Rowan, Fleming, Robertson Counties Sherman R. Arnett FOR CIRCUIT COURT CLERK Wathan Armstrong FOR COUNTY JUDGE Clyde Litton FOR SHERIFF Carl Jones FOR JAILER Jessie Anderson FOR CORONER Jess McDaniel FOR MAGISTRATE 2 - Upper Farmers, Lower Farmers, Thomas Addition, West Morehead Precincts. Ralph Lawton FOR MAGISTRATE 3 - Hogtown, Clearfield, City Hall Precincts. Clella Moore

FOR SALE OR RENT - Eight-room furnished house located at Midfield, Ky. on KY 826, 1.500 ft. south of US 60. A. D. Jones, phone 693-3351, Salt Lick, Ky.

BUSINESS OPPORTUNITY - Man or woman. Reliable person from this area to service and collect from automatic dispensers. No experience needed. . . we establish contracts for you. Car, reference and \$995 to \$1195 cash necessary. Four to 12 hours weekly take excellent monthly income. Full time offers. For local interview write, include telephone number, Eagle Industries, 4725 Excelsior Blvd., St. Louis Park, Minnesota 55416.

FOR SALE - 250 cc motorcycle. Runs well, needs small repair. Cheap. Best offer. Call 784-9248.

FOR SALE - 1967 model Briggs & Stratton motorcycle with helmet. \$225. Phone 784-7499.

Dog Licenses, At \$1.50 Go On Sale July 1 Agriculture Commissioner J. Robert Miller has announced dog license tags for the 1969-70 fiscal year will officially go on sale at county court houses July 1, although some counties may have them earlier. Counties which have vaccination clinics for dogs in June will sell license tags at the clinics. Owners are requested to meet two basic requirements in order to sell the tags. They are urged to employ a dog warden to issue tags, investigate claims and impound stray dogs; and establish an animal shelter or dog pound. The annual license fee of \$1.50 is broken up in the following manner: 25 cents is retained by the warden making the sale; 50 cents is refunded to the county for operation of the dog law program; and the remaining 75 cents is deposited in the State Livestock Fund after the department's administrative costs are deducted. The Livestock Fund is to reimburse property owners for damages caused by unknown or unclaimed dogs. Kennel tags are \$10 per year for a licensed less than 10 dogs and \$15 annually for a larger kennel. Simple tags will be yellow and kennel tags will be green. The new tags will expire June 30, 1970.

St. Claire Medical Center

Morehead, Ky. 784-4161 ADMISSIONS June 4 - Irene Wright, Youcum; Eunice Hargis, Morehead; Edward D. Burke, Mazi; Anna S. Shelton, Ashland; Roxanne Parish, Olive Hill; John David Brogan, MSU; Cheryl Ann Stinson, Sandy Hook; Barbara Delores Blados, Olive Hill; Jeanette Merle Maggard, Grayson. June 5 - Sandra Gilbert, Morehead; Ernie O. Maggard, Jacobs; George Clevenger, Newfoundland; Chloce M. Cartwright, Olive Hill; Van Edward Chapman, Clearfield; Paris Jackson, Sr., Hillsboro; Dorsey Gregory, Morehead; Kersey Alderman, Morehead. June 6 - Shirley Cornett, Clearfield; Bonnie McCarty, Owingsville; Stella Alderman, Morehead; Lygia Williams, Morehead; Sheila Saczalski, Clearfield; Jackie Matthews, Morehead; Carl Hutchinson, Morehead; Clifford Burton, Morehead; Steady Bryant, Olive Hill; William Bowman, Morehead; Ora Williams, W. Liberty; Henry Ferguson, Moon. June 7 - Carl Hutchinson, Ora Williams, Thomas Wynn, James Staton, Viola Adkins, Anna Shelton, Sheila Saczalski, Eunice Hargis. June 8 - Laura Phillips, Lottie Bradley, Irene Wright, John Brogan. June 9 - Jackie Matthews, Kersey Alderman, Sandra Gilbert, Jennie Benton, Carl Hutchinson, Dorsey Clevenger. June 10 - David Boggs, Dorsey Gregory, Edward Miller, Marge Harned, Shirley Cornett and baby, Lygia Williams and baby, Steady Bryant, Kathy Fields, Hattie Sparks, Jeanette Maggard, Donna Hall. BIRTHS June 6 - Mr. and Mrs. Travis Cornett, son; Mr. and Mrs. James Williams, daughter. June 8 - Mr. and Mrs. Ronald Saczalski, daughter. June 10 - Mr. and Mrs. Roger Wilson, son; Mr. and Mrs. James Molton, daughter.

Rowan County Extension Office

It's still not too late for those who have completed setting up soil chemical weed control. Two materials that can be used are Venemar or Euflex. Venemar should be broadcast over the field and plowed in immediately up to 10 days after setting. Euflex is used as a spray in a band 15 to 20 inches wide. It is not necessary to plow this material in. If you would like further information stop by or call the Extension Office.

SPRAYS - Keep in mind that 2,4-D can be very harmful to tobacco. Drift from this material or the use of a sprayer that has had this material on it can very seriously damage your crop. It will remain in a sprayer for years no matter how much it has been washed out. Be very careful.

BEE SWARMS - If honey bees swarm around your place notify the Extension Office. Some may be interested in having such a swarm. Also try who is interested in obtaining bees from these should list the Extension Office number.

DISEASES - Some Rowan County farmers as well as others in the area are having trouble getting a good stand in tobacco because of Phythium Rot a fungus disease which causes the plants to rot off at the surface of the ground. There is no cure for it except to treat.

PLANT BEDS - Old plant beds are a source of infection for the crop. If you are going to use the same site next year and are throwing away this bed end use it to a good purpose such as soybeans or cow peas for turning under this fall. Be sure your neighbors have plans before you destroy them.

News Report From... Rowan County Extension Office

Ceremony For 123rd Division Is Scheduled

A celebrity-studded ceremony awaits members of the 123rd Tactical Reconnaissance Wing and the 123rd Tactical Reconnaissance Group when deactivation procedures are held June 9 at Sheppard Air National Guard Base, adjoining Standfield Field in Louisville. Gov. Louie B. Nunn heads the list of participants, which includes the mayor of Louisville and Kentucky's two U. S. Senators. Mayor Kenneth A. Scheieff joins senior Senator John Sherman Cooper and junior Senator Marlow W. Cook as the 123rd ends 16 months active duty. The units were activated by President Lyndon B. Johnson on Jan 26, 1968, three days after North Korea captured the intelligence ship, USS Pueblo. Many in the 123rd are from this county and area.

Kentucky Mushroom Farms LAWTON, KENTUCKY PLEASE APPLY TO - (1) Experienced Mechanic Convinient with gas, diesel and propane gas. (2) Two-Tractor/Trailer Drivers Handling horse manure from race tracks to farms. (3) Handy Man For general repair and maintenance work.

CHEAP'S MOBILE HOMES Eastern Kentucky's Largest Dealer! COME TO SEE 91 of the Finest Mobile Homes on display anywhere! 10-12-14-16 ft. widths 38 to 70 ft. lengths Every each out on an installation, decorated and landscaped as you can see how it will look on your lot.

Complete Ambulance Service Oxygen Equipped "Equipped To Serve You" MEMBER OF KENTUCKY FUNERAL DIRECTORS' BURIAL ASSOCIATION AUTHORIZED TO SERVICE Burial Insurance Contracts Issued by COMMONWEALTH LIFE INSURANCE CO. LAWSON FUNERAL HOME

CHEAP'S MOBILE HOMES Eastern Kentucky's Largest Dealer! COME TO SEE 91 of the Finest Mobile Homes on display anywhere! 10-12-14-16 ft. widths 38 to 70 ft. lengths Every each out on an installation, decorated and landscaped as you can see how it will look on your lot.

Complete Ambulance Service Oxygen Equipped "Equipped To Serve You" MEMBER OF KENTUCKY FUNERAL DIRECTORS' BURIAL ASSOCIATION AUTHORIZED TO SERVICE Burial Insurance Contracts Issued by COMMONWEALTH LIFE INSURANCE CO. LAWSON FUNERAL HOME

CHEAP'S MOBILE HOMES Eastern Kentucky's Largest Dealer! COME TO SEE 91 of the Finest Mobile Homes on display anywhere! 10-12-14-16 ft. widths 38 to 70 ft. lengths Every each out on an installation, decorated and landscaped as you can see how it will look on your lot.

Publisher's en...



Sometimes we run across local news a long ways from home.

We attended the annual summer meeting of the Kentucky Press Association last week at the Kentucky Dam Village, Gilbertsville, something over 300 miles from Morehead.

A representative of General Telephone Company who was at the gathering advised:

General will soon start converting the Morehead telephone exchange to direct (long distance) dialing. Installation and testing will take something over a year, meaning this service will be available in early 1971. You don't go through any operator with direct dialing, and the computers calculate the toll charges on your telephone bill.

No replacement has been named to succeed W. E. Williams as manager of the Morehead district. But, he said that Mr. Williams had received a very considerable promotion and will be one of the top policy men in the Kentucky system. His headquarters will be at Lexington, so it seems that we are losing the Williams family who have been a dedicated asset to Morehead community.

Last month Morehead installed its 5,000th telephone, daily reported upon in the Morehead News. When will the 10,000th be installed? He said it would come in 1972.

The last statement is rather amazing. It took us 114 years to get 5,000 phones; and it seems that the next 5,000 will come in a three year span. This is arrived at from tables, computers etc which really rule.

Incidentally, we learned for sure what we have been printing as conjecture for some time - the Morehead telephone exchange has gained, percentage-wise, in number of lines over the past 10 years more than any other in Kentucky.

The projection is that Morehead will continue to go on increasing in number of telephones, both residential and business, for the next 20 years longer. This is economy happy tidings, because bank drawings and the number of telephones are business barometers. It is hard to believe there's just no telling how big Morehead would get. Some flats and hollows exist outside the city limits at a "gold mine" price.

OUR DREAMS OF MANY YEARS ABOUT TO BECOME A REALITY

This is a great prospect for the publisher... something we, and this newspaper, have worked and fought for over many years is about to come true.

The U. S. Army Corps of Engineers officially announced today that construction bids for Cave Run Reservoir will be opened on or about July 31. This is the "big" step and spells out that the reservoir should be completed by late 1973 (December) and opened for public use by Memorial Day, 1975.

This Publisher has spent more time... also money... on this one project, extending over the past 15 years, than almost all others combined.

The greatest thing that ever happened here was establishment and subsequent growth of Morehead State University. It is the greatest thing that ever happened here. It is the greatest thing that ever happened here. It is the greatest thing that ever happened here.

DESERVING - Kentucky's largest newspaper, the Louisville Courier-Journal, carried an editorial Monday praising Morehead State University for its "progressive" step in creating a "senior" composed primarily of students and faculty or staff members. This is the most liberal move made by any Kentucky institution of higher learning. Also, feasible, understandable and apparently workable.

SHORT - The drive for \$250,000 to expand St. Claire Medical Center is not over. The goal is \$500,000 or more short in the community's share of the \$1,000,000 expansion. Co-Chairmen J. Roger Caudill and Alpha M. Hatchman have appointed 10 named, astute and determined board members to plan to spend several hours looking over the drive for the money. They are unpublicized, but obviously effective, campaign to raise the balance will be launched. Have you given? Will you plan more? The campaign offices are open the next week (Saturday) noon of Peoples Bank.

RELIGIOUS - Morehead's new basketball coach, Bill Harrell, has a fine coaching record. But, you probably didn't know he is recognized as one of Kentucky's outstanding Christian leaders. Bill spends more of his spare time in the local area and does religious work, and he is on many church committees.

FLY AWAY - When you read this Thursday this short-billed country Publisher will be in Houston, Texas, guest of Columbia Gulf Transmission. This is the "red carpet" invitation, and they're even flying me down and back in a company owned jet. The two Dorcas and a box of oil and gas getting in the car of the jet on the agenda. Also, cocktail parties where we'll be central; and girls where we might not be so central. One of our best and prettier girls that Kentucky and we told him that was not true, although Texas might be second.

WATCH YOUR STEP - Tomorrow is Friday the 13th when all kinds of bad things are supposed to happen.

HAD - Hearings on the racial problem at Morehead State University have been behind closed doors and not reported in the press. In West Kentucky just west we learned some of the health facts. The work is that 10 or 12 girls and one white girl ought to be and will be checked out of school with what we call a dishonorable discharge. One of the things they did was attack the girls and the white girl. They were a hard and emphatic faction on her chest. (We call them all chest's whether man or woman).

MAYBE WIN A FAW - When the 1969-70 Morehead State University basketball schedule is announced, it will mean that the team is presently a school of status outside the Ohio Valley conference. We just hope they win a half of it. We just hope they win a half of it. We just hope they win a half of it.

BIG MONEY - Total expenditures for the University of Kentucky for the fiscal year ending June 30, 1969, are \$1,235,563, 15 cents, an increase of \$1,000,000 over the previous year.

Commencement At Breckinridge

Tim Clayton, President of Student Council, and Harlen Hamm, instructor of Speech and Dramatics, received top awards during the annual Honor Program at University Breckinridge.

Clayton, son of Mr. and Mrs. C. G. Clayton, received the coveted Outstanding Student Award and Hamm was honored as the Outstanding Faculty member for the 1968-69 academic year.

Ronald Hart, director, said that Clayton's selection was the first time an underclassman had been honored. He said the selection is by a committee of faculty and students after a review of the academic and extra-curricular participation of all nominees. Each student must have a 2.5 academic average and final selection came from reviewing the nominees list of activities and a statement of future plans.

Hamm's selection was also by a committee of faculty and students and is awarded for outstanding service to the school's total curriculum and interest in

student affairs. Hart said, in making the presentation, the time value of someone with Hamm's qualities is visible by observation in the classroom or during extra-curricular activities and in the respect of the students and faculty. During the current year Hamm has served as chairman for the faculty senate, Southern Association Committee for evaluation, Thespians Advisor, Beta Club Advisor, and coach of the speech, and debate teams to record accomplishments.

Others who earned awards were Jean Lightner, Gary Lanham, Rachael Fulbright, Tim Porter, Bobbie Manning, Debra Pack, Debra Buskirk, Marjorie Wenz, Jim Hinson, Phil Pratt, Robin Razor, Mike Kegley, Audrey Phillips, Joan Lightner, Debbie Epperhart, Rodney Stanley.

Others - Patty White, Louise Venetozzi, Marsha Nail, Debbie Binion, Janie Allen, Scott McClain, Carolyn Cassidy, Stephen Butcher, Leslie

Engelhardt, Sandy Williams, Roger Hoffman, Steve Stetler, Beth Elliott, Mike Kegley, Carlos Hill, Patrick Watts, Ralph Derrickson, Laura Sadler, Jerry Calvert, Alson Lake, Dawn Payne, Ann Lea Lake, June Justice, Linda Casley, Sheryl Binion, George Burgess, Stacey Bentley, Joe Back and Cheri Ellington.



HONOR STUDENT - Students served as commencement speakers at University Breckinridge and Stephen Butcher, who ranked number one in his graduating class (3.95), sets the tone for the address with illustrations around the classes motto: "The air is reached or not makes great the life." The top four students academically delivered the commencement address. Other participants were Debra Buskirk, Roger Hoffman, and Laura Sadler, in order of their class ranking.



ELECT HINSON - Jim Hinson, senior and son of Mr. and Mrs. Ernest Hinson, will head the University Breckinridge student council for the 1969-70 academic year. He was elected president by a majority of student voters during the annual student council election day. Jerry Calvert, son of Mr. and Mrs. J. B. Calvert, was elected vice-president and will serve with Hinson on the executive committee. Hinson's campaign was based on total student participation. He said all students should consider themselves a part of the council because any action taken affects their actions and involvement in the total school curriculum. His opponent was Rachael Fulbright, junior class member and daughter of Dr. and Mrs. Glen Fulbright. Calvert's opponent was Janie Queen, daughter of Mr. and Mrs. Tom Queen.



JOYOUS - University Breckinridge's graduating class sings "Climb Every Mountain" prior to presentation of diplomas. The thirty-two member class was presented by Mrs. Hazel Calhoun, class sponsor. Diplomas were presented by Ronald Hart, director of the school. Graduating seniors were: Geneva Jane Allen, James Curtis Barker, Deborah Lynn Binion, Sheryl Ellington, Debra Jean Buskirk, James Stephen Taylor, Jr., Stephanie Bernice Tucker, James Warren Wells, James Archie Williams, Jr.

Gregory, George Carlos Hill, Jr., Roger Clinton Hoffman, Ronald Alvin Jackson, June Cheryl Justice, Ann Lea Lake, Drew Evans Lane, Gary Lee Lanham, Linda Pat McGary, Robert J. Mays, Charles Lee Moore, Robert Tyler Needham, Stephen Dennis Perkins, Norman James Phillips, Teresa Duff Roberts, Kim Douglas Rogers, Laura Jean Sadler, Jerry Michael Scroggs, Herschel Kenneth Taylor, Jr., Stephanie Bernice Tucker, James Warren Wells, James Archie Williams, Jr.



LAZY AFTERNOON - No, just a reading lesson by Mrs. Elizabeth Anderson, supervising teacher of Intermediate II at University Breckinridge. Mrs. Anderson took advantage of the warm weather to take her entire class outdoors for the lesson.



HIGHEST AWARD - Tim Clayton, Outstanding Student Award recipient, received his plaque from Mrs. Joyce Saxon, University Breckinridge faculty member. Clayton received the award during the annual Honor Program at Breckinridge.

Husband of Morehead Girl Graduates At Air Force School

Master Sergeant Howard B. Haggard, son of Mr. and Mrs. J. T. Haggard, Rt. 3, Winchester, Ky., has graduated from a U. S. Air Force technical school at Sheppard AFB, Tex.

He was trained as an aircraft equipment technician and assigned to a unit of the Tactical Air Command at Forbes AFB, Kan.

The sergeant, who has served in Vietnam, is a veteran of the Korean War. The sergeant's wife, Delma, is the daughter of Mr. and Mrs. Walter Erwin, Rt. 3, Morehead, Ky.

WHEN YOU INSURE BE SURE YOU INSURE in sure INSURANCE

For all types insurance... **C. Roger Lewis Agency**

129 E. MAIN ST. MOREHEAD, KY. Phone 784-4168

Yes, we write all types Homeowner's, Store Plus, Fire, General Liability & Auto, Life, and you name it. We insure everything & sell anything.

FATHER'S DAY Specials

Remember DAD With That Special Gift

MEN'S PERMA PRESS CASUAL PANTS \$3.87 Pair

MEN'S Wrist Watches \$9.97 to \$14.97

MEN'S Dress Oxfords \$5.88 and \$8.88

MEN'S Billfolds \$2.00 Each

MEN'S Perma-Press SPORT SHIRTS \$2.00 Each

MEN'S White Handkerchiefs 8 for \$1.00

DOLLAR DISCOUNT STORE

MAIN STREET - WILSON AVE. MOREHEAD, KY.

STORE HOURS: Monday thru Thursday, 9:30 to 6:30 - Friday, 9:30 to 6:30 - Saturday, 9:30 to 6:30

Entertain Members Of Fire Dept.

The 20 members of the Morehead Fire Department and Mayor William H. Layne were guests of honor Monday evening at a dinner given by L. G. Bishop, who heads Jerry's Restaurant, East Main Street, Morehead.

The steak dinner at Jerry's was devoid of program. The 20 members of the Morehead Fire Department and city personnel other than the firemen.

RETIREMENT SMILES

Mrs. Virginia Rice and Mrs. Blanche Wetz are all smiles following a retirement banquet held in their honor. The retirement affair was hosted by University Breckinridge faculty. Mrs. Rice is retiring after 22 years as supervising teacher in Home Economics. She was presented a white Tureen made in Italy by her fellow teachers. Mrs. Wetz served as supervising teacher at Intermediate III level for 16 years and will officially retire this year. The banquet was held at Jerry's Restaurant in honor of her years of service.

"Sunshine City"
ST. PETERSBURG, Fla. (UPI)—The City of St. Petersburg proudly boasts that its nickname is the "Sunshine City," and there appears little room to challenge this.
On Feb. 9, 1969, the city recorded its 731st consecutive day in which the sun had not failed to shine, and began its third year on a sunny note.



AN ARID SITUATION—The acute shortage of water in southern India is punctuated by the flow of containers at a central town water spot. The water is turned on periodically and the containers are lined up well in advance. Most of Madras' lakes have completely dried and the drought has become critical to the people of the region.

PLUMBING and HEATING
REPAIRS-ALTERATIONS-INSTALLATIONS

Planning on a New Bathroom?

The latest in bathroom design can be yours at surprisingly low cost. Choose from a wide selection of new, modern fixtures. Call now for free estimates.

For All Your Needs...
C & P PLUMBING
Heating & Electric

430 West Main St.
Morehead, Ky.
PH. 784-4047

Just What Your Doctor Ordered...

Your registered pharmacist is dedicated to safeguarding your health by filling your doctor's prescriptions with professional precision. We help your doctor help you.

For Prescriptions, First Aid Supplies, Toiletries, Sundries

C. E. Bishop Drug Co.
"The Retail Store"
MAIN STREET - MOREHEAD, KY.

BEGINNING IN JUNE, We're on the air on Friday until 10 p.m.

JUNE, 1969 PROGRAM NOTES

STATE SERVICE PROGRAMS
Modern Supervisory Practice and Efficient Reading presented in cooperation with the Kentucky Training and Development Foundation. Participating/cooperating agencies and groups include the Kentucky Chamber of Commerce, Associated Industries of Kentucky, Bluegrass Chapter of ASTD, Kentuckiana Chapter of ASTD, Bluegrass Personnel Association, Louisville Personnel Association, Kentucky Department of Education and the University of Kentucky Community College system.

ADULT EDUCATION AND TRAINING
Modern Supervisory Practice—7:00 Mon & 4:00 Fri through June 20
Speed Reading—7:00 Wed
Modern Math for Parents—6:30 Wed

SCHEDULE	Time	Topic	Time	Topic
MONDAY	4:00	Smart Sewing	7:00	Conversations with Eric Hoffer
	4:30	Misterson's Neighborhood	7:30	NET Jazz
	5:00	What's New	8:00	NET Playhouse
	5:30	Friendly Giant	8:30	2-Paduch Swing Choir
	6:00	French Chef	9:30	2-Contemporary
	6:30	2, 9, 16—Modern Supervisory Practice	TUESDAY	
	7:00	NET Public Affairs	4:00	Misterson's Neighborhood
	7:30	NET Jazz	4:30	Friendly Giant
	8:00	NET Playhouse	5:00	3, 10, 17—Art Studio
	8:30	2-Paduch Swing Choir	5:30	NET Public Affairs
	9:30	2-Contemporary	6:00	Astronomy for You
	10:00	NET Jazz	6:30	Book
	10:30	NET Playhouse	7:30	Folk Guitar
	11:00	2-Paduch Swing Choir	8:30	Conversation
	11:30	2-Contemporary	9:00	French Chef (Repeat)
	12:00	NET Jazz	9:30	NET Jazz
	12:30	NET Playhouse	10:00	2-Paduch Swing Choir
	1:00	2-Paduch Swing Choir	10:30	TBA
	1:30	2-Contemporary	11:00	Let's Talk (Repeat)
	2:00	NET Jazz	11:30	Sounds of Summer
	2:30	NET Playhouse	12:00	NET Jazz
	3:00	2-Paduch Swing Choir	WEDNESDAY	
	3:30	2-Contemporary	4:00	11, 18—Art Studio
	4:00	NET Jazz	4:15	Misterson's Neighborhood
	4:30	NET Playhouse	5:00	What's New
	5:00	2-Paduch Swing Choir		
	5:30	2-Contemporary		

June Program Guide - Kentucky Educational Television

CHILDREN'S PROGRAMS
Misterson's Neighborhood—4:30 (Sat-Sun)
What's New—5:00 daily
Art Studio—4:45 Tues, 4:15 Wed until June 18
Music for Young People—5:30 Thurs 4:00 Wed
Spectra—5:30 Mon, 5:00 Tues, 4:45 Wed
3 & 5—The Giant Planets
10 & 12—The Earth in Space
17 & 18—The Moon
24 & 25—Minor Members of the Solar System
The Investigator—5:30 Thurs beginning June 25
Oceanography—4:00 Fri beginning June 27

DRAMA AND LITERATURE
What's New—5:00 Mon
NET Playhouse—8:00 Mon
—Everyman
—Siegfried (Sat) (C)
—14—Confrontation
—Lullaby Playrights
—30—Dellius
Book Best—8:00 Tues & 7:30 Thurs 8 & 5—David Douglas Duncan

SCHEDULE

Time	Topic	Time	Topic
6:00	Folk Guitar (Repeat)	5:30	Focus
6:30	Modern Math for Parents	6:00	NET Jazz
7:00	Speed Reading	6:30	Antiques
7:30	Conversations with Eric Hoffer	7:00	Decision: Constitution in Action
8:00	NET Jazz	7:30	Decision: Constitution in Action
8:30	NET Playhouse	8:00	NET Journal
9:00	2-Paduch Swing Choir	8:30	NET Journal
9:30	2-Contemporary	9:00	NET Journal
10:00	NET Jazz	THURSDAY	
10:30	NET Playhouse	4:00	What's New for You (Repeat)
11:00	2-Paduch Swing Choir	4:30	Misterson's Neighborhood
11:30	2-Contemporary	5:00	5, 12, 19—Music for Young People
12:00	NET Jazz	5:30	The Investigator
12:30	NET Playhouse	6:00	Conversation (Repeat)
1:00	2-Paduch Swing Choir	6:30	Book Best (Repeat)
1:30	2-Contemporary	7:00	Smart Sewing (Repeat)
2:00	NET Jazz	7:30	NET Festival
2:30	NET Playhouse	8:00	NET Festival
3:00	2-Paduch Swing Choir	8:30	NET Festival
3:30	2-Contemporary	9:00	NET Festival
4:00	NET Jazz	FRIDAY	
4:30	NET Playhouse	5, 11, 20—Modern Supervisory Practice	
5:00	2-Paduch Swing Choir	5:00	NET Public Affairs
5:30	2-Contemporary	5:30	Misterson's Neighborhood
6:00	NET Jazz	6:00	What's New
6:30	NET Playhouse	6:30	Spectra (Repeat)
7:00	2-Paduch Swing Choir	7:00	Focus
7:30	2-Contemporary	7:30	NET Public Affairs
8:00	NET Jazz	8:00	Astronomy for You
8:30	NET Playhouse	8:30	Book
9:00	2-Paduch Swing Choir	9:00	Folk Guitar
9:30	2-Contemporary	9:30	Conversation
10:00	NET Jazz	10:00	French Chef (Repeat)
10:30	NET Playhouse	10:30	NET Jazz
11:00	2-Paduch Swing Choir	11:00	2-Paduch Swing Choir
11:30	2-Contemporary	11:30	TBA
12:00	NET Jazz	12:00	Let's Talk (Repeat)
12:30	NET Playhouse	12:30	Sounds of Summer
1:00	2-Paduch Swing Choir	1:00	NET Jazz
1:30	2-Contemporary	1:30	NET Jazz
2:00	NET Jazz	2:00	NET Jazz
2:30	NET Playhouse	2:30	NET Jazz
3:00	2-Paduch Swing Choir	3:00	NET Jazz
3:30	2-Contemporary	3:30	NET Jazz
4:00	NET Jazz	4:00	NET Jazz
4:30	NET Playhouse	4:30	NET Jazz
5:00	2-Paduch Swing Choir	5:00	NET Jazz
5:30	2-Contemporary	5:30	NET Jazz

All times are Eastern—Central One Hour Earlier

Policeman's Lot
is Oslo
OSLO (UPI) - More than 77 per cent of the police in Oslo, Norway's capital city, complain of headaches every day. A survey showed 44.7 per cent suffer from insomnia and 27.6 per cent said they have had nerves because of their jobs. The survey was made among 250 police officers.

AT DOYLES

Approximately 50 MOVIE HOMES to choose from - all are decorated with many type furniture, storm windows, shutters and many other extras - PRICES ARE SLASHED!

HERE ARE SOME OF OUR SPECIALS:

- 1. 60 x 12 Atlantic, Front Kitchen, 3 bedrooms, beautiful avocado carpet with matching furniture. 79 ft. extra ceiling and 8 inch base. \$8995.00
- ON SALE AT ... \$4995.00 ... COMPARE THIS!
- 2. 60 x 12 Gardner E. A. Front Kitchen, carpet and house like, birch walls, floor, etc. \$6995.00
- SOME DEALERS ASK \$6995.00 - it's your's at \$4995.00
- 3. 60 x 12 NAMCO 4 bedroom with upstairs, 1 1/2 baths, birch walls, carpet, sheer drapes. \$6995.00
- 4. 60 x 12 MARRIOTT, Old English, center dining room, too beautiful to explain on paper! Some dealers perhaps ask \$5900.00 to \$6900.00
- OUR SPECIAL PRICE on this unit is ONLY \$4995.00
- 5. 60 x 12 NAMCO Design 70 - has the new look - is pure luxury! Carpet on living room, hall, and both bedrooms. Rear vanity bath also is built! On most any lot would be priced at \$6995.00, offering OUR BIG SALE... COME AND SEE IT AT \$4995.00

WE DELIVER AND SET UP ON FOUNDATION FREE!

We trade for anything of value... Open until 8:00 p.m. Monday thru Friday - Saturdays til 6:00 p.m. - Sunday, 1:00-8:00 p.m.

PHONE 845-8601

Doyle Mobile Homes, Inc.
Highway 11 West of FLEMINGSBURG, KY.

no better way to say
"HAPPY FATHER'S DAY"

Father always appreciates gifts with style - and these have more than their share. Choose from a superior selection of gifts he can wear and save at Martin's.

Sport Coats
by Campus

STRAW HATS
by Champ
Reg. \$7.98
Sale Price... **\$3.98**

Swim Trunks
by Campus - Catalina Martin
\$3.98 - \$7.50

Accessories - by Shields, Inc.
Pajamas & Robes - by Arroy - Kim Berry
Priced From... **3.98 - 7.98**

Knit and Perma Press Shirts
by Arrow and Catalina Martin
Priced From... **\$4.00 - \$7.98**

Summer SLACKS
for Father's Day
by Farah and Hagger
Priced From... **6.98 - 10.98**

SHOES
by Freeman and Bass
Priced From... **\$14.98 - \$29.98**

SOCKS
All Colors
79¢ - \$1.50 Per Pair

Martin's
"Morehead's Most Modern and Progressive Department Store"
MAIN STREET - MOREHEAD, KY.

Sensing The News

The danger of union violence being carried to the supermarkets and grocery stores of the nation is far greater than most people realize. Legislation now before the Congress may determine whether this violence is to be prevented and whether consumer rights are to be protected in the future.

Farm union organizers are working overtime to get a tight grip on agricultural production and to powers over what farm products are offered for sale at retail outlets. Farm unionists in California grape-growing areas have demonstrated what lies ahead for consumers if unionists have their way. They have sought to organize a national boycott of California grapes.

In New York City, grocery stores selling California grapes have been the target of fire-bomb attacks. In Detroit efforts to enforce the grape boycott have included acts of violence and harassment of store owners and employees.

Clearly, the public has cause for concern about this situation. Among those who already are deeply concerned - to the point of doing something about the situation - is State Senator Lorraine Beebe of Michigan. Senator Beebe, who is chairman of the Consumer's Rights Committee, recently said it is "only a matter of time before supermarkets and grocery stores are faced with demands to remove any number of thousands of items carried on grocery shelves: cherries from Michigan, oranges from Florida, dairy products from Wisconsin, and Brand name products of all kinds."

The roughstuff that lies ahead, unless something is done, was revealed in candid remarks by the Rev. W. Warren Dierker, director of the California Migrant Ministry. He urged boycott supporters to "make a noise every time you see served packages in restaurants, camps, your service of churches, church dinners, etc." Misqu coasting, such as the controversial National Council of Churches, have become deeply involved in the California grape situation on the side of the union bosses.

In view of the danger of outright union and intimidation of grocery store operators, it is imperative that Congress pass protective legislation. Senator George Murphy, (R-Calif.) has introduced a bill to that end.

Senator Murphy's bill would meet the public need by forbidding all picketing at retail food establishments, out-living violence as a means of implementing a boycott, and banning secondary boycotts. Sound necessary as are these provisions of Senator Murphy's legislative proposal, even greater strengthening of the bill is needed to fully protect the consumer's right of access to farm products.

Senator Murphy's bill allows a farmer to get a temporary restraining order against strikers if he can convince the court that the strike threatens loss or spoilage of a crop in commercial quantities. It would be much more to the public interest, however, if the Murphy bill were amended to forbid all strikes at harvest time or at other critical periods.

Flemingsburg Stockyards

June 7, 1969
Hogs - Packers \$24.90; Sows \$17.50 to 22.00; Stock Hogs \$22.00 to \$25.95; Sows and Pigs \$94 to \$128; Sows \$6 to \$24.
Cattle - Steers \$21.00 to \$22.00; Heifers \$20.00 to \$30.75; Baby Steers \$22.00 to \$27.00; Cows \$16.00 to \$29.00; Fat Cows \$21.00 to \$22.50; Slaughter From Cows \$130 to \$200; Bulls \$22.00 to \$25.00; Stock Sows \$22.00 to \$36.50; Stock Heifers \$22.00 to \$32.00; Cows and Calves \$100 to \$207; Stock Bulls \$18 to \$24.00; Slaughter Veals \$34.00; Cows \$27.00 to \$43.50.
Slaughter - Hogs \$24, Sows \$20, Heifers \$20, Veals \$23; Total Receipts 700.

CONCRETE BLOCKS

Full Line of Brick

"Don't Buy Until You Try"

Standard Supply
664-4631

Expert Plain Lumber Co.
Dealer in Rowan County

Mayville, Ky.

Those Wonderful Moments...

"Be still there follow I'm gone take care of everything!" It's a rare and wonderful moment when Dad takes over.

Dad is a pretty great fellow, but there are some jobs that he just isn't cut out for... and Junior agree. However, Dad is still an important figure around the house. He's pretty important around the bank, too... in fact, all our customers are! We appreciate the people who do business with us, and we make a special effort to meet all their needs - whatever they might be. We would like to be your banker, too!

PEOPLES BANK of Morehead
MOREHEAD, KENTUCKY
ESTABLISHED 1907

SOCIETY

Dub Bellamy left Sunday for a two-week visit with his daughters, Mrs. Jim Keagle and Mrs. Dave Harris and their families in Warren, Ohio.

Mrs. Lilly Schmidt of Highland, Md. and Mrs. Herbert Schmidt and Mr. and Mrs. Clarence Willison of Grayson were guests last weekend of Mr. and Mrs. Howard Jones.

Mr. and Mrs. Arvil Crase of Princeton, Ill. are announcing the arrival of a daughter on May 28. She weighed six pounds, three ounces and has been named Amy Susan. She has a sister, Jennifer. Mr. and Mrs. Crase are former residents of Morehead.

Mr. and Mrs. Walter Calvert were weekend guests of Mr. and Mrs. Bruce Walters in Pikeville and attended the wedding Saturday of Miss Madge Walters Jr. and Mr. John Hammond Baird Saturday at 2:30 p.m. in the First Presbyterian Church in Pikeville.

Miss Betty Lane attended the funeral Saturday of her aunt, Mrs. Mary Lewis in Hamilton, Ohio. Other members of the family attending were Caswell Lane, M. Sterling; Jim Lane and Mrs. Thelma Robertson, Sharpshurg.

Mr. and Mrs. Wendell Downs, Vona, Curtis and Eddie of Kansas City were guests last weekend of Dr. and Mrs. George Barber and family.

Visitors at the home of Mr. and Mrs. Woodrow Barber last week were Col. and Mrs. William E. Barber of Camp Lejeune, N. C.; Mrs. Mabel Barber and Mrs. Ron Kidding, Lexington; Mr. and Mrs. Harold Barber and Mrs. R. B. Sheets, Rusty and Raymond of West Liberty; Dr. and Mrs. George Barber and family.

Michael Bruce Barber is spending two weeks with his grandparents, Mr. and Mrs. Woodrow Barber while his parents are on vacation.

Miss Patti Bolin and Mrs. Paul J. Reynolds were guests at a meeting Monday of the Clark County Home Economists Club at Old South Inn in Winchester and presented a program on "Consumer Education."

Jim Williams spent Sunday night with his sister, Mrs. W. O. Smith Jr., and Mr. Smith in Lexington.

Those from Morehead who attended the State Convention of Veterans of World War I and Ladies Auxiliary in Lexington from Friday to Sunday were Mrs. Anna Jones, Mrs. Maude Hamm and Mrs. Exie Barnett. Mrs. Jones was elected president and Mrs. Barnett, junior vice president.

Mr. Robert Needham is in Frankfurt this week attending a state health workshop.

Mrs. Everett Blair was called Sunday to Madisonville, Ind. by the death of her mother, Mrs. R. H. Raycox.

Dr. and Mrs. F. B. Fisher, Laura, Therese and Karl of Athens, Ohio were guests last weekend of Mr. and Mrs. L. A. Fair.

Mr. and Mrs. Thomas Hogan, Freddie and Vicki spent the weekend in Lebanon with Mr. and Mrs. Don Nelson and family, former residents of Morehead. They visited My Old Kentucky Home on Saturday.

Mr. J. B. Calvert Sr., Mrs. LeGrand Jayne and Mrs. Mason Jayne were guests of Mr. and Mrs. S. H. Hagaman in Summerville, W. Va. from Thursday to Saturday.

Dr. and Mrs. George Barber, Mark, Jeff and David left Saturday for a two-week vacation. They will visit Mr. and Mrs. John Anderson in Johnson City, Tenn.; Dr. and Mrs. Cratis Williams in Boone, N. C.; Mr. and Mrs. John Lester at Ft. Pierce, Fla. and Mr. and Mrs. Ova Hanes at Vero Beach, Fla.; and Dr. Barber will attend a medical meeting in St. Petersburg.

Mr. and Mrs. Robert Vaughan left Thursday for a ten-day vacation at Kentucky Lake.

Mr. and Mrs. Ralph Miller of Brownsville are welcoming their first child, a daughter, Jennifer Marie, born June 2. Mrs. Miller is the former Karen Farmer, daughter of Dr. and Mrs. Sidney Farmer, and granddaughter of Mrs. Evelyn West of Morehead.

Mr. and Mrs. Donnie Gastineau and family of Louisville, Mr. and Mrs. Raymond Black and family of Dayton, and Mrs. Lenora Burke of Rockwood were recent guests of Mr. and Mrs. Roy Gastineau.

Mrs. Ethel Moore left Tuesday for a visit with her mother, Mrs. J. H. Jones, in Bowling Green.

Those from Rowan County attending the Old Folios and Rebekah Lodge luncheon at Lexington Sunday were Mrs. Mary Ann Gentry, Mrs. Betty Gentry and Mrs. S. H. Gentry, Mrs. E. D. Patton, Mrs. and Mrs. T. Casey, Miss Nancy Cassidin and Mrs. Ferrell Hill.



Guests last week of Mr. and Mrs. Bud Ramey were Mr. and Mrs. David Ramey and family of Anderson, Ind.; Mr. and Mrs. Victor Ramey and family of Portage, Ind.; Mr. and Mrs. William Kincaid, Lexington; and Mr. and Mrs. Jim Ramey and family of New Castle, Ind.

Mr. and Mrs. Bud Ramey left Monday for Lynn, Ind. to attend the funeral of Mrs. Bill Ramey.

Mrs. Ferrell Hill of Farmers spent the weekend with Mr. and Mrs. W. T. Garey.

Mr. and Mrs. A. D. Coleman attended the funeral of his brother, Mr. Rush F. Coleman, at the Methodist Church at Shelbyana Monday. Burial was at Pikeville.

Mr. and Mrs. Graydon Hackney have as their visitors their daughters and families, Mr. Al Carlisle and children, Kraig, Clark, Kristi and Julie Ann of Seattle, Wash. and Mrs. Ray Almon and children, David, Roger and Sheri Lynn of Pocatello, Idaho.

Mr. and Mrs. John Harrison Ward and daughters Barbara and Marilyn of Cleveland, Ohio, were Monday guests of Mrs. V. H. Wolford.

Miss Laura Hackney left Tuesday for Provo, Utah to attend a six-week drama workshop at Brigham Young University. She accompanied Mr. and Mrs. Larry Dales and children, Jill and Nelson who will spend the summer in Provo while Mr. Dales is working on his doctorate at Brigham Young.

Miss Janie Rather who has been teaching in the Columbus, Ohio school system arrived last week to spend the summer at her home here.

Among the 900 delegates and advisers attending the 24th annual meeting of the Kentucky Association of Future Homemakers of America at Western State University, Bowling Green, this week, Tuesday through today (Thursday) are four from Morehead. They are Janie Allen, who will receive a State degree; Susan Allen, delegate; Marjorie Wentz, a member of the 1968-69 publicity committee and a 1969-70 candidate for state office; and Mrs. Byron Wentz, adviser.

Mrs. Susie Hackney of Arlington, Va. arrived Monday for a visit with her sons, Graydon Hackney and Paul Hackney and their families.

Mr. and Mrs. Jack McAllister and daughter, Katy of Columbus, Ohio spent the weekend with her parents, Mr. and Mrs. Creed Patrick, Mrs. McAllister and Katy remained for a longer visit.

Mrs. Joe Mauk was called to Portsmouth, Ohio Saturday due to the illness of her mother, Mrs. Lenora Stamper who is a patient in Mercy Hospital. She was accompanied by her daughter, Mrs. Kenney Fouch.

Miss Patti Bolin left Wednesday for Bowling Green where she will attend a State FHA meeting for two days and will then go to Clinton, Ky. for a visit at her home.

Keith Leslie, Johnny Spurlock and Phillip Haywood of Prestonsburg were guests last Tuesday night of Jim Williams.

Mrs. Helen Durbin of New Albany, Ind. was the guest of Mr. and Mrs. J. Arch Williams from Thursday to Sunday, and attended the graduation exercise at University Brookside at which time Jim Williams graduated. Others here were Mr. and Mrs. W. O. Smith Jr. of Lexington and Mrs. Della Mae Henry of Kenova, W. Va.

Mr. and Mrs. Gene Samuel of Tallahassee, Fla. will arrive today (Thursday) for a visit with her parents, Mr. and Mrs. J. Arch Williams.

Mrs. W. H. Layne attended the Governors Committee of Women held at Cumberland Falls last weekend.

Mr. and Mrs. Kermit Couch of Warren, Mich. were guests Monday and Tuesday of Mr. and Mrs. John E. Allen and family, and Mr. and Mrs. L. A. Fair. They were here to attend the Morehead State University graduation at which time their son, Doyle, graduated.

Mr. and Mrs. Ronald Hart and daughter, Shari were Lexington visitors Monday.

Mrs. Jim Gross and Scotty of Ashland spent last week with her parents, Mr. and Mrs. Nathan Gullett. Sunday visitors of the Gross family in Ashland were Mrs. Ronald Hart and Shari, and Mrs. Gullett.

Dr. and Mrs. E. D. Patton, Mrs. and Mrs. T. Casey, Miss Nancy Cassidin and Mrs. Ferrell Hill are spending this week with Mrs. Patton.

TO WED - Mr. and Mrs. Clyde Jasper of Lexington announce the engagement of their daughter, Miss Joanne Jasper of Cynthia, to Mr. Larry E. Newman, also of Cynthia, son of Mr. and Mrs. Paul Newman, Morehead. A graduate of Henry Clay High School, Lexington, and Morehead State University, Miss Jasper is employed in the Harrison County school system. Mr. Newman, also employed in the Harrison County school system, is a graduate of Rowan County High School and Morehead State University. The wedding will be June 27 in Northern Heights Christian Church, Lexington.

Mr. and Mrs. Ed Taylor of Lexington spent Saturday night with Mr. and Mrs. Clyde Bruce. Miss Hazel Roe also of Lexington, is spending the week at the Bruce home.

Mrs. Elizabeth Foote of New Orleans arrived Sunday to spend the summer with her parents, Mr. and Mrs. B. F. Penix. Mr. and Mrs. Tom Penix of Akron, Ohio spent last Tuesday and Wednesday at the Penix home.

Mrs. Austin Alfrey returned home Sunday from a two-week visit with Mr. and Mrs. Gene Austin Alfrey and family in Winter Haven, Fla.

Mr. E. L. Hummel entered the Veterans Administration Hospital in Huntington, W. Va. last week. Mrs. Hummel accompanied him.

Mrs. Kellum Fannin, Mabry Addition, had as her guests Saturday, Mr. and Mrs. Bernard Johnson, Dayton, Ohio; Mr. and Mrs. James Bolin and family, Muncie, Ind.; Mr. and Mrs. Virgil Richardson, Mr. and Mrs. Harold Stone and Mrs. Eva Stone. Other visitors Sunday were Mr. and Mrs. Roma May of Connersville, Ind.

Mr. and Mrs. Fred Burton of Columbus, Ohio spent the weekend visiting her parents, Mr. and Mrs. Chester Butts.

Among those from out of town attending the funeral of Mr. Charles O. Lewis were: Mr. and Mrs. Calvin Shelton, Mr. and Mrs. Will Shelton, Mr. and Mrs. Oscar Shelton and Mr. and Mrs. Bud McCord, Cincinnati; Mr. and Mrs. Charles Terwilliger, Goshen, Ohio; Mr. and Mrs. Robert Schlagheck, Junior Lewis, Mr. and Mrs. Charles B. Lewis and Mr. and Mrs. Ronald Cahill, Loveland, Ohio; Mr. and Mrs. Roger Lewis, Shelby, Ohio; and George Terwilliger, Maineville, Ohio.

Mr. and Mrs. Walter Calvert were weekend guests of Mr. and Mrs. E. Bruce Walters in Pikeville and attended the wedding Saturday afternoon of Miss Madge Walters Jr. and Mr. John Hammond Baird in the First Presbyterian Church. Other guests from Morehead attending the wedding were Dr. and Mrs. Adron Doran and Mr. and Mrs. William Mahaney and sons, James, John and Bob.

Ford Keynote For Observance At Baptist Center

Kentucky's Lieutenant Governor Woodell H. Ford will keynote a series of activities June 20-22 commemorating the one hundredth anniversary of the opening of Spring Meadows, Baptist child care institution located in Middletown, Kentucky. Baptists operate a similar home, Pine Crest, at Morehead.

Spring Meadows claims to be the oldest Southern Baptist child care agency, having had a continuous operation since June 21, 1869. Reverend J. D. Herndon is in his tenth year as superintendent, and is only the seventh person to hold this office since the home was established.

The lieutenant governor, who is also an active Baptist layman, will speak at a dinner on the evening of June 20 at the Kentucky Fair and Exposition Center. Homecoming Day will be observed at Spring Meadows on June 21. The program includes a historical program to be presented in the afternoon by the staff and children of the home. Dr. Wayne Dehoney, pastor of the Walnut Street Baptist Church, Louisville, will conclude the three-day celebration with a memorial service in his church on June 22. Trustees, staff, and children of Spring Meadows will honor guests. It will be Walnut Street Church which gave birth to the children's home in 1869.

At Morehead . . .

Music In The Oddest Manner

When Robert Schietroma of the Morehead State University music faculty described some of his instruments as unorthodox, he makes an understatement. Schietroma gets musical sounds from rusty brake drums taken off junked cars, galvanized pipe, blocks of wood and cymbals.

The music instructor is a specialist in percussion and the unusual instruments based on ordinary items which are used.

Besides giving his students an opportunity to improvise with different types of instruments, the extraordinary collection is providing Schietroma with low-cost suggestions for high school band directors who want more percussion

sounds but cannot afford extra conventional instruments.

Fabricating the suspended brake drums took a week's spare time and caused a junk dealer to question Schietroma's sanity.

"It unnerved the fellow to see grown men roaming through his junkyard and banging on brake drums," Schietroma recalled. "I explained that we needed drums of different pitch but the man seemed anxious for us to find our materials and leave quickly."

The brake drums, bells and galvanized pipe have been used in three concerts of the MSU Percussion Ensemble and Schietroma reports a "generally good" reception.

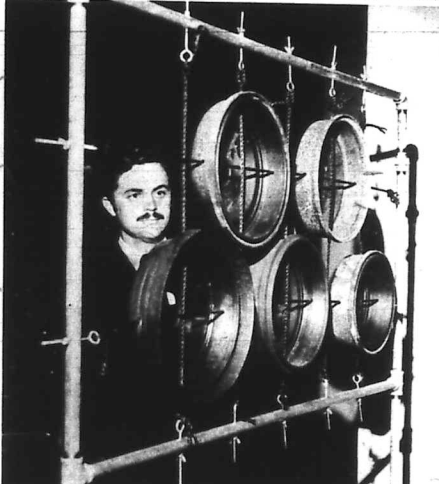
"Moving the instruments on stage looks like you're getting ready for an auction but attitudes change when the music starts," Schietroma said. "Our students haven't mastered the techniques yet but they're doing better than I anticipated at this point."

Schietroma, who also is music director of University Breckinridge School, is optimistic about the future of his unorthodox instruments.

"After all, when you can produce authentic musical sounds from a pile of junk, there must be hope," he quipped.



WED 50 YEARS . . . Mr. and Mrs. S. P. Wheeler who were married June 6, 1919, celebrated their Golden Wedding Anniversary Sunday, at a buffet dinner at their home on West Second Street. Their children and families attending included Mrs. and Mrs. Paul E. Wheeler and sons, Robert and Jeff, Fort Worth, Tex.; Mr. and Mrs. Lewis Gossette, Jacksonville, Fla.; Mr. and Mrs. James Gaylord, Norfolk, Va.; Mrs. Emma Grosz, St. Petersburg, Fla.; and sons, Robert and Jeff, Fort Worth, Tex.; Mr. and Mrs. Lewis Gossette, Jacksonville, Fla.; Mr. and Mrs. John Parr, Loveland, Ohio; Mr. and Mrs. A. B. Caudill, Lebanon, Ohio; Mrs. Edgar Messer, Richmond, Calif.; and Mr. and Mrs. Joseph Wheeler, Grayson.



UNORTHODOX MUSICIAN . . . instrument he built from scrap parts. Robert Schietroma, instructor of music at Morehead State University, works classes and has been performed in out on the musical brake drum concerts.

Interest Rates Going Up Prices Going Up

Hadn't you better buy now and beat some of this inflation?

Take A Look At One Of These Beautiful Homes:

IN SHERWOOD FOREST - full basement (garage, laundry, storage, office or family room here). Two baths, three bedrooms, dining room, built-in kitchen, carpet all over. Brick veneer.

IN GREEN VALLEY acres on paved street, paved driveway. Six rooms including large family or studio room, built-in kitchen, hardwood floors, 10 x 20 patio, large beautiful lot 100' x 200'.

IN HILL N DALE 100' x 150' lot, on paved street, city water, natural gas, brick veneer, six rooms, 1 1/2 baths, carpet all over (includes kitchen and baths). All have been in use long enough to be HOMES (not houses) and all are looking for new owners.

J. A. Shackelford

Licensed REAL ESTATE BROKER Bonded
Phone 784-5105 - Morehead

THANKS - to the people

of Rowan County

Respectfully and humbly I thank you for the majority you gave in the May primary in my race for County Judge. My good wife, Ruth Litton, who worked so hard for me, extends the same thoughtful message.

I have only the kindest feeling toward those who worked or voted for my opponent. They will receive the same consideration as everybody else if I am your next County Judge.

I reiterate my primary pledge that I will make Rowan County a diligent, hard working and honest County Judge. Upmost during my stewardship will be the welfare of our people, consideration of their problems, and a firm conviction in which to live and of which we will all be proud.

Thankfully yours,
CLYDE M. LITTON
Democratic Nominee for
Judge of Rowan County

FLOWERS . . . Shown with Mrs. Ezelle DeHart, right, a nationally accredited flower judge, who taught the June lesson to Rowan homemakers are from left: Mrs. Mildred Wightman, Area Extension Agent; Mrs. Oscar Caudill, Mrs. Edna Mitchell, Miss Grace Crosthwaite and Miss Ethel Patton.

Women's Medical News

By Louise Chase
Branch 1 Medical News Service

Some people really do die of broken hearts. Within six months of the burial of their wives, nearly five of each hundred surviving husbands dropped dead themselves, a British study reveals. This death rate is 40 percent higher than might reasonably have been expected. As time went on, the widowers' death rate slowed down until it equaled that of married men.

An extraordinary number of the men's deaths was due to heart or circulatory impiments. As compared with married men of the same age, 68 percent more widowers died from "coronary thrombosis and other arteriosclerotic and degenerative heart disease."

Pointing to evidence that emotional stress affects the body in many ways, the investigators suggest that bereavement caused changes in the "psycho-endocrine functions" of the fatally stricken widowers, placing an unbearable strain on some hearts.

Dr. C. Murray Parkes and his colleagues followed 4,486 widowers, all 55 years of age and older, for nine years. They called for further research into the effect of bereavement on younger widowers and on widows.

"LET THE PUNISHMENT FIT THE . . ."

A British doctor has reported the rare case of a 15-year-old girl who became pregnant despite the fact that she had never menstruated.

The girl, four feet 10 inches tall and weighing 68 pounds, had an uneventful pregnancy and delivered a baby weighing more than eight pounds, which was adopted by her mother.

The baby's father, an unmarried friend of the family, was sentenced to prison for, approximately enough, nine months.

UNANIMOUSLY APPROVED DRUGS

Of 1,584 prescription drugs developed in the past 10 years, 15 have been unanimously chosen "major therapeutic advances" by leading doctors and medical professors.

The Medical Letter, a non-profit professional publication that evaluates prescription drugs for doctors, announced that the 15 drugs include: a new antibiotic, a new low-dose tranquilizer, a new anti-cancer drug, a new anti-epileptic drug, a new anti-depressant, a new anti-anxiety drug, a new anti-allergy drug, a new anti-inflammatory drug, a new anti-ulcer drug, a new anti-hypertensive drug, a new anti-asthma drug, a new anti-diabetic drug, a new anti-obesity drug, a new anti-cholesterol drug, and a new anti-cholesterol drug.

Adult Education Group Will Visit University

Adult basic education specialists from seven midwest states will visit Morehead State University Wednesday after inspecting an MSU-sponsored educational project in Lewis County.

The unique "fly-in" workshop involves 30 adult basic education administrators from Iowa, Kansas, Minnesota, Missouri, Nebraska, North Dakota and South Dakota.

The Kentucky stopover, one of three nationally, starts Wednesday morning in Lexington. Leaving Lexington at 8 a.m., the group will visit the Adult Basic Education Learning Center on the Ohio River at Old Lock and Dam Site No. 32 in Lewis County.

Following a picnic luncheon with the center's staff and Lewis County school officials, the ABE visitors travel to the Morehead campus for a series of meetings and demonstrations starting at 2 p.m. The workshop is sponsored by the

University of Missouri at Kansas City with the Kentucky trip hosted by the Appalachian Adult Basic Education Demonstration Center at Morehead State University.

Nationally, the group is visiting ABE centers in Philadelphia, Pa. and Raleigh, N. C.

While in Morehead, the midwest administrators will receive reports on the Ohio State Modular Learning Center at Waverly, Ohio, a special project of MSU's ABE Center. Mrs. Elaine Kirk, coordinator of educational television at Morehead State, will present a micro-teaching demonstration.

Sue Stevens will outline MSU's "computer assisted instruction" project which involves adult basic education. A report on the Appalachian Center's operations will be submitted by George W. Eyster, executive director.

It Is Getting Worse ... Farm Labor Problem

Labor problems are one reason many smaller farmers are selling their farms and getting out of the business. "There's just no help," has been a too-often heard complaint.

A partial remedy may lie with the local Farm Labor Representative at the local state employment office.

This man operates out of the Farm Placement Service, a free convenience of the Kentucky Division of Employment Services, Kentucky Department of Economic Security. The Farm Labor Representative knows where and when workers are available for help on farms for full-time or part-time.

When a request for labor has been made by a potential employer, the representative will file a farm labor order. The order states the number of workers needed, the kind of work to be performed, hours of work and wages offered.

The order authorizes the representative to begin recruitment of workers to meet the farmer's specifications. State Employment Offices (and the

Farm Labor Representative) are located at Ashland, Bowling Green, Corbin, Covington, Danville, Elizabethtown, Frankfort, Glasgow, Harlan, Hazard, Henderson, Hopkinsville, Lexington, Louisville, Middlesboro, Mayfield, Maysville, Morehead, Owensboro, Paducah, Pikeville, Prestonsburg, Somerset and Winchester.

Making Own Clothes Facet Of 4-H Girls

It's smarter! It's better! It's cheaper! and it's fun! What is? Making and modeling your own clothes.

That is the way 4-H girls feel who take part in the statewide 4-H Dress Revue program which credits not only best choice of attire, but also sewing ability.

The girls are taught modeling finesse so when they show off their handiwork they will sit, stand and walk in a graceful and poised manner.

To help them acquire these talents is Simplicity Pattern Co. Inc., sponsor of the national 4-H Dress Revue program for 23 years. In cooperation with the Extension Service, Simplicity stylists work with clothing specialists and local volunteer 4-H leaders. Area fashion shows are presented where 4-H girls model professionally made clothes and their own garments.

Learning to choose the right patterns, fabrics and accessories is one of the main goals of the program. Annual awards are given by Simplicity.

This year about 8 out of every 100 girls participating in the program are expected to qualify for a county dress revue medal. Last year nearly 26,000 girls in a nationwide enrollment of 335,000 earned a medal, according to Extension Service reports.

The state award is an expense-paid trip to the National 4-H Congress held in Chicago the first week in December. Then there are national scholarships of \$600 each presented to the six most outstanding state winners.

In Chicago, Simplicity will host the 1969 state and national award winners at a fashion picnic supper which will feature an advance showing of styles for Spring, 1970. A set of various sized dressmaking scissors encased in a personalized leather pouch will be presented to each girl by a company official. Music and entertainment will enhance the colorful party.

What more incentive could a girl want to make pattern and fabric, needle and thread, the most important things in her life right now?

Looking for the Wide Tire?



Wide 78

MULTI-MILE ALRAY PREMIUM PACEMAKERS

Wholesale - Retail

As Low As **\$26.00**

Rayon Cord and Fiberglass Belts First Line and Seconds

New Regular Tread Tires As Low As \$12.00

Morehead Tire Supply

Buyers of Scrap Iron and Metals

ARVEL CAUDILL, Owner

116 Branham Ave. - Behind The Dairy Mart - Phone 784-4558 - Morehead, Ky.

BATTSON DRUGS

"Your Walgreen Agency"

784-4491

MAIN STREET MOREHEAD

Reg. \$1.50 Hai Karate After Shave LOTION 4-oz. 97¢	All Men's Gift Sets 10% OFF Reg. Price
Gillette Foamy 11-oz. 79¢	Reg. \$20.88 Electric Tooth Brush \$11.95
Noxzema Skin Cream 2 1/2-oz. 49¢	Style Hair Spray 13-oz. 49¢
Alka Seltzer 25's 51¢	Sominex Tablets 16's 88¢
Ultra Brite Toothpaste King 68¢	Gillette Super S. S. Blades 10's 83¢

Dr. Billie J. Caudill Elected To State Board

Dr. Billie J. Caudill, Morehead, and Dr. Donald Chatham, Shelbyville, were elected this week as new members of the Board of Trustees of the Rural Kentucky Medical Scholarship Fund.

The Board approved \$74,500 in loans to medical students for the coming school year.

Twenty-one of the 1969-70 loan recipients have agreed to practice in counties listed as "critically in need of physicians." Under this plan a student may borrow up to \$2,500 a year.

The ten most critical counties include from this area - Jackson, Knott, Lee, Powell and Wolfe.

Among the ten "Semi-critical" areas are Carter-Lewis, Magoffin, Breathitt and Bracken-Robertson.

Nurses From This Area To Hold Frankfurt Meeting

The June meeting of the Kentucky Nurses' Association, District II, will be held at the Farmer's Bank Building, Club Room, Frankfurt, on Monday, June 16, at 7:30 p.m.

The program will include a discussion on "Nursing Role in Care of the Eye." The speaker will be Dr. James McIntyre or Dr. David Eifrig, from University of Kentucky Department of Ophthalmology.



VIETNAMESE SMOKERS ... Smoking is apparently enjoyed by all in South Vietnam. Evidence of the fact are these photographs taken of villagers along Route 4. A youngster (left), barely waist-high, puffs on a cigarette, a mother holding her child chews a big cigar (right).




Sanitone-clean slipcovers look better-feel new.

Let us dryclean your slip covers the new Sanitone way - colors will be brighter, fabric will look and feel like new again.

Our new Sanitone dry-cleaning process gets all the soil out.

Imperial Cleaners

116 E. First St. - Ph. 784-4104 - Morehead, Ky.



THANKS

LEARNING TO SEW ... These Rowan County girls participated in the Area 4-H Style Revue held in Mason County Friday. From left - Debra Hardin, Advanced Dress; Teresa Brown, First Dress; Bridget Wheeler, Apron; Vanessa Brown, Apron; Vickie Hardin, Skirt and Made Blouse; and Dianna Kidd, Skirt and Selected Blouse.

"The Stephen Foster" Story Opens Saturday At Bardstown

"The Stephen Foster Story" opens its 11th season Saturday at J. Dan Talbot Amphitheatre in Bardstown with a new "Jeanie."

Linda Crouch replaces two-year Chrys Crowder as the girl "with the light brown hair." Mike Morton will play Stephen for the second year.

The drama will be performed nightly at 8:30 p.m. in the 1,000-seat Amphitheatre except Mondays. Sunday matinees begin June 22 at 3 p.m. at Bardstown High School's air-conditioned auditorium.

For tickets call 348-5971 (Bardstown) or write The Stephen Foster Drama Association, Drawer D, Bardstown, Ky. 40004.

I want to express my deep appreciation and sincere thanks to all of you in Rowan County supporting me in the recent Primary Election.

Ollie W. Barker

invest rent money in

HOME

We'll show you many homes to suit your needs.

Authorized Mortgage Loan Broker for The Prudential Insurance Company of America

Contact **Alpha Hutchinson**

Licensed and Bonded Real Estate Broker

PB 784-5305, 784-4196

Morehead, Ky.

See Alpha to find the right home ... on the right terms!

TOAST ROWAN COUNTY'S DAIRY INDUSTRY DURING JUNE DAIRY MONTH



INSIST ON REAL DAIRY PRODUCTS

AMERICAN DAIRY ASSOCIATION OF KENTUCKY

THE VOICE OF THE DAIRY FARMER



FOR THE DUNES... Big wheels and high fenders make up the design of a "Dune Buggy," featured at this year's Motor Show in Geneva, Switzerland. The novel vehicle was presented by the Volkswagen Company, one of the 1,391 firms from 21 nations participating in the event.

Store Gasoline The Safe Way

AMES, IOWA (UPI) - Most persons wouldn't think of keeping 50 pounds of dynamite in their garage. But chances are many will keep at least a gallon of gasoline there most of the summer.

Normal Wardle, extension safety specialist at Iowa State University, says that a gallon of gasoline has the explosive potential equal to 50 pounds of dynamite. He said the number of home accidents involving gasoline has increased in recent years because more people have lawn mowers and other yard equipment operated by small gasoline engines.

The best kind of storage container for gasoline, Wardle said, is a metal can with a spring-loaded cover. To meet legal requirements, the can must be painted red. Gasoline kept in a container with a tight-fitting screw-on cap is a potential bomb, he said, especially when stored in the sun or a warm place. As it warms, pressure can develop to the point of bursting the container.

DDT Formula Is The Theme Of Kentucky Firemen

"DDT - Dedication, determination, and tenacity."

If any single element could be culled from the general attitude displayed by this year's participants—students and instructors alike—during the 40th annual session of the Kentucky Fire School, "DDT" has got to be it.

A professional school for professionals, the Kentucky Fire School is held annually at Lexington's University of Kentucky campus and is generally considered to be among the nation's best and oldest fire schools. This year's seminar, held from June 2 through June 4, was attended by more than 1,000 fire-fighters, police officers and specialist from related fields.

Setting the tone for an attitude which was to prevail throughout the three-day training session, Robert W. Grant of Boston, Fire Service Specialist for the National Fire Protection Association, delivered the keynote address. He told students and faculty that immense sociological and technological advances in the world during the past five years have left fire organizations behind in some areas of technical, research and administrative know-how.

The course and devotion to duty of fire-fighters everywhere, whom "the people sometimes forget are on call 24 hours a day to protect lives and property," was highlighted by Kentucky's Republican Senator John Sherman Cooper.

Particularly now, Senator Cooper noted, is this true when firemen, called upon to put out fires in times of urban disorder, find themselves suddenly thrust "into the line of fire."

And volunteer firemen, who number nearly two-thirds of the Commonwealth's total force of about 12,000 fire-fighters, came in for a special word of commendation by the Senator for their dedication to community safety.

James Butcher, Carol Wentz Plan To Attend Murray University

A total of 2,178 freshmen have been admitted for the fall semester at Murray State University, according to Registrar Wilson Gant.

Included are James Butcher and Carol Wentz from Morehead.

Rowan Public Library And Bookmobile

121 W. Main - Next To Midland Trail Hotel Telephone 784-7137

LIBRARY OPEN - Mondays & Thursdays, 10 a.m. to 8 p.m.; Tuesdays, Wednesdays & Fridays, 10 a.m. to 5 p.m.; Saturdays 9 a.m. to 3 p.m.
SPECIAL BOOKS, FILMS - If you desire a special book not in the library, or almost any special film notice.
CHILDREN'S HOUR - Each Wednesday at library - 1 to 2 p.m.

ROWAN BOOKMOBILE SCHEDULE FOR COMING WEEK STARTING TODAY

THURSDAY - Paragon, 9 to 10; Law's Trailer Park, 10:15 to 10:30; White's Grocery, 10:40 to 11; Old House School, 12:10 to 12:30; Clearfield School, 12:30 to 3:30; Clearfield Post Office, 3:30 to 3:45.

MONDAY - Cranston Area, 9 to 10; Tiddon Hoop School, 10 to 1:30; Rock Fork, 1:35 to 2:15; T.G.T., 2:15 to 2:30; White's Grocery, 2:35 to 3; Holly Road, 3 to 3:20; Waltz Grocery, 3:30 to 4.
TUESDAY - Smile, 9 to 10:30; D.B. Restaurant, 10:35 to 11; Sharkey Road, 11:10 to 10:35 to 11; Sharkey Road, 11:10 to 11:45; Gregory Grocery, 11:45 to 12:15; Farmers and Sharkey Road, 12:20 to 1:30; Moore's Flat, 1:40 to 3:35.

WEDNESDAY - Farmers School, 9 to 12:30; Tar Flat, 12:30 to 2; Farmers Vicinity, 2 to 2:30; Farmers Post Office, 2:30 to 3; Upper Licking, 3 to 3:35.

(If day listed is holiday Bookmobile will not operate that date.)

Special Examination Required To Fill Out Income Taxes

A special enrollment examination will be held on September 29 and 30 for accountants and others who wish to qualify to represent taxpayers at all levels before the Internal Revenue Service.

Information about the examination and application forms are available from IRS District offices. Applicants must file no later than August 31, 1969 and must include with their application form a \$25 fee to cover the costs of administering the exam.

MONEY MAKERS - All outstanding Series E Savings Bonds are still drawing interest. The rate - raised five times over the years - is now 4.25 per cent, the maximum allowed by law, if Bonds are held to maturity.

Take stock in America
Buy U.S. Savings Bonds & Freedom Shares

Remember - it's His Day

at

Layne's

FATHERS DAY GIFTS THAT TAKE TOP HONORS

20% OFF on all Sport Coats and Suits

3 DAYS ONLY Thurs. - Fri. - Sat.

Layne's

Morehead

his COUNTRY SPORT COAT

Jewelry - Jade East - Ties - Socks - Shoes - pajamas - Knits - T-Shirts - Shorts and many other fine gifts for Dad on Father's Day at Layne's.



Skyline is the most wanted mobile home in America. Why? Because it is the most livable mobile home built. You'll want what it offers: Prestige. Quality. Beauty. Comfort. Convenience. If you are looking for a way of life that is new and exciting, Skyline is it. Think about it.

Skyline

MOBILE HOMES

Rowan-Motor Sales

117 WEST MAIN ST. MOREHEAD, KY.



HOUSEHOLD THINGS

By United Press International Don't throw out that old piece of furniture just because it's a bit battered and worn. With an assist from an antique kit, the oldest and most battered pieces can be saved, according to the National Paint, Varnish and Lacquer Association. Best of all, you needn't worry about nicks and scars since they often enhance the beauty of an antique piece of furniture.

Termite Trouble?

See or Call CHESTER KISER CONSTRUCTION CO. Phone 784-5109 & 784-5442 Agents for OLD RELIABLE CONTROL CHEMICAL CO., INC.



TIGHT SQUEEZE... When General Electric transported a huge pressure vessel through rural Berchmans in Spain, one wall of a building (right) had to be removed, then replaced, to allow for passage. The 360-ton vessel was bound for the Santa Maria De Geronza nuclear power plant being built by the U.S. firm's Atomic Power Equipment Department. "The transportation of the vessel and cradle is believed to be one of the longest overland movements of a shipment this size ever to take place in Europe," according to the project manager, L. W. Trevann. It was moved overland 137 miles through the rugged Basque country after a sea voyage which took it from Rotterdam to Bilbao.

Dairymen WIN FREE Southern States Dairy Feed

• During June Dairy Month, you're invited to enter Southern States Dairy Feed Give-Away Drawing. No purchase is required. Just come in any time during Dairy Month and register by dropping an entry blank, which we'll give you, into the official drawing box.

1st Prize... 3 tons of Southern States Dairy Feed
2nd Prize... 2 tons of Southern States Dairy Feed
3rd Prize... 1 ton of Southern States Dairy Feed
Winners get their choice of any Southern States Pelleted Dairy Feed—20% protein or less. Drawing is for June Dairy Month only, so come in soon. And remember: You're always a winner when you use one of Southern States Dairy Feeds. They're unsurpassed in helping you make more milk and more income—above-feed-cost.

Rowan Farmers Supply

Morehead, Ky. Phone 784-7223

Your Nearest Farm and Home Cooperative Agency

SPECIAL SALE

LP-GAS FORCED AIR \$569⁹⁵ HEATING SYSTEM

(Completely installed in an average 6-room house)

AS LOW AS 10% DOWN
\$16⁰⁰ PER MONTH

No monthly payments until September

Check these features:

- Clean and economical operation
- Central thermostat control
- 7 warm-air ducts
- Cold air return
- Blower and system suitable for later addition of air conditioning
- Rent-free use of tank and meter

Easy Pay Plan

You can pay just 10% down and take up to 36 months to pay the balance. NO MONTHLY PAYMENTS DUE UNTIL SEPTEMBER! Offer expires July 31, 1969.

Act now and enjoy whole-house heating comfort this winter. For one low package price, you get Empire's remarkable new 100,000 BTU LP-Gas forced air furnace completely custom installed by Ashland's home heating specialists.

The Empire furnace is slimmer, trimmer—takes less space in your home. Operates quietly. Its steel heat exchanger provides efficient, low cost operation. The matched burner assembly is designed to eliminate the major cause of burner service calls. Just set the room temperature you desire on the sensitive dial control and forget about it.

For more details, send this coupon to the Ashland LP-Gas Bank Plant nearest you.

Please send me more details on the special Forced Air Heating Offer:

Name _____
Address _____
City _____ State _____
Phone _____

Ashland
The Industrial Resources Company
GAS & REFINING COMPANY

U.S. 80 East - Box D, Morehead, Kentucky - Phone: 784-5168

GIVE GENEROUSLY PLEDGE TO ST. CLAIRE EXPANSION FUND

CITIZENS BANK

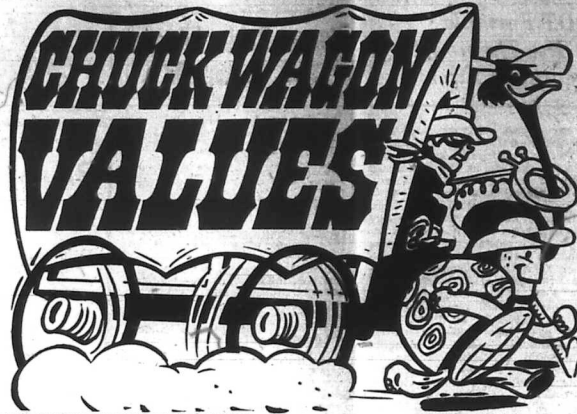
PLEASE TO ST. CLAIRE EXPANSION FUND

THE CITIZENS BANK

117 WEST MAIN ST. MOREHEAD, KY.



It's "happening" frontier-style! That means hearty eatin' at smart prices. So get your wagon rolling to IGA and load up on Chuck Wagon Values... specially-ly those succulent TableRite steaks!



- AJAX Laundry Detergent Giant Size 59¢
- IGA WHITE Laundry Detergent Reg. Size 19¢
- AXION Laundry Presoak Giant Size 69¢
- Palmolive Liquid King Size 79¢

IGA FANCY

Tomato Catsup
14-oz. Bottle **15¢**

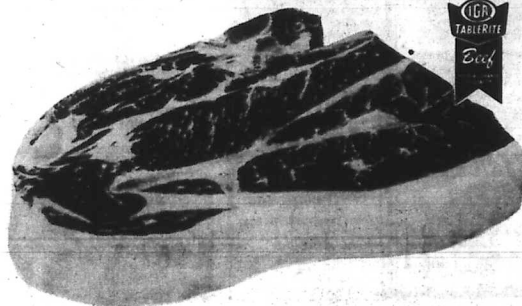
Realemon Concentrate 32-oz. Bottle **59¢**

PURE VEGETABLE SHORTENING
Crisco 3-lb. Can **69¢**
Jello All Flavors 3-oz. Pkg. **10¢**

Mix or Match
IGA RIPE 'N RAGGED
Apricots
Fruit Cocktail
Cling Peaches
Bartlett Pears
303 Can **5 for \$1**

OREO CREAM SANDWICH COOKIES 1-lb. Pkg. **49¢**
RITZ CRACKERS 12-oz. Box **39¢**
Fig Newtons 1-lb. Pkg. **39¢**
PREMIUM SALTINES 1-lb. Box **35¢**
Honey Graham CRACKERS 1-lb. Box **39¢**

TableRite **Chuck Steak**
lb. **59¢**



IGA SPRAY ROOM
Air Fresheners Pine, Spice or Floral 6-oz. Can 3 for **\$1**
VANITY FAIR REGAL
Decorated Towels Jumbo Size 4 for **\$1**
VANITY FAIR REGAL DECORATED
Bathroom Tissue Roll 4 for **39¢**

CHUCK ROAST
TABLERITE
lb. **49¢**

TABLERITE Ground Beef lb. **59¢**
TABLERITE Rib Roast STANDING lb. **99¢**
TABLERITE Bacon Thin Sliced 1-lb. Pkg. **69¢**

FROZEN BUYS!
IGA GOLDEN French Fries 2-lb. Pkg. **39¢**
IGA GOLDEN FRIED Onion Rings 1-lb. Pkg. **69¢**
IGA Sliced Strawberries 16-oz. Pkg. **45¢**
IGA FLORIDA Orange Juice 6-oz. Can **19¢**
OLE SOUTH Fruit Cobblers Blackberry, Peach Apple or Cherry 2-lb. Pkg. **89¢**

ICEBERG **Lettuce**
Head **19¢**

SELECT Cucumbers Each **10¢**
CRISP Pascal Celery Stalk **23¢**
CRISP Green Peppers Each **10¢**
RED BUTTON Radishes 8-oz. Collo. **10¢**
FRESH Green Onions Bunch **10¢**

FREE! \$200.00 FREE!
You Do Not Have To Be Present To Win!
Nothing To Buy **Allen's IGA Foodliner** Just Register Each Week
FIRST PRIZE \$100 - SECOND PRIZE \$50 - THIRD PRIZE \$25
Plus 25 Fourth Prize Winners of \$1.00 Each.
Drawing Will Be Held Each Monday Morning at 8:00 and the Winners Will Be Announced In This Newspaper and on the Radio.
\$100.00 - S. Woodrow, Morehead, Ky.
\$50.00 - Don Lacy, Morehead, Ky.
\$25.00 - Mattie White, Morehead, Ky.
Wynona Reed, Olive Hahitt, Joe Fanning, Carol McDaniel, Wade Gilliam, C. E. Dillon, Robert Cunningham, Tom Gister, Sr., Martha Connett, Oba Caldwell, Iva Mackwell, Alice Packard, Lois Carter, Roy Turner, Margaret May, Jewel Bateman, Roy Eastling, Jack Oester, John Phily, Pink Charles, Armand Taylor, Glen Colyer, Mildred Fetter, Iva Caldwell

MORE CHUCK WAGON BUYS!
TABLERITE Ice Milk Ass. Flavors 1/2-gal. Ctn. **49¢**
TABLERITE Biscuits Old Style or Buttermilk 10-oz. Tube **5¢**
KRAFT NATURAL Sliced Cheese 6-oz. Pkg. **49¢**
PARKAY WHIPPED Margarine 4-oz. Label 1-lb. Ctn. **39¢**
TABLERITE U.S.A. GRADE "A" Large Eggs Doz. **43¢**

JUNE 15 IS DAD'S DAY - DON'T FORGET!
"The Owner's in the Store"
McClure's Mac 1-10
The greatest lightweight of 'em all in less than 200 lbs. of best-cutting, dependable, easy-to-handle! McClure's 1-10 built up cutting job you've got around the farm, cabin or right at the house. Complete with 12" cutting bar, sharp-toothed, weathered-up handles, the capacity you and all tools and the new, advanced design that won't hang up in heavy brush or sticking rocks. Complete with 12" cutting bar and sharp-toothed handles.

Family FINANCIAL PROTECTION
Fiduciary Question Asked by The Institute of Life Insurers, 377 Park Ave. N. Y. N. Y. 10017
Q For years I was covered by a group insurance policy at the company where I worked. Although it probably wasn't enough, I didn't have a policy I bought on my own. Now that I'm in business for myself, I am looking into such insurance. Money is a scarce native, but I find that some policies pay dividends and others don't. Can you tell me more about this?
A Well certainly try. The policies that pay annual dividends to policyholders are called "participating" insurance. About two-thirds of all life insurance policies are of this type. Dividend size is usually paid annually after the first year or two the policy has been in force. Dividend size is determined by the company's actual experience in such areas as death rates of policyholders, investment return and operating expenses.
The premiums for participating insurance are designed to be somewhat larger than needed at the outset in order to provide for unforeseen expenses. With a "non-participating" policy, premiums are fixed as closely as possible to the anticipated cost of insurance, and there are no dividends paid.
Mutual insurance companies usually sell only participating policies, but stock insurance companies (which are owned by their stockholders) may sell both participating and non-participating types.
There is, of course, no way of forecasting at the time you buy the policy whether a participating or non-participating type will be lower in cost in the long run.
Q We think our family circumstances are average in most respects. But if we really are average, how much life insurance would we have?
A In 1968 the average insured family's protection was an estimated \$25,500 - \$1,700 more than at the end of 1967. The average for all families in the United States was an estimated \$18,000; but this figure takes into account those who have no life insurance coverage.

MONUMENTS
Granite and Marble
First Class Material at a Reasonable Price - Erected on Concrete Foundation.
Dayton Porter
PHONE 784-5321

TERMITES?
call **Terminix!**
World's largest termite control organization.
\$25,000 GUARANTEE
Against Future Termite Damage
FREE ESTIMATES
For Information Call
Carr Lumber Company
PHONE 784-5438
All Work Done By Terminix Co., Lexington, Ky.

SEE THE WORLD'S LIGHTEST DIRECT DRIVE CHAIN SAW.
McClure's Mac 1-10
The greatest lightweight of 'em all in less than 200 lbs. of best-cutting, dependable, easy-to-handle! McClure's 1-10 built up cutting job you've got around the farm, cabin or right at the house. Complete with 12" cutting bar, sharp-toothed, weathered-up handles, the capacity you and all tools and the new, advanced design that won't hang up in heavy brush or sticking rocks. Complete with 12" cutting bar and sharp-toothed handles.

Monarch Supply Store
Phone 784-5796
Morehead, Ky.