

## SHS PARTICIPATES IN MSU FESTIVAL

The Scott High School Marching Band participated in Morehead State University's Blue and Gold Festival of Marching Bands recently. The event is designed to promote the educational aspects of marching band with the emphasis placed on performance and learning. The Kentucky Music Educators Association sanctions the band festival, adjudicated by a team of nationally recognized authorities in the field of marching band. The band received three trophies recognizing outstanding assessment in the areas of overall performance, percussion and auxiliary. Under the direction of drum major Chastity James, the band performed "Fire!," "The Fire Bird Suite Mvt4," "Ritual Fire Dance," "Fire Dance" and "The Fire Bird Suite Finale Mvt5." Sherri Stanfield is the band director. Participating in the awards ceremony were, front row from left, Dr. Scott McBride, chair of MSU's Department of Music; SHS students Brad Thirtyacre, James, Heather Hodgson; who were joined by Dr. Michael Seelig, dean of MSU's Caudill College of Humanities. In back are Jennifer Peterson, Shelbyville junior, Lawrence Banks, Ashland senior, and Stephanie Sanders, Paris senior, field commanders for MSU's Marching Band.

(MSU photo by Tim Holbrook)

11-3-03ajb

MSU is an affirmative action, equal opportunity educational institution.



## MCHS PARTICIPATES IN MSU FESTIVAL

The Mason County High School Marching Band participated in Morehead State University's Blue and Gold Festival of Marching Bands recently. The event is designed to promote the educational aspects of marching band with the emphasis placed on performance and learning.

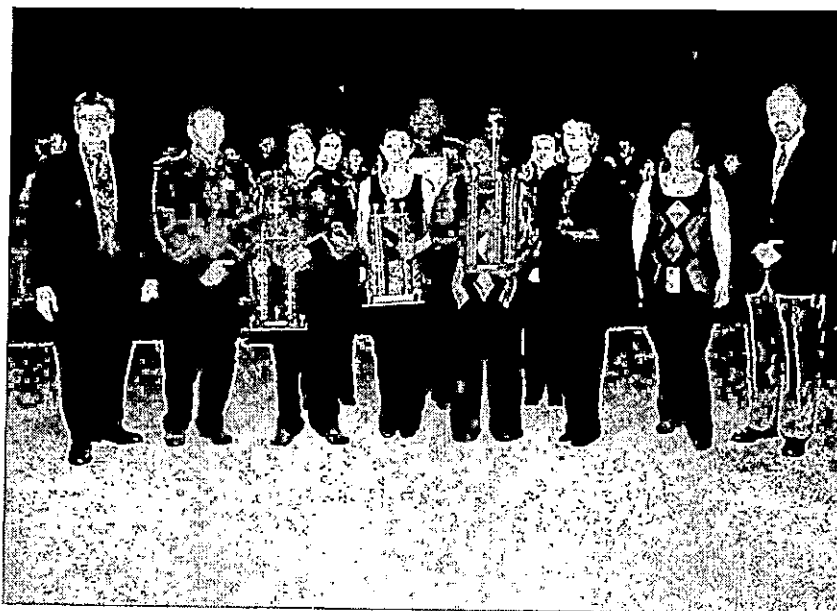
The Kentucky Music Educators Association sanctions the band festival, adjudicated by a team of nationally recognized authorities in the field of marching band. The band received three trophies recognizing outstanding assessment in the areas of overall performance, percussion and auxiliary. Under the direction of drum major Cassandra Manning, the band performed selections from "Stained Glass." John Merz is the band director with Scott Reed as an assistant.

Participating in the awards ceremony were, front row from left, Dr. Scott McBride, chair of MSU's Department of Music; MCHS students Wesley Hull, Allan Crump, Sarah Adkins, Ashley Goodine, Manning and Jennifer Conrad; who were joined by Dr. Michael Seelig, dean of MSU's Caudill College of Humanities. In back are Jennifer Peterson, Shelbyville junior, Lawrence Banks, Ashland senior, and Stephanie Sanders, Paris senior, field commanders for MSU's Marching Band.

(MSU photo by Tim Holbrook)

11-3-03ajb

MSU is an affirmative action, equal opportunity educational institution.



## BSHS PARTICIPATES IN MSU FESTIVAL

The Bryan Station High School Marching Band participated in Morehead State University's Blue and Gold Festival of Marching Bands recently. The event is designed to promote the educational aspects of marching band with the emphasis placed on performance and learning. The Kentucky Music Educators Association sanctions the band festival, adjudicated by a team of nationally recognized authorities in the field of marching band. The BSHS band received three trophies recognizing outstanding assessment in the areas of overall performance, percussion and auxiliary. Under the direction of drum major Michele Combs, the band performed highlights from "Carmina Burana." Shawn Parrish is the band director with Shaun Owens as the assistant band director. Participating in the awards ceremony were, front row from left, Dr. Scott McBride, chair the Department of Music, BSHS students Stephanie Moore, Combs and Theodore Brown; who were joined by Dr. Michael Seelig, dean of MSU's Caudill College of Humanities. In back are Jennifer Peterson, Shelbyville junior, Lawrence Banks, Ashland senior, and Stephanie Sanders, Paris senior, field commanders for MSU's Marching Band.

(MSU photo by Tim Holbrook)

11-3-03ajb

MSU is an affirmative action, equal opportunity educational institution.



## HHS BAND PARTICIPATES IN MSU FESTIVAL

The Huntington High School Marching Band participated in Morehead State University's Blue and Gold Festival of Marching Bands recently. The event is designed to promote the educational aspects of marching band with the emphasis placed on performance and learning. The Kentucky Music Educators Association sanctions the band festival, adjudicated by a team of nationally recognized authorities in the field of marching band. The band received three trophies recognizing outstanding assessment in the areas of overall performance, percussion and auxiliary. Under the direction of drum majors Jeremy Gunn and Scott Studery, the band performed "Glory." Melissa Ash is the band director with Dan White as an assistant. Participating in the awards ceremony were, from left, Dr. Scott McBride, chair of MSU's Department of Music; HHS students Studery and Gunn; and Dr. Michael Seelig, dean of MSU's Caudill College of Humanities. In back are Jennifer Peterson, Shelbyville junior, Lawrence Banks, Ashland senior, and Stephanie Sanders, Paris senior, field commanders for MSU's Marching Band.

(MSU photo by Tim Holbrook)

11-3-03ajb

MSU is an affirmative action, equal opportunity educational institution.



## CMHS PARTICIPATES IN MSU FESTIVAL

The Cabell Midland (W.Va.) High School Marching Band participated in Morehead State University's Blue and Gold Festival of Marching Bands recently. The event is designed to promote the educational aspects of marching band with the emphasis placed on performance and learning. The Kentucky Music Educators Association sanctions the band festival, adjudicated by a team of nationally recognized authorities in the field of marching band. The CMHS band received three trophies recognizing outstanding assessment in the areas of overall performance, percussion and auxiliary. Under the direction of drum majors Mallory Evans and Brandon Dennison, the band performed "Knights Around the World." Rhonda Smalley is the band director with assistants Mark Armstrong and Tammy Glover. Participating in the awards program were, from left, Dr. Scott McBride, chair of MSU's Department of Music; CMHS students Dennison, Evans and Josh Moore; and Dr. Michael Seelig, dean of MSU's Caudill College of Humanities. In back are Jennifer Peterson, Shelbyville junior, Lawrence Banks, Ashland senior, and Stephanie Sanders, Paris senior, field commanders for MSU's Marching Band.

(MSU photo by Tim Holbrook)

11-3-03

MSU is an affirmative action, equal opportunity educational institution.



## MCHS PARTICIPATES IN MSU FESTIVAL

The McCreary Central High School Marching Band participated in Morehead State University's Blue and Gold Festival of Marching Bands recently. The event is designed to promote the educational aspects of marching band with the emphasis placed on performance and learning. The Kentucky Music Educators Association sanctions the band festival, adjudicated by a team of nationally recognized authorities in the field of marching band. The band received three trophies recognizing outstanding assessment in the areas of overall performance, percussion and auxiliary. Under the direction of drum major Jessica Jones, the band performed "Quest for the Throne." Dale Mayberry is the band director. Participating in the awards ceremony were, front row from left, Dr. Scott McBride, chair of MSU's Department of Music; MCHS students Sasha Walters, Katie Pinkerton, and Jones; who were joined by Dr. Michael Seelig, dean of MSU's Caudill College of Humanities. In back are Jennifer Peterson, Shelbyville junior, Lawrence Banks, Ashland senior, and Stephanie Sanders, Paris senior, field commanders for MSU's Marching Band.

(MSU photo by Tim Holbrook)

11-3-03ajb

MSU is an affirmative action, equal opportunity educational institution.



## GCHS PARTICIPATES IN MSU FESTIVAL

The Grant County High School Marching Band participated in Morehead State University's Blue and Gold Festival of Marching Bands recently. The event is designed to promote the educational aspects of marching band with the emphasis placed on performance and learning. The Kentucky Music Educators Association sanctions the festival, adjudicated by a team of nationally recognized authorities in the field of marching band. The band received three trophies recognizing outstanding assessment in the areas of overall performance, percussion and auxiliary. Under the direction of drum major Meghan Thompson, the band performed "Hits of Chicago." DuWayne Dale is the band director and Jason Milner is the assistant band director. Participating in the awards ceremony were, front row from left, Dr. Scott McBride, chair of MSU's Department of Music; GCHS students Samantha Snow, Thompson, and Brittany Smoot; who were joined by Dr. Michael Seelig, dean of MSU's Caudill College of Humanities. In back are Jennifer Peterson, Shelbyville junior, Stephanie Sanders, Paris senior, Lawrence Banks, Ashland senior, field commanders for MSU's Marching Band.

(MSU photo by Tim Holbrook)

11-3-03ajb

MSU is an affirmative action, equal opportunity educational institution.



# Photo

University Communications

Pauline Young, Director

[www.moreheadstate.edu](http://www.moreheadstate.edu)

Morehead State University

UPO Box 1100

Morehead, KY 40351-1689

(606) 783-2030

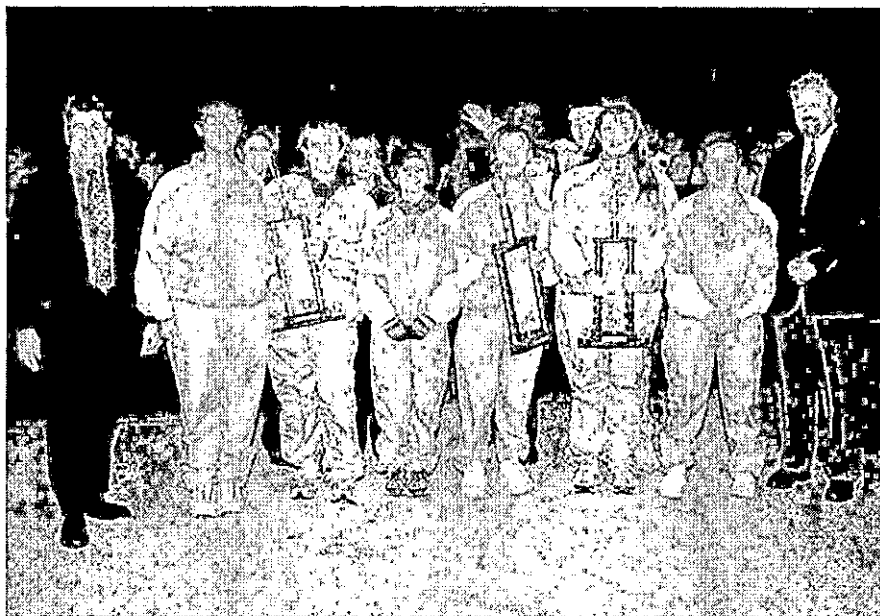
## CCHS PARTICIPATES IN MSU FESTIVAL

The Casey County High School Marching Band participated in Morehead State University's Blue and Gold Festival of Marching Bands recently. The event is designed to promote the educational aspects of marching band with the emphasis placed on performance and learning. The Kentucky Music Educators Association sanctions the festival, adjudicated by a team of nationally recognized authorities in the field of marching band. The band received three trophies recognizing outstanding assessment in the areas of overall performance, percussion and auxiliary. Under the direction of drum major Dustin Austin, the band performed "Tempered Steel" and "The Great Locomotive Chase." Lynn Justice is the band director. Participating in the awards ceremony were, front row from left, Dr. Scott McBride, chair of MSU's Department of Music; CCHS students Tony Cooper, Kendra Peek, Drema Murphy, Austin, Rachel Johnson, Ben Sweeney and Beth Bates; who were joined by Dr. Michael Seelig, dean of MSU's Caudill College of Humanities. In back are Jennifer Peterson, Shelbyville junior, Stephanie Sanders, Paris senior, and Lawrence Banks, Ashland senior, field commanders for MSU's Marching Band.

(MSU photo by Tim Holbrook)

11-3-03ajb

MSU is an affirmative action, equal opportunity educational institution.





## LCHS PARTICIPATES IN MSU FESTIVAL

The Lincoln County High School Marching Band participated in Morehead State University's Blue and Gold Festival of Marching Bands recently. The event is designed to promote the educational aspects of marching band with the emphasis placed on performance and learning. The Kentucky Music Educators Association sanctions the festival, adjudicated by a team of nationally recognized authorities in the field of marching band. The LCHS band received three trophies recognizing outstanding assessment in the areas of overall performance, percussion and auxiliary. Under the direction of drum major Brittney House, the band performed "The Music of Styx." Joe Briley is the band director. Participating in the awards ceremony were, front row from left, Dr. Scott McBride, chair of MSU's Department of Music; LCHS students Roganna Woodrum, Jessilyn Coontz, DeShonna Taylor, House, Johnnton Adams and Vincent Denny; who were joined by Dr. Michael Seelig, dean of MSU's Caudill College of Humanities. In back are Jennifer Peterson, Shelbyville junior, Stephanie Sanders, Paris senior, and Lawrence Banks, Ashland senior, field commanders for MSU's Marching Band.

(MSU photo by Tim Holbrook)

11-3-03ajb

MSU is an affirmative action, equal opportunity educational institution.



# Photo

University Communications

Pauline Young, Director

[www.moreheadstate.edu](http://www.moreheadstate.edu)

Morehead State University

UPO Box 1100

Morehead, KY 40351-1689

(606) 783-2030

## NLHS PARTICIPATES IN MSU FESTIVAL

The North Laurel High School Marching Band participated in Morehead State University's Blue and Gold Festival of Marching Bands recently. The event is designed to promote the educational aspects of marching band with the emphasis placed on performance and learning. The Kentucky Music Educators Association sanctions the festival, adjudicated by a team of nationally recognized authorities in the field of marching band. The NLHS band received three trophies recognizing outstanding assessment in the areas of overall performance, percussion and auxiliary. Under the direction of drum major Jana Hamilton, the band performed "Intrigue of the Past." David McFadden is the band director with Priscilla Wilkerson as the assistant director. Participating in the awards ceremony were, front row from left, Dr. Scott McBride, chair of MSU's Department of Music; NLHS students, front, Amanda Brown and Hamilton, second row, Wilkerson and McFadden; who were joined by Dr. Michael Seelig, dean of MSU's Caudill College of Humanities. In back are Jennifer Peterson, Shelbyville junior, Lawrence Banks, Ashland senior, and Stephanie Sanders, Paris senior, field commanders for MSU's Marching Band.

(MSU photo by Tim Holbrook)

11-3-03ajb

MSU is an affirmative action, equal opportunity educational institution.



## CHS PARTICIPATES IN MSU FESTIVAL

The Conner High School Marching Band participated in Morehead State University's Blue and Gold Festival of Marching Bands recently. The event is designed to promote the educational aspects of marching band with the emphasis placed on performance and learning. The Kentucky Music Educators Association sanctions the festival, adjudicated by a team of nationally recognized authorities in the field of marching band. The CHS band received three trophies recognizing outstanding assessment in the areas of overall performance, percussion and auxiliary. Under the direction of drum majors T.J. Hudak and Sara Lidyard, the band performed "Dance Movements." Chris Peterson is the band director and June Levis is the assistant. Participating in the award ceremony were, front row from left, Dr. Scott McBride, chair of MSU's Department of Music; CHS students Aaron Brewer, Lidyard, Hudak and Ashley Mulholland; who were joined by Dr. Michael Seelig, dean of MSU's Caudill College of Humanities. In back are Jennifer Peterson, Shelbyville junior, Lawrence Banks, Ashland senior, and Stephanie Sanders, Paris senior, field commanders for MSU's Marching Band.

(MSU photo by Tim Holbrook)

11-3-03ajb

MSU is an affirmative action, equal opportunity educational institution.



# Photo

University Communications

Pauline Young, Director

[www.moreheadstate.edu](http://www.moreheadstate.edu)

Morehead State University

UPO Box 1100

Morehead, KY 40351-1689

(606) 783-2030

## EHS PARTICIPATES IN MSU FESTIVAL

The Edgewood High School Marching Band participated in Morehead State University's Blue and Gold Festival of Marching Bands recently. The event is designed to promote the educational aspects of marching band with the emphasis placed on performance and learning. The Kentucky Music Educators Association sanctions the festival, adjudicated by a team of nationally recognized authorities in the field of marching band. The EHS band received three trophies recognizing outstanding assessment in the areas of overall performance, percussion and auxiliary. Under the direction of drum major Nick Smith, the band performed "Impression from the Heart." John Hylton is the band director with Tim Baker as the assistant. Participating in the awards ceremony were, front row from left, Dr. Scott McBride, chair of MSU's Department of Music; EHS students Mark Vickers, Austin Williams, Smith, Kevin Durbin and Alex Smith; who were joined by Dr. Michael Seelig, dean of MSU's Caudill College of Humanities. In back are Jennifer Peterson, Shelbyville junior, Lawrence Banks, Ashland senior, and Stephanie Sanders, Paris senior, field commanders for MSU's Marching Band.

(MSU photo by Tim Holbrook)

11-3-03ajb

MSU is an affirmative action, equal opportunity educational institution.



## ABHS PARTICIPATES IN MSU FESTIVAL

The Ashland Blazer High School Marching Band participated in Morehead State University's Blue and Gold Festival of Marching Bands recently. The event is designed to promote the educational aspects of marching band with the emphasis placed on performance and learning. The Kentucky Music Educators Association sanctions the festival, adjudicated by a team of nationally recognized authorities in the field of marching band. The band received three trophies recognizing outstanding assessment in the areas of overall performance, percussion and auxiliary. Under the direction of drum majors Melissa Thompson and Kaitlin Mansfield, the band performed "Nutville," "Suitcase Blues," "Bellfront Blues" and "Le Jazz Hot." Chris Whelan is the band director with Terry Thompson as the assistant. Participating in the awards ceremony were, front row from left, Dr. Scott McBride, chair of MSU's Department of Music; ABHS students Megan Gullett, Amanda Gray, Tonya Morrison, Samantha Bowling, Thompson, Sarah Sweeney, Katie Conn, Jennifer Hall, Morgan McKenzie and Sam Douglass. Second row, from left, Melissa Rymer, Josh Hanners, Tre Sizemore, Andrew Gillun, Jaosn Nattier, Trevor Fawbush, Patrick Nichols, Matt Johnson and Steven Leffler; who were joined by Dr. Michael Seelig, dean of MSU's Caudill College of Humanities. In back are Jennifer Peterson, Shelbyville junior, Lawrence Banks, Ashland senior, and Stephanie Sanders, Paris senior, field commanders for MSU's Marching Band.

(MSU photo by Tim Holbrook)

11-3-03ajb



# Photo

University Communications

Pauline Young, Director

[www.moreheadstate.edu](http://www.moreheadstate.edu)

Morehead State University

UPO Box 1100

Morehead, KY 40351-1689

(606) 783-2030

## RHS PARTICIPATES IN MSU FESTIVAL

The Russell High School Marching Band participated in Morehead State University's Blue and Gold Festival of Marching Bands recently. The event is designed to promote the educational aspects of marching band with the emphasis placed on performance and learning. The Kentucky Music Educators Association sanctions the festival, adjudicated by a team of nationally recognized authorities in the field of marching band. The RHS band received three trophies recognizing outstanding assessment in the areas of overall performance, percussion and auxiliary. Under the direction of drum major Julie Baker, the band performed "Fascinatin' Rhythm The Music of George Gershwin." Chip Lewis is the band director with Mark Casto as the assistant. Participating in the awards ceremony were, front row from left, Dr. Scott McBride, chair of MSU's Department of Music; RHS students Amber McClain, Gayle Murray, Jennifer Dolly, Baker, Sarah Thorpe and Heather Sherman. Second row, from left, Joel Lara and Lucas Sanders; who were joined by Dr. Michael Seelig, dean of MSU's Caudill College of Humanities. In back are Jennifer Peterson, Shelbyville junior, Lawrence Banks, Ashland senior, and Stephanie Sanders, Paris senior, field commanders for MSU's Marching Band.

(MSU photo by Tim Holbrook)

11-3-03ajb

MSU is an affirmative action, equal opportunity educational institution.



# Photo

University Communications

Pauline Young, Director

[www.moreheadstate.edu](http://www.moreheadstate.edu)

Morehead State University

UPO Box 1100

Morehead, KY 40351-1689

(606) 783-2030

## DMHS PARTICIPATES IN MSU FESTIVAL

The DuPont Manual High School Marching Band participated in Morehead State University's Blue and Gold Festival of Marching Bands recently. The event is designed to promote the educational aspects of marching band with the emphasis placed on performance and learning. The Kentucky Music Educators Association sanctions the festival, adjudicated by a team of nationally recognized authorities in the field of marching band. The DMHS band received three trophies recognizing outstanding assessment in the areas of overall performance, percussion and auxiliary. Under the direction of drum majors Tara Morrison and Pat Mosser, the band performed "Minimally Speaking: New Rhythmics, Layers, Echoes." Curtis Essig is the band director. Participating in the awards ceremony were, front row from left, Dr. Scott McBride, chair of MSU's Department of Music; MHS students Jeffery Tankersley, Mosser, Morrison, and Arlyn Woodall; who were joined by Dr. Michael Seelig, dean of MSU's Caudill College of Humanities. In back are Jennifer Peterson, Shelbyville junior, Lawrence Banks, Ashland senior, and Stephanie Sanders, Paris senior, field commanders for MSU's Marching Band.

(MSU photo by Tim Holbrook)

11-3-03ajb

MSU is an affirmative action, equal opportunity educational institution.



## PHS PARTICIPATES IN MSU FESTIVAL

The Prestonsburg High School Marching Band participated in Morehead State University's Blue and Gold Festival of Marching Bands recently. The event is designed to promote the educational aspects of marching band with the emphasis placed on performance and learning. The Kentucky Music Educators Association sanctions the festival, adjudicated by a team of nationally recognized authorities in the field of marching band. The PHS band received three trophies recognizing outstanding assessment in the areas of overall performance, percussion and auxiliary. Under the direction of drum major Robert Risner, the band performed "Crazy Train," "Bohemian Rhapsody," "School's Out" and "We're Not Gonna Take It." Christie Piper is the band director. Participating in the awards ceremony were, front row from left, Dr. Scott McBride, chair of MSU's Department of Music; PHS students Sam Hale, Kevin Ross, Bill Ton, Kim Gibson, Risner, Chris Walker and Samatha Creech; who were joined by Dr. Michael Seelig, dean of MSU's Caudill College of Humanities. In back are Jennifer Peterson, Shelbyville junior, Lawrence Banks, Ashland senior, and Stephanie Sanders, Paris senior, field commanders for MSU's Marching Band.

(MSU photo by Tim Holbrook)

11-3-03ajb

MSU is an affirmative action, equal opportunity educational institution.





## **LCHS PARTICIPATES IN MSU FESTIVAL**

The Lee County High School Marching Band participated in Morehead State University's Blue and Gold Festival of Marching Bands recently. The event is designed to promote the educational aspects of marching band with the emphasis placed on performance and learning. The Kentucky Music Educators Association sanctions the festival, adjudicated by a team of nationally recognized authorities in the field of marching band. The LCHS band received three trophies recognizing outstanding assessment in the areas of overall performance, percussion and auxiliary. Under the direction of drum major Megan Murrey, the band performed "The Music of Emerson, Lake and Palmer." Tony Barrett is the band director. Participating in the awards ceremony were, front row from left, Dr. Scott McBride, chair of MSU's Department of Music; LCHS students Brooke Steely, Chauncey Vanderpool, Murrey and Tiffany Thacker; who were joined by Dr. Michael Seelig, dean of MSU's Caudill College of Humanities. In back are Jennifer Peterson, Shelbyville junior, Lawrence Banks, Ashland senior, and Stephanie Sanders, Paris senior, field commanders for MSU's Marching Band.

(MSU photo by Tim Holbrook)

11-3-03ajb

MSU is an affirmative action, equal opportunity educational institution.



## MCHS PARTICIPATES IN MSU FESTIVAL

The Montgomery County High School Marching Band participated in Morehead State University's Blue and Gold Festival of Marching Bands recently. The event is designed to promote the educational aspects of marching band with the emphasis placed on performance and learning. The Kentucky Music Educators Association sanctions the festival, adjudicated by a team of nationally recognized authorities in the field of marching band. The band received three trophies recognizing outstanding assessment in the areas of overall performance, percussion and auxiliary. Under the direction of drum major Nick Breimer the band performed "Essential Jazz," "Wind Machine," "How High The Moon" and "Caravan." Travis Boyd is the band director with Tonya Boyd as the assistant. Participating in the awards ceremony were, front row from left, Dr. Scott McBride, chair of MSU's Department of Music; MCHS students Breimer, Stephane Fraley, Jessica Drake, Megan Samples; who were joined by Dr. Michael Seelig, dean of MSU's Caudill College of Humanities. In back are Jennifer Peterson, Shelbyville junior, Lawrence Banks, Ashland senior, and Stephanie Sanders, Paris senior, field commanders for MSU's Marching Band.

(MSU photo by Tim Holbrook)

11-3-03ajb

MSU is an affirmative action, equal opportunity educational institution.



## RCSHS PARTICIPATES IN MSU FESTIVAL

The Rowan County Senior High School Marching Band participated in Morehead State University's Blue and Gold Festival of Marching Bands recently. The event is designed to promote the educational aspects of marching band with the emphasis placed on performance and learning. The Kentucky Music Educators Association sanctions the festival, adjudicated by a team of nationally recognized authorities in the field of marching band. The RCSHS band received three trophies recognizing outstanding assessment in the areas of overall performance, percussion and auxiliary. Under the direction of drum major Jessica Tackitt, the band performed "Colors of Spain." Kevin Christie is the band director with David Fuller and Chuck Caudill as assistants. Participating in the awards ceremony were, front row from left, Dr. Scott McBride, chair of MSU's Department of Music; RCHS students Michelle Campbell, Tackitt, Shwiania Long, Brandon Thompson; who were joined by Dr. Michael Seelig, dean of MSU's Caudill College of Humanities. In back are Jennifer Peterson, Shelbyville junior, Lawrence Banks, Ashland senior, and Stephanie Sanders, Paris senior, field commanders for MSU's Marching Band.

(MSU photo by Tim Holbrook)

11-3-03ajb

MSU is an affirmative action, equal opportunity educational institution.



# Photo

University Communications

Pauline Young, Director

[www.moreheadstate.edu](http://www.moreheadstate.edu)

Morehead State University

UPO Box 1100

Morehead, KY 40351-1689

(606) 783-2030

## GCHS PARTICIPATES IN MSU FESTIVAL

The Gallatin County High School Marching Band participated in Morehead State University's Blue and Gold Festival of Marching Bands recently. The event is designed to promote the educational aspects of marching band with the emphasis placed on performance and learning. The Kentucky Music Educators Association sanctions the band festival, adjudicated by a team of nationally recognized authorities in the field of marching band. The GCHS band received three trophies recognizing outstanding assessment in the areas of overall performance, percussion and auxiliary. Under the direction of drum major Cassie Burgin, the band performed "Childhood Memories." Keith Howard is the band director with Raven Palmer the assistant. Participating in the awards program were, from left, Dr. Scott McBride, chair of MSU's Department of Music; GCHS students Toby Jimino, Calvin Combs-Caldwell, Burgin, Sarah Courtney and Jesse Brewer; and Dr. Michael Seelig, dean of MSU's Caudill College of Humanities. In back are Jennifer Peterson, Shelbyville junior, Lawrence Banks, Ashland senior, and Stephanie Sanders, Paris senior, field commanders for MSU's Marching Band.

(MSU photo by Tim Holbrook)

11-03-03

MSU is an affirmative action, equal opportunity educational institution.



# Photo

University Communications

Pauline Young, Director

[www.moreheadstate.edu](http://www.moreheadstate.edu)

Morehead State University

UPO Box 1100

Morehead, KY 40351-1689

(606) 783-2030

## **RACELAND BAND PARTICIPATES IN MSU FESTIVAL**

The Raceland-Worthington High School Marching Band participated in Morehead State University's Blue and Gold Festival of Marching Bands recently. The event is designed to promote the educational aspects of marching band with the emphasis placed on performance and learning. The Kentucky Music Educators Association sanctions the band festival, adjudicated by a team of nationally recognized authorities in the field of marching band. The band received three trophies recognizing outstanding assessment in the areas of overall performance, percussion and auxiliary. Under the direction of drum major Elizabeth Gehringer, the band performed "Supernatural," "Everybody's Everything" and "Samba Pa Ti, Smooth." David Barker is the band director. Participating in the awards ceremony were, from left, Dr. Scott McBride, chair of MSU's Department of Music; Gehringer, and Dr. Michael Seelig, dean of MSU's Caudill College of Humanities. In back are Jennifer Peterson, Shelbyville junior, Lawrence Banks, Ashland senior, and Stephanie Sanders, Paris senior, field commanders for MSU's Marching Band.

(MSU photo by Tim Holbrook)

11-3-03ajb

MSU is an affirmative action, equal opportunity educational institution.



# Photo

University Communications

Pauline Young, Director

[www.moreheadstate.edu](http://www.moreheadstate.edu)

Morehead State University

UPO Box 1100

Morehead, KY 40351-1689

(606) 783-2030

## DHS PARTICIPATES IN MSU FESTIVAL

The Dayton High School Marching Band participated in Morehead State University's Blue and Gold Festival of Marching Bands recently. The event is designed to promote the educational aspects of marching band with the emphasis placed on performance and learning. The Kentucky Music Educators Association sanctions the band festival, adjudicated by a team of nationally recognized authorities in the field of marching band. The DHS band received three trophies recognizing outstanding assessment in the areas of overall performance, percussion and auxiliary. Under the direction of drum major Brandon Fromeyer, the band performed highlights from "The Lord of the Rings." Kevin Grow is the band director with Kevin Shanks as the assistant band director. Participating in the awards ceremony were, front row from left, Dr. Scott McBride, chair of MSU's Department of Music; DHS students Ashley Buschard, Breayantey Hurtt, Chris Searay, Charlie Peterson, Brandon Fromeyer, Lindsay Brossart, Amanda Soellner and Bobbie Jo Sunuer; who were joined by Dr. Michael Seelig, dean of MSU's Caudill College of Humanities. In back are Jennifer Peterson, Shelbyville junior, Lawrence Banks, Ashland senior, and Stephanie Sanders, Paris senior, field commanders for MSU's Marching Band.

(MSU photo by Tim Holbrook)

11-3-03ajb

MSU is an affirmative action, equal opportunity educational institution.



## BHS PARTICIPATES IN MSU FESTIVAL

The Bellevue High School Marching Band participated in Morehead State University's Blue and Gold Festival of Marching Bands recently. The event is designed to promote the educational aspects of marching band with the emphasis placed on performance and learning. The Kentucky Music Educators Association sanctions the band festival, adjudicated by a team of nationally recognized authorities in the field of marching band. The band received three trophies recognizing outstanding assessment in the areas of overall performance, percussion and auxiliary. Under the direction of drum major Christy Ackerson, the band performed selections from "Carmina Burana." Tim Kennedy is the band director. Participating in the awards ceremony were, front row from left, Dr. Scott McBride, chair of MSU's Department of Music; BHS students Nikkita Wilke, Alex Hart, Ackerson, Emily Alley and Patrick Dowling; who were joined by Dr. Michael Seelig, dean of MSU's Caudill College of Humanities. In back are Jennifer Peterson, Shelbyville junior, Lawrence Banks, Ashland senior, and Stephanie Sanders, Paris senior, field commanders for MSU's Marching Band.

(MSU photo by Tim Holbrook)

11-3-03ajb

MSU is an affirmative action, equal opportunity educational institution.



## MCHS PARTICIPATES IN MSU FESTIVAL

The Morgan County High School Marching Band participated in Morehead State University's Blue and Gold Festival of Marching Bands recently. The event is designed to promote the educational aspects of marching band with the emphasis placed on performance and learning. The Kentucky Music Educators Association sanctions the band festival, adjudicated by a team of nationally recognized authorities in the field of marching band. The band received three trophies recognizing outstanding assessment in the areas of overall performance, percussion and auxiliary. Under the direction of drum major Will Joseph, the band performed "Prologue," "Lowrider" and "The Horse." Greg Greene is the band director. Participating in the awards ceremony were, front row from left, Dr. Scott McBride, chair of MSU's Department of Music; MCHS students Sherry Keeton, Jeremy Ison, Brandon Tharp, Tyler Tharp and Brian Johnson; who were joined by Dr. Michael Seelig, dean of MSU's Caudill College of Humanities. In back are Jennifer Peterson, Shelbyville junior, Lawrence Banks, Ashland senior, and Stephanie Sanders, Paris senior, field commanders for MSU's Marching Band.

(MSU photo by Tim Holbrook)

11-3-03ajb

MSU is an affirmative action, equal opportunity educational institution.





# Photo

University Communications

Pauline Young, Director

[www.moreheadstate.edu](http://www.moreheadstate.edu)

Morehead State University

UPO Box 1100

Morehead, KY 40351-1689

(606) 783-2030

## CCHS PARTICIPATES IN MSU FESTIVAL

The Clay County High School Marching Band participated in Morehead State University's Blue and Gold Festival of Marching Bands recently. The event is designed to promote the educational aspects of marching band with the emphasis placed on performance and learning. The Kentucky Music Educators Association sanctions the band festival, adjudicated by a team of nationally recognized authorities in the field of marching band. The band received three trophies recognizing outstanding assessment in the areas of overall performance, percussion and auxiliary. Under the direction of drum major Jenna Wilson, the band performed "Pretty Fly," "Killer Joe," "Land of Make Believe" and "Get It On." Brian Ward is the band director.

Participating in the awards ceremony were, front row from left, Scott McBride, chair of MSU's Department of Music; CCHS students Jared Smith and Wilson; who were joined by Dr. Michael Seelig, dean of MSU's Caudill College of Humanities. In back are Jennifer Peterson, Shelbyville junior, Lawrence Banks, Ashland senior, and Stephanie Sanders, Paris senior, field commanders for MSU's Marching Band.

(MSU photo by Tim Holbrook)

11-3-03ajb

MSU is an affirmative action, equal opportunity educational institution.



## LCHS PARTICIPATES IN MSU FESTIVAL

The Lewis County High School Marching Band participated in Morehead State University's Blue and Gold Festival of Marching Bands recently. The event is designed to promote the educational aspects of marching band with the emphasis placed on performance and learning. The Kentucky Music Educators Association sanctions the festival, adjudicated by a team of nationally recognized authorities in the field of marching band. The band received three trophies recognizing outstanding assessment in the areas of overall performance, percussion and auxiliary. Under the direction of drum major Megan McGlone, the band performed "Penny Lane 2003," "Eleanor Rigby," "Yesterday," "Octopus's Garden" and "Penny Lane." Matt Voiles is the band director. Participating in the awards ceremony were, front row from left, Dr. Scott McBride, chair of MSU's Department of Music; LCHS students Anna Kamer, McGlone, and Lance O'Cull; who were joined by Dr. Michael Seelig, dean of MSU's Caudill College of Humanities. In back are Jennifer Peterson, Shelbyville junior, Lawrence Banks, Ashland senior, and Stephanie Sanders, Paris senior, field commanders for MSU's Marching Band.

(MSU photo by Tim Holbrook)

11-3-03ajb

MSU is an affirmative action, equal opportunity educational institution.



# Photo

University Communications

Pauline Young, Director

[www.moreheadstate.edu](http://www.moreheadstate.edu)

Morehead State University

UPO Box 1100

Morehead, KY 40351-1689

(606) 783-2030

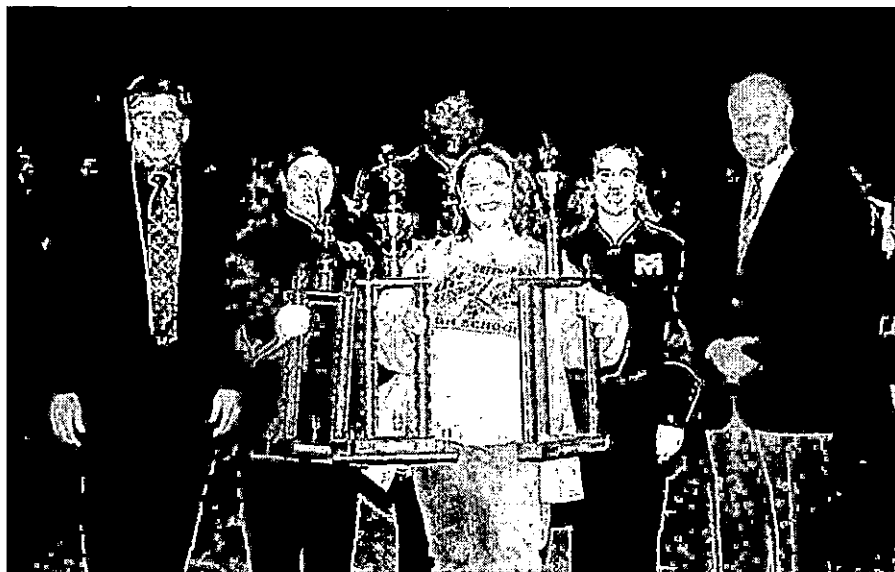
## GCHS PARTICIPATES IN MSU FESTIVAL

The Greenup County High School Marching Band participated in Morehead State University's Blue and Gold Festival of Marching Bands recently. The event is designed to promote the educational aspects of marching band with the emphasis placed on performance and learning. The Kentucky Music Educators Association sanctions the festival, adjudicated by a team of nationally recognized authorities in the field of marching band. The band received three trophies recognizing outstanding assessment in the areas of overall performance, percussion and auxiliary. Under the direction of drum major Nichole Flannery, the band performed "Latin Heat: Malaguene, Peanut Vendon, Grenada." Marc Carpenter is the band director. Participating in the awards ceremony were, front row from left, Dr. Scott McBride, chair of MSU's Department of Music; GCHS student Melissa Newhouse; who were joined by Dr. Michael Seelig, dean of MSU's Caudill College of Humanities. In back are Jennifer Peterson, Shelbyville junior, Lawrence Banks, Ashland senior, and Stephanie Sanders, Paris senior, field commanders for MSU's Marching Band.

(MSU photo by Tim Holbrook)

11-3-03ajb

MSU is an affirmative action, equal opportunity educational institution.



## HCHS PARTICIPATES IN MSU FESTIVAL

The Henry County High School Marching Band participated in Morehead State University's Blue and Gold Festival of Marching Bands recently. The event is designed to promote the educational aspects of marching band with the emphasis placed on performance and learning. The Kentucky Music Educators Association sanctions the festival, adjudicated by a team of nationally recognized authorities in the field of marching band. The HCHS band received three trophies recognizing outstanding assessment in the areas of overall performance, percussion and auxiliary. Under the direction of drum major LeeAnn Bird, the band performed "Chant Rituals," and "Chant and Jubilo." Chip Anderson is the band director. Participating in the awards ceremony were, front row from left, Dr. Scott McBride, chair of MSU's Department of Music; HCHS students Allison Bickers and Bird; who were joined by Dr. Michael Seelig, dean of MSU's Caudill College of Humanities. In back are Jennifer Peterson, Shelbyville junior, Lawrence Banks, Ashland senior, and Stephanie Sanders, Paris senior, field commanders for MSU's Marching Band.

(MSU photo by Tim Holbrook)

11-3-03ajb

MSU is an affirmative action, equal opportunity educational institution.



# Photo

University Communications

Pauline Young, Director

[www.moreheadstate.edu](http://www.moreheadstate.edu)

Morehead State University

UPO Box 1100

Morehead, KY 40351-1689

(606) 783-2030

## THS PARTICIPATES IN MSU FESTIVAL

The Tecumseh High School Marching Band participated in Morehead State University's Blue and Gold Festival of Marching Bands recently. The event is designed to promote the educational aspects of marching band with the emphasis placed on performance and learning. The Kentucky Music Educators Association sanctions the festival, adjudicated by a team of nationally recognized authorities in the field of marching band. The THS band received three trophies recognizing outstanding assessment in the areas of overall performance, percussion and auxiliary. Under the direction of drum major Netasha Otto, the band performed "Music of the Rat Pack." Bryan Martin is the band director with Melissa Willardson and Netasha Martin as assistant directors. Participating in the awards ceremony were, front row from left, Dr. Scott McBride, chair of MSU's Department of Music; Otto; who were joined by Dr. Michael Seelig, dean of MSU's Caudill College of Humanities. In back are Jennifer Peterson, Shelbyville junior, Lawrence Banks, Ashland senior, and Stephanie Sanders, Paris senior, field commanders for MSU's Marching Band.

(MSU photo by Tim Holbrook)

11-3-03ajb

MSU is an affirmative action, equal opportunity educational institution.



## SCHS PARTICIPATES IN MSU FESTIVAL

The Sheldon Clark High School Marching Band participated in Morehead State University's Blue and Gold Festival of Marching Bands recently. The event is designed to promote the educational aspects of marching band with the emphasis placed on performance and learning. The Kentucky Music Educators Association sanctions the festival, adjudicated by a team of nationally recognized authorities in the field of marching band. The SCHS band received three trophies recognizing outstanding assessment in the areas of overall performance, percussion and auxiliary. Under the direction of drum major Paige Preece, the band performed "Styx Live." Michelle Napier is the band director. Participating in the award ceremony were, front row from left, Dr. Scott McBride, chair of MSU's Department of Music; SCHS students Nichols Endicott, Ad Maynard, Preece, Adora Smith, Elizabeth Horn; who were joined by Dr. Michael Seelig, dean of MSU's Caudill College of Humanities. In back are Jennifer Peterson, Shelbyville junior, Lawrence Banks, Ashland senior, and Stephanie Sanders, Paris senior, field commanders for MSU's Marching Band.

(MSU photo by Tim Holbrook)

11-3-03ajb

MSU is an affirmative action, equal opportunity educational institution.



# Tips

University Communications

Pauline Young, Director

[www.moreheadstate.edu](http://www.moreheadstate.edu)

Morehead State University

UPO Box 1100

Morehead, KY 40351-1689

(606) 783-2030

## HIGHLIGHTS AT MOREHEAD STATE UNIVERSITY

(Nov. 9-15)

### Sunday, Nov. 9

Rifle: Eagles vs. Jacksonville State, Button Rifle Range, 8 a.m., free. Additional information: (606) 783-2088.

Senior recital: Lawrence Banks, tuba, Duncan Recital Hall, 5 p.m., free. Additional information: (606) 783-2473.

### Monday, Nov. 10

Lecture: "Costa Rica – Kentucky Partnership," by German Rojas Hidalgo and Carlos Salazar Ramirez, senators from Costa Rica, 2 Breckinridge Hall, 3 p.m., free. Additional information: (606) 783-2096.

Choral Festival, featuring performances by MSU and festival choirs, Duncan Recital Hall, 7 p.m., also Nov. 11, free. Additional information: (606) 783-2480.

### Tuesday, Nov. 11

Basketball (exhibition): Eagles vs. Sports Reach, Academic-Athletic Center, 7 p.m., free. Additional information: (606) 783-2087.

Chi Omega Follies, Button Auditorium, 7 p.m., charge. Additional information: (606) 783-2779.

### Wednesday, Nov. 12

Lecture: "Nigeria, Giant of Africa," by Dr. Afolabi Adedibu, visiting professor from Ladoko Akintola University of Technology, Nigeria, 112 Rader Hall, 3-4:30 p.m., free. Additional information: (606) 783-2096.

Jazz clinic, with Jamey Aebersold, Duncan Recital Hall, Baird Music Hall, 4 p.m., free. Additional information: (606) 783-2198.

Concert: Jamey Aebersold, D's Main Street Bistro, 139 East Main Street, Morehead, 6 p.m.; reservations recommended. Additional information: (606) 783-2198.

International Education Concert, Duncan Recital Hall, 8 p.m.; featuring Dr. Roma Prindle and MSU students. Donations accepted to support the MSU Study Abroad Scholarship Fund. Additional information: (606) 783-2096.

(MORE)

Tips (Nov. 9-15)  
2-2-2-2-2

Thursday, Nov. 13

Lecture: "Chinese Education System," Riggle Room, Adron Doran University Center,  
2-3:30 p.m., free. Speakers: Huang Yu, deputy director-general, and Xu Fucui, director  
of the Center for Scholarly Exchange, both with the Guangxi Education Department,  
Guangxi Province, Peoples Republic of China. Additional information: (606) 783-2096.

MSU Reading Series, featuring Keith Wahle and Jerry Roscoe, Kentucky Folk Art Center,  
7 p.m., free. Additional information: (606) 783-2340.

Spanish Club Dinner and Fiesta, Baptist Student Union, 5 p.m., charge. Additional information:  
(606) 783-2096.

####

11-3-03sas



# News

University Communications

Pauline Young, Director

[www.moreheadstate.edu](http://www.moreheadstate.edu)

Morehead State University

UPO Box 1100

Morehead, KY 40351-1689

(606) 783-2030

Nov. 6, 2003

FOR IMMEDIATE RELEASE

MOREHEAD, Ky.---The main gallery in Claypool-Young Art Building at Morehead State University will be the site of the "2003 Art Faculty Exhibition," Nov. 19 through Dec. 11, with an opening reception on Wednesday, Nov. 19, from 6 - 8 p.m.

The annual "Art Faculty Exhibition" showcases the artworks of faculty in MSU's Department of Art. Reflecting the strength and diversity of the department's programs and instruction, the show features a wide range of media and techniques. Paintings, drawings, digital photography, computer generated images and prints, as well as three-dimensional sculptures and ceramic works will be on display.

Complimentary refreshments and live music will be featured at the opening reception on Nov. 19. The activity is free and open to the public.

In association with the exhibition, there will be an Art Faculty Forum on Thursday, Nov. 20, from 11:30 a.m. -12:30 p.m. Exhibiting artists will be on hand to discuss their work and answer questions. Refreshments will be available.

The gallery in Claypool-Young is an educational resource of the Department of Art and the University as a whole. The "2003 Art Faculty Exhibition" is an embodiment of the mission of the gallery, both as a venue for instruction and as a means for displaying work.

Viewing is available at the gallery Monday through Friday, 8 a.m. to 4 p.m. or by appointment. There is no admission charge. Parking is available on Elizabeth Avenue and Main Street.

Any information is available by calling Jennifer Reis, gallery director, at (606) 783-5446.

####

# Tips

University Communications

Pauline Young, Director

[www.moreheadstate.edu](http://www.moreheadstate.edu)

Morehead State University

UPO Box 1100

Morehead, KY 40351-1689

(606) 783-2030

## DECEMBER HIGHLIGHTS AT MOREHEAD STATE UNIVERSITY

Dec. 2, Holiday Party, Button Drill Room, 4-6 p.m., followed by Holiday Tree Lighting.

Additional information: (606) 783-2071.

Dec. 2, Christmas Carol Concert, featuring University choruses and Concert Choir, Duncan

Recital Hall, 8 p.m., free. Additional information: (606) 783-2473.

Dec. 3, Recital: OperaWorks, Duncan Recital Hall, 8 p.m., free. Additional information:

(606) 783-2481.

Dec. 2, Basketball: Lady Eagles vs. Ohio University, Academic-Athletic Center, 7 p.m., charge.

Additional information: (606) 783-2126.

Dec. 4, Annual Christmas Sing-A-Long, Duncan Recital Hall, 3 p.m., free. Additional

information: (606) 783-2473.

Dec. 4, Art exhibit: "Family History," Kentucky Folk Art Center, through Feb. 28, charge;

Opening reception, Dec. 4, 6-8 p.m. free. Additional information: (606) 783-2204.

Dec. 4, Second Stage theatre production: "String Geese Fish Rain," Lucille Caudill Little

Theatre, 7:30 p.m., through Dec. 6, charge. Additional information: (606) 783-2170.

Dec. 4, Concert Band performance, Duncan Recital Hall, 8 p.m., free. Additional information:

(606) 783-2473.

Dec. 6, Rifle: Eagles vs. Austin Peay State University, Button Rifle Range, 8 a.m., free.

Additional information: (606) 783-2088.

Dec. 6, Appalachian Holiday Arts and Crafts Fair, Laughlin Health Building, 9 a.m. to 4 p.m.,

charge. Additional information : (606) 783-2204.

Dec. 6, Holiday concert: Faculty Brass Quintet, Duncan Recital Hall, 7 p.m., free.

Additional information: (606) 783-2473.

Dec. 6, Basketball: Eagles vs. Texas A & M-Corpus Christi, Academic-Athletic Center, 7 p.m.,

charge. Additional information: (606) 783-2087.

Dec. 6, Concert: "Bluegrass Holiday," with David Parmley & Continental Divide, and Don

Rigsby, Button Auditorium, 8:30 p.m., charge. Additional information: (606) 783-9001.

Dec. 7, Senior Recital: Tim Holcomb, percussion, Duncan Recital Hall, 1 p.m., free. Additional

information: (606) 783-2473.

(MORE)

## December highlights

2-2-2-2

Dec. 8, Final exams, also Dec. 9, 11 and 12. Reading Day, Dec. 10, no exams.  
Additional information: (606) 783-2008.

Dec. 12, Board of Regents quarterly meeting, 302 Breckinridge Hall, 9 a.m. Additional  
information: (606) 783-2030.

Dec. 12, Baccalaureate Nursing Program Pinning Ceremony, Patti Bolin Room, Lloyd Cassity  
Building, 6-8:30 p.m. Additional information: (606) 783-2296.

Dec. 13, Winter Commencement, Academic-Athletic Center, 10:30 a.m., free. Additional  
information: (606) 783-2008.

Dec. 15, Basketball: Eagles vs. Kentucky Christian College, Academic-Athletic Center, 7 p.m.,  
charge. Additional information: (606) 783-2087.

Dec. 19, Concert: "Americana Crossroads Live," featuring: Kendra Ward & Bob Bence; Pine  
Mountain Railroad, Duncan Recital Hall, 7:30 p.m. Additional information:  
(606) 783-2001.

Dec. 24, Holiday break begins, no office hours, through Jan. 1; Kentucky Folk Art Center  
open regular hours except for Dec. 25 and Jan. 1. Additional information:  
(606) 783-2008.

####

11-6-03sas

# Tips

University Communications

Pauline Young, Director

[www.moreheadstate.edu](http://www.moreheadstate.edu)

Morehead State University

UPO Box 1100

Morehead, KY 40351-1689

(606) 783-2030

## **JANUARY HIGHLIGHTS AT MOREHEAD STATE UNIVERSITY**

Jan. 1, New Year's Day holiday, no office hours. Additional information: (606) 783-2008.

Jan. 3, Basketball: Eagles vs. Greenville College, Academic-Athletic Center, 7 p.m., charge.  
Additional information: (606) 783-2087.

Jan. 6, Spring Convocation, TBA. Additional information: (606) 783-2002.

Jan. 8, Basketball: Eagles vs. Murray State University, Academic-Athletic Center, 7:30 p.m.,  
charge. Additional information: (606) 783-2087.

Jan. 10, Basketball: Eagles vs. University of Tennessee-Martin, Academic-Athletic Center,  
7:30 p.m., charge. Additional information: (606) 783-2087.

Jan. 14, Rifle: Eagles vs. Rose-Hulman, Button Rifle Range, 8 a.m. Additional information:  
(606) 783-2088.

Jan. 15, Basketball: Eagles vs. Tennessee Tech, Academic-Athletic Center, 7:30 p.m., charge.  
Additional information: (606) 783-2087.

Jan. 17, Basketball: Eagles vs. Austin Peay State University, Academic-Athletic Center,  
7:30 p.m., charge. Additional information: (606) 783-2087.

Jan. 19, Martin Luther King Jr. Holiday; no classes or office hours. Additional information:  
(606) 783-2008.

Jan. 21, Central Kentucky Blood Center blood drive, Button Drill Room, 11 a.m. – 5 p.m., also  
Jan. 22. Additional information: (800) 775-2522.

Jan. 28, "Contemporary Art Quilts: Works by Rebekka Seigel, David Walker, Susan Shie and  
James Acord," main gallery, Claypool-Young Art Building, through Feb. 27; Opening  
reception, Jan. 28, 6-8 p.m., free. Additional information: (606) 783-5446.

Jan. 30, Concert: "Americana Crossroads Live," with Mustard's Retreat, Duncan Recital Hall,  
7:30 p.m. Additional information: (606) 783-2001.

#####

11-05-03sas

# News

University Communications

Pauline Young, Director

[www.moreheadstate.edu](http://www.moreheadstate.edu)

Morehead State University

UPO Box 1100

Morehead, KY 40351-1689

(606) 783-2030

Nov. 6, 2003

FOR IMMEDIATE RELEASE

MOREHEAD, Ky.---Three Morehead State University staff members will serve on the City of Morehead's Sesquicentennial Planning Committee.

Set for 2006, the celebration will mark the city's 150th birthday. The Rowan County Historical Society is making plans now for events surrounding the sesquicentennial.

MSU representatives on the planning committee are: Joel Pace, director of admissions; Lora Pace, First Year program director; and Matt Collinsworth, director of the Kentucky Folk Art Center.

Joel Pace has served as director of admissions since fall 2002, and had been the associate director since 2000. He joined the Division of Student Life in 1997 as a financial aid counselor, and has been an MSU employee since 1996.

Pace's wife Lora has been employed in her current position since 1996. She previously was a residence hall director and area coordinator in the Office of Student Housing from 1990-96. She is a member of numerous university committees and also serves on the Staff Congress.

The KFAC director since March, Collinsworth is the former manager of Morehead Tomorrow, where he secured grant funding for city and University rehabilitation and construction projects, among other duties. Additionally, he is a former adjunct instructor, having taught writing classes at MSU.

Collinsworth also is serving on the Sesquicentennial Committee's board. The Rev. Lloyd Dean of Morehead serves as chair of the committee.

Additional information is available by calling the Rev. Dean at (606) 784-9145, or Helen Surmont at (606) 784-9527.

####

sas

# News

University Communications

Pauline Young, Director

[www.moreheadstate.edu](http://www.moreheadstate.edu)

Morehead State University

UPO Box 1100

Morehead, KY 40351-1689

(606) 783-2030

Nov. 6, 2003

FOR IMMEDIATE RELEASE

MOREHEAD, Ky.---Morehead State University's Small Business Development Center will offer an "Introduction to Microsoft Excel," a two-part series geared toward current business owners and pre-business planners who want to learn about the excel spreadsheet.

The first session will be held on Tuesday, Nov. 11, followed by the second on Tuesday, Nov. 18. Each two-hour workshop will be held in 302 Combs Building, beginning at 5:30 p.m.

The registration fee is \$15. Because of limited seating, pre-registration is necessary.

The course will cover the Excel 2000 spreadsheet application as well as the program's basic and intermediate functions/capabilities. Also included will be instructions on starting the program; examining the Excel window; creating, editing, formatting and enhancing a worksheet; working with formulas, charts and functions; using names; and managing and printing worksheets.

All training programs, sponsored or cosponsored by SBDC are available to all individuals without regard to race, sex, creed or national origin. Arrangements will be made for those with disabilities when requested in advance.

Additional information and pre-registration are available by calling SBDC at (606) 783-2895.

####

Nov. 6, 2003

FOR IMMEDIATE RELEASE

**KPCEC HOLDS CONFERENCE AT MSU AT WEST LIBERTY : A Picture Story:**

MOREHEAD, Ky.--- Morehead State University at West Liberty hosted the fall conference of the Kentucky Postsecondary Continuing Education Council at Natural Bridge State Park, Monday through Wednesday, Oct. 20-22.

The conference began at the park on Monday evening with a "Networking Dinner" before participating in a busy day on Tuesday. The group traveled to the MSU at West Liberty campus where they heard from a host of speakers that included Dr. Tom Layzell, president of the Council on Postsecondary Education; Donna Davis from the Kentucky Community and Technical College System; and Dr. Ben Malphrus, director of MSU's Space Science Center.

The conference wrapped-up on Wednesday with Dr. Regis Gilman of Alpha Sigma Lambda, a non-traditional adult student honorary, and State Sen. Robert Stivers speaking with the group.

#####

**Cutlines:**

- 1--Dr. Tom Layzell, president of the Council on Postsecondary Education, left, was a guest speaker the Kentucky Postsecondary Continuing Education Council 2003 Fall Conference held at Morehead State University at West Liberty. He was greeted by Dr. Jonell Tobin, MSU at West Liberty director, center, and Ben Boggs, CPE senior associate of academic affairs.
- 2--President of the Council on Postsecondary Education, Dr. Tom Layzell spoke with the educators gathered at Morehead State University at West Liberty during the annual Kentucky Postsecondary Continuing Education Council 2003 Fall Conference. After his remarks, he answered questions from the audience.
- 3--Listening to state educators during the Kentucky Postsecondary Continuing Education Council 2003 Fall Conference held at MSU at West Liberty were, from left, Dr. Tom Layzell, president of the Council on Postsecondary Education; Ron Daley from the University Center of the Mountains; and Dr. Michael R. Moore, MSU provost.

(MSU photos by Jason Blanton)

11-3-03ajb

1



2



3





## ALUMNUS INDUCTED AT MSU

Dr. Rachel Holloway (center) of Blacksburg, Va., chair of the Department of Communication Studies at Virginia Polytechnic Institute, has been named the first inductee into the Harlen Hamm Forensics Hall of Fame at Morehead State University. Making the presentation were Dr. Cathy Thomas, left, associate professor of speech and former speech team coach, and Lisa Shemwell, speech team coach. Dr. Holloway held numerous state and OVC titles while a member of the MSU Speech Team from 1979-1983, including national champion in informative speaking in 1982 and 1983. She was the featured speaker for the Department of Communication and Theatre's Distinguished Alumni Lecture Series recently. The Harlen Hamm Forensics Hall of Fame was named to honor the late professor who taught speech at MSU for more than 20 years.

(MSU photo)

11-7-03

MSU is an affirmative action, equal opportunity educational institution.



# News

University Communications

Pauline Young, Director

[www.moreheadstate.edu](http://www.moreheadstate.edu)

Morehead State University

UPO Box 1100

Morehead, KY 40351-1689

(606) 783-2030

Nov. 7, 2003

FOR IMMEDIATE RELEASE

MOREHEAD, Ky.---The Kentucky Folk Art Center (KFAC) and Morehead State University's Appalachian Heritage Program have announced the next installment of the speakers series "Appalachia: Yesterday and Today.

Ken Ward Jr., an environmental reporter with the "Charleston Gazette," will present "The Debate over Mountaintop Removal: Perspectives from an Environmental Reporter" at KFAC on Tuesday, Nov. 18, at 7 p.m.

Ward has developed a regional and national reputation for his investigative stories on mountaintop removal and slurry impoundments in West Virginia, including the controversial mining practices themselves and the legal challenges that citizens' organizations have mounted against them. He is well versed in environmental regulations, the history of the mining industry and environmental politics. In addition to his regular writing for the Gazette, Ward often publishes features on mountaintop mining and citizen activism in "In These Times."

"Ken Ward Jr. is one of the most experienced observers and reporters of the mining industry in our region," said Dr. John Hennen, MSU professor of history. "He understands both the environmental and social issues related to mountaintop removal. For anyone interested in this issue, it will be important to hear Ken speak."

"While we in Northeast Kentucky haven't been faced with mountaintop removal on a daily basis like our neighbors in Southeast Kentucky or in West Virginia, this is still one of the most controversial issues facing the Appalachian region," said Dr. John Ernst, director of MSU's Appalachian Heritage Program. "This debate will affect the future of our region's economy, environment and society."

New speakers and dates will be announced as they are scheduled.

Additional information is available by calling (606) 783-2204. KFAC, located at 102 West First Street in Morehead, is open Monday-Saturday, 9 a.m. to 5 p.m., and Sundays, 1-5 p.m.

####

# News

University Communications

Pauline Young, Director

[www.moreheadstate.edu](http://www.moreheadstate.edu)

Morehead State University

UPO Box 1100

Morehead, KY 40351-1689

(606) 783-2030

Nov. 7, 2003

FOR IMMEDIATE RELEASE

MOREHEAD, Ky.---Megan Ann Helphinstine of Ewing and Peyton Allen Reynolds of Morehead have been named Morehead State University's 2003 Homecoming Queen and King, respectively, during ceremonies on the campus.

Helphinstine, the daughter of Mike and Judy Helphinstine, is a junior nursing major. She was sponsored by Delta Tau Delta fraternity.

"Shocking is the first thing I noticed feeling," she said of the announcement of her name as queen. "This is the first time someone from my sorority, Chi Omega, has been crowned in 13 years," she added. "I think it's a great thing and an honor to represent Morehead State, and to be chosen out of all the students because the students voted for this," said the Fleming County High School graduate who was a member of the 2002 Homecoming Court.

Reynolds, the son of Ronnie and Sharon Reynolds, is a junior philosophy major. He was sponsored by Chi Omega sorority.

When his name was announced, Reynolds said he also experienced shock. "I just stood there for a second," he said.

"This was really a great experience for many reasons, but especially because of the way Greek life was involved," Reynolds continued.

Being a member of the Homecoming court also was a fun experience, he noted, recalling the activities that led up to the announcement. "Riding in the parade and seeing people I have known for a long time, was great," he added.

A local student who graduated from Rowan County Senior High School, Reynolds saw numerous friends in the crowd. His mother also works on campus as a counseling coordinator for the Today's Youth program.

####

# Photo

University Communications

Pauline Young, Director

[www.moreheadstate.edu](http://www.moreheadstate.edu)

Morehead State University

UPO Box 1100

Morehead, KY 40351-1689

(606) 783-2030

## MSU'S KING AND HIS COURT

Peyton Reynolds, Morehead junior, was named the Homecoming King during ceremonies at Morehead State University. Following the announcement, he was photographed with other candidates in the competition. Included were, from left, Andy Thomas, Dayton, Ohio, junior; Chris Mallice, Niagara Falls, N.Y., senior; Dominic Schillizzi, Louisville senior; Gabriel Schadle, Eaton, Ohio, senior; Dru Belli, Johnsontown, Ohio, senior; King Reynolds, Bradley Opell, Louisa junior; Eric Heck, Bellevue senior; Raymond Sanders, Union senior; Adam Rossman, Butlerville, Ohio, senior; and Josh Gruenke, Maysville senior.

(MSU photo by Tim Holbrook)

11-6-03

MSU is an affirmative action, equal opportunity educational institution.



# Photo

University Communications

Pauline Young, Director

[www.moreheadstate.edu](http://www.moreheadstate.edu)

Morehead State University

UPO Box 1100

Morehead, KY 40351-1689

(606) 783-2030

## MSU'S QUEEN AND HER COURT

The 2003 Homecoming Queen, Megan Ann Helphinstine, Ewing senior, posed with her court for an official photograph. Included were, from left, Jessica Bodimer, Gallipolis, Ohio, sophomore; Tiffany Reed, Hebron sophomore; Cara Anderson, Hamilton, Ohio, junior; Gena Boyle, Winchester senior; Brittany Atkins, Ashland senior; Queen Helphinstine, Rachel Martin, Morehead senior; Brooke Hudson, Lotts Creek senior; Casey French, Erlanger junior; Lindsay Wilson, Booneville senior; and Sarah Fischer, Cynthiana senior.

(MSU photo by Tim Holbrook)

11-6-03

MSU is an affirmative action, equal opportunity educational institution.



## A CROWNING MOMENT AT MSU

Megan Helphinstine, a junior nursing major, was named the 2003 Homecoming Queen at Morehead State University. After the announcement during halftime ceremonies of the Homecoming football game, MSU President Ronald G. Eaglin placed the crown on her head, while Mrs. Bonnie Eaglin watched. Helphinstine is the daughter of Mike and Judy Helphinstine of Ewing.

(MSU photo by Tim Holbrook)

11-6-03

MSU is an affirmative action, equal opportunity educational institution.



# News

University Communications

Pauline Young, Director

[www.moreheadstate.edu](http://www.moreheadstate.edu)

Morehead State University

UPO Box 1100

Morehead, KY 40351-1689

(606) 783-2030

Nov. 10, 2003

FOR IMMEDIATE RELEASE

MOREHEAD, Ky.---The Morehead State University Volleyball Team will travel to Eastern Kentucky University for an Ohio Valley Conference game on Wednesday, Nov. 12.

For those from the campus or the community who want to attend the game, the University's Student Activities Office wants to make that possible. A bus will leave the Academic-Athletic Center at 5 p.m. and return after the game. The cost is \$5 per person.

The Eagles, under first-year coach Jaime Gordon, stand atop the OVC standings while ECU is tied for second. A win Wednesday over Eastern Kentucky will give MSU the outright regular-season OVC title.

You may make your reservations by calling (606) 783-2071. Spaces will be reserved on a first come, first served basis.

####

# News

University Communications

Pauline Young, Director

[www.moreheadstate.edu](http://www.moreheadstate.edu)

Morehead State University

UPO Box 1100

Morehead, KY 40351-1689

(606) 783-2030

Nov. 10, 2003

FOR IMMEDIATE RELEASE

MOREHEAD, Ky.---When it comes to art in Carter County, you might say it's hard keeping up with the Joneses – at least David and Tim Jones.

The two Olive Hill residents, who are first cousins, have each won a prestigious design competition at Morehead State University.

David Jones, an MSU graduate student majoring in art, had his entry selected as the new logo for the Student Government Association (SGA). The logo spells out the University's name and strongly features the SGA acronym. It is somewhat triangular, set against an eagle silhouette.

"I was trying to make something that would, obviously, relate to what it was, and to the University," he said. "Also, I tried to make something that would reproduce well, both large and small, and in black and white or color."

David says he kept his design "clean" so that it would "work well in various formats."

The new logo will be used as SGA's identifying symbol in printed materials and other items. David's design was announced as the winning submission at a ceremony following the homecoming parade, Oct. 16. He received a cash award and a T-shirt bearing his newly-designed logo.

Though he had been informed a few days earlier that his entry was one of the finalists, David said he was "excited and really surprised that I won."

His cousin Tim echoed David's reaction when his cover design was selected for the fall issue of "Inscape," the University's semi-annual student artistic and literary publication.

"I was pretty shocked, actually, and very happy," Tim said. He received a cash prize for winning the design contest, and, like David, was notified on Oct. 16.

Tim is a senior, pursuing a degree in studio art with an emphasis in graphic design. He incorporated his photograph of a Cincinnati homeless man holding a notebook with "Inscape" written on it, into his winning cover design.

"I was playing off trying to get a good photograph and thought using him would have more impact than using someone I knew for the picture," he said. "I wanted to get a good interaction between me and the homeless man."

(MORE)



Tim has won other art competitions, including last year's studio art show sponsored by the University's Interdisciplinary Women's Studies Program. He also runs a home-based small business, where he designs logos and other artwork for business cards, T-shirts and more.

"I like to take graphic designs and photography, and present my work sculpturally, like interactively or in 3-D, rather than just having it hang on the wall," Tim said. He is glad he won the "Inscape" contest, but says that "just being published at all" is a reward in itself.

Both he and David are graduates of West Carter High School and are officers in MSU's Visual Arts Guild.

The son of Alan and Paulette Jones of Olive Hill, Tim says he believes he inherited his photographic talents from his father. He also said he appreciates the support he gets from his sister, Shellie Hallock, academic career coordinator at MSU, and his girlfriend Jessica Johnson. He plans to graduate from MSU in December 2004.

David is the son of Michelle Jones of Olive Hill and the late Donald Jones, and enjoys working on projects with his younger brother Donnie. He is a spring 2003 graduate of MSU, earning his degree in studio art. He is taking courses toward a master's degree in art, and also aspires to attend either architecture school or further graduate school, studying fine arts.

A graduate assistant in the Department of Art, David serves as the graphic designer for MSU's student yearbook magazine, the "Raconteur," and is currently collaborating with faculty and staff on designs for various publications and public relations projects.

Additional information about MSU's Department of Art is available by calling the department at (606) 783-2766.

####

sas

## MSU DESIGN CONTEST WINNERS

Olive Hill cousins David Jones, left, and Tim Jones were each winners of art-related competitions at Morehead State University, where they are both students. David's design was chosen as the winner in the MSU Student Government Association logo contest. Tim's design was selected for the cover of this semester's issue of "Inscape," the University's student semi-annual literary and art magazine. David, a graduate student in art, is the son of Michelle Jones and the late Donald Jones. Tim is a senior, pursuing a degree in studio art with a graphic design emphasis. He is the son of Alan and Paulette Jones. Additional information about programs of study in MSU's Department of Art is available by calling (606) 783-2766.

(MSU photo by Shirley A. Smith)

11-10-03sas

MSU is an affirmative action, equal opportunity educational institution.



# News

University Communications

Pauline Young, Director

[www.moreheadstate.edu](http://www.moreheadstate.edu)

Morehead State University

UPO Box 1100

Morehead, KY 40351-1689

(606) 783-2030

Nov. 10, 2003

FOR IMMEDIATE RELEASE

MOREHEAD, Ky.---The classic Greek tragedy “Antigone” will be staged at Morehead State University Tuesday through Sunday, Nov. 18-23.

The University’s theatre students will present Sophocles’ masterpiece in the Lucille Caudill Little Theatre in Breckinridge Hall at 7:30 p.m. each evening, along with a 2 p.m. matinee performance on Sunday, Nov. 23.

“Antigone” tells the story of the title character who defies a royal order of her uncle, King Creon, and buries her brother, Polyneices, who died leading a civil war. Antigone’s act challenges the power of the government over personal morals and spiritual tradition.

Principal cast members include Juliana Peterson, **Alexandria** senior, as Antigone; John Page, **Owensboro** junior, as Creon; Tashena Nobrega, **Morehead** senior, as Eurydice; Nate Kamer, **Garrison** senior, as Teiresias; and Hannah Leitz, **Morehead** senior, as Ismene.

Josh Daniels, **West Union, Ohio**, senior, is the play’s production stage manager, and Robert Daniels, **West Liberty** junior, is the sound designer.

Dr. Travis Lockhart, professor of theatre, is directing the production.

Admission is \$8 for adults, \$2 for non-MSU students and senior citizens and free for MSU students with a valid EagleCard ID. Reservations are suggested and may be made by calling the Theatre Box Office at (606) 783-2170. Tickets also will be sold at the door if seats are available.

Additional information on the production is available by calling the box office.

####

sas

# News

University Communications

Pauline Young, Director

[www.moreheadstate.edu](http://www.moreheadstate.edu)

Morehead State University

UPO Box 1100

Morehead, KY 40351-1689

(606) 783-2030

Nov. 10, 2003

FOR IMMEDIATE RELEASE

MOREHEAD, Ky.---A Lewis County student is among those involved in the production of the Greek tragedy "Antigone" to be staged Tuesday through Sunday, Nov. 18-23, at Morehead State University.

Sophocles' masterpiece "Antigone" tells the story of a young woman who, in defiance of a royal order issued by her uncle, King Creon, buries her brother Polyneices, who died leading a civil war. Antigone's act of civil disobedience tests the state's power over ancient spiritual and moral tradition.

Nate Kamer, **Garrison** senior, will portray Teiresias in the play. A theatre major, he is the son of Dan and Connie Kamer. A member of the MSU Players, he is a Theta Alpha Phi theatre honorary pledge.

"Antigone" will be staged in the Lucille Caudill Little Theatre in Breckinridge Hall at 7:30 p.m. each evening, along with a 2 p.m. matinee performance on Sunday, Nov. 23.

Admission is \$8 for adults, \$2 for non-MSU students and senior citizens and free for MSU students with a valid EagleCard ID. Reservations are suggested and may be made by calling the Theatre Box Office at (606) 783-2170. Tickets also will be sold at the door if seats are available.

Additional information on the production is available by calling the box office.

####

sas

# News

University Communications

Pauline Young, Director

[www.moreheadstate.edu](http://www.moreheadstate.edu)

Morehead State University

UPO Box 1100

Morehead, KY 40351-1689

(606) 783-2030

Nov. 10, 2003

FOR IMMEDIATE RELEASE

MOREHEAD, Ky.---A Daviess County student is among those involved in the production of the Greek tragedy "Antigone" to be staged Tuesday through Sunday, Nov. 18-23, at Morehead State University.

Sophocles' masterpiece "Antigone" tells the story of a young woman who, in defiance of a royal order issued by her uncle, King Creon, buries her brother Polyneices, who died leading a civil war. Antigone's act of civil disobedience tests the state's power over ancient spiritual and moral tradition.

John Page, **Owensboro** junior, will portray Creon in the play. A member of the MSU Players, and a theatre major, he is a member of Theta Alpha Phi theatre honorary. He is the son of Patricia Blair and John A. Page.

"Antigone" will be staged in the Lucille Caudill Little Theatre in Breckinridge Hall at 7:30 p.m. each evening, along with a 2 p.m. matinee performance on Sunday, Nov. 23.

Admission is \$8 for adults, \$2 for non-MSU students and senior citizens and free for MSU students with a valid EagleCard ID. Reservations are suggested and may be made by calling the Theatre Box Office at (606) 783-2170. Tickets also will be sold at the door if seats are available.

Additional information on the production is available by calling the box office.

####

sas

# News

University Communications

Pauline Young, Director

[www.moreheadstate.edu](http://www.moreheadstate.edu)

Morehead State University

UPO Box 1100

Morehead, KY 40351-1689

(606) 783-2030

Nov. 10, 2003

FOR IMMEDIATE RELEASE

MOREHEAD, Ky.---A Meade County student is among those involved in the production of the Greek tragedy "Antigone" to be staged Tuesday through Sunday, Nov. 18-23, at Morehead State University.

Sophocles' masterpiece "Antigone" tells the story of a young woman who, in defiance of a royal order issued by her uncle, King Creon, buries her brother Polyneices, who died leading a civil war. Antigone's act of civil disobedience tests the state's power over ancient spiritual and moral tradition.

Kevin Allmon, **Brandenburg** freshman, will portray a boy leading Teiresias in the play. A theatre major, he is the son of Tammy Allivand.

"Antigone" will be staged in the Lucille Caudill Little Theatre in Breckinridge Hall at 7:30 p.m. each evening, along with a 2 p.m. matinee performance on Sunday, Nov. 23.

Admission is \$8 for adults, \$2 for non-MSU students and senior citizens and free for MSU students with a valid EagleCard ID. Reservations are suggested and may be made by calling the Theatre Box Office at (606) 783-2170. Tickets also will be sold at the door if seats are available.

Additional information on the production is available by calling the box office.

####

sas

# News

University Communications

Pauline Young, Director

[www.moreheadstate.edu](http://www.moreheadstate.edu)

Morehead State University

UPO Box 1100

Morehead, KY 40351-1689

(606) 783-2030

Nov. 10, 2003

FOR IMMEDIATE RELEASE

MOREHEAD, Ky.---A Campbell County student is among those involved in the production of the Greek tragedy "Antigone" to be staged Tuesday through Sunday, Nov. 18-23, at Morehead State University.

Sophocles' masterpiece "Antigone" tells the story of a young woman who, in defiance of a royal order issued by her uncle, King Creon, buries her brother Polyneices, who died leading a civil war. Antigone's act of civil disobedience tests the state's power over ancient spiritual and moral tradition.

Juliana Peterson, a senior theatre major from **Alexandria**, will play the lead role of Antigone. The daughter of Brenda Moore, she is a member of the MSU Players and Theta Alpha Phi honorary.

"Antigone" will be staged in the Lucille Caudill Little Theatre in Breckinridge Hall at 7:30 p.m. each evening, along with a 2 p.m. matinee performance on Sunday, Nov. 23.

Admission is \$8 for adults, \$2 for non-MSU students and senior citizens and free for MSU students with a valid EagleCard ID. Reservations are suggested and may be made by calling the Theatre Box Office at (606) 783-2170. Tickets also will be sold at the door if seats are available.

Additional information on the production is available by calling the box office.

####

sas

# News

University Communications

Pauline Young, Director

[www.moreheadstate.edu](http://www.moreheadstate.edu)

Morehead State University

UPO Box 1100

Morehead, KY 40351-1689

(606) 783-2030

Nov. 10, 2003

FOR IMMEDIATE RELEASE

MOREHEAD, Ky.---A Henderson County student is among those involved in the production of the Greek tragedy "Antigone" to be staged Tuesday through Sunday, Nov. 18-23, at Morehead State University.

Sophocles' masterpiece "Antigone" tells the story of a young woman who, in defiance of a royal order issued by her uncle, King Creon, buries her brother Polyneices, who died leading a civil war. Antigone's act of civil disobedience tests the state's power over ancient spiritual and moral tradition.

Jim Britt, **Henderson** sophomore, will be a member of the chorus in the play. An English major, he is a member of Lambda Chi Alpha fraternity and a resident assistant in East Mignon Hall. He is the son of Pamela Straight and Dwayne Britt.

"Antigone" will be staged in the Lucille Caudill Little Theatre in Breckinridge Hall at 7:30 p.m. each evening, along with a 2 p.m. matinee performance on Sunday, Nov. 23.

Admission is \$8 for adults, \$2 for non-MSU students and senior citizens and free for MSU students with a valid EagleCard ID. Reservations are suggested and may be made by calling the Theatre Box Office at (606) 783-2170. Tickets also will be sold at the door if seats are available.

Additional information on the production is available by calling the box office.

####

sas



# News

University Communications

Pauline Young, Director

[www.moreheadstate.edu](http://www.moreheadstate.edu)

Morehead State University

UPO Box 1100

Morehead, KY 40351-1689

(606) 783-2030

Nov. 10, 2003

FOR IMMEDIATE RELEASE

MOREHEAD, Ky.---Three Rowan County students are among those involved in the production of the Greek tragedy "Antigone" to be staged Tuesday through Sunday, Nov. 18-23, at Morehead State University.

Sophocles' masterpiece "Antigone" tells the story of a young woman who, in defiance of a royal order issued by her uncle, King Creon, buries her brother Polyneices, who died leading a civil war. Antigone's act of civil disobedience tests the state's power over ancient spiritual and moral tradition.

Hannah Leitz, **Morehead** senior, will portray Ismene in the play. A theatre major, she is a member of the MSU Players and Theta Alpha Phi theatre honorary. Leitz is the daughter of Steve and Judy Leitz.

Tashena Nobrega, a senior Spanish, philosophy and government major, has been cast in the role of Eurydice. She is a member of Gamma Beta Phi honor society, Phi Sigma Pi, Theta Alpha Phi, the Spanish Club and Amnesty International. She is the daughter of Joe and Sheila Nobrega of **Morehead**.

Jamie Thompson, **Morehead** theatre major, will be a member of the chorus. A sophomore, he is a member of the MSU Players, the MSU Winterguard, On Guard Performance Arts Ensemble and a Theta Alpha Phi theatre honorary pledge. Thompson is the son of Tammy Hunt and Rusty and Lorie Thompson.

"Antigone" will be staged in the Lucille Caudill Little Theatre in Breckinridge Hall at 7:30 p.m. each evening, along with a 2 p.m. matinee performance on Sunday, Nov. 23.

Admission is \$8 for adults, \$2 for non-MSU students and senior citizens and free for MSU students with a valid EagleCard ID. Reservations are suggested and may be made by calling the Theatre Box Office at (606) 783-2170. Tickets also will be sold at the door if seats are available.

Additional information on the production is available by calling the box office.

####

sas

# News

University Communications

Pauline Young, Director

[www.moreheadstate.edu](http://www.moreheadstate.edu)

Morehead State University

UPO Box 1100

Morehead, KY 40351-1689

(606) 783-2030

Nov. 10, 2003

FOR IMMEDIATE RELEASE

MOREHEAD, Ky.---A Boyd County student is among those involved in the production of the Greek tragedy "Antigone" to be staged Tuesday through Sunday, Nov. 18-23, at Morehead State University.

Sophocles' masterpiece "Antigone" tells the story of a young woman who, in defiance of a royal order issued by her uncle, King Creon, buries her brother Polyneices, who died leading a civil war. Antigone's act of civil disobedience tests the state's power over ancient spiritual and moral tradition.

Kyle Hamilton, **Ashland** sophomore, will be a member of the chorus. A theatre major, he is a member of MSU Players and a Theta Alpha Phi honorary pledge. He is the son of Mickey and Johnda Blankenship.

"Antigone" will be staged in the Lucille Caudill Little Theatre in Breckinridge Hall at 7:30 p.m. each evening, along with a 2 p.m. matinee performance on Sunday, Nov. 23.

Admission is \$8 for adults, \$2 for non-MSU students and senior citizens and free for MSU students with a valid EagleCard ID. Reservations are suggested and may be made by calling the Theatre Box Office at (606) 783-2170. Tickets also will be sold at the door if seats are available.

Additional information on the production is available by calling the box office.

####

sas

# News

University Communications

Pauline Young, Director

[www.moreheadstate.edu](http://www.moreheadstate.edu)

Morehead State University

UPO Box 1100

Morehead, KY 40351-1689

(606) 783-2030

Nov. 10, 2003

FOR IMMEDIATE RELEASE

MOREHEAD, Ky.---Two Morgan County students are among those involved in the production of the Greek tragedy "Antigone" to be staged Tuesday through Sunday, Nov. 18-23, at Morehead State University.

Sophocles' masterpiece "Antigone" tells the story of a young woman who, in defiance of a royal order issued by her uncle, King Creon, buries her brother Polyneices, who died leading a civil war. Antigone's act of civil disobedience tests the state's power over ancient spiritual and moral tradition.

Blake Barrington Ellis of **West Liberty** will portray a guard in the play. A freshman English major, he is the son of Larry and Artie Ellis.

Robert Daniels is the play's sound designer. A junior theatre major, he is a member of Theta Alpha Phi honorary and the MSU Players. He is the son of Roger and Crystal Daniels of **West Liberty**.

"Antigone" will be staged in the Lucille Caudill Little Theatre in Breckinridge Hall at 7:30 p.m. each evening, along with a 2 p.m. matinee performance on Sunday, Nov. 23.

Admission is \$8 for adults, \$2 for non-MSU students and senior citizens and free for MSU students with a valid EagleCard ID. Reservations are suggested and may be made by calling the Theatre Box Office at (606) 783-2170. Tickets also will be sold at the door if seats are available.

Additional information on the production is available by calling the box office.

####

sas

# News

University Communications

Pauline Young, Director

[www.moreheadstate.edu](http://www.moreheadstate.edu)

Morehead State University

UPO Box 1100

Morehead, KY 40351-1689

(606) 783-2030

Nov. 10, 2003

FOR IMMEDIATE RELEASE

MOREHEAD, Ky.---A Floyd County student is among those involved in the production of the Greek tragedy "Antigone" to be staged Tuesday through Sunday, Nov. 18-23, at Morehead State University.

Sophocles' masterpiece "Antigone" tells the story of a young woman who, in defiance of a royal order issued by her uncle, King Creon, buries her brother Polyneices, who died leading a civil war. Antigone's act of civil disobedience tests the state's power over ancient spiritual and moral tradition.

Will Duty of **Prestonsburg** will portray Haemon in the play. A junior theatre major, he is a member of Theta Alpha Phi honorary and the MSU Players.

"Antigone" will be staged in the Lucille Caudill Little Theatre in Breckinridge Hall at 7:30 p.m. each evening, along with a 2 p.m. matinee performance on Sunday, Nov. 23.

Admission is \$8 for adults, \$2 for non-MSU students and senior citizens and free for MSU students with a valid EagleCard ID. Reservations are suggested and may be made by calling the Theatre Box Office at (606) 783-2170. Tickets also will be sold at the door if seats are available.

Additional information on the production is available by calling the box office.

####

sas

# News

University Communications

Pauline Young, Director

[www.moreheadstate.edu](http://www.moreheadstate.edu)

Morehead State University

UPO Box 1100

Morehead, KY 40351-1689

(606) 783-2030

Nov. 10, 2003

FOR IMMEDIATE RELEASE

MOREHEAD, Ky.---A Johnson County student is among those involved in the production of the Greek tragedy "Antigone" to be staged Tuesday through Sunday, Nov. 18-23, at Morehead State University.

Sophocles' masterpiece "Antigone" tells the story of a young woman who, in defiance of a royal order issued by her uncle, King Creon, buries her brother Polyneices, who died leading a civil war. Antigone's act of civil disobedience tests the state's power over ancient spiritual and moral tradition.

Leondus C. Vinson of **Flat Gap** will be a member of the chorus in the play. A sophomore theatre major, he is active in the Catholic Newman Center on campus. He is the son of Patricia Vinson.

"Antigone" will be staged in the Lucille Caudill Little Theatre in Breckinridge Hall at 7:30 p.m. each evening, along with a 2 p.m. matinee performance on Sunday, Nov. 23.

Admission is \$8 for adults, \$2 for non-MSU students and senior citizens and free for MSU students with a valid EagleCard ID. Reservations are suggested and may be made by calling the Theatre Box Office at (606) 783-2170. Tickets also will be sold at the door if seats are available.

Additional information on the production is available by calling the box office.

####

sas

# News

University Communications

Pauline Young, Director

[www.moreheadstate.edu](http://www.moreheadstate.edu)

Morehead State University

UPO Box 1100

Morehead, KY 40351-1689

(606) 783-2030

Nov. 10, 2003

FOR IMMEDIATE RELEASE

MOREHEAD, Ky.---A Pike County student is among those involved in the production of the Greek tragedy "Antigone" to be staged Tuesday through Sunday, Nov. 18-23, at Morehead State University.

Sophocles' masterpiece "Antigone" tells the story of a young woman who, in defiance of a royal order issued by her uncle, King Creon, buries her brother Polyneices, who died leading a civil war. Antigone's act of civil disobedience tests the state's power over ancient spiritual and moral tradition.

Geoffrey A. Middleton of **Dorton** will be a member of the chorus in the play. A senior production and theatre major, he is the son of Jimmy and Mildred Mullins.

"Antigone" will be staged in the Lucille Caudill Little Theatre in Breckinridge Hall at 7:30 p.m. each evening, along with a 2 p.m. matinee performance on Sunday, Nov. 23.

Admission is \$8 for adults, \$2 for non-MSU students and senior citizens and free for MSU students with a valid EagleCard ID. Reservations are suggested and may be made by calling the Theatre Box Office at (606) 783-2170. Tickets also will be sold at the door if seats are available.

Additional information on the production is available by calling the box office.

#####

sas

# News

University Communications

Pauline Young, Director

[www.moreheadstate.edu](http://www.moreheadstate.edu)

Morehead State University

UPO Box 1100

Morehead, KY 40351-1689

(606) 783-2030

Nov. 10, 2003

FOR IMMEDIATE RELEASE

MOREHEAD, Ky.---Two Jefferson County students are among those involved in the production of the Greek tragedy "Antigone" to be staged Tuesday through Sunday, Nov. 18-23, at Morehead State University.

Sophocles' masterpiece "Antigone" tells the story of a young woman who, in defiance of a royal order issued by her uncle, King Creon, buries her brother Polyneices, who died leading a civil war. Antigone's act of civil disobedience tests the state's power over ancient spiritual and moral tradition.

Leah Brown of **Louisville** is the play's assistant stage manager. A junior public relations/advertising major, she is a member of Theta Alpha Phi theatre honorary and the MSU Players. She is the daughter of Christopher and Linda Brown.

Emily Nicole Ray will be a member of the chorus for the play. She is a senior psychology major and is a member of Theta Alpha Phi, the MSU Players, Psi Chi psychology honorary and Psi Lambda honorary. Ray is the daughter of Ernie and Becky Ray of **Louisville**.

"Antigone" will be staged in the Lucille Caudill Little Theatre in Breckinridge Hall at 7:30 p.m. each evening, along with a 2 p.m. matinee performance on Sunday, Nov. 23.

Admission is \$8 for adults, \$2 for non-MSU students and senior citizens and free for MSU students with a valid EagleCard ID. Reservations are suggested and may be made by calling the Theatre Box Office at (606) 783-2170. Tickets also will be sold at the door if seats are available.

Additional information on the production is available by calling the box office.

####

sas

# News

University Communications

Pauline Young, Director

[www.moreheadstate.edu](http://www.moreheadstate.edu)

Morehead State University

UPO Box 1100

Morehead, KY 40351-1689

(606) 783-2030

Nov. 10, 2003

FOR IMMEDIATE RELEASE

MOREHEAD, Ky.---A Michigan student is among those involved in the production of the Greek tragedy "Antigone" to be staged Tuesday through Sunday, Nov. 18-23, at Morehead State University.

Sophocles' masterpiece "Antigone" tells the story of a young woman who, in defiance of a royal order issued by her uncle, King Creon, buries her brother Polyneices, who died leading a civil war. Antigone's act of civil disobedience tests the state's power over ancient spiritual and moral tradition.

Dee Halbleib of **Dearborn Heights** will be a member of the chorus in the play. A member of the MSU Players, she is a Theta Alpha Phi theatre honorary pledge. She is a sophomore theatre major and the daughter of James and Reneé Halbleib.

"Antigone" will be staged in the Lucille Caudill Little Theatre in Breckinridge Hall at 7:30 p.m. each evening, along with a 2 p.m. matinee performance on Sunday, Nov. 23.

Admission is \$8 for adults, \$2 for non-MSU students and senior citizens and free for MSU students with a valid EagleCard ID. Reservations are suggested and may be made by calling the Theatre Box Office at (606) 783-2170. Tickets also will be sold at the door if seats are available.

Additional information on the production is available by calling the box office.

####

sas



# News

University Communications

Pauline Young, Director

[www.moreheadstate.edu](http://www.moreheadstate.edu)

Morehead State University

UPO Box 1100

Morehead, KY 40351-1689

(606) 783-2030

Nov. 10, 2003

FOR IMMEDIATE RELEASE

MOREHEAD, Ky.---A New Jersey student is among those involved in the production of the Greek tragedy "Antigone" to be staged Tuesday through Sunday, Nov. 18-23, at Morehead State University.

Sophocles' masterpiece "Antigone" tells the story of a young woman who, in defiance of a royal order issued by her uncle, King Creon, buries her brother Polyneices, who died leading a civil war. Antigone's act of civil disobedience tests the state's power over ancient spiritual and moral tradition.

Rich Timbo of **Westwood** will portray a sentry in the play. The senior theatre major is a member of the MSU Players, and Theta Alpha Phi theatre honorary. He is the son of Richard J. Timbo and Bridgett Timbo.

"Antigone" will be staged in the Lucille Caudill Little Theatre in Breckinridge Hall at 7:30 p.m. each evening, along with a 2 p.m. matinee performance on Sunday, Nov. 23.

Admission is \$8 for adults, \$2 for non-MSU students and senior citizens and free for MSU students with a valid EagleCard ID. Reservations are suggested and may be made by calling the Theatre Box Office at (606) 783-2170. Tickets also will be sold at the door if seats are available.

Additional information on the production is available by calling the box office.

####

sas

# News

University Communications

Pauline Young, Director

[www.moreheadstate.edu](http://www.moreheadstate.edu)

Morehead State University

UPO Box 1100

Morehead, KY 40351-1689

(606) 783-2030

Nov. 10, 2003

FOR IMMEDIATE RELEASE

MOREHEAD, Ky.---A North Carolina student is among those involved in the production of the Greek tragedy "Antigone" to be staged Tuesday through Sunday, Nov. 18-23, at Morehead State University.

Sophocles' masterpiece "Antigone" tells the story of a young woman who, in defiance of a royal order issued by her uncle, King Creon, buries her brother Polyneices, who died leading a civil war. Antigone's act of civil disobedience tests the state's power over ancient spiritual and moral tradition.

Gina Thompson of **Troutman** is the play's assistant stage manager. She is a junior exercise science major and a member of the MSU Players. She is the daughter of Leonard and Sandra Thompson.

"Antigone" will be staged in the Lucille Caudill Little Theatre in Breckinridge Hall at 7:30 p.m. each evening, along with a 2 p.m. matinee performance on Sunday, Nov. 23.

Admission is \$8 for adults, \$2 for non-MSU students and senior citizens and free for MSU students with a valid EagleCard ID. Reservations are suggested and may be made by calling the Theatre Box Office at (606) 783-2170. Tickets also will be sold at the door if seats are available.

Additional information on the production is available by calling the box office.

####

sas

# News

University Communications

Pauline Young, Director

[www.moreheadstate.edu](http://www.moreheadstate.edu)

Morehead State University

UPO Box 1100

Morehead, KY 40351-1689

(606) 783-2030

Nov. 10, 2003

FOR IMMEDIATE RELEASE

MOREHEAD, Ky.---An Indiana student is among those involved in the production of the Greek tragedy "Antigone" to be staged Tuesday through Sunday, Nov. 18-23, at Morehead State University.

Sophocles' masterpiece "Antigone" tells the story of a young woman who, in defiance of a royal order issued by her uncle, King Creon, buries her brother Polyneices, who died leading a civil war. Antigone's act of civil disobedience tests the state's power over ancient spiritual and moral tradition.

Asher Hart of **Kokomo** will portray a messenger in the play. A sophomore theatre major, he is a member of the MSU Players. He is the son of Mr. and Mrs. Keefe Hart.

"Antigone" will be staged in the Lucille Caudill Little Theatre in Breckinridge Hall at 7:30 p.m. each evening, along with a 2 p.m. matinee performance on Sunday, Nov. 23.

Admission is \$8 for adults, \$2 for non-MSU students and senior citizens and free for MSU students with a valid EagleCard ID. Reservations are suggested and may be made by calling the Theatre Box Office at (606) 783-2170. Tickets also will be sold at the door if seats are available.

Additional information on the production is available by calling the box office.

####

sas

# News

University Communications

Pauline Young, Director

[www.moreheadstate.edu](http://www.moreheadstate.edu)

Morehead State University

UPO Box 1100

Morehead, KY 40351-1689

(606) 783-2030

Nov. 10, 2003

FOR IMMEDIATE RELEASE

MOREHEAD, Ky.---Two Ohio students are among those involved in the production of the Greek tragedy "Antigone" to be staged Tuesday through Sunday, Nov. 18-23, at Morehead State University.

Sophocles' masterpiece "Antigone" tells the story of a young woman who, in defiance of a royal order issued by her uncle, King Creon, buries her brother Polyneices, who died leading a civil war. Antigone's act of civil disobedience tests the state's power over ancient spiritual and moral tradition.

Katherine Burdick of **Mason** will be a member of the chorus in the play. A junior communication major, she is a member of the Concert Band and the Traveling Troupe. She is the daughter of Robert and Donna Burdick.

Josh Daniels of **West Union** is the play's production stage manager. A senior theatre and electronic media major, he is a member of Theta Alpha Phi honorary and the MSU Players. He is the son of Russell and Donna Daniels.

"Antigone" will be staged in the Lucille Caudill Little Theatre in Breckinridge Hall at 7:30 p.m. each evening, along with a 2 p.m. matinee performance on Sunday, Nov. 23.

Admission is \$8 for adults, \$2 for non-MSU students and senior citizens and free for MSU students with a valid EagleCard ID. Reservations are suggested and may be made by calling the Theatre Box Office at (606) 783-2170. Tickets also will be sold at the door if seats are available.

Additional information on the production is available by calling the box office.

#####

sas

# News

University Communications

Pauline Young, Director

[www.moreheadstate.edu](http://www.moreheadstate.edu)

Morehead State University

UPO Box 1100

Morehead, KY 40351-1689

(606) 783-2030

Nov. 10, 2003

FOR IMMEDIATE RELEASE

MOREHEAD, Ky.---A West Virginia student is among those involved in the production of the Greek tragedy "Antigone" to be staged Tuesday through Sunday, Nov. 18-23, at Morehead State University.

Sophocles' masterpiece "Antigone" tells the story of a young woman who, in defiance of a royal order issued by her uncle, King Creon, buries her brother Polyneices, who died leading a civil war. Antigone's act of civil disobedience tests the state's power over ancient spiritual and moral tradition.

Beth Anne Humphrey of **Elkins** will be a member of chorus in the play. A sophomore theatre major, she is a member of the Traveling Troupe and MSU Players and a Theta Alpha Phi theatre honorary pledge. She is the daughter of Ruth and Richard Humphrey.

"Antigone" will be staged in the Lucille Caudill Little Theatre in Breckinridge Hall at 7:30 p.m. each evening, along with a 2 p.m. matinee performance on Sunday, Nov. 23.

Admission is \$8 for adults, \$2 for non-MSU students and senior citizens and free for MSU students with a valid EagleCard ID. Reservations are suggested and may be made by calling the Theatre Box Office at (606) 783-2170. Tickets also will be sold at the door if seats are available.

Additional information on the production is available by calling the box office.

#####

sas

# News

University Communications

Pauline Young, Director

[www.moreheadstate.edu](http://www.moreheadstate.edu)

Morehead State University

UPO Box 1100

Morehead, KY 40351-1689

(606) 783-2030

Nov. 10, 2003

FOR IMMEDIATE RELEASE

MOREHEAD, Ky.---The classic Greek tragedy "Antigone" will be staged at Morehead State University Tuesday through Sunday, Nov. 18-23.

The University's theatre students will present Sophocles' masterpiece in the Lucille Caudill Little Theatre in Breckinridge Hall at 7:30 p.m. each evening, along with a 2 p.m. matinee performance on Sunday, Nov. 23.

"Antigone" tells the story of the title character who defies a royal order of her uncle, King Creon, and buries her brother, Polyneices, who died leading a civil war. Antigone's act challenges the power of the government over personal morals and spiritual tradition.

Principal cast members include Juliana Peterson, **Alexandria** senior, as Antigone; John Page, **Owensboro** junior, as Creon; Tashena Nobrega, **Morehead** senior, as Eurydice; Nate Kamer, **Garrison** senior, as Teiresias; and Hannah Leitz, **Morehead** senior, as Ismene.

Josh Daniels, **West Union, Ohio**, senior, is the play's production stage manager, and Robert Daniels, **West Liberty** junior, is the sound designer.

Dr. Travis Lockhart, professor of theatre, is directing the production.

Admission is \$8 for adults, \$2 for non-MSU students and senior citizens and free for MSU students with a valid EagleCard ID. Reservations are suggested and may be made by calling the Theatre Box Office at (606) 783-2170. Tickets also will be sold at the door if seats are available.

Additional information on the production is available by calling the box office.

#####

sas

# News

University Communications

Pauline Young, Director

[www.moreheadstate.edu](http://www.moreheadstate.edu)

Morehead State University

UPO Box 1100

Morehead, KY 40351-1689

(606) 783-2030

Nov. 10, 2003

FOR IMMEDIATE RELEASE

MOREHEAD, Ky.---A Lewis County student is among those involved in the production of the Greek tragedy “Antigone” to be staged Tuesday through Sunday, Nov. 18-23, at Morehead State University.

Sophocles’ masterpiece “Antigone” tells the story of a young woman who, in defiance of a royal order issued by her uncle, King Creon, buries her brother Polyneices, who died leading a civil war. Antigone’s act of civil disobedience tests the state’s power over ancient spiritual and moral tradition.

Nate Kamer, **Garrison** senior, will portray Teiresias in the play. A theatre major, he is the son of Dan and Connie Kamer. A member of the MSU Players, he is a Theta Alpha Phi theatre honorary pledge.

“Antigone” will be staged in the Lucille Caudill Little Theatre in Breckinridge Hall at 7:30 p.m. each evening, along with a 2 p.m. matinee performance on Sunday, Nov. 23.

Admission is \$8 for adults, \$2 for non-MSU students and senior citizens and free for MSU students with a valid EagleCard ID. Reservations are suggested and may be made by calling the Theatre Box Office at (606) 783-2170. Tickets also will be sold at the door if seats are available.

Additional information on the production is available by calling the box office.

####

sas

# News

University Communications

Pauline Young, Director

[www.moreheadstate.edu](http://www.moreheadstate.edu)

Morehead State University

UPO Box 1100

Morehead, KY 40351-1689

(606) 783-2030

Nov. 10, 2003

FOR IMMEDIATE RELEASE

MOREHEAD, Ky.---A Daviess County student is among those involved in the production of the Greek tragedy “Antigone” to be staged Tuesday through Sunday, Nov. 18-23, at Morehead State University.

Sophocles’ masterpiece “Antigone” tells the story of a young woman who, in defiance of a royal order issued by her uncle, King Creon, buries her brother Polyneices, who died leading a civil war. Antigone’s act of civil disobedience tests the state’s power over ancient spiritual and moral tradition.

John Page, **Owensboro** junior, will portray Creon in the play. A member of the MSU Players, and a theatre major, he is a member of Theta Alpha Phi theatre honorary. He is the son of Patricia Blair and John A. Page.

“Antigone” will be staged in the Lucille Caudill Little Theatre in Breckinridge Hall at 7:30 p.m. each evening, along with a 2 p.m. matinee performance on Sunday, Nov. 23.

Admission is \$8 for adults, \$2 for non-MSU students and senior citizens and free for MSU students with a valid EagleCard ID. Reservations are suggested and may be made by calling the Theatre Box Office at (606) 783-2170. Tickets also will be sold at the door if seats are available.

Additional information on the production is available by calling the box office.

#####

sas



# News

University Communications

Pauline Young, Director

[www.moreheadstate.edu](http://www.moreheadstate.edu)

Morehead State University

UPO Box 1100

Morehead, KY 40351-1689

(606) 783-2030

Nov. 10, 2003

FOR IMMEDIATE RELEASE

MOREHEAD, Ky.---A Meade County student is among those involved in the production of the Greek tragedy “Antigone” to be staged Tuesday through Sunday, Nov. 18-23, at Morehead State University.

Sophocles’ masterpiece “Antigone” tells the story of a young woman who, in defiance of a royal order issued by her uncle, King Creon, buries her brother Polyneices, who died leading a civil war. Antigone’s act of civil disobedience tests the state’s power over ancient spiritual and moral tradition.

Kevin Allmon, **Brandenburg** freshman, will portray a boy leading Teiresias in the play. A theatre major, he is the son of Tammy Allivand.

“Antigone” will be staged in the Lucille Caudill Little Theatre in Breckinridge Hall at 7:30 p.m. each evening, along with a 2 p.m. matinee performance on Sunday, Nov. 23.

Admission is \$8 for adults, \$2 for non-MSU students and senior citizens and free for MSU students with a valid EagleCard ID. Reservations are suggested and may be made by calling the Theatre Box Office at (606) 783-2170. Tickets also will be sold at the door if seats are available.

Additional information on the production is available by calling the box office.

####

sas

# News

University Communications

Pauline Young, Director

[www.moreheadstate.edu](http://www.moreheadstate.edu)

Morehead State University

UPO Box 1100

Morehead, KY 40351-1689

(606) 783-2030

Nov. 10, 2003

FOR IMMEDIATE RELEASE

MOREHEAD, Ky.---A Campbell County student is among those involved in the production of the Greek tragedy "Antigone" to be staged Tuesday through Sunday, Nov. 18-23, at Morehead State University.

Sophocles' masterpiece "Antigone" tells the story of a young woman who, in defiance of a royal order issued by her uncle, King Creon, buries her brother Polyneices, who died leading a civil war. Antigone's act of civil disobedience tests the state's power over ancient spiritual and moral tradition.

Juliana Peterson, a senior theatre major from **Alexandria**, will play the lead role of Antigone. The daughter of Brenda Moore, she is a member of the MSU Players and Theta Alpha Phi honorary.

"Antigone" will be staged in the Lucille Caudill Little Theatre in Breckinridge Hall at 7:30 p.m. each evening, along with a 2 p.m. matinee performance on Sunday, Nov. 23.

Admission is \$8 for adults, \$2 for non-MSU students and senior citizens and free for MSU students with a valid EagleCard ID. Reservations are suggested and may be made by calling the Theatre Box Office at (606) 783-2170. Tickets also will be sold at the door if seats are available.

Additional information on the production is available by calling the box office.

####

sas

# News

University Communications

Pauline Young, Director

[www.moreheadstate.edu](http://www.moreheadstate.edu)

Morehead State University

UPO Box 1100

Morehead, KY 40351-1689

(606) 783-2030

Nov. 10, 2003

FOR IMMEDIATE RELEASE

MOREHEAD, Ky.---A Henderson County student is among those involved in the production of the Greek tragedy "Antigone" to be staged Tuesday through Sunday, Nov. 18-23, at Morehead State University.

Sophocles' masterpiece "Antigone" tells the story of a young woman who, in defiance of a royal order issued by her uncle, King Creon, buries her brother Polyneices, who died leading a civil war. Antigone's act of civil disobedience tests the state's power over ancient spiritual and moral tradition.

Jim Britt, **Henderson** sophomore, will be a member of the chorus in the play. An English major, he is a member of Lambda Chi Alpha fraternity and a resident assistant in East Mignon Hall. He is the son of Pamela Straight and Dwayne Britt.

"Antigone" will be staged in the Lucille Caudill Little Theatre in Breckinridge Hall at 7:30 p.m. each evening, along with a 2 p.m. matinee performance on Sunday, Nov. 23.

Admission is \$8 for adults, \$2 for non-MSU students and senior citizens and free for MSU students with a valid EagleCard ID. Reservations are suggested and may be made by calling the Theatre Box Office at (606) 783-2170. Tickets also will be sold at the door if seats are available.

Additional information on the production is available by calling the box office.

####

sas

# News

University Communications

Pauline Young, Director

[www.moreheadstate.edu](http://www.moreheadstate.edu)

Morehead State University

UPO Box 1100

Morehead, KY 40351-1689

(606) 783-2030

Nov. 10, 2003

FOR IMMEDIATE RELEASE

MOREHEAD, Ky.---Three Rowan County students are among those involved in the production of the Greek tragedy “Antigone” to be staged Tuesday through Sunday, Nov. 18-23, at Morehead State University.

Sophocles’ masterpiece “Antigone” tells the story of a young woman who, in defiance of a royal order issued by her uncle, King Creon, buries her brother Polyneices, who died leading a civil war. Antigone’s act of civil disobedience tests the state’s power over ancient spiritual and moral tradition.

Hannah Leitz, **Morehead** senior, will portray Ismene in the play. A theatre major, she is a member of the MSU Players and Theta Alpha Phi theatre honorary. Leitz is the daughter of Steve and Judy Leitz.

Tashena Nobrega, a senior Spanish, philosophy and government major, has been cast in the role of Eurydice. She is a member of Gamma Beta Phi honor society, Phi Sigma Pi, Theta Alpha Phi, the Spanish Club and Amnesty International. She is the daughter of Joe and Sheila Nobrega of **Morehead**.

Jamie Thompson, **Morehead** theatre major, will be a member of the chorus. A sophomore, he is a member of the MSU Players, the MSU Winterguard, On Guard Performance Arts Ensemble and a Theta Alpha Phi theatre honorary pledge. Thompson is the son of Tammy Hunt and Rusty and Lorie Thompson.

“Antigone” will be staged in the Lucille Caudill Little Theatre in Breckinridge Hall at 7:30 p.m. each evening, along with a 2 p.m. matinee performance on Sunday, Nov. 23.

Admission is \$8 for adults, \$2 for non-MSU students and senior citizens and free for MSU students with a valid EagleCard ID. Reservations are suggested and may be made by calling the Theatre Box Office at (606) 783-2170. Tickets also will be sold at the door if seats are available.

Additional information on the production is available by calling the box office.

#####

sas

# News

University Communications

Pauline Young, Director

[www.moreheadstate.edu](http://www.moreheadstate.edu)

Morehead State University

UPO Box 1100

Morehead, KY 40351-1689

(606) 783-2030

Nov. 10, 2003

FOR IMMEDIATE RELEASE

MOREHEAD, Ky.---A Boyd County student is among those involved in the production of the Greek tragedy "Antigone" to be staged Tuesday through Sunday, Nov. 18-23, at Morehead State University.

Sophocles' masterpiece "Antigone" tells the story of a young woman who, in defiance of a royal order issued by her uncle, King Creon, buries her brother Polyneices, who died leading a civil war. Antigone's act of civil disobedience tests the state's power over ancient spiritual and moral tradition.

Kyle Hamilton, **Ashland** sophomore, will be a member of the chorus. A theatre major, he is a member of MSU Players and a Theta Alpha Phi honorary pledge. He is the son of Mickey and Johnda Blankenship.

"Antigone" will be staged in the Lucille Caudill Little Theatre in Breckinridge Hall at 7:30 p.m. each evening, along with a 2 p.m. matinee performance on Sunday, Nov. 23.

Admission is \$8 for adults, \$2 for non-MSU students and senior citizens and free for MSU students with a valid EagleCard ID. Reservations are suggested and may be made by calling the Theatre Box Office at (606) 783-2170. Tickets also will be sold at the door if seats are available.

Additional information on the production is available by calling the box office.

####

sas

# News

University Communications

Pauline Young, Director

[www.moreheadstate.edu](http://www.moreheadstate.edu)

Morehead State University

UPO Box 1100

Morehead, KY 40351-1689

(606) 783-2030

Nov. 10, 2003

FOR IMMEDIATE RELEASE

MOREHEAD, Ky.---Two Morgan County students are among those involved in the production of the Greek tragedy "Antigone" to be staged Tuesday through Sunday, Nov. 18-23, at Morehead State University.

Sophocles' masterpiece "Antigone" tells the story of a young woman who, in defiance of a royal order issued by her uncle, King Creon, buries her brother Polyneices, who died leading a civil war. Antigone's act of civil disobedience tests the state's power over ancient spiritual and moral tradition.

Blake Barrington Ellis of **West Liberty** will portray a guard in the play. A freshman English major, he is the son of Larry and Artie Ellis.

Robert Daniels is the play's sound designer. A junior theatre major, he is a member of Theta Alpha Phi honorary and the MSU Players. He is the son of Roger and Crystal Daniels of **West Liberty**.

"Antigone" will be staged in the Lucille Caudill Little Theatre in Breckinridge Hall at 7:30 p.m. each evening, along with a 2 p.m. matinee performance on Sunday, Nov. 23.

Admission is \$8 for adults, \$2 for non-MSU students and senior citizens and free for MSU students with a valid EagleCard ID. Reservations are suggested and may be made by calling the Theatre Box Office at (606) 783-2170. Tickets also will be sold at the door if seats are available.

Additional information on the production is available by calling the box office.

####

sas

# News

University Communications

Pauline Young, Director

[www.moreheadstate.edu](http://www.moreheadstate.edu)

Morehead State University

UPO Box 1100

Morehead, KY 40351-1689

(606) 783-2030

Nov. 10, 2003

FOR IMMEDIATE RELEASE

MOREHEAD, Ky.---A Floyd County student is among those involved in the production of the Greek tragedy “Antigone” to be staged Tuesday through Sunday, Nov. 18-23, at Morehead State University.

Sophocles’ masterpiece “Antigone” tells the story of a young woman who, in defiance of a royal order issued by her uncle, King Creon, buries her brother Polyneices, who died leading a civil war. Antigone’s act of civil disobedience tests the state’s power over ancient spiritual and moral tradition.

Will Duty of **Prestonsburg** will portray Haemon in the play. A junior theatre major, he is a member of Theta Alpha Phi honorary and the MSU Players.

“Antigone” will be staged in the Lucille Caudill Little Theatre in Breckinridge Hall at 7:30 p.m. each evening, along with a 2 p.m. matinee performance on Sunday, Nov. 23.

Admission is \$8 for adults, \$2 for non-MSU students and senior citizens and free for MSU students with a valid EagleCard ID. Reservations are suggested and may be made by calling the Theatre Box Office at (606) 783-2170. Tickets also will be sold at the door if seats are available.

Additional information on the production is available by calling the box office.

####

sas

# News

University Communications

Pauline Young, Director

[www.moreheadstate.edu](http://www.moreheadstate.edu)

Morehead State University

UPO Box 1100

Morehead, KY 40351-1689

(606) 783-2030

Nov. 10, 2003

FOR IMMEDIATE RELEASE

MOREHEAD, Ky.---A Johnson County student is among those involved in the production of the Greek tragedy “Antigone” to be staged Tuesday through Sunday, Nov. 18-23, at Morehead State University.

Sophocles’ masterpiece “Antigone” tells the story of a young woman who, in defiance of a royal order issued by her uncle, King Creon, buries her brother Polyneices, who died leading a civil war. Antigone’s act of civil disobedience tests the state’s power over ancient spiritual and moral tradition.

Leondus C. Vinson of **Flat Gap** will be a member of the chorus in the play. A sophomore theatre major, he is active in the Catholic Newman Center on campus. He is the son of Patricia Vinson.

“Antigone” will be staged in the Lucille Caudill Little Theatre in Breckinridge Hall at 7:30 p.m. each evening, along with a 2 p.m. matinee performance on Sunday, Nov. 23.

Admission is \$8 for adults, \$2 for non-MSU students and senior citizens and free for MSU students with a valid EagleCard ID. Reservations are suggested and may be made by calling the Theatre Box Office at (606) 783-2170. Tickets also will be sold at the door if seats are available.

Additional information on the production is available by calling the box office.

####

sas



# News

University Communications

Pauline Young, Director

[www.moreheadstate.edu](http://www.moreheadstate.edu)

Morehead State University

UPO Box 1100

Morehead, KY 40351-1689

(606) 783-2030

Nov. 10, 2003

FOR IMMEDIATE RELEASE

MOREHEAD, Ky.---A Pike County student is among those involved in the production of the Greek tragedy "Antigone" to be staged Tuesday through Sunday, Nov. 18-23, at Morehead State University.

Sophocles' masterpiece "Antigone" tells the story of a young woman who, in defiance of a royal order issued by her uncle, King Creon, buries her brother Polyneices, who died leading a civil war. Antigone's act of civil disobedience tests the state's power over ancient spiritual and moral tradition.

Geoffrey A. Middleton of **Dorton** will be a member of the chorus in the play. A senior production and theatre major, he is the son of Jimmy and Mildred Mullins.

"Antigone" will be staged in the Lucille Caudill Little Theatre in Breckinridge Hall at 7:30 p.m. each evening, along with a 2 p.m. matinee performance on Sunday, Nov. 23.

Admission is \$8 for adults, \$2 for non-MSU students and senior citizens and free for MSU students with a valid EagleCard ID. Reservations are suggested and may be made by calling the Theatre Box Office at (606) 783-2170. Tickets also will be sold at the door if seats are available.

Additional information on the production is available by calling the box office.

####

sas

# News

University Communications

Pauline Young, Director

[www.moreheadstate.edu](http://www.moreheadstate.edu)

Morehead State University

UPO Box 1100

Morehead, KY 40351-1689

(606) 783-2030

Nov. 10, 2003

FOR IMMEDIATE RELEASE

MOREHEAD, Ky.---Two Jefferson County students are among those involved in the production of the Greek tragedy "Antigone" to be staged Tuesday through Sunday, Nov. 18-23, at Morehead State University.

Sophocles' masterpiece "Antigone" tells the story of a young woman who, in defiance of a royal order issued by her uncle, King Creon, buries her brother Polyneices, who died leading a civil war. Antigone's act of civil disobedience tests the state's power over ancient spiritual and moral tradition.

Leah Brown of **Louisville** is the play's assistant stage manager. A junior public relations/advertising major, she is a member of Theta Alpha Phi theatre honorary and the MSU Players. She is the daughter of Christopher and Linda Brown.

Emily Nicole Ray will be a member of the chorus for the play. She is a senior psychology major and is a member of Theta Alpha Phi, the MSU Players, Psi Chi psychology honorary and Psi Lambda honorary. Ray is the daughter of Ernie and Becky Ray of **Louisville**.

"Antigone" will be staged in the Lucille Caudill Little Theatre in Breckinridge Hall at 7:30 p.m. each evening, along with a 2 p.m. matinee performance on Sunday, Nov. 23.

Admission is \$8 for adults, \$2 for non-MSU students and senior citizens and free for MSU students with a valid EagleCard ID. Reservations are suggested and may be made by calling the Theatre Box Office at (606) 783-2170. Tickets also will be sold at the door if seats are available.

Additional information on the production is available by calling the box office.

####

sas

# News

University Communications

Pauline Young, Director

[www.moreheadstate.edu](http://www.moreheadstate.edu)

Morehead State University

UPO Box 1100

Morehead, KY 40351-1689

(606) 783-2030

Nov. 10, 2003

FOR IMMEDIATE RELEASE

MOREHEAD, Ky.---A Michigan student is among those involved in the production of the Greek tragedy "Antigone" to be staged Tuesday through Sunday, Nov. 18-23, at Morehead State University.

Sophocles' masterpiece "Antigone" tells the story of a young woman who, in defiance of a royal order issued by her uncle, King Creon, buries her brother Polyneices, who died leading a civil war. Antigone's act of civil disobedience tests the state's power over ancient spiritual and moral tradition.

Dee Halbleib of **Dearborn Heights** will be a member of the chorus in the play. A member of the MSU Players, she is a Theta Alpha Phi theatre honorary pledge. She is a sophomore theatre major and the daughter of James and Reneé Halbleib.

"Antigone" will be staged in the Lucille Caudill Little Theatre in Breckinridge Hall at 7:30 p.m. each evening, along with a 2 p.m. matinee performance on Sunday, Nov. 23.

Admission is \$8 for adults, \$2 for non-MSU students and senior citizens and free for MSU students with a valid EagleCard ID. Reservations are suggested and may be made by calling the Theatre Box Office at (606) 783-2170. Tickets also will be sold at the door if seats are available.

Additional information on the production is available by calling the box office.

####

sas

# News

University Communications

Pauline Young, Director

[www.moreheadstate.edu](http://www.moreheadstate.edu)

Morehead State University

UPO Box 1100

Morehead, KY 40351-1689

(606) 783-2030

Nov. 10, 2003

FOR IMMEDIATE RELEASE

MOREHEAD, Ky.---A New Jersey student is among those involved in the production of the Greek tragedy “Antigone” to be staged Tuesday through Sunday, Nov. 18-23, at Morehead State University.

Sophocles’ masterpiece, “Antigone” tells the story of a young woman who, in defiance of a royal order issued by her uncle, King Creon, buries her brother Polyneices, who died leading a civil war. Antigone’s act of civil disobedience tests the state’s power over ancient spiritual and moral tradition.

Rich Timbo of **Westwood** will portray a sentry in the play. The senior theatre major is a member of the MSU Players, and Theta Alpha Phi theatre honorary. He is the son of Richard J. Timbo and Bridgett Timbo.

“Antigone” will be staged in the Lucille Caudill Little Theatre in Breckinridge Hall at 7:30 p.m. each evening, along with a 2 p.m. matinee performance on Sunday, Nov. 23.

Admission is \$8 for adults, \$2 for non-MSU students and senior citizens and free for MSU students with a valid EagleCard ID. Reservations are suggested and may be made by calling the Theatre Box Office at (606) 783-2170. Tickets also will be sold at the door if seats are available.

Additional information on the production is available by calling the box office.

#####

sas

# News

University Communications

Pauline Young, Director

[www.moreheadstate.edu](http://www.moreheadstate.edu)

Morehead State University

UPO Box 1100

Morehead, KY 40351-1689

(606) 783-2030

Nov. 10, 2003

FOR IMMEDIATE RELEASE

MOREHEAD, Ky.---A North Carolina student is among those involved in the production of the Greek tragedy “Antigone” to be staged Tuesday through Sunday, Nov. 18-23, at Morehead State University.

Sophocles’ masterpiece “Antigone” tells the story of a young woman who, in defiance of a royal order issued by her uncle, King Creon, buries her brother Polyneices, who died leading a civil war. Antigone’s act of civil disobedience tests the state’s power over ancient spiritual and moral tradition.

Gina Thompson of **Troutman** is the play’s assistant stage manager. She is a junior exercise science major and a member of the MSU Players. She is the daughter of Leonard and Sandra Thompson.

“Antigone” will be staged in the Lucille Caudill Little Theatre in Breckinridge Hall at 7:30 p.m. each evening, along with a 2 p.m. matinee performance on Sunday, Nov. 23.

Admission is \$8 for adults, \$2 for non-MSU students and senior citizens and free for MSU students with a valid EagleCard ID. Reservations are suggested and may be made by calling the Theatre Box Office at (606) 783-2170. Tickets also will be sold at the door if seats are available.

Additional information on the production is available by calling the box office.

####

sas

# News

University Communications

Pauline Young, Director

[www.moreheadstate.edu](http://www.moreheadstate.edu)

Morehead State University

UPO Box 1100

Morehead, KY 40351-1689

(606) 783-2030

Nov. 10, 2003

FOR IMMEDIATE RELEASE

MOREHEAD, Ky.---An Indiana student is among those involved in the production of the Greek tragedy “Antigone” to be staged Tuesday through Sunday, Nov. 18-23, at Morehead State University.

Sophocles’ masterpiece “Antigone” tells the story of a young woman who, in defiance of a royal order issued by her uncle, King Creon, buries her brother Polyneices, who died leading a civil war. Antigone’s act of civil disobedience tests the state’s power over ancient spiritual and moral tradition.

Asher Hart of **Kokomo** will portray a messenger in the play. A sophomore theatre major, he is a member of the MSU Players. He is the son of Mr. and Mrs. Keefe Hart.

“Antigone” will be staged in the Lucille Caudill Little Theatre in Breckinridge Hall at 7:30 p.m. each evening, along with a 2 p.m. matinee performance on Sunday, Nov. 23.

Admission is \$8 for adults, \$2 for non-MSU students and senior citizens and free for MSU students with a valid EagleCard ID. Reservations are suggested and may be made by calling the Theatre Box Office at (606) 783-2170. Tickets also will be sold at the door if seats are available.

Additional information on the production is available by calling the box office.

####

sas

# News

University Communications

Pauline Young, Director

[www.moreheadstate.edu](http://www.moreheadstate.edu)

Morehead State University

UPO Box 1100

Morehead, KY 40351-1689

(606) 783-2030

Nov. 10, 2003

FOR IMMEDIATE RELEASE

MOREHEAD, Ky.---Two Ohio students are among those involved in the production of the Greek tragedy "Antigone" to be staged Tuesday through Sunday, Nov. 18-23, at Morehead State University.

Sophocles' masterpiece "Antigone" tells the story of a young woman who, in defiance of a royal order issued by her uncle, King Creon, buries her brother Polyneices, who died leading a civil war. Antigone's act of civil disobedience tests the state's power over ancient spiritual and moral tradition.

Katherine Burdick of **Mason** will be a member of the chorus in the play. A junior communication major, she is a member of the Concert Band and the Traveling Troupe. She is the daughter of Robert and Donna Burdick.

Josh Daniels of **West Union** is the play's production stage manager. A senior theatre and electronic media major, he is a member of Theta Alpha Phi honorary and the MSU Players. He is the son of Russell and Donna Daniels.

"Antigone" will be staged in the Lucille Caudill Little Theatre in Breckinridge Hall at 7:30 p.m. each evening, along with a 2 p.m. matinee performance on Sunday, Nov. 23.

Admission is \$8 for adults, \$2 for non-MSU students and senior citizens and free for MSU students with a valid EagleCard ID. Reservations are suggested and may be made by calling the Theatre Box Office at (606) 783-2170. Tickets also will be sold at the door if seats are available.

Additional information on the production is available by calling the box office.

####

sas

# News

University Communications

Pauline Young, Director

[www.moreheadstate.edu](http://www.moreheadstate.edu)

Morehead State University

UPO Box 1100

Morehead, KY 40351-1689

(606) 783-2030

Nov. 10, 2003

FOR IMMEDIATE RELEASE

MOREHEAD, Ky.---A West Virginia student is among those involved in the production of the Greek tragedy "Antigone" to be staged Tuesday through Sunday, Nov. 18-23, at Morehead State University.

Sophocles' masterpiece "Antigone" tells the story of a young woman who, in defiance of a royal order issued by her uncle, King Creon, buries her brother Polyneices, who died leading a civil war. Antigone's act of civil disobedience tests the state's power over ancient spiritual and moral tradition.

Beth Anne Humphrey of **Elkins** will be a member of chorus in the play. A sophomore theatre major, she is a member of the Traveling Troupe and MSU Players and a Theta Alpha Phi theatre honorary pledge. She is the daughter of Ruth and Richard Humphrey.

"Antigone" will be staged in the Lucille Caudill Little Theatre in Breckinridge Hall at 7:30 p.m. each evening, along with a 2 p.m. matinee performance on Sunday, Nov. 23.

Admission is \$8 for adults, \$2 for non-MSU students and senior citizens and free for MSU students with a valid EagleCard ID. Reservations are suggested and may be made by calling the Theatre Box Office at (606) 783-2170. Tickets also will be sold at the door if seats are available.

Additional information on the production is available by calling the box office.

####

sas



## GREEK TRAGEDY TO BE STAGED AT MSU

“Antigone,” Sophocles’ timeless masterpiece of Greek theater, will be presented Tuesday through Sunday, Nov. 18-23, at Morehead State University. The play tells the story of a young woman who, in defiance of a royal order, buries her brother, who died leading a civil war. Cast in the title role is Juliana Peterson, left, **Alexandria** senior. Also appearing in the play are John Page, **Owensboro** junior, as King Creon, and Hannah Leitz, **Morehead** senior, as Ismene.

“Antigone” will be staged in the Lucille Caudill Little Theatre in Breckinridge Hall at 7:30 p.m. Nov. 18-22, with a 2 p.m. matinee performance on Nov. 23. Admission is \$8 for adults, \$2 for non-MSU students and senior citizens, and free for MSU students with a valid EagleCard ID. Reservations are suggested. If seats are available, tickets will be sold at the door. Additional information, or details on reservations, is available by calling the Theatre Box Office at (606) 783-2170.

(MSU photo by Tim Holbrook)

11-10-03sas

MSU is an affirmative action, equal opportunity educational institution.



# News

University Communications

Pauline Young, Director

[www.moreheadstate.edu](http://www.moreheadstate.edu)

Morehead State University

UPO Box 1100

Morehead, KY 40351-1689

(606) 783-2030

Nov. 11, 2003

FOR IMMEDIATE RELEASE

MOREHEAD, Ky.---The Caudill College of Humanities at Morehead State University has established interdisciplinary programs to promote diversity among the arts, humanities, social sciences and other campus-wide disciplines.

Three years ago, the MSU Interdisciplinary Women's Studies program began, organizationally located within the Caudill College. Since that time, the MSU Interdisciplinary Appalachian Heritage Program and the MSU Arts & Humanities Council have been established while an organizational steering committee is currently planning for an MSU Interdisciplinary Cultural Studies Program.

"For the past two decades, I have heard faculty discuss the need to break down college and department walls to promote interdisciplinary initiatives, to have academic programs and events focusing on the accomplishments and struggles of women and minorities, to make the visual and performing arts more available to the campus and broader community, and to have a program focused on the Appalachian region that is our mission to serve," said Dr. Michael Seelig, college dean. "These initiatives were started because faculty wanted them included in the College's comprehensive, multi-year strategic plan, and they are supported in part through the University Planning Council strategic initiative process."

According to Dr. Sylvia Henneberg, assistant professor of English and director of women's studies, "The MSU Interdisciplinary Women's Studies Program is essential to our campus because it strengthens, energizes, and diversifies radically different disciplines by building bridges between them. The program brings together students, faculty and community members from divergent backgrounds, offering them support and allowing them to share experiences, resources, and awareness centering on gender issues."

"Appalachian Heritage really goes to the heart of MSU's mission," said Dr. John Ernst, associate professor of history and director of Appalachian Heritage. "The program is involved in community outreach on both cultural and political issues and fosters collaborative grant writing, lecture series and events."

(MORE)

“The MSU Arts & Humanities Council is part of a larger initiative within the Caudill College of Humanities to encourage campus and community partnering while increasing exposure to cultural opportunities both on campus and off,” said Jennifer Reis, art gallery director and director of the Arts & Humanities Council. “The mission of the Council is to promote, support, and develop interdisciplinary cultural and educational programming on the behalf of the regional and University community. It is our vision to create a cultural climate that encourages dialogue and partnering in ideas, resources, and audiences.”

These initiatives have already resulted in a minor in Women’s Studies, the development of a proposal for a collaborative minor in Appalachian Studies between the Caudill College and the Institute for Regional Analysis and Public Policy, the Wilma Grote Lecture Series, the Appalachian Heritage Lecture Series and Speakers’ Bureau, the joint submission of a major NEH grant between Appalachian Heritage and the Kentucky Folk Art Center, establishment of an extensive e-mail subscription service for cultural events, development of a Web site with a cultural events calendar, planning for a Spring 2004 Arts & Humanities Festival, and several other collaborative ventures with academic departments and local arts institutions and groups.

In an effort to assist the campus to achieve other diversity goals, the Caudill College has placed an emphasis on the recruitment and retention of minority faculty, and graduate and undergraduate students. Dr. Ricky Little, associate professor of music, is coordinating this effort.

“It has been a challenge for all of us to move forward on these fronts during fiscally difficult times; however, people have waited so long for “interdisciplinary” and “diversity” activities, so central to the mission of Academic Affairs, to occur,” Dr. Seelig said. “We are very grateful for the support of the administration and the University Planning Council.”

Additional information on Caudill College initiatives is available by calling (606) 783-2650.

#####

# Media Advisory

University Communications

Pauline Young, Director

[www.moreheadstate.edu](http://www.moreheadstate.edu)

Morehead State University

UPO Box 1100

Morehead, KY 40351-1689

(606) 783-2030

**EVENT:** MSU Board of Regents Work Session  
**DATE:** Friday, Nov. 14, 2003  
**TIME:** 10 a.m.  
**SITE:** Riggle Room, Adron Doran University Center

Morehead State University's Board of Regents will hold a work session on Friday to discuss items of interest in the coming year. Among the topics for discussion will be a follow-up on the visioning workshop held in August; and a progress report on the expansion/renovation of the Adron Doran University Center.

Prior to the work session, the Audit Committee will meet at 9 a.m.

####

**Media representatives planning to attend the meeting are asked to call the Office of University Communications at (606) 783-2030 before noon on Thursday, Nov. 13.**

11-11-03py

# News

University Communications

Pauline Young, Director

[www.moreheadstate.edu](http://www.moreheadstate.edu)

Morehead State University

UPO Box 1100

Morehead, KY 40351-1689

(606) 783-2030

Nov. 11, 2003

FOR IMMEDIATE RELEASE

MOREHEAD, Ky.---The Kentucky Folk Art Center's annual Appalachian Holiday Arts and Crafts Fair will be held at the Laughlin Health Building on the Morehead State University campus on Saturday, Dec. 6, from 9 a.m.-4 p.m.

The Appalachian Holiday Arts and Crafts Fair offers visitors a wide and varied selection of regional arts and crafts, ranging from the traditional to the cutting edge, including many holiday decorations and gifts. With more than 100 artists and craftspeople from Kentucky and other states, the fair is the largest and most diverse event of its kind in the region.

Admission is \$3 per person; children under 12 are admitted for free.

"There's something for everyone," said Tammy Stone one of the event coordinators. "Visitors will find traditional crafts, holiday decorations and hand made furniture. It's the best opportunity in the region to find unique, handmade holiday gifts," she added.

"This is certainly one of our most successful and well-attended events," said Matt Collinsworth, KFAC's director. "It represents a wonderful opportunity for regional craftspeople and the area's holiday shoppers."

The Kentucky Folk Art Center is a cultural, educational and economic development service of Morehead State University. KFAC, located at 102 West First Street in Morehead, is open Monday-Saturday, 9 a.m. to 5 p.m., and Sundays, 1-5 p.m.

Additional information is available from the Center's Web site at [www.kyfolkart.org](http://www.kyfolkart.org), or by calling (606) 783-2204.

####

# News

University Communications

Pauline Young, Director

[www.moreheadstate.edu](http://www.moreheadstate.edu)

Morehead State University

UPO Box 1100

Morehead, KY 40351-1689

(606) 783-2030

Nov. 11, 2003

FOR IMMEDIATE RELEASE

MOREHEAD, Ky.---Morehead State University's Speech Team won sixth place honors overall at the Central Forensic Association Tournament at Randolph-Macon College in Ashland, Va.

A total of 15 schools competed in the event on Oct. 24 and 25.

Individual student accomplishments were:

Alisha Andress, **Fort Mitchell** senior communication-electronic media major, second place in after dinner speaking, third in impromptu speaking, and with Liz Haynes, **Lexington** junior math/chemistry major, sixth place in duo interpretation.

Samantha Holbrook, **Olive Hill** freshman biology and chemistry major, second place in informative speaking.

Bryan Combs, **Jackson** senior advertising/public relations major, fourth place in informative speaking.

Pauline Barnes, **Paris** freshman nursing major, fifth place in informative speaking.

Tami Shannon, **Hillsboro, Ohio**, sophomore advertising/public relations major, fifth place in persuasion speaking.

David Poff, **Science Hill** senior advertising and public relations /communication major, also competed, contributing to the team's overall finish with his high preliminary ranking in prose interpretation.

Currently the team has five students – Amanda Day, **Morehead** junior; Summer Copley, **Elkhorn City** sophomore; Andress; Haynes; and Holbrook - who are qualified for the National Speech Tournament in April at Providence, R.I.

Morehead State will next compete in a tournament at Berea College on Nov. 15.

Additional information is available by calling MSU speech team coach Lisa Shemwell at (606) 783-2103.

####

## **MSU'S SPEECH TEAM COMPETES IN VIRGINIA**

Seven members of the Morehead State University's speech team competed at the Central Forensic Association Tournament held at Randolph-Macon College. Team members competing included, from left, Pauline Barnes, Paris freshman; Tami Shannon, Hillsboro, Ohio, sophomore; Liz Haynes, Lexington junior; Bryan Combs, Jackson senior; Alisha Andress, Fort Mitchell senior; David Poff, Science Hill senior; and Samantha Holbrook, Olive Hill freshman. MSU will next compete at Berea College on Nov. 15. Additional information is available by calling team coach Lisa Shemwell at (606) 783-2103.

(MSU photo)

11-11-03ajb

MSU is an affirmative action, equal opportunity educational institution.



# News

University Communications

Pauline Young, Director

[www.moreheadstate.edu](http://www.moreheadstate.edu)

Morehead State University

UPO Box 1100

Morehead, KY 40351-1689

(606) 783-2030

Nov. 11, 2003

FOR IMMEDIATE RELEASE

MOREHEAD, Ky.---The award-winning Morehead State University Indoor Marching Percussion Ensemble will perform in Wetherby Gymnasium on the campus on Monday, Nov. 17, at 7:30 pm.

The ensemble will present its 2003 production, "From the Point of Origin," created by Brian S. Mason, director of the ensemble. This audio and visual extravaganza will showcase the 40-member ensemble with a variety of musical styles, through the continually evolving staging of each performer.

Following this performance, Mason will turn the spotlight on the techniques and artistry required of the performing members, before presenting an encore performance.

The program, which will be approximately one hour in length, is free and open to the public.

This will be the ensemble's preview performance before leaving to compete against the best university marching percussion ensembles in the nation at the Percussive Arts Society International Convention Marching Percussion Festival, an event which the ensemble is a three-time champion.

Additional information is available from Mason by calling (606) 783-2402 or by sending a message to [b.mason@moreheadstate.edu](mailto:b.mason@moreheadstate.edu).

####



# News

University Communications

Pauline Young, Director

[www.moreheadstate.edu](http://www.moreheadstate.edu)

Morehead State University

UPO Box 1100

Morehead, KY 40351-1689

(606) 783-2030

Nov. 12, 2003

FOR IMMEDIATE RELEASE

MOREHEAD, Ky.---Dr. Joel G. Best, chair of the Department of Sociology and Criminal Justice at the University of Delaware will speak on Wednesday, Nov. 19, at 2:15 p.m. in 302 Breckinridge Hall on the Morehead State University campus.

The title of his presentation will be “The Illusion of Diffusion: Serious People, Silly Ideas, and Institutional Fads.”

Dr. Best has served as president of the Society for the Study of Social Problems as well as the Midwest Sociological Society. He has authored six books with two additional volumes forthcoming in 2004, has edited six anthologies and has published more than 40 articles and book chapters.

His book, “Threatened Children: Rhetoric and Concern about Child-Victims,” was the winner of the prestigious Charles Horton Cooley Award from the Society for the Study of Symbolic Interaction. Dr. Best’s most recent book, “Damned Lies and Statistics: Untangling Numbers from the Media, Politicians, and Activists,” has attracted considerable interest well beyond academic sociology.

Dr. Best earned undergraduate degrees in sociology and psychology from the University of Minnesota and holds master’s degrees in sociology and history from the University of California at Berkeley and Minnesota respectively. He also earned a Ph.D. degree in sociology from Berkeley.

The campus lecture is free and open to the public. A reception will follow in 109 Breckinridge Hall.

The 2003-04 Lecture Series is sponsored by MSU’s Institute for Regional Analysis and Public Policy. Additional information is available by calling (606) 783-5419.

####

# Tips

University Communications

Pauline Young, Director

[www.moreheadstate.edu](http://www.moreheadstate.edu)

Morehead State University

UPO Box 1100

Morehead, KY 40351-1689

(606) 783-2030

## HIGHLIGHTS AT MOREHEAD STATE UNIVERSITY

(Nov. 16-22)

### Sunday, Nov. 16

Junior recital: James Hay, euphonium, with Chris Kennedy, senior, French horn, Duncan Recital Hall, 1 p.m., free. Additional information: (606) 783-2473.

Bassoon recitals, featuring students of David Oyen, Duncan Recital Hall, 3 p.m., free. Additional information: (606) 783-2473.

Student recital: Tim Brown, saxophone, Duncan Recital Hall, 5 p.m., free. Additional information: (606) 783-2473.

### Tuesday, Nov. 18

Theatre production: "Antigone," Lucille Little Theatre, 7:30 p.m., through Nov. 22, also Nov. 23, 2 p.m., charge. Additional information: (606) 783-2170.

Guest recital: U.S. Army Field Band Clarinet Quartet, Duncan Recital Hall, 8 p.m., free. Additional information: (606) 783-2473.

### Wednesday, Nov. 19

American Red Cross Blood Drive, Button Drill Room, 11 a.m. – 5 p.m. Additional information: (606) 783-5124.

Faculty Art Exhibition, main gallery, Claypool-Young Art Building, through Dec. 11; opening reception, Nov. 19, 6-8 p.m., free. Additional information: (606) 783-5446.

### Thursday, Nov. 20

MSU Reading Series, featuring Kim Dearing and Austen Reilley, Kentucky Folk Art Center, 7 p.m., free. Additional information: (606) 783-2340.

Faculty recital: Mike Acord, clarinet, Duncan Recital Hall, 8 p.m., free. Additional information: (606) 783-2473.

### Saturday, Nov. 22

Middle School Band Clinic, Duncan Recital Hall and Fulbright Auditorium, time TBA. Additional information: (606) 783-2473.

Nov. 22, Basketball: Lady Eagles vs. Miami, Academic-Athletic Center, 3 p.m., charge. Additional information: (606) 783-2126.

Nov. 22, MSU Reading Series, featuring Adrian Swain and Liz Mandrell, Kentucky Folk Art Center, 7 p.m., free. Additional information: (606) 783-2340.

####

11-10-03sas

# News

University Communications

Pauline Young, Director

[www.moreheadstate.edu](http://www.moreheadstate.edu)

Morehead State University

UPO Box 1100

Morehead, KY 40351-1689

(606) 783-2030

Nov. 12, 2003

FOR IMMEDIATE RELEASE

MOREHEAD, Ky.---Morehead State University hosted the "Federal Showcase of K-12 Education Resources" Friday, Nov. 7. The Appalachian Regional Commission (ARC), the Federal Interagency Committee on Education in cooperation with the Kentucky Association of School Administrator, presented the showcase. The event was held to increase awareness of education resources currently available in the Appalachian region from federal agencies and focused on free and low-cost resources available to address educational needs from kindergarten to high school graduation.

More than 150 educators from 11 states and the District of Columbia attended the one-day conference held at Breckinridge and Baird Music halls.

Dr. Ronald G. Eaglin, president of MSU, welcomed the group, "We are pleased to host this event. It is an excellent example of the collaboration between higher education and area elementary and secondary educators."

Dr. Eaglin told the group of the exciting programs and progress that MSU is making, highlighted by the new Space Science Center, a \$3 million space tracking system.

Richard J. Peltz, alternate federal co-chair of the ARC, and Tom Luna, executive director rural education task force of the U.S. Department of Education, addressed the crowd.

Both explained the progress that had been made in education, the ways to improve the system and how the ARC and U.S. Department of Education are committed to helping the service region.

Representatives from more than 10 federal agencies, including the Department of Education, Department of Defense, Institute for Museum and Library Service and the National Science Foundation conducted breakout sessions covering training, professional development, specialized curriculum and financial and in-kind resources available to teachers and schools as well as the best ways to access them.

Kentucky, Virginia, West Virginia, Ohio, Alabama, South Carolina, Tennessee, North Carolina, Georgia, Pennsylvania, Maryland and Washington, D.C. had educators at the event.

####

ajb

## MSU HOSTS ARC SHOWCASE

Morehead State University hosted the "Federal Showcase of K-12 Education Resources" Friday, Nov. 7. The Appalachian Regional Commission (ARC), the Federal Interagency Committee on Education in cooperation with the Kentucky Association of School Administrators, presented the showcase. The event was held to increase awareness of education resources currently available in the Appalachian region from federal agencies and focused on free and low-cost resources available to address educational needs from kindergarten to high school graduation. Tom Luna, executive director rural education task force of the U.S. Department of Education talked with several groups of national and local educators during the showcase. More than 150 educators from 11 states and the District of Columbia attended the one-day conference held at Breckinridge and Baird Music halls.

(MSU photo by Jason Blanton)

11-12-03ajb

MSU is an affirmative action, equal opportunity educational institution.



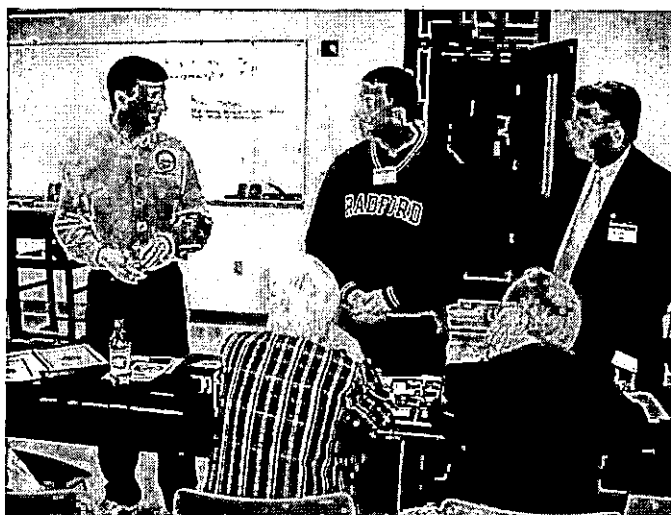
## MSU HOSTS ARC SHOWCASE

Morehead State University hosted the "Federal Showcase of K-12 Education Resources" Friday, Nov. 7. The Appalachian Regional Commission (ARC), the Federal Interagency Committee on Education in cooperation with the Kentucky Association of School Administrators, presented the showcase. The event was held to increase awareness of education resources currently available in the Appalachian region from federal agencies and focused on free and low-cost resources available to address educational needs from kindergarten to high school graduation. During one of the breakout sessions, from left, Keith Watts, assistant director of Arizona State University's Mars Education Program; Mark England, Hurley (Va.) High School teacher; and Dale Duvall, associate dean of MSU's Primary – 16+ Program, discuss a product made for students. More than 150 educators from 11 states and the District of Columbia attended the one-day conference held at Breckinridge and Baird Music halls.

(MSU photo by Jason Blanton)

11-10-03ajb

MSU is an affirmative action, equal opportunity educational institution.



# Photo

University Communications

Pauline Young, Director

[www.moreheadstate.edu](http://www.moreheadstate.edu)

Morehead State University

UPO Box 1100

Morehead, KY 40351-1689

(606) 783-2030

## MSU HOSTS ARC SHOWCASE

Morehead State University hosted the "Federal Showcase of K-12 Education Resources" Friday, Nov. 7. The Appalachian Regional Commission (ARC), the Federal Interagency Committee on Education in cooperation with the Kentucky Association of School Administrators, presented the showcase. The event was held to increase awareness of education resources currently available in the Appalachian region from federal agencies and focused on free and low-cost resources available to address educational needs from kindergarten to high school graduation. Dana Thomas, Director of Pupil Personnel for Menifee County Schools, center, attended one of the breakout sessions during the event. More than 150 educators from 11 states and the District of Columbia attended the one-day conference held at Breckinridge and Baird Music halls.

(MSU photo by Jason Blanton)

11-10-03ajb

MSU is an affirmative action, equal opportunity educational institution.



# Photo

University Communications

Pauline Young, Director

www.moreheadstate.edu

Morehead State University

UPO Box 1100

Morehead, KY 40351-1689

(606) 783-2030

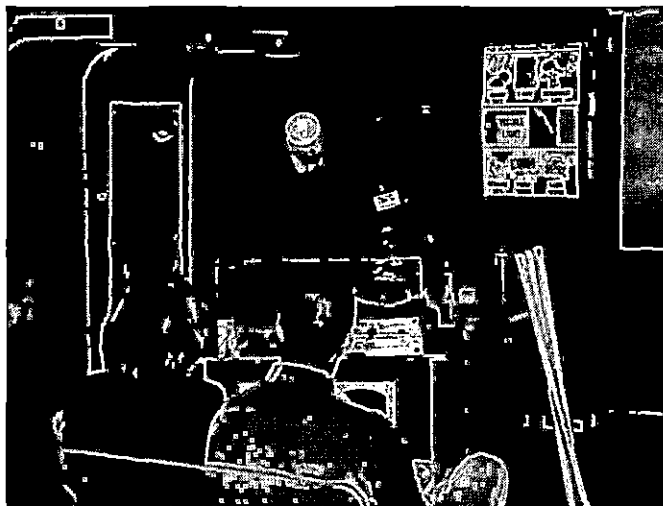
## **MSU HOSTS ARC SHOWCASE**

Morehead State University hosted the "Federal Showcase of K-12 Education Resources" Friday, Nov. 7. The Appalachian Regional Commission (ARC), the Federal Interagency Committee on Education in cooperation with the Kentucky Association of School Administrator, presented the showcase. The event was held to increase awareness of education resources currently available in the Appalachian region from federal agencies and focused on free and low-cost resources available to address educational needs from kindergarten to high school graduation. The National Science Center was one of the organizations sponsoring a display. NSC brought its mobile unit and gave science demonstrations. More than 150 educators from 11 states and the District of Columbia attended the one-day conference held at Breckinridge and Baird Music halls.

(MSU photo by Jason Blanton)

11-10-03ajb

MSU is an affirmative action, equal opportunity educational institution.



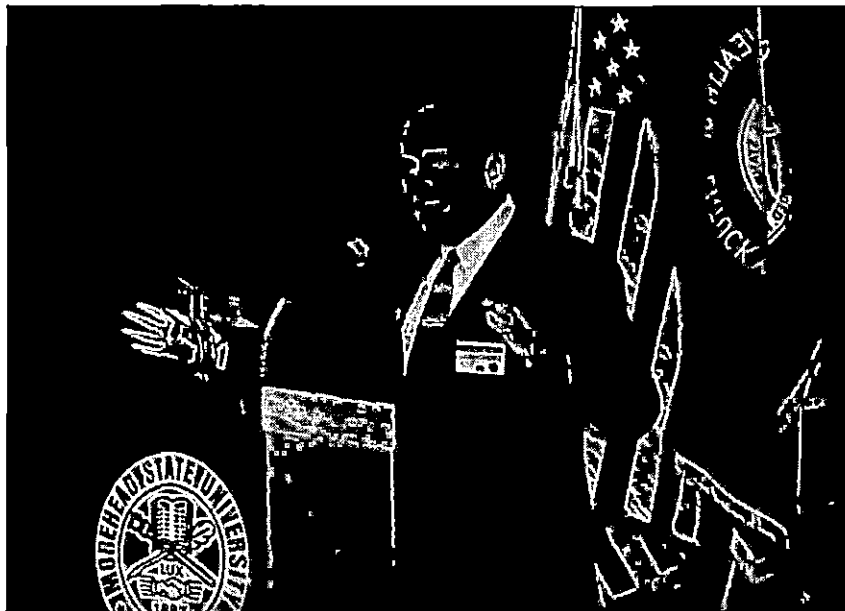
## MSU HOSTS ARC SHOWCASE

Morehead State University hosted the "Federal Showcase of K-12 Education Resources" Friday, Nov. 7. The Appalachian Regional Commission (ARC), the Federal Interagency Committee on Education in cooperation with the Kentucky Association of School Administrator, presented the showcase. The event was held to increase awareness of education resources currently available in the Appalachian region from federal agencies and focused on free and low-cost resources available to address educational needs from kindergarten to high school graduation. Richard J. Peltz, alternate federal co-chair of the ARC, addressed the crowd with opening remarks of the event. More than 150 educators from 11 states and the District of Columbia attended the one-day conference held at Breckinridge and Baird Music halls.

(MSU photo by Jason Blanton)

11-10-03ajb

MSU is an affirmative action, equal opportunity educational institution.





## MSU HOSTS ARC SHOWCASE

Morehead State University hosted the "Federal Showcase of K-12 Education Resources" Friday, Nov. 7. The Appalachian Regional Commission (ARC), the Federal Interagency Committee on Education in cooperation with the Kentucky Association of School Administrators, presented the showcase. The event was held to increase awareness of education resources currently available in the Appalachian region from federal agencies and focused on free and low-cost resources available to address educational needs from kindergarten to high school graduation. More than 150 educators from 11 states and the District of Columbia attended the one-day conference held at Breckinridge and Baird Music halls. Dr. Ronald G. Eaglin, president of MSU, welcomed the group to the event and the MSU community. Dr. Eaglin told the group of the exciting programs and progress that MSU is making, highlighting the new Space Science Center, a \$3 million space tracking system.

(MSU photo by Jason Blanton)

11-10-03ajb

MSU is an affirmative action, equal opportunity educational institution.



## MSU HOSTS ARC SHOWCASE

Morehead State University hosted the "Federal Showcase of K-12 Education Resources" Friday, Nov. 7. The Appalachian Regional Commission (ARC), the Federal Interagency Committee on Education in cooperation with the Kentucky Association of School Administrators, presented the showcase. The event was held to increase awareness of education resources currently available in the Appalachian region from federal agencies and focused on free and low-cost resources available to address educational needs from kindergarten to high school graduation. Shown talking before the showcase were: Tim Moore, superintendent of Mason County schools; Dr. Dan Branham, dean MSU's college of education; and Joe Dan Gold, superintendent of Morgan County schools. More than 150 educators from 11 states and the District of Columbia attended the one-day conference held at Breckinridge and Baird Music halls.

(MSU photo by Jason Blanton)

11-10-03ajb

MSU is an affirmative action, equal opportunity educational institution.



# News

University Communications

Pauline Young, Director

[www.moreheadstate.edu](http://www.moreheadstate.edu)

Morehead State University

UPO Box 1100

Morehead, KY 40351-1689

(606) 783-2030

Nov. 14, 2003

FOR IMMEDIATE RELEASE

MOREHEAD---The folk duo Zoe Speaks and Clyde Bowling and The Southern Bluegrass Boys will perform at the next “Americana Crossroads Live” concert on Friday, Nov. 28, at Morehead State University.

Zoe Speaks, which is made up of Mitch Barrett and Carla Gover, will open the show at 7:30 p.m. in Duncan Recital Hall in Baird Music Hall on the campus. At 8:30 p.m., Bowling and his group will take the stage.

The husband and wife duo jump in and out of their East Kentucky vernacular to play everything from old-time gospel to guitar-thumping contemporary acoustic tunes to create their town style of Appalachian flavored music. Their roots are firmly embedded as Barrett is from Blue Lick while Gover grew up in Whitesburg.

Morehead State Public Radio and the Kentucky Center for Traditional Music present the “Americana Crossroads Live” concert series. Doors open at 7 p.m. There will be a 15-minute intermission between performances. Those attending the event are eligible for door prizes.

Fans are asked to bring a non-perishable food donation to the concert to aid a food drive to benefit God’s Pantry at Christian Social Services in Morehead.

MSPR will record the concert for broadcast on Thursday, Dec. 4, at 8 p.m.

Toyota Motor Manufacturing of Georgetown is a corporate sponsor of the series with additional sponsorship by KCTM, Kentucky Folk Art Center, Farmers Mercantile Boots and Shoes, Poppy Mountain Bluegrass Festival, Root-A-Baker’s Bakery and Papa John’s.

Beginning in January, an admission fee will be charged to “Americana Crossroads Live” events. Admission will be \$3 each and free to children ages 12 and under. Season passes will be available for \$30 each at the Nov. 28 concert.

Additional information about the concert is available by calling MSPR at (800) 286-9659 or (606) 783-2001; or log on to MSPR’s Web site at [www.msradio.com](http://www.msradio.com).

####

ajb

# Photo

University Communications

Pauline Young, Director

[www.moreheadstate.edu](http://www.moreheadstate.edu)

Morehead State University

UPO Box 1100

Morehead, KY 40351-1689

(606) 783-2030

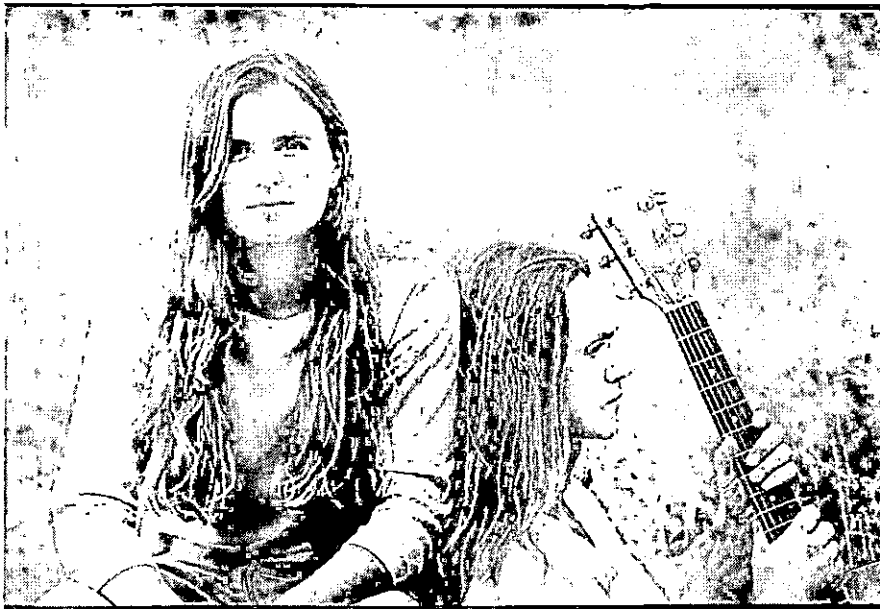
## CONCERT AT MSU

Folk duo Zoe Speaks will perform at the next "Americana Crossroads Live" concert on Friday, Nov. 28, at Morehead State University. Zoe Speaks – Carla Gover and Mitch Barrett - will open the show at 7:30 p.m. in Duncan Recital Hall. Clyde Bowling and The Southern Bluegrass Boys will take the stage at 8:30 p.m. Doors open for the event at 7 p.m. "Americana Crossroads Live" is a presentation of Morehead State Public Radio and the Kentucky Center for Traditional Music. Additional information is available by calling (606) 783-2001 or (800) 286-9659; or by visiting the Web site at [www.msuradio.com](http://www.msuradio.com).

(MSU photo)

11-14-03ajb

MSU is an affirmative action, equal opportunity educational institution.



# News

University Communications

Pauline Young, Director

[www.moreheadstate.edu](http://www.moreheadstate.edu)

Morehead State University

UPO Box 1100

Morehead, KY 40351-1689

(606) 783-2030

Nov. 14, 2003

FOR IMMEDIATE RELEASE

MOREHEAD, Ky.---The Morehead State University Police Department is seeking your help in locating anyone with knowledge of an automobile accident that occurred on campus.

On Friday, Nov. 7, at approximately 8:45 p.m., an MSU student was struck by a vehicle in the crosswalk at the intersection of University Boulevard and Battson-Oates Drive. The driver of the automobile stopped at the scene and spoke to the victim who explained she was not hurt. All parties left the scene without exchanging personal information.

The Police Department is following up on the incident and is now looking for a dark color, four-door Chevrolet Lumina, driven by a female who was approximately five-foot-five-inches tall. Police officers also are seeking the driver of a van who could be a witness.

Anyone with knowledge of the accident is asked to contact Lt. James Frazier with MSU's Police Department at (606) 783-2035.

####

# News

University Communications

Pauline Young, Director

[www.moreheadstate.edu](http://www.moreheadstate.edu)

Morehead State University

UPO Box 1100

Morehead, KY 40351-1689

(606) 783-2030

Nov. 14, 2003

FOR IMMEDIATE RELEASE

MOREHEAD, Ky. --- Morehead State University has its highest enrollment in the institution's 116-year history.

President Ronald G. Eaglin announced Friday that 9,509 students had enrolled for the fall semester, surpassing the previous record of 9,390 which was set in the fall of 2002. That figure had eclipsed the 10-year high of 9,169 from the fall of 1992.

"We are pleased to have exceeded our target enrollment of 9,500 as part of the statewide effort to increase the number of college students in Kentucky," Dr. Eaglin said. "Several areas of the University contributed to the overall growth and we are especially proud of the fact that enrollment in Mt. Sterling nearly doubled with the opening of our new campus."

Dr. Eaglin noted that MSU's enrollment patterns continue to reflect state and national trends with an increasing number of students enrolled at off-campus locations and through the Internet.

Morehead State enrolled 2,935 students at its five regional centers, five other teaching sites, on television with KET and online via the Kentucky Virtual University and the World Wide Web. Online classes attracted 845 students. MSU at Prestonsburg had the highest off-campus enrollment at 634. Totals for other regional centers include West Liberty, 458; Ashland, 330; Mt. Sterling, 319; and Jackson, 96.

####

# News

University Communications

Pauline Young, Director

[www.moreheadstate.edu](http://www.moreheadstate.edu)

Morehead State University

UPO Box 1100

Morehead, KY 40351-1689

(606) 783-2030

Nov. 17, 2003

FOR IMMEDIATE RELEASE

PIKEVILLE, Ky.---The Morehead State University East Kentucky Small Business Development Center and JobSight of Pikeville in conjunction with the Governor's Office of Agriculture Policy are presenting a "Tilling the Soil of Opportunity" entrepreneurial course beginning Dec. 2.

This 10-session course will be held at the Big Sandy Community and Technical College in Pikeville on Tuesdays from 6 - 9 p.m. Topics to be featured are product research, marketing and financial management and a variety of speakers from the fields of accounting, insurance, legal and more.

The program is suitable for those wishing to start their own business. The \$45 registration fee includes study guides and necessary materials, as well as snacks.

Additional information and registration are available by calling the Small Business Development Center at (606) 432-5848; or by e-mail to Linda Casebolt at [l.casebo@moreheadstate.edu](mailto:l.casebo@moreheadstate.edu).

The Small Business Development Center is partially funded by the U. S. Small Business Administration. All training programs sponsored or co-sponsored by SBDC are available to all individuals without regard to race, color, sex, creed, or national origin. Special arrangements will be made for those with disabilities if requested in advance.

####

# News

University Communications

Pauline Young, Director

[www.moreheadstate.edu](http://www.moreheadstate.edu)

Morehead State University

UPO Box 1100

Morehead, KY 40351-1689

(606) 783-2030

Nov. 17, 2003

FOR IMMEDIATE RELEASE

PIKEVILLE, Ky.---The Morehead State University East Kentucky Small Business Development Center and JobSight of Pikeville in conjunction with the Governor's Office of Agriculture Policy are presenting a "Tilling the Soil of Opportunity" entrepreneurial course beginning Dec. 2.

This 10-session course will be held at the Big Sandy Community and Technical College in Pikeville on Tuesdays from 6 - 9 p.m. Topics to be featured are product research, marketing and financial management and a variety of speakers from the fields of accounting, insurance, legal and more.

The program is suitable for those wishing to start their own business. The \$45 registration fee includes study guides and necessary materials, as well as snacks.

Additional information and registration are available by calling the Small Business Development Center at (606) 432-5848; or by e-mail to Linda Casebolt at [l.casebo@moreheadstate.edu](mailto:l.casebo@moreheadstate.edu).

The Small Business Development Center is partially funded by the U. S. Small Business Administration. All training programs sponsored or co-sponsored by SBDC are available to all individuals without regard to race, color, sex, creed, or national origin. Special arrangements will be made for those with disabilities if requested in advance.

####



# News

University Communications

Pauline Young, Director

[www.moreheadstate.edu](http://www.moreheadstate.edu)

Morehead State University

UPO Box 1100

Morehead, KY 40351-1689

(606) 783-2030

Nov. 17, 2003

FOR IMMEDIATE RELEASE

MOREHEAD, Ky.---Learn the best ways to handle business taxes and other financial records by attending a pair of workshops offered by Morehead State University's Small Business Development Center.

"Small Business Record Keeping and Small Business Taxes I" will be held on Wednesday, Dec. 10, from 5:30-7:30 p.m. at the Kentucky Folk Art Center, 102 West First Street in Morehead.

The workshop will focus on essential information for potential and current business owners. It will cover tax information for sole proprietors including filing requirements, tax forms and tax law changes that affect small businesses.

Sharon Walters, MSU associate professor of accounting, will be the instructor.

"Small Business Taxes II" will be held on Thursday, Dec. 11, from 5:30-7:30 p.m. at the same location.

This workshop will provide participants with the latest information on taxes and tax forms, maintaining records as well as current laws and penalties. The instructor will be Donna Davidson, a representative from the Internal Revenue Service.

Admission is free, but advance registration is necessary due to limited seating.

Training programs sponsored or co-sponsored by SBDC are available to all individuals without regard to race, color, sex, creed or national origin. Special arrangements for those with disabilities will be made if requested in advance.

Additional information and registration are available by calling (606) 783-2895.

####

ajb

# News

University Communications

Pauline Young, Director

[www.moreheadstate.edu](http://www.moreheadstate.edu)

Morehead State University

UPO Box 1100

Morehead, KY 40351-1689

(606) 783-2030

Nov. 17, 2003

FOR IMMEDIATE RELEASE

MOREHEAD, Ky.---When Corbitt's day starts off with his car being totaled by a huge cod falling from the sky, he thinks it can't get any worse. It can!

When he finds out the Atlantic Ocean's gone, he thinks it can't get any worse. It can!

His only refuge is a bar. His only hope is that, somehow, he can change his luck. Things can't get any worse. Right?

The play "String Geese Fish Rain" will be staged at Morehead State University, Thursday through Sunday, Dec. 4-6. The University's theatre students will present Brian Bufkin's work at 7:30 p.m. each evening at the Little Theatre in Breckinridge Hall.

In String Geese Fish Rain, the oceans are gone and fish rain from the sky. To get out of the fish rain, Corbitt enters the Beach Front Bar and Grille and strikes up a conversation with the proprietor, Barkeep, whose wife Alice wears a taxidermed monkey on her back and whose janitor is Tennessee Williams.

Their conversation is periodically interrupted by the Professor, who enters to explain things like "fish rain" and "monkey taxidermy" and who beats his assistant Nebbish at every opportunity.

Stranger still, Lucifer enters and turns out to be a regular customer. After much discussion, Lucifer agrees to buy Corbitt's soul for the price of true love and a really good fish sandwich.

This prompts the entrance of Jehovah, a woman who taunts Lucifer mercilessly. Underneath the humorous interaction of these characters lies a sense of mystery, menace and despair. Before the play ends, Corbitt and Alice will learn that, no matter how crazy the world gets, powerful forces are still at work and actions always have consequences.

Principal cast members include Travis Yates McNabb, **Salt Lick** sophomore, as Corbitt; Cindy Hay, **Belfry** junior, as Alice; Robert Daniels, **West Liberty** junior, as Lucifer; Nathaniel Dials, **West Liberty** sophomore, as Nebbish; the Rev. Jason Baker, **Mt. Vernon** freshman, as Professor; Jessica Roberts-Smith, **Louisa** sophomore, as Jehovah; Dallas Black, **Morehead** junior, as Tennessee Williams; and Robert Ball, **Morehead** sophomore, as Barkeep.

(MORE)

String Geese Fish Rain  
2-2-2-2

Tara Jean Denney, **Jackson, Ohio**, sophomore, is the play's production stage manager. Jonathan Mayo, **Shelbyville** sophomore, and Sherre Robirds, **Inez** junior, are assistant stage managers. Pamela Martin, **Morehead** sophomore, will assist Corbett in designing the lighting.

Greg Carlisle, instructor of theatre and speech, is directing the production.

Admission is \$3. Reservations may be made by calling the Theatre Box Office at (606) 783-2170. Tickets also will be sold at the door if seats are available.

#####

ajb

## "STRING GEESE FISH RAIN" TO BE STAGED AT MSU

The play "String Geese Fish Rain" will be staged at Morehead State University Thursday through Sunday, Dec. 4-6. The University's theatre students will present Brian Bufkin's work at 7:30 p.m. each evening in the Little Theatre in Breckinridge Hall. In String Geese Fish Rain, the oceans are gone and fish rain from the sky. To get out of the fish rain, Corbitt enters the Beach Front Bar and Grille and where he strikes up a conversation with the proprietor, Barkeep, whose wife Alice wears a taxidermed monkey on her back and whose janitor is Tennessee Williams. Principal cast members include, from left, Cindy Hall, **Belfry** junior, as Alice; Robert Ball, **Morehead** sophomore, as Barkeep; and Travis Yates McNabb, **Salt Lick** sophomore, as Corbitt. Admission is \$3. Reservations may be made by calling the Theatre Box Office at (606) 783-2170. Tickets also will be sold at the door if seats are available.

(MSU photo by Tim Holbrook)

11-25-03ajb

MSU is an affirmative action, equal opportunity educational institution.



Morehead State University

UPO Box 1100

Morehead, KY 40351-1689

(606) 783-2030

Nov. 17, 2003

FOR IMMEDIATE RELEASE

**MSU/PRESTONSBURG HOLDS HALLOWEEN HEALTH FAIR: A Picture Story:**

PRESTONSBURG, Ky.---Morehead State University at Prestonsburg held its 4th annual Halloween Health Fair on Monday, Oct. 27. Children, preschool through 4th grade, from Floyd, Pike, Martin and Johnson County schools were invited to attend the event held on the extended campus. The activity was held to raise health and safety awareness among elementary age students from the region.

During the event, professionals from the area gave health and safety related presentations to the more than 500 children who attended the presentation, visited the haunted house, and received gift bags filled with donations from area merchants and individuals.

Presenters included: Rick Handcock for school bus safety; Ranger Tony Burke from the U.S. Army Corp of Engineers at Dewey Lake; Lola Ratliff from the Floyd County Board of Education; Bobby Carpenter, Darrell Sparks, and Tommy Hereford from the Floyd County Fire Department; Diane Blackburn and Connie Meek from the Johnson County Health Department; Adam McGuire and Charles Noble with Smokey Bear from the Floyd County Forestry Division; Martha Williams, Martin County; Jennifer O'Brian with Big Sandy Community Technical College's Dental Hygiene program; Octavia Dales from the Pike County Health Department; and Dawonna Duke.

Local supporters who donated gifts, time or money included: Jonda Pelphrey, Century 21; Prestonsburg Wal-Mart; Pikeville Super Wal-Mart; Paintsville Wal-Mart; Prestonsburg Auto Mart; Archer Clinic Pharmacy; Dr. William Thorndyke; Downtown Drug; Prestonsburg Pizza Hut; Dr. Roger N. Jurich; Foodland; Inez Shop Rite; Dr. Keith Leslie; Highlands Home Health; McClure Vending; Paran Management; Community Trust Bank; Prestonsburg Home Furniture; Appalachian Wireless; Prestonsburg Big Lots; Pepsi Corporation; John Hylton; Reno's Restaurant; and Snyder's Dardi Distributor.

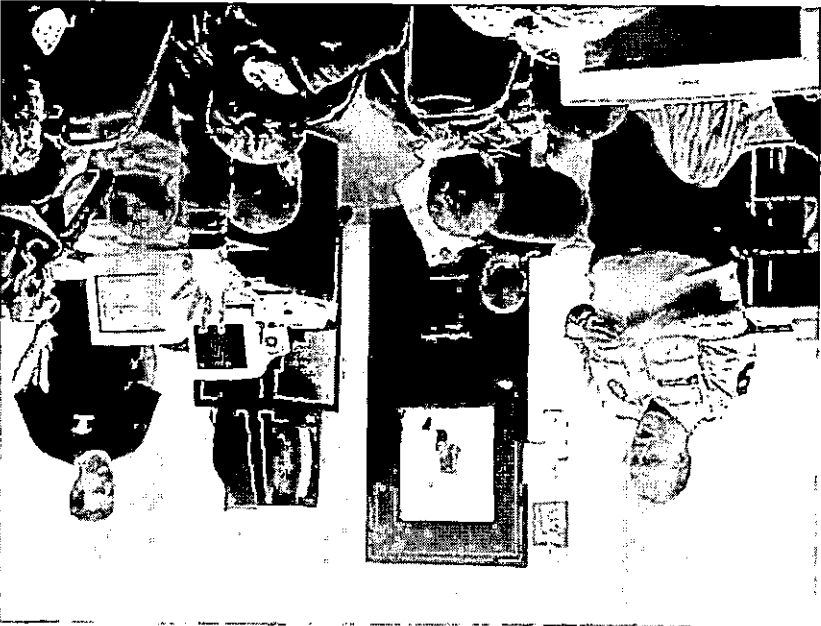
**Cutlines:**

- 1---Dr. Charles Johnson, associate director of Morehead State University at Prestonsburg, left, got into the act during the 4<sup>th</sup> annual Halloween Health Fair as he played a crazed doctor in the haunted house. He was assisted by Betsy Layne student Eric Prater.
- 2---Morehead State University at Prestonsburg director Lula Bowling and Dawonna Prater, extended campus assistant, talked with the students about what they learned during the 4<sup>th</sup> annual Halloween Health Fair.
- 3---Prestonsburg Fire Department members, Bobby Carpenter, left, and Darrell Sparks talked about fire safety with the children during the 4<sup>th</sup> annual Halloween Health Fair held at Morehead State University at Prestonsburg. Health and safety organizations participated in the event and passed out materials for the 500 students from Floyd, Johnson, Martin and Pike counties who attended.

(MSU photos by Jason Blanton)

#####

3



2



1



# Tips

University Communications

Pauline Young, Director

[www.moreheadstate.edu](http://www.moreheadstate.edu)

Morehead State University

UPO Box 1100

Morehead, KY 40351-1689

(606) 783-2030

## HIGHLIGHTS AT MOREHEAD STATE UNIVERSITY

(Nov. 23-29)

### Sunday, Nov. 23

Senior recital: Brian Egan, tuba, Duncan Recital Hall, 1 p.m., free. Additional information: (606) 783-2473.

Student recital: Erica Ashford, trumpet, Duncan Recital Hall, 3 p.m., free. Additional information: (606) 783-2473.

Student recital: Scott Simpson, bassoon, Duncan Recital Hall, 5 p.m., free. Additional information: (606) 783-2473.

Basketball: Lady Eagles vs. Gardner-Webb, Academic-Athletic Center, 3 p.m., charge. Additional information: (606) 783-2126.

### Monday, Nov. 24

Guest recital: Fernando Hasahimoto, percussion, Duncan Recital Hall, 8 p.m., free. Additional information: (606) 783-2473.

### Tuesday, Nov. 25

Basketball: Eagles vs. Asbury, Academic-Athletic Center, 7 p.m., charge. Additional information: (606) 783-2087.

### Wednesday, Nov. 26

Thanksgiving holiday break, no classes or office hours, through Nov. 28. Additional information: (606) 783-2008.

### Friday, Nov. 28

Concert: "Americana Crossroads Live," featuring Zoe Speaks, and Clyde Bowling and the Southern Bluegrass Boys, Duncan Recital Hall, 7:30 p.m., food donations accepted at the door to benefit God's Pantry at Christian Social Services. Additional information: (606) 783-2001.

#####

11-17-03sas

# News

University Communications

Pauline Young, Director

[www.moreheadstate.edu](http://www.moreheadstate.edu)

Morehead State University

UPO Box 1100

Morehead, KY 40351-1689

(606) 783-2030

Nov. 18, 2003

FOR IMMEDIATE RELEASE

MOREHEAD, Ky.---A Morehead State University professor will be included in a special arts program that will air on Kentucky Educational Television at 9 p.m. on Sunday, Nov. 23.

Dr. Ricky Little, associate professor of music, can be seen in the broadcast of an edition of the "In Performance at the Governor's Mansion" series. The "In Performance" concert was an anniversary celebration in honor of the Governor's Awards in the Arts, and features the premiere of a suite of three dance and music performances celebrating the diversity of Kentucky arts.

The American Spiritual Ensemble, of which Dr. Little is the assistant director, was among the musical groups that performed in September for the series at the Kentucky Center in Louisville. The ensemble's appearance was followed by a set from the Kentucky Jazz Connection, a group of some of Louisville's top jazz musicians.

Also featured that night were the Imani Dance and Drum Company, Hog Operation and the Kentucky Cloggers and the Gordon Dance Project, performing to music by Michael Fitzpatrick, cellist.

Dr. Little recently completed his seventh tour of Spain with the ensemble and participated in a series of three concerts in Taichung, Taiwan.

On MSU's faculty since 1995, Dr. Little is a renowned vocal concert artist, having performed in venues throughout the world. Additionally, he serves as a private voice coach.

Additional information is available by calling Dr. Little at (606) 783-2473.

####

sas



# News

University Communications

Pauline Young, Director

[www.moreheadstate.edu](http://www.moreheadstate.edu)

Morehead State University

UPO Box 1100

Morehead, KY 40351-1689

(606) 783-2030

Nov. 19, 2003

FOR IMMEDIATE RELEASE

MOREHEAD, Ky.---Carol Nutter, assistant director for public services at Morehead State University's Camden-Carroll Library, has been installed as president of the Kentucky Library Association at the association's annual conference held in Louisville in October.

Nutter received the prestigious "Academic Librarian of the Year" award, which was selected by the association's academic section.

Several MSU librarians made presentations during the conference. Those include:

Pamela Anderson and Jason Vance presented a poster session on "Interlibrary Loan Purchasing Project at Morehead State University;" Gary Austin presented a poster session titled "Periodicals Usage Study;" Jennifer Little presented "WebQuests for Instruction;" and Elsie Pritchard presented "Enriching the Public Catalog with Tables of Contents."

Pritchard served as the KLA mini-session chair for the conference and was selected to serve as editor of In-Focus. Little was installed as chair of the "Library Technology Roundtable" while Austin completed his term as chair of the "Government Documents Roundtable."

Larry Besant, CCL director, and Bill Malone, librarian, served as session moderators. Also attending from MSU was librarian Tom Kmetz.

####

ajb

# News

---

University Communications

Pauline Young, Director

---

Morehead State University

UPO Box 1100

Morehead, KY 40351-1689

(606) 783-2030

Nov. 19, 2003

FOR IMMEDIATE RELEASE

MOREHEAD, Ky.---Nominations are now being accepted for Morehead State University's 2003-04 Distinguished Teacher Award.

MSU's Professional Development Committee is soliciting nominations from MSU faculty, staff, students, alumni and the general public. The award, established in 1964 by the MSU Alumni Association, is given annually to recognize an outstanding teacher in the classroom.

The primary criteria are that the recipient exemplify the highest ideals of teaching and scholarship and qualify as a full-time faculty member of tenured or special status.

Nominations should include the name, address and telephone number of the person making the nomination along with a one-page letter detailing how the nominee meets the criteria. Previous recipients of the award are not eligible.

All nominations should be submitted to Dr. Michael R. Moore, provost and executive vice president, by 4:30 p.m. on Monday, Dec. 1. His mailing address is Morehead State University, 205 Howell-McDowell Administration Building, Morehead, KY 40351-1689.

Additional information and a detailed list of the criteria may be obtained in 205 Howell-McDowell or by calling (606) 783-2002.

#####

# News

University Communications

Pauline Young, Director

[www.moreheadstate.edu](http://www.moreheadstate.edu)

Morehead State University

UPO Box 1100

Morehead, KY 40351-1689

(606) 783-2030

Nov. 19, 2003

FOR IMMEDIATE RELEASE

MOREHEAD, Ky.---Two Morgan County students are among those involved in the production of "String Geese Fish Rain" to be staged Thursday through Sunday, Dec. 4-6, at Morehead State University.

Robert Daniels, **West Liberty** junior, will portray Lucifer in the play. A theatre major, he is the son of Roger and Crystal Daniels. A member of the MSU Players, he is a Theta Alpha Phi theatre honorary pledge.

Nathaniel Dials, **West Liberty** sophomore, will play Nebbish. A theatre major, he is the grandson of Freddie and Yvonne Ison.

"String Geese Fish Rain" will be staged in the Lucille Caudill Little Theatre in Breckinridge Hall at 7:30 p.m. each evening.

In "String Geese Fish Rain," the oceans are gone and fish rain from the sky. To get out of the fish rain, Corbitt enters the Beach Front Bar and Grille and strikes up a conversation with the proprietor, Barkeep, whose wife Alice wears a taxidermed monkey on her back and whose janitor is Tennessee Williams.

Their conversation is periodically interrupted by the Professor, who enters to explain things like "fish rain" and "monkey taxidermy" and who beats his assistant Nebbish at every opportunity.

Stranger still, Lucifer enters and turns out to be a regular customer. After much discussion, Lucifer agrees to buy Corbitt's soul for the price of true love and a really good fish sandwich.

This prompts the entrance of Jehovah, a woman who taunts Lucifer mercilessly. Underneath the humorous interaction of these characters lies a sense of mystery, menace and despair. Before the play ends, Corbitt and Alice will learn that, no matter how crazy the world gets, powerful forces are still at work and actions always have consequences

Admission is \$3. Reservations may be made by calling the Theatre Box Office at (606) 783-2170. Tickets also will be sold at the door if seats are available.

####

ajb

# News

University Communications

Pauline Young, Director

[www.moreheadstate.edu](http://www.moreheadstate.edu)

Morehead State University

UPO Box 1100

Morehead, KY 40351-1689

(606) 783-2030

Nov. 19, 2003

FOR IMMEDIATE RELEASE

MOREHEAD, Ky.---A Rockcastle County student is among those involved in the production of "String Geese Fish Rain" to be staged Thursday through Sunday, Dec. 4-6, at Morehead State University.

The Rev. Jason L. Baker, **Mount Vernon** freshman, will portray Professor in the play. A theatre major, he is the son of Larry Baker and Elizabeth Baker.

"String Geese Fish Rain" will be staged in the Lucille Caudill Little Theatre in Breckinridge Hall at 7:30 p.m. each evening.

In "String Geese Fish Rain," the oceans are gone and fish rain from the sky. To get out of the fish rain, Corbitt enters the Beach Front Bar and Grille and strikes up a conversation with the proprietor, Barkeep, whose wife Alice wears a taxidermed monkey on her back and whose janitor is Tennessee Williams.

Their conversation is periodically interrupted by the Professor, who enters to explain things like "fish rain" and "monkey taxidermy" and who beats his assistant Nebbish at every opportunity.

Stranger still, Lucifer enters and turns out to be a regular customer. After much discussion, Lucifer agrees to buy Corbitt's soul for the price of true love and a really good fish sandwich.

This prompts the entrance of Jehovah, a woman who taunts Lucifer mercilessly. Underneath the humorous interaction of these characters lies a sense of mystery, menace and despair. Before the play ends, Corbitt and Alice will learn that, no matter how crazy the world gets, powerful forces are still at work and actions always have consequences

Greg Carlisle, instructor of theatre and speech, is directing the production.

Admission is \$3. Reservations may be made by calling the Theatre Box Office at (606) 783-2170. Tickets also will be sold at the door if seats are available.

####

ajb

# News

University Communications

Pauline Young, Director

[www.moreheadstate.edu](http://www.moreheadstate.edu)

Morehead State University

UPO Box 1100

Morehead, KY 40351-1689

(606) 783-2030

Nov. 19, 2003

FOR IMMEDIATE RELEASE

MOREHEAD, Ky.---A Lawrence County student is among those involved in the production of "String Geese Fish Rain" to be staged Thursday through Sunday, Dec. 4-6, at Morehead State University.

Jessica Roberts Smith, **Louisa** sophomore, will portray Jehovah in the play. She is the granddaughter of Violet Robert, the late Harlan Roberts, and the late W.D. Sparks and Mary Lou Branham Sparks. A member of the MSU Players, she is a Theta Alpha Phi theatre pledge.

"String Geese Fish Rain" will be staged in the Lucille Caudill Little Theatre in Breckinridge Hall at 7:30 p.m. each evening.

In "String Geese Fish Rain," the oceans are gone and fish rain from the sky. To get out of the fish rain, Corbitt enters the Beach Front Bar and Grille and strikes up a conversation with the proprietor, Barkeep, whose wife Alice wears a taxidermed monkey on her back and whose janitor is Tennessee Williams.

Their conversation is periodically interrupted by the Professor, who enters to explain things like "fish rain" and "monkey taxidermy" and who beats his assistant Nebbish at every opportunity.

Stranger still, Lucifer enters and turns out to be a regular customer. After much discussion, Lucifer agrees to buy Corbitt's soul for the price of true love and a really good fish sandwich.

This prompts the entrance of Jehovah, a woman who taunts Lucifer mercilessly. Underneath the humorous interaction of these characters lies a sense of mystery, menace and despair. Before the play ends, Corbitt and Alice will learn that, no matter how crazy the world gets, powerful forces are still at work and actions always have consequences

Greg Carlisle, instructor of theatre and speech, is directing the production.

Admission is \$3. Reservations may be made by calling the Theatre Box Office at (606) 783-2170. Tickets also will be sold at the door if seats are available.

####

ajb

# News

University Communications

Pauline Young, Director

[www.moreheadstate.edu](http://www.moreheadstate.edu)

Morehead State University

UPO Box 1100

Morehead, KY 40351-1689

(606) 783-2030

Nov. 19, 2003

FOR IMMEDIATE RELEASE

MOREHEAD, Ky.---A Shelby County student is among those involved in the production of "String Geese Fish Rain" to be staged Thursday through Sunday, Dec. 4-6, at Morehead State University.

Jonathan Mayo, **Shelbyville** sophomore, is an assistant stage manager for the production. A theatre major, he is the son of Derek Mayo and Jodi Mayo. A member of the MSU Players, he is a Theta Alpha Phi theatre pledge.

"String Geese Fish Rain" will be staged in the Lucille Caudill Little Theatre in Breckinridge Hall at 7:30 p.m. each evening.

In "String Geese Fish Rain," the oceans are gone and fish rain from the sky. To get out of the fish rain, Corbitt enters the Beach Front Bar and Grille and strikes up a conversation with the proprietor, Barkeep, whose wife Alice wears a taxidermed monkey on her back and whose janitor is Tennessee Williams.

Their conversation is periodically interrupted by the Professor, who enters to explain things like "fish rain" and "monkey taxidermy" and who beats his assistant Nebbish at every opportunity.

Stranger still, Lucifer enters and turns out to be a regular customer. After much discussion, Lucifer agrees to buy Corbitt's soul for the price of true love and a really good fish sandwich.

This prompts the entrance of Jehovah, a woman who taunts Lucifer mercilessly. Underneath the humorous interaction of these characters lies a sense of mystery, menace and despair. Before the play ends, Corbitt and Alice will learn that, no matter how crazy the world gets, powerful forces are still at work and actions always have consequences

Greg Carlisle, instructor of theatre and speech, is directing the production.

Admission is \$3. Reservations may be made by calling the Theatre Box Office at (606) 783-2170. Tickets also will be sold at the door if seats are available.

####

ajb

# News

University Communications

Pauline Young, Director

[www.moreheadstate.edu](http://www.moreheadstate.edu)

Morehead State University

UPO Box 1100

Morehead, KY 40351-1689

(606) 783-2030

Nov. 19, 2003

FOR IMMEDIATE RELEASE

MOREHEAD, Ky.---A Martin County student is among those involved in the production of "String Geese Fish Rain" to be staged Thursday through Sunday, Dec. 4-6, at Morehead State University.

Sherre Robirds, **Inez** junior, will be an assistant stage manager for the play. A theatre major, she is the daughter of the Rev. David L. and Judith Robirds and a member of the MSU Players.

"String Geese Fish Rain" will be staged in the Lucille Caudill Little Theatre in Breckinridge Hall at 7:30 p.m. each evening.

In "String Geese Fish Rain," the oceans are gone and fish rain from the sky. To get out of the fish rain, Corbitt enters the Beach Front Bar and Grille and strikes up a conversation with the proprietor, Barkeep, whose wife Alice wears a taxidermed monkey on her back and whose janitor is Tennessee Williams.

Their conversation is periodically interrupted by the Professor, who enters to explain things like "fish rain" and "monkey taxidermy" and who beats his assistant Nebbish at every opportunity.

Stranger still, Lucifer enters and turns out to be a regular customer. After much discussion, Lucifer agrees to buy Corbitt's soul for the price of true love and a really good fish sandwich.

This prompts the entrance of Jehovah, a woman who taunts Lucifer mercilessly. Underneath the humorous interaction of these characters lies a sense of mystery, menace and despair. Before the play ends, Corbitt and Alice will learn that, no matter how crazy the world gets, powerful forces are still at work and actions always have consequences

Greg Carlisle, instructor of theatre and speech, is directing the production.

Admission is \$3. Reservations may be made by calling the Theatre Box Office at (606) 783-2170. Tickets also will be sold at the door if seats are available.

####

ajb

# News

University Communications

Pauline Young, Director

[www.moreheadstate.edu](http://www.moreheadstate.edu)

Morehead State University

UPO Box 1100

Morehead, KY 40351-1689

(606) 783-2030

Nov. 19, 2003

FOR IMMEDIATE RELEASE

MOREHEAD, Ky.---A Bath County student is among those involved in the production of “String Geese Fish Rain” to be staged Thursday through Sunday, Dec. 4-6, at Morehead State University.

Travis Yates McNabb, **Salt Lick** sophomore, will portray Corbitt in the play. A theatre major, he is the son of Relzda McNabb and Debbie McNabb and a member of the MSU Players.

“String Geese Fish Rain” will be staged in the Lucille Caudill Little Theatre in Breckinridge Hall at 7:30 p.m. each evening.

In “String Geese Fish Rain,” the oceans are gone and fish rain from the sky. To get out of the fish rain, Corbitt enters the Beach Front Bar and Grille and strikes up a conversation with the proprietor, Barkeep, whose wife Alice wears a taxidermed monkey on her back and whose janitor is Tennessee Williams.

Their conversation is periodically interrupted by the Professor, who enters to explain things like “fish rain” and “monkey taxidermy” and who beats his assistant Nebbish at every opportunity.

Stranger still, Lucifer enters and turns out to be a regular customer. After much discussion, Lucifer agrees to buy Corbitt's soul for the price of true love and a really good fish sandwich.

This prompts the entrance of Jehovah, a woman who taunts Lucifer mercilessly. Underneath the humorous interaction of these characters lies a sense of mystery, menace and despair. Before the play ends, Corbitt and Alice will learn that, no matter how crazy the world gets, powerful forces are still at work and actions always have consequences

Greg Carlisle, instructor of theatre and speech, is directing the production.

Admission is \$3. Reservations may be made by calling the Theatre Box Office at (606) 783-2170. Tickets also will be sold at the door if seats are available.

#####

ajb



# News

University Communications

Pauline Young, Director

[www.moreheadstate.edu](http://www.moreheadstate.edu)

Morehead State University

UPO Box 1100

Morehead, KY 40351-1689

(606) 783-2030

Nov. 19, 2003

FOR IMMEDIATE RELEASE

MOREHEAD, Ky.---A Pike County student is among those involved in the production of “String Geese Fish Rain” to be staged Thursday through Sunday, Dec. 4-6, at Morehead State University.

Cindy Hall, **Belfry** junior, will portray Alice in the play. A history major, she is the daughter of Ronald and Dianna Hall and a member of the MSU Players.

“String Geese Fish Rain” will be staged in the Lucille Caudill Little Theatre in Breckinridge Hall at 7:30 p.m. each evening.

In “String Geese Fish Rain” the oceans are gone and fish rain from the sky. To get out of the fish rain, Corbitt enters the Beach Front Bar and Grille and strikes up a conversation with the proprietor, Barkeep, whose wife Alice wears a taxidermed monkey on her back and whose janitor is Tennessee Williams.

Their conversation is periodically interrupted by the Professor, who enters to explain things like “fish rain” and “monkey taxidermy” and who beats his assistant Nebbish at every opportunity.

Stranger still, Lucifer enters and turns out to be a regular customer. After much discussion, Lucifer agrees to buy Corbitt's soul for the price of true love and a really good fish sandwich.

This prompts the entrance of Jehovah, a woman who taunts Lucifer mercilessly. Underneath the humorous interaction of these characters lies a sense of mystery, menace and despair. Before the play ends, Corbitt and Alice will learn that, no matter how crazy the world gets, powerful forces are still at work and actions always have consequences

Greg Carlisle, instructor of theatre and speech, is directing the production.

Admission is \$3. Reservations may be made by calling the Theatre Box Office at (606) 783-2170. Tickets also will be sold at the door if seats are available.

####

ajb

# News

University Communications

Pauline Young, Director

[www.moreheadstate.edu](http://www.moreheadstate.edu)

Morehead State University

UPO Box 1100

Morehead, KY 40351-1689

(606) 783-2030

Nov. 19, 2003

FOR IMMEDIATE RELEASE

MOREHEAD, Ky.---Two Rowan County students are among those involved in the production of "String Geese Fish Rain" to be staged Thursday through Sunday, Dec. 4-6, at Morehead State University.

Dallas Black, **Morehead** junior, will portray Tennessee Williams in the play. A theatre major, he is the son of Charles and Barbara Black. A member of the MSU Players, he is a Theta Alpha Phi theatre pledge.

Pamela Martin, **Morehead** sophomore, will be the assistant lighting designer for the play. The daughter of Marty and Lora Williams, she is a theatre and history major. A member of the MSU Players, she is a Theta Alpha Phi theatre pledge.

"String Geese Fish Rain" will be staged in the Lucille Caudill Little Theatre in Breckinridge Hall at 7:30 p.m. each evening.

In "String Geese Fish Rain," the oceans are gone and fish rain from the sky. To get out of the fish rain, Corbitt enters the Beach Front Bar and Grille and strikes up a conversation with the proprietor, Barkeep, whose wife Alice wears a taxidermed monkey on her back and whose janitor is Tennessee Williams.

Their conversation is periodically interrupted by the Professor, who enters to explain things like "fish rain" and "monkey taxidermy" and who beats his assistant Nebbish at every opportunity.

Stranger still, Lucifer enters and turns out to be a regular customer. After much discussion, Lucifer agrees to buy Corbitt's soul for the price of true love and a really good fish sandwich.

This prompts the entrance of Jehovah, a woman who taunts Lucifer mercilessly. Underneath the humorous interaction of these characters lies a sense of mystery, menace and despair. Before the play ends, Corbitt and Alice will learn that, no matter how crazy the world gets, powerful forces are still at work and actions always have consequences

Admission is \$3. Reservations may be made by calling the Theatre Box Office at (606) 783-2170. Tickets also will be sold at the door if seats are available.

####

# News

University Communications

Pauline Young, Director

[www.moreheadstate.edu](http://www.moreheadstate.edu)

Morehead State University

UPO Box 1100

Morehead, KY 40351-1689

(606) 783-2030

Nov. 19, 2003

FOR IMMEDIATE RELEASE

MOREHEAD, Ky.---A Jackson County, Ohio, student is among those involved in the production of "String Geese Fish Rain" to be staged Thursday through Sunday, Dec. 4-6, at Morehead State University.

Tara Jean Denney, **Jackson, Ohio**, sophomore, will be the stage manager for the play. A theatre major, she is the daughter of Phillip and Mabel Denney. She is a member of the MSU Players and the Honors Program and a Theta Alpha Phi theatre honorary pledge.

"String Geese Fish Rain" will be staged in the Lucille Caudill Little Theatre in Breckinridge Hall at 7:30 p.m. each evening.

In "String Geese Fish Rain," the oceans are gone and fish rain from the sky. To get out of the fish rain, Corbitt enters the Beach Front Bar and Grille and strikes up a conversation with the proprietor, Barkeep, whose wife Alice wears a taxidermed monkey on her back and whose janitor is Tennessee Williams.

Their conversation is periodically interrupted by the Professor, who enters to explain things like "fish rain" and "monkey taxidermy" and who beats his assistant Nebbish at every opportunity.

Stranger still, Lucifer enters and turns out to be a regular customer. After much discussion, Lucifer agrees to buy Corbitt's soul for the price of true love and a really good fish sandwich.

This prompts the entrance of Jehovah, a woman who taunts Lucifer mercilessly. Underneath the humorous interaction of these characters lies a sense of mystery, menace and despair. Before the play ends, Corbitt and Alice will learn that, no matter how crazy the world gets, powerful forces are still at work and actions always have consequences.

Greg Carlisle, instructor of theatre and speech, is directing the production.

Admission is \$3. Reservations may be made by calling the Theatre Box Office at (606) 783-2170. Tickets also will be sold at the door if seats are available.

#####

ajb

# News

University Communications

Pauline Young, Director

[www.moreheadstate.edu](http://www.moreheadstate.edu)

Morehead State University

UPO Box 1100

Morehead, KY 40351-1689

(606) 783-2030

Nov. 19, 2003

FOR IMMEDIATE RELEASE

MOREHEAD, Ky.---Appalachian author Garry Barker has had his 1986 short story collection, "Mountain Passage and Other Stories of Eastern Kentucky," reprinted by the Jesse Stuart Foundation.

The book includes prize winning stories, "The Liberation of Elsie Watts" and "Big Game," plus other works that have been included in the anthologies "The Uneven Ground, Groundwater" and "Appalachia Inside Out."

"Mountain Passage" is a featured book in "Appalachian Literature, Appalachian Culture: Literature-Based, Cross-Curricular Activities for Middle and High School Classrooms," written by Judy Sizemore, edited by Ginny Eager and published in 2000 by the Stuart Foundation.

University editor at Morehead State University, Barker has published eight other books of fiction, poetry, history, and essay, and writes the newspaper column "Head of the Holler" that is distributed in regional papers.

He is a commentator for Morehead State Public Radio and a frequent speaker across the region. Recently, he signed copies of his book at the Kentucky Book Fair in Frankfort.

"The stories in "Mountain Passage" were written when I first worked at MSU during the early 1980s," Barker said. "They are drawn from real experiences. The settings are Elliott and Fleming counties, where I grew up, and the people are drawn from characters very familiar to me. I think this is my best work."

When first published, reviewers praised "Mountain Passage." Novelist Lee Smith wrote that "Garry Barker's stories linger in your mind like your own memories. With his flawless Appalachian diction and keen eye for detail, Barker has written a group of stories for the reader to savor."

The Daily Independent of Ashland wrote that "Barker introduces readers to characters that reflect his inbred love for his native hills. The reader will be quick to note similarities between his attachment and style of yarn-spinning and that of another master of the art, Jesse Stuart," while novelist Sharyn McCrumb noted that "The honesty of the writing and the author's familiarity with his subject turn familiar scenes into poignant visions of Appalachia."

(MORE)

The late Jim Wayne Miller wrote that "Barker works from human experience, not from some literary notion of what 'Appalachian' stories should be."

A prolific writer, Barker has penned stories for "American Heritage" and "Arts Across Kentucky," entries for the new "Encyclopedia of Appalachia" and short fiction for "M Magazine." He has won awards from "Appalachian Heritage," the Catholic Press Association, the Kentucky Arts Council, and the East Kentucky Leadership Foundation, plus special recognition from the Kentucky Education, Arts and Humanities Cabinet.

A graduate of Berea College, Barker and his wife Danetta live near his childhood home at Bald Hill, a Fleming County farm community. He is currently working on a book about Elliott County with photographer Tom Barnes, as well as a history of Bybee Pottery.

Additional information is available by calling Barker at (606) 783-2274.

####

ajb



# News

University Communications

Pauline Young, Director

[www.moreheadstate.edu](http://www.moreheadstate.edu)

Morehead State University

UPO Box 1100

Morehead, KY 40351-1689

(606) 783-2030

Nov. 21, 2003

FOR IMMEDIATE RELEASE

MOREHEAD, Ky.---The late Alpha and Mildred Hutchinson of Morehead were memorialized in words and cast bronze when Morehead State University recently dedicated "Education's Gift," the second piece in its outdoor Sculpture Concourse.

Former state budget director Lawrence Forgy Jr., the principal speaker at the ceremony at Crosthwait Plaza, remembered the Hutchinsons as "two warm and giving human beings who loved their family and their community." Forgy is a member of the Board of Directors of The Citizens Bank of Morehead, the institution with which the Hutchinson family was affiliated for more than 60 years, and the sponsor of the sculpture.

MSU President Ronald G. Eaglin described the statue as "a fitting memorial to the lives of two loving and generous friends of the University."

The cast bronze sculpture depicts a young boy holding aloft a small globe. It was created by Stephen J. Tirone, associate professor of art at MSU, and modeled by second grader Grant Markwell, great-grandson of the Hutchinsons and the son of Mr. and Mrs. Dan Markwell of Morehead. The statue was unveiled by the artist, the model and Susan Neff of Morehead, daughter of the Hutchinsons and board chair of The Citizens Bank.

In responding to the unveiling on behalf of her family, Mrs. Neff said her parents would be pleased that their great-grandson was the model and that the sculpture was located on the MSU campus in the city they loved and served throughout their adult lives.

MSU's Sculpture Concourse was established in 2002 to visually demonstrate the link between the fine arts and education and to recognize the University's historic mission of teacher training. It is a joint project of the Caudill College of Humanities and the College of Education.

The first statue was unveiled in April 2002 in memory of former MSU President Adron Doran.

(MORE)

## Sculpture Concourse Dedication

2-2-2-2-2

### Cutlines:

- 1---Second grader Grant Markwell and his grandmother, Susan Hutchinson Neff of Morehead, assisted in the unveiling of the second cast bronze statue in Morehead State University's Sculpture Concourse. Grant was the model for the piece titled "Education's Gift." It was dedicated in memory of Alpha and Mildred Hutchinson and sponsored by The Citizens Bank of Morehead. Grant is the great-grandson of the Hutchinsons and Mrs. Neff is their daughter. This is the second statue completed by MSU art professor Steve Tirone.
  
- 2---In his remarks at the dedication ceremony, former state budget director Lawrence Forgy Jr., a longtime friend of the Hutchinsons, described them as “two warm and giving human beings who loved their family and their community.”

####

(MSU photos by Tim Holbrook)





2



1

# News

University Communications

Pauline Young, Director

[www.moreheadstate.edu](http://www.moreheadstate.edu)

Morehead State University

UPO Box 1100

Morehead, KY 40351-1689

(606) 783-2030

Nov. 21, 2003

FOR IMMEDIATE RELEASE

MOREHEAD, Ky.---Morehead State University alumnus Virginia (Ginni) Fox of Frankfort, a member of the University's Board of Regents and the Board of Trustees of the MSU Foundation, Inc., Tuesday was named the first cabinet secretary in the administration of Kentucky Gov.-elect Ernie Fletcher.

"We are very proud of this important recognition of Ginni Fox," said MSU President Ronald G. Eaglin. "This latest achievement adds to her reputation as an outstanding public servant and a distinguished alumnus of Morehead State University. Gov.-elect Fletcher made an excellent decision by selecting her to be Kentucky's top educator for the next four years."

Here is the text of the announcement:

Lexington, KY: Governor-Elect Ernie Fletcher announced his Secretary of Education today at Northern Elementary School in Lexington. Fletcher named former executive director and CEO of Kentucky Educational Television, Virginia Fox, who was one of the first 10 people to launch KET in 1968 and helped transform it into the largest PBS member network in the United States.

In working with KET, Fox became the first and only female CEO of a national organization in public broadcasting, the creator of the first National ITV Satellite Schedule - (NISS) serving over 23 million students annually, creator of SERC, the first public broadcaster/DOE interstate consortium for distance learning, and the Founding Director of the Organization of State Broadcasting Executives.

"My primary focus has always been to help provide a quality education for every person in Kentucky, and that is why I have joined this Administration," said Virginia Fox. "I believe Ernie and I share a common goal for education in Kentucky; one of improving access to education and information that will improve the lives of so many great people throughout the Commonwealth. I know that we share a vision for Kentucky's future, and that is why I am honored that Ernie has asked me to serve on this team."

(MORE)

Fox named education secretary  
2-2-2-2-2

Virginia Fox was born in Campbellsville, Kentucky and grew up in Fleming County. She received a Bachelor's Degree elementary education from Morehead State University and Master's Degree in library science from the University of Kentucky. Virginia Fox was the Executive Director of Kentucky Educational Television (KET) from 1991-2002 and has served on numerous boards and committees throughout Kentucky and across the United States.

She's married to Victor Fox and they live in Frankfort, Kentucky.

"I am extremely proud to introduce today an individual who demonstrates the type of experience, talent and leadership that I want to be a part of our new administration," said Governor-Elect Ernie Fletcher. "That's why I have chosen a Secretary of Education that will be an inspiration for children, teachers, and all Kentuckians. She will be an inspiration because of her lifetime of service and her acceptance of this appointment is greatly appreciated. I look forward to our service together as we work to improve education across the great Commonwealth of Kentucky."

####



MSU is an affirmative action, equal opportunity educational institution.

## HOLIDAY DINNER AT MSU

Morehead State University's Office of Multicultural Student Services hosted an early Thanksgiving dinner (Nov. 19) at the Multicultural Student Services Center on campus. Students, faculty and staff enjoyed turkey, ham and all the trimmings. Among those attending were education major Shannequea Hamilton, **Louisville** junior, who dined with MSU President Ronald G. Eaglin.

(MSU student photo by José Solis)

11-21-03sas

MSU is an affirmative action, equal opportunity educational institution.



## 'EARLY' THANKSGIVING AT MSU

Morehead State University's Office of Multicultural Student Services hosted an early Thanksgiving dinner (Nov. 19) at the Multicultural Student Services Center on campus. Students, faculty and staff enjoyed turkey, ham and all the trimmings. Among those attending were, from left, Joyisha Boyd, **Bronx, N.Y.** sophomore; Dr. Francene Botts-Butler, director of multicultural student services; Pamela Jaisingh, international studies director, and Dennis McKay, assistant director of residence education.

(MSU student photo by José Solís)

11-21-03sas

MSU is an affirmative action, equal opportunity educational institution.



# News

University Communications

Pauline Young, Director

[www.moreheadstate.edu](http://www.moreheadstate.edu)

Morehead State University

UPO Box 1100

Morehead, KY 40351-1689

(606) 783-2030

Nov. 21, 2003

FOR IMMEDIATE RELEASE

MOREHEAD ---Clyde Bowling and The Southern Bluegrass Boys along with folk duo Zoe Speaks will perform at the next "Americana Crossroads Live" concert on Friday, Nov. 28, at Morehead State University.

Zoe Speaks, the husband and wife team of Mitch Barrett and Carla Gover, will open the show at 7:30 p.m. in Duncan Recital Hall in Baird Music Hall on the campus. At 8:30 p.m., Bowling and his group will take the stage.

Bowling has been in the business for more than 40 years. From Butcher Hollow in Johnson County, he wrote eight songs on his current release "Life in Butcher Hollow, KY."

"Bluegrass is family music that is 'American music' created in the mountains," said Bowling. "I am proud to be an advocate of such music."

Morehead State Public Radio and the Kentucky Center for Traditional Music present the "Americana Crossroads Live" concert series. Doors open at 7 p.m. There will be a 15-minute intermission between performers. Those attending the concert are eligible for door prizes.

Fans are asked to bring a non-perishable food donation to aid a food drive to benefit God's Pantry at Christian Social Services in Morehead.

MSPR will record the concert for broadcast on Thursday, Dec. 4, at 8 p.m.

Toyota Motor Manufacturing of Georgetown is a corporate sponsor of the series with additional sponsorship by KCTM, Kentucky Folk Art Center, Farmers Mercantile Boots and Shoes, Poppy Mountain Bluegrass Festival, Root-A-Baker's Bakery and Papa John's.

Beginning in January, an admission fee will be charged for "Americana Crossroads Live" events. Admission will be \$3 each and free to children 12 and under. Season passes will be available for \$30 each at the Nov. 28 concert.

Additional information is available by calling MSPR at (800) 286-9659 or (606) 783-2001; or log on to MSPR's Web site at [www.msradio.com](http://www.msradio.com).

####

ajb

## CONCERT AT MSU

Clyde Bowling and The Southern Bluegrass Boys will perform at the next "Americana Crossroads Live" concert on Friday, Nov. 28, at Morehead State University. The folk duo Zoe Speaks – Carla Gover and Mitch Barrett - will open the show at 7:30 p.m. in Duncan Recital Hall. Bowling and his group will take the stage at 8:30 p.m. Doors will open at 7 p.m. "Americana Crossroads Live" is a presentation of Morehead State Public Radio and the Kentucky Center for Traditional Music. Additional information is available by calling (606) 783-2001 or (800) 286-9659; or by visiting the Web site at [www.msuradio.com](http://www.msuradio.com).

(Photo by BluegrassPro.com)

11-21-03ajb

MSU is an affirmative action, equal opportunity educational institution.



Nov. 21, 2003

FOR IMMEDIATE RELEASE

MOREHEAD, Ky.---The Kentucky Folk Art Center has announced the opening of a new exhibit titled "Tributaries: A Collaborative Quest for Family History" on Thursday, Dec. 4, which will run Feb. 27. The display will feature 16 new mixed-media assemblages by Lexington artist Robert Morgan, along with text and photographs by his sister, Mary Morgan, and her daughter, Morgan Adams.

Wanting to know more about their own family history, Mary Morgan and her sister began the search for their roots. The project involved the traditional resources used in genealogy research, such as official birth, marriage and death records, and eventually drew them to a remote hilltop cemetery in Breathitt County that had almost been destroyed by an adjacent mountaintop removal mining project. The quest also took them to Ireland, the original home of several ancestors who came to America in the mid-1800s.

Morgan Adams documented their progress in a written account that incorporates her own reactions and the personal feelings experienced by she and her mother as the project unfolded.

Robert Morgan is well known in Kentucky for his controversial 'found-object' sculptures and assemblages that challenge traditional social mores. For this project, the artist collaborated with family members by producing fantasy portraits of several Morgan family ancestors that incorporate fact and fancy and myth and reality.

In the introduction, Morgan Adams sets the stage for what the viewer might expect to experience through the exhibition: "Your grandfather came over on the Mayflower; Fought in the Revolutionary War. He was a horse thief with a heart of gold. He married a Cherokee princess. He buried treasure, and it's still out there somewhere, forever lost... Everyone has wanted to know the truth about their ancestors... The problem is, truth is an elusive thing."

Using his characteristic mix of junk material and found objects, Robert Morgan transformed and interpreted the results of their quest by producing what he refers to as "six family efficies, six effigies, six ancestral totems and 'the four original' self-portraits."

(MORE)



“This exhibition should be worth a visit by anyone with an interest in their family history,” said Kentucky Folk Art Center Curator, Adrian Swain. “The particular approach this family took can serve as inspiration to other people to find their own novel way to investigate and interpret their family’s past.”

The title “Tributaries” likens the concept of “family” to a river, continuously changing and being renewed. As described by Morgan Adams: “The people in our history are made by facts and dim recollections. I’ll bet your family is like that too. And that you, your parents, your children, your friends, and even random people on the street, are creating their own legends. (As the river) always flowing, trickles and waterfalls, carving canyons. More tributaries are forming all the time.”

The exhibition opens with a public reception at the Center on Thursday, Dec. 4, from 6 to 8 p.m. with refreshments and live music. There is no admission charge for the reception, and the public is invited to attend.

The Kentucky Folk Art Center is a cultural, educational and economic development service of Morehead State University. Located at 102 West First Street in Morehead, the center is open Monday-Saturday, 9 a.m. to 5 p.m., and Sundays, 1-5 p.m.

Additional information is available by calling (606) 783-2204

####

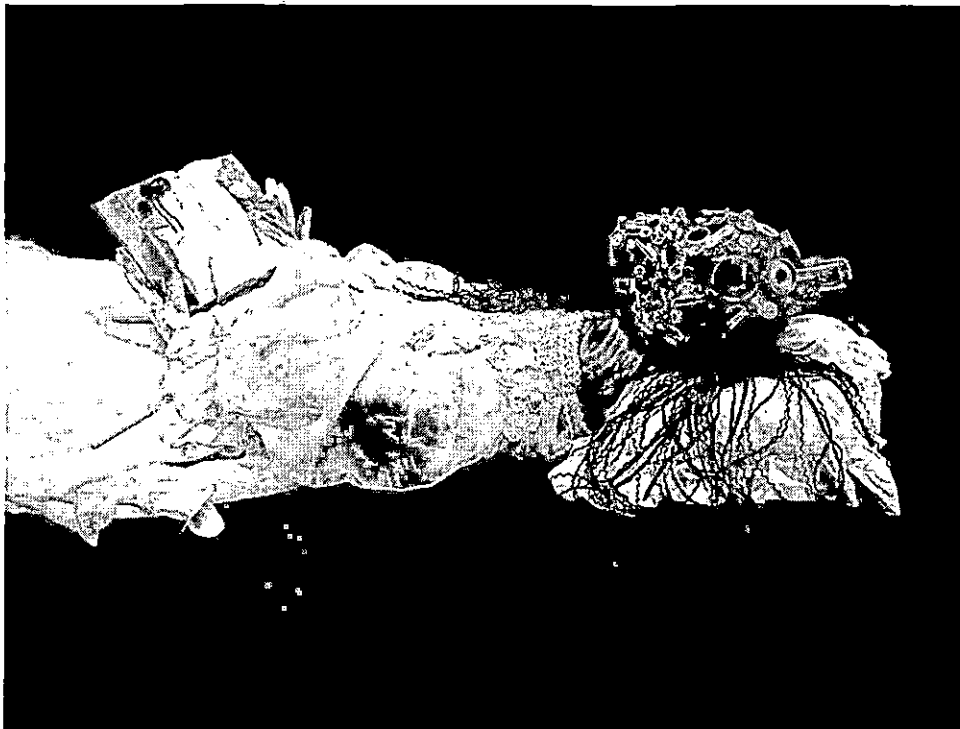
## **FAMILY'S HISTORY IS THEME OF KFAC EXHIBIT**

A family's quest for the history of their roots resulted in a new exhibit slated to run Dec. 4 through Feb. 27 at the Kentucky Folk Art Center in Morehead. The work was completed by Lexington artist Robert Morgan, along with photographs and text by his sister Mary Morgan and her daughter Morgan Adams. Among the 16 pieces is "Fairlena" (detail) by Robert Morgan completed from found materials earlier this year. The display will begin with an opening reception on Thursday, Dec. 4, from 6 to 8 p.m. at the Kentucky Folk Art Center, located at 102 West First Street. Additional information is available by calling (606) 783-2204.

(MSU photo)

11-21-03

MSU is an affirmative action, equal opportunity educational institution.



# News

University Communications

Pauline Young, Director

[www.moreheadstate.edu](http://www.moreheadstate.edu)

Morehead State University

UPO Box 1100

Morehead, KY 40351-1689

(606) 783-2030

Nov. 24, 2003

## FOR IMMEDIATE RELEASE

MOREHEAD, Ky.---Morehead State University's OperaWorks will present an evening of scenes from opera, operetta and classic music theatre on Wednesday, Dec. 3, at 8 p.m. in Duncan Recital Hall in Baird Music Hall.

There is no admission charge for the OperaWorks performance which will be directed by Dr. Roma Prindle, associate professor of music. Linda Goldberg, staff accompanist, will be the pianist.

The program will open with a tribute to the famous Austrian composer, Wolfgang Amadeus Mozart. Scenes from his operas "Cosi fan tutti" and "The Marriage of Figaro" will be featured.

Scenes from the operetta "Die Fledermaus" by another Austrian composer, Johann Strauss, will be performed as well. Excerpts from "Gianni Schicchi" by Giacomo Puccini, "Lakmé" by Leo Delibes, and "The Tales of Hoffman" by Jacques Offenbach will be included. Also on the program are operetta excerpts from "Mikado" and "Trial by Jury" by Gilbert and Sullivan, and scenes from Jerome Kern's classic musical "Showboat."

Dr. Prindle organized OperaWorks in 1994 to give music majors stage performance experience. The ensemble has performed throughout the region. In 2000, they were invited to present several performances of "A Kentucky Mummer's Play" in Ireland. OperaWorks will again travel abroad in May to present Dr. Prindle's new work, "Wild Mountain Thyme," in England and Wales.

Members of Wednesday night's cast include: Brandon Thompson of **Louisa**; Jeremy Howard of **Oak Hill, Ohio**; Clark Walker of **Vinton, Ohio**; Sara House of **Mt. Orab, Ohio**; Noelle Barnes of **Cynthiana**; Leslie Allnatt of **Louisville**; Melissa Spalding of **Louisville**; Martina Wheeler of **Louisa**; Melody Burcham of **Hazard**; Andrea Trusty of **West Liberty** and Dr. Mark Minor of **Morehead**.

Additional information on the performance or the overseas tour to England and Wales is available from Dr. Prindle by calling (606) 783-2481.

####

MSU is an affirmative action, equal opportunity educational institution.

# Tips

University Communications

Pauline Young, Director

[www.moreheadstate.edu](http://www.moreheadstate.edu)

Morehead State University

UPO Box 1100

Morehead, KY 40351-1689

(606) 783-2030

## HIGHLIGHTS AT MOREHEAD STATE UNIVERSITY

(Nov. 30-Dec. 6)

### Sunday, Nov. 30

Student recital: Erica Shonté Revely, percussion, Duncan Recital Hall, 8 p.m., free. Additional information: (606) 783-2473.

### Tuesday, Dec. 2

Holiday Party, Button Drill Room, 4-6 p.m., followed by Holiday Tree Lighting. Additional information: (606) 783-2071.

Basketball: Lady Eagles vs. Ohio University, Academic-Athletic Center, 7 p.m., charge. Additional information: (606) 783-2126.

Christmas Carol Concert, featuring University choruses and Concert Choir, Duncan Recital Hall, Baird Music Hall, 8 p.m., free. Additional information: (606) 783-2473.

### Wednesday, Dec. 3

Recital: OperaWorks, Duncan Recital Hall, Baird Music Hall, 8 p.m., free. Additional information: (606) 783-2481.

### Thursday, Dec. 4

Annual Christmas Sing-A-Long, Duncan Recital Hall, Baird Music Hall, 3 p.m., free. Additional information: (606) 783-2473.

Art exhibit: "Family History," Kentucky Folk Art Center, through Feb. 28, charge; Opening reception, Dec. 4, 6-8 p.m. free. Additional information: (606) 783-2204.

Second Stage theatre production: "String Geese Fish Rain," Lucille Caudill Little Theatre, Breckinridge Hall, 7:30 p.m., through Dec. 6, charge. Additional information: (606) 783-2170.

Concert Band performance, Duncan Recital Hall, Baird Music Hall, 8 p.m., free. Additional information: (606) 783-2473.

(MORE)

Tips Nov. 30-Dec. 6  
2-2-2-2-2

Saturday, Dec. 6

Rifle: Eagles vs. Austin Peay State University, Button Rifle Range, 8 a.m., free. Additional information: (606) 783-2088.

Appalachian Holiday Arts and Crafts Fair, Laughlin Health Building, 9 a.m. to 4 p.m., charge. Additional information : (606) 783-2204.

Holiday concert: Faculty Brass Quintet, Duncan Recital Hall, Baird Music Hall, 7 p.m., free. Additional information: (606) 783-2473.

Basketball: Eagles vs. Texas A & M-Corpus Christi, Academic-Athletic Center, 7 p.m., charge. Additional information: (606) 783-2087.

Concert: "Bluegrass Holiday," with David Parmley & Continental Divide, and Don Rigsby, Button Auditorium, 8:30 p.m., charge. Additional information: (606) 783-9001.

#####

11-21-03sas

# News

University Communications

Pauline Young, Director

[www.moreheadstate.edu](http://www.moreheadstate.edu)

Morehead State University

UPO Box 1100

Morehead, KY 40351-1689

(606) 783-2030

Nov. 25, 2003

FOR IMMEDIATE RELEASE

MOREHEAD, Ky.---Morehead State University is seeking the names and addresses of family members of the first nine faculty and administrative staff members employed when the institution reopened in 1923 as a public institution.

They included Charles D. Lewis, academic dean; Inez F. Humphrey, English; Emma Shader, music; Dan M. Holbrook, mathematics; Charles O. Peratt, history; Evelyn Royalty, expression (speech); Henry C. Haggan, agriculture; Ruby Vansant, mathematics; and Anna Carter, secretary. All are deceased.

“President Eaglin has requested that we plan a special ceremony at next spring’s Founders Day to honor those nine individuals whose names were placed on the student family apartment buildings in Lakewood Terrace in 1960 and 1962,” said Keith Kappes, MSU’s vice president for university relations. “Seven of the buildings have been razed and the other two are scheduled for demolition in the next year or so. We want to make sure that those nine MSU pioneers and the buildings named for them are not lost to history.”

Kappes said relatives of the nine would be invited to Founders Day as special guests of the University. Names and addresses of family members should be mailed to University Relations, MSU, 204 Howell-McDowell Ad. Bldg., Morehead, KY 40351; or e-mailed to [k.kappes@moreheadstate.edu](mailto:k.kappes@moreheadstate.edu); or faxed to (606) 783-2277.

Of the nine buildings named for the original faculty and staff members, only Carter and Holbrook halls remain.

#####

# News

University Communications

Pauline Young, Director

[www.moreheadstate.edu](http://www.moreheadstate.edu)

Morehead State University

UPO Box 1100

Morehead, KY 40351-1689

(606) 783-2030

Nov. 25, 2003

FOR IMMEDIATE RELEASE

MOREHEAD, Ky.---A Morehead State University professor has been named president of her professional organization which presented her with a prestigious teaching award.

Emma Gillespie Perkins, assistant professor of art education, is the 41st president of the Kentucky Art Education Association (KAEA), founded in 1957. KAEA is the nation's third oldest, non-profit educational art outreach organization, representing art teachers at all levels. Its members advance art education through professional development, service, advancement of knowledge and leadership.

As state president, Perkins serves as the delegate for Kentucky at the National Art Education Association (NAEA), representing the southeast region of the United States.

At the fall KAEA state conference, held in October at Western Kentucky University, Perkins was presented with the organization's "Higher Education Teacher of the Year" award, and will now be the state's nominee in the competition for the NAEA level for recognition and service honors.

KAEA promotes quality instruction in visual art education and sponsors workshops, publishes journals, articles, reports and surveys, provides its members with a communications network and supports student exhibitions. The organization sponsors numerous events such as the Allstate High School Art Show and Competition and "ARTSFEST," a science fair-style art celebration, both for elementary and middle school students, and mini-grants and professional development for its members.

Perkins coordinated last year's fall KAEA conference, held at MSU. The event included a variety of cultural activities, creative presentations and hands-on experiences, including a "gallery hop," along with workshops.

An MSU graduate, Perkins earned a Master of Arts degree in studio art, having earned a Bachelor of Arts in art history and studio art from Ohio State University. She has completed course work for her doctoral degree in curriculum and instruction: art education design at the University of Kentucky.

Additional information is available by calling Perkins at (606) 783-2458.

####

sas

# News

University Communications

Pauline Young, Director

[www.moreheadstate.edu](http://www.moreheadstate.edu)

Morehead State University

UPO Box 1100

Morehead, KY 40351-1689

(606) 783-2030

Nov. 25, 2003

FOR IMMEDIATE RELEASE

MOREHEAD, Ky.---Morehead State University's Fine Arts Showcase will be held on Wednesday, Dec. 3, at 7:30 p.m. in the Claypool-Young Art Building.

The activity, presented by the Caudill College of Humanities, will feature the presentation of literary and art works that have been selected for inclusion in *Inscape*, the campus visual and literary arts magazine.

Copies of the 2003 fall edition of *Inscape* will be sold at the showcase.

The event, which is free and open to the public, will include live music and refreshments.

Additional information is available by calling Melodie Past, *Inscape* managing editor, at (606) 783-2783 or by e-mail to [mpast@kih.net](mailto:mpast@kih.net).

#####

ajb



# News

University Communications

Pauline Young, Director

[www.moreheadstate.edu](http://www.moreheadstate.edu)

Morehead State University

UPO Box 1100

Morehead, KY 40351-1689

(606) 783-2030

Nov. 25, 2003

FOR IMMEDIATE RELEASE

MOREHEAD, Ky.---Three Morehead State University ROTC cadets have been awarded scholarships.

Cadet Brian D. Reynolds, **Cincinnati, Ohio**, senior, was awarded the Gen. Creighton W. (Abe) Abrams Scholarship. The Bank of America, Fort Sam Houston branch, sponsors this annual program that recognizes students for academic, community and leadership achievement. The program consists of seven scholarships awarded each year, three selected from schools in each of the two ROTC regions and one national recipient. All 270 schools submit nominations each year for this scholarship.

He received one of six regional scholarships which provide cash in the amount of \$1,000 for use at the discretion of the recipient.

Reynolds is the top cadet in MSU's ROTC program this year, serving as the Cadet Battalion Commander. A criminology major and member of the Kentucky National Guard, he will be commissioned as a second lieutenant in the United States Army upon his graduation in May 2004.

Cadet Douglas A. Blevins, **Mount Sterling** senior, and Cadet Joseph A. Smith, **Jackson** senior, were awarded United Services Automobile Association (USAA) Scholarships.

Blevins has been selected to serve as the Cadet Battalion Commander during the spring semester. A music major and current Kentucky National Guard member, he will be commissioned as a second lieutenant in the United States Army upon his graduation in May 2004.

Smith completed both the Leadership Training Course and the National Advanced Leadership Camp in 2003. A criminology major and a member of the Kentucky National Guard, he will be commissioned as a second lieutenant in the United States Army upon his graduation in May 2004.

The USAA sponsors this annual scholarship program that recognizes students for outstanding academic, leadership and community service. There are 29 USAA-sponsored Army ROTC scholarships awarded each year, 14 cadets selected from each of the two ROTC Regions and one national award.

####

ajb

# News

University Communications

Pauline Young, Director

[www.moreheadstate.edu](http://www.moreheadstate.edu)

Morehead State University

UPO Box 1100

Morehead, KY 40351-1689

(606) 783-2030

Nov. 25, 2003

FOR IMMEDIATE RELEASE

MOREHEAD, Ky.---The current high prices in the beef cattle industry are producing increased interest in this industry. With this in mind, the Department of Agricultural and Human Sciences at Morehead State University and the Kentucky Department of Agriculture will hold three meetings in December related to the beef cattle industry.

On Tuesday, Dec 2, John Brethour, professor of beef sciences at the Agricultural Resource Center in Hays, Kan., will talk on "Using Ultrasound in Feeder Cattle."

Dr. Twig Marston, associate professor at Kansas State University, will talk about "Retained Ownership" on Thursday, Dec 11.

On Tuesday, Dec 16, Dr. Lance Whitlock, dairy nutritionist with Agri-King will talk on "Forage Preservation and Utilization."

All meetings will be held in the classroom of the MSU Farm Pavilion beginning with registration at 6 p.m., followed by a meal and the program.

Additional information is available by calling Dr. Troy Wistuba, assistant professor of agriculture, at (606) 783-2671.

####

# News

University Communications

Pauline Young, Director

[www.moreheadstate.edu](http://www.moreheadstate.edu)

Morehead State University

UPO Box 1100

Morehead, KY 40351-1689

(606) 783-2030

Nov. 25, 2003

FOR IMMEDIATE RELEASE

MOREHEAD, Ky.---The Kentucky Center for Traditional Music will present an evening of traditional and bluegrass music on Saturday, Dec. 6. "Bluegrass Holiday" will feature David Parmley & Continental Divide along with Don Rigsby.

Parmley is the co-founder and former lead singer for the Bluegrass Cardinals. With Continental Divide, he performs a variety of music from traditional and new bluegrass to country.

Rigsby, an award winning vocalist and mandolin player, will be joined on stage by Ron Stewart, Rick Wasson and Harold Nixon.

The show will begin at 8:30 p.m. at Button Auditorium on the Morehead State University campus. Admission will be \$10 for the general public and \$5 for MSU students with a valid EagleCard ID.

Additional information is available by calling KCTM at (606) 783-9001, or the Kentucky Folk Art Center at (606) 783-2204.

####

ajb

# News

University Communications

Pauline Young, Director

[www.moreheadstate.edu](http://www.moreheadstate.edu)

Morehead State University

UPO Box 1100

Morehead, KY 40351-1689

(606) 783-2030

Nov. 25, 2003

FOR IMMEDIATE RELEASE

MOREHEAD, Ky.---Morehead State University will be closed Wednesday through Friday, Nov. 26-28, in observance of the Thanksgiving holiday.

Offices will reopen and classes resume on Monday, Dec. 1, at 8 a.m.

Any questions may be directed to the MSU Police Department at (606) 783-2035.

####

# News

University Communications

Pauline Young, Director

[www.moreheadstate.edu](http://www.moreheadstate.edu)

Morehead State University

UPO Box 1100

Morehead, KY 40351-1689

(606) 783-2030

Nov. 25, 2003

FOR IMMEDIATE RELEASE

MOREHEAD, Ky.---Dr. Ronald D. Morrison, professor of English at Morehead State University, received the 2003 Outstanding Teacher Award from the South Atlantic Association of Departments of English (SAADE).

The award was presented during the annual meeting of the South Atlantic Modern Language Association (SAMLA) in Atlanta, Nov. 15. SAADE is an affiliate organization of SAMLA, a professional organization for scholars and teachers of modern languages with a membership of more than 2,000.

Each year SAADE recognizes one outstanding university teacher from the following institutional categories: two-year colleges, four-year private colleges and universities, four-year public colleges and universities, and institutions granting the doctorate in English.

At the awards ceremony, Dr. Morrison gave a brief address on his teaching philosophy, which will be published in the SAADE Newsletter.

"I'm very proud to have won this award and to bring this honor back to Morehead State," said Dr. Morrison. "Teaching is simultaneously one of the most exhilarating and humbling experiences one can ever experience."

Dr. Morrison said that he was especially proud to have been nominated for the award by his department chair, Dr. Philip Krummrich, chair of MSU's Department of English, Foreign Languages and Philosophy.

A member of the MSU faculty since 1988, Dr. Morrison holds the Ph.D., M.A., and M.Phil. degrees in English from the University of Kansas. He received his bachelor's degree in English from Marymount College of Kansas.

A specialist in Victorian literature, Dr. Morrison has authored more than 40 scholarly essays, abstracts, and book reviews, and he makes frequent presentations at state, regional, and national academic conferences.

On the campus, he chairs the University Tenure Committee and the President's Committee on Faculty Compensation and is a former chair of the Faculty Senate.

####

ajb