

News

University Communications

Pauline Young, Director

www.moreheadstate.edu

Morehead State University

UPO Box 1100

Morehead, KY 40351-1689

(606) 783-2030

Oct. 3, 2003

FOR IMMEDIATE RELEASE

MOREHEAD, Ky.---Morehead State University's Office of Continuing Education will be offering Hatha Yoga classes that can help participants renew, regenerate, and rejuvenate their bodies, while also donating to a worthy cause.

Teaching the class will be Donna Jusay, MSU graduate and certified YogaFit instructor. Hatha Yoga, which means "yoga for health," is based on an ancient art that originated in India. This style of yoga strengthens and stretches the muscles, joints and spine. YogaFit is a demystified, user-friendly form of yoga that is designed for everybody.

Classes are open to the public and will be held on Mondays and Wednesdays beginning Oct. 6, from 6:15-7 p.m. at MSU Wellness Center. Participants will need to bring a towel for the classes and are asked to bring a non-perishable food item, or make a \$1 donation for each class attended. All items donated will be presented to Christian Social Services, and DOVES of Gateway.

"This time of year is when there is the greatest need," said Marilyn Smith, Christian Social Services representative. "This is a wonderful opportunity to give to the community and show true collaboration with the University and community members."

Additional information and registration details are available by calling the MSU Office of Continuing Education at (606) 783-2875.

####

dt

News

University Communications

Pauline Young, Director

www.moreheadstate.edu

Morehead State University

UPO Box 1100

Morehead, KY 40351-1689

(606) 783-2030

Oct. 3, 2003

FOR IMMEDIATE RELEASE

MOREHEAD, Ky.--- A workshop offered by Morehead State University's Small Business Development Center is designed to help would-be entrepreneurs find out what they need to know to get started with their own businesses.

"Starting and Financing Your Business" will be held from 5:30-7:30 p.m. on Thursday, Oct. 9, at the Kentucky Folk Art Center, located at 102 W. First Street in Morehead. The seminar will focus on preliminaries of business and financing opportunities.

Topics for discussion will include advertising and marketing, permits/licenses, financial considerations, business planning and selection, and sources of loans.

The workshop is free for all participants, but advance registration is necessary due to limited seating.

Additional information and registration details are available by calling the MSU Small Business Development Center at (606) 783-2895.

####

dt

News

University Communications

Pauline Young, Director

www.moreheadstate.edu

Morehead State University

UPO Box 1100

Morehead, KY 40351-1689

(606) 783-2030

Oct. 3, 2003

FOR IMMEDIATE RELEASE

MOREHEAD, Ky.--- Morehead State University is offering free flu vaccines to faculty, staff, faculty/staff spouses, students, retirees and retirees/spouses while supplies last.

To receive a vaccination, employees must present their faculty/staff ID Cards. Spouses of MSU employees must provide the employee's Social Security number and MSU department name.

Flu vaccination clinics have been scheduled for several locations on campus:

- Tuesday, Oct. 21, Thompson Hall Basement, 9 a.m.-2 p.m.;
- Wednesday, Oct. 29, Rice Maintenance Building conference room, 3-5 p.m.;
- Monday, Nov. 3, Allie Young Hall Room 31, 1-5 p.m.;
- Tuesday, Nov. 4, Thompson Hall Basement, 9 a.m.-4 p.m.;
- Tuesday, Nov. 11, Thompson Hall Basement, 9 a.m.-4 p.m.;
- Wednesday, Nov 12, Jayne Stadium Training Room, 1-3 p.m.;

The flu vaccine also will be given daily in the Caudill Health Clinic in Allie Young Hall, beginning, Nov. 17, and continuing until the supply is depleted: Monday through Friday, 9-11 a.m. and 1:30-4:15 p.m.

Additional information is available by calling the clinic at 783-2055.

####

dt

News

University Communications

Pauline Young, Director

www.moreheadstate.edu

Morehead State University

UPO Box 1100

Morehead, KY 40351-1689

(606) 783-2030

Oct. 7, 2003

FOR IMMEDIATE RELEASE

MOREHEAD, Ky.---An experienced educator and counseling professional has been named chair of Morehead State University's Department of Leadership and Secondary Education.

Patricia W. Stevens, Ph.D., began work as the LSE chair Aug. 11, with the beginning of the fall 2003 semester. She most recently worked as a professor and chair in the Department of Counseling and Educational Leadership at Eastern Kentucky University, also serving as the coordinator of the counseling and education psychology program.

At MSU, Dr. Stevens will supervise the administration of the degree programs within LSE department, including counseling, adult and higher education, secondary education and educational leadership. Her instructional duties will include teaching one counseling course each semester.

"I'm delighted to be here," Dr. Stevens said. "The people have been incredibly supportive and encouraging. She added that the natural beauty of MSU's campus is an extra benefit, allowing her to work "in an incredible atmosphere."

Dr. Stevens' primary academic discipline is in training mental health counseling professionals, and she has an extensive background in that field. She has worked as a mental health worker, a rape response counselor, substance abuse counselor, and as a psychotherapist, among other positions, in both the public and private sectors.

Her higher education teaching experience includes serving on the faculty at the University of Colorado at Denver, where she was a professor of counseling psychology. She also was a past director of the school's marriage and family training program and its Counseling and Family Therapy Center.

Dr. Stevens has written numerous journal articles and other publications, and has presented her research in seminars, meetings and workshops on state, regional and national levels. Additionally, she has made presentations on such issues as family counseling, parenting, school-based therapy and substance abuse in Vietnam, Costa Rica, Australia, Malaysia and Canada.

(MORE)

New LSE chair
2-2-2-2-2

The author of several books and book chapters, she co-wrote "Substance Abuse Counseling," now in its second edition with the Prentice-Hall publishing company and in review for a third edition for spring 2004. She also has conducted online courses and created educational materials in other non-print media.

Dr. Stevens earned a bachelor's degree in psychology at Spring Hill College in Mobile, Ala.; a master's degree in agency counseling at the University of Alabama at Birmingham; and a doctoral degree in counselor education at Mississippi State University.

Additional information is available by calling Dr. Stevens at (606) 783-2261.

####

sas



News

University Communications

Pauline Young, Director

www.moreheadstate.edu

Morehead State University

UPO Box 1100

Morehead, KY 40351-1689

(606) 783-2030

Oct. 7, 2003

FOR IMMEDIATE RELEASE

MOREHEAD, Ky.---A popular musical tradition at Morehead State University will continue with the presentation of Octubafest, set for Oct. 12-Nov. 23.

Octubafest is a series of concerts featuring instruments of the tuba family, including the euphonium. Among the musicians performing are MSU students, faculty and guests.

Kicking off this year's series will be euphonium recitals by junior Shelly Molinary of **St. Paul, Va.**, who will perform at 3 p.m. on Sunday, Oct. 12, and graduate student Christopher Reighley of **Wilmington, Ohio**, at 8 p.m. on Wednesday, Oct. 15. The recitals will be held in Duncan Recital Hall in the Baird Music Hall on campus.

The tuba/euphonium studio recitals will be held on Thursday, Oct. 23. These concerts feature solos, quartets, and the MSU Tuba/Euphonium Ensemble at 3 and 8 p.m., also in Duncan.

"Octoberfest!" will close out the month's concerts, with the Tuba/Euphonium Ensemble performing at the One on One Restaurant and Lounge on Main Street in Morehead from 8-10 p.m. on Thursday, Oct. 30.

Junction, a professional tuba/euphonium quartet, will open November's activities with a recital at 3 p.m. on Tuesday, Nov. 4, in Duncan Recital Hall. The group was formed to build a broader repertoire through the performance of new original works and arrangements for tuba/euphonium quartet. The ensemble's members include tubist Dr. Stacy Baker, MSU associate professor of music; euphoniumists Kelly Biese and Angie Hunter, music faculty at the German Bible Institute in Koenigsfeld, Germany; and Velvet Brown, associate professor of tuba/euphonium at Penn State University.

Student performances continue with a recital by Lawrence Banks, **Ashland** senior, on tuba, at 5 p.m. on Sunday, Nov. 9. James Hay, **Tollesboro** junior, will play the euphonium in a joint recital with Chris Kennedy, **Newark, Ohio**, senior, on French horn, at 1 p.m. on Sunday, Nov. 16.

The final concert of Octubafest will be a student tuba recital with Brian Egan, **Dayton** senior. He will perform at 1 p.m. on Sunday, Nov. 23.

All events will be held in Duncan Recital Hall except for the Oct. 30 ensemble performance. The on-campus performances are free and open to the public.

Additional information is available by calling Dr. Baker at (606) 783-2107 or by e-mail at s.baker@moreheadstate.edu.

####

sas

Tips

University Communications

Pauline Young, Director

www.moreheadstate.edu

Morehead State University

UPO Box 1100

Morehead, KY 40351-1689

(606) 783-2030

HIGHLIGHTS AT MOREHEAD STATE UNIVERSITY

(Oct. 12-18)

Thursday, Oct. 16

Opening reception: "Images from the Mountains" traveling art exhibit, fifth floor, Camden-Carroll Library, 4-6 p.m., free; exhibit runs through Nov. 7. Additional information: (606) 783-2829.

Homecoming Weekend, through Oct. 18. Additional information: (606) 783-2080.

Homecoming Parade, downtown Morehead, 6:30 p.m., free. Additional information: (606) 783-2071.

"Octubafest," tuba/euphonium performances, Duncan Recital Hall, 8 p.m., free, also Oct. 23. Additional information: (606) 783-2107.

Friday, Oct. 17

Hall of Fame Banquet, multi-purpose room, Laughlin Health Building, 7 p.m.; ticket required. Additional information: (606) 783-2080.

Saturday, Oct. 18

Sculpture unveiling, Crosthwait Plaza, 11 a.m., free. Additional information: (606) 783-2080.

Football: MSU vs. Davidson, Jayne Stadium, 1 p.m., charge. Additional information: (606) 783-2020.

Basketball preview: MSU men's and women's teams, Academic-Athletic Center, following football game, free. Additional information: (606) 783-2088.

####

10-6-03sas

News

University Communications

Pauline Young, Director

www.moreheadstate.edu

Morehead State University

UPO Box 1100

Morehead, KY 40351-1689

(606) 783-2030

Oct. 7, 2003

FOR IMMEDIATE RELEASE

MOREHEAD, Ky.---A Daviess County student is among those participating in the musical "Good News," Tuesday through Sunday, Oct. 7-12, in the Lucille Little Theatre on the campus of Morehead State University.

The musical portrays college life in the 1920s, complete with football heroes, pretty coeds and stuffy college professors. "Good News" features classic Broadway hit tunes, including "The Varsity Drag" and "The Best Things in Life Are Free."

John Page of **Owensboro** will play Tom Marlowe in the production. A junior, he is a theatre major and a member of both the MSU Players and Theta Alpha Phi theatre honorary. He is the son of Patricia Blair and John A. Page.

Showtimes are 7:30 p.m. Oct. 7-11; and 2 p.m. on Oct. 12. Admission is \$8 for adults, \$2 for non-MSU students and senior citizens and free for MSU students with a valid EagleCard ID.

Additional information on the production is available by calling the Theatre Box Office at (606) 783-2170.

####

sas

News

University Communications

Pauline Young, Director

www.moreheadstate.edu

Morehead State University

UPO Box 1100

Morehead, KY 40351-1689

(606) 783-2030

Oct. 7, 2003

FOR IMMEDIATE RELEASE

MOREHEAD, Ky.---A Lewis County student is among those presenting the musical "Good News," Tuesday through Sunday, Oct. 7-12, in the Lucille Little Theatre on the campus of Morehead State University.

The musical portrays college life in the 1920s, complete with football heroes, pretty coeds and stuffy college professors. "Good News" features classic Broadway hit tunes, including "The Varsity Drag" and "The Best Things in Life Are Free."

Nate Kamer of **Garrison** will play Coach Bill Johnson. A senior, he is a theatre major, a member of the MSU Players and pledge president of Theta Alpha Phi theatre honorary. He is the son of Dan and Connie Kamer.

Showtimes are 7:30 p.m. Oct. 7-11; and 2 p.m. on Oct. 12. Admission is \$8 for adults, \$2 for non-MSU students and senior citizens and free for MSU students with a valid EagleCard ID.

Additional information on the production is available by calling the Theatre Box Office at (606) 783-2170.

####

sas

News

University Communications

Pauline Young, Director

www.moreheadstate.edu

Morehead State University

UPO Box 1100

Morehead, KY 40351-1689

(606) 783-2030

Oct. 7, 2003

FOR IMMEDIATE RELEASE

MOREHEAD, Ky.---A Boyd County student is among those participating in the musical “Good News,” Tuesday through Sunday, Oct. 7-12, in the Lucille Little Theatre on the campus of Morehead State University.

The musical portrays college life in the 1920s, complete with football heroes, pretty coeds and stuffy college professors. “Good News” features classic Broadway hit tunes, including “The Varsity Drag” and “The Best Things in Life Are Free.”

Kyle Hamilton of **Ashland** will play Slats in the production. A sophomore, he is a theatre major and a member of both MSU Players and Theta Alpha Phi national theatre honorary. He is the son of Mickey and Johnda Blankenship.

Showtimes are 7:30 p.m. Oct. 7-11; and 2 p.m. on Oct. 12. Admission is \$8 for adults, \$2 for non-MSU students and senior citizens and free for MSU students with a valid EagleCard ID.

Additional information on the production is available by calling the Theatre Box Office at (606) 783-2170.

####

sas

News

University Communications

Pauline Young, Director

www.moreheadstate.edu

Morehead State University

UPO Box 1100

Morehead, KY 40351-1689

(606) 783-2030

Oct. 7, 2003

FOR IMMEDIATE RELEASE

MOREHEAD, Ky.---A Grant County student is among those presenting the musical “Good News,” Tuesday through Sunday, Oct. 7-12, in the Lucille Little Theatre on the campus of Morehead State University.

The musical portrays college life in the 1920s, complete with football heroes, pretty coeds and stuffy college professors. “Good News” features classic Broadway hit tunes, including “The Varsity Drag” and “The Best Things in Life Are Free.”

Jennifer Bennett of **Crittenden** will play Irene in the production. A senior, she is a theatre major and a member of Sigma Sigma Sigma sorority, MSU Players and Theta Alpha Phi theatre honorary. She is the daughter of Earl and Christy Bennett.

Showtimes are 7:30 p.m. Oct. 7-11; and 2 p.m. on Oct. 12. Admission is \$8 for adults, \$2 for non-MSU students and senior citizens and free for MSU students with a valid EagleCard ID.

Additional information on the production is available by calling the Theatre Box Office at (606) 783-2170.

####

sas

News

University Communications

Pauline Young, Director

www.moreheadstate.edu

Morehead State University

UPO Box 1100

Morehead, KY 40351-1689

(606) 783-2030

Oct. 7, 2003

FOR IMMEDIATE RELEASE

MOREHEAD, Ky.---A Lincoln County student is among those presenting the musical “Good News,” Tuesday through Sunday, Oct. 7-12, in the Lucille Little Theatre on the campus of Morehead State University.

The musical portrays college life in the 1920s, complete with football heroes, pretty coeds and stuffy college professors. “Good News” features classic Broadway hit tunes, including “The Varsity Drag” and “The Best Things in Life Are Free.”

Elizabeth Nicole Estes of **Stanford** will play Corda in the production. A sophomore, she is a member of the MSU Marching Band Color Guard and the daughter of Danny and Mary Ann Estes.

Showtimes are 7:30 p.m. Oct. 7-11; and 2 p.m. on Oct. 12. Admission is \$8 for adults, \$2 for non-MSU students and senior citizens and free for MSU students with a valid EagleCard ID.

Additional information on the production is available by calling the Theatre Box Office at (606) 783-2170.

####

sas

News

University Communications

Pauline Young, Director

www.moreheadstate.edu

Morehead State University

UPO Box 1100

Morehead, KY 40351-1689

(606) 783-2030

Oct. 7, 2003

FOR IMMEDIATE RELEASE

MOREHEAD, Ky.---A Meade County student is among those participating in the musical "Good News," Tuesday through Sunday, Oct. 7-12, in the Lucille Little Theatre on the campus of Morehead State University.

The musical portrays college life in the 1920s, complete with football heroes, pretty coeds and stuffy college professors. "Good News" features classic Broadway hit tunes, including "The Varsity Drag" and "The Best Things in Life Are Free."

Kevin Allmon of **Brandenburg** will portray Sylvester in the production. A freshman, he is a theatre major and a member of the MSU Players. He is the son of Patricia Blair and John A. Page.

Showtimes are 7:30 p.m. Oct. 7-11; and 2 p.m. on Oct. 12. Admission is \$8 for adults, \$2 for non-MSU students and senior citizens and free for MSU students with a valid EagleCard ID.

Additional information on the production is available by calling the Theatre Box Office at (606) 783-2170.

####

sas

News

University Communications

Pauline Young, Director

www.moreheadstate.edu

Morehead State University

UPO Box 1100

Morehead, KY 40351-1689

(606) 783-2030

Oct. 7, 2003

FOR IMMEDIATE RELEASE

MOREHEAD, Ky.---Two Jefferson County students are among those participating in the musical "Good News," Tuesday through Sunday, Oct. 7-12, in the Lucille Little Theatre on the campus of Morehead State University.

The musical portrays college life in the 1920s, complete with football heroes, pretty coeds and stuffy college professors. "Good News" features classic Broadway hit tunes, including "The Varsity Drag" and "The Best Things in Life Are Free."

Leah Brown of **Louisville** will play Cloe and serve as choreographer in the production. A junior public relations and advertising major, she is a member of MSU Players. She is the daughter of Christopher and Linda Brown.

Emily Ray, also of **Louisville**, will play Frances. A senior psychology major, she is a member of MSU Players, Psi Chi, Psi Lambda and Theta Alpha Phi.

Showtimes are 7:30 p.m. Oct. 7-11; and 2 p.m. on Oct. 12. Admission is \$8 for adults, \$2 for non-MSU students and senior citizens and free for MSU students with a valid EagleCard ID.

Additional information on the production is available by calling the Theatre Box Office at (606) 783-2170.

####

sas

News

University Communications

Pauline Young, Director

www.moreheadstate.edu

Morehead State University

UPO Box 1100

Morehead, KY 40351-1689

(606) 783-2030

Oct. 7, 2003

FOR IMMEDIATE RELEASE

MOREHEAD, Ky.---A Martin County student is among those presenting the musical "Good News," Tuesday through Sunday, Oct. 7-12, in the Lucille Little Theatre on the campus of Morehead State University.

The musical portrays college life in the 1920s, complete with football heroes, pretty coeds and stuffy college professors. "Good News" features classic Broadway hit tunes, including "The Varsity Drag" and "The Best Things in Life Are Free."

Sherre Robirds of Inez will play Amy in the production. A junior theatre/journalism major, she is the daughter of the Rev. and Mrs. David L. Robirds. She is a member of MSU Players and a staff writer for the Trail Blazer, MSU's student newspaper.

Showtimes are 7:30 p.m. Oct. 7-11; and 2 p.m. on Oct. 12. Admission is \$8 for adults, \$2 for non-MSU students and senior citizens and free for MSU students with a valid EagleCard ID.

Additional information on the production is available by calling the Theatre Box Office at (606) 783-2170.

####

sas

News

University Communications

Pauline Young, Director

www.moreheadstate.edu

Morehead State University

UPO Box 1100

Morehead, KY 40351-1689

(606) 783-2030

Oct. 7, 2003

FOR IMMEDIATE RELEASE

MOREHEAD, Ky.---A Magoffin County student is among those presenting the musical “Good News,” Tuesday through Sunday, Oct. 7-12, in the Lucille Little Theatre on the campus of Morehead State University.

The musical portrays college life in the 1920s, complete with football heroes, pretty coeds and stuffy college professors. “Good News” features classic Broadway hit tunes, including “The Varsity Drag” and “The Best Things in Life Are Free.”

Travis H. Montgomery of **Salyersville** will play Gunner in the production. A junior English major, he is a member of Grand Master Shin’s Chung Do Kwan Tao Kwan Do Club of Salyersville. He is the son of Donald and Linda Montgomery.

Showtimes are 7:30 p.m. Oct. 7-11; and 2 p.m. on Oct. 12. Admission is \$8 for adults, \$2 for non-MSU students and senior citizens and free for MSU students with a valid EagleCard ID.

Additional information on the production is available by calling the Theatre Box Office at (606) 783-2170.

####

sas

News

University Communications

Pauline Young, Director

www.moreheadstate.edu

Morehead State University

UPO Box 1100

Morehead, KY 40351-1689

(606) 783-2030

Oct. 7, 2003

FOR IMMEDIATE RELEASE

MOREHEAD, Ky.---A Shelby County student is among those participating in the musical "Good News," Tuesday through Sunday, Oct. 7-12, in the Lucille Little Theatre on the campus of Morehead State University.

The musical portrays college life in the 1920s, complete with football heroes, pretty coeds and stuffy college professors. "Good News" features classic Broadway hit tunes, including "The Varsity Drag" and "The Best Things in Life Are Free."

Jonathan Mayo of **Shelbyville** will play Pooch in the production. A sophomore theatre major, he is a member of MSU Players and the son of Derek and Jodi Mayo.

Showtimes are 7:30 p.m. Oct. 7-11; and 2 p.m. on Oct. 12. Admission is \$8 for adults, \$2 for non-MSU students and senior citizens and free for MSU students with a valid EagleCard ID.

Additional information on the production is available by calling the Theatre Box Office at (606) 783-2170.

####

sas

News

University Communications

Pauline Young, Director

www.moreheadstate.edu

Morehead State University

UPO Box 1100

Morehead, KY 40351-1689

(606) 783-2030

Oct. 7, 2003

FOR IMMEDIATE RELEASE

MOREHEAD, Ky.---A Kenton County student is among those presenting the musical “Good News,” Tuesday through Sunday, Oct. 7-12, in the Lucille Little Theatre on the campus of Morehead State University.

The musical portrays college life in the 1920s, complete with football heroes, pretty coeds and stuffy college professors. “Good News” features classic Broadway hit tunes, including “The Varsity Drag” and “The Best Things in Life Are Free.”

Rachel B. Doan of **Erlanger** will play Millie in the production. A junior theatre education major, she is a member of Theta Alpha theatre honorary, coordinator of MSU Players and academics chair of Delta Zeta sorority. She is the daughter of Doug and Teresa Doan.

Showtimes are 7:30 p.m. Oct. 7-11; and 2 p.m. on Oct. 12. Admission is \$8 for adults, \$2 for non-MSU students and senior citizens and free for MSU students with a valid EagleCard ID.

Additional information on the production is available by calling the Theatre Box Office at (606) 783-2170.

#####

sas

News

University Communications

Pauline Young, Director

www.moreheadstate.edu

Morehead State University

UPO Box 1100

Morehead, KY 40351-1689

(606) 783-2030

Oct. 7, 2003

FOR IMMEDIATE RELEASE

MOREHEAD, Ky.---A Hardin County student is among those participating in the musical "Good News," Tuesday through Sunday, Oct. 7-12, in the Lucille Little Theatre on the campus of Morehead State University.

The musical portrays college life in the 1920s, complete with football heroes, pretty coeds and stuffy college professors. "Good News" features classic Broadway hit tunes, including "The Varsity Drag" and "The Best Things in Life Are Free."

Chris Ryan of **Elizabethtown** will play **Windy** in the production. A freshman theatre major, he is a member of Lambda Chi Alpha fraternity and the U.S. Navy Reserves.

Showtimes are 7:30 p.m. Oct. 7-11; and 2 p.m. on Oct. 12. Admission is \$8 for adults, \$2 for non-MSU students and senior citizens and free for MSU students with a valid EagleCard ID.

Additional information on the production is available by calling the Theatre Box Office at (606) 783-2170.

####

sas

News

University Communications

Pauline Young, Director

www.moreheadstate.edu

Morehead State University

UPO Box 1100

Morehead, KY 40351-1689

(606) 783-2030

Oct. 7, 2003

FOR IMMEDIATE RELEASE

MOREHEAD, Ky.---A Carter County student is among those participating in the musical “Good News,” Tuesday through Sunday, Oct. 7-12, in the Lucille Little Theatre on the campus of Morehead State University.

The musical portrays college life in the 1920s, complete with football heroes, pretty coeds and stuffy college professors. “Good News” features classic Broadway hit tunes, including “The Varsity Drag” and “The Best Things in Life Are Free.”

Cristy Smith of **Grayson** is the costume designer for the production. A junior theatre major, she is a member of MSU Players and Theta Alpha Phi theatre honorary. She is the daughter of Ronnie and Donna Smith.

Showtimes are 7:30 p.m. Oct. 7-11; and 2 p.m. on Oct. 12. Admission is \$8 for adults, \$2 for non-MSU students and senior citizens and free for MSU students with a valid EagleCard ID.

Additional information on the production is available by calling the Theatre Box Office at (606) 783-2170.

####

sas

News

University Communications

Pauline Young, Director

www.moreheadstate.edu

Morehead State University

UPO Box 1100

Morehead, KY 40351-1689

(606) 783-2030

Oct. 7, 2003

FOR IMMEDIATE RELEASE

MOREHEAD, Ky.---A Wolfe County student is among those participating in the musical "Good News," Tuesday through Sunday, Oct. 7-12, in the Lucille Little Theatre on the campus of Morehead State University.

The musical portrays college life in the 1920s, complete with football heroes, pretty coeds and stuffy college professors. "Good News" features classic Broadway hit tunes, including "The Varsity Drag" and "The Best Things in Life Are Free."

Robert Patton Jr. of **Campton** will play a football player, policeman and teacher in the production. A freshman communication major, he is a member of MSU Players and the Newspaper and Public Relations Students Society of America. He is the son of Bobby and Linda Patton.

Showtimes are 7:30 p.m. Oct. 7-11; and 2 p.m. on Oct. 12. Admission is \$8 for adults, \$2 for non-MSU students and senior citizens and free for MSU students with a valid EagleCard ID.

Additional information on the production is available by calling the Theatre Box Office at (606) 783-2170.

####

sas

News

University Communications

Pauline Young, Director

www.moreheadstate.edu

Morehead State University

UPO Box 1100

Morehead, KY 40351-1689

(606) 783-2030

Oct. 7, 2003

FOR IMMEDIATE RELEASE

MOREHEAD, Ky.---A Campbell County student is among those participating in the musical "Good News," Tuesday through Sunday, Oct. 7-12, in the Lucille Little Theatre on the campus of Morehead State University.

The musical portrays college life in the 1920s, complete with football heroes, pretty coeds and stuffy college professors. "Good News" features classic Broadway hit tunes, including "The Varsity Drag" and "The Best Things in Life Are Free."

Juliana Peterson of **Alexandria** will play Flo in the production. A senior theatre major, she is a member of Theta Alpha Phi theatre honorary and MSU Players. She is the daughter of Brenda Moore.

Showtimes are 7:30 p.m. Oct. 7-11; and 2 p.m. on Oct. 12. Admission is \$8 for adults, \$2 for non-MSU students and senior citizens and free for MSU students with a valid EagleCard ID.

Additional information on the production is available by calling the Theatre Box Office at (606) 783-2170.

####

sas

News

University Communications

Pauline Young, Director

www.moreheadstate.edu

Morehead State University

UPO Box 1100

Morehead, KY 40351-1689

(606) 783-2030

Oct. 7, 2003

FOR IMMEDIATE RELEASE

MOREHEAD, Ky.---A Madison County student is among those participating in the musical "Good News," Tuesday through Sunday, Oct. 7-12, in the Lucille Little Theatre on the campus of Morehead State University.

The musical portrays college life in the 1920s, complete with football heroes, pretty coeds and stuffy college professors. "Good News" features classic Broadway hit tunes, including "The Varsity Drag" and "The Best Things in Life Are Free."

Jason L. Baker of Berea will play Brad in the production. He is a freshman theatre major.

Showtimes are 7:30 p.m. Oct. 7-11; and 2 p.m. on Oct. 12. Admission is \$8 for adults, \$2 for non-MSU students and senior citizens and free for MSU students with a valid EagleCard ID.

Additional information on the production is available by calling the Theatre Box Office at (606) 783-2170.

####

sas

News

University Communications

Pauline Young, Director

www.moreheadstate.edu

Morehead State University

UPO Box 1100

Morehead, KY 40351-1689

(606) 783-2030

Oct. 7, 2003

FOR IMMEDIATE RELEASE

MOREHEAD, Ky.---A Bath County student is among those participating in the musical “Good News,” Tuesday through Sunday, Oct. 7-12, in the Lucille Little Theatre on the campus of Morehead State University.

The musical portrays college life in the 1920s, complete with football heroes, pretty coeds and stuffy college professors. “Good News” features classic Broadway hit tunes, including “The Varsity Drag” and “The Best Things in Life Are Free.”

Travis Yates McNabb of **Salt Lick** is the assistant stage manager for the production. A sophomore theatre major, he is a member of MSU Players and the son of Relzda McNabb and Debbie McNabb.

Showtimes are 7:30 p.m. Oct. 7-11; and 2 p.m. on Oct. 12. Admission is \$8 for adults, \$2 for non-MSU students and senior citizens and free for MSU students with a valid EagleCard ID.

Additional information on the production is available by calling the Theatre Box Office at (606) 783-2170.

####

sas

News

University Communications

Pauline Young, Director

www.moreheadstate.edu

Morehead State University

UPO Box 1100

Morehead, KY 40351-1689

(606) 783-2030

Oct. 7, 2003

FOR IMMEDIATE RELEASE

MOREHEAD, Ky.---Two **West Liberty** students are among those participating in the musical "Good News," Tuesday through Sunday, Oct. 7-12, in the Lucille Little Theatre on the campus of Morehead State University.

The musical portrays college life in the 1920s, complete with football heroes, pretty coeds and stuffy college professors. "Good News" features classic Broadway hit tunes, including "The Varsity Drag" and "The Best Things in Life Are Free."

Kyle Lewis, the son of Nancy and Charles, will portray a policeman and appear in the role of Grubs. He is a sophomore electronic media major.

Jessica Taulbee is working in the scene shop for the production. A graduate student in theatre, she is a member of Theta Alpha Phi theatre honorary. She is the daughter of Marilyn Taulbee.

Showtimes are 7:30 p.m. Oct. 7-11; and 2 p.m. on Oct. 12. Admission is \$8 for adults, \$2 for non-MSU students and senior citizens and free for MSU students with a valid EagleCard ID.

Additional information on the production is available by calling the Theatre Box Office at (606) 783-2170.

####

sas

News

University Communications

Pauline Young, Director

www.moreheadstate.edu

Morehead State University

UPO Box 1100

Morehead, KY 40351-1689

(606) 783-2030

Oct. 7, 2003

FOR IMMEDIATE RELEASE

MOREHEAD, Ky.---Four **Morehead** students are among those participating in the musical “Good News,” Tuesday through Sunday, Oct. 7-12, in the Lucille Little Theatre on the campus of Morehead State University.

The musical portrays college life in the 1920s, complete with football heroes, pretty coeds and stuffy college professors. “Good News” features classic Broadway hit tunes, including “The Varsity Drag” and “The Best Things in Life Are Free.”

Dallas Black is the production’s set designer. A junior theatre major, he is a member of MSU Players and a Theta Alpha Phi pledge. He is the son of Barbara and Charles Black.

Hannah Leitz will appear in the role of Connie Lane. A senior theatre major, she is a member of Theta Alpha Phi theatre honorary and MSU Players. She is the daughter of Steve and Judy Leitz.

Jamie Thompson will portray Vinny in the show and serve as the sound designer. A sophomore theatre major, she is a member of the Color Guard, Winter Guard and MSU Players. She is a Theta Alpha Phi pledge.

Jason Waddell will portray Larry. He is a freshman art major.

Showtimes are 7:30 p.m. Oct. 7-11; and 2 p.m. on Oct. 12. Admission is \$8 for adults, \$2 for non-MSU students and senior citizens and free for MSU students with a valid EagleCard ID.

Additional information on the production is available by calling the Theatre Box Office at (606) 783-2170.

#####

sas

News

University Communications

Pauline Young, Director

www.moreheadstate.edu

Morehead State University

UPO Box 1100

Morehead, KY 40351-1689

(606) 783-2030

Oct. 7, 2003

FOR IMMEDIATE RELEASE

MOREHEAD, Ky.--- Six Ohio students are among those participating in the musical "Good News," Tuesday through Sunday, Oct. 7-12, in the Lucille Little Theatre on the campus of Morehead State University.

The musical portrays college life in the 1920s, complete with football heroes, pretty coeds and stuffy college professors. "Good News" features classic Broadway hit tunes, including "The Varsity Drag" and "The Best Things in Life Are Free."

Alicia Brown of **Lucasville** will play Babe O'Day. A sophomore theatre major, she is a member of the Cross Country/Track and Field team and MSU Players. An Honors Program student, she is the daughter of Jim and Denise Brown.

Katherine Burdick of **Mason** has been cast in the role of Patricia. A junior communications major, she is a member of the speech team and Concert Band at MSU. She is the daughter of Robert and Donna Burdick.

Josh Daniels of **West Union** is the show's lighting designer and will portray Beef Saunders in the production. A senior theatre/electronic media major, he is a member of Theta Alpha Phi theatre honorary and MSU Players. The son of Russell and Donna Daniels, he worked as a spot electrician for the "Lost Colony" outdoor drama.

Tara Denney of **Jackson** is the musical's assistant stage manager. A sophomore theatre major, she is active in the Honors Program and a member of MSU Players. A Theta Alpha Phi pledge, she is the daughter of Phillip and Mabel Denney.

Laurie Dye of **Findlay** is playing Professor Charlotte Kenyon in the show. She is a senior theatre major and the daughter of Joe and Pam Dye.

Cassandra Rowland of **Cincinnati** will portray Pearl. She is a freshman special education major and a member of the Eagle M.A.F.I.A. She is the daughter of Gary and Anne Rowland.

Showtimes are 7:30 p.m. Oct. 7-11; and 2 p.m. on Oct. 12. Admission is \$8 for adults, \$2 for non-MSU students and senior citizens and free for MSU students with a valid EagleCard ID. Additional information is available by calling the box office at (606) 783-2170.

####

sas

News

University Communications

Pauline Young, Director

www.moreheadstate.edu

Morehead State University

UPO Box 1100

Morehead, KY 40351-1689

(606) 783-2030

Oct. 7, 2003

FOR IMMEDIATE RELEASE

MOREHEAD, Ky.---Two West Virginia students are among those presenting the musical “Good News,” Tuesday through Sunday, Oct. 7-12, in the Lucille Little Theatre on the campus of Morehead State University.

The musical portrays college life in the 1920s, complete with football heroes, pretty coeds and stuffy college professors. “Good News” features classic Broadway hit tunes, including “The Varsity Drag” and “The Best Things in Life Are Free.”

Beth Anne Humphrey of **Elkins** will play Patricia Bingham in the production. A sophomore theatre major, she is a member of MSU Players and a Theta Alpha Phi pledge. She is the daughter of Richard and Ruth Humphrey.

Samantha S. Jackson of **Winfield** is the show’s assistant stage manager. A junior psychology/theatre major, she is a member of Theta Alpha Phi and MSU Players. She is the daughter of Larry Jackson and Susan M. Jackson.

Showtimes are 7:30 p.m. Oct. 7-11; and 2 p.m. on Oct. 12. Admission is \$8 for adults, \$2 for non-MSU students and senior citizens and free for MSU students with a valid EagleCard ID.

Additional information on the production is available by calling the Theatre Box Office at (606) 783-2170.

####

sas

News

University Communications

Pauline Young, Director

www.moreheadstate.edu

Morehead State University

UPO Box 1100

Morehead, KY 40351-1689

(606) 783-2030

Oct. 7, 2003

FOR IMMEDIATE RELEASE

MOREHEAD, Ky.---A North Carolina student is among those presenting the musical “Good News,” Tuesday through Sunday, Oct. 7-12, in the Lucille Little Theatre on the campus of Morehead State University.

The musical portrays college life in the 1920s, complete with football heroes, pretty coeds and stuffy college professors. “Good News” features classic Broadway hit tunes, including “The Varsity Drag” and “The Best Things in Life Are Free.”

Gina Thompson of **Troutman** is the show’s choreographer and will portray Lucy. An exercise science major, she is a member of MSU Players and the daughter of Leonard and Sandra Thompson.

Showtimes are 7:30 p.m. Oct. 7-11; and 2 p.m. on Oct. 12. Admission is \$8 for adults, \$2 for non-MSU students and senior citizens and free for MSU students with a valid EagleCard ID.

Additional information on the production is available by calling the Theatre Box Office at (606) 783-2170.

####

sas

News

University Communications

Pauline Young, Director

www.moreheadstate.edu

Morehead State University

UPO Box 1100

Morehead, KY 40351-1689

(606) 783-2030

Oct. 7, 2003

FOR IMMEDIATE RELEASE

MOREHEAD, Ky.---A New Jersey student is among those presenting the musical “Good News,” Tuesday through Sunday, Oct. 7-12, in the Lucille Little Theatre on the campus of Morehead State University.

The musical portrays college life in the 1920s, complete with football heroes, pretty coeds and stuffy college professors. “Good News” features classic Broadway hit tunes, including “The Varsity Drag” and “The Best Things in Life Are Free.”

Rich Timbo of **Washington Township** is portraying Bobby Randall. He is a senior theatre major and a member of Theta Alpha Phi and MSU Players. Timbo is the son of Mr. and Mrs. Richard Timbo.

Showtimes are 7:30 p.m. Oct. 7-11; and 2 p.m. on Oct. 12. Admission is \$8 for adults, \$2 for non-MSU students and senior citizens and free for MSU students with a valid EagleCard ID.

Additional information on the production is available by calling the Theatre Box Office at (606) 783-2170.

####

sas

News

University Communications

Pauline Young, Director

www.moreheadstate.edu

Morehead State University

UPO Box 1100

Morehead, KY 40351-1689

(606) 783-2030

Oct. 7, 2003

FOR IMMEDIATE RELEASE

MOREHEAD, Ky.---A Georgia student is among those presenting the musical “Good News,” Tuesday through Sunday, Oct. 7-12, in the Lucille Little Theatre on the campus of Morehead State University.

The musical portrays college life in the 1920s, complete with football heroes, pretty coeds and stuffy college professors. “Good News” features classic Broadway hit tunes, including “The Varsity Drag” and “The Best Things in Life Are Free.”

Nicolett Davis of **Kennesaw** is the show’s production stage manager. A senior theatre major, she is a member of the Student Government Association, the Morehead M.A.F.I.A., Theta Alpha Phi and MSU Players. Davis is the daughter of Charles and Erlene Davis.

Showtimes are 7:30 p.m. Oct. 7-11; and 2 p.m. on Oct. 12. Admission is \$8 for adults, \$2 for non-MSU students and senior citizens and free for MSU students with a valid EagleCard ID.

Additional information on the production is available by calling the Theatre Box Office at (606) 783-2170.

####

sas

News

University Communications

Pauline Young, Director

www.moreheadstate.edu

Morehead State University

UPO Box 1100

Morehead, KY 40351-1689

(606) 783-2030

Oct. 7, 2003

FOR IMMEDIATE RELEASE

MOREHEAD, Ky.---An Indiana student is among those presenting the musical “Good News,” Tuesday through Sunday, Oct. 7-12, in the Lucille Little Theatre on the campus of Morehead State University.

The musical portrays college life in the 1920s, complete with football heroes, pretty coeds and stuffy college professors. “Good News” features classic Broadway hit tunes, including “The Varsity Drag” and “The Best Things in Life Are Free.”

Adam Turner of **Dillsboro** is the show’s musical director. A senior piano performance major, he is a member of the University’s Concert Choir and Chamber Singers. He is the son of Mark Turner and Allison Turner.

Showtimes are 7:30 p.m. Oct. 7-11; and 2 p.m. on Oct. 12. Admission is \$8 for adults, \$2 for non-MSU students and senior citizens and free for MSU students with a valid EagleCard ID.

Additional information on the production is available by calling the Theatre Box Office at (606) 783-2170.

####

sas

News

University Communications

Pauline Young, Director

www.moreheadstate.edu

Morehead State University

UPO Box 1100

Morehead, KY 40351-1689

(606) 783-2030

Oct. 8, 2003

FOR IMMEDIATE RELEASE

MOREHEAD, Ky.---The campus and community are gearing up for a “super” weekend when Morehead State University hosts its annual Homecoming festivities, slated for Oct. 16-18. Alumni and friends are expected to come from near and far to enjoy the camaraderie that abounds during this special time that is following the theme “We Want You Back: A Super Homecoming 2003.”

A popular activity of the young and those young at heart is the annual Homecoming Parade, which will begin at 6:30 p.m. on Thursday, Oct. 16. Fifteen floats--10 made by campus groups and five coming from community organizations--will be a part of the parade as it travels down Main Street.

“More than 60 units have registered to participate and we are adding more daily,” said Gerome Stephens, parade coordinator. The deadline is Friday, Oct. 10, for any new entries to be added to the parade lineup.

Float building will be held at the Eastern Kentucky Tobacco Warehouse on U.S. 60 East, from noon to midnight, Sunday through Wednesday, Oct. 12-15. Everyone is invited to stop by to see the progress being made and to offer Eagle support, Stephens said.

Following the parade, there will be a Pep Rally at Jayne Stadium on Thursday evening. Members of the community are invited to attend.

Additional information about the Homecoming Parade is available by calling Stephens at (606) 783-2071.

####

News

University Communications

Pauline Young, Director

www.moreheadstate.edu

Morehead State University

UPO Box 1100

Morehead, KY 40351-1689

(606) 783-2030

Oct. 8, 2003

FOR IMMEDIATE RELEASE

MOREHEAD, Ky.---The annual Faculty Showcase Recital, featuring the talents of faculty members in Morehead State University's Department of Music, will be held on Thursday, Oct. 9, in Baird Music Hall on the campus.

The performance, which is free and open to the public, will begin at 8 p.m. in Duncan Recital Hall.

"The program of solo and collaborative pieces is suited to a variety of musical tastes, featuring music ranging from Baroque to jazz," said Dr. Scott McBride, department chair.

Among those providing entertainment will be:

Assistant professors: Dr. Jeanie K. Lee, trombone; Dr. David Oyen, bassoon; Ray Ross, guitar; Steven Snyder, piano; Greg Wing, trumpet.

Associate professors: Michael Acord, clarinet; Dr. Stacy Baker, tuba; L. Curtis Hammond, horn; Frank Oddis, drums and timpani; Dr. Roma Prindle, soprano; Dr. Robert Pritchard, flute; Dr. Paul Taylor, piano; Gordon Towell, tenor saxophone; Dr. John Viton, oboe.

Professor: Larry Keenan, Yamaha PSR 9000.

The participants also include: Deb Eastwood, trumpet; Janean Freeman, soprano; Jennifer Hughes, piano; Kevin Lampson, bass; Brian S. Mason, xylophone, tamburo and vibes; and Mary Ellen McNeill, piano.

Works by J.S. Bach, Clifford Brown, Claude Debussy, Henry Mancini, Frederic Chopin, Peter Joseph von Lindpaintner, Jacques Offenbach, Jose Padilla, Chic Corea and Carlos Curinach will be performed during the evening program.

Additional information is available by calling the Department of Music at (606) 783-2473.

####

News

University Communications

Pauline Young, Director

www.moreheadstate.edu

Morehead State University

UPO Box 1100

Morehead, KY 40351-1689

(606) 783-2030

Oct. 9, 2003

FOR IMMEDIATE RELEASE

MOREHEAD, Ky.---Cadet Tristen D. Nelson of **Ft. Campbell** has been awarded a three-year ROTC scholarship at Morehead State University.

The scholarship will pay all tuition and fees, according to Lt. Col. John H. Karaus, chair of the Department of Military Science. In addition, recipients receive an allotment for books and supplies, plus a \$300 monthly subsistence allowance during the next three years.

The MSU sophomore will be commissioned as a second lieutenant in the United States Army upon completion of the ROTC program.

He is the son of Gregory and Loronda Goff of Ft. Campbell.

####

ajb

News

University Communications

Pauline Young, Director

www.moreheadstate.edu

Morehead State University

UPO Box 1100

Morehead, KY 40351-1689

(606) 783-2030

Oct. 9, 2003

FOR IMMEDIATE RELEASE

MOREHEAD, Ky.--- Cadet Jason M. Steeber of **Dayton, Ohio**, has been awarded a three-year ROTC scholarship at Morehead State University.

The scholarship will pay all tuition and fees, according to Lt. Col. John H. Karaus, chair of the Department of Military Science. In addition, recipients receive an allotment for books and supplies, plus a \$300 monthly subsistence allowance during the next three years.

The MSU sophomore will be commissioned as a second lieutenant in the United States Army upon completion of the ROTC program.

He is the son of Keith and Sheri Steeber of Dayton.

####

ajb

News

University Communications

Pauline Young, Director

www.moreheadstate.edu

Morehead State University

UPO Box 1100

Morehead, KY 40351-1689

(606) 783-2030

Oct. 9, 2003

FOR IMMEDIATE RELEASE

MOREHEAD, Ky.--- Cadet Patrick R. LaMonda of **Eastview** has been awarded a three-year ROTC scholarship at Morehead State University.

The scholarship will pay all tuition and fees, according to Lt. Col. John H. Karaus, chair of the Department of Military Science. In addition, recipients receive an allotment for books and supplies, plus a \$300 monthly subsistence allowance during the next three years.

The MSU sophomore will be commissioned as a second lieutenant in the United States Army upon completion of the ROTC program.

He is the son of Nancy LaMonda of Eastview and Gary LaMonda of Louisville.

####

ajb

News

University Communications

Pauline Young, Director

www.moreheadstate.edu

Morehead State University

UPO Box 1100

Morehead, KY 40351-1689

(606) 783-2030

Oct. 9, 2003

FOR IMMEDIATE RELEASE

MOREHEAD, Ky.--- Cadet Shannon Nikole Martin of **Louisville** has been awarded a four-year ROTC scholarship at Morehead State University.

The scholarship will pay all tuition and fees, according to Lt. Col. John H. Karaus, chair of the Department of Military Science. In addition, recipients receive an allotment for books and supplies, plus a \$250 monthly subsistence allowance during the next four years.

The MSU freshman will be commissioned as a second lieutenant in the United States Army upon completion of the ROTC program.

She is the daughter of Theresa Whitener and Steve Martin of Louisville.

####

ajb

News

University Communications

Pauline Young, Director

www.moreheadstate.edu

Morehead State University

UPO Box 1100

Morehead, KY 40351-1689

(606) 783-2030

Oct. 9, 2003

FOR IMMEDIATE RELEASE

MOREHEAD, Ky.---Four cadets have been awarded ROTC scholarships at Morehead State University.

Receiving three-year scholarships are:

Patrick LaMonda of **Eastview**. A sophomore, he is the son of Nancy LaMonda of Eastview and Gary LaMonda of Louisville.

Tristen D. Nelson of **Ft. Campbell**. A sophomore, he is the son of Gregory and Loronda Goff.

Jason M. Steeber of **Dayton, Ohio**. A sophomore, he is the son of Keith and Sheri Steeber.

Receiving a four-year scholarship is:

Shannon Nikole Martin of **Louisville**. A freshman, she is the daughter of Theresa Whitener and Steve Martin.

The scholarship will pay all tuition and fees, according to Lt. Col. John H. Karaus, chair of the Department of Military Science. In addition, recipients receive an allotment for books and supplies, plus a monthly subsistence allowance.

The students will be commissioned as a second lieutenant in the United States Army upon completion of the ROTC program.

####

News

University Communications

Pauline Young, Director

www.moreheadstate.edu

Morehead State University

UPO Box 1100

Morehead, KY 40351-1689

(606) 783-2030

Oct. 9, 2003

FOR IMMEDIATE RELEASE

MOREHEAD, Ky.---Morehead State University will crown its 2003 Homecoming Queen and King during halftime ceremonies of the football game that begins at 1 p.m. in Jayne Stadium on Saturday, Oct. 18.

The winners will be determined from the 11 candidates who are vying for each title.

Among the nominees for Homecoming queen are:

Cara Anderson of Hamilton, Ohio, the daughter of Tom and Sharon Anderson. A junior music major, she is sponsored by Mignon Tower.

Brittany Renee Atkins of Ashland, the daughter of Sammy and Tina Atkins. A senior biology major, she is sponsored by Kappa Delta.

Jessica Bodimer of Gallipolis, Ohio, the daughter of Charles and Patricia Bodimer. A sophomore exercise science major, she is sponsored by Tau Kappa Epsilon.

Gena Megan Boyle of Winchester, the daughter of Shelia Brewer and Mark Boyle. A senior government major, she is sponsored by Sigma Phi Epsilon.

Sarah Harris Fischer of Cynthiana, the daughter Greg and Debra Fischer. A senior nursing major, she is sponsored by Delta Gamma.

Casey French of Erlanger, the daughter of David and Charlene French. A junior communications major, she is sponsored by Kappa Sigma.

Megan Ann Helphinstine of Ewing, the daughter of Mike and Judy Helphinstine. A senior nursing major, she is sponsored by Delta Tau Delta.

Lona Brooke Hudson of Lotts Creek, the daughter of Ann and Bill Grigsby. A senior communications major, she is sponsored by Chi Omega.

Rachel M. Martin of Morehead, the daughter of Harold and Leslie Martin. A senior exercise science major, she is sponsored by the French Club.

Tiffany Reed of Hebron, the daughter of Doug and Cathy Reed. A sophomore communications major, she is sponsored by Sigma Pi.

Lindsay Wilson of Booneville, the daughter of Arnold and Bonnie Wilson. A senior elementary education major, she is sponsored by the Order of Omega.

(MORE)

2003 Homecoming candidates
2-2-2-2-2

Vying for the title of Homecoming king are:

Dru Belli of Johnstown, Ohio, the son of David and Patti Belli. A senior exercise science major, he is sponsored by the Interfraternity Council.

Josh Gruenke of Maysville, the son of James and Paulette Gruenke. A senior government major, he is sponsored by Kappa Delta.

Eric Heck of Bellevue, the son of Paul and Barb Heck. A senior criminology major, he is sponsored by Sigma Sigma Sigma.

Chris Mattice of Niagara Falls, N.Y., the son of Randy and Teresa Mattice. A senior computer information system and business information system major, he is sponsored by Mignon Tower.

Bradley Opell of Louisa, the son of Fred and Joan Opell. A junior physics major, he is sponsored by Student Alumni Ambassadors.

Peyton Allen Reynolds of Morehead, the son of Ronnie and Sharon Reynolds. A junior philosophy major, he is sponsored by Chi Omega.

Adam Rossmann of Butlerville, Ohio, the son of Dale and Pati Rossmann. A senior business management major, he is sponsored by Delta Gamma.

R. Todd Sanders of Union, the son of Dennis and Ginger Sanders. A senior pre-veterinary major, he is sponsored by the Panhellenic Council.

Gabriel Schadle of Eaton, Ohio, the son of Gail and Kim Schadle. A senior advertising major, he is sponsored by Gamma Phi Beta.

Dominic Schillizzi of Louisville, the son of Andy and Flora Schillizzi. A senior English major, he is sponsored by Academic Honors Student Association.

Andy Thomas of Dayton, Ohio, the son of Fred and Shelia Thomas. A junior communications major, he is sponsored by Sigma Phi Epsilon.

A variety of activities will be held during the Homecoming weekend which runs Thursday through Saturday, Oct. 16-18. Additional information on the schedule is available by calling the MSU Alumni Association at (606) 783-2080.

#####



Anderson Cara



Atkins Brittany



Bodimer Jessica



Boyle Gena



Fischer Sarah



French Casey



Helphinstine...



Hudson Brooke



Martin Rachel



Reed Tiffany



Wilson Lindsay



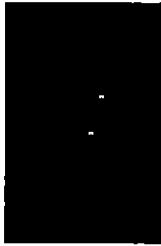
Belli Dru



Gruenke Josh



Heck Eric



Mattice Chris



Opell Bradley



Reyonlds Peyton



Rossman Adam



Sanders Raymond



Schadle Gabriel



Schillizzi D...



Thomas Andy

News

University Communications

Pauline Young, Director

www.moreheadstate.edu

Morehead State University

UPO Box 1100

Morehead, KY 40351-1689

(606) 783-2030

Oct. 10, 2003

FOR IMMEDIATE RELEASE

MOREHEAD, Ky.---Six alumni will be honored in a special ceremony which will be held during Morehead State University's Homecoming 2003, set for Thursday through Saturday, Oct. 16-18.

New members will be inducted into the Hall of Fame on Friday, Oct. 17, at 7 p.m. in the multi-purpose room of Laughlin Health Building. Tickets are \$15 per person. This will mark the second consecutive year that alumni and athletes will be recognized in one celebration.

Entering the Alumni Hall of Fame will be:

Steve Davis, M.D. ('72). Dr. Davis has served as director for Kentucky's Adult and Child Health Program with the Department of Public Health since his appointment in July 1995. He is responsible for overall direction of the Division of Adult and Child. Prior to his appointment, he was a practicing pediatrician who developed a large practice in Pikeville. He earned his M.D. degree from the University of Kentucky in 1976. The Lexington native received his bachelor's degree in biology from MSU.

Virginia Harpham ('39). Harpham is a retired violinist with the National Symphony Orchestra based in Washington, D.C. She played in the orchestra from 1956-90, where she was the principal of the second violin section (1964-90). She has performed at numerous events, including the White House for a function honoring Egyptian President Anwar Sadat. In March 2003, at the age of 85, Harpham presented her final public solo performance. The Pleasant Lake, Ind., native received her Bachelor of Music Education degree from Morehead State Teachers College.

Ron Lewis ('81). Congressman Lewis has represented the Second District since May 1994. Lewis' victory marked the first republican win in the district in 129 years. He serves on the House's Conservative Opportunity Society. The ordained Southern Baptist minister is a 1969 University of Kentucky graduate. Lewis, a South Shore native, received his master's degree in higher education from MSU.

The Eagle Athletic Hall of Fame inductees are:

(MORE)

Priscilla Blackford. A three-year letter winner in women's basketball, Blackford was a two-time All Ohio Valley Conference selection and was named the 1982-83 OVC Player of the Year. The Frankfort native ranks sixth on MSU's all-time scoring list and second in rebounding.

Julie Magrane Muntz (95). A four-year letter winner in women's basketball, Muntz ranks third on the MSU scoring list and fourth in rebounding. The Morehead native was first team All OVC in 1991-92, second team in 1989-90, honorable mention in 1990-91 and made the all freshmen team in 1988-89.

Ed Noe (62). Earning three varsity letters in basketball, Noe played on the 1960-61 MSU team that participated in the NCAA tournament. He earned All OVC twice. The Mt. Clemens, Mich., native will join teammates Granny Williams, Norm Pokley and Hecky Thompson in the Eagle Athletic Hall of Fame.

Following a "We Want You Back, A Super Homecoming" theme, Homecoming 2003 will kickoff with the Morehead Area Homecoming Parade that will begin on Main Street at 6:30 p.m. on Thursday, Oct. 16. Following the parade, a pep rally to support the MSU Eagles will be held in Jayne Stadium.

Concluding Thursday's events, MSU's National Pan Hellenic Council will sponsor a talent show that starts at 6:30 p.m. in the Reed Hall Auditorium while the Department of Communication and Theatre will sponsor a Distinguished Alumni Lecture in Room 2 of Breckinridge Hall. Communication alumni also will offer a classroom lecture on Friday in the same location.

Blue and Gold Day is Friday, Oct. 17, on campus and in the Morehead community and everyone is encouraged to show their Eagle pride by wearing the school's colors. The NPHC will host a block party from 4:30-9 p.m. on the Alumni Tower Patio.

Also on Friday, the MSU baseball team will host an "alumni game" at Sonny Allen Field. Members of the 1963, 1973, 1983 and 1993 Ohio Valley Conference Championship teams have been invited to return to the campus for special recognition.

The evening's activities will begin with a Welcome Reception, sponsored by the Alumni Association, from 5-6:30 p.m. at the Ramada Inn, followed by the Hall of Fame banquet.

The Delta Eta Alumni Association (Pi Kappa Phi) will meet at 8 p.m. in 302 Breckinridge Hall.

(MORE)

Several activities are on tap for Saturday morning. Communication alumni will have an open house in Breckinridge Hall and Pi Kappa Phi will have its 30th anniversary brunch in Laughlin Health Building's multi-purpose room.

The second statue in a series by Steve Tirone, MSU associate professor of art, will be unveiled. The dedication ceremony will begin at 11 a.m. in Crosthwait Plaza, located between Ginger and Rader halls.

The Golden Alumni Reunion (Class of 1953 and prior) is set for Saturday beginning at 11:30 a.m. in the Len Miller Room of the Academic-Athletic Center. Also on Saturday morning, the Baseball Eagles will have a reunion for the 1963, 1973, 1983 and 1993 teams; Kappa Sigma will host an alumni cookout; and there will be a Greek tailgate party.

The official MSU tailgate party runs from 11-12:30 at the AAC lobby/lawn. Tickets, at \$10 for adults and \$5 for children, must be purchased in advance.

Matt Ballard's football Eagles will take on Davidson in a game set to kickoff at 1 p.m. in Jayne Stadium. Crowning of the Homecoming King and Queen will be announced during halftime ceremonies.

After the game, a Football Festival and Eagle Basketball (Men's and Women's) Preview are scheduled in the AAC. NPHC will host a Step Show from 7:30-10 p.m. in Button Auditorium and a homecoming party from 10 p.m.-2 a.m. at the Carl Perkins Center.

Additional information on Homecoming 2003 activities, or to purchase tickets for the events, is available by calling the MSU Alumni Association at (606) 783-2080.

####

ajb

Noe



Harpham



Davis



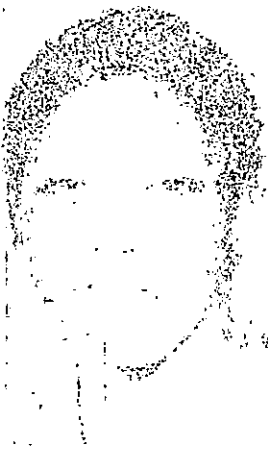
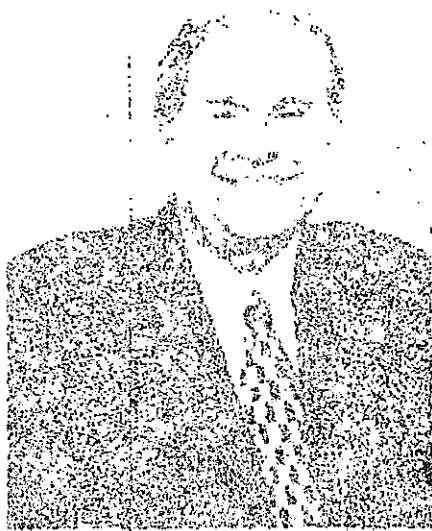
Lewis



Blackford



Muntz



News

University Communications

Pauline Young, Director

www.moreheadstate.edu

Morehead State University

UPO Box 1100

Morehead, KY 40351-1689

(606) 783-2030

Oct. 10, 2003

FOR IMMEDIATE RELEASE

MOREHEAD, Ky.---Modern masters of traditional Irish music will perform at Morehead State University at the next presentation of "Americana Crossroads Live" on Friday, Oct. 31.

The trio, bohola, will take the stage at 8:30 p.m. in Duncan Recital Hall within Baird Music Hall on MSU's campus, following a 7:30 p.m. set by Bluegrass singer/songwriter Gary Ferguson.

Hailed by audiences and critics alike, bohola brings vibrancy to traditional Irish melodies. Its rich sound has been described as "driving, muscular and yet very emotive... with deep roots in the pure drop tradition" of Irish music. Led by accordion virtuoso Jimmy Keane, the band includes fiddler Sean Cleland and singer/dordan player Pat Broaders. The Irish Voice called bohola's self-titled debut album on Shanachie Records "one of the most impressive debut recordings ever by an Irish traditional music group."

The group's repertoire includes ancient celtic tunes, along with 100-year-old harp pieces, reels, jigs, slides, polkas and barn dances, as well as newly written pieces of traditional Irish music. They feature not only old Irish melodies, but songs brought to North America by immigrants.

Morehead State Public Radio and the Kentucky Center for Traditional Music present the "Americana Crossroads Live" concert series. Doors open at 7 p.m. There will be a 15-minute intermission between bohola and Ferguson's performances. Those attending the event will be eligible for door prizes, and there will be Halloween candy for children in the audience. Morehead State Public Radio will record the concert for broadcast on Thursday, Nov. 6, at 8 p.m.

Toyota Motor Manufacturing of Georgetown is a corporate sponsor of the series with additional sponsorship by KCTM, Kentucky Folk Art Center, Farmers Mercantile Boots and Shoes, Poppy Mountain Bluegrass Festival, Root-A-Baker's Bakery and Papa John's.

Additional information about the concert is available by calling MSPR at (800) 286-9659 or (606) 783-2001; or log on to MSPR's Web site at www.msuradio.com.

####

sas

MSU is an affirmative action, equal opportunity educational institution.

IRISH BAND TO PERFORM AT MSU

A traditional Irish band, bohola, will be in concert at Morehead State University on Friday, Oct. 31, as part of the next installment of the popular "Americana Crossroads Live" series. The group's repertoire includes ancient tunes, along with 100-year-old harp pieces, reels, jigs, slides, polkas and barn dances, as well as newly written pieces of traditional Irish music. The band will take the stage at 8:30 p.m., following a 7:30 p.m. set by Bluegrass singer/songwriter Gary Ferguson, in Duncan Recital Hall, within Baird Music Hall on the campus. Morehead State Public Radio and the Kentucky Center for Traditional Music present the "Americana Crossroads Live" concert series. Doors open at 7 p.m. Additional information about the concert is available by calling MSPR at (800) 286-9659 or (606) 783-2001; or log on to MSPR's Web site at www.msuradio.com.

(Submitted photo)

10-10-03sas

MSU is an affirmative action, equal opportunity educational institution.



News

University Communications

Pauline Young, Director

www.moreheadstate.edu

Morehead State University

UPO Box 1100

Morehead, KY 40351-1689

(606) 783-2030

Oct. 13, 2003

FOR IMMEDIATE RELEASE

MOREHEAD, Ky.---A touring exhibition of contemporary mountain artworks from Kentucky artists is now on the Morehead State University campus. The 2003 collection is the 17th annual gathering of "Images from the Mountains."

The exhibition will be showcased on the fifth floor of the Camden-Carroll Library through Nov. 8.

A reception will be held on Thursday, Oct. 16, from 4-6 p.m.

Several local artists will be featured. The artists, with ties to MSU, include:

Robert Franzini, chair of MSU's Department of Art; Joe Sartor, associate professor emeritus of art; Sara Pennington of Elliottville, a recent graduate; and Melissa Scruggs Brashear of Jeff, a graduate student majoring in art.

Also exhibiting works in the show are: Tabby Back of Eolia; Caroline Baker of Pound, Va.; Thelma Jean Bullock of Brodhead; Barbara Church of Oven Fork; Deanna Dunaway of Olive Hill; James Durham of Liberty; Ron Gevedon of Cannel City; Larry King of Whitley City;

Geraldine Lewis of Isonville; David Lucas of Cromona; Justin Maggard of Viper; Ruby Queen of Hitchins; Shannon Shepherd of Stanville; Luann Vermillion of Whitesburg; and Brandon Scott Wooton of Krypton..

In the show, are original prints, photographs, handmade paper and textiles, and all mediums of painting and drawing by artists living across 11 counties in East Kentucky and the southwest corner of Virginia.

Kentucky Appalachian Artisan Center, Southeast Community College Appalachian Program, Appalshop and the MSU Arts and Humanities Council are sponsors of the event.

Additional information on the exhibit is available by calling Clara Keyes, librarian IV in the Camden-Carroll Library, at (606) 783-5122; or on the Web at www.appalshop.org/images.

####

ajb

Tips

University Communications

Pauline Young, Director

www.moreheadstate.edu

Morehead State University

UPO Box 1100

Morehead, KY 40351-1689

(606) 783-2030

NOVEMBER HIGHLIGHTS AT MOREHEAD STATE UNIVERSITY

- Nov. 1, Admissions Open House, Wetherby Gymnasium, 9 a.m.- 1 p.m., free. Additional information: (606) 783-2000; or (800) 585-6781.
- Nov. 1, Volleyball: Eagles vs. Samford, Wetherby Gymnasium, 11 a.m., free. Additional information: (606) 783-2122.
- Nov. 1, Football: Eagles vs. Duquesne, Jayne Stadium, 1 p.m., charge. Additional information: (606) 783-2020.
- Nov. 1, Rifle: MSU vs. Tennessee-Martin, Button Rifle Range, time TBA, free. Additional information: (606) 783-2088.
- Nov. 2, Senior recital: Jeffrey Jones, horn, Duncan Recital Hall, 3 p.m., free. Additional information: (606) 783-2473.
- Nov. 3, Spring 2004 advance registration, academic departments, 8 a.m. – 4:30 p.m., through Nov. 6. Additional information: (606) 783-2008.
- Nov. 4, Guest recital: Junction, tuba/euphonium quartet, Duncan Recital Hall, 3 p.m., free. Additional information: (606) 783-2473.
- Nov. 5, Concert: Recycled Percussion, Button Auditorium, 8 p.m., free. Additional information: (606) 783-2071.
- Nov. 6, Concert: Jazz Ensemble I, Duncan Recital Hall, 8 p.m., free. Additional information: (606) 783-2473.
- Nov. 7, Transfer Day, for transfer students, Office of Admissions, 301 Howell-McDowell, 9 a.m. – 3:30 p.m. on the main campus; 8 a.m. – 4:30 p.m. at MSU at Jackson, Ashland and Prestonsburg. Additional information: (606) 783-2000; or (800) 585-6781.
- Nov. 8, All-State Bands Audition Clinic, for high school students, Baird Music Hall, 9:30 a.m., preregistration necessary, free. Additional information: (606) 783-2473.
- Nov. 8, Rifle: Eagles vs. Tennessee Tech, Button Rifle Range, time TBA, free. Additional information: (606) 783-2088.
- Nov. 8, Senior recital: Sheri Anderson, clarinet, Duncan Recital Hall, 5 p.m., free. Additional information: (606) 783-2473.
- Nov. 9, Rifle: Eagles vs. Jacksonville State, Button Rifle Range, time TBA, free. Additional information: (606) 783-2088.
- Nov. 9, Senior recital: Lawrence Banks, tuba, Duncan Recital Hall, 5 p.m., free. Additional information: (606) 783-2473.

(MORE)

November highlights

2-2-2-2-2

- Nov. 10, Choral Festival, featuring performances by MSU and festival choirs, Duncan Recital Hall, 7 p.m., also Nov. 11, free. Additional information: (606) 783-2480.
- Nov. 11, Basketball (exhibition): Eagles vs. Sports Reach, Academic-Athletic Center, 7 p.m., free. Additional information: (606) 783-2087.
- Nov. 11, Chi Omega Follies, Button Auditorium, 7 p.m., charge. Additional information: (606) 783-2779.
- Nov. 12, International Education Concert, Duncan Recital Hall, 8 p.m. Donations accepted to support the MSU Study Abroad Scholarship Fund. Additional information: (606) 783-2096.
- Nov. 13, MSU Reading Series, featuring Keith Wahle and Jerry Roscoe, Kentucky Folk Art Center, 7 p.m., free. Additional information: (606) 783-2340.
- Nov. 20, Concert: Jazz Ensemble II, Duncan Recital Hall, 8 p.m., free. Additional information: (606) 783-2473.
- Nov. 14, Board of Regents work session, time and location TBA. Additional information: (606) 783-2030.
- Nov. 16, Junior recital: James Hay, euphonium, with Chris Kennedy, senior, French horn, Duncan Recital Hall, 1 p.m., free. Additional information: (606) 783-2473.
- Nov. 16, Bassoon recitals, featuring students of David Oyen, Duncan Recital Hall, 3 p.m., free. Additional information: (606) 783-2473.
- Nov. 16, Student recital: Tim Brown, saxophone, Duncan Recital Hall, 5 p.m., free. Additional information: (606) 783-2473.
- Nov. 18, Theatre production: "Antigone," Lucille Little Theatre, 7:30 p.m., through Nov. 22, also Nov. 23, 2 p.m., charge. Additional information: (606) 783-2170.
- Nov. 18, Guest recital: U.S. Army Field Band Clarinet Quartet, Duncan Recital Hall, 8 p.m., free. Additional information: (606) 783-2473.
- Nov. 19, American Red Cross Blood Drive, Button Drill Room, 11 a.m. – 5 p.m. Additional information: (606) 783-5124.
- Nov. 19, Faculty Art Exhibition, main gallery, Claypool-Young Art Building, through Dec. 11; opening reception, Nov. 19, 6-8 p.m., free. Additional information: (606) 783-5446.
- Nov. 19, Faculty recital: Greg Wing, trumpet, Duncan Recital Hall, 8 p.m., free. Additional information: (606) 783-2473.
- Nov. 20, MSU Reading Series, featuring Kim Dearing and Austen Reilley, Kentucky Folk Art Center, 7 p.m., free. Additional information: (606) 783-2340.
- Nov. 20, Faculty recital: Mike Acord, clarinet, Duncan Recital Hall, 8 p.m., free. Additional information: (606) 783-2473.
- Nov. 22, Middle School Band Clinic, Duncan Recital Hall and Fulbright Auditorium, time TBA. Additional information: (606) 783-2473.

(MORE)

November highlights
3-3-3-3-3

Nov. 22, Basketball: Lady Eagles vs. Miami, Academic-Athletic Center, 3 p.m., charge.
Additional information: (606) 783-2126.

Nov. 22, MSU Reading Series, featuring Adrian Swain and Liz Mandrell, Kentucky Folk Art Center, 7 p.m., free. Additional information: (606) 783-2340.

Nov. 23, Senior recital: Brian Egan, tuba, Duncan Recital Hall, 1 p.m., free. Additional information: (606) 783-2473.

Nov. 23, Student recital: Erica Ashford, trumpet, Duncan Recital Hall, 3 p.m., free. Additional information: (606) 783-2473.

Nov. 23, Student recital: Scott Simpson, bassoon, Duncan Recital Hall, 5 p.m., free. Additional information: (606) 783-2473.

Nov. 23, Basketball: Lady Eagles vs. Gardner-Webb, Academic-Athletic Center, 3 p.m., charge.
Additional information: (606) 783-2126.

Nov. 24, Guest recital: Fernando Hasahimoto, percussion, Duncan Recital Hall, 8 p.m., free. Additional information: (606) 783-2473.

Nov. 25, Basketball: Eagles vs. Asbury, Academic-Athletic Center, 7 p.m., charge. Additional information: (606) 783-2087.

Nov. 26, Thanksgiving holiday break, no classes or office hours, through Nov. 28. Additional information: (606) 783-2008.

Nov. 28, Concert: "Americana Crossroads Live," featuring Zoe Speaks, and Irene Kelly, Duncan Recital Hall, 7:30 p.m. Additional information: (606) 783-2001.

Nov. 30, Student recital: Shonté Revely, percussion, Duncan Recital Hall, 8 p.m., free. Additional information: (606) 783-2473.

#####

10-10-03sas

Tips

University Communications

Pauline Young, Director

www.moreheadstate.edu

Morehead State University

UPO Box 1100

Morehead, KY 40351-1689

(606) 783-2030

DECEMBER HIGHLIGHTS AT MOREHEAD STATE UNIVERSITY

Dec. 2, Holiday Party, Button Drill Room, 4-6 p.m., followed by Holiday Tree Lighting.
Additional information: (606) 783-2071.

Dec. 2, Christmas Carol Concert, featuring University choruses and Concert Choir, Duncan Recital Hall, 8 p.m., free. Additional information: (606) 783-2473.

Dec. 3, Recital: OperaWorks, Duncan Recital Hall, 8 p.m., free. Additional information: (606) 783-2481.

Dec. 2, Basketball: Lady Eagles vs. Ohio University, Academic-Athletic Center, 7 p.m., charge.
Additional information: (606) 783-2126.

Dec. 4, Annual Christmas Sing-A-Long, Duncan Recital Hall, 3 p.m., free. Additional information: (606) 783-2473.

Dec. 4, Art exhibit: "Family History," Kentucky Folk Art Center, through Feb. 28, charge;
Opening reception, Dec. 4, 6-8 p.m. free. Additional information: (606) 783-2204.

Dec. 4, Second Stage theatre production: "String Geese Fish Rain," Button Auditorium, 7:30 p.m., through Dec. 6, charge. Additional information: (606) 783-2170.

Dec. 4, Concert Band performance, Duncan Recital Hall, 8 p.m., free. Additional information: (606) 783-2473.

Dec. 6, Appalachian Holiday Arts and Crafts Fair, Laughlin Health Building, 9 a.m. to 4 p.m., charge. Additional information : (606) 783-2204.

Dec. 6, Rifle: Eagles vs. Austin Peay State University, Button Rifle Range, time TBA.
Additional information: (606) 783-2088.

Dec. 6, Holiday concert: Faculty Brass Quintet, Duncan Recital Hall, 7 p.m., free.
Additional information: (606) 783-2473.

Dec. 6, Basketball: Eagles vs. Texas A & M-Corpus Christi, Academic-Athletic Center, 7 p.m., charge. Additional information: (606) 783-2087.

Dec. 7, Senior Recital: Tim Holcomb, percussion, Duncan Recital Hall, 1 p.m., free. Additional information: (606) 783-2473.

Dec. 8, Final exams, through Dec. 9; also Dec. 11-12. Reading Day, Dec. 10, no exams.
Additional information: (606) 783-2008.

(MORE)

December highlights
2-2-2-2-2

- Dec. 12, Board of Regents quarterly meeting, 302 Breckinridge Hall, 9 a.m. Additional information: (606) 783-2030.
- Dec. 13, Winter Commencement, Academic-Athletic Center, 10:30 a.m., free. Additional information: (606) 783-2008.
- Dec. 15, Basketball: Eagles vs. Kentucky Christian College, Academic-Athletic Center, 7 p.m., charge. Additional information: (606) 783-2087.
- Dec. 19, Concert: "Americana Crossroads Live," featuring: Kendra Ward & Bob Bence; Pine Mountain Railroad, Duncan Recital Hall, 7:30 p.m. Additional information: (606) 783-2001.
- Dec. 24, Holiday break, no classes or office hours, through Jan. 4; Kentucky Folk Art Center open regular hours except for Dec. 25 and Jan. 1. Additional information: (606) 783-2008.

####

10-10-03sas

Tips

University Communications

Pauline Young, Director

www.moreheadstate.edu

Morehead State University

UPO Box 1100

Morehead, KY 40351-1689

(606) 783-2030

HIGHLIGHTS AT MOREHEAD STATE UNIVERSITY

(Oct. 19-25)

Tuesday, Oct. 21

CKBC Blood Drive, Button Drill Room, 11 a.m. – 5 p.m., free t-shirt for donors; also Oct. 22.

Additional information: (800) 775-2522.

Lecture: “The Battle for Mill Creek, 1964: The War on Poverty in Eastern Kentucky,” Kentucky Folk Art Center, 7 p.m., free. Additional information: (606) 783-2204.

Wednesday, Oct. 22

SBDC workshop: “Pre-Business Planning,” MSU at Ashland, 5:30-7:30 p.m., free, preregistration necessary. Additional information: (606) 783-2895.

Volleyball: MSU vs. Eastern Kentucky University, Wetherby Gymnasium, 7 p.m., free. Additional information: (606) 783-2122.

Thursday, Oct. 23

MSU Tuba/Euphonium Studio Recitals (solos, quartets, and the MSU Tuba/Euphonium Ensemble), Duncan Recital Hall, 3 p.m. and 8 p.m., free. Additional information: (606) 783-2473.

MSU Reading Series, featuring Dr. Phillip Krummrich and Lisa Creech, Kentucky Folk Art Center, 7 p.m., free. Additional information: (606) 783-2340.

Friday, Oct. 24

Soccer: Eagles vs. Samford, Jayne Stadium, 5 p.m., free. Additional information: (606) 783-2589.

Saturday, Oct. 25

Volleyball: MSU vs. Tennessee State University, Wetherby Gymnasium, 3 p.m., free. Additional information: (606) 783-2122.

#####

10-13-03sas

News

University Communications

Pauline Young, Director

www.moreheadstate.edu

Morehead State University

UPO Box 1100

Morehead, KY 40351-1689

(606) 783-2030

Oct. 13, 2003

FOR IMMEDIATE RELEASE

MOREHEAD, Ky.---Morehead State University has received a \$398,757 grant from the National Science Foundation to enhance the number of students graduating in the areas of mathematics or computer science.

"There were many of the faculty in the department who contributed to our grant proposal. Over half of the faculty should be credited," said Dr. Rodger Hammons, chair of the Department of Mathematics and Computer Science.

Only the names of five faculty members could be listed on the final proposal: Dr. Kathy Lewis, Dr. Doug Chatham and Dr. Russell May, assistant professors; Dr. Lloyd Jaisingh, professor; and Dr. Hammons.

The intention of the grant, titled "Computer Science and Mathematics Scholarship Program," is to increase the number of students completing degrees in the areas of mathematics and/or computer science and who successfully enter the workforce.

The program will provide for 30 scholarships of up to \$3,125 per year, to be awarded during a four-year period.

"The scholarship recipients are chosen from students who are academically talented and financially needy. We will work with MSU's Office of Financial Aid to determine financial need," Dr. Hammons said.

"The academically talented requirement will be determined by a combination of high school and/or university grade-point-average, math ACT sub scores, letters of recommendation and other indicators," he added.

Overseeing the grant will be a project management team that includes the faculty members, along with Kenya Arrington, assistant director of admissions-diversity; Carol Becker, director of financial aid; and Dr. Mike Hopper, director of career services. This team is responsible for the recruitment and selection of students to receive the scholarships.

(MORE)

Computer Science and Mathematics Scholarship Program
2-2-2-2

Many support services will be provided for the scholarship recipients, such as a tutoring lab; Math and Computer Science Student Club; special sections of MSU 101, Discovering University Life and MSU 400, The World of Work, a course designed to assist students in finding a job; assignment of a faculty mentor who will meet with the recipient each month to prepare a progress report; membership in a professional organization; special seminars with guest speakers; and shadowing experiences with industries or potential employers.

The grant began in September and will run through August 2007. Additional information is available by calling Dr. Hammons at (606) 783-2921 or by e-mail to r.hammons@moreheadstate.edu.

####

ajb

News

University Communications

Pauline Young, Director

www.moreheadstate.edu

Morehead State University

UPO Box 1100

Morehead, KY 40351-1689

(606) 783-2030

Oct. 13, 2003

FOR IMMEDIATE RELEASE

MOREHEAD, Ky.---Morehead State Public Radio has received a \$15,000 grant that will be used to purchase equipment and construct a recording studio at WOCS radio in Booneville.

Instrumental in acquiring the grant was Sen. Robert Stivers, (R-Manchester). The money came from coal severance settlement.

“On behalf of WOCS, we are extremely grateful of the efforts of Sen. Stivers and Rep. (Marie) Rader (R-McKee) for their support of this student operated facility,” said MSPR General Manager Paul Hitchcock.

WOCS, which is located at Owsley County High School, is part of the MSPR network. The station broadcasts locally from 9:30 a.m. – noon weekdays with students from Owsley County High School. The students select local music programming, write and voice public service and underwriter announcements, broadcast local high school sports and conduct remote events from area festivals and fairs.

“This money will contribute to the advanced educational opportunities at Owsley County High School in the areas of broadcast journalism, audio production and reporting,” Hitchcock added.

MSPR includes WOCS (88.3 FM), the flagship station WMKY (90.3 FM), and a translator (88.3 FM) in Inez.

Additional information is available by calling MSPR at (606) 783-2001 or by visiting the Web at www.msuradio.com.

####

ajb

MSPR RECEIVES GRANT FOR WOCS

Morehead State Public Radio received a \$15,000 grant to be used to purchase equipment and construct a recording studio at WOCS radio in Booneville. At the award presentation were, from left, Steve Jackson, Owsley County superintendent; Paul Hitchcock, general manager of MSPR; Tom Burns, WOCS station manager; Sen. Robert Stivers of Manchester; Rep. Marie Rader of McKee; and Alan Taylor, Owsley County High School assistant principal. The money came from coal severance settlement. WOCS, which is located at Owsley County High School, is part of the MSPR network. The station broadcasts locally from 9:30 a.m. - noon weekdays with students from Owsley County High School. The students select local music programming, write and voice public service and underwriter announcements, broadcast local high school sports and conduct remote events from area festivals and fairs.

(MSU photo)

10-13-03ajb

MSU is an affirmative action, equal opportunity educational institution.



News

University Communications

Pauline Young, Director

www.moreheadstate.edu

Morehead State University

UPO Box 1100

Morehead, KY 40351-1689

(606) 783-2030

Oct. 13, 2003

FOR IMMEDIATE RELEASE

MOREHEAD, Ky.---Morehead State University will host more than 200 high school students from Kentucky, Ohio, and Indiana for the annual Eastern Kentucky FFA Field Day Judging Contest scheduled for Friday, Nov. 7.

The program, sponsored by MSU's Department of Agricultural and Human Sciences, will begin at 9 a.m. at the Derrickson Agricultural Complex.

Competition in individual and team judging will include livestock, horse, tractor driving, soils, tobacco grading, auctioneering and horticulture. Also, this year there will be competition in demonstrations and public speaking, and an FFA quiz contest for freshmen. Plaques and ribbons will be awarded in each division.

Additional information is available from Dr. Lane Cowsert, department chair and Field Day coordinator, at (606) 783-2662.

####

News

University Communications

Pauline Young, Director

www.moreheadstate.edu

Morehead State University

UPO Box 1100

Morehead, KY 40351-1689

(606) 783-2030

Oct. 13, 2003

FOR IMMEDIATE RELEASE

PAINTSVILLE, Ky.---Anyone in the Paintsville region considering enrolling in college in the near future is invited to learn more about Morehead State University in a special "Meet MSU Night" planned for Tuesday, Oct. 14.

Potential students will meet with faculty, staff and other University representatives at the Ramada Inn in Paintsville, from 6-8 p.m. The event will provide an opportunity to learn more about financial aid, academic degree programs, residence hall living and numerous student interests available at MSU.

Students are encouraged to bring parents or other family members to the event.

Other "Meet MSU Night" programs, planned for 6-8 p.m. this fall, are: on Tuesday, Oct. 21, at the Drawbridge Inn in Ft. Mitchell; on Thursday, Oct. 23 at the Hurstborne Inn in Louisville; on Tuesday, Oct. 28 at the Plaza in Ashland; and on Thursday, Nov. 6, in Lexington.

Additional information is available by calling MSU's Office of Admissions at (606) 783-2000; or toll-free at (800) 585-6781.

####

sas

News

University Communications

Pauline Young, Director

www.moreheadstate.edu

Morehead State University

UPO Box 1100

Morehead, KY 40351-1689

(606) 783-2030

Oct. 14, 2003

FOR IMMEDIATE RELEASE

MOREHEAD, Ky.---The U.S. Department of Homeland Security has announced that a Morehead State University graduate is among the 101 recipients – and the lone Kentuckian - of the highly competitive awards under the new Homeland Security Scholars and Fellows Program.

Caleb L. Evans of Hillsboro, the son of Don and Kerry Evans, is attending Purdue University as a graduate student in the college of engineering. He is pursuing a master's degree in mechanical engineering.

This educational program will support the development and mentoring of the next generation of scientists as they study ways to prevent terrorist attacks within the U.S., reduce America's vulnerability to terrorism, and minimize the damage and recovery efforts from attacks that occur.

"We are extremely pleased to welcome these individuals as part of our team to explore the future scientific possibilities for protecting our nation against terrorism," said Secretary Tom Ridge.

The Department received nearly 2,500 applications for review from more than 100 experts selected from a variety of fields that included physical, biological, social and behavioral sciences, engineering, mathematics, or computer science. The Homeland Scholars and Fellows Program is open to all U.S. students interested in pursuing scientific and technological innovations that can be applied to the DHS mission. Students from engineering disciplines comprised about one-third of the awards followed by computer science and math, psychology and social sciences. Men and women were almost equally represented as award recipients. The students began their programs this fall.

"We firmly believe that this program will produce talented scientists and engineers that will play a vital role in securing our nation against terrorism," said Under Secretary for Science and Technology, Dr. Charles McQueary. "This first group of scholars and fellows will be the foundation that we can build upon in the coming years that will specifically focus on science and homeland security issues."

(MORE)

Funding for this program will increase to \$2 million dollars for fiscal year 2003. In addition, DHS has proposed increasing its funding for fiscal year 2004, with a commitment to increase the number of scholarship and fellowship awards for next year. In addition, the Homeland Security Scholars and Fellows Program will be expanded to provide internships and specialized fellowships for students and faculty to further their knowledge of homeland security through short- and long-term exchanges at laboratories, facilities, and organizations throughout the homeland security complex.

The DHS Scholarship and Fellowship Program will ensure the future supply of individuals skilled in critical areas such as the life and social sciences. After graduation, students are encouraged to consider employment offers from DHS, state and local operational offices, DHS-affiliated laboratories and facilities, and/or DHS-related university positions.

The Oak Ridge Institute for Science and Education (ORISE), a U.S. Department of Energy facility focusing on scientific initiatives and educational programs is the coordinator of the program. ORISE is managed by Oak Ridge Associated Universities and has many years of experience coordinating well-known fellowship programs like the National Science Foundation.

For more information about the Homeland Security Scholars and Fellows Program or to apply, visit its Web site www.ornl.gov/dhsed/.

The U.S. Department Homeland Security's Office of Science and Technology serves as the primary research and development arm of the Department, utilizing our nation's scientific and technological resources to provide federal, state and local officials with the technology and capabilities to protect the homeland.

Evans was co-valedictorian of Rowan County Senior High School in 1997. He graduated from MSU in December 2002 with a bachelor's degree in physics and mathematics where he had maintained a perfect 4.0 grade point average.

Additional information is available by calling Dr. Capp Yess, assistant professor of physical sciences, at (606) 783-2939.

#####

ajb



News

University Communications

Pauline Young, Director

www.moreheadstate.edu

Morehead State University

UPO Box 1100

Morehead, KY 40351-1689

(606) 783-2030

Oct. 14, 2003

FOR IMMEDIATE RELEASE

MOREHEAD, Ky.---Morehead State University's Wellness Center will host the 2003 WellFest on Wednesday, Oct. 29, from 8 a.m. to 3 p.m. in the Laughlin Health Building.

The WellFest is open to all MSU students, faculty, staff and community members. The Wellness Center and the Department of Health, Physical Education and Sport Sciences are sponsoring a number of booths with health-related information for the entire MSU community.

There is no charge for most screenings; however, there will be a \$3 charge, or a donation of three cans of non-perishable food, for cholesterol or blood glucose tests.

Information regarding physical fitness, nutrition, medial health, physical safety and well-being will be available.

Additional information on the 2003 WellFest is available by calling MSU's Wellness Center at (606) 783-2083.

####

ajb

News

University Communications

Pauline Young, Director

www.moreheadstate.edu

Morehead State University

UPO Box 1100

Morehead, KY 40351-1689

(606) 783-2030

Oct. 14, 2003

FOR IMMEDIATE RELEASE

MOREHEAD, Ky.---Morehead State University's Department of Communication and Theatre will host some special activities during the Homecoming weekend which runs Oct. 16-18.

The Distinguished Alumni Lecture will be offered on Thursday, Oct. 16, at 7 p.m. in Room 2 of Breckinridge Hall. The program is free and open to the public.

Alumnus Dr. Rachel Holloway of Blacksburg, Va., chair of the Department of Communication Studies at Virginia Tech, will speak on the value of communication skills.

Dr. Holloway completed a Bachelor of Arts degree in speech communication at MSU in 1983. She continued her education at Purdue University where she earned a master's degree in 1985 and Ph.D. degree in public affairs and issue management and rhetorical theory and criticism.

While a student at Purdue, she was the recipient of the David Ross Foundation and David Ross Dissertation research grants. She has been awarded the Alumni Advising Award from Virginia Tech, where she also was a finalist for the Alumni Teaching Award for two years.

She also has received numerous other awards including the Central States Communication Association Outstanding New Teacher Award in 1993, which is given annually to individuals who excel during their first five years of teaching. She was named the Outstanding Faculty Adviser in 1991-92 by the Mid-Atlantic District of Public Relations Student Society of America.

A frequent presenter at professional meetings as well as on-campus and continuing education seminars, she has taught classes dealing with the principles, problems and issue management in public relations, fundamentals of speech communication and inquiry and reasoning in communication.

Dr. Holloway has written a book, edited 10 books or book chapters, and refereed numerous papers, journal articles and manuscripts. She holds membership in various professional organizations including National Communication Association, Southern States Communication Association and Public Relations Society of America.

(MORE)

On Friday, Oct. 17, Keith Yarber of Lexington, executive vice president and general manager of Clear Channel Communications, will conduct seminars in the public relations and electronic media classes as part of the department's Professionals in the Schools program.

A two-time MSU graduate, Yarber earned a bachelor's degree in 1979 and a master's degree in communication in 1980. Upon graduation, he assumed a position at WKQQ-FM in Lexington as a senior account manager. He moved to Village Cable of Chapel Hill, N.C., the next year as an advertising sales manger.

After three years in North Carolina, Yarber returned to Kentucky in 1984 as executive vice president of Village Communications of Kentucky, with oversight of three radio stations in Lexington and one in Raleigh, N.C. In 1997, he assumed his current post, where he oversees the operations at WLAP-AM, WXRA-AM, WMXL-FM, WBUL-FM, WKQQ-FM, WLKT-FM and WMKJ-FM.

Yarber has been a featured speaker for various seminars, such as Cable, Radio and Lexington advertising bureaus, Kentucky Broadcasters Association, Leadership Lexington as well as Clear Channel executive management meetings.

He was the Corporation of Public Broadcasting's national award winner for a public documentary, "Child Abuse, Society's Silent Problem."

The department also will host an alumni reunion and open house in Breckinridge Hall on Saturday, Oct. 18, beginning at 10 a.m.

Additional information is available by calling the Department of Communication and Theatre at (606) 783-2134.

####

News

University Communications

Pauline Young, Director

Morehead State University

UPO Box 1100

Morehead, KY 40351-1689

606-783-2030

Oct. 14, 2003

FOR IMMEDIATE RELEASE

MOREHEAD, Ky.---Lexington attorney Lawrence E. (Larry) Forgy Jr. will be the featured speaker here Saturday morning when Morehead State University dedicates the second piece in its outdoor Sculpture Concourse to the memories of Morehead banker Alpha M. Hutchinson and his wife, Mildred.

The ceremony is scheduled at 11 a.m. at Crosthwait Plaza between Rader and Ginger halls as an activity of Homecoming 2003. It is free and open to the public.

Forgy is a member of the Board of Directors of The Citizens Bank of Morehead, the institution with which the Hutchinson family was affiliated for more than 60 years. Mr. and Mrs. Hutchinson were bank officers at the times of their deaths. Forgy is a former state budget director and former vice president of the University of Kentucky. Before recently returning to private law practice, he was a senior executive in the Chicago regional office of the U.S. Department of Labor. He holds an honorary doctorate from MSU.

"We are proud to have this opportunity to honor the lives of two loving and generous friends of the University in a permanent fashion," said MSU President Ronald G. Eaglin. "We welcome Larry Forgy, who has strong ties to the Hutchinsons and to this institution."

Titled "Education's Gift," the cast bronze sculpture depicts a young boy holding aloft a small globe. It was created by Stephen J. Tirone, associate professor of art at MSU, and was modeled by first grader Grant Markwell, great-grandson of the Hutchinsons and the son of Mr. and Mrs. Dan Markwell of Morehead. The statue will be unveiled by the artist, the model and Susan Neff of Morehead, daughter of the Hutchinsons and board chair of The Citizens Bank.

MSU's Sculpture Concourse was established in 2002 to visually demonstrate the link between the fine arts and education and to recognize the University's historic mission of teacher training. It is a joint project of the Caudill College of Humanities and the College of Education. The first statue was unveiled in April 2002 in memory of former MSU President Adron Doran.

#####

News

University Communications

Pauline Young, Director

www.moreheadstate.edu

Morehead State University

UPO Box 1100

Morehead, KY 40351-1689

(606) 783-2030

Oct. 14, 2003

FOR IMMEDIATE RELEASE

MOREHEAD, Ky.---The fall fund drive at Morehead State Public Radio will get underway on Saturday, Oct. 18, and continue through Friday, Oct. 24, with a goal of raising \$27,000.

"We really want to hear from our listeners with their donations and comments," MSPR General Manager Paul Hitchcock said. "We offer a variety of news, information and entertainment programs that are unique to this region.

"Our students learn from our professional staff members who are dedicated to the mission of Morehead State University," Hitchcock added. "The money raised by our listeners will help us meet the rising costs it takes to provide network programs such as "Morning Edition," "Car Talk" and "A Prairie Home Companion."

Pledges can be made by calling (606) 783-2001 or (800) 286-9659, stopping by MSPR's studios in 132 Breckinridge Hall, or online at www.msuradio.com.

During the fund drive, MSPR will broadcast live from several locations:

Saturday, Oct. 18, 11 a.m. – 1 p.m. Jayne Stadium, prior to MSU's football game;

Sunday, Oct. 19, noon-2 p.m. – St. Patrick Catholic Church in Mt. Sterling, during Court Days;

Tuesday, Oct. 21, 10 a.m. – 1 p.m. Button Drill Room, Central Kentucky Blood Center's fall blood drive;

Thursday, Oct. 23, 11 a.m. – 2 p.m. – Kentucky Folk Art Center.

Current members are asked to renew their pledges and, during the week, MSPR would like to increase its membership list by at least 100. For those making pledges, special premiums are available, including: an MSPR glass mug; "Best of Americana Crossroads Live, Vol. 4," "True Life Blues-Songs of Bill Monroe Tribute" and "Alligator Records 30th Anniversary Collection" compact discs; one year subscription to "Newsweek" magazine; Wal-Mart gift cards; Movie Warehouse rentals; tickets for the Kentucky Horse Park in Lexington; accommodations and dinner at Carter Cave State Resort Park; and folk art from the Kentucky Folk Art Center.

(MORE)

MSPR Fall Fund Drive
2-2-2-2

Highlights of the week will include resuming web streaming and numerous in-studio guests, including Carla Van Hoose, Greg Schaber, Rob McNurlin, Russ Ward and Larry Albert.

Members of the community also may provide assistance by volunteering to answer the phone. You can register to help by calling Debbie Cline, MSPR broadcast operations specialist, at (606) 783-2321.

Several businesses -- WKCA/WIVY, Holbrook Drugs, Baldwin Distributing, Alpha Promotions, Morehead National Bank, U.S. Bank, Peoples Bank, WGOH/WUGO -- have offered challenges to benefit the drive. Businesses that wish to offer a challenge may call Hitchcock at (606) 783-2334.

MSPR broadcasts 24 hours a day and the network includes WMKY (90.3 FM) in Morehead, WOCS (88.3 FM) LeRose/Booneville and a translator (88.3 FM) in Inez.

The radio station receives funding from the Corporation for Public Broadcasting, MSU, regional business underwriters and through listener support. Listeners are encouraged to become MSPR members to help offset the costs of programming, equipment, network fees and student wages.

#####

ajb

News

University Communications

Pauline Young, Director

www.moreheadstate.edu

Morehead State University

UPO Box 1100

Morehead, KY 40351-1689

(606) 783-2030

Oct. 15, 2003

FOR IMMEDIATE RELEASE

MOREHEAD, Ky.---The Morehead State University community will have an opportunity to help meet the everyday need for blood and its components at a Central Kentucky Blood Center drive Tuesday and Wednesday, Oct. 21 and 22, on campus.

The blood drive will be held in Button Drill Room from 11 a.m. until 5 p.m. Donors must be at least 17 years of age, weigh a minimum of 110 pounds and be in good general health.

Everyone who donates on these days will receive a free T-shirt. The complete process takes less than an hour, and donors may give blood every 56 days.

CKBC provides blood to 65 hospitals in 61 Kentucky counties.

Additional information is available by calling CKBC's Holly Ray at (800) 775-2522.

####

sas

News

University Communications

Pauline Young, Director

www.moreheadstate.edu

Morehead State University

UPO Box 1100

Morehead, KY 40351-1689

(606) 783-2030

Oct. 15, 2003

FOR IMMEDIATE RELEASE

ASHLAND, Ky.---Anyone in the Ashland area considering enrolling in college in the near future is invited to learn more about Morehead State University at a special "Meet MSU Night" planned for Tuesday, Oct. 28.

Potential students will meet with faculty, staff and other University representatives at the Plaza Hotel in Ashland. The event will provide an opportunity to learn more about financial aid, academic degree programs, residence hall living and other student services available at MSU.

Students are encouraged to bring parents or other family members to the event.

Other "Meet MSU Night" programs this fall will be held from 6-8 p.m. on: Tuesday, Oct. 21 at the Drawbridge Inn in Ft. Mitchell; Thursday, Oct. 23 at the Hurstborne Inn in Louisville; and Thursday, Nov. 6, in Lexington.

Additional information is available by calling MSU's Office of Admissions at (606) 783-2000; or toll-free at (800) 585-6781.

####

sas

News

University Communications

Pauline Young, Director

www.moreheadstate.edu

Morehead State University

UPO Box 1100

Morehead, KY 40351-1689

(606) 783-2030

Oct. 15, 2003

FOR IMMEDIATE RELEASE

FT. MITCHELL, Ky.---Anyone in the Ft. Mitchell region considering enrolling in college in the near future is invited to learn more about Morehead State University at a special "Meet MSU Night" planned for Tuesday, Oct. 21.

Potential students will meet with faculty, staff and other University representatives at the Drawbridge Inn in Ft. Mitchell from 6-8 p.m. The event will provide an opportunity to learn more about financial aid, academic degree programs, residence hall living and other matters relating to students at MSU.

Students are encouraged to bring parents or other family members to the event.

Other "Meet MSU Night" programs this fall will be held from 6-8 p.m. on: Thursday, Oct. 23, at the Hurstborne Inn in Louisville; on Tuesday, Oct. 28, at the Plaza Hotel in Ashland; and on Thursday, Nov. 6, in Lexington.

Additional information is available by calling MSU's Office of Admissions at (606) 783-2000; or toll-free at (800) 585-6781.

####

sas

News

University Communications

Pauline Young, Director

www.moreheadstate.edu

Morehead State University

UPO Box 1100

Morehead, KY 40351-1689

(606) 783-2030

Oct. 15, 2003

FOR IMMEDIATE RELEASE

LOUISVILLE, Ky.---Anyone in the Louisville region considering enrolling in college in the near future is invited to learn more about Morehead State University at a special "Meet MSU Night" planned for Thursday, Oct. 23.

Potential students will meet with faculty, staff and other University representatives at the Hurstborne Inn in Louisville from 6-8 p.m. The event will provide an opportunity to learn more about financial aid, academic degree programs, residence hall living and other interests available at MSU.

Students are encouraged to bring parents or other family members to the event.

Other "Meet MSU Night" programs this fall will be held from 6-8 p.m. on: Tuesday, Oct. 21, at the Drawbridge Inn in Ft. Mitchell; Tuesday, Oct. 28, at the Plaza Hotel in Ashland and Thursday, Nov. 6, in Lexington.

Additional information is available by calling MSU's Office of Admissions at (606) 783-2000; or toll-free at (800) 585-6781.

####

sas

News

University Communications

Pauline Young, Director

www.moreheadstate.edu

Morehead State University

UPO Box 1100

Morehead, KY 40351-1689

(606) 783-2030

Oct. 15, 2003

FOR IMMEDIATE RELEASE

MOREHEAD, Ky.---A Morehead State University graduate student enrolled in the guidance and counseling education specialist program is the second recipient of the Major James Scott DeHart fellowship.

Joey Riddle, of Clearfield, has been awarded the fellowship for the 2003-2004 school year.

"I was honored to receive the fellowship," Riddle said.

The son of Robin Robinson and the late Jerry Riddle, he would like to pursue a career working with rehabilitating head injury patients.

A graduate of Rowan County Senior High School, he earned a bachelor's degree in psychology from Morehead State University in 2002.

The Major James Scott DeHart Memorial Endowment Fund was established to aid graduates of Rowan County who enroll full-time at MSU. DeHart, a native of Haldeman, had a distinguished military career in the Air Force from 1950 until his death in 1969.

To be eligible for the award, applicants should be a graduate of Rowan County Senior High School. Additional information on the award is available from the Office of Graduate Programs by calling (606) 783-2039.

####

ajb

News

University Communications

Pauline Young, Director

www.moreheadstate.edu

Morehead State University

UPO Box 1100

Morehead, KY 40351-1689

(606) 783-2030

Oct. 15, 2003

FOR IMMEDIATE RELEASE

MOREHEAD, Ky.---The Kentucky Folk Art Center and Morehead State University's Appalachian Heritage Program have initiated a new speakers series, "Appalachia: Yesterday and Today." The series will feature speakers of national, regional and local interest who will address topics dealing with Appalachia's history, culture, environment and contemporary issues.

The series' first installment will be held on Tuesday, Oct. 21, at 7 p.m. in the KFAC auditorium. The speaker will be Dr. Tom Kiffmeyer, MSU assistant professor of history. His presentation, "The Battle for Mill Creek: The War on Poverty in Appalachia," will examine the War on Poverty launched in East Kentucky during the 1960s. A look at Mill Creek, Kentucky—one of the first efforts to end Appalachian poverty in the 1960s—foreshadows many of the problems that the Appalachian Volunteers faced toward the end of the decade and demonstrates how, in many ways, the poor had as influential impact on the War on Poverty as the War had on them.

At MSU, Dr. Kiffmeyer teaches Kentucky, Eastern Kentucky and Native American History, as well as Civil War and Reconstruction. He holds a Ph.D. degree in history from the University of Kentucky.

Dr. Kiffmeyer has published and presented widely, and his manuscript "Reformers, Radicals, and Republicans: The Appalachian Volunteers and the War on Poverty in Eastern Kentucky" is being considered for publication by the University of North Carolina Press.

"The Appalachian Heritage Program is thrilled to join the Kentucky Folk Art Center in co-sponsoring a new speaker's series, 'Appalachia: Yesterday and Today,'" said Dr. John Ernst, director of MSU's Appalachian Heritage Program. "Each year we will invite writers, artists and activists, both local and national, to talk about the region. We believe that this type of project helps fulfill Morehead State's mission in East Kentucky.

"'Appalachia: Yesterday and Today' will be a wonderful program for anyone interested in the history and contemporary culture of Appalachia," said Matt Collinsworth, KFAC director. "The speakers that we feature will offer important ideas and insights about Appalachia's past and about the circumstances that confront our region today."

New speakers and dates will be announced as they are scheduled. Additional information is available by calling (606) 783-2204. KFAC, located at 102 West First Street in Morehead, is open Monday-Saturday, 9 a.m. to 5 p.m., and Sundays, 1-5 p.m.

####

MSU is an affirmative action, equal opportunity educational institution.

Morehead State University

UPO Box 1100

Morehead, KY 40351-1689

(606) 783-2030

Oct. 16, 2003

FOR IMMEDIATE RELEASE

"MEET MSU NIGHT" IN PAINTSVILLE: A Picture Story

PAINTSVILLE, Ky.---Morehead State University's Office of Admission presented its first in a series of "Meet MSU Nights" at the Paintsville Ramada Inn where nearly 50 high school students Johnson County and surrounding region attended the event.

Potential college students met with faculty, staff and other University representatives. The event provided an opportunity to learn more about financial aid, academic degree programs, residence hall living and numerous student interests available at MSU.

Other "Meet MSU Night" programs, planned for 6-8 p.m. this fall, are: on Tuesday, Oct. 21, at the Drawbridge Inn in Ft. Mitchell; on Thursday, Oct. 23 at the Hurstborne Inn in Louisville; on Tuesday, Oct. 28 at the Plaza in Ashland; and on Thursday, Nov. 6, in Lexington.

Additional information is available by calling MSU's Office of Admissions at (606) 783-2000; or toll-free at (800) 585-6781.

#####

Cutlines:

1--Dr. Rodger Hammons, chair of MSU's Department of Mathematics and Computer Science, chats with interested students at the "Meet MSU Night" held in Paintsville.

2--Dr. Jim Turner, assistant professor of management, left, and Dr. Scott Meisel, assistant professor of accounting, of Morehead State University talks with the Walters family of Johnson County. Steve and Amanda are employees with the Johnson County School System while their son, Mike, is a senior at Johnson Central High School.

3--Vincent Butler, admissions specialist at MSU, discusses some financial aid matters with Cayla Moore, left, and Sarah Howard, right, both of Inez, students at Sheldon Clark High School.

4--Morehead State University students Amy Aschenauer, Ashland junior, and Billy Dollarhide, Paintsville junior, assisted with the "Meet MSU Night" held in Paintsville. The MSU students hosted the University Center/Student Activities display and talked with Angela Meade, of Flat Gap, and her daughter Patricia, a junior at Johnson Central High School.

5--Johnson Central High School's Youth Service Center Director Karen Salyer helped students Melanie Spradlin, Ashley LeMaster and Savannah Cunagin get information from Morehead State's Derek Rivers, representing the ROTC program, during the "Meet MSU Night" held in Paintsville.

(MSU photos by Jason Blanton)





News

University Communications

Pauline Young, Director

www.moreheadstate.edu

Morehead State University

UPO Box 1100

Morehead, KY 40351-1689

(606) 783-2030

Oct. 16, 2003

FOR IMMEDIATE RELEASE

MOREHEAD, Ky.---Morehead State University will hold an open house and formally dedicate its MSU at Mount Sterling campus on Friday, Oct. 24, starting at 1 p.m.

The dedication ceremony, which will begin at 2 p.m., will include remarks by MSU President Ronald G. Eaglin; Rep. Adrian Arnold (D-Mount Sterling); David Burdine, chair of the Montgomery CommUNITY Development Board; Dr. Dan Connell, associate vice president for academic outreach and support; Dr. Janet Kenney, campus director; and representatives from the community and student population.

The newest of MSU's five regional centers, which opened for classes this fall, is located in the Clay Community Center at 3400 Indian Mound Drive in Mount Sterling. The day's activities are free and open to the public.

MSU has been offering classes in Montgomery County for more than 25 years. An increased interest in postsecondary education, reinforced by a feasibility study conducted by the Montgomery Community Development, Inc., led to the establishment of the new facility. Enrollment at the center has grown from 71 students in 2000 to 319 this fall.

"We have been extremely pleased with the success of this partnership with Morehead State University," Burdine said. "This is what we had hoped for and we look forward to a continued and growing relationship."

This arrangement has been a win-win situation for Morehead State as well, according to Dr. Eaglin. "Joining into this educational venture has been a rewarding experience."

Dr. Kenney believes the MSU at Mount Sterling campus has been extremely well received by those in the area. "The first semester has been tremendously exciting," she said. "We have experienced a growth of more than 100 students and we have received requests daily for additional classes or more program options, not only from this county but from the surrounding counties as well."

The first full-time director in Montgomery County, Dr. Kenney is a telecommunications professional and a former chair of MSU's Department of Communication and Theatre. She came to the University in 1994 and holds the rank of associate professor of radio-TV.

(MORE)

MSU at Mount Sterling Open House/Dedication
2-2-2-2-2

Having an opportunity to take classes close to home has been advantageous for many students, but especially for Jamie Donaldson, an MSU sophomore who has completed all his classes in Mount Sterling.

“With the new center, there are more classes offered,” said Donaldson who is a university studies major. “Now, it’s more of a reality that you can get a degree here.”

While enrolled in college courses, Donaldson, a Montgomery County High School graduate, has been working full-time as a graphic artist at the Mount Sterling Advocate since 1997. “It really helps being able to go to school here,” he said. “I have a full-time job and two children. There is no way I could go to the campus to take classes.”

Establishing the \$5.5 million Clay Community Center was the culmination of the efforts of several business and industry leaders, the school system, and legislators, including U.S. Rep. Ernie Fletcher of Lexington. Through his efforts, the center received a \$283,500 grant from the U.S. Department of Housing and Urban Development.

MSU at Mount Sterling will provide educational and training opportunities primarily for Montgomery County, as well as the surrounding counties of Bath, Bourbon, Clark, Menifee, Nicholas and Powell. More than 70 courses in a variety of subjects will be offered in the 2004 spring semester.

Additional information is available by calling MSU at Mount Sterling at (859) 499-0780 or toll free at (866) 870-0809.

####

News

University Communications

Pauline Young, Director

www.moreheadstate.edu

Morehead State University

UPO Box 1100

Morehead, KY 40351-1689

(606) 783-2030

Oct. 16, 2003

FOR IMMEDIATE RELEASE

MOREHEAD, Ky.---Campus flags fluttered at half staff Thursday as the Morehead State University community joined other Kentuckians in paying tribute to the life of former Gov. Edward T. (Ned) Breathitt, who died Tuesday night in Lexington at the age of 78.

Also a former vice chair of the University's Board of Regents, Breathitt was governor from 1963 to 1967 and is the namesake of MSU's Breathitt Sports Center athletics complex at the east end of the campus.

"Governor Breathitt was a great friend of this institution, of public higher education and of the citizens of the Commonwealth of Kentucky," said MSU President Ronald G. Eaglin. "He leaves a great legacy of service."

While governor, Breathitt supported and signed the law in 1966 that elevated MSU and other regional state colleges to university status. He will lie in state at the Capitol Rotunda on Friday and be buried Saturday in Hopkinsville, his home town. A memorial service is planned Friday at 11 a.m. at the Capitol.

####

News

University Communications

Pauline Young, Director

www.moreheadstate.edu

Morehead State University

UPO Box 1100

Morehead, KY 40351-1689

(606) 783-2030

Oct. 16, 2003

FOR IMMEDIATE RELEASE

MOREHEAD, Ky.---Morehead State University's Caudill College of Humanities, Arts and Humanities Council and Department of Art will present the Third Annual Halloween Costume Contest on Wednesday, Oct. 29.

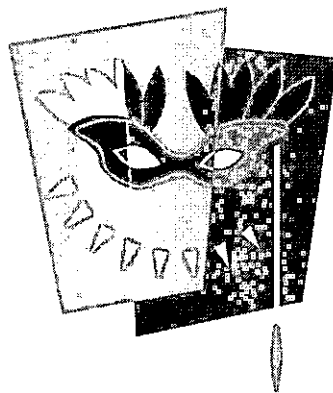
The event will begin at 7 p.m. in the Claypool-Young Art Building on the MSU campus. There will be refreshments and live music at this free event where participants may show off their creative attire.

The costume contest will run from 7:30 - 8:30 p.m., followed by a film screening of "The Rocky Horror Picture Show" in the Room 111 at 8:45 pm.

University students will be rewarded for their creativity in costume design with gift certificates from the MSU Bookstore for the top three costumes.

Additional information is available by calling Jennifer Reis at 783-5446.

#####



Photo

University Communications

Pauline Young, Director

www.moreheadstate.edu

Morehead State University

UPO Box 1100

Morehead, KY 40351-1689

(606) 783-2030

WRITING PROJECT AT MSU

A Mason County teacher participated in the 2003 Morehead Writing Project Invitational Summer Institute at Morehead State University. The project is designed to instruct teachers of all grade levels on how to incorporate more meaningful writing across the curriculum. Attending the Institute were, front row from left: Vickie White, associate director; Dominique Pleasant-Moore, Straub Elementary School; and Dr. Nancy Peterson, co-director. Back row from left: Mark Mantooth, associate director; Dr. Glen Colburn, co-director; and Lisa Wheeler, associate director. Additional information on the summer institute is available by calling (606) 783-5165.

(MSU photo by Tim Holbrook)

10-16-03ajb

MSU is an affirmative action, equal opportunity educational institution.



Photo

University Communications

Pauline Young, Director

www.moreheadstate.edu

Morehead State University

UPO Box 1100

Morehead, KY 40351-1689

(606) 783-2030

WRITING PROJECT AT MSU

A Floyd County teacher participated in the 2003 Morehead Writing Project Invitational Summer Institute at Morehead State University. The project is designed to instruct teachers of all grade levels on how to incorporate more meaningful writing across the curriculum. Attending the Institute were, front row from left: Mark Mantooth, associate director; Dr. Glen Colburn, co-director; Audra Slocum, Betsy Layne High School; Vickie White, associate director; Lisa Wheeler, associate director; and Dr. Nancy Peterson, co-director. Additional information on the summer institute is available by calling (606) 783-5165.

(MSU photo)

10-16-03ajb

MSU is an affirmative action, equal opportunity educational institution.



Photo

University Communications

Pauline Young, Director

www.moreheadstate.edu

Morehead State University

UPO Box 1100

Morehead, KY 40351-1689

(606) 783-2030

WRITING PROJECT AT MSU

A Menifee County teacher participated in the 2003 Morehead Writing Project Invitational Summer Institute at Morehead State University. The project is designed to instruct teachers of all grade levels on how to incorporate more meaningful writing across the curriculum. Attending the Institute were, front row from left: Mark Mantooth, associate director; Dr. Glen Colburn, co-director; Denita Trimble, Menifee County Middle School; Vickie White, associate director; Lisa Wheeler, associate director; and Dr. Nancy Peterson, co-director. Additional information on the summer institute is available by calling (606) 783-5165.

(MSU photo)

10-16-03ajb

MSU is an affirmative action, equal opportunity educational institution.



Photo

University Communications

Pauline Young, Director

www.moreheadstate.edu

Morehead State University

UPO Box 1100

Morehead, KY 40351-1689

(606) 783-2030

WRITING PROJECT AT MSU

Two Greenup County teachers participated in the 2003 Morehead Writing Project Invitational Summer Institute at Morehead State University. The project is designed to instruct teachers of all grade levels on how to incorporate more meaningful writing across the curriculum. Attending the Institute were, front row from left: Diana Brown, Greenup County schools; and Misty Hydrick, Greenup County High School. Back row from left: Mark Mantooth, associate director; Dr. Glen Colburn, co-director; Vickie White, associate director; Lisa Wheeler, associate director; and Dr. Nancy Peterson, co-director. Additional information on the summer institute is available by calling (606) 783-5165.

(MSU photo by Tim Holbrook)

10-16-03ajb

MSU is an affirmative action, equal opportunity educational institution.



Photo

University Communications

Pauline Young, Director

www.moreheadstate.edu

Morehead State University

UPO Box 1100

Morehead, KY 40351-1689

(606) 783-2030

WRITING PROJECT AT MSU

Two Montgomery County teachers participated in the 2003 Morehead Writing Project Invitational Summer Institute at Morehead State University. The project is designed to instruct teachers of all grade levels on how to incorporate more meaningful writing across the curriculum. Attending the Institute were, front row from left: Pam Kissinger, McNabb Middle School; and Krystal Holbrook, Camargo Elementary School. Back row from left: Mark Mantooth, associate director; Dr. Glen Colburn, co-director; Vickie White, associate director; Lisa Wheeler, associate director; and Dr. Nancy Peterson, co-director. Additional information on the summer institute is available by calling (606) 783-5165.

(MSU photo by Tim Holbrook)

10-16-03ajb

MSU is an affirmative action, equal opportunity educational institution.



Photo

University Communications

Pauline Young, Director

www.moreheadstate.edu

Morehead State University

UPO Box 1100

Morehead, KY 40351-1689

(606) 783-2030

WRITING PROJECT AT MSU

Several Boyd County teachers participated in the 2003 Morehead Writing Project Invitational Summer Institute at Morehead State University. The project is designed to instruct teachers of all grade levels on how to incorporate more meaningful writing across the curriculum. Attending the Institute were, front row from left: Nichole Moore, Charles Russell Elementary; Chris Ann Wallace, Summit Elementary; and Amanda Hood, Charles Russell Elementary. Back row from left: Mark Mantooth, associate director; Dr. Glen Colburn, co-director; Lisa Wheeler, associate director; Vickie White, associate director; and Dr. Nancy Peterson, co-director. Additional information on the summer institute is available by calling (606) 783-5165.

(MSU photo)

10-16-03ajb

MSU is an affirmative action, equal opportunity educational institution.



Photo

University Communications

Pauline Young, Director

www.moreheadstate.edu

Morehead State University

UPO Box 1100

Morehead, KY 40351-1689

(606) 783-2030

WRITING PROJECT AT MSU

Several Rowan County teachers participated in the 2003 Morehead Writing Project Invitational Summer Institute at Morehead State University. The project is designed to instruct teachers of all grade levels on how to incorporate more meaningful writing across the curriculum. Attending the Institute were, front row from left: Austen Reiley of Rowan County Middle School; Jane Hearn of Rowan County Technical College; Amy Gilliam of Rowan County Middle School; Melissa Jones of Rowan County Middle School; Vickie White, associate director; and Dr. Nancy Peterson, co-director. Back row from left: Mark Mantooth, associate director; Dr. Glen Colburn, co-director; Liz Littleton, Rowan County Middle School; Rebecca May, Clearfield Elementary School; and Lisa Wheeler, associate director. Additional information on the summer institute is available by calling (606) 783-5165.

(MSU photo)

10-16-03ajb

MSU is an affirmative action, equal opportunity educational institution.



News

University Communications

Pauline Young, Director

www.moreheadstate.edu

Morehead State University

UPO Box 1100

Morehead, KY 40351-1689

(606) 783-2030

Oct. 17, 2003

FOR IMMEDIATE RELEASE

MOREHEAD, Ky.---The Kentucky Folk Art Center will present a special Halloween program on Monday, Oct. 27, at 7 p.m.

Laura Lee and Michael Duncan O'Connell, founders of the Family Folk Theatre, will present a delightful evening of storytelling and comedy that will be suitable for the entire family. The community is invited to get into the Halloween spirit with the O'Connells as they present "Wiley and the Hairy Man, and other Spooky Tales". Children of all ages are invited.

The O'Connells have toured nationally with their original plays and concerts.

Admission is free. Refreshments will be served prior to the performance, beginning at 6:30 p.m.

Additional information is available by calling the Kentucky Folk Art Center at (606) 783-2204. KFAC, located at 102 West First Street in Morehead, is open Monday-Saturday, 9 a.m. to 5 p.m., and Sundays, 1-5 p.m.

####

Photo

University Communications

Pauline Young, Director

www.moreheadstate.edu

Morehead State University

UPO Box 1100

Morehead, KY 40351-1689

(606) 783-2030

O'CONNELLS WILL PRESENT HALLOWEEN PROGRAM

Laura Lee and Michael Duncan O'Connell and their Family Folk Theatre will present an evening of storytelling and comedy in the spirit of Halloween on Monday, Oct. 27, at the Kentucky Folk Art Center. The program, which is suitable for all ages, will include Wiley and the Hairy Man and other Spooky Tales. There is no admission charge. Refreshments will be served prior to the performance which begins at 6:30 p.m.

(MSU photo)

10-17-03py

MSU is an affirmative action, equal opportunity educational institution.



News

University Communications

Pauline Young, Director

www.moreheadstate.edu

Morehead State University

UPO Box 1100

Morehead, KY 40351-1689

(606) 783-2030

Oct. 17, 2003

FOR IMMEDIATE RELEASE

MOREHEAD, Ky.---Want to start a business at your home, but are a bit hesitant about where to begin?

Morehead State University's Small Business Development Center will provide some advice at a pre-business planning workshop, "Home-Based Businesses," on Tuesday, Nov. 4, for those who are working out of their homes or are planning to do so in the future.

The two-hour seminar will begin at 5:30 p.m. at the Kentucky Folk Art Center, located at 102 West First Street in Morehead. There is no charge for the session, but pre-registration is necessary due to limited seating.

Participants will assess their self-employment skills, consider home-based business ideas and learn the advantages and disadvantages of this type of business venture. Topics to be discussed include how to turn talents and hobbies into profits, how and where to find clients, and methods to advertise and market your products/services. A question and answer session will conclude the program.

All training programs, sponsored or cosponsored by SBDC are available to all individuals without regard to race, sex, creed or national origin. Arrangements will be made to those with disabilities when requested in advance.

Additional information and pre-registration are available by calling MSU's SBDC at (606) 783-2895.

#####

News

University Communications

Pauline Young, Director

www.moreheadstate.edu

Morehead State University

UPO Box 1100

Morehead, KY 40351-1689

(606) 783-2030

Oct. 17, 2003

FOR IMMEDIATE RELEASE

MOREHEAD, Ky.---The Community Advisory Board for Morehead State Public Radio will conduct its quarterly meeting on Sunday, Nov. 2, at 3 p.m. in MSPR's studios, located at 132 Breckinridge Hall on the Morehead State University campus.

The Board meetings are open to the public.

Additional information is available by calling Paul Hitchcock, MSPR general manager, at (606) 783-2001.

####

News

University Communications

Pauline Young, Director

www.moreheadstate.edu

Morehead State University

UPO Box 1100

Morehead, KY 40351-1689

(606) 783-2030

Oct. 17, 2003

FOR IMMEDIATE RELEASE

MOREHEAD, Ky.---Always wanted to learn more about making fliers, brochures, catalogs, or business cards for your home, work, group or agency? Here's your chance with a course offered by Morehead State University's Office of Continuing Education.

Topics to be included in “**Microsoft Publisher**” are creating, formatting, organizing and modifying a publication. Individuals also will learn how to add clip art, use the drawing tools and work with design templates.

The instructor for this class is Kim Buford, who has been teaching computer classes for the Office of Continuing Education and at St. Claire Regional Medical Center.

Classes will run from 5:30 - 7:30 p.m. every Thursday, Nov. 6-20, in 312 Combs Building. The registration fee is \$45 per person.

Additional information and registration are available by calling the Office of Continuing Education at (606) 783-2875.

####

News

University Communications

Pauline Young, Director

www.moreheadstate.edu

Morehead State University

UPO Box 1100

Morehead, KY 40351-1689

(606) 783-2030

Oct. 17, 2003

FOR IMMEDIATE RELEASE

MOREHEAD, Ky.---Recycled Percussion will make a return visit to Morehead State University on Wednesday, Nov. 5, for an 8 p.m. performance in Button Auditorium.

Using recycled tools, barrels, building site leftovers, pots and pans, step ladders and the occasional chainsaw, the group will use most anything as their "instruments." They are known for energizing and inspiring audiences in more than 40 states across the country.

Band members create an interactive show that is appropriate for all ages, using fresh and fun ways to recycle junk.

Working in the music industry for four years, Recycled Percussion has played with several headline performers, including LL Cool J, Godsmack, Staind and They Might Be Giants. They also have played during halftime shows of both the San Francisco 49ers and the Utah Jazz.

The band has been named one of the hottest acts at the National Association for Campus Activities. It has made television appearances on "Talk Soup," "Chronicle" and HBO.

MSU's Student Activities Office is sponsoring the performance. There is no admission charge. Additional information is available by calling at (606) 783-2071.

####

Photo

University Communications

Pauline Young, Director

www.moreheadstate.edu

Morehead State University

UPO Box 1100

Morehead, KY 40351-1689

(606) 783-2030

RECYCLED PERCUSSION COMES TO MSU

Recycled Percussion, a musical group that utilizes items found in trash for its instruments, will appear in concert on Wednesday, Nov. 5, at Morehead State University. The free performance, sponsored by MSU's Student Activities Council, will begin at 8 p.m. in Button Auditorium. Additional information is available by calling (606) 783-2071.

(File photo)

10-17-03

MSU is an affirmative action, equal opportunity educational institution.

Recycled Percussion



News

University Communications

Pauline Young, Director

www.moreheadstate.edu

Morehead State University

UPO Box 1100

Morehead, KY 40351-1689

(606) 783-2030

Oct. 17, 2003

FOR IMMEDIATE RELEASE

MOREHEAD, Ky.---A critically-acclaimed Bluegrass singer and songwriter will perform at the next presentation of "Americana Crossroads Live" on Friday, Oct. 31, at Morehead State University.

Gary Ferguson will open the concert with a 7:30 p.m. performance in Duncan Recital Hall within Baird Music Hall on MSU's campus. After his set, the trio, bohola, will bring its traditional Irish music sound to the stage at 8:30 p.m.

Ferguson is a prolific songwriter, and his compositions have been recorded by such music notables as Cliff Waldron, Larry Sparks and Paul Adkins. He has recorded six compact discs and placed several songs on the Bluegrass charts.

The Maryland native has developed a reputation as both a writer and interpreter of Civil War-era songs. Two of his songs, "Last Day at Gettysburg" and "The Undelivered Message," are among his most requested. They are included on a Rebel Records 2002 release, "Songs of the Civil War." "Last Day at Gettysburg" also earned Ferguson a nomination for Song of the Year and Songwriter of the Year awards at the Society for the Preservation of Bluegrass Music of America (SPBGMA). His more recent recordings have been collaborations with such artists as Sally Love and Junior Barber, and his CD, "Our Old Home," is on both the Bluegrass and Americana charts.

The "Americana Crossroads Live" concert series is presented by Morehead State Public Radio and the Kentucky Center for Traditional Music. Doors open at 7 p.m. There will be a 15-minute intermission between bohola and Ferguson's performances. Those attending the event will be eligible for door prizes, and there will be Halloween candy for children in the audience. MSPR will record the concert for broadcast on Thursday, Nov. 6, at 8 p.m.

Toyota Motor Manufacturing of Georgetown is a corporate sponsor of the series with additional sponsorship by KCTM, Kentucky Folk Art Center, Farmers Mercantile Boots and Shoes, Poppy Mountain Bluegrass Festival, Root-A-Baker's Bakery and Papa John's.

Additional information about the concert is available by calling MSPR at (800) 286-9659 or (606) 783-2001; or log on to MSPR's Web site at www.msradio.com.

####

sas

MSU is an affirmative action, equal opportunity educational institution.

FERGUSON IN CONCERT AT MSU

Critically-acclaimed Bluegrass singer and songwriter Gary Ferguson will perform at the next edition of "Americana Crossroads Live" on Friday, Oct. 31, at Morehead State University.

Ferguson will open the concert with a 7:30 p.m. performance in Duncan Recital Hall within Baird Music Hall. The group bohola, specializing in traditional Irish music, will follow with an 8:30 p.m. set. The "Americana Crossroads Live" concert series is presented by Morehead State Public Radio and the Kentucky Center for Traditional Music. Doors open at 7 p.m. There will be a 15-minute intermission between bohola and Ferguson's performances. Those attending will be eligible for door prizes, and there will be Halloween candy for children in the audience.

Additional information about the concert is available by calling MSPR at (800) 286-9659 or (606) 783-2001; or log on to MSPR's Web site at www.msuradio.com.

(Photo by Annie Tubiolo)

10-14-03sas

MSU is an affirmative action, equal opportunity educational institution.



MSU HOSTS BROWNIES' COMPUTER DAY

Girl Scout Brownies from several East Kentucky counties gathered at Morehead State University recently to participate in a special program designed to help them earn their computer use merit badges. Dr. Lola Smith and Darla Hunt, both instructors in the University's Department of Information Systems, sponsored the event and participated as teachers for the scouts, showing them how to use computers, and how to create calendars and play games for learning and entertainment. Additional information is available by calling Dr. Smith at (606) 783-9425.

(MSU photo by Shirley A. Smith)

10-17-03sas

MSU is an affirmative action, equal opportunity educational institution.



MSU HOSTS BROWNIES' COMPUTER DAY

Girl Scout Brownies from several East Kentucky counties gathered at Morehead State University recently to participate in a special program designed to help them earn their computer use merit badges. Dr. Lola Smith and Darla Hunt, both instructors in the University's Department of Information Systems, sponsored the event and participated as teachers for the scouts, showing them how to use computers, and how to create calendars and play games for learning and entertainment. Among the Brownies at the event was Kelsha Ousley of **Garrett**, 6, a first grade student at Duff Elementary School. Additional information is available by calling Dr. Smith at (606) 783-9425.

(MSU photo by Shirley A. Smith)

10-17-03sas

MSU is an affirmative action, equal opportunity educational institution.



Photo

University Communications

Pauline Young, Director

www.moreheadstate.edu

Morehead State University

UPO Box 1100

Morehead, KY 40351-1689

(606) 783-2030

MSU HOSTS BROWNIES' COMPUTER DAY

Girl Scout Brownies from several East Kentucky counties gathered at Morehead State University recently to participate in a special program designed to help them earn their computer use merit badges. Dr. Lola Smith and Darla Hunt, both instructors in the University's Department of Information Systems, sponsored the event and participated as teachers for the scouts, showing them how to use computers, and how to create calendars and play games for learning and entertainment. Among the Brownies attending the event was, seated, Elizabeth Johnson of **Pikeville**, age 6, who is a second grader at Myra Christian Academy. Looking on, as Dr. Smith guided the girls through a Web site is Shelby Rose, a 6-year-old first grader at Meniffee Elementary School. Additional information is available by calling Dr. Smith at (606) 783-9425.

(MSU photo by Shirley A. Smith)

10-17-03sas

MSU is an affirmative action, equal opportunity educational institution.



Photo

University Communications

Pauline Young, Director

www.moreheadstate.edu

Morehead State University

UPO Box 1100

Morehead, KY 40351-1689

(606) 783-2030

MSU HOSTS BROWNIES' COMPUTER DAY

Girl Scout Brownie troops from several East Kentucky counties gathered at Morehead State University recently to participate in a special program designed to help them earn their computer use merit badges. Dr. Lola Smith and Darla Hunt, both instructors in the University's Department of Information Systems, sponsored the event and participated as teachers for the scouts, showing them how to use computers, and how to create calendars and play games for learning and entertainment. Among the Brownies at the event was Megan Ballard, 7, the daughter of Anthony and Laura Ballard of **Jeffersonville**. Ballard is a second grader at Camargo Elementary School. Additional information is available by calling Dr. Smith at (606) 783-9425.

(MSU photo by Shirley A. Smith)

10-17-03sas

MSU is an affirmative action, equal opportunity educational institution.



Photo

University Communications

Pauline Young, Director

www.moreheadstate.edu

Morehead State University

UPO Box 1100

Morehead, KY 40351-1689

(606) 783-2030

MSU HOSTS BROWNIES' COMPUTER DAY

Morehead State University hosted Girl Scout Brownie troops from several East Kentucky counties recently to participate in a special program designed to help them earn their computer use merit badges. Dr. Lola Smith and Darla Hunt, both instructors in the University's Department of Information Systems, sponsored the event and participated as teachers for the scouts, showing them how to use computers, and how to create calendars and play games for learning and entertainment. Menifee County Brownies, Paige Warren, 8, and Katie Mullins, 7, were among the scouts attending the event. Warren, left, the daughter of Marty and Brenda Warren of **Frenchburg**, is in the third grade at Menifee Elementary School. Mullins, the daughter of Scott and Julie Mullins of **Frenchburg**, is a second grader at Botts Elementary. Additional information is available by calling Dr. Smith at (606) 783-9425.

(MSU photo by Shirley A. Smith)

10-17-03sas

MSU is an affirmative action, equal opportunity educational institution.



Photo

University Communications

Pauline Young, Director

www.moreheadstate.edu

Morehead State University

UPO Box 1100

Morehead, KY 40351-1689

(606) 783-2030

MSU HOSTS BROWNIES' COMPUTER DAY

Girl Scout Brownie troops from several East Kentucky counties gathered at Morehead State University recently to participate in a special program designed to help them earn their computer use merit badges. Dr. Lola Smith and Darla Hunt, both instructors in the University's Department of Information Systems, sponsored the event and participated as teachers for the scouts, showing them how to use computers, and how to create calendars and play games for learning and entertainment. Dr. Smith assisted Katie Kilgore, 6, of **Frenchburg**, log onto a games Web site. Kilgore, the daughter of Sonny and Melissa Kilgore, is a first grader at Meniffee Elementary School. Additional information is available by calling Dr. Smith at (606) 783-9425.

(MSU photo by Shirley A. Smith)

10-17-03sas

MSU is an affirmative action, equal opportunity educational institution.



Photo

University Communications

Pauline Young, Director

www.moreheadstate.edu

Morehead State University

UPO Box 1100

Morehead, KY 40351-1689

(606) 783-2030

MSU HOSTS BROWNIES' COMPUTER DAY

Several Brownies from Girl Scout troops in East Kentucky counties gathered at Morehead State University recently to participate in a special program designed to help them earn their computer use merit badges. Dr. Lola Smith and Darla Hunt, both instructors in the University's Department of Information Systems, sponsored the event and participated as teachers for the scouts, showing them how to use computers, and how to create calendars and play games for learning and entertainment. Among the Brownies at the event was Dakota Waggoner, the daughter of Jamie and Miranda Waggoner of **Frenchburg**. Waggoner, 7, is a second grader at Menifee Elementary School. Additional information is available by calling Dr. Smith at (606) 783-9425.

(MSU photo by Shirley A. Smith)

10-17-03sas

MSU is an affirmative action, equal opportunity educational institution.



Tips

University Communications

Pauline Young, Director

www.moreheadstate.edu

Morehead State University

UPO Box 1100

Morehead, KY 40351-1689

(606) 783-2030

HIGHLIGHTS AT MOREHEAD STATE UNIVERSITY

(Oct. 26-Nov. 1)

Sunday Oct. 26

Soccer: Eagles vs. Jacksonville State, Jayne Stadium, 2 p.m., free. Additional information: (606) 783-2589.

Monday, Oct. 27

Halloween Health and Safety Fair, for students from Pike, Floyd and Johnson counties, Morehead State University at Prestonsburg, by invitation, free. Additional information: (606) 886-2405 or (800) 648-5372.

“Wiley and the Hairy Man, and other Spooky Tales” theatre and Halloween stories, by Folk Family Theatre, Kentucky Folk Art Center, 7 p.m., free. Additional information: (606) 783-2204.

Tuesday, Oct. 28

Delta Zeta/Theta Chi Haunted House, Button Drill Room, 7-11 p.m., charge, also Oct. 29-31. Additional information: (606) 783-2886.

Wednesday, Oct. 29

WellFest, Laughlin Health Building, 8 a.m. – 3 p.m., free, with minimal charge for selected screenings. Additional information: (606) 783-2083.

3rd Annual Halloween Costume Contest, Claypool-Young Art Building, featuring refreshments, live music, movie; prizes for MSU student winners, 7 p.m., free. Additional information: (606) 783-5446.

Thursday, Oct. 30

Octoberfest! MSU Tuba/Euphonium Ensemble, One on One Restaurant and Lounge, Main Street, Morehead, 8-10 p.m., charge. Additional information: (606) 783-2107.

Friday, Oct. 31

“Americana Crossroads Live,” featuring Gary Ferguson, and bohola, Duncan Recital Hall, 7:30 p.m. Additional information: (606) 783-2001.

(MORE)

Tips Oct. 26-Nov. 1
2-2-2-2-2

Saturday, Nov. 1

Admissions Open House, Wetherby Gymnasium, 9 a.m. - 1 p.m., free. Additional information:
(606) 783-2000; or (800) 585-6781.

Volleyball: Eagles vs. Samford, Wetherby Gymnasium, 11 a.m., free. Additional information:
(606) 783-2122.

Football: Eagles vs. Duquesne, Jayne Stadium, 1 p.m., charge. Additional information:
(606) 783-2020.

Rifle: MSU vs. Tennessee-Martin, Button Rifle Range, time TBA, free. Additional
information: (606) 783-2088.

####

10-20-03sas

News

University Communications

Pauline Young, Director

www.moreheadstate.edu

Morehead State University

UPO Box 1100

Morehead, KY 40351-1689

(606) 783-2030

Oct. 20, 2003

FOR IMMEDIATE RELEASE

**By Shirley Smith
MSU Staff Writer**

MOREHEAD, Ky.---The story of an immigrant family struggling to find a better life in the American Midwest is told in a new book by a Morehead State University faculty member.

Dr. Kent Freeland's "Odyssey to Iowa" follows David Davis, his wife and two daughters who leave the coal mining hills of Southeastern Wales and journey to Canada, and then to Iowa to start a new life in North America. The book details the storms, fires, sickness and other difficulties of 19th century rural life and is written for a pre-teen or teenaged audience.

In writing the book, which is categorized as historical fiction, he drew upon documentation available about European immigrants' experiences and some limited family records, but much of it is an invented story. It is the second such novel for the professor of education, who co-wrote last year's "Norwegian Saga" with his brother, Alan Freeland of Northfield, Minn.

"We both thought how fulfilling it might be to take some of our personal family history and create a story," Dr. Freeland said. "We decided to write about our ancestors and the people we had heard about from the area where we had grown up."

The Freelands grew up in the central Iowa town of Huxley.

"It's a small rural community, populated predominantly by Scandinavians," he said. "Our Freeland grandparents were Norwegian and we used some of the events from our grandparents' lives as the basis for 'Norwegian Saga'." Their grandfather, Andrew Freeland, left Stavanger, Norway, in 1888 at age 6, along with his mother and five siblings.

"With little money and a limited ability to speak English, the family of seven forged a new life in the Midwest region of the United States," he continued. In the book, "we trace our grandfather's development from a curious boy who experiences a strange meal at Ellis Island, to a teenager who acquires a keen eye for earning and saving money, to a young man who marries an Iowa girl who also has Norwegian roots."

Dr. Freeland says "Norwegian Saga" was completed because he and his brother collaborated so well on the writing.

(MORE)

“My brother can speak Norwegian almost fluently. Therefore, I relied on him to read some of the documents that were written in Norwegian and to converse with people when we made a trip to Norway in 2001.” Dr. Freeland said he and his brother visited the city from which their grandfather and his family left for their trip to the U.S.

For their research, the brothers spoke with acquaintances of their parents, grandparents and great-grandparents, and listened to oral histories. They also conducted research in libraries and on the Internet, and divided the actual writing. Dr. Freeland said he enjoyed the process of writing the book so much, he decided to try one on his own, using the same basic method.

“This time, my topic was to be ancestors from my mother’s side of the family,” he said. “Odyssey to Iowa” was written about his great-grandparents who left Wales in 1879.

In writing both the books, Dr. Freeland says he had a good critic at home to assist him.

“Once I completed a chapter, I would read it to my wife, Kay, who would sit and listen to see if it were interesting and held together,” he explained. Mrs. Freeland, who is the superintendent of Rowan County Schools, would then critique the story, offering suggestions for improvements.

Dr. Freeland says writing the books has been a “nice integration of my job and my personal family interest. I specialize in social studies education at Morehead State University, so history and geography were essential elements when I composed. Since I teach education courses, I wanted the books to be enjoyed by adolescents as well as adults.”

The books are paperbacks, of about 100 pages each, so they don’t take a long time to read, according to Dr. Freeland. “I also kept the chapter length short,” he said.

“I think the books have a valuable place in elementary, middle school and high school libraries because of how they depict the life of immigrant people.”

He is currently at work on a third work of historical fiction, loosely based on his English maternal ancestors.

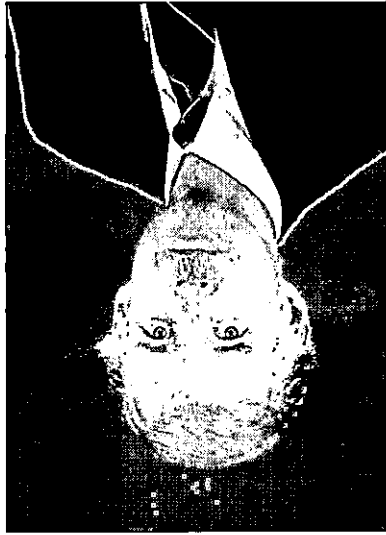
Dr. Freeland, on MSU’s faculty since 1977, previously worked as a teaching assistant at the University of Iowa. Earlier, he taught fourth and sixth grade in Wisconsin public schools.

He holds a bachelor’s degree in history from Iowa State University, a master’s degree in curriculum and instruction from the University of Wisconsin-Milwaukee, and a doctoral degree in elementary education, administration and supervision from the University of Iowa.

Both “Norwegian Saga” and “Odyssey to Iowa” are available from the publisher, iUniverse, Inc., or from amazon.com, Barnes & Noble, Borders and locally, at CoffeeTree Books and the University Bookstore.

Additional information is available by calling Dr. Freeland at (606) 783-2852.

#####



News

University Communications

Pauline Young, Director

www.moreheadstate.edu

Morehead State University

UPO Box 1100

Morehead, KY 40351-1689

(606) 783-2030

Oct. 21, 2003

FOR IMMEDIATE RELEASE

MOREHEAD, Ky.---If your dream is to complete a college degree, and you have been taking college courses, Morehead State University has devised a plan to assist you in making your dream a reality.

For those who wish to enroll for the spring semester, a Transfer Student Registration day has been set for Friday, Nov. 7, from 9 a.m. until 3 p.m. on the main campus in Morehead and at the extended campuses at MSU at Ashland, MSU at Jackson, MSU at Mount Sterling, MSU at Prestonsburg and MSU at West Liberty from 8 a.m.-4:30 p.m. on the same day.

Morehead State University works cooperatively with regionally accredited colleges and universities. Through numerous agreements with the Kentucky Community and Technical College System, MSU has developed a seamless system allowing students from KCTCS to transfer credits to Morehead State.

To apply to the University, a completed Undergraduate Admission and Scholarship Application along with ACT/SAT scores must be provided. A transcript of all courses from schools previously attended and a Transfer Recommendation Form (available from MSU's Office of Admissions) must be included.

The first stop on the main campus for new transfer students should be the Office of Admissions, 301 Howell-McDowell Administration Building. Representatives from academic departments, as well as financial aid, admissions, housing and other units will be on hand.

Students also may be admitted and register for classes at one of the five extended campuses where advising will be available.

A complete listing of course offerings is available on the Web at www.moreheadstate.edu/units/registrar/classes.htm.

For those who qualify for financial aid, students transferring to MSU must complete a Personal Data Sheet, provide results from the Application for Federal Student Aid (FAFSA) and be admitted into a degree program.

(MORE)

Transfer Student Registration Day
2-2-2-2-2

“During the Transfer Student Registration Day, students may register for spring classes, receive academic advising, get their photo taken for their EagleCard, take a campus tour – basically, all the things we normally do to acquaint students to the campus,” said Joel Pace, director of admissions.

After earning an associate degree, a student may pursue a Bachelor of University Studies degree or one of several bachelor’s degree options at one of the five regional campuses: with an AAS in education, a Bachelor of Arts degree in elementary education (primary through fifth grades); AAS in nursing, a Bachelor of Science in nursing; AAS in business technology, Bachelor of Business Administration with options in accounting, computer information systems and management; or AAS in human sciences, Bachelor of Social Work.

Additional information is available by calling the Office of Admissions at (606) 783-2000 or (800) 585-6781, option 1; or on the Web at www.moreheadstate.edu and click on current students.

####

News

University Communications

Pauline Young, Director

www.moreheadstate.edu

Morehead State University

UPO Box 1100

Morehead, KY 40351-1689

(606) 783-2030

Oct. 23, 2003

FOR IMMEDIATE RELEASE

MOREHEAD, Ky.---Morehead State University's Office of Admissions will host an Open House on Saturday, Nov. 1, to assist high school seniors and others who wish to continue their education by attending college.

The days' event will begin with registration in Wetherby Gymnasium at 9 a.m. Campus tours will allow students an opportunity to visit classroom buildings, residence halls, the athletics complex and other University facilities.

MSU representatives will be on hand to answer questions that students or their family members may have about the University. Faculty and staff will share information about academic programs, financial aid, housing and other facets of college life.

"This is a wonderful opportunity for anyone considering attending college in the near future to get a first-hand look at our University," said Melissa Dunn, assistant director of admissions. "It is our hope that when they see our beautiful campus and learn about our excellent programs, it will convince them that MSU is a great educational value."

To participate in the event, complete the online registration card by logging on to www.morehead-st.edu/units/admissions/open_house.html.

Additional information is available by calling the Office of Admissions at (606) 783-2000 or (800) 585-6781.

####

sas

News

University Communications

Pauline Young, Director

www.moreheadstate.edu

Morehead State University

UPO Box 1100

Morehead, KY 40351-1689

(606) 783-2030

Oct. 23, 2003

FOR IMMEDIATE RELEASE

MOREHEAD, Ky.---High school musicians in Morehead State University's service region who aspire to play in the All-State Band can receive some extra help in getting there, thanks to members of the University's music faculty.

The first-ever All-State Bands Audition Clinic, presented by MSU's wind and percussion faculty, will be held in Baird Music Hall on Saturday, Nov. 8. The clinic is designed to assist students who will audition at the annual Kentucky Music Educators Association's All-State high school band's performance at the organization's February conference.

Being selected to play in the All-State band is a prestigious honor for both the student and his or her school, explained Dr. Robert Pritchard, MSU associate professor of music, who will be among those teaching at the clinic.

"Throughout high school, one of the big goals a band student has is making All-State," he said. "Every now and then we have a few students who ask specifically for help with their All-State pieces, so we thought we'd offer it to the region."

Since All-State music selections have already been made, student musicians are most likely already practicing the audition pieces, according to Dr. Pritchard. Students will receive instruction on technique and interpretation, as well as printed instructional materials. Master classes will focus on performance of the audition music.

"We will be helping them individually with their pieces, and for about a third of the time, we will touch on sight reading," Dr. Pritchard said. Additionally, the Baird Winds, Faculty Brass Quintet and Faculty Jazz ensembles will give a concert after the initial 9:30 a.m. check-in.

Faculty members teaching in the clinic, and their area/instrument of expertise are: Dr. Pritchard, flute; Dr. John Viton, oboe; Mike Acord, clarinet; Dr. David Oyen, bassoon; Gene Norden, saxophone; Dr. L. Curtis Hammond, horn; Gregory Wing, trumpet;

Dr. Jeanie Lee, trombone; Dr. Stacy Baker, euphonium/tuba; Frank Oddis, percussion; Brian Mason, percussion; Dr. Richard Miles, director of bands; and Dr. Susan Creasap, associate director of bands.

(MORE)

All-State band clinic
2-2-2-2-2

There is no charge for students attending the clinic, though pre-registration is necessary by Wednesday, Oct. 29. Invitations to participate have been sent to music educators and band directors throughout MSU's service region.

Dr. Pritchard said the music faculty hopes to have a minimum of 50 students take advantage of the clinic. "We hope to keep doing this in the future and make it better and better."

Additional information is available by calling the Department of Music at (606) 783-2473.

#####

sas

News

University Communications

Pauline Young, Director

www.moreheadstate.edu

Morehead State University

UPO Box 1100

Morehead, KY 40351-1689

(606) 783-2030

Oct. 24, 2003

FOR IMMEDIATE RELEASE

MOREHEAD, Ky.---Seventeen state education leaders from the People's Republic of China will visit Morehead State University to learn about the educational system, the nation's culture and East Kentucky in particular.

The participants, presidents and vice presidents from various postsecondary institutions in the Guangxi Province, will spend two weeks, Nov. 2-14, learning about the workings of a university in the United States and finding answers to questions they may have.

"We hope to provide them an understanding of how we operate," said Dr. Robert Frank, associate dean of international education, who is coordinating the tour. "This experience will allow our guests to learn more about the educational system and how we are alike, as well as how we are different."

To allow the most inclusive educational experience, the visit will include stops with historical significance, places considered a normal part of American life and sporting events.

After arriving on the Morehead State campus, the delegation will attend a campus orientation program and hear presentations from each of the academic units as well as Camden-Carroll Library and the University Bookstore. They will tour the University Farm and the MSU at Prestonsburg campus, and attend an exhibition game of MSU's basketball Eagles.

As part of the educational process, the group will travel to Frankfort to tour the Kentucky state capitol and meet the staff at the Council on Postsecondary Education, take a shopping expedition to Wal-mart and Kroger in Morehead, travel to Lexington to attend the races at Keeneland and shop at Fayette Mall, and tour the Family Dollar Distribution Center.

The educators will be guests of the University for a reception, hosted by MSU President and Mrs. Ronald G. Eaglin upon their arrival as well as a farewell banquet before departing.

MSU has active agreements with Guangxi University and Guangxi Teachers University. This is the third year the University has hosted the Chinese delegation.

Additional information is available by calling Dr. Frank at (606) 783-2096.

####

News

University Communications

Pauline Young, Director

www.moreheadstate.edu

Morehead State University

UPO Box 1100

Morehead, KY 40351-1689

(606) 783-2030

Oct. 24, 2003

FOR IMMEDIATE RELEASE

MOREHEAD, Ky.---Two noted scholars will begin this year's lecture series hosted by Morehead State University's Institute for Regional Analysis and Public Policy (IRAPP).

Dr. Timothy Warner will present "Looking at Earth from the Heavens: The Science of Remote Sensing" at 3:15 p.m. on Wednesday, Nov. 5, in 405 Combs Building.

An associate professor of geography at West Virginia University, Dr. Warner holds the Ph.D. degree from Purdue University. His research focuses on using advanced computer vision techniques to identify individual trees and herbaceous plants in high-resolution aerial imagery.

Chairperson of the Remote Sensing Specialty Group of the American Association of Geographers, he has published 23 peer-reviewed papers and 42 conference papers and abstracts on related topics. He has received nearly \$1 million in grants to support his research.

Werner Fornos, president of the Population Institute since 1982, will give the second lecture in the IRAPP series. He will present "Gaining People, Losing Ground," the same title as that of a book he authored. The lecture will begin at 4 p.m. on Thursday, Nov. 6, in 419 Reed Hall.

Frequently appearing on radio and television programs, Fornos has been described as "the foremost spokesman on global population issues." He is among the 50 persons named to the Earth Times Hall of Fame for his contributions to the environment and development in the last decade. He received the 2003 United Nations Populations Award.

The lectures are free and open to the public. Receptions will follow both presentations in the Patti Bolin Room of Lloyd Cassity Building.

Additional information on the 2003 Lecture Series is available by calling IRAPP at (606) 783-5419.

####

sas

News

University Communications

Pauline Young, Director

www.moreheadstate.edu

Morehead State University

UPO Box 1100

Morehead, KY 40351-1689

(606) 783-2030

Oct. 24, 2003

FOR IMMEDIATE RELEASE

WHITESBURG, Ky.---Students have a variety of opportunities to take classes at Morehead State University during the spring semester. Getting an education is possible in a traditional classroom setting close to home, via the Internet, by Compressed Video (ITV), Kentucky Educational Television (KET), or as correspondence study courses.

To register early, when there is the best variety of classes available, advance registration for the 2004 spring term will be held Monday through Thursday, Nov. 3-6, for classes to be offered in Whitesburg.

Students may register at MSU at Jackson, located in the Breathitt County Life Skills Center, 1127 Main Street in Jackson. Current students, who have an official checksheet on file, may register via MSU's Web site (www.moreheadstate.edu) using their Personal Identification Number (PIN). Those who do not have a PIN are given the option to choose one when they log onto the student user page.

Classes, scheduled to meet at Southeast Community College, 201 Long Avenue in Whitesburg, begin Monday, Jan. 12. The courses include:

EDSP 350, Mental Retardation and Orthopedic Handicaps, 4:10-6:50 p.m., Tuesdays.

EDSP 601, Survey of Exceptional Children, 4:10-6:50 p.m., Mondays.

ENG 341, American Literature to 1865, 12:40-1:40 p.m., Tuesday, Thursday and Friday2.

ENG 390, Professional Writing, 7-9:40 p.m., Mondays.

GOVT 322, Courts and Civil Liberties, Fridays, 5-9 p.m.; Saturdays, 9 a.m.- 2 p.m.; Feb. 20-March 20.

GOVT 351, Public Administration, Fridays, 5-9 p.m.; Saturdays, 9 a.m. - 2 p.m. April 1-30.

IET 603, Quality Assurance in Science and Technology, 7-9:40 p.m., Tuesdays.

Textbooks for the classes are available from the University Bookstore. Orders may be placed by calling (888) STORE-05 or via the Internet at www.bookstore.moreheadstate.edu.

Purchases will be shipped to the address specified by the student.

(MORE)

Advance registration/Whitesburg

2-2-2-2-2

The cost per credit hour for Kentucky residents and non-residents is \$141 for undergraduate courses and \$203 for graduate classes at the regional sites.

Additional information is available by calling the MSU at Jackson campus at (606) 666-2800 or toll free at (800) 729-5225.

####

ajb

News

University Communications

Pauline Young, Director

www.moreheadstate.edu

Morehead State University

UPO Box 1100

Morehead, KY 40351-1689

(606) 783-2030

Oct. 24, 2003

FOR IMMEDIATE RELEASE

HAZARD, Ky.---Morehead State University will host advance registration for the 2004 spring term Monday through Thursday, Nov. 3-6, for classes to be offered in Hazard.

Students may register at MSU at Jackson, located in the Breathitt County Life Skills Center, 1127 Main Street in Jackson, from 9 a.m.-5 p.m.

Current students, who have an official checksheet on file, may register via MSU's Web site (www.moreheadstate.edu) using their Personal Identification Number (PIN). Those who do not have a PIN are given the option to choose one when they log onto the student user page.

Classes for the spring term will begin Monday, Jan. 12.

The courses, which include graduate and undergraduate offerings and held at the Hazard Center for Rural Health, 100 Airport Gardens Road in Hazard, are:

ACCT 382, Intermediate Accounting II, 7-9:40 p.m., Tuesdays.

BIS 329, Web Technology and Information Architecture, 7-9:40 p.m., Mondays (Internet supported).

BIS 321, Business Communications, 4:10-6:50 p.m., Wednesdays.

BIS 440, Planning and Implementation IT, 12:40-1:40 p.m., Monday, Wednesday, Friday1.

CIS 305, C/C++ Programming II, 7-9:40 p.m., Thursdays, Internet supported.

ECON 300, Quantitative Methods in Business and Economics, 7-9:40 p.m., Wednesdays.

GOVT 322, Courts and Civil Liberties, 5-9 p.m., Fridays, 9-noon, Saturdays; Feb. 20-March 20.

GOV 351, Public Administration, 5-9 p.m., Fridays, April 1-30.

MNGT 300, Quantitative Methods in Business and Economics, 7-9:40 p.m., Wednesdays.

MNGT 306, Production Management, 4:10-6:50 p.m., Tuesdays.

MNGT 420, New Venture Creations, 7-9:40 p.m., Tuesdays.

REAL 399, Special Class, 5-9 p.m., Fridays; 9-noon, Saturdays; Jan. 16-Feb. 21.

SOC 354, The Individual and Society, 6-8:40 p.m., Tuesdays.

(MORE)

Pre-registration for Hazard classes
2-2-2-2-2

Textbooks for the classes are available from the University Bookstore. Orders may be placed by calling (888) STORE-05 or via the Internet at www.bookstore.moreheadstate.edu. Purchases will be shipped to the address specified by the student.

The cost per credit hour for Kentucky residents and non-residents is \$141 for undergraduate courses and \$203 for graduate classes at the regional sites.

Additional information is available by MSU at Jackson at (606) 666-2800 or toll free at (800) 729-5225.

####

ajb

News

University Communications

Pauline Young, Director

www.moreheadstate.edu

Morehead State University

UPO Box 1100

Morehead, KY 40351-1689

(606) 783-2030

Oct. 24, 2003

FOR IMMEDIATE RELEASE

ASHLAND, Ky.---An increase in the number of class offerings for the spring semester has been announced by Morehead State University. Students have an opportunity to get an education in a traditional classroom setting close to home, via the Internet, by Compressed Video (ITV), Kentucky Educational Television (KET), or as correspondence study courses.

To register early, when there is the best variety of classes available, advance registration for the spring term will be held Monday through Thursday, Nov. 3-6, at Morehead State University at Ashland.

Students may register from 9 a.m. to 5 p.m. each day at MSU at Ashland, located at 1401 Winchester Avenue in Ashland. Current students, who have an official checksheet on file, may register via MSU's Web site (www.moreheadstate.edu) using their Personal Identification Number (PIN). Those who do not have a PIN are given the option to choose one when they log onto the student user page.

Classes for the spring term begin Monday, Jan. 12.

A total of 63 courses, which include graduate and undergraduate offerings, will be available at MSU at Ashland. Among the disciplines represented are accounting, astronomy, business information systems, computer information systems, education, English, government, history, human sciences, mathematics, marketing, management, nursing and allied health sciences, physical education, psychology, science, sociology, social work and speech.

Textbooks for the classes are available from the University Bookstore. Orders may be placed by calling (888) STORE-05 or via the Internet at www.bookstore.moreheadstate.edu. Purchases will be shipped to the address specified by the student.

The cost per credit hour for Kentucky residents and non-residents is \$141 for undergraduate courses and \$203 for graduate classes at the regional sites.

Additional information is available from H. Jack Webb, MSU at Ashland director, locally at (606) 327-1777 or toll free at (800) 648-5370.

####

ajb

News

University Communications

Pauline Young, Director

www.moreheadstate.edu

Morehead State University

UPO Box 1100

Morehead, KY 40351-1689

(606) 783-2030

Oct. 24, 2003

FOR IMMEDIATE RELEASE

JACKSON, Ky.---An increase in the number of class offerings for the spring semester has been announced by Morehead State University. Students have an opportunity to get an education in a traditional classroom setting close to home, via the Internet, by Compressed Video (ITV), Kentucky Educational Television (KET), or as correspondence study courses.

To register early, when there is the best variety of classes available, advance registration for the 2004 spring term will be held Monday through Thursday, Nov. 3-6, at Morehead State University at Jackson.

Students may register from 9 a.m. to 5 p.m. each day at MSU at Jackson, located in the Breathitt County Life Skills Center, 1127 Main Street in Jackson. Current students, who have an official checksheet on file, may register via MSU's Web site (www.moreheadstate.edu) using their Personal Identification Number (PIN). Those who do not have a PIN are given the option to choose one when they log onto the student user page.

Classes, which will be held at the Lees College campus of Hazard Community College, begin Monday, Jan. 12.

A total of 40, which include graduate and undergraduate offerings, will be available at MSU at Jackson for area residents. Among the disciplines represented are accounting, business information systems, communications, economics, education, English, government, industrial education and technology, mathematics, marketing and science.

Textbooks for the classes are available from the University Bookstore. Orders may be placed by calling (888) STORE-05 or via the Internet at www.bookstore.moreheadstate.edu. Purchases will be shipped to the address specified by the student.

The cost per credit hour for Kentucky residents and non-residents is \$141 for undergraduate courses and \$203 for graduate classes at the regional sites.

Additional information is available by calling Dr. Jeff Edgens, director of MSU at Jackson, locally at (606) 666-2800 or toll free at (800) 729-5225.

####

ajb

News

University Communications

Pauline Young, Director

www.moreheadstate.edu

Morehead State University

UPO Box 1100

Morehead, KY 40351-1689

(606) 783-2030

Oct. 24, 2003

FOR IMMEDIATE RELEASE

MAYSVILLE, Ky.---Students have a variety of opportunities to take classes at Morehead State University during the spring semester. Getting an education is possible in a traditional classroom setting close to home, via the Internet, by Compressed Video (ITV), Kentucky Educational Television (KET), or as correspondence study courses.

To register early, when there is the best variety of classes available, advance registration for the 2004 spring term will be held Monday through Thursday, Nov. 3-6.

Students may register by mail to Extended Campus Programs, 312 Allie Young Hall, Morehead State University, Morehead, Ky., 40351. Current students, who have an official checksheet on file, may register via MSU's Web site (www.moreheadstate.edu) using their Personal Identification Number (PIN). Those who do not have a PIN are given the option to choose one when they log onto the student user page.

Classes, scheduled to meet at Mason County High School and Maysville Community College, begin Monday, Jan. 12. The courses, which include graduate and undergraduate offerings, include:

EDIL 610 School Leadership Practicum, 4-6:40 p.m., Tuesdays.

EDIL 634 Leadership for Human Resources Development in Schools, 7-9:40 p.m., Tuesdays.

NURB 366 Theory and Practice of Professional Nursing, 4:10-6:50 p.m., Thursdays.

SOC 545, Death and Dying, 5:30-8:10 p.m., Mondays.

SWK 545, Death and Dying, 5:30-8:10 p.m., Mondays

Textbooks for the classes are available from the University Bookstore. Orders may be placed by calling (888) STORE-05 or via the Internet at www.bookstore.moreheadstate.edu. Purchases will be shipped to the address specified by the student.

The cost per credit hour for Kentucky residents and non-residents is \$141 for undergraduate courses and \$203 for graduate classes at the regional sites.

Additional information is available by calling (606) 783-2605 or toll free at (800) 585-6781, option 3.

####

ajb

News

University Communications

Pauline Young, Director

www.moreheadstate.edu

Morehead State University

UPO Box 1100

Morehead, KY 40351-1689

(606) 783-2030

Oct. 24, 2003

FOR IMMEDIATE RELEASE

PIKEVILLE, Ky.---Morehead State University will host advance registration for the 2004 spring term Monday through Thursday, Nov. 3-6, in Pikeville.

Students may register from 9 a.m. to 5 p.m. each day at the Appalachian Graduate Consortium on the Pikeville College campus. Current students, who have an official checksheet on file, may register via MSU's Web site (www.moreheadstate.edu) using their Personal Identification Number (PIN). Those who do not have a PIN are given the option to choose one when they log onto the student user page.

Classes for the spring term, scheduled to meet in the Armington Building at Pikeville College, begin Monday, Jan. 12.

The four graduate courses are:

EDEL 623, Advanced Language Arts for the Elementary Teacher, 6-8:40 p.m.,
Thursdays.

EDF 600, Research Methods in Education, 6-8:40 p.m., Wednesdays.

EDGC 666, Theories of Counseling, 6-8:40 p.m., Wednesdays.

EDIL 637, Leadership for School Program Collaboration, 5-7:40 p.m., Wednesdays.

Textbooks for the classes are available from the University Bookstore. Orders may be placed by calling (888) STORE-05 or via the Internet at www.bookstore.moreheadstate.edu. Purchases will be shipped to the address specified by the student.

The cost per credit hour for Kentucky residents and non-residents is \$141 for undergraduate courses and \$203 for graduate classes at the regional sites.

Additional information is available by calling Dr. John Nelson, site coordinator, at (606) 218-5460; MSU at Prestonsburg at (606) 2405 or (800) 648-5372; or MSU's regional campus coordinator on the main campus at (606) 783-2605 or (800) 585-6781, option 3.

####

ajb

News

University Communications

Pauline Young, Director

www.moreheadstate.edu

Morehead State University

UPO Box 1100

Morehead, KY 40351-1689

(606) 783-2030

Oct. 24, 2003

FOR IMMEDIATE RELEASE

PRESTONSBURG, Ky.---An increase in the number of class offerings for the spring semester has been announced by Morehead State University. Students have an opportunity to get an education in a traditional classroom setting close to home, via the Internet, by Compressed Video (ITV), Kentucky Educational Television (KET), or as correspondence study courses.

To register early, when there is the best variety of classes available, advance registration for the spring term will be held Monday through Thursday, Nov. 3-6, at Morehead State University at Prestonsburg.

Students may register from 9 a.m. to 5 p.m. each day at MSU at Prestonsburg, located at 719 University Street in Prestonsburg. Current students, who have an official checksheet on file, may register via MSU's Web site (www.moreheadstate.edu) using their Personal Identification Number (PIN). Those who do not have a PIN are given the option to choose one when they log onto the student user page.

Classes, which will be held at MSU at Prestonsburg, begin Monday, Jan. 12.

More than 100 courses, which include graduate and undergraduate offerings, will be available for area residents. Among the disciplines represented are accounting, astronomy, biology, business information systems, computer information systems, criminology, economics, education, English, geography, government, history, health, human sciences, mathematics, marketing, management, music listening, nursing, philosophy, psychology, science, sociology, social work and speech.

Textbooks for the classes are available from the University Bookstore. Orders may be placed by calling (888) STORE-05 or via the Internet at www.bookstore.moreheadstate.edu. Purchases will be shipped to the address specified by the student.

The cost per credit hour for Kentucky residents and non-residents is \$141 for undergraduate courses and \$203 for graduate classes at the regional sites.

Additional information is available from Lula Bowling, director of MSU at Prestonsburg, locally at (606) 886-2405 or toll free at (800) 648-5372.

####

ajb

MSU is an affirmative action, equal opportunity educational institution.

News

University Communications

Pauline Young, Director

www.moreheadstate.edu

Morehead State University

UPO Box 1100

Morehead, KY 40351-1689

(606) 783-2030

Oct. 24, 2003

FOR IMMEDIATE RELEASE

HINDMAN, Ky.---Morehead State University will host advance registration for the 2004 spring term Monday through Thursday, Nov. 3-6, for classes to be offered in Hindman.

Students may register at MSU at Jackson, located in the Breathitt County Life Skills Center, 1127 Main Street in Jackson, from 9 a.m.-5 p.m.

Current students, who have an official checksheet on file, may register via MSU's Web site (www.moreheadstate.edu) using their Personal Identification Number (PIN). Those who do not have a PIN are given the option to choose one when they log onto the student user page.

Classes for the spring term will begin Monday, Jan. 12.

The courses, which include graduate and undergraduate offerings, are:

CTE 698, Career and Vocational Guidance, 7-9:40 p.m., Wednesdays.

ENG 367, Old Testament Literature, 11:30 a.m. – 12:30 p.m., Tuesday, Thursday, Fridays².

GOVT 322, Courts and Civil Liberties, 5-9 p.m. Fridays; 9 a.m.-2 p.m., Saturdays; Feb. 20-March 20.

GOVT 351, Public Administration, 5-9 p.m. Fridays; 9 a.m.-2 p.m., Saturdays; April 1-30.

IET 364, Career and Vocational Guidance, 7-9:40 p.m., Wednesdays.

IET 603, Quality Assurance in Science and Technology, 7-9:40 p.m., Tuesdays.

Textbooks for the classes are available from the University Bookstore. Orders may be placed by calling (888) STORE-05 or via the Internet at www.bookstore.moreheadstate.edu. Purchases will be shipped to the address specified by the student.

The cost per credit hour for Kentucky residents and non-residents is \$141 for undergraduate courses and \$203 for graduate classes at the regional sites.

Additional information is available by MSU at Jackson at (606) 666-2800 or toll free at (800) 729-5225.

####

ajb

News

University Communications

Pauline Young, Director

www.moreheadstate.edu

Morehead State University

UPO Box 1100

Morehead, KY 40351-1689

(606) 783-2030

Oct. 24, 2003

FOR IMMEDIATE RELEASE

WEST LIBERTY, Ky.---An increase in the number of class offerings for the spring semester has been announced by Morehead State University. Students have an opportunity to get an education in a traditional classroom setting close to home, via the Internet, by Compressed Video (ITV), Kentucky Educational Television (KET), or as correspondence study courses.

To register early, when there is the best variety of classes available, advance registration for the spring term will be held Monday through Thursday, Nov. 3-6, at MSU at West Liberty.

Students may register from 9 a.m. to 5 p.m. each day. Current students, who have an official checksheet on file, may register via MSU's Web site (www.moreheadstate.edu) using their Personal Identification Number (PIN). Those who do not have a PIN are given the option to choose one when they log onto the student user page.

Classes, which will be held at MSU at West Liberty, 155 Continental Drive in West Liberty, begin Monday, Jan. 12.

More than 100 courses, which include graduate and undergraduate offerings, will be available for area residents. Courses offered meet general education requirements and a variety of programs. Among the disciplines represented are accounting, art, biology, business information systems, computer information systems, criminology, economics, education, English, geography, government, history, health, human sciences, mathematics, marketing, management, music listening, philosophy, psychology, science, sociology, social work, speech and theatre.

Textbooks for the classes are available from the University Bookstore. Orders may be placed by calling (888) STORE-05 or via the Internet at www.bookstore.moreheadstate.edu. Purchases will be shipped to the address specified by the student.

The cost per credit hour for Kentucky residents and non-residents is \$141 for undergraduate courses and \$203 for graduate classes at the regional sites.

Additional information is available from Dr. Jonell Tobin, director of MSU at West Liberty, locally at (606) 743-15900 or toll free at (800) 648-5371.

####

ajb

News

University Communications

Pauline Young, Director

www.moreheadstate.edu

Morehead State University

UPO Box 1100

Morehead, KY 40351-1689

(606) 783-2030

Oct. 24, 2003

FOR IMMEDIATE RELEASE

MOUNT STERLING, Ky.---An increase in the number of class offerings for the spring semester has been announced by Morehead State University. Students have an opportunity to get an education in a traditional classroom setting close to home, via the Internet, by Compressed Video (ITV), Kentucky Educational Television (KET), or as correspondence study courses.

To register early, when there is the best variety of classes available, advance registration for the spring term will be held Monday through Thursday, Nov. 3-6, at Morehead State University at Mount Sterling.

Students may register from 9 a.m. to 5 p.m. each day at MSU at Mount Sterling, 3400 Indian Mound Drive in Mount Sterling. Current students, who have an official checksheet on file, may register via MSU's Web site (www.moreheadstate.edu) using their Personal Identification Number (PIN). Those who do not have a PIN are given the option to choose one when they log onto the student user page.

MSU will offer 76 courses this spring at MSU at Mt. Sterling for students in Montgomery County and the surrounding area. Courses offered meet general education requirements and a variety of programs.

Among the courses, which include graduate and undergraduate offerings, are biology, business information systems, computer information systems, education, English, finance, government, history, management, marketing, philosophy, science, speech and sociology. The complete listing is available at www.moreheadstate.edu/units/registrar/classes.htm.

Classes begin Monday, Jan. 12.

Textbooks for the classes are available from the University Bookstore. Orders may be placed by calling (888) STORE-05 or via the Internet at www.bookstore.moreheadstate.edu. Purchases will be shipped to the address specified by the student.

The cost per credit hour for Kentucky residents and non-residents is \$141 for undergraduate courses and \$203 for graduate classes at the regional sites.

Additional information on spring classes or the registration process may be obtained by calling Dr. Janet Kenney, center director, at (859) 499-0780 or toll free (866) 870-0809.

####

ajb

News

University Communications

Pauline Young, Director

www.moreheadstate.edu

Morehead State University

UPO Box 1100

Morehead, KY 40351-1689

(606) 783-2030

Oct. 24, 2003

FOR IMMEDIATE RELEASE

MOREHEAD, Ky.---For the spring semester, Morehead State University has increased the number of classes with the offerings available through several venues. Students have an opportunity to get an education in a traditional classroom setting, via the Internet, by Compressed Video (ITV), Kentucky Educational Television (KET), or through correspondence study courses.

To register early, when there is the best variety of classes available, currently enrolled students may advance registration for the 2004 spring term Monday through Thursday, Nov. 3-6, on the main campus or online.

Students may register from 8 a.m. to 4 p.m. each day in their academic departments according to classification. Graduate students, and current seniors and juniors will register on Monday. All classifications may register Tuesday through Thursday.

Current students, who have an official checksheet on file, may register via MSU's Web site (www.moreheadstate.edu), from 8 a.m. on Monday through 4 p.m. on Thursday. Those who do not have a Personal Identification Number (PIN) will be given the option to choose one when they log onto the student user page.

Classes for the spring term, at all on- and off-campus locations, begin Monday, Jan. 12. A complete listing of course offerings is available in the Class Directory and Business Guide for Spring 2004 or online at the University's homepage at www.moreheadstate.edu and select current students, then by online services.

Textbooks for the classes are available from the University Bookstore, located at 149 East Main Street in Morehead. Orders may be placed by calling (888) STORE-05 or via the Internet at www.bookstore.moreheadstate.edu. Purchases will be shipped to the address specified by the student.

Additional information on the registration process is available by calling the Office of the Registrar at (606) 783-2008.

Advance registration will be held at the five regional campuses during the same period. Additional information is available by calling MSU at Ashland at ((606) 327-1777 or (800) 648-5370; MSU at Jackson at (606) 666-2800 or (800) 729-5225; MSU at Mount Sterling at (859) 499-0780 or (866) 870-0809; MSU at Prestonsburg at (606) 886-2405 or (800) 648-6372; or MSU at West Liberty at (606)743-1500 or (800) 648-5371.

####

News

University Communications

Pauline Young, Director

www.moreheadstate.edu

Morehead State University

UPO Box 1100

Morehead, KY 40351-1689

(606) 783-2030

Oct. 24, 2003

FOR IMMEDIATE RELEASE

MOREHEAD, Ky.---A local writer has had his second book published by the Jesse Stuart Foundation.

Dr. Jack D. Ellis, retired director of libraries at Morehead State University, has written "Patriots & Heroes: Eastern Kentucky Soldiers of WWII" which was released in September. The book profiles the physical, psychological and emotional stress suffered by America's military men.

Dr. Ellis uses interviews, letters, documents and personal experiences to present the stories. He is a veteran of the Army Air Corps where he served from 1944-1947.

The author's first book, "Morehead Memories: True Stories from Eastern Kentucky" was published in 2001.

A professor of library science, Dr. Ellis is an MSU graduate where he received a bachelor's degree in 1957. He continued his education at George Peabody College and the University of Southern Mississippi where he earned an Ed.D. degree in 1968.

####

News

University Communications

Pauline Young, Director

www.moreheadstate.edu

Morehead State University

UPO Box 1100

Morehead, KY 40351-1689

(606) 783-2030

Oct. 27, 2003

FOR IMMEDIATE RELEASE

MOREHEAD, Ky.---Morehead State University's Speech Team won fifth place honors overall in its first competition of the year.

Seven of the team members traveled to Clemson University, where they competed in the Double-Header Speech Tournament with the University of West Florida.

Eleven schools participated in the two tournaments with MSU placing sixth overall in the second competition.

In the first competition, hosted by Clemson, individual student accomplishments were:

Amanda Day, **Morehead** junior psychology major, third place in programmed oral interpretation; Day and Summer Copley, **Elkhorn City** sophomore university studies major, fourth place in duo interpretation;

Tami Shannon, **Hillsboro, Ohio**, sophomore advertising/public relations major, fourth place in persuasion; Lance Sparkman, **Hi Hat** freshman general studies major, fifth place in informative; Liz Haynes, **Lexington** junior math/chemistry major, sixth place in informative.

Copley also received sixth place in poetry and Sparkman earned seventh place in prose interpretation.

For the tournament hosted by West Florida:

Haynes received sixth place in informative speaking and fourth place in impromptu; Sparkman, fifth place in informative speaking; Day, fifth place in programmed oral interpretation; Shannon, fifth place in persuasion and Alisha Andress, **Fort Mitchell** senior communication-electronic media major, sixth place in both after dinner speaking and impromptu.

First-year team member David Poff, **Science Hill** senior advertising and public relations /communication major, also competed, contributing to the team's overall finish.

"We are excited about being off to such a fast start this year," said Lisa Shemwell, speech team coach. "This is the earliest competition we have attended in years."

According to Shemwell, 14 team members are working on events, preparing for this semester's other competitions: tournaments at Randolph-Macon College in Ashland, Va., in October; and at the University of Indianapolis and Berea College in November. The team also will host a high school tournament on campus on Saturday, Dec. 6.

Additional information is available by calling Shemwell at (606) 783-2103.

####

MSU SPEECH TEAM COMPETES

Seven members of Morehead State University's speech team competed at a doubleheader tournament at Clemson University, winning fifth and sixth places in the two contests. Team members competing included, from left: David Poff, **Science Hill** senior; Alisha Andress, **Fort. Mitchell** senior; Amanda Day, **Morehead** junior; Summer Copley, **Elkhorn City** sophomore; Liz Haynes, **Lexington** junior; Tami Shannon, **Hillsboro, Ohio**, sophomore ; and Lance Sparkman, **Hi Hat** freshman. Their individual results in various categories ranged from third through seventh places. Additional information is available by calling team coach Lisa Shemwell at (606) 783-2103.

(MSU photo)

10-27-03sas

MSU is an affirmative action, equal opportunity educational institution.



News

University Communications

Pauline Young, Director

www.moreheadstate.edu

Morehead State University

UPO Box 1100

Morehead, KY 40351-1689

(606) 783-2030

Oct. 27, 2003

FOR IMMEDIATE RELEASE

MOREHEAD, Ky.--Morehead State University's Office of International Education will sponsor International Week, Nov. 10-14, featuring lectures, music and cuisine from other lands.

The events, highlighting the diverse cultures represented at MSU, will include:

Monday, Nov. 10

Lecture: "Costa Rica—Kentucky Partnership," 2 Breckinridge Hall, 3-4:30 p.m.; featuring German Rojas Hidalgo and Carlos Salazar Ramirez, senators from Costa Rica.

- French Club's "Tea with Proust," Fuzzy Duck, Morehead Plaza, 7 p.m. Reading and discussion of the works of French author Marcel Proust.

Tuesday, Nov. 11

- Italian Feast, Cornucopia Room, Lappin Hall, 11 a.m.-1 p.m.; \$6.75 per person.
- Study Abroad Fair, Commonwealth Room, Adron Doran University Center, 4-6 p.m. Details will be provided on overseas study.

Wednesday, Nov. 12

- Lecture: Dr. Afolabi Adedibu, visiting professor from Ladoko Akintola University of Technology, Nigeria, will speak on "Nigeria, Giant of Africa," 112 Rader Hall, 3-4:30 p.m.
- "International Education Concert," Duncan Recital Hall, 8 p.m.; featuring Dr. Roma Prindle, associate professor of music, and MSU students. Donations will be accepted to support the MSU Study Aboard Scholarship Fund.

Thursday, Nov. 13

- Oriental Lunch, Cornucopia Room, Lappin Hall, 11 a.m.-1 p.m.; \$6.75 per person.
- Lecture: "Chinese Educational System," Riggle Room, Adron Doran University Center, 2-3:30 p.m. Speakers: Huang Yu, deputy director-general, and Xu Fucui, director of the Center for Scholarly Exchange, both with the Guangxi Education Department, Guangxi Province, People's Republic of China.

(MORE)

International Week
2-2-2-2-2

- Spanish Club Dinner and Fiesta, Baptist Student Union, 7 p.m.; \$7 per person for the general public; \$6 for MSU students; \$4 for children under four years of age.

Friday, Nov. 14

- “Learn About Our Home Countries,” 116 Breckinridge Hall, 3 p.m. Featured speakers will include MSU international students Irda Hoxha of Albania and Lahiru Jayasuria of Sri Lanka.

All programs are open to the public. Unless otherwise noted, there is no admission charge.

Additional information is available by calling the Office of International Education at (606) 783-2096 or by e-mail to r.frank@moreheadstate.edu.

####

ajb

News

University Communications

Pauline Young, Director

www.moreheadstate.edu

Morehead State University

UPO Box 1100

Morehead, KY 40351-1689

(606) 783-2030

Oct. 28, 2004

FOR IMMEDIATE RELEASE

MOREHEAD, Ky.---Morehead State University is seeking nominations for its 2004 Founders Day Award for University Service.

"We encourage our faculty/staff, students, alumni and other friends to nominate deserving candidates who have given superior service to Morehead State University through the years," said MSU President Ronald G. Eaglin.

The award will be presented during the annual observance on Thursday, March 18, as the University celebrates its 82nd year as a public institution of higher learning. Morehead Normal School, MSU's predecessor institution, opened its doors in 1887 and the campus was converted to a state normal school in 1922. "On this special day, we will continue our efforts to recognize and honor many of those whose efforts have contributed to our growth," Dr. Eaglin said.

Nominations for the 2004 award should be submitted in writing to Founders Day Chairperson, Morehead State University, Palmer Development House, Morehead, KY 40351-1689 or fax to (606) 783-5089. Current full-time employees of MSU are not eligible. Nominees must have demonstrated extensive service to the University as an employee and/or volunteer. Nominations must be received by **Wednesday, Nov. 26**.

The Founders Day Award for University Service was established by MSU's Board of Regents in 1978. Recipients have included W.E. Crutcher, 1978; Linus A. Fair, 1979; U.S. Rep. Carl D. Perkins, 1980; Dr. Warren C. Lappin, 1981; Dr. Ted L. Crosthwait, 1982; Monroe Wicker, 1983; Lloyd Cassity, 1984; Grace Crosthwaite, 1985; Boone Logan, 1986; Dr. Rondal Hart, 1987; George T. Young, 1988; John E. Collis, 1989; Dr. Wilhelm Exelbirt, 1990; Dr. R.H. Playforth, 1991; Dr. Mary Northcutt Powell, 1992; Sen. Woody May, 1993; Dr. J.E. Duncan, 1994; Harlen L. Hamm and Sherman R. Arnett, 1995; Dr. Adron Doran, 1996; Robert S. Bishop and K. Martin Huffman, 1997; Dr. Charles J. Pelfrey, 1998; Carolyn S. Flatt, 1999; Dr. Earl J. Bentley, 2000; Mrs. Mignon M. Doran, 2001; Dr. C. Nelson Grote, 2002; and Merl Fair Allen, 2003.

Addition information is available by calling (606) 783-2033.

####

MSU is an affirmative action, equal opportunity educational institution.

News

University Communications

Pauline Young, Director

www.moreheadstate.edu

Morehead State University

UPO Box 1100

Morehead, KY 40351-1689

(606) 783-2030

Oct. 28, 2003

FOR IMMEDIATE RELEASE

MOREHEAD, Ky.---When pre-registering for the 2004 Spring Semester, Morehead State University students are reminded that this is the perfect time to select or make changes to your meal membership.

Anyone wanting details or to make changes may do so by stopping by the EagleCard Office in Alumni Tower between Nov. 3-Dec. 12. If you do not wish to make any changes, you will be charged for the same option you currently have and do not need to contact the EagleCard Office.

To activate and use your meal card, student accounts must be paid or deferred in full. Additional information is available on the EagleCard Office Web page from the University's homepage at www.moreheadstate.edu.

####

News

University Communications

Pauline Young, Director

www.moreheadstate.edu

Morehead State University

UPO Box 1100

Morehead, KY 40351-1689

(606) 783-2030

Oct. 28, 2003

FOR IMMEDIATE RELEASE

MOREHEAD, Ky.---As the Commonwealth determines its new leadership, you can listen to Morehead State Public Radio for updates on the vote count.

Beginning at 6 p.m. on Election Day, (Nov. 4) the MSPR newsroom staff will report results every half-hour, remaining on the job until the vote count is complete.

Nelson Gullett will report from the Rowan County Courthouse, while Kristin Murdock, Rianna Robinson and news director Charles Compton will provide updates from the studios of Morehead State Public Radio. Reporters from Kentucky Public Radio, the Kentucky News Network, Kentucky Educational Television and the Associated Press also assist in MSPR's election coverage.

Assistant news director/ sport director Chuck Mraz also will report on the results and on reaction to those results Wednesday during "Morning Edition."

Additional information is available by calling MSPR at (606) 783-2001.

####

News

University Communications

Pauline Young, Director

www.moreheadstate.edu

Morehead State University

UPO Box 1100

Morehead, KY 40351-1689

(606) 783-2030

Oct. 28, 2003

FOR IMMEDIATE RELEASE

MOREHEAD, Ky.---Music lovers will have an opportunity to learn more about Morehead State University's Percussion Ensemble which is featured this week on "Mixed Media," Kentucky's only weekly arts series.

The program will air on Tuesday, Oct. 28, at 8 p.m. on KET with a rebroadcast slated for Saturday, Nov. 1, at 6 p.m. Highlights of the show are an interview with Rick Mattingly, host of the 2003 Percussive Arts Society International Convention (PASIC), and photographs from the University of Louisville's photographic archives. Throughout the program, entertainment will be provided by MSU's Percussion Ensemble, a nationally recognized group.

The ensemble, under the direction of Frank Oddis, will perform during PASIC which will be held in Louisville, Nov. 19-22.

Oddis, an associate professor of music, has led the ensemble to three Percussive Arts Society national championships in marching percussion. He has served as coordinator of the percussion program at MSU since 1977.

For the ensemble's latest venture, the Concert Percussion Ensemble toured Beijing, China, where it performed at the Central Conservatory of Music and the famed Beijing Concert Hall.

Having worked as a freelance percussionist and drummer for many well known celebrities and jazz artists, Oddis performs with the Lexington Singers Pops Concerts and the West Virginia Symphony Orchestra.

On the campus, he has hosted the Day of Marching Percussion for 16 years which is considered to be a national pioneer and innovator in the area of indoor marching percussion ensembles. His arrangements and compositions have been performed by university and high school percussion ensembles nationwide.

Oddis holds a Master of Music Performance degree from East Carolina University and a Bachelor of Music Education degree from Morehead State. He performs with the University's Faculty Jazz Quartet which recently released a compact disc recording, "Blue Duck Suit."

He serves as an adjudicator for many state and regional organizations, including DCI, PAS and Bands of America. He is a clinician and endorser of Ludwig drums, Sabian cymbals and Vic Firth sticks and mallets.

####

News

University Communications

Pauline Young, Director

www.moreheadstate.edu

Morehead State University

UPO Box 1100

Morehead, KY 40351-1689

(606) 783-2030

Oct. 28, 2003

FOR IMMEDIATE RELEASE

MOREHEAD, Ky.---Music lovers will have an opportunity to learn more about Morehead State University's Percussion Ensemble which is featured this week on "Mixed Media," Kentucky's only weekly arts series.

The program will air on Saturday, Nov. 1, at 6 p.m. on KET. Highlights of the show are an interview with Rick Mattingly, host of the 2003 Percussive Arts Society International Convention (PASIC), and photographs from the University of Louisville's photographic archives. Throughout the program, entertainment will be provided by MSU's Percussion Ensemble, a nationally recognized group.

The ensemble, under the direction of Frank Oddis, will perform during PASIC which will be held in Louisville, Nov. 19-22.

Oddis, an associate professor of music, has led the ensemble to three Percussive Arts Society national championships in marching percussion. He has served as coordinator of the percussion program at MSU since 1977.

For the ensemble's latest venture, the Concert Percussion Ensemble toured Beijing, China, where it performed at the Central Conservatory of Music and the famed Beijing Concert Hall.

Having worked as a freelance percussionist and drummer for many well known celebrities and jazz artists, Oddis performs with the Lexington Singers Pops Concerts and the West Virginia Symphony Orchestra.

On the campus, he has hosted the Day of Marching Percussion for 16 years which is considered to be a national pioneer and innovator in the area of indoor marching percussion ensembles. His arrangements and compositions have been performed by university and high school percussion ensembles nationwide.

Oddis holds a Master of Music Performance degree from East Carolina University and a Bachelor of Music Education degree from Morehead State. He performs with the University's Faculty Jazz Quartet which recently released a compact disc recording, "Blue Duck Suit."

He serves as an adjudicator for many state and regional organizations, including DCI, PAS and Bands of America. He is a clinician and endorser of Ludwig drums, Sabian cymbals and Vic Firth sticks and mallets.

####

Tips

University Communications

Pauline Young, Director

www.moreheadstate.edu

Morehead State University

UPO Box 1100

Morehead, KY 40351-1689

(606) 783-2030

HIGHLIGHTS AT MOREHEAD STATE UNIVERSITY

(Nov. 2-8)

Sunday, Nov. 2

Senior recital: Jeffrey Jones, horn, Duncan Recital Hall, 3 p.m., free. Additional information: (606) 783-2473.

Monday Nov. 3

Spring 2004 advance registration, academic departments, 8 a.m. – 4:30 p.m., through Nov. 6. Additional information: (606) 783-2008.

Tuesday, Nov. 4

Guest recital: Junction, tuba/euphonium quartet, Duncan Recital Hall, 3 p.m., free. Additional information: (606) 783-2473.

Wednesday, Nov. 5

IRAPP lecture: "Looking at Earth from the Heavens: The Science of Remote Sensing," by Dr. Timothy Warner, 405 Combs Building, 3:15 p.m., free. Additional information: (606) 783-5419.

Concert: Recycled Percussion, Button Auditorium, 8 p.m., free. Additional information: (606) 783-2071.

Thursday, Nov. 6

IRAPP lecture: "Gaining People, Losing Ground," by Werner Fornos, 419 Reed Hall, 4 p.m., free. Additional information: (606) 783-5419.

Concert: Jazz Ensemble I, Duncan Recital Hall, 8 p.m., free. Additional information: (606) 783-2473.

Friday, Nov. 7

Transfer Day, for transfer students, Office of Admissions, 301 Howell-McDowell, 9 a.m. – 3:30 p.m. on the main campus; 8 a.m. – 4:30 p.m. at MSU at Jackson, Ashland and Prestonsburg. Additional information: (606) 783-2000; or (800) 585-6781.

Saturday, Nov. 8

All-State Bands Audition Clinic, for high school students, Baird Music Hall, 9:30 a.m., preregistration necessary, free. Additional information: (606) 783-2473.

Rifle: Eagles vs. Tennessee Tech, Button Rifle Range, time TBA, free. Additional information: (606) 783-2088.

Senior recital: Sheri Anderson, clarinet, Duncan Recital Hall, 5 p.m., free. Additional information: (606) 783-2473.

#####

10-22-03sas

MSU is an affirmative action equal opportunity educational institution.

News

University Communications

Pauline Young, Director

www.moreheadstate.edu

Morehead State University

UPO Box 1100

Morehead, KY 40351-1689

(606) 783-2030

Oct. 28, 2003

FOR IMMEDIATE RELEASE

MOREHEAD, Ky.---A Morehead State University student was arrested Monday at his campus apartment and charged with three drug offenses.

William H. Pulliam, 20, a sophomore from Louisville, was lodged in the Rowan County Detention Center. He faces charges of trafficking in a controlled substance, trafficking in marijuana and possession of drug paraphernalia.

MSU Police Chief Joe Cline said Pulliam's arrest at Holbrook Hall resulted from a joint investigation by campus police and the Buffalo Trace Narcotics Task Force.

#####



**Appalachian Regional Commission
Press Release**

ARC TO SHOWCASE EDUCATION RESOURCES

Washington, Oct. 24, 2003--The Appalachian Regional Commission (ARC) in partnership with the Federal Interagency Committee on Education and in cooperation with the Kentucky Association of School Administrators and Morehead State University (MSU) will hold a conference to increase awareness of education resources currently available in the Appalachian region from federal agencies.

“The goal of this partnership is to make people aware of what is out there and how those resources can be put to work expanding educational opportunities across the Appalachian region,” said Anne Pope, federal co-chair of the ARC.

The conference will take place on Nov. 7, 2003, in Baird Music Hall at Morehead State University in Morehead, Ky., from 8 a.m. to 3 p.m. and will focus on free and low-cost resources available to address educational needs from kindergarten to high school graduation. School officials, library and museum administrators, and others interested in improving education in their localities are invited to attend.

“There are a lot of resources and a wealth of free educational programs in math, science and the humanities available to local schools, teachers, students and parents every year,” said Pope. “Every teacher and every student deserves access to these first class resources. Opportunities in education lead to opportunities in the job market. People growing up in Appalachia deserve every opportunity to build a better life, and increasing awareness of what is available is one of the ways ARC helps.”

Dr. Ronald Eaglin, president of MSU, stated, “We are pleased to host this event. It is an excellent example of the collaboration between higher education and area elementary and secondary educators.”

Representatives of more than 10 federal agencies, including the Department of Education, Department of Defense, Institute for Museum and Library Service and the National Science Foundation will conduct breakout sessions covering training, professional development, specialized curriculum, financial and in-kind resources available to teachers and schools as well as the best ways to access them.

(MORE)

ARC Education Showcase

2-2-2-2-2

The registration fee is \$25, which includes breakfast and lunch. The fee is waived and a limited amount of travel support is also available for participants from ARC-designated distressed counties. A list of these counties is available online at www.arc.gov. Breakfast begins at 8 a.m. and exhibits will be open all day.

To register go to www.kasa.org or for more information contact Shirley LaFavers (Shirley@kasa.org) or Wanda Darland (wanda@kasa.org) at the Kentucky Association of School Administrators, (502) 875-3411.

####

News

University Communications

Pauline Young, Director

www.moreheadstate.edu

Morehead State University

UPO Box 1100

Morehead, KY 40351-1689

(606) 783-2030

Oct. 31, 2003

FOR IMMEDIATE RELEASE

MOREHEAD, Ky.---The Kentucky Folk Art Center is looking for artwork for a new exhibition titled "Lost and Found (Again)" that will feature works made from "found" objects by self-taught artists from around Kentucky.

"Some artists recycle things that have been thrown away by others or that they have found and come up with ingenious new uses for them," said Adrian Swain, curator at KFAC. "Unlike more conventional art materials, a found object already has an original identity. The artist reinterprets it and gives it new meaning, usually quite different from what it originally was.

"The skill of the artist is in taking objects that already served one purpose and incorporating them into a new work of art," Swain continued.

"Lost and Found (Again)" is a follow-up to an earlier exhibition by Kentucky Folk Art Center titled simply "Lost and Found." The Center is soliciting entries from all over Kentucky, and plans are underway to travel the exhibition to other museums and cultural institutions. Kentucky Folk Art Center will publish a full-color exhibition catalogue, including photos of featured works of art. The exhibition will include three cash prizes totaling \$1,000, which will be awarded for artistic excellence.

"Lost and Found, (Again)" is made possible in part by a grant from the Kentucky Arts Council, a state agency of the Education, Arts and Humanities Cabinet. The exhibition will open with a reception for the public at Kentucky Folk Art Center in Morehead on Thursday, March 4. The deadline for entries is Dec. 5.

The competition is open to any self-taught artist living in Kentucky. The guidelines are listed on the entry form which is available by calling KFAC at (606) 783-2204; by writing to Lost and Found, Kentucky Folk Art Center, 102 West First Street, Morehead, KY 40351.

Additional information is available from Swain, the exhibition curator, by e-mail to a.swain@moreheadstate.edu. Applications will be reviewed by an independent juror and all entries must be received at the Center no later than Dec. 5.

Kentucky Folk Art Center is a cultural and educational service of Morehead State University. The center, located at 102 West First Street in Morehead, is open Monday-Saturday, 9 a.m. to 5 p.m., and Sundays, 1-5 p.m.

####

News

University Communications

Pauline Young, Director

www.moreheadstate.edu

Morehead State University

UPO Box 1100

Morehead, KY 40351-1689

(606) 783-2030

Oct. 31, 2003

FOR IMMEDIATE RELEASE

MOREHEAD, Ky.---World famous jazz performer and educator, Jamey Aebersold of New Albany, Ind., will make a return visit to the Morehead State University campus on Wednesday, Nov. 12.

His stay will be highlighted by a clinic on jazz improvisation and an evening concert.

Anyone interested in learning about jazz music is invited to the clinic which begins at 4 p.m. in Duncan Recital Hall in Baird Music Hall on campus.

A concert will be held at D's Main Street Bistro, located at 139 East Main Street in Morehead, beginning at 6 p.m. Aebersold will be featured along with the MSU Faculty Jazz Ensemble. Reservations are recommended and may be made by calling (606) 783-0996.

Aebersold is an annual contributor to the Jazz Studies program at MSU and was recognized as an MSU Fellow earlier this year.

Additional information is available by calling Dr. Gordon Towell, associate professor of music, at (606) 783-2198.

####

News

University Communications

Pauline Young, Director

www.moreheadstate.edu

Morehead State University

UPO Box 1100

Morehead, KY 40351-1689

(606) 783-2030

Oct. 31, 2003

FOR IMMEDIATE RELEASE

MOREHEAD, Ky.---The College of Science and Technology at Morehead State University will host its 10th annual Mathematics, Physics and Advanced Technology Exploration (MPATE) Day on Wednesday, Nov. 5, on the campus.

More than 20 schools and approximately 450 students are expected to participate, according to Joyce Saxon, associate professor of mathematics, who is coordinating the registration for the event.

The day begins with check-in in Button Auditorium, beginning at 8:30 a.m.

Teams of students will participate in challenging and exciting learning activities involving mathematics, computer science, physics and technology. Each team will consist of students from different schools with prizes being awarded to the groups with the highest scores.

Faculty and staff members in MSU's Department of Mathematical Sciences will coordinate the annual event.

Additional information is available by calling Saxon at (606) 783-2923.

####