

News

University Communications

Pauline Young, Director

www.moreheadstate.edu

Morehead State University

UPO Box 1100

Morehead, KY 40351-1689

(606) 783-2030

Aug. 4, 2003

FOR IMMEDIATE RELEASE

MOREHEAD, Ky.---Students attending Morehead State University this year will buy more than just textbooks when they visit the University Bookstore.

Research from the National Association of College Stores (NACS) indicates that students at MSU and across the nation are relying on their local college bookstore for an increasingly wide range items, from clothing, to gifts, to computers and more. Despite online retailing options, nine out of 10 students buy textbooks from the college bookstore with the average student spending \$498 at the college bookstore each year. Students spend about \$125 per year on insignia items such as hats, clothing and gifts.

"Our store is often viewed solely as a source for textbooks, but we're much more than that," said Jackie Griffey, general manager of the University Bookstore. "Because we're basically located in students' backyard, we've been able to learn their needs first-hand and meet them with a variety of popular items."

NACS research indicates that students shop or browse at their college bookstore an average of five times per month.

"Because of our convenient location and close relationship with students, our store has become a hub of student life," said Griffey. "Students find it very easy to shop for their other needs while they're here to buy books or other required materials. And once they get to know our merchandise, they tend to return the next time a need arises."

The University Bookstore is open Monday – Friday, 8 a.m. until 4:30 p.m., and Saturdays 10 a.m. until 2 p.m. The store also offers a wide variety of clothing, gifts and other items at its Web site, located at www.bookstore.moreheadstate.edu.

Additional information is available by calling (606) 783-2081.

Headquartered in Oberlin, Ohio, NACS is the professional trade association representing more than 3,100 collegiate retailers and approximately 1,200 associate members who supply books and other products to college stores. NACS member stores daily serve the majority of America's 15.6 million college students while supporting the academic missions of higher education institutions everywhere.

####

MSU is an affirmative action, equal opportunity educational institution.

News

University Communications

Pauline Young, Director

www.moreheadstate.edu

Morehead State University

UPO Box 1100

Morehead, KY 40351-1689

(606) 783-2030

Aug. 5, 2003

FOR IMMEDIATE RELEASE

MOREHEAD, Ky.---Morehead State University has announced that Jessica Dawn Allen of **Bulan** is among those students receiving a Regents Scholarship for the fall semester.

Allen, the daughter of Deborah and Gerald Allen, is a graduate of Perry County Central High School. She was a member of the Leo Club, Appalachian Regional Theatre Society, All-State Chorus, Women's Ensemble, Central Harmony and All-District Choir, and president of Chamber Choir. She received third place in the state in a drama competition and is the team leader of PSI.

To be eligible for the Regents Scholarship, applicants must be admitted to MSU as an entering freshman, have an admissions index of 500 or more and have a minimum ACT composite of 20.

Applications and information on scholarships and grant programs at MSU are available from the Office of Admissions, MSU, Morehead, KY 40351-1689. The toll-free number is (800) 585-MSU1 (6781).

####

trt

News

University Communications

Pauline Young, Director

www.moreheadstate.edu

Morehead State University

UPO Box 1100

Morehead, KY 40351-1689

(606) 783-2030

Aug. 5, 2003

FOR IMMEDIATE RELEASE

MOREHEAD, Ky.---Morehead State University has announced that two graduates of East Ridge High School in Pike County are among those students receiving a Regents Scholarship for the fall semester.

April LeAnn Holland, the daughter of Lloyd Holland of **Elkhorn City**. She is a member of the National Honor Society, Do Something Club founder, and a Pikeville Methodist Hospital volunteer. She has been a WYMT-TV scholar, a Pikeville College PEPP graduate, and listed in "Who's Who Among American High School Students."

Kari Rachel Slone, the daughter of Michael and Patricia Slone of **Lick Creek**. She is a member of the Academic Team, Do Something Club and the Faith First Baptist Church youth group.

To be eligible for the Regents Scholarship, applicants must be admitted to MSU as an entering freshman, have an admissions index of 500 or more and have a minimum ACT composite of 20.

Applications and information on scholarships and grant programs at MSU are available from the Office of Admissions, MSU, Morehead, KY 40351-1689. The toll-free number is (800) 585-MSU1 (6781).

####

trt

News

University Communications

Pauline Young, Director

www.moreheadstate.edu

Morehead State University

UPO Box 1100

Morehead, KY 40351-1689

(606) 783-2030

Aug. 5, 2003

FOR IMMEDIATE RELEASE

MOREHEAD, Ky.---Morehead State University has announced that five students from **Morehead** are among those receiving a Regents Scholarship for the fall semester.

The students, all graduates of Rowan County Senior High School, are:

Matthew A. Duff, the son of John and Mary Duff. He is an umpire for Little League baseball games and assists with set-up and concessions at Rowan County games. He received the Kentucky Educational Excellence Scholarship and is a National Honor Roll inductee. He was listed in "Who's Who Among American High School Students."

Robert Allen Ginter, the son of Robert and Julie Ginter. He was RCSHS 2003 "Man of the Year" and was listed in "Who's Who Among American High School Students."

Diana Juliet Knoll, the daughter of James and Lois Knoll. She participated in the KMEA All-State Choir the last three years and the KMEA All-District Band the last two year where she was first chair French horn in 2003. She also was first runner up and talent winner in the 2003 Junior Miss Pageant.

Kristen Nicole Moore, the daughter of Charles Moore. Nominated as a delegate to represent Kentucky at the International Summit of Young Technology Leaders, she has received an award for more than 300 hours of volunteer service at St. Claire Regional Medical Center. She was listed in "Who's Who Among American High School Students" and the National Honor Roll.

Brianna Lenore Swetnam, the daughter of Dallas Swetnam. She was a four-year member of the National Forensic League and received the Best Interview Award in the 2002 Junior Miss Pageant.

To be eligible for the Regents Scholarship, applicants must be admitted to MSU as an entering freshman, have an admissions index of 500 or more and have a minimum ACT composite of 20.

Applications and information on scholarships and grant programs at MSU are available from the Office of Admissions, MSU, Morehead, KY 40351-1689. The toll-free number is (800) 585-MSU1 (6781).

####

trt

News

University Communications

Pauline Young, Director

www.moreheadstate.edu

Morehead State University

UPO Box 1100

Morehead, KY 40351-1689

(606) 783-2030

Aug. 5, 2003

FOR IMMEDIATE RELEASE

MOREHEAD, Ky.---Morehead State University has announced that Derrick Paul Raisor of **Taylorsville** is among those students receiving a Regents Scholarship for the fall semester.

Raisor, the son of Paul and Sandra Raisor, is a graduate of Eminence Independent High School. He is a member of the National Honor Society, PAC All Academic Team and completed 56 hours of community service his senior year. He was named Student of the Month in November and named to the First-Team Academic All-State.

To be eligible for the Regents Scholarship, applicants must be admitted to MSU as an entering freshman, have an admissions index of 500 or more and have a minimum ACT composite of 20.

Applications and information on scholarships and grant programs at MSU are available from the Office of Admissions, MSU, Morehead, KY 40351-1689. The toll-free number is (800) 585-MSU1 (6781).

####

trt

News

University Communications

Pauline Young, Director

www.moreheadstate.edu

Morehead State University

UPO Box 1100

Morehead, KY 40351-1689

(606) 783-2030

Aug. 5, 2003

FOR IMMEDIATE RELEASE

MOREHEAD, Ky.---Morehead State University has announced that Holly Eileen Medley of **Springfield** is among those students receiving a Regents Scholarship for the fall semester.

Medley, the daughter of Debbie Medley, is a graduate of Washington County High School. She was vice president of the Beta Club.

To be eligible for the Regents Scholarship, applicants must be admitted to MSU as an entering freshman, have an admissions index of 500 or more and have a minimum ACT composite of 20.

Applications and information on scholarships and grant programs at MSU are available from the Office of Admissions, MSU, Morehead, KY 40351-1689. The toll-free number is (800) 585-MSU1 (6781).

####

trt

News

University Communications

Pauline Young, Director

www.moreheadstate.edu

Morehead State University

UPO Box 1100

Morehead, KY 40351-1689

(606) 783-2030

Aug. 5, 2003

FOR IMMEDIATE RELEASE

MOREHEAD, Ky.---Morehead State University has announced that Derek R. Burton of **Campton** is among those students receiving a Regents Scholarship for the fall semester.

Burton, the son of Roy and Kathy Burton, is a graduate of Wolfe County High School. He was a member of Beta Club, a 4-H teen leader volunteer and active in his church. He received Distinguished in social studies and Proficient in reading and related arts in state CATS test.

To be eligible for the Regents Scholarship, applicants must be admitted to MSU as an entering freshman, have an admissions index of 500 or more and have a minimum ACT composite of 20.

Applications and information on scholarships and grant programs at MSU are available from the Office of Admissions, MSU, Morehead, KY 40351-1689. The toll-free number is (800) 585-MSU1 (6781).

####

trt

News

University Communications

Pauline Young, Director

www.moreheadstate.edu

Morehead State University

UPO Box 1100

Morehead, KY 40351-1689

(606) 783-2030

July 31, 2003

FOR IMMEDIATE RELEASE

MOREHEAD, Ky.---Dr. M. Scott McBride, a conductor, clinician, adjudicator and consultant throughout the United States and Canada, has been named chair of the Department of Music at Morehead State University.

He assumed his new duties in July, succeeding Dr. Christopher Gallaher who retired after more than 30 years at the University.

"We are fortunate to have a professional with Dr. McBride's experience be a part of MSU's award-winning music program," said Dr. Michael Seelig, dean of the Caudill College of Humanities. "Under his leadership, the department and its students will continue to excel, retaining the status of keeping Morehead State among the best music programs in the country."

Dr. McBride, who holds the title of professor of music, comes to MSU from the State University of West Georgia where he served as department chair and professor of music. He is a former director of bands at Jacksonville State University in Alabama and associate director of bands and coordinator of music education at California State University, Fresno.

An Ohio native, Dr. McBride attended Kent State University, where he earned the Bachelor of Music degree in music education (1976) and the Master of Music degree in performance (1978). In 1990, he completed requirements for the Doctor of Philosophy degree in music education from the University of Oklahoma. His principal trombone teachers were James Hummer, Vern Kagarice, Irvin Wagner and Paul Wallace. He studied conducting with John Boyd, Vance George, John Paynter, W. Francis McBeth, H. Robert Reynolds, Leopold Sipe and Gene Thrailkill.

Before pursuing a university teaching career, he taught instrumental music, elementary through high school, in the Ohio's public schools.

Dr. McBride has a variety of professional interests that include performing, conducting, brass pedagogy, wind orchestration and the investigation of current problems and trends in music education.

(MORE)

As an orchestrator for wind instruments, he has received critical acclaim for the color and textural variety of his works. His most recent and significant wind orchestration is Philip Wilby's "Paganini Variations," a work originally commissioned by the BBC and published by Novello & Co., Ltd.

He has made numerous appearances as a performer, clinician and presenter at state, regional and national meetings of the College Band Directors National Association, the Music Educators National Conference and the College Music Society.

His guest conducting activities include engagements with several all-state and all-district bands in Alabama, Arkansas, California, Florida, Georgia, Indiana, Missouri and New York. His professional conducting appearances include engagements with the Gadsden Symphony Orchestra (Ala.) and the West Georgia Winds.

Since 1987, he has been on the production of entertainment staffs for several collegiate bowl games including the Alamo, All-American, Gator, Holiday, Liberty, Orange, and Sugar Bowls, and in 1999 he directed the half-time entertainment for the NCAA Kick-Off Classic in New York's Giants Stadium.

In all, his professional work has taken him to 29 states, the District of Columbia, three Canadian provinces and the United Kingdom.

Dr. McBride is a member the College Music Society, Music Educators National Conference, College Band Directors National Association, National Band Association and the World Association for Symphonic Bands and Ensembles. He is a life and honorary member of Kappa Kappa Psi and an honorary member of Pi Kappa Lambda, Phi Mu Alpha Sinfonia and Tau Beta Sigma.

####



Dr. Scott McBride

Tips

University Communications

Pauline Young, Director

www.moreheadstate.edu

Morehead State University

UPO Box 1100

Morehead, KY 40351-1689

(606) 783-2030

HIGHLIGHTS AT MOREHEAD STATE UNIVERSITY

(Aug. 10-16)

Monday, Aug. 11

Residence Halls open for fall semester, upperclassmen only, 8 a.m., also Aug. 13.

Additional information: (606) 783-2060.

Tuesday, Aug. 12

Fall Convocation, Button Auditorium, 10 a.m. Additional information: (606) 783-2002.

Residence halls open for fall semester, freshmen students, 2 – 5 p.m. for Alumni Tower, Butler Hall, East Mignon, Nunn Hall and Regents Hall; 5 – 9 p.m. for Cooper Hall, Mignon Hall, Mignon Tower, Waterfield Hall and remaining halls. Additional information: (606) 783-2060.

Block Party, Regents/Wilson halls parking plaza, 8 – 11 p.m., free. Additional information: (606) 783-2060.

Wednesday, Aug. 13

Fall class drop/add for preregistered students, in academic departments, 8 a.m. – 5 p.m.; through Aug. 15. Additional information: (606) 783-2008.

Fall semester business days and registration, for freshmen, Button Drill Room, 9 a.m. – 5 p.m. Additional information: (606) 783-2008.

Thursday, Aug. 14

Fall semester business days and registration, for sophomores and juniors, Button Drill Room, 11 a.m. – 6 p.m. Additional information: (606) 783-2008.

Friday, Aug. 15

Fall semester business days and registration, for seniors and graduate students, Button Drill Room, 11 a.m. – 6 p.m. Additional information: (606) 783-2008.

#####

8-4-03sas

News

University Communications

Pauline Young, Director

www.moreheadstate.edu

Morehead State University

UPO Box 1100

Morehead, KY 40351-1689

(606) 783-2030

Aug. 5, 2003

FOR IMMEDIATE RELEASE

MOREHEAD, Ky.--- Morehead State University is gearing up for the start of the fall semester and the back to school activities. The fall term begins Monday, Aug. 18, at 8 a.m.

For returning students who have not pre-registered, class registration may be completed on the Web, if the student's adviser has approved the schedule. Current students, who have an official checksheet on file, may register via MSU's web site at www.moreheadstate.edu using their Personal Identification Number (PIN). Those who do not have a PIN are given the option to choose one when they log onto the student user page.

Students will register for classes in the office of their academic major Wednesday through Friday, Aug. 13-15, from 8 a.m.-5 p.m.

The financial part of the registration process will be accomplished in Button Drill Room on a set schedule: freshman, 9 a.m.-5 p.m., Wednesday; sophomores and juniors, 11 a.m.-6 p.m., Thursday; and seniors and graduate students, 11 a.m.-6 p.m., Friday. New student orientation events will be held in Button on Thursday and Friday morning from 8 -11 a.m. and at other locations on campus at other times.

The registration process is not complete until all fees are paid. A late charge will be assessed if all fees are not paid by 6 p.m. on Friday, Aug. 15.

Additional information is available on the Web or calling the Office of the Registrar at (606) 783-2008.

####

ajb

News

University Communications

Pauline Young, Director

www.moreheadstate.edu

Morehead State University

UPO Box 1100

Morehead, KY 40351-1689

(606) 783-2030

Aug. 5, 2003

FOR IMMEDIATE RELEASE

MOREHEAD, Ky.---The start of another fall semester at Morehead State University is upon us. Faculty, staff and students have been working together to get ready for the official opening of the 2003-04 school year.

Once students have settled into their rooms and attended the orientation sessions that apply to them, there will be plenty of Welcome Week activities, presented by the offices of Student Activities, Student Government Association and the Residence Hall Association, for them to enjoy.

As increased enrollment brings an increase in campus traffic, residence halls will open on a staggered schedule in an effort to ease traffic snarls and to ensure moving assistance is available for freshmen.

Beginning Tuesday, Aug. 12, students living in Alumni Tower, Butler, East Mignon, Nunn and Regents halls may move into their rooms from 2-5 p.m. From 5-9 p.m., residence hall check-in will be held for students living in Mignon Tower, Cooper, Mignon, Waterfield, Wilson and other halls. While students may check in after 9 p.m., move-in assistance will not be available after that time.

During the day, from 2-9 p.m., EagleCard pickup, parking passes, and other business matters may be taken care of in the Laughlin Health Building.

The traditional Block Party will be held on the Regents/Wilson halls lawn from 8-11 p.m. This annual event is a good opportunity to meet fellow students, faculty and staff.

Business days will get underway for new students from 9 a.m. to 5 p.m. in the Button Drill Room, the next morning, Aug. 13. Academic advising for students who do not have a schedule, or students who need to make schedule changes will be available in the academic departments from 8 a.m. to 4 p.m. that day, as well as on Thursday and Friday.

The opening session of the orientation program will begin at 8 p.m. Wednesday, Aug. 13, with an official welcome from SGA President Josh Gruenke, Maysville senior, in Laughlin Health Building. His remarks will be followed by Curtis Zimmerman's presentation, "Hooray! Building Community Out of Classmates."

(MORE)

For the convenience of student shoppers as well as the MSU community, the University Bookstore will be open from 8 a.m. until 5 p.m. Wednesday, and until 6 p.m. on Thursday and Friday.

MSU President Ronald G. Eaglin will kick off the orientation activities on Thursday, Aug. 14, as he greets new students at 8 a.m. in Button Auditorium. Following his address, Zimmerman will return with, "Living Life At Performance Level." Next will be the "You Are the Star" video presentation and an introduction to Greek life. Concluding the morning session will be Gary Vanmeter, senior director in MSU's Information Technology, describing the "Use and Abuse of Network Resources."

During the 11 a.m. – 1 p.m. lunch break, students interested in pursuing career opportunities in hotel restaurant/institution management, or in dietetics/nutrition, are invited to enjoy free food in the Cornucopia Room, located on the first floor of Lappin Hall.

After lunch, Morehead attorney Keith McCormick and Vice President for Student Life Madonna Weathers, along with Jud Laipply will present "You'll Laugh, You'll Change, You'll Live" in the Laughlin Health Building from 1:15-3:30 p.m.

Beginning at 4 p.m., there will be mandatory residence hall floor meetings for students, which will be followed by various activities within the residence halls, Button Auditorium and Jayne Stadium. Among those activities will be the "Tune In" game show in Button, from 7-8:30 p.m.

Both business and pleasure continue on Friday morning, Aug. 15, with the "Big Money" financial presentation at 8:30 a.m. in Button Auditorium. At 10 a.m., MSU 101 classes will meet at various campus locations, and campus tours will be conducted with peer advisers from 11:30 a.m. – 12:30 p.m. The popular "Blow-Up Games" will be held on the Laughlin lawn from 4-8 p.m.

Non-traditional students (those aged 23 and above, married, or single students with children) are invited to participate in an orientation program designed to address their special needs from 10 a.m. – noon on Friday in 2 Breckinridge Hall.

Events on Saturday, Aug. 16, include Wellness Center orientation from 2-6 p.m., and open recreation in the Laughlin building from 2-9:45 p.m. Available sports are basketball, volleyball, weight lifting, sauna, racquetball and more.

(MORE)

On Sunday morning, Aug. 17, all students are invited to a worship service at 11 a.m. in Button Auditorium. For the rest of the day, students can prepare for the Activities Fair, Street Dance and Ice Cream Social on University Boulevard from 8-11 p.m. that night.

Other events early in the fall semester include a show with hypnotist Tom DeLuca on Tuesday, Aug. 19; a performance by Step Afrika on Wednesday, Aug. 27; and an evening with magician Mike Super on Wednesday, Sept. 3. These three free events will be held at 8 p.m. in Button Auditorium.

MSU's football Eagles will open the 2003 home season on Saturday, Sept. 6, with a 3:30 p.m. match-up against the Dayton Flyers in Jayne Stadium. The game will be preceded by a tailgate party at 2 p.m.

Family members will be invited back to campus Sept. 26-28 for the annual Family Weekend. These three days will include a golf scramble, talent show and the Eagles' football game against Drake, among other activities.

Alumni and other friends of the University should mark their calendars for Homecoming 2003, set for Oct. 17-19.

MSU theatre students will stage four major productions this year, including: "Good News," Oct. 7-11, Lucille Little Theatre in Breckinridge Hall; "Antigone," Nov. 18-22, Little Theatre "Pippin," March 11-13, Button Auditorium and "Orpheus Descending," April 13-17, Little Theatre.

Additional information on how you can be a part of the festivities at MSU is available by calling the Office of Admissions at (606) 783-2000 or toll-free at (800) 585-6781.

#####

sas

Photo

University Communications

Pauline Young, Director

www.moreheadstate.edu

Morehead State University

UPO Box 1100

Morehead, KY 40351-1689

(606) 783-2030

PREPARING FOR FALL TERM AT MSU

Fall 2003 classes at Morehead State University will begin Aug. 18, and faculty, staff and students have been busy getting ready to begin a new academic year. Susan Lane of Morehead helped spruce up the University's Camden-Carroll Library, which will soon be used by thousands of MSU students. Additional information on registering for the fall term at MSU is available by calling the Office of Admissions at (606) 783-2000 or (800) 585-6781.

(MSU photo by Guy Huffman)

8-5-03sas

MSU is an affirmative action, equal opportunity educational institution.



Photo

University Communications

Pauline Young, Director

www.moreheadstate.edu

Morehead State University

UPO Box 1100

Morehead, KY 40351-1689

(606) 783-2030

FALL SEMESTER NEARS AT MSU

Fall 2003 classes at Morehead State University will begin Aug. 18, and faculty, staff and students have been busy getting ready to begin a new academic year. Jacob Eubank of **Mt. Sterling** shelved books at the University's Camden-Carroll Library, which will soon be used by thousands of MSU students. Additional information on registering for the fall term at MSU is available by calling the Office of Admissions at (606) 783-2000 or (800) 585-6781.

(MSU photo by Guy Huffman)

8-5-03sas

MSU is an affirmative action, equal opportunity educational institution.



Photo

University Communications

Pauline Young, Director

www.moreheadstate.edu

Morehead State University

UPO Box 1100

Morehead, KY 40351-1689

(606) 783-2030

SHOPPING FOR CLASSES AT MSU

Morehead State University experienced a record enrollment during the fall of 2002. Another semester will begin with registration and business days Aug. 13-15 with classes slated to start Monday, Aug. 18. Jennifer Johnson, left, and Marvell Watkins, both of **Mt. Sterling**, got a head start on textbook shopping at the University Bookstore. It is not too late to register for the fall term at MSU. Details are available by calling the Office of Admissions at (606) 783-2000 or (800) 585-6781.

(MSU photo by Guy Huffman)

8-5-03sas

MSU is an affirmative action, equal opportunity educational institution.



News

University Communications

Pauline Young, Director

www.moreheadstate.edu

Morehead State University

UPO Box 1100

Morehead, KY 40351-1689

(606) 783-2030

Aug. 6, 2003

FOR IMMEDIATE RELEASE

MOREHEAD, Ky.---The bluegrass group Blue Moon Rising and folk singer/songwriter Annie Gallup will perform at the next "Americana Crossroads Live" concert on Friday, Aug. 29, at Morehead State University.

Blue Moon Rising will take the stage at 8:30 p.m. The East Tennessee band derived its name from a newspaper article commemorating the life of "The Father of Bluegrass Music," Bill Monroe. While remaining true to its roots, the band has developed a sound all its own.

The group's new CD on Crosscut Records, "Where Wood Meets Steel," was the band's first nationwide release.

Blue Moon Rising has been selected by the IBMA Showcase Talent Committee of one of only 13 bands to perform at the 2003 World of Bluegrass Trade Show in Louisville. The showcase events are slated for Sept. 29-Oct. 1, at the Galt House.

Annie Gallup will open the show at 7:30 p.m. in Duncan Recital Hall in Baird Music Hall on the campus.

Morehead State Public Radio and the Kentucky Center for Traditional Music will present the "Americana Crossroads Live" concert series. Doors open at 7 p.m. and there will be a 15-minute intermission between performances. Those attending the event are eligible for door prizes.

Morehead State Public Radio will record the concert for broadcast on Thursday, Sept. 4, at 8 p.m.

Toyota Motor Manufacturing of Georgetown is a corporate sponsor of the series with additional sponsorship by KCTM, Kentucky Folk Art Center, Farmer's Mercantile Boots and Shoes, Poppy Mountain Bluegrass Festival and Root-A-Baker's Bakery.

The "Best of Americana Crossroads Live, Vol. III" CD is available, featuring 18 songs from the series.

Additional information about the concert or the CD are available by calling MSPR at (800) 286-9659 or (606) 783-2001 or log on to MSPR's Web site at www.msradio.com.

####

ajb

MSU is an affirmative action, equal opportunity educational institution.

Photo

University Communications

Pauline Young, Director

www.moreheadstate.edu

Morehead State University

UPO Box 1100

Morehead, KY 40351-1689

(606) 783-2030

CONCERT AT MSU

The East Tennessee bluegrass band Blue Moon Rising will perform at the next "Americana Crossroads Live" concert on Friday, Aug. 29, at Morehead State University. Blue Moon Rising will take the stage at 8:30 p.m. in Duncan Recital Hall. Annie Gallup will begin the show at 7:30 p.m. Doors open for the event at 7 p.m. "Americana Crossroads Live" is a presentation of Morehead State Public Radio and the Kentucky Center for Traditional Music. Additional information is available by calling (606) 783-2001 or (800) 286-9659; or by visiting the Web site at www.msuradio.com.

(File photo)

8-6-03ajb

MSU is an affirmative action, equal opportunity educational institution.



News

University Communications

Pauline Young, Director

www.moreheadstate.edu

Morehead State University

UPO Box 1100

Morehead, KY 40351-1689

(606) 783-2030

Aug. 8, 2003

FOR IMMEDIATE RELEASE

MOREHEAD, Ky.---“Divine Object: The Venerated Image,” an exhibition comprised of artworks that explore the theme of reverence, will be on display in the main gallery of the Claypool-Young Art Building at Morehead State University, Aug. 27 – Sept. 26. The exhibition will open with a reception, which is free and open to the public, on Wednesday, Aug. 27, from 6 to 8 p.m.

Since the advent of the Enlightenment and its emphasis on the secular, art with spiritual or religious underpinnings have been all but absent from visual art in American and European culture. In contemporary art, however, there is a renewed interest in religious subject matter and icons, spiritual issues, and an iconic or reverential treatment of subjects. Eleven artists working with these themes from across the nation were selected to participate, including Sara Crisp from Cumberland, Maine; Kristy Deetz from DePere, Wis.; Maureen Fahy from Columbus, Ohio; Susan Jarvis from Newfane, Vt.; Nate Larson from Columbus, Ohio; Lisa Meek from Cleveland, Ohio; Cristin Millett from State College, Pa.; Jeff Murphy from Charlotte, N.C.; Diego M. Rios from Richmond, Calif; Monica Sheets from Minneapolis, Minn.; and Darrell Taylor from Iowa City, Iowa.

As part of an artists’ lecture series, funded in part by the Kentucky Arts Council, Deetz, instructor of art at the University of Wisconsin, will be the visiting artist associated with the exhibition. She is an encaustic painter, an ancient technique consisting of pigment suspended in wax.

Deetz will lecture about her work and technique on Monday, Sept. 22, at 5 p.m. again on Tuesday, Sept. 23, at 12:40 p.m. Both events, which are free and open to the public, will be held in the Claypool-Young Art Building. Light refreshments, provided by the Cave Run Arts Association, will be available during the Monday lecture and demonstration.

The MSU gallery features contemporary art for the community as well as the University’s service region in East Kentucky. The gallery is open Monday through Friday, 8 a.m. to 4 p.m. or by appointment. There is no admission charge for viewing.

Additional information is available by calling Jennifer Reis, gallery director, (606) 783-5446.

####

Photo

University Communications

Pauline Young, Director

www.moreheadstate.edu

Morehead State University

UPO Box 1100

Morehead, KY 40351-1689

(606) 783-2030

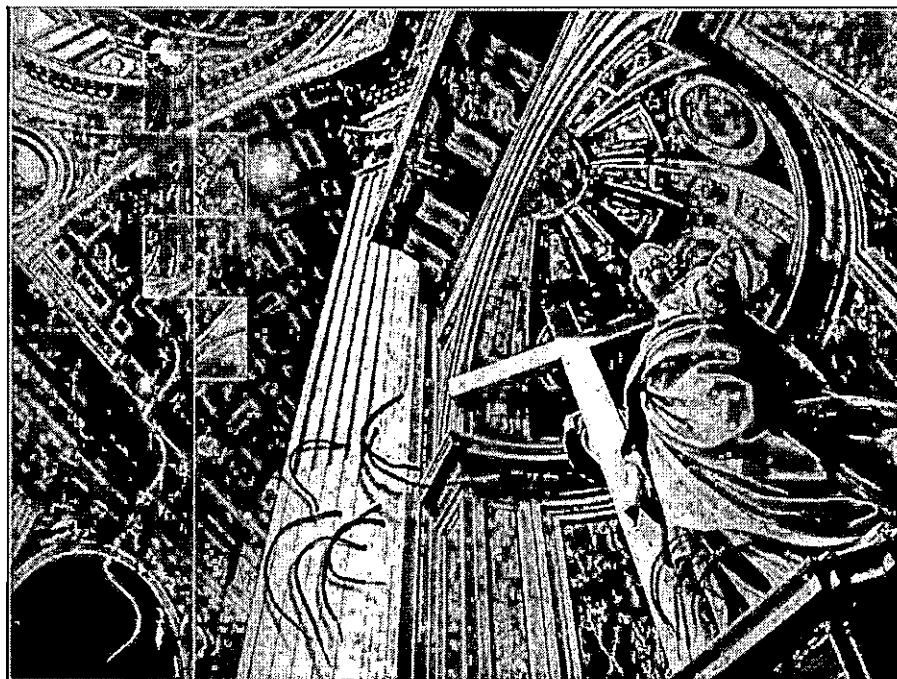
EXHIBIT OPENS AT MSU

Morehead State University will host an art exhibit, titled "Divine Object: The Venerated Image," in the main gallery of the Claypool-Young Art Building, Aug. 27-Sept. 26. The display will include "Basilica di San Pietro," a computer generated image by Jeffrey Murphy of Charlotte, N.C. The public is invited to attend the opening reception on Wednesday, Aug. 27, from 6 to 8 p.m. Gallery hours are weekdays, 8 a.m.-4 p.m. or by appointment. There is no charge for viewing. Additional information is available by calling Jennifer Reis, gallery director, at (606) 783-5446.

(MSU photo)

8-8-03py

MSU is an affirmative action, equal opportunity educational institution.



News

University Communications

Pauline Young, Director

www.moreheadstate.edu

Morehead State University

UPO Box 1100

Morehead, KY 40351-1689

(606) 783-2030

Aug. 8, 2003

FOR IMMEDIATE RELEASE

MOREHEAD, Ky.---With construction and new street directions, Morehead State University faculty, staff and students must be observant when traveling or parking on campus.

To avoid a parking ticket, several parking regulations should be observed:

*It is not possible to mark with signs or paint all areas of university property where parking is prohibited. Guidelines are strictly enforced 24 hours a day in some locales where parking is forbidden. These include: driving lanes or double parking; parking in reserved areas; parking in loading or unloading areas; parking in service entrances or construction areas; parking on the grass, sidewalks or crosswalks; parking in driveways; parking across two lanes or adjacent to or over yellow lines or curbs or in lanes marked for fire hydrants.

*Every vehicle must be parked between two lines or space markers on a paved lot. In gravel lots, legal spaces will be marked by bumper blocks or otherwise designated by posts or cables. Parking shall not be extended beyond these designated lanes.

*Vehicles are not permitted in areas or spaces closed by the use of barricades, traffic cones, or other traffic devices.

*Individuals may not perform vehicle maintenance on University property other than to make minor emergency repairs.

*In the case of curb parking, all vehicles must be parked in the direction of the traffic flow.

*Parking in Zone S is enforced from 11 p.m. on Sunday through 4:30 p.m. on Friday. With the exception of reserved spaces and Zone M, open parking is permitted in any legally marked space from 4:30 until 11p.m. daily and all day Saturday.

*Permits will not be issued for vehicles that are not considered operational. If issued, such permits may be revoked immediately upon discovery.

*Vehicles must be removed from University property during periods when school is not in session. Permission to leave vehicles during break periods may be obtained from the MSU Police Department. Vehicles that must be moved for any reason will be towed at the owner's expense.

(MORE)

Parking fines
2-2-2-2-2

*Students, with the exception of graduate assistants, may not utilize a faculty/staff (F/S) permit. This restriction includes relatives and family members of faculty and staff members. The use of such a permit will be considered fraudulent registration and will be treated accordingly.

A fine will be assessed for disobeying the parking regulations. The rates are:

*utilizing spaces for those with disabilities, \$50;

*unregistered vehicle, fraudulent/misuse of decal, \$35;

*no valid permit/improperly displayed, expired meter, reserved space, improper zone, yellow zone, parking in driving lane, blocking driveway, double parking, no marked space, fire lane, \$25.

All \$25 fines will increase to \$35 if not paid within seven days from the date the ticket was issued.

Individuals who receive six or more parking tickets in a vehicle registration period may lose their parking privileges for the remainder of that academic year.

Additional information is available by calling the Traffic Office at 783-2220.

Questions/comments may be sent to p.flannery@moreheadstate.edu.

####

ajb

News

University Communications

Pauline Young, Director

www.moreheadstate.edu

Morehead State University

UPO Box 1100

Morehead, KY 40351-1689

(606) 783-2030

Aug. 8, 2003

FOR IMMEDIATE RELEASE

MOREHEAD, Ky.---To better serve the students of Morehead State University, the University's Student Government Association has purchased two new EagleCard CampusCash add value stations that will allow the students easier access.

"SGA voted to buy the add value stations because we saw a student need for them. Nobody wants to walk around campus in order to put money on their card so they can print out a paper. We just wanted to place these machines in a location where they would get the most use," said SGA President Josh Gruenke of Maysville.

An MSU student can "load value" onto the EagleCard CampusCash (chip) at either of the two Card Value Centers (CVCs) or six Card Service Centers (CSCs) located around the campus.

"We are delighted that SGA helped to make it easier for the students by adding the two new locations," said EagleCard Coordinator Doug Snedegar. "We now offer eight locations, in high traffic areas, which should make it easier for the students to have convenient access to an add value station."

Places where value may be loaded on the EagleCard CampusCash are: 1st floor of Breckinridge Hall (CSC), 1st floor of Combs Building (CSC), 2nd floor of Adron Doran University Center (CVC), Food Court at Alumni Tower (CSC), Camden-Carroll Library (two locations) 1st Floor (CVC), Computer Lab (CSC), 1st floor of Ginger Hall (CSC) and 1st floor of Lappin Hall (CSC).

All faculty, staff and students must have an EagleCard, which serves as the official identification card of the University. A microchip allows the card to be used as a debit card with deposits made at any of the eight designated machines on campus.

CampusCash can be used in soft drink machines (20 percent discount), snack machines, copiers, on-campus laundry (10 percent discount), and computer lab printing. This convenience should take the worry out of not having the correct change. Students should always treat their EagleCard like they would a credit card. The CampusCash on your ID is treated as cash and is nonrefundable, if lost or stolen. CampusCash is stored on the chip portion of your EagleCard and is accepted anywhere on campus where you see the CampusCash logo.

With the renovations to ADUC, the EagleCard office has been relocated to the lobby level of Alumni Tower. This is the place to pick up the EagleCard or to have questions answered about meal plans, dining club, express club, ATM access, departmental access card and departmental copy card.

Additional information is available by calling (606) 783-2701.

#####

MSU is an affirmative action, equal opportunity educational institution.

SGA BUYS EAGLECARD MACHINES

Morehead State University's Student Government Association has acquired two new EagleCard CampusCash add value stations. SGA President Josh Gruenke of **Maysville** purchases a soda with his EagleCard from one of the new machines. Locations where value may be loaded on the EagleCard CampusCash are: 1st floor of Breckinridge Hall (CSC), 1st floor of Combs Building (CSC), 2nd floor of Adron Doran University Center (CVC), Food Court at Alumni Tower (CSC), Camden-Carroll Library (two locations) 1st Floor (CVC), Computer Lab (CSC), 1st floor of Ginger Hall (CSC) and 1st floor of Lappin Hall (CSC). CampusCash can be used in soft drink machines (20 percent discount); snack machines, copiers, on-campus laundry (10 percent discount); and computer lab printing.

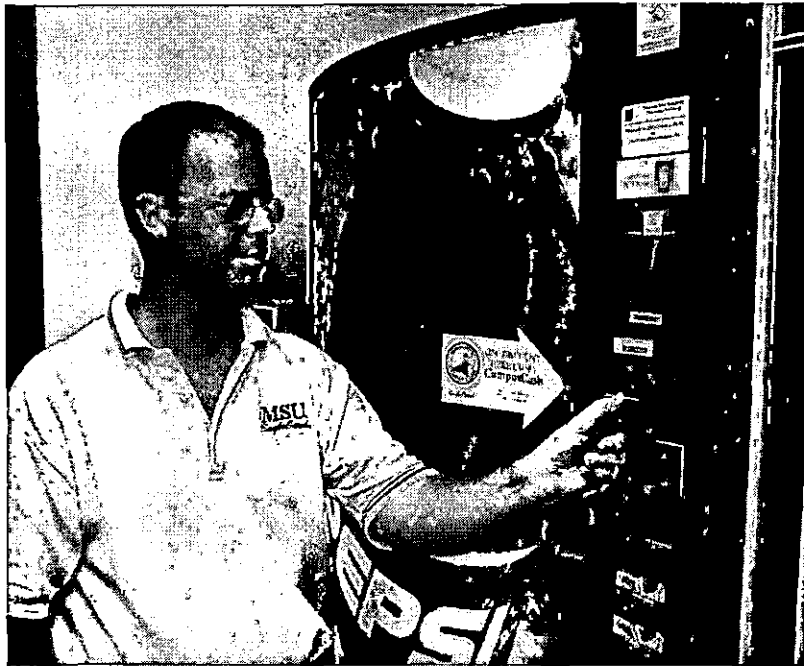
(MSU photo by Tim Holbrook)

8-8-03 ajb

MSU is an affirmative action, equal opportunity educational institution.



DOUG 2 8-03



DOUG 8-03



JOSH & DOUG
8-03



Aug. 8, 2003

FOR IMMEDIATE RELEASE

MOREHEAD, Ky.---Looking for ways to educate students about their personal safety is an ongoing effort at Morehead State University.

When the students return this fall, they will see that traffic on what is now Battson-Oates Drive, has been changed to facilitate movement away from campus. The street was recently repaved and new signs have been erected.

For Madonna Weathers, vice president of student life, safety means encouraging everyone to be aware of their surroundings.

"We want our students to feel safe in their home away from home," she said. "This allows them to devote more time to their studies, getting the most from their educational experience and learning to be better citizens in society."

Surveillance cameras have been installed in classroom and parking areas, allowing for live monitoring on a daily basis. The cameras were made possible through a \$22,500 strategic initiative approved earlier this year. When funds become available, the University plans to video monitor the entrances to all buildings, including all residence halls.

During the summer, the last phase of the \$8.5 million, multi-year plan to install in-room sprinkler systems was completed. All residence halls are now fully sprinkled and ongoing efforts are continuing to upgrade fire safety systems in student residence halls. Smoke detectors are installed in each residence hall and when the fire alarm sounds, the local fire department responds to each call.

MSU's residence halls are locked 24 hours a day, seven days a week. Public safety assistants and student cadets check the entrance areas of all halls on a nightly basis. Students can gain access to their hall by a key system only.

A professionally trained staff, including student staff members, is on call to assist in case of an emergency. A 24-hour crisis response team is available through the Office of Public Safety.

One of the projects of the Student Government Association's Campus Improvement Committee, in conjunction with the University Police Department, is to monitor campus safety. Each semester, SGA committee members join police officers, representatives from the Division of Student Life, physical plant and risk management, for a safety walk. Identified safety concerns are addressed immediately.

The University's emergency phone system, which links directly to University police dispatch, makes the campus a safer place. The "blue phones" are highly visible with locations in the parking lots, near the main buildings and at the entrance to residence halls.

(MORE)

When returning to campus after hours, students may be transported from the parking areas to their residence hall thanks to a shuttle service, operated by University police personnel. The shuttle van, purchased by the Family Association and SGA, has been in operation since 1998. There is no charge for the service.

This service heightened awareness and the University has continued to make improvements for the safety of those on the campus, Weathers noted.

"While safety is a concern, even the best-laid plans can hit a snag if the educational process is not complete," she continued. "We begin talking with parents and students about campus safety issues prior to the student enrolling at Morehead State."

"When the semester begins, we put forth every effort to share information and encourage students to become more aware of their surroundings and share the responsibility for keeping themselves safe on campus," Weathers said.

As part of new student orientation, a variety of programs are offered to help students adjust to college and life on campus. In addition to the presentation of traditional issues, such as diversity and money management, discussion will focus on other programs that deal with drug and alcohol abuse and their relationship to campus violence, sexual assault and date rape. All new students must enroll in MSU 101, discovering university life, where campus safety issues continue to be addressed.

The beginning of the school year also is a time for review of training for staff members and an opportunity to discuss situations where intervention may be necessary. "We just want to remind everyone to do his or her part in creating a safe campus environment here at MSU," Weathers said. "A safe campus is everyone's responsibility," the vice president added.

The University is making every effort to keep the students informed and the lines of communication open. Designated bulletin boards have been established for emergency postings, campus-wide messages may be sent by voice or electronic mail, and a newly established broadcast outlet (Channel 68 on campus), will provide alerts and offer instant messages should the need arise.

Additional information about safety programs available on campus will be posted on the Web at www.moreheadstate.edu.

####

News

University Communications

Pauline Young, Director

www.moreheadstate.edu

Morehead State University

UPO Box 1100

Morehead, KY 40351-1689

(606) 783-2030

Aug. 8, 2003

FOR IMMEDIATE RELEASE

ASHLAND, Ky.---There is still time to register and attend Morehead State University for the fall 2003 term. Registration for MSU at Ashland is scheduled for Wednesday through Friday, Aug. 13-15.

Students may register from 9 a.m. to 5:30 p.m. on Wednesday and from 9 a.m. to 6 p.m. on Thursday and Friday.

Nearly 60 undergraduate and graduate courses, including several via distance learning, will be offered this fall.

Among the areas represented are accounting, business, computer information systems, education, government, health, management, physical education, sociology and social work. Also available are courses designed for registered nurses working toward the B.S.N. degree.

Textbooks for courses taught at the center are for sale by phone at (888) 786-7305 9 or online at <http://bookstore.moreheadstate.edu>.

All classes will meet at the center, located at 1401 Winchester Avenue. The cost per credit hour is \$141 at the undergraduate level and \$203 at the graduate level for all students taking classes at MSU's regional locations, whether they are Kentucky residents or not.

Classes offered during the fall term are listed at www.moreheadstate.edu/units/registrar/classes.htm.

Before beginning the registration process, students will need approval of their adviser.

Additional information about the registration process is available from the Office of the Registrar at (606) 783-2008.

Specific information on classes or registration may be obtained by calling H. Jack Webb, center director, locally at (606) 327-1777, or toll-free at (800) 648-5370.

####

ajb

News

University Communications

Pauline Young, Director

www.moreheadstate.edu

Morehead State University

UPO Box 1100

Morehead, KY 40351-1689

(606) 783-2030

Aug. 8, 2003

FOR IMMEDIATE RELEASE

JACKSON, Ky.--- There is still time to register and attend Morehead State University at Jackson for the fall 2003 term. Nearly 30 undergraduate and graduate level courses including some by distance learning will be offered at MSU Jackson this fall.

Registration will be conducted from 9 a.m. – 5:30 p.m. on Wednesday, Aug. 13, and from 9 a.m. – 6 p.m. on Thursday and Friday, Aug. 14 and 15, at the office, located at 1127 Main Street in Jackson.

Classes begin on Monday, Aug. 18.

Among the areas represented in the course listing are accounting, business, computer information systems, education, management and social work. Also available are courses designed for registered nurses working toward the B.S.N. degree.

Textbooks for all courses are sale by phone at (888) 786-7305; or online at <http://bookstore.moreheadstate.edu>.

The cost per credit hour is \$141 at the undergraduate level and \$203 at the graduate level for all students taking classes at MSU's regional locations, whether they are Kentucky residents or not.

Classes offered during the fall term are listed at www.moreheadstate.edu/units/registrar/classes.htm.

Before beginning the registration process, students will need approval of their adviser.

Additional information about the registration process is available from the Office of the Registrar at (606) 783-2008.

Specific information on classes or registration may be obtained by calling Dr. Jeff Edgens, center director, locally at (606) 666-2800 or toll free at (800) 729-5225.

####

ajb

News

University Communications

Pauline Young, Director

www.moreheadstate.edu

Morehead State University

UPO Box 1100

Morehead, KY 40351-1689

(606) 783-2030

Aug. 8, 2003

FOR IMMEDIATE RELEASE

WEST LIBERTY, Ky.--- There is still time to register and attend Morehead State University at West Liberty for the fall 2003 term. Registration will be conducted Wednesday through Friday, Aug. 13-15, for the fall 2003 classes offered at MSU West Liberty.

Students may register from 9 a.m.- 5:30 p.m. on Wednesday and from 9 a.m. to 6 p.m. on Thursday and Friday at the center.

Classes begin on Monday, Aug. 18, at the center, located at 155 Continental Drive.

Textbooks may be ordered by phone at (888) 1786-7305 or online at <http://bookstore.moreheadstate.edu>.

A variety of undergraduate and graduate courses will be available including some Internet courses. Among the areas represented are art, business, computer information systems, criminology, geography, government, health, history, math, nursing, physical education, science, social work, Spanish and speech.

Classes offered during the fall term are listed at www.moreheadstate.edu/units/registrar/classes.htm.

Before beginning the registration process, students will need approval of their adviser.

Additional information about the registration process is available from the Office of the Registrar at (606) 783-2008.

Specific information on classes or registration may be obtained by calling Dr. Jonell Tobin, center director, locally at (606) 743-1500, or toll-free at (800) 648-5371.

#####

ajb

News

University Communications

Pauline Young, Director

www.moreheadstate.edu

Morehead State University

UPO Box 1100

Morehead, KY 40351-1689

(606) 783-2030

Aug. 8, 2003

FOR IMMEDIATE RELEASE

MT. STERLING, Ky.--- There is still time to register and attend Morehead State University at Mt. Sterling for the fall 2003 term. MSU will offer 33 courses this fall for students in Montgomery County and the surrounding area, as the new Clay Center--MSU Mt. Sterling--will open.

Registration will be conducted from 9 a.m.-5:30 p.m. on Wednesday, Aug. 13, and on Thursday and Friday, Aug. 14 and 15, from 9 a.m.-6 p.m.

Classes will begin Monday, Aug. 18. Among the courses offered are accounting, art, biology, computer information systems, English, finance, government, health, history, management, philosophy, science, speech, sociology and theatre. The complete listing is available at www.moreheadstate.edu/units/registrar/classes.htm.

Before beginning the registration process, students will need approval of their adviser.

Additional information about the registration process is available from the Office of the Registrar at (606) 783-2008.

Textbooks may be ordered by phone at (888) 786-7305 or online at <http://bookstore.moreheadstate.edu>.

The cost per credit hour is \$141 at the undergraduate level and \$203 at the graduate level.

Additional information on fall classes or the registration process may be obtained by calling Dr. Janet Kenney, center director, at (859) 498-0780 or toll free (866) 870-0809.

####

ajb

News

University Communications

Pauline Young, Director

www.moreheadstate.edu

Morehead State University

UPO Box 1100

Morehead, KY 40351-1689

(606) 783-2030

Aug. 8, 2003

FOR IMMEDIATE RELEASE

PIKEVILLE, Ky.--- There is still time to register and attend Morehead State University for the fall 2003 term. Morehead State University will offer several graduate level courses this fall for students in the Pike County area.

Registration will be conducted from 9 a.m.-5:30 p.m. on Wednesday, Aug. 13, and from 9 a.m. – 6 p.m. on Thursday and Friday, Aug. 14 and 15, at Pikeville College, where classes will be held.

Classes begin on Monday, Aug. 18. Courses to be offered during the fall term are listed at www.moreheadstate.edu/units/registrar/classes.htm.

Before beginning the registration process, students will need approval of their adviser.

Additional information about the registration process is available from the Office of the Registrar at (606) 783-2008

Textbooks may be ordered by phone at (888) 786-7305 or online at <http://bookstore.moreheadstate.edu>.

The cost per credit hour is \$141 at the undergraduate level and \$203 at the graduate level for all students taking classes at MSU's regional locations, whether they are Kentucky residents or not.

The fall schedule includes:

- EDEL 632, Elementary School Curriculum, 6 -8:40 p.m., Thursdays.
- EDEL 640, Contemporary Instructional Practices in Grades P-9, 6 -8:40 p.m., Tuesdays.
- EDEL 680, History and Philosophy of Education, 6 -8:40 p.m., Mondays.
- EDF 610, Advanced Human Growth and Development, 6 -8:40 p.m., Mondays.
- EDGC 667, Group Counseling, 6 - 8:40 p.m., Wednesdays.
- EDIL 634, Leadership Human Resources and Development School, 6 -8:40 p.m., Tuesdays.

Additional information on fall classes or the registration process may be obtained by calling Dr. John Nelson, site coordinator, at (606) 218-5460.

####

ajb

News

University Communications

Pauline Young, Director

www.moreheadstate.edu

Morehead State University

UPO Box 1100

Morehead, KY 40351-1689

(606) 783-2030

Aug. 8, 2003

FOR IMMEDIATE RELEASE

HINDMAN, Ky.--- There is still time to register and attend Morehead State University for the fall 2003 term. Morehead State University will offer several courses this fall for students in the Knott County area.

Students may register at MSU at Jackson, located at the Jefferson Hotel, 1127 Main Street in Jackson. Current students, who have an official checksheet on file, may register via MSU's Web site (www.moreheadstate.edu) using their Personal Identification Number (PIN). Those who do not have a PIN are given the option to choose one when they log onto the student user page.

Classes begin on Monday, Aug. 18. Textbooks may be ordered by phone at (888) 786-7305 or online at <http://bookstore.moreheadstate.edu>.

The cost per credit hour is \$141 at the undergraduate level and \$203 at the graduate level.

The fall schedule includes:

BIS 321, Business Communications, 12 -1:40 p.m., Tuesdays, Thursdays, Fridays.

EET 500, Digital Signal Processing I, 7:10 – 9:50 p.m., Thursdays.

ENG 342, American Literature Since 1865, 7:10 – 9:50 p.m., Wednesdays.

ENG 365, Literature of the South, 6 – 8:40 p.m., Mondays.

IET 619, Total Quality Control, 7:10 – 9:50 p.m., Tuesdays.

NAHS 300, Ethic/Legal Issues Health, 4:10-6:50 p.m., Wednesdays.

Additional information is available by calling Dr. Jeff Edgens, MSU Jackson director, at (606) 666-2800 or toll-free at (800) 729-5225.

####

ajb

News

University Communications

Pauline Young, Director

www.moreheadstate.edu

Morehead State University

UPO Box 1100

Morehead, KY 40351-1689

(606) 783-2030

Aug. 8, 2003

FOR IMMEDIATE RELEASE

MAYSVILLE, Ky.--- There is still time to register and attend Morehead State University for the fall 2003 term. Morehead State University will offer four courses this fall for students in the Mason County area.

Students may register by mail to Extended Campus Programs, 312 Allie Young Hall, Morehead State University, Morehead, Ky., 40351. Current students, who have an official checksheet on file, may register via MSU's Web site (www.moreheadstate.edu) using their Personal Identification Number (PIN). Those who do not have a PIN are given the option to choose one when they log onto the student user page.

Classes begin on Monday, Aug. 18, at Mason County High School. Textbooks may be ordered by phone at (888) 786-7305 or online at <http://bookstore.moreheadstate.edu>.

The cost per credit hour is \$141 at the undergraduate level and \$203 at the graduate level for all students taking classes at MSU's regional locations, whether they are Kentucky residents or not.

The fall schedule includes:

EDIL 618, School Finance and Support Service, 4 -6:40 p.m., Mondays.

EDIL 628, School Law and Ethics, 5 -7:40 p.m., Tuesday.

NURB 461, Nursing Leadership and Management, 4:10 -6:50 p.m., Thursday.

NURB 497, Nursing Senior Seminar, 4:10 -8:30 p.m., Mondays.

Additional information is available by calling MSU's regional campus coordinator at (606) 783-2605, or toll-free at (800) 585-6781, and selecting option 3.

#####

ajb

News

University Communications

Pauline Young, Director

www.moreheadstate.edu

Morehead State University

UPO Box 1100

Morehead, KY 40351-1689

(606) 783-2030

Aug. 8, 2003

FOR IMMEDIATE RELEASE

SALYERSVILLE, Ky.--- There is still time to register and attend Morehead State University for the fall 2003 term. Morehead State University will offer eight courses for students in Magoffin County this fall.

Students may register at MSU at Prestonsburg or by mail to Extended Campus Programs, 312 Allie Young Hall, Morehead State University, Morehead, Ky., 40351. Current students, who have an official checksheet on file, may register via MSU's Web site (www.moreheadstate.edu) using their Personal Identification Number (PIN). Those who do not have a PIN are given the option to choose one when they log onto the student user page.

Classes begin on Monday, Aug. 18, at Magoffin County High School. Textbooks may be ordered by phone at (888) 786-7305 or online at <http://bookstore.moreheadstate.edu>.

The cost per credit hour is \$141 at the undergraduate level and \$203 at the graduate level.

The fall schedule includes:

- AGR 388, Methods of Curriculum Development, 7:10-9:50 p.m. Thursdays.
- ENG 390, Professional Writing, 7:10-9:50 p.m., Tuesdays.
- HS 388, Methods of Curriculum Development, 7:10-9:50 p.m., Thursdays.
- IET 388, Methods of Curriculum Development, 7:10 -9:50 p.m. Thursdays.
- NAHS 300, Ethic/Legal Issues Health, 4:10 -6:50 p.m., Wednesdays.
- NURB 349, Pharmacology, 4:10 -6:50 p.m., Tuesdays.
- NURB 354, Health Assessment, 4:10 -6:50 p.m., Thursdays.
- NURB 497, Nursing Senior Seminar, 4:10 -8:30 p.m., Mondays

Additional information is available by calling MSU Prestonsburg at (606) 886-2405 or toll-free at (800) 648-5372; or MSU's regional campus coordinator at (606) 783-2605, or toll-free at (800) 585-6781, and selecting option 3.

#####

ajb

News

University Communications

Pauline Young, Director

www.moreheadstate.edu

Morehead State University

UPO Box 1100

Morehead, KY 40351-1689

(606) 783-2030

Aug. 8, 2003

FOR IMMEDIATE RELEASE

PRESTONSBURG, Ky.--- There is still time to register and attend Morehead State University at Prestonsburg for the fall 2003 term. Nearly 100 classes, including some Internet courses, will be offered at MSU Prestonsburg this fall for graduate and undergraduate students.

Registration is scheduled for Wednesday through Friday, Aug. 13-15, from 9 a.m. to 5:30 p.m. on Wednesday and 9 a.m. to 6 p.m. on Thursday and Friday.

Current students, who have an official check sheet on file, may resister via MSU's Web site (www.moreheadstate.edu) using their Personal Identification Number (PIN). Those who do not have a PIN are given the option to choose one when they log into the student user page.

Classes will be offered in a variety of subject including accounting, art, biology, computers, criminology, economics, special education, elementary education, English, finance, geography, government, health, history, management, philosophy, physics, psychology, speech and social work. Also available are courses designed for registered nurses working toward the B.S.N. degree.

Textbooks are for sale by phone at (888) 786-7305 and online at <http://bookstore.moreheadstate.edu>.

All classes will meet at the center, located at 719 University Drive. The cost per credit hour is \$141 at the undergraduate level and \$203 at the graduate level.

More than 800 students are enrolled in classes at MSU Prestonsburg each year. Students may pay bills, receive advising and complete the registration process on site.

Classes offered during the fall term are listed at www.moreheadstate.edu/units/registrar/classes.htm.

Before beginning the registration process, students will need approval of their adviser.

Specific information on classes or registration may be obtained by calling Lula Bowling, center director, locally at (606) 886-2405 or toll-free from (800) 648-5372.

####

ajb

News

University Communications

Pauline Young, Director

www.moreheadstate.edu

Morehead State University

UPO Box 1100

Morehead, KY 40351-1689

(606) 783-2030

Aug. 8, 2003

FOR IMMEDIATE RELEASE

WHITESBURG, Ky.--- There is still time to register and attend Morehead State University for the fall 2003 term. MSU will offer a graduate course this fall for students in the Whitesburg area.

Students may register at MSU at Jackson, located at 1127 Main Street in Jackson. Current students, who have an official checksheet on file, may register via MSU's Web site (www.moreheadstate.edu) using their Personal Identification Number (PIN). Those who do not have a PIN are given the option to choose one when they log onto the student user page.

Classes begin on Monday, Aug. 19, at Whitesburg Middle School. Textbooks may be ordered by phone at (888) 786-7305 or online at <http://bookstore.moreheadstate.edu>.

The cost per credit hour is \$141 at the undergraduate level and \$203 at the graduate level for all students taking classes at MSU's regional locations, whether they are Kentucky residents or not.

The fall schedule includes:

CTE 660,	Trends and Issues Career Ed, 04:10 - 6:50 pm, Wednesdays.
EET 500,	Digital Signal Processing I, 7:10 - 9:50 p.m., Thursdays.
ENG 365,	Literature of the South, 6 - 8:40 p.m., Mondays.
GEO 505,	Conservation of Natural Resources, 5 - 9 p.m., Fridays Oct. 3- Nov. 1 5 Weekends, 9 a.m. - 12 p.m., Saturdays.
IET 619,	Total Quality Control, 7:10 - 9:50 p.m., Tuesdays.
MNGT 357,	Business Information and Industry Analysis, 7:10 - 9:50 p.m., Wednesdays.
SCI 690,	Advance Science Elementary Teacher, 4:10 - 6:50 p.m., Tuesdays.
SCI 690L	Advance Science Elementary Teacher Lab, TBA.

Additional information is available by calling MSU Jackson at (606) 666-2800 or toll free at (800) 729-5225.

####

ajb

Tips

University Communications

Pauline Young, Director

www.moreheadstate.edu

Morehead State University

UPO Box 1100

Morehead, KY 40351-1689

(606) 783-2030

HIGHLIGHTS AT MOREHEAD STATE UNIVERSITY

(Aug. 17-23)

Sunday, Aug. 17

Activities Fair and Ice Cream Social, University Boulevard, 8-11 p.m., free. Additional information: (606) 783-2071.

Monday, Aug. 18

Fall 2003 classes begin at all on and off campus locations, term ends Dec. 12. Additional information: (606) 783-2008.

Tuesday, Aug. 19

Soccer: MSU vs. College of Charleston (exhibition), Jayne Stadium, 7 p.m., free. Additional information: (606) 783-2589.

Hypnotist Tom DeLuca, Button Auditorium, 8 p.m., free. Additional information: (606) 783-2071.

#####

8-11-03sas

Tips

University Communications

Pauline Young, Director

www.moreheadstate.edu

Morehead State University

UPO Box 1100

Morehead, KY 40351-1689

(606) 783-2030

SEPTEMBER HIGHLIGHTS AT MOREHEAD STATE UNIVERSITY

Sept. 1, Labor Day holiday, no classes or office hours. Additional information: (606) 783-2008.

Sept. 3, Magician Mike Super, Button Auditorium, 8 p.m., free. Additional information: (606) 783-2071.

Sept. 4, Art Exhibit: "Spring and Fall, Neon as an Art Form," Kentucky Folk Art Center, Adkins Gallery, through Dec. 31; opening reception, Sept. 4, 6-8 p.m., free. Additional information: (606) 783-2004.

Sept. 5, Soccer: MSU vs. Appalachian State, Jayne Stadium, 5 p.m., free. Additional information: (606) 783-2589.

Sept. 6, Tailgate Party, White's Lot near Jayne Stadium, 2 p.m., free. Additional information: (606) 783-2071.

Sept. 6, Football: MSU vs. Dayton, Jayne Stadium, 3:30 p.m., charge. Additional information: (606) 783-2020.

Sept. 11, MSU/Ashland Small Business Development Center workshop: "Home-Based Businesses," 1401 Winchester Ave., Ashland, preregistration necessary, charge. Additional information: (606) 329-8011.

Sept. 15, MSU/East Kentucky Small Business Development Center conference: "Networking to Strengthen East Kentucky's Economy," Paintsville, charge. Additional information: (606) 788-7331.

Sept. 19, Board of Regents meeting, 302 Breckinridge Hall, 9 a.m. Additional information: (606) 783-2030.

Sept. 19, Soccer: MSU vs. UT-Chattanooga, Jayne Stadium, 5 p.m., free. Additional information: (606) 783-2589.

Sept. 24, American Red Cross Blood Drive, Button Drill Room, 11 a.m. – 5 p.m. Additional information: (606) 783-5124.

Sept. 25, Faculty Showcase Recital, Duncan Recital Hall, 8 p.m., free. Additional information: (606) 783-2473.

Sept. 26, Soccer: MSU vs. Virginia Military Institute, Jayne Stadium, 5 p.m., free. Additional information: (606) 783-2589.

Sept. 26, Family Weekend, featuring talent show, golf scramble, tailgate party and more. Additional information: (606) 783-2071.

Sept. 26, "Americana Crossroads Live," featuring Lee Murdock, and Cliff Eberhardt, Duncan Recital Hall, 7:30 p.m. Additional information: (606) 783-2001.

(MORE)

September highlights
2-2-2-2-2

Sept. 26, Volleyball: MSU vs. Murray State University, Wetherby Gymnasium, 7 p.m., free. Additional information: (606) 783-2122.

Sept. 27, Volleyball: MSU vs. Tennessee-Martin, Wetherby Gymnasium, 11 a.m., free. Additional information: (606) 783-2122.

Sept. 27, Football: MSU vs. Drake, Jayne Stadium, 1 p.m., charge. Additional information: (606) 783-2020.

Sept. 28, Soccer: MSU vs. Western Kentucky University, Jayne Stadium, 2 p.m., free. Additional information: (606) 783-2589.

#####

8-11-03sas

Tips

University Communications

Pauline Young, Director

www.moreheadstate.edu

Morehead State University

UPO Box 1100

Morehead, KY 40351-1689

(606) 783-2030

OCTOBER HIGHLIGHTS AT MOREHEAD STATE UNIVERSITY

Oct. 2, Folk art exhibit: "Father and Son," Kentucky Folk Art Center, Adkins gallery, through Nov. 30. Opening reception, Oct. 2, 6-8 p.m., free. Additional information: (606) 783-2204.

Oct. 7, Office of Career Services' Job Fair, Button Drill Room, 10 a.m. – 1 p.m., free. Additional information: (606) 783-2233.

Oct. 7, Theatre production, "Good News," Lucille Little Theatre, 7 p.m., through Oct. 11; also Oct. 12, 2 p.m., charge. Additional information: (606) 783-2170.

Oct. 8, Art exhibit: "Modern Iconography: Symbols Public and Private" by Elizabeth Kuhn, through Nov. 7, Claypool-Young Art Building main gallery; opening reception, Oct. 8, 6-8 p.m., free. Additional information: (606) 783-2766.

Oct. 9, Kentucky Center for Traditional Music's "Sound of Our Heritage," for public school students, Button Auditorium, 10:30 a.m., free. Additional information: (606) 783-9001.

Oct. 16, Homecoming Parade, downtown Morehead, 6:30 p.m., free. Additional information: (606) 783-2080.

Oct. 16, "Octubafest," tuba/euphonium performances, Duncan Recital Hall, 8 p.m., free, also Oct. 23. Additional information: (606) 783-2473.

Oct. 17, Hall of Fame Banquet, multi-purpose room, Laughlin Health Building, 7 p.m.; ticket required. Additional information: (606) 783-2080.

Oct. 18, Sculpture unveiling, Crosthwait Plaza, 11 a.m., free. Additional information: (606) 783-2080.

Oct. 18, Football: MSU vs. Davidson, Jayne Stadium, 1 p.m., charge. Additional information: (606) 783-2020.

Oct. 18, Basketball preview: MSU men's and women's teams, Academic-Athletic Center, after 1 p.m. football game, free. Additional information: (606) 783-2088.

Oct. 28, Delta Zeta/Theta Chi Haunted House, Button Drill Room, time TBA, charge. Additional information: (606) 783-2886.

Oct. 31, "Americana Crossroads Live," featuring Gary Ferguson, and Bohola, Duncan Recital Hall, 7:30 p.m. Additional information: (606) 783-2001.

####

8-7-03sas

News

University Communications

Pauline Young, Director

www.moreheadstate.edu

Morehead State University

UPO Box 1100

Morehead, KY 40351-1689

(606) 783-2030

Aug. 11, 2003

FOR IMMEDIATE RELEASE

MOREHEAD, Ky.---Morehead State University has announced that Amanda Carol Hurst of **Sharpsburg** is among those students receiving a Leadership Award for the fall semester.

Hurst, the daughter of Renee' Hurst, is a graduate of Bath County High School. Recipient of the Community Improvement Award, she is a member of the National Beta Club, treasurer of her Future Farmers of America chapter, a Governor's Scholar nominee, chapter president of Family, Career, and Community Leaders of America, and has been listed on the honor roll.

To be eligible for the Leadership Award, applicants must be admitted to MSU as an entering freshman; have exhibited strong leadership and achievement capabilities through school and community activities; have a minimum ACT composite of 18, and have a minimum 2.50 grade point average (on a 4.00 scale) based on seven semesters of work.

Applications and information on scholarships and grant programs at MSU are available from the Office of Admissions, MSU Morehead, KY 40351-1689. The toll-free number is (800) 585-MSU1 (6781).

####

trt

News

University Communications

Pauline Young, Director

www.moreheadstate.edu

Morehead State University

UPO Box 1100

Morehead, KY 40351-1689

(606) 783-2030

Aug. 11, 2003

FOR IMMEDIATE RELEASE

MOREHEAD, Ky.---Morehead State University has announced that Kaylyn Jo Burke of **Catlettsburg** is among those students receiving a Leadership Award for the fall semester.

Burke, the daughter of Joe and Teresa Burke, is a graduate of Lawrence County High School. She is a member of the Democratic Woman's Club, Future Business Leaders of America, Student Council and historian for Health Occupational Students of America. She also volunteered at Three Rivers Medical Center and J.J. Jordan Geriatric Center.

To be eligible for the Leadership Award, applicants must be admitted to MSU as an entering freshman; have exhibited strong leadership and achievement capabilities through school and community activities; have a minimum ACT composite of 18, and have a minimum 2.50 grade point average (on a 4.00 scale) based on seven semesters of work.

Applications and information on scholarships and grant programs at MSU are available from the Office of Admissions, MSU Morehead, KY 40351-1689. The toll-free number is (800) 585-MSU1 (6781).

####

trt

News

University Communications

Pauline Young, Director

www.moreheadstate.edu

Morehead State University

UPO Box 1100

Morehead, KY 40351-1689

(606) 783-2030

Aug. 11, 2003

FOR IMMEDIATE RELEASE

MOREHEAD, Ky.---Morehead State University has announced that Rebecca Lynn Rayburn of **Olive Hill** is among those students receiving a Leadership Award for the fall semester.

Rayburn, the daughter of Lynda Dinklocker, is a graduate of West Carter High School. Recipient of the National Honor Roll, American Scholar and U.S. History awards, she has been listed in "Who's Who Among American High School Students." She was recognized for the most served hours in Disability Reachout.

To be eligible for the Leadership Award, applicants must be admitted to MSU as an entering freshman; have exhibited strong leadership and achievement capabilities through school and community activities; have a minimum ACT composite of 18, and have a minimum 2.50 grade point average (on a 4.00 scale) based on seven semesters of work.

Applications and information on scholarships and grant programs at MSU are available from the Office of Admissions, MSU Morehead, KY 40351-1689. The toll-free number is (800) 585-MSU1 (6781).

####

trt

News

University Communications

Pauline Young, Director

www.moreheadstate.edu

Morehead State University

UPO Box 1100

Morehead, KY 40351-1689

(606) 783-2030

Aug. 11, 2003

FOR IMMEDIATE RELEASE

MOREHEAD, Ky.---Morehead State University has announced that Laura Katherine Wagner of **Ewing** is among those students receiving a Leadership Award for the fall semester.

Wagner, the daughter of Jerry and Corkey Wagner, is a graduate of Fleming County High School. She has been listed in "Who's Who Among American High School Students," "Who's Who Among American High School Athletes" and on the honor roll. She also has participated in FCHS Community Service Projects.

To be eligible for the Leadership Award, applicants must be admitted to MSU as an entering freshman; have exhibited strong leadership and achievement capabilities through school and community activities; have a minimum ACT composite of 18, and have a minimum 2.50 grade point average (on a 4.00 scale) based on seven semesters of work.

Applications and information on scholarships and grant programs at MSU are available from the Office of Admissions, MSU Morehead, KY 40351-1689. The toll-free number is (800) 585-MSU1 (6781).

####

trt

News

University Communications

Pauline Young, Director

www.moreheadstate.edu

Morehead State University

UPO Box 1100

Morehead, KY 40351-1689

(606) 783-2030

Aug. 11, 2003

FOR IMMEDIATE RELEASE

MOREHEAD, Ky.---Morehead State University has announced that Morgan Nichole Kirk of **Wallins** is among those students receiving a Leadership Award for the fall semester.

Kirk, the daughter of Roger and Lisa Kirk, is a graduate of James A. Cawood High School. She is a member of Family Career and Community Leaders of America (FCCLA), JACHS Drama Club and Y-Club. Vice president of STAR (Students Taking Action with Recognition) events, she shared a first place honor in regional team competition for Advanced Technology, Most Dedicated award in FCCLA, Most Outstanding Marce Player, and two Best Actress trophies for leading female roles. She also has participated in several community events and fundraising activities for the Growing Up Safe House and the Relay for Life.

To be eligible for the Leadership Award, applicants must be admitted to MSU as an entering freshman; have exhibited strong leadership and achievement capabilities through school and community activities; have a minimum ACT composite of 18, and have a minimum 2.50 grade point average (on a 4.00 scale) based on seven semesters of work.

Applications and information on scholarships and grant programs at MSU are available from the Office of Admissions, MSU Morehead, KY 40351-1689. The toll-free number is (800) 585-MSU1 (6781).

####

trt

News

University Communications

Pauline Young, Director

www.moreheadstate.edu

Morehead State University

UPO Box 1100

Morehead, KY 40351-1689

(606) 783-2030

Aug. 11, 2003

FOR IMMEDIATE RELEASE

MOREHEAD, Ky.---Morehead State University has announced that Jeremy Stevan Endicott of Inez is among those students receiving a Leadership Award for the fall semester.

Endicott, the son of Steve and Barbara Endicott, is a graduate of Sheldon Clark High School. President of the East Kentucky Leadership Network, he is a member of Big Brothers/Big Sisters and the Inez First Baptist Church. He received a Certificate of Achievement in Leadership from Gov. Paul Patton and volunteers at Inez Physical Therapy.

To be eligible for the Leadership Award, applicants must be admitted to MSU as an entering freshman; have exhibited strong leadership and achievement capabilities through school and community activities; have a minimum ACT composite of 18, and have a minimum 2.50 grade point average (on a 4.00 scale) based on seven semesters of work.

Applications and information on scholarships and grant programs at MSU are available from the Office of Admissions, MSU Morehead, KY 40351-1689. The toll-free number is (800) 585-MSU1 (6781).

####

trt

News

University Communications

Pauline Young, Director

www.moreheadstate.edu

Morehead State University

UPO Box 1100

Morehead, KY 40351-1689

(606) 783-2030

Aug. 11, 2003

FOR IMMEDIATE RELEASE

MOREHEAD, Ky.---Morehead State University has announced that two students from Morgan County are among those receiving a Leadership Award for the fall semester.

The students, graduates of Morgan County High School, are:

Amber Meghan Day, the daughter of Sherry and Mike Day of **West Liberty**. She is a National Honor Society president, Relay for Life captain, West Liberty Vet Clinic volunteer, and American Red Cross CPR instructor. She has received a Homemakers Scholarship, been a Student Council member and listed on the honor roll.

Jeffrey Adam Goodpaster, the son of Jeffrey Goodpaster of **West Liberty**.

To be eligible for the Leadership Award, applicants must be admitted to MSU as an entering freshman; have exhibited strong leadership and achievement capabilities through school and community activities; have a minimum ACT composite of 18, and have a minimum 2.50 grade point average (on a 4.00 scale) based on seven semesters of work.

Applications and information on scholarships and grant programs at MSU are available from the Office of Admissions, MSU Morehead, KY 40351-1689. The toll-free number is (800) 585-MSU1 (6781).

####

trt

News

University Communications

Pauline Young, Director

www.moreheadstate.edu

Morehead State University

UPO Box 1100

Morehead, KY 40351-1689

(606) 783-2030

Aug. 11, 2003

FOR IMMEDIATE RELEASE

MOREHEAD, Ky.---Morehead State University has announced that two students from Pike County are among those students receiving a Leadership Award for the fall semester.

Joseph Michael Casebolt, the son of Mike and Kathi Casebolt of **Pikeville**, is a graduate of East Ridge High School. He is a martial arts participant in Kick Crime and Drugs, volunteer at HOPE, Inc., and a member of the National Honor Society. He has been listed on the National Honor Roll and four years in "Who's Who Among American High School Students."

Joseph Kelly Ramey, the son of Kelly Ramey of **McAndrews**, is a graduate of Belfry High School. He has participated in All-County and All-State Football, and been listed in "Who's Who Among American High School Students."

To be eligible for the Leadership Award, applicants must be admitted to MSU as an entering freshman; have exhibited strong leadership and achievement capabilities through school and community activities; have a minimum ACT composite of 18, and have a minimum 2.50 grade point average (on a 4.00 scale) based on seven semesters of work.

Applications and information on scholarships and grant programs at MSU are available from the Office of Admissions, MSU Morehead, KY 40351-1689. The toll-free number is (800) 585-MSU1 (6781).

####

trt

News

University Communications

Pauline Young, Director

www.moreheadstate.edu

Morehead State University

UPO Box 1100

Morehead, KY 40351-1689

(606) 783-2030

Aug. 11, 2003

FOR IMMEDIATE RELEASE

MOREHEAD, Ky.---Morehead State University has announced that Krissy Rae McKenzie of **Morehead** is among those students receiving a Leadership Award for the fall semester.

McKenzie, the daughter of Priscilla Patrick and Kenny McKenzie, is a graduate of Bath County High School.

To be eligible for the Leadership Award, applicants must be admitted to MSU as an entering freshman; have exhibited strong leadership and achievement capabilities through school and community activities; have a minimum ACT composite of 18, and have a minimum 2.50 grade point average (on a 4.00 scale) based on seven semesters of work.

Applications and information on scholarships and grant programs at MSU are available from the Office of Admissions, MSU Morehead, KY 40351-1689. The toll-free number is (800) 585-MSU1 (6781).

####

trt

News

University Communications

Pauline Young, Director

www.moreheadstate.edu

Morehead State University

UPO Box 1100

Morehead, KY 40351-1689

(606) 783-2030

Aug. 11, 2003

FOR IMMEDIATE RELEASE

MOREHEAD, Ky.---Morehead State University has announced that Stephen Elliot Morris of **Corbin** is among those students receiving a Leadership Award for the fall semester.

Morris, the son of Stephen Morris, is a graduate of Corbin High School. He received the Corbin High School Honor award, and recognition by PRIDE. He has been listed in "Who's Who Among American High School Students" and on the honor roll.

To be eligible for the Leadership Award, applicants must be admitted to MSU as an entering freshman; have exhibited strong leadership and achievement capabilities through school and community activities; have a minimum ACT composite of 18, and have a minimum 2.50 grade point average (on a 4.00 scale) based on seven semesters of work.

Applications and information on scholarships and grant programs at MSU are available from the Office of Admissions, MSU Morehead, KY 40351-1689. The toll-free number is (800) 585-MSU1 (6781).

####

trt

News

University Communications

Pauline Young, Director

www.moreheadstate.edu

Morehead State University

UPO Box 1100

Morehead, KY 40351-1689

(606) 783-2030

Aug. 11, 2003

FOR IMMEDIATE RELEASE

MOREHEAD, Ky.---Morehead State University has announced that Nichole Lynn Dalton of **Hazel Green** is among those students receiving a Presidential Scholarship for the fall semester.

Dalton, the daughter of Mike and Brenda Dalton, is a graduate of Morgan County High School. She has been listed in "Who's Who Among American High School Students, named to the National Honor Roll and received the Presidential Award for Academic Excellence. She is a volunteer at God's Pantry, a peer mediator and a member of the National Honor Society and Fellowship of Christian Athletes.

To be eligible for the Presidential Scholarship, applicants must be admitted to MSU as an entering freshman and meet one of the following criteria: be a National Merit Scholar or Finalist; a valedictorian or salutatorian from MSU's Kentucky service region with an ACT composite of at least 30; a National Merit Semi-Finalist; or have completed the Kentucky Governor's Scholar Program. Individuals with an ACT composite of at least 28, or a minimum grade point average of 3.75 (on a 4.0 scale) will be considered for the award.

Applications and information on scholarships and grant programs at MSU are available from the Office of Admissions, MSU, Morehead, KY 40351-1689. The toll-free number is (800) 585-MSU1 (6781).

####

trt

News

University Communications

Pauline Young, Director

www.moreheadstate.edu

Morehead State University

UPO Box 1100

Morehead, KY 40351-1689

(606) 783-2030

Aug. 11, 2003

FOR IMMEDIATE RELEASE

MOREHEAD, Ky.---Morehead State University has announced that Emily Megan Robinson of **Elkhorn City** is among those students receiving a Presidential Scholarship for the fall semester.

Robinson, the daughter of Jeff Robinson, is a graduate of East Ridge High School. A 2002 Governor's Scholar, she was a member of the National Honor Society, Academic Team, Do Something Community Service club and her church youth group.

To be eligible for the Presidential Scholarship, applicants must be admitted to MSU as an entering freshman and meet one of the following criteria: be a National Merit Scholar or Finalist; a valedictorian or salutatorian from MSU's Kentucky service region with an ACT composite of at least 30; a National Merit Semi-Finalist; or have completed the Kentucky Governor's Scholar Program. Individuals with an ACT composite of at least 28, or a minimum grade point average of 3.75 (on a 4.0 scale) will be considered for the award.

Applications and information on scholarships and grant programs at MSU are available from the Office of Admissions, MSU, Morehead, KY 40351-1689. The toll-free number is (800) 585-MSU1 (6781).

####

trt

News

University Communications

Pauline Young, Director

www.moreheadstate.edu

Morehead State University

UPO Box 1100

Morehead, KY 40351-1689

(606) 783-2030

Aug. 11, 2003

FOR IMMEDIATE RELEASE

MOREHEAD, Ky.---Morehead State University has announced that Gena Danielle Combs of **Hazard** is among those students receiving a Presidential Scholarship for the fall semester.

Combs, the daughter of Clarisa Combs, is a graduate of Perry County Central High School. She has received awards in art, drama and choir.

To be eligible for the Presidential Scholarship, applicants must be admitted to MSU as an entering freshman and meet one of the following criteria: be a National Merit Scholar or Finalist; a valedictorian or salutatorian from MSU's Kentucky service region with an ACT composite of at least 30; a National Merit Semi-Finalist; or have completed the Kentucky Governor's Scholar Program. Individuals with an ACT composite of at least 28, or a minimum grade point average of 3.75 (on a 4.0 scale) will be considered for the award.

Applications and information on scholarships and grant programs at MSU are available from the Office of Admissions, MSU, Morehead, KY 40351-1689. The toll-free number is (800) 585-MSU1 (6781).

####

trt

News

University Communications

Pauline Young, Director

www.moreheadstate.edu

Morehead State University

UPO Box 1100

Morehead, KY 40351-1689

(606) 783-2030

Aug. 11, 2003

FOR IMMEDIATE RELEASE

MOREHEAD, Ky.---Morehead State University has announced that Megan Ashley Darrell of **Carlisle** is among those students receiving a Presidential Scholarship for the fall semester.

Darrell, the daughter of David and Pricy Darrell, is a graduate of Nicholas County High School. She was a 2002 Kentucky Governor's Scholar, valedictorian of her senior class and listed on the honor roll.

To be eligible for the Presidential Scholarship, applicants must be admitted to MSU as an entering freshman and meet one of the following criteria: be a National Merit Scholar or Finalist; a valedictorian or salutatorian from MSU's Kentucky service region with an ACT composite of at least 30; a National Merit Semi-Finalist; or have completed the Kentucky Governor's Scholar Program. Individuals with an ACT composite of at least 28, or a minimum grade point average of 3.75 (on a 4.0 scale) will be considered for the award.

Applications and information on scholarships and grant programs at MSU are available from the Office of Admissions, MSU, Morehead, KY 40351-1689. The toll-free number is (800) 585-MSU1 (6781).

####

trt

News

University Communications

Pauline Young, Director

www.moreheadstate.edu

Morehead State University

UPO Box 1100

Morehead, KY 40351-1689

(606) 783-2030

Aug. 11, 2003

FOR IMMEDIATE RELEASE

MOREHEAD, Ky.---Morehead State University has announced that Lindsay Allen Tufono of **Jeffersonville** is among those students receiving a Presidential Scholarship for the fall semester.

Tufono, the daughter of Julie and Tracy Allen, is a graduate of Montgomery County High School. She is a member of the National Honor Society, Beta Club, Youth Salute, Montgomery County Youth Service Learning Council and Teen Leadership. She also participated in a Mock Trial and as an attorney.

To be eligible for the Presidential Scholarship, applicants must be admitted to MSU as an entering freshman and meet one of the following criteria: be a National Merit Scholar or Finalist; a valedictorian or salutatorian from MSU's Kentucky service region with an ACT composite of at least 30; a National Merit Semi-Finalist; or have completed the Kentucky Governor's Scholar Program. Individuals with an ACT composite of at least 28, or a minimum grade point average of 3.75 (on a 4.0 scale) will be considered for the award.

Applications and information on scholarships and grant programs at MSU are available from the Office of Admissions, MSU, Morehead, KY 40351-1689. The toll-free number is (800) 585-MSU1 (6781).

####

trt

News

University Communications

Pauline Young, Director

www.moreheadstate.edu

Morehead State University

UPO Box 1100

Morehead, KY 40351-1689

(606) 783-2030

Aug. 11, 2003

FOR IMMEDIATE RELEASE

MOREHEAD, Ky.---Morehead State University has announced that Jana Renee Lyons of **Frenchburg** is among those students receiving a Presidential Scholarship for the fall semester.

Lyons, the daughter of Nancy and Barry Lyons, is a graduate of Menifee County High School.

To be eligible for the Presidential Scholarship, applicants must be admitted to MSU as an entering freshman and meet one of the following criteria: be a National Merit Scholar or Finalist; a valedictorian or salutatorian from MSU's Kentucky service region with an ACT composite of at least 30; a National Merit Semi-Finalist; or have completed the Kentucky Governor's Scholar Program. Individuals with an ACT composite of at least 28, or a minimum grade point average of 3.75 (on a 4.0 scale) will be considered for the award.

Applications and information on scholarships and grant programs at MSU are available from the Office of Admissions, MSU, Morehead, KY 40351-1689. The toll-free number is (800) 585-MSU1 (6781).

####

trt

News

University Communications

Pauline Young, Director

www.moreheadstate.edu

Morehead State University

UPO Box 1100

Morehead, KY 40351-1689

(606) 783-2030

Aug. 11, 2003

FOR IMMEDIATE RELEASE

MOREHEAD, Ky.---Morehead State University has announced that Alicia Nicole Collier of **Garrison** is among those students receiving a Presidential Scholarship for the fall semester.

Collier, the daughter of Julie Sullivan, is a graduate of Lewis County High School. Secretary of the senior class and Student Council, she participates in Marching Band Champions Against Drugs and the National Beta Club. She is a National Merit Semi-Finalist and an Enable Teen Leader.

To be eligible for the Presidential Scholarship, applicants must be admitted to MSU as an entering freshman and meet one of the following criteria: be a National Merit Scholar or Finalist; a valedictorian or salutatorian from MSU's Kentucky service region with an ACT composite of at least 30; a National Merit Semi-Finalist; or have completed the Kentucky Governor's Scholar Program. Individuals with an ACT composite of at least 28, or a minimum grade point average of 3.75 (on a 4.0 scale) will be considered for the award.

Applications and information on scholarships and grant programs at MSU are available from the Office of Admissions, MSU, Morehead, KY 40351-1689. The toll-free number is (800) 585-MSU1 (6781).

####

trt

News

University Communications

Pauline Young, Director

www.moreheadstate.edu

Morehead State University

UPO Box 1100

Morehead, KY 40351-1689

(606) 783-2030

Aug. 11, 2003

FOR IMMEDIATE RELEASE

MOREHEAD, Ky.---Morehead State University has announced that Justin Blaine Egan of **Edgewood** is among those students receiving a Presidential Scholarship for the fall semester.

Egan, the son of James and Brenda Egan, is a graduate of Holy Cross District High School. He has received the United States Achievement Academy and Kentucky High School Athletic Association Academic awards. A National Honor Society member, he has volunteered his time for church and community service projects and was an active participant in various 5K-community road races.

To be eligible for the Presidential Scholarship, applicants must be admitted to MSU as an entering freshman and meet one of the following criteria: be a National Merit Scholar or Finalist; a valedictorian or salutatorian from MSU's Kentucky service region with an ACT composite of at least 30; a National Merit Semi-Finalist; or have completed the Kentucky Governor's Scholar Program. Individuals with an ACT composite of at least 28, or a minimum grade point average of 3.75 (on a 4.0 scale) will be considered for the award.

Applications and information on scholarships and grant programs at MSU are available from the Office of Admissions, MSU, Morehead, KY 40351-1689. The toll-free number is (800) 585-MSU1 (6781).

####

trt

News

University Communications

Pauline Young, Director

www.moreheadstate.edu

Morehead State University

UPO Box 1100

Morehead, KY 40351-1689

(606) 783-2030

Aug. 11, 2003

FOR IMMEDIATE RELEASE

MOREHEAD, Ky.---Morehead State University has announced that Arthur Darren Back of **Wolf Coal** is among those students receiving a Presidential Scholarship for the fall semester.

Back, the son of Arthur and Betty Back, is a graduate of Breathitt County High School. A Governor's Scholar with a 4.0 grade point average, he is an assistant football coach at a local elementary school. He also participated in a Georgetown College Presidential Mentorship Program.

To be eligible for the Presidential Scholarship, applicants must be admitted to MSU as an entering freshman and meet one of the following criteria: be a National Merit Scholar or Finalist; a valedictorian or salutatorian from MSU's Kentucky service region with an ACT composite of at least 30; a National Merit Semi-Finalist; or have completed the Kentucky Governor's Scholar Program. Individuals with an ACT composite of at least 28, or a minimum grade point average of 3.75 (on a 4.0 scale) will be considered for the award.

Applications and information on scholarships and grant programs at MSU are available from the Office of Admissions, MSU, Morehead, KY 40351-1689. The toll-free number is (800) 585-MSU1 (6781).

####

trt

News

University Communications

Pauline Young, Director

www.moreheadstate.edu

Morehead State University

UPO Box 1100

Morehead, KY 40351-1689

(606) 783-2030

Aug. 11, 2003

FOR IMMEDIATE RELEASE

MOREHEAD, Ky.---Morehead State University has announced that Kara Nicole Carr of **Greenup** is among those students receiving a Presidential Scholarship for the fall semester.

Carr, the daughter of Jean and Johnny Carr, is a graduate of Greenup County High School. She received the Freshman Science award and the French III award. She is a member of Beta Club.

To be eligible for the Presidential Scholarship, applicants must be admitted to MSU as an entering freshman and meet one of the following criteria: be a National Merit Scholar or Finalist; a valedictorian or salutatorian from MSU's Kentucky service region with an ACT composite of at least 30; a National Merit Semi-Finalist; or have completed the Kentucky Governor's Scholar Program. Individuals with an ACT composite of at least 28, or a minimum grade point average of 3.75 (on a 4.0 scale) will be considered for the award.

Applications and information on scholarships and grant programs at MSU are available from the Office of Admissions, MSU, Morehead, KY 40351-1689. The toll-free number is (800) 585-MSU1 (6781).

####

trt

News

University Communications

Pauline Young, Director

www.moreheadstate.edu

Morehead State University

UPO Box 1100

Morehead, KY 40351-1689

(606) 783-2030

Aug. 11, 2003

FOR IMMEDIATE RELEASE

MOREHEAD, Ky.---Morehead State University has announced that Sarah Kaye Meeks of **Frankfort** is among those students receiving a Presidential Scholarship for the fall semester.

Meeks, the daughter of Rita and Steve Meeks, is a graduate of Frankfort High School. She is a member of the National and Spanish honor societies, Students Against Drunk Driving, Drama Club and Governor's Scholar program. She also served on the First Church of the Nazarene youth group council.

To be eligible for the Presidential Scholarship, applicants must be admitted to MSU as an entering freshman and meet one of the following criteria: be a National Merit Scholar or Finalist; a valedictorian or salutatorian from MSU's Kentucky service region with an ACT composite of at least 30; a National Merit Semi-Finalist; or have completed the Kentucky Governor's Scholar Program. Individuals with an ACT composite of at least 28, or a minimum grade point average of 3.75 (on a 4.0 scale) will be considered for the award.

Applications and information on scholarships and grant programs at MSU are available from the Office of Admissions, MSU, Morehead, KY 40351-1689. The toll-free number is (800) 585-MSU1 (6781).

####

trt

News

University Communications

Pauline Young, Director

www.moreheadstate.edu

Morehead State University

UPO Box 1100

Morehead, KY 40351-1689

(606) 783-2030

Aug. 11, 2003

FOR IMMEDIATE RELEASE

MOREHEAD, Ky.---Morehead State University has announced that two students from Floyd County are among those receiving a Presidential Scholarship for the fall semester.

Shellie LeAnn Hayes, the daughter of Keith Hayes of **Langley**, is a graduate of Allen Central High School. She was a 2002 Governor's Scholar, WYMT Mountain Achiever and 2003 Basketball Homecoming Queen. President of Beta Club and Student Council, she is a member of Garrett First Baptist Church.

Henry David Hicks, the son of Cindy Martin of **Martin**, is a graduate of The Piarist School. He is a member of Beta Club, Martin First Baptist Church and a Wofford Scholar. He received the Harvard University Prize Book award, President's Education award and participated in a recent food drive.

To be eligible for the Presidential Scholarship, applicants must be admitted to MSU as an entering freshman and meet one of the following criteria: be a National Merit Scholar or Finalist; a valedictorian or salutatorian from MSU's Kentucky service region with an ACT composite of at least 30; a National Merit Semi-Finalist; or have completed the Kentucky Governor's Scholar Program. Individuals with an ACT composite of at least 28, or a minimum grade point average of 3.75 (on a 4.0 scale) will be considered for the award.

Applications and information on scholarships and grant programs at MSU are available from the Office of Admissions, MSU, Morehead, KY 40351-1689. The toll-free number is (800) 585-MSU1 (6781).

####

trt

News

University Communications

Pauline Young, Director

www.moreheadstate.edu

Morehead State University

UPO Box 1100

Morehead, KY 40351-1689

(606) 783-2030

Aug. 11, 2003

FOR IMMEDIATE RELEASE

MOREHEAD, Ky.---Morehead State University has announced that Jennie Leigh Williams of **Sandy Hook** is among those students receiving a Presidential Scholarship for the fall semester.

Williams, the daughter of John and Betty Williams, is a graduate of Elliott County High School. She has been listed in "Who's Who Among American High School Students," captain of Academic Team and chosen as an Outstanding Student of America.

To be eligible for the Presidential Scholarship, applicants must be admitted to MSU as an entering freshman and meet one of the following criteria: be a National Merit Scholar or Finalist; a valedictorian or salutatorian from MSU's Kentucky service region with an ACT composite of at least 30; a National Merit Semi-Finalist; or have completed the Kentucky Governor's Scholar Program. Individuals with an ACT composite of at least 28, or a minimum grade point average of 3.75 (on a 4.0 scale) will be considered for the award.

Applications and information on scholarships and grant programs at MSU are available from the Office of Admissions, MSU, Morehead, KY 40351-1689. The toll-free number is (800) 585-MSU1 (6781).

####

trt

News

University Communications

Pauline Young, Director

www.moreheadstate.edu

Morehead State University

UPO Box 1100

Morehead, KY 40351-1689

(606) 783-2030

Aug. 11, 2003

FOR IMMEDIATE RELEASE

MOREHEAD, Ky.---Morehead State University has announced that three students from Campbell County are among those receiving a Presidential Scholarship for the fall semester.

The students, graduates of Campbell County High School, are:

Christine Cora Holthaus, the daughter of Daniel and Lisa Holthaus of **California**. She has been listed in "Who's Who Among American High School Students" and the National Honor Roll. A member of the National Beta Club, she volunteers at Fair Haven Homeless Shelter and works at Operation Christmas Child Warehouse.

Emily Christine Listermann, the daughter of Mary Lu Listermann of **Alexandria**. She has participated in All-State Symphonic Band, Kentucky Governor's Scholar and Beta Club. She has volunteered at Lexington Senior Citizens Center, been a speaker for Governor's Scholar Recruitment Program and listed on the National Honor Roll.

Mark Gerard McCafferty, the son of Charles and Roseann McCafferty of **Alexandria**. He was a member of the marching and symphonic bands, KMEA All-State Band for two years and a Governor's Scholar. He is an active member of Boy Scout Troop 75, a semi-finalist for the Cincinnati Arts Association Overture Awards and an Eagle Scout candidate.

To be eligible for the Presidential Scholarship, applicants must be admitted to MSU as an entering freshman and meet one of the following criteria: be a National Merit Scholar or Finalist; a valedictorian or salutatorian from MSU's Kentucky service region with an ACT composite of at least 30; a National Merit Semi-Finalist; or have completed the Kentucky Governor's Scholar Program. Individuals with an ACT composite of at least 28, or a minimum grade point average of 3.75 (on a 4.0 scale) will be considered for the award.

Applications and information on scholarships and grant programs at MSU are available from the Office of Admissions, MSU, Morehead, KY 40351-1689. The toll-free number is (800) 585-MSU1 (6781).

#####

trt

MSU is an affirmative action, equal opportunity educational institution.

News

University Communications

Pauline Young, Director

www.moreheadstate.edu

Morehead State University

UPO Box 1100

Morehead, KY 40351-1689

(606) 783-2030

Aug. 11, 2003

FOR IMMEDIATE RELEASE

MOREHEAD, Ky.---Morehead State University has announced that Amanda Marie Traugott of **Ashland** is among those students receiving a Presidential Scholarship for the fall semester.

Traugott, the daughter of Michael and Teresa Traugott, is a graduate of Paul G. Blazer High School.

To be eligible for the Presidential Scholarship, applicants must be admitted to MSU as an entering freshman and meet one of the following criteria: be a National Merit Scholar or Finalist; a valedictorian or salutatorian from MSU's Kentucky service region with an ACT composite of at least 30; a National Merit Semi-Finalist; or have completed the Kentucky Governor's Scholar Program. Individuals with an ACT composite of at least 28, or a minimum grade point average of 3.75 (on a 4.0 scale) will be considered for the award.

Applications and information on scholarships and grant programs at MSU are available from the Office of Admissions, MSU, Morehead, KY 40351-1689. The toll-free number is (800) 585-MSU1 (6781).

####

trt

News

University Communications

Pauline Young, Director

www.moreheadstate.edu

Morehead State University

UPO Box 1100

Morehead, KY 40351-1689

(606) 783-2030

Aug. 11, 2003

FOR IMMEDIATE RELEASE

MOREHEAD, Ky.---Due to continued program growth, Morehead State University's special facility for high-achieving students has already been filled for the fall 2003 semester.

Dr. Beverly McCormick, assistant vice president for academic affairs and director of the Honors Leadership Residential College (HLRC), says recruitment efforts have succeeded to the point where several students had to be placed on a waiting list to enter the program.

"It's wonderful that people are finding out about us, and that it has attracted such high-ability students," she said. "It gives these students a reason to come to MSU."

The HLRC, located in Butler Hall, provides a living-learning environment to assist the University's top freshmen scholarship recipients and honors students develop their academic and leadership skills. According to Dr. McCormick, the average ACT score of the 2003-04 HLRC students is 24.5, and the average grade point average is 3.62.

With 68 students enrolled in its first year, the HLRC has now reached its capacity of 170 students - 150 new freshmen and 20 returning sophomores. Most of the students also are enrolled in MSU's George M. Luckey Academic Honors Program.

The sophomores include peer leaders Brett Burns, **Booneville**, and Lisa Hinkle, **Catlettsburg**, last year's HLRC students who will assist new students develop leadership skills. Honors program seniors Scott Stauble of **Louisville** and Melissa Yeoman of **West Lafayette, Ind.**, will be in-house tutors.

Additionally, the HLRC students include four resident assistants, upperclassmen who mentor and tutor the freshmen: Joyisha Boyd, **Bronx, N.Y.**, sophomore; Rob Lux, **Edgewood** senior; Chris Garris, **Olive Hill** senior and Jill Salisbury, **Lucasville, Ohio**, junior.

Now in its third year, the HLRC is one of the model programs of the American Democracy Project of the American Association of State Colleges and Universities (AASCU). The venture aims to enhance college students' understanding of, participation in and support of civic actions. There are 146 AASCU-member public colleges and universities participating in the project.

(MORE)

“It’s good for our students to get involved in civic activities, first in Butler Hall as our community, then MSU and the Morehead community,” Dr. McCormick said.

HLRC students take Leadership I in the fall and Leadership II in the spring 2004 semester. “These classes are focused on civic engagement,” she continued. “We’re going to be looking at leadership as far as service to society, especially in the spring semester.”

Also new for this year, the HLRC members will join other students for a leadership retreat at Cave Run Lake.

“At the lake, we’ll be doing a variety of leadership activities that will require our students to call upon their leadership skills and work with others,” Dr. McCormick said.

The retreat will feature a unique game exercise, where students will be given various materials from which they must invent an original game, which they will then teach to their fellow students. Representatives from MSU’s ROTC program and the Department of Health, Physical Education and Sport Sciences will be assisting with the retreat.

“This will be a great way for the freshmen to get involved from the onset,” she said. “It is also a bonding experience, and gives them an opportunity to meet and work with each other in trust-building tasks.”

Additional information about the HLRC is available by calling Dr. McCormick at (606) 783-2027.

####

sas

News

University Communications

Pauline Young, Director

www.moreheadstate.edu

Morehead State University

UPO Box 1100

Morehead, KY 40351-1689

(606) 783-2030

Aug. 11, 2003

FOR IMMEDIATE RELEASE

MOREHEAD, Ky.---An assortment of courses designed to preserve and promote traditional Appalachian music is available this fall at Morehead State University with the help of the Kentucky Center for Traditional Music.

MSU offers a minor in traditional music, through the University's Department of Music and KCTM. The Traditional Music Studies Program addresses issues of community, style, commercialism and revival. Some of the regionally affected genres to be examined are string band music, Bluegrass, blues, shape-note singing and gospel. No formal musical background is necessary for enrollment in this program.

"We're very lucky at Morehead State University to be one of a hand full of schools in the nation where the students can study traditional music. We here at the Kentucky Center for Traditional Music invite anyone interested in studying traditional music to join us in the classroom this fall semester. Whether you're a singer-songwriter, seasoned guitarist, or parking lot mandolin picker, we'd love to have you in class," KCTM Education Coordinator Jesse Wells said.

Practical Theory in Traditional Music (MUST 103) will be offered on Thursdays from 6:30-8 p.m. in 208 Baird Music Hall. This is an introduction to music theory as applicable to tradition based musical styles. Areas covered include chord construction, various scales, harmony and transposition. Wells will be the instructor of this course.

Traditional Vocal Harmony (MUST 104) will be offered on Tuesdays from 6:30-8 p.m. in 208 Baird Music Hall. Practical guidance in singing lead, tenor, and baritone and bass harmonies as they are performed in Bluegrass, country music and gospel groups will be covered. Don Rigsby, director of KCTM, will teach the class.

Private Lessons in banjo, mandolin, fiddle, acoustic guitar, and bass (MUSP 238 and 438) are taught, under the course listing "Private Banjo."

In addition, Traditional Music Ensemble (MUSM 183, 383, 583) is being offered.

(MORE)

KCTM Courses
2-2-2-2

Folk & Country Music Listening (MUSH 261) is included as part of the minor in traditional music. This class is an introduction to various styles, periods and media of music. Ray Ross, assistant professor of music, will be the instructor.

The Kentucky Center for Traditional Music was established in June 2000 in support of the cultural, educational and economic development missions of MSU. Its purposes include the preservation of traditional music through collection and display of artifacts, sponsorship of public programs of education and performance, and the nurturing of music artists and instrument makers.

There is still time to register and attend classes at Morehead State University during the fall term. Registration is scheduled for Wednesday through Friday, Aug. 13-15. Students may register from 9 a.m. to 5 p.m. on Wednesday and from 9 a.m. to 6 p.m. on Thursday and Friday.

Additional information about the registration process is available from the Office of the Registrar at (606) 783-2008. Details about KCTM are available by calling (606) 783-9001 or on the Web at www.kctm.info.

####

ajb

News

University Communications

Pauline Young, Director

www.moreheadstate.edu

Morehead State University

UPO Box 1100

Morehead, KY 40351-1689

(606) 783-2030

Aug. 12, 2003

FOR IMMEDIATE RELEASE

WEST LIBERTY, Ky.---A new two-year degree in computer technology and telecommunications will be offered, starting this month, at Morehead State University at West Liberty.

The first class, IET 120, Technology Systems, is scheduled for Thursdays at 5:30 p.m., starting Thursday, Aug. 21. Students may register on Aug. 13, 14 or 15 at MSU at West Liberty.

"We are pleased to have this new associate degree program available at our center for students in this area who want to prepare themselves for jobs in the information age economy," said Dr. Jonell Tobin, director of MSU at West Liberty.

The associate of applied science degree requires 64 semester hours, including 33 hours in technology classes and 18 hours of general education courses. All of the classes will be available in West Liberty, either live or via distance learning.

Those who complete the two-year degree may apply all of their coursework to a four-degree program in the same field, according to Dr. Gerald DeMoss, dean of MSU's College of Science and Technology.

"This degree option was just added to our catalog and we are excited about its potential for helping prepare a new technology workforce in East Kentucky," Dr. DeMoss stated.

Additional information on the degree in computer technology and telecommunications is available from MSU at West Liberty at (606) 743-1500 or toll-free at 1-800-648-5371.

####

News

University Communications

Pauline Young, Director

www.moreheadstate.edu

Morehead State University

UPO Box 1100

Morehead, KY 40351-1689

(606) 783-2030

Aug. 12, 2003

FOR IMMEDIATE RELEASE

MOREHEAD, Ky.---Morehead State University has announced that Robbie T. Dials of **Ewing** is among those students receiving an Alumni Award for the fall semester.

Dials, the son of Randall and Rita Dials, is a graduate of Fleming County High School. A third place overall winner at the Science Fair, he received state and national Community Service Awards in FCCLA for a Veteran Awareness project, earned gold medals in state and national STAR events competition, and was selected first team in All EKC football. He has received Outstanding Earth Science Student and the Fleming County Senior Football Academic awards.

To be eligible for the Alumni Award, at least one parent or grandparent of the applicant must be an MSU alumnus and an active member of the MSU Alumni Association. The candidate must be admitted as an entering freshman or transfer student and have a minimum ACT composite of 18.

Applications and information on scholarships and grant programs at MSU are available from the Office of Admissions, MSU, Morehead, KY 40351-1689. The toll-free number is (800) 585-MSU1 (6781).

####

trt

News

University Communications

Pauline Young, Director

www.moreheadstate.edu

Morehead State University

UPO Box 1100

Morehead, KY 40351-1689

(606) 783-2030

Aug. 12, 2003

FOR IMMEDIATE RELEASE

MOREHEAD, Ky.---Morehead State University has announced that Dustin S. Hinds of **Means** is among those students receiving an Alumni Award for the fall semester.

Hinds, the son of Bradley Hinds, is a graduate of Menifee County High School. Valedictorian of his high school class, he has been a Mock Trial lawyer and the senior class president.

To be eligible for the Alumni Award, at least one parent or grandparent of the applicant must be an MSU alumnus and an active member of the MSU Alumni Association. The candidate must be admitted as an entering freshman or transfer student and have a minimum ACT composite of 18.

Applications and information on scholarships and grant programs at MSU are available from the Office of Admissions, MSU, Morehead, KY 40351-1689. The toll-free number is (800) 585-MSU1 (6781).

####

trt

News

University Communications

Pauline Young, Director

www.moreheadstate.edu

Morehead State University

UPO Box 1100

Morehead, KY 40351-1689

(606) 783-2030

Aug. 12, 2003

FOR IMMEDIATE RELEASE

MOREHEAD, Ky.---Morehead State University has announced that Clinton D. Holbrook of **West Liberty** is among those students receiving an Alumni Award for the fall semester.

Holbrook, the son of Darrell and Machele Holbrook, is a graduate of Morgan County High School. A 2002 Governor's Scholar, he has been FCCLA historian, and a member of the National Honor Society, Student Council and the Varsity Baseball Team.

To be eligible for the Alumni Award, at least one parent or grandparent of the applicant must be an MSU alumnus and an active member of the MSU Alumni Association. The candidate must be admitted as an entering freshman or transfer student and have a minimum ACT composite of 18.

Applications and information on scholarships and grant programs at MSU are available from the Office of Admissions, MSU, Morehead, KY 40351-1689. The toll-free number is (800) 585-MSU1 (6781).

####

trt

News

University Communications

Pauline Young, Director

www.moreheadstate.edu

Morehead State University

UPO Box 1100

Morehead, KY 40351-1689

(606) 783-2030

Aug. 12, 2003

FOR IMMEDIATE RELEASE

MOREHEAD, Ky.---Morehead State University has announced that Emily Cole Brown of **Morehead** is among those students receiving an Alumni Award for the fall semester.

Brown, the daughter of Jamie and Lisa Brown, is a graduate of Rowan County Senior High School. She has been a member of the Beta and Anchor clubs.

To be eligible for the Alumni Award, at least one parent or grandparent of the applicant must be an MSU alumnus and an active member of the MSU Alumni Association. The candidate must be admitted as an entering freshman or transfer student and have a minimum ACT composite of 18.

Applications and information on scholarships and grant programs at MSU are available from the Office of Admissions, MSU, Morehead, KY 40351-1689. The toll-free number is (800) 585-MSU1 (6781).

####

trt

News

University Communications

Pauline Young, Director

www.moreheadstate.edu

Morehead State University

UPO Box 1100

Morehead, KY 40351-1689

(606) 783-2030

Aug. 13, 2003

FOR IMMEDIATE RELEASE

MOREHEAD, Ky.---Morehead State University has announced that Heather Nicole Crouch of **Salt Lick** is among those students receiving an Alumni Award and Regional Honors Scholarship for the fall semester.

Crouch, the daughter of Randall and Virgie Crouch, is a graduate of Bath County High School. She is a member of Beta Club and All-District Band. She is a volunteer at Bath Veterinary Clinic and Bath County Memorial Library and has been listed on the National Honor Roll.

To be eligible for the Alumni Award, at least one parent or grandparent of the applicant must be an MSU alumnus and an active member of the MSU Alumni Association. The candidate must be admitted as an entering freshman or transfer student and have a minimum ACT composite of 18.

To be eligible for the Regional Honors Scholarship, the applicant must be admitted to MSU as an entering freshman; be a graduate of a high school within MSU's Kentucky service region; be recommended by the high school; be the highest or second highest ranking academic achiever coming to MSU from that high school and have at least a cumulative 3.50 grade point average (on a 4.0 scale) based on seven semesters of work.

Applications and information on scholarships and grant programs at MSU are available from the Office of Admissions, MSU Morehead, KY 40351-1689. The toll-free number is (800) 585-MSU1 (6781).

####

trt

News

University Communications

Pauline Young, Director

www.moreheadstate.edu

Morehead State University

UPO Box 1100

Morehead, KY 40351-1689

(606) 783-2030

Aug. 13, 2003

FOR IMMEDIATE RELEASE

MOREHEAD, Ky.---Morehead State University has announced that Joel "Dustin" Charles of **Ashland** is among those students receiving an Alumni Award and Regents Scholarship for the fall semester.

Charles, the son of Chuck and Jo Charles, is a graduate of Paul G. Blazer High School. He is a member of the Beta Club and the National Honor Society. He received the AK Steel Self-Reliance Award. President of TSA and the Video Club, he received Distinguished on the KCCT test.

To be eligible for the Alumni Award, at least one parent or grandparent of the applicant must be an MSU alumnus and an active member of the MSU Alumni Association. The candidate must be admitted as an entering freshman or transfer student and have a minimum ACT composite of 18.

To be eligible for the Regents Scholarship, applicants must be admitted to MSU as an entering freshman, have an admissions index of 500 or more and have a minimum ACT composite of 20.

Applications and information on scholarships and grant programs at MSU are available from the Office of Admissions, MSU Morehead, KY 40351-1689. The toll-free number is (800) 585-MSU1 (6781).

####

trt

News

University Communications

Pauline Young, Director

www.moreheadstate.edu

Morehead State University

UPO Box 1100

Morehead, KY 40351-1689

(606) 783-2030

Aug. 13, 2003

FOR IMMEDIATE RELEASE

MOREHEAD, Ky.---Morehead State University has announced that Jon Brandon McCormick of **Catlettsburg** is among those students receiving an Alumni Award and Leadership Award for the fall semester.

McCormick, the son of NorNa Fannin, is a graduate of Lawrence County High School. He is a member of Advanced Choral and the football team where he received the Luke Varney Jr. Award. He has been a 4-H camp counselor and a spirit leader.

To be eligible for the Alumni Award, at least one parent or grandparent of the applicant must be an MSU alumnus and an active member of the MSU Alumni Association. The candidate must be admitted as an entering freshman or transfer student and have a minimum ACT composite of 18.

To be eligible for the Leadership Award, applicants must be admitted to MSU as an entering freshman; have exhibited strong leadership and achievement capabilities through school and community activities; have a minimum ACT composite of 18, and have a minimum 2.50 grade point average (on a 4.00 scale) based on seven semesters of work.

Applications and information on scholarships and grant programs at MSU are available from the Office of Admissions, MSU Morehead, KY 40351-1689. The toll-free number is (800) 585-MSU1 (6781).

####

trt

News

University Communications

Pauline Young, Director

www.moreheadstate.edu

Morehead State University

UPO Box 1100

Morehead, KY 40351-1689

(606) 783-2030

Aug. 13, 2003

FOR IMMEDIATE RELEASE

MOREHEAD, Ky.---Morehead State University has announced that Sarah Nicole Riffe of **Grayson** is among those students receiving an Alumni Award and Regional Honors Scholarship for the fall semester.

Riffe, the daughter of Tom Riffe, is a graduate of East Carter High School. She is a Distinguished Scholar, volunteer at Carter Nursing and Rehabilitation Center and served on Region 7 Teen Drug Prevention Advisory Board. She has received National Math, Science and Leadership Awards and has been listed in "Who's Who Among American High School Students." She is a member of the Pactolus United Methodist Church.

To be eligible for the Alumni Award, at least one parent or grandparent of the applicant must be an MSU alumnus and an active member of the MSU Alumni Association. The candidate must be admitted as an entering freshman or transfer student and have a minimum ACT composite of 18.

To be eligible for the Regional Honors Scholarship, the applicant must be admitted to MSU as an entering freshman; be a graduate of a high school within MSU's Kentucky service region; be recommended by the high school; be the highest or second highest ranking academic achiever coming to MSU from that high school and have at least a cumulative 3.50 grade point average (on a 4.0 scale) based on seven semesters of work.

Applications and information on scholarships and grant programs at MSU are available from the Office of Admissions, MSU Morehead, KY 40351-1689. The toll-free number is (800) 585-MSU1 (6781).

####

trt

News

University Communications

Pauline Young, Director

www.moreheadstate.edu

Morehead State University

UPO Box 1100

Morehead, KY 40351-1689

(606) 783-2030

Aug. 13, 2003

FOR IMMEDIATE RELEASE

MOREHEAD, Ky.---Morehead State University has announced that Jared Chase Hamilton of **Harold** is among those students receiving a Regional Honors Scholarship for the fall semester.

Hamilton, the son of Lucia Hamilton, is a graduate of Betsy Layne High School. He received second in District Academics in Math, an award for the most math classes taken at BLHS and an award for the best grade in Calculus. He is also a member of Student Council, Beta Club and the National Honors Society.

To be eligible for the Regional Honors Scholarship, the applicant must be admitted to MSU as an entering freshman; be a graduate of a high school within MSU's Kentucky service region; be recommended by the high school; be the highest or second highest ranking academic achiever coming to MSU from that high school and have at least a cumulative 3.50 grade point average (on a 4.0 scale) based on seven semesters of work.

Applications and information on scholarships and grant programs at MSU are available from the Office of Admissions, MSU Morehead, KY 40351-1689. The toll-free number is (800) 585-MSU1 (6781).

####

trt

News

University Communications

Pauline Young, Director

www.moreheadstate.edu

Morehead State University

UPO Box 1100

Morehead, KY 40351-1689

(606) 783-2030

Aug. 13, 2003

FOR IMMEDIATE RELEASE

MOREHEAD, Ky.---Morehead State University has announced that William A. Stewart of **Banner** is among those students receiving an Alumni Award and Regents Scholarship for the fall semester.

Stewart, the son of Rosa Stewart, is a graduate of Prestonsburg High School. He has a 3.8 cumulative grade point average.

To be eligible for the Alumni Award, at least one parent or grandparent of the applicant must be an MSU alumnus and an active member of the MSU Alumni Association. The candidate must be admitted as an entering freshman or transfer student and have a minimum ACT composite of 18.

To be eligible for the Regents Scholarship, applicants must be admitted to MSU as an entering freshman, have an admissions index of 500 or more and have a minimum ACT composite of 20.

Applications and information on scholarships and grant programs at MSU are available from the Office of Admissions, MSU Morehead, KY 40351-1689. The toll-free number is (800) 585-MSU1 (6781).

####

trt

News

University Communications

Pauline Young, Director

www.moreheadstate.edu

Morehead State University

UPO Box 1100

Morehead, KY 40351-1689

(606) 783-2030

Aug. 13, 2003

FOR IMMEDIATE RELEASE

MOREHEAD, Ky.---Morehead State University has announced that Kelli Jo Manis of **Worthington** is among those students receiving an Alumni Award and Regents Scholarship for the fall semester.

Manis, the daughter of Steve and Beth Manis, is a graduate of Raceland-Worthington High School. She is a member of the National Spanish Honor Society, a volunteer at King's Daughters Medical Center and Helping Hands. She has been listed in "Who's Who Among American High School Students" and the National Honor Roll. She also participates in the World for Christ Missions.

To be eligible for the Alumni Award, at least one parent or grandparent of the applicant must be an MSU alumnus and an active member of the MSU Alumni Association. The candidate must be admitted as an entering freshman or transfer student and have a minimum ACT composite of 18.

To be eligible for the Regents Scholarship, applicants must be admitted to MSU as an entering freshman, have an admissions index of 500 or more and have a minimum ACT composite of 20.

Applications and information on scholarships and grant programs at MSU are available from the Office of Admissions, MSU Morehead, KY 40351-1689. The toll-free number is (800) 585-MSU1 (6781).

####

trt

News

University Communications

Pauline Young, Director

www.moreheadstate.edu

Morehead State University

UPO Box 1100

Morehead, KY 40351-1689

(606) 783-2030

Aug. 13, 2003

FOR IMMEDIATE RELEASE

MOREHEAD, Ky.---Morehead State University has announced that Bradley Kyle Miller of **Greenup** is among those students receiving an Alumni Award and a Regents Scholarship for the fall semester.

Miller, the son of Gary and Sharon Miller, is a graduate of Greenup County High School. He was a Kentucky State Senior Beta Club officer.

To be eligible for an Alumni Award, at least one parent or grandparent of the applicant must be an MSU alumnus and an active member of the MSU Alumni Association. The candidate must be admitted as an entering freshman or transfer student and have a minimum ACT composite of 18.

To be eligible for the Regents Scholarship, applicants must be admitted to MSU as an entering freshman, have an admissions index of 500 or more and have a minimum ACT composite of 20.

Applications and information on scholarships and grant programs at MSU are available from the Office of Admissions, MSU Morehead, KY 40351-1689. The toll-free number is (800) 585-MSU1 (6781).

####

trt

News

University Communications

Pauline Young, Director

www.moreheadstate.edu

Morehead State University

UPO Box 1100

Morehead, KY 40351-1689

(606) 783-2030

Aug. 13, 2003

FOR IMMEDIATE RELEASE

MOREHEAD, Ky.---Morehead State University has announced that Lindsey Rae Vicini of **Cumberland** is among those students receiving an Alumni Award and Regents Scholarship for the fall semester.

Vicini, the daughter of Frank and Debbie Vicini, is a graduate of Cumberland High School. She is president of the National Honor Society, vice president of FCCLA and 2002 Homecoming Queen. She was a WYMT Mountain Achiever, valedictorian of her class and the recipient of the Junior English Award.

To be eligible for the Alumni Award, at least one parent or grandparent of the applicant must be an MSU alumnus and an active member of the MSU Alumni Association. The candidate must be admitted as an entering freshman or transfer student and have a minimum ACT composite of 18.

To be eligible for the Regents Scholarship, applicants must be admitted to MSU as an entering freshman, have an admissions index of 500 or more and have a minimum ACT composite of 20.

Applications and information on scholarships and grant programs at MSU are available from the Office of Admissions, MSU Morehead, KY 40351-1689. The toll-free number is (800) 585-MSU1 (6781).

####

trt

News

University Communications

Pauline Young, Director

www.moreheadstate.edu

Morehead State University

UPO Box 1100

Morehead, KY 40351-1689

(606) 783-2030

Aug. 13, 2003

FOR IMMEDIATE RELEASE

MOREHEAD, Ky.---Morehead State University has announced that Sarah Ann Sparks of **Offutt** is among those students receiving an Alumni Award and Presidential Scholarship for the fall semester.

Sparks, the daughter of John and Sheila Sparks, is a graduate of Johnson Central High School. She is a State Governors Cup champion in English composition, a participant in the Commonwealth Diploma Program and a State Foreign Language Festival Champion in Spanish costume. She has received 4-H honors and the Daughters of the American Revolution Good Citizen Award. She is also a member of the Sulphur Springs United Baptist Church.

To be eligible for the Alumni Award, at least one parent or grandparent of the applicant must be an MSU alumnus and an active member of the MSU Alumni Association. The candidate must be admitted as an entering freshman or transfer student and have a minimum ACT composite of 18.

To be eligible for the Presidential Scholarship, applicants must be admitted to MSU as an entering freshman and meet one of the following criteria: be a National Merit Scholar or Finalist; a valedictorian or salutatorian from MSU's Kentucky service region with an ACT composite of at least 30; a National Merit Semi-Finalist; or have completed the Kentucky Governor's Scholar Program. Individuals with an ACT composite of at least 28, or a minimum grade point average of 3.75 (on a 4.0 scale) will be considered for the award.

Applications and information on scholarships and grant programs at MSU are available from the Office of Admissions, MSU Morehead, KY 40351-1689. The toll-free number is (800) 585-MSU1 (6781).

####

trt

News

University Communications

Pauline Young, Director

www.moreheadstate.edu

Morehead State University

UPO Box 1100

Morehead, KY 40351-1689

(606) 783-2030

Aug. 13, 2003

FOR IMMEDIATE RELEASE

MOREHEAD, Ky.---Morehead State University has announced that Jamala Renee' Pelfrey of **Whitesburg** is among those students receiving an Alumni Award and Regional Honors Scholarship for the fall semester.

Pelfrey, the daughter of Nancy Trent, is a graduate of Whitesburg High School. Vice president of Beta Club, she received Distinguished in History and Arts and Humanities. She also received the United States Achievement Academy Award. She was a member of the Academic Team, Interact Club and the 2001-2002 Grand Marshall. She has also been listed on the honor roll.

To be eligible for the Alumni Award, at least one parent or grandparent of the applicant must be an MSU alumnus and an active member of the MSU Alumni Association. The candidate must be admitted as an entering freshman or transfer student and have a minimum ACT composite of 18.

To be eligible for the Regional Honors Scholarship, the applicant must be admitted to MSU as an entering freshman; be a graduate of a high school within MSU's Kentucky service region; be recommended by the high school; be the highest or second highest ranking academic achiever coming to MSU from that high school and have at least a cumulative 3.50 grade point average (on a 4.0 scale) based on seven semesters of work.

Applications and information on scholarships and grant programs at MSU are available from the Office of Admissions, MSU Morehead, KY 40351-1689. The toll-free number is (800) 585-MSU1 (6781).

####

trt

News

University Communications

Pauline Young, Director

www.moreheadstate.edu

Morehead State University

UPO Box 1100

Morehead, KY 40351-1689

(606) 783-2030

Aug. 13, 2003

FOR IMMEDIATE RELEASE

MOREHEAD, Ky.---Morehead State University has announced that two students from Lewis County are among those receiving an Alumni Award and a Regional Honors Scholarship for the fall semester.

The students, graduates of Lewis County High School, are:

Mary Elisha Fite, the daughter of Glen Fite of **Tollesboro**. She is a member of the National Honor Society and has been listed in "Who's Who Among American High School Students" and the National Honor Roll.

Dennis Matthew Weddington, the son of Dennis and Debbie Weddington of **Garrison**. He is a member of the Beta Club and National Honor Society and has been featured on Best of the Class. He has been listed in "Who's Who Among American High School Students" and the National Honor Roll.

To be eligible for the Alumni Award, at least one parent or grandparent of the applicant must be an MSU alumnus and an active member of the MSU Alumni Association. The candidate must be admitted as an entering freshman or transfer student and have a minimum ACT composite of 18.

To be eligible for the Regional Honors Scholarship, the applicant must be admitted to MSU as an entering freshman; be a graduate of a high school within MSU's Kentucky service region; be recommended by the high school; be the highest or second highest ranking academic achiever coming to MSU from that high school and have at least a cumulative 3.50 grade point average (on a 4.0 scale) based on seven semesters of work.

Applications and information on scholarships and grant programs at MSU are available from the Office of Admissions, MSU Morehead, KY 40351-1689. The toll-free number is (800) 585-MSU1 (6781).

####

trt

News

University Communications

Pauline Young, Director

www.moreheadstate.edu

Morehead State University

UPO Box 1100

Morehead, KY 40351-1689

(606) 783-2030

Aug. 13, 2003

FOR IMMEDIATE RELEASE

MOREHEAD, Ky.---Morehead State University has announced that Denita Brooke Rudd of **Means** is among those students receiving an Alumni Award and Regional Honors Scholarship for the fall semester.

Rudd, the daughter of Orbin Rudd Jr., is a graduate of Menifee County High School. She was the top ranking student of her class, regional vice-president of FFA and had a 4.0 grade point average. She worked with the Pride Program to clean up the community, visited nursing home patients with her church and participated in the Relay for Life.

To be eligible for the Alumni Award, at least one parent or grandparent of the applicant must be an MSU alumnus and an active member of the MSU Alumni Association. The candidate must be admitted as an entering freshman or transfer student and have a minimum ACT composite of 18.

To be eligible for the Regional Honors Scholarship, the applicant must be admitted to MSU as an entering freshman; be a graduate of a high school within MSU's Kentucky service region; be recommended by the high school; be the highest or second highest ranking academic achiever coming to MSU from that high school and have at least a cumulative 3.50 grade point average (on a 4.0 scale) based on seven semesters of work.

Applications and information on scholarships and grant programs at MSU are available from the Office of Admissions, MSU Morehead, KY 40351-1689. The toll-free number is (800) 585-MSU1 (6781).

####

trt

News

University Communications

Pauline Young, Director

www.moreheadstate.edu

Morehead State University

UPO Box 1100

Morehead, KY 40351-1689

(606) 783-2030

Aug. 13, 2003

FOR IMMEDIATE RELEASE

MOREHEAD, Ky.--Morehead State University has announced that Ralph Vernon Lockard III of **West Liberty** is among those students receiving an Alumni Award and Regents Scholarship for the fall semester.

Lockard, the son of Ralph V. Lockard Jr., is a graduate of Morgan County High School. He received Distinguished on his senior portfolio and was a member of the Varsity Cheerleading Squad, secretary of the Arts Club, a PSI teen leader and a peer mediator.

To be eligible for the Alumni Award, at least one parent or grandparent of the applicant must be an MSU alumnus and an active member of the MSU Alumni Association. The candidate must be admitted as an entering freshman or transfer student and have a minimum ACT composite of 18.

To be eligible for the Regents Scholarship, applicants must be admitted to MSU as an entering freshman, have an admissions index of 500 or more and have a minimum ACT composite of 20.

Applications and information on scholarships and grant programs at MSU are available from the Office of Admissions, MSU Morehead, KY 40351-1689. The toll-free number is (800) 585-MSU1 (6781).

####

trt

News

University Communications

Pauline Young, Director

www.moreheadstate.edu

Morehead State University

UPO Box 1100

Morehead, KY 40351-1689

(606) 783-2030

Aug. 13, 2003

FOR IMMEDIATE RELEASE

MOREHEAD, Ky.---Morehead State University has announced that Aaron Smith Eldridge of **Morehead** is among those students receiving an Alumni Award and Leadership Award for the fall semester.

Eldridge, the son of Timothy and Claudette Eldridge, is a graduate of Rowan County Senior High School.

To be eligible for the Alumni Award, at least one parent or grandparent of the applicant must be an MSU alumnus and an active member of the MSU Alumni Association. The candidate must be admitted as an entering freshman or transfer student and have a minimum ACT composite of 18.

To be eligible for the Leadership Award, applicants must be admitted to MSU as an entering freshman; have exhibited strong leadership and achievement capabilities through school and community activities; have a minimum ACT composite of 18, and have a minimum 2.50 grade point average (on a 4.00 scale) based on seven semesters of work.

Applications and information on scholarships and grant programs at MSU are available from the Office of Admissions, MSU Morehead, KY 40351-1689. The toll-free number is (800) 585-MSU1 (6781).

####

trt

Morehead State University

UPO Box 1100

Morehead, KY 40351-1689

(606) 783-2030

Aug. 13, 2003

FOR IMMEDIATE RELEASE

Back to School at MSU: A Picture Story

MOREHEAD, Ky.---Summer vacation is over for Morehead State University faculty, staff and students who have returned to the campus for the fall semester.

Classes begin on Monday, Aug. 18, at all on and off campus locations. The last day to register for credit is Monday, Aug. 25.

Freshmen students beginning the college experience arrived on campus on Tuesday, Aug. 12. It was moving day for hundreds who came with furniture, household appliances, clothes and various mementos of home.

Faculty and staff members began the day with a welcome back continental breakfast, hosted by the Camden-Carroll Library staff. It was a time for sharing stories of vacation trips, updating on research projects and special activities and meeting the new additions to the MSU family.

At the annual fall convocation, MSU President Ronald G. Eaglin welcomed the group then introduced the guest speaker, Dr. Thomas D. Layzell, president of the Council on Postsecondary Education.

"We have been moving and hopefully will continue to move in the right direction," Dr. Layzell said, noting that there are some challenging days ahead, both in the political arena and economically.

"As the state is in the midst of a gubernatorial election year, we have an uncertainty of whether we will stay on the same path or if the new governor will put his own agenda in place," he said.

On the economic front, legislative concerns are emerging, regarding accountability and affordability. He believes that transfer of credits between community colleges and universities and myths of what will transfer will be on the legislative agenda.

To survive during trying budgetary times, Dr. Layzell offered four suggestions: stay focused on the public agenda and don't allow for deviation; keep working toward the agenda and show how you are accountable for what you do, strengthen partnerships as you can never have too many friends, and show how you are going to achieve your goals.

Dr. Layzell said he was optimistic about where we are, enthusiastic about heading the CPE and excited and looking forward to the challenge that lies ahead.

In his remarks, MSU Provost Michael Moore predicted enrollment will be 9,400 as the University is expecting a record number of incoming freshmen and a larger percentage of non-traditional students.

Quoting data released by the Education Trust, Dr. Moore stated that MSU has confirmed the large percentage of our graduates are employed in the University's service region. For example, in Elliott County, 90 percent of all teachers earned degrees from MSU; while 82 percent in Morgan County received one or more degrees from Morehead State. From that data, 58 percent were graduates of Morgan County High School who came to the University, earned a degree, before returning to teach in their home county. In Pike County, 53 percent of the current teaching faculty received one or more degrees from MSU.

In other announcements, the co-chairs of the Campus Giving Campaign were named: Dr. David Magrane, chair of the Department of Biological and Environmental Sciences, and Dr. Bob Albert, dean of the College of Business.

"We are hopeful for a successful year," Dr. Magrane said. "You will be given an opportunity to participate because you can make a difference.

"The key is participation. You are closest to the students; you will benefit from the process; and you can give to areas of your interest."

The theme of the annual campaign, "One Eagle at a Time," will continue this year with a goal of raising \$135,000 in cash, achieving a 55 percent participation across campus with 22 budget units giving 100 percent, and 382 people giving through payroll deduction.

Dr. Eaglin reminded the crowd that a second convocation will be held this term. On Tuesday, Sept. 2, at 10:20 a.m., Congressman Hal Rogers (R-KY), will discuss the advantages to MSU of the forthcoming Space Science Center. A groundbreaking ceremony for a space tracking system, the first phase of the Space Science Center, will be held at 1:30 p.m. that day.

Cutlines:

1---Students came from near and far, unloading clothes, furniture and an assortment of household items, when they checked into campus housing.

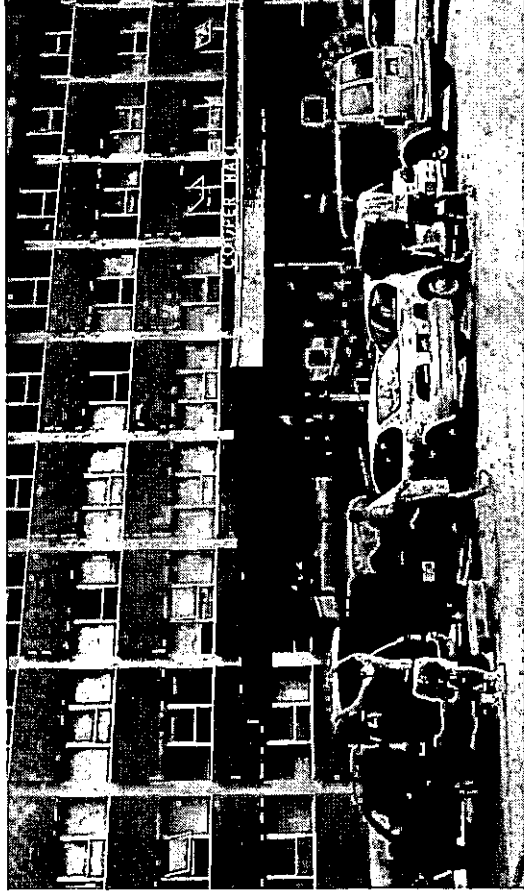
2---Kicking off the back to school activities was the faculty/staff continental breakfast. Enjoying the fare were, from left, Jeanie Scruggs, administrative assistant in the office of the vice president for student life; Myron Doan, dean of students, and Jane Fitzpatrick, University general counsel.

3---After speaking at MSU's annual fall convocation, Dr. Thomas D. Layzell, left, president of the Council on Postsecondary Education, accepted a copy of the official Eagle portrait from MSU President Ronald G. Eaglin.

#####

(MSU photos by Tim Holbrook)

8-13-03



1



2



3

News

University Communications

Pauline Young, Director

www.moreheadstate.edu

Morehead State University

UPO Box 1100

Morehead, KY 40351-1689

(606) 783-2030

Aug. 14, 2003

FOR IMMEDIATE RELEASE

MOREHEAD, Ky.---Morehead State University has announced that Timothy James (TJ) Evans of **Owingsville** is among those receiving a Regional Honors Scholarship for the fall semester.

Evans, the son of Vickie and Lee Evans, is a graduate of Bath County High School. He is a member of Beta Club, Academic Team and Taps In Motion, a national champion clogging team. He was co-parliamentarian of Future Business Leaders of America, vice president of Fellowship of Christian Athletes, and listed on the national honor roll.

To be eligible for the Regional Honors Scholarship, the applicant must be admitted to MSU as an entering freshman; be a graduate of a high school within MSU's Kentucky service region; be recommended by the high school; be the highest or second highest ranking academic achiever coming to MSU from that high school and have at least a cumulative 3.50 grade point average (on a 4.0 scale) based on seven semesters of work.

Applications and information on scholarships and grant programs at MSU are available from the Office of Admissions, MSU, Morehead, KY 40351-1689. The toll-free number is (800) 585-MSU1 (6781).

####

trt

News

University Communications

Pauline Young, Director

www.moreheadstate.edu

Morehead State University

UPO Box 1100

Morehead, KY 40351-1689

(606) 783-2030

Aug. 14, 2003

FOR IMMEDIATE RELEASE

MOREHEAD, Ky.---Morehead State University has announced that Brandy Sue Brock of **Pineville** is among those receiving a Regional Honors Scholarship for the fall semester.

Brock, the daughter of Susan Brock, is a graduate of Bell County High School.

To be eligible for the Regional Honors Scholarship, the applicant must be admitted to MSU as an entering freshman; be a graduate of a high school within MSU's Kentucky service region; be recommended by the high school; be the highest or second highest ranking academic achiever coming to MSU from that high school and have at least a cumulative 3.50 grade point average (on a 4.0 scale) based on seven semesters of work.

Applications and information on scholarships and grant programs at MSU are available from the Office of Admissions, MSU, Morehead, KY 40351-1689. The toll-free number is (800) 585-MSU1 (6781).

####

trt

Morehead State University

UPO Box 1100

Morehead, KY 40351-1689

(606) 783-2030

Aug. 14, 2003

FOR IMMEDIATE RELEASE

MOREHEAD, Ky.---Morehead State University has announced that four students from Boyd County are among those receiving a Regional Honors Scholarship for the fall semester.

Amanda Garyette Carter, the daughter of Gary and Nancy Carter of **Catlettsburg**, is a graduate of Boyd County High School. She is state historian of the Family, Career and Community Leaders of America, participated in Mock Trial and All-State Piano Ensemble. She has been listed in "Who's Who Among American High School Students," on the national honor roll and named a Boyd County Distinguished Leader.

Katie Lynne Holbrook, the daughter of Danny and Patty Holbrook of **Ashland**, is a graduate of Rose Hill Christian. She is a member of Beta Club and salutatorian of her class. She received the DAR Good Citizen Award and has been named Elks Teenager of the Month.

Katherine Nicole Miles, the daughter of Lucy and Jerry Miles of **Rush**, is a graduate of Boyd County High School. She is a FCCLA regional reporter, children's church teacher's aide and a FACTS committee volunteer. She has received the Presidential Award for Academic Excellence for two years, Boyd County High Distinguished Leader for two years, and has been a state STAR events winner.

Blair Michelle Neal, the daughter of Rosemary Sparks of **Ashland**, is a graduate of Fairview High School. She is a member of the National Honor Society, editor of the school yearbook and an FCCLA honors graduate.

To be eligible for the Regional Honors Scholarship, the applicant must be admitted to MSU as an entering freshman; be a graduate of a high school within MSU's Kentucky service region; be recommended by the high school; be the highest or second highest ranking academic achiever coming to MSU from that high school and have at least a cumulative 3.50 grade point average (on a 4.0 scale) based on seven semesters of work.

Applications and information on scholarships and grant programs at MSU are available from the Office of Admissions, MSU, Morehead, KY 40351-1689. The toll-free number is (800) 585-MSU1 (6781).

####

trt

News

University Communications

Pauline Young, Director

www.moreheadstate.edu

Morehead State University

UPO Box 1100

Morehead, KY 40351-1689

(606) 783-2030

Aug. 14, 2003

FOR IMMEDIATE RELEASE

MOREHEAD, Ky.---Morehead State University has announced that four students from Carter County are among those receiving a Regional Honors Scholarship for the fall semester.

Trisha Dawn Edington, the daughter of Patricia Riley, is a graduate of West Carter High School. She has been listed in "Who's Who Among American High School Students," on the national honor roll, and named an All-American Scholar by the U.S. Achievement Academy. She is a West Carter JROTC Battalion Commander, Veteran's of Foreign Wars Citation and Medal award winner, and received the Zero Demerit award from Upward Bound.

Carrie R. Hargett, the daughter of Jackie and Byron Hargett, is a graduate of West Carter High School. She has been listed in "Who's Who Among American High School Students" and the national honor roll. She graduated with a 4.0 grade point average and has completed more than 200 hours of community service.

Jessica Ann Roe, the daughter of Kim and Charles Roe, is a graduate of West Carter High School. She has been listed in "Who's Who Among American High School Students," on the national honor roll and the national merit scholars. She is a volunteer at local businesses and for three years has served as girl's varsity basketball manager at West Carter.

Brittany Vaye Theinert, the daughter of Wilma Theinert, is a graduate of East Carter High School. She has been a distinguished scholar, usherette in 2002 graduation, and listed on the national honor roll.

To be eligible for the Regional Honors Scholarship, the applicant must be admitted to MSU as an entering freshman; be a graduate of a high school within MSU's Kentucky service region; be recommended by the high school; be the highest or second highest ranking academic achiever coming to MSU from that high school and have at least a cumulative 3.50 grade point average (on a 4.0 scale) based on seven semesters of work.

Applications and information on scholarships and grant programs at MSU are available from the Office of Admissions, MSU, Morehead, KY 40351-1689. The toll-free number is (800) 585-MSU1 (6781).

#####

trt

News

University Communications

Pauline Young, Director

www.moreheadstate.edu

Morehead State University

UPO Box 1100

Morehead, KY 40351-1689

(606) 783-2030

Aug. 14, 2003

FOR IMMEDIATE RELEASE

MOREHEAD, Ky.---Morehead State University has announced that four Elliott County students are among those receiving a Regional Honors Scholarship for the fall semester.

Jessica Lynne Cox, the daughter of Vernon and Patty Cox of **Olive Hill**, is a graduate of Elliott County High School. She is a member of FBLA and Beta Club.

Joshua David Hickman, the son of Carolyn Hickman of **Sandy Hook**, is a graduate of Infinite Possibilities Christian Leadership School. He has been listed on the national honor roll and was valedictorian of his graduating class.

Kesha Dawn Ison, the daughter of Jim and Michelle Ison of **Sandy Hook**, is a graduate of Elliott County High School. She is a member of Beta Club, Co-Ed Y and FBLA.

Mary Rebekah Sloas, the daughter of Sharon Boggs of **Isonville**, is a graduate of Elliott County High School. She is a member of FCA, FBLA, and reporter of Band, Beta Club and FCCLA. She participates in Educational Talent Search and Upward Bound. She has received excellence awards in English, geometry, biology, art and foods. She has appeared in "Who's Who Among American High School Students" and has been an elementary school tutor for four years.

To be eligible for the Regional Honors Scholarship, the applicant must be admitted to MSU as an entering freshman; be a graduate of a high school within MSU's Kentucky service region; be recommended by the high school; be the highest or second highest ranking academic achiever coming to MSU from that high school and have at least a cumulative 3.50 grade point average (on a 4.0 scale) based on seven semesters of work.

Applications and information on scholarships and grant programs at MSU are available from the Office of Admissions, MSU, Morehead, KY 40351-1689. The toll-free number is (800) 585-MSU1 (6781).

####

trt

News

University Communications

Pauline Young, Director

www.moreheadstate.edu

Morehead State University

UPO Box 1100

Morehead, KY 40351-1689

(606) 783-2030

Aug. 14, 2003

FOR IMMEDIATE RELEASE

MOREHEAD, Ky.---Morehead State University has announced that three students from Floyd County are among those receiving a Regional Honors Scholarship for the fall semester.

Courtney LeeAnn Conn, the daughter of Toney and JoAnn Conn of **Prestonsburg**, is a graduate of Prestonsburg High School. She has been listed in "Who's Who Among American High School Students" and on the national honor roll. She is a member of the National Honor Society, Floyd County 4-H Teen Council, PHS Honor Choir and participated in the 4-H Community Theatre.

Gary Nicholas Francis, the son of Gary Francis of **Garrett**, and Tonia and Rick Robinson of **Prestonsburg**, is a graduate of Prestonsburg High School. He was a top ranking student in his junior class. He participates in soccer and the Jenny Wiley Theater. He also received the chemistry award.

Jacki Nicole Shell, the daughter of Jack Shell of **Betsy Layne**, is a graduate of Betsy Layne High School. She is a member of the National Honor Society and Beta Club. She also received a biology award.

To be eligible for the Regional Honors Scholarship, the applicant must be admitted to MSU as an entering freshman; be a graduate of a high school within MSU's Kentucky service region; be recommended by the high school; be the highest or second highest ranking academic achiever coming to MSU from that high school and have at least a cumulative 3.50 grade point average (on a 4.0 scale) based on seven semesters of work.

Applications and information on scholarships and grant programs at MSU are available from the Office of Admissions, MSU, Morehead, KY 40351-1689. The toll-free number is (800) 585-MSU1 (6781).

####

trt

News

University Communications

Pauline Young, Director

www.moreheadstate.edu

Morehead State University

UPO Box 1100

Morehead, KY 40351-1689

(606) 783-2030

Aug. 14, 2003

FOR IMMEDIATE RELEASE

MOREHEAD, Ky.---Morehead State University has announced that five students from Greenup County are among those receiving a Regional Honors Scholarship for the fall semester.

Jonathan Curtis Bailey, the son of Kim Bailey, is a graduate of Russell High School. He is a member of Beta Club and Pentecostal Holiness Tabernacle Church where he is a musician. He volunteers his time by reading with primary students and visiting the sick and elderly in the hospital. He has been listed in "Who's Who Among American High School Students" and on the honor roll for four years.

Adam N. Collier, the son of Bob and Kathy Collier of **Load**, is a graduate of Greenup County High School. He is a member of the soccer team, church youth group and the church basketball team. He has participated in state competition for FBLA and Beta Club. He also has been listed on the honor roll.

Christie M. Grubb, the daughter of Linda and Clifford Grubb of **Russell**, is a graduate of Russell High School. She has been listed in "Who's Who Among American High School Students" and on the national honor roll. She is a member of FBLA, where she has had many first and third place finishes at the regional and state level.

Sarah Jo Roberts, the daughter of Vicki and Herman Roberts of **Greenup**, is a graduate of Greenup County High School. She has been listed on the honor roll, and received awards in U.S. history and psychology. She has been a member of Youth Leadership.

Brandon Keith Vansickle, the son of Rhonda Vansickle of **South Shore**, is a graduate of Greenup County High School. A member of the baseball team, he attends Siloam Baptist Church where he is a church song leader and bible study teacher. He also has been listed on the honor roll throughout high school and received the Algebra II award.

To be eligible for the Regional Honors Scholarship, the applicant must be admitted to MSU as an entering freshman; be a graduate of a high school within MSU's Kentucky service region; be recommended by the high school; be the highest or second highest ranking academic achiever coming to MSU from that high school and have at least a cumulative 3.50 grade point average (on a 4.0 scale) based on seven semesters of work.

Applications and information on scholarships and grant programs at MSU are available from the Office of Admissions, MSU, Morehead, KY 40351-1689. The toll-free number is (800) 585-MSU1 (6781).

####

trt

News

University Communications

Pauline Young, Director

www.moreheadstate.edu

Morehead State University

UPO Box 1100

Morehead, KY 40351-1689

(606) 783-2030

Aug. 14, 2003

FOR IMMEDIATE RELEASE

MOREHEAD, Ky.---Morehead State University has announced that two students from Johnson County are among those receiving a Regional Honors Scholarship for the fall semester.

Kimberly Ann Haney, the daughter of Donald and Doris E. Haney of **Staffordsville**, is a graduate of Johnson Central High School. She has been listed in "Who's Who Among American High School Students" and a Beta Club Community Service Participant. She is a USAA winner in mathematics and speech and drama. She is a recipient of the National Leadership Award and a member of the Third Street Freewill Baptist Church.

Brandon Keith Ratliff, the son of Richard and Sherry Ratliff of **Meally**, is a graduate of Johnson Central High School. He is a four-year Morehead State University Upward Bound participant, Beta Club president and a hospital and fire department haunted house volunteer. He has been on the national honor roll and is a member of the Tomahawk Freewill Baptist Church.

To be eligible for the Regional Honors Scholarship, the applicant must be admitted to MSU as an entering freshman; be a graduate of a high school within MSU's Kentucky service region; be recommended by the high school; be the highest or second highest ranking academic achiever coming to MSU from that high school and have at least a cumulative 3.50 grade point average (on a 4.0 scale) based on seven semesters of work.

Applications and information on scholarships and grant programs at MSU are available from the Office of Admissions, MSU, Morehead, KY 40351-1689. The toll-free number is (800) 585-MSU1 (6781).

####

trt

News

University Communications

Pauline Young, Director

www.moreheadstate.edu

Morehead State University

UPO Box 1100

Morehead, KY 40351-1689

(606) 783-2030

Aug. 14, 2003

FOR IMMEDIATE RELEASE

MOREHEAD, Ky.---Morehead State University has announced that Emily Ann Borders of **Louisa** is among those receiving a Regional Honors Scholarship for the fall semester.

Borders, daughter of Kenneth Borders, is a graduate of Lawrence County High School. She is a member of PEPP, All-State Chorus and the National Honor Society.

To be eligible for the Regional Honors Scholarship, the applicant must be admitted to MSU as an entering freshman; be a graduate of a high school within MSU's Kentucky service region; be recommended by the high school; be the highest or second highest ranking academic achiever coming to MSU from that high school and have at least a cumulative 3.50 grade point average (on a 4.0 scale) based on seven semesters of work.

Applications and information on scholarships and grant programs at MSU are available from the Office of Admissions, MSU, Morehead, KY 40351-1689. The toll-free number is (800) 585-MSU1 (6781).

####

trt

News

University Communications

Pauline Young, Director

www.moreheadstate.edu

Morehead State University

UPO Box 1100

Morehead, KY 40351-1689

(606) 783-2030

Aug. 14, 2003

FOR IMMEDIATE RELEASE

MOREHEAD, Ky.---Morehead State University has announced that Ryan Christopher Potter of **McRoberts** is among those receiving a Regional Honors Scholarship for the fall semester.

Potter, the son of Lisa Branham and Jody Potter, is a graduate of Fleming-Neon High School. He is a member of Beta Club and the National Honor Society. He has been listed in "Who's Who Among American High School Students" and is a volunteer at ARH Hospital.

To be eligible for the Regional Honors Scholarship, the applicant must be admitted to MSU as an entering freshman; be a graduate of a high school within MSU's Kentucky service region; be recommended by the high school; be the highest or second highest ranking academic achiever coming to MSU from that high school and have at least a cumulative 3.50 grade point average (on a 4.0 scale) based on seven semesters of work.

Applications and information on scholarships and grant programs at MSU are available from the Office of Admissions, MSU, Morehead, KY 40351-1689. The toll-free number is (800) 585-MSU1 (6781).

####

trt

News

University Communications

Pauline Young, Director

www.moreheadstate.edu

Morehead State University

UPO Box 1100

Morehead, KY 40351-1689

(606) 783-2030

Aug. 14, 2003

FOR IMMEDIATE RELEASE

MOREHEAD, Ky.---Morehead State University has announced that five students from Salyersville are among those receiving a Regional Honors Scholarship for the fall semester.

Tasha Mashea Brown, the daughter of Tammy Holbrook, is a graduate of Magoffin County High School. She is an All-American Scholar and has been listed as a National Honor Roll Gold Elite and "Who's Who Among American High School Students."

Brandi Nichole Joseph, the daughter of Beverly and Jerry Joseph, is a graduate of Magoffin County High School. She is a PSI teen leader and has been listed in "Who's Who Among American High School Students" and on the national honor roll.

Krysta Nicole LeMaster, the daughter of Lisa LeMaster, is a graduate of Magoffin County High School. She is an All-American Scholar and has been listed in "Who's Who Among American High School Students" and on the national honor roll.

Sarah Beth Nickell, the daughter of Patricia Collins, is a graduate of Magoffin County High School. She received "Excellence on Kentucky Core Content Test" award for two years. She has been listed in "Who's Who Among American High School Students" and on the national honor roll.

Crystal Perkins, the daughter of Fay Perkins, is a graduate of Magoffin County High School. She is a member of Mu Alpha Theta, Beta Club, FCCLA, Science Club, and is vice president for Future Educators of America and her senior class. She has been listed in "Who's Who Among American High School Students."

To be eligible for the Regional Honors Scholarship, the applicant must be admitted to MSU as an entering freshman; be a graduate of a high school within MSU's Kentucky service region; be recommended by the high school; be the highest or second highest ranking academic achiever coming to MSU from that high school and have at least a cumulative 3.50 grade point average (on a 4.0 scale) based on seven semesters of work.

Applications and information on scholarships and grant programs at MSU are available from the Office of Admissions, MSU, Morehead, KY 40351-1689. The toll-free number is (800) 585-MSU1 (6781).

####

trt

News

University Communications

Pauline Young, Director

www.moreheadstate.edu

Morehead State University

UPO Box 1100

Morehead, KY 40351-1689

(606) 783-2030

Aug. 14, 2003

FOR IMMEDIATE RELEASE

MOREHEAD, Ky.---Morehead State University has announced that two students from Martin County are among those receiving a Regional Honors Scholarship for the fall semester.

Charles Joshua-Ray Horn, the son of Angela Calloway of Inez, is a graduate of Sheldon Clark High School. He is a member of the National Honor Society, Beta Club and FCA. Captain of the Academic/Quick Recall team and a TIP mentor, he is listed in "Who's Who Among American High School Students."

Kendra Nicole Stafford, the daughter of Kenneth and Geneva Stafford of Lovely, is a graduate of Sheldon Clark High School. She is president of FBLA, a member of the National Honor Society and listed in "Who's Who Among American High School Students."

To be eligible for the Regional Honors Scholarship, the applicant must be admitted to MSU as an entering freshman; be a graduate of a high school within MSU's Kentucky service region; be recommended by the high school; be the highest or second highest ranking academic achiever coming to MSU from that high school and have at least a cumulative 3.50 grade point average (on a 4.0 scale) based on seven semesters of work.

Applications and information on scholarships and grant programs at MSU are available from the Office of Admissions, MSU, Morehead, KY 40351-1689. The toll-free number is (800) 585-MSU1 (6781).

####

trt

News

University Communications

Pauline Young, Director

www.moreheadstate.edu

Morehead State University

UPO Box 1100

Morehead, KY 40351-1689

(606) 783-2030

Aug. 14, 2003

FOR IMMEDIATE RELEASE

MOREHEAD, Ky.---Morehead State University has announced that Lacinda M. Cracraft of **Maysville** is among those receiving a Regional Honors Scholarship for the fall semester.

Cracraft, the daughter of Angela Earls, is a graduate of Mason County High School. She has been listed in "Who's Who Among American High School Students" and on the national honor roll. She also has received the Outstanding Student of America award.

To be eligible for the Regional Honors Scholarship, the applicant must be admitted to MSU as an entering freshman; be a graduate of a high school within MSU's Kentucky service region; be recommended by the high school; be the highest or second highest ranking academic achiever coming to MSU from that high school and have at least a cumulative 3.50 grade point average (on a 4.0 scale) based on seven semesters of work.

Applications and information on scholarships and grant programs at MSU are available from the Office of Admissions, MSU, Morehead, KY 40351-1689. The toll-free number is (800) 585-MSU1 (6781).

####

trt

News

University Communications

Pauline Young, Director

www.moreheadstate.edu

Morehead State University

UPO Box 1100

Morehead, KY 40351-1689

(606) 783-2030

Aug. 14, 2003

FOR IMMEDIATE RELEASE

MOREHEAD, Ky.---Morehead State University has announced that Kayla Suzanne McCoy of **Pilgrim** is among those receiving a Regional Honors Scholarship for the fall semester.

McCoy, the daughter of Paul Dean and Dianne McCoy, is a graduate of Sheldon Clark High School. She is president of the Beta and Key clubs. She is a member of the National Honor Society, valedictorian of her senior class and listed in "Who's Who Among American High School Students."

To be eligible for the Regional Honors Scholarship, the applicant must be admitted to MSU as an entering freshman; be a graduate of a high school within MSU's Kentucky service region; be recommended by the high school; be the highest or second highest ranking academic achiever coming to MSU from that high school and have at least a cumulative 3.50 grade point average (on a 4.0 scale) based on seven semesters of work.

Applications and information on scholarships and grant programs at MSU are available from the Office of Admissions, MSU, Morehead, KY 40351-1689. The toll-free number is (800) 585-MSU1 (6781).

####

trt

News

University Communications

Pauline Young, Director

www.moreheadstate.edu

Morehead State University

UPO Box 1100

Morehead, KY 40351-1689

(606) 783-2030

Aug. 14, 2003

FOR IMMEDIATE RELEASE

MOREHEAD, Ky.---Morehead State University has announced that Lara Dawn Lawson of **Jeffersonville** is among those receiving a Regional Honors Scholarship for the fall semester.

Lawson, the daughter of Lisa and Larry Lawson, is a graduate of Menifee County High School. She is a member of Beta Club.

To be eligible for the Regional Honors Scholarship, the applicant must be admitted to MSU as an entering freshman; be a graduate of a high school within MSU's Kentucky service region; be recommended by the high school; be the highest or second highest ranking academic achiever coming to MSU from that high school and have at least a cumulative 3.50 grade point average (on a 4.0 scale) based on seven semesters of work.

Applications and information on scholarships and grant programs at MSU are available from the Office of Admissions, MSU, Morehead, KY 40351-1689. The toll-free number is (800) 585-MSU1 (6781).

####

trt

News

University Communications

Pauline Young, Director

www.moreheadstate.edu

Morehead State University

UPO Box 1100

Morehead, KY 40351-1689

(606) 783-2030

Aug. 14, 2003

FOR IMMEDIATE RELEASE

MOREHEAD, Ky.---Morehead State University has announced that John Bradford Williams of **West Liberty** is among those receiving a Regional Honors Scholarship for the fall semester.

Williams, the son of Anita Williams, is a graduate of Morgan County High School. A member of the National Honor Society, he has been chosen for the Rogers Scholars Program.

To be eligible for the Regional Honors Scholarship, the applicant must be admitted to MSU as an entering freshman; be a graduate of a high school within MSU's Kentucky service region; be recommended by the high school; be the highest or second highest ranking academic achiever coming to MSU from that high school and have at least a cumulative 3.50 grade point average (on a 4.0 scale) based on seven semesters of work.

Applications and information on scholarships and grant programs at MSU are available from the Office of Admissions, MSU, Morehead, KY 40351-1689. The toll-free number is (800) 585-MSU1 (6781).

####

trt

News

University Communications

Pauline Young, Director

www.moreheadstate.edu

Morehead State University

UPO Box 1100

Morehead, KY 40351-1689

(606) 783-2030

Aug. 14, 2003

FOR IMMEDIATE RELEASE

MOREHEAD, Ky.--Morehead State University has announced that four students from Pike County are among those receiving a Regional Honors Scholarship for the fall semester.

Amanda Suzanne Hensley, the daughter of Watson and Connie Hensley of **South Williamson**, is a graduate of Belfry High School. She is a member of the girls varsity basketball team, FCA, SADD and the National Society of High School Scholars. She has been listed in "Who's Who Among American High School Students" and on the honor roll.

Joseph Allen Mayhorn, the son of Steve and Marilyn Mayhorn of **Freeburn**, is a graduate of Phelps High School. He is a participant in the National Homeless Awareness Month and the National Honor Society. He volunteers as a youth leader for vacation bible school and at the local nursing home with HOSA Club. He has been listed in "Who's Who Among American High School Students and on the national honor roll.

Bryan Randall Ratliff, the son of Sharon and Randall Ratliff of **Kimper**, is a graduate of Pike County Central High School. He is a member of the Academic Team and technology editor for the school yearbook.

Adam Oliver Stanley, the son of Michael and Billie K. Stanley of **Pikeville**, is a graduate of Pikeville High School.

To be eligible for the Regional Honors Scholarship, the applicant must be admitted to MSU as an entering freshman; be a graduate of a high school within MSU's Kentucky service region; be recommended by the high school; be the highest or second highest ranking academic achiever coming to MSU from that high school and have at least a cumulative 3.50 grade point average (on a 4.0 scale) based on seven semesters of work.

Applications and information on scholarships and grant programs at MSU are available from the Office of Admissions, MSU, Morehead, KY 40351-1689. The toll-free number is (800) 585-MSU1 (6781).

####

trt

News

University Communications

Pauline Young, Director

www.moreheadstate.edu

Morehead State University

UPO Box 1100

Morehead, KY 40351-1689

(606) 783-2030

Aug. 15, 2003

FOR IMMEDIATE RELEASE

MOREHEAD, Ky.--- Morehead State University has announced that Ashlee Jean Gordon of **East Moline, Ill.**, is among those students receiving a Tuition Assistance Grant for the fall semester.

Gordon, the daughter of Sue Gordon, is a graduate of United Township High School. She was a member of the National Honor Society, Rotary Club and Interact Club. Gordon was active in the Key and Letterman Clubs.

To be eligible for the Tuition Assistance Grant, the applicant must be an out-of-state student. The candidate must be admitted as an entering freshman or transfer student and have a minimum ACT composite of 20.

Applications and information on scholarships and grant programs at MSU are available from the Office of Admissions, MSU, Morehead, KY 40351-1689. The toll-free number is (800) 585-MSU1 (6781).

####

ajb

News

University Communications

Pauline Young, Director

www.moreheadstate.edu

Morehead State University

UPO Box 1100

Morehead, KY 40351-1689

(606) 783-2030

Aug. 15, 2003

FOR IMMEDIATE RELEASE

MOREHEAD, Ky.---Morehead State University's Kentucky Zeta Chapter of Sigma Phi Epsilon has received the prestigious Edwin Buchanan Cup Award for outstanding chapter excellence.

The award was announced last evening (Aug. 14) at the national conference, held in San Antonio, Texas.

Morehead State is one of 270 active chapters in the nation. Bernal Atkins, **Sandy Hook** junior, is the chapter president.

Named for a former grand president of Sigma Phi Epsilon, the Buchanan award is the most coveted honor granted to a chapter for overall excellence in all areas, according to Gary Adkins of Morehead, MSU chapter adviser.

####

News

University Communications

Pauline Young, Director

www.moreheadstate.edu

Morehead State University

UPO Box 1100

Morehead, KY 40351-1689

(606) 783-2030

Aug. 15, 2003

FOR IMMEDIATE RELEASE

MOREHEAD, Ky.---Book lovers of all ages should plan to take advantage of a special fair at Morehead State University Monday through Friday, Sept. 8-12.

"Hats Off to Reading!" book fair, hosted by MSU's chapter of the Collegiate Middle Level Association, will be held from 8 a.m. to 5 p.m. each day in 305 Ginger Hall.

Scholastic books will be available for readers of all ages. Popular titles as well as classics and non-fiction books will be offered for purchase as a gift for a child or to enhance a personal library.

The Collegiate Middle Level Association provides professional development for students who are majoring in middle grades education. Organized in 2002, the group hopes to earn money to send members to the National Middle School Convention in Atlanta in November.

Rachel Moore, **Isonville** senior, president of the MSU chapter. Joyce Minor, instructor of education, is the club's faculty adviser.

Additional information is available by calling Minor at (606) 783-2837.

####

sas

News

University Communications

Pauline Young, Director

www.moreheadstate.edu

Morehead State University

UPO Box 1100

Morehead, KY 40351-1689

(606) 783-2030

Aug. 15, 2003

FOR IMMEDIATE RELEASE

MOREHEAD, Ky.---The Kentucky Manufacturing Assistance Center (KMAC) will be offering three seminars on the Morehead State University campus in the coming weeks.

In conjunction with MSU's Department of Industrial Education and Technology, KMAC will offer seminars on lean simulation, value stream mapping and workplace organization.

The "Lean Simulation Overview" is set for Thursday, Aug. 21. This seminar will cover the principles and techniques of lean manufacturing and continuous improvement. These processes assist manufacturers in waste elimination and increased productivity.

On Thursday, Aug. 28, the "Value Stream Mapping" class will be held. This process is a tool that can be used to map a company's current state, analyze and find non-value-added activities and draw a future state map that eliminates waste.

The "Visual Workplace Organization" or 5S system is scheduled for Thursday, Sept. 4. This series of activities is designed to improve workplace organization and standardization with a focus on communication, organization, efficiency and productivity.

KMAC offers seminars and workshops aimed at helping small manufacturing companies in Kentucky to increase competitiveness, reduce costs and improve profit margins. KMAC invites IET faculty/staff and graduate students to participate in seminars at no cost.

Additional information is available from the KMAC Web site at www.kmac-mep.org or by calling (800) 637-4634.

####

ajb

News

University Communications

Pauline Young, Director

www.moreheadstate.edu

Morehead State University

UPO Box 1100

Morehead, KY 40351-1689

(606) 783-2030

Aug. 15, 2003

FOR IMMEDIATE RELEASE

MOREHEAD, Ky.---Folk singer/songwriter Annie Gallup along with the East Tennessee bluegrass band Blue Moon Rising will perform at the next "Americana Crossroads Live" concert on Friday, Aug. 29, at Morehead State University.

Gallup will open the show at 7:30 p.m. in Duncan Recital Hall in Baird Music Hall on the campus. According to her fans, Gallup's writing "is unabashedly imaginative and richly sensual. She is a teller of short, elaborate tales, song-length works of fiction that sparkle with the complexity and polish of poetry. Tightly packed lyrical strands that crackle with intelligence and spry word play and pulse with insistent rhythm."

Since releasing her first CD in 1994, Gallup has been touring the country and writing her own songs. The Ann Arbor, Mich., native has been playing guitar since receiving one for her 10th birthday.

Blue Moon Rising will take the stage at 8:30 p.m. The East Tennessee band derived its name from a newspaper article commemorating the life of "The Father of Bluegrass Music," Bill Monroe.

The group's new CD on Crosscut Records "Where Wood Meets Steel," was the band's first nationwide release.

Morehead State Public Radio and the Kentucky Center for Traditional Music present the "Americana Crossroads Live" concert series. Doors open at 7 p.m. and there will be a 15-minute intermission between performances. Those attending the event are eligible for door prizes.

Morehead State Public Radio will record the concert for broadcast on Thursday, Sept. 4, at 8 p.m.

Toyota Motor Manufacturing of Georgetown is a corporate sponsor of the series with additional sponsorship by KCTM, Kentucky Folk Art Center, Farmer's Mercantile Boots and Shoes, Poppy Mountain Bluegrass Festival and Root-A-Baker's Bakery.

The "Best of Americana Crossroads Live, Vol. III" CD is available, featuring 18 songs from the series.

Additional information about the concert or the CD is available by calling MSPR at (800) 286-9659 or (606) 783-2001; or log on to MSPR's Web site at www.msradio.com.

#####

ajb

CONCERT AT MSU

Folk singer/songwriter Annie Gallup will open the next "Americana Crossroads Live" concert on Friday, Aug. 29, at 7:30 p.m. at Morehead State University. The East Tennessee bluegrass band Blue Moon Rising will take the stage at 8:30 p.m. in Duncan Recital Hall. Doors open for the event at 7 p.m. "Americana Crossroads Live" is a presentation of Morehead State Public Radio and the Kentucky Center for Traditional Music. Additional information is available by calling (606) 783-2001 or (800) 286-9659; or by visiting the Web site at www.msuradio.com.

(File photo)

8-04-03ajb

MSU is an affirmative action, equal opportunity educational institution.



Annie Gallup

News

University Communications

Pauline Young, Director

www.moreheadstate.edu

Morehead State University

UPO Box 1100

Morehead, KY 40351-1689

(606) 783-2030

Aug. 18, 2003

FOR IMMEDIATE RELEASE

MOREHEAD, Ky.---Fans of the popular “Americana Crossroads Live” concerts at Morehead State University can now bring home the latest “Best of” compilation on compact disc.

“Best of Americana Crossroads Live, Vol. 3,” is now available for purchase from Morehead State Public Radio. The CD includes 18 tracks from past “Americana” performers, including Melvin Goins and Windy Mountain, Jeff Black, J.D. Crowe and The New South, Rod Picott, Claire Holley and Kate Campbell.

The newest CD, as well as volumes one and two, features more than an hour of music and a four-page booklet with information about the performers.

“Americana Crossroads Live” concerts, presented by MSPR and the Kentucky Center for Traditional Music, are held in Duncan Recital Hall on the MSU campus. The concerts, held the last Friday of each month, feature Bluegrass, folk and traditional music.

The CDs are \$17.50, which includes shipping and handling. Order may be placed through MSPR at wmky@moreheadstate.edu, or by calling (800) 286-9659. Checks or money orders may be mailed to MSPR, 132 Breckinridge Hall, Morehead State University, Morehead, Ky., 40351-1689.

Additional information on the CDs, including audio samples, are available online at www.moreheadstate.edu/wmky/ac_live_cd.htm.

####

sas

News

University Communications

Pauline Young, Director

www.moreheadstate.edu

Morehead State University

UPO Box 1100

Morehead, KY 40351-1689

(606) 783-2030

Aug. 18, 2003

FOR IMMEDIATE RELEASE

MOREHEAD, Ky.---The Kentucky Folk Art Center will host a new exhibition, "Spring & Fall: Neon as an Art Form," by Morehead artist Jeffery Hill, Sept. 4 - 28. The public is invited to an opening reception on Thursday, Sept. 4, from 6 to 8 p.m. at the center.

Spring & Fall is a series of eight, hanging paintings. The ninth wall hanging, titled Heaven and Hell, was inspired by Hill's recent interview of Kentucky folk artists Ronald and Jessie Cooper. Videotape showing the creation of one of the series' sculptures is included with the artwork.

Hill also will display some of his earlier neon work, some of which will be for sale.

A Detroit, Mich., native, Hill is an assistant professor of mass communications at Morehead State University. He received a grant from the Art Alliance for Contemporary Glass to create this body of work.

In the early 1990s, he was a practicing neon artist, exhibiting in his hometown and in Canada. His body of neon sculpting work has consisted of freestanding sculpture, mixed media, antique renovation, furniture building and canvas painting.

"The imperfections of Spring & Fall, birth and death, are explored in this series by using the simplest form of identification – color and color gradation – the light which is given by the neon tubes becomes the beginning point of the pieces to allow the season to cycle through in all its imperfect glory," Hill says of this series. "As Joseph Campbell has said 'The world is perfect. It's a mess'."

The artist describes the sculpture, Heaven and Hell, as "done in solid colors to show the perfection of Heaven and the perfection of Hell."

The Kentucky Folk Art Center is a cultural, educational and economic development service of Morehead State University. Located at 102 West First Street in Morehead, the center is open Monday-Saturday, 9 a.m. to 5 p.m., and Sundays, 1-5 p.m.

Additional information is available from the Center's Web site at www.kyfolkart.org, or by calling (606) 783-2204.

####

Photo

University Communications

Pauline Young, Director

www.moreheadstate.edu

Morehead State University

UPO Box 1100

Morehead, KY 40351-1689

(606) 783-2030

MSPR WINS NATIONAL AWARD

Public Radio News Directors Incorporated (PRNDI) honored Morehead State Public Radio (MSPR) and its newscast, Mountain Edition, with a first place award in the "2002 Student Newscast Competition." The newscast featured the work of several MSU students and was anchored by Megan George of **Olive Hill**. A public radio network based in New Bern, N.C, currently employs George. The competition was open to student broadcasters nationwide. MSPR's news director Charles Compton accepted the award for the University at the annual convention held in Montreal, Canada, in July. MSPR has now won PRNDI awards in three of the past five years.

(MSU photo by Tim Holbrook)

8-18-03ajb

MSU is an affirmative action, equal opportunity educational institution.



News

University Communications

Pauline Young, Director

www.moreheadstate.edu

Morehead State University

UPO Box 1100

Morehead, KY 40351-1689

(606) 783-2030

Aug.18, 2003

FOR IMMEDIATE RELEASE

MOREHEAD, Ky.---Morehead State University has announced that Sarah K. Meeks of **Frankfort** is among those students receiving a Regents Scholarship for the fall semester.

Meeks, the daughter of Steve and Rita Meeks, is a graduate of Frankfort High School. She is a member of National Beta Club, National Honor Society and the Spanish Honor Society. Meeks is active in SADD, and a member of the yearbook staff, as well as the Nazarene youth group, where she serves on the youth council.

To be eligible for the Regents Scholarship, applicants must be admitted to MSU as an entering freshman, have an admissions index of 500 or more and have a minimum ACT composite of 20.

Applications and information on scholarships and grant programs at MSU are available from the Office of Admissions, MSU, Morehead, KY 40351-1689. The toll-free number is (800) 585-MSU1 (6781).

####

ajb

News

University Communications

Pauline Young, Director

www.moreheadstate.edu

Morehead State University

UPO Box 1100

Morehead, KY 40351-1689

(606) 783-2030

Aug.18, 2003

FOR IMMEDIATE RELEASE

MOREHEAD, Ky.---Morehead State University has announced that Nicholas T. Bobrowski of **Greensburg** is among those students receiving a Regents Scholarship for the fall semester.

Bobrowski, the son of Garth Bobrowski, is a graduate of Green County High School. He was a member of National Honor Roll, an All American Scholar, and graduated in the top 15 percent of his class. Bobrowski has received the President's Award for Educational Excellence, Green County High School Citizenship Award and the Lincoln Trail Youth Salute.

To be eligible for the Regents Scholarship, applicants must be admitted to MSU as an entering freshman, have an admissions index of 500 or more and have a minimum ACT composite of 20.

Applications and information on scholarships and grant programs at MSU are available from the Office of Admissions, MSU, Morehead, KY 40351-1689. The toll-free number is (800) 585-MSU1 (6781).

####

ajb

News

University Communications

Pauline Young, Director

www.moreheadstate.edu

Morehead State University

UPO Box 1100

Morehead, KY 40351-1689

(606) 783-2030

Aug.18, 2003

FOR IMMEDIATE RELEASE

MOREHEAD, Ky.---Morehead State University has announced that Jessica R. Caudill of **Clearfield** is among those students receiving a Regents Scholarship for the fall semester.

Caudill, the daughter of Mark and Tammy Caudill, is a graduate of Rowan County Senior High School. She is a member of "Who's Who Among American High School Students," earned the Presidential Award and all state academics. Caudill volunteers with the shriners, the elderly and at a local daycare center.

To be eligible for the Regents Scholarship, applicants must be admitted to MSU as an entering freshman, have an admissions index of 500 or more and have a minimum ACT composite of 20.

Applications and information on scholarships and grant programs at MSU are available from the Office of Admissions, MSU, Morehead, KY 40351-1689. The toll-free number is (800) 585-MSU1 (6781).

####

ajb

News

University Communications

Pauline Young, Director

www.moreheadstate.edu

Morehead State University

UPO Box 1100

Morehead, KY 40351-1689

(606) 783-2030

Aug.18, 2003

FOR IMMEDIATE RELEASE

MOREHEAD, Ky.---Morehead State University has announced that Travis A. Roark of **Ashland** is among those students receiving a Regents Scholarship for the fall semester.

Roark, the son of Rick and Tonneta Roark, is a graduate of Raceland High School. He is a member of Beta Club, received the "All A's" award in physics and pre-calculus and graduated with honors. Roark earned honorable mention all state in football, was voted "Mr. Football" by his class and was all area and all district in baseball.

He has signed to play football with MSU.

To be eligible for the Regents Scholarship, applicants must be admitted to MSU as an entering freshman, have an admissions index of 500 or more and have a minimum ACT composite of 20.

Applications and information on scholarships and grant programs at MSU are available from the Office of Admissions, MSU, Morehead, KY 40351-1689. The toll-free number is (800) 585-MSU1 (6781).

####

ajb

News

University Communications

Pauline Young, Director

www.moreheadstate.edu

Morehead State University

UPO Box 1100

Morehead, KY 40351-1689

(606) 783-2030

Aug. 18, 2003

FOR IMMEDIATE RELEASE

MOREHEAD, Ky.---Morehead State University has announced that Jessica L. Newton of **Yerkes** is among those students receiving a Regents Scholarship for the fall semester.

Newton, the daughter of Robert Newton, is a graduate of Perry County Central High School. She is a member of the honor roll.

To be eligible for the Regents Scholarship, applicants must be admitted to MSU as an entering freshman, have an admissions index of 500 or more and have a minimum ACT composite of 20.

Applications and information on scholarships and grant programs at MSU are available from the Office of Admissions, MSU, Morehead, KY 40351-1689. The toll-free number is (800) 585-MSU1 (6781).

####

ajb

News

University Communications

Pauline Young, Director

www.moreheadstate.edu

Morehead State University

UPO Box 1100

Morehead, KY 40351-1689

(606) 783-2030

Aug. 18, 2003

FOR IMMEDIATE RELEASE

MOREHEAD, Ky.---Morehead State University has announced that Katie Jean Stacy of **Hebron** is among those students receiving a Regents Scholarship for the fall semester.

Stacy, the daughter of Paul and Judy Stacy, is a graduate of Conner High School. A member of the Women of Conner, she received the student of the month award, a congressional proclamation for the National Honor Society service project and volunteers as a girls' soccer coach for the Boone County Youth Soccer Association.

To be eligible for the Regents Scholarship, applicants must be admitted to MSU as an entering freshman, have an admissions index of 500 or more and have a minimum ACT composite of 20.

Applications and information on scholarships and grant programs at MSU are available from the Office of Admissions, MSU, Morehead, KY 40351-1689. The toll-free number is (800) 585-MSU1 (6781).

####

ajb

News

University Communications

Pauline Young, Director

www.moreheadstate.edu

Morehead State University

UPO Box 1100

Morehead, KY 40351-1689

(606) 783-2030

Aug. 18, 2003

FOR IMMEDIATE RELEASE

MOREHEAD, Ky.---Morehead State University has announced that Matthew A. Gann of **Pineville** is among those students receiving a Regents Scholarship for the fall semester.

Gann, the son of Kenny and Jan Gann, is a graduate of Bell County High School. He is a member of National Honor Society and a volunteer instructor for "first tee of Pine Mountain."

To be eligible for the Regents Scholarship, applicants must be admitted to MSU as an entering freshman, have an admissions index of 500 or more and have a minimum ACT composite of 20.

Applications and information on scholarships and grant programs at MSU are available from the Office of Admissions, MSU, Morehead, KY 40351-1689. The toll-free number is (800) 585-MSU1 (6781).

####

ajb

News

University Communications

Pauline Young, Director

www.moreheadstate.edu

Morehead State University

UPO Box 1100

Morehead, KY 40351-1689

(606) 783-2030

Aug.18, 2003

FOR IMMEDIATE RELEASE

MOREHEAD, Ky.---Morehead State University has announced that Rhea Ashley Evans of **Grayson** is among those students receiving a Regents Scholarship for the fall semester.

Evans, the daughter of “Bo” and Ruby Evans, is a graduate of East Carter High School. She is a member of all district band, earned the “John Philip Sousa Award” and distinguished solo and ensemble in KMEA competitions. Evans is a member of the Grayson Nazarene Church, president of the East Carter Young Democrats and has been a volunteer at King’s Daughters Medical Center.

To be eligible for the Regents Scholarship, applicants must be admitted to MSU as an entering freshman, have an admissions index of 500 or more and have a minimum ACT composite of 20.

Applications and information on scholarships and grant programs at MSU are available from the Office of Admissions, MSU, Morehead, KY 40351-1689. The toll-free number is (800) 585-MSU1 (6781).

####

ajb

Tips

University Communications

Pauline Young, Director

www.moreheadstate.edu

Morehead State University

UPO Box 1100

Morehead, KY 40351-1689

(606) 783-2030

HIGHLIGHTS AT MOREHEAD STATE UNIVERSITY

(Aug. 24-30)

Tuesday, Aug. 26

Central Kentucky Blood Center blood drive, Button Drill Room, 11 a.m. – 5 p.m., also Aug. 27. Additional information: (800) 775-2522.

Wednesday, Aug. 27

Step Afrika, Button Auditorium, 8 p.m., free. Additional information: (606) 783-2071.

Art exhibit: “Divine Object: The Venerated Image” by Kristy Deetz, main gallery, Claypool Young Art Building through Sept. 26, opening reception, 6-8 p.m., free. Additional information: (606) 783-2766.

Friday, Aug. 29

Soccer: MSU vs. Wright State, Jayne Stadium, 7 p.m., free. Additional information: (606) 783-2589.

“Americana Crossroads Live,” featuring Annie Gallup, and Blue Moon Rising, Duncan Recital Hall, 7:30 p.m., free. Additional information: (606) 783-2001.

#####

8-19-03sas

News

University Communications

Pauline Young, Director

www.moreheadstate.edu

Morehead State University

UPO Box 1100

Morehead, KY 40351-1689

(606) 783-2030

Aug. 19, 2003

FOR IMMEDIATE RELEASE

MOREHEAD, Ky.---The dynamic dance company Step Afrika! will give a special performance at Morehead State University on Wednesday, Aug. 27.

Step Afrika! is a collaborative project between the Soweto Dance Theatre, based in South Africa, and American dancers. The ensemble specializes in the history, development and performance of stepping.

Its repertoire includes stepping, tap, South African dances (including Zulu and gumboot), clogging, hip-hop, house and freestyle dancing.

Critics describe the company's performances as a "high energy brand of precision stepping," and its individual dancers as "an enormously powerful ensemble."

In addition to performing in North America, Europe and South Africa, the members of Step Afrika! regularly conduct residencies and clinics in schools and community-based organizations across the U.S., and offer year-round classes on the traditions of stepping.

The MSU performance will be held at 8 p.m. in Button Auditorium. It is free and open to the public.

Additional information is available by calling MSU's Student Activities Council at (606) 783-2071.

#####

sas

Photo

University Communications

Pauline Young, Director

www.moreheadstate.edu

Morehead State University

UPO Box 1100

Morehead, KY 40351-1689

(606) 783-2030

STEP AFRIKA! COMING TO MSU

The high-energy dance company Step Afrika! will perform at Morehead State University at 8 p.m. on Wednesday, Aug. 27, in Button Auditorium. Step Afrika! is recognized as a leader in arts education, specializing in the history, development and performance of stepping. Included in the company's repertoire besides stepping are tap, South African dances (including Zulu and gumboot), clogging, hip-hop, house and freestyle dancing. Sponsored by MSU's Student Activities Council, the show is free and open to the public. Additional information is available by calling the SAC office at (606) 783-2071.

(MSU photo)

8-19-03sas

MSU is an affirmative action, equal opportunity educational institution.



News

University Communications

Pauline Young, Director

www.moreheadstate.edu

Morehead State University

UPO Box 1100

Morehead, KY 40351-1689

(606) 783-2030

Aug. 20, 2003

FOR IMMEDIATE RELEASE

MOREHEAD, Ky.---Morehead State Public Radio's James "Buck" Hawkins, **Hillsboro, Ohio**, senior, has received a \$5,000 Bayliss Radio Scholarship plus a \$1,000 Kentucky Broadcasters Association's Harry Barfield Scholarship for the 2003-04 school year.

"Buck is an all-around great student and we're very proud of what he's achieved. He has worked very hard and I know these scholarships will benefit his continued education at Morehead State University," said MSPR General Manager Paul Hitchcock. "An excellent student and hard worker. These awards couldn't have been presented to a better candidate."

Established in 1985, the John Bayliss Broadcast Foundation seeks to perpetuate the memory of radio executive Bayliss and his many contributions to the business. The underlying theme of the Foundation is the development of young talent for the radio industry so the broadcasting principles Bayliss stood for live on in his name.

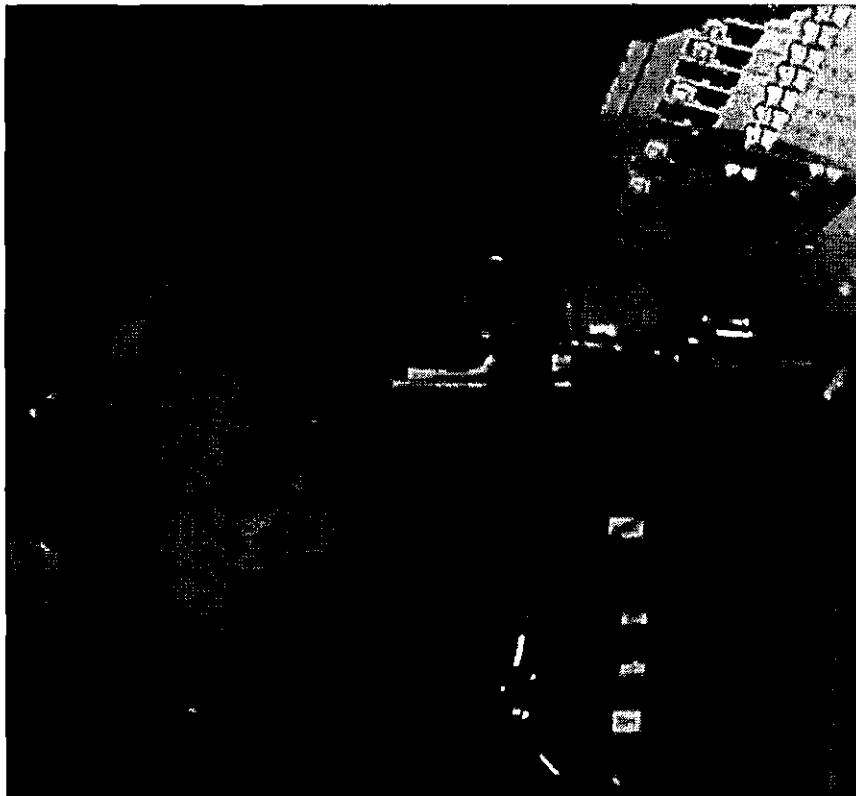
The Bayliss Foundation Board of Directors annually awards up to 15 scholarships, each in the amount of \$5,000. To be eligible, applicants must be attending an institution in the United States, entering their junior or senior year in college, or applying to graduate school. They must be preparing for a career in the radio industry.

The student must have at least a 3.0 grade point average. Applicants must provide a typewritten application, an official college transcript and three letters of recommendation written by non-relatives who can evaluate their scholastic and personal strengths. The student must submit a two-page typewritten essay describing his/her broadcasting goals as they relate to radio and the ways in which they hope to achieve these goals.

The KBA earmarked a total of \$7,000 in scholarships aid to college students in Kentucky for the upcoming school year. During the first 12 years of the Barfield Scholarship program, KBA has given a total of \$50,000.

#####

ajb



Photo

University Communications

Pauline Young, Director

www.moreheadstate.edu

Morehead State University

UPO Box 1100

Morehead, KY 40351-1689

(606) 783-2030

MSU ACCEPTS CONTRIBUTION FROM LOCAL BUSINESS

Representatives from Sealmaster Bearings visited the Morehead State University campus recently to present the University with its annual contribution. MSU President Ronald G. Eaglin, accepted the \$5,000 check from Don Cherry, plant manager. On hand for the presentation were, from left, Kevin Carpenter, human resources director at Sealmaster, Cherry, Dr. Eaglin, and Barbara Ender, MSU's vice president for development. Sealmaster has been an avid supporter of MSU for 13 years.

(MSU photo by Tim Holbrook)

8-18-03py

MSU is an affirmative action, equal opportunity educational institution.



News

University Communications

Pauline Young, Director

www.moreheadstate.edu

Morehead State University

UPO Box 1100

Morehead, KY 40351-1689

(606) 783-2030

Aug. 20, 2003

FOR IMMEDIATE RELEASE

MOREHEAD, Ky.---Morehead State University has announced that Jeremy W. Troxell of **Prestonsburg** is among those students receiving an Alumni Award for the fall semester.

Troxell, the son of Shawn Troxell, is a graduate of Prestonsburg High School. A first place overall winner in the Literacy Passage for German in the Regional Foreign Language Festival, he was chosen all county chorus and honor choir. He is a member of the National Honor Society and National Honor Roll along with "Who's Who Among American High School Students."

To be eligible for the Alumni Award, at least one parent or grandparent of the applicant must be an MSU alumnus and an active member of the MSU Alumni Association. The candidate must be admitted as an entering freshman or transfer student and have a minimum ACT composite of 18.

Applications and information on scholarships and grant programs at MSU are available from the Office of Admissions, MSU, Morehead, KY 40351-1689. The toll-free number is (800) 585-MSU1 (6781).

####

ajb

News

University Communications

Pauline Young, Director

www.moreheadstate.edu

Morehead State University

UPO Box 1100

Morehead, KY 40351-1689

(606) 783-2030

Aug. 20, 2003

FOR IMMEDIATE RELEASE

MOREHEAD, Ky.---Morehead State University has announced that Christopher A. Lisle of **Jeffersonville** is among those students receiving a Leadership Award for the fall semester.

Lisle, the son of Maranda Lisle, is a graduate of Montgomery County High School. He is a member of the Kentucky Army National Guard and received certification in Web page design (Montgomery County ATC).

To be eligible for the Leadership Award, applicants must be admitted to MSU as an entering freshman; have exhibited strong leadership and achievement capabilities through school and community activities; have a minimum ACT composite of 18, and have a minimum 2.50 grade point average (on a 4.00 scale) based on seven semesters of work.

Applications and information on scholarships and grant programs at MSU are available from the Office of Admissions, MSU Morehead, KY 40351-1689. The toll-free number is (800) 585-MSU1 (6781).

####

ajb

News

University Communications

Pauline Young, Director

www.moreheadstate.edu

Morehead State University

UPO Box 1100

Morehead, KY 40351-1689

(606) 783-2030

Aug. 20, 2003

FOR IMMEDIATE RELEASE

MOREHEAD, Ky.---Morehead State University has announced that Tracy L. Coffee of **West Liberty** is among those students receiving a Leadership Award for the fall semester.

Coffee, the daughter of Mary Coffee, is a graduate of Morgan County High School. She has been listed in "Who's Who Among American High School Students" and the National Honor Society. She was a member of the MCHS volleyball team and earned all tournament awards for two years.

To be eligible for the Leadership Award, applicants must be admitted to MSU as an entering freshman; have exhibited strong leadership and achievement capabilities through school and community activities; have a minimum ACT composite of 18, and have a minimum 2.50 grade point average (on a 4.00 scale) based on seven semesters of work.

Applications and information on scholarships and grant programs at MSU are available from the Office of Admissions, MSU Morehead, KY 40351-1689. The toll-free number is (800) 585-MSU1 (6781).

####

trt

News

University Communications

Pauline Young, Director

www.moreheadstate.edu

Morehead State University

UPO Box 1100

Morehead, KY 40351-1689

(606) 783-2030

Aug. 20, 2003

FOR IMMEDIATE RELEASE

MOREHEAD, Ky.---Morehead State University has announced that Nigel Aaron Miller of **Corbin** is among those students receiving a Leadership Award for the fall semester.

Miller, the son of Gary Miller and Teresa Hill, is a graduate of Corbin High School.

To be eligible for the Leadership Award, applicants must be admitted to MSU as an entering freshman; have exhibited strong leadership and achievement capabilities through school and community activities; have a minimum ACT composite of 18, and have a minimum 2.50 grade point average (on a 4.00 scale) based on seven semesters of work.

Applications and information on scholarships and grant programs at MSU are available from the Office of Admissions, MSU Morehead, KY 40351-1689. The toll-free number is (800) 585-MSU1 (6781).

####

ajb

News

University Communications

Pauline Young, Director

www.moreheadstate.edu

Morehead State University

UPO Box 1100

Morehead, KY 40351-1689

(606) 783-2030

Aug. 20, 2003

FOR IMMEDIATE RELEASE

MOREHEAD, Ky.---Morehead State University has announced that Emmily D. Phillips of **Hillsboro** is among those students receiving a Leadership Award for the fall semester.

Phillips, the daughter of Velma Phillips, is a graduate of Fleming County High School. Recipient of her school's foreign language award, she has earned numerous citizenship awards and overall was awarded the "best work ethic."

To be eligible for the Leadership Award, applicants must be admitted to MSU as an entering freshman; have exhibited strong leadership and achievement capabilities through school and community activities; have a minimum ACT composite of 18, and have a minimum 2.50 grade point average (on a 4.00 scale) based on seven semesters of work.

Applications and information on scholarships and grant programs at MSU are available from the Office of Admissions, MSU Morehead, KY 40351-1689. The toll-free number is (800) 585-MSU1 (6781).

####

ajb

News

University Communications

Pauline Young, Director

www.moreheadstate.edu

Morehead State University

UPO Box 1100

Morehead, KY 40351-1689

(606) 783-2030

Aug. 20, 2003

FOR IMMEDIATE RELEASE

MOREHEAD, Ky.---Morehead State University has announced that Bethanie A. Skidmore of **Mt. Sterling** is among those receiving a Regional Honors Scholarship for the fall semester.

Skidmore, the daughter of James and Reva Skidmore, is a graduate of Montgomery County High School. She is a member of "Who's Who Among American High School Students," National Beta Club and National Honor Roll. Skidmore is a representative of the Daughters of American Revolution, Hugh O'Brian Youth Leadership and Montgomery County Teen Leadership groups.

To be eligible for the Regional Honors Scholarship, the applicant must be admitted to MSU as an entering freshman; be a graduate of a high school within MSU's Kentucky service region; be recommended by the high school; be the highest or second highest ranking academic achiever coming to MSU from that high school and have at least a cumulative 3.50 grade point average (on a 4.0 scale) based on seven semesters of work.

Applications and information on scholarships and grant programs at MSU are available from the Office of Admissions, MSU, Morehead, KY 40351-1689. The toll-free number is (800) 585-MSU1 (6781).

####

ajb

News

University Communications

Pauline Young, Director

www.moreheadstate.edu

Morehead State University

UPO Box 1100

Morehead, KY 40351-1689

(606) 783-2030

Aug. 20, 2003

FOR IMMEDIATE RELEASE

MOREHEAD, Ky.---Morehead State University has announced that David B. Wright of **Paintsville** is among those receiving a Regional Honors Scholarship for the fall semester.

Wright, the son of David and Paula Wright, is a graduate of Paintsville High School. He is a member of the Beta Club, student technology leadership program and Science Olympiad team. Wright received the "Art II" award, was a local art coal fair winner and has pieces of art in the Huntington Museum of Art. He is a member of the Paintsville Church of Christ youth group.

To be eligible for the Regional Honors Scholarship, the applicant must be admitted to MSU as an entering freshman; be a graduate of a high school within MSU's Kentucky service region; be recommended by the high school; be the highest or second highest ranking academic achiever coming to MSU from that high school and have at least a cumulative 3.50 grade point average (on a 4.0 scale) based on seven semesters of work.

Applications and information on scholarships and grant programs at MSU are available from the Office of Admissions, MSU, Morehead, KY 40351-1689. The toll-free number is (800) 585-MSU1 (6781).

####

ajb

News

University Communications

Pauline Young, Director

www.moreheadstate.edu

Morehead State University

UPO Box 1100

Morehead, KY 40351-1689

(606) 783-2030

Aug. 20, 2003

FOR IMMEDIATE RELEASE

MOREHEAD, Ky.---Morehead State University has announced that Ashley D. Hannah of **Leander** is among those receiving a Regional Honors Scholarship for the fall semester.

Hannah, the daughter of Danny and Vicki Hannah, is a graduate of Johnson Central High School. She is a member of the National Society of High School Scholars, an All American Scholar and maintained a perfect 4.0 grade-point-average. Hannah volunteers for the Salvation Army and local food drives. She is a member of the Southland 4-H club, where she earned the "Team Award."

To be eligible for the Regional Honors Scholarship, the applicant must be admitted to MSU as an entering freshman; be a graduate of a high school within MSU's Kentucky service region; be recommended by the high school; be the highest or second highest ranking academic achiever coming to MSU from that high school and have at least a cumulative 3.50 grade point average (on a 4.0 scale) based on seven semesters of work.

Applications and information on scholarships and grant programs at MSU are available from the Office of Admissions, MSU, Morehead, KY 40351-1689. The toll-free number is (800) 585-MSU1 (6781).

####

ajb

News

University Communications

Pauline Young, Director

www.moreheadstate.edu

Morehead State University

UPO Box 1100

Morehead, KY 40351-1689

(606) 783-2030

Aug. 20, 2003

FOR IMMEDIATE RELEASE

MOREHEAD, Ky.---Morehead State University has announced that Jared C. Hamilton of **Harold** is among those receiving a Regional Honors Scholarship for the fall semester.

Hamilton, the son of Lucia Hamilton, is a graduate of Betsy Layne High School. He is a member of the National Honor Society, Beta Club and student council. He has earned the school's calculus award, placed second in district in Math (quick recall) and received the U.S. Army Award for most math classes taken.

To be eligible for the Regional Honors Scholarship, the applicant must be admitted to MSU as an entering freshman; be a graduate of a high school within MSU's Kentucky service region; be recommended by the high school; be the highest or second highest ranking academic achiever coming to MSU from that high school and have at least a cumulative 3.50 grade point average (on a 4.0 scale) based on seven semesters of work.

Applications and information on scholarships and grant programs at MSU are available from the Office of Admissions, MSU, Morehead, KY 40351-1689. The toll-free number is (800) 585-MSU1 (6781).

####

ajb

News

University Communications

Pauline Young, Director

www.moreheadstate.edu

Morehead State University

UPO Box 1100

Morehead, KY 40351-1689

(606) 783-2030

Aug. 20, 2003

FOR IMMEDIATE RELEASE

MOREHEAD, Ky.---Morehead State University has announced that Derrick M. Jordan of **Grayson** is among those receiving a Regional Honors Scholarship for the fall semester.

Jordan, the son of Gary and Elizabeth, is a graduate of East Carter High School. He received the Student Athlete Academic Award for basketball and football. Jordan received the "Principal's Award" for perfect attendance.

To be eligible for the Regional Honors Scholarship, the applicant must be admitted to MSU as an entering freshman; be a graduate of a high school within MSU's Kentucky service region; be recommended by the high school; be the highest or second highest ranking academic achiever coming to MSU from that high school and have at least a cumulative 3.50 grade point average (on a 4.0 scale) based on seven semesters of work.

Applications and information on scholarships and grant programs at MSU are available from the Office of Admissions, MSU, Morehead, KY 40351-1689. The toll-free number is (800) 585-MSU1 (6781).

####

ajb

News

University Communications

Pauline Young, Director

www.moreheadstate.edu

Morehead State University

UPO Box 1100

Morehead, KY 40351-1689

(606) 783-2030

Aug. 22, 2003

FOR IMMEDIATE RELEASE

MOREHEAD, Ky.---Dr. Sylvia Henneberg, assistant professor of English, has been selected as the new director of Morehead State University's Interdisciplinary Women's Studies Program, organizationally located within the Caudill College of Humanities.

The program offers an undergraduate minor in Women's Studies that requires students to take courses across multiple academic disciplines. Regardless of their major, students are introduced to the new scholarship on women in such areas as sociology, history, psychology, literature, politics, political philosophy and health.

This program is the first of three similar initiatives by the college to promote interdisciplinary collaboration, community partnership and diversity. An Interdisciplinary Appalachian Heritage Program started last fall, and an Interdisciplinary Cultural Studies Program is scheduled to begin in Spring 2003.

Dr. Henneberg earned a doctorate in English from the University of Georgia as well as several diplomas from French and German universities. During 2001-02, she was awarded the prestigious American Postdoctoral Research Leave Fellowship by the American Association of University Women to conduct research at Ohio State University.

She has published several articles and has made numerous presentations on a diverse range of women's issues portrayed in literature. She is currently writing a book to be titled "The Creative Crone: Aging in the Poetry of May Sarton and Adrienne Rich."

Dr. Henneberg has taught a broad range of composition, rhetoric and literature courses as well as "Honors American Literature from 1865 to the Present," and "Honors Literature and Composition: 'Pushing the Limits of Genre'." She has established an impressive record of professional service to the University, has been actively involved with the Women's Studies Program since 1999, and assisted in planning the Wilma E. Grote Symposium for the Advancement of Women from 1999-2001.

In addition to coordinating the minor in Women's Studies, Dr. Henneberg will work closely with a campus wide advisory council, conduct program assessments and reviews, recruit students, arrange on-campus lectures and other activities and plan field trips to related events.

(MORE)

Women's Studies director
2-2-2-2-2

She also will collaborate with other campus interdisciplinary programs, develop grant proposals, manage an operating budget, promote the Wilma Grote Lecture Series, and serve as a member of the Caudill College dean's leadership-management team.

"This is an exciting time for Women's Studies," explained Dr. Michael Seelig, dean of the college. "Last year there was a high level of excitement and increased activities under the leadership of Dr. Clarenda Phillips, associate professor of sociology." Dr. Phillips is conducting research this year at the University of Kentucky on a Fellowship awarded by the National Institute of Mental Health.

"Dr. Henneberg hopes to increase the external funds needed to support the program through grant writing and fund raising activities," Dr. Seelig added.

Additional information about the program may be obtained from Dr. Henneberg by calling her at (606) 783-5288.

####



News

University Communications

Pauline Young, Director

www.moreheadstate.edu

Morehead State University

UPO Box 1100

Morehead, KY 40351-1689

(606) 783-2030

Aug. 22, 2003

FOR IMMEDIATE RELEASE

MOREHEAD, Ky.---Three Morehead State University staff members have completed the College Business Management Institute (CBMI), sponsored by the Southern Association of College and University Business Officers and the University of Kentucky.

Completing the three-year institute were: Joe Hunsucker, director of internal audits, and Dana Baldrige, director of payroll, in the Division of Administration and Fiscal Services; and Kathy Cox, planning and budget analyst in the Division of Planning and Technology.

Since 1953, CBMI has been offering the intensive course of study in business and financial management for administrators of colleges and universities. The program provides participants an overview of current issues and procedures applicable to institutions of higher education, large and small, public and private.

Ranging from entry level to advanced topics, faculty who are practicing administrators and leaders in their fields teach approximately 60 courses.

The institute is designed to provide participants with the latest issues and hottest topics in higher education; to develop professional relationships with colleagues at other institutions; to study administrative issues specific to higher education; to learn how other institutions deal with administrative problems; and to gain a broader perspective of higher education business administration.

####

ajb

News

University Communications

Pauline Young, Director

www.moreheadstate.edu

Morehead State University

UPO Box 1100

Morehead, KY 40351-1689

(606) 783-2030

Aug. 25, 2003

FOR IMMEDIATE RELEASE

MOREHEAD, Ky.---After three years of planning, Morehead State University is ready to take its first big step toward entering the space age.

Two public events are scheduled Tuesday, Sept. 2, to officially launch construction of the first phase of MSU's Space Science Center, a \$3 million space tracking system.

U.S. Rep. Harold (Hal) Rogers, (R-KY), will be the featured speaker at a 10:20 a.m. convocation in Button Auditorium. His remarks will center on the project's potential impact on the University and its service region. Rogers arranged most of the tracking system's cost with federal appropriations.

A groundbreaking ceremony for the space tracking system will be held at 1:30 p.m. near Nunn Hall.

"This will be a historic day for Morehead State," said MSU President Ronald G. Eaglin. "We are very excited about the potential of this project, not only for our current students but for those to come, and for this opportunity to thank Congressman Rogers for his wonderful support."

The space tracking system, which will be located on a ridge top overlooking Eagle Lake, will support research and radio frequency astrophysics and satellite telecommunications. Once completed, the University hopes to revolutionize its science curriculum and to stimulate high-tech economic development opportunities in the region.

Congressman Rogers placed funding for the project in the annual budgets of the Small Business Administration and NASA. Other MSU partners in the project are the Kentucky National Science Foundation Experimental Program to Stimulate Competitive Research (EPSCoR), Kentucky Science and Engineering Foundation, National Science Foundation and the Kentucky Transportation Cabinet.

A sign will be installed marking the area where work has begun to improve an existing road that will provide access to the site of the tracking system's antenna. R.L.Caudill Construction, Inc., of Owingsville is building the road at a cost of \$267,700.

The MSU Space Science Center is a joint effort of the College of Science and Technology and the Institute for Regional Analysis and Public Policy.

####

MSU is an affirmative action, equal opportunity educational institution.

News

University Communications

Pauline Young, Director

www.moreheadstate.edu

Morehead State University

UPO Box 1100

Morehead, KY 40351-1689

(606) 783-2030

Aug. 26, 2003

FOR IMMEDIATE RELEASE

MOREHEAD, Ky.---When she was in elementary school, Pamela K. Owens dreamed of becoming a published writer. Now the dream has come true for the Morehead State University graduate student.

"The ABC's of Life for Children and Adults" is now available in bookstores and on the Web at www.XulonPress.com. For her first writing project, Owens has a collection of short stories, essays and poems promoting Christian concepts, such as honesty, decency and a strong work ethic.

A venture that was approximately three years in the making, some of the works, Owens noted, were completed in 2000 while working on a certification with the Institute of Children's Literature in West Redding, Conn. She also designed the layout and did the art work.

The book has been more than a labor of love; it has been therapeutic as well. "The book promotes positive values in young people," Owens said. "There is so much evil out there, we need to get back to the basics."

She has carried the concept of promoting biblical principles and morals throughout the book. Even in the title, each letter depicts a purpose: A for abolishing apathetic attitudes; B is building biblical behavior patterns and C for choosing a Christ-like character.

A Boyd County native, Owens graduated from Fairview High School, worked for the Boyd County Public Library and King's Daughters Medical Center in Ashland, while taking classes at Ashland Community College where she completed an associate degree.

She earned a bachelor's degree from Marshall University in Huntington, W.Va., in 1986 while majoring in journalism-public relations, with minors in English, psychology and political science. She then moved to Nashville where she worked for the Jean and Alexander Heard Library at Vanderbilt University.

Before beginning graduate studies, she also worked for Harris Publishing and Thomas Nelson Publishers.

(MORE)

MSU student publishes book
2-2-2-2-2

In the spring, Owens completed a master's degree in adult and higher education, specializing in counseling, at Morehead State. She is continuing her studies by taking classes for the education specialist degree with hopes of pursuing a Ph.D. degree in counseling and psychology.

She believes her past experiences will allow her to help others. She also has completed coursework in the marriage and family therapy program with Trevecca Nazarene University and worked as a volunteer with Cottage Cove Ministries.

Additional information is available from Owens by calling (606) 783-3212 or sending a message to her at pkowenma@yahoo.com.

####

Photo

University Communications

Pauline Young, Director

www.moreheadstate.edu

Morehead State University

UPO Box 1100

Morehead, KY 40351-1689

(606) 783-2030

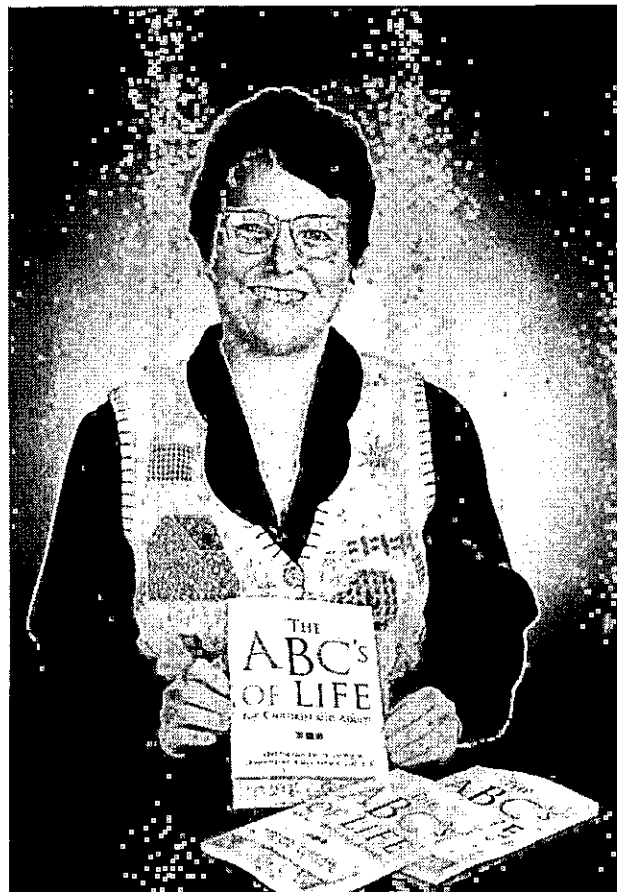
MSU STUDENT PUBLISHES BOOK

Pamela K. Owens of Ashland, a Morehead State University graduate student, has had a dream come true. She saw the release of her first book, "The ABC's of Live for Children and Adults." The book is a collection of short stories, essays and poems promoting Christian concepts, such as honesty, decency and a strong work ethic. Owens, who earned a master's degree from MSU in the spring, is working on an education specialist degree and would like to obtain a Ph.D. degree in counseling and psychology.

(MSU photo by Tim Holbrook)

8-26-03py

MSU is an affirmative action, equal opportunity educational institution.



Tips

University Communications

Pauline Young, Director

www.moreheadstate.edu

Morehead State University

UPO Box 1100

Morehead, KY 40351-1689

(606) 783-2030

HIGHLIGHTS AT MOREHEAD STATE UNIVERSITY

(Aug. 31-Sept. 6)

Sunday, Aug. 31

Soccer: MSU vs. Georgetown, Jayne Stadium, 2 p.m., free. Additional information:
(606) 783-2589.

Monday, Sept. 1

Labor Day holiday, no classes or office hours. Additional information: (606) 783-2008.

Tuesday, Sept. 2

Space Science Center convocation, Button Auditorium, 10:20 a.m., free. Additional information:
(606) 783-2030.

Groundbreaking: Space Science Center tracking system, Nunn Hall vicinity, 1:30 p.m., free.
Additional information: (606) 783-2030.

Wednesday, Sept. 3

Magician Mike Super, Button Auditorium, 8 p.m., free. Additional information:
(606) 783-2071.

Thursday, Sept. 4

Art Exhibit: "Spring and Fall, Neon as an Art Form," Adkins Gallery, Kentucky Folk Art Center,
through Dec. 31; opening reception, Sept. 4, 6-8 p.m., free. Additional information:
(606) 783-2004.

Friday, Sept. 5

Soccer: MSU vs. Appalachian State, Jayne Stadium, 5 p.m., free. Additional information:
(606) 783-2589.

Saturday, Sept. 6

Tailgate Party, White's Lot near Jayne Stadium, 2 p.m., free. Additional information:
(606) 783-2071.

Football: MSU vs. Dayton, Jayne Stadium, 3:30 p.m., charge. Additional information:
(606) 783-2020.

####

8-26-03sas

Media Advisory

University Communications

Pauline Young, Director

www.moreheadstate.edu

Morehead State University

UPO Box 1100

Morehead, KY 40351-1689

(606) 783-2030

EVENT: Board of Regents Planning Retreat and Work Session

DATE: Thursday and Friday, Aug. 28 and 29, 2003

TIME: Work session begins at 6 p.m. on Thursday

SITE: Sheltowee Trail Country Club

Morehead State University's Board of Regents will conduct an orientation for new members and hold a planning session. If six members are present, this could constitute a regularly called meeting.

No action is anticipated on any official business.

####

8-27-03py

News

University Communications

Pauline Young, Director

www.moreheadstate.edu

Morehead State University

UPO Box 1100

Morehead, KY 40351-1689

(606) 783-2030

Aug. 28, 2003

FOR IMMEDIATE RELEASE

MOREHEAD, Ky.---A Morehead State University faculty member will sing “Songs of Love and Desire” at her upcoming recital. Dr. Roma Prindle’s, associate professor of music, will perform at 8 p.m. in Duncan Recital Hall on Monday, Sept. 8.

In keeping with the theme, the program will include music from several countries and time periods. Music from the English Baroque era will open the recital, with songs by Henry Purcell. Italian songs by Donaudy and Cimara, Spanish and Brazilian songs by Obradors, Rodrigo and Guastavino, and selections in German by Richard Strauss also will be included.

Additionally, she will perform French melodies by Poulenc, early 20th-century English music by Hubert Parry and Roger Quilter, and songs from the classic music theatre era by Jerome Kern and Noel Coward.

A Kentucky native, Dr. Prindle is an honors graduate of Transylvania University, and holds the Master of Music and Doctor of Musical Arts degrees from the Hartt School of Music at the University of Hartford in Connecticut. She returned to Kentucky in 1993 to teach music at MSU.

Dr. Prindle organized the performance ensemble, OperaWorks, to give vocal students an opportunity to perform in opera, operetta and music theatre throughout the region. Plans are underway for an OperaWorks tour of Dr. Prindle’s new work, “Wild Mountain Thyme,” in Great Britain in May 2004.

In addition to teaching music at the collegiate level, Dr. Prindle has an extensive performing career as a recital and concert artist. She has performed professionally with several American opera companies, including Minnesota Opera, Connecticut Opera, Goodspeed Opera, Opera Roanoke, Connecticut Concert Opera and Opera Express. She has appeared in concert in Austria, Germany, Ireland, France, Italy and in 30 U.S. states.

Dr. Prindle created the title role in the world premiere of Victoria Fullam's opera “Mermaid,” with Minnesota Opera Workshop and was a regional finalist in the Metropolitan Opera Council Auditions and the National Association of Teachers of Singing Artist Auditions.

(MORE)

Dr. Prindle recital
2-2-2-2-2

As a professional operatic stage director, she has presented productions for the Dorian Opera. She also is active as a master clinician, and has presented vocal masterclasses throughout the region, as well as in Austria, Germany and Taiwan. Dr. Prindle's students have been consistent winners of regional vocal competitions, including the National Association of Teachers of Singing state and regional competitions.

The recital is free and open to the public. Mary Ellen McNeill will accompany Dr. Prindle on the piano. A 1991 graduate of MSU, McNeill is a past winner of the Concerto Competition and the A. Frank and Bethel Gallaher Memorial Music Performance Competition, and was the Outstanding Undergraduate in Music in 1990 and 1991.

In 1994, McNeill earned the Master of Music degree at the University of Cincinnati, and returned to MSU in 1995 where she served as staff accompanist until 2002. Currently, she is in demand as a collaborative pianist and instructor throughout Central and East Kentucky.

Additional information on the performance is available by calling Dr. Prindle at (606) 783-2481.

####

sas



News

University Communications

Pauline Young, Director

www.moreheadstate.edu

Morehead State University

UPO Box 1100

Morehead, KY 40351-1689

(606) 783-2030

Aug. 28, 2003

FOR IMMEDIATE RELEASE

MOREHEAD, Ky.---Carolyn Franzini of Morehead has been appointed to the Morehead State Public Radio's Community Advisory Board. She replaces Robert Fletcher of Inez who resigned.

Food service director for the Rowan County school system, Franzini is active in various community projects. She is treasurer of the Morehead Sister Cities program and a member of the Morehead Tourism Commission.

Franzini coordinates the annual Cave Run Storytelling Festival and is the host of "A Time For Tales" which is broadcasted Sunday afternoon at 4 p.m. on MSPR.

The MSPR advisory board assists the network in providing a better community service, builds relations in the service region and expands the network's base of support. The group reviews the services provided by the network, advises management on programming, public relations and fundraising, and evaluates the network's progress in serving the educational and cultural needs of the area.

Other board members include: Gayle Brabec of Frenchburg, Robert Caummisar of Grayson, John Cannon of Ashland, David Gray of Flemingsburg, Linda Jarrells of Sandy Hook, Vicki McGinnis of Greenup County, Courtney Spear of Vanceburg and John Tierney of Olive Hill.

Members of the board serve a three-year term and meet quarterly. The next meeting will be Nov. 1.

Additional information about the advisory board is available by calling MSPR at (800) 286-9659 or (606) 783-2001; or log on to MSPR's Web site at www.mspradio.com

#####

ajb



Media Advisory

University Communications

Pauline Young, Director

www.moreheadstate.edu

Morehead State University

UPO Box 1100

Morehead, KY 40351-1689

(606) 783-2030

EVENT: Convocation
DATE: Sept. 2, 2003
TIME: 10:20 a.m.
SITE: Button Auditorium

U.S. Rep. Harold (Hal) Rogers (KY-5) will be the featured speaker. He will address the impact the forthcoming Space Science Center will have on the campus and the community. The space tracking system, which will be located on a ridge top overlooking Eagle Lake, will support research and radio frequency astrophysics and satellite telecommunications.

EVENT: Groundbreaking ceremony for space tracking system
DATE: Sept. 2, 2003
TIME: 1:30 p.m.
SITE: Near Nunn Hall

The groundbreaking will officially launch construction of the first phase of the Space Science Center. R.L. Caudill Construction, Inc., of Owingsville, is building the road to the site at a cost of \$267,700.

Additional information is available by calling (606) 783-2030.

####

8-29-03py

News

University Communications

Pauline Young, Director

www.moreheadstate.edu

Morehead State University

UPO Box 1100

Morehead, KY 40351-1689

(606) 783-2030

Aug. 28, 2003

FOR IMMEDIATE RELEASE

MOREHEAD, Ky.---Six buildings which housed thousands of Morehead State University student families over the last 43 years are being demolished in Lakewood Terrace to provide space for student parking and other activities.

Haggan, Humphrey, Lewis and Peratt halls, as well as two duplexes, are being razed by Blair Excavating Services of Morehead at a cost of \$77,230. The project will be completed within a month. All of the structures were built in 1960.

"Those buildings served us well for many years but they simply have outlived their usefulness," said Madonna Weathers, vice president for student life. "We replaced some of the efficiency units with a new apartment building but there are more desirable rental units in the community to serve the needs of other students who need family housing."

Royalty, Shader and Vansant halls were demolished in 2001 to provide a site for Eagle Lake Apartments which opened last fall. With the current demolition of four structures, only three of the 10 original apartment buildings in Lakewood Terrace will remain. Carter, Holbrook and Perkins halls, built in 1962, will continue to be in service. They contain one-bedroom apartments.

Three of the original five duplexes are being renovated to serve as a temporary control facility for MSU's space tracking system which is being erected on the ridgetop above Nunn Hall.

Normal Hall is being refurbished, including a sprinkler system, for each of its 40 apartments. It returns to service next spring.

Most of the Lakewood Terrace area being cleared will be converted to student parking for those who live in nearby residence halls, Weathers said.

####

Photo

University Communications

Pauline Young, Director

www.moreheadstate.edu

Morehead State University

UPO Box 1100

Morehead, KY 40351-1689

(606) 783-2030

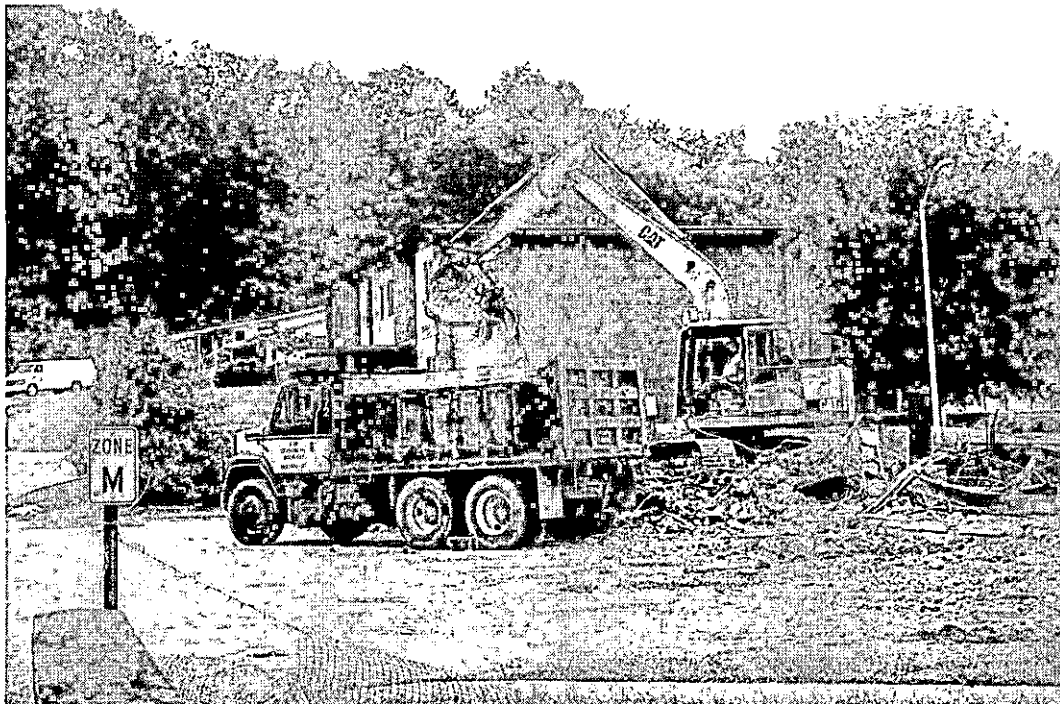
INTO HISTORY

Workmen from Blair Excavating Service of Morehead load the remnants of Haggan Hall as part of the Lakewood Terrace demolition project. Six buildings are being demolished in Lakewood Terrace to provide space for student parking and other activities.

(MSU photo by Tim Holbrook)

8-29-03

MSU is an affirmative action, equal opportunity educational institution.



News

University Communications

Pauline Young, Director

www.moreheadstate.edu

Morehead State University

UPO Box 1100

Morehead, KY 40351-1689

(606) 783-2030

Aug. 29, 2003

FOR IMMEDIATE RELEASE

MOREHEAD, Ky.---Morehead State University's 2003 Homecoming Parade has been set for Thursday, Oct. 16, at 6:30 p.m. in Morehead.

All floats should be based on the theme of this year's event: "We Want You Back, A Super Homecoming 2003."

An information meeting will be held Tuesday, Sept. 9, at 4:30 p.m. in the Adron Doran University Center grill to discuss the upcoming event. Applications and information will be distributed at this time.

In the community category, prizes are \$750 for first place, \$500 for second place, and \$250 for third place. The competition is open to all Morehead area community groups and organizations.

The deadline for University and community groups is Friday, Sept. 26. On campus, float theme approval forms may be turned in at Student Activities Office, located in the basement of Fields Hall.

Community groups may pick up packets and drop off application forms at the Morehead Chamber of Commerce, located in the Depot at 150 East First Street, between 8:30 a.m. – 4:30 p.m., weekdays.

The Eastern Kentucky Tobacco Warehouse will open for float construction on Sunday, Oct. 12 at 4 p.m. An organizational meeting on float building is slated for 5 p.m. A group does not have to construct its float at the warehouse.

Additional information may be obtained by calling Gerome Stephens, graduate assistant in the Office of Student Activities, at (606) 783-2071.

####

ajb

News

University Communications

Pauline Young, Director

www.moreheadstate.edu

Morehead State University

UPO Box 1100

Morehead, KY 40351-1689

(606) 783-2030

Aug. 29, 2003

FOR IMMEDIATE RELEASE

MOREHEAD, Ky.---Morehead State Public Radio has received an additional \$18,425 grant from the 2003 Rural Listener Access Incentive Fund to enhance reception and programming in the network's rural listening audience.

"We will use the extra money to enhance the signal to our rural listeners, especially the communities served by WOCS in LeRose/Booneville," said Paul Hitchcock, MSPR general manager.

The Rural Listener Access Incentive Fund (RLAIF) embodies the Corporation for Public Broadcasting (CPB) to provide a continued commitment to rural public radio. In its first three years, the RLAIF has distributed nearly \$6.4 million in rural bonuses to 125 stations and nearly \$1.8 million in competitive funds for projects benefiting rural stations and listeners.

For 2003, the RLAIF totals \$4.1 million in bonus, competitive, and emergency funding. CPB supports public radio's service to rural listeners while recognizing the challenge of such efforts.

According to the RLAIF, rural public radio stations grapple with circumstances that other stations rarely experience, such as a coverage area with fewer potential listeners spread over a wider geographic area. Because of fewer listeners, there is more difficulty in achieving higher levels of membership and corporate support.

The \$18,425 was awarded to MSPR for damage to WMKY's transmitter site, including MSPR's main antenna during the February ice storm. This fund is available only for rural grantees in the rare and unique circumstances (typically as a result of natural disaster) where listeners are at risk of losing access to a CPB-funded public radio signal as determined jointly by CPB and the grantee.

The total amount of grant funds MSPR has received from the CPB during the 2002-03 fiscal year is \$145,688.

####

ajb

News

University Communications

Pauline Young, Director

www.moreheadstate.edu

Morehead State University

UPO Box 1100

Morehead, KY 40351-1689

(606) 783-2030

Aug. 29, 2003

FOR IMMEDIATE RELEASE

MOREHEAD, Ky.---Dr. Paul Taylor, Morehead State associate professor of music, will present a piano recital on Tuesday, Sept. 9.

The performance will begin at 8 p.m. in Duncan Recital Hall of Baird Music Hall on the campus.

Dr. Taylor will present Bach's Prelude and Fugue in E-major, Beethoven's Piano Sonata in E-flat, op. 27 #1, Chopin's "Harp Etude" and Waltz in E-flat, Prokofiev's Toccata, op. 11 and Debussy's Poisson d'or (Goldfish).

The event is free and open to the public.

A published writer on piano pedagogy, Dr. Taylor came to MSU in 1990. He earned a Bachelor of Music degree from the University of Texas, Master of Music degree from the University of Illinois and the Doctor of Musical Arts degree from the University of Wisconsin-Madison.

Additional information on the recital may be obtained from Dr. Taylor at (606) 783-2405.

####

ajb

News

University Communications

Pauline Young, Director

www.moreheadstate.edu

Morehead State University

UPO Box 1100

Morehead, KY 40351-1689

(606) 783-2030

Aug. 29, 2003

FOR IMMEDIATE RELEASE

MOREHEAD, Ky.---Dr. John Ernst, associate professor of history at Morehead State University, has been named the new director of the University's Interdisciplinary Appalachian Heritage Program, replacing Dr. Roma Prindle, associate professor of music. The program is organizationally located within the Caudill College of Humanities.

"The primary purpose of the program is to foster a greater holistic understanding and appreciation of the region and people geographically served by the University," said Dr. Michael Seelig, dean of the college. Joining the Interdisciplinary Women's Studies Program, the Appalachian Heritage initiative is the second of three programs designed to promote interdisciplinary collaboration, community partnership, and diversity within the college and throughout the campus. An Interdisciplinary Cultural Studies Program is scheduled to start during the 2003 spring semester.

Dr. Ernst earned a doctoral degree in history from the University of Kentucky. Since 1997, he has co-directed an oral history project with Dr. Yvonne Baldwin, chair of the Department of Geography, Government and History on Kentuckians and the Vietnam War. They have interviewed more than 80 individuals and are co-authoring a book on the topic.

As part of his faculty responsibilities, Dr. Ernst teaches modern American studies as well as upper-division courses in American foreign policy and American military history. He has been a part-time instructor at the University of Kentucky, interned at the Kentucky Historical Society as an assistant editor on the publications staff, and served as a researcher and staff writer for "The Kentucky Encyclopedia," published by the University Press of Kentucky.

He has published several books, articles and book reviews and has made presentations at many professional conferences. Dr. Ernst has served as a consultant to both the Vietnam Center at Texas Tech University and Educational Testing Service, was selected for the Master Teacher Award within the Caudill College and as a NEH Summer Fellow, and has been a member of the Publications Advisory Committee for the Kentucky Historical Society.

(MORE)

Dr. Ernst to head Appalachian Heritage Program
2-2-2-2-2

As part of his duties, Dr. Ernst will work closely with a campus wide advisory council, collaborate on an Appalachian Studies minor with the Institute for Regional Analysis and Public Policy, schedule course offerings, develop curriculum, conduct program assessments and reviews, recruit students, arrange on-campus lectures and other activities, plan field trips to related events, collaborate with other campus interdisciplinary programs as well as the Kentucky Folk Art Center and Kentucky Center for Traditional Music, develop grant proposals, manage an operating budget, and serve as a member of the college dean's leadership-management team.

"Dr. Ernst will be very involved helping to highlight and promote issues of regional arts and humanities, as well as social, historical, political, economic, educational, business and health issues," said Dr. Seelig. "He possesses a strength in grant writing skills that provides an opportunity to expand activities through external funding."

Additional information about the program is available from Dr. Ernst by calling him at (606) 783-2484.

####

