

Member Zip Code
Telephone Area Code
Telephone No.
Post Office
Saint Charles Medical Center
Morehead State Univ. (All Branches)
Morehead News (All Branches)
Except Society
Morehead News - Society Only
Rowan County State
P.O. No.

The Morehead News

MOREHEAD, KENTUCKY, THURSDAY MORNING, MARCH 6, 1969

For Each Copy
Pay Cashier... 10¢

Mail Subscription Rates - in Kentucky, one year \$4.50; two years \$8.00; five years \$17.50. Outside Kentucky, including overseas - One year \$5.00; two years \$9.00; five years \$20.00. Cash by returning for five years.

Entered 2d Class Mail Matter
A Post Office - Morehead, Ky.

Wright Probably Out At Morehead Eagles May Get A New Coach In Basketball

The Louisville Courier-Journal and the Lexington Herald may have been half right and half wrong in sports page headlines Monday morning about the basketball coaching "controversy" at Morehead State University.

Both newspapers said they had learned that Coach Bob Wright would resign at the end of this season. This is probably correct.

Both of the daily publications reported that Larry McKenzie, freshman coach at Marshall University, Huntington, would

likely be his successor. That is wrong, and the Morehead News has authoritatively learned that McKenzie has never been under consideration, and probably has no chance for the job.

Billy Reed of the Herald Staff wrote: "MSU officials told Wright he is open to this year's job. Nothing could be further from the fact, and Wright immediately denied this."

Recruiting Criticized
The truth of the matter is that the dissatisfaction is not over Wright's handling of this or any other year's team, but rather his lack of recruiting. It's openly said on Morehead Streets and on the University campus that "Morehead won't be able to beat a small junior college next year because Wright has recruited nobody in four years. All of the acceptable players on the team were here when Wright arrived, except perhaps a transfer."

Reed may have been correct in reporting that Wright has accepted a job to coach a junior college in Florida next year. It has been rumored at MSU for the past two weeks that Wright had made "Florida connections."

The Board of Regents will meet this month and the decision is theirs. But, there's no question that University officials are unhappy with Wright's recruiting or rather a lack of recruiting.

It is also obvious that University officials and downtown fans have no dislike of Coach Wright personally. In fact, he is well liked as an individual and as a citizen.

Others Sign Players
On the other hand it would be difficult to find any sports follower in this area who does not feel that Wright has failed to recruit, and dark days are ahead for the Eagles.

The recruiting situation became so pronounced during the past month that several members of the athletic staff, including Athletic Director Bob Laughlin, have been recruiting probably without Wright's knowledge but without his consent. These players will be freshmen next year and ineligible for the varsity.

MAYBE GOING
Contrary to reports in the metropolitan press Morehead State University basketball coach Bob Wright is not under fire, or has he ever been, over coaching methods of the Eagles. He has been criticized for failure to recruit for the future. Wright is expected to resign at Morehead and accept a coaching position at Florida Junior College.

Continued On Next Page

Continued On Next Page

Continued On Next Page

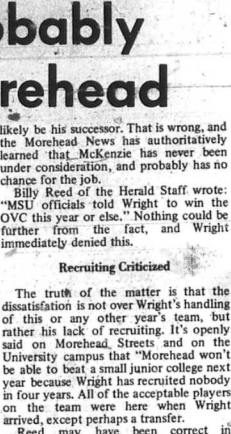
Continued On Next Page

Continued On Next Page

Continued On Next Page

Continued On Next Page

Continued On Next Page



She's From Downtown Morehead
Mary Ann Cline from Morehead has been chosen K-Mate for the month of March at Morehead State University. Her father is United States Attorney for the eastern district of Kentucky.

Mental Health Center May Be Reality By This Fall

The Cave Run Mental Health and Mental Retardation Association, serving five counties and home-based at Morehead may be a reality this year.

A multi-county meeting was held at Alumni Towers on the campus of Morehead State University and it appears that the preliminaries are about over and the five county units, plus the center at Morehead, may be in operation before fall.

The program bears heavy funding and is mostly from the federal government.

It has been concluded that one out of every four persons need mental health care in one form or another.

Morehead had previously been voted the center because of Morehead State University which has come forth with full cooperation, plus a probable training program, and St. Claire Medical Center.

Best evidence that the "planning" stage is over and the "doing" or "operational" stage is near was the election of Mrs. Judith Clough as Program Coordinator (Executive Secretary) at a salary of \$10,000 a year.

Mrs. Clough had previously been Secretary of the Association itself. The appointment resulted in her resignation, and Mrs. Joanne Needham, Morehead, was elected in her place.

Because Morehead is the home-base all officers are from here. Banker Alpha M. Hutchinson is President; and Newspaper Publisher W.E. Crutcher is Treasurer.

Each of the five counties will have its own mental health and mental retardation program. Likely law mental health facilities under the program.

Besides employing Mrs. Clough the five-county group moved toward site or location for Morehead center. Hutchinson heads a committee to recommend a suitable site. Under immediate consideration are: On the proposed, but in embryo stage, industrial park at Morehead, 5,000 square feet under the Morehead Sundry Store which belongs to William H. Layne; W.J. Sample building; and the premises now occupied on Main Street by the Morehead News.

Wood Industries Board
Elets C.L. Armstrong
C.L. Armstrong of the Homer Gregory Lumber Company, Morehead, has been elected to the Board of Directors of the Kentucky Wood Industry Association.

The Kentucky Wood Industry Association is a statewide organization with the purpose of developing and expanding the wood industry in the state and to make maximum use of the forest resources within the framework of good forest management practices and conservation.

Continued On Next Page

Continued On Next Page

Continued On Next Page



She's From Downtown Morehead
Mary Ann Cline from Morehead has been chosen K-Mate for the month of March at Morehead State University. Her father is United States Attorney for the eastern district of Kentucky.

Mental Health Center May Be Reality By This Fall

The Cave Run Mental Health and Mental Retardation Association, serving five counties and home-based at Morehead may be a reality this year.

A multi-county meeting was held at Alumni Towers on the campus of Morehead State University and it appears that the preliminaries are about over and the five county units, plus the center at Morehead, may be in operation before fall.

The program bears heavy funding and is mostly from the federal government.

It has been concluded that one out of every four persons need mental health care in one form or another.

Morehead had previously been voted the center because of Morehead State University which has come forth with full cooperation, plus a probable training program, and St. Claire Medical Center.

Best evidence that the "planning" stage is over and the "doing" or "operational" stage is near was the election of Mrs. Judith Clough as Program Coordinator (Executive Secretary) at a salary of \$10,000 a year.

Mrs. Clough had previously been Secretary of the Association itself. The appointment resulted in her resignation, and Mrs. Joanne Needham, Morehead, was elected in her place.

Because Morehead is the home-base all officers are from here. Banker Alpha M. Hutchinson is President; and Newspaper Publisher W.E. Crutcher is Treasurer.

Each of the five counties will have its own mental health and mental retardation program. Likely law mental health facilities under the program.

Besides employing Mrs. Clough the five-county group moved toward site or location for Morehead center. Hutchinson heads a committee to recommend a suitable site. Under immediate consideration are: On the proposed, but in embryo stage, industrial park at Morehead, 5,000 square feet under the Morehead Sundry Store which belongs to William H. Layne; W.J. Sample building; and the premises now occupied on Main Street by the Morehead News.

Wood Industries Board
Elets C.L. Armstrong
C.L. Armstrong of the Homer Gregory Lumber Company, Morehead, has been elected to the Board of Directors of the Kentucky Wood Industry Association.

The Kentucky Wood Industry Association is a statewide organization with the purpose of developing and expanding the wood industry in the state and to make maximum use of the forest resources within the framework of good forest management practices and conservation.

Continued On Next Page

Continued On Next Page

Continued On Next Page

Investigation Into Liquor Traffic Seen Eaglets, Vikings In Tourney Play Tonight

Two Morehead teams - Rowan County High and University Breckinridge - will be in action this (Thursday) evening in opening round games of the district high school basketball tournament at Laughlin Fieldhouse on the campus of Morehead State University.

University Breckinridge plays Menifee County at 7 o'clock this evening, followed by a collision between Morgan County and Rowan County.

The pairings for tomorrow (Friday) - Ezel vs. University Breckinridge - Menifee County winner at 7 p.m.; Bath County vs. the Morgan County-Rowan County winner, 8:30 p.m. (Ezel and Bath County drew first rounds byes).

The final game is Saturday at 7:30 p.m. Both the winner and runner-up advance to the 16th regional to be played next week also at the University Fieldhouse.

Students and faculty may purchase tickets for any session at their school for \$1. Price of admission at the door will be \$1.25. There will be no reserved seats with the first come getting the better chair seat.

Officials for the tournament are Howard Rogers of Winchester, and Bill Ring of Lexington.

Bath County High, recent conquerors of powerful Ashland, is the district tourney favorite.

Ashland remains the experts choice to cop the regional next week and advance to the state tournament at Louisville.

Week's Schedule Open To Public At Morehead State University

Thursday, March 6 - Faculty Recital - David Bushouse, French horn, and Larry Keenan, piano - Baird Recital Hall, 8 p.m.; Basketball - 61st District Tournament - University Breckinridge vs. Menifee County, 7 p.m. - Rowan County vs. Morgan County, 9 p.m. - Laughlin Fieldhouse.

Friday, March 7 - Basketball - 61st District Tournament - Ezel vs. Brock-Menifee winner, 7 p.m. - Bath County vs. Morgan-Rowan winner, 9 p.m. - Laughlin Fieldhouse.

Saturday, March 8 - Basketball - 61st District Tournament - Championship, 7:30 p.m.

Tuesday, March 11 - Faculty Recital - Susanne Hower, cello, and Lucretia Stetler, piano - Baird Recital Hall, 8 p.m.; Lecture - Pierre Salinger, former presidential press secretary - Button Auditorium - 2 p.m. - 4 p.m.

Wednesday, March 12 - Basketball - 16th Regional Tournament - Laughlin Fieldhouse, 7 p.m. and 9 p.m.

Thursday, March 13 - Basketball - 16th Regional Tournament - Laughlin Fieldhouse, 7 p.m. and 9 p.m.

True Mackey In Race For State Representative

True Mackey, veteran of three terms in the Kentucky Legislature, today announced his candidacy for State Representative from the 71st district. He is a democrat.

Mackey set out that in his previous tenure in the General Assembly he had always voted and worked for the interests of Morehead State University.

"I am proud," Mr. Mackey said, "that Morehead State University is in the district I expect to serve in the next Legislature. You may be assured that the University will find me always willing to work for the highest possible appropriation and benefits."

He continued: "Many of the good people of Rowan County and this area know me personally. I ask that you inquire of them as to my experience and ability to make a good State Representative, and the manner in which I served my constituents before Rowan County became a part of the district."

Evidence of Mr. Mackey's support of education at all levels - secondary and higher - came in 1956 when the Kentucky Education Association conferred on him an award for "highest

Continued On Next Page

Circuit Court Will Convene Next Monday

The March term of Rowan Circuit Court which opens at 9 o'clock Monday morning could be the busiest, perhaps most publicized of any court session at Morehead for years.

The grand jury is expected to make a full scale investigation of the illegal liquor traffic which State Police said was "the most wide open" in all of Kentucky before raising starting in November.

All kinds of charges have been hurled over what State Police say was the million dollar traffic in alcoholic beverages with customer buying openly from drive-in drive-around windows.

Several members of the State Police are expected to appear before the grand jury. About 20 raids have been made since State Police put the "heat" on the flow of liquor and beer.

The docket is also heavy with hold-over cases charging liquor violations. These cases are amplified by true bills returned by the November grand jury which adjourned prematurely when Circuit Judge John J. Winn became ill.

The last grand jury left a large number of cases, and business, to the March term because they could not return a true bill in open court with the presiding judge ill and absent.

The publicized trial of Heman McGuire on three alleged counts on embezzlement is set for the term that opens Monday. McGuire, former Superintendent of Carter County schools, has served a federal prison term for income tax evasion as an outgrowth of the same type of allegations that he took large sums of money from the school fund. These cases were sent to Rowan County for the Carter Circuit Court.

Normal for Rowan County because there hasn't been a full Circuit Court term since last June.

Circuit Clerk William Armstrong today released the names of 54 citizens summoned for grand and petit jury duty.

In the order drawn from the jury wheel they are: Beulah Mae Forman, Roy V. Dehart, Fred Collins, Ivan Baker, Falt Cornett, Wayne Pettit, Alkie Y. Manning, Dorothy A. Collins, Jerry Anderson, B. C. Dillon, Wilburn Hardin, Ozel Switzer, Margaret Jayne, Taylor Pence, John Barker.

Others - Cecil Gregory, Mrs. Oscar Caudill, Ed Brown, Saylor Myhner, Bobby Hardin, Edith M. Cline, Chester Robinson, A. B. Bowne, Naida Litton, Gretchen Duncan, John Holbrook, Jr., Dewey Sloan, Phillip Lewis, Arch Williams, Robert Needham, S.J. Litton, Alex Lambert, Douglas Johnson, Frank Ginter, Katherine Clayton, Geneva Rees.

Others summoned for jury duty - Sam Evans, Willie Kelsey, V.D. Flood, Carson Castle, Hobart Williams, Charles M. Roberts, Col. Charles B. Crutchfield, J.H. Kegel, Cecil Frealey, Jean Murray, Arvil Crase, Sterling Johnson, Hubert Allen, Blanchard Thomas, George Ision, Mabel Alfrey and Raymond Murphy.

Campbell Will Be Detective On State Police

Kentucky State Trooper Marion D. Campbell, Morehead, is one of 16 State Troopers recently selected for assignment to the KSP Bureau of Investigation, according to an announcement made by KSP Director Col. Charles B. Crutchfield.

The Bureau, re-organized last March at the direction of Gov. Louie B. Nunn and Public Safety Director William O. Newman, is a highly-specialized arm of the State Police responsible for the investigation of criminal offenses occurring within KSP areas of jurisdiction.

Trooper Detective Campbell, a native Kentuckian, was born at Carlisle and graduated from Nicholas County High School. He joined the KSP in January 1964 and has received several commendations during his service with the KSP.

He will report to Frankfort's KSP Academy on Monday, March 3, for a week-long training course in criminal investigations. Upon completion of that course, he will return to Morehead's KSP Post #3 to assume his duties.

Campbell is married, has two children and lives at Morehead.

True Mackey
veteran of three terms

Continued On Next Page

Continued On Next Page

CAVE RUN RESERVOIR KENTUCKY

CAVE RUN RESERVOIR LICKING RIVER, KENTUCKY

LOCATION OF DAM The dam site is on the Licking River, 173.6 miles above the mouth, and four miles upstream from Farmers, Kentucky. The project is located approximately 84 air miles southeast of Cincinnati, Ohio.

AUTHORITY The project was authorized by the Flood Control Act of 22 June 1938, Public Law No. 758, 74th Congress, 1st Session and Flood Control Act of 28 June 1938, Public Law No. 761, 75th Congress, 3rd Session.

Table with 2 columns: DAM Type, Length and random fill. Rows include Maximum height (140 feet), Length (2,700 feet), Maximum base width (915 feet), and Quantity of fill (3,350,000 cu yd).

SPILLWAY Uncontrolled outlet about 650' bottom width, through hill on left abutment approximately 700' south of dam along axis with maximum discharge of about 115,000 c.f.s.

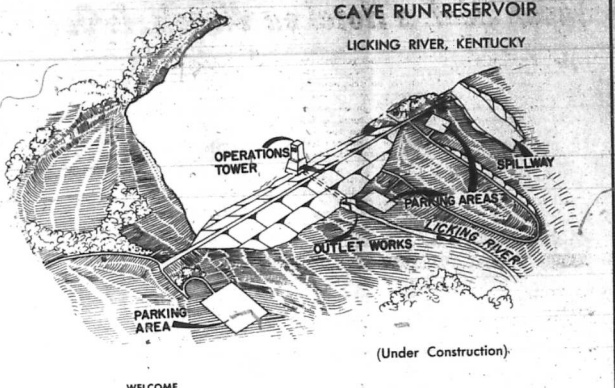
OUTLET WORKS Intake structure with gate controlled circular concrete conduit 15 feet in diameter leading to stilling basin near center of dam.

RELOCATIONS Tentative relocations comprise portions of three state highways and affected utilities and cemeteries.

DRAINAGE AREA ABOVE DAM 826 square miles.

MAXIMUM FLOW OF RECORD AT DAM SITE 21,836 c.f.s., February 1962.

Table with 4 columns: RESERVOIR, Elevation (ft. above sea level), Capacity (Ac-ft), Area (Main Stream Length, Mi.), and Peak (Cfs). Rows include Peak, Minimum, Water Quality, Seasonal, and Flood Control.



WELCOME The Corps of Engineers welcomes you to the site of the Cave Run reservoir. Descriptions of some of the important features of the project and a reservoir map are presented in this folder for your information and convenience.

(Under Construction)



U. S. ARMY ENGINEER DISTRICT, LOUISVILLE CORPS OF ENGINEERS 1965

Advertisement for St. Claire Medical Center, Morehead, Ky. Phone number 874-1611. The ad includes a list of admissions and dismissals.

ADMISSIONS Feb. 26 - Norman Roberts, Morehead; McKinley Davis, Olive Hill; Thelma Henderson, Olive Hill; Maude Gilliam, Olive Hill; Omar T. Johnson, Soldier; Jesse A. Sparks, Olive Hill; Robert W. Addington, Sandy Hook; Charles Vansant, Sandy Hook; Ann Margaret McDaniell, Elliotville. Feb. 27 - Mary Sparks, Morehead; Nancy Henderson, Olive Hill; John Robinson, Frenchburg; Ethel Bailey, Morehead; Jency Whitman, Olive Hill; Maude Skages, Stark. Feb. 28 - Charles O. Lewis, Morehead; James R. Thompson, Morehead; Opal M. Maxie, Isonville; Laura Deilah Holbrook, Ault; Mary C. Gay, Frenchburg. March 1 - Delphia Brickey, Sandy Hook; Dallas Howard, Sandy Hook; Milzia Black, Soldier. March 2 - Willie H. Caudill, Morehead; Floyd Bruce, Olive Hill; Phyllis Black, Clearfield; David Roger Root, Olive Hill; Emerson Howard, Morehead; Eva Karen Shaver, West Liberty. March 3 - Mary Blaylock, Morehead; Gracie Boggs, Lawton; Virginia Cassity, Morehead; Lou Ellen Aggs, Jeffersonville; Walton Johnson, Olive Hill; Louise Thompson, Salt Lick; Nola Bowling, 1965.

French They Are a Funny Race, When It Comes to Handshaking

By WILLIAM SUNDERLAND Once in the family, or with Paris (UPI)—To Americans close friends, handshaking switches to cheek kissing. It's all formalized, and different in France it is a way of life. Throughout Europe handshaking is much more common than in the United States. For example, women almost always shake hands with somebody when introduced. But the French carry it to an extreme. The first five or 10 minutes of every working morning is devoted to shaking hands. Upon arriving in the office, everybody shakes hands with everybody else. In an office of 20 or 30 persons this takes a bit of time. Everybody also says "How are you?" Nobody expects an answer. That's fine until lunchtime, when there may be a few warring handshakes. After lunch, the whole thing is repeated. "Did you eat well?" Generally no answer is required. When the day's work is over, everybody shakes hands as they march out the door. Once in the family, or with France, unless you are meeting a visiting king or queen. And then, as with protocol in most areas, it is up to the king or queen if they want to shake hands they put out their hand first. So, a typical day in the life of the working Frenchman: kiss wife and kiddies goodby; a cup of coffee at the corner cafe, shaking hands with the barman and the proprietor since he is a regular customer; to the bus stop, where shaking hands with people who regularly ride the same bus with him; into the office, where it is handshaking all around; a few handshakes while leaving for lunch; handshakes with the waiters at his favorite restaurant and a Parisian left-right kiss for the proprietor and his wife since they are old friends. After lunch the whole routine starts over. By the time the Frenchman finally gets home to greet his wife with a left-right Parisian kiss or a left-right non-Parisian kiss he probably has shaken hands close to hundreds of times. It all contributes to being tired at the end of a work day.

House of Dior Designer Switches to Men's Wear

By WALTER LOGAN ward pitched California shoulder hats made famous by President John F. Kennedy and most of them on falling. Some of the designs were outstanding. One was a four button double breasted men's jacket with a shawl collar and a color that might be called "Aubergine. Aubergine is the color of an eggplant and the suit was nowhere that dark but that is the general idea. Also good was a black pony-merino topcoat, eight buttons double breasted, a black dinner jacket in a vertically ribbed material with a black and white striped waist and a white lace shirt. There was an occasional reminder of the current Edwardian look but this was not remotely overdone. Overall the constant reminder of the 1940's was the French Sinatra at the Paramount, for example. A typical suit was a three-button, double-breasted, wide lapel, dark with light striping and cut with roped shoulders, wide peaked lapels. A French jacket was cut on the length of the lapels and two buttons fastened fairly close together. A new York recent coat was a shaped two button suit with soft shoulders, with notched lapels and deep side vents. You want red velvet? He had that too. Very great. Hollywood India. HOLLYWOOD (UPI) - Donald, wife's John Randolph joins Kirk Douglas and Henry Fonda in "There Was a Great Great Seal."

Wright -

Continued From Preceding Page since Morehead is a basketball major in the NCAA. Reed Mostly Wrong Following is Reed's article from Monday's Lexington Herald. "There will be at least one new face in the Ohio Valley Conference coaching ranks next year. "We have learned that Bob Wright, Morehead State University basketball coach, will resign his position at the end of the season. "That fact that Morehead is in the thick of the race and could force a playoff with Murray for the league title and the NCAA tournament bid that goes with it by beating East Tennessee tonight, has no bearing on Wright's decision. "He's leaving. That's it, no matter what. "The decision for Wright to leave is mutual. Morehead officials have felt dissatisfied with Wright's handling of the team the last three years and the officials reportedly told Wright to win the OVC this year or else. "The other side being nonrenthal of Wright's three-year pact which expires this season. "Rumors concerning Wright's departure which have been circulating around the league since the season began. "Wright denied everything when contacted a couple of weeks ago. "I haven't had any offers and I haven't resigned," Wright said. "The former Ashland High School coach also said Morehead officials hadn't told him to win or else this season. "We also understand Wright is considering a junior college coaching job in Florida next. "Wright took the Morehead post on March 31, 1965, his 39th birthday, replacing Bob Laughlin who held the position for the previous 11 years. "Laughlin is now athletic director at the school and the fieldhouse is named after him. "Among the top candidates for the as yet unannounced opening is Larry McKenzie, whose Marshall University freshman team finished the season unbeaten.

True Mackey -

Continued From Preceding Page meritorious service to education. "Several of Mr. Mackey's close relatives have attended and graduated from Morehead State University. Mr. Mackey also said that the State Representative had come from Rowan County since the re-districting act had placed Rowan, Fleming and Robertson in the same legislative district. "I believe in all fairness," Mr. Mackey continued, "that papers with the Secretary of State in presentation will come to all three counties over a period of time. Mr. Mackey, who filed his declaration of candidacy with the Secretary of State in Frankfort Thursday, issued the following statement: "As a candidate for the Democratic nomination for the office of State Representative from the 71st District, composed of Fleming, Robertson and Rowan counties, I herewith present the following facts: "I was born in Lewis County, Kentucky and attended the public schools there. I also attended the University of Kentucky for four years. "I have resided in Robertson County since 1938, and operated a business there for 25 years. I have also owned and operated farms in Fleming and Robertson counties since 1945. "I was elected and served as State Representative of Fleming and Robertson counties in 1950-51, 1956-57, and 1958-59. My voting record in those sessions of the Legislature, will prove my interest in education, agriculture, roads, welfare, etc. "I was reared in the Christian Church and I am a Director and past President of the Germantown Far Association. I am a member and Past Commander of American Legion Post No. 143, and a member of Veterans of Foreign Wars and the Fleming County Farm Bureau. "If the people of the 71st District want a representative who will vote their convictions and not yield to pressure groups, I can meet that requirement 100%. "If you can favor me with your support in the May 27 primary, I will surely appreciate your confidence in me."

March Inventors

Several famous inventors were born in March, notes World Book Encyclopedia. They include George Pullman, March 3, 1861; Alexander Graham Bell, March 3, 1847; and Rudolf Diesel, March 18, 1858.

Bids Advertised

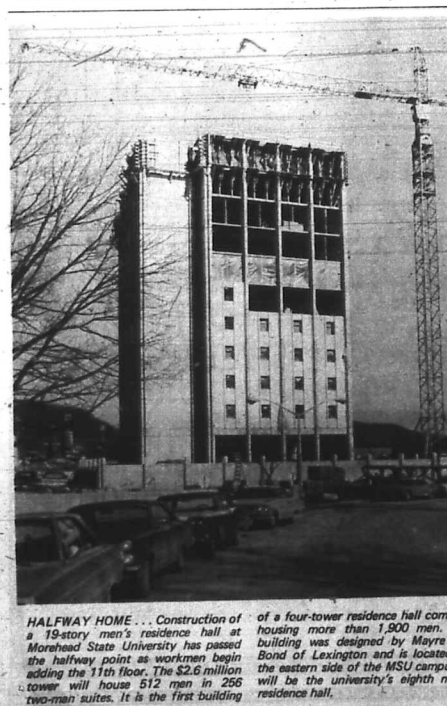
Continued From Preceding Page and Pine Grove. Bid specifications call for two elevated tanks - one of 50,000 gallons at the Jess Hall farm near Carter County; and another of 40,000 capacity at the Bob Wells farm near Sharkey. The latter is large enough to also supply the Flat and Moore's Flat customers when they are added to the system. Attorney Paul Blair is legal counsel for the water district. The operation will be governed and supervised by a citizens (consumer) board of which Arnett is President. They will set rates in accordance with recommendations of FHA so the \$520,000 loan can be amortized. The contract with the city at 36 cents a thousand gallons at meter stations carries an escalator clause so this can be increased or lowered according to the cost of production or living (dollar) index. Arnett was confident the system could be installed this year and the \$12 who have posted the \$50 deposits will have water by winter.

March Inventors

Continued From Preceding Page and Pine Grove. Bid specifications call for two elevated tanks - one of 50,000 gallons at the Jess Hall farm near Carter County; and another of 40,000 capacity at the Bob Wells farm near Sharkey. The latter is large enough to also supply the Flat and Moore's Flat customers when they are added to the system. Attorney Paul Blair is legal counsel for the water district. The operation will be governed and supervised by a citizens (consumer) board of which Arnett is President. They will set rates in accordance with recommendations of FHA so the \$520,000 loan can be amortized. The contract with the city at 36 cents a thousand gallons at meter stations carries an escalator clause so this can be increased or lowered according to the cost of production or living (dollar) index. Arnett was confident the system could be installed this year and the \$12 who have posted the \$50 deposits will have water by winter.

What's Their Place? Legislative Women

"Women and Legislation" occupied participants of the Commission on Women's open meeting in Frankfort as a panel discussed social security, public assistance and labor standards for women. Ray Colyer, Frankfort, district Social Security manager, urged women to contact their local offices when they reach 62 or need medicare. However, the depend entirely on social security, for it is only supplemental income for the aged. Ernest Rall, director of the Department of Economic Security's division of Program Development and Evaluation, explained public assistance is available in three ways - income maintenance, medical assistance and social services. Rall also explained, women may be eligible for medical assistance when they are not eligible for the other services. "Plan a meaningful life," Eugene Hoke, director of the Commission on Aging, said. He urged women to concern themselves with the changes of middle age and to prepare themselves for old age and retirement. Mrs. June Wakeford, Atlanta, regional director of the Women's Bureau, U.S. Department of Labor, reviewed the Fair Labor Standards Act which forbids discrimination because of sex. She also pointed out women are limited in the number of work hours per week, while men are not. Minimum wage laws were discussed by Martin Glazer, head of the legal staff, Department of Labor. Mrs. Edith Stanley, County Attorney of Jefferson County, did not feel there is significant sex discrimination in industry. She felt the important factor in advancement is motivation - how much women want to sacrifice to "get ahead" in their careers.



HALFWAY HOME... Construction of a 19-story men's residence hall at Morehead State University has passed the halfway point as workmen begin adding the 11th floor. The \$2.6 million tower will house 512 men in 266 two-man suites. It is the first building of a four-tower residence hall complex housing more than 1,900 men. The building was designed by Mayre and Bond of Lexington and is located on the eastern side of the MSU campus. It will be the university's eighth men's residence hall.

The Morehead News

Formerly Rowan County News "Over 100,000 Readings Each Year" Published every Thursday at Morehead, Rowan County, Ky. Entered as Second Class Mail Matter at Post Office, Morehead, Kentucky, 40361. W. E. Crutcher, Publisher; Harold E. Casper, General Manager; Mary J. Casper, Business Manager. Office: Fourth Estate Building, E. Main St., Phone 764-4118. When requesting change of address be sure to include old address. SUBSCRIPTION RATES: One year in Kentucky \$4.00; Five years in Kentucky \$17.50; One year outside Kentucky (including overseas) \$5.00; Five years outside Kentucky (including overseas) \$20.00. - Run by Morehead News, Inc. No advertisements published on Saturday. News omitted on subscription.

MOREHEAD AREA

Church News

Compiled weekly by the Morehead Ministerial Association. This column is available, without charge, to recognized churches. Copy must be submitted to Editor (name and address) for that particular month. Do not substitute copy to The Morehead News.

Mary Lister Rev. Larry Babbitt

CLEARFIELD CHURCH OF GOD - The first meeting of the Ladies' Missionary Society will be on February 24, at the Clearfield, Church of God, on Dry Creek Road.

Officers were elected as follows: President - Mrs. Phyllis Baldridge, Vice President - Mrs. Jean Gilkison, Secretary - Treasurer - Mrs. Turner, and Reporter - Miss Kathleen Moore.

METHODIST - Special Sunday Evening Services continue with special features: This Sunday, March 9, 7:00 p.m., Steve Engelhardt will present a quartet of instrumental and folk songs and spirituals. Bob Dunaway, MSU Methodist Campus Minister, will be the speaker. Refreshments will be served in the Fellowship Hall after the service.

FAITH PRESBYTERIAN - Dr. Charles W. Riddle, of the Morehead State University faculty, will be the guest minister at Faith Presbyterian Church this Sunday, March 9, for services at 9:30 and 10:45 a.m. His sermon topic will be "Radiantly Adequate Christians."

FIRST BAPTIST - The First Baptist Church will participate in race relations this coming Sunday, March 9th. The Rev. E.G. Smith, pastor of the Bethel Baptist Church of Maysville, will be the principle speaker.

Weekly Meditation

THE POWER OF CHRISTIAN LOVE - Fulton Oursler once told a story that illustrates very well the power of Christian love to change and brighten the lives of unbelieving men.

she was drowned with all the others aboard. The lonely Irishman was dazed and shaken by the news, and retired in solitude to a room in the boardinghouse where he lived.

Rowan Public Library And Bookmobile

121 W. Main - Next To Midland Trail Hotel Telephone 784-7137 Mrs. Ben Harter - Librarian

LIBRARY OPEN - Mondays & Thursdays, 10 a.m. to 8 p.m.; Tuesdays, Wednesdays & Fridays, 10 a.m. to 5 p.m.; Saturdays, 9 a.m. to 3 p.m.

ROWAN BOOKMOBILE SCHEDULE FOR COMING WEEK STARTING TODAY

THURSDAY - Paragon, 9 to 10; Law's Trailer Park, 10:15 to 10:30; White's Grocery, 10:40 to 11; Old House School, 12:10 to 12:30; Clearfield School, 12:30 to 3:30; Clearfield Post Office, 3:30 to 3:45.

Glover's Son Is Dead At Birth

Joel Stewart Glover, infant son of Henry and Phyllis (Alfrey) Glover, Jr., was dead at birth Tuesday at St. Claire Medical Center in Mo., head.

Surviving are the parents; paternal grandparents, Mr. and Mrs. Henry Glover, Sr., Morehead; and maternal grandparents, Mr. and Mrs. Vernon Alfrey, also of Morehead.

The Tildon Hogg PTA will meet this Thursday, at 7:30 p.m., at the school. The Cultural Arts Committee is in charge of the event.

Super Chief, a Hotel on Wheels, Is One of the Last Luxury Trains

By ALBERT W. WIESE ABOARD THE SUPER-CHIEF, Enroute in Arizona (UPI)—Almost everyone agrees that America's railroads are discouraging passenger traffic but there are still some deluxe trains traveling across the country.

It does have the advantage over a hotel in that you're being transported smoothly and quietly and there is no telephone to bother you.

Since the number of rooms is limited in each car and each car has its own porter, service is right at your fingertips. Leave a call to be awakened and the soft doorbell brings you back from a restful night's sleep.

The dining car on the Super brings back memories of the dining cars of yesteryear. Each has a small bud vase with a single rose bud. These are replaced each morning.

Food and service are as good as any first class cafe in a big city. Australian lobster tails, thick steaks, fresh mountain trout would like a private dinner there.

from stations along the route. Another has a board lounge for a better view of the scenery. Lounge Car For that afternoon tall one of pre-dinner cocktail the lounge car offers the best of everything and served in the style that made the old time railroads famous.

One of these is the Santa Fe's Super Chief which leaves Los Angeles and Chicago daily for its 40-hour trip between the two cities.

The Super, as it is called, has just about all the luxury of a plush hotel—except for a swimming pool.

Each room has a six-chained music system giving the passenger his choice of classical, popular or children's music. Latest news reports and a channel for stock quotations, plus one for a nearby radio station.

While you're getting dressed the porter brings a complimentary pot of coffee as a "wake-up."

For relaxing as you speed along the tracks, one car contains a reading room where the latest newspapers are supplied away from his desk each room.

Each unit has its own lounge and dining facilities. How long the Super will be with us is hard to estimate. Even Santa Fe officials can't be sure what the future holds.

Normally we make just a Little Profit on each car we sell. We can afford this policy because we sell a lot of cars — and vice versa. But, because of a slight slump, we haven't sold our quota for the month. So, to get back into the swing of things, we're kissing the Little Profit goodbye on the next 30 cars we sell. This is true.

We're kissing profits goodbye during this stock reduction

sale!



4 - 1969 Grand Prix's All have Air and Full-Power Price Start At \$4,300



4 - 1969 Firebird Coupes Almost Any Equipment You Could Want. Prices Start At \$3,075



5 - 1969 Catalinas Coupes and Sedans Some Have Air Our Very Best Buy Price Start At \$3,395



4 - 1969 LeMans Coupes and Sedans New Color Selection All have V-6, Automatic, Power Steering, Radio Prices Start At \$3,075

A Limited Selection Of 1969 Buicks - Electra 225's - LeSabres - GS 400's & 350's

Coming Soon - "The Judge"

The Little Profit Dealer Stone Pontiac - Buick - GMC, Inc. "The Little Profit Dealer" U. S. 60 E. MOREHEAD, KY.

THE LITTLE PROFIT SAVES YOU MORE THAN ANYTHING YOU EVER BARGAINED FOR.

Miss Simpson Becomes Cardinal Key Member
 Sally Simpson, daughter of Dr. and Mrs. W.C. Simpson, 1341 Knapp Ave., Morehead, is a member of Cardinal Key, newest national women's honors group at Morehead State University.
 Miss Simpson is a senior, majoring in home economics.
 To be elected to Cardinal Key, a woman student must be a junior or senior with at least a 3.0 grade average. The women's honor society is a sister organization of Blue Key, national men's honor society.
 The MSU group was installed as a national Cardinal Key chapter last Saturday by Dr. Dorcas Anderson of Kent State University. Morehead had been a Cardinal Key colony since 1966.

**This Is What The ...
 Morehead Jaycees
 ... Are Doing**

Morehead State University's football coach, Jake Hallum presented an interesting program on "Football Now and in the Future at M.S.U." at the Jaycees' last regular meeting. Coach Hallum, along with the Jaycees, are optimistic about next season.

AREA 6A SPRING MEETING
 The Morehead Jaycees will host the

annual Area 6A Spring Meeting Sunday March 9 at the Rowan County High School Cafeteria. Over 50 delegates from Jaycee Chapters in Ashland, Grayson, Louisa, Olive Hill and Greenup will attend the meeting. State President Gene Peter of Buechel-Fern Creek, National Director Bill Hennessee of Pikeville and Area Vice-President Budd Stidom will be in charge of the forums and seminars. Morehead Jaycee Jarryl Austin is serving as local chairman of the project.

AMERICANISM ESSAY CONTEST
 The Jaycees are again co-sponsoring the Americanism Essay Contest with Commonwealth-Life Insurance Co. The purpose of the project is to stimulate students to better understand the significance of America's heritage of personal freedoms, private enterprise, and self government.

The contest is open to all seventh and eighth grade students in Rowan County. Essays must be 300 to 1,500 words on the theme, "What America Means to Me." Jaycees Chuck Waldemayer and Joe Pierce are co-chairing the project and presenting the details at each of the County's grade schools. The local winner will receive a \$25 Savings Bond and will advance to State and National competition.

Don Brewer Gets Policy Position

W. D. (Don) Brewer, 56, Flemingsburg, former post office inspector, who had been residing in Littleton, Colo., near Denver, is one of seven top officials of the U.S. Commerce Department announced by Secretary of Commerce Maurice H. Stans. His appointment comes from President Richard Nixon.

The appointment is the first to come to an area man under the present administration and is the most important post for an area person in several years.

Brewer, a rubber company executive from Littleton, was named federal co-chairman of the Four Corners Regional Commission, involved in distressed areas of Colorado, Utah, Arizona and New Mexico.

He is widely known in the Morehead area.

Pierre Salinger Speaks Here Next Tuesday

Pierre Salinger - politician, lawmaker, newsmen and presidential confidant - will lecture next Tuesday at Morehead State University.

The 43-year-old former White House press secretary to Presidents Kennedy and Johnson will present "The Kennedy Years - Before and After" at 2 p.m. in Button Auditorium, following a luncheon at Alumni Tower at 12:45.
 At 3 p.m., the former U.S. senator from California will conduct a question-and-answer session with students.

Salinger, a native of San Francisco and history graduate of the University of San Francisco, moved into the limelight in 1959 when he became press aide to then-Senator John F. Kennedy. He ran the senator's press operations through the vigorous campaign of 1960 and moved to the White House with the new president in January, 1961.

Following the assassination of President Kennedy, Salinger remained briefly as President Johnson's press secretary but resigned to write his best-selling book of the Kennedy era, "With Kennedy."

Salinger was appointed to the U.S. Senate in 1964 to complete the term of the late Clair Elford of California. He was a candidate for the seat that same year but lost to Republican George Murphy.

A Navy hero of World War II and former reporter for the San Francisco Chronicle, Salinger has credentials as a world traveler. He accompanied President Kennedy to all conferences with world leaders, including the historic summit with Soviet Premier Khrushchev in Vienna in 1961.

Now a vice president of Continental Airlines, Inc., Salinger took a leave of absence last year to work in the presidential campaign of Sen. Robert F. Kennedy.

Harold Carroll Serving With Army In Vietnam

Steelworker Third Class Harold E. Carroll, USN, son of Mr. Johnee W. Carroll of Route 5, Olive Hill, is serving with Navy Mobile Construction Battalion Maintenance Unit 302 headquartered at the Naval Support Facility, Cam Ranh Bay, Vietnam.

His unit is one of two construction battalion maintenance units in Vietnam and the first of its kind since the Korean War.

Rowan County Extension Office

Adrian M. Razor
 Mildred R. Wightman
 Paul W. Mills
 Area Extension Agents

Those attending the Homemakers Advisory Council meeting on Monday afternoon, March 3, were Mrs. Robert Alderman, Mrs. Earline Lowe, Mrs. Charles Chumley, Mrs. Bill Haney, Mrs. Oscar Caudill, Mrs. Winfred McCarty, Mrs. Ival Bryant, Mrs. Charles Humphries, Mrs. Grace Apel, Mrs. Lowell Murray, Mrs. Eugene Brown, County President, presided at the meeting.

CORN MEETING

There will be a meeting for corn growers in the RECC Building in Flemingsburg Kentucky on March 11 at 7:30 p.m. All phases of corn production will be discussed. Meeting will be Mr. John Willis, Area Agronomist, and Douglas Howard, Area Agronomist, and S.H. Phillips, State Extension Specialist in Forage Production.

HALDEMAN DEVELOPMENT MEETS

The new Community Development Club at Haldeam will hold its monthly meeting at Haldeam School on the evening of Thursday, March 6, at 7:00. Mr. William Bridges, Extension Specialist in Community Development from the University of Kentucky, will be present.

HOME BEAUTIFICATION MEETING

Those of us who like flowers and would like to improve the looks of our homes should make every effort to attend the illustrated lecture given by Mr. Ed Strong, Area Extension Specialist in Horticulture, Tuesday morning March 11 at 1:30 p.m. in the basement of the Courthouse. Also at this meeting Mr. Winston Swango, Area Extension Specialist in Insect Control will discuss common insects and their control.

PRUNING DEMONSTRATIONS

If you get your paper in time, come on out to the pruning demonstration at Mr. Merle Gilbert farm on Ditney Ridge. Merle lives near the Davis Kid Farm.

FARM RECORD BOOKS - Need a Farm Record Book? We have them here at the Extension Office.

PLANT BEDS - It is important that we not work our plant beds too wet. Turn them as soon as possible and leave them exposed a couple of weeks if we can.

Bushouse Will Be Heard In Recital This Evening

David Bushouse, instructor of music at Morehead State University, will be in recital this (Thursday), at 8 p.m. in Baird Recital Hall.

The faculty recital will consist of solos for the horn as well as chamber works featuring the horn, including compositions by Haydn, Amram, Punte and Dukas. Larry Keenan will provide piano accompaniment.

Soil Group To Make 4 Awards

Four Honorary Membership awards will be conferred by the Soil Conservation Club of Morehead State University at a club meeting Tuesday in the MSU home economics building.

The awards will go to - Leland Hall, Chairman of the Rowan County Soil Conservation District; State Representative Sherman Arnett; Mrs. J. Kidwell Grannis, one of the founders of the Kentucky Soil Conservation Council; and James S. Shropshire, Commissioner of the Kentucky Department of Natural Resources.

Shropshire will be the speaker for the 7 p.m. gathering.

Rowan Soil Conservation

by Don Nelson

With spring about here, now is the time to be planning on how much of a row crop we need to put out, the type of land we are going to put it on, and the way we are going to go about producing this crop.

In producing corn on our farms, the practice of planting and cultivating with a minimum amount of tillage is gaining fast in popularity due to substantial savings in time, work, and fuel cost. Crop yields can be maintained or even increased. With wheel track planting, two diskings and one grading operation are eliminated from the seedbed preparation. Savings can run up to \$10.00 or more on this one simple operation. With some of the new type planters, all the operation can be done with one trip over the field and this even reduces your expenses more than wheel track planting.

Some of the other advantages of minimum tillage of corn are: (1) Soil erosion and water runoff are reduced on sloping land due to the loose soil between the rows absorbing the moisture quickly. (2) Your crop gets a head start against weed growth in between the rows due to the soil being rough and loose in between the rows. (3) Seeds germinate faster and emerge quickly when soil around the seed is compacted enough by the planting equipment to retain the moisture. (4) Soil tillth is gradually improved due to less tillage and compaction with farm machinery. (5) High yields come from higher plant population - the results of better seed germination, weed control, and more water absorption.

If you are planning on using minimum tillage on your corn for this year, you need to start early so that you will have time to adjust your equipment well ahead of planting. Most planters can be rigged for wheel track planting.

Anyone needing more information can contact us here at the Soil Conservation Office and we will be glad to assist you.

Apartment Residency
 Americans: Living in an apartment doesn't contribute to a person's or a family's status-unless it's a high-rise apartment.

University
 CHAMBERS
cinema
 MOREHEAD, KY. 784-5522

Daily Matinee
 BOX OFFICE OPEN
 1:30 til 9:45 p.m.

NOW THRU TUESDAY

"The Fastest Auto Chase In Movie History"

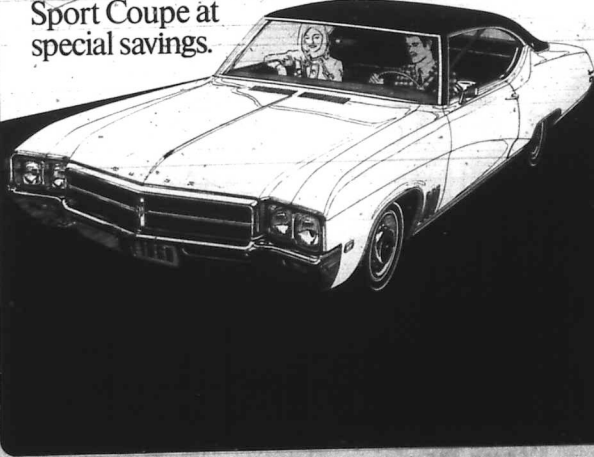
STEVE MCQUEEN AS 'BULLITT'
 The word 'cop' isn't written all over him - something more puzzling is.

ROBERT VAUGHN
 JACQUELINE BISSET DON GORDON ROBERT DOVALL SIMON DARLAND NORMAN FELL

FEATURE TIMES: 2:00 - 4:00 - 6:00 - 8:00 and 9:45 p.m.

A Delightful Decision.

A specially-equipped Buick Skylark Custom Sport Coupe at special savings.



Five popular 1969 Buick Skylark models are now specially equipped with a lot of extra things. Things like door guards, remote control outside mirrors, convenience doors, vinyl tops, whitewall tires, deluxe wheel covers and belt reveal moldings. And they're offered to you now at special savings, too. The reason? Simple. We want to make your buying a Buick right now a delightful decision. Your Buick dealer is waiting.

It's Delightful Decision time at your Buick Dealers' now.



BIRTHDAY IN MARCH?

It may be time to renew your DRIVER'S LICENSE



Published as a public service by this newspaper.

Sanitone
 Certified Master Drycleaners

When we hurry your Sanitone drycleaning, we don't cut any corners.

We'll match any drycleaner for fast service - 1 day, 1/2 day. But we'll insist on giving you Sanitone quality - brighter colors, softer feel, impeccable spotting and finishing. After all, you might be rushed, but you don't need to settle for less than the best. See us.

Imperial Cleaners
 PH. 784-4104 MOREHEAD, KY.

BALTIMORE DRUGS
 "Your Walgreen Agency"

MAIN STREET 784-4491 MOREHEAD

Reg. \$1.58 Contac Capsules Only 79¢	Reg. \$1.15 LISTERINE Now 69¢
Reg. 88¢ Bayer Aspirin 62¢	200 Count Box KLEENEX Reg. 33¢ Limit 2 19¢
Reg. 86¢ Phillips Milk of Magnesia ONLY 69¢	Reg. 86¢ Hair Spray 49¢
Reg. 86¢ Disposable Diapers \$1.18	Reg. 79¢ COLGATE Instant Shave NOW 59¢
Reg. \$1.99 CREST Toothpaste 69¢	Reg. 85¢ MILES I-A-Day Vitamins \$1.39

ublisher's en...

Day-day publication, and editorial observations, of the publisher of this newspaper.

This is written on Tuesday, but you won't be reading this column or anything else in the good old Morehead News until Thursday because it is printed Wednesday afternoon or evening.

So, the battle between the Eagles of Morehead State University and the thoroughbred of Murray State University will be history when you peruse these lines.

We flatly predict on this Tuesday afternoon that Morehead will best school Murray for the OVC round ball title, and earn the right to compete powerful Marquette in NCAA eliminations at Carbondale, Ill. this Saturday.

- 96 Carson Newman 69
119 Pan American 75
82 At Marshall 85
116 Kentucky State 86
73 At Eastern 60
89 Marshall 92
109 Western Michigan 92
82 At Pan American 74
111 Murray 78
97 Austin Peay 79
88 At Mid. Tennessee 93*
86 At Western 87*
93 At Tennessee Tech 84
63 East Tennessee 82
92 Morris Harvey 78
85 At S. Mississippi 93
91 At Miami, Fla. 92*
77 Eastern 65
106 Mid. Tennessee 74
79 At Kentucky State 72
90 At Austin Peay 91*
89 At Murray 91*
78 Western 77
64 Dayton, O. (forfeit) 75
84 Tennessee Tech. 64
77 At East Tennessee 67
Denotes overtime.

Our Eagles could have had a record of 26-0 or 25-1 and be highly ranked nationally. Instead, it is 18-8.

Notice the asterisk (*) above Murray lost all four overtime games. Their conference record is 11-3 with all three defeats being in overtime and away from home. Their OVC slate could be 14-1.

Morehead should have never lost two early season games to Marshall, the cellar-dweller in the Mid. American. The Eagles are a 15 point better club. The other two teams were at Southern Mississippi in Morehead's poorest performance of all year, with our colored boys perhaps skittering in that segregated atmosphere, and to Dayton, a "questionable" team.

All that is past history and cannot be retrieved. We've already predicted on this Tuesday that Morehead will beat Murray in the play-off, and we've already predicted a 2-51 split.

Although Marquette will be favored by 10 points since they are one of the nation's powerful teams, we pray and say that the Eagles will pull a major upset at Carbondale and thereby advance to NCAA regional play. Do we hope it won't be an overtime? Morehead!

WE DELAYED - For the past month or so this Publisher who is back on his diet which strictly forbids alcoholic beverages of any kind has known this would be Bob Wright's last year at the MSU basketball coach. But we didn't want to upset convalescing Dr. Adron Doran by breaking it in print. If you read the page one story (this issue) on this you'll know the reason is that Bob, a real likeable fellow, never seems to realize that recruiting is 80 or 90 percent of his taxpayer's job. Bob just didn't like to take to the high road or go to the salt mines.

THIS IS OUR ALL CONFERENCE TEAM As you have already surmised most of this column will be about basketball... that is as it should be because basketball is in the air of Morehead. So, four times will drive the 235 miles to Bowling Green for the OVC play-off.

also enjoy any and all observations whether true or conjured in our dreams about the minutiae of life.

Since the reformed author of this column owns 100 percent of the stock of this newspaper, including the debts but not the girls, I'll be writing you about it. And if you don't like it you can have your money back... or subscribe to Playboy.

You may recall that the highest scoring player in all Eagle basketball history was Dan Swartz. Our farm readers want their money's worth, paid-up rural readers are sort of like Dan's father who had never seen a basketball game.

So, farmer friends bear with us a little more on basketball and what just we derive end this column by giving you the initials of the man who is courting a woman other than his wife (in initial or first name, too) up in Hogtown precinct.

If we were picking an all Ohio Valley conference team this year (which is what we are exactly doing right here) it would be the following: RCHS Vikings; Harley Swift, E. Tennessee; Jim Daniels, Western; Jerry Virden, Murray; and Bobby Washington, Eastern. Our first substitute would be Weir, the hog farmer, coach of our downtown coaches will dispute these choices, but they know about as much about basketball as we do about delivering babies.

Alcinder would be the team listed above. Gosh, wouldn't the team listed above be something great? They could give following and UCLA running fits.

Both the winner and runner-up in district play advance to the regionals... and the 16th regional will be next week at Laughtin Fieldhouse, a victory Monday over East Tennessee, a Morehead restaurant posted this marquee sign: "We're Number 1 - Mr. Alcinder Here We Come."

I would be amiss with so much palaver about basketball if we didn't mention that the district high school eliminations will be this week at Morehead. Bath County High is favored, but the RCHS Vikings or the UB Eagles could pull an upset.

Both the winner and runner-up in district play advance to the regionals... and the 16th regional will be next week at Laughtin Fieldhouse, a victory Monday over East Tennessee, a Morehead restaurant posted this marquee sign: "We're Number 1 - Mr. Alcinder Here We Come."

LWV SUPPLIES INFORMATION ABOUT OUR EARLY HISTORY The "Know Your County?" pamphlet edited by the Morehead-Rowan County League of Women Voters contains this information:

Population of Rowan County - 1860, 2,282 of which 2,139 were white, one free colored and 142 slaves; 1870, 2,991 of which 2,929 were white and 32 free colored. (All the slaves must have taken off after the Civil War.)

Thus, the negro population of Rowan County was greater than that now. Today, Rowan County has about 10 negroes.

The same book reports that in 1870 Rowan County produced 7,900 lbs. of tobacco; and farms had 703 horses, 31 mules, 1,92 cattle, and 13 hogs. The county produced the following farm production back then, almost a hundred years ago - 327 tons hay, 95,746 bushels corn, 2,227 bushels wheat and 745 bushels barley.

HAPPY THOUGHT - For many years this Publisher has considered the harbinger of spring to be if it was daylight - when the CMO's George Washington passes through Morehead.

PRETTIEST SIGHT OF WEEK - Some of those MSU co-eds doing a snake dance in their nightgowns this Monday night victory celebration. In the Monday night they have been saving up several hundred giant fire-crackers for the occasion in which we would have gladly joined except for this bum leg. It would have sort of been out of place for a 36 year old, but it was a real party. Publisher mistook those 5,000 University celebrants who earned the half-day holiday grant Wednesday afternoon by their gracious and getting-well President.

V.I.P. VISITOR - An old friend, Attorney General John Beckridge, dropped by Monday. He said it was a "first-to-be" but he had been out of town. He was available at Kentucky's next Governor. We will give him the democratic factions in Rowan and area counties are starting to get together. Frankfort. Nixon moved into the White House. The democrats

HEAVY MAIL - Ten, or more, of our readers in the Dayton area mailed us clippings from Ohio newspapers about the Kirt's travesty when a weak-kneed referee stopped the Eagles-Flyers game. One was by some sports columnist, probably taking a high school journalism course, who wrote that the referee had started by throwing Morehead fans who had slipped into the seats of Dayton fans. Since when has Dayton sold a ticket to any fan from a visiting team? It'll take Dayton a long time to live down this, and the resulting cover-up deceit.

UNENFORCED LAW - Along with Ken Johnson, we were dinner guests at the Governor's Mansion at the time a democrat (Ned Breathitt) had the door closed to the Kentuckian League of Women Voters for a law "to stop all this spending of money in elections." Ken commented such a statute would be enacted by the next General Assembly, enacted by the next General Assembly, enacted by the next General Assembly. Today, we received the official printed report of campaign expenditures in the last November general election as required by that "honest election" statute and it shows that Rowan County the democrats reported no election expenditures and the republicans reported they spent \$15.

YOU SHOULD HEAR HIM - When this, sometimes seen in important places Publisher, was privileged to fly all over the nation on Air Force One with the President (with Betty) and the Vice President was extended by Pierre Salinger, the man who most reminds us of Rowan County Attorney, Jimmy Clay. Mr. Salinger will speak in Morehead Tuesday afternoon in a program dedicated to see that a particular group of Kentucky youths have an opportunity to become useful citizens.

BUY SEVERAL - Rowan County Girl Scout Council has a big money project coming up this month - sale of Girl Scout cookies. Four varieties will be offered at 50 cents a box, a bargain in itself. Through the years, we've never turned one down, and buy from every Girl Scout who solicits at our office or home.

APPROPRIATE - The Morehead News has received more mail (all favorable) on the story about the flag pole and flag in front of our new building than anything we recall. This convinces us that America is made up of 99 percent of what should be shared and one percent of what should be shirked.

OUT OF HAND - You should read the article on this issue by VanCannon. Our doctor in nearby Sandy Hook received last year, \$119,758.36 in Medicaid (welfare) money for his services... a Pikeville drug store received \$72,000 in Medicaid money. This thing is about to blow sky high and really infuriates one who has to borrow money to pay his income taxes.

HOUSING - Morehead is about to get a new and rather large apartment house. Plans call for 30 apartments to start with and 40 more to be added. It will be built at the west city limits just past Red Hed Service Station. (Story, page one.)

PREDICTION - Lake View Heights Subdivision in which some of us have more than a passing interest will be first in Rowan County's second largest (population) community. Latest project there, which will become a reality, is a community swimming pool. This is "only" living.

JUST A DREAM - Everybody has dreams, some about snakes, alligators or perhaps men about women and women about men. The other night we dreamed a horse named "Reviewer" won the Kentucky Derby. We had not known any such horse was entered. When the eligibles came out this week, there was an eligible called by the name of "Reviewer" - a Bold Ruler colt. His past performances were so good and he looked 50 to 1. This is probably like the dream we've had in our minds. Kluge in Russia and we went up in the same Lexington motel bed where we had gone to sleep after an evening on the town. The "sure and certain" Derby winner will be in our first Monday night. Kluge in Russia and we went up in the same Lexington motel bed where we had gone to sleep after an evening on the town. The "sure and certain" Derby winner will be in our first Monday night.

BIG BUSINESS - Those Allen boys (Hubert and Bob) must be on their way to becoming supermarket tycoons. See story of their latest business acquisitions on page one of this issue.

BIG MONEY - The Morehead State University Board of Regents meets this month and it is our educated guess the \$10 million for fiscal 1969-70 will be around \$10 million. Education is unquestionably the biggest business in our community.

COMING A top level meeting will be held this (Thursday) evening at St. Claire Medical Center. It is the forerunner of expansion of all physical facilities of the hospital. See page one for details.



TRIBUTE - The Morehead State University Younger Women's Club honored Chief Security Officer Russell Kirk with an award and plaque for outstanding service to the University community. From left - Sharon Durham who made the presentation, Officer Kirk, Mrs. Kirk and Joyce Sexton, President of the Club.

Teaching Young Boys... Frenchburg Center

Marking one edge of this beautiful mountain city is the handsome grounds of Frenchburg Boys Center where recently between 40 and 50 persons joined hands in a program dedicated to see that a particular group of Kentucky youths have an opportunity to become useful citizens.

Also present were Child Welfare Commissioner George Perkins and department representatives who were anxious to get acquainted with Menfice part of Kentucky and that reality is nearer than many think.

PRODUCTIVE - In our book, the meeting that opened the door to bring millions of federal dollars to our community was that held last month by the Menfice County and the Kentucky Municipal League. We are not at liberty to impart more at this time, except to say if Morehead doesn't obtain a re-certification of the "workable program" with possible annual renewal, we'll be plain damn fools and/or grass ought to grow on our streets and outdoors. More about this later so keep your subscription renewed and save by renewing for two or five years.

POSSIBLE - Many folks in Menfice claimed if Cave Run reservoir was built, it would be a good thing for the county. Some figures at hand indicate they may be right because the total taxes collected now (before Cave Run) to operate the OVC football next season is less than the Moreheadians pay in individual income taxes.

HEN FRUIT - A couple issues back we commented about a planned "Wonderful World of Women Week" in Kentucky, adding there are already about 500 proclaimed weeks in the United States. You may be interested to know that March is "Egg Month In Kentucky."

CONCLUDING - It is the confirmed belief from this corner that the Morehead State University Eagles will be first in Rowan County's second largest (population) community. Latest project there, which will become a reality, is a community swimming pool. This is "only" living.

Just a dream - Everybody has dreams, some about snakes, alligators or perhaps men about women and women about men. The other night we dreamed a horse named "Reviewer" won the Kentucky Derby. We had not known any such horse was entered. When the eligibles came out this week, there was an eligible called by the name of "Reviewer" - a Bold Ruler colt. His past performances were so good and he looked 50 to 1. This is probably like the dream we've had in our minds. Kluge in Russia and we went up in the same Lexington motel bed where we had gone to sleep after an evening on the town. The "sure and certain" Derby winner will be in our first Monday night. Kluge in Russia and we went up in the same Lexington motel bed where we had gone to sleep after an evening on the town. The "sure and certain" Derby winner will be in our first Monday night.

Perkins explained the center could fit into a normal society of slow-learning youths, 13, 14 and 15 years old, with an occasional 10-year-old or the other age limit an occasional 17-year-old. Youths will be supervised at all times, even in group work training. The crafts to prepare them for vocations, social values, work experience on the premises, recreation and religious activities, all aimed toward making a useful citizen of a youth who otherwise might not have this opportunity.

The commissioner explained the center could retain a boy until he was 21. Still detainable, he said, is whether the center can retain a youth to age 21.

Department administrative aides pointed out job openings at the center for local people who could contact Supt. Landan at the center any Wednesday for the next three to five weeks after which he will be at the center full time.

The stream flows through the community but as a citizen said, name Beaver Creek is more synonymous with area downstream.

The new training center for boys is located in a stable community of good people and churches, a good highway. One of the most valuable assets is the magnificent scenery.

Eddie Conley, a 6-1 guard at Morehead State University, has been selected for the All-Ohio Valley Conference freshman team. The lone scholarship player for the boys is Eddie Conley, a 6-2 senior guard Jerry Quincy, an All-OVC selection at Morehead's varsity. They played high school basketball at Jenkins High School. Morehead's freshman squad compiled a 2-8 record under the direction of Leon Schrader.



Clag Sprout... Farm Editor. and his friend. Clag Sprout.

DEAR MISTER EDITOR: Well, here in March all across the country farmers and ranchers is getting started on a new year. I got to thinking about how ever year they are fewer people left on farms. I saw some figures where farm households are dropping at four million to less than three million since 1960, and families that don't live on farms has went up nine million to more than 57 million.

Incidental, Mister Editor, the folks at the country store Saturday night got a report from Zeke Grubb on how much a teller asks. Zeke had some 500 lbs. of head of cattle, 2,400 chickens, 1183* 225 lambs, 26 acres of grain and 50 acres of fruits and vegetables by the time he was 70 year old. In an average year, he will cut 20 percent of candy, and wash everything down with 75 gallons of soft drinks.

You take that average American and multiply him by 200 million and you've got a powerful big job for farmers and ranchers. The thing that might save us is that the fewer farmers we got the smarter they need a law. Our farmers now is planting corn with arpland they can plant 10 times faster than with a 10-row planter.

I don't know where it's going to end, Mister Editor, but I see the scientists predicts during the next 20 year the world will need more food and consumer goods than has been used in all history up to now. And half of the goods we got now wasn't even invented 10 year ago.

Things is moving powerful fasted was telling me that the average man is the only animal in the world that will work himself into a early old age just so he can relax and enjoy his old age.

Your... Social Security

"I imagine every adult member of a family has at least one or another household has children thought as to how to provide for his children should he become disabled, pass away, or reach retirement age," reflected Thomas B. Thompson, district manager of the Afland social security office.

In establishing a family income program the concerned father or mother probably places heavy reliance on such resources as private insurance, employer investments, social security, etc., to provide for his family. Most people are aware of what their private insurance, company pension plans, etc., will provide because they were participants in preparing their insurance program, or had been acquainted with their company's pension plans through orientation. Many people, however, may not be acquainted with the important role of benefits provided to the family, children in particular, by social security or retirement of a mother or father, social security will provide monthly benefits to unmarried children under 18, or between 18 and 22 if they are full-time students in college, and unmarried children 18 or over who were severely disabled before they reached 18 and who continue to be disabled. These benefits are substantial too. For an example, the father of two young children was killed in an accident. He had average earnings of \$454-a month covered by social security. His widow and children will receive \$384 each month in social security benefits. By the time the oldest child reaches 18, this family will have received more than \$35,000 in social security benefits in alleviating the family's financial burden - to keep the family together - aids the children to complete their education and provides for the care of the disabled, and a lifetime income.

USE COST

CLASSIFIED ADVERTISING RATES
No Classified Ads Accepted After 12 o'clock Noon Tuesday
Per word first insertion .76
Per word each subsequent insertion of same ad without any changes .56
Minimum charge (first insertion) \$1.50
Minimum charge (each subsequent insertion) \$1.00
Display Classified Advertising, per inch \$1.25
Entered as Second Class Mailing Matter
Post Office - Morehead, Ky.

ATTENTION - Due to the growth of the city of Morehead and Morehead State University, we are in constant need of good help. We are now taking applications for manager trainees, waitresses, car hops, cooks, porters and dishwashers. If you like restaurant work and are interested in a future, permanent employment, good wages, paid life insurance policy, annual bonus, and paid vacation apply in person (no phone calls please) to Jerry's Restaurant, U.S. Hwy. 60, Morehead, Ky.

WELL DRILLING - Water well drilling Call R.J. Esham, phone 784-7121.
FOR RENT - Furnished apartments. Call 784-4213, 784-5819 or 784-4504.

FOR RENT House trailers on Morggo Fork Road. Pete Armstrong, 784-5732.
FOR SALE - 30 acre farm. Good 5 room house with birch cabinets and bath. Good barn. 46 tobacco. Phone 784-4370.

NEED DRIVES GRAVELED with creek rock? Fill dirt or topsoil, creeks cleaned and creek hauled. Also backhoe work. See Avery Adkins, U.S. 60, Rowan and Carter counties line, 7 days week. Phone 784-4517.

CARPET & RUG CLEANING - Need your carpets shampooed and cleaned? Call Paul Ferguson, 784-9407. Free estimates given. All work guaranteed.

FOR RENT - Two-bedroom unfurnished apartments. Holbrook Manor. Phone 784-4550 or 784-5171. Shown by appointment.

FOR RENT - Business rooms, office space, and apartment, Phone 784-4778.

AUCTION SALE - Every other Saturday night. Used mobile homes, boats, motors, and trailers. Keeton Furniture Co., West Main, Morehead. Phone 784-4988.

FOR RENT - House trailers, 1 or 2 bedrooms, Utilities paid. Morehead Camp Motel, 1/2 mile east on US 60.

LOTS FOR SALE - Pleasant Valley Subdivision, 2 miles west of Morehead. City water now, natural gas soon. \$750 down payment, monthly payments as low as \$35.75 on balance. Call 784-5233 or 784-5515.

HAND WANTED - Stone mason to make repairs to Doughboy Monument on Courthouse lawn. Restoration being sponsored by Corbie Ellington Post, American Legion. Contact one Ollie Barker at Big Store Furniture Co., phone 784-5593.

FOR SALE - New all electric brick home. Three bedroom, 2 ceramic tile baths, built in range and oven, garbage disposal, fire place, full basement and car garage. On corner lot. Price \$25,000. \$6,000 down. Call R.S. Woodrow, 784-5317.

FOR RENT - New 50x12 two-bedroom mobile homes. Inside city limits. See or call H.K. Taylor or Johnny Dickerson, phone 784-4147.

FOR SALE - Four bedroom house close to high school. All 100 acres bottom land, well fenced. Orville Fultz, phone 784-091.

FOR RENT - Modern brick veneer central air conditioning and heating private rest room facilities. Contact H.K. Taylor or Johnny Dickerson, phone 784-4147.

FARM FOR SALE - 410 acres; 100 in grass, 300 in timber. Has 7 room house, two barns and 1.51 acre tobacco base. Located on Big Run Rd. in Fleming Co. Call 876-2457.

INSULATION - Blown insulation or batt insulation installed. Warren Lumber Co., Mt. Sterling, Ky., phone 498-4440.

WELCOME United Pentecostal Church
Pastor - Lloyd Dean
Oliver Acts 2:38

MOVING? Do you want an "ON TIME" move? Schedule a move with Junior Fritz of MOREHEAD MOVIES. Your furniture will arrive at destination on time, not days later. Independently owned by an experienced man. Low Rates total. Phone 784-7881 or 784-8384.

FOR SALE - 30 acre farm. Good 5 room house with birch cabinets and bath. Good barn. 46 tobacco. Phone 784-4370.

FOR RENT - Business rooms, office space, and apartment, Phone 784-4778.

FOR RENT - House trailers on Morggo Fork Road. Pete Armstrong, 784-5732.

FOR SALE - 30 acre farm. Good 5 room house with birch cabinets and bath. Good barn. 46 tobacco. Phone 784-4370.

FOR RENT - Business rooms, office space, and apartment, Phone 784-4778.

TREED PROVEN

REZONING ORDINANCE WHEREAS: The Board of City Council of the City of Morehead this date held hearing on a proposal to rezone the after described property and no objections or protest have been voiced or presented by interested person or party, and Council now being advised,
IT IS ORDAINED by the Board of City Council that the zoning ordinance adopted March 16, 1960 be amended so and is hereby rezoned from R-1 (residential) to light industrial.

BALDWIN PLANOS & ORGANS - Decorator model as low as \$529. A used Hammond organ. Stoneypher Baldwin Co., 2nd and Wood St., Maysville, Ky.
FOR RENT - Sleeping rooms. Call 784-4935.

WORK WANTED - Will do roofing, roof repairs and painting. By the contract or by the hour. Work guaranteed. Call 784-5381.

FOR SALE - Mobile home tires and rims, axles and springs. H.K. Taylor or Johnny Dickerson, phone 784-4147.

TRAILERS FOR RENT - All utilities paid, \$120 and up. Have 2 furnished apartments for rent, all utilities paid, \$125. Also trailer space for rent, city utilities, outside city limits, 1/3 mile east. No city tax. Daniel Boone Motel. Phone 784-4171.

TRAILER SPACE FOR RENT - Trailer parking, overnight camping area. We invite your inspection of this mobile home court before you decide to locate. Contact Arlene Flannery, Shawnee Hill Airport Road, Farmers, Ky.

NOTICE TO CREDITORS Notice is hereby given that Ranie Lambert has been appointed by the Rowan County Court as Administratrix of the estate of Willis Lambert, deceased, and all persons having claims against said estate must present same, properly proved, and all persons owing said estate will please settle same with either of the undersigned.

FOR RENT - Business rooms, office space, and apartment, Phone 784-4778.

FOR RENT - House trailers on Morggo Fork Road. Pete Armstrong, 784-5732.

FOR SALE - 30 acre farm. Good 5 room house with birch cabinets and bath. Good barn. 46 tobacco. Phone 784-4370.

NEED DRIVES GRAVELED with creek rock? Fill dirt or topsoil, creeks cleaned and creek hauled. Also backhoe work. See Avery Adkins, U.S. 60, Rowan and Carter counties line, 7 days week. Phone 784-4517.

CARPET & RUG CLEANING - Need your carpets shampooed and cleaned? Call Paul Ferguson, 784-9407. Free estimates given. All work guaranteed.

FOR RENT - Two-bedroom unfurnished apartments. Holbrook Manor. Phone 784-4550 or 784-5171. Shown by appointment.

FOR RENT - Business rooms, office space, and apartment, Phone 784-4778.

AUCTION SALE - Every other Saturday night. Used mobile homes, boats, motors, and trailers. Keeton Furniture Co., West Main, Morehead. Phone 784-4988.

FOR RENT - House trailers, 1 or 2 bedrooms, Utilities paid. Morehead Camp Motel, 1/2 mile east on US 60.

LOTS FOR SALE - Pleasant Valley Subdivision, 2 miles west of Morehead. City water now, natural gas soon. \$750 down payment, monthly payments as low as \$35.75 on balance. Call 784-5233 or 784-5515.

HAND WANTED - Stone mason to make repairs to Doughboy Monument on Courthouse lawn. Restoration being sponsored by Corbie Ellington Post, American Legion. Contact one Ollie Barker at Big Store Furniture Co., phone 784-5593.

FOR SALE - New all electric brick home. Three bedroom, 2 ceramic tile baths, built in range and oven, garbage disposal, fire place, full basement and car garage. On corner lot. Price \$25,000. \$6,000 down. Call R.S. Woodrow, 784-5317.

FOR RENT - New 50x12 two-bedroom mobile homes. Inside city limits. See or call H.K. Taylor or Johnny Dickerson, phone 784-4147.

FOR SALE - Four bedroom house close to high school. All 100 acres bottom land, well fenced. Orville Fultz, phone 784-091.

FOR RENT - Modern brick veneer central air conditioning and heating private rest room facilities. Contact H.K. Taylor or Johnny Dickerson, phone 784-4147.

FARM FOR SALE - 410 acres; 100 in grass, 300 in timber. Has 7 room house, two barns and 1.51 acre tobacco base. Located on Big Run Rd. in Fleming Co. Call 876-2457.

INSULATION - Blown insulation or batt insulation installed. Warren Lumber Co., Mt. Sterling, Ky., phone 498-4440.

WELCOME United Pentecostal Church
Pastor - Lloyd Dean
Oliver Acts 2:38

MOVING? Do you want an "ON TIME" move? Schedule a move with Junior Fritz of MOREHEAD MOVIES. Your furniture will arrive at destination on time, not days later. Independently owned by an experienced man. Low Rates total. Phone 784-7881 or 784-8384.

FOR SALE - 30 acre farm. Good 5 room house with birch cabinets and bath. Good barn. 46 tobacco. Phone 784-4370.

FOR RENT - Business rooms, office space, and apartment, Phone 784-4778.

FOR RENT - House trailers on Morggo Fork Road. Pete Armstrong, 784-5732.

Political Announcements

REPUBLICAN PARTY
FOR SHERIFF
Clayton Koldiron
Curtis E. Lewis
Jim Phillips

FOR JAILER
Richard Whitbread
Roy Pyle

FOR CORONER
Calvin Ray Lytle

DEMOCRATIC PARTY
FOR STATE REPRESENTATIVE
71st District - Rowan, Fleming, Robertson Counties
True Mackey

FOR CIRCUIT COURT CLERK
Wathan Armstrong

FOR COUNTY JUDGE
W. C. Flannery
Chryle Litton

FOR COUNTY ATTORNEY
James E. (Shirley) Clay

FOR SHERIFF
W. Doris Brown
Carl Jones
Forrest May

FOR COUNTY COURT CLERK
Ottis W. Elean

FOR TAX COMMISSIONER
Juanita Wilson

FOR JAILER
Jessie Anderson
James Rhoads
Olen M. Thomas

FOR CORONER
Jesse McDaniel
Edna Thomas

FOR MAGISTRATE
District 1 - Courthouse, North Morehead, Brantly Predicts.
Alfred Ellis

FOR MAGISTRATE
District 2 - Upper Farmers, Lower Farmers, Thomas Addition, West Morehead Predicts.
Ralph Layton

FOR MAGISTRATE
District 3 - Hoptown, Clearfield, City Hall Predicts.
Chella Moore
Muriel Scoggins

FOR MAGISTRATE
District 4 - Rodburns, Easton, Pine Grove Predicts.
Ora L. Mabry
Lornie Sparks
Charles O. Waddell

Political Announcements in Nearby Areas

REPUBLICAN PARTY
FOR STATE SENATOR
Carrie Lewis Elliott and Gregory Coan
Roger E. Qualls

STAR METAL CO. - Located Route 60 at Farmers, Ky. across from feed mill. We buy copper, brass, aluminum, radiators, batteries and lead scrap. Copper, 39 cents lb.; radiators, 25 cents lb.; batteries, \$1.25 each; aluminum, 7 cent lb.; brass, 18 cents to 30 cents lb.; lead, 7 cents lb. Check with us before you sell. We pay top prices across country.

FOR SALE - House and lot on Toliver St. Good garden and two beautiful lots on knoll. Drive by and see this. Look for the sign. Alfrey Realty, Mabel Alfrey, broker, 784-5986 or 784-9282.

FOR SALE - 1959 Dodge, Good condition, \$175. Call 784-9333 or 784-9197.

FOR SALE - 254 acres on Tar Flat. 75 acre wood on flat. All timber with over 1 million feet of wood. 97 acres at head of Big Brushy. Has young 1 acre of plantings. Good. Would have to build. \$500. 2 acres on Flemingsburg Road suitable for trailer park. Has electricity, septic tank and sewage already installed, \$5,000. Alfrey Realty, Mabel Alfrey, broker, 784-5986 or 784-9282.

FOR SALE - Tools and miscellaneous. Sewing machines, lawn mowers, well pumps, washers and dryers, electric clocks and small appliances repaired. L.H. Purdue residence phone 784-7928.

FOR SALE
MABEL ALFREY, Broker
784-5986 or 784-9282

ACE APPLIANCE SERVICE - 121 South Wilson Ave., phone 784-9317. Guaranteed appliances, freezers, refrigerators, washers and dryers, gas and electric ranges. All appliances fully guaranteed.

7TH ANNUAL SALE of tractors and farm equipment. Also cars and trucks. Saturday, March 15, 1969, 9 am. Kentucky King Warehouse, Maysville, Ky. Unloading time March 10 through March 14. Sponsored by the Maysville Rotary Club. For more information, call 566-564-3337.

SPARE TIME INCOME - Refilling and collecting money from new type high-quality coin-operated dispensers in your area. No selling. To qualify you must have car, references, \$600 to \$2,900 cash. Seven to twelve hours weekly can net excellent monthly income. More full-time. For personal interview, write United Distributing Company, 701 (A) Investment Bldg., Pittsburgh, Pa., 15222. Include phone number.

CARD OF THANKS - We extend our heartfelt thanks to all those who were so helpful and thoughtful during the illness and death of our loved one, David O. Markwell. We are particularly grateful for the kind and consoling words of Reverends Stanley Cox and Vernon Evans and the efficient service of the Stucky Funeral Home. - The Markwell Family

CARD OF THANKS - We, the family of Jimmy Ray Fultz, wish to thank the people of the bottom of the hill for their kind and considerate during his illness and death. We especially thank Rev. Ted Greene, those who sent the beautiful floral offerings and Stucky Funeral Home. Your gentle kindness will be remembered always. - The Family of Jimmy Ray Fultz.

FOR SALE - 3 bedroom home on .6 acre land, U.S. 60 west. Gray shingle, hardwood floors, bath, utility room, drilled well, new pump, 500 gal. septic tank, private driveway, 11x22 garage. \$9,900. Alfrey Realty, Mabel Alfrey, Broker, 784-5986 or 784-9282.

ABOUT CARDS OF THANKS, OBITUARY PICTURES etc. The Morehead News is often asked why the pictures of some people who have passed on are used in the paper and others are not? Why Cards of Thanks are printed the following week for some and not for others? The reason is that the Morehead News charges for not receiving the picture or the information needed to write the card of thanks. This is part of the services assumed by your funeral home in almost every place. They usually charge for you as part of their service, except that the newspaper makes a nominal (very small) charge for the engraving; and also for the Card of Thanks which most funeral homes add to your bill. So, if you have a death in the family you should not contact the Morehead News as many apparently feel is the right place. You should advise your funeral home that you desire the picture of the deceased in the Morehead News; and a Card of Thanks. You will, of course, need to furnish the picture, and information desired in the Card of Thanks. The Morehead News furnishes a form for funeral homes with all information, including suggested forms of the Card of Thanks etc. It is reiterated that a small engraving charge is made for the picture, and a small charge for the Card of Thanks may be added to your bill or the funeral home. You may use either or both the picture and/or the Card of Thanks. Unlike metropolitan and many community newspapers the Morehead News makes no charge for the obituary itself.

DATES AND EVENTS FROM YESTERYEARS President McKinley signed act setting gold dollar as unit of value, March 14, 1900. President Taft stopped shipment of arms to Mexico, March 14, 1912. Joseph P. Kamp of the New York World began a campaign to raise \$100,000 for a pedestal for the Statue of Liberty, March 15, 1885. King George of Greece was assassinated, March 18, 1917. U.S. Senate rejected the Versailles Treaty, March 18, 1919.

GET UP NIGHTS? BACKACHE? THE PAIN-FLOW SMART-BIG can't be beaten. It's the only medicine that's been proven to relieve pain in 15 minutes. It's the only medicine that's been proven to relieve pain in 15 minutes. It's the only medicine that's been proven to relieve pain in 15 minutes.

WHEN DOES WORK STOP BEING WORK? When you work for yourself. When you know that all your talent and efforts are being used to improve your life. Work stops being work when you become so interested in your job that you forget that you are working. When you are so interested in your job that you forget that you are working.

IF YOU BUY A NEW MOBILE HOME AND DON'T CONSIDER CHEAP'S PRICES AND QUALITY YOU'LL LOSE MONEY

WHY PAY RENT
What you can own a New Mobile Home from CHEAP'S
and pay for it in small monthly payments. \$3 Month. Consider from \$100 to \$1000. 10-12-14-16 weeks in stock.
CHEAP'S LARGEST AND BEST SELECTIONS
Every mobile home is individually designed and constructed, and set upon a great lot on your own site just how it will look on your lot.
IF YOU BUY A NEW MOBILE HOME AND DON'T CONSIDER CHEAP'S PRICES AND QUALITY YOU'LL LOSE MONEY
FREE
300 mile delivery and set up on foundation. Payments to suit you.
Open Air Clubhouse On Beauty Pier
CHEAP'S
Montgomery Ward & Co.
L.L. Roberts 810 3-1
P.O. Box 24
P.O. Box 24

FOR RENT - 3 room furnished house with large bath. Utilities paid. Contact Mrs. Decide Hardin, 14 White St., Thomas Addition, or call 784-7248.

FOR SALE - 1967 Dodge R/T with power steering and stereo. 28,000 miles with full warranty. Call 784-9075.

WANTED - Experienced man to help on cattle dealer's farm. Farm work, cattle feeding and care. No milking. Good wages and modern house. Phone 219-724-9235. Bob Bookout, Rt. 6, Decatur, Ind. 46733.

TRAILER FOR RENT - 825 E. Main St. Male students preferred. Reasonable rent. Call 784-4221 or 784-7114.

FOR RENT - 3 room furnished house with bath. One mile out Flemingsburg Road. Call or see Mrs. J.B. Nesbitt, 784-5303.

TRAILER FOR RENT - Call 784-5201.

SHADY REST PET HOTEL is now in the new pages of your phone book. Have AKC stud service. Also board your pet for a day or a year with tender, loving care given all. Phone 784-7833.

TRAILER FOR RENT - Married couple only. Call 784-7473.

FOR SALE - New five room house, electric heat, with carpet. 4 1/2 miles out on Route 22. Christy Creek. Priced \$13,000. Call 784-9550.

FOR SALE - 1967 Buick Wildcat, 4 door h/t. Jim Simcox, 306 W. Main, Owingsville.

LEGAL NOTICE - If my name appears on such papers as contracts, agreements, mortgages, deeds or notes I have signed or my signature copied, I have never signed such papers. - Mattie H. Jones, Farmers, Ky.

FOR SALE - 1964 Impala. Clean car. Low mileage. \$700. Bill Hampton, 784-9114 after 4 p.m.

Library Provides Employment Advice

A wealth of new materials to assist job-seekers in selecting and planning an employment career is available through Kentucky's regional library system, one of which is Morehead.

The Department of Libraries has purchased 24 Occupational Kits, published by Science Research Associates (SRA) Inc., Chicago, Ill. For distribution to all Regional Library Headquarters and larger member libraries.

Included are 330 occupational briefs and analyses describing major job fields, the nature of the work, education required, salary scales and hours of work, along with chances for advancement and outlook for the future.

John Myers Graduates At Sheppard Base
Airman First Class John R. Myers, son of Mr. and Mrs. A.H. Myers, Rt. 1, Boones Mill, Va., has been graduated at Sheppard AFB, Inc., from the training course for U.S. Air Force medical equipment repairmen.

Airman Myers, a 1962 graduate of Franklin County High School in Rocky Branch, Va., is remaining at Sheppard for duty with the Air Training Command.

His wife, Carol, is the daughter of Mrs. Betty Haney, Rt. 1, Davenport, Fla.

Mrs. Myers' father, Ray Haney, resides on RFD 1, Morehead.

E. Tennessee Falls; Eagles Tied

By Dick Walls & John Cannon - At approximately 9:45 last night pandemonium broke out on the University campus. Screaming and shouting was heard from the dormitories. Cars paraded around campus honking their horns, fireworks exploded. People paraded the campus.

The reason? The Eagles had just downed East Tennessee, 77-67, to tie for Murray for the OVC title. They play Murray Wednesday night on a neutral court for the championship and the right to represent the OVC in the Midwest Regional of the NCAA.

Eagles Keep Cool

The Eagles, notoriously weak on the road, kept their cool against East Tennessee. Playing before 4000 screaming fans the cagers of coach Bob Wright overcame the 50 point production of

Mike Kretzer and Harley Swift for their eighteenth victory of the season. Playing like the pros, Kretzer said they could Morehead came from two points down at halftime to pull away for good with 7:30 left. At this point they mounted a 12 point spread, 73-61, which East Tennessee could never overcome.

Cathright Leads Eagles In Clutch

The Eagle's hard earned victory came through the efforts of the seldom publicized 6'3" forward Roy Cathright. Cathright, a junior, did just about everything right for the Eagles. He finished the game with 12 clutch points and a team high 13 rebounds. Willie "Hobo" Jackson led the well-balanced Morehead attack with 23 points. He also collected 10 rebounds.

Jerry Conley, playing with four fouls for the final 15 minutes of the

game, hit the nets for 20 points. Lamar Green added 13 points and 10 rebounds while the other Eagle starter, guard Bobby Hiles finished with five.

Kretzer And Swift Score 50

Mike Kretzer and Harley Swift were about 80 per cent of the East Tennessee offense last night. Both playing their last home game were almost too much for the victorious Eagles.

Kretzer, a forward took game high honors with 30 points. Swift, a 6'3" All-Conference guard finished his last collegiate game with 20.

Morehead out rebounded the Buccaneers 47-37 and also out shot them hitting 33 of 68 for 48.3 per cent to Morehead's 28 of 65 for 43.1 per cent.

The Eagles victory last night gave them a 11-3 conference record and an overall mark of 18-8. The playoff game to decide the championship will take place in D.A. Diddle Arena at Western on Wednesday night.

It's Murray Next

For the Thoroughbreds of Murray, the title game will not be a new experience. They met East Tennessee in a playoff game last year and lost it 79 to 75. No doubt that game will be very much on the minds of the Murray players Wednesday.

In many ways Murray and Morehead are similar. Both teams rely heavily on senior players who have played together since freshmen. Both teams, therefore, face a "now-or-never" situation, since they will both be badly hurt by graduation.

Both teams are in the playoff game because they lost games to teams far less powerful - Morehead lost to Middle Tennessee early in the season and Murray losing to East Tennessee a week-and-a-half ago.

Both teams are almost unbeatable on their home courts, but that factor will mean little on the neutral court Wednesday night.

The teams have split their two games this season. Morehead trounced the Racers 111-78, at home, but lost to them 91-89 in overtime at Murray.

Murray has the advantage of resting since Saturday night, but it should be anyone's game Wednesday.

Wednesday night's game will begin at 7:30 Central Standard Time. Preliminary plans is for the Student Council to charter a bus for students. The team went to Western last night.

Fire Marshals Inspecting Schools In Kentucky

Over 2,000 of Kentucky's public, private and parochial schools have been visited by inspectors of the State Fire Marshal's Office since September 1 as part of the Public Safety Department's fire prevention program.

Conducted for the purpose of assisting each school board in the location and program has uncovered many deficiencies which might have otherwise remained hidden to the untrained eye and precipitated real tragedy. In each case, recommendations for corrective action have been provided the school authorities concerned.

Hospital Auxiliary Will Meet Monday Evening

The St. Claire Medical Center Auxiliary will meet in the hospital dining room next Monday, (Mar. 10) at 7:30 p.m.

Students of Mrs. Victor Venetozzi will present a program of light entertainment.

BRIDGEPORT Conn (UPI) - Cantor Ramon Gilbert will not co-officiate at ceremonies in which the wedding music of Richard Wagner is performed because he believes the German composer held "blatant, arrogant and well-documented anti-Semitic feelings."

The popular nuptial music from Mendelssohn's "Midsummer Night's Dream" is an unattractive alternative for the cantor.

Wedding ceremonies at his Congregation B'nai Israel must meet the demands of tradition and true "Jewishness." After all, Gilbert says, "A cantor is trained to maintain a certain tradition, not contribute to its dissolution."

Both teams are in the playoff game because they lost games to teams far less powerful - Morehead lost to Middle Tennessee early in the season and Murray losing to East Tennessee a week-and-a-half ago.

Both teams are almost unbeatable on their home courts, but that factor will mean little on the neutral court Wednesday night.

The teams have split their two games this season. Morehead trounced the Racers 111-78, at home, but lost to them 91-89 in overtime at Murray.

Murray has the advantage of resting since Saturday night, but it should be anyone's game Wednesday.

Wednesday night's game will begin at 7:30 Central Standard Time. Preliminary plans is for the Student Council to charter a bus for students. The team went to Western last night.

Over 2,000 of Kentucky's public, private and parochial schools have been visited by inspectors of the State Fire Marshal's Office since September 1 as part of the Public Safety Department's fire prevention program.

Conducted for the purpose of assisting each school board in the location and program has uncovered many deficiencies which might have otherwise remained hidden to the untrained eye and precipitated real tragedy. In each case, recommendations for corrective action have been provided the school authorities concerned.

The St. Claire Medical Center Auxiliary will meet in the hospital dining room next Monday, (Mar. 10) at 7:30 p.m.

Students of Mrs. Victor Venetozzi will present a program of light entertainment.

Local citizens watch with interest as a sewing machine is unloaded from a U.S. Navy Coast Guard LST for delivery to the Christian Service Society Sewing Center in DaNang, Republic of Vietnam.

Dry Ridge Convalescent Home
Dry Ridge, Ky. Area Code 606-824 8161
Nursing Home for the Aged, Sick and Retarded Children. All ages admitted from 2 weeks to 100 years of age. Approved by Federal, State and State Public Assistance Programs. Doctor and Drug Bills and the Permitted Length of Stay in the Nursing Home is paid by one or the other Programs, for those who qualify Medically and Financially.

For more information, check with your local Public Assistance Office or call the Nursing Home.

Your Income Tax

This column of questions and answers is supplied by the Louisville office of the U. S. Internal Revenue Service.

Q - My boss still hasn't given me a W-2 statement. What should I do?

A - Employers are required to issue withholding statements to their employees by January 31, so it would be advisable to your employer about it.

Q - I received a package of estimated tax forms in the mail. Does that mean I have to fill one out and send it in?

A - You do not have to file an estimated return for 1968 unless you meet the requirements as explained in the instructions that came with the estimated forms.

Estimated tax forms have been sent to every taxpayer who filed an estimated return for 1968 as well as to those taxpayers who had a balance due of \$40 or more when they filed their 1967 return. The forms identified with the taxpayer's name, address and social security number just as they appear in IRS files.

Q - If you are required to file an estimated return, be sure to use the forms sent you. It will assure that your estimated tax payments are properly credited to your account.

Q - Can I deduct the assessment I had to pay for a new sidewalk?

A - No, the law generally does not permit deductions for assessments for local benefits that tend to increase the value of your property. The amount of the assessment can be capitalized, however, and added to the basis of your property.

Q - Where can I get a copy of "Your Federal Income Tax"?

A - This publication can be purchased for 60 cents at local IRS offices or from the Superintendent of Documents, U.S. Government Printing Office, Washington, D.C. 20402. Ask for Publication 17.

Q - What records should I keep on my 1968 return in case I'm audited?

A - Keep whatever you need to substantiate the amounts and deductions on your return. Cancelled checks, paid bills, Forms W-2 (Wage and Tax Statement), and 1099 (U.S. Information Return for Calendar Year), bank books and similar records in addition to a copy of your return will be helpful.

Q - I've got a refund coming. Where should I send my return?

A - Send it to your regional service center. An envelope addressed to the center was provided in all 1040 tax packages. If you don't have an envelope, check the tax return instructions for the address of your IRS service center.

Q - Can I deduct my Medicare premiums?

A - Yes, premiums for Medicare and other medical insurance are deductible if you itemize expenses on your return.

Q - Don't forget that medical insurance premiums are handled differently than other medical expenses. One half of these premiums up to a maximum of \$150 may be deducted without regard for the 3 percent limitation generally imposed on medical expenses.

Q - Details on deducting medical insurance premiums and other medical expenses can be found in the 1040 instructions.

Q - To help out my daughter, I took care of several of the mortgage payments on her new house. Can I deduct anything for this?

A - No. The law does not allow you any deduction for taxes and interest paid for someone else, if you are not legally liable. If the mortgage was in your name, you may deduct the interest when you itemize your deductions.

Q - I cashed in some U.S. savings bonds last year. What do I report as interest on them?

A - Report as interest the difference between what you paid for the bonds, the issue price, and what you received when you turned them in. Some cash basis



TERMITES?
call **Terminix!**
America's largest termite control organization!
\$25000 GUARANTEE
Against Future Termites Damage
FREE ESTIMATES
For Information Call
Carr Lumber Company
PHONE 784-5438
101 West Dixon St.
Terminix Co., Inc., Frankfort, Ky.

AS BOOKS PILE IN SO DOES THE WORK - At the State Department of Libraries during a peak month about 2,000 requests for books are processed. Mrs. Opal Heighechew, Eminence, circulation clerk, and Mrs. Lucy W. Chapman, Frankfort, director of the Reference and Loan Division, open the daily mail and fill requests from Kentucky's 20 regional libraries.

Two Rowan Bridges Will Be Repaired

A contract for \$76,741.70 for repairs on two US 40 bridges in Rowan County has been awarded to Acme Building Cleaning Company, Inc., Lexington, by the Department of Highways, Governor Louie B. Nunn and Commissioner of Highways William B. Hareling announced today.

The bridges span the C & O Railroad and Triplett Creek near Bluestone.

The bridges have needed repairs for several months, but the letting of contracts was delayed in a maze of other highway activities.

The bridges are supersound structurally, being comparatively new and expensive, but the surfaces are rough. Some "underneath" work is included in the \$76,741.70 contract.

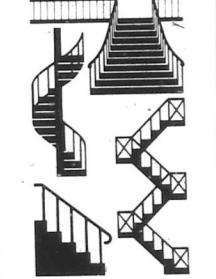
Mentally Retarded Program Scheduled

"A Sheltered Workshop for Mentally Retarded" will be the discussion subject at next Tuesday's (Mar. 11) meeting of the Rowan County Association for mentally retarded.

It will be in the Health Center, Sun Street, at 7:30 p.m. Sponsors said: "All parents who have a child with a problem of this type should attend... along with everybody interested in this vital community program."

taxpayers elect to report the interest earned each year on their bonds rather than all at once when they redeem the bonds. Either way of reporting this interest income is acceptable. However, once the election to report the interest each year is made, you must continue to do so for all discount bonds you own or acquire later.

RETIRING?



Forget Long, Tiring Stairways! An economy-priced mobile home by Skyline is specifically planned for one-floor living. So forget long, tiring stairways. Take life easy in a Skyline!
Isn't it time you looked into a mobile home by

Skyline
Rowan Motor Sales
PH 784-4147
WEST MAIN MOREHEAD, KY

h.i.s.
COUNTRY
4 PC COMBO
FIVE-STEP TO EASY FASHION
Step one: Come into our store today and get a load of our smart 4-piece Country Sports Combo by h.i.s. in a comfortable blend. Step two: Slip into the first pair of contrasting Post-Grad stacks. Terrific. Step three: Try the second pair of contrasting Post-Grads on for size. Even better. Step four: Button up the Ivy tattered hopsack vest. Notice how well it blends. Step five: Slip into the hopsack Country Sport coat with its 3-button front, natural shoulders, hooded vent, lapped seams and patch 1166 pockets. Everything's color-coordinated in your favorite shade. Now, don't forget Step six... pay \$55.00 and it's all yours!
LAYNE'S
MAIN STREET MOREHEAD, KY.

TUESDAY NIGHT AT THE MOVIES
ALFRED HITCHCOCK PRESENTS
ROCK HUDSON
A GATHERING OF EAGLES
TUESDAY 7:00 PM
WSAZ-TV

Don't Let This Happen To You!
6% Penalty
Under Kentucky Revised Statutes a six percent penalty is added on all taxes not paid by February 1, 1969.
Further, the tax bills are subject, as of January 1, 1969 to advertisement (three times) in the newspaper and sold at the courthouse door. Another penalty, and advertising costs, are added.
The law also requires that automobiles, trucks, etc. on which the tax has not been paid to be picked up by the Sheriff.
If you received no tax bill or if you have any question about your bill check with the Rowan County Sheriff's Office.
This notice is important. Be sure your taxes are paid.
John Green
Sheriff, Rowan County
PHONE: 606-784-5442
Home 784-4789

BAKERY
TASTE-TREATS FROM THE BAKERY
Surprise the Family with a New Dessert
So temptingly good... our delicious pastries... a complete variety. Take some home, soon.
Kentuckian Bakery
Phone 784-7348
Main Street - Morehead

Dry Ridge Convalescent Home
Dry Ridge, Ky. Area Code 606-824 8161
Nursing Home for the Aged, Sick and Retarded Children. All ages admitted from 2 weeks to 100 years of age. Approved by Federal, State and State Public Assistance Programs. Doctor and Drug Bills and the Permitted Length of Stay in the Nursing Home is paid by one or the other Programs, for those who qualify Medically and Financially.
For more information, check with your local Public Assistance Office or call the Nursing Home.

2nd Tire 1/2 PRICE
When you buy the first at our low everyday trade-in price
Firestone SAFETY CHAMPION
Our popular 4-ply nylon cord tire with high performance wet and road tread. Long mileage. Excellent SUV, R/T, R/TX rubber and handsome sculptured sidewall design.
All sizes on SALE!
NO MONEY DOWN!
Take months to pay!
Another great buy!
Firestone D1C-100 RETREADS \$10
FULL 4-PLY NYLON CORD
Morehead Home & Auto
"Your Local Firestone Store"
MAIN STREET MOREHEAD, KY.



Handle your money to your advantage... Bank on Us

From Checking and Saving Accounts to low-cost loans, you can count on us to offer complete banking services and facilities to make money management easier and more convenient. It all adds up to this... when it's a matter of your money, come to us!

FULL SERVICE BANKING

- Checking Accounts • Savings Accounts • Automotive Loans
Mortgage Loans • Travelers Checks • Bank-by-Mail



SISTER ACT... Veronica Smiley (left) and Deborah Smiley (right) are the seventh and eighth members of their Prestonsburg family to attend Morehead State University. Veronica, a freshman, and Deborah, a sophomore, hope to become special education teachers.

Higher Education Choice... They Like M.S.U.

Morehead State University is a tradition with the family of Vyron A. Smiley of Prestonsburg. The Smileys have had three children graduate from MSU, three others attended Morehead, and two daughters are now enrolled at MSU. Presently carrying the Smiley name at Morehead are Veronica Ann, a freshman, and Deborah Sue, a sophomore. Both are elementary education majors and hope to become special education teachers.

Morehead State," says Veronica. James Smiley, the first family member to earn an MSU degree, teaches at Pikeville College. Younger brother Wayne, No. 2 on the graduation list, is on the faculty of Hazard Community College, Elizabethtown. She is the latest Smiley to wear an MSU cap and gown. Nick, Rick and Judy Smiley attended Morehead State but moved on to other colleges. Rick is now in the Army. Two other brothers also graduated from Kentucky universities. The yearly trek of Smiley children to Morehead and other campuses has not been easy. Mrs. Smiley, a housewife, and her husband, a disabled, retired carpenter, are not able to pay all of the college expenses but their children have won scholarships, earned loans and worked to stay in school. Older Smileys have helped the younger ones who, in turn, will help the even younger. A ninth Smiley expects to continue the family tradition at Morehead this fall. Martha, like most of her brothers and sisters, has been accepted at MSU for admission as a freshman after she graduates from Prestonsburg High this spring. But the Smiley-MSU love affair may not end with her. Younger sister Dinah, a PHS sophomore, and brother Phillip, an eighth grader, also have started asking questions about Morehead State. "At our home, if you don't want to go to Morehead," says Veronica, "You're not a true Smiley."

Elder Kelly Profitt, 82, Claimed In Baltimore

Elder Kelley Profitt who has preached countless hundreds of sermons in this area of Kentucky died last Tuesday in Baltimore, Maryland, at age 82. He was one of the best known pioneer Rowan County citizens, and before ill health struck officiated at many funerals. The remains were brought to Lane Funeral Home in Morehead and final services conducted Saturday morning at 10 o'clock in Cranston Primitive Church. This was one of the places of worship Elder Profitt helped found and in which he often spoke the gospel. He left Morehead for Baltimore in later years to reside with relatives. The end was not unexpected at Mr. Profitt had been in failing health for months. He was born in Rowan County Feb. 21, 1889 and lived here almost all his life. He was the son of Cleburn and Lizzie (Brown) Profitt, and his ancestors were among the county's first settlers. Three close friends in the Primitive Baptist Church movement - Charles Littleton, Floyd Hall and Lindsay Caudill - conducted the funeral. Burial was in the Cranston cemetery. He married Margaret Burton, and after her death married Amanda Hall who also

preceded him in death. Besides being a preacher, Mr. Profitt engaged in farming and the timber business. His chief love though was the Primitive Baptist Church. Immediate survivors are two sons - Glennmore Profitt of Baltimore, and Everett Profitt, Ashland; a daughter, Mrs. Bessie Walker, Dayton, O.; 10 grandchildren; 16 great grandchildren; a brother, Kist Profitt, Ashland; and eight step-children - Opal Kirk, Ida Bailey, Lucy Johns, Kelly Hall, Charles Hall, Peyton Hall, Mrs. Judy Carter and Eathel Hall. Casket bearers - Cophas Littleton, Everett Blevins, Lige Caudill, Ray Lewis, Blanchard Thomas and Charles Humphreys. Lane Funeral Home was in charge of arrangements.

Glenn Ginter Serving On Front In Vietnam Army Private First Class Glenn Ginter, 19, son of Thomas O. Ginter, Morehead, has been assigned to the 39th Engineer Battalion near Chu Lai, Vietnam, as a personnel specialist. His mother, Mrs. Effie M. Ginter, lives in Olive Hill.

invest rent money in HOME... We'll show you many homes to suit your needs. See Alpha to find the right home... on the right terms! Alpha Hutchinson Licensed and Bonded Real Estate Broker

Revival March 10 thru 15 First Church Of God Tabernacle, Clearfield Starting at 7 p.m. Nightly The six night revival will begin Monday evening March 10, services each night starting at 7 p.m., and continue through Saturday evening March 15. Rev. Willard Wilcox Well Known Evangelist Eastland Parkway First Church of God Lexington, Ky.

SPRING Fashions prettier than ever All New Spring Dresses \$14.98 to \$69.98 COATS \$14.98 to \$49.98 Ladies Dresses \$7.98 to \$10.98 Martin's Morehead's Most Modern and Progressive Department Store

Longrifles Set For 1st Shoot Kentucky Long Rifles have scheduled their first open shoot of the year for Sunday, Mar. 16 at the range near Morehead. Ground beef and choice steaks will be for the prize. Entry fee is \$1 for each match, or \$9 for all 10. The competition, open to the public, calls for open sights only with sunshades permitted and NMLRA rules will apply. The shoot starts at 10 a.m. and will be at distances ranging from 25 to 100 yards. Ladies competition is included, and one match will with flintlocks only.

Ladies... If you don't know about cars, know your dealer. We know it's hard for many ladies to buy and maintain a car. That's why we make a special effort to put ladies in position. From making, come in and let us handle your transportation problems with a lady-minded Chevrolet. We stand behind our sales with the best service in town! LARRY FANNIN CHEVROLET

SOCIETY

Sgt. and Mrs. Ronald Quesinberry spent two weeks with his parents, Mr. and Mrs. Walter Quesinberry, Flemingsburg Road. Sgt. Quesinberry is stationed at the Air Force base in Little Rock, Ark.

The Central-Eastern Kentucky chapter of Sigma Alpha Iota will hold its March meeting in Baird Music Hall on the Morehead State University campus. Mrs. Violet Severy will be the hostess, assisted by Mrs. Palmer L. Hall and Adele Berrian. Following the business meeting, there will be a musical program consisting of Harpsichord Solos presented by Mrs. Severy and selections for two pianos presented by Mrs. W.W. MacLaury and Mrs. Paul Westcott.

Visiting with Mr. and Mrs. Atlie Plank this past week were Mrs. and Mrs. Lloyd Dean.

Mrs. Ronald Quesinberry was honored Thursday, February 13, with a stork shower given by Miss Diane Wells. Guests attending were Julia Smith, Helen Whitt, Ida White, Charlotte Russell, Bonita, Mary and Mrs. Christy, Marilyn Kidd, Minnie Kidd, Hazel Sparkman and daughter, Jean and Tommy Adams. Mrs. Quesinberry received many nice gifts.

Mrs. Bernice Baldrige honored Mrs. Lawrence Collier with a surprise birthday party Wednesday, Feb. 19. Guests were Mrs. and Mrs. Robert Glickson, Mr. and Mrs. Ezra Baldrige, Jr. and children, Ronda, Randall, Jeffery, and Jamie, Mr. and Mrs. Blanchard Thomas, Mr. and Mrs. Ray Ferguson and son, Eugene, Mr. and Mrs. Errel Butler, Mr. and Mrs. Howard C. Hall, Mr. and Mrs. Herbert Baker, Mr. and Mrs. Elbert Click, Mr. Floyd Pickrel, Rev. Lawrence Collier, Mrs. Emma Pettit, Mrs. William G. Turner, Pam Pickrel, Ruth McClurg, Florio Dulin, Joretta Butler, Polly McClurg and Larry Cooper.

Mr. and Mrs. William A. Crowe, Morehead, announce the marriage of their daughter, Janet Elizabeth, to Mr. Robert C. Reeves, son of Mr. and Mrs. James W. Reeves of Salt Lick, on Friday, February 21. They are residing in Salt Lick.

The Hayes Branch Homemakers met Feb. 13 at the home of Mrs. Mildred Patrick. Mrs. Geneva Humphries presided, and Mrs. Patrick gave the devotion, and lesson, "Framing Pictures," was presented by Mrs. Lucy Parker. Next month's project leaders are Nellie Dameron and Geneva Humphries. Other members present were Mrs. Betty Jo Davis, Mary Barker, Wanda Cox and Gaythol Sparks. After the meeting, Mrs. Mildred Wightman presented a tape on the talk given by Mrs. Williams of Oklahoma at the annual area meeting. Next meeting will be at the home of Gaythol Sparks.

Mr. and Mrs. George R. Harvey returned home last week from a visit at Walkie Beach, Hawaii.

Misses Diane James and Pat Abner of Louisville spent the weekend with their parents, Mr. and Mrs. Harlan James and Mr. and Mrs. Dave Abner.

Mr. and Mrs. Steve Heilbrun of Cincinnati were weekend guests of Mr. and Mrs. Ernest Jayne. Mrs. Heilbrun, who has been visiting at the Jayne residence, returned to her home in Cincinnati with them.

Mrs. J.T. Mays and son, Bob, were guests Saturday and Sunday of Mr. and Mrs. Paul Todd and family in Lexington, and visited with Andre Bowne who is a patient at St. Joseph hospital.

Dr. and Mrs. Warren Proudfoot attended the District meeting of the American College of Surgeons in Louisville last Sunday and Monday.

The 12th District PTA Board met Tuesday, Feb. 25, at the home of Mrs. Warren Proudfoot. The president, Mrs. Jean Williams of Owingsville, presided.

Mr. and Mrs. Steve Hamilton and children, Stephanie, Elizabeth, and Bobby, left last Thursday for Ft. Lauderdale, Fla. where he will be in spring training with the Yankees. They will visit with her parents, Mr. and Mrs. Lester Potter, in Dayton, Ohio.

Mr. and Mrs. Ron Kinsling of Lexington spent the weekend with Mr. and Mrs. Woodrow Barber. They were all guests of Dr. and Mrs. George Barber and family for Sunday dinner at which time Mark Barber celebrated his 10th birthday.

Mr. and Mrs. Lewis Kenney and Cameron, and Mrs. Ernest Kenney and Sunday guests of Mr. and Mrs. H. C. Kenney and family in Portsmouth.

The first grade class at Tilden Hodge School honored their teacher, Mrs. Wanda Dean, with a surprise party, March 3. They also presented her with a gift. Children participating were Jamie Crawford, Goss Keys, David Bryant, Natalie Johnson, Anthony Anderson, Danny Blanton, John Jackson, Gary Cooper, Mike Adams, Allen Hicks, Allen McCaslin, Allen Allen, Richard Easton, Billy Stacey, Lela Johnson, Billy Keary, Rhonda Spangher, Sandra Spangher, and



A Special Place For A Special Society Editor
784-7739
USE THIS PHONE ONLY
Mrs. Helen Ross
Society Editor

Weekend guests of Dr. and Mrs. Donald Blair and family were her parents, Mr. and Mrs. Walter Gilcock, of Shelbyville.

Mrs. J.M. Clayton was the Saturday luncheon guest of Mrs. Opal Rose in Flemingsburg.

Mr. Roy Wade Cline and son, Barry, of Frankfort spent Friday and Saturday with his parents, Mr. and Mrs. Ora Cline.

Mrs. Fleming Chisholm, Jr. of Bowling Green is the guest of Mr. and Mrs. Fleming Chisholm, Sr. They were all visitors of Mrs. W.C. Collins in Charleston over the weekend.

Mr. and Mrs. Delbert Adams, Mrs. Austa Fraley of Salt Lick and Mr. and Mrs. Howard Williams of Bailey Chapel spent Sunday with Mr. and Mrs. C.W. Caskey.

Mr. and Mrs. Glenn Blair and son, David Edward, of Kettering, Ohio were weekend guests of Mr. and Mrs. David Blair.

Mrs. Everett Blair was hostess for a luncheon Thursday, Feb. 27, for the Cave Run Auxiliary to the Medical Center.

Miss Alice Joyce Akin of Covington spent the weekend with her mother, Mrs. Everett Blair.

The First Baptist Church is holding prayer service at their church this week from Monday to Friday.

Mr. and Mrs. Ray Vanzant and Missy of Louisville were weekend guests of Mrs. R.G. Mauk and here to visit Mr. C.O. Lewis, who is a patient at St. Claire Medical Center. Other visitors at the Mauk residence were Mrs. Louraine Kegley and Inez Kegley of Dayton.

Mr. and Mrs. Richard Tackett and son, Johnny, Mr. and Mrs. Leroy Lewis of Mansfield, Ohio, Mr. and Mrs. Edward Lewis and daughter, Louise, and Mr. and Mrs. Alvin Castle of Olive Hill visited Sunday with Mr. C.O. Lewis at St. Claire Medical Center.

The Haldeman PTA met last Thursday at the school cafeteria. Mr. Clifford Cassidy, guest speaker, brought the group up-to-date on the building program for Rowan County Schools. The sixth grade, directed by Mrs. Elysa Mink, presented a program of music appropriate for February. The first and sixth grades tied in the attendance contest.

Epsilon Chapter of Delta Kappa Gamma will meet Saturday for a luncheon meeting at the Home Economics Department on Morehead State University campus. Dr. Jack Ellis, librarian at MSU will be guest speaker. His topic will be "Mass Media and Values." The Morehead University Home Economics Club will serve.

Mr. and Mrs. W.H. Carter entertained at their home Sunday with a dinner honoring the birthdays of Miss Anna Carter, Jack Carter III, Jack Holly, Terry Jackie, and Skipper, Mr. and Mrs. Roger Carter, Millie, Lance, Troy, and Johnny, Mac Carter, Mrs. Jack Carter III, Sally, Sandy, and Joe, Mrs. Mayne Wiley, Mr. and Mrs. Hubert Allen, Barbara and Lee, and Mr. Clyde Moore of Vanceburg.

Mr. Curley Barker and Mr. Tag Calvert returned home Wednesday from a business trip in Salisbury, N.C.

The Day Homemakers will meet Tuesday, March 11, at the home of Mrs. Bonnie Thompson. The lesson, "Cake Decorating," will be presented by Mrs. Martha McBryer and Mrs. Louise McCarty.

Mr. and Mrs. Donald Fair and daughter, Donna, of Amelia, Ohio were weekend guests of Mr. and Mrs. L.A. Fair.

Mrs. Michael Turner and Darren left Saturday for an extended visit with Mr. and Mrs. C.E. Turner in Decatur, Ga.

The Haldeman-U.S. 60 Development Club will meet at 7 p.m. Thursday (tonight) at the Haldeman School. Donna Hall, Chairman of the Youth Recreation Committee, will report on a sock hop to be held soon.

Sites for garbage disposal and recreation will also be discussed by the group. First, Mrs. Cline, president, urges all members as well as interested people to attend the meeting.

Mrs. W.C. Lappin, Mrs. Wathan Gullett and Mr. Bob Angin received word Friday of the death of their aunt, Mrs. Minnie Winkler, in Akron, Ohio.

Women's Medical News

A survey of 162 Little League players has revealed that every single pitcher suffered from bone and cartilage inflammation or some other elbow injury.

In citing this survey by medical researchers to a National Conference on Medical Aspects of Sports, Prof. G. Lawrence Raper, University of California, said that only a few non-pitchers revealed damaged elbows.

Dr. Raper pointed out the danger of stress to joint structures during the growing years. Curved ball throwing is not recommended for boys under 14 years of age. Pitching should be limited to two innings per game.

COLOR TELEVISION "X-RAYS SOUL"
"The use of color gives an x-ray picture of the soul," according to Dr. Max Leuschner of the Institute of Psyc-Diagnostic Medicine.

Dr. Leuschner said you reveal yourself when you adjust your color television set so as to play up one color more than another. If you heighten the red tones, you exhibit self-confidence and physical vitality, he said. If you mute them, you're probably self-effacing. Intensifying the blue indicates tranquility and impassivity. Turning up the yellow shows an optimistic personality. Preferring violet indicates neuroticism.

In other words, when adjusting the color TV set leads to family squabbles, there's no point in blaming color blindness or color insensitivity. It's a clash of personalities.

TO CONCEIVE OR NOT CONCEIVE
"When children are taught how babies are conceived, they should be taught how babies are not conceived," Dr. Selig Neubard has told students at Michigan State University.

The New Rochelle, N.Y. obstetrician, and gynecologist said that, although ignorance of modern reliable methods of contraception might explain some unplanned pregnancies, intelligent American women cannot use such an excuse. They are, or should be, informed



MARRIED . . . Mr. and Mrs. Richard J. Bonyata, Barbour Court, announce the marriage of their daughter, Rebecca Jane, to Mr. John David Wells, son of Mrs. Betty Jean Wells, Lynchburg, Va. They were married March 1 in the Church of the Brethren, Lynchburg. Their only attendants were her sister, Betsy Bonyata, and his brother, James Wells. The bride is a senior at Rowan County High School, Mr. Wells is a freshman at Central Virginia Community College, Lynchburg.

enough to avoid "surprise" pregnancies.

23 SAFETY RULES FOR POWERFUL DRUGS
Like a rope, the drug your doctor prescribes can be either a lifeline or a garrote - depending on whether it's used properly or not.

Most people realize that medicine cabinets should be cleaned out. But safety rules for prescription drugs are more intricate than that, according to an informative pamphlet listing 23 rules, including:

- * Never take a medicine in the dark.
- * If new symptoms develop after medication, tell your doctor.
- * Keep the label up when pouring from a medicine bottle so that the dripage does not destroy the label.
- Fuller explanations are given in the pamphlet, available free from Sue Boe, Pharmaceutical Manufacturers Association, 1155 Fifteenth Street, N.W., Washington, D.C. 20005.

Local Residents Have A Longer Life Span

Of the many young couples who will be getting married this year in Rowan County, what proportion of them will live to celebrate their golden wedding anniversary?

The answer, based upon recent studies, is - more than a third of them. The assumption that goes with it, of course, is that no divorce or annulment intervenes along the way. In that event, all bets are off.

The likelihood that both husband and wife will survive to mark that 50-year milestone is more than twice as favorable as it was for their grandparents, when they got married.

The improvement in the prospects for a longer life span is the result of spectacular achievements in the fields of health, biology and medicine during the last few decades.

Just what the chances are of a person's reaching the various landmark stages in life are detailed in the latest national studies made by insurance statisticians and others.

For the average Rowan County couple just getting married, where the bridegroom is 22 and the bride 19 - (there are some 110 young men and 120 young women locally at those ages at present) - the odds are about 7 out of 10 that both of them will be around in the year 2010 to mark the bride's 60th birthday.

For their grandparents, the odds were only 5 out of 10 that they would reach

Two Rowan Soldiers Assigned To Fort Knox

Two Rowan Countians have been assigned to Company D, 19th Battalion, 5th Brigade at the United States Armor Training Center at Fort Knox.

They are - Private Wendell Pennington, son of Mr. and Mrs. Lowell Pennington, Morehead; and Private Larry G. Brown, son of Mr. and Mrs. Luster J. Brown of Clearfield. They will spend the next two months learning the fundamental skills of the soldier in today's modern, action Army - firing live ammunition under simulated combat situations, learning protective measures and first aid for chemical, biological and radiological attacks, as well as being schooled in the use of modern arms.

that point. The prospects - of living to the retirement age of 65 are also greater than ever, the figures show.

Of the 130 young men in the local area who are now 18 and are going to work or into the armed forces or to college, the indications are that some 90 of them will reach 65.

At that point, their chances of living an additional 10 years are listed as better than 6 out of 10.

Of particular importance to a man are the first 30 years or so of his married life, when there are likely to be dependent children in the family. It is a period of maximum economic responsibility.

For the 110 men in Rowan County who have arrived at age 22 and are at the marrying stage, the statistics show that no less than 89 percent of them will be on hand to witness the marriage of their youngest children. This occurs on the average, when the father is about 53 years old.



WED IN 1909 - Mr. and Mrs. Sam Gregory of Morehead celebrated their 60th wedding anniversary Monday, March 3. They were married March 3, 1909. They are the parents of seven children - five girls and two boys. They are as follows: Mrs. Gladie Moss, Morehead; Mrs. Ethel Faulkner, West Detroit, Mich.; Mrs. Myrtle Murphy, Huntington, W. Va.; Mrs. Bulat Riggs, Flatwoods, Ky.; Mr. Orville Gregory, Caledonia, Ohio; and Mr. Marvin Gregory, Chicago, Ill. In addition, Mr. and Mrs. Gregory have twenty seven grandchildren.

WSAZ-TV
PERRY MASON
Weekdays
5:00 pm
N3WS
6 pm Picture
Late N3WS
11 pm Picture

SPECIAL PORTRAIT OFFER
Fri. & Sat.
March 14 & 15
10 a.m. - 5 p.m.
No Appointment Necessary
NO AGE LIMIT - SATISFACTION GUARANTEED!
BIG 8 X 10 PORTRAIT ONLY \$59¢
GROUP PORTRAITS \$1.00 Per Person
Limit 1 Per Person
3 Per Family
BRING A FRIEND - 25¢ Handling
THE BIG STORE
181 EAST MAIN
MOREHEAD, KY.

Take the fashion route in MISS AMERICA SHOES

Swing with Miss America Shoes on AMERICAN BANDSTAND and HAPPENING '69

Make tracks in our sassy steppers, our fast going flats, and our incurably romantic pastels. Miss America makes the shoes you love to move in. They're for exuberant, fashion-spirited girls.

\$10.99 to \$13.99

Chumley's Shoe Center
"Fitting Shoes Is Our Business"

Medicaid . . Are Many Doctors, Druggists, Dentists Making A Killing?

by S. C. Van Curon

The Economic Security Department in Frankfort is beginning to wonder if the poor people of Kentucky Appalachia are getting medical aid or medical attention.

This fine distinction between the two comes after discovery that some doctors, dentists and pharmacies have been and are receiving extremely high payments for services under the Medicaid program.

Economic Security Commissioner Eugene Goss says his department is not pointing the finger of accusation at anyone but he wonders if many persons are going to doctors when there is no real need to do so.

He suggested perhaps there is a feeling of loneliness or neglect in some isolated regions among the poor and they go to see a doctor for attention rather than for a real need for medical aid or care.

"You can't blame a doctor," Goss said, "for he is bound under his professional oath to see people who bring their medical problems to him, whether real or imagined." He suggested that the doctor's office often is a place for neglected people to get attention.

They're Really Concerned

Goss said representatives of the Federal Health, Education and Welfare Department made a review of the program in February 1968. He got the results in

July. After that, he said he began to review some bills from vendors because the budget was running tight. He got the bills and started a careful review in the department questioning whether there is adequate procedure now in effect to control the program.

Goss asked about the first of February this year for a complete list of annual payments to vendors for details on the larger bills. "We're concerned," he said about the size of the program, the bills and the budget."

Goss and members of his department have met with members of the medical community to discuss the problem. Dr. Henry B. Ashman, president of the Kentucky Medical Association, has expressed interest of the profession in reasonable utilization of the program.

There is some concern that some patients are paying too frequent visits to the doctor's office.

Kentucky will spend approximately \$48 million in fiscal 1968-69 on its medical program in cooperation with the Federal Government, with the state paying 19.9 percent and the federal the balance.

The Medicaid program is distinct from Medicare, a part of Social Security where the patient pays \$4 a month for medical insurance with the first \$50 deductible.

The state pays 20 percent of the first \$50. The federal is handled by contract by Metropolitan Insurance in Lexington of the Federal Government.

Records in the Economic Security Department—a public record—show that 12 doctors drew over \$50,000 from Medicaid payments during calendar 1968. The highest was Dr. B. L. Adkins at Sandy Hook with \$119,768.36. Others are Dr. A. Stacey Jr., Pineville, \$103,255.46; Dr. R.R. Evans, Arjay, \$84,979.68; Dr. J.J. Croley, Barboursville, \$96,345.03; Dr. P.F. Maddox, Campton, \$80,840.59; Dr. R.E. Cornett, Jackson, \$57,649.67; Dr. G.R. Powell, Paintsville, \$53,878.67; Dr. H.H. Perry, Whitesville, \$53,680.75; Dr. R.E. Hayden, Barboursville, \$55,818.95; Dr. A.J. Nash, Jenkins, \$69,448.56; Dr. R.J. Aiken, Fleming, \$108,480.83; and Dr. R.D. Wells, Inez, \$73,374.98.

It's Big Money

In calendar 1967 Dr. Maddox's bill was

\$76,314.55; Dr. Stacey's was \$73,079.00; and Dr. Croley's was \$85,518.40.

Some of these may be running a clinic and billing for two or more doctors under one billing number. Dr. Stacey said he has all three under the same number.

Dr. Maddox is the only doctor in Colfco County and goes 16 to 20 hours a day.

Several doctors across the state submit very small bills, having little if any Medicaid patients.

Doctors receive the Economic Security Department says, \$8 for the first call in call for the same illness.

Drug bills also run high in the Appalachian area. One of the highest came from Sargents Drug in Pikeville for \$234,729.01. The average prescription is about \$3 Economic Security officials said.

Drug stores are paid \$1.40 each for labor for filling the prescription and drugs are billed to the state at cost. Prescriptions are written for drugs by

generic names. No brand names are permissible.

Clark's Pharmacy in Neon had the highest single bill with \$328,290.73 while another store under the same name at Jenkins had a bill for \$125,950.19.

Others with high drug bills are Bingham and Co., Pineville, \$97,565.84; Mosgrum Drug Store, Pineville, \$127,657.84; L.V. Lee Drug Co., Harlan, \$100,021.55; Don Peeler Pharmacy, Madisonville, \$94,147.35; Big Sandy Drug Co., \$120,610.23; Herndon Drug Co., \$125,287.94; Wolfenbarger Pharmacy, \$118,433.61; Burgess Drug, \$110,602.99; Clark's Pharmacy, Jenkins, \$125,950.19; and Campbell Drug, Hyden, \$127,517.87.

To do \$100,000 a year prescription business, a drug store would have to fill about 90 prescriptions a day, seven days a week.

Twenty seven dentist had bills that ran above \$10,000 for the year. Top was a dentist at Manchester with a bill of \$54,598.

It All Depends
Why, certainly, of course; a preacher shouldn't engage in politics—if he's not on your side.

SOPHOMORES, JUNIORS, SENIORS
THIS IS YOUR

LADDER

TO

SUCCESS

INVESTIGATE NOW

As an ROTC Cadet, you can:

*Earn an Officer's Commission in 2 Years.

*Receive \$50.00 per month.

*Fulfill your Military Obligation as an Officer.

*Learn to be a leader while working for your Degree.

For More Information See The
PROFESSOR OF MILITARY SCIENCE,
Ground Floor, Allie Young Hall.

The Land Baron In Eastern Kentucky

Peter Amyx could be called the land baron of Eastern Kentucky. Born in Guilford County, North Carolina, in 1784, he died in Morgan County in 1865, and in the years between he surveyed thousands of acres of land in Eastern Kentucky for others, claiming vast boundaries for himself.

Amyx was a son of Matthew Amick (Amyx), soldier of the Revolutionary War who was wounded in the Battle of Guilford Courthouse and died at Burkesville, Kentucky in 1832.

At the time Amyx moved westward

through Kentucky, Morgan County still was a part of Floyd County and early records indicate he was important in the creation of Morgan in 1822-23.

In 1822 he served as a member of the House of Representatives in Floyd County.

Amyx served as deputy surveyor in Floyd County a number of years and as magistrate. He was elected surveyor in 1819 and sworn into office August 17.

The pioneer served his state, region and Floyd and Morgan Counties in many important ways and later surveyed through the state northward to Cincinnati. According to noted Eastern Kentucky historian Henry Scalf, Amyx's "mountain barony of land was so huge it could not be properly cared for and fell apart under the incessant harassment of settlers."

Amyx's children were Matthew III, Joseph, Andrew, Angeline, Nan and Elizabeth and his descendants are widely distributed in the area he surveyed while it was a wilderness.

Dr. Hacke Contracts To Author New Textbook

Dr. Robert E. Hacke, assistant professor of English at Morehead State University, has signed a contract to write a college linguistics text for Charles Scribner's Sons, New York publishers.

Dr. Hacke has completed the outline, introduction, and first chapter for the text, which will be titled A Linguistic Handbook for College English. He expects the book to be approximately 350 pages in length, and completion date is set for March 1970.

Bathroom Special

3-Piece

White Bath Set

Complete With Fittings to Floor

NOW \$114⁹⁵

C & P Plumbing Heating & Electric

430 West Main St. Morehead, Ky. Ph. 784-4077

Miss Ford Country says:

Ford Pickups are No. 1 in sales!



They work like trucks and ride like cars. Two steel-beam axles give Ford's exclusive Twin-I-Beam front suspension its extra strength. Coil springs make the going easy.

Save now at Ford Dealers
ROWAN MOTOR SALES

117 West Main St.

Morehead, Ky.

SAVEWAY
ROYAL FLUSH
Play WIN

SUPERVALU

Combination SERVING CART TRAY RACK

REDEEM THIS COUPON TODAY
No. 4 VALUABLE COUPON
SERVING CART TRAY RACK
WITH THIS COUPON & \$2.00 PURCHASE (Excluding Cigarettes & Alcoholic Beverages) **\$1.49** each
EXPIRATION DATE: March 8, 1969.

LUCKY LEAF
APPLE SAUCE
25 oz. jar **25¢**

GOOD VALUE
CRINKLE CUT
French Fries
5 lb. bag **79¢**

SUPER VALU GRADE "A"
VEGETABLES
5 pkg. **\$1**
BABY LIMAS • FORDHOOK LIMAS
BROCCOLI SPEARS • BRUSSELS SPROUTS
CAULIFLOWER

4 pkg. \$1

FOLGER'S COFFEE 1 lb. can **59¢**
*with \$5.00 purchase or more

FOLGER'S Instant Coffee 10 oz. jar **\$1.29**

HUNT'S TOMATO SAUCE 8 oz. can **10¢**

STOKELY'S FINEST HALVES or SLICES
PEACHES 29 oz. cans **4 99¢**

DEL MONTE FANCY
CATSUP 14 oz. bottle **19¢**

SWANSON 3 COURSE *CHICKEN *TURKEY *SALISBURY
SUPER VALU SALTINE CRACKERS 1 lb. pkg. **25¢**

FLAV-O-RITE
DINNERS 16 oz. can **59¢**

SAVE 20¢ each
MRS. SMITH **Apple Pies** 7-oz. each **79¢**

FLAV-O-RITE
Chocolate Candies 16 oz. can **69¢**
FLAV-O-RITE CARAMEL
Sweet Rolls 10 oz. pkg. **35¢**
BUBBLE BATH
Mr. Bubble 12 oz. can **34¢**
FOULD'S ELBO
Macaroni 7-oz. box **5¢**
FOULD'S ELBO
Spaghetti 7-oz. box **5¢**

10¢ OFF PAK
LAUNDRY DETERGENT giant 49 oz. pkg. **BOLD 69¢**

Snowy **Bleach** 1 1/2 gal. **43¢** Snowy **Bleach** 1 1/2 gal. **68¢** Snowy **Bleach** 2 1/2 gal. **99¢**

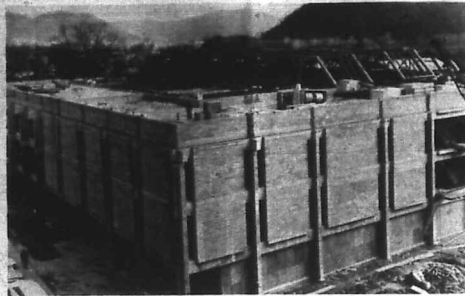
Real Good Rental Property

FOR SALE

Located in town. 1968 income was \$3,073.00 after utilities were paid. Priced For A Quick Sale.



C. ROGER LEWIS REAL ESTATE, 1001 H. H. KY. 10451 - 406-731-1100



EXPANSION NEARING FINISH... A \$2.8 million renovation and expansion of Doran Student House at Morehead State University is scheduled for completion this September. The three-story, 19-room building will house a cafeteria, bookstore, post office, ballroom, multi-purpose room, student organization offices, meeting rooms, and private dining rooms. Located at the west end of the MSU campus, the student house was occupied originally in 1957. The enlarged building was designed by James Allen Clark and Associates of Lexington.

Ranger's Column

U.S. Forest Service - Morehead, Ky.

James Hogge, Fire-Control Technician for the Morehead District of the Daniel Boone National Forest has been visiting all of the consolidated schools within the Forest boundary in Morgan, Menifee, Bath and Rowan Counties on forest fire prevention programs. The programs consist of illustrated talks using either colored slides or movies.

This year he has some interesting movies in color on the national forests including those in Alaska along with other conservation and fire prevention films. He has an assortment of films which are suitable for groups from the lower grade levels in elementary schools on upward. In addition to programs at schools during the day he has presented programs to several service, civic and conservation clubs and groups at night. Any organization interested in a program of that type may request one through this office by mail or telephone.

During 1968 a new high was reached for exporting of logs. The 1968 figure for logs exported from the west coast states shows a new high of 2.2 billion board feet, of which 2 1/2 billion went to Japan. This export volume is becoming a source of great concern to those who are interested in supplying the needs of domestic users.

These exports have been primarily in the log and is manufactured over-land timber offered for sale from the National Forests in the west now have clauses requiring local manufacture. It is felt that the combination of increased exports and reduced production as a result of flooding and flood damage in the western states has reduced the supply of lumber for domestic needs. The demand for western lumber is greater than the supply and we all understand what takes place: the price of the available material goes up.

Retail price of western lumber on the eastern market has had a sharp increase. The increase in price of west coast lumber has created a greater demand for pine east of the Mississippi River. Some sales of Southern Yellow Pine have hit an all time high - stumpage price of as much as \$80.00 per thousand, especially in the south near the plywood mills.

This all adds up to the fact that our eastern timberlands will need to supply more of the future demand for lumber and lumber products. This fact tells something more than mere management and more protection of our eastern forests. Whether you own timberlands or not, you can help protect them from fire which in turn is a protection to your future.

Death Comes To Fredro Brown, 49

Death came Saturday at Daniel Boone Nursing Home to a well known Moreheadian, Fredro Brown, 49.

He suffered a brain tumor four years ago and never recovered.

Funeral services were conducted Monday morning at Clearfield Tabernacle by Rev. Scott Griffith with interment in Clearfield cemetery.

Mr. Brown was born at Morehead on Aug. 22, 1919 and resided here all his life. He was the son of William and Jennie (Lee) Brown, both deceased.

He leaves his wife, the former Josephine Black, three daughters - Mrs. Virginia Conley of Morehead, Mrs. Ella May Copher, Salt Lick, and Mrs. Barbara Boggs, Ypsilanti, Mich., two sons - Freddie and Paul, both at home, two brothers - William Brown of Olive Hill and Clarence Brown, Downey, Idaho and two sisters - Mrs. Myrtle Lacy and Mrs. Aveline Traylor, both of Morehead.

Mr. Brown was employed most of his life by the Kentucky Department of Highways. He was a member of the Church of God.

Bearers - Carl Jones, Bob Hardin, J.C. Black, Paul Black, Vernon Hays, Myrtle Traylor and Red Lacy. Arrangements were cared for by Lane Funeral Home.

Adult Programs Station WMKY-FM

The listing of programs for Adult Radio Listening for the week of March 6 to 12 on WMKY-FM Morehead.

Thursday 4:00 "American Heritage" Lesson No. 4, From One to Thirteen 4:30 "Employment of Music" Lesson No. 4, American Music.

Friday 4:00 to 5:00 "Talkback Adult Radio"

Monday 4:00 "Employment of Music" Lesson No. 5, Mozart 4:30 "American Heritage" Lesson No. 5, From Cities to Frontier

Tuesday 4:00 "Adventures in Maturity" Lesson No. 5, How to Communicate 4:30 "Creative Writing" Lesson No. 5, Producing an Original Story

Wednesday 4:00 "Everybody's Shakespeare" Lesson No. 5, Much Ado About Nothing 4:30 "Who Am I?" Lesson No. 5, The Religions of the East.

If Mao-Tse-tung died recently, as rumored, no doubt Red Chinese are expecting him to rise from the grave any day now.

USDA CHOICE STEAK SALE



VER RAY TENDER ROUND... 89¢ lb.
VER RAY TENDER SIRLOIN... \$1.09 lb.
VER RAY TENDER T-BONE... \$1.19 lb.

- Rotisserie Roast 99¢
- Ground Round Steak ... 89¢
- Eye of Round Roast \$1.42
- Bacon Ends Pieces 3-lb. 99¢
- FISCHER'S All Meat Wieners 12 oz. pkgs. 45¢
- Smoked Ham Slices 99¢
- Hilberg Drumsticks ... 2 oz. each 10¢

- VER RAY LEAN Pork Steak 69¢ lb.
- BONELESS RUMP Roast of Pork 99¢
- 1/4 SLICED - 1/2 End Chops, 1/2 Center Chops 69¢ lb.
- Pork Loin 69¢ lb.
- HICKORY SMOKED Slab Bacon 49¢ lb.
- VER RAY TENDER Family Steak 99¢
- TENDER Cube Steak \$1.19 lb.
- FRESH Ground Beef 55¢ lb.
- FRESH Pork Liver 29¢ lb.
- FRESH SLICED Beef Liver 49¢ lb.
- CHICKEN Breasts or Thighs ... 59¢ lb.

- ECKRICH Smorgas Pak ... 1 lb. pkg. 89¢
- ECKRICH ALL BEEF Smorgas Pak ... 12 oz. pkg. 89¢
- ECKRICH Smok-Y Links ... 10 oz. pkg. 69¢

SMOKED HAM \$69¢ lb.

BONNIE MAE Buttermilk or Sweetmilk BISCUITS 5¢ tube of 10

CALIFORNIA SUNKIST ORANGES 59¢ dozen

- CRISP GREEN Cabbage 13¢ lb.
- PLASTIC JUICERS: Reuleaux or Reulime ... 2 1/2 oz. 19¢
- WILD Bird Seed 10 lbs. 89¢

- LONG GREEN SLICING Cucumbers 2-29¢
- SWEET GREEN Peppers 2-29¢

SAVEWAY SUPER VALUE



- COMPARE Our High Quality! Our Low Prices...
- VER RAY TENDER Porterhouse Steak .. \$1.29 lb.
- VER RAY TENDER Sirloin Tip Steak ... \$1.19 lb.
- VER RAY TENDER BONELESS Rump Roast 99¢ lb.

KRAFT CHEESE American or Pimento SLICES 59¢ 12 oz. pkg.

Coffee-mate 69¢ 11 oz. jar

Martha White Cake Mix 4 for \$1



Those Wonderful Moments...

"Daddy, is a real bank something like my Piggy bank? One of those amazing questions we get from children."

No, honey, your little piggy bank just takes money and holds it. A real bank takes your money and puts it to work. And they pay you to let them use your money to make our town grow and prosper. They help people build houses, buy cars and begin businesses. Your piggy bank can't do that.

PEOPLES BANK of Morehead
MOREHEAD, KENTUCKY
ESTABLISHED 1907



MUSICAL MONEYMAKERS... Two music fraternities at Morehead State University, Sigma Alpha Iota and Phi Mu Alpha, operate a coffee and doughnut concession in the music building to raise funds for their various activities. Brooks Callihan, Greenup freshman, buys his morning orange juice from Eileen Songer, Ashland senior. Miss Songer is the daughter of Mr. and Mrs. T.F. Songer, 1005 29th St. Callihan is the son of Mr. and Mrs. Robert B. Callihan, 1600 Riverside Dr.

Thurman Sensing Sensing The News

If President Richard M. Nixon really wants to set this nation on a truly new course, he will have to end the Liberal Establishment's control over key government jobs at the middle echelon level. Conservative government cannot be achieved simply by installing a new President in the White House. The White House, executive department and agency staffers and aides must be persons imbued with a realistic, conservative outlook.

Thus far Mr. Nixon has moved slowly in filling these middle echelon posts. A number of former administration aides are even being held over. Need exists now for prompt filling of the key positions by persons who are identified with policies of realism and conservatism.

President Nixon made a very specific campaign pledge to clean house at the State Department. Those who supported Mr. Nixon in the election are counting on him to live up to his campaign promise. They will be looking closely at the new personnel arrangements at the State Department and at the White House. Unquestionably, a major reason to expect that hardliners on international questions will be appointed to major policy-making and advisory posts.

An effective housecleaning at the State Department cannot be accomplished without a thorough-going change of Assistant Secretaries of State. Those officials identified with the unrealistic, no-win, giveaway policies of the last eight years must be replaced. Now men who are known as realists, must be given positions of authority. For example, Mr. Nixon's supporters, who want and expect significant change, will view with special interest the President's choice of a new Assistant Secretary of State for African Affairs. Joseph Palmer is identified with the mistaken and often disastrous policies of the last administration, such as the economic sanctions against Rhodesia, and the indecisive stand on the Nigerian-Biafran war. Mr. Palmer, as a symbol of what's been wrong with one major segment of U.S. foreign policy, should go. His replacement should be a man who is known as an advocate of realistic African policies and believer in cementing relations with civilized states in Africa.

The staffing at the White House also is of great concern to the country. It is very important that these staff members be persons who believe in cold war victory, who reject the soft-headed disarmament notions of the last administration, who are firm on such issues as Red China, Castro, and who believe in close ties with the free enterprise nations of the world community.

It is revealing that Dr. Richard V. Allen, the only well-known hardliner appointed to the White House national security staff, has come under attack by newspaper columnists identified with the Liberal Establishment. The elements in the country who couldn't elect Hubert Humphrey apparently have decided to mount a subtle campaign to prevent appointment of conservatives and to promote selection of middle echelon officials who are inclined to continue the policies of the past.

Americans understandably are proud of the smooth and courteous ceremonial trappings from the Johnson administration to the Nixon administration. But those who supported Mr. Nixon don't expect and surely don't want a continuation of the policies in force these eight years past. The election of Mr. Nixon was a signal from the electorate that it's time for a change - a meaningful change in national policy.

As the Liberal Establishment continues to have enduring influence through the mass media concentrated in the Northeast, it is using its power to try to infiltrate the Nixon administration and to divert it from conservative and realistic goals. It is very important, therefore, that conservatives who turned out for Mr. Nixon at the polls also let the President know and his top officials know that they are waiting on and counting on the housecleaning that he promised in Washington.



A PTA Meeting In Haldeman 45 Years Ago

This is a picture taken at a 1927 meeting of the Parent Teachers Association at Haldeman, at that time a thriving, industrialized community in Rowan County. Many of those shown are deceased. Front row from left - Lottie Powers, teacher; Mrs. Margaret Caudill, teacher; Mrs. Emogene Adams, teacher; Austin Riddle, teacher; Mrs. Lela Eldridge, teacher; Mrs. Evelyn Stinson, teacher; Mrs. Mary Jo Blair, teacher. Second row - Mrs. M. J. Blair, Mrs. Ida Eldridge, Mrs. Iva Evans, Mrs. Lucy Bocoak, Mrs. Pearl Brown, Mrs. Dovie Sturgill, Mrs. Bess Hogge, Lawrence O. Sturgill. Third row - George Eldridge, Mrs. Sarah Hogge, Mrs. Amy Stinson; Mrs. Herb Cartee; Mrs. Bertha Clark, Mrs. Lora Kogley, Mrs. Linda Kogley, Mrs. Mollie A. Eldridge. Fourth row - Mrs. Nina Bocoak, Mrs. Mayme Jones, Mrs. Peach Early, Mrs. Mollie Eldridge, Mrs. Bessie Kelly, Mrs. Danner, Mrs. Hayes, Mrs. Stinson, Luther Stinson, Rear row - Chester Stinson, John Eldridge, Mrs. Levee Sturgill, Mrs. Mae Sturgill, Mrs. Cox, Mrs. Alice Hart, Mrs. Welch, Mrs. Wilson, Mrs. Lucy Kogley.

Men on the move, move with underwear



ATHLETIC SHIRTS Soft, springy, absorbent cotton knit. Cut for maximum comfort and smooth fit. Pure white finish that stays fresh-looking washing after washing. Sizes 34-54

3 for \$1.99 69c each

TEE SHIRTS Soft, cotton knit quarter-sleeve shirt. Looks equally well as an undershirt for sport shirt. Long neck-in, won't ride up. Sizes S, M, L, XL.

WASH and WEAR SHORTS High-count Sanforized cotton broadcloth that needs no ironing. Full cut and panel waist means comfortable fit. Reinforced at stress points. In all-over patterns, solid colors or white. Sizes 28-52.

KNIT BRIEFS Rib knit cotton briefs that "give" with every movement for full-time comfort. Heat resistant, low-elastic waist and leg bands. Sizes 28-44.

3 for \$2.65 89c each

Dollar Discount Store

Main Street - Morehead, Ky.

Complete Ambulance Service

Oxygen Equipped

"Equipped To Serve You"

Member of Kentucky Funeral Director's Burial Association

AUTHORIZED TO SERVICE

Burial Insurance Contracts Issued by COMMONWEALTH LIFE INSURANCE CO.

Lane Funeral Home

Phone 784-4134 - Morehead, Ky.

BROWN'S MOBILE HOMES

See the Most Beautiful Mobile Homes in the world at Brown's Mobile Homes

Main Street Grayson, Ky. Phone 474-5844 or 474-6489

ON THE SPOT FINANCING OPEN 8 to 7 (Seven Days A Week)

Even Elephants Can't Remember All The Changes in the

INCOME TAX

Both Federal and State

\$5 UP

Both Federal and State Life

BLOCK Co.

America's Largest Tax Service with Over 3000 Offices

Located over Layman's Dept. Store in the McKinney Building. PHONE 784-8623 - Morehead, Ky.

Any shoemaker who can save your sole is in the

Barren River Lodge Plans Completed - This artist's rendering illustrates the lodge complex planned for Barren River Reservoir State Park. Four three-story guest buildings are to the left of the swimming pool and main lodge, upper right. Construction will begin before summer, and the opening date is set for Fall, 1970. The two guest wings at lower left are to be added at a later date.

March Is The Season For Many Changes

The seasons change in March as the globe rolls around the sun. March brings in spring and ends the winter. Spring in the northern half of the world begins with the vernal equinox, which almost always occurs on March 21. On this day, the sun rises directly in the east and sets directly in the west, so that the length of the day is exactly equal to the length of the night.

March can be both wintry and springlike. Blustery, windy days occur as frequently as mild, sunny days.

"In the Northern Hemisphere, many animals and plants awaken, or come to life again, during March," says World Book Encyclopedia. "Sap flows in the trees, and green buds begin to appear. The first pussy willows and wild flowers can be found in the woods."

"Most frogs lay their eggs. Hibernating animals such as bears and woodchucks leave their winter sleeping places; Wild geese and ducks begin their northward flights."

Lecturer At Morehead Today And Tomorrow

Dr. Harold Weinstock of Illinois Institute of Technology, Chicago, will be a visiting lecturer today, and tomorrow (March 6 and 7) at Morehead State University.

He will appear under auspices of the American Association of Physics Teachers and the American Institute of Physics as part of a broad, nationwide program to stimulate interest in physics. The program is in its 12th year and is supported by the National Science Foundation.

Professor Weinstock will give lectures, hold informal meetings with students and assist faculty members with curriculum and research problems. His lecture topics will be "The Wonders of Low-Temperature Physics" and "Low-Temperature Heat Capacities of Solids."

Dr. Weinstock is presently engaged in research for the U.S. Atomic Energy Commission.

His visit was arranged by Dr. Russell M. Bregelman, assistant professor of physics at MSU.

MOTHERS

WHAT A TREMENDOUS VALUE OFFER!

The Biggest Value In Our History

Miller's Motel

406 E. Main St.

In Cooperation with Thompson Studios will have one of their professional photographers here on the Days specified.

MARCH 10 & 11 1 p.m. to 8 p.m.

Family Groups Taken \$6 EXTRA PER PERSON (Includes Frieded Protein, Cheese From A Large Selection, Mashed Potatoes, Minors On Offer! No Age Limit! Adults Welcome)

11 x 14 PHOTOGRAPH FULL VIEW OF BABIES FOR ONLY **.88**

Sorry! Only One Day To A Family.

11 x 14 PHOTOGRAPH Plus 40c Handling Charge!

STATE TERMITE CONTROL AND CHEMICAL COMPANY, INC.

Dear Friend and Customer:

This letter is to inform you that State Termite Control and Chemical Company and Old Reliable Chemical Corporation are united as one and are now under new management. Arthur H. Brown, the former President of State Termite Control and Chemical Company, owns no part nor is connected in any way with Old Reliable or State Termite Control and Chemical Company.

We want you to know that your contribution in the past has been highly appreciated, and we look forward to serving you in the future. A representative of State Termite Control and Chemical Company, Inc. will be by to see you soon and will explain in detail the new rules and procedures our board of directors has now adopted. These changes are designed to assure you of continuous and better service.

Respectfully yours,
Robert F. Trimble, President

See or Call -
Chester Kiser Construction Co.
PHONE 784-5109 or 784-5442

LOOKING FOR POLYESTER FIBER GLASS TIRES

Morehead Tire Supply

LOOK NO FURTHER MOREHEAD TIRE CAN SUPPLY ALL! YOUR TIRE NEEDS & WANTS

Highest Prices Paid for Scrap Iron and Metal

118 Broadway Ave. - Behind The Dairy Mart - Phone 784-4222 - Morehead, Ky.



MUSICAL MONEYMAKERS... Two music fraternities at Morehead State University, Sigma Alpha Iota and Phi Mu Alpha, operate a coffee and doughnut concession in the music building to raise funds for their various activities. Brooks Callihan, Greenup freshman, buys his morning orange juice from Ellen Songer, Ashland senior. Miss Songer is the daughter of Mr. and Mrs. T.F. Songer, 1005 29th St. Callihan is the son of Mr. and Mrs. Robert B. Callihan, 1600 Riverside Dr.

Thurman Sensing

Sensing The News

If President Richard M. Nixon really wants to set this nation on a truly new course, he will have to end the Liberal Establishment's control over key government jobs at the middle echelon level. Conservative government cannot be achieved simply by installing a new President in the White House. The White House, executive department and agency staffers and aides must be persons imbued with a realistic, conservative outlook.

Thus far Mr. Nixon has moved slowly in filling these middle echelon posts. A number of former administration aides are even being held over. Need exists now for prompt filling of the key positions by persons who are identified with policies of realism and conservatism.

President Nixon made a very specific campaign pledge to clean house at the State Department. Those who supported Mr. Nixon in the election are counting on him to live up to his campaign promise. They will be looking closely at the new personnel arrangements at the State Department and at the White House. Unquestionably, they have reason to expect that hardliners on international questions will be appointed to major policy-making and advisory posts.

An effective housecleaning at the State Department cannot be accomplished without a thorough change of Assistant Secretaries of State. Those officials identified with the unrealistic, no-win, giveaway policies of the last eight years must be replaced. Now men, who are known as realists, must be given positions of authority.

For example, Mr. Nixon's supporters, who want and expect significant change, will view with special interest the President's choice of a new Assistant Secretary of State for African Affairs.

The incumbent Assistant Secretary, Joseph Palmer, is identified with the mistaken and often disastrous policies of the last administration, such as the economic sanctions against Rhodesia, the political pressure against South Africa, and the indecisive stand on the Nigerian-Biafran war. Mr. Palmer, as a symbol of what's been wrong with one major segment of U.S. foreign policy, should go. His replacement should be a man who is known as an advocate of realistic African policies and believer in cementing relations with civilized states in Africa.

The staffing at the White House is also of great concern to the country. It is very important that these staff members be persons who believe in cold war victory, who reject the soft-headed disarmament notions of the last administration, who are firm on such issues as Red China, Castro, and who believe in close ties with the free enterprise nations of the world community.

It is revealing that Dr. Richard V. Allen, the only well-known hardliner appointed to the White House national security staff, has come under attack by newspaper columnists identified with the Liberal Establishment. The elements in the country who couldn't elect Hubert Humphrey apparently have decided to mount a subtle campaign to prevent appointment of conservatives and to promote selection of middle echelon officials who are inclined to continue the policies of the past.

Americans understandably are proud of the smooth and courteous ceremonial transits from the Johnson administration to the Nixon administration. But those who supported Mr. Nixon don't expect and surely don't want a continuation of the policies in force these eight years past. The election of Mr. Nixon was a signal from the electorate that it's time for a change - a meaningful change in national policy.

As the Liberal Establishment continues to have enduring influence through the mass media concentrated in the Northeast, it is using its power to try to infiltrate the Nixon administration and to divert it from conservative and realistic goals. It is very important, therefore, that conservatives who turned out for Mr. Nixon at the polls also let the President and his top officials know that they are waiting on a cotting on the housecleaning that he promised in Washington.



A PTA Meeting In Haldeman 45 Years Ago

This is a picture taken at a 1927 meeting of the Parent Teachers Association at Haldeman, at that time a thriving, industrialized community in Rowan County. Many of those shown are deceased. Front row from left - Lottie Powers, teacher; Mrs. Margaret Caudill, teacher; Mrs. Emogene Adams, teacher; Austin Riddle, teacher; Mrs. Lula Eldridge, teacher; Mrs. Evelyn

Stinson, teacher; Mrs. Mary Jo Blair, teacher. Second row - Mrs. Middleton, Mrs. Ida Eldridge, Mrs. Iva Evans, Mrs. Lucy Bocock, Mrs. Pearl Brown, Mrs. Dowie Sturgill, Mrs. Bess Hogge, Lawrence O. Sturgill, Third row - George Eldridge, Mrs. Sarah Hogge, Mrs. Any Stinson, Mrs. Herb Cartee, Mrs. Bertha Clark, Mrs. Lora Kegley, Mrs. Linda Kegley, Mrs. Mollie A.

Eldridge. Fourth row - Mrs. Nina Bocock, Mrs. Mayme Jones, Mrs. Peach Early, Mrs. Mollie Eldridge, Mrs. Bessie Kelly, Mrs. Danner, Mrs. Hayes, Mrs. Stinson, Luther Stinson, Rear row - Chester Stinson, John Eldridge, Mrs. Levee Sturgill, Mrs. Mae Sturgill, Mrs. Cox, Mrs. Alice Hart, Mrs. Welsh, Mrs. Wilson, Mrs. Lucy Kegley.

Men on the move, move with

FRUIT OF THE LOOM underwear



ATHLETIC SHIRTS Soft, spry, absorbent cotton knit. Cut for maximum comfort and smooth fit. Pure white finish that stays fresh-looking washing after washing. Sizes 34-54.

3 for \$1.99 69¢ each

TEE SHIRTS Soft, cotton knit quarter-sleeve shirt. Looks equally well as an undershirt for sport shirt. Long tuck-in, won't ride up. Sizes S, M, L, XL.

WASH AND WEAR SHORTS High-count Sanforized cotton broadcloth that needs no ironing. Full cut and panel seat means comfortable fit. Reinforced at stress points. In all-over patterns, solid colors or white. Sizes 28-52.

KNIT BRIEFS Rib knit cotton briefs that "give" with every movement for full-time comfort. Heat-resistant live-elastic waist and leg bands. Sizes 28-44.

3 for \$2.65 89¢ each

Dollar Discount Store

Main Street - Morehead, Ky.

Complete Ambulance Service

Oxygen Equipped "Equipped To Serve You"

Member of Kentucky Funeral Director's Burial Association AUTHORIZED TO SERVICE

Burial Insurance Contracts Issued By COMMONWEALTH LIFE INSURANCE CO.

Lane Funeral Home

Phone 784-4134 - Morehead, Ky.

BROWN'S MOBILE HOMES

See the Most Beautiful Mobile Homes in the world at Brown's Mobile Homes

Main Street Grayson, Ky. Phone 474-5844 or 474-6489

ON THE SPOT FINANCING OPEN 8 TO 7 (Seven Days A Week)

Even Elephants Can't Remember All The Changes in the

INCOME TAX

If paycheques have problems, how about people? The easy answer - take your return to BLOCK. Our system of checking every return means you will receive every legitimate deduction. Come in today.

BOTH FEDERAL AND STATE \$5 UP LIFE

GUARANTEE We guarantee accurate preparation of every tax return. If we make any errors that cost you any penalty or interest, we will pay the penalty or interest.

BLOCK Co.

America's Largest Tax Service with Over 3000 Offices

Located over Laynes' Dept. Store in the McKinney Building. PHONE 784-0623 - Morehead, Ky.

Any shoemaker who can save your sole is in the

BARREN RIVER LODGE PLANS COMPLETED - This article's rendering illustrates the lodge planned for Barren River Reservoir State Park. Four three-story guest buildings are to the left of the swimming pool and main lodge, upper right. Construction will begin before summer and the opening date is set for Fall, 1970. The two guest wings at lower left are to be added at a later date.

March Is The Season For Many Changes

The seasons change in March as the globe rolls around the sun.

March brings in spring and ends the winter. Spring in the northern half of the world begins with the vernal equinox, which almost always occurs on March 21. On this day, the sun rises directly in the east and sets directly in the west, so that the length of the day is exactly equal to the length of the night.

March can be both wintry and springlike. Blustery, windy days occur as frequently as mild, sunny days.

In the Northern Hemisphere, many animals and plants awaken, or come to life again, during March," says World Book Encyclopedia. "Sap flows in the trees, and green buds begin to appear. The first pussy willows and wild flowers can be found in the woods.

"Most frogs lay their eggs. Hibernating animals such as bears and woodchucks leave their winter sleeping places. Wild geese and ducks begin their northward flights.

Lecturer At Morehead Today And Tomorrow

Dr. Harold Weinstock of Illinois Institute of Technology, Chicago, will be a visiting lecturer today, and tomorrow (March 6 and 7) at Morehead State University.

He will appear under auspices of the American Association of Physics Teachers and the American Institute of Physics as part of a broad, nationwide program to stimulate interest in physics. The program is in its 12th year and is supported by the National Science Foundation.

Professor Weinstock will give lectures, hold informal meetings with students and assist faculty members with curriculum and research problems. His lecture topics will be "The Wonders of Low Temperature Physics" and "Low Temperature Heat Capacities of Solids."

Dr. Weinstock is presently engaged in research for the U.S. Atomic Energy Commission.

His visit was arranged by Dr. Russell M. Brogman, assistant professor of physics at MSU.

MOTHERS

WHAT A TREMENDOUS VALUE OFFER!

The Biggest Value in Our History

Miller's Motel

406 E. Main St.

In Cooperation with Thompson Studios will have one of their professional photographers here on the days specified.

MARCH 10 & 11 1 p.m. to 8 p.m.

FAMILY GROUPS TAKEN BY EXTRA FEE PERSON.

Choose From A Large Selection of Finished Prints. Mothers! Don't Miss This Offer! No Age Limit! "Adults Welcome"

LARGE 11 x 14 PHOTOGRAPH FULL VIEW OF BABIES FOR ONLY \$1.88

11 x 14 PHOTOGRAPH Plus 4x6 Handing Charge!

STATE TERMITE CONTROL AND CHEMICAL COMPANY, INC.

Dear Friend and Customer:

This letter is to inform you that State Termite Control and Chemical Company and Old Reliable Chemical Corporation are united as one and are now under new management. Arthur H. Brown, the former President of State Termite Control and Chemical Company, owns no part nor is connected in any way with Old Reliable or State Termite Control and Chemical Company.

We want you to know that your consideration in the past has been highly appreciated, and we look forward to serving you in the future. A representative of State Termite Control and Chemical Company, Inc. will be by to see you soon and will explain in detail the new rules and procedures our board of directors has now adopted. These changes are designed to assure you of continuous and better service.

Respectfully yours,
Robert P. Trimble, President

See or Call -
Chester Kiser Construction Co.
PHONE 784-5109 or 784-5442

LOOKING FOR POLYESTER FIBERGLASS TIRES

LOOK NO FURTHER MOREHEAD TIRE CAN SUPPLY ALL! YOUR TIRE NEEDS & WANTS

Highest Prices Paid for Scrap-Iron and Metal

Morehead Tire Supply

118 Brandon Ave. - Behind The Dairy Mart - Phone 784-4658 - Morehead, Ky.

Good For What Ails You

A growing savings account can be good medicine in times of need. Generous dividends keep your account growing and healthy, and the Federal Savings and Loan Corporation keeps it insured safe up to \$15,000.

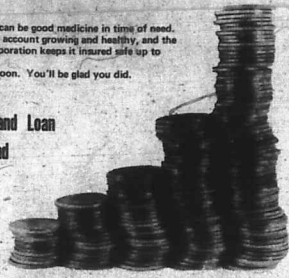
Prescription: Start saving soon. You'll be glad you did.

First Federal Savings and Loan Association of Morehead



MAIN ST. - MOREHEAD, KY.

Open Monday thru Friday till 4 p.m.



Investment problem? Why don't you ask the Man from Merrill Lynch:

William F. Gray of our Lexington office will be in Morehead on Monday, March 10 from 9 a.m. to 6 p.m., at the Bruce Motel, Route 60, Telephone 784-4131.

He'll be glad to give you our Research Department's evaluation of individual stocks or arrange for them to review your present holdings or suggest an investment program to fit your individual objectives and financial situation.

Whatever your investment needs may be, please feel free to call on Mr. Gray. For an appointment telephone the motel, 784-4131, or our Lexington office collect, 606-252-1414. No obligation, of course. At Merrill Lynch, all you ever pay is the standard stock exchange commission when you buy or sell listed securities.



MERRILL LYNCH, PIERCE, FENNER & SMITH INC

237 E. Main at Esplanade, Lexington 40507

A LADY NEEDS ONLY ONE DIRT COLLECTOR



and it's not her modern electric range!

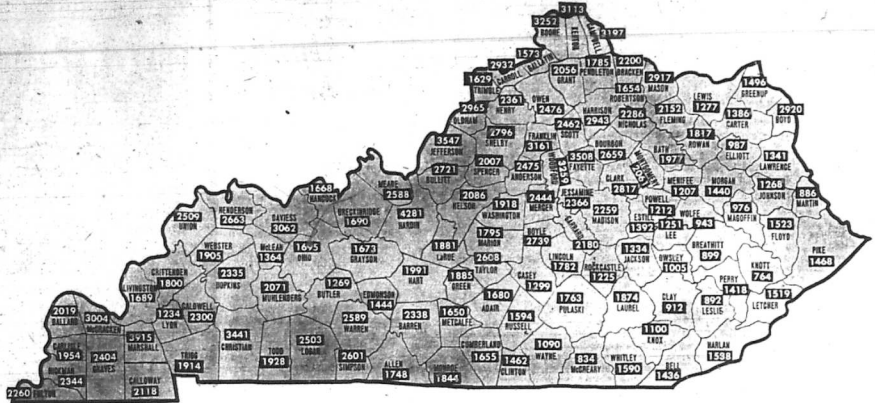
Why not get rid of the dirt collector you can do without—that old fashioned range and oven? Today's electric range doesn't collect sticky spillovers, crusty drippings, greasy splatterings. It can clean its own oven automatically for less than 7¢. There's no work involved. Just set the automatic control and forget it. See your electric appliance dealer for a modern, carefree electric range with a built-in servant—it cleans itself.

UP TO SEE ON YOUR WIRING BILL, IF YOU BUY AN ELECTRIC RANGE FIRST! If you change from 2-wire to 3-wire, 100-ampere service, and install the new range, starting in 1968, we'll pay you \$75. This amount will be paid March 31, if you have 3-wire service installed on your electric range, with any 115-volt additional wiring needed. See your KU or OGE engineer for eligibility.



KENTUCKY UTILITIES COMPANY

Six rate reductions since 1962



This Should Be Of Interest To All Kentuckians

This map, reprinted from Sunday's Louisville Courier-Journal, shows the per capita income for each of Kentucky's 120 counties. The national per person income is \$2,978 and only four Kentucky counties exceeded this. An analysis of the immediate area indicates that Rowan would be much lower if it were not for many high professional salaries and the federal wage scale on new construction at Morehead State University; Elliott has no industry; Morgan would be much lower except for considerable tobacco acreage as

would Bath, Menifee, Fleming and Lewis. Carter, Mason and Montgomery have both industry and considerable, although decreasing, tobacco bases. Such plants as Arco and Ishland Oil bring Ishland near the national average while Mason is both an industrial and good farming county. One of the surprises is Greenup which has good farming land and also industry. However, many work on Greenup County live in Ohio or Floyd County and are probably computed there.

Rebounding, Scrapy Defense Puts Morehead Past Tech

By Don Smith

Among the crowd of 4100 fans Saturday night were 100 former Eagle greats, who came to see the present Eagles battle Tennessee Tech.

In the last home game appearance of the Morehead seniors, the Eagles won handily, 84-64, upping their OVC record to 10-3.

The Eagles swept the boards pulling down 62 rebounds to Tech's 35. The Golden Eagles of Tech, facing a scrapy Morehead defense, went without a field goal for the first four minutes of the game. At that time the home team had an 8 to 0 lead, a lead they never relinquished.

With 9:03 remaining in the first half, Tech found itself down by eleven points, 17 to 6, on two foul shots by Willie Jackson, as guard Jim Sutton picked up his third foul.

Tech Comes Back

But then Art Bosnak, seven foot Tech center, averaging only 4.7 points as a sub going in the game, and forward Kettel Strauss carried the Golden Eagles of Tech until they trailed only 26-25 with 3:45 remaining in the half.

Then forward Lamar Green took charge the remainder of the half as he staged a one-man show eight of the next 11 Eagle points to put Morehead

in the drivers seat at halftime, 37-25. Tech returned from the locker room with a hot streak of its own. Guard Bill Bland's torrid shooting brought Tech to back within one, 44-43. Morehead immediately called time out with almost 14 minutes remaining and the fans getting restless.

Eagles Catch Fire

Morehead Coach Bob Wright's strategy worked as the Eagles tacked on ten straight points to give them a commanding 54-44 lead with 10:32 remaining. The Eagles were never challenged again.

When Wright lifted Green, who scored 28 points and grabbed 19 rebounds in one of his best overall games of the season, he bowed out to a thunderous ovation.

Bosnak Surprise

Ron Sutton, Tech's leading scorer with a 16.3 average, was held to eight by the Eagle defense. The big surprise was Bosnak who led Tech's attack with 20 counters.

After the game, Jackson was named "Senior Athlete of the Year" by the Alumni "M" Club. The Colgate Knights presented trophies to the senior members of the squad. They were Willie Jackson, Lamar Green, Danny Cornette (who managed 16

State Park Reservations Setting A New Record

Advance reservations at Kentucky State Parks are running 10% ahead of the rate at this time last year, according to Parks Commissioner Robert Gable.

In a meeting of park managers at Lake Cumberland State Park, Commissioner Gable announced, "By all indications we should have another record-breaking year in 1969. Our January occupancy," for the seven park lodges open year-round, he said, "was more than 40% higher than last year."

Jaycees Sponsor Rowan Physical Fitness Program

In support of the President's Council for Physical Fitness and Sports, the Morehead Jaycees are launching a county search for physical fitness leaders. The program is co-sponsored by a Life Insurance Company.

Special Physical Fitness Leadership Award certificates will be presented to physical educators, writers, leaders of recreation centers or clubs and people in business or government who have, through their efforts and individual initiative, organized fitness programs for children of school age and for adults.

The deadline for nominations will be March 31.

For more information call Gary Furnish at 784-7646.

Why Take Pictures... Just to Hide 'em?

Enjoy Them "Proudly on Display"

HOLDS ALL SIZES
1000 - 2000 or More.
2 1/2 x 3 1/2 thru 8 x 10
ALL IN ONE!

Family-View

PHOTO-CURIO

The Southern Belle Studio

One Mile East of City Limits on U.S. 60
WARD WILLIAMS, Photographer - Phone 784-5620

I-N-T-E-R-L-O-C-K-S ITSELF... can't ever be filled!

Jim Walter HOMES
CORPORATION

■ CUSTOM-BUILT ON YOUR PROPERTY
■ 100% FINANCING

See or Call -
Orville Howard
308 Flemingsburg Road - Morehead, Ky.
PHONE 784-5640

Bishop Drug Co.
"Your Retail Store"
MOREHEAD, KY.

MAIN ST.

for ALL YOUR PHARMACEUTICALS
Prompt Delivery

Your registered pharmacist works promptly and accurately to compound the prescription your doctor orders. His skill and knowledge are always available. Just call.

For Prescription Service

Putting you first, keeps us first.

America's No.1 Tourist Attraction.

Chevrolet's Sports-Recreation Dept.

1. Series 10 Chevy Sportvan 106.
5. Chevelle SS 396 Convertible.
2. Series 20 Longhorn Pickup with over-cab camper body.
6. Impala Convertible.
3. Series 20 Suburban.
4. Camaro SS Convertible with RS equipment.



"Crackers and" Sale!

- IGA XTRA WHIPPED Salad Dressing... 39¢
- SMUCKER'S Jelly... 5 for \$1
- IGA TASTY Sandwich Spread... 49¢
- KRAFT CHEESE AND Macaroni Dinner... 19¢
- VAN CAMP ALL BEEF Tamales... 29¢

- IGA SALTINE CRACKERS... 19¢
- HEINZ BEAN VEGETABLE OR CHICKEN NOODLE SOUP... 10¢
- IGA CREAMY PEANUT BUTTER... 49¢
- IGA CRISP 'N GOOD POTATO CHIPS... 39¢

IGA Health & Beauty Aids I SALE!

- IGA Aspirin... 1¢
- IGA Peroxide... 1¢
- IGA RUBBING Alcohol... 1¢
- IGA REG. OR HARD TO HOLD Hair Spray... 1¢
- IGA CHILDREN'S Vitamins... 1¢
- COLGATE Tooth Paste... 1¢
- ARRID EXTRA DRY Deodorant... 1¢
- IGA Aspirin... 1¢
- WILKINSON SWORD Razor Blades... 1¢
- IGA SPICE OR MENTHOL Shave Cream... 1¢
- SHIRLEY GAY Nylons... 4 Pairs 1¢

FREE! \$2,000 FREE!

You Do Not Have To Be Present To Win!

\$200.00 Each Week for 10 Weeks Will Be Given Away by

Allen's IGA Foodliner

FIRST PRIZE \$100 - SECOND PRIZE \$50 - THIRD PRIZE \$25

Plus 25 Fourth Prize Winners of Uncirculated Silver Dollars

Drawing Will Be Held Each Monday Morning at 8:00 and the Winners Will Be Announced In This Newspaper and on the Radio.

\$100.00 - D. C. Short, Morehead, Ky.
\$50.00 - Marie Pettit, Morehead, Ky.
\$25.00 - Larry Crisp, Morehead, Ky.

SILVER DOLLAR WINNERS

G. W. McBrayer, Sue Bryan, Anthony Wall, Margaret Shoop, Mildred Williams, Bernice Crisp, Violet Papp

Sally Eldridge, Ben Beffitt, Margus Harlan, Ruth Chan, Sue Brown, Geneva Mace

Everett Perry, George Swain, Nellie Dameron, Fay Ladd, Edgar Cox, Max Ora Falls

Willow Onay, Ham Bays, Pearl Love, Fay Ellis, Bob Hoover, Mrs. Elizabeth

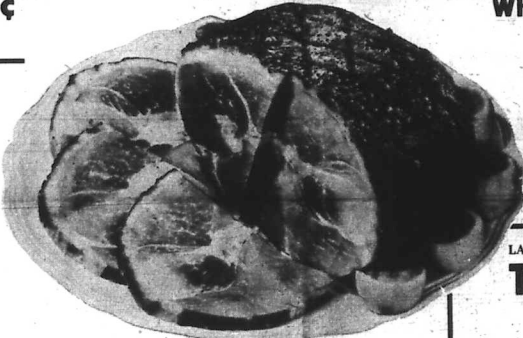


We're "doing our thing" ... and that's offering you the finest foods at the lowest prices. "Crackers and ..." is this week's tick. Very variety, simple, quick ... "save-in" soon and take your pick.

- TABLETREAT BREAD... 5 for 88¢
- TABLETREAT ICE CREAM... 59¢
- RED CROSS SPAGHETTI OR MACARONI... 12¢
- GRADE "A" SMALL EGGS... 3 Doz. \$1
- TABLETREAT BREAD... 4 for 88¢

TableRite SMOKED Ham

Whole or Butt Half . . . 58¢



- SLICED PORK STEAKS... 55¢
- WEBBERS SAUSAGE... 59¢
- WEBBERS SAUSAGE... \$1.17
- FISHER'S QUICK CUT WHOLE HAMS... 79¢

LAND-O-LAKES Turkeys

16-lb. up 33¢

TURKEYS 5 - 14-lbs. 1b. 39¢

COFFEE Folger's Instant Coffee

10-oz. Jar \$1.19

Folger's 1-lb. Can 49¢

- VAN CAMP W/BEANS
- CHILI... 29¢
- CHICKEN OF THE SEA TUNA... 33¢
- IGA CRISP 'N GOOD Snack Crackers... 29¢
- IGA FILLETS PERCH... 39¢

- COMET Cleanser... 15¢
- Joy Liquid... 56¢
- Oxydol... 69¢
- BIRDSEYE Awake... 3 for \$1
- DELSEY BATHROOM Tissue... 25¢

GOLDEN FRESH Carrots

1-lb. Cello 9¢

- SELECT Cucumbers... 2 for 29¢
- FRESH Green Onions... 10¢
- FLORIDA Oranges... 49¢
- WINECAP OR Rome Apples... 59¢
- CRISP Celery Hearts... 29¢
- RED BUTTON Radishes... 9¢

CLOROX

1/2-gal. Bot. 29¢

ROBIN HOOD FLOUR

25-lb. Bag \$1.89

VALUABLE COUPON!

Good Only At IGA Stores Through March 12

LIGHTNING WHITE "The Laundry Whittener"

32-oz. bot. 49¢

WITH COUPON 20¢

TABLETREAT EVAPORATED Milk 10¢

Family FINANCIAL PROTECTION

Automatic - Question Answered by the Health Insurance Company, 277 Park Ave., N. Y. N. Y., 10017

Q. I was recently married and used to have health insurance. I don't know what I have a wife and am thinking about future responsibilities as a father. I think I need to have some protection. What should I look for?

A. One of the most important things to check in a hospital policy is the amount allowed for your room and board bill. This part of the policy pays toward the room, meals, routine nursing, and other services. Because daily rates vary from area to area, it is important to know if the rates allowed in the policy are adequate in terms of hospital charges in your city.

Another important thing to check is the number of days the hospital policy will pay for. In most cases, within 90 days of hospitalization at the rate equal to local hospital charges for a semi-private room is adequate.

You might also want to check what benefits are available for surgery and X-rays, laboratory tests, drugs, and the in-hospital visit of a doctor.

Your insurance man can give you information about local hospital rates and the policy that would be most suitable for your needs.

Q. A section of my new health insurance policy provides that my wife will be paid a certain amount if I should die following an accidental injury. I'm wondering if there's some limit on the time that can elapse between the accident and death?

A. There is, but the length of time varies from company to company and policy to policy. Most policies provide that the death must be within 90 days of the accident unless the insured person has been totally disabled during that time.

MONUMENTS

Granite and Marble

First Class Material at a Reasonable Price. Erected on Concrete Foundation.

Dayton Porter

PHONE 784-8321

Termite Trouble?

See or Call

CHESTER KISER CONSTRUCTION CO.

Phone 784-5109 & 784-5442

Agents for

STATE TERMITE CONTROL CHEMICAL CO., INC.

SEE THE LIGHTEST AUTOMATIC OIL AND CHAIN SAW IN THE WORLD.

MCCULLOCH MAC2-10

10 1/2 hp. of cutting power - Professional Operator's Favorite - Professional Operator's Favorite - Professional Operator's Favorite - Professional Operator's Favorite - Professional Operator's Favorite

Morech Supply Store

Phone 784-5778

Morehead, Ky.