

The Morehead Independent

VOLUME VIII. MOREHEAD, KENTUCKY, THURSDAY MORNING, APRIL 17, 1941. NUMBER SIXTEEN



Well, Easter has gone and we are now starting into the summer season full blast. It is truly remarkable how time flies and the change that is made from time to time. I never would have thought they would have ever changed "Nick" and "Bill" the two cops from Flemingburg. They were as inseparable as butter and bread. The City Council put "Bill" at the quarry and "Nick" by the stockyards. Well, that's politics for you boys and I'll bet Blumner was behind it. Anyone in the market for baby chicks, fencing or sheep? Write J. B. Lester. He has a line out of Chicago. Mahlin Hall, I understand, was once a football player. The boys around Sandy Hook always yell to him, "Hi, Sallor." Bert Sparks of Cranford has just quit Vienna Sausage company. Once in great while he will take a thin slice of bologna plain. No casualties are reported from the Jefferson Day Dinner. It was a good time was had by all but my wife. She thinks it awful for a Republican to go to a Democrat dinner and would not sit near me. I went just to spite her and see some of my friends. I enjoyed every minute of it, if I did have to sit just across the table from Andrew Crutcher. He is a good fellow. Don't think boys, I was just hounding. I was sincere in the manner of checking out the Republican. They have told me some wild tales around here on Democrats. Arthur Barker, even "Bob" Crutcher, have had his wife and succeeded his office in public. And that Alice Manning could get his wife out of bed at the dance last night. I know some things almost as bad on the Republicans. To you "Bob" Miller, I want to say you are the greatest tribute to Judge Young that I have ever heard. I would have heard of many things you said about him that would have laughed and no doubt said, "Bob, you oney cuss, you will make my people think I'm a great big man." To us he was big and that more. He was big enough in mind and body to overlook the local party that took him. We miss that great man ALLIE W. YOUNG, Jefferson. Tom Hicks, Dayton, Ohio, talk. Am not sending you a check. You called me long distance for. See the city for putting a red light in the middle of the street. Kentucky Plumbers Lending, Kentucky, call operator No. 3, Olive Hill, Kentucky. Called here Monday for you. Ask her. She has a friend, Ruth Miller, paid \$3.88 for those pants he is delivering the mail in and \$1.88 for the pants. Dr. ... blew my rent money on the horses last week after I had saved like a dog for it. Herman Cooper cannot eat meat, smoke, chew, take a drink, stay out late at night, or even think of fried pork in meal and greens. "Why doesn't Herman get off and die?" Mr. and Mrs. Landolt. I noted the tears in your eyes when you took the little girl to the orphans home the other day. I hated to see her go too.

Bowling League Standings

The Bishop Drug Company bowling team stands at the top of city bowlers in the second half of the present tourney with a standing of six games won, none lost.

Following is the standing of all competing teams to date:

Team	W	L	ST	PCT
Bishop's Drug	6	0	1	1000
R. C. Cola	5	1	2	833
Midland Trail Garage	4	2	2	666
Druce's 5 & 10c Store	4	2	2	666
College Pitchers	3	3	0	500
McBrayer's	3	3	0	500
Carr-Caudill	2	4	3	333
Collins Motor	1	5	1	166
McKinney's	1	5	1	166

Land Use Program Planned For Rowan County Farmers

Committee Will Direct All Agricultural Activities

Plans are underway to develop a Land Use Program Planning Committee for Rowan County. This committee, made up of farmers of the county, cooperating with all Agricultural workers, will direct all Agricultural activities. The first step in connection with getting this work started is being carried out by Mr. R. M. Sandefur, working through the County Agent's office. Mr. Sandefur, who is Assistant County Agent of Rowan County, shows the communities and neighborhoods of the county. A Community Land Use Planning Committee will set up for each community and a County Committee will be set up from members of these various community committees. Studies made by these committees will be the basis of Agricultural work in the future.

Rowan County is one of the seven counties in the state which are in the general Agricultural Improvement Program into which all activities will fit.

At present there are several agencies active in Rowan County. They include Agricultural Extension, or County Agent Work, Agricultural Conservation Program, Farm Security Administration, Veterans' Affairs, and the U. S. Forest Service.

(Continued on Page Four)

Students To Attend Fellowship Meeting At Covington

Eight Morehead young people will represent the Christian Young People's Fellowship at the annual Fellowship Meet of the Christian Young People which will be held in the Covington Christian Center, April 19-20.

Frances Peratt, Margaret Penn, Richard Dougherty, Athalen Lawson, Mabel Carr, Walter Carr, Helen Crowley, and James Reynolds will represent the local church at the state convention. Young people from all over Kentucky are expected to attend. Attendance of over three hundred is anticipated.

Frances Peratt, a delegate and member of the Morehead church, was elected Secretary of the Eastern District of Young People at a summer conference held at Camp Mechem last summer.

Delegates to the Covington convention are guests in the homes of church members for nights and breakfasts, as well as several luncheons and banquets which are given in their honor in the city.

The theme of the meeting this year is "Christian Youth Unite in Action." Fine programs have been planned for the entire week, including period and banquet, luncheons, trips, excellent study groups with food jagers, inspirational worship services, a sunrise service, and a consecration service. After the Sunday lunch, the meeting will close with a Friendship Circle.

College Players To Give "Echo" May 2nd

The College Players under the direction of Neville Finzel will present "Echo," a one-act drama, as part of the drama school day program, May 2nd. This play was first presented at the Bon Theatre in Chicago, in 1933.

The cast of characters includes: Blanche Thomas as Henry Ross, Frances Peratt as Lillian Ross, and Mark Coldwell as David Ross.

The play will be presented at one o'clock in the College auditorium. This is the sixteenth production of the College Players.

12 Men Take Air Corps Examination

Examinations To Be Held In Lexington Until April 25

Eleven men from the college and one from Morehead who are now in college have already taken the air corps examination for entrance into the air corps. Those from the college were Crawford, Tom Petro, Harry Walker, Ralph Museum, James Caudill, Emerson Jones, Felix Weiland, Ralph Huston Jay Justice, Christopher Crawford, and James Plogher. Mr. Stuart Lawton, Morehead also took the examination.

The examination is being held in Lexington at the Traction Building every week day until April 11 and it will then be held in Lexington from April 14 to 25th inclusive, except Sunday.

According to information furnished here the men who enter this service will receive \$105.00 per month for seven and one-half months of training. If they pass this work and are commissioned Second Lieutenants in the Army Air Corps they go into active service for three years. As Flying Army Second Lieutenants they receive the equivalent of \$245.00 per month. At the end of this period of the service each man receives a cash bonus of \$500.00 and is pleased from the service.

Approximately twenty more men from the college are expected to take the examination in the next few days.

Dr. J. G. Black, of the college, has been asked to assist with the work here in Morehead and he has indicated that he will be ready with any information or assistance he may be able to give.

Rufus Flannery Elected President Of Future Farmers

Rufus Flannery was elected president of the Morehead Future Farmers last Friday at the annual Father and Son Banquet.

Flannery, Lewis, elected vice-president, Elijah Cox, Secretary, James Hall, Reporter, and Charles McKenzie were re-elected officers.

Seventy-five attended the banquet which was held at the Morehead High School.

Commissioner of Agriculture, William H. May, has announced the appointment of Wesley Veck Derry, Jr., as Director of the Division of Weights and Measures in the State Department of Agriculture. May stated that the work has indicated that he would like to have a full time head needed.

Perry at present is the Department's Administrative Assistant and is formerly with the Farm Credit Administration.

Wm. O'Donnell Elected President Of Eastern College

William F. O'Donnell, superintendent of Richmond city schools who was elected Friday to the presidency of Eastern Teachers College to succeed H. L. Donovan, president-elect of the University of Kentucky, contemplates his new duties with mixed emotions.

Of his election to the presidency of one of America's finest teachers colleges is an honor which I deeply appreciate," he said. "My joy, however, is somewhat tempered by the multitude of my responsibilities as the successor of a truly great leader, one who has left the impress of his life and character on this institution. I shall humbly take up the work which he has put upon me."

"In assuming these duties, I am strengthened by the thought that I shall have the solid counsel of the board of trustees, the loyal support and co-operation of the faculty of able men and women with whom I long have been pleased to work."

(Continued on Page 4.)

Faye Lytton To Reign As 1941 May Queen

Miss Faye Lytton, sophomore at Morehead State Teachers College, was chosen at a Thursday morning convocation as the College "May Queen" it has been announced.

Miss Lytton is the daughter of Mr. and Mrs. James H. Lytton of the Ridge.

Her attendants will be Misses Delpha McClure, Dulsten Strain, Alma Bell, Thelma Sulzer, Katherine Palmer, and Katherine Sluss.

J. Dan Talbott Warns Nation To Beware Of Evils Within, Without

Addresses Over 450 Democrats Of Eighth District At Jefferson Day Banquet Here Saturday, April 12

Over 450 Democrats from counties comprising the Eighth congressional district heard J. Dan Talbott, State Director of Finance, make the principal address of the evening Saturday, April 12, at a dinner celebrating the birthday of Thomas Jefferson.

Speaking on the trend of times in connection with the times of Jefferson, Talbott likened present world conditions to the times of Jefferson remarking that "we must be on guard against enemies both within and without this nation."

Also speaking briefly on the program were: Representative of the House of Representatives, Congressman from the Eighth District.

The dinner, given in the special cafeteria of the Morehead State Teachers College, was sponsored by the eighth district, Honorable Robert Humphreys, Secretary of the State Central Executive Committee, presided. V. D. "Mike" Flood, Rowan County Chairman,

Local Fish, Game Club To Be Shown Color Movies, April 21

Through the efforts of Jack Helwig of the N. E. Kennard Hardware Store, the local Fish and Game Club will see the technicolor movies of "Grand American Handicap" and "Canadian Trails," April 21, at 7:30 p. m., at the Science Building of the Morehead State College. Herbert Hogan, publicity director of the group, said.

The first film concerns itself with trapshooting, the second with hunting in the Canadian north woods.

The public is cordially invited to attend.

Landscaping Is Being Completed At Science Building

Work has been completed on the landscaping of the Science building, according to Professor H. C. Haggan of the Agriculture department. The Industrial Arts Club and the Agriculture Club cooperated in raising the money for the project and also did the work of the Agriculture Club intends to landscape the ends of the Science building next year when funds are available.

The Agriculture Club is now working on an outdoor park behind the Science building. The park will include grills, tables, a d d will be landscaped with native shrubs. The park will be available for use by any group on the campus as soon as it is completed.

The Agriculture Club is also cooperating with Miss Curralean Smith in the planting of a garden behind Fields Hall.

Forest Ranger Asks Cooperation

Mountain People Urged To Control Their Burning

(By Earl M. Stoller)

The spring fire season is now here. Forest Service and COC men who are charged with the responsibility of protecting the Cumberland National Forest from the ravages of forest fires, have been fighting wild fires for the past month which have been in the majority of cases caused by man's carelessness.

I am asking those who live in the area to be careful with matches with fire and matches when the weather is dry and forest fires will run wild.

Most of the people living in and near the Cumberland National Forest realize that they are the principal recipients of the products of the forest.

They benefit by having increased game, better timber, and improved recreational areas. Local residents of most of the hunting and profit by a larger game population, which can only come through the forest.

It is the duty of the forest ranger to increase the number of game and the government's more employment to local people.

I am, therefore, confidently expecting the local residents to cooperate by doing the things which will help in keeping Kentucky's woods from burning.

Prevent forest fires by:

1. Burn the forest grass and brush in the cool of the evening. Your fire will not be likely to get away from you at night time.
2. Stay with the fire until it is safe.
3. Check your fire about 10:00 A. M. to see if it is smoldering on the edges of the woods.
4. Make a ring, or plow a furrow, around the most of the woods. The fire line will then be built before the burning begins.
5. Start the fire from the leeward side of the woods.
6. If you are going to smoke in the woods—stop and smoke in a cleared place.
7. Build a camp fire, a warming fire, or any other kind of a fire in a cleared place, clean the ground away from the fire for a distance of at least fifteen feet in all directions. And be sure to water it out when you leave.

W.P.A. Project To Aid Nat'l. Defense

George H. Goodman, administrator announced today that the Work Projects Administration would begin immediately to conduct an index of naturalization records important to the National Defense. The project is sponsored by the United States Department of War and Immigration and Naturalization Services will cost approximately \$21,588. It will employ fifty-six workers over a period of six months. In compiling the index Federal, Circuit, county and municipal courts records will be searched throughout the State.

Frank Miller On U. K. Tennis Team

Frank W. Miller, son of Dr. and Mrs. Frank B. Miller, spent the week with his folks, previous to taking a Spring vacation trip down South this week. Frank is playing in the No. 3 position on the University of Kentucky tennis team. He will be searched throughout the State.

SALES REPORT MOREHEAD STOCKYARDS THURSDAY, APRIL 10

The sales report for the sale of April 10th at the Morehead Stockyards is as follows:

Hogs: Packers, \$8.50; Mediums, \$8.00; Cows and Steers, \$9.00; \$8.00; Sows and Pigs, \$2.75.

Cattle—Steers, \$7.90 to \$8.70; Heifers, \$8.10 to \$9.10; Cows, \$5.10 to \$6.40; Cows and Steers, \$9.00 to \$9.00; Stock Cattle, \$23.00 to \$39.00; Bulls, \$8.20 per head.

Mediums \$10.00 per head. Cows and Steers, \$11.00 to \$11.00.

Stockyard Prices April 10, Equals Cincinnati Market

Farmers And Traders Well Satisfied With Operation Of Local Stockyards

Paying prices equal to prices on the Cincinnati market, the new Morehead Stockyards are proving more popular each week to farmers from an ever-widening circle, according to reports emanating from farmers and traders in this section of the State.

Pointing out that "it comes as a welcome surprise that the Morehead yards are paying such high prices," the Board stated that the enterprise is now virtually assured of success.

Not only are we pleased with the receipts given to the Morehead yards, but dealers from several counties have expressed themselves as extremely gratified at the way business is transacted here," J. R. Wendel, secretary of the Board, stated to an independent representative of the State.

The secretary set out the fact that the policy of "fair dealing" with all persons trading at the Morehead yards was now beginning to prove itself in a rising number of traders.

The local yards had a sale on Thursday, April 10th, prices on nearly all stock were at their usual high price, according to persons conducting the sale with steers bringing from \$7.90 to \$8.70, heifers selling at from \$8.10 to \$9.10, cows marketing at from \$5.10 to \$6.40, and calves selling at prices ranging from \$8.00 to \$9.00, stock cattle ranging in prices from \$23.00 to \$39.00, bulls marketing at prices varying from \$8.20 upward.

Top yields sold at \$12.00, medium yields at \$11.00, and common and large at from \$6.50 to \$12.00.

These prices will probably be maintained if not improved, it was estimated by the Board.

Directors also pointed out that Sale Day brings into town a huge volume of other business that would not be conducted here if the local yards had not been established.

Trucks from Fleming, Bath, Johnson, Martin, Lawrence, Pike, Morgan, Elliott, Carter, Montgomery and Mason counties are to be seen each Thursday in spite of the fact that many of these counties also have established yards.

President of the local yards is W. L. Jayne, Bill Carter is vice-president and J. R. Wendel is secretary and treasurer of the organization. On the Board of Directors are included among the stockholders of the yards are many of the county's most substantial and enterprising citizens.

Navy Recruiting Officer To Be Here April 25-26

Many Vacancies Exist At This Time For Enlistment In The Navy

There will be a representative of the Navy Recruiting Service at Morehead, Friday and Saturday, April 25th and 26th for the purpose of examining and accepting young men who are interested in a career in the Navy.

Many vacancies exist at this time for enlistment in the Navy. The young men between the ages of seventeen and thirty-one who can pass the required physical and mental examination, will be enlisted as apprentice seaman and transferred to the Training Station at Great Lakes, Illinois, for recruit training before being sent aboard one of the ships of the United States Fleet. The pay while in the rating of apprentice seaman is \$10.00 a month for the first four months, after four months naval service pay increases to \$36.00 a month. It is authorized, upon the recommendation of the commanding officer, that an initial outfit of uniforms, worth about \$90.00 is given to each recruit. The uniform is made of salinants permeable fabric, which is accepted, to be called within a few days.

The Navy provides an excellent opportunity to learn any standard trade such as Machinist, Electrician, Carpenter, Plumber, Stenographer, Boatswain, Metallsmith, and many others.

Those interested in the United States Navy are asked to meet the Navy Recruiting Officer in your section, or write to the Navy Recruiting Station, Ashland, Kentucky, for further information.

Fruit And Vegetable Market Opens Soon

An open-air market, carrying a variety of fresh fruits and vegetables will open in the city in the next few days. The new business is located on U. S. 60 just east of the Morehead City limits. It will be operated by Kenneth Orcutt and Kenneth Lewis.

Breakridge Students Attend Danville Convention

The junior and senior classes of the Breakridge Training School spent Friday and Saturday, April 11, 12, at Danville, attending the State convention of Science clubs. Students of the organization, accompanied by their sponsors, met and visited many historical spots in Kentucky, both going and coming from the convention.

Published each Thursday morning at Morehead, Kentucky by the INDEPENDENT PUBLISHING COMPANY

ADVERTISING RATES MADE KNOWN UPON APPLICATION
WILLIAM J. SAMPLE, Editor and Publisher

One year in Kentucky	\$1.50
Six Months in Kentucky	.75
One year Out of State	2.00
(All Subscriptions Must Be Paid in Advance)	

Entered as second class matter February 27, 1934, at the post-office at Morehead, Kentucky, under Act of Congress of March 3, 1879.



Political Announcements

DEMOCRATS

We are authorized to announce:

MORT MAY

As a candidate for Sheriff of Rowan County, subject to the action of the Democratic Primary on Saturday, August 2, 1941.

We are authorized to announce:

BERT TOLLIVER

As a candidate for Jailer of Rowan County, subject to the action of the Democratic Primary on Saturday, August 2, 1941.

We are authorized to announce:

ALLIE F. "ROSS" SOBRELL

As a candidate for Jailer of Rowan County, subject to the action of the Democratic Primary on Saturday, August 2, 1941.

We are authorized to announce:

BILL HUDGINS

As a candidate for County Clerk of Rowan County, subject to the action of the Democratic Primary on Saturday, August 2, 1941.

We are authorized to announce:

JESSE J. CAUDILL

As a candidate for Sheriff of Rowan County, subject to the action of the Democratic Primary to be held Saturday, August 2, 1941.

We are authorized to announce:

ALBY HARDIN

As a candidate for Jailer of Rowan County, subject to the action of the Democratic Primary on Saturday, August 2, 1941.

REPUBLICAN

We are authorized to announce:

MARVIN ADKINS

As a candidate for Sheriff of Rowan County, subject to the action of the Democratic Primary on Saturday, August 2, 1941.

Political Announcement

TO THE DEMOCRATIC VOTERS OF ROWAN COUNTY:

This statement is to formally announce my candidacy for re-election as Jailer for Rowan County. At the November election, of 1937 you honored me by electing me as your jailer. The records will show how I have discharged the trust imposed in me. During the first year of my term I was placed under the handicap of having no jail in which to confine prisoners and those who should have been confined to jail were placed in other jails but notwithstanding this handicap, which forced me to serve you for one year with very little compensation, no one heard complaint from me but like all of our citizens I was proud of the fact that we were soon to have a jail in keeping with our progressive county and give you the best that I had and aided in every way possible for the completion of our jail.

During my entire term I have co-operated faithfully with your officers. I have tried to keep all the public buildings in my care in a clean and sanitary condition and prisoners intrusted to my care have been well fed and their safety and security has been looked after with the result that there has been a less number of escapes than in any like period of the past. The experience of the past four years will enable me to better serve you in the future and I now promise the voters that if honored by your selection in the primary and election in November that I shall give to this office the best that lies within me and shall, at all times, faithfully serve you in every way that I can.

Respectfully yours,
ALBY HARDIN

average spring wheat crop, as indicated by the December crop report, would provide a supply of about 1,200,000 bushels for 1941-42 and this indicated supply will exceed the marketing quota level established by the Agricultural Adjustment Act.

The quota will become effective when announced and will continue during the 1941-42 marketing year if approved by two-thirds of the farmers voting in the referendum.

Farmers who plant within their wheat acreage allotments will market free of penalty all wheat produced on their allotted acreages plus any wheat carried over from previous years, if the quota is approved. Wheat in excess of the quota on an over-planted farm would be subject to penalty unless stored under seal.

If a quota is proclaimed and disapproved, the quota law provides that, under the government crop loan program, loans cannot be made on the crop for which the quota is rejected.

an County, subject to the action of the Republican Primary on Saturday, August 2, 1941.

We are authorized to announce:

MILLARD F. MOORE

As a candidate for Sheriff of Rowan County, subject to the action of the Republican Primary on Saturday, August 2, 1941.

We are authorized to announce:

ISAAC CAUDILL

As a candidate for Jailer of Rowan County, subject to the action of the Republican Primary on Saturday, August 2, 1941.

We are authorized to announce:

ARTHUR BARBER

As a candidate for the office of Judge of Rowan County, subject to the action of the Republican Primary election, to be held Saturday, August 2, 1941.

We are authorized to announce:

LESTER CASKEY

As a candidate for the office of Sheriff of Rowan County, subject to the action of the Republican primary election, to be held Saturday, August 2, 1941.

Tentative Plans For Wheat Quota Vote Announced

Approximately 14,000 Kentucky wheat growers are eligible to vote in the national wheat marketing quota referendum tentatively set for May 31st, the State Agricultural Adjustment Administration Office has announced.

Although the marketing quota determination has not yet been made, it is estimated that the wheat carryover on July 1 this year may exceed 385,000,000 bushels, which would be the largest carryover on record. This carryover plus a 1941 winter wheat crop of 633,000,000 bushels and an

SHERIFF'S SALE OF REAL ESTATE FOR TAXES

The undersigned or one of his deputies will on Monday May 5th, 1941, at about 1:00 o'clock P. M., at the Courthouse in Morehead, Kentucky, offer for sale the following described Real Estate or so much thereof to satisfy the 1940 County and State taxes against same.

MOREHEAD DISTRICT NO. 1

Adams, Ida	9 acres & 1 lot	\$ 10.80
Adkins, Frank	1 lot	7.50
Adkins, James	3.5 acres	2.70
Alfrey, Jane	1 acre	9.00
Armstrong, Lillie	50 acres	18.00
Amburgey, Robert	1 lot	2.70
Black, Michael	50 acres	7.50
Baldrige, Buck	9 acres	1.36
Brown, Henry C.	3-4 acre	9.00
Brown, Minnie	44 acres	7.00
Brown, George	1 acre	9.00
Brown, J. F.	1 lot	7.50
Bailey, Willis	51 acres	20.46
Baldrige, Maggie	1 acre	20.46
Baldrige, D. B.	35 acres	3.30
Baldrige, Clarence	1 lot	25.27
Bays, Robert Sr.	1 lot	3.60
Bays, Robert Jr.	1 lot	3.60
Black, Grace	1 lot	25.27
Bogges, J. L.	1 lot	14.40
Bowman, Herbert	82 acres	18.70
Bowling, S. S.	3 acres	9.40
Brown, Frank	5 acres	14.40
Bumgardner, Myrtle	1 lot	8.70
Carter, W. H.	1 lot	7.46
Cassidy, Carl	50 acres	20.10
Cassidy, Nell	1 lot	6.70
Caudill, Myrtle	1 lot	13.30
Caudill, Stanley	1 lot	6.10
Caudill, Stewart	116 acres	2.96
Caudill, H. C.	1 lot	17.01
Caudill, Mrs. Lindsey	1 lot	13.30
Caskey, Alf	8 lots	155.77
Casey, George	32 acres	5.20
Clark, Mary J.	1 lot	9.00
Clay, Maude	1 lot	12.60
Coldiron, Sam	75 acres	4.30
Conn, Troy	37 acres	11.50
Cox, Wesley	100 acres	35.19
Cox, Hulda	160 acres & 3 lots	50.14
Craiger, Frank	22 acres	11.50
Campbell, Tommy	50 acres	9.70
Carpenter, James	1 lot	5.20
Cassidy, Howell	15 acres	4.30
Cassidy, S. W.	2 acres	4.30
Christian, Lola	2 acres	4.30
Collinsworth, G. W.	121 acres	3.60
Corrette, Margaret	1 lot	2.70
Croze, Willie	100 acres	6.20
Croze, Abe Estate	50 acres	5.20
Cooper, Lillie Mae	1 lot	3.60
Cundiff, Tom	100 acres	1.80
Conn, Anna	1 lot	2.96
Black, Georgia	1 lot	1.80
Boyd, Harley	1 acre	4.30
Bays, Taylor	1 lot	5.20
Dalton, Loretta & Noah	20 acres	10.80
Deboard, Lena	185 acres	20.50
Dillon, Thomas	1 lot	3.60
Dawson, Cecil	1 lot	5.40
Day, Alice	75 acres	6.30
Deboard, S. W. Heirs	100 acres	3.60
Dillon, Mrs. Lula	40 acres	9.70
Dillon, Dock	40 acres	18.70
Downing, G. D.	1 lot	34.18
Evans, Milton	1 lot	2.70
Evans, Arthur	1 lot	3.40
Ferguson, Phoebe	1 lot	15.37
Fannin, Lione	Tangible	11.50
Ferguson Funeral Home	35 acres	3.40
Flannery, Warren	1 lot	7.90
Foster, M. M.	2 acres	7.00
Fugate, Otis	75 acres	4.74
Fugate, G. E.	50 acres	6.10
Ferguson, J. W.	79 acres	3.36
Gregory, Sam	25 acres	9.70
Gambale, Jesse	18 acres & 1 lot	84.85
Gastineau, Everett	1 lot	29.50
Goldberg, Harry	45 acres & 1 lot	9.00
Greene, Van V.	79 acres	16.20
Gregory, D. S.	1 lot	56.50
Gullett, Marguerite	1 lot	10.80
Hall, Betty Estate	2 lots	3.80
Hall, Noah	45 acres	4.40
Hall, Noah & J. M. Caudill	85 acres	2.16
Hall, Myrtle	1 lot	14.40
Hall, Albert	2 lots	7.03
Hamilton, Lizzie	1 lot	3.16
Harmon, Thomas Estate	1 lot	9.00
Hogge, Mrs. E.	28 acres	14.40
Hollan, Manda, Deceased	2 lots	14.40
Holbrook, Lillian	2 lots	31.14
Howard, Stella	200 acres	34.80
Howard, Vernon	1 lot	11.50
Hyatt, W. E.	1 acre & 1 lot	5.40
Hall, Edgar	100 acres	5.40
Honaker, Margaret	60 acres	11.50
Jennings, Harry	121 acres	24.00
Johnson, Russell	425 acres	16.10
Johnson, Luther	60 acres	21.00
Johnson, Clayton	121 acres	16.10
Jones, Truba	60 acres	24.00
Jones, Clarence	2 lots	16.10
Jones, Garcia	8 acres	6.10
Jenkins, Medford	1 acre	6.10
Jones, Wm. M.	200 acres	9.70
Jones, Wm.	85 acres	7.90
Kidd, Elizabeth	65 acres	5.40
Kissinger, J. N.	1 lot	11.50
Kash, F. J.	1 lot	28.85
Keeton, W. H.	1 lot	3.40
Kelsey, John	20 acres	3.60
Lambert, Tracy	14 acres	3.40
Lane, James	1 lot	20.50
Lane, W. F. Heirs	1 lot	7.20
Landrich, Cecil	1 lot	8.31
Laughlin, Shirley	1 lot	137 acres
Lee, W. B.	1 lot	1 lot
Lewis, Talmage	2 lots	27.00
Manning, Harve L.	11.50	Royle, Joe
Manning, John	100 acres	15 acres
Martin, L. F.	15 acres	8.10
Lewis, Emmett	1 lot	5.40
Lemaster, Henry	2 acres	9.61
Moore, Earl	43 acres	9.70
Markwe, Bailey	1-2 acre	6.10
Miller, Alice	40 acres	6.10
Midland Baking Company	1 lot	78.74

Moore, J. H.	Real Estate	10.69
Mutters, S. B.	Real Estate	6.35
Myhner, Nath	75 acres	7.90
Myhner, L. T.	2 acres	2.70
Nipp, G. W.	61 acres	5.20
Owens, Buddie	1 lot	7.00
Patrick, Roy	2 lots	19.80
Perry, J. H.	Real Estate	27.00
Perry, Lou A.	1 lot	5.40
Perry, Russell	1 lot	20.50
Porter, Albert Heirs	1 lot	2.70
Powers, Norma	1 lot	3.60
Prather, Clara	1 lot	4.50
Proctor, C. A. Estate	12 acres	Bal. 42.00
Proctor, W. E.	225 acres & 5 lots	7.10
Proffitt, Glenmore	1 lot	6.20
Quisenberry, Joe	22 1-2 acres	16.90
Ramey, Willie	1 lot	11.50
Ramey, Custer	52 acres	7.90
Ratcliff, John T.	1 lot	11.50
Rice, W. H. & Robert Bishop	3 acres	9.00
Roberts, Mrs. H. L.	1 lot	1.82
Royle, Celia	2 acres	11.50
Stewart, James A.	1 lot	2.26
Stewart, Morgan	7 acres	10.80
Jones, Estelle	2 lots	7.90
Sackett, Jennie	1 lot	4.30
Senff, Earl King	1 lot	7.32
Seargant, W. G.	21 acres	Bal. 6.30
Skaggs, Ira & Jerry	1 acre	5.20
Skaggs, Jonah	50 acres	5.20
Skaggs, Murvil	Real Estate	3.67
Sluss, E. B.	Tangible	Bal. 54.40
Smedley, E.	100 acres	1.80
Sparkman, Evalate B.	3 acres	2.73
Spurlock, H. A.	125 acres	9.36
Southern Belle	Tangible	11.50
Tackett, C. H.	1 lot	25.00
Tearl, R. E.	Tangible	2.70
Tomlinson, E. H.	50 acres	8.00
Tolliver, James Estate	28 acres	29.50
Trumbo, J. M.	1 lot	7.10
Trumbo, Thomas M.	65 acres	1.02
Vogue Beauty Shoppe	Tangible	9.70
Workman, Robert	16 3-4 acres	2.70
Wright, Miranda	45 acres	6.10
Willace, H. C.	1 lot	

FARMERS, DISTRICT NO. 2

Black, J. W.	100 acres	8.80
Black, Jm	25 acres	7.00
Armstrong, Wm	13 acres	11.50
Archer, Fred	100 acres	16.90
Alfrey, Sidney	61 acres	2.96
Alfrey, Harry	25 acres	.90
Alfrey, Buddie Heirs	25 acres	1.80
Black, W. J.	8 acres	7.00
Black, Gilbert	65 acres	5.20
Black, Ed	5 acres	5.20
Black, Elbert	40 acres	5.20
Brown, Granville	1 acre	7.90
Brown, Willie	100 acres	7.00
Black, Dane	20 acres	6.10
Black, Dane	20 acres	6.10
Carey, Virgil	8 acres	12.60
Caudill, Martha E.	171 acres	9.70
Crosby, Sherman	80 acres	6.10
Christy, George	135 acres	7.30
Cook, Mrs. James	75 acres	4.70
Corne, Wm. Deceased	3 acres	3.60
Croze, Arthur	2.96	1.80
Corne, Robert	4.30	6.10
Cassidy, Fred	30 acres	2.70
Campbell, P. A.	65 acres	1.80
Cogswell, Herbert	22 acres	6.10
Conn, Sam	12 acres	1.80
Day, J. P.	20 acres	1.80
Donoh, George	100 acres	3.86
Elam, Mrs. Pete	1 lot	6.10
Elam, Ward	1 lot	1.80
Ellington, P. E.	Tangible	3.87
Eversole, John, Deceased	1 acre	2.70
Ferguson, Ernest and	100 acres	Bal. 18.00
Sam Coldiron	40 acres	6.10
Gibbs, William	2 acres	9.70
Gibbs, J. W.	50 acres	9.70
Hays, John	30 acres	9.70
Hunter, T. J.	100 acres	9.70
Howton, Henderson	100 acres	9.70
Hall, Price	1 acre	9.70
Hargis, Robert	125 acres	6.10
Hall, Frank	40 acres	4.30
Hall, John	50 acres	4.30
Hall, Floyd	50 acres	11.50
Hall, Clemma	60 acres	5.20
Haves, Bert	2 acres	5.20
Hicks, George	30 acres	5.20
Hildegard, Tillie	97 acres	5.40
Hunter, Laura	185 acres	5.40
Hyatt, Floyd	1 acre	3.40
Hyatt, Clayton	1 acre	3.40
Jenkins, Robert	20 acres	7.90
Johnson, J. D.	90 acres	3.40
Johnson, J. W.	50 acres	7.90
Jones, Bessie	60 acres	4.30
Kissick, Harlan	40 acres	

THE MOREHEAD INDEPENDENT

Williams, Leonard 4 acres 2.86	Goodman, Tom 142 acres 9.70	Lyon, Clarence 125 acres 4.50	(Columbia) HORACE HEIDT Heidt is one of the most consistent of the wax-makers and his present twosome is no exception. 4.50 Its another Heidi Hit. A new addition to the organization, Bonnie Kempler is introducing on "G'bye Now," a tune from "Hellzapoppin." Kempler's novelty whisperings and lyrical quips make this a tune out standing record. "Do You Believe in Fairy Tales?" is from the forthcoming lyric "Pot of Gold" and is a sprightly dance item with Larry Cotton doing the vocal refrain.
Wright, J. V. 25 acres 7.00	Gregory, Charles 35 acres 1.36	Maddie, R. A. 100 acres 10.00	OLD MILL STREAM (Bluebird) BENNY GOODMAN The King of Swing, with his new orchestra, improves his regular rating with his latest disc. The Goodman solo of "Memory of a Rose" is a standout. Students of the clarinet will gobble up this one. Benny's chorus and Helen Forrest's vocalizing are a tops. "Corn Silk" on the other hand is never tiresome. Miss Lawrence ain't too long on singing but her imitable style makes the album something to be cherished.
Wright, G. M. 110 acres 8.35	Gregory, Arthur 42 acres 1.50	Mullins, D. M. 1200 acres 828.00	Professional Cards A. F. Ellington DENTIST Phone 26 -- Morehead
Wallace, Aleck Jr. Real Estate 7.90	Hall, G. W. 140 acres 5.20	Mullins, Chester A. 127 acres 5.40	Dr. L. A. Wise Has moved to the J. A. Bays Jewelry Store where he will be located every Friday, examining eyes and fitting glasses.
Ramey, Taylor Real Estate 2.70	Hamm, John A. 117 acres 7.00	McRoberts, John & Jewell 100 acres 10.80	Lane Funeral Home Funeral Directors Ambulance Service Phone: 91 (Day), 174 (Night)
HOGTOWN, DISTRICT NO. 3			
Adkins, James W. 1 lot 3.80	Hellerbrand, W. H. 50 acres 3.60	McClintock, Bessie 100 acres 3.60	DR. D. DAY Jeweler - Optometrist Carey Avenue MOREHEAD, KY.
Adkins, Jason 53 acres 4.50	Hellerbrand, Holly Stacy 56 acres 4.50	McFarland, J. H. 300 acres 8.00	Looking At The Record (By Douglas Whitney) JENNY...MY SHIP (Columbia) Eddy Duchin The sad saga of Jananathun and the sad saga of Jenny, hit tune of the "mash musical drama" "Lady in the Dark" has been etched on wax by Eddy Duchin's musical crew and backed up with "My Ship" another tune from the same show. June Robinson's voice with a Duchin recording, the maestro's playing is a standout. Ben Gately is the vocalist on the flip-over. The record is a sure fire hit for Duchin fans.
Adkins, Elizabeth 140 acres 5.40	Hamm, Jesse 51 acres 5.10	Martin, J. H. 100 acres 10.00	A LITTLE CHURCH IN ENGLAND—LET'S MAKE LOVE AGAIN (Okeh) DIK JERGENS Dik Jergens, whose band has been making rapid strides in the recording field, has bobbed up with two additional sides which add stature to the maestro. On "A" side is Irving Berlin's new tune, "A Little Old Church In England" with Harry Cook taking a neat vocal. The Jergens' Saxophone section can take a bow with this platter. On the reverse is a danceable arrangement of "Let's Make Love and Get Married." Rhumba and blower enthusiasts will find this platter to their complete satisfaction.
Adkins, Johnnie Real Estate 1.80	Hamm, Ben 7 acres 1.80	Mitler, J. H. 100 acres 10.00	UN. DOS, TRES UN DOS UN MOMENTO (Victor) ENRIC MADRIGUERA The popular Latin-American band leader and master of the south-side-of-the-border theme, who just signed a record contract with Victor and these are his first efforts for the new label. Rhumba and blower enthusiasts will find this platter to their complete satisfaction.
Adkins, W. R. 56 acres 3.60	Hamm, Charles 90 acres 3.60	Morris, Linda 100 acres 10.00	MY SISTER AND I—SLOW DOWN (Bluebird) BOB CHESTER 12.60
Adkins, J. B. 100 acres 3.60	Harris, Jesse 26 acres 2.60	McBry, John 200 acres 2.00	
Black, Alena 6 acres 2.16	Hyatt, Troy 129 acres 12.90	Mobly, John 1 lot 1.00	
Bocook, George 2 acres 7.90	Hyatt, Mrs. G. D. 15 acres 1.50	Nickell, Mrs. J. L. 75 acres 3.60	
Brooks, James 60 acres 7.20	Humphries, Sarah 35 acres 3.60	Oliver, Zella 27 1/2 acres 1.28	
Bryant, Heirs 150 acres 18.00	Johnson, W. J. 35 acres 3.60	Osborne, Grace Real Estate 1.26	
Butler, Earcel 10 acres 1.00	Johnson, Clifton 7.90	Parkley, A. F. 2 lots 14.40	
Barracks, Mrs. Russell 80 acres 8.00	Jones, Rosa 100 acres 10.00	Peyton, C. G. 80 acres 8.00	
Barnett, Roscoe 50 acres 5.00	Junior Order Am. Workmen 1 acre 9.00	Phelps, W. O. 22 acres 2.20	
Barker, E. L. 207 acres 20.70	Kinder, R. B. 50 acres 5.00	Phelps, Grace 10.80	
Brown, Everett 40 acres 4.00	Kelley, H. A. 40 acres 4.00	Quent, T. A. 1.80	
Brown, Wm. 200 acres 2.00	Kidd, Lee 30 acres 3.00	Ramey, Howard 35 acres 3.60	
Butcher, J. M. Real Estate 6.42	Kelley, H. A. 7.90	Razor, T. F. Heirs 20.50	
Butcher, E. F. 6 acres 3.88	Kelley, H. A. 30 acres 3.00	Richards, Anna 123 acres 12.30	
Caudill, James H. 30 acres 3.40	Kelley, H. A. 30 acres 3.00	Raybould, Enoch L. 1 lot 1.00	
Carter, O. J. 50 acres 5.00	Kelley, H. A. 30 acres 3.00	Reynolds, Edna 75 acres 7.50	
Christian, Addie 1 lot 13.00	Kelley, H. A. 30 acres 3.00	Riley, Grant 47 acres 4.70	
Clarke, D. M. Coffey, Sam 50 acres 5.00	Kelley, H. A. 30 acres 3.00	Stephens, Bethel 140 acres 1.40	
Conley, Sarah 30 acres 3.60	Kelley, H. A. 30 acres 3.00	Sparks, Onnie 25 acres 2.50	
Conley, Joe 1 lot 13.00	Kelley, H. A. 30 acres 3.00	Springer, Ethel 50 acres 5.00	
Coomer, John 30 acres 3.60	Kelley, H. A. 30 acres 3.00	Stacy, Anna F. 140 acres 1.40	
Cox, Everett 1 lot 13.00	Kelley, H. A. 30 acres 3.00	Thompson, Clyde 2 1/2 acres 2.25	
Cox, Luther 240 acres 24.00	Kelley, H. A. 30 acres 3.00	Thompson, James H. 70 acres 7.00	
Cox, E. M. Real Estate 8.80	Kelley, H. A. 30 acres 3.00	Thornberry, Mrs. E. W. 2 1/2 acres 2.25	
Cornette, T. R. 8 acres 8.80	Kelley, H. A. 30 acres 3.00	Tackett, Rosa 300 acres 3.00	
Crawford, Earnie 20 acres 2.00	Kelley, H. A. 30 acres 3.00	Tackett, A. C. 100 acres 1.00	
Cline, Sul 1 lot 13.00	Kelley, H. A. 30 acres 3.00	Thompson, Hannah 150 acres 1.50	
Cox, John M. 32 acres 3.20	Kelley, H. A. 30 acres 3.00	Thompson, Sedith 75 acres 7.50	
Caudill, Noah E. 35 acres 3.50	Kelley, H. A. 30 acres 3.00	White, Cassie Heirs 150 acres 1.50	
Dehart, Tommy, Heirs 15 acres 1.50	Kelley, H. A. 30 acres 3.00	White, Harlan 40 acres 4.00	
Day, Lee 180 acres 1.80	Kelley, H. A. 30 acres 3.00	Williams, G. W. 125 acres 1.25	
Dehart, Saul 11 acres 1.10	Kelley, H. A. 30 acres 3.00	Williams, J. H. 213 acres 2.13	
Edridge, John 1 1/2 acres 1.50	Kelley, H. A. 30 acres 3.00	White, Sanford 60 acres 6.00	
Frale, T. F. 6 acres 6.00	Kelley, H. A. 30 acres 3.00	Wells, Forest 21 acres 2.10	
Ferguson, Roscoe 39 acres 3.90	Kelley, H. A. 30 acres 3.00	Whisman, J. W. 260 acres 2.60	
Frazier, Earl 12 acres 1.20	Kelley, H. A. 30 acres 3.00	White, Virgil 25 acres 2.50	
Frale, Amos 65 acres 6.50	Kelley, H. A. 30 acres 3.00	Alfred, Allen 8 acres 8.00	
Frale, Boone 5 1/2 acres 5.25	Kelley, H. A. 30 acres 3.00	Andree, B. E. 5000 acres 5.00	
Frale, Willis 90 acres 9.00	Kelley, H. A. 30 acres 3.00	Aisept, Carrie 100 acres 1.00	
Frale, W. M. 75 acres 7.50	Kelley, H. A. 30 acres 3.00	Baldridge, Luther 46 acres 4.60	
Fultz, Bill 20 acres 2.00	Kelley, H. A. 30 acres 3.00	Baldridge, Johnny 46 acres 4.60	
Fultz, Vesta 100 acres 1.00	Kelley, H. A. 30 acres 3.00	Bonecutter, Rachell 100 acres 1.00	
Fultz, Elizabeth Estate 50 acres 5.00	Kelley, H. A. 30 acres 3.00	Brown, Walter 22 acres 2.20	
Hall, Mary 2 lots 2.00	Kelley, H. A. 30 acres 3.00	Brown, Dr. Wales Heirs 75 acres 7.50	
Hall, Aleck 1-4 acres 4.40	Kelley, H. A. 30 acres 3.00	Blair, Lillie 1 lot 1.00	
Hampilton, Harlan 43 acres 4.30	Kelley, H. A. 30 acres 3.00	Harper, W. C. 14000 acres 14.00	
Hampilton, Craig 80 acres 8.00	Kelley, H. A. 30 acres 3.00	Baldrige, Dock 1 acre 1.00	
Hays, D. B. 1 lot 1.00	Kelley, H. A. 30 acres 3.00	Brammel, Maye 1 lot 1.00	
Hinton, E. J. 40 acres 4.00	Kelley, H. A. 30 acres 3.00	Caudill, Arlie 1 lot 1.00	
Hall, Squire 11 acres 1.10	Kelley, H. A. 30 acres 3.00	Clayton, M. F. 30 acres 3.00	
Hall, Frank 10 acres 1.00	Kelley, H. A. 30 acres 3.00	Lox, C. H. 3850 acres 38.50	
Hall, D. B. 50 acres 5.00	Kelley, H. A. 30 acres 3.00	Craycraft, W. T. 73 acres 7.30	
Johnson, C. W. 25 acres 2.50	Kelley, H. A. 30 acres 3.00	Carter, Ruthie 44 acres 4.40	
Johnson, France 25 acres 2.50	Kelley, H. A. 30 acres 3.00	Carter, Malinda 8 acres 8.00	
Kennedy, G. F. Tangible 50 acres 5.00	Kelley, H. A. 30 acres 3.00	Cooper, Francis 50 acres 5.00	
Kegley, John 135 acres 13.50	Kelley, H. A. 30 acres 3.00	Cooper, Sant 75 acres 7.50	
Lewis, Palmage Real Estate 90 acres 9.00	Kelley, H. A. 30 acres 3.00	Cooper, Andrew 90 acres 9.00	
Linville, Casul 135 acres 13.50	Kelley, H. A. 30 acres 3.00	Creamer, G. L. 100 acres 1.00	
Loveace, Lou 90 acres 9.00	Kelley, H. A. 30 acres 3.00	Dalder, Ben 25 acres 2.50	
Moore, Isaac Meyers, Dewey 20 acres 2.00	Kelley, H. A. 30 acres 3.00	Dekenna Gas Corporation 400 acres 4.00	
Morker, Elmer Elwood 300 acres 3.00	Kelley, H. A. 30 acres 3.00	Dehart, Jack 70 acres 7.00	
Parker, Mrs. T. 100 acres 1.00	Kelley, H. A. 30 acres 3.00	Dye, Agnes 38 acres 3.80	
Parker, Dave Estate 55 acres 5.50	Kelley, H. A. 30 acres 3.00	Dye, Thomas 1 lot 1.00	
Porter, Geneva 50 acres 5.00	Kelley, H. A. 30 acres 3.00	Dehart, Mary 4 acres 4.00	
Puckett, Martin L. 70 acres 7.00	Kelley, H. A. 30 acres 3.00	Edington, E. M. 870 acres 8.70	
Reed, Leslie 42 acres 4.20	Kelley, H. A. 30 acres 3.00	Edmondson, Phoebe 100 acres 1.00	
Reeder, Chester 1 acre 1.00	Kelley, H. A. 30 acres 3.00	Ellis, Almon 2 acres 2.00	
Stone, Sam 70 acres 7.00	Kelley, H. A. 30 acres 3.00	Fannin, J. B. 1 lot 1.00	
Stone, Melvin 50 acres 5.00	Kelley, H. A. 30 acres 3.00	Farmers Fruit Farm 40 acres 4.00	
Smith, Willahd 1 lot 1.00	Kelley, H. A. 30 acres 3.00	Ferguson, Florence 100 acres 1.00	
Smith, Marieta 40 acres 4.00	Kelley, H. A. 30 acres 3.00	Foster, Fannie 100 acres 1.00	
Stamper, Mose 1 acre 1.00	Kelley, H. A. 30 acres 3.00	Frale, J. E. 1 lot 1.00	
Stinson, Jesse 3 lots & 20 acres 12.00	Kelley, H. A. 30 acres 3.00	Federal Bueur Corp. 76 acres 7.60	
Stinson, Oney 21 acres 2.10	Kelley, H. A. 30 acres 3.00	Fultz, Dave & Frank 80 acres 8.00	
Stinson, Woodrow 40 acres 4.00	Kelley, H. A. 30 acres 3.00	Gearthart, John M. 2467 acres 24.67	
Sparks, Mrs. W. J. 1 acre 1.00	Kelley, H. A. 30 acres 3.00	Gearthart, Amanda 100 acres 1.00	
Stegall, Ina 1 acre 1.00	Kelley, H. A. 30 acres 3.00	Gearthart, Amos H. 178 acres 1.78	
Stegall, Steve Heirs 70 acres 7.00	Kelley, H. A. 30 acres 3.00	Graham, Elmer 26 acres 2.60	
Stegall, Albert 53 acres 5.30	Kelley, H. A. 30 acres 3.00	Gulley, R. 128 acres 1.28	
Tackett, W. B. 25 acres 2.50	Kelley, H. A. 30 acres 3.00	Gulley, Orpha 1 lot 1.00	
Terry, Isaac 70 acres 7.00	Kelley, H. A. 30 acres 3.00	Hall, Virginia Real Estate 1.00	
Templeton, Marpha Heirs 120 acres 12.00	Kelley, H. A. 30 acres 3.00	Hall, L. H. 1 lot 1.00	
Thomas, Enoch 65 acres 6.50	Kelley, H. A. 30 acres 3.00	Harper, T. P. 75 acres 7.50	
Turner, Elihu Heirs 120 acres 12.00	Kelley, H. A. 30 acres 3.00	Hansburger, S. J. 100 acres 1.00	
Trent, Charles 74 acres 7.40	Kelley, H. A. 30 acres 3.00	Hillix, George 560 acres 5.60	
White, A. S. Heirs 12 acres 1.20	Kelley, H. A. 30 acres 3.00	Huffman, Irene Hogue 60 acres 6.00	
Williams, Robert Real Estate 13.00	Kelley, H. A. 30 acres 3.00	Huffman, T. K. 75 acres 7.50	
Williams, Mrs. W. D. 1 lot 1.00	Kelley, H. A. 30 acres 3.00	Ingram, W. B. 50 acres 5.00	
Wilson, Floyd 1 acre 1.00	Kelley, H. A. 30 acres 3.00	Johnson, Mrs. A. F. 25 acres 2.50	
Withrow, Herb 36 acres 3.60	Kelley, H. A. 30 acres 3.00	Johnson, Semmie 35 acres 3.50	
Wagoner, Mrs. Estelle 1 acre 1.00	Kelley, H. A. 30 acres 3.00	Jones, Paul R. 100 acres 1.00	
Wilson, Silas 153 acres 1.53	Kelley, H. A. 30 acres 3.00	Jefferson, Helen Reardon 75 acres 7.50	
PINE GROVE, DISTRICT NO. 4			
Bays, J. W. 153 acres 1.53	Harold, James 70 acres 7.00	Jones, Willie 30 acres 3.00	
Barker, James 39 acres 3.90	Hawkins, Ed M. 75 acres 7.50	Kegley, Myrtle 1 lot 1.00	
Black, Burlin 75 acres 7.50	Hawkins, Luther 75 acres 7.50	Ky. Oil Products Co. Tangible 30 acres 3.00	
Blanton, Mander Heirs 145 acres 1.45	Holloway, John 100 acres 1.00	Kegley, W. A. 13 acres 1.30	
Buckland, Mrs. A. V. 85 acres 8.50	Huffman, T. K. 1200 acres 12.00	Kenneth, Willie 2 acres 2.00	
Burton, Wylie 185 acres 1.85	Ingram, W. B. 50 acres 5.00	Kimberly, E. C. 65 acres 6.50	
Chadima, Mary 25 acres 2.50	Johnson, Mrs. A. F. 25 acres 2.50	Livingstone, Mattie 4000 acres 4.00	
Cooper, Everett 3 1/2 acres 3.50	Johnson, Semmie 35 acres 3.50	Lemasters, Anna 1 acre 1.00	
Curtis, Zack 50 acres 5.00	Jones, Paul R. 100 acres 1.00	Lemasters, Harry 10 acres 1.00	
Archer, Albert 48 acres 4.80	Jefferson, Helen Reardon 75 acres 7.50	Law, Ora Richard 60 acres 6.00	
Barker, William 20 acres 2.00	Jones, Willie 30 acres 3.00	Loux, Anna B. 135 acres 1.35	
Buckner Heirs 62 acres 6.20	Kegley, Myrtle 1 lot 1.00		
Burton, Pierce 60 acres 6.00	Ky. Oil Products Co. Tangible 30 acres 3.00		
Burton, Wylie 85 acres 8.50	Kegley, W. A. 13 acres 1.30		
Daughters of America 1 lot 1.00	Kenneth, Willie 2 acres 2.00		
Duke, William 27 acres 2.70	Kimberly, E. C. 65 acres 6.50		
Estep, Mitchell 200 acres 2.00	Livingstone, Mattie 4000 acres 4.00		
Eldridge, Melvin 60 acres 6.00	Lemasters, Anna 1 acre 1.00		
Fisher, Mary Tangible 17.32	Lemasters, Harry 10 acres 1.00		
Frayman, J. C. 185 acres 1.85	Law, Ora Richard 60 acres 6.00		
Fannin, Claude 45 acres 4.50	Loux, Anna B. 135 acres 1.35		
Gulley, Harve 50 acres 5.00			
Gearthart, Sarah 81 acres 8.10			

HELM HAS CHAMPION HEN ILLINOIS CONTEST Laid 146 points-115 days Winner Both National Chick Raising Contests. Officially blood-tested As sorted makes \$2.99 Postpaid. Free helpful Bulletin.

O'Donnell-- (Continued from page 1) antly associated. "As for the student body, there is none better. I have always loved and admired the young men and women on Eastern's campus and I welcome this opportunity to share in their work."

NEWS and FACTS . . . of Statewide Interest

DO YOU KNOW

... that Kentucky's \$20,000,000 legal beer industry employs 15,000 people, pays salaries and wages totaling \$10,000,000 annually and pays State taxes in excess of \$1,000,000 a year? To preserve these benefits, which are so important to Kentucky's social and economic welfare, our Committee has cooperated with law-enforcement authorities in the revocation of 10 retail beer licenses, suspension of six, cancellation of two, refusal of one license application and the padlocking of two retail beer outlets. Thus, legal beer is sold under the strict control of state and local authorities, and under the watchful eye of our Committee. YOU can help by patronizing only reputable, law-abiding beer retailers.

KENTUCKY BREWERS & BEER DISTRIBUTORS COMMITTEE

FRANK E. DAUGHERTY, State Director 301 Martin Brown Bldg., Louisville, Ky. PUBLISHED IN COOPERATION WITH THE UNITED BREWERS INDUSTRIAL FOUNDATION

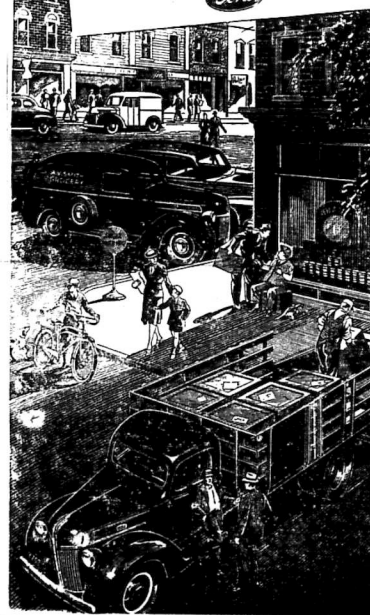
Look at the FORD TRUCKS ON MAIN STREET!

IN VILLAGE, town, and big city—on farms and on the highways . . . wherever you look, you see Ford Trucks at work. There are more Ford Trucks at work on the nation's hauling jobs than trucks of any other make!

There are definite reasons why. Truck owners want a truck with the power, performance and dependability that Ford Trucks deliver. They want economy that starts with low first cost and continues on with low operating and low maintenance cost. In low operating and low maintenance cost. In low operating and low maintenance cost. In low operating and low maintenance cost.

FORD TRUCKS AND COMMERCIAL CARS

FORD MOTOR COMPANY . . . BUILDERS OF FORD AND MERCURY CARS, FORD TRUCKS, COMMERCIAL CARS, STATION WAGONS AND TRANSIT BUSES



Commissioner's Sale

THE COMMONWEALTH OF KENTUCKY ROWAN CIRCUIT COURT Peoples Bank of Morehead, Plaintiff Versus W. E. Proctor, Ollie Proctor, Defendant.

By virtue of a judgment and order of sale of the Rowan Circuit Court rendered at the June Term thereof 1939, in the above cause for the sum of Eight Thousand Four Hundred Seventeen Dollars and Eighteen Cents with interest at the rate of six percent per annum from its date until paid and its cost therein I shall proceed to offer for sale at the Court House in the City of Morehead, Kentucky, to the highest and best bidder, at public auction on the 5th day of May, 1941, at One O'clock P. M., or thereabout, upon a credit of 6, 12 & 18 months, the following described property, to-wit:

A certain lot of land with all improvements thereon situated on the North side of Railroad Street in the town of Morehead, Rowan County, Kentucky, known as the "Osbourne Hotel" property and bounded on the North by a ditch the East by the property of Don Johnson and on the South by Railroad Street and on the West by the property of Sam Allen (which property contains only 11 2-3 square rods) as shown by deed from Warren Alderson to Don Johnson, recorded in Deed Book No. 5, page 595, the property hereby conveyed is the old H. C. Powers Hotel lot, except the portion now owned by said Allen, heretofore referred to. Being the same property conveyed to parties of the first part by Peoples Bank of Morehead and others, by deed of date March 1st, 1912, recorded in Deed Book No. 18, page 590, Rowan County Records for deeds.

Also a certain building lot situated in the City of Morehead, Rowan County, Kentucky, beginning at the Southwest corner, of the Fourth Street, thence a Northernly course 147 feet to a set stone at Northwest corner of said lot, thence a Northernly course to the Northeast corner of said lot 59 1-2 feet to a set stone, thence a Southernly course to the Southwest corner of said lot 147 feet, thence a Southernly course 59 1-2 feet to the beginning corner. Being the same land conveyed to parties of the first part by W. D. Mabry and wife by deed of date September 1st, 1912, recorded in Deed Book No. 44, page 121, Rowan County Records for deeds.

Also that tract or parcel of land in the County of Rowan and the State of Kentucky, described as follows: Beginning at a point in the Midland Trail Highway (known as Henderson, Cut, also known as Rockwall Hollow); thence crossing the railroad E. 4 1-2 poles to Trinitie Creek; thence with the meanders of said creek, thence the same S. 30 E. 30 poles S. 19 W. 19 poles, S. 6 W. 12 poles S. 28 W. 10 poles, S. 56 W. 16 poles S. 30 W. 6 poles, S. 3 E. 20 poles, S. 15 W. 14 poles S. 9 W. 32 poles to two water birches in an arroyo on the bank N. 58 W. 48 poles to the Northwest side of said Railroad at a rock; thence with the same course and with the fence at a set stone near culvert, at a distance of 45 poles and on to the center of county road; then with the center of the Midland Trail Highway a Northernly course a distance of 102 poles to the place of beginning, containing approximately 39 acres, excepting Railroad Right of Way as defined by fencing on both sides of Railroad. Being the same land conveyed to J. E. Johnson and W. E. Proctor by Cynthia Baidridge and her husband, by deed dated November 19th, 1925, recorded in Deed Book No. 38, page 72, Rowan County Records. The said J. E. Johnson conveyed his one-half interest in said land to W. E. Proctor, by deed date April 15th, 1926, recorded in Deed Book No. 41, at page 5 Rowan County records for deeds.

Also a certain lot or parcel of land lying and being in Rowan County, Kentucky, described as follows: Situated on East Main Street in the City of Morehead, Kentucky, and on the West side thereof and beginning at a point on small bank at the foot of 63 feet from the junction of said Main Street and Elizabeth Avenue and said point being at the corner of Lot No. 2 sold by J. C. Carter to S. E. Logan, thence with said Logan's line westward course a distance of 140 feet to ten foot alley, thence a S. W. course with said alley, a distance of 94 1-2 feet to the corner of lot No. 6 sold to D. B. Caudill by parties of the first part; thence with said Caudill's line an eastward course a distance of 140 feet to Main Street on the top of the bank; thence a N. E. course with Main Street a distance of 94 1-2 feet to the place of beginning containing Lots 3, 4, and 5 of the Normal School Addition to Morehead, Kentucky, being the same land conveyed to parties of the first part by J. C. Carter, by deed dated December 15, 1915, recorded in Deed Book No. 27, page 107 of the Rowan County records for deeds.

Or sufficient thereof to produce the sum of money so ordered to be made. For the purchase price, the purchaser must execute bond, with approved securities, bearing legal interest from the day of sale, until paid, and having the force and effect of a judgment. Bidders will be prepared to comply promptly with these terms.

Street in the City of Morehead, Kentucky, and on the West side thereof and beginning at a point on small bank at the foot of 63 feet from the junction of said Main Street and Elizabeth Avenue and said point being at the corner of Lot No. 2 sold by J. C. Carter to S. E. Logan, thence with said Logan's line westward course a distance of 140 feet to ten foot alley, thence a S. W. course with said alley, a distance of 94 1-2 feet to the corner of lot No. 6 sold to D. B. Caudill by parties of the first part; thence with said Caudill's line an eastward course a distance of 140 feet to Main Street on the top of the bank; thence a N. E. course with Main Street a distance of 94 1-2 feet to the place of beginning containing Lots 3, 4, and 5 of the Normal School Addition to Morehead, Kentucky, being the same land conveyed to parties of the first part by J. C. Carter, by deed dated December 15, 1915, recorded in Deed Book No. 27, page 107 of the Rowan County records for deeds.

Arthur Hooge, Commissioner Rowan Circuit Court

NOTICE OF SALE In order of sale of the Rowan Circuit Court rendered at the March Term 1941, therein, in the above cause, of land heretofore described, for which sum to be made on the first described tract being the sum of Fifty-two Dollars and Three Cents (52.00) Dollars, with interest from the 19th day of October, 1940, the further sum of Thirty-Two Dollars and Sixteen Cents (32.16) Dollars, with interest from the 19th day of October, 1940, and the following sums to be made from the sale of the second tract of land: \$52.00 with interest from the 19th day of October, 1940; the further sum of \$32.16 with interest from the 19th day of October, 1940, until paid; and the further sum of \$50.00 with interest from June 25, 1936 until paid, and the plaintiff's costs hereon, an expanded bill proceed to offer for sale at the Court House door in Morehead, Kentucky, to the highest and best bidder, at a public auction on the 5th day of May, 1941, at One O'clock P. M., or thereabout upon a credit of six months, the following described property:

Being Lot No. 4, Block "A" of the College View Addition to Morehead, Rowan County, Kentucky, fronting 52 feet on Lee Avenue, as shown by plat of the said addition to Morehead, Kentucky, and reference is made to the heretofore referred to plat of record in the County Clerk's office of Rowan County, Kentucky, in Deed Book No. 38, page 72, of the said Clerk's office.

Tract No. 2 Being Lot No. 5, Block "A", of the College View Addition to Morehead, Rowan County, Kentucky, said lot fronting 52 feet on the East side of Lee Avenue of the said addition and shown by plat of the said addition and to Morehead, Kentucky, and further reference is

Arthur Hooge, Commissioner Rowan Circuit Court

hereby referred to said plat, which has been filed for record in the County Clerk's office of the Rowan County, Kentucky.

State Farm News

A survey which the Pet Milk Company made among approximately 1,000 milk producers in Graves county showed that about seven hundred of them are breeding cows, scrub bulls or to beef bulls. Plans are being made to bring in more registered dairy cattle sires. The Union Bank and Trust Co. of Irvine is placing five registered bulls among farmers in Estill county. Several farmers also have purchased registered sires, and three purebred herds have been founded.

The Boyle County Farm Bureau advanced \$250 for the purchase of a portable sheep dipping vat. A county committee will direct its use. The 116 members of the county sheep association have insured about 9,000 sheep. Carl Brown, a McLean County farmer, reports a net profit above all costs of \$890.82 on his poultry for the year 1940. Sixteen hundred chicks were started, of which seven hundred were kept for layers. A demonstration in pasture improvement has been started on the farm of C. Beach in Breathitt county. Ridding land was treated with limestone and superphosphate, and lespedeza, red clover, top, timothy, meadow fescue and white clover sowed. Plans of sheep raisers in Warren county include a wool pool, a lamb show and sale, a ewe-type fair to be held in connection with a tour and dipping demonstrations, the purchase of at least 1,600 western ewes, and the use of registered rams.

State Finds Many Men For Defense Jobs

During the past three weeks more than 15,500 workers have been registered with the War Relocation Employment Compensation Commission's Employment Service, Robert E. Hensley, Acting Executive Director, announced today. "The Kentucky voluntary registration campaign opened in conjunction with the nation-wide effort to locate the Nation's unemployed man-power and the skilled workers needed to keep defense production up to schedule. "Every effort is being made by the employment service section to obtain a one hundred percent registration of available Kentucky workers so that this State may be fully represented in the national inventory of man-power available for defense jobs."

Land Program--

(Continued from Page 1) national Agricultural teaching, National Forest and others. Problems that farmers planning committees point out will be worked on by these activities with the cooperation of these committee members.

State And County Officials Held Subject To Draft

State and county officials, whether elective or appointive, are subject to the Selective Service Act, Assistant Attorney General W. Owen Keller said Tuesday. "There are a number of National Guard officers in the State who were county officers, one of them being the Clerk of the Circuit," Keller wrote Oscar G. Kipping of Carrollton. "They, of course, were called due to their National Guard connection, but the same rule would apply as to the selective service law." Keller also said informally that

deferment of county officials was left largely to the discretion of draft boards.

"If the boards class these officials as indispensable to the community," he said, "they can defer them, although, of course, that is not provided by law."

U. S. To Open Tract In Idaho To Homesteaders

Secretary of Interior Harold I. Ickes today said 2,755 acres of public land on the Fayette division of the Boise Reclamation Project in Idaho will be opened to homesteaders, probably this summer. Those having original homesteads on the land will be given an opportunity to file new claims first, he said. The original homesteaders filed desert-land claims under the Homestead Act of 1862. In 1892 the Carey Act was passed providing for State development of the land, and the homesteaders relinquished their right to the land.

Try Us For Prices And Quality In Our Mdse. We Carry All The Brands S & W DISPENSARY Main St. Caskey Bldg.

Attention! WE SERVICE AND REPAIR ALL MAKES AND MODELS OF COMMERCIAL AND HOUSEHOLD REFRIGERATORS, ALSO RADIOS AND OTHER APPLIANCES. MOREHEAD APPLIANCE SHOP PHONE 359 KENTUCKY

SEE AMERICA'S FIRST REFRIGERATOR BRINGING YOU Super Market Refrigeration THE 1941 Westinghouse "Martha Washington" * 5 KINDS OF COLD FOR YOUR 5 KINDS OF FOOD ...made possible by EXCLUSIVE TRUE-TEMP CONTROL The whole town's talking about the new Westinghouse "Martha Washington"—the "dream" refrigerator of 1941! Sleek, streamlined exterior and color-styled interior, with HI-FLEX GLASS shelves, bright PEASANTWARE dials and "LUCITE" crystal trim. And such features! Super Market Refrigeration—5 zones of cold to keep YOUR food as Super Markets keep it. Now SUPER FREEZER with ZERO-SALT frozen food compartment; new "Window-front" MEAT-KEEPER with UTILITRAY top; new full-width illuminated TRUE-TEMP Control Dial; new AEROSPRING Self-Closing Door with TRIP-LOK trigger-type latch, and many others. See the "Martha Washington" today—the refrigerator that looks as good as it is.

ECONOMY COAL STEAM AND DOMESTIC LUMP-EGG-NUT-STOKER Machine Mined and Shaker Screened WILLARD COAL CORPORATION (Home Located at Willard, Kentucky) J. L. BOGGESS, Secy. PHONE 465 C. B. LANE, Secy. PHONE 91

Collins Motor Co. Phone 18 - Morehead, Ky.

McBRAYER'S "MOREHEAD'S COMPLETE FURNITURE STORE" THE Leisure Line OF ELECTRIC HOME APPLIANCES

Morehead STOCKYARDS Sale Every THURSDAY

The Big Refrigerator Bargain
is a **BIG** GENERAL ELECTRIC!

SEE GE
THAT'S THE BUY!

Everything You Want, Everything You Need In A Refrigerator—Plus G-E's Enduring Economy—Now At The Lowest Price in G-E History!

Today's living standards—and shopping habits—require bigger refrigerators. Get yourself a big, fully equipped G-E Refrigerator now—while prices are so low and terms so easy. Spend just a few dollars more in easy payments now and have a refrigerator that will serve you for years to come.

YOU'LL ALWAYS BE GLAD YOU BOUGHT A G-E!

GENERAL ELECTRIC
N. E. KENNARD
HARDWARE CO.
MOREHEAD, KY.

\$9
Plus a Big 8 cu. ft. G-E in Your Kitchen. \$9 a Month Pay for It.
(Other G-E models as little as \$6 down—\$6 a month)

College Comments

(By Alton Payne)
Director of Public Relations
Morehead State Teachers College

Many persons have asked concerning the drop in the Spring term enrollment at the college. We fell off approximately twenty-six percent over a similar period last year.

We might well be proud of the fact that we didn't fall off more than that in the light of various situations. In the first place the national conservation act is beginning to hit colleges and institutions of higher learning across the nation hard. It is not the fact that so many men of college age are actually being drafted, but many of them fear to enter for a semester's work for fear that they will not be able to finish it due to the draft. And that might be true. Of course this didn't affect our fall enrollment since all persons in college at the time of the passage of the draft act were automatically deferred until June. But from here on out, the going will be rough. Also, with factories booming on defense orders, many more jobs are open per semester, which absorbs many men and some few women.

It has recently been pointed out that the number of high school graduates leaving with high school diplomas each year over the nation is on the wane. This "pinch" hasn't yet begun to be felt by institutions of higher learning. We shall feel that for the next five or six years even if the draft were "cut out" tomorrow.

So the next few years are going to be "rough sailing" as far as actual increase in the number of students attending college is concerned.

And with the above facts the fact that many persons are entering technological schools with the view of better equipping themselves for government jobs, and the picture is completed.

However, in spite of all this, the second semester enrollment, that is in February, actually shows some increase regardless of the fact that we lost over one hundred students, some fifty more than usual, from our first semester class.

Which leads us to the conclusion that if Morehead is to prosper we must adopt our curriculum to the times. This was discussed by President Vaughan at a recent meeting of the Mt. Sterling Rotary Club. More and more, our college is emphasizing Home Economics, Industrial Arts and some of the "solid" science courses. As time goes on Morehead will enter more and more into the national defense program until we shall be geared to time with the times. That is the hope of the president and the faculty and staff attempting to serve the best interests of the radius which we serve.

There is nothing to fity off at a tangent about. Waves of hysteria common when a nation is on the verge of war, are unfounded. Morehead, her president, her staff and her faculty are marching ahead, slowly, cautiously, but fearlessly.

Conferences will be conducted by Miss Nancy Basham of Owensboro for the Story Hour. Mrs. Byron C. S. DeJarnette for Juniors, Reverend Harold D. Tallant for Young People, Reverend Lewis C. Ray, and Dr. J. W. Black for Pastors, all of Louisville.

Special features include presenting of the Story Hour Department, and at 11:00 o'clock the Young People's Speakers' Tournament Friday morning. The Junior and Adult Departments and the Association will be presented Friday afternoon. At 5:15 P. M. Friday the Young People-Adult Banquet will be held. The State Intermediate Sword Drill will be 7:45 P. M. Friday. Saturday morning will be marked by the Life Dedication Service at 7:00 and Business Session at 11:10 Saturday afternoon's program will include the Junior Party at 2:00, the Inter-mediate Banquet at 5:15, the State, Regional, and Associational Officers' Banquet at 5:15. Secretary DeJarnette speaks Saturday night. The theme of the Convention is "Following the Living Christ."

J. Dan Baldwin Appointed Director Of Marketing

J. Dan Baldwin, Vocational Agriculture Teacher at Hawserville, will become Assistant Director of Marketing in the State Department of Agriculture, according to an announcement by William H. May, Commissioner of Agriculture.

Baldwin, thirty-two, is a native of McLean County. He received his B. S. degree from Western State Teachers College in 1931 and has taken graduate work at the University of Kentucky. He taught in Cadiz before going to Hawserville in 1937. He has been particularly active in the organization of cooperatives in Hancock County.

It was stated that Baldwin would assume his new duties upon completion of the present school term at Hawserville.

Indian Tribes Given Own Court In Iowa

The Indian, who has been forced to adjust himself to the white man's society is winning back a little of the liberty he lost.

The first Sae and Fox Indian court in the history of the tribe was held on the reservation near here recently. Heretofore, Indians have appeared in white men's courts. Now they will be allowed to take care of their own difficulties on the reservation.

USED CARS THAT ARE Usable

EXTRA SPECIAL

1937 FORD
FORDOR SEDAN \$195.00

1938 FORD
TUDOR SEDAN \$295.00

1939 Ford Fordor

1939 Ford Tudor

1936 Chevrolet Tudor

1936 Ford Coupe

1940 Chevrolet 1 1/2 Ton

1939 Chevrolet Pickup

1937 Plymouth Pickup

1935 Ford Sedan

1936 International 1 1/2 Ton

Collins Motor Co.

Phone 18 Morehead, Ky.

1941 Electric REFRIGERATORS MORE Economical THAN EVER!

Operating Cost Has Dropped 50% In Last Five Years and Today Is As Low As 35c a Month. New Improvements Assure Bigger Savings In Food Buying and Better Protection

Let Us Show You Our New 1941
HOTPOINT
REFRIGERATORS

TRIFLING EXPENSE—Year 'round efficient use of the standard family-size 1941 electric refrigerator costs considerably less than a dollar a month... the price of two or three sticks of gum a day.

DEPENDABLE PERFORMANCE—Is assured, no matter how hot the weather, by the simple, quiet, enclosed mechanism... electrically operated.

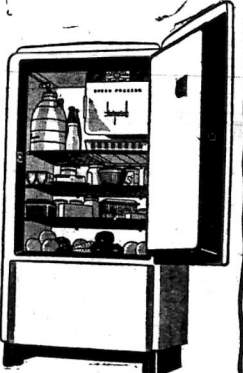
LONG LIFE—Scientific design combined with the finest workmanship and materials, plus highest manufacturing standards, mean years and years of trouble-free service.

PLENTY OF ICE—Larger freezing units make more ice in less time even on sweltering days... and frozen desserts and salads without hours of waiting.

MORE ROOM—Bigger inside space provides more food storage and improved space arrangements help save time and labor in preparation of meals.

BETTER PROTECTION—A variety of cold-and-moisture zones keep different foods (meats, green vegetables, dairy products, etc.) most wholesome and full-flavored until used.

GREATEST VALUES—A dozen standard makes of electric refrigerators offer you a choice of unequalled values.



See Your Dealer For
Other Standard Makes

REDDY KILOWATT, your electrical servant

**BETTER BUY SOON BECAUSE
PRICE TRENDS ARE UPWARD**

IT COSTS LESS TO LIVE BETTER ELECTRICALLY

KENTUCKY POWER & LIGHT COMPANY
INCORPORATED

State Baptists To Meet At Western City, April 17th

Registration Goal For Kentucky Baptists Set At 1,500; Statement

The State Baptist Training Union Convention will meet April 17-20 with the First Baptist Church, Owensboro, beginning on Thursday night and closing Sunday at noon. Acting President L. C. Roberts, Owensboro, will preside. Dr. R. E. Humphries is host pastor. The registration goal is 1,500.

State Secretary Byron C. S. DeJarnette of Louisville announces the following out-of-town personalities for the program: Dr. Ross E. Dillon, Troy, Alabama, who will speak Thursday night; Dr. J. O. Williams, Nashville, Tennessee, who will bring the Saturday night message; Mr. W. A. Harrell, Nashville, Tennessee, who will speak Thursday night, as well as lead conferences on Friday; Miss Thelma Arnott for Story Hour Leaders' Conference; Miss Roxie Jacobs for Junior Leaders' Conferences; Mrs. Henry C. Rogers for Intermediate Conferences; Miss Blaine Coleman for Intermediate Leaders' Conferences and Dr. Clay I. Hudson for Adult Conferences, all of Nashville, Tennessee.

The music will be directed by Dr. T. E. West of Williamsburg accompanied by Mr. William H. Brannon, Jr., organist; Miss Margaret Humphries, pianist, both of Owensboro, and Miss Marjorie Sutterlin, violinist, all of Nashville. Dr. W. C. Boone, Louisville, will be in charge of the devotional and Life Dedication services. The Life Dedication message will be Sunday morning message will be brought by Dr. R. E. Humphries. Mr. Casper Gardner, Owensboro will bring the welcome address; Mr. L. C. Roberts will respond; Miss Christina Stockmann, Louisville, will be in charge of the Book Store and present "Book Friends,



Here's How I Proved LEONARD Gives Greater Value!



"I'm a keen buyer—I want the most for my money! That's why I bought my Leonard the 'Feature Challenge Chart' way—comparing Leonard feature by feature with other electric refrigerators—definitely PROVING Leonard gave me MORE!"

Don't think of buying any other refrigerator until you have seen the sensational new Leonard. Big, over-size 6 1/2 Cubic Feet modern art as low as

\$ 119.95

Illustrated is Model LS-6 at

LEONARD'S FEATURE Challenge Chart

VALUES YOU'LL FIND IN THE LEONARD LINE (CHECK WITH ANY OTHER MAKE)

<p>"Plus" FEATURES!</p> <ul style="list-style-type: none"> Big Handy Vegetable Bin Stainless Steel Zero-Freeze with Door Pop-Out Ice Trays Glass-Covered Meat Chest "Len-A-Light" Lighting "Presto" 5-Way Shelf Hi-Humid Food Freshener with coils in walls Glass-Covered Crisper Space for Frozen Foods Glaicer Sealed Unit 5-Year Protection Plan 	<p>"Plus" BEAUTY!</p> <ul style="list-style-type: none"> Stainless Steel Door Strip banishes 80 screwheads New Modern Styling newish Interior Crack-Proof "Permalin" Exterior Finish
<p>"Plus" SIZES!</p> <ul style="list-style-type: none"> 6 1/2 and 8 1/2 Cu. Ft. Sizes 	<p>"Plus" SAVINGS!</p> <ul style="list-style-type: none"> Leonard's new prices save you up to \$30 as compared with last year's prices

CHECK CHOOSE!

GET ALL YOU PAY FOR—
COME IN...
CHECK THE FEATURES THIS
LEONARD WAY!

McBRAYER'S
"MOREHEAD'S COMPLETE FURNITURE STORE"

FROM
EVERY ANGLE
THERE'S NOTHING BETTER

Agriculture Tips

By H. C. HAGGAN
Morehead State College

SPRAYING GRAPE

The grape is almost as old as civilization, but the types grown at home in eastern Kentucky are mostly of American origin. The European grape is not used in this section of the country due to many reasons. Whether one lives in the country or in town grapes can be had for the table and are easy to

produce if a good spray schedule is followed. Each year the Department of Agriculture of the Morehead State Teachers College is asked, "why do grapes rot on the vine about the time they should be ripening?" The rotting is due to a fungus disease known as Black Rot and can be easily eradicated by a little effort. There are other diseases that attack the grape but most of these are controlled with the same spray material used in Black Rot control. For lack of space the spray schedule will be discussed as briefly as possible.

The grape is also attacked by scale insects, aphids or sucking

insects without scales, and chewing insects. Spray schedules may be given when there are no leaves on the vine. This spray is called the dormant spray. Scale insects have been noticed on the vines at a number of places this year. To control these use liquid lime sulphate one pint to make up eight gallons of spray. Cover every inch of the cane as good spraying means a number of applications at the right strength, at the right time, and covering every inch of surface.

When new growth is about one inch long the grape should be sprayed with Bordeaux mixture (4-5-50). This means that four pounds of copper sulphate is dissolved in water (in wooden container) and mixed with five lbs. of hydrated lime, adding water to make up fifty gallons. The Bordeaux mixture can be purchased as a ready mixed spray but when purchased this way it comes rather high in price. If a 4-4-50 mixture is bought at the store about eight pounds would be had. This would make four pounds of copper sulphate and four pounds of hydrated lime would be in it thus making eight pounds. Then to make the 4-5-50 mixture, one would add an additional pound of hydrated lime. This material would cost not less than twenty-five cents per pound in that quality while the copper sulphate crystals could be purchased separately. The lime will cost about one cent per pound. Spraying can always be done cheaper where the grower will take time to mix his own spray. The Bordeaux mixture controls Black Rot, Mildews, and other fungous diseases.

When the clusters are breaking which is about two weeks later, the grapes are sprayed again with Bordeaux mixture to which a spreader is added. The spreader can be a pound of soap chips dissolved in a small amount of water and added to the Bordeaux. This makes the spray stick tighter and spread more easily. When the blossoms are opening, repeat the Bordeaux spray.

After the blossoms fall, spray with Bordeaux mixture again to which is added 1-2 pounds of lead arsenate. This mixture will control the fungous diseases as well as the chewing insects.

When the berries get about the size of peas and before they begin to touch add another mixture of Bordeaux with lead arsenate. If any sucking insects are present add to the Bordeaux-lead arsenate spray about one-half pint of nicotine sulphate to make up the

Tests Made Of New Uses For Tobacco

An exhibit of materials made from by-products of tobacco, was examined by members of the Board of Trustees of the University of Kentucky at their April meeting. It represented a report of research work at the Agricultural Experiment Station, in an effort to find new uses for tobacco by-products that may increase returns from this crop.

Dean Thomas P. Cooper of the college of agriculture explained that in an exhibit was celluloid made from tobacco leaves and stalks. This material could be used in making plastics, paper-board, paper cartons and other useful products. Both wood and cloth can be water-proofed with liquids made from tobacco by-products, the Experiment Station has found. A tobacco fat was produced from which soap would be made.

A nicotine spray developed at the Experiment Station several years ago has found wide use among growers of fruits—vegetables and other plants. Progress has been made in breeding a type of tobacco low in nicotine content, Dean Cooper to the Board of Trustees.

The research work in new uses for tobacco was explained at the Experiment Station last July, through a special appropriation made by the State Legislature.

U. K. Man Publishes Reports On Water Organisms

Now its air-conditioning cases for minerals in the University of Kentucky geological museum. Human beings, however, would probably not like the environment because the minerals placed in such cases are deprived of virtually all moisture. It seems that less than a year ago, after almost ten years of effort, Professor David M. Young, curator of the museum succeeded in assembling in one collection specimens of every meteorite known to have fallen in the state of Kentucky. These meteorites are of three types, stone, iron, and iron.

Since the iron meteorites decompose or rust through exposure to the atmosphere, these meteorites have been placed in sealed glass containers with an air condensing agent, which will keep all moisture away from the specimens for many years.

U. K. Air-Conditions Mineral Cases

Two reports on 621 different kinds of "algae" or small green water organisms, have been published within the last two years by Dr. B. B. McInteer, associate professor of Botany at the University of Kentucky.

This unusual group of plants is often referred to as "pond scum" or "frog spawn," etc., and some are so small that when placed side by side it would require 25,000 to cover an inch in length. They are common that one drop of water often contains several hundred individual specimens. These plants are interesting to a scientist, and of value in soil building, in serving as the chief source of food for the fish, and in many other ways.

1,000 Mattresses Made In Kentucky

Approximately 1,000 mattresses have been made in the Kentucky Rural Mattress program, using

cotton provided by the Surplus Commodities Corporation, according to Miss Myrtle Weldon, State leader of home demonstration work. Bell county leads with 445 mattresses, followed by McCracken, with 227, and Hart with 108. Kentucky communities are taking part in the program.



NEW HOUSE? Nope... Just Painted with Kurfees "80 and 20"!

Like magic, Kurfees "80 and 20" house paint makes an old house look new... keeps it looking that way for years!

Kurfees "80 and 20" contains 80% lead... with just enough zinc (20%) to prevent rapid chalking. Covers better, lasts longer, costs less in the long run!

Let Kurfees "80 and 20" help make your house look new again! Twenty-four beautiful colors and white! Come in... ask for full details. No obligation, of course!

FREE! New Color Card!

KURFEES

Young Hardware

Phone 92 Morehead, Ky.

Chessie Chat

is an important guy to industry! He's used to make edible and lubricating oils, candy, cosmetics, peanut butter, dyes, and medicines. In fact, 19,555 tons of peanuts were exported and O. last year but only a small part of them finished up at the circus or a ball game!

Ever heard the history of the locomotive cawatcher? Locomotives belonging to an early railroad suffered so much damage from collisions with trespassing cows that something had to be done about it. A young employee soon invented a small truck supporting two iron spears and attached it to the front of the engines. This was effective but very hard on cows! To avoid lawsuits from irate farmers a crosswise bar was substituted, and from that evolved the present V-shaped cawatcher.

First in War, first in Peace, and first in the hearts of his countrymen. Yes, George Washington was a true leader... first in many ventures. Among them was the James River Co., organized in Virginia in 1785. This was the original predecessor company of Chesapeake and Ohio and George Washington was its first president!

Next time you crack a peanut, handle it gently, Mr. Peanut

SHIP and TRAVEL by TRAIN!

CHESAPEAKE AND OHIO LINES

April's a month when we start thinking about that summer vacation! Here's a way to plan your trip minus the irksome details. Chesapeake and Ohio travel experts will help you make up a CHESIE TRAVEL PACKAGE, securing all your transportation, hotel rooms, sightseeing and other reservations in advance! See your agent about this money-saving, carefree way to travel.

"When GENERAL MOTORS builds and backs it — everybody Knows it's good!"

HYDRA-MATIC GM

WORLD'S ONLY DRIVE WITH NO CLUTCH TO PRESS!... NO GEARS TO SHIFT!

WHEN you see the Hydra-Matic emblem on the "car ahead," you know it stands for two things: One—the drive that's backed by the big name in motordom! Two—the drive that does things no other drive can do! No other drive in the world completely eliminates the conventional clutch and clutch pedal. No clutch gives completely automatic shifting through all four forward speeds. And no other makes driving so simple, easy and safe. Why not try the car that has the drive that General Motors builds—try Oldsmobile! Hydra-Matic Drive Optional at Extra Cost.

Detroit Transmission Division of General Motors where Oldsmobile Hydra-Matic Drives are produced.

THE CAR Ahead! IT'S OLDSMOBILE

College View Service Station
Morehead, Kentucky

REMEMBER — THE **REXALL** DRUG STORE FOR BEST VALUES IN TOWN

NOAH did all right with TWO TWOS

SO WILL YOU when you buy at the **ONE CENT SALE**

THESE ARE EXAMPLES OF THE MORE THAN 200 BIG VALUES DURING THIS SALE

EXTRA! A Big Special EACH DAY

WEDNESDAY ONLY
WHILE THEY LAST ONE SALE ONLY TO A CUSTOMER
Pricilla Soap (6 cakes in box) Six gorgeous cakes in sampler style of grand-mother's day. **only 29¢ per box**

THURSDAY ONLY
WHILE THEY LAST ONE SALE ONLY TO A CUSTOMER
Medford Vellum Stationery A handsome box of stationery. 34 folders, 50 single sheets, 48 envelopes. **only 29¢ per box**

FRIDAY SATURDAY
WHILE THEY LAST ONE SALE ONLY TO A CUSTOMER
ADRIENNE Gay Ensemble Powder, lipstick, perfume in gayer, smartest pack. **\$1.50 NOW ONLY 89¢**

25c Firstfold Ready-made Bandages **Quik-Bands 2 for 26¢**

Pleasant, Relieving Rub-down in Hot Weather **Alco-Rex 2 for 26¢**

25c size Ray's **Soap Flakes 2 for 26¢**

25c Purest **Castor Oil 2 for 26¢**

Medford Papeterie Smart, correct for men or women. 24 sheets and envelopes. **2 for 26¢**

Purest Milk of Magnesia Extra refined. Free from disagreeable earthy taste. **2 for 51¢**

Purest Aspirin Quick dependable relief for simple aches and pains or colds. **2 for 50¢**

Liggett's Milk Chocolate Bar Wholesome, delicious candy made with pure ingredients. **2 for 16¢**

Symbol Water Bottle What a saving, 2 bottles for the price of one. Full 2 quart size. **2 for \$1.01**

Purest Rubbing Alcohol Compound Big favorite everywhere — breaks easily produced. Free of irritating odor. Save. **2 for 51¢**

Stag Brushless Shaving Cream 39c tube **2 for 40¢**

60c 8 oz. size **2 for 61¢**

Giver's Hasol Riper's skin the care Hasol is famous for. **2 for 51¢**

Mi 31 Tooth Powder Many who want powder cleansing often recommended by dentists use Mi 31. Try it. **2 for 36¢**

38c tubes Klezco Dental Creme Here's a value that is value. Enough tooth paste to last a long time. And with no soap and salt the cleansing, extra pleasant taste. **39¢**

ALL REXALL PRODUCTS SOLD ON A MONEY-BACK GUARANTEE OF SATISFACTION

Wed. Thurs. Fri. & Sat. April 23 24 25 & 26

C. E. BISHOP DRUG STORE
Morehead, Kentucky

The business meeting of the Rowan County Women's Club will hold last Tuesday evening at the home of Mrs. John Francis, Miss Frances Caudill, outstanding student who was sent by the club on the annual Student Pilgrimage...

CLASSIFIED ADS

WANT AD RATES: (Payable in Advance) 1 time, per word... 2 times, per word... 3 times, per word... 4 times, per word... 5 times, per word... 6 times, per word... 7 times, per word... (No ad taken for less than 25¢) Special rates by the month...

FOR SALE HOUSE and Lot—located at 506 East Main Street. Reasonable price. See Mrs. Ethel Geig.

MALE HELP WANTED STEADY WORK—GOOD PAY RELIABLE MAN wanted to call on farmers in Rowan County. No experience or capital required. Write Mrs. C. W. Barnes, Box 18, Covington, Kentucky.

FOR RENT A MODERN FOUR-ROOM cottage with bath and up-to-date conveniences \$15.00 per month. Call Mr. 208 or see C. E. CAUDILL at Peoples Bank.

WANTED GIRL WANTS HOUSE WORK by week or day. Experienced. Apply CLARENCE ALLEN, 211 South Avenue, U. S. 88.

ALFREY CEMETERY—All persons having relatives or friends buried in the Old Alfrey Cemetery at Coswell are urged to meet there on Saturday, April 19th, for the purpose of cleaning up the cemetery. Please bring working tools. Those who cannot come and wish to help, leave your contribution at the County Clerk's office—MINNIE UTTERBACK.

WANTED—An ambitious, wide-awake man or woman to look after renewals and new subscriptions for the popular, fast-selling magazine THE AMERICAN HOME. Its easy, pleasant work, and it pays big commissions. Spare time only required. Write today to Director, Sales Division, THE AMERICAN HOME MAGAZINE CORPORATION, 211 South Avenue, New York, New York.

NOTICE

Notice is hereby given to all property owners within the City of Morehead that sanitary sewers now connected with and running into storm sewers must be changed by May 1st. Our ordinance covering this offense carries a penalty of \$50.00 per day, and each day is a separate offense. Any property owner who is in doubt as to where his sewage empties can have it checked without cost by applying to the City Clerk.

Mrs. Margaret Culvert and Elizabeth Nickell were co-hostesses to an Easter breakfast at the Sunnyside Service Easter morning. Thirty-two guests, the members of the Young Woman's Sunday School Class at the Christian Church, were served a delightful breakfast.

A long table was decorated with spring flowers. The centerpiece, a flowers garden within a white painting fence. The place cards were Easter eggs in gay Easter bonnets. Miss Juanita Minish is teacher of the class. Miss Edith Maggard, president and Miss Elizabeth Nickell, membership chairman.

Guests of Mr. and Mrs. J. F. Hackney for the weekend were Mr. and Mrs. Graydon Hackney and little daughter, from Lima, Ohio; Paul Hackney, of Cincinnati; Tony Hackney, Charleston, W. Va.; Glenn Hackney and Mrs. Byron Dixon, Washington, D. C.; and Mrs. P. Smith of Cincinnati. L. Dixon and Mrs. Smith remained for a longer visit.

Mrs. Teddo Evelyn and daughter, Mary Carolyn, Mr. Mrs. James Johnson, Mrs. Otto Carr, and Walter Carr attended the opening race at Keenland on Thursday.

Mr. and Mrs. Clifford Long and son, George Everett, of West Liberty, visited Mr. and Mrs. Otto Carr Saturday night.

The Woman's Auxiliary Society of the Baptist Church met Monday evening at the home of Mrs. J. T. Jayne with Mrs. Edna May, president, as hostess. Other guests were Mrs. E. C. Hogue, Mrs. Raymond and Mrs. Jayne.

Mr. and Mrs. G. B. McCullough returned Sunday night from New Umblerland, Pennsylvania, where they attended the wedding of their niece, Miss Nancy Catherine Van Allen at 2:30 p. m. Saturday.

Mrs. E. D. Patton had as dinner guests Sunday, Mr. and Mrs. Taul Peddy and children of Olive Hill, Miss Ethel Patton, Olive Hill, Mayme Wylie, Lexington, Mr. and Mrs. Tom Tucker, Lexington.

Mr. and Mrs. Andre Bowne had as guests Saturday and Sunday her mother, Mrs. Gladys Roberger, her brother, Billy Robert Robertson, and Mr. and Mrs. Herbert Peratt of Mt. Sterling.

Mr. and Mrs. Otto Carr and Miss Isabel Carr were guests of Mr. and Mrs. Arlie Caudill and family in Mt. Sterling, Sunday for an Easter dinner party.

Miss Fatti Bollen had as her guest Friday night, her sister, Miss Genevieve Bolin of Louisville. They were weekend guests in Ashland and Charleston.

Mr. and Mrs. Dudley Caudill of Dawson Springs and Mr. and Mrs. Genevieve of Fort Gay were weekend guests of Mrs. A. M. Day.

Mr. and Mrs. Glenn Carr and Mrs. Martha Koutley of Escal were guests Monday night of Mr. and Mrs. O. P. Carr.

Miss Rebecca Patton, Miss Susanne Chiles and Harold Pfeiffer will leave Wednesday for a visit in Mt. Vernon, Pa.

Mr. and Mrs. V. H. Wolford, Joyce and Betty June were dinner guests Sunday of Mr. and Mrs. W. Wolford in Grayson.

Mrs. W. C. Lappin and Mrs. V. H. Wolford were visitors in Bloomington, Indiana, at the week-end with his mother, Mrs. James Bach.

Morton Bach who is stationed at Huntington, West Virginia, spent the week-end with his mother, Mrs. James Bach.

Mrs. Lena Miller found a pair of spectacles with brown celluloid frames. Owner call at the telephone office.

Mrs. Bert Proctor who underwent a serious operation on Saturday at St. Joseph's in Lexington is reported to be improving nicely.

Mrs. W. L. Jayne Miss Nola Jayne, and Miss Phyllis Ann Jayne visited relatives in Ashland, Saturday.

Mr. and Mrs. Lester Hogue and Mr. Bert Proctor accompanied Mrs. Proctor to Lexington on Friday.

Miss Gladys Evelyn Evans of Pikeville was at home for the weekend.

Mrs. Ellis Johnson left Saturday to visit her mother in Williamson, West Virginia, this week.

Miss Marion E. Farnsworth was a weekend guest of Mrs. Jean Hyden.

Mrs. E. W. Station of Lexington visited Mrs. Allen Hyden last night.

Otto Carr and Walter Carr attended the opening game at Cincinnati on Tuesday.

Leo Davis Oppenheimer was at home from Brooksville for the weekend.

Mrs. Glenn Lane, Mr. and Mrs. C. E. Nickell spent the day Tuesday in Lexington.

Reverend and Mrs. A. E. Landolt were visitors in Lexington on Monday and Tuesday.

Mrs. Lester Blair was in Lexington on Saturday.

Miss Mabel Carr, stopped in Lexington on Tuesday.

Miss Catherine Powers of Olive Hill was at home Sunday.

Miss Sansi Proctor visited her mother on Sunday.

THINK ON THESE THINGS

By REV. B. H. KAZEE

It is quite well known that a people bent to church last Sunday who may be seen again until some other special observance takes place, such as Easter. This brings up the question as to why people do this. The answer is not obvious; it must be sought in the background of the truth and therefore is not often sought nor understood. There is such a thing as being "religious" and then there is something as being "spiritual". The whole world is "religious" in one way or another. Men are often "religiously" devoted as to what or whom they worship, and when they worship they are naturally religious. It is to "feel religious," and seeks such opportunities as will give it a medium of expression in what it thinks of as worship. Thus, forms and ceremonies become very popular to the flesh and the observance of days and special occasions with special prayers and ceremonies will appeal to the flesh. This element is often appealed to greatly in the forms and ceremonies of lodges and other orders. The flesh likes to feel that it is worshipped, and will readily respond to such ceremonies as will give it a consciousness of having done so.

This is not to say that all who participate in special occasions do so on a fleshly basis. We have in mind to explain why the "flesh" will respond to such special occasions and ceremonies, and then to point out that when the "flesh" is worshipped, it usually has indirectly complimented itself, and has caused itself to feel that it is being worshipped. This is contrary to spiritual worship for those who worship in spirit and truth do not have the feeling that they are being worshipped, but rather that they see themselves to be worse than they had previously thought. They feel that they are being worshipped by God and that God is much better than they had ever thought. Spiritual worship constantly rules out the claims of the natural man, and increasingly exalts God. His goodness, thereby increasing our worship of Him, and our dependence on Him. But this

CHURCH NEWS

St. Alban's Mission, Episcopal. Reverend F. C. Lighthorn, St. T. B. Manly Sterling, Sunday, April 20th (Octave of Easter). Holy Communion and Sermon at 8:30 A. M. No evening service on Friday, April 20th.

On Sunday morning, at 10:45, Reverend L. Edward Mattingly, Pastor of the Methodist Church will take for his sermon topic, "Imperfect Vision." At the Vesper Service at 8:00 o'clock the subject will be "On Hearing the Voice." This service will be opened with fifteen minutes of meditation music by Mrs. M. E. Geese at the organ. The public is invited to attend both of these services.

The Carlisle District Conference of the Methodist Church will convene at Carlisle, Wednesday, April 16, at 8:30 A. M. His word, W. H. Brook, Mr. and Mrs. C. P. Caudill, Glenn Lane and Reverend L. Edward Mattingly will officially represent the Morehead Methodist Church. Other members of the local congregation plan to attend.

Reverend John L. Church, who formerly held a meeting in Morehead, will be the guest speaker for the Conference.

Dr. Charles Hatfield, Professor of Mathematics, Georgetown College will preach at both services at the Baptist Church next Sunday. Pastor Kazee will be away in a revival meeting at Magoffin Institute, at Sky, Kentucky.

worship of God in "spirit and in truth" needs little ceremony or special days. Often it is most ardent when the worshipper is alone with God, and is silent, or praying, or meditating. Certainly, one can worship in this way in public worship on other days besides the special days, and indeed worship will be far above the power of outward ceremony to express. The world is very "religious" but only those who are "spiritual" know what it is to worship God. Others think they do, but their error does not occur to them until they have been introduced, by God's grace, into that realm where the "spirit of God" meets the spirit of man. Being comes subject to the "spirit of God." Such a worshiper will not wait until next Easter to return to church.

Fishing Season Well Under Way in Kentucky

Ky. Anglers Spend \$92,000 Annually For Fishing Licenses

The Fishing season is now well under way in the waters of Kentucky with both men, women and children participating in so doing they are contributing to the more than \$1,000,000 (million) sports fishermen and fishermen of the United States spend annually in pursuit of their favorite recreation, according to figures received from the United States Department of the Interior by S. A. Wakefield, Director of the Kentucky Division of Game and Fish.

While Kentucky anglers spend only about \$92,000 annually for the fishing licenses, sportsmen throughout the nation contribute

more than \$10,000,000. Tackle equipment costs them \$35,000,000; transportation, hotel quarters, food, gasoline for automobiles, and boat, hats, coats, shirts, jackets, trousers, overcoats, boots, tents, blankets and miscellaneous equipment total more than \$955,000,000.

Sports fishermen sell no fish, so they deserve no monetary profit from their efforts and they outnumber the men engaged in commercial fishing, 80 to 1. Recreational fishing as a sports industry tops all sports including baseball, football, basketball, golf, tennis, polo, hockey, skiing, and swimming.

Borden States All Fires Caused By Carelessness

Prosecution in Either State Or Federal Court Is Initiated

Residents within and adjacent to the Cumberland National Forest are becoming more careful with their spring burning, according to Forest Supervisor H. L. Borden today. Out of a total of 72 fires for this year, all caused by carelessness, only ten are attributed as a result of escaping from electric and field burning. When- ever negligence or carelessness is shown, said Supervisor Borden, prosecution in either Federal or State court is initiated. Last Saturday, April 5, 1941, District Ranger E. D. Shirley, of Berea, prosecuted Orbin Gillum of Livingston, Kentucky in Justice of the Peace Frank Shell's court on a jury found Mr. Gillum guilty and he was fined \$100 and costs. Mr. Gillum had set a sedge field on fire at about 10:00 in the morning, checked it at noon and then abandoned it. Later it broke out and before being suppressed burned over several acres of woodland.

Independent \$1.50

MILLS THEATRE

THURSDAY & FRIDAY APRIL 18-19 "LADY EVE" with George Forma, Betty Hutton, Gladys George, Doris Lester

SAT. SUN. & MON. APRIL 19-20-21 "ROAD TO ZANBAR" with Bob Crosby, Doris Lester

TUESDAY & WEDNESDAY APRIL 22-23 "DOUBLE FEATURE" "CHEERS FOR MISS BISHOP" with Billie Holiday, William Cagney

THURSDAY & FRIDAY APRIL 24-25 "DOUBLE FEATURE" "ROAD SHOW" with Adolphe Menjou, Carole Landis

THURSDAY & FRIDAY APRIL 24-25 "LONE WOLF TAKES CHANCE" with Warren William, LUCKY FRIDAY NIGHT

THURSDAY & FRIDAY APRIL 24-25 "DOUBLE FEATURE" "NORTH OF THE BORDER" with Willa Bill Elliott, "MARKED MEN" with John Barrymore, "THE GREEN ARCHER" and NEWS

SUNDAY & MONDAY "TOPPER RETURNS" with John Barrymore, Madam Young, Billie Holiday, Gladys George

TUESDAY & WEDNESDAY APRIL 22-23 "DOUBLE FEATURE" "GAMBLING ON HIGH SEAS" with Wayne Morris, "MAN FROM MONTERREY" with John Wayne

THURSDAY & FRIDAY APRIL 24-25 "DOUBLE FEATURE" "WEST OF PINTO BASIN" with Ray Corrigan, John King, "RIDE KELLY RIDE" with Marvin Stephens, Rita Quigley

SUNDAY APRIL 26 "MAN MADE MONSTER" with Lionel Atwell, Frank Albertson

NEW LOW PRICES

MEET JOHN DOE

OPEN AIR MARKET

To open soon. Look for announcement.

We will handle a complete line of fresh fruits and vegetable. Located just east of city limits on D. S. 60.

OWNED AND OPERATED BY Kenneth Vencill & Kenneth Lewis

N.Y.A. Boys Making Progress in Radio And Wood Work

Group Supervised by Morehead State Teachers College Graduate

The N.Y.A. boys on the campus of Morehead State Teachers College are quite busy these days, according to Vennie Caudill, supervisor and a graduate of Morehead State College.

Caudill said that his present group comprised thirty-five boys most of whom are enrolled at the College or at Breckinridge Training School. Some are taking full courses in wood-work and radio, now in use at the College, and Caudill said, under the supervision of W. M. Yost, Radio Shop instructor, and M. N. Watson, Woodshop instructor for the school.

In the woodshop work some of the men are at present engaged in the construction of fifty arm table chairs for kindergarten classes for the Rowan County School System, Caudill said. They are also building eight typing desks and eight office chairs for the school system, the supervisor set out. Material is furnished, work is done free.

In the radio shop the boys are now working on a transmitter for the Morgan County School system. Many of these radio shop men are learning the trade with the idea of becoming radio service men. A local transmitter is now in use at the College, and contact has been made with other radio stations over a wide located on the fourth floor of the Science Hall.

Independent, \$1.50 Yr.

trimble theatre

THURSDAY & FRIDAY APRIL 17-18 "LADY EVE" with George Forma, Betty Hutton, Gladys George, Doris Lester

SAT. SUN. & MON. APRIL 19-20-21 "ROAD TO ZANBAR" with Bob Crosby, Doris Lester

TUESDAY & WEDNESDAY APRIL 22-23 "DOUBLE FEATURE" "CHEERS FOR MISS BISHOP" with Billie Holiday, William Cagney

THURSDAY & FRIDAY APRIL 24-25 "DOUBLE FEATURE" "ROAD SHOW" with Adolphe Menjou, Carole Landis

THURSDAY & FRIDAY APRIL 24-25 "LONE WOLF TAKES CHANCE" with Warren William, LUCKY FRIDAY NIGHT

THURSDAY & FRIDAY APRIL 24-25 "DOUBLE FEATURE" "NORTH OF THE BORDER" with Willa Bill Elliott, "MARKED MEN" with John Barrymore, "THE GREEN ARCHER" and NEWS

SUNDAY & MONDAY "TOPPER RETURNS" with John Barrymore, Madam Young, Billie Holiday, Gladys George

TUESDAY & WEDNESDAY APRIL 22-23 "DOUBLE FEATURE" "GAMBLING ON HIGH SEAS" with Wayne Morris, "MAN FROM MONTERREY" with John Wayne

THURSDAY & FRIDAY APRIL 24-25 "DOUBLE FEATURE" "WEST OF PINTO BASIN" with Ray Corrigan, John King, "RIDE KELLY RIDE" with Marvin Stephens, Rita Quigley

SUNDAY APRIL 26 "MAN MADE MONSTER" with Lionel Atwell, Frank Albertson

NEW LOW PRICES

MEET JOHN DOE

OPEN AIR MARKET

To open soon. Look for announcement.

We will handle a complete line of fresh fruits and vegetable. Located just east of city limits on D. S. 60.

OWNED AND OPERATED BY Kenneth Vencill & Kenneth Lewis

Caudill stated that men between the ages of seventeen and twenty-five are eligible for the classes and work. Most of the men came to the MSTC campus this past October with no experience at all. They have been taught to handle many different tools and construct a variety of different things. In addition to the actual work work, the N.Y.A. group are given relaxation in the form of sports including basketball, baseball, volleyball and ping-pong. It is understood that they will organize tennis classes and possibly a tournament in the near future.

In the radio shop the boys are now working on a transmitter for the Morgan County School system. Many of these radio shop men are learning the trade with the idea of becoming radio service men. A local transmitter is now in use at the College, and contact has been made with other radio stations over a wide located on the fourth floor of the Science Hall.

Caudill said that his present group comprised thirty-five boys most of whom are enrolled at the College or at Breckinridge Training School. Some are taking full courses in wood-work and radio, now in use at the College, and Caudill said, under the supervision of W. M. Yost, Radio Shop instructor, and M. N. Watson, Woodshop instructor for the school.

In the woodshop work some of the men are at present engaged in the construction of fifty arm table chairs for kindergarten classes for the Rowan County School System, Caudill said. They are also building eight typing desks and eight office chairs for the school system, the supervisor set out. Material is furnished, work is done free.

In the radio shop the boys are now working on a transmitter for the Morgan County School system. Many of these radio shop men are learning the trade with the idea of becoming radio service men. A local transmitter is now in use at the College, and contact has been made with other radio stations over a wide located on the fourth floor of the Science Hall.

Independent, \$1.50 Yr.

trimble theatre

THURSDAY & FRIDAY APRIL 17-18 "LADY EVE" with George Forma, Betty Hutton, Gladys George, Doris Lester

SAT. SUN. & MON. APRIL 19-20-21 "ROAD TO ZANBAR" with Bob Crosby, Doris Lester

TUESDAY & WEDNESDAY APRIL 22-23 "DOUBLE FEATURE" "CHEERS FOR MISS BISHOP" with Billie Holiday, William Cagney

THURSDAY & FRIDAY APRIL 24-25 "DOUBLE FEATURE" "ROAD SHOW" with Adolphe Menjou, Carole Landis

THURSDAY & FRIDAY APRIL 24-25 "LONE WOLF TAKES CHANCE" with Warren William, LUCKY FRIDAY NIGHT

THURSDAY & FRIDAY APRIL 24-25 "DOUBLE FEATURE" "NORTH OF THE BORDER" with Willa Bill Elliott, "MARKED MEN" with John Barrymore, "THE GREEN ARCHER" and NEWS

SUNDAY & MONDAY "TOPPER RETURNS" with John Barrymore, Madam Young, Billie Holiday, Gladys George

TUESDAY & WEDNESDAY APRIL 22-23 "DOUBLE FEATURE" "GAMBLING ON HIGH SEAS" with Wayne Morris, "MAN FROM MONTERREY" with John Wayne

THURSDAY & FRIDAY APRIL 24-25 "DOUBLE FEATURE" "WEST OF PINTO BASIN" with Ray Corrigan, John King, "RIDE KELLY RIDE" with Marvin Stephens, Rita Quigley

SUNDAY APRIL 26 "MAN MADE MONSTER" with Lionel Atwell, Frank Albertson

NEW LOW PRICES

MEET JOHN DOE

OPEN AIR MARKET

To open soon. Look for announcement.

We will handle a complete line of fresh fruits and vegetable. Located just east of city limits on D. S. 60.

OWNED AND OPERATED BY Kenneth Vencill & Kenneth Lewis

Advertisement for COPPER PIPES featuring a large image of a pipe and text: "PARDON ME... IS MY Ectoplasm SHOWING?"