

News

University Communications

Pauline Young, Director

Morehead State University

UPO Box 1100

Morehead, KY 40351-1689

(606) 783-2030

Feb. 1, 2001

FOR IMMEDIATE RELEASE

MOREHEAD, Ky.---As many as 85 percent of small businesses fail within the first three years, according to statistics from Information International; Morehead State University's Small Business Development Center may have the information needed to keep your business on the road to success.

Joe Riggs, a business consultant with Customware, Inc. in Frankfort, will teach a "Business Accounting and Technology" workshop on Wednesday, Feb. 21, from 6 to 8:30 p.m. in 210 Combs Building on MSU's campus. There is a \$15 registration fee.

"We believe the future of our country's economy is directly related to small businesses, and we want to help as many as possible to avoid the first-time mistakes that may jeopardize or slow their businesses," Riggs said. Since joining Customware in 1997, he has been helping companies improve their businesses by increasing their use of technology and utilizing various softwares.

Among the topics for discussion at the seminar are basic accounting needs and their importance; available technology and how it can help; Web sites; and future planning.

All training programs, sponsored or co-sponsored by MSU's Small Business Development Center, are available to all individuals without regard to race, color, sex, creed or national origin. Special arrangements for the disabled will be made if requested in advance.

Registration is necessary because of limited seating. Additional information and registration are available by calling MSU's SBDC at (606) 783-2895.

####

rdm

News

University Communications

Pauline Young, Director

Morehead State University

UPO Box 1100

Morehead, KY 40351-1689

(606) 783-2030

Feb. 2, 2001

FOR IMMEDIATE RELEASE

MOREHEAD, Ky.---Morehead State University has formed a partnership with The College Board to offer Advanced Placement Program classes, workshops and conferences for middle and high school teachers and supervisors.

Classes in Biology, Calculus AB, English Language, English Literature, U.S. History and Statistics will be offered during the weeklong Advanced Placement Summer Institute, July 9-13, on the MSU campus. The cost to participants will be \$325 per person, per course.

The registration fee will cover the cost of instruction, College Board Advanced Placement packets and other training materials. There is an additional \$25 lab fee for the biology workshop. Courses are suitable for those who are new to the AP teaching experience or who have been involved for several years.

The Advanced Placement Program, which consists of 33 courses in 19 subject areas, gives students an opportunity to enhance their studies by taking college level courses and exams while still in high school. This program also is designed for those teachers who wish to help their students excel while pursuing creative ideas.

MSU will be part of the Southern Region that includes Tennessee, Virginia, North Carolina, South Carolina, Louisiana, Mississippi, Alabama, Georgia, Florida and Kentucky. However, middle and high school teachers from across the United States may attend the workshops.

To register, applicants must complete the application form and mail it along with a \$100 deposit by Friday, May 18, to MSU's Office of Continuing Education, 215 Allie Young Hall, Morehead, KY 40351. The \$100 deposit is nonrefundable. The balance of the registration fee is due by Friday, June 1. Payment may be made by credit card, personal check, school district check, or MSU will bill your district for the registration fee.

The College Board, a national non-profit membership association dedicated to preparing, inspiring and connecting students to college, provides educators with information, tools and strategies needed to build and strengthen their professional skills and techniques. More than half of the nation's high schools now take part in the Advanced Placement Program, which allows students to study subjects of interest, while motivating and challenging them to a more rigorous performance.

Additional information and a registration packet are available by calling Tina Stafford, MSU regional campus coordinator, at (606) 783-2005 or (800) 783-6781, option 3.

####

News

University Communications

Pauline Young, Director

Morehead State University

UPO Box 1100

Morehead, KY 40351-1689

(606) 783-2030

Feb. 2, 2001

FOR IMMEDIATE RELEASE

MOREHEAD, Ky.---Morehead State University will host a variety of events, from movies and music to theatre and lectures, during February which is Black History Month.

The activities, which are free and open to the public, include:

*A series of movies by Ashra and Merira Kwesi: Tuesday, Feb. 6, "African Fashions;" Thursday, Feb. 15, "African History, Part I;" Tuesday, Feb. 20, "African History, Part II;" and Tuesday, Feb. 27, "Education Tour." The films will be shown at 7 p.m. in the Commonwealth Room of the Adron Doran University Center.

*Community gatherings are slated for consecutive Sundays--Feb. 4, 11, 18 and 25--in the Commonwealth Room of ADUC from 11 a.m. to 12:30 p.m. The activities will be led by the Rev. Anthony W. Gaines, associate pastor of Covington United Community Christian Church and two-time graduate of the University.

*"Postal History: Depictions of African Americans on Postal Stamps," a lecture by Dr. Tim Ashmore, MSU assistant professor of speech, will be offered on Sunday, Feb. 4, in the Riddle Room of ADUC from 5 to 7 p.m.

*A gospel play written and directed by Tyree Gaines, a Morehead junior, "Look Where He's Brought Me From," will be performed on Saturday, Feb. 10, in the Duncan Recital Hall from 6 to 8 p.m.

*A production by Kimberly Ross-Brown and Stacey Webster-Little, Lexington Community College assistant professors, "An Urgent Plea: Speaking the Facts" will be presented on Sunday, Feb. 11, in Duncan Recital Hall from 5 to 7 p.m. In the performance, the two female characters discuss the consequences of sexual promiscuity, facts on HIV and Aids Awareness, and ways to foster healthy relationships between the sexes.

*The "Third Annual Salute to African-American History: Who Am I?," vignettes by Morehead State students and staff, and the Ron Hayden Jazz Quartet of Louisville, is slated for Sunday, Feb. 18, in Duncan Recital Hall, from 5 to 7 p.m.

*"The Meeting," a conversation between Malcolm X and Dr. Martin Luther King, Jr., will be performed by 7 AM Productions of Greensboro, N.C., on Sunday, Feb. 25, in Duncan Recital Hall, from 5 to 7 p.m.

All events are sponsored by MSU's offices of the President and Multicultural Student Services and the African/African American Professional Coalition. Additional information on the month-long celebration is available by calling Dr. Francene Botts-Butler, director of multi-cultural student services, at (606) 783-2668 or Tim Young, director of distance learning, at (606) 783-2082.

####

MSU is an affirmative action, equal opportunity educational institution.

News

University Communications

Pauline Young, Director

Morehead State University

UPO Box 1100

Morehead, KY 40351-1689

(606) 783-2030

Feb. 2, 2001

FOR IMMEDIATE RELEASE

ASHLAND, Ky.---Employees and employers alike may gain a better understanding of customer service in a seminar to be offered by Morehead State University's Ashland Small Business Development Center and the Ashland Alliance.

The course will be offered from 1 to 3:30 p.m. on Tuesday, Feb. 13, at MSU at Ashland, G.B. Johnson Building, 1401 Winchester Ave. Topics for discussion will include customer relations skills and techniques for working with the public.

Dennis J. Hillen, senior vice president of marketing and sales for Community Trust Bank, will lead the workshop. Participants will learn how to ask the right questions and how to handle complaints when dealing with the public.

There is a \$20 charge for the class. Ashland Alliance members may register for \$10.

All training programs, sponsored or co-sponsored by MSU's Small Business Development Center, are available to all individuals without regard to race, color, sex, creed, or national origin. Special arrangements for the disabled will be made if requested in advance.

Pre-registration is necessary due to limited seating. Registration and additional information are available by calling MSU's Ashland SBDC at (606) 329-8011.

####

krc

News

University Communications

Pauline Young, Director

Morehead State University

UPO Box 1100

Morehead, KY 40351-1689

(606) 783-2030

Feb. 2, 2001

FOR IMMEDIATE RELEASE

MOREHEAD, Ky.---Whether toning up for summer activities, improving computer skills or learning another language is on your list of things to accomplish, Morehead State University's Office of Continuing Education may have the class to help.

More than 50 courses will be taught this semester. The offerings include:

- Aerobics, Monday-Friday, Feb. 5-May 4, 5:30, 6:30 and 7:30 p.m. programs, Wellness Center, \$45 for two classes each week or \$59 for unlimited sessions;
- Aerobics swing dance, on Tuesdays, Feb. 20-April 17, 7 p.m., dance studio, Laughlin Health Building, \$49 fee;
- Water aerobics, Monday-Thursday, Feb. 5-May 3, 5 p.m., McClure Pool, \$55;
- Arthritis in Motion, Monday, Wednesday and Friday, Feb. 5-May 3, 9 a.m., McClure Pool, \$40;
- Swimming lessons, Saturday, Feb. 10-March 24 or March 31-April 23, McClure Pool, \$65;
- Tai Chi, Thursday, Feb. 12-April 24, 5:30 p.m., dance studio, Laughlin Health Building, \$59;
- Yoga, Thursday, March 22-April 26, 11 a.m., gymnastics room, Academic-Athletic Center, \$45;
- Kayak rolling, Thursday, March 20-April 24, 7 p.m., McClure Pool, \$25;
- A+ computer programming certification, Tuesday, Wednesday and Thursday, March 20-May 3, 5:30 p.m., conference room 2, Waterfield Hall, \$379;
- Introduction to Word, Monday, March 19, 26, April 2 or 9, 5 p.m., \$55;
- Introduction to Excel, Monday, April 23, 30, May 7 or 14, 5 p.m., \$55;
- Introduction to the World Wide Web, Thursday, March 22 or Tuesday, April 24, 5 p.m., \$29;
- Web Page, Tuesday, March 27 or April 3, 5 p.m., \$29;
- Genealogy, Monday, May 21, 5 p.m., \$29;

(MORE)

Continuing education
2-2-2-2

- Creative Writing, date and time: TBA, \$40;
- Back to Black, tips for debt elimination, Monday, May 7, 6 p.m., Eagle Meeting Room, Adron Doran University Center, \$49;
- CPR American Heart Association Certification, date and time: TBA, \$30;
- Instant piano for busy people, Saturday, April 21, 9:30 a.m., Commonwealth Room, Adron Doran University Center, \$59;
- Piano by ear, Saturday, April 21, 1:30 p.m., Commonwealth Room, Adron Doran University Center, \$59;
- Basic dog obedience, Tuesday, March 20-May 8, 5 p.m., Derrickson Agricultural Complex, \$29;
- Beginning horsemanship, Tuesday, Feb. 13-March 27 or April 3-May 8, 6 p.m., Derrickson Agricultural Complex, \$65;
- Advanced horsemanship, Wednesday, Feb. 21-April 18, 6 p.m., Derrickson Agricultural Complex, \$85;
- Horse jumping, Thursday, Feb. 22-April 19, 6 p.m., Derrickson Agricultural Complex, \$85;
- Scuba diving, Monday, March 19-April 23, time: TBA, McClure Pool and Waterfield Hall, \$179;
- Kentucky Motorcycle Program, Morehead and Ashland locations, date and time: TBA, \$80, basic and \$50 advanced courses;
- Stress management, Thursday, March 8, Riggle Room, 9:10 a.m., Adron Doran University Center, \$25; and
- Sexual harassment recognition, prevention and correction tips, Wednesday, April 24, 9:10 a.m., Adron Doran University Center, \$25;

A variety of courses also will be offered online in three different sessions, Wednesday, March 14-April 18, April 11-May 16 or May 9-June 13. The classes range from computer and Spanish instruction to grant writing and SAT/ACT preparation.

Registration and additional information are available by calling (606) 783-2875.

####

News

University Communications

Pauline Young, Director

Morehead State University

UPO Box 1100

Morehead, KY 40351-1689

(606) 783-2030

Feb. 2, 2001

FOR IMMEDIATE RELEASE

MOREHEAD, Ky.---The Morehead State University Interdisciplinary Women's Studies Program has announced a call for student papers for the Judy Rogers Essay Contest.

Entries may be from any discipline that addresses women's issues, may be creative or critical and should not exceed 10 pages in length. Any student who is or was enrolled in a women's studies course or in one that is cross-listed with such a class is eligible to enter.

The essays should provide insights into gender issues, in general, and women's issues, in particular. Directly or indirectly, papers should acknowledge and analyze gender imbalance as well as female empowerment, present new ideas and be written in a clear and concise manner.

Submissions should be sent to Dr. Susan Eacker, director of the Interdisciplinary Women's Studies Program, Rader Hall 336, by Thursday, March 1. A cover sheet containing the author's name, which women's studies course the student was or is enrolled in, and when and by whom the class was taught.

Evaluation of submissions by the program's advisory council will be blind, so the author's name should not appear on the essay itself. The winner will be notified by Thursday, March 15.

The author, who will receive a \$100 award, will present the winning paper during the Wilma E. Grote Symposium for the Advancement of Women which will be held March 22-24 on the campus.

Additional information is available from Dr. Eacker by mail to UPO 993, Morehead State University, Morehead, KY 40351, by e-mail to s.eacker@morehead-st.edu or by telephone at (606) 783-2459.

####

Tips

University Communications

Pauline Young, Director

Morehead State University

UPO Box 1100

Morehead, KY 40351-1689

(606) 783-2030

HIGHLIGHTS AT MOREHEAD STATE UNIVERSITY

(Feb. 11-17)

Tuesday, Feb. 13

Allied Health Job Fair, Crager Room, Adron Doran University Center, 1-4 p.m., free. Additional information: (606) 783-2233.

Thursday, Feb. 15

43rd Annual Band Clinic, for high school students by audition, through Feb. 18. Additional information: (606) 783-2486.

Lady Eagle Basketball: MSU vs. Murray State University, Academic-Athletic Center, 5:30 p.m., charge. Additional information: (606) 783-2126.

Black History Month activity: "African History, Part I," movie by Ashra and Merira Kwesi, Commonwealth Room, Adron Doran University Center, 7 p.m., free. Additional information: (606) 783-2129.

Eagle Basketball: MSU vs. Murray State University, Academic-Athletic Center, 7:30 p.m., charge. Additional information: (606) 783-2087.

Concert: Concert and Jazz bands, Button Auditorium, 7:30 p.m., free. Additional information: (606) 783-2486.

Friday, Feb. 16

Concert: Symphony Band, Button Auditorium, 8 p.m., free. Additional information: (606) 783-2486.

Saturday, Feb. 17

Eagle Baseball: MSU vs. Spalding College, Allen Field, 2 p.m., free. Additional information: (606) 783-2881.

Lady Eagle Basketball: MSU vs. University of Tennessee at Martin, Academic-Athletic Center, 5:30 p.m., charge. Additional information: (606) 783-2126.

Eagle Basketball: MSU vs. University of Tennessee at Martin, Academic-Athletic Center, 7:30 p.m., charge. Additional information: (606) 783-2087.

Recital: MSU Department of Music Prism, Button Auditorium, 8 p.m., free. Additional information: (606) 783-2486.

####

2-5-01rdm

News

University Communications

Pauline Young, Director

Morehead State University

UPO Box 1100

Morehead, KY 40351-1689

(606) 783-2030

Feb. 9, 2001

FOR IMMEDIATE RELEASE

MOREHEAD, Ky.---Complete with concerts, guest conductors and educational clinics, Morehead State University's Department of Music will host its 43rd annual Concert Band Clinic Thursday through Sunday, Feb. 15-18.

More than 120 schools from seven states attend the program each year. The clinic features four honor bands comprised of high school students from the central and eastern portions of the United States.

To be eligible to participate, students must be recommended by their high school band director and send an audition tape to the Department of Music. Upon their arrival on campus, they will perform briefly to determine band and clinic assignments.

Band directors will participate in a variety of activities including observation of guest conductors' rehearsals, a Director's Jazz Band, special clinics and music industry exhibits.

Various concerts by Morehead State bands will be held in Button Auditorium throughout the workshop. These performances, which are free and open to the public, include:

*Feb. 15, Concert and Jazz bands, 7:30 p.m.

*Feb. 16, Symphony Band, 8 p.m.

*Feb. 17, MSU Prism Concert, 8 p.m.

The Band Clinic Honor Band will perform on Sunday, Feb. 18, at 1 p.m. in Button Auditorium. There is a \$4 admission charge.

Guest conductors at the clinic include Ray Cramer, director of bands at Indiana University; Dr. Patrick Dunnigan, associate director of bands at Florida State University; Dr. John Laverty, director of bands at Syracuse University; and Linda Moorehouse, associate director of bands at Louisiana State University.

Additional information is available by calling the bands office in the Department of Music at (606) 783-2486.

####

rdm

News

University Communications

Pauline Young, Director

Morehead State University

UPO Box 1100

Morehead, KY 40351-1689

(606) 783-2030

Feb. 9, 2001

FOR IMMEDIATE RELEASE

MOREHEAD, Ky.---Some rarely seen works from the collection of Morehead State University's Kentucky Folk Art Center are on display now through March in an exhibit titled "Out of Hiding."

"Like most museums, KFAC's permanent collection includes many wonderful works, from Kentucky and elsewhere, most of which are normally out of sight, in climate-controlled storage," said Adrian Swain, museum curator/registrar.

This exhibition begins the process of making more of these works available for public viewing, Swain noted. The museum expects to continue this process with periodic "Out of Hiding" exhibitions in the next few years.

Works featured in this exhibit include that of painters, such as Jimmy Lee Suddith of Alabama. His "sweet mud" portraits utilize a mixture of clay, sugar and paint. Some Kentucky folk artists, Minnie Adkins of Isonville, Ronald Cooper of Flemingsburg and the late Minnie Black of London, are represented by examples that are not typical of their work.

"This exhibition demonstrates the vitality of the creative spirit among self-taught artists," Swain said.

KFAC, a cultural and educational service of MSU, is located at 102 W. First St. in Morehead. The center is open Monday through Saturday, 9 a.m.-5 p.m., and Sunday, 1-5 p.m.

Additional information is available by calling the center at (606) 783-2204.

####

Photo

University Communications

Pauline Young, Director

Morehead State University

UPO Box 1100

Morehead, KY 40351-1689

(606) 783-2030

RARELY SEEN WORKS COME 'OUT OF HIDING'

Some rarely seen works from Morehead State University's Kentucky Folk Art Center are on display now through March in an exhibit titled "Out of Hiding." Currently on display are five figures by Thomas (T.C.) May, of **Floyd County**. KFAC, a cultural and educational service of MSU, is located at 102 W. First St. in Morehead. The center is open Monday through Saturday, 9 a.m.-5 p.m., and Sunday, 1-5 p.m.

(KFAC photograph)

2-13-01ahn

MSU is an affirmative action, equal opportunity educational institution.



News

University Communications

Pauline Young, Director

Morehead State University

UPO Box 1100

Morehead, KY 40351-1689

(606) 783-2030

Feb. 9, 2001

FOR IMMEDIATE RELEASE

MOREHEAD, Ky.---If opening a new business or expanding a current one is of interest to you, Morehead State University's Small Business Development Center could offer assistance with a workshop about financing such endeavors on Thursday, Feb. 15.

The "Small Business Loans" workshop will be held from 5 to 7 p.m. in the Eagle Meeting Room of the Adron Doran University Center. The seminar will cover a variety of topics including the basics of lending, understanding business plans and financial statements and sources of capital.

All training programs, sponsored or co-sponsored by MSU's Small Business Development Center, are available to all individuals without regard to race, color, sex, creed or national origin. Special arrangements for the disabled will be made if requested in advance.

Bank of the Mountains in West Liberty provided support for the workshop.

There is no charge for attending but pre-registration is necessary because of limited seating. Additional information and registration are available by calling MSU's SBDC at (606) 783-2895.

####

rdm

News

University Communications

Pauline Young, Director

Morehead State University

UPO Box 1100

Morehead, KY 40351-1689

(606) 783-2030

Feb. 9, 2001

FOR IMMEDIATE RELEASE

MOREHEAD, Ky.---Dr. Ronald Spangler, a Morehead State University associate professor of industrial education, uses his skills to aid students, colleagues and community groups.

When a map of the Camden-Carroll Library was needed a few years ago, staff members contacted Dr. Spangler. He and his students accepted the challenge, using a computer to make the drawing. "Once we got the layout of the building, it was relatively easy to keep up with the changes, and there have been several," he said.

Recently the library staff showed their appreciation for his efforts with a \$100 gift certificate to the University Bookstore. "I was really surprised and certainly didn't expect it," he said of the gift. "Things like this make you realize that people appreciate you more than you know sometimes."

In addition to working on projects with students at the University, Dr. Spangler researches alternative building design such as a rammed earth, cordwood and strawbale. He recently helped build a strawbale house in Berea and plans to construct a cordwood building on his property in East Kentucky where he will live with his wife after retirement.

The professor has provided assistance for community groups as well. When the local Disaster and Emergency Services unit was planning a mock disaster last year, Dr. Spangler accepted the task. He created a computer-generated model of MSU's Reed Hall after a bomb blast. "I've done all kinds of three-dimensional models for local constituencies as well as for use in teaching," he said.

It was a fellow student at Berea College that introduced Dr. Spangler to design and drafting. "A good friend was in the industrial education department," he said. "I saw some of his work and liked it, so I signed up for a class."

Dr. Spangler earned a bachelor's degree in industrial education from Berea College, a master's degree in the same from Eastern Kentucky University. Since 1994, he has become more interested in the technology of instruction and completed his Ed.D. degree in instructional design and technology from the University of Kentucky. He has been a faculty member at Morehead State since 1987, where he earned a bachelor's degree in industrial technology.

Additional information is available by calling Dr. Spangler at (606) 783-2432.

#####

rdm

MSU is an affirmative action, equal opportunity educational institution.

Photo

University Communications

Pauline Young, Director

Morehead State University

UPO Box 1100

Morehead, KY 40351-1689

(606) 783-2030

MOREHEAD STATE FACULTY MEMBER AT WORK

Dr. Ronald Spangler, associate professor of industrial education at Morehead State University, polishes a set of house plans in his office in Lloyd Cassity Building. Besides teaching duties, he assists community groups with special projects, such as a computer-generated model of MSU's Reed Hall that was used in a mock disaster drill. With the help of his students, Dr. Spangler created a map of the University's Camden-Carroll Library a few years ago. Since that time, he has updated the computer-generated drawing several times and recently the library staff presented him with a \$100 gift certificate to the University Bookstore for his efforts.

(MSU photo by Tim Holbrook)

2-9-01rdm

MSU is an affirmative action, equal opportunity educational institution.

News

University Communications

Pauline Young, Director

Morehead State University

UPO Box 1100

Morehead, KY 40351-1689

(606) 783-2030

Feb. 9, 2001

FOR IMMEDIATE RELEASE

MOREHEAD, Ky.---Paintings, computer art, sculpture, photography and drawings are included in Morehead State University's Visual Art Guild exhibition that will be on display Feb. 12-23 in the Strider Gallery of Claypool-Young Art Building.

The opening reception for the student art show will be Thursday, Feb. 15, beginning at 7 p.m. in the gallery. There is no admission charge. Gallery hours are 8a.m.-4 p.m., weekdays.

Students participating in the exhibit include:

Julia Casey, **Phelps** sophomore and the daughter of Robert and Pearl Casey;

Amanda Fleshman, **West Liberty** sophomore and the daughter of Jim and Sandy Fleshman;

Sarah Grubb, **London** freshman and the daughter of Jan and Ed Philpot and Rick and Joann Grubb;

Elizabeth Haight, **Greenup** junior and the daughter of David and Maria Haight;

Toni Hobbs, **Beattyville** junior and the daughter of Tony and Linda Hobbs;

Andrew Josef Maciula, **Middlesboro** senior and the son of Kenneth and Terry Maciula;

Heather Randolph, **London** senior and the daughter of Jan and Ed Philpot and wife of John Randolph;

Xavier Scott, **Grayson** junior and the husband of Stacey Scott. He is the son of Mary Martin, Sherry Daniels and Charles Scott;

Peggy J. Spencer, **Owingsville** senior and the daughter of Matthew and Imogene Spencer;

Courtney Stephens, **Batavia, Ohio**, senior and the daughter of George and Mindy Stephens;

Laura Sullivan, **Owenton** junior and the daughter of Nancy Rice of **Monterey** and Donald Sullivan of **Shelbyville**.

The Visual Art Guild is a student organization for those with an interest in participating or supporting the visual arts. Additional information is available from the club's sponsor, Elizabeth Mesa-Gaido, associate professor of art, by calling (606) 783-2763.

####

rdm

News

University Communications

Pauline Young, Director

Morehead State University

UPO Box 1100

Morehead, KY 40351-1689

(606) 783-2030

Feb. 9, 2001

FOR IMMEDIATE RELEASE

MOREHEAD, Ky.---Morehead State University theatre students will present "The Heiress," Tuesday-Saturday, Feb. 20-24, in Kibbey Theatre on the campus.

Winner of Broadway's Tony and Hollywood's Academy awards, "The Heiress" is "a powerful drama," according to Dr. Travis Lockhart, professor of theatre. "This is the story of a young couple who fall in love and plan to elope after they are forbidden to marry," he said. "The play ends with an ironic turn of events."

The student participants appearing in lead roles are: Steve Kazee, **Ashland** junior, as Morris Townsend and Brooke Reed, **Louisville** senior, as Catherine Sloper. Dr. Lockhart will direct the production.

The show begins at 8 p.m. each day, except for Feb. 25, which will be a 2 p.m. matinee. Reservations are necessary due to limited seating.

Tickets are \$8 for adults, \$2 for senior citizens and high school students and free to MSU students with a valid ID card. Additional information and tickets are available by calling MSU's theatre box office at (606) 783-2170.

####

krc

News

University Communications

Pauline Young, Director

Morehead State University

UPO Box 1100

Morehead, KY 40351-1689

(606) 783-2030

Feb. 9, 2001

FOR IMMEDIATE RELEASE

MOREHEAD, Ky.---Patricia Stewart-Hopkins, **Florence** junior, will play the role of Marian in Morehead State University theatre students' presentation of "The Heiress," Tuesday through Sunday, Feb. 20-25, in Kibbey Theatre on the campus.

Winner of Broadway's Tony and Hollywood's Academy awards, "The Heiress" is "a powerful drama," according to Dr. Travis Lockhart, professor of theatre. "This is the story of a young couple who fall in love and plan to elope after they are forbidden to marry," he said. "The play ends with an ironic turn of events."

A psychology major, Stewart-Hopkins is the daughter of Betty and Thomas Hopkins. She is a member of Theta Alpha Phi theatre honor society, Psi Chi psychology honors fraternity, Psi Lambda psychology club and the MSU Players.

The show begins at 8 p.m. each day, except for Feb. 25, which will be a 2 p.m. matinee. Reservations are necessary due to limited seating.

Tickets are \$8 for adults, \$2 for senior citizens and high school students and free to MSU students with a valid ID card. Additional information and tickets are available by calling MSU's Theatre Box Office at (606) 783-2170.

####

krc

News

University Communications

Pauline Young, Director

Morehead State University

UPO Box 1100

Morehead, KY 40351-1689

(606) 783-2030

Feb. 9, 2001

FOR IMMEDIATE RELEASE

MOREHEAD, Ky.---William Greene III, an **Augusta** freshman, will participate in Morehead State University theatre students' presentation of "The Heiress," Tuesday through Sunday, Feb. 20-25, in Kibbey Theatre on the campus.

Winner of Broadway's Tony and Hollywood's Academy awards, "The Heiress" is "a powerful drama," according to Dr. Travis Lockhart, professor of theatre. "This is the story of a young couple who fall in love and plan to elope after they are forbidden to marry," he said. "The play ends with an ironic turn of events."

A communications major, Greene is the son of Bill Greene Jr.

The show begins at 8 p.m. each day, except for Feb. 25, which will be a 2 p.m. matinee. Reservations are necessary due to limited seating.

Tickets are \$8 for adults, \$2 for senior citizens and high school students and free to MSU students with a valid ID card. Additional information and tickets are available by calling MSU's Theatre Box Office at (606) 783-2170.

####

krc

News

University Communications

Pauline Young, Director

Morehead State University

UPO Box 1100

Morehead, KY 40351-1689

(606) 783-2030

Feb. 9, 2001

FOR IMMEDIATE RELEASE

MOREHEAD, Ky.---Steve Kazee, junior, and Kristin Kouns, freshman, both of **Ashland**, will participate in Morehead State University theatre students' presentation of "The Heiress," Tuesday through Sunday, Feb. 20-25, in Kibbey Theatre on the campus.

Winner of Broadway's Tony and Hollywood's Academy awards, "The Heiress" is "a powerful drama," according to Dr. Travis Lockhart, professor of theatre. "This is the story of a young couple who fall in love and plan to elope after they are forbidden to marry," he said. "The play ends with an ironic turn of events."

Kazee, the son of Mike and Kathy Kazee, is a member of Theta Alpha Phi theatre honor society and the MSU Players. A Dean's List student, he will play the role of Morris Townsend.

Kouns, the daughter of Thomas and Marissa Kouns, is a member of MSU Players. Also a theatre major, she will appear as Maria.

The show begins at 8 p.m. each day, except for Feb. 25, which will be a 2 p.m. matinee. Reservations are necessary due to limited seating.

Tickets are \$8 for adults, \$2 for senior citizens and high school students and free to MSU students with a valid ID card. Additional information and tickets are available by calling MSU's Theatre Box Office at (606) 783-2170.

#####

krc

News

University Communications

Pauline Young, Director

Morehead State University

UPO Box 1100

Morehead, KY 40351-1689

(606) 783-2030

Feb. 9, 2001

FOR IMMEDIATE RELEASE

MOREHEAD, Ky.---Matt Morphew, **Lexington** junior, will participate in Morehead State University theatre students' presentation of "The Heiress," Tuesday through Sunday, Feb. 20-25, in Kibbey Theatre on the campus.

Winner of Broadway's Tony and Hollywood's Academy awards, "The Heiress" is "a powerful drama," according to Dr. Travis Lockhart, professor of theatre. "This is the story of a young couple who fall in love and plan to elope after they are forbidden to marry," he said. "The play ends with an ironic turn of events."

A theatre major, Morphew is the son of Mike and Mary Morphew. He is a member of Theta Alpha Phi theatre honor society, MSU Players and Pi Kappa Phi social fraternity.

The show begins at 8 p.m. each day, except for Feb. 25, which will be a 2 p.m. matinee. Reservations are necessary due to limited seating.

Tickets are \$8 for adults, \$2 for senior citizens and high school students and free to MSU students with a valid ID card. Additional information and tickets are available by calling MSU's Theatre Box Office at (606) 783-2170.

####

krc

News

University Communications

Pauline Young, Director

Morehead State University

UPO Box 1100

Morehead, KY 40351-1689

(606) 783-2030

Feb. 9, 2001

FOR IMMEDIATE RELEASE

MOREHEAD, Ky.---Emily Moses, a **Cynthiana** senior, will play the role of Mrs. Penniman in Morehead State University theatre students' presentation of "The Heiress," Tuesday through Sunday, Feb. 20-25, in Kibbey Theatre on the campus.

Winner of Broadway's Tony and Hollywood's Academy awards, "The Heiress" is "a powerful drama," according to Dr. Travis Lockhart, professor of theatre. "This is the story of a young couple who fall in love and plan to elope after they are forbidden to marry," he said. "The play ends with an ironic turn of events."

A communications major with an emphasis in journalism, Moses the daughter of Steve and Marsha Moses. An All-American Scholar, she is a member of Theta Alpha Phi theatre honor society and MSU Players.

Moses is the opinion editor for the The Trail Blazer, MSU's student newspaper.

The show begins at 8 p.m. each day, except for Feb. 25, which will be a 2 p.m. matinee. Reservations are necessary due to limited seating.

Tickets are \$8 for adults, \$2 for senior citizens and high school students and free to MSU students with a valid ID card. Additional information and tickets are available by calling MSU's Theatre Box Office at (606) 783-2170.

####

krc

News

University Communications

Pauline Young, Director

Morehead State University

UPO Box 1100

Morehead, KY 40351-1689

(606) 783-2030

Feb. 9, 2001

FOR IMMEDIATE RELEASE

MOREHEAD, Ky.--- Emily Ray, sophomore, and Brooke Reed, senior, both of **Louisville**, will participate in Morehead State University theatre students' presentation of "The Heiress," Tuesday through Sunday, Feb. 20-25, in Kibbey Theatre on the campus.

Winner of Broadway's Tony and Hollywood's Academy awards, "The Heiress" is "a powerful drama," according to Dr. Travis Lockhart, professor of theatre. "This is the story of a young couple who fall in love and plan to elope after they are forbidden to marry," he said. "The play ends with an ironic turn of events."

A psychology major, Ray is the daughter of Ernie and Becky Ray.

Reed, the daughter of Ellen Squires and Dennis Reed, is a member of Theta Alpha Phi theatre honor society and MSU Players. A theatre major, she will appear as Catherine Sloper.

The show begins at 8 p.m. each day, except for Feb. 25, which will be a 2 p.m. matinee. Reservations are necessary due to limited seating.

Tickets are \$8 for adults, \$2 for senior citizens and high school students and free to MSU students with a valid ID card. Additional information and tickets are available by calling MSU's Theatre Box Office at (606) 783-2170.

####

krc

News

University Communications

Pauline Young, Director

Morehead State University

UPO Box 1100

Morehead, KY 40351-1689

(606) 783-2030

Feb. 9, 2001

FOR IMMEDIATE RELEASE

MOREHEAD, Ky.---Amanda Simmons, **Shelbyville** senior, will play the role of Mrs. Montgomery in Morehead State University theatre students' presentation of "The Heiress," Tuesday through Sunday, Feb. 20-25, in Kibbey Theatre on the campus.

Winner of Broadway's Tony and Hollywood's Academy awards, "The Heiress" is "a powerful drama," according to Dr. Travis Lockhart, professor of theatre. "This is the story of a young couple who fall in love and plan to elope after they are forbidden to marry," he said. "The play ends with an ironic turn of events."

A theatre major, Simmons is the daughter of Vance and Marg Simmons. She is a member of the MSU speech team and an associate coach for the Rowan County Senior High School speech team.

The show begins at 8 p.m. each day, except for Feb. 25, which will be a 2 p.m. matinee. Reservations are necessary due to limited seating.

Tickets are \$8 for adults, \$2 for senior citizens and high school students and free to MSU students with a valid ID card. Additional information and tickets are available by calling MSU's Theatre Box Office at (606) 783-2170.

####

krc

News

University Communications

Pauline Young, Director

Morehead State University

UPO Box 1100

Morehead, KY 40351-1689

(606) 783-2030

Feb. 9, 2001

FOR IMMEDIATE RELEASE

MOREHEAD, Ky.---Nicolett Davis, a **Jacksonville, Fla.**, freshman, will participate in Morehead State University theatre students' presentation of "The Heiress," Tuesday through Sunday, Feb. 20-25, in Kibbey Theatre on the campus.

Winner of Broadway's Tony and Hollywood's Academy awards, "The Heiress" is "a powerful drama," according to Dr. Travis Lockhart, professor of theatre. "This is the story of a young couple who fall in love and plan to elope after they are forbidden to marry," he said. "The play ends with an ironic turn of events."

A theatre major, Davis is the daughter of Charles and Erlene Davis. She is a member of the MSU Players, publicity chairman for the Radio Club and vice president of the Aikido Club.

The show begins at 8 p.m. each day, except for Feb. 25, which will be a 2 p.m. matinee. Reservations are necessary due to limited seating.

Tickets are \$8 for adults, \$2 for senior citizens and high school students and free to MSU students with a valid ID card. Additional information and tickets are available by calling MSU's Theatre Box Office at (606) 783-2170.

####

krc

Photo

University Communications

Pauline Young, Director

Morehead State University

UPO Box 1100

Morehead, KY 40351-1689

(606) 783-2030

MSU THEATRE STUDENTS PRESENT 'THE HEIRESS'

Morehead State University theatre students will present the award-winning play "The Heiress," Tuesday through Sunday, Feb. 20-25, in Kibbey Theatre on the MSU campus. The production, centers on a young couple who plan to marry despite family objections. Rehearsing a scene are, from left, Matt Morphew, **Lexington** junior, as Dr. Austin Sloper; Brooke Reed, **Louisville** senior, as Catherine Sloper; and Steve Kazee, **Ashland** junior, as Morris Townsend. Showtime is 8 p.m., except for Feb. 25, which will be a 2 p.m. matinee. Because of limited seating, reservations are necessary. Additional information and reservations are available by calling MSU's Theatre Box Office at (606) 783-2170.

(MSU photo by Tim Holbrook)

2-9-01rdm

MSU is an affirmative action, equal opportunity educational institution.

News

University Communications

Pauline Young, Director

Morehead State University

UPO Box 1100

Morehead, KY 40351-1689

(606) 783-2030

Feb. 9, 2001

FOR IMMEDIATE RELEASE

FRANKFORT, Ky.---Presidents from educational institutions across the state will join with those from state government and state agencies for a Summit to Reduce High-Risk Drinking Among College Students on Tuesday, Feb. 27, in Frankfort.

The summit, which begins at 11 a.m. at the Capital Plaza, will provide the setting for leaders to develop statewide strategies to help combat the abuse of alcohol among college students.

Coordinating the day's agenda will be Morehead State University President Ronald G. Eaglin who is leading the campaign. "The use of alcohol has increased to become a national problem," Dr. Eaglin said. "It is only by working together that we can change the way our young people deal with a situation that can cause irreparable harm and may become life threatening."

The status of alcohol abuse on Kentucky's campuses will be presented during the summit. Information also will be provided by individuals who have dealt with high-risk alcohol abuse including discussions by Betty Waters Straub of Louisville, a business consultant and evaluator of the U.S. Department of Education grant; Dr. William DeJong, executive director of the Higher Education Center for Alcohol and Other Drug Prevention and a lecturer at the Harvard School of Public Health; Larry Carrico, executive director of Champions for a Drug Free Kentucky; and Ed Ford from the governor's office.

A special signing ceremony will conclude the day's agenda with each of the educational leaders accepting responsibility for achieving academic success for their students.

Last year, MSU increased its alcohol awareness program after receiving a \$249,000 grant from the U.S. Department of Education that is administered through the Kentucky Network Project to Reduce High-Risk Drinking Among College Students. Dr. Eaglin is the project director.

Additional information on the Feb. 27 summit is available by calling Judy Krug, MSU student wellness coordinator and chair of the Kentucky network, at (606) 783-2125 or by e-mail to j.krug@morehead-st.edu.

#####

MSU is an affirmative action, equal opportunity educational institution.

Media Advisory

University Communications

Pauline Young, Director

Morehead State University

UPO Box 1100

Morehead, KY 40351-1689

(606) 783-2030

EVENT: Board of Regents Work Session

DATE: Saturday, Feb. 10, 2001

TIME: 9 a.m.

SITE: Riggle Room, Adron Doran University Center

The Regents will meet for a work session to discuss topics that will come before the board at its March 3 quarterly meeting.

Among the topics for discussion will be the draft of MSU's strategic plan for 2001-2005.

Media representatives planning to attend the work session are requested to call the Office of University Communications at (606) 783-2030, before noon on Friday, Feb. 9, so that sufficient support materials will be available.

#####

Tips

University Communications

Pauline Young, Director

Morehead State University

UPO Box 1100

Morehead, KY 40351-1689

(606) 783-2030

MARCH HIGHLIGHTS AT MOREHEAD STATE UNIVERSITY

March 1, Eating Disorders Ribbon Day, second floor information booth, Adron Doran University Center, 10 a.m.-3 p.m., free. Additional information: (606) 783-2779.

March 1, Teaching for Success conference, Adron Doran University Center, 8:30 a.m., charge. Additional information: (606) 783-5208.

March 2, Eating Disorders Awareness Day, second floor information booth, Adron Doran University Center, 10 a.m.-2 p.m., free. Additional information: (606) 783-2779.

March 3, Eagle Softball: MSU vs. Kent State University, softball field, 11 a.m., free. Additional information: (606) 783-5283.

March 3, Eagle Baseball: MSU vs. Wright State University, Allen Field, 1 p.m., doubleheader, free. Additional information: (606) 783-2881.

March 3, Eagle Softball: MSU vs. Indiana University-Purdue University, Indianapolis, softball field, 3 p.m., free. Additional information: (606) 783-5283.

March 3, MSU Board of Regents meeting, campus, time: TBA. Additional information: (606) 783-2030.

March 4, Eagle Softball: MSU vs. Kent State University, softball field, 11 a.m., free. Additional information: (606) 783-5283.

March 4, Eagle Baseball: MSU vs. Wright State University, Allen Field, 1 p.m., free. Additional information: (606) 783-2881.

March 4, Eagle Softball: MSU vs. Indiana University-Purdue University, Indianapolis, softball field, 3 p.m., free. Additional information: (606) 783-5283.

March 5, Eating disorders screening, Eagle Dining and Eagle Meeting rooms, Adron Doran University Center, 4:30-6:30 p.m., free. Additional information: (606) 783-2779.

March 6, Spring 2001 Job Fair, Crager Room, Adron Doran University Center, 10 a.m.-1 p.m., free. Additional information: (606) 783-2233.

March 6, Lady Eagle and Eagle Tennis: MSU vs. Georgetown College, Sadler Tennis Courts, 3 p.m., free. Additional information: (606) 783-5408.

(MORE)

March Highlights
2-2-2-2

March 7, Eagle Softball: MSU vs. Wright State University, softball field, 2 p.m., doubleheader, free. Additional information: (606) 783-5283.

March 7, MSU Day for Russell High School students, 10 a.m.-2 p.m., Riggle Room, Adron Doran University Center. Additional information: (606) 783-2000.

March 8, Lady Eagle and Eagle Tennis: MSU vs. Bellarmine College, Sadler Tennis Courts, 3 p.m., free. Additional information: (606) 783-5408.

March 9, Eagle Softball: MSU vs. West Virginia Institute of Technology, softball field, 2 p.m., free. Additional information: (606) 783-5283.

March 9, Eagle Baseball: MSU vs. Indiana University-Purdue University, Indianapolis, Allen Field, 2 p.m., doubleheader, free. Additional information: (606) 783-2881.

March 10, Eagle Baseball: MSU vs. Indiana University-Purdue University, Indianapolis, Allen Field, 11 a.m., free. Additional information: (606) 783-2881.

March 10, Eagle Softball: MSU vs. East Tennessee State University, softball field, 2 p.m., doubleheader, free. Additional information: (606) 783-5283.

March 10, Eagle Baseball: MSU vs. Youngstown State University, Allen Field, 5 p.m., free. Additional information: (606) 783-2881.

March 11, Eagle Baseball: MSU vs. Youngstown State University, Allen Field, 1 p.m., free. Additional information: (606) 783-2881.

March 12-16, Spring Break, no classes or office hours. Classes resume and offices reopen at 8 a.m., March 19.

March 14, Eagle Baseball: MSU vs. Marshall University, Allen Field, 2 p.m., doubleheader, free. Additional information: (606) 783-2881.

March 20, Eagle Baseball: MSU vs. Cedarville College, Allen Field, 6 p.m., free. Additional information: (606) 783-2881.

March 21, Eagle Baseball: MSU vs. Union College, Allen Field, 6 p.m., free. Additional information: (606) 783-2881.

March 22, Future Business Leaders of America spring conference, campus, 8 a.m., charge. Additional information: (606) 783-5393.

March 22-24, Wilma E. Grote Symposium for the Advancement of Women, campus, charge. Keynote speaker: Bobbie Ann Mason, Kentucky author. Additional information: (606) 783-2015.

March 24, Eagle Baseball: MSU vs. Murray State University, Allen Field, 2 p.m., doubleheader, free. Additional information: (606) 783-2881.

(MORE)

March highlights

3-3-3-3

March 25, Eagle Baseball: MSU vs. Murray State University, Allen Field, 2 p.m., free.
Additional information: (606) 783-2881.

March 27-28, Red Cross Blood Drive, Button Drill Room, 8 a.m.-5 p.m. Additional information:
(606) 783-5124.

March 28, Performance: "Lest We Forget," a one-woman play with Mary Moore, grill, Adron
Doran University Center, 7 p.m., free. Additional information: (606) 783-2129.

March 29-June 17, Exhibit: "Urban Folk Art," Kentucky Folk Art Center, charge. Additional
information: (606) 783-2204.

March 29, Founders Day, campus. Activities include memorial brick dedication ceremony, Little
Bell Tower, 10:30 a.m.; luncheon, Crager Room, 11:30 a.m., charge. Additional
information: (606) 783-2741.

March 29-31, Theatre: "The Secret Garden," Button Auditorium, 8 p.m., charge. Additional
information: (606) 783-2170.

March 31, Preview Day, for high school students, Button Drill Room, 11 a.m., free. Additional
information: (606) 783-2000 or (800) 585-6781.

March 31, Eagle Softball: MSU vs. University of Tennessee at Martin, softball field, 1 p.m.,
doubleheader, free. Additional information: (606) 783-5283.

####

2-12-01rdm

Tips

University Communications

Pauline Young, Director

Morehead State University

UPO Box 1100

Morehead, KY 40351-1689

(606) 783-2030

APRIL HIGHLIGHTS AT MOREHEAD STATE UNIVERSITY

April 1, Eagle Softball: MSU vs. University of Tennessee at Martin, softball field, 1 p.m., free.
Additional information: (606) 783-5283.

April 3, Alcohol screening day, Commonwealth and Eagle Dining rooms, Adron Doran
University Center, 10 a.m.-2 p.m., free. Additional information: (606) 783-2125.

April 3, Eagle Softball: MSU vs. Eastern Kentucky University, softball field, 1 p.m.,
doubleheader, free. Additional information: (606) 783-5283.

April 4, Eagle Baseball: MSU vs. Belmont University, Allen Field, 3 p.m., doubleheader,
free. Additional information: (606) 783-2881.

April 4, Eagle Tennis: MSU vs. Pikeville College, Sadler Tennis Courts, 3 p.m., free. Additional
information: (606) 783-5408.

April 6, Eagle and Lady Eagle Tennis, MSU vs. Samford University, Sadler Tennis Courts,
2:30 p.m., free. Additional information: (606) 783-5408.

April 7, Drum major clinic, for high school students, Baird Music Hall, 9 a.m.-4:30 p.m., charge.
Additional information: (606) 783-2486.

April 7, Eagle Baseball: MSU vs. University of Tennessee at Martin, Allen Field, 2 p.m.,
doubleheader, free. Additional information: (606) 783-2881.

April 8, Eagle Baseball: MSU vs. University of Tennessee at Martin, Allen Field, 2 p.m.,
free. Additional information: (606) 783-2881.

April 11, Eagle and Lady Eagle Tennis, MSU vs. Eastern Kentucky University, Sadler Tennis
Courts, 2:30 p.m., free. Additional information: (606) 783-5408.

April 11, Eagle Baseball: MSU vs. Lipscomb University, Allen Field, 3 p.m.,
doubleheader, free. Additional information: (606) 783-2881.

April 12, Spring Egg Hunt, Fields Hall lawn, 5:30 p.m., free. Additional information:
(606) 783-2071.

April 13, Eagle and Lady Eagle Tennis, MSU vs. Cumberland College, Sadler Tennis Courts,
2:30 p.m., free. Additional information: (606) 783-5408.

April 13, Eagle Softball: MSU vs. Eastern Illinois University, softball field, 3 p.m.,
doubleheader, free. Additional information: (606) 783-5283.

(MORE)

April highlights
2-2-2-2

April 14, Lady Eagle Tennis: MSU vs. Belmont University and Northern Kentucky University, Sadler Tennis Courts, time: TBA, free. Additional information: (606) 783-5408.

April 14, Eagle Softball: MSU vs. Eastern Illinois University, softball field, 1 p.m., free. Additional information: (606) 783-5283.

April 15, Eagle and Lady Eagle Tennis, MSU vs. Tennessee Technological University, Sadler Tennis Courts, 10 a.m., free. Additional information: (606) 783-5408.

April 19, MSU Regional Foreign Language Festival, for high school students, various campus locations, 8 a.m.-3 p.m., charge. Additional information: (606) 783-2582.

April 21, Science Olympiad, various locations on campus, 9 a.m. Additional information: (606) 783-2913.

April 21, Eagle Baseball: MSU vs. Austin Peay State University, Allen Field, 2 p.m., doubleheader, free. Additional information: (606) 783-2881.

April 22, Eagle Baseball: MSU vs. Austin Peay State University, Allen Field, 2 p.m., free. Additional information: (606) 783-2881.

April 28, Blue and Gold Steer and Heifer Preview Show, Derrickson Agricultural Complex, 1 p.m., \$25 entry fee per animal, free admission. Additional information: (606) 783-2671.

April 28, Spring Gala, "Under the Big Top," campus, 6 p.m., reservations required. Additional information: (606) 783-2071.

April 29, Honors Convocation, Button Auditorium, 2 p.m., free. Additional information: (606) 783-2807.

####

2-12-01rdm

Tips

University Communications

Pauline Young, Director

Morehead State University

UPO Box 1100

Morehead, KY 40351-1689

(606) 783-2030

HIGHLIGHTS AT MOREHEAD STATE UNIVERSITY

(Feb. 18-24)

Sunday, Feb. 18

Eagle Softball Pitching and Catching Clinic, for fifth-ninth graders, Wetherby Gymnasium, noon-1:30 p.m. for beginners, 2-3:30 p.m. for advanced players, charge. Additional information: (606) 783-5283.

Eagle Baseball: MSU vs. Shawnee State University, Allen Field, 2 p.m., free. Additional information: (606) 783-2881.

Concert: Band Clinic Honor Band, Button Auditorium, 1 p.m., charge. Additional information: (606) 783-2486.

Tuesday, Feb. 20

Poet and editor Stephen Corey, seminar on venues for publishing, 405 Combs building, 1:50 p.m.; seminar on editing process, 413 Combs Building, 3:30 p.m.; poetry reading, Kentucky Folk Art Center, 8 p.m. All events are free. Additional information is available by calling (606) 783-2136.

Theatre: "The Heiress," through Feb. 25, Kibbey Theatre, 8 p.m., except Feb. 25, 2 p.m., charge. Additional information: (606) 783-2170.

Wednesday, Feb. 21

Poet Steve Coleman, grill, Adron Doran University Center, 9 p.m., free. Additional information: (606) 783-2071.

Saturday, Feb. 24

Preview Day, for high school students, Button Drill Room, 11 a.m., free. Additional information: (606) 783-2000 or (800) 585-6781.

Eagle Baseball: MSU vs. University of Toledo, Allen Field, 1 p.m., doubleheader, free. Additional information: (606) 783-2881.

#####

2-12-01rdm

News

University Communications

Pauline Young, Director

Morehead State University

UPO Box 1100

Morehead, KY 40351-1689

(606) 783-2030

Feb. 12, 2001

FOR IMMEDIATE RELEASE

MOREHEAD, Ky.---The premiere performance of the MSU Traditional Music Ensemble is set for Thursday, Feb. 15, at 3 p.m. in the Duncan Recital Hall.

Affiliated with the recently established Kentucky Center for Traditional Music, this group will perform a variety of bluegrass music as well as other works in the traditional music genre.

Under the leadership of Jesse Wells, MSU senior from Flat Gap, this ensemble rehearses bi-weekly and members receive one hour of academic credit.

There is no admission charge.

Additional information is available by calling (606) 783-2473.

####

Tips

University Communications

Pauline Young, Director

Morehead State University

UPO Box 1100

Morehead, KY 40351-1689

(606) 783-2030

APRIL HIGHLIGHTS AT MOREHEAD STATE UNIVERSITY

April 1, Eagle Softball: MSU vs. University of Tennessee at Martin, softball field, 1 p.m., free.
Additional information: (606) 783-5283.

April 3, Alcohol screening day, Commonwealth and Eagle Dining rooms, Adron Doran
University Center, 10 a.m.-2 p.m., free. Additional information: (606) 783-2125.

April 3, Eagle Softball: MSU vs. Eastern Kentucky University, softball field, 1 p.m.,
doubleheader, free. Additional information: (606) 783-5283.

April 4, Eagle Baseball: MSU vs. Belmont University, Allen Field, 3 p.m., doubleheader,
free. Additional information: (606) 783-2881.

April 4, Eagle Tennis: MSU vs. Pikeville College, Sadler Tennis Courts, 3 p.m., free. Additional
information: (606) 783-5408.

April 6, Eagle and Lady Eagle Tennis, MSU vs. Samford University, Sadler Tennis Courts,
2:30 p.m., free. Additional information: (606) 783-5408.

April 7, Drum major clinic, for high school students, Baird Music Hall, 9 a.m.-4:30 p.m., charge.
Additional information: (606) 783-2486.

April 7, Eagle Baseball: MSU vs. University of Tennessee at Martin, Allen Field, 2 p.m.,
doubleheader, free. Additional information: (606) 783-2881.

April 8, Eagle Baseball: MSU vs. University of Tennessee at Martin, Allen Field, 2 p.m.,
free. Additional information: (606) 783-2881.

April 11, Eagle and Lady Eagle Tennis, MSU vs. Eastern Kentucky University, Sadler Tennis
Courts, 2:30 p.m., free. Additional information: (606) 783-5408.

April 11, Eagle Baseball: MSU vs. Lipscomb University, Allen Field, 3 p.m.,
doubleheader, free. Additional information: (606) 783-2881.

April 12, Spring Egg Hunt, Fields Hall lawn, 5:30 p.m., free. Additional information:
(606) 783-2071.

April 13, Eagle and Lady Eagle Tennis, MSU vs. Cumberland College, Sadler Tennis Courts,
2:30 p.m., free. Additional information: (606) 783-5408.

April 13, Eagle Softball: MSU vs. Eastern Illinois University, softball field, 3 p.m.,
doubleheader, free. Additional information: (606) 783-5283.

(MORE)

April highlights

2-2-2-2

April 14, Lady Eagle Tennis: MSU vs. Belmont University and Northern Kentucky University, Sadler Tennis Courts, time: TBA, free. Additional information: (606) 783-5408.

April 14, Eagle Softball: MSU vs. Eastern Illinois University, softball field, 1 p.m., free. Additional information: (606) 783-5283.

April 15, Eagle and Lady Eagle Tennis, MSU vs. Tennessee Technological University, Sadler Tennis Courts, 10 a.m., free. Additional information: (606) 783-5408.

April 19, MSU Regional Foreign Language Festival, for high school students, various campus locations, 8 a.m.-3 p.m., charge. Additional information: (606) 783-2582.

April 21, Science Olympiad, various locations on campus, 9 a.m. Additional information: (606) 783-2913.

April 21, Eagle Baseball: MSU vs. Austin Peay State University, Allen Field, 2 p.m., doubleheader, free. Additional information: (606) 783-2881.

April 22, Eagle Baseball: MSU vs. Austin Peay State University, Allen Field, 2 p.m., free. Additional information: (606) 783-2881.

April 28, Blue and Gold Steer and Heifer Preview Show, Derrickson Agricultural Complex, 1 p.m., \$25 entry fee per animal, free admission. Additional information: (606) 783-2671.

April 28, Spring Gala, "Under the Big Top," campus, 6 p.m., reservations required. Additional information: (606) 783-2071.

April 29, Honors Convocation, Button Auditorium, 2 p.m., free. Additional information: (606) 783-2807.

####

2-12-01rdm

Tips

University Communications

Pauline Young, Director

Morehead State University

UPO Box 1100

Morehead, KY 40351-1689

(606) 783-2030

HIGHLIGHTS AT MOREHEAD STATE UNIVERSITY

(Feb. 18-24)

Sunday, Feb. 18

Eagle Softball Pitching and Catching Clinic, for fifth-ninth graders, Wetherby Gymnasium, noon-1:30 p.m. for beginners, 2-3:30 p.m. for advanced players, charge. Additional information: (606) 783-5283.

Eagle Baseball: MSU vs. Shawnee State University, Allen Field, 2 p.m., free. Additional information: (606) 783-2881.

Concert: Band Clinic Honor Band, Button Auditorium, 1 p.m., charge. Additional information: (606) 783-2486.

Tuesday, Feb. 20

Poet and editor Stephen Corey, seminar on venues for publishing, 405 Combs building, 1:50 p.m.; seminar on editing process, 413 Combs Building, 3:30 p.m.; poetry reading, Kentucky Folk Art Center, 8 p.m. All events are free. Additional information is available by calling (606) 783-2136.

Theatre: "The Heiress," through Feb. 25, Kibbey Theatre, 8 p.m., except Feb. 25, 2 p.m., charge. Additional information: (606) 783-2170.

Wednesday, Feb. 21

Poet Steve Coleman, grill, Adron Doran University Center, 9 p.m., free. Additional information: (606) 783-2071.

Saturday, Feb. 24

Preview Day, for high school students, Button Drill Room, 11 a.m., free. Additional information: (606) 783-2000 or (800) 585-6781.

Eagle Baseball: MSU vs. University of Toledo, Allen Field, 1 p.m., doubleheader, free. Additional information: (606) 783-2881.

####

2-12-01rdm

News

University Communications

Pauline Young, Director

Morehead State University

UPO Box 1100

Morehead, KY 40351-1689

(606) 783-2030

Feb. 12, 2001

FOR IMMEDIATE RELEASE

MOREHEAD, Ky.---Guitarists and balladeers will be performing during Morehead State University's "Americana Crossroads Live" on Friday, Feb. 23, at 7:30 p.m. in Duncan Recital Hall on the campus.

The concert, sponsored by WMKY 90.3 FM, the University's public radio to the mountains, and the Kentucky Center for Traditional Music, will feature Mother Jane, Anne MacFie and Pat Kirtley. The emcee for the evening will be Sandy Knipp, host of WMKY's "Bluegrass Diversion" program and KCTM director.

The Lexington-based folk duo, Mother Jane was named Ace Magazine's Best Undiscovered Band of 2000. Guitarists Beth Burden and Lisa Raymond have played on the nationally syndicated radio program "Woodsongs Old Time Radio Hour" and at the Kentucky Music Conference.

A professional musician for more than three decades, MacFie plays mountain dulcimer, guitar and snare drum. Her music includes the traditional songs of Appalachia and the British Isles. She has performed across the United States and in music festivals at Kentucky State Parks.

The first place winner in the National Fingerstyle Guitar Championship in 1995, Kirtley also won the 1994 National Thumbpicking Guitar Contest. His music, which includes folk, Celtic, country, pop and songs of his native Kentucky, has been featured on National Public Radio's "Morning Edition" and "All Things Considered."

The concert is free and open to the public. The doors open at 7 p.m.

Additional information on "Americana Crossroads" is available by calling WMKY at (606) 783-2001.

####

News

University Communications

Pauline Young, Director

Morehead State University

UPO Box 1100

Morehead, KY 40351-1689

(606) 783-2030

Feb. 12, 2001

FOR IMMEDIATE RELEASE

MOREHEAD, Ky.---Morehead State University's Department of English, Foreign Languages and Philosophy will host poet and editor Stephen Corey on Tuesday, Feb. 20.

Corey had been slated to come to campus earlier in the month, but he had to reschedule his visit to speak on literary editing and to give a poetry reading.

The acting editor of "The Georgia Review" in Athens, he will provide an insider's look at that journal and other venues for publishing literary work. The one-hour seminar will be held in 405 Combs Building beginning at 1:50 p.m. He will teach a workshop on the literary journal's editing process, with focus on poetry, from 3:30 to 5:30 p.m. in 413 Combs Building.

A poet who has published eight collections, Corey will read from his work at 8 p.m. at the Kentucky Folk Art Center, 102 W. First St. in Morehead.

All events are open to the public with no admission charge.

Corey has spent nearly 25 years working as an editor of literary publications. His published works include "Greatest Hits: Poems 1980-2000," "Mortal Fathers and Daughters," and "All These Lands You Call One Country."

His poems, essays and reviews have appeared in many periodicals, including "The American Poetry Review," "The New Republic," "Ploughshares," "Shenandoah," and "Poets & Writers." Twice selected as Georgia Author of the Year in Poetry, Corey has been the recipient of numerous grants and awards, and has taught at universities and writing conferences across the country.

Additional information is available by calling Dr. Sheri Joseph, assistant professor of English, at (606) 783-2136.

####

News

University Communications

Pauline Young, Director

Morehead State University

UPO Box 1100

Morehead, KY 40351-1689

(606) 783-2030

Feb. 12, 2001

FOR IMMEDIATE RELEASE

MOREHEAD, Ky.---Jessica Reynolds is the third sibling in her family to attend college after participating in Morehead State University's Upward Bound. The **Elliott County** freshman now takes part in Student Support Services on the campus.

After her two older sisters, Jennifer and Stephanie, participated in Upward Bound during their high school years, Jessica decided it was a good choice for her as well. "It's kind of like a family thing for us," she said.

A 1996 magna cum laude graduate of MSU, Jennifer is a teacher at Rowan County Middle School. While a college student, she worked as a tutor-counselor during Upward Bound's summer camp where she now teaches classes. Stephanie is a senior at Eastern Kentucky University.

The siblings, the daughters of Ron and Rhonda Reynolds, have a younger sister, Robin, who is a freshman at Elliott County High School. She recently became active in Upward Bound.

Besides family tradition, the program was attractive to Jessica because she could earn six college credits and learn the layout of the campus and how to use the Camden-Carroll Library before entering Morehead State as a freshman.

"The program showed me what college was going to be like," Jessica said. "In the career planning class, I learned that there are not a lot of jobs that I would want to do without a college degree."

When she became a full-time college student, Jessica's decision to continue in the federally-funded Trio Programs was an easy one. "It's good to have someone to help you sometimes because you need it," she said.

Thousands of Kentuckians have attained educational goals through the Trio Programs, which were established by the Higher Education Act of 1965. On the MSU campus, the Commonwealth Educational Opportunity Center, Educational Talent Search, Student Support Services and Upward Bound offer assistance for disadvantaged students whose parents did not graduate from college.

(MORE)

Trio Programs
2-2-2-2

Morehead State's Educational Talent Search has worked with more than 25,000 middle and high school students since it began on the campus in 1968. Academic counseling and information about postsecondary education options are provided to its participants in 10 counties.

Counselors in Upward Bound work with high school students to generate the academic skills and motivation necessary for success in postsecondary education. The program, which includes activities after school, on weekends and a summer camp, has served more than 2,100 students since 1966.

Initiated in 1971, Student Support Services offers tutoring, academic advising, and personal career and financial aid counseling to 221 undergraduates each year. Its participants enjoy a variety of events throughout the semester, such as white water rafting or to a hockey game.

Designed for non-traditional students, the Commonwealth Educational Opportunity Center serves approximately 2,000 adults annually. The CEOC, which has served more than 15,000 adults in 10 years, works to increase the educational level and college attendance rate in a 27-county area.

Kentucky students will join hundreds of others for National Trio Day on Saturday, Feb. 24. Students will compete in a Scholars Bowl contest and attend a theatrical performance by Hasan Davis at Berea College, which is hosting the statewide celebration.

Additional information about National Trio Day is available by calling Gera L. Drake, MSU's communications and information coordinator with CEOC, at (606) 783-2063

####

rdm

Photo

University Communications

Pauline Young, Director

Morehead State University

UPO Box 1100

Morehead, KY 40351-1689

(606) 783-2030

MOREHEAD STATE PROVIDES SUPPORT TO STUDENTS

Jessica Reynolds, an **Elliott County** freshman, completes a homework assignment in Morehead State University's Camden-Carroll Library. A participant in the federally funded Trio Program, Jessica participated in the Upward Bound Program as a high school student and is currently in the Student Support Services unit. Jessica, the third daughter of Ron and Rhonda Reynolds, has been guided toward success in postsecondary education by MSU's academic counselors. The Trio Programs, which also include Educational Talent Search and the Commonwealth Educational Opportunity Center, were established for low-income students whose parents did not graduate from college.

(MSU photo by Tim Holbrook)

2-9-01rdm

MSU is an affirmative action, equal opportunity educational institution.



News

University Communications

Pauline Young, Director

Morehead State University

UPO Box 1100

Morehead, KY 40351-1689

(606) 783-2030

Feb. 13, 2001

FOR IMMEDIATE RELEASE

MOREHEAD, Ky.---Dr. Roma Prindle, Morehead State University associate professor of music, will present a voice recital on Tuesday, Feb. 27, at 8 p.m. in Duncan Recital Hall of Baird Music Hall.

"I was inspired by my recent time in Ireland while on tour with OperaWorks," said Dr. Prindle, who is director of the MSU group. "I have chosen to present an entire program of music with Celtic or Celtic-inspired origins."

Dr. Prindle, who is being accompanied by Mary Ellen McNeill on piano, will open the program with the well-known aria, "Rejoice Greatly" from George Frederick Handel's famous oratorio, "Messiah," which premiered in Dublin in 1742.

At the center of the program will be Samuel Barber's "Hermit Songs." These are settings of anonymous Irish texts of the eighth to 13th centuries, written by monks and scholars, often on the margins of manuscripts they were copying or illuminating, according to Dr. Prindle.

Excerpts from "Moore's Irish Melodies" as set by Benjamin Britten will be included, as will Dublin-born Charles Villiers Stanford's "The Fairy Lough," "To Eire," by Arnold Bax and Beethoven's "Erin, Oh! Erin!" Also on the program are some familiar folk songs.

A soprano, Dr. Prindle is coordinator of vocal studies at MSU. She has sung professionally with several U.S. opera companies, including the Minnesota, Connecticut, Goodspeed and Connecticut Concert operas, Opera Express and Opera Roanoke, and with choralists Robert Shaw and Dale Warland.

Her career is international as well, with solo performances in Austria, Germany, Ireland and Italy, and vocal master classes presented in Taiwan. Dr. Prindle also has taught in Salzburg, Austria, through the Kentucky Institute for International Studies.

Additional information is available by calling Dr. Prindle at (606) 783-2481.

####

News

University Communications

Pauline Young, Director

Morehead State University

UPO Box 1100

Morehead, KY 40351-1689

(606) 783-2030

Feb. 13, 2001

FOR IMMEDIATE RELEASE

ASHLAND, Ky.---Two courses to assist small business owners in completing their taxes will be offered by Morehead State University's Ashland Small Business Development Center and the Ashland Alliance on Tuesday, Feb. 20, at MSU at Ashland, 1401 Winchester Ave.

Elizabeth Hurst, owner and operator of Greenup Tax Service, will teach "Self Employment 'Schedule C' Tax" at 9:30 a.m. and "Payroll and Employer Tax Issues" at 1 p.m. There is a \$20 charge for each of the two-hour classes. Ashland Alliance members may register for \$10 per course.

Topics to be discussed at the "Self Employment" session include small business deductions, sales and expense records and procedures for completing the Schedule C tax form. Part- and full-time employee payroll deductions, payroll records and various types of employer tax forms and requirements will be covered in the "Tax Issues" class. Time will be allotted for questions during both seminars.

All training programs, sponsored or co-sponsored by MSU's Small Business Development Center, are available to all individuals without regard to race, color, sex, creed or national origin. Special arrangements for the disabled will be made if requested in advance.

Pre-registration is necessary because of limited seating. Additional information and registration are available by calling MSU's Ashland SBDC at (606) 329-8011.

####

News

University Communications

Pauline Young, Director

Morehead State University

UPO Box 1100

Morehead, KY 40351-1689

(606) 783-2030

Feb. 14, 2001

FOR IMMEDIATE RELEASE

MOREHEAD, Ky.---Morehead State University's Upward Bound program is accepting applications for instructors interested in teaching during its summer component, June 11-July 14.

Instructors are needed in mathematics, English, sciences, career planning, foreign languages, art, drama, dance, writing, physical education and other areas of interest to teenagers. In addition to teaching approximately four hours per day, Monday-Friday, instructors participate in two evening and/or weekend activities each week.

To be eligible, candidates must have at least a bachelor's degree. Experience in teaching or nd prior experience working with teenagers is preferred. Applications, which may be obtained from the Upward Bound office, 205 Allie Young Hall, are due **Tuesday, March 6**.

Additional information is available by calling (606) 783-2611 or (800) 5-UPWARD.

#####

News

University Communications

Pauline Young, Director

Morehead State University

UPO Box 1100

Morehead, KY 40351-1689

(606) 783-2030

Feb. 14, 2001

FOR IMMEDIATE RELEASE

MOREHEAD, Ky.--Growing up, Thomas Frazier, a Morehead State University senior, often took things apart to see how they worked.

It was his curiosity and interest in science that led the Louisa biology major to pursue medical school. "As a kid in Eastern Kentucky, you look for professions that you can do around your home," Frazier said. "There are no geneticists, no biomedical engineers. There are dentists and physicians."

After receiving his degree from MSU in May, Frazier plans to attend the University of Louisville School of Medicine on a Dean's Merit Scholarship. Valued at approximately \$50,000, the scholarship covers tuition, books and supplies for his four years of medical school, providing he ranks in the top third of his class, Frazier noted.

A Dean's List student at Morehead State, Frazier also is a finalist for the M.D./Ph.D. degree program at the University of Louisville. The school selects two students each year to enter that curriculum.

A participant in Emory University's Summer Undergraduate Research Education program, Frazier spent time investigating DNA vaccines for HIV. He shared that experience with fellow MSU science students and faculty members during the Department of Biological and Environmental Sciences Spring Seminar Series.

"It was an opportunity to do graduate-type research without the obligations of graduate or professional school," Frazier said. In addition, "if you're going to make yourself the most competitive applicant to schools...you need to get out there and do research."

Frazier, the son of Annette Frazier and the late James Frazier, has presented his work at regional, state and national conferences as a participant in the Honors Program roundtables. He also had a poster accepted for the SURE conference.

Currently Frazier is not certain whether he will pursue biomedical research as a profession or become a physician, or both. "I want to explore medicine as a whole and not confine myself to just one thing," he said. "The project over the summer allowed me to broaden my scope and career path."

####

rdm

Photo

University Communications

Pauline Young, Director

Morehead State University

UPO Box 1100

Morehead, KY 40351-1689

(606) 783-2030

MOREHEAD STATE STUDENT SPEAKS ON RESEARCH EXPERIENCE

Thomas Frazier, **Louisa** senior, spoke about his research to fellow Morehead State University students and faculty members during the Department of Biological and Environmental Sciences Spring Seminar Series. He was a participant in Emory University's Summer Undergraduate Research Education program. A biology major, Frazier will attend the University of Louisville School of Medicine in the fall on a Dean's Merit Scholarship, valued at approximately \$50,000.

(MSU photo by Tim Holbrook)

2-1-01rdm

MSU is an affirmative action, equal opportunity educational institution.



News

University Communications

Pauline Young, Director

Morehead State University

UPO Box 1100

Morehead, KY 40351-1689

(606) 783-2030

Feb. 14, 2001

FOR IMMEDIATE RELEASE

MOREHEAD, Ky.---Morehead State University will host the first Appalachian P-16⁺ regional summit to address the shortages of teachers and administrators in Kentucky's public schools on Tuesday and Wednesday, Feb. 20 and 21.

Educational leaders from across the state will speak at the "Teachers and Administrators for the 21st Century: Recruitment, Training and Retention" session. The program is designed for administrative teams; P-16⁺ council members; site-based councils; university and college faculty members and administrative teams; state, regional and local education policy makers; and interested business and parent groups.

Featured speakers will include Dr. Gordon Davies, president, and Jim Applegate, vice president of academic affairs, Council on Postsecondary Education; Eugene Wilhoit, commissioner of education; Dr. Robert F. Sexton, executive director of the Prichard Committee for Academic Excellence; Wayne Young, executive director of the Kentucky Association of School Administrators; Judith Gambill, president of the Kentucky Education Association; and various state legislators.

Sharing ideas at the breakout sessions will be educators from secondary schools and colleges and universities.

Registration begins at 8 a.m. on Tuesday with the welcome and opening remarks by MSU President Ronald G. Eaglin slated for 8:30 a.m. There is no charge for attending, however, pre-registration is necessary for those planning to attend the luncheon. The summit will conclude at noon on Wednesday.

Additional information is available by calling Dr. Deborah Abell, chair of MSU's Department of Leadership and Secondary Education and P-16⁺ coordinator, by calling (606) 783-5207 or by e-mail to d.abell@morehead-st.edu.

####

News

University Communications

Pauline Young, Director

Morehead State University

UPO Box 1100

Morehead, KY 40351-1689

(606) 783-2030

Feb. 14, 2001

FOR IMMEDIATE RELEASE

MOREHEAD, Ky.---Morehead State University will host the first Appalachian P-16⁺ regional summit to address the shortages of teachers and administrators in Kentucky's public schools on Tuesday and Wednesday, Feb. 20 and 21.

Educational leaders from across the state will speak at the "Teachers and Administrators for the 21st Century: Recruitment, Training and Retention" session. The program is designed for administrative teams; P-16⁺ council members; site-based councils; university and college faculty members and administrative teams; state, regional and local education policy makers; and interested business and parent groups.

Featured speakers will include Dr. Gordon Davies, president, and Jim Applegate, vice president of academic affairs, Council on Postsecondary Education; Eugene Wilhoit, commissioner of education; Dr. Robert F. Sexton, executive director of the Prichard Committee for Academic Excellence; Wayne Young, executive director of the Kentucky Association of School Administrators; Judith Gambill, president of the Kentucky Education Association; and various state legislators.

Sharing ideas at the breakout sessions will be educators from secondary schools and colleges and universities. Kelly Middleton and Elizabeth Pettit of **Mason County** schools will lead the session titled "Jumpstart to Mastery: A Teacher Induction Program" and "Mason County Leadership Academy."

Registration begins at 8 a.m. on Tuesday with the welcome and opening remarks by MSU President Ronald G. Eaglin slated for 8:30 a.m. There is no charge for attending, however, pre-registration is necessary for those planning to attend the luncheon. The summit will conclude at noon on Wednesday.

Additional information is available by calling Dr. Deborah Abell, chair of MSU's Department of Leadership and Secondary Education and P-16⁺ coordinator, by calling (606) 783-5207 or by e-mail to d.abell@morehead-st.edu.

####

News

University Communications

Pauline Young, Director

Morehead State University

UPO Box 1100

Morehead, KY 40351-1689

(606) 783-2030

Feb. 14, 2001

FOR IMMEDIATE RELEASE

MOREHEAD, Ky.---Morehead State University will host the first Appalachian P-16⁺ regional summit to address the shortages of teachers and administrators in Kentucky's public schools on Tuesday and Wednesday, Feb. 20 and 21.

Educational leaders from across the state will speak at the "Teachers and Administrators for the 21st Century: Recruitment, Training and Retention" session. The program is designed for administrative teams; P-16⁺ council members; site-based councils; university and college faculty members and administrative teams; state, regional and local education policy makers; and interested business and parent groups.

Featured speakers will include Dr. Gordon Davies, president, and Jim Applegate, vice president of academic affairs, Council on Postsecondary Education; Eugene Wilhoit, commissioner of education; Dr. Robert F. Sexton, executive director of the Prichard Committee for Academic Excellence; Wayne Young, executive director of the Kentucky Association of School Administrators; Judith Gambill, president of the Kentucky Education Association; and various state legislators.

Sharing ideas at the breakout sessions will be educators from secondary schools and colleges and universities. Taking part in the program will be Brenda Maynard, Judy Lester, and Felicia Dotson of **Pike County** schools.

Registration begins at 8 a.m. on Tuesday with the welcome and opening remarks by MSU President Ronald G. Eaglin slated for 8:30 a.m. There is no charge for attending, however, pre-registration is necessary for those planning to attend the luncheon. The summit will conclude at noon on Wednesday.

Additional information is available by calling Dr. Deborah Abell, chair of MSU's Department of Leadership and Secondary Education and P-16⁺ coordinator, by calling (606) 783-5207 or by e-mail to d.abell@morehead-st.edu.

####

News

University Communications

Pauline Young, Director

Morehead State University

UPO Box 1100

Morehead, KY 40351-1689

(606) 783-2030

Feb. 14, 2001

FOR IMMEDIATE RELEASE

MOREHEAD, Ky.---Morehead State University will host the first Appalachian P-16⁺ regional summit to address the shortages of teachers and administrators in Kentucky's public schools on Tuesday and Wednesday, Feb. 20 and 21.

Educational leaders from across the state will speak at the "Teachers and Administrators for the 21st Century: Recruitment, Training and Retention" session. The program is designed for administrative teams; P-16⁺ council members; site-based councils; university and college faculty members and administrative teams; state, regional and local education policy makers; and interested business and parent groups.

Featured speakers will include Dr. Gordon Davies, president, and Jim Applegate, vice president of academic affairs, Council on Postsecondary Education; Eugene Wilhoit, commissioner of education; Dr. Robert F. Sexton, executive director of the Prichard Committee for Academic Excellence; Wayne Young, executive director of the Kentucky Association of School Administrators; Judith Gambill, president of the Kentucky Education Association; and various state legislators.

Sharing ideas at the breakout sessions will be educators from secondary schools and colleges and universities. Carol Chitwood, with **Hardin County** schools and past president of the Kentucky Association of School Human Resource Managers, will lead the sessions titled "Teacher, Administrator and Staff Perceiver Interview Process" and "Personnel Records: What You Need to Know."

Registration begins at 8 a.m. on Tuesday with the welcome and opening remarks by MSU President Ronald G. Eaglin slated for 8:30 a.m. There is no charge for attending, however, pre-registration is necessary for those planning to attend the luncheon. The summit will conclude at noon on Wednesday.

Additional information is available by calling Dr. Deborah Abell, chair of MSU's Department of Leadership and Secondary Education and P-16⁺ coordinator, by calling (606) 783-5207 or by e-mail to d.abell@morehead-st.edu.

####

News

University Communications

Pauline Young, Director

Morehead State University

UPO Box 1100

Morehead, KY 40351-1689

(606) 783-2030

Feb. 15, 2001

FOR IMMEDIATE RELEASE

MOREHEAD, Ky.---A woman described as caring, creative and charismatic will be honored for her contributions during Morehead State University's 2001 Founders Day on Thursday, March 29.

Mrs. Mignon McClain Doran, former first lady of MSU, will receive the University's Founders Day Award for University Service during the luncheon which begins at 11:30 a.m. in the Crager Room of the Adron Doran University Center. Tickets, which are \$10 per person, are on sale through March 20.

When Dr. Adron Doran assumed the MSU presidency, the University community was quick to embrace the husband and wife team who would turn the single-purpose college into a comprehensive regional university. From 1954 until 1977, Mrs. Doran was known for sharing her talents and energies with those on the campus and across the country. By dedicating herself to the service of people, she received national and international acclaim.

A desire to help students improve their social graces and become more successful in their careers led Mrs. Doran to found and serve as the first director of the Personal Development Institute (PDI). She described this special program as "a unique and pioneering enterprise devoted to development of the total person for a richer, fuller life."

A music major in college, Mrs. Doran has played the organ for more than half a century, giving benefit concerts throughout East Kentucky. For nearly 20 years, she played at the boys' state high school basketball tournament and has performed at an NCAA tournament and numerous horse shows. While at MSU, she provided music at home basketball games and continues to hold annual holiday musicales at her Lexington home.

Like her husband who is recognized for his bow tie, Mrs. Doran was known for her exquisite hats that were suitable for the occasion. At a special "Hats off to Mignon" day in May 1997, she received commendations from the state legislature, former students and faculty and countless others who credited her for her wisdom and guidance.

The University also has honored her as the first recipient of the MSU Alumni Association's Special Service Award; recipient of an honorary doctorate in humanities from the University's Board of Regents, as well as a residence hall complex named in her honor.

(MORE)

Mrs. Doran
2-2-2-2

An MSU scholarship also has been established in honor of the Dorans.

For her achievements, Mrs. Doran has received numerous awards and accolades: the Kentucky Young Democrats named her the Outstanding Woman Kentuckian and the Cardinal Key National Honor Sorority designated her Woman of the Year. Instrumental in establishing various campus organizations, including the University Woman's Club, she was a former president of the Kentucky Federation of Women's Clubs. Listed in the 1970 edition of Community Leaders of America, she is a former member of the International Platform Association, Governor's Commission on Children and Youth and Board of Trustees of Pikeville College. She was the only female charter member of the Kentucky Commission on Registry and Finance.

Also on Founders Day, MSU will honor former employees of the University at the Memorial Brick Ceremony at 10:30 a.m. at Little Bell Tower; and Gene Wilhoit, education commissioner, will speak at the Founders Day Luncheon, which also will include recognition of new and former MSU Fellows and announcement of outstanding giving awards.

Details on the Founders Day activities, including ticket information for the luncheon, are available by calling (606) 783-2599 or (800) 833-4483.

####

News

University Communications

Pauline Young, Director

Morehead State University

UPO Box 1100

Morehead, KY 40351-1689

(606) 783-2030

Feb. 15, 2001

FOR IMMEDIATE RELEASE

MOREHEAD, Ky.---A 20-year-old West Liberty man who was not enrolled at Morehead State University was taken from an MSU residence hall Thursday morning after suffering an apparent drug overdose. He was taken to St. Claire Medical Center in Morehead and later transferred to the University of Kentucky Hospital in Lexington.

MSU police were told that Dustin Smith arrived early Thursday to visit friends in Mignon Tower. His friends were unable to awaken him later Thursday morning and emergency medical personnel were summoned.

According to police interviews, there was no indication of drug use in that room in the residence hall. Smith reportedly told his friends that he was high on a prescription drug he had taken earlier in the evening before arriving at MSU.

MSU Police Chief Doug Brown said information collected by his officers was being forwarded to the Kentucky State Police.

####

News

University Communications

Pauline Young, Director

Morehead State University

UPO Box 1100

Morehead, KY 40351-1689

(606) 783-2030

Feb. 16, 2001

FOR IMMEDIATE RELEASE

MOREHEAD, Ky.---Morehead State University wants to make the college decision-making process a little easier for high school students by hosting a Preview Day on Saturday, Feb. 24

"Preview Day will give future University students the opportunity to get answers to questions they may have about a variety of topics, from academics to financial aid to athletics," said Larry Lipker, assistant director of admissions.

The day will begin with registration, refreshments and display viewing at 11 a.m. in Button Auditorium. The campus guests will be greeted by MSU President Ronald G. Eaglin and various University representatives. During the day's activities, students may take a campus tour, meet with faculty members from the academic departments and visit the University Bookstore which will be open from 10 a.m. to 2 p.m.

"Parent involvement is very beneficial as well," Lipker said. "They will hear from administrators, faculty and current MSU students and their parents."

Following the program, the Eagle football coaching staff will be available to talk with future college athletes in Jayne Stadium.

Additional information about Preview Days is available from the Office of Admissions at (606) 783-2000 or (800) 585-6781.

####

rdm

News

University Communications

Pauline Young, Director

Morehead State University

UPO Box 1100

Morehead, KY 40351-1689

606-783-2030

Feb. 16, 2001

FOR IMMEDIATE RELEASE

MOREHEAD, Ky.---Nominations are now being accepted for two awards given by Morehead State University to recognize both a faculty and staff member for outstanding service.

MSU's Service Committee is soliciting nominations for recipients of these awards not only from the University's faculty and staff, students and alumni, but also from the general public.

The deadline is 4 p.m. Monday, March 5, for submission of nominations for the Distinguished Faculty and Distinguished Staff Service awards, according to Sheri White, committee chair.

To be eligible for the awards, the faculty or staff member must exemplify the highest ideals of citizenship and services. Information sheets with specific criteria may be obtained from White at (606) 783-5238.

Nominations should include name, address and telephone number(s) of nominee, along with a one-page letter detailing how the nominee meets the criteria. "All nominations will remain anonymous," White said.

All materials should be submitted to Chairperson, Service Committee, Morehead State University, 110 Ginger Hall, Morehead, KY 40351-1689.

Presentation of the awards will be made during the University's Honors Convocation on Sunday, April 29.

####

py

News

University Communications

Pauline Young, Director

Morehead State University

UPO Box 1100

Morehead, KY 40351-1689

(606) 783-2030

Feb. 16, 2001

FOR IMMEDIATE RELEASE

MOREHEAD, Ky.---Some Morehead State University students will have an opportunity to express their views of college life in a study where the results will be shared with accrediting bodies, governmental agencies and prospective students.

Randomly selected freshmen and seniors from MSU will join students from more than 300 other universities across the nation participating in a survey titled "The College Student Report." Data will be compiled on how and where students spend their time, the nature and quality of their interactions with faculty members and peers, what they have gained from their classes and other aspects of the college experience.

The anonymous survey, which is available in online or print versions, takes less than 15 minutes to complete. It is supported by a grant from The Pew Charitable Trusts and is part of the National Survey of Student Engagement (NSSE) produced by the Center for Postsecondary Research and Planning at Indiana University.

The results of the NSSE survey will be used to help colleges and universities improve undergraduate education by providing valuable information about student engagement in learning and learning outcomes.

####

Tips

University Communications

Pauline Young, Director

Morehead State University

UPO Box 1100

Morehead, KY 40351-1689

(606) 783-2030

HIGHLIGHTS AT MOREHEAD STATE UNIVERSITY

(Feb. 25-March 3)

Sunday, Feb. 25

Eagle Softball Pitching and Catching Clinic, for fifth-ninth graders, Wetherby Gymnasium, noon-1:30 p.m. for beginners, 2-3:30 p.m. for advanced players, charge. Additional information: (606) 783-5283.

Eagle Baseball: MSU vs. University of Toledo, Allen Field, 1 p.m., free. Additional information: (606) 783-2881.

Monday, Feb. 26

Eating Disorders Awareness Forum, Commonwealth Room, Adron Doran University Center, 7 p.m., free. Additional information: (606) 783-2779.

Tuesday, Feb. 27

Graduation Fair, Crager Room, Adron Doran University Center, 10 a.m.-5 p.m., also Feb. 28, 10 a.m.-2 p.m., free. Additional information: (606) 783-2080.

Theatre: "Walking Shadows," eating disorders awareness play, Rowan County Board of Education board room, 121 E. Second St., Morehead, free. Additional information: (606) 783-2779.

Faculty Recital: Dr. Roma Prindle, Duncan Recital Hall, Baird Music Hall, 8 p.m., free. Additional information: (606) 783-2473.

Wednesday, Feb. 28

Eagle Baseball: MSU vs. University of Dayton, Allen Field, 1 p.m., doubleheader, free. Additional information: (606) 783-2881.

Eating Disorders Awareness Workshop: "How to Help a Friend with an Eating Disorder," East Room A, Adron Doran University Center, 6:30-8 p.m., free. Additional information: (606) 783-2779.

Thursday, March 1

Eating Disorders Ribbon Day, second floor information booth, Adron Doran University Center, 10 a.m.-3 p.m., free. Additional information: (606) 783-2779.

Teaching for Success conference, Adron Doran University Center, 8:30 a.m., charge. Additional information: (606) 783-5208.

(MORE)

Highlights
2-2-2-2

Friday, March 2

Eating Disorders Awareness Day, second floor information booth, Adron Doran University Center, 10 a.m.-2 p.m., free. Additional information: (606) 783-2779.

Saturday, March 3

MSU Board of Regents meeting, campus, 9 a.m. Additional information: (606) 783-2030.

Eagle Softball: MSU vs. Kent State University, softball field, 11 a.m.; MSU vs. Indiana University-Purdue University, Indianapolis, softball field, 3 p.m.; free. Additional information: (606) 783-5283.

Eagle Baseball: MSU vs. Wright State University, Allen Field, 1 p.m., doubleheader, free. Additional information: (606) 783-2881.

####

2-19-01rdm

Photo

University Communications

Pauline Young, Director

Morehead State University

UPO Box 1100

Morehead, KY 40351-1689

(606) 783-2030

MSU EMPLOYEES COMPLETE YEARS OF SERVICE

A recognition ceremony was held recently for those individuals who have completed milestone years of service at Morehead State University. Participating were, front row from left, Rosemary Hinton, 10; Michelle Patrick, 10; Cindy Trent, 25, and MSU President Ronald G. Eaglin who greeted the honorees. Middle row from left, are Peggy Overly, 15; Jo Jennings, 10; Connie Kibbey, 10; Pauline Young, 25; and Gary Flanagan, 10. Back row from left, Gene Caudill, 30; Murray Grevious, 10; and Tim Young, 15.

(MSU photo by Tim Holbrook)

2-22-01py

MSU is an affirmative action, equal opportunity educational institution.



News

University Communications

Pauline Young, Director

Morehead State University

UPO Box 1100

Morehead, KY 40351-1689

(606) 783-2030

Feb. 22, 2001

FOR IMMEDIATE RELEASE

MOREHEAD, Ky.---Current and future business owners may benefit from a planning seminar to be offered by Morehead State University's Small Business Development Center.

"Creating an Effective Business Plan" will be taught on Wednesday, Feb. 28, from 2 to 4:30 p.m. in 210 Combs Building on the campus. Topics for discussion include various business plan styles, how to use such preparation to assist in operating and financing a proposal and how to impress potential investors and/or bank loan officers. Time will be allotted for a question and answer session.

There is a \$5 charge for the class, which is sponsored by Bank of the Mountains in West Liberty. Pre-registration is necessary due to limited seating.

All training programs, sponsored or co-sponsored by MSU's Small Business Development Center, are available to all individuals without regard to race, color, sex, creed or national origin. Special arrangements for the disabled will be made if requested in advance.

Registration and additional information are available by calling MSU's SBDC at (606) 783-2895.

####

News

University Communications

Pauline Young, Director

Morehead State University

UPO Box 1100

Morehead, KY 40351-1689

(606) 783-2030

Feb. 22, 2000

FOR IMMEDIATE RELEASE

MOREHEAD, Ky.---When the Lexington Arts and Cultural Council called for entries for its Horse Mania program, Elizabeth Mesa-Gaido, Morehead State University associate professor of art, decided it was an event for her.

"I thought it would be fun to do something different and to have it in the public realm," Mesa-Gaido said. Ordinarily, her artwork is politically or socially inspired.

For two weeks, creating the horse became the artist's main focus. She chose to name it "Tomas" for her young nephew, Tomas Gibbons of New York City. The design included plants indigenous to his hometown and countries that his relatives came from—Germany, Cuba and Spain.

Once complete, Tomas joined the other 77 works of art where they were displayed around Lexington for several months. The Horse Mania equines were auctioned at Keeneland with Mesa-Gaido's work selling for \$7,200. This contributed to the \$750,000 garnered by the auction with all money going to the council's public art fund.

Tomas' sale, however, was not the end of Mesa-Gaido's participation in public art. She was asked by officials from the Speed Museum in Louisville to create a design for a city bus.

Using all of her free time away from the classroom for about three weeks, she produced line drawings of bird bodies with different animal heads on a beige background. The bus with her art may be seen on the streets in Louisville.

####

rdm

Photo

University Communications

Pauline Young, Director

Morehead State University

UPO Box 1100

Morehead, KY 40351-1689

(606) 783-2030

MSU PROFESSOR CATCHES 'HORSE MANIA'

Elizabeth Mesa-Gaido, Morehead State University associate professor of art, designed "Tomas" for the Lexington Arts and Cultural Council's Horse Mania program. She chose the name for her young nephew, Tomas Gibbons of New York City. The design included plants indigenous to his hometown and countries that his relatives came from—Germany, Cuba and Spain. Once complete, Tomas joined the other 77 works of art that were displayed around Lexington for several months. The Horse Mania equines were later auctioned at Keeneland with Mesa-Gaido's work selling for \$7,200. This contributed to the \$750,000 garnered by the auction with all money going to the council's public art fund.

(MSU photo)

2-22-01

MSU is an affirmative action, equal opportunity educational institution.



News

University Communications

Pauline Young, Director

Morehead State University

UPO Box 1100

Morehead, KY 40351-1689

(606) 783-2030

Feb. 23, 2001

FOR IMMEDIATE RELEASE

MOREHEAD, Ky.---Morehead State University's Speech Team placed fourth in its division in a recent swing competition, hosted by two schools.

Jeremy Booher, **Lexington** freshman, won third place in the persuasion category at the Murray State University tournament and second place in the same at the Hopkinsville Community College contest. Steve Black, **Xenia, Ohio**, junior, and Amanda Simmons, **Shelbyville** senior, also contributed to the win.

This academic year, the team has attended tournaments at Western Kentucky University, Berry College in Rome, Ga., Carson-Newman College in Jeffersonville, Tenn., and Transylvania University in Lexington.

Additional information is available from Lisa Shemwell, speech coach, by calling (606) 783-2103.

####

News

University Communications

Pauline Young, Director

Morehead State University

UPO Box 1100

Morehead, KY 40351-1689

(606) 783-2030

Feb. 23, 2001

FOR IMMEDIATE RELEASE

MOREHEAD, Ky.---One name was omitted from Morehead State University's Dean's List for Mason County for the 2000 fall semester. The list should have included Virginia Devon Gifford of **May's Lick**.

To be named to the list, a student must be enrolled on a full-time basis and achieve at least a 3.5 grade point average on a 4.0 scale.

####

MSU ALUMNUS SHARES EXPERIENCES

Morehead State University alumnus Dr. Roger Cleveland of Lexington returned to the campus recently to share his experiences with students. Before his presentation, he talked with Peggy Overly, minority student services coordinator, and Duane Morris, left. Currently an equity consultant in the Kentucky Department of Education, Dr. Cleveland has worked as a social and academic intervention counselor in the Cincinnati Public Schools, taught at Northern Kentucky University and Middle Tennessee State University. He has conducted workshops in urban areas for students, parents and grassroots community activists on a variety of topics, including social skills, conflict resolution, peer pressure and cultural sensitivity training. Dr. Cleveland, earned a bachelor's degree in communications from MSU, completed graduate work at the University of Kentucky, received his master's degree from Union College and the doctoral degree from the University of Cincinnati. Morris is a freshman from **Burlington Twp., N.J.**, and the son of Lynne Morris

(MSU photo by Tim Holbrook)

2-23-01

MSU is an affirmative action, equal opportunity educational institution.



MSU ALUMNUS SHARES EXPERIENCES

Morehead State University alumnus Dr. Roger Cleveland of Lexington returned to the campus recently to share his experiences with students. Before his presentation, he talked with Myron Harvey, right. Currently an equity consultant in the Kentucky Department of Education, Dr. Cleveland has worked as a social and academic intervention counselor in the Cincinnati Public Schools, taught at Northern Kentucky University and Middle Tennessee State University. He has conducted workshops in urban areas for students, parents and grassroots community activists on a variety of topics, including social skills, conflict resolution, peer pressure and cultural sensitivity training. Dr. Cleveland, earned a bachelor's degree in communications from MSU, completed graduate work at the University of Kentucky, received his master's degree from Union College and the doctoral degree from the University of Cincinnati. A sophomore, Harvey is the son of Manuel Harvey of **Lawrenceburg**.

(MSU photo by Tim Holbrook)

2-23-01

MSU is an affirmative action, equal opportunity educational institution.



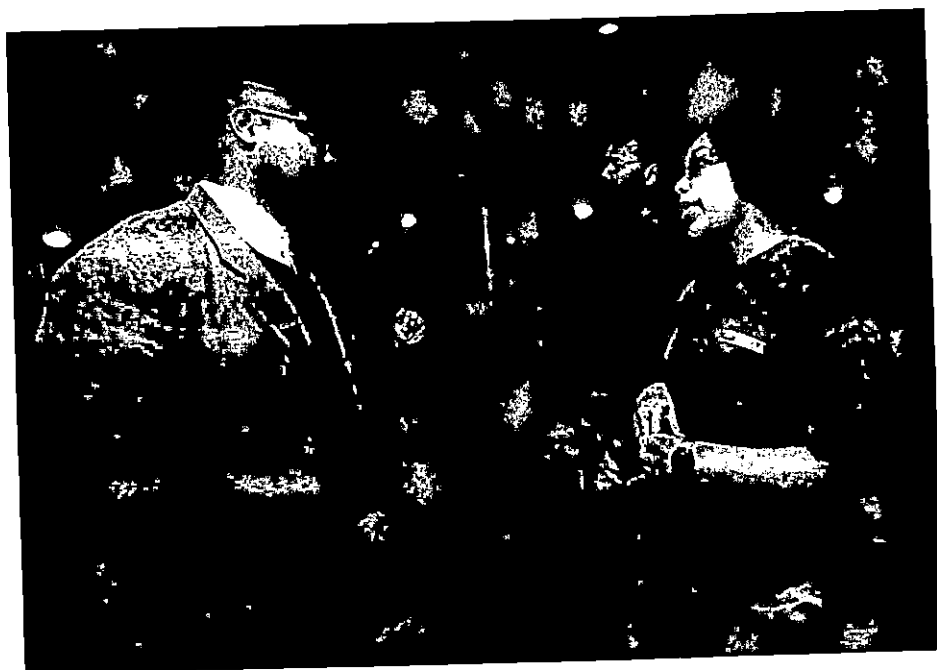
MSU ALUMNUS SHARES EXPERIENCES

Morehead State University alumnus Dr. Roger Cleveland of Lexington returned to the campus recently to share his experiences with students. Before his presentation, he talked with Tanyeka Holt, right. Currently an equity consultant in the Kentucky Department of Education, Dr. Cleveland has worked as a social and academic intervention counselor in the Cincinnati Public Schools, taught at Northern Kentucky University and Middle Tennessee State University. He has conducted workshops in urban areas for students, parents and grassroots community activists on a variety of topics, including social skills, conflict resolution, peer pressure and cultural sensitivity training. Dr. Cleveland earned a bachelor's degree in communications from MSU, completed graduate work at the University of Kentucky, received his master's degree from Union College and the doctoral degree from the University of Cincinnati. Holt is a **Louisville** junior and the daughter of Brenda Griggs.

(MSU photo by Tim Holbrook)

2-23-01

MSU is an affirmative action, equal opportunity educational institution.



Photo

University Communications

Pauline Young, Director

Morehead State University

UPO Box 1100

Morehead, KY 40351-1689

(606) 783-2030

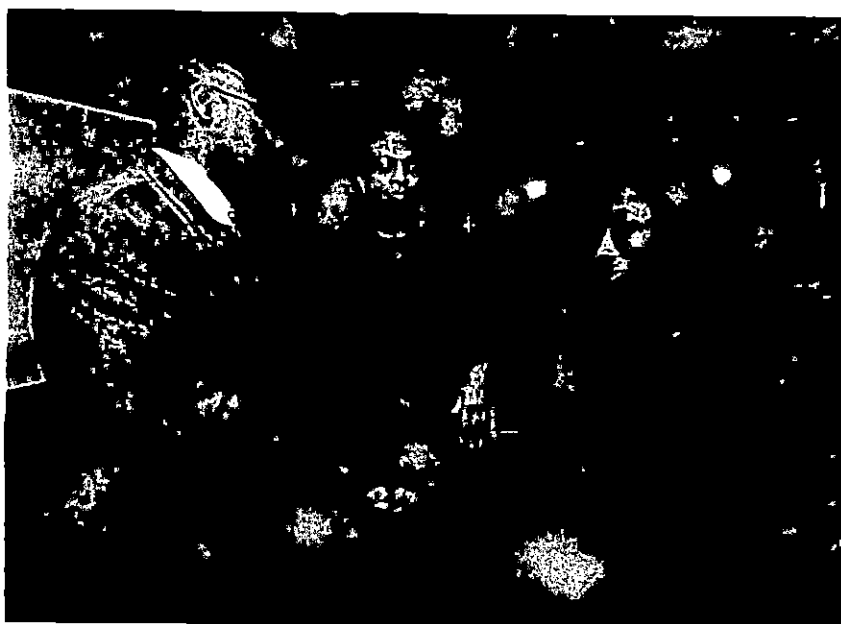
MSU ALUMNUS SHARES EXPERIENCES

Morehead State University alumnus Dr. Roger Cleveland of Lexington returned to the campus recently to share his experiences with students. Before his presentation, he talked with Peggy Overly, minority student services coordinator, and LaRaissa S. Davis, left. Currently an equity consultant in the Kentucky Department of Education, Dr. Cleveland has worked as a social and academic intervention counselor in the Cincinnati Public Schools, taught at Northern Kentucky University and Middle Tennessee State University. He has conducted workshops in urban areas for students, parents and grassroots community activists on a variety of topics, including social skills, conflict resolution, peer pressure and cultural sensitivity training. Dr. Cleveland, earned a bachelor's degree in communications from MSU, completed graduate work at the University of Kentucky, received his master's degree from Union College and the doctoral degree from the University of Cincinnati. Davis is a **Radcliff** junior and the daughter of Desiree Davis.

(MSU photo by Tim Holbrook)

2-23-01

MSU is an affirmative action, equal opportunity educational institution.



Tips

University Communications

Pauline Young, Director

Morehead State University

UPO Box 1100

Morehead, KY 40351-1689

(606) 783-2030

HIGHLIGHTS AT MOREHEAD STATE UNIVERSITY

(March 4-10)

Sunday, March 4

Eagle Softball: MSU vs. Kent State University, 11 a.m., MSU vs. Indiana University-Purdue University, Indianapolis, 3 p.m., softball field, free. Additional information: (606) 783-5283 free.

Eagle Baseball: MSU vs. Wright State University, Allen Field, 1 p.m., free. Additional information: (606) 783-2881.

Monday, March 5

Eating disorders screening, Eagle Dining and Eagle Meeting rooms, Adron Doran University Center, 4:30-6:30 p.m., free. Additional information: (606) 783-2779.

Tuesday, March 6

Spring 2001 Job Fair, Crager Room, Adron Doran University Center, 10 a.m.-1 p.m., free. Additional information: (606) 783-2233.

Lady Eagle and Eagle Tennis: MSU vs. Georgetown College, Sadler Tennis Courts, 3 p.m., free. Additional information: (606) 783-5408.

Wednesday, March 7

Eagle Softball: MSU vs. Wright State University, softball field, 2 p.m., doubleheader, free. Additional information: (606) 783-5283.

MSU Day for Russell High School students, 10 a.m.-2 p.m., Riggle Room, Adron Doran University Center. Additional information: (606) 783-2000.

Thursday, March 8

Lady Eagle and Eagle Tennis: MSU vs. Bellarmine College, Sadler Tennis Courts, 3 p.m., free. Additional information: (606) 783-5408.

Friday, March 9

Eagle Softball: MSU vs. West Virginia Institute of Technology, softball field, 2 p.m., free. Additional information: (606) 783-5283.

Eagle Baseball: MSU vs. Indiana University-Purdue University, Indianapolis, Allen Field, 2 p.m., doubleheader, free. Additional information: (606) 783-2881.

(MORE)

Highlights
2-2-2-2

Saturday, March 10

Eagle Baseball: MSU vs. Indiana University-Purdue University, Indianapolis, 11 a.m.; MSU vs. Youngstown State University, 5 p.m., Allen Field, free. Additional information: (606) 783-2881.

Eagle Softball: MSU vs. East Tennessee State University, softball field, 2 p.m., doubleheader, free. Additional information: (606) 783-5283.

####

2-26-01rdm

Media Advisory

University Communications

Pauline Young, Director

Morehead State University

UPO Box 1100

Morehead, KY 40351-1689

(606) 783-2030

EVENT: Morehead State University Board of Regents Meeting

DATE: Saturday, March 3, 2001

TIME: 9 a.m.

SITE: Riggle Room, Adron Doran University Center

The Board agenda contains a variety of items for discussion and/or action, including approvals of tenure, tenure with promotions, sabbatical leaves, program deletions/suspensions and a Bachelor of Science degree in computer science.

Other items include acceptance of the second quarter financial report, ratification of Student Government Association Constitution amendments and amendments to Personnel Policy PAc-17 (sabbatical leaves of absence) and Policy PAc-28 (educational leaves of absence).

Reports will be presented on preliminary statistics for 2001 spring enrollment, Lakewood Terrace Project, real property acquisition, private giving and major gifts.

The MSU Spotlight will focus on the Student Government Association.

Media representatives planning to attend this meeting are requested to contact the Office of University Communications at (606) 783-2030 by 4:30 p.m. Thursday, March 1, so that sufficient support materials will be available.

#####

2-26-01py

Tips

University Communications

Pauline Young, Director

Morehead State University

UPO Box 1100

Morehead, KY 40351-1689

(606) 783-2030

HIGHLIGHTS AT MOREHEAD STATE UNIVERSITY

(March 4-10)

Sunday, March 4

Eagle Softball: MSU vs. Kent State University, 11 a.m., MSU vs. Indiana University-Purdue University, Indianapolis, 3 p.m., softball field, free. Additional information: (606) 783-5283 free.

Eagle Baseball: MSU vs. Wright State University, Allen Field, 1 p.m., free. Additional information: (606) 783-2881.

Monday, March 5

Eating disorders screening, Eagle Dining and Eagle Meeting rooms, Adron Doran University Center, 4:30-6:30 p.m., free. Additional information: (606) 783-2779.

Tuesday, March 6

Spring 2001 Job Fair, Crager Room, Adron Doran University Center, 10 a.m.-1 p.m., free. Additional information: (606) 783-2233.

Lady Eagle and Eagle Tennis: MSU vs. Georgetown College, Sadler Tennis Courts, 3 p.m., free. Additional information: (606) 783-5408.

Wednesday, March 7

Eagle Softball: MSU vs. Wright State University, softball field, 2 p.m., doubleheader, free. Additional information: (606) 783-5283.

MSU Day for Russell High School students, 10 a.m.-2 p.m., Riggle Room, Adron Doran University Center. Additional information: (606) 783-2000.

Thursday, March 8

Lady Eagle and Eagle Tennis: MSU vs. Bellarmine College, Sadler Tennis Courts, 3 p.m., free. Additional information: (606) 783-5408.

Friday, March 9

Eagle Softball: MSU vs. West Virginia Institute of Technology, softball field, 2 p.m., free. Additional information: (606) 783-5283.

Eagle Baseball: MSU vs. Indiana University-Purdue University, Indianapolis, Allen Field, 2 p.m., doubleheader, free. Additional information: (606) 783-2881.

(MORE)

Highlights
2-2-2-2

Saturday, March 10

Eagle Baseball: MSU vs. Indiana University-Purdue University, Indianapolis, 11 a.m.; MSU vs. Youngstown State University, 5 p.m., Allen Field, free. Additional information: (606) 783-2881.

Eagle Softball: MSU vs. East Tennessee State University, softball field, 2 p.m., doubleheader, free. Additional information: (606) 783-5283.

####

2-26-01rdm

News

University Communications

Pauline Young, Director

Morehead State University

UPO Box 1100

Morehead, KY 40351-1689

(606) 783-2030

Feb. 26, 2001

FOR IMMEDIATE RELEASE

MOREHEAD, Ky.---Registered visitors to the Kentucky Folk Art Center at Morehead State University increased by 10 percent during the year 2000, according to KFAC Director Garry Barker.

More than 6,400 visitors signed the guest register at the Center and an estimated 4,000 more came in groups and to evening events. "These figures do not include attendance during Appalachian Celebration events, unless the event was held at the Folk Art Center," Barker said, noting that during the Celebration every Morehead motel was filled.

The 2001 schedule of events at the Folk Art Center includes four major exhibitions, the Celebration, the WoodFolk Fest, and a series of evening events that range from poetry readings to organization receptions. The 50-seat Jimmy Ruth Auditorium is available for public use, as is the Edgar Tolson Library. In addition, tours of the Moonlight School may now be arranged through the Center.

The Kentucky Folk Art Center is open 9 a.m. to 5 p.m., Monday through Saturday, and 1 to 5 p.m. on Sundays. Admission is \$3 for adults every day except Sunday when there is no admission charge.

Tour arrangements or to reserve a room may be made by calling the center. Additional information is available on the KFAC Web site at www.kyfolkart.org or by calling (606) 783-2204.

####

kfac

News

University Communications

Pauline Young, Director

Morehead State University

UPO Box 1100

Morehead, KY 40351-1689

(606) 783-2030

Feb. 27, 2001

FOR IMMEDIATE RELEASE

MOREHEAD, Ky.---Representatives from Walt Disney World are coming to the Morehead State University campus to interview students for its Fall Program and Fall Advantage internships.

An information session is scheduled for Tuesday, March 27, at 6 p.m. in Reed Hall Auditorium. Interested students, who are at least 18 years old, should bring a resumé as interviews will be conducted after the meeting. Students from any academic program may apply.

The Fall Program starts in late August and the Fall Advantage begins in mid-May. Both internships conclude in early January.

Additional information is available by calling the Office of Career Services at (606) 783-2233 or by visiting www.wdwcollegeprogram.com.

####

News

University Communications

Pauline Young, Director

Morehead State University

UPO Box 1100

Morehead, KY 40351-1689

(606) 783-2030

Feb. 27, 2001

FOR IMMEDIATE RELEASE

MOREHEAD, Ky.---Morehead State University's Office of Career Services will hold its Spring Job Fair on Tuesday, March 6, from 10 a.m. to 1 p.m. in the Crager Room of the Adron Doran University Center.

Current students and graduates from all college majors and programs are encouraged to attend, according to Dr. Mike Hopper, career services director. "Students should bring copies of their resumé and come prepared for initial interviews," he said.

Employers scheduled to visit campus include several branches of the U.S. armed forces and various government agencies. They include Camp Molly Lauman, Greater Louisville Inc., Hyatt Regency and Kentucky State Police. Other companies that will recruit by Internet are Camp Rimrock for Girls, College Light Opera Company, Dollywood and New York Life.

Several graduate schools also are registered. For a complete list of job fair participants, visit www.moreheadstate.edu/spring_jobfair.

Additional information is available by calling career services at (606) 783-2233.

####

rdm

News

University Communications

Pauline Young, Director

Morehead State University

UPO Box 1100

Morehead, KY 40351-1689

(606) 783-2030

Feb. 28, 2001

FOR IMMEDIATE RELEASE

MOREHEAD, Ky.---Dr. Michael J. Fimian has been named instructional technology director for Morehead State University's College of Education and Behavioral Sciences to help administer the University's \$1.4 million grant project, "Preparing Tomorrow's Teachers to Use Technology."

The PT³ grant involves a consortium composed of MSU and the school districts in Carter, Elliott, Fleming, Morgan and Rowan counties. Dr. Fimian will coordinate and maintain technology services to students, teachers, faculty, consultants and consortium members.

"The added value of having an individual with Dr. Fimian's impressive credentials and experiences is his ability to assume several of the management functions associated with implementing a project of this magnitude," said Dr. Michael Moore, executive vice president for academic affairs.

A former associate professor of education at Arkansas State University and South Carolina State University, Dr. Fimian has been director of Project CADRE at Appalachian State University, a federally-funded effort to train college professors, public school teachers and teacher trainees to use multimedia programs that support instruction.

Dr. Fimian has taught in public schools, conducted workshops, authored instructional software, served as a consultant and published several articles, books and book chapters. He is the recipient of thousands of dollars in project funding.

He earned a Bachelor of Science degree in experimental/behavioral psychology from Boston College, a Master of Science degree in special education from the University of Oregon and a Ph.D. degree in special education and educational psychology from the University of Connecticut. Dr. Fimian holds an Ed.S. degree from Utah State University where he was the recipient of the Scholar of the Year award from the Department of Instructional Technology.

In addition to his PT³ duties, he will teach classes on the campus and continue in his director's position for the College of Education and Behavioral Sciences upon completion of the grant activities.

Additional information is available by calling MSU's College of Education and Behavioral Sciences at (606) 783-2040.

#####

Photo

University Communications

Pauline Young, Director

Morehead State University

UPO Box 1100

Morehead, KY 40351-1689

(606) 783-2030

RESEARCHERS INTRODUCE TOPICS TO MSU STUDENTS

Morehead State University's Department of Biological and Environmental Sciences has begun its Spring Seminar Series to introduce undergraduate and graduate students to various research projects. Dr. Bruce Mattingly, chair of MSU's Department of Psychology, lectured on "Dopamine Receptors and Cocaine-Induced Behavioral Sensitization." An MSU graduate with a Bachelor of Science degree in psychology and mathematics, Dr. Mattingly earned his Master of Science and Ph.D. degrees from the University of Kentucky. His current research project is funded by the National Institute on Drug Abuse. The series also included a discussion by Dr. Grayson Brown, University of Kentucky professor of entomology, who spoke on his research: "Applied Entomology in Genetically-Engineered Agriculture."

(MSU student photo by Guy Huffman)

2-28-01rdm

MSU is an affirmative action, equal opportunity educational institution.



News

University Communications

Pauline Young, Director

Morehead State University

UPO Box 1100

Morehead, KY 40351-1689

(606) 783-2030

Feb. 28, 2001

FOR IMMEDIATE RELEASE

MOREHEAD, Ky.---Renowned Elliott County folk artist Minnie Adkins will celebrate her birthday and her new book with a party and book signing on Tuesday, March 13, at the Kentucky Folk Art Center. The public is invited to attend the event from 1 to 3 p.m.

The new book, "Bloom Where You Are Planted," is a 38-page paperback with many full-color illustrations, according to Garry Barker, KFAC director. "It follows her life from her early years, growing up in Elliott County, to becoming a folk artist now known across the United States.

"The book is written in the author's words and style, the colorful and heartwarming saga of a woman who did, indeed, bloom where she was planted," Barker said. From her birth in 1934, Adkins' life is depicted in both words and pictures in her new book, which also includes stories from her husband, Herman Peters.

"Bloom Where You Are Planted," which sells for \$20 plus tax, is available at the KFAC Museum Store. Adkins also will sign copies of her first book, "Bright Blue Rooster."

Additional information is available by calling the Kentucky Folk Art Center at 606-783-2204.

####

kfac

News

University Communications

Pauline Young, Director

Morehead State University

UPO Box 1100

Morehead, KY 40351-1689

(606) 783-2030

Feb. 28, 2001

FOR IMMEDIATE RELEASE

MOREHEAD, Ky.---Morehead State University graduates from Carter and Elliott counties recently returned to their alma mater to share knowledge with current students during MSU's Department of Biological and Environmental Sciences Spring Seminar Series.

Michael Fultz of **Olive Hill** spoke on "Remodeling of the Actin Cytoskeleton in A7r5 Smooth Muscle Cells." The son of Edna and Frank Fultz, he earned a bachelor's degree in 1995 and Master of Science degree in 1997, both in biology, from MSU.

Fultz is a fourth year student and candidate for the Ph.D. degree in the biomedical science program of the Department of Physiology at Marshall University's School of Medicine. He has made presentations at the national, state and local levels and had work published in the "Canadian Journal of Physiology," "Acta Physiol" and "Journal of Muscle Research and Cell Motility."

Mike Spencer of **Sandy Hook** presented a session on "Family Togetherness: Rit, Rin and Ras Related Small g-Proteins." The son of Frank and Joan Spencer, he earned a bachelor's degree in 1996 and a master's degree in 1998 from Morehead State.

He currently works for Dr. Doug Andres, associate professor in the Department of Biochemistry at the University of Kentucky's Medical School.

The seminar series was designed to introduce undergraduate and graduate students to various research projects. Other presenters have included Dr. Bruce Mattingly, chair of MSU's Department of Psychology, Dr. Cynthia L. Trombino, MSU assistant professor of biology, and Dr. Grayson Brown, University of Kentucky professor of entomology.

Additional information is available by calling Dr. Ted Pass II, professor of biology and coordinator of the Seminar Series, at (606) 783-2962.

####

rdm

News

University Communications

Pauline Young, Director

Morehead State University

UPO Box 1100

Morehead, KY 40351-1689

(606) 783-2030

Feb. 28, 2001

FOR IMMEDIATE RELEASE

MOREHEAD, Ky.---Eight students from **Bath County** completed degree requirements during Morehead State University's 2000 Fall Semester.

They were:

Elizabeth Marie Adkins, **Salt Lick**, Bachelor University Studies;

Ingrid Ball, **Salt Lick**, Bachelor of Business Administration;

Jamie Michelle Conyers, **Owingsville**, Bachelor of Arts, Cum Laude;

Kimberly N. Crouch, **Owingsville**, Bachelor of Business Administration;

Carla Michelle Helphinstine, **Owingsville**, Bachelor of Arts;

Andrea Beth Hunt, **Owingsville**, Bachelor of Arts;

Leslie Jones, **Owingsville**, Bachelor of Business Administration, Cum Laude;

Dennis Sean Moody, **Owingsville**, Bachelor of Science, Magna Cum Laude.

To graduate Cum Laude, students must earn a cumulative grade point average of 3.5 to 3.69 on a 4.00 scale. Magna Cum Laude graduates must earn a cumulative grade point average of 3.7 to 3.89 on a 4.00 scale.

####

krc

News

University Communications

Pauline Young, Director

Morehead State University

UPO Box 1100

Morehead, KY 40351-1689

(606) 783-2030

Feb. 28, 2001

FOR IMMEDIATE RELEASE

MOREHEAD, Ky.---Kathryn Rachele Cinnamon of **Foursite** completed degree requirements during Morehead State University's 2000 Fall Semester. She received a Bachelor of Social Work degree.

####

krc

News

University Communications

Pauline Young, Director

Morehead State University

UPO Box 1100

Morehead, KY 40351-1689

(606) 783-2030

Feb. 28, 2001

FOR IMMEDIATE RELEASE

MOREHEAD, Ky.---Four students from **Boone County** completed degree requirements during Morehead State University's 2000 Fall Semester.

They were:

Kevin Michael Dawson, **Union**, Bachelor of Arts;

Roger Eugene Hayner, **Hebron**, Master of Business Administration;

Wendy L. Phillips, **Florence**, Bachelor of University Studies;

Sarah A. Vosmeier, **Florence**, Bachelor of Arts, Magna Cum Laude.

To graduate Magna Cum Laude, students must earn a cumulative grade point average of 3.7 to 3.89 on a 4.00 scale.

####

krc

News

University Communications

Pauline Young, Director

Morehead State University

UPO Box 1100

Morehead, KY 40351-1689

(606) 783-2030

Feb. 28, 2001

FOR IMMEDIATE RELEASE

MOREHEAD, Ky.---Two students from **Bourbon County** completed degree requirements during Morehead State University's 2000 Fall Semester.

They were:

William B. Clark, **Paris**, Bachelor of Business Administration;

Shirley Allen Johnson, **Mt. Sterling**, Master of Science.

####

krc

News

University Communications

Pauline Young, Director

Morehead State University

UPO Box 1100

Morehead, KY 40351-1689

(606) 783-2030

Feb. 28, 2001

FOR IMMEDIATE RELEASE

MOREHEAD, Ky.---Seventeen students from **Boyd County** completed degree requirements during Morehead State University's 2000 Fall Semester.

They were:

Heather L. Brown, **Catlettsburg**, Bachelor of Arts, Summa Cum Laude;

Michael Wesley Caudill, **Ashland**, Bachelor of Science, Cum Laude;

Craig Walter Cornelius, **Ashland**, Master of Business Administration;

Steven M. Dalton, **Ashland**, Bachelor of Business Administration;

Janelle Marie Dixon, **Ashland**, Bachelor of Arts;

Cristen Cathleen Ferguson-Isaac, **Catlettsburg**, Master of Arts;

Ralph Michael Garvin, **Ashland**, Bachelor of Arts;

Amoreena Gregory, **Ashland**, Bachelor of Science in Nursing;

Dorothy C. Hocevar, **Ashland**, Bachelor of Arts, Cum Laude;

Tonia Renae Lucas, **Ashland**, Bachelor of Arts, Magna Cum Laude;

Audrey N. Robinson, **Ashland**, Bachelor of Business Administration,

Magna Cum Laude;

Natalie Dawn Stewart, **Ashland**, Bachelor of Business Administration;

Sara Christine Stiltner, **Catlettsburg**, Bachelor of Arts;

Robert Paul Terry, **Ashland**, Bachelor of Science;

Tomie Elizabeth Thompson, **Ashland**, Bachelor of Science in Nursing;

Robert Dale Wilks, **Catlettsburg**, Bachelor of Science;

Andrea Jo Wolfenbarger, **Ashland**, Bachelor of Science.

To graduate Cum Laude, students must earn a cumulative grade point average of 3.5 to 3.69 on a 4.00 scale. Magna Cum Laude graduates must earn a cumulative grade point average of 3.7 to 3.89 on a 4.00 scale. To graduate Summa Cum Laude, students must earn a cumulative grade point average of 3.9 to 4.0 on a 4.00 scale.

#####

krc

News

University Communications

Pauline Young, Director

Morehead State University

UPO Box 1100

Morehead, KY 40351-1689

(606) 783-2030

Feb. 28, 2001

FOR IMMEDIATE RELEASE

MOREHEAD, Ky.---Two students from **Boyle County** completed degree requirements during Morehead State University's 2000 Fall Semester.

They were:

Jamie B. Doom, **Danville**, Bachelor of Business Administration;

Kristian David Logue, **Junction City**, Bachelor of Science.

####

krc

News

University Communications

Pauline Young, Director

Morehead State University

UPO Box 1100

Morehead, KY 40351-1689

(606) 783-2030

Feb. 28, 2001

FOR IMMEDIATE RELEASE

MOREHEAD, Ky.---Three students from **Bracken County** completed degree requirements during Morehead State University's 2000 Fall Semester.

They were:

Terry Steven Burton, **Brooksville**, Bachelor of Business Administration,
Cum Laude;

Victor L. McElfresh, **Augusta**, Bachelor of Arts;

Michael Anthony Ruf, **Augusta**, Bachelor of Arts.

To graduate Cum Laude, students must earn a cumulative grade point average of 3.5 to 3.69 on a 4.00 scale.

####

krc

News

University Communications

Pauline Young, Director

Morehead State University

UPO Box 1100

Morehead, KY 40351-1689

(606) 783-2030

Feb. 28, 2001

FOR IMMEDIATE RELEASE

MOREHEAD, Ky.---Nine students from **Breathitt County** completed degree requirements during Morehead State University's 2000 Fall Semester.

They were:

Cathy Ann Branson, **Jackson**, Bachelor of University Studies, Cum Laude;

Karen Ruth Bunn, **Campton**, Bachelor of Social Work, Summa Cum Laude;

Hazel Michelle Campbell, **Clayhole**, Bachelor of Arts;

Deanna R. Fraley, **Jackson**, Bachelor of Arts, Cum Laude;

Brian Ray Gross, **Jackson**, Bachelor of Arts;

Gregory Lee Gross, **Jackson**, Bachelor of Business Administration;

Terry Leighton Miller, **Jackson**, Bachelor of Business Administration,

Magna Cum Laude;

Charles David Napier, **Quicksand**, Master of Arts;

Carolyn Turner, **Booneville**, Master of Arts in Education.

To graduate Cum Laude, students must earn a cumulative grade point average of 3.5 to 3.69 on a 4.00 scale. Magna Cum Laude graduates must earn a cumulative grade point average of 3.7 to 3.89 on a 4.00 scale. To graduate Summa Cum Laude, students must earn a cumulative grade point average of 3.9 to 4.0 on a 4.00 scale.

####

krc

News

University Communications

Pauline Young, Director

Morehead State University

UPO Box 1100

Morehead, KY 40351-1689

(606) 783-2030

Feb. 28, 2001

FOR IMMEDIATE RELEASE

MOREHEAD, Ky.---Three students from **Brown County, (Ohio)** completed degree requirements during Morehead State University's 2000 Fall Semester.

They were:

James M. Malott, **Georgetown**, Bachelor of Business Administration;

Carrie A. Meranda, **Georgetown**, Bachelor of Arts, Summa Cum Laude;

Tamme Renee Spiller, **Ripley**, Bachelor of Business Administration,

Magna Cum Laude.

To graduate Magna Cum Laude, students must earn a cumulative grade point average of 3.7 to 3.89 on a 4.00 scale. Summa Cum Laude graduates must earn a cumulative grade point average of 3.9 to 4.0 on a 4.00 scale.

####

krc

News

University Communications

Pauline Young, Director

Morehead State University

UPO Box 1100

Morehead, KY 40351-1689

(606) 783-2030

Feb. 28, 2001

FOR IMMEDIATE RELEASE

MOREHEAD, Ky.---Fifteen students from **Carter County** completed degree requirements during Morehead State University's 2000 Fall Semester.

They were:

Eric Elwood Barker, **Olive Hill**, Bachelor of Arts;

Kimberly Dawn Birchfield, **Olive Hill**, Bachelor of Arts;

John Franklin Bishop, **Olive Hill**, Bachelor of Social Work;

Joe Michael Carhart, **Olive Hill**, Bachelor of Science;

Jeffery Scott Carroll, **Louisa**, Master of Arts in Education;

Brandon Wayne Fraley, **Grayson**, Bachelor of Business Administration;

Janet L. Fultz, **Olive Hill**, Bachelor of Social Work;

Patricia Ann Hignite, **Olive Hill**, Associate of Applied Business;

Billy L. Huffman, **Grayson**, Bachelor of Arts, Cum Laude;

Jennifer R. Justice, **Olive Hill**, Bachelor of Business Administration;

Cathy Lynn Lemaster, **Olive Hill**, Bachelor of Business Administration;

Sabrina L. Perry, **Olive Hill**, Bachelor of Social Work;

Tammy Marlene Royse, **Olive Hill**, Associate of Applied Business;

Kimberly Carlene Stidham, **Grayson**, Associate of Arts;

Karen Sue Tackett, **Olive Hill**, Master of Arts in Education.

To graduate Cum Laude, students must earn a cumulative grade point average of 3.5 to 3.69 on a 4.00 scale.

####

krc

News

University Communications

Pauline Young, Director

Morehead State University

UPO Box 1100

Morehead, KY 40351-1689

(606) 783-2030

Feb. 28, 2001

FOR IMMEDIATE RELEASE

MOREHEAD, Ky.---Jeanie Sunshine Lucas of **Winchester** completed degree requirements during Morehead State University's 2000 Fall Semester. She received a Bachelor of Business Administration and graduated Magna Cum Laude.

To graduate Magna Cum Laude, students must earn a cumulative grade point average of 3.7 to 3.89 on a 4.00 scale.

####

krc

News

University Communications

Pauline Young, Director

Morehead State University

UPO Box 1100

Morehead, KY 40351-1689

(606) 783-2030

Feb. 28, 2001

FOR IMMEDIATE RELEASE

MOREHEAD, Ky.---Four students from **Cincinnati** completed degree requirements during Morehead State University's 2000 Fall Semester.

They were:

Jill D. Gaines, Associate of Arts, (45224)

Adrienne J. Gordon, Bachelor of Business Administration, Cum Laude; (45255)

Nicholas James Fucito, Bachelor of Business Administration. (45244)

Christopher William Tumser, Bachelor of Business Administration; (45245)

To graduate Cum Laude, students must earn a cumulative grade point average of 3.5 to 3.69 on a 4.00 scale.

#####

krc

News

University Communications

Pauline Young, Director

Morehead State University

UPO Box 1100

Morehead, KY 40351-1689

(606) 783-2030

Feb. 28, 2001

FOR IMMEDIATE RELEASE

MOREHEAD, Ky.---Three students from **Elliott County** completed degree requirements during Morehead State University's 2000 Fall Semester.

They were:

Glenn Jason Boggs, **Clearfield**, Master of Business Administration;

Cindy Lou Porter, **Morehead**, Associate of Applied Business;

Shana N. Whitley, **Sandy Hook**, Bachelor of Arts.

####

krc

News

University Communications

Pauline Young, Director

Morehead State University

UPO Box 1100

Morehead, KY 40351-1689

(606) 783-2030

Feb. 28, 2001

FOR IMMEDIATE RELEASE

MOREHEAD, Ky.---Seven students from **Fayette County** completed degree requirements during Morehead State University's 2000 Fall Semester.

They were:

Barry Eugene Gray, **Lexington**, Master of Arts;

Brandon Scott Harding, **Lexington**, Master of Arts;

Lorraine Marie Kling, **Morehead**, Degree of Education Specialist;

Deanna Page, **Lexington**, Master of Arts;

Lara G. Plumley, **Lexington**, Bachelor of Science;

Reagan Kay Rossi, **West Liberty**, Master of Arts;

Stanley P. Shifferd, **Florence**, Master of Arts.

####

krc

News

University Communications

Pauline Young, Director

Morehead State University

UPO Box 1100

Morehead, KY 40351-1689

(606) 783-2030

Feb. 28, 2001

FOR IMMEDIATE RELEASE

MOREHEAD, Ky.---Eight students from **Fleming County** completed degree requirements during Morehead State University's 2000 Fall Semester.

They were:

Rebecca L. Arnold, **Flemingsburg**, Bachelor of Arts;

Hillary M. Barker, **Flemingsburg**; Bachelor of Science, Cum Laude;

David J. Deatley, **Wallingford**, Bachelor of Science;

Sheila M. Fawns, **Flemingsburg**, Bachelor of University Studies, Cum Laude;

Edward Kayne Ishmael, **Hillsboro**, Bachelor of Arts, Cum Laude;

Melissa B. Marshall, **Flemingsburg**, Associate of Arts;

Connie Jean Masters, **Flemingsburg**, Bachelor of Arts;

Lonna Louise Powell, **Flemingsburg**, Bachelor of Business Administration.

To graduate Cum Laude, students must earn a cumulative grade point average of 3.5 to 3.69 on a 4.00 scale.

####

krc

News

University Communications

Pauline Young, Director

Morehead State University

UPO Box 1100

Morehead, KY 40351-1689

(606) 783-2030

Feb. 28, 2001

FOR IMMEDIATE RELEASE

MOREHEAD, Ky.---Thirty students from **Floyd County** completed degree requirements during Morehead State University's 2000 Fall Semester.

They were:

Amy Caroline Adams, **David**, Bachelor of Social Work, Cum Laude;
Shirley Blair, **Prestonsburg**, Bachelor of University Studies;
James Curtis Carter, **Prestonsburg**, Bachelor of University Studies;
Brenda Fay Coleman, **Prestonsburg**, Bachelor of Arts;
John W. Collins, **Banner**, Bachelor of Business Administration, Cum Laude;
Tiffany D. Compton, **Weeksbury**, Bachelor of Science, Cum Laude;
Harla Renae Conn, **Martin**, Associate of Arts;
Brandalyn C. Elkins, **Ivel**, Bachelor of Arts, Magna Cum Laude;
Sandra Jean Griffith, **Banner**, Bachelor of Arts, Magna Cum Laude;
Brad N. Hall, **Weeksbury**, Master of Business Administration;
Jeremy R. Hall, **Estill**, Bachelor of Arts, Magna Cum Laude;
Missouri Faye Holbrook, **Prestonsburg**, Bachelor of Business Administration;
Emma Jean Howard, **Hippo**, Bachelor of Business Administration;
James F. Howard, **Prestonsburg**, Bachelor of University Studies;
Sharon A. Johnson, **Dwale**, Bachelor of University Studies;
Robert Kenneth Kinman, **Wayland**, Bachelor of Arts;
Christopher R. Lafferty, **Martin**, Bachelor of Music Education, Cum Laude;
Coley Martin, **Martin**, Master of Arts in Education;
Marie R. Miller, **Drift**, Bachelor of Arts, Cum Laude;
Heather Jean Nelson, **Banner**, Bachelor of Arts, Cum Laude;
Christopher N. Newsome, **Dana**, Bachelor of Arts;
Mary Angelia Osborne, **Garrett**, Master of Business Administration;
Samuel Everett Ratliff, **Bevinsville**, Master of Business Administration;
Charles E. Rowe, **Prestonsburg**, Bachelor of Science;

(MORE)

MSU Graduate List

2-2-2-2

Leslie A. Rowe, **Prestonsburg**, Bachelor of Science;

Julie Lynn Slone, **Prestonsburg**, Bachelor of Arts;

Forrest Joseph Stewardson, **Harold**, Bachelor of Science, Magna Cum Laude;

Billie L. Turner, **Garrett**, Master of Business Administration;

Jennifer S. Wade, **Martin**, Bachelor of Arts;

Brian Lee Woofert, **East Point**, Bachelor of Business Administration,

Summa Cum Laude.

To graduate Cum Laude, students must earn a cumulative grade point average of 3.5 to 3.69 on a 4.00 scale. Magna Cum Laude graduates must earn a cumulative grade point average of 3.7 to 3.89 on a 4.00 scale. To graduate Summa Cum Laude, students must earn a cumulative grade point average of 3.9 to 4.0 on a 4.00 scale.

####

krc

News

University Communications

Pauline Young, Director

Morehead State University

UPO Box 1100

Morehead, KY 40351-1689

(606) 783-2030

Feb. 28, 2001

FOR IMMEDIATE RELEASE

MOREHEAD, Ky.---Two students from **Frankfort** completed degree requirements during Morehead State University's 2000 Fall Semester.

They were:

Kyle Thomas Hutcherson, Bachelor of Business Administration;

Kelye J. Thompson, Bachelor of Arts, Cum Laude.

To graduate Cum Laude, students must earn a cumulative grade point average of 3.5 to 3.69 on a 4.00 scale.

####

krc

News

University Communications

Pauline Young, Director

Morehead State University

UPO Box 1100

Morehead, KY 40351-1689

(606) 783-2030

Feb. 28, 2001

FOR IMMEDIATE RELEASE

MOREHEAD, Ky.---Six students from **Greenup County** completed degree requirements during Morehead State University's 2000 Fall Semester.

They were:

Travis K. Barber, **Greenup**, Bachelor of Business Administration,
Magna Cum Laude;

John R. Brandenburg, **Flatwoods**, Bachelor of Science, Magna Cum Laude;

Erin Ruth Gullett, **Flatwoods**, Bachelor of Arts;

Andrea L. Preston, **Worthington**, Bachelor of Arts;

James H. Roberts, **Flatwoods**, Master of Business Administration;

Steven Ronald Robinson, **Flatwoods**, Master of Business Administration.

To graduate Magna Cum Laude, students must earn a cumulative grade point average of 3.7 to 3.89 on a 4.00 scale.

####

krc

News

University Communications

Pauline Young, Director

Morehead State University

UPO Box 1100

Morehead, KY 40351-1689

(606) 783-2030

Feb. 28, 2001

FOR IMMEDIATE RELEASE

MOREHEAD, Ky.---Anita Lynn Carney of **Oak Hill, Ohio**, completed degree requirements during Morehead State University's 2000 Fall Semester. She received a Master of Arts degree.

####

krc

News

University Communications

Pauline Young, Director

Morehead State University

UPO Box 1100

Morehead, KY 40351-1689

(606) 783-2030

Feb. 28, 2001

FOR IMMEDIATE RELEASE

MOREHEAD, Ky.---Eight students from **Louisville** completed degree requirements during Morehead State University's 2000 Fall Semester.

They were:

Charnita Renee Basemore, Bachelor of University Studies;

Jason Joseph Becker, Bachelor of Science;

Nicholas Benjamin Benyo, Bachelor of Arts;

Rita Linette Childress, Bachelor of Social Work;

Jason E. Filippazzo, Bachelor of Business Administration;

Garry Roy Sapp, Bachelor of Arts;

Scott Andrew Siebel, Bachelor of Arts;

Jennifer Faith Woodcock, Bachelor of Arts.

####

krc

News

University Communications

Pauline Young, Director

Morehead State University

UPO Box 1100

Morehead, KY 40351-1689

(606) 783-2030

Feb. 28, 2001

FOR IMMEDIATE RELEASE

MOREHEAD, Ky.---Twelve students from **Johnson County** completed degree requirements during Morehead State University's 2000 Fall Semester.

They were:

James Harold Blair, **Denver**, Bachelor of Business Administration,

Magna Cum Laude;

Rhonda L. Blanton, **Hager Hill**, Bachelor of Arts, Magna Cum Laude;

Heather D. Brown, **West Van Lear**, Bachelor of Music;

Micca Nicole Caudill, **Oil Springs**, Bachelor of Science;

Telena R. Conley, **Staffordsville**, Bachelor of Arts;

Russell C. Dean, **Tutor Key**, Master of Arts;

Tracy Leigh Goggans, **Staffordsville**, Bachelor of Business Administration;

Nelson W. Gullett, **Paintsville**, Bachelor of Arts, Magna Cum Laude;

Jimmy Wayne Frazier, **Paintsville**, Bachelor of Business Administration;

Tammie Gayle Matijasic, **Paintsville**, Master of Arts in Education;

Heather S. Mckenzie, **Paintsville**, Bachelor of Arts

Frank Marion Ratliff, **Paintsville**, Bachelor of Business Administration.

To graduate Magna Cum Laude, students must earn a cumulative grade point average of 3.7 to 3.89 on a 4.00 scale.

####

krc

News

University Communications

Pauline Young, Director

Morehead State University

UPO Box 1100

Morehead, KY 40351-1689

(606) 783-2030

Feb. 28, 2001

FOR IMMEDIATE RELEASE

MOREHEAD, Ky.---Five students from **Kenton County** completed degree requirements during Morehead State University's 2000 Fall Semester.

They were:

Katherine Jean Byrley, **Taylor Mill**, Bachelor of Arts;

Matthew John Collins, **Ft. Wright**, Bachelor of Arts, Cum Laude;

Kathy Lee Denman, **Edgewood**, Bachelor of University Studies;

Michael S. Miller, **Erlanger**, Bachelor of Business Administration;

Lesli Renee Schadler, **Independence**, Bachelor of Arts.

To graduate Cum Laude, students must earn a cumulative grade point average of 3.5 to 3.69 on a 4.00 scale.

####

krc

News

University Communications

Pauline Young, Director

Morehead State University

UPO Box 1100

Morehead, KY 40351-1689

(606) 783-2030

Feb. 28, 2001

FOR IMMEDIATE RELEASE

MOREHEAD, Ky.---Six students from **Knott County** completed degree requirements during Morehead State University's 2000 Fall Semester.

They were:

Shane Amburgey, **Emmalena**, Bachelor of Science;

Gregory D. Childers, **Dema**, Bachelor of Science;

Chad J. Crisp, **Topmost**, Bachelor of Science;

Jacqueline Jacobs, **Hindman**, Bachelor of Social Work;

Dawn Posey, **Hazard**, Master of Arts in Education;

Douglas Ritchie, **Mallie**, Bachelor of Arts.

####

krc

News

University Communications

Pauline Young, Director

Morehead State University

UPO Box 1100

Morehead, KY 40351-1689

(606) 783-2030

Feb. 28, 2001

FOR IMMEDIATE RELEASE

MOREHEAD, Ky.---Eleven students from **Lawrence County** completed degree requirements during Morehead State University's 2000 Fall Semester.

They were:

Saundrea G. Boggs, **Webbville**, Bachelor of Arts;

Christopher Michael Conn, **Louisa**, Bachelor of Science;

Darrell D. Gauze, **Louisa**, Bachelor of Business Administration;

Paula Jean Holbrook, **Louisa**, Master of Arts;

Ora Jay Hylton, **Louisa**, Bachelor of Science, Magna Cum Laude;

Lea Anna Marcum, **Louisa**, Bachelor of Business Administration;

Darlen Michelle Napier, **Louisa**, Bachelor of Music Education, Cum Laude;

Joseph Brandon Pigg, **Louisa**, Bachelor of Arts;

Charles Paul Preece, **Louisa**, Bachelor of Science;

James M. See, **Louisa**, Bachelor of Arts;

Anita Sparks Slone, **Blaine**, Master of Arts in Education.

To graduate Cum Laude, students must earn a cumulative grade point average of 3.5 to 3.69 on a 4.00 scale. Magna Cum Laude graduates must earn a cumulative grade point average of 3.7 to 3.89 on a 4.00 scale.

####

krc

News

University Communications

Pauline Young, Director

Morehead State University

UPO Box 1100

Morehead, KY 40351-1689

(606) 783-2030

Feb. 28, 2001

FOR IMMEDIATE RELEASE

MOREHEAD, Ky.---James Edward Johnson of **Ironton, Ohio**, completed degree requirements during Morehead State University's 2000 Fall Semester. He received a Master of Business Administration degree.

####

krc

News

University Communications

Pauline Young, Director

Morehead State University

UPO Box 1100

Morehead, KY 40351-1689

(606) 783-2030

Feb. 28, 2001

FOR IMMEDIATE RELEASE

MOREHEAD, Ky.---Lewissa F. Brandenburg of **Beattyville** completed degree requirements during Morehead State University's 2000 Fall Semester. She received a Master of Arts degree.

####

krc

News

University Communications

Pauline Young, Director

Morehead State University

UPO Box 1100

Morehead, KY 40351-1689

(606) 783-2030

Feb. 28, 2001

FOR IMMEDIATE RELEASE

MOREHEAD, Ky.---Three students from **Letcher County** completed degree requirements during Morehead State University's 2000 Fall Semester.

They were:

Michael S. Mullins, **Jackhorn**, Bachelor of Arts;

Tiffany Dianna Slone, **Jeremiah**, Bachelor of Arts;

Scarlett Jolene Stewart, **Deane**, Bachelor of Arts.

####

krc

News

University Communications

Pauline Young, Director

Morehead State University

UPO Box 1100

Morehead, KY 40351-1689

(606) 783-2030

Feb. 28, 2001

FOR IMMEDIATE RELEASE

MOREHEAD, Ky.---Six students from **Lewis County** completed degree requirements during Morehead State University's 2000 Fall Semester.

They were:

Charity E. Burriss, **Vanceburg**, Bachelor of Science, Cum Laude;

Jeanie Lee Clary, **Emerson**, Master of Arts in Education;

Judy K. Killen, **Vanceburg**, Bachelor of Arts;

Angela Marie Kimbler, **Wallingford**, Master of Arts in Education;

Crystal K. Redden, **Vanceburg**, Bachelor of Business Administration;

Melissa G. Sizemore, **Vanceburg**, Bachelor of Business Administration.

To graduate Cum Laude, students must earn a cumulative grade point average of 3.5 to 3.69 on a 4.00 scale.

####

krc

News

University Communications

Pauline Young, Director

Morehead State University

UPO Box 1100

Morehead, KY 40351-1689

(606) 783-2030

Feb. 28, 2001

FOR IMMEDIATE RELEASE

MOREHEAD, Ky.---Eleven students from **Magoffin County** completed degree requirements during Morehead State University's 2000 Fall Semester.

They were:

Melanie L. Arnett, **Salyersville**, Bachelor of Science;

Melissa Louise Barnett, **Salyersville**, Bachelor of University Studies;

Tony Lee Cole, **Salyersville**, Bachelor of Business Administration, Cum Laude;

Lisa L. Cooper, **Frankfort**, Master of Arts in Education;

Starr Crystal Gasparac, **Salyersville**, Bachelor of Social Work;

Denise Renee Miller, **Salyersville**, Bachelor of Business Administration;

Traci Neil Prater, **Salyersville**, Bachelor of Business Administration,

Magna Cum Laude;

Randall Keith Risner, **Hueysville**, Bachelor of Science;

Jennifer Lynn Salyer, **Salyersville**, Master of Arts in Education;

Charlie Allen Skaggs, **Salyersville**, Bachelor of Arts;

Elizabeth Ruth Tackett, **Salyersville**, Bachelor of Arts, Summa Cum Laude.

To graduate Cum Laude, students must earn a cumulative grade point average of 3.5 to 3.69 on a 4.00 scale. Magna Cum Laude graduates must earn a cumulative grade point average of 3.7 to 3.89 on a 4.00 scale. To graduate Summa Cum Laude, students must earn a cumulative grade point average of 3.9 to 4.0 on a 4.00 scale.

####

krc

News

University Communications

Pauline Young, Director

Morehead State University

UPO Box 1100

Morehead, KY 40351-1689

(606) 783-2030

Feb. 28, 2001

FOR IMMEDIATE RELEASE

MOREHEAD, Ky.---Katie Eileen Kennedy of **Newark, Ohio**, completed degree requirements during Morehead State University's 2000 Fall Semester. She received a Bachelor of Science degree.

####

krc

News

University Communications

Pauline Young, Director

Morehead State University

UPO Box 1100

Morehead, KY 40351-1689

(606) 783-2030

Feb. 28, 2001

FOR IMMEDIATE RELEASE

MOREHEAD, Ky.---Three students from **Martin County** completed degree requirements during Morehead State University's 2000 Fall Semester.

They were:

Douglas E. Jude, **Pilgrim**, Bachelor of Business Administration;

Joe Edward Maynard, **Inez**, Bachelor of Business Administration;

Susan Lynn Whitt, **Pilgrim**, Master of Arts in Education.

####

krc

News

University Communications

Pauline Young, Director

Morehead State University

UPO Box 1100

Morehead, KY 40351-1689

(606) 783-2030

Feb. 28, 2001

FOR IMMEDIATE RELEASE

MOREHEAD, Ky.---Nine students from **Mason County** completed degree requirements during Morehead State University's 2000 Fall Semester.

They were:

Kimberly A. Cropper, **Mays Lick**, Bachelor of Arts;

Jane Ann Huss, **Maysville**, Bachelor of Business Administration, Cum Laude;

Ann S. Legris, **Mays Lick**, Bachelor of Arts;

Jason Gerard Mellenkamp, **Maysville**, Bachelor of Social Work;

Randall D. Orme, **Maysville**, Bachelor of Arts;

Annlyn F. Purdon, **Maysville**, Bachelor of Business Administration;

Leigh A. Rains, **Maysville**, Bachelor of Science;

Heidi Lynn Redmond, **Maysville**, Bachelor of Science;

Emily R. Schumacher, **Maysville**, Bachelor of Business Administration,

Cum Laude.

To graduate Cum Laude, students must earn a cumulative grade point average of 3.5 to 3.69 on a 4.00 scale.

####

krc

News

University Communications

Pauline Young, Director

Morehead State University

UPO Box 1100

Morehead, KY 40351-1689

(606) 783-2030

Feb. 28, 2001

FOR IMMEDIATE RELEASE

MOREHEAD, Ky.---Jeffrey N. Meador of **Guston** completed degree requirements during Morehead State University's 2000 Fall Semester. He received a Bachelor of Music degree.

####

krc

News

University Communications

Pauline Young, Director

Morehead State University

UPO Box 1100

Morehead, KY 40351-1689

(606) 783-2030

Feb. 28, 2001

FOR IMMEDIATE RELEASE

MOREHEAD, Ky.---Six students from **Meniffee County** completed degree requirements during Morehead State University's 2000 Fall Semester.

They were:

Virginia Lee Adams, **Wellington**, Bachelor of Science, Cum Laude;

Kimberly Karen Davis, **Wellington**, Bachelor of Arts, Cum Laude;

Tessa J. Roach, **Mariba**, Bachelor of Arts;

Brandon Wayne Stamm, **Frenchburg**, Bachelor of Science, Cum Laude;

Christa L. Stamm, **Frenchburg**, Bachelor of Business Administration;

Lajohnnda Christine Williams, **Sudith**, Bachelor of Arts.

To graduate Cum Laude, students must earn a cumulative grade point average of 3.5 to 3.69 on a 4.00 scale.

####

krc

News

University Communications

Pauline Young, Director

Morehead State University

UPO Box 1100

Morehead, KY 40351-1689

(606) 783-2030

Feb. 28, 2001

FOR IMMEDIATE RELEASE

MOREHEAD, Ky.---Melanie F. Dean of **Harrodsburg** completed degree requirements during Morehead State University's 2000 Fall Semester. She received a Bachelor of Business Administration degree.

####

krc

News

University Communications

Pauline Young, Director

Morehead State University

UPO Box 1100

Morehead, KY 40351-1689

(606) 783-2030

Feb. 28, 2001

FOR IMMEDIATE RELEASE

MOREHEAD, Ky.---Eric Joseph Elam of **Celina, Ohio**, completed degree requirements during Morehead State University's 2000 Fall Semester. He received a Bachelor of Science degree.

####

krc

News

University Communications

Pauline Young, Director

Morehead State University

UPO Box 1100

Morehead, KY 40351-1689

(606) 783-2030

Feb. 28, 2001

FOR IMMEDIATE RELEASE

MOREHEAD, Ky.---Eighteen students from **Montgomery County** completed degree requirements during Morehead State University's 2000 Fall Semester.

They were:

Brian Joseph Anderson, **Mt. Sterling**, Bachelor of Business Administration;
John Raymond Arnold, **Mt. Sterling**, Bachelor of Science;
Kyle Christopher Beckham, **Mt. Sterling**, Bachelor of University Studies;
Rosemary C. Bodie, **Jeffersonville**, Bachelor of Arts;
Sarah Margaret Branham, **Jeffersonville**, Bachelor of Business Administration;
James Tracy Carroll, **Mt. Sterling**, Bachelor of Arts;
Michael Gene Catron, **Mt. Sterling**, Master of Arts;
Robert Scott Corbin, **Louisville**, Bachelor of Music Education, Cum Laude;
Steven Wesley Graham, **Mt. Sterling**, Bachelor of Business Administration;
Jillian Dawn Gross, **Mt. Sterling**, Bachelor of Business Administration,
Magna Cum Laude;
Lisa Michelle Hawkins, **Mt. Sterling**, Master of Science;
Rebecca Lynn Hess, **Mariba**, Bachelor of Arts;
Amy Lynn Kelly, **Mt. Sterling**, Bachelor of Arts, Summa Cum Laude;
Tamela Rae Porter, **Mt. Sterling**, Master of Art in Education;
Larry Todd Richardson, **Mt. Sterling**, Bachelor of Science;
Randall Eugene Runyon, **Mt. Sterling**, Bachelor of Social Work,
Magna Cum Laude;
Stacy M. Stull, **Mt. Sterling**, Bachelor of Arts, Cum Laude;
Brenda J. Terpin, **Mt. Sterling**, Bachelor of Science in Nursing;
Paul Eugene Wheeler, **Mt. Sterling**, Bachelor of Science, Cum Laude.

To graduate Cum Laude, students must earn a cumulative grade point average of 3.5 to 3.69 on a 4.00 scale. Magna Cum Laude graduates must earn a cumulative grade point average of 3.7 to 3.89 on a 4.00 scale. To graduate Summa Cum Laude, students must earn a cumulative grade point average of 3.9 to 4.0 on a 4.00 scale.

####

krc

News

University Communications

Pauline Young, Director

Morehead State University

UPO Box 1100

Morehead, KY 40351-1689

(606) 783-2030

Feb. 28, 2001

FOR IMMEDIATE RELEASE

MOREHEAD, Ky.---Two students from **Montgomery County, (Ohio)** completed degree requirements during Morehead State University's 2000 Fall Semester.

They were:

Jason Patrick Wadle, **Englewood**, Bachelor of Business Administration;

Sarah Beth Weekley, **Miamisburg**, Bachelor of Arts, Magna Cum Laude.

To graduate Magna Cum Laude, students must earn a cumulative grade point average of 3.7 to 3.89 on a 4.00 scale.

####

krc

News

University Communications

Pauline Young, Director

Morehead State University

UPO Box 1100

Morehead, KY 40351-1689

(606) 783-2030

Feb. 28, 2001

FOR IMMEDIATE RELEASE

MOREHEAD, Ky.---Twelve students from **Morgan County** completed degree requirements during Morehead State University's 2000 Fall Semester.

They were:

Andrea D. Aragon, **Crockett**, Bachelor of Arts;

Damon Matthew Ballinger, **Morehead**, Bachelor of University Studies;

Anita Beth Burchett, **West Liberty**, Bachelor of Arts, Magna Cum Laude;

Kimberly C. Cole, **West Liberty**, Bachelor of Business Administration,

Magna Cum Laude;

Kimberly Jo Conley, **West Liberty**, Bachelor of Business Administration;

Jody Mae Franklin, **West Liberty**, Bachelor of Science, Magna Cum Laude;

Amy Lynn Haybarker, **Camby, Indiana**, Bachelor of Science,

Magna Cum Laude;

Tonya Wrae Thompson, **Mt. Sterling**, Bachelor of Business Administration;

Kristi Jane Trusty, **West Liberty**, Bachelor of Arts, Cum Laude;

Cindy Lou Vance Bradley, **West Liberty**, Associate of Arts, with Distinction;

Kash J. Wireman, **Cannel City**, Bachelor of Arts;

William W. Wright, **West Liberty**, Bachelor of Science.

To graduate Cum Laude, students must earn a cumulative grade point average of 3.5 to 3.69 on a 4.00 scale. Magna Cum Laude students must earn a cumulative grade point average of 3.7 to 3.89 on a 4.00 scale.

####

krc

News

University Communications

Pauline Young, Director

Morehead State University

UPO Box 1100

Morehead, KY 40351-1689

(606) 783-2030

Feb. 28, 2001

FOR IMMEDIATE RELEASE

MOREHEAD, Ky.---Thaddeus Christopher Beck of **Mt. Gilead, Ohio**, completed degree requirements during Morehead State University's 2000 Fall Semester. He received a Bachelor of Science degree.

####

krc

News

University Communications

Pauline Young, Director

Morehead State University

UPO Box 1100

Morehead, KY 40351-1689

(606) 783-2030

Feb. 28, 2001

FOR IMMEDIATE RELEASE

MOREHEAD, Ky.---Amie Jo Richardson of **New Hope** completed degree requirements during Morehead State University's 2000 Fall Semester. She received a Bachelor of Arts degree and graduated Cum Laude.

To graduate Cum Laude, students must earn a cumulative grade point average of 3.5 to 3.69 on a 4.00 scale.

####

krc

News

University Communications

Pauline Young, Director

Morehead State University

UPO Box 1100

Morehead, KY 40351-1689

(606) 783-2030

Feb. 28, 2001

FOR IMMEDIATE RELEASE

MOREHEAD, Ky.---Two students from **Carlisle** completed degree requirements during Morehead State University's 2000 Fall Semester.

They were:

Larry K. Bretz, Bachelor of Arts;

Justin Tyler Massey, Bachelor of Business Administration.

####

krc

News

University Communications

Pauline Young, Director

Morehead State University

UPO Box 1100

Morehead, KY 40351-1689

(606) 783-2030

Feb. 28, 2001

FOR IMMEDIATE RELEASE

MOREHEAD, Ky.---Amy L. Adams of **Crestwood** completed degree requirements during Morehead State University's 2000 Fall Semester. She received a Bachelor of Arts degree and graduated Cum Laude.

To graduate Cum Laude, students must earn a cumulative grade point average of 3.5 to 3.69 on a 4.00 scale.

####

krc

News

University Communications

Pauline Young, Director

Morehead State University

UPO Box 1100

Morehead, KY 40351-1689

(606) 783-2030

Feb. 28, 2001

FOR IMMEDIATE RELEASE

MOREHEAD, Ky.---Two students from **Booneville** completed degree requirements during Morehead State University's 2000 Fall Semester.

They were:

Jaclyn S. Roberts, Bachelor of Business Administration;

Christopher Ray Shouse, Bachelor of Arts.

####

krc

News

University Communications

Pauline Young, Director

Morehead State University

UPO Box 1100

Morehead, KY 40351-1689

(606) 783-2030

Feb. 28, 2001

FOR IMMEDIATE RELEASE

MOREHEAD, Ky.---Five students from **Pendleton County** completed degree requirements during Morehead State University's 2000 Fall Semester.

They were:

Julie R. Ackman, **Falmouth**, Bachelor of Music Education, Cum Laude;

Desiree Elizabeth Beiting, **California**, Bachelor of Science;

Matthew J. Brown, **Williamstown**, Bachelor of Arts;

Amber Lee Fogle, **Berry**, Bachelor of Arts, Summa Cum Laude;

Gena Kay True, **Demossville**, Bachelor of Arts.

To graduate Cum Laude, students must earn a cumulative grade point average of 3.5 to 3.69 on a 4.00 scale. Summa Cum Laude graduates must earn a cumulative grade point average of 3.9 to 4.0 on a 4.00 scale.

####

krc

News

University Communications

Pauline Young, Director

Morehead State University

UPO Box 1100

Morehead, KY 40351-1689

(606) 783-2030

Feb. 28, 2001

FOR IMMEDIATE RELEASE

MOREHEAD, Ky.---Nine students from **Perry County** completed degree requirements during Morehead State University's 2000 Fall Semester.

They were:

Polly Begley, **Combs**, Bachelor of Arts;

Wanda Kaye Browning, **Avawam**, Bachelor of Social Work, Cum Laude;

Mark Aaron Dixon, **Hazard**, Bachelor of Arts, Magna Cum Laude;

Kevin W. Fugate, **Happy**, Bachelor of Arts;

Brenda L. Napier, **Vicco**, Bachelor of Arts;

Rhoda Nell Noplis, **Jeff**, Master of Arts in Education;

Amy Renee Ritchie, **Avawam**, Bachelor of Social Work;

Charles David Sandlin, **Hazard**, Bachelor of University Studies;

Rebecca Anne Williams, **Cornettsville**, Bachelor of Arts.

To graduate Cum Laude, students must earn a cumulative grade point average of 3.5 to 3.69 on a 4.00 scale. Magna Cum Laude graduates must earn a cumulative grade point average of 3.7 to 3.89 on a 4.00 scale.

####

krc

News

University Communications

Pauline Young, Director

Morehead State University

UPO Box 1100

Morehead, KY 40351-1689

(606) 783-2030

Feb. 28, 2001

FOR IMMEDIATE RELEASE

MOREHEAD, Ky.---Twenty students from **Pike County** completed degree requirements during Morehead State University's 2000 Fall Semester.

They were:

Rita Smith Adams, **Pikeville**, Bachelor of Arts;
Kathryn Ann Atkins, **Pikeville**, Master of Business Administration;
April Blackburn, **Phelps**, Bachelor of Social Work;
Jamie S. Caines, **Belfry**, Bachelor of Business Administration;
Elisha Leigh Carter, **Pikeville**, Bachelor of Arts, Cum Laude;
Lola J. Coleman, **Raccoon**, Bachelor of Arts;
Shaun E. Collins, **Raccoon**, Bachelor of Science;
Kimberly N. Freeman, **Steele**, Bachelor of Science, Magna Cum Laude;
Dana Jo Hall, **Virgie**, Bachelor of Business Administration,
Summa Cum Laude;
Tammie K. Hensley, **Pikeville**, Master of Arts in Education;
William J. Higginbotham, **Morehead**, Master of Business Administration;
Terry Dean May, **Pikeville**, Bachelor of University Studies;
Karen Gay Phillips Mounts, **Belfry**, Master of Arts in Education;
Jacinta Newsome, **Belcher**, Bachelor of Arts, Magna Cum Laude;
Rudean Reynolds, **Leburn**, Master of Business Administration;
Lanna Roberts, **Virgie**, Bachelor of University Studies;
Gina R. Salisbury, **Raccoon**, Master of Arts in Education;
Bradley Trent Stiltner, **Elkhorn City**, Bachelor of Arts;
Chadley B. Stiltner, **Elkhorn City**, Bachelor of Arts;
Vickie Lynn Stone, **Pikeville**, Bachelor of Business Administration.

To graduate Cum Laude, students must earn a cumulative grade point average of 3.5 to 3.69 on a 4.00 scale. Magna Cum Laude, graduates must earn a cumulative grade point average of 3.7 to 3.89 on a 4.00 scale. To graduate Summa Cum Laude, students must earn a cumulative grade point average of 3.9 to 4.0 on a 4.00 scale.

####

krc

MSU is an affirmative action equal opportunity educational institution.

News

University Communications

Pauline Young, Director

Morehead State University

UPO Box 1100

Morehead, KY 40351-1689

(606) 783-2030

Feb. 28, 2001

FOR IMMEDIATE RELEASE

MOREHEAD, Ky.---Joshua Alma Perry of **Clay City** completed degree requirements during Morehead State University's 2000 Fall Semester. He received a Bachelor of Science degree and graduated Magna Cum Laude.

To graduate Magna Cum Laude, students must earn a cumulative grade point average of 3.7 to 3.89 on a 4.00 scale.

####

krc

News

University Communications

Pauline Young, Director

Morehead State University

UPO Box 1100

Morehead, KY 40351-1689

(606) 783-2030

Feb. 28, 2001

FOR IMMEDIATE RELEASE

MOREHEAD, Ky.---Two students from **Preble (Ohio) County** completed degree requirements during Morehead State University's 2000 Fall Semester.

They were:

Leslie Gail Dennis, **Somerville**, Bachelor of University Studies,

Magna Cum Laude;

Sunny J. Kramer, **Eaton**, Bachelor of Arts.

To graduate Magna Cum Laude, students must earn a cumulative grade point average of 3.7 to 3.89 on a 4.00 scale.

####

krc

News

University Communications

Pauline Young, Director

Morehead State University

UPO Box 1100

Morehead, KY 40351-1689

(606) 783-2030

Feb. 28, 2001

FOR IMMEDIATE RELEASE

MOREHEAD, Ky.---Mary Lou Barnett of **Somerset** completed degree requirements during Morehead State University's 2000 Fall Semester. She received a Bachelor of Social Work degree.

####

krc

News

University Communications

Pauline Young, Director

Morehead State University

UPO Box 1100

Morehead, KY 40351-1689

(606) 783-2030

Feb. 28, 2001

FOR IMMEDIATE RELEASE

MOREHEAD, Ky.---Three students from **Mt. Olivet** completed degree requirements during Morehead State University's 2000 Fall Semester.

They were:

David P. Curtis, Bachelor of Science;

Jennifer L. Fooks, Bachelor of Business Administration, Magna Cum Laude;

Stephen Tyler Staggs, Bachelor of Business Administration, Magna Cum Laude.

To graduate Magna Cum Laude, students must earn a cumulative grade point average of 3.7 to 3.89 on a 4.00 scale.

####

krc

News

University Communications

Pauline Young, Director

Morehead State University

UPO Box 1100

Morehead, KY 40351-1689

(606) 783-2030

Feb. 28, 2001

FOR IMMEDIATE RELEASE

MOREHEAD, Ky.---Sixty-seven students from **Rowan County** completed degree requirements during Morehead State University's 2000 Fall Semester.

They were:

Thudchapong Abhigantaphand, **Morehead**, Master of Business Administration;

Ali Reza Alavizadeh, **Morehead**, Master of Science;

Darlene Allen, **West Liberty**, Bachelor of Business Administration,

Cum Laude;

Donna Robin Anderson, **Phyllis**, Master of Arts in Education;

Jeanne Michelle Anderson, **Morehead**, Bachelor of Science;

John Charles Antuna, **Morehead**, Bachelor of Arts;

Jessica Lynn Armstrong, **Morehead**, Master of Science;

Peggy Ellen Ballard, **Morehead**, Bachelor of University Studies;

Jennifer Lynn Benedict, **Morehead**, Bachelor of University Studies;

Christopher James Berry, **Morehead**, Master of Arts;

Richard Todd Bingham, **Morehead**, Bachelor of Business Administration;

Adonica Georgiana Blackman, **Clearfield**, Bachelor of Arts;

Christopher David Bledsoe, **Morehead**, Bachelor of Science;

Shonda G. Bledsoe, **Morehead**, Bachelor of Arts, Cum Laude;

Valarie C. Bricker, **Morehead**, Bachelor of Business Administration;

Darlene Kay Brooks, **Morehead**, Associate of Arts, Distinction;

Mellissa Marie Brown, **Clearfield**, Bachelor of Business Administration;

Nancy Ropars Brown, **Morehead**, Bachelor of Arts, Summa Cum Laude;

Jamie Lynn Caba, **Morehead**, Master of Arts;

Crystal Gale Chapman, **Clearfield**, Bachelor of Arts, Summa Cum Laude;

Timothy Chapman, **Clearfield**, Bachelor of Arts;

Carrie E. Conn, **Morehead**, Bachelor of University Studies;

Timothy Ray Dunn, **Morehead**, Bachelor of Arts;

(MORE)

MSU Graduate List
2-2-2-2

Brandon Scott Fain, **Clearfield**, Bachelor of Arts;
John Thomas Fern, **Morehead**, Bachelor of Science;
Christopher V. Fultz, **Morehead**, Bachelor of Arts;
Beverly Lynn Gibbs, **Morehead**, Bachelor of Arts, Magna Cum Laude;
Deanna Sue Goforth, **Morehead**, Bachelor of Social Work;
Lydia D. Graham, **Morehead**, Bachelor of Arts;
Joshua Samuel Gruneisen, **Morehead**, Bachelor of Arts;
April Diane Haight, **Clearfield**, Master of Business Administration;
John Wesley Haywood, **Morehead**, Bachelor of Arts, Magna Cum Laude;
Larry Joseph Holbrook, **Morehead**, Bachelor of Science;
Michael Anthony Howard, **Morehead**, Bachelor of Science, Cum Laude;
Misty Lee Ison, **Clearfield**, Bachelor of University Studies, Magna Cum Laude;
Eiko Kamo, **Morehead**, Bachelor of Arts;
Anne Elizabeth King, **Morehead**, Bachelor of Science;
Ella Jane Lamkin, **Morehead**, Bachelor of University Studies;
Nathan K. Lewis, **Morehead**, Bachelor of Science;
Xuefei Li, **Morehead**, Master of Science;
Fang Liu, **Morehead**, Master of Business Administration;
Glen A. Maynard, **Morehead**, Bachelor of Science;
Katherine Ann McCafferty, **Morehead**, Master of Science;
Julie Ann Mcguire, **Morehead**, Bachelor of Arts;
Vanessa Jean McIntosh, **Morehead**, Bachelor of Social Work;
Nadine E. Melahn, **Morehead**, Master of Arts;
Laura Beth Messer, **Morehead**, Bachelor of Science;
Lara E. Moore, **Morehead**, Bachelor of Arts;
James Gabriel Nickell, **Clearfield**, Bachelor of Arts;
Michael T. Norman, **Morehead**, Bachelor of Business Administration;
Tommy Ong, **Morehead**, Bachelor of Arts;
Heather Dawn Pierce, **Morehead**, Master of Arts in Education;
Tonya T. Potter, **Clearfield**, Associate of Applied Business;
John Gregory Randolph, **Morehead**, Bachelor of Music Education;

(MORE)

William Christopher Ray, **Morehead**, Bachelor of Science;
Allyson Mignon Sanders, **Morehead**, Bachelor of Arts;
Debra Elizabeth Sharp, **Morehead**, Bachelor of Arts;
Pamela Ann Smith, **Morehead**, Associate of Applied Business;
Nicole Lynn Sparks, **Morehead**, Bachelor of Arts;
Brian Alan Sperger, **Morehead**, Bachelor of Science;
Jerry Gayler Stephens, **Morehead**, Bachelor of Science;
Wenyu Tang, **Morehead**, Master of Arts;
Eric Daniel Terhune, **Morehead**, Bachelor of University Studies;
Stephanie J. Trent, **Morehead**, Bachelor of Business Administration;
Kimberly G. Walters, **Clearfield**, Bachelor of Arts;
Charlene Ruth Ward, **Morehead**, Bachelor of Arts;
Lucy Williams, **Morehead**, Bachelor of Business Administration.

To graduate Cum Laude, students must earn a cumulative grade point average of 3.5 to 3.69 on a 4.00 scale. Magna Cum Laude graduates must earn a cumulative grade point average of 3.7 to 3.89 on a 4.00 scale. Summa Cum Laude, students must earn a cumulative grade point average of 3.9 to 4.0 on a 4.00 scale.

####

krc

News

University Communications

Pauline Young, Director

Morehead State University

UPO Box 1100

Morehead, KY 40351-1689

(606) 783-2030

Feb. 28, 2001

FOR IMMEDIATE RELEASE

MOREHEAD, Ky.---Kelly Jean Kremin of **Portsmouth, Ohio**, completed degree requirements during Morehead State University's 2000 Fall Semester. She received a Bachelor of Music Education degree.

####

krc

News

University Communications

Pauline Young, Director

Morehead State University

UPO Box 1100

Morehead, KY 40351-1689

(606) 783-2030

Feb. 28, 2001

FOR IMMEDIATE RELEASE

MOREHEAD, Ky.---Robert W. Gaskins of **Shelbyville** completed degree requirements during Morehead State University's 2000 Fall Semester. He received a Bachelor of Arts degree.

#####

krc

News

University Communications

Pauline Young, Director

Morehead State University

UPO Box 1100

Morehead, KY 40351-1689

(606) 783-2030

Feb. 28, 2001

FOR IMMEDIATE RELEASE

MOREHEAD, Ky.---Kelli Kristine Thompson of **Mason, Ohio**, completed degree requirements during Morehead State University's 2000 Fall Semester. She received a Bachelor of Arts degree.

####

krc

News

University Communications

Pauline Young, Director

Morehead State University

UPO Box 1100

Morehead, KY 40351-1689

(606) 783-2030

Feb. 28, 2001

FOR IMMEDIATE RELEASE

MOREHEAD, Ky.---Four students from **Wolfe County** completed degree requirements during Morehead State University's 2000 Fall Semester.

They were:

Christopher Brandon Carroll, **Campton**, Bachelor of Business Administration;

Glenna N. Mayabb, **Hazel Green**, Bachelor of Arts, Cum Laude;

Jaclyn Denise McWhorter, **Campton**, Bachelor of Arts;

Tracy Lynn Phipps, **Hazel Green**, Bachelor of Science.

To graduate Cum Laude, students must earn a cumulative grade point average of 3.5 to 3.69 on a 4.00 scale.

####

krc

News

University Communications

Pauline Young, Director

Morehead State University

UPO Box 1100

Morehead, KY 40351-1689

(606) 783-2030

Feb. 28, 2001

FOR IMMEDIATE RELEASE

MOREHEAD, Ky.---Russell Marcum Bates of **Versailles** completed degree requirements during Morehead State University's 2000 Fall Semester. He received a Bachelor of Science degree.

####

krc

News

University Communications

Pauline Young, Director

Morehead State University

UPO Box 1100

Morehead, KY 40351-1689

(606) 783-2030

Feb. 28, 2001

FOR IMMEDIATE RELEASE

MOREHEAD, Ky.---George Anthony Berzonski of **Akron, Ohio**, completed degree requirements during Morehead State University's 2000 Fall Semester. He received a Master of Arts degree.

####

krc

News

University Communications

Pauline Young, Director

Morehead State University

UPO Box 1100

Morehead, KY 40351-1689

(606) 783-2030

Feb. 28, 2001

FOR IMMEDIATE RELEASE

MOREHEAD, Ky.---Dan Curtis Hausser of **Marietta, Ohio**, completed degree requirements during Morehead State University's 2000 Fall Semester. He received a Bachelor of Arts degree.

####

krc

News

University Communications

Pauline Young, Director

Morehead State University

UPO Box 1100

Morehead, KY 40351-1689

(606) 783-2030

Feb. 28, 2001.

FOR IMMEDIATE RELEASE

MOREHEAD, Ky.---James R. Tolle of **Wilmington, Ohio**, completed degree requirements during Morehead State University's 2000 Fall Semester. He received an Associate of Arts degree.

####

krc

News

University Communications

Pauline Young, Director

Morehead State University

UPO Box 1100

Morehead, KY 40351-1689

(606) 783-2030

Feb. 28, 2001,

FOR IMMEDIATE RELEASE

MOREHEAD, Ky.---Amy M. Wolfe of **Loveland, Ohio**, completed degree requirements during Morehead State University's 2000 Fall Semester. She received a Bachelor of Arts degree and graduated Magna Cum Laude.

To graduate Magna Cum Laude, students must earn a cumulative grade point average of 3.7 to 3.89 on a 4.00 scale.

####

krc

News

University Communications

Pauline Young, Director

Morehead State University

UPO Box 1100

Morehead, KY 40351-1689

(606) 783-2030

Feb. 28, 2001

FOR IMMEDIATE RELEASE

MOREHEAD, Ky.---Two students from **Adams (Ohio) County** completed degree requirements during Morehead State University's 2000 Fall Semester.

They were:

Tracy Kay Ralston, **Stout**, Master of Arts;

Jeanett Rose Sloop, **Manchester**, Bachelor of Social Work.

####

krc

News

University Communications

Pauline Young, Director

Morehead State University

UPO Box 1100

Morehead, KY 40351-1689

(606) 783-2030

Feb. 28, 2001

FOR IMMEDIATE RELEASE

MOREHEAD, Ky.---Two students from **Jeannette, Pa.**, completed degree requirements during Morehead State University's 2000 Fall Semester.

They were:

Jeremey J. Bianakonsky, Bachelor of Arts;

Brandi Lee Dent, Bachelor of Arts, Summa Cum Laude.

To graduate Summa Cum Laude students must earn a cumulative grade point average of 3.9 to 4.0 on a 4.00 scale.

####

krc

News

University Communications

Pauline Young, Director

Morehead State University

UPO Box 1100

Morehead, KY 40351-1689

(606) 783-2030

Feb. 28, 2001

FOR IMMEDIATE RELEASE

MOREHEAD, Ky.---Kenneth Christopher Bixby of **Hawthorn Woods, Ill.**, completed degree requirements during Morehead State University's 2000 Fall Semester. He received a Bachelor of Arts degree.

####

krc

News

University Communications

Pauline Young, Director

Morehead State University

UPO Box 1100

Morehead, KY 40351-1689

(606) 783-2030

Feb. 28, 2001

FOR IMMEDIATE RELEASE

MOREHEAD, Ky.---Tracy Renee Bloomgren of **Sugar Grove, Pa.**, completed degree requirements during Morehead State University's 2000 Fall Semester. She received a Associate of Applied Science degree.

####

krc

News

University Communications

Pauline Young, Director

Morehead State University

UPO Box 1100

Morehead, KY 40351-1689

(606) 783-2030

Feb. 28, 2001

FOR IMMEDIATE RELEASE

MOREHEAD, Ky.---Fredric Alan Combs of **Noblesville, Ind.**, completed degree requirements during Morehead State University's 2000 Fall Semester. He received a Bachelor of University Studies degree.

####

krc

News

University Communications

Pauline Young, Director

Morehead State University

UPO Box 1100

Morehead, KY 40351-1689

(606) 783-2030

Feb. 28, 2001

FOR IMMEDIATE RELEASE

MOREHEAD, Ky.---Travis Lee Facemyer of **Ripley, W.Va.**, completed degree requirements during Morehead State University's 2000 Fall Semester. He received a Bachelor of Science degree.

####

krc

News

University Communications

Pauline Young, Director

Morehead State University

UPO Box 1100

Morehead, KY 40351-1689

(606) 783-2030

Feb. 28, 2001

FOR IMMEDIATE RELEASE

MOREHEAD, Ky.---Jeremy Scott Gates of **Creswell, Ore.**, completed degree requirements during Morehead State University's 2000 Fall Semester. He received a Master of Business Administration degree.

####

krc

News

University Communications

Pauline Young, Director

Morehead State University

UPO Box 1100

Morehead, KY 40351-1689

(606) 783-2030

Feb. 28, 2001

FOR IMMEDIATE RELEASE

MOREHEAD, Ky.---Cinda Marie Gee of **Covington, Ind.**, completed degree requirements during Morehead State University's 2000 Fall Semester. She received a Master of Arts degree.

####

krc

News

University Communications

Pauline Young, Director

Morehead State University

UPO Box 1100

Morehead, KY 40351-1689

(606) 783-2030

Feb. 28, 2001

FOR IMMEDIATE RELEASE

MOREHEAD, Ky.---Kevin C. Sanborn of **Wabash, Ind.**, completed degree requirements during Morehead State University's 2000 Fall Semester. He received a Bachelor of Arts degree and graduated Cum Laude.

To graduate Cum Laude, students must earn a cumulative grade point average of 3.5 to 3.69 on a 4.00 scale.

####

krc

News

University Communications

Pauline Young, Director

Morehead State University

UPO Box 1100

Morehead, KY 40351-1689

(606) 783-2030

Feb. 28, 2001

FOR IMMEDIATE RELEASE

MOREHEAD, Ky.---Joevon Antoine Stennett of **Hermitage, Tenn.**, completed degree requirements during Morehead State University's 2000 Fall Semester. He received a Bachelor of Arts degree.

####

krc

News

University Communications

Pauline Young, Director

Morehead State University

UPO Box 1100

Morehead, KY 40351-1689

(606) 783-2030

Feb. 28, 2001

FOR IMMEDIATE RELEASE

MOREHEAD, Ky.---Vanessa Dawn Antkiw of **Delhi, Ontario, Canada**, completed degree requirements during Morehead State University's 2000 Fall Semester. She received a Bachelor of Arts degree and graduated Magna Cum Laude.

To graduate Magna Cum Laude, students must earn a cumulative grade point average of 3.7 to 3.89 on a 4.00 scale.

####

krc

News

University Communications

Pauline Young, Director

Morehead State University

UPO Box 1100

Morehead, KY 40351-1689

(606) 783-2030

Feb. 28, 2001

FOR IMMEDIATE RELEASE

MOREHEAD, Ky.---Marcisha Angelic Brazley of , **Memphis, Tenn.**, completed degree requirements during Morehead State University's 2000 Fall Semester. She received a Bachelor of Arts degree.

####

krc

News

University Communications

Pauline Young, Director

Morehead State University

UPO Box 1100

Morehead, KY 40351-1689

(606) 783-2030

Feb. 28, 2001

FOR IMMEDIATE RELEASE

MOREHEAD, Ky.---Ryan D. Huff of **Lebanon** completed degree requirements during Morehead State University's 2000 Fall Semester. He received a Bachelor of Arts degree.

####

krc