

Special Stockyards Edition The Morehead Independent

"ONE OF KENTUCKY'S GREATER WEEKLIES"

VOLUME VIII. MOREHEAD, KENTUCKY, THURSDAY MORNING, FEB. 20, 1941. NUMBER EIGHT



Editorial Note: Woody is now on his way to the hospital in St. Louis, Mo. from an attack of St. Vitus's dance.

MARY CHILES HOSPITAL, Mt. Sterling, Kentucky, Tuesday—Dear Gibbs: (He is the linotype operator.) You might find this hard to read, but you could not print it right anyhow!

These hospitals are fine. They have a sign on my door saying: "No visitors—At Any Time." Why, even Alby Hardin will let you walk around and out on the bars at his place. The only difference I can see is that here you have to be in bed all the time and listen to babies crying and men and women grunting. The only reason I'm staying another couple of days longer is because Mr. Gibbs (aka's the superintendent here) has gone to Florida for a few days and left me here with all the nurses, and you know, Gibbs, that I am the best judge of Women and Poker hands in the County. If I do say so myself, there are few-looking bunch of nurses here that have ever seen. If you ever see a doctor, don't pass up the Mary Chiles Hospital.

Collins Motor Co. Tops City Bowlers

The Collins Motor Company gathered two more games into the fold and dropped one in the Morehead Bowling League last week to remain at the top, with a record of twelve victories to three defeats. Bruce's 5 and 10 made the same showing of two wins and one loss to retain their position in second place. McBrayer's Furniture Store is in third place. Other team records and standings are given below:

Table with columns: Team Name, Wins, Losses, Percentage. Includes Collins Motor Co., McBrayer's Furniture Co., Burton Drug, Carr-Caudill, Greyhound, Midland Trail Garage, McKinney's, Eagles Nest, Bishop's Drug, and Curt's Transfer.

SCHEDULE FEBRUARY 17-21

McBrayer's Furniture Store versus Curt's Transfer, 6:45 Monday. College Professors versus Collins Motor Company, 8:45 Monday. Midland Trail Garage versus Greyhound Restaurant, 6:45 Wednesday. Burton's Drug Store versus Bishop's Drug Store, 8:45 Wednesday. McKinney's Dept. Store versus Eagles Nest, 8:45 Friday. Bruce's 5 & 10 Store versus Carr-Caudill Lumber, 8:45 Friday.

George Cornette will be the prize for 3-game high average 189. Bill Blair won for high game for week 233.

Paralysis Drive Is Successful In Rowan County

A new dam and sluiceway project on Triplett Creek, near the College Power Plant, is under construction by the local Works Progress Administration.

New Dam, Sluiceway Under Construction

The project is under the supervision of James M. Layne, local general foreman.

Electric Appliance Shop Opened In Morehead

A new electric appliance shop, handling a complete line of radios and Shaver's refrigerators along with a service department par excellence, opens Thursday in the new building in the room formerly occupied by the Blue 'N' Gold Firm.

Man Injures Self Fatally In Plunge Over High Cliff

William Kegley, 41, is found after missing for 24 hours. He had been missing from home for more than 24 hours before the body was found Saturday.

Man Injures Self Fatally In Plunge Over High Cliff

William Thomas Kegley, 41, of Coney Creek, Kentucky was found on a rock of falling over a cliff seventy feet high near his home, February 14. He had been missing from home for more than 24 hours before the body was found Saturday.

Millard F. Moore Will Make Race For Sheriff

Millard F. Moore, prominent Rowan County citizen and businessman, announced this week his intention to become a candidate for the office of Sheriff of Rowan County, subject to the action of the Republican Party at the primary election to be held Saturday, August 2, 1941.

College Enrollment Clears Mark Of Similar '40 Period

Enrollment at Morehead State Teachers College showed over that of the second semester of last year, college authorities announced today.

Eagles Drop Game To Marshall 46-35 In Monday Thriller

The Morehead College Eagles dropped a thrilling basketball game here Monday night to Marshall College of Huntington, W. Virginia, 46-35.

Dr. Vaughan Speaks At Maysville Club

Dr. W. H. Vaughan was the main speaker at a meeting of the Maysville Rotary Club last Tuesday evening.

Series Of Sunday Recitals To Be Inaugurated Soon

A series of musical programs known as Sunday Recitals will soon be inaugurated on the campus of Morehead State Teachers College. This will be the first of a series to ever be offered by the Morehead school.

Morehead Stockyards To Hold Opening Sale Thurs., Feb. 20

Dave Epperhart Breaks Rowan Record Raising Burley Tobacco

Dave Epperhart, of the Brushy community, is marketing a new crop of certified Number 16 burley tobacco seed.

Father Of Local Man Succumbs

Thomas J. Daugherty, 69, of Flemingsburg, Kentucky, died at the St. Joseph Hospital in Lexington Sunday night, February 16th.

Farm Labor Must Be Absorbed By Industrial Pickup

Unemployed and "under-employed" farm labor which is being produced commodities for export must either be absorbed by industrial "pick-up" or must shift to production of dairy products, poultry, meats, wool, fruit and vegetables.

Mrs. Verlina King, 86, Dies In Elliott

Mrs. Verlina King, 86, died Friday, February 14, at her home in Elliott, Elliott County, Kentucky.

State Swim Meet Being Planned For Morehead College

If plans materialize, the state swimming meet will be held at Morehead this spring. The beautiful Sand Natorium, home of the Eagle Mermaid, will house the contest, which lasts only one day.

Life-long Newfoundland Resident; Known Here

Mrs. King had been a lifelong resident of Elliott County. Surviving here are three sons, William King, of Lexington, Ky.; James and Joseph King, of Ashland, Ky.; and Mrs. Sarah King, of the Grey of Newfoundland, Ky.

College Professors Versus Collins Motor Company

Collins Motor Co. gathered two more games into the fold and dropped one in the Morehead Bowling League last week to remain at the top, with a record of twelve victories to three defeats.

Paralysis Drive Is Successful In Rowan County

A new dam and sluiceway project on Triplett Creek, near the College Power Plant, is under construction by the local Works Progress Administration.

SELL YOUR LIVESTOCK IN MOREHEAD

WE, THE BUSINESS MEN OF MOREHEAD, HAVE MADE A CAREFUL STUDY OF MOREHEAD'S NEW AND MODERN STOCKYARDS. WE KNOW YOU WILL MAKE NO MISTAKE IN BRINGING YOUR STOCK HERE. YOU ARE ASSURED AS GOOD OR BETTER PRICES AND FAIR AND HONEST TREATMENT. THIS IS A DEPENDABLE STOCKYARDS OPERATED ON A PLAN OF HONEST DEALING WITH THE PUBLIC.

<p>Our Congratulations To The Morehead Stockyards The Peoples Bank Of Morehead <small>Insurance Corporation Member Federal Deposit</small></p>	<p>Compliments Of The East End Grocery E. Main St. Phone 56</p>	<p>Shop In Morehead "SHOP IN MOREHEAD—THE SHOPPING CENTER!" Morehead merchants and business men are keenly interested in the growth and development of the livestock industry in this section of the State. To prove that they are interested, most merchants have planned a special selling event to coincide with the opening sale of the new MOREHEAD STOCKYARDS. Morehead stores are now stocked with the latest Spring items; prices are at a history-making, rock-bottom low for quality merchandise!</p>	<p>We Heartily Endorse The Morehead Stockyards Western Auto Associate Store <small>(CHARLES TURNER, Owner)</small></p>	<p>Compliments Of Cut-Rate Grocery Phone 278</p>
--	--	--	---	--

WELCOME TO THE NEW
MOREHEAD STOCKYARDS
THE ECONOMY STORE
FAIRBANKS AVENUE

COMPLIMENTS OF
JACK WEST
Whiskey-Wine-Gin

WELCOME!
TO
THE MOREHEAD STOCKYARDS
FROM
THE BIG STORE
RAILROAD STREET

AN OLD-FASHIONED WELCOME TO A BRAND NEW ENTERPRISE
FROM
I. G. A. GROCERY
PHONE 44

WE CONGRATULATE THOSE WHO HAVE MADE
THE MOREHEAD STOCKYARDS
POSSIBLE
C. E. BISHOP DRUG CO.
"THE REXALL STORE"

WE ARE PROUD TO ENDORSE THE
MOREHEAD STOCKYARDS
ELAM-WHEELER WHOLESALE GRO.
EAST MAIN STREET

A NEW ENTERPRISE FOR MOREHEAD; MOREHEAD FOR THE NEW ENTERPRISE—100 PERCENT
THE NEW MOREHEAD STOCKYARDS
D. R. PERRY MOTOR COMPANY

CONGRATULATIONS TO THE MANAGEMENT AND PERSONNEL OF THE NEW
MOREHEAD STOCKYARDS
LANE INSURANCE AGENCY

COMPLIMENTS OF
V. H. WOLFFORD INSURANCE AGENCY

CONGRATULATIONS TO
THE MOREHEAD STOCKYARDS
UNION GROCERY COMPANY
ERNEST THOMPSON, Manager

CONGRATULATIONS TO
THE MOREHEAD STOCKYARDS
FROM
THE MILLS THEATRE
"The Home of Perfect Projection and Sound"

OUR CONGRATULATIONS TO
THE MOREHEAD STOCKYARDS
COLLINS MOTOR COMPANY
PHONE 18

COMPLIMENTS OF
S & W DISPENSARY

WHILE VISITING
THE MOREHEAD STOCKYARDS
"Most Modern Yards In Eastern Kentucky"
DINE AT
THE EAGLES NEST

A HEARTY WELCOME TO MOREHEAD'S NEWEST ENTERPRISE FROM
THE REGAL STORE
PHONE 25

WE ARE 100 PERCENT FOR
THE MOREHEAD STOCKYARDS
MIDLAND TRAIL GARAGE

CONGRATULATIONS TO
MOREHEAD STOCKYARDS
SHADY REST SERVICE STATION
PHONE 61

COMPLIMENTS OF
McBRAYER'S FURNITURE STORE

This is a bank where a farmer can sit at our desk and talk over his problems with thorough mutual understanding.

We like to deal with farmers — maybe that's why they like to deal with us.

This bank is always interested in the growth and development of business in Morehead. We are especially interested in the development of the livestock industry in this section of the State. Congratulations to the Morehead Stockyards!

The Citizens Bank
"MEMBER FEDERAL DEPOSIT INSURANCE CORPORATION"

We know the farmers' credit needs, and our experience in helping others with situations similar to theirs has often enabled us to point out new ways for them to make money. You'll find us ready to listen, whatever your problem may be.

Morehead Stockyards Opening Sale Thu. Feb. 20

1940 Termed "A Successful Fire Year" By Foresters

Number Of Runaway Fires Reduced And Expenditures Decreased
Federal foresters this week con-

firmed their earlier estimates of a "successful" 1940 fire season. End-of-the-year reports on national forests reveal that the number of run-away fires were reduced and expenditures decreased. Acres lost per million in 1940 were cut to 1,538 as compared to 1,728 for 1939.

Although conditions turned more favorable toward the end of the season, the Forest Service says that 1940 was probably as near to a really bad year as any since

1934 when one inch was about 500,000 as compared to \$1,827,347 in 1939 for tangible damage only, and expenditures in fighting forest fires for the period July 1 to December 31 amounted to only \$2,995,000 as compared to \$3,280,000 in the same period in 1939.

Twelve men lost their lives in the line of duty. More fires reached the 300-acre size in 1940 than in any season since the record began, but fewer continued on into the 10 to 30 thousand acre classification. A total of 221 fires burned over 300 acres or more in 1940 while only 160 reached that size in 1939 and the three preceding years averaged 97.

New developments during the past year included improved portable radios to maintain better communication on the fire line and in fire discovery, the greater use of special highly trained "40-man crews" as shock troops on going fires that threaten to get away, new trench-building machines, and "smoke-jumpers" or parachute fire-fighters to reach back country fires while they are still small enough to be put out by one or two men.

Fifty fire boys were enrolled in game conservation 4-H club in Hopkins county last year. They protected quail nests, built rat guards on nesting trees, made bird houses, and planted feed and cover crops for birds.

National forest damage, including some intangible as well as

Independent Ads Pay

All Cars Seek Buyer Preference - But

THE U.S.A. PICKS CHEVROLET

for Styling - for Road Action with Economy - for Low Price



It's the only low-priced car with a 90-h.p. Valve-in-Head "Victory" Engine... the only low-priced car with exclusive Body by Fisher and all the other features listed here... it out-styles, out-accelerates and OUT-VALUES all other biggest-selling low-priced cars!

FEATURE	90-H.P. ENGINE	CONCEALED SAFETY STOP	WIDE OPEN SPEED	WIDENED WHEEL-BASE	NEW GRINDER ENGINE	UPPER HAVOC CLUTCH
YES	YES	YES	YES	YES	YES	YES
NO	NO	NO	NO	NO	NO	NO

The U.S.A. has given its verdict on motor cars... given it unmistakably by awarding Chevrolet sales leadership over all other makes of cars for nine of the last ten years... and now the U.S.A. is giving this same verdict again by showing clear-cut preference for the new Chevrolet for '41!

"The U.S.A. picks Chevrolet!" And, if you'll make your own eye-try—buy it first of the new Chevrolet for '41, we're convinced that you'll pick Chevrolet, too. And get the nation's No. 1 car-value as a result! Please see your nearest Chevrolet dealer—today!

Again CHEVROLET'S THE LEADER!

Yes... keep out the glare... but let in the daylight!



The only translucent Venetian Blinds... keeps out the sun's glare yet admits the soft daylight. A complete range of color selection to harmonize with any interior.

A new patented 4-way adjustment gives you perfect control of light, air, and privacy! Fabric, NOT WOODEN, slats... no clutter, much lighter, and washable. Altogether the most important improvement in Venetian Blinds in 30 years!

LET US GIVE YOU PRICES ON VENETIAN BLINDS IN WOOD, METAL OR FABRIC.

BRUCE'S
5c, 10c & \$1.00 STORE
MOREHEAD, KENTUCKY

VALUE OF AN INDUSTRY

You may be surprised at what it means to a community to have an industry that employs 150 persons—

A plant investment of at least \$100,000... annual payroll of \$200,000; support of 1,000 people; support of one dozen stores; a 10-room schoolhouse; \$60,000 annually for transportation; a new market for the farm products from 8,000 acres of land; an annual expenditure in trade of at least \$1,000,000; an increased taxable valuation of at least \$1,000,000.

Multiply these benefits 100 times, and you have an idea of what Kentucky's brewing industry—which employs 15,000 persons—means to this state.

The purpose of the Kentucky Brewers & Beer Distributors Committee is to help preserve beer's benefits for Kentuckians, by cooperating with law enforcement authorities to keep beer retailing as wholesome as the beverage itself.

KENTUCKY BREWERS & BEER DISTRIBUTORS COMMITTEE
Frank E. Dougherty, State Director
263 Martin Brown Bldg., Louisville, Ky.

Midland Trail Garage
Morehead, Kentucky

FEBRUARY CLEARANCE

Starts Thurs. FEB. 20

SALE

Starts Thurs. FEB. 20

Green Glass Mixing
BOWLS 5c
60 Ounce Water Jug Only **10c**
9 OZ. TABLE GLASSES 2 For 5c
Ladies', Childrens and Mens Sweaters at close-out prices. We have hundreds of items on sale. Come in Thursday and you will be convinced.

Big thick 8 x 10 Pencil Tablets **3 for 39c**
Big 5c cake verigated hard water soap **2 for 5c**

We congratulate Morehead on the opening of the new Stockyards, "One of Eastern Kentucky's Most Modern Yards."

We are listing only a few of our Specials for this Sale

TINWARE Huge Assortment of Tinware, consisting of Dishpans, Wash Basins, Flour Sifters, Muffin Pans, Pudding Pans, etc. Come early for this bargain, while they last for only **5c**

Enamelware Big values in white and red trim enamelware, consisting of 14 qt. roll rim Dishpans, 10 qt. Water Pails, 1 1/2 qt. double boilers, 6 qt. covered Kettles, 1 1/2 qt. Perculators, 10 qt. combinets, while they last **39c**

The same items will be on sale at our Olive Hill Store, beginning Saturday, February 22

BRUCE'S

5c, 10c & \$1.00 STORES
MOREHEAD AND OLIVE HILL

CUTEX Nail Polish Only **5c**

Bath **TOWELS** Extra Large **9c**

INFANTS RAYON TRAINING PANTIES 5c
Regular 10c size Tom Thumb Paint and Enamel, only **5c**
25c Cans only **10c**

Regular \$1.00 Curtains (Priscilla and Cottage Sets) per pair only **47c**
Regular 59c Curtains (Priscilla and Cottage Sets) per pair only **33c**

We extend an invitation to visit our store while in town Thursday attending the opening of Morehead's new Stockyards.

THE MOREHEAD INDEPENDENT
(Official organ of Rowan County)

Published each Thursday morning at Morehead, Kentucky by the INDEPENDENT PUBLISHING COMPANY

ADVERTISING RATES MADE KNOWN UPON APPLICATION

WILLIAM J. SAMPLE Editor and Publisher
 One year in Kentucky \$1.50
 Six Months in Kentucky .75

Entered as second class matter February 27, 1934, at the post-office at Morehead, Kentucky, under Act of Congress of March 3, 1879



Thursday, February 20 should be marked on your calendar in red numerals, for truly it will be a day of historical interest to the people of Morehead, Rowan County and Eastern Kentucky. Thursday, February 20, will mark the formal opening of Morehead's newest enterprise, The Morehead Stockyards; the most modern stockyards in all Eastern Kentucky.

A number of our public spirited citizens, interested in the growth and development of the livestock industry in this section, have labored long hours giving freely of their time and services, in order that Morehead might have a stockyards. The organization is operated on a co-operative basis, incorporated with a capital stock of \$10,000 insuring its solidarity and stability. It was organized for the sole purpose of stimulating business in this section and to help the farmers of this section to realize a greater profit from their livestock, by eliminating the long hauls to other markets. It is possible for farmers of adjoining counties to do their own hauling to Morehead, a much shorter distance, and to save the expense they would otherwise incur by shipping to other more distant yards, thereby increasing their net profits.

Political

Announcements DEMOCRATS

We are authorized to announce: **MOET MAY**
 As a candidate for Sheriff of Rowan County, subject to the action of the Democratic Primary on Saturday, August 2, 1941.

We are authorized to announce: **BERT FOLLIVER**
 As a candidate for Judge of Rowan County, subject to the action of the Democratic Primary on Saturday, August 2, 1941.

We are authorized to announce: **ALIE Y. (TOSIS) SOBRELL**
 As a candidate for Judge of Rowan County, subject to the action of the Democratic Primary on Saturday, August 2, 1941.

We are authorized to announce: **BILL HUDGINS**
 As a candidate for County Court Clerk of Rowan County, subject to the action of the Democratic Primary on Saturday, August 2, 1941.

REPUBLICAN

We are authorized to announce: **MARVIN ADKINS**
 As a candidate for Sheriff of Rowan County, subject to the action of the Republican Primary on Saturday, August 2, 1941.

We are authorized to announce: **MILLARD F. MOORE**
 As a candidate for Sheriff of Rowan County, subject to the action of the Republican Primary on Saturday, August 2, 1941.

Enrollment--

(Continued from Page 1.)
 Alton Payne, director of public relations, explained that while the enrollment of many colleges decreased, Morehead's had increased because the college is offering a better and broader curriculum every semester.

INDEPENDENT ADS GET RESULTS!

Chessie Chats



Chesapeake and Ohio patrons enjoy many extra travel luxuries at thirty low coach fares of 2c a mile or less. Air-conditioned and quiet, the spacious *Impassible Coach* in regular service on THE GEORGE WASHINGTON, THE SPOTSWAN and THE F.V. has overhead lighting, carpeted floors, roomy, deep-cushioned revolving chairs. Enjoy coach features at their finest—Go Chesapeake and Ohio!

In the last twelve years the railroads have transported billions of pounds of high explosives, including dynamite, black and smokeless powder and explosive ammunition without accident, death or injury. Another evidence of the CARE which is the watchword of railroaders.

QUESTION: What has 1,075,192 legs... and rides the railroad? ANSWER: All the cattle, hogs and sheep—over 75,000 tons on the hoof—shipped last year by fast Chesapeake and Ohio scheduled freight.



The building of an average railroad freight car requires materials from 31 states and provides employment equivalent to the work of one man for a year.

Through sleeping car service via C. & O. and connecting railroads serve 8 of the 10 largest cities in the country.

In the first stages of their development, several early railroads experimented with treadmills driven by horses. It is reported that the strange contrivance tried out by one time was condemned after it had been derailed by a trespassing cow!

SHIP and TRAVEL by TRAIN!

CHESAPEAKE AND OHIO LINES

WE ARE 101% For THE MOREHEAD STOCKYARDS COTTAGE CAFE
 S. B. MUTTERS, Owner and Manager

Look! Look! COTTAGE CAFE
 Where good friends meet to drink and eat. The place where you get more for less. We give you **Absolutely FREE** A BOWL OF VEGETABLE OR BEAN SOUP
 With every plate lunch without any cost to you. Why pay more when you can get it here for less?
 We Serve Your Favorite Brand Of Beer!
Cottage Cafe
 S. B. MUTTERS, Owner and Manager

Only CROSLLEY gives you the Shelvador

\$99.95
 PRICES START AT \$99.95 FOR A 6 CU. FT. MODEL

and the SHELVADOR gives you 100% more usability

- 1 Where in your refrigerator do you put the small packages, fruit, eggs, other items most often in use?
- 2 On the main shelves where they are hard to see, difficult to reach, taking up space needed for taller, bulkier articles?
- 3 Or on the "bonus shelf space" in the Shelvador, in plain sight, easy to reach, impossible to overlook or forget?

The Shelvador gives you the clutter-free convenience of extra shelf space and 100% more usability than anything else at the price. The Shelvador saves you trouble and waste!

LOW DOWN-PAYMENT—EASY TERMS AT MOREHEAD APPLIANCE CO. MOREHEAD, KENTUCKY

WE ARE OPEN DAY AND NIGHT

24 Hr. Service - 24 Hr. Wrecker Service

Visit Us While Attending The Opening Sale Of The Morehead Stockyards.

Ford - Lincoln - Mercury

Used Cars That Are Usable

1940.....	Buick Four-Door Sedan
1939.....	Ford Coupe
1939.....	Plymouth Tudor
1940.....	Ford Pickup
1934.....	Chevrolet Pickup

SPECIAL
 1934 1½ TON DODGE. MOTOR PERFECT, NEW TIRES, WILD STOCK RACKS, A REAL BUY.

COLLINS MOTOR CO.
 Phone 18 Morehead, Kentucky

Farm Labor--

(Continued from Page 1.)

food supply to the undernourished in that region. A shift from wheat to livestock on the plains would probably not lower our cereal intake but would add to our meat items and help conserve the soil. Shifts in the Corn Belt to bean meats, milk and wool would also meet the needs of our conservation work and our national commodities, increased competition with areas already specializing in production of domestically-consumed products is in prospect. "Export outlets have been greatly diminished by the war, and for some agricultural products are likely to remain small for some time to come," according to the report. "Cotton and tobacco in the South, wheat in the Great

Plains and Pacific Northwest, land in the Corn Belt, and fruits everywhere formerly produced for export—all present date spots in our demand picture for farm products. Bright spots include those domestically consumed products such as dairy and poultry products, meats, wool, fruits, and vegetables that will be taken from the market in greater quantities as the defense program stimulates pay roll increased throughout the country. "Adjustments by farmers to meet these changes in demand are bound to be widespread, for all major commodities will be affected to some extent. A shift from cotton and tobacco to milk, fruits and vegetables in the South would make available a much better food and fiber budget. "The basic problem is really one of how many people must find their support in agriculture. If industrial "pick-up" would fur-

nish enough employment to the people unemployed or underemployed on farms owing to lost exports, then no additional shifts to other products would be necessitated. A partial employment of these people would make possible a slackening of the intensity of farm production. Some of the poor land could be abandoned, less labor and materials could be increased. "This type of solution would be the same as that of other periods in our national history. Land in New England was abandoned when the Erie Canal brought cheaper products from the West, but industrial development in nearby cities created jobs for those displaced from New England farms. In the present situation, so long as an inadequate amount of non-farm employment is not available, the nonpower backed up on the farms presses toward more rather than less intensive use of land.

and all proceeds may be kept by the respective clubs. The price of admission at the door will be ten cents. On Saturday night the feature will be the crowning of the King and Queen, who will be chosen from the ranks of the student body. The Blue and White Orchestra from Lexington will furnish the music. The price of admission will be one dollar for stag or couple. The hours for dancing will be from eight to twelve.

Lappin Sets New Program In Motion

Speaking before a regular meeting of the faculty, Morehead College Dean W. C. Lappin today proposed a plan "for the permanent improvement of instruction." Dean Lappin made a motion bringing into being a special committee for the study of instructional problems at Morehead State which was passed by a wide majority.

The new committee will be comprised of eight faculty members, two to be elected by the Department heads from their own number, two by Training School staff members, and four by the remainder of the teachers at large. "This will be a co-operative and I hope, a democratic way of approaching the problem of forwarding instruction at Morehead. In the final analysis, it is the class-room instructor that will improve his own teaching," Dean Lappin said. "I merely want to bring the problem a little nearer home so that we can all profit mutually by our experiences," Lappin declared.

Three Days Special Feb. 20, 21, & 22 For

- The FARMER'S Family**
- 8 Ounce Sanforized Overall .98
 - Extra Heavy Overall Pant .95
 - Men's Heavy Work Shoes \$1.49 - 1.89
 - Men's Oxfords \$1.89
 - Extra! Men's Dress Pants \$1.29
 - Ladies Print Dresses, Fast Colors .49 - .89
 - Ladies Extra Quality Sanforized House Dresses \$1.00
 - Ladies Sport and Dress Oxfords \$1.89
 - One Lot Ladies Dress Slippers \$1.39

THE BARGAIN STORE
ARTHUR BLAIR, Manager
MAIN STREET MOREHEAD, KY.

Wm. Kegley--
(Continued from Page 1.)

months, two sisters and one brother. Funeral services were held at the home Monday. Burial followed on the grounds of his father-in-law's farm on Caney Creek.

Seventh Annual Winter Carnival At M. C. Marth 7th

The Eighth Annual Winter Carnival will be held the seventh and eighth of March in the spacious college gymnasium. On Friday, March 7, the social committee will present the barks, clovers, side shows, and all the fun and frolic that a campus represents. Each club on the campus will have the privilege of operating a booth on the carnival.

SAVE THESE WAYS WITH THE NEW GENERAL ELECTRIC REFRIGERATOR



G-E's 10-Star Storage Features provide proper preservation for every type of food. You can now take full advantage of bargain days at the market. G-E's Conditioned Air and 10-Star Storage Features keep fresh foods and left-overs perfectly for days without a penny-worth of waste. G-E's famed sealed-in-steel Thrift Unit has a record for dependable performance unpassed by any other food-storing mechanism in America.

NEW 1941 G-E REFRIGERATORS NOW ON DISPLAY!

See the many new features in the many new G-E models—the improved appearance, the more usable storage space, and, in some models, the new G-E Butter Conditioner that keeps butter just right for spreading. Get a G-E built to your income and have one of the finest refrigerators money can buy.

GENERAL ELECTRIC
CARTER COUNTY APPLIANCE SHOP
OLIVE HILL, KENTUCKY

Lowest G-E Prices in History
\$134.95
Model 150-41 Shown at Left

SPRING CLEARANCE

- One lot 18c and 25c wall paper going at only 15c per double roll.
- Sturdy Ironing Boards, Reg. \$1.49 Val. **98c**
 - Electric Irons, Regular \$2.49 Value **\$1.49**
 - Innerspring Mattresses **9.95**
 - Childrens Rockers, Reg. \$1.49 Value **98c**

One lot linoleum remnants, various lengths at one-half price. One lot grass rugs, decorative patterns, size 27 in. x 54 in. 3 for \$1.00. Rag, chenilla, velour and wool throw rugs at a real bargain. All heaters, furnaces, circulators and laundry stoves at a tremendous reduction.

SALE

In order to make room for several carloads of new Spring merchandise which will be arriving soon, we must move all of our present stock. In order to move our present stock, we must make prices so attractive that it will be snapped up in a hurry. That is just what we are doing. Prices are being reduced one-half to one-third on many items. Below are only a few of the many attractive bargains to be found at McBRAYER'S during this gigantic clearance.

RUGS

One Lot Alexander Smith 27 in. x 54 in. Floor Samples at 33 1-3 percent discount. These are our 1940 samples from which room size, custom fit rugs are selected. As these patterns are being discontinued for the new 1941 line we are clearing these out at only a fraction of their original cost.

- One lot 9 x 12 Alexander Smith Rugs at half price. Values up to \$99.50 at only \$49.50.
- Four - Piece Bed Room Suites **\$39.95**
 - Three-Piece Living Room Suites **\$49.95**
 - Five-Piece Breakfast Sets **\$9.95**
 - Kitchen Ranges, A Real Buy **29.95**

Studio couches, desks, dining room suites, mattresses and beds, springs, occasional and rockers, cabinets and cabinet bases, kitchen tables, mirrors and pictures, dressing tables and card tables as well as scores of other items too numerous to mention, which you will buy at a tremendous saving during this February clearance at McBRAYER'S. Terms to fit each individual need.

McBRAYER'S

"MOREHEAD'S COMPLETE FURNITURE STORE"

Superphosphate furnished Adair county farmers in the Agricultural Conservation program last year would have cost about \$50,000 if bought in the open market, according to County Agent, E. R. Rankin.

Professional Cards

A. F. Ellington
DENTIST

Phone 26 Morehead

Dr. L. A. Wise
Has moved to the J. A. Bays Jewelry Store where he will be located every Friday, examining eyes and fitting glasses.

Lane Funeral Home
Funeral Directors
Ambulance Service
Phone: 91 (Day), 174 (Night)

Dr. O. M. Lyon
DENTIST
Office Phone 274 - Residence 127
OFFICE: COZY BUILDING
Morehead, Kentucky

FLOREST
ATKINSON GREENHOUSE
FLOREST
MRS. NELL PROCTOR
Local Representative
Call 161 for prompt service on wreaths, sprays, etc.

DR. D. D. DAY
Jeweler - Optometrist
Carey Avenue
MOREHEAD, KY.

Try Us For Prices And
Quality In Our Mdse.

We Carry All The Brands

S & W DISPENSARY
Main St. Caskey Bldg.

COAL
Stoker or Poker

CALL 71

Stoker or Furnace Nut \$2.95 ton Delivered
All coal dust-proofed, Oil treated 15c ton extra

Special Prices on Wholesale Lots
MOREHEAD ICE & COAL CO.

ECONOMY COAL
STEAM AND DOMESTIC

LUMP-EGG-NUT-STOKER

Machine Mined and Shaker Screened

WILLARD COAL CORPORATION
(Mines Located at Willard, Kentucky)

J. L. BOGGESS, Pres. PHONE 285
C. B. LANE, Secy. PHONE 91

Karl Olson States U.S. Defense Needs At Farm Meeting

American Unity And Better Economic Relations With Latin America

Karl Olson of the National Defense Commission, speaking at the Farm and Home Convention at the College of Agriculture at Lexington outlined the following course for the United States: "First, we must, in our total defense program, see that our own nation is unified. We cannot have unity which is essential for even a semblance of effective defenses if we tolerate unemployment, idle industrial plants, the weakening of labor standards, false economizing of the farm program, unnecessary sacrifice of consumer's income, discrimination against Negroes and new immigrant groups, or apathy of the citizenry. Second, we must have a program of industrialists for the sake of European trade. Unity will demand sacrifices but there must be equal sacrifice on the part of all groups in the nation.

"Secondly, we must see to our position in Latin America. The challenge of a German economic penetration and control in South America must be met. The danger here is that Germany will gain political domination over Latin America through trade deals with the individual republics. To meet this danger we can no longer leave our trade relations with Latin America to the haphazard and organized efforts of private traders.

"This raises difficult problems, and no one would advocate dumping the surplus products of Latin America in our own market. But a way must be found to insure that Hitler, through competitive bidding, does not get his foothold for nothing and insure the success of his political penetration as well.

Fox Hunters Set Forest Fire On Holly Branch, 13th

Forest Officials Declare "It's Bad Luck To Start A Forest Fire On The 13th"

On February 13, 1941, Forest Fire Warden, Emmitt Blanton, of Triplett, Kentucky, took immediate

action to put out a small forest fire which occurred on Holly Fork when he received news of the fire from Dispatcher Joe Nease. The fire was the fourth which has occurred this year on the Red River Ranger district on the Cumberland National Forest, and according to present information, it was probably set by some fox hunters who were too friendly with members of the Wilkins Family.

If investigation determines who set the fire; it will go to show that there is truth in the superstition that the 13th is an unlucky day. It may also bear out the new superstition that, "its bad luck to start a forest fire."

In connection with the last statement, "its bad luck to start a forest fire," Forest Guards, distributed throughout the Red River District from Ray Fraley at Triplett, to Arthur Childers at Bear Track have been distributing buttons to children and adults in the wooded sections in connection with their efforts to stop the forest fires due to careless brush burners, casual owners, hunters, and other local residents.

C.A.A. Courses To Be Offered Student Pilots At U. Of K.

Program Expected To Begin This Semester

According to a message received from Congressman Virgil Chapman by Acting President Thomas P. Cooper, the University of Kentucky will be included in the government's spring program for civilian pilot training.

This message is the response to an application made last November by the University, and was received by President Cooper, who said that he would push campus organization of the program in order that it might begin in time for completion this semester.

A total of 212 University students have already indicated that they wished to take the course if offered, but no definite plans for selecting the students who will take the course have been made yet. Publication of the program's organization will be made as soon as formal acceptance is given, University officials explained. Federal aid for training of twenty students was asked in the University petition to the Chicago office, and that number will be the maximum allotment for the University because of facilities at the Lexington airport. When the proposed new Lexington airport is completed, it is believed that more C.A.A. courses will be given if the first trial of the program merits it, the University Senate, faculty governing body decided at a recent meeting.

Divided into ground and flight training, the C.A.A. course includes instruction in navigation, engines, history of aviation, and meteorology. Campus professors will teach the ground courses and the Lexington Flying Service will offer the flight training if the course goes into effect.

The Department of Markets at the Kentucky College of Agricultural Experimentation believes good hog prices may be expected the rest of the winter and in the spring. The demand for pork is increasing, without a corresponding increase in hog marketing.

One hundred and twenty-three reservoirs were constructed on farms in Henry county last year. Preliminary "to beginning" the work, 105 farmers attended a demonstration in which 750 cubic yards of earth were moved in seven hours.

Classified
Ads Pay
Epidemic Of

Cold Symptoms
656 Liquid or 686 Tablets with 689 Salve or 698 Nose Drops generally relieves cold symptoms the first day. —Adv.

CALL
CITY CAB
PHONE 86
Quick-Courteous Service

BENTON'S Baby Chicks
All leading brands of baby chicks, ducklings, turkeys, geese, guinea fow, and other poultry. Write: C. B. Benton, Phone 818, 111 S. Third St., Lexington, Kentucky.

COLDS
Casey Discouffert
For quick relief from cold symptoms take 666
666
Liquid Tablets - Salve - Nose Drops

GOLDE'S

Celebrate the Grand Opening of Morehead Stockyards

with Bargains that will make you come to this big Event.

These SPECIAL PRICES GOOD Only THURS. FRI. & SAT.

BOYS LEATHER FRONT ZIPPER JACKETS 98c

Mens Heavy Work Or Dress S O X 5c

Boys RUBBER BOOTS 98c

Womens GOLOSHES While 100 Pairs Last! 10c pr. First Come First Served

Childrens Knit UNION SUITS 10c
Boys Heavy Long UNION SUITS 39c

Girls & Womens Genuine LEATHER JACKETS Regular \$7.35 Now \$2⁹⁸

MENS HEAVY-WEIGHT GREY Flannel Shirts Thursday, Friday and Saturday 39c

MENS HEAVY LEATHER Work Shoes Thursday, Friday and Saturday \$1.29

WOMENS WINTER COATS Choice of the Store Sport Coats and Fur-Trimmed Dress Coats Values to \$29.50 Special Group of Coats, Values Up to \$9.95 \$2⁹⁸

MENS ALL-WOOL Overcoats Values Up to \$19.50 Thursday, Friday and Saturday \$7⁹⁸

CHILDRENS Snow Shoes Fur Tops and Fancy Plaid Tops Values to \$1.98 98c

CHILDRENS PANTIES 5c
Mens Heavy UNION SUITS Long Sleeves Long Legs 49c

Mens RUBBER BOOTS \$1.69
Womens HATS Values to \$2.95 Your Choice 59c
Come and Get 'Em!

FINAL CLEARANCE ALL WOMENS WINTER SHOES OXFORDS and DRESS SHOES Values Up to \$6.95 Your Choice \$1.00

Goldé's Department Store

MOREHEAD, KENTUCKY

Ky. Dairy Industry Produces High Cash Income

Kentucky's position in the dairy industry is vividly depicted in a new handbook issued by the Milk Industry Foundation. According to the book, Milk Facts, 560,000 cows valued at \$24,200,000 produced \$15,789,000 in cash farm

milk income for Kentucky farmers in 1939. Production of fluid milk in the state for the year totaled 577,000,000 quarts; creamery butter—31,298,000 pounds; cheddar cheese—5,546,000 pounds; ice cream—1,839,000 gallons.

The United States is one of the ranking milk using nations in the world with per capita consumption of fluid milk totaling 153 quarts a year, photographs show. Milk and its products comprise over twenty-

five percent of the 1939 pounds of the principal foods consumed each year by the average American, the book says, with forty-five million quarts of milk delivered daily to homes and stores.

Pictorial charts and figures show the importance of the milk industry to the country's economic picture and illustrate how milk costs less in the United States in manufacture of labor. Diagrammatic charts illustrate how the annual milk quarts is utilized.

Fluid or fresh milk for cities and villages providing the farmer's highest cash return, accounts for 29.9 percent of the country's total production. Creamery butter takes 11.9 percent, farm butter—9.2 percent, while 11.7 percent of the milk is used as fluid milk on farms where produced. In making 6.3 percent of the total milk is used; ice cream—3.1 percent and canned milk—4.3 percent, according to charts.

175 Operators License Revoked During January

February Is Designated As "Safety Month"

After announcing that the Department of Revenue suspended and revoked 175 operators' licenses during January, Commissioner of Revenue Clyde Reeves said that the Department was making every effort to co-operate with the Governor in making effective his recent proclamation of February as "Safety Month." Revocations and suspensions are proceeding, he said, at the rate of almost two for each such revocation or suspension for the previous year.

Reeves pointed out, however, that the Department must first rely upon local courts to supply it with information upon which a revocation or suspension can be based. Most courts are furnishing the Department of Revenue with such information. Notices of convictions for violating various traffic laws are coming in now at the rate of 2,500 a month.

L. C. Triplett, Supervisor of the Operator's License Section, said that an interesting development which resulted from quite a number of notices of convictions was that persons who are brought before the courts plead guilty to most any charge in order to avoid publicity, only to learn a few days later that the Department has revoked their operator's license. Triplett said, "While in most of the cases the licenses should have been revoked because the person

Co. Attorneys May Carry Weapons

County attorneys legally may carry concealed weapons for self-protection "in discharge of official duties," Assistant Attorney General K. Lewis held today.

When not performing official duties, he added, a county attorney is subject to the same penalties as any citizen if he carried such weapons.

Lewis' opinion was given to County Attorney R. Harold Schwartz of Owensville who wanted to know whether a county attorney could carry a pistol when he was "investigating alleged breaches of the law and has been threatened with bodily harm."

Kentucky Uses Big Phosphate Tonnage

The serious attitude of Kentucky farmers toward conservation is reflected by their use of 300,000 tons of superphosphate and phosphate materials in 1940. S. C. Jones of the State College of Agriculture says that this amount of phosphate would treat approximately two million acres.

Cooperative tests made by the Tennessee Valley Authority and the Kentucky Experiment Station in Logan, Livingston and Marshall counties show that applications of phosphate materially increases corn yields, and that the use of both phosphate and lime often doubles yields.

DON'T COUGH
ASK FOR MENTHOLMULSION
FOR COUGHS FROM COLDS THAT WON'T FURNISH
TAKE ONE SP. OF MENTHOLMULSION
WAIT FIVE MINUTES
IF YOU FAIL TO GET EXPECTED RELIEF
ASK FOR YOUR MONEY BACK

At Leading Drugstore Everywhere Independent \$1.50

"Fine Quality Baby Chicks"
From Kentucky U. S. Approved flocks, all tested for Pullorum Disease by the Tube Agglutination Method, which is considered the most accurate.
Several years of fine production breeding back of our flocks, and the only kind of chicks that will make money this year, will be good chicks.
Our first hatch, in Monday, February 3, 1941, and each Monday thereafter. Place your orders as early as possible please. Write for prices, etc.
Thomas & Rankin Hatchery
"KENTUCKY U. S. APPROVED"
TEL. 136 "Maysville Road" FLEMINGSBURG, KY.

LOOK! LOOK!
CLOSING EVERYTHING OUT TO THE WALLS!
Everything must go at cost and below cost.
50 Lb. Mattress \$ 3.49
50 Lb. Pabco Rugs, 9x12 3.75
One 2-piece Bed Room Suite, Used 7.50
One 2-piece Walnut B.R. Suite, Used 15.00
Two Good Pianos, Each 18.00
One Computing Scale, Cost \$160.00, good as New 22.50
Six old Marble Top Dressers, your pick, Each 6.00
This is just a few out of hundreds of bargains. Hundreds of pictures and books priced to sell. Rush for these bargains.
"WALK A BLOCK AND SAVE A LOT"
HUTCHINSON BARGAIN STORE
MOREHEAD, KENTUCKY

Independent, \$1.50 Yr.

GET IN.. STRETCH OUT .. and enjoy a great new ride!

NEW COMFORT was the keynote as we made plans for this year's Ford. Get in, through the new wide doors! Stretch out in room to spare! Seating width has been increased as much as 7 inches. Knee-room and inside length are greatest in the low-price field. Then take the road and try its ride!

A soft, steady, gliding new Ford ride that takes good road or bad in a satisfying new kind of stride. And notice the quietness of this big Ford! There's news at your Ford Dealer's that's too good to miss! News in comfort. News in value. And news in a "deal" that you'll find easy to take!



GET THE FACTS AND YOU'LL GET A FORD!



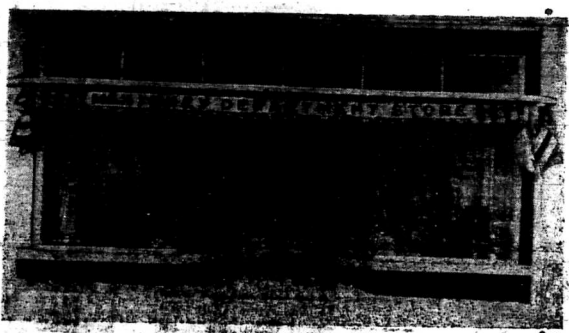
Collins Motor Company
Phone 18 Morehead, Ky.

STOCK UP . . . CHECK UP . . .

Check, Compare, Buy, And . . . While In Morehead Visit McKINNEY'S



It is a policy of this store to close-out all Fall and Winter merchandise at this time of the year in order to make room for new Spring clothing and for that reason you can find specials here on



AND SEE One of the most modern stores in Kentucky
SEE Some of the most outstanding values in clothing and piece goods
SEE And stock up this Spring with quality merchandise that is guaranteed to satisfy

Dresses, Suits, Shoes, Sweaters, etc., at below cost prices

- KNIT BATH
- PALM BEACH TIES
- CURLIE SUITS
- ARROW SHIRTS
- ALLIGATOR COATS

WE SELL A COMPLETE LINE OF INFANTS WEAR
A FEW OF OUR NATIONALLY ADVERTISED LINES ARE

- PARIS FASHION SHOES
- FORTUNE SHOES
- WEVENBURG SHOES
- WOLF ENGINE SHOES
- BABY DEER SHOES

- CAROLE KING DRESSES
- MARY LEE DRESSES
- MISS NEW YORKER SLIPS
- ARCHER & MOJUD HOSIERY
- GOSSARD CORSETS AND BRASSIERES

A. B. MCKINNEY'S

"THE STORE THAT SELLS THE BEST FOR JUST A LITTLE LESS"

Morehead, Kentucky

Social & Personal
Phone - 235

On Friday evening, Mrs. Jesse T. Way, Mrs. Andre B. Borne, Mrs. Len Miller and Mrs. Ellis Johnson entertained in the lobby at Thompson Hall with a Dessert Bridge Party. They entertained thirteen tables of guests. The Valentine motif and colors were used in the refreshments and decorations. Individual ice cream maidens in red hearts with gold arrows, white cakes trimmed with red hearts and red and white heart shaped mints were served. White candles lit with bows of red tulle and red carnations were used for decorations. Miss Louise Caudill won the prize for highest score, Mrs. Edward Bishop, second high and Mrs. W. C. Windham, third high.

CLASSIFIED ADS

WANT AD RATES: (Payable in Advance) 1 time, per word... 2c 2 times, per word... 3c 3 times, per word... 4c 4 times, per word... 5c 5 times, per word... 6c 6 times, per word... 7c (No ad taken for less than 25c) Special rates by the month

Cards of thanks, articles in Memoriam, lodge notices, resolutions, etc. are advertised and are charged for at the above rates. Ads ordered by telephone are accepted from persons listed in the telephone directory on memorandum charge only; in return for this courtesy the advertiser is expected to remit promptly.

FOR RENT SEE ROOM MODERN HOUSE located on corner of Main Street and U. S. Highway 32. Rent reasonable. See or call N. H. Brown or Claude Brown. Phone 2824 and 2812 respectively.

FOR SALE 108-ACRE FARM—Good 8-room house and barn and outbuildings, four miles west of Morehead on Route 30, will rent or reliable party. Write O. W. R. McClurg, 3163 South Hackley, Muncie, Indiana 4651.

MALE HELP WANTED STEADY WORK—GOOD PAY RELIABLE MAN WANTED to call on farmers in Rowan County. No experience or capital required. Write Mr. C. W. BURNS, Box 18, Covington, Ky.

Telephone 17-F-33 Call Mrs. Patton

FARM FOR SALE FOR RENT OR SALE SIX-ROOM HOUSE located on U. S. 60, 3 miles east of Morehead, O. see W. M. CAUDILL.

FOR RENT FOUR-ROOM FURNISHED house, located at 154 Lyons Avenue. Phone or see ORA FRALEY.

was a guest of Mrs. D. F. Walker and Mrs. J. R. Wendel on Monday and Tuesday.

Mr. and Mrs. Henry Watson, Mary Esther and Maxine DeBard attended the Prayer Meeting and Young Peoples Service at the Mt. Pisgah Church last Sunday afternoon.

Mr. and Mrs. Henry Watson invite their Christian friends to attend the Prayer Services that are held at their home in Morehead the last Wednesday night in every month at 7:00 p. m.

The Mission Study Class of the W. M. U. will meet at the Baptist Church Thursday, from seven to ten p. m., to study the Mission Book, "Trail of Seed." Mrs. E. D. Judd is chairman.

The Ladies Bible Class of the Methodist Church gave a handkerchief shower in honor of Mrs. J. H. McKinney, who is leaving to be with her son, Joe D. McKinney in Gary, Indiana. She received many beautiful handkerchiefs.

Mrs. Cecil Frisley entertained the Women's Society of Christian Service of the Methodist Church at her home on Friday evening, when a farewell gift was presented to their secretary, Mrs. J. H. McKinney who is leaving on February 25, for Gary, Indiana.

Mr. and Mrs. N. E. Kennard, Mrs. Mary and Mrs. Harry Jeffers were guests Sunday at Mr. and Mrs. Monroe Nickell at West Liberty.

Mr. and Mrs. Tilford Gevedon and daughter, Mary Carolyn, and Miss Mary Handwood visited Mr. and Mrs. Rodney White in Stanton on Sunday.

Miss Phyllis Ann Jayne spent the weekend with her grandmother, Mrs. John M. Vaughan in Ashland.

Miss Elsie K. Dralle of Louisville was a guest of Mrs. J. F. Walker and Mrs. J. R. Wendel on Thursday and Friday.

Miss Marguerite Bishop spent last week-end in Lexington, the guest of her cousin, Miss Lee Forest Hurt.

Mr. and Mrs. Paul Combs of Charleston, West Virginia, will visit her parents, Mr. and Mrs. J. L. Boggess next weekend.

Mrs. L. C. McGuire and Mr. and Mrs. A. C. Rettiff visited Mrs. James Smith in Winchester last week.

Mr. and Mrs. Paul Little of Lexington will be guests of Mr. and Mrs. D. B. Caudill this weekend.

Mrs. Laura Cherry of Bowling Green arrived Tuesday for a visit with her daughter, Mrs. J. D. Falls and family.

Mrs. Richard Montjoy and son, "Butch" and Miss Grace Jones, were in Mount Sterling on Saturday.

Mr. and Mrs. William Lindsey and their daughter, Marabelle of Lexington, were weekend guests of Mrs. C. U. Walt.

Mr. and Mrs. W. P. Cecil of Norwood, Ohio, were visiting his sister, Mrs. James Besh and friends in Morehead last Sunday afternoon.

Dr. and Mrs. John H. Milton announced the birth of a daughter on Friday at St. Joseph's hospital in Lexington.

Miss Christine Hall of Farmers was a guest Friday night of Mrs. Russell Meadows.

Murvel Caudill and Russell Meadows spent the weekend in Fullerton.

O. P. Carr and Arthur Caudill were business visitors in Cincinnati on Monday.

Mr. and Mrs. J. A. Allen, Mr. and Mrs. Clarence Allen, Mr. and Mrs. Bill Allen were visitors in Ashland on Sunday.

Mrs. Roger McKinney who has been seriously ill is showing some improvement.

Harry Boggess who is stationed at Fort Thomas is ill in the hospital there.

Mr. and Mrs. C. E. Nickell and Mrs. Maggie Hogue were visitors in Lexington on Tuesday.

President W. H. Vaughan spoke at a meeting of the Mayville Rotary Club on Tuesday night.

Mr. and Mrs. Harry Jeffers of Frankfort were the weekend guests of Mr. and Mrs. N. E. Kennard.

Mr. and Mrs. Ray Sims visited his mother in Bourbon County last weekend.

Mrs. Dwight Pierce and children are visiting her aunt in Flemingsburg.

Miss Loretta Williams of Flat Gap was a weekend guest of Mrs. W. L. Jayne and family.

Mrs. A. W. Adkins is ill this week with an attack of tonsillitis.

Mr. D. B. Cornette continues ill at his home on Bay Avenue.

Dr. and Mrs. L. M. Garred moved into their new home last week.

CHURCH NEWS

The Adult Ladies' Bible Class of the Methodist Church will conduct a Canteen Sale in McElroy's Furniture Store all day Friday, February 21. Proceeds from the sale will go to religious workers and organizations doing mission work in the United States Army Camps.

Brotherhood Dinner Held Wednesday Night The annual Brotherhood Dinner of Christian Churches throughout the world was held Wednesday evening in the United States Army Camp at the Christian Church here was under the direction of the local Missionary Society.

The program consisted of special music, a reading of letters from churches who send their greetings to Morehead, a talk by Professor G. C. Banks and a plea by the pastor to increase the sense of kinship between American and suffering British Christian Churches. An offering was received for the benefit of Churches in Britain that have suffered during the bombings of the island.

Day of Prayer Observed in Christian Church The Annual World Day of Prayer will be observed at the Christian Church, Friday, February 22. The program for the day will be under the auspices of the Women's Missionary Society.

During the morning, under the direction of Mrs. G. C. Banks, the women will make and roll bandages for use in war-torn lands. Luncheon will be served at noon. In the afternoon at 3:00, t. o. p. President of the Society, Mrs. C. O. Peritt will lead an interesting program, concluding the day with prayer for world peace and human unity.

Young Peoples Guild To Present Play "Dust of the Road," a one-act play, will be presented in the Christian Church auditorium, Sunday evening, February 23rd, at seven o'clock. It will be presented by the Young Peoples Guild and will take place of the regular Sunday evening services. The public is invited.

Mrs. Landolt, who is directing the play, and who has presented it twice before in other localities, believes the cast of the present play superior to any she has ever directed. The play is intensely dramatic. It contains a part of feeling that will kindle the emotions of everyone. The leading role is taken by

trimble theatre

MT. STERLING, KY. FRIDAY FEBRUARY 21 "NORTHWEST MOUNTED POLICE" Gary Cooper—Madeline Carroll

SATURDAY FEBRUARY 22 "THE TULSA KID" Don "Red" Barry

SUNDAY FEBRUARY 23 "DR. KILDARE GOES HOME" Lew Ayres—Lionel Barrymore

MONDAY & TUESDAY FEBRUARY 24-25 "QUEEN OF THE YUKON" Charles Bickford—Ernie Roth

WEDNESDAY FEBRUARY 26 "KITTY FOYLE" Ginger Rogers

THURSDAY FEBRUARY 27 "LET'S MAKE MUSIC" Bob Crosby—Joan Eggers

SUNDAY FEBRUARY 28 "I'M STILL ALIVE" Sam Taylor

MILLS THEATRE

PHONE 140 THURSDAY & FRIDAY "SON OF MONTE CRISTO" with Louis Hayward and Joan Bennett

FRIDAY IS "LUCKY" NIGHT! \$10.00 Jackpot and five extra dollars in cash prizes. Station five tickets to Mills Theatre. Ten prizes on in all!

SATURDAY DOUBLE FEATURE PROGRAM Number One "WILDCAT OF TUSCON" with Wild Bill Elliott

Number Two "PHANTOM SUBMARINE" with Anita Louise and Bruce Bennett

Big Midnight Show 11:30 P. M. "OH GUE STAKE" DURSOS SPOOK SHOW - ON THE SCREENS

"POGUES TAVERN" Advertisement 12c

SUNDAY & MONDAY with Ginger Rogers and Donnell Byrne Also Mills Theatre Orchestra "TRUTH OR DREAM" PATHE NEWS

TUESDAY & WEDNESDAY "GOLDEN PLEASURES" with Lew Ayres and Rita Johnson Also Special Advertisements "OUR HAPPYEST HOME"

Used Cars With An OK That Counts

Used cars are moving... Now is the time to get ready for Spring driving... Come in and let us help select your car while our stock is complete.

G. M. A. C. TERMS
1936 Chevrolet Town Sedan
1936 Chevrolet Sport Sedan
1937 Packard "120" Sedan
1939 Chevrolet Town Sedan
1937 Chevrolet Sport Sedan
1933 Chevrolet 1/2 Ton Pickup

ALL THESE CARS COMPLETELY RECONDITIONED AND GUARANTEED

Midland Trail Garage

YOUR CHEVROLET DEALER Morehead, Kentucky

Mills Theatre Sunday & Monday

CONTINUOUS SHOWING SUNDAY FROM 1:45 P. M. CONTINUOUS SHOWING MONDAY FROM 3:15 P. M.

What Did Kitty Foyle Have That You (?) Haven't Got?

ROGERS 'Kitty Foyle' The Natural History of a Woman with DENNIS MORGAN JAMES CRAIG EDUARDO CIANNELLI - BRINEY COSSART - GLADYS COOPER Directed by SAM WOOD

GET THIS CHECK FREE! Purina Startena... With Each 100-Lb. Bag of PURINA STARTENA... REGAL STORE MOREHEAD, KY.