

The Morehead Independent

"ONE OF KENTUCKY'S GREATER WEEKLIES"
MOREHEAD, KENTUCKY, THURSDAY MORNING, DEC. 19, 1940

VOLUME VII

NUMBER FORTY-EIGHT



Rowan Agriculture Extension Service In Meeting Here

Plan Re-Organization And A New Program For Year 1941

The Soil Improvement Committee of the Rowan County Agricultural Extension Service met Tuesday, December 10 at the County Agent's office to reorganize and plan a program for 1941. Those present were: Henry Edridge, David Epphardt, John A. Adkins, E. F. Reed, W. F. Weils, R. A. Decker, William Estep, Geo. Brown, C. B. Turner, W. H. Clark, Lee Baldrige, Sr., Lewis Fraley, Jesse McBrayer, D. C. Caudill, and Eddie M. Perkins.

The gag or what you might call I put in about Dr. Adkins last week was just a joke and for the benefit of ladies night held at the Men's Club. At this Yuletide season I will enlighten the men of this community as to what their wives want for Christmas. It has always been a problem to select a gift for the wife and I think I am due a lot of thanks for making this personal survey to determine their wants. I list below as follows:

Gladys Everhart: Sewing machine and dress.
Dorcas Pennebaker: Peace, relief to this war-torn world. To them personally she wants, contentment, security, thankfulness, and hope for tomorrow and that her husband will be a little bit more reserved in his attitude toward the weaker sex.

55 Attend Annual "Woman's Night" At Mens Club

Well Enjoyed By All

Members of the Morehead Mens Club had a very successful "Woman's Night" Monday evening with a banquet in the Methodist Church, featuring one of the best and most exciting programs that the organization has ever presented.

Sidney Hinton: A new husband that looks like Tyrone Power, has the physique of Clark Gable and smokes like Bill Winesland. (That's gratitude for you.)
Sallie Palmer: A new fur coat, a piano like Mrs. Haggan's and a new set of hair for John.

Ethel Falls: A fur coat, a new dress like the one Mrs. Hoke has, a piano like Mrs. Haggan's.

Miss P. Black: A better disposition.
J. Dudley: Six extra hours for each day that I may have more time to get and cross my husband. (What a mess!)
Ester Judd: A woman's privilege to change her mind, a pipe for my husband that will not smoke and stink like the one he now has.

Terry Winesland: A new safety chain for the woman's Club.
Mrs. W. B. Jackson: A vacuum sweeper, a house like Mr. Falls and curtain material.
Feg Blake: A full paid mortgage on our home, have an income in our family, have Glenn Lane renew our note and cancel our overdraft. Also I'd like to kiss a man without a mousethick.

ANNETTE: Bew, Mastungton, Robert Bishop, Dr. Terrell, Stith Cain, and George Young. I list below some girls that have also won Santa Claus.
Ester Babasano: A man with a good disposition is all she wants this year.

Lottie Catlett: Please bring the men of the Mens Club everything good for Christmas, and may they have a happy holiday and success next year. ("Boy," she's playing the board.)
Eugenia Nave: Modesty forbids me asking for a man, but cant you give me a handsome, wealthy, intelligent, father-in-law WHOSE only son inherits these characteristics?

Key Palmer: Please "Daddy," Mrs. Daugherty said I would look so nice in a Leopard skin coat, and I saw one in Lexington for only \$65.00.

I sincerely hope that I have been of help to you gentlemen who do your Christmas shopping early. I have the written letters on file and any of you that want to check them I would be glad to have you do so.

Rural Schools Close December 24

The rural schools will have their Christmas programs on Tuesday, December 24th, and their holidays will last until Monday, December 30th when they will again resume their school work.

One of the features of the program was the installation of John M. Palmer, Sales-manager of the Lee Clay Products Company as President and an address by Dr. J. D. Falls, head of the Department of Extension of the Morehead State Teachers College, the outgoing President of Palmer will not officiate at the office until January 1, however.
Dr. R. D. Judd gave the welcome address to the meeting. He was answered by Mrs. W. E. Crutcher for the ladies. Dr. F. A. Dudley, head of the Department of Extension of the Morehead State Teachers College, was Master of Ceremonies. Reverend B. H. Kazee was in charge of the group singing.

At last Wednesday's meeting of the club, Professor William R. Willoughby, appearing on the program as the guest of honor, discussed American defense. His theme was built around the three schools of thought concerning the defense of the Americas, namely: (1) Defend America and her immediate possessions only, refusing loans to South and Central American countries and not constructing naval bases and military units in any other place of the Americas; (2) Laying plans to defend the Americas north of the large bays in South America; and (3) defending all the Americas and all our possessions even to the coast be transgressed.

CHRISTMAS GREETINGS



Another day, another week, another month, another year, fades into memory. Only the recollection of days well spent and a trust fulfilled keep fleeting time from turning our thoughts toward pessimism. For the year 1940 has seen a world at war for the second time within a generation. We well know that war is futile, but we make ourselves the liar by permitting it to exist.

City High School Plans Program

Public Invited To Attend Sessions At Gymnasiums

On Friday, December 20th the Morehead Public School invites its parents and friends to visit the school Friday morning and see the school at work. On Friday afternoon, starting at one o'clock, the Morehead P.T.A. will meet in the gymnasium for their business sessions. Immediately afterward the following program will be given:

1. Play "The Boy Who Stole Christmas" by High School pupils.
2. Welcome, by Darnese Jones.
3. Song "Oh Come All Ye Faithful," by 4th, 5th, and 6th grades.
4. The Birth of Jesus, by 5th grade.
5. Song "Hark, the Herald Angels Sing," by 4th, 5th, and 6th grades.
6. Poem "Night Before Xmas," by 3rd grade.
7. Song "Jolly Santa Claus," by 1st, 2nd, and 3rd grades.
8. New business (Program for January).
9. Program by Morehead School.
10. High School Glee Club—"Silent Night" and "Joy to the World."
11. Poem "Goodbye," Eva Wilson.

Masonic Lodge Meets December 27th

Morehead Masonic Lodge No. 654 will hold their annual meeting, December 27. The election of officers is scheduled for 1:30 P. M. A big order try will follow the meeting. All Masons are urged to be present.

Eagles Take Drubbing From Central Mich.

Morehead's Eagles took it on the chin at the local gymnasium Wednesday night 48-20 losing to Central Michigan Teachers. For the Eagles it was the first loss in three starts. Ellis Johnson's and Len Miller's lads had previously beaten Holbrook and Union by substantial scores.

Morehead P. T. A. Will Meet On Friday, Dec. 20th

Public Invited To See School At Work

The Morehead P.T.A. will hold the December meeting Friday at one o'clock in the gymnasium. All members are urged to be present. The program is as follows:
1. Call to order by President by Mrs. Brown.
2. Roll call and minutes by secretary, Miss Boggers.
3. Old business.
4. New business (Program for January).
5. Program by Morehead School.
The program will consist of a play by the high school pupils and songs by the high school glee club, and songs and readings by the first six grades.
6. Adjournment to January meeting 1941.

Editor Appointed To State Position

Ratliff H. Lane, editor and owner of the Sentinel-Democrat, Mt. Sterling weekly newspaper, has accepted a position in the public relations division of the Kentucky Selective Service Administration with offices in Louisville.

Woody Whips Cop As Mens Club Sits Wondering

Hilarious Program Given For Annual Women's Night

Things took a serious turn for a few minutes at the Mens Club Monday night at their annual "Woman's Night" program. Just as things got under way a knock was heard at the door.

"He's here Hiram," Doctor Adkins answered. "Why?"
"I've a warrant for his arrest... I had to get tough with that fellow." P. S. Where were you last week-end, Woody?
"And take him he did!"
A painful silence hung over the club. No one said a word.
Suddenly the door burst open. Woody entered triumphant and wearing Hiram Lee's coat—a mile too big.
"Do you know he quipped, 'I had to get tough with that fellow.' P. S. Where were you last week-end, Woody?"

John Markwell, 79, Dies At Home

John Markwell, 79, died at the home of his daughter, Mrs. Allie Carpenter on this past Thursday following a short illness.
Funeral services were held at the Church of God on Saturday with Reverend T. F. Lyons in charge. He is survived by one son and one daughter. His wife preceded him in death several years ago.

Midland Trail Garage In New Headquarters

Garage Most Modern In All Eastern Kentucky

The Midland Trail Garage, in business here for the past eight

years, moved this week to their new headquarters on Main Street opposite the Midland Trail Hotel.

The public in general are complimenting the Jaynes, their entire staff and the city itself for this move.

The new garage, brick and steel throughout, is one of the best equipped and most modern in all eastern Kentucky. Containing over 9000 feet of floor space, ample room is given for the handling of auto repairs.

W. L. Jayne is manager of the Midland Trail Garage and has been in the garage business for the past twenty years, coming here from Ashland at a time when the prospect of Morehead were seen thus a haze of mist from the mud roads. Jayne, like other far-sighted businessmen, that have helped Morehead grow. Morehead were seen thus a haze of mist from the mud roads. Jayne, like other far-sighted businessmen, that have helped Morehead grow. Morehead were seen thus a haze of mist from the mud roads. Jayne, like other far-sighted businessmen, that have helped Morehead grow.

Late Postoffice To Remain Open Late Saturday

Effort Made To Accommodate Huge Christmas Mail

Added service to accommodate patrons of the Morehead post office during the Christmas rush was announced today by Postmaster W. E. Crutcher.

The Postmaster said that the Morehead office will be open all day on Saturday of this week instead of closing at 2 o'clock as in the past. All windows will be open Saturday afternoon.

Every effort will be made to see that every gift parcel is delivered prior to Christmas," Mr. Crutcher said. All employees of the office have been put on longer hours this year that people wait until Christmas mail is dispatched and delivered. "We anticipate no delay in the handling of mail at the Morehead office," he said.

The Morehead office, according to the Postmaster, expects a large Christmas mail rush this year than when the office had its biggest week. It was pointed out that since Christmas falls on Wednesday this year that people are waiting until the last minute, many apparently planning on mailing packages and cards over the weekend.

"The Postmaster said that packages and cards that needed to travel any distance should be mailed as early as possible in order that they might be delivered in time for Christmas. He said that mailers put their packages in suitable Christmas wrappings with heavy paper and be well tied or sealed with a parcel post label. He said that many mailers were bringing their packages in wrapped in cello or thin paper which would probably be torn off and the address lost before they reach their destination."

Post office employees are not permitted to wrap packages and patrons should not ask them to do so, the Postmaster pointed out.

Felix Powers, 82, Died Last Week

Funeral services were held last Thursday for Felix Powers, 82, who died at the home of his daughter, Mrs. Perry Prather.

The Reverend James Wiseman was in charge of the services, which were held in the Clearfield cemetery.

"Uncle Felix" as he was known to this community, was well known and highly respected. He was a Democrat, he was active in politics here until recently.

Vikings Win Ninth Consecutive Game

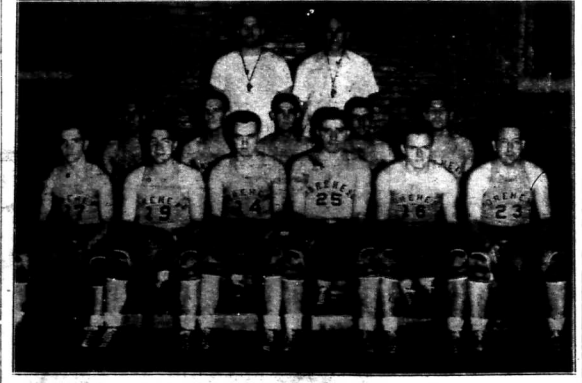
Coach Roy Holbrook's Vikings made it nine in a row by topping the hitherto undefeated Raceland Ramblers 23-19 at Raceland, Tuesday.

The first quarter ended with the teams deadlocked 8-8, but in the second quarter the Holbrook boys took the lead and were never bested. Half-time saw the Vikings on top 17-16.

Warren Hicks was high for Morehead with seven. Cox paced the losers with five.

The undefeated Vikings met Boyd County High here, December 20 at the High School gymnasium.

Boyd County is coached by Harry Lowman, a graduate of MSTC with the class of '39.



Pictured above is the 1940-41 edition of the Morehead College basketball squad. From left to right, first row: George Wiggins, Ralph Mussman, Jack Dumford, Harry Walker, Corley Howerton, and Tom Williamson; second row: Walter Hambrick, Duane Barnes, Earl Duncan, Paul Adams, and Vincent Zachem; standing, Coaches F. H. Johnson and Len Miller.

Presents That Are Different . . .

CHRISTMAS SPECIAL

NYLON HOSE
98c



THE BIG STORE

RAILROAD STREET—MOREHEAD, KY.

FOOD SPECIALS

For the Christmas Feast



A better dinner for less money. What more can we offer you in these food specials of the week? Everything you want and need to make the family dinner a huge success. You'll be surprised how far your pennies can go.

BIRDS EYE BRAND FROSTED FOODS, N U T S, FRUITS, VEGETABLES, FRESH MEATS, CHICKENS AND TURKEYS.

I. G. A. Grocery

PHONE 44

Commissioner's Sale

The Commonwealth of Kentucky, Rowan Circuit Court

City of Morehead Plaintiff

Versus B. M. Mullins, et al

Defendants

And Citizens Bank

Versus

City of Morehead and the unknown heirs of M. Mullins

By virtue of a judgment and order of sale of the Rowan Circuit Court rendered at the December Rule Day Term thereof, 1940, in the above cause, for the Three Hundred (\$300.00) Dollars, and the further sum of \$159.88 with sum of interest from July 15, 1929, and the further sum of \$1606.79 with interest from October 7, 1927, until paid and its cost therein I shall proceed to offer for sale at the Court House door in the City of Morehead, Kentucky, to the highest and best bidder, at public auction on the 6th day of January, 1941, at One O'clock P. M. or thereafter, upon a credit of (6) six months, the following described property, to-wit:

For the purchase price, the purchaser must execute bond, with approved securities, bearing legal interest from the day of sale, until paid, and having the force and effect of a judgment. Bidders will be prepared to comply promptly with these terms.

ARTHUR HOGGE

Master Commissioner Rowan Circuit Court.

Located in Rowan County, Kentucky, beginning at the corner of D. M. Holbrook property, now the corner of the alley, thence running with said street and fence southward direction fifty-two (52) feet to the line of William Hawkins, thence running with line of said Hawkins a northwest direction, 144 feet to the alley and corner, thence with said alley sixty-two (62) feet to the corner a north-east direction, thence with said alley and fence southward direction to the beginning corner, 141 feet and being the same land devised to B. M. Mullins by wife, Nancy Mullins by Will of date July 8, 1934, and recorded in Will Book "A" page 226, also see deed book No. 77 at page 363, Rowan County records.

Or sufficient thereof to produce the sum of money so ordered to be made. For the purchase price, the purchaser must execute bond, with approved securities, bearing legal interest from the day of sale, until paid, and having the force and effect of a judgment. Bidders will be prepared to comply promptly with these terms.

ARTHUR HOGGE

Master Commissioner Rowan Circuit Court.

Commissioner's Sale

The Commonwealth of Kentucky, Rowan Circuit Court

Herman Johnson, et al, Plaintiff

Versus Hiram Jackson, et al, Defendant

By virtue of a judgment and order of sale of the Rowan Circuit Court rendered at the November Rule Day Term thereof, 1940, in the above cause, and its cost therein I shall proceed to offer for sale at the Court House door in the City of Morehead, Kentucky, to the highest and best bidder, at public auction on the 6th day of January, 1941, at One O'clock P. M. or thereafter, upon a credit of six (6) months, the following described property, to-wit:

A certain tract or parcel of

Lane Funeral Home

Funeral Directors

Ambulance Service

Phone: 91 (Day), 174 (Night)

Dr. O. M. Lyon
DENTIST

Office Phone 274 - Residence 237

OFFICE: COZY BUILDING

Morehead, Kentucky

A. F. Ellington
DENTIST

Phone 26 - - - Morehead

CITY CAB
PHONE 86
QUICK - COURTEOUS SERVICE

Dr. L. A. Wise

Has moved to the J. A. Bays Jewelry Store where he will be located every Friday, examining eyes and fitting glasses.

of wine and being in the County of Rowan and the County of Fleming, being a compact boundary of land, bounded as follows:

On the North by the lands of William Rust and Harve Dalton; on the East by the lands of Sam Mabry; on the south by the lands of Sam Mabry and Hiram Kiser and George Jackson; on the West by the lands of William Rust.

That said description is by boundary and contains approximately 398.2 acres of land.

For the purchase price, the purchaser must execute bond, with approved securities, bearing legal interest from the day of sale, until paid, and having the force and effect of a judgment. Bidders will be prepared to comply promptly with these terms.

ARTHUR HOGGE

Master Commissioner Rowan Circuit Court.

Band Recital Held

Wind instrument students of Professor M. E. George held an informal band recital in the basement of Field's Hall Thursday afternoon. Included on the program were a cornet trio by Robert Sharpe, Allan Rush, Horace Owens; a clarinet quartette by Dorothy Simmons, Edmund Weicher, Helen Coughlin, Ollie Lynch; a trombone quartet by Kathryn Damron, David Yasa, Richard Coffelt, Forrest Neal, a French Horn quartet, by David Eskridge, Marian Kaiter, Crosley, and Lionel Lyon; and clarinet duet, Eddie Weicher, Helen Coughlin.

COAL

Stoker or Poker

CALL 71

Stoker or Furnace Nut \$2.95 ton Delivered
All coal dust-proofed, Oil treated 15c ton extra

Special Prices on Wholesale Lots
MOREHEAD ICE & COAL CO.

All Aboard For

Bruce's

SANTA CLAUS SAYS

Toytown

IS IN FULL

SWING

WITH THOUSANDS OF GIFTS AND TOYS



Beginning Wednesday, Dec. 18, we will be open evenings until Christmas.

ALL NEW TOYS and GIFTS

Again this year Bruce's 5c 10c and \$1.00 Store has assembled a huge assortment of new toys and gifts that has never been equaled in Morehead either in price or quality.

Your past experience in shopping with us proves conclusively that we make no misleading statements regarding quality of merchandise or prices.

Buy only NEW and desirable Toys and Gifts that you will be proud of giving your friends. We invite you to compare quality and prices.

TOYS FOR ALL THE KIDDIES

GIFTS FOR ALL YOUR FRIENDS

NO SAMPLES, ALL NEW, CLEAN MERCHANDISE. HURRY! HURRY!

FOLLOW THE CROWD TO

BRUCE'S

5c 10c and \$1.00 Store

"Where Your Dollar Goes Farther"

USED CARS

That Are Usable

- 1939 Ford Sedan, good as new. Radio and heater.
- 1936 Ford Sedan, a real buy.
- 1937 Ford 60. Good condition.
- 1940 Ford Coupe, A-1 shape, low mileage.
- 1929 Ford Tudor, radio and heater.
- 1938 Ford Pickup, a real buy.
- 1935 Ford Coupe, radio and heater.

Collins Motor Co.

PHONE 18
MOREHEAD, KENTUCKY

Commissioner's Sale

The Commonwealth of Kentucky, Rowan Circuit Court, City of Morehead Plaintiff, Versus Jack Cecil and Eunice Cecil Defendants.

NOTICE OF SALE

By virtue of a judgment and order of sale of the Rowan Circuit Court rendered at the Special September Term thereof, 1940, in the above cause, for the sum of One Thousand Seventy-Dollars and Seventy-three (\$1070.73) cents, with interest at the rate of six (6) percent per annum from the 15th day of July, 1928, until paid and its cost therein, I shall proceed to offer for sale at the Court

House door in the City of Morehead, Kentucky, to the highest and best bidder, at public auction on the 6th day of January, 1941, at One O'clock P. M., of thereabout, upon a credit of six (6) months, the following described property, to-wit: "A certain tract or parcel of land, located in the City of Morehead, Rowan County, Kentucky, on Hargis Avenue and Sun Street and bounded as follows: Beginning at a stake in the line of Hargis Avenue and extending thence a northerly direction a distance of fifty (50) feet to the corner of Hargis Avenue and Sun Street; thence an Easterly direction with the South edge of Sun Street, a distance of 146 feet to the corner of Atilla Logan property; thence with said Logan property a southerly course a distance of 50 feet to a stake; thence a straight

line a westerly course to the beginning. Being a rectangular lot fifty (50) feet in width and fronting on Hargis Avenue (50) fifty feet and being 146 feet in depth." Or sufficient thereof to produce the sum of money so ordered to be made. For the purchase price, the purchaser must execute bond, with approved securities, bearing legal interest from the day of sale, until paid, and having the force and effect of a judgment. Bidders will be prepared to comply promptly with these terms.

ARTHUR HOGGE, Master Commissioner Rowan Circuit Court.

Commissioner's Sale

The Commonwealth of Kentucky, Rowan Circuit Court, Lillian Clay, et al Plaintiff, Versus Ear W. Semff, et al Defendant.

By virtue of a judgment and order of sale of the Rowan Circuit Court rendered at the Special September Term thereof 1940, in the above cause I shall proceed to offer for sale at the Court House door in the City of Morehead, Kentucky, to the highest and best bidder, at public auction on the 6th day of January, 1941, at One O'clock P. M., or thereabout, upon a credit of six (6) months, the following described property, to-wit:

On the North by the Pioneer Orchard, Nath Adkins and Clara Childster, On the East by the George Moore tract, On the South by Triplett Creek, On the West by Andy Livingood. Lying about one-half mile North of Farmers, Rowan County, Kentucky, and on the North side of Triplett Creek and on the Licking River turnpike and containing 220 acres more or less and formerly known as the Squire William Moore farm and for more particular description see record of deed in Deed Book No. 38 at page 358 of the Rowan County records.

This tract of land contains about 220 acres of level land, and about \$500.00 worth of timber on land, with buildings and outbuildings.

Or sufficient thereof to produce the sum of money so ordered to be made. For the purchase price, the purchaser must execute bond, with approved securities, bearing legal interest from the day of sale, until paid, and having the force and effect of a judgment. Bidders will

be prepared to comply promptly with these terms. ARTHUR HOGGE, Master Commissioner Rowan Circuit Court.

Farm Population Gains Fastest In Eastern Kentucky

More Births Than Deaths Among Farm People In Kentucky

Kentucky's farm population is continuing to gain rapidly in the eastern counties, according to a study made by representatives of the State College of Agriculture of populn changes last year. Most pronounced gains in farm population in 1939 occurred in eastern counties and in the Jackson Purchase area.

There were more births than deaths among farm people in all parts of Kentucky. The smallest difference was about one and a half births for each death in the area surrounding Louisville, and the largest difference was approximately four births for each death in nineteen southeastern counties. More people moved from cities to farms than from farms to cities last year, the report states. The cityward flow was slowest in those areas where natural increase was most rapid. In the Louisville area, not only were the migration rates in both directions high, but the number moving to farms from the city was actually larger than the number leaving farms for town.

The report says: "A general

conclusion is that, with certain exceptions, notably the Inner Blue grass region, gains in farm population continue to be largest in

those areas least well suited to agricultural production on a commercial scale and with standards of living dependent upon subsistence farming, non-farm employment such as mining, and various forms of public assistance."

"Ma!" called Sammy. "Ma! I got a hundred in school."

"Fine," said his mother. "What subject did you get a hundred in?"

"Two," said Sammy — "60 in reading and 40 in spelling."

Independent, \$1.50 Yr. Independent \$1.50

LOOK! LOOK!

Special INNERSPRING MATTRESSES \$10.95

NEW COAL AND WOOD HEATERS

Furniture of all kinds and plenty of antiques. If we can't sell you furniture for less money than our firm, we don't deserve your patronage. Come in, see for yourself. You be the judge.

Walk a Block and Save a Lot

HUTCHINSON BARGAIN STORE

Opposite C & O Depot MOREHEAD, KENTUCKY

ECONOMY COAL STEAM AND DOMESTIC

LUMP-EGG-NUT-STOKER

Machine Mined and Shaker Screened

WILLARD COAL CORPORATION

(Mines Located at Willard, Kentucky)

J. L. BOGGESS, Pres. PHONE 265

C. B. LANE, Secy. PHONE 91

NEW AND USED FURNITURE

NEW INNERSPRING MATTRESS, Only \$12

ANTIQUES

We now have in stock over 100 new Stoves, Gas, Coal or Wood at bargain prices. Electric Hot Plates

Toasters, Rugs, Floor Coverings,

Kitchen Utensils and Enamel Ware.

Pictures and Mirrors

P & H WHOLESALE CO.

WHOLESALE AND RETAIL

223 Railroad St. Phone 260 Morehead, Ky.

Used Cars are our business

ANY CHEVROLET DEALER CAN SELL YOU A NEW CHEVROLET AS WELL AS WE CAN. BUT, OUR USED CARS ARE OUR OWN RESPONSIBILITY. THEY MUST BE RIGHT TO UPHOLD OUR REPUTATION FOR FAIR DEALING.

THESE CARS ARE SOLD WITH AN O. K. THAT COUNTS. LOOK THEM OVER BEFORE YOU BUY.

1940 Chevrolet Town Sedan

1939 Chevrolet Sport Sedan

1938 Chevrolet Sport Sedan

1940 Chevrolet 1/2 Ton Pick-up

1940 International 1/2 Ton Pick-up

1939 Chevrolet 1 1/2 Ton Stake

Midland Trail Garage MOREHEAD, KENTUCKY

WE WISH YOU A VERY MERRY CHRISTMAS AND A PROSPEROUS

NEW YEAR

UNION GROCERY COMPANY

This Christmas Give Your Friends— ELECTRIC APPLIANCES

They Are Moderately Priced, Economical To Use, Well-Made, Smart and Handsome. They Simplify Housekeeping, Save Time and Work, Help To Modernize the Home, Give Years of Satisfactory Service

Make Christmas Merrier at Your House with Festoons of Colored Lights

Suggestions for



See Your Dealer Also for High Quality Electric Appliances

Your Gift List

PREMIER VAC-KIT



Light and easy-to-carry, the VAC-KIT quickly and thoroughly cleans upholstery, curtains, Venetian blinds, drape-ries, radiators, auto and piano interiors, shelves, etc. It's very handy and amazingly efficient in getting dust and dirt out of crevices, crannies and folds. Saves much time and work in housekeeping. Operating cost less than 5c a month for current. With hose and attachments... \$29.50

SIGNALING AUTOMATIC TOASTER



Set lever for light, dark or in-between toast. Toasts two delicious, evenly-browned slices at once, both sides. Bell signals when toast is done. A touch of the release lever pops up toast... \$8.95

7-CUP CHROME PERCOLATOR



Smartly styled in graceful modern lines. Non-tempering chrome finish over seamless copper body. Fuse protection against overheating... \$5.95

TWO-UNIT HOT PLATE



Provides safe, clean, convenient surface cooking. Easily portable, plugs into any outlet. Two fast-heating units. Acid-resisting porcelain top. A big value at... \$9.95

Sunbeam MIXMASTER

America's favorite food mixer. Has the "DIAL THE RECIPE" Mix-Finder that enables you to "tune in" the correct speed for every mixing need. Takes the timing and work of cooking, baking, getting meals off your hands. Complete with juicer... \$23.75



Sunbeam IRONMASTER

Irons Faster! It's the ONLY Double-Automatic Iron! Has the cool, convenient Thumb-Tip Regulator up in the handle. RIGHT UNDER YOUR THUMB. Marked for all types of fabrics. Ready to "go" in 30 seconds. Solder Low Heat for Rayons. Faster High Heat for Linens... \$9.95



Sunbeam SHAVEMASTER

The electric shaver that's WINNING AMERICA TO DRY-SHAVING. Has the exclusive Sunbeam head. Shaves close on a straight edge and faster with its screened comb and lightning-fast oscillating blades. Model M. A.C. only \$7.50. Model H. A.C.-D.C. \$15.00



Sunbeam WAFFLE BAKER

Bakes four good sized waffles at once—has 80-inch overall baking area. Other waffle bakers have only 27 sq. inches. Yet the Sunbeam occupies little more space on the table. Completely Automatic... \$16.00



THESE ARTICLES, TOO, WOULD MAKE PLEASING GIFTS

- | | | | | |
|----------------|-----------------|-----------------|-------------------|-------------------|
| Floor Lamp | Table Lamp | Washing Machine | Wall Lamp | Coffee Urn Set |
| Vacuum Cleaner | Table Stove | Chaffing Dish | Ironing Machine | Tree Lighting Set |
| Water Heater | Dish Washer | Beam Heater | Automatic Roaster | Vibrator |
| China Cabinet | Egg Cooker | Curling Iron | Clock | Sun Ray Lamp |
| Light Bulbs | Toaster Fry Set | Automatic Range | Heat Lamp | Hot Dryer |

Buy Now and Avoid the Last Minute Rush

→ IT COSTS LESS TO LIVE BETTER ELECTRICALLY ←

KENTUCKY POWER & LIGHT COMPANY

INCORPORATED

FORD

LINCOLN ZEPHYR

V - 12

NOW ON DISPLAY
AT OUR SHOW ROOM

New Lincoln Automatic
Overdrive Transmission

This overdrive is entirely automatic in its operation, yet instantly controllable by the driver. Reduces engine speed 30 percent, saves on gasoline and oil . . . brings added joy to driving.

LET US DEMONSTRATE THE NEW LINCOLN ZEPHYR TO YOU TODAY.

LINCOLN

MERCURY

On Display Now-
the 1941 MERCURY 8!



Brand New Styling Inside And Out - Longer Wheelbase - An Entirely New Ride - Increased Vision - Wider Seats - Faster Acceleration - Many Other New Features!

Get the facts on this brilliant new Mercury 8—see it at our showrooms today. And get the facts, too, on the kind of deal we are giving these days—you'll be surprised how little it costs to own a new Mercury!

See it Today *Get Our Deal*

See the **NEW FORD** Here
- and Get Our Deal!

- New, Extremely Wide Bodies!
- Brand New Styling!
- Greater Vision!
- Longer Wheelbase!
- Faster Acceleration!
- New, Rigid Frame!
- New Seating Comfort!
- An Entirely New Ride!



Compare the comfort, performance and economy of this car with anything anywhere near its price range! See the kind of deal we are giving now—see how little it will cost you to own this great car! Come in today!

Get the Facts
Get our Deal
and You'll
Get a Ford!

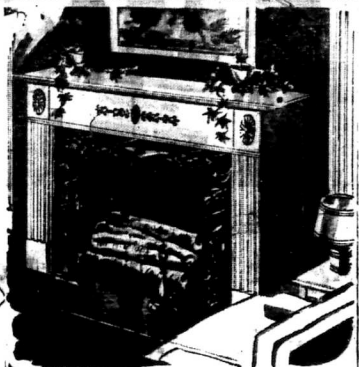
COLLINS MOTOR CO.

Main Street

Phone 18

Morehead, Ky.

"to hang
by the
chimney
with
care ..."



Don't overlook the house when it comes to selecting presents that will make the family happy. Here are grand ways to add to the comfort and pleasure of everyone in the house all through the coming year—and our store is just packed with other equally good and economical suggestions.

GIVE A SAMPSON TABLE

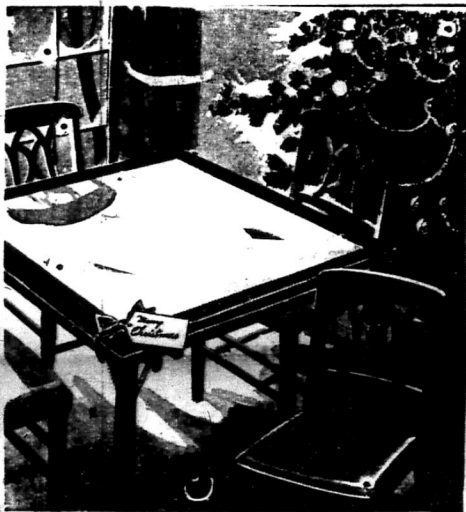


TABLE ASSORTMENT OF BEAUTIFUL PATTERNS \$1.98
COMPLETE SET \$9.95



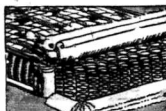
Gifts To Living..

This Christmas don't forget yourself and your family... give furniture which will increase the joy and comfort of everyday living for every member of the family. Or give an easy chair for father, a 'dINETTE' set to mother... or give the home maker of the family a chair for sewing or just plain resting. There are scores of thrilling gift hints at McBrayer's... don't overlook a one!

OCCASIONAL CHAIRS AND ROCKERS \$4.95 UP

Give luxurious sleep with an innerspring mattress.

\$9.95 to \$39.50



A WARM AND COZY WAY TO SAY MERRY CHRISTMAS — GIVE A BLANKET.



YOUR HOME

Give Practical Gifts
This Christmas



Let McBrayer's Supply Your Holiday Needs

Your home is your most prized possession. It is the result of hours of planning and years of hard work and sacrifices. It is a haven of rest and relaxation after a day's labor is finished. What then, is more fitting than that during this Yuletide season you feather your nest with modern conveniences that you and your loved ones might enjoy life more fully.



OCCASIONAL TABLES

Tables that meet every need at moderate prices. Wide selection to choose from.

98c to \$9.95

SMOKING SETS

He may not admit it, but he will appreciate one of these smoking sets.

98c to \$5.95



Sturdy Velocipedes for the kiddies that will take a lot of hard knocks.

\$1.49 to \$5.95

FLOOR LAMPS

Brighten your home with one of these attractive seven-way floor lamps.

ONLY \$4.95



TABLE LAMPS

Table and Boudoir Lamps in attractive styles and colors.

98c to \$2.95

ELECTRICITY OR NO ELECTRICITY!
NOW! 1941 ZENITH ELECTRIC RADIO
ALSO OPERATES FROM ECONOMICAL PACKAGED BATTERY POWER
PER HOUR POWER OPERATING COST
\$39.95
ALSO PLAYS FROM 110 VOLT AC DC

FOR THE BREAKFAST NOOK



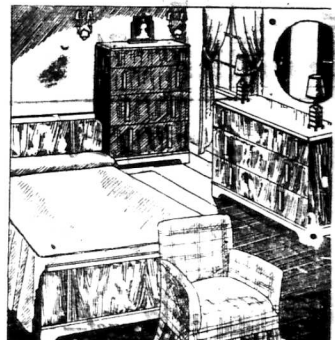
FURNITURE FOR EVERY ROOM IN THE HOUSE

LIVING ROOM SUITES



LET McBRAYER'S GIFTS DRESS UP YOUR HOME FOR CHRISTMAS

BED ROOM SUITES

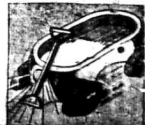


IF SHE'D DARE TELL YOU BEFORE CHRISTMAS SHE'D SURELY SAY, "I WANT THAT GORGEOUS BED ROOM SUITE AT McBRAYER'S."

McBRAYER'S

Morehead's Complete Furniture Store

DON'T FORGET THE KIDDIES. THEIR CHRISTMAS DEPENDS ON YOU.



THE MOREHEAD INDEPENDENT
(Official organ of Rowan County)

Published each Thursday morning at Morehead, Kentucky by the
INDEPENDENT PUBLISHING COMPANY

ADVERTISING RATES MADE KNOWN UPON APPLICATION

WILLIAM J. SAMPLE Editor and Publisher

One year in Kentucky	\$1.50
Six Months in Kentucky	75
One year Out of State	2.00

(All Subscriptions Must Be Paid in Advance)

Entered as second class in February 27, 1934, at the post-office at Morehead, Kentucky, under Act of Congress of March 3, 1879.

WANT AD RATES:
(Payable in Advance)

One time, per word	2c
Two times, per word	3c
Three times, per word	4c
Four times, per word	5c
Five times, per word	6c
Six times, per word	7c

(No ad taken for less than 25c)
Special rates by the month.

Chans of Thanks, articles in Memoriam, lodge notices, resolutions, etc., are advertised and are charged for at the above rates. Ads ordered by telephone are accepted from persons listed in the telephone directory on memorandum charges only; in return for this courtesy the advertiser is expected to remit promptly.



NATURE

(By G. B. Pennebaker, Ph. D.) Morehead State Teachers College

HAZARDS OF MIGRATING BIRDS

During the long journey which the migrating birds make twice a year, there are many birds to be remembered. Some of these dangers make it quite uncertain whether a migrant will reappear a year hence to resume the building of nests and rearing of other broods, or whether he will be destroyed by some force beyond his control before he returns.

These hazards are of two general types, viz, the natural and the artificial ones. The artificial ones are much more destructive of the lives of these feathered friends than are the artificial ones, although which one is said and written about the artificial ones. This presumption is because something can be done to remedy the latter, while the former are usually not always beyond the control of man. Most of the man-made hazards which birds encounter affect chiefly the southern migrants. Birds occasionally strike such things as telegraph and high-tension wires, tall spires, monuments, towers, etc., as is evidenced by the finding of dead birds near these structures.

The most destructive of these, however, are the light houses. Birds are attracted by these lights and usually are to a flame, and unless they injure themselves by striking the framework, or the light itself, they are completely exhausted and finally sink down to be engulfed by the waves below. In this way many birds lose their lives each migrating season.

Although these artificial hazards take the lives of many migrating birds, the toll is not to be compared with that taken by nature

herself. Late migrants in the fall frequently are caught by cold weather which reduces the food supply thus causing them to take off under unfavorable conditions. One of the most hazardous conditions encountered is a wet, heavy snowstorm. The wet snow clings to the body for a time, wetting the feathers and interfering with flight thus causing exhaustion and loss of life in the storm. Heavy wind storms also frequently take the lives of whole flocks of migrating birds. Birds seem to be unable to detect approaching storms, as has been supposed, and will fly right into tornadoes or typhoons with the list of all and nearly all of the flock.

The early spring migrants sometimes find themselves too far north for the season. Late snows and sleet frequently cover all food supply and some of these fellows such as the purple grackle, the redwing, the blackbird, the bluebird and the robin find themselves hungry and shivering in the cold. Not infrequently if they do not actually starve they are so weakened by hunger and cold that they become easy prey for cats and other predatory animals.

If they would scatter a little grain for our friends under these adverse circumstances we would be amply repaid by songs in the spring and summer.

COAL

B. F. Morrison
\$2.45 and \$2.60
PER TON
RUSH, KY.



LEST YOU Forget—

Having fun in Louisville is largely a matter of where you go and what you do. So remember that dining and dancing in the Bluegrass Room at the Brown Hotel is an exciting adventure in merry-making!

The most succulent food anywhere in the South! Music that makes you want to trip the light fantastic! Two marvelous floor shows nightly! And night-club atmosphere the equal of any you'll find in New York or Chicago!

Expensive? About half what you probably think! So, if you've a weakness for fun, come to the Bluegrass Room, the next time you're in Louisville!

THE BROWN HOTEL
Louisville's Largest and Finest
MAROLD E. HARTER, Manager

BIG NEWS!

Announcing The Opening Of The Most Modern Garage In Eastern Kentucky

We have recently moved to our new and commodious headquarters on Main Street opposite the Midland Trail Hotel. Our new plant contains over 9000 feet of well-lighted floor space. Our mechanics are superior workmen.

We sincerely feel that now, as never before, we are in a position to render our friends and customers the finest automobile sales and service in all eastern Kentucky. It is with a reasonable degree of pride that we invite your inspection of our new garage.

for Economical Transportation

Sales



Service

MIDLAND TRAIL GARAGE

Main St. Phone 150 Morehead, Ky.

McBRAYER'S

Morehead's Complete Furniture Store

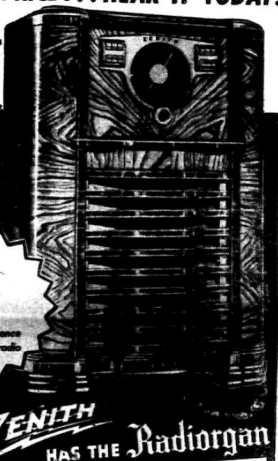
With the coming of electricity to rural homes, many of the once unheard of luxuries and conveniences are at our fingertips, and thus rural homes are enjoying city conveniences through the mediums of electricity.



Westinghouse
Iron Designed
for EASE...

This beautiful, modern streamlined electric iron has been designed to make ironing as easy a task as possible. Constructed to fit your working hand with weight balanced so that it requires almost no effort on your part to do the job. Priced at **\$4.95**

TONE...
THAT SURPASSES ANYTHING
ZENITH HAS EVER OFFERED AT
THIS PRICE... HEAR IT TODAY!



\$79.95

Liberal allowance
for your old radio

Only **ZENITH**
HAS THE Radiorgan

85543 • You will be amazed when you hear Model 85543! By the touch of your fingers, you control the tone to suit your own good taste. Powerful B tube chassis including heater cathode rectifier tube, Wavemagnet line aerial and foreign reception, and Wavemagnet.



40535 • Acoustically designed cabinet in rich walnut finish. Has a powerful 6 tube chassis including heater cathode rectifier tube, Wavemagnet line aerial or ground, Standard broadcast, Black Dial, mellotone speaker.

\$19.95

Enjoy Perfect Coffee

BUY A
CORY
COFFEE BREWER
AND RECEIVE 1 LB.
MAXWELL HOUSE
COFFEE
FREE



Regular
Price
30c



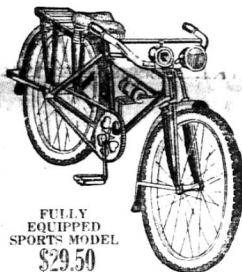
New
Patented
Cory
Brewing

8 CUP SIZE
with electric unit . . . \$5.95
kitchen range model . \$3.45

For limited time only, this famous coffee free with any size CORY Brewer—6, 8 or 12 cup capacity. Wide neck style, lovely platinum striped, heat-resisting glass. Complete with stand for top section, coffee measure and CORY Glass Filter ROD.

Seeing the coming advance in prices we have taken advantage of the market and have stocked our store with the latest in merchandise at old prices. Buy your home appliance needs now and enjoy the benefits of these savings.

BE Sporting THIS Christmas



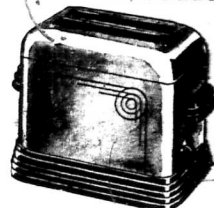
FULLY
EQUIPPED
SPORTS MODEL
\$29.50

Give
A
Bike

Give your boy or girl a welcome "pal" this Christmas—a bicycle. The sports model illustrated is one of our sensational Christmas values—rugged, sturdy, yet free of excess weight—fully equipped; air cooled coaster brake, self balanced pedals, electric headlight and horn, and other features. Buy on convenient budget plan.

GIVE
SOMETHING
USEFUL
THIS
CHRISTMAS
GIVE
ELECTRICAL
GIFTS

ELECTRIC
Toasters
98c to \$6.95



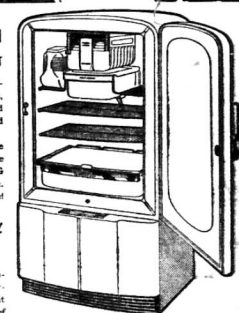
New Model 1941 Westinghouse
Refrigerator

*Come on, Pop ...
let's give Mom a
Westinghouse
Refrigerator!*



Super Market FOOD PROTECTION
KEEPS FOOD JUST LIKE THE STORES KEEP IT

"The best gift of all!" That's what she'll say of this new Westinghouse Refrigerator that features super market food protection . . . 5 different zones of cold. This assures the RIGHT kind of temperature and humidity for everything. Keep this way—the way



EXCLUSIVE *TRUE-TEMP CONTROL*
IS THE SECRET

Just turn a dial. That's all there is to it. True-Temp Control, an exclusive Westinghouse device, holds food temperatures steady—5 different kinds of cold—regardless of changes in food load or kitchen temperatures.

DELUXE EQUIPMENT

Includes: Full width glass-topped Humidrawer . . . Big 15-pound drawer-type Meat-Keeper . . . and a colorful water server of genuine Hall chinaware.

Christmas Special
\$112.75 UP

JUST WHAT I WANTED



- BOWL SHAPED TUB
- DOUBLE WALLS
- SAFETY ROLL WRINGER
- IRON-CLAD GUARANTEE
- BOWL CHASSIS DESIGN
- FAST CLEAN WASHING

MODEL
"800"

What woman wouldn't be happy to have her old washer replaced by a new, modern Speed Queen for Christmas! Especially this big, exclusive-featured Speed Queen with automatic timer—temperature gauge—self-winding electric cord—oversize Bowl-Shaped Tub with double walls to keep water hot—Super-Duty Safety Roll Wringer—all white baked enamel finish—and many other features. It is a practical gift that will bring genuine joy 52 times a year, for many years to come.

AUTOMATIC TIMER
No longer need you GUESS the time for each batch. In the number of minutes specified—and your Speed Queen **STOPS AUTOMATICALLY** when each batch is washed.
Prices Start At
\$49.95

Stop in this week and look at our complete line of Speed Queen washers. A liberal allowance will be made on your old washer, and you may have all next year to pay the balance.



**2 BIG STEPS TO
GREATER FREEDOM**



Westinghouse
Electric Ranges
and
Water Heaters



'FOR COOL, CLEAN, ECONOMICAL
ELECTRIC COOKING! CHRISTMAS SPECIAL
\$119.50

McBRAYER'S

Morehead's Complete Furniture Store



JACK WEST



In this, the brightest holiday of the year, may we wish you all God's blessings and a truly Merry Season.

N. E. KENNARD HARDWARE COMPANY

N. E. KENNARD

J. W. HELWIG



MR. and MRS. VERNON ALFREY

COUNTY CLERK'S OFFICE



Merry, merry Christmas to you and all of our friends on this bright holiday occasion.

C. E. BISHOP DRUG COMPANY



Make up your gift list with WHITMAN'S BOX CANDY

BATTSON'S DRUG STORE



We're proud to say it... we're proud to mean it... "Merry Christmas to You and Your Loved Ones!"

PEOPLES BANK



A complete line of whiskies, wines and gins
BUCK'S WHISKEY STORE



We extend hearty greetings to friends old and new with the hope that our friendship grows even greater.

CITIZENS BANK



We could wish you many, many nice things... but for none more earnestly than that the day will be one of supreme joy and happiness for you and yours.

J. A. ALLEN MEAT MARKET



AT CHRISTMAS

It's a real pleasure for us to send old friends and patrons the SEASONS GREETINGS!
SLUSS BARGAIN STORE

CHRISTMAS



May nothing delay Santa on his way to your house—it's our hope that he comes early and well laden.

IMPERIAL CLEANERS

PHONE 302
Ova Bradley—Solicitor



If you were to put everything nice in a great big sack, labeled: "To you from Us," you'd get some idea of the wish we're trying to convey to you on Christmas.

EAST END GROCERY



Get the facts and you'll get a Ford

COLLINS MOTOR CO.



We have a complete line of new and used tires and tubes. Tire repair and re-tread service. Distributor for Gillette Tires and Tubes.

CAUDILL'S TIRE SHOP



We wish to take this means of expressing our appreciation of your patronage in the past, and look forward to serving you in the future.

COTTAGE CAFE



We're sending heartfelt greetings, for the merriest Christmas ever.

BARGAIN STORE



McBRAYER'S

Morehead's Complete Furniture Store



To all our friends and customers, our heartiest good wishes for a happy Yuletide.

MILLS THEATRE

"Home of Perfect Projection and Sound"

CHRISTMAS CHEER



YEAR AFTER YEAR

What cheer rings from tolling Christmas bells for you? Our hope is contentment and happiness for each of you.

ELAM-WHEELER WHOLESALE GROCERY



May we join the many who are wishing you a Merry Christmas.

REGAL STORE



Here's hoping your Christmas bag is packed with cheer.

A. B. MCKINNEY DEPT. STORE



It's your move, let us move you . . . We have the equipment.

PHONE 279

CURT'S TRANSFER



"DON'T WALK—CALL US"

CITY CAB CO.

PHONE 86

Located in the

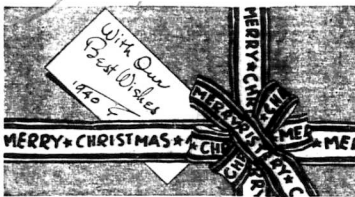
Sanitary Barber Shop



Best wishes for a very, merry Christmas.

CLARK LANE

INSURANCE



MOREHEAD LUMBER CO.

MOREHEAD, KENTUCKY

W. C. SWIFT, Manager



Don't forget us for your Christmas orders.

S. & W. DISPENSARY
W. MAIN ST.



Merry Christmas to you and your loved ones.

PHONE 116

MODEL LAUNDRY



CRACKER BARREL COMMENTS

—WOODY HINTON



XMAS SPECIALS

Machine Perm. . . . \$2.00 up
Machineless Perm. \$3.50 & \$4.

Monnie Carter
Mary Hazelwood
Operators

BLUEBIRD BEAUTY SHOP

CHRISTMAS



The very best of everything to you on Christmas.

VIRGIL WOLLFORD

INSURANCE



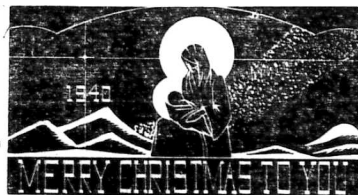
Here's wishing you find your Christmas morning loaded to the brim with good things for the holiday

CUT RATE GROCERY



Happiness . . . contentment . . . and the joy of good fellowship; that's our wish for you on Christmas.

L. G. A. GROCERY



May the bright star of peace and contentment shine on us, bringing once more to the hearts of man the Golden Rule.

MIDLAND TRAIL GARAGE

Social & Personal

Phone - 235

Morehead County Woman's Club

Interesting Meeting. The Rowan County Woman's Club held its Christmas Party in the basement of the Methodist Church last Tuesday evening.

Christmas Story from St. Luke. Mrs. C. E. Bishop. Christmas Carols sung by group with introduction by Mabel Alfrey.

Church of God Christmas Program

Due to the fact that we do not want to interfere with other programs that have been planned for Sunday evening, we have arranged to present "The Garden of Prayer" at the Church of God December 25th.

Officers Selected At Woman's Council At Church

At the December meeting of the Woman's Council of the Christian Church the following officers for the New Year were selected.

Martha Lee Pennebaker Entertains In Her Home

Martha Lee Pennebaker entertained at her home on Bays Avenue on Saturday, December 14 from four to six o'clock with a party in honor of her twelfth birthday.

Officers Selected At Woman's Council At Church

At the December meeting of the Woman's Council of the Christian Church the following officers for the New Year were selected.

Candle-Light Carol Service

On Sunday afternoon, at 5:00 o'clock there will be a Candle-Light Carol Service at the Methodist Church.

Young People To Have Social

The Young Peoples Sunday School class will entertain the college boys and girls who will be going home for the Christmas Holidays on Thursday evening at the home of Mr. and Mrs. Forest Lee.

Miss Rebecca Patton and Herman Ray Beard of Ashland were Monday night guests of Mrs. E. D. Patton.

Weekend guests were Mr. and Mrs. Paul Alfrey and three children of Olive Hill, Mope Ross and Bob Tucker of Lexington.

Down Home 'at Pine Ridge with the home-to-in philosophers of the air in the story they searched five years to find!

Miss Rebecca Patton and Herman Ray Beard of Ashland were Monday night guests of Mrs. E. D. Patton.

Down Home 'at Pine Ridge with the home-to-in philosophers of the air in the story they searched five years to find!

Miss Rebecca Patton and Herman Ray Beard of Ashland were Monday night guests of Mrs. E. D. Patton.

Down Home 'at Pine Ridge with the home-to-in philosophers of the air in the story they searched five years to find!

Miss Rebecca Patton and Herman Ray Beard of Ashland were Monday night guests of Mrs. E. D. Patton.

Down Home 'at Pine Ridge with the home-to-in philosophers of the air in the story they searched five years to find!

Miss Rebecca Patton and Herman Ray Beard of Ashland were Monday night guests of Mrs. E. D. Patton.

Down Home 'at Pine Ridge with the home-to-in philosophers of the air in the story they searched five years to find!

Miss Rebecca Patton and Herman Ray Beard of Ashland were Monday night guests of Mrs. E. D. Patton.

Down Home 'at Pine Ridge with the home-to-in philosophers of the air in the story they searched five years to find!

Miss Rebecca Patton and Herman Ray Beard of Ashland were Monday night guests of Mrs. E. D. Patton.

Down Home 'at Pine Ridge with the home-to-in philosophers of the air in the story they searched five years to find!

Miss Rebecca Patton and Herman Ray Beard of Ashland were Monday night guests of Mrs. E. D. Patton.

THE MOREHEAD INDEPENDENT

Eastern Star Christmas Party. About seventy-five members and their guests assembled in the Masonic Hall for a pot luck supper and a Christmas party December 13th.

Local Girl Scout Troop Makes Large Contribution. The Girl Scout Troop has made a large contribution to the sale of T. B. Seals in the community this year.

Christmas Party Was Held By Morehead Woman's Club. The annual Christmas Party of the Morehead Woman's Club was held at the Christian Church on Tuesday evening.

Church of God Christmas Program. Due to the fact that we do not want to interfere with other programs that have been planned for Sunday evening, we have arranged to present "The Garden of Prayer" at the Church of God December 25th.

Officers Selected At Woman's Council At Church. At the December meeting of the Woman's Council of the Christian Church the following officers for the New Year were selected.

Martha Lee Pennebaker Entertains In Her Home. Martha Lee Pennebaker entertained at her home on Bays Avenue on Saturday, December 14 from four to six o'clock with a party in honor of her twelfth birthday.

Officers Selected At Woman's Council At Church. At the December meeting of the Woman's Council of the Christian Church the following officers for the New Year were selected.

Candle-Light Carol Service. On Sunday afternoon, at 5:00 o'clock there will be a Candle-Light Carol Service at the Methodist Church.

Young People To Have Social. The Young Peoples Sunday School class will entertain the college boys and girls who will be going home for the Christmas Holidays on Thursday evening at the home of Mr. and Mrs. Forest Lee.

Miss Rebecca Patton and Herman Ray Beard of Ashland were Monday night guests of Mrs. E. D. Patton.

Weekend guests were Mr. and Mrs. Paul Alfrey and three children of Olive Hill, Mope Ross and Bob Tucker of Lexington.

Down Home 'at Pine Ridge with the home-to-in philosophers of the air in the story they searched five years to find!

Miss Rebecca Patton and Herman Ray Beard of Ashland were Monday night guests of Mrs. E. D. Patton.

Down Home 'at Pine Ridge with the home-to-in philosophers of the air in the story they searched five years to find!

Miss Rebecca Patton and Herman Ray Beard of Ashland were Monday night guests of Mrs. E. D. Patton.

Down Home 'at Pine Ridge with the home-to-in philosophers of the air in the story they searched five years to find!

Miss Rebecca Patton and Herman Ray Beard of Ashland were Monday night guests of Mrs. E. D. Patton.

Down Home 'at Pine Ridge with the home-to-in philosophers of the air in the story they searched five years to find!

Miss Rebecca Patton and Herman Ray Beard of Ashland were Monday night guests of Mrs. E. D. Patton.

Down Home 'at Pine Ridge with the home-to-in philosophers of the air in the story they searched five years to find!

Miss Rebecca Patton and Herman Ray Beard of Ashland were Monday night guests of Mrs. E. D. Patton.

Down Home 'at Pine Ridge with the home-to-in philosophers of the air in the story they searched five years to find!

Miss Rebecca Patton and Herman Ray Beard of Ashland were Monday night guests of Mrs. E. D. Patton.

Down Home 'at Pine Ridge with the home-to-in philosophers of the air in the story they searched five years to find!

Miss Rebecca Patton and Herman Ray Beard of Ashland were Monday night guests of Mrs. E. D. Patton.

Down Home 'at Pine Ridge with the home-to-in philosophers of the air in the story they searched five years to find!

Miss Rebecca Patton and Herman Ray Beard of Ashland were Monday night guests of Mrs. E. D. Patton.

Down Home 'at Pine Ridge with the home-to-in philosophers of the air in the story they searched five years to find!

Miss Rebecca Patton and Herman Ray Beard of Ashland were Monday night guests of Mrs. E. D. Patton.

Down Home 'at Pine Ridge with the home-to-in philosophers of the air in the story they searched five years to find!

Miss Rebecca Patton and Herman Ray Beard of Ashland were Monday night guests of Mrs. E. D. Patton.

Dr. G. B. Pennebaker was in Lexington Saturday to attend an Executive Committee meeting of the Kentucky Academy of Science held in the office of Dr. Alfred Browder at the University of Kentucky.

Samuel Reynolds, who is a student at the University of Kentucky, spent last weekend at home. Paul Reynolds returned to Gaysville on Monday where he will resume his old position.

Mrs. Alvin Caudill has returned from a ten days treatment in the Hot Baths at Martinville, Indiana. Mr. and Mrs. Clifton Johnson of Ashland were guests of Mrs. E. D. Patton on Tuesday.

Claude Dillon Kessler was a business visitor in Lexington on Tuesday and Wednesday. Mr. and Mrs. Henry Glover and Mrs. Otto Carr shopped in Lexington on Saturday.

Lieutenant and Mrs. Jeff Dunn returned Tuesday from a visit of several days in Lexington. Mr. and Mrs. John N. Palmer were business visitors in Louisville last week.

J. W. Lowe At Collins Motor Co. J. W. "Jinks" Lowe, master mechanic and a life-long resident of Morehead, is now associated with the Collins Motor Company, according to Garland Collins, manager. Lowe had previously been associated with Claude Brown's garage.

Robert Alfrey who is teaching in Durham, North Carolina, will arrive Saturday to spend Christmas with his family. Mr. and Mrs. S. D. Alfrey.

Mrs. and Mrs. Warren C. Lappin and daughter, Miss Mary Ella Lappin are expected home Saturday from Bloomington, Indiana, for the holidays. Talmadge Barker returned Saturday from St. Joseph's in Lexington where he underwent another operation. He is improving nicely.

Mrs. O. P. Carr and Miss Mabel Carr were in Mt. Sterling Saturday to see Mrs. Andrew Bowen and her daughter, Jane Bennett Bowen. Mr. and Mrs. S. C. Penix of Salt Lake were dinner guests Monday evening of Mr. and Mrs. B. F. Penix.

Mrs. Mary Alice Calvert, Miss Doris Penix, Miss Margaret Penix and Walter Calvert were in Lexington on Saturday. Mr. and Mrs. Dave C. Caudill, Mrs. Garland Collins and Mrs. C. W. Arnold were visitors in Lexington on Tuesday.

Mrs. Elma Bellamy of West Liberty, was a weekend guest at the home of her son, L. D. Bellamy. Mrs. Paul Combs of Charlestown is spending the holidays with her parents, Mr. and Mrs. J. L. Boggs.

Mr. and Mrs. Ted Cook and Mrs. Tom Cook of Fleming County were weekend last week of Mr. Minnie Barker.

Clarence Barker of Olive Hill visited Mrs. Minnie Barker last week. Mr. and Mrs. R. L. Braden spent last weekend in Louisville. ST. ALBAN'S MISSION (Episcopal) Reverend F. C. Lightbourn, S. T. B., Mount Sterling, Sunday, December 22nd (Fourth Sunday in Advent); Evening Prayer and Sermon, 7:00. Wednesday, December 25th (Christmas Day); Holy Communion with hymns and address, 11:00 A. M.

Trimble Theatre

THURSDAY DECEMBER 20 "DOWN ARGENTINE WAY" Don Ameche-Betty Grable

FRIDAY DECEMBER 20 "OUR TOWN" Martha Scott-William Holden

SATURDAY DECEMBER 21 "RAINBOW OVER THE RANGE" Tex Ritter

SUNDAY DECEMBER 22 "THE MARK BROTHERS" The Marx Brothers

MONDAY & TUESDAY DECEMBER 23-24 "MEN AGAINST THE SKY" Richard Dix-Wendy Barrie

CHRISTMAS DAY OUR MERRY CHRISTMAS TO YOU. "BITTER SWEET" Jeanette McDonald-Nelson Eddy

THURSDAY DECEMBER 26 "DREAMING OUT LOUD" Frances Langford Lann and Abner

SATURDAY DECEMBER 27 "OLE SWIMMING HOLE" Jackie Moran

SUNDAY DECEMBER 28 "THE SECRET FOUR" News and Cartoons

Free picture show for colored kids Monday morning.

MILLS THEATRE

PHONE 140 THURSDAY & FRIDAY DECEMBER 19-20 "MEXICAN SPIFFIRE OUT WEST" with Leon Errol

SATURDAY DECEMBER 21 DOUBLE FEATURE PROGRAM Number 1 "FARGO KID" Tim Holt

Number 2 "LAST ALARM" J. Farrell McDonald

SUNDAY & MONDAY DECEMBER 22-23 "BLONDIE PLAYS CUPID" with Arthur Lake and Penny Singleton

TUESDAY & WEDNESDAY DECEMBER 24-25 "QUEEN OF THE YUKON" with Charles Bickford

Tabb Program

SATURDAY DECEMBER 21 "OLE SWIMMING HOLE" Jackie Moran

SUNDAY DECEMBER 22 "THE SECRET FOUR" News and Cartoons

Free picture show for colored kids Monday morning.

NOTICE

Mr. J. W. Lowe formerly connected with Brown Motor Company, has been employed by us in our mechanical department.

Collins Motor Co.

PHONE 18 Morehead, Kentucky

Christmas Club Account



Pennies—Nickels—Dimes and Other Small Amounts DEPOSITED in our CHRISTMAS CLUB

will come back in DOLLARS in time for your Holiday Shopping

Join Now—Have Money for Christmas

1941 Club Now Open THE CITIZENS BANK MOREHEAD, KY. Member Federal Deposit Insurance Corporation

Russell

THURSDAY & FRIDAY DECEMBER 19-20 DOUBLE FEATURE "NORTHWEST PASSAGE" with S. Tracy—Robert Young

SATURDAY & SUNDAY DECEMBER 21-22 "BITTER-SWEET" with N. Eddy—McDonald

MONDAY & TUESDAY DECEMBER 23-24 DOUBLE FEATURE "SHE COULDN'T SAY NO" with Roger Pryor—E. Arden

TUESDAY & WEDNESDAY DECEMBER 25-26 "GO WEST" with Marx Brothers

SATURDAY DECEMBER 27 "THUNDERING FRONTIER" with Chas. Starrett—Iris Meredith

SUNDAY DECEMBER 28 "HOWARDS OF VIRGINIA" with Cary Grant—Martha Scott

NEW LOW PRICES Daily matinee all seats 25c and balcony seats evening except Sunday

DIXIE THEATRE

OLIVE HILL, KY. Sun. & Mon. December 22-23

Down Home 'at Pine Ridge with the home-to-in philosophers of the air in the story they searched five years to find!

Miss Rebecca Patton and Herman Ray Beard of Ashland were Monday night guests of Mrs. E. D. Patton.

Weekend guests were Mr. and Mrs. Paul Alfrey and three children of Olive Hill, Mope Ross and Bob Tucker of Lexington.

Down Home 'at Pine Ridge with the home-to-in philosophers of the air in the story they searched five years to find!

Miss Rebecca Patton and Herman Ray Beard of Ashland were Monday night guests of Mrs. E. D. Patton.

FOOD SPECIALS for the Christmas Feast

Company coming? A hungry family looking forward to the most of the year? You as a hostess want your Christmas dinner to set a new high in holiday repasts...

Table with 2 columns: Item and Price. Includes Meats (Picnic Hams, Round Or, Loin Steak, Hens, Fryers, Pork Chops) and Nuts (Pecans, English Walnuts, Fancy Mixed Nuts).

MIXED CANDY, CHOCOLATE DROPS, GUM CANDY, ALL 10c Lb.

LARGE ASSORTMENT OF FRUIT CAKES 25c AND UP

East End Grocery Phone 56 Morehead, Ky.