



**THE MOREHEAD INDEPENDENT**  
(Official organ of Rowan County)

Published each Thursday morning at Morehead, Kentucky by the INDEPENDENT PUBLISHING COMPANY

ADVERTISING RATES MADE KNOWN UPON APPLICATION

WILLIAM J. SAMPLE	Editor and Publisher
One year in Kentucky	\$1.50
Six Months in Kentucky	.75
One year Out of State	2.00
(All Subscriptions Must Be Paid in Advance)	

Entered as second class matter February 27, 1934, at the post-office at Morehead, Kentucky, under Act of Congress of March 3, 1879.

**WANT AD RATES:**  
(Payable in Advance)

One time, per word	2c
Two times, per word	3c
Three times, per word	4c
Four times, per word	5c
Five times, per word	6c
Six times, per word	7c
(No ad taken for less than 25c)	
Special rates by the month.	

Cards of Thanks, articles in Memoriam, lodge notices, resolutions, etc., are advertised and are charged for at the above rates. Ads ordered by telephone are accepted from persons listed in the telephone directory on memorandum charges only; in return for this courtesy the advertiser is expected to remit promptly.



**NATURE**

(By G. B. Pennebaker, Ph. D.) Morehead State Teachers College

**TIME AND RATE OF MIGRATION OF BIRDS**  
One often sees a flock of birds fly either by day or by night, depending upon the environment. Some day he suddenly realizes that the birds are no longer there—they have migrated. The question arises: "When did they leave, and they fly by day or night?" Some birds are exclusively nocturnal while others are diurnal in their migrations. A few forms migrate by day. These include the hawks, cranes, loons, gulls, pelicans, night hawks, and many others. Some of the smaller birds, in particular the strong fliers, also migrate during the day. These include the jays, some flycatchers, bluebirds, blackbirds, woodpeckers, kingbirds, etc. Most of the small birds, such as wrens, warblers, vireos, chats, small flycatchers and others do their flying at night. During the day they feed and rest. In some instances they gradually move southward as they feed. A few birds, including most of the ducks and geese, fly by day or by night depending upon the available food in the area they are crossing and the prevailing weather.



seems they do not travel day after day until they reach their destination. After one day's migration, they may rest and feed for a few days before they move on. Because of these stops most birds will not average more than seven to five to a hundred miles per day. However, a few of the more long-distance migrants, the turn-stomachs, plovers and terns may average two hundred or more miles per day for their journey from winter to summer quarters.

**No '41 Reduction To Be Required For Burlymen**  
There are four hundred fifty-two burley tobacco growers in Rowan county whose allotments are one acre or less and if these small growers along with other growers in the burley area approve marketing quotas for the next 3 years in the referendum on November 23rd, there will be no reduction in these small allotments during the three-year period, C. B. Turner, chairman of the Rowan County Agricultural Conservation Association, said today.

Mr. Turner also pointed out that, if growers approve the three-year plan on November 23, no 1941 burley allotment for any farm in the county will be reduced below the 1940 allotment and that no allotment of more than one acre may be reduced more than ten percent below the 1940 allotment within the next three years. (The only possible exceptions in these regulations, Mr. Turner said, would be farmers who might be penalized for attempting to evade or help others to evade the tax on marketings of excess tobacco under the marketing quota, which is now in effect for the 1940 marketing year.) If a quota is voted for only one year, Mr. Turner said, some further reduction in 1941 allotments may be required. Burley growers will vote on 3 questions on November 23. These questions are: (1) Are you in favor of quotas for three years? (2) Are you opposed to quotas for three years, but favor the quota for one year? (3) Are you opposed to quotas for three years and one year? Three-year quotas will be adopted provided two-thirds of the voters approve them. A one-year quota will be adopted if the combined vote for three-year and one-year quotas amounts to a two-thirds majority. If more than one-third of the voters oppose quotas, they will not be operative. The decision of the growers in the referendum will be final, Mr. Turner said. The Cascade Tunnel of the Great Northern Railroad through the Cascade Mountains in the state of Washington, is the longest tunnel in the Western Hemisphere, being 7.78 miles in length.

**Kentucky State Patrol Sets Out To Make Arrests**

Every Kentuckian who drives a motor vehicle stands a one to twenty chance of being arrested for a traffic violation during the next twelve months, according to statistics compiled from records in the State Department of Revenue and released this week. These odds are based upon arrests made during the first ten months of 1940. Records further indicate that new drivers are less frequently involved in accidents and traffic violations than old ones, which may be attributed to the fact that every new driver is required to take an examination given by the State Highway Patrol, it was observed by Colonel Jack Nelson, State Director. Colonel Nelson called attention to the usual high fatality rate from traffic accidents during December and urged drivers to use caution during the coming weeks in consideration of early darkness, fog, ice and snow hazards. Railway tickets may be purchased at any railroad office in the United States, Canada or Mexico to any city or town reached by rail in three countries.

**ECONOMY COAL**  
STEAM AND DOMESTIC  
**LUMP-EGG-NUT-STOKER**  
Machine Mined and Shaker Screened  
**WILLARD COAL CORPORATION**  
(Mines Located at Willard, Kentucky)  
J. L. BOGGESS, Pres. PHONE 283  
C. B. LANE, Secy. PHONE 91

**LOOK! LOOK!**  
Special  
**INNERSPRING MATTRESSES \$10.95**

**NEW COAL AND WOOD HEATERS**  
Furniture of all kinds and plenty of antiques. If we can't sell you furniture for less money than any other firm, we don't deserve your patronage. Come in, see for yourself. You be the judge.

**HUTCHINSON BARGAIN STORE**  
Opposite C & O Depot  
MOREHEAD, KENTUCKY

**COAL**  
**Stoker or Poker**  
CALL 71  
Stoker or Furnace Nut \$2.95 ton Delivered  
All coal dust-proofed, Oil treated 15c ton extra  
Special Prices on Wholesale Lots  
**MOREHEAD ICE & COAL CO.**

**Used Cars**  
are our business  
ANY CHEVROLET DEALER CAN SELL YOU A NEW CHEVROLET AS WELL AS WE CAN. BUT, OUR USED CARS ARE OUR OWN RESPONSIBILITY. THEY MUST BE RIGHT TO UPHOLD OUR REPUTATION FOR FAIR DEALING.  
THESE CARS ARE SOLD WITH AN O. K. THAT COUNTS. LOOK THEM OVER BEFORE YOU BUY.  
1940 Chevrolet Town Sedan  
1938 Chevrolet Town Sedan  
1938 Chevrolet Sport Sedan  
1937 Chevrolet Coupe  
1940 Chevrolet 1/2 Ton Pick-up  
1940 International 1/2 Ton Pick-up  
1936 Chevrolet 1/2 Ton Pick-up  
1939 Chevrolet 1 1/2 Ton Stake  
**Midland Trail Garage**  
MOREHEAD, KENTUCKY

**Lane Funeral Home**  
Funeral Directors  
Ambulance Service  
Phone: 91 (Day), 174 (Night)

**Dr. O. M. Lyon**  
DENTIST  
Office Phone 274 - Residence 237  
OFFICE: COZY BUILDING  
Morehead, Kentucky

**A. F. Ellington**  
DENTIST  
Phone 26 - Morehead

**CITY CAB**  
PHONE 86  
QUICK - COURTEOUS SERVICE

**Dr. L. A. Wise**  
Has moved to the J. A. Bays Jewelry Store where he will be located every Friday, examining eyes and fitting glasses.

**COAL FOR SALE AT THE Star Hill Coal Mines**  
Located 3 Miles East of Grayson  
**\$2.45 and \$2.60 PER TON**  
**B. F. Morrison**  
RUSH, KY.

**NEW AND USED FURNITURE**  
NEW INNERSPRING MATTRESS, Only \$12  
**ANTIQUES**  
We now have in stock over 100 new Stoves, Gas, Coal or Wood at bargain prices. Electric Hot Plates  
Toasters, Rugs, Floor Coverings,  
Kitchen Utensils and Enamel Ware.  
Pictures and Mirrors  
**P & H WHOLESALE CO.**  
WHOLESALE AND RETAIL  
223 Railroad St. Phone 260 Morehead, Ky.

**THE BROWN HOTEL**  
Louisville's Largest and Finest  
HAROLD E. HARTER, Manager  
Discover Louisville's Best "Bright Spot!"  
Whatever else you do when you come to Louisville, don't miss visiting the Bluegrass Room at the Brown Hotel! You'll discover that it's the nicest, gayest spot in the city!  
Truly marvelous food—the best in the South! Grand music—for dancing or listening! Superb entertainment—two floor shows nightly! And reasonable prices at all times!  
If you'll drop us a line, we'll be happy to send you all the details. Why not do it now?

**USED CARS**  
That Are Usable  
1940 Ford Tudor Sedan, Radio and Heater.  
1939 Ford Sedan, Fourdoor. Radio and Heater. New tires.  
1940 Ford Coupe, New Tires, 10 w mileage.  
1939 Ford Pick-up, a real buy.  
1937 Chevrolet Tudor at a bargain.  
1939 1 1/2 Ton Ford. Ninety-five H. P. engine.  
1932 Plymouth, 4-Door Sedan, good tires, a real buy.  
**Collins Motor Co.**  
PHONE 18  
MOREHEAD, KENTUCKY

# YOUR HOME

Give Practical Gifts  
This Christmas



Let McBrayer's Supply  
Your Holiday Needs

Your home is your most prized possession. It is the result of hours of planning and years of hard work and sacrifices. It is a haven of rest and relaxation after the day's labor is finished. What then, is more fitting than that during this Yuletide season you feather your nest with modern conveniences that you and your loved ones might enjoy life more fully.

## FOR THE BREAKFAST NOOK



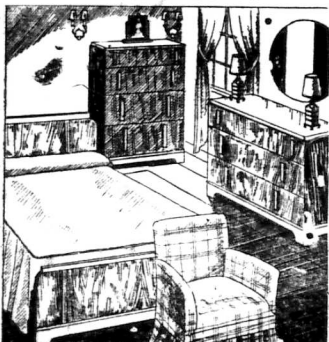
FURNITURE FOR EVERY ROOM IN THE HOUSE

## LIVING ROOM SUITES



LET McBRAYER'S GIFTS DRESS UP YOUR HOME FOR CHRISTMAS

## BED ROOM SUITES



IF SHE'D DARE TELL YOU BEFORE CHRISTMAS SHE'D SURELY SAY, "I WANT THAT GORGEOUS BED ROOM SUITE AT McBRAYER'S."

A WARM AND COZY WAY TO SAY MERRY CHRISTMAS — GIVE A BLANKET.



## OCCASIONAL TABLES

Tables that meet every need at moderate prices. Wide selection to choose from.

98c to \$9.95

## SMOKING SETS

He may not admit it, but he will appreciate one of these smoking sets.

98c to \$5.95



Sturdy Velocipedes for the kiddies that will take a lot of hard knocks.

\$1.49 to \$5.95

## FLOOR LAMPS

Brighten your home with one of these attractive seven-way floor lamps.

ONLY \$4.95



## A NEW COUPE JUST LIKE DADS



\$4.95 to \$9.95

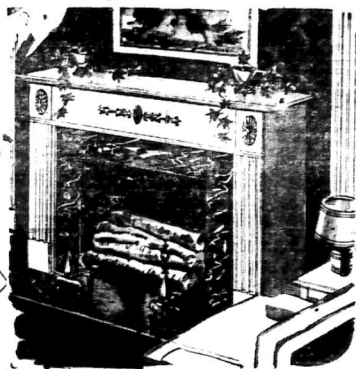
## TABLE LAMPS

Table and Boudoir Lamps in attractive styles and colors.

98c to \$2.95



"to hang by the chimney with care . . ."



Don't overlook the house when it comes to selecting presents that will make the family happy. Here are grand ways to add to the comfort and pleasure of every one in the house all through the coming year—and our store is just packed with other equally good and economical suggestions.

## Give a Sampson Table

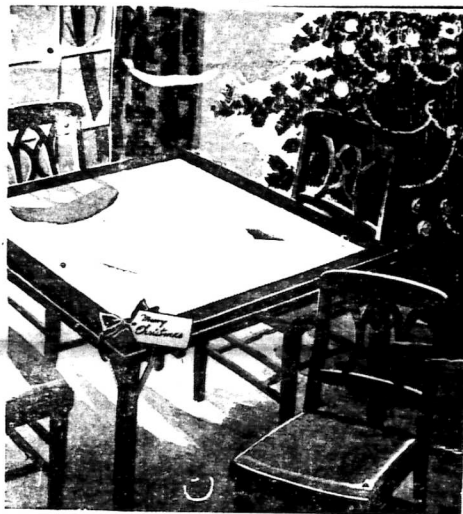


TABLE ASSORTMENT OF BEAUTIFUL PATTERNS COMPLETE SET . . . . . \$1.98 \$9.95

## GIFTS TO LIVING . . .

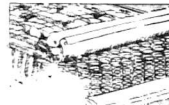


This Christmas don't forget yourself and your family . . . give furniture which will increase the joy and comfort of everyday living for every member of the family. Or give an easy chair for father, a dinette set to mother . . . or give the home maker of the family a chair for sewing or just plain resting. There are scores of thrilling gift hints at McBrayer's . . . don't overlook a one!

## OCCASIONAL CHAIRS AND ROCKERS \$4.95 UP

Give luxurious sleep with an inner-spring mattress.

\$9.95 to \$39.50



# McBRAYER'S

Morehead's Complete Furniture Store

DON'T FORGET THE KIDDIES. THEIR CHRISTMAS DEPENDS ON YOU.



### Xmas Pageant--

(Continued from Page 1.)

...morning will be one of worship and prayer. The choir will present special Christmas music and the pastor will present the last in a series of Christmas sermons. Next Sunday evening the church services will be dismissed in cooperation with Professors George and Horton under whose direction the Oratorio, "Messiah," by Handel will be presented at the College. However, the Young People Guild will hold its annual Christmas party at 8:15 in the Church basement. The Pastor and his wife take this annual opportunity to entertain those students who leave Morehead for the Holidays.

### White Sale--

(Continued from Page 1.)

...that are practically new. It would be well for every citizen in the county to be present at this sale and see just what creative art work is doing for the schools in the county. There will be toys made by the children, vases, etc. decorated by children and decorated. They have been making nests of blocks, clothes pin toys, rubber dolls and animals in the schools. But besides the toys and gifts there will be warm clothes and dresses as usual. There will be all kinds of novelties, shoes, pocket books, hats, etc. We can't name everything, you will just have to come and see. Bring in your neighbors with you and let's have a happy day, because when you donate you are helping the children of the county and when you are buying you are helping the children of the county.

### F. F. A.--

(Continued from Page 1.)

...of April.)  
 Carrots:  
 Beets:  
 Spinach--after 15th. Longstanding or New Zealand.  
 Beans: Valentine; Stringless Greenpod. 15-20th.  
 Cucumbers: Long Green for pickles or slices.  
 Cantaloupes: After 15th. Sow late tomatoes in bed under cover.  
 Bed: Sweet potatoes--Nancy Hall or Southern Queen. During April signs of these will be the Civic Chorus, under the direction and the first sign should be the first fight against insects. Two

classes both vegetable Sucking and leaf eating. To combat successfully know which class is bothering the plant.

There is a new spray material on the market. It has been used for some time but few people have used it. It is Rotenone, a very effective spray and will not injure humans when taken internally.

Treatment for Cabbage Worm: Paris Green, one pound.  
 Lead Arsenate, one pound.  
 Hydrated Lime, twelve pounds.  
 When cabbage begins to head use Rotenone dust 1-1 1/2 percent. Potato Beetle--Begin with first sign of the hardshells. Calcium arsenate, one pound. (Hydrated lime, six pounds. Or use two level tablespoons of lead arsenate to one gallon of water sprayed.)

Bean Beetle:  
 Keep a KEEN EYE for the FIRST egg clusters on the underside of the leaf, if found apply IMMEDIATELY home mixed dusts or ready mixed.  
 Calcium Arsenate, one pound.  
 Sulphur, one pound.  
 Hydrated Lime, four pounds.  
 Repeat this application every ten days.

### Rabbit Disease--

(Continued from Page 1.)

...experienced. From eating it. A good rule to follow when there is any doubt is to cook the meat until there are no pink or 'rare' portions remaining even close to the bones.  
 "By being careful in the handling of the cotton-tails and cooking the meat until it is well done," Major Brown pointed out, "hunters and housewives need have no fear of contracting Tularemia."

### White Christmas Service At Methodist Church

On Sunday morning, at 10 A. M. the Methodist Church and Church School will unite to observe their annual White Christmas Service. The Church School will meet at usual at 9:45, and the classes will make their records. Promptly at 10 the White Christmas program will begin in the main auditorium of the church. Special music will be rendered by the church choir and by the boys and girls. Miss Antoinette will sing Ave Maria, accompanied by the organ, piano and two violins. A Christmas story will be told by Miss Catherine Palmes, and a brief Christmas meditation will be given by the pastor. White gifts for the needy will be presented by all who care to participate. The service will take place at the usual preaching service at 10:45, and the public is cordially invited to attend.  
 There will be no evening service Sunday on account of the singing of Handel's "Messiah" at the College auditorium at 7:30 P. M., by the Civic Chorus, under the direction of Professor Horton and George.

### Think On These Things...

(By El Z. Kasse)  
**NOTES FOR CHRISTMAS**  
 Christmas is, of course, mainly a Holy Day of the Roman Catholic Church. It is first celebrated in the Church of Rome about 350 A. D. The word itself identifies it as such. Christmas, Mass. It is celebrated by that church as a mass.  
 Dioletian (284-305 A. D.), while he that a multitude of Christians keeping court at Miconedra, learned were assembled in the city to celebrate the birthday of Jesus, and set fire to the building, whereby all the worshippers perished in the flames.

Christmas customs were added gradually. The date of Christ's birth is unknown to reliable history. The 25th came from the Yule-feast of the Norsemen, in commemoration of the fiery sun-wheel. Nights from December 25th to January 6th they could trace the personal movements and interferences on earth of the god Odin and other gods. Many of the usages of the Germans and Romans were adopted by the Christians and Christianized. But the church sought to combat the depreoted heathen feeling by adding its grandly devised church ceremony and dramatic production. Hence sprang the "Manger-songs" and a multitude of Christmas carols. The Christmas dramas later degenerated into farces and fools' feasts, and the custom of reciprocal presents and of special Christmas meals and dishes.  
 The Christmas tree likely came from the Roman Saturnalia, a heathen custom, Vergil distinctly portrays the Christmas tree with its pendant toys.

The visit of Santa Claus, bearing gifts, properly belongs to the Catholic St. Nicholas' day, December 6th.

In America, the day of celebration (December 25th) has become far more important to the public mind than has He for whom it is intended; for thousands of people celebrate "Christ's Birthday" with hearts barred against Him. Business has about gobbled up the day, and feasting and drinking combine to make the celebration of the day in the minds of most people.

God probably withheld from history the exact date of Christ's birthday for this very reason: He knew the day would be more important than Christ. There is no scriptural mention of Christ, anywhere in the Bible, nor is there of the date of Christ's birth.

**EDUCATION**  
 FAITH IN DEMOCRACY  
 R. D. JUDD, Ph.D.  
 MOREHEAD STATE TEACHERS' COLLEGE

Question: Does the American youth have faith in our Democracy?  
 Answer: Recently, in an article the writer pointed out that the frontiers of American Democracy lie in our public schools. If one were to include the NYA and CCC in our public school system there is an abundance of evidence to show that our youth does have faith in the democratic way of living. Let us give a few American statistics. In 1933 there were about 500,000 young persons on the verge hitch-hiking from post to pillar, without money, home or job. Since 1933 approximately 5,000,000 young people have been employed daily. At least one-fourth of the 9,000,000 unemployed who have gone back to work have been in the youth age bracket.  
 The Federal Government has allocated \$30,485,373 to the states for youth not in school and not yet employed. Of this amount about \$7,000,000 has been earmarked for the class room, off-the-job instruction and training. In this way tens of thousands of young people have been enabled to complete high school and college. More than 152,000 young men have left the CCC camps for private jobs, training for which they received in camp. These young men sent home to their needy families \$590,000,000. Let us look at some returns to society these young people have made. During their stay in camps they planted 1,885,000,000 trees; constructed 43,000 bridges; built 113,000 miles of trail roads; labored 5,600,000 mandays fighting forest fires.  
 If one measures the efficiency of his government by the amount of benefits derived therefrom, it is difficult to understand how youth could not have great faith in our American democracy.

### Elbert M. Bohon To Succeed Chaney

Former Social Security Head Transferred To Columbus

Appointment of Elbert M. Bohon as manager of the Ashland office of the Social Security Board was announced today by Robert C. Goodwin, regional director of the Federal agency with headquarters in Cleveland, Ohio. The Cleveland area includes the States of Kentucky, Ohio and Michigan.  
 "In promoting Mr. Bohon to be manager at Ashland after December 1," Mr. Goodwin said, "I am following its policy of advancing its own personnel as opportunity permits," Mr. Goodwin said.  
 "With the promotion of James A. Chaney, former manager at Ashland, to duties in the Columbus, Ohio, social security office, we are able to advance another native Kentuckian to succeed Mr. Bohon. A native of Louisville, Mr. Bohon was educated in the public schools and in Spencerian College in that city. He was employed by the L. & N. Railroad and the Standard Oil Company before the staff of the Federal government, with the Veterans Administration, in 1930.  
 "Mr. Bohon became a member of the staff of the Social Security Board in July, 1937, serving under William M. Duffy, manager at Louisville. Since December, 1938, he has been acting manager of the

Frankfort office. His transfer to Ashland is effective December 1. No other changes in personnel of the Ashland office are planned. Mr. Bohon, like all other members of the field staff of the Social Security Board, received his appointment under the Federal government's classified, competitive civil service system. He and his wife will reside in Ashland after December 1," Mr. Goodwin said.  
 The Ashland office serves thirteen counties of Northeastern Kentucky.

### Tom Harmon Hails Army Flying Cadets

"Tornado" Tom Harmon, Michigan's Marvel and All-American

football hero, took time out to "carry the ball" for the United States Army's Flying Cadet recruiting drive.  
 Tommy, who hails from Gary, Indiana, a part of the Fifth Corps Area, is homing with the National Defense Program, said: "I like to fly on the gridiron, but boy, this flying for the Army is really something! I'm very much influenced that way myself."  
 Tommy suggests that all patriotic American youths get in touch with their nearest Army recruiting station and learn about the Army's Flying Cadet scholarships, open to physically fit and unmarried youths at least twenty years old and not yet twenty-seven.

**Only 10 Shopping Days Till Christmas**

**Keeping a Husband Happy...**

**Snow Suits**

**TO KEEP THEM SNUG AND WARM**

No need to worry about your youngsters catching cold when they play outdoors if you know they're dressed cozy warm. And the snow togs we offer are such fun to wear--so gay and smart, and cut for lively action and plenty of it! Lots of styles to choose from

—in prices for every budget. A special group of two-piece snow suits of rugged woolen texture, soft and warm. Sizes 2 to 6 in many colors.

**\$2.95 to \$6.95**

Even a family which sticks religiously to a slim budget can profit in actual savings if the shirts of the man in the family are bought at the Economy Store.

**SHIRTS 98c TO \$1.98**

**Ladies Dresses \$1.98 to \$6.95**

She'll love the gift and she'll love you... if it's something nice to wear.

**LADIES PURSES**  
 An ideal gift and one that will long be remembered. A wide selection. All prices.

**DOLLS**  
 BEAUTIFUL ASSORTMENT ALL SIZES--ALL PRICES

**DRESSER SETS**  
 98c to \$8.95

**Sure Fire Gift Hits for HIM!**

Illustrated are only a few of the many gift suggestions for men to be found here at prices that will give you much more for your money. Complete your list and your shopping today.

Fine grand French lisle hose. Full fashioned.

Tie and Handkerchief gift sets in striking new patterns.

Finest quality pure Irish linen handkerchiefs. Gift box of three.

**Widest selection of choicest leathers in gloves.**

**TIES! TIES! TIES!**  
 A little gift that makes a big impression. Hundreds to choose from.

# The ECONOMY Store

Morehead, Kentucky

**CHRISTMAS CLUB ACCOUNT**

**Pennies—Nickels—Dimes and Other Small Amounts DEPOSITED in our CHRISTMAS CLUB will come back in DOLLARS**

**in time for your Holiday Shopping**

Join Now—Have Money for Christmas

1941 Club Now Open  
**THE CITIZENS BANK**  
 MOREHEAD, KY.  
 Member Federal Deposit Insurance Corporation

**COLLEGE COMMENTS**

(From Alton Payne)  
 Director, Public Relations  
 Morehead State Teachers  
 College

A school endowed with too much responsibility and an enormous

**HOLIDAY LIQUOR**



Whiskey, Wines, Gins and Champagne (Domestic and Imported Scotch). Packed in Holiday boxes.

Here's a grand array of liquor values for your Holiday entertaining and for gifts, too. You will find all your favorite brands on our shelves — and friendly helpful clerks to give you service. Prompt delivery.

**S. & W. DISPENSARY**  
 MOREHEAD, KY.

ic athletic program; a school given the dregs in the public coffee at the state institutions with powerful lobbies have skinned the cream and drunk the coffee; a school without romance and over-enthusiasm with unworshipful scholars; a gloomy place where no self-respecting man would want to go; a product no salesman would want to sell—the state teachers colleges in the country!

This picture was painted by generations rebellious against the rigidity of schools, to whom the word "teachers" connoted pedagogue—unhappy school days. But the depression rubbed out the picture and drew another of the state teachers colleges.

Youth benefit of funds discovered their democratic spirit, their humanness, and found in the teaching profession an income inviting and stable before melting business opportunities.

Today there are no large schools where football gate receipts are reckoned, nor are they important where metropolitan papers seek college queens or fraternity scandals. But their intrinsic goodness has begun to appeal after a post-prohibition period of beer drinking and their professional training is being watched, for teachers college graduates are in demand now as never before. We are expanding. For one example, we are beginning to place graduates in northern Kentucky, in Cincinnati, in other states.

This is the background upon which a publicity director in a state college must build. But we are not alone.

In a recent questionnaire sent out by the National College Publicity Association it was found that in thirty-eight state teachers colleges replying to questions on publicity problems have desks, typewriters and other essential equipment necessary for complete work. More than four-fifths, however, are without the services of field agents; one-half of the group does not furnish graduates of secondary schools with literature; but with gilt-edged literature

pouring out from other colleges, we wonder how much is to be reaped? At a recent meeting of representatives college people it was found at this College that few high school seniors were supplied with any information about Morehead. We are attempting correction of this by sending out old annuals, catalogues, etc. Soon we shall have from the printers a beautiful two-color photo bulletin which we shall send to high schools over this section. Letters are already being sent.

We are content ourselves with individual write-ups to papers over the state about successful students here. Other colleges are doing the same. An occasional radio broadcast, the survey shows, may be accomplished. Large universities have their own stations. A student committee representing the various counties enrolled has been appointed to work at vacation intervals. They are also arranging dates for personal calls on high school seniors. Morehead is taking its place.

**SCHOOL NEWS**

The Christmas program which will be held at the Corey School Tuesday morning, December twenty-fourth at nine-thirty is as follows:

Theme Song: Work for the Night is Coming.

First Christmas: Short talks by a five girls and one boy.

Song: "Away in a Manger."

One Act Play: "By ten primary children, 'Oh, What A Difference.'"

Song: "You Are My Sunshine."

One Act Play: "Peace and Good Will."

Song: "I Think When I Read That Sweet Story."

One Act Play: "Aune Jemima's Present."

Declamation: "Just Before Christmas."

One Act Play: "Catching the Spirit."

Song: "Three Old Maids."

One Act Play: "Standing Room Only."  
 Song: "I Shall Not Be Moved."  
 One Act Play: "Uncle Takes Bobby Street."  
 Song: "Zachary and Peggy Jane."  
 Song: "Christ Was Born in a Manger."  
 Farewell Goodnight: "Merry Christmas Wishes."  
 Theme Song: "Work for the Night is Coming."

(Ruby C. Moore, Teacher)

At the November meeting of the P.T.A. the pupils presented a short Thanksgiving program and a play portraying the writing of the "Star Spangled Banner" by Francis Scott Key. A contest to determine the schools best spelling was also held at this meeting and Hurshal J. Moore, grade seven, was the winner. Bible Word Drills, introduced by Reverend Leeper while visiting the school, were enjoyed and Edith Moody, grade seven, was the winner of these contests. A hot lunch consisting of vegetable soup and cocoa was served to all present.

The P.T.A. has sold enough hand-work to purchase a large world map in a steel case and is now planning to earn money to add to a set of maps.

Some toys for the White Elephant Sale have been made.

Although there have been three withdrawals, the school is proud of a new pupil, Otis Caldwell, grade seven.

Seven pupils had perfect attendance for the month of November, as well as for the entire school year thus far. They are John Thomas Caldwell, Velva Caldwell, Elizabeth Kissick, Arvil Brown, Hurshal Jr., Moore, Grunville Moore and Virginia Moore.

**BOOK NOTES . . .**

(Mr. Stith Malone Cain)  
 Assistant Librarian  
 Morehead State Teachers College  
**FICTION HEADLINES OF THE PRESENT (Continued)**

Today we are going to continue our discussion on Recent Headlines in the field of Fiction books. They are as follows:

1. Diver, Maude (Sylvia Lyndon.) Houghton, Mifflin Publishing Company. \$2.50.

The scene of Sylvia Lyndon is laid in England. Sylvia Lyndon is the chief character. Sylvia lives in a London flat and has a secret desire for the country and an opportunity to bring up children.

2. Maerfeld, John (Bailans.) Macmillan Publishing Company. \$2.50.

A romance by the poet and author of such novels as The Bird of Dawning, based upon the early life of Theodore, who rose from poverty to become Empress of the East.

3. Barretto, Larry. (Journey Through Time.) Farrar and Rinehart Publishing Company. \$2.50.

When Bruce and Jane Randolph take their nineteen-year-old son to France they are confronted with the great moments of their own past lives. As they travel from the Riviera to Paris, facing another war with dreadful calm, these moments become alive.

4. Marks, Percy (No Steeper Well.) Tokes Publishing Company. \$2.50.

The early part of this story is the period of the new novel by the author of (A Tree Crown Straight.) The story is that of Jerry Baker, expelled from Harvard who is sent to a little isolated California mountain town, where the Boston code doesn't operate.

5. Wells, H. C. (Babes in the Darling Wood.) Alliance Publishing Company. \$2.75.

A dynamic novel of love and violence and the hopes for a new world order set against the chaos of warring Europe today.

**Local Beta Club Elect New Members**

Nine new members of the Breckinridge Training School chapter of the National Beta Club were elected recently, and have

been announced as follows:  
 Walter Hayes, Joyce Wolford, Randall Wells, Virginia Crabtree, Denver Dalton, Betty Banks, Helen Crooley, Mary Denny, and Hazel Bays.

County agents in Kentucky reporting profits from poultry where bred-to-lay pullets are raised and proper attention is given feeding, housing and sanitation.



**SANTA KNOWS**

Good Food Comes From I. G. A.

Yes — Santa's roly-poly profile is ample evidence of the quality of IGA food. And you will agree enthusiastically when you've brought your own food list here. Extra quality staples, meats and fresh fruits and vegetables. Budget prices to please you.

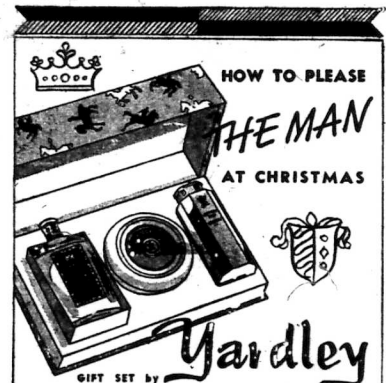
**BIRDS EYE BRAND FROSTED FOODS. NUTS, FRUITS, VEGETABLES, FRESH MEATS, CHICKENS AND TURKEYS.**

**I. G. A. Grocery**  
 PHONE 44

**BISHOP'S PRESENTS**

From It's TOILET GOODS DEPARTMENT

Gift Sets By YARDLEY, SHULTON, OLD SPICE, CARA NOME, EVENING IN PARIS, FRIENDSHIP GARDENS



Thanks to Yardley, the man is no longer a major Christmas problem! Give him something he needs! He's bound to be delighted when he discovers his favorite Yardley set with Shaving Bowl, Afters Shaving Lotion, and Invincible Talc. The set . . . \$2.85



May we present EARLY AMERICAN Friendship's Garden TOILET WATER. A new bouquet of old-fashioned flowers from a Garden in the Deep South. A companion fragrance to EARLY AMERICAN Old Spice.



They love LAVENDER! They love clouds of Yardley's airy Dusting Powder—gently perfumed with one of the most beloved fragrances in the world — Yardley's English Lavender. And they love a cologne that's exquisitely fresh and feminine — Yardley Lotus Cologne. The set of two will cost you only \$2.50



Friendship Garden Treasure Box Soap, Toilet Water, Talcum and Sachet. \$1.00



Plantation Box The delicate bouquet is blended from dew drenched blossoms that have at ways betokened youth and romance. \$2.00

**C. E. BISHOP DRUG CO.**

"THE REXALL STORE"

Morehead, - - - Kentucky

# McBRAYER'S

Morehead's Complete Furniture Store

With the coming of electricity to rural homes, many of the once unheard of luxuries and conveniences are at our fingertips, and thus rural homes are enjoying city conveniences through the mediums of electricity.



Westinghouse  
Iron Designed  
for EASE...

This beautiful, modernly streamlined electric iron has been designed to make ironing as easy a task as possible. Constructed to fit your working hand with weight balanced so that it requires almost no effort on your part to do the job. Priced at **\$4.95**



A FULL SIZE  
CONSOLE FOR ONLY  
**\$49.95**

**A PRICE SENSATION**

6536 • Comes with features you don't believe in. Guaranteed longer reception. Radiator, treble and bass control and Wavemagnet. Come in and hear it play.

Only **ZENITH**  
HAS THE Radiogram



6D510 • At home in any room of the house—plugs into AC or DC. Wavemagnet—no aerial and no ground and deep-toned speaker.

**\$14.95**

Enjoy Perfect Coffee

BUY A  
**CORY**  
COFFEE BREWER  
AND RECEIVE 1 LB.  
**MAXWELL HOUSE**  
COFFEE  
FREE

Regular Price 30c

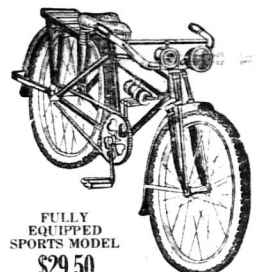
New Patented Color for CORY brewing

8 CUP SIZE  
with electric unit . . . \$5.95  
kitchen range model . \$3.45

For limited time only, this famous coffee free with any size CORY Brewer—6, 8 or 12 cup capacity. Wide neck style, lovely platinum striped, heat-resisting glass. Complete with stand for top section, coffee measure and CORY Glass Filter ROD.

Seeing the coming advance in prices we have taken advantage of the market and have stocked our store with the latest in merchandise at old prices. Buy your home appliance needs now and enjoy the benefits of these savings.

*BE Sporting This Christmas*



FULLY  
EQUIPPED  
SPORTS MODEL  
**\$29.50**

GIVE  
A  
BIKE!

Give your boy or girl a welcome "pal" this Christmas—bicycle. The sports model illustrated is one of our sensational Christmas values—rugged, sturdy, yet free of excess weight—fully equipped; air cooled coaster brake, self balanced pedals, electric headlight and horn, and other features. Buy on convenient budget plan.

## Electric Toasters

98c to \$6<sup>95</sup>

New Model 1941 Westinghouse Refrigerator

Merry Christmas  
and Many Happy Years

OF  
**SUPER MARKET**  
FOOD PROTECTION

Westinghouse Refrigerator  
**THE BIG BUY**  
this Christmas

A BIG BARGAIN in Super Market Refrigeration at a new low price. Provides 5 different kinds of cold: Below-freezing cold for ice cubes and frozen foods... Extra non-freeze cold (humidified) for meats... Extra cold for milk and beverages... Standard cold for staples... Crisping cold for vegetables.

EXCLUSIVE TRUE-TEMP CONTROL IS THE SECRET

This EXCLUSIVE Westinghouse feature assures constant cold—5 different kinds of cold—in 5 different parts of your refrigerator all at once. Dial one setting. True-Temp Control takes care of the rest—holds the 5 zones of cold steady, regardless of temperature outside the refrigerator. Come in—see the new Westinghouse Holiday Special today.

DELUXE EQUIPMENT  
Includes: Full width glass-topped Humidrawer... Big 15-pound drawer-type Meats-Keeper... and a colorful water server of genuine Hall chinaware.

Christmas Special  
**\$159.95**

"I'd like a new  
**SPEED QUEEN**  
WASHER!"

MODEL "500"

BOWL-SHAPED TUB For Fast Washing

DOUBLE WALLS To Keep Water Hot

STEEL CHASSIS For Strength

ARC-CUATE TRANSMISSION Finest On Any Washer

Certainly you'd like a new Speed Queen washer for Christmas! You are entitled to the time-and-labor-saving advantages of a modern Speed Queen—a washer that gets your wash "on the line in half the time." We'll be glad to make you a liberal allowance on your old washer and give you all next year to pay for the balance on the new one. Come in this week.

No other washer gives you all these features. Yet, the price of this double wall Speed Queen is LESS than most conventional type, single wall washers!

only  
**\$49.95**

GAS ENGINE MODELS for HOMES WITHOUT ELECTRICITY

**SPEED QUEEN**

**2 BIG STEPS TO GREATER FREEDOM**

Westinghouse  
Electric Ranges  
and  
Water Heaters

FOR COOL, CLEAN, ECONOMICAL ELECTRIC COOKING!

CHRISTMAS SPECIAL  
**\$119.50**

GIVE  
SOMETHING  
USEFUL  
THIS  
CHRISTMAS  
GIVE  
ELECTRICAL  
GIFTS

# McBRAYER'S

Morehead's Complete Furniture Store

# Survey Shows Few Realize What The Schools Teach

## Majority Think Education Is Not Over Emphasized

The training of youth for democratic living and the addition of courses in high schools which prepare young people for an occupation, objectives receiving major emphasis in schools today, are recognized by relatively few citizens outside the teaching profession, according to the results of a recent poll conducted by the American Youth Commission and published by the National Education Association. The poll was undertaken with the cooperation of the American Institute of Public Opinion of which George Gallup is director.

Seventy-three percent of a sampling of the United States' population, when asked if they believe too much importance is being placed on education these days, indicated that they do not think education is over-emphasized. Although a number of reasons were given for this faith in education, only six percent mentioned the necessity of education to the country's advance as a democracy, and only twenty-two percent mentioned the value of education in the attainment of success and in meeting today's complex civilization.

Answers indicated that a little less than three-fourths of the citizens recognize the college preparatory functions of the high school, while a little less than a half of the population recognize that high school programs of education are

planned to include the needs of those who will not go beyond high school graduation.

The poll indicated that the majority of citizens, eighty-five percent, would answer, "Yes-better," to the question, "Do you think that people today are getting a better education in school than their parents got? Little more than one person in twenty thinks education is "about the same", and a slightly higher proportion think education today is poorer. Two percent have no opinion.

The eighty-five percent who think education has improved gave the following reasons:

- Have more schools and better equipment ..... 27 percent
- Have better trained teachers ..... 17 percent
- Have a variety of subjects and better course material ..... 14 percent
- Have greater advantages and opportunities ..... 13 percent
- Children are required to go to school longer ..... 9 percent
- More money is spent on education ..... 2 percent
- Other reasons given ..... 3 percent

Total ..... 85 percent

From the reasons given, it becomes apparent that six in ten adults think that more schools, better equipment, better prepared teachers, and a broader curriculum result in a higher type of education.

## Educators Favor Free Discussion

### Poll Reveals Students Should Conduct Discussions

WASHINGTON, D. C., Dec. 6.—The importance of education to the school longer ..... 9 percent free discussion, vital concepts of democracy, is shown in a recent poll conducted by the American Youth Commission and published by the National Education Association. The poll was undertaken with the cooperation of the American Institute of Public Opinion of which George Gallup is director.

Questioned as to their beliefs on whether youth groups should discuss controversial issues, those citizens who had advanced in education through high school or beyond were found to be far more appreciative of this right of democracy than those who had not had a high school education. Asked the question, "Do you think that youth groups in church groups, social groups, and other youth organizations should discuss such questions (labor unions, war, and government policy) among themselves?" College graduates of all ages were found to be emphatically in favor of free discussion of issues, and eighty-five percent of the high school graduates interviewed favor the issue. As compared to this, however, only sixty-two percent of those who had not themselves graduated from high school were found to favor this freedom of discussion on the part of youth groups. The remainder of the non-high school graduates lean toward suppression of speech and discussion or else have no opinion in the matter. Averaging answers of persons with all degrees of education, seventy-two percent of the general

sampling of the public interviewed were found to believe in unhampered discussion for youth groups as part of the educational process; eighteen percent indicated that they are opposed; and ten percent have no opinion in the matter.

The reasons given for their views by those favoring discussion are as follows:

- An opportunity for young people to become informed ..... 42 percent
- Such discussion helps young people to think ..... 5 percent
- They should be free to discuss what they wish ..... 5 percent
- Can see no harm in it ..... 4 percent

To arouse their interest in current problems ..... 1 percent

Other reasons given ..... 4 percent

72 percent

Two persons in three think teachers should discuss in high school classrooms such questions as labor unions, war, and government policy; twenty-three percent oppose it; and ten percent have no opinion. Nearly one-half of the public believes that teachers are fair to all sides in such discussions; only one in four is skeptical.

Among a number of significant findings, the poll revealed that the American public has a generally favorable point of view toward the present day program of public education. While most people (eighty-five percent) feel that education has improved in the past generation, almost three-fourths of the people feel that education is not given too much emphasis. A two-and-one-half percent deviation from actual results in the recent presidential race on the part of surveys conducted by the American Institute of Public Opinion serves as an indication of its accuracy as a medium for indicating public opinion.

Locomotives now travel more than twice as fast as formerly because it is necessary to stop for coal and water.

Losses resulting from fires on American railroads in 1939 totaled \$4,272,796, a decrease of fifty-three percent compared with 1924.

There are approximately 3,000 crossties per mile of railroad track.

Approximately 12,000 air-conditioned railroad passenger cars are now in operation, contrasted with three such cars ten years ago.

# Christmas Gift Headquarters

GIVE SOMETHING PRACTICAL THIS CHRISTMAS. WE HAVE A COMPLETE LINE OF GIFTS FOR MOTHER, FATHER, SISTER OR BROTHER.

## MOTHER and SISTER:

- Crepe Dresses ..... \$1.98 to \$6.95
- Silk Slips ..... \$0.95 to \$1.95
- Silk Gowns ..... \$1.00 to \$2.49
- House Coats ..... \$1.95 to \$3.49
- Silk Pajamas ..... \$1.95 to \$2.49
- Silk Bed Jackets ..... \$1.29
- Hose ..... \$0.49 - 79 - 98
- House Shoes ..... \$0.98 - \$1.49
- Dress Shoes ..... \$1.98 - \$3.95
- Suede and Kid Gloves ..... \$1.00 - \$1.95
- Purses ..... \$0.49 - \$1.95
- Dresser Sets ..... \$1.98 - \$4.95
- Manicure Sets ..... \$0.49 - \$0.98
- Fitted Cases ..... \$2.98 - \$9.95
- Umbrellas ..... \$1.00 - \$2.95
- Bed Spreads ..... \$0.98 to \$2.98
- Towels ..... 10c - 25c - 49c
- Curtains ..... \$0.50 - \$0.75 - \$0.98
- Pillow Case Sets ..... \$0.49 to \$1.40
- Luncheon Sets ..... \$0.49 - \$0.98

## FATHER and BROTHER:

- Military Sets ..... \$1.00 - \$4.95
- Ash Tray - Cigarette Combination ..... \$1.50 - \$2.00
- Belt and Buckle Sets ..... 98c and Up
- Suspenders ..... 50c
- Purses ..... \$0.95 - \$1.95
- Shirts ..... \$1.00 - \$1.95
- Ties ..... 49c - 69c - 95c
- Box Handkerchiefs ..... 25c - 50c
- Linen Handkerchiefs ..... 25c Ea.
- Pajamas ..... 98c - \$1.95
- Bath Robes ..... \$1.98 - \$3.50
- Dress Shoes ..... \$1.98 - \$4.95
- House Shoes ..... 98c - \$1.98
- Kid Gloves ..... 98c - \$2.00
- Socks ..... 25c - 35c - 50c
- Men's Umbrellas ..... \$1.98
- Woolen Sweaters ..... 98c to \$3.50
- Leather Jackets ..... \$4.79 - \$8.98
- Men's Mackinaws ..... \$5.19
- Boy's Mackinaws ..... \$3.69

We have a nice line of gifts and gift sets for baby sister or brother. Look our line over before buying.

# The Bargain Store

ARTHUR BLAIR, Manager

Morehead,

Kentucky

**A GIFT OF AN Aladdin Mantle Lamp**

Brings Lasting Joy to Entire Family

With its Amazing Abundance of Modern White Light from NEROSENE (22)

Aladdin Lamps do make ideal gifts and are something that every member of the family can enjoy for years. Provides an essential protection against eye strain due to poor light. Easier for you to clean than ever pleasant reminder of the giver.

There is an Aladdin for every purpose—table lamp, bracket and floor style—with handsomely decorated shades to beautify as well as properly light your home. Just the gift too that talks back loud, some friend or relative that needs better light.

**\$1.00 TRADE ALLOWANCE**

On Any Aladdin Mantle Lamp

Come in For Demonstration of the Aladdin



**N. E. KENNARD HARDWARE CO. MOREHEAD, KY.**

**GOING TO Washington?**

**Go CHESAPEAKE and OHIO and arrive Refreshed—READY FOR BUSINESS OR PLEASURE!**



**CHESE, QUIET SLEEPING CAR**... perfectly air-conditioned... gliding over smooth roadbed... starting and stopping gently

... that is sight on Chesapeake railroad... where service is keyed to your comfort so you may Sleep Like a Kitten.

**TRAINS DAILY from 2 TRAINS DAILY FROM MOREHEAD**

**THE GEORGE WASHINGTON** leaves at 6:45 p. m. in time for a delicious, home-purvised dinner in the Taver car. Arrives Washington 8:2 p. m.

**THE SPORTSMAN** leaves: 10:44 p. m., giving you 1 hour or two in the lounge before retiring for rest. sleep. Arrives Washington 12:45 p.

**CHEESAPEAKE and OHIO Lines**

Watch for Our Announcement In Next Week's Independent

for Economical Transportation



Midland Trail Garage

**Social & Personal**

**Phone - 235**

The public is cordially invited to attend a piano recital Sunday afternoon, December 15, at 3:00 o'clock in the Methodist Church.

The following girls and boys, pupils of Mrs. M. E. George, will play:

George Dewey Alfrey, Eleanor Bruce, Janice Ruth Caudill, Mary Shoney, Karenne George, Nancy Hillbrook, Donald Miller, Martha Lee Penneshaker, Barbara Shafter, Barbara Tabor, Jean Tabor, Nanette Robinson, Mary Scot Wendell, Lois Jean Wheeler, Sue Wood, and Marian Johnson.

The Woman's Council of the Morehead Christian Church met Wednesday afternoon at the home of Mrs. C. O. Peratt for their December meeting. Officers for the coming year were elected at this meeting.

Mrs. Peratt was assisted in entertaining by Mrs. Jack Helwig, Mrs. Cora Wells and Mrs. L. C.

**MILLS THEATRE**

PHONE 140  
**THURSDAY & FRIDAY**  
**"MARRIED ADVENTURE"**  
 Mrs. Martin Johnson  
 —also—  
**"HOW HIGH UP IS IT?"**  
**SATURDAY**  
**BIG DOUBLE FEATURE**  
 Number One  
**THUNDERING FRONTIER**  
 Charles Starrett  
 Number Two  
**"THAT GANG OF MINE"**  
 East Side Kids  
 Chapter Three  
**"DEADWOOD DICK"**  
 NEWS  
**SUNDAY & MONDAY**  
**"ESCAPE TO GLORY"**  
 Pat O'Brien  
 Constance Bennett  
**PARAMOUNT NEWS**  
**TUESDAY & WEDNESDAY**  
**"ELLERY QUEEN—**  
**MASTER DETECTIVE"**  
 Ralph Bellamy  
 Margaret Lindsay

**Russell MAYVILLE**

**THURSDAY**  
 DECEMBER 14  
**"MR. KILDARE'S CRISIS"**  
 with L. Barrymore—Law Ayres

**FRIDAY**  
 DECEMBER 15  
**"CHARTER PILOT"**  
 with Lynn Bari—Lloyd Nolan  
**STAGE—BOONE COUNTY**  
**JAMOREE**  
 Running Continues from 1 P. M.

**SAT. & SUN. & MON.**  
 DECEMBER 14-15-16  
**"TIN PAN ALLEY"**  
 with Alice Faye—Jack Oakie

**TUESDAY & WEDNESDAY**  
 DECEMBER 17-18  
**"NIGHT AT EARL**  
**CARROLL'S"**  
 with Ken Murray—Rose Hobart

**THURSDAY**  
 DECEMBER 19  
**"NORTHWEST PASSAGE"**  
 with Spencer Tracy—Bobt. Young

**SCHINE'S**  
**WASHINGTON**  
 MAXWELL

**THURSDAY**  
 DECEMBER 12  
**"WHO KILLED AUNT**  
**MAGGIE?"**  
 with Wendy Barrie—Walter Abel

**FRIDAY & SATURDAY**  
 DECEMBER 13-14  
**"TRAILING DOUBLE**  
**TROUBLE"**  
 with Ray Corrigan—John Kitz  
 Max Terhune

**SUNDAY & MONDAY**  
 DECEMBER 15-16  
**"BANK DICK"**  
 with W. C. Fields—Una Merkle

**TUESDAY & WEDNESDAY**  
 DECEMBER 17-18  
**"MARGIE"**  
 with Nan Grey—Ezra Brown

**THURSDAY**  
 DECEMBER 19  
**"ALWAYS A BRIDE"**  
 with Rosamary Lane—Geo. Reeves

Mr. and Mrs. A. B. Boone announce the birth of a daughter on Friday, December 6, at the Mary Callie Hospital in Mt. Sterling. She has been named Jane Bennett Bowen.

Mrs. C. F. Kessler honored Mrs. Kessler's fifth-anniversary birthday on Saturday with a family birthday dinner. Mrs. E. D. Patton was a guest. Mr. Kessler received many gifts.

Mr. and Mrs. H. L. Holtzclaw and Mrs. R. L. Brown of Charleston, West Virginia were guests last weekend of Dr. and Mrs. J. B. Holtzclaw.

Mrs. Drew Evans and Miss Gladys Evelyn Evans will drive to Charleston, South Carolina on Thursday to ship Lieutenant Eldon Evans car to him in Panama.

Reverend and Mrs. A. E. Landolt and Mrs. E. D. Blair were in Lexington on Monday. Reverend Landolt attended the Central Kentucky Ministers' meeting.

Mr. and Mrs. Isaac Moore and Mr. and Mrs. C. F. Kessler were Sunday guests of Mr. and Mrs. George Lewis in Elliottville.

Miss Ella Wilkes, Miss Mildred Sweet and Miss Bernice Clark were weekend visitors in Cincinnati.

Mrs. E. D. Patton and Miss Rebecca Patton shopped in Lexington on Saturday and were overnight guests of Mrs. Mayne Wiley.

Miss Lynn Thompson, Mrs. T. W. Hinton and son, Tommy were visitors in Frankfort on Sunday.

The library staff of the college will be at home to the faculty and students in the library Monday, December 16 from 4.5 p. m.

Miss Gladys Evelyn Evans was a weekend guest of Miss Mildred Martin in Lexington.

Mrs. Eldon Evans and baby spent last weekend with her parents in Mt. Sterling.

Leo Davis Oppenheimer who is teaching at Brooksville spent the weekend at home.

Mr. D. B. Cornette who has been ill some time continues without much change in his condition.

Mrs. Mary J. Clark is visiting her sister, Mrs. Ed C. Brown in Huntington this week.

Miss Helen Paek and Robert Elam were visitors in Lexington on Tuesday.

Harry Bogges who is stationed at Fort Thomas was at home three days last week.

Mr. J. F. Walker who has been ill for some time is much better this week.

Mrs. B. F. Penix was a visitor in Lexington on Monday.

Mrs. William Sample spent the weekend in Cincinnati.

Miss Mary Carolyn Gevedon is ill at her home with the flu.

Mrs. M. C. Crosley and Johnny shopped in Lexington on Saturday.

Mrs. J. A. Allen has been ill the

The Rowan County Woman's Club will hold its annual Christmas Party Tuesday night, December 17 at 7:30 P. M. in the basement of the Methodist Church.

Mrs. J. M. Cassidy, Mrs. Henry Glover, Miss Grace Crosthwaite, Mrs. C. Z. Johnson and Miss Ellen Hudgins will act as hostesses for the occasion.

Mrs. C. U. Waltz went to Lexington on Monday where the cast X-Ray showed a perfect set, but it will be some time yet before Mrs. Waltz will be out. Mrs. Ernest Jayne and Mr. and Mrs. Wilford Waltz accompanied her to Lexington.

The Morehead Woman's Club met last Tuesday, Dec. 10, at the home of Mrs. R. W. Jennings, Miss Virginia Conroy, chairman of the Literary Department was in charge of the program.

Miss Helen Board reviewed "Mr. Skeffington" by Elizabeth.

The Morehead Alumni Club met at the home of President and Mrs. W. H. Vaughan on Monday evening. Twenty-three members were present. The luncheon session was spent in formulating the by-laws. Then a social hour was enjoyed during which Mrs. Vaughan served delightful refreshments.

Mrs. J. G. Black attended a meeting and luncheon at the Henry Clay Hotel in Ashland on Monday. Other presidents of clubs of the eighth district and district officers were there to plan the State Convention which meets at Ashland in May.

Miss Patti Bohn and Miss Nola Jayne attended a District Home Economics Conference and luncheon in Maysville on Saturday. Miss Bohn acted as judge in a style show of grease made by high school students.

The Morehead Woman's Club will give its annual Christmas Party Tuesday night, December 17, at 7:30 P. M. in the basement of the Methodist Church.

It will be "Men's Night."

The Methodist Women's Society of Christian Service will meet at Alle Young Hall Thursday evening at 7:30. Miss Ester Robinson and Miss Rebecca Thompson will be hostesses.

Mr. and Mrs. Herbert Elam shopped in Lexington on Saturday.

**LOST**  
 KEY CASE WITH SEVERAL keys. Key C. Z. Bruce's name on case. If found return to Mrs. Bruce or The Morehead Independent and receive reward.

**RELIABLE MAN WANTED TO**  
 call on farmers in Rowan County. No experience or capital required. Write M. C. W. BINNS, Box 18, Covington, Ky.

**FOR SALE**  
 ONE-HALF TON, 1938 FORD V-8 Pickup Truck, Model 85, Looks

and runs like new, in perfect condition. 4-new guaranteed tires and tubes, if you want a good truck, see this one at once. Thomas & Rankin Hatchery, Phone 186, Flemingsburg, Kentucky.

**Church of God Plans Program**  
 The Young Peoples Organization at the Church of God will have "Christmas" for the theme of each Sunday's program. The program for this coming Sunday at 6:00 o'clock is as follows:  
 Theme: Christmas Carols.  
 Song: "It Came Upon a Midnight Prayer."  
 Audience

Original of the Christmas Carol... Katherine Barber  
 Story of "Silent Night, Holy Night" ... Dorothy Ellis  
 Song: "Silent Night" ... Trio  
 Story: "Away in a Manger" ... Fryl Black  
 Song: "Away in a Manger" ... Helen Early, Juanita Blair, Eva VanHook, Olive VanHook.  
 Story: "O, Little Town of Bethlehem" ... Doris Bate  
 Song: "O, Little Town of Bethlehem" ... Children  
 Reading: "The First Christmas Eve" ... Mabel Alfrey  
 Song: "Glory to God in the Highest" ... Quartette  
 Benediction.

**ST. ALBAN'S MISSION (Episcopal)**  
 Reverend L. C. Lightbourn, S. T. B. Mount Sterling. Sunday, December 15th (Third Sunday in Advent): Holy Communion, with hymns and short address, 8:30 A. M. No evening service this Sunday. Beginning with this Sunday, the Holy Communion will be celebrated twice instead of once, each month, at 8:30 A. M.

Twenty-three Boone County farmers received 83,000 pounds of forty-seven percent superphosphate for conducting demonstrations in cooperation with the Tennessee Valley Authority. Nineteen of them will make comparisons of ten varieties of grass.

**Trimble THEATRE**  
 MT. STERLING, KY.

**FRIDAY**  
 DECEMBER 13  
**"THE SAINT TAKES OVER"**  
 George Sanders

**SATURDAY**  
 DECEMBER 14  
**"BULLET CODE"**  
 George O'Brien

**SUNDAY**  
 DECEMBER 15  
**"BAD MAN OF WYOMING"**  
 Wallace Berry

**MONDAY & TUESDAY**  
 DECEMBER 16-17  
**"GIRL FROM HAVANA"**  
 Dennis O'Keefe—Claire Carleton  
 MT. STERLING NIGHTS

**WED. & THURS.**  
 DECEMBER 18-19  
**"DOWN ARGENTINE WAY"**  
 Don Ameche—Betty Grable  
 (Technicolor)

**Tabb Program**

**SATURDAY**  
 DECEMBER 14  
**"LAST ALARM"**  
 Serial and Shorts

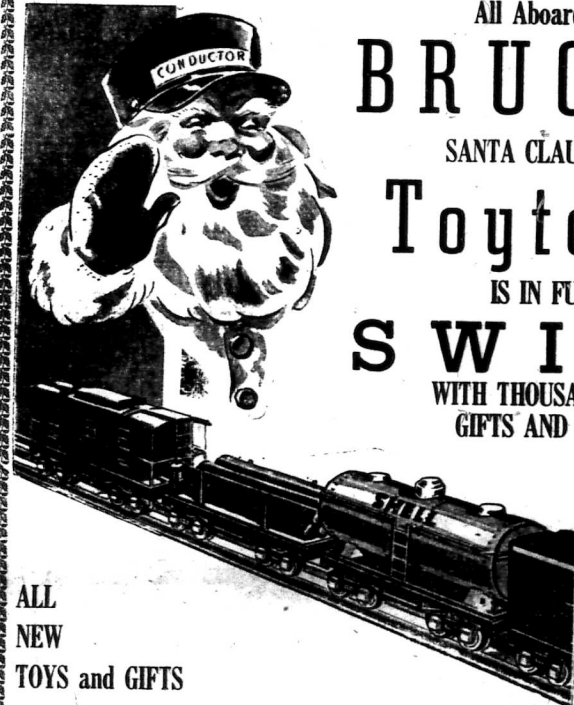
**SUNDAY**  
 DECEMBER 15  
**"THE FATAL HOUR"**  
 Cartoons and News

Produced by JACK VOONEN and SAM. Screen Play by Howard J. Green, Harry Thayer, Richard A. Anderson. Distributed by M-G-M BOND Picture.

**LUM AND ABNER**

with FRANCES LAVANOFF, FRANK CLAVEN, BOB WATSON, PHIL HARRIS and VCCO Production.

Down Home at Pine Ridge with the home-to-home philosophers of the air. In the story they searched five years to find!



**ALL ABOARD For BRUCE'S SANTA CLAUS SAYS Toytown IS IN FULL S W I N G WITH THOUSANDS OF GIFTS AND TOYS**

Beginning Wednesday, Dec. 18, we will be open evenings until Christmas.

Again this year Bruce's 5c 10c and \$1.00 Store has assembled a huge assortment of new toys and gifts that has never been equaled in Morehead either in price or quality.

Your past experience in shopping with us proves conclusively that we make no misleading statements regarding quality of merchandise or prices.

Buy only NEW and desirable Toys and Gifts that you will be proud of giving your friends. We invite you to compare quality and prices.

**TOYS FOR ALL THE KIDDIES**

**GIFTS FOR ALL YOUR FRIENDS**

**NO SAMPLES -- ALL NEW, CLEAN MERCHANDISE. HURRY! HURRY!**

**FOLLOW THE CROWD TO**

**BRUCE'S**

**5c 10c & \$1.00 STORE**

**"WHERE YOUR DOLLAR GOES FARTHER"**