

The Morehead Independent

"ONE OF KENTUCKY'S GREATER WEEKLIES"

VOLUME VII.

U. of Ky. Library X. MOREHEAD, KENTUCKY, THURSDAY MORNING, DEC. 5, 1940

NUMBER FORTY-SIX

"Now Is Time To Go To College" Says Vaughan

"The colleges throughout the land are being besieged by teachers now as never before," Morehead College President, W. H. Vaughan said in a press statement today.

Charles D. Arnett Taken By Death

Former Secretary Of State Was Well Known In This Section

Charles D. Arnett, 61, Kentucky's secretary of state during the A. B. Chandler administration and former secretary of the National Housing Commission, died Tuesday at the home of his daughter in Louisville, Kentucky.

Tobacco Market Opened Mon. With Average Of \$17.23

Seven of central Kentucky's tobacco markets outside of Lexington Tuesday sold a total of 1,594,142 pounds of burley, returning \$27,649.85 to the growers.

James W. Adkins Passes Saturday

Eighty-Six-Year Old Ellottsville Man, Well Known And Respected

James W. Adkins, 86-year-old resident of Ellottsville, Kentucky, died at his home there, November 30, 1940 in Rowan County, Oct. 9, 1984. He resided here most of his life and was united in marriage to Sarah Dean Tussey.

Superintendent, Wife Entertain Members Of School Board

Mr. and Mrs. Roy Cornette entertained the Board members at their home on Monday evening at 6:00 o'clock. This dinner was in honor of the Board members whose time will expire the first of the year. This was their last regular meeting. Those present were J. B. Fraley, Alvin Caudill, Jess Boggs, Bill Layne and Hendrix Tolliver.

Rowan County Club Meets On Monday

Mrs. Beulah Williams calls attention to all members of the Morehead Rowan County Alumni Club.

Judd To Address Johnson Teachers

Dr. R. D. Judd, head of the Education department at Morehead State Teachers College, will be the main speaker at the Johnson County Teachers meeting December 12.

Citizens Bank Xmas Club Pays Members \$5,000 This Year

The Christmas Club accounts of the Citizens Bank are to be paid out this week, according to Chairman, Glenn Lane.

"It is this fact coupled with better business conditions over the nation that points toward continued success in placing our teachers," President Vaughan declared.

Vikings Whip Breck 19-13 In Fast Game Last Friday

Roy Holbrook's fast quintet beat the Breck Eagles 19-13 in a fast game at the College gymnasium last Friday night.

Leola Caudill Named To YWCA Post

Miss Leola Margaret Caudill, a graduate of Morehead State Teachers College, was recently named as health instructor at the Lexington YWCA. Miss Caudill has recently been given graduate work at the University of Kentucky.

James W. Adkins Passes Saturday

Eighty-Six-Year Old Ellottsville Man, Well Known And Respected

Delay Occasioned In Carpentry Course

Some delay has been occasioned in beginning the special carpentry course at the Public School, due to the non-arrival of governmental farm sheets.

Sale Will Help Provide Children For This Winter

Don't forget the White Elephant Sale December 14 and gifts will be in line for everybody, both old and young.

County Asked To Participate In Dec. 14 White Elephant Sale

Four of the football "Eagles" have a right to feel proud of themselves this week as they stand the spotlight of all Kentucky sports enthusiasts.

Rowan County Club Meets On Monday

Mrs. Beulah Williams calls attention to all members of the Morehead Rowan County Alumni Club.

Judd To Address Johnson Teachers

Dr. R. D. Judd, head of the Education department at Morehead State Teachers College, will be the main speaker at the Johnson County Teachers meeting December 12.

Successful Red Cross Drive Nets \$275.00 To Date Here

New 1941 Tags Now Available

The new 1941 auto license have been received by County Clerk Vernon Alfrey and can be purchased any time.

Eagles To Open Season Against Holbrook College

Basketball Will Get Under Way On Monday Night

Plans Made For Church Programs January Call

For Methodist Church Sunday Morning

Rowan County Men Eight Men Have Volunteered For Service In Two Branches

Rowan County will send nine men to the service in January in compliance with an order received by the local draft board from national headquarters.

Delay Occasioned In Carpentry Course

Some delay has been occasioned in beginning the special carpentry course at the Public School, due to the non-arrival of governmental farm sheets.

Sale Will Help Provide Children For This Winter

Don't forget the White Elephant Sale December 14 and gifts will be in line for everybody, both old and young.

County Asked To Participate In Dec. 14 White Elephant Sale

Four of the football "Eagles" have a right to feel proud of themselves this week as they stand the spotlight of all Kentucky sports enthusiasts.

Rowan County Club Meets On Monday

Mrs. Beulah Williams calls attention to all members of the Morehead Rowan County Alumni Club.

Judd To Address Johnson Teachers

Dr. R. D. Judd, head of the Education department at Morehead State Teachers College, will be the main speaker at the Johnson County Teachers meeting December 12.

Successful Red Cross Drive Nets \$275.00 To Date Here

New 1941 Tags Now Available

The new 1941 auto license have been received by County Clerk Vernon Alfrey and can be purchased any time.

Eagles To Open Season Against Holbrook College

Basketball Will Get Under Way On Monday Night

Plans Made For Church Programs January Call

For Methodist Church Sunday Morning

Rowan County Men Eight Men Have Volunteered For Service In Two Branches

Rowan County will send nine men to the service in January in compliance with an order received by the local draft board from national headquarters.

Delay Occasioned In Carpentry Course

Some delay has been occasioned in beginning the special carpentry course at the Public School, due to the non-arrival of governmental farm sheets.

Sale Will Help Provide Children For This Winter

Don't forget the White Elephant Sale December 14 and gifts will be in line for everybody, both old and young.

County Asked To Participate In Dec. 14 White Elephant Sale

Four of the football "Eagles" have a right to feel proud of themselves this week as they stand the spotlight of all Kentucky sports enthusiasts.

Rowan County Club Meets On Monday

Mrs. Beulah Williams calls attention to all members of the Morehead Rowan County Alumni Club.

Judd To Address Johnson Teachers

Dr. R. D. Judd, head of the Education department at Morehead State Teachers College, will be the main speaker at the Johnson County Teachers meeting December 12.

Successful Red Cross Drive Nets \$275.00 To Date Here

New 1941 Tags Now Available

The new 1941 auto license have been received by County Clerk Vernon Alfrey and can be purchased any time.

Eagles To Open Season Against Holbrook College

Basketball Will Get Under Way On Monday Night

Plans Made For Church Programs January Call

For Methodist Church Sunday Morning

Rowan County Men Eight Men Have Volunteered For Service In Two Branches

Rowan County will send nine men to the service in January in compliance with an order received by the local draft board from national headquarters.

Delay Occasioned In Carpentry Course

Some delay has been occasioned in beginning the special carpentry course at the Public School, due to the non-arrival of governmental farm sheets.

Sale Will Help Provide Children For This Winter

Don't forget the White Elephant Sale December 14 and gifts will be in line for everybody, both old and young.

County Asked To Participate In Dec. 14 White Elephant Sale

Four of the football "Eagles" have a right to feel proud of themselves this week as they stand the spotlight of all Kentucky sports enthusiasts.

Rowan County Club Meets On Monday

Mrs. Beulah Williams calls attention to all members of the Morehead Rowan County Alumni Club.

Judd To Address Johnson Teachers

Dr. R. D. Judd, head of the Education department at Morehead State Teachers College, will be the main speaker at the Johnson County Teachers meeting December 12.

Successful Red Cross Drive Nets \$275.00 To Date Here

New 1941 Tags Now Available

The new 1941 auto license have been received by County Clerk Vernon Alfrey and can be purchased any time.

Eagles To Open Season Against Holbrook College

Basketball Will Get Under Way On Monday Night

Plans Made For Church Programs January Call

For Methodist Church Sunday Morning

Rowan County Men Eight Men Have Volunteered For Service In Two Branches

Rowan County will send nine men to the service in January in compliance with an order received by the local draft board from national headquarters.

Delay Occasioned In Carpentry Course

Some delay has been occasioned in beginning the special carpentry course at the Public School, due to the non-arrival of governmental farm sheets.

Sale Will Help Provide Children For This Winter

Don't forget the White Elephant Sale December 14 and gifts will be in line for everybody, both old and young.

County Asked To Participate In Dec. 14 White Elephant Sale

Four of the football "Eagles" have a right to feel proud of themselves this week as they stand the spotlight of all Kentucky sports enthusiasts.

Rowan County Club Meets On Monday

Mrs. Beulah Williams calls attention to all members of the Morehead Rowan County Alumni Club.

Judd To Address Johnson Teachers

Dr. R. D. Judd, head of the Education department at Morehead State Teachers College, will be the main speaker at the Johnson County Teachers meeting December 12.



Things I'd like to do and run... Stick some cigars in Reverend Kaeze's pocket just before the sermon.

Let the public know how Clark Lane acts while on a camping trip when he gets with Warren Shaffer out on a boat with some people.

Let the public know how Clark Lane acts while on a camping trip when he gets with Warren Shaffer out on a boat with some people.

Let the public know how Clark Lane acts while on a camping trip when he gets with Warren Shaffer out on a boat with some people.

Let the public know how Clark Lane acts while on a camping trip when he gets with Warren Shaffer out on a boat with some people.

Let the public know how Clark Lane acts while on a camping trip when he gets with Warren Shaffer out on a boat with some people.

Let the public know how Clark Lane acts while on a camping trip when he gets with Warren Shaffer out on a boat with some people.

The Task Ahead Dr. J. B. Holtzclaw MOREHEAD STATE TEACHERS COLLEGE

Table with 2 columns: State and Pet. of adults vot. Rows include South Carolina, Mississippi, Arkansas, Georgia, Kentucky, Virginia, U. S. Average.

(Continued on Page Two)

Rowan County Men Eight Men Have Volunteered For Service In Two Branches

Rowan County Men Eight Men Have Volunteered For Service In Two Branches

Rowan County Men Eight Men Have Volunteered For Service In Two Branches

(Continued on Page Three)

THE MOREHEAD INDEPENDENT
(Official organ of Rowan County)

Published each Thursday morning at Morehead, Kentucky by the INDEPENDENT PUBLISHING COMPANY

ADVERTISING RATES MADE KNOWN UPON APPLICATION

WILLIAM J. SAMPLE Editor and Publisher
One year in Kentucky \$1.50
Six Months in Kentucky 75
One year Out of State 2.00
(All Subscriptions Must Be Paid in Advance)

Entered as second class matter February 27, 1934, at the post-office at Morehead, Kentucky, under Act of Congress of March 3, 1879.

WANT AD RATES:
(Payable in Advance)

(No ad taken for less than 25c)
(Special rates by the month.)
One time per word 2c
Two times per word 3c
Three times per word 4c
Four times per word 5c
Five times per word 6c
Six times per word 7c

Cards of Thanks, articles in Memoriam, lodge notices, resolutions, etc. are advertised and are charged for at the above rates. Ads ordered by telephone are accepted from persons listed in the telephone directory on memorandum charges only, in return for this courtesy the advertiser is expected to remit promptly.



NATIONAL EDITORIAL ASSOCIATION
1948 Active Member

The Task Ahead--

(Continued from Page 1.)
shown that the rigid poll tax required in several of these states have served to deprive the majority of poor white people of the right to vote. Although the payment of a poll tax as a prerequisite for voting has been discontinued in most states, this requirement is still maintained in Virginia, Tennessee, South Carolina, Georgia, Alabama, Mississippi, Texas and Arkansas.

Try Us For Prices and Quality In Our MERCHANDISE

We Carry All The Brands

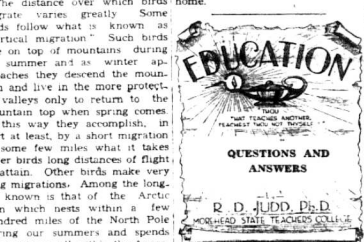
S & W DISPENSARY

Caskey Building Main Street

NATURE

(By G. B. Pennebaker, Ph. D.) Morehead State Teachers College

MIGRATION DISTANCES
(By Dr. G. B. Pennebaker, M.S.C.)
The distance over which birds migrate varies greatly. Some birds follow what is known as "vertical migration." Such birds live on top of mountains during the summer and as winter approaches they descend the mountain and live in the more protected valleys only to return to the mountain top when spring comes. In this way they accomplish, in part at least, by a short migration of some few miles what it takes other birds long distances of flight to attain. Other birds make very long migrations. Among the longest known is that of the Arctic tern which nests within a few hundred miles of the North Pole during our summers and spends our winters well within the Antarctic circle. The air line distance between its summer and winter homes is some 11,000 miles. Since he makes the round trip each year, he travels about 22,000 miles in a north-south direction. The golden plover makes almost as great a flight. These birds thus enjoy more daylight per year than any other living creature. Most of our birds, however, migrate only a few hundred miles each season. This is true of many of our "resident" species such as blue jays, downy woodpecker, nuthatches and chickadees. Usually the individuals that are seen in winter are not the same as the ones that were present in summer. As the winter individuals are coming from their summer homes farther north, the summer residents of



that species are moving to regions further south to make their winter home.
Question: Do students of this generation get a better type of education than the students of the preceding generation?
Answer: This question has arisen in the writer's mind many times in the past few years. He is continually attempting to gauge the progress of his students as compared to the standards under which he grew up. It seems that there might be this difference: my students have a greater range of information than the students of the preceding generation. That is they know more about many subjects whereas the students in my day had their intellectual interests confined to narrower interests. In my day we were required to know a great deal about a few subjects. In other words we plowed deep in a few subjects. Would it be fair to say that in our generation we had a whole lot of ideas about a few subjects, the present generation get a few ideas about a whole lot of subjects. In a recent bulletin "What Education" an interesting opinion is given which in a way controverts the above view. The American Youth Commission arranged for this Gallup Poll of public opinion. Let us quote from the findings of the Commission.
Perhaps it is not surprising that

seventy-three percent of the adult population does not think that education is over-emphasized today or that eighty-five percent think that youth receives a better education today than their parents got. This broad sweeping simple concerning education is interesting. It has a double-barrel meaning. It may be that we are not over-emphasizing education in a general way but that we are too busy concentrating in some areas of education. The final question is this: are the students of this generation able to meet the demands of a complicated age any better than we were in our generation? There are many who are of the opinion that we need fewer subjects to confuse the mind of the student and that we need to give direction to a more thorough and intensive study of a particular problem. The idea which seems prevalent at Harvard covers the ground adequately. The writer was told when a student there that they recommended few subjects so as to achieve complete mastery and thoroughness.

ST. ALBAN'S MISSION
(Episcopal)
Reverend F. C. Lightbourn, S. T. B., Mount Sterling Sunday, December 8th. (Second Sunday In Advent) Evening Prayer and Sermon, 7:00. On this and the two following Sundays, a course Book of Revelation. All who are interested in a better understanding of this book, which has a real message for today, are invited to attend.

Co. Chairman--
(Continued from Page 1.)
newly printed copies of the "Party Law," made up of the rules adopted by the state convention in Louisville, July 2, of this year, asked county chairmen to issue calls locally for the meetings. The following Saturday the precinct committees, constituting county committees, will meet at county seats and select county chairmen. The letters contained congratulations on the recent Democratic victory in the county by Thomas R. Underwood, of Lexington, Chairman of the committee and were

Church Programs--

(Continued from Page 1.)
Our people are urged to hear the Morehead Civic Church

sing Handel's "Messiah," under the direction of Professors Horton and George.
On Sunday morning, at 10:45, the Pastor's subject will be: "When Christianity Works." The public is cordially invited to worship with us.

A. F. Ellington
DENTIST
Phone 26 Morehead



LOOKING FOR Jun?
If it's fun you're looking for, don't overlook the Bluegrass Room at the Brown Hotel!

We don't mind telling you that the Bluegrass Room is the nicest, smartest, gayest "bright spot" south of the Mason-Dixon line. Food fit for a king, really danceable music, two floor shows nightly, and "atmosphere" galore—it easily ranks with the finest restaurant-night clubs anywhere! Yet the prices are really low!

So the next time you come to Louisville—have the time of your life in the Bluegrass Room!

THE BROWN HOTEL
Louisville's Largest and Finest
HAROLD E. HARTER, Manager

in order to make it still more difficult for the poor whites to vote, some of these states require the present penalties and interest by those who do not keep their poll tax assessments regularly paid.
Such requirements have served to disfranchise large numbers of white tenant farmers and others on the lower end of the economic scale.
There is now a concerted drive on the part of liberals in the South to eliminate these poll tax laws.

Friday and Saturday SPECIALS

| | |
|---|---|
| NO. 2 1/2 STOKLEY Green Beans 2 for 29c | NO. 303 STOKLEY Honey Pod Peas 2 for 27c |
| 14 OUNCE Stokley Catsup 2 for 23c | NO. 300 STOKLEY Cranberry Sauce ea. 15c |
| NO. 2 STOKLEY Cherries (Sour Pitted) 2 for 29c | 47 OUNCE STOKLEY Tomato Juice ea. 20c |
| NO. 2 MIXED—(STOKLEY'S FINEST) Vegetables ea. 10c | NO. 2 1/2 Stokley Hominy 3 for 27c |
| NO. 2 1/2 STOKLEY Chopped Kraut ea. 10c | NO. 2 1/2 VAN CAMPS Chili Con Carne 2 for 25c |

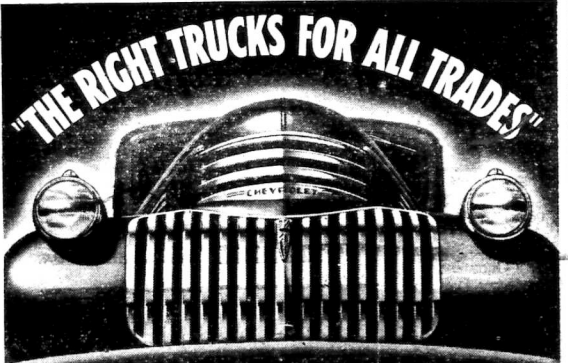
FRESH MEATS

| | |
|---------------------------|----------------------------|
| Pork Chops 19c Lb. | Pork Sausage 15c Lb. |
| Round Steak 30c Lb. | Veal Steak 30c Lb. |
| Ground Beef 18c Lb. | Hens 15c Lb. |

FRYERS 16c Lb.

| | |
|------------------------------|----------------------------|
| Oranges 15c Doz. | Apples 10 Lbs. 19c |
| Head Lettuce 3 for 25c | 4-Tie Brooms ea. 19c |

EAST END GROCERY
468 E. Main St. Phone 56 Morehead Ky.



NEW 1941 CHEVROLET TRUCKS

MOST POWERFUL TRUCK ENGINES IN THE LOW-PRICE FIELD
90-HORSEPOWER STANDARD ENGINE
174 FOOT POUNDS TORQUE
93-HORSEPOWER HEAVY DUTY "LOAD-MASTER" ENGINE (Optional at extra cost on Heavy Duty trucks)
192 FOOT POUNDS TORQUE
OUT-PULL
OUT-VALUE
OUT-SELL!
MASSIVE NEW TRUCK STYLING making these new 1941 Chevrolet trucks the best-looking as well as the best-performing trucks in the entire lowest price field.
NEW LONGER WHEELBASE
NEW RECIRCULATING BALL-BEARING STEERING GEAR greatly reduces steering effort—brings true passenger car steering ease to truck operation.
NEW, MORE COMFORTABLE DRIVER'S COMPARTMENT with greatly increased leg room and better, form-fitting seat and back in cabs, giving much greater driver comfort.

60 MODELS . . . ON NINE LONGER WHEELBASES
A COMPLETE LINE FOR ALL LINES OF BUSINESS

Midland Trail Garage
Morehead, - Kentucky



GIFT ROBES HOUSE COATS
Everything that is new

Corduroys with zipper fronts. Chinelles, Prints, Silks. No matter what material or style you want - - - we have it at bargain prices

98c to \$3.98

SPECIAL PURCHASE ALL WOOL BATH ROBES \$3.98

Christmas Gift Headquarters

That MAN IS HERE

AGAIN

LET'S HAVE FUN FOR "41" EVERYTHING FOR MOTHER, DAD AND ALL THE KIDS IS HERE!

| | |
|---|--|
| <p>CHILDRENS OUTFIT PAJAMAS SAMPLES 39c Reg. 79c Values</p> | <p>CHILDRENS KNIT UNION SUITS Sizes 2 to 10. Short sleeves, elastic bottoms. 19c</p> |
|---|--|

ALL THE RIGHT ANSWERS TO WHAT TO GIVE!
THIS STORE IS JAMMED WITH THE GREATEST LAYOUT OF BARGAINS IN THE HISTORY OF OUR BUSINESS. STACKS AND STACKS OF EVERYTHING FOR YOU AND YOURS. YOU SAVE 50 PERCENT OR MORE!

Give Her a FUR COAT

We Have Made Special Arrangements To Finance These Coats

Easy Terms 1-3 Cash Balance \$2.00 Week
Regular \$100.00 Values
\$49.50 to \$69.50



FUR TRIMMED DRESS COATS \$9.98
More Style and Greater Value TO SAVE ONE-THIRD ON ANY COAT YOU BUY \$29.50

SPORT COATS
HEAVY TWEEDS, FLEECES—COVERT CLOTHES, CORDUROY WOOD ZIPPER LININGS, REVERSIBLE, STURGIL BACKS, BOXY OR MILITARY FITTED STYLES—BRIGHT COLORS OR PLAIN COLORS WITH HOODS TO MATCH
\$7.98 \$9.98 to \$16.50

Special Group Sport Coats
ALL WOOL FLANNEL LINED COATS LEFT OVER FROM LAST YEAR. BUT THE STYLES ARE GOOD—GET THIS Extra Value Your Choice. Val. to \$9.98 \$2.98

MENS REVERSIBLE COMBINATION RAIN and TOP COATS
One side of gaberdine. Other side tweed
\$3.98

MENS 3-4 Length Corduroy Reversible **COATS**
Known as the fingertip length. One side gaberdine. One side corduroy
\$5.98
Regular \$9.95 Value
Tan, green, brown, grey, blue



MENS ALL WOOL OVERCOATS and TOP COATS
New Raglands and conservative styles. Smart tweeds—and other all wool fabrics Regular \$17.50 Values
\$9.98

Mens and Young Mens ALL WOOL **SUITS**
Double and single breasted. Plain and sport backs. Smartest patterns in the finest woolsens
\$9.98 Up
SAVE 1/2



Distinctive SHIRTS

Special holiday group bought at a price from one of America's finest manufacturers for a special holiday selling—either as gifts or for personal use

Special Sale of the World's Finest **SHIRTS** \$1.00
One Lot Reg. \$1. - \$1.49 **SHIRTS** 79c
Xmax Sale of Better **SHIRTS** \$1.65
And \$1.95 Val. Val. to \$2.50




MENS FANCY SOCKS AND JERKS

| | |
|-----------------|------------|
| REG. 50c SOCKS | 35c |
| REG. 35c SOCKS | 25c |
| 25c JERKS | 2 PAIR 25c |
| 20c WORK SOCKS | 9c |
| 15c DRESS SOCKS | 7c |



MENS DRESS GLOVES
Regular \$1.00 fleece lined kid gloves
59c

Other fine dress gloves in pig skin, cape skin and kids
98c to \$1.98

Save 1-2 On Toys and Gifts

| | | | | |
|--|---|--|---|--|
| Boys Wool Leather Front JACKETS Zipper front. Reg. \$1.98 Value \$1.39 | Boys All Wool Mackinaw JACKETS Slant pockets, zipper front. Regular \$2.98 Value \$1.98 | Mens All Wool SPORT SWEATERS Zipper front, zipper pocket and a l h e r styles. Val. to \$2.98 \$1.98 | Mens Corduroy PANTS Blue, green, brown \$2.98 | Mens All Wool Dress PANTS Tweeds, worsteds, cashmere \$1.98 Up |
|--|---|--|---|--|



MENS HATS
All new smartest styles and colors
BROWN, GREEN, BLUE GREY TAN AND BLACKS
\$1.39 Up

SHOE SALE

MENS DRESS OXFORDS
Made by Jarman. All new leathers and styles
\$2.98 to \$3.98

MENS DRESS OXFORDS
Black or Brown
\$1.89



Bull's Eye In Gifts for MEN

Mens Heavy Fleeced Jersey Sport **JACKETS**
Zipper front. Slant zipper pockets. Brown and green and green and red combination.
Reg. \$4.95
\$2.98

Genuine Horse Hide Full Silk lined **JACKETS**
Black and Browns Zipper front. Reg. \$9.95 Value
\$5.95

Genuine Suede -Leather **JACKETS**
Reg. \$7.95 Values
\$4.95

Mens Leather Front. Wool back and sleeves SPORT **JACKETS**
Reg. \$2.98 Value
\$1.98




5000 NEW SILK TIES
Beautiful Holiday patterns. Select your gift ties here now and save as you buy
25c up to \$1.50

BEAUTIFUL SILK AND WOOL SCARFS
49c to 98c

GOLDE'S
Morehead, Kentucky
The Home Of Super Bargains

AGAIN WE SCOOPED: The T

We Purchased Entire Sample and Floor Stock of Toys and Other Gift Items from Wholesale Wholesalers at a Mere Fraction of Wholesale Cost

WE SHOOT THE WORKS AT

Hold Everything Don't Spend a Dime Until You See Our Gigantic M

Dolls! Dolls!



Just hundreds of dolls of all kinds--big ones - little ones - plain ones, fancy ones, but every one a lovable gift for some little miss. And they're priced as low as

10c

- 25c Dolls..... 10c
- 59c Dolls..... 25c
- \$1.00 Dolls..... 49c
- \$1.98 and \$2.49 Dolls..... 98c
- \$2.95 to \$3.95 Dolls..... \$1.98
- \$4. \$5 and \$6.00 Dolls..... \$2.98

DOLL and MUFF SETS

\$1.00 Value 59c.

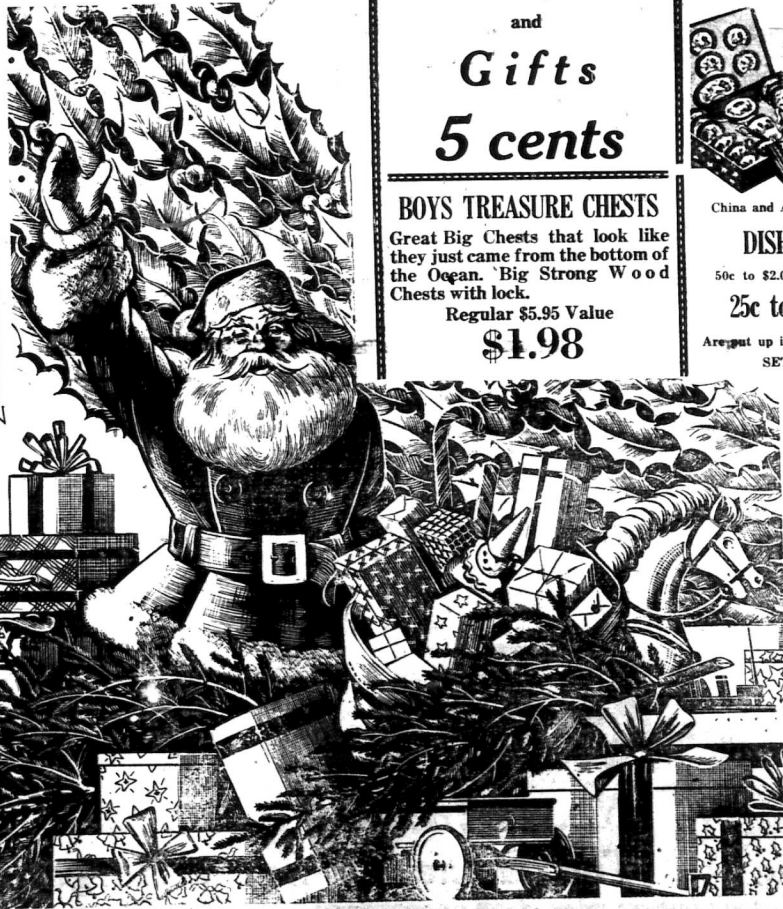
DOLL CRIBS and BASSINETS

1/2 PRICE - - - SAMPLES

Big Group Regular \$1 Asst. Toys

59c

Over 500 Toys of All Kinds In This Group



LARGE SIZE
CEDAR CHESTS
Well made. Very attractive. From
\$1.95 to \$15.00

1 - 2 PRICE

3000

REGULAR 10c

Toys

and

Gifts

5 cents

BOYS TREASURE CHESTS

Great Big Chests that look like they just came from the bottom of the Ocean. Big Strong Wood Chests with lock.

Regular \$5.95 Value

\$1.98

By far the greatest selection of dolls, and gifts this side of Louisville. Everything for women. Solid train load packed and jammed street. All to be sold at 1-2 price and less. T rush here for the most thrilling bargains ev

Wholesale Shattered HURRY!



China and Aluminum

DISHES

50c to \$2.00 Values

25c to 98c

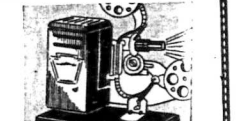
Regret up in attractive SETS

DOLL CRIBS

Extra Strong Wood

98c

Regular \$1.98 Value



MOVIE PROJECTOR

FIVE SAMPLES

Only one of each size and model. Value from \$1.95 to \$25.00

1/2 PRICE

ELECTRIC AND MARBLE GAMES

Regular \$1.00 and \$1.95

ELECTRIC GAMES

69c

BOYS CHEMISTRY SETS

AND SCIENCE SCOPES PROJECTORS AND ETC. Values from \$1.00 to \$3.95

49c to \$1.98

TOY MARKET

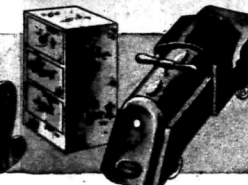
Items from one of the Nations Leading
COST - AND NOW

AT 1-2 PRICE AND LESS

Mountain Of TOYS and Other GIFTS

and all other kinds of toys
everything for boys, girls, men and
children in our store and on the
Internet. Thousands of people will
be amazed at the prices ever presented.

Low Prices
BUY! HURRY!



**PEDDLE
CARS**

All sizes. One of a kind.
Regular \$1.98 Value.

98c

Children's Large Size
LAWN SEATS
Regular \$1.00 Values

39c

**LARGE ENOUGH FOR 2
CHILDREN TO SIT ON**

WETTY DOLLS

Drinks its bottle. Wets its diaper.
Regular 75c Dolls

25c

Boy Scout Special Electric
SEMAPHORE SETS

Send signals by electricity
\$1.95 SETS

49c

GIFTS for the Home

\$5.00 Bed Spreads... \$1.98 & \$2.98
75c All Linen Tea Towels 49c pair
\$3.95 to \$7.95 Rayon Drapes Lined
Solid Colors \$1.98 & \$2.98

Samples

One only of each
item. Act quick!

One tricycle with bal-
loon tires. Reg. \$20.00
value going for
\$7.98

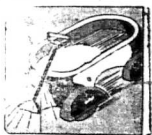
**ONE BIKE. SMALL
SIZE**
Reg. \$15.00 Value
Going for
\$5.00

Remember One Only!

**Genuine Taylor
STROLLER**
Reg. \$7.00 Value
\$3.98

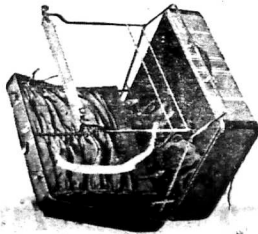
Table and Two Chairs
Regular \$1.00 Sets
49c

**AIR GUNS
FOR THE BOYS**
Reg. \$1. Guns. Large
size
49c



EXPRESS WAGON
Sturdy, rugged. Easy
steering. All metal.

LEATHER GOODS
The luxury Gift



At the head of the list of Christmas gifts that are sure of a
hearty welcome—Leather! Especially if the gift comes from
Golde's—famous for quality and reliability.

LADIES' OVERNIGHT CASE

50 SAMPLES
FITTED CASES AND DRESSER SETS
Only one of a kind. Here's where you can get your
girl a fitted set from

1-3 TO 1-2 OF REG. PRICE

4 1-2 x 4 1-2
**FELT BASE
RUGS**
Reg. \$1.25 Value
59c

**INFANTS
GIFTS**
Comb and brush sets and
many other gifts for the
babies.
1-2 PRICE

Thousands of Reg. 25c
Gifts & Toys; Choice.. **10c**



AUTOS

All metal peddle. Heavy
rubber tires. Only one
of a kind. Ten smart
styles. Value from \$12.
to \$22.50.

1-2 PRICE

GOLDE'S Dept.
Store

OPEN EVENINGS
FROM NOW 'TIL CHRISTMAS



Radio Lamp Combination

BED LAMP, TABLE LAMP AND FLOOR LAMP
WITH RADIO INCLUDED IN BASES
REG. PRICE \$22.50 TO \$49.50

Wonderful
Gifts

1-2 PRICE

\$5 & \$6 Stanlow Mechanical
Erector Sets \$1.98

Metal Fishing Rods With Reels

Regular \$1.49 Values 49c A REAL GIFT

Only One Hobby Horse You can Actually

Ride and go Places on. Its a Steal!

Regular \$15.00 Value First Come Gets It For Only **\$5** You Save Exactly **\$10.00**

**HITS FOR
LITTLE
MISSSES**



Here are stars of the
gift parade that are
sure to make big hits
with the lassies. We
guarantee their wel-
come in any little girl's
heart, and we know
you'll like the value-
giving prices.

DOLL BUGGY

Real leather top, rubber tires

Values From
\$1.98 to \$9.95

1-2 PRICE

**Maple Breakfast
SETS**

STURDY TABLE AND TWO CHAIRS
REG. \$4.00 SET FOR **\$1.98**

That Man
Is Her
A

GOLDE'S

Xmas Giving
Buying
Starts Here

Morehead, Ky. Your Gift Headquarters



Hoods and
Scarf Sets

In Christmas boxes. An ideal gift for the outdoor girl.

98c
59c

Womens SWEATERS

Who would want a nicer gift than one of these warm, fleecy, all wool sweaters. A n y style. She could want from Sloppy Joe's to fine Zephyr knits with all the fancy do-dads

Samples
98c

SPECIAL PURCHASE

SALE
LADIES GENUINE
CAPE SKIN
LEATHER COATS

Full finger-tip lengths—belted styles. Fleece lined—Samples of \$9.95

\$4.98

Special Purchase
SALE
Women's Finer
Dresses

Just in time for the Holiday Season—
All brand new midseason frocks
REG. VAL. TO \$4.95 Now \$2.98
REG. VAL. TO \$7.95 Now \$4.98
REG. VAL. TO \$12.95 Now \$7.98

Use Our Layaway
--- Plan ---
On Better Coats and Dresses, No Extra Charges



Xmas SALE Starts
Fri., Dec. 6 8:30 A. M. PRICES SHATTERED



Full Fashioned
HOSE

Irregular and dark shades of 79c and \$1. Hose. Popular brands. Holeproof Gordon's Berkshires

39 cents



Holiday
Gift Slips

Packed in Holiday Boxes. Ten styles in satins, crepes, and knits. Snip bottoms. Brassier combination slippers, lace trims and plain tailored styles—all seams taped and bound to make them absolutely rip-proof seams.

98c and \$1.95



BAGS

Big assortment of sample bags. Values to \$1.95. An array of styles. Football bags, genuine leathers, fabrics in all colors. Your choice

98 cents

Childrens
SNOW SUITS

Every kind and style. One and two piece
Val. from \$1.98 to \$7.95

From 98c to
\$4.98

Childrens
TWEED COATS

And Caps to match
98c



| | | | |
|-----|-----------------------------|-----|------------------|
| 50c | EXTRA LARGE* TURKISH TOWELS | 35c | 3 for \$1.00 |
| 39c | EXTRA HEAVY TURKISH TOWELS | 29c | |
| 35c | TURKISH TOWELS | 25c | WHITE AND COLORS |
| 25c | TURKISH TOWELS | 2 | FOR 25c |

Childrens All Wool
SNOW SUITS
Fleece lined. Knee patches. Zipper legs. Sizes from 2 to 10

\$1.98

Regular \$4.95 Values

MENS ALL WOOL MACKINAW COATS

Regular \$6.95 Value

\$4.98

Mens Mackinaw Jackets
All Wool \$3.98

SPECIAL SALE
BOX HDKFS.

1 - 2 Price
Half
Half

Ladies All Wool Sport
SCARFS
WHITE AND BRIGHT COLORS
49c & 98c

WOMENS
Outing Flannel
PAJAMAS
ALL COLORS ALL SIZES
69c

OPEN EVENINGS
FROM NOW 'TIL CHRISTMAS

27 INCH
Heavy Outing
7c Yd.

36 INCH
Brown Muslin
5c Yd.

36 INCH
Dress Prints
8c Yd.

MOUNTAIN MIST
Quilt Bats
39c

TRAIL THEATRE PROGRAM

Morehead, Ky. Phone 156

THURS. & FRI. DECEMBER 5-6
 Allan Jones, Martha Raye and Joe Fenner
"Boy's From Syracuse"
 Popular Science & News

SATURDAY, DECEMBER 7
 Big Double Feature Program
 1. "THREE MEN FROM TEXAS" with Hopalong Cassidy and Andy Clyde
 2. "THE GAY CABARET" with the Cisco Kid. Chapter 6 "King Of Royal Mounted & Carion. Continuation showing Sunday from 2:30 P. M. Notice! Big Midnight Premiere 10:30 P. M. "Rhythm On The River"

SUN. & MON. DEC. 8-9
 Bing Crosby, Mary Martin and Lilian Cornwell
"Rhythm On The River"
 News and the Big Premiere. Cent. showing Sun. 2:30-4:30 — 6:30 & 8:30

TUESDAY DEC. 10
 Madeline Carroll and Doug. Fairbanks, Jr.
"Safari"
 Chap. 4 "Winners of the West" & Short

WEDNESDAY DECEMBER 11
 Chas. Bickford and J. Craig
"South Of Karanga"
 Also Selected Short Subjects

COMING THURSDAY DECEMBER 12
 W.S.M. Grand Ole Opry's
"Jamup & Honey"
 Matinee and Night

Independent, \$1.50 Yr. **White Sale--**

Lane Funeral Home

Funeral Directors
 Ambulance Service
 Phone: 91 (Day), 174 (Night)

Dr. O. M. Lyon DENTIST

Office Phone 274 — Residence 237
 OFFICE: COZY BUILDING
 Morehead, Kentucky

(Continued from Page 1.)

months, getting ready for a last big sale of the year, so that children, my children and yours, might have the same opportunity to have art in their lives as boys and girls do who live in richer communities and who have greater opportunities. Nothing is too good for the children of Rowan County so let's show our cooperation on this date by donating and buying. We will appreciate either or both.

COME IN TODAY

View

The 1941 Lincoln
 Zephyr V-12 Club
 Coupe

Push Button Control

COLLINS MOTOR CO.

Phone 18

MOREHEAD, KENTUCKY

COAL

Stoker or Poker

CALL 71

Stoker or Furnace Nut \$2.95 ton Delivered
 All coal dust-proofed, Oil treated 15c ton extra

Special Prices on Wholesale Lots

Morehead Ice & Coal Co.

Used Cars

are our business

ANY CHEVROLET DEALER CAN SELL YOU A NEW CHEVROLET AS WELL AS WE CAN. BUT, OUR USED CARS ARE OUR OWN RESPONSIBILITY. THEY MUST BE RIGHT TO UPHOLD OUR REPUTATION FOR FAIR DEALING.

THESE CARS ARE SOLD WITH AN O. K. THAT COUNTS. LOOK THEM OVER BEFORE YOU BUY.

1938 Chevrolet Sedan

1938 Chevrolet Town Sedan

1937 Chevrolet Coupe

1931 Chevrolet Coupe

1931 Ford Coupe (Model A)

Midland Trail Garage

MOREHEAD, KENTUCKY

Future Farmers--

(Continued from Page 1.)

asily be run between the rows when the plants are up. During the month of March the following can be set:

Asparagus, Martha Washington, Cabbage, Cauliflower (see Jan.), Rhubarb, Onions, Lettuce.
 Plant the following:
 Radishes, (Rapid Red variety); Turnips, Purple top, Mustard, Southern curled, Spinach, Bloomsdale Savoy, Lettuce, Grand Rapids, Peas, Alaska or Radio.

Toward the end of the month side dress the cabbage, onions, broccoli, cauliflower, and lettuce with nitrate of soda or chicken manure. Remember to have a variety of vegetables for the table and plenty to can of those that can be preserved for winter.

SCHOOL NEWS

We are glad to have a new pupil enrolled in the eighth grade in New Home, Glenn Cox. Glenn has just recently recovered from an operation for appendicitis. Thankgiving pictures to color were given as attendance certificates. The twelve pictures selected as the best colored were used to decorate our school room.

Those having a perfect attendance record for the fifth month of school are as follows: Martha Trent, Essie Dehart, Astzona Trent, Sidney Cox, Clona Trent, Maudie Trent, Kathleen Cox, Jewell Dehart, Martha Conn, Jewel Crum, Thelma Crum, Marie Dehart, Monie Lee Dehart, Edgar Dehart, Nellie Trent, Reba Trent, Odice Trent, Dixie Cox, Beauford Trent.

Two dogs have attended the City school for four years. Mrs. Mayme Lowe, teacher, says they have learned to be quiet and also when to be noisy. If the children are quiet and at work, they take their place by the stove and sleep or watch out of the corner of their eyes, but if something funny comes up and the children laugh, the dogs jump up and wag their tails and heads and enjoy the fun too. They belong to two little boys who come to school.

The past week has been a busy

one for the Seas Branch School. A school kitchen has been installed, and each day at quarter to twelve a hot-lunch is served to the fifty-one children on their desks. The plate lunch comes out steaming hot, with at least two vegetables, perhaps a salad and very often a desert. On Monday they served soup, beans, potatoes, turnips, beets and onions. Mrs. Mabel Alvey describes the lunch as very delicious and well served as she happened to be a visitor there on that day. The child is allowed as many helpings as he desires. Nothing could be more helpful in a school than this WPA luncheon project. A hot lunch gives the child energy and better prepares him for his afternoon's work. Too, they learn comradeship, they enjoy this as a social get-together. Mrs. Laura Adkins is the cook at Seas Branch, and another is expected to help her in a few days. The first project of this kind was the Old House Creek project, directed by Eunice Cecil Cranston and Wes Cox schools are thinking of adding this project to their schools.

BOOK NOTES...

(Mr. Suth Malone Cain, Assistant Librarian, Morehead State Teachers College FICITION HEADLINERS OF THE PRESENT

Recent Fiction books, that are being re-read a lot today, will be the topic of our discussion in today's article. Practically all of these books, we are going to discuss today, and in next week's article are best sellers. They are as follows:
 1. Fedorova, Nina (The Family) Little Publishing Company, \$2.50
 The Atlantic \$10,000 Prize Novel is one of the honors that the Family won. This is a very unusual and absorbing story about a family of Russian exiles who ran a boarding house in Tientsin through its doors, pass Chinese and Japanese, Russian, English and Americans, individuals who play their parts in the life of the family.

2. Wolfe, Thomas (You Can't Go Home Again.) Harper Brothers Publishing Company, \$3.00.
 You Can't Go Home Again is one of Thomas Wolfe's most mag-

ture and thoughtful novels, entirely completed before his death. Laid in the boom of 1929, it is the story of George Webber, a gifted novelist whose first book has opened up an entirely new world to him but has turned his family and friends against him.
 3. Lotts, Noah (Hester Row.) Knopf Publishing Company, \$2.50.
 Hester Row runs away from the English inn where she has been brought up, falls into low company, and is shipped to the West Indies, where, eighteen and very beautiful, she finds that life is just beginning for her. A picturesque 18th century romance by the author of (Cain Lowrie) and (I Met A Gypsy).

4. Storn, Hans Otto (Count Ten.) McGraw-Hill Publishing Company, \$2.50.
 This is an attempt to depict an average American's search for a pattern of living in our time--telling the life and loves and grow-pains of Eric Maraden from boyhood to maturity.

CASKEY TAXI

OPERATING FROM THE SAME OLD STAND

PHONE 33

OREAR CASKEY, Owner

Dr. L. A. Wise

Has moved to the J. A. Bays Jewelry Store where he will be located every Friday, examining eyes and fitting glasses.

CALL CITY CAB PHONE 86
 QUICK - COURTEOUS SERVICE
 Owned and Operated by VAN CASKEY

CARD OF THANKS

We take this method of thanking each and everyone for their kind deeds of sympathy during the death of our husband and father, James W. Adkins, especially Bro. Lyons and the singers of the Church of God, and the Ferguson Funeral Home.
 May God bestow His richest blessings upon each and everyone of you is our wish.

MRS. J. W. ADKINS AND FAMILY

Independent \$1.50

COAL FOR SALE AT THE Star Hill Coal Mines
 Located 8 Miles East of Glasgow
\$2.45 and \$2.60 PER TON
B. F. Morrison
 RUSH, KY.



Holiday FOOD SPECIALS

"Come and get it"—stock up now for that big holiday dinner and save money on the choicest foods. Our stocks are replete with special holiday values that give the family budget a big lift. Phone orders carefully filled and promptly delivered.

Birds, Eye Brand Frosted Foods, Nuts, Fruits, Vegetables, Fresh Meats, Chickens and Turkeys.

I G A Grocery
 PHONE 44

ECONOMY COAL
 STEAM AND DOMESTIC
LUMP-EGG-NUT-STOKER
 Machine Mined and Shaker Screened

WILLARD COAL CORPORATION
 (Mines Located at Willard, Kentucky)

J. L. BOGCESS, Pres. PHONE 265
 C. B. LANE, Secy. PHONE 91

Yeo-o-OW! We're **CLEARIN' THE CORRAL!**

ALL OUR 1-2-3 YEAR OLD CARS!

Swap your old dobbie for a Blue-Blood Bargain! Prices Smashed! Here's the year's big opportunity! Ride a winner! Save! Act now!

A Word to Stay-at-Home Husbands!

A change of scene is as welcome to a wife as a new hat. And it doesn't hurt you, either! So why don't you and the "little woman" have yourselves a fling in Louisville soon?

When it comes to flings—there's no place in the South quite equal to the Bluegrass Room. Here you can enjoy the best food, dance (or just listen!) to excellent music, and see not one, but two floor shows—all for as little as two or three dollars!

That's the way to "step out" in style—without unbalancing the budget!

THE BROWN HOTEL
 Louisville's Largest and Finest
 HAROLD E. HARTER, Manager

TRADE!—HERE'S A WHOLE HERD to choose from! Almost every popular make and model! Many extra on feed! Many with good shoes! All frisky and full of thousands of miles!

TRADE!—PRICES ARE DOWN! Value is up! These good cars must be moved—to cut our mounting maintenance costs! See them! Try them! Make any reasonable bid! And you can get your choice!

TRADE!—DO IT NOW! Retire "old faithful" before those "doctor bills" climb any higher! Drive a blue-blood—an up-to-date car you can have confidence in—a car that'll look smart for a long, long time to come!

| | | | | | |
|--|-------|--|-------|---|-------|
| 1939 Dodge Four Door Sedan. Good tires, runs like new. Bargain | \$545 | 1940 Ford Coupe. only 12,000 miles. Get him before he breaks loose | \$575 | 1934 Chevrolet Tudor. Would be a fine one to hitch up for Sunday drives | \$175 |
| 1940 Dodge Coupe. good as new. Perfect mechanical condition | \$695 | 1938 Ford DeLuxe Tudor. Lead this one home for only | \$395 | 1939 Dodge 1.2 Ton Pickup. This one rearin' to go for only | \$375 |
| 1939 Ford DeLuxe Sedan. Sound as a drum. Dependable | \$625 | 1937 Chevrolet Sedan. Good shoes. Grab him while grabbing is good | \$325 | 1939 Ford 1.2 Ton Pickup. Get this one before he jumps our fence | \$375 |
| 1939 Ford Tudor Sedan. longing for the wide-open spaces | \$575 | 1937 Ford Tudor 60. We will let you have this one for only | \$295 | 1938 Ford 1.2 Ton Pickup. Best this one in your stall for low price of | \$345 |

Collins Motor Co.
 Main Street Phone 18 Morehead, Ky.

Trade while Trading's Good—at your FORD DEALER'S

Social & Personal
Phone - 235

Woman's Club Christmas Decoration Drive... The Morehead Women's Club will again sponsor the Christmas Decoration Contest... Each year the Christmas decorations of the Morehead homes become more beautiful and...

Christmas programs presented in the entire choir under the leadership of Mr. L. E. Williams will be presented...

Missionary Society To Meet Thursday... The Missionary Society of the Christian Church will meet at the home of Miss Inez Faith Humphrey...

Honor Girl Scouts are Selected... For the first time the organization of the Morehead Troop of Girl Scouts, "Honor Scouts" have been selected...

Woman's Club in Meeting at Home of Mrs. H. C. Hagan... The Morehead County Women's Club met at the home of Mrs. H. C. Hagan last Tuesday evening...

Revival began at the Church of God Sunday evening... A revival began at the Church of God Sunday evening which has continued through the week and...

Russell... Thursday & Friday... Saturday & Sunday... Monday & Tuesday... Wednesday & Thursday... Friday & Saturday... Sunday & Monday... Tuesday & Wednesday... Thursday... Friday... Saturday... Sunday

Mr. and Mrs. E. W. McKinney and son, Charles, spent Thursday with their daughter... Miss Louise Caudill, chairman of the Social Studies Committee...

Miss Leola Margaret Caudill who is the newly-elected director of Health Education in the Lexington Y.W.C.A. visited her mother...

Mr. and Mrs. B. W. Cornette of Ashland visited at the home of Mr. Cornette's father, D. B. Cornette over the weekend...

Richard Walker has arrived from Peoria, Illinois, to be with his grandfather, Mr. J. F. Walker who continues ill, though he is holding his own...

The Morehead Merchant's Club will meet at the Methodist Church at 6:30 P. M. on Thursday evening in addition to the regular business election of officers will be held...

Mrs. Naomi Claypool will be the speaker at the Louisa Woman's Club on Friday... Mrs. Clarence Allen, Mrs. C. W. Arnold, Mrs. Dave Caudill and Mrs. Garland Collins shopped in Cincinnati on Tuesday...

Misses Braun, Moore and Paulson of the Breck Training School were in Cincinnati November 30 to hear Jascha Heifetz, violinist...

Miss Edna Neal, critic teacher at Breckinridge Training School, will speak to the Women's Club in West Liberty, Tuesday evening, December 17...

Professor G. C. Banks of Morehead College was the speaker before the Mason County Teachers meeting held in the Presbyterian Church, Maysville, Monday evening...

Mrs. Myrtle Hall and Miss Margaret Findlay were visitors in Mt. Sterling on Saturday... Dr. and Mrs. N. C. Marsh visited Dr. Marsh's parents in Cynthia last weekend...

Mr. and Mrs. Ray Wendell were in Carlisle Tuesday on business... Mrs. E. D. Patton and Mrs. C. F. Kessler were in Ashland Tuesday to see the Christmas Parade...

Mrs. A. W. Young went to Louisville on Wednesday to consult Dr. Irvin Abel under whose care she has been for some time... Mr. and Mrs. B. F. Penix, Miss Doris Penix and Miss Margaret Penix visited their daughter, Elizabeth in Dayton on Sunday...

Mrs. Naomi Claypool will be the speaker at the Louisa Woman's Club on Friday... Mrs. Clarence Allen, Mrs. C. W. Arnold, Mrs. Dave Caudill and Mrs. Garland Collins shopped in Cincinnati on Tuesday...

Think On These Things... 'Tis not enough that Christ was born Beneath the star that shone, And earth was set that blestled morn Within a golden zone...

MALE HELP WANTED... STEADY WORK—GOOD PAY... RELIABLE MAN WANTED to call on farmers in Rowan County...

FOR SALE... ONE-HALF TON, 1928 FORD V-8 PICKUP Truck, Model 85, Looks and runs like new...

ADMISSION... Matinee 10c-15c—After 6 P. M. 10c-15c

When Lizio, an Italian, was a child of the death of his dissipated son, he replied, "It's no news to me; he never was alive."

MILLS THEATRE... THURSDAY & FRIDAY... "LONE WOLF KEEPS A DATE"...

SATURDAY DOUBLE FEATURE... "BEYOND THE SACRAMENTO"...

SUNDAY & MONDAY... "LONG VOYAGE HOME"...

TUESDAY & WEDNESDAY... "LIL ABNER"...

A JOYOUS CHRISTMAS FOR THE D-E-A-F-E-N-E-D... THE NEW VACUUM TUBE ACOUSTICON... Hear Easily and Naturally With This Amazing New Aid... A Demonstration Monday, Dec. (9th.) AT OFFICE OF GEO. C. DEVINE OPTOMETRIST... 132 Market Street, Maysville, Kentucky... CHARLES L. BOBBITT, M.D.

MILLS THEATRE
Sunday and Monday
Continous Showing Sun. From 2 P.M. Midnight Premier Sat. 11 P.M.

The searing loves and primitive hatreds of the men who live by the sea! A story that only Eugene O'Neill could tell! The greatest of America's playwrights and the most gifted of directors bring you the mightiest sea drama ever filmed... played by a brilliant cast!... The LONG VOYAGE HOME... JOHN WAYNE MITCHELL HUNTER... JOHN THOMAS IAN WAYNE FITZGERALD WILFRID LAWSON JOHN QUALEN MILDRED NATWICK... Directed by JOHN FORD

Trimble Theatre... OLIVE HILL, KY. DEC. 22-23... Down Home at Pine Ridge with the home... philoposophers of the air in the story they searched five years to find!... SATURDAY DECEMBER 7... "BLAZING SIX SHOOTERS" Charles Starrett... SUNDAY DECEMBER 8... "BLONDIE PLAYS CUPID" Penny Singleton-Arthur Lake... MONDAY & TUESDAY DECEMBER 9-10... "LEATHER PUSHERS" Rickie Allen-Audrey Arden... WED. & THURS. DECEMBER 11-12... "TIN PAN ALLEY" Alice Faye-Betty Grable... Tabb Program... SATURDAY DECEMBER 7... "MIDNIGHT LIMITED" Serial and Shorts... SUNDAY DECEMBER 8... "HIDDEN ENEMY" News and Shorts

DIXIE THEATRE... OLIVE HILL, KY. DEC. 22-23... Down Home at Pine Ridge with the home... philoposophers of the air in the story they searched five years to find!... SATURDAY DECEMBER 7... "BLAZING SIX SHOOTERS" Charles Starrett... SUNDAY DECEMBER 8... "BLONDIE PLAYS CUPID" Penny Singleton-Arthur Lake... MONDAY & TUESDAY DECEMBER 9-10... "LEATHER PUSHERS" Rickie Allen-Audrey Arden... WED. & THURS. DECEMBER 11-12... "TIN PAN ALLEY" Alice Faye-Betty Grable... Tabb Program... SATURDAY DECEMBER 7... "MIDNIGHT LIMITED" Serial and Shorts... SUNDAY DECEMBER 8... "HIDDEN ENEMY" News and Shorts