

# Photo

University Communications

Pauline Young, Director

Morehead State University

UPO Box 1100

Morehead, KY 40351-1689

(606) 783-2030

## MSU STUDENTS WILL SING FOR THE COMMUNITY

The Morehead State University choirs will present a "Carol Concert" on Tuesday, Dec. 7, at 8 p.m. in Duncan Recital Hall on the campus in a performance that is free and open to the public. Among the student performers are, front row from left, Rebecca Adams, a **Morehead** freshman; Libby Adkins, a **Salt Lick** senior; and Marie Abner, a **Morehead** freshman. Back row from left, Olivia Evans, a **Morehead** senior; Jonathan Adkins, a **Salt Lick** senior; and Liz Mraz, a **Morehead** freshman. The program will feature the Concert Choir, Chamber Singers, University Chorus, and the Men's and Women's Choruses, all under the direction of Dr. Greg Detweiler, assistant professor of music. Throughout the evening, the audience will join the choirs to sing carols. Jonathan Adkins will conduct "Still, Still, Still," which will be sung by the University Chorus.

(MSU photo by Tim Holbrook)

12-2-99rdm

MSU is an affirmative action equal opportunity educational institution.



# News

University Communications

Pauline Young, Director

Morehead State University

UPO Box 1100

Morehead, KY 40351-1689

(606) 783-2030

Dec. 3, 1999

FOR IMMEDIATE RELEASE

MOREHEAD, Ky.---Lisa Dawn Burriss of **Vanceburg** will be the student speaker for Morehead State University's Winter Commencement, which will be held on Saturday, Dec. 18, at 10:30 a.m. in Academic-Athletic Center.

Approximately 500 graduate and undergraduate students are candidates for degrees to be conferred by MSU President Ronald G. Eaglin. Also during the ceremonies, the honorary Doctor of Humanities degree will be presented to Josephine D. Richardson of **Whitesburg**, a former community journalist and social worker who operates a mountain crafts outlet. The honorary Doctor of Public Service degree will be awarded to John M. Rosenberg of **Prestonsburg**, director of the Appalachian Research and Defense Fund of Kentucky.

An honors graduate, Burriss will receive a bachelor's degree with a major in English and a minor in technical communications. Nominated as the outstanding English student of the year for 1999, she was a Dean's List student each semester of her college career.

A graduate of Lewis County High School, Burriss is the daughter of Roger and Vickie Burriss. She is a member of Delta Gamma social sorority and Sigma Tau Delta honor society.

While an MSU student, Burriss worked for Lexmark International, Inc. in Lexington where she began as a technical writer. During two summers, she completed a cooperative education experience where she was a member of a team that completed such projects as book development. In the next year and a half, she was a technical writer, editing printer manuals and compiling books using FrameMaker software and developing desktop publishing skills. During the last year she was the lab manager for the Lexmark project and served as the liaison between MSU and the main office, supervising trainees and making assignments to other writers.

Once degrees are conferred, the new graduates will be greeted by MSU Alumni Association president, Janet Coakley of **Harrison, Ohio**.

Dr. L.K. Williams, professor of accounting and recipient of the 1999 Distinguished Teacher Award, will be the grand marshal, with Dr. Frances Helphinstine, professor of English, serving as faculty marshal.

(MORE)

Winter Commencement 1999  
2-2-2-2

Student marshals will be Ali Alvizadeh of **Morehead**, representing Graduate Programs; Dan J. Osborn, **Thealka** junior, and Eric R. Hudson, **Lost Creek** senior; College of Science and Technology; Holly Bumgardner, **Morehead** sophomore, and Rob Nester, **Jeffersonville** sophomore, College of Business; Sarah Lochow, **Morehead** senior, and Lara Plumley, **Lexington** senior, College of Education and Behavioral Sciences; and Joel Chaffins, **Morehead** senior, and Ada Lewis, **Olive Hill** junior, Caudill College of Humanities.

A reception for graduates and their families, co-sponsored by the MSU Alumni Association, will be hosted by each of the college's deans and faculty immediately following the ceremony.

For additional information, you may call the Office of the Registrar at (606) 783-2008.

####

# News

University Communications

Pauline Young, Director

Morehead State University

UPO Box 1100

Morehead, KY 40351-1689

(606) 783-2030

Dec. 3, 1999

FOR IMMEDIATE RELEASE

MOREHEAD, Ky.--A new partnership is evolving in the eastern region of Kentucky designed to bring representatives of higher education, pre-kindergarten, elementary, middle and secondary education to the same table with other interested community stakeholders to address issues of student achievement and success.

The Appalachian P-16+ Council will convene for the first time on Thursday, Dec. 9, from 1 to 4 p.m. in the Riggle Room of the Adron Doran University Center on the Morehead State University campus.

The Council is comprised of presidents and chief academic officers of both public and private universities, community colleges and technical schools, superintendents of several regional school districts, representatives of business and industry and local governments, as well representatives of the Kentucky Department of Education, the Kentucky Council on Postsecondary Education, the Kentucky Educational Development Corporation, the Kentucky Education Professional Standards Board and the Prichard Committee.

"The work of this Council will complement the work of the recently established Kentucky P-16+ Council organized to address state-level issues and concerns," said Dr. Ronald G. Eaglin, president of Morehead State University and co-chair of the regional council effort. "There are several problems unique to our region that also must be addressed, and this is an opportunity for those of us in East Kentucky to come together in a way that has not happened before." The Council is also being co-chaired by President Angeline Dvorak of Ashland Community College and Larry Graves, superintendent of Ashland Independent School District.

The Council's agenda will include a presentation of the national trend of P-16 councils by Paul Ruiz of the Education Trust, a private association based in Washington, D.C., and a presentation of the State P-16+ Council in Kentucky by Jim Applegate of the Kentucky Council on Postsecondary Education. A case will be made for forming P-16 regional councils in Kentucky and the Council members will address business issues related to staffing, funding and taking on tasks related to the improvement of student performance from pre-kindergarten through college and beyond.

"This is truly a significant happening for all of us who are committed to strengthening the success of all students in our region," concluded Dr. Eaglin.

####

# News

University Communications

Pauline Young, Director

Morehead State University

UPO Box 1100

Morehead, KY 40351-1689

(606) 783-2030

Dec. 3, 1999

FOR IMMEDIATE RELEASE

MOREHEAD, Ky.---Students from Morehead State University will be members of the All-College Band that will participate in the inaugural activities when Gov. Paul Patton ushers in his second term of office.

The 200 member intercollegiate band will march in the governor's parade that begins at 10 a.m. in Frankfort. The band will be part of the third division of the parade, according to John Fannin, assistant professor of bands at Murray State University, who is the parade coordinator.

The inaugural parade, which will include 89 other marching bands along with five former governors and state dignitaries, is slated for Tuesday, Dec. 7, beginning at 10 a.m. at the intersection of West Main and Washington Streets in Frankfort.

The parade will proceed up Main Street to Capitol Avenue where it will pass the governor's reviewing stand and end at the state capitol building, according to information from the governor's office.

Among the 28 MSU students participating in the event are: Julie Ackman, the daughter of Bill and Ruth Ann Ackman, plays horn. A senior music education major from **Falmouth**, she is a member of the MSU Symphony Band, Sigma Alpha Iota international women's music fraternity, MSU Marching Band and serves as a student director of the MSU basketball band.

Faith Adams, the daughter of Steve Adams and a **Russell** sophomore, plays horn. Tara Age, the daughter of Debby and Kevin Age and a sophomore music education major from **Louisville**, serves as a guard. She is a member of Sigma Alpha Iota and MSU Concert Band.

Wendy Amburgey, the daughter of Jim and Linda Amburgey and a sophomore communications major from **Letcher**, plays trumpet. She is a member of the MSU marching and concert bands. Rob Arnold, the son of Linda Arnold and a **London** sophomore, will be the drum major.

Tracee Blackstock, the daughter of Jon Blackstock and Molly Blackstock, is a senior music education major from **Ironton, Ohio**, and band assistant. She is a member of Sigma Alpha Iota, Sigma Sigma Sigma and the Percussive Arts Society. Jeanie Branham, a **Prestonsburg** sophomore and the daughter of Eugene Branham, plays clarinet.

(MORE)

Inaugural Parade  
2-2-2-2

Amber Broadnax, a **Cincinnati** sophomore and the daughter of Robin Broadnax, is a guard. Anthony Capalad, the son of Elpinio and Barbra Capalad and a junior communications major from **Norton, Va.**, plays tenor drum. He is a student of Frank Oddis, associate professor of music, and a member of Phi Mu Alpha music fraternity.

Kyle Dixon, the son of Butch and Lynne Dixon and a senior music education major from **Greenup**, is a band assistant. He is a member of Phi Mu Alpha, MSU symphony and concert bands and a student director of the basketball band. Eric J. Dykes, the son of Jenny Lou Dykes and a senior music education major from **Science Hill**, plays tuba. He is a member of T.U.B.A. and the MSU Concert Band.

Julia Graepel, a **Morehead** senior and the daughter of Ursula Graepel, plays flute. Rhiannon Hedrick, the daughter of Bill Hedrick and a **Prestonsburg** junior, is a band assistant. Kevin Hogle, the son of Darlene Coots and a senior percussion major from **Newport**, plays cymbal. He is a student of Oddis and a member of Phi Mu Alpha.

Jason Hurd, the son of Claude Hurd and a sophomore music education from **Indianapolis**, will play the trombone. He is a member of Phi Mu Alpha and MSU Concert Band. Rebecca May, the daughter of Dennis and Jackie May and a senior elementary education major from **Brandenburg**, will play the flute. She is a member of Sigma Alpha Iota and MSU Marching Band and is the principal flute for MSU's Concert Band.

Jeremy E. Miller, the son of Don and Vicki Miller and a senior music and real estate major from **Claypool, Ind.**, will play the snare drum. Aaron Nicholson, the son of Timothy Nicholson and a **West Baden, Ind.** senior, will play baritone.

Shaun R. Popp, the son of Raymond and Sharon Popp and a senior music education major from **Sassafras**, will play alto saxophone. He is a member of Phi Mu Alpha and MSU Symphony Band. Robert Scheeler, the son of Robert and Linda Scheeler and a senior music education major from **Grove City, Ohio**, will play bass drum. He is a member of Phi Mu Alpha.

Chris Schmidt, the son of Rose Durbin and a senior music major from **Elizabethtown**, will play tuba. He is a member of T.U.B.A. and MSU Symphony Band. Jim Shepherd, the son of Judy Shepherd and a senior music education major from **Prestonsburg**, will play trumpet. He is a member of the Symphony Band, Concert Choir and Phi Mu Alpha.

(MORE)

Inaugural Parade  
3-3-3-3

Chad M. Sheridan, the son of Phillip and Brenda Sheridan and a senior music education major from **Pleasant Hill, Ohio**, will play alto saxophone. He is a member of MSU Symphony Band and Phi Mu Alpha. Brian Silvey, the son of Allen and Diane Silvey and is a senior music education major from **Maysville**, will play trombone. He is a member of Phi Mu Alpha, Pi Kappa Lambda and MSU symphony and concert bands.

Alyssa Stevens, the daughter of Hershell and Joy Stevens and a junior music education major from **West Liberty**, will play trumpet. She is a member of MSU marching and symphony bands and Sigma Alpha Iota. Heather Walton, the daughter of Pat Walton and a sophomore music education major from **Ashland**, will play clarinet. She is a member of MSU Symphony Band and Rejoice Wind Ensemble.

B. Matt Voiles, the son of Bruce and Arlene Voiles and a senior music education major from **Jamestown, Ohio**, will be a band assistant. He is a member of MSU marching and concert bands.

####

rdm

MSU is an affirmative action equal opportunity educational institution.

# Photo

University Communications

Pauline Young, Director

Morehead State University

UPO Box 1100

Morehead, KY 40351-1689

(606) 783-2030

## MSU STUDENTS WILL PARTICIPATE IN INAUGURAL PARADE

Students from Morehead State University will join other students from across the state in the all-collegiate band that will perform at the Inaugural Parade that begins at 10 a.m. on Tuesday, Dec. 7, in Frankfort when Gov. Paul Patton ushers in his second term of office. Participating will be, front row, from left, Shaun Popp, a **Sassafras** senior; Matt Voiles, a **Jamestown, Ohio**, senior; Tara Age, a **Louisville** sophomore; Faith Adams, a **Russell** sophomore; Heather Walton, an **Ashland** sophomore; Aaron Nicholson, a **West Baden, Ind.**, senior; Tracee Blackstock, an **Ironton, Ohio**, senior. Second row, from left, Anthony Capalad, a **Norton, Va.**, junior; Wendy Amburgey, a **Letcher** sophomore; Kyle Dixon, a **Greenup** senior; Rebecca May, a **Brandenburg** senior; Kevin Hogle, a **Newport** senior; Jeremy Miller, a **Claypool, Ind.**, senior; Jason Hurd, an **Indianapolis** sophomore; Third row, from left, Chris Schmidt, an **Elizabethtown** senior; Eric Dykes, a **Science Hill** senior; Julie Ackman, a **Falmouth** senior; Jim Shepherd, a **Prestonsburg** senior; Rob Scheeler, a **Grove City, Ohio**, senior; Chad Sheridan, a **Pleasant Hill, Ohio**, senior; and Brian Silvey, a **Maysville** senior. Also participating but not in photo are Julia Graepel, a **Morehead** senior; Rob Arnold, a **London** sophomore; Jeanie Branham, a **Prestonsburg** sophomore; Alyssa Stevens, a **West Liberty** junior; Amber Broadnax, a **Cincinnati** sophomore; and Rhiannon Hedrick, a **Prestonsburg** junior.

(MSU photo by Tim Holbrook)

12-3-99 rdm





# News

University Communications

Pauline Young, Director

Morehead State University

UPO Box 1100

Morehead, KY 40351-1689

(606) 783-2030

Dec. 3, 1999

FOR IMMEDIATE RELEASE

MOREHEAD, Ky.---As the holidays approach, Morehead State University's Minority Student Services will host a special celebration for its students.

On Dec. 15, the students will celebrate Kwanzaa and graduation, according to Peggy Overly, minority student affairs coordinator. The festivities will begin at 7 p.m. in the Commonwealth Room of the Adron Doran University Center.

During the celebration, graduating seniors will receive a special certificate and a kentu (a stole), which they will wear during the University's commencement exercises slated for Saturday, Dec. 18, at 10:30 a.m. in the Academic-Athletic Center.

MSU's Black Gospel Ensemble will sing for the group before the banquet, and following the meal, Dr. Roger Cleveland of Frankfort, a consultant in the Kentucky Department of Education's Division of Equity and an MSU alumnus, will be the guest speaker.

The Kwanzaa holiday was started in 1966 by Dr. Maulana Karenga, a professor at California State University. The celebration's name is Swahili for "the first fruits," and it encourages African Americans to reflect upon their African roots as well as their present life in America.

During the meal, a centerpiece of fruits and vegetables will adorn the table and given to the students to take home after the celebration.

"Kwanzaa was developed to encourage use of the major principals, those things you can use year-round." Overly said. "It's a really special time."

There are seven principals of Kwanzaa, which Overly assigns to students to research and present to the group during their celebration. They are unity, self-determination, collective work and responsibility, cooperative economics, purpose, creativity and faith.

Additional information on the celebration is available from Overly at (606) 783-2129.

####

rdm

# News

University Communications

Pauline Young, Director

Morehead State University

UPO Box 1100

Morehead, KY 40351-1689

(606) 783-2030

Dec. 3, 1999

FOR IMMEDIATE RELEASE

MOREHEAD, Ky.---Morehead State University has received a grant to provide Upward Bound services to Greenup County High School students.

An academic program, Upward Bound was designed to help students prepare for college. The program consists of monthly activities during the school year as well as an academic six-week residential program on the MSU campus during the summer.

Upward Bound is now recruiting freshmen and sophomores at Greenup County High School. To qualify for the program, a student must be a potential first-generation college student and/or meet federal income guidelines and have academic potential.

Representatives from MSU's Upward Bound program will visit Greenup County High School on Thursday, Dec. 16, to talk with students and answer any questions. Additional information is available from the GCHS guidance counselor or MSU's Upward Bound office at 1-800-5UPWARD.

####

# News

University Communications

Pauline Young, Director

Morehead State University

UPO Box 1100

Morehead, KY 40351-1689

606-783-2030

Dec. 3, 1999

FOR IMMEDIATE RELEASE

MOREHEAD, Ky.---Invitations are in the mail for Morehead State University's annual holiday dinner party to be held on Friday, Dec. 17, in the Adron Doran University Center.

The evening, hosted by President and Mrs. Ronald G. Eaglin, begins with hors d'oeuvres at 6:30 p.m., followed by dinner and holiday entertainment. The theme will be "A Dickens Holiday."

"Each year, Bonnie and I look forward to greeting friends, from the campus and the region, on this festive occasion," Dr. Eaglin said. "This campus tradition allows us to launch the holiday season with friends."

Tickets for the dinner are \$17.50 per plate and must be purchased and picked up by 4:30 p.m. on Friday, Dec. 10, according to Susette Redwine, co-chair of the dinner party committee. Reservations may be made for tables of up to eight persons by calling (606) 783-2071.

Charles Dickens, portrayed by Dr. Michael Moore, executive vice president for academic affairs, will welcome the guests.

MSU students will provide songs of the season for the evening's entertainment. Debralee Sullivan, a Falmouth senior, will perform during the reception period. The dinner program will be provided by MSU's Chamber Singers, under the direction of Dr. Greg Detweiler, assistant professor of music. Heather Brown, a West Van Lear senior, will provide piccolo accompaniment for the singers.

The holiday dinner party committee also includes Alan Baldwin, co-chair; Yvonne Baldwin, Jean Besant, Larry Besant, Roger Barker, Dee Biebighauser, Darin Blackburn, Susan Creasap, Bonnie Eaglin, Dennis McKay, Brenda Malinauskas, Marilyn Moore, Betty Philley, Janet Ratliff and Detweiler.

####

rdm

# Tips

---

University Communications

Pauline Young, Director

---

Morehead State University

UPO Box 1100

Morehead, KY 40351-1689

(606) 783-2030

## HIGHLIGHTS AT MOREHEAD STATE UNIVERSITY

(Dec. 12-18)

### Sunday, Dec. 12

Concert: MSU Orchestra, Duncan Recital Hall, Baird Music Hall, 3 p.m., free,  
Adam Crane, director. Additional information: (606) 783-2473.

Concert: MSU Fusion Ensemble, Duncan Recital Hall, Baird Music Hall, 8 p.m., free.  
Additional information: (606) 783-2473.

### Tuesday, Dec. 14

Senior Recital: Norvel Perkins, baritone, Duncan Recital Hall, Baird Music Hall, 8 p.m., free.  
Additional information: (606) 783-2473.

### Wednesday, Dec. 15

Kwanzaa Celebration, Commonwealth Room, Adron Doran University Center, 7 p.m.  
Additional information: (606) 783-2129.

### Friday, Dec. 17

Holiday Dinner Party: "A Dickens Holiday," Crager Room, Adron Doran University  
Center, hors d'oeuvres, 6:30 p.m., dinner to follow, charge. Additional information:  
(606) 783-2071.

### Saturday, Dec. 18

Winter Commencement, Academic-Athletic Center, 10:30 a.m. Additional information:  
(606) 783-2008.

####

12-7-99rdm

## FEBRUARY HIGHLIGHTS AT MOREHEAD STATE UNIVERSITY

Feb. 4, OVC Rifle Championship, Button Drill Room, all day, free. Additional information (606) 783-2088.

Feb. 4, Eagle Tennis: MSU vs. University of Dayton, George Sadler Courts, 6 p.m., free. Additional information: (606) 784-4066.

Feb. 5-6, OVC Rifle Championship, Button Drill Room, all day, free. Additional information (606) 783-2088.

Feb. 10, Lady Eagle Basketball: MSU vs. Tennessee State University, Academic-Athletic Center, 5:45 p.m., charge. Additional information: (606) 783-2126.

Feb. 10, Eagle Basketball: MSU vs. Tennessee State University, Academic-Athletic Center, 8 p.m., charge. Additional information: (606) 783-2087.

Feb. 12, Lady Eagle Basketball: MSU vs. Austin Peay State University, Academic-Athletic Center, 1 p.m., charge. Additional information: (606) 783-2126.

Feb. 12, Eagle Basketball: MSU vs. Austin Peay State University, Academic-Athletic Center, 3:45 p.m., charge. Additional information: (606) 783-2087.

Feb. 17, Allied Health Job Fair, Crager Room, Adron Doran University Center, 1-4 p.m. Additional information: (606) 783-2233.

Feb. 19, Eagle Baseball: MSU vs. Indiana University-Southeast, Allen Field, free, 1 p.m. Additional information: (606) 783-2882.

Feb. 19, Eagle Baseball: MSU vs. Transylvania University, Allen Field, free, 1 p.m. Additional information: (606) 783-2882.

Feb. 22-27, Theatre: "Electra," Button Auditorium, 8 p.m., except Feb. 27 at 2 p.m., charge. Additional information: (606) 783-2170.

Feb. 24, Red Cross Blood Drive, Crager Room, Adron Doran University Center, 9 a.m.-4 p.m.

Feb. 24, Lady Eagle Basketball: MSU vs. Southeast Missouri State University, Academic-Athletic Center, 5:45 p.m., charge. Additional information: (606) 783-2126.

Feb. 24, Eagle Basketball: MSU vs. Southeast Missouri State University, Academic-Athletic Center, 8 p.m., charge. Additional information: (606) 783-2087.

(MORE)

## FEBRUARY HIGHLIGHTS

2-2-2-2

- Feb. 26, Preview Day, Crager Room, Adron Doran University Center, noon. Additional information: (606) 783-2000 or (800) 585-6781.
- Feb. 26, Lady Eagle Basketball: MSU vs. Eastern Illinois University, Academic-Athletic Center, 5:45 p.m., charge. Additional information: (606) 783-2126.
- Feb. 26, Eagle Basketball: MSU vs. Eastern Illinois University, Academic-Athletic Center, 8 p.m., charge. Additional information: (606) 783-2087.
- Feb. 26, Eagle Baseball: MSU vs. University of Toledo, double header, Allen Field, free, noon. Additional information: (606) 783-2882.
- Feb. 19, Eagle Baseball: MSU vs. University of Toledo, Allen Field, free, 1 p.m. Additional information: (606) 783-2882.
- Feb. 29, Spring Job Fair, Crager Room, Adron Doran University Center, 10 a.m.-1 p.m. Additional information: (606) 783-2233.

**Due to early press deadlines, some listings may be subject to change.**

12-8-99rdm

####

# Tips

University Communications

Pauline Young, Director

Morehead State University

UPO Box 1100

Morehead, KY 40351-1689

(606) 783-2030

## JANUARY HIGHLIGHTS AT MOREHEAD STATE UNIVERSITY

- Jan. 3, MSU offices reopen following holiday break, 8 a.m.
- Jan. 3, Lady Eagle Basketball: MSU vs. Oakland University, Academic-Athletic Center, 7 p.m., charge. Additional information: (606) 783-2126.
- Jan. 5-7, Registration for Spring semester, Crager Room, Adron Doran University Center. Classes begin Jan. 10, 8 a.m. Additional information: (606) 783-2008.
- Jan. 6, Lady Eagle Basketball: MSU vs. Tennessee Tech, Academic-Athletic Center, 5:45 p.m., charge. Additional information: (606) 783-2126.
- Jan. 6, Eagle Basketball: MSU vs. Tennessee Tech, Academic-Athletic Center, 8 p.m., charge. Additional information: (606) 783-2087.
- Jan. 8, Eagle Basketball: MSU vs. Middle Tennessee State University, Academic-Athletic Center, 1 p.m., charge. Additional information: (606) 783-2087.
- Jan. 8, Lady Eagle Basketball: MSU vs. Middle Tennessee State University, Academic-Athletic Center, 3:15 p.m., charge. Additional information: (606) 783-2126.
- Jan. 17, Dr. Martin Luther King, Jr. Holiday; no classes or office hours.
- Jan. 17, Martin Luther King, Jr. Unity in the Community March, Eagle monument (free speech area), 6:30 p.m. Additional information: (606) 783-2668.
- Jan. 18, Central Kentucky Blood Center Blood Drive, Button Drill Room, 10 a.m.-5 p.m.; also Jan. 19. Additional information: (606) 276-2534.
- Jan. 20, Lady Eagle Basketball: MSU vs. University of Tennessee-Martin, 5:45 p.m., Academic-Athletic Center, charge. Additional information: (606) 783-2126.
- Jan. 20, Eagle Basketball: MSU vs. University of Tennessee-Martin, 8 p.m., Academic-Athletic Center, charge. Additional information: (606) 783-2087.
- Jan. 22, Lady Eagle Basketball: MSU vs. Murray State University, Academic-Athletic Center, 5:45 p.m., charge. Additional information: (606) 783-2126.
- Jan. 22, Eagle Basketball: MSU vs. Murray State University, Academic-Athletic Center, 8 p.m., charge. Additional information: (606) 783-2087.

**Due to early press deadlines, some listings may be subject to change.**

12-8-99rdm

####

# Photo

University Communications

Pauline Young, Director

Morehead State University

UPO Box 1100

Morehead, KY 40351-1689

(606) 783-2030

## PUBLIC SAFETY NAMES EMPLOYEE OF YEAR

Morehead State University's Office of Public Safety has named Kenneth R. Fouch, right, a police telecommunicator, as its Employee of the Year. The **Morehead** resident has been with the University since 1992. In December he will begin the 16-week police officer basic training course through the Kentucky Department of Criminal Justice Police Academy in Richmond. The presentation was made by Richard F. Green, manager of public safety. Fouch, who was selected by his peers, is the first two-time winner.

(MSU photo by Tim Holbrook)

12-10-99rdm

*MSU News  
Bath*





# Photo

University Communications

Pauline Young, Director

Morehead State University

UPO Box 1100

Morehead, KY 40351-1689

(606) 783-2030

## MSU'S OFFICER OF THE YEAR NAMED

Morehead State University's Office of Public Safety has named Robert L. Clemons as its Police Officer of the Year. A Sharpsburg resident, Clemons came to the University in 1994. Since receiving this award, he has been promoted to the rank of sergeant. Richard F. Green, left, manager of public safety, made the presentation.

(MSU photo by Tim Holbrook)

12-10-99rdm

*sent to  
Bobbie  
Morehead*



# Photo

University Communications

Pauline Young, Director

Morehead State University

UPO Box 1100

Morehead, KY 40351-1689

(606) 783-2030

## NEW OFFICER TAKES OATH AT MSU

James E. Frazier of Olive Hill is a new police officer with Morehead State University's Office of Public Safety. The oath of office was administered by Carol Johnson, assistant to MSU President Ronald G. Eaglin. A former police officer in Elliott County, Frazier is a 1998 graduate of the basic police training program at the Kentucky Department of Criminal Justice Police Academy in Richmond.

(MSU photo by Tim Holbrook)

12-10-99rdm

*sent to  
Elliott  
OHP  
Morehead News*



# News

University Communications

Pauline Young, Director

Morehead State University

UPO Box 1100

Morehead, KY 40351-1689

(606) 783-2030

Dec. 10, 1999

FOR IMMEDIATE RELEASE

MOREHEAD, Ky.---Two individuals who have made outstanding contributions to the development of the region will be awarded honorary degrees during Morehead State University's Winter Commencement on Saturday, Dec. 18, at 10:30 a.m. in Academic-Athletic Center.

During the ceremonies, the honorary degree of Doctor of Humanities will be presented to Josephine D. Richardson of **Whitesburg**, a former community journalist and social worker who operates a mountain crafts outlet. The honorary degree of Doctor of Public Service will be awarded to John M. Rosenberg of **Prestonsburg**, director of the Appalachian Research and Defense Fund of Kentucky, Inc. (Appalred).

Richardson, active in community, regional and statewide organizations, has been promoting Appalachian culture for more than 30 years, most recently from the Cozy Corner, a bookstore/arts and crafts outlet. She also is co-owner and manager of the Courthouse Café.

Known for her efforts in serving the needs of others, Richardson spent four years as a journalist with the "Mountain Eagle," a weekly newspaper in Whitesburg. While she was concerned with getting the news to her readers, she also originated two new features, a cooking column titled "Good Eating" and an entertainment section that covered events, movies, concerts and plays in Letcher and surrounding counties.

Richardson and her husband Bill came to Eastern Kentucky in 1969 to begin a training program in film/video for young people. The classes, funded by a federal grant, grew into Appalshop, which is recognized as a highly acclaimed media arts and cultural center.

Educated in New York, Richardson is a graduate of Marymount College in Tarrytown and later attended Columbia University. In her early career as a social worker, she worked in New York and Connecticut then moved to Kentucky where she worked with Home Health Services in Whitesburg. With an average caseload of 150 patients, she provided social services to chronically ill, geriatric, maternal and infant care patients throughout Letcher County.

(MORE)

Active in numerous community and civic organizations, Richardson is a member of the Kentucky Commission on Women, Prichard Committee for Academic Excellence, Kentucky Art and Craft Foundation, Gaines Center for the Humanities with the University of Kentucky, Governor's Task Force on Early Childhood and Partners in the Americas-Kentucky/Ecuador Partnership.

She and her husband have three children: Justine, William Jared and Anna.

Also active in contributing to the Appalachian community, Rosenberg has been associated with Appalred for more than 28 years and has served as its director since 1973. The federally funded, rural legal services program provides representation for approximately 7,000 clients a year in 37 of Eastern and Southeastern Kentucky through a network of 11 offices.

Through the years, Appalred has served more than 250,000 citizens in all aspects of poverty law. The staff authored a constitutional amendment, which was adopted after a statewide campaign by Kentuckians for the Commonwealth. Rosenberg successfully argued for the amendment against a federal constitutional challenge in the Kentucky Supreme Court.

A majority of Rosenberg's caseload deals with environmental law and representation of the elderly and he has authored a number of articles in these areas. He has worked in the U.S. Department of Justice's Civil Rights Division as chief of the criminal and western sections.

A graduate of Duke University with an A.B. degree in chemistry, he earned his law degree from the University of North Carolina School of Law. He is a member of the American, Kentucky and Floyd County bar associations as well as the National Legal Aid and Defender Association.

Rosenberg serves on the boards of the Office of Kentucky Legal Services Program, Kentucky Citizens Law Center, the David School, Prestonsburg Job Corps, East Kentucky Corporation, Floyd County Education Forum and ALCOR, Inc. He was the recipient of ABA's 1990 John Minor Wisdom Public Service and Professionalism Award, NLADA's 1991 Kutak-Dodds Prize and the 1992 Berea College Service Award.

A former member of Morehead State University's Board of Regents, he was inducted into the Floyd County Chamber of Commerce's Hall of Fame in 1991.

Rosenberg and his wife Jean are parents of two children, Michael and Ann.

Approximately 500 graduate and undergraduate students are candidates for degrees to be conferred by MSU President Ronald G. Eaglin during the morning ceremony. Lisa Dawn Burriss, a graduating senior from Vanceburg, will be the student speaker.

####

# Media Advisory

University Communications

Pauline Young, Director

Morehead State University

UPO Box 1100

Morehead, KY 40351-1689

(606) 783-2030

**EVENT:** Licking Valley Extended Campus Center Board of Advisers meeting

**DATE:** Thursday, Dec. 16, 1999

**TIME:** 10 a.m.

**SITE:** Licking Valley Center  
1084 Highway 7  
West Liberty, Ky.

Among the items on the agenda will be an update on the building project by Joe Planck, MSU director of physical plant, a report from the advisory board's nominating committee and remarks by MSU President Ronald G. Eaglin.

Dr. Mike Hopper, MSU director of career services, will discuss information available through his office and the Career Marketplace Web site and its benefits for students, employers and the public.

The meeting is open to the community and the news media.

####

12-10-99py

# Tips

University Communications

Pauline Young, Director

Morehead State University

UPO Box 1100

Morehead, KY 40351-1689

(606) 783-2030

## HIGHLIGHTS AT MOREHEAD STATE UNIVERSITY

(Dec. 19-Jan. 8)

### Sunday, Dec. 19

Lady Eagle Basketball: MSU vs. University of North Carolina-Asheville, Academic-Athletic Center, 7 p.m., charge. Additional information: (606) 783-2126.

### Tuesday, Dec. 21

Lady Eagle Basketball: MSU vs. Marshall, Academic-Athletic Center, 2 p.m., charge. Additional information: (606) 783-2126.

### Wednesday, Dec. 23

Holiday break, begins at 4:30 p.m. Offices reopen Jan. 3. Registration for spring semester, Jan. 5-7. Classes begin Jan. 10.

### Monday, Jan. 3

MSU offices reopen following holiday break, 8 a.m.

Lady Eagle Basketball: MSU vs. Oakland University, Academic-Athletic Center, 7 p.m., charge. Additional information: (606) 783-2126.

### Wednesday, Jan. 5

Registration for spring semester, Crager Room, Adron Doran University Center, through Jan 7. Classes begin Jan. 10, 8 a.m. Additional information: (606) 783-2008.

### Thursday, Jan. 6

Lady Eagle Basketball: MSU vs. Tennessee Tech, Academic-Athletic Center, 5:45 p.m., charge. Additional information: (606) 783-2126.

Eagle Basketball: MSU vs. Tennessee Tech, Academic-Athletic Center, 8 p.m., charge. Additional information: (606) 783-2087.

### Saturday, Jan. 8

Eagle Basketball: MSU vs. Middle Tennessee State University, Academic-Athletic Center, 1 p.m., charge. Additional information: (606) 783-2087.

Lady Eagle Basketball: MSU vs. Middle Tennessee State University, Academic-Athletic Center, 3:15 p.m., charge. Additional information: (606) 783-2126.

####

12-13-99rdm

# News

University Communications

Pauline Young, Director

Morehead State University

UPO Box 1100

Morehead, KY 40351-1689

(606) 783-2030

Dec. 13, 1999

FOR IMMEDIATE RELEASE

ASHLAND, Ky.---Morehead State University has invited students and school officials from 16 area high schools to its Eagle Flight Night on Thursday, Dec. 16.

High school officials will gather at 5 p.m. at the American Electric Power Building, 1701 Carter Ave. in Ashland. Students are invited to a reception from 6 to 8 p.m.

The evening, hosted by MSU's Tri-State Alumni Chapter and the Office of Admissions, will provide information about the University. MSU President Ronald G. Eaglin, faculty and staff members will be on hand to discuss programs and services.

MSU will enter the names of school officials' in a drawing for scholarships, according to Cheryl Million, assistant director of admissions/recruitment. A superintendent, principal and counselor each will receive a scholarship for their respective schools.

The University also will award a scholarship to the school with the most students in attendance. The schools will determine the method of distribution.

Students from these high schools are expected to attend Eagle Flight Night: Russell Independent, Rock Hill, Boyd County, West Carter, East Carter, Fairview Independent, Raceland Independent, Lawrence County, Ironton, Dawson Bryant, Cabell-Huntington, Wayne County, Greenup County, Portsmouth, Paul G. Blazer and South Point.

Additional information is available from MSU's Office of Admissions toll free at (800) 585-6781, or locally at (606) 783-2000.

####

# Media Advisory

University Communications

Pauline Young, Director

Morehead State University

UPO Box 1100

Morehead, KY 40351-1689

606-783-2030

**EVENT:** MSU's 1999 Winter Commencement

**DATE:** Saturday, Dec. 18, 1999

**TIME:** 10:30 a.m.

**SITE:** Academic-Athletic Center

**HONORARY DEGREES:** Honorary Doctor of Humanities—Josephine D. Richardson of Whitesburg, a former community journalist and social worker who operates a mountain crafts outlet.

Honorary Doctor of Public Service—John M. Rosenberg of Prestonsburg, director of the Appalachian Research and Defense Fund of Kentucky.

**STUDENT SPEAKER:** Graduating senior Lisa Dawn Burris of Vanceburg

**DEGREE CANDIDATES:** Approximately 500 graduate and undergraduate students are candidates for degrees which will be conferred by MSU President Ronald G. Eaglin.

####

12-13-99py



# News

University Communications

Pauline Young, Director

Morehead State University

UPO Box 110

Morehead, KY 40351-1689

(606) 783-2030

Dec. 14, 1999

FOR IMMEDIATE RELEASE

MOREHEAD, Ky.---A group of educators from East Kentucky are combining resources to enhance the quality of education in the region.

A newly formed "P-16+ Regional Council" is bringing together presidents of two-and four-year public and private colleges and universities, superintendents of public school districts, CEO's of regional businesses and industry, local government leaders, members of state agencies and private educational associations to address issues related to promoting student achievement and success.

At the council's first meeting, held recently at Morehead State University, Dr. Paul Ruiz of the Education Trust in Washington, D.C., commended the group for its initiative. "You want your region to compete with the best in the nation," he said. "Education has fallen behind because we are showing less attention and concern for our students.

"If you raise the bar and provide the support, kids will meet the challenge to learn more," he said.

On the national level, 18 states now have P-16+ councils and 45 regional P-16+ councils are now active. "The regional council is actively addressing issues of standards, assessment, testing, dropout rates, course alignment, articulation, remediation, teacher preparation, workforce development and many other areas," Dr. Ruiz said.

Formerly known as the "Appalachian P-16+ Council," the new initiative has set a goal of bringing the leadership of the pre-kindergarten, elementary, middle and secondary education system in Eastern Kentucky to the same table with the leadership of the regional postsecondary education system and other interested community leaders to work together.

Dr. Ronald G. Eaglin, president of Morehead State University; Dr. Angeline Dvorak, president of Ashland Community College; and Larry Graves, superintendent of the Ashland Independent School District, are serving as co-chairs of the group.

"The development of P-16+ regional councils throughout the Commonwealth will complement and strengthen the work of the recently formed Kentucky P-16+ State Council," according to a statement by the co-chairs.

(MORE)

P-16+ Regional Council  
2-2-2-2

“We will not only be an active participant in statewide education initiatives, but we will be able to address many of the problems unique to our region.”

Dr. Jim Applegate, representing the Kentucky Council on Postsecondary Education and a member of the workgroup staffing the Kentucky P-16+ State Council, explained the developing agenda on behalf of the State Council. “Presently, the central issues of teacher preparation and development, alignment and student transition are our statewide issues, and the members of the State Council are looking forward to working closely with the Appalachian P-16+ Council,” he said.

The group discussed the advantages of having a regional council that would conduct a series of localized summits that would bring school teachers and college faculty together, focus on two or three major regional initiatives and facilitate the development of smaller P-16+ joint ventures in areas throughout East Kentucky.

The Kentucky group hopes to utilize resources from Georgia where there are 13 regional councils supporting the work of its state P-16+ council.

The council, which will meet again in April, will be based at MSU. Business matters will be handled by an organizational steering committee headed by Dr. Michael Seelig, executive assistant in the Office of the President, and Dr. Bud Harty, professor of education.

#####

## MSU SERVICE HONOREES

Several Morehead State University employees were honored recently for attaining milestones in their years of service at the University. MSU President Ronald G. Eaglin congratulated each employee as he presented a service pin symbolic of the achievement. Among those being honored were, front row from left, Madalene Butler, 15; Della Johnson, 20; Angela Martin, 10; Michael Padula, 10; Orville Waddell, 15; and Terry Mays, 15. Middle row from left, David Wright, 15; Joe Planck, 30; Bonnie Long, 10; Regina Stevens, 15; and James Stegall, 10. Back row from left, Wanda Terry, 25; Carol Barker, 25; Dr. Eaglin; and Richard Stamper, 20.

(MSU photo by Tim Holbrook)

12-15-99rdm



# News

---

University Communications

Pauline Young, Director

---

Morehead State University

UPO Box 1100

Morehead, KY 40351-1689

(606) 783-2030

Dec. 17, 1999

FOR IMMEDIATE RELEASE

MOREHEAD, Ky.---Morehead State University will close for the holidays at 4:30 p.m. on Wednesday, Dec. 22. Administrative offices and Camden-Carroll Library will reopen at 8 a.m. on Monday, Jan. 3.

MSU's Kentucky Folk Art Center will close at 5 p.m. on Dec. 22, and reopen at 9 a.m. on Jan. 3.

Registration for the spring semester will be Jan. 5-7. Classes will begin on Monday, Jan. 10.

####

# PSA

*Representative copy  
mailed 18 copies  
12-20-99*

University Communications

Pauline Young, Director

Morehead State University

UPO Box 1100

Morehead, KY 40351-1689

(606) 783-2030

SUBJECT: Registration for MSU'S Ashland Area Extended Campus Center

RELEASE DATE: Now through Jan. 7, 2000

TIME: 15 sec.

ANNOUNCER:

REGISTRATION FOR SPRING SEMESTER CLASSES AT MOREHEAD STATE UNIVERSITY'S ASHLAND AREA EXTENDED CAMPUS CENTER WILL TAKE PLACE THURSDAY AND FRIDAY, JAN. 6 AND 7, FROM 8 A.M. TO 6 P.M. AT THE CENTER. CLASSES BEGIN MONDAY, JAN. 10. FOR MORE INFORMATION CONTACT THE CENTER LOCALLY AT 606-327-1777 OR TOLL FREE AT 800-648-5370.

####

12-20-99rdm

# News

---

University Communications

Pauline Young, Director

---

Morehead State University

UPO Box 1100

Morehead, KY 40351-1689

(606) 783-2030

Dec. 20, 1999

## FOR IMMEDIATE RELEASE

ASHLAND, Ky.--Morehead State University will conduct registration on Thursday and Friday, Jan. 6 and 7, for its spring 2000 classes at the Ashland Area Extended Campus Center.

Students may register from 8 a.m. to 6 p.m. both days at the center or by mail to Dixie L. Blankenbeckler, regional campus coordinator, 215 Allie Young Hall, Morehead State University, Morehead, Ky. 40351. Current students may register via MSU's Web site ([www.moreheadstate.edu](http://www.moreheadstate.edu)) using your Personal Identification Number (PIN). Those who do not have a PIN number, may call the Office of Information Technology at (606) 783-5000.

Classes begin Monday, Jan. 10.

More than 40 classes, which include undergraduate and graduate offerings, will be available this spring for area residents. Among the areas represented are accounting, business information systems, computer information systems, economics, education, finance, government, history, industrial education and technology, marketing, management, nursing, physical education, psychology, sociology and social work.

Textbooks for the classes are available from the University Bookstore. Orders may be placed by calling (800) 786-7305; materials will be mailed to the student's home address.

The cost per credit hour is \$102 for undergraduate courses and \$147 for graduate courses at the regional sites for Kentucky residents and non-residents.

Additional information is available from Jack Webb at the Ashland Area ECC locally at (606) 327-1777, or toll-free at (800) 648-5370.

####

# News

University Communications

Pauline Young, Director

Morehead State University

UPO Box 1100

Morehead, KY 40351-1689

(606) 783-2030

Dec. 20, 1999

FOR IMMEDIATE RELEASE

FLEMINGSBURG, Ky.---Morehead State University will conduct registration on Thursday, Jan. 6, for its spring 2000 classes which will be held at Simons Middle School.

Students may register from 4 to 6 p.m. at the school or by mail to Dixie L. Blankenbeckler, regional campus coordinator, 215 Allie Young Hall, Morehead State University, Morehead, Ky. 40351. Current students may register via MSU's Web site ([www.moreheadstate.edu](http://www.moreheadstate.edu)) by using their Personal Identification Number (PIN). Those who do not have a PIN number, may call the Office of Information Technology at (606) 783-5000.

Classes begin Monday, Jan. 10.

Four classes, which include undergraduate and graduate offerings, will be available this spring for area residents. Among the areas represented are music, science and vocational education.

Textbooks for the classes are available from the University Bookstore. Orders may be placed by calling (800) 786-7305; materials will be mailed to the student's home address.

The cost per credit hour is \$102 for undergraduate courses and \$147 for graduate courses at the regional sites for Kentucky residents and non-residents.

Additional information is available from Blankenbeckler at (606) 783-2605, or toll-free at (800) 585-6781.

The spring schedule includes:

MUSH 364, African American Music, 4:10 to 7 p.m., Mondays.

SCI 690, Advanced Science for the Elementary Teacher, 4:10 to 6:10 p.m., Wednesdays.

SCI 690L, Advanced Science for the Elementary Teacher Lab, 6:20 to 8:30 p.m.,

Wednesdays.

VOC 698, Career and Vocational Guidance, 4:10 to 7 p.m., Tuesdays.

####

# News

University Communications

Pauline Young, Director

Morehead State University

UPO Box 1100

Morehead, KY 40351-1689

(606) 783-2030

Dec. 20, 1999

FOR IMMEDIATE RELEASE

LOUISA, Ky.---Morehead State University will conduct registration on Thursday and Friday, Jan. 6 and 7, for its spring 2000 classes which will be held at Louisa Middle School.

Students may register from 4 to 6 p.m. at the school or by mail to Dixie L.

Blankenbeckler, regional campus coordinator, 215 Allie Young Hall, Morehead State University, Morehead, Ky. 40351. Current students may register via MSU's Web site

([www.moreheadstate.edu](http://www.moreheadstate.edu)) using a Personal Identification Number (PIN). Students who do not have a PIN number may call the Office of Information Technology at (606) 783-5000.

Classes begin Monday, Jan. 10.

Five classes, which include undergraduate and graduate offerings, will be available this spring for area residents. Among the areas represented are education, music, science and vocational education.

Textbooks for the classes are available from the University Bookstore. Orders may be placed by calling (800) 786-7305; materials will be sent to the student's home address.

The cost per credit hour is \$102 for undergraduate courses and \$147 for graduate courses at the regional sites for Kentucky residents and non-residents.

Additional information is available from Blankenbeckler at (606) 783-2605, or toll-free at (800) 585-6781.

The spring schedule includes:

EDSP 370, Assessment Study of Moderate and Severe Disabilities, 6 to 9 p.m.,

Thursdays.

MUSH 364, African American Music, 4:10 to 7 p.m., Mondays.

SCI 690, Advanced Science for the Elementary Teacher, 4:10 to 6:10 p.m., Wednesdays.

SCI 690L, Advanced Science for the Elementary Teacher, 6:20 to 8:30 p.m.,

Wednesdays.

VOC 698, Career and Vocational Guidance, 4:10 to 7 p.m., Tuesdays.

####



# News

University Communications

Pauline Young, Director

Morehead State University

UPO Box 1100

Morehead, KY 40351-1689

(606) 783-2030

Dec. 20, 1999

FOR IMMEDIATE RELEASE

SALYERSVILLE, Ky.---Morehead State University will conduct registration on Thursday and Friday, Jan. 6 and 7, for its spring 2000 classes which will be held at Magoffin County High School.

Students may register from 4 to 6 p.m. at the school or by mail to Dixie L. Blankenbeckler, regional campus coordinator, 215 Allie Young Hall, Morehead State University, Morehead, Ky. 40351. Current students may register via MSU's Web site ([www.moreheadstate.edu](http://www.moreheadstate.edu)) using a Personal Identification Number (PIN). Students who do not have a PIN number may call the Office of Information Technology at (606) 783-5000.

Classes begin Monday, Jan. 10.

Four classes, which include undergraduate and graduate offerings, will be available this spring for area residents. Among the areas represented are education, physical education and vocational education.

Textbooks for the classes are available from the University Bookstore. Orders may be placed by calling (800) 786-7305; materials will be sent to the student's home address.

The cost per credit hour is \$102 for undergraduate courses and \$147 for graduate courses at the regional sites for Kentucky residents and non-residents.

Additional information is available from Blankenbeckler at (606) 783-2605, or toll-free at (800) 585-6781.

The spring schedule includes:

EDF 610, Advanced Human Growth and Development, 4:10 to 7 p.m., Thursdays

EDSP 350, Mental Retardation and Orthopedic Handicaps, 4:10 to 7 p.m., Wednesdays.

PHED 599, Workshop: Organization and Administration of Athletics, 7:10 to 9:50 p.m., Tuesdays.

VOC 698, Career and Vocational Guidance, 4:10 to 7 p.m., Tuesdays.

#####

# News

University Communications

Pauline Young, Director

Morehead State University

UPO Box 1100

Morehead, KY 40351-1689

(606) 783-2030

Dec. 20, 1999

FOR IMMEDIATE RELEASE

MT. STERLING, Ky.--- Morehead State University will conduct registration on Thursday, Jan. 6, for its spring 2000 classes which will be held at McNabb Middle School.

Students may register from 4 to 6 p.m. at the school or by mail to Dixie L. Blankenbeckler, regional campus coordinator, 215 Allie Young Hall, Morehead State University, Morehead, Ky. 40351. Current students may register via MSU's Web site ([www.moreheadstate.edu](http://www.moreheadstate.edu)) using their Personal Identification Number (PIN). Those who do not have a PIN number may call the Office of Information Technology at (606) 783-5000.

Classes begin Monday, Jan. 10.

Ten classes, including undergraduate and graduate offerings, will be available this spring for area residents. Among the areas represented are computer information systems, education, English, speech, social work and vocational education.

Textbooks for the classes are available from the University Bookstore. Orders may be placed by calling (800) 786-7305; materials will be sent to the student's home address.

The cost per credit hour is \$102 for undergraduate courses and \$147 for graduate courses at the regional sites for Kentucky residents and non-residents.

Additional information is available from Blankenbeckler at (606) 783-2605, or toll-free at (800) 585-6781.

The spring schedule includes:

CIS 101, Computers for Learning, 6 to 8:40 p.m., Thursdays.

CIS 211, Microcomputers, 6 to 8:40 p.m., Tuesdays.

CIS 616, Educational Computing, 4:10 to 7 p.m., Fridays.

EDF 610, Advanced Human Growth and Development, 4:10 to 7 p.m., Thursdays.

EDSE 634, Secondary School Curriculum, 4:10 to 7 p.m., Mondays.

ENG 100, Writing I, 6 to 8:40 p.m., Mondays.

SPCH 108, Fundamentals of Speech Communications, 6 to 8:40 p.m., Wednesdays.

SPCH 383, Small Group Communication, 7:10 to 9:50 p.m., Mondays.

SWK 380, Social Work Practicum /Health Care, 6 to 8:40 p.m., Tuesdays.

VOC 698, Career and Vocational Guidance, 4:10 to 7 p.m., Tuesdays.

####

MSU is an affirmative action equal opportunity educational institution.

# News

University Communications

Pauline Young, Director

Morehead State University

UPO Box 1100

Morehead, KY 40351-1689

(606) 783-2030

Dec. 20, 1999

FOR IMMEDIATE RELEASE

HINDMAN, Ky.---Morehead State University will conduct registration on Thursday and Friday, Jan. 6 and 7, for its spring 2000 classes held at the Hazard Community College-Knott County Branch.

Students may register from 4 to 6 p.m. at the school or by mail to Dixie L. Blankenbeckler, regional campus coordinator, 215 Allie Young Hall, Morehead State University, Morehead, Ky. 40351. Current students may register via MSU's Web site ([www.moreheadstate.edu](http://www.moreheadstate.edu)) using their Personal Identification Number (PIN). Those who do not have a PIN number may call the Office of Information Technology at (606) 783-5000.

Classes begin Monday, Jan. 10.

Ten classes, including undergraduate and graduate offerings, will be available this spring for area residents. Among the areas represented are computer information systems, economics, education, finance and management.

Textbooks for the classes are available from the University Bookstore. Orders may be placed by calling (800) 786-7305; materials will be sent to the student's home address.

The cost per credit hour is \$102 for undergraduate courses and \$147 for graduate courses at the regional sites, for Kentucky residents and non-residents.

Additional information is available from Blankenbeckler by calling (606) 783-2605, or toll-free at (800) 585-6781.

The spring schedule includes:

CIS 311, Introduction to Management Information Systems, 7:10 to 9:50 p.m., Mondays.

ECON 342, Money and Banking, 7:10 to 9:50 p.m., Thursdays.

EDSP 350, Mental Retardation and Orthopedic Handicaps, 4:10 to 7 p.m., Wednesdays.

EDF 610, Advanced Human Growth and Development, 4:10 to 7 p.m., Thursdays.

EDSE 634, Secondary School Curriculum, 4:10 to 7 p.m., Mondays.

EDSP 350, Mental Retardation and Orthopedic Handicaps, 4:10 to 7 p.m., Wednesdays.

EDUC 582, Discipline and Classroom Management, 4:10 to 7 p.m., Tuesdays.

FIN 342, Money and Banking, 7:10 to 9:50 p.m., Thursdays.

MNGT 310, Small Business Organization, 11:30 to 12:30 p.m., Tuesdays, Thursdays, Fridays.

MNGT 311, Human Resource Management, 11:30 to 12:30 p.m., Mondays, Wednesdays, Fridays.

#####

MSU is an affirmative action equal opportunity educational institution.

# News

University Communications

Pauline Young, Director

Morehead State University

UPO Box 1100

Morehead, KY 40351-1689

(606) 783-2030

Dec. 20, 1999

## FOR IMMEDIATE RELEASE

MAYSVILLE, Ky.---Morehead State University will conduct registration on Thursday, Jan. 6, for its spring 2000 classes held at the Maysville Community College.

Students may register from 4 to 6 p.m. at the college or by mail to Dixie L. Blankenbeckler, regional campus coordinator, 215 Allie Young Hall, Morehead State University, Morehead, Ky. 40351. Current students may register via MSU's Web site ([www.moreheadstate.edu](http://www.moreheadstate.edu)) using their Personal Identification Number (PIN). Those who do not have a PIN number may call the Office of Information Technology at (606) 783-5000.

Classes begin Monday, Jan. 10.

Three classes will be available this spring for area residents. Among the areas represented are education, music and physical education.

Textbooks for the classes are available from the University Bookstore. Orders may be placed by calling (800) 786-7305; materials will be sent to the student's home address.

The cost per credit hour is \$102 for undergraduate courses and \$147 for graduate courses at the regional sites for Kentucky residents and non-residents.

Additional information is available from Blankenbeckler at (606) 783-2605, or toll-free at (800) 585-6781.

The spring schedule includes:

EDF 610, Advanced Human Growth and Development, 4:10 to 7 p.m., Thursdays.

MUSH 364, African American Music, 4:10 to 7 p.m., Mondays.

PHED 599, Workshop: Organization and Administration of Athletics, 7:10 to 9:50 p.m., Tuesdays.

####

# News

University Communications

Pauline Young, Director

Morehead State University

UPO Box 1100

Morehead, KY 40351-1689

(606) 783-2030

Dec. 20, 1999

## FOR IMMEDIATE RELEASE

RACELAND, Ky.---Morehead State University will conduct registration on Thursday and Friday, Jan. 6 and 7, for its spring 2000 classes which will be held at Raceland Independent High School.

Students may register from 4 to 6 p.m. at the school or by mail to Dixie L. Blankenbeckler, regional campus coordinator, 215 Allie Young Hall, Morehead State University, Morehead, Ky. 40351. Current students may register via MSU's Web site ([www.moreheadstate.edu](http://www.moreheadstate.edu)) using their Personal Identification Number (PIN). Those who do not have a PIN number may call the Office of Information Technology at (606) 783-5000.

Four classes will be available this spring for area residents. Among the areas represented are economics, education and finance.

Textbooks for the classes are available from the University Bookstore. Orders may be placed by calling (800) 786-7305; materials will be sent to the student's home address.

The cost per credit hour is \$102 for undergraduate courses and \$147 for graduate courses at the regional sites for Kentucky residents and non-residents.

Additional information is available by calling Blankenbeckler at (606) 783-2605, or toll-free at (800) 585-6781.

The spring schedule includes:

ECON 342, Money and Banking, 7:10 to 9:50 p.m., Thursdays.

EDSE 634, Secondary School Curriculum, 4:10 to 7 p.m., Mondays.

EDSP 350, Mental Retardation and Orthopedic Handicaps, 4:10 to 7 p.m., Wednesdays.

FIN 342, Money and Banking, 7:10 to 9:50 p.m., Thursdays.

####

# News

University Communications

Pauline Young, Director

Morehead State University

UPO Box 1100

Morehead, KY 40351-1689

(606) 783-2030

Dec. 20, 1999

## FOR IMMEDIATE RELEASE

VANCEBURG, Ky.---Morehead State University will conduct registration on Thursday and Friday, Jan. 6 and 7, for its spring 2000 classes which will be held at the Lewis County High School.

Students may register from 4 to 6 p.m. at the school or by mail to Dixie L. Blankenbeckler, regional campus coordinator, 215 Allie Young Hall, Morehead State University, Morehead, Ky. 40351. Current students may register via MSU's Web site at ([www.moreheadstate.edu](http://www.moreheadstate.edu)), using their Personal Identification Number (PIN). Those who do not have a PIN number may call the Office of Information Technology at (606) 783-5000.

Classes begin Monday, Jan. 10.

Five classes, which include undergraduate and graduate offerings, will be available this spring for area residents. Among the areas represented are education, physical education, science and speech.

Textbooks for the classes are available from the University Bookstore. Orders may be placed by calling (800) 786-7305; materials will be sent to the student's home address.

The cost per credit hour is \$102 for undergraduate courses and \$147 for graduate courses at the regional sites for Kentucky residents and non-residents.

Additional information is available from Blankenbeckler at (606) 783-2605, or toll-free at (800) 585-6781.

The spring schedule includes:

EDSP 370, Assessment Study of Moderate and Severe Disabilities, 6 to 9 p.m.,

Thursdays.

PHED 599, Workshop: Organization and Administration of Athletics, 7:10 to 9:50 p.m.,

Tuesdays.

SCI 690, Advanced Science for the Elementary Teacher, 4:10 to 6:10 p.m., Wednesdays.

SCI 690L, Advanced Science for the Elementary Teacher, 6:20 to 8:30 p.m.,

Wednesdays.

SPCH 383, Small Group Communication, 7:10 to 9:50 p.m., Mondays.

####

# News

University Communications

Pauline Young, Director

Morehead State University

UPO Box 1100

Morehead, KY 40351-1689

(606) 783-2030

Dec. 20, 1999

## FOR IMMEDIATE RELEASE

PIKEVILLE, Ky.---Morehead State University will conduct registration on Thursday and Friday, Jan. 6-7, for its spring classes which will be held at Pike County Central High School.

Students may register from 8 a.m. to 6 p.m. both days at the center or by mail to Dixie L. Blankenbeckler, regional campus coordinator, 215 Allie Young Hall, Morehead State University, Morehead, Ky. 40351. Current students may register via MSU's Web site ([www.moreheadstate.edu](http://www.moreheadstate.edu)) using their Personal Identification Number (PIN). Those who do not have a PIN number may call the Office of Information Technology at (606) 783-5000.

Classes begin Monday, Jan. 10.

Nine classes, which include undergraduate and graduate offerings, will be available this spring for area residents. Among the areas represented are education and science.

Textbooks for the classes are available from the University Bookstore. Orders may be placed by calling (800) 786-7305; materials will be sent to the student's home address.

The cost per credit hour is \$102 for undergraduate courses and \$147 for graduate courses at the regional sites for Kentucky residents and non-residents.

Additional information is available from Blankenbeckler at (606) 783-2605, or toll-free at (800) 585-6781.

The spring schedule includes:

EDEL 632, Elementary School Curriculum, 6 to 8:40 p.m., Thursdays.

EDEL 680, History and Philosophy of Education, 6 to 8:40 p.m., Wednesdays.

EDIL 601, Introduction to School Leadership and Administration, 6 to 8:40 p.m., Mondays.

EDIL 618, School Finance and Support Services, 6 to 8:40 p.m., Tuesdays.

EDSE 633, Effective Classroom Instruction, 6 to 8:40 p.m., Tuesdays.

EDSE 634, Secondary School Curriculum, 4:10 to 7 p.m., Mondays.

EDUC 582, Discipline and Classroom Management, 4:10 to 7 p.m., Tuesdays.

SCI 690, Advanced Science for the Elementary Teacher, 4:10 to 6:10 p.m., Wednesdays.

SCI 690L, Advanced Science for the Elementary Teacher, 6:20 to 8:30 p.m., Wednesdays.

#####

# News

University Communications

Pauline Young, Director

Morehead State University

UPO Box 1100

Morehead, KY 40351-1689

(606) 783-2030

Dec. 20, 1999

## FOR IMMEDIATE RELEASE

OWINGSVILLE, Ky.---Morehead State University will conduct registration on Thursday and Friday, Jan. 6 and 7, for its spring 2000 classes which will be held at the Bath County High School.

Students may register from 4 to 6 p.m. at the school or by mail to Dixie L. Blankenbeckler, regional campus coordinator, 215 Allie Young Hall, Morehead State University, Morehead, Ky. 40351. Current students may register via MSU's Web site ([www.moreheadstate.edu](http://www.moreheadstate.edu)) using their Personal Identification Number (PIN). Those who do not have a PIN number may call the Office of Information Technology at (606) 783-5000.

Classes begin Monday, Jan. 10.

Three classes will be available this spring. Among the areas represented are music, education and physical education.

Textbooks for the classes are available from the University Bookstore. Orders may be placed by calling (800) 786-7305; materials will be sent to the student's home address.

The cost per credit hour is \$102 for undergraduate courses and \$147 for graduate courses at the regional sites for Kentucky residents and non-residents.

Additional information is available from Blankenbeckler at (606) 783-2605, or toll-free at (800) 585-6781.

The spring schedule includes:

EDSP 370, Assessment Study of Moderate and Severe Disabilities, 6 to 9 p.m.,

Thursdays.

MUSH 364, African American Music, 4:10 to 7 p.m., Mondays.

PHED 599, Workshop: Organization and Administration of Athletics, 7:10 to 9:50 p.m.,

Tuesdays.

####



# News

University Communications

Pauline Young, Director

Morehead State University

UPO Box 1100

Morehead, KY 40351-1689

(606) 783-2030

Dec. 20, 1999

FOR IMMEDIATE RELEASE

PRESTONSBURG, Ky.---Morehead State University will conduct registration on Thursday and Friday, Jan. 6 and 7, for its spring 2000 classes which will be held at Prestonsburg Community College.

Students may register from 8 a.m. to 6 p.m. both days at the center or by mail to Dixie L. Blankenbeckler, regional campus coordinator, 215 Allie Young Hall, Morehead State University, Morehead, Ky. 40351. Current students may register via MSU's Web site ([www.moreheadstate.edu](http://www.moreheadstate.edu)) using their Personal Identification Number (PIN). Those who do not have a PIN number may call the Office of Information Technology at (606) 783-5000.

Classes begin Monday, Jan. 10.

More than 100 classes, including undergraduate and graduate offerings, will be available this spring. Among the areas represented are accounting, art, business information systems, computer information systems, criminology, economics, education, English, finance, geography, government, history, health, human sciences, industrial education and technology, mathematics, management, nursing, physical education, philosophy, paralegal studies, psychology, science, sociology, speech and social work.

Textbooks for the classes are available from the University Bookstore. Orders may be placed by calling (800) 786-7305; materials will be sent to the student's home address.

The cost per credit hour is \$102 for undergraduate courses and \$147 for graduate courses at the regional sites for Kentucky residents and non-residents.

Additional information is available from Blankenbeckler at (606) 783-2605, or toll-free at (800) 585-6781.

####

# News

University Communications

Pauline Young, Director

Morehead State University

UPO Box 1100

Morehead, KY 40351-1689

(606) 783-2030

Dec. 20, 1999

## FOR IMMEDIATE RELEASE

JACKSON, Ky.---Morehead State University will conduct registration on Thursday and Friday, Jan. 6 and 7, for its spring 2000 classes held at the Hazard Community College-Lees College Campus.

Students may register from 8 a.m.-6 p.m. Jan. 6, and 8 a.m.-4:30 p.m. Jan. 7 at the campus, or by mail to Dixie L. Blankenbeckler, regional campus coordinator, 215 Allie Young Hall, Morehead State University, Morehead, Ky. 40351. Current students may register via MSU's Web site ([www.moreheadstate.edu](http://www.moreheadstate.edu)) using their Personal Identification Number (PIN). Those who do not have a PIN number may call the Office of Information Technology at (606) 783-5000.

Classes begin Monday, Jan. 10.

Nineteen classes, including undergraduate and graduate offerings, will be available this spring for area residents. Among the areas represented are business information systems, computer information systems, economics, education, finance, management, physical education, psychology and speech.

Textbooks for the classes are available from the University Bookstore. Orders may be placed by calling (800) 786-7305; materials will be sent to the student's home address.

The cost per credit hour is \$102 for undergraduate courses and \$147 for graduate courses at the regional sites for Kentucky residents and non-residents.

Additional information is available from Blankenbeckler at (606) 783-2605, or toll-free at (800) 585-6781.

The spring schedule includes:

BIS 321, Business Communications, 12:40 to 1:40 p.m., Mondays, Wednesdays and Fridays.

CIS 311, Introduction to Management Information Systems, 7:10 to 9:50 p.m., Mondays.

ECON 342, Money and Banking, 7:10 to 9:50 p.m., Thursdays.

EDEE 305, Learning Theories and Practices in Early Elementary, 2 to 3 p.m., Mondays,

Tuesdays, Wednesdays and Thursdays (First nine weeks).

(MORE)

Jackson Schedule

2-2-2-2-2

EDEE 321, Teaching Math in Early Elementary Grades, 6 to 8:40 p.m., Mondays.

EDEE 322, Teaching Social Studies in Early Elementary Grades, TBA.

EDEE 323, Language Arts in Early Elementary, 6 to 8:40 p.m., Wednesdays.

EDEE 331, Reading for Early Elementary Teachers, 6 to 8:40 p.m., Thursdays.

EDEE 331L, Reading for Elementary Teachers Lab, TBA.

EDF 600, Research Methods in Education, 6 to 8:40p.m., Tuesdays.

EDIL 647, Leadership for School Communications Relations, 6 to 8:40p.m., Mondays.

EDSP 350, Mental Retardation and Orthopedics Handicapped, 4:10 to 7 p.m.,  
Wednesdays.

EDUC 582, Discipline and Classroom Management, 4:10 to 7 p.m., Tuesdays.

FIN 342, Money and Banking, 7:10 to 9:50 p.m., Thursdays.

MNGT 310, Small Business Organizations, 11:30 a.m. to 12:30 p.m., Tuesdays,  
Thursdays and Fridays.

MNGT 311, Human Resource Management, 11:30 a.m. to 12:30 p.m., Mondays,  
Wednesdays, and Fridays.

PHED 311, Movement Exploration, 6 to 8:40 p.m., Thursdays.

PSY 390, Psychology of Personality, 2 to 4:30 p.m., Wednesdays.

SPCH 300, Oral Communications, 2 to 4:30 p.m., Mondays.

####

# News

University Communications

Pauline Young, Director

Morehead State University

UPO Box 1100

Morehead, KY 40351-1689

(606) 783-2030

Dec. 20, 1999

FOR IMMEDIATE RELEASE

WEST LIBERTY, Ky.---Morehead State University will conduct registration on Thursday and Friday, Jan. 6 and 7, for its spring 2000 classes which will be held at the Licking Valley Extended Campus Center.

Students may register from 8 a.m. to 6 p.m. both days at the center or by mail to Dixie L. Blankenbeckler, regional campus coordinator, 215 Allie Young Hall, Morehead State University, Morehead, Ky. 40351. Current students may register via MSU's Web site ([www.moreheadstate.edu](http://www.moreheadstate.edu)) using their Personal Identification Number (PIN). Those who do not have a PIN number may call the Office of Information Technology (606) 783-5000.

Classes begin Monday, Jan. 10.

More than 40 classes, including undergraduate and graduate offerings, will be available this spring. Among the areas represented are accounting, art, business information systems, computer information systems, criminology, economics, education, English, finance, geography, government, history, health, mathematics, management, orientation, physical education, science, sociology, speech and social work.

Textbooks for the classes are available from the University Bookstore. Orders may be placed by calling (800) 786-7305; materials will be sent to the student's home address.

The cost per credit hour is \$102 for undergraduate courses and \$147 for graduate courses at the regional sites for Kentucky residents and non-residents.

Additional information is available from Blankenbeckler at (606) 783-2605, or toll-free at (800) 585-6781.

####

# News

University Communications

Pauline Young, Director

Morehead State University

UPO Box 1100

Morehead, KY 40351-1689

(606) 783-2030

Dec. 21, 1999

FOR IMMEDIATE RELEASE

MOREHEAD, Ky.---Three Morehead State University seniors who are majoring in family and consumer science education attended a leadership conference in Louisville recently.

Connie Harless of **Inez**, Tami M. Hart of **Clearfield** and Christi D. Stewart of **Ezel** attended the Family, Career and Community Leaders of America weekend leadership training conference. Accompanied by their chapter adviser, Jane C. Ellington, associate professor of human sciences, they participated in meetings that revolved around the "Leadership for Tomorrow" theme.

The three students recently completed their professional semester and are candidates for MSU's Winter Commencement.

The students and Ellington also attended sessions on community involvement, family related issues and public relations and heard from keynote speakers.

Family, Career and Community Leaders of America is a national student organization that helps young men and women become leaders and addresses personal, family, work and societal issues through family and consumer science education. The organization has nearly 220,000 members.

####

rdm

Dec. 22, 1999

FOR IMMEDIATE RELEASE

## **MSU's HOLIDAY DINNER PARTY: A Picture Story**

In the midst of holiday greenery and sparkling lights, friends of Morehead State University gathered for an evening of seasonal entertainment at the annual holiday dinner party.

The evening, hosted by MSU President and Mrs. Ronald G. Eaglin, followed the theme "A Dickens Holiday." From the hors d'oeuvres to the holiday sing along, party-goers enjoyed a festive atmosphere.

Entertainment was provided by MSU Chamber Singers under the direction of Dr. Greg Detweiler, assistant professor of music, with musical accompaniment provided by Heather Brown, West Van Lear senior, on piccolo.

Greeting the more than 300 guests was Charles Dickens, portrayed by Dr. Michael Moore, executive vice president for academic affairs. Brandon Fraley, Grayson senior and president of the Student Government Association, gave the invocation.

### Cutlines:

- 1---MSU's Chamber Singers, led by Dr. Greg Detweiler, right, provided a sampling of holiday tunes.
- 2---H. Jack Webb of Ashland, standing, stopped for a chat with Nelson and Wilma Grote and Alpha Hutchinson of Morehead.
- 3---In keeping with the theme, Dickens (Dr. Michael Moore) offered holiday greetings.
- 4---Over a cup of hot cider, Morgan Ravenscraft, the daughter of Kim and Allen Ravenscraft of Morehead, chatted with Clay Barton, the son of Krista and Bob Barton of Morehead.
- 5---The holiday party offered a pleasant atmosphere for Helen Hayes, left, and Kathy Mincey.
- 6---MSU President Ronald G. Eaglin, left, enjoyed a moment with Judy and George Stevens of Lexington, and Dickens (Dr. Michael Moore), standing.
- 7---Could it be local news or maybe sports that Walter Carr of Morehead and Skipper Smith of Mt. Sterling were discussing at the holiday dinner party.

(MSU photos by Tim Holbrook)

12-22-99py





3



4





5



6

7



# Photo

University Communications

Pauline Young, Director

Morehead State University

UPO Box 1100

Morehead, KY 40351-1689

(606) 783-2030

## FALMOUTH SENIOR PROVIDES ENTERTAINMENT AT MSU

In the midst of holiday greenery and sparkling lights, friends of Morehead State University gathered for an evening of seasonal entertainment at the annual holiday dinner party. The evening, hosted by MSU President and Mrs. Ronald G. Eaglin, followed the theme "A Dickens Holiday." From the hors d'oeuvres to the holiday sing along, party-goers enjoyed a festive atmosphere. Debralee Sullivan, an MSU senior from Falmouth, provided sounds of the season for the opening reception.

(MSU photo by Tim Holbrook)

12-22-99py

MSU is an affirmative action equal opportunity educational institution.



# Photo

University Communications

Pauline Young, Director

Morehead State University

UPO Box 1100

Morehead, KY 40351-1689

(606) 783-2030

## FALMOUTH SENIOR PROVIDES ENTERTAINMENT AT MSU

In the midst of holiday greenery and sparkling lights, friends of Morehead State University gathered for an evening of seasonal entertainment at the annual holiday dinner party. The evening, hosted by MSU President and Mrs. Ronald G. Eaglin, followed the theme "A Dickens Holiday." From the hors d'oeuvres to the holiday sing along, party-goers enjoyed a festive atmosphere. Debralee Sullivan, an MSU senior from Falmouth, provided sounds of the season for the opening reception.

(MSU photo by Tim Holbrook)

12-22-99py

MSU is an affirmative action equal opportunity educational institution.



# News

University Communications

Pauline Young, Director

Morehead State University

UPO Box 1100

Morehead, KY 40351-1689

(606) 783-2030

Dec. 22, 1999

FOR IMMEDIATE RELEASE

MOREHEAD, Ky.—Finding quality childcare is often a worry for working parents.

The faculty, staff and students at Morehead State University need not worry or look any farther than Downing Hall, the location of the MSU Child Care Center. It's a place where "we provide quality care," said Sue E. Johnson, director of the center.

Each day, children, ages six weeks to 12 years, participate in "developmentally appropriate programs." The programs are designed for specific age groups—infants, toddlers, preschoolers and after-school care children.

"Our main goal," Johnson said, "is to provide a safe and healthy environment in a comprehensive, early childhood program where children can have fun and enjoy learning." The childcare associates, or teachers, have lesson plans, which are implemented on a daily basis.

The center, which is open from 6:30 a.m. to 6 p.m. Monday through Friday, observes open enrollment, allowing children to be enrolled at any point during the year. Currently, the Child Care Center would like to expand its enrollment for the spring semester.

One of the advantages of the center is its proximity to offices and classrooms on campus. "It's very convenient for the parents," Johnson said.

Its location not only makes it easy for parents to drop off and pick up their children, but it also gives parents the opportunity to have lunch with their children or just drop in for a visit.

The rates are "designed to encompass all the needs of those who use the Child Care Center." Financial assistance is available to those who qualify.

Children begin their day at the center with breakfast, and then move on to circle time, "which is the main teaching time of the day." The teachers introduce the day's theme and the children participate in small group activities.

"Those activities are prepared to enhance sensory skills, fine motor skills and problem solving," Johnson said. The children also play outside, have lunch and a nap.

After a snack and free time, the teachers bring the children together again for afternoon circle time, which wraps up the day.

In addition to after-school care of school-aged children, the Child Care Center provides a summer club for them that is filled with sports and recreation.

For additional information, contact Johnson at (606) 783-2034.

12-22-99rdm

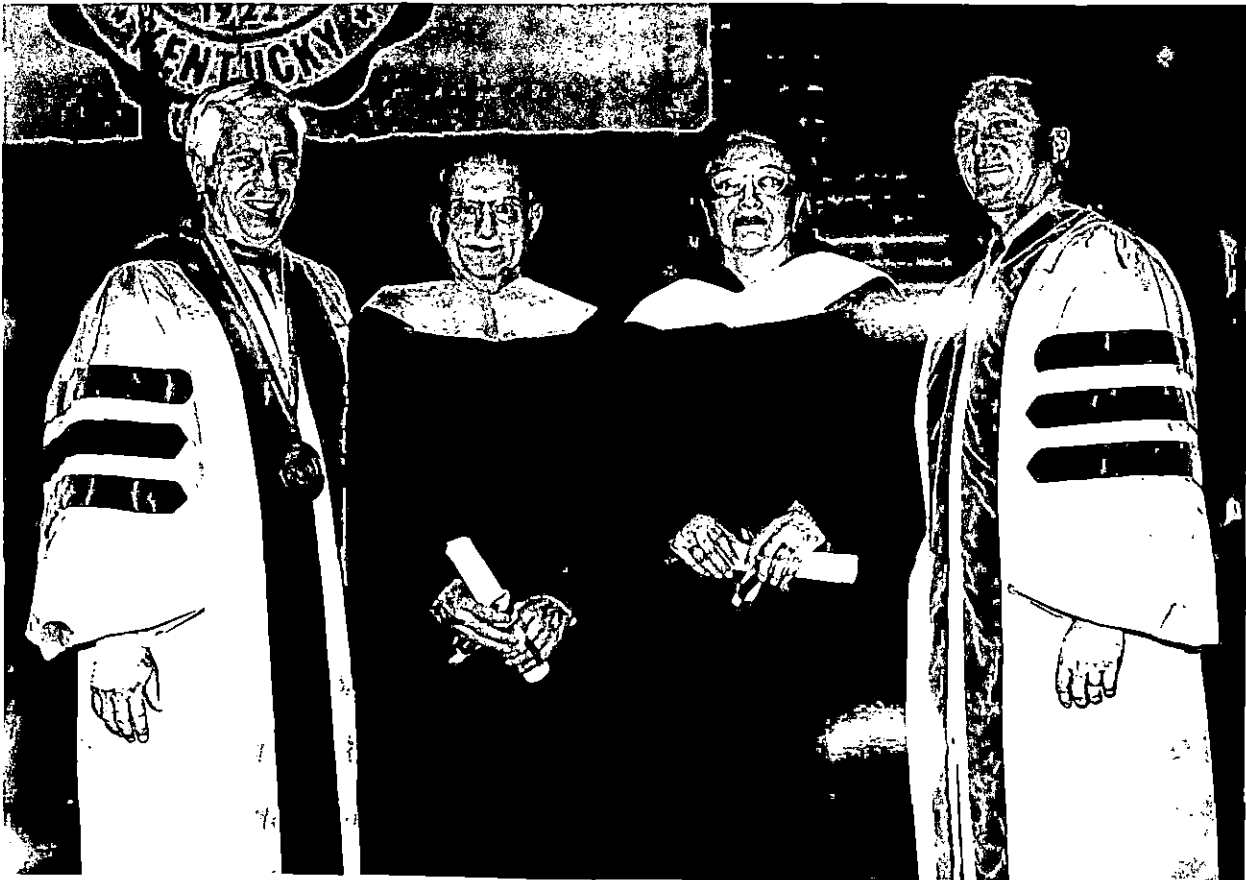
####

## HONORARY DEGREES AWARDED AT MSU

Approximately 500 students were candidates for degrees during Morehead State University's Winter Commencement. During the graduation exercises, two individuals were recognized by the awarding of honorary degrees for their outstanding contributions to the community and region. John M. Rosenberg of Prestonsburg was awarded the Doctor of Public Service and Josephine D'Amato Richardson of Whitesburg received the honorary Doctor of Humanities degree. MSU President Ronald G. Eaglin, left, and L.M. (Sonny) Jones of Frankfort, far right, chair of the University's Board of Regents, made the presentation.

(MSU photo by Tim Holbrook)

12-22-99py



# Photo

University Communications

Pauline Young, Director

Morehead State University

UPO Box 1100

Morehead, KY 40351-1689

(606) 783-2030

## VANCEBURG STUDENT GIVES COMMENCEMENT ADDRESS

Lisa Dawn Burriss of Vanceburg, a senior English major, was the student speaker at Morehead State University's Winter Commencement. In her address, she spoke of the University as her home and the students as her family and in leaving, she had realized that the memories she was taking with her are ones that will be shared with children and grandchildren years from now, reminding us of our forever friends. A graduate of Lewis County High School, she is the daughter of Roger and Vickie Burriss. She was involved in the MSU/Lexmark Writing Project during her four years in college and during the last year, served as the lab manager where she was the liaison between the University and Lexmark.

(MSU photo by Tim Holbrook)

12-22-99

MSU is an affirmative action equal opportunity educational institution.



# News

University Communications

Pauline Young, Director

Morehead State University

UPO Box 1100

Morehead, KY 40351-1689

(606) 783-2030

Dec. 22, 1999

FOR IMMEDIATE RELEASE

MOREHEAD, Ky.---Amid the sounds of cheers from family and friends, degree candidates crossed the stage to receive congratulations from Morehead State University President Ronald G. Eaglin during Winter Commencement, Dec. 18.

Among the ceremonies was the awarding of honorary degrees to two individuals who have made outstanding contributions to the community and the region.

Josephine D. Richardson of Whitesburg, a former community journalist and social worker who operates a mountain crafts outlet, was presented the honorary degree of Doctor of Humanities. In her response, she spoke of the honor of the occasion and asked the graduates to go back to their communities and make improvements for our children's futures. She and her husband were instrumental in establishing Appalshop, a media arts and cultural center based in Whitesburg.

John M. Rosenberg of Prestonsburg, director of the Appalachian Research and Defense Fund of Kentucky, Inc., was awarded the honorary degree of Doctor of Public Service. Noting his appreciation, he remarked "even lawyers are speechless sometimes." In his work, Rosenberg is known for protecting the environment and the rights of the individual.

He is a former member of the University's Board of Regents.

Lisa Dawn Burriss of Vanceburg gave the student address. An English major, she reminded her classmates that they should be proud of their accomplishments. "We have been teachers, showing one another how to see things from a different perspective.

"A new page in our life is about to be turned and I believe our years at Morehead State has prepared us for it."

####



# Photo

University Communications

Pauline Young, Director

Morehead State University UPO Box 1100

Morehead, KY 40351-1689

(606) 783-2030

## MSU STUDENT SINGS AT COMMENCEMENT

Morehead State University conferred degrees on approximately 500 undergraduate and graduate students at its 1999 Winter Commencement. Karen Pescosolido, a **Maysville** senior, sang the national anthem at the exercises. After the conferring of degrees and the induction into the MSU Alumni Association, she led the graduates and those in attendance in singing the University's Alma Mater.

(MSU photo by Tim Holbrook)

12-22-99rdm



# Photo

University Communications

Pauline Young, Director

Morehead State University UPO Box 1100

Morehead, KY 40351-1689

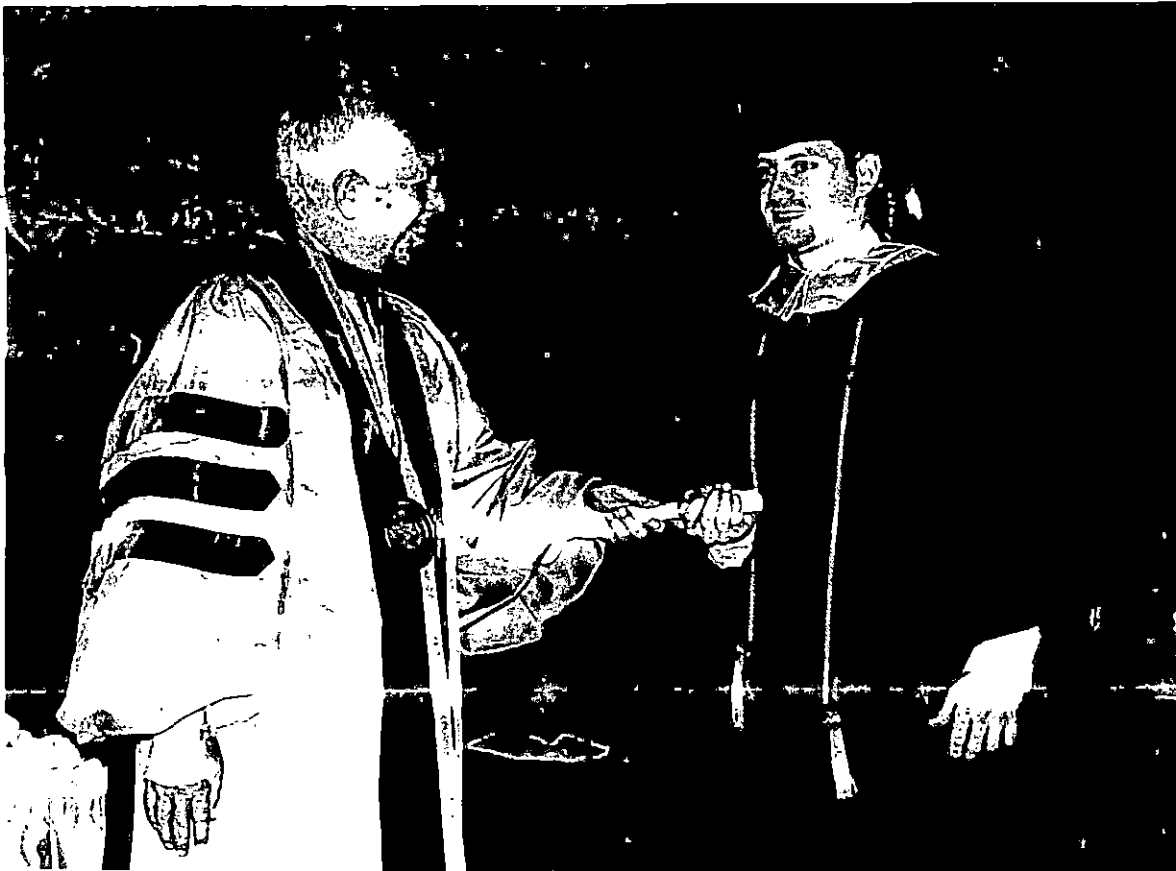
(606) 783-2030

## MSU CONFERS DEGREES

Morehead State University conferred degrees on approximately 500 undergraduate and graduate students at its 1999 Winter Commencement. Matthew James Banks of Whitesburg, right, who was a candidate for the Master of Business Administration degree, received personal congratulations from MSU President Ronald G. Eaglin. The new graduate joins the more than 40,000 MSU alumni around the world.

(MSU photo by Tim Holbrook)

12-22-99rdm



# Photo

University Communications

Pauline Young, Director

Morehead State University UPO Box 1100

Morehead, KY 40351-1689

(606) 783-2030

## MSU CONFERS DEGREES

Morehead State University conferred degrees on approximately 500 undergraduate and graduate students at its 1999 Winter Commencement. Craig Allen Kimble of **South Point, Ohio**, right, who was a candidate for the Master of Business Administration degree, received personal congratulations from MSU President Ronald G. Eaglin. The new graduate joins the more than 40,000 MSU alumni around the world.

(MSU photo by Tim Holbrook)

12-22-99rdm



# Photo

University Communications

Pauline Young, Director

Morehead State University UPO Box 1100

Morehead, KY 40351-1689

(606) 783-2030

## MSU CONFERS DEGREES

Morehead State University conferred degrees on approximately 500 undergraduate and graduate students at its 1999 Winter Commencement. Michael Shane Combs of Clearfield, right, who was a candidate for the Master of Science degree with an emphasis in vocational industrial education, received personal congratulations from MSU President Ronald G. Eaglin. The new graduate joins the more than 40,000 MSU alumni around the world.

(MSU photo by Tim Holbrook)

12-22-99rdm



# Photo

University Communications

Pauline Young, Director

Morehead State University

UPO Box 1100

Morehead, KY 40351-1689

(606) 783-2030

## MSU CONFERS DEGREES

Morehead State University conferred degrees on approximately 500 undergraduate and graduate students at its 1999 Winter Commencement. Barbara Susan Arnold of **Mt. Sterling**, right, who was a candidate for a Bachelor of Business Administration degree with an emphasis in management, received personal congratulations from MSU President Ronald G. Eaglin. The new graduate joins the more than 40,000 MSU alumni around the world.

(MSU photo by Tim Holbrook)

12-22-99rdm



# Photo

University Communications

Pauline Young, Director

Morehead State University UPO Box 1100

Morehead, KY 40351-1689

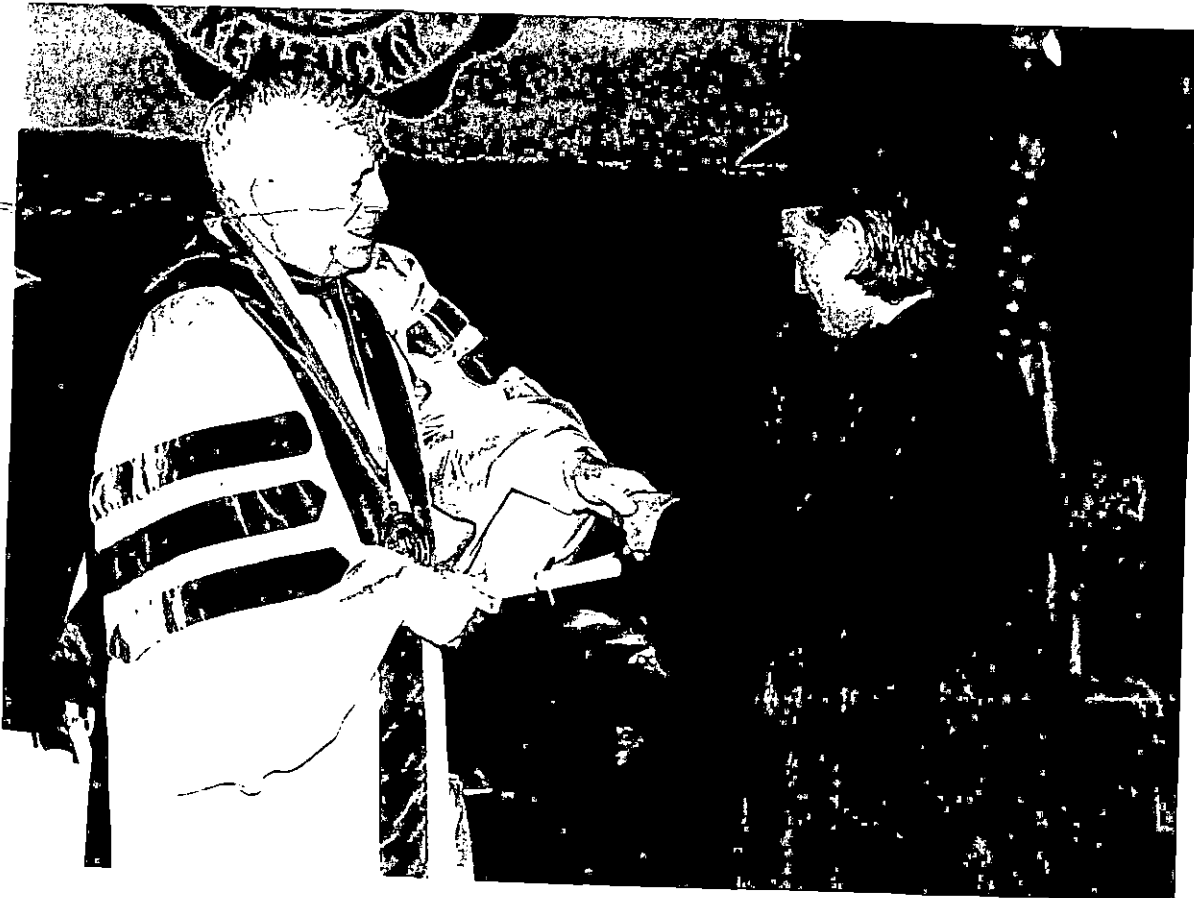
(606) 783-2030

## MSU CONFERS DEGREES

Morehead State University conferred degrees on approximately 500 undergraduate and graduate students at its 1999 Winter Commencement. Beverly Blackburn of Pikeville, right, who was a candidate for the Bachelor of Business Administration degree with an emphasis in real estate, received personal congratulations from MSU President Ronald G. Eaglin. The new graduate joins the more than 40,000 MSU alumni around the world.

(MSU photo by Tim Holbrook)

12-22-99rdm



# Photo

University Communications

Pauline Young, Director

Morehead State University UPO Box 1100

Morehead, KY 40351-1689

(606) 783-2030

## MSU CONFERS DEGREES

Morehead State University conferred degrees on approximately 500 undergraduate and graduate students at its 1999 Winter Commencement. Kevin Michael Childers of **Winchester**, right, who was a candidate for the Bachelor of Business Administration degree with an emphasis in management, received personal congratulations from MSU President Ronald G. Eaglin. The new graduate joins the more than 40,000 MSU alumni around the world.

(MSU photo by Tim Holbrook)

12-22-99rdm



# Photo

University Communications

Pauline Young, Director

Morehead State University UPO Box 1100

Morehead, KY 40351-1689

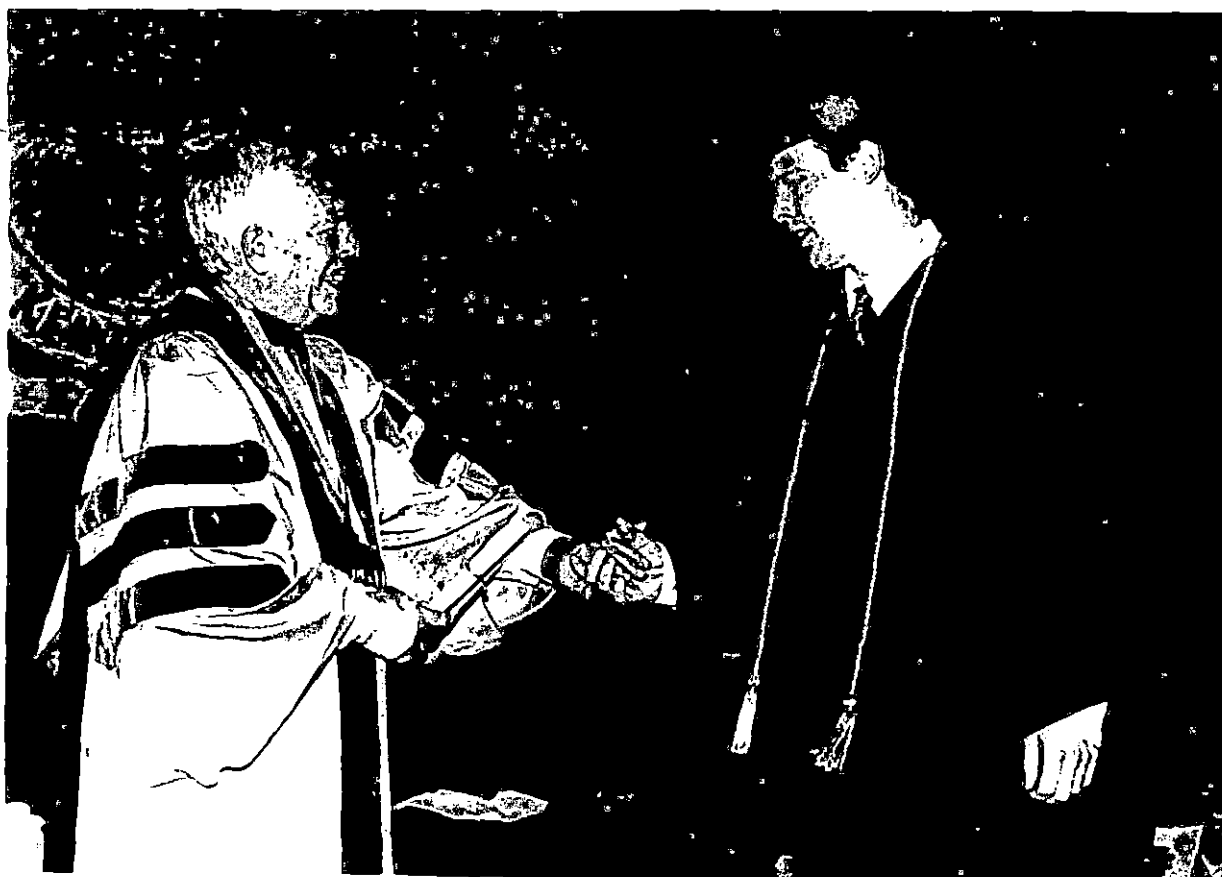
(606) 783-2030

## MSU CONFERS DEGREES

Morehead State University conferred degrees on approximately 500 undergraduate and graduate students at its 1999 Winter Commencement. Christopher Jason Crotts of **Morehead**, right, who was a candidate for the Bachelor of Business Administration degree with an emphasis in computer information systems, received personal congratulations from MSU President Ronald G. Eaglin. The new graduate joins the more than 40,000 MSU alumni around the world.

(MSU photo by Tim Holbrook)

12-22-99rdm





# Photo

University Communications

Pauline Young, Director

Morehead State University UPO Box 1100

Morehead, KY 40351-1689

(606) 783-2030

## MSU CONFERS DEGREES

Morehead State University conferred degrees on approximately 500 undergraduate and graduate students at its 1999 Winter Commencement. Donzell Kinte Dawson of **Dayton, Ohio**, right, who was a candidate for the Bachelor of Business Administration degree with an emphasis in computer information systems, received personal congratulations from MSU President Ronald G. Eaglin. The new graduate joins the more than 40,000 MSU alumni around the world.

(MSU photo by Tim Holbrook)

12-22-99rdm



# Photo

University Communications

Pauline Young, Director

Morehead State University UPO Box 1100

Morehead, KY 40351-1689

(606) 783-2030

## MSU CONFERS DEGREES

Morehead State University conferred degrees on approximately 500 undergraduate and graduate students at its 1999 Winter Commencement. Kimber Hamilton of **Harold**, right, who was a candidate for the Bachelor of Business Administration degree with an emphasis in accounting, received personal congratulations from MSU President Ronald G. Eaglin. The new graduate joins the more than 40,000 MSU alumni around the world.

(MSU photo by Tim Holbrook)

12-22-99rdm



# Photo

University Communications

Pauline Young, Director

Morehead State University UPO Box 1100

Morehead, KY 40351-1689

(606) 783-2030

## MSU CONFERS DEGREES

Morehead State University conferred degrees on approximately 500 undergraduate and graduate students at its 1999 Winter Commencement. Mary Ellen Henderson Yonts of **Stanton**, right, who was a candidate for the Bachelor of Business Administration degree with an emphasis in accounting, received personal congratulations from MSU President Ronald G. Eaglin. The new graduate joins the more than 40,000 MSU alumni around the world.

(MSU photo by Tim Holbrook)

12-22-99rdm



# Photo

University Communications

Pauline Young, Director

Morehead State University UPO Box 1100

Morehead, KY 40351-1689

(606) 783-2030

## MSU CONFERS DEGREES

Morehead State University conferred degrees on approximately 500 undergraduate and graduate students at its 1999 Winter Commencement. Amber Jo Kretzer of Van Lear, right, who was a candidate for the Bachelor of Business Administration degree with an emphasis in computer information systems, received personal congratulations from MSU President Ronald G. Eaglin. The new graduate joins the more than 40,000 MSU alumni around the world.

(MSU photo by Tim Holbrook)

12-22-99rdm



# Photo

University Communications

Pauline Young, Director

Morehead State University UPO Box 1100

Morehead, KY 40351-1689

(606) 783-2030

## MSU CONFERS DEGREES

Morehead State University conferred degrees on approximately 500 undergraduate and graduate students at its 1999 Winter Commencement. Lisha G. McGuire of Frenchburg, right, who was a candidate for the Bachelor of Business Administration degree with an emphasis in accounting, received personal congratulations from MSU President Ronald G. Eaglin. The new graduate joins the more than 40,000 MSU alumni around the world

(MSU photo by Tim Holbrook)

12-22-99rdm



# Photo

University Communications

Pauline Young, Director

Morehead State University UPO Box 1100

Morehead, KY 40351-1689

(606) 783-2030

## MSU CONFERS DEGREES

Morehead State University conferred degrees on approximately 500 undergraduate and graduate students at its 1999 Winter Commencement. Nathan Leith Salisbury of Oil Springs, right, who was a candidate for the Bachelor of Business Administration degree with an emphasis in accounting, received personal congratulations from MSU President Ronald G. Eaglin. The new graduate joins the more than 40,000 MSU alumni around the world

(MSU photo by Tim Holbrook)

12-22-99rdm



# Photo

University Communications

Pauline Young, Director

Morehead State University UPO Box 1100

Morehead, KY 40351-1689

(606) 783-2030

## MSU CONFERS DEGREES

Morehead State University conferred degrees on approximately 500 undergraduate and graduate students at its 1999 Winter Commencement. Kathe Kyndra Silvers of Somerset, right, who was a candidate for the Bachelor of Business Administration degree with an emphasis in accounting, received personal congratulations from MSU President Ronald G. Eaglin. The new graduate joins the more than 40,000 MSU alumni around the world.

(MSU photo by Tim Holbrook)

12-22-99rdm



# Photo

University Communications

Pauline Young, Director

Morehead State University UPO Box 1100

Morehead, KY 40351-1689

(606) 783-2030

## MSU CONFERS DEGREES

Morehead State University conferred degrees on approximately 500 undergraduate and graduate students at its 1999 Winter Commencement. Phillip W. Gulley of Morehead, right, who was a candidate for the Associate of Applied Business degree with an emphasis in real estate, received personal congratulations from MSU President Ronald G. Eaglin. The new graduate joins the more than 40,000 MSU alumni around the world.

(MSU photo by Tim Holbrook)

12-22-99rdm





# Photo

University Communications

Pauline Young, Director

Morehead State University UPO Box 1100

Morehead, KY 40351-1689

(606) 783-2030

## MSU CONFERS DEGREES

Morehead State University conferred degrees on approximately 500 undergraduate and graduate students at its 1999 Winter Commencement. Brian Lee Adkins of Morehead, right, who was a candidate for the Bachelor of Arts degree in physical education, received personal congratulations from MSU President Ronald G. Eaglin. The new graduate joins the more than 40,000 MSU alumni around the world.

(MSU photo by Tim Holbrook)

12-22-99rdm



# Photo

University Communications

Pauline Young, Director

Morehead State University UPO Box 1100

Morehead, KY 40351-1689 (606) 783-2030

## MSU CONFERS DEGREES

Morehead State University conferred degrees on approximately 500 undergraduate and graduate students at the 1999 Winter Commencement. Melissa Lynn Blair of **Leander**, right, who was a candidate for the Bachelor of Arts degree in elementary education, received personal congratulations from MSU President Ronald G. Eaglin. The new graduate joins the more than 40,000 MSU alumni around the world.

(MSU photo by Tim Holbrook)

12-22-99rdm



# Photo

University Communications

Pauline Young, Director

Morehead State University UPO Box 1100

Morehead, KY 40351-1689

(606) 783-2030

## MSU CONFERS DEGREES

Morehead State University conferred degrees on approximately 500 undergraduate and graduate students at its 1999 Winter Commencement. David Ray Brien of Mt. Sterling, right, who was a candidate for the Bachelor of Arts degree with an emphasis in physical education, received personal congratulations from MSU President Ronald G. Eaglin. The new graduate joins the more than 40,000 MSU alumni around the world

(MSU photo by Tim Holbrook)

12-22-99rdm



# Photo

University Communications

Pauline Young, Director

Morehead State University UPO Box 1100

Morehead, KY 40351-1689

(606) 783-2030

## MSU CONFERS DEGREES

Morehead State University conferred degrees on approximately 500 undergraduate and graduate students at its 1999 Winter Commencement. Melanie D. Carter of Winchester, right, who was a candidate for the Bachelor of Arts degree with an emphasis in physical education, received personal congratulations from MSU President Ronald G. Eaglin. The new graduate joins the more than 40,000 MSU alumni around the world.

(MSU photo by Tim Holbrook)

12-22-99rdm



# Photo

University Communications

Pauline Young, Director

Morehead State University UPO Box 1100

Morehead, KY 40351-1689

(606) 783-2030

## MSU CONFERS DEGREES

Morehead State University conferred degrees on approximately 500 undergraduate and graduate students at its 1999 Winter Commencement. Michele See Combs of **Louisa**, right, who was a candidate for the Bachelor of Arts degree with an emphasis in special education, received personal congratulations from MSU President Ronald G. Eaglin. The new graduate joins the more than 40,000 MSU alumni around the world.

(MSU photo by Tim Holbrook)

12-22-99rdm



# Photo

University Communications

Pauline Young, Director

Morehead State University UPO Box 1100

Morehead, KY 40351-1689

(606) 783-2030

## MSU CONFERS DEGREES

Morehead State University conferred degrees on approximately 500 undergraduate and graduate students at its 1999 Winter Commencement. Donna Sue Dulen of **West Liberty**, right, who was a candidate for the Bachelor of Arts degree with an emphasis in special education, received personal congratulations from MSU President Ronald G. Eaglin. The new graduate joins the more than 40,000 MSU alumni around the world.

(MSU photo by Tim Holbrook)

12-22-99rdm



# Photo

University Communications

Pauline Young, Director

Morehead State University UPO Box 1100

Morehead, KY 40351-1689

(606) 783-2030

## MSU CONFERS DEGREES

Morehead State University conferred degrees on approximately 500 undergraduate and graduate students at its 1999 Winter Commencement. Laura R. Hatton of Clearfield, right, who was a candidate for the Bachelor of Arts degree with an emphasis in criminology, received personal congratulations from MSU President Ronald G. Eaglin. The new graduate joins the more than 40,000 MSU alumni around the world.

(MSU photo by Tim Holbrook)

12-22-99rdm



# Photo

University Communications

Pauline Young, Director

Morehead State University UPO Box 1100

Morehead, KY 40351-1689

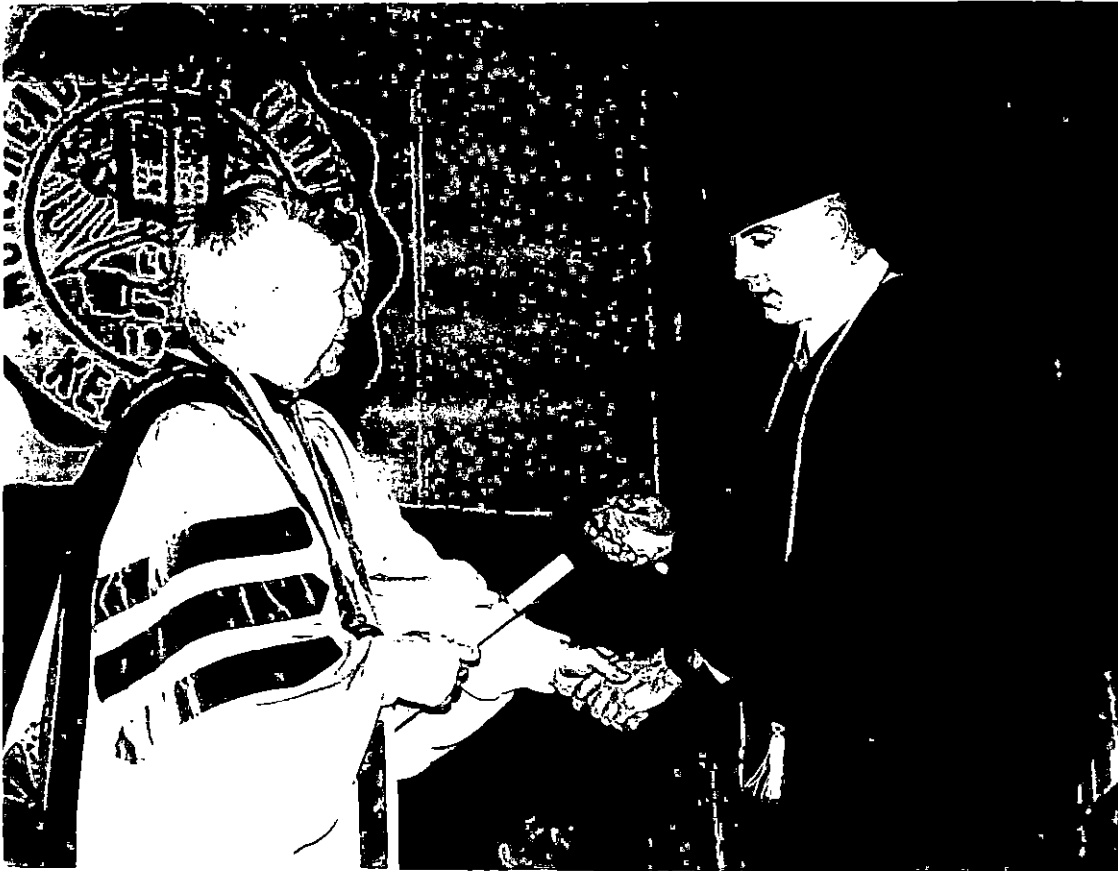
(606) 783-2030

## MSU CONFERS DEGREES

Morehead State University conferred degrees on approximately 500 undergraduate and graduate students at its 1999 Winter Commencement. Derris Mitchell Hedger of **Mays Lick**, right, who was a candidate for the Bachelor of Arts degree with an emphasis in criminology, received personal congratulations from MSU President Ronald G. Eaglin. The new graduate joins the more than 40,000 MSU alumni around the world.

(MSU photo by Tim Holbrook)

12-22-99rdm





# Photo

University Communications

Pauline Young, Director

Morehead State University UPO Box 1100

Morehead, KY 40351-1689

(606) 783-2030

## MSU CONFERS DEGREES

Morehead State University conferred degrees on approximately 500 undergraduate and graduate students at its 1999 Winter Commencement. Brandi Nicole Hogg of **Isom**, right, who was a candidate for the Bachelor of Arts degree with an emphasis in elementary education, received personal congratulations from MSU President Ronald G. Eaglin. The new graduate joins the more than 40,000 MSU alumni around the world.

(MSU photo by Tim Holbrook)

12-22-99rdm



# Photo

University Communications

Pauline Young, Director

Morehead State University UPO Box 1100

Morehead, KY 40351-1689

(606) 783-2030

## MSU CONFERS DEGREES

Morehead State University conferred degrees on approximately 500 undergraduate and graduate students at its 1999 Winter Commencement. Mary Ann Lane of **Mt. Sterling**, right, who was a candidate for the Bachelor of Arts degree with an emphasis in elementary education, received personal congratulations from MSU President Ronald G. Eaglin. The new graduate joins the more than 40,000 MSU alumni around the world.

(MSU photo by Tim Holbrook)

12-22-99rdm



# Photo

University Communications

Pauline Young, Director

Morehead State University UPO Box 1100

Morehead, KY 40351-1689

(606) 783-2030

## MSU CONFERS DEGREES

Morehead State University conferred degrees on approximately 500 undergraduate and graduate students at its 1999 Winter Commencement. Rhonda M. Prater Merion of **Martin**, right, who was a candidate for the Bachelor of Arts degree with an emphasis in special education, received personal congratulations from MSU President Ronald G. Eaglin. The new graduate joins the more than 40,000 MSU alumni around the world.

(MSU photo by Tim Holbrook)

12-22-99rdm



# Photo

University Communications

Pauline Young, Director

Morehead State University UPO Box 1100

Morehead, KY 40351-1689

(606) 783-2030

## MSU CONFERS DEGREES

Morehead State University conferred degrees on approximately 500 undergraduate and graduate students at its 1999 Winter Commencement. Sandy Lynn Moore of **Sandy Hook**, right, who was a candidate for the Bachelor of Arts degree with an emphasis in special education, received personal congratulations from MSU President Ronald G. Eaglin. The new graduate joins the more than 40,000 MSU alumni around the world.

(MSU photo by Tim Holbrook)

12-22-99rdm



# Photo

University Communications

Pauline Young, Director

Morehead State University UPO Box 1100

Morehead, KY 40351-1689

(606) 783-2030

## MSU CONFERS DEGREES

Morehead State University conferred degrees on approximately 500 undergraduate and graduate students at its 1999 Winter Commencement. Johnah Napier of Essie, right, who was a candidate for the Bachelor of Arts degree, with an emphasis in elementary education, received personal congratulations from MSU President Ronald G. Eaglin. The new graduate joins the more than 40,000 MSU alumni around the world.

(MSU photo by Tim Holbrook)

12-22-99rdm



# Photo

University Communications

Pauline Young, Director

Morehead State University UPO Box 1100

Morehead, KY 40351-1689

(606) 783-2030

## MSU CONFERS DEGREES

Morehead State University conferred degrees on approximately 500 undergraduate and graduate students at its 1999 Winter Commencement. Mark Andrew Peace of **Burlington**, right, who was a candidate for the Bachelor of Arts degree with an emphasis in physical education, received personal congratulations from MSU President Ronald G. Eaglin. The new graduate joins the more than 40,000 MSU alumni around the world.

(MSU photo by Tim Holbrook)

12-22-99rdm



# Photo

University Communications

Pauline Young, Director

Morehead State University

UPO Box 1100

Morehead, KY 40351-1689

(606) 783-2030

## MSU CONFERS DEGREES

Morehead State University conferred degrees on approximately 500 undergraduate and graduate students at its 1999 Winter Commencement. Margie E. Renchen of Maysville, right, who was a candidate for the Bachelor of Arts degree with an emphasis in elementary education, received personal congratulations from MSU President Ronald G. Eaglin. The new graduate joins the more than 40,000 MSU alumni around the world.

(MSU photo by Tim Holbrook)

12-22-99rdm



# Photo

University Communications

Pauline Young, Director

Morehead State University UPO Box 1100

Morehead, KY 40351-1689

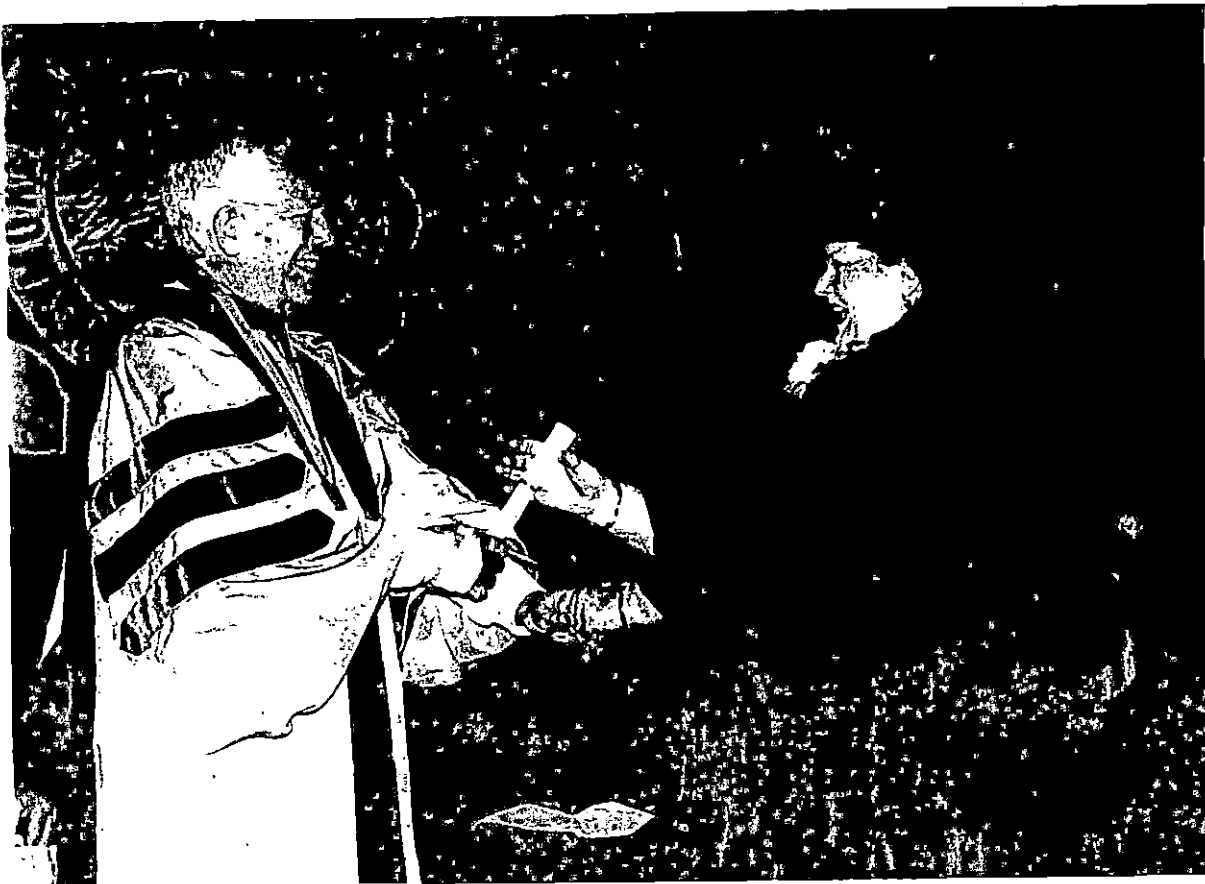
(606) 783-2030

## MSU CONFERS DEGREES

Morehead State University conferred degrees on approximately 500 undergraduate and graduate students at its 1999 Winter Commencement. Regina Kay Back of **Denniston**, right, who was a candidate for the Bachelor of Social Work degree, received personal congratulations from MSU President Ronald G. Eaglin. The new graduate joins more than 40,000 MSU alumni around the world.

(MSU photo by Tim Holbrook)

12-22-99rdm





# Photo

University Communications

Pauline Young, Director

Morehead State University UPO Box 1100

Morehead, KY 40351-1689

(606) 783-2030

## MSU CONFERS DEGREES

Morehead State University conferred degrees on approximately 500 undergraduate and graduate students at its 1999 Winter Commencement. Nikki Jane Cheek of Salyersville, right, who was a candidate for the Bachelor of Social Work degree, received personal congratulations from MSU President Ronald G. Eaglin. The new graduate joins the more than 40,000 MSU alumni around the world.

(MSU photo by Tim Holbrook)

12-22-99rdm



# Photo

University Communications

Pauline Young, Director

Morehead State University UPO Box 1100

Morehead, KY 40351-1689

(606) 783-2030

## MSU CONFERS DEGREES

Morehead State University conferred degrees on approximately 500 undergraduate and graduate students at its 1999 Winter Commencement. Regina McKay Cramer of **Martin**, right, who was a candidate for the Bachelor of Social Work degree, received personal congratulations from MSU President Ronald G. Eaglin. The new graduate joins the more than 40,000 MSU alumni around the world.

(MSU photo by Tim Holbrook)

12-22-99rdm



# Photo

University Communications

Pauline Young, Director

Morehead State University UPO Box 1100

Morehead, KY 40351-1689

(606) 783-2030

## MSU CONFERS DEGREES

Morehead State University conferred degrees on approximately 500 undergraduate and graduate students at its 1999 Winter Commencement. April Dawn Pendland Harris of **Wallingford**, right, who was a candidate for the Bachelor of Social Work degree, received personal congratulations from MSU President Ronald G. Eaglin. The new graduate joins the more than 40,000 MSU alumni around the world.

(MSU photo by Tim Holbrook)

12-22-99rdm



# Photo

University Communications

Pauline Young, Director

Morehead State University UPO Box 1100

Morehead, KY 40351-1689

(606) 783-2030

## MSU CONFERS DEGREES

Morehead State University conferred degrees on approximately 500 undergraduate and graduate students at its 1999 Winter Commencement. Robyn Audrey Mills of Clearfield, right, who was a candidate for the Bachelor of Social Work degree, received personal congratulations from MSU President Ronald G. Eaglin. The new graduate joins the more than 40,000 MSU alumni around the world.

(MSU photo by Tim Holbrook)

12-22-99rdm



# Photo

University Communications

Pauline Young, Director

Morehead State University UPO Box 1100

Morehead, KY 40351-1689

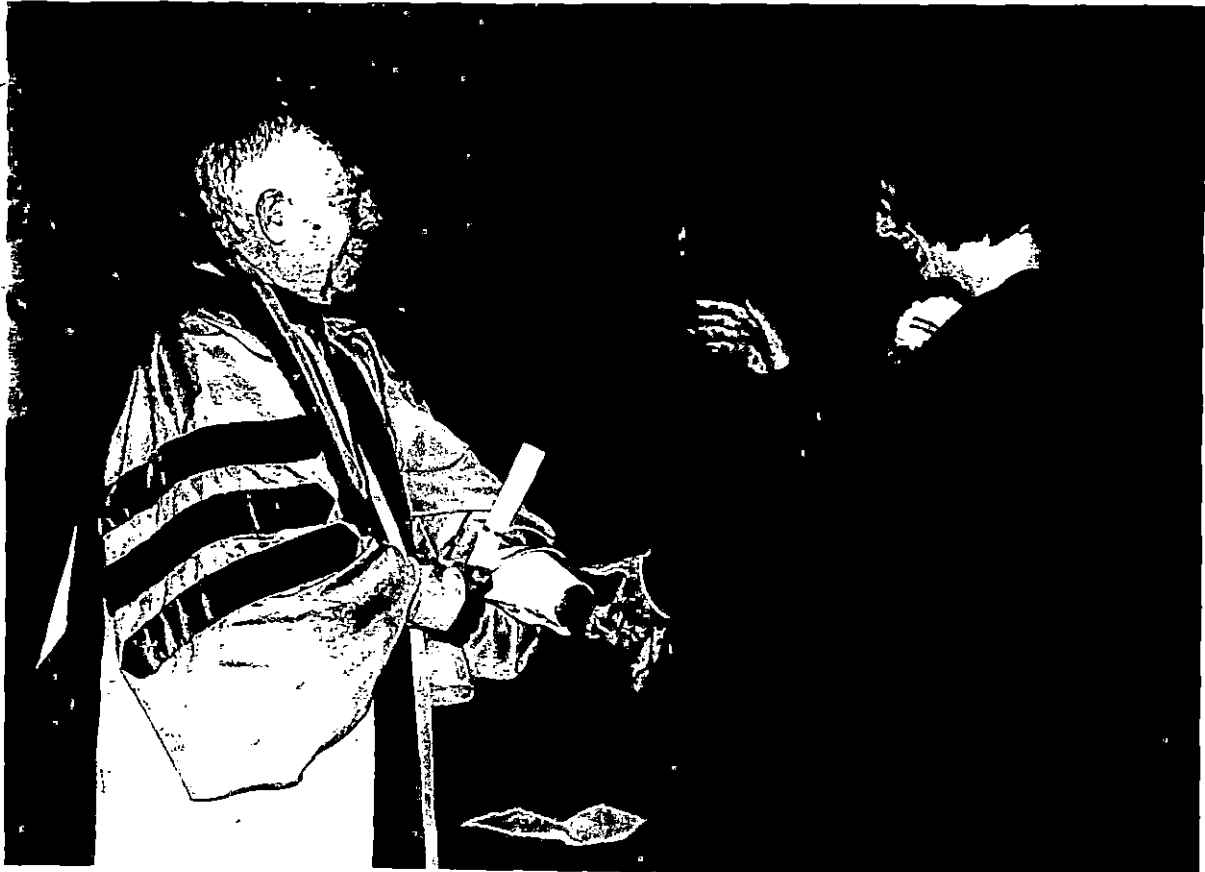
(606) 783-2030

## MSU CONFERS DEGREES

Morehead State University conferred degrees on approximately 500 undergraduate and graduate students at its 1999 Winter Commencement. Johnda Karen Skaggs of Isonville, right, who was a candidate for the Bachelor of Social Work degree, received personal congratulations from MSU President Ronald G. Eaglin. The new graduate joins the more than 40,000 MSU alumni around the world.

(MSU photo by Tim Holbrook)

12-22-99rdm



# Photo

University Communications

Pauline Young, Director

Morehead State University UPO Box 1100

Morehead, KY 40351-1689

(606) 783-2030

## MSU CONFERS DEGREES

Morehead State University conferred degrees on approximately 500 undergraduate and graduate students at its 1999 Winter Commencement. Christopher Rian Brown of Ewing, right, who was a candidate for the Bachelor of Science degree with an emphasis in agricultural science, received personal congratulations from MSU President Ronald G. Eaglin. The new graduate joins the more than 40,000 MSU alumni around the world

(MSU photo by Tim Holbrook)

12-22-99rdm



# Photo

University Communications

Pauline Young, Director

Morehead State University UPO Box 1100

Morehead, KY 40351-1689

(606) 783-2030

## MSU CONFERS DEGREES

Morehead State University conferred degrees on approximately 500 undergraduate and graduate students at its 1999 Winter Commencement. Rodney L. Creech of **W. Alexandria, Ohio**, right, who was a candidate for the Bachelor of Science degree with an emphasis in agricultural science, received personal congratulations from MSU President Ronald G. Eaglin. The new graduate joins the more than 40,000 MSU alumni around the world.

(MSU photo by Tim Holbrook)

12-22-99rdm



# Photo

University Communications

Pauline Young, Director

Morehead State University UPO Box 1100

Morehead, KY 40351-1689

(606) 783-2030

## MSU CONFERS DEGREES

Morehead State University conferred degrees on approximately 500 undergraduate and graduate students at its 1999 Winter Commencement. Mindy Kay Garrison of **Dover**, right, who was a candidate for the Bachelor of Science degree with an emphasis in environmental science, received personal congratulations from MSU President Ronald G. Eaglin. The new graduate joins the more than 40,000 MSU alumni around the world.

(MSU photo by Tim Holbrook)

12-22-99rdm





# News

University Communications

Pauline Young, Director

Morehead State University

UPO Box 1100

Morehead, KY 40351-1689

(606) 783-2030

Dec. 23, 1999

FOR IMMEDIATE RELEASE

MOREHEAD, Ky.--Morehead State University will hold registration for the spring 2000 semester Wednesday through Friday, Jan. 5-7, on the campus.

The first day of registration will be a business day only for advanced scheduled freshmen and transfer students. Tuition and fees may be paid in the Crager Room of the Adron Doran University Center from 10 a.m. until 5 p.m.

Class scheduling in academic departments will be available on Jan. 6 and 7 beginning at 8 a.m. both days.

For advanced registered sophomore and junior students Jan. 6 has been designated as a business day and Jan. 7 for senior and graduate students. Entry to arena for business days will be based on an alphabetical system by last name; which may be found on page 11 of MSU's Course Directory and Business Guide.

Those students who have not yet declared a major will schedule classes in 233 Allie Young Hall. Undergraduates, who have not previously been admitted or were not enrolled this fall, will begin the registration process in the Office of Admissions, 301 Howell-McDowell Administration Building.

Graduate students who were not previously enrolled may begin the registration process in 701 Ginger Hall.

All fees must be paid in full by 6 p.m. on Jan. 7.

Schedule changes will be made at no charge in the student's major department until Jan. 18. After that time, adjustments will be handled in the registrar's office and a \$10 fee will be assessed.

All classes, at on- and off-campus locations, will begin Monday, Jan. 10.

Students who want to take classes at one of MSU's off-campus locations also may register during these days. Registration will be held Jan. 6 and 7 from 8 a.m. to 6 p.m. at the Ashland Area Extended Campus Center, Licking Valley Extended Campus Center in West Liberty at Prestonsburg Community College and Pike County Central High School.

Registration will be held on Jan. 6 from 4 to 6 p.m. at Simons Middle School in Flemingsburg, McNabb Middle School in Mt. Sterling, Maysville Community College and Hazard Community College-Knott County Branch for classes in Hindman.

Students may register on Jan. 6 and 7 from 4 to 6 p.m. at Louisa Middle School, Magoffin County High School in Salyersville, Raceland Independent High School, Bath County High School in Owingsville and Lewis County High School in Vanceburg.

(MORE)

Spring Registration  
2-2-2-2-2

Registration will held at Hazard Community College-Lees College Campus in Jackson on Jan. 6 from 8 a.m. to 6 p.m. and Jan. 7 from 8 a.m.-4:30 p.m.

Course directories with a complete list of classes and registration information are available online at [www.morehead-st.edu/units/registrar](http://www.morehead-st.edu/units/registrar). Additional information is available from the Office of the Registrar at (606) 783-2008.

####

rdm