

Table with 2 columns: Service Name and Phone Number. Includes Telephone Area Code, News, Police, etc.

The Morehead News

For Each Copy Pay Cashier... 10¢

Mail Subscription Rates... \$2.50 per year...

Entered 2nd Class Mail Matter...

Eleven Injured in 2 Car Auto Crash

Nine Members Of Family In One Automobile

Eleven people were injured, nine of them hospitalized, following a car and truck collision Monday afternoon on Highway 1024 near Emerson in Carter County.

Basketball Schedule Released

A challenging 26-game basketball schedule has been announced for Morehead State University's Eagles for the 1968-69 season.



NEW DIRECTOR... Ronald Hart, for the past year director of alumni relations at Morehead State University...

member of the board of directors of the U.S. Junior Chamber of Commerce, Hart taught industrial arts at Breckinridge for seven years...

Rowan Library Petition Is 800 Names Short

Rowan County citizens seeking a 4 1/2 cent tax on each \$100 assessment to keep the bookmobile and library today called on all citizens for help.

At a meeting Tuesday night it was decided that the library and bookmobile be closed "to enable the staff to obtain the necessary signatures."



LEAVIN MOREHEAD... Dr. F. F. Leavin Bigler left Morehead this week for a new position as Resident in Thoracic and Cardiovascular Surgery at the University of Kansas.

Pollution Problem Clarified

The R.L. Wells Lumber Company has been granted permission to modify their topsoil waste burner with new equipment designed to reduce air pollution from smoke and sawdust emissions.

Three Rowan Countians To Be Inducted

Three Rowan Countians have been named for induction in the armed forces on July 11. They are Michael Ora Fannin, John R. Phillips and Harold Brewer.

Rowan County's Foreign Population Is Negligible

How many of the people who have come to the United States from other countries in the last few decades have settled in Rowan County?

Morehead Upsets Bardstown

Morehead's American Legion baseball team gained its stature during the week by defeating Bardstown 4-3 at Brooks Park Wednesday.

Twilight Golf Play Organized

An eight-team, twilight golf league has been organized at Morehead State University, with play scheduled at the University Golf Course for each Thursday afternoon for six weeks beginning today.

Rowan County's Foreign Population Is Negligible

How many of the people who have come to the United States from other countries in the last few decades have settled in Rowan County? What is the proportion of foreign-born in the local population as compared with the proportion in other areas?

Cave Run to Get Almost \$4 Million

Employment! Young Moreheadians Seek Summer Jobs

The district employment office at Morehead is attempting to find summer employment for young men and women.

28 MSU Grads Get Scholarships

Twenty 1968 graduates and students at Morehead State University have been granted assistantships or fellowships for continuing their education.

Only \$200,000 Cut From The Total Requested

A cut in federal expenditures is not expected to slow construction of Cave Run Reservoir, Congressman Carl D. Perkins told this newspaper today.

Budget For Morehead Adopted

By national standards the City of Morehead is operated very economically. The City conducts its affairs for about \$500 a day. This is considered small in almost any business.

Rowan County's Foreign Population Is Negligible

How many of the people who have come to the United States from other countries in the last few decades have settled in Rowan County? What is the proportion of foreign-born in the local population as compared with the proportion in other areas?

Jaycees Sponsoring A Talent Contest

The Morehead Jaycees are sponsoring a Talent Contest, which will be held on Tuesday, September 24th, during the Northeast Gateway Regional Fair.

# Mile Markers Part Of The Highway System

Did you ever wonder what those little green numbers on the back side of highway signs are? Well, they're "mile markers", and that's not as simple as it sounds.

To most motorists, they might seem to be some kind of code, but really, they're a very useful, economic method developed by the Kentucky Department of Highways for determining a particular highway location within one-tenth of a mile.

State Police point out -- and with good reason -- that the old system of placing mileage signs near cities and towns are confusing.

For instance: If one of the old roadway mileage signs read "Smithville, 10 miles", one wondered whether this meant to the center of town or one particular end of town.

Before the present mile posting system was initiated in 1962, accident locations usually referred to city limits which frequently changed through an addition of surveys.

The Highway Department, through directions given on any accident were not always explicit and often caused undue delay in an emergency vehicle reaching the scene of the accident.

Another advantage of this new system is that with the investigating officers referencing all accident locations to the mile-marking system, it is possible to

Dr. Earl J. Bentley, former track coach and assistant football coach at Morehead State University, has been named chairman of the University's Division of Physical Education and Recreation. Dr. James H. Fowles, dean of the School of Education, has announced.

Dr. Bentley received his doctor's degree in physical education recently at the University of Southern Mississippi in Hattiesburg, after a two-year leave of absence.

Dr. Bentley came to Morehead in 1959 from Wadley (Ala.) Junior College, and in addition to teaching physical education and coaching the track team, was the defensive line coach under former coach Guy Perry.

He received his B.S. degree from Troy (Ala.) State University in 1951 and his master's from the University of Tennessee in 1956.

## Pollution —

Continued From Preceding Page  
The firm to measure the smoke and particulate emissions of the burner. Mr. Gravelly, in talking about air pollution control, said the results of the test are the same type of equipment at Glasgow. He indicated that it was doing the job of meeting the tough test set up by the state. He believes that this equipment will work on green waste, and will eliminate the air pollution problem here in Morehead.

Bill Dailey and Bob Wells have indicated they will rush the installation as soon as a permit is received from the manufacturer. They are anxious to get the situation cleared up as rapidly as possible. Rees is expected to ship the equipment to the waste water plant. The plans are to get most of the equipment in place over a week-end. They do not expect to be down more than one or two work days. The company will gradually be able to feed the large accumulated pile of sawdust into the burner as well as the waste from daily production. The equipment includes a ring of forced air jets around the base of the burner to speed the rate of burning and raises the temperature. An electronic control device senses the temperature of the gases escaping from the top of the burner and increases or decreases the air flow automatically to maintain a constant burning temperature. The high burning temperature reduces smoke and insures burning of even small dust particles. Additional controls at the top of the burner are adjusted by an operator as the electronic control recorder shows is necessary. The operator also makes adjustment when a large change in the volume of waste entering the burner occurs.

The Kentucky Wood Industry Association has lead the efforts of the industry to find a way to comply with air pollution regulations. The eyes of the sawmill industry throughout the state will be watching the Morehead test at Waste Lbr. Co. KWIA is very optimistic because of the success of the dry waste test at Glasgow. KWIA Members at Morehead, in addition to R. L. Wells Lumber Co., are Ray L. White & Sons, Drew & Lumber, Homer Gregory and Co. Greer Lumber Company, and Harold White Lumber Company. Other members in the general area are Frederick & Mary, West Liberty; Moore & White at Vanceburg; Grain Industrial Pallets, Inc. at Carter County; C. L. Lumber at West Liberty; and Paul Logan Co., Vanceburg.

Continued From Preceding Page  
Jack Bizzell and Tim Baker. Ron Tucker, Charles Honeywell, Rondal Hart and Jim Osborne were named alternates.

Continued From Preceding Page  
The festival derives its name, as one resident recalls, "from the time we were pretty well covered up with blackberry briars. It's not that way now, but every blackberry pie, jellies and jams will be available to spark nostalgia among the old-timers."

Most activities will be free. Carlisle is 35 miles northeast of Lexington on Ky-32 and Ky-36.

until the bass have spawned once. Another mistake is overfishing for the bass. When fishing, you should try to balance our with 1 pound bass to 4 pounds of bluegill.

Drain and Restock if Fishing Becomes Poor. Many of our ponds provide good fishing for the first 3 or 4 years, then become overstocked with bluegill. In an unbalanced pond that has too many bluegills, the catch will be made up mostly of small bluegills 3 to 5 inches long.

For more information on how to manage your farm pond for fishing, restocking, and problems, you can contact us here at the Soil Conservation Office and we will be glad to assist you. Many of our ponds need to be drained and restocked. If you are in balance in some way to provide good fishing.

Personal Mister Editor, I aim to take extra care of my parts and hope to be a senior citizen until we get peace on this earth of ours.

Yours truly,  
Clay Sprout

Employment of the older worker based on ability rather than age received an official boost this month when the Age Discrimination in Employment Act goes into effect according to Pat Melan, Region 4 Director, U.S. Dept. of Labor, Public Contracts Division (WHPC) U.S. Department of Labor, which has the responsibility to enforce the law established by Congress last year.

"The Act prohibits arbitrary discrimination in employment and helps employers and employees find ways to meet problems arising from the impact of age on employment," Melan reported.

"It prohibits individuals 40 to 65 years old from age discrimination by employers of 25 or more in industry affecting interstate commerce. From June 12 to June 30 the employer criteria is for 50 or more employees."

He stated that employment agencies are also prohibited from discriminating against the 40 to 65 year olds. Labor organizations have the same prohibition as employers.

Melan reported that inquiries about the Act will be answered by mail, telephone or personal interview at any office of the WHPC. The extra copy of office is located at 118 Fuller Building, 120 West Second Street. The telephone number is: 252-2312.

## Rowan Soil Conservation

By Don Nelson

Bill Whitaker of Morehead has done an excellent job of Critical Area Stabilization in front of his home. The home is located in the Pine Crest Subdivision. To start off his project, Bill had a bulldozer to come in and shape it so a tractor and blade could work over it and reshape it. After the tractor had reshaped it, he came in and seeded it to several different grasses and legumes, fertilized, and watered it. He used 1,000 pounds of 10-10-10 per acre and mulched it. The mulch will hold the moisture and soil till the grasses, and legumes take over.

There are many areas such as this when new homes, business places and roads that need to be re-established to some type of vegetation such as grasses, legumes, trees, shrubs etc. Areas that are stabilized prevent erosion, sedimentation and siltation. Beautification of the area is a by-product.

These critical areas across the nation are becoming more of a problem each year due to more construction work being performed. This sedimentation clogs our streams and causes flooding, erosion of our streambanks, and kills many of our fish in these streams. Research has proven that for every dollar that is spent on these critical areas it is worth 20 dollars returned to the nation for the preservation of siltation.

If anyone has a critical area here in Rowan County, you can contact the Soil Conservation Office here at Morehead and we will be glad to assist you.

With over 800 farm ponds in the county we need to think more about managing our ponds for fish after they have been stocked. Farm ponds are an important source of recreation for both farm and urban people. Many fishponds are not as productive as they should be, simply because they are not properly managed. While there is still much to be learned about farm fishpond management, there are certain things that should and should not be done if good fishing is to be maintained. Below are eight, easy to remember rules to follow:

1. Construct the Pond Properly. Proper management really begins with proper pond construction. Make it large enough, with deep edges and at least 6 feet deep.

2. Stock the Pond Correctly. A pond owner cannot afford to try experiments or pet ideas with stocking rates and ratios. Bass and Bluegill have made the best combination for our farm ponds.

3. Protect the Watershed. Silt, Chemicals and various waste materials can interfere with fish production. They may die if overfishing kills the fish outright, or make it difficult for the fish to find food.

4. Protect the pond from Livestock. If allowed to the pond, they trample the shoreline, and cause weeds to grow around the pond. They also destroy the fish nests around the edges.

5. Control Water Weeds. The small fish hide in these weeds so the larger fish cannot get them. This in turn will cause your bluegill to become overstocked.

6. Do Not Fertilize. Unless you have a thorough knowledge of the water chemistry and follow the rather rigid schedule of fertilization, you shouldn't fertilize a farm pond. Sporadic application, usually do more harm than good as they often merely make the nuisance weeds grow faster.

7. Harvest Properly. Fishing should not begin in a new farm pond

until the bass have spawned once. Another mistake is overfishing for the bass. When fishing, you should try to balance our with 1 pound bass to 4 pounds of bluegill.

Drain and Restock if Fishing Becomes Poor. Many of our ponds provide good fishing for the first 3 or 4 years, then become overstocked with bluegill. In an unbalanced pond that has too many bluegills, the catch will be made up mostly of small bluegills 3 to 5 inches long.

For more information on how to manage your farm pond for fishing, restocking, and problems, you can contact us here at the Soil Conservation Office and we will be glad to assist you. Many of our ponds need to be drained and restocked. If you are in balance in some way to provide good fishing.

Personal Mister Editor, I aim to take extra care of my parts and hope to be a senior citizen until we get peace on this earth of ours.

Yours truly,  
Clay Sprout

Employment of the older worker based on ability rather than age received an official boost this month when the Age Discrimination in Employment Act goes into effect according to Pat Melan, Region 4 Director, U.S. Dept. of Labor, Public Contracts Division (WHPC) U.S. Department of Labor, which has the responsibility to enforce the law established by Congress last year.

"The Act prohibits arbitrary discrimination in employment and helps employers and employees find ways to meet problems arising from the impact of age on employment," Melan reported.

"It prohibits individuals 40 to 65 years old from age discrimination by employers of 25 or more in industry affecting interstate commerce. From June 12 to June 30 the employer criteria is for 50 or more employees."

He stated that employment agencies are also prohibited from discriminating against the 40 to 65 year olds. Labor organizations have the same prohibition as employers.

Melan reported that inquiries about the Act will be answered by mail, telephone or personal interview at any office of the WHPC. The extra copy of office is located at 118 Fuller Building, 120 West Second Street. The telephone number is: 252-2312.

H. H. Lacy Gladys M. Lacy  
Realtor - Auctioneer Broker - Auctioneer  
Salesman - Howard Briggs

PHONE 784-6750 MOREHEAD, KY.



GRAND SLAM BASEBALL is now being explained to a group of young baseball players as preparation is made for the first annual Morehead Personna Grand Slam Baseball competition. The program is conducted by the Morehead Jaycees with all

boys 8-13 eligible for awards and free trip to state and national finals. Rondal Hart, project chairman, explains the program during a practice session at Little League Park. Competition will be held July 6, at 4:00 p.m. at Little League Park.

## Kentucky Moves Forward . . .

# Stripping Machines

Stripping Machine Ahead. Yes, it's that time of year again, when motorists should be on the lookout for highway painters and their equipment working on the roads.

Recently, the Kentucky Department of Highways introduced to its motorists, primarily in urban areas, a special purpose marking material. This material is laid by a machine called a "Night Liner," which was first used to mark roadways during the evening hours. This new material dries in approximately three minutes, causing very little congestion for the motorist.

Also as highway progress continues, Kentucky's methods of marking highways are continually improving. A newer material, "Greenlight Powder," is now being utilized in Kentucky. This powder is used extensively at major intersections. Its name is derived from the fact that it dries in about the length of time it takes a green light to change, thus allowing traffic to flow with very little interruption.

Another new development -- putting heaters on the larger stripping machines -- allowed Highway Department workers to start earlier this season, and will let them keep on stripping as late as December.

Kentucky has been using glass and stripping paint for many years to mark the center of highways. The glass has proved harmless to tires because it is in the form of minute, spherical beads, smaller than a granule of sugar. The glass is combined with the paint and is now spread on top of the paint -- allowing the line to "glow" almost indefinitely.

Other important lines you'll find on the

highways are known as edge lines. These are the "white lines" you see on the "outside" of a broad, busy roadway.

Like the center line, these also consist of stripping paint and the spherical beads of glass and have proved to be a great safety feature by helping to cut down on many serious accidents.

In the past year, the Commonwealth of Kentucky has put approximately 2,500 miles of edge lines on its high-speed highways.

The Highway Department, in the next year, expects to be using much more of the specialized marking materials, thus making the highways of Kentucky safer and more secure for motorists.

## Golf Play —

Continued From Preceding Page  
Ron Tucker, Charles Honeywell, Rondal Hart and Jim Osborne were named alternates.

Continued From Preceding Page  
The festival derives its name, as one resident recalls, "from the time we were pretty well covered up with blackberry briars. It's not that way now, but every blackberry pie, jellies and jams will be available to spark nostalgia among the old-timers."

Most activities will be free. Carlisle is 35 miles northeast of Lexington on Ky-32 and Ky-36.

until the bass have spawned once. Another mistake is overfishing for the bass. When fishing, you should try to balance our with 1 pound bass to 4 pounds of bluegill.

Drain and Restock if Fishing Becomes Poor. Many of our ponds provide good fishing for the first 3 or 4 years, then become overstocked with bluegill. In an unbalanced pond that has too many bluegills, the catch will be made up mostly of small bluegills 3 to 5 inches long.

For more information on how to manage your farm pond for fishing, restocking, and problems, you can contact us here at the Soil Conservation Office and we will be glad to assist you. Many of our ponds need to be drained and restocked. If you are in balance in some way to provide good fishing.

Personal Mister Editor, I aim to take extra care of my parts and hope to be a senior citizen until we get peace on this earth of ours.

Yours truly,  
Clay Sprout

Employment of the older worker based on ability rather than age received an official boost this month when the Age Discrimination in Employment Act goes into effect according to Pat Melan, Region 4 Director, U.S. Dept. of Labor, Public Contracts Division (WHPC) U.S. Department of Labor, which has the responsibility to enforce the law established by Congress last year.

"The Act prohibits arbitrary discrimination in employment and helps employers and employees find ways to meet problems arising from the impact of age on employment," Melan reported.

"It prohibits individuals 40 to 65 years old from age discrimination by employers of 25 or more in industry affecting interstate commerce. From June 12 to June 30 the employer criteria is for 50 or more employees."

He stated that employment agencies are also prohibited from discriminating against the 40 to 65 year olds. Labor organizations have the same prohibition as employers.

Melan reported that inquiries about the Act will be answered by mail, telephone or personal interview at any office of the WHPC. The extra copy of office is located at 118 Fuller Building, 120 West Second Street. The telephone number is: 252-2312.

Choose from a large selection of monuments in stock or order.

**BARKER MONUMENT COMPANY**

Located just east of Olive Hill on US 60

"Where you see what you are buying" when you want the best you want Georgia granite. We cut our own stone and are equipped to cut dates on stones already in cemetery.

**Jim Barker, Owner Phone 286-4374.**

Hours—Mon, thru Sat, 9:00 A.M. — 5:30 P.M.  
Marble available on order

**Trees Make Community**

SAN FRANCISCO (UPI) — When you see trees you know the living is good.

To help communities plant the right trees in the right place, a new 20-page booklet "Trees For Better Neighborhoods" has been published.

The illustrated brochure shows how trees can be used to show off the best features of a community and hide the less attractive things. It gives names, types, sizes and other instructive data on various kinds of trees.

The booklet also discusses rate of growth, climate and soil conditions, and recommends varieties for specific needs.

What kinds of trees have given the community its character? What trees are best in this kind of soil in this climate? What trees recall local history and background?

Questions like these are among the topics in the new booklet.

"Trees For Better Neighborhoods" was published by Chiron Chemical Co., San Francisco. Its theme is: "When you see a neighborhood rich with trees, you know the living is good here."

Dauphin in "Contract" — Noddy French actor Claude Dauphin landed a supporting role in "20th Century-Fox's "Hard Contract" with James Coburn.

**BURGLARY!**

A sickening shock . . . and, like fire, it can destroy and rob you of important papers, jewelry and other valuables worth many, many times the very small yearly cost of renting one of our vault-guarded bank Safe Deposit boxes.

Rent a safe deposit box here . . . now!

**PEOPLES BANK OF MOREHEAD**

There's a STANDARD answer

Chevron Diesel Fuels burn clean, increase injector life, triple fuel filter life.

**STANDARD OIL**

CALL YOUR STANDARD OIL MAN IN MOREHEAD  
E.C. DEHART 784-5172

\*Standard Oil Company (Inc.) in Ky.

**The Morehead News**

Formerly Morehead News, Morehead, Kentucky, Ky. Published every Thursday at Morehead, Morehead County, Ky. Entered as Second Class, Post Office, Morehead, Kentucky, 62551.

W. E. Crutcher, Publisher  
Howard A. Conell, General Manager  
Mary J. Conell, Business Manager  
Office Fourth Building, E. Main St., Phone 784-4116

When requesting change of address be sure to include old address.

One year in Kentucky	12.00
Five years in Kentucky	55.00
Five years in Kentucky (including postage)	15.00
Two years outside Kentucky (including postage)	2.00
One year outside Kentucky (including postage)	1.00
Subscription by Renewing for 5 Years	5.00

No subscriptions outside the U.S. All subscriptions payable in advance. News accepted on telephone.

**HOMEES FOR SALE**

6 rooms, 1 bath ranch type home located on a 50 x 84 ft. lot in Bishop within a nice walking distance to schools, church and downtown. House 30 x 40 ft. Has 3 bedrooms, fireplace in living room, dining room combination, kitchen with built-in birch kitchen cabinets. 7 closets, storm windows and doors. Exterior walls masonry, Bedford stone front and side. Take a look at this nice home today.

7 rooms, 2 baths, garage, carport, brick ranch type home located 6 miles from city limits on a blacktop road. 3 bedrooms with closets which have two purpases: storage and sleeping. Living room has fireplace and new wall to wall carpet in living room and hall. Nicely furnished room just off the living room and kitchen area which has built-in paneling and brick. Other interior walls plastered. Kitchen has lovely built-in birch kitchen cabinets. Nice lawn well landscaped. Ideal place for children to play. Lot size 135 ft. front 110 ft. deep. One of our best homes.

**H. H. Lacy Gladys M. Lacy**  
Realtor - Auctioneer Broker - Auctioneer  
Salesman - Howard Briggs

PHONE 784-6750 MOREHEAD, KY.



# Braves Take Lead In Babe Ruth Standings

The Braves won their first two games to take the lead in the first week's play of the Morehead Babe Ruth League. The Giants and Reds are 1-1 while the Cubs lost their first two.

**The week's results -**  
Braves 5, Cubs 4 - The Braves outlasted the Cubs 5 to 4 in the first game of the season. The Braves were held scoreless until the fourth inning when Fugate reached first on an error and was brought home on a hit by Cassidy. The Braves trailing 4-3 in the seventh scored two runs as McIntosh reached first on an error. Cassidy followed with a double scoring McIntosh with the tying run. Cassidy then scored as Needham reached first on an error. The Cubs were led by Miller who had two of his team's four hits. Greer was the winning hurler as Duff was the loser.

Giants 13, Reds 3 - The Giants blasted the Reds 13 to 3 in both teams opening game. Dulin with two hits and Fouch with four runs batted in led the winners in hitting. Fouch was the winning pitcher holding the Reds to just one single. Ferguson ruined Fouch's bid for a no hitter with a single in the third inning. Abner was the losing pitcher.

Reds 5, Cubs 1 - The Reds won their first game turning back the Cubs who suffered their second straight loss 5-4. The winning pitcher was Pratt and the loss went to Cisco. The Reds were held to only two hits but made them count.

Ferguson had the only extra base hit with a triple.  
Braves 7, Giants 1 - The Braves took over sole ownership of first place as they handed the Giants their first defeat 7 to 1. The Braves winning their second straight game as Fugate was the winning pitcher. Staton suffered his first loss pitching for the Giants. Morrison led the losers in hitting with three hits. Adkins and Murray had two hits for the Giants. The Braves used their five hits to a winning cause as Cassidy collected two with a home run and a single.

### Russell Kidd Assigned To The Pacific Area

Fireman Apprentice Russell D. Kidd, USN, son of Mr. and Mrs. Della C. Kidd of Route 3, Morehead, is serving aboard the store issue ship USS Pollux in the Western Pacific.

His ship recently was awarded the Meritorious Unit Commendation for meritorious service to the fleet during the period July 1966 to July 1967. During this period, the Pollux maintained a supply effectiveness of about ninety percent and issued over 220,000 line items.

In addition, Pollux sought out and accomplished many varied special support missions such as delivery of freight and special order items to different units.

**BROWN'S MOBILE HOMES**



See the Most Beautiful Mobile Homes in the world at **Brown's Mobile Homes**

Main Street Grayson, Ky.  
Phone 474-5844 or 474-6489

ON THE SPOT FINANCING OPEN 8 to 7 (Seven Days A Week)

### Expert Puts In Word for Pork

CHICAGO (UPI) — A well-bred hog should be a welcome addition to anyone's table, even the diet conscious. So says the secretary of the pork industry committee of the National Live Stock and Meat Board.

Robert Nelson says the modern hog is just what the doctor ordered for the weight watcher. It has more lean meat and protein and less fat and calories than the hog of even 12 years ago.

"As a matter of fact," says Nelson, "pork today has 26 percent fewer calories and 67 percent less fat than food composition tables once indicated. Pork products contain as much ... or more ... protein, as other animal protein foods."

Homemakers aren't aware of this, Nelson says. He cited a national consumer survey conducted by the Meat Board and the U.S. Department of Agriculture which showed housewives consider pork to be fat, wasteful, hard to digest, and a food to be avoided in warm weather or for weight reducing.

Research has shown, Nelson adds, that pork is nearly 100 per cent digestible.

**open house**

Jackson Builders

**EVERYBODY WELCOME**

The Gold Medallion is your assurance that the living in this house offers is the finest money can buy — all-electric from cornerstone to TV antenna. A Gold Medallion home has major electric appliances, full housepower wiring, light for living, and above all, clean, quiet electric heating — perhaps the most appreciated of all the joys of total electric living. Draftless and trouble-free, electric heating gives you the biggest plus of all — individual room temperature control.

So come on out. See tomorrow's living today — in a modern all-electric Gold Medallion home.

See the Gold Medallion Home Saturday or Sunday, June 22 or 23 in Lakeview Subdivision from 2-5 p.m. This lovely home is heated with electric baseboard equipment. See all of Jackson Builders new all electric homes in Lakeview Subdivision, Morehead's prestige subdivision located 4 miles west of Morehead just off U. S. 60.





**KU** KENTUCKY UTILITIES COMPANY  
an investor-owned electric company

GO FIRST CLASS ELECTRICALLY  
POWERLESS LIGHTING  
PUMP WATER HEATING  
CLEAN LOOKING  
THRIFTY HEATING



— SAVE WITH STONE — SAVE WITH STONE — SAVE WITH STONE — SAVE WITH STONE —



## We're kissing profits goodbye during this stock reduction

# Sale!

Normally we make just a Little Profit on each car we sell. We can afford this policy because we sell a lot of cars — and *vice versa*. But, because of a slight slump, we haven't sold our quota for the month. So, to get back into the swing of things, we're kissing the Little Profit goodbye on the next 30 cars we sell. *This is true.*



1968 PONTIAC GRAND PRIX  
*It Has Been Driven A Few Miles*  
**SAVE \$1,000**



1968 LEMANS SPORT COUPES  
Prices Start At ..... **\$2,857**



2-1968 PONTIAC EXECUTIVES  
*Four Doors — Company Cars*  
**At Our Cost**



4-1968 PONTIAC CATALINAS  
*Four Door Sedan — Loaded With Equipment — Factory Air*  
Prices Start At .... **\$3,477**

Cars Shown By Appointment

## Stone Pontiac - Buick - GMC, Inc.

U. S. 60 E. "Your Little Profit Dealer" MOREHEAD, KY.

THE LITTLE PROFIT SAVES YOU MORE THAN ANYTHING YOU EVER BARGAINED FOR.

© Copyright — Leon Sheffer Oshick Adv., Inc. \* SM-LSGA, INC.

— SAVE WITH STONE — SAVE WITH STONE — SAVE WITH STONE — SAVE WITH STONE —

### The Shooting

The latest act of violence affecting public figures in this country—the shooting of Senator Robert Kennedy and others in Los Angeles—is a poor commentary on life in the United States and an effective propaganda weapon for Communists everywhere.

Certainly the growing climate of crime and violence in the nation today is one of ever increasing concern, the trend must be arrested if the nation is to escape an era of unparalleled lawlessness and chaos.

The Kennedy shooting is the latest proof, if any more is needed, that the rising crime rate in the United States must be checked if the nation's future welfare and stability is to be safeguarded.

### Crises In France & England

The present may prove to have been a decisive turning point in western history.

The picture of the United States is not entirely encouraging, though the economy would be sound enough if it were not for strains imposed by the Vietnam war. The drain of the war, financially and as it affects the morale of the nation, and the pressure on the government from undertaking certain needed domestic programs, could produce really runaway inflation and a crisis of confidence in the dollar.

whether the electorate will rebel at the increasing sacrifices demanded, is an almost desperate question in London today.

Meanwhile France, which had seemed to be the personification of stability, under General Charles DeGaulle's strong hand, is undergoing a very serious crisis and no one knows how the situation will develop in coming months.

### Vietnam & New Weapons

A question which may soon be pertinent in Washington concerns the use of tactical nuclear weapons in Vietnam. Unless the Paris talks bring about deescalation of the fighting or the enemy adopts restraint, some agonizing decision will face President Johnson.

not in favor of an endless continuation of the American sacrifice in Vietnam.

That is how the United States can quickly put an end to the grim carnage which is now in the fifth year for the U.S. The only sure military method lies in the use of tactical nuclear weapons.

Chances of such a withdrawal are slim, so too are chances of an endless continuation of the present type of fighting. Indications are new tactics and strategy, and probably new weapons, would be the choice.

### California's Primary

Senator Robert Kennedy's ballot victory in California was less impressive than earlier ones in Indiana and Nebraska. Although he won, his margin was only a few percentage points over Senator Eugene McCarthy, who also received more than 40 percent of all votes cast.

After saying this, however, the fact remains that Kennedy won a huge bloc of the delegate votes from two ballots at the minimum. This is a major mathematical and psychological lift to Kennedy campaigners.

Since the right shooting of Kennedy on the night of his triumph has made the Senator's sympathy of the nation and world this will be remembered as the biggest news of the 1968 California primary; it could also have a major political impact on the year's political campaign.

### Humphrey & Paris

Vice President Hubert Humphrey has the most to lose—and to gain—from the outcome of U.S.-North Vietnamese peace talks in Paris.

might well do if the Paris talks fail. Humphrey is certain to be closely identified with this policy.

Such a turn of events would surely bring new and anguished cries from various segments of the nation, clergy and laymen—and hurt Humphrey's chances of winning the Democratic nomination at Chicago. Likewise, should the President's Paris negotiators succeed in deescalating the war, Humphrey would gain most among Democratic nomination candidates.

the right of his triumph has made the Senator's sympathy of the nation and world this will be remembered as the biggest news of the 1968 California primary; it could also have a major political impact on the year's political campaign.

### Goldwater's Victory

Former Senator Barry Goldwater's recent court victory is a testimonial to the 1964 Republican presidential candidate's determination and perseverance. And it is more.

now have second thoughts about such an approach.

It is a blow in terms of reasonable limits on those who gamble that candidates for public office have no protection against defamation of character and downright attack.

Even Goldwater's best friends advised him not to fight the issue in court, for they felt he had little to win, after his 1964 loss, and that the experience would be personally painful.

Certainly those who would attack a candidate's character and qualifications as Goldwater's were attacked in 1964 by the publisher who was recently ordered to pay \$75,000 will

But Goldwater ignored such advice. Instead, he and his family contributed considerable money and time, to the fight for principle and decent treatment of candidates, and won. All those who seek public office, and all Americans, are in his debt.

### Higher Interest Rates

One of the ironies of the present money market is that a Democratic administration's policies have forced interest rates up all-time highs.

also now runs fifteen billion dollars annually. In addition, the average citizen who utilizes credit in the purchase of a home, car or appliances, pays much more in interest than he would have a few years ago.

Since the Democratic Party has, traditionally, favored low interest rates (considered in the interest of the working man who must buy on credit), the situation today is the reverse of what former Democratic administrations have sought to achieve.

the best way to get a day's work done is to work a day.

The primary reason for soaring interest rates is, of course, the high cost of the war in Vietnam. Yet the high interest rates the federal government now pays on U.S. bonds are costing the taxpayer in two ways.

People who talk fast and much of ten outrun their facts.

## Here you are, cats, the best 2-way sign available— one side protests poverty, the other side deplores the war in Vietnam— and listen to the price...



### NEWS REPORT FROM WASHINGTON

Washington, D.C.—Kennedy party leaders is proving a boon force for the light to Humphrey's campaign. Polls show Humphrey almost as strong in the Democratic Party with local party leaders as is Nixon in the G.O.P.

The one award hanging men's heads over the Vice President's head is that tied to the Paris peace negotiations. Should they fall and should the President be forced to escalate the now-unpopular Vietnam war, Humphrey, a loyal supporter of the President's policies, would surely suffer from his association with them. This is not apparently, could scare away some delegates from his banner to produce the nomination of another Democrat in Chicago.

Kennedy himself didn't think, in the besting, of 1968 was his year. He felt he had to get into the race because of the issues and political sentiment revealed by McCarthy in his anti-war campaigning, however, and entered late.

Why is there usually a sea breeze on the beach by day and often a land breeze at night? The delightful sea breeze enjoyed by so many at beaches is caused by the fact that the ocean heats up faster than water. Thus, the sun heats the land along the seashore during daylight and heat radiation rises.

John Kennedy in 1956 was spared running on a losing Stevenson ticket and in 1960 President Eisenhower was retiring. In 1972 the President is not likely to be retiring, whether he be Nixon or Humphrey.

So the picture facing Kennedy today includes the sober realization that the President could eliminate him from consideration in the party for another eight years. On the other hand, if he is elected, he is elected, either could serve eight years.

Meanwhile, the President's influence—and that of state.

much has been written and many films have been made about World War II, however, the members of this special-trained group called the name of "The Devil's Brigade."

Uncle Sam Remembers His Soldier boys who were killed in the number of Americans who were killed in the Vietnam War, 58,000.

White House urges flexible law on trade.

Time to Spare

White House urges flexible law on trade.

Time to Spare

White House urges flexible law on trade.

Time to Spare

White House urges flexible law on trade.

Time to Spare

White House urges flexible law on trade.

Time to Spare

White House urges flexible law on trade.

Time to Spare

White House urges flexible law on trade.

### SUNDAY'S SERMON

YOU ARE FREE

You would measure your true worth, count your blessings. Think first of your heart. Even though you may encounter prejudice and discrimination along the way, you still have the right to pick and choose the routes that will lead to your own personal destiny. You are free to object, to challenge, in any eventuality. You are free to pursue the profession of your choice, to attend the church of your own choice.

Who Knows?

- 1. On what date did Germany attack the Soviet Union in World War II?
2. What is the nickname for the state of Maine?
3. Where is the highest water fall in the world?
4. What is the last line in all four verses of "The Star-Spangled Banner"?
5. Name the four states that experienced a total solar eclipse on June 5, 1957?
6. What President of the U.S. carried the phrase, "rugged individualism"?
7. Locate the O'Shaughnessy Dam.
8. Name the three sons of Noah.
9. What is an eta?
10. Name the author of "Of Mice and Men"?

- Answers To Who Knows
1. June 22, 1941.
2. The Pine Tree State.
3. Angel Falls (3,212 ft.) in Venezuela, South America.
4. O'er the land of the free and the home of the brave.
5. Maryland and Delaware.
6. Herbert Hoover.
7. California.
8. Shem, Ham and Japhet.
9. A unit of electrical energy.
10. John Steinbeck.

### BIBLE VERSE

"Whatever ye do, in word, or in deed, do all in the name of the Lord Jesus, giving thanks to God the Father through him."

### THE DEVIL'S BRIGADE

Much has been written and many films have been made about World War II, however, the members of this special-trained group called the name of "The Devil's Brigade."

### Briets, Very Brief

White House urges flexible law on trade.

Poll finds 67% feel religion is on wane.

School integration in South is said to lag.

Nuclear "prints" help police identify clues.

### PORTS OF CALL

...FOR TRAVEL AND ADVENTURE

By Edward H. Sims

For those who like to drive through various states on summer holidays the United States offers countless attractions. One should consult the latest super-highway map for the entire country and take advantage of these fine roads to enjoy such a trip to the maximum.

The highway program begun in the Eisenhower Administration should have been completed by 1970 according to the original programing but, as so much in the field of construction and financing, the program is running behind schedule in many states.

Colorado is fine in summer and water and Denver, at about a mile high, is not often too hot. Montana's countryside is hard to beat, though it is further removed from a metropolis like Denver than most of Colorado.

Health and Beauty

An extremely common type headache, which falls in the second category, is that known as the tension headache. This headache is related to tension and is caused by the muscles which overlie the skull and also those located in the back of the neck.

Chemical fertilizers, on the other hand, provide the elements for plant growth that are lacking in the soil. Just which one is best is really not covered by asking the State Agricultural Stations of almost every state.

LOUISA'S LETTER

Dear Louisa,
We have four boys and three of them are very much alike but the third boy is very different from the other two. He is very athletic and very much interested in sports. This worries his father as he, himself, was a football hero in his school and his idea of some of that ones who go in for sports in a big way.

"If you REALLY loved me, you would have jumped!"



# Publisher's Column...

We are reluctant to confess but the truth of the matter is that this outdoor... Publisher has not taken advantage for more than five years of the picnic grounds and parks provided in this area by the Daniel Boone National Forest.

That is, we hadn't visited any except for some newspaper pictures during a half decade... until last week.

We were on an outing Tuesday at the Roburn Park and impart to the Daniel Boone National Forest, administered by the Department of Agriculture, that a good job has been and is being done. We could write columns but condense it by advising you to take advantage of these facilities. You'll be pleasantly surprised. This is a wise investment and administration of our tax dollars.

Last issue Forest Ranger Joe Mauk dwelt at some length, and properly so, on the two poisonous snakes of the area - the copperhead and rattler.

The picnic and camping areas of Daniel Boone Forest are mostly void of poison ivy, oak and sumac. However, figures at hand indicate that 70 percent of our people contact this allergy.

Here's some information that might be helpful.

Allergic reactions to three native plants, poison ivy, poison oak, and poison sumac, have long been a source of concern to the early settlers because of the ill effects of these plants, and Captain John Smith described them in his journal, thus reporting the first allergic disease to occur in America.

The sticky sap of all three plants contains an active ingredient known as urushiol, an olefin (a combination of plant resin and a volatile oil). Since poison ivy, oak, and sumac each have individual plant characteristics, each is not identical. But the urushiol of each shares one trait: it can cause similar allergic skin reactions. The most common symptoms are allergic effects about one person in ten, urushiol can affect at least seven times that many.

The rash usually produces may develop within a few hours, or it may appear several days after contact. The reaction - occurring anywhere the sap has touched the body - may be mild, moderate, or severe, depending on individual sensitivity and degree of exposure. The skin may merely turn red and itch; small weeping areas may form; or, in more severe cases, large blistered areas with inflammation and swelling may appear. Occasionally, extremely sensitive persons exposed to urushiol over large areas of the body may die.

Contrary to common belief, reactions to poison ivy, oak, or sumac do not occur if the sap is simply touched. Urushiol must make contact with the skin. This contact is usually made by touching plant leaves or stems. Urushiol is present in all parts of the plant, including stems and roots. Smoke from the burning plants carries droplets containing urushiol, which may be inhaled or enter the nose, throat, and lungs. Children sometimes eat the berries, which can cause an allergic reaction in the mouth or in the rectal area as the plant is excreted. Clothing or tools that touch the plants, or pets that rub against them, can pick up the sap and pass it to a person indirectly.

Staying away from the plants is the best way to avoid a skin reaction. Poison ivy and poison oak grow almost everywhere; in back yards as well as in woods and pastures. Long sleeves, long trousers, gags, and gloves will help to prevent exposure in heavily wooded areas. Protective ointments can be applied to the skin before working in the vicinity of plants. And when contact cannot be avoided, washing immediately with strong soap and rinsing well helps to quench the sap before it can do too much harm. Changing exposed clothes and washing them in strong soap removes the sap and minimizes the risk of contact. The family pet should not be overlooked; a thorough bath is in order if it is suspected to have been "challenged" with urushiol. He is not in danger himself, since animals don't usually react to urushiol.

**THIS IS WAY YOU SPENT YOUR MONEY**

At hand is a national newspaper survey which shows that Rowan Counties spent most of their incomes as follows last year:

- Food, \$5,247,000 or 32% out of every dollar. This does not include restaurants, but covers all other food outlets including dairies, delicatessens, and Supermarkets got the big part of it.
- Cars, trucks, motorcycles, boats and other automotive equipment, \$2,044,000. This was the second highest per capita expenditure.
- Department stores and variety stores carrying general merchandise, \$1,290,000.
- Specialty and apparel shops, including those selling hats, shoes, dresses and other articles of clothing, \$783,000.
- Furniture and home furnishings stores, \$782,000.

The report reveals that Rowan Counties are better than the average family in the United States. The average Rowan County household spent \$1,525 for take home food while the national average was \$1,218 for each family. In Kentucky the average was \$1,146.

Thus, the people of Rowan County lived about 20 percent better [food-wise] than the average for the nation.

**WHERE ARE THE EAGLES HEADED?**

Morehead State University has released a "challenging" 26 game basketball schedule for the coming year.

About the only city limits "challenging" are three new opponents, all to be met on their floors. They are - Mississippi Southern, Miami, Florida; and Dayton, O.

During the past season the Eagles

won 12 and lost nine. In OVC play they were 8-6, and there is some question among the "downstate" boys that they will better this record although almost all the players will be back.

It's not so much a question of coaching as recruiting.

The schedule:

- Nov. 30 - Arsenal Newman.
- Dec. 5 - Pan American; 7 - Marshall at Huntington, W.Va.; 9 - Kentucky State; 14 - Eastern Kentucky at Richmond; 17 - Marshall; 27-28 - Pan American Tournament, Edinburg, Texas.
- Jan. 4 - Murray; 6 - Austin Peay; 11 - Middle Tennessee; 13 - Western Kentucky at Bowling Green; 18 - Tennessee Tech at Knoxville, Tenn.; 20 - Murray; 23 - Murray; 22 - Western Kentucky; 26 - Dayton at Dayton, Ohio; March 1 - Tennessee Tech, and 3 - East Tennessee at Johnson City.

**OPEN TO PUBLIC** - We recommend the Lisa Walker (by bus) and coming Sunday for the major league double header baseball game between Cincinnati and Chicago. The cost is \$9 for everything.

Today [Thursday] is the deadline for reservations. Telephone either Bobby Stamper or Jack Helwig, Jr.

**GOOD NEWS** - The House of Representatives Appropriations Committee this week recommended \$3,800,000, 000 less than the U.S. Army Corps of Engineers requested for the construction of the Licking River dam. There has been some criticism, locally and in Washington, directed at the engineers about construction delays at Cave Run. It is our educated opinion that the delay is due to the fact that the earth moving etc. until acceptable and usable roads could be completed to the dam site, about eight miles southwest of Washington, directed at the advanced and it is anticipated that the 'big' bids for Cave Run are not too far away.

**THEY'RE GOOD** - This Morehead American Legion team is on top of the state championship this year. They defeated Bardotown, rated tops, during the week. You can see them in Morehead in action this Sunday afternoon at 2 o'clock [Brooks Park] against Lexington.

**BEING CORRECTED** - Jim Newman, Secretary-Treasurer of the Kentucky Wood Industry Impart that the pollution problem on Flemingsburg Road is being corrected. The R.L. Wells Lumber Company has been granted permission to build construction of a waste burner with new equipment. This company and others have been named in true bills returned by the Rowan County Board of Health. Home owners in the area were incensed over the alleged smoke and pollution problem.

**COULD BE LOST** - We reluctantly report to you today that Rowan County is in danger of losing, and right now, its library and bookmobile. It seems that many citizens are reluctant to sign the petition for a \$1/2 cent on each \$100 assessment. We respectfully request that you check your own local county tax bill. If you are assessed at \$10,000 with a tax of \$50 a year, isn't that a rather small price to pay for our children and adults too? The library is the most important thing in all the good things but think the other fellow should pay for them. The library has been closed and the bookmobile is not operating.

**PROBABLY COMING** - Are the banks in Morehead being forced to a seven percent rate of interest? It would seem so, although no official announcement has been made. We do know that several private banks are being charged at Lexington, and almost all other banks. That is first line, old and established credit. In many parts of the state the interest rate has climbed to eight percent. This money market is really tight.

**APPLE PIE** - If Senator Edward Kennedy should become President of the United States, which he might just do, a Moreheadite will have a free pass to 1600 Pennsylvania Avenue. She is Nell Carr, the maid in the President's Home in Morehead State University. When Senator Kennedy spoke in Morehead last fall Nell, a colored lady, served his dinner. He ate more than half of her apple pie, and Nell makes these big kind of pie. She furnished apple pies for a special function for Senator and Mrs. Kennedy in Washington. She says she can bake an apple pie like this, "was Kennedy's comment, having partaken of Nell's apple pie (one Christmas present we agree).

**WHY THE DELAY?** - Morehead's Chamber of Commerce has for four months been telling us that - 1. The neon sign at the west end of Main Street will be repaired so that it will spell "Morehead" instead of "MOR". and the east Main Street sign will be moved from College Boulevard to Roburn Street.

But the only city limits "challenging" are three new opponents, all to be met on their floors. They are - Mississippi Southern, Miami, Florida; and Dayton, O.

During the past season the Eagles



**TO ATTEND MSU** - Miss Rhodena Forman, daughter of Mr. and Mrs. Paul Forman, Route 4, Morehead State University, was awarded a Gamma Beta Phi Society scholarship to Morehead State University. On the recommendation of the local Beta Phi Society, she has also been given a pre-nobleship scholarship to MSU. Miss Forman is a 1968 honor graduate of Rowan County High School.

## Wrestling Coach Named At Morehead

Daniel R. Walker, for six years football and wrestling coach at Clarksville High School, Vine Grove, has been named wrestling coach and an assistant football coach at Morehead State University. District Director Bob Laughlin has announced.

Walker received his bachelor of science degree from the University of Louisville in 1962, where he played four years of college football.

In 1958 he was named the Most Outstanding Athlete at Sycamore High School, Blue Ash, Ohio, and in 1962 was named the most improved player on the U. of L. squad.

Last season, his North Hardin High School wrestling team captured the state championship and he was named Coach of the Year. In 1967, the team finished second in the state.

The arrival of Walker completes the Eagles football coaching staff for next season under new head coach John J. [Jake] Hallum, named to the post May 1 when Coach Guy Penney resigned to work on the faculty of the University of Southern Mississippi.

Only offensive backfield coach Mike Brown is back from last year's staff. Newcomers in addition to Walker include: Wayne Chapman, [Morehead, 1963] defensive line; Larry Marmie, [Eastern Kentucky, 1963] defensive backfield, and John Dealing, [Orrerben [Ohio] College, 1960] defensive line.

In addition to coaching the Morehead wrestlers, Walker will work with incoming freshmen players.

communication gap between parents and teen-agers is the current one between Congress and the White House... Congressman Carl D. Perkins called today for advice on how he should vote on the proposed tax increase. As much money as he has obtained for his district the 7th Kentucky District Congressman has no alternative except to vote 'yes'.

Morehead State University graduates are advised not to worry unduly because commencement speakers told them their knowledge would soon become obsolete. Perhaps they can derive some comfort in the results of a survey which shows that college graduates forget in nine months half of what they learned in college. That's the same as saying that DeGaulle has a split personality. He now says he is opposed to dictatorship... a trade magazine foresees that 1969 cars will cost more. That's the same as saying the sun will rise in the east tomorrow morning and set in the west.

A poll shows that 25 percent of Americans believe peace talks in France will end the Vietnam war. It has long been known that a considerable number of people will believe just about anything.

It used to be said that "life is just one damned thing after another." Now such things are coming in rapidly in increasing and overlapping multiples. The only kind of love that is completely and permanently blind is that of a mother for a son.

# Morehead To Entertain Soil Conservationists

More than 150 soil conservationists from across Kentucky are expected to attend the state convention of the Kentucky Chapter of the Soil Conservation Society of America Friday and Saturday, June 21 and 22, at Morehead State University.

The theme of this year's convention is "Community Development."

Warren C. Holt, Mayfield, president of the Kentucky Council of Chapters, will preside over the two-day meeting. All of the state's nine chapters are expected to be represented.

Other principal officers include Floyd E. Kells, Florence, vice-president, and James Ross, London, secretary and treasurer.

Following a welcome Friday at 2 p.m. by Dr. C. Nelson Grote, dean of the School of Applied Science, technology at the University, the afternoon's program, scheduled to be held in the University Breckridge School auditorium, will include the following discussions on community development:

People involvement, with H.A. Ritchie, Lexington conservationist in charge; Education, led by Dr. Charles Derrickson, head of the Agriculture Department, led by William H. Casey, Lexington, biologist with the U.S. Soil Conservation Service.

Bob Miller, nationally-known farm director of radio station WLW, Cincinnati, will be the principal speaker at a banquet Friday at 6:30 p.m. in the Alumni Tower dining room.

Saturday morning, Dr. William Householder, director of the Agriculture Department at Eastern Kentucky University, will discuss agriculture's role in soil conservation, beginning at 9 a.m. He will be followed by Robert Keim, executive vice-president of the Covington, Kenton and Boone County Chamber of Commerce.

## Home Ec Group Completes Course

Thirteen high school home economic teachers from across Kentucky have completed a two-day Morehead State University follow-up conference to the University's 1967 workshop on Special Courses.

The teachers, who designed courses for high school home economics study in the workshop last year, evaluated the original material and have rewritten the curriculum for use by other home economic teachers in the state.

Sponsored by the University and the Kentucky Health and Education Department, the workshop was under the direction of Miss Fattu Bolin, a home economics instructor at the University.

The teachers attending were: Mrs. Henrietta Thompson, Henry Clay High, Lexington; Mrs. Elizabeth Watson, Winchester; Mrs. Mildred W. Mindel, Mt. Washington High, Louisville; Miss Cillia H. Burton, Butler County High, Morgantown; Miss Rebecca Berryman, Ohio County High, Hartford.

Mrs. Susel Bobson, Waddy; Mrs. Joyce M. Asbury, Fleming County High, Flemingsburg; Mrs. Martha Taylor, Nicholas County High, Carlisle; Miss Jean Cline, Rowan County High, Morehead; Miss Mildred Setser, Somerset City Schools; Miss Nell Peiphray, Garrard County High, Lancaster; and Miss Beulah Emory, Owensboro.

## Occupational Tax Stamps Are Required By IRS

Robert J. Dath, District Director of Internal Revenue in Kentucky has released important information concerning Federal occupational tax stamp requirements.

Persons who manufacture, maintain for use, or deal in or with the businesses or products listed below and who are currently registered, must, on or before July 1, 1968 register and pay for occupational tax stamps for the new fiscal year ending June 30, 1969.

Dath added that persons who will engage in business for the first time must register and pay for occupational tax stamps before commencing business in connection with gaming devices, wagering, narcotics, marijuana, distilled spirits, wines, beers, stills, and firearms.

## TV NOTES

**NEW YORK (UPI)** - For the fourth season, CBS will have a series of four National Geographic Society specials, starting Oct. 23 with "America's Underland." The National Geographic Society's other three will be seen in December, February and April.

Jack Benny is going to expand his own video show to three for the 1968-69 season. He has been doing only one special a season for NBC for the past three years. The new agreement for two new specials and one repeat.

Four episodes of "The Beverly Hills" CBS series for the coming season are being filmed in England this summer.

After spending the past two seasons with NBC, Danny Thomas returns to CBS, his outlet for many years, to star in two specials. One of the hours will be based on updated characters and situations of the old "Make Room for Daddy" half-hour weekly series in which he played a night club singer, "Danny Williams." The other will be a comedy-variety show featuring a short "Make Room for Daddy" sequence in addition to guest stars.

Bob Hope is set for nine comedy specials on NBC for 1968-69. Eight will be one hour long and the ninth will be a 90-minute affair filmed during the comedian's annual Christmas tour of U.S. overseas bases.

Elly Wallach and wife Anne Jackson will star in one of the original dramas on the new "On Stage" series of specials for NBC during the new season. Their one-hour play has not yet been chosen.

Veteran character actress Loretta Tuttle will be one of the regular characters on the new "Julia" series starring Diahann Carroll on NBC in the fall.

—Jack Gaver

## Morehead Band Concert Scheduled June 27

The first of three band concerts to be presented by 45 members of the Advance Conducting and School Band Literature summer term class at Morehead State University will be given Thursday, June 27, at 7 p.m. on the University campus.

In the event of inclement weather, the concerts will be presented in Baird Music Hall, according to Dr. Robert Hawkins, director of Bands at the University.

The other concerts are scheduled for July 11 and July 25. The majority of the band are high school band graduates on campus for the summer doing work.

**Terminix**  
If It's a PEST call Terminix.  
for Guaranteed Protection

**TERMITES Or Any Household Pests**  
Rats, Mice, Ants, Water Bugs, Silverfish, Carpet Beetles... Flying Ants... WHATEVER IT IS we will get them out and KEEP them out!

PROMPT, INEXPENSIVE, POSITIVE SERVICE!  
RADIO DISPATCHED TRUCKS FOR FASTER SERVICE!

**CARR LUMBER COMPANY**  
540 WEST MAIN ST. PHONE 784-5430  
All Work Done By Terminix Company, Lexington, Kentucky

**you can ride on our reputation!**

When you buy an OK used car from us, our reputation's on wheels! We're sure, you're sure, if it's OK.

Larry Fannin Chevrolet, Inc.  
"Where Customer Satisfaction Is Standard Equipment"  
PHONE 784-5136 MOREHEAD, KY.

**open house**  
Jackson Builders  
EVERYBODY WELCOME

The Gold Medallion is your assurance that the living this house offers is the finest money can buy - all electric from cornerstone to TV antenna. A Gold Medallion home has major electric appliances, full horsepower wiring, light for living, and above all, clean, quiet electric heating - perhaps the most appreciated of all the joys of total electric living. Draftless and trouble-free, electric heating gives you the biggest plus of all - individual room temperature control.

So come on out. See tomorrow's living today - in a modern all-electric Gold Medallion home.

See this Gold Medallion Home Saturday or Sunday, June 22 or 23 in Lakeview Subdivision from 2-5 p.m. This large home is heated with electric baseboard equipment. See all of Jackson Builders new all electric homes in Lakeview Subdivision, Morehead's prestige subdivision located 4 miles west of Morehead just off U. S. 60.

**KU**  
SYMBOL KENTUCKY UTILITIES COMPANY  
an investor-owned electric company  
OF SERVICE

**Weekend Special**

Bobby Brooks -

Shirt Shifts, Dresses, Culotte Dresses

Permanently Priced Reg. \$9.95 This Weekend \$5.99

**LAYNE'S**  
MAIN STREET MOREHEAD, KY.

# USE THESE TRIED AND PROVEN COST SAVING METHODS

**CLASSIFIED ADVERTISING RATES**  
 No Classified Ads Accepted After 12 o'clock Noon Tuesday

Per word first insertion . . . . . 7¢  
 Per word each subsequent insertion . . . . . 5¢  
 Minimum charge (first insertion) . . . . . \$1.50  
 Minimum charge (each subsequent insertion) . . . . . \$1.00  
 Display Classified Adver-  
 tising, per inch . . . . . \$1.25  
 Entered as Second Class Mailing Matter at  
 Post Office - Morehead, Ky.

**FOR RENT - 3 bedroom, 10x6 trailer.** Also parking spaces. Call 784-4848 or see P.M. Johnston, Tolliver Addition. p-25

**FOR RENT - Nice 2 bedroom trailer.** Couple only. See Nelson Jennings, Dry Creek Road, Phone 784-4265. c-25

**FOR RENT - Room, 2 blocks from MSU, 1 block from post office.** Private entrance. Call 784-5764. c-25

**FOR RENT - Trailer space.** City gas available. Burchett's Trailer Court, Olive Hill, Ky. Phone days, 286-2560 or nights, 286-2396. c-tf

**FOR RENT - 2 bedroom, furnished house.** Contact, Beulah Pennington, 219 Lyons Ave. or call 784-5284. c-tf

**FOR RENT - Furnished apartment and 50x12 furnished mobile home.** Both are located in town. Phone 784-4144. H.K. Taylor or Johnny Dickerson. c-tf

**WANTED - Apartment for 1968-69 school year.** 3 or 4 college boys. Contact Ed Moore, 143 Waterfield Hall by July 15. c-28

**AMBITIOUS LADIES - Add to your family income** with a pleasant, easy, and profitable part-time job. Earn over \$2 per hour. Write Box 298, Owingsville, Ky. c-26

**FOR SALE - Over 4 acres on Ky. 32** about 1 1/2 miles from Elliottville. Also 20 acres more or less. See or call Doris Kegley. 784-4766. c-27

**FOR SALE - Picnic tables, sturdy construction.** dressed 2" material, sea-son attached, will deliver. Andrew S. Porter, Route 2, Hillsboro, Ky. 876-2502. p-26

**FOR SALE - 1966 Chevrolet station wagon.** V-8 automatic, power steering, power rear window windshield wipers, radio, air conditioning. See Tom Howard, Caudill Bros. Tire Service or call 784-5551. p-27

**FOR SALE - 3-bedroom farm dwelling** in Mabry Addition. Modern kitchen, large carpeted living room with fire place. Call 784-7738. c-tf

**WANTED - Would like to rent a 4** bedroom house by September 1. Call 784-4909. c-26

**FOR RENT - Sleeping room.** May share living room and kitchen. Call 784-7079. c-25

**FOR RENT - 3 bedroom, modern house.** Electric heat, 20 minutes from Morehead on Route 32. Call A.E. Black, 784-4706. c-tf

**FOR SALE - Farm with modern, 6-** room house on Dry Creek Road, approximately 3 miles from Morehead. Ample water supply for all uses. See James O. Lambert or call 784-5736. c-26

**FOR SALE - 1956 Willys Jeep, A-1** condition, new top, 3 hp outboard motor, David Bradley gear tractor, all attachments. Phone 784-4472. c-tf

**FOR RENT - Small, furnished, 4 room** house at 125 Bridge St. Call 784-4525 or see owner at above address. c-tf

**BUYING COINS - Stop at 180 E. Main** St., Apt. A, over VPI Jewelry any time after 12:30. p-27

**CARD OF THANKS - We take this** means to express our gratitude to the friends who were so kind and helpful to us during the death of our dear father and grandfather, Charlie Hall. We acknowledge with heartfelt thanks, the many expressions of sympathy, interest and kindness extended to us in this time of loss. We would like to personally thank the following: Mrs. C.E. Hogue, Mrs. Anderson, Laura Plank, Evalee Gulliver Ann Beane, Lula Wagner, Helen Roark, Iva Evans, Bess Hogue, Parthena Thomas, Woodrow Hall, Roberta Early, Elsie Early, Dora Williams, Geneva Humphries, Wilma Gower, and the staff of the funeral home. We would like to thank Reverends Floyd Hall and Lindsay Caudill for their comforting words, those who sent the beautiful flowers, Lane Funeral Home for their efficient service, and all others who assisted in any way. May God bless you all. - Children and grandchildren. c-25

**FOR RENT OR LEASE - 5 rooms over** Pat's Poolroom. Suitable for offices. \$75 month. All Mrs. D.B. Caudill, 784-4889 or Pat McGary, 784-9068. c-28

**PIANO FOR SALE - Owner being** transferred out of state. Piano financed thru World Life Insurance Company. Either pay bank off or assume payments. Piano is only 6 months old, and may be seen locally. Write at once to Mike Hart, P.O. Box 254, Paris, Kentucky. c-25

**BUSINESS OPPORTUNITY MAN OR** WOMAN - Reliable person from this area to service and collect from automatic dispensers. No experience needed. We establish accounts for you. Cash references and \$985 to \$1785 cash capital necessary. 4 to 12 hours weekly nets excellent monthly income. Full time more. For local interview, write Eagle Industries, 4725 Excelsior Blvd., St. Louis Park, Minnesota 55426. c-25

**FOR RENT - 5 room furnished house** with bath, 1 block from Wagon Ave., Tolliver Addition. See owner, 433 Water Ave. c-tf

**WOMEN SEWERS WANTED - Work** at home doing simple sewing. We supply materials and pay shipping both ways. Good rate of pay. Piece work. Write Dept. 2W3, Jamster Industries, Inc., 100 Ashmun, Sault Ste. Marie, Mich., 49783. c-25

**FOR SALE - 2 houses and lots in** Swanton Addition. Contact Ralph Early, 784-4958. c-tf

**NOTICE TO CREDITORS**  
 Notice is hereby given that Ishmael Pennington has been appointed by the Rowan County Court as Executor of the estate and under the Will of Roscoe C. Pennington deceased and all persons having claims against said estate will please present same, properly proved, and all persons owing said estate will settle same with the undersigned not later than September 5, 1968. Ishmael Pennington Executor  
 Route 1  
 Morehead, Ky. c-26

**COAL BIDS ASKED**  
 Bids will be accepted at the office of the Rowan County Superintendent of Schools on the supplying of coal to the Rowan County Schools during the 1968-69 school year.  
 Bids will be accepted until 4:00 p.m. on July 1, 1968 and shall include the following:  
 1. Cost of coal per ton, source and BTU rating of coal.  
 2. One contract will be let for the entire year.  
 3. Coal delivered to those schools who central heating shall be lump and light.  
 4. Coal delivered to those schools who stoker furnaces shall be oil treated coal.  
 5. Successful bidder will be required to post a performance bond in the amount of \$5000.00.  
 6. Successful bidder shall have coal weighed by an official weighman. Tickets will be presented to the office of the Superintendent signed by the weighman and successful bidder before payment is made.  
 A contract signed by the successful bidder and company supplying coal shall be on file in the office of the Superintendent by August 15. Clifford R. Cassidy Superintendent  
 Rowan County Schools c-26

**BIDS ASKED**  
 The Rowan County Board of Education will accept bids on gasoline and motor oil for the 1968-69 school year. Bids will be received until 4:00 p.m. on July 25, 1968 at the Rowan County Board of Education requests that bids be listed on both high test gasoline and regular gasoline. Also, both detergent motor oil and non-detergent motor oil.  
 Brand names of gasoline and motor oil shall be specified on all bids. Clifford R. Cassidy Superintendent  
 Rowan County Schools c-26

**FOR SALE - 1966 Mustang, white** side walls, automatic transmission, air conditioned, low mileage, excellent condition. \$1795. Phone 784-7717. c-26

**FOR RENT - 3 room furnished house** to rent now for fall term. Preferably college boys. Utilities paid. Located in Thomas Addition. Call 784-7248. c-tf

**NOTICE TO CREDITORS**  
 Notice is given that Mrs. Ottis W. Elam has been appointed by the Rowan County Court as Administrator of the estate of Ida P. White, deceased, and all persons having claims against said estate must present same, properly proved, and all persons owing said estate must settle same with either the undersigned.  
 Mrs. Ottis W. Elam  
 Route 1  
 Morehead, Kentucky c-26

**LESTER HOGGE, Attorney**  
 Morehead, Kentucky c-26

**FOR SALE - 1966 Mustang, white** side walls, automatic transmission, air conditioned, low mileage, excellent condition. \$1795. Phone 784-7717. c-26

**FOR RENT - 3 room furnished house** to rent now for fall term. Preferably college boys. Utilities paid. Located in Thomas Addition. Call 784-7248. c-tf

**FOR SALE - 1966 Mustang, white** side walls, automatic transmission, air conditioned, low mileage, excellent condition. \$1795. Phone 784-7717. c-26

**FOR RENT - 3 room furnished house** to rent now for fall term. Preferably college boys. Utilities paid. Located in Thomas Addition. Call 784-7248. c-tf

**FOR SALE - 1966 Mustang, white** side walls, automatic transmission, air conditioned, low mileage, excellent condition. \$1795. Phone 784-7717. c-26

**FOR RENT - 3 room furnished house** to rent now for fall term. Preferably college boys. Utilities paid. Located in Thomas Addition. Call 784-7248. c-tf

**FOR SALE - 1966 Mustang, white** side walls, automatic transmission, air conditioned, low mileage, excellent condition. \$1795. Phone 784-7717. c-26

**FOR RENT - 3 room furnished house** to rent now for fall term. Preferably college boys. Utilities paid. Located in Thomas Addition. Call 784-7248. c-tf

**CARPETS a frigh? Make them a** beautiful sight with Blue Lustre. Rent electric shampooer \$1. McBryer's, Olive Hill and Morehead. c-25

**FOR SALE - Three bedroom frame** house on Tolliver St., large garden or bulleye garden, bath, 50x12 living room, older home on 50x12 lot. Also two building lots on sloping hillside. Call 784-5764. c-25

**FOR SALE - 50x12 and other 50x12** building sites, on lot 50x128 and other 50x12. Close to stadium. Drive up US 60, turn right at rock store, two streets to Tolliver street and Alfrey Realty, Mable Alfrey broker. 784-5986 or 784-7283. c-tf

**NOTICE TO CREDITORS**  
 Notice is hereby given that Deward Hall has been appointed by the Rowan County Court as Administrator with the Will annexed of the estate of Charley Hall, deceased, and all persons having claims against said estate and all persons owing said estate will please present same, properly proved, to the undersigned not later than September 14, 1968. Deward Hall  
 Box 278 Route No. 2  
 Morehead, Kentucky c-27

**THOMAS R. BURNS**  
 Attorney at Law  
 Morehead, Kentucky c-27

**ORDINANCE TO REGULATE TRAFFIC**  
 BE IT ORDAINED BY THE BOARD of City Council of the City of Morehead, Kentucky, as follows:  
 SECTION I. That no parking shall be permitted or allowed, at any time, on the south side of University Street in the City of Morehead, Kentucky, between the east and Elizabeth Avenue to its intersection on the west with Normal Avenue and that parking on said University Street shall be permitted only on the North side of said street between the designated intersections.  
 SECTION II. That all ordinances in conflict herewith are repealed to the extent of such conflict only.  
 SECTION III. That any person violating this ordinance shall be fined in a sum not less than \$5.00 nor more than \$25.00.  
 SECTION IV. That the ordinance shall be in effect immediately upon publication.

**PASSED AND ADOPTED THIS JUNE 11,** 1968.  
 William H. Layne, Mayor  
 Minnie B. Preston  
 City Clerk c-26

**ORDINANCE FIXING CITY TAX RATE**  
 FOR THE YEAR OF 1968  
 BE IT ORDAINED BY THE BOARD of City Council of the City of Morehead, Kentucky, as follows:  
 SECTION I. That the property assessment as presented by the Tax Assessor and as adopted by the Board of Equalizers, be, and the same is hereby approved as the official property assessment for the City of Morehead for the tax year of 1968.  
 SECTION II. That the City tax rate for real and personal property be, and the same is hereby fixed at forty-eight (48) cents per One Hundred Dollars of assessed valuation for the tax year of 1968. The tax rate on real estate shall be at \$1.50 per male person subject to said tax.  
 SECTION III. That all taxes paid prior to November 1, 1968 shall be discounted at the rate of 2% of the tax bill; that all taxes paid on or after November 1, 1968 and prior to January 1, 1969, shall bear the net amount of the tax bill; that all taxes not paid until January 1, 1969, and thereafter, shall bear a penalty of 1% per month, remaining delinquent on November 1, 1969, shall be collected by levy and sale of property as provided by law.

**PASSED AND ADOPTED BY THE BOARD** of City Council of the City of Morehead, Kentucky this 11th day of June, 1968.  
 William H. Layne, Mayor  
 Minnie B. Preston  
 City Clerk c-26

**FOR SALE - 1966 Mustang, white** side walls, automatic transmission, air conditioned, low mileage, excellent condition. \$1795. Phone 784-7717. c-26

**FOR RENT - 3 room furnished house** to rent now for fall term. Preferably college boys. Utilities paid. Located in Thomas Addition. Call 784-7248. c-tf

**FOR SALE - 1966 Mustang, white** side walls, automatic transmission, air conditioned, low mileage, excellent condition. \$1795. Phone 784-7717. c-26

**FOR RENT - 3 room furnished house** to rent now for fall term. Preferably college boys. Utilities paid. Located in Thomas Addition. Call 784-7248. c-tf

**FOR SALE - 1966 Mustang, white** side walls, automatic transmission, air conditioned, low mileage, excellent condition. \$1795. Phone 784-7717. c-26

**FOR RENT - 3 room furnished house** to rent now for fall term. Preferably college boys. Utilities paid. Located in Thomas Addition. Call 784-7248. c-tf

**FOR SALE - 1966 Mustang, white** side walls, automatic transmission, air conditioned, low mileage, excellent condition. \$1795. Phone 784-7717. c-26

**FOR RENT - 3 room furnished house** to rent now for fall term. Preferably college boys. Utilities paid. Located in Thomas Addition. Call 784-7248. c-tf

**FOR SALE - 1966 Mustang, white** side walls, automatic transmission, air conditioned, low mileage, excellent condition. \$1795. Phone 784-7717. c-26

**FOR RENT - 3 room furnished house** to rent now for fall term. Preferably college boys. Utilities paid. Located in Thomas Addition. Call 784-7248. c-tf

**FOR SALE - 1966 Mustang, white** side walls, automatic transmission, air conditioned, low mileage, excellent condition. \$1795. Phone 784-7717. c-26

**FOR RENT - 3 room furnished house** to rent now for fall term. Preferably college boys. Utilities paid. Located in Thomas Addition. Call 784-7248. c-tf

**FOR SALE - 1966 Mustang, white** side walls, automatic transmission, air conditioned, low mileage, excellent condition. \$1795. Phone 784-7717. c-26

**FOR RENT - 3 room furnished house** to rent now for fall term. Preferably college boys. Utilities paid. Located in Thomas Addition. Call 784-7248. c-tf

**FOR SALE - 1966 Mustang, white** side walls, automatic transmission, air conditioned, low mileage, excellent condition. \$1795. Phone 784-7717. c-26

**FOR RENT - 3 room furnished house** to rent now for fall term. Preferably college boys. Utilities paid. Located in Thomas Addition. Call 784-7248. c-tf

**FOR SALE - 1966 Mustang, white** side walls, automatic transmission, air conditioned, low mileage, excellent condition. \$1795. Phone 784-7717. c-26

**FOR RENT - 3 room furnished house** to rent now for fall term. Preferably college boys. Utilities paid. Located in Thomas Addition. Call 784-7248. c-tf

**FOR SALE - 1966 Mustang, white** side walls, automatic transmission, air conditioned, low mileage, excellent condition. \$1795. Phone 784-7717. c-26

**FOR RENT - 3 room furnished house** to rent now for fall term. Preferably college boys. Utilities paid. Located in Thomas Addition. Call 784-7248. c-tf

**FOR SALE - 1966 Mustang, white** side walls, automatic transmission, air conditioned, low mileage, excellent condition. \$1795. Phone 784-7717. c-26

**FOR RENT - 3 room furnished house** to rent now for fall term. Preferably college boys. Utilities paid. Located in Thomas Addition. Call 784-7248. c-tf

**FOR SALE - 1966 Mustang, white** side walls, automatic transmission, air conditioned, low mileage, excellent condition. \$1795. Phone 784-7717. c-26

**FOR RENT - 3 room furnished house** to rent now for fall term. Preferably college boys. Utilities paid. Located in Thomas Addition. Call 784-7248. c-tf

**FOR SALE - 1966 Mustang, white** side walls, automatic transmission, air conditioned, low mileage, excellent condition. \$1795. Phone 784-7717. c-26

**FOR RENT - 3 room furnished house** to rent now for fall term. Preferably college boys. Utilities paid. Located in Thomas Addition. Call 784-7248. c-tf

**FOR SALE - 1966 Mustang, white** side walls, automatic transmission, air conditioned, low mileage, excellent condition. \$1795. Phone 784-7717. c-26

**FOR RENT - 3 room furnished house** to rent now for fall term. Preferably college boys. Utilities paid. Located in Thomas Addition. Call 784-7248. c-tf

**FOR SALE - 1966 Mustang, white** side walls, automatic transmission, air conditioned, low mileage, excellent condition. \$1795. Phone 784-7717. c-26

**FOR RENT - 3 room furnished house** to rent now for fall term. Preferably college boys. Utilities paid. Located in Thomas Addition. Call 784-7248. c-tf

**FOR SALE - 1966 Mustang, white** side walls, automatic transmission, air conditioned, low mileage, excellent condition. \$1795. Phone 784-7717. c-26

**FOR RENT - 3 room furnished house** to rent now for fall term. Preferably college boys. Utilities paid. Located in Thomas Addition. Call 784-7248. c-tf

**FOR SALE - 1966 Mustang, white** side walls, automatic transmission, air conditioned, low mileage, excellent condition. \$1795. Phone 784-7717. c-26

**FOR RENT - 3 room furnished house** to rent now for fall term. Preferably college boys. Utilities paid. Located in Thomas Addition. Call 784-7248. c-tf

**FOR SALE - 1966 Mustang, white** side walls, automatic transmission, air conditioned, low mileage, excellent condition. \$1795. Phone 784-7717. c-26

**FOR RENT - 3 room furnished house** to rent now for fall term. Preferably college boys. Utilities paid. Located in Thomas Addition. Call 784-7248. c-tf

**FOR SALE - 1966 Mustang, white** side walls, automatic transmission, air conditioned, low mileage, excellent condition. \$1795. Phone 784-7717. c-26

**FOR RENT - 3 room furnished house** to rent now for fall term. Preferably college boys. Utilities paid. Located in Thomas Addition. Call 784-7248. c-tf

**FOR SALE - 1966 Mustang, white** side walls, automatic transmission, air conditioned, low mileage, excellent condition. \$1795. Phone 784-7717. c-26

**FOR RENT - 3 room furnished house** to rent now for fall term. Preferably college boys. Utilities paid. Located in Thomas Addition. Call 784-7248. c-tf

**FOR SALE - 1966 Mustang, white** side walls, automatic transmission, air conditioned, low mileage, excellent condition. \$1795. Phone 784-7717. c-26

**FOR RENT - 3 room furnished house** to rent now for fall term. Preferably college boys. Utilities paid. Located in Thomas Addition. Call 784-7248. c-tf

**FOR SALE - 1966 Mustang, white** side walls, automatic transmission, air conditioned, low mileage, excellent condition. \$1795. Phone 784-7717. c-26

**FOR RENT - 3 room furnished house** to rent now for fall term. Preferably college boys. Utilities paid. Located in Thomas Addition. Call 784-7248. c-tf

**FOR SALE - 1966 Mustang, white** side walls, automatic transmission, air conditioned, low mileage, excellent condition. \$1795. Phone 784-7717. c-26

**FOR RENT - 3 room furnished house** to rent now for fall term. Preferably college boys. Utilities paid. Located in Thomas Addition. Call 784-7248. c-tf

**FOR SALE - 1966 Mustang, white** side walls, automatic transmission, air conditioned, low mileage, excellent condition. \$1795. Phone 784-7717. c-26

**FOR RENT - 3 room furnished house** to rent now for fall term. Preferably college boys. Utilities paid. Located in Thomas Addition. Call 784-7248. c-tf

## Rowan County Extension Office

**Adrian M. Razor**  
**Mildred R. Wightman**  
**Paul W. Mills**  
 Area Extension Agents

If you have bugs in your trees or shrubs that look like small June beetles, you have Japanese Beetles. I saw some about at Mr. and Mrs. Quesinberry's in the Thomas Add. Sunday evening, and I am sure there are many more in the county. They tell us that these insects eat 258 different kinds of vegetation. Control for these is Malathion, Sevin, or DDT. Any of these can be obtained at the local store.

Strawberries have been very good this year although yields have been reduced by the wet weather. Roth has taken heavy toll in every patch.  
 It is now time to think of next year's crop and to take care of the field so that it will produce next year. Sow your middles, leaving an 18 to 24 inch picking row. Try to get all the weeds etc. in this operation.  
 Fertilize at the rate of 4 to 6 hundred pounds per acre of 10-10-10 fertilizer to promote runner growth and next year's crop. Keep all runner growth cleaned out.

We are having a lot of calls from people saying that they have branches dying in their apple and pear trees. If you have this trouble your trees have either twig or fire blight. There is not much we can do unless we just cut off the infected part and burn it. The time to control this disease is when the tree is in bloom, and the material to use is Agrimycin.

**OCCUPATIONAL LICENSE NOTICE**  
 All county licenses for the sale of soft drinks, ice cream and tobacco, and for the operation of pool rooms and restaurants expired midnight Sunday, June 30.

Licenses are now on sale at the office of the County Court Clerk.

OTTIS ELAM  
 Clerk, County of Rowan

**OCCUPATIONAL LICENSE NOTICE**  
 All county licenses for the sale of soft drinks, ice cream and tobacco, and for the operation of pool rooms and restaurants expired midnight Sunday, June 30.

Licenses are now on sale at the office of the County Court Clerk.

OTTIS ELAM  
 Clerk, County of Rowan

**OCCUPATIONAL LICENSE NOTICE**  
 All county licenses for the sale of soft drinks, ice cream and tobacco, and for the operation of pool rooms and restaurants expired midnight Sunday, June 30.

Licenses are now on sale at the office of the County Court Clerk.

OTTIS ELAM  
 Clerk, County of Rowan

**OCCUPATIONAL LICENSE NOTICE**  
 All county licenses for the sale of soft drinks, ice cream and tobacco, and for the operation of pool rooms and restaurants expired midnight Sunday, June 30.

Licenses are now on sale at the office of the County Court Clerk.

OTTIS ELAM  
 Clerk, County of Rowan

**OCCUPATIONAL LICENSE NOTICE**  
 All county licenses for the sale of soft drinks, ice cream and tobacco, and for the operation of pool rooms and restaurants expired midnight Sunday, June 30.

Licenses are now on sale at the office of the County Court Clerk.

OTTIS ELAM  
 Clerk, County of Rowan

**OCCUPATIONAL LICENSE NOTICE**  
 All county licenses for the sale of soft drinks, ice cream and tobacco, and for the operation of pool rooms and restaurants expired midnight Sunday, June 30.

Licenses are now on sale at the office of the County Court Clerk.

OTTIS ELAM  
 Clerk, County of Rowan

**OCCUPATIONAL LICENSE NOTICE**  
 All county licenses for the sale of soft drinks, ice cream and tobacco, and for the operation of pool rooms and restaurants expired midnight Sunday, June 30.

Licenses are now on sale at the office of the County Court Clerk.

OTTIS ELAM  
 Clerk, County of Rowan

**OCCUPATIONAL LICENSE NOTICE**  
 All county licenses for the sale of soft drinks, ice cream and tobacco, and for the operation of pool rooms and restaurants expired midnight Sunday, June 30.

Licenses are now on sale at the office of the County Court Clerk.

OTTIS ELAM  
 Clerk, County of Rowan

**OCCUPATIONAL LICENSE NOTICE**  
 All county licenses for the sale of soft drinks, ice cream and tobacco, and for the operation of pool rooms and restaurants expired midnight Sunday, June 30.

Licenses are now on sale at the office of the County Court Clerk.

OTTIS ELAM  
 Clerk, County of Rowan

**Moving? STOP!**  
 Just Relax  
 MOREHEAD MOVERS



They Will Take Care of All That Tugging, Lifting, Packing, Etc. For You. They Have The Right Equipment To Handle The Job and FAST.  
 Phone 784-7661 or 784-9394. c-26

**IN THE DISTRICT COURT OF THE UNITED STATES FOR THE EASTERN DISTRICT OF KENTUCKY AT LEXINGTON**

**CIVIL ACTION No. 1282**

United States of America, vs. 421.3 Acres of Land More or Less, Situated in Bath, Meigs, Morgan, and Rowan Counties, Commonwealth of Kentucky, and Edith R. Thomas, et al. DEFENDANTS.

**NOTICE: CONDEMNATION**  
 [Rowan County, Ky.]  
 T.D. TRACTS NOS. 810-SIDNEY (aka Sidney) Roberts, et al.; Myrtle/Boyd Griffin (aka Griffin) and Myrtle Patrick Griffin; Chris Patrick and Judy Ailie Patrick; Alva Thomas and Bertha Thomas; Bethel Smithwood and Arthur Smithwood; Hollie Thomas and Beatrice Thomas; Lawrence Thomas and Juanita Thomas; #2304 - Swisk Oil Corp.; S.D. Wheeler; W.H. Caskey; J.C. Young; High Gravity

**NOTICE: CONDEMNATION**  
 [Rowan County, Ky.]  
 T.D. TRACTS NOS. 810-SIDNEY (aka Sidney) Roberts, et al.; Myrtle/Boyd Griffin (aka Griffin) and Myrtle Patrick Griffin; Chris Patrick and Judy Ailie Patrick; Alva Thomas and Bertha Thomas; Bethel Smithwood and Arthur Smithwood; Hollie Thomas and Beatrice Thomas; Lawrence Thomas and Juanita Thomas; #2304 - Swisk Oil Corp.; S.D. Wheeler; W.H. Caskey; J.C. Young; High Gravity

**LP GAS**  
 Bottle & Bulk Installations Dependable Service  
 SOUTHERN STATES  
 Owingsville Petroleum Service  
 Phone 674-5511 Owingsville



# Walker Is Wrestling Supervisor

Daniel R. Walker, for six years football and wrestling coach at North Hardin High School, Vine Grove, has been named wrestling coach and an assistant football coach at Morehead State University, Athletic Director Bob Laughlin has announced.

Walker received his bachelor of science degree from the University of Louisville in 1962, where he played four years of college football.

In 1958 he was named the Most Outstanding Athlete at Sycamore High School, Blue Ash, Ohio, and in 1962 was named the most improved player on the U of L squad.

Last season, his North Hardin High School wrestling team captured the state

championship and he was named Coach of the Year. In 1967, the team finished second in the state.

The arrival of Walker completes the Eagles football coaching staff for next season under new Head Coach John J. [Name] Hallam, named to the post May 1.

When Coach Guy Penny resigned to work on his doctorate at the University of Southern Mississippi, Mike Brown is back from last year's staff. Newcomers in addition to Walker include: Wayne Chapman, [Morehead, 1963] defensive line; Larry Marmie, [Eastern Kentucky, 1963] defensive backfield; and John Behling, [Cincinnati [Ohio] College, 1960] defensive line.

# Barker Elected By Insurance Men

John D. Barker, has been elected President of the Morehead Area Association of Life Underwriters. Barker will assume responsibility July 1 as leader of the local organization of professional insurance men.

The group also elected Andrew J. Offutt first Vice-President, and Robert G. Lee to the second vice presidency. H. Dean Cook will fill the post of Secretary-Treasurer for the coming year.

Directors are J. Clester Garvin of Olive Hill, Ben Spradlin of West Liberty, and Lee. It was announced at the meeting that

# Bernice Boggs Enrolled In Special Course

Bernice Boggs of the School of Science at Morehead State University is among the 37 college teachers enrolled in a "History of Biology Summer Institute" at Ohio State University, Columbus.

The institute started June 17 and continues through July 27. Sponsored by the National Science Foundation, the Institute aims to assist teachers in bridging the gap between students training in science and those training as non-scientists.

Cook received his company's "Rookie of the Year" award. He lives in Clearfield with his wife, Leola, and their two children.

# Custom Blacktop Work

Driveways, Parking Lots, Streets

FREE ESTIMATES

# East Kentucky Paving

Phone 784-4275

Christy Creek

# Rexall 2 Sale

SALE STARTS THURSDAY, JUNE 20th... As advertised on TOP TELEVISION SHOWS!



"YOU'LL DO A DOUBLE TAKE!" says LOUIS NYE, star of TV, stage and motion pictures.



PROMPT, COURTEOUS PRESCRIPTION SERVICE. Your good health is our most important concern. YOUR Rexall PHARMACY

**REXALL SUPER PLENAMINS**  
America's favorite multivitamin-mineral product Selected for use by the U.S. Olympic Team

72's, **4.79**  
Other sizes available. See Pharmacies.

**REXALL MILK OF MAGNESIA**  
PLAIN or FLAVORED  
Antacid with gentle laxative action.  
12 oz. REG. 79c **2 FOR 90c**

**REXALL ASPIRIN**  
None finer made. 5-grain tablets.  
100's **2 FOR 93c**  
Rexall Aspirin, 300's 1.19 each, 2 for 2.19

**REXALL ANTISEPTIC MOUTHWASHES**  
**BLUE ORAL** Cool blue, refreshing taste. PINT **2 FOR 1.23**  
**KLENZO** Refreshing, spicy flavor. PINT **2 FOR 1.23**  
**M-31** Refreshing, spicy flavor. PINT **2 FOR 1.29**

**REXALL CREAMS**  
**REXALL LOTIONS**  
**REXALL NIGHT CREAM**  
**REXALL DAY CREAM**  
**REXALL TANNING LOTION**  
**REXALL TANNING CREAM**  
**REXALL TANNING MILK**  
**REXALL TANNING POWDER**  
**REXALL TANNING GEL**  
**REXALL TANNING FOAM**  
**REXALL TANNING MIST**  
**REXALL TANNING SPRAY**  
**REXALL TANNING CREAM**  
**REXALL TANNING LOTION**  
**REXALL TANNING MILK**  
**REXALL TANNING POWDER**  
**REXALL TANNING GEL**  
**REXALL TANNING FOAM**  
**REXALL TANNING MIST**  
**REXALL TANNING SPRAY**  
**REXALL TANNING CREAM**  
**REXALL TANNING LOTION**  
**REXALL TANNING MILK**  
**REXALL TANNING POWDER**  
**REXALL TANNING GEL**  
**REXALL TANNING FOAM**  
**REXALL TANNING MIST**  
**REXALL TANNING SPRAY**  
**REXALL TANNING CREAM**  
**REXALL TANNING LOTION**  
**REXALL TANNING MILK**  
**REXALL TANNING POWDER**  
**REXALL TANNING GEL**  
**REXALL TANNING FOAM**  
**REXALL TANNING MIST**  
**REXALL TANNING SPRAY**  
**REXALL TANNING CREAM**  
**REXALL TANNING LOTION**  
**REXALL TANNING MILK**  
**REXALL TANNING POWDER**  
**REXALL TANNING GEL**  
**REXALL TANNING FOAM**  
**REXALL TANNING MIST**  
**REXALL TANNING SPRAY**  
**REXALL TANNING CREAM**  
**REXALL TANNING LOTION**  
**REXALL TANNING MILK**  
**REXALL TANNING POWDER**  
**REXALL TANNING GEL**  
**REXALL TANNING FOAM**  
**REXALL TANNING MIST**  
**REXALL TANNING SPRAY**  
**REXALL TANNING CREAM**  
**REXALL TANNING LOTION**  
**REXALL TANNING MILK**  
**REXALL TANNING POWDER**  
**REXALL TANNING GEL**  
**REXALL TANNING FOAM**  
**REXALL TANNING MIST**  
**REXALL TANNING SPRAY**  
**REXALL TANNING CREAM**  
**REXALL TANNING LOTION**  
**REXALL TANNING MILK**  
**REXALL TANNING POWDER**  
**REXALL TANNING GEL**  
**REXALL TANNING FOAM**  
**REXALL TANNING MIST**  
**REXALL TANNING SPRAY**  
**REXALL TANNING CREAM**  
**REXALL TANNING LOTION**  
**REXALL TANNING MILK**  
**REXALL TANNING POWDER**  
**REXALL TANNING GEL**  
**REXALL TANNING FOAM**  
**REXALL TANNING MIST**  
**REXALL TANNING SPRAY**  
**REXALL TANNING CREAM**  
**REXALL TANNING LOTION**  
**REXALL TANNING MILK**  
**REXALL TANNING POWDER**  
**REXALL TANNING GEL**  
**REXALL TANNING FOAM**  
**REXALL TANNING MIST**  
**REXALL TANNING SPRAY**  
**REXALL TANNING CREAM**  
**REXALL TANNING LOTION**  
**REXALL TANNING MILK**  
**REXALL TANNING POWDER**  
**REXALL TANNING GEL**  
**REXALL TANNING FOAM**  
**REXALL TANNING MIST**  
**REXALL TANNING SPRAY**  
**REXALL TANNING CREAM**  
**REXALL TANNING LOTION**  
**REXALL TANNING MILK**  
**REXALL TANNING POWDER**  
**REXALL TANNING GEL**  
**REXALL TANNING FOAM**  
**REXALL TANNING MIST**  
**REXALL TANNING SPRAY**  
**REXALL TANNING CREAM**  
**REXALL TANNING LOTION**  
**REXALL TANNING MILK**  
**REXALL TANNING POWDER**  
**REXALL TANNING GEL**  
**REXALL TANNING FOAM**  
**REXALL TANNING MIST**  
**REXALL TANNING SPRAY**  
**REXALL TANNING CREAM**  
**REXALL TANNING LOTION**  
**REXALL TANNING MILK**  
**REXALL TANNING POWDER**  
**REXALL TANNING GEL**  
**REXALL TANNING FOAM**  
**REXALL TANNING MIST**  
**REXALL TANNING SPRAY**  
**REXALL TANNING CREAM**  
**REXALL TANNING LOTION**  
**REXALL TANNING MILK**  
**REXALL TANNING POWDER**  
**REXALL TANNING GEL**  
**REXALL TANNING FOAM**  
**REXALL TANNING MIST**  
**REXALL TANNING SPRAY**  
**REXALL TANNING CREAM**  
**REXALL TANNING LOTION**  
**REXALL TANNING MILK**  
**REXALL TANNING POWDER**  
**REXALL TANNING GEL**  
**REXALL TANNING FOAM**  
**REXALL TANNING MIST**  
**REXALL TANNING SPRAY**  
**REXALL TANNING CREAM**  
**REXALL TANNING LOTION**  
**REXALL TANNING MILK**  
**REXALL TANNING POWDER**  
**REXALL TANNING GEL**  
**REXALL TANNING FOAM**  
**REXALL TANNING MIST**  
**REXALL TANNING SPRAY**  
**REXALL TANNING CREAM**  
**REXALL TANNING LOTION**  
**REXALL TANNING MILK**  
**REXALL TANNING POWDER**  
**REXALL TANNING GEL**  
**REXALL TANNING FOAM**  
**REXALL TANNING MIST**  
**REXALL TANNING SPRAY**  
**REXALL TANNING CREAM**  
**REXALL TANNING LOTION**  
**REXALL TANNING MILK**  
**REXALL TANNING POWDER**  
**REXALL TANNING GEL**  
**REXALL TANNING FOAM**  
**REXALL TANNING MIST**  
**REXALL TANNING SPRAY**  
**REXALL TANNING CREAM**  
**REXALL TANNING LOTION**  
**REXALL TANNING MILK**  
**REXALL TANNING POWDER**  
**REXALL TANNING GEL**  
**REXALL TANNING FOAM**  
**REXALL TANNING MIST**  
**REXALL TANNING SPRAY**  
**REXALL TANNING CREAM**  
**REXALL TANNING LOTION**  
**REXALL TANNING MILK**  
**REXALL TANNING POWDER**  
**REXALL TANNING GEL**  
**REXALL TANNING FOAM**  
**REXALL TANNING MIST**  
**REXALL TANNING SPRAY**  
**REXALL TANNING CREAM**  
**REXALL TANNING LOTION**  
**REXALL TANNING MILK**  
**REXALL TANNING POWDER**  
**REXALL TANNING GEL**  
**REXALL TANNING FOAM**  
**REXALL TANNING MIST**  
**REXALL TANNING SPRAY**  
**REXALL TANNING CREAM**  
**REXALL TANNING LOTION**  
**REXALL TANNING MILK**  
**REXALL TANNING POWDER**  
**REXALL TANNING GEL**  
**REXALL TANNING FOAM**  
**REXALL TANNING MIST**  
**REXALL TANNING SPRAY**  
**REXALL TANNING CREAM**  
**REXALL TANNING LOTION**  
**REXALL TANNING MILK**  
**REXALL TANNING POWDER**  
**REXALL TANNING GEL**  
**REXALL TANNING FOAM**  
**REXALL TANNING MIST**  
**REXALL TANNING SPRAY**  
**REXALL TANNING CREAM**  
**REXALL TANNING LOTION**  
**REXALL TANNING MILK**  
**REXALL TANNING POWDER**  
**REXALL TANNING GEL**  
**REXALL TANNING FOAM**  
**REXALL TANNING MIST**  
**REXALL TANNING SPRAY**  
**REXALL TANNING CREAM**  
**REXALL TANNING LOTION**  
**REXALL TANNING MILK**  
**REXALL TANNING POWDER**  
**REXALL TANNING GEL**  
**REXALL TANNING FOAM**  
**REXALL TANNING MIST**  
**REXALL TANNING SPRAY**  
**REXALL TANNING CREAM**  
**REXALL TANNING LOTION**  
**REXALL TANNING MILK**  
**REXALL TANNING POWDER**  
**REXALL TANNING GEL**  
**REXALL TANNING FOAM**  
**REXALL TANNING MIST**  
**REXALL TANNING SPRAY**  
**REXALL TANNING CREAM**  
**REXALL TANNING LOTION**  
**REXALL TANNING MILK**  
**REXALL TANNING POWDER**  
**REXALL TANNING GEL**  
**REXALL TANNING FOAM**  
**REXALL TANNING MIST**  
**REXALL TANNING SPRAY**  
**REXALL TANNING CREAM**  
**REXALL TANNING LOTION**  
**REXALL TANNING MILK**  
**REXALL TANNING POWDER**  
**REXALL TANNING GEL**  
**REXALL TANNING FOAM**  
**REXALL TANNING MIST**  
**REXALL TANNING SPRAY**  
**REXALL TANNING CREAM**  
**REXALL TANNING LOTION**  
**REXALL TANNING MILK**  
**REXALL TANNING POWDER**  
**REXALL TANNING GEL**  
**REXALL TANNING FOAM**  
**REXALL TANNING MIST**  
**REXALL TANNING SPRAY**  
**REXALL TANNING CREAM**  
**REXALL TANNING LOTION**  
**REXALL TANNING MILK**  
**REXALL TANNING POWDER**  
**REXALL TANNING GEL**  
**REXALL TANNING FOAM**  
**REXALL TANNING MIST**  
**REXALL TANNING SPRAY**  
**REXALL TANNING CREAM**  
**REXALL TANNING LOTION**  
**REXALL TANNING MILK**  
**REXALL TANNING POWDER**  
**REXALL TANNING GEL**  
**REXALL TANNING FOAM**  
**REXALL TANNING MIST**  
**REXALL TANNING SPRAY**  
**REXALL TANNING CREAM**  
**REXALL TANNING LOTION**  
**REXALL TANNING MILK**  
**REXALL TANNING POWDER**  
**REXALL TANNING GEL**  
**REXALL TANNING FOAM**  
**REXALL TANNING MIST**  
**REXALL TANNING SPRAY**  
**REXALL TANNING CREAM**  
**REXALL TANNING LOTION**  
**REXALL TANNING MILK**  
**REXALL TANNING POWDER**  
**REXALL TANNING GEL**  
**REXALL TANNING FOAM**  
**REXALL TANNING MIST**  
**REXALL TANNING SPRAY**  
**REXALL TANNING CREAM**  
**REXALL TANNING LOTION**  
**REXALL TANNING MILK**  
**REXALL TANNING POWDER**  
**REXALL TANNING GEL**  
**REXALL TANNING FOAM**  
**REXALL TANNING MIST**  
**REXALL TANNING SPRAY**  
**REXALL TANNING CREAM**  
**REXALL TANNING LOTION**  
**REXALL TANNING MILK**  
**REXALL TANNING POWDER**  
**REXALL TANNING GEL**  
**REXALL TANNING FOAM**  
**REXALL TANNING MIST**  
**REXALL TANNING SPRAY**  
**REXALL TANNING CREAM**  
**REXALL TANNING LOTION**  
**REXALL TANNING MILK**  
**REXALL TANNING POWDER**  
**REXALL TANNING GEL**  
**REXALL TANNING FOAM**  
**REXALL TANNING MIST**  
**REXALL TANNING SPRAY**  
**REXALL TANNING CREAM**  
**REXALL TANNING LOTION**  
**REXALL TANNING MILK**  
**REXALL TANNING POWDER**  
**REXALL TANNING GEL**  
**REXALL TANNING FOAM**  
**REXALL TANNING MIST**  
**REXALL TANNING SPRAY**  
**REXALL TANNING CREAM**  
**REXALL TANNING LOTION**  
**REXALL TANNING MILK**  
**REXALL TANNING POWDER**  
**REXALL TANNING GEL**  
**REXALL TANNING FOAM**  
**REXALL TANNING MIST**  
**REXALL TANNING SPRAY**  
**REXALL TANNING CREAM**  
**REXALL TANNING LOTION**  
**REXALL TANNING MILK**  
**REXALL TANNING POWDER**  
**REXALL TANNING GEL**  
**REXALL TANNING FOAM**  
**REXALL TANNING MIST**  
**REXALL TANNING SPRAY**  
**REXALL TANNING CREAM**  
**REXALL TANNING LOTION**  
**REXALL TANNING MILK**  
**REXALL TANNING POWDER**  
**REXALL TANNING GEL**  
**REXALL TANNING FOAM**  
**REXALL TANNING MIST**  
**REXALL TANNING SPRAY**  
**REXALL TANNING CREAM**  
**REXALL TANNING LOTION**  
**REXALL TANNING MILK**  
**REXALL TANNING POWDER**  
**REXALL TANNING GEL**  
**REXALL TANNING FOAM**  
**REXALL TANNING MIST**  
**REXALL TANNING SPRAY**  
**REXALL TANNING CREAM**  
**REXALL TANNING LOTION**  
**REXALL TANNING MILK**  
**REXALL TANNING POWDER**  
**REXALL TANNING GEL**  
**REXALL TANNING FOAM**  
**REXALL TANNING MIST**  
**REXALL TANNING SPRAY**  
**REXALL TANNING CREAM**  
**REXALL TANNING LOTION**  
**REXALL TANNING MILK**  
**REXALL TANNING POWDER**  
**REXALL TANNING GEL**  
**REXALL TANNING FOAM**  
**REXALL TANNING MIST**  
**REXALL TANNING SPRAY**  
**REXALL TANNING CREAM**  
**REXALL TANNING LOTION**  
**REXALL TANNING MILK**  
**REXALL TANNING POWDER**  
**REXALL TANNING GEL**  
**REXALL TANNING FOAM**  
**REXALL TANNING MIST**  
**REXALL TANNING SPRAY**  
**REXALL TANNING CREAM**  
**REXALL TANNING LOTION**  
**REXALL TANNING MILK**  
**REXALL TANNING POWDER**  
**REXALL TANNING GEL**  
**REXALL TANNING FOAM**  
**REXALL TANNING MIST**  
**REXALL TANNING SPRAY**  
**REXALL TANNING CREAM**  
**REXALL TANNING LOTION**  
**REXALL TANNING MILK**  
**REXALL TANNING POWDER**  
**REXALL TANNING GEL**  
**REXALL TANNING FOAM**  
**REXALL TANNING MIST**  
**REXALL TANNING SPRAY**  
**REXALL TANNING CREAM**  
**REXALL TANNING LOTION**  
**REXALL TANNING MILK**  
**REXALL TANNING POWDER**  
**REXALL TANNING GEL**  
**REXALL TANNING FOAM**  
**REXALL TANNING MIST**  
**REXALL TANNING SPRAY**  
**REXALL TANNING CREAM**  
**REXALL TANNING LOTION**  
**REXALL TANNING MILK**  
**REXALL TANNING POWDER**  
**REXALL TANNING GEL**  
**REXALL TANNING FOAM**  
**REXALL TANNING MIST**  
**REXALL TANNING SPRAY**  
**REXALL TANNING CREAM**  
**REXALL TANNING LOTION**  
**REXALL TANNING MILK**  
**REXALL TANNING POWDER**  
**REXALL TANNING GEL**  
**REXALL TANNING FOAM**  
**REXALL TANNING MIST**  
**REXALL TANNING SPRAY**  
**REXALL TANNING CREAM**  
**REXALL TANNING LOTION**  
**REXALL TANNING MILK**  
**REXALL TANNING POWDER**  
**REXALL TANNING GEL**  
**REXALL TANNING FOAM**  
**REXALL TANNING MIST**  
**REXALL TANNING SPRAY**  
**REXALL TANNING CREAM**  
**REXALL TANNING LOTION**  
**REXALL TANNING MILK**  
**REXALL TANNING POWDER**  
**REXALL TANNING GEL**  
**REXALL TANNING FOAM**  
**REXALL TANNING MIST**  
**REXALL TANNING SPRAY**  
**REXALL TANNING CREAM**  
**REXALL TANNING LOTION**  
**REXALL TANNING MILK**  
**REXALL TANNING POWDER**  
**REXALL TANNING GEL**  
**REXALL TANNING FOAM**  
**REXALL TANNING MIST**  
**REXALL TANNING SPRAY**  
**REXALL TANNING CREAM**  
**REXALL TANNING LOTION**  
**REXALL TANNING MILK**  
**REXALL TANNING POWDER**  
**REXALL TANNING GEL**  
**REXALL TANNING FOAM**  
**REXALL TANNING MIST**  
**REXALL TANNING SPRAY**  
**REXALL TANNING CREAM**  
**REXALL TANNING LOTION**  
**REXALL TANNING MILK**  
**REXALL TANNING POWDER**  
**REXALL TANNING GEL**  
**REXALL TANNING FOAM**  
**REXALL TANNING MIST**  
**REXALL TANNING SPRAY**  
**REXALL TANNING CREAM**  
**REXALL TANNING LOTION**  
**REXALL TANNING MILK**  
**REXALL TANNING POWDER**  
**REXALL TANNING GEL**  
**REXALL TANNING FOAM**  
**REXALL TANNING MIST**  
**REXALL TANNING SPRAY**  
**REXALL TANNING CREAM**  
**REXALL TANNING LOTION**  
**REXALL TANNING MILK**  
**REXALL TANNING POWDER**  
**REXALL TANNING GEL**  
**REXALL TANNING FOAM**  
**REXALL TANNING MIST**  
**REXALL TANNING SPRAY**  
**REXALL TANNING CREAM**  
**REXALL TANNING LOTION**  
**REXALL TANNING MILK**  
**REXALL TANNING POWDER**  
**REXALL TANNING GEL**  
**REXALL TANNING FOAM**  
**REXALL TANNING MIST**  
**REXALL TANNING SPRAY**  
**REXALL TANNING CREAM**  
**REXALL TANNING LOTION**  
**REXALL TANNING MILK**  
**REXALL TANNING POWDER**  
**REXALL TANNING GEL**  
**REXALL TANNING FOAM**  
**REXALL TANNING MIST**  
**REXALL TANNING SPRAY**  
**REXALL TANNING CREAM**  
**REXALL TANNING LOTION**  
**REXALL TANNING MILK**  
**REXALL TANNING POWDER**  
**REXALL TANNING GEL**  
**REXALL TANNING FOAM**  
**REXALL TANNING MIST**  
**REXALL TANNING SPRAY**  
**REXALL TANNING CREAM**  
**REXALL TANNING LOTION**  
**REXALL TANNING MILK**  
**REXALL TANNING POWDER**  
**REXALL TANNING GEL**  
**REXALL TANNING FOAM**  
**REXALL TANNING MIST**  
**REXALL TANNING SPRAY**  
**REXALL TANNING CREAM**  
**REXALL TANNING LOTION**  
**REXALL TANNING MILK**  
**REXALL TANNING POWDER**  
**REXALL TANNING GEL**  
**REXALL TANNING FOAM**  
**REXALL TANNING MIST**  
**REXALL TANNING SPRAY**  
**REXALL TANNING CREAM**  
**REXALL TANNING LOTION**  
**REXALL TANNING MILK**  
**REXALL TANNING POWDER**  
**REXALL TANNING GEL**  
**REXALL TANNING FOAM**  
**REXALL TANNING MIST**  
**REXALL TANNING SPRAY**  
**REXALL TANNING CREAM**  
**REXALL TANNING LOTION**  
**REXALL TANNING MILK**  
**REXALL TANNING POWDER**  
**REXALL TANNING GEL**  
**REXALL TANNING FOAM**  
**REXALL TANNING MIST**  
**REXALL TANNING SPRAY**  
**REXALL TANNING CREAM**  
**REXALL TANNING LOTION**  
**REXALL TANNING MILK**  
**REXALL TANNING POWDER**  
**REXALL TANNING GEL**  
**REXALL TANNING FOAM**  
**REXALL TANNING MIST**  
**REXALL TANNING SPRAY**  
**REXALL TANNING CREAM**  
**REXALL TANNING LOTION**  
**REXALL TANNING MILK**  
**REXALL TANNING POWDER**  
**REXALL TANNING GEL**  
**REXALL TANNING FOAM**  
**REXALL TANNING MIST**  
**REXALL TANNING SPRAY**  
**REXALL TANNING CREAM**  
**REXALL TANNING LOTION**  
**REXALL TANNING MILK**  
**REXALL TANNING POWDER**  
**REXALL TANNING GEL**  
**REXALL TANNING FOAM**  
**REXALL TANNING MIST**  
**REXALL TANNING SPRAY**  
**REXALL TANNING CREAM**  
**REXALL TANNING LOTION**  
**REXALL TANNING MILK**  
**REXALL TANNING POWDER**  
**REXALL TANNING GEL**  
**REXALL TANNING FOAM**  
**REXALL TANNING MIST**  
**REXALL TANNING SPRAY**  
**REXALL TANNING CREAM**  
**REXALL TANNING LOTION**  
**REXALL TANNING MILK**  
**REXALL TANNING POWDER**  
**REXALL TANNING GEL**  
**REXALL TANNING FOAM**  
**REXALL TANNING MIST**  
**REXALL TANNING SPRAY**  
**REXALL TANNING CREAM**  
**REXALL TANNING LOTION**  
**REXALL TANNING MILK**  
**REXALL TANNING POWDER**  
**REXALL TANNING GEL**  
**REXALL TANNING FOAM**  
**REXALL TANNING MIST**  
**REXALL TANNING SPRAY**  
**REXALL TANNING CREAM**  
**REXALL TANNING LOTION**  
**REXALL TANNING MILK**  
**REXALL TANNING POWDER**  
**REXALL TANNING GEL**  
**REXALL TANNING FOAM**  
**REXALL TANNING MIST**  
**REXALL TANNING SPRAY**  
**REXALL TANNING CREAM**  
**REXALL TANNING LOTION**  
**REXALL TANNING MILK**  
**REXALL TANNING POWDER**  
**REXALL TANNING GEL**  
**REXALL TANNING FOAM**  
**REXALL TANNING MIST**  
**REXALL TANNING SPRAY**  
**REXALL TANNING CREAM**  
**REXALL TANNING LOTION**  
**REXALL TANNING MILK**  
**REXALL TANNING POWDER**  
**REXALL TANNING GEL**  
**REXALL TANNING FOAM**  
**REXALL TANNING MIST**  
**REXALL TANNING SPRAY**  
**REXALL TANNING CREAM**  
**REXALL TANNING LOTION**  
**REXALL TANNING MILK**  
**REXALL TANNING POWDER**  
**REXALL TANNING GEL**  
**REXALL TANNING FOAM**  
**REXALL TANNING MIST**  
**REXALL TANNING SPRAY**  
**REXALL TANNING CREAM**  
**REXALL TANNING LOTION**  
**REXALL TANNING MILK**  
**REXALL TANNING POWDER**  
**REXALL TANNING GEL**  
**REXALL TANNING FOAM**  
**REXALL TANNING MIST**  
**REXALL TANNING SPRAY**  
**REXALL TANNING CREAM**  
**REXALL TANNING LOTION**  
**REXALL TANNING MILK**  
**REXALL TANNING POWDER**  
**REXALL TANNING GEL**  
**REXALL TANNING FOAM**  
**REXALL TANNING MIST**  
**REXALL TANNING SPRAY**  
**REXALL TANNING CREAM**  
**REXALL TANNING LOTION**  
**REXALL TANNING MILK**  
**REXALL TANNING POWDER**  
**REXALL TANNING GEL**  
**REXALL TANNING FOAM**  
**REXALL TANNING MIST**  
**REXALL TANNING SPRAY**  
**REXALL TANNING CREAM**  
**REXALL TANNING LOTION**  
**REXALL TANNING MILK**  
**REXALL TANNING POWDER**  
**REXALL TANNING GEL**  
**REXALL TANNING FOAM**  
**REXALL TANNING MIST**  
**REXALL TANNING SPRAY**  
**REXALL TANNING CREAM**  
**REXALL TANNING LOTION**  
**REXALL TANNING MILK**  
**REXALL TANNING POWDER**  
**REXALL TANNING GEL**  
**REXALL TANNING FOAM**  
**REXALL TANNING MIST**  
**REXALL TANNING SPRAY**  
**REXALL TANNING CREAM**  
**REXALL TANNING LOTION**  
**REXALL TANNING MILK**  
**REXALL TANNING POWDER**  
**REXALL TANNING GEL**  
**REXALL TANNING FOAM**  
**REXALL TANNING MIST**  
**REXALL TANNING SPRAY**  
**REXALL TANNING CREAM**  
**REXALL TANNING LOTION**  
**REXALL TANNING MILK**  
**REXALL TANNING POWDER**  
**REXALL TANNING GEL**  
**REXALL TANNING FOAM**  
**REXALL TANNING MIST**  
**REXALL TANNING SPRAY**  
**REXALL TANNING CREAM**  
**REXALL TANNING LOTION**  
**REXALL TANNING MILK**  
**REXALL TANNING POWDER**  
**REXALL TANNING GEL**  
**REXALL TANNING FOAM**  
**REXALL TANNING MIST**  
**REXALL TANNING SPRAY**  
**REXALL TANNING CREAM**  
**REXALL TANNING LOTION**  
**REXALL TANNING MILK**  
**REXALL TANNING POWDER**  
**REXALL TANNING GEL**  
**REXALL TANNING FOAM**  
**REXALL TANNING MIST**  
**REXALL TANNING SPRAY**  
**REXALL TANNING CREAM**  
**REXALL TANNING LOTION**  
**REXALL TANNING MILK**  
**REXALL TANNING POWDER**  
**REXALL TANNING GEL**  
**REXALL TANNING FOAM**  
**REXALL TANNING MIST**  
**REXALL TANNING SPRAY**  
**REXALL TANNING CREAM**  
**REXALL TANNING LOTION**  
**REX**

### Your ... Social Security

By Thomas E. Thompson - Ashland District Mgr. For Social Security information write: District Social Security Office, 1816 Carter Avenue - Ashland, Ky. - Phone 343-7666

More than 175,000 children will benefit from recent changes in the social Security Law.

It is no longer necessary to prove that a child is dependent on his mother before monthly benefits can be paid to the child. Dependency of a child under the old law could be established only by the mother having worked at least 1-1/2 years in the 3 year period (currently insured) before the mother died or retired, or became disabled. If she failed to meet the "currently insured" requirement, she must have been contributing at least 1/2 the child's support, which was difficult to prove in many cases.

Now, under the new law the "currently insured" requirement has been eliminated. A child is now considered dependent on his mother in the same way as he has always been considered dependent on his father. Proof of the child's dependency will no longer be required unless the child was adopted by someone else.

Individuals whose claims have been disallowed for failure to establish dependency of the child on his mother, should contact the nearest Social Security Office to see if they now qualify under the new law.

The social security office is located at 1816 Carter Ave, Ashland, Kentucky 41101. The telephone number is 325-7666. The office is open Monday through Friday from 8:45 a.m. until 5 p.m. For those who cannot come in during regular hours without experiencing hardship or inconvenience, the office is open on Saturday from 9 a.m. until noon.

A representative may be contacted at the following places: Vanceburg Court-house, June 24; West Liberty Court-house, June 26; Olive Hill City Hall, June 27; and Morehead Employment Office, June 28.

### Shoplifting Convictions On Increase

Shoplifting convictions have increased nearly 100 percent in the last five years according to Ivan Jett, Executive Vice President of the Kentucky Retail Federation.

Shoplifting losses are costing Kentuckians about \$25 million annually and this results in higher prices. Jett stated that he thought the public, the courts, and the law enforcement agencies were finally becoming aware of the enormous losses and the importance of controlling this crime.

Unfortunately, he said, too many people think that shoplifting losses are solely the retailer's problem, whereas it is the problem of every one and every one pays a price when crime is not controlled.

**NEWSPAPER** - The Wilderness Road Village of the Arts, Danville, publishes its own daily newspaper, titled "The Village Mirror", representing the first newspaper published in the City. It contains news dating from 1792 as well as present day village and theatre happenings.

**WHEN YOU INSURE BE SURE YOU INSURE in sure INSURANCE**

For all types insurance ... **C. Roger Lewis Agency**

129 E. MAIN ST. MOREHEAD, KY.

Yes, we write all types Home-owner's, Store Pkgs., Fire, General Liability & Auto, Life, and you name it. We insure everything & sell anything.

# SAVEWAY



MARTHA WHITE MEAL *Self-Rising* 5-lb. Bag **39¢**

VAN CAMP YELLOW HOMINY 20-oz. Can **10¢**

\*Quantity Rights Reserved.



STOKELY FRUIT COCKTAIL **19¢**  
16 oz. can



STOKELY SLICED BEETS **10¢**  
16 oz. can



SUPER VALU SALAD DRESSING **37¢**  
32 oz. jar



# STOKELY SUNSHINE SALE



STOKELY FRUIT DRINKS **19¢**  
46 oz. can  
● Grape ● Fruit Punch ● Lemonade ● Orange

Mix or Match!

STOKELY Apple Sauce ..... 2 17-oz. cans **29¢**  
VAN CAMP'S Beef Stew ..... 24 oz. can **39¢**  
VAN CAMP'S Vienna Sausage ..... 4 oz. can **19¢**



STOKELY GOLDEN CORN **5 \$1**  
CREAM STYLE or WHOLE KERNEL 17 oz. cans

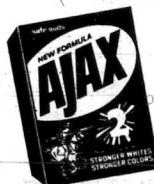
FLAV-O-RITE Cake Donuts **25¢**  
pkgs. of 12

STOKELY Shellie Beans ..... 5 16 oz. cans **\$1**  
STOKELY CUT or FRENCH CUT Green Beans ..... 5 16 oz. cans **\$1**  
STOKELY Catsup ..... 14 oz. bottle **19¢**



STOKELY PEAS **5 \$1**  
16 oz. cans

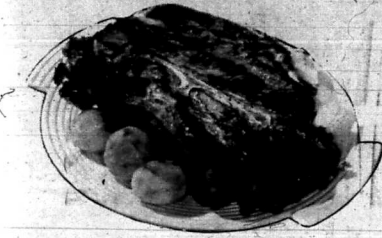
CHARMIN White or Assorted Bathroom Tissue ..... 4-roll Pkg. **35¢**



AJAX Laundry Detergent **99¢**  
84 oz. pkg.

Cold Power DETERGENT **69¢**  
49 oz. pkg.





VER RAY TENDER  
**CHUCK ROAST**  
**39¢** lb.

**SAVEWAY**  
**SUPER VALU**



**Clennie Hollon**  
 Clennie's address is 878, Louisville, Ky.  
 This is my opinion only and not that of Kennedy's, Humphreys, Johnsons, Coopers, McCarrthys, Rockefeller and the likes of them. I think that instead of building a shanty town in Washington for the marchers of the pore, they should git in a good supply of horse whips and send them pore right back where they come from and let them work out a living if'n we "never had times so good" in this United States. They's a lot of us pore what didn't git to go to Washington. We's too pore to go. 100, if Congressmen were to give us \$3150 per year for our vote; then it wouldn't be more'n a year until we would be right back demanding a raise. You can't give nobody enough of nothing please him.

BONELESS EASY CARVE   
**Chuck Roast 69¢** lb.

LEAN, MEATY  
**SPARE RIBS**  
**49¢** lb.

FAMILY PACK  
 Fryers ..... **39¢** lb.  
 ENGLISH or  
 Shoulder Roast .. **55¢** lb.  
 SOUTHERN STAR  
 Pure Lard ..... **49¢** 4-lb. Ctn.  
 ECKRICH  
 Smoked Sausage **69¢** lb.

Miami Valley Sliced  
**BACON**  
**49¢** lb.

VER RAY LEAN PORK  
**STEAKS** LB. **49¢**

GOOD VALUE FROZEN  
**FRENCH FRIES** 2 lb. bag **25¢**

FLAV-O-RITE  
**ICE CREAM** 1/2-gal. **49¢**

JUMBO 27 SIZE CALIFORNIA  
**CANTALOUPE**  
**3** for **\$1.00**

NEW U.S. No. 1 SIZE A  
 Red Potatoes ..... **10** lb. bag **79¢**  
 California Nectarines ..... **39¢** lb.  
 FRESH FLORIDA  
 Sweet Corn ..... **5** ears **39¢**

**TOWN & COUNTRY STEAK KNIFE**  
**88¢**  
 \$1.95 VALUE with \$5.00 Purchase YOURS FOR ONLY...  
 Last Chance for Steak Knife

**BIG SAVINGS!**  
**CONTEMPO DINNERWARE**  
**99¢** \*With \$5.00 Purchase  
 3-PIECE PLACE SETTING  
 • Cup • Saucer • Dinner Plate

SUCHER'S  
 WHOLE SMOKED  
**PICNICS**  
**35¢** lb.

MORTON FROZEN  
**FRUIT PIES**  
 • Apple • Peach • Coconut - Custard  
 each **25¢**

BLUE BONNET  
**MARGARINE**  
**4** 1 lb. pkgs. **\$1**

Instead of the United States a fighting Communism, it looks mighty like she is a harboring Communism.  
 Hon. Gene Snyder of Kentucky is a member of Congress and he has asked the Secretary in charge of Shanty Towns and things like that for a permit which would allow his constituents of his District to come to Washington and camp out this summer on the White House properties. Now, Mr. Snyder's constituents will have to fight chiggers, plimies, mosquitoes, and other nuisances to campers someplace besides the White House yard and there ain't no doubt but what this is discrimination against these voters of the 4th Congressional District of Kentucky.  
 Us Pore Are Marching Onward!! But to what?

We read where them military leaders way over yanner met and they bled themselves a little and mixed it with other liquid and drunk it to prove that they were warriors and meant well. Why do we have to go over there to fight for rich people as blood suckers?  
 Lowell Wilson tells us that he has been sleepy and hungry ever since this new Time begin.

The Life of the roosters has been disrupted by the Time changes. The two roosters of Raymond Williams got disgusted and left his henhouse. When the time change comeabout, these roosters got all confused as when to crow for daylight. They had got to crowing evn time a light came on in the William's home.

All, they's a lot of big younguns at Raymond's house and he says they start coming in about ten o'clock at night and the last one is usually in around 3:30 a.m. These rooster got to crowing ever time a light come on in the Williams resident thinking it must be time for daylight. These roosters got no sleep because the big younguns come in practically every hour of the night and turned on a light. The roosters crowed and Raymond woke up. So the two roosters gathered up the three old hens a few days ago and away they went. They was sleeping in George Stamper, Jr's barn and crowing when it starts getting daylight. And Raymond say he would git take up with George if he knowed he would feed him good. Raymond is sleepy.

Orville Smallwood, London, Ky. told me that a feller told him what a Hippie were. He writ "A Hippie is a feller with hair like Tarzan and walks like Jane Tarzan's woman and smells like Cheeta." Occasionally Cheeta does fall in the river.

My Radio has done informed me that Lynda Bird is that-a-way a ready. Don't know how a feller will keep up with the radio a telling us all the election news and the news about the expectans up around Washington Dee Cee. They seems to be a gittin' a head of us pore. I guess they're a like us pore. They ain't got nothing else to do.

I'm a pore man but if I managed the Washington Dee Cee estate, I would allow no big bunch of people to louse around on the grounds. That would be one Right they never would git. Such doing is going to be the downfall of our democracy if'n we don't begin to be more careful. And we ain't a gon' to be more careful!!!

Listen to the . . .  
**Evangelistic Call Broadcast**  
 Each Sunday at 2:30 p.m. on WMOR 1330 On Your Dial  
 for the  
**Sick, Aged and Shut-ins**  
**Starting July 7**  
 for people of all faiths  
 — Directed by —  
 EVANGELIST: Evelyn Lucas  
 3021 19th Street Northwest  
 Canton, Ohio

# Dairy Products Keeping Up With Population

By Dr. Darward Olds  
 U.K. Animal Sciences Dept.  
 World population may double in the next 35 years. Whether world food production also can double remains to be seen. Here, with most of the readily available land under cultivation, per acre yields have been increased through liberal use of fertilizers, pest control, improved seeds, and better farm management. In much of Asia, Africa and Latin America, fertilizers are used very sparingly, yet they need an amount equivalent to the world's present annual production.

and other animal food products.  
 Dairy cattle rank high among all species of livestock in efficiency of food production. What is more, they can utilize grazing land, much of which is unsuitable for the plow. The bacteria in the stomachs of cattle can utilize feedstuffs that cannot be digested by people. For example, corn stalks, corn cobs, straw, soybean vines, etc., all can be utilized by ruminants with perhaps a urea and molasses supplement.

In recent years, much has been written and said about air pollution. Our automobiles, factories, heating systems, and even our bodies produce various carbon oxides in large quantities. Green plants utilize carbon dioxide in the synthesis of glucose (sugar) among other steps. Without plants, it is certain that our air pollution problem would be much larger than at present.

To be sure, economic pressures have been and will continue to modify agriculture and livestock production. However, it appears very likely that ruminants, and particularly dairy cattle, will play essential roles in world food production and air pollution reduction for many years to come.

THOUGHT - "I'm mighty thankful I can't see into the future," says Old Sorehead. "It's had enough to be able to see into the past."

# Regulations On Motorcycles Is More Stringent

Responsibility for enforcement of new regulations governing the use of motorcycles and protective equipment to be worn by operators and riders has been divided among the Division of Driver Licensing, Kentucky State Police, and the Motor Vehicle Inspection in the Department of Public Safety, Commissioner W.O. Newman said.

The Bureau of License Examining is in the process of familiarizing their examiners with procedures to be used in testing motorcycle operators.

The Division of Driver Licensing will handle the licensing procedures with a similar license being used for motorcycles as is used for motor vehicles. Motorcycle will be stamped across the face of the license.

The Division of Motor Vehicle Inspection is in charge of equipment approval provisions, including headgear and eye protector devices to be worn by operators and riders. All equipment is required to be approved by this Division and the eye protective devices must meet established standards.

Permanent seats, footrests and rear view mirrors are required on motorcycles under this law, which goes into effect June 15.

If passengers are to be carried, footrests are required for the passenger as well as the rider and a permanently attached seat for the passenger is mandatory.

Passengers on motorcycles must wear



WINNER . . . Mary Jane [Hurt] Hocker, daughter of Mrs. Virginia Williams, Tipton Avenue, is the recipient of an award by a national food processing company for her outstanding work in the field of Home Economics. Presentation was made at the University Breckinridge Awards Day. She majored in Home Economics.

approved headgear, but eye protector devices are required only for the driver of the motorcycle.

Motorcycle sale and service businesses may write the Division of Motor Vehicle Inspection in Frankfort for a list of approved headgear and eye protective devices and manufacturing companies which have obtained approval for use of these devices.

# Pleasure Boating Is Popular In Kentucky

A major step in the improvement of safe pleasure boating is underway in Kentucky. Gov. Louie B. Nunn has directed the Kentucky State Police to launch a cooperative program of training with the United States Power Squadron, the nation's largest private and comprehensive boating educational organization.

Power Squadron units in Louisville, Kentucky, and the Cincinnati, Ohio area will develop an organized program of training for State water patrol officers and will serve in an advisory capacity to the State in water safety for pleasure boaters.

The Power Squadron, a non-profit organization dedicated to boating safety and education, will participate in the cooperative effort as a part of their boating safety education program.

Col. C.B. Crutchfield, director of the Kentucky State Police, commented, "The State Police will encourage boat owners and users to attend power squadron classes."

Public Safety Commissioner William O. Newman emphasized during preliminary meetings the expanding use of our waterways in Kentucky and stated it is imperative a staunch effort be made to provide a high degree of professionalism in the additional training of police officers who patrol our lakes and rivers.

"I want to see water patrol officers become fully certified with the basic United States Power Squadron training in piloting," Commissioner Newman said.

"As the use of waterways increases the trained nucleus of troopers will be able to extend their abilities through the educational program of the Division of State Police. I want these men to get additional training in seamanship, basic weather, marine electronics, mechanics and other related boating subjects to supplement the basic objectives as the program advances."

Commanders James M. Miller and John S. Piers, hearing in Louisville and Kentucky Lake Squadrons, will name liaison officers to work directly with the State Police. The officers hold advanced grade training in the Power Squadron program and are seasoned boaters.

The first steps will be the implementation of a four phase program: planning for a class in piloting and water safety at the State Police; selection of a site to begin in the fall; recommendations for improved safe boating equipment for State patrol boats, study of current boat handling and seamanship practices; and a promotion program to motivate State Police officers to attend courses in boating safety.

Commander Miller said, "The Department of Public Safety's participation in this project will place Kentucky's State Police in the forefront among the nation's water police. When the program is developed as planned," he said, "Ken-

tucky will have a water police unit to rival the best in the nation. The troopers patrolling Kentucky's waterways will be accomplished boaters, as well as thoroughly trained law enforcement officers."

According to Commissioner Newman, "This program was started because the United States Power Squadrons have had more than a half-century of experience in boating education."

"As the largest private organization of boaters in the world, the Power Squadrons have over 70,000 members in over 260 local groups with two in Kentucky. Their sole purpose is the extension of safe boating education to the public and the enhancement of their own training through advanced courses taken by their members," Commander Miller said.

"Hundreds of Squadron officers have served their country in times of national emergency when their training in seamanship and navigation was needed by the Armed Forces."

"Power Squadron personnel hold many commendations from the various services of the Federal government," he said. "The Squadrons have given boating education training to the U.S. Navy, the Coast Guard, the U.S. Coast and Geodetic Survey and other government agencies concerned with safe boating practices."

# Heart Attack Fatal To Billy Roberts

Billy Thomas Roberts, 30, formerly of Morehead, suffered a fatal heart attack Saturday at his home, 1585 Jennifer Court, Lexington.

The remains were brought to Stucky Funeral Home in Morehead and funeral services were conducted there Tuesday afternoon. Burial was in Brown cemetery. Rev. Ted Green conducted the last rites.

Mr. Roberts was born in Bourbon County June 18, 1937 and died three days before his 31st birthday.

His was the son of the late William Roberts and Nancy Honaker Landreth. His mother and wife, the former Dorothy Kay Glascock, survive.

Mr. Roberts also leaves a brother, Burns W. Roberts of Gary, Ind.; and two sisters - Mrs. Nancy Highley of Piquette, O., and Mrs. Betty Bradley, Morehead.

He was a graduate of Rowan County High School and a member of Southland Christian Church at Lexington. Mr. Roberts was manager of a restaurant. The end was unexpected as he was in apparent good health.

The casket bearers - Harry Hoack, Jerry Highley, Robert Bradley, Melvin Miller, Cecil Wells, Junior Honaker, Donald Powell and Rommy Barfield, Stucky Funeral Home was in charge of arrangements.

# SHOE SALE Starting today at . . .

## FAMILY STYLE Martin's

We've all the classic, current and forward-looking styles you like the most in our beautiful fall collection of shoes! Despite our modest prices, all your kith and kin are sure to go well heeled!

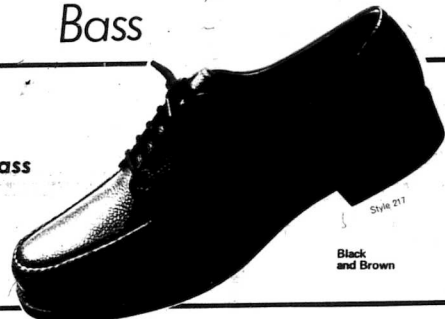
all by Bass

# SPORTOCASINS

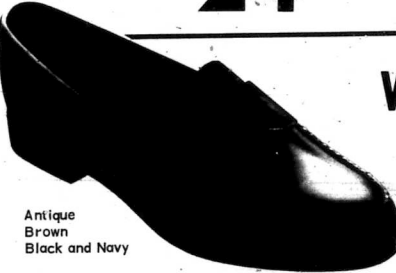
These true moccasins are ideal travel companions . . . with rightful claim to enduring moccasin comfort. The smart tie style and handsome scotch grain let them travel in the best circles.

. . . by Bass

**\$24.98**



Black and Brown



Antique Brown Black and Navy

# WEEJUNS Moccasins for Women

A true moccasin casual by Bass . . . with classic lines that stay in step with the finest sporty looks. Made with meticulous care . . . of the finest leather, to appeal to women of discriminating taste everywhere.

by Bass

**\$13.98**



Style 204

by Bass

# Long Wing Tip Blucher

Goodyear Welt

Wine, Black, Burnt Amber Corfam, English Kip lined throughout with vamp and tongue perforated, leather storm welt stitched all around; treated leather soles & topilifts with "V" plate; flexible insole; Bootmaker finish; special flex construction. Tweed last.

**\$29.98**

# Martin's

**YOUR BIG CHANCE TO SAVE**  
 Going, going, gone. Shoes that will strap comfortably in any walk of life. Do not miss this unique opportunity!

Morehead's Modern, Complete and Progressive Dept. Store  
 MAIN STREET MOREHEAD, KY.

# open house

Jackson Builders

## EVERYBODY WELCOME

The Gold Medallion is your assurance that the living this house offers is the finest money can buy - all electric from cornerstone to TV antenna. A Gold Medallion home has major electric appliances, full housepower wiring, light for living, and above all, clean, quiet electric heating - perhaps the most appreciated of all the joys of total electric living. Heatless and trouble-free, electric heating gives you the biggest plus of all - individual room temperature control.

So come on out. See tomorrow's living today - in a modern all-electric Gold Medallion home.

See this Gold Medallion Home Saturday or Sunday, June 22 or 23 in Lakeview Subdivision from 12-5 p.m. This home is centrally located and cooling with a heat pump. See all of Jackson Builders new all electric homes in Lakeview Subdivision, Morehead's prestige subdivision located 4 miles west of Morehead just off U. S. 60.

**KU**  
 SYMBOL KENTUCKY UTILITIES COMPANY  
 OF SERVICE  
 an investor-owned electric company



# SOCIETY

Recent guests of Mr. Harrison Ramey and daughter, Rosa, were Mrs. Luther Aultrey and Ray Ramey of Shelby, Ohio; and Mr. and Mrs. Dennis Hinton, New Castle, Ind.

A Special Phone  
Area 7  
784-7739



Mrs. Virginia Cox, who has been a patient at King's Daughters' Hospital in Ashland, returned home Friday.

Mr. and Mrs. Paul Fannin of Wapella, Ill. visited with his mother, Mrs. Kellum Fannin, last week.

Sgt. John W. Stewart will be returning to Morehead in July after spending six years with the Marine Corps. He has been serving in Vietnam since January 1966. Sgt. Stewart has recently been promoted to S/SGT, but hasn't received his warrant yet.

A surprise household shower was given for Miss Carolyn Horstman, bride-elect of Mr. Edward Alderman, May 4 at the home of Mrs. Roy Sparkman. Other hostesses were Mrs. Earl Alderman, Mrs. John Paul Thomas, Jody Taylor and Paula, Mr. and Mrs. Roy Sparkman, Clifton and David, Mrs. Walter Caudill, and Mrs. Dale Challen, all of Morehead. Also attending were Mr. and Mrs. Richard Alderman and children, and Mrs. Kelly Little, Cindy Cincinnati. Dorothy will spend the summer at her home here.

Mr. and Mrs. Jimmy Reynolds and family of Cincinnati are visitors this week of Mr. and Mrs. Oscar Patrick.

Mr. and Mrs. Oscar Patrick, Mr. and Mrs. Creed Patrick and son, Richard, and Mr. Lester, Dorris, E. Reynolds, and Mr. and Mrs. Jack McAllister of Columbus, Ohio attended the funeral of Mr. Paul Edward Patrick in Mt. Sterling last Wednesday.

Mrs. Tom Powers and daughters, Emily and Tom, Stanford was guest from Wednesday to Saturday of her sister, Mrs. Paul Jackson, Jr., at Plummers in Morehead. Mrs. Jackson and family spent the weekend with his mother, Mrs. J.H. Powers and family.

Guests last Sunday of Mr. and Mrs. Devlie Fultz were Mr. and Mrs. Carl Clark and daughters, Lesha Carol, and Mrs. Joan M. Pleasant, Ind. Mr. and Mrs. Bill Brown and children, Nora and Rickie of Farmland, Ind.

Among those attending the Fultz reunion held last Sunday at the home of Mr. and Mrs. Devlie Fultz were: Mrs. E. K. Kline, Mrs. Anna, Lexey, and Patty, Miss Jeanie Shields of Clearfield, Mr. and Mrs. Curt Clark, Ricky, and Mrs. Johnnie Fultz, and Mrs. Claude Brown, Sonja, and Kenny of Richmond, Ind. Mr. and Mrs. Leonard Adams, Mr. and Mrs. Robert Bernd and son, Don Allen of Indianapolis; Pvt. Vernon Ray Fultz of Ft. Campbell, others attending were, Mr. and Mrs. Sam Fultz and son, Jeffrey, Mrs. Bertha Hamilton, Mr. and Mrs. William Thomas of Archard, Mr. Albert Stergill of Haldeman, and Mr. and Mrs. Luther Williams, Pauline, Christine, and Aline of Flemingsburg.

Dr. and Mrs. Denver Stone of Lexington were weekend guests of his sister, Mrs. Cecil Hunt, and Mr. Hunt.

Mr. and Mrs. Jim Laughlin of Lexington spent Saturday and Sunday with his parents, Mr. and Mrs. Robert Laughlin.

Mr. C.B. Daugherty of Charleston, S.C. arrived Thursday for a visit at his home here.

Dr. and Mrs. N.C. March accompanied their granddaughter, Marsha Cunningham to Elizabethtown Thursday where she was met by her parents, Dr. and Mrs. George Cunningham and went to La-Center where the Cunningham's will reside.

Mr. and Mrs. Wathan Gullett spent the weekend with Mr. and Mrs. Jim Gross and family in Ashland.

Mr. and Mrs. Ronald Hart and daughter, Shari, were weekend guests of his mother, Mr. and Mrs. O.L. Hart, in Corbin.

Miss Ann Huffman who is with the Methodist Childrens Home in Versailles, spent the weekend with her parents, Mr. and Mrs. Keith Huffman and family.

Mr. and Mrs. J. Arch Williams and son, Jim, and Mrs. Gene Samuel attended the funeral of Mrs. Williams' brother, Mr. Raymond Waggoner, in Olive Hill Sunday.

Mr. and Mrs. Larry Hillman and daughter, Kathy and Sherri, of Oxford, Ohio were weekend guests of Mr. and Mrs. Glenn Lane. Other visitors for the weekend and spending the week are Maj. and Mrs. Ernest Volganer and daughters, Lisa, Lauren, and Jennifer of Vienna, Va.

Mr. and Mrs. Bob Wells and daughter, Mallie, returned home last Tuesday from a visit with their daughter, Mrs. Spencer Mann, and Mr. Mann in Biloxi, Miss. Mrs. Mann returned home with them for a week's visit and returned to her home Sunday.

Maj. and Mrs. E.H. Seborg of Hawthorne, Calif. are welcoming their fourth child, a girl, born June 13th. She weighed 8 lbs. 13 oz. and has been named Sherri Lucille. She has two brothers, Brian and Mark, and a sister, Dorris. Mrs. Seborg is the former Lucille Mayhall, daughter of Dr. and Mrs. C.C. Mayhall.

Dr. Zell Walters returned to his home Saturday from the St. Joseph hospital in Lexington. He was accompanied by Mrs. Walters and Mr. Lester, Cindy Cincinnati. Dorothy will spend the summer at her home here.

Mr. and Mrs. Jimmy Reynolds and family of Cincinnati are visitors this week of Mr. and Mrs. Oscar Patrick.

Mr. and Mrs. Oscar Patrick, Mr. and Mrs. Creed Patrick and son, Richard, and Mr. Lester, Dorris, E. Reynolds, and Mr. and Mrs. Jack McAllister of Columbus, Ohio attended the funeral of Mr. Paul Edward Patrick in Mt. Sterling last Wednesday.

Mrs. Tom Powers and daughters, Emily and Tom, Stanford was guest from Wednesday to Saturday of her sister, Mrs. Paul Jackson, Jr., at Plummers in Morehead. Mrs. Jackson and family spent the weekend with his mother, Mrs. J.H. Powers and family.

Guests last Sunday of Mr. and Mrs. Devlie Fultz were Mr. and Mrs. Carl Clark and daughters, Lesha Carol, and Mrs. Joan M. Pleasant, Ind. Mr. and Mrs. Bill Brown and children, Nora and Rickie of Farmland, Ind.

Among those attending the Fultz reunion held last Sunday at the home of Mr. and Mrs. Devlie Fultz were: Mrs. E. K. Kline, Mrs. Anna, Lexey, and Patty, Miss Jeanie Shields of Clearfield, Mr. and Mrs. Curt Clark, Ricky, and Mrs. Johnnie Fultz, and Mrs. Claude Brown, Sonja, and Kenny of Richmond, Ind. Mr. and Mrs. Leonard Adams, Mr. and Mrs. Robert Bernd and son, Don Allen of Indianapolis; Pvt. Vernon Ray Fultz of Ft. Campbell, others attending were, Mr. and Mrs. Sam Fultz and son, Jeffrey, Mrs. Bertha Hamilton, Mr. and Mrs. William Thomas of Archard, Mr. Albert Stergill of Haldeman, and Mr. and Mrs. Luther Williams, Pauline, Christine, and Aline of Flemingsburg.

Dr. and Mrs. Denver Stone of Lexington were weekend guests of his sister, Mrs. Cecil Hunt, and Mr. Hunt.

Mr. and Mrs. Jim Laughlin of Lexington spent Saturday and Sunday with his parents, Mr. and Mrs. Robert Laughlin.

Mr. C.B. Daugherty of Charleston, S.C. arrived Thursday for a visit at his home here.

Dr. and Mrs. N.C. March accompanied their granddaughter, Marsha Cunningham to Elizabethtown Thursday where she was met by her parents, Dr. and Mrs. George Cunningham and went to La-Center where the Cunningham's will reside.

Mr. and Mrs. Wathan Gullett spent the weekend with Mr. and Mrs. Jim Gross and family in Ashland.

Mr. and Mrs. Ronald Hart and daughter, Shari, were weekend guests of his mother, Mr. and Mrs. O.L. Hart, in Corbin.

Miss Ann Huffman who is with the Methodist Childrens Home in Versailles, spent the weekend with her parents, Mr. and Mrs. Keith Huffman and family.

Mr. and Mrs. Ralph Claiborne, who were enroute from Florida to their home in Wilmington, Ohio, spent Tuesday with Mr. and Mrs. Jack Evans and family. Missy and Mindy Evans accompanied them home to spend the week.

Mr. and Mrs. Woodrow Barber were luncheon guests of Miss Jeanne Parsons in Lexington last Tuesday. Mr. and Mrs. Barber spent last Wednesday with her mother, Mrs. Curtis Williams, at Blaine. Sunday guests at the Barber home were Mr. Raymond Corlie and daughter, Penny, of Middletown, Ohio.

Mr. and Mrs. Walter Holbrook of Olive Hill were guests Monday of Mr. and Mrs. Frank Kessler.

Mr. and Mrs. Max Dunaway spent the weekend with his parents, Mr. and Mrs. Roy Dunaway, in Russell, Ky.

Mrs. Charles Layne and daughter, Linda, returned to their home in Dayton Saturday after a visit with her parents, Mr. and Mrs. Cecil Purvis, and family. They were accompanied home by Mr. and Mrs. Today Turner, Nora Beth and Ricky, who spent the weekend.

Sgt. and Mrs. Joseph Lyons, David, Bobby, and Sam, of Columbus, Ohio were guests from Thursday to Monday of Mr. and Mrs. Cecil Purvis.

Airman 1/C and Mrs. Jerome Bowen of Dow Air Force Base, Bangor, Maine, are spending a 30 day leave with his business and professional people in Morehead before reporting to Okinawa.

Annette Tabor of Silver Lake, Ind. is spending the summer with her grandparents, Mr. and Mrs. Homer Bowen.

M/sgt. and Mrs. William Sloan and children, Keith, Rosemary, David, Ronnie, and Mona of Columbia, Miss. arrived Saturday for a visit with her parents, Mr. and Mrs. Edgar Hall, M/Sgt. Sloan left Monday while Mrs. Sloan and children remained for a three week's visit.

Mrs. Elmer Kinder returned home Monday from a visit with Mr. and Mrs. Glenn Curtis and family in Hillsboro, Ohio. She accompanied the Curtis family to the National and the National arene Assembly. Barry, Terry, and Dovana Curtis returned home with Mrs. Kinder for a visit.

Rev. Lloyd Dean recently toured the University of Kentucky with a group of students and faculty from the University of Greenup, Carter, Boyd, and Lawrence County.

Jimmy Scott Alfrey of Dayton, Ohio is spending the summer with his grandmother, Mrs. Elmer Johnson, and Mr. James, near him at Mr. Carmel last weekend.

Mrs. Edith Johnson and Mrs. Lester Gaskey were Lexington visitors Monday.

Sunday dinner guests of Mr. and Mrs. Sam Evans were Rev. and Mrs. Jake Plank, Mr. and Mrs. Leslie Pendland, Mr. and Mrs. George W. Gentry, Mr. and Mrs. Evans, Mr. and Mrs. Jack Evans, Missy and Mindy, Mr. and Mrs. Glenn Buckner, and Miss Nadine Plunk.

Mr. Jimmy Ward spent the weekend with his grandparents, Mr. and Mrs. T.W. Karris and his aunt, Mrs. Karris, in Mt. Sterling. Ann is attending the University of Kentucky this summer working on her doctorate.

A son, the first child in the family, was born Monday to Mr. and Mrs. Kenny Jones of Lexington. He weighed eight pounds and half an ounce on arrival at Good Samaritan Hospital. The baby is the first grandchild of Mr. and Mrs. M.M. and Mrs. George W. Seabord and the first great-grandchild of Mr. and Mrs. William Nester, all of Morehead. Mr. and Mrs. Jones and Mr. and Mrs. DeFord visited Tuesday in Lexington with the new arrival and his parents.

Mr. and Mrs. Hayden Carmichael and daughters, Marilyn and Linda of Statesboro, Ga. arrived Saturday for a visit with Mr. and Mrs. Leo Oppenheimer and other relatives in Morehead. Mr. Carmichael is spending a few days this week in Indiana.

Mr. and Mrs. Gene Samsel are spending this week in Florida.

Mr. and Mrs. Don Travis of Bowling Green spent the weekend visiting her parents, Mr. and Mrs. Lewis Higgins.

Mr. and Mrs. Harold Croswatke of Dayton were weekend guests of his mother, Mrs. Stella Bristow. They also visited with her mother, Mrs. Eugenia Bristow, and his aunt, Mrs. Leila Shroff in Owensville.

The American Legion Auxiliary will meet June 25th, at the home of Mrs. Leona Coleman. This will be a pot luck dinner meeting and will meet at 6:30 p.m.

Mrs. Martha Bennett and Mrs. Babel Brandenburg of Stanton were Sunday visitors of Mr. and Mrs. Dudley Caudill, Everett Randall, and Mrs. Edith Martin.

Mr. and Mrs. Joe Dalley returned to their home in Eustis, Fla. last week after a three week's visit with their son, Bill Dalley, and Mrs. Dalley. Danny Dalley accompanied them home for a visit.

Mrs. Dennis Stevens of Cincinnati spent from Wednesday to Friday with her parents, Mr. and Mrs. George Cline, in Morehead.

Mr. and Mrs. Winford Croswatke and Mr. and Mrs. Larry Croswatke spent last weekend in Columbus, Ohio. Mr. Winford Croswatke went by plane from Cincinnati to Nassau on a trip sponsored by Ford Philco. He returned home Sunday.

Those from the Farmers Rebekah Lodge who attended the district meeting in Mt. Sterling last Wednesday were: Mr. and Mrs. W.J. Garey, Miss Nancy Gaddill, Miss Grace Croswatke, Miss Patty Johnson, Mrs. Ella Mae Ramey, Mrs. Pearl Ball, Mrs. Lillie Parker, Mrs. Florence Mitchell, Mrs. Beulah Harter, Mrs. Louella Johnson, Mrs. Cleo Gullert, Mrs. Christine Shields, and Mrs. Goldie White.

Mr. and Mrs. Bob Horine, Bob and Virginia, who in Lexington spent last Wednesday night with Mr. and Mrs. W.T. Garey, Mrs. Evelyn Reed and son, Bill, returned to their home in Eustis, Fla. the Garey home. Those who were visitors Sunday were Mrs. Lizzie Nickell of Stacy Fork, Mr. and Mrs. David Gullett of Camp Hill, Mrs. Bayne Garey, Mrs. Ferrell Hill of Farmers, and Mr. and Mrs. John B. Messer.

Mr. and Mrs. Gene Samsel, Sr. spent Friday night with Mrs. Della Mae Henry in Kenova, W.Va. They are guests this week in Mt. Sterling with Mrs. Gene Samsel, Sr., in Libertyville, Ill.

## Recreation Leaders to Have Meet

A year-long community recreational stimulation and development program will be climaxed June 20-21 with civic officials and leaders from six Eastern Kentucky cities attending a climactic conference at Morehead State University.

The program, started last July 1 under the provisions of Title 1 of the federal Higher Education Act of 1965, was designed as a study of the community recreational needs of Boyd, Rowan, Elliott, Johnson, Mason and Pike counties.

Under the leadership and supervision of the federal government and staff members recreational programs involving participants of all ages have been established and are operating in Mayville, Paintsville, Shio, Hick, Brooksville and in Rowan County.

Reh Gexney, director of program recreation at the University, has spearheaded the project with the assistance of Dr. John R. Duncan, recently named acting dean of the Morehead Graduate School, and Bill Pierce, who has been appointed acting director of admissions at the University.

The program has been financed jointly by the University and the federal government with \$19,310 of a \$25,746 grant being provided by the federal government under the Higher Education Act.

More than 100 mayors, school superintendents, recreation commissioners and other community leaders are expected to attend the conference next week, registration for which is scheduled for the University campus.

Efforts are being made to have Rep. Carl Perkins (D., Ky. 7th District) as the principal speaker at luncheon opening the conference. The luncheon will be in the dining room of Alumn Tower.

Rotating interest sessions have been scheduled for Friday and Saturday morning, covering such subjects as: Financing a community recreation program; federal resources available through the National Recreation and Parks Association; school-community sponsorship; leadership responsibilities.

Dr. Garrett Eppley, professor emeritus at Indiana University and one of the national recreation leaders on community recreation, headlines a number of recognized leaders in the field who will lead the discussions. Others include Dave Wright, director of field services, and Pete Verhoven, research associate, both with the NRP/A Washington, D.C. office.

Others will include: Ernie Chaffin, director of recreation at Hamilton Ken Jenkins, Elizabethtown recreation director; John Gettler, supervisor of recreation at Lexington; and John Tattam, Fayette County recreational supervisor.

The Rev. Donald R. Herren, pastor of the Southern Hills Methodist Church, Lexington, is a member of the Fayette County Recreation and Parks Board, will be the principal speaker at a conference luncheon, scheduled for 7:30 Friday, June 21, in Alumn Tower.

Overnight accommodations are available at \$5.00 per person for those who need them, Chaffin said.

Ruth Ann Alban, a senior in business education at Morehead State University, has been named Miss Future Business Teacher of the Fayette County business fraternity at its national convention June 8-11 in Washington, D.C.

Miss Alban, who was named Miss Future Business Teacher of Kentucky by the fraternity earlier in the year, received a plaque signifying the honor and an all-expense-paid trip to the regional convention of the Southern Education Association in Memphis, Tenn., in November.

The Morehead chapter of Phi Beta Lambda also received a Gold Seal Award at the national convention in recognition of its activities on the campus during the past school year.

Morehead students participating in the national meeting were Stuart Owens, senior, Morehead, named earlier as Miss Kentucky Business Education, and Peggy Hopkins, Pikeville, a sophomore and honored previously as Miss Business Executive of Kentucky.

They were accompanied by Dr. Ardyce Lightner and Bill Thompson, instructors in the Morehead business education department at Morehead.

## Miss Horsman, Mr. Alderman Are Married

The First Church of God, Morehead, was the scene of the wedding June 9 of Miss Carolyn Jean Horstman, daughter of Mr. Harry C. Horstman, Sr. of Scioto, Ohio, and Mr. Edward W. Alderman, Jr. and Mrs. Glenn Williams, neephews of the groom. The ring bearer was Bradley Thomas Horstman, the bride's nephew.

Oliven in marriage by her father, the bride wore a floor-length gown styled in the late 1950s, a cap of dentise lace held her butterfly bouffant veil of French silk illusion. She carried a cascade of roses, carnations and baby's breath.

Miss Sue Horstman, sister of the bride, was maid of honor. Miss Rita Jane Darr, niece of the groom, was junior bridesmaid. They wore floor-length gowns of pink linen accented with applique flowers and green velvet ribbons. Their headresses were bouffant veils held by pink linen bows and they carried red roses and pink carnations.

The flower girl, Lisa Kay Horstman, niece of the bride, wore a white dotted Swiss gown and carried a basket of baby's breath.

Mr. Earl Alderman, Sr. was his brother's best man. Ushers were Mr. Earl Alderman, Jr. and Glenn Williams, neephews of the groom. The ring bearer was Bradley Thomas Horstman, the bride's nephew.

A reception was held in the church social room. Mrs. Earl Alderman, Sr., Mrs. Roy Sparkman, Mrs. Larry Horstman, Mrs. Harry Horstman, Mr. Harry Darr and Mrs. John Paul Thomas were hostesses. Miss Cindy Thomas kept the guest book.

After a wedding trip to Cumberland Falls and the Smoky Mountains, Mr. and Mrs. Alderman are residing at 414 Water Avenue, Morehead.

The bride teaches at Carrollton, Ohio, High School. Mr. Alderman is employed with Thomas Engineering and Surveying Co., Columbus, Ohio.

Private Shirley R. Caudill, daughter of Mrs. Annie M. Caudill, Morehead, has completed eight weeks of basic training at the Women's Army Corps Center, Ft. McClellan, Ala.

She received instruction in Army history and traditions, administrative procedures, military justice, first aid and field training.

sophomore and honored previously as Miss Business Executive of Kentucky. They were accompanied by Dr. Ardyce Lightner and Bill Thompson, instructors in the Morehead business education department at Morehead.

## Ruth Ann Alban Receives Honor

Ruth Ann Alban, a senior in business education at Morehead State University, has been named Miss Future Business Teacher of the Fayette County business fraternity at its national convention June 8-11 in Washington, D.C.

Miss Alban, who was named Miss Future Business Teacher of Kentucky by the fraternity earlier in the year, received a plaque signifying the honor and an all-expense-paid trip to the regional convention of the Southern Education Association in Memphis, Tenn., in November.

The Morehead chapter of Phi Beta Lambda also received a Gold Seal Award at the national convention in recognition of its activities on the campus during the past school year.

Morehead students participating in the national meeting were Stuart Owens, senior, Morehead, named earlier as Miss Kentucky Business Education, and Peggy Hopkins, Pikeville, a sophomore and honored previously as Miss Business Executive of Kentucky.

They were accompanied by Dr. Ardyce Lightner and Bill Thompson, instructors in the Morehead business education department at Morehead.

**The Answer to CANCER**

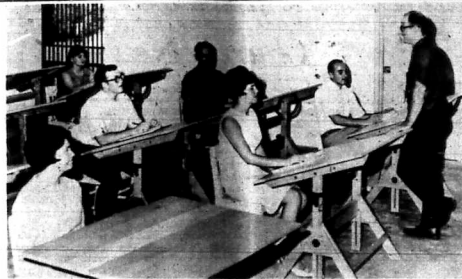
Great progress has been made in the treatment of Cancer. Prospects for the victims are brighter today than ever before. But the main hope and hope is in early detection. The check in your doctor will give you a sign of the disease. Since early cancer often goes unnoticed, you should see your doctor regularly for a medical exam. A Check-Up Can Save Your Life!

**Reliable Prescription Service**

**Benson Drugs**

MAIN ST. MOREHEAD, KY.

# Red Hed Leads League With 4 Straight Victories



Red Hed forged to the front in the Morehead Men's Softball League with four straight victories.

Battson Drug is also undefeated but has played only two games. Thacker's is a half-game out of first place with four wins and one defeat. Others - Imperial Cleaners 3-1; Maloney's 1-1; Abner's 2-2; Allen's IGA 2-3; Elwood's 1-3; Salt Lick 1-3; General Telephone 0-2; and Donahue 0-4. J. White has an amazing hitting record. He connected 12 times in his first 14 appearances in the softball league for an average of .857. Mays of Thacker's has nine hits in 12 times at bat for .750.

Others - Reynolds, Imperial, six hits in 11 times at bat; .545; W. Adkins [Allen's] six for 12; and J. Conley [Thacker's] six hits out of 12 times at bat.

Success of the Red Hed team can be attributed in large part to J. White who has hurled the team to all four of its victories. C. Purvis of Imperial has three wins and no defeats.

Fifteen players have hit home runs, but nobody has connected more than once.

The week's run-down - Maloney's 9, Thacker's 6 - Maloney's handed Thacker's their first defeat of the season. Maloney's scored six times in the third inning then coasted the rest of the way. Potenza had a home run for the winners and Collins was the winning hurler. Thacker's were held to 8 hits as Gene Caudill was the losing pitcher.

Red Hed 16, General Telephone 3 - Red Hed blasted General Telephone to the tune of 16 to 3 to keep their winning ways. Joe White was the winning pitcher and also led the hitters with four hits in four times at bat. Weishaus was the leading batsman for the Telephone with three hits. Pikal was the losing hurler.

Imperial 13, Abner's Boozers 1 - Imperial routed Abner's Boozers with a commanding 13 to 1 win. Clinton Purvis was the winning pitcher and Toots Bailey was the loser. John Holbrook was the leading batter with three hits in four times at the plate.

Thacker's 19, Elwood's 2 - Thacker's rebounded from their defeat by Maloney's to whip Elwood's 19 to 2. Mays was three for three at bat and Bill Baldridge hit a home run to lead the winners. Gene Caudill was the winning hurler and Fultz was the losing pitcher.

Imperial 13, Salt Lick 3 - The Imperial Cleaners won their second game in this week with a 13 to 3 win over Salt Lick. Mac Hart was Imperial's leading batter with 3 hits. Warren Purvis was the winning pitcher and Stull was the loser.

Abner's Boozers 28, Playboys 2 - Abner's Boozers romped over the winless Donahue's Playboys 28 to 2. Toots Bailey was the winning pitcher and Gregor took the defeat. The Boozers had 25 hits and held the Playboys to just two singles.

Allen's IGA 5, General Telephone 4 - Allen's IGA won their first game as they squeaked by General Telephone by one run. Duke Molton was the winning pitcher and Fultz took the defeat. Trailing the entire game, the IGA scored three times in the bottom of the sixth. Duke Molton belted a single to score the go ahead runs.

Battson's 14, Maloney's 9 - In a thrill-packed game that went ten innings, Battson's outlasted Maloney's 14 to 9. Maloney's led the score in the seventh with Potenza reaching second on an error and coming home on a clutch hit by Harold Tackett. Battson's broke loose for six runs in the tenth inning to ice the win. Jones was the winning pitcher and Collins the loser.

Red Hed 11, Elwood's 1 - The Red Hed moved a step closer to an undefeated season with their fourth straight win. Joe White was the winning hurler and Fultz the loser. White held Elwood's to just one hit as Justice ruined his bid for a no hitter with a third inning single.

Imperial 14, Abner's Boozers 4 - The Imperial repeated an earlier win over the Boozers with a 14 to 4 triumph. Steve Young had a home run for the winners and Ron Hart had two hits. The winning pitcher was Clint Purvis and the loser was Toots Bailey.

Thacker's 12, Playboys 0 - Thacker's won their fourth game shutting out the winless Playboys 12 to 0. Bill Rospert and Sonny Moore hit home runs. Gene Caudill held the Playboys to two hits and the losing pitcher was C. Sizemore.

Allen's IGA 1, Salt Lick 0 - Allen's IGA defeated Salt Lick by forfeit.

BIGGEST - The world's largest ferro-alloys furnace is at Calvert City, Ky.

FIRST CLASS . . . Don Young, art instructor at Morehead State University, conducts one of the first classes to be held in the University's new \$1,096,000 Art Building. Officially opened with the beginning of the summer term at the University June 10, the three-level, air - conditioned

building is one of the most modern and completely equipped of its kind in the country. Featured are a tri-level exhibition gallery, a 164-seat visual presentation room, outside sculpture courts, a ceramic studio and skylighted studios.

## Letter? Si Legacy? No

MEXICO CITY (UPI) - If you get a letter from a man identifying himself as a Mexican lawyer and telling you that a long lost friend or relative has died in Mexico and is about to make you rich - count to 10 and then check up on the letter writer.

This advice comes from the Mexico City Better Business Bureau which has been having trouble with a man who has been running Americans with such "legions" letters. Complaints have come to the Bureau from such cities as Rochester, Detroit, Boston, St. Louis and Sacramento.

It's always possible such a letter can be legitimate. But it's always wiser to make sure, the Bureau advises. This particular fellow's gimmick was that he needed a small sum for processing the necessary papers, filing documents, etc. - sometimes he only asked for 100 pesos (\$8) but apparently the letters flooded out in sufficient number to add up to respectable figures.

## City of Morehead, Kentucky Budget For Fiscal Year Of July 1, 1968 to July 1, 1969

City Tax	\$75,000.00
Bank Shares	800.00
City License	7,545.48
College Police Protection	29,000.00
Police Court	1,000.00
Garbage Collection	4,500.00
Kentucky Utilities Franchise	9,503.06
Parking Meters	17,000.00
Fire Insurance License Receipts	125.00
Phone Booth	13,500.00
Auto License	1,200.00
Miscellaneous	7,202.00
Income From Building Inspection Fees	1,000.00
<b>GRAND TOTAL</b>	<b>\$171,737.54</b>
City Attorney-Salary and Fees	\$ 5,000.00
Auditors	600.00
City Clerk's Salary	4,544.00
Assistant to City Clerk	2,500.00
Mayor's Salary	1,200.00
Police Judge's Salary	2,700.00
Councilmen (8)	1,000.00
Printing and Office Supplies	1,000.00
Dieting Prisoners (Co. Jail)	6,000.00
Insurance and Bonds	1,000.00
Social Security	2,500.00
Street Lights and Electric Utilities	13,000.00
Tax Equalizers	300.00
Tax Assessor	863.00
Parking Meter Repairs and Parts	1,500.00
Travel Expense	1,200.00
Rowan County Library	1,200.00
Planning and Zoning	700.00
Building Codes Enforcement Officer	3,816.00
Recreational Board	1,200.00
Miscellaneous	2,947.22
Sub-Total	\$ 55,570.22

## BUDGET-POLICE DEPARTMENT FISCAL YEAR 1968-69

Chief of Police	\$ 6,240.00
Patrolmen (5)	[\$5,179.20 each]
Assistant Chief	25,000.00
Sgt. Police	5,491.20
Uniforms	5,335.20
Radio Operators	1,000.00
Auto Expense - Gas, Oil, and Maintenance	7,500.00
Radio Maintenance	4,000.00
Walkie-Talkie	500.00
Office Expense	200.00
Police In-Service Training, Including Travel	400.00
Miscellaneous	4,000.00
<b>Total</b>	<b>\$ 62,062.40</b>

## BUDGET-FIRE DEPARTMENT FISCAL YEAR 1968-69

<b>SALARIES</b>	
Fire Chief	\$ 1,200.00
Asst. Chief and Men [Deills]	1,500.00
Men [Fire Calls]	2,000.00
<b>TRUCK EXPENSE</b>	
Gas and Oil	\$ 250.00
Batteries	100.00
Repair	250.00
<b>MISCELLANEOUS</b>	
Group Insurance	\$ 300.00
Expense for man to Fire School	60.00
Annual Dues-State Firemen's Assn.	25.00
Office Expense	15.00
<b>Total</b>	<b>\$ 400.00</b>

<b>NEW EQUIPMENT</b>	
Hose 400 Ft. 2 1/2" Double Jacket @ 2.05 per ft.	\$ 820.00
Hose 400 Ft. 1 1/2" Double Jacket @ 1.55 per ft.	620.00
Savings for purchase of new Fire Truck	5,000.00
<b>Total for Fire Dept.</b>	<b>\$ 12,140.00</b>

## BUDGET-SANITATION DEPARTMENT FISCAL YEAR 1968-69

Extra Labor Sanitation Department	\$ 800.00
Caretaker at City Dump	1,080.00
Sanitation and Street Repair Foreman and (Team)	7,824.60
Sanitation and Street Workers (2) Men	6,160.32
City Truck Expense and Upkeep	3,500.00
Insect and rodent Extermination	600.00
<b>Total</b>	<b>\$ 19,964.92</b>

## BUDGET-STREET DEPARTMENT FISCAL YEAR 1968-69

Improving Streets	\$ 20,000.00
Curb and Sidewalk repair	2,000.00
Sub-Total	\$ 22,000.00
Grand Total	\$ 171,737.54

ORDINANCE ADOPTING CITY BUDGET FOR 1968-69 BE IT ORDAINED by the Board of City Council of the City of Morehead, Kentucky as follows: That the budget for the fiscal year, July 1, 1968 to July 1, 1969, as prepared and presented by the Budget Committee, a copy of which is annexed hereto and adopted in reference, be, and the same is hereby adopted and approved. PASSED AND ADOPTED by the Board of City Council this 11th day of June, 1968. Attest: Minnie B. Preston, City Clerk William H. Layne, Mayor

**FREE**  
**\$100.00**  
**IN CASH**  
**EACH WEEK**

PLAY . . . **LUCKY NUMBER**



**SUPER VALU**

**21 WINNERS!**

- 1-First Prize . . . . . \$50.00
- 10-Second Prizes . . . . . 3.00
- 10-Third Prizes . . . . . 2.00

- \* It's Easy and Fun To Play
- \* No Purchase Necessary
- \* A New Contest Each Week

Each time you visit Saweway Super Valu, ask for lucky number ticket . . . no purchase necessary.

## Play Lucky Number

### Last Week's Winners

- Bertha Pelfrey
- Rosie Brown
- Sudie Cooper
- Virgil Workman
- Verna Stidams
- Charles Shelly
- Sue Lycans

### Here's How You-Can Win!

- Bring in your Lucky Number each week and compare it with the 21 Lucky Numbers posted at Saweway Super Valu.
- If your Lucky Number matches any of the 21 Lucky Numbers posted in our store, you will win cash prizes of \$50, \$3, or \$2.
- A new list of Lucky Numbers is posted every Monday morning and left up thru Saturday, giving you 6 days to compare your number.
- Starting this week, every time you shop at Saweway Super Valu, you will be given a new Lucky Number ticket to be used the following week. Be sure to tear your Lucky Number ticket in half. Deposit the stub in the jackpot barrel and you keep the other half to compare any day the next week, Monday thru Saturday.
- When you visit our store this week be sure to get your Lucky Number ticket for next weeks contest.

**Saweway**

**SUPER VALU**



# FREE BOWLS

with a \$3.00 purchase of Ashland Gasoline

These attractively textured bowls in Avocado Green are just the thing for serving salads, cereals, soups, desserts, chip-and-dip, snacks. With every \$3.00 purchase of Ashland Gasoline you get one small bowl FREE. The

large, matching bowl can be yours for only 88¢ with an oil change or lubrication at regular prices. Start collecting a complete set. Stop at any Ashland Oil service station displaying the "FREE BOWL" sign.



ASHLAND OIL & REFINING COMPANY



# Ranger's Column

U.S. Forest Service - Morehead, Ky.  
By Joe Maik

The strength of our nation rests in the development and maintenance of strong family ties. A family that works together and plays together is stronger than one in which each member goes his separate way.

National forest recreation is mostly of the family type. Visit any of the camp ground or picnic areas on the Daniel Boone National Forest and you will find whole families, from the youngest in his play pen to grandpa in his camp chairs under the trees, enjoying the simple pleasures of outdoor living.

Parents find themselves closer to their children as they hike together down a woodland trail or sit around a campfire at night. Even the family dog becomes an eager participant in the adventure of outdoor group living.

Less than one percent of the land area in the national forest system is devoted to intensive recreational use such as campgrounds, picnic areas, organization camps, and summer, home sites.

The recreationist who visits a public campground or picnic area, however, is not confined to its boundaries and can drive over scenic woodland roads that are uncluttered by billboards or

## Charles Bailey Finishes His Basic Training

Airman Charles W. Bailey, son of Mr. and Mrs. G.W. Bailey of Rt. 1, Morehead, has completed basic training at Amarillo AFB, Tex. He has been assigned to the Air Force Technical Training Center at Keesler AFB, Miss., for specialized schooling as a communications specialist.

Airman Bailey, a graduate of Rowan County High School, attended Morehead State University.

other commercial use. As he pursues these travel routes he may be wholly unaware that nearby timber is being harvested, or that other uses are being made of the land. Scenic strips along forest highways, waterways, and around recreation areas protect the recreation resources.

The wildlife of the forest is a big attraction to family groups vacationing on the national forests or just passing through. It is estimated that over 3 1/3 million big-game animals spend at least part of the year on these public lands.

This is about 35 percent of the nation's total big game population, but it includes more than 85 percent of the country's elk, mountain goats, moose, and grizzly bear, and nearly 60 percent of its mule deer and black bear. The national forests are used for many purposes and frequently many uses occur in the same area.

**Walking on Corn**  
WASHINGTON (U.P.)—Every time you take a step, corn helps your shoe soles bend more easily. Tanners have long used corn syrup or dextrose (corn sugar) in making stiff leather more pliable, according to the Corn Refiners Association, Inc., Washington, D.C.

**CARPET CLEANING AT ITS BEST!**  
Are your carpets or rugs dull, old or need repairs. If so, call or write  
**Nichols & Unruh Carpet Service**  
For the Finest in Cleaning, Installation, and Repair  
PHONE 473-3121  
After 5 P.M., 473-7344

**TERMITE TROUBLE?**  
See Dr. Call  
**CHESTER KISER CONSTRUCTION CO.**  
Phone 784-5109 & 784-5442  
Agents for  
**State Termite Control and Chemical Co. Inc.**

## MOREHEAD AREA

# Church News

Compiled weekly by the Morehead Ministerial Association. This column is available, without charge, to recognized churches. Copy must be submitted to Editor (name below) for that particular month. Do not submit copy to The Morehead News.

June Editor: Rev. Scott Griffin

**THE CLEARFIELD TABERNACLE**—Will be having their annual Sunday School picnic this Sunday June 23. Just immediately after the morning worship service, the picnic will be on the church lawn.

The 79th International Convention of the Church of God will convene in Anderson, Indiana, June 17-23. "It's more than a camping, convention or assembly," says Charles Y. Weber, Convention Director. "It's all of these put together in the greatest early gathering of the Church of God. Key leaders from the United States and many other countries will join together in fellowship, sharing, study and policy decisions."

More than 20,000 people will be in attendance during the week. Services are conducted from six o'clock in the morning until ten o'clock each night, with a variety of conferences, workshops and activities for ministers, children, youth and adults. Great preaching and inspirational music will be featured in each of the nineteen mass meetings in Warner Auditorium.

This 7,500 seat convention center will be filled even beyond its normal capacity for many of the services. Several people from our Church will be attending these services including Rev. John C. Thornberry, Rev. R. Dale Whalen, and Rev. Scott M. Griffin.

**FAITH PRESBYTERIAN**—Dr. Richard M. Beemer will be the speaker at Faith Church this Sunday, June 23, at 9:30 a.m. His topic will be: "Church Structures — Help or Hindrance?"

Dr. Beemer will be the second of Faith Church's elders to address the congregation in a series of sermons designed to help the congregation think through its life and work. A brief coffee-and-discussion period will follow the service. The congregation will also hear a report on its building program.

On Sunday evening, at 6 p.m., a new series of Sunday evening studies will begin, under the leadership of Allen Lake. The study for the summer series will be on "The Crisis in the Nation." The Sunday evening study is an in-

formal discussion, conducted around the supper table. Those participating bring their own sandwiches, with coffee, tea, and soft drinks available at the church. All interested persons are welcome.

**PENITENTIAL**—The Morehead United Pentecostal Church is in search of a young Pentecostal boy or girl who will be given a four year Scholarship to "Gateway College of Evangelism," St. Louis, Missouri. The first class of the new college will open 13 Sept. 1968.

Mr. Donald Lacy, former student of Apostolic Bible Institute, Minnesota is directing the activities of the young people through the Sunday School Department.

Mr. Walter Cales, formerly of West Virginia, is now conducting all night services at the local assembly, Brother Lloyd Dean, pastor of the U.P.C. representing the church at the thirty-fourth convention in Summersville this week. The U.P.C. comprises the 120 counties of the state.

The local Ladies Auxiliary has been busy participating in the "Mothers Memorial Drive," which is devoted to many worthwhile projects in the world.

**FIRST CHRISTIAN**—This Saturday at our church there will be a "curriculum materials meeting" for representatives of the Christian Churches in our district. Some of our state officers will be here to introduce our churches to the proposed new materials being produced for our Church School, men and women's groups and for the use of our youth. This meeting will help prepare us to use this literature wisely.

Starting on July 15, our church in conjunction with the Episcopalian and Presbyterian Churches will hold its annual Vacation Bible School. This school will be for children between the ages of three years old and the sixth grade. The theme of this year's school is "God, Creator and Sustainer." By the use of the Bible for observing the world about us, the theme is brought down to the everyday experiences of each child and young person.

## Weekly Meditation

**ISRAEL'S DESTINATION** - Psalms 48:14 "For this God is our God forever and ever; he will be our guide even unto death."

God truly was the guide of Israel through the wilderness, as a cloud of smoke in the day and a pillar of fire at night. Little did Abraham realize the enormity of the statement from God that he would number his seed as the sand of the sea. It was a promise for the future but nevertheless a true promise, one that has come to pass in this day.

The war between the Arab nations and Israel reminded us that the story of Goliath against David could be just as true to day as in ages past. Psalms 91:7 reminded us that "A thousand shall fall at thy side and ten thousand at thy right hand; but it shall not come nigh thee." The very fact that Israel traded 5,000 Egyptian soldiers for 9 Israel soldiers bears this out.

The Bible said "the desert shall bloom as a rose." Israel is working around the clock today preparing and irrigating the land and now is benefiting an oasis in the midst of a hostile world.

The Scriptures ask "Who are these that ride upon the clouds of Heaven and are like doves at the windows?" Since May 1948 many thousands have been flying to Israel from all countries of the world on major airlines. The Lord said he would gather them again from the four corners of the earth back to their homeland.

Another promise in Psalms reminds us that "He turneth the wilderness into a standing water, and dry ground into water springs."

Psalms 122:9 Our feet shall stand within thy gates O Jerusalem.

Psalms 122:9 Jerusalem is builded as a city what is compact together. The walls have been thrown down and the city now nighle down throughout the world without fear of the enemy.

Psalms 125:2 "As the mountains are round about Jerusalem, so the Lord is round about his people from henceforth even for ever." The tiny country of

Israel accomplished this enormous task with the help of the Lord. Psalms 148:13 says "Let them praise the name of the Lord; for his name is excellent; his glory is above the earth and heaven." Israel truly has much to be thankful for as God has done great things by her.

Isaiah 2:1-3 "The word that Isaiah, the son of Amos, saw concerning Judah and Jerusalem, 2 And it shall come to pass in the last days, that the mountain of the Lord's house shall be established in the top of the mountains; and it shall be exalted above the hills; and all nations shall flow into it. 3 And many people shall go and say, Come, ye, and let us go up to the mountain of the Lord, to the house of the God of Jacob; and he will teach us of his ways, and we will walk in his paths; for out of Zion shall go forth the law, and the word from Jerusalem." We are reminded still yet in Isaiah 35:10 "and the ransomed of the Lord shall return, and come to Zion with songs and everlasting joy upon their heads; they shall bring forth the wheat and suck and sighing shall flee away."

Isaiah 60:16 says "Thou shalt suck the milk of the Gentiles, and shalt suck the breast of kings; and thou shalt know that I the Lord am thy Saviour and thy Redeemer, the mighty One of Jacob." For the past few years, thousands of tourists from all over the world have been visiting Jerusalem and spending considerable amounts of money to fulfill the Scriptures.

Isaiah 60:20 "The sun shall no more go down, neither shall thy moon withdraw; for the Lord shall be thine everlasting light, and the days of thy mourning shall be ended." - Lloyd Dean

**Walter Ramey Serves On The Vietnam Front**  
Army Private First Class Walter B. Ramey, 21, whose parents, Mr. and Mrs. Morrow Ramey, and wife, Donna, live in Clarkfield, has been assigned as a炊事员 (cook) with the 198th Infantry Brigade in Vietnam.

**BEST SELLERS**  
(UPI)  
(Compiled by Publisher's Weekly)

**Books**  
SUPPORT—Arthur Hailey  
COURAGE—John G. Sweeney  
MYRA BRECKENRIDGE—Gore Vidal  
THE TALENTED MR. RYLANDER—John Updike  
THE YANKEES—Paddy Chatterjee  
THE TROUBLE—John Updike  
THE KENNEDY GAMBOL—John Updike  
THE TALENTED MR. RYLANDER—John Updike  
THE TALENTED MR. RYLANDER—John Updike  
THE TALENTED MR. RYLANDER—John Updike  
THE TALENTED MR. RYLANDER—John Updike

**Non-Fiction**  
BETWEEN PARENT AND CHILD—Boris O. Gurev  
THE HATED APP—Dorothy Morris  
THE TALENTED MR. RYLANDER—John Updike  
THE TALENTED MR. RYLANDER—John Updike  
THE TALENTED MR. RYLANDER—John Updike  
THE TALENTED MR. RYLANDER—John Updike  
THE TALENTED MR. RYLANDER—John Updike  
THE TALENTED MR. RYLANDER—John Updike  
THE TALENTED MR. RYLANDER—John Updike  
THE TALENTED MR. RYLANDER—John Updike

**Complete Ambulance Service**  
**Oxygen Equipped**

**"Equipped To Serve You"**

Member of Kentucky Funeral Director's Burial Association

--Authorized To Service--

Burial Insurance Contracts Issued By  
**COMMONWEALTH LIFE INSURANCE CO.**

**LANE FUNERAL HOME**  
Phone 784-4134 Morehead, Ky.

**ORKINGuard PROTECTION**  
It makes good sense.

Orkin's complete program of scientific pest control is guaranteed to leave your home or business pest-free all year long for pennies a day. So why put up with the worry, trouble and annoyance of insects and rodents? Call Orkin today and ask to speak to an ORKINGuard pest control specialist.

**ORGIN**  
World's Largest Termite and Pest Control Company

**784-5789**

**Don't Wait—Call Today for GUARANTEED PROTECTION**

**TERMITE TROUBLE?**

See Dr. Call  
**CHESTER KISER CONSTRUCTION CO.**  
Phone 784-5109 & 784-5442  
Agents for  
**State Termite Control and Chemical Co. Inc.**

**Stop PAYING RENT**

**BUY A NEW HOME TODAY**

**For Only \$3495.00**  
\$495.00 Down and \$59.11 per month  
Including Taxes, Insurance and Carrying Charges

MORE THAN 80 COACHES ON OUR LOT FOR YOU TO CHOOSE FROM. WE REPRESENT 14 OF AMERICA'S LEADING HOME MANUFACTURERS WHY BUY WHERE YOU HAVE ONLY EIGHT OR TEN COACHES TO CHOOSE FROM?...COME TO CHEAPS WHERE YOU CAN HAVE A CHOICE.....

Come in and let us talk with you about your housing needs.

**Free** 300 MILE DELIVERY AND SET UP ON YOUR FOUNDATION. ALSO A FREE DECORATIONS KIT WITH EVERY COUCH WE SELL.

**Cheaps MOBILE HOMES**  
Opposite Cheap Chevrolet FLEMINGSBURG, KENTUCKY

Visit Our Lot Today

Open 6 Days A Week And After Church On Sunday

Do as many home - buyers are doing. Stop in and see us for the best in Mortgage Financing. It's important!

**First Federal Savings and Loan Association of Morehead**

MAIN STREET MOREHEAD, KY.

Open Until Noon On Saturday

**Drive a Buick Bargain and get a Buick.**

Now. At your Buick dealer.

**GM**

**Beat the Heat Values**  
WITH SUMMER'S HOTTEST BUYS

**FAN CLEARANCE**  
Portable Fan \$14.88

**EASTERN ELECTRIC**  
Window Fan \$11.97

**Paper Plates 97¢**

**Plastic Forks & Spoons 39¢**

**13" Diameter GRILL \$7.00**

**LARGE Styro-Foam Ice Chests \$7.00**

**13-oz. "Just Wonderful" Hair Spray 2 for \$1**

**STYRO-FOAM Water Jugs 2 for \$1**

**House Hunting?**

**DOLLAR DISCOUNT STORE**  
MAIN STREET - WILSON AVE. - MOREHEAD, KY.  
Mon. 8:30-7:00 Tues/Thru Thurs 8:30-5:30 Fri. 8:30-8:00 Sat. 8:30-6:00

**Dry Ridge Convalescent Home**  
 Dry Ridge, Ky. Area Code 606-824 8161  
 Nursing Home for the Aged, Sick and Retarded Children. All ages admitted from 2 weeks to 100 years of age. Approved by Federal Medicare and State Public Assistance Programs. Doctor and Drug Bills and the Permitted Length of Stay in the Nursing Home is paid by one of the other Programs, for those who qualify Medically and Financially.  
 For more information, check with your local Public Assistance Office or call the Nursing Home.



**HOUSEHOLD HINTS**  
 By United Press International  
 Crumble crackers made a plastic sandwich bag. Secure with a fastener and smash with a rolling pin.

A lemon yields more juice if it is heated before squeezing.

Nuts chop more easily if they have been stored in the freezer for a few hours.

Baking soda can be used to remove odors on a chopping board, from cooking utensils or hands. The enough water to dampen a paper towel, sprinkle the towel with soda, and rub the board or utensils. Rinse.

When woodwork was becoming gummy, wash it off with soap or detergent suds. Then rinse and dry before revarnishing.

A thin coating of petroleum jelly on lips and teeth help prevent the dryness which can make smiling a chore for the bride or girl awaiting Beauty contestants say it works all the time.

## Housing Laws Are Clarified

It is against the law in Kentucky now to discriminate racially in the sale or rental of most housing handled by real estate agents.

Rioting, unlawful assembly and interference with fire-fighting operations are prohibited under other statutes passed by the 1968 General Assembly.

These are samples of some 200 new Kentucky law which went into effect June 13. Some laws carried emergency clauses and became effective upon enactment. Others were to be effective on specific dates.

One new law allows 18-year-old males to marry without parental consent, granting them the same privilege which 18-year-old males already enjoy. Another makes it more difficult to obtain divorces.

There are some of the new laws which now must be obeyed. These and the remainder of the 214 passed and approved by Gov. Louie B. Nunn, or allowed to become law without his signature, are summarized in an informational bulletin prepared by the Kentucky Legislative Research Commission.

It is called Informational Bulletin No. 67 and may be obtained free of charge by writing to the Commission at the State Capitol in Frankfort.

James T. Fleming, commission director, said some 5,000 copies of the bulletin already had been mailed and that he expects this number to be increased by about 3,000. Those already mailed went principally to lawyers, and to county officials, libraries and schools.

Penalties for violation of the riot control laws range up to five years in jail and a \$5,000 fine.

Another of the new laws requires drivers accused of drunken driving to take sobriety tests or lose their licenses for up to six months. Standards for determining drunkenness by measuring the amount of alcohol in the blood are strict.

Under one new law, the 60-day waiting period in divorce proceedings now comes at the beginning of the process, rather than after the judge issues an interlocutory decree, and involves only couples with children.

Other additions to the statutes are laws to:

- Require motorcycle drivers to acquire a special operator's license and to wear safety helmets and goggles to protect their eyes and heads.
- Raise the price of an auto driver's license \$1 from \$2 to \$3 -- with 50 cents going to the circuit clerk's office and 50 cents to state driver education and county roads.
- Require loan companies to disclose the cost of a loan as simple interest and in dollars and cents.
- Establish standards for inspection of all meat processing plants operating within the state.
- Require parents to have their children immunized against measles and smallpox before entering school.
- Prohibit auto insurance companies

## Women's Medical News

BY LOUISE CHASE  
 Women's Medical News Service

College students in general are "not real swinging cats" where sex is concerned. As a matter of fact they have only sexual knowledge and are often uninformed and misinformed. This is the judgment of Dr. Frederick Cohn of the University of New Mexico School of Medicine, who has been giving a course on sex education to university juniors and seniors.

Although the course ranges in subject matter from a look of medieval sexual behavior to current sexual behavior in the United States, Dr. Cohn told Women's Medical News Service in a recent interview that the subject of greatest interest to his students is contraception. They want to know what the various methods are, how they work, how reliable they are, what side effects are associated with each.

Oddly enough, although these young men and women are almost through with their formal education, they show great ignorance of human anatomy. They often don't know the proper names and functions of the various organs of the body.

They have many misconceptions concerning the menstrual cycle, and are not certain what is normal and what is abnormal in their cycles. They don't know what homosexuality is -- and what it is not.

In their personal behavior, Dr. Cohn believes these young folk to be highly moral, from their point of view. They deplore promiscuous sexual behavior. Premarital sex is not frowned upon by the students if it is between two people who love each other and feel responsible for each other. The key element must be love in their view. Sexual relations without love, on the other hand, is disdained.

The course is taught by a multidisciplinary team of experts including a Ph.D. in health education, a psychiatrist, and anthropologist, a lawyer, and a minister, priest, and rabbi, in addition to Dr. Cohn, who is a physician.

His main purpose is to prepare prospective teachers who might be called upon to teach sex education in elementary and high schools.

Since the students are highly suspicious of anything that smacks of institutional morality -- and are apt to feel that the older generation is phony where sex is concerned -- an effort is made to keep moral judgments, as such, out of the teaching of sexual behavior.

from cancelling liability policies unless the driver fails to pay his premium or has lost his license.

Allow night racing of Thoroughbred horses and day racing of quarterhorses, with pari-mutuel betting.

Create a joint legislative-committee to investigate suspected un-American activities, which Gov. Nunn did last week.

## Academic Scholarships Go To 24

Twenty-four Kentucky high school graduating seniors have been awarded \$100 per semester academic scholarships admitted to the Pre-Honors Program at Morehead State University.

Dr. Adron Doran, president of the University of New Mexico School of Medicine, who has been giving a course on sex education to university juniors and seniors.

Those who complete the Pre-Honors Program satisfactorily may be invited to enter the Honors Program in their junior and senior years. Those selected complete directed studies under the direction of an adviser, participate in seminars and are granted certain special academic privileges.

The 24 scholarships will pay \$100 a semester toward the student's fees as long as he or she remains in the Honors Program by maintaining specified academic and social levels.

The Presidential scholarship winners include:

- Sara Rose Planck, John E. Razor, Jeanie Stidon and Josephine Diane Thompson, all of Rowan County High, Morehead.
- Rhonda Cassidy, Stanford, Donna Crawford, Pulaski County High, Somerset; Carl Franklin McDowell, Silver Creek High, Glasgow.
- Debra Lynn Cooper, Johns Creek High, Pikeville; and Patricia Ann Harrison, Farmington.

Those receiving scholarships upon recommendation of Gamma Beta Phi are:

- Donald Clouse, Corbin; Nancy Lea, Simon Kenton High, Covington; Benny McGuffee, Highland High, Grayson; Rhonda Forman, Rowan County High, Morehead; Mona Watts, Harlan; Rebecca Ewing, Boone County High, Florence.
- Janet Preston, Meade Memorial, Williamsport; Deborah Poland, Gallatin County High, Glencoe; Larry Crain, Suda East Butler High, Louisville; Josephine Lincoln, Gretna.
- Carolyn True, Scott County High, Georgetown; Roger Bradford, Union County High, Sturgis; Karen Ross, Mason County High, Mayfield; David Drake, Bloomfield, and Linda Laine, Catlettsburg.

## Articles By Chaney And Ward Are Featured

Two members of the physical education faculty at Morehead State University are the authors of articles in the May edition of the Kentucky Association for Health, Physical Education and Recreation Journal. They are:

- Rex Chaney, director of program recreation at the University, and Dr. Nan K. Ward, director of women's physical education.

In his article, "Responsibility of the School in Education for Leisure," Chaney points out that schools not only should prepare individuals to earn a living, but also should prepare them for living, "And this includes living in leisure, he said."

"The school must educate the whole person," he said, emphasizing.

Regardless of how we define our aims, our objectives, forces and goals, all educative objectives in the community have a role to play in achieving the end-product -- a well-educated person.

"The end-product must be able to cope with our ever changing and ever expanding society," he wrote.

"The educative forces must stress the importance of the individual and his relationship with peers and society. This includes being concerned with the preparation of the individual in his own 'worthy use of leisure time' or 'self-realization'."

Dr. Ward, in her article, "Physical Education in Community Colleges," reports on an extensive study of the University of Kentucky Community Colleges for the purpose of establishing guidelines for physical education programs.

"Good physical education, intramural and recreation programs are essential to the success of the major obligations of the community colleges," she says, "although such programs have not been developed."

"Community colleges' obligations have been met, she pointed out, but some phases have not been expanded, such as the lack of finances and proper development."

In order that good physical education programs can be developed at each of the 15 Kentucky community colleges, Dr. Ward recommends a five-point program:

1. Develop an appropriate physical education curriculum to meet the needs of the situation.
  2. Provide proper equipment and facilities for the program.
  3. Hire full-time physical education instructors.
  4. Offer the program to students, and
  5. Continue to evaluate the program and make necessary revisions in order to meet changing needs.
- At present, there are nine junior colleges in Kentucky being operated as branches of the University of Kentucky. These are located at Covington, Ashland, Hazard, Henderson, Henderson, Elizabethtown, Somerset, Hopkinsville and Prestonsburg.

**DAILY MATINEE**  
 Box Office Open 1:30 til 10:00 p.m.

**NOW Thru SATURDAY**

**IF YOU'RE THIRTY, YOU'RE THROUGH!**

52% of the nation is under 25 and they've got the power that's how 24 year old Max Frost became President of the United States -- it's perhaps the most unusual motion picture you will ever see!



**WILD IN THE STREETS**  
 SHELLEY WINTERS CHRISTOPHER YOUNG DAVID WARD  
 HOLBROOK ED BEVELLY  
 Show Times: 2:00 - 4:00 - 6:00 - 8:00 and 10:00 p.m.

**\* STARTS SUNDAY \***

**COMMIE MAJOR...or U.S. SERGEANT?**



**LEE MARVIN**  
 EXPOSES INTO ACTION AS  
**"SERGEANT RYKER"**  
 A UNIVERSAL PICTURE IN COLOR  
 Show Times: 2:00 - 4:00 - 6:00 - 8:00 and 10:00 p.m.

**SEE THE WORLD'S LIGHTEST DIRECT DRIVE CHAIN SAW.**



**McCulloch MAC 1-10**

The greatest lightweight of 'em all is here. 10 1/2 lbs. of fast cutting, dependable, easy handling McCulloch. It'll tackle any cutting job you've got around the farm, cabin or right at home. Complete with 12" cutting bar, magneto primer, weatherproof ignition, big capacity gas and oil tanks and the new, streamlined design that won't hang up in heavy brush or limbing work. \*Please weight only, dry, low bar and chain.

**Monarch Supply Store**  
 Phone 784-5796  
 Morehead, Ky.

### Off-Season

Choosing Sunglasses  
 NEW YORK (UPI) -- Many people willingly sacrifice the eye comfort they seek when they purchase sunglasses on the spur of the moment, says Charles J. Sidor, president of the Guild for Prescription Opticians of America.

Choosing a pair of sunglasses is frequently done as quickly as possible, but low quality sunglasses often have lenses that distort color, hinder proper visual perception and do not adequately screen both the oculars.

Middle East TV  
 AMMAN (UPI) -- Jordan has become the 10th Middle East nation to have television. The only countries in the area who still don't have television are Israel, Yemen and the Persian Gulf emirates.

home the little girls are in bed and Linda has his dinner waiting.

It's a Spartan schedule but Galloway enjoys it. On weekends he entertains friends at home and occasionally visits other private parties.

"We're messy - stay-at-homes," he explains.

Family Tours  
 Two or three times a year the studio will organize a group study tour for the thirty-ish actor. He takes Linda along to make a holiday of it.

Don is a native of Kentucky and a graduate of the University of Kentucky where he starred on the track team.

He also put in a hitch with the Army and worked in New York where he tried to attend drama schools. But he was so busy working in television that the theater he didn't have time to attend classes.

Don still has strong ties to the Blue Grass State. He recently purchased a 144-acre farm near Brooksville, Ky., his home town.

"I used to work on the same farm when I was kid," Don says. "My father will oversee to that it will be worked by

## TV PROFILE

### Tough Schedule Doesn't Faze Don Galloway of 'Inside'

By VERNON SCOTT  
 UPI Hollywood Correspondent

**HOLLYWOOD (UPI)** -- Don Galloway, the clean cut cop in "Inside," is every bit the all-around, successful married man of his profession.

He is married to actress Linda Robinson, and, along with his daughters Tracy, 3, and Jennifer, 1, has recently moved into a new home in the San Fernando valley.

Don made the move with an eye to beating the Southern California freeway system. His home is only three minutes from Universal Studios where the NBC-TV series is filmed.

The neighbors hear Galloway rev up his small motorcycle every workday morning at about 7:28 a.m. and put-out off to work at a maximum 26 miles per hour.

His breakfast consists of a cup of coffee as he tips over the house to avoid waking up his family females.

More often than not Galloway works 12 hours a day with star Raymond Burr -- one of his favorite people -- and other members of the police-oriented series.

By the time Don returns it

### LP-Gas Forced Air Heating System

as low as 10% down

# \$1600

PER MONTH FOR 36 MONTHS  
 completely installed, average 6-room home

Enjoy whole-house heating comfort at the touch of a dial! Plus cleanliness and economy -- with Ashland LP-Gas. AND RIGHT NOW SAVE EVEN MORE! Take advantage of this special low, off-season price on a new Empire LP-Gas Furnace. Complete installation is included!

- 100,000 BTU EMPIRE LP-Gas forced air furnace. Compact, fully guaranteed.
- 7 warm-air ducts. • Cold-air return duct.
- Central thermostat control.
- Complete custom installation by our home heating specialists.
- Blower and system adequate for addition of air conditioning later.
- Rent-free use of tank and meter.

Offer expires July 31, 1968

ALL this for only \$569.95, completely installed, in an average 6-room home for \$16.00 a month for 36 months.

**3 EASY-PAY PLANS** -- On new homes, the total cost can be included in your mortgage. For conversion or replacement, the payments can be set upon a 5-year FHA loan; or you can pay just 10% down and take up to 36 months on the balance.

For more details, mail this coupon to the Ashland LP-Gas Bulk Plant nearest you.

Please send me more details on the special Forced Air Heating Offer.

Name \_\_\_\_\_

Address \_\_\_\_\_

City \_\_\_\_\_ State \_\_\_\_\_

Phone \_\_\_\_\_

Directions to home \_\_\_\_\_

Call your nearest Ashland LP-Gas Bulk Plant for a free home heating survey.

**Ashland LP-Gas** -- the modern energy fuel!  
 ASHLAND OIL & REFINING COMPANY

**Monuments Granite and Marble**  
 First Class Material at A Reasonable Price!  
 Erected on Concrete Foundation.  
**Dayton Porter**  
 Phone 784-5321

**Let Us Carpet Your Home or Office At Wholesale Prices!**

All Patterns -- All Colors

Priced \$4.00 to \$6.00 per sq. yd.

- Mill End Top Quality Carpet
- Thousands of Yards In Stock

100% Acrylic or 100% 501 Dupont Nylon Guaranteed Mott Proof!

**Ed Mabry Const. Co.**  
 Located Off Ky. 32 Behind State Police Barracks  
 PHONE 784-7333

## INSURED

• Six Months Certificates with automatic renewal privileges, minimum \$2500, also issued for larger amounts.

# 60

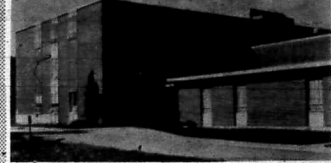
**LEADS THE WAY**

**YOUR DOLLARS GROW FASTER WITH SAFETY SURPLUS**

**BANK OF MAVSVILLE**  
 COMBINED BANK AND TRUST COMPANY

WE'RE LOOKING FOR MONEY





### St. Claire Medical Center

Morehead, Ky.

784-4161

#### ADMISSIONS

June 12 - Hannah White, Morehead; Sarah Roberts, Grayson; Eliza Bowling, Sandy Hook, Frank Smith, Evanston; H. War Hillman, Olive Hill; Oather Bowen, Soldier; Rose Marie Barker, Burke; Walter Davis, West Liberty; James Collins, Morehead.

June 13 - Rinda Hutchinson, Morehead; Carol Sue Howard, Morehead; Phoebe Ferguson, West Liberty; Sandra Dalley, Morehead.

June 14 - A.D. Watson, Jr., Lytten.

June 15 - Charlotte Kiser, Olive Hill; Cynthia Belt, Columbus, Ohio; Mary Calvert, Farmers; Kathleen Evans, Salt Lick; Russell Carter, Lynn, Indiana; Maude Price, White Oak, Ky.; Virgie Lowe, Olive Hill; Roy Nell Lewis, Clearfield; Rebecca Bugler, Morehead; Andy Belridge, Morehead.

June 17 - Mollie Adkins, Sandy Hook; Marcella Hamilton, Vanceburg; Barbara Kathy Lewis, Sandy Hook; Donella Reynolds, Morehead; Tammy Gregory, Morehead; Nicky Reeder, Olive Hill; Cecil Carroll, Upper Tygart; Willie Carroll, Upper Tygart; Billy Reynolds, Olive Hill; Olive Lewis, Morehead.

June 18 - Dixon Shouse, Morehead; John C. Thompson, Olive Hill; Connie Miller, Olive Hill; Evelyn Leadingham, Olive Hill; Lucille Jessie, Olive Hill; Wenite Bocooc, Olive Hill.

#### DISMISSALS

June 12 - Lena Willis, Juanita Roe, Sarah Roberts, Rosemary Keck and baby, Sherree Jean Lewis, Buser James Puliz, Clarence Adkins, Clayton Lancaster, Roy Sullivan, Jewell Nickles, Clyde Thomas, Jr.

June 13 - Martha Tharp, Annie McClure, James Caskey, Jackie Caskey.

For That Important Event When The Cake Has To Be Good And For All Those Bridal Shows, Let Us Do All The Baking.

**Kentuckian Bakery**  
FOR THOSE SPECIAL OCCASION CAKES  
Phone 784-7349  
Main Street Morehead, Ky.

Frank Smith, Walter Davis, June 14 - Carol Sue Howard, Judith Bowen and baby, Regine Dennis and baby, Wanda Back, Rinda Hutchinson, Esta McCleese, Marie Davis, Nora Hall, Wood Bumgardner.

June 15 - Gladys Forman, Virgie Johnson, Nora Richmond, Lona Webb.

June 16 - Phyllis Henspoon, Sandra Dalley and baby, Russell Carter, Stanley C. Underwood, Mary E. Sluss.

June 17 - Eliza Bowling, James Hart, H. War Hillman.

June 18 - Roy Nell Lewis, Charlotte Kiser and baby, Cynthia Belt.

#### BIRTHS

June 12 - Mr. and Mrs. Fred White, son.

June 13 - Mr. and Mrs. Billy Dalley, daughter.

June 15 - Mr. and Mrs. Spencer Kiser, son.

June 16 - Mr. and Mrs. Allie J. Fife, daughter; Mr. and Mrs. Donald Butler, daughter.

### It's Big Business . . .

## Kentucky Tourists

Selling the state of Kentucky to tourists and travellers is a big business and the innovation of "hospitality clinics" throughout the state offers hope of tourism becoming even bigger and more profitable.

The idea, initiated by Gov. Louie B. Nunn, and performed by the Department of Public Information and the Distributive Education Service of the Department of Education, offers a unique course in hospitality, congeniality, courtesy, and service to tourist-oriented establishments.

To date 20 such "hospitality clinics" have been conducted across the state in conjunction with local sponsors, and some 975 employees in various areas have attended.

The purpose of these "clinics" is to familiarize those engaged in the tourist business—waitresses, cooks, service station attendants, park employees, sales clerks, and service oriented businesses—with the most pleasing and inviting traits of hospitality.

"It is an attempt to make 'ambassadors' and 'salesmen' out of those persons in the privately-owned businesses dealing directly with the tourist.

Commissioner W. James Host, Public Information, reports efforts last year in tourist trade resulted in 316 million out-of-state visitors vacationing in Kentucky, generating \$26 million in new tax revenues, and total spending by all tourists of \$440 million.

It is a boon to business because Kentucky now has over 32,000 hotels and motel rooms, over 800 major restaurants, and 24,000 jobs dependent on the tourist industry.

The hospitality clinics offer local bus-

## Zero Corn Tillage In Kentucky Expanding

Zero-tillage for corn production in Kentucky is a rapidly expanding system. But entomologists are finding one problem they didn't expect. Since zero-tillage system involves killing grass and other plants in the field, insects find all there is to eat now are the corn plants.

Dr. Roy Scheibner, U.K. Cooperative Extension Service entomologist, explained it this way:

"Herbicides used in zero-tillage [to kill grass, etc.] have done a good job of removing vegetation. But pest insects now have nothing else in the field to feed on except corn plants. Several areas already have reported severe damage from armyworms. The damage might not have been so bad if the worms had anything else but the corn plants to feed on. A fairly small population of army worms in a zero-tillage field can cause considerable damage."

He said also that aphids may be a problem too. "Aphs were observed transporting corn root aphids in fields. With no other plants on which to feed, the aphids may be deposited on corn. The corn thus may have to support all the aphids."

Armyworm: Use Parathion or carbaryl [Sevin]. If the corn is to be used for grain only, other insecticides may be used. [Parathion is considered a very toxic material and is best used by a trained, equipped custom spray

operator.]

Root Aphids: This is a difficult pest to control. "It will be difficult to apply materials in such a way to do much good in zero-tillage corn. Growers who used a soil insecticide at planting time will perhaps have less trouble with these insects, and other soil insecticides that attack in corn fields," Dr. Scheibner says. A check with local area extension agents will be helpful for more detailed information on these problems.

## Deadline For Excursions Today

Do you want to see a major league double-header, plus having other fun? The Morehead Lions Club is sponsoring its first of two excursions to Cincinnati this Sunday [June 23] and you are invited. The Reds play two games with the Chicago Cubs.

However, today [Thursday] is a deadline for reservations. The cost is \$9, including tickets to the ball park, bus transportation etc.

If you want to make this trip you should contact before 5 p.m. this [Thursday] evening either Bobby Stamper [phones 784-4127 or 784-4924] or Jack [phone 784-4127, Jr.; phones 784-5684 or 784-5434].

The Lions Club anticipates running two or more Greyhound buses to Cincinnati Sunday morning. The buses will leave the Morehead station [Bartson Drug] at 8:30 a.m.

Stamper said no reservations could be accepted after this [Thursday] evening. The Lions Club plans another baseball excursion later in the season, the date to be announced later.

## Jane Howard, 87, Is Claimed

Jane Howard, an 87 year old Morehead woman, died Monday following a long illness.

Funeral services were conducted Wednesday at Lane Funeral Home followed by burial in Brown cemetery.

Mrs. Howard was born June 10, 1880 in Elliott County, daughter of the late Aaron and Sabra [Porter] Ison.

She married Granville Howard, who survives.

Mrs. Howard leaves the following daughters - Mrs. Alma Caudill, Elkton, O.; Rose Bud Cooney and Dixie Flinnery, both of Middletown, O.; and Mrs. Jewel Proctor, Olive Hill.

She also leaves a brother, Doctor Ison, Crandon, Wisc., and six sisters - Mrs. Allie LeMasters, Fairborn, O.; Louisa Buchanan, Margaret Whit, Mary Wilson, Grace Conley and Minnie Pence, all of Crandon, Wisc.

Mrs. Howard was a member of the Baptist Church. She resided in Rowan County all her adult life.

Grandsons served as casket bearers. Lane Funeral Home was in charge of arrangements. Rev. Ted Green conducted the funeral.

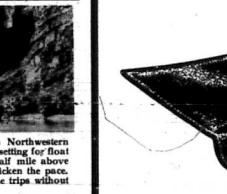
## Bus Drivers To Get Training

The Division of Pupil Transportation of the State Department of Education will sponsor a two-day school bus driver training course at Rowan County High School, Morehead, Kentucky, on July 25-26, 1968.

The Rowan County School System will provide the facilities for the school. It is anticipated that school bus drivers from these school districts will attend this training school: Bath County, Elliott County, Menifee County, Morgan County, Rowan County, and Wolfe County. School administrators and other interested school personnel are encouraged to attend these training sessions. The sessions begin at 8:30 a.m. each day.

Supervisors in the Division of Pupil Transportation and instructors from the Kentucky State Police will lead discussions on defensive driving, traffic laws and accident responsibilities, student control aboard the bus, preventive maintenance, and handling emergencies.

## Trade at Home

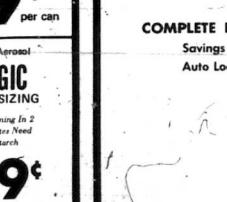


## Check and Double Check . . .

Check all our banking services . . . including a Regular or Special Checking Account to fit your needs. You can pay your bills quickly and conveniently with a Checking Account, and your cancelled check is your receipt. So safe, too. Let us help you choose the Checking Account for you.

**COMPLETE BANKING SERVICES**

Savings Accounts • Mortgage Loans • Checking Accounts  
Auto Loans • Safety Deposit Boxes • Travelers Checks



For . . . Complete Plumbing, Heating and Cooling Installations

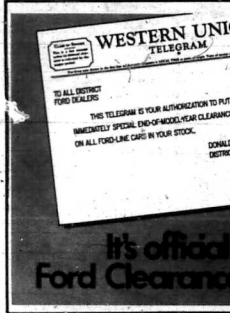
And . . . Complete Electrical Service

See . . .

**C & P Plumbing Heating & Electric**

159 E. First St. - Ph. 784-4047

GATEWAY TO FUN. . . These girls are pictured at the Rowan County Girl Scout Camp. From left - Marsha Reynolds, Sus Stone, Ann Keller, Janet Flagle, Roberta Kendall and Susan Abner. They painted the sign for Camp Kill-A-Me.



Authorized Mortgage Loan Broker for the Prudential Insurance Company of America

Contact **Alpha Hutchinson**

Licensed and Bonded Real Estate Broker

Ph 784-5305, 784-4196

Morehead, Ky.

invest rent money in a HOME OF YOUR OWN

We'll show you many homes to suit your needs.

See Alpha to find the right home . . . on the right terms!

**Vacation in KENTUCKY PARKS** • Your dollars go farther

Department of Public Information, Section PDB  
Capital Annex, Frankfort, Kentucky 40601

Please send, without obligation, information on Kentucky's 40 state and national parks, the finest in the nation.

Name \_\_\_\_\_  
Street Address \_\_\_\_\_  
City \_\_\_\_\_ State \_\_\_\_\_ Zip \_\_\_\_\_

**40 STATE AND NATIONAL PARKS**  
The finest in the nation.

**Expanding Industry in South Carolina**

COLUMBIA, S.C. (UPI) — Capital investments by industry for new and expanded manufacturing facilities in South Carolina since 1959 total more than \$2 billion, according to the U.S. Department of Commerce.

In 1959, the state reorganized its development board to create a comprehensive industrial development program, and since then the state has been among the leaders of industrial growth in the South.

**FAST WATER** . . . The Yampa River in Northwestern Colorado's Dinosaur National Monument is setting for float trips. Spectacular canyon walls rise to a half mile above water. Present white water rapids quicken the pace. Vacationers are cautioned not to attempt these trips without professional help.

**THE MOREHEAD COUNTRY STORE**  
116 WEST MAIN STREET  
MOREHEAD, KENTUCKY

The Store That Brought LOW PRICES To The Morehead Area

OPEN Week Days 8:00 a.m. to 8:00 p.m.  
Sunday 10:00 a.m. to 6 p.m.

**HAIR SPRAY SALE!**

JUST WONDERFUL (13-oz.) AQUA NET - SUDDEN BEAUTY STYLE - SUMMER BLONDE - SUAVE YOUR CHOICE **29¢** per can

Today thru Sunday, June 23 - BRING YOUR FAMILY

<b>DURA Soap Pads</b> 30 for only <b>39¢</b>	<b>GIANT SIZE IVORY LIQUID DETERGENT</b> <b>47¢</b>	<b>20-oz. Aerosol MAGIC SPRAY SIZING</b> Cuts Ironing In 2 Eliminates Need For Starch <b>59¢</b>
	<b>GIANT SIZE JOY LIQUID DETERGENT</b> <b>47¢</b>	

**Lana Turner:  
Modern Girls  
Lack 'Oomph'**

MEXICO CITY (UPI) — Lana Turner misses the good old days when actresses had "It," glamor ruled Hollywood and movies built a dream world.

In Mexico City where she was filming "The Big Cube," her first picture in three years, the 48-year-old former "Sweater Girl" complained there's no glamor any more.

"The days when an actor or actress had to work in picture after picture before reaching star status are gone. Nowadays, an actor makes one movie and suddenly he's a star," she said.

"The days of 'It' and 'Oomph' and 'Sweater Girls' are gone," Lana said.

"So many of the kids who come up today are so much slicker you can't tell them apart. They wear the same hairdos, mississippis, smiles and makeup. They copy each other. They don't have that 'whatever-it-is' that makes them different. The only one I've seen come along in years who may have that little extra is Julie Christie."

**Realistic Trend**

Miss Turner who was Hollywood's reigning sex goddess for many years, and representative for the wave of girls bearing the name "Lana" today, associates the "lack of glamor" with the realistic trend in films.

"The public wants to see pictures which are entertaining and not films concerning problems that could almost be their own—or are close to it—and are being played out by actors who are practically no different than they are."

"Motion pictures should be illusions like they used to be—a dream world."

According to Lana she's been reading books, plays and scripts for the last three years, looking for something to do that would be gratified.

"This was the first one I read," she said, referring to "The Big Cube." "It's entertaining, although it deals with a realistic situation of today. But it's also a part that is dramatic and has dignity. And that's important to me."

"Acting has been my life. I don't know anything else, and I'd die if I couldn't act. But if the part is not what I want, I'll just twiddle my thumbs and do nothing."

**Tips Help You  
Beautify Face**

NEW YORK (UPI) — Some women have their own special ways of applying make-up, some have a natural knack, while others require qualified guidance, says one cosmetics manufacturer.

To keep in touch with all contemporary beauty methods, the firm conducted a survey. Among the findings: women today emphasize the eyes more than any other feature.

When using powder, along with eye make-up, it's the powder that goes on first.

Back to eyes. The experts from the Amway Corp. said eye shadow never should go beyond the region just above the eyelid—beyond the frontal bone.

**Other tips:**

—When selecting a makeup foundation, always choose a shade that picks up the lightest tone in your skin. As to the question of which application is best, the circular, downward or upward, the answer is upward.

—Before starting to apply any make-up, clean your skin thoroughly.

**Expo Was Hypo**

To Quebec

WASHINGTON (UPI)—EX-PO 67, the World's Fair held in Montreal last year, swelled the number of tourists visiting the Province of Quebec in 1967 to 688,133, compared with 174,480 during 1966, the American Automobile Association reported. That was a 29.7 per cent increase in the number of tourists welcomed at the province's Tourist Branch Information Centers.

While spring is still the thing, make the outdoor scene with a party-in your patio! And to "stock-up" for that "cook-out", join the "save-in" at your neighborhood IGA, where our own "Penny Pincher's Patio Party" is what's happening now... and you'll be the guest of honor!



**at IGA's  
Kappening  
Patio Party!**

- FROZEN FOODS**
- IGA FROZEN STRAWBERRIES 16-oz. Pkg. **39¢**
  - BIRDSEYE COOL WHIP Qt. **49¢**
  - HONEYSUCKLE TURKEY GRAVY 2-lb. **\$1.49**
  - MORTON'S CREAM PIES 14-oz. **4 For \$1**

**Ground Beef** lb. **49¢**

TableRite Fresh

FRESH GROUND CHUCK lb. **69¢**

LOHREY WIENERS 1-lb. Pkg. **49¢**

TableRite Ice Cream 1/2 gal. Ctn. **59¢**

- VINE RIPENED CANTALOUPE Each **29¢**
- RED RIPE TOMATOES lb. **19¢**
- SUNKIST LEMONS 39¢ Doz.
- SPANISH ONIONS lb. **15¢**

FRESH GEORGIA GOLDEN Peaches lb. **19¢**



DOMINO Sugar 86¢

Domit One With \$3.00 Order

PATIO PARTNERS TableTreat Bar-B-Q BUNS 12 ct. Pkg. **2 for 49¢**



KLEENEX FAMILY NAPKINS 60-ct. Pkg. **11¢**

**PATIO PARTNERS** No Return Bottles

IGA Asst. Flavors Fruit Drinks 46-oz. Can **4 for \$1**

IGA Asst. Flavors Soft Drinks 16-oz. Bot. **6 for 49¢**

IGA Flour Plain or Self-Rising 5-lb. Bag **39¢**

Tomato Juice Libby Fancy 46-oz. Can **24¢**

Fab Laundry Detergent Giant Size **58¢**

Potato Chips IGA Twin Pack 9-oz. **39¢**

Chuck Steak Table Rite Tasty lb. **59¢**

ROUND BONE POT ROAST lb. **59¢**

BONELESS CHUCK ROAST lb. **59¢**

LEAN MEATY SHORT RIBS **43¢**

TableRite CHUCK ROAST lb. **45¢**

MOOTZ RANCH STYLE BREAD 20-oz. Loaf **4 For \$1**

KINGSFORD CHARCOAL 10-lb. Briquets **59¢**

BLUE BONNET MARGARINE 1-lb. Qtz. **26¢**

TableRite Large Eggs U.S.D.A. Grade "A" Doz. **39¢**



**PATIO PARTNERS** VAN CAMP Pork & Beans No. 2 Can **15¢**



IGA HI POWER Bleach 1/2-gal. Size **24¢**

Any electrician who knows what's watt is in the

Yellow Pages

Allen's IGA FOODLINER

STORE HOURS: 8-6 Mon. - Thurs. 8-8 Fri. & Sat.

Quantity Rights Reserved