

IMPORTANT NUMBERS

Morehead Zip Code 40351
Telephone Area Code 606
Morehead Fire Department 784-5252
Police 784-4711
Saint Charles Medical Center 784-4161
Morehead State College (All Branches) 784-4181
Morehead News (A Branch) 784-4116
Except Society 784-4116
Morehead News (Daily) 784-4116
Bowen County Sheriff 784-5446
POLICE - City 784-7511, State 784-4127

Vol. 85

MOREHEAD, KENTUCKY, THURSDAY MORNING, APRIL 18, 1968

For Each Copy
Pay Cashier... 10¢

FINE OF \$20 TO \$50 FOR VIOLATION OF
Tearing or mutilating newspapers or periodicals
NEWSPAPERS OR PERIODICALS
BELOW \$100 TO PUBLIC CLERKS
See Ky. Statutes Article 433.980

Morehead Water Shortage Has Been More Than Fully Solved City, University Facilities Capable Of Supplying Community Of 50,000 Population Or More

Morehead, and the immediate area should not in the foreseeable future experience a shortage of purified "PH" water.

Few communities are in the enviable position of having storage purification and pumping facilities that will supply four times, or more, its present population.

This situation developed as Morehead State University last year expanded and renovated its water purification and storage facilities to care for an enrollment of 10,000, plus probably 10,000 others, and the City of Morehead last week opened its own \$1 1/2 million plant which can produce enough water for 25,000 or more.

Actually, Morehead now has PH water facilities to supply 50,000 people, probably with a few renovations 100,000. Since 1950 the City has been buying purified water at a master meter from the University.

As of last week the City started pumping its own supply from Licking River, and the University now furnishes only itself from its expanded plant on Triplett Creek at Bridge Street.

Through the years Morehead has experienced water shortages. The worst was in 1940 when Triplett Creek dried up and water was let out of clay conduits on Christy Creek, a tributary, and also transported by railway tank cars.

Following this, and other intermittent shortages and alarms of an inadequate supply, the University (then Morehead State College) created a 12 1/2 million gallon impoundment, known as Evans reservoir at rear of the campus.

But, three years ago the water usage at the University with its increased enrollment and water consumption in More-

head where the population trebled in two decades reached alarming proportions. There were a few days when Morehead and the University had little or no water. This problem was not raw water, but limited treatment facilities.

This led to a decision by the Board of Regents to expand the University plant. It also brought a municipal election controversy with one side advocating renewal of the contract with the University because of the physical plant cost, and the other proposing that the City build its own plant.

The controversy was resolved when the federal government awarded Morehead an outright grant of almost \$750,000 for its own plant. The divided Council then voted unanimously for Morehead's own plant. The Board of Regents said it didn't care about selling water to the City, but would if Morehead was unable to finance its own facilities. This is what makes the Morehead-PH water situation favorable today and long in the future.

Both the University and the City plant will produce a supply between 50,000 and 100,000 people. The University draws its raw water from Triplett Creek. Additionally, the University owns the 12 1/2 million gallon impoundment reservoir. The U.S. Corps of Engineers plans to widen and straighten Triplett Creek starting above Bridge Street, site of the University pumping station, which should mean an increased supply of untreated water from Triplett. Also, water pools will be created in the new creek bed if construction proceeds as followed.

Some \$1,000,000 in Licking River. This should be an unending, and per-

petual supply of raw water as the pumping station is about two miles below massive Cave Run dam, a \$30 million project partially completed.

The City has a pumping and treating capacity of over 1 1/2 million gallons a day; a 600,000 gallon storage reservoir about two miles west of Morehead to provide more than adequate pressure, and large 16 inch transmission lines.

It is probable that the City Utility Board will enter into a contract to supply most of Bath County, including Owingsville the county-seat, with purified water, a master meter near the Farmers bridge. This agreement is presently in status quo because the Morehead Board is asking more for water than the Bath County Rural Water District wants to pay.

A Rowan County Rural Water District has been created by Fiscal Court. It is likely they will buy their PH water from the city and lines will be laid to 90 percent of all farm homes in Rowan County.

Morehead residents noted a film and mud in the new supply when first turned on from Licking River last week. This was anticipated, and soon dispelled.

J. Roger Caudill is Chairman of the Municipal Plant Board; L. G. Bishop, Vice-Chairman, and Tom Queen, Secretary. The other members are Dave Abern and Paul Quisley. The Board also operates the natural gas and sewage treatment system.

Luther Jayne is Manager of the Morehead owned pumping station and purification plant at Farmers. Herman Brown is Superintendent of the water, gas and sewage systems.

McGure Case Again Transferred To Rowan

Embezzlement cases against former Carter County Superintendent Heman McGure have been transferred again from Carter Circuit Court to the Rowan Circuit Court but if, and when, a trial might be held is problematical.

The cases were in Rowan County for over a year. They were re-docketed at each court session as Commonwealth Attorney Elijah M. Hodge said the prosecution rested with the officials. The cases were returned to Carter County by agreement of both sides.

A trial on indictments returned three years ago by a Carter County Grand Jury had been set to open Tuesday in Carter Circuit Court.

However, it was learned that a hearing last Friday resulted in a decision by Carter Circuit Judge Gerald Gardner to set the case back to Rowan County. Judge Gardner said a court order will reflect his finding that Car-

ter County no longer has jurisdiction. The case originally was transferred to Rowan County in 1966 on grounds that charges against the school official couldn't be tried impartially in his home county.

It was returned to Carter County last May at the request of Lexington Attorney John Y. Brown, who is helping with the prosecution. Brown said that the "case should be heard" in the county of original jurisdiction at the time, defense attorneys agreed to the move.

In the Feb. 1967 hearing, defense attorneys failed in a plea for dismissal of the case. However, they were successful in convincing that the move back to Carter County was illegal because the situation leading to the original transfer was unchanged.

Commonwealth Atty. Ralph N. Walter, who is involved in the litigation in

Continued On Next Page

Morehead Accelerates ROTC Program

The U.S. Army cadre now on campus at Morehead State University to organize and administer the school's new Reserve Officers Training Corps program now includes one officer and four non-commissioned officers.

Lt. Col. Thomas A. Harris, a veteran of 16 years' service with the Army and for the past two years executive officer and assistant professor of military science at Eastern Kentucky University, is the head of the new Morehead Department of Military Science. He assumed his duties February 1.

Since then, he has been joined by Sergeant Major Manuel P. Cabral, who will be designated the chief enlisted instructor who will be in charge of the program's operation next September.

Staff Sergeant Vernon P. Ringer, administrative supervisor, and Staff Sergeant Donald Carson, supply supervisor.

Reporting for duty April 29, will be Sergeant 1st Class James C. Robbins, holder of the Silver Star and Bronze Star awards for service in Vietnam. Sergeant Robbins, who is a graduate of the University, direct from Vietnam, will be an enlisted instructor.

A native of Honolulu, Sgt. Maj. Cabral is a veteran of more than 26 years' service. He was undergoing basic training in Hawaii when the Japanese bombed Pearl Harbor December 7, 1941. His unit—the 29th Infantry—was credited with the capture of the first two-man Japanese submarine off the shores of Watanabe Beach.

After World War II, Sgt. Maj. Cabral taught at the University of Hawaii until 1953. He returned there

in 1955, following two years as advisor for the 96th Infantry Division in the Army Reserve.

In 1960 and 1961, he was adjutant general sergeant major for the 1st Corps Group, Ullongbo, Korea, after which he returned to the University of Hawaii. He was sergeant major for the 1st Corps Group, VII Corps, Stuttgart, Germany, from 1965 until July 1966, after which he came to Fort Bragg, N.C., as sergeant major of the 2nd Training Brigade until last month when he came to Morehead.

Married to the former Miriam K. Veltig of Honolulu, the chief instructor and his family live at Apartment 2, 423 Main Street, Morehead.

Staff Sgt. Ringer, 24, a veteran of 5 1/2 years' service, came to the University ROTC program direct from Germany where he had spent four years and eight months. A native of Washington, Pa., he met and married his wife, Heidrun, in Germany. They have one son, 2, and his family live at 332 Wilson Ave.

Staff Sgt. Carson, 29, a veteran of 10 years' service with the Army, was a sergeant major of the 1st Corps Group, Ullongbo, Korea, after which he was stationed for the past 14 months.

Like S/Sgt. Ringer, he met and married his wife, Heidi, while serving in Germany. They are making their home in Morehead at 236 Allen Avenue.

Rounding out the new Morehead ROTC administrative staff is Mrs. Wilma Davis, the secretary. Mrs. Davis and her husband, Leslie, moved here last

Continued On Next Page

Hearts Broken!

Little League Unable To
Let 64 Boys Play

Sixty four Morehead boys had to be rejected this week for Little League play because there aren't enough teams or facilities.

Fifty were accepted out of 114 who tried out. This completely filled club rosters.

The Morehead News has long decried lack of recreation in the community. [Story on page seven.]

RCHS Alumni Will Meet Next Tuesday

The Alumni Association of Rowan County High School will meet next Tuesday (April 23) at 7:30 to complete plans for the annual spring banquet.

The gathering will be in the RCHS cafeteria.

Continued On Next Page

Ronald Blair Awarded The Bronze Medal

Army Private First Class Ronald L. Blair, 21, son of Mr. and Mrs. Ronald Blair, Morehead, has received the Bronze Star Medal in Vietnam.

The private, a cannoner in Battery B of the 32nd Artillery's 2nd Battalion, entered the Army in October 1966 and completed basic training at Ft. Knox, Ky.

The medal was awarded for PFC Blair's actions on 9 November 1967 during an intense mortar and rocket attack on B Battery's base camp located at a remote outpost in Tay Ninh Province. PFC Blair, although painfully wounded himself, ran to the Battery's aid station while the mortars were still coming in heavy and informed the medic that one of his buddies was seriously wounded. He left the safety of a bunker several times to help with casualties. Up until his own evacuation he continued to help the medic take care of other wounded soldiers.

Rowan's Second Oldest Native Citizen Claimed

Mrs. Mary Lou Jones, probably Rowan County's second oldest native citizen, passed away Friday at her Morehead residence.

She would have been 96 years of age had she lived three more days, being born at Morehead April 15, 1872, son of pioneer citizens, John and Susan Hall. Mrs. Jones, widely known, lived in Morehead all her life.

The end was not unexpected as she had been in failing health for several months.

Early in life she married William Jones who preceded his wife in death. They reared an unusually large family, and surprisingly 11 of them, six sons and five daughters, survive their mother.

The surviving sons are - Clinton

Pfc. Ronald L. Blair
... Injured in Vietnam

The victim is Clinton Willis Fultz, 35.

Jeff Pernel, 53, also of Clearfield, is in serious condition in Veterans Hospital at Huntington suffering from head, chest and internal injuries. Pernel was the driver of the 1956 Chevrolet.

State Police said the vehicle was traveling south on what is known as Bringer road, a narrow blacktop strip classified as a rural road without assigned number.

The car crossed a narrow wooden bridge, left the highway, traveled 83 feet and ran into a large tree with heavy force, according to the police blotter. Scene of the crash was two miles from Soldier.

Funeral services for Fultz were conducted Tuesday afternoon at Stucky Funeral Home in Morehead, followed by burial in Dillon cemetery. Rev. Ward Bowman officiated at the last rites.

Fultz was born in Rowan County March 10, 1933 and resided in the Clearfield area most of his life. He was never married.

He was the son of Willis and [Lila Pernel] Fultz. Both parents are deceased.

Immediate survivors are a sister, Mrs. Amanda Jones, Wolf Lake, Ind.; and two brothers - Charlie Jones, Morehead, and Ora Jones, Wolf Lake.

Stucky Funeral Home is in charge of arrangements.

The casket bearers - Junior Black, Wilburn Baldrige, Richard Lewis, Ray Lewis, Raymond Lewis and Irvis Black.

The five surviving daughters - Myrtle Berry, Robinson, Mrs. Inez Perry, Mrs. Dannie Roberts and Mrs. Myrtle Hamm, all of Morehead; and Mrs. Thelma Hart of Mt. Vernon.

There are 25 surviving grandchildren, 33 great grandchildren, and 16 great great grandchildren.

The family has been prominent in Rowan County history before and after the turn of the century.

Funeral services were conducted Sunday afternoon at one o'clock at Clearfield Tabernacle by Reverends Ted Green and Schaeff Griffith. Interment was in Brown cemetery.

Stucky Funeral Home was in charge of arrangements.

The casket bearers - Roy Day, Neal Roberts, Billy Jones, Leon Roberts, Bobby Jones, Clyde Day, Gary Jones and Jack Roberts.

Clean-Up Now!

Garbage Trucks Will Operate
Daily Until May 15

Unlike most communities Morehead will have an entire month for clean-up, paint-up and fix-up.

In most places this is confined to one week of six days.

Clean-up month, proclaimed by Mayor William H. Layne, started Monday and continues through May 15.

The City will go to the extra expense of operating garbage trucks daily, and refuse placed at curb-side will be gathered until May 15.

A dog quarantine in Morehead will be in effect for 60 days, from April 15 through June 15. Active rabies have been reported in the area, the Department of Health reported. Dog owners should keep their animals in the house or in pens.

The show opens at 7:30 p.m. Admission of \$1 will be charged.

Continued On Next Page

Continued On Next Page

Continued On Next Page

Continued On Next Page

Continued On Next Page

Continued On Next Page

Continued On Next Page

Continued On Next Page

Continued On Next Page

Continued On Next Page

Continued On Next Page

Continued On Next Page

Continued On Next Page

Continued On Next Page

Continued On Next Page

Continued On Next Page

Continued On Next Page

Continued On Next Page

Continued On Next Page

Continued On Next Page

Continued On Next Page

Continued On Next Page

Continued On Next Page

Continued On Next Page

Continued On Next Page

Continued On Next Page

Continued On Next Page

Continued On Next Page

Continued On Next Page

Continued On Next Page

Continued On Next Page

Continued On Next Page

Continued On Next Page

Continued On Next Page

Continued On Next Page

Continued On Next Page

Continued On Next Page

Continued On Next Page

Continued On Next Page

Continued On Next Page

Continued On Next Page

Continued On Next Page

Continued On Next Page

Continued On Next Page

Continued On Next Page

Continued On Next Page

Continued On Next Page

Continued On Next Page

Continued On Next Page

Continued On Next Page

Continued On Next Page

Continued On Next Page

Continued On Next Page

Continued On Next Page

Continued On Next Page

Continued On Next Page

Continued On Next Page

Continued On Next Page

Continued On Next Page

Continued On Next Page

Continued On Next Page

Continued On Next Page

Continued On Next Page

Continued On Next Page

Continued On Next Page

Continued On Next Page

Continued On Next Page

Continued On Next Page

Continued On Next Page

Continued On Next Page

Continued On Next Page

Continued On Next Page

Continued On Next Page

Continued On Next Page

Continued On Next Page

Continued On Next Page

Continued On Next Page

Continued On Next Page

Continued On Next Page

Continued On Next Page

Continued On Next Page

Continued On Next Page

Continued On Next Page

Continued On Next Page

Continued On Next Page

Continued On Next Page

Continued On Next Page

Continued On Next Page

Continued On Next Page

Continued On Next Page

Continued On Next Page

Continued On Next Page

Continued On Next Page

Continued On Next Page

Continued On Next Page

Continued On Next Page

Continued On Next Page

Continued On Next Page

Continued On Next Page

Continued On Next Page

Continued On Next Page

Continued On Next Page

Continued On Next Page

Continued On Next Page

Continued On Next Page

Continued On Next Page

Continued On Next Page

Continued On Next Page

Continued On Next Page

Continued On Next Page

Continued On Next Page

Continued On Next Page

Continued On Next Page

Continued On Next Page

Continued On Next Page

Continued On Next Page

Continued On Next Page

Continued On Next Page

Continued On Next Page

Continued On Next Page

Continued On Next Page

Continued On Next Page

Continued On Next Page

Continued On Next Page

Continued On Next Page

Continued On Next Page

Continued On Next Page

Continued On Next Page

Continued On Next Page

Continued On Next Page

Continued On Next Page

Continued On Next Page

Continued On Next Page

Continued On Next Page

Continued On Next Page

Continued On Next Page

Continued On Next Page

Continued On Next Page

Continued On Next Page

Continued On Next Page

Continued On Next Page

Continued On Next Page

Continued On Next Page

Continued On Next Page

Continued On Next Page

Continued On Next Page

Continued On Next Page

MOREHEAD SUNDRY STORE

116 WEST MAIN STREET
MOREHEAD, KENTUCKY

REG. 92¢ - 2 fl. oz.

COPPERTONE

Suntan Lotion

77¢

REG. \$1.45 - 2 fl. oz.

QT LOTION

by Coppertone

\$1.09

TV LAP
and BED TRAY

77¢

19 inch ROUND
SERVING-SNACK
TABLE

\$1.39

50 FEET
GARDEN
HOSE

Guaranteed 8 Yrs.

\$1.77


10-16 HARDWOOD
CHARCOAL
BRIQUETS

59¢

LAWN
CHAIR

\$3.69

WILL RITUAL DANCES CURE ULCERS?



The dance is probably just as effective as the hit or miss guesswork methods too many of us are using, trying to treat our own ailments. We urge you to see your doctor about any persistent symptoms of trouble. And if he prescribes, you can be assured he is treating you with modern medical science and not a tribal dance.

Dependable Prescription Service

Battson Drugs

MAIN ST. MOREHEAD, KY.

Firestone LAWN & GARDEN OFFER



**HIGH ANALYSIS
20-10-5
Formula**

LAWN AND PLANT FOOD

\$1.99

with these
BIG PLUSSES

- Contains WHITE - A superior green fertilizer
- Promotes - for plant vigor and resistance to disease
- Phosphorus - for healthy root growth
- Iron - for healthy green leaves
- 1000 times faster growth

**LIMIT 2
ADDITIONAL BAGS
\$1.99**

Build a beautiful lawn the sure economical Firestone way

Firestone Thrift-Cut 18" ROTARY MOWER

A rugged, economically priced rotary mower loaded with features

Grass Collector \$6.95
8" x 10" x 10" \$4.95

\$41.68

SAF-P-KEY STARTER MAKES THIS MOWER START AS EASILY AS YOUR CAR. JUST TURN THE KEY - INSTANT START

- Ball bearing wheels
- 4-position fingertip cutting height adjustment
- 3 1/2 H.P. Engine
- Deluxe engine control panel
- Deluxe folding handle for convenient storage
- Rechargeable battery included
- Deluxe Aluminum deck
- Firestone Tires

\$129.95

NO MONEY DOWN

- Dependable 3 H.P. engine - Instant action recoil starter
- 1 to 3 1/4 inches adjustable cutting height
- Firestone wide-tread tires

Morehead Home & Auto

Your Local Firestone Store

MAIN STREET MOREHEAD, KY.



THE CHORUS LINE for the 20th annual Morehead Lions Club Variety Show features these beauties. They are, from left - Mrs. Thelma Skaggs, Mrs. Billy Calvert, Mrs. Ronnie Jones, Mrs. Robert Williams, Mrs. Walter Carr and Mrs. Bob Reynolds. Two others in the chorus, both single,

are Sharon Allen and Kathy Taylor. Tickets at \$1 went on sale this week for the three evening performances - April 25, 26 and 27 - at Morehead Grade auditorium. Each show starts at 7:30. All profits go to the Lions eye-glass fund.

State Education Gets Biggest Financial Boost

Kentucky's public schools will receive the biggest financial boost ever in a two-year period when Gov. Louie B. Nunn's record \$2.47 billion budget goes into effect on June 30.

The budget, which the General Assembly recently unanimously adopted, provides nearly \$554 million the next two years for elementary and secondary education alone. This is \$132 million, or approximately 25 percent, more than was appropriated for education in the biennium just ending.

While the Minimum Foundation "Program" will take a major share of the education dollar - an increase of \$107 million - there are new facilities such as educational television to be implemented the first time.

The state's \$9 million ETV system, which now is under construction and scheduled to become operative this fall, will receive \$4.5 million. This, however, is just barely enough for a 65-hour a week schedule, according to Leonard Press, executive director of the Kentucky ETV Authority.

Press, who had hoped for a more extensive program schedule, says the budget will allow about 14 hours a

week of programs beyond school requirements.

Press notes, debt services of \$689,890 and interconnecting charges of \$433,402 will take nearly half of the \$2.1 billion available the first year, and similar amounts of the money the second year.

Increased appropriations through the Minimum Foundation Program will give the state's 29,000-plus certified teachers another financial boost. They will get in the next two years \$96 million more in salaries, which State Department of Education officials say will allow yearly average increases of \$700 to \$800.

The state's hard pressed school construction program and the operating expense allotment for each classroom unit are among other phases of education which are to receive major increases.

The allotment for operating expenses will increase by 55 percent in the next two years, from the \$900 currently allotted per classroom unit to \$1,400.

For construction purposes, each classroom unit will receive an additional \$600 - a 100 percent increase - over the two-year period.

Education authorities say, however, this will no more than offset increase cost in school construction. For example, they point out a high school classroom unit today costs \$2,100 per child compared to \$1,770 in 1965. Construction costs of an elementary classroom unit increased about \$200 in the same period, they said.

The educational rehabilitation program, which serves adults as well as school age children, will also get more money, some \$13 million compared with approximately \$10 million in the current biennium.

This will also mean additional Federal money, which is available on a three-to-one Federal-State basis, according to education authorities.

Education authorities point to the rehabilitation program as one of their most successful. They said the program last year served 11,110 persons and returned to the employed ranks 4,810, which gives Kentucky ninth ranking among the 50 states with such a program.

Over \$32 million in additional money will go to vocational education. This will help equip and place in operation seven new extension centers this fall and 12 others which are scheduled to open in 1969. This also will permit expanded programs at several other schools where additional facilities are under construction.

Higher education in the state's colleges and universities will get some \$57.9 million more money. Of this amount, \$28.4 million will go to the University of Kentucky, which will open new community colleges this fall at Hazard and Mayfield and permit taking into the system Paducah Junior College.

The municipally-owned University of Louisville will receive under the new budget a 300 percent increase in funds - \$6.2 million in the biennium compared to \$2.2 million in the current biennium.

ROTC Program -

Continued From Preceding Page

July from Columbus, Ohio, where he was with the Wright-Patterson Air Force Base. Mr. Davis is associated with the closed circuit television operations at the University.

No stranger to military life, Mrs. Davis has worked as a secretary at Loring Air Force Base in Maine, at Lockbourne Air Force Base and with the Department of Defense in Columbus.

The cadre, which is expected to reach 80 officers and 10 non-commissioned officers by September, will be increased by a major, two captains and a master sergeant within the next few weeks.

Meanwhile, the program progresses with these developments:

• Fifty-seven students currently attending the University have requested admission to the two-year accelerated program and have successfully passed their physical examinations.

• Work is expected to start in May on the renovation of Butson Auditorium to house the new program. Temporary headquarters have been established in the new Laughlin Health Building but soon will be relocated in Allie Young Hall until the new quarters in Butson are ready.

More than 1,000 incoming freshmen are expected to participate in the program next fall with the first cadets successfully completing the four-year course on the campus receiving Army commissions in June of 1972.

Those completing the accelerated program will be commissioned second lieutenants in the Army in June of 1970. Unless they are enrolled in the accelerated program, no student currently attending the University will be required to participate in the ROTC program.

McGuire Case -

Continued From Preceding Page

Carter, but not in Rowan County, commented that the latest switch reduces the prospect of the case ever coming to trial.

He noted that McGuire already has spent a year and a day in prison on income tax charges. In addition, McGuire was fined \$5,000 on the tax charges and was ordered to repay \$6,510 as a result of a civil suit filed by taxpayers.

In the meantime, Walter said, at least one key witness in the embezzlement case has died.

McGuire is charged with embezzling or converting to his own use a total of \$8,251.25 in payments for school bus bodies that never were delivered, a total of \$8,741 in illegal payments to a plumbing and heating firm, and an unspecified amount for school-bus chassis that never were delivered.

Washington Diplomats Scheduled At M'head

Two Washington diplomats will be among the speakers for the third annual International Relations Day at Morehead State University Thursday, April 27.

They are: Sidney H. Hibbelthwaite, information counselor at the British Embassy, and Yves Jacques, consul from the French Embassy, both Washington. Also appearing on the program will be Dr. Richard L. Butters of the Paterson School of Diplomacy at the University of Kentucky. Sponsored by the University's Political Science Club, the day's program will open at 10:20 a.m. in Butson Auditorium on the campus.

A luncheon also is planned in the Alumni Tower cafeteria, followed by a seminar at 2 p.m. in the faculty lounge of the Doran Student House.

Handling the arrangements for the day are: Stuart Flate, a senior from Cleveland, Ohio, program, Glenn Johnson, junior, Paris, physical facilities, Pinkie Sparks, junior, Mt. Olivet, public relations, and Louie Stewart, Clearfield, chairman of the steering committee. Dr. Jack Bizzell, associate professor of political science at the University, is sponsor of the club.

Helping to provide an international atmosphere on the campus for the event



Sidney H. Hibbelthwaite
Morehead speaker

Indian Relics May Be Viewed At R.C.H.S.

An exhibit of Indian relics will be shown at the Rowan County High School, Morehead, Saturday, April 27, under the sponsorship of the Green River Archeology Society of Kentucky.

The exhibit, open from 3 until 9 p.m., will be free to members of the society who need only to show their membership card for admittance. A small admittance will be charged all others.

Persons wishing to participate may contact the Green River Archeology Society of Kentucky, Blue Grass Chapter, Morehead State University, Morehead, Ky. 40351.

Woodwind Quintet To Present April Recital

The Morehead State University woodwind quintet will present a concert Tuesday, April 23, at Baird Music Hall on the campus, beginning at 8 p.m.

The group consists of: James Martin, flute; Joseph Martin, oboe; William Bigham, clarinet; David Bushouse, horn, and Dr. Frederick Mueller, bassoon. They will be assisted by Mrs. Violet C. Severy, at the harpichord, and Keith Huffman, violinist.


Make your pipe dream come true



An electric water heater can be installed anywhere...no unnecessary pipes or vents. Always fast delivery...rapid recovery.

Turn your "pipe dream" - plenty of hot water without waiting - into the real thing, with a rapid-recovery full-time service electric water heater. Not only no long, heat-wasting pipe work, but more water heats up as you use it, around the clock. Worst service, too, without maintenance problems. See your dealer for a safety flameless electric water heater!

UP TO 88¢ ON YOUR WIRING BILL IF YOU BUY AN ELECTRIC WATER HEATER NOW! If you change your mind, you can return it for a full refund. Get an electric water heater anytime 1968, we'll save you \$25 on your wiring bill. Call June 23, 1968, or write to: KU Electric Water Heater, we'll give you \$25 on your wiring bill. See your KU or GEI dealer for complete details.



C & P Plumbing Heating & Electric

159 E. First St. - Ph. 784-4047

KENTUCKY UTILITIES COMPANY

Six rate reductions since 1962

Morehead Coin Club Membership Growing

The newly formed Morehead coin club met last Tuesday night. Highlight of the meeting was an enthusiastic coin auction.

The club, which has recently been organized through the joint efforts of the Morehead coin collectors club and the city recreation department, extends an invitation to all interested beginning and regular coin collectors to attend its next meeting on April 23.

At the past meeting Richard Eversole conducted the sale of the coins. Randall Miller, a Morehead instructor, and Harold Bellamy, a local coindealer,

offered many coins for auction. Coins were also offered by others in the Morehead area.

Many area residents actively involved in coin speculation and collection have indicated their interest in helping beginners start their collection.

Dr. George Barber, local physician, told club members that he would offer several of his coins for auction at the next session, April 23 at Rowan County High School in room 18-B. The sale of coins will be conducted by Richard Eversole. Dr. Barber also stated he would spend time helping those just starting their collection.

Club officials were pleased with the recent turnout and expect a large gathering for the next meeting.

Area residents are reminded that they need not have previous experience in coin collecting to join the club. Everyone in all age groups are invited to attend the meetings. All interested persons, beginning and established collectors or dealers are urged to attend the next meeting. The meeting will be Tuesday, April 23 at 7:30 p.m. at Rowan County High School in room 18-B.

Any persons who have coins for sale are encouraged to attend this meeting. Refreshments will be served.

Mrs. Gregory Dies At Age 72

Mrs. Mary Tennie Gregory, 72, died Sunday at her home of RFD 1, Morehead, following a long illness.

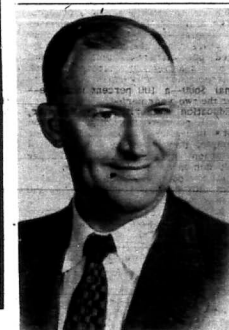
Funeral services were conducted yesterday [Wednesday] at Poplar Grove United Baptist Church followed by interment in Caudill cemetery at Sharkey. Reverends Wardy Craft and Burl Stephens conducted the funeral.

Mrs. Gregory was born in Elliott County Feb. 24, 1896, daughter of the late Russell C. and Amanda [Pennington] Caudill.

She married James Matthew Gregory, who preceded his wife in death. Mrs. Gregory resided in Rowan County all her adult life and was a devoted and active member of the United Baptist Church for 58 years.

Immediate survivors are the following four sons and six daughters - Lloyd Gregory and Mrs. Leona Eldridge, both of Sharkey; Lonnie Gregory and Willie Burl Gregory, both of Morehead; Larry Gregory and Mrs. Delphia Cox, both of Dayton, O.; Mrs. Olive Harris, Flemingsburg; Mrs. Elsie Black, New Castle, Ind.; and Mrs. Marjorie Branham and Mrs. Beatrice Cox, both of Hillsboro. Mrs. Gregory also leaves 45 grandchildren, 28 great grandchildren, a brother, Willie Caudill, Sharkey, and two sisters - Mrs. Grace Gregory, Hillsboro and Mrs. Bertha Eldridge, Flemingsburg.

Stucky Funeral Home was in charge of arrangements. Grandsons served as casket bearers.



AG LEADER. . . Hobart Lacy has been appointed by the Kentucky Bankers Association as Rowan County Agricultural Chairman. Lacy is Vice-President of the Peoples Bank of Morehead, long a leader in the Farm Bureau, heads the Gideon Bible Society, and holds numerous other civic and community policy positions.

McClain Funeral This Morning

Funeral services for Orville McClain, 61, will be held this [Thursday] morning at 10 o'clock at Slab Camp Church. Burial will be in McClain cemetery. Reverends Benny Baldridge and Zora Trent will conduct the funeral.

Stucky Funeral Home has charge of arrangements.

Mr. McClain is survived by his wife, mother, two sons, two daughters and five brothers.

we're cooking up something
SPECIAL
Come in and try our

Variety of Danish Pastry
Delicious Cakes and Pies
All are -

Fresh Daily

Kentuckian Bakery

FOR THOSE SPECIAL OCCASION CAKES

Phone 784-7349

Main Street Morehead, Ky.



PINE RECORD . . . The Safety Award plaque for completing 1967 without a lost-time or disabling injury was presented to the employees of Columbia Gulf Transmission Company's Morehead Compressor Station. Columbia Gulf Vice President Lewis O. Smith, right, presented the award to Morehead Section Superintendent R.C. "Wimpy" Powell.

Plan Game Survey By Telephone

Sometime between April 15-25 3,000 Kentuckians will get a telephone call from the Department of Fish and Wildlife Resources in Frankfort.

It's all part of a yearly project to determine the amount of game killed by Kentucky hunters during the past year. All calls will be made between 8 and 9 p.m.

The secretaries who call will want to know if there is a hunter in the household, and if so, will he cooperate with the Department in compiling information for the annual game harvest survey, explained Carl Kays, the biologist handling the project.

Hunters who agree to help will be mailed questionnaires listing the species of game hunted in the state and asked to report the number of animals or gamebirds killed and the number of hunt-

'Carmen' To Be Heard Over Morehead Station

"Carmen," Bizet's most renowned opera, will be heard as the final production of the current Metropolitan Opera season when it is heard over WKY-FM, the radio voice of Morehead State University, and the Texaco-Metropolitan Opera Radio Network at 2 p.m. Saturday, April 20.

Bizet completed "Carmen," his last opera, in 1875. It was introduced in Paris just three months before the composer's death. The opera is generally appreciated as one of the finest products of the French lyric theatre.

ing trips, made during the year, Kays added.

Information gleaned from returned questionnaires helps the game management biologists determine the length of future hunting seasons and set other policies affecting hunters, Kays said.

NEED MONEY To Consolidate Your Bills?

CASH YOU GET	State Easy Monthly Payment Plan	30 mos.	36 mos.	48 mos.	60 mos.
\$1000	\$45.29	\$31.21	\$24.17	\$19.08	\$17.25
2000	87.94	62.42	48.34	38.16	34.50
3000	131.88	93.63	72.51	57.15	51.75
4000	175.82	124.84	96.67	75.53	68.39
5000	219.76	156.05	119.87	93.92	84.48
6000	263.70	187.26	143.08	112.13	101.07
7000	307.64	218.47	164.29	126.34	114.42
8000	351.58	249.68	185.50	140.55	127.77
9000	395.52	280.89	206.71	154.76	141.12
10000	439.46	312.10	227.92	168.97	154.47

Payments include Principal and Interest, Insurance Available

Grayson Industrial Loan Co.

CARL E. JOHNSON, Mgr.

MAIN ST. * PHONE 474-6611 * GRAYSON, KY.

YOUR BEST BUY TODAY... COULD BE A DAY OF NEEDED HOSPITAL-MEDICAL CARE

ONLY A HOSPITAL is equipped and staffed 24 hours a day - to provide the life saving services and supplies you or your family may need.

ONLY A PHYSICIAN can diagnose the condition, admit the patient and order the necessary hospital services and supplies when needed.



YOUR BEST BUY IN HEALTH CARE PROTECTION IS



These Plans Offer You:

- Maximum benefits per dollar as a result of efficiency and economy of operation.
- A choice of hospital care alternatives.
- All other covered hospital services paid in full.
- Surgical-Medical plans with specific alternatives.
- Major Medical or Extended Benefit Plans for Groups.

APPLY NOW

MAIL THIS COUPON TODAY

BLUE CROSS and BLUE SHIELD

2101 Baltimore Road, Louisville, Ky. 40203

GROUP PLANS MAY BE FORWARDED WHERE THERE ARE 5 OR MORE EMPLOYEES

MO686

NAME _____
ADDRESS _____
CITY _____ STATE _____ ZIP _____

Please send information, without obligation, by check below:

- ☐ I am interested in forming an employee Group Plan.
- ☐ I am 64 or under. Neither my spouse nor I work where there are 10 or more persons.
- ☐ I will soon be 19 or marry before 19 and want to keep protection.
- ☐ I am interested in your Blue Cross and Blue Shield 65 Plan for persons age 65 or older.

(Farm Bureau Members, not enrolled, see your Farm Bureau Agent.)

SAVE WITH STONE - SAVE WITH STONE - SAVE WITH STONE -

easy pickup

Our Little Profit saves you more than anything you ever bargained for on trucks. *This is true.*

25 New and Used Trucks in Stock

Let Us Make \$50.00 and You Will Own A New GMC Truck

The Stone Deal Is The Best Deal

Heavy Duty Trucks. 1 Ton - 3/4 Ton - 1/2 Ton. Any Size You Need.

The Little Profit Dealer

STONE PONTIAC-BUICK, GMC, INC.

"Your Little Profit Dealer"

U. S. 60 E. MOREHEAD, KY.

THE LITTLE PROFIT SAVES YOU MORE THAN ANYTHING YOU EVER BARGAINED FOR.

SAVE WITH STONE - SAVE WITH STONE - SAVE WITH STONE -

USE DO COST

CLASSIFIED ADVERTISING RATES

No Classified Ads Accepted After 12 o'clock Noon Tuesday

Per word first insertion .70
 Per word each subsequent insertion of same ad without any changes .50
 Minimum charge (first insertion) \$1.50

Minimum charge (each subsequent insertion) \$1.00
 Display Classified Advertising, per inch .125
 Inserted as second class Mailing Matter at

Post Office - Morehead, Ky.

ATTENTION - Due to the growth of the city of Morehead and Morehead State University, we are in constant need of good help. We are now taking applications for manager, trainee, waitresses, car hops, cooks, porters and dishwashers. If you like restaurant work and are interested in a job with a future, permanent employment, good wages, paid life insurance policy, annual bonus, and paid vacation apply in person (no phone calls please) to Jerry's Restaurant, 115 Hwy. 60, Morehead, Ky. c-17

WELL DRILLING - Water well drilling. Call J.R. Esham, phone 784-7121. c-17

FOR RENT - Furnished apartments. Call 784-4213, 784-5819 or 784-4504. c-17

BALDWIN and WURTLER pianos and organs at low factory prices. Easy payments. Martin, Gibson, Fender guitars. 784-5131. 325 1/2 S. 1st Street, Ashland, Ky. c-17

CUSTOM BACKHOE and dozer work. Johnny Lantz, phone 784-4074 after 6 p.m. c-17

FOR RENT - House trailers, 1 or 2 bedrooms. Utilities paid. Morehead Camp Motel, 1 1/2 mile east on US 60. c-17

CUSTOM BUILDING, new homes, remodeling, bulldozer and backhoe. Woodrow Construction, phone 784-5317. c-17

FOR RENT - House trailers on Morgan Fork Road. Pete Armstrong, 784-5732. c-17

FULL TIME - PART TIME - If you are looking for an unusual job and interested in beauty secrets, call or write Clara Rowe, Viviane Woodward, Cosmetics, 2230 Zandale Shopping Center, Lexington, Ky. Phone 277-5320. Executive positions available. c-17

FOR SALE - Good metal top Jeep. Robert Lyons, 440 Allen Ave., Morehead, Ky. c-17

BUILDING SITE - 10 acre level farm just off Cranston Road. Good barn, pond, well, fenced, small cabin. Alfrey Healy, Mabel Alfrey, Broker, 784-5986. c-17

WELCOME United Pentecostal Church West Main - Morehead Pastor - Lloyd Dean Obeye Acts 2:38 c-17

FOR SALE - 1961 Great Lake mobile home, 10'x50'. Excellent condition. For additional information, call 784-4984. c-17

BREEDING SERVICE Call Lawrence Arnett, Jr. 784-7916 c-17

WANTED - Serviceman and mechanic. Apply in person at Morehead Home and Auto, Main Street, Morehead. c-17

OFFICE SPACE for rent in C. Roger Lewis Building, Main Street, Morehead. Close to post office, banks, courthouse. Phone 784-4168. c-17

FOR SALE - 1967 repossessed Singer sewing machine. Full price \$30.84. This machine zig zag, sews on buttons, makes buttonholes, darts, monograms, makes fancy stitches, etc. Also in a cabinet. Only 6 payments of \$5.14 each. Call 784-7469. c-17

FOR SALE - Over ten acres of level bottom land 4 miles from Morehead, on Christy Creek. Call Orville Fultz, 784-7091. c-17

JOBS WANTED - For outside house painting and small concrete jobs, such as sidewalks, driveways, steps, etc. Call Francis Callahan, 784-5381. c-17

CARPET & RUG CLEANING - Need your carpets shampooed and cleaned? Call Paul Ferguson, 784-5467. Free estimates given. All work guaranteed. c-17

FOR SALE - 5-room house, barn, smokehouse, 2 outhouses, and some furniture. Buildings to be torn down and removed in Cave Run construction. Phone 683-4411. c-17

NOTICE - Notice is given that Billy Queberry, Jr., 1, Morehead will not be responsible for debts made after March 26 by anyone other than himself. c-17

FOR RENT - Two-bedroom unfurnished apartments. Holbrook Manor, Phone 784-4550 or 784-5171. By appointment. c-17

\$100 REWARD is being offered for anyone having information leading to the recovery of a Stevens automatic .22 rifle, model no. 87A, taken from the Otis Johnson home of Rt. 3, Morehead. Anyone having such information, call Bert Buckett, 784-4789. p-18

REDUCE safely, simply and fast with Goshue tablets. Only 98¢. C.E. Bishop Drug. p-17

LP GAS

Bottles & Bulk Installations Dependable Service SOUTHERN STATES

Owingsville Petroleum Service Phone 674-5511 Owingsville

WANTED - Responsible man and wife with three children want to rent a 3-bedroom home with reasonable rent. Phone 784-7178 after 6:30 evenings. c-16

FOR SALE - Honda 160. Call 784-5275 after 4:00 and ask for Danny Toler. c-17

FOR SALE - 1 lot in Green Valley Acres, 100' front, 200' deep. City water, paved street, see or write Lester Caudill, Green Valley Acres. Phone 784-4253. c-16

FOR SALE - Approximately 1 acre with 350' front on Flemingsburg Road. Call or write Lester Caudill, Green Valley Acres, phone 784-4253. c-16

FOR SALE - 4-room house with 1 1/2 acre land on Holly Fork Road. Menard Archer, phone 784-7160. c-17

ELECTROLUX Sales - Service - Parts Trade-Ins - Terms Authorized Representatives

ROBERT FRALEY Phone 784-5187

EARL FRALEY Phone 784-4327 Morehead, Ky. 40351 c-17

WANTED - 3 ladies part-time help. No experience needed. Must have 15 hours available a week. Call 784-9466. c-17

PUBLIC AUCTION - Personal property of Lizzie Ratliff, 614 Rowell St., to be sold at noon, April 27. All types household furnishings including antiques. This is a sale you can't afford to miss. Kindell Keeton, Auctioneer. p-17

INVITATION TO BID The Rowan County Board of Education will accept bids until 4:00 p.m. May 6, 1968 on 3 School Buses listed as follows:

2 - 1956 Chevrolet 48 Passenger Buses
 1 - 1947 Chevrolet 12 Passenger Bus

These vehicles may be inspected at the School Bus Garage one mile east of Morehead on U.S. 60.
 Clifford R. Cassidy, Supt. Rowan County Schools c-18

FOR SALE - 1960 Falcon, blue and white in good condition, \$150. Call 784-7178 between 9 and 5 after 784-4379. c-17

FOR RENT - Modern brick veneer office space. Approximately 400 square feet ground floor. Central air and heating. Private rest rooms. Call or contact H.K. Taylor 784-4147. c-17

MONTGOMERY WARD (Doing Business in America for 90 years) Desires a qualified husband and wife team to operate a franchise catalog store in Morehead. If you're willing to make an investment of \$2500 (financing is available) for a business of your own, please write a letter stating your qualifications to:

R.E. Conway 808 Oakhill Drive Lexington, Ky. 40505 c-17

HOUSE to be moved or torn down because of Cave Run Dam - 2 story farm house with aluminum siding. Make offer - Jack Ellis, 784-7473. c-17

CARPETS and tile too can be beautiful! You use Blue Lustre. Rent electric shampooer. M. McBrayer's, Olive Hill and Morehead. c-16

FOR SALE - 10 acres and 3-bedroom ranch. Selling South 26 W. 10 pole. Call 784-5986 or 784-7283. c-17

FOR SALE - 1965 Mercury Monterey, automatic transmission, power steering and radio. 31,800 miles. Excellent condition. Phone 784-5732. c-17

FOR SALE - 1963 trailer, 40x10, 2 bedrooms, furnished. Storm door, Coleman furnace. See weekends or weekdays after 5. Jayne's Trailer Park, 1 mile out Flemingsburg Road. c-17

TRIED PROVEN

Sealed bids will be received at the office of the Rowan County Court Clerk at the courthouse, Morehead, Rowan County, Kentucky until 10:00 o'clock a.m., April 25, 1968 for the furnishing and sale of Two 1968 Model Heavy Duty Dump Trucks to the Rowan County Fiscal Court for use by the Rowan County Clerk's Office and all bids must conform to the specifications and other bid requirements.

The Rowan County Fiscal Court reserves the right to reject any and all bids and further reserves the right to accept the best bid in its discretion. This April 4, 1968. W. C. Flannery Rowan County Fiscal Court Chairman

FOR SALE - Nice 3-bedroom frame house on N. Wilson Ave. Contact Ned Edward Hayes 784-5325. c-17

FOR RENT - Business rooms, office space, and apartments. Phone 784-4778. c-17

FOR SALE - 8 x 46 Liberty Mobile Home. Excellent condition. Cash and/or assume financing. Call 784-7182. c-17

COMMISSIONER'S SALE THE COMMONWEALTH OF KENTUCKY ROWAN CIRCUIT COURT

Kent Machine Company Plaintiff Versus Morehead Concrete Products Company, Inc. and Aubrey Kautz Defendants

NOTICE OF SALE By virtue of a judgment and order of sale of the Rowan Circuit Court, dated the 1st day of March, 1968, in the above cause, for the sum of Seven Thousand Seven Hundred Sixty Four Dollars and Four Cents (\$7,764.40), with interest at the rate of six percent (6%) per annum, from the first day of July, 1967 until paid, and its costs therein, I shall proceed to offer for sale at the Court House door in the City of Morehead, Kentucky, to the highest and best bidder, at public auction on the 29th day of April, 1968, at One O'clock P.M. or thereafter, upon a credit of six (6) months, or the purchaser has the privilege of paying cash in hand if he so desires, the following described property, to-wit:

One Kenmore Plain Pallet Block Machine, Serial No. 621-135, complete with 2" HP air cooled vibrator motor, 15 HP hydraulic power units, one set of vibrator assemblies and all controls.

One Kent Front Pallet Return fitted to above Kenmore Block Machine complete with pallet roller and rotary brush cleaner.

One Hydraulic Off-bearing Hoist, Serial No. 767-126, complete with Magnetic spade and all controls fitted to the above Kenmore Block Machine.

One Three cavity 8" Modular Mold Box complete with press heads to make two 2-core stretcher block, one corner sash breaker block, or one corner sash breaker block with 1" single bulb nose on it.

One Four cavity 6" Modular Mold Box complete with press heads to make three 2-core double corner block and one double corner breaker block.

One Six cavity 4" Modular Mold Box complete with press heads to make five 2-core stretcher block, one double corner breaker block plus attachment to make six 4" solid blocks, four 2" slabs or one double corner breaker block with single bulb nose.

One Two cavity 12" Modular Mold Box complete with press heads to make two 2-core stretcher block or one corner sash breaker block, and two half corner sash block.

One Chimney Block mold complete with press head to make full 16"x16" chimney block with round core and corner vents.

One Kent 50 cu. ft. Batch Mixer, Serial No. 645-106, complete with 40 HP drive motor, clutch and air operated door, loss starter and push button.

One Kent 50 cu. ft. Inclined Skip Hoist, Serial No. 803-101, complete with gear-head lift motor and all controls.

2000 Used 5/16"x18 1/2"x26" Steel Pallets

50 Used two compartment, 72 block capacity, block racks with cubic.

That to further secure said indebtedness that plaintiff be and is hereby adjudged a lien on the following described real estate:

A certain tract or parcel of land, lying and being in Rowan County, Kentucky, and described as follows:

A certain tract or parcel of ground, situated in the City of Morehead, Rowan County, Kentucky, near the passenger depot of the Chesapeake and Ohio Railroad on the Southeast side of said railroad, and bounded as follows: Beginning at a black oak tree (now down) in line of said railroad right of way to a stake, then running South 26 W. 10 pole with said right of way to a stake, corner to the lot now owned by William W. 72 13 13 pole, then to the 6 links to a stone in the center of Trumbo Lane, thence N. 32 W. 16 poles to the 6 links, containing one half acre, more or less.

This being the same property conveyed to the party of the first part by K.L. Supply Company, Inc., by deed dated 18th day of June, 1963, which deed is duly recorded in Deed Book 75, page 87, Rowan County records.

The purchaser is to assume the 1968 taxes.

Or a sufficient thereof to produce the sum of money so ordered to be made. For the purchase price, the purchaser must execute bond, with approved securities, bearing legal interest from the day of sale, until paid, and having the force and effect of a judgment. Bidders will be prepared to comply promptly with these terms.

Austin N. Alfrey, Master Commissioner, Rowan Circuit Court Lester Hogge, Attorney c-17

Claig Sprout ... Sez

DEAR MISTER EDITOR: While you have been in Florida for three or more weeks me and Timothy was accusing the Publisher and Editor in sort a respectful and informative manner.

You is a strange man. You refused to raise the pay of me and Timothy on the grounds you don't make money. Yet you go to one Florida and we conclude you is the best of a time, all costing big money.

Mister Editor, you is always a write-on about your apathy to the 105 contestants as profligate who don't you catch on to one of them rich widows or divorcees in Florida. You could generate the money to get enough money from your bride party to me and Timothy more.

Also, Mister Editor me and Timothy was observing that you is pretty good at some things. You has been hinting that things are not all rosy at the University of Kentucky and Oswald might be fired from the Presidency. You was right because said Oswald resigned while you on vacation because he was gonna get fired.

Me and Timothy also decided we won't be a thin dime on your Kentucky Derby horse. Mister Editor you is might poor on your race horse selections.

Zeke Grubb's preacher come by the country store Saturday night to get a spell with the fellers. As usual, he bring along a heap of good food for thought.

He said that the world is full of great evils of the world was that everybody was looking for excuses while they had work out their problems themselves. And he told the fellers our Government was one of the worst offenders in this business of looking for excuses.

For instance, he said this Government report that decided last month that them who built down buildings and let the stores ain't guilty of their crimes. Society was guilty on account of it ain't trying the hoodlums over their they think they want and need.

And the good Parson reported he had saw where a crime prevention agency was urging folks to lock their car doors when they parked them. He agreed this was good advice, but this agency went on to say that car owners that didn't lock their doors was contributing to the delinquency of the minor that steals the car.

Ed Doolittle was agreed 100 per cent with the Parson. Ed said the time ain't far off when they'll arrest the feller that puts glass windows in his store instead of arretting the punks that throw bricks through the glass windows. They'll claim the feller had put up steel bars or hadn't built the store in the first place they wouldn't have been no temptation for the punks to throw the rocks and bricks.

And Ed said he had saw already where the new \$1.60 minimum wage was getting blamed on the over-crowded unemployment. Them that was unemployed at the \$1.60 rate, claimed it, was about the same one that was unemployed at the \$1.40 rate, and afore that, at the \$1 rate.

This was about as close, Mister Editor, as the fellers ever had heard Ed come to come along with change that was being brought about by a Democrat Administration.

Bookum said they was another feller who could expect in this excuse theory that was sweeping the country. He said it wouldn't be long afore the Government would blame all our highway deaths on the folks that makes auto, on the grounds they was making 'em to run too fast.

Was just in Lexington, Mister Editor, how lucky the store-keeper was he not getting sued for letting the fellers hold their seasons every Saturday night at the store. Some of our wives will sue him yet for contributing to non-support.

Yours truly, Claig Sprout

Head Start Program Accelerated

Nineteen thousand children are expected to enroll in this summer's Head Start program in Kentucky, according to the Kentucky Office of Economic Opportunity which administers the Federal program.

This summer's program will be funded by over \$5 million - a slight increase over the previous summer's program since 1965 when Head Start first began in Kentucky, a spokesman for OEO said.

This summer's enrollment will be in addition to 6,000 children from low income families who are attending full-year Head Start programs, the spokesman said. He also noted that school districts in 117 counties in Kentucky have either summer or full-year programs.

He said staff operating the programs will be trained at five State universities, Kentucky State College and the University of Louisville.

Among the board goals of Head Start are: improvement of the child's health, ability to think, reason and speak clearly; build his self-confidence, and provide him with wider and varied experiences in broadening his horizons.

Results Of Festival Are Released

Two pianists from Ashland's Paul Blain High School received the top awards in the piano division of the Kentucky Music Educators Association Music Festival at Morehead State University yesterday.

Named "best of the day" of 67 solo piano contestants was Ralph Richey, a classmate, Leslie Long, was named alternate best of the day.

Richey will represent the Morehead region along with other regional state winners in the Kentucky Music Teachers Association statewide contest to be held at Morehead in November.

Both Richey and Long are students of Mrs. Neils Leonard, a private piano teacher in Ashland.

Of the total 105 contestants participating in the festival, 19 were given superior ratings in the junior high school contest, 33 in the senior high school division.

Those given superior ratings and the divisions in which they competed follows: Piano solo, junior division, Michael Berhard and Alan Seale, Mt. Sterling, Lou Ann Stull, Mappletown, Jennifer Bogley and Terry Holbrook, University of Kentucky, Morehead, and Amy Vanosue, Owen Thornbury and Lisa Nutini, Coles.

Piano solo, senior division, David Bishop and Terry Holly, Breckinridge, Treas. Whit and Michael Rosenberg, Mt. Sterling, Laurel Chaffin, Powell County, Susan Thompson, Anita Palmer, Marab. Barrette, Margaret Judd, Ella Mae Stewart, Vicki Hatfield, Alice Hobson, Leslie Long, Ralph Richey, John Radcliff, Ruth Danks and Kathy King, all of Paul Blazer, Ashland, Terry Ennor, Montgomery County, and Mary Dorsey and Martha Brown, Fleming County.

Piano duets, junior division: Hill-Landrecht, Breckinridge, Jones-Kempin, Farrisview, Adams-Boyd County, McCullough, Putnam; Denny-Brackman, McDowell, Rife-Smith, Fairview-McDowell, and Hopsen-Fetty, Russell-McDowell.

Piano duets, senior division: Layne-Bauer, Holly Family, Thompson-Green, Farrisview, Adams-Boyd County, Kinner-Kinner and Judd-VanOsue, Paul Blazer-Coles, Coleskey-Rosenberg, Mt. Sterling, and Hart-Granite, Fleming.

The final section of the four-day competitions - the voice contests - will be held at the University Saturday, April 27. Keith Huffman, associate professor of music at Morehead, is the co-ordinator of the festival. He has organized and administered the music festivals at Morehead for 23 years.

GIRL SCOUT NEWS

The monthly community meeting will be Monday the 22nd at the Christian Reformed Church on Main St. Mrs. Mabelle Groves will be the host.

The Day Camp Coordinators will be working on the program and plans for day camp in June. We are still in desperate need of people to help us this week of day camp.

It's really hard to understand why more people have not contacted Mrs. Roberts. The Girl Scout program is definitely a desirable and wholesome activity for our young people. Surely everyone knows that it is carried on by volunteer help.

Your leaders, community coordinator, Scout leader and cookie chairman are people who do a job of free charge because they care. Everyone enjoys living in a community where the little extras are to be had for our children, but not everyone wants to help with the work. If you have talents to share the Girl Scouts will welcome your interest. See you Monday!

ing County. Piano solos, junior division: Horton-Malone, Mt. Sterling, Ketter-Sturgill, Putnam; McDowell-Connelly - Wilson, Coles, and Reams-Green, Coles.

Piano duos, senior division: Danks-King, Paul Blazer, and Miller-Miller, Russell.

Piano concertos: Vicki Hatfield, Paul Blazer; Leslie Long and Ralph Richey, Paul Blazer; Brenda Elvins, Olive Hill and Lisa Nutini and Owen Thornbury, Coles.

The final section of the four-day competitions - the voice contests - will be held at the University Saturday, April 27. Keith Huffman, associate professor of music at Morehead, is the co-ordinator of the festival. He has organized and administered the music festivals at Morehead for 23 years.

ing County. Piano solos, junior division: Horton-Malone, Mt. Sterling, Ketter-Sturgill, Putnam; McDowell-Connelly - Wilson, Coles, and Reams-Green, Coles.

Piano duos, senior division: Danks-King, Paul Blazer, and Miller-Miller, Russell.

Piano concertos: Vicki Hatfield, Paul Blazer; Leslie Long and Ralph Richey, Paul Blazer; Brenda Elvins, Olive Hill and Lisa Nutini and Owen Thornbury, Coles.

The final section of the four-day competitions - the voice contests - will be held at the University Saturday, April 27. Keith Huffman, associate professor of music at Morehead, is the co-ordinator of the festival. He has organized and administered the music festivals at Morehead for 23 years.

REVIVAL

April 24 thru 28

At the New Midland Church of God

Rev. Clifford Hutchinson Will be Preaching During the Revival

The New Church Will Be Dedicated At The 2 p.m. Sunday Services, April 28

Pastor Guy McKenzie Invites Everyone To Attend

invest rent money in

HOME

We'll show you many homes to suit your needs.

See Alpha to find the right home ... on the right terms!

Alpha Hutchinson Licensed and Bonded Real Estate Broker

Ph 784-5305, 784-4196

Morehead, Ky.

Chappa MOBILE HOMES

Own a Modern Home for as low as \$3495

Small Monthly Rent Payments

Eastern Kentucky's Largest Mobile Home Display FLEMINGSBURG, KENTUCKY

Boom In Marriages In Rowan County Forecast

A few of the changes that will be taking place in Rowan County during the next few years can be predicted with any degree of assurance—but there is one that can be.

It is that an unprecedented wave of young people in the local area will suddenly be reaching adulthood, ready for jobs, for marriage, for housing and for a wide range of goods and services.

Because of the unusually large number, they will have a noticeable impact on the local economy.

The dramatic expansion in the number of young adults is traceable to the baby boom that followed World War II. Now, two decades later, those babies are today a new adult.

At the present time, according to government data, there are some 1,342 young men and women locally between the ages of 20 and 25, the young adult bracket.

Over the next three to four years, most of them may be expected to marry and set up households of their own. The added amount of spending that will be generated in the process will be of great importance to the local business community.

The facts and figures come from the Census Bureau, from National Economic Research Associates, consulting economists, and from market studies made for Modern Bride, a publication.

Nationally, in terms of dollars and cents, it is estimated that an average of \$1,500 is spent by a young couple in connection with their engagement and wedding and that an additional \$3,000 is expended in the process of equipping their household.

Applying the averages to Rowan County and to the 100 or so local marriages that are probable in this age group during the next few years, some \$2,700,000 in new business may be looked for, especially in durable goods and housing. Part of it will be for cash and the rest on credit.

The money will go for furniture, carpeting, washing machines, electrical equipment, draperies, linens and, eventually, for baby carriages.

New Livestock Rule Effective

A new regulation covering "carcass grade and weight" sales has gone into effect as of April 6, the U.S. Cooperative Extension Service noted this week. It will be used in livestock marketing, says Zack C. Sandley, extension service marketing specialist. It resulted from requests of all segments of the livestock industry for guidelines and regulations on this form of marketing. More than 10 percent of the nation's slaughter cattle and 2.5 percent of slaughter hogs now are marketed under the "grade and weight" system.

Any meat packer buying livestock on the basis of carcass grade, carcass weight or a combination of the two, must:

- Tell the seller prior to sale "significant details" of the purchase contract.
- Maintain identity of each seller's livestock and carcasses.
- Keep enough records to properly cover settlement for each purchase transaction.

- Buy and make payment on the basis of carcass prices, and,
- Pay on the basis of actual (hot) carcass weight before carcasses are shrunk, and use hooks, rollers, gambrels and similar equipment of uniform weight to weigh carcasses from the same species of livestock in each packing plant and include only the weight of this equipment in tare weight.

The packer must also (when livestock are purchased on a grade, or grade-and-weight basis) (a) make payment on the basis of final USDA carcass grades, or furnish the seller with detailed written specifications for any other grades used in determining final payment and (b) grade carcasses by the close of the second business day after slaughter day.

NAME The Kentucky region of Kentucky takes its name from the colloquial pronunciation of the pennynyal, an annual plant of the mint family which grows profusely in the area.



SEW AND SAVE. . . Participants in the Rowan County clothing workshop conducted by Mrs. Nancy W. Kovach, Area Extension Agent in Clothing are from the left, Mrs. Margaret Jones, Mrs. Kovach, pinning hem, Mrs. Ruth Reynolds, Mrs. Lucy Parker, Mrs. Edith Black, Mrs. Mary Barker, Mrs. John Caudill, a visitor from Ohio, Mrs. Georgeann Bailey and Mrs. Gaythel Sparks. Others who participated in the work shop were Mrs. Maxine Collins, Mrs. Yvonne Grey, Mrs. Gladys Cooper, Mrs. Jean Murray, Mrs. Louise McCarty, and Mrs. Laura Barker. The women completed simple summer dresses through which they learned basic construction and fitting techniques. The workshop was held in Lyons Chapel of the Church of God.

State Lets Prime Contract For Signs On Interstate 64

A contract for metal signs on Interstate 64 in Bath and Rowan Counties has been awarded by the Department of Highways, Governor Louie B. Nunn and Highway Commissioner William B. Hazelrigg announced today. The project will begin at US 60 near Owensville and extend to KY 32 northeast of Morehead, a distance of 14 miles. McClure Construction Company, Jamestown, submitted the low bid of \$34,594.32. The highway will be opened to traffic by Nov. 15.

Feeding Cattle To Heavy Weights Costly

Be cautious if you try to feed cattle to heavy weights, says Dr. Roy C. Gray Jr., U.K. Cooperative Extension service beef cattle specialist. "Cost of gains goes up sharply as cattle are fed to heavier weights," he says. "Any time it costs more to put on a pound of beef than it will sell for, the feeder needs to change his program immediately."

MSU Spring Sports Season Biggest Ever

The arrival of the spring sports season at Morehead State University has been greeted with mixed emotions.

Although the golf and tennis teams are yet undefeated, the baseball Eagles scattered for their homes Saturday for a few days of spring vacation snarling from four consecutive losses to Central Michigan. These gave them a 2-6 record for the season.

It has been Coach John [Sonny] Allen's golfers who have grabbed the spotlight in the early season. They sport a 5-0 record, four wins of which came last week.

The Eagle linkmen defeated the Central Michigan golfers in three consecutive matches over the Morehead course, winning 13 1/2 to 10 1/2 on Thursday, 13 1/2 to 10 1/2 Friday and 10 1/2 to 7 1/2 Saturday.

Their fifth victory also came Saturday with Centre College a 9 1/2 to 8 1/2 squeaker in the season's first triangular match here. Central Michigan beat Centre 11 1/2 to 6 1/2 at the same outing.

The consistent play of Wayne Martin, Winchester, and freshman Butch Van-beyersley shot 74-75-75.

Low man of the series, however, was Central Michigan's Mike Smith with a three-under-par 67 in the three-way match Saturday.

The Morehead golfers return to action April 26-27 when they participate in the Marshall University tournament at Huntington.

Although temporarily "courtless" at Morehead because of the construction of a new men's dormitory and a delay in the construction of their new courts, Coach George Sadler's tennis team also is flashing signs of a winning season.

In their only outing of the year Monday, April 8, the Eagle netters defeated Campbellsville College at Campbellsville 9-0.

Results of the singles matches were: Jim Miller [M] defeated Bill Underhill [C] 6-0, 8-6; Steve Wright [M] defeated Mike McGinley [C] 6-0, 6-3; Jim Lopez [M] defeated Mike Helm [C] 3-6, 6-0, 6-3.

John Schwam [M] defeated Dennis Rigon [C] 6-0, 6-1; Richard Emery [M] defeated Mike Sullivan [C] 6-0, 6-0 and Rick Eisert [M] defeated Steve Small [C] 6-0, 6-3.

In the doubles matches: Miller and Wright [M] defeated Underhill and Rigon [C] 6-1, 6-2; Lopez and Schwam [M] defeated [C] 9-7, 6-2, and Emery and

Buck [M] defeated Small and DeHart [C] 6-0, 6-0.

The netters' next match will be Tuesday, April 23, with Eastern Kentucky, a match originally scheduled for Morehead but moved here to be played at Richmond because of the limited court situation here.

Coach Leston Stewart's baseball Eagles hope to snap their losing streak Saturday, April 20, when they open a 12-game Ohio Valley Conference schedule with East Tennessee at the Morehead diamond.

After an explosive start, the Eagles have run into a rash of early season jitters and wild pitching both accentuated last week in their four losses to Central Michigan.

In Thursday's game, GM's Dick Lange stifled the Morehead batters with a four-hitter to take the opener 10-1. The visitors swept Friday's doubleheader 14-4 and 6-2 in an afternoon punctuated by Central Michigan's Bryce Johnson hitting two home runs to lead a 15-hit attack in the first game, and the hitting of Morehead sophomore first baseman Reese Stephenson.

Stephenson went 4-for-5 in the first game and got Morehead's only two hits off Michigan's Mike Zimmerman in the eighth in a 2-for-3 performance, giving him an impressive 6-for-8 afternoon. Stephenson is a younger brother of the Chicago Cubs' Johnny Stephenson.

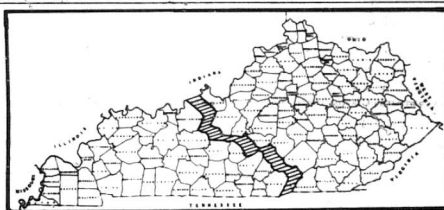
Saturday's game was a 12-11 slugfest highlighted by five home runs—three of which were consecutive blasts by Morehead's Doug Moulton, Gary Paulin and Sam Daugherty in the 4th inning to score four runs.

Nichigan's Randy Adams and Al Stevens hit the other two circuit blows with Adams hitting his in the third with one on and Stevens in the eighth with the bases empty.

Trailing 12-10 in the bottom of the ninth, the Eagles almost sent the game into extra innings before Paulin was cut down at the plate trying to score on pitch hitter John Kieffer's single to end the game.

Rightfielder Eddie Wallingford had scored earlier on a double and two Michigan errors to make the score 12-11.

Track Coach Marshall Banks charges return to action April 26 at Huntington in a meet with Marshall University after a two-week layoff following participating in the Ohio University Relays at Athens.



TIME FOR A CHANGE—Kentucky will go on daylight saving time for six months April 28. This is in accordance with the Federal Uniform Time Act from which the 1968 Legislature failed to exempt Kentucky. That part of Kentucky to the right of the diagonal black lines will observe Eastern Daylight Time until Oct. 27. The counties to the left of that space will observe Central Daylight Saving Time. Daylight time is one hour faster than standard time.

Special low, off-season price! LP-GAS FORCED AIR HEATING SYSTEM ONLY \$569⁹⁵

(completely installed, average 6-room home)

as low as 10% down

\$16⁰⁰ per month, 36 months

One low package price, complete, if you act now! You get EMPIRE'S remarkable new 100,000 BTU LP-Gas forced air furnace, 7 warm-air room ducts, cold-air return duct, central thermostat control, complete custom installation by Ashland's home heating specialists, rent-free use of tank and meter.

Empire's new furnace is slimmer, trimmer—takes less space in your home. Blower is quiet operating, and provides adequate power so that air conditioning may be added later. New steel heat exchanger gives you more efficient, lower cost heating. The matched burner assembly is designed to eliminate the major cause of burner service calls. You just set the room temperature you want on the super-sensitive dial control . . . and forget it!

3 EASY-PAY PLANS

On new homes, the total cost can be included in your mortgage. For conversion or replacement, the payments can be set up on a 5-year FHA loan, or you can pay just 10% down and take up to 36 months on the balance.

Offer expires July 31, 1968

For more details, mail this coupon to the Ashland LP-Gas Bulk Plant nearest you.

Please send me more details on the special Forced Air Heating Offer.

Name

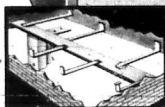
Address

City State

Phone

Directions to home

Call your nearest Ashland LP-Gas Bulk Plant for a free home heating survey.



Ashland LP-Gas—the modern energy fuel!

Ashland

ASHLAND OIL & REFINING COMPANY

U.S. 60 East - Box D - Morehead, Kentucky - Phone 784-5168



DERBY FESTIVAL QUEEN CANDIDATES—"My Old Kentucky Home" serves as an appropriate setting for this year's Kentucky Derby Festival princesses. One of these attractive Kentucky coeds will be crowned Queen of the '68 Festival on the evening of April 26th at the Fillies' 10th Annual Festival Ball in Louisville. The belles left to right are Mary Heyburn, Susan Hill, Lynne Korn, Raymond, Barbara Ann Brown and Suzanne Huffines.

Stop collecting rent receipts!



Start Building Ownership in your own home

THE SAME, or very nearly the same monthly amounts can be used to buy your home through our sound home loan. Stop in for full details this week!



First Federal Savings and Loan Association of Morehead

Main St.

Open Until Noon On Saturdays Morehead

Just when you've resisted the urge to buy a '68 Mustang... they come up with great new savings

Mustang—No. 1 in resale value—springs another surprise! Now, special savings on a smart chrome pop-open gas cap. Options also has styled steel wheels, wide-overs, and 61 foot lamps. Save during your Ford Dealer's Spring Sports Sale.



See the light. The switch is on...to Mustang

ROWAN MOTOR SALES

117 West Main St.

Morehead, Ky.

SOCIETY

Mr. John Jayne, who attends VPI in Blacksburg, Va., spent the Easter holidays with his parents, Mr. and Mrs. Luther Jayne.

Mr. Hardy Jones recently attended an RFA Congressional breakfast in Washington, D.C. He accompanied Jim Lewis of Sandy Hook, Harold Haight and Jim Davis of Grayson.

Mr. and Mrs. Jim Laughlin of Lexington spent the weekend with their parents, Mr. and Mrs. Robert Laughlin.

Mr. and Mrs. Larry Cassidy of McComb, Ohio, were weekend guests of their parents, Mr. and Mrs. Boone Caudill, and Mr. and Mrs. Roy Cassidy.

Miss Lynn Evans of Cincinnati spent the weekend with her parents, Mr. and Mrs. Eldon Evans.

Weekend guests of Mr. and Mrs. Wathan Gault were Mr. and Mrs. John Gault of New Richmond, Ohio, and Mr. and Mrs. Jim Gross and son, Scotty, of Ashland. The Gross family stayed for a week's visit.

Mr. and Mrs. Rondal Hart and daughter, Shari, spent the weekend with his parents, Mr. and Mrs. O.L. Hart in Corbin, and helped them celebrate their 50th anniversary.

Mr. and Mrs. Anthony Lambert are welcoming their second child, a son born April 15, at St. Claire Medical Center. He weighed 8 lbs. 15 oz. and has been named, Allen Scott. He has a brother, Andrew Tyler. The grandparents are Mr. and Mrs. Leo Jamison, and Mr. and Mrs. James Lambert.

Mr. and Mrs. Gerald Royce of Winchester, and Mr. and Mrs. James Brown and son, Buckley, of Mr. Sterling, were Sunday guests of Mr. and Mrs. Leo Jamison.

The Hayes Branch Homemakers Club met last Thursday at the home of Mrs. Lucy Parker. Mrs. Parker, the president, presided. Mrs. Phyllis Roberts, secretary, gave the report on the lesson "Selection of New Fabrics" was presented by Mrs. Parker and Mrs. Estle Hamm. Other members attending were Mrs. Mildred Patrick, Mrs. Wanda Cox, Mrs. Mary Barker, and Mrs. Nella Dameron, one visitor, Mrs. Nancy J. Caudill. Refreshments were served during the social hour.

Mrs. Nancy J. Caudill of Batavia, Ohio was the weekend guest of Mr. and Mrs. Allie Parker.

Mr. and Mrs. Clayton Turner and family of Terre Haute, Ind. spent the weekend with his parents, Mr. and Mrs. C.B. Turner, Elliottville.

Mrs. Margaret Turner returned home Saturday from a visit with her mother, Mrs. Louella Owen, in Greencastle, Ind. She was accompanied by Mr. and Mrs. Kenneth Landreth and daughter.

Mr. and Mrs. Milton Johnson of Niles, Ohio were weekend guests of Mrs. Johnson in Olive Hill, and Mr. and Mrs. Woodrow Evans.

Saturday dinner guests of Mr. and Mrs. John Butcher were Mr. and Mrs. Jimmy Moore and family of Columbus, Ohio, and Mr. and Mrs. Freddie Moore of Dayton.

Donna Fitzpatrick Snedegar of Hayes Branch entered the University of Kentucky Medical Center Saturday.

Mr. and Mrs. Terry Wicker were Sunday night guests of his parents, Mr. and Mrs. Monroe Wicker.

Mr. and Mrs. James M. Horton and Mr. Jack Stigall were in Lexington and Frankfort last Wednesday on business.

Miss Jane Rafter is spending the week with her sister, Mrs. Robert Fisher, and Mr. Fisher in Titusville, Fla.

Mr. and Mrs. William Eugene Calvert and daughters, Karen and Jill, returned to their home in Kalamazoo, Mich. Tuesday after spending the weekend with his mother, Mrs. Callie Caudill. Mr. Caudill accompanied them home for a visit.

Mr. and Mrs. Jack McAllister and daughter, Katie, of Columbus, Ohio, were weekend guests of her parents, Mr. and Mrs. Creed Patrick.

Dr. and Mrs. Jack Bizzell and son, Jeffrey, left Saturday for a week's visit with their families, Mr. and Mrs. Jesse Edlin in Anna, Ill., and Mr. and Mrs. Chick Watkins, in Memphis, Tenn.

Mr. and Mrs. Royal Brown of Lexington spent the weekend with their daughter, Mrs. Rex Chaney, Mr. Chaney and family.

Mr. and Mrs. Bemis Slus and family of Moreland, Ind. were weekend guests of Mr. and Mrs. Ralph Cassidy, and Mr. and Mrs. Carl Slus.

The Clearfield Tabernacle Missionary Society met Tuesday, April 19, at the church with Mrs. Alma Boyd, president, presiding. Mrs. Edith Hart presented the lesson. New Officers for the year are: Mrs. Alma Boyd, president; Mrs. Beattie Switzer, vice president; Mrs. Jean Hollan, secretary; Mrs. Nettie Myhrner, membership chairman; Mrs. Emma Hutchinson, spiritual life director; Mrs. Edith Hart, Missionary Education; Mrs. Mae Caudill, Hibernian; Mrs. Lella Grogan, Stewardess; Mrs. Rose Hall, Finance Director; and Mrs. Edith Griffith, Parliamentarian.

A "Special Place for a Special Society Edition"

784-7739

USE THIS PHONE ONLY
Mrs. Helen J. Jones
- Society Edition -

Jamie and Jeffrey Manning of Dayton were guests last week of their father, Mr. Lowell Manning, and their grand parents, Mr. and Mrs. Goebel Manning.

The Area Development Club of Clearfield held a call meeting last week at the Tabernacle with 27 members present. Mr. Sherman Arnett was the speaker.

Mr. and Mrs. George Hall and son, Jimmy, and Jamie and Jeffrey Manning of Dayton spent the weekend with their parents, Mr. and Mrs. Oscar Hall, in Clearfield.

Mr. and Mrs. Ora Cline spent the weekend with Mr. and Mrs. Roy Wade Cline and son, Barry, in Frankfort. They all attended Hollywood On Ice in Louisville Saturday.

Judy Fannin and Nancy Baker were honored with a surprise birthday party last Sunday at the home of Doug Jones. Guests were Pat Abner, Sally Caudill, Jerry Perkins, Sam Williams, Gene Ed Harris, Anna Royvaldo, John White, Mar Lee Cole, Jean Trent, and Larry Keyley.

Mr. and Mrs. Hardy Jones, Doug and Patty, spent the weekend with Mrs. Frances Jones at Insko.

Mrs. Ethel J. Moore left Friday for a visit with her mother, Mrs. J. Jones in Bowling Green. She will attend KEA in Louisville Thursday and Friday before returning home Saturday.

Sp. 5 Zack Richards arrived home last Thursday from Vietnam for a visit with his wife and family, who have been at the home of her parents, Mr. and Mrs. Wilford Waltz. Sp. 5 and Mrs. Zack Richards, who are now in the service, left Saturday for a visit in Bradenton, and West Palm Beach, Fla.

Mr. and Mrs. Phil McBrayer, Kelly and David, of St. Louis, Mo. were guests last week of their parents, Mr. and Mrs. A.B. Bowne, and Mrs. Earl McBrayer.

Mr. and Mrs. Bill Badger Robertson, Laura and Bill, of Austin, Texas spent last week with his sister, Mrs. A.B. Bowne, Mr. Bowne and family.

Mr. and Mrs. A.B. Bowne and son, Tom, entertained with family dinner at their home last Wednesday. Guests were Mr. and Mrs. Roy Smythe, Holly and Todd, of Ashland; Mr. and Mrs. Phil McBrayer, Kelly and David, of St. Louis, Mo. Mr. and Mrs. Bill Badger Robertson, Laura and Bill, of Austin, Texas, and Mrs. A.B. Bowne and family. Mr. Badger Robertson, Miss Carolyn White, Mr. Ed Harrison, and Mrs. Rodney Nixon and daughter, Beth, of Mr. Sterling; Miss Jackie Wurzelbach of Dayton; and Mrs. Jack Paul Todd, Mary and Mike, and Mrs. and Mrs. Jesse Mays and son, Bob.

Mr. and Mrs. Charles Brooks of Middletown, Ohio announce the marriage of their daughter, Marcela to Mr. Roger Egan Stevens, son of Mr. and Mrs. Charles L. Stevens of Farmers. The double ring ceremony was performed at the Christian Church of Morehead April 6 at 6 p.m. by the Rev. Alvin Busby. Members of the immediate families were present. The bride was given in marriage by the groom's father, Mr. Robert Anderson, of Charleston, W. Va. Mr. Paul Calvert was best man and Mrs. David Calvert was maid of honor. The bride chose a lace dress with an overskirt. Mrs. Calvert was retired in pink white with lace inserts. The bride is employed with the Middletown Intercity Box Co. as a secretary, the groom is serving with the U.S. Army.

Mr. and Mrs. Arnold Davis, Dennis and Timmy, and Mr. and Mrs. Dennis Davis have returned to their home in Farmers after a week's visit in Tampa, Fla. They also visited with Donald Davis, who is stationed at Ft. McClellan, Ala.

Weekend guests of Mr. and Mrs. Howard Chisler, Mrs. Mary, and Mrs. G.R. Nye, Joellen, Jerry, and Jimmy of Eden, N.Y., Mr. and Mrs. H.C. Kenny and daughter Kimberly Ann, of Portsmouth, and Mr. Lewis Kenny.

Mrs. Lewis Kenny and Cameron spent the weekend with her parents, Mr. and Mrs. Hansford Spears, in Prestonsburg.

Miss Kathy Orclere and Miss Lana Moore left last Tuesday for Winter Haven, Fla. for a visit with Mr. and Mrs. Gene Austin Alfrey.

Don and Lee Helwig left Friday for a week's visit at Daytona Beach, Fla.

Guests last week of Mr. Harry Ramey and Rosie Ramey were Mrs. Luther Alfrey, Mr. and Mrs. Halleck Hoskins, Mr. Linton Ramey, Mr. and Mrs. Taylor Ramey all of Shelby, Ohio, Mrs. Laura Price of Sophia, W. Va., and Mrs. and Mrs. Clifton Price and daughter of Columbus.

M/Sgt. and Mrs. Phillip Dice, Keith, and Victor and Linda of Montgomery, Ala., were guests Friday of Mrs. Hazel Plummer.

The Morehead State University Woman's Club will meet on Tuesday, April 23, at 7:30 p.m. in the Home Economics Auditorium. The speaker will be Mrs. R. Wesley Naye. Her subject will be "The Total Look of a Woman." In Houston, Mrs. Naye started the first modeling and charm school which she had for nineteen years. One of her students was Kathryn Grant who is now Mrs. Bing Crosby. "Best Food Forward" was a daily television show which Mrs. Naye did for several years. The Naye's moved to Louisville a few years ago and her husband, R. Wesley Naye, is Vice President of American Commercial Barge Lines, Memphis. Their daughter, Mary Lynn, "Miss Houston - 1966," graduated from college last year, and they have a son, Michael, who is nine years old. In addition to sponsoring various groups throughout the United States, Mrs. Naye conducts the "Seventeen Magazine" Beauty Workshop in Louisville. Most recently she narrated the "Miss Louisville" Pageant. A reception for Mrs. Naye will be held after the meeting in the Social Living Room. All members of the MSU Woman's Club are invited. The Younger Woman's Club is invited.

Guests last weekend of Mr. and Mrs. Howard Jones were Mr. and Mrs. Harold Jones, Crawfordville, Ind.; Mr. and Mrs. Bobby Jones and daughter, Lisa, and Mrs. Juanita Lewis, Frankfort; Miss Pat Johnson, Campton; Misses Maud and Marie Adams, Farmers; and Mrs. Charles Neal, Mr. Sterling.

The Farmers 4-H Club held its regular meeting April 11. The program on "Program for Spring and Summer" with topics of Rally Day, Senior Camp, Variety Show, and Special Interest Camp being discussed.

Mr. and Mrs. Jack F. Varnell of Insko announced the birth of their first child, a son, born April 4. He weighed 8 lbs. and has been named Jack Robert. Mr. and Mrs. Varnell is the former Miss Karen Bowen of Haldeman, Ky. The maternal grandparents are Mr. and Mrs. Samuel F. Bowen, Haldeman, Ky., and the paternal grandparents are Mr. and Mrs. L.F. Varnell of Heskell, Tenn.

Weekend guests of Mr. and Mrs. Roy Gaudin were Mr. and Mrs. Donald Gaudin and son, Donald Roy, of Louisville. Mr. and Mrs. Raymond Black, of Louisville, and Mr. and Mrs. Orville Amburgey of Dayton, and Mrs. Orville Amburgey.

Mr. and Mrs. Guy Penny, Debbie, Dee, and Dianne, left Saturday for a week's visit with their parents, Mr. and Mrs. Daisy Penny, and Mr. and Mrs. H.A. Buttram in Piedmont, Ala.

Mrs. Robert Walker left for her home in Crestline, Ohio last Thursday after a visit with Mr. and Mrs. F.E. Moorefield. Sunday dinner guests of the Moorefields were Mrs. and Mrs. Larry Ball and son, Andy.

Weekend guests of Mr. and Mrs. Virgil White were Mr. and Mrs. Clifford Davis and family of Muncie, Ind.; Mr. and Mrs. Lucian White of Great Falls, Mont.; Mr. and Mrs. Charles L. White and daughter, Jill, of Columbus, Mr. and Mrs. Elmont White of Barbourville, Ky., and Mrs. John W. White and family of London.

Mrs. Susie Hackney, Mrs. Byron Dixon, Mr. Kenyon Hackney and daughter, Carmo, and Byron Paul Dixon of Arlington, Va. were weekend guests of Mr. and Mrs. Paul Hackney and family, and Mr. and Mrs. Graydon Hackney and family.

Mrs. Monroe Wicker, and Mrs. Glenn Lane were Ashland visitors Monday.

Mr. and Mrs. Dale Greer and daughter, Laura Beth, of Louisville, and Mr. and Mrs. Don Travis of Bowling Green were guests of Mr. and Mrs. Lewis Higgins for the weekend.

Miss Mary Caudill of Columbus, Ohio and Mr. and Mrs. Lewis Wright of Ohio, Ohio, were weekend guests of Mr. and Mrs. Caudill. Mr. Caudill remained for a longer visit. Other guests Thursday and Friday were Mrs. Delbert Thornberry, Debbie and Doug, of St. Louis, Mo.

Mrs. Nell Collins and daughter, Sharon, of Lexington spent the weekend with her parents, Mr. and Mrs. J.M. Cassidy.

Mr. and Mrs. Dick Mulford, Wendell and Molly Ann, of Chillicothe, Ohio, were weekend guests of Mr. and Mrs. Fred Cassidy. Mr. and Mrs. Cassidy spent the weekend with her parents, Mr. and Mrs. R.L. Salyer, in Salyersville.

Mr. and Mrs. Tim Harold and daughter, Holly, of Chillicothe, Ohio spent the weekend with Mr. and Mrs. Dave Gannon and family.

Mr. and Mrs. Joe Bayless, Michael, Laura Jane, and David, of Obion, Ill., and Mr. and Mrs. Ray and Mrs. Kayla, of Indianapolis, Ind. were guests of Mr. and Mrs. D.E. Bayless over the weekend.

Mrs. Jack Helwig, Sr. and Mrs. Jack Helwig, Jr. were Lexington visitors last Tuesday.

Weekend guests of Mrs. Nell Kash were Mrs. Carol Sue Layne, Mr. and Mrs. Jim Bob, and Mr. and Mrs. Hugh Allen, and Mr. and Mrs. Mike Manley and son, Mark, all of Columbus, Ohio. Mrs. Manley is the former Kathy Meese.

Mr. and Mrs. John Will Holbrook left Tuesday for Dallas, Texas where they will attend the General Conference of the Methodist Church. This is the Conference of the F.W.B. Church and the Methodist into The United Methodist.

BETROTHED - Mr. and Mrs. Floyd Rose of Middletown, Ohio announced the engagement and forthcoming marriage of their daughter, Anita, to Mr. Roger Glen Johnson, son of Mr. and Mrs. Shelby Johnson of Morehead. The wedding will be solemnized at 7:30 o'clock June 29 in the Meadowlark First Church of God in Middletown, Ohio. Miss Rose is a graduate of Morehead State University and is a second grade teacher in the Princeton City School District, Sharonville, Ohio. She is a granddaughter of Mrs. Silas Richardson and the late Mrs. Richardson of Salt Lick. Mr. Johnson is a graduate of Morehead State University and is employed by Armco Steel Corporation in Middletown. He is a grandson of Mr. Cooper Black and the late Mrs. Black of Morehead.

The Sharkey Homemakers met at the home of Grace Curtis April 9 for their regular monthly meeting. Their lesson was on "Selecting New Fabrics." House plants were exchanged, games played, and refreshments served. Members present were Stella Litton, Etha Mays, Hazel Black, Edith Hicks, Nancy Barker, Eva Caudill, Irene Caudill, Pat Eldridge, Loretta Cornette, Gladys Cooper, John Anderson, and Mrs. Francis Alderman, and Grace Curtis.

The cheerleaders of the Tilden Hodge School entertained the following with a party at the T.G.T. Clubhouse Friday, April 19. Donna Smith, Patay Anderson, Nenni Cooper, John Anderson, Debbie Plank, Angie Kuller, Patty Caudill, Becky Lyon, Kathy Caudill, Brenda Alderman, Suzanne Coleman, Mike Caudill, Shana Rice, Rickie Waltz, and King Terry Smith, Mike Smith, and Keith Smith. Following the party, eleven girls had a slumber party at the clubhouse.

The Central-Eastern Kentucky Alumnae Chapter of Sigma Alpha Iota, national professional music fraternity, will meet on Monday, April 20, at 2:30 p.m. at the home of Mrs. Thomas P. Field, 1014 Charleston Way S., Lexington. The meeting will feature a formal business meeting and installation of officers.

Mr. and Mrs. Bill Malone of Columbia, S.C. left Tuesday after a visit with her mother, Mr. and Mrs. Alvin McGary and family.

The Day Homemakers met April 9 at the home of Mrs. Bonnie Thompson for an all day meeting. The lesson "Fabrics and New Fabrics" was presented by Mrs. Laura Barker, and Mrs. Louise McGary. Other members present were Mrs. Frances Wolfe, Mrs. Nell Coleman, Mrs. Lena Coleman, Mrs. Edith Cline, Mrs. Thelma Casper, Mrs. Ica, Caldwell, Mrs. Martha McBrayer, Mrs. Emma McBrayer, Mrs. Nora Patton, and two visitors, Mrs. Mesta Walenta Patton and Mrs. Mildred Wighman.

Mr. and Mrs. Bernice Hane of Hamilton, Ohio spent the weekend with his mother, Mrs. Dorothy Hane, and Mr. and Mrs. V.D. Flood.

Mr. and Mrs. Elwood Brown, Stephanie, and Mrs. John Donahay, Mrs. Charles Layne, Linda and Mike, Mr. Charles Purvis, and Bev Delavan of Dayton, and Jackie Purvis of Ft. Knox were weekend guests of Mr. and Mrs. Cecil Purvis.

Mrs. Toddy Turner and Ricky and Mr. Cecil Purvis spent last Thursday in Lexington.

Steve and Ricky Hauck left Sunday for their home in Williamsburg, Ohio after a visit with Mr. and Mrs. Elton John and Mrs. and Mrs. Johnson and Miss Nancy Caudill accompanied them home.

Dr. and Mrs. James Earl Davis, Chris, Mike, and Rebecca will leave Thursday [today] for Louisville to attend KEA, and to spend the weekend with their parents, Mr. and Mrs. James L. Kidd, in Falmouth.

Mr. and Mrs. Al Evans of Lexington are welcoming their first child, a son, born at the University Medical Center April 10th. He weighed 8 lbs. 10 oz. and has been named Brian Christopher. Mr. Evans is the former Jack Blair, daughter of Mrs. Thelma Smith.

Mr. and Mrs. Cole Proctor are welcoming their second child, a son, born April 11, at St. Claire Medical Center. He weighed 6 lbs. 14 oz. and has been named Thomas Cole. He has a sister Susan Ann.

Friday dinner guests of Mr. and Mrs. Earl McBrayer were Mr. and Mrs. Harold Ellington, Terry and Leigh Ann, and Mrs. Jack McBrayer, Brian, and Mrs. and Mrs. Elton John, and Mrs. Wayne Chapman, Kevin, Garin, and Jill, and Mr. and Mrs. Phil McBrayer, Kelly and David, of St. Louis, Mo.

ADMISSIONS

April 10 - Lulu Kate Williams, Florence Proctor, Morehead.
April 11 - Lorraine Sloan, Morehead; Enid Boggs, Olive Hill; Pauline Johnson, Elliottville; Sandra Rinsler, Cannel City; Virgil Phillips, Olive Hill; Ronald Egnew, Morehead; Stephen Gee, Morehead; Norman Addison, Ashland.
April 12 - Donna Anderson, Morehead; Crecy Holbrook, Olive Hill; Tennessee Greer, Sandy Hook; Ephraim Fyffe, Martha; James Flannery, Olive Hill; Harris Mullins, Olive Hill; Weber Crawford, Olive Hill.
April 13 - Ed Wells, Olive Hill; Barbara Arnewood, Olive Hill; Teresa Caudill, Morehead; Gus Peroula, Evansville, Ind.; James Stanley, N. Chm; David, Ohio; Granville Kiser, Olive Hill; Stephen Perkins, Morehead.
April 14 - Bertha Howard, Cinc., Ohio; Mable Penix, W. Liberty, Gertie, Peters, Sandy Hook; Dean Black, Morehead; Nora Richmond, Head of Graceland; Paulette Lambert, Morehead; Rudolph Cassidy Hook; Fredro Brown, Morehead; John Kelsey, Morehead; William Mowbray, Lorain, Ohio.
April 15 - JoAnn Snedegar, Hillsboro; Lois Arnett, West Liberty; Phyllis Terry, Arnett, West Liberty; Phyllis Terry Arnett, Morehead; Jean Hays, Morehead; Delvin Lewis, Gallon, Ohio; Jack Butler, Olive Hill; Charles Stamper, Morehead; James Goss, Ashland; Donna Moore, Yocum.

April 16 - Sandra Banks, Morehead; Ruth Barron, Morehead; Bill Stevens, Morehead; Benjamin Gid, Long Island, N.Y.; William Matthews, Morehead; Clifford Erwin, Olive Hill.

DISMISSALS

April 10 - Deckie Cantrell, Chlo Wheeler, Nancy Masters, Cheryl Ferguson, Magdell Wells, Ollie Keeton, Edward Stinson, Gillard Law.
April 11 - Charles Hay, Harrison Keeton, Nancy Masters, Roy Masters, Myrtle Gibson, Margie Byerly and baby, Lorraine Sloan and baby, Patricia Riley and baby, Michael Greer, Marie Stamper, Rosemary Lewis.
April 12 - Oval Ferguson, Everett Hyatt, Norman Addison, Lena Watt, son, Chlo Cartwright.
April 13 - Stephen Gee, James Flannery, Ed Thompson, Weber Crawford, Pauline Johnson, Fannie Gibson.
April 14 - Donna Anderson and baby, Martha Proctor and baby, Mary Gregory, son, John Donahay, Meade Roberts, Gus Peroula, James Stanley.

April 15 - Plez Fyffe, Rudolph Caudill, Granville Kiser, Sandra Rinsler.

The marriage of Miss Eva Blackburn of Pikeville, and Mr. Kenny Ford of Salt Lick took place April 14 at the Blue Bank Church. A reception was held at the home of Mr. and Mrs. Kenneth Orclere, with forty-five guests attending. The bride, a student at Morehead State University, will graduate in May. Mr. Ford is employed at A.O. Smith Co. in Mt. Sterling.

TERMITE TROUBLE?

See or Call
CHESTER KISER
CONSTRUCTION CO.
Phone 784-5109
& 784-5442
Agents for
State Termite Control and Chemical Co. Inc.

TAPE AWAY THE HOURS WITH AN 800 AUTOMATIC STEREO TAPE PLAYER

FOR YOUR BOAT OR CAR!
• Uninterrupted hours of music
• One hand operation
• Beautiful stereo sound
• Reproduction
• Tamper-proof
• Maintenance free
• Limited

\$39.95 - \$109.95
Complete Synthesizer of Cartridge Tapes
SEE IT SOON AT MOREHEAD HOME & AUTO

St. Claire Medical Center

Morehead, Ky.

784-4161

and baby.

April 16 - John Kelsey, Barbara Arnewood and baby, Ira Day, Mable Penix, Lulu Williams, Tennessee Greer, Bertha Howard.

BIRTHS

April 11 - Mr. and Mrs. Cole Proctor, son, Mr. and Mrs. Versel Sloan, Son.
April 12 - Mr. and Mrs. Lloyd Anderson, Son; Mr. and Mrs. Kelse Rinsler, Son.
April 13 - Mr. and Mrs. Billy Arnewood, daughter.
April 14 - Mr. and Mrs. Joseph Caudill, daughter.
April 15 - Mr. and Mrs. Anthony Lambert, Son; Mr. and Mrs. Hager Arnett, Son; Mr. and Mrs. John D. Terry, daughter.
April 16 - Mr. and Mrs. Bobby Snedegar, Son; Mr. and Mrs. Marshall Banks, daughter.

27 Adults Enrolled At M'head

Twenty-seven adults have attended the classes offered in 1967-1968, as part of the total home economics program offered at the University Breckinridge School, Morehead State.

This program is offered in secondary schools in Kentucky, under the auspices of the State Department of Vocational Education. Mrs. W.H. Rice is in charge of the program and coordinates the program with the help of student teachers in home economics at the Morehead State University.

Program topics that have been covered dealt with beginning sewing skills, interior decorating projects, leisure time activities, cooking skills. The topics that have been planned for the new series in 1968-1969 are updating and refinishing home furnishings, and better management for the working homemaker.

Any adult interested in attending one or more of the lessons planned, contact Mrs. Rice for further details. There is no charge for these home living classes.

Adults who have attended one or more of the classes in 1967-1968 include: Mrs. Ross C. Anderson; Mrs. Tommy Caudill; Mrs. Holly Crowthair; Mrs. Warren Cooper; Mrs. Basil Dameron; Mrs. W. Michael Damm; Thelma Evans; Mrs. Dale Walker; Mrs. Monroe Wicker; Mrs. Virginia H. Williams; Mrs. Pauline Gentry; Mrs. Palmer Hall; Miss Pauline Gentry; Mrs. E.J. Jones; Betty Lane; Hazel Lowe; Effie Lowe; Mrs. Pearl Lowe; Mrs. Ruth W. Porter; Mrs. Pearl Patton; Mrs. Mae Smalley; Mrs. Lucille Sear; Mrs. Chris Schlegel; Mrs. Frances Sparks; Miss Pauline Tomlinson; Mrs. Eugene Sherman; Mrs. Alvin McGary.

STUDENTS HAPPY SPRING VACATION
DAILY MATINEE
Box Office Open 1:30 til 10:00 p.m.

NOW Thru SATURDAY
Elvis goes West... and the West goes wild and that's no Sitting Bull!

Elvis is kessin' cousins again- and even some perfect strangers!

ELVIS PRESLEY
BURGES MEREDITH-JOAN BLONDELL
KATY JURADO-THOMAS GOMEZ

STAY AWAY JOE PARAVISION AND METROGRAM

FEATURE TIMES: 2:00 - 4:10 - 6:05 - 8:05 - 10:00

Sunday-Monday-Tuesday

Richard Burton-Elizabeth Taylor
Alec Guinness-Peter Ustinov

They lie, they cheat, they destroy... They mean to die.

The Comedians
How to see a Graham Green

Salt Lick Soldier Reports In Vietnam

Army Private William C. Johnson, son of Mr. and Mrs. Kelly Johnson, star Route 1 salt lick, has been assigned to the 8th Transportation Group near Qui Nhon, Vietnam, March 20. Pvt. Johnson is a truck driver in the group's 27th Transportation Battalion. He entered the Army in October 1967 and completed basic training at Ft. Knox, Ky. He was last stationed at Ft. Dix, N.J.

The 21-year-old soldier was graduated from Bath County High School, Morehead, Ky., in 1965. Before entering the Army he was employed by Upperhart Trucking Company, Morehead. Johnson's wife, Linda Sue, lives on Route 1, Morehead.

Letters . . .

to the editor

This newspaper welcomes letters, particularly on subjects of general local, or area, interest. Right is reserved to condense. No letters will be printed without author's signature and address.

The Editor:
On a recent visit to Morehead I was shocked to learn there had been no fitting monument to the late Judge W. Young.

Morehead would not be today where it stands in the State of Kentucky if it had not been for this illustrious man. A dormitory on the campus of Morehead State University is named in honor

of Judge Young but that is not enough. I was a student at Morehead some 36 years ago.

Mrs. Charles (Martha E. Owen) Erbacher
Perryville, Indiana

GLAD SHE NO LONGER LIVES AT MOREHEAD

The Editor:
I read your newspaper issues of March 7 and 14. At first I laughed until I realized you really were serious. Then, I did a slow but very warm burn. As I understand it, some young man or men passed out some papers and stated personal opinions - of what I couldn't quite understand from your report, because the entire page was filled with protests from the good citizens of Morehead.

The Circuit Court allowed the protesters the honor of using the taxpayers' Court House with so many restrictions that about the only thing left for them to do was to decline the use of the Court Room or carry on a debate of the weather conditions.

The President of the United States who holds a most honored position is open to criticism and certainly gets his share, but to criticize the president and policies of Morehead State University was so sacrilegious as to cause petitions, letters and protests. Since when does the Chamber of Commerce presidents have a damn thing to do with Morehead State University's employer-employee relations? Does any employer need the support or non-support of outsiders in such matters? Hog Wash!

Sort of reminds me of one other time you had a news item of interest to me. Seems Morehead State had some construction to do. The blue collared workers' pay scale was too high in some people's opinions so the good towns people joined together to lower the scale. All along your newspaper has deplored the condition of the poor, supported food stamps and wondered why the young left your fair city. Well, I left your fair city because I deplored the conditions of the poor, had too much pride for food stamps and felt that a town that lowers pay scales and raises prices had very little to offer me. I am glad am not there now to be embarrassed by the good towns people's narrow mindedness, and their - "I'm right, you are wrong" - attitude.

Jo Anne McBrayer
273 Birchwood Court
Wabash, Indiana

THINKS 'MOREHEAD' SIGNS NEED REPAIR

The Editor:
In this day of big business more money is spent on advertising that ever before. It must be sound business or progressive business wouldn't spend

Karl Payne To Give His Faculty Recital

Karl Payne, instructor of music at Morehead State University, will present his faculty recital Friday, April 26, at Baird Music Hall on the campus, beginning at 8 p.m.

Payne received his bachelor and master degrees in music from the University of Indiana, and was a piano student of Joseph Battista. He has appeared many times throughout the state as a soloist and accompanist.

His program will include: "Partita No. 1 in E Flat" by Bach; three works of Brahms from "Opus 118," "Intermezzo No. 1 and 2" and "The Ballade"; "Polka" from "Age of Pops" by Shostakovich; "Fantasy in C Minor" by Mozart; "Undine" by Ravel and "Pavane and Toccata" by Foulenc.

so much on it.

But, advertising can have an adverse effect if it is improperly used. I am speaking of the two "Morehead" signs as you enter the community from the east or west on U.S. 60. In their present condition they would give a stranger the idea they were entering a ghost or backward town.

The sign on the west end has all the neon out except MOR. The sign to the east wasn't on at all Thursday night when I checked it. It is also improperly located near a stop light, and is not even at the entrance of Morehead as the city limits are half-mile further east at Rodburn.

I am proud we have signs like this if they were kept in proper working order. It would cost little money to have them repaired.

Ligeon A. Kessler
504 W. Main Street
Morehead, Ky.

Editor's Note - These signs were erected many years ago by the Chamber of Commerce, but evidently no provisions were made for service or repairs.

RECOMMENDS TOUGH ATTITUDE IN THIS SITUATION

The Editor:
The minority trouble in our Universities seems to be well organized. I would suggest to our college leaders a Texas style round-up day soon to count, brand, and weed out the culls in their long horn cattle.

Kentucky should be the first state in the union to count and brand the long-haired educators and students who defy the laws of our government. Could any of our leaders explain to a Gold Star mother why her tax dollars were used to pay educators to teach students to be a security risk to this nation?

Director J. Edgar Hoover and General Lewis H. Hensley are two dedicated men in Washington, D.C. who have honored their oath of office. They have given this nation years of outstanding service. No man that respects law and order would question their integrity. They deserve our support.

Sincerely yours,
Howard Stone
RFD 1
Sharpsburg, Ky.



SLOW GOING . . . Paratroopers of the 101st Airborne Division struggle while deep-dredging mud while crossing the swamp southeast of Phouc Vinh on a search and clear operation in Vietnam. The men are members of C. Company, 1st Battalion (Airborne) 506th Infantry.

The Extra Ingredient . . . Professional Skill



When our registered pharmacists compound a prescription, years of professional training, knowledge and experience stand behind it. Have your prescriptions filled here, with complete confidence. Fresh, potent drugs . . . and prompt service, too.

We Are in Business for Your Good Health!

C. E. BISHOP DRUG CO.

"Your Rexall Store"
Main St. Morehead, Ky.



\$100.00 IN CASH EACH WEEK

PLAY . . . LUCKY NUMBER

at



21 WINNERS!

1-First Prize \$50.00
10-Second Prizes 3.00
10-Third Prizes 2.00

- * It's Easy and Fun To Play . . .
- * No Purchase Necessary . . .
- * A New Contest Each Week . . .

Come In This Week for Your First Lucky Number for Next Week's Contest . . .

Here's How You Can Win!

1. Bring in your Lucky Number each week and compare it with the 21 Lucky Numbers posted at Saveaway Super Valu.
2. If your Lucky Number matches any of the 21 Lucky Numbers posted in our store, you will win cash prizes of \$50, \$3, or \$2.
3. A new list of Lucky Numbers is posted every Monday morning and left up thru Saturday, giving you 6 days to compare your number.
4. Starting this week, every time you shop at Saveaway Super Valu, you will be given a new Lucky Number ticket to be used the following week. Be sure to tear your Lucky Number ticket in half. Deposit the stub in the jackpot barrel and you keep the other half to compare any day the next week, Monday thru Saturday.
5. When you visit our store this week be sure to get your first Lucky Number ticket for next week's contest.

SAVEAWAY



Year's lowest prices on Ford XL's... Mustang Sprints... Fairlane hardtops!

Ford's See-the-light Sale!



Save on Ford XL's with air conditioning! Talk about cool deals! You won't see the likes of this one again if you wait all year. Our top-of-the-line XL Fastback is now on sale with • Factory-installed air conditioning • Tinted windshield and windows • 302-cu. in. V-8 • High-performance axle • Disappearing headlamps • Die-cast grille • GT stripes • Quiet ride of a great road car. The supply of these XL's is limited. So hurry!

Save on Mustang Sprints! Here's your chance to get the best selling sports car in the world . . . loaded with special equipment you never could get at this price before • GT stripes • Pop-open gas cap • Wheel covers • Sporty trim • Go V-8 and also save on • Wide-open tires • Styled steel wheels • GT lug caps • Buckets, floor-mounted stick, carpeting come at no extra cost! But hurry! These Mustang Sprints are going fast!

Save on Fairlane Hardtops! Special savings, too, on America's most popular intermediate. Specially equipped hardtops with • Vinyl roof • Sporty wheel covers • White side-wall tires • Smart accent side moldings • Pleated vinyl upholstery



Fairlane Wins Mobile Gas Economy Run Class C, Averaging 22.7 Miles Per Gallon



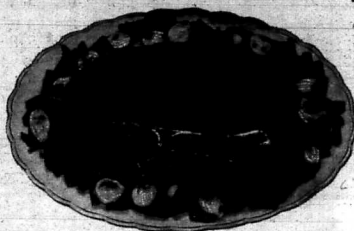
SAVEWAY

SUPER VALU

Family Pack

Fryers

35¢



Center Cut Ham Slices

1/4 Pork Loin Sliced

Boneless Rump of Pork

Fresh Pork Cutlettes

Hickory Smoked Slab Bacon

1/3 End Chops

2/3 Center Chops

Whole or Half

lb. 89¢

lb. 69¢

lb. 89¢

lb. 89¢

lb. 49¢

VerRay Lean

Pork Steaks lb. 49¢

lb. 89¢

lb. 69¢

lb. 89¢

lb. 89¢

lb. 49¢

lb. 89¢

lb. 69¢

lb. 89¢

lb. 89¢

lb. 49¢

lb. 89¢

lb. 69¢

lb. 89¢

lb. 89¢

lb. 49¢

lb. 89¢

lb. 69¢

lb. 89¢

lb. 89¢

lb. 49¢

lb. 89¢

lb. 69¢

lb. 89¢

lb. 89¢

lb. 49¢

lb. 89¢

lb. 69¢

lb. 89¢

lb. 89¢

lb. 49¢

lb. 89¢

lb. 69¢

lb. 89¢

lb. 89¢

lb. 49¢

lb. 89¢

lb. 69¢

lb. 89¢

lb. 89¢

lb. 49¢

lb. 89¢

lb. 69¢

lb. 89¢

lb. 89¢

lb. 49¢

lb. 89¢

lb. 69¢

lb. 89¢

lb. 89¢

lb. 49¢

lb. 89¢

lb. 69¢

lb. 89¢

lb. 89¢

lb. 49¢

lb. 89¢

lb. 69¢

lb. 89¢

lb. 89¢

lb. 49¢

lb. 89¢

lb. 69¢

lb. 89¢

lb. 89¢

lb. 49¢

lb. 89¢

lb. 69¢

lb. 89¢

lb. 89¢

lb. 49¢

lb. 89¢

lb. 69¢

lb. 89¢

lb. 89¢

lb. 49¢

lb. 89¢

lb. 69¢

lb. 89¢

lb. 89¢

lb. 49¢

lb. 89¢

lb. 69¢

lb. 89¢

lb. 89¢

lb. 49¢

lb. 89¢

lb. 69¢

lb. 89¢

lb. 89¢

lb. 49¢

lb. 89¢

lb. 69¢

lb. 89¢

lb. 89¢

lb. 49¢

lb. 89¢

lb. 69¢

lb. 89¢

lb. 89¢

lb. 49¢

lb. 89¢

lb. 69¢

lb. 89¢

lb. 89¢

lb. 49¢

lb. 89¢

lb. 69¢

lb. 89¢

lb. 89¢

lb. 49¢

lb. 89¢

lb. 69¢

lb. 89¢

lb. 89¢

lb. 49¢

lb. 89¢

lb. 69¢

lb. 89¢

lb. 89¢

lb. 49¢

lb. 89¢

lb. 69¢

lb. 89¢

lb. 89¢

lb. 49¢

lb. 89¢

lb. 69¢

lb. 89¢

lb. 89¢

lb. 49¢

lb. 89¢

lb. 69¢

lb. 89¢

lb. 89¢

lb. 49¢

lb. 89¢

lb. 69¢

lb. 89¢

lb. 89¢

lb. 49¢

lb. 89¢

lb. 69¢

lb. 89¢

lb. 89¢

lb. 49¢

lb. 89¢

lb. 69¢

lb. 89¢

lb. 89¢

lb. 49¢

lb. 89¢

lb. 69¢

lb. 89¢

lb. 89¢

lb. 49¢

lb. 89¢

lb. 69¢

lb. 89¢

lb. 89¢

lb. 49¢

lb. 89¢

lb. 69¢

lb. 89¢

lb. 89¢

lb. 49¢

lb. 89¢

lb. 69¢

lb. 89¢

lb. 89¢

lb. 49¢

lb. 89¢

lb. 69¢

lb. 89¢

lb. 89¢

lb. 49¢

lb. 89¢

lb. 69¢

lb. 89¢

lb. 89¢

lb. 49¢

lb. 89¢

lb. 69¢

lb. 89¢

lb. 89¢

lb. 49¢

lb. 89¢

lb. 69¢

lb. 89¢

lb. 89¢

lb. 49¢

lb. 89¢

lb. 69¢

lb. 89¢

lb. 89¢

lb. 49¢

lb. 89¢

lb. 69¢

lb. 89¢

lb. 89¢

lb. 49¢

lb. 89¢

lb. 69¢

lb. 89¢

lb. 89¢

lb. 49¢

lb. 89¢

lb. 69¢

lb. 89¢

lb. 89¢

lb. 49¢

lb. 89¢

lb. 69¢

lb. 89¢

lb. 89¢

lb. 49¢

lb. 89¢

lb. 69¢

lb. 89¢

lb. 89¢

lb. 49¢

lb. 89¢

lb. 69¢

lb. 89¢

lb. 89¢

lb. 49¢

lb. 89¢

lb. 69¢

lb. 89¢

lb. 89¢

lb. 49¢

lb. 89¢

lb. 69¢

lb. 89¢

lb. 89¢

lb. 49¢

lb. 89¢

lb. 69¢

lb. 89¢

lb. 89¢

lb. 49¢

lb. 89¢

lb. 69¢

lb. 89¢

lb. 89¢

lb. 49¢

lb. 89¢

lb. 69¢

lb. 89¢

lb. 89¢

lb. 49¢

lb. 89¢

lb. 69¢

lb. 89¢

lb. 89¢

lb. 49¢

lb. 89¢

lb. 69¢

lb. 89¢

lb. 89¢

lb. 49¢

lb. 89¢

lb. 69¢

lb. 89¢

lb. 89¢

lb. 49¢

lb. 89¢

lb. 69¢

lb. 89¢

lb. 89¢

lb. 49¢

lb. 89¢

lb. 69¢

lb. 89¢

lb. 89¢

lb. 49¢

lb. 89¢

lb. 69¢

lb. 89¢

lb. 89¢

lb. 49¢

lb. 89¢

lb. 69¢

lb. 89¢

lb. 89¢

lb. 49¢

lb. 89¢

lb. 69¢

lb. 89¢

lb. 89¢

lb. 49¢

lb. 89¢

lb. 69¢

lb. 89¢

lb. 89¢

lb. 49¢

lb. 89¢

lb. 69¢

lb. 89¢

lb. 89¢

lb. 49¢

lb. 89¢

lb. 69¢

lb. 89¢

lb. 89¢

lb. 49¢

lb. 89¢

lb. 69¢

lb. 89¢

lb. 89¢

lb. 49¢

lb. 89¢

lb. 69¢

lb. 89¢

lb. 89¢

lb. 49¢

lb. 89¢

lb. 69¢

lb. 89¢

lb. 89¢

lb. 49¢

Continued On Next Page |

Notice Of Sheriff's Sale Of Delinquent Tax Bills

Continued From Preceding Page

5445	Roff-Council Land Company	25.82
5446	Sheets, Ellis	18.99
5503	Skaggs, Raymond	32.73
5519	Sloan, William B. Jr.	55.14
5528	Sloan, John	19.24
5542	Sloan, Don	12.00
5546	Smedley, Wilburn	8.22
5550	Smedley, Richard	19.24
5559	Smith, J. A.	6.29
5570	Smith, Robert	7.44
5572	Smith, Tom	20.97
5579	Sodagar, Sanford	14.16
5589	Sorrell, Chester	12.18
5592	Southern Holding Company	57.37
5593	Spangler, Ben	6.29
5605	Sparks, Philip	19.68
5610	Sparks, Harry	5.08
5614	Spears, James	12.74
5628	Stacy, James	8.02
5630	Stacy, Charles	3.91
5643	Stamper, John	51.25
5647	Stamper, Willie G.	7.08
5648	Stamper, Johnny	1.957
5651	Stamper, Ray	5.89
5652	Stamper, Ray	6.56
5653	Stamper, Hazlan	7.24
5655	Stamper, Charles D.	10.59
5667	Stanley, Leslie	15.74
5672	Stark, Steve	16.77
5676	Staton, Jack	16.17
5681	Stegall, Jack	9.79
5684	Stegall, Cecil	19.24
5686	Stegall, Elijah	19.24
5689	Stegall, Allen	13.19
5702	Stevens, Jim	17.32
5705	Stevens, James H.	37.49
5706	Stevens, Wilburn	32.19
5739	Stevens, Herbert	13.19
5773	Sublett, Charles G.	11.81
5777	Swim, William	11.37
5793	Swinton, Millard	14.68
5796	Shumate, Nora	8.53
5806	Slem, W. C. [Heirs]	12.52
5810	Sloan, Tommy	14.89
5809	Sloan, George	16.17
5810	Sloan, Rosa	16.17
5811	Sloan, Buddy	17.82
5813	Sloan, Tom	50.45
5828	Smith, Edward & Betty	50.45
5831	Smith, Aurelia [Dec]	46.95
5832	Snipes, Chalmers	29.36
5833	Sparkman, Debbie	7.83
5842	Sparks, Dea	56.07
5862	Stegall, Leonard	23.61
5866	Stegall, Russell	14.68
5867	Stegall, Henry	17.85
5869	Stevens, Alvin	33.28
5874	Stevens, Jim	33.28
5876	Sidham, James	34.79
5891	Sturgill, Allen	66.09
5898	Shelby, Tommy	18.78
5908	Sherrill, [Dec]	9.39
5909	Sloan, Tom & Oscar	6.26
5913	Smedley, Jesse	9.39
5919	Southern Holding Company	6.26
5920	Spaulding, George	9.39
5923	Stamper, Ida Mae	7.83
5924	Stamper, Julia	7.83
5925	Stevens, Norman	10.68
5937	Stevens, Jerry M.	28.16
5939	Stevens, Addie	21.03
5946	Stacy, Mae	10.62
5963	Stoll Oil Company	23.18
5977	Tackett, Bob	30.12
5985	Tackett, Clarence	7.87
6002	Tufo, Karl and Jack	12.59
6020	Thomas, Jack	44.79
6026	Thomas, C.H.	6.39
6033	Thomas, Dennis Ray	6.30
6034	Thomas, Willard	11.33
6040	Thompson, Vernon	49.07
6050	Thompson, Ernest	25.03
6081	Traylor, Perry	7.87
6086	Trent, Vernon	5.08
6088	Trent, Curtis	15.74
6094	Trent, Corbie	7.83
6100	Trent, Leonard	15.74
6112	Turner, Lucille	69.85
6122	Turner, Elkhorn Mining Co.	18.79
6145	Thomas, Carl S.	45.53
6150	Thomas, Billy	23.83
6162	Thompson, Mrs. J.	25.03
6171	Todd, Albert	6.91
6194	Thomas, Willard	13.04
6198	Trent, Henry	590.25
6204	Tackett, Clarence & Brumwick	20.59
6225	Unchester, William J.	12.91
6232	Vance, Bobb & Ledford	18.38
6235	Dam, John Van	26.76
6241	Via, John	6.65
6251	Waddell, Troy	8.22
6258	Wagner, Ralph	6.65
6262	Walker, William D.	8.60
6264	Walker, Robert	30.61
6271	Wallace, Ernest	11.57
6275	Wallace, Homer	5.08
6278	Wallace, Bruce	19.68
6281	Wallace, Darrell	19.68
6283	Wallen, Charles	19.68
6203	Warren, Ronald	23.58
6307	Warren, Charles	19.68
6310	Watson, James	9.79
6312	Watson, Everett	28.69
6313	Watson, Nege & Richard	7.64
6316	Watts, Billy D.	13.39
6321	Webster, George	38.91
6323	Weir, Mrs. Mary O.	73.16
6343	Wells, Ewell	17.56
6345	Wells, Calvin	36.89
6360	Whisman, Glen & Helen	23.96
6372	Whitaker, Culbert	6.29
6420	Witt, Emory, Jr.	22.76
6425	Whitt, Donald B.	11.08
6435	Wibbles, Thomas A.	16.09
6447	Williams, Hobart	5.08
6448	Williams, Lord	12.91
6478	Williams, Gary	22.03
6481	Wilson, Jack	14.16
6482	Wilson, Odis	21.13
6501	Woolley, Charles	39.90
6508	Workman, George	12.52
6521	Wright, Janicy & George	50.08
6522	Wyatt, Harold	32.60
6531	Waddell, Chester	73.81
6536	Wallace, John	25.15
6538	Wallace, Cleveland Henry	7.83
6540	Wallace, Clarence	15.65
6542	Wallace, Henry	21.13
6583	Williams, Rev. J.H.	21.13
6585	Williams, Don and Hazel	21.13
6596	Wooten, Herbert	21.13
6603	Wilson, Odis	21.13
6611	Webb, William R.	21.13
6616	Webb, Redwine	21.13

Sports Shorts

First Replay
LUBBOCK, Tex. (UPI)—Texas Tech's 26-7 football victory over Kansas in 1966 was the first intercollegiate grid contest in which instant video replay was used by coaches and the referee. The game, called in the opening minute of the first half, was a 10-0 home win. It also is believed the first terminated by weather.

PRINCETON, N.J. (UPI)—Sports equipment is big business and it's being played with introduction of new products based on advanced technology. Golf club "woods" that are actually hollow metal, aluminum tennis racket, new style baseball bats and gloves, and now a practically indestructible golf ball. The ball (PCB-Berch) is the only patented solid, molded, 1-piece golf ball that can't be sliced cut "no out of round." It is guaranteed to be perfectly playable for 180 holes.

Archery Popper
MINNEAPOLIS (UPI)—Archery is one of the fastest growing sports in America, with about 4 million bow-and-arrow enthusiasts engaged in it, says the National Geographic. For the first time, archery will be included in the 1968 Summer Olympics.

Time and Distance
NEW YORK (UPI)—How "long" is one one-hundredth of a second? In a recent 60-yard dash, it was three and a half inches. The calculation was made at the inaugural meet in the new electronic Square Garden by an electronic photo-recording system that "sees" 1/100th of a second for judges' viewing.

At the Garden event, the Bulls' device photographed Lemont Miller of U.S.C. beating Dalton LeBlanc of the Houston Rockets by a hundredth of a second. Translated into distance, the photo pictured the winner ahead by three and a half inches.

ABA Record
NEW YORK (UPI)—Louis Armstrong of the New Orleans, established an American Basketball Association record by scoring 64 points on the final night of the 1967-68 season.

Field Goals
MINNEAPOLIS (UPI)—Les Sylvaire of the Anaheim Angels set American Basketball Association records by attempting 26 three-point field goals and converting 10 of them in a game against Denver this year.

Impressive
MINNEAPOLIS (UPI)—Larry Jones of the Denver Rockets had the most impressive halftime production of any player in the American Basketball Association when he scored 41 points against Oakland last year.

6224	Wilburn, Beatrice	49.07
6238	Wright, Amos	25.03
6660	White, Bill	7.87
6661	Yoder, Emory	17.32
6669	Young, Neddie Sue	20.15
6673	Young, Elizabeth	46.59

You get the most for your money with a checkbook!

Who can really run a house—have firm control, compare costs, and get the most for their household budget money—without a quick, clear, handy checkbook-stub record? Cancelled checks automatically become easy-to-file, easy-to-find receipts, too!

Open Your Checking Account Here... NOW!

PEOPLES BANK

OF MOREHEAD

6336	Wallace, John	21.13
6338	Wallace, Cleveland Henry	39.90
6540	Wallace, Clarence	12.52
6542	Wallace, Henry	50.08
6583	Williams, Rev. J.H.	32.60
6585	Williams, Don and Hazel	73.81
6596	Wooten, Herbert	25.15
6603	Wilson, Odis	7.83
6611	Webb, William R.	15.65
6616	Webb, Redwine	21.13

Church News

Compiled weekly by the Morehead Ministerial Association. This column is available, without charge, to recognized churches. Copy must be submitted to Editor, Morehead News, for that particular month. Do not submit copy to The Morehead News.

—April Editor—
J. Hubert Johnston
—May Editor—
Rev. Ray Thomas

BROADCAST - "LIFE AT ITS BEST"

The name given to a new five-minute daily inspirational program being broadcast over radio station WVMOR by members of the Morehead Ministerial Association. The brief devotional "spot" will be broadcast in the afternoon, Monday through Friday. Time for the broadcast is set at 4:25 p.m., though daily programming needs may necessitate occasional changes.

The program began last week, with the Rev. Larry Burkert as speaker. The Rev. Scott Griffith is the broadcaster this week, with the Rev. Alvin G. Busby scheduled for next week's program.

Station WVMOR and the Morehead Ministerial Association are cooperating to

make this program available to the public.

FAITH PRESBYTERIAN—The Rev. Emory Smith will be guest speaker at the Faith Presbyterian Church this Sunday at 9:30 a.m. in the absence of the Rev. J. Hubert Johnston, who is on vacation. Mr. Smith, who is campus minister at M.S.U. for the Kentucky Baptist Convention, will preach on the theme: "Doubting Thomas? I Doubt It." The 9:30 a.m. service will be the church's only service of worship this Sunday, due to the M.S.U. vacation. Nursery and church school for children through grade 3 will be held at the same hour. Classes in the School of Faith will resume next Wednesday and Thursday.

Weekly Meditation

COMFORT IN AFFLICTION

II Cor. 4:17-18: "For our light affliction, which is but for a moment, worketh for us a far more exceeding and eternal weight of glory; while we look not at the things which are seen, but at the things which are not seen; for the things which are seen are temporal, but the things which are not seen are eternal."

Let us look at some pertinent questions regarding this scripture. Why are we afflicted? Why do we suffer? Why do God's people suffer? Why do so many Christians have financial burdens? Why are God's people so persecuted? These are questions which are asked many times a day by the Christians of this day. GOD said, "my people are a tried people." Millions of God's dear people are afflicted and smitten, suffering and languishing, bowed down with grievous burden and heavy loads. For comfort and faith to the thousands of God's afflicted children, we turn to the word of God.

Suffering is not an abnormal experience among believers. Rather, the Christian who does not suffer, who does not have a thorn in the flesh, is abnormal. Jesus said, "In the world ye shall have tribulation." Then in the book of I Peter 4:12-13, "Beloved, think it not strange concerning the fiery trial which is to try you, as though some strange thing happened unto you: But rejoice, inasmuch as ye are partakers of Christ's suffering; that, when His glory shall be revealed, ye may be glad also with exceeding joy." So let us accept the truth that being a Christian does not exempt us from afflictions and suffering, and let us face the fact that to be a child of God subjects us to additional suffering, but to be a child of God outweighs the suffering.

If you feel down-hearted and burdened, depressed, disgusted with life, just pause a moment, look up, think of heaven, how rich you are to be His child. Think of the Homecoming, the resurrection, being united with your family again, "Heaven will surely be worth it all."

May I say, Heaven will be cheap if any price. Consider what the apostle Paul endured during the thirty five years

he was a Christian. From the day he was saved, he had been afflicted. He had been imprisoned, shipwrecked, beaten, scourged, threatened, stoned, in poverty, want and hunger, and rejected of his own people. And called a "light affliction." How heavy are your afflictions? Are they equal to a apostle's? I could say that mine are very, very light, compared with Paul's afflictions. Beloved, how often we murmur and repine and become discouraged and blue and down-hearted and feel that our lot is worse than that of anyone else on earth. I am sure that Paul encourages our hearts only for a little while. He says, "Our light affliction, which is but for a moment."

Our light afflictions cause us to pray, and be drawn closer to the Lord. What right have we, as believers, who have not been so faithful to and zealous for our Lord as Paul was, to expect that we shall escape these things which Paul experienced? And yet all too often we think that the pathway of the Christians should be roses and sunshine, and when we have trouble and tribulations there is something wrong. Heb. 12:6-8: "For whom the Lord loveth he chasteneth, and scourgeth every son whom He receiveth."

V. 7, "If ye endure chastening, God dealeth with you as with sons: for what son is he whom the father chasteneth not?" V. 8, "But if ye are without chastisement, whereof all are partakers, then ye are bastards, and not sons." Before Paul's life was over, he would be falsely accused, imprisoned, condemned and finally beheaded for the cause of Christ whom he loved. "Is this a light affliction?" we ask. "Yes," says Paul. "Is it a light affliction. When we think of what Paul suffered, and especially Jesus on the cross, then our afflictions are light. The Holy Spirit tells us that Jesus was not made perfect without suffering. Testing, trials, suffering and chastening are God's way of purifying and cleansing and conforming His children to the image of His Son. Beloved, if this is God's wise providence to make you Christ-like, and a fit subject for heaven, would this be comfort in afflictions?—Ted Greene.

Forest Fire Loss In March Was Near Record

"In the month of March a near record of one hundred and fifty-four forest fires burned over 2,800 acres of woodland in the fifteen county Northeastern District," reported Rex McDowell, Fire Control Assistant of the Kentucky Division of Forestry.

"The high occurrence was due the unusually dry month of February and several warm days with the usual March winds," McDowell explained. "Most of these fires were caused by careless

debris burners," McDowell added. "Persons wishing to burn trash and debris should use care in burning as the fire danger period will continue until the leaves on the trees are fully grown," McDowell urged. "All trash and debris must be piled and a clean line around the pile to prevent the spread of fire to the woods. In addition, such debris burning must be done after 4:30 p.m. local time during the months of March, April and May."

Now Under New Management

SKI-VUE Motel and Restaurant

29 Completely Modern Units

Dine in our Air Conditioned Dining Room

Fast Friendly Service • • • Excellent Food

Enjoy the comfort of your own home in our "Quaint Friendly Atmosphere"

Plenty of Free Parking • • • Courteous Service

Owned and Operated by Bill Patrick

1 MILE EAST ON U.S. 60

MOREHEAD, KY.

How many times this year will it call you downstairs?



Public Auction

We are Authorized by Signed Contract with Delbert Collins and Sylvia Collins, his wife, to Sell At Public Auction on the premises located 3 1/4 miles from Flemingsburg, Ky., on State Highway No. 613, On The Farm Where They Now Reside,

WEDNESDAY, APRIL 24TH, 1968
STARTING AT 9:30 A.M. (Fast Time)

All Their Personal Property on said Farm, due to having sold this Farm, and to soon give possession of same to purchaser; The Following (Items of personal property as follows to-wit:— John Deere and other equipment as follows,

1-1964 2010 John Deere, 800 Hours, 2-John Deere 14 inch breaking Plows; 1-John Deere Lift Disc Harrow; 1-Ellis Tobacco Sifter; 1-New Post Bed Digger; 1-John Deere 7-1/2, 8-Motor; 1-John Deere 36-A Manure Loader; 1-95 Bu. John Deere Manure Spreader; 1-John Deere 14-T. Hay Baler; 1-John Deere 850-A Hay Rake; 1-9-Ft. Cultipacker; 1-Super Grass Seeder; 1-1950 Ford Tractor; 1-Set Ford Cultivators; 1-1952 Ford Truck, flat bed, new tires; 1-New 2-1/2 Tack Tobacco Press; 1-275 Gal. Cattle Watering Tank; 1-Deep Well Pump, complete (new); 1-Edgetiller; 2-Chain Saws, 24 inch; 1-Homelite; 1-McCulloch; Hand Tools, Chains; and many other items to be sold.

50 BEEF CATTLE, WELL BRED, TO BE SOLD—Hereford, Charolais, Some Purebred Angus Cows; Charolais are 1/2 to 15/16 Good Blood Lines; 2-Charolais Bulls, One 7/8 Service Age, 15/16 Not Service Age, One 3-year Old Mare, Saddle Type, Extra Nice.

A Number of Nice Items of Household Furniture Will Be Sold.

TERMS OF THE SALE, Will Be Cash day of Sale.
**DELBERT COLLINS,
SYLVIA COLLINS, Owners**

SALE WILL BE CONDUCTED BY
W. L. Thomas Real Estate Agency

"Licensed & Bonded Real Estate Brokers"

Office 119, Mt. Sterling Ave., Phs. 845-6611 or 6951
Vester Lyle Marshall, Auctioneer
W. L. THOMAS, Sales Manager
(Not Responsible For Accidents Of Any Kind)

The numbers are against you. The average family gets 1405 calls a year. And if only one-fourth of them happen while you're up there, that's 366 trips for 1968.

Approach No. 1: Keep running downstairs.

Approach No. 2: Get an extension telephone.

Cost of Approach No. 2: Around 4 cents a day. (Which is a bargain you already pay about four times that for your regular phone.)

There is no Approach No. 3. Approach our business office or ask the man on the telephone truck.

General Telephone

In Eastern Kentucky: Carter Caves, A Vacation Wonderland Offering Every Family A Time Of Relaxation



MODERN 28 - room Caveland Lodge offers excellent accommodations to Carter Caves State Park's overnight guests. Also available are handsome efficiency and one-bedroom cottages, 80 individual tent and trailer sites and a large group camping area for organizations. Overnight accommodations are almost always at a premium at Carter Caves, and the camping area is usually filled to peak capacity during the summer vacation season.

Now open for the
season and ready
to "get you
away from
it all"

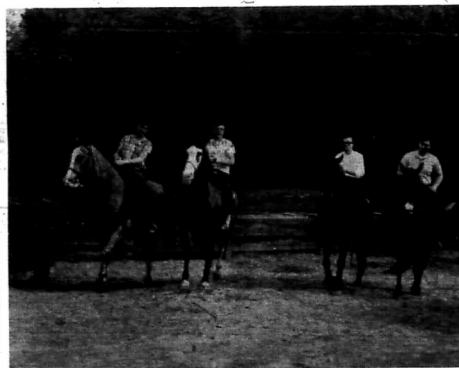
★ ★ ★



ARE you a pool swimmer rather than one who enjoys a lake? That's alright at Carter Caves State Park. A few steps from your beautiful room at Caveland Lodge you will find this swimming pool, inviting your afternoon dip or furnishing a splendid spot at which to sun-bathe. Carter Caves is one of ten Kentucky State Parks that provide swimming pools. In addition to Smokey Valley Lake, you can enjoy swimming in this pool. That's the idea at Carter Caves... giving the nation's vacationers a choice. And you'll have fun at whatever you choose.



CAMPING out has become as much a part of vacation time as any other form of recreation. And Carter Caves State Park offers 80 individual tent and trailer sites for those who like to bring their own home with them. Residents from far and wide choose Carter Caves State Park each year for its relaxing atmosphere and the vacation opportunities offered in the Carter County Vacationland. Many lasting friends are found during days spent at Carter Caves State Park.



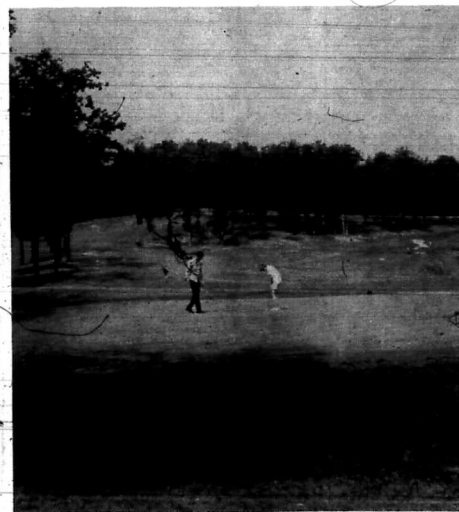
MOUNT UP and you are set for a perfect afternoon at Carter Caves State Park. Riding paths at the Caves lead deep into the beautiful forests of Eastern Kentucky where you can enjoy all of the beauty of nature as the afternoon - or early-morning - sun threads its way through the lofty trees. A must during anyone's stay at Carter Caves is a ride through the beautiful hill country of Eastern Kentucky. And you'll find it at Carter Caves, located between Grayson and Olive Hill in Carter County.



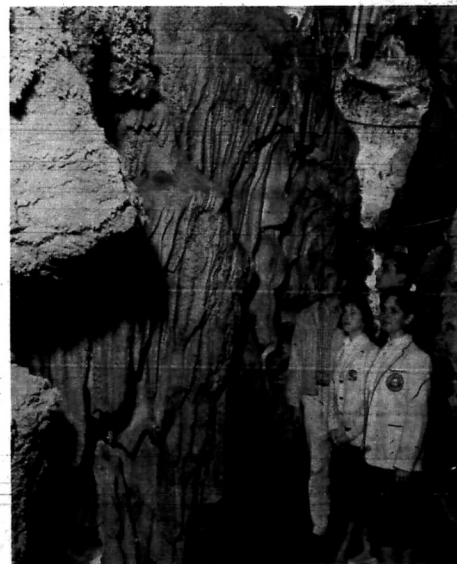
CARTER Caves State Park is one of Kentucky's newest and finest recreational areas. While developed into a State Park by the Commonwealth, the original idea and land purchase for this Eastern Kentucky Vacation Wonderland was a dream, and finally a reality, brought about by combined efforts of Grayson and Olive Hill business and civic leaders. These people are proud that their idea and labor have been developed into one of the nation's finest recreational areas. They join together to invite you and your family to Carter Caves State Park, whether it be for an hour, a day, or several weeks. This is your Park, provided for your recreation.



TAKE a beautiful bath house, add a soft sand beach, and throw in 50 acres of lake and you have a perfect picture of Smokey Valley Lake located at Carter Caves State Park in Carter County. Perfect for swimming and fishing, this lake draws residents from all over the country, as well as residents out for a good time, whether it be a few hours or a few days. Situated below a high line of beautiful forest, Smokey Valley Lake is one of the prime targets of vacation-minded residents to flock to Carter Caves State Park each year.



DRIVING or putting, whatever your game, you'll find both on the beautiful nine-hole golf course at Carter Caves State Park. Designed to add just the right ring of challenge to your game, Carter Caves is one of the most beautiful courses you will ever play. Greens are manicured to perfection to lend their assistance to your most important putts. Tee up... it's golf time at Carter Caves State Park.



ONE of the most interesting facilities of Carter Caves State Park is the guided tours of Caves within the Park compound. These tours are provided for group enjoyment and school are made daily through well-lighted caves. During the tour you will be told, in several instances, of the historical value of these caverns in days gone by. And, of course, you will be interested in the strange rock formation carved out by nature. This is just one of the many moments of pleasure you can receive by visiting Carter Caves State Park between Grayson and Olive Hill in Carter County, Kentucky.

This Is What The ... Morehead Jaycees ... Are Doing



OUTSTANDING SPOKE. ... Jarrell Austin, Morehead Jaycees, was honored at last week's Regional meeting by being selected as the Outstanding Spoke (first year Jaycee) in Region 6. The honor culminated a year of

Jaycee activity that saw Jarrell win local honors as Jaycee of the Month, Chairman of the Month, and Speak Up participant. Jarrell will now advance to state competition to compete with winners of the other five Regions.



POLICY POSITION. ... Ray Bailey, Immediate Past President of the Morehead Jaycees, has been elected State Vice-President, Region 6, Kentucky Jaycees. Ray was nominated and elected at the annual Region meeting which was held in Louisville. As a member of the state executive committee Ray will supervise the activities of local Jaycee chapters in Olive Hill, Grayson, Ashland, Greenup, Flatwoods, Louisville, and Morehead.

SPARK PLUG WINNER. ... Pete Avers, Internal Vice-President of the Morehead Jaycees, has been selected as Spark Plug of the Year for the Region 6 Jaycees. His selection is a result of activities at the local level, written test on Jaycee programming, and an oral interview concerning Jaycee activities. Pete recorded one of the highest scores ever scored on these tests, and will now advance to the final state competition in Covington.

from HISTORY'S SCRAPBOOK DATES AND EVENTS FROM YESTERYEARS

Cessation of hostilities marked end of the Revolutionary War, April 19, 1783.

War was declared with Spain, April 20, 1808. The first electric railway was put into operation, Washington, D.C. to Bladensburg, Maryland, April 20, 1851.

U.S. Marines landed at Vera Cruz, Mexico, April 21, 1914. Oklahoma was opened to settlers, April 22, 1889. The Office of Price Administration began sugar rationing, April 22, 1942.

The U.S. Senate passed a World War I Soldiers Bonus Bill, April 23, 1925.

The Library of Congress was founded, April 24, 1800. Stephen F. Austin obtained grant of land in Texas from Mexico for colonization, April 24, 1821.

The United Nations conference opened at San Francisco, April 25, 1945.

Protect your home AGAINST TERMITES with Money Saving

ORKIN "12"

Exclusive NEW PLAN of
Complete Termite Protection
with 12 Important Points

DON'T WAIT - CALL TODAY FOR GUARANTEED PROTECTION

784-5789

ORKIN

World's Largest Termite and Pest Control Company

American
Office Supply
MAIN ST. MOREHEAD

Task Force Survey This Area

Jobs, not handouts, motivate a task-force type, industrial-site tour of Eastern Kentucky, Commissioner Paul W. Grubbs of the Kentucky Department of Commerce, has announced.

Commissioner Grubbs, by direction of Governor Louie B. Nunn, planned the two-day tour April 17-18 "for a complete survey and re-evaluation of all plant sites, both actual and potential, in Eastern Kentucky. We cannot have jobs in the area without more industry. We cannot have more industry without more plant sites, and for the most part, the present sites available in Eastern Kentucky need a considerable amount of attention in terms of access, grading, and utilities."

"We will determine on this tour the cost of developing these sites in addition to uncovering other potential sites," Governor Nunn said. "Eastern Kentuckians have an acute need for more employment. By helping the 49 counties in the Appalachian Region of Kentucky, we will be helping all of Kentucky. We plan to take the jobs to Eastern Kentucky, not to train the people for jobs in Cincinnati, Dayton, Detroit, and other out-of-state areas."

The recent appointment of Clifford A. Gordon as Eastern Kentucky University specialist for the Kentucky Department of Commerce was the first step by State Government to ease the un-

employment problem in the region, Nunn added.

The two-day tour of Eastern Kentucky, Commissioner Grubbs said, will leave Frankfort early on April 17—proceeding to Jackson, Hazard, Pikeville, Prestonsburg, Paintsville, Morehead and Owsingville, with some possible inter-mediate stops. It will be met at various stops on the itinerary by local industrial development organizations.

In addition to Commissioner Grubbs and key members of his staff, the entourage will include representatives of the Governor's office, the Kentucky Chamber of Commerce, the Associated Industries of Kentucky, other State Government agencies, and members of the press.

News Report from... Rowan County Extension Office

Adrian M. Razor
Mildred R. Wightman
P.O. Box 100
Area Extension Agents

As this is written many of us in Rowan County and area have tobacco plants that are up while others are waiting to see some of theirs.

We are emphasizing an old practice this year because we think the benefits from it are very helpful in turning off a good seed of plants. Some folks continued using Bluestone-Lime over the years but with the coming of Wildfire resistant tobacco most people quit using Bluestone-Lime. Some of the troubles that can be eliminated are: curcum, liverwort, and leaf spot diseases. The Bluestone-Lime mixture should be applied once or more times to the surface of the soil of the tobacco bed when the plants have just begun to grow or are the size of a dime.

To Prepare Bluestone-Lime Mixture: [1] Fill a clean 50 gallon barrel or oil drum 3/4 full of water strained through a cloth. [2] In one container thoroughly mix 4 pounds of fresh commercial hydrated lime in 3 or 4 gallons of strained water. [3] In another container dissolve 3 pounds of powdered bluestone in about 4 gallons of water. [4] Pour the lime water into the barrel of water and stir vigorously. While stirring, add the bluestone solution slowly. [5] Add water to make 50 gallons.

To Apply: Mix one pound of 50-percent wettable DDT powder to 50 gallons of the bluestone-lime mixture giving effective control of fleabeetles and curcums. Apply with removing the cotton cover, with an ordinary sprinking can. Stir each time you are sprinking can. It is filled. Fifty gallons will treat 1400 running feet of bed 9 feet wide, or 100 running feet of bed and plowed area on each side and on the ends for a distance of 2 to 3 feet.

Ditch around the bed to keep surface water from flowing over it. Cut weeds instead of pulling them, or make another application of bluestone-lime after pulling weeds.

Caution: Bluestone-Lime does not injure plants, so don't wash it off. Don't mix nitrate of soda with bluestone-lime.

If your cover crop is knee high, turn it. Most cover crops are allowed to get too high and require too long a time to decay the cover crop material. Plow yours before this happens to you.

Most fruits are ready for the first pick now. Try not to pick and have a good fruit crop this year. If you have a small number of trees there is a small number of trees available. If you have several trees a more complete job may be done.

Why does red clover and alfalfa keep growing in August and September when the ground is dry? The answer, of course, is their root system. These plants have a tap root that grows deep into the soil and is able to utilize moisture which grasses cannot reach.

Sometimes we underestimate these plants. Last week I dug up a red clover plant on a field that was renovated in 1967 on the Clarence Bristow farm in Bath County. This one-year old red clover had a tap root that measured 21 1/2 inches long.

This root system was well developed because of the management Clarence gave the field last year. After the clover was needed and germinated, all cattle were taken off the field until the clover was about 12 inches tall. This permitted the development of a strong and vigorous root system.

But we can also overestimate the punishment these plants will take. Usually a plant will have about equal amounts of growth above and below the ground. We can greatly reduce both top and root growth of these plants by grazing before they become established. Some research has indicated pasture yields can be lowered by as much as 60% by hard early grazing.

Fencing our livestock hay and grain at this time of year will help keep pastures from being over grazed. If we take care of these plants now they will do a better job of taking care of us during the dry summer months.

We will have our second horse and pony ride Sunday afternoon, April 21, at 2:00 p.m. at the F.D. Wellman Farm located approximately 3 miles from Morehead just off highway U.S. 60. Turn right just beyond Gearhart Pond and follow signs.

BOATING

By JACK WOLSTON

NEW YORK (UPI) — One of the biggest headaches plaguing pleasure boat manufacturers today is delivery of their products to the retail dealer.

It's a difficult job to deliver a boat and it's expensive.

One industry source estimates that delivery charges for boats commonly range from 3 to 15 per cent.

Some manufacturers say that various regional markets even within 600 miles of the factory are literally inaccessible because of transportation costs by truck common carrier often are equal to the price of the boat.

Some manufacturers delivering boats by truck-trailer from the New York area to Florida often must unload and take to the water en route or take circuitous routes to bypass states where wide restrictions are less than the beam of the boat.

Virginia, South Carolina, Georgia, and Florida, for example, prohibit highway loads over 15-foot width. Wide loads in all states usually have special permits and some must be conveyed forward and aft by cars with "wide load"

Many manufacturers have their own fleet of trucks. This is a conservative proposition. Shipping is usually seasonal and the fleet must be maintained, along with drivers on a year-around basis. Also, most trucks return empty, although some haul supplies back to the factory.

On larger boats, height of the truck is another problem. Because of underpasses this must be under 14 feet, which means that in most states flying bridges must be closed off and the boats must be off and stored in the boat yard.

A number of solutions to the industry's problem have been offered. One of the most intensive and seemingly well-tracked comes from Richard A. Gurel, president of Sea-Airways, Inc., of Passaic, N.J.

For almost five years now Gurel has been working on the idea of utilizing over-cargoing LSTs (Landing Ship, Tanks) to transport boats to sea routes and inland waterways.

Under Gurel's plan, the boats and supplies could be put on boats either from land points or while anchored off the coast and then delivered by marines or land areas where they could be trucked the shortest distance to dealers' showrooms.

He even envisions helicopter picking up boats up to 30 feet at factories and whirling them to the LST.

Boats are expected to be about 20 per cent less than present trucking and rail schedules.

A number of investment groups have expressed interest in Gurel's plan, as well as boat builders and he hopes to have his first operational within two or three months.

Initial service would be confined to the East Coast, the Ohio, Mississippi and Missouri Rivers, the St. Lawrence and its tributaries, the Caribbean and the Gulf Coast, with service eventually being extended to the West Coast via the Panama Canal.

It would take about 3 1/2 days to deliver a boat from the New York area to Miami, a trip that now takes sometimes up to 10 days," Gurel says.

Boat manufacturers in France, Sweden and West Germany also are interested in Gurel's plan. He says they find it easy to ship by freighter to the United States but then discover it is a frustrating situation to deliver to dealers from the ports of entry.

Safety Rule
ST. LOUIS (UPI) — Raymond H. Harris, St. Louis county coroner, who has carried on a vigorous campaign to reduce automobile deaths, circulated "12 rules" to emphasize the safety program. The rules say "make it a rule" be extra safe.

The extra inch on the ruler is colored red.

Tiptoe tiptoe.
Sun. Look under the porch. Look under the FLORISTS in the YELLOW PAGES. Where your fingers do the walking.

30-MINUTE DRYING.
• NO PAINT ODOOR
• CLEAN UP
• WITH WATER
• FOR MOST INTERIOR SURFACES
• FOR BASE & MENT WALLS

729

Choose from a large selection of monuments in stock or order From

BARKER MONUMENT COMPANY

Located just east of Olive Hill on US 90

"Where you see what you are buying" when you want the best you want Georgia granite. We cut our own stones and are equipped to cut dates on money already set in cemetery.

Jim Barker, Owner Phone 286-4374

Hours—Mon, thru Sat, 9:00 A.M. - 5:30 P.M.
Marble available on order

Dry Ridge Convalescent Home

Dry Ridge, Ky. Area Code 606-824 8161

Nursing Home for the Aged, Sick and Related Children. All ages admitted from 2 weeks to 100 years of age. Approved by Federal Medicare and State Public Assistance Programs. Doctor and Drug Bills and the Permitted Length of Stay in the Nursing Home is paid by one or the other Programs, for those who qualify Medically and Financially.

For more information, check with your local Public Assistance Office or call the Nursing Home.

If It's a PEST call Terminix!

For Guaranteed Protection

TERMITES OR ANY Household Pests
Rats, Mice, Ants, Water Bugs, Silverfish, Carpet Beetles... Flying Ants... WHATEVER it is we will get them out and keep them out!

PROMPT, INEXPENSIVE, POSITIVE SERVICE!

RADIO DISPATCHED TRUCKS FOR FASTER SERVICE!

CARR LUMBER COMPANY

540 WEST MAIN ST. PHONE 784-5438
All Work Done By Terminix Company, Lexington, Kentucky

Complete Ambulance Service
Oxygen Equipped

"Equipped To Serve You"

Member of Kentucky Funeral Director's Burial Association

--Authorized To Service--

Burial Insurance Contracts Issued By
COMMONWEALTH LIFE INSURANCE CO.

LANE FUNERAL HOME

Phone 784-4134 - Morehead, Ky.

Let Us Carpet Your Home or Office At Wholesale Prices!

All Patterns - All Colors

Price \$4.00 to \$6.00 per sq. yd.

• Mill End Top Quality Carpet
• Thousands of Yards In Stock

100% Acrylic or 100% 101 Dapson Nylon
Guaranteed Moist Proof

Ed Mabry Co. Inc.

Located Off Ky. 32 Behind State Police Barracks

PHONE 784-7333

TERRIFIC SAVINGS
INTERIOR FLAT WALL PAINTS

COVERS WOOD, WALLPAPER, WILDBOARD, OLD PAINT, PLASTER

DEVILLE VINYL LATEX

729

30-MINUTE DRYING.
• NO PAINT ODOOR
• CLEAN UP
• WITH WATER
• FOR MOST INTERIOR SURFACES
• FOR BASE & MENT WALLS

729

Dollar Discount Store

MAIN STREET MOREHEAD, KY.

