

Photo

Pauline Young, Media Relations Director

Judith Yancy, Director of Institutional Relations

Morehead State University

UPO Box 1100

Morehead, KY 40351-1689

606-783-2030

MSU'S YOUNG DEMOCRATS ELECT OFFICERS

Morehead State University's chapter of the Young Democrats has announced its officers for the coming year. The group's officers and adviser met recently. They are, from left, Randall Combs, Jackson senior and a political science major, president; Dr. Marilyn Mote-Yale, associate professor of government and chapter adviser; Harla Renae Conn, Martin junior and an elementary education major, treasurer; Sara E. Pinyerd, Jeremiah senior and a business administration major, secretary, and Peggy A. Combs, Jackson senior and a business administration major, vice president. The officers will serve a one-year term. Additional information on the group is available at its website at <http://www.geocities.com/CapitolHill/7990>.

(MSU photo by Tim Holbrook)

11-3-97adb

*Jackson Times
Breathitt County Voice
Morehead News
Trail Blazer
Raconteur
Floyd County Times
Mountain Eagle
Letcher County News
Press*



Photo

Pauline Young, Media Relations Director

Judith Yancy, Director of Institutional Relations

Morehead State University

UPO Box 1100

Morehead, KY 40351-1689

606-783-2030

BOOK READY FOR THE BIG SCREEN

When he wrote the book "The Carr Creek Legacy," Dr. Don Miller, Morehead State University professor emeritus of education, knew it was special. He didn't realize how well it would be received by others until representatives from the movie industry asked for the script. Among those showing interest are the Walt Disney Corporation, Steven Spielberg and Ron Howard. Dr. Miller recently presented a copy of his work to Clara Keyes, head of Special Collections at the University's Camden-Carroll Library. The book, which chronicles how a small school overcame insurmountable obstacles to play basketball in a national competition, is available at the University Bookstore or from the author. A two-time graduate of MSU, Dr. Miller was a member of the 1948 Carr Creek basketball team and retired from MSU in 1994 after 29 years of teaching.

(MSU photo by Tim Holbrook)

11-4-97py



*Morehead News
STATEment
Trail Blazer
Daily Independent
Herald-Leader
Troublesome Creek
Times*

News

Pauline Young, Media Relations Director

Judith Yancy, Director of Institutional Relations

Morehead State University

UPO Box 1100

Morehead, KY 40351-1689

606-783-2030

Nov. 4, 1997

FOR IMMEDIATE RELEASE

MOREHEAD, Ky.---Charles Compton, a Cincinnati native, has been named director of news programming at WMKY 90.3 FM, the listener-supported radio station at Morehead State University.

A graduate of Cincinnati's Xavier University, Compton has spent most of his professional career in Washington state where he worked for Northwest Public Radio. He is an award winning journalist whose reports have been aired on National Public Radio's "All Things Considered" and "Morning Edition."

Compton has been at MSU for only a brief period but he knows what matters. "The students are real important. I thoroughly enjoy working with them," he said, noting that he took the job because he saw the opportunity to enhance the station's professional and technical atmosphere.

"I really want to improve the professionalism and technology. When students see you working on that level, they learn what they see," Compton said.

Moving from the northwest to Morehead State University allowed Compton to come home. "I was raised in Cincinnati and my wife was raised in Covington, this move gives us the chance to be near both our families," he said.

Compton is working on a master's degree from Washington State University. He is the son of Charles and Dorothy Compton of Cheviot, Ohio, and is married to the former Ruslyn Case of Park Hills.

####

db

News

Pauline Young, Media Relations Director

Judith Yancy, Director of Institutional Relations

Morehead State University

UPO Box 1100

Morehead, KY 40351-1689

606-783-2030

Nov. 4, 1997

FOR IMMEDIATE RELEASE

MOREHEAD, Ky.--- Grover S. Kearns, assistant professor of computer information systems at Morehead State University, has earned his Ph.D. degree in business administration from the University of Kentucky.

His dissertation was entitled "Alignment of Information Systems Strategy with Business Strategy: Impact on the Use of IS for Competitive Advantage."

A member of MSU's faculty since 1996, Dr. Kearns earned the Bachelor of Business Administration degree from Northern Arizona University in 1969 and Eastern Kentucky University in 1984 in management and accounting, respectively. He also earned the Master of Business Administration from the University of Texas in 1970.

The former director of financial planning and forecasting at the Kentucky Utilities Company, he has been an active participant in various professional organizations including Decision Science Institute, Association for Information Systems and American Institute of Certified Public Accountants.

####

cvd

News

Pauline Young, Media Relations Director

Judith Yancy, Director of Institutional Relations

Morehead State University

UPO Box 1100

Morehead, KY 40351-1689

606-783-2030

Nov. 7, 1997

FOR IMMEDIATE RELEASE

MOREHEAD, Ky.---A Morehead State University student group has contributed \$350 to the Camden Carroll Library to help purchase materials for biological research.

The Biology Club raised the money through a variety of activities including bake sales. During the semester, the group's members sold cookies, brownies, soda and pizza, donated by Domino's, on Thursdays from 10 a.m. to 2 p.m. on the campus.

Now in its second year, the club is striving to assist students who are bio-science majors, according to Chris Hunter, **Martin** senior and a medical technology major who is the club's president. "Hopefully, this donation will be the first of many. We're just getting started," Hunter said. "I would like for the contributions to continue, so additional biological research materials could be purchased."

Hunter hopes other student organizations will assist in obtaining materials for the library. "We want more people to get involved because we're trying to get more books for everyone to use not just biology majors," he said.

The funds will be processed into the library fund through the MSU Foundation, Inc. Purchases will be left to the discretion of the library staff.

It will take from 30 to 60 days before the books will be on the shelf, according to Larry Besant, director of libraries. "The books have to be selected, ordered, shipped and processed before being shelved for patron use," he said.

Other officers of the Biology Club are: Megan Klaas, **Melbourne** junior and a biology major, vice president; Brandy Bromagen, **Owingsville** junior and a pre-medicine major, secretary; Stephen Kiser, **Pikeville** senior and a medical technology major, treasurer, and Carrie Hieneman, **Greenup** junior and a pre-medicine major, and Jamie Salyer, **Salyersville** senior and a biology major, public relations officers.

####

adb

Photo

Pauline Young, Media Relations Director

Judith Yancy, Director of Institutional Relations

Morehead State University

UPO Box 1100

Morehead, KY 40351-1689

606-783-2030

BIOLOGY CLUB DONATES FUNDS TO MSU LIBRARY

Morehead State University's Biology Club recently contributed \$350 to the University's Camden-Carroll Library to be used to purchase biology reference materials. The club's officers making the presentation were, front row from left, Brandy Bromagen, **Owingsville** junior; Elsie Pritchard, chair of the library's Collection Development Committee, and Chris Hunter, **Martin** senior. Back row from left are Carrie Hieneman, **Greenup** junior; Jamie Salyer, **Salyersville** senior, and Stephen Kiser, **Pikeville** senior.

(MSU photo by Tim Holbrook)

11-7-97adb

*Morehead News
Irail Blazer
Bath County News-Outlook
Greenup News - Times
Appalachian News-Express
Salyersville Independent
Floyd County Times*



Photo

Pauline Young, Media Relations Director

Judith Yancy, Director of Institutional Relations

Morehead State University

UPO Box 1100

Morehead, KY 40351-1689

606-783-2030

MSU'S 'JUST US' TO PRESENT CLASSIC RECIPES

If you're interested in learning how to make "Verna Mae's Special Pigtail Perlou?" or any of those other classic dishes, the recipes will be shared in a special benefit production being sponsored by of Morehead State University's Department of Communications. The show, entitled "Sinkin' Spells, Fainting Fits and Other Joys of Good Home Cooking," will be held in Breckinridge Auditorium on Wednesday, Nov. 12, beginning at 8 p.m. Scripted by Dr. Shirley Gish, MSU professor of speech, the production is based on Ernst Mickler's book by the same name as well as his "The White Trash Cookbook." Appearing during the evening will be members of the department's group known as "Just Us." They include, front row from left, Dr. Janet Kenney, department chair, and Dr. Gish. Middle row from left, Dr. Michael Moore, MSU executive vice president for academic affairs and professor of speech; Dr. Bill Layne, associate professor of theatre, and Thomas Yancy, assistant professor of electronic media. In back is Dr. Travis Lockhart, professor of theatre and the program's director. Admission is \$5 for adults and \$1 for students. Proceeds will benefit the Department of Communications' general scholarship fund.

(MSU photo by Tim Holbrook)

11-7-97py

*Morehead News
Trail Blazer
Daily Independent
STATEment
Raconteur
Both County News-
Outlook*



News

Pauline Young, Media Relations Director

Judith Yancy, Director of Institutional Relations

Morehead State University

UPO Box 1100

Morehead, KY 40351-1689

606-783-2030

Nov. 7, 1997

FOR IMMEDIATE RELEASE

MOREHEAD, Ky.---WMKY 90.3 FM, listener supported public radio from Morehead State University, has announced some special programs for November.

Among the programs to be offered are:

"Focus on Writing" returns to the lineup on Sunday, Nov. 23, at 4:30 p.m. The monthly series features readings and discussions with local and visiting writers. This month's program will feature poet George Eklund, MSU associate professor of English. His poetry has been published in numerous journals such as the Seattle Review, New York Quarterly, Cincinnati Review and Louisville Review.

"The National Heritage Awards Program," on Thursday, Nov. 27, at 9 p.m. All types of music will be featured with performances by "the dean of West Coast Blues" Charles Brown; bluegrass singers Jim and Jesse; "shout" band gospel traditionalist Edward Babb, and Indian musician Ali Akbar Khan.

"John Denver--The Man and His Music," Saturday, Nov. 29, 4 p.m. Steve Young, host and producer of WMKY's "Friends and Folk," will present a special tribute to the late entertainer. Through commentary and music, Young will remember Denver as a gifted musician and songwriter, both as a solo artist and with the Chad Mitchell Trio.

"U.S. 23 Talent Showcase," Saturday, Nov. 29, at 8 p.m. Recorded at the Mountain Arts Center in Prestonsburg, the showcase will include performances by Michelle Whisman of **Campton** and Annalyse McCoy of **Inez**.

In addition, WMKY will broadcast Eagle football on Saturday, Nov. 15, when MSU takes on the University of Evansville. The game begins at 1 p.m.

Additional information on WMKY programming is available by calling (606) 783-2394.

####

cvd

News

Pauline Young, Media Relations Director

Judith Yancy, Director of Institutional Relations

Morehead State University

UPO Box 1100

Morehead, KY 40351-1689

606-783-2030

Nov. 7, 1997

FOR IMMEDIATE RELEASE

MOREHEAD, Ky.---Morehead State University's Department of Music will host the 38th annual Choral Festival for High School Singers on Monday and Tuesday, Nov. 17-18, in Baird Music Hall on the campus.

On Monday, Nov. 17, at 8 p.m., the University's Concert Choir and Chamber Singers, under the direction of James Ross Beane, MSU associate professor of music and festival director, will share the stage in Duncan Recital Hall.

On Tuesday, Nov. 18, at 7 p.m., a 250-voice honor chorus composed of high school students from Kentucky and Ohio will be lead by guest conductor, Robert Page, who is making his 10th appearance on the campus. Jay Flippin, MSU associate professor of music, will accompany the Festival Chorus.

Both concerts are free and open to the public.

Page, professor of music and director of choral studies at Carnegie Mellon University, has been described as a "national treasure" by the American Record Guide. He has been director of the Mendelssohn Choir of Pittsburgh since 1979 and director of special projects and choral activities with the Pittsburgh Symphony Orchestra since 1989.

While serving as assistant conductor and director of choruses of the Cleveland Orchestra from 1971-89, Page conducted the world-renowned ensemble on many occasions, including national radio and television broadcasts.

Page's choirs can be heard on 40 discs on major labels, including Columbia, London, RCA, Decca and Sony Classics. The conductor has received eight Grammy Award nominations and won awards for his recordings of Olf's "Carmina Burana" and "Catulli Carmina" and a Grand Prix du Disc for Gershwin's "Porgy and Bess" and a Prix Mondial de Montreux for his world-premiere recording of the Shostakovich Symphony No. 13, "Babi Yar."

Additional information is available by calling Beane at (606) 783-2480.

####

cvd

News

Pauline Young, Media Relations Director

Judith Yancy, Director of Institutional Relations

Morehead State University

UPO Box 1100

Morehead, KY 40351-1689

606-783-2030

Nov. 8, 1997

FOR IMMEDIATE RELEASE

MOREHEAD, Ky.---The 38th annual Choral Festival for High School Singers will be held on Monday and Tuesday, Nov. 17-18, in Baird Music Hall on the Morehead State University campus.

On Monday, Nov. 17, at 8 p.m., the University's Concert Choir and Chamber Singers will perform in Duncan Recital Hall under the direction of James Ross Beane, MSU associate professor of music and festival director.

The Chamber Singers will perform motets and madrigals by John Bennett and Christopher Morales, as well as selections by John Donne, Bernhard Heiden and Paul Sjolund. The Concert Choir, accompanied by Larry Keenan, professor of music and Jennifer Hughes, Ft. Thomas junior, will perform works by Stravinsky, Mulholland, Bagley and Dawson.

On Tuesday, Nov. 18, at 7 p.m., a 250-voice chorus composed of high school students from Kentucky and Ohio will perform a short number of choruses. The Festival Chorus will be conducted by Robert Page of the Pittsburgh Symphony Orchestra with Jay Flippin, MSU associate professor of music, as accompanist.

MSU students participating in the Concert Choir and/or Chamber Singers (listed by hometown) are:

KENTUCKY: Morehead--Damon Caskey, sophomore and the son of Cynthia Caskey; Sandra Hunt, graduate student, sings with both ensembles;

Ashland--Melissa Salyers, freshman and the daughter of Linda and Charles Turner; **Berea**--Adria Dowd, junior and the granddaughter of Bill and Jan Hamilton; **Brandenburg**--Becca May, sophomore and the daughter of Dennis and Jackie May; **Burlington**--Kellie Napier, senior and the daughter of Tom and Ronda Napier, sings with both ensembles;

Crittenden--Gena True, sophomore and the daughter of Gene and Kay Livingood, sings with both ensembles; **Cynthiana**--David Herrington, sophomore and the son of Fred and Juanita Herrington; Carol Palmer, sophomore and the daughter of Donald and Carolyn Palmer; **Danville**--Daniel Reardon, sophomore and the son of Kenneth and Minnie Reardon;

(MORE)

Choral Festival
2-2-2-2-2

Firebrick--Tracy Jordan, junior and the daughter of Earl D. and Judy Jordan; **Fort Thomas**--Jennifer Hughes, junior and the daughter of Ed and Doris Hughes; **Garrison**--Elizabeth Reeder, junior and the daughter of Barry and Fredia Reeder; **Hazard**--Aaron Bowling, junior and the son of Chester and Mary Bowling, sings with both ensembles; William Fugate, sophomore and the son of Kelvin and Iris Morgan, sings with both ensembles;

Hillsboro--Olivia Evans, sophomore and the daughter of Dan and Kerry Evans; **Irvine**--Alicia Flinchum, freshman and the daughter of Howard and Wanda Flinchum; **Jeff**--Stephen Brashear, freshman and the son of Timothy and Darla Deaton, sings with both ensembles; **Lexington**--Lee Henderson, freshman and the son of Linda Henderson;

Louisa--Michelle Napier, sophomore and the daughter of Charles and Dianne Napier; Barbara Parker, junior and the daughter of Marlene and Douglas Parker, sings with both ensembles; **Louisville**--Tanyeka Holt, freshman and the daughter of Brenda and David Griggs; **Lovely**--Brent Sammons, sophomore and the son of the Rev. Harry D. and Brenda Sammons; **Mallie**--Ariana Amburgey, sophomore and the daughter of Betty Williams;

Martin--Chris Lafferty, senior and the son of Fred and LaVonne Lafferty, sings with both ensembles; **Maysville**--Katie Davis, freshman and the daughter of John and Edith Davis; Karen Pescosolido, sophomore and the daughter of Mr. and Mrs. William S. West, sings with both ensembles; **McCarr**--Lilly Sullivan, junior and the daughter of William E. and Peggy Sullivan;

Mt. Sterling--Suzanne Manley, freshman and the daughter of Betsy Jacobs-Manley; Jessica Wilson, freshman and the daughter of Patty and Sanford Williams; **Owingsville**--Norvel Perkins, junior and the son of Glen and Malverie Perkins; **Pikeville**--Wendy Jackson, freshman and the daughter of Debbie and William Jackson; Cathy Mullins, senior and the daughter of John and Mary Mullins, sings with both ensembles; Melia Thompson, junior and the daughter of Melvin and Linda Thompson;

Prestonsburg--Jennifer Goodman, freshman and the daughter of Sammy and Sharon Goodman; Michael Halfhill, sophomore and the son of Michael and Peggy Halfhill; **Sassafras**--Shaun Popp, sophomore and the son of Raymond and Sharon Popp; **Shelbiana**--Tonya Castle, sophomore and the daughter of Tommy and Karen Castle; **Virgie**--Amanda Hall, sophomore and the daughter of Raymond Hall.

(MORE)

Choral Festival
3-3-3-3

From other states/countries:

OHIO: Brookville--Veda Ruggieri, freshman and the daughter of Julia Ruggieri;
Carroll--Mindee DeLong, sophomore and the daughter of David and Pamela DeLong;
Franklin Furnace--Nicholas Basham, sophomore and the son of David and Julia Basham;
Leipsic--Christine Meyer, freshman and the daughter of Richard and Karen Meyer;

Miamisburg--Drew Kline, junior and the son of Ruthann Kline; Middletown--Erin
Jessee, junior and the daughter of John and Donna Jessee; Park Forest--Judy Allstatter, senior
and the daughter of Rachael and Dale Allstatter; Sardinia--Heather Wilson, junior and the
daughter of Dennis and Cindy Wilson; Sheffield--Danielle Thrush, junior and the daughter of
George and Debra Thrush;

Trenton--Amanda Hill, freshman and the daughter of Art and Dana Hill; Vienna--Toni
Chamblin, junior and the daughter of Linda Chamblin; Willow Wood--Erin Sowards, sophomore
and the daughter of Russell and Marilyn Sowards; Winchester--Josh Hamer, freshman and the
son of Jodie Hamer;

CONNECTICUT: Trumbull--Nat Dobas, senior and the son of Dan and Gwen Dobas;

GEORGIA: Statesboro--Jeffrey Bishop, senior and the son of Parker and Judy Bishop;

INDIANA: Derby--Theresa Sutcliffe, freshman and the daughter of Terry and Sharle
Sutcliffe;

NEW MEXICO: LaUnion--Heather Staniak, junior and the daughter of Andrew and
Kathleen Staniak;

NORTH CAROLINA: Clyde--Christine Sterle, sophomore and the daughter of David
and Madeline Sterle;

GERMANY: Uhl dingen--Julia Graepel, sophomore and the daughter of Ursula Graepel.

Also singing with the choir will be Dr. Deborah Plum, MSU associate professor of
journalism.

####

cvd

Media Advisory

Pauline Young, Media Relations Director

Judith Yancy, Director of Institutional Relations

Morehead State University

UPO Box 1100

Morehead, KY 40351-1689

606-783-2030

- EVENT:** MSU Board of Regents Meeting
- DATE:** Friday, Nov. 14, 1997
- TIME:** 12:30 P.M.
- SITE:** Riggle Room, Adron Doran University Center
- NOTE:** The board's committees will hold public sessions prior to the meeting of the full board as follows:
9:30 a.m., Academic Affairs Committee
10 a.m., Student Life and External Relations Committee
10:30 a.m., Administration and Fiscal Services Committee

The board agenda includes a number of items for action and/or discussion, including approval of 1997 winter graduates; report on CPE Excellence Trust Fund; final report on 1997 fall enrollment, and acceptance of the 1996-97 Audit Report with an analysis of Fourth Quarter Financial Information and Internal Audit Status Report.

The regents will be asked to accept the Fourth Quarter Financial Report and amend the 1996-97 Operating Budget; accept the First Quarter Financial Report and amend the 1997-98 Operating Budget; ratify rescision of Personnel Policy PG-26 (Tuition Waiver) and replace with UAR 326.01 and 327.01; approve amended personnel policies related to personal leave of absence without pay, vacation leave and sick leave; ratify a series of personnel actions; amend Staff Congress Constitution and Bylaws, and approve revisions to the Intercollegiate Athletics Mission Statement.

Reports will be provided on personal service contracts, external agreements, 1996-97 Intercollegiate Athletics Program and major gifts since June 1, 1997.

Media representatives planning to attend are requested to call the Office of Institutional Relations at (606) 783-2030, so that sufficient support materials will be available to them.

####

11-10-97jy

News

Pauline Young, Media Relations Director

Judith Yancy, Director of Institutional Relations

Morehead State University

UPO Box 1100

Morehead, KY 40351-1689

606-783-2030

Nov. 11, 1997

FOR IMMEDIATE RELEASE

MOREHEAD, Ky.--Morehead State University's Department of English, Foreign Languages and Philosophy and the Graduate Writers Association are sponsoring a literary reading by two area writers.

Pam Shingler of **David** and Marta Tomes of **Mt. Sterling** will read from their works at the Kentucky Folk Art Center at 8 p. m. on Tuesday, Nov. 18.

Tomes, who completed her M.A. degree at MSU in 1995, wrote a chapbook of poems as a creative thesis. In addition to having numerous poems and short stories published in *Inscape*, MSU's student literary magazine, she has been published in *Kentucky Poetry Review* and *Wind Magazine*. She is currently teaching freshman English at MSU.

Shingler is completing her M.A. degree in English at MSU. She has worked as a reporter and editor for *The Floyd County Times*, *Appalachian News-Express*, and the *Kentucky Press Association*. The Paintsville native is currently director of development at *The David School* at David.

Additional information is available from Carol Mauriello, MSU instructor of English, at (606) 783-5166 or Dr. Lynne Taetzch, MSU assistant professor of English, at 783-2136.

####

db

News

Pauline Young, Media Relations Director

Judith Yancy, Director of Institutional Relations

Morehead State University

UPO Box 1100

Morehead, KY 40351-1689

606-783-2030

Nov. 11, 1997

FOR IMMEDIATE RELEASE

MOREHEAD, Ky.---Morehead State University will be represented by three groups of students in the National College Cheerleading Championships in Orlando, Fla., Jan. 8-11.

The co-ed varsity and all-girl varsity teams placed first in the qualifying round while the junior varsity squad received a second place bid.

MSU's co-ed team will be defending its title in Division I while competing for its ninth win in 11 appearances. The group won the title in 1988 and 1991 through 1997.

The competition, sponsored by the Universal Cheerleaders Association, will be held in the MGM Studios. Additional information is available from Myron Doan, MSU dean of students and coach of the squads, at (606) 783-2014.

####

py

News

Pauline Young, Media Relations Director

Judith Yancy, Director of Institutional Relations

Morehead State University

UPO Box 1100

Morehead, KY 40351-1689

606-783-2030

Nov. 12, 1997

FOR IMMEDIATE RELEASE

MOREHEAD, Ky.---WMKY 90.3 FM, Morehead State University's listener supported public radio station, completed its fall fund drive with a record-breaking total of more than \$20,000.

"We've used that goal before but had to rely on post-drive mailings and additional gifts to hit our total," said Angela Mullins, WMKY development and promotion director. "This year we hit our goal on-air, just after 'Car Talk' on Saturday morning."

"I think the drive was fun this year and listeners felt that excitement," said Gordon Nichols, WMKY acting manager. "We tried some new ideas, such as challenging other public stations to competitions and offering locally-grown Christmas trees at certain giving levels."

Mullins attributes the campaign's success to the efforts of those who volunteered or gave financial support. "Our listeners are the reason we are here," she said.

Additional information on WMKY's programming or to make a contribution, contact Mullins at (606) 783-2394.

####

adb

News

Pauline Young, Media Relations Director

Judith Yancy, Director of Institutional Relations

Morehead State University

UPO Box 1100

Morehead, KY 40351-1689

606-783-2030

Nov. 12, 1997

FOR IMMEDIATE RELEASE

MOREHEAD, Ky.---The Phlebotomy Technician Program, sponsored by Morehead State University's Office of Continuing Education and Conference Services, will offer a new class starting Jan. 8 and continuing for approximately 13 weeks.

The sessions will meet from 5 to 9 p.m. on Tuesdays and Thursdays. Registrations are now being accepted.

Additional information is available by calling Gail Wise at (606) 783-2635.

####

db

News

Pauline Young, Media Relations Director

Judith Yancy, Director of Institutional Relations

Morehead State University

UPO Box 1100

Morehead, KY 40351-1689

606-783-2030

Nov. 12, 1997

FOR IMMEDIATE RELEASE

MOREHEAD, Ky.---Morehead State University theatre students will present Tom Stoppard's "Rosencrantz and Guildenstern Are Dead," Tuesday through Sunday, Nov. 18-23, on the campus.

Showtime for the presentation, which will be held in Kibbey Theatre, is 8 p.m. Tuesday through Saturday with a 2 p.m. matinee on Sunday.

Among those appearing in the production are Keith A. McCormick II, **Morehead** junior; Tres Dean, **Tutor Key** senior; Shawn Slone, **Prestonsburg** senior, and Brian Isaac Phillips, **Nicholasville**, senior.

Assisting with the play are Dr. William J. Layne, MSU associate professor of theatre, who is scenic designer; Rich Timmers, **Florence** senior, is assisting with lighting; Phillips is assisting with sound, and Karl Ruckdeschel, **Lexington** senior, is costume designer. Elizabeth Harris, **Olive Hill** graduate student, will direct the production.

Tickets are \$6 for adults, \$2 for senior citizens and high school students, and free to MSU students with a valid I.D. card.

Because of limited seating, reservations are necessary and may be made by calling MSU's Theatre Box Office at (606) 783-2170.

####

cvd

Photo

Pauline Young, Media Relations Director

Judith Yancy, Director of Institutional Relations

Morehead State University

UPO Box 1100

Morehead, KY 40351-1689

606-783-2030

AWARD-WINNING PLAY TO BE PERFORMED AT MSU

Morehead State University theatre students will present Tom Stoppard's, "Rosencrantz and Guildenstern Are Dead," Tuesday through Sunday, Nov. 18-23, in Kibbey Theatre. Appearing in leading roles are, Tres Dean, left, **Tutor Key** senior; Shawn Slone, **Prestonsburg** senior, and Brian Isaac Phillips, in back, **Nicholasville** senior. Showtime for the play is 8 p.m. Tuesday through Saturday with a 2 p.m. matinee on Sunday. Tickets are \$6 for adults, \$2 for senior citizens and high school students, and free to MSU students with a valid I.D. card. Because of limited seating, reservations are necessary and may be made by calling MSU's Theatre Box Office at (606) 783-2170. The play, described as funny, brilliant and chilling, was the winner of the Tony and New York Drama Critics Award.

(MSU photo by Tim Holbrook)

11-12-97cvd

Morehead News, Trail Blazer, Raconteur, Herald-Leader, Weekly Progress, Paintsville Herald, Jessamine Journal, Floyd County Times, Bath County News-Outlook, Ledger Independent



News

Pauline Young, Media Relations Director

Judith Yancy, Director of Institutional Relations

Morehead State University

UPO Box 1100

Morehead, KY 40351-1689

606-783-2030

Nov. 12, 1997

FOR IMMEDIATE RELEASE

MOREHEAD, Ky.---A Virginia resident will participate in Morehead State University theatre students' production of "Rosencrantz and Guildenstern Are Dead," Tuesday through Sunday, Nov. 18-23, on the campus.

Ethan Moore, the son of Ray and Carol Moore of **Big Stone Gap**, has an acting role in the production. A senior sociology and psychology major, he is a member of Pi Gamma Mu and Theta Alpha Phi.

Showtime for the presentation, which will be held in Kibbey Theatre, is 8 p.m., with a 2 p.m. Sunday matinee. Because of limited seating, reservations are necessary.

Tickets are \$6 for adults, \$2 for senior citizens and high school students, and free to MSU students with a valid I.D. card. Additional information is available by calling MSU's Theatre Box Office at (606) 783-2170.

####

cvd

The Post

News

Pauline Young, Media Relations Director

Judith Yancy, Director of Institutional Relations

Morehead State University

UPO Box 1100

Morehead, KY 40351-1689

606-783-2030

Nov. 12, 1997

FOR IMMEDIATE RELEASE

MOREHEAD, Ky.---Two Ohio residents will participate in Morehead State University theatre students production of "Rosencrantz and Guildenstern Are Dead," Tuesday through Sunday, Nov. 18-23, on the campus.

The students are:

Elizabeth Payne, the daughter of Gearld and Rebecca Payne of **South Point**, is a musician for the production. A sophomore theatre major, she is a member of the MSU Players and the Honors Program.

Amy Talbott, the daughter of Jim and Joann Prater of **Upper Arlington**, is props assistant. A senior theatre major, she is a member of MSU Players and Theta Alpha Phi.

Showtime for the presentation, which will be held in Kibbey Theatre, is 8 p.m., with a 2 p.m. Sunday matinee. Because of limited seating, reservations are necessary.

Tickets are \$6 for adults, \$2 for senior citizens and high school students, and free to MSU students with valid I.D. card. Additional information is available by calling MSU's Theatre Box Office at (606) 783-2170.

####

cvd

*Jonathan Tribune
Upper Arlington News*

News

Pauline Young, Media Relations Director

Judith Yancy, Director of Institutional Relations

Morehead State University

UPO Box 1100

Morehead, KY 40351-1689

606-783-2030

Nov. 12, 1997

FOR IMMEDIATE RELEASE

MOREHEAD, Ky.---A Bell County resident will participate in Morehead State University's theatre students production of "Rosencrantz and Guildenstern Are Dead," Tuesday through Sunday, Nov. 18-23, on the campus.

Andrew "Drew" Maciula, the son of Ken and Terry Maciula of **Middlesboro**, will portray the Ambassador from England and Court Attendant in the production. A sophomore theatre and art major, he is secretary of the soccer club.

Showtime for the presentation, which will be held in Kibbey Theatre, is 8 p.m., with a 2 p.m. Sunday matinee. Because of limited seating, reservations are necessary.

Tickets are \$6 for adults, \$2 for senior citizens and high school students, and free to MSU students with valid I.D. card. Additional information is available by calling MSU's Theatre Box Office at (606) 783-2170.

####

cvd

Daily News

News

Pauline Young, Media Relations Director

Judith Yancy, Director of Institutional Relations

Morehead State University

UPO Box 1100

Morehead, KY 40351-1689

606-783-2030

Nov. 12, 1997

FOR IMMEDIATE RELEASE

MOREHEAD, Ky.---A Boone County resident will participate in Morehead State University theatre students production of "Rosencrantz and Guildenstern Are Dead," Tuesday through Sunday, Nov. 18-23, on the campus.

Holly Ford, the daughter of William and Donna Ford of Florence, will portray Alfred in the production. A graduate student majoring in theatre, she is a member of Theta Alpha Phi and MSU Players.

Showtime for the presentation, which will be held in Kibbey Theatre, is 8 p.m., with a 2 p.m. Sunday matinee. Because of limited seating, reservations are necessary.

Tickets are \$6 for adults, \$2 for senior citizens and high school students, and free to MSU students with valid I.D. card. Additional information is available by calling MSU's Theatre Box Office at (606) 783-2170.

#####

cvd

Boone County Recorder

News

Pauline Young, Media Relations Director

Judith Yancy, Director of Institutional Relations

Morehead State University

UPO Box 1100

Morehead, KY 40351-1689

606-783-2030

Nov. 12, 1997

FOR IMMEDIATE RELEASE

MOREHEAD, Ky.---Four Boyd County residents will participate in Morehead State University theatre students production of "Rosencrantz and Guildenstern Are Dead," Tuesday through Sunday, Nov. 18-23, on the campus.

The students are:

Amy Adkins of **Catlettsburg**, the daughter of Bruce Adkins and Margaret Burns, will portray a Lady of Court in the production. A senior theatre and mathematics major, she is a member of the MSU Players and Math Club.

Janelle Dixon, the daughter of John and Jeanette Dixon of **Ashland**, will portray a Lady of Court in the production. A sophomore nursing major, she is a Theta Alpha Phi pledge and a member of Kappa Delta social sorority and MSU Players.

Andrew Rice, the son of James and Patricia Rice of **Catlettsburg**, will portray a tragedian. A junior marketing major, he is a member of Pi Kappa Phi fraternity and MSU Players.

Stacey Songer, the daughter of Dr. and Mrs. Jess D. Songer of **Catlettsburg**, is a musician for the production. A senior elementary education major, she is a Sunday School teacher, Bible Bowl sponsor and a member of the theatre department at Ashland Community College.

Showtime for the presentation, which will be held in Kibbey Theatre, is 8 p.m., with a 2 p.m. Sunday matinee. Because of limited seating, reservations are necessary.

Tickets are \$6 for adults, \$2 for senior citizens and high school students, and free to MSU students with valid I.D. card. Additional information is available by calling MSU's Theatre Box Office at (606) 783-2170.

####

cvd

Daily Independent

News

Pauline Young, Media Relations Director

Judith Yancy, Director of Institutional Relations

Morehead State University

UPO Box 1100

Morehead, KY 40351-1689

606-783-2030

Nov. 12, 1997

FOR IMMEDIATE RELEASE

MOREHEAD, Ky.---A Bracken County resident will participate in Morehead State University's theatre student production of "Rosencrantz and Guildenstern Are Dead," Tuesday through Sunday, Nov. 18-23, on the campus.

Troy Miller of **Augusta**, the son of Keith and Betsy Miller and Darlene and Benny McNeese, will portray Claudius in the production. A sophomore theatre major, he is a member of the MSU Players and NewsCenter 12.

Showtime for the presentation, which will be held in Kibbey Theatre, is 8 p.m., with a 2 p.m. Sunday matinee. Because of limited seating, reservations are necessary.

Tickets are \$6 for adults, \$2 for senior citizens and high school students, and free to MSU students with valid I.D. card. Additional information is available by calling MSU's Theatre Box Office at (606) 783-2170.

####

cvd

*Bracken County News
Ledger Independent*

News

Pauline Young, Media Relations Director

Judith Yancy, Director of Institutional Relations

Morehead State University

UPO Box 1100

Morehead, KY 40351-1689

606-783-2030

Nov. 12, 1997

FOR IMMEDIATE RELEASE

MOREHEAD, Ky.---Two **Olive Hill** residents will participate in the Morehead State University theatre students production of "Rosencrantz and Guildenstern Are Dead," Tuesday through Sunday, Nov. 18-23, on the campus.

The students, the children of Robert and Starlene Harris, are:

Elizabeth Ann Harris is director of the production. A graduate student majoring in theatre, she is a member of the MSU Players and Theta Alpha Phi.

Robert L. Harris, II will portray Polonius in the production. He is a freshman theatre and music major.

Showtime for the presentation, which will be held in Kibbey Theatre, is 8 p.m., with a 2 p.m. Sunday matinee. Because of limited seating, reservations are necessary.

Tickets are \$6 for adults, \$2 for senior citizens and high school students, and free to MSU students with valid I.D. card. Additional information is available by calling MSU's Theatre Box Office at (606) 783-2170.

####

cvd

Olive Hill Times

News

Pauline Young, Media Relations Director

Judith Yancy, Director of Institutional Relations

Morehead State University

UPO Box 1100

Morehead, KY 40351-1689

606-783-2030

Nov. 12, 1997

FOR IMMEDIATE RELEASE

MOREHEAD, Ky.---Two **Lexington** residents will participate in the Morehead State University theatre students production of "Rosencrantz and Guildenstern Are Dead," Tuesday through Sunday, Nov. 18-23, on the campus.

The students are:

Matthew L. Morphew, the son of Mike and Mary Morphew, is a musician in the production.

A freshman, he is a member of the Concert Choir.

Julia Reynolds Lane, a sophomore theatre major, will portray Gertrude in the production.

She is a member of the MSU Players.

Showtime for the presentation, which will be held in Kibbey Theatre, is 8 p.m., with a 2 p.m. Sunday matinee. Because of limited seating, reservations are necessary.

Tickets are \$6 for adults, \$2 for senior citizens and high school students, and free to MSU students with valid I.D. card. Additional information is available by calling MSU's Theatre Box Office at (606) 783-2170.

####

cvd

Lexington Herald-Leader

News

Pauline Young, Media Relations Director

Judith Yancy, Director of Institutional Relations

Morehead State University

UPO Box 1100

Morehead, KY 40351-1689

606-783-2030

Nov. 12, 1997

FOR IMMEDIATE RELEASE

MOREHEAD, Ky.---Three Floyd County residents will participate in Morehead State University's theatre students production of "Rosencrantz and Guildenstern Are Dead," Tuesday through Sunday, Nov. 18-23, on the campus.

The students are:

Jeanie Branham, the daughter of Eugene and Mary Branham of **Prestonsburg**, is a musician in the production. A freshman music education major, she is a member of the MSU Marching and Symphony bands.

Michael Slone, the son of Gleason and Louise Slone of **Bypro**, is a musician in the production. A sophomore philosophy major, he was also a musician for the recent theatre production "Working."

Shawn Slone, the son of Paul and Carol Slone of **Prestonsburg**, will portray the Player in the production. A senior history and theatre major, he is a member of the MSU Players and Theta Alpha Phi.

Showtime for the presentation, which will be held in Kibbey Theatre, is 8 p.m., with a 2 p.m. Sunday matinee. Because of limited seating, reservations are necessary.

Tickets are \$6 for adults, \$2 for senior citizens and high school students, and free to MSU students with valid I.D. card. Additional information is available by calling MSU's Theatre Box Office at (606) 783-2170.

####

cvd

Floyd County Times

News

Pauline Young, Media Relations Director
Judith Yancy, Director of Institutional Relations

Morehead State University

UPO Box 1100

Morehead, KY 40351-1689

606-783-2030

Nov. 12, 1997

FOR IMMEDIATE RELEASE

MOREHEAD, Ky.---A Grant County resident will participate in Morehead State University's theatre students production of "Rosencrantz and Guildenstern Are Dead," Tuesday through Sunday, Nov. 18-23, on the campus.

Phillip Ponder, a **Crittenden** junior theatre major, designed the poster for the play and will portray a Tragedian in the production. A Theta Alpha Phi pledge, he is a member of the Student Alumni Ambassadors.

Showtime for the presentation, which will be held in Kibbey Theatre, is 8 p.m., with a 2 p.m. Sunday matinee. Because of limited seating, reservations are necessary.

Tickets are \$6 for adults, \$2 for senior citizens and high school students, and free to MSU students with valid I.D. card. Additional information is available by calling MSU's Theatre Box Office at (606) 783-2170.

####

cvd

*Grant County News/
Grant County Express*

News

Pauline Young, Media Relations Director

Judith Yancy, Director of Institutional Relations

Morehead State University

UPO Box 1100

Morehead, KY 40351-1689

606-783-2030

Nov. 12, 1997

FOR IMMEDIATE RELEASE

MOREHEAD, Ky.---A Jessamine County resident will participate in Morehead State University's theatre students production of "Rosencrantz and Guildenstern Are Dead," Tuesday through Sunday, Nov. 18-23, on the campus.

Brian Isaac Phillips, the son of Willis and Trudy Phillips of **Nicholasville**, will portray Rosencrantz in the production. A senior theatre major, he is a member of the MSU Players and Theta Alpha Phi.

Showtime for the presentation, which will be held in Kibbey Theatre, is 8 p.m., with a 2 p.m. Sunday matinee. Because of limited seating, reservations are necessary.

Tickets are \$6 for adults, \$2 for senior citizens and high school students, and free to MSU students with valid I.D. card. Additional information is available by calling MSU's Theatre Box Office at (606) 783-2170.

####

cvd

Jessamine Journal

News

Pauline Young, Media Relations Director
Judith Yancy, Director of Institutional Relations

Morehead State University

UPO Box 1100

Morehead, KY 40351-1689

606-783-2030

Nov. 12, 1997

FOR IMMEDIATE RELEASE

MOREHEAD, Ky.---Two Johnson County residents will participate in Morehead State University's theatre students production of "Rosencrantz and Guildenstern Are Dead," Tuesday through Sunday, Nov. 18-23, on the campus.

The students are:

Kristopher Castle, the son of Gale and Carolyn Castle of **Lowmansville**, will portray Horatio and the second soldier in the production. He is a freshman theatre major.

Tres Dean, the son of Russell Dean Jr. of **Lawrenceburg, Ind.**, and Brad and Debbie Daniels of **Tutor Key**, will portray Guildenstern in the production. A senior communications major, he is sports anchor at WMKY 90.3 FM, the University's radio station, and a member of Theta Alpha Phi and MSU Players.

Showtime for the presentation, which will be held in Kibbey Theatre, is 8 p.m., with a 2 p.m. Sunday matinee. Because of limited seating, reservations are necessary.

Tickets are \$6 for adults, \$2 for senior citizens and high school students, and free to MSU students with valid I.D. card. Additional information is available by calling MSU's Theatre Box Office at (606) 783-2170.

####

cvd

*Paintsville Herald
Weekly Progress
Dearborn County Register*

News

Pauline Young, Media Relations Director

Judith Yancy, Director of Institutional Relations

Morehead State University

UPO Box 1100

Morehead, KY 40351-1689

606-783-2030

Nov. 12, 1997

FOR IMMEDIATE RELEASE

MOREHEAD, Ky.---A Larue County resident will participate in Morehead State University's theatre students production of "Rosencrantz and Guildenstern Are Dead," Tuesday through Sunday, Nov. 18-23, on the campus.

Joseph C. Streible Jr. of **Hodgenville**, the son of Charlene Goddie and Joe Streible, will portray a Tragedian in the production. A junior speech major, he is a freshman peer adviser and a member of the Leadership Development Program.

Showtime for the presentation, which will be held in Kibbey Theatre, is 8 p.m., with a 2 p.m. Sunday matinee. Because of limited seating, reservations are necessary.

Tickets are \$6 for adults, \$2 for senior citizens and high school students, and free to MSU students with valid I.D. card. Additional information is available by calling MSU's Theatre Box Office at (606) 783-2170.

####

cvd

Larue County Herald

News

Pauline Young, Media Relations Director

Judith Yancy, Director of Institutional Relations

Morehead State University

UPO Box 1100

Morehead, KY 40351-1689

606-783-2030

Nov. 12, 1997

FOR IMMEDIATE RELEASE

MOREHEAD, Ky.---A Nelson County resident will participate in Morehead State University's theatre students production of "Rosencrantz and Guildenstern Are Dead," Tuesday through Sunday, Nov. 18-23, on the campus.

Misty Dawn Abel, the daughter of Faye and Eddie Abel of **New Haven**, is assistant stage manager and will portray Ophelia in the production. A sophomore biology major, she is a member of MSU Players, Honors Program and Leadership Program

Showtime for the presentation, which will be held in Kibbey Theatre, is 8 p.m., with a 2 p.m. Sunday matinee. Because of limited seating, reservations are necessary.

Tickets are \$6 for adults, \$2 for senior citizens and high school students, and free to MSU students with valid I.D. card. Additional information is available by calling MSU's Theatre Box Office at (606) 783-2170.

####

cvd

The Kentucky Standard

News

Pauline Young, Media Relations Director

Judith Yancy, Director of Institutional Relations

Morehead State University

UPO Box 1100

Morehead, KY 40351-1689

606-783-2030

Nov. 12, 1997

FOR IMMEDIATE RELEASE

MOREHEAD, Ky.---A Pike County resident will participate in Morehead State University's theatre students production of "Rosencrantz and Guildenstern Are Dead," Tuesday through Sunday, Nov. 18-23, on the campus.

Shannon Ison Blackburn, the son of George and Rita Blackburn of **Fords Branch**, will portray a Tragedian in the production. He is a freshman education major.

Showtime for the presentation, which will be held in Kibbey Theatre, is 8 p.m., with a 2 p.m. Sunday matinee. Because of limited seating, reservations are necessary.

Tickets are \$6 for adults, \$2 for senior citizens and high school students, and free to MSU students with valid I.D. card. Additional information is available by calling MSU's Theatre Box Office at (606) 783-2170.

#####

cvd

*Appalachian News-
Express*

News

Pauline Young, Media Relations Director
Judith Yancy, Director of Institutional Relations

Morehead State University

UPO Box 1100

Morehead, KY 40351-1689

606-783-2030

Nov. 12, 1997

FOR IMMEDIATE RELEASE

MOREHEAD, Ky.---A **Morehead** resident will participate in Morehead State University's theatre students production of "Rosencrantz and Guildenstern Are Dead," Tuesday through Sunday, Nov. 18-23, on the campus.

Keith Allen McCormick II, the son of Beverly and Keith McCormick, will portray Hamlet in the production. A junior speech and theatre major, he is a Theta Alpha Phi pledge and a member of the Soccer Club and MSU Players.

Showtime for the presentation, which will be held in Kibbey Theatre, is 8 p.m., with a 2 p.m. Sunday matinee. Because of limited seating, reservations are necessary.

Tickets are \$6 for adults, \$2 for senior citizens and high school students, and free to MSU students with valid I.D. card. Additional information is available by calling MSU's Theatre Box Office at (606) 783-2170.

####

cvd

Morehead News

News

Pauline Young, Media Relations Director

Judith Yancy, Director of Institutional Relations

Morehead State University

UPO Box 1100

Morehead, KY 40351-1689

606-783-2030

Nov. 12, 1997

FOR IMMEDIATE RELEASE

MOREHEAD, Ky.---A Whitley County resident will participate in Morehead State University's theatre students production of "Rosencrantz and Guildenstern Are Dead," Tuesday through Sunday, Nov. 18-23, on the campus.

Cecelia Adkins, the daughter of Anna Adkins of **Williamsburg**, is a musician in the production. She is a sophomore majoring in radio-television.

Showtime for the presentation, which will be held in Kibbey Theatre, is 8 p.m., with a 2 p.m. Sunday matinee. Because of limited seating, reservations are necessary.

Tickets are \$6 for adults, \$2 for senior citizens and high school students, and free to MSU students with valid I.D. card. Additional information is available by calling MSU's Theatre Box Office at (606) 783-2170.

####

cvd

The Whitley Republican

News

Pauline Young, Media Relations Director

Judith Yancy, Director of Institutional Relations

Morehead State University

UPO Box 1100

Morehead, KY 40351-1689

606-783-2030

Nov. 13, 1997

FOR IMMEDIATE RELEASE

MOREHEAD, Ky.---Marching percussion students from the region will participate in the Day of Marching Percussion at Morehead State University on Saturday, Nov. 15.

Fourteen high school marching percussion ensembles will perform throughout the day in competition that begins at 8 a.m. in Wetherby Gymnasium. The day's activity is being sponsored by the Department of Music and the local chapter of the Percussive Arts Society.

The competition includes a six minute time-limit for routines from bands and a two minute time-limit for routines from individuals. During the afternoon, individual competitions will be held in the areas of snare drum, multi-toms and keyboards. In addition, clinics and workshops will be presented by leading clinicians.

MSU's Percussion Ensemble will give a guest performance during the afternoon.

All competitions may be viewed by the general public. Tickets are \$6 for adults and \$4 for students.

Additional information is available by calling Frank Oddis, MSU associate professor of music, at (606) 783-2487.

####

adb

News

Pauline Young, Media Relations Director

Judith Yancy, Director of Institutional Relations

Morehead State University

UPO Box 1100

Morehead, KY 40351-1689

606-783-2030

Nov. 13, 1997

FOR IMMEDIATE RELEASE

MOREHEAD, Ky. ---Three individuals associated with WMKY 90.3 FM, listener supported public radio from Morehead State University's campus, were recognized by the Kentucky Broadcasters Association last month.

Honored were the station's assistant news director, a student reporter and a former general manager.

Larry Netherton, who retired as general manager last year, received the association's Life Member Award in recognition of his more than 25 years of service to public radio. He began his career at WMKY as a graduate assistant in 1965, eventually becoming general manager 10 years later. He currently serves as an assistant professor of radio/tv in the Department of Communications.

Chuck Mraz, assistant news director, was awarded first place in the Class Two Division for sports writing. His winning feature was on former MSU women's basketball player Amy Kieckbusch, the 1997 OVC Women's Basketball Player of the Year.

Tres Dean, the son of Russell Dean Jr. of Lawrenceburg, Ind., and Brad and Debbie Daniels of Tutor Key, won second place in the same division for sports writing. His feature was on Northern Kentucky basketball player Paul Cluxton, who set a national record in free throw shooting last year.

"We're extremely proud of Chuck and Tres, and thrilled that Larry was recognized as well. Larry dedicated much of his life to WMKY and it's nice to see him honored at the state level," said Dr. Janet Kenney, Chair of MSU's Department of Communications.

####

cvd

News

Pauline Young, Media Relations Director
Judith Yancy, Director of Institutional Relations

Morehead State University

UPO Box 1100

Morehead, KY 40351-1689

606-783-2030

Nov. 14, 1997

FOR IMMEDIATE RELEASE

MOREHEAD, Ky.---Morehead State University's Office of Publications and Printing Services has won three awards in graphic design from the National Association of Campus Activities (NACA) Great Lakes Region.

Taking first place honors in the 1997-98 judging was a multi-color poster for the Student Government Association and Student Activities Council entitled "Got Fun?" and a one-color poster for the Tracy Lawrence/Tracy Byrd concert. An "SGames" poster won a second place award.

The winning entries were designed by Dan Shute, MSU's graphic designer.

Shute, a member of the MSU staff since 1995, is responsible for designing publications for all areas of the University. He has done freelance work, including layout and illustration, for a number of organizations.

A graduate of Marshall University, Shute is a native of South Point, Ohio.

####

cvd

News

Pauline Young, Media Relations Director

Judith Yancy, Director of Institutional Relations

Morehead State University

UPO Box 1100

Morehead, KY 40351-1689

606-783-2030

Nov. 14, 1997

FOR IMMEDIATE RELEASE

MOREHEAD, Ky.---David J. Eisenhour, assistant professor of biology, has received his Ph.D. degree from Southern Illinois University in Carbondale.

His dissertation was entitled "Systematics, variation, and speciation of the Macrhybopsis aestivalis complex (Cypriniformes: Cyprinidae) west of the Mississippi River."

A member of the American Society of Ichthyologists and Herpetologists and the Kentucky Academy of Science, Dr. Eisenhour joined the MSU faculty in August. He was a teaching/research assistant from 1990 to 1997 with positions at the University of Tennessee and Southern Illinois University.

Dr. Eisenhour has presented papers at a number of professional conferences and had works published in scientific journals. He was named the 1990 Science and Technology Graduate of the Year at Evangel College in Springfield, Mo.; received the 1996 Richard E. Blacwelder Award in Zoology from Southern Illinois and the Stoye Award for best student paper in General Ichthyology by the American Society of Ichthyologists and Herpetologists in 1996.

The son of Joe and Judy Eisenhour of Mountain Grove, Mo., Dr. Eisenhour and his wife Lynn have one son, Jonathan David Eisenhour.

####

adb

News

Pauline Young, Media Relations Director

Judith Yancy, Director of Institutional Relations

Morehead State University

UPO Box 1100

Morehead, KY 40351-1689

606-783-2030

Nov. 14, 1997

FOR IMMEDIATE RELEASE

MOREHEAD, Ky.---Some local infants and toddlers are tooling around town in a new bright red convertible. Don't get alarmed though, it's not a new car but a new buggy.

The Bye Bye Buggy was purchased by the Morehead State University/St. Claire Medical Center Child Care Center to allow infants and toddlers a greater opportunity to get out and enjoy the outdoors.

Aimee Beach, the center's director, found the six-seat-buggy in a catalogue and talked to her supervisor about ordering it. "We have wanted this buggy for a long time," she said. "The children love it. When they see the buggy their eyes light up."

The buggy allows the child care associate for the infants and toddlers to take the children out for a walk in a group. Because the majority of the children aren't walking yet, this is the only way they can go outside as a class, Beach added.

The center, located on the corner of Second and Hargis Street, is ideally located for riding the children around the residential streets, according to Beach. "The children are still young but they know things from outside, such as trees, and we can point out different things in nature for them to look at and learn to recognize," Beach said. "That makes the buggy not only a recreational vehicle but provides the children with another avenue for learning."

Beach added that the buggy's safety features, such as brakes and waist as well as shoulder straps, make taking the children outside an enjoyable experience for both the associate and the children. "You know the children are safe and that makes the outing better for everyone," Beach said.

The older children were not left out completely by the purchase of the buggy. Knowing how much children enjoy playing with and in boxes, one of the associates took the big, huge box the buggy was shipped in and made a playhouse for all the children. "We cut windows and a door. The house is big enough for the children to walk around inside; they love it," Beach said.

####

db

Photo

Pauline Young, Media Relations Director

Judith Yancy, Director of Institutional Relations

Morehead State University

UPO Box 1100

Morehead, KY 40351-1689

606-783-2030

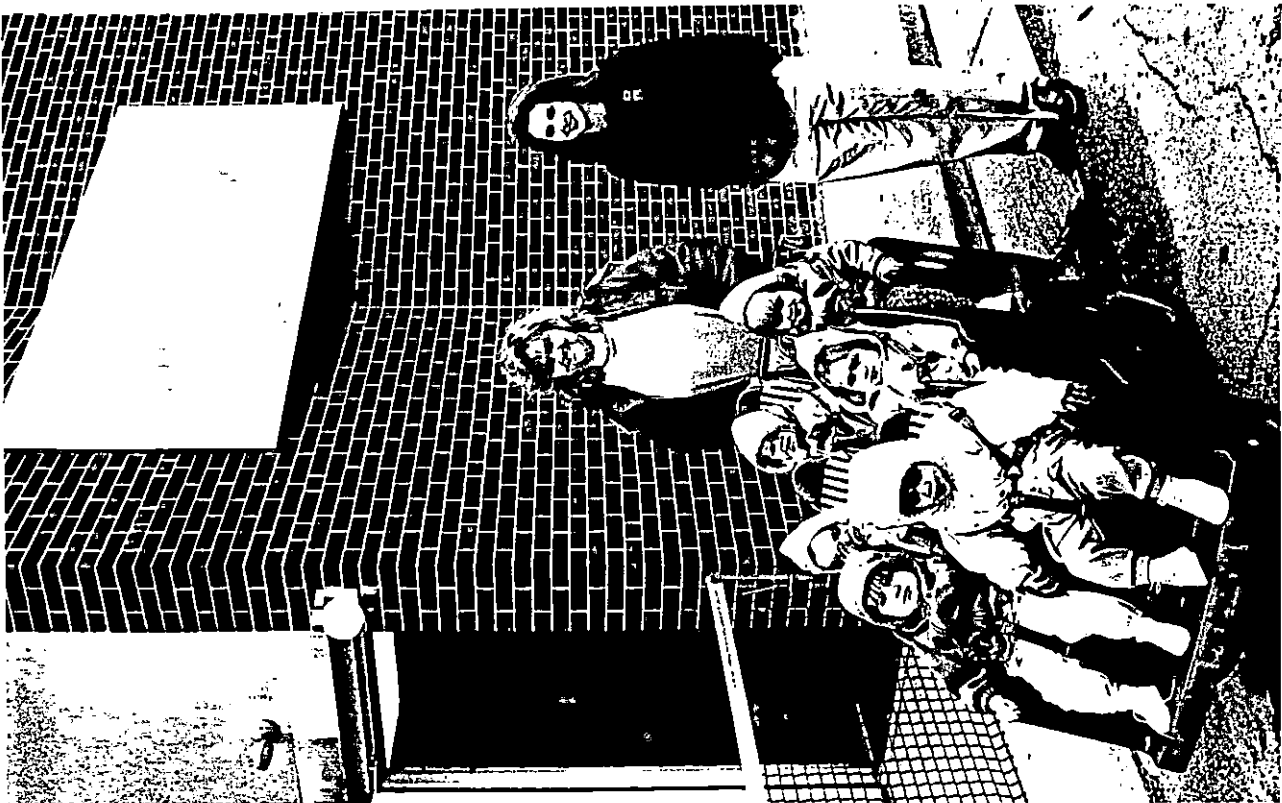
ALL ABOARD FOR BYE BYE BUGGY RIDE

The Morehead State University/St. Claire Medical Center Child Care Center has purchased a new Bye Bye Buggy. The six-seat buggy is a favorite with the children, according to Aimee Beach, right, center director. On a recent outing with associate Kirsten Lindahl are infants in her group. Hooded, belted, strapped and seated in the front row from left are, Olivia McMurry-Gearner, and Jaliah Lofton; middle row from left are twins Anne Marie and Julia Kling; seated in the back are Ellen Lap and Deveney Redwine.

(MSU photo by Tim Holbrook)

11-14-97db

*Morehead News
Trail Blazer
Daily Independent
Bath County News-Outlook
Racountew*



News

Pauline Young, Media Relations Director
Judith Yancy, Director of Institutional Relations

Morehead State University

UPO Box 1100

Morehead, KY 40351-1689

606-783-2030

Nov. 15, 1997

FOR IMMEDIATE RELEASE

MOREHEAD, Ky.---The RecReading Collection at Morehead State University's

Camden-Carroll Library has the newest releases, including books on the New York Best Seller List.

The books, located to the immediate left of the Circulation Desk on the first floor, include a variety of subjects in fiction, non-fiction and biography works. They may be checked out for a two-week period.

Among the new titles in fiction are: "Vegas Rich" by Fern Michaels, "Vanishing Point" by Morris West, "My Other Life" by Paul Theroux, "10 lb. Penalty" by Dick Francis and "Flood Tide" by Clive Cussler.

Best sellers in biography include: "Coach: the Life of Paul Bear Bryant" by K. Dunnavant, "Ansel Adams: A Biography" by M.S. Alinder; "All Madden" by John Madden, "Diana: Her True Story" by Andrew Morton; "Stealing Home" by Sharon Robinson and "Waylon: An Autobiography" by Waylon Jennings.

Best-selling non-fiction works include: "Don't Know Much About the Civil War" by K. C. Davis, "The Royals" by Kitty Kelley; "Dogs Never Lie About Love" by J.M. Masson; "Apocalypse Now" by J.F. Garner; "What Your Kindergartner Needs to Know" by E.D. Hirsch and "Book" by Whoopi Goldberg.

Additional information is available by calling Juanita Hall, head of CCL's Cataloging Department at (606) 783-5118.

####

py

News

Pauline Young, Media Relations Director

Judith Yancy, Director of Institutional Relations

Morehead State University

UPO Box 1100

Morehead, KY 40351-1689

606-783-2030

Nov. 15, 1997

FOR IMMEDIATE RELEASE

MOREHEAD, Ky.---Morehead State University's Concert Band will perform on Wednesday, Nov. 19, at 8 p.m. in Duncan Recital Hall.

The performance by the 90-member ensemble is free and open to the public.

The band, composed of students from a variety of majors, will feature works by Ron Nelson, Alfred Reed, Red Skelton, Carl Strommen, David Holsinger, Daniel Bukvich and J.C. Heed.

Membership in the Concert Band is open to any student who has previous band experience. Additional information is available by calling Dr. Susan Creasap, assistant director of bands, at (606) 783-2488.

####

PY

News

Pauline Young, Media Relations Director

Judith Yancy, Director of Institutional Relations

Morehead State University

UPO Box 1100

Morehead, KY 40351-1689

606-783-2030

Nov. 16, 1997

FOR IMMEDIATE RELEASE

MOREHEAD, Ky.--Morehead State University's Board of Regents has agreed to provide President Ronald G. Eaglin with a deferred compensation package, effective next July 1.

Specific details of the supplemental retirement plan will be negotiated before the end of the current fiscal year, according to Board Chair L.M. "Sonny" Jones. He emphasized that Dr. Eaglin had not indicated any interest in leaving his post.

"We have the utmost respect for President Eaglin," Jones said, following last week's meeting. "We are convinced we have a star in the field of higher education administration," he said, adding that a verbal agreement to enhance Dr. Eaglin's retirement package was made when he was first hired in 1992. Currently, MSU's president has retirement benefits through the Kentucky Teachers Retirement System.

"We believe this sends a message to the higher education community that MSU is committed to attracting and retaining quality leadership," he said. The board chair also told the media that the negotiations might include an agreement that the 57-year-old president stay until age 62. "It is of particular importance that he remain on the job in view of the reorganization of public higher education in Kentucky," Jones said.

In other business, the regents approved the granting of an honorary Doctor of Humanities degree to Lexington philanthropist Lucille Caudill Little. The degree will be presented at the University's Winter Commencement, which will be held Saturday, Dec. 20, at 10:30 a.m. in the Academic-Athletic Center.

A Rowan County native, Little has dedicated her life to enriching the lives of others, giving of herself and millions of dollars to improving the educational and cultural quality of life of Central and Eastern Kentucky.

Among the various reports given to the board was that of final enrollment figures for the fall semester which showed 8,208 students enrolled this fall as compared 8,344 for fall 1996, or a 1.6 percent decrease.

The regents accepted financial reports for the 1996-97 fourth quarter of the 1996-97 operating budget and the first quarter of the 1997-98 operating budget as well as the 1996-97 audit report. Other actions taken by the board included amending various personnel policies related to leave of absence without pay, vacation leave and sick leave.

####

News

Pauline Young, Media Relations Director

Judith Yancy, Director of Institutional Relations

Morehead State University

UPO Box 1100

Morehead, KY 40351-1689

606-783-2030

Nov. 18, 1997

FOR IMMEDIATE RELEASE

MOREHEAD, Ky.---Invitations are in the mail for Morehead State University's annual holiday dinner party to be held on Friday, Dec. 12, at the Adron Doran University Center.

Hosted by President and Mrs. Ronald G. Eaglin, the evening begins with a social period at 6:30 p.m., followed by dinner and holiday entertainment. "Through the Eyes of a Child" will be the theme for this year's event.

"A campus tradition, the dinner party provides Mrs. Eaglin and myself with an opportunity to launch this festive holiday season with friends of the University," Dr. Eaglin said. "We look forward each year to greeting friends, both from the campus and the region."

Tickets for the \$17.50 per plate dinner must be purchased and picked up by 4:30 p.m. on Friday, Dec. 5, according to Susette Redwine, co-chair of the dinner party committee. Reservations may be made for table parties of eight or for individuals by calling (606) 783-2071.

Dr. Charles Derrickson, retired dean of MSU's College of Science and Technology who also served as president of the former Lees College, will serve as master of ceremonies.

Dinner-goers will dine on stuffed chicken breast, a tropical fruit salad, potatoes, broccoli spears and a special holiday dessert. Music in keeping with the season will be provided by the Morgan County Schools Choir, directed by Linda Hopkins; the Morgan County Schools Bell Choir, directed by Connie Herdman, and the Rowan County Middle School Choir, directed by Shelia Marshall.

The holiday dinner party committee also includes Alan Baldwin, co-chair; Dora Ahmadi, Yvonne Baldwin, Jean Besant, Larry Besant, Roger Barker, Sandy Barker, Dee Biebighauser, Patti Breeden, Susan Creasap, Bonnie Eaglin, Ruth Ann Harney-Howard, Beverly McCormick, Dennis McKay, Brenda Malinauskas, Marilyn Moore, Betty Phillely, Janet Ratliff, Dan Shute, Paul Taylor and Vanessa Weikel.

####

PSA

Pauline Young, Media Relations Director
Judith Yancy, Director of Institutional Relations

Morehead State University

UPO Box 1100

Morehead, KY 40351-1689

606-783-2030

SUBJECT: Holiday Dinner Party
RELEASE DATE: Now thru Dec. 5, 1997
TIME: 30 seconds

ANNOUNCER:

A FESTIVE EVENING TO CELEBRATE THIS HOLIDAY SEASON AND VIEW IT "THROUGH THE EYES OF A CHILD" IS PLANNED FOR THOSE ATTENDING THE HOLIDAY DINNER PARTY HOSTED BY MSU PRESIDENT AND MRS. EAGLIN ON FRIDAY, DEC. 12, AT THE ADRON DORAN UNIVERSITY CENTER. THE EVENING BEGINS WITH A SOCIAL AT 6:30 P.M. RESERVATIONS FOR THE \$17.50 PER PLATE DINNER WILL BE ACCEPTED THROUGH FRIDAY, DEC. 5, AND TICKETS SHOULD BE PICKED UP BY 4:30 P.M. THAT DAY. FOR RESERVATIONS, CALL 606-783-2071.

####

11-18-97jy

News

Pauline Young, Media Relations Director

Judith Yancy, Director of Institutional Relations

Morehead State University

UPO Box 1100

Morehead, KY 40351-1689

606-783-2030

Nov. 18, 1997

FOR IMMEDIATE RELEASE

MOREHEAD, Ky.---Morehead State University's administrative offices will close for the Thanksgiving holiday at 4:30 p.m. on Tuesday, Nov. 25. Classes are not scheduled to meet Monday and Tuesday, Nov. 24-25.

Regular office hours and classes will resume at 8 a.m. on Monday, Dec. 1.

####

News

Pauline Young, Media Relations Director

Judith Yancy, Director of Institutional Relations

Morehead State University

UPO Box 1100

Morehead, KY 40351-1689

606-783-2030

Nov. 20, 1997

FOR IMMEDIATE RELEASE

MOREHEAD, Ky.---Morehead State University will host an Appalachian Christmas Arts and Craft Market on Saturday, Dec. 6, from 9 a.m. to 5 p.m. in the Laughlin Health Building on campus.

More than 100 exhibitors are expected to participate in the market where they will offer various crafts and art ideas for the holiday season. The market also will include a small antique show.

Among the items for sale will be baskets, glass blowing and photographs. There also will be woodworking vendors on site.

"The market will have a lot of Christmas crafts but there is going to be more offered than that," said Georgia S. Grigsby, MSU administrative/marketing assistant for Continuing Education and Conference Services. "There will be everything in crafts that you could want."

Vendors will be on site all day long displaying and selling their wares. Admission is \$2 per person.

Additional information is available by calling Grigsby at (606) 783-5153.

####

adb

PSA

Pauline Young, Media Relations Director

Judith Yancy, Director of Institutional Relations

Morehead State University

UPO Box 1100

Morehead, KY 40351-1689

606-783-2030

SUBJECT: Arts And Crafts Market

RELEASE DATE: Now through Dec. 5, 1997

TIME: :30 sec

ANNOUNCER:

MORE THAN 100 EXHIBITORS WILL BE ON HAND FOR AN APPALACHIAN CHRISTMAS ARTS AND CRAFTS MARKET ON SATURDAY, DEC. 6, AT MOREHEAD STATE UNIVERSITY'S LAUGHLIN HEALTH BUILDING. THE MARKET WILL BE OPEN AND VENDORS ON SITE DISPLAYING AND SELLING THEIR WARES FROM 9 A.M. UNTIL 5 P.M. ADMISSION IS \$2 PER PERSON. WHETHER YOU ARE LOOKING FOR GIFT IDEAS FOR THE SEASON OR CRAFTS YOU NEED, THIS IS THE PLACE TO BE THE FIRST SATURDAY IN DECEMBER.

####

11-20-97py

News

Pauline Young, Media Relations Director

Judith Yancy, Director of Institutional Relations

Morehead State University

UPO Box 1100

Morehead, KY 40351-1689

606-783-2030

Nov. 20, 1997

FOR IMMEDIATE RELEASE

MORHEAD, Ky.---Dr. Paul Taylor, Morehead State University associate professor of Music, will present a piano recital on Friday, Dec. 5, at 8 p.m. in Duncan Recital Hall on the campus.

He will be accompanied by Jennifer Hughes, an MSU junior from West Van Lear. The performance is free and open to the public.

The recital will include several compositions that were popularized in recent movies: Chopin's g minor Ballade from "A Song To Remember;" Goldberg Variations from "Thirty Two Short Films About Glenn Gould;" Romaninov 3rd concerto from "Shine," and Beethoven's Sonata in A from "Immortal Beloved."

Additional information is available from MSU's Department of Music at (606) 783-2473.

####

adb

News

Pauline Young, Media Relations Director

Judith Yancy, Director of Institutional Relations

Morehead State University

UPO Box 1100

Morehead, KY 40351-1689

606-783-2030

Nov. 20, 1997

FOR IMMEDIATE RELEASE

MOREHEAD, Ky.---Morehead State University's Department of Music will present the University Chorus in concert at 8 p.m. on Wednesday, Dec. 3, in Duncan Recital Hall.

The concert which is free and open to the public will feature traditional choral selections for the holiday season, according to Dr. Kenneth Siple, MSU assistant professor of music, who directs the choral group.

The University chorus is composed of students and area residents.

####

News

Pauline Young, Media Relations Director
Judith Yancy, Director of Institutional Relations

Morehead State University

UPO Box 1100

Morehead, KY 40351-1689

606-783-2030

Nov. 21, 1997

FOR IMMEDIATE RELEASE

MOREHEAD, Ky.--Morehead State University will kick off its holiday season with the annual tree lighting ceremony on Thursday, Dec. 4.

The activities will begin with a children's party in the Adron Doran University Center, beginning at 4:30 p.m. The party, sponsored by the Student Government Association, is free and open to the public.

Several student organizations will participate in the holiday celebration for the children. The students will tell stories, hand out candy and paint faces. There also will be an opportunity to have a picture made with Santa.

The official tree lighting ceremony will begin at 6 p.m. at the tree, located on the lawn of Fields Hall near the President's Home. Taking part in the ceremony will be MSU President Ronald Eaglin and his wife Bonnie. All other campus holiday lighting displays will be illuminated at this time.

Additional information is available by calling the Office of Student Activities at 783-2071.

####

adb

News

Pauline Young, Media Relations Director

Judith Yancy, Director of Institutional Relations

Morehead State University

UPO Box 1100

Morehead, KY 40351-1689

606-783-2030

Nov. 21, 1997

FOR IMMEDIATE RELEASE

MOREHEAD, Ky.---The Morehead State University dance team qualified to compete in the 1998 National Dance Team Championships, Thursday through Saturday, Jan. 8-10 in Orlando, Fla.

This is the second year the team has qualified. The group finished in third place last year.

Additional information is available from Lora Hardwick Pace, coordinator of retention and team coach, at (606) 783-2517.

####

adb

News

Pauline Young, Media Relations Director

Judith Yancy, Director of Institutional Relations

Morehead State University

UPO Box 1100

Morehead, KY 40351-1689

606-783-2030

Nov. 21, 1997

FOR IMMEDIATE RELEASE

MOREHEAD, Ky. ---Morehead State University's OperaWorks will present its version of Gilbert and Sullivan's "The Mikado" on Tuesday and Thursday, Dec. 2 and 4, in Duncan Recital Hall. The show, which begins at 8 p.m. both nights, is free and open to the public.

The original work was inspired by the 1885 Japanese Exhibition in Kensington Gardens in Victorian England, which motivated thousands of Britons to purchase Japanese art for their parlors, according to Roma Prindle, MSU assistant professor of music and director of the operetta. When the British subjects chose to ignore the people who produced the works, the sarcastic pen of the playwrights went to work. What first appears to be a stereotypical presentation of Japanese characters is actually a gentle bashing of the social and cultural limitations of contemporary audiences, she added.

Prindle has studied with some of the country's foremost Gilbert and Sullivan directors. For this production, she has updated "The Mikado" to 1997 and utilized an automobile factory somewhere in Kentucky as the setting.

The title role of the Mikado will be played by Dr. Ricky Little, baritone, MSU assistant professor of music. Larry Keenan, professor of music, will provide keyboard accompaniment.

Other cast members include: Shaun Popp, **Sassafrass** sophomore, as Nanki-Poo, the son of Mikado; Aaron Bowling, **Hazard** junior, is Ko-Ko, Lord High Executioner; David Herrington, **Cynthiana** sophomore, as Pooh-Bah, Lord High Everything Else; William Fugate, **Combs** sophomore as Pish-Tush, a noble lord, and Barbara Parker, **Louisa** junior, as Katisha, an elderly lady. Appearing as school girls are: Kelly Napier, **Burlington** junior, as Yum-Yum; Cathy Mullins, **Pikeville** senior, Pitti-Sing, and Carrie Hegge, **Williamstown** junior, as Peep-Bo.

Also appearing as members of the chorus and factory workers are: Michelle Agee, **Mt. Sterling** freshman; Mindee DeLong, **Carroll, Ohio**, sophomore; Janean Freeman, **Morehead** graduate student; Josh Hamer, **West Chester, Ohio**, freshman; Lee Henderson, **Lexington**, freshman; Michelle Napier, **Louisa** sophomore; Norvel Perkins, **Owingsville** junior; Veda Ruggieri, **Brookville, Ohio**, freshman; Brent Sammons, **Lovely** sophomore; and Jessica Williams, **Mt. Sterling** freshman.

Additional information is available from Prindle at (606) 783-2481.

####

adb

Photo

Pauline Young, Media Relations Director

Judith Yancy, Director of Institutional Relations

Morehead State University

UPO Box 1100

Morehead, KY 40351-1689

606-783-2030

MSU'S OPERAWORKS WILL PRESENT 'THE MIKADO'

Morehead State University's OperaWorks will present "The Mikado" on Tuesday and Thursday, Dec. 2 and 4, in Duncan Recital Hall, Baird Music Building, on the campus. Cast members in the operetta include Norvel Perkins, **Owingsville** junior; Lee Henderson, **Lexington** freshman; Shaun Popp, **Sassafrass** sophomore; William Fugate, **Combs** sophomore; David Herrington, **Cynthiana** sophomore; Brent Sammons, **Lovely** sophomore, and Josh Hamer, **West Chester, Ohio**, freshman. The performance, which is free and open to the public, begins at 8.p.m. each evening.

(MSU photo by Tim Holbrook)

11-21-97adb



Trail Blazers

Photo

Pauline Young, Media Relations Director

Judith Yancy, Director of Institutional Relations

Morehead State University

UPO Box 1100

Morehead, KY 40351-1689

606-783-2030

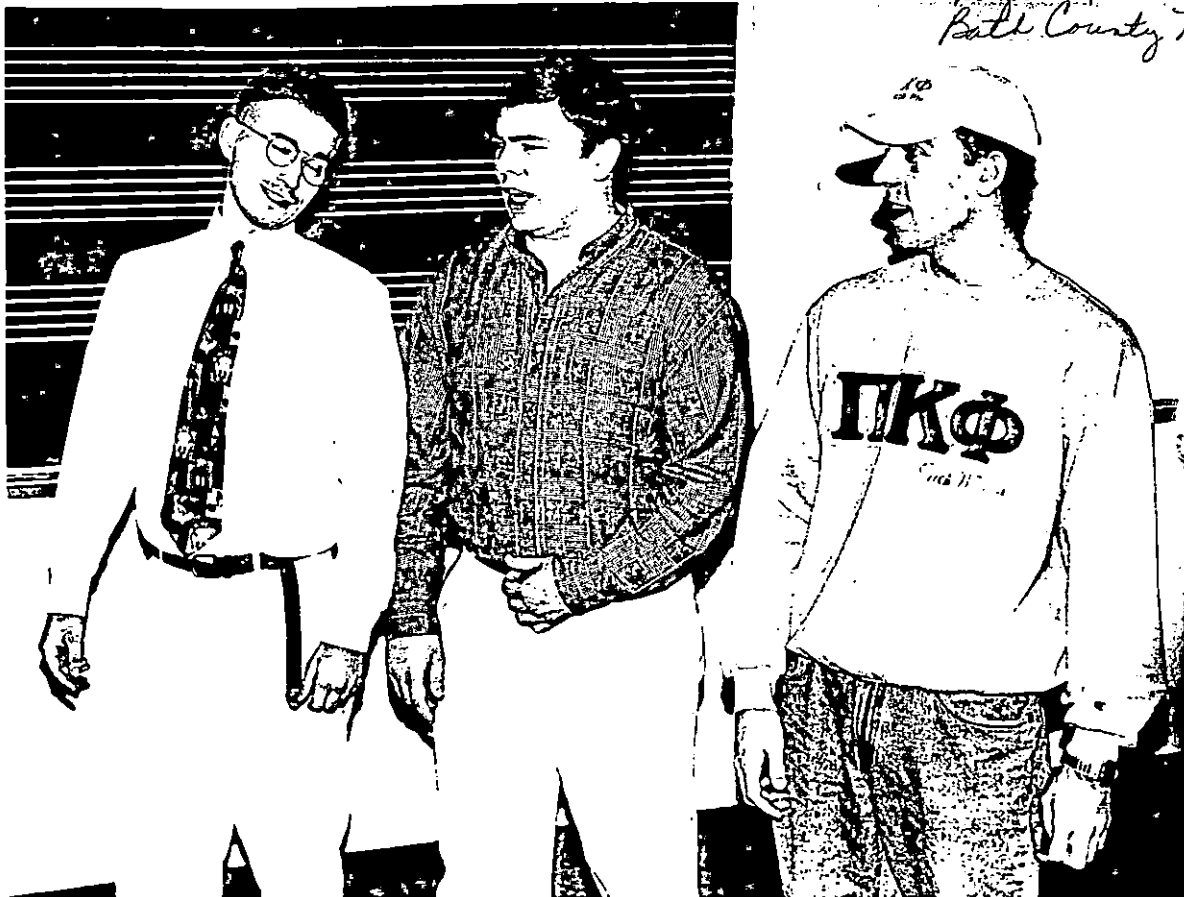
MSU'S OPERAWORKS WILL PRESENT 'THE MIKADO'

Morehead State University's OperaWorks will present "The Mikado" on Tuesday and Thursday, Dec. 2 and 4, in Duncan Recital Hall, Baird Music Building, on the campus. Cast members in the operetta include, from left: William Fugate, Combs sophomore, as Pish-Tush; Brent Sammons, Lovely sophomore, as a factory worker; and David Herrington, Cynthiana sophomore, as Pooh-Bah, (Lord High Everything Else). The performance, which begins at 8 p.m. both evenings, is free and open to the public.

(MSU photo by Tim Holbrook)

11-21-97adb

*Morehead News
Herald-Lender
Daily Independent
Cynthiana Democrat
East Kentucky Sun
Mountain Citizen
Perry County News
Wayne Herald-Voice
Booth County News-Outlook*



News

Pauline Young, Media Relations Director

Judith Yancy, Director of Institutional Relations

Morehead State University

UPO Box 1100

Morehead, KY 40351-1689

606-783-2030

Nov. 21, 1997

FOR IMMEDIATE RELEASE

MOREHEAD, Ky.---Morehead State University has received a \$26,798 grant from the Kentucky Real Estate Commission to provide educational services in real estate to the University's 22-county service region in Eastern Kentucky

The grant will provide funds for a variety of services offered to licensees and materials for classes on and off campus.

This is the 12th year that MSU's Real Estate Studies has received the grant, according to Dr. Beverly McCormick, assistant vice president of Enrollment Management, who serves as chairholder of the program.

"The grant will benefit not only degree seeking students but also will allow those people who already hold a real estate license to continue their education," Dr. McCormick said.

"The program serves the community as a research resource to local agents and offers advice to those buying and selling real estate," Dr. McCormick said. "Knowledge about real estate is important to everyone. Most of us are going to own property one day and will need to at least know the basics."

####

db

Tips

Pauline Young, Media Relations Director

Judith Yancy, Director of Institutional Relations

Morehead State University

UPO Box 1100

Morehead, KY 40351-1689

606-783-2030

DECEMBER HIGHLIGHTS AT MOREHEAD STATE UNIVERSITY

- Dec. 2, Recital: OperaWorks, Duncan Recital Hall, 8 p.m.; free; Roma Prindle, director. Additional information: (606) 783-2473.
- Dec. 3, Recital: University Chorus, Duncan Recital Hall, 8 p.m.; free. Dr. Ken Siple, director. Additional information: (606) 783-2473.
- Dec. 4, Holiday Tree Lighting, Fields Hall lawn, Time: TBA. Additional information: (606) 783-2071.
- Dec. 4, Recital: OperaWorks, Duncan Recital Hall, 8 p.m.; free. Additional information: (606) 783-2473.
- Dec. 5, Faculty Recital: Paul Taylor, Duncan Recital Hall, 8 p.m.; free. Additional information: (606) 783-2473.
- Dec. 6, Appalachian Christmas Arts and Crafts Market, Laughlin Health Building, 9 a.m.-5 p.m.; charge. Additional information: (606) 783-5153.
- Dec. 6, Rifle Team: MSU vs. Austin Peay State University and University of Cincinnati, range; time: TBA; Additional information: (606) 783-2539.
- Dec. 7, Concert: MSU Brass Ensembles "Holiday Concert," Duncan Recital Hall, 8 p.m.; free. Additional information: (606) 783-2473.
- Dec. 8, Men's Basketball: MSU vs. Marshall University, Academic-Athletic Center; 7:30 p.m. charge. Additional information: (606) 783-2087.
- Dec. 8, Concert: Symphony Band, Duncan Recital Hall, 8 p.m.; free. Additional information: (606) 783-2473.
- Dec. 10-12 and Dec. 15-16, Final examinations for the fall semester.
- Dec. 11, Recital: Annual Christmas "Sing-a-long," Duncan Recital Hall, 3 p.m.; free. Additional information: (606) 783-2473.
- Dec. 12, Holiday Dinner Party, Crager Room, Adron Doran University Center, 6:30 p.m.; charge. Additional information: (606) 783-2071.
- Dec. 18, Women's Basketball: MSU vs. Wofford College, Academic-Athletic Center, 7:30 p.m.; charge. Additional information: (606) 783-2126.
- Dec. 20, Winter Commencement, Academic-Athletic Center, 10:30 a.m. Additional information: (606) 783-2008.
- Dec. 23, Offices close for holiday break, 4:30 p.m. Offices reopen, Jan. 5.

Due to early press deadlines, some listings may be subject to change.

####

11-21-97py

Tips

Pauline Young, Media Relations Director

Judith Yancy, Director of Institutional Relations

Morehead State University

UPO Box 1100

Morehead, KY 40351-1689

606-783-2030

JANUARY HIGHLIGHTS AT MOREHEAD STATE UNIVERSITY

Jan. 3, Men's Basketball: MSU vs. Southeast Missouri, Academic-Athletic Center, 3 p.m.; charge. Additional information: (606) 783-2087.

Jan. 5, Men's Basketball: MSU vs. Eastern Illinois, Academic-Athletic Center, 7:45 p.m.; charge. Additional information: (606) 783-2087.

Jan. 5, Offices reopen after holiday break, 8 a.m.

Jan. 13, Men's Basketball: MSU vs. Tennessee-Martin, Academic-Athletic Center, 7:30 p.m.; charge. Additional information: (606) 783-2087.

Jan. 14, Campus-wide convocation, location TBA.

Jan. 14, Business Days for spring semester; Class scheduling Jan. 15 and 16. Additional information: (606) 783-2008.

Jan. 14, Women's Basketball: MSU vs. Tennessee-Martin, Academic-Athletic Center, 7:30 p.m.; charge. Additional information: (606) 783-2126.

Jan. 17, Women's Basketball: MSU vs. Eastern Kentucky University, Academic-Athletic Center, 5:30 p.m.; charge. Additional information: (606) 783-2126.

Jan. 17, Men's Basketball: MSU vs. Eastern Kentucky University, Academic-Athletic Center, 7:45 p.m.; charge. Additional information: (606) 783-2087.

Jan. 19, Dr. Martin Luther King Jr. Holiday; no classes or office hours.

Jan. 19, Women's Basketball: MSU vs. Belmont, Academic-Athletic Center, 7:30 p.m.; charge. Additional information: (606) 783-2126.

Jan. 22, Men's Basketball: MSU vs. Tennessee Tech, Academic-Athletic Center, 7:30 p.m.; charge. Additional information: (606) 783-2087.

Jan. 24, Women's Basketball: MSU vs. Middle Tennessee, Academic-Athletic Center, 5:30 p.m.; charge. Additional information: (606) 783-2126.

Jan. 24, Men's Basketball: MSU vs. Middle Tennessee, Academic-Athletic Center, 7:45 p.m.; charge. Additional information: (606) 783-2087.

Jan. 26, Women's Basketball: MSU vs. Tennessee Tech, Academic-Athletic Center, 7:30 p.m.; charge. Additional information: (606) 783-2126.

Due to early press deadlines, some listings may be subject to change.

####

11-21-97py

News

Pauline Young, Media Relations Director
Judith Yancy, Director of Institutional Relations

Morehead State University

UPO Box 1100

Morehead, KY 40351-1689

606-783-2030

Nov. 21, 1997

FOR IMMEDIATE RELEASE

MOREHEAD, Ky.---One of the goals of Morehead State University's Alpha Lambda Pi student paralegal club is to provide activities that will make the transition from student to the work force easier.

The group also wants students to know what to expect when looking for a job.

During the last year, the group's members have attended the Greater Lexington Paralegal Association fall seminar and the 9th Annual Kentucky Paralegal Forum in Louisville.

To be eligible to join the club, students must be full-time in good standing with the University and interested in the program. The Club promotes fundamental skills related to the paralegal profession, networking with members of the legal community, and offers job preparation tips to students.

The group has fund raisers to sponsor guest speakers and attend conferences. Next year, they hope to visit the Cincinnati area with stops at the Chase Law Library, the Federal Court House and Library and attend an employment seminar sponsored by Cincinnati Paralegal Association and Mount Saint Joseph College.

"This organization provides wonderful opportunities for students to meet and network with professionals in the legal community as well as with other paralegals throughout the state," said Stephen Herzog, MSU assistant professor of government and the group's adviser. "This gives them an opportunity to enhance their skills and explore future employment prospects."

Officers of the club, elected to a one-year term, are:

President--Reba Bush, **Webbville** senior. She is a member of Phi Kappa Phi honor society, member of the Kentucky Paralegal Association and a USAA All-American Scholar. The daughter of Lutie E. Mills and the late Virgil Mills, she is the mother of Charles V. Whitt and grandmother of Kindra and Kyle Whitt of Fallsburg.

Vice President--Soreya R. Lambat, **Malawi, Africa**, senior.

Secretary--Kimsu Conway, **Flemingsburg** senior. She is the wife of Wayne Conway.

Treasurer--Myra Jill Hicks, **Monticello** senior. She is the daughter of Marvin and Mary Ann Hicks.

Executive assistant--Debra F. Reynolds, **Lexington** senior. A member of the Kentucky Paralegal Association and Phi Kappa Phi honor society, she is the wife of Doug Reynolds.

Also members of the club are: Melissa Abdon, **Greenup** senior; Tonya Bailey, **Owingsville** sophomore; Miranda Collins, **Owingsville** freshman; Amy Gillum, **Ashland** junior; Lucy Holman, **Olive Hill** graduate student, and Sabrina Shepherd, **Prestonsburg** senior.

####

adb

Photo

Pauline Young, Media Relations Director

Judith Yancy, Director of Institutional Relations

Morehead State University

UPO Box 1100

Morehead, KY 40351-1689

606-783-2030

MSU'S PARALEGAL CLUB

Members of Morehead State University's Alpha Lambda Pi student paralegal club network with state paralegal groups and attend seminars and forums to stay abreast of the latest technology. Members of the group at a recent meeting are, from left, Soreya Lambat, **Malawi, Africa**, senior, vice-president; Debbie Reynolds, **Lexington** senior; Stephen Herzog; MSU assistant professor of government and the club's adviser; Melissa Abdon, **Greenup** senior; Kimsu Conway, **Flemingsburg** senior, secretary; Reba Bush, **Webbville** senior, president; and Jill Hicks, **Monticello** senior, treasurer.

(MSU photo)

11-21-97adb

*Morehead News
Herald-Leader
Greenup News-Times
Flemingsburg Gazette
Fleming Shopper
Big Sandy News
Wayne County Outlook
Trail Blazer*



News

Pauline Young, Media Relations Director
Judith Yancy, Director of Institutional Relations

Morehead State University

UPO Box 1100

Morehead, KY 40351-1689

606-783-2030

Nov. 21, 1997

FOR IMMEDIATE RELEASE

MOREHEAD, Ky.---Morehead State University's Department of English, Foreign Languages and Philosophy and the Philosophy Club will sponsor a guest speaker on Thursday, Dec. 4, 3 p.m. in East Room A, Adron Doran University Center.

Dr. Larry Hickman, professor of philosophy and director of the Center for Dewey Studies at Southern Illinois University, will present a paper entitled "Three Effects of Advanced Technology: Somnambulism, Fundamentalism, and Splintered Specialism."

The lecture is free and open to the public. Advance copies of the paper may be obtained from philosophy faculty members. Additional information is available from Dr. Scott Davison, assistant professor of philosophy, at (606) 783-2273.

####

adb

News

Pauline Young, Media Relations Director

Judith Yancy, Director of Institutional Relations

Morehead State University

UPO Box 1100

Morehead, KY 40351-1689

606-783-2030

Nov. 22, 1997

FOR IMMEDIATE RELEASE

MOREHEAD, Ky.---Morehead State University's theatre students will present Jaston Williams, Ed Howard and Joe Sears' "A Tuna Christmas," Monday and Tuesday, Dec. 8-9, on the campus.

Showtime for the presentation, which will be held in Kibbey Theatre, is 8 p.m.

In this comedy, two actors will play 22 roles as they look at the Christmas festivities of Tuna, Texas. Appearing in the leading roles are Brian Isaac Phillips, **Nicholasville**, senior, Arles and Company, and Shawn D. Slone, **Prestonsburg** senior, Thurston and Company.

Assisting with the play will be Rich Timmers, **Florence** senior, lighting designer; Julia Lane, **Lexington** sophomore, is costume designer; Elizabeth Harris, **Olive Hill** graduate student, is the play's director, and Phillips will be sound designer.

Tickets are \$6 for adults, \$3 for senior citizens and high school students, and free to MSU students with a valid I.D. card. Because of limited seating, reservations are necessary and may be made by calling MSU's Theatre Box Office at (606) 783-2170.

####

cvd

Photo

Pauline Young, Media Relations Director

Judith Yancy, Director of Institutional Relations

Morehead State University

UPO Box 1100

Morehead, KY 40351-1689

606-783-2030

'A TUNA CHRISTMAS' AT MSU

Morehead State University theatre students will present "A Tuna Christmas," Monday and Tuesday, Dec. 8-9, in Kibbey Theatre. In this comedy, two individuals play 22 roles as they enjoy the holiday festivities of Tuna, Texas. Appearing in the leading roles are Shawn Slone, left, **Prestonsburg** senior and the son of Paul and Carol Slone, and Brian Phillips, **Nicholasville** senior and son of Willis and Trudy Phillips. Show time for the play is 8 p.m. Tickets are \$6 for adults, \$3 for senior citizens and high school students, and free to MSU students with valid I.D. card. Proceeds will benefit the Alicia Vallotton Scholarship Fund. Because of limited seating, reservations are necessary and may be made by calling MSU's Theatre Box Office at (606) 783-2170.

(MSU photo by Tim Holbrook)

11-22-97cvd

*Lloyd County Times
Jasmine Journal
Morehead News
Trail Blazer
Raconter
Daily Independent
Ledger Independent
Appalachian News-Express*



News

Pauline Young, Media Relations Director

Judith Yancy, Director of Institutional Relations

Morehead State University

UPO Box 1100

Morehead, KY 40351-1689

606-783-2030

Nov. 22, 1997

FOR IMMEDIATE RELEASE

MOREHEAD, Ky. ---Six Morehead State University students will participate in Jaston Williams, Ed Howard and Joe Sears production of "A Tuna Christmas," Monday and Tuesday, Dec. 8-9, on the campus.

Appearing in the leading roles are:

*Brian Isaac Phillips, the son of Willis and Trudy Phillips of **Nicholasville**, will portray Arles and Company and serve as sound designer. A senior theatre major, he is a member of the MSU Players and Theta Alpha Phi.

*Shawn D. Slone, the son of Paul and Carol Slone of **Prestonsburg**, will host Thurston and Company. A senior theatre and history major, he is a member of the MSU Players.

Participating in the production will be:

*Elizabeth Harris, daughter of Robert and Starlene Harris of **Olive Hill**, is the director. A graduate student majoring in theatre, she is a member of MSU Players and Theta Alpha Phi national theatre honor fraternity.

*Julia Reynolds Lane, a sophomore theatre major from **Lexington**, is assistant stage manager. She is a member of the MSU Players.

*Troy Miller of **Augusta**, the son of Keith and Betsy Miller and Darlene and Benny McNeese, is production stage manager. A sophomore theatre major, he is a member of MSU Players.

*Rich Timmers, the son of Richard Timmers of **Florence**, is lighting designer. He is a senior theatre major.

Show time for the performance, which will be held in Kibbey Theatre, is 8 p.m.

Tickets are \$6 for adults, \$3 for senior citizens and high school students, and free to MSU students with valid I.D. card. Because of limited seating, reservations are necessary and may be made by calling MSU's Theatre Box Office at (606) 783-2170.

####

cvd

*Jessamine Journal
Floyd County Times
Olive Hill Times
Herald-Leader
Boone County News
The Times
Kentucky Post
Boone County Recorder*

News

Pauline Young, Media Relations Director

Judith Yancy, Director of Institutional Relations

Morehead State University

UPO Box 1100

Morehead, KY 40351-1689

606-783-2030

Nov. 22, 1997

FOR IMMEDIATE RELEASE

MOREHEAD, Ky.---Yanya Yang, Morehead State University graduate student from China, will have an art exhibit in the Strider Gallery, Claypool-Young Art Building, Dec. 1-20.

In this show, Yang's works will include paintings and graphic design pieces.

Influenced by her brother, Yang began studying art at the age of 12. She has since received numerous awards, such as Merit awards at the Water Tower Annual Exhibition in Louisville and Annual Wabash Valley Juried Art Exhibition in Terre Haute, Ind., in 1997 and the Anhui Fine Arts Exhibition in Anhui, China, in 1993.

Yang earned the B.F.A. degree at the National Academy of Fine Arts in Hangzhou, China, and is currently enrolled in the master's program in computer graphic design at MSU. In the spring, she plans to enroll at Indiana University to pursue a Master of Fine Arts degree.

The Strider Gallery is open Monday through Friday, 8 a.m. to 3:30 p.m.

Additional information is available by calling MSU's Department of Art at (606) 783-2766.

#####

cvd

News

Pauline Young, Media Relations Director
Judith Yancy, Director of Institutional Relations

Morehead State University

UPO Box 1100

Morehead, KY 40351-1689

606-783-2030

Nov. 22, 1997

FOR IMMEDIATE RELEASE

MOREHEAD, Ky.--- Ruth Ann Harney-Howard, area coordinator in the Office of Student Housing at Morehead State University, has been elected president of Kentucky Association of Housing Officers (KAHO).

Harney-Howard will serve as president for the 1997-98 academic year. In her new role, she hopes to continue the interaction and correspondence between the state institutions, provide informative programs and information to housing officers and incorporate a resident adviser track at the state meeting.

Actively involved for several years in KAHO, she served as state editor for two years, and served as the Kentucky state Representative for the Southeastern Association of Housing Officers (SEAHO) for the last four years.

A member of the Governing Council since 1994 and the Host Task Force Committee this year, Harney-Howard is presently serving on Nominations and Elections Committee for SEAHO.

While working for MSU during the last 20 years, she has been active in various professional groups as well as campus organizations. She is immediate past president of the MSU Woman's Club and president-elect of the Human Sciences Alumni Association.

She is married to Ralph Howard, Jr., an MSU alumnus who owns his own business in Hazard.

####

adb

News

Pauline Young, Media Relations Director

Judith Yancy, Director of Institutional Relations

Morehead State University

UPO Box 1100

Morehead, KY 40351-1689

606-783-2030

Nov. 22, 1997

FOR IMMEDIATE RELEASE

MOREHEAD, Ky.---Increased student interest in the Physician Assistant Program has led to the establishment of a Pre-Physician Assistant Studies Student Association (PPASSA) at Morehead State University.

The newly-formed association has announced its officers:

President--Micca Nicole Maggard, a **Hager Hill** junior biology major. The daughter of Larry and Jeanne Maggard, she is a member of the American Chemical Society's publicity department.

Vice President--Charity Salisbury, **Harold** sophomore biology major, the daughter of Ronald and Linda Salisbury.

Secretary--Leslie Anne Wilcox, **Grayson** sophomore biology major. The daughter of Leland and Verla Wilcox, she is president of her church youth group and a member of the National Right to Life Organization.

Treasurer--Billie Michelle Chaney, **Steele** sophomore biology major. The daughter of Virginia Chaney, she is a member of the Academic Honors Student Association.

Members of the new organization include:

Stacey Dawn Barker, **Wurtland** sophomore biology major. She is the daughter of Donald Barker.

Michael Booth, **Carlisle** junior and a pre-physician assistant major, the son of Herbert and Joyce Booth.

Elizabeth Bowling of **Winchester**.

Joy Brown, **Olive Hill** sophomore biology major. She is the daughter of Diana and James Brown Jr.

Amanda Bush, **West Liberty** freshman. She is the wife of Phillip Bush.

Brandice Crum, **Morehead** freshman biology major. She is the daughter of Nadine Blankenship of **Stanville**.

Mamie Cunningham, **Catlettsburg** freshman biology major. She is the daughter of James Cunningham.

(MORE)

PPASSA
2-2-2-2-2

Kristy Forsythe, **Ivel** sophomore and a pre-physician assistant major. She is daughter of Robert and LoJeanne Forsythe.

Joseph Issac, **Louisa** senior biology major. He is the son of Gallie Isaac Jr.

Ryan Kling, MSU head athletic trainer.

Libbia Maddox, **Russell** health science major, is married to Greg Maddox. She is a volunteer at Our Lady of Bellefonte Hospital and a member of Phi Theta Kappa.

Steven Montgomery, **Salysersville** junior biology major. The son of Harold and Linda Montgomery, he is a volunteer in the emergency room at Highlands Regional Medical Center.

Brent Porter, **Olive Hill** senior biology major. He is the son of Norma Porter.

Joseph Reed, **Williamsburg** sophomore and a pre-physician assistant major. He is the son of Kenneth and Barbara Reed.

Billy Steven Riley, **Booneville** sophomore biology major. He is the son of Bill and Sue Riley.

Melinda Ritchie, **Emmalena** sophomore biology major. She is the daughter of Afton Ritchie.

To be eligible for membership in the association, students must have at least a 2.3 grade point average and declare the Pre-Physician Assistant studies as their major area of study. The organization, which maintains open membership throughout the year, will strive to educate prospective students about the Physician Assistant Program and that profession.

The group meets the second Monday of each month. Previous topics of discussion have included: the volunteer application process to St. Claire Medical Center; review of applications for the program; and the interview procedure with emphasis on appearance and aptitude.

Susan Maxey, MSU student services officer, is the group's adviser. Additional information is available by calling (606) 783-2636.

####

adb

News

Pauline Young, Media Relations Director

Judith Yancy, Director of Institutional Relations

Morehead State University

UPO Box 1100

Morehead, KY 40351-1689

606-783-2030

Nov. 25, 1997

FOR IMMEDIATE RELEASE

MOREHEAD, Ky.---Students from Montgomery County High School, Rowan County High School and West Carter High School took part recently in a Careers in Science Symposium at the annual Kentucky Academy of Science meeting hosted by Morehead State University.

Industrial scientists from across the state were on hand to provide science career information to the students, including representatives from Lexmark, Toyota, Proctor & Gamble, Eastern Kentucky University's forensic program and Ashland Petroleum.

Phil Vickers from Guardian Automotive Industries, a new Morehead industry, also explained the plastics processes used by the company and shared what the plant looked for in new employees.

Funded by the Ashland Foundation and United Catalysts, Inc., the symposium is designed to expose high school students to the science field and the importance of science careers, according to David Wesley, KAS Industrial Science Section chair. This is the fifth year that the Industrial Science Section has offered the symposium.

Attending from Montgomery High School were Arthur Abner, Chris Alsept, Dorothy Arnold, Wesley Baker, Michelle Brandenburg, Kyle Berryman, Patrick Bonfield, Kevin Bowling, Kristine Brown, Jolie Campbell, Adam Canales, Josh Chandler, Patrick Clayton, Stephanie Creech, Bobbie Curtis, Dede Davis, Carie Day, David Eads, Eric Ellis, Eric Follett, Brooke Fugate;

Tasha Gibson, Russell Hamm, Troy Howell, D.J. Jointer, K.C. Jones, Tyler Mark, Michael Martin, Kimberly McFadden, Josh Orme, Bryce Patrick, Anthony Prater, Josh Risner, April Rose, Mark Townsend, Aaron Vice and Nathan Vinson. Accompanying them were Marilyn McIlwain and Greg Horn, MCHS science teachers.

Rowan County High School students taking part included Marsha Alfrey, John Allen, Holley Bumgardner, Nichole Hamilton, Theresa Iwu, Erica Lafferty, Beth McCarty, Stephanie Owens, Brooke Pennington, Josh Rahn, Jessica Smedley, Sarah Sparks, Christi Stamper, Jennifer Taylor, Shanda Thomas; Rhonda Adams, Angela Brewer, Kim Burton, Leah Ann Burton, Melissa Coldiron, Stephanie Cooley, Sandra Darling, Kevin Fields, Aaron Gay, Angela Gregory,

(MORE)

KAS Career Symposium

2-2-2-2-2

Amanda Harper, Wes Helterbrand, Jessica Hill, Kerri Johnson, Dawn Kindinger, Stacey Lundergan, Tawnya McCleese, Vicki McClurg, Sarah Sims, Brandy Smith, Stevanie Smith, James Thomas, Daniel Waddell, Tina Wagoner and Miranda Wilson. Accompanying the students were Nancy Lane and Debbie Howes, RCHS science teachers.

Participating from West Carter High School were Beth Baker, Willie McCoy, Kelli Hargett, Paul Richards, Becky Hamilton, Jarrod James, Jennifer Littleton, Jessica Cox, Kim Lunsford, Angela Royse, Jessica Roark, Tina Ruley, Michelle Walker, Amanda Whisman, Christie Adkins, Jason Barker, Patrick Flannery, Cisha Blevins, David Cannon, Jessi Perry, Melissa Barker, Betty Jo Raybourn and Brandon Hamilton. Accompanying the WCHS students was their teacher William Gillum.

The KAS, established in 1914, encourages scientific research, promotes the dissemination of scientific information and unifies scientific interests in the state.

####

News

Pauline Young, Media Relations Director

Judith Yancy, Director of Institutional Relations

Morehead State University

UPO Box 1100

Morehead, KY 40351-1689

606-783-2030

Nov. 25, 1997

FOR IMMEDIATE RELEASE

MOREHEAD, Ky.---Students from several Eastern Kentucky high schools, including West Carter High School, took part recently in a Careers in Science Symposium at the annual Kentucky Academy of Science meeting hosted by Morehead State University.

Industrial scientists from across the state were on hand to provide science career information to the students, including representatives from Lexmark, Toyota, Proctor & Gamble, Eastern Kentucky University's forensic program and Ashland Petroleum.

Phil Vickers from Guardian Automotive Industries, a new Morehead industry, also explained the plastics processes used by the company and shared what the plant looked for in new employees.

Funded by the Ashland Foundation and United Catalysts, Inc., the symposium is designed to expose high school students to the science field and the importance of science careers, according to David Wesley, KAS Industrial Science Section chair. This is the fifth year that the Industrial Science Section has offered the symposium.

Participating from WCHS were Beth Baker, Willie McCoy, Kelli Hargett, Paul Richards, Becky Hamilton, Jarrod James, Jennifer Littleton, Jessica Cox, Kim Lunsford, Angela Royse, Jessica Roark, Tina Ruley, Michelle Walker, Amanda Whisman, Christie Adkins, Jason Barker, Patrick Flannery, Cisha Blevins, David Cannon, Jessi Perry, Melissa Barker, Betty Jo Raybourn and Brandon Hamilton. Accompanying the WCHS students was their teacher William Gillum.

The KAS, established in 1914, encourages scientific research, promotes the dissemination of scientific information and unifies scientific interests in the state.

####

Olive Hill Jones

News

Pauline Young, Media Relations Director

Judith Yancy, Director of Institutional Relations

Morehead State University

UPO Box 1100

Morehead, KY 40351-1689

606-783-2030

Nov. 25, 1997

FOR IMMEDIATE RELEASE

MOREHEAD, Ky.---Students from several Eastern Kentucky high schools, including Rowan County High School, took part recently in a Careers in Science Symposium at the annual Kentucky Academy of Science meeting hosted by Morehead State University.

Industrial scientists from across the state were on hand to provide science career information to the students, including representatives from Lexmark, Toyota, Proctor & Gamble, Eastern Kentucky University's forensic program and Ashland Petroleum.

Phil Vickers from Guardian Automotive Industries, a new Morehead industry, also explained the plastics processes used by the company and shared what the plant looked for in new employees.

Funded by the Ashland Foundation and United Catalysts, Inc., the symposium is designed to expose high school students to the science field and the importance of science careers, according to David Wesley, KAS Industrial Science Section chair. This is the fifth year that the Industrial Science Section has offered the symposium.

RGHS students participating included Marsha Alfrey, John Allen, Holley Bumgardner, Nichole Hamilton, Theresa Iwu, Erica Lafferty, Beth McCarty, Stephanie Owens, Brooke Pennington, Josh Rahn, Jessica Smedley, Sarah Sparks, Christi Stamper, Jennifer Taylor, Shanda Thomas;

Rhonda Adams, Angela Brewer, Kim Burton, Leah Ann Burton, Melissa Coldiron, Stephanie Cooley, Sandra Darling, Kevin Fields, Aaron Gay, Angela Gregory, Amanda Harper, Wes Helterbrand, Jessica Hill, Kerri Johnson, Dawn Kindinger, Stacey Lundergan, Tawnya McCleese, Vicki McClurg, Sarah Sims, Brandy Smith, Stevanie Smith, James Thomas, Daniel Waddell, Tina Wagoner and Miranda Wilson.

Accompanying the students were Nancy Lane and Debbie Howes, RGHS science teachers.

The KAS, established in 1914, encourages scientific research, promotes the dissemination of scientific information and unifies scientific interests in the state.

#####

Morehead News

Photo

Pauline Young, Media Relations Director

Judith Yancy, Director of Institutional Relations

Morehead State University

UPO Box 1100

Morehead, KY 40351-1689

606-783-2030

RCHS STUDENTS ATTEND SCIENCE CAREERS SYMPOSIUM

Approximately 40 students from Rowan County High School took part recently in a Careers in Science Symposium at the annual Kentucky Academy of Science meeting hosted by Morehead State University. Taking a break from the proceedings for lunch were, from left, Erica Lafferty, Beth McCarty and Jennifer Taylor.

11-25-97jy



Morehead News