

IMPORTANT NUMBERS

- Morehead Zip Code 40351
Telephone Area Code 606
Morehead Post Department 784-2522
Forest Fly 784-4161
Saint Clare Medical Center 784-4181
Morehead News (All Branches) 784-4181
Morehead News (All Branches Except Society) 784-7789
Rowan County Sheriff 5446
POLICE City 784-7531; State 784-4127

Editorial Dept. Post Office - Morehead, Ky.

Vol. 84

MOREHEAD, KENTUCKY, THURSDAY MORNING, OCTOBER 5, 1967

No. 40

The Morehead News

For Each Copy 10¢
Pay Cashier . . . 10¢

Subscription Rates - In Kentucky, one year - \$2.00; two years - \$3.50; three years - \$4.50. Outside Kentucky, one year - \$2.50; two years - \$4.00; three years - \$5.00. Single copies 10¢. Delivery guaranteed.

Last Rowan Interstate Advertisised

All of Interstate 64 through Rowan County, except the four-lane connector at Morehead, will be under construction, or contract, this month.

The Department of Highway announced today at Frankfort that the contract for grade and drain from one mile east of Ky. 32 to east end of Big Perry has been let to Davis Construction Co., Sandy Hook. Low bid was \$1,324,259.

Advertising for the stretch from east Rowan County into west Carter County (Upper Tygart area), was released this week.

Stretches west of Ky. 32 (Flemingsburg Road) are under construction. Morehead will have all interstate to the west by November of next year. The major highway will be finished through Rowan County by November, 1969.

Design for the connector at Morehead has been completed and land acquisition is expected to start soon. This is one of the few four-lane connectors in the state, and will extend from Main Street (Flemingsburg Road) north about two miles (over Divide Hill) to Join the Morehead interchange near Pine Crest Home and the Glennis Fraley farm.

OEI Makes Grant For This Area

Lewis, Greenup, Carter, Elliott, Rowan and Morgan Counties, Kentucky, 315 for a four-component, 12-month Conduct and Administration program. The announcement was made today by Centers V. Sanders, Director, Middle Atlantic Region, OEI.

The applicant agency is the Northeast Kentucky Area Development Council, and the local share of the grant is \$38,824.

The first of the four components is for Conduct and Administration, allowing the CAA to continue its on-going programs, plus the development of new programs. Under the direction of James Templeton, the staff consists of 12 professional employees.

The second component, a Neighborhood Center Program, is designed to reach the low-income residents in this six-county rural area via the establishment of these centers. Staff will endeavor to bring the total resources of the communities to bear on the problems of educational, social and economic development. Staff consists of one professional, and 22 nonprofessional employees.

The third and fourth components are both Full Year Head Start programs, both to be operated jointly by the Stark County and Morehead State University accommodating 150 children in two classes of 15 children each. The established Head Start curriculum will be utilized, along with health services, a daily hot lunch and an after-school program.

Under the direction of Mary Miller, staff will consist of one professional, and 20 non-professionals, and 41 volunteer workers.

Rowan United Fund Drive Starts Friday

Rowan County's annual United Fund Drive gets underway tomorrow.

Chairman F. E. Moorefield said the plan is to conclude the campaign by the end of March.

Goal is about \$11,000. The money is divided among local charitable organizations. Concept of the United Fund is to consolidate community money raising campaigns into one centralized effort.

First solicitations will be by the advance gift committee. This group calls on business places.

Personal and home solicitations will follow, Moorefield said.

Congress Eyes Bill Governing Vote Eligibility

Moving to another state may cost residents of Rowan County their vote in the next Presidential election.

Some have taken notice, those who come from other states to live in the local area also face the prospect of not being eligible to vote.

The matter comes to the fore at this time because of a bill being considered in Congress. It would permit otherwise qualified citizens to retain their vote even though they may not have lived in the new state as long as time current laws specify.

A bill, which is called the "Residency Voting Act of 1967," would allow such persons to vote in the Federal election if they are in residence by September 15, or slightly more than two months.

At the present time, most states require a minimum period of residence of six months and many require a year or more. The exception is New York City, which has just reduced the period to three months.

Just what moving about is done by residents of Rowan County is indicated in figures compiled over a five-year period by the Census Bureau. They show that no less than 88 percent of the local population were born in Kentucky and have never lived anywhere else.

The proportion is larger than in most parts of the United States, where only 66 percent are lifelong residents. In the State of Kentucky, it is 84 percent.

Not that they didn't do any moving at all in their lives. About 10.9 percent of them reported that they had always lived in the same house.

Seventy percent of the Selective Service quotas to be filled next summer will be made up of students who have had one year of graduate school work or who have just received bachelor degrees.

Under the provisions of the Selective Service directive issued last May, "any student who has been accepted for graduate school, or who is in a graduate school as of October 1 of this year, automatically becomes classified 2-S until June of 1968 when he automatically will become 1-A."

"This means," he stressed, "that beginning next June, we will have the most highly educated Selective Service draftees in the history of our military service."

As a result," he said, "enrollments in the nation's graduate schools in the fall of 1968 will include men not acceptable for military service, but none who have been deferred for educational purposes."

Dr. Arlt, who is on the Morehead campus, said that the bill would allow such persons to vote in the Federal election if they are in residence by September 15, or slightly more than two months.



HOME-COMING QUEEN . . . LYDIA LEWIS, a sophomore from Maysville, was elected Homecoming Queen by the student body Monday.

Democratic Gathering Fish Fry Oct. 14

Rowan County's democratic party today announced part of its schedule between now and the November election.

Saturday, Oct. 14 - Fish Fry, Main Subdivision, Christy road, about a mile from Morehead.

Students To Be Classified For Service

Seventy percent of the Selective Service quotas to be filled next summer will be made up of students who have had one year of graduate school work or who have just received bachelor degrees.

Under the provisions of the Selective Service directive issued last May, "any student who has been accepted for graduate school, or who is in a graduate school as of October 1 of this year, automatically becomes classified 2-S until June of 1968 when he automatically will become 1-A."

This means, he stressed, that beginning next June, we will have the most highly educated Selective Service draftees in the history of our military service.

As a result, he said, enrollments in the nation's graduate schools in the fall of 1968 will include men not acceptable for military service, but none who have been deferred for educational purposes.

Homecoming! Schedule Of Events At The University

FRIDAY 2:30 p.m. - Speech by Senator Ted Kennedy, Fieldhouse.

8:00 to 1:00 - Registration of Alumni etc. Health Building.

8:00 to 1:00 - Academic Coffee, Open House, All Schools; other academic coffees from 4:30 to 6:00.

10:30 a.m. - Dedication of Alumni Tower.

Morehead Will Host Top Leaders Friday

Dignitaries! In Morehead Tomorrow For Kennedy Speech

It was impossible for The Morehead News to obtain the names of all dignitaries who will be in Morehead tomorrow (Friday) for the speech of Senator Ted Kennedy.

It is known that the following have accepted - All present members, and most former members of the Morehead State University Board of Regents.

Lt.-Governor Harry Lee Waterfield who will represent Gov. E. T. Breathitt; Kentucky Senior Senator John Sherman Cooper.

Congressman Carl D. Perkins, Congressman Tim Lee Carter, Former Governor and Federal Judge Bert T. Combs,

Federal Judge Bernard T. Moynahan. Kennedy's speech is at 2 o'clock in the Fieldhouse.

The ribbon cutting for I-64 from Slate Creek to Ewington will be Tuesday, Oct. 31, it was learned this morning.

The planning committee from Rowan, Bath and Montgomery counties had scheduled the program for Oct. 20.

Highway Commissioner Mitchel Tindler advised the contractor could not since three short sections have to be re-built.

The complete program and the exact time of the ribbon cutting will be announced next week from the office of Billy Joe Hall, Assistant to the Commissioner.

The tentative program calls for a motorcycle from Morehead and probably one from Mt. Sterling; appearance of the Morehead State University 170 piece band; invitation of an all-female organization is sending its own motorcycle.

Although the Slate Creek-Ewington stretch is not officially open, some motorists are using the south lane. The north lane is undergoing repairs.

All of the interstates from Morehead west will be completed according to the time-table, but November 8 next year.

University Enrollment Hits 6,140

Morehead State University is beginning the fall semester with a record enrollment of 6,140 students, Dr. John R. Duncan, director of admissions, has announced.

This represents an increase of 656 students, or 11.9 per cent over the 5,484 registered for the fall, 1966, term.

This represents a decrease of 3.7 per cent in the number of out-of-state students in the total record enrollment and reflects a continuation of the University's concerted effort to keep out-of-state registrations at a minimum.

Benefits Increased To Many Widows, Orphans

Widows and children of deceased veterans of all military conflicts will receive greater benefits under the Veterans' Pension and Readjustment Assistance Act of 1967 (Public Law 90-77), which became effective October 1.

Since August 1, 1967, 1967 made many more widows eligible for benefits by reducing the marriage time requirement from five years to one year.

Eligibility for death pensions on the basis of need was extended to widows of veterans who served during the Vietnam era—since August 5, 1964.

Widows on the current pension rolls will receive cost-of-living increases of \$6, \$3 and \$2 a month, depending on their current income, with the largest increases [about 8 1/2 per cent] going to those with the greatest need.

Democratic Gathering Fish Fry Oct. 14

Rowan County's democratic party today announced part of its schedule between now and the November election.

Saturday, Oct. 14 - Fish Fry, Main Subdivision, Christy road, about a mile from Morehead.

Students To Be Classified For Service

Seventy percent of the Selective Service quotas to be filled next summer will be made up of students who have had one year of graduate school work or who have just received bachelor degrees.

Under the provisions of the Selective Service directive issued last May, "any student who has been accepted for graduate school, or who is in a graduate school as of October 1 of this year, automatically becomes classified 2-S until June of 1968 when he automatically will become 1-A."

This means, he stressed, that beginning next June, we will have the most highly educated Selective Service draftees in the history of our military service.

As a result," he said, "enrollments in the nation's graduate schools in the fall of 1968 will include men not acceptable for military service, but none who have been deferred for educational purposes."

Homecoming! Schedule Of Events At The University

FRIDAY 2:30 p.m. - Speech by Senator Ted Kennedy, Fieldhouse.

8:00 to 1:00 - Registration of Alumni etc. Health Building.

8:00 to 1:00 - Academic Coffee, Open House, All Schools; other academic coffees from 4:30 to 6:00.

10:30 a.m. - Dedication of Alumni Tower.

Kennedy To Be Greeted By Dignitaries

Plans are complete at Morehead State University for the appearance on the campus Friday afternoon of U. S. Senator Edward M. [Ted] Kennedy and the opening of the University's annual Homecoming observance.

The youthful Massachusetts Senator and brother of the late President John F. Kennedy is scheduled to arrive at the Rowan County Airport at 2 p.m. in his own plane, following a noon speaking engagement at Morgantown, W. Va.

He will be met at the airport by a student delegation led by Art Dayton, president of the Student Council, Miss Lydia Lewis, Maysville, the 1967 Homecoming Queen and the presidents of 11 social organizations on the campus.

With Bill Ewers of the University Business Office at the wheel, he then will be driven to the home of Morehead University President and Mrs. Adron Doran on the campus.

There will meet briefly with several dignitaries, including U. S. Senator John Sherman Cooper, Lieut. Gov. Harry Lee Waterfield and Congressman Carl Perkins and Tim Lee Carter before going to the Laughlin Gymnasium to deliver an address before an all-student-faculty convocation, beginning at 2:30 p.m. which will open to the public.

Lieut. Gov. Harry Lee Waterfield will represent the State of Kentucky. He will be unable to attend because of a previous commitment.

Sharing the platform with the Senator at the Fieldhouse will be U. S. Senator John Sherman Cooper, Lieut. Gov. Harry Lee Waterfield, Congressman Carl Perkins and Tim Lee Carter before going to the Laughlin Gymnasium to deliver an address before an all-student-faculty convocation, beginning at 2:30 p.m. which will open to the public.

Past and present members of the University's Board of Regents; officers of the Alumni Association; constitutional state heads of the State Government and Junior Chamber of Commerce and Chamber of Commerce officials and the audience.

University Enrollment Hits 6,140

Morehead State University is beginning the fall semester with a record enrollment of 6,140 students, Dr. John R. Duncan, director of admissions, has announced.

This represents an increase of 656 students, or 11.9 per cent over the 5,484 registered for the fall, 1966, term.

This represents a decrease of 3.7 per cent in the number of out-of-state students in the total record enrollment and reflects a continuation of the University's concerted effort to keep out-of-state registrations at a minimum.

This trend is even more significant in the junior class with 1,821 students at the University this fall. These include 1,376 beginning freshmen and 401 transfer students for a total of 1,776.

Of these, 1,403 are Kentucky residents, while 374 live out-of-state or 79 per cent of out-of-state and 21 per cent out-of-state. This represents a substantial decrease of out-of-state students as compared with the number registered at the University in the fall of 1966.

A breakdown of the new enrollments show 2,102 freshmen, 1,384 sophomores, 2,207 juniors, 631 seniors and 416 graduate students.

The greatest increase is reflected in the junior class with a gain of 265 students over the same period a year ago. The next greatest gain is in the senior class with 205 more than a year ago.

Graduate students are next with an increase of 108; freshmen with 69 and sophomores with nine more than the number enrolled at those class levels in the fall of 1966.

Nepal Exchange Student Rowan County Visitor

Gevinde Nir Pande, exchange student from Nepal, will be a Rowan County visitor for the next two weeks.

He is Assistant Chief, Rural Youth Program, Department of Agriculture. The visitor will first stay with Mr. and Mrs. Benjamin Hayes, Forest Hill.

Pande will be in Kentucky until November studying the Extension Service Program, mainly leadership development. In Nepal, the exchange is sponsored by the Department of Agriculture Extension, Ministry of Land Reform, Food and Agriculture, His Majesty's Government.

In the United States, it is conducted by the National 4-H Club Foundation on behalf of the State-Land-Grant Universities and the U. S. Department of Agriculture. Nepal has also sent three Extension Agents to the U. S. under the International Farm Youth Exchange.

In exchange, the U. S. is sending three U. Y. E. delegates to Nepal for a six-month study program. Mr. Pandu holds a B.S. degree from Tri-Chandra College, Nepal. He lives on 10 acres of land, all of which is irrigated and with two acres under irrigation. Crops grown are: rice, wheat, livestock, cattle and chickens.

Claig Sprout... Sez

and his friend
Timothy Together

Dear Mister Editor:
I see by the papers where Congressman Robert Michel of Illinois was mighty upset about some of them meetings Agriculture Secretary Freeman was holding around the country.

For instance, he says they held one in Kansas and they was wild applause for everthing Secretary Freeman said and when somebody got up to complain about some items in the farm program they was boosed down.

Congressman Michel done a little investigating and he reports that for this meeting in Kansas they had about 1,600 folks there and around 400 of them was Federal employees, flew there at a cost of \$3,827 to the taxpayers. Farthermore, Congressman Michel found out most of the applause for the farm program was coming from them 400, and most of the boosing agin the complainers was also coming from the same 400.

I ain't never understood the farm program under the Republicans or the Democrats and I don't aim to get political over matters I don't understand. But it seems to me, Mister Editor, if the Secretary of Agriculture has to get the deck stacked for applause at these meetings with the farmers, they was some weak spots in it.

This same piece I was reading in the papers said Congressman Michel aiming to look into some other meetings Freeman was holding in the

Auxiliary Will Hear About Mental Retardation

Rev. Larry Buskirk will be the speaker next Monday evening at a meeting of the St. Claire Medical Center Auxiliary. He will talk on the mental retardation program for Rowan County. Rev. Buskirk is president of the Rowan County Association for Mental Retardation.

farm belt and see how many Federal farm employees was being flew or hauled to furnish the background music. Personal, I just try to live with whatever rabbits them farm magicians in Washington pulls out of the hat--and some of them was queer bunies.

Incidental, speaking of Washington, I see where a column writer named Ashley Cooper, a Charleston, S. C. paper has compiled a list of some of the lapel buttons they was now wearing in the nation's capital. It copied 'em down for you, Mister Editor, so you'd have a better idea of how the thinking was going these days amongst the citizens at our seat of Government.

"I am a human being--Do not fold, spindle or mutilate."
"I am anonymous, help me!"
"Stamp out reality."
"Fight poverty--give me \$10."
"Eat, drink and be merry, for tomorrow you may be radioactive."
"We shall overkill."
"Drink Canada dry. Visit Expo 67."
"Goodnight, David... Goodnight, Goliath."

Yours truly,
Claig Sprout



JUNIOR MISS HOPEFULS... These pretty Rowan County High School seniors are contestants in the Rowan County Junior Miss Pageant which will be held Oct. 14. From left - Rita Shelton, Kathy Reynolds, Terry Holley, Rhodena Forman, Joyce Swim Phyllis Whitt.



ADDITIONAL PAGEANT BEAUTY... Other Junior Miss hopefuls from Rowan County High School from left - Sheila Oney, Brenda Booth, Wilma Smith, Sandi Turner, Sheri Oney and Hedy DeHart. The pageant is sponsored annually by the Morehead Jaycees and is open to high school seniors from Morehead and Rowan County. The pageant will be held in Button Auditorium, Saturday, October 14, at 8:00 p.m.

Students -

Continued From Preceding Page

campus for a two-day consultation with University officials in connection with the new graduate programs offered, emphasized that after next June "no deferments whatsoever will be granted to graduate students with exception of medical, veterinary and dental students." This means that a graduate student who read and understood the regulations knew when he entered graduate school this fall that he was classifying himself automatically 1-A for military service," he said.

"This is tragic," he went on. "The term 'Selective Service' not only means 'selected for service' but also 'selected for deferment,' and we must devise some system under which the education of our future scientists, researchers and technical people can be continued uninterrupted."

"Unless such a system can be devised, we will lose one of the most valuable resources of our nation--its highly-trained leaders of tomorrow." The former dean of the Graduate School of the University of California at Los Angeles went on to stress the urgent need today for an ever-increasing number of trained people for the faculties of the new junior and community colleges springing up all over the country.

"Within the next six years, he predicted, "we will need 140,000 new teachers for the junior colleges which are coming into existence today at the rate of 10 a month."

Dr. Arlt praised Morehead State University highly for recognizing this need and for its efforts to date in initiating the type of graduate programs necessary to help meet this need.

The Council of Graduate Schools president also praised the University for the careful way in which it is developing its graduate programs.

The Council of Graduate Schools is one of the three top professional organizations in the nation which graduate schools of an educational institution may belong. It has 247 institutional members at the present time with headquarters in Washington. Dr. Arlt has served as its president since 1961.

M'head Will Host -

Continued From Preceding Page

Others will include Federal Judge and former Kentucky Gov. Bert T. Combs, Circuit Judge Bernard T. Moynahan and Commonwealth Attorney Elijah Hogge. Music at the convocation will be provided by the University's concert choir under the direction of James Beane and its 125-piece marching band under the direction of Dr. Robert Hawkins.

Immediately following the Senator's address, a reception will be held in the spacious activities room of the new Laughlin Health Building at which, as many persons as possible will be given an opportunity to meet the Senator. Senator Kennedy is scheduled to leave for the Rowan County Airport at 4:45 p.m. from which Governor Breathitt's personal plane will take him to Louisville, where he is scheduled to catch a 6:30 p.m. flight for Memphis.

RCHS Annual Fun Night Scheduled November 4

The Morehead Grade School's annual "Fun Night", one of the year's top events, has been set for Saturday, Nov. 4. Ken Speer is Chairman. Fun night is sponsored by the Morehead Teachers' Association and to be unaided at a meeting Monday, presided over by President Mrs. E. C. Razor.

Sgt. VanCorbach Receives Promotion In Army

Master Sergeant William B. VanCorbach, Jr., an Operations Sergeant at Ireland Army Hospital, was promoted this week to his present rank. Sergeant VanCorbach entered the Army in January of 1951. His wife, Mrs. VanCorbach, is presently residing at Route 4, Cedar Hills, Elizabethtown, Ky., is the daughter of Mrs. Minnie Swineford of Route 1, Morehead. During his Army career, the sergeant has been awarded the Army Commendation Medal, Combat Medical Badge, Good Conduct Ribbon (5th award), and the National Defense Ribbon.

The Morehead News

Morehead News County News Over 18,000 Readers Each Week
Published every Thursday at Morehead, News County, Ky. Entered as Second Class Post Office No. 100, Morehead, Kentucky, 40351
W. L. Thomas, Publisher
Ronald J. Casoli, General Manager
W. L. Thomas, Editor
Office: Fourth Level Building, E. Main St., Phone 784-1111
When requesting change of address be sure to include old address.
SUBSCRIPTION RATES: \$ 3.50 One year in Kentucky 15.00 Two years in Kentucky 28.00 One year outside Kentucky (including overseas) 4.00 Two years outside Kentucky (including overseas) 7.50 Five years outside Kentucky (including overseas) 17.50 (No subscription for less than one year. All subscriptions payable in advance. None accepted on telephone.)

F. CALVIN BIGLER, M.D. Conservative FOR CITY COUNCILMAN

Dr. Bigler is pledged to: 1. Annex areas dependent on Morehead --- to extend full citizenship to many associate and absentee members of this community.

Morehead State University has made this place the higher educational and cultural center of Northeast Kentucky. But because the needed acquisition of land within the city limits by the university and by other non-taxable agencies for highway development, federally financed low cost housing and church expansion --- the property tax base of the city of Morehead is dwindling at an alarming rate. If the trend continues with fewer and fewer paying for more and more services to more and more people, with the foreseeable future, no one will be left to pay for everything, and everybody.

The Morehead community is already far bigger than the city limits. Those people living outside who are dependent upon this town for police and fire protection and for their jobs should be granted the rights, privileges and responsibilities of full citizenship. Right now, the northern town limit should be the hilltops above the head of the hollows. As the Morehead community expands up and down the Triplett Creek Valley and northward toward I-64, the town limits should similarly progress. Just as our college became a university, so too must our town become a city --- and act like it.

Along this line, the tremendous unacknowledged efforts of the Morehead Utility Plant Board in obtaining water for this area, not just this town, are soundly applauded. But the lack of positive action by this group in obtaining natural gas for the area is soundly deplored. Morehead has a choice. Will the town spring up of many little neighborhoods to assert the leadership so necessary for development? Or will the town and its citizens realize Morehead's responsibility to its present and future community --- and to the unaided --- by keeping pace with the times? Political Announcement

TONITE Thru TUESDAY

TRAIN THEM! EXCITE THEM!

Damn them or praise them... you'll never forget them!

METROCOLOR

The Dirty Dozen
Based on the exciting best-seller.

MAVIN BREWSTER CHARLES BRONSON JOHN CAHILL ROBERT CAVANES JACQUEE JOHNSON BURGINE BROWN BROWN CASSAVETTES JACKEL KENNEDY LOPEZ MEENER RYAN SAVALAS WALKER WEBBER

FEATURE TIME
Weekdays At: Saturday and Sunday at: 6:00 and 8:45 2:00 - 5:00 - 8:00

Admission This Attraction
Adults \$1.25 Children 50c

Starts Wednesday - Oct. 11

MAVINS BAREFOOT IN THE PARK

Dedicated To The Proposition
That Every Girl Gets Sooner or Later!

Black Friday The 13th
Midnite Show at 11:00 p.m.

BIG DRINKERS
in blood-curdling color

THE BLACK CAT
A HEMISPHERE PICTURE

FREE! Admission To Anyone Who Brings In A Black Cat

The Mail (Hic!) Must Go Thru

CAPE TOWN, South Africa (UPI) -- Seaman on ships that pass the southernmost point of Africa without calling at Cape Town have their own methods of saying their postage prayers. Sometimes they work --

Recently, 7-year-old Elizabeth van Niekerk found a metal canister washed up on the beach near Cape Point. Inside was a bundle of letters all stamped for posting to Holland -- and a full bottle of whisky.

A covering letter to the finder by Radio Operator B.J. Oskamp explained that the canister had been thrown overboard from the Dutch oil tanker "Sepia" as she passed the Cape Peninsula enroute from the Persian Gulf to Britain. The crew hoped that this method of throwing their letters home to their family and friends in Holland. The whisky was included as a mark of appreciation to the finder for posting the letters.

Unfortunately the canister was found almost four months after it had been thrown overboard, but the letters were posted nevertheless.

Elizabeth commented: "It was exciting. Just like in a story book."

To which her father, J.F. van Niekerk, added a happy "Cheers!"

Six State Parks Offer Lower Winter Rates

Lower rates will go into effect at six Kentucky State Parks with overnight accommodations this winter. Parks Commissioner Edward V. Fox said winter lodge rates will be \$7 for a single and \$10 for a double, plus tax. Cottage rates will be reduced one-third for this period with a two-day minimum reservation. The winter rate schedule will be in effect Dec. 1-March 31.

Offering the new rates will be these parks: Cumberland Falls at Corbin; General Butler at Carrollton; Jenny Wiley at Prestonsburg; Kentucky Dam Village at Gilbertsville; Lake Cumberland near Jamestown, and Natural Bridge at Slade.

Two of the year-round parks, Lake Cumberland and Kentucky Dam Village will offer both lodge and cottage accommodations. Cumberland Falls will have available lodge rooms and lodge cottages. The three remaining parks will feature lodge room accommodations only.

Fox said all State parks are open year-round, but some close their overnight facilities during the winter. These are: John James Audubon, Oct. 30; Buckhorn Lake, Nov. 15; Carter Caves, Nov. 15; Pennyrile Forest, Nov. 15; Pine Mountain, Nov. 15; Kenlake, Nov. 30; and Rough River Dam, Nov. 30.

Public Auction Improved - Well Located Farm

We are Authorized by Signed Contract, with J. W. Taylor and Mabel Taylor, his wife, of Richmond, Indiana to Sell At Public Auction, on the Farm, located on State Highway No. 165, about 4 1/2 miles from Ewing and only a short distance from Fairview.

On Wednesday, Oct. 11, 1967
Starting at 10 a.m. (Fast Time)

Their Improved Farm of 168 Acres, Nice 5-Room Home, With Electric, Telephone, Available Garage Attached; Blue Grass Lawn; Fine Garden Space; On Western Ewing Water Line, if purchaser wants to connect; Stock and Tobacco Barn; Large Garden Space; On School, Mail, and Milk Routes. A short distance from Dwelling at back is large Combustion Stock and Tobacco Barn; Small Lake in Lot for water; Large Corn Crib; Poultry House; for this Barn is New. A short distance back out on the Farm is good 5-Bed Stock and Tobacco Barn, with several small tracts of fine Clovers around this Barn. Considerable Walnut and Locust Timber on back of this Farm. Ample water supply for Livestock. All Tobacco sticks go with the Farm.

Terms of Sale: 20% of Purchase Price of Farm will be paid day of Sale, balance to be paid upon delivery of deed by March 1st, 1968 with Deed, or sooner if desired by purchaser, and can be arranged with the Sellers. More about this day of Sale. 1967 Taxes Will Be Paid by Sellers.

JAMES W. TAYLOR
MABEL TAYLOR, Owner

Sale will be conducted by the W. L. Thomas Real Estate Agency, "Licensed and Bonded Real Estate Brokers."
Office, 119-Mt. Sterling Ave, Phones 845-6611 or 6951-Flemingsburg, Ky.
Col. Walter J. Fritts, Auctioneer
W. L. Thomas Sales Manager.
[Not Responsible for Accidents of any Kind]

Complete Ambulance Service Oxygen Equipped "Equipped To Serve You"

Member of Kentucky Funeral Director's

Authorized To Service -

Burial Insurance Contracts Issued by COMMONWEALTH LIFE INSURANCE CO.

LANE FUNERAL HOME

Phone 784-4134 - Morehead, Ky.

New McCulloch Mac 10 series makes all other lightweights out of date and up to 25% overweight

MAC-1-10, world's lightest direct drive chain saw. 10 1/2 lbs.* with all MAC-2-10, world's lightest automatic oiling chain saw... 10 1/2 lbs.* with all the features of the big timber McCullochs including reborable cast-iron cylinder.

*Engine weight only, dry, less bar and chain.

MAC-1-10 10 1/2 lbs. MAC-2-10 10 1/2 lbs. self oiling

Monarch Supply Store

Morehead Kentucky

MOREHEAD QUINCY

The Store That Brought Low Prices To The MOREHEAD AREA

116 WEST MAIN STREET MOREHEAD, KENTUCKY

Reg. \$1.49 SERVICE BRAND - USP

FANTASTIK SPRAY CLEANER

99c

With Spray Gun

FOLDING - METAL IRONING BOARD

IRONING BOARD \$3.88

CLIP THIS COUPON Good For 10c Cash with your purchase of any size box KOTEX SUNDRY STORE Void After Nov. 11, 1967

PAD AND COVER 88c

CLIP THIS COUPON Good For 25c Cash with your purchase of any 6-pack METRECAL SUNDRY STORE Void After Nov. 11, 1967

ASPIRIN 13c

Bottle of 100

Reg. \$2.95

RONSON

Typhon Lighter \$1.99 Only

CLIP THIS COUPON Good For 10c Cash with your purchase of any size FASTASTIK CLEANER SUNDRY STORE Void After Nov. 11, 1967



MOREHEAD SPEAKER — Henry Ward, democratic nominee for Gov., and 7th District Congressman Carl D. Perkins, confer at a state-wide rally. Perkins will be the principal speaker at the Rowan County Fish Fry, Mabry Addition, Christy Creek, on Saturday, Oct. 14. Serving of fish under the direction of Chefs Jimmy Clay and Forrest L. May, starts at 2 p.m. Democrats from area counties have been invited. Music and entertainment will be provided. The fish fry is open to the public and free.

Clennie Hollon



When the negroes decided to loot the store of Rep. Law in Michigan, they were met by a blazing shotgun. The store wasn't looted. What Michigan needs is more Law, the human type, in order to stop rioting, burning, and looting. Such action as rioting, looting, and burning cannot be accepted by the American people and even setting aside a day of Prayer by the President and our Governor will not solve the problem of rioting, burning, and looting. The One above does not approve of such.

The big truck sped out of the parking lot of the Laurel Grocery Company of East Bernstadt, Ky. The alert watchman saw it leave and immediately reported it to Police Headquarters. The Police were on the alert and policemen were dispatched to stop the truck and arrest the thief. Several miles down the road, the truck was pulled over. The driver appeared puzzled that he was being arrested. He wanted to know what it was all about but he was only advised to get into the Police car — and probably told not to say, nothing until he got him a lawyer.

He sort of reluctantly got into the police cruiser and he heard the police radio into Headquarters and tell them he had stopped the stolen truck and had their man captured.

"Bill, the man's name", the Police radioed in. "You have the right man alright," came the answer from Police Headquarters. "You have one of the owners of the firm and the truck."

Bill sort of forgot to tell his night watchman that he intended to use one of the trucks for a little business trip down the road. Bill even felt proud of his watchman for being on the alert and promised to see that he got a raise for this fine action.

We have checked this situation over and from the results of the raid, we find that this alert watchman still has not received his raise in pay and that has been several months ago since the incident took place. Corsey Gabbard has gone on him a diet and he has lost quite a bit of extra poundage. He nearly lost his britches, a lot of times. His britches are too big for him as he reduced. His big brother, Roy, came for a visit and he gave him his best pair of britches, but Roy didn't want to up and just take the clothes right off'n the back of his brother so he up and gave him \$2.00 and a purty good knife for the britches and Corsey was pleased.

Corsey says the diet is cutting down his poundage but some of us want to believe the new set of teeth has a lot to do with it.

Uncle Lige Moore was working with a pair of shoes on his feet that didn't match. He was sort of told about it but Uncle Lige couldn't see if it made any difference if the shoes matched or not just a long as they were good shoes and felt good and he weren't going nowhere. He claims they ain't a bit of use of throwing away two un-matched shoes if they are good and fit a feller.

Bethel Deaton was complaining a right smart about his Prince Albert smoking tobacco. He claims that it ain't what it used to be. According to him a feller can't get around smoking it while barefooted a fall. He showed us where his feet were burned a right smart from burning parties from his self-rolled cigarettes. He hates to have to put on his shoes in the summer just to smoke. He's heard of smoker's jackets but he ain't never heard of no smoker's shoes.

Sammy Thorpe was a laying out in the yard a gittin' him a good sun tan so he would look good in the girls. He fell asleep while taking this beauty treatment. But we can tell you honestly that he woke after his mammy put on his shoes in the summer just to smoke. He's heard of smoker's jackets but he ain't never heard of no smoker's shoes.

You know it would take a nery person to allow a big long black snake to run across his neck belly without letting out a few noises.

G.I. Training Plan Will Start

Provisions of the new G.I. Bill authorizing on-the-job, apprenticeship and farm cooperative training becomes effective October 1. Monthly payments for this type of training were provided by Public Law 90-77, recently signed by the President, for veterans who had military service after January 31, 1955.

Interested veterans should contact their nearest VA office to see what training has been approved for them, and to learn how they can participate in on-the-job and apprenticeship training.

Veterans with no dependents who enroll in full-time apprentice or on-the-job training will receive \$80 a month for the first six months. Veterans with one dependent will receive \$90; two or more dependents \$100. Smaller payments are provided for additional six-month periods.

Under the farm cooperative program, a veteran must attend an approved school for at least 12 clock hours a week taking courses that relate to agricultural work in which he is now engaged. Payments range from \$109 a month for veterans without dependents to \$145 with two dependents plus \$7 for each additional dependent.

— SAVE WITH STONE — SAVE WITH STONE — SAVE WITH STONE —

THANK YOU

Your Enthusiastic Support For Our Great 1968 Models Prove That We Have A Winner Again. We Delivered Far More New Cars and Trucks Than We Ever Have Before.

We Are Indeed Grateful

We Have 68 Models In Stock Ready For Delivery With Plenty More On The Way!

See ...

Stone Pontiac-Buick-GMC, Inc.

And ...

We Will Prove You "SAVE WITH STONE"

11 - GMC - International Trucks & Scouts In Stock.

Get the best truck deal from the truck dealer.

The Best Used Car Buys Are At Stone

1965 GTO Conv. 4 Speed - 3 Deuces - All Sharp & Ready to go - Our Low, Low Price	\$1,695	1964 Valiant 2 Door - Local One Owner Car Extra Sharp	\$995
1964 Chev. Pickup Custom Cab - All Chrome Equipment Big 6 Engine. Ready To Go At	\$895	1963 Chev. BelAir 4 Door - V-8 - Automatic - Excellent Condition Thru-out - Local Owner.	\$895
1961 Chev. BelAir 2 Dr. 6 Cyl - Local Car That's Had Good Care	\$395	1964 Chrysler 4 Door - V-8 - All Power - Guaranteed - If You Want One Of The Best Used Cars Anywhere - You Will Buy This	\$1,395
1965 Buick Wildcat 2-Dr. H.T. Custom - Has Everything Including Factory Air	\$2,395	1963 Chev. BelAir 2 Door - Automatic - 6 Cyl - Extra Sharp - Runs Out A-1	\$895
1962 Pontiac Grand Prix All Power - Buckets - Runs Out A-1.	\$795	1966 GMC Pickup Longwide Bed - Sold & Serviced By Stone	\$1,495
1965 Jeep Wagon Powertok All 4 Wheels. Big 6 Engine. Big Off Road Tires - Go Anywhere Any Weather	\$1,995	1965 Buick LeSabre 4 Door - V-8 - Automatic - Power Steering - Brakes. Low Mileage - Sold & Serviced By Stone	\$1,895
1962 Corvair Monza Automatic - Real Good 2nd Car.	\$395	1 - 1957 Pontiac Wagon Runs Out Good	\$100
1963 Olds 4-Dr. H.T. All Power - New Tires - Local Car.	\$1,095	1 - 1965 GMC Diesel Truck Toroflow 1700 Rear Axle 2 Speed - 7000 Front Axle - Big Brakes - 5 Speed Tran. Ready For Big Job	\$2,295
1963 Pontiac Grand Prix All Power - Buckets - Console - WW Tires - Sharp	\$1,395	1959 Ford Runs Good - As Is	\$50
1965 Chev. Impala Super Sport 396 Engine - 7 Speed - Buckets - Console - New Tires - Sharp As A Tack	\$1,795	1 - 1962 Case Bulldozer (Gas) In Good Condition.	\$1,895

Stone Pontiac-Buick-GMC, Inc.

Cars Also Shown By Appointment

NEW AND USED CARS - U. S. 60 EAST

MOREHEAD, KY.

— SAVE WITH STONE — SAVE WITH STONE — SAVE WITH STONE —

Help Us Reach Goal of 300 in Sunday School

United Pentecostal Church

West Main St. - Morehead, Ky.

10 A.M. SUNDAY

R. E. BIGNEY
SUNDAY SCHOOL EVANGELIST

LLOYD DEAN
FLAYOR

DONALD LACY
Sunday School
Superintendent



We ALWAYS PAY an entire month of profit on savings here by the tenth. Make the right start now, and every month. Save by the 10th!

4%

CURRENT RATE
PER ANNUM

Compounded Semiannually

FIRST FEDERAL SAVINGS AND LOAN ASSOCIATION OF MOREHEAD



Main St. Morehead, Ky.

— OPEN SIX DAYS A WEEK —

invest rent money in

a HOME OF YOUR OWN

We'll show you many homes to suit your needs.

See Alpha to find the right home ... on the right terms!

Authorized Mortgage Loan Broker for The Prudential Insurance Company of America

Contact

Alpha Hutchinson
Licensed and Bonded Real Estate Broker

Ph 784-5305, 784-4196
Morehead, Ky.



NOTICE

All voters in No. 9 Precinct (Clearfield) are hereby notified that the polling place has been changed from Oscar Caudill's Garage to Lee Clay Union Hall effective November 1967 General Election.

Signed: JOHN T. GREEN
Sheriff Rowan Co., Ky.

Morehead - Rowan County PUBLIC LIBRARY

Main Street
Morehead
THE WONDERFUL WORLD OF BOOKS

Among the new books which arrived last month, there was a Vista Book Kit. This kit is a collection of varied reading for all ages of people with wide horizons of interests. For example: 'Vogel Serra's Baseball Guidebook; Jesse Stuart's Harvest, which contains 18 short stories; Harry Shaw's Errors in English and Ways to Correct Them; 1001 Top Jobs for High School Graduates; Johnetta Starks' Measure, Cut and Sew; The Cokesbury Game Book; Glen's Auto Troubleshooting Guide; Margaret Rowan's 'All About Our 50 States; Block's book on Alcoholism; a complete nursery song book; a desk encyclopedia and several books on the arts [useful and fine], and science [physical, political and social].

At long last Wanda Caudill has started to work in the library as clerk-typist. Bookmobile circulation continues to increase as schools are being served. The library circulation is increasing after a late-summer low. Registration of users has reached the 1800 mark. Mrs. Rollin [Delores] Dewing was in charge of last week's Story Hour Wednesday afternoon at 2:00. Rev. Larry Buskirk was in charge of the Children's Hour [for school children] Saturday morning at 10:00. Please help us recruit new attendants so that the number reached will justify the time spent by public-spirited citizens who vol-

Green Johnson Dies Of Heart Attack

An 82 year old widely known Rowan Countyman, Green B. Johnson, died Saturday at his residence.

Mr. Johnson, despite his age, had been in apparent good health until suffering a heart attack.

Funeral services were conducted Monday afternoon at 1 o'clock Free Will Baptist Church, followed by burial in Brown cemetery.

Mr. Johnson was born Feb. 19, 1882 in Menifee County, son of the late Marion and Betty [Odin] Johnson.

He married Lily Ann Sorrell.

Immediate survivors are a daughter, Mrs. Edith Jones, Morehead; two sons - Bridges Johnson, Clearfield, and Richard Johnson, Salt Lick, and a sister Mrs. Kathryn Murphy, Belvine, Ky.

A retired farmer, Mr. Johnson was a member of the Baptist Church.

Rev. Ted Green conducted the funeral. Grandsons served as casket bearers. Sucky Funeral Home cared for arrangements.

under for this type of library service. The bookmobile will go to Haideman on Monday; to Christy Creek and Elliottville on Tuesday; to Dry Creek, the CCC Trail and the Oak Grove Community on Wednesday and to Clearfield, North Fork of Licking and Licking River South of Farmers on Thursday.

Saturday most of the library staff will attend the official opening of the new library at Flemingsburg.

Shop The Classified Ads



For Your Homecoming Bakery Needs You Should Be Coming To Us

Kentuckian Bakery
FOR THOSE SPECIAL OCCASION CAKES
Phone 784-7349
Main Street Morehead, Ky.

MIKE & DON'S

Quality Plumbing and Heating

Located at Oscar Caudill's Service Station
MORGAN FORK

For all your plumbing needs call Mike & Don's quality plumbing and heating. Complete installation and service work. All type of back-hoe work.

PHONES: 784-5559

REVIVAL



Rev. Daniel Yearly

Gospel Preaching

Gospel Music

Associate In Department of Youth Work of Kentucky Baptist Convention

FIRST BAPTIST CHURCH

MAIN STREET

OCTOBER 8-15 - 7:00 NIGHTLY

Nursery Provided

Class Project Goes in Circles

STANFORD, Calif. (UPI) — Small boys and grown professors are fascinated by a rolling hoop — especially if professors can ride in it.

Such a hoop was designed and built on the Stanford University campus by five professors and 12 students to teach engineering design. It took four weeks to put together.

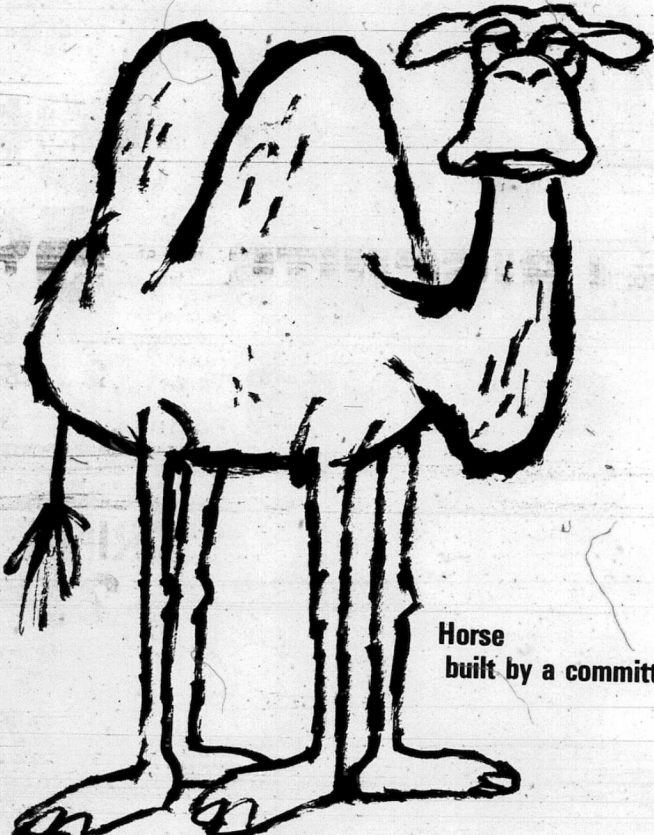
"It's just for fun," said Prof. John Manning, one of the builders. The only requirement was that it be a marketable product. My guess is that with some improvements it might be manufactured and sold for around \$200.

The hoop rider sits behind the motor on a narrow platform which rolls around a track inside the hoop. Belts and pulleys connect the motor and platform wheels to provide power.

Manning said no plans were made to manufacture the hoop or to market it.

"But it sure is fun to ride," he said.

PIE TOWN, N. M. (UPI) — This town is said to have received its name because the owner of a mining claim near the site was in the habit of baking luscious pastry for travelers and nearby residents.



Horse built by a committee.

It's an old joke. But the moral is as good today as it ever was. Henry Ward knows that the most inefficient way to get efficiency in state-government would be to appoint another committee. Yet, that's what Henry Ward's opponent would like to do.

Therefore, if you want more efficient state government, you have a choice. You can vote for appointing a 50-man committee to study the matter again for a couple of years . . . or you can vote for Henry Ward who knows what needs to be done now, and has already done it wherever he has been in state government. His record proves it.

If you want efficient government now . . .

Elect Henry Ward—Sound Builder for Kentucky

Paid for by Kentuckians for Ward, Foster Dickman, Chairman, Robert Evans, Treasurer, Sheraton Hotel, Louisville.



Daringly new! Chevrolet's new line of Super Sports for '68.

Computer-tuned suspension systems. Improved shock absorbers. New double-cushioned rubber body mounts. They all team up to bring you the smoothest, most silent Chevrolet ride ever. A fresh new idea in ventilation comes standard on every 1968 Camaro and Corvette. It's Astro Ventilation, a system that lets air in, but keeps noise and wind

out. You'll appreciate all the proved safety features on the '68 Chevrolets, including the GM-developed energy-absorbing steering column and many new ones. More style. More performance. More all-around value. One look tells you these are for the man who loves driving. One demonstration drive shows why!



Be smart!
Be sure!
Buy now at your Chevrolet dealer's.

LARRY FANNIN CHEVROLET, INC.

E. MAIN STREET MOREHEAD, KY. PHONE: 784-5136



16-5996

Nun Designed Loved Figures

COBURG, Germany (UPI)—The world-famed Hummel figurines of little children in Bavarian costumes were the brainchild of a young artist who later became a nun.

The figurines, made by a porcelain manufacturer near Coburg, are named after their creator, Berta Hummel, who was born May 21, 1909, in the Bavarian village of Massing, outside Munich.

When she was 16, Berta left her home to attend the Munich Academy of Fine Arts. There she became friendly with two nuns and decided to take the vows herself. She took the name Sister Maria Innocentia (her initials on every Hummel figure) and lived in a convent in Siesen, almost on Lake Constance, Baden, See.

Sister Maria-Innocentia continued to draw and paint, especially Bavarian children from her childhood memories. Instantly, they became popular. In 1933, the W. Goebel porcelain company of Oberai obtained permission to reproduce the nun's drawings as porcelain figures.

Although Sister Maria-Innocentia died in 1946, many of her sketches have not yet been turned into porcelain figures. The most popular figurine is the Merry Wanderer, a boy — with a satchel and a furled umbrella over his shoulder.

Courtyard Puts Fun in Science

PLANO, Tex. (UPI) — At Sigler Elementary School, an outdoors science court makes the learning of science fun.

It all started with an open space, left in the center of the school complex when it was built. Somebody got the idea to beautify the area to practical and beautiful use by making it an outdoors place to teach science.

With a \$2,500 grant from the Educational Facilities Laboratory in New York City and the help of a landscape architect, the school put together the project.

The area has three "zones," each representing a separate climate. One is arid or desert, the second temperate, the third tropical. There is a waterfall on a small stream, and there is a fish pond. Each glass will add more to the area — plants of animals or insects peculiar to each climate.

The court can be used to teach geography, genetics, biology, healthful practices, physics, or several other topics. Best of all it promises to make learning fun, already one student has been caught dipping his toes into the fish pond.

Monuments Granite and Marble
First Class Material at A Reasonable Price!
Erected on Concrete Foundation.
Dayton Porter
Phone 784-5321

TERMITE TROUBLE?
See or Call
CHESTER KISER CONSTRUCTION CO.
Phone 784-5109 & 784-5442
Agents for State Termite Control and Chemical Co. Inc.

Rats!rats!
Missed out? There's plenty more. Look under FURNITURE DEALERS in the YELLOW PAGES.
Where your fingers do the walking.

SAVEWAY



SAVINGS ROUNDUP



MEADOW GOLD ICE MILK
1/2 gal. **39¢**

HUNT'S FANCY Peaches
No. 2 1/2 can **25¢**

ARMOUR STAR Beef Stew 24 oz. can **49¢**

MORTON MEAT PIES
• Turkey • Chicken • Beef **15¢ each**

SUPER VALU Vegetables ... poly bag **37¢**

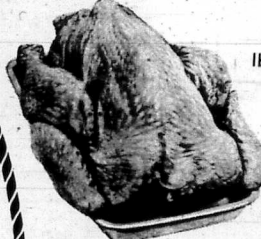
MIRACLE Margarine ... lb. **29¢**

FOLGER'S COFFEE
*with \$5.00 purchase, or more. **59¢ lb.**

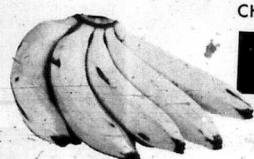
HAPPY HOST CUT Green Beans .. 16 oz. can **10¢**



FRESH SLICED Beef Liver
lb. **49¢**



BONNIE MAE BISCUITS



FLAV-O-RITE HAMBURGER Buns pkg. of 12 **29¢**

CAMPBELL'S TOMATO SOUP..... Can **10¢**

ARMOUR'S VIENNA Sausage 5 5-oz. Cans **\$1**

STOKLEY Fruit Cocktail 2 1/2 Size **39¢**

FLAV-O-RITE CHOCOLATE Candies 1 lb. bag **69¢**

FACIAL TISSUE Kleenex Tissues .. box of 200 2-ply sheets **25¢**

SUAVE Hair Spray Reg. 99¢ Value **59¢**

GRADE 'A' LARGE VICE EGGS Doz. **37¢**

SUCHER'S WHOLE SMOKED PICNICS 35¢ lb.

Sliced Picnics ... lb. **39¢**

LOHREY Sliced QUARTER OF PORK LOIN 79¢ lb.

Pork Sausage 1 lb. roll **49¢**

BONELESS "EASY CARVE" Chuck Roast lb. **79¢**

JENNIE-O BONELESS Turkey Roast 2 lb. roll **\$1.99**

HICKORY SMOKED Whole or Half Slab Slab Bacon lb. **49¢**

ECKRICH All Meat Wieners lb. **69¢**

Serve with Hot Biscuits!

FRESH DRESSED STEWING CHICKEN 19¢ lb.

BONNIE MAE BUTTERMILK or SWEET MILK BISCUITS tube of ten **5¢**

CHIQUITA BRAND BANANAS 13¢ lb.

BOXED IN THE TROPICS!

CALIFORNIA Oranges .. dozen **49¢**

GOLDEN Yams ... 2 lbs. **25¢**

RED Radishes.... Cello Bag **5¢**

DOLE PINK PINEAPPLE & GRAPEFRUIT DRINK 46-oz. Can. **25¢**

MARTHA WHITE Flour 25-lb. Bag **\$2.19**

Coffee-mate . . . 18-oz. Jar **97¢**

SKIPPY Peanut Butter . . . 12-oz. Size **39¢**

AJAX GIANT SIZE **59¢**

SUPER VALU Cake Mix for **\$1.00**

1% Save Super Valu Register Tapes and Give 1% to Your Favorite Charity

One percent of gross sales of Ray's Saweway Super Valu Store is available to churches, schools, PTA's, scout groups or any non-profit charitable organization in this area, at no extra cost to you, or redeem them for valuable premiums -- Corning Ware, Teflon Pans, Teflon Skillets, Pyrex Baking Dishes, Rugs and Lamps.

Publisher's Pen...

Day-day let-ans-down, and editorial... of the publisher of this newspaper.

A Louisville metropolitan newspaper this week printed an illustrated story about the discontinuance of steam locomotives on the Morehead and North Fork Railroad (M&NF) including engine No. 14, probably the last of its kind to operate in Kentucky.

The story was interesting and good publicity for Morehead, and area. However, it was not 'timely' since engine 14 was replaced by diesels several years ago, and the Morehead News printed many photos, plus pictures at that time.

The event was also transcribed by the wire services. We recall a freelance writer who wrote the story to aid in the fund raising for St. Clair Medical Center did a 'follow-up' for the Christian Science Monitor, one of the really great newspapers of America. One would have thought from the recitation of this week in the Louisville paper that all of this had just happened.

We have a letter today from Mrs. F. Calvin Higler suggesting that engine No. 14 be placed in a public park at Morehead. This is a fine thought and one that should be carried through.

However, the plan to acquire engine 14, and install it in such a park, or public place, at Morehead was advanced several times. We have talked with Roy Cassidy, M&NF General Manager, about this several times. We think that he is holding out the last steam engine for this precise purpose. Roy is a civic minded citizen.

Additionally, traffic on I-64, when completed, is expected to be 17 times greater (by 1975) than it now is. It is proved that more than 100,000 will off the four-lane at every town or intersection. It is also an axiom that those communities offering attractions will draw the tourist business. What could be more inducive in a few years than steam engine No. 14?

YOU ARE CERTAIN TO BE PLEASANTLY SURPRISED!
Highway Commissioner Mitchell Tindler advised today that the ribbon cutting for I-64 from State Creek to Ewington will probably be on Tuesday, Oct. 31.

There's a lot of pomp, ceremony and mingling at an affair like this. You'll see that 170 Morehead State University Band, finest in the land... most of the former Highway Commissioner, a lot of important folks in government... free food and soft drinks... and considerable platform speaking.

However, by clarification there is really no such thing as these days as a 'ribbon cutting'. That is out of date, except in 'name'. Instead, the planning committee erected a big illustrated paper barrier across the highway, and at a 'given' signal the dignitaries drive through this, much like the home football team taking the field on game day.

The photographers snap bulbs at the instant the barrier is broken. It was our privilege the other day to travel this new stretch of Interstate. It is probably the most beautiful scenery in all of Kentucky. The road follows the high places, or knobs, and the view is magnificent all the way from Owingsville to Mt. Sterling.

It is estimated that motorists will save 15 minutes or more, when this stretch is opened. Incidentally, the last stretch of I-64 in Rowan County will be let this month.

INVENTION - As everybody in these parts knows, Noah Kennard is sort of an inventor and real handy with tools and ideas. About 20 years back he built an electric, automatic basketball scoreboard for the old-fashioned, college gymnasium. Everybody said it was the best scoreboard around. Finally, someone persuaded Uncle Noah to patent the scoreboard. He found a Japanese had beat him to it by three weeks. Now, Mr. Kennard has come up with another invention. It is a one-man shooting range.

The sportsman steps on a button and a target is hurled in the air. Unlike the skeet shooting device it is built for one-man operation... sort of

like throwing marbles, or tin cans in the air. Sportsman J. M. [Chin] Clayton says Mr. Kennard's shooting range, showed an interest, and they are partners. Application for a patent will soon be made as Mr. Kennard has completed the blue prints and working model.

KICK-OFF - United Fund Drive Chairman F. Moorehead stopped by to advise the annual off for the annual United Fund Drive will be tomorrow or Friday. First solicitations will be by the advance gift committee visiting business places... goal is about the same as last year... personal and residential solicitations will follow... the drive is planned to end the last of October.

The United Fund, which this year supports generously, is the annual charity campaign that eliminates almost all the rest. Further, almost all United Fund donations go to local organizations and to the county in Rowan County. Give generously - this is Morehead's one and own cooperative charity undertaking.

GRADUATE EVERY YEAR? - The Clates Walker family of Route One, Olive Hill, is scheduled to have one of its members graduate from Morehead State University each year, for the next four years. Entering the Morehead administration building in the order (left to right) they are expected to complete college studies are Frances, 21, a senior; Faye Elaine,

20; Junior; Helen, 19 sophomore; and Curtis, 18, freshman. A period of a year and a month separate the ages of each of the four students. The family has four more children, who have not yet reached college age. Under construction in the background is the University's new 6-story education building.

FINEST EVER - How many of the homecoming events on Friday and Saturday at Morehead State University are you planning to attend? It's not often that a community [not county] publisher has such an opportunity and we bought tickets for about everything except the dance. Reason... we didn't include the Saturday night dance as we're just a little old for this modern age. Then, our youngest daughter called and insisted we also go to the dance, and have the night dance [hope it's a waltz] with her. So, if you want to contact the scribbles for these two days, you'll find us [all dressed up] at the particular affair which happens to be underway at that time.

WRONG WAY - If you desire publicity on an observance etc, the thing not to do is to have somebody sign a proclamation. They're as out of date as petitions and engine No. 14 on the M&NF.

GROWING - We were interested in an item today listing Rowan County with 24 4-H clubs and 700 members. We used to be a member, also an Eagle Boy Scout.

EAGLE PROBLEM - Most down-town football 'experts' thought the weakness of this year's Eagle team might be at quarterback. It looked that way as Morehead was upset 21-15 at Murray. The Eagles didn't gain much yardage until a freshman, Marston, the third string qb, was inserted late in the game. This is the same Marston that this column mentioned as a fine punter, but too small [160 pounds] for defensive back.

MUTAL - This column has been writing for sometime about the potential major league baseball players from this area. Today we learn that Morehead State University has completed an arrangement with the New York Mets under which the newly-signed players receiving Professional Baseball Scholarships may continue their education at Morehead State University. Under provisions of the agreement, the New York fledglings will ball at Morehead before reporting to the Mets for spring training. The day may not be long off when they'll be saying in New York - "That Morehead produces fine baseball players, wherever in the heck is Morehead?"

CLIP THIS - Morehead Postmaster Claude Clayton today gave the dates that mail should be dispatched in order to reach Vietnam for Christmas delivery. Gifts weighing more than five pounds, sent by surface mail rates - Nov. 11; Gifts five pounds or less, plus letters and greeting cards sent at surface rates (these go by air on a space available rate) - Dec. 1; Air mail gifts and Christmas mail for distant states and foreign countries should be mailed earlier than in past years. The Post

Office department expects a big increase in this year's Yule mailings.

ALWAYS TRUE - A former business man told his friend: "I went broke because of advertising." Asked if he spent too much money for his advertising programs the answer was "No but my competitor advertised."

LONG LIST - Above we mentioned the arrangement between the New York Mets and MSU. Since then we've come across the names of MSU baseball players signed by big league clubs in very recent years. They include - Matt Gearhart, Mike Colman, Charlie Meriz and Joe Campbell, all by New York Mets; Fred Peterson, a starting pitcher, Steve Hamilton, reliever, and Ron Klimkowski, New York Yankees; Dennis Coyle, Philadelphia; Jack Rudowski, Boston; Terry West, Minnesota; Tom Ellis, an San Francisco; Richard Green, Baltimore; and Leston Stewart, Pittsburgh. After reading this you probably realize why the Mets picked Morehead 'arrangement'.

NICE - For our distant readers, including Vietnam, today announced their election plans including a fish fry, court-house rally, ribbon cutting, fund dinner, women's coffee, and youth rallies. Look for the GOP to come with a like program. This November election is harder fought than the Vietnam War! Is a mistake.

OUR LUCK - Damascus, our Kentucky Derby selection, is the horse of the year. Worst race he ever run in the Derby and that's the only time we've expected to have talked with Cooper several times in the past five years, and he has always been of the belief that the Vietnam War! Is a mistake.

POLITICAL CLASH - The democrats of Rowan County today announced their election plans including a fish fry, court-house rally, ribbon cutting, fund dinner, women's coffee, and youth rallies. Look for the GOP to come with a like program. This November election is harder fought than the Vietnam War! Is a mistake.

CONCLUSION - When Ted Kennedy speaks at Morehead tomorrow (non-political) we'll wager he won't say anything nice about Republicans or LBJ. Kennedy's time schedule Friday is as tight and close as the American League pennant race. The Senator will be in Kentucky only about long enough for the Morehead address... a friend complains that building costs for a home in Morehead have reached \$18 or \$20 a floor foot, and commercial buildings about \$20 a floor foot. He seemed surprised. He should have been reading the good old Morehead News and learned that many months ago. He would also know that land in, and around, Morehead is perhaps the highest in all of Kentucky... a Morehead restaurant manager says his business is the best ever. It should be with a 1000 hungry MSU students at his doorstep. Had you noticed in the advertisements of the 1968 cars that the less attractive a car is, the more attractive the girl is pictured in it? With reference to the movement to have all holidays fall on Monday, we believe we have a better suggestion. Make all Mondays, and Sally Rand, 63, is still doing her fan dance. She looks like she could still handle the 'What's My Line' television program, 'What's My Line' failed. It might have been successful if the reservations were taken. We hear a Morehead University class is planning to ascertain why people buy. In many cases it seems the highest bidder, buying is compulsory... Rowan County High is planning a 'super-duper' homecoming the day after night of Friday, Oct. 27. Make your reservations. Many feel there are more welfare and OEO workers in Rowan County than eligible recipients or enrollees. A Kentucky judge has barred mini-skirts in his court, and refused the testimony of several girls until they changed to longer garments. During the recess while they were changing, two-thirds of the male jury disappeared.

20; Junior; Helen, 19 sophomore; and Curtis, 18, freshman. A period of a year and a month separate the ages of each of the four students. The family has four more children, who have not yet reached college age. Under construction in the background is the University's new 6-story education building.

UNIVERSITY PROGRAMS STUDIED
Dr. Gustave O. Arlt, president of the Council of Graduate Schools in the United States, Washington, will visit Morehead State University Oct. 2 and 3 to consult with university officials concerning the school's graduate programs. Dr. Arlt, who was invited to the Morehead campus by President Adron Doran, will meet with the deans of the five schools of the University, the heads of departments planning to offer graduate degrees in the near future, as well as the entire faculty during his two-day stay on the campus.

Dr. Jarvis H. Hill, dean of Morehead's graduate programs, said the Council of Graduate Schools is one of the three top professional organizations in the nation to which graduate schools of an educational institution may belong. He said "the organization's function is to improve and advance graduate education, and to accept members only after visiting them and talking with their leaders."

Dr. Hill added that the council is not an accrediting agency like the Southern Association of Colleges and Schools, but is rather an organization that makes recommendations, not regulations, on how the quality of education of its member schools can be improved. Representatives of the Council's member institutions meet yearly.

To become a member of the Council of Graduate Schools, a school must have graduate programs in at least three areas other than education and must have at least 30 students graduate from these programs each year. Dr. Hill pointed out that Morehead now has the required programs - Biology, history, English, and Music - but is not yet turning out the minimum 30 graduates. He estimates the University will meet this requirement within three years.

Dr. Arlt is a 1931 graduate of the University of California Law School and has spent many years as a civic and educational leader in various parts of the nation.

Water Resources Help Important To State Growth
Calling for cooperation between State and Federal governments and private business, Governor Edward T. Breathitt outlined suggestions for water resources development recently during a "floating conference" on state water problems. The conference, sponsored by the U.S. Army Corps of Engineers, was held during a boat cruise on the Ohio River from Cincinnati to Markland Dam, near Warsaw.

Breathitt was accompanied by several State-agency heads, Corps officials, State Legislators, and executives from private industry.

Discussed were these topics:
* Rochester Dam on the Green River - Told by the Corps that it was having trouble finding enough benefits to justify the proposed \$100 million project. Breathitt suggested an alternative plan: build a coffer dam further upstream as a navigation aid alone. It would enable shipping to build up and perhaps make a multi-purpose structure more feasible later.

Red River levee - Land acquisition has already begun for this multi-purpose structure, scheduled for completion in 1974. It will provide adequate water supply for Lexington and other Kentucky River cities.

State park in Campbell County - The State Parks Department is conducting a feasibility study on the park, to include a marina and camping sites.

Avalanche Dam Bridge - Breathitt said Kentucky is willing to build approaches to the bridge from U.S. 42 and would consider building the structure as a full facility if Indiana decided not to do so.

WARDROBE MAKERS!

LADIES' SWEATERS

From Our Regular Stock Broken Sizes & Colors Values To \$16.00

now 1/2 price

LAYNE'S LADIES' STORE
MAIN ST. MOREHEAD, KY.

Stop going from shiver to simmer...

Install an electric heat pump for perfect year-round comfort - automatically!

You could search the world over for the perfect year-round climate... and then find it in your own home. If you simply install an electric heat pump. Like 75 degree weather? Just set it on your heat pump thermostat and that's where it stays - warming your home in winter, switching over automatically to cool things down in summer. And, of course, electric weather conditioning is wonderfully clean because electricity just can't make dirt. No flame, no fumes, no fuel! Winter's coming soon, so stop in at our local office sooner for more information on perfect year-round weather conditioning with an electric heat pump - the way of today. Make a clean break with the past.

KENTUCKY UTILITIES COMPANY
Six rate reductions since 1962

GUARANTEED BRAKE RELINE

Guaranteed 30,000 Miles Or Three Years

\$24

Best Quality Bonded Brake Linings

INSTALLED EXCHANGE prices for Ford, Chevrolet, Dodge, Plymouth and American Compacts. Others slightly higher.

Includes all this work:
* Replace old linings and shoes with Firestone Bonded Linings
* Adjust-brakes for full drum contact
* Inspect drums, hydraulic system, return springs and grease seals

GUARANTEE
We guarantee our brake relining service for the specified number of miles and years from date of installation, whichever comes first. Adjustments provided on mileage and based on prices current at time of adjustment.

Morehead Home & Auto
Your Local Firestone Store

MAIN STREET MOREHEAD, KY.

Store-Wide Specials
IN EVERY DEPARTMENT

Table Lamps
From 30" to 36" Heights
Values to \$7.99

CANDY SPECIAL
Orange Slices
Reg. 29c lb. NOW lb. 17c

LAY-AWAY TODAY ALL
Your Halloween Party Needs and Costumes

LONG-LASTING Broadloom Rug
Size 21' x 36'
Reg. \$2.98

ONLY \$1.27

HOBBS VARIETY STORE
30 Minute Free Parking At Rear Of Store

Fall Beds Pay Most Dividends

The blue chip stock of the tobacco crop is the fall-prepared plant bed, says Ira Massie, U.K. Cooperative Extension Service tobacco specialist.

One dividend is that when the busy spring "work-load" comes, farmers already have plant bed preparation finished.

Here are some tips:

- 1] Pick a fertile, well-drained area free of shade and close to a water source. Soil should be disgauged free.
- 2] Plow at least two weeks before treatment, earlier if you can. This breaks-up air pockets and gets weed seed to surface for easier killing.
- 3] Working the bed site depends on

weed-seed treatment plans. If you burn the site, only the top of the dirt turned up needs to be knocked off. If a trench or a chemical is to be used, make a good seed bed and break up clods.

4] For weed treatment, soil temperature must be at least 50 degrees F. for any method used. The soil must be dry enough to work. If soil is colder than 50 degrees F., don't work the site.

Materials used in fall-treatment do just as good a job as when used any other time of the year.

Measure soil temperature one inch under the surface.



NAOMI HUTCHINSON, a freshman from Flemingsburg, is the October calendar girl at Morehead State University.



EVANGELISM IN DEPTH

FIRST CHURCH OF GOD
Second and Highways
Morehead, Kentucky

OCTOBER 2 - 8
NIGHTLY
7-30

George Ann McBryer
Minister in Music

A Friendly Welcome Awaits You

For Rent

PROPERTY ON WEST MAIN STREET

We have an approved Tiny Tot Nursery Building - a good going business or we will split property up as follows -

One large office or store room fronting on Main Street, also a real nice 2 bedroom apartment furnished or unfurnished with basement - large back yard going back to a street with room for a trailer in the back.

Any way you want to rent this just call your Ole Bargain Barn Buddy Curt Hutchinson . . .

784-5973

Curt's Auto Fair

AND BARGAIN BARN

YOU ARE INVITED

Democratic Fish Fry

SATURDAY, OCT. 14

Mabry Subdivision - Christy Creek Road - Ky. 32

One Mile From Morehead

Principal Speaker - Congressman Carl D. Perkins plus other speakers.

Serving starts at 2:00 p.m. and lasts until dark.

Special Music - Platform Acts - Best Program Ever

EVERYTHING FREE

The public is welcome. This Fish Fry is sponsored by the Rowan County Democratic Organization. A Special Invitation is extended to citizens from Rowan, Bath, Menifee, Morgan, Elliott, Carter, Lewis and Fleming Counties.

In Charge of The Food - Jimmy Clay, Best Fish Fryer in Kentucky - 1,000 pounds of Fish - Cases and Barrels of Soft Drinks.

Everything Free - Plenty Parking!

Attend All These Coming Events

THURSDAY, OCT. 26 - Rowan County Rally, Morehead Courthouse, 7:00 p.m. In Charge of Executive Committee and Regular Rowan County Democratic Organization.

TUESDAY, OCT. 31 - Ribbon Cutting [Non-Political] at Slate Creek. Henry Ward will be present. Motorcade from Morehead planned.

FRIDAY, NOV. 3 - Big annual dinner and fund raising drive, RCHS Cafeteria, starts 6 p.m. Principal speaker - Wendell Ford, Tickets \$5.

WOMEN'S COFFEES AND YOUTH RALLIES - At Morehead and throughout rural sections. Dates, places, time, to be announced.

Letters . . . to the editor

This newspaper welcomes letters, particularly on subjects of general local, or area, interest. Right is reserved to condense. No letters will be printed without author's signature and address.

PROPOSES ENGINE 14 BE PLACED IN PARK

The Editor:
I read in the Courier-Journal about the last steam locomotive in Kentucky. Wouldn't it be wonderful if we could get the Morehead and North Fork Railroad No. 14 in our city park?
Many towns have a locomotive sitting in their park so children can see the steam engine and learn about it while playing on it. Locomotive No. 14 is of special historical interest to the Morehead area. A plaque or monument could tell the history of this particular locomotive, of the railroad industry in this area, and of the importance to steam locomotive, of the railroad industry in this area, and of the importance to steam locomotives of this area's clay for fire brick.

Mrs. F. Calvin Digler
Morehead, Ky.

DEVELOPMENT COUNCIL UNDERGOING ORGANIZATION

The Editor:
The Northeast Kentucky Area Development Council that is made up of six

Conduct Funeral For Mrs. John Poston

A native pioneer Rowan County woman, Mrs. John (Kona Mae) Poston, 75, passed away Saturday at Connelville, Pa., where she had made her home in recent months. Mrs. Poston was 75 years of age, and died after a stroke.

The Pennsylvania hospital gave "pulmonary hemorrhage" as the immediate cause of death.

The remains were brought to Lane Funeral Home at Morehead. Funeral services were conducted yesterday (Wednesday) afternoon at 2 o'clock at Blue Bank Church of God, followed by burial in the family plot at Elington cemetery.

Mrs. Poston was born in Rowan County Oct. 3, 1887, daughter of the late John and Rose (Kistick) Ellington. Early in life she married John Poston, widely known Rowan County citizen, who passed away Sept. 7, 1951.

Mrs. Poston was a housewife all her life, and a member of the Church of God.

Immediate survivors are the following three daughters and two sons - Mrs. Thelma Story, Grange City, Ky.; Mrs. Gladys Trimble, Connelville, Pa.; Mrs. Frances Christy, Frankfurt, Germany; Elwood Poston, Franklin, Pa.; and Kenneth Poston, Middletown, Ind.

She also leaves three brothers - Ed Ellington, Fleming City, and Eggle Ellington and Harlan Ellington, both of Sikeemee.

Reverend Herbert Moore and Harm Barnette conducted the funeral. Lane Funeral Home cared for arrangements.

The casket bearers - Danny Ray Story, Jack Story, Jerry Story, Donnie Story, Jimmie Story and Johnnie Story.

Breck Student Advances In Scholarship Judging

Fonda Christine Fry, University Breckinridge, has been named a semifinalist in the 1967-68 National Merit Scholarship Program.

Principal Reudus Back was notified this week of her selection.

The 14,000 semi-finalists appointed throughout the nation have advanced to the second step in the competition for 2,900 scholarships, valued at more than \$8 million.

Announcement of winners will be made in May.

counties - Carter, Elliott, Greenup, Lewis, Morgan and Rowan has an Annual Meeting this year, October 17, 1967, for the reorganization of the Board.

Because of it being funded by the Office of Economic Opportunity, it is necessary that the Board be a broadly based one. The following organizations and agencies have been elected to represent Rowan County in a previous meeting: County Government, Education, City Government, Higher Education, Health, Doctors, Child Welfare, Civic Organizations, Business & Industry, Organized Labor, Minority Groups, Agricultural Agencies, Clergy, Veterans Organization, Public Assistance and County Development Association.

Your Rowan County Action Agency would like to invite you--the Target Group or economically deprived, senior citizens and those who would like to be on the Legal Aid Board to attend a meeting at the Court House Friday, October 13, 1:30 p.m. The meeting will be held in the conference room in the basement of the court house.

Northeast Ky. Area Development Council
Morehead, Ky.

SLIGHT DELAY IN I-64 RIBBON CUTTING CEREMONY

The Editor:
I would like to bring you up to date on the stretch of I-64 from Slate Creek to Ewington.

The Director of Construction has advised me that the project will not be completed by October 20 as we had hoped. The project has experienced several problems and the latest, of magnitude, of course, is the replacement of several sections of unusable pavement. Therefore, we must wait until it is completed before having the (dedication) ceremony.

It is the opinion of the Division of Construction that we can open the project on October 31. This is on a Tuesday, and I am hopeful this will be satisfactory to the planning (dedication) committee.

I am looking forward to a very fine ceremony on I-64 near Owingsville, and I know that the citizens of your area are particularly pleased that this project will be ready for use in the immediate future.

Mitchell W. Tinder
Commissioner of Highways
Frankfort, Ky.

[Editor's Note - This newspaper learned today that the ribbon cutting ceremony is being changed to Oct. 20 to Oct. 31. Details, exact time of day, etc. will appear in The Morehead News.]

YOU ARE INVITED TO AN ENJOYABLE FALL WEEKEND IN THE KENTUCKY MOUNTAINS

For an enjoyable fall weekend in the Kentucky Mountains, come to the fourth annual Kingdom Come Swappin' Meetin', a Folk Arts Festival, October 13-15 at Southeast Community College in Cumberland.

Featured singers include John Cables Niles, Kentucky's noted composer and arranger of folk music; Jean Ritchie, the popular singer of Appalachian folk songs; and Yvonne Gregory, who has been head staff singer at WSM in Nashville.

Two Concerts, a Swappin' Session and a Hymn Sing, will feature all of the featured singers plus many non-professional singers and story tellers. A program of folk dancing will feature demonstrations by the popular Berea Country Dancers. Callers will be present for audience participation.

Folk arts and crafts will be featured all weekend with the finest craftsmen from the area displaying handmade chairs and dulcimers, weaving, woodworking, and various other crafts.

Richard Wedgwood
Southern Community College
Cumberland, Ky.

Children are active — and not always careful. Safeguard them by being prepared. Come in and see our complete line of first aid and health aid needs.

We Give Top Value Stamps

A Boy Is Bound to Get Cut, Scratched, Bruised . . .

Balfson Walgreen Drugs

Free Delivery Prescription Service

Mobile Home License

Licenses for all Mobile Homes or House Trailers parked within city limits were due October 1, 1967. If you don't have yours, please do so at once. Available at City Hall, Main St., Morehead, Ky.

Minnie Preston, Clerk

For the Real Estate Deal of the year, or Auctioneering at its best - Contact

E. ROGER LEWIS

ROGER LEWIS BUILDING, MOREHEAD, KENTUCKY, PH. 784-4244

NEED MONEY To Consolidate Your Bills?

CASH YOU GET	12 Mos.	18 Mos.	24 Mos.	36 Mos.	48 Mos.
\$500	\$45.29	\$31.21	\$24.17	\$20.06	\$17.24
1000	67.94	48.62	38.34	30.12	26.05
1500	90.58	62.42	48.44	40.04	34.78
2000	135.86	92.63	72.68	60.24	54.39
2500	180.81	124.50	94.53	79.75	68.39
3000	224.67	154.53	119.67	99.00	85.40
3500	268.53	184.56	142.82	118.05	101.07
4000	356.24	244.62	189.11	156.15	134.42
5000	440.45	302.28	233.56	192.72	162.50

Payments include Principal and Interest. Insurance Available

Grayson Industrial Loan Co.

CARL E. JOHNSON, Mgr.

MAIN ST. * PHONE 474-6611 * GRAYSON, KY.

COVER YOUR WALLS WITH A CARPET OF COLOR SPRED SATIN LATEX WALL PAINT

no stirring it's HOMOGENIZED

Popular SPRED SATIN gives a rich, flatter, soft wall finish you will be proud of... for years.

Easy to apply with brush or roller and dries in just 20 minutes. Clean up with warm! Children guarantee and coverage.

NOW \$5.50 Gal. In four choice of 2004 custom-blended colors!

WHITE LUMBER CO.

5 Miles East On U. S. 60
PH. 784-5588 At U.S. 60 and Big Ferry Road Junction MOREHEAD, KY.

SOCIETY

Those here last Tuesday to attend the funeral of Mr. L. E. Pelfrey were: Mr. and Mrs. Warren Pelfrey, Miami-burg, Ohio; Mr. and Mrs. Riley Pelfrey, Hillsboro, Ohio; Mrs. Frances Thorsby, Royal Oak, Mich.; Mr. and Mrs. M. Hayes, Columbus, Ind.; Mr. and Mrs. Nelson Whitt and son, Muncie, Ind.; Mr. and Mrs. Cecil Jackson and son, Ada, Ohio; Mr. and Mrs. Arlon Pelfrey, Logan, W. Va.; Mr. and Mrs. Bill E. Fannin, Ashland; Mr. and Mrs. Harold Wallace, Prestonsburg; Mrs. W. D. Jones, Insko, Prestonsburg; Earl Reed and Gayle, Caney, Mr. and Mrs. Jasper Jones, Insko, Mr. and Mrs. Donnie Patrick and Mrs. and Mrs. Walton Jones and son of Cannon City; Gobel Ratliff, West Liberty; Mr. and Mrs. William J. Smith, Winchester; Mr. and Mrs. H. W. Hillman, Olive Hill; Mrs. Virgil Conn, Stark; John Lee Burton, Blaine; Jim Lewis, Mr. and Mrs. L. C. White, and Curt Ferguson of Sandy Hook; Mr. Bryson, Greenup; Mr. and Mrs. Dick Womack, Oldtown; Mr. and Mrs. Arnold Haigh, Mr. and Mrs. Frank and Mrs. F. A. Plummer, E. A. Aplegate, and Mr. and Mrs. Sid Colley of Grayson.



Miss Nancy Gaudill and Mrs. Elton Johnson were in Huntington Sunday to visit with Mr. and Mrs. Frank Kessler. Mr. Kessler is a patient at the C&O Hospital.

Mr. and Mrs. Walter Calvert visited with Mr. and Mrs. James A. Davis and Adair in Grayson Sunday.

Mrs. Elbert Christy and Mrs. Randy Wells were Lexington visitors Saturday.

Mrs. Grace Apel spent the weekend with her son, Francis Apel, Mr. and Mrs. A. D. Plummer, E. A. Aplegate, and Mr. and Mrs. Sid Colley of Grayson.

Miss Hildred Maggard and Mrs. LeGrand Jayne were Lexington visitors Saturday.

Mr. and Mrs. William H. Layne returned Friday from Owensboro where they attended the annual meeting of the Kentucky Municipal League last week.

Mrs. Elizabeth Anderson of Flemingsburg visited with Mr. and Mrs. Hartley Batts last Wednesday.

Mr. and Mrs. William Lindsay of Frankfort were guests from Thursday to Sunday of her mother, Mr. C. L. Waltz and other relatives in Morehead.

Mr. and Mrs. Ray Lambert and children, Marla, Keta and Mark spent Saturday in Lexington.

Mrs. Ray Lambert, Miss Linda Tackett, Mrs. Tommy Brown and Mrs. Leroy Caudill attended the National Hairdressers and Cosmetology Association meeting Sunday at the Kentucky Hotel in Louisville.

Dr. and Mrs. J. K. Smith and Mr. and Mrs. C. G. Clayton attended the Morehead-Murray game at Murray Saturday night.

Creed Patrick, Alpha Hutchinson, Russell McClure, Jack Helwig Jr., Bill Burns and son, J. B. Calvert Jr. and Bill Owens of Greenup attended the Morehead-Murray game at Murray Saturday night.

Mrs. J. H. Johnson returned Sunday to her home in Cleveland after a three week visit with Mr. and Mrs. N. E. Kennard, Mr. and Mrs. Arthur Blair, Mr. and Mrs. Jack Helwig Sr. and other relatives in Morehead.

Mrs. Joe Holl and Mrs. Howell Tenney of Louisville were guests Wednesday and Thursday of Mr. and Mrs. N. E. Kennard.

Those who attended the Delta Kappa Gamma luncheon Saturday in Maxwells were Hazel Nauau, Naomi Clappold, Era Mae Smelley, Ethel Moore, Hazel Whitaker, Blanche Witz and Elizabeth Anderson. Edna Mitchell Long of Raceton, land spoke on "Interpretation of Values."

Mrs. Hazel Calhoun counselor at Breckinridge, and Mrs. Woodrow Barber, counselor at Morehead State University, attended the Eastern Kentucky School Counselors meeting Friday in Paintsville.

Mr. and Mrs. Woodrow Barber and grandson, David Barber visited last Tuesday with Mrs. Curtis Williams at Blaine.

Mr. and Mrs. Lewis Higgins were Lexington visitors Saturday.

Dr. and Mrs. Byron Wentz attended the Eastern Kentucky Optometric Society meeting Saturday in Lexington.

Dr. George Barber attended a medical association meeting in Louisville Thursday.

Those who attended an AAUW State workshop meeting Saturday at Franklin County High School were Mrs. Mabel Barber, Mrs. Pauline Green, Miss Pauline Tomlinson, Mrs. Peaches Cecil, Mrs. Paul Reynolds, Mrs. Pearl Hagan, Mrs. Clarice Williams, Mrs. Dorothy Collins, Mrs. Octavia Graves, Miss Patti Bolin, Mrs. Faye Belcher and Mrs. Edith Conyers. They were also among guests who attended a tea at the Governor's mansion in the afternoon.

Mr. and Mrs. N. E. Kennard entertained with a dinner Wednesday honoring their guest, Mrs. Joe Holl of Louisville. Guests were Mr. and Mrs. Arthur Blair, Mrs. J. H. Johnson, Mrs. Leo Oppenheimer, Mrs. Lueter Blair, Mrs. J. H. Johnson and Mrs. E. W. McKinley.

Mr. and Mrs. Jack Helwig III are welcoming their first child, a son born Sept. 30 at St. Claire Medical Center. He weighed nine pounds eleven ounces and has been named Jack IV. The grandparents are Mr. and Mrs. Jack Helwig Jr. and Mr. and Mrs. Carl Sluss.

Mr. and Mrs. Ronald Hart and daughter, Shari, were Lexington visitors Saturday.

Dr. and Mrs. Donald E. Howard and children, Danny, Johnny and Janie of Frankfort were weekend guests of his parents, Mr. and Mrs. Orville Howard.



Mr. and Mrs. Anthony Cooley married at bride's home

Miss Fannin, Mr. Cooley Are Married

The marriage of Miss Nancy Lou Fannin, daughter of Mr. and Mrs. Clela Fannin of Morehead, and Anthony Cooley, son of Mrs. Elmer Cooley, also of Morehead, was solemnized Saturday, Sept. 30, at the home of the bride's parents. Rev. Ted Greene, pastor of the First Free Will Baptist Church, officiated at the double ring ceremony. The bride chose for her wedding a street-length gown of white nylon lace over satin. She carried a bouquet of white carnations tied with white satin streamers.

Mrs. Marcella Fannin, the bride's sister-in-law, was matron of honor. Clela Fannin Jr., brother of the bride, served Mr. Cooley as best man.

Assisting at the reception following the wedding were Elmer Hall, Mrs. Eugene Fraley and Mrs. Ray Smith. The bride is employed at Mountaineer House. Mr. Cooley is a student at Morehead State University.



Mrs. Geraldine Conway world traveler

MSU Women Will Hear Miss Conway

Mrs. Geraldine Conway of Columbus, Ohio, will be the guest speaker for the Morehead State University Woman's Club at 7:30 p.m. Tuesday, October 10. She will use as her topic "Life Involvement" at the meeting to be conducted in the University Home Economics Building, Room 215.

Mrs. Conway has traveled extensively in Latin America, Asia, Canada and Europe. In August, 1966, she took a team of three and went to Viet Nam where she ministered to American and Vietnamese troops.

"Mrs. Conway has written a pamphlet 'I Asked for the Meaning of Life' in addition to a series entitled 'Frontiers of Prayer.' She has spoken in churches, schools, evangelistic missions and civic organizations throughout the world."

Wives of faculty and staff and faculty and staff women are invited.

Mr. and Mrs. Ora Fraley and Mr. and Mrs. Everett Fraley visited Sunday with their brother, Zora Fraley, who is a patient at the hospital in Huntington.

Miss Nellie Hinton of Flemingsburg visited with Mrs. Lula Blair last week.

J. B. Howard of Centerville, Ind. and Mr. and Mrs. Kenny Wheeler and family of Ashland were weekend guests of Mr. and Mrs. Russell Barker.

Mr. and Mrs. Phil Bradley and children, Greg, Chip and Amanda of Warsaw, were weekend guests of Mrs. Maude Ellington.

Mr. and Mrs. Wathan Gullett spent the weekend with Mr. and Mrs. Jim Gross and family in Ashland.

Mrs. Troy Hall returned home Sunday from a ten-day visit with Mr. and Mrs. Richard Evans and Mr. and Mrs. Dewey Evans in Indianapolis, Ind. She was met in Cincinnati by Mr. Hall and Mr. and Mrs. Bobby Blevins.



Mr. and Mrs. Bruce Michael Roberts double-ring ceremony

Miss Fraley Is Bride Of Mr. Rogers

Miss Vicki Lynn Fraley, daughter of Mr. and Mrs. Earl Scott Fraley, became the bride of Mr. Bruce Michael Rogers in a double-ring ceremony Friday evening, Sept. 29, at 7:30 in the Morehead Methodist Church.

Mrs. Harold Stone was the bride's matron of honor. Mr. Stone served Mr. Rogers as best man. The bride was given in marriage by her father.

A reception following the ceremony was held in the church parlor.

After a short wedding trip, the couple is residing at 123 Sun Street, Morehead. Out-of-town guests attending the wedding were Miss Jayne Snedegar, Frankfort; Miss Mary Olive Anderson and Ed Ford, Miss Mary Hamm, Miss Pat Gopher, Paris; Mr. and Mrs. Forrest Patrick, Frankfort; George Fraley, Middletown, Ohio; and Mrs. Dennis Judge, Louisville.



Mrs. L. A. Fair spent the weekend with Mr. and Mrs. Donald Fair and family in Amelia, Ohio.

Mr. and Mrs. L. A. Fair spent the weekend with Mr. and Mrs. Donald Fair and family in Amelia, Ohio.

Rex Chaney, John Duncan and Bill Peirce were in Murray over the weekend to attend the Morehead-Murray game.

Mrs. Bob Wright and children, Sara Bert and Bob Gordon spent the weekend with Mr. and Mrs. O. L. Brown in Lebanon, Ohio.

The wedding of Miss Judy Ann Bowles, daughter of Mr. and Mrs. Harry Bowles, Wallingford Route 2, and Mr. Robert Allen Hamm, son of Mr. and Mrs. Edward Hamm of Flemingsburg, will be Saturday, Oct. 7. Both Miss Bowles and Mr. Hamm are employed with the Randall Company in Flemingsburg.

Dr. and Mrs. F. Calvin Bigler spent Sept. 25-28 in Louisville where he attended the Kentucky Medical Association as a delegate. Mrs. Bigler was a delegate to the KMA Auxiliary meeting.

Rowan County Barracks 3079, Veterans of World War I, and the Ladies Auxiliary will meet Saturday, Oct. 7, at 2 p.m. at Rowan County High School for the regular business meeting.

Mr. and Mrs. L. A. Fair spent the weekend with Mr. and Mrs. Donald Fair and family in Amelia, Ohio.

Rex Chaney, John Duncan and Bill Peirce were in Murray over the weekend to attend the Morehead-Murray game.

Mrs. Bob Wright and children, Sara Bert and Bob Gordon spent the weekend with Mr. and Mrs. O. L. Brown in Lebanon, Ohio.

The wedding of Miss Judy Ann Bowles, daughter of Mr. and Mrs. Harry Bowles, Wallingford Route 2, and Mr. Robert Allen Hamm, son of Mr. and Mrs. Edward Hamm of Flemingsburg, will be Saturday, Oct. 7. Both Miss Bowles and Mr. Hamm are employed with the Randall Company in Flemingsburg.

Dr. and Mrs. F. Calvin Bigler spent Sept. 25-28 in Louisville where he attended the Kentucky Medical Association as a delegate. Mrs. Bigler was a delegate to the KMA Auxiliary meeting.

Mr. and Mrs. A. T. McNeely and family attended the Kentucky-Mississippi game in Lexington, Saturday.

Mr. and Mrs. Robert B. Moore of Lexington spent Monday with his parents Mr. and Mrs. Robert Moore.

The Sherwood Forest Homemakers met last Thursday night at the home of Mrs. Margaret Hardin. The lesson, "Updating Furniture," was presented by Mrs. Frances Wolfe. Other members present were Mrs. Sue Anderson, Mrs. Mildred Wightman, Mrs. Elaine Speer, Mrs. Betty Porter, Mrs. Elaine Pollette and Mrs. Guberlie Hays.

Mrs. R. L. Salyer of Salyersville spent Saturday night and Sunday with Mr. and Mrs. Fred Cassidy and Mr. and Mrs. Dave Carlson and family.

Saturday dinner guests of Mr. and Mrs. Lindsay Caudill were Mr. and Mrs. Oscar Cornett of Pittsburgh, Pa.; Mr. and Mrs. Walter McIntire, Ashland; Mrs. Madge Cornett and daughter, Judy, Frankfort; Mr. and Mrs. Roy Cornett, Mr. and Mrs. J. M. Clife, Mrs. Ward Cornett and Mr. and Mrs. Jack Ellis and daughter, Jackie.

Mr. and Mrs. J. M. Cassidy and Mr. and Mrs. Lindsay Caudill visited Sunday with Mrs. Ethel Boggess in Versailles.

The members of the Farmers Christian Church held their annual picnic Sunday at Bluffs State Park.

Johnny Fraley and Carolyn Perkinson who attended the University of Kentucky, spent last Thursday with his parents, Mr. and Mrs. Glennis Fraley. Weekend guests of the Fraleys were his sister, Mrs. Lisa Saul, and Mr. Saul of Fairborn, Ohio.

Mr. and Mrs. J. Earl McBrayer attended the funeral of Mrs. Ann Dixon in Prestonsburg last Tuesday. Their daughter, Mrs. Bert Dixon, and Mr. Dixon enroute to their home in Minneapolis, Minn., spent last Wednesday night with them. C. H. McBrayer was a guest at the McBrayer home Sunday and Monday.

Mr. and Mrs. Ken Howard of Auburndale, Fla. are the parents of a son, Ryan Tyler, born Sept. 28. The baby weighed seven and three-fourths pounds on arrival.

Mrs. Howard is the former Barbara Aber, daughter of Mr. and Mrs. Dave Aber of Morehead. Mrs. Aber and daughter, Kelly are in Auburndale for a visit with the Howard family.

FOSTER HOMES - The State Department of Child Welfare is looking for foster homes big enough to care for from four to eight youngsters.

BUY MORE SPEND LESS SAVE MORE

Prices Good Fri Thru Wednesday - Oct. 6 thru 11

<p>Reg. \$1.49</p> <p>Contac Now 99¢</p>	<p>3-lb. Size</p> <p>Shortening 64¢</p>	<p>Reg. \$1.09</p> <p>Vicks Formula 44 Now 77¢</p>
<p>SNO DRIFT</p> <p>Slab Bacon 45¢ lb.</p>	<p>By The Piece</p> <p>Cake Mix 4 for 97¢</p>	<p>46-oz.</p> <p>Fruit Drinks 3 for 84¢</p>
<p>SWANS DOWN</p> <p>Mix 4 for 97¢</p>	<p>Mix or Match</p> <p>Homestead Margarine 97¢ 5-lb.</p>	<p>Maxwell House - Folger's Chase 'n Sanborn Coffee 69¢ lb.</p>

WHITE'S Clover Farm

"A Complete, Modern Store"

Support The 4-H County Clean-Up... WE ARE

Open Sundays For Your Convenience

WHITE'S Clover Farm

"A Complete, Modern Store"

At The Crossroads

Junction of Big Perry, Morehead and Vanceburg Roads

M'head Legion Plans Big Program For Year

The Corbie-Ellington Post of the American Legion at Morehead today announced an objective program for the next year, spearheaded by C. B. Corne.

This includes a membership drive, Rowan County's biggest, to enlist every veteran of the first World War, World War II, Korean conflict, and the Vietnam war.

Opening of a new recreation park on land leased, without cost, for 30 years from Jack Cecil on Tar Flat.

Construction of a new building, including parking areas, and landscaping for the American Legion baseball team.

Terms of the lease provide that Region

baseball games be played there next year.

A concerted effort to raise more money for Legion baseball. Corne said one fund raising drive was successful, but only about a third of the necessary money raised because of additional expenses in a move to the new park.

The Post also announced the signing membership of four soldiers in Vietnam, or who have served on the Vietnam front. They are - Denver Carr, Keith Murphy, Tony Porter and Larry Murray.

"If you are a veteran of any war we want your membership in the Morehead Legion Post," was the request and slogan issued today by Corne.

Important Questions And Answers

Who expedited the Interstate 64 highway through Rowan County so that it will be completed a year ahead of schedule.

The answer - Henry Ward. Contracts for practically all of I-64 in Rowan County have been let.

Who approved a four-lane connector at Morehead, one of the very few four-lane connectors on all of I-64, that cost more than any connector in Kentucky, around \$2 million?

The answer - Henry Ward.

Who is a proved friend to Morehead State University and its leadership?

The answer - Henry Ward. He has demonstrated [by action] this many times, including a new road on the campus, paving of faculty housing, other on-campus street improvements, etc., all from the emergency fund.

Who has pledged that U. S. 60 from Morehead to Slate Creek, connecting with Cave Run Reservoir, will be kept in high state of maintenance?

The answer - Henry Ward . . . in his Morehead speech and in writing.

Who will see that Cave Run Reservoir gets a state park?

The answer - Henry Ward, rated the "number one" man in America on state parks . . . Henry Ward is Kentucky's Park System the finest in the nation.

Who brought Kentucky's Highway Program from near the bottom, and elevated it to second place, surpassed only by the state of Texas, last year . . . and this year Kentucky went in first and place in total miles of roads built, even more than Texas and such big and rich states as California, New York, Ohio etc?

The answer - Henry Ward, recognized as perhaps the best highway commissioner any state ever had. They call Henry Ward "the bulldozer."

Who has served all his adult life in high public and policy positions without personal gain, or even one iota of scandal or wrong-doing?

The answer - Henry Ward.

Who built more Rural Secondary and Farm-To-Market roads than any man in the 112 year history of Rowan County?

The answer - Henry Ward. A complete list of all Rowan County roads that Henry Ward built and improved which are not available, but released in Morehead News show the following - CCC trail, near Ellitoville, about six miles; Blountsville surface, about 1 1/2 miles surface on Hilda-Blountstone road beginning at Ky. 32 near Hilda; surface and improvements to Holly Fork road; road to Morehead State University, location and construction; about six miles on Dry Creek from Clearfield to CCC trail; surfacing Big Brushy road; surfacing additional miles Rock Fork road; surfacing Pine Crest road; surfacing Blountstone Flats; surfacing three miles or more Farmers-Sharkey road; three miles surfacing Lower Licking road; access road in vicinity of athletic field at Morehead State University.

These are more recent projects but there are many others including - widening and surfacing Morfance; about 11 miles; Main Street; Wrigley road; road from Farmers to Grange City; Town Branch surfacing; Seas Branch; Harris-Haldeman loop; lower Cal Grove road; other paving at Hill Crest subdivision; Dry Creek; Caudill Hill; McBryner road; Open Fork; Oak Grove; Moore School; Little Perry; Logan road; Hickory Grove-Paragon; access road to Rowan County Airport; and Mabry Street in Morehead.

The above does not include all the roads that Henry Ward approved for Rowan County.

The Highway Manual records show that during Henry Ward's stewardship in the Highway Department a total of \$765,074.83 was spent on the 112 rural secondary roads of Rowan County, an all time high.

In view of this it is not understandable how anybody in Rowan County, armed with the facts . . . could vote against Henry Ward for Governor.

Low Nicotine Cigarettes Are Possible

Greater demand for burley tobacco could result from manufacturers' efforts to produce a low-nicotine cigarette, Tom Reed, tobacco marketing specialist in the Kentucky Department of Agriculture, says.

"Cigarette companies will place strong demands on flyings and lugs from the 1967 tobacco crop, he says. These grades have less nicotine than the other leaves and may play an even more prominent role in blending of the so-called saved cigarettes, Reed says.

Reed cautioned growers: "Until extensive barn samplings are made by cigarette manufacturers to determine nicotine levels of this year's crop, we cannot be sure of a strong demand for all grades. It is quite possible that our low and tip grades may not be easy to dispose of because they have undergone chemical damage and have retained a rather high nicotine level."

Carefully sorting of grades will be profitable, he said. "It is important that he advised them to be especially careful not to mix the "thin" grades, flyings and lugs, with the leaf grades. This could very well result in a mixed grade that is unacceptable to the buyer because such a mixture indicates a high nicotine content."

High Honor Goes To Morehead Prof.

Harlen Hamm, speech and drama instructor at Morehead State University's Breckinridge School, has been named "Kentucky Speech Teacher of the Year" by the Kentucky Speech Association.

Hamm was selected for the honor at a conference last weekend in Lexington, attended by 175 speech educators. In addition to receiving a plaque, Hamm will represent Kentucky speech teachers at the Southern Speech Association Conference at its April meeting in Memphis. This group will also select a speech teacher of the year.

The award Hamm won is given each year to the person "whose teaching is the most outstanding young speech teacher in the state." Candidates for the award must not have taught more than five years.

Hamm, a native of Felicity, Ohio, received his BA degree from Morehead in 1964 and his masters from Bowling Green [Ohio] State University in 1965. He is director of the Kentucky State Teachers, which is a sub-group of the National Speech Association, a high school drama organization.

Hamm has taught at Breckinridge for two years.

Buyer, Be Wise, Beware

By Robert Matthews Attorney General Commonwealth of Kentucky

Almost always when a customer makes a large purchase or signs up for a transaction calling for extended credit, the person or firm with whom he deals will ask for references and credit background.

The buyer accepts this as reasonable and good business practice but how often does he do the same thing? How often does he ask for references and credit background of the salesman or the concern the salesman represents.

"It is the obligation of the consumer to do those things which a normal prudent man would do under similar circumstances. If he does less, he may find himself in difficulty from which neither the Consumer Protection Division nor the courts can extricate him.

An ounce of care is worth a pound of cure.

Death Comes To Mrs. Goldie Templeman, 62

Mrs. Goldie Ellen Templeman, 62, prominent Rowan County woman, passed away Tuesday.

Funeral services will be conducted tomorrow [Friday] morning at 10:30 at Clearfield Tabernacle, followed by burial in Ditney cemetery. The remains are at Stucky Funeral Home. Rev. L. E. Collier will conduct the funeral.

Mrs. Templeman was born April 16, 1905, daughter of the late Sam and Martha [Subject] Stamper.

She married Arthur J. Templeman who preceded his wife in death.

Mrs. Templeman was a member of the Church of God.

Grandsons and nephews will serve as casket bearers.

Immediate survivors include the following four sons and six daughters - Clevis Templeman and Bill Templeman both of Sheboy, Arbur Templeman and Mrs. Ava Poole, both of Crestline, O.; Mrs. Faye Grant, Joliet, Ill.; Roy Templeman, at home; and Mrs. Donna Anderson and Mrs. Lois Anderson, all of Morehead.

She also leaves two brothers - Norman Stamper, San Diego, Calif., and Charles Stamper, Morehead; and three sisters - Mrs. Charles Tyree, Mrs. Winford Caudill and Mrs. Oma Dickerson, all of Riverside, Calif. There are 22 surviving grandchildren.

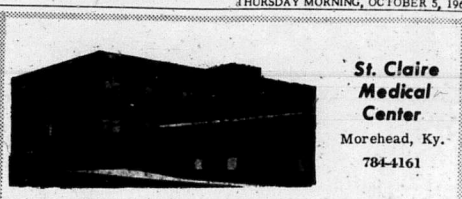
Stucky Funeral Home is handling arrangements.

Eastern Star To Install New Officers

Thelma Bumgardner and Elwood Bumgardner will hold the highest offices - Worthy Matron and Worthy Patron, respectively, for the coming year of the Morehead chapter, Order of Eastern Star.

They will be installed, along with other newly elected officers, next Tuesday, Oct. 10 at the Masonic Hall. The program will be at 7:30.

Other OES officers - Pearl Patton, Associate Matron; A. D. Coleman, Associate Patron; Lonna Coleman, Secretary; Patricia Elam, Conduress; and Joyce Lyons, Associate Conduress.



St. Claire Medical Center

Morehead, Ky. 784-4161

ADMITTED

Sept. 27 - Jackte Litton, Lytton; Ida Cladwell, Morehead; Freda Gurm, Morehead; Ishah Henderson, Olive Hill; Clyde Collins, Olive Hill.

Sept. 28 - Bonnie Pence, Morehead; Frances Gregory, Morehead; Herman McGlothlin, Morehead; Estill Harris, Olive Hill.

Sept. 29 - Mark Conley, Morehead; William Markwell, Morehead; Rosie Knapp, Morehead; Jewell Watson, West Liberty; Janice McKee, Morehead; Sharon Black, Morehead; Barbara Adkins, Haldeman.

Sept. 30 - Arlene Porter, Olive Hill; Mary Lou Helwig, Morehead; Karen McClurg, Morehead.

Oct. 1 - Beulah Whitl, Lytton; Versal Royse, Elliottville.

Oct. 2 - Stella Fielding, Olive Hill; Ruth Wolfe, Grayson; Thursday Kelley, West Liberty; John Dyer, Clearfield; Judy Erwin, Olive Hill; Cecil Fraley, Morehead; Herman Moore, Morehead; Ed Havens, W. Liberty; Danny Kiser, Olive Hill; Vickie Lynn Porter, Morehead; Agnes Vittoe, Frenchburg; Betty Reynolds, Farmers; Barbara Clary, Head of Grasses.

Revival Planned At Baptist Church

The First Baptist Church of Morehead begins revival October 8 and continues through the following Sunday, October 15.

Rev. Daniel Veary, associate in the Department of Youth Work in the Kentucky Baptist Convention is the evangelist.

Rev. Veary has had wide experience in evangelistic work. He has led youth revivals in many parts of his native state, Texas, and was invited to be a youth speaker in Japan several years ago. Rev. Veary was active in athletics in his home town - Cleburn, Texas, where he made all state in football and baseball.

The evangelistic services will begin each evening at 7:30. A nursery will be provided, the Rev. Kenneth Cole said.

TRANSY NOTABLES - Henry Clay was once a professor of law at Transylvania College at Lexington, and Jefferson Davis was a student there.

from HISTORY'S SCRAPBOOK

DATES AND EVENTS FROM YESTERYEARS

Regular steamboat service was established between New York and California, October 6, 1848. The State of Liberty was unveiled, October 6, 1886.

"We the People" was first broadcast, October 7, 1937.

Corporal Alvin York captured German machine gun nests and became a national hero, October 8, 1918.

Alaska was transferred to the United States, October 9, 1867. The first college commencement in America was held at Harvard College, October 9, 1842.

The U.S. Navy Academy at Annapolis opened, October 10, 1845.

Thomas Edison applied for his first patent - for a vote recorder - October 11, 1868.

Shop The Classified Ads

INK 68

AND OWN A BEAUTIFUL CUSTOM-DESIGNED CAPP HOME IN 1967!

YOU'LL SAVE EVERY STEP OF THE WAY

- Don't delay! Labor and materials are going up!
- Build a Capp-Home now!
- Our financing covers everything we do and furnish at 6% simple interest the lowest rate in the building industry!
- We deliver and our carpenters do the heavy erection right to your lot. We furnish all finishing materials inside and out for the price quoted.

You can include colorized pictures, kitchen cabinets, fireplace and heating packages.

Your Capp-Home man is: **Jack Riffe**
213 Caroline Drive
Bellefonte, Ky. 40110

Phone: (606) 354-9487

MAIL THIS COUPON TODAY
To CAPP HOMES Dept. 1008
2205 Homestead Ave., Minn. 55006
Please send me more information

NAME _____
ADDRESS _____
CITY/TOWN OR RFD. _____
STATE _____ ZIP _____
Character of lot: Phone _____
 I don't own a lot but I could get one. C

WHY ARE ACTIVE FAMILIES INSTALLING ALL-ELECTRIC LAUNDRIES?

FASTER

SAFE

The all-electric laundry is a real wife-saver! The electric washer does the dirty work while Mom prepares supper. After the meal, she loads the clean clothes into the electric dryer. Safe for synthetic fabrics and permanent press clothes. Do the family's wash anytime - any hour - rain or shine. Small wonder that flameless all-electric laundries are the modern homemaker's most wanted appliances!

BIG CASH BONUS AVAILABLE NOW

If you purchase an electric clothes dryer or an electric water heater during October, November or December, your Grayson Rural Electric Cooperative will pay you a cash bonus in the amount of \$20.00. So see your local appliance dealer now.

Grayson Rural Electric Cooperative Corp.
GRAYSON, KENTUCKY

Mr., Mrs. Payne On Cincinnati Program

Karl Payne of the Morehead State University faculty and his wife, Beverly, private music teacher, will perform in Cincinnati Oct. 4, as a part of the Musical Homes Tour.

The Tour, sponsored by the Keyboard Club of Cincinnati, is designed to afford an opportunity for musicians to hear the music of other musicians and to derive funds for college scholarships to talented individuals.

The tour will include five prominent Cincinnati homes where a half-hour of music will be played at each. The tour will render piano duets and a solo will be played by Payne.

The Keyboard Club of Cincinnati was started about 30 years ago by Payne's mother.

The tour is to be from 2 p.m. until 5 p.m.

Adkins, Elkins Receive Their Army Assignments

Two Rowan Countians have received assignments after completing their basic training at Lackland Air Force Base, Texas.

They are - Airman Kenneth D. Adkins, son of Mrs. Ethel Durham, RFD 3, Morehead; and Airman Anthony B. Elkins, son of Mrs. Nina E. Elkins, also of RFD 3.

Airman Adkins has been assigned to the Air Force Technical Training Center at Sheppard AFB for specialized schooling as an aircraft maintenance specialist. He is a graduate of Rowan County High.

Airman Elkins was assigned as a supply specialist with a unit of the Tactical Air Command at McConnell AFB, Kansas. Airman Elkins attended RCHS, and married the former Elsie Stevens of West Liberty. His father, Leonard L. Elkins, lives at Eau Gallie, Fla.

C & P Plumbing Heating & Electric

159 E. First St. - Phone 784-4047

EULAS CAUDILL, Mgr.

100% Financing

on Bathroom Installations New Furnace Installations and All Appliances

- DISTRIBUTORS OF -

- Crane & Williamson Forced-Air Heating Systems
- Budd Water Heaters
- Denning Water Pumps
- Crane & Kohler Bath Fixtures

WANT THAT BOLD, SUAVE, CONFIDENT, MONEY-IN-THE-BANK LOOK?

Then start your Savings Program today

THE Citizens BANK
MEMBER F.D.I.C. MORHEAD, KENTUCKY
"GROW WITH US"

INTEREST FOR YOU

INTEREST IN YOU

Go forWARD



ACCIDENTS

PREVENTABLE

YOU MAY ENROLL... John A. Regan, State Department of Public Safety, shows some of the visual materials he will use in teaching a Defensive Driving Course at Morehead next Monday and Tuesday.

enroll by calling the Extension Office [784-5457]. The first class will be Oct. 9 from 7 through 9:30 a.m.; others next Tuesday from 7 through 9:30 a.m. through 4 p.m. Classes will be in the basement of the courthouse.

Morehead Upset At Murray By 21 To 15

Morehead State University's football team has been involved in the breaking of two streaks within a week, but resulting in entirely different situations. After having beaten Middle Tennessee for the first time in 16 years on September 23, Morehead traveled to Murray and last Saturday became the thoroughbred's first victim in 12 games.

in the Murray game and sparked the Eagles to their two touchdowns. The 5-10, 160-pounder scooted around end for a 25-yard touchdown run and later pitched out speedster Tommy Gray who went 57 yards for the score. Gray carried the ball 22 times and gained 137 yards, and added two points in conversion after Marston's touchdown to run his season scoring total to 32.

Head Coach Guy Penny of the defending OVC champions credited Tillman with doing the best job of calling plays and utilizing offense that he has seen in the past few years. Tillman hit on 16 of 29 passes for 175 yards and two touchdowns, and for good measure scored the other Murray touchdown on a one-yard sneak. Tillman received good support from the fullback Joe Meade and tailback Russ Hake, who joined 171 of Murray's 198 yards rushing. Ends Gerald Young and Harvey Tanner hauled in 12 of Tillman's passes, with Young on the receiving end of the two touchdown passes.

Penney said that Eads would alternate at tailback and quarterback while tight end Mike Mincey would be moved to full back. Ron Gathright, a freshman from Louisville, who started the Murray game at fullback in place of the injured Otto Gsell, will be moved to Marston's defensive halfback spot against Austin Peay. Gsell, who reinjured a pulled hamstring muscle that kept him out of the Middle Tennessee game, is a doubtful starter against the Governors. The injury bug also hit the defense when halfback Richard Cobb sprained his ankle on the second play of the game on Saturday night. The Pleasant, N.J., native will probably miss the Homecoming tilt, according to Penney. Although Austin Peay has been scored upon freely in dropping its first three games of the season, Penny and the Morehead coaching staff does not regard the Governors lightly.

They have an outstanding quarterback in Carl Williams, who lead the OVC in total offense last season," said Penny. "They are also strong on offense. The defense is spearheaded by linebackers Phillip Farinella and George Clarkville, considered by many to be two of the finest linebackers in the conference. Austin Peay's offense is down, however, with the loss of Little All-American John Ogles and Head Coach Bill Dupes considers this a rebuilding year at the Clarksville, Tenn., school. The Homecoming game will start at 2:30 p.m. at Breathitt Sports Center.

Chosen from a large selection of monuments in stock or order

BARKER MONUMENT COMPANY

Located just east of Olive Hill on US 60

"Where you see what you are buying" when you want the best you want Georgia granite. We cut our own stones and are equipped to cut dates on stones already set in cemetery.

Jim Barker, Owner Phone 286-4374

Hours: Mon. thru Sat. 9:00 A.M. - 5:00 P.M. Marble available on order

Doctor and Pharmacist Are Allies for Health

When your doctor prescribes, he knows our registered pharmacists compound the prescription precisely the right way. We stand ready at all times to serve you from our fresh, potent stock, including the newest "miracle drugs."

You Can Depend on Us For All Prescriptions

We Fill Medicare Prescriptions

C. E. Bishop Drug Co.

Main St. Morehead, Ky.

HOUSEHOLD HINTS

By United Press International

A black lacquer effect can be simulated easily with a semi-gloss enamel intended for use on wood. Simply sand the surface smooth before painting, and apply two coats of the enamel. Let each coat dry before applying the next coat. This touch will give your furniture a sophisticated, Japanese look.

Never leave a knife soaking in water. It can ruin the cutting edge.

Eyes are one of nature's most nutritious packaged foods.

Stains such as lipstick should be removed with a paper towel before washing. Glasses that hold milk, tea or coffee should be rinsed soon after use. Gets rid of rings.

When spray painting the exterior of your house to prevent sagging with heavily pigmented paint, adjust pressure to assure a thin uniform coat. Stir the paint frequently during spraying, especially if you turn the pan-off for more than five minutes. Spray from a scaffold for high areas. Ladders are clumsy for spraying and limit reach, causing uneven distribution.

Before using a handy spray gun for your painting, mask objects you want to shield against stray paint particles. Wrapping paper or newspapers, held with masking or decorator's tape are the easiest materials to use. When painting wood frames, mask panes.

Now is the time to have the heating plant in your home checked and put in ready-to-operate condition. If you wait until the first cold snap you'll be in the throat of all who have done likewise.

Ranger's Column

By Jim McGee

U.S. Forest Service, Morehead, Ky.

By James D. Hogg [Fire Control Officer]

One of the best forms of outdoor recreation is hiking in the woods, and it is felt by most, that this is the best month of the year to enjoy the outdoors here in eastern Kentucky. Some of the advantages over other seasons are the beautiful colors of the foliage, ideal temperatures, absence of insects and other wood pests.

In addition to the above reasons, we here on the Morehead District have added a few of our own. We have recently maintained the many miles of foot trails which were built for forest users. This maintenance work consisted of removing low vegetation, fallen trees, replacing water bars, and in general putting these trails back in condition to make walking these trails a pleasure.

There are various routes which can be taken. If you have just a few minutes, the loop trail at the Ribben Recreation Area is fine, or for a hours walk, take the Martins Branch trail out of the Ashburn area. This trail leads up to the ridge top between North Fork of Triplet and East Fork watershed and ends on the ridge top. Just south of Morehead on the Lockage road, there is a seven mile trail constructed which is ideal for an easy days hike.

From many points, Morehead and the Triplet Valley can be viewed, all Ambury Rocks has a side trail leading out to them, if you don't want to hike all day on this trail, it is called Big Limestone, you can cut your trip short and take the Becky Branch trail down the Triplet valley just west of Clearfield. But if you prefer to go to the end of Big Limestone, and climb Big Limestone Knob, about halfway to the end of the trail, there is an unimproved motor road in Hungry Branch just east of Farmers.

We have a vast network of trails over the entire Weapons Area and the Clear Creek Recreation Area in Bath and Menifee Counties. Such things as beautiful mature timber, sandstone cliffs, wildturkey, deer, limestone caves, Run Dam basin and timber being harvested can be seen by hiking in this area, and these and all developed foot trails on the district are plainly marked.

These trails seldom go over a gently ten percent slope, so for the tops in forest enjoyment these are crisp sunny October days, take a lunch and stay all day. It doesn't cost anything and you will have an experience equal to any form of outdoor recreation.

Just remember to leave the woods free litter and be careful with smokes and fires, so that those in the future may enjoy the woods equally as well.

News Report From...

Rowan County Extension Office

Adrian M. Razor
Mildred R. Wightman
Area Extension Agents

One of the best steps toward a good plant bed is to sterilize it in the fall. Use any of the improved methods of treatment and you can sow in the spring at your own convenience.

If your boy or girl does not belong to 4-H encourage him to join the largest youth organization in the country. It now provides an opportunity for both rural and town boys and girls. Want to make a contribution? Volunteer as a 4-H Leader.

If you haven't already done so you still have time to line that back field that hasn't been limed for several years. More important still, have you checked the PH of your tobacco patch? Test it this fall and lime it if it is needed.

Cover crops are a must. Most folks sowed their cover crops before the rain and they are now starting to come out. If you haven't sown yours, let's do it as soon as possible. Not only do they hold the soil and prevent leaching but they also are a source of winter pasture. You would be surprised with a sufficient cover crop will do to cow milk flow in the winter or early spring.

Most tobacco appears to be curing well although some barns will probably have some "Piebald" tobacco due to the fact that we have had a very dry curing season.

At a meeting in Lexington last week we striped a sample of tobacco from the Marrowfork Farm, which had considerable [K] tobacco in it.

Kentuckian To Help African Pest Control

A State official will go to East Africa in October to coordinate a mosquito control project and reduce malaria. For this project the World Health Organization of the United Nations has selected Corburn H. Gayle, director of division of pest and noxious weed control in the Kentucky Department of Agriculture.

Commissioner Wendell P. Butler said Gayle will take a six-months leave-of-absence beginning between Oct. 1-15. During his absence, Roy E. Rich, his assistant, will become acting director.

Major REA Meeting Scheduled

Representatives of more than 3.6 million rural electric consumers will meet here next week to help form the policies and make the decisions that will shape the future of the nation's rural electrification program.

Delegates from 36 rural electric systems in Alabama, Kentucky, Mississippi and Tennessee will participate in this task when the National Rural Electric Cooperative Association holds its Region III meeting, starting Oct. 8, at the Buena Vista Hotel.

One of the focal points of the meeting will be consideration of new approaches to Congress to overcome the threat of a financial crisis that confronts the rural electrification program in the years ahead.

Robert D. Fartridge, NRECA acting general manager, the keynote speaker during the first general session of the meeting, Oct. 9, has said that failure of Congress to approve a Rural Electric Credit System designed to bring private investment funds into the program makes this problem even more acute.

"This and other economic problems of rural America, where nearly one half of the nation's poverty stricken reside, will receive extensive consideration from the delegates.

Another featured speaker will be Rural Electrification Administrator Norman Clapp, who will address the delegates Oct. 10, during the closing session of the meeting.

Other subjects to be considered include ways to involve a greater number of youth and young adults in the activities and operation of rural electric cooperatives, and to help promote the participation of rural women in consumer oriented organizations.

Recommendations approved at the Region III meeting and at nine other regional meetings where rural electric systems in 45 states will be represented, will be considered for final adoption at the NRECA annual meeting next February in Dallas, Texas.

Breck Reading Hour Set Tonight

"The Reading Hour," a new and unique program in the presentation of dramatic readings will be presented by the University Breckinridge School Speech and Drama Department tonight at 7:30 in the school auditorium on the campus of Morehead State University.

Featured will be student preparations for competing contest as well as those prepared for public presentation.

Among the outstanding readers to participate are Dennis Scarles, Carol Grote, Sheryl Binion, Carla Fannin and Jerry Galvert. A special reading will be presented as a duet by Sony Jones and Carol Grote.

There is no admission charge and the public is invited.

The program is presented by the University-Breckinridge Theatopian Society and Forensic League.

Martin's your

BUTTE KNIT

Start Your Fall Fashion Course With

Butte Knit Suits

All New Fall Colors

\$39⁹⁸ to \$45⁰⁰

Dresses \$29⁹⁸

Butte Knit Long Coat and Dress Ensemble \$55⁰⁰

Naturalizer

Simple elegance... The collar pump by Naturalizer

OTHERS \$12⁹⁸ to \$16⁹⁸

Jonathan Logan Dresses \$17⁹⁸ to \$24⁵⁰

Martin's

Morehead's Modern, Complete & Progressive Department Store

MAIN STREET MOREHEAD, KY.



TABLERITE
ICE CREAM
GALLON CARTON **98¢**

BEEF ROUNDUP!

COME EARLY!
DON'T GET TROMPED!



- Bakery Specials -**
- 20-OZ. LOAF TableTreat ENRICHED BREAD ... **4 For 88¢**
 - 16-OZ. LOAF TableTreat ENRICHED BREAD ... **5 For 88¢**
 - 12-OZ. PKG. TableTreat BUTTERFLAKE ROLLS ... **2 For 59¢**
 - 16-OZ. SIZE TableTreat COCONUT LAYER CAKE ... **39¢**
 - HEAD LETTUCE ... **2 For 29¢**
 - CARROTS GOLDEN FINGER 1-lb. Cello **12¢**
 - POTATOES ROUND WHITE 20-lb. Bag **69¢**
 - JONATHAN APPLES 4-lb. Bag **49¢**
 - RED OR WHITE GRAPES lb. **19¢**

TV NOTES

NEW YORK (UPI) — Boston pro basketball star Bill Russell has a role in a forthcoming episode of ABC's new "Cowboy in Africa" series. He will play a ranch hand in "The Time of the Predator."

It was 40 years ago this September that the Columbia Broadcasting System went on the air for the first time — as a radio network, naturally. In 1927, television was still in the laboratory.

The second of the drama specials aired under the "CBS Playhouse" title this season will be seen Dec. 4 at 9 p.m. The two-hour original is "Dear Friends" by veteran video playwright Herold Rose.

Nancy Marchand plays Mia in the new CBS daytime serial, "Love is a Many Splendored Thing" a native of Los Angeles who has been acting in movies since she was a child. Her mother was born in Nanking, China, and her mother is a native American of Scotch-Irish ancestry.

One of the attractions for the second season of "NBC Experiment in Television" a series that goes on after the first of next year, will be a bi-lingual love story, "Meeting in Prague." The story, which will be filmed in Prague deals with a romance between a married American woman and a Czech widower when she visits Prague. The gimmick is that neither speaks the other's language, with an American writer and a Czech writer creating the speeches for the respective characters.

The Hitlers in England's Royal Shakespeare Company's video production of "A Midsummer Night's Dream," which will be a CBS special later this season, is Diana Rigg, who had a good run on American television as Emma Peel in ABC's recent "The Avengers" series.

—Jack Gaver

TableRite BLADE BONE CHUCK ROAST lb. **45¢**

- | | | | |
|----------------------|-----|---------------------------|--------|
| CHUCK ROAST BONELESS | 59¢ | SIRLOIN STEAK | 99¢ |
| RIB ROAST | 79¢ | TOP ROUND STEAK | 99¢ |
| CHUCK STEAK | 59¢ | GROUND ROUND | 89¢ |
| POT ROAST | 59¢ | SELECT BABY BEEF LIVER | 49¢ |
| SHORT RIBS | 43¢ | WEBBER'S SAUSAGE 2-lbs. | \$1.19 |
| BONELESS BEEF STEW | 69¢ | FISCHER'S BOLONA | 49¢ |
| STANDING RIB ROAST | 79¢ | FISCHER'S SMOKED PICNICS | 39¢ |
| SIRLOIN TIP ROAST | 99¢ | FISCHER'S QUICK CUT HAM | 77¢ |
| BONELESS RUMP ROAST | 99¢ | BEEF FOREQUARTER | 49¢ |
| HEEL OF ROUND ROAST | 89¢ | BEEF SIDES FREEZER READY! | 55¢ |
| ROUND STEAK | 89¢ | BEEF HINDQUARTERS | 67¢ |



PRICED RITE

GRADE "A" LARGE
EGGS
3 Doz. **\$1**

Fresh GROUND BEEF lb. **49¢**

- IGA CLING PEACHES SLICED OR HALVES 2 1/2 Can **22¢**
- IGA FRUIT COCKTAIL 303 Can **22¢**
- SALAD BOWL SALAD DRESSING Qt. Jar **33¢**
- GOOD N RICH GELATIN DESSERTS CHOICE OF 6 FLAVORS 3-oz. Pkg. **5¢**
- GOOD N RICH PUDDING CHOICE OF 4 FLAVORS 4-oz. Pkg. **5¢**
- TABLERITE EVAPORATED MILK Tall Can **10¢**

IGA ENRICHED FLOUR Plain or Self-Rising 10-lb. bag **79¢**

- PARAMOUNT CHILI W/BEANS 300 Can **29¢**
- PRELATE TUNA chunk lite 6 1/2-oz. Can **26¢**
- NABISCO PREMIUM SALTINES 1-lb. Box **31¢**
- GOOD N RICH CAKE MIXES And FROSTING CHOICE OF FLAVORS 7-oz. Pkg. **10¢**
- IGA DELUXE PURPLE PLUMS 2 1/2 Can **29¢**
- KRAFT JET PUFF MARSHMALLOWS 1-lb. Pkg. **19¢**
- DOG HOUSE DOG FOOD 16-oz. Can **12 For 98¢**
- IGA FRUIT DRINKS CHOICE OF FIVE FLAVORS 46-oz. Can **3 For 79¢**

MORTON'S FROZEN CREAM PIES 16-oz. Pkg. **4 For \$1**

START YOUR Westchester Stoneware SET NOW!

WHITE DOVER IRONSTONE DINNERWARE!

DINNER PLATE ONLY 22¢

WITH EACH \$5.00 PURCHASE

ALSO MATCHING COMPLETER PIECES AT SAVINGS UP TO 50%

For the next 12 weeks Allen's IGA will offer our customers the dinner plate, cup or saucer for 22¢ with each \$5.00 order. We are proud to have this high quality stoneware and all of the completer pieces at money saving prices. It's beautiful and practical for any home. Don't be late - start your set today while shopping the easy way - at Allen's IGA.

Advocates Flogging KARACHI, Pakistan (UPI) — Social worker Abdul Rehman Chowdhry, a Muslim League member, recommends public flogging for adulterers and other social offenders.

In a widely circulated letter to national and provincial authorities, Chowdhry said "adultery, smuggling and other social evils are prevailing on a scale never before." He said fines are not enough punishment. The only deterrent, Chowdhry claimed is to "whack them (offenders) where the skin is sensitive."



SYMBOL OF QUALITY

Incorporated in the Wilbert burial vault are the most modern scientific developments for underground protection. For example: Inner liner of thick precast asphalt for water resistance. Around the asphalt, the concrete is cast using scientific process which fuses the asphalt to the concrete.

Sold Through Your Local Licensed Funeral Director

Wilbert
Burial Vaults
Manufactured by

Cloud

CONCRETE PRODUCTS, INC.

Phone 255-7986
ROUTE 2-OLD FRANKFORT PIKE Lexington, Ky.

Your Local Burial Vault Manufacturer For Over 30 Years!