

The Morehead News

MOREHEAD, KENTUCKY, THURSDAY MORNING, JULY 27, 1967

For Each Copy
Pay Cashier . . . 10¢

Mail Subscription Rates - In Kentucky, one year - \$1.50, two years \$2.50, five years \$15.00. Outside Kentucky, including postage, one year \$2.00, two years \$3.50, five years - \$17.50. Save by renewing for two years.

IMPORTANT NUMBERS

Metropolitan Telephone	40351
Telephone Area Code	606
Morehead Fire Department	78-4282
Forest Fire	78-4122
State Health Medical Center	78-4161
Morehead State University (All Branches)	78-4181
Morehead News (All Branches Except Societies)	78-4116
Morehead News	78-4779
Rowan County Sheriff	78-5446
POLICE	City 784-7511; State 784-1127

Land in Cave Run To Be Re-Appraised

Congressman Says Prices Offered Are Not Enough

J. W. Quick To Be Optimist Club Speaker

The United States Army Corps of Engineers (Louisville office) has decided to re-appraise much of the acreage they seek for Cave Run reservoir, located on the Licking River at the Hath-Rowan county line about 10 miles southwest of Morehead.

Seventh District Congressman Carl D. Perkins said today that the decision followed "months of bitter protest from landowners in Morgan, Rowan and Menifee counties."

It is also known that Bath Counties are unhappy with the manner the Corps has proceeded.

Perkins said that "the engineers have notified me that they will take a second look at the prices they have offered farmers."

Perkins said he had many letters of protest.

U. S. Senator John Sherman Cooper reported that his mail had been heavy, and bitter, from landowners of the four affected counties.

Congressman Perkins told this newspaper "farmers have complained from the outset that the prices for their land offered by the engineers is not sufficient to enable them to acquire comparable farms away from the reservoir site."

The congressman added, "Cave Run, on Licking River, is not the area in which landowners have been protesting against prices offered by the engineers. The same thing has been going on in the region to be covered by the Carr Creek reservoir in Knott County. Public meetings have been held at Hindman in an effort to get the engineers to change their land buying methods."

"I am glad to see the re-appraisals ordered in the Cave Run area," Perkins said. "I hope the engineers will take the same action in the Carr Creek section."

The \$30 million Cave Run dam has been in sharp controversy for more than two years.

It is alleged in Washington that the U. S. Army Corps of Engineers said during all the planning, and hearings, that the land to be acquired would be up to 770 media sea level feet and continued on Next Page



J. W. Quick
Optimist Club speaker

The Morehead Optimist Club will hold its annual Ladies Night and installation of officers on Tuesday, August 1, at 7 p.m. The special speaker for the dinner meeting at the Kentucky Club Inn will be Mr. J. W. Quick, past Vice-President and Boys Work Chairman of Optimist International.

Mr. Quick is a native of West Virginia and now resides in Jeffersonville, Kentucky. He is Director of the Department of Public Works for the city of Louisville and has served as Vice-President of the International Club and has served as Lieutenant Governor and Governor in 1959-1960. He has also served as vice club-building chairman of the Kentucky West Virginia District and was a member of the International Membership and Attendance Committee from 1962-1964. In 1964-65, he served as International Director and served as Vice-President of Optimist International in 1965-66. He is presently Chairman of the Boys Work Committee.

Dr. C. Nelson Grote, Lieutenant Governor of Zone 12, will install the new officers. Dr. J. E. Dunham is the incoming President. Mr. John Collins and Mr. Alvin McGary will be installed as Vice-Presidents and Mr. Bill Powers will be installed as Secretary-Treasurer.

Moreheadian Enrolled At School In Spain

Marilyn J. Riehle, Box 305, Morehead, is enrolled in the third annual Augustana Summer School in Spain. The group left July 3 for a six-week session on the campus of the University of Madrid, where a student may earn a maximum of six credit hours taught in Spanish.

The term includes a nine-day travel period in which they will visit historic and scenic spots in Spain. The school is sponsored by Augustana College at Rock Island, Ill.



A WEEK AT CAMP - Sunday afternoon these ten scouts from Troop No. 142 and Explorer Post 142 of Morehead departed for a week at Camp McKee Scout Reservation near Mt.

Flue Cured Growers Vote To Continue Acreage-Poundage

Growers of flue-cured tobacco, the largest of U.S.-produced leaf crops, have voted by 95.5 percent to continue under acreage-poundage production controls and price supports for the next three years, 1968, 1969 and 1970.

In the referendum, held July 18, flue-cured producers voted on the question of continuing the tobacco program in effect for them since 1965 or having unlimited production and no price supports, no program.

There was no issue of accepting acreage-poundage quotas or acreage controls along-as there was in two unsuccessful referendums, in 1965 and 1967, to adopt a similar marketing quota program for burley. In both votes, growers of burley had a choice between holding to the status quo-acreage poundage alone-or going to acreage-poundage, which limits both the acreage and the number of pounds which may be sold.

Advocates of acreage-poundage say it is the only realistic program available to keep burley on a practical supply-demand basis and thus protect, in both the short and long-range views, the availability of price supports, tied, by law, to reasonable production controls.

A 96 2/3 majority of the growers voting is required to adopt a tobacco program of any kind. About 57 percent of the producers balloting in the last two referendums on the new program favored it for burley.

Acreage-poundage for flue-cured tobacco was passed originally in a special referendum in May, 1965, by a 73.6 percent majority. This was not long after it was authorized in new legislation.

U. S. Department of Agriculture officials say the program has been effective. A USDA report notes estimated carryover of old crop flue-cured tobacco on July 1, 1967, beginning of the marketing year, was about 4,270 million pounds (farm sales weight). This represents a decrease of 285 million pounds, or 11 percent, from the all-time high carryover of two years ago. Government price support holdings included on the July 1 carryover totaled 547 million pounds, down 206 million pounds, or 27 percent in the last two years.

By states in which flue-cured tobacco is produced, this is how growers favored the program in the 18 flue-cured tobacco North Carolina, 97.1 percent; South Carolina, 98.4; Georgia, 93.6; Florida, 93; Virginia, 94.4; and Alabama, 96.1.

Jaycees To Sponsor Talent Contest

A talent contest will be held Tuesday night, August 22 at 7:30 p.m. during the Northeast Gateway Regional Fair.

The contest is being sponsored by the Morehead Jaycees.

Any one interested in entering this talent contest should contact Betty Gamble, 328 Lyons Ave., Morehead. Applications should be made before August 5.

Cash prizes will be awarded to first, second and third place winners.

The winner of this contest will be able to go to Huntington to take part in a talent contest there. The winner of the Huntington contest will appear on the Johnny Carson Show.



A TOTAL LOSS - Flames that eventually destroyed the Martindale Furniture Store here at Morehead leap from windows as firemen pour on water. Smoke rose about 2,000 feet in the air and flames jumped 60 feet above the rooftop. The loss, was estimated at \$250,000. The cause of fire has not yet been determined. This was the second fire Martindale has had in the past five days. The other fire occurred last Thursday night at his home on Martindale drive. photos by Martin Huffman

Martindale Furniture Store Burns; Loss Is \$250,000

Progress At Morehead Creek Widening

Contracts for widening and straightening Triplet Creek through Morehead will be let in January, Congressman Carl D. Perkins told The Morehead News this morning.

Perkins said the Louisville District, U.S. Army Corps of Engineers, estimated the project would cost \$655,000. This is considerably below the anticipated cost figures of a year ago.

The City must provide the rights-of-way. After the work is completed the city also must furnish maintenance.

A 200 foot right-of-way is required extending from Bridge Street to near the Gearhart pond.

The Corps of Engineers is permitted under existing federal statutes to spend as much as a million dollars on projects of this type.

The Louisville Corps approved the creek widening a year ago.

One of the hold-ups at Morehead has been the securing of a right-of-way from the Chesapeake and Ohio Railroad. The rail carrier has a turnaround near Bridge Street in Morehead and the creek widening takes part of this.

Perkins said he was certain that the creek widening could be completed next year.

Twenty-five people were drowned in a flood at Morehead on the night of July 4, 1939.

Since then the widening of Triplet to prevent a further tragedy has been a number one order of city business.

The project was stalemated about 15 years ago because the maximum amount the Corps of Engineers could spend was \$400,000. In an informal referendum (submitted with water bills) Moreheadians voted 10 years ago again for bond issue for about \$200,000 for the creek widening.

Engineers say that Morehead will not have future flash floods after the creek is widened and straightened.

Morehead State University Will Offer New Degree

Morehead State University will offer a baccalaureate degree program in Health Education beginning this fall, according to Dr. Paul Raines, chairman of the committee on curriculum in Health Education.

Those majoring in Health Education may earn the bachelor's degree with teaching certificate if they plan to teach in the elementary or secondary schools.

Students preparing to become teachers may earn a major in Health Education with a second major in any of the following related fields: physical education, special education, biology, psychology or home economics.

Braves Lead Pony League

The Pony League season is going into its home stretch with the Cubs leading the race by one game.

In a most exciting game last week the score topped the Cubs 3 to 1. The score was tied 1 to 1 until the fifth inning when the Braves took the lead.

Burgardner was the winning pitcher for the Braves while his teammate, Jim Tom Holbrook, went 2 for 3 at the plate.

The team standings are: Braves won 7 lost 2; Cubs won 7 lost 3; Reds won 3 lost 5; Giants won 0 lost 7.

The top batting averages in Pony League are: Fouch 48%, Cubs' David 45%, Braves; J. Baker 36%, Reds; Greene 32%, Braves; Adkins 30%, Cubs; Greer 30%, Reds; Holbrook 30%, Braves.

Next week's schedule is: Thursday July 27, 5:15, Cubs vs Reds; Saturday, July 29, 1:30, Cubs vs Giants, 3:30, Reds vs Braves; Tuesday, August 1, 5:15, Giants vs Braves; Thursday, August 3, 5:15, Braves vs Reds.

Post Summer Session Scheduled At M'Head

A three-week Post Summer Session will open at Morehead State University Monday, August 7, with registration scheduled from 8 to 10 a.m. on the first floor of the Combs Classroom Building.

Classes in 22 courses of study and carrying credit hours ranging from one to three will meet daily from 8 a.m. until noon, beginning at 8 a.m. the day classes register and continuing through noon Wednesday, August 23, with one exception. Classes carrying two semester hours of credit close on Tuesday, August 18.

Fees for each course for Kentucky residents will be \$9.00 per semester hour for undergraduate credit and \$12.

per semester hour for graduate credit. Out-of-state student fees will be \$22.50 per semester hour for undergraduate credit and \$30.00 per semester hour for graduate credit.

Rooms will be available for women in East Mignon Hall and for men in Regents Hall at a cost of \$6.00 per week. The cafeteria of the Doran Student House will be open for meals.

In addition, students wishing to participate in the School Lunch Seminar in the Home Economics Department are being asked to register at 8 a.m. Monday, August 7, in Room 213 of the Home Economics Building. This course will end August 11.

Carlos Sublett Graduates At Texas Air Force Base

Second Lieutenant Carlos G. Sublett, son of Mrs. Thelma Sublett of Rt. 3, Morehead, Ky., has been graduated from the training course at Sheppard AFB, Tex., for U.S. Air Force accounting and finance officers.

Lieutenant Sublett, who learned to direct Air Force financial programs and operations, is being assigned to Duluth International Airport, Minn. He becomes a member of the Air Defense Command which provides aerospace defense against hostile aircraft and missiles.

The lieutenant was commissioned in 1966 upon completion of Officer Training School at Lackland AFB, Tex.

Lieutenant Sublett, who attended Rowan County High School and Amarillo [Tex.] College, received a B.A. degree in accounting in 1966 from Michigan State University. He is a member of Beta Gamma Sigma.

Your... Social Security

By Thomas B. Thompson - Ashland District Manager, Social Security Administration; 1816 Carter Avenue - Ashland, Ky.; Phone 324-7666

The Federal Medicare Program administered by the Social Security Administration does not pay for prescription drugs, Thomas B. Thompson, District Manager of the Ashland Social Security Office, announced today. Even after a year of the program's operation there is still confusion about this. Many druggists have reported that Medicare beneficiaries have attempted to use their red, white and blue cards to get medicines.

Thompson pointed out that Medicare patients in hospitals do receive free medicines administered to them while in the hospital. Also, a patient transferred to a participating skilled nursing home after a stay of at least three days in a hospital will receive free medicines normally dispensed by the home.

It was also pointed out that hypodermic injections administered in the doctor's office are also covered, providing they are not routine injections. Although Medicare does not pay for medicines dispensed by a drug store or through the doctor's office, it should be noted that the Kentucky Medical Assistance Program does pay for certain drugs. This state medical assistance program is under the Kentucky Department of Health, but the applications for the state medical cards are handled by the Kentucky Division of Public Assistance.

As it is possible for a person to be eligible under both programs, Thompson advised those persons with Medicare cards to inquire at their nearest Public Assistance Office for information about the Kentucky Medical Assistance Program.

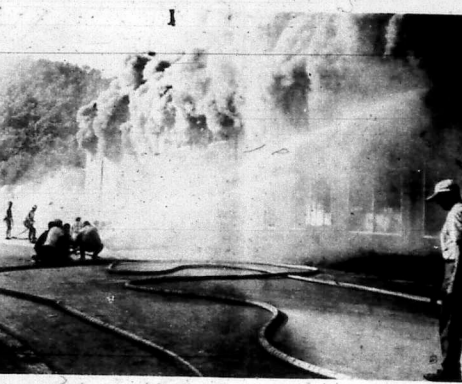
The Social Security Office, 1816 Carter Avenue, Ashland, Kentucky 4101, is always willing to help with any Medicare claim or problem. The office is open Monday through Friday from 8:45 a.m. DST until 5 p.m. DST, and on Saturday from 9 a.m. until noon. The telephone number is 325-7666.

A representative from the Social Security Administration may be contacted at the following places: Vanceburg Courthouse, July 31; Morehead Employment Office, Aug. 1; West Liberty Courthouse, Aug. 2; and Louisa Post Office, Aug. 3.

JOSH BELL COUNTY - Bell County was formerly known as Josh Bell County, named after Joshua F. Bell of Danville. The 1873 Legislature eliminated the familiar name Josh. The County is celebrating its 100th birthday this year.

PRISON TRAINING - Literacy training and vocational training in seven occupations are now available at Kentucky State Reformatory at La Grange. The State has developed library services at Kentucky's correctional institutions.

Quarter Of A Million... Damage To Martindale



Imperial Cleaners Move Into A Two-Way Tie For First Place

Imperial Cleaners edged Maloney's 11 to 10, Maloney's opened the game up with 5 runs in the first inning and lead until the last inning when Imperial came on to score 5 runs and sewed the game up. Dora Lee Trent went 3 for 4 at the plate for the winners while Joe Tolle went 4 for 4 at the plate for the losers.

Batton's beat Norge Village 17 to 15 in a real slugfest contest. Gary Virden and Walker both got home runs for Norge. Larry Chinn connected for 3 home runs and Denzil Dennis for one for Batton's, and had since reversed Batton's squeaked by Richard's Restaurant in another close one for Bat-

Re-Appraised -

Continued From Preceding Page

300 yards back from the flood stage water mark... and the Corps reversed this to acquire the entire valley in Bath and Menifee counties, presumably for a Primitive Weapons Hunting Ground.

At the outset the engineers said they would rebuild State Highway 826 in Bath and Menifee counties to modern standards. This the Kentucky Department of Highways has publicly stated they will not agree to abandonment of Highway 826.

The engineers made 'ridiculously low' appraisals on most all property and farms in the valley... this led to wide discontent and repeated protests.

The land acquisition department of the Louisville Corps has offices in Morehead, but they have been unsuccessful in purchasing much of the land needed for Cave Run, destined to be Kentucky's fourth largest reservoir.

There is no question but that a landowner revolt exists throughout the entire valley.

In the cases heard in federal court at Lexington the juries have sided with property owners.

Meanwhile, the Cave Run area has been in the news nationally. It is proposed that a model city of 25,000 be located in the Midland-Farmers area of Bath and Rowan Counties. This is under study.

Gov. Edward T. Breathitt said last month that he was certain one of the largest mental hospitals (federally financed) would be built in the vicinity of the Rowan County airport, about two miles below the dam. The Governor said he expected to turn the first spadeful of dirt for the mental institution before he leaves office in December. It is known that this bears the highest priority, employing more than 400 people at the outset.

The area below the dam is rated almost ideal for future high way 64 is near the dam. The area also has big berth natural gas lines, a three way tie with electric utilities, and the Chesapeake and Ohio railroad.

Geology Team Will Map Morehead Area

A four-man team of Morehead State University scientists are expected to complete by early November the geological mapping of an area encompassing a 10-mile radius of the University.

The project, started in June in conjunction with a concentrated effort sponsored by the U.S. Geological Survey and the Kentucky Geological Survey, is being carried out to determine geological formations for the purpose of developing economic resources, flood control and soil conservation projects and other more efficient land use programs.

Assigned to the survey from the Morehead State University School of Sciences and Mathematics are James Chaplin, John Phitley, Dave Hylbert and Harry Hord. All are associate professors of geology. They are spending part-time on the project, which includes not only the Morehead quadrangle but also the Bangor quadrangle on the south and the Cranston quadrangle on the north.

The Morehead University work is a part of a state-wide program, started several years ago with the overall objective of preparing geological maps of the entire state.

Your Pharmacist Helps Safeguard Your Health



You can bring your doctor's prescription to our registered pharmacists with complete confidence. We give it the careful attention it deserves... our standards do not allow any kind of compromise with quality.

You Can Count on Us... When Accuracy Counts

- Brand Name Cosmetics
- Coty
- Du Barry
- Helena Rubenstein
- Juanita Lansing
- Faberge - Dana
- Fanny Farmer Candies
- Hall Mark Cards

- We Give - TOP VALUE STAMPS

Batton Walgreen Drugs
Free Delivery Prescription Service

PUBLIC AUCTION

SATURDAY, JULY 29th 1:00 P. M.



7 ROOM FRAME DWELLING

This house has 5 Bedrooms, Wall to Wall Carpeting in Living Room, Hallway, and the three Bedrooms on First Floor, it has Solid Foundation and on a good 70' x 150' Lot.

1/8 MILE FROM CITY LIMITS - ON FLEMINGSBURG ROAD, MOREHEAD, KY.

OWNER: MR. & MRS. CARL V. FRALEY

TERMS: 10% Day of Sale, balance upon Delivery of Deed on or before 30 days.

Announcements at sale take precedence over printed matter.

C. Roger Lewis AUCTIONEER

Alpha Hutchinson REALTOR

Phone 784-4168 - Morehead, Ky. - Phone 784-4196

HOBBS COLD WEATHER Lay-A-Way

WOMEN'S and MISSES
Fall and Winter
COATS
New Selection Arriving Daily
\$9.99 to \$24.99

BLANKET SALE

Lay-A-Way Your Blanket Today For A Warm Winter...

The Diamond
Reg. \$2.99 Size 22 x 90 **2 for \$5.00**

Complete Selection of Blankets from \$2.99 to \$5.99

HOBBS VARIETY STORE 30 Minute Free Parking At Rear of Store

It's a Dagwood Delight...



A new electric NO-FROST refrigerator-freezer now holds more than ever before... enough food for 213 1/2 'Dagwood Sandwiches!'

It's like having a Norwegian in your kitchen when you own a bigger than ever electric refrigerator-freezer. Buy food at bargain prices, store it in your new huge electric refrigerator-freezer and you'll always be prepared for mealtime emergencies or snacks. And although there's more storage space on the inside... the floor space stays the same. Delighted? You will be when you visit your dealer and discover your store more refrigerator freezer never needs defrosting in either compartment... it's the way of today!

KU KENTUCKY UTILITIES COMPANY
Six rate reductions since 1962

Tuberculosis Cases Fall In Kentucky

The number of active tuberculosis cases in Kentucky has been reduced by two-thirds since 1950 primarily as a result of the State's improved detection and treatment program for TB.

State Health Department statistics show that the total number of new TB cases in Kentucky dropped from more than 3,700 in 1950 to less than 1,300 in 1966. The case rate per each 100,000 persons fell from 125.2 to an estimated 41.6 for these same periods.

Thomas Layton, executive director of the Kentucky TB Hospital Commission, attributed the reduced number of cases to these factors:

- More effective detection methods.
- Improved new drugs which have helped shorten the treatment and hospitalization periods.
- Employment of additional physicians at the TB Hospitals.
- Effective use of out-patient clinics which were started in 1959.

Better diets brought about by a higher standard of living.

The State's treatment program, according to Layton, is centered in the operation of six regional tuberculosis hospitals by the TB Hospital Commission. These provide services for Kentuckians in all 120 counties. The hospitals are at Madisonville, Louisville, Paris, Ashland, London and Glasgow.

Kentucky Leader In

Interstate Highways

Kentucky, by the end of June, had 625 miles, or 52 percent, of its planned 1212-mile expressway system open to traffic.

The completed mileage is a combination of 350 miles of interstate routes and 275 miles of Parkways (toll roads). In addition, 310 miles of both types of roads are under construction and another 285 miles are planned for construction.

The statistics are contained in a mid-year status summary just compiled and distributed by the Department of Highways.

A map in the report also shows the Department's progress on building and improving more than 400 miles of developmental roads in the Appalachian area of the state. There, 15 miles are open to traffic; 30 miles are under construction; right-of-way is being acquired for 49 miles; and 115 miles are being designed. Some will be four-lane, others two-lane.

The state has five years in which to complete this 400-mile program. Of the major roads under construction this summer, some 120 miles of them will be completed and opened to traffic this fall.

A synopsis of the major projects: I-24 -- This 90-mile route in Western Kentucky is in final engineering stages and right-of-way paving has begun, first

contract to be let late this year or early in 1968.

I-64 -- To be 192 miles long from Louisville to Ashland, 95 miles now open, 42 miles under construction; 10 miles from east of Mt. Vernon to Owsingsville to be finished this year.

I-65 -- All but about 30 miles of this 138-mile route from Louisville to the Tennessee line now open; the rest under construction with nine miles from Middlesboro to Horse Cave to be finished this year. Entire route scheduled for completion in 1968.

I-75 -- All of 76-mile-long route from Louisville to I-75 under construction with 35 miles scheduled for completion this year. Completed section will extend from I-75 near Walton to US 227 southeast of Carrollton. A short section of less than two miles in Jefferson County has been open since last December.

I-75 -- This north-south route will be 192 miles long from Covington to the Tennessee line, 130 miles now open; 41 miles under construction; 19 miles to be completed this year, between Goldsboro in Whitley County to south-west of Corbin and in Madison and Rockcastle counties.

I-75 -- Known as the Waterson Expressway in Evansville, it now extends more than 15 miles from US 60 on the west to US 42 on the East. Ultimately it will be extended on the west to the Sherman Minton Bridge across the Ohio River between Louisville and New Albany, Indiana, and on the East to I-71. The latter portion is now under construction.

I-275 -- Another urban route in Northern Kentucky, it will be 24 miles long extending through Campbell, Kenton and Boone counties crossing new bridges across the Ohio river into both Ohio and Indiana. Right-of-way appraising is underway.

I-471 -- This 4.8-mile urban connector will reach to I-275 at Newport, to a new bridge across the Ohio River into Cincinnati. Preliminary right-of-way appraising underway. Mountain Parkway -- 76-mile toll portion completed from Winchester to Salyersville; free portion (Ky. 114) from Salyersville to Prestonsburg completed and rest of toll free section from Prestonsburg to Pikeville being developed under Appalachian program; ultimate length, 122 miles.

Mountain Parkway, South -- The southern leg of this facility also will be toll-free and will extend 80 miles from Campton to Whitesburg.

Boating Big Business On Kentucky Streams

Boating in Kentucky is as diverse and varied as the many rivers and streams which criss-cross the state.

From the mountains of the east to the water-wonderland region of the west, every sort of boat is seen--canoes, sailboats, high speed cruisers, vacation houseboats and other craft.

This fleet of pleasure boats travels across the state's 13,000 miles of navigable waterways, 12 major reservoirs and numerous lesser bodies of water.

Some of the best boating opportunities can be found at 20 State parks which offer boating accommodations as well as fishing and water sports activities, picnicking areas, camping grounds and, at many, overnight lodging. Thirteen of these parks have complete marinas with a wide range of services including boat and motor rentals, gas and oil, live bait and other supplies, boat slips for harboring craft and boat launching ramps.

Fishing boats may be rented by the hour or for \$3 daily; outboard motors for \$5 daily. Life jackets and cushions cost 50 cents a day. Lanterns and night running lights are also available at boat docks on the larger reservoirs.

Complete marina facilities are available at the following State Parks: Barren River near Glasgow; Buckhorn Lake at Buckhorn; Falmouth Lake at Falmouth; Fort Boonesborough (on the Kentucky River) near Richmond; General Burnside Island (on Lake Cumberland) at Burnside; Greenbriar Lake near Greenbriar; Jenny Wiley (on Dewey Lake) near Prestonsburg; Kenlake (on Kentucky Lake) near Hardin; Kentucky Dam Village (on Kentucky Lake) at Gilbertsville; Lake Cumberland near James-town; Lake Malone at Greenville; Rough River Dam at Falls of Rough, and Lake Barkley near Cadiz.

With the exceptions of Falmouth Lake and Greenbriar Lake State Parks, there is no horsepower limitations on outboard motors. Free boat launching sites are provided at most parks. A charge of 50 cents per boat is made at leased boat docks operating at Kentucky Dam, the Village, Kenlake, Barren River Reservoir and Lake Barkley State Parks. Kenlake State Park, additionally, is equipped to launch sailboats at its marina.

State parks at smaller reservoirs where no outboard motors are permitted are Carter Caves near Olive Hill, General Butler at Carrollton, Audubon at Henderson, Natural Bridge near Slade and Pennyrite Flats near Dawson Springs. At these parks rental fishing boats and "pedal-powered"

dream boats are available to the public. At Big Bone Lick State Park near Mt. Olivet, a free boat launching site gives access to the Ohio River. A small scenic fishing lake is planned here.

Besides the State park facilities, there are many private commercial boat docks and fishing camps on rivers and reservoirs across the state.

More information on this new service, State parks and locations of privately-owned resorts and boat docks may be obtained by writing: Travel Division, Department of Public Information, Capitol Annex Building, Frankfort, Ky. 40601.

ATTENTION!

Ford-Chevy
Plymouth
Owners

Weekend Brake Special

\$195 includes
Lining and Labor
For All 4 wheels

Morehead Home & Auto
Main St. Morehead, Ky.

CURT'S GOING WILD!

Our \$50,000 Car Sale Is Still In Progress

We need to reduce our inventory and we're doing just that. Take advantage of this sale at your old buddy, Curt's. We have anything you need from a compact to a Cadillac. We're giving a loan for your old car as a trade-in as we need cheap cars badly for Poor Boy's Row. See us for a real deal.

We're wheelin' and dealin'. Your old Bargain Barn Buddy, Curt, up at Curt's Auto Fair.

This Sunday, July 30, at 1:30 p.m. is the big Fifth Sunday Singing at the Clearfield Tabernacle featuring everybody that loves to sing. We need singers and listeners. Let's fill the tabernacle. We are prayer and air conditioned.

A Financing Plan. To Suit You. Curt Sez, He Won't Be Undersold

CURT'S

Auto Fair & Bargain Barn

We Have The Best Warranty In This Area.

Morehead, Ky.



Come to Chevron Island for hard-working, super detergent action RPM motor oils.

E.C. DeHart, Agent

MOREHEAD, KY.



STANDARD OIL COMPANY

Clennie Hollon

Clennie's address is 800, Berea, Ky.

Aphrodite was the beautifullest woman in the whole world, bar nobody, and if that wasn't enough to make women hate her and men fall down at her feet and gibber and bite holes in the carpet and she had a magic belt that doubled her charm and that did it.

She was also in the very topmost layer of the social upper crust on account of being charter member of the select and snooty Mt. Olympus VIPs Club. With all that stuff on the ball it is not easy to see how come it was she, hauled off and married up with a one-hoss king named Anchises. He musta had virtues that only Aphrodite knowed about.

Anyway, they had one youngun that I go of. His name was Aeneas. A gent named Vergil writ a long lince about Aeneas a couple of thousand years ago. I been a little slow gitrin' a holts of it. It says here that Aeneas was a handsome hunk of a man. One of these nature boy home wreckers that goes around with nothing on but tights and pouches out his muscles and wows the ladies. Whenever he got a holts of their soft little hand and gazed fondly into their azure orbs they went woozy and didn't know which was straight up.

The way it generally turned out was her children got adopted by somebody and her husband, who had been looking for an excuse to take to drink, now had it. So everybody was happy except Nature Boy who wasn't figgering on having another blonde to feed. For instance, Aeneas was over in Carthage on the lam from almost being Exhibit A in a shogun wedding back where he had suddenly left from, and ran into Queen Dido and sweet-talked her into a state of non compo mentis. Later when he skipped town on her she went down to the water and jumped off a pier and drowned. MORAL--All these neckid' Gorgeous Georges should ort to be expunged, doggone it, unless they happen to be us.

DOLLAR DISCOUNT STORE

MAIN STREET - WILSON AVE. - MOREHEAD, KY.

STORE HOURS: Mon. Thru Thurs, 8 to 5:30 - Fri, 8 to 8 - Sat, 8 to 6.

Blanket Lay-Away Sale

50¢ Down Will Hold Any Blanket - Shop Now - Large Selection

SAVE NOW
NEW-FIBER WOVEN
JUMBO 80 x 90
DOUBLE BED SIZE
94% Rayon - 6% Acrylics
S L A \$4.87
E

CORVAIR
100% Cotton
THERMAL BLANKET
SIZE 72 x 90
\$3.77

SAVE - Big
Therma Cloud
72x90
BLANKET
94% Rayon, 6% Acrylic - Gives You Comfort With-Out Weight Winter or Summer
\$3.77



Lay-Away Special -
BEACON
Four Star Patterns
SIZE 70 x 90
* Machine Washable
\$3.88

Special
Solid Colors or Striped
THERMAL BREEZE
Sheet Blanket
SIZE 72 x 90
Acetate Binding
\$1.37

Bargain Buys
EVERWARM
Automatic Blanket
* Washable
* Size 72 x 84
* Single Control
\$10.87

COVER YOUR WALLS WITH A CARPET OF COLOR SPRED SATIN LATEX WALL PAINT

no stirring
it's HOMOGENIZED
Popular SPRED SATIN gives a rich, lustrous, soft wall finish you will be proud of... for years.
Easy to apply with brush or roller and dries in just 20 minutes. Clean up with water! Glidden guarantees its beauty, durability, ease of application, washability and coverage.
In your choice of 2044 custom blended colors!
NOW \$5.50

WHITE LUMBER CO.
5 Miles East On U. S. 60
PH. 784-5588 At U. S. 60 and Big Perry Road Junction MOREHEAD, KY.

Chappa **MOBILE HOME**
Own a Modern Home for as low as **\$2795.00** and on Small Monthly Rent Payments
Eastern Kentucky's Largest Mobile Home Display
FLEMINGSBURG, KENTUCKY
Open 7 Days Weekly After Church On Sunday

The Morehead News
Fermoy, Rowan County News
Published every Thursday at Morehead, Rowan County, Ky.
Entered as Second Class Mailing Matter, July 27, 1961, at Morehead, Kentucky, 40351.
W. E. Caldwell, Publisher
Ronald J. Gault, General Manager
Mary J. Gault, Circulation Manager
Office: Fourth Latta Building, E. Main St., Phone 784-5126
When requesting change of address be sure to include old address.
SUBSCRIPTION RATES
One year in Kentucky \$3.00
Two years in Kentucky 6.00
Five years in Kentucky 15.00
One year outside Kentucky (including overseas) 4.00
Two years outside Kentucky (including overseas) 7.50
Five years outside Kentucky (including overseas) 17.50
- Save 5¢ per year for 5 years -
No subscription taken for less than one year. All subscriptions payable in advance, those accepted on telephone.

S, M or L...

We have savings accounts to fit every goal-size!

PERHAPS YOU WISH to start saving for next year's vacation—a fairly small one goal. And, are ready to begin a home down payment fund—a bigger goal. Time to think of retirement savings, too.

There are many types of savings accounts here from which to choose. Each fit your saving needs. All earn the same generous rate, too. Stop in soon and try on several "for size!"

4% current rate per annum compounded semiannually

First Federal Savings and Loan Association of Morehead

Morehead, Kentucky

— OPEN SIX DAYS A WEEK —

Indians Cited In Dallas Office

DALLAS (UPI)—Indians from as far away as the Apaches in Arizona are making the transition to city life in Dallas with the help of the Bureau of Indian Affairs.

An agency of the U.S. Department of Interior, the Dallas operation has assisted more than 8,000 Indians in the past decade. In many cases, the change was from trapper to skilled technician.

"For the most part, the Indian is a good worker," Robert W. Beames, director of the Dallas field office, said. "He has manual dexterity and is certainly patient and good with detail work."

Beames, who is one-fourth Choctaw, said if the Indian has one shortcoming it is his lack of communication.

"He is not a talker," he said. "He is quiet and sometimes that leads to misunderstanding. An employer might think he is disgruntled or sulky, when actually it's just the nature of the Indian to be silent."

Many Tribes

Each week young Indians arrive in Dallas from such as the Navajo tribe of Arizona, New Mexico, Colorado and Utah; Cheyenne tribe of Montana; Sioux tribe of North and South Dakota or one of several tribes in Oklahoma. As one of seven such field employment offices, Dallas gets applicants from hundreds of tribes throughout the nation.

All the estimated 380,000 Indians in the United States are free citizens — and have been since an act of congress in 1924. Many live on reservations, where local offices of the bureau are ready to process applications for field employment and send them on to Dallas or other centers.



A NICE CATCH - Two nights of fishing on the banks of Cherokee Lake near Riddlesville, Tennessee, netted this fine string of fish for Wallace (left) in picture with his wife.

East Kentucky Controversy Strip Mining

Kentucky's 1966 strip mine law is accomplishing its purpose in western Kentucky but may require amendments to become totally effective in the Eastern Kentucky coalfield.

That appears to be the consensus that emerged from a recent strip mine symposium in Owensboro and a tour of Eastern Kentucky strip mine sites by Governor Edward T. Breathitt and officials of the Department of Natural Resources. The purpose of both was to examine the effectiveness of the new law.

State Natural Resources Commissioner J. O. Matlick says the heart of the law is the "striped bank" in Western Kentucky, where the terrain is relatively flat, must be graded back to the approximate original contour, lands in the mountainous Eastern Kentucky must be graded by the terrace-back method, covering the coal seam with at least four feet of spoil and reducing the highwall. No slope steeper than 25 degrees can be stripped.

Some 170 of the more than 300 people attending the symposium visited strip mine sites in Western Kentucky and came away praising the law as "effective." They saw lands graded back to a gentle, rolling topography and covered with vegetation.

Both conservationists and industry spokesmen were among members of the tour group and each side spoke of "good law" and "a growing spirit of cooperation between the coal industry and conservationists."

After his tour of Eastern Kentucky where he saw slide damage caused by strip-mine operations, Breathitt called for re-examination of standards under which both strip mining and highway construction are authorized in mountainous areas.

He directed Matlick and highway Commissioner Mitchell W. Tinder to begin

Letters... to the editor

The manager welcomes letters, particularly on subjects of general local or area interest. All letters are subject to condensation. No letters will be printed without author's name.

More Students Approved For University

Approximately 1,716 new students have been granted admission to Morehead State University for the 1967-68 school year, according to a report issued to the University's Office of Admissions.

The report indicates that admission for the 1967-68 school year is the highest since the 1966-67 school year. The 1966 fall semester had 1,716 new students, 1,717 for the 1967-68 school year. The 1967-68 school year is the highest since the 1966-67 school year.

The Morehead Drive-In Theatre

Presents For The Coming Week

Show Starts each night, 8:00 p.m.

Thursday-Friday

SHE'S THE WORLD'S MOST BEAUTIFUL BANK ROBBER!

natalie wood

penelope

ian bannen dick shawn peter fark lila kedroska lou paroli jonathan winters

Saturday Only

TRIPLE FEATURE!

Gun, gun, who's got the gun?

DAVID JANSSEN has got to know IN WARNING SHOT

Plus "THE BIG T.N.T. SHOW"

The Byrds, James Brown, Joan Boez and all Your Favorite Singing Stars

Plus "THE HIRED KILLER"

IN COLOR Starring Robert Webber

Sunday-Monday-Tuesday

THIS IS GEORGY... THIS IS GEORGY'S... THIS IS GEORGY'S...

GEORGY GIRL

JAMES MASON GLEN ROBERTS LYNN FLETCHER

Coming Soon

"THE DEVILS ANGELS" and "FUNERAL IN BERLIN"

Channel Swimmers

NEW YORK (UPI) — Since 1875 about 100 persons have swum the English Channel as sport.

Gertrude Ederle became the first woman to accomplish the feat when she swam the channel in just over 14 1/2 hours in 1926.

summer savings are great on

Take advantage of our all-star deals today!

Larry Fannin Chevrolet, Inc.

East Main St. Morehead, Ky.

Where Customer Satisfaction Is Standard Equipment.

Who can beat that?

Who's all concerned for this one?

Thanks to all concerned for this one.

Beulah McClellan, Route 1, Thomas Addition Morehead, Ky.

Miss Turner To Attend State Homemakers Meeting

Miss Sandi Turner, Route 3, a Future Homemakers of America member from Rowan County High will attend the annual Leadership Training Conference for State and District Future Homemakers officers at the FFA Leadership Training Center, Hardinsburg, July 24-27.

Mrs. Norma Roberts, FHA advisor at Rowan County High will chaperon Miss Turner at this meeting. They will be joined in Morehead by Miss Valerie Redwine of Sandy Hook, and Miss Marsha Razor of Salt Lick.

MOREHEAD SUNDRY STORE

116 WEST MAIN STREET MOREHEAD, KENTUCKY

ALL POPULAR BRAND CIGARETTES

AT THE LOWEST PRICES Available Anywhere In Ky.

REGULARS - 24c Ea. or 2 for 47c - \$2.35 Ctn.
KING & FILTERS - 24c or \$2.39 Ctn.
100's MM - 25c Ea. or \$2.50 Ctn.

REG. 95¢ Family Size

PEPSODENT Toothpaste

ONLY 69¢

REG. 95¢ 3 1/2

Sheffield S.S. Blades

ONLY 19¢

MISS-BRECK HAIR SPRAY

83¢

7-oz. WHISK Nail Polish Remover

33¢

12's Kotex

Fri, July 28 and Sat, July 29 Only

Various Colors Umbrellas

ONLY 99¢

MISS-BRECK HAIR SPRAY MUM

83¢

Reg. \$1.09 - 4 1/2 oz.

12's TEC - ADULT TOOTH BRUSH

29¢

Reg. 33¢

SAVINGS IS THE "BUY WORD" AT SAVEWAY



BABY HIPPO... A baby Hippopotamus, shown with its mother in a pool at the Washington National Zoo, is destined for the Chilean National Zoo in Santiago.

GOLDEN TOUCH OF HOSPITALITY BY JANE ASHLEY

Whether you pan broil or bake pork chops, they are at their best when cooked with a little liquid...

Glazed Pork Chops 4 pork chops, cut 1 inch thick 2 teaspoons salt 1/2 teaspoon pepper 2 tablespoons corn oil 2 cup light corn syrup 2 cups finely chopped oranges 2 teaspoons corn starch 1/4 cup cold water

Monuments Granite and Marble First Class Material at A Reasonable Price! Erected on Concrete Foundation. Dayton Porter Phone 784-5321

SEE THE LIGHTEST AUTOMATIC OILING CHAIN SAW IN THE WORLD.

McCulloch MAC-10 10 1/2 lbs. of cutting power! Professional loggers • Farmers • Construction men • Outdoorsmen • This is the lightweight you've really been waiting for.

Monarch Supply Store Phone 784-5796 Morehead, Ky.

CAMPBELL'S Bean & Bacon SOUP 10¢ regular can



WHOLE FRYERS 27¢ lb. Cut-up Fryer 7¢ lb.

Family Pack Fryers 25 Pieces 33¢ Brasts, Legs & Thighs 59¢ lb.

VER RAY LAM FRESH PORK STEAKS 59¢ lb.

GOOD VALUE GOLDEN MARGARINE 6 1 lb. \$1 SAVE 17¢ pkgs.

HOME-GROWN SWEET CORN 5 ears 29¢ FRESH! SWEET!

CARNATION MILK 2 29¢ For TALL CANS For FLAV-O-RITE Pot Pies 5 for 89 BEEF-CHICKEN-TURKEY



THOMPSON WHITE Seedless Grapes 33¢ lb. FRESH CALIFORNIA Nectarines 29¢ lb. CRISP CALIFORNIA Pascal Celery 25¢ stalk

HEINZ KETCHUP 14 oz. bottle 19¢

FLAV-O-RITE Fig Bars 2 lb. carton 49¢

SUPER VALU COFFEE 3 lb. Can \$1.59

ROBIN HOOD FLOUR 5 lb. bag 39¢ *with \$5.00 purchase or more

THANK YOU PURPLE PLUMS 19¢ BIG No. 2 1/2 can



KRAFT DELUXE Cheese Slices 8 oz. pkg. 39¢ Hot Dog Buns FLAV-O-RITE 8 pkgs. 25¢

HAPPY HOST SWEET PEAS 2 16 oz. cans 25¢



GOOD VALUE SALAD Dressing with this coupon quart jar 29¢ Coupon good thru July 29.



BUY NOW AND SAVE! Reg. Drip or Electric Perk



Claig Sprout... Sez

Dear Mister Editor:

Bear Hookam announced at the country store Saturday night he might be going off to college next year. He brought a clipping from some magazine talking about a feller 70-odd year old getting his college diploma last month, and the piece said the University of Kentucky was now offering free tuition to all students over 65 year old.

Ed Doollittle said he was strong agin this idea. He allowed as how goin' to college after you was too old to work was like lighting the lantern after you had fell of the stooling. You could look back and see where you fell from, but it wasn't going to help 'yore broke leg none.

Zeke Grubb was agreed with Ed, said it was a shame to turn the colleges into old folks homes when they was turning down young students on account of not having room fer 'em. There was some things, said Zeke, that run pritty good backwards, but time ain't one of 'em.

Clem Webster of the Great Society wasn't agreed exact with Ed and Zeke. He said there was plenty of useful work over old folks and the Government had now took note of this fact. For instance, he reported, he had saw where they had a Federal foster grandparent program that was working real good, special in the big cities. Retired people was paid \$1.50 a hour to visit orphans and take 'em to the zoo and fer walks in the parks and such things. He said he had saw a Government report where they had got 2,500 former grandparent in 27 states and the program was growing.

And Josh Clodhopper was of the opinion they might be a great future fer old folks in the U.S. postal system. He said the more ZIP they get the more problems they got. For instance, he said he had saw in the papers where the Postmaster General reported money was now running so short they might have to stop all deliveries and let the folks come to the post office for their mail. Josh claimed this was a good chance fer old folks. They could just leave the mail sacks at the office and old fellers like Ed and Zeke could get a job dumping it out on the floor and piling it up according to the map, East and West like the newspaper ZIP and a feller living West of town could look through the West pile.

Ed claimed this was Great Society junk, but he agreed the day might come when old folks would have to get a job. He said some of the taxes fer our big give-away program. For instance, he had saw a piece in the papers where "oland owed us \$30 million and we had agreed to knock off \$10 million if they would teach English in their schools." He figured, afore the deal was closed, if them folks in Poland would learn to say "thank you" in English, he might mark the whole bill paid.

Yours truly,
Claig Sprout

Miss Williams Attends Girl Scout Encampment

Debbie Dee Williams, daughter of Mr. and Mrs. James S. Williams, Elizabeth Avenue, Morehead, Va., will return Sunday from Bowden, Va., where she has attended the Girl Scout Regional Wilderness Encampment.

Selected as the representative from the Wilderness Round Council, she has participated with 100 other Senior Scouts from twelve states and the District of Columbia in this primitive camping event. The camp is located in an undeveloped area of the Monongahalia National forest.

During their two-week stay in the mountains, the girls first established a base camp and conducted orientation sessions. They then backpacked into the forest area for several days where they carried out their patrol activities without direct adult supervision.

Debbie has been in scouting for ten years, starting as a Brownie in the second grade. After becoming a First



PROGRESS SHOWN - U.S. Education Commissioner Harold Howe II saw many of the new educational developments in use during a visit to the Morehead State University campus. While here he saw students at teletype keyboards working math problems sent them from a computer

Ranger's Column

By Joe Meek
U.S. Forest Service - Morehead, Ky.

Camping is becoming more popular as a form of outdoor recreation. Facilities for camping seems to be more in demand by the public than any other type of facility. Most of the camping area here at the Forest Service Recreation Area in Rodburn Hollow is filled up about every night. During the week about 40% of those are campers spending three or more days within the area.

The remainder are over night campers traveling across country. On the weekend the trend seems to reverse with about 60% spending the entire weekend and about 40% being overnight campers. Reports from other districts, other National Forest and National Parks, as well as State Parks, are the same. On a recent trip over the weekend we counted the number of vehicles that were handling campers, towing travel trailers or had tent camping equipment in luggage racks.

The average was about one out of every ten vehicles. The Forest Service in managing the National Forests for multiple use of the lands for timber, wildlife, water and recreation develop camping areas on suitable site on the National Forests where there is a demand for facilities and sites are suitable.

Normally camp grounds are developed along with other recreation facilities such as swimming, picnicking, scenic or historical attractions. The greatest demand is for areas with water-related uses. Future areas will probably be much larger in order to justify the need over head facilities within the areas such as bath houses, shelters, water distribution systems as well as full time custodial services during the camping season.

One of the most interesting things about the campers is that many are looking for remote areas away from towns, highway areas and other types of use, areas that are quiet, however, they do desire adequate facilities for water, sanitation, etc.

Class Scout, she attended Camp Judy Layne where she participated in all special backpacking and primitive camp units. Last summer she started her Counselor-In-Training course and graduated on July 6 of this year as a qualified counselor and staff member of the camp.

Georgia Stripe

WATERMELONS
Average Weight 16-lbs. **2 for \$1.00**

We Have About 500 Pounds

TOMATOES HOME GROWN
First Come First Serve **5 lbs. for 98¢**

WHITE'S CLOVER FARM
Junctor Big Perry; Morehead, Vanceburg Roads

Open Sundays For Your Convenience

Toll Revenues Exceed A Million

Revenue from Kentucky's highway toll facilities totaled more than \$1 million in June, Highway Commissioner Mitchell W. Under announces.

Last month's receipts amounted to \$1,000,783, an increase of \$67,000 over June of last year.

Gross receipts of the toll facilities for June of 1967 and 1966 in that order as reported by the Department - Shawneetown Bridge - \$51,750 and \$30,663; Kentucky Turnpike - \$551,810 and \$377,419; Mountain Parkway, \$126,147 and \$105,798; Western Kentucky Parkway - \$231,444 and \$239,098, and Blue Grass Parkway - \$239,629 and \$180,464.

Included in the Kentucky Turnpike figures for last month are revenues collected from Jefferson County's Outer Loop ramps, which totaled \$24,338, and the Fern Valley Ramps, which totaled \$8,717.

Truck Owners Must File Return

Owners of trucks, truck-tractors, or buses may be required to file a Federal highway use tax return, Form 2290, this month according to Mr. G. C. Hooks, District Director of Internal Revenue in Kentucky.

The tax year begins on July 1 and runs through the following June 30. Publication No. 349, "Federal Use Tax on Trucks, Truck-Tractors, and Buses," which furnishes detailed information on this subject, may be obtained by dropping a post card to your District Director, Internal Revenue Service, P. O. Box 1735, Louisville, Kentucky 40201.

Ponderous Peso May Get Even Ponderouser

By TERRANCE W. MCGARRY

MEXICO CITY (UPI) - While the United States worries about a silver coin shortage, Mexico is taking an opposite tack - sending Mexicans to their sellers for reinforced pockets to hold loads of heavy change.

For years the basic Mexican currency - the peso - has been available in either coin or paper form.

The ranchers and farmers of the countryside have traditionally put their trust in the coins which carry their own silver backing. But many city dwellers prefer paper bills that fit better in wallets and purses.

"The days of 'coin or paper, Senor' are over," said the Mexican Government recently announced that as of next year, all one-peso bills will be retired, and the coins will carry the load.

And a load it will be.

The peso is worth 8 U.S. cents but the coin is about the size and heft of a U.S. silver dollar.

A pocketful of change - say \$2 worth, or 25 such coins - can cause a list to stagnate in a man's walk, and a huge bulge in his pocket.

The reason for the switch, officials said, is that the paper money is "uneconomic" - it has to be recalled from circulation every three years when the bills become frayed, and reissued.

The American Bank Note Co. of the U.S. has been producing the notes for Mexico. A factor in the decision was doubtless a chance to cut down the foreign trade gap by eliminating part of the company's bill.

The paper pesos were only a stopgap measure anyway, officials say, because the old Mex-

FASHIONETTES

Heels inch up slightly in all shoe categories from flat to medium heights for fall and winter. Toes are blunt and brogue details are solidly aligned to complement the wider toe. They are straight or curved, geometric and architectural - often in contrasting materials or colors.

Question: If heels are rising after they reached a low-down level, will items which can't seem to go any higher, start inching down? If so, it may lead to a new fashion forecasting technique - low heels, high heels, high heels, low heels.

If you don't know the difference between a midi and a mini at this point, go to the rear of the class. Mini describes what's coming down - hemlines of some coats and dresses seen in fall and winter collections of the nation's pace-setting designers. Mini is what's gone up - hemlines of other dresses.

Doubledfabrics are in the forefront for fall and winter. Gabardines and pette tones remain big favorites and sponzy, extra heavy crepes and crease look terrific. The battle between tweeds and flat finished fabrics ends in a draw, but the tweeds look newer, brighter colored and very flattened.

One way to outdo the Twiggy makeup look of lashes painted longer beneath the eyes - pencil them on heavily across the lid up to join the eyebrows. Some of the fashion models are doing this, for starting effect.

Relax At
TRAIL
MOOREHEAD, KY.
Air Conditioned
Fun For People of All Ages

A Musical Masterpiece of Enchanting Entertainment

Walt Disney's Snow White AND THE SEVEN DWARFS

Technical Color

PLUS! Color Hit No. 2

A HAYSHEED WITH CITY BACKLASH
©1964 Walt Disney Productions

WALT DISNEY'S A Country Coyote goes Hollywood
Technical Color

SPECIAL NOTE - Bring the Children To The Early Matinees At 1:00 p.m. Both Thursday and Friday Afternoon.

Sunday - Monday - Tuesday

★ First Run This Area ★

FERLIN HUSKY
JOI LANSING
DON BOWMAN
JOHN CARRADINE
LEO CHANEY
LINDA HO
NASH RATHBONE

They'll scare your pants off and give you a chill for life!

HILLBILLYS IN A HAUNTED HOUSE COLOR by DeLuxe

FERLIN HUSKY
MOLLY BEE
SONNY JAMES
JOI LANSING
DON BOWMAN

PLUS! Country Music At Its Best

Hillbillys Arise! Take Place Backstage And Everybody's Goin' To The Grand Ole

COUNTRY MUSIC of 30 STARS!

ARNOLD STANG
HUNTER HALL
LEO GORLEY
"SECOND RIDDLE TO BE A BUIBUI"

Starts Wednesday - August 2

ONE MILLION YEARS BY
the Quiller Memorandum

Are medicines always a mystery to you?

You needn't be concerned with the special ingredients that make up the medicines you order from the pharmacy. Your registered pharmacist is standing by with skill, precision, ready to fill the prescriptions your doctor calls for.

C.E. Bishop Drug Company
MAIN ST. MOREHEAD, KY.

RUPTURED

THEN IT'S THE WORLD FAMOUS "DOBBS TRUSS" BULBLESS - BELTLESS - STRAPLESS

It holds like the hands! It can be worn while bathing. It does not spread the rupture. It holds with a convex pad. Reason should teach you not to place a bulb or ball in opening, thus keeping the muscles spread apart.

F. A. WINES, Truss Technician, Dobbs Truss Co., will be at Midland Trail Hotel, Morehead, Ky., Tuesday, Aug. 1. Hours 9:00 a.m. to 6:00 p.m. Free demonstration. Ask at desk.

THIS BANK your City Date account \$1000

with the Great Checking Account... So Many Dollars... Cash... Your Signature

CHECKS are better than cash

- SAFE IN MAILING
- AUTOMATIC RECEIPT
- EASY DENOMINATION
- EASY TO CARRY
- THEFT PROOF
- NO LOSS IF LOST
- FINGERTIP CONVENIENCE

Citizens BANK MOREHEAD, KENTUCKY "GROW WITH US"

INTEREST FOR YOU

C & P Plumbing Heating & Electric

159 W. First St. - Phone 784-4047

100% Financing

on Bathroom Installations New Furnace Installations and All Appliances

DISTRIBUTORS OF -

Grady & Bryant Electric
All City Electric
All City Heating
All City Water Works
Grady & Robert Bath Fixtures

Layne's

ALL FOUR DEPARTMENTS

LADIES' - MEN'S BUDGET - CHILDREN'S

Summer Sale

Continues Thru This Week

Offering savings of 1/3 to 1/2 and more...

Layne's

MAIN ST.

McKinney Bldg.

MOREHEAD

Firestone FOR TIRES... MORE TIRES

LOW PRICES ON 3 Big Deals

DEAL 1

\$12.00

Includes hundreds of brand new Firestone tires and Firestone retreads

Transmucous selection of retreads and used tires...
NO MONEY DOWN
Take months to pay!

DEAL 2

\$5.00

Hundreds of certified A-T tread tires with thousands and thousands of miles left

DEAL 3

\$20.00

Hundreds of other fine quality new tires—all Firestone—including both new 1967 and discontinued '66 designs

PLEASE VISIT US AT FIRESTONE STORES... competitively priced at Firestone Dealers and at all service stations displaying the Firestone sign.

Morehead Home & Auto

116 MAIN STREET

MOREHEAD, KY.

This Is What The...

Morehead Jaycees

... Are Doing

The Morehead Jaycees sponsored four young golfers to participate in the state junior golf tournament...
Over 150 boys from all over Kentucky were trying to capture the title of State Junior Golf Champion...

ner was Stacey Russell from Allen County with a score of 142. The novice winner was Ronnie Spriggs from Henderson with a 163.
The four local winners will be honored by the Morehead Jaycees at a local awards banquet.

The Jaycees Installation Ceremony and Pot-Luck Supper will be held on Saturday, July 29, at 6:30 p.m. at the Rowan County High School Cafeteria...
The newly elected officers for the 1967-68 year are: President, Mary Jo Thompson; 1st Vice President, Barbara Raimsey; 2nd Vice President, Judy Thompson; Secretary, Alice Greenhill; Treasurer, Jean Bailey; Social Chairman, Betty Gambill; Project Chairman, Marian Rogers; Religious Chairman, Violet Crase; Telephone Chairman, Nancy Avers.



The big event in summer scouting is attending established camp. Many of our girls have been going to Judy Layne or Shawana this year.

Completed the eight week Counselor-in-training course at Judy Layne on July 6. Debbie is the first Rowan County girl to participate in the C.I.T. program...
The fourth and last session at Judy Layne starts August 6. Susan Abern, Junior Troop 58, Linda Howard, Louise Venetozzi, Sandy Williams and Leslie Williams, Cadette Troop 417, will attend.

On July 30, Terry Ann Blanton and Cojuna Cooper, Junior Troop 223, will go to Shawana, located outside of Lexington for their first year of camping experience...
Carol Hough, daughter of Mr. and Mrs. William Hough of Elizabeth Avenue, is serving as a counselor at Judy Layne this summer.

KENTUCKY-BORN - Kentucky-born Abraham Lincoln was the first U. S. President born outside of the original 13 colonies.

Indoor Plant Lighting
40-watt lamps... This fixture should be suspended more than one foot above the trays or flats containing the plants...
As long as the room temperature stays between 60 and 75 degrees, no additional heat is needed, Janne said.

Nagging Lack of Blacksmiths
ANN ARBOR, Mich. (UPI) - Add another category to the manpower shortage: Blacksmiths...
The number of horses in the country is increasing faster than the available smiths, according to Prof. Ross J. Wilheim of the University of Michigan.

Complete Ambulance Service
Oxygen-Equipped
"Equipped To Serve You"

Member of Kentucky Funeral Director's Association - Authorized To Service -

Burial Insurance Contracts Issued By
COMMONWEALTH LIFE INSURANCE CO.

LANE FUNERAL HOME
Phone 784-4134 - Morehead, Ky.

Lucy Ann Hamilton Claimed At Age 81

Mrs. Lucy Ann Hamilton, Clearfield, died July 25 at the age of 81 at the Mercy Hospital in Portsmouth, Ohio. She was born in Rowan County, January 25, 1886, the daughter of Albert and Louise Cooper. She was the widow of George Hamilton, who died July 16, 1966.

She leaves six children: Emmett Hamilton, Shelby, Ohio; Kelly Hamilton, Wrigley, Ky.; William Hamilton, Ashland, Ky.; Mrs. Betty Edmonson, South Shore, Ky.; Mrs. Rhena Gallenstein, Ypsilanti, Mich.; and Mrs. Evelyn Fisk, Dayton, Ohio.

Funeral services will be held at the home in Clearfield at 1:00 p.m. Thursday. The funeral will be held in the home at 2:00 p.m. Friday with burial in the Roberson Cemetery near Wrigley, Ky. with the Rev. Eugene Haney of West Liberty, officiating.

Death Takes Effie Tuerscher

Effie Messer Tuerscher, 70, a native Rowan Countian died last Friday in Cincinnati, Ohio.

Mrs. Tuerscher is the daughter of William and Almida (Sparks) Messer. Funeral services were conducted at the Lane Funeral Home Monday at 10 a.m. by Rev. Charlie Littleton, Rev. Lloyd Hall and Rev. Charles Gandy. Burial was in the Dawson Cemetery with Pat McManus, Tim McManus, Roger Eldridge and Sam Lewis casket bearers.

William Ratliff Home From Vietnam

Specialist 5, William O. Ratliff, son of Mr. and Mrs. Tatt Ratliff, Route 1, Fliersburg, returned home Saturday after serving 12 months with Battery C, 2nd Battalion, 20th Aerial Artillery, 1st Cavalry Division in Vietnam.

While there, he was awarded the Army Commendation Medal and the Air Medal with "V" Device for heroism in action, September 1966. William entered the Army August 4, 1965 and completed basic training at Fort Knox, Ky. then received 10 months school and training for helicopter maintenance at Fort Huachuca, Va.

On his return trip from Vietnam, he was separated from active duty in Oakland, California. He said, "It sure is nice to be back and no one will realize what a wonderful country we live in unless they have been in a place like Vietnam."

Morehead - Rowan County PUBLIC LIBRARY

Main Street Morehead

THE WONDERFUL WORLD OF BOOKS



Members of Mrs. Katherine Caudill's class attending the summer session at Rowan County High School visited the new Rowan County Civic Center...
The members of the class are Shirley Carter, Sherry Jones, Jimmie Jefferson, Debbie Caudill, Jerry Johnson, Jimmie Christian, Allen Plumley, Lynwood Wilcox, Sherry Porter, teacher's aide Debra Johnson, James Fowler, Stanley Cecil, Dale Carpenter and Carl Howard. Charlene Hall, Brenda Stanford, Linda Newsome and June Porter, teacher's aides from Morehead University came with the group.

Morehead Lions Club Is Number One In The State

The International Association of Lions Clubs announced that the Morehead Lions Club was the winner of the number one Lions Club in the State of Kentucky for the year 1966-67. The local club, chartered in 1952, has never participated in any competition for state or district honors since its inception until this year.

The contest was based on enter-club visits, obtaining new members, chartering other Lions Clubs, attending district and state meetings, and obtaining eye-pledge cards, along with having at least 75% attendance at local meetings...
The Morehead Club chartered a Lions Club in Sandy Hook, with a membership of 35 charter members. This was the only charter in the Morehead District this year. The local club also made the necessary arrangement for an elderly Rowan Co. citizen for a corneal transplant, which was very successful, at the Kentucky Lions Eye Foundation Hospital in Louisville.

Ward Conducting 'Quiet' Campaign

Quiet campaigning "Kentucky style" has been Henry Ward's watchword since he won the May 23 Democratic primary...
Ward, the Paducah native who got more votes than all of his opponents together, has been visiting over the state, talking to friends and supporters.

"I'm talking to the people now... before full scale campaigning begins... asking them about their problems, about what they want state government to do for them."
Too many times candidates get away from the people, and I'm not going to let that happen to me... the former newspaperman said.
Ward also has been stressing the major points in his program - industrial development to bring in good jobs, strengthened education, stepped-up highway and rural road construction, increased health facilities.

Eagles Schedule Ten Opponents For 1967 Season

The Morehead State University Eagles, defending Ohio Valley Conference football champions, have scheduled ten games for its 1967 season...
It will be the first time in 11 seasons that the Eagles have played more than nine games. Two new opponents are scheduled, Kentucky State College and Central Michigan University.

The schedule, released by Athletic Director Robert Laughlin, includes seven OVC and three non-conference opponents...
The complete schedule includes:
Sept. 16 - Marshall Home 7:30 EST
Sept. 23 - Middle Tenn. Home 7:30 EST
Sept. 30 - Miami Tech. Away 6:00 CST
Oct. 7 - Austin Peay Home 2:00 EST
Oct. 14 - Ky. State Away 2:00 EST
Oct. 21 - Miami Tech. Away 2:00 CST
Oct. 28 - Western Away 2:00 CST
Nov. 4 - East Tenn. Home 2:00 EST
Nov. 11 - Central Mich. Away 2:00 EST
Nov. 18 - Eastern Ky. Home 2:00 EST

RUPTURED
THEN IT'S THE WORLD FAMOUS "DOBBS TRUSS" BULBLESS - BELTLESS - STRAPLESS
It holds like the hands. It can be worn while walking. It does not spread the rupture. It holds with a concave pad...
Free demonstration. Ask at desk.

WHAT'S STOPPING YOU FROM STARTING YOUR NEW HOME?

You can get CASH from **CAPP HOMES**

To help complete your new home WE FURNISH ALL FINISHING MATERIALS INSIDE AND OUT FOR THE PRICE QUOTED. We will even loan you money for labor and materials needed to complete anything not provided by Capp-Homes!

MAIL THIS COUPON TODAY:
To CAPP HOMES Dept. 601
2355 Hennepin Ave., Minneapolis, Minn. 55406
Please send me more information

NAME _____
ADDRESS _____
TOWN OR RFD. _____
STATE _____ ZIP _____
I don't own a lot I don't own a lot I don't own a lot I don't own a lot I don't own a lot

There's one thing vacationers forget...
Too Often!

The valuables they leave at home - jewelry, important papers, family keepsakes! Remember, burglars or fire could rob you of everything - bringing your vacation or over a week end - unless your valuables are safeguarded in a Safe Deposit box here. It costs so little!

Rent a Safe Deposit box, here... and NOW!

PEOPLES BANK OF MOREHEAD

Rowan County Board of Education

Financial Statement

1966-67

-Receipts-

Table with 2 columns: Description and Amount. Includes 'Balance on hand at start of year', 'Revenue from local sources', 'Federal aid through the state', 'TOTAL RECEIPTS', and 'GRAND TOTAL, all receipts and balance'.

SALARIES EXPENDITURES

Table with 2 columns: Name and Net Salary. Lists various administrative and principal staff members with their respective salaries.

Main expenditure table with 2 columns: Description and Amount. Lists numerous vendors and services such as 'Bourbon Tire Service', 'Peoples Bank', 'Perry Hardware', 'Postmaster, Stamps', 'Public Safety Dept.', 'Radio Corp. of America', 'Random House', 'Rayburn Auto Parts', 'Ridgewood Distributors', 'Richard Rosen Press', 'Rowan County Bond & Interest', 'Rowan County High School', 'Rowan County Social Security Revolving Fund', 'Rowan County Special Voted Building Fund', 'Stanley Auto Parts', 'Stanton Sheet Music Co.', 'Sterling Publishing Co.', 'Stewart, Welding', 'Stone Auto Parts', 'Stonemont, Bus Repair Parts', 'Berk Thompson, Bus Repair Parts', 'Thompson Glass Co.', 'Thompson Janitor Supply House', 'United Janitorial Supplies', 'United Service Co.', 'Utility Plant Board', 'Viking Press', 'Wayne Sales, Inc.', 'Western Auto Assoc.', 'Westminster Press', 'Ray L. White & Sons', 'William Morrow & Co.', 'William-Nichell Oil Co.', 'W. H. Wilson Co.', 'Worford Ins. Co.', 'World Publishing Co.', 'Woods Garage, Welding'.

Table with 2 columns: Description and Amount. Continues the list of vendors and services from the previous table, including 'Ginn & Co.', 'Government Guided Books', 'Grayson RECC', 'Grolier Society', 'Pearl Hagan', 'Hatemard School', 'Hammond, Inc.', 'Hammond & Stevens Co.', 'Harper & Row', 'Harrod-Early, Inc.', 'Harkness Bindery', 'Frank H. Hobbs', 'Holt, Rinehart & Winston', 'Haugthorn Miffelen Co.', 'Imperial Cleaners', 'Imperial Rental Service', 'Kentucky Music Co.', 'Kentucky Power Co.', 'Kentucky School Boards Assoc.', 'Kopp Office Supply', 'Laidlaw Bros.', 'Lang Co.', 'J. S. Latta, Inc.', 'Clint W. Lee Co.', 'C. E. Lewis, Tax Refund', 'Rocky Lewis Agency', 'Frank Lewis Travel', 'Lexington Spring Service', 'Library of Congress', 'Little, Brown & Co.', 'Lifton-Ford School', 'Lyons Band Inst. Co.', 'McGubbin Chevrolet Co.', 'McGraw Hill Book Co.', 'McHugh Bros. Auto Supply', 'MFA Insurance Co.', 'Ed Mabry Const. Co.', 'Phillip Mabry Travel', 'Manufacturers Trust Co.', 'Meadows & Cragger', 'Monarch Supply Co.', 'Fred F. Moore Music Co.', 'Joan Moore Travel', 'Willis Moore, Labor', 'Morehead Hand Towel Service', 'Janitorial Supplies', 'Morehead Grade School', 'Morehead Home & Auto', 'Morehead News, Printing & Publishing', 'Music-Colevin Motor Co.', 'National Farm Book Co.', 'A. J. Nystrom Co.', 'Oliver Hill Motor Sales', 'Oxford Univ. Press'.

Table with 2 columns: Description and Amount. Contains 'Recapitulation of General Fund', 'Balance on hand at beginning of year', 'Total Receipts', 'Grand Total, all receipts & balance', 'Total Expenditures', and 'Actual Balance'. Also includes a 'Recapitulation of School Building Fund' section.

Advertisement for 'THIS WEEK'S PATTERNS' featuring a dress pattern. Includes text: 'THIS WEEK'S PATTERNS', 'In Two Size Ranges', 'Color and Cuffs', 'Dress Pattern No. 3314 & 3393', 'Stanton Sheet Music Co.', 'Sterling Publishing Co.', 'Stewart, Welding', 'Stone Auto Parts', 'Stonemont, Bus Repair Parts', 'Berk Thompson, Bus Repair Parts', 'Thompson Glass Co.', 'Thompson Janitor Supply House', 'United Janitorial Supplies', 'United Service Co.', 'Utility Plant Board', 'Viking Press', 'Wayne Sales, Inc.', 'Western Auto Assoc.', 'Westminster Press', 'Ray L. White & Sons', 'William Morrow & Co.', 'William-Nichell Oil Co.', 'W. H. Wilson Co.', 'Worford Ins. Co.', 'World Publishing Co.', 'Woods Garage, Welding'.

Advertisement for '3\$0 A YEAR FEEDS CHILD'. Includes text: '3\$0 A YEAR FEEDS CHILD', 'Although many school children throughout Israel are being asked to fast...'

Advertisement for 'TERMITE TROUBLE?'. Includes text: 'TERMITE TROUBLE? See or Call CHESTER KISER CONSTRUCTION CO. Phone 784-5109 & 784-5442 Agents for State Termite Control and Chemical Co. Inc.'

Advertisement for 'GOING PLACES?'. Includes text: 'GOING PLACES? Then you need State Farm's new "GO" insurance for extra protection for your family, your possessions, even accidents...'

CLYDE H. SMITH, Agent 134 R. East Main St. Phone 784-4950 Morehead, Ky.

IGA DELUXE
Cake Mix ALL FLAVORS
 4 19 oz. pkgs. **88¢**



BUTTERMILK OR OLD STYLE
 TABLERITE
Biscuits
 12 8 oz. cans of 10 **88¢**



Ice Milk 1/2 Gal. Asst. Flavors
2 for 88¢

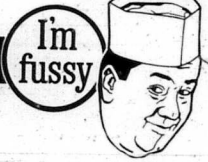
This Week
Richelieu GLASSWARE
Juice Glass
 5 1/2 oz. Only **9¢** WITH EXCH \$5.00 PURCHASE
 Next week we start over again with the 15-oz. tumbler - Don't miss these beautiful 15-oz., 12-oz., 9-oz. and 5 1/2-oz. Richelieu Glasses.



SALE!

ZESTA 1-lb. Box **CRACKERS** for **38¢**
 IGA SANDWICH 1 3/4-lb. Box **COOKIES** for **88¢**

TABLERITE FOR EATING PLEASURE!



When it comes to serving meat that will satisfy... select TableRite. Our fussy meatmen make sure it is prepared for fullest flavor and tenderness.

GEORGIA RED **5 for 88¢**
 Tomatoes 303 Can
 LIBBY'S CREAM STYLE **4 88¢**
 Golden Corn 303 Can
 ROYAL GUEST **5 88¢**
 Sweet Peas 303 Can
 DOLE **3 for \$1**
 Pineapple *SLICED *CRUSHED No. 2 CHUNKS Can
 LIBBY'S **3 88¢**
 Tomato Juice 46-oz. Can

Libby's Deep Brown
BEANS
8 88¢
 for 14 oz. can



Round Steak
 TRIMMED-RITE:
 IGA TableRite Meats are trimmed for the table with all excess fat and bone removed. Only enough fat is left on each cut to assure you of fine flavor.
79¢
 lb.

Sirloin Steak
 AGED-RITE:
 Care fed and naturally aged you are guaranteed beef that is tender every time. You'll taste the difference!
99¢
 lb.

ROBIN HOOD
Flour
 5-lb. bag **53¢**

Swiftning
3 59¢
 lb. can

FROZEN FOODS
 IGA Lemonade
10 88¢
 6 oz. cans

IGA WEINER OR **8 Pack 2 for 49¢**
Hamburger Buns
 TABLETREAT **3 88¢**
Sweet Rolls 6 Pack

TABLERITE T-Bone Steak lb. \$1.09	HALF QUART R-C Cola 6-Bottle Carton 39¢	JIFF Peanut Butter 18-oz. 59¢
BONELESS Loin Tip Steak lb. 99¢	PLUS BOTTLE DEPOSIT	LIBBY'S Sloppy Joes 15-oz. Can 59¢
MUCHMORE Sliced Bacon 1-lb. Pkg. 69¢		IGA HOMESTYLE Cookies Pkg. 3 for 88¢
EDWARDS Wieners 12-oz. Pkg. 39¢		TABLERITE Longhorn Cheese 10-oz. Pkg. 49¢

HEAD Lettuce
2 for 29¢
 Large Head

H-I-C
DRINKS
 ASSORTED FLAVORS **3 46 oz. cans 88¢**

Allen's
IGA
FOODLINER
 STORE HOURS
 8-6 Mon. - Thurs.
 8-8 Fri. & Sat.

HOMI-GROWN **2 25¢** SLICING
Green Beans lbs. **Cucumbers** each **5¢**

THE FAMILY LAWYER

Constitution Vs. Caligula

Historians tell us that Caligula, the evil Roman emperor, used a sly trick to enforce his despotic rule. He posted his laws on pillars, so high up that the people could never be sure what they were. But if the lawmakers of today should try to copy Caligula, they would run head-on into the "due process" clause of the Constitution. Under this clause, no person may be punished under a law that he cannot reasonably understand. Take the case of a motorist who was cited for speeding. According to the local traffic ordinance, the speed limit applied to all "built-up" areas of the community. But a court threw out the charge, on the ground that the ordinance



was too vague to be understood. The court said a neighborhood that seemed "built up" to a visiting farmer might seem quite different to his city cousin. The mischief in a vague law lies not only in leaving the people unsure of what they are doing, but also in allowing too much leeway in its enforcement. Thus, a law on the improper influence of a juror was held unconstitutional because there was too much scope in the word "influence." The court said: "A newspaper article, a bribe, a gesture, a smile, a lifting of the eyebrows—all can be caught in its broad net."

True, it may not always be practical to make the rules so plain that there is no room for doubt. Perfect clarity is not required. For example, an accused hit-and-run driver claimed that the statute under which he was arrested was too vague to be constitutional.

"It requires the giving of 'reasonable' assistance to an injured person," he said. "But what does 'reasonable' mean? Opinions may differ a great deal on that point."

However, the court upheld the statute and found the defendant guilty as charged. The court said the legislature could not be expected to spell out a specific treatment for every possible injury. In other words, the Constitution allows vagueness that cannot reasonably be avoided—but forbids vagueness that leaves the public unfairly in the dark.

"The posing of criminal laws high on a semantic wall beyond the vision of the people," said one court, "cannot be given judicial sanction."

An American Bar Association public service feature by WILL BERNARD. © 1967 American Bar Association

Fewer Migrants
 SAN FRANCISCO (UPI) — Once farm workers poured into California by the thousands, but today migrants account for only a small portion of the state's agricultural work force. Figures released recently by the California Department of Employment show that of 227,300 hired workers on California farms, 14,000 are from out of state.

Cops Challenge Marriage Rite
 STUTTGART, Germany (UPI) — Policemen in the South German state of Wuerttemberg-Baden are challenging the constitutionality of a 1946 regulation requiring them to have their superior's permission to marry and to prove to him that the prospective bride is of good character.

ATHLETE'S FOOT GERM HOW TO KILL IT. IN ONE HOUR.
 Strong medicine. 7-11, check it out. **ATHLETE'S FOOT GERM HOW TO KILL IT. IN ONE HOUR.** **ATHLETE'S FOOT GERM HOW TO KILL IT. IN ONE HOUR.** **ATHLETE'S FOOT GERM HOW TO KILL IT. IN ONE HOUR.**

