



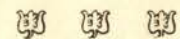
MOREHEAD  
Normal School,

«MOREHEAD, KY.»



MOREHEAD  
NORMAL SCHOOL,

MOREHEAD, KY.



CATALOGUE

1901-1902.

---

---

1901  
Advocate Publishing Co  
Mt. Sterling,  
Ky



WHEATLEY, FRED,	Rodbourne.
WHEATLEY, JESSE,	Rodbourne.
WORTHINGTON, SALLIE,	Carter City.
WITHROW, BERTHA,	Morehead.
WITHROW, GEORGE,	Morehead.
WITHROW, SAMUEL,	Morehead.
WOOLUM, MINTA,	Morehead.
WILSON, FLORA,	Morehead.
WILSON, GLENMORE,	Morehead.
WILSON, HOMER,	Morehead.
WILSON, STELLA,	Morehead.
YOUNG, ELIZABETH,	Morehead.

PUPILS NOT ENROLLED ELSEWHERE.

MUSIC.—MRS. CAYWOOD.

JOHNSON, DOAN MRS.,	Morehead.
MCGUIRE, LUCY MRS.,	Morehead.
WHITT, DORA,	Morehead.
VINTON, KARL,	Morehead.
VINTON, LILLIAN,	Morehead.
BODKINS, ALICE,	Morehead.

MUSIC.—MRS. DE SABLE.

CAUDILL, MARY,	Morehead.
EVANS, SHERMAN MRS.,	Morehead.
GOODAN, LIDA,	Morehead.
OXLEY, FLOSSIE,	Morehead.
PIGMAN, LIZZIE,	Morehead.
ROBINSON, ESSIE,	Morehead.

ORATORY.

LEAH TIPPETT,	Morehead.
---------------	-----------

TYPEWRITING.

MRS. W. A. YOUNG,	Morehead.
-------------------	-----------

Total Enrollment . . . . .	219
Boarders . . . . .	67

RICE, CAREY,	Morehead.
RICE, ELSIE,	Morehead.
RICE, JENNIE,	Morehead.
RILEY, CHARLIE,	Morehead.
RILEY, MYRTLE,	Morehead.
ROICE, HENRY,	Rodbourne.
ROSE, DOTTIE,	Morehead.
SELLARDS, SADIE,	Carter City.
SEXTON, EVA,	Carter City.
SEXTON, BESSIE,	Carter City.
SHUMATE, CHARLIE,	Morehead.
STEWART, ALEX,	Brady.
STEWART, JAMES,	Brady.
STEWART, LOTTIE,	Morehead.
SWIFT, CHRIS,	Morehead.
TABOR, O'BANYAN,	Elliottsville.
TACKETT, WILLIAM,	Morehead.
TIPPETT, HATTIE,	Morehead.
TIPPETT, MAUD,	Morehead.
TOLLIVER, ETHEL,	Hilda.
THOMAS, BEULAH,	West Liberty.
THOMAS, GEORGIA,	West Liberty.
THOMAS, LUCY,	West Liberty.
TRUMBO, ALLIE,	Morehead.
TRUMBO, FRANK,	Morehead.
TRUMBO, LUTHER,	Morehead.
TRUMBO, THOMAS,	Morehead.
TRUMBO, TAYLOR,	Morehead.
TRUMBO, LACY,	Morehead.
TYREE, NANNIE,	Rodbourne.
TUSSEY, WILLIAM,	Morehead.
VINCENT, REBIE,	Soldier.
WARNOCK, MARGARET,	Carter City.
WADKINS, SADIE,	Morehead.
WILLIAMS, EFFIE,	Morehead.
WILLIAMS, OLLIE,	Morehead.
WHITE, ADALINE,	Oquawka, Illinois.
WHITT, ADDISON,	Morehead.
WHITT, ALICE,	Morehead.

## CALENDAR.



FIRST TERM—Begins Monday, September 10, 1901.

THANKSGIVING DAY—Thursday, November 28, 1901.

PUBLIC ENTERTAINMENT—Friday Evening, December 20, 1901.

EXAMINATIONS—December 17, 18, 19, 1901.

SECOND TERM—Begins January 6, 1902.

PATRIOTIC ENTERTAINMENT—February 21, 1902.

EXAMINATIONS—June 2, 3, 1902.

CLOSING EXERCISES—June 4, 5, 1902.



## OFFICERS.



### CHRISTIAN WOMAN'S BOARD OF MISSIONS.

National Headquarters, 152 East Market Street, Indianapolis, Ind.

MRS. O. A. BURGESS, 1612 Bellefontaine St., President.

MRS. N. E. ATKINSON, Wabash, Ind., Vice-President.

MRS. ANNIE B. GRAY, 1133 Capitol Ave. N., Rec. Secretary.

MRS. HELEN E. MOSES, 152 E. Market St., Cor. Secretary.

MARY J. JUDSON, 152 E. Market St., Treasurer.

MATTIE POUNDS, 152 E. Market St., Superintendent Y. P. D.

### STATE OFFICERS.

MRS. A. M. HARRISON, Lexington, President.

MRS. ELIZABETH SARGENT, Hopkinsville, First V. President.

MRS. O. E. HAGERMAN, Parkland, Second V. President.

MISS SUE SUBLETTE, Lexington, Sec. and Organizer.

MRS. J. A. STUCKY, Lexington, Recording Secretary.

MRS. O. L. BRADLEY, Lexington, Treasurer.

MRS. M. S. WALDEN, Danville, Supt. Young People's Work.

## MOREHEAD NORMAL SCHOOL

15

LIPSITZ, FRANK,	Morehead.
LIPSITZ, LOUIS,	Morehead.
MABRY, CHARLES,	Leadenham.
MABRY, I. S.,	Leadenham.
MARK, CHESTER,	Morehead.
MARK, JESSIE,	Morehead.
MANN, G. C.,	Dan.
MARTIN, BLANCHE,	Morehead.
MESSER, LIDA,	Mizpah.
MILLER, NELLIE,	Morehead.
MILLER, VIVIEN,	Morehead.
MCGLONE, EFFIE,	Rooney.
MCGLONE, BENJAMIN,	Rooney.
MCGLONE, PARTHENA,	Rooney.
MCROBERTS, JULIA,	Muse's Mills,
MYERS, GILBERT,	Freestone.
MCCLURE, CHRIS,	Bangor.
NOLIN, DIXIE,	Morehead.
NOLIN, MATTIE,	Morehead.
NICKELL, EMMA,	Morehead.
NICKELL, CLELA,	Morehead.
PARKER, CLEFF,	Morehead.
PARKER, LULA,	Morehead.
PARKER, QUILLA,	Brady.
PARKER, WM.,	Brady.
PROCTOR, ALLIE,	Morehead.
PROCTOR, BERT,	Morehead.
PROCTOR, EFFIE,	Morehead.
PROCTOR, ETTA,	Morehead.
PROCTOR, EZRA,	Morehead.
PROCTOR, HERBERT,	Morehead.
PROCTOR, FAITH,	Morehead.
P'SIMER, ETTA,	Morehead.
PEYTON, BOONE,	Bangor.
QUICK, ELMER,	Morehead.
QUICK, GLENN,	Morehead.
RAINE, FREDRICA,	Morehead.
RAINE, LIZZIE,	Morehead.
RAZOR, L. B.,	Mt. Sterling.

HARRISON, HARRY,	Morehead.
HARRISON, ROBERT,	Morehead.
HARRISON, THOMAS,	Morehead.
HAVENS, FRANK,	Morehead.
HAVENS, WILLIAM,	Morehead.
HANEY, LOUIS,	Morehead.
HARMON, ANNA,	Brady.
HARRIS, O. H.,	Elliottsville.
HAMM, LUCIEN,	Muse's Mills.
HAMM, EDGAR,	Muse's Mills.
HAMM, NANNIE,	Muse's Mills.
HURST, W. F.,	Ringo's Mills.
HOOK, GEORGE,	Wilmington, Ohio.
HUFFMAN, RUBY,	Carter City.
HOGGE, WILLIAM,	Munsen.
HOGGE, CHARLES,	Munsen.
HOGG, TILDEN,	Munsen.
HOGGE, RAY,	Munsen.
HALL, SQUARE,	Morehead.
JOHNSON, GEORGE,	Morehead.
JOHNSON, WILLIE,	Morehead.
JOHNSON, GARRARD,	Hazel Green.
JOSSELSOON, FRANK,	Morehead.
JOSSELSOON, NATHAN,	Morehead.
JOSSELSOON, MOSES,	Morehead.
KNAPP, ANNA,	Morehead.
KILBOURNE, KENNETT,	Mizpah.
KILBOURNE, MYRTIE,	Mizpah.
LANE, CHARLES,	Morehead.
LANE, MAY,	Morehead.
LAMBERT, HELEN,	Rodbourn.
LEADENHAM, GEORGE,	Leadenham.
LOGAN, MAY,	Morehead.
LYTTLETON, REBECCA,	Freestone.
LYTTLETON, HUSTON,	Morehead.
LYTTLETON, JOE,	Morehead.
LYTTLETON, OLLIE,	Morehead.
LIPSITZ, ANNA,	Morehead.

## LOCAL ADVISORY BOARD.



HIRAM BRADLEY, Chairman.

M. B. MARK,	G. A. NICKELL,
D. G. COMBS,	G. B. CAYWOOD,
J. G. WHITT,	W. A. YOUNG,
J. M. CAREY,	WM. DURHAM,
C. A. PROCTOR,	W. H. DANIELS,
J. E. CLARKE,	T. B. TIPPETT,

J. W. RILEY.



## FACULTY.



FRANK C. BUTTON, Principal.  
Professor of Sacred History.

L. ETTA RANNELLS,  
Professor of English Literature and Pedagogy.

ERRETT WEIR MCDIARMID,  
Professor of Latin and Mathematics.

MRS. G. B. CAYWOOD,  
MRS. THEO. DE SABLE,  
Teachers of Vocal and Instrumental Music.

CORA A. HOOK,  
Primary Teacher.

J. W. RILEY,  
Business Department.

LEAH TIPPETT,  
Teacher of Shorthand and Typewriting.

R. B. NEAL, Grayson, Ky.,  
General Agent.

MRS. F. C. BUTTON,  
Matron.

## MOREHEAD NORMAL SCHOOL

13

COMPTON, CORA,	Olive Hill.
CLAYTON, CARL,	Morehead.
CLAYTON, MYRTLE,	Morehead.
CLAYTON, WALDEN,	Morehead.
DAY, CLAUDE,	Morehead.
DAY, EDWARD,	Morehead.
DAY, TONY,	Morehead.
DAY, WILLIE,	Morehead.
DAY, ROY,	Morehead.
DAVIS, ALLEN,	Rockville.
DAVIS, IRVIN,	Morehead.
DAVIDSON, DAISY,	Rodbourne.
DOUGLAS, JOHN,	Comanchie, Texas.
DUFF, S. B.,	Mt. Sterling.
DUNCAN, ROY,	Enterprise.
DYE, NANNIE,	Morehead.
DYE, JERRIE,	Morehead.
EARLY, FLORA,	Rodbourne.
ELLINGTON, FLORA,	Bangor.
EVANS, BLANCHE,	Morehead.
EVANS, HAZEL,	Morehead.
EVANS, FLORENCE,	Morehead.
EVANS, MAMIE,	Morehead.
EVANS, WILLIE,	Morehead.
EVERMAN, MOLLIE,	Carter.
ENGLISH, LENORA,	Carter City.
FOLEY, MARY,	Sharpsburg.
FOGG, WILLIE,	Morehead.
FOUCH, ARTHUR,	Elliottsville.
FRALEY, PEACH,	Morehead.
FRALEY, WICK,	Morehead.
FRAZIER, ALLIE,	Morehead.
FRAZIER, GEORGE,	Morehead.
GILLIAN, FERNIA,	West Liberty.
GILKERSON, IDA,	Carter City.
GEYHART, WILLIAM,	Morehead.
GARTEN, EMERY,	Morehead.
GOODAN, EDWARD,	Morehead.
GOODAN, ANNA,	Morehead.

## EXPENSES.

Primary Course, per month . . . .	\$1 00
Intermediate Course, per month . .	1 50
Advanced Course, per month . . . .	2 00
Shorthand, per month . . . . .	3 75
Rooms furnished and heated . . . .	FREE
Table Board, per week . . . . .	2 00

TO PROSPECTIVE  
STUDENTS.

It is strongly urged that all who contemplate entering school do so on or before the opening day of the term. With enlarged facilities and an increasing corps of teachers, the Morehead Normal School again presents its claims to your attention. The present year is the best in its history. The prospects are bright for thoroughly successful work. Everything possible will be done for the student's pleasure and profit. We have no iron-clad regulations. We expect our students to conduct themselves like ladies and gentlemen. We invite all to visit the school and examine our work. A cordial welcome will be given to all new students.

For further information address,

F. C. BUTTON,  
MOREHEAD, KY.

The situation of the school, on a great through line of traffic, puts pupils attending it in touch with the great world, and at the same time affords facilities for instruction at less cost than in large towns.

## PURPOSE.

The Morehead Normal is a school for teachers. It gives them that technical education which fits them for their vocation. Its courses meet all the requirements of the County and State examinations. Its aim is to fill every teacher with enthusiasm for work and to inspire them with higher ideals of life. It seeks to make honorable men and women of its students and to prepare them for useful lives.

## METHODS.

Text books are used, but the student's attention is directed mainly to the study itself. All work is made fresh and interesting. Daily recitations are required of each student who thus comes in close contact with the teachers. Lectures are given by the teachers from time to time, and the school is drilled daily in Sacred History. Special instruction is given in Reading, Music, Parliamentary Law, Physiology, Physical Culture and Bible Study. The work of each student is discussed in the monthly Faculty meeting, and methods of helping each one advance in the work are considered. Every legitimate means is employed to keep the interest of the student aroused.



# COURSE OF STUDY.

	MATHEMATICS	LANGUAGE.	HISTORY.	SCIENCE.	PEDAGOGY.	
FIRST YEAR.	Mental Arithmetic. Practical Arithmetic.	Word Lessons. Elementary Grammar.	El. History. U. S. History.	Elementary Physiology.		Spelling. Oratory.
SECOND YEAR.	Practical Arithmetic. Beginners Algebra.	High English Grammar.	Gen'l History Bible History	Physiology.		Reading. Oratory.
THIRD YEAR.	Higher Arithmetic. Higher Algebra.	Composition. Rhetoric.	O. T. Study. N. T. Study.	Zoology. Botany.	Psychology.	Latin. Latin.
FOURTH YEAR.	Plane Geometry. Solid Geometry.	English Literature. American Literature.	History of Greece. History of Rome.	Physics. Civics.	Theory and Art of Teaching	Caesar. Caesar.

## ADVANTAGES.

The school owns 60 acres of land, furnishing ample room for physical exercise. The location is beautiful and healthful. The buildings are supplied with modern school furniture. The boarding hall, known as "Hodson Hall," is a three-story frame building, containing about twenty-two apartments. Every room is well furnished. The student could not find a better home. Experienced teachers have been employed and the instruction is thorough. A rigorous discipline is maintained. The expenses are very low. Careful attention is paid to morals and manners. A Christian atmosphere pervades the school.

## ANNOUNCEMENTS.

A large, new school building, second to none in Eastern Kentucky, will be erected by January 1, 1902.

An Industrial Department will be put into operation, by means of which worthy young men and women can work their way through school.

By vote on the question of Local Option June 1, the entire county of Rowan, including the town of Morehead, voted "no license," so that there are no saloons near the school.



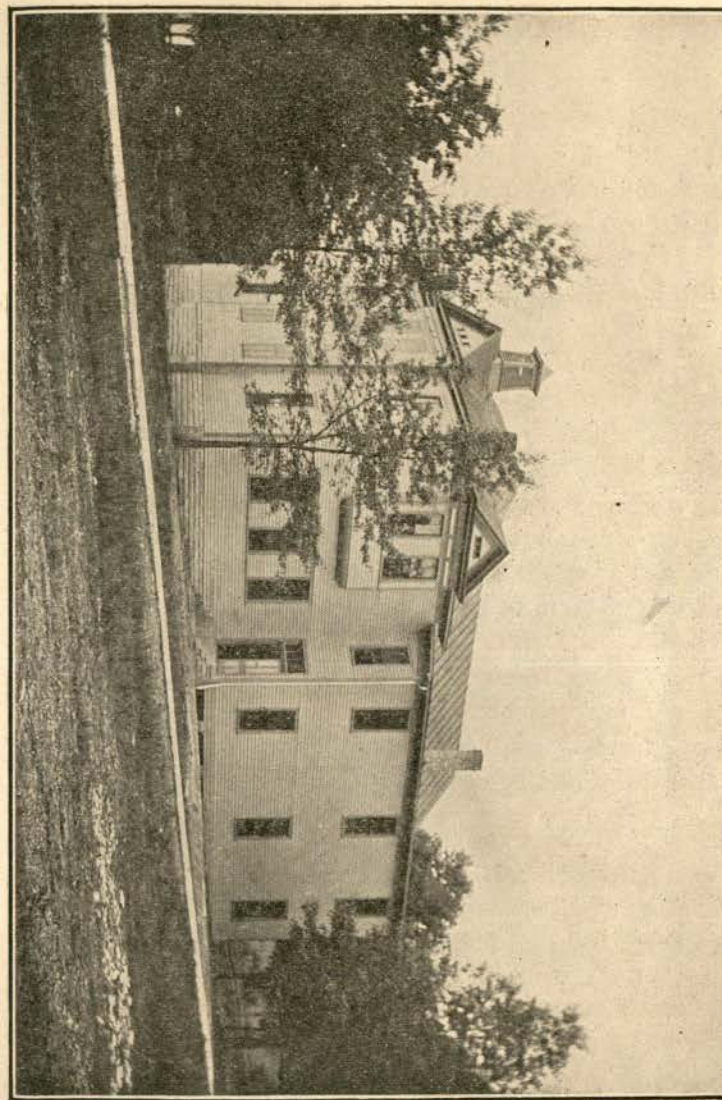
## Pupils Enrolled.

※

ADAMS, WILLIAM,  
ADKINS, MYRTIE,  
ADKINS, BERTHA,  
ALLEN, DAISY,  
ALLEN, GLENNA,  
ALLEN, WILLIE,  
ANGLIN, CORBIE,  
ANGLIN, FERNA,  
BANFIELD, PHILIP,  
BANFIELD, TAYLOR,  
BLAIR, MAUD,  
BOGGESE, JESSE,  
BRADLEY, ARTHUR,  
BRADLEY, WILLIAM,  
BRADLEY, MAY,  
BRYAN, ELERY,  
BRYAN, LILLIE,  
BRYAN, VIRGIL,  
BUTTON, FRANK,  
BUTTON, HATTIE,  
BUTTON, PHEBE,  
CAREY, LENA,  
CARR, NETTIE,  
CARTER, CHARLIE,  
CASSITY, GERTRUDE,  
CATRON, ALFRED,  
CATRON, LIZZIE,  
CAVENS, ANNA,  
CAUDILL, AMANDA,  
CAUDILL, BERTHA,  
CAUDILL, FANNIE,  
CAUDILL, GEORGE,  
CAUDILL, GILBERT,  
CAUDILL, HERBERT,  
CAUDILL, MYRTIE,  
CAUDILL, LESLIE,  
COOPER, H. G.,  
COOPER, NELLIE,

Morehead.  
Elliottsville.  
Morehead.  
Morehead.  
Morehead.  
Morehead.  
Morehead.  
Morehead.  
Torrent.  
Rockville.  
Morehead.  
Morehead.  
Brady.  
Brady.  
Morehead.  
Morehead.  
Morehead.  
Morehead.  
Morehead.  
Morehead.  
Morehead.  
Morehead.  
Titusville, Pa.  
Rodbourne.  
Godsey.  
Morehead.  
Morehead.  
Lexington.  
Morehead.  
Morehead.  
Morehead.  
Morehead.  
Morehead.  
Morehead.  
Morehead.  
Hilda.  
Hilda.

SCHOOL BUILDING





## Historical.

其

THE MOREHEAD NORMAL SCHOOL was founded in 1887, with Mrs. Phebe E. Button and F. C. Button as teachers, and with one pupil in attendance the first day. Each succeeding year has brought to the school a large measure of success. The liberality of Gen. Wm. T. Withers, of Lexington, Ky., made the school possible; the generosity of Hon. T. F. Hargis, of Louisville, Ky., provided for the first school-house, and the grounds for all the buildings; a gift from Robert Hodson and wife, of Oquakwa, Ill., became the basis of a fund for the erection of a boarding hall. For thirteen years it had been supported by the Kentucky Christian Missionary Convention. On July 31, 1900, it passed under the control of the Christian Woman's Board of Missions. Under the new management the buildings have been repaired and enlarged, the number of teachers has been increased, the courses of study have been strengthened, and a new epoch in its history has begun.

### LOCATION.

Morehead, Kentucky, is a growing town of about eleven hundred inhabitants, located on the C. & O. Railroad. It is the county seat of Rowan county, once noted for its lawlessness, but now one of the most law-abiding counties in Eastern Kentucky. The town is easy of access by rail and stage.

HODSON HALL—GIRLS' DORMITORY

