

**MOREHEAD NORMAL SCHOOL.**

**CATALOGUE.**

**1911-1912.**

*While given  
as program, should you*

# Morehead Normal School

---

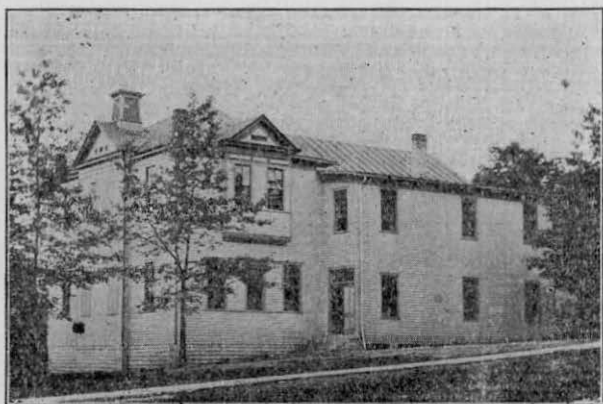
*Under the Direction and Control of the Chris-  
tian Woman's Board of Mission.*

---

CATALOG  
1911-1912

---

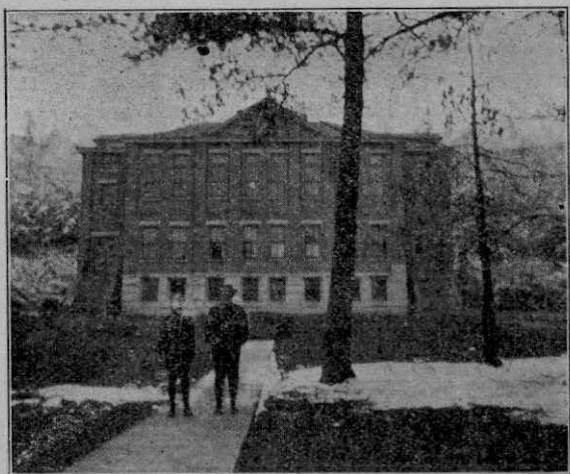
MOREHEAD, KENTUCKY,



HARGIS HALL



HODSON HALL.



BURGESS HALL.

## NATIONAL OFFICERS.

MRS. ANNA R. ATWATER, President.  
MRS. IDA W. HARRISON, Vice President.  
MRS. HELEN DUNGAN, Recording Secretary.  
MRS. M. E. HARLAN, Corresponding Secretary.  
MISS MARY JUDSON, Treasurer.  
MISS MATTIE POUNDS, Supt. Young People's Dept.  
HEADQUARTERS. Missionary Training School, Indianapolis, Indiana.

## STATE OFFICERS.

MRS. JOHN GAY, President.  
MRS. SARAH K. YANCEY, Corresponding Secretary.  
MRS. J. A. STUCKY, Recording Secretary.  
MRS. O. L. BRADLEY, Treasurer.  
MRS. MARY S. WALDEN, Supt. Young Peoples, Work.

## LOCAL ADVISORY COMMITTEE.

HIRAM BRADLEY, Chairman.  
J. M. CAREY. A. W. YOUNG.  
S. M. BRADLEY. D. G. COMBS.  
W. H. DANIELS. MRS. CORA W. STEWART.

## **FACULTY. HIGH SCHOOL.**

FRANK C. BUTTON, A. M. Principal,  
Sacred History and Latin.

J. A. ROBISON, B. S.,  
Mathematics and Natural Sciences.

## **NORMAL.**

D. M. HOLBROOK, B. S.  
DR. G. C. NICKELL, M. D.

## **GRADES.**

MRS. E. M. HOPKINS,  
Primary.

MISS ETTA SHAFER,  
Fourth and Fifth.

MISS ELLA ALLISON,  
Sixth and Seventh.

MRS. CORA CONNER,  
Eighth.

## **MUSIC.**

MISS ANNIE TIBBOTT,

## **SEWING.**

MRS. EVA J. ROBISON.

## **MATRON.**

MISS. E. M. JAMESON.

## **TREASURER.**

MRS. F. C. BUTTON.

## **Manager Boarding Hall**

W. P. LAWRENCE.

## **FIELD AGENT.**

R. B. NEAL, Pikeville, Ky.

## CALENDAR.

---

**FIRST TERM**--Begins Monday September 11, 1911.

**ENDS**--Friday, December 22, 1911.

**THANKSGIVING DAY**--Thursday, November 30, 1911.

**SECOND TERM**--Begins, Tuesday January 2, 1912.

**WASHINGTON'S BIRTHDAY**--February 22, 1912.

**BACCALAUREATE SERMON**--May 12, 1912.

**COMMENCEMENT**--Thursday, May 16, 1912.

## HISTORICAL.

The Morehead Normal School was founded in 1887, with Mrs. Phoebe Button and F. C. Button as teachers, and with one pupil in attendance the first day. Each succeeding year has brought to the school a large measure of success. The liberality of Gen. William T. Withers, of Lexington, Ky., made the school possible; the generosity of Hon. T. F. Hargis, of Louisville, Ky., provided for the first school house and the grounds for all the buildings, a gift from Robert Hodson and wife of Oquawka, Ill., being the basis of a fund for the erection of a boarding hall.

For thirteen years it was supported by the Kentucky Christian Missionary Convention. On July 31, 1900, it passed under the control of the Christian Woman's Board of Missions. Under this new and competent management the buildings have been repaired and enlarged, the number of teachers has been increased, the course of study have been strengthened and a new epoch in its history has begun.

### LOCATION.

Morehead, a growing city of 1,200 inhabitants in Eastern Kentucky, is situated on the Lexington Division of the C. & O. Railroad, midway between Lexington and Ashland. Its beautiful and healthful situation makes it a favorable location for the school. During recent years a marked change for the better has come over the community, Lawlessness is a thing of the past, and Morehead because of its order and quiet has become the chosen residence city of many prosperous and cultured people.

### GROUNDS.

There are one hundred and ninety acres of land belonging to the school. The grounds have been enlarged recently by the purchase of an adjoining tract of three acres with a cottage of four rooms and a farm containing about



one hundred and twenty acres. An imposing hill, heavily wooded, rises immediately in the rear of the buildings to a height of 300 feet. This hill is included in the school property and is a favorite resort for students and teachers who are given to pedestrainism and hill climbing. The grounds are within easy reach of the depot and post office, and are at the same time removed from the noise of the main streets.

#### **BUILDINGS.**

Hargis Hall contains five large recitation rooms and library. These rooms are well lighted and supplied with modern school desks. This building has been named in honor of the late Chief Justice, Thomas F. Hargis.

Withers Hall, the new dormitory for young men is a beautiful frame building containing twenty rooms, with furnance heat, bath rooms, basement, etc. The rooms in this building have a most pleasing outlook and make admirable quarters for young men.

Hodson Hall, the young ladies' dormitory, is a three story frame building containing about twenty six apartments. Every room is well furnished. The girls are in charge of a competent matron.

Burgess Hall is a modern building of brick and stone. The basement is used for industerial purposes. On the first floor are rooms for young men and the professor in charge. The chapel room with a seating capacity of 500 occupies the second floor. These buildings are connected by broad stone walks. They are well adapted for the purpose they serve.

#### **AIM.**

The founders and sustainers of this school are men and women who have supremest belief and confidence in God and in His word. Their idea of education is more than intellectual development. Here in the mountains of Eastern Kentucky are scores of bright young men and women

who have never yet discovered the talents they possess and who could be brought to become efficient servants in the world's work. The purpose of this school is to reach these young people with the influence of a thorough Christian education. In a positive Christian environment, it seeks to train young men and women to distinctive Christian service at home and in foreign fields.

### **METHODS**

Text books are used, but the student's attention is directed mainly to the study itself. All work is made fresh and interesting. Daily recitations are required of each student who thus comes in close contact with the teachers. Lectures are given by the teachers from time to time. Special instruction is given in Reading, Music, Parliamentary Law, Physiology, Physical Culture and Bible Study. The work of each student is discussed in the monthly Faculty meeting and methods of helping each one advance in the work are considered. Every legitimate means is employed to keep the interest of the student aroused.

## **DEPARTMENTS**

### **Academic.**

#### **CLASSICAL COURSE**

The classical course is arranged for those who wish to prepare for college. Our graduates are admitted without examination into Transylvania University and State University.

#### **ENGLISH COURSE**

The English course in the Academic department is intended to meet the wants of those who are unable to undertake a long course of study. It is practically the same as

the classical course with the exception of the four years of Latin.

### TEACHERS' COURSE

The Teachers' Course is arranged with special reference to the wants of common school teachers. Prof. D. M. Holbrook has this work in charge. It furnishes a thorough preparation for teaching common branches.

## Biblical.

### BIBLICAL DEPARTMENT

It is now generally conceded that the study of the Bible should be a part of the curriculum of every school. A more prominent place will be given to this important part of a liberal education. Opportunities will be given to every student to become acquainted with the great facts of Bible history.

Four courses are offered:

- I. Sacred History in both Testaments.
- II. Apostolic History and Doctrine.
- III. Expository and Homiletic work.
- IV. Sunday School pedagogy and organization.

The class in course IV will recite 30 minutes daily for one term; the other class work will occupy one hour daily for one year in each course. Course I is required of all the graduates. The Classical course as given elsewhere plus the four courses here outlined will be the Classical-Ministerial course, while the regular English course and the above four courses will be the English-Ministerial course.

## Normal.

The training of teachers has always been a special feature of this institution. Some of the most successful teachers in the Eastern Section of the State have secured their training in this department, and its reputation for thor-

---

oughness has become so well established that there is among School Boards a demand for teachers trained in the Normal Department of this school. Teachers can attend school here at less cost than in almost any institution where like advantages are offered. In fact the expense is very little more, if any, than living expenses would be in the student's home. Teachers may secure either County or State Certificate courses, and special attention will be given both to preparing them for examination and training them in the art of teaching. Throughout all the counties of North-east Kentucky this school has a large proportion of the public school teachers—one county alone having fifty-four teachers who secured the larger part of their instruction in this institution. What the school has done for public school teachers in the past in some measure indicates what may be expected of it in the future. From year to year our aim and endeavor is to present to students better and larger advantages.

## MANUAL TRAINING.

### WOOD WORKING DEPARTMENT

We announce a course in wood-working for boys who would like to find out whether they are "hand-minded:" and if not especially so, would like to train the hand to do something anyway.

The training of the hand is no new thing. Nothing can so help the mind to develop as some hand craft, which causes the mind to be strengthened thereby. No better craft than working in wood has ever been devised. The placing of wood working as one of the subjects taught in every manual training school, leads us to think this statement is true. The mind and hand should be trained jointly. These facts have been known for a long time, but not until recently have they been correlated.

**BENCH WORK EQUIPMENT**—We have an equipment of saws, planes, try-squares, gauges, screw-drivers, oil and oil stones, chisels, sand paper etc. Our benches are equipped with rapid acting vises, bench stops, etc.

For these tools and benches the pupil is held responsible and is taught to protect the same and keep tools in good working condition.

**INSTRUCTION**:—Instructions suitable to both young and old will be given according to the demand, but to give full outline of the work here would require more space than we are allotted. For further particulars write J. A. Robison.

No extra charge is made for this instruction, but all who take manual training must pay, \$1.00 which is to cover expense of material used in said department. Each student is expected to make some complete object shown either from a blue-print or from his own draft. These individual pieces become the property of the student, at close of term,

provided he furnishes the material required to construct them.

#### SEWING—MRS. J. A. ROBISON.

Modern education aims to develop character and efficiency. The education of three or four generations ago, now termed "classical" had for its ultimate purpose training for the clergy or other learned professions, and centered its efforts on the development of character, moral training, together with training the intellect memory.

The training for practical efficiency was given by daily life. Character should always come first in education, but of the three factors which influence the formation of character—home school and church—the KIND of HOME has, undoubtedly, by far the greatest influence.

The efficient person is one capable of self-support. "A productive citizen" not "A social debtor."

In order for efficiency the individual must have training for his particular work in the world; best through schooling, supplemented by the school of experience.

The introduction of manual training as a necessary part of education has raised sewing to an art of great importance.

Outside of the practical advantage of being able to use the needle, the mental training through hand and eye has been proved to have a permanent effect on the character.

The training of the hand makes it dexterous in other employment. Habit of thrift, cleanliness, patience and accuracy are inculcated, economy taught, and the inventive faculty developed.

A thorough course in the use of the needle is given. The practice begins with the simple forms of work and advances gradually to the more complicated pieces, such as cutting fitting and dress making.

Two recitation periods are given each week.

## MUSIC.

Private lessons are given in Vocal Music and on the Piano and Organ.

Three pianos are in constant use in this department.

A Course in Piano Teaching is offered; and students completing this course will be awarded diplomas.

Any one desiring further information on the work of this department please write to the Teacher of Music.

Each year a Chorus is organized, to which students of the High School Normal, and upper Grammar grades are eligible. This Chorus leads the music for the Chapel service.

Quartets and sight reading classes may be organized each term. Each student above the Fourth Grade is required to supply himself or herself with the text book in music.

### EXPENSES

#### MUSIC—Instrumental (Organ-Piano)

Fall Term, 28 Lessons.....	\$9 80
Winter and Spring Term, 36 Lessons.....	12.60

#### MUSIC—Vocal:

Fall Term, 28 Lessons .....	9 80
Winter and Spring Term, 36 lessons.....	12.60

Special arrangements may be made for private or class work for less than an entire term.

## BOARDING.

W. P. Lawrence has charge of the Boarding Hall, which is in the Girl's Dormitory. A splendid bill of fare is provided each day and the small amount of \$2.00 pays table board, room, fuel and lights a week. No better board can be found anywhere for this amount.



## HIGH SCHOOL COURSE

### FIRST YEAR

Latin; English; Algebra; History.

### SECOND YEAR

Latin; English; Algebra (First half year) Geometry  
(second half.)

Physical Geography .. .. Botany.

### THIRD YEAR

Latin; English; Physics; Geometry; History.

### FOURTH YEAR

Latin; English; Arithmetic; U. S. History and Civics.

## Outline of Courses of Study.

### I, Outline of Latin Course.

#### FIRST YEAR

A First Book of Latin, completed.

Especial attention must be given to 1, Accurate pronunciation. 2, Inflections. 3, Vocabulary. 4, Preserving the Latin order in translating. 5, Elementary principals of Syntax. 6, Securing the best English expression for the translation.

#### SECOND YEAR

Latin Grammar.

Caesar's Gallic Wars, Books I-IV.

Latin Composition.

#### THIRD YEAR

Latin Grammar.

Cicero's Orations against Catiline, I-IV.

Prose Composition.

#### FOURTH YEAR

Vergil's Aeneid.

Prose Composition.

### II, OUTLINE OF ENGLISH COURSE.

Follow the college entrance requirements from year to year



III, OUTLINE OF COURSE IN MATHEMATICS.

FIRST YEAR.

Algebra—to Quadratics.

SECOND YEAR

Algebra—From Quadratics to end of book.

Geometry—Plane, Three Books.

THIRD YEAR

Geometry—Plane and Solid, completed.

FOURTH YEAR

Arithmetic—Higher.

IV, OUTLINE OF COURSE IN SCIENCE.

SECOND YEAR

Physical Geography,—Elementary Physical Geography.

Botany,—Elements of Botany, completed. Herbarium with fifteen flowers analyzed.

THIRD YEAR

Physics—High School Physics, completed. One half of this work to be laboratory work, under direct supervision of the teacher.

NOTE--We are prepared to give one thousand experiments with the Crowell Apparatus.

V, OUTLINE OF COURSE IN HISTORY.

FIRST YEAR—History of England.

SECOND YEAR—(See Second Year Course.)

THIRD YEAR—History General.

FOURTH YEAR

American History—First half year.

Civics—Second half year.

*Course of Study by Grades.*

FIRST GRADE.

TEXT BOOKS.

Practical Primer. McGuffey's First Reader.

APPARATUS:

Pencil, Tablet, Rule.

READING: Supplementary Reading. Cyr's Dramatic

First Reader. Brook's Reading by Grades—1st. year.

Spelling.

Writing.

Language.

Number Work.

Oral Instruction in Geography.

Nature Study. (Nature Study and Life, pages 478—479.)

SECOND GRADE.

TEXT BOOKS.

McGuffey's Second Reader.

Writing Book, No. 1.

APPARATUS:

Pencil, rule, tablet, practice paper.

READING:—New McGuffey's Second Reader, completed.

Supplementary Reading. Cyr's or Brooks, Book II.

Spelling.

Writing.

Language.

Number work.

Oral Instruction in Geography.

Nature Study, pages 480—481.

THIRD GRADE.

TEXT BOOKS:

McGuffey's Third Reader.

Modern Pronouncing Speller.

Writing Book, No. 2.

APPARATUS:

Pencil, rule, practice paper.

READING:—New McGuffey's Third Reader, completed.

Supplementary Reading. Cyr's or Brook's, Book III.

Spelling.

Writing.

Arithmetic.

Ray's Elementary Arithmetic to page 64.

Oral Instruction in Geography.

Nature Study. pages 482—483.

#### FOURTH GRADE

##### TEXT BOOKS:

McGuffey's Fourth Reader.

Modern Pronouncing Speller.

Writing Book No. 3.

Ray's Elementary Arithmetic.

Steps in English.

Natural Primary Geography.

##### APPARATUS:

Pencil, pen, ink, practice paper.

READING:— McGuffey's Fourth Reader to page 164.

Supplementary reading. Cyr's or Brock's, IV.

Spelling.

Text Books in the hands of students.

Writing.

Language.

Arithmetic:

Review Third Grade Work and from page 64 to page 103  
Geography

Teach pupils to use text intelligently and independently.

Oral Lesson:

Nature Study, follow outline for this grade on page 484-485

#### FIFTH GRADE.

##### TEXT BOOKS.

McGuffey's Fourth Reader.

Modern Pronouncing Speller.

Writing Book No. 4.

Ray's Elementary Arithmetic.

Steps in English.

Natural Primary Geography.

Primary History U. S.

APPARATUS: Pencil, Rule, pen, ink, practice paper.

Reading: New McGuffey's Fourth Reader, completed and review book. Supplementary Reading: Cyr's or Brook's grade V.

Spelling.

Writing.

Language. Completing Part II

Arithmetic.

Elementary to page 173.

Geography.

Review Fourth year and complete Primary Geography.

Oral Work.

Nature Study—Outlines on pages 486-487.

#### SIXTH GRADE.

##### TEXT BOOKS.

McGuffey's Fifth Reader.

Modern Pronouncing Speller.

Writing Book No. 5.

Ray's Practical Arithmetic.

Steps in English.

Natural Complete Geography.

Kinkead's History of Kentucky.

##### APPARATUS.

Pencil, rule, pen, ink, practice paper.

Reading.

New McGuffey's Fifth Reader, to page 210.

Supplementary Reading.

Cyr's or Brook's, books VI.

Spelling.

Writing.

Book V, and use practice paper.

Language.

Steps in English part III. completed and reviewed.

Arithmetic.

Ray's Modern Practical Arithmetic, to page 165.

Geography.

Natural Complete Geography.

American History.

Leading facts of Kinkead's History of Ky. 1st Term.

Eclectic Primary History.

Physiology.

Willis' Essentials of Health.

#### SEVENTH GRADE.

##### TEXT BOOKS.

McGuffey's Fifth Reader.

Modern Pronouncing Speller.

Writing Book No. 6.

Ray's Practical Arithmetic.

Harvey's New English Grammar.

Natural Complete Geography.

Primary History and Eclectic Advanced.

##### APPARATUS.

Pencil, rule, pen, ink, practice paper.

Reading.

Fifth Reader completed.

Supplemental Reading.

Cyr's or Brook's Book, VII.

Spelling.

Writing. Book No. 6.

Language.

Grammar—Harvey's New English Grammar to part IV.  
Arithmetic.

Ray's Modern Practical, from page 165-267.

(Supplementary—Dubb's.)

Geography.

Natural Complete Geography, from Countries North of  
U. S. completed.

American History.

Eclectic Primary, completed first term.

Eclectic Advanced, from beginning to Administrations.

OUTLINE FOR EIGHTH GRADE.

Arithmetic:

FIRST TERM.

Ray's Practical Arithmetic—Review Percentage, Discount, Interest, Proportion, to Mensuration.

SECOND TERM.

Complete the Book & General Review.  
(Ray's Intellectual Arithmetic, once a week.)  
(Supplemental—Dubb's Problems.)

History.

FIRST TERM.

H. S. History to Monroe's Administration.

SECOND TERM.

Complete the book and Review.  
(Supplemental, Current Events.)  
English:—

Harvey's Advanced Grammar.—First Term.  
Review Etymology as far as Syntax.

SECOND TERM

Syntax completing the Book.  
(Gray's Elegy, memorized, diagrammed, analyzed. Composition writing each week. Writing in English second term)  
Geography.

FIRST TERM.

Review and complete entire text.

SECOND TERM

Study local State Geography.

Civil Government:—Completed First Term.

Physiology:—Completed Second Term.

Literature:—Evangeline, Miles Standish, Hiawatha, The Great Stone Face, Snow Bound, etc.

Spelling:—Words from texts studied. definition and correct use in sentences. Application in Composition and letter writing.

## **Directions For New Students.**

### **ENTRANCE ON CERTIFICATE**

In order to have their classification arranged beforehand students from recognized academies and high schools should send certificates showing what studies they have pursued and for what length of time, what text books they have used, with the amount of work accomplished, and the ranks of grade attained. Satisfactory certificates, if sent before entrance, will relieve them from examinations except in reference to their ability to write correct English. If, after trial, they fail to maintain themselves in the classes to which they were assigned, they will be placed where they can work to best advantage.

### **ARRIVAL**

On arriving in Morehead, young women should go to Hodson Hall and young men to Withers Hall. Students are admitted at any time, but they gain much in every way by arriving on the opening day of the term.

### **REGULATIONS**

The Regulations of the Institution are few and simple, appealing to the self-respect and personal responsibility of the students. Students are not permitted to use intoxicating liquors or tobacco or to visit places of amusement outside of the grounds. Secret societies are not allowed in connection with the school. Students that need to be absent from class, chapel, or any other required exercise, must get an excuse from the proper officer in advance. The necessary labor connected with the school at boarding hall dormitories, school buildings, etc. is done by students. So far as possible this is assigned to those desiring to earn their way. All students must attend Chapel daily and Sunday school and Church services on Sunday morning, unless excused by his or her advising officer. The student may consult his advising officer on any matter as he would a parent at home, and receive from him friendly



council and necessary permissions and excuses.

The advising officer for all young women is the matron. The advising officer for the young men is the manager of Withers Hall. Students who do not make their home in either of the dormitories, must at the close of each session, leave the grounds immediately. Those who do not desire the regulated life thus provided for are advised to go elsewhere. We are not prepared to act as guardian of the idle, listless, or lawless.

#### **INCIDENTAL FEE**

An incidental fee of \$1.50 will be charged to all dormitory students. This fee is to be used in repairing damages done to buildings, rooms, or furniture. Said fee to be returned to student in case no damages occur for which he is directly or indirectly responsible.

### **General Information.**

#### **ATTENDANCE**

Students must enter on the first day if possible, and attend regularly until the close of the Term. This is essential to most successful work. A single recitation missed means a lower grade, while in some cases it means failure to pass at all.

#### **REPORTS.**

At close of each month a statement of each students progress is sent to the Parent or Guardian. The grades are estimated upon a per cent scale whereon 100 denotes perfect merit and 70 the lowest mark which entitles a student to regular standing.

#### **LIBRARY.**

The school Library is located in Burgess Hall and contains books of reference and reading which students may use at any time they may desire. We plan to have a reading room which shall be open at some time each day for the use of students.



### **SOCIETIES**

There are two Literary Societies. Crescent and Philothean, conducted by the students of the school. Programs are given weekly, and consist of parliamentary drill, essays, debates, orations, and whatever conduces to confidence in public speaking.

A Young Men's Christian Association and A Young Woman's Missiary Circle are also active agencies for good to the students.

### **GOVERNMENT**

For the next year the Government, to some extent, will be thru the Honor Council. This Council will be chosen from the student body and with the approval of the Faculty, will be empowered to act in cases where regulations of the school have been violated. Firmness tempered with kindness, we believe, is the rule that works best.

### **RELIGIOUS LIFE.**

The religious life in the Morehead Normal is as nearly as possible, like that of a refined Christian Home. Each recitation day devotional exercises are held in the Chapel. A reverent observance of Sunday is desired. No calls or visits are permitted on that day. All students are required to attend Sunday School and the Sunday Morning Church Service.

### **SOCIAL LIFE.**

The Social Life is well looked after. Receptions are occasionally held at which students may meet approved guests, cultivate ease of manner and overcome diffidence. Once each month and at such other times as the Faculty may decide, the young men and women are allowed "Social Privileges."

### **HEALTH.**

The preservation of the health is most essential. Sanitary precautions are used and care is taken to prevent sickness. All students who are ill receive the best care possible. A doctor is called and a nurse looks after the patient in the Hospital Rooms to which they are removed.

**CARE OF ROOMS.**

The students are required to care for their own rooms. Excellence in house-keeping is encouraged. The boys as well as the girls, clean their own rooms. Each day beds must be made, floors swept, slop emptied etc. Once each week rooms must be mopped and everything in the rooms thoroughly cleaned; the wood work and windows to be cleaned as the director in charge may deem necessary.

**VISITING.**

Visiting home within the term is strongly discouraged. When parents desire their children to come home they must write their request to the Principal of the school. Parents or Guardians may visit the school at any time. Callers are asked to come on Friday afternoons or Saturdays.

**CORRESPONDENCE.**

All mail to or from the students must pass thro the office of the school. A young lady student may have four or five correspondents outside of her immediate family, if certified to in writing by parents or guardian. Too frequent letters from any one person will be forwarded to parents. No correspondence with persons in Morehead will be permitted.

**STUDY HALL.**

The main object in attending school is to learn. Without study not much learning is acquired, therefore a study period is held in Burgess Hall every recitation day from 7 p.m. till 9:30. A teacher is in charge to direct study.

**DRESS AND UNIFORM.**

Simplicity in dress is strongly urged, it saves time, energy, money and thought. To overcome difficulties a Uniform has been decided upon for the next year. This uniform to be worn when off the Campus, on the street, at church or on the way to and from home. This applies to all young ladies in the Dormitories. The uniform shall consist of a black suit, coat and skirt, either a black or white waist and a cap with school monogram on it. The

suit may be of any suitable black material, and will cost no more than any other suit. The cap may be had for \$1.50.

All clothing for school wear should be neat and plain and marked with owners name. Wearing of jewelery is especially discouraged, as it is out of harmony with school life.

The BOYS of the Dormitories are required to wear a distinguishing mark in the form of a gray cap with the school initials worked in gold on a piece of black broadcloth which is to be sewed on the cap.

#### HOME LIFE.

It is the aim of the school to care for the young people entrusted to its care as nearly as possible as would be done in their own homes. Their manners, morals, house-keeping, mending and deportment on all occasions are looked after. Their welfare and happiness is the chief aim of the matron or Director in charge.

#### LAUNDRY.

The young women may do their laundry if they so desire. The basement is fitted up for this with all necessary articles. Those who do their washing there must furnish their own soap, starch etc.

#### TABLE BOARD.

No where can better board be had than in the Boarding Department at Hodson Hall. For \$2, room, fuel, lights and board are furnished. No deduction will be made for absence except for a week at a time. It is desired that the board be paid a month in advance.

#### NECESSARY EQUIPMENT.

Each student must come provided with two sheets, two pilow cases one pair of blankets or one comforter, one bed spread, a supply of towels and napkins, a laundry bag, an umbrella, overshoes, also a Bible and Academic Dictionary.

#### GRADUATION

A student may obtain a Diploma from the Morehead

Normal School upon the following conditions: That he or she shall have completed satisfactorily the course of study leading to the Diploma; that a graduation fee of \$1.50 shall have been paid and that he or she shall have observed all the rules and regulations of the Institution.

#### SESSIONS.

The school year consists of two Sessions of 17 weeks each. The first beginning the 2nd. Monday in September and closing Friday December 22, 1911. Second Session beginning January 2, 1912 closes May 19, 1912.

#### MEDICAL FUND

Each student in the dormitories is expected to pay one dollar, which shall entitle him to medical attention at any time within the year. It will provide for doctor, nurse and medicine, except in cases of prolonged illness, in which case, an extra fee shall be charged.

## To Students.

1 TO GIRLS:—Except upon permission granted for good reason, no girls shall leave the Campus unless accompanied by a Chaperon.

2 No students, shall except for special reasons, spend the night in the town away from school.

3 Absolute promptness to all DUTIES is required. A student must be punctual at every recitation and meal unless excused for illness.

4 Borrowing or lending is prohibited, being bad practice and bad taste.

5 A student while on his way to or from school, is under the regulations of the school.

6 Any student who is a party to a secret correspondence is liable to be expelled.

7 Any student whose conduct and influence is deemed detrimental to the school may be expelled.

8 No student shall open an account at any store in town unless special arrangements has been made between parents and merchants. The school will be in no way responsible for any accounts thus made.

9 It is desired that all Students from a distance, live in the Dormitories.

10 On Fridays after school or on Saturday mornings the young ladies are permitted to do any shopping down town. They will be accompanied by a Chaperon.

#### TO FRIENDS.

Friends of education can be of great assistance to us by sending to us the names of young men and young women who are planning to go to school. If you know of any such people, send in their names and addresses and we will send them catalogues and other information about the school.

A cordial welcome awaits all students. Committees of the old students will meet trains and show newcomers to school grounds. Everything possible will be done for the student's pleasure and profit. For further information address the Principal of the Morehead Normal School, Morehead, Ky.



**HIGH SCHOOL DEPARTMENT.**

Allegood, Heber,	Washington, N. C.
Button, Frank,	Morehead, Ky.
Bradley, Arthur,	Morehead, ,,
Blair, Hettie,	Morehead, ,,
Cook, Fred C.	Glenallen, W. Va.
Downs, Reed,	Oldtown, Ky.
England, Lenna,	Pikeville, ,,
Evans, Roy,	Morehead, ,,
Granger, Gordon,	Richmond, ,,
Green, Lindsay,	San Angelo, Tex.
Hogge, Thomas,	Elliottsville, Ky.
Holbrooks, Roy,	Morehead, ,,
Hylton, Sylvan,	Glenallen, W. Va.
Henderson, Cloris,	Barnesville, Ohio.
Johnson, Thomas,	Morehead, Ky.
Littleton, Michael A.,	Carter, ,,
Martt, Ezra,	Miner, ,,
Miller, Edith,	Morehead, ,,
McGlosson, Bethyl,	,, ,,
McGlone, Estella,	Carter, ,,
Matherly, D. H.,	Log Lick, ,,
Nickell Walter.	Morehead, ,,
Rainey, Ida,	Hedges; ,,
Shepherd, Bertha,	Matewan, W. Va.
Spaulding, Gladys,	Safford, Arizona
Salor, Frona,	Louisa, Ky.
Vancver, Roscoe,	Pikeville, ,,
Wheeler, Myrtle,	Backbone, ,,

## NORMAL: ROLL.

Allen, Glenna,	Morehead, Ky.
Allen, Daisy,	„ „
Alley, Frank,	„ „
Adkins, Ada,	Clay, W. Va.
Bashford, Farmer,	Havana, Ky.
Baker, Clarena,	Hoods, „
Baily, Cscar,	Martha, „
Bailey, May,	Morehead, „
Boyd, Prentice,	„ „
Brown, Ethyl,	Wagner, „
Burke, Emmanuel,	Myra, „
Byrd, Ida,	Level, „
Bradley, T. A.,	Hilda, „
Crosthwait, Claude,	Cogwell, „
Caudill, John,	Morehead, „
Carter, Charles,	Rodburn, „
Carter, Anna,	„ „
Cornett, E. C.	Waltz, „
Catron, Elvira,	Winkler, „
Cooper, Maude,	Morehead, „
Caudill, Pruda,	„ „
Cavins, Leonard,	„ „
Combs, Louisa,	Clearfield „
Dawson, Sallie,	Grange, City, „
Early, Dora,	Rodburn, „
Ellington, Audrey,	Bangor, „
Gillespie, Clifton,	Yale, „
Goodman, James,	Dew Drop, „
Goodman, Daisy,	„ „



---

Gray, Eliza,	Bruin, Ky.
Greer, Calvin,	Myra, ,,
Hamilton, Kelly,	Harrison, ,,
Hamilton, Nancy,	,, ,,
Ham, Samuel,	Upper Tygart. ,,
Harris, Frank	Wurtland, ,,
Hatfield, Marguerite	Edgerton, ,,
Hall, Leetah	Plummers Landing, ,,
Hillman, Ethel	Glenwood ,,
Hurley, Ella Mae	Morehead, ,,
Hall, Alpha	Morehead, ,,
Johnson, Anna	,, ,,
Johnson, Frank	Hilda, ,,
Kiser, Ollie	Grayson ,,
Knapp, Lena	Plummers Landing ,,
Lambert, Jas A.	Crix, ,,
Lyttleton, J H.	Morehead ,,
Logan, Sadie	,, ,,
Logan, Piercie	,, ,,
Lyons, Amanda	,, ,,
Littleton, Joe	,, ,,
Littleton, J. H.	,, ,,
Mark, Flora	Stark ,,
Mabry, Sam	Winkler, ,,
Mabry, Major	Gimlet, ,,
Mabry, Willie	,, ,,
Mabry, Maggie	Crix, ,,
Mabry, A. J.	Winkler, ,,
Maze, Matt	Farmers ,,
Maddix, F. R.	Saulsbury, ,,



---

Maddix, Edward	Aden, ,,Ky
McCarty, Nona	Salt Lick, ,,
McDavid, Martha	Rosedale, ,,
McBrayer, C. W.	Ringo's Mills ,,
McGreger, Hiner	Plnmmsers, Landing ,,
Nickell, Amy	Morehead, ,,
Patton, Mayme	Soldier, ,,
Parsons, W. A.	Everman, ,,
Parker, Ezra	Elliottsville ,,
Pelfrey, I. E.	Elliottsville, ,,
Proctor, Herbert	Morehead, ,,
Reeves, Donna	Cogswell, ,,
Richards, Lottie	Soldier, ,,
Richardson, Gladys	Jeffersonsville, ,,
Richardson, Earl	Jeffersonsville, ,,
Richardson, Mergie	Jeffersonsville, ,,
Rice, Carey	Morehead, ,,
Robinson, Pearl	Pikeville, ,,
Royse, Fred	Ringos Mills, ,,
Royse, Nell	Ringos Mills, ,,
Ross, Dale	Olive Hill, ,,
Shumate, Lizzie	Morehead, ,,
Stambough, Verner,	Siltha, ,,
Spousel, Jailah,	Hope, ,,
Scaggs, J. P.	Ferryville, ,,
Scaggs, H. R.	,, ,,
Scaggs, Luther	Morehead, ,,
Smith, Edison	,, ,,
Smith, Hannah	,, ,,
Stamper, David	Wyatt ,,

Shay, Hettie	Soldier, Ky.
Scaggs, Mahala	Morehead, ,,
Tyree, Wayne	Morehead, ,,
Toliver, Lenora	,, ,,
Tabor, D. T.	,, ,,
Thompson, Gladys	Stark, ,,
Turner, Claude	Elliottsville, ,,
Wilcox, Eva	Rosedale, ,,
Wilson, Myrtle	Morehead, ,,
Williams, Nannie Lee	Farmers, ,,
Walter, Della	Harris, ,,
Walter, Essie	Harris, ,,
Webb, Maude	Oldtown, ,,
Virgin, Lydia,	
Vincil, Mattie.	

## EIGHTH GRADE.

Abbott, Olive	Morehead, Ky.
Baily, Pearl	Freestone ,,
B adley, Kirby	Morehead ,,
Clayton, Alma	,, ,,
Conway, Ethel	,, ,,
Day, Olive	,, ,,
Dice, Ruth	,, ,,
DeBord, Lillie	McGlone ,,
Fraley, Bessie	Morehead ,,
Fraley, Grace	,, ,,
Farrold, Reba	,, ,,
Farrold, Ruth	,, ,,
Foster, Della	,, ,,

---

Gover, Mabel	„ „
Goodan, Anna	„ „
Gregory, Truby	„ „
Hall, Betheal	Wagner „
Johnson, Hattie	Grange City „
Lewis, Jewel	Morehead „
Logan, Boone	Morehead „
Lyttleton, Geneva	Morehead „
Murray, Grace	Edgarton. W. Va.
Messer, Flora,	Freestone, Ky.
McDavid, Martha	Rosedale, „
Morefield, Etta	Morehead, „
Morefield, Eva	Morehead, „
Morefield, John	Clearfield, „
Overstreet, Milton	Hopewell, „
Oppenheimer, Leo	Lawton, „
P'Simer, Lettie	Morehead, „
Parsons, Rosa	Everman, „
Rice, Elsie	Morehead, „
Ratliffe, Corbett	Omer, „
Raybourn Arthur	Lawton „
Scaggs, Mary,	Morehead „
Scaggs, Pearl,	Morehead „
Scaggs, Hannah	Morehead „
Shumate, Lizzie	Morehead „
Six, Thomas	Wyoming „
Tabor, Myrtle	Morehead „
Thompson, Cordellia	Olympia „
Vansant, Vernon	Morehead, „
Vansant, Ruth	Morehead, „

Vincill, Gus  
Whitt, Vergil

Wyatt Ky  
Gimlet ,,

## SEVENTH GRADE

Adkins, John  
Anglin, Ruth  
Bryant, Clacie  
Blair, Fred  
Button, Ida  
Blair, Ina  
Boyd, Nell  
Caudill, Carrie  
Clayton, Eula  
Cooper, Everett  
Carpenter, Gertrude  
Clarke, Irene  
Cavens, Mary  
Cook, Maude  
Clarke, Naomi  
Carter, Olga  
Cavins, Roy  
Clarke, Vera  
DeHart, Lorena  
DeHart, Eugenia  
Dyer, Sarah  
Evans, Frankie  
Evans, Paul  
Flood, Virgil  
Goldsmith, Clifford  
Goodman, Earl

Farmers, ,,  
Morehead, ,,  
Paragon, ,,  
Craney, ,,  
Morehead, ,,  
" ,,  
" ,,  
" ,,  
" ,,  
" ,,  
Mayfield ,,  
Lexington, ,,  
Morehead, ,,  
Olympia, ,,  
Crosbyton Tex  
Lexington, Ky  
Morehead, ,,  
Hilda, ,,  
Hilda, ,,  
Farmers, ,,  
Ringo's Mills, ,,  
Morehead, ,,  
" ,,  
" ,,  
Dew Drop, ,,

---

Hilton, Canary	Glenellen W. Va.
Hogge, Irene	Morehead Ky
Harris, Neva	" "
Holbrook, Nola	" "
Hogge, Pearl	" "
Johnson, Flora	" "
Johnson Wm.	" "
Kendall, Guy	Upper Tygart Ky
Koerper, Hazel	Paintsville "
Knipp, Jesse	Grahn "
Lyons, Bruce	Farmers "
Lewis, Blaine	Williamson, W. Va.
Lowe, Carl	" "
Lyons, Hester	Morehead, Ky
Lyttleton, Nannie	Lytton, "
Mullins, Della	Pikeville, "
Miller, Earl	Morehead, "
McGlone, Ethel	" "
Martin, Leora	" "
Madix, Letha	Counts X Roads, "
Morefield, Luther	Clearfield, "
Miller, Walter	Morehead, "
Newton, Garner	" "
Nickell, George	" "
Newton, Sadie	" "
Philipps, Anna	" "
P'Simer, Sam	Morehead, "
Reed, Bruce	
Romans, Charlie	Hellier, "
Scaggs, Hansell	Morehead, "

Sword, Ida	Pikeville, ,,
Sturn, Russell	Logan, W. Va.
Scaggs, Samuel	Morehead, Ky
Tippett, Alleen	,, ,,
Townsend Fred	,, ,,
Tyree, Kathleen	,, ,,
Tabor, Noble	Elliottsville, ,,
Thurber, Vernie	Morehead, ,,
Wheeler, Elvie	Backbone, ,,
Wilson, Sarrah	Morehead, ,,
Walsh, William	Wrigley, ,,

### Intermediate Department.

Adams, Celia	Morehead
Adams, Vivian	do
Adams, Delbert	do
Allen, Thelma	do
Allen, Mattie Bell	do
Bertrand, Samantha	Pikeville, Ky.
Bond, Claud	Ashland, Ky.
Browning, Mary	Clearfield, Ky.
Banfield, Paul	Morehead
Caudill, Clay	do
Caudill, Hattie	do
Caudill, Roy	do
Cornett, Breck	do
Craig, Millard	do
Craig, Marie	do
Duncan, Thomas	do
Duncan, Wade	do

---

Dice, Hazel	do
Deal, Raymond	Ashland, Ky
Dunaway, Herbert	Morehead
Fraley, Monnie	do
Foster, Ivel	do
Gregory, Levi	do
Fook, Clarence	do
Hook, Carrie	do
Hogge, Earl	do
Hudgins, Charles	do
Horton, Edna	do
Harmon, Marie	do
Johnson, Hobart	do
Johnson, Melville	do
Johnson, Minnie May	do
Johnson, Bernard	Clearfield, Ky
Johnson, Carl	Hilda, Ky
Kelly, Belva	Ashland, Ky
Kissinger, Ada	Morehead
Layne, Paul	Lawton, Ky
Lyons, Nora	Morehead
Lewis, Addie	do
Lewis, Therman	do
McGlone, Olive	do
Maggard Earl	do
McKinney, Morris	do
Proctor, Estill	do
Poindexter, Fred	Lexington, Ky
Riley, Cathryn	Morehead
Rose, Lena	do

---

Scaggs, Robert	do
Scaggs, Ambrose	do
Shumate, Lenna	do
Smith, Mabel	Yale, Ky.
Trumbo, Manda	Morehead
Trumbo, Celva	do
Trumbo, Frank	do
Trumbo, Thomas	do
Tyree, Olive	do
Townsend, Carrie	do
Utterback, Grace	Paragon, Ky
VanSant, Ruby	Morehead
Walker, Harmon	

### Primary Department.

Abram, Avery	Henderson, Blanche
Allen, John	Hogge, Pauline
Allen, Claude	Hogge, Walter
Banfield, Cleo	Hogge, Carl
Banfield, Loue	Howard, Bertha
Barbour, Billy	Hudgins, Woodward
Botts, Elizabeth	Hudgins, Grace
Bradley, Jessamine	Jennings, Charles
Brown, Je sie	Johnson, Annie
Brown, Roy	Johnson, Agnes
Cassity, Ruth	Johnson, Alice
Cassity, Nell	Jones, Garner
Caudill, Tina	Kentner, Tom
Caudill, Edna	Kissinger, Holly
Caudill, Roscoe	Lewis, Annie
Cavins, Sarah	Lewis, Willie
Christian, Strausie	Lyons, Hope
Clayton, Stella	Maggard, Hildreth
Clayton George	Mays, Gertrude



Cooper, Homer  
Cornett, Willie  
Day, Robert  
Dunaway, Roy  
Duncan, Charles  
Duncan, Lucy  
Ellison, Charles  
Ellison, Joe  
Fanner, Loiunell  
Farrell, Ola  
Farrell, Nellie  
Gearhart, Cameron  
Riley, Mary  
Rose, Lila  
Rose, Mary  
Samon, Virgil  
Scaggs, Oscar  
Scaggs, Marion  
Scaggs, Henry  
Scaggs, Edith  
Toliver, Myrtle  
Toliver, Jewel  
Trumbo, Annie

Moore, Grace  
Moore, Jack  
Morgan, Lorena  
Myers, Arthur  
McGlone, Bruce  
McGlone, Ormond  
McKinney, Osmend  
Nickell, Elizabeth  
Nickell, Beulah  
Powers, Norma  
Proctor, Ethel  
Rice, Bessie  
Trumbo, John  
Trumbo, Elizabeth  
Trumbo, Hansford  
Trumbo, Rollo  
Tussey, Bennet  
Vansant, Lewis  
Vaugh, Tom  
Wilson Allie  
Woolum, Lorine  
Woolum, John  
Young, Taylor

# **RECAPITULATION**

High School	.	.	.	.	27
Normal	.	.	.	.	102
Grade Eight	.	.	.	.	45
Grades Six and Seven	.	.	.	.	67
Grades Four and Five	.	.	.	.	60
Primary	.	.	.	.	84
Music	.	.	.	.	29
					<hr/> 414
Counted Twice	.	.	.	.	29
					<hr/> 385
Total					7
States Represented	.	.	.	.	7
Boarders in Town and Halls					155

## EXPENSES

	Per Month
Primary Course	\$1.00
Intermediate Course	1.50
Academic Course	2.00
Normal Course	2.00
Instrumental Music	3.00
Table Board, per week	2.00
Rooms furnished, heated and lighted free.	

## Alumni

### 1902

VIRGIL GAINS BRYAN	ANNA LEEDS KNAPP
LENA BLAINE CAREY	FLORENCE EVANS
ALICE WHITT	MAUDE TIPPETT
EZRA PROCTOR	

### 1904

RUBY MILDRED HUFFMAN	LOTTIE STEWART
CORRINE CONDETTA SHELLEY	MATTIE LEE NOLIN
OTTIE PRIOR LAWRENCE	AMELIA LOUISE REID
BLANCHE EVANS	GILBERT MYERS
JOSEPH WILSON LYTTLETON	

### 1905

PEARL ALICE BLAIR	HINTON GILBERT GILMORE
IRIS CLAUDE SAUNDERS	

### 1906

WILLIAM JOHNSTON COTTON	CLYDE CARLISLE HUFFMAN
RICHARD SHERMAN HINTON	NELL GERTRUDE MILLER
JEFFIE NESMITH SHARP	JAMES ANDREW SHARP
HENRY TURNER MARTIN	ERNEST HAYES BARBER
OLLIE LYTTLETON	MINNIE LOU HELLMAN
MAUDE JACOBS	

### 1907

RUSH MONROE DESKINS	CECIL CHARLES EVANS
GLENN A DAVIS ALLEN	HATTIE LUCY BUTTON
SIMON PETER MILLER	ETHEL CHERRY HILTON
LELLIE LEE MARTIN	

### 1908

GRACE FLORENCE FRANCES	FREDERICK KELLUM BLAIR
VIVIEN LOUISE MILLER	FERNA ANGLIN
GRACE MAY MORRIS	EVERETT LEE DIX

1909

ALINE ADAIR REID	PHEBE ELIZA BUTTON
VESTA MAY KENDALL	OLLIE BERYL TAYLOR
CORBETT ELLSWORTH PHILLIPS	

1910

MATTENYA ALLEGOOD	GEORGE EARLIE BARBER
ESPIE CLARENCE BARBER	WILBER L. DAVIS
OMER HOUSTON DIX	LYDE M. DOWNS
EDNA L. FOWLER	ETHEL L. FOWLER
ANNA MOUNTS	CHARLES M. GILMORE
AMY L. NICKELL	HERBERT PROCTOR
BERT LEE SPARKS	EMERY E. WHEELER
MYRTLE D. WILSON	JOHN N. WHITE

1911

LINDSAY MILLER GREEN	FRANK WHITFIELD BUTTON
ARTHUR MCKEE BRADLEY	HETTIE MILDRED BLAIR
BETHYL LUCILLE MCGLOSSON	REED M. DOWNS
JAMES ROY EVANS	ESTELLA MCGLONE