

MOREHEAD CHRISTIAN CHURCH
Treasurer's Report
For Year Ended June 30, 1964

Disbursements

World Outreach

Unified Promotion, \$2,640; Composite Capital, \$300;
Christian Church Homes, \$200; Edna Johnson, \$190;
Week of Compassion, \$108; Cane Ridge Project, Christmount
Christian Assembly, Council of Churches (World, National
and State) each \$10. \$ 3,488.00

Worship and Services

Organist's Salary, \$312; Choir Director's Salary,
\$436.40; Flowers, \$38.11; Nursemaid, \$255; Broadcast,
\$42; Misc., \$272.62 1,356.13

Church Administration

Pastor's Salary, \$5,600.04; Church Secretary, \$467;
Church Office, \$462.99; Pension Fund Dues, \$848.40;
Pastor's Social Security, \$152; Pastor's Car Allow.,
\$936; Pastor's Convention Expense, \$200 8,666.43

Education Department

Church School Supplies, \$723.09; Library, \$88; DSF, \$500;
Misc. \$134.62. 1,445.71

Property Department

Utilities and Fuel, \$842.10; Repairs and Maintenance,
\$1,539.82; Insurance, \$608.87; Custodian, \$480;
Capital Expenditures, \$2,403.91. 5,874.70
Total Disbursements \$20,830.97

Offering and Other Income

Bank Balance July 1, 1963 \$ 1,995.34
Pledges and Regular Giving 15,496.20
Loose 1,132.17
Sunday School 699.95
Other (Includes \$1,949.34 from special gifts) 2,441.37
Total Offering and Other Income \$21,765.03

Bank and Fund Balances

Bank Balance June 30, 1964 \$ 934.06

General Fund \$ 634.06
Special Fund 300.00
Insurance Fund -0-

\$ 934.06

Disciple Student Fellowship Bank Balance June 30, 1964 \$ 108.99

ALEX D. CONYERS
Church Treasurer

God's Power Redeems the World

ALL SAINTS. C.M.D.

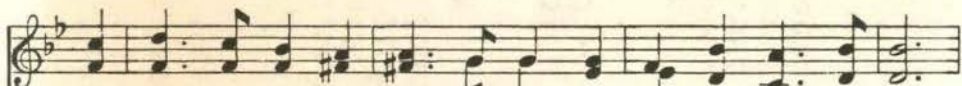
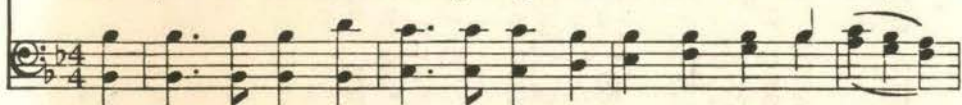
RUSSELL F. HARRISON, 1918-

In moderate time

HENRY S. CUTLER, 1824-1902



1. Our Fa - ther, Thou Al - might - y God, In song we voice our praise,
2. O God, whose great cre - a - tive pow'r A - bounds on ev - 'ry hand,
3. Cre - a - tive God, whose love sus - tains, Whose spir - it can re - deem,
4. In Je - sus Christ, the world's great light, For this his - tor - ic time,



For ev - 'ry gift so free - ly giv'n, En - rich - ing all our days.
Fill men with love, that peace may dwell In each and ev - 'ry land.
E - raise the sin and pride of self; May truth in us be seen.
Bind close in Chris - tian fel - low - ship, In kin - ship all man - kind.



Ful - fill in us Thy deep de - sire, Thy will for all man - kind.
May faith and hope find fer - tile soil For seeds of truth to grow,
Bring to our need - y u - ni - verse Thy wis - dom for this hour,
May all men see on earth this day, The light that bright - ly beams,



Re - move our sin and self - ish - ness; Re - new each heart and mind.
Help men to turn from fu - tilé ways; Thy pur - pose may they know.
Draw all Thy chil - dren close to Thee, That each may gain Thy pow'r.
To point the way; pro - claim to man: God's pow'r the world re - deems. AMEN.

