

IMPORTANT NUMBERS	
Morehead Zip Code	40351
Telephone Area Code	606
Morehead Post Department	784-2122
Telephone	784-4712
Salon Clinic Medical Center	784-4161
Morehead State College (Students)	784-4161
Morehead News (All Branches)	784-4116
Except Society	784-7739
Morehead News - Society Only	784-7739
Rowan County Sheriff	784-5446
POLICE - City 784-7311; State 784-4127	

Vol. 83

MOREHEAD, KENTUCKY, THURSDAY MORNING, MARCH 3, 1966

No. 9

The Morehead News

For Each Copy . . .
On Newsstands
Pay
Cashier . . . 10¢

Morehead Officially Gains Status Of University

Bill Is Almost Sabotaged In Kentucky State Senate

Morehead, Murray, Western and Eastern will attain University status, and name, on July 1 but the academic upgrading came only after some clever and confusing parliamentary procedure Thursday and Friday in the Kentucky Senate at Frankfort.

The "supposedly agreed" bill, which passed the House 83-0, was almost sabotaged Thursday through some pre-arranged "behind-the-scenes" maneuvering, obviously originating from Lexington and Louisville, homes of the state's only two previous universities.

Former Governor Lawrence W. Wetherby, with a strong University of Louisville and University of Kentucky background, pulled the surprise trigger, by speaking, and leading the fight for an amendment to House Bill 238 to establish a senior [four year] college at Paducah.

More "behind corridor and closed door" agreements had evidently been made than proponents recognized, and Wetherby's amendment passed by one vote - 18 to 17.

House Bill 238 was then adopted in routine fashion by 32 to 5. Wetherby, and four other Senators, voted for the amendment, and then against the bill itself. At the Senate Capitol this has two classifications, depending on what version is given - "political chicanery" or "smart, parliamentary maneuvering."

Adoption of the amendment meant that the bill would be returned to the House of Representatives, which almost certainly would not sponsor on the senior college at Paducah because no money had been appropriated, or was available, for this. Further, Kentucky's Council on Public Higher Education has recommended that if the Commonwealth establishes another four year college it be in northern Kentucky, near Corning.

In effect, the amendment all but killed the University of the House voted not to concur, it would have gone into conference, and students of the Kentucky Legislature usually begin this the

graveyard.

Voting for the amendment were Senators: Bernard J. Bonn, Louisville; George G. Brand, Mayfield; Thomas Brizendine, Frankfort; C. Gibson Downing, Lexington; Martin J. Duffy, Louisville; Richard L. Frymire, Madisonville; Tom Garrett, Paducah; Tom Harris, Worthville; Donald L. Johnson, Ft. Thomas; Fairis Johnson, Martin; Shelby C. Kinkead, Lexington; C.W.A. McCann, Louisville; Vernon C. McGinty, Louisville; Scott Miller, Jr., Louisville; Walter B. Reichert, Louisville; John Raymond Turner, Jackson; Wendell VanHoose, Tator Kay; and Lawrence W. Wetherby, Frankfort. Total 18.

Voting against the amendment [on the side of Morehead, Eastern, Western and Murray] were Senators: Owen Billington, Murray; J.D. [Jiggs] Buckman, Shepherdsville; Richard C. Clinch, Louisville; Floyd Hayes Ellis, Rockfield; William Engle, Hazard; Wendell H. Ford, Owensboro; Clay Gay, Hyden; Durham W. Hootar, Pineville; Ed J. Kelly, Flemingsburg; James E. [Jim] Lewis, Sandy Hook; William C. Mann, Burkesville; Pleasant W. Mobley, Manchester; Edward A. Murphy, Richmond; James H. Newberry, Hiseville; Wilson Palmer, Cynthiana; Dr. Foster Spence, Pikeville. Total 17.

Senators Walter "Dee" Huddleston, Elizabethtown, and William L. Sullivan, Henderson, passed on this "key" amendment vote. Senator O.O. Duncan, Whitley City, was absent for the Thursday session and the one that followed the next day.

But, from the time of the adoption of what seemed political observers call the "kiss of death" amendment, it was obvious that telephone calls were being made all over the state and automobiles probably ran all night. Senator Garrett [Paducah] charged the next day that Governor Edward T. Brantlett and the four State College Presidents "operated with authority."

Regardless, when the Senate reconvened at nine o'clock the next morning

[Friday], the stage had been set to never let House Bill 238 return to the House with the amendment.

It took six Senate votes, mixed with speeches, charges and counter-charges, to remove the amendment and pass the bill in its original form.

Here are the six ballots -

✓ Motion by Buckman to remove the "climber" from House Bill 238. This passed 25 to 8.

✓ Motion by Brizendine to reconsider vote by which House Bill 238 was passed. Adopted 23-8.

✓ Motion to reconsider vote on amendment to House Bill 238; passed by 22 to 9. This is the "all important" vote (discussed below) creating Morehead State University; Eastern Kentucky University; Western Kentucky University; and Murray State University.

✓ Motion to table House Bill 238. This was defeated 5-25.

✓ Motion to re-commit [to committee] House Bill 238. This was also defeated 25 to 5.

✓ Motion to pass House Bill 238 [without amendment and same as adopted by the House]. Passed by 29 to 6.

History books will record that the four institutions of higher learning became universities by the 29-6 ballot. Actually, as of the Friday morning session, there were 22 Senators for the bill while the Wetherby-Garrett forces could have mustered 13.

The vote on reconsideration of the previous day's amendment was:

Re: pointed, here are the changes in the Thursday and Friday voting: Bonn changed in favor of the new Universities; Brand, who had voted with Wetherby's forces, passed Friday; Brizendine changed, and helped lead the fight Friday for University status; Duffy changed; Huddleston passed; Fairis Johnson changed; Duncan passed; and the one McCann changed; Spence and Turner absent; VanHoose and Wetherby passed. Actually, the Wetherby-Garrett group recognized that the opposition had [Friday] more than the necessary 20 votes, and some passed, including Wetherby whose name is last on the Senate roll call.

Gov. Brantlett wasted no time after passage of the bill in its original [House] form, and announced he would sign it.

-Continued On Next Page



By His Signature Morehead Became A University

Governor Edward T. Brantlett, seated, shows the signed bill to these men who helped Morehead, Eastern, Western and Murray achieve the name and stature of 'University.' The Governor had just signed House Bill 238 when this picture was made at his office in Frankfort. Note the number of fountain pens, on desk used in signing the important document - four which were presented to representatives. From Morehead who attended the impres-

sive ceremony Saturday morning. From left House Speaker Shelby McCallum; Representative Sherman Arnett, Clearfield; Dr. Adron Boran President of Morehead State University; Senator Ed J. Kelly, Flemingsburg; [Other pictures of the ceremony and a documented feature about what this will mean to Morehead, and area, will appear in the next issue.]

Council Again Seeking A Federal Grant For Water

Designate Mayor To Act If Money Not Available July 1

Morehead moved again Tuesday for a federal grant with the possibility of constructing its own water pumping and purification system, with the raw supply from Licking River, eight miles to the west.

City Council unanimously adopted a resolution to re-submit an application for outright [free] federal funds through the Economic Development Association, a division of the Department of Commerce.

The resolution provided, however, that in the event the grant is not available by July that an attempt be made to re-open negotiations with Morehead State University the present supplier.

Tuesday's Council action followed a meeting in Lexington Friday, County Attorney Thomas R. Burns, Municipal Plan Board Chairman J. Roger Caudill, other representatives of the city and plant board, engineers and officials of the Economic Development Association and the State Department of Health. It was brought out at the gathering that a grant of up to 50 percent is possible from EDA, and perhaps 10 percent additional, making a total of 60 percent since Morehead is in the Appalachia region.

Thus far, a federal water grant for Morehead has been elusive and clouded. After the impending water shortage was announced in November, 1963, an application was submitted to the regional office at Atlanta for federal [grant] money. But no money was available.

The last Congress passed broad, and funded, programs for such grants with elastic classifications for improving the economy, and about \$200 million was allocated to EDA. It is under this appropriation that Council Tuesday submitted its application.

Total cost for the project, according to the engineers, will be around \$1,600,000. A 60 percent grant would provide approximately \$960,000, with the city putting up between \$600,000 and \$100,000, probably through issuance of revenue bonds. Previous reports from fiscal agents indicate that the entire indebtedness of the Utility Plant Board, a subsidiary of Council, would be refinanced for Morehead's portion of the bill if this plan is followed.

Morehead State University has already advertised contracts with bid opening this month, to expand its own facilities to care for an enrollment of 9,000 to 10,000.

-Continued On Next Page

Investigation Is Critical Of Morehead Water

The Kentucky Inspection Bureau, regarded as the sounding board and/or spokesman for the fire insurance companies [underwriters] were openly critical this week of the "water supply situation" in Morehead.

Following an on-the-site survey about two weeks ago, Manager John L. Thompson sent in writing -

"...emphasizing the danger to the city's fire protection . . ."

"Often the elevated [college hill reservoirs] facilities are nearly empty."

"Twenty-four hour operation of the [pumping] plant was necessary several times during 1965 - great difficulty exists during warm months to fill the storage facilities . . . similar, or worse, conditions, will still be summer."

The report noted a deficiency in tests of the fire siren - a Morehead training school in fire-fighting had been held since 1961, and the fire department is in need of a folding ladder.

The complete report, dated Feb. 21, and signed by Manager Thompson reads: "Contain rather obvious deficiencies exist, regarding the source of supply, treatment plant capacity, and distribution system."

"Several years ago we received copies of preliminary plans for expansion of the existing treatment plant to either of two recommended capacities, with the larger recommended capacity being estimated to adequately serve college and municipal needs for approximately 25 years, while the smaller recommended capacity was estimated to be adequate for only 10 years. These preliminary recommendations were made in 1962."

"In 1964 we were advised that serious consideration was being given by the City and County to the construction of a new treatment facility, and we also received preliminary plans for this proposed venture."

"In 1965 we were advised that actual construction of municipally owned treatment facilities was expected to begin during 1965."

"During a recent inspection of the City's fire protection facilities, we were very much surprised to learn the issue of whether to construct a municipal facility or to continue to buy water from the college had not been resolved, nor had much progress been made toward construction of municipal facilities."

"We were advised that the college is proceeding with the 10-year expansion recommended in 1962."

"We wish to emphasize the danger to the City's fire protection and to the existing fire insurance classification brought about by the precarious situation."

-Continued On Next Page

Fines Assessed For . . . Forest Vandalism

Man Killed In Accident

Donald R. Holland, 21 and Stanley Eugene Holland, 24, brothers from Menifee County and William R. Ferrell, 23 of Salt Lick, Kentucky, were fined \$200.00 each and required to pay for signs damaged in the amount of \$260.00 at a hearing before U.S. Commissioner William Hays in Winchester on February 24. The charges were the outgrowth of a spree by the trio on the afternoon of February 15.

According to a statement by District Ranger Robert A. Reynolds in charge of the Morehead District on the afternoon of February 15, Fire Control Officer Joe Mauk received a report that a white car occupied by three men had been seen traveling south along the Midland - Yale road in Bath County damaging and removing signs along side the Primitive Weapons Hunting Area on the national forest. Later the license number, description of car and occupants were obtained.

This information was relayed to Menifee County Sheriff Earl Wells, Bath County Deputy Sheriff Virgil Caudill and Kentucky State Police Trooper Paul Combs. Both forest officers Reynolds and Mauk immediately began an investigation to determine the extent of damage and parties responsible. Later that night Stanley Eugene Holland and William R. Ferrell were picked up by officers and lodged in Menifee County jail on drunkenness charges. The following

-Continued On Next Page

Tournament Starts Tonight At Morehead

Play in the 61st District Basketball Tournament will begin this evening in the Morehead State College Fieldhouse. Tip-off is scheduled for 7 o'clock with the second game to follow 20 minutes after completion of the first game.

Morgan County, a new member of the revamped 61st district, is a top heavy favorite to defeat Breckinridge Training and Bath County in the upper bracket and advance to the 10th Regional Tourney.

-Continued On Next Page

Morehead's Newest Church Is Named 'Faith Presbyterian'

Morehead's newest place of worship has been officially named Faith Presbyterian Church.

Adoption of the name was by ballot of the congregation. Allen Lake is the Address.

Faith Presbyterian Church meets each Sunday morning at 11:30, followed by worship service at 12:30.

The Rev. Robert McGuire, Lexington, is Supply Minister. The organist is Mrs. William Hight.

Rowan County Junior High Champs

Members of the Fieldman Grade School basketball team, along with Principal James Batts, Coach Jack Batts, and cheerleaders display certificates of award presented to them by the Morehead Jaycees.

The Fieldman team was undefeated during the current years play and emerged victorious in the season ending tourney last week. Herb Ramo, Jaycees Sports Chairman, stated that final results of season play will be entered in point totals toward the over-all All-Sports Trophy to be presented by the Jaycees.

-Continued On Next Page

Morehead Man Killed In Accident

Kenneth Glenn Brown, 22, Tolliver Addition, Morehead, was killed and two injured at 11:20 Wednesday night in a two car collision on U.S. 60 about five miles west of Morehead on what is known as the half-way house curve.

The State Police report shows that Brown was sitting in the front seat of a 1966 Ford Tudor, driven by Robert Gee, 30, also of Morehead. Gee was hospitalized at St. Claire Hospital, but his condition is satisfactory. Another passenger in the rear seat, Gordon Lacy, 30, Madison, O., was not injured.

Driver of the other car was Keith Himes, 18, RFD 3, Morehead, who suffered injuries that are not serious. State Police reported that Gee was traveling west and apparently lost control because of ice on the curve, crashing into the oncoming Himes automobile.

The cars hit almost broadside. Howard Everett Evans, 46, Aberdeen, O., was hospitalized at St. Claire when the tractor-trailer he was driving left U.S. 60 about seven miles east of Morehead at 12:30 Thursday morning. State Police said the highway had frozen spots probably causing Evans to lose control. The vehicle overturned.

Worst accident of the new year is

-Continued On Next Page

Two Records! No January Fatalities In February

The 11 February deaths was also a district record for this short month.

The district is composed of the following counties: Bath, Elliott, Fleming, Lewis, Mason, Menifee, Montgomery, Morgan, Powell, Rowan and Wolfe.

Rowan Counties Continue Savings Bond Purchases

Rowan County is one of the 11 counties in the state of Series E and H Savings Bonds. Rowan County during January 1966 had \$926 and the new goal in 1966 is \$1,000.

Rowan County's sales for the month were \$464,954. The new Series-E goal for the month is \$1,000.

-Continued On Next Page

54 Summoned For Jury Services Matched Term

Circuit Clerk Herb Bradley today released the names of 54 Rowan County jurors summoned for grand and petit jury service at the March term of Circuit Court.

The session begins Monday, March 14 at 9 a.m. before Judge John J. Winn. The jurors in the order their names were drawn from the jury wheel are: Frank A. Brooks, Bill Pierce, Frank Netherly, Clarence E. Eppert, Ira Skaggs, Bill Sloan, Russell Jones, Stanley K. Brown, Charles E. Smith, J. Duncan, Roy Eldridge, W. H. Boyd, J. E. Duncan, Millard Mause, Robert R. Williams, Charles Roy, Anderson Lacy, Clarence E. LeFevre, Elbert E. Moore, Dale W. Kidd, James E. Black, Harry Caldwell, Luster Lambert, Chester A. Klier, Mr. Ora Hall, George Pence, J. Williams, Chas. Egan, Warren C. Cooper, Col. J. H. Smith, Lowell Manning, Earl Murray, John Barker, John A. Hamm, T. Clayton Jackson, Charles Glover, Joe Pank, William M. Perkins, J. H. Klegley, Delmore Cooper, David Mabry, Ed Porter, Ted Green, Henry Shuster, Wm. Caudill, William Linton, J. Bell, and Alvin Hutchinson, Arlen Cox, Luster Klegley, Harold Bellman, Herman Brown, W. J. Bailey, J. C. Stewart and E.G. Robertson.

University -

Continued From Preceding Page the next day - Saturday.

All six of the University's presidents in the Commonwealth - Kentucky, Louisiana, Mississippi, Alabama, Georgia, and Florida - members of the Legislature who spearheaded the measure, and educational officials from the state, met at the governor's office at 11 o'clock Saturday morning. All of the Presidents praised the passage of the bill as opening the door to achievement, advancement and maximum contribution of higher education.

The bill changes the membership on the Council of Public Higher Education to nine laymen with the University Presidents as ex officio members. University officials present John C. W. Brown, who embraced the bill with this clause, but the two senators from Lexington - Kincaid and Downing - apparently didn't like the bill, although they are registered for it on final passage, but on the other side with the 'killer' amendment.

Governor Breathitt passed out over 500 pads used in signing the bill Saturday morning.

Legally, Morehead, Eastern, Western and Murray will become "Universities" on July 1. All had stopped ordering stationery, pens, etc. using the name colleges.

All of the status of the three colleges to Universities followed recommendations of a national study group, and a 45-voice vote of the Council on Public Higher Education.

All of the four new Universities have prepared organizational charts and proposals, breaking the institutions into "schools." At Morehead, this calls for four full Vice-Presidents, three level Deans, and five Deans of as well as a number of assistant Deans.

Bowling Green, home of Western, celebrated Saturday night with 600 at a dinner, and further public observance, and the celebration of the anniversary of the founding of the University. Murray and Richmond are also expected to schedule special civic celebrations.

Morehead has had a similar celebration created in 1923. They are: Morehead Normal School, Morehead Normal School and Teachers College, Morehead State College, Morehead College of Education, and now Morehead State University.

Investigation -

Continued From Preceding Page regarding water supply.

"Often the water storage facilities are nearly empty, and it is our understanding that during a major fire last year stored supply was exhausted. Consumption continues to increase while existing treatment and storage facilities become more and more inadequate. The undersize of the system from the voters to the distribution system severely hampered distribution of the already insufficient supply. It is also understood that this undersized main is in poor condition."

"Plant records indicate that 24-hour day operation was necessary several times during 1965, and also indicate great difficulty in exceeding domestic consumption during warm months, in the hills the storage facilities are not. It can only be expected that similar, or worse conditions will exist this summer."

"In view of the seriousness of this matter we should appreciate being advised as soon as possible of the intentions of the City in this matter. We understand that the City is planning regarding water emergency provisions being made for the summer's heavy consumption, as it obviously will be many months before the expansion of existing facilities or construction of new facilities could be completed."

"In reviewing the Mrs. Depen's case, it was noted that regular daily tests of the siren are not being made. Provision should be made for daily testing of the siren. The automatic timing device is desired."

"The Morehead Fire Department has been advised a local training device in modern fire-fighting methods since 1961. Prompt arrangements should be made for holding this training locally."

"It was noted that an additional ladder (a folding room ladder would be satisfactory) were added to the company carried by the older pump. The credit at the ladder company could be received."

"If there are any questions regarding these recommendations, the City of Morehead is at your service to please let us know."

Water Grant -

Continued From Preceding Page

10,000. (The status of the Institution was changed Saturday by the Legislature and Governor's signature from 'college' to 'University'.)

This expansion means that the college will probably have additional water by next February and the crucial dried in this year, probably spring and fall. The Department of Health has lowered Morehead's water rating from "excellent" to "provisional"; and the Kentucky Inspection Bureau this week released a critical report, often the prelude to an adverse effect on fire insurance coverage, or rates.

Following Tuesday's action by Council of Manages, Clyde H. Smith, Lowell Manning, Earl Murray, John Barker, John A. Hamm, T. Clayton Jackson, Charles Glover, Joe Pank, William M. Perkins, J. H. Klegley, Delmore Cooper, David Mabry, Ed Porter, Ted Green, Henry Shuster, Wm. Caudill, William Linton, J. Bell, and Alvin Hutchinson, Arlen Cox, Luster Klegley, Harold Bellman, Herman Brown, W. J. Bailey, J. C. Stewart and E.G. Robertson.

The resolution passed Tuesday reads: "WHEREAS, the Mayor and City Attorney, as directed, on Thursday, February 24, 1966, met at the offices of Howard C. Bell and Associates, engineers, at Lexington, Kentucky, with representatives of that Engineering Firm, the fiscal agent of the City, representative of the Bell and Associates, engineers, representative of the Economic Development Association, Mr. J. Roger Caudill and Dr. J.K. Smith and Mr. Cline; and

"WHEREAS, the Mayor and City Attorney, as directed, on Thursday, February 24, 1966, met at the offices of Howard C. Bell and Associates, engineers, at Lexington, Kentucky, with representatives of that Engineering Firm, the fiscal agent of the City, representative of the Bell and Associates, engineers, representative of the Economic Development Association, Mr. J. Roger Caudill and Dr. J.K. Smith and Mr. Cline; and

"WHEREAS, the Mayor and City Attorney, as directed, on Thursday, February 24, 1966, met at the offices of Howard C. Bell and Associates, engineers, at Lexington, Kentucky, with representatives of that Engineering Firm, the fiscal agent of the City, representative of the Bell and Associates, engineers, representative of the Economic Development Association, Mr. J. Roger Caudill and Dr. J.K. Smith and Mr. Cline; and

"WHEREAS, the Mayor and City Attorney, as directed, on Thursday, February 24, 1966, met at the offices of Howard C. Bell and Associates, engineers, at Lexington, Kentucky, with representatives of that Engineering Firm, the fiscal agent of the City, representative of the Bell and Associates, engineers, representative of the Economic Development Association, Mr. J. Roger Caudill and Dr. J.K. Smith and Mr. Cline; and

"WHEREAS, the Mayor and City Attorney, as directed, on Thursday, February 24, 1966, met at the offices of Howard C. Bell and Associates, engineers, at Lexington, Kentucky, with representatives of that Engineering Firm, the fiscal agent of the City, representative of the Bell and Associates, engineers, representative of the Economic Development Association, Mr. J. Roger Caudill and Dr. J.K. Smith and Mr. Cline; and

"WHEREAS, the Mayor and City Attorney, as directed, on Thursday, February 24, 1966, met at the offices of Howard C. Bell and Associates, engineers, at Lexington, Kentucky, with representatives of that Engineering Firm, the fiscal agent of the City, representative of the Bell and Associates, engineers, representative of the Economic Development Association, Mr. J. Roger Caudill and Dr. J.K. Smith and Mr. Cline; and

"WHEREAS, the Mayor and City Attorney, as directed, on Thursday, February 24, 1966, met at the offices of Howard C. Bell and Associates, engineers, at Lexington, Kentucky, with representatives of that Engineering Firm, the fiscal agent of the City, representative of the Bell and Associates, engineers, representative of the Economic Development Association, Mr. J. Roger Caudill and Dr. J.K. Smith and Mr. Cline; and

"WHEREAS, the Mayor and City Attorney, as directed, on Thursday, February 24, 1966, met at the offices of Howard C. Bell and Associates, engineers, at Lexington, Kentucky, with representatives of that Engineering Firm, the fiscal agent of the City, representative of the Bell and Associates, engineers, representative of the Economic Development Association, Mr. J. Roger Caudill and Dr. J.K. Smith and Mr. Cline; and

"WHEREAS, the Mayor and City Attorney, as directed, on Thursday, February 24, 1966, met at the offices of Howard C. Bell and Associates, engineers, at Lexington, Kentucky, with representatives of that Engineering Firm, the fiscal agent of the City, representative of the Bell and Associates, engineers, representative of the Economic Development Association, Mr. J. Roger Caudill and Dr. J.K. Smith and Mr. Cline; and

"WHEREAS, the Mayor and City Attorney, as directed, on Thursday, February 24, 1966, met at the offices of Howard C. Bell and Associates, engineers, at Lexington, Kentucky, with representatives of that Engineering Firm, the fiscal agent of the City, representative of the Bell and Associates, engineers, representative of the Economic Development Association, Mr. J. Roger Caudill and Dr. J.K. Smith and Mr. Cline; and

"WHEREAS, the Mayor and City Attorney, as directed, on Thursday, February 24, 1966, met at the offices of Howard C. Bell and Associates, engineers, at Lexington, Kentucky, with representatives of that Engineering Firm, the fiscal agent of the City, representative of the Bell and Associates, engineers, representative of the Economic Development Association, Mr. J. Roger Caudill and Dr. J.K. Smith and Mr. Cline; and

"WHEREAS, the Mayor and City Attorney, as directed, on Thursday, February 24, 1966, met at the offices of Howard C. Bell and Associates, engineers, at Lexington, Kentucky, with representatives of that Engineering Firm, the fiscal agent of the City, representative of the Bell and Associates, engineers, representative of the Economic Development Association, Mr. J. Roger Caudill and Dr. J.K. Smith and Mr. Cline; and

"WHEREAS, the Mayor and City Attorney, as directed, on Thursday, February 24, 1966, met at the offices of Howard C. Bell and Associates, engineers, at Lexington, Kentucky, with representatives of that Engineering Firm, the fiscal agent of the City, representative of the Bell and Associates, engineers, representative of the Economic Development Association, Mr. J. Roger Caudill and Dr. J.K. Smith and Mr. Cline; and

"WHEREAS, the Mayor and City Attorney, as directed, on Thursday, February 24, 1966, met at the offices of Howard C. Bell and Associates, engineers, at Lexington, Kentucky, with representatives of that Engineering Firm, the fiscal agent of the City, representative of the Bell and Associates, engineers, representative of the Economic Development Association, Mr. J. Roger Caudill and Dr. J.K. Smith and Mr. Cline; and

"WHEREAS, the Mayor and City Attorney, as directed, on Thursday, February 24, 1966, met at the offices of Howard C. Bell and Associates, engineers, at Lexington, Kentucky, with representatives of that Engineering Firm, the fiscal agent of the City, representative of the Bell and Associates, engineers, representative of the Economic Development Association, Mr. J. Roger Caudill and Dr. J.K. Smith and Mr. Cline; and

"WHEREAS, the Mayor and City Attorney, as directed, on Thursday, February 24, 1966, met at the offices of Howard C. Bell and Associates, engineers, at Lexington, Kentucky, with representatives of that Engineering Firm, the fiscal agent of the City, representative of the Bell and Associates, engineers, representative of the Economic Development Association, Mr. J. Roger Caudill and Dr. J.K. Smith and Mr. Cline; and

Chakeres Announces New Manager Of Morehead Theatre

P.R. DeLong, who has been in the cinema business for 30 years as theatre owner and operator, is the new Manager of the Theatre in Morehead.

The Phil Chakeres Company, Springfield, O., assumed active management Tuesday. A new Main Street indoor cinema is planned at Morehead.

DeLong replaces Russ Brown, who has been Morehead Manager for 11 1/2 years - since 1955. Brown is being transferred to the management of the theatre owned by Chakeres at Danville.

Mr. and Mrs. DeLong will move to Morehead from Irton, where he has been Manager of Starway Drive-In. They have twin sons, both married; and three grandchildren.

He has been with the Chakeres Organization for the past two years. DeLong has been active in civic affairs and is a member of the Masonic order.

Mr. Brown has managed the Trail Theatre since 1955. He has been active in civic affairs and is a member of the Masonic order.

Mr. Brown has managed the Trail Theatre since 1955. He has been active in civic affairs and is a member of the Masonic order.

Mr. Brown has managed the Trail Theatre since 1955. He has been active in civic affairs and is a member of the Masonic order.

Mr. Brown has managed the Trail Theatre since 1955. He has been active in civic affairs and is a member of the Masonic order.

Mr. Brown has managed the Trail Theatre since 1955. He has been active in civic affairs and is a member of the Masonic order.

Mr. Brown has managed the Trail Theatre since 1955. He has been active in civic affairs and is a member of the Masonic order.

Mr. Brown has managed the Trail Theatre since 1955. He has been active in civic affairs and is a member of the Masonic order.

Mr. Brown has managed the Trail Theatre since 1955. He has been active in civic affairs and is a member of the Masonic order.

Mr. Brown has managed the Trail Theatre since 1955. He has been active in civic affairs and is a member of the Masonic order.

Kentucky Has Made Progress In Forestry

Praise for Kentucky's forestry program during the last 10 years and the completion of a new study that will help utilize the state's forest resources more effectively were the highlights of the recent third annual Governor's Conference on Forestry.

Kentucky has "turned the corner" in rehabilitating its "once battered forest resources," a new study that will help utilize the state's forest resources more effectively were the highlights of the recent third annual Governor's Conference on Forestry.

Edward P. Gluff, Chief of the U.S. Forest Service, Washington, D.C., said that only 10 years ago Kentucky had "a whole of a job to do" to save the state's forests. The downward trend has been reversed and your state has built up one of the nation's top forestry organizations," he said.

In 1963 about 100,000 acres were planted on state and private land, and last year 160,000 acres were planted. The average area burned each year is less than 10,000 acres, less than it was in 1957," Gluff said.

He pointed out that in 1956 Kentucky had 100,000 acres of forest land, and more than 30,000. While the state tree nursery output was 6.3 million then, now 17 million seedlings are produced each year.

Governor Edward T. Breathitt announced the completion of a statewide forestry survey described as the first "holistic" inventory of ever conducted of Kentucky's forest resources. "He made the announcement at a press conference preceding the opening of the conference's opening-day banquet at Morehead."

For the first time information regarding forest species of trees, rate of growth and timber volume will be available on the county level, the governor said.

The survey, which Breathitt said will help Kentucky attract timber-based industries, shows:

"If markets were available, Kentucky forest could produce an additional 17 million board feet of sawtimber."

"The state could also double the annual production of small trees for poles and posts."

"Between 1945 and 1964 the forest area increased three percent and the volume of wood in lumber producing trees increased 46 percent."

"The sawtimber volume in large trees that can most profitably be converted to high quality products decreased 12 percent during the same period."

"94 percent of the state's commercial forest is privately owned. About half of that area is occupied by stands of trees large enough to saw into lumber."

"Kentucky has 11.7 million acres of commercial forests, occupying more than 40 percent of the state's land area. Between 1949 and 1964 the volume of oak, yellow poplar, ash, soft-maple, and hickory increased 46 percent."

"The volume of black walnut, beech and shortleaf pine decreased."

"Kentucky ranks eighth in hardwood timber production in the country over states in the volume of oak, hickory, yellow poplar, and black walnut. The state ranks fourth in the production of hardwood timber in the country."

The survey reveals, Breathitt said, that the greatest opportunity for expanding forest-based products lies in the eight Eastern Kentucky counties - Floyd, Harlan, Leslie, Knott, Letcher, Martin, Perry and Pike.

Breathitt said the survey, conducted by the Federal government in cooperation with the state, shows that an additional harvest of 151 million board feet of sawtimber could be supported in these counties - or enough wood for 20 to 25 well-equipped sawmills.

In his banquet address, resolved to make during the next two years "the strongest effort Kentucky has ever made to conserve and perpetuate its forest-based products, land, water and mineral resources."

Concerning forest resources development, Breathitt said "It is our feeling in Kentucky that the state must provide

the primary action, with the Federal government taking on a supporting role."

He said a Natural Resources Committee of the National Governor's Conference has recommended that the state participate in forest development programs through approved management practices, forest-fire protection, insect and disease control, marketing and utilization, and purchases, and use itself, was reached protection, research and information and education. Breathitt is chairman of the committee.

Unless the State maintains the dominant role in the federal-state relationship, Breathitt said, "the leadership of forestry activities will slip rapidly from the hands of our State officials into those of one or more federal agencies."

Douglas A. Craig, assistant regional forester for Region 4, Atlanta, which Kentucky recently joined, told the delegates of a need to educate urban voters and leading industrial and business leaders to the words of forestry.

Noting that the effect of urban voters on forestry legislation is increasing, Craig said both legislators and voters have a vested interest in forestry through positive thoughts and action."

He noted that the bulk of the program in Kentucky is carried by the State. He said the program is carried by the State. He said the program is carried by the State. He said the program is carried by the State.

He noted that the bulk of the program in Kentucky is carried by the State. He said the program is carried by the State. He said the program is carried by the State. He said the program is carried by the State.

He noted that the bulk of the program in Kentucky is carried by the State. He said the program is carried by the State. He said the program is carried by the State. He said the program is carried by the State.

He noted that the bulk of the program in Kentucky is carried by the State. He said the program is carried by the State. He said the program is carried by the State. He said the program is carried by the State.

He noted that the bulk of the program in Kentucky is carried by the State. He said the program is carried by the State. He said the program is carried by the State. He said the program is carried by the State.

He noted that the bulk of the program in Kentucky is carried by the State. He said the program is carried by the State. He said the program is carried by the State. He said the program is carried by the State.

He noted that the bulk of the program in Kentucky is carried by the State. He said the program is carried by the State. He said the program is carried by the State. He said the program is carried by the State.

He noted that the bulk of the program in Kentucky is carried by the State. He said the program is carried by the State. He said the program is carried by the State. He said the program is carried by the State.

He noted that the bulk of the program in Kentucky is carried by the State. He said the program is carried by the State. He said the program is carried by the State. He said the program is carried by the State.

He noted that the bulk of the program in Kentucky is carried by the State. He said the program is carried by the State. He said the program is carried by the State. He said the program is carried by the State.

He noted that the bulk of the program in Kentucky is carried by the State. He said the program is carried by the State. He said the program is carried by the State. He said the program is carried by the State.

He noted that the bulk of the program in Kentucky is carried by the State. He said the program is carried by the State. He said the program is carried by the State. He said the program is carried by the State.

He noted that the bulk of the program in Kentucky is carried by the State. He said the program is carried by the State. He said the program is carried by the State. He said the program is carried by the State.

He noted that the bulk of the program in Kentucky is carried by the State. He said the program is carried by the State. He said the program is carried by the State. He said the program is carried by the State.

He noted that the bulk of the program in Kentucky is carried by the State. He said the program is carried by the State. He said the program is carried by the State. He said the program is carried by the State.

Mrs. Charles O. Peratt Claimed In California

A former prominent Morehead woman - Mrs. Charles O. [Ethel Veach] Peratt, 75, has passed on. The wife of one of the first professors at Morehead Normal School and Teachers College died Thursday at Walnut Creek, Calif. where she made her home for the past 15 years.

Her late husband, Prof. C.D. Peratt, was one of the best known educators of the state's present community college leaders. He was one of the original faculty members when Morehead [now a University] was a Normal School.

Mrs. Peratt, daughter of the late Samuel Rogers and Laura Rogers, was born in 1891 at Morehead. She lived in Morehead for 15 years.

She and Prof. Peratt were married in 1914. They spent most of their lifetime [1923-1975] in Morehead where he was a Professor of History until retirement in 1946.

Mrs. Peratt was a graduate of Chicago Musical College, class of 1916, taught piano at Morehead, and was particularly active in the Christian Church. She participated in many church and community efforts and campaigns.

Funeral services were held Monday at Walnut Creek, Calif. She leaves a daughter, Mrs. W.N. [Frances] Garrison, Alamo, Calif.; a son, [Name], a graduate of a school; Mrs. O.R. Gaffin, Carlisle, Pa.; Mrs. Hinton Williamson, Louisville, O.; Mrs. [Name], Ochoa, Calif.; Mrs. [Name], New Rochelle, N.Y.; and Oren Gaffin, Versailles.

The remains were brought to Carlisle for burial at the local cemetery. Prayers will be said, possibly Sunday afternoon, Mar. 13, with leaders of the Christian Church participating.

Morehead Proclamation Cities Achievements Of Women

Pointing to past achievements, future goals and attainable horizons of the three women's clubs in Rowan County, Mayor William H. Layne, following a national pattern, has proclaimed March as "Women's Clubs Month."

Local clubs and their Presidents are: Morehead Women's Club, Mrs. "Bob" Rogers; Rowan County Woman's Club, Miss Grace Crosswhite; and Younger Women's Club, Mrs. John Waggoner.

Morehead is the home of Mrs. A. Doran, nationally recognized leader, speaker, and officer of the National Federation of Women's Clubs. Mrs. Doran is the only member from within the old 27th or new 8th district of Kentucky who has been State President.

In her position as President of the Speakers; declined the offer of accession to the National Presidency to spend more time with her husband in promoting MSU, and in policy positions in the western, central and eastern sectors of the Commonwealth.

The Mayor also emphasized the remarkable growth in membership of women's clubs, and the increasing number of chapters - and the fact that Morehead is the site of three active organizations which maintain this size have only one Federation affiliate.

Burley Vote Confusion Could Exist

Burley tobacco growers should not be confused over the question of how acreage can be cut 15 percent under the present tobacco program while it would be 6.3 percent under the proposed acreage-pooling program, the Burley Tobacco Cooperative Association said in a report.

The reduction in acreage under the present program came under provisions of the 1954 formula provided in the law presently in use, while the acreage-pooling program is a new, and different, law. The Association pointed that the simple difference of different formulae strict; the other with a more realistic system of determining quotas for burley.

Under the present system, it is required that acreage adjustments be made in one year in an effort to bring supplies in line with demand. Under the acreage-pooling, the reduction of excess production would be spread gradually over a period of years.

The Association said the Secretary of Agriculture must declare an acreage quota based on the fixed formula. With the formula, he has a little flexibility in the present program to maintain a total supply level for burley of 2.8 years of production. Under the acreage-pooling, and by using the most generous figures available, the Secretary was required to proclaim a minimum cut in acreage of 15 percent. Thus the sharp cut, one year, to bring supplies in line as required.

The acreage-pooling law, the Burley Association said, does not require the sharp cut, all at once. The new law has a national quota of 625 million pounds, and a more reasonable system in the program, but at the same time overcomes the trend of excessively high yields per acre. The trend to high yields brought about the acreage-cut decision which it faces now.

The Association said "growers must realize that the acreage-pooling law is a production control established by law for them to have price supports at all. When they voted for price supports they also voted for acreage-pooling. By voting for acreage-pooling, growers would, in effect, change the laws under which they

Mrs. Wyatt May Become Kentucky Mother Of Year

A western Kentucky woman with strong Morehead connections has been nominated as the Kentucky Mother of the Year.

She is Mrs. Otis Wyatt, Mayfield, mother of Mrs. George Burgess, Secretary to the President of Morehead State University; and sister to Mrs. Mignon Doran, wife of the President of MSU and a member of the faculty of the sprawling University campus has been named.

Wyatt's son, Dr. George M. Wyatt, is Chief of Staff at Guernsey Memorial Hospital, Cambridge, O. Her nomination was submitted in western Kentucky, at least 10 factors of achievement including a lifetime of civic contributions; 22 years a member of her women's club; raising President four times; active in church work; and a member of a pioneer family that helped build and promote western Kentucky, that of the "Buck" and Mrs. O.P. McClain, and ancestors.

Mrs. Wyatt has been a frequent visitor to Morehead, and is favorably known to many Moreheadians.

operate. This will not affect the price support structure, but the change does bring about a change of systems under the other. It would be so-called like changing jobs for better working conditions."

The Burley Association said "growers, however, that the decision to operate is one that should not be made lightly. It is a decision that should be made after careful consideration. The real issue goes to the voters of the state. The voters should be asked to support the change, together with production controls."

Trade at Home

For Your own school and community progress

200-Acre Farm For Sale

Near Elliottville, Ky.

100 Acres Cropland, All Tillable And Returning A Good Income, And 100 Acres Timber.

Nice 2 1/2 Acre Lake, New Barn, .6 Acre Tobacco Base.

Reasonable Price-Terms If Necessary

See Or Call

Ed Mabry

Office 784-7333 - Residence 784-4475

Home For Sale By Owner

Two bedrooms, large living room, kitchen, bath, large utility room (could be third bedroom) 3 car garage.

This house has been completely remodeled throughout, featuring floored attic, textured ceilings, new inlay in kitchen and utility, new bathroom fixtures, built-in kitchen cabinets, storm windows, shrubs and trees, extra shelving, newly finished oak flooring, awnings and many other features. It is located in one of Morehead's best residential sections and is in short walking distance to high school, college and downtown.

It is an excellent buy, priced some \$4,000 - \$5,000 under the average house market in town.

For Showing By Appointment Only Call 784-4484 or 784-4610



I LOST THE RECEIPT

Valuable papers and documents are easily mislaid and lost. Receipts, certificates, records, policies, abstracts and deeds - they are safe in a safe deposit box at the Citizens Bank. Rentals are as low as \$3.50 annually.



News Report From...

Rowan County Extension Office

ROBERT H. WOLFE
County Extension Agent
ADRIAN M. RAZOR
County Extension Agent
MARJORIE B. GABBARO
Home Demonstration Extension Agent

A Rowan County committee was appointed last week to lead up and get out the vote for the Burley Tobacco referendum to be held March 10. Purpose of this committee is to make sure that everyone understands the proposed program and that all eligible voters participate.

The committee is as follows: Leland Hall, Chairman; Glannie Fraley, Vice-Chairman; J.A. Shackelford, Secretary-Treasurer; W.E. Crutcher and William Whitaker - Co-chairman of Publicity and members: H.H. Lacy and Clyde Litton, and Alpha Hutchinson.

The committee plan to make use of mass media including meetings, newspaper and radio to inform the public.

PLANT BEDS - Now is the time that we should start thinking about plant beds as a major fact, I understand that some few have already gotten their sowed. Of course, the lucky ones sterilize their beds in the fall and all they have to do is scratch them up lightly and sow the seed when they dry out. For those who haven't prepared their beds, pick a fertile, well-drained site with a good exposure to the sun and after working it up sterilize by either burning or by using some chemicals. Gassing is becoming very popular and seems to have the advantage over burning due to the fact that moisture is not taken from the ground as in the case of burning. Be sure to follow directions if using gas and by all means work the bed down

The Morehead News

Published weekly by The Morehead News Company, Inc.
Published at 1000 W. Main St., Morehead, Ky.
M. E. Gaudin, Editor
Office: 1000 W. Main St., Morehead, Ky. 40351
Phone: 784-4484
Subscription rates: \$3.00 per year in advance.
Single copies: 10¢.
Second class postage paid at Morehead, Ky.
Postmaster: Please send address changes to The Morehead News, 1000 W. Main St., Morehead, Ky. 40351.

Absolute AUCTION!

Located about 8 miles west of Morehead, about 25 miles west of Flemingsburg, on State Route 10, the Crockett Road, Route 577 on

Friday, March 4, 1966

Beginning At 10 A.M.

will sell the following consisting of

FARM IMPLEMENTS

- 1-WH. Atlas Chain tractor
- 3 point hitch
- 1-14 inch breathing pump mounted
- 2 new cultivators
- 1-spraying blade
- 1-cab. front loader and cultivator
- and rearing machine, all in good condition
- 2-motorized mowing machines
- 1-disc harrow
- All kinds of burning chains and blowers
- 2-motor sprayers in good condition
- 1-new case plow
- 2-2 new corn planters, like new
- 1-Minor-Minor V-type roller and mow, good condition
- 3-tractor repairs, like new
- 1-cultivating hoe
- 1-cultivating hoe
- Some horse drawn tools

These are only a few items which will be sold. Also a complete line of household goods.

Sale will be conducted by

H. T. Shields & Kendall Keeton

CLARENCE McKee, Clerk

You can't afford to miss this sale



JAYCEES ACCEPT NEW MEMBERS
Morehead Jaycees accepted five young men into the chapter this week. From left: Jim Willich, Caden Bunco, Bill Allison, Mickey Wells, Jess Thompson.

to a fine tight, getting the clods worked out and etc. Use a recommended amount of Methyl Bromide after being sure that the plastic cover is on securely and air-tight.

After sterilizing select a variety of seed that you are going to use and sow about 2 teaspoonsful to a bed 9" x 100". Canvas after sowing.

We have a few sample packets of seed given me by Ira Massie which we will pass out on a first-come, first-served basis.

EXTENSION HOME ECONOMICS MEETINGS

March 3 - Mrs. Laura Barker's home-Tailoring Workshop.

March 7 - Mrs. Marjorie Gabbard's home - Foods Training School.

March 29 - 31 - University of Kentucky - State Homemakers Meeting.

According to Marjorie Gabbard, Home Demonstration Extension Agent, many people are overweight because they regularly eat a little more than they need. Regardless if a few extra calories are taken at a time or if they are consumed by the shovelful at one time, about 35-hundred mean an extra pound of fat tucked under the skin. Obviously, only 100 calories extra per day can mean an extra pound per month added to body weight. So try cutting your regular amount of 100 calories per day and/or increasing physical activities-a pound a month may be dropped. Experts on obesity and reducing recommend a combination of both eating less and extra activity-the trend being to put more stress on exercise than was formerly the case.

Stamp Act Aids Art

LAKEWOOD, N.Y. (AP) - A retired steamship executive has put the postage stamp to new use - to paint.

Paul Cureau, 74, an accomplished amateur painter, uses used stamps, pasted on mount- age-like, to do both portrait and scenic works.

Cureau is a philatelist by avocation. One of his paintings is of a street scene in Leisure Village, a retirement community located in Lakewood. Cureau said the actual "painting" averages about five hours of work but the planning process may take several days.

Cureau was with the United States Lines for almost 35 years as a retirement promotion manager. He retired in 1957 and moved to Lakewood with his wife, Hattie, in 1964.

Chocolate is consumed in the United States at the rate of more than two million pounds a day.

Beef ribs and loin, which yield the tender cuts preferred for steaks and roasts, make up less than 30 per cent of a beef carcass.

If you have a garment with woolen fabric laminated to foam, never let the iron touch the foam side. Use a pressing cloth to protect the foam.

Spots on a felt hat often can be removed by rubbing them lightly with a clean blotter.

Soak baby's milk-stained garments in cold water before washing in hot soap or detergent suds.

RUPTURE-EASER

Available At
BATTSON DRUGS
Main St. Morehead, Ky.

TERMITE TROUBLE?
See or Call
CHESTER KISER
CONSTRUCTION CO.
Phone 784-5109
& 784-5442
Agents for
State Termite
Control and
Chemical Co. Inc.

- SAVE WITH STONE - SAVE WITH STONE -

VOLUME

And

The Best Service Before And After The Sale
Makes Stone Pontiac, Buick, GMC, Inc. The First
Choice In The Area For Your New Or Used Car Buy.

Thirty-One Brand New Factory
Fresh Pontiacs - Buicks And GMC's
In Stock - Ready For Delivery.
All Are Priced To Sell.

Buy A New 1966 GMC Pickup For
\$1,798

The Best Used Car Buys Anywhere

1965 Pontiac Catalina

4 door - automatic - power steering and brakes - factory air - guaranteed one owner - our very best buy
\$2,795

1960 Chevrolet

convertible - V-8 - automatic - power steering and brakes - local car - very sharp
\$895

1964 Buick Skylark

bucket seats - V-8 - automatic - we sold it new - guaranteed one owner
\$1,995

1960 Chevrolet

door - 6 cylinder - standard shift - local car that's extra sharp
\$795

1964 Buick

4 door hardtop - sold and serviced by us - a cream puff with factory air condition
\$2,395

1960 Pontiac

4 door - automatic - extra sharp - guaranteed
\$695

1963 Rambler Classic 770

automatic - radio - heater - new tires - guaranteed all the way -
\$1,095

1960 Chrysler

wagon - all power and factory air condition - runs out A-1
\$395

1962 Chevrolet Nova

4 door - clean as a pin - new tires - local cream puff
\$1,095

1962 Ford Galaxie 500

4 door - automatic - new tires - local car at a very special price
\$995

1962 Ford Sunliner

convertible - automatic - power steering and brakes - 41,000 miles
\$995

1962 Ford

4 door wagon - 39,000 actual miles - very sharp in every way - hurry
\$995

2-1961 Chevrolet

convertibles - both V-8 - automatic - both very sharp
\$1,095

1960 Buick

convertible - all power - extra sharp - was \$1,095.
\$850

Used Trucks

1964 Dodge

1/2 ton pickup - large racks - extra sharp in every way
\$1,295

1961 International

ready to go to work
\$995

37 1/2 Months Financing

"SAVE WITH STONE"
STONE PONTIAC, BUICK, GMC, INC.

USED CARS - 60 EAST PHONE 784-4937 MOREHEAD, KY.

Cars Also Shown By Appointment

SAVE WITH STONE - SAVE WITH STONE

Yes Mar. 10 VOTE Yes Mar. 10

Get Supplies In Line With Demand
Keep Price Support Program Sound
Prevent More Acreage Cuts
Your Crop Short One Year
Next Years Poundage Higher
Get Higher Prices

Your Interest At Stake

Vote Yes - For Acreage - Poundage

MAYSVILLE TOBACCO
BOARD OF TRADE

Yes

Yes

Publisher's pen.

Day-by-day pre-announcements and editorial observations, of the publisher of this newspaper.

Truly our cup runneth over today. The second of many dreams has become a reality.

Morehead State College is a University. This Publisher was as happy and flustered as a new bride Saturday being privileged to sit in as Governor Breathitt affixed his signature to House Bill 238.

The other dream - Cave Run Reservoir - is under construction. Morehead State University - Cave Run and I-64 will completely change the economy in the community. A new, and better way, of life has been opened for our people. We would properly add our hospital, and improved health care.

We began as the Governor signed the bill with some 50 pens, one of which will be framed and hang in Morehead City Hall. But, when he, and the four Presidents of the new Universities, mentioned that this newspaper had spent more space, approvingly so, than any other publication, our cup was like a gusher on behalf of all the Morehead News Staff.

It wasn't easy - neither was the \$39 million for Cave Run. A book with hundreds of factual pages could be written about how both were achieved and on every page would be sweat, tears, and blood of some folks who gave their time, talent, and money faithfully, effectively and unselfishly.

No place in Kentucky, perhaps in the nation, has a brighter future than our own Morehead, area.

THE DATE WILL BE ANNOUNCED AND YOU ARE INVITED.

Business came to a standstill. In Bowling Green, friends in the Senate voted to remove the "killer" amendment to the University bill. The Western caucus was taken on Friday, and Thursday's damage. (See story on page one).

It is not for us to rectify all that happened, except that some lights burned all night Thursday in Morehead, and automobile mileage piled up.

Western had its first celebration Saturday on attaining University status, but President Kelly Thompson advises another is scheduled, probably at Ed Diddle arena.

In Morehead, and the area, doing things to celebrate this great day? The answer is an emphatic "Yes". Plans are being formulated for a big celebration, probably Tuesday, March 22, or Saturday, March 26. An attempt is being made to arrange the date to fit the Governor's busy schedule.

Every organization in our community, and area, will be called on - so will you, as a good citizen. The full announcement will come next week. Never before have we, individually and collectively, had a finer opportunity to demonstrate our loyalty, appreciation and unselfish devotion to what is now Morehead State University.

The University belongs to all of Kentucky, but, we are the truly fortunate folks because it is located right here in our community. Watch us grow - and prosper.

PREDICTION - A little difference of opinion, which really don't amount to much, developed over the hawg rifle incident between Morehead and Eastern. If Bob Martin, President of Eastern Kentucky University, attends the next sports event when the Maroons play at Morehead State University, we dare say that Dr. Martin will receive a standing ovation, and long ovation. The same is true when Morehead State University President Dr. Adron Doran visits the campus of Eastern Kentucky University. These two men probably worked the hardest, and the most effectively, to insure the ceremony of signing House Bill 238 in the Governor's office at 11:29 a.m. Saturday. We hope to some day record in print the whole story. The road was rougher than you can possibly conceive.

DANGEROUS BUSINESS - Resident Engineer Henry Vickers confirms vandalism near Cave Run dam at the same time as the Cumberland National Forest, for which three men have been convicted, primarily as the result of the "detective" work by Ranger Joe Mauk of Morehead. The plan was to place which we don't or won't, the last place would be U.S. government property. This community (not country) Publisher is already in one law suit with Uncle Sam and we know from first-hand experience that he's a tough opponent. In fairness to our associates we must add that our litigation is on the civil, and not the criminal, docket as U.S. Attorney George Cline will confirm. Complaint is that we have to pay for our own advertising help (taxes) those on the other side.

PROBABLE PROCEDURE - As the last line was written a telephone call came from a relative who was once Morehead State Teachers College - "Name question" which we don't have the answer. But, a couple telephone calls to the Morehead State Teachers College, which doesn't officially become a University until the Attorney General will sign the check at the June 30th date. The University will be established at the June 30th date. The University will be established at the June 30th date. The University will be established at the June 30th date.

2. Credit transcripts will be printed 'Morehead State University' with smaller underneath wording, "Formerly Morehead State College". 3. After a couple years the words "Formerly Morehead State College" will be removed, and any graduate or former student, of Morehead State Teachers College and Normal School, Morehead State Teachers College, or Morehead State College, can soon request a credit transcript (or credentials) and it will read: "Morehead State University". Anyway, as of today, the order has been given to destroy everything in The Morehead News files that reads, "Morehead State College", replacing this with "University". This brings to mind that several road signs, including those at the east and west entrances to Morehead need be changed - that certainly should be done before the Mar. 22, or Mar. 26, all-out community observance.

FORECAST - If Lawrence Wetherby should ever again seek state-wide office, he will probably win. His total vote hereabouts might be counted on two hands, leaving out the thumbs, following that surprise "left hand" play in the Senate Thursday. It almost worked. And it'll be right difficult for anybody in these parts to vote against Senator Ed Kelly following that successful Friday morning Senate floor fight.

SURPRISE - We hadn't recognized until the Kentucky Inspection Bureau released its critical report [elsewhere in this issue] that the Morehead Fire alarm wasn't blowing 12 noon as it used to, because of a faulty timing device. But, we have known for some months that insurance underwriters were not happy with the Morehead fire alarm, as emphasized in the State inspection report after an on-the-spot investigation.

NO SURPRISE - A.B. Chandler dropped by the Publisher's office last week to impart "in confidence" his intention to run for the United States Senate. We didn't print it, but a week later the wire services broke loose. Our educated guess is that ABC will run if John Sherman Cooper doesn't seek reelection.

ALL SAME ADDRESS - An executive of a Cincinnati department store thought Morehead must have a population of 20,000, judging from the number of customers who thus give their address, and the fact that the Morehead Post Office's RFD's extend so far that you may reside 30 miles distant and your address is Morehead. The Morehead Post Office is in a sense, the real terminal for this part of Kentucky - same as the Morehead district offices of General Telephone Company, about to be expanded to thousands more floor feet.

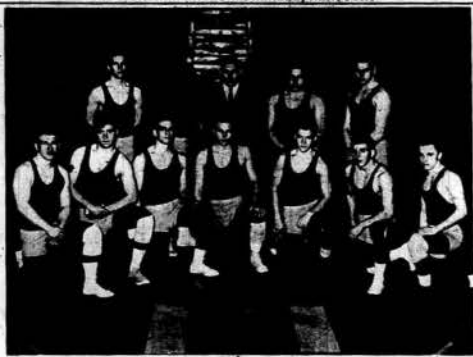
PROGRESSING - As readers will note most of the column is about Morehead State University - properly and timely so. Thus, we impart that 300,000 watt educational television station at MSU is progressing - channel 38 - will reach as far as Ashland, Lexington, Prentissburg and southern Ohio - the feeder for transmitters at Ashland, Paducah, Hazard etc. - studios will be in the new Educational Building on which construction will start this year having been approved at the last meeting of the Board of Regents - the T-V equipment will cost upwards of \$200,000 and studios \$150,000. Channel 38 may go on the air in 1967 and reception will be in almost every school of eastern Kentucky, plus homes.

CURTAIN ON FIRST ACT - Deadline to change, or protect, the tax increase at the Rowan Tax Commissioner's office has expired. The next controversial step is appointed of the Board of Equalizers - a job that apparently nobody wants as Morehead property was raised (on the average) six times and Rowan farms and farm homes eight times. The Equalizers have a full docket when they convene in May. We know one taxpayer who lowered his assessment by only \$5 so he could appear before them and "find out what is going on." The most unenviable position we can think of is being on the Rowan Finance Court when the new tax rate is voted on.

INEVITABLE - This newspaper has already strongly endorsed [editorially] the budget package control plan to be voted on Mar. 10, and predicted passage by much more than the required two-thirds, because "it's the only way." Today, we impart that all ASC officers have absentee ballots for eligible growers who will not be in the county on election day or have a physical incapacity that will prevent them from going to their polling place. All absentee ballots will be counted as received at ASC by 5 p.m. on Mar. 10.

NOVEMBER DECISION - The Morehead News will also editorially support the Constitutional Revision referendum on the Nov. 5 general election ballot. In these days you can't do business in horse and buggy style and our progress, competition is so outmoded, and violated so many times, that it's like the one horse show and street cars.

CONCLUDING OBSERVANCE - It was inappropriate to name that new dance



CHAMPS - Morehead State College wrestlers finished their 1966 season on a winning note Tuesday night as they defeated Marshall University 23-8. The Eagles were 7-1 for the season and won the mythical Ohio Valley Conference Championship with two wins over Eastern Kentucky, the only other OVC school with a wrestling team. Members of the championship team kneeling are [l to r]: Rodger Colvin, 167 pounds; John Ponsell, 177 pounds; Dick Roche, 145 pounds; Bill Harzard, 152 pounds; Barry Roche, 130 pounds; Bob Whitaker, 123 pounds and Mike Whitmore, 115 pounds. Standing with Coach Bill Bowers are: Bruce Dowdy, 137 pounds; Allie Leftenant, 160 pounds; Bowers; Otto Gsell, heavyweight and Jim Welschans, 191 pounds.

'The Johnson Hop' for the President as he doesn't hop - he lunges - . French designers say there is nothing about the middle-aged American woman that makes her stand out. It is assumed he wasn't speaking from an anatomical viewpoint - . Foreign nations are agreed that Hubert Humphrey is the most "promising" Vice-President the United States has ever had. Many women are dressing to look like little girls. The Morehead State University male students who let their hair grow long resemble big girls. . If Highway Commissioner Henry Ward can solve the problem that is certain to come when 1-64 traffic bottle-necks on Morehead's Main Street he's a 1913.

Immediate survivors are his father, Glenn A. Brown; and maternal grandparents, Mr. and Mrs. Anderson Lacy, Morehead. He attended the Church of God, the Casket bearers: George Paul Bowman, Carl Early, Garland Early, Jimmy Johnson, Paul Lambert, Bobby Brown, Tuffie Brown and Doris Lee Trent.

Last Rites Said For Kenneth Brown

The funeral for Kenneth Olen Brown, an automobile accident victim, was conducted Saturday afternoon at 2 o'clock at Lane Funeral Home. Rev. Stanley Canill officiated, after which the remains were taken to Forest Lawn Gardens for interment.

Mr. Brown was killed in a Rowan County highway crash last week [Details appear elsewhere in this edition].

He was 22 years of age, being born in Morehead Sept. 4, 1943.

Immediate survivors are his father, Glenn A. Brown; and maternal grandparents, Mr. and Mrs. Anderson Lacy, Morehead.

He attended the Church of God, the Casket bearers: George Paul Bowman, Carl Early, Garland Early, Jimmy Johnson, Paul Lambert, Bobby Brown, Tuffie Brown and Doris Lee Trent.

from HISTORY'S SCRAPBOOK

DATES AND EVENTS FROM YESTERYEARS

The Good Neighbor Policy was enunciated by President Roosevelt March 4, 1933.
Béla Károlyi was the last of the Habsburg Monarchs. U.S. Marines landed in China, March 5, 1927.
Premier Josef Stalin was made marshal of the Soviet Union, March 6, 1943.
A patent was granted for the telephone to Alexander Bell, March 7, 1876.
Discovery of the South Pole was announced by Amundsen, March 1, 1912.
Berlin was raided by 2,000 planes, March 8, 1944.
The American 1st Army crossed the Rhine river, March 8, 1945.
The Monitor-Merrimack naval battle took place, March 9, 1862.

Dorthea's Beauty Shop

350 1/2 Main St. Over Vi's Jewelry Store

It's time for a "New Look," time to get your hair in shape for and exciting spring!

Special Until March 17!

Free Shampoo And Set With Each Permanent!

Come In Or Call For An Appointment Now
Mrs. Dorthea H. Cales - Owner - Operator

Legal Notice

Relocation Assistance for families and businesses displaced as result of the construction of Project, Kentucky SP No. 6-404-IR2, Federal Aid No. E64-6 (3) 119, known as the Lexington - Catlettsburg Road, extending from Northeast of Interchange with US 60, 2.3 miles East of Owsingville to 1.0 mile West of Ky. 801, station 1797-60 to 2147-40.

In accordance with Chapter I, Title 23, United States Code, Section 133, relocation assistance will be provided by the State Highway Department to all persons displaced as a result of the above named project.

Each person so affected will be personally contacted by a representative of the Highway Department to discuss in detail the assistance program. Should it be necessary to acquire information prior to his visit, you may contact Frank L. Kennard at the District No. 9 Office, Flemingsburg, Kentucky, Telephone No. 845-2551.

Signed: S. B. Riddle
District Engineer

St. Claire Medical Center

784-4161
Morehead, Ky.

ADMISSIONS
Feb. 23 - Viola Goodman, Morehead; John Ivan Ellington, Morehead; George Jarrell, Sandy Hook.
Feb. 24 - Mary Smith, Sandy Hook; Betty Johnson, Olive Hill; Robert George, Morehead; Howard Evans, Aberdeen, Ohio; Sally McDaniel, Olive Hill.
Feb. 25 - Phyllis Flannery, Morehead; Emogene Adkins, West Liberty; Evaline Jones, Morehead; Patricia Roy, Morehead; Kenneth Crowley, Morehead.
Feb. 26 - Maggie Click, Haldeman; Grace Adkins, Haldeman; Lou McQuitty, Morehead; Zell Walter, Morehead; Francis Brockman, New York, N.Y.
Feb. 27 - Imogene Cuddy, Morehead; Zella Crank, Olive Hill; Robert Click, Haldeman.
Feb. 28 - Nancy Brown, Erlanger, Ky.; Ramona Roberts, Olive Hill; Lillian Caskey, Morehead; Emogene Adkins, West Liberty; Gloria Perry, Morehead; March 1 - Barbara Hall, Morehead; Janie Fannin, Sandy Hook; James Ison, Olive Hill; Larry Burton, Morehead; Virgil Sparkman, Morehead; Clarence Leach, Salt Lake.

DISMISSALS
Feb. 23 - Mona Williams, Corda Kelsey, Gladys Forman, Richard Thompson, Hiram Sidam.
Feb. 24 - Angie Jones, Mrs. Ruth Logan and daughter, Mrs. Amanda Dickerson and daughter, Marion Jenkins.
Feb. 25 - Jewel Watson, Lizzie Ham, Sharon Jackson, Mrs. Ruth McGee and baby, Virginia Martin, James Little, Joseph Bays, Earl Fisher.
Feb. 26 - Mrs. Marjorie Madden and daughter, Gustav Eldridge, Mrs. Elizabeth Smith and son, David Hunt, Thomas Eldridge, Howard Evans, John Ellington, Francis Brockman.
Feb. 27 - Florence Peitner, Patricia Boyd, Emogene Adkins, Betty Johnson, Ken Crowley.
Feb. 28 - Mary Smith, Mrs. Phyllis Flannery and son, Mrs. Viola Goodman and daughter.
Mar. 1 - Leora Johnson and Grace Adkins.

BIRTHS
Feb. 23 - Mr. and Mrs. Stephen W. Smith and son.
Feb. 24 - Mr. and Mrs. Clayton Goodman, daughter.
Feb. 25 - Mr. and Mrs. Denver Dean Flannery and son.
Feb. 27 - Mr. and Mrs. Douglas Cuddy, son.
Feb. 28 - Mr. and Mrs. Reggie Brown, daughter; Mr. and Mrs. James H. Carter, son; Mr. and Mrs. Charles E. Roberts, daughter.

Fun Train Rolls Along On Laughter and Hope

By RUSSELL NIELSEN
United Press International
RENO, Nev. (UPI) - The grey-haired little lady had been here before and she was coming back. To hear her, she might think it was the end of the Rainbow.
She was aboard a "fun train," 18 cars crowded with revellers which had just left Oakland bound for Reno and a weekend of entertainment.
"Last time I hit four jackpots in 30 minutes," she told a group of first-timers. "It's all in knowing how to pull the handle."
It would take nearly eight hours for the "fun train" to reach the "biggest little city," but everything had been done to make the time pass pleasantly.
There were three bar cars, a dance car and a diner - which, by virtually every measure, the train rolled out of Sacramento. The bar cars were jammed.
Since many groups brought their own refreshments, it wasn't long until the entire train seemed like a giant club car.
"The fun trains are promoted by the Reno Chamber of Commerce as a means of tapping the populous San Francisco Bay area. Millions of visitors come to Reno each year. Some drive, some fly and some take buses. Some have even walked. The fun trains are the most ambitious undertaking to reap the tourist harvest during the slack winter months."

Stone Chrysler Products, Inc.

Can Sell You A Car For Less

Buy This Car Delivered In Morehead For \$1,845.06

In Stock - Ready For Delivery



License And
Ky. Tax Extra

Plymouth Valiant 100 2-Door Sedan

Proof You Can Buy From Stone Chrysler Products For Less.

(The Only Dealer In Morehead That Sells A Car That The Manufacturer Warranties For 5 Full Years Or 50,000 Miles.)

Come Out Flemingsburg Road And See And Buy
The New Chrysler - Plymouth And Dodge - But Be Sure
And Bring Title Because We Are Going To Deal.

Stone Chrysler Products, Inc.

Flemingsburg Rd. - Phone 784-4524 - Morehead, Ky.
(Former Location Of Fralry's Auto Sales & Repair)

USE COST

CLASSIFIED ADVERTISING RATES

No Classified Ads Accepted After 12 Noon Tuesday

Per word first insertion5¢
Per word each subsequent insertion of same ad without any changes3¢
Minimum charge (first insertion)\$1.00
Minimum charge (each subsequent insertion)60¢
Display Classified Advertising, per inch95¢

Entered as Second Class Mailing Matter at Post Office - Morehead, Ky.

FOR SALE OR RENT - Business building near Ford Garage, Over 2,000 ft. floor space, 12x12 overhead door. Ideal for body shop, storage, boat sales, cabinet shop, many other uses. Call or see U. W. Walz, phone 784-5790. - c-f

FOR SALE - 1959 Rambler American 2-door station wagon. Automatic transmission. Call Luther Jayne at 784-4264. - c-f

FOR SALE - Three-year-old house, nice lot. Four rooms and bath. Contact George Sloan, Rock Fork Road, third house on left. - c-f

FOR SALE - 1957 Ford 2-door hardtop. Luther Jayne, phone 784-4264. - c-f

OFFICE SPACE available. Built to tenant's specifications. Utilities furnished, including heat and air conditioning. Phone 784-5414 day or 784-5656 night. - c-f

FARM FOR SALE - 120 acres with 10-room modern house, two barns and 1.22 tobacco base. In Carter County. Call 286-2664 or see Charles Fultz on Smith's Run. - c-f

FOR SALE - 1961 Ford 2-door hardtop. V-8 overdrive. Call 784-4264. - c-f

FOR SALE - 1957 Dodge 2-door hardtop. V-8 automatic. See or call Luther Jayne, phone 784-4264. - c-f

FOR SALE - 500 bales alfalfa hay, 50¢ bale. Also some mixed hay. William S. Conkey, Route 1, Flemingsburg, Ky. phone 845-9963. - P-9

FOR SALE - 1964 Chevrolet 2-door Impala hardtop. Call Luther Jayne at 784-4264. - c-f

Call 784-4264, Luther Jayne, for LIKE NEW 1965 Chevrolet Impala hardtop. V-8, P-8. - c-f

FOR SALE - Practically new 52'x10' two-bedroom house trailer. Take over \$69 monthly payments. Call Frank Hicks, phone 784-4702. - P-10

FOR SALE - Good small farm on Dry Creek. Have some stock, mule, small farm equipment can let go with farm. Call 784-5736 or see James Lambert at College Barber Shop. - c-f

FOR SALE - Household goods moving business located in Morehead. One or two vans, Intrastate and ICC authorities included. Phone 784-5903. - c-f

FOR SALE - 1964 Volvo sports sedan, model 544. Radio, heater, windshield washer, twin carburetors, new tires, plus snow tires. \$1,250. Call 784-7158. - c-f

NOW IS THE TIME to select that new John Deere equipment - dozers - loaders - backhoes. We will trade - we will finance - we will service. Also a large selection of good used equipment including 1010 dozers - 440 dozers - Case 1000 loader - Fordson wheel loader - Schramm pneumaticator - Cat D-2 - practically new Cat D-4 - JD 840 scraper and a Cat L-4 as is - where is for \$1,000.00.

ENSLAW MACHINERY COMPANY
1401 - 8th Avenue
Huntington, West Virginia
Phone 529-7135 - c-9

FOR SALE - Fleming County farm, 230 acres fertile land on blacktop highway. 3.89 tobacco base, 2 barns, 2 barns, plenty outbuildings. Allen Gallowsy, phone 990, Ashland, Ky. Phone 324-5524. - P-12

MOVING AND STORAGE

For complete Local and Long Distance Moving Service, Packing and Storage... Call 784-5903

BLAIR TRANSFER & STORAGE
Agents For Greyhound Van Lines
613 W. Main - Morehead, Ky. - c-f

VACUUM CLEANER - Electrolux, all new attachments. Take over \$69 monthly payments. \$5.00 each. Will discount for cash. Phone 784-5096. - c-f

APARTMENT FOR RENT - Contact H. M. Meadows, phone 784-5637, or James Ison, phone 784-5666. - c-f

FOR RENT - Two and 3-room furnished apartments. Call 784-7391 after 5:00 p.m. - c-f

INSURANCE AGENTS - Male or female. No collections. Serve full time to selling. Leads and appointments furnished free. Daily commissions, monthly and quarterly renewals. Monthly salary to those who qualify. Complete lines of life and health insurance. Write to: Box 126, Morehead, Ky. - c-9

TRIED PROVEN

If You Want To Buy, Sell or Mortgage **REAL ESTATE** See **ALPHA HUTCHINSON** See Our Sales List For A **HOME BUSINESS PROPERTY** FARM Licensed and Bonded Real Estate Broker Authorized Mortgage Loan Broker for The Prudential Insurance Company of America. Phone 784-5305 - c-f

WELL DRILLING - Water well drilling. Call J.A. Esham, phone 784-7121. - c-f

FOR SALE - One 6-room house, all modern, small garden, good outbuilding and garage. Located near Olive Hill at Globe, Ky. See Belle Ervin or call 286-4111. - c-f

DOZER WORK - Call Douglas Forman, business phone 784-4147 or residence 784-4662. - c-f

1966 GMC PICKUP - \$1798 FULL PRICE. Includes heater, defroster, dual headlights, turn signals, 240 cu. in. 155 HP engine, oil filter, dual speed electric windshield wipers and washer, rear belts, back-up lights, 6 1/2 ft. Ford Fenderbide bed, front coil springs, leaf springs rear, shock absorbers front and rear. See Doug Forman at Douglas Buick, GMC, 50 East, Morehead, phone 784-4937. - c-f

OFFICE SPACE for rent with central heat and air conditioning. On second floor of new C. Roger Lewis Building, 321 Main Street. Close to post office, courthouse, banks. Phone 784-4168. - c-f

SPINET PIANO BARGAIN - Responsible party wanted to take over low monthly payments of a spinet piano. Can be seen locally. Write Credit Manager, P.O. Box 215, Shelbyville, Indiana. - P-11

FILL DIRT - Free for the hauling. Phone 784-4089. - c-10

SINGER PORTABLE - Rebuilt. In good condition. Can be equipped to zig-zag. Take over 6 payments of \$5.00 each or discount for cash. Phone 784-5096. - c-f

FOR SALE - Three-bedroom home, one year old, located in one of Morehead's choice residential areas, 115 Kamp Avenue. Panned family room with built-in book cases. Carpeted living room, large 16x10 kitchen with 28 ft. of birch cabinets. Complete with cyclone-like fence around back yard. Must be seen to be appreciated. Call 784-7117 for appointment. - c-f

FOR SALE OR TRADE - House and lot on West Main Street. Will trade for good used house trailer. Call 784-7396. - c-f

FOR RENT - Furnished cabin at 437 Second Street. Call College. Call 784-4204 or 784-4572. - c-f

FOR SALE - Westinghouse electric range. Excellent condition, one year old. Call Mrs. Ken Speer, phone 784-7433. - P-9

FOR SALE - Three-bedroom home on 50x73 ft. lot, half-mile from Lee Clay Plant. See Courtney Brown, phone 784-7111. - P-11

FOR RENT - Three-bedroom furnished house. Call 784-7521. - c-f

NEED A GOOD USED, USED CAR? **NEED A HOME?** Brown's Auto Sales in Grayson, Ky. has several, both one and two bedrooms. Located at Brown's Auto Sales or call 474-5844 (TRUCK 474-6484) - c-f

RUG DRIVERS Semi or Straight Diesel or Gas Ages 21-40

Some experience helpful but not necessary. You can earn over \$3 per hour after short training. For application write: National Wage Survey Division, c/o Haackl Freight Terminal Bldg., 1255 Corwin Avenue, Hamilton, Ohio. Or call 513-855-8727, evenings 713-241-3570. - c-10

NOTICE TO CREDITORS

Notice is given that Edwin Turner has been appointed Administrator with will annexed of the estate of Lorene Turner; deceased. All persons having claims against said estate will please present same, properly proven, and all persons owing said estate will please pay the same to either of the undersigned on or before the 31st day of May 1966. Edwin Turner, Administrator Morehead, Kentucky Austin N. Alfrey Attorney - c-9

MUSICAL INSTRUMENTS - Guitars, amplifiers, banjos, basses, violins, Big variety. Fender, Martin, others. Headquarters Baldwin pianos, organs. Zwick Music Co., Ashland, Ky. - c-9

APARTMENTS FOR RENT - Completely furnished apartments and room. Morehead, Camp Meade, 1 mile East US 60. Phone 784-4759. - c-f

FOR SALE - 1960 National 2-bedroom mobile home. Phone 784-5608. - c-f

FOR SALE - Creek gravel and topsoil. Boone Hollar, phone 784-7169. - c-f

OFFICE SPACE FOR RENT - Available immediately. McKinney Building. Phone 784-4778. - c-f

NOTICE - Have nice trailer parking space for rent with concrete patio. Close to city limits. Call 784-5302 mornings except Monday and Tuesday. - c-f

NOTICE OF PUBLIC HEARING All interested persons are hereby notified that the Board of City Council of the City of Morehead, Kentucky will, at its regular meeting, at the City Hall, at the hour of 7:30 p.m. on Tuesday the 8th day of March, 1966, conduct a public hearing on two petitions to rezone a residential district that is a General Business (B-1) District, and at which time and place the public is invited to be heard and said areas now described as follows:

"Being that portion of land commencing on Normal Avenue at the Hodge and Hodge Law Office line, thence in general North direction with the East side of Normal Avenue to Second Street; thence with the South side of Second Street in a general East direction to a public alley way and lands of Dr. E.D. Blair; thence with said public alley way in a general South direction to the rear lot line of Hodge and Hodge Law Office property; thence in a general West direction to the line of Hodge and Hodge Law Office property, to the BEGINNING."

Also that area of land bounded as follows: Bounded on the South by Second Street; on the North by Third Street and on the West by Tippett Avenue and on the East by lands of Morehead State College.

William H. Layne Mayor City of Morehead, Kentucky - c-9

FARMS FOR SALE

486 ACRES - 3 houses and 5 barns; 8 acres tobacco base; fair fencing; on a good road. A good buy at \$200 per acre. A real grass farm.

281-ACRE HILL FARM - 5.72 tobacco base; 4 houses; 6 barns, one new barn and stripping room; 7 ponds. A good grass farm that pastures loss of stock. Long frontage on blacktop road. Not a bad buy at \$37,000.

170-ACRE HILL FARM - Two sets improvements. 66 acres tobacco base. Milk brought in over \$10,000 last year; tobacco alone paid \$7,100; 23 acres hay; 3 miles of creek. At \$31,000, a real tobacco and grass farm.

36 ACRES - Nice 6-room house insured for \$60,000 and tobacco and milk barn insured for \$1,500; half-acre tobacco base. On blacktop road. A real buy at \$9,000.

CLINTON DAYTON REAL ESTATE

P.O. Box 17 - Carlisle, Ky. Phone 809 After 7:00 p.m. - c-9

INCREASE YOUR INCOME IMMEDIATELY

BE IN YOUR OWN BUSINESS ONE WEEK FROM TODAY

FULL OR PART TIME

Now, due to our expanding market we are making available for the first time a 100% protected investment and territory that puts you in your own business in an established expanding billion dollar market. You will receive company training, expert field supervision, advertising and merchandising to back you up. Only a few hours a week required supplying our local established accounts, affording immediate income. No selling experience required. The popularity of our products, famous oral hygiene and pharmaceutical items recently advertised on TV and selling in major chain and department stores, will do the rest. Anyone can qualify if personal and financial background is sound. For less than \$100.00 (partial financing if qualified) this ready to roll operation can be yours in a week or less.

Can you afford to miss this opportunity? For full particulars mail name, address and phone number without delay to:

NEW DEALER DIVISION
WINSTON
4500 W. Hallandale Beach Blvd.
Hollywood, Florida - c-10

FOR RENT - One room with private bath and cooking facilities. Call 784-5903. - c-f

SPINET PIANO - Leaving for New York to accept position. Have paid nearly \$300.00 on my year-old spinet piano; would like to assume my payments. If interested, please write Ed Meyers, P.O. Box 23, Versailles, Ky. - c-9

TRACTOR & IMPLEMENT SALE - March 4, 1966, beginning at 9 a.m. at Kentucky King Hardware, Mayville, Ky. Sponsored by Mayville Rotary Club. The way equipment is coming in, this sale looks bigger than ever. About 50 dealers participate in this sale. Over 500 pieces last year. - c-9

EMPLOYMENT WANTED - Would like part-time office work, typing, filing, etc. Call 784-5306. - c-10

FOR SALE - 7-room house with bath, 3-room house with shower. Good condition. L.B. Smedley, phone 784-4737. - c-f

NO EXPERIENCE necessary to earn good income with Avon Cosmetics. We will train you. For appointment call 325-4153 or write Mrs. Lois Leonard, P.O. Box 1269, Ashland, Ky. 41101. - c-8

HAY FOR SALE - 800 bales teresa clover hay for sale. At McCloskey, Midland, Ky. phone 683-3171. - c-10

FOR SALE 94-acre farm all in grass. Nice 6-room modern home, large tobacco barn, dairy and hay barn, 2 large ponds, .73 tobacco base, good fence. One of the best buys in Rowan County. Near but not effected by Cave Run Reservoir. Write or call Gilbert Jones, Route 1, Box 146, Jasper, Florida. Tel. 846-3769 after 5 p.m. - c-f

FOR RENT - 3-room house. Available March 7. Call 784-5665. - c-9

SPARE TIME INCOME - No selling. Refill and collect money from new type coin operated dispensers in this area. Must have cash, references, \$550 to \$1,000. No experience necessary. An excellent income. More time can result in more money. For personal interview call Mr. J. W. Inc., 10 California Ave., Pittsburgh, Pa. 15212. Include phone number. - P-9

\$50 REWARD - For information leading to arrest and conviction of person, or persons, who stole 3 iron kettles from the school hall from my property. Archie Ison, Elliottville, Ky. phone 784-5070. - c-9

CAR FOR SALE - 1959 Ford Fairlane 500. One owner, clean, factory air, all automatic. Call 784-5911. - c-f

Glennie Hollon

Glennie's address is: 509 E. Main St., Morehead, Ky. - c-9

Wolffbargers' Pill. Bern works as fast as they can in filling them. Medical Card prescriptions, but you really should have your doctor to give you a pill to take so you will be at ease a standing in line. Too, this standing in line can give you some wonderful experience. The line is going to be long in the future. The more we are offered for our health, the sicker we will get. Seems like a good idea to get it now.

Carl Coldiron a school teacher of Morehead, lives at Morehead, Kentucky. He comes over to Wolffbargers' to see him this time. But later told me how he bought himself \$4.75 worth of how and had to go around to the back of his car, lift up the trunk lid, get out his piggy bank and shake out the money quarters for to pay for the gas.

Of course, school kids and milk men who use pure don't give all their money to their teachers. They just give them enough to keep them hanging on. If teachers were smart and learned and intelligent, they would just up and quit and sign up for a Fordson Draw Check or some kind and let the school officials and school superintendents and personnel directors and transportation officers and bus drivers do the teaching for a spell. Somebody would wise up then if possible. Teachers could mingle well with us recognized pore and we think they is enough in the Trougher all of us.

Seems like we been reading in big papers that school children has got some idea of letting us grow enough somebody to feed the whole world. Somebody besides us pore farmers is a going to do the extra farming. Us pore can't grow enough to do ourselves let alone a trying to grow some for other hungry people. Somebody us pore Americans is a going to starve to death. You just wait and see.

Farm Bureau In Favor Of Bill Before Assembly

By Tevis Bennett

The Kentucky Farm Bureau Federation is supporting Senate Bill 199 introduced in the state General Assembly. The bill relates to the sale of farm products grown on state-owned land.

If enacted, the legislation would prohibit the sale of tobacco, corn, grain or other farm products grown on land owned by the state or under the direction or control of any agency of the state. Timber or tree seedlings would be the only exception.

The bill also provides that, if enacted, the law would not apply to county institutions producing farm products or to the products of any agricultural experimental or agricultural research programs of state agencies or educational institutions.

If enacted, the law would not apply to the land until two years after date of acquisition. The law would become effective January 1, 1967.

The voting delegates of the Kentucky Farm Bureau, at its annual meeting in November, said, "We are opposed to the sale of agricultural products from recreation and other state-owned areas that are not necessary for research, health or security."



SWEETHEARTS - Diana Trent and Kenny Arnett were crowned Queen and King, respectively, of Rowan County's Future Homemakers and Future Farmers of America at their annual party. FFA Vice-President, Bobby Trent crowned the Queen, while FFA President Sharon Eldridge placed the titled ornament on the new King.

King, Queen Selected By Farm Youths

The Future Homemakers of America and the Future Farmers of America of Rowan County High School had their annual Sweetheart Party Thursday in the Rowan County High School Cafeteria with approximately 50 present.

Sponsors are Miss Jean Cline, Mrs. James Baldwin, and Clark Banks.

Highlight of the evening was the crowning of the sweethearts. The FFA sweet heart, Kenny Arnett, was crowned by the FFA president, Sharon Eldridge. Diana Trent crowned the Queen, while FFA President Sharon Eldridge placed the titled ornament on the new King.

Another of the special events of the evening was the election of Miss FFA. This selection was made

from baby pictures of various members of the club. Bonith Scott won but received slight competition from Diana Trent, Ellen Morehouse, Reta Cline and Teresia Hicks. The selection was made by the entire school student body. It was a penny for each vote cast. The money was being raised for the State FFA Scholarship Fund.

Other prizes were awarded to the following FFA members: Sandra Hamm for making the most original decorated box and Carol Blair for having the prettiest pie.

Sandy Knapp and Orchar Messer played four instrumental selections on electric guitars. Social dancing and various games were the other forms of entertainment and recreation.

Red rosebush corsages were presented to the officers of the FFA club by the two sponsors, Mrs. James Baldwin and Miss Jean Cline.

CHEVROLET



Front row - Bill Plank, Body Repair; Roy Boyd; Service; Jim Thomas, Service; Sharon Tolson, Bookkeeper; Eddie Ward, Salesman; Larry Fannin, New Car Manager; Backrow - Ray Walters, Service Manager; Rossey Harmon, Service; J. C. Jolley, Body Repair; Randolph Conn, Service; Kenneth Hamm, Service; Charles Hampton, Parts Manager. Not pictured - Ben Reflett, Service; William Bolar, Salesman; L. D. Fannin, Used Car Manager.

Now That You've Seen Them Come In And Meet Them!

The staff at Larry Fannin Chevrolet want all of you to stop by and get acquainted with them at their new facilities on East Main Street. While remodeling is still going on, all of our departments are open to serve you. Stop by and see the change taking place.

Larry Fannin Chevrolet has 24 new cars and trucks in stock now, with more arriving daily and the used car department. Is loaded with all makes and models of good used cars, with many of them carrying the OK 25 month warranty.

So if you're in the market for a new or used car, drop by or call the fine folks at Larry Fannin Chevrolet today.

Grand Opening Coming Soon!

OK

Larry Fannin Chevrolet

E. Main St. Morehead, Ky. Phone 784-5666



WHAT BETTER RECORD AT TAX-PAYING TIME?

Right now is the time to start enjoying the safety, prestige, and many conveniences of having a checking account here. For tax-paying time will soon be here and — for recording and proof of payments — our checking accounts are hard to beat! Also, you can take your choice of accounts here — all give you the handy check-stub record of expenditures; cancelled checks that automatically become easy-to-file receipts!

PEOPLES BANK
OF MOREHEAD



AUCTION OF GOOD FARM MACHINERY

As agents for LUCIAN ALLEN we are authorized by special contract to sell the FARM EQUIPMENT, etc.

MON. MAR. 7th-10 A.M.
LOCATION: On Highway No. 36, 8 Miles South of Owingsville, Ky. at SUDITH, KY., in Menifee County.

Equipment, Etc.

1961 Oliver 800 Tractor, Model 50, 100, 150, 200, 250, 300, 350, 400, 450, 500, 550, 600, 650, 700, 750, 800, 850, 900, 950, 1000, 1050, 1100, 1150, 1200, 1250, 1300, 1350, 1400, 1450, 1500, 1550, 1600, 1650, 1700, 1750, 1800, 1850, 1900, 1950, 2000, 2050, 2100, 2150, 2200, 2250, 2300, 2350, 2400, 2450, 2500, 2550, 2600, 2650, 2700, 2750, 2800, 2850, 2900, 2950, 3000, 3050, 3100, 3150, 3200, 3250, 3300, 3350, 3400, 3450, 3500, 3550, 3600, 3650, 3700, 3750, 3800, 3850, 3900, 3950, 4000, 4050, 4100, 4150, 4200, 4250, 4300, 4350, 4400, 4450, 4500, 4550, 4600, 4650, 4700, 4750, 4800, 4850, 4900, 4950, 5000, 5050, 5100, 5150, 5200, 5250, 5300, 5350, 5400, 5450, 5500, 5550, 5600, 5650, 5700, 5750, 5800, 5850, 5900, 5950, 6000, 6050, 6100, 6150, 6200, 6250, 6300, 6350, 6400, 6450, 6500, 6550, 6600, 6650, 6700, 6750, 6800, 6850, 6900, 6950, 7000, 7050, 7100, 7150, 7200, 7250, 7300, 7350, 7400, 7450, 7500, 7550, 7600, 7650, 7700, 7750, 7800, 7850, 7900, 7950, 8000, 8050, 8100, 8150, 8200, 8250, 8300, 8350, 8400, 8450, 8500, 8550, 8600, 8650, 8700, 8750, 8800, 8850, 8900, 8950, 9000, 9050, 9100, 9150, 9200, 9250, 9300, 9350, 9400, 9450, 9500, 9550, 9600, 9650, 9700, 9750, 9800, 9850, 9900, 9950, 10000, 10050, 10100, 10150, 10200, 10250, 10300, 10350, 10400, 10450, 10500, 10550, 10600, 10650, 10700, 10750, 10800, 10850, 10900, 10950, 11000, 11050, 11100, 11150, 11200, 11250, 11300, 11350, 11400, 11450, 11500, 11550, 11600, 11650, 11700, 11750, 11800, 11850, 11900, 11950, 12000, 12050, 12100, 12150, 12200, 12250, 12300, 12350, 12400, 12450, 12500, 12550, 12600, 12650, 12700, 12750, 12800, 12850, 12900, 12950, 13000, 13050, 13100, 13150, 13200, 13250, 13300, 13350, 13400, 13450, 13500, 13550, 13600, 13650, 13700, 13750, 13800, 13850, 13900, 13950, 14000, 14050, 14100, 14150, 14200, 14250, 14300, 14350, 14400, 14450, 14500, 14550, 14600, 14650, 14700, 14750, 14800, 14850, 14900, 14950, 15000, 15050, 15100, 15150, 15200, 15250, 15300, 15350, 15400, 15450, 15500, 15550, 15600, 15650, 15700, 15750, 15800, 15850, 15900, 15950, 16000, 16050, 16100, 16150, 16200, 16250, 16300, 16350, 16400, 16450, 16500, 16550, 16600, 16650, 16700, 16750, 16800, 16850, 16900, 16950, 17000, 17050, 17100, 17150, 17200, 17250, 17300, 17350, 17400, 17450, 17500, 17550, 17600, 17650, 17700, 17750, 17800, 17850, 17900, 17950, 18000, 18050, 18100, 18150, 18200, 18250, 18300, 18350, 18400, 18450, 18500, 18550, 18600, 18650, 18700, 18750, 18800, 18850, 18900, 18950, 19000, 19050, 19100, 19150, 19200, 19250, 19300, 19350, 19400, 19450, 19500, 19550, 19600, 19650, 19700, 19750, 19800, 19850, 19900, 19950, 20000, 20050, 20100, 20150, 20200, 20250, 20300, 20350, 20400, 20450, 20500, 20550, 20600, 20650, 20700, 20750, 20800, 20850, 20900, 20950, 21000, 21050, 21100, 21150, 21200, 21250, 21300, 21350, 21400, 21450, 21500, 21550, 21600, 21650, 21700, 21750, 21800, 21850, 21900, 21950, 22000, 22050, 22100, 22150, 22200, 22250, 22300, 22350, 22400, 22450, 22500, 22550, 22600, 22650, 22700, 22750, 22800, 22850, 22900, 22950, 23000, 23050, 23100, 23150, 23200, 23250, 23300, 23350, 23400, 23450, 23500, 23550, 23600, 23650, 23700, 23750, 23800, 23850, 23900, 23950, 24000, 24050, 24100, 24150, 24200, 24250, 24300, 24350, 24400, 24450, 24500, 24550, 24600, 24650, 24700, 24750, 24800, 24850, 24900, 24950, 25000, 25050, 25100, 25150, 25200, 25250, 25300, 25350, 25400, 25450, 25500, 25550, 25600, 25650, 25700, 25750, 25800, 25850, 25900, 25950, 26000, 26050, 26100, 26150, 26200, 26250, 26300, 26350, 26400, 26450, 26500, 26550, 26600, 26650, 26700, 26750, 26800, 26850, 26900, 26950, 27000, 27050, 27100, 27150, 27200, 27250, 27300, 27350, 27400, 27450, 27500, 27550, 27600, 27650, 27700, 27750, 27800, 27850, 27900, 27950, 28000, 28050, 28100, 28150, 28200, 28250, 28300, 28350, 28400, 28450, 28500, 28550, 28600, 28650, 28700, 28750, 28800, 28850, 28900, 28950, 29000, 29050, 29100, 29150, 29200, 29250, 29300, 29350, 29400, 29450, 29500, 29550, 29600, 29650, 29700, 29750, 29800, 29850, 29900, 29950, 30000, 30050, 30100, 30150, 30200, 30250, 30300, 30350, 30400, 30450, 30500, 30550, 30600, 30650, 30700, 30750, 30800, 30850, 30900, 30950, 31000, 31050, 31100, 31150, 31200, 31250, 31300, 31350, 31400, 31450, 31500, 31550, 31600, 31650, 31700, 31750, 31800, 31850, 31900, 31950, 32000, 32050, 32100, 32150, 32200, 32250, 32300, 32350, 32400, 32450, 32500, 32550, 32600, 32650, 32700, 32750, 32800, 32850, 32900, 32950, 33000, 33050, 33100, 33150, 33200, 33250, 33300, 33350, 33400, 33450, 33500, 33550, 33600, 33650, 33700, 33750, 33800, 33850, 33900, 33950, 34000, 34050, 34100, 34150, 34200, 34250, 34300, 34350, 34400, 34450, 34500, 34550, 34600, 34650, 34700, 34750, 34800, 34850, 34900, 34950, 35000, 35050, 35100, 35150, 35200, 35250, 35300, 35350, 35400, 35450, 35500, 35550, 35600, 35650, 35700, 35750, 35800, 35850, 35900, 35950, 36000, 36050, 36100, 36150, 36200, 36250, 36300, 36350, 36400, 36450, 36500, 36550, 36600, 36650, 36700, 36750, 36800, 36850, 36900, 36950, 37000, 37050, 37100, 37150, 37200, 37250, 37300, 37350, 37400, 37450, 37500, 37550, 37600, 37650, 37700, 37750, 37800, 37850, 37900, 37950, 38000, 38050, 38100, 38150, 38200, 38250, 38300, 38350, 38400, 38450, 38500, 38550, 38600, 38650, 38700, 38750, 38800, 38850, 38900, 38950, 39000, 39050, 39100, 39150, 39200, 39250, 39300, 39350, 39400, 39450, 39500, 39550, 39600, 39650, 39700, 39750, 39800, 39850, 39900, 39950, 40000, 40050, 40100, 40150, 40200, 40250, 40300, 40350, 40400, 40450, 40500, 40550, 40600, 40650, 40700, 40750, 40800, 40850, 40900, 40950, 41000, 41050, 41100, 41150, 41200, 41250, 41300, 41350, 41400, 41450, 41500, 41550, 41600, 41650, 41700, 41750, 41800, 41850, 41900, 41950, 42000, 42050, 42100, 42150, 42200, 42250, 42300, 42350, 42400, 42450, 42500, 42550, 42600, 42650, 42700, 42750, 42800, 42850, 42900, 42950, 43000, 43050, 43100, 43150, 43200, 43250, 43300, 43350, 43400, 43450, 43500, 43550, 43600, 43650, 43700, 43750, 43800, 43850, 43900, 43950, 44000, 44050, 44100, 44150, 44200, 44250, 44300, 44350, 44400, 44450, 44500, 44550, 44600, 44650, 44700, 44750, 44800, 44850, 44900, 44950, 45000, 45050, 45100, 45150, 45200, 45250, 45300, 45350, 45400, 45450, 45500, 45550, 45600, 45650, 45700, 45750, 45800, 45850, 45900, 45950, 46000, 46050, 46100, 46150, 46200, 46250, 46300, 46350, 46400, 46450, 46500, 46550, 46600, 46650, 46700, 46750, 46800, 46850, 46900, 46950, 47000, 47050, 47100, 47150, 47200, 47250, 47300, 47350, 47400, 47450, 47500, 47550, 47600, 47650, 47700, 47750, 47800, 47850, 47900, 47950, 48000, 48050, 48100, 48150, 48200, 48250, 48300, 48350, 48400, 48450, 48500, 48550, 48600, 48650, 48700, 48750, 48800, 48850, 48900, 48950, 49000, 49050, 49100, 49150, 49200, 49250, 49300, 49350, 49400, 49450, 49500, 49550, 49600, 49650, 49700, 49750, 49800, 49850, 49900, 49950, 50000, 50050, 50100, 50150, 50200, 50250, 50300, 50350, 50400, 50450, 50500, 50550, 50600, 50650, 50700, 50750, 50800, 50850, 50900, 50950, 51000, 51050, 51100, 51150, 51200, 51250, 51300, 51350, 51400, 51450, 51500, 51550, 51600, 51650, 51700, 51750, 51800, 51850, 51900, 51950, 52000, 52050, 52100, 52150, 52200, 52250, 52300, 52350, 52400, 52450, 52500, 52550, 52600, 52650, 52700, 52750, 52800, 52850, 52900, 52950, 53000, 53050, 53100, 53150, 53200, 53250, 53300, 53350, 53400, 53450, 53500, 53550, 53600, 53650, 53700, 53750, 53800, 53850, 53900, 53950, 54000, 54050, 54100, 54150, 54200, 54250, 54300, 54350, 54400, 54450, 54500, 54550, 54600, 54650, 54700, 54750, 54800, 54850, 54900, 54950, 55000, 55050, 55100, 55150, 55200, 55250, 55300, 55350, 55400, 55450, 55500, 55550, 55600, 55650, 55700, 55750, 55800, 55850, 55900, 55950, 56000, 56050, 56100, 56150, 56200, 56250, 56300, 56350, 56400, 56450, 56500, 56550, 56600, 56650, 56700, 56750, 56800, 56850, 56900, 56950, 57000, 57050, 57100, 57150, 57200, 57250, 57300, 57350, 57400, 57450, 57500, 57550, 57600, 57650, 57700, 57750, 57800, 57850, 57900, 57950, 58000, 58050, 58100, 58150, 58200, 58250, 58300, 58350, 58400, 58450, 58500, 58550, 58600, 58650, 58700, 58750, 58800, 58850, 58900, 58950, 59000, 59050, 59100, 59150, 59200, 59250, 59300, 59350, 59400, 59450, 59500, 59550, 59600, 59650, 59700, 59750, 59800, 59850, 59900, 59950, 60000, 60050, 60100, 60150, 60200, 60250, 60300, 60350, 60400, 60450, 60500, 60550, 60600, 60650, 60700, 60750, 60800, 60850, 60900, 60950, 61000, 61050, 61100, 61150, 61200, 61250, 61300, 61350, 61400, 61450, 61500, 61550, 61600, 61650, 61700, 61750, 61800, 61850, 61900, 61950, 62000, 62050, 62100, 62150, 62200, 62250, 62300, 62350, 62400, 62450, 62500, 62550, 62600, 62650, 62700, 62750, 62800, 62850, 62900, 62950, 63000, 63050, 63100, 63150, 63200, 63250, 63300, 63350, 63400, 63450, 63500, 63550, 63600, 63650, 63700, 63750, 63800, 63850, 63900, 63950, 64000, 64050, 64100, 64150, 64200, 64250, 64300, 64350, 64400, 64450, 64500, 64550, 64600, 64650, 64700, 64750, 64800, 64850, 64900, 64950, 65000, 65050, 65100, 65150, 65200, 65250, 65300, 65350, 65400, 65450, 65500, 65550, 65600, 65650, 65700, 65750, 65800, 65850, 65900, 65950, 66000, 66050, 66100, 66150, 66200, 66250, 66300, 66350, 66400, 66450, 66500, 66550, 66600, 66650, 66700, 66750, 66800, 66850, 66900, 66950, 67000, 67050, 67100, 67150, 67200, 67250, 67300, 67350, 67400, 67450, 67500, 67550, 67600, 67650, 67700, 67750, 67800, 67850, 67900, 67950, 68000, 68050, 68100, 68150, 68200, 68250, 68300, 68350, 68400, 68450, 68500, 68550, 68600, 68650, 68700, 68750, 68800, 68850, 68900, 68950, 69000, 69050, 69100, 69150, 69200, 69250, 69300, 69350, 69400, 69450, 69500, 69550, 69600, 69650, 69700, 69750, 69800, 69850, 69900, 69950, 70000, 70050, 70100, 70150, 70200, 70250, 70300, 70350, 70400, 70450, 70500, 70550, 70600, 70650, 70700, 70750, 70800, 70850, 70900, 70950, 71000, 71050, 71100, 71150, 71200, 71250, 71300, 71350, 71400, 71450, 71500, 71550, 71600, 71650, 71700, 71750, 71800, 71850, 71900, 71950, 72000, 72050, 72100, 72150, 72200, 72250, 72300, 72350, 72400, 72450, 72500, 72550, 72600, 72650, 72700, 72750, 72800, 72850, 72900, 72950, 73000, 73050, 73100, 73150, 73200, 73250, 73300, 73350, 73400, 73450, 73500, 73550, 73600, 73650, 73700, 73750, 73800, 73850, 73900, 73950, 74000, 74050, 74100, 74150, 74200, 74250, 74300, 74350, 74400, 74450, 74500, 74550, 74600, 74650, 74700, 74750, 74800, 74850, 74900, 74950, 75000, 75050, 75100, 75150, 75200, 75250, 75300, 75350, 75400, 75450, 75500, 75550, 75600, 75650, 75700, 75750, 75800, 75850, 75900, 75950, 76000, 76050, 76100, 76150, 76200, 76250, 76300, 76350, 76400, 76450, 76500, 76550, 76600, 76650, 76700, 76750, 76800, 76850, 76900, 76950, 77000, 77050, 77100, 77150, 77200, 77250, 77300, 77350, 77400, 77450, 77500, 77550, 77600, 77650, 77700, 77750, 77800, 77850, 77900, 77950, 78000, 78050, 78100, 78150, 78200, 78250, 78300, 78350, 78400, 78450, 78500, 78550, 78600, 78650, 78700, 78750, 78800, 78850, 78900, 78950, 79000, 79050, 79100, 79150, 79200, 79250, 79300, 79350, 79400, 79450, 79500, 79550, 79600, 79650, 79700, 79750, 79800, 79850, 79900, 79950, 80000, 80050, 80100, 80150, 80200, 80250, 80300, 80350, 80400, 80450, 80500, 80550, 80600, 80650, 80700, 80750, 80800, 80850, 80900, 80950, 81000, 81050, 81100, 81150, 81200, 81250, 81300, 81350, 81400, 81450, 81500, 81550, 81600, 81650, 81700, 81750, 81800, 81850, 81900, 81950, 82000, 82050, 82100, 82150, 82200, 82250, 82300, 82350, 82400, 82450, 82500, 82550, 82600, 82650, 82700, 82750, 82800, 82850, 82900, 82950, 83000, 83050, 83100, 83150, 83200, 83250, 83300, 83350, 83400, 83450, 83500, 83550, 83600, 83650, 83700, 83750, 83800, 83850, 83900, 83950, 84000, 84050, 84100, 84150, 84200, 84250, 84300, 84350, 84400, 84450, 84500, 84550, 84600, 84650, 84700, 84750, 84800, 84850, 84900, 84950, 85000, 85050,

Down
From
Early Files

Memories Lane

5 Years Ago

From Mar. 2, 1961 issue - State Highway Commissioner Henry Ward carried (moving van) the district highway engineering office from Morehead to temporary headquarters at Flemingsburg. This was a "burning issue" between the two towns with Ward and Gov. Bert Combs siding with Flemingsburg.

Clark B. Lane was appointed Morehead Tax Assessor.

The Morehead Eagles returned from victories at Tampa and Miami, Fla. to defeat Eastern 90-73 at the Morehead Fieldhouse. But, Morehead fans were critical they couldn't get tickets for the return game at Richmond since Eastern fans had 100, or more, tickets for the game in Morehead's Fieldhouse. The Ohio Valley Conference crown rested on the outcome of the upcoming game at Richmond and the gymnasium was sold out.

Political announcements: Ray Bailey, Democrat, State Representative, Frank Kendall Harper, Democrat, Jailer; Bridges Johnson, Democrat, Magistrate. Death: Thomas F. Stidom, 83.

10 Years Ago

Lawrence Maud, 32, was charged with the murder of Cecil White, 64, his best friend. State Police Detective Murvel Caudill charged a carefully laid plot, with money the motive.

"Within This Valley" was chosen as the slogan for Rowan County's Centennial Pageant. The winning slogan was submitted by Marie B. Howard. George J. Cline was elected President of the Morehead Chamber of Commerce, and Glenn W. Lane, Treasurer. Plans for additional electric service in Rowan and three adjoining counties was announced at a district REA meeting at Morehead.

The Legislature had a bill to increase the number of Regents at Morehead, and the other state colleges, from five to eight.

Deaths: George W. McDaniel, 78; Calvin Sexton, 74.

20 Years Ago

Morehead State Teachers College President William H. Vaughan was elected Vice-President of the American Association of Teachers Colleges in annual session at Cleveland, O.

Read Rose Dairy expanded operations. Several meetings were held at Morehead to clarify the GI Bill of Rights. Controversy, and misunderstanding, were apparent.

Mills Theatre announced it would have matinees every day. A J.C. Wells bus transported a load of Rowan Countians to Frankfort to appear before the Highway Commission and Gov. Simeon Willis seeking road improvements.

The U.S. Army awarded the bronze star posthumously to Clarence Slusher of Rowan County.

Deaths: Gun Utterback, 59; Mrs. Arch Thompson, sister-in-law of Ernie Thompson; Mrs. Allen Cline, 38; Dr. B. Cleff Wilson, former Moreheadian, at Louisville.

25 Years Ago

From Mar. 6, 1941 issue - New 1941 V-8 Fords were advertised at \$777. Chevrolet slightly less.

H.C. Hagan was elected Rowan County Red Cross Chairman; Mrs. Blanche Waltz, Executive Secretary.

World-renowned evangelist Kirby Page spoke at MISC.

Owners of Morehead Stockyards said "Lene" caused a disappointing volume of receipts.

Woody Hinton wrote an entire column proving [100 years research] that the grounding shadow is a legend.

Farmers Consolidated School started a tabloid newspaper.

J.B. Horzwal announced a leave of absence from the staff at M.C. Murvel Hall, received a BS degree in radio engineering.

Deaths: D.B. Cornette, 83; Jess Johnson, 60.

Moreheadian Will Be On 'Status Of Women' Program

Women's status in the modern world will be the main topic of discussion when Homemakers Federation members from throughout Kentucky meet at the University of Kentucky Mar. 28-31 for their annual meeting.

Mrs. James Brookshire, Breckinridge County, state president of the Kentucky Federation of Homemakers, and Mrs. Ruth Saunders, acting chairman of UK Extension home economics programs, today announced details of the program for the three-day meeting.

Keynoting the conference will be the presentation on findings of the Governor's Commission on the Status of Women, scheduled for Wednesday morning, Mar. 30. Miss Chloe Gifford, director of special activities at UK and Commission chairman, will discuss its work and will moderate a panel made up of members of the Commission and Commission members.

Different aspects of the status of women and the panel members will discuss them are: volunteer leadership—Mrs. Adron Duran, past president of the Kentucky Federation of Women's Clubs; religion—Sister Mary Luke Tobin, Superior General, Motherhouse, Sister of Loretto, Merina, Ky.; legal status—Robert Matthews, Attorney General, Commonwealth of Kentucky; culture—Mrs. Garnett Bale, president of the Friends of Kentucky Volunteer Service; employment—Carl Caba, state Commissioner of Labor; and family living—Mrs. Mary Browder, UK Extension family life specialist.

Bob Bishop Purchases 4 Registered Angus Cows

Bob Bishop, Morehead, recently purchased four registered Angus cows and one Aberdeen-Angus bull from Dixie Stock Farms Inc., Lancaster, Kentucky. Bishop operates a drug store in Morehead and is also engaged in farming.

Farmers Study Pros And Cons

Burley Vote Near

Burley tobacco growers in Kentucky and elsewhere in the eight-state burley producing belt will vote next Thursday, March 10, on proposed acreage-poundage production controls.

The special referendum was called by U.S. Secretary of Agriculture Orville Freeman in his announcement of burley quotas for 1966, which ordered a 15 percent cut in acreage for most farms. The cut will not be restored under the present program.

County growers will vote between 8 a.m. and 6 p.m., local time, at community polling places set up by the county ASCS committee. Growers will favor on the question, "Are you in favor of acreage-poundage quotas for burley tobacco for the three marketing years beginning October 1, 1966?"

While the question on the ASC ballot in the referendum is simple, the issues involved go to the very heart of the tobacco program itself. Tobacco today is under constant attack, with continuing efforts by some Congressmen to eliminate price supports, and leaders of the burley industry do not hesitate to say that unless all tobacco programs are kept dollar-and-dime it will not be long before the valuable price support system is lost.

John M. Berry, president of the Burley Tobacco Growers Co-Operative Association, said growers should clearly understand the issue involved before they vote.

"The tobacco program was set up to benefit the grower—regardless of the size of the allotment, with the price support system from which he has benefited for 25 years. Simply look at the benefits and who receives them. Can we afford to even risk losing them? When the danger signals are flying, we think the grower ought to know about them. And the danger signals are getting stronger and stronger. We would be wrong if we did not point out any dangers as we see them."

The Burley Tobacco Growers Co-Operative Association has administered the price support program in Kentucky, Ohio, Indiana, West Virginia and Missouri since the 1940 crop.

"There is nothing automatic about the tobacco program," Berry stressed, "and it is up to growers to provide their interest with his every effort unless

he wants to lose this program. And the people in the cities and towns ought to know that they have more of a stake than they may realize in the success of the tobacco program."

"The Burley Association considered all of the facts and issues, including the national image of tobacco these days, and decided that the proposed acreage-poundage program provides the best available way to protect the price support program. This is the only real issue: How can we best keep the burley tobacco program of price supports and the necessary production controls."

"Without price supports, the advantages of burley tobacco production as we know them today—regardless of the size of a grower's allotment—will be gone. But things being what they are, realistically, no one can really expect price supports to continue unless growers show a willingness to keep the other half of the bargain—to accept production control in exchange for price supports."

Berry said every grower should ask himself whether Congress, were the agricultural vote in becoming less and less effective, would be willing to continue to vote money for the tobacco program if the growers' actions show they are less than willing to accept their share of the responsibilities for the soundness of the program.

Growers were asked to think about the problem carefully while the decision is still theirs to make, or "we may find," Berry said, "that there are those, without any care or feeling whatever about the tobacco grower and his problems, who may be making our decisions for us."

Waltrede Wade Blair Is Among Western Graduates

One student from Rowan county, of a total of 167, have completed requirements for degrees at Western Kentucky State College at the close of the first semester of the 1965-66 academic year, according to Rhea Lazarus, Registrar of the College.

Waltrede Wade Blair from Rowan county will be among the 167 June 3 graduates, completing requirements the first semester.

Women's Medical News

BY LOUISE CHASE
Women's Medical News Service

Mothers, you are not to blame if your new-born baby develops colic. This news comes from Dr. Jack L. Paradise, pediatrician of the Bellaire Clinic, Bellaire, Ohio. Dr. Paradise told colleagues attending a recent meeting here of the American Academy of Pediatricians that in a study of 146 mothers and their new-borns he could find little evidence that the emotional state, intelligence, education, or attitudes of mothers caused babies to get colic.

Some infants got it although their mothers were "cheerful nonworriers," the doctor noted. Other babies whose mothers were quite anxious did not get it. Nor did colic seem related to nausea during pregnancy, disappointment with the baby's sex, maternal age of parental allergy. He urged physicians to dispel such erroneous notions so as to relieve the new mother's anxiety.

WHITE HOUSE CONFERENCE PUSHES FAMILY PLANNING

At a recent White House Conference on Health, physician-members of a panel on family planning made the following recommendations:

- Every woman who wants it should be given birth control information when she has her check-up following childbirth.
- Family planning should be part of every hospital's outpatient service.
- Family planning, information and service should be an integral part of medical care plans.
- Social workers should be permitted to discuss family planning with their clients as they now discuss a variety of other family matters.

TRAGEDY: FAILURE TO IMMUNIZE

Are you and your family properly immunized against polio? Are your immunizations up-to-date? The answer should be yes—or tragedy can strike as it did in this bustling city not so long ago. An outbreak of the disease took the life of a teen-age girl and hospitalized 18 other residents. After the epidemic subsided, public health authorities vaccinated seven-eighths of the population.

Morehead G.P. Is Elected To National G.P.

Dr. Billie Jo Caudill, 458 East Main Street, has been elected to active membership in the American Academy of General Practice, a national association of 29,000 family doctors.

As a member of the AAGP, Dr. Caudill will be required to complete 150 hours of postgraduate medical study every three years. The program, unique among medical associations, is designed to help member physicians keep abreast of the latest scientific developments in medicine.

Founded in 1947, the AAGP is the country's second largest national medical association.

BEGINNING - The public weather service of the United States began in 1870 as part of the Army Signal Corps.

lation of 140,000 people. But, noted chief medical officer Dr. John Ardley, this was prevention after the fact. Had any of those stricken had been immunized before the outbreak.

TERMITES?

call Terminix!

Terminix's termite control guarantee

\$5000 GUARANTEE

Applied Fumigant Termite Damage

For Free Inspection, call

CARR

LUMBER CO.

PHONE 784-5421

All Work Done By

Terminix Co.

Louisville, Ky.

MOORE'S DRY WALL Remodeling and Building RALPH MOORE

128 Branham Ave. Phone 784-5155

Choose from a large selection of monuments in stock or order. From BARKER MONUMENT COMPANY Located just east of Olive Hill on US 90 "Where you see what you are buying" when you want the best you want Georgia granite. We cut our own stones and are equipped to cut dates on stones already set in cemetery. Jim Barker, Owner Phone 286-4374 Hours: Mon. thru Sat. 9:00 A.M. - 5:00 P.M. Marble available on order

Call Brown Trucking Company For Crushed Limestone Or Greek Gravel Excavating Or Hauling Phone: 784-5727 - 784-5830 - 784-4890

Complete Ambulance Service Oxygen Equipped "Equipped To Serve You" Member of Kentucky Funeral Director's Burial Association --Authorized To Service-- Burial Insurance Contracts Issued By COMMONWEALTH LIFE INSURANCE CO. LANE FUNERAL HOME Phone 784-4134 - Morehead, Ky.

Free Florida Vacation For Two At Miami Beach With purchase of a new Mobile Home. For details see Barbour Doyle at... Doyle Mobile Home Sales Maysville Rd. Flemingsburg, Ky.

On March 10 VOTE YES FOR Acreage-Poundage

The present tobacco control program has brought prosperity to thousands of farmers. It is endangered today by overproduction, which continues to mount despite acreage reductions. The new acreage-poundage program is designed to protect your important tobacco support program. We recommend, therefore, that you support this vital program at the polls on March 10 for the following reasons:

- 1. ALLOTMENTS** — If present acreage program is continued, Burley allotments for the 1966 crop will be cut by 15%. This reduction will be applied unless the special referendum called by the Secretary of Agriculture passes by two-thirds majority on March 10.
- 2. INCOME PROTECTION** — The new program will allow growers to make up for poor growing seasons. Burley farmers who are unable because of destructive factors to produce their quotas can grow enough in the following year to make up for past crop losses. The acreage-poundage program should, therefore, stabilize Burley growers income in the long run.
- 3. ACREAGE STABILITY** — The new acreage-poundage program should eliminate further acreage cuts by bringing the supply of Burley tobacco in line with demand.
- 4. IMPROVED MARKETS** — With production stabilized, Burley farmers can concentrate on growing a more useable tobacco. This more desirable leaf should result in a greater demand for U.S. Burley tobacco on both domestic and foreign markets.

*USDA — 296-66 January 27

IN SUMMARY, THE ACREAGE-POUNDAGE PROGRAM IS DESIGNED TO HELP YOU, THE BURLEY GROWER



R. J. Reynolds Tobacco Company

FORD DEALERS STOMP DOWN MUSTANG PRICE

2590⁰⁰43

ROWAN MOTOR SALES

117 WEST MAIN ST. MOREHEAD, KY.

Come see us stomp down this "list price" to the all-time low you actually pay for a new '66 Mustang! Come to our Big Ford Drive—we're moving out a record number of '66 Fords and Mustangs! Now going on!

FORD DEALER'S BIG FORD DRIVE

*F.O.B. Dealer. Dealer's suggested retail price for Mustang. Excludes charges, taxes and local license fees. See your local Ford Dealer for his selling price.

SOCIETY

The Veterans of World War I and the Ladies Auxiliary will hold the regular meeting Saturday, March 5, at 2:30 p.m. at Rowan County High School. A membership drive is in progress and all members and those eligible for membership are urged to attend.

Mr. and Mrs. Asa Crosthwaite and Mrs. Duff Marshall of Dayton, O. spent from Wednesday to Friday with Mr. and Mrs. James Stinson and Anna Lois Crosthwaite.

Cliff Meyers and Willie Willis of Pikeville were Sunday guests of Mr. and Mrs. Earl McClary.

Mr. and Mrs. Claude Allen Messer of Haldeman are announcing the arrival of their first child, a son, born Feb. 10. He weighed seven pounds one ounce and has been named Mark Allen. His grandparents are Mr. and Mrs. Clarence Withrow and Mr. and Mrs. Alex Messer, all of Haldeman.

Mr. and Mrs. Larry Joe Brandon of Racine, Wis. and Airman David Sebastian of Harrodsburg were weekend guests of Mr. and Mrs. Cledith Barker and son, Winford Scott.

Mr. and Mrs. Jack Barber of Fairborn, O. spent the weekend with his mother, Mrs. J.C. Barber Sr.

Mr. and Mrs. Herbert Ross and son, Randy of Ashland were Sunday visitors in Morehead.

Mr. and Mrs. Larry Fisher were weekend guests of his parents, Mr. and Mrs. Wilson Fisher in Wilmington, O.

Mr. and Mrs. Paul Jackson spent the weekend with their daughter, Mrs. Thomas Ray Hamilton and Mr. Hamilton in Brookville, O. Miss Betty Higgins of Lexington spent the weekend with her parents, Mr. and Mrs. Lewis Higgins.

Mr. and Mrs. James A. Davis of Grayson spent Saturday night and Sunday with her parents, Mr. and Mrs. Walter Calvert.

Miss Dorothy Walter who teaches in Cincinnati, spent the weekend with her mother and Dr. Walter who is a patient in St. Claire Medical Center.

Miss Nina Caudill of Columbus, O. spent the weekend with her parents, Mr. and Mrs. Riley Caudill.

Mr. and Mrs. Glenda Fraley returned last Monday from a ten day vacation in Ft. Myers, Fla.

Dr. and Mrs. N.C. Marsh visited Sunday with relatives in Cynthia and with Mrs. Lillian McCaskey who is a patient in the hospital at Paris.

Mrs. Patty Hays of Flemingsburg spent Friday with Mrs. K.H. Fanning.

Mr. and Mrs. Willard Calvert entertained Sunday at their home with a birthday dinner honoring his father, Frank Calvert Sr. Other guests were Mrs. Frank Calvert, Mr. and Mrs. Willard Calvert Jr., Tommy Calvert and Miss Sharon Williams.

Mr. and Mrs. Henry Paxson of Concord were Saturday and Sunday guests of Mr. and Mrs. D.E. Bayliffe. Mr. and Mrs. Bayliffe were Wednesday night visitors in Huntington, W. Va.

Miss Alice Cox attended funeral services Saturday for her sister-in-law, Mrs. Clarine Cox in Cynthia.

Mr. and Mrs. W.C. Lane and family had as their guests from Friday to Sunday their niece, Sidney Jane McCartney, and Lewis Wright, both of Flemingsburg. Mrs. Lane's sister, Mrs. Howard McCartney and sons, Frank, Eldon and Dent, Flemingsburg, visited her Sunday.

Mrs. Michael Roberts of Mr. Sterling spent Tuesday night and Wednesday with her sons, W.T. Garey and Miss Nancy Caudill.

Mr. and Mrs. W.C. Lane and family had as their guests from Friday to Sunday their niece, Sidney Jane McCartney, and Lewis Wright, both of Flemingsburg. Mrs. Lane's sister, Mrs. Howard McCartney and sons, Frank, Eldon and Dent, Flemingsburg, visited her Sunday.

Mrs. Michael Roberts of Mr. Sterling spent Tuesday night and Wednesday with her sons, W.T. Garey and Miss Nancy Caudill.

Mr. and Mrs. W.C. Lane and family had as their guests from Friday to Sunday their niece, Sidney Jane McCartney, and Lewis Wright, both of Flemingsburg. Mrs. Lane's sister, Mrs. Howard McCartney and sons, Frank, Eldon and Dent, Flemingsburg, visited her Sunday.

Mrs. Michael Roberts of Mr. Sterling spent Tuesday night and Wednesday with her sons, W.T. Garey and Miss Nancy Caudill.

Mr. and Mrs. W.C. Lane and family had as their guests from Friday to Sunday their niece, Sidney Jane McCartney, and Lewis Wright, both of Flemingsburg. Mrs. Lane's sister, Mrs. Howard McCartney and sons, Frank, Eldon and Dent, Flemingsburg, visited her Sunday.

Mrs. Michael Roberts of Mr. Sterling spent Tuesday night and Wednesday with her sons, W.T. Garey and Miss Nancy Caudill.

Mr. and Mrs. W.C. Lane and family had as their guests from Friday to Sunday their niece, Sidney Jane McCartney, and Lewis Wright, both of Flemingsburg. Mrs. Lane's sister, Mrs. Howard McCartney and sons, Frank, Eldon and Dent, Flemingsburg, visited her Sunday.

Mrs. Michael Roberts of Mr. Sterling spent Tuesday night and Wednesday with her sons, W.T. Garey and Miss Nancy Caudill.

Mr. and Mrs. W.C. Lane and family had as their guests from Friday to Sunday their niece, Sidney Jane McCartney, and Lewis Wright, both of Flemingsburg. Mrs. Lane's sister, Mrs. Howard McCartney and sons, Frank, Eldon and Dent, Flemingsburg, visited her Sunday.

Mrs. Michael Roberts of Mr. Sterling spent Tuesday night and Wednesday with her sons, W.T. Garey and Miss Nancy Caudill.

Mr. and Mrs. W.C. Lane and family had as their guests from Friday to Sunday their niece, Sidney Jane McCartney, and Lewis Wright, both of Flemingsburg. Mrs. Lane's sister, Mrs. Howard McCartney and sons, Frank, Eldon and Dent, Flemingsburg, visited her Sunday.

A Special Place
For A Special
Society Editor

784-7739

USE THIS PHONE ONLY
Mrs. Beane Joyce
Society Editor

Mr. and Mrs. Victor Brickley and daughter, Nellie of Blaine.

Mr. and Mrs. Victor Brickley and daughter, Nellie of Blaine.

Mrs. Boyd Blair of West Liberty was the Sunday afternoon guest of Mr. and Mrs. Winford Crosthwaite.

Mrs. Clarence Baldrige entertained at her home Sunday with a family dinner honoring Mr. Baldrige's birthday. Those present were Mr. and Mrs. Robert Alley and children, Greg and Robin; Mr. and Mrs. Aubrey Kautz Jr. and sons, Ronnie and Rusty; Mr. and Mrs. Jack Baldrige and children, Nina and Joe; and Mr. and Mrs. Fred White.

Among those from out of town attending the luncheon and spring millinery show presented here Monday for the Kentucky Society for Crippled Children were Mrs. Walter Ferguson, Mrs. Barton Hays, W.L. Thompson, Mrs. Mathilda Blackberry and Mrs. Freda Hall, Lexington; and Mrs. Andre Duke, Mayfield.

Mr. and Mrs. Harrison Trent of Clearfield observed their Golden Wedding anniversary Monday with open house and a dinner at the home of their son and daughter, Mr. and Mrs. C.W. Trent and daughter, Kathy, Morehead Route 3.

Present for the occasion were their children, grandchildren and friends: Mrs. Harry Trent and family, Detroit, Mich.; Mr. and Mrs. Carl Ray Kogley and family, Dayton, O.; Mr. and Mrs. Tom Trent, Jr. and Mrs. Robert Trent, Mrs. John Holloway and daughters, Mr. and Mrs. Clarence Stewart, Mr. and Mrs. Teddy Trent and the hosts, all of Morehead; Mr. and Mrs. Wales Trent and son, Gary, Miss Gertrude Trent and Stephanie Jean Trent, Clearfield.

Guests were Mr. and Mrs. Bonnie Baldrige, Rev. and Mrs. Davis Kidd, Glenda Kidd, Meredith Stucky and Daniel Workman.

Mr. and Mrs. Aubrey Kautz Jr. and sons, Rusty and Ronnie will leave today (Thursday) for a two-week vacation in Sarasota and Lakeland, Fla.

Mr. and Mrs. Hubert Eldridge and children, Stephen and Debbie of New Carlisle, O. spent the weekend with their mother, Mrs. Nell-Kash.

Sunday visitors at the home of Mr. and Mrs. Winford Sidon were Mr. and Mrs. James K. Roberts and Mrs. Robert K. Roberts and sons, George and Keith of South Williamson, Ky.; Miss Loraine Roberts, Alexandria, Va.; Mrs. Walter Gornessworth and Mrs. Jack Richmond of Inez.

Weekend guests of Mr. and Mrs. Russell Kautz of C.W. Roberts were Mr. and Mrs. C. Roger Roberts and sons, George and Keith of South Williamson, Ky.; Miss Loraine Roberts, Alexandria, Va.; Mrs. Walter Gornessworth and Mrs. Jack Richmond of Inez.

Mr. and Mrs. Lester Potter of Raceland were guests of their daughter, Mrs. Steve Hamilton and family for the weekend.

Dr. W.C. Lappin spent Thursday and Friday in Louisville attending an educational meeting.

Mrs. Agnabell Jarrell and children of Olive Hill were Monday visitors of Mr. and Mrs. A.E. Martin.

Mr. and Mrs. Mike Dudley, former editor of the University, and their son, Gregory were weekend guests of Mr. and Mrs. John E. Allen Jr. and Mrs. Betty Jean Wells. After a visit with his parents, Mr. and Mrs. Steve Dudley Sr. in Winchester, Mr. Dudley who is a professional golfer, will report to Hawthorne Valley Country Club, in Cleveland.

The Garden Department of the Morehead Woman's Club met Monday evening at the home of Mrs. Vella Jayne with Mrs. Blanche Waltz as her cohostess.

Mrs. Agnes Williams, chairman, presided. Mike Rogers reviewed "Silent Spring" and Robert Wolff gave a talk on Lawn Care. Other members present were Mrs. Sue Simpson, Mrs. Mary Alice Jayne, Mrs. Bertha Hough, Mrs. Edythe Keller, Mrs. Sarah Latham, Mrs. Ruby Lambert, Mrs. Kay Penny, Mrs. Jean Rogers, Mrs. Stella Stewart, Mrs. Ann Taylor and Mrs. Margaret Young.

The Chit Chat and Sew Homemakers Club met Feb. 25 at the home of Mrs. Ethel Williams. Mrs. Lydia Bryant presented the current lesson, "Citizenship" and Mrs. Williams gave another lesson on ceramics.

Other members present were Mrs. Jewell Taylor, Mrs. Gypsy Parke, Mrs. Lela Hogan and Mrs. Bob Jackson. Visitors were Mrs. Fran Deaton, Mrs. Sada Ravenscraft, Mrs. Greta Todd and Mrs. Martha Nelson.

Dr. and Mrs. Adron Doran were Saturday business visitors to Louisville.

Mr. and Mrs. Donald Fair and daughter, Donna of Amelia, O. were guests of Mr. and Mrs. L.A. Fair last Saturday.

Mrs. Eugenia Hays recently returned from a three-week stay with her daughter, Mrs. Harold Crosthwaite, and Mr. Crosthwaite in Dayton.

Paudits, Money For Charity Greet Morehead Style Show

The Rowan County Committee of the Kentucky Society for Crippled Children (Mrs. Bob Laughlin, Chairman and Mrs. Everett Blair, Co-Chairman) sponsored a Benefit Millinery Style Show Monday. Over 75 ladies from Morehead and five from Lexington gathered to see an exotic array of chic chapeaux newly arrived from the New York millinery marts, and original designs by Deane Tant.

Mrs. Adron Doran, Morehead and Mrs. Andrew Duke of Mayville were the models. Bernard Evers, cooperated in making the show a success.

A stunning array of more than three dozen hats spaced the giving which resulted in \$121 for the charity. Door prizes were from Dean's Studio Vi's Jewelry, and Ebell's Flowers. Mrs. Bob Wright, wife of Morehead State University's basketball coach, was the winner of a lovely spring hat.

Displaying an amazing versatility as a quick-change artist, Mrs. Doran paraded thirty-four hats, complete with suitable accessories and outfits, during the hour and half show.

J. Phil Smith and son, Len of Jackson were Sunday visitors at the home of Mr. and Mrs. Lester Hodge.

Dr. and Mrs. Leo D. Oppenheimer and family of Covington spent the weekend with his mother, Mrs. Leo Oppenheimer.

Jack Helwig Jr. and J.B. Calvert Jr. left Monday for a vacation in Sarasota, Fla.

Mr. and Mrs. Roy Cornett left Monday for a two-week visit in St. Petersburg, Fla.

Roger Robinson and Mike Layne of Dayton were visitors of Mr. and Mrs. Cecil Purvis last Saturday. Mr. and Mrs. Arlie Caudill of Mt. Sterling were guests at the Purvis home Sunday.

Mr. and Mrs. Doerr Warren of Columbus spent the weekend with her parents, Mr. and Mrs. John Green.

Mr. and Mrs. Fred Canally and Mrs. Dave Carlson were visiting Mr. and Mrs. R.L. Salyer in Salyersville over the weekend.

Mr. and Mrs. Clarence Combs and daughter, Jennifer Lynn of Jackson spent last Monday and Tuesday with her parents, Mr. and Mrs. Russell Boyd.

Guests over the weekend of Mrs. R.H. Hayes were Fola Hayes of Nashville and Mr. and Mrs. Orville Hayes, Mayaville.

Mr. and Mrs. Joe McClure and son, Billy of Somerset spent the weekend with their son and family, Mr. and Mrs. Russell McClure.

The birthdays of Danny Crase, Henry Lacy and Mrs. Sam Salyer were celebrated Sunday at the Salyer home on Wilson Avenue. A family dinner was enjoyed by Mr. Salyer and son, Allen, Mr. and Mrs. Robert Lacy and Mr. and Mrs. Chaldon Crase and children, Rhonda and Bryan of Batavia, O.

Patti Bolin, Betty McCluskey, Janet Bryan and Mrs. Virginia Rice attended the Kentucky Home Economics Association meeting at the "Innocent Families" in Louisville, Thursday and Friday. Miss Bolin was in Chicago Friday and Saturday attending the National Council of Home Economics Administrators.

J.H. Phippley Jr. visited Sunday with his sister, Mrs. Joe Stout in Milton, Ky.

The Book Club met Thursday night at the home of Mrs. Lester Hodge with 19 members present. Rev. J.C. Banks reviewed "The Source" by G.M. Michener. Margaret Heaslip and Mrs. Ethel Moore were cohostesses for the session.

Mr. and Mrs. John Gullett of New Richmond, O. were guests of his parents Mr. and Mrs. Wathan Gullett for the weekend.

Mrs. Marvin Gales spent Sunday in Columbus visiting her daughter and family, Mr. and Mrs. Ronnie Tucker and children.

Sunday guests of Mr. and Mrs. C.W. Caskey were Mr. and Mrs. Howard Williams of Owensville.

Mr. and Mrs. George Borders of Louisville spent last weekend with her sister, Mrs. Alice Mobley.

Mrs. Arch Williams and son, Jim were Saturday visitors in Lexington.

Miss Lynn Thompson had as her guest on Sunday, Mrs. Myrtle Leedy of Stark.

Weekend guests of Mr. and Mrs. Elton Johnson were his sister and family, Mr. and Mrs. Marvin Riggs and sons, Bob, Bill and Tim of Monroe, O.

Mrs. Mitchell Maynard of Ashland spent the weekend visiting with her sisters, Mrs. Roy Holtbrook, Mrs. Frank Whitney and Miss Lydia Marie Caudill.

Mrs. W. C. Lane, Mrs. L.D. Fanning and Mrs. Winford Crosthwaite were Thursday visitors in Cincinnati.

Curley Barker left Sunday to attend a carpenter training course this week in Aberdeen, N. C. Mrs. Barker accompanied him. She and her daughter, Mrs. Harold Crosthwaite, were also visited with her sister, Mrs. Hope McMillan.



"Photos" by Martin Huffman, Jr. A GLIMPSE OF SPRING... An outpouring of Morehead's style-conscious ladies crowded the private style show.

Monday contributing to the Kentucky Society for Crippled Children. This is a view of part of the group. The show followed a luncheon.



OH'S AND AH'S... The classic beauty of Mrs. Yvonne J. Mayville, who was one of the models in the Crippled Children's Benefit Millinery Style Show, is framed by a Romance de sole brim topped with ten cabbage roses alternating in Romance and Pink hues.

Mr. and Mrs. James Melvin Hane and family of Hodgenville were Sunday guests of his sister and family, Mr. and Mrs. George Barber and children.

Paul J. Reynolds and Joe Tolliver returned Wednesday from a ten-day fishing trip to Astor, Fla.

Sunday dinner guests of Mr. and Mrs. Woodrow Barber were Mr. and Mrs. O.C. Williams and family and Ralph Williams of Ashland. Other guests during the afternoon.

Progress Shown By Girl Scouts At Morehead

Next week Girl Scouts of Morehead and Girl Scouts around the world will be celebrating a promise they made when they first became Girl Scouts. The promise: "On my honor, I will try, to do my duty to God and my country, and to help other people at all times." This, "A Promise in Action," is the theme of Girl Scout Week this year.

The Girl Scouts in Morehead and the Rowan County area put that promise into action all year by carrying out service projects such as helping with handicapped children, providing personal attention to patients at the hospital, helping to better our County Library, helping other groups to serve, and helping to restore and clean up park and wildlife areas.

Girl Scouts in this area are part of the Wilderness Road Girl Scout Council, which covers 51 counties in eastern and central Kentucky. The Council, with offices in Lexington and Middletown, has 7300 girl members and 1450 adult volunteers, 115 girl and 15 adult volunteers in Rowan County.

For these people, a promise is not something to be made and then forgotten; and in the case of the Girl Scout Promise, it is truly "a promise in action!"

Some Boons Certified Seed May Be Available

A relatively small amount of certified seed of the newly released variety of ornamental, Boone, probably will be available this year in Kentucky.

Dr. Robert Buckner, USDA Agricultural Research Service agronomist stationed at the University of Kentucky Ag Experiment Station, said "about 10,000 pounds" is expected. The variety, released in 1958 after going through the foundation and registration steps of the certification process, has "high value for Kentucky use."



HAPPY GROUP... This picture was taken after the wedding of Miss Linda Carol Stamper and Gary Eugene Gum (couple in center). At left are his parents, Mr. and Mrs. Eugene Gum; at right her parents, Mr. and Mrs. W.G. Stamper of Morehead.

Linda Stamper Is Married To Gary E. Gum

The wedding of Miss Linda Carol Stamper, daughter of Mr. and Mrs. W.G. Stamper of Morehead, and Mr. Gary Eugene Gum, son of Mr. and Mrs. Eugene Gum of Tolleboro, was solemnized Feb. 12 at the bride's home in the Thomas Addition. Rev. Russell Reynolds performed the double ring ceremony.

Given in marriage by her father, the bride wore a ballerina-length dress of white satin brocade. The fitted bodice, styled with a scoop neckline and elbow-length sleeves, topped a bell-shaped skirt. Her nose-length veil was held by a corner of organza covered leaves and simulated pearls. She carried a nosegay of pink and white, multi-colored carnations tied with white satin streamers.

A close friend, Miss Carol Sue Blair was the bridesmaid of Mr. and Mrs. Darrell Gene Goodson served Mr. Gum as best man.

Immediately following the ceremony a reception was held with Mrs. Edna Denham serving at the bride's table. Miss Ruth Ann Skaggs, Miss Jean Van-Dusen and Mrs. Hazel Lowe assisted.

Mr. and Mrs. Gum are making their home in Tolleboro. Mr. Gum is employed in Mayville.

Nine Rowan Counties Attend Co-op Meeting

Nine Rowan Counties were among Southern States Representatives attending a regional meeting of Southern States Cooperative at Lexington last week.

Spokesmen for the co-op, home-based at Richmond, Va., reported dollar-volume sales for the last six months of 1965 were \$45,600,000, up 1 1/2 million for a corresponding time the previous year.

Attending from Rowan County were: W.T. Garey, Manager; and Board Members: Lawrence C. J., and Harold Brewer, RFD 1; Elbert Moore, Charles Ed Kiser, and Edward Briss, RFD 2; William Perkins, RFD 3; Oscar Hood, RFD 4; and Frank Lewis, Smith.

Caransto, Kent Presley, Fred Perino, Betty Starnes, Sheila Manley, John Bantola, Phyllis Lykins, Jennifer Roseman, Anita Miller, Sue Hall, Betty Downs, Carolyn Whalen, Joyce Klus, Norbert Allertbauer, Roger Plund, Sue Tackett, and other Morehead University students.

Other Morehead University students taking their student teaching in Rowan County include: Tildon Hoggie - Margretta Kelley and Carolyn Gorman, Clearfield; Loreta Stewart and Phyllis Alfieri; El-Hotville - Robert Jenkins and Theodore Trent.

The Morehead State University students who will do their training at Breckinridge in Rowan County High School are: Patricia Gee, David Saxton, Deanna Brewer, James Gee, Dolores Callahan, Michael Fletcher, Ronald Harper, Robert Henke, Michael Heller, and Lynn Staatsbyhn.

51 MSU Students Training In Rowan Schools

Fifty one Morehead State University students are doing their student teaching at consolidated and high schools in Rowan County.

Of these, 35 are taking this work, mandatory for a degree to teach, at Breckinridge Training School, a subsidiary of Morehead State University, two at Tildon Hoggie Consolidated School on Cranston Road, two at Clearfield; 10 at Rowan County High; and two at Elliottville.

The Morehead State University students who will do their training at Breckinridge are: Nancy Wright, Carolyn Breeding, Carol Mitchell, Howard Stanfill, Shirley Tipton, Frances Rolph, Stephen Stue, Margaret Adams, Juanita Gayhart, Oris Conner, Lonnie Davis, Frederick Scott, Linda Pereira, Susan Clark, Philip Salisbury, James Mastrodiana, Rudolph

so many good used cars at Larry Fannin Chevrolet it's hard to choose!



1962 Chevrolet Impala - 4 door hardtop - black - power steering and brakes - 25 month warranty
1964 Ford XL - 2 door hardtop - white - 25 month warranty
1964 Chevrolet - 4 door hardtop - white - air conditioned - power steering and brakes - 25 month warranty
1965 Thunderbird - air conditioned - power windows, steering and brakes - silver with black vinyl top - 25 month warranty
1963 Pontiac Catalina - 4 door hardtop - green and white - 25 month warranty

LARRY FANNIN CHEVROLET

E. MAIN ST. MOREHEAD, KY. PHONE 784-5136

