

News

PUBLIC INFORMATION

JUDITH YANCY, DIRECTOR

MOREHEAD STATE UNIVERSITY

UPO BOX 1100

MOREHEAD, KY 40351

606-783-2030

Dec. 1, 1987
FOR IMMEDIATE RELEASE

MOREHEAD, Ky.--Ted Marshall, Morehead State University associate professor of sociology and project director of the MSU-Morgan Center, has received a grant of \$20,000 from the Eastern Kentucky Concentrated Employment Program, Inc.

The grant will provide planning materials, adult literacy programs and course instructors for the Center, according to Marshall.

In addition, college courses will be offered under the grant.

"The MSU-Morgan Center is an effort by the University to provide services in the Morgan County region to educate adults and make them more employable, specifically for employment in the correctional facility," Marshall said.

Classes in job training and improved speaking skills will be available with MSU faculty serving as instructors.

"I am excited about the variety and number of services relating to education and employment that the Center will provide. It is a great feeling to be part of the planning and implementation of this program," Marshall added.

The MSU-Morgan Center has been open since September and is preparing for its Spring schedule of classes. Additional information on the Center and courses offered is available by phoning the Center at (606) 743-1500.

#####

mar

Photo

PUBLIC INFORMATION

JUDITH YANCY, DIRECTOR

MOREHEAD STATE UNIVERSITY

UPO BOX 1100

MOREHEAD, KY 40351

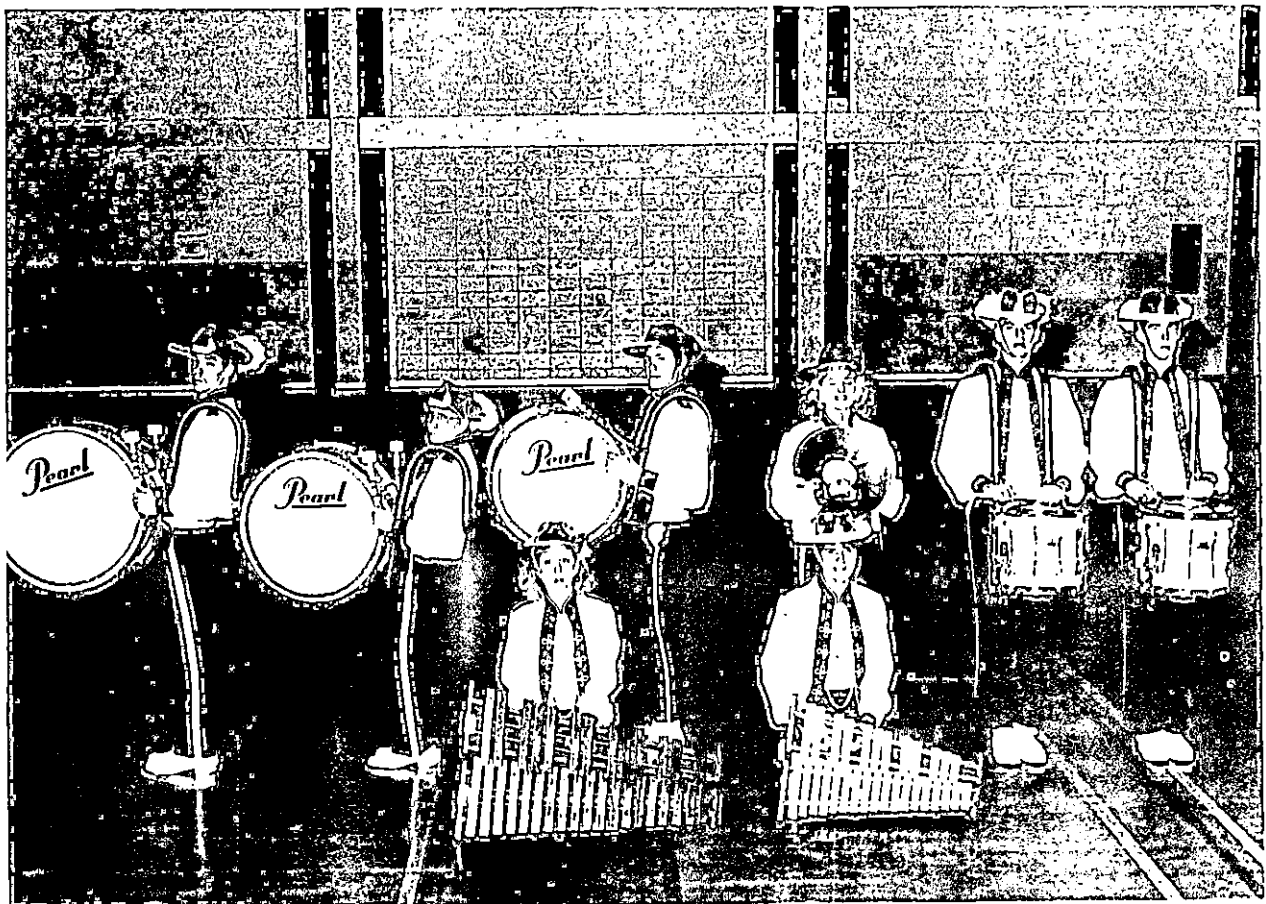
606-783-2030

HART COUNTY PERCUSSION WINS AWARD

Hart County High School's percussion section placed second in its division at "A Day of Percussion" clinic/competition held recently at Morehead State University. The event featured 23 percussion units from Kentucky, Indiana, Ohio, South Carolina and West Virginia. Each percussion unit was judged for its overall performance by top percussion clinicians.

(MSU photo by Linda Denton)

12-1-87mar



Hart County News

Photo

PUBLIC INFORMATION

JUDITH YANCY, DIRECTOR

MOREHEAD STATE UNIVERSITY

UPO BOX 1100

MOREHEAD, KY 40351

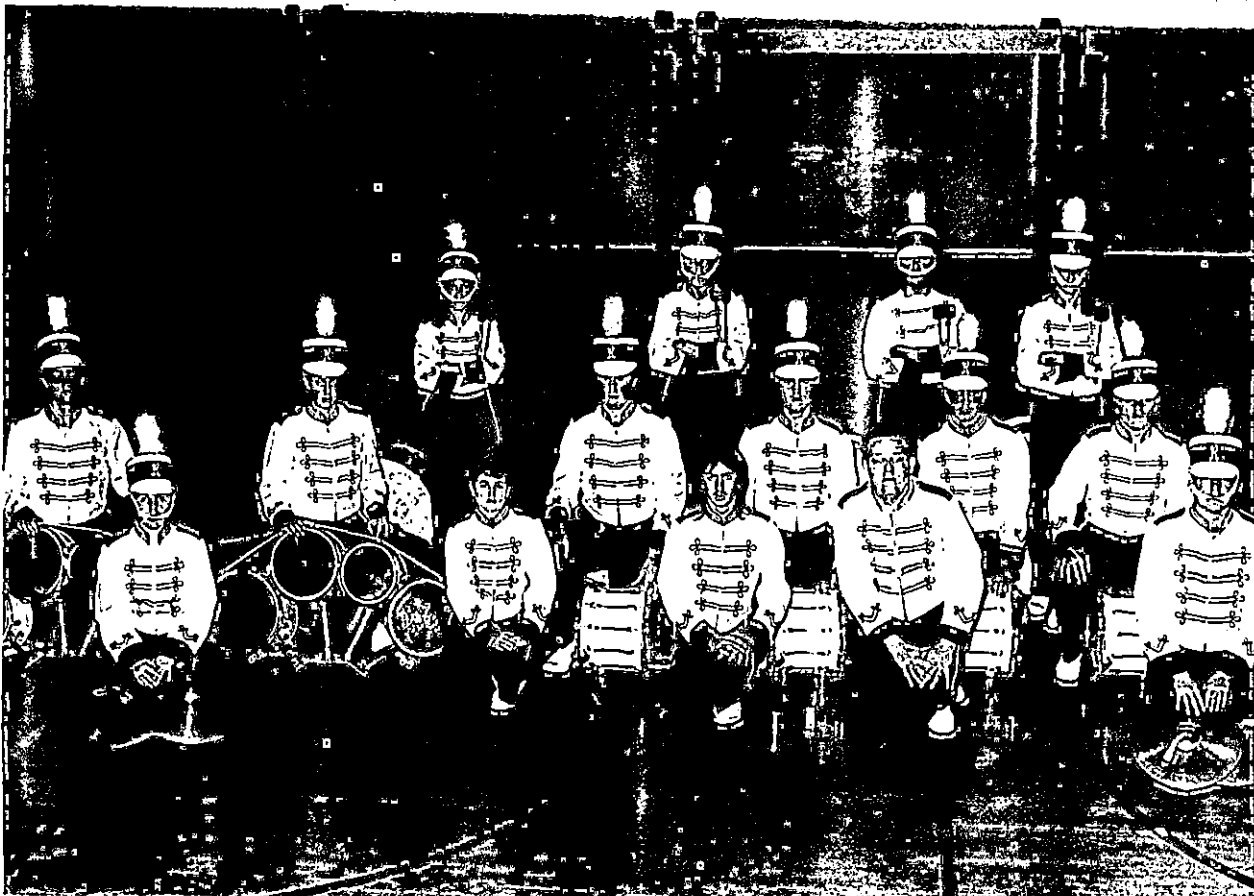
606-783-2030

RUSSELL HIGH SCHOOL PERCUSSION WINS AWARD

Russell High School's percussion section placed first in its division at "A Day of Percussion" clinic/competition held recently at Morehead State University. The event featured 23 percussion units from Kentucky, Indiana, Ohio, South Carolina and West Virginia. Each percussion unit was judged for its overall performance by top percussion clinicians.

(MSU photo by Linda Denton)

12-1-87mar



Greenup News

Photo

PUBLIC INFORMATION

JUDITH YANCY, DIRECTOR

MOREHEAD STATE UNIVERSITY

UPO BOX 1100

MOREHEAD, KY 40351

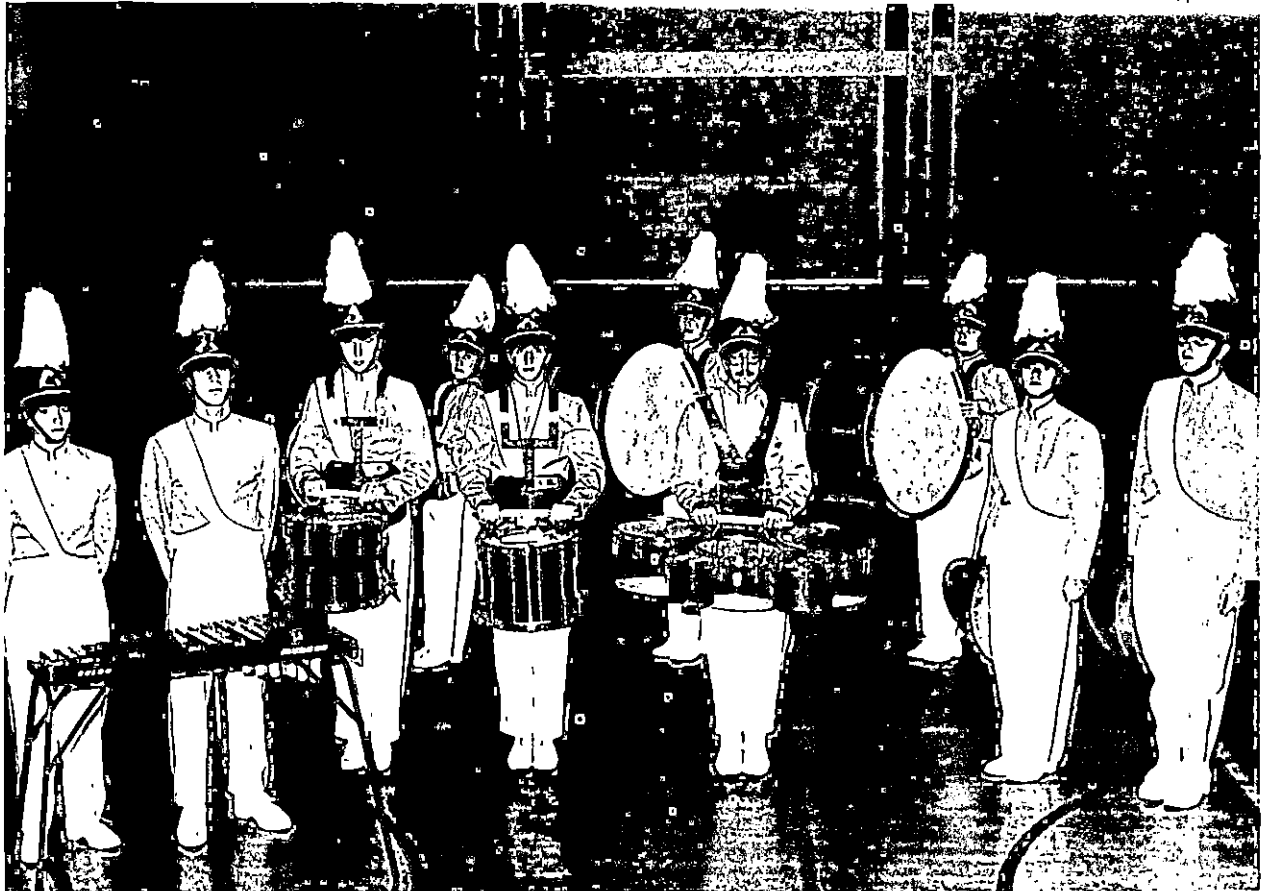
606-783-2030

BELLEVUE HIGH SCHOOL PERCUSSION WINS AWARD

Bellevue High School's percussion section placed first in its division at "A Day of Percussion" clinic/competition held recently at Morehead State University. The event featured 23 percussion units from Kentucky, Indiana, Ohio, South Carolina and West Virginia. Each percussion unit was judged for its overall performance by top percussion clinicians.

(MSU photo by Linda Denton)

12-1-87mar



Campbell County Recorder

Photo

PUBLIC INFORMATION

JUDITH YANCY, DIRECTOR

MOREHEAD STATE UNIVERSITY

UPO BOX 1100

MOREHEAD, KY 40351

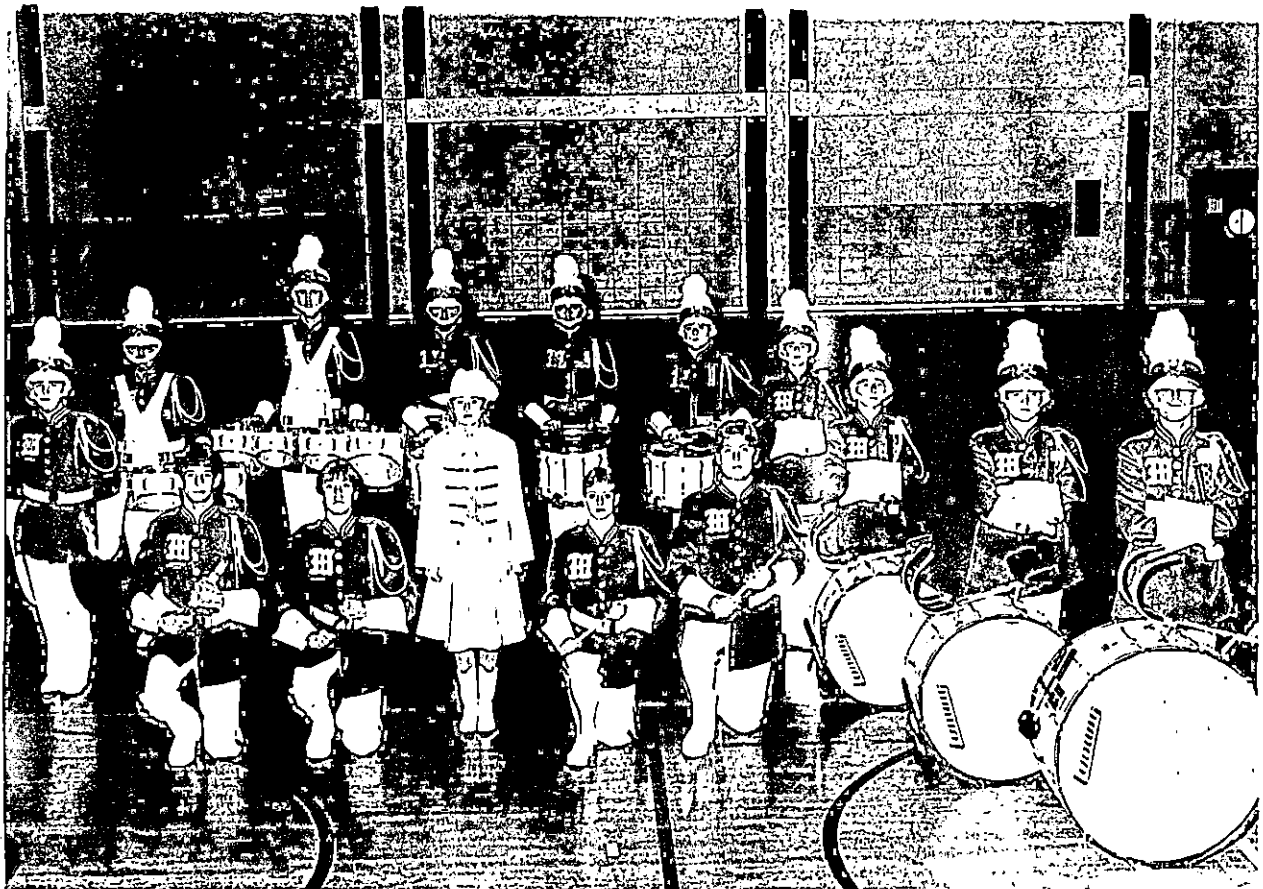
606-783-2030

MEADE COUNTY HIGH SCHOOL PERCUSSION WINS AWARD

Meade County High School's percussion section placed second in its division at "A Day of Percussion" clinic/competition held recently at Morehead State University. The event featured 23 percussion units from Kentucky, Indiana, Ohio, South Carolina and West Virginia. Each percussion unit was judged for its overall performance by top percussion clinicians.

(MSU photo by Linda Denton)

12-1-87mar



Meade County Messenger

Photo

PUBLIC INFORMATION

JUDITH YANCY, DIRECTOR

MOREHEAD STATE UNIVERSITY

UPO BOX 1100

MOREHEAD, KY 40351

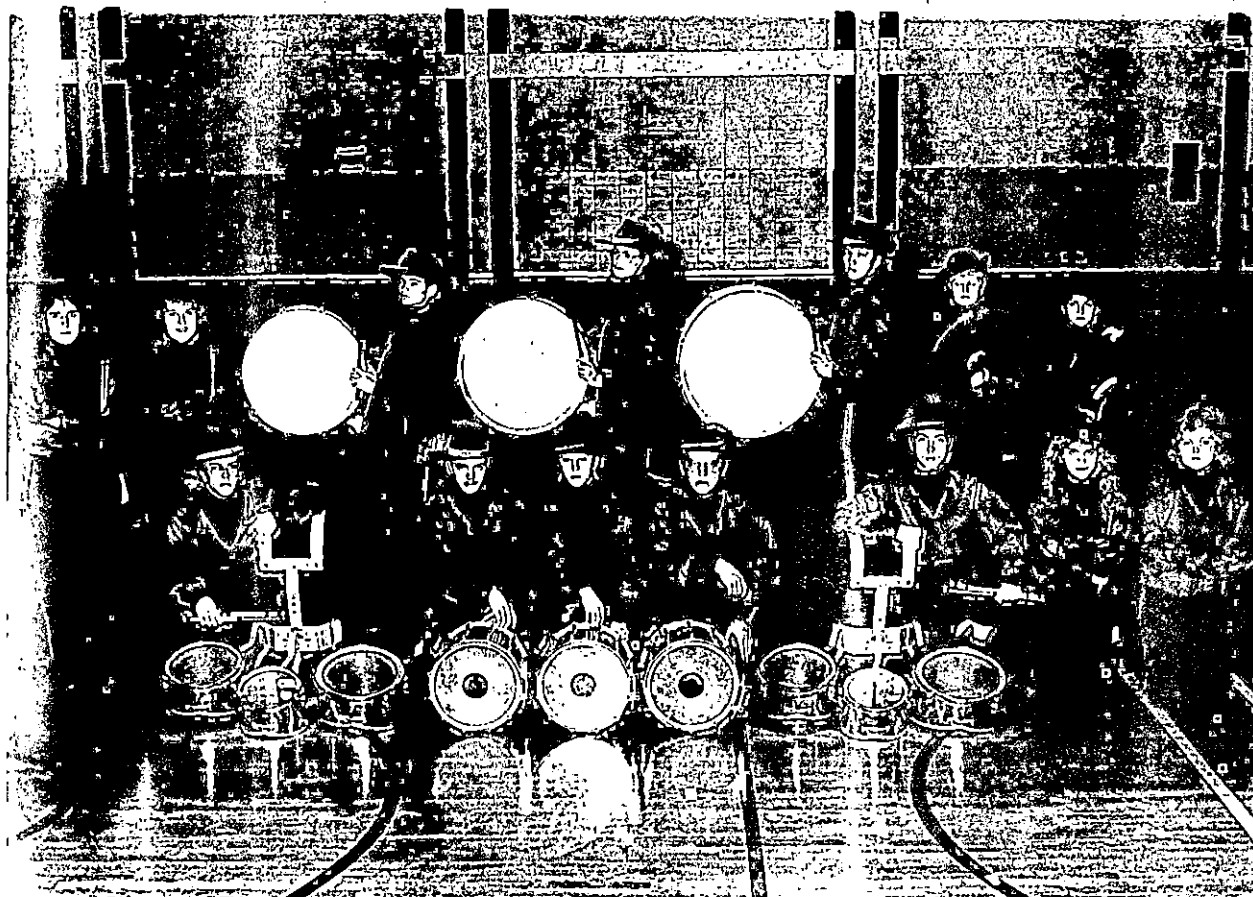
606-783-2030

PENDLETON COUNTY HIGH SCHOOL PERCUSSION WINS AWARD

Pendleton County High School's percussion section placed third in its division at "A Day of Percussion" clinic/competition held recently at Morehead State University. The event featured 23 percussion units from Kentucky, Indiana, Ohio, South Carolina and West Virginia. Each percussion unit was judged for its overall performance by top percussion clinicians.

(MSU photo by Linda Denton)

12-1-87mar



Falmouth Outlook

Photo

PUBLIC INFORMATION

JUDITH YANCY, DIRECTOR

MOREHEAD STATE UNIVERSITY

UPO BOX 1100

MOREHEAD, KY 40351

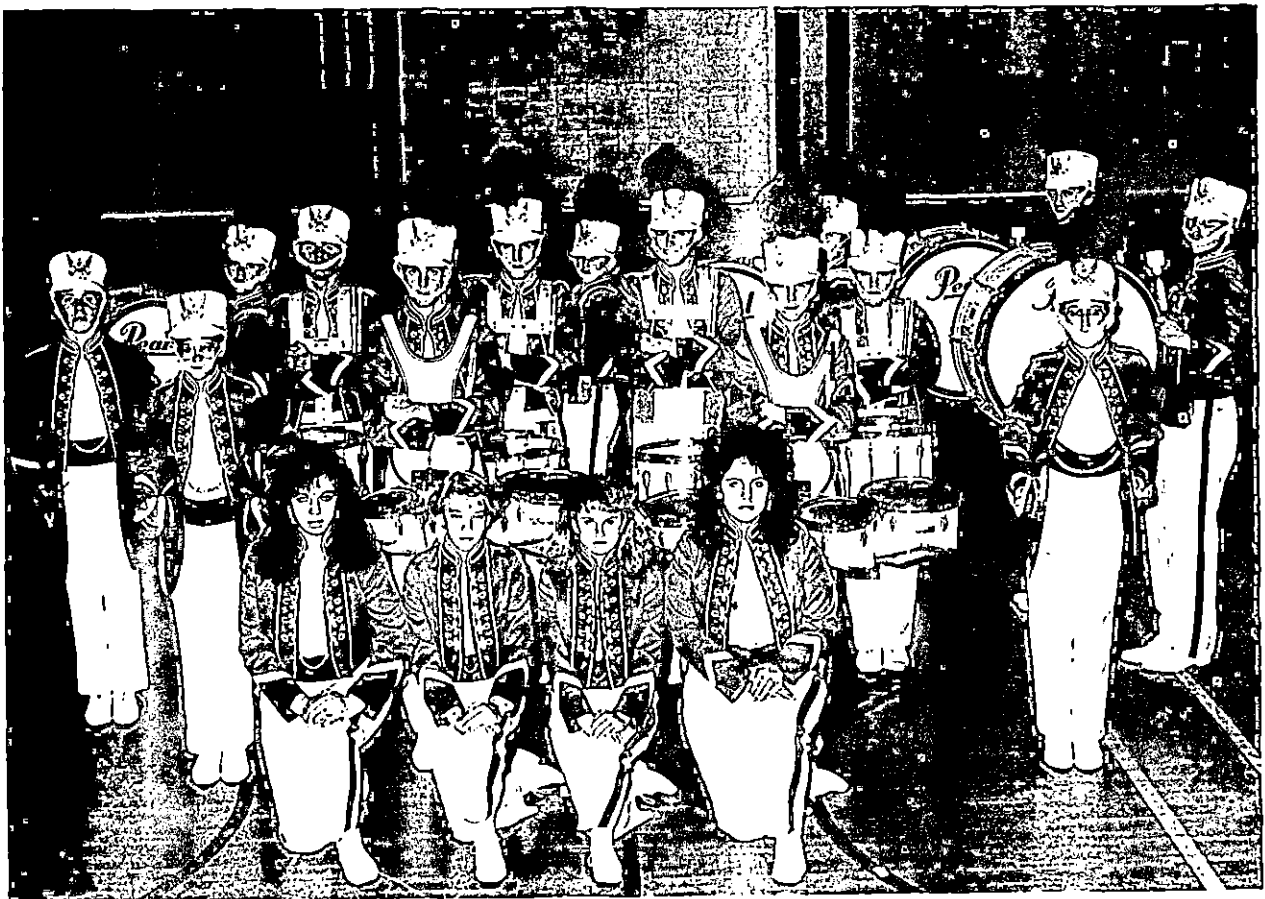
606-783-2030

HIGHLANDS HIGH SCHOOL PERCUSSION WINS AWARD

Highlands High School's percussion section placed first in its division at "A Day of Percussion" clinic/competition held recently at Morehead State University. The event featured 23 percussion units from Kentucky, Indiana, Ohio, South Carolina and West Virginia. Each percussion unit was judged for its overall performance by top percussion clinicians.

(MSU photo by Linda Denton)

12-1-87mar



Campbell County Recorder

Photo

PUBLIC INFORMATION

JUDITH YANCY, DIRECTOR

MOREHEAD STATE UNIVERSITY

UPO BOX 1100

MOREHEAD, KY 40351

606-783-2030

HILLIARD HIGH SCHOOL PERCUSSION WINS AWARD

Hilliard High School's percussion section placed second in its division at "A Day of Percussion" clinic/competition held recently at Morehead State University. The event featured 23 percussion units from Kentucky, Indiana, Ohio, South Carolina and West Virginia. Each percussion unit was judged for its overall performance by top percussion clinicians.

(MSU photo by Linda Denton)

12-1-87mar



*Dublin Suburbia News
Columbus, OH*

Photo

PUBLIC INFORMATION

JUDITH YANCY, DIRECTOR

MOREHEAD STATE UNIVERSITY

UPO BOX 1100

MOREHEAD, KY 40351

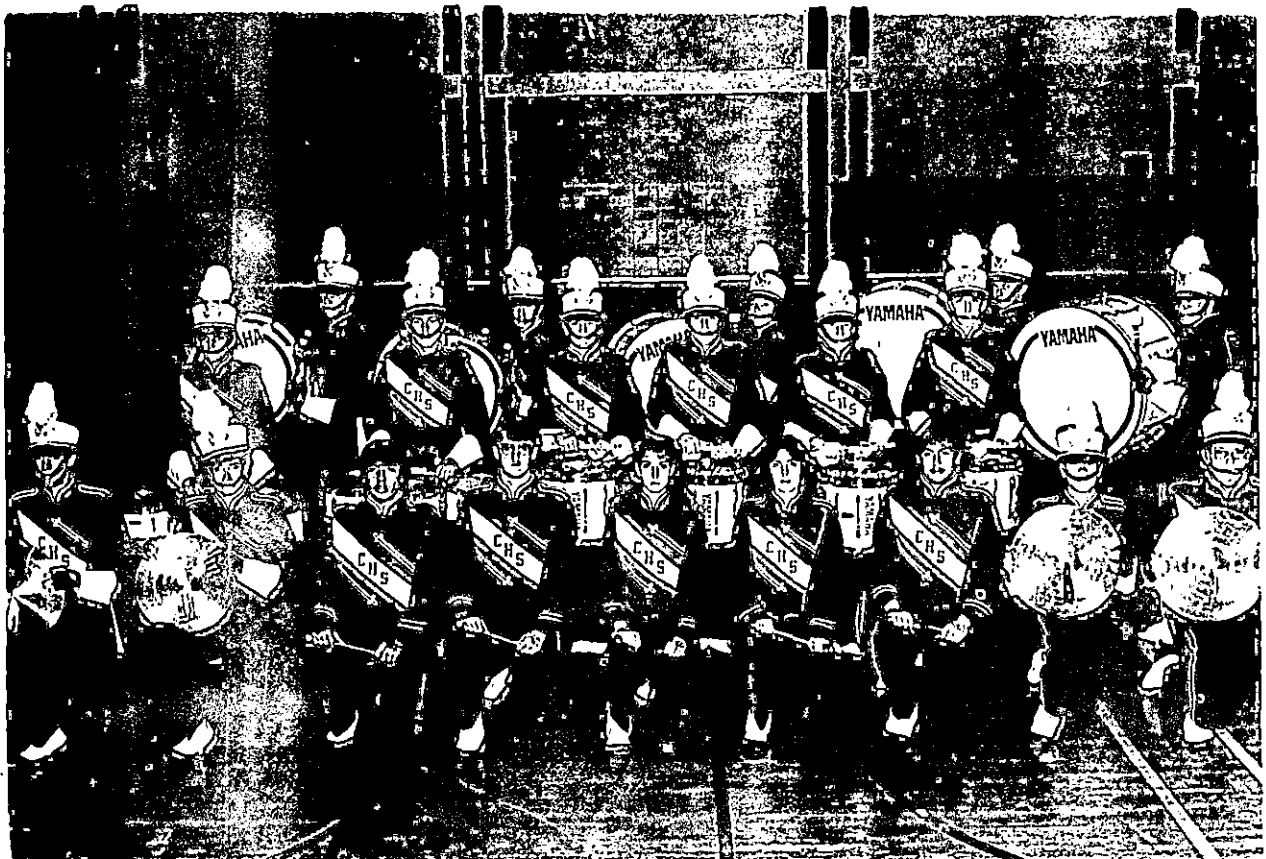
606-783-2030

CARROLLTON HIGH SCHOOL PERCUSSION WINS AWARD

Carrollton High School's percussion section placed second in its division at "A Day of Percussion" clinic/competition held recently at Morehead State University. The event featured 23 percussion units from Kentucky, Indiana, Ohio, South Carolina and West Virginia. Each percussion unit was judged for its overall performance by top percussion clinicians.

(MSU photo by Linda Denton)

12-1-87mar



*Free Press-Standard
Carrollton, OH*

Photo

PUBLIC INFORMATION

JUDITH YANCY, DIRECTOR

MOREHEAD STATE UNIVERSITY

UPO BOX 1100

MOREHEAD, KY 40351

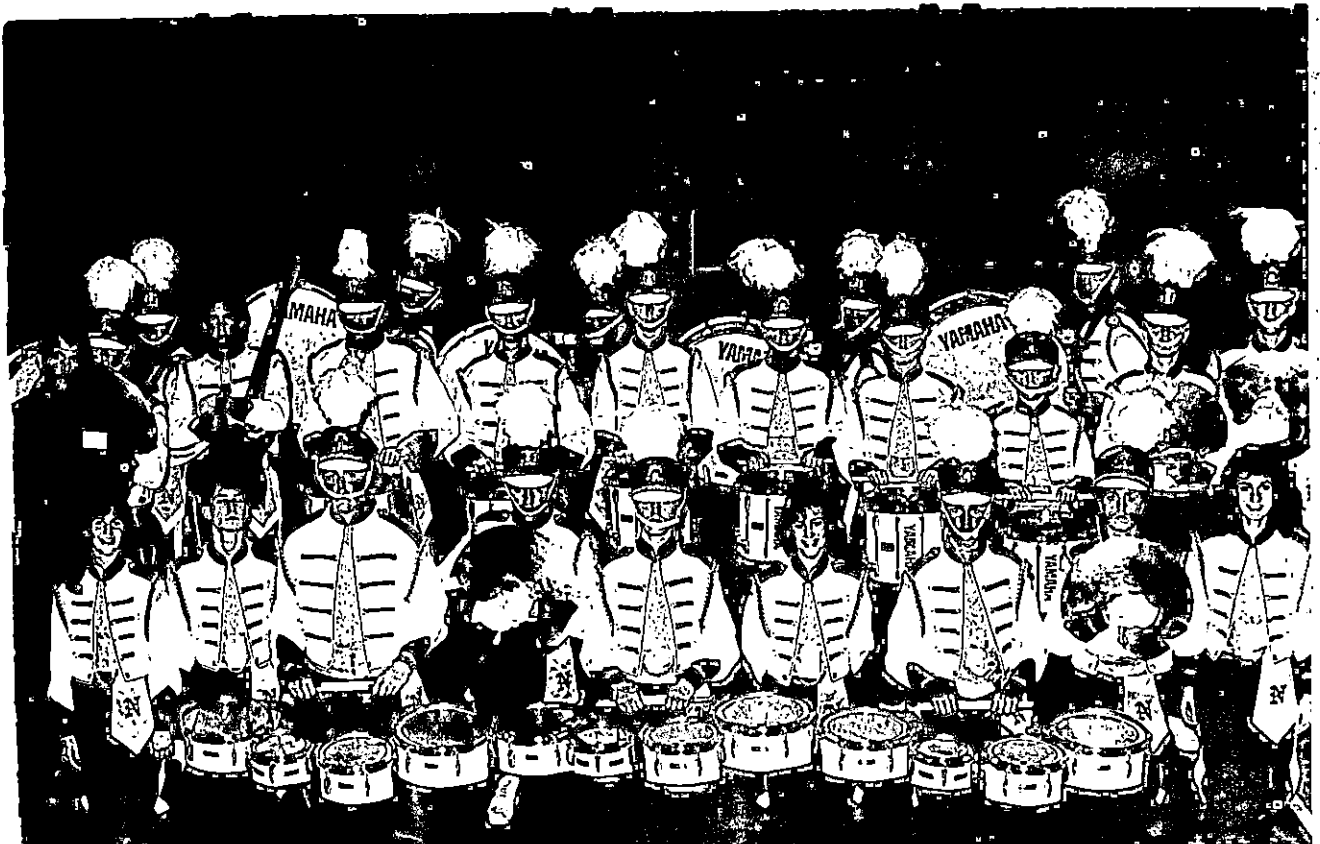
606-783-2030

NORTHMONT HIGH SCHOOL PERCUSSION WINS AWARD

Northmont High School's percussion section placed third in its division at "A Day of Percussion" clinic/competition held recently at Morehead State University. The event featured 23 percussion units from Kentucky, Indiana, Ohio, South Carolina and West Virginia. Each percussion unit was judged for its overall performance by top percussion clinicians.

(MSU photo by Linda Denton)

12-1-87mar



*Huber Heights Courier
Denton*

Photo

PUBLIC INFORMATION

JUDITH YANCY, DIRECTOR

MOREHEAD STATE UNIVERSITY

UPO BOX 1100

MOREHEAD, KY 40351

606-783-2030

BEDFORD NORTH LAWRENCE HIGH SCHOOL PERCUSSION WINS AWARD

Bedford North Lawrence High School's percussion section placed third in its division at "A Day of Percussion" clinic/competition held recently at Morehead State University. The event featured 23 percussion units from Kentucky, Indiana, Ohio, South Carolina and West Virginia. Each percussion unit was judged for its overall performance by top percussion clinicians.

(MSU photo by Linda Denton)

12-1-87mar



*The Times-Mail
Bedford, IN*

Photo

PUBLIC INFORMATION

JUDITH YANCY, DIRECTOR

MOREHEAD STATE UNIVERSITY

UPO BOX 1100

MOREHEAD, KY 40351

606-783-2030

CENTER GROVE HIGH SCHOOL PERCUSSION NAMED GRAND CHAMPION

Center Grove High School's percussion section placed first in its division and received the grand champion award at "A Day of Percussion" clinic/competition held recently at Morehead State University. The event featured 23 percussion units from Kentucky, Indiana, Ohio, South Carolina and West Virginia. Each percussion unit was judged for its overall performance by top percussion clinicians.

(MSU photo by Linda Denton)

12-1-87mar



*The News
Franklin, IN*

News

PUBLIC INFORMATION

JUDITH YANCY, DIRECTOR

MOREHEAD STATE UNIVERSITY

UPO BOX 1100

MOREHEAD, KY 40351

606-783-2030

Dec. 2, 1987
FOR IMMEDIATE RELEASE

MOREHEAD, Ky.--Morehead State University senior Melody Hood, soprano, will present a recital, Friday, Dec. 4, in Duncan Recital Hall at 7 p.m.

The daughter of Dr. and Mrs. Willis T. Hood of Mt. Sterling, she has been a member of Symphony Band, Marching Band, Concert Choir, Chamber Singers, Jazz Vocal Ensemble and the MSU Show Choir. She is also a member of the women's honorary fraternity, Sigma Alpha Iota.

Robert Holbrook will accompany her on the harpsichord and the piano. She is a student of Vasile Venettozzi, MSU associate professor of music.

#####

Photo

PUBLIC INFORMATION

JUDITH YANCY, DIRECTOR

MOREHEAD STATE UNIVERSITY

UPO BOX 1100

MOREHEAD, KY 40351

606-783-2030

MSU HOSTS BAND DAY!

Morehead State University held a Band Day recently which featured a high school marching band directed by an MSU alumnus and rated as superior in the state.

MSU President C. Nelson Grote, left, presents Dixie Heights High School drum major Jodi Spada with an appreciation trophy. Looking on are Daryl Angel, MSU alumnus and Dixie Heights High School band director, and Chris Bryant, right, band captain.

(MSU photo)

12-2-87mar

Kentucky Post
News Enterprise
Kenton County Recorder



Photo

PUBLIC INFORMATION

JUDITH YANCY, DIRECTOR

MOREHEAD STATE UNIVERSITY

UPO BOX 1100

MOREHEAD, KY 40351

606-783-2030

MSU HOSTS BAND DAY!

Morehead State University held a Band Day recently which featured a high school marching band directed by an MSU alumnus and rated as superior in the state.

MSU President C. Nelson Grote, left, presents Pikeville High School drum major Cassie McKenzie with an appreciation trophy. Looking on are Stephen Rice, MSU alumnus and Pikeville High School band director, and Tom Swartz, right, Pikeville principal.

(MSU photo)

12-2-87mar

Appalachian News-Express
Williamson Daily News



Photo

PUBLIC INFORMATION

JUDITH YANCY, DIRECTOR

MOREHEAD STATE UNIVERSITY

UPO BOX 1100

MOREHEAD, KY 40351

606-783-2030

A DAY OF PERCUSSION

Ravenswood High School's percussion section competed in "A Day of Percussion" clinic/competition hosted by Morehead State University's Department of Music and Marching Percussion. Twenty-three high schools from Kentucky, Indiana, Ohio, South Carolina and West Virginia participated in the event and were judged for their overall performance by top percussion clinicians.

(MSU photo by Linda Denton)

12-2-87mar



*The News
Ravenswood, WV*

Photo

PUBLIC INFORMATION

JUDITH YANCY, DIRECTOR

MOREHEAD STATE UNIVERSITY

UPO BOX 1100

MOREHEAD, KY 40351

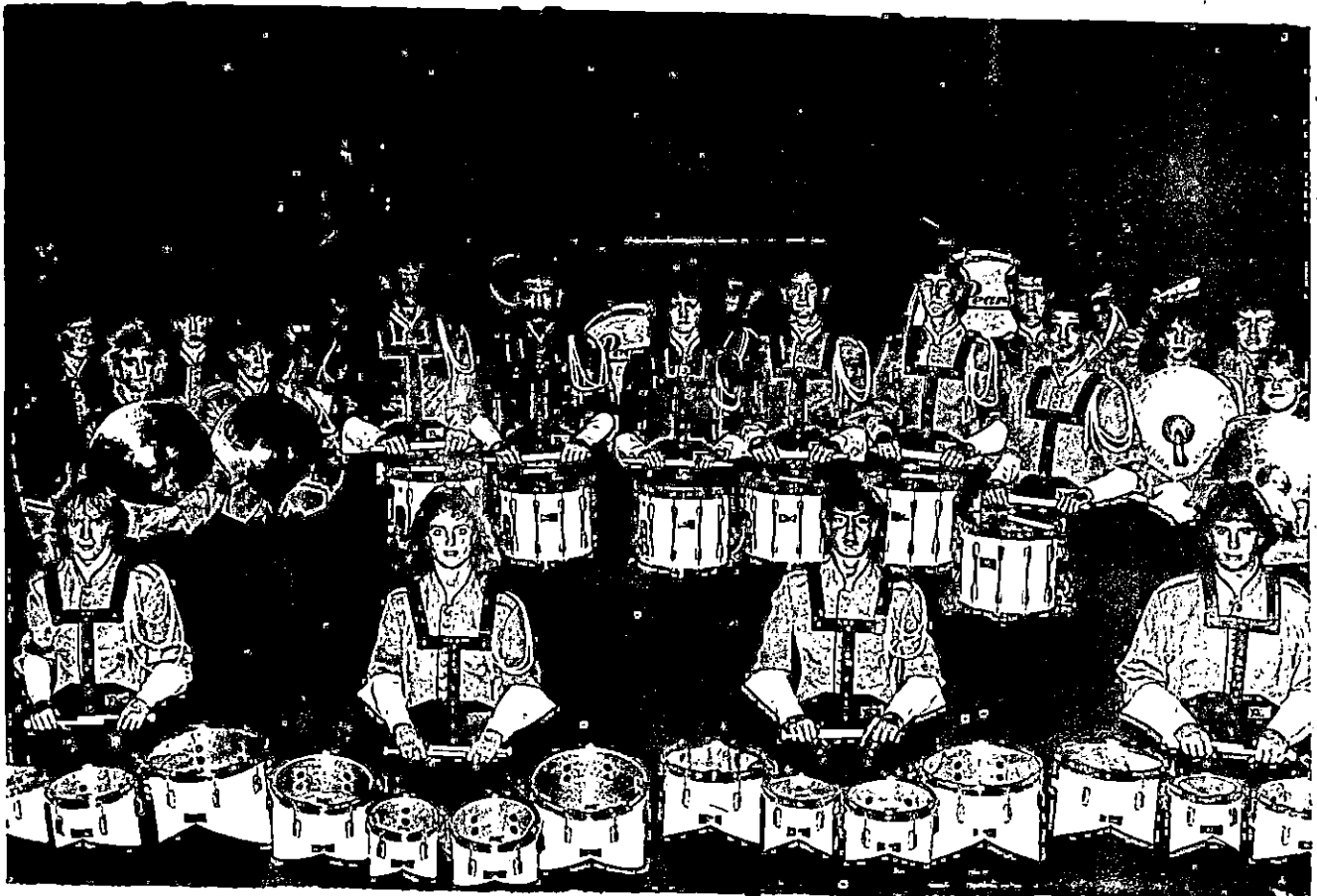
606-783-2030

A DAY OF PERCUSSION

R. Welson Snider High School's percussion section competed in "A Day of Percussion" clinic/competition hosted by Morehead State University's Department of Music and Marching Percussion. Twenty-three high schools from Kentucky, Indiana, Ohio, South Carolina and West Virginia participated in the event and were judged for their overall performance by top percussion clinicians.

(MSU photo by Linda Denton)

12-2-87mar



*The Journal Gazette
Fort Wayne, IN*

Photo

PUBLIC INFORMATION

JUDITH YANCY, DIRECTOR

MOREHEAD STATE UNIVERSITY

UPO BOX 1100

MOREHEAD, KY 40351

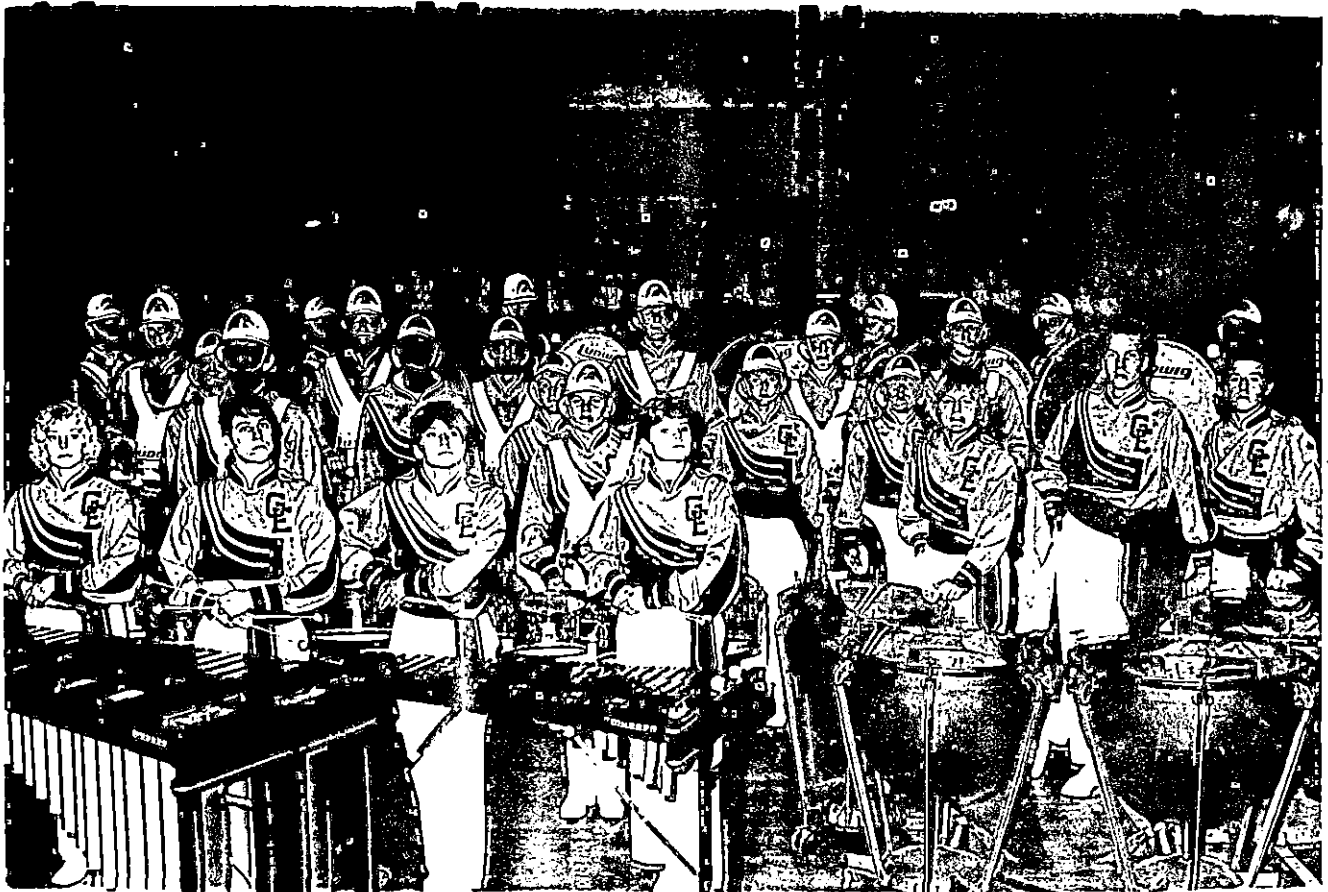
606-783-2030

A DAY OF PERCUSSION

Greenbriar East High School's percussion section competed in "A Day of Percussion" clinic/competition hosted by Morehead State University's Department of Music and Marching Percussion. Twenty-three high schools from Kentucky, Indiana, Ohio, South Carolina and West Virginia participated in the event and were judged for their overall performance by top percussion clinicians.

(MSU photo by Linda Denton)

12-2-87mar



*Meadow River Post
Rainelle, WV*

Photo

PUBLIC INFORMATION

JUDITH YANCY, DIRECTOR

MOREHEAD STATE UNIVERSITY

UPO BOX 1100

MOREHEAD, KY 40351

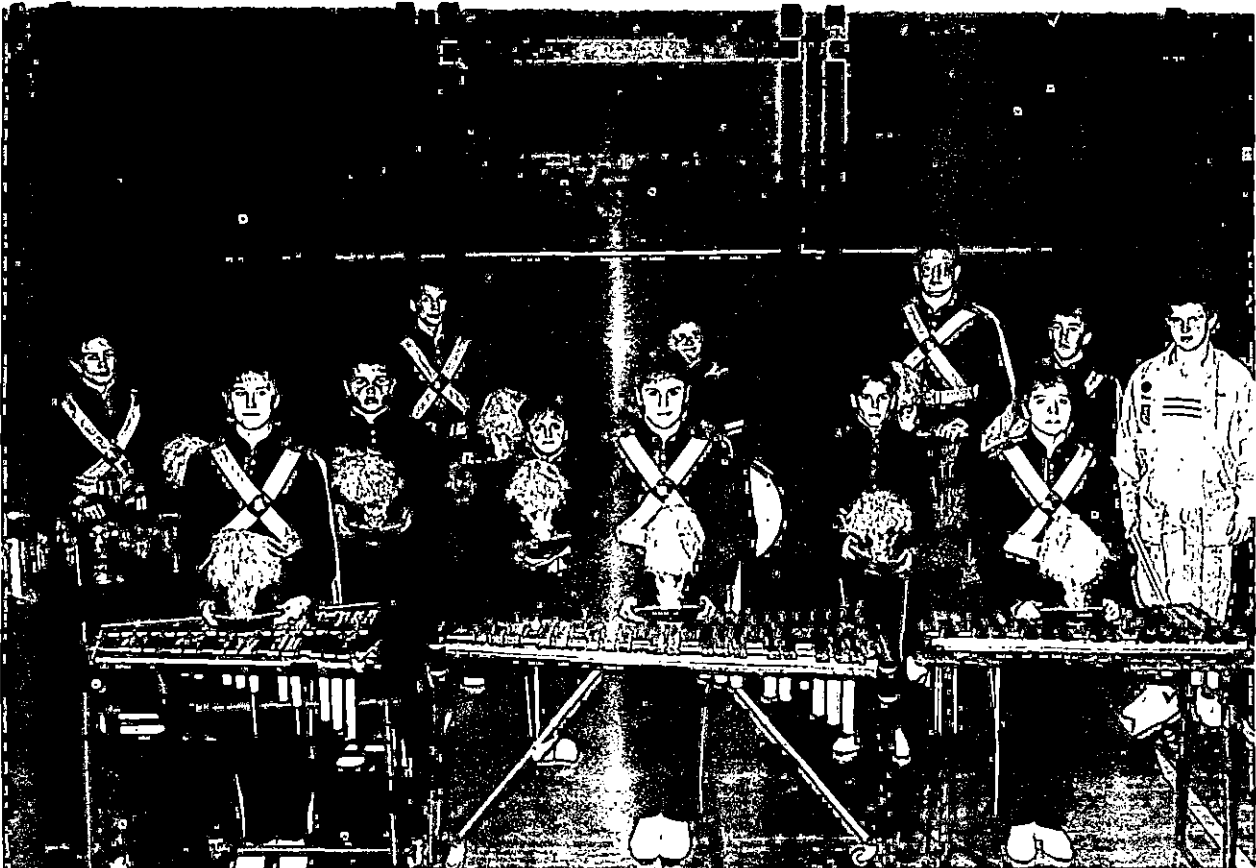
606-783-2030

A DAY OF PERCUSSION

Carroll County High School's percussion section competed in "A Day of Percussion" clinic/competition hosted by Morehead State University's Department of Music and Marching Percussion. Twenty-three high schools from Kentucky, Indiana, Ohio, South Carolina and West Virginia participated in the event and were judged for their overall performance by top percussion clinicians.

(MSU photo by Linda Denton)

12-2-87mar



News-Democrat

Photo

PUBLIC INFORMATION

JUDITH YANCY, DIRECTOR

MOREHEAD STATE UNIVERSITY

UPO BOX 1100

MOREHEAD, KY 40351

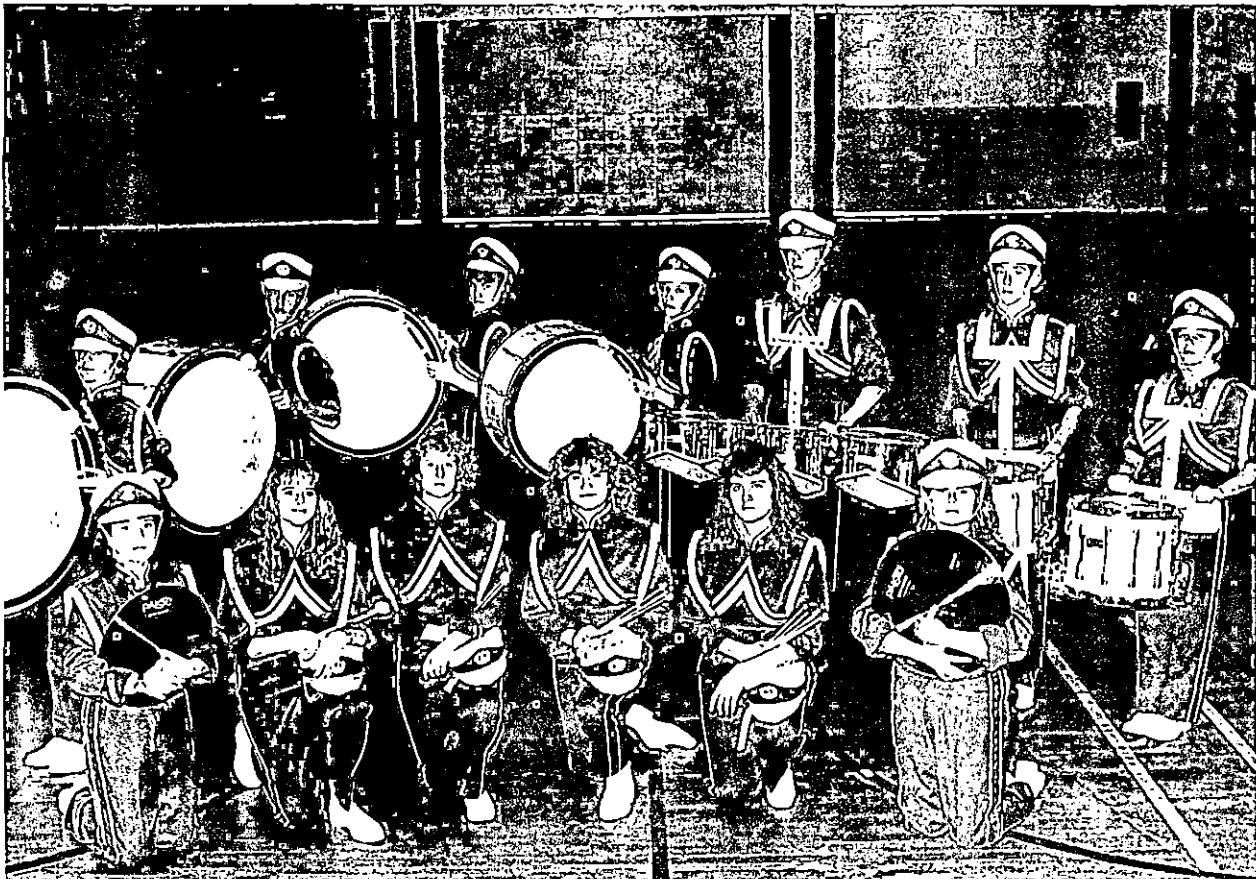
606-783-2030

A DAY OF PERCUSSION

Connor High School's percussion section competed in "A Day of Percussion" clinic/competition hosted by Morehead State University's Department of Music and Marching Percussion. Twenty-three high schools from Kentucky, Indiana, Ohio, South Carolina and West Virginia participated in the event and were judged for their overall performance by top percussion clinicians.

(MSU photo by Linda Denton)

12-2-87mar



Boone County Recorder

Photo

PUBLIC INFORMATION

JUDITH YANCY, DIRECTOR

MOREHEAD STATE UNIVERSITY

UPO BOX 1100

MOREHEAD, KY 40351

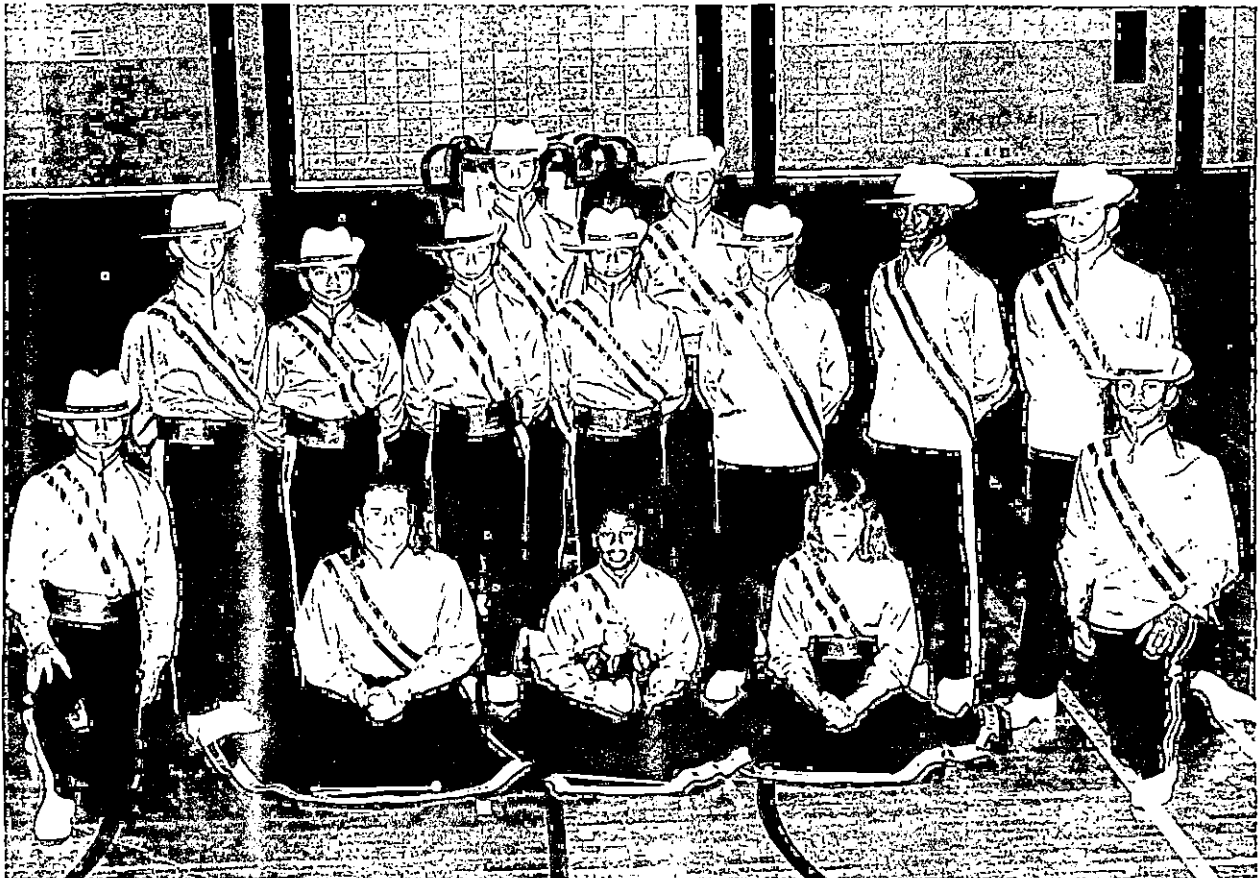
606-783-2030

A DAY OF PERCUSSION

Spring Valley High School's percussion section competed in "A Day of Percussion" clinic/competition hosted by Morehead State University's Department of Music and Marching Percussion. Twenty-three high schools from Kentucky, Indiana, Ohio, South Carolina and West Virginia participated in the event and were judged for their overall performance by top percussion clinicians.

(MSU photo by Linda Denton)

12-2-87mar



*The Record
Columbia, SC*

Photo

PUBLIC INFORMATION

JUDITH YANCY, DIRECTOR

MOREHEAD STATE UNIVERSITY

UPO BOX 1100

MOREHEAD, KY 40351

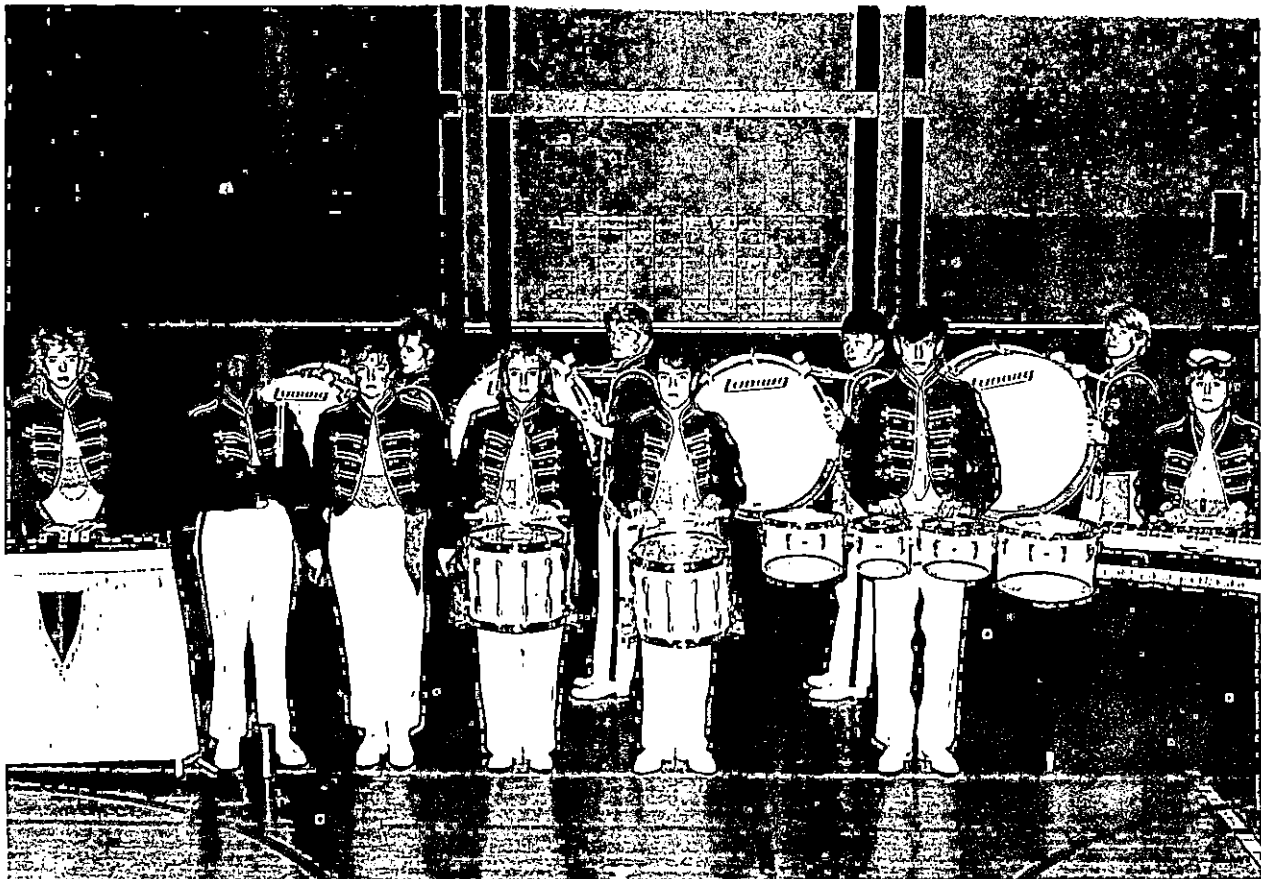
606-783-2030

A DAY OF PERCUSSION

Tates Creek High School's percussion section competed in "A Day of Percussion" clinic/competition hosted by Morehead State University's Department of Music and Marching Percussion. Twenty-three high schools from Kentucky, Indiana, Ohio, South Carolina and West Virginia participated in the event and were judged for their overall performance by top percussion clinicians.

(MSU photo by Linda Denton)

12-2-87mar



Herald-Leader

Photo

PUBLIC INFORMATION

JUDITH YANCY, DIRECTOR

MOREHEAD STATE UNIVERSITY

UPO BOX 1100

MOREHEAD, KY 40351

606-783-2030

A DAY OF PERCUSSION

New Richmond High School's percussion section competed in "A Day of Percussion" clinic/competition hosted by Morehead State University's Department of Music and Marching Percussion. Twenty-three high schools from Kentucky, Indiana, Ohio, South Carolina and West Virginia participated in the event and were judged for their overall performance by top percussion clinicians.

(MSU photo by Linda Denton)

12-2-87mar



Cincinnati Suburban Press

Photo

PUBLIC INFORMATION

JUDITH YANCY, DIRECTOR

MOREHEAD STATE UNIVERSITY

UPO BOX 1100

MOREHEAD, KY 40351

606-783-2030

A DAY OF PERCUSSION

Hurricane High School's percussion section competed in "A Day of Percussion" clinic/competition hosted by Morehead State University's Department of Music and Marching Percussion. Twenty-three high schools from Kentucky, Indiana, Ohio, South Carolina and West Virginia participated in the event and were judged for their overall performance by top percussion clinicians.

(MSU photo by Linda Denton)

12-2-87mar



Herald-Dispatch

Photo

PUBLIC INFORMATION

JUDITH YANCY, DIRECTOR

MOREHEAD STATE UNIVERSITY

UPO BOX 1100

MOREHEAD, KY 40351

606-783-2030

A DAY OF PERCUSSION

Woodrow Wilson High School's percussion section competed in "A Day of Percussion" clinic/competition hosted by Morehead State University's Department of Music and Marching Percussion. Twenty-three high schools from Kentucky, Indiana, Ohio, South Carolina and West Virginia participated in the event and were judged for their overall performance by top percussion clinicians.

(MSU photo by Linda Denton)

12-2-87mar



*Post Herald-Register
Buckley, WV*

News

PUBLIC INFORMATION

JUDITH YANCY, DIRECTOR

MOREHEAD STATE UNIVERSITY

UPO BOX 1100

MOREHEAD, KY 40351

606-783-2030

Dec. 2, 1987
FOR IMMEDIATE RELEASE

MOREHEAD, Ky.--Morehead State University will hold its 1987 Winter Commencement at 1:30 p.m. Saturday, Dec. 12, in Button Auditorium.

Approximately 300 undergraduate and graduate students are candidates for degrees to be conferred by MSU President C. Nelson Grote.

Commencement speakers include MSU Board of Regents Chairman Louie B. Nunn, Dr. Grote and graduating senior David W. Coleman of Catlettsburg.

Coleman, a Dean's List student, will receive his B.S. degree in industrial education during the ceremony. A College of Applied Sciences and Technology student, he earned his Associate of Science degree in mining technology from MSU in 1981 and returned in 1985 for his bachelor's degree.

A graduate of Feds Creek High School, he is the grandson of Donald and Okie Ward of Pike County. His parents are Donetta Shell of Phyllis and Wayne Coleman of Phelps. Coleman, who is married to the former Lisa Ann Rice, plans to teach in the public schools and continue his studies at the graduate level.

Following the conferring of degrees by Dr. Grote, the new graduates will be welcomed into the MSU Alumni Association by Lisa Browning of Owingsville, Association first vice president.

Dr. Earle L. Louder, professor of music and MSU's 1987 Distinguished Faculty Award recipient, will serve as grand marshal with Dr. Frances L. Helphinstine, professor of English, and Dr. Gerald DeMoss, Department of Biological and Environmental Sciences chair, assisting as faculty marshals.

(MORE)

commencement
2-2-2-2-2

Student marshals will be Janie Fryman of **Flemingsburg** and John B. White of **Morehead**, representing Graduate and Special Academic Programs; Susan Barker of **Morehead** and Kenneth Bandy of **Salyersville**, College of Applied Sciences and Technology; Cindy Worthington of **Olive Hill** and Tamela Parker of **Morehead**, College of Professional Studies; Elizabeth Collins of **Morehead** and Ada Miracle of **Garrison**, College of Arts and Sciences.

Commencement activities will begin Saturday at 10 a.m. with the traditional pinning ceremony for graduates of MSU's associate degree in nursing program in the Eagle Room, Adron Doran University Center. This will be the last class of MSU's two-year nursing degree graduates as that program has been replaced by a four-year nursing degree program.

Following commencement, Dr. and Mrs. Grote will host a reception for all new graduates and their families in the Crager Room, ADUC.

#####

jy



Photo

PUBLIC INFORMATION

JUDITH YANCY, DIRECTOR

MOREHEAD STATE UNIVERSITY

UPO BOX 1100

MOREHEAD, KY 40351

606-783-2030

BLUE RIBBON WINNER

Morehead State University's Department of Agriculture and Natural Resources recently held its student biannual floral design show. Kenitha King of Morehead received a Blue Ribbon for her arrangement of "Winter Wonderland." The show, entitled "Christmas of a New Beginning," had 69 exhibits, according to Martha Norris, right, associate professor of agriculture, who instructs the floral design class. King is a registered nurse in MSU's Office of Student Health Services.

(MSU photo by Ray Bradley)

12-2-87py



Photo

PUBLIC INFORMATION

JUDITH YANCY, DIRECTOR

MOREHEAD STATE UNIVERSITY

UPO BOX 1100

MOREHEAD, KY 40351

606-783-2030

FRENCHBURG STUDENTS RECEIVE RED RIBBONS

Morehead State University's Department of Agriculture and Natural Resources recently held its student biannual floral design show. Among the award winners were two Frenchburg students, Lori Back, left, sophomore, and Angie Lovelace, freshman.

Both students received Red Ribbons for their interpretations of "Jingle Bell Rock."

The show, entitled "Christmas of a New Beginning," had 69 exhibits, according to Martha Norris, associate professor of agriculture.

(MSU photo by Ray Bradley)

12-2-87py



Menifee County News

Photo

PUBLIC INFORMATION

JUDITH YANCY, DIRECTOR

MOREHEAD STATE UNIVERSITY

UPO BOX 1100

MOREHEAD, KY 40351

606-783-2030

RED RIBBON WINNER

Morehead State University's Department of Agriculture and Natural Resources recently held its student biannual floral design show. Kathy Clark, Olive Hill senior, received a Red Ribbon for her arrangement of "Tooth Fairy." Viewing the arrangement with Clark is her husband Mike. The show, entitled "Christmas of a New Beginning," had 69 exhibits, according to Martha Norris, associate professor of agriculture, who instructs the floral design class.

(MSU photo by Ray Bradley)

12-2-87py



Olive Hill Times

Photo

PUBLIC INFORMATION

JUDITH YANCY, DIRECTOR

MOREHEAD STATE UNIVERSITY

UPO BOX 1100

MOREHEAD, KY 40351

606-783-2030

AWARD WINNER

Morehead State University's Department of Agriculture and Natural Resources recently held its student biannual floral design show. Kim Alcorn, Morehead sophomore, received the Creativity Award for her arrangement of "Christmas Eve with Family." The show, entitled "Christmas of a New Beginning," had 69 exhibits, according to Martha Norris, associate professor of agriculture, who instructs the floral design class.

(MSU photo by Ray Bradley)

12-2-87py



Morehead News

Photo

PUBLIC INFORMATION

JUDITH YANCY, DIRECTOR

MOREHEAD STATE UNIVERSITY

UPO BOX 1100

MOREHEAD, KY 40351

606-783-2030

AWARD WINNER

Morehead State University's Department of Agriculture and Natural Resources recently held its student biannual floral design show. Carmela Morris, Ashland senior, received the Tri-Color Award for her arrangement. The show, entitled "Christmas of a New Beginning," had 69 exhibits, according to Martha Norris, associate professor of agriculture, who instructs the floral design class.

(MSU photo by Ray Bradley)

12-2-87py



Daily Independent

Photo

PUBLIC INFORMATION

JUDITH YANCY, DIRECTOR

MOREHEAD STATE UNIVERSITY

UPO BOX 1100

MOREHEAD, KY 40351

606-783-2030

BLUE RIBBON WINNER

Morehead State University's Department of Agriculture and Natural Resources recently held its student biannual floral design show. Angela Sargent, Grayson senior, received a Blue Ribbon for her arrangement of "Glory of Christmas." The show, entitled "Christmas of a New Beginning," had 69 exhibits, according to Martha Norris, associate professor of agriculture who instructs the floral design class.

(MSU photo by Ray Bradley)

12-2-87py



Journal & Enquirer

Photo

PUBLIC INFORMATION

JUDITH YANCY, DIRECTOR

MOREHEAD STATE UNIVERSITY

UPO BOX 1100

MOREHEAD, KY 40351

606-783-2030

AWARD WINNER

Morehead State University's Department of Agriculture and Natural Resources recently held its student biannual floral design show. Kathleen Carr, Mt. Carmel, Ohio, sophomore, received the Best of Show Award for her arrangement. The show, entitled "Christmas of a New Beginning," had 69 exhibits, according to Martha Norris, associate professor of agriculture, who instructs the floral design class.

(MSU photo by Ray Bradley)

12-2-87py



Cincinnati Suburban Press

Photo

PUBLIC INFORMATION

JUDITH YANCY, DIRECTOR

MOREHEAD STATE UNIVERSITY

UPO BOX 1100

MOREHEAD, KY 40351

606-783-2030

NEW MSU STUDENT SERVICE

Morehead State University's Office of Computing Services, with the assistance of the Office of Student Development, has designed a program to allow students to verify personal information on the University's main frame computer. On hand for the ribbon cutting were, from left, Mike Mincey, vice president for student development; Bill Mahaney, Office of Computing Services acting director; Kara Flaming, Ashland senior; C. B. McCoy, Office of Computing Services lead systems analyst; Steve Strathmann, Williamsburg, Ohio, senior and Student Government Association president, and Beth Patrick, Office of Computing Services data base systems analyst. Located on the first floor of the Adron Doran University Center, the terminal is available during normal business hours of the University Center. Access to the information is achieved by typing one's student ID and Social Security number. By following instructions displayed on the student inquiry screen, students may view certain biographical data, the courses in which they are currently enrolled, mailing address and any holds on their records.

(MSU photo by Ray Bradley)

12-2-87py



Morehead News

Photo

PUBLIC INFORMATION

JUDITH YANCY, DIRECTOR

MOREHEAD STATE UNIVERSITY

UPO BOX 1100

MOREHEAD, KY 40351

606-783-2030

VIVE LE FRANCAIS!

Morehead State University recently initiated its first membership class of Pi Delta Phi, a national French honor society. Dr. Pierre Limouzy of the University of St. Louis and a national vice president of Pi Delta Phi, presented Mary Jo Netherton, MSU associate professor of french and Pi Delta Phi advisor, with the charter. Active members include: Anita Maze, Morehead; Trish Dilego, Ashland; Melanie Reti, Canton, Ohio; Jeri Miracle, Garrison; Hilde Darby, Greenup; Rhonda Vaughn, Carlisle; Patty Van Fleet, Sardinia, Ohio; Dominique Ah Chong, Mauritius Islands; Jeff Issler, Cincinnati; Jamie Lester, South Point, Ohio; Julie Daniels, Louisa, and Debra Riley, Morehead.

(MSU photo)

12-2-87mar



Morehead News

Photo

PUBLIC INFORMATION

JUDITH YANCY, DIRECTOR

MOREHEAD STATE UNIVERSITY

UPO BOX 1100

MOREHEAD, KY 40351

606-783-2030

SANTA'S HELPERS DECORATE CAMPUS

Morehead State University Plant Operations personnel have been helping capture the spirit of the season across the campus as they trim shrubs and trees with multi-colored lights. The old spruce tree on University Boulevard in front of Camden-Carroll Library also has been festooned with lights creating a 40-foot outdoor Christmas tree. Hanging lights on the plaza across from the Adron Doran University Center are Zach McClurg of Morehead, right, with assistance from Robert Carroll of Olive Hill.

(MSU photo by Ray Bradley)

12-2-87jy



Morehead News

PSA

PUBLIC INFORMATION

JUDITH YANCY, DIRECTOR

MOREHEAD STATE UNIVERSITY

UPO BOX 1100

MOREHEAD, KY 40351

606-783-2030

SUBJECT: GREENHOUSE
RELEASE DATE: NOW THRU DEC. 23
TIME: 10 SEC.

ANNOUNCER:

STUDENT-GROWN POINSETTIAS ARE NOW AVAILABLE FROM THE
MOREHEAD STATE UNIVERSITY GREENHOUSE AT COSTS RANGING
FROM \$2 TO \$10 EACH DEPENDING ON THE SIZE. FOR ADDITIONAL
INFORMATION, CALL 783-2264.

####

12-2-87jy

News

PUBLIC INFORMATION

JUDITH YANCY, DIRECTOR

MOREHEAD STATE UNIVERSITY

UPO BOX 1100

MOREHEAD, KY 40351

606-783-2030

Dec. 3, 1987
FOR IMMEDIATE RELEASE

MOREHEAD, Ky.--Morley Davidson of Morehead will take a national mathematics examination at Morehead State University this Saturday (Dec. 5).

The William Lowell Putnam Examination is the most challenging exam given to college math students and is a six-hour test. It is sponsored by the Mathematics Association of America and the American Mathematics Society.

"If Morley scores well on this test, he will become a member of an international mathematics competition team and will compete against some of the top mathematical minds in the world," said Dr. Glenn Johnston, MSU Department of Mathematics chair.

Assisting Dr. Johnston in administering the exam will be Dr. Robert Lindahl, MSU professor of mathematics, and Randy Leigh, MSU instructor of mathematics.

#####

mar

News

PUBLIC INFORMATION

JUDITH YANCY, DIRECTOR

MOREHEAD STATE UNIVERSITY

UPO BOX 1100

MOREHEAD, KY 40351

606-783-2030

Dec. 3, 1987
FOR IMMEDIATE RELEASE

MOREHEAD, Ky.--Morehead State University has a new clogging team as its representative in competitions throughout the area.

The Clogging Eagles and Appalachian folk dance team, under the direction of Scott McKee, debuted at the Elderhostel Program held at Carter Caves State Resort Park recently.

The team is available for guest appearances through the MSU Speakers Bureau at (606) 783-2077. In addition, McKee will instruct a clogging course at the University during the Spring 1988 semester. The course is offered for one-hour credit and registration information is available from the MSU Department of Health, Physical Education, and Recreation, (606) 783-2180.

McKee is currently conducting the course as part of the Morehead State/Rowan County Community Education Program.

Members of the team include:

- *Dr. Lawrence Albert, MSU assistant professor of speech
- *Mrs. Linda Albert of Morehead
- *Bo Bowling of Winchester
- *Kricket Herald of New Richmond, Ohio
- *Teague Pasco of West Lafayette, Ind.
- *Regina Ritchie of Hazard
- *Wanda Ritchie of Clearfield
- *Bridget Rogers of Morehead
- *Dr. Barbara Russell, MSU assistant professor of education
- *Deanna Stamper of Vanceburg
- *Marsha Wallace of Vancleve

#####

mar

Photo

PUBLIC INFORMATION

JUDITH YANCY, DIRECTOR

MOREHEAD STATE UNIVERSITY

UPO BOX 1100

MOREHEAD, KY 40351

606-783-2030

CLOGGING--EAGLES' STYLE!

Morehead State University clogging team members Scotty McKee of Morehead, left, and Bo Bowling of Winchester performed for the Elderhostel Program held recently at Carter Caves State Resort Park. The performance marked the team's debut and featured Appalachian folk dancing as well as the traditional clog. The Clogging Eagles are available for guest appearances through the MSU Speakers Bureau.

####

12-2-87mar



Morehead News

PSA

PUBLIC INFORMATION

JUDITH YANCY, DIRECTOR

MOREHEAD STATE UNIVERSITY

UPO BOX 1100

MOREHEAD, KY 40351

606-783-2030

SUBJECT: MSU JOB TRAINING
RELEASE DATE: Now, thru Jan. 15, 1988
TIME: :30 sec.

ANNOUNCER:

MOREHEAD STATE UNIVERSITY'S JOB TRAINING CENTER IS NOW ACCEPTING APPLICATIONS FOR TRAINING PROGRAMS SCHEDULED TO BEGIN IN JANUARY. THE THREE COURSES BEING OFFERED ARE IN THE AREAS OF LABORATORY SECRETARY/CLINICAL ASSISTANT, MEDICAL TRI-AIDE, AND BANKING-CLERICAL. THE COURSES, GEARED FOR ADULTS WHO WISH TO ATTAIN MARKETABLE JOB SKILLS, ARE FREE TO QUALIFIED APPLICANTS IN BATH, BOYD, BRACKEN, FLEMING, GREENUP, LEWIS, MONTGOMERY, MASON, ROBERTSON AND ROWAN COUNTIES. ADDITIONAL INFORMATION IS AVAILABLE FROM M-S-U'S JOB TRAINING CENTER, (606) 783-2370.

####

12-3-87py

Tips

PUBLIC INFORMATION

JUDITH YANCY, DIRECTOR

MOREHEAD STATE UNIVERSITY

UPO BOX 1100

MOREHEAD, KY 40351

606-783-2030

THIS WEEK AT MOREHEAD STATE UNIVERSITY
(Dec. 6-12)

Monday, Dec. 7

READING DAY FOR FINAL EXAMS.

7:30 P.M. BASKETBALL: Lady Eagles vs. Charleston, Academic-Athletic Center.
Additional information: (606) 783-2500.

8 P.M. BLACK COALITION TALENT SHOW, Crager Room, Adron Doran University
Center. Additional information: (606) 783-3614.

Tuesday, Dec. 8

FINAL EXAMS, thru Dec. 11.

Thursday, Dec. 10

8:30 A.M.-4:10 P.M. CONTINUING EDUCATION FOR NURSES WORKSHOP, "Computer
Technology and Nursing," Adron Doran University Center; also Dec. 11, 9 a.m.-4:30 p.m.
Additional information: (606) 783-2632.

Friday, Dec. 11

7:30 P.M. AN OLD-FASHIONED CHRISTMAS DINNER, Crager Room, Adron Doran
University Center. Ticket information: (606) 783-2071.

Saturday, Dec. 12

ACT and GRE EXAMS, Ginger Hall 501 A. Additional information: (606) 783-2526.

10 A.M. NURSING DEPARTMENT PINNING CEREMONY, Eagle Room, Adron Doran University
Center. Additional information: (606) 783-2632.

1:30 P.M. COMMENCEMENT, Button Auditorium. Additional information:
(606) 783-2008.

####

py

News

MOREHEAD STATE UNIVERSITY

UPO BOX 1100

MOREHEAD, KY 40351

PUBLIC INFORMATION

JUDITH YANCY, DIRECTOR

606-783-2030

Dec. 4, 1987
FOR IMMEDIATE RELEASE

MOREHEAD, Ky.--Morehead State University President and Mrs. C. Nelson Grote will be hosts for an "Old-Fashioned Christmas Dinner" on Friday, Dec. 11, at 7:30 p.m. in the Crager Room, Adron Doran University Center.

"Wilma and I hope that our friends will join us to share in the spirit and warmth of this very special holiday season," said Dr. Grote.

Tickets for the dinner, which is open to members of both the campus and local communities, are \$10 per person. Tickets will be available at the door, but reservations are encouraged, according to Harlen Hamm, dinner planning committee chairman.

Tables for groups of four or more persons may be reserved by calling Anna Mae Riggle at 783-2071 no later than 4:30 p.m. on Dec. 8. Individual reservations also may be made at that same number.

"The committee has planned a most festive evening complete with decorations of the holiday season, an outstanding menu and special music by faculty and community musicians," Hamm said.

The menu will include hot apple cider and cheese fondue with breadsticks, crab meat salad, Cornish game hen, wild rice with Mandarin oranges, bouquetiere vegetables, hot rolls, beverages, and upside-down apple walnut pie with whipped cinnamon topping.

Serving on the dinner planning committee in addition to Hamm and Riggle are Carrie Back, Shirley Hamilton, Larry Keenan, Dr. Bill Layne, Carole Morella and Don Young.

#####

News

PUBLIC INFORMATION

JUDITH YANCY, DIRECTOR

MOREHEAD STATE UNIVERSITY

UPO BOX 1100

MOREHEAD, KY 40351

606-783-2030

Dec. 4, 1987
FOR IMMEDIATE RELEASE

MOREHEAD, Ky.--Morehead State University's Continuing Education for Nursing and Allied Health professionals will offer a workshop for nursing educators and nursing administrators on Thursday and Friday, Dec. 10-11.

The workshop, entitled "Computer Technology and Nursing," will include an overview of the computer, a review of microcomputers and their applications in nursing, and computer applications in nursing administration, practice, education, research and community health.

Dr. Virginia Saba, a member of the graduate faculty at Georgetown University School of Nursing in Washington, D.C., will conduct the two-day session.

All participants will receive continuing education units from MSU. Nurses will receive 12 contact hours from the Kentucky Board of Nursing.

The cost of the workshop is \$72 which includes refreshments and handouts. Registration will begin at 8:30 a.m. on Thursday in the Eagle Room, Adron Doran University Center. Laboratory work will be completed in Reed Hall 426.

Additional information is available by calling MSU's Department of Nursing and Allied Health Sciences, (606) 783-2632.

####

py

News

PUBLIC INFORMATION

JUDITH YANCY, DIRECTOR

MOREHEAD STATE UNIVERSITY

UPO BOX 1100

MOREHEAD, KY 40351

606-783-2030

Dec. 4, 1987
FOR IMMEDIATE RELEASE

MOREHEAD, Ky.--Morehead State University's Individual Events (IE) Team placed fourth in a recent tournament held at Marshall University.

In addition, the team received the Chief Justice Marshall traveling trophy for accumulating the most points from previous Marshall tournaments.

"This is an outstanding feat for the team considering we only took six members to the tournament," said Cathy Thomas, MSU assistant professor of speech and team coach.

Individual winners include:

*Darin Blackburn, **Elkhorn City** sophomore, third in dramatic duo.

*Kellie Crump, **Cynthiana** sophomore, second in rhetorical criticism; fourth in informative; fifth in persuasion, and to the semi-finals in impromptu.

*Chance Pennington, **Morehead** freshman, third in dramatic duo and sixth in dramatic interpretation.

*Carol Tyler, **Mt. Sterling** freshman, third in poetry.

In addition, Crump was recognized as being the sixth best speaker at the tournament which featured 20 schools from the East Coast, Southeast and Midwest regions.

#####

mar

News

PUBLIC INFORMATION

JUDITH YANCY, DIRECTOR

MOREHEAD STATE UNIVERSITY

UPO BOX 1100

MOREHEAD, KY 40351

606-783-2030

*****ATTENTION*****

In Morehead State University's calendar listing for January, there are two changes in dates of events that need to be made.

The Arts in Morehead: Dawn Upshaw concert has been rescheduled for Jan. 28, while the Faculty Chamber Music Camerata has been moved from that date to Jan. 26. Times, places, etc., remain the same.

A copy of the previous listing is enclosed.

#####

12-7-87

Tips

PUBLIC INFORMATION

JUDITH YANCY, DIRECTOR

MOREHEAD STATE UNIVERSITY

UPO BOX 1100

MOREHEAD, KY 40351

606-783-2030

HIGHLIGHTS FOR JANUARY 1988

Offices reopen following Christmas holiday, Jan. 4.

ACT Residual Exam, Jan. 4, Ginger Hall 501 A. For additional information: (606) 783-2526.

Basketball: MSU vs. Marshall University, Jan. 9, Academic-Athletic Center, 7:30 p.m. For additional information: (606) 783-2500.

Registration for spring semester, Jan. 11-12, Wetherby Gymnasium, 8 a.m.-6 p.m. For additional information: (606) 783-2008.

Art exhibit: Abner and Kathleen Jonas, Jan. 11-Feb. 13, Gallery, Claypool-Young Art Building, weekdays, 8 a.m.-4 p.m.; Saturdays, 9 a.m.-4 p.m. For additional information: (606) 783-2766.

Martin Luther King's Birthday Holiday, Jan. 18. No classes or office hours.

CTBS Initial Testing, Jan. 19-20, Ginger Hall 501 A. For additional information: (606) 783-2526.

CTBS Retesting, Jan. 21-22, Ginger Hall 501 A. For additional information: (606) 783-2526.

Basketball: Lady Eagles vs. Youngstown State, Jan. 23, Academic-Athletic Center, 5 p.m. For additional information: (606) 783-2500.

Basketball: Eagles vs. Youngstown State, Jan. 23, Academic-Athletic Center, 7:30 p.m. For additional information: (606) 783-2500.

Basketball: Lady Eagles vs. Tennessee State University, Jan. 25, Academic-Athletic Center, 5 p.m. For additional information: (606) 783-2500.

Basketball: Eagles vs. Tennessee State University, Jan. 25, Academic-Athletic Center, 7:30 p.m. For additional information: (606) 783-2500.

Basketball: Lady Eagles vs. Western Kentucky University, Jan. 27, Academic-Athletic Center, 7:30 p.m. For additional information: (606) 783-2500.

Arts in Morehead: Dawn Upshaw, Metropolitan Opera soprano, Jan. 27, Duncan Recital Hall, 8 p.m. For additional information: (606) 783-2931.

Faculty Chamber Music Camerata, Jan. 28, Duncan Recital Hall, 8 p.m. For additional information: (606) 783-2473.

Board of Regents meeting, Jan. 29, Riggle Room, Adron Doran University Center, 10 a.m. For additional information: (606) 783-2030.

(MORE)

January Highlights

2-2-2-2-2-2

Eagle Championship Speech Tournament, Jan. 29-30, Breckinridge, all day. For additional information: (606) 783-2712.

Basketball: Lady Eagles vs. Middle Tennessee State University, Jan. 30, Academic-Athletic Center, 5 p.m. For additional information: (606) 783-2500.

Basketball: Eagles vs. Middle Tennessee State University, Jan. 30, Academic-Athletic Center, 7:30 p.m. For additional information: (606) 783-2500.

National Engineering Aptitude Search Test (NEAS), Jan. 30, Ginger Hall 501 A. For additional information: (606) 783-2526.

####

py

Tips

PUBLIC INFORMATION

JUDITH YANCY, DIRECTOR

MOREHEAD STATE UNIVERSITY

UPO BOX 1100

MOREHEAD, KY 40351

606-783-2030

HIGHLIGHTS FOR JANUARY 1988

Offices reopen following Christmas holiday, Jan. 4.

ACT Residual Exam, Jan. 4, Ginger Hall 501 A. For additional information: (606) 783-2526.

Registration for spring semester, Jan. 11-12, Wetherby Gymnasium, 8 a.m.-6 p.m. For additional information: (606) 783-2008.

Art exhibit: Abner and Kathleen Jonas, Jan. 11-Feb. 13, Gallery, Claypool-Young Art Building, weekdays, 8 a.m.-4 p.m.; Saturdays, 9 a.m.-4 p.m. For additional information: (606) 783-2766.

Martin Luther King's Birthday Holiday, Jan. 18. No classes or office hours.

CTBS Initial Testing, Jan. 19-20, Ginger Hall 501 A. Additional information: (606) 783-2526.

CTBS Retesting, Jan. 21-22, Ginger Hall 501 A. Additional information: (606) 783-2526.

Arts in Morehead: Dawn Upshaw, Metropolitan Opera soprano, Jan. 27, Duncan Recital Hall, 8 p.m. For additional information: (606) 783-2931.

Faculty Chamber Music Camarata, Jan. 28, Duncan Recital Hall, 8 p.m. For additional information: (606) 783-2473.

Board of Regents meeting, Jan. 29, Riggle Room, Adron Doran University Center, 10 a.m. For additional information: (606) 783-2030.

Eagle Championship Speech Tournament, Jan. 29-30, Breckinridge, all day. For additional information: (606) 783-2712.

National Engineering Aptitude Search Test (NEAS), Jan. 30, Ginger Hall 501 A. For additional information: (606) 783-2526.

####

py

Media Advisory

PUBLIC INFORMATION

JUDITH YANCY, DIRECTOR

MOREHEAD STATE UNIVERSITY

UPO BOX 1100

MOREHEAD, KY 40351

606-783-2030

EVENT: 1987 Winter Commencement

DATE: Saturday, Dec. 12, 1987

TIME: 1:30 p.m.

LOCATION: Button Auditorium

SPEAKERS: MSU Board of Regents Chairman Louie B. Nunn
MSU President C. Nelson Grote
Graduating senior David W. Coleman of Catlettsburg

#####

12-7-87

News

PUBLIC INFORMATION

JUDITH YANCY, DIRECTOR

MOREHEAD STATE UNIVERSITY

UPO BOX 1100

MOREHEAD, KY 40351

606-783-2030

Dec. 8, 1987
FOR IMMEDIATE RELEASE

MOREHEAD, Ky.--Morehead State University's new baccalaureate degree program in nursing is progressing satisfactorily in its compliance with the standards governing prelicensure programs.

The Department of Nursing and Allied Health Sciences was notified recently by the Kentucky Board of Nursing, which monitors licensure standards, that the B.S.N. program had received "initial approval status," according to Dr. Charles Derrickson, dean of the College of Applied Sciences and Technology.

"This bill of good health means a great deal to the dedicated faculty and staff for it signifies that the program even in its embryonic stages offers a quality curriculum," Dr. Derrickson said.

Consideration of full approval will not be given by the board until the first four-year class graduates in 1990, according to Dr. Betty M. Porter, department chair.

MSU's B.S.N. program, approved by the Council on Higher Education in October 1985, offers a curriculum track for the four-year student as well as one for registered nurses with two-year degrees or diplomas who may enter at the junior level, Dr. Porter said.

The R.N. track was implemented in the fall of 1986, while the fall of 1987 saw the first students enrolled in the four-year track.

In addition to offering classes on the main campus, the nursing faculty has been teaching basic required courses for the program to registered nurses in Ashland, Prestonsburg and Maysville.

MSU phased out its two-year nursing degree program which had produced nearly 600 graduates since its inception in 1971.

"Nationally, the nursing profession is encouraging members to strengthen their education through the four-year degree programs and beyond," said Dr. Porter. "We are committed to providing the best possible professional program to produce highly-skilled health care providers to serve the people of Eastern Kentucky," she added.

#####

News

PUBLIC INFORMATION

JUDITH YANCY, DIRECTOR

MOREHEAD STATE UNIVERSITY

UPO BOX 1100

MOREHEAD, KY 40351

606-783-2030

Dec. 8, 1987
FOR IMMEDIATE RELEASE

MOREHEAD, Ky.--Morehead State University has been named a bicentennial campus by the Commission on the Bicentennial of the United States Constitution.

"MSU was chosen on the basis of its outstanding program and strong commitment to the bicentennial," said Betty Seay, project director for the United States Constitution Celebration in Kentucky.

To become a bicentennial campus, MSU had to establish a bicentennial committee representative of the campus community; develop a commemorative program to educate members of the campus community about the meaning and significance of the U.S. Constitution, and receive an official designation from the federal commission, according to Dr. William Green, MSU associate professor of government and campus bicentennial committee chair.

Members of the committee include: Dr. John Philley, dean of arts and sciences; Dr. George Luckey, professor of philosophy; Dr. Gary Cox, professor of geography; James Dahlberg, assistant professor of paralegal studies;

Dr. James Quisenberry, professor of communications; Dr. Charles Holt, professor of history; Dr. Stuart Sprague, professor of history; Dr. John Kleber, professor of history and honors program director; Bill Royster, MSU senior and president of Phi Alpha Delta pre-law fraternity, and Dr. Green.

MSU has planned activities which will address yearly bicentennial themes and will cover a five-year period, Dr. Green added. These themes include:

(MORE)

bicentennial campus
2-2-2-2-2-2-2-2-2-2

"The Founding Fathers: What Did They Intend?" (1987); "The Federalist Papers: Publius and the Ratification Campaign (1988); "The President and Congress: The Constitution Between Friends" (1989); "The Supreme Court: The Least Dangerous Branch" (1990), and "The Bill of Rights: A Charter of Liberty" (1991).

In addition, MSU will sponsor an essay contest based on the above themes for Eastern Kentucky high school seniors. The winner will receive a scholarship award of \$1,420 yearly, to be used for tuition and board.

Phi Alpha Delta will sponsor an essay contest, as well, for MSU seniors. The winner will receive a certificate and leading constitutional treatise at the Phi Alpha Delta banquet.

The MSU Honors Program will offer various seminars including the current seminar on the Supreme Court and the Constitution.

A lecture and symposia series will be established to invite visiting scholars to address the yearly bicentennial themes.

The bicentennial celebration will last through 1991.

#####

mar

News

PUBLIC INFORMATION

JUDITH YANCY, DIRECTOR

MOREHEAD STATE UNIVERSITY

UPO BOX 1100

MOREHEAD, KY 40351

606-783-2030

Dec. 8, 1987
FOR IMMEDIATE RELEASE

MOREHEAD, Ky.--Seven Morehead State University students have been selected as cheerleaders for the MSU Lady Eagles basketball team.

Selected were:

*Kristi Adkins, **West Chester, Ohio**, sophomore and daughter of Bob and Jan Adkins.

*Amy Campbell, **Ashland** sophomore and daughter of Michael and Bonnie Campbell.

*Marc deBourbon, **West Chester, Ohio**, junior and grandson of Martha Jahnke.

*Lori Donaldson, **Mt. Sterling** freshman and daughter of Jackie and Sandy Donaldson.

*Suzette Hignite, **Flatwoods** freshman and daughter of Edsel and Dorothy Hignite.

*Joy Kinney, **Louisville** freshman and daughter of Stephen and Teresa Kinney.

*James Little, **Beaver** freshman and son of Issac and Ruth Little.

Allison Lusby of **Port Richey, Fla.**, a freshman and the daughter of Arthur and Patricia Lusby, and Shannon Ziegler of **Silver Grove**, a freshman and the son of Thomas and Sharon Ziegler, were selected as alternates.

The cheerleaders were chosen on the basis of an interview and performance of partner stunts, precision of motions and gymnastic ability, according to Myron Doan, adviser.

#####

mar

News

PUBLIC INFORMATION

JUDITH YANCY, DIRECTOR

MOREHEAD STATE UNIVERSITY

UPO BOX 1100

MOREHEAD, KY 40351

606-783-2030

Dec. 8, 1987
FOR IMMEDIATE RELEASE

MOREHEAD, Ky.--Morehead State University sophomores Amy Campbell and Suzette Hignite, both of Russell, have been selected as Lady Eagles varsity basketball cheerleaders.

Campbell, the daughter of Michael and Bonnie Campbell, is an accounting major.

Hignite, the daughter of Edsel and Dorothy Hignite, is an elementary education major and a member of Chi Omega sorority.

The cheerleaders were chosen on the basis of an interview and performance of partner stunts, precision of motions and gymnastic ability, according to Myron Doan, adviser.

#####

mar

*The Greenup News
Times Trader*

News

PUBLIC INFORMATION

JUDITH YANCY, DIRECTOR

MOREHEAD STATE UNIVERSITY

UPO BOX 1100

MOREHEAD, KY 40351

606-783-2030

Dec. 8, 1987
FOR IMMEDIATE RELEASE

MOREHEAD, Ky.--Morehead State University freshman Shannon Ziegler of Silver Grove has been chosen as a Lady Eagles varsity basketball cheerleader.

The son of Thomas and Sharon Ziegler, he is a university studies major.

Cheerleaders were chosen on the basis of an interview and performance ability of partner stunts, precision of motions and gymnastic ability, according to Myron Doan, adviser.

#####

mar

Campbell County Recorder

News

PUBLIC INFORMATION

JUDITH YANCY, DIRECTOR

MOREHEAD STATE UNIVERSITY

UPO BOX 1100

MOREHEAD, KY 40351

606-783-2030

Dec. 8, 1987
FOR IMMEDIATE RELEASE

MOREHEAD, Ky.--Morehead State University freshman Joy Kinney of Louisville has been chosen as a Lady Eagles varsity basketball cheerleader.

The daughter of Stephen and Teresa Kinney, she is an English major.

Cheerleaders were chosen on the basis of an interview and performance ability of partner stunts, precision of motions and gymnastic ability, according to Myron Doan, adviser.

####

mar

Voice/Skyline News

News

PUBLIC INFORMATION

JUDITH YANCY, DIRECTOR

MOREHEAD STATE UNIVERSITY

UPO BOX 1100

MOREHEAD, KY 40351

606-783-2030

Dec. 8, 1987
FOR IMMEDIATE RELEASE

MOREHEAD, Ky.--Morehead State University freshman Allison Lusby of Port Richey has been chosen as a Lady Eagles varsity basketball cheerleader alternate.

The daughter of Arthur and Patricia Lusby, she is a radio/television major.

Cheerleaders were chosen on the basis of an interview and performance ability of partner stunts, precision of motions and gymnastic ability, according to Myron Doan, adviser.

#####

mar

*Sarjona Reader
Jasper Springs, FLA*

News

PUBLIC INFORMATION

JUDITH YANCY, DIRECTOR

MOREHEAD STATE UNIVERSITY

UPO BOX 1100

MOREHEAD, KY 40351

606-783-2030

Dec. 8, 1987
FOR IMMEDIATE RELEASE

MOREHEAD, Ky.--Morehead State University freshman James Little of Beaver has been chosen as a Lady Eagles varsity basketball cheerleader.

He is the son of Issac and Ruth Little and is an accounting major.

Cheerleaders were chosen on the basis of an interview and performance ability of partner stunts, precision of motions and gymnastic ability, according to Myron Doan, adviser.

####

mar

Floyd County Times

News

PUBLIC INFORMATION

JUDITH YANCY, DIRECTOR

MOREHEAD STATE UNIVERSITY

UPO BOX 1100

MOREHEAD, KY 40351

606-783-2030

Dec. 8, 1987
FOR IMMEDIATE RELEASE

MOREHEAD, Ky.--Morehead State University freshman Lori Donaldson of Mt. Sterling has been chosen as a Lady Eagles varsity basketball cheerleader.

The daughter of Jackie and Sandy Donaldson, she is an elementary education major.

Cheerleaders were chosen on the basis of an interview and performance ability of partner stunts, precision of motions and gymnastic ability, according to Myron Doan, adviser.

####

mar

*Mt. Sterling Advocate
Montgomery Jones*

News

PUBLIC INFORMATION

JUDITH YANCY, DIRECTOR

MOREHEAD STATE UNIVERSITY

UPO BOX 1100

MOREHEAD, KY 40351

606-783-2030

Dec. 8, 1987
FOR IMMEDIATE RELEASE

MOREHEAD, Ky.--Morehead State University students Kristi Adkins and Marc deBourbon, both of West Chester, have been selected as Lady Eagles varsity basketball cheerleaders.

Adkins, the daughter of Bob and Jan Adkins of 7237 Cincinnati Day Road, is a sophomore elementary education major and a member of Chi Omega sorority.

deBourbon, the grandson of Martha Jahnke and a graduate of Lakota High School, is a junior history and pre-law major and a member of Theta Chi fraternity.

Cheerleaders were chosen on the basis of an interview and performance ability of partner stunts, precision of motions and gymnastic ability, according to Myron Doan, adviser.

#####

mar

Cincinnati Suburban Press

Photo

PUBLIC INFORMATION

JUDITH YANCY, DIRECTOR

MOREHEAD STATE UNIVERSITY

UPO BOX 1100

MOREHEAD, KY 40351

606-783-2030

SPANISH HONORARY INITIATES

Morehead State University's Chapter of Sigma Delta Phi, national collegiate Spanish honor society, recently inducted seven student members and one associate member. The new initiates include, front from left, Katie Ball of Falmouth; Tim Bailey of Loveland, Ohio; Lisa Hopkins of West Liberty; Dr. Roger Jones, professor of art, associate member, and Joan Altman of Jasper, Ind. Back, from left, Dr. Vicente Cano, MSU associate professor of Spanish and chapter adviser, standing; Melissa Lowe of Ashland; Elizabeth Grannis of Mt. Sterling and Patti Close of West Palm Beach, Fla.

(MSU photo by Linda Denton)

12-8-87jy

Photo mailed to: Trail Blazer, Morehead News, Greenup News, Montgomery Times, Mt. Sterling Advocate, Falmouth Outlook, Licking Valley Courier, Loveland Herald and Daily Independent.



News

PUBLIC INFORMATION

JUDITH YANCY, DIRECTOR

MOREHEAD STATE UNIVERSITY

UPO BOX 1100

MOREHEAD, KY 40351

606-783-2030

Dec. 10, 1987
FOR IMMEDIATE RELEASE

MOREHEAD, Ky.--A group of eight novice members from Morehead State University's Individual Events (IE) team took first place in sweepstakes at the recent Holiday Frolic Speech Tournament hosted by Ohio State University.

"Our young team members put in an outstanding performance and we are very proud of their individual efforts," said Cathy Thomas, MSU assistant professor of speech and IE team coach.

Individual winners included:

*Tammy Skaggs, **Cynthiana** freshman, sixth in extemporaneous speaking and after dinner speaking.

*Jennifer Hester, **Louisville** freshman, first in impromptu speaking, third in extemporaneous speaking and fifth in prose.

*Kellie Crump, **Cynthiana** freshman, first in informative speaking, second in impromptu speaking and fourth in persuasion.

*Carol Tyler, **Mt. Sterling** freshman, first in poetry, second in prose, third in informative speaking and fifth in impromptu speaking.

*Chance Pennington, **Morehead** freshman, third in after dinner speaking and sixth in prose.

*Krys Lynham, **Cynthiana** freshman, third in persuasion, fourth in poetry and fifth in after dinner speaking.

*Melinda Clark, **Morehead** freshman, first in persuasion and prose, and second in poetry.

*Kelly O'Connell, **Morehead** freshman, third in prose and fifth in poetry.

#####

News

PUBLIC INFORMATION

JUDITH YANCY, DIRECTOR

MOREHEAD STATE UNIVERSITY

UPO BOX 1100

MOREHEAD, KY 40351

606-783-2030

Dec. 10, 1987
FOR IMMEDIATE RELEASE

MOREHEAD, Ky.--Due to a dramatic decrease in blood donations, the holiday season becomes the most critical time for community blood supplies.

In an effort to help educate Eastern Kentuckians and generate additional blood donations during the season, WMKY, public radio from Morehead State University, has launched a public awareness campaign encouraging listeners to "give the gift of life."

The 90.3 FM campaign, which runs through mid-January, includes daily features dealing with several aspects of blood banking. Some of the topics explored are misconceptions about blood donation; AIDS and blood-giving, and a walk-through of the blood donation process.

During the six-week effort, WMKY will also keep listeners informed of bloodmobile visits throughout the Eastern Kentucky region.

"Any assistance we can get to help people in our area is appreciated," commented Joy Curry of the Huntington, W. Va.-based Tri-State Regional Blood Center.

Also cooperating in WMKY's efforts is the Central Kentucky Blood Center in Lexington.

"Central Kentucky Blood Center is very pleased that WMKY has chosen to deal with the safety of the blood supply," said CKBC Administrator Tom Watts. "During the holiday season, the community blood supply is greatly diminished. We feel the information being provided by WMKY will help donors feel comfortable about donating and will have a very positive effect this holiday season."

WMKY's program director Susan Westfall added that the station staff is very interested in the project. "The region is in need of blood this time of year," says Westfall. "We're glad to help in any way we can. The entire staff has shown a real commitment to the cause."

Additional information on bloodmobile visits in Eastern Kentucky is available by calling WMKY at (606) 783-2001.

#####

wmky/jy

News

PUBLIC INFORMATION

JUDITH YANCY, DIRECTOR

MOREHEAD STATE UNIVERSITY

UPO BOX 1100

MOREHEAD, KY 40351

606-783-2030

Dec. 10, 1987
FOR IMMEDIATE RELEASE

MOREHEAD, Ky.--Morehead State University President C. Nelson Grote will host a reception at 4 p.m. Sunday, Dec. 13, at the Holiday Inn for participants in a "Salute to the Seventh District."

Organized by State Superintendent of Public Instruction Alice McDonald in conjunction with the Kentucky Appalachian Foundation, Inc., the "Salute" is designed to recognize significant achievements in each of the 27 school districts within Kentucky's Seventh Congressional District.

Accompanying the superintendent will be civic, business and education leaders as well as state Department of Education staff members.

Following the reception, the group will depart for Prestonsburg, stopping on the way in West Liberty to tour the MSU-Morgan Center. On Monday, the "Salute" group will meet and recognize public school officials in Hindman, Paintsville and Ashland.

Dr. Grote along with Dr. Jim Bowman, MSU's associate dean for education; Dr. Randy Wells, school relations coordinator, and other School of Education faculty members will accompany the group on its "Salute" visits.

#####

Photo

PUBLIC INFORMATION

JUDITH YANCY, DIRECTOR

MOREHEAD STATE UNIVERSITY

UPO BOX 1100

MOREHEAD, KY 40351

606-783-2030

MSU ON PARADE

Morehead State University's Marching Band participated in the inaugural parade festivities for Kentucky's new governor, Wallace Wilkinson. Helping carry the banner as the parade passed the official reviewing stand in Frankfort last Tuesday was MSU President C. Nelson Grote, center.

(MSU photo by Ray Bradley)

12-10-87jy



Morehead News

News

PUBLIC INFORMATION

JUDITH YANCY, DIRECTOR

MOREHEAD STATE UNIVERSITY

UPO BOX 1100

MOREHEAD, KY 40351

606-783-2030

Dec. 11, 1987

SPECIAL TO THE MOREHEAD NEWS

MOREHEAD, Ky.--With an abundance of good news, 1987 was a vintage year for Morehead State University as it entered its "Second Century of Service."

Enrollment increases dominated the year, while private gifts exceeded the million dollar mark for the first time in the institution's history. Adding to this excitement was the homecoming of a new president, Dr. C. Nelson Grote, and recognition of MSU's student athletes' academic record with the University becoming the first recipient of the Ohio Valley Conference Academic Banner.

A 10.1 percent fall enrollment increase over the fall of 1986 capped a year of growing enrollment which saw MSU's 1987 Spring enrollment increase by 7.3 percent over the previous spring and Summer I take a 9 percent jump from the year before.

The fall enrollment of 6,490 students included a 13.4 percent growth in full-time student population, which created such a demand for on-campus student housing that three dorms---previously closed---were reopened.

Not only did the gift-giving year of \$1,249,075 surpass all previous years, but three additional milestones were reached with the largest corporate gift, the largest individual gift and the largest bequest.

The Ashland Oil Foundation committed a half million dollars over a three-year period to MSU, with \$350,000 earmarked for scholarships for academic excellence, for enhancement of certain academic programs and for a series of distinguished lectures. Another \$150,000 was designated as the Ashland Oil-Albright Challenge Grant with \$50,000 in three annual increments which must be matched by the University in new, unrestricted gifts.

The grant was named in honor of MSU's 10th president, Dr. A. D. Albright, in recognition of his contributions to higher education.

The banner giving year of 1986-87 also included \$681,878 from Terry and Susan Jacobs for artificial turf at Jayne Stadium which represented the largest individual gift.

(MORE)

1987 at MSU
2-2-2-2-2

The largest bequest came from a retired faculty member, Dr. Norman Tant, who earmarked \$100,000 from his estate to endow the Norman and Deane Rust Tant Scholarship Endowment Fund, and also designated the University to share in his residuary estate. A check for nearly \$112,000 was presented at the birthday breakfast marking 100 years since the opening of MSU's predecessor institution, the Morehead Normal School, on Oct. 3, 1887.

For Dr. and Mrs. C. Nelson Grote, 1987 will be remembered as the year they came home. Dr. Grote, who began his career in higher education administration at MSU 27 years earlier, became the University's 11th president on July 1, 1987, returning after a 16-year absence which saw him lead Schoolcraft College as president from 1971 to 1981 and serve as chief executive officer (chancellor) of The Community Colleges of Spokane for six years.

At a news conference at the end of his first day in office, President Grote said that he planned to emphasize fund raising as a means to obtain "that margin of excellence," and pledged his administration to exploring ways for MSU to play a vital role in the region's economic development, to working closely with Eastern Kentucky public school officials, civic leaders and legislators, and to developing student retention programs in addition to recruitment programs.

"You can enroll students and insure their failure or you can enroll students and prepare them for success," Dr. Grote noted.

Earlier this fall, in his address at the Faculty/Staff Assembly which launched the new academic year, Dr. Grote outlined a series of priorities which included better salaries for both faculty and staff, a well-maintained and equipped working environment, and an environment that stimulates creativity and productivity. If these goals are accomplished, then a fourth goal--seeing MSU achieve an even higher level of excellence--would be attained.

Re-emphasizing his slogan unveiled at Founders Day, "Together We Can!", Dr. Grote called for a sense of unity campuswide, saying:

"I am absolutely confident that if we will unify our resources and our creativity and work together like we have never worked before that we can achieve both our individual and corporate goals. We can be the kind of university that you will be proud to be associated with and one about which our graduates will extol the virtues. I can't do that by myself, neither can you, but together we can do anything we decide to do."

Later that same message was repeated by Dr. Glenn Terrell, president emeritus of Washington State University who spoke at Dr. Grote's inauguration. Encouraging goal-setting without regard to obstacles such as money, Dr. Terrell said that by continuing to practice Dr. Grote's slogan, there "are no limits to the things we can do."

(MORE)

1987 at MSU
3-3-3-3-3-3

The inauguration of Dr. C. Nelson Grote drew many dignitaries and a platform party which included three former MSU presidents, two former governors and then-Gov. Martha Layne Collins. Gov. Collins, bringing greetings from the citizens of the Commonwealth, assured the crowd of more than 1,100 that MSU was "on sure footing" and had entered a "new era of progress and prosperity."

Some of that progress and prosperity was evident in the re-establishment of MSU's School of Education and the School of Business and Economics; approval of a four-year degree in veterinary technology; the naming of Dr. Robert L. Goodpaster, a prominent Ashland-area educator, as director of the MSU-Ashland Center; the formal opening of the MSU-Morgan Center in West Liberty, and for the third consecutive time a 100 percent passage rate on the national licensure examination by a graduating class from the University's nursing program.

MSU also holds the distinction of being the first school to win the OVC's Academic Achievement Banner, recognizing the conference institution with the best overall academic record involving student-athletes who participate in conference-sponsored sports and invitational meets. The banner was presented by OVC Commissioner Jim Delaney during half-time of the MSU-Eastern Kentucky University football game.

For the students, perhaps the biggest news was a concert schedule which brought such highly popular recording artists to the AAC as Lee Greenwood, .38 Special, the Beach Boys, Joan Jett and REO Speedwagon.

And for MSU's varsity cheerleading squad, the good news included being invited to participate in the National College Cheerleading Championship at Sea World in San Diego, Calif., in January 1988 as one of the top five Division I teams in the country.

Ahhhh, 1987! It was a very good year.

#####

jy

Photo

PUBLIC INFORMATION

JUDITH YANCY, DIRECTOR

MOREHEAD STATE UNIVERSITY

UPO BOX 1100

MOREHEAD, KY 40351

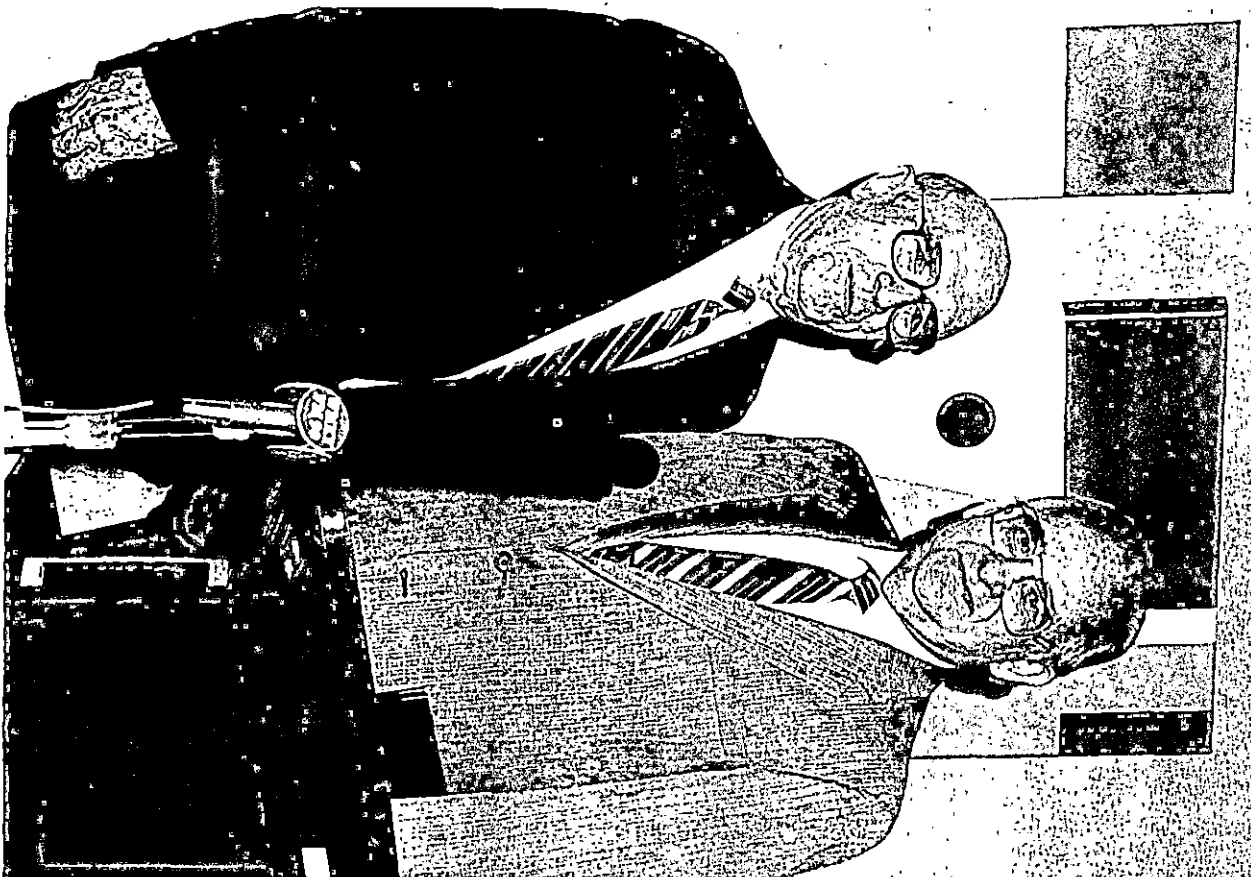
606-783-2030

A PRESIDENTIAL PAIR

Dr. A. D. Albright, left, and Dr. C. Nelson Grote shared the MSU presidency during 1987. Dr. Albright stepped down June 30 as the University's 10th president and Dr. Grote took over the helm on July 1, for the final six months of the year.

(MSU photo by Ray Bradley)

12-8-87jy



Photo

PUBLIC INFORMATION

JUDITH YANCY, DIRECTOR

MOREHEAD STATE UNIVERSITY

UPO BOX 1100

MOREHEAD, KY 40351

606-783-2030

THE GROTE REPORT (CARD)

MSU President C. Nelson Grote and Leona Schafer of Pana, Ill., who taught him in grades one through three, review his early years in education as a student based on his report cards from those days. Ms. Schafer presented Dr. Grote with the Presidential Medallion, the symbol of the office, during his inauguration as the University's 11th president.

(MSU photo by Ray Bradley)

12-8-87jy



Morehead News

Photo

PUBLIC INFORMATION

JUDITH YANCY, DIRECTOR

MOREHEAD STATE UNIVERSITY

UPO BOX 1100

MOREHEAD, KY 40351

606-783-2030

COMPLETES PROGRAM

Two Mt. Sterling residents participated in the Service Occupation for Seniors training program through Morehead State University's Job Training Center.

Completing the program were, from left, Ira Prater and Charles Stamper, who received congratulations from Jacquelyn Scott, Job Training Center coordinator.

(MSU photo by Ray Bradley)

12-11-87py



Montgomery Times
Mt. Sterling Advocate

Photo

PUBLIC INFORMATION

JUDITH YANCY, DIRECTOR

MOREHEAD STATE UNIVERSITY

UPO BOX 1100

MOREHEAD, KY 40351

606-783-2030

COMPLETES PROGRAM

Mary Mauk of Olive Hill, center, recently completed the Service Occupation for Seniors training program through Morehead State University's Job Training Center. Congratulating her on this achievement were Shirley Hamilton, left, coordinator of training, and Jacquelyn H. Scott, job training program coordinator, Office of Extended Campus Programs.

(MSU photo by Ray Bradley)

12-11-87py



Olive Hill Times

Photo

PUBLIC INFORMATION

JUDITH YANCY, DIRECTOR

MOREHEAD STATE UNIVERSITY

UPO BOX 1100

MOREHEAD, KY 40351

606-783-2030

COMPLETES PROGRAM

Two Morehead residents participated in the Service Occupation for Seniors training program through Morehead State University's Job Training Center. Completing the program were, from left, Beulah Dillon and Ted Ockerman, who received congratulations from Jacquelyn Scott, Job Training Center coordinator.

(MSU photo by Ray Bradley)

12-11-87py



Morehead News

News

PUBLIC INFORMATION

JUDITH YANCY, DIRECTOR

MOREHEAD STATE UNIVERSITY

UPO BOX 1100

MOREHEAD, KY 40351

606-783-2030

Dec. 14, 1987
FOR IMMEDIATE RELEASE

MOREHEAD, Ky.--Morehead State University's varsity cheerleading squad is one of the five top teams in the nation selected to compete in the National College Cheerleading Championship at the Division I level.

MSU's cheerleaders will participate in the Universal Cheerleading Association-sponsored competition to be held Jan. 8-11 at Sea World in San Diego, Calif., according to Myron Doan, assistant to the vice president for student development and squad adviser.

The MSU cheerleaders, ranked 11th in the nation last year, will be competing against squads from Appalachian State, Furman, George Mason and James Madison universities.

"This was a marvelous Christmas present for a hard-working team of energetic students," said Doan, who received word of MSU's selection after the judges reviewed videotapes of the squad in action.

Competing in the national finals will be: Angie Brown, **Clearfield** junior; Margaret Ann Blackwell, **Frankfort** junior; Melissa Collins, **Morehead** senior; Scott Cooke, **Ashland** graduate student; Robert Eskridge, **Phelps** sophomore; Sandra Leah Everman, **Garrison** sophomore; Darold Giles, **Louisville** junior; Terri Goss, **Inez** sophomore; Jill Irvin, **Moorefield** sophomore; Mike McBeath, **Lexington** senior; Eddie Petry, **South Shore** freshman; Ronnie Pies, **Harrison, Ohio**, junior; Leigh Clay Richardson, **Sharpsburg** sophomore, and Barry Wolford, **Phelps** sophomore.

#####

Photo

PUBLIC INFORMATION

JUDITH YANCY, DIRECTOR

MOREHEAD STATE UNIVERSITY

UPO BOX 1100

MOREHEAD, KY 40351

606-783-2030

MSU CHEERLEADERS CALIFORNIA-BOUND

Picked as one of the top five Division I squads in the nation, Morehead State University's cheerleaders will compete in the National College Cheerleading Championship in San Diego, Calif., Jan. 8-11. Team members include, front from left, Darold Giles of Louisville; Barry Wolford of Phelps; Mike McBeath of Lexington; Ronnie Pies of Harrison, Ohio; Scott Cooke of Ashland; Eddie Petry of South Shore and Robert Eskridge of Phelps. Back row, from left, Margaret Blackwell of Frankfort; Leigh Richardson of Sharpsburg; Sandy Everman of Garrison; Angie Brown of Clearfield; Melissa Collins of Morehead; Terri Goss of Inez and Jill Irvin of Moorefield.

(MSU photo by Ray Bradley)

12-14-87jy

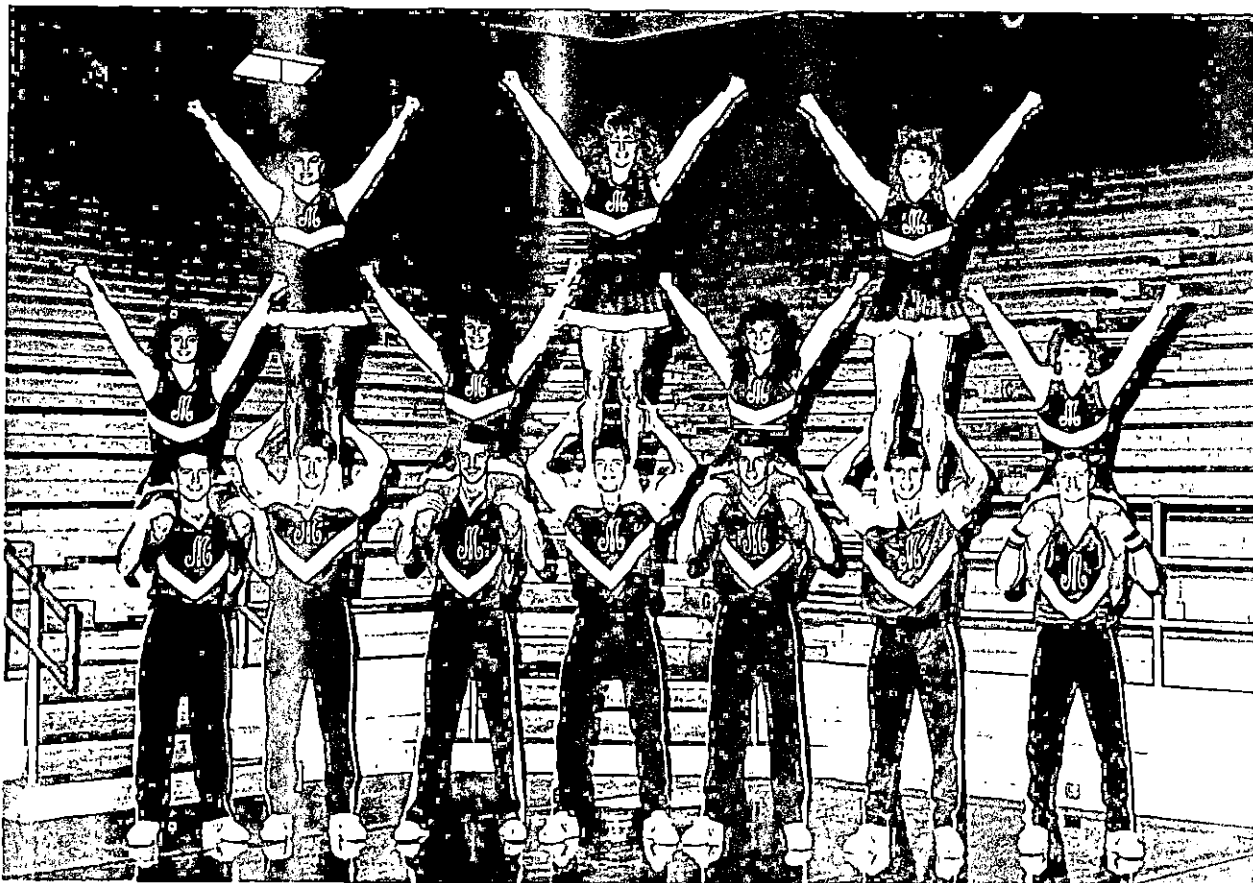


Photo sent to: Morehead News, STATEment, Trail Blazer, Olive Hill Times, Bath County Outlook, Carlisle Mercury, Mt. Sterling Advocate, Montgomery Times, Appalachian News Express, Lewis County Herald, Daily Independent, Martin Mercury, Martin Countian, Jackson Times, Greenup News, Winchester Sun, Big Sandy News, Harrison, OH and Frankfort Journal.

Photo

PUBLIC INFORMATION

JUDITH YANCY, DIRECTOR

MOREHEAD STATE UNIVERSITY

UPO BOX 1100

MOREHEAD, KY 40351

606-783-2030

NEW MEMBERS

Pi Sigma Alpha, national political science honor society at Morehead State University, recently initiated seven new members. They include, front row from left, Rick Martin, Worthington senior; Laura Thornton, Park Hills junior; Donnie Kidd, Grethel junior, and Don Bromagen, Carlisle senior. Back row from left, Bernard Wieker, Mousie senior; William Lyons, South Shore senior, and Sheridan Martin, Drift junior. Dr. Jack Bizzel, MSU professor of government, is the group's adviser.

(MSU photo by Linda Denton)

12-14-87py

**Photo to: Greenup News, Morehead News,
Floyd County Times, Carlisle Mercury,
Troublesome Creek Times, Trail Blazer,
and Kenton County Recorder.**



News

PUBLIC INFORMATION

JUDITH YANCY, DIRECTOR

MOREHEAD STATE UNIVERSITY

UPO BOX 1100

MOREHEAD, KY 40351

606-783-2030

Dec. 15, 1987

1987 WINTER COMMENCEMENT: A Picture Story

MOREHEAD, Ky.--Approximately 300 degrees were conferred on Saturday (Dec. 12) at Morehead State University before a standing-room-only crowd of nearly 1,500 people who packed Button Auditorium for 1987 Winter Commencement.

The turnout for commencement may have been the largest crowd in Button's history, according to MSU officials.

More than 200 candidates were present to receive their graduate or undergraduate degrees along with personal congratulations from President C. Nelson Grote as their friends and families watched.

"I want to believe that something has been imparted to you here that can not be taken away--something that will grow. And that is the seed of knowledge, the grasping of learning," MSU Board of Regents Chairman Louie B. Nunn told the graduates.

Driving by the birthplace of Abraham Lincoln on his way to commencement that morning, Nunn said he was reminded that Lincoln didn't have a computer or a library, but just a few borrowed books and his mother's Bible. "From these sources, he gained strength, character and wisdom, but more than that he gained a philosophy of life to live with," he noted.

"Look to the future, for it is ours; reflect on the past, for it is what and who we are," student speaker David W. Coleman of Catlettsburg told his fellow graduates.

"Our presence here today is proof that we can succeed," he said. The Pike County native urged his classmates to take all their experiences with them as they left the University and use them as building blocks for the future to form "a more perfect society in which we all may live."

Coleman, a Dean's List student, received his B.S. degree in industrial education. He earned an associate degree in mining technology from MSU in 1981.

In his remarks, President Grote noted that it was a special day not only for the graduates and their families, but also for the University.

(MORE)

"What you do with your degree, how you use it, will reflect on this institution; but also what this University does will reflect on your degree. There's a bond that links us one to another. Let us make a pact that we will support each other through the years," Dr. Grote said.

Welcoming the University's newest alumni into the Alumni Association following the conferring of degrees was Lisa Browning of Owingsville, president-elect of the Association.

The graduates, their families and friends were guests at a reception afterwards hosted by the president and his wife in the Crager Room, Adron Doran University Center.

Cutlines:

- 1---MSU Board of Regents Chairman Louie B. Nunn, left, exchanges small talk with MSU Vice President for Student Development Mike Mincey as they wait for the academic procession to form.
- 2---Led by Registrar Gene Ranvier, the student marshals carrying the banners identifying the University's three colleges start down the University Center staircase on the way to Button Auditorium.
- 3---Standing at attention as the National Anthem is sung are, from left, Dr. Alban Wheeler, MSU's faculty regent; former Gov. Nunn, and President C. Nelson Grote.
- 4---Student speaker David W. Coleman, a Pike County native now residing in Catlettsburg, told his fellow classmates that their presence "here today is proof that we can succeed."
- 5---Addressing the graduates, Dr. Grote told them that the day was not only special for them, but also for the University.
- 6---Button Auditorium was packed with a standing-room-only crowd of friends and family members who were on hand to see their loved ones graduate. It was, according to MSU officials, perhaps the largest crowd in Button's history.
- 7---Dressed in a miniature cap and gown just like her mother's was little Amanda Dornacher. Her mother, Amy Dornacher of Edgewood, received her Bachelor of Arts degree in para-legal studies.
- 8---One enthusiastic graduate ready to tackle the world outside gave fair warning with her mortar board's message.
- 9---Friends and family members of the graduates were greeted by Dr. and Mrs. Grote at a post-commencement reception.
- 10---Winter Commencement 1987 also signified the end of an era as MSU graduated its last two-year nursing degree class. Members of the last class are, from left, Marsha Ann Conley of Salyersville, Carolyn Sue Miller of Morehead, Kathy Standafer of West Liberty and Kim Stevens of Paintsville. The program, which has produced nearly 600 graduates since its inception in 1971, has been replaced with a four-year nursing degree.

(MSU photos)

#####

winter commencement
2-2-2-2-2-2

"What you do with your degree, how you use it, will reflect on this institution; but also what this University does will reflect on your degree. There's a bond that links us one to another. Let us make a pact that we will support each other through the years," Dr. Grote said.

Welcoming the University's newest alumni into the Alumni Association following the conferring of degrees was Lisa Browning of Owingsville, president-elect of the Association.

The graduates, their families and friends were guests at a reception afterwards hosted by the president and his wife in the Crager Room, Adron Doran University Center.

Cutlines:

- 1---Addressing Morehead State University's 1987 Winter Commencement graduates, Dr. Grote told them that the day was not only special for them, but also for the University.
- 2---Button Auditorium was packed with a standing-room-only crowd of friends and family members who were on hand to see their loved ones graduate. It was, according to MSU officials, perhaps the largest crowd in Button's history.
- 3---One enthusiastic graduate ready to tackle the world outside gave fair warning with her mortar board's message.
- 4---Winter Commencement 1987 also signified the end of an era as MSU graduated its last two-year nursing degree class. Members of the last class are, from left, Marsha Ann Conley of Salyersville, Carolyn Sue Miller of Morehead, Kathy Standafer of West Liberty and Kim Stevens of Paintsville. The program, which has produced nearly 600 graduates since its inception in 1971, has been replaced with a four-year nursing degree.

(MSU photos)

#####

Mailed to: Magoffin County Times, Salyersville Independent, Licking Valley
Courier, Paintsville Herald & Mountain Chronicle.

winter commencement
2-2-2-2-2-2

"What you do with your degree, how you use it, will reflect on this institution; but also what this University does will reflect on your degree. There's a bond that links us one to another. Let us make a pact that we will support each other through the years," Dr. Grote said.

Welcoming the University's newest alumni into the Alumni Association following the conferring of degrees was Lisa Browning of Owingsville, president-elect of the Association.

The graduates, their families and friends were guests at a reception afterwards hosted by the president and his wife in the Crager Room, Adron Doran University Center.

Cutlines:

- 1---Addressing Morehead State University's 1987 Winter Commencement graduates, Dr. Grote told them that the day was not only special for them, but also for the University.
- 2---Button Auditorium was packed with a standing-room-only crowd of friends and family members who were on hand to see their loved ones graduate. It was, according to MSU officials, perhaps the largest crowd in Button's history.
- 3---One enthusiastic graduate ready to tackle the world outside gave fair warning with her mortar board's message.

(MSU photos)

#####

Mailed to those #3's not listed elsewhere.

winter commencement
2-2-2-2-2

"What you do with your degree, how you use it, will reflect on this institution; but also what this University does will reflect on your degree. There's a bond that links us one to another. Let us make a pact that we will support each other through the years," Dr. Grote said.

Welcoming the University's newest alumni into the Alumni Association following the conferring of degrees was Lisa Browning of Owingsville, president-elect of the Association.

The graduates, their families and friends were guests at a reception afterwards hosted by the president and his wife in the Crager Room, Adron Doran University Center.

Cutlines:

- 1---Addressing Morehead State University's 1987 Winter Commencement graduates, Dr. Grote told them that the day was not only special for them, but also for the University.
- 2---Button Auditorium was packed with a standing-room-only crowd of friends and family members who were on hand to see their loved ones graduate. It was, according to MSU officials, perhaps the largest crowd in Button's history.
- 3---One enthusiastic graduate ready to tackle the world outside gave fair warning with her mortar board's message.
- 4---Student speaker David W. Coleman, a Pike County native now residing in Catlettsburg, told his fellow classmates that their presence "here today is proof that we can succeed."

(MSU photos)

#####

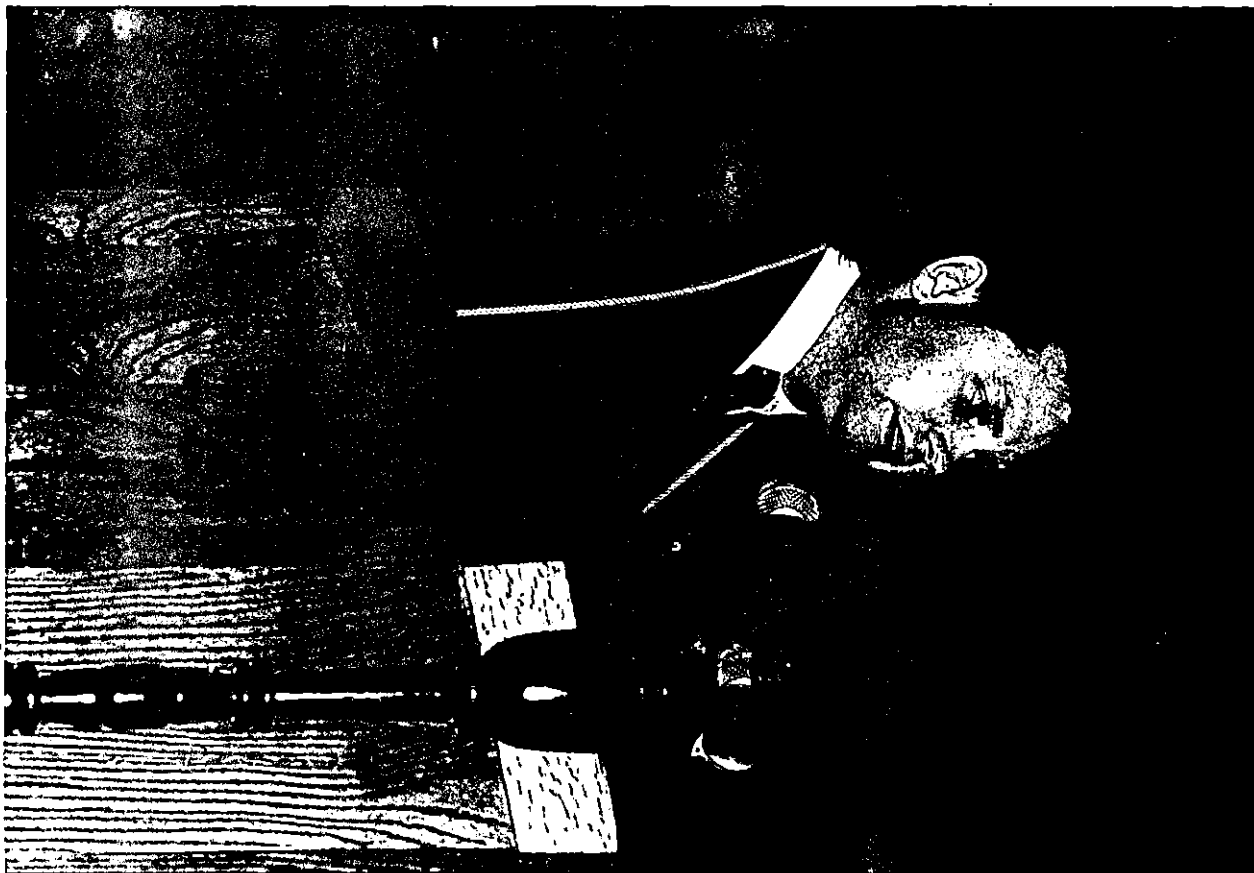
Mailed to: Appalachian News-Express, Big Sandy News, Williamson Daily News, and Greenup News.

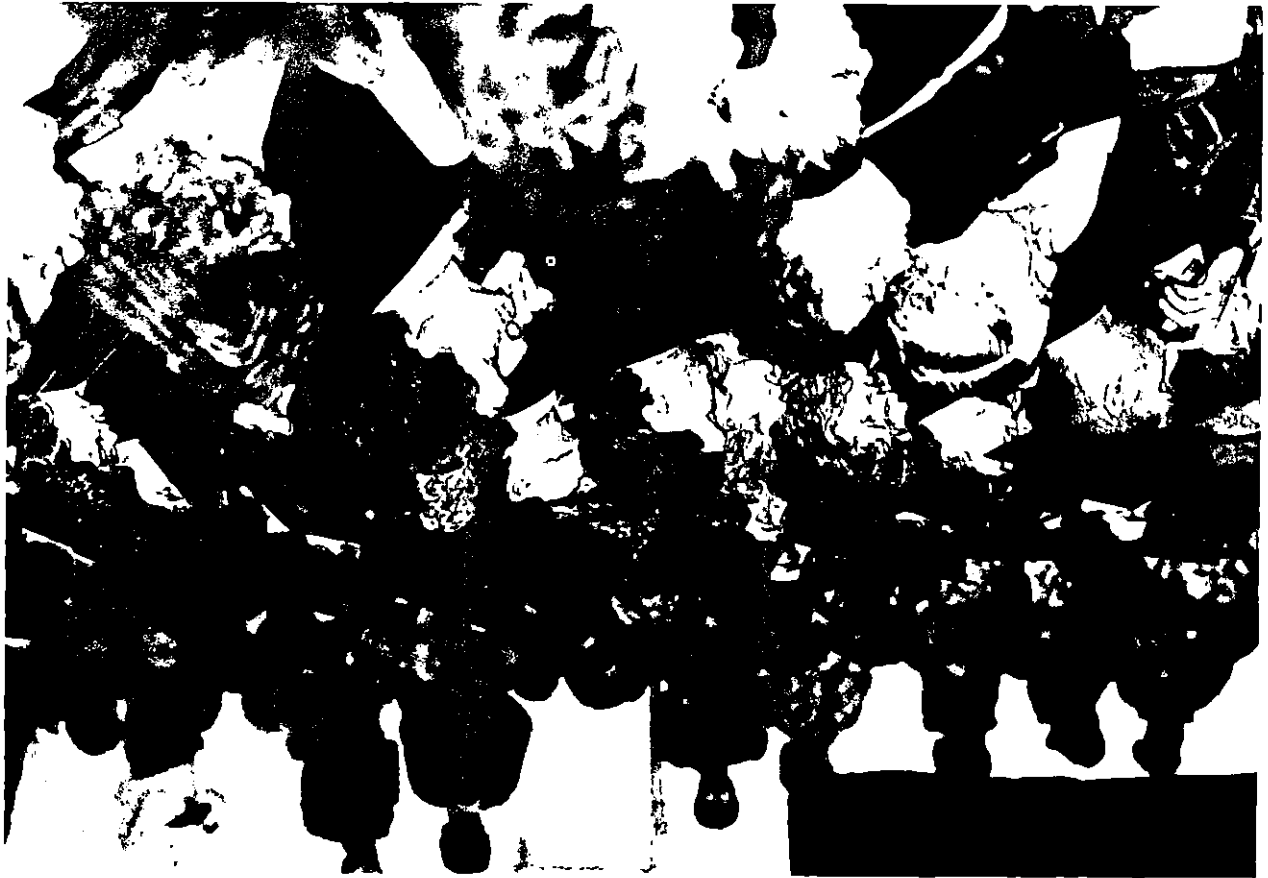
①

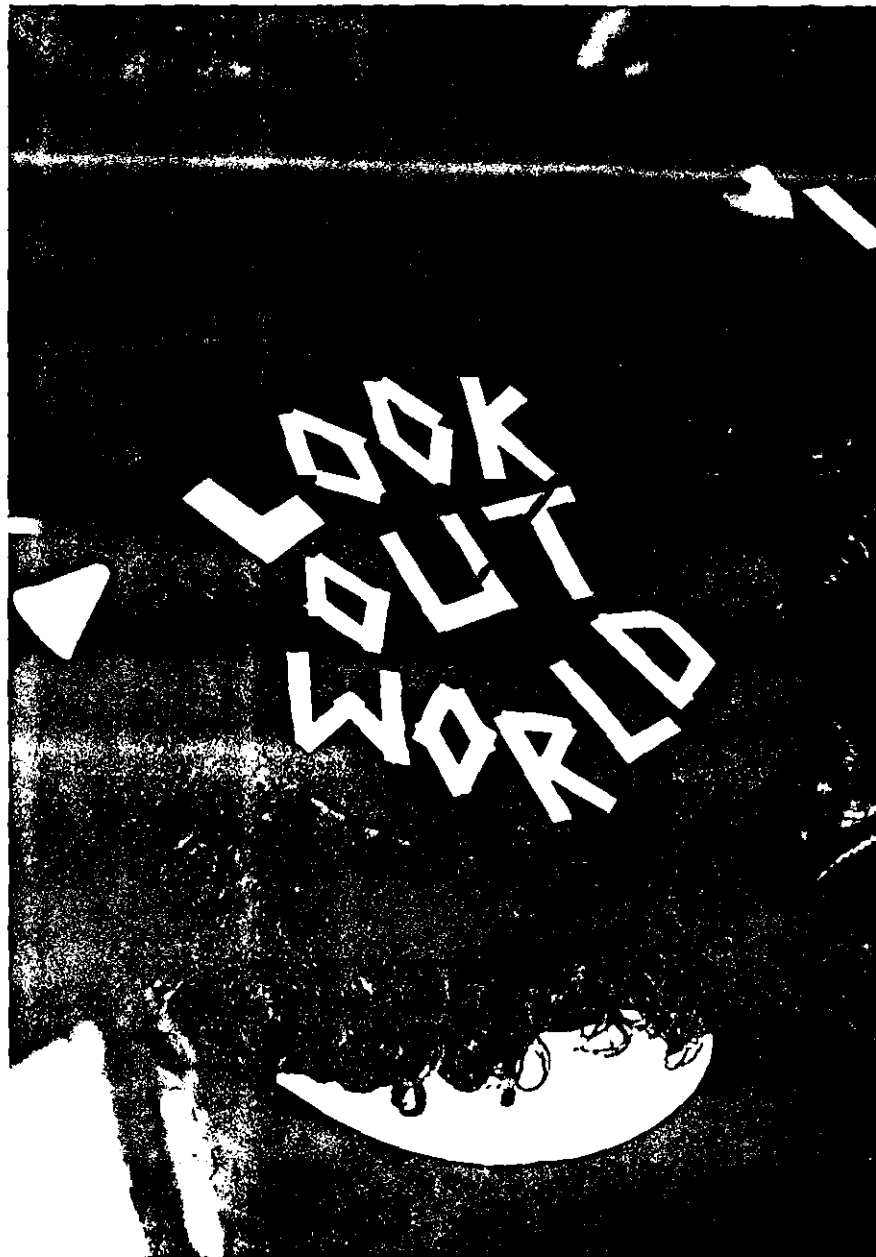


②









(2) (8)



(7)



9



10
4

News

PUBLIC INFORMATION

JUDITH YANCY, DIRECTOR

MOREHEAD STATE UNIVERSITY

UPO BOX 1100

MOREHEAD, KY 40351

606-783-2030

December 15, 1987
FOR IMMEDIATE RELEASE

MOREHEAD, Ky.--Applications are now being accepted for the Pharmacy Technician Training Program scheduled to begin in January through Morehead State University's Job Training Center.

Upon completion of the five-month training program, graduates will be competent in maintaining patient/customer records, setting up, packaging and labeling medication doses, filling, dispensing and auditing routine orders for stock supplies, maintaining inventories of drug supplies, and mixing drugs with parenteral fluids, according to Jacquelyn H. Scott, job training program coordinator.

In addition to the classroom instruction, on-site training will be conducted at St. Claire Medical Center, Morehead Clinic, Bath County Health Services, and area retail pharmacy sites.

"Graduates will be skilled professionals, trained to work at entry level positions in hospital and clinic pharmacies, or in related jobs in the pharmaceutical or research industry," Scott said. "Participants will be trained in employability skills, stress and time management, assertiveness, resume writing and interview techniques," she added.

The program is free to qualified applicants but enrollment is limited. Additional information is available from area Kentucky Department of Employment Services offices or MSU's Job Training Center, (606) 783-2370.

####

py

PSA

PUBLIC INFORMATION

JUDITH YANCY, DIRECTOR

MOREHEAD STATE UNIVERSITY

UPO BOX 1100

MOREHEAD, KY 40351

606-783-2030

SUBJECT: Pharmacy Technician
RELEASE DATE: Now, thru Jan. 15
TIME: 30 sec.

ANNOUNCER:

APPLICATIONS ARE NOW BEING ACCEPTED FOR THE PHARMACY
TECHNICIAN TRAINING PROGRAM SCHEDULED TO BEGIN IN
JANUARY THROUGH MOREHEAD STATE UNIVERSITY'S JOB
TRAINING CENTER. UPON COMPLETION OF THE 18-WEEK
COURSE, GRADUATES WILL BE QUALIFIED FOR ENTRY LEVEL
POSITIONS IN HOSPITAL AND CLINIC PHARMACIES OR RELATED
JOBS IN THE PHARMACEUTICAL OR RESEARCH INDUSTRY. THE
PROGRAM, FREE TO ELIGIBLE PARTICIPANTS, HAS A LIMITED
ENROLLMENT. ADDITIONAL INFORMATION IS AVAILABLE FROM
THE KENTUCKY DEPARTMENT OF EMPLOYMENT SERVICES IN YOUR
AREA, OR MSU'S JOB TRAINING CENTER, (606) 783-2370.

12-15-87py

Photo

PUBLIC INFORMATION

JUDITH YANCY, DIRECTOR

MOREHEAD STATE UNIVERSITY

UPO BOX 1100

MOREHEAD, KY 40351

606-783-2030

TOYS FOR CHILDREN

Morehead State University's Scabbard and Blade, ROTC national honor society, recently collected donations from military science students and purchased toys to be given to children who visit the emergency room at St. Claire Medical Center during the holiday season. Presenting the toys to SCMC personnel were, from left, Keith Brown, Somerset senior and president of Scabbard and Blade; Marion Krumm (behind Brown), Morehead junior; Susan Adams, Neon senior and Dawn Vice, Flemingsburg junior. Accepting the gifts was Sue Anne Trent, SCMC registered nurse. Also on hand were SCMC personnel Dr. Bob Young and Roger Russell, director of planning and development. Capt. Larry Purinton, assistant professor of military science, is adviser for the group.

(MSU photo)

12-15-87py



Photo

PUBLIC INFORMATION

JUDITH YANCY, DIRECTOR

MOREHEAD STATE UNIVERSITY

UPO BOX 1100

MOREHEAD, KY 40351

606-783-2030

MSU WINTER GRADUATE

Jackie Burchett of Lucasville, Ohio, left, was one of nearly 300 Morehead State University students to complete degree requirements during the fall semester. Following the 1987 Winter Commencement ceremonies, smiles were abundant when Jackie and her father Jack chatted with MSU President C. Nelson and Mrs. Grote.

(MSU photo)

12-15-87py



Parksmouth Times

Photo

PUBLIC INFORMATION

JUDITH YANCY, DIRECTOR

MOREHEAD STATE UNIVERSITY

UPO BOX 1100

MOREHEAD, KY 40351

606-783-2030

MSU WINTER GRADS

The future might be the topic of discussion by these Grayson area residents, who received their baccalaureate degrees from Morehead State University during the school's 1987 Winter Commencement program recently. Making plans are, from left, Angie Ramey, Jeffrey Huffman and Dawna Rae Lucas, who were among nearly 300 MSU students completing degree requirements during the fall semester.

(MSU photo)

12-15-87jy



Journal-Examiner

Photo

PUBLIC INFORMATION

JUDITH YANCY, DIRECTOR

MOREHEAD STATE UNIVERSITY

UPO BOX 1100

MOREHEAD, KY 40351

606-783-2030

WINTER COMMENCEMENT

Nearly 300 students completed degree requirements at Morehead State University during the fall semester. Following the 1987 Winter Commencement ceremonies, Tina Milton, and her parents, Edith and Willard Milton of Wallingford, had time to visit with MSU's First Lady, Wilma Grote.

(MSU photo)

12-15-87py



Flemingsburg Gazette

Photo

PUBLIC INFORMATION

JUDITH YANCY, DIRECTOR

MOREHEAD STATE UNIVERSITY

UPO BOX 1100

MOREHEAD, KY 40351

606-783-2030

OLIVE HILL STUDENTS GRADUATE

Lisa Jones, left, and Jami Porter, both of Olive Hill, are all smiles as they prepare to receive their undergraduate degrees from Morehead State University during the 1987 Winter Commencement program. Nearly 300 MSU students completed degree requirements during the fall semester.

(MSU photo)

12-15-87:jj



Olive Hill Times

Photo

PUBLIC INFORMATION

JUDITH YANCY, DIRECTOR

MOREHEAD STATE UNIVERSITY

UPO BOX 1100

MOREHEAD, KY 40351

606-783-2030

MSU WINTER GRAD

Nearly 300 Morehead State University students completed requirements for their degrees during the fall semester and nearly two-thirds of the degree candidates took part in MSU's 1987 Winter Commencement program. Getting a little help from Kathleen Armstrong, right, an MSU staff member, is Salt Lick resident Suzanne Stull, who received her Bachelor of Arts degree.

(MSU photo)

12-15-87jy



Bath County News Outb.

Photo

PUBLIC INFORMATION

JUDITH YANCY, DIRECTOR

MOREHEAD STATE UNIVERSITY

UPO BOX 1100

MOREHEAD, KY 40351

606-783-2030

WINTER GRADUATE

Raccoon native, Jennifer Slone, left, receives a little help from her friend Angie Weaver, as she prepares to participate in the 1987 Winter Commencement at Morehead State University. Slone was one of nearly 300 candidates to receive a degree.

(MSU photo)

12-15-87py



Appalachian News Express

Photo

PUBLIC INFORMATION

JUDITH YANCY, DIRECTOR

MOREHEAD STATE UNIVERSITY

UPO BOX 1100

MOREHEAD, KY 40351

606-783-2030

MSU WINTER GRADS

Gina Day, left, receives a little help from her friend Kerry Logan of Morehead as the two get ready to receive their undergraduate degrees at Morehead State University's 1987 Winter Commencement program.

(MSU photo)

12-15-87jy



Morehead News

Photo

PUBLIC INFORMATION

JUDITH YANCY, DIRECTOR

MOREHEAD STATE UNIVERSITY

UPO BOX 1100

MOREHEAD, KY 40351

606-783-2030

GRADUATION TIME

Commencement is always special for families of new graduates and the Lewis family of Isonville is no different. Darreline Lewis, third from left, received her master's degree in elementary education from Morehead State University at Winter Commencement. Her husband Marion Lewis helps her robe up as sons Ashley and Myron watch.

(MSU photo by Ray Bradley)

12-15-87jy



Photo

PUBLIC INFORMATION

JUDITH YANCY, DIRECTOR

MOREHEAD STATE UNIVERSITY

UPO BOX 1100

MOREHEAD, KY 40351

606-783-2030

WINTER GRADS

Making one last adjustment to her mortar board before beginning the procession to Morehead State University's 1987 Winter Commencement ceremony is Sandra Kay Oulandi of Booneville. She was one of nearly 300 MSU students who completed degree requirements during the fall semester.

(MSU photo by Ray Bradley)

12-15-87jy



The Booneville Sentinel

Photo

PUBLIC INFORMATION

JUDITH YANCY, DIRECTOR

MOREHEAD STATE UNIVERSITY

UPO BOX 1100

MOREHEAD, KY 40351

606-783-2030

MSU FACULTY RECEIVE TRAINING

A workshop on computer technology and nursing was held at Morehead State University recently. Attending the two-day session were these MSU nursing faculty members, from left, Barbara Moore, assistant professor; Suzy Hamlin, lab assistant, and Hedy Caldwell, assistant professor. Dr. Virginia Saba of Georgetown University, right, conducted the workshop.

(MSU photo by Ray Bradley)

12-15-87py



Morehead News

Photo

PUBLIC INFORMATION

JUDITH YANCY, DIRECTOR

MOREHEAD STATE UNIVERSITY

UPO BOX 1100

MOREHEAD, KY 40351

606-783-2030

A MOMENT TO TALK

Pauline Ramey, left, Morehead State University coordinator of Continuing Education for Nursing and Allied Health Sciences, and Dr. Virginia Saba of Georgetown University compared notes on nursing careers at MSU recently. Dr. Saba conducted the two-day workshop on computer technology and nursing held recently on the MSU campus.

(MSU photo by Ray Bradley)

12-15-87py



Morehead News

Photo

PUBLIC INFORMATION

JUDITH YANCY, DIRECTOR

MOREHEAD STATE UNIVERSITY

UPO BOX 1100

MOREHEAD, KY 40351

606-783-2030

COMPUTER WORKSHOP FOR NURSES

Morehead State University recently sponsored a workshop for registered nurses on computer technology and nursing. Attending the two-day session was Carol Cissell of Jewish Hospital in Cincinnati, left, who received some personal attention from Dr. Virginia Saba of Georgetown University, who served as the faculty for the workshop.

(MSU photo by Ray Bradley)

12-15-87py



Cincinnati Suburban Press

Photo

PUBLIC INFORMATION

JUDITH YANCY, DIRECTOR

MOREHEAD STATE UNIVERSITY

UPO BOX 1100

MOREHEAD, KY 40351

606-783-2030

COMPUTER WORKSHOP

Morehead State University recently sponsored a workshop for registered nurses on computer technology and nursing. Attending the two-day session were, from left, Charlotte Proffitt and Marjorie Byrne of the Deaconess Hospital School of Nursing. Standing is Dr. Virginia Saba of Georgetown University who served as the faculty.

(MSU photo by Ray Bradley)

12-15-87py



Cincinnati Suburban Press

Photo

PUBLIC INFORMATION

JUDITH YANCY, DIRECTOR

MOREHEAD STATE UNIVERSITY

UPO BOX 1400

MOREHEAD, KY 40351

606-783-2030

COMPUTER WORKSHOP FOR NURSES

Five registered nurses with Pathways, Inc., attended a computer technology for nurses workshop at Morehead State University recently. Attending were, seated from left, Nancy Terry of Grayson and Loretta Howard of Ashland; standing, from left, Lara Knight of Paintsville, Jane Rucker of Flatwoods and Libby Easterling of West Liberty. Dr. Virginia Saba of Georgetown University, far right, conducted the two-day session.

(MSU photo by Ray Bradley)

12-15-87py



*Journal-Engineer
Shocking Valley Courier
Daily Independent*

Photo

PUBLIC INFORMATION

JUDITH YANCY, DIRECTOR

MOREHEAD STATE UNIVERSITY

UPO BOX 1100

MOREHEAD, KY 40351

606-783-2030

COMPUTER WORKSHOP FOR NURSES

Lara Knight, left, Pathways, Inc., in Paintsville, and Gloria Hall, Carl Perkins Rehabilitation Center in West Van Lear, participated in a computer technology workshop for nurses at Morehead State University recently. Dr. Virginia Saba of Georgetown University, right, conducted the two-day session.

(MSU photo by Ray Bradley)

12-15-87py



Paintsville Herald

Photo

PUBLIC INFORMATION

JUDITH YANCY, DIRECTOR

MOREHEAD STATE UNIVERSITY

UPO BOX 1100

MOREHEAD, KY 40351

606-783-2030

COMPUTER WORKSHOP FOR NURSES

Two Morehead residents recently attended a workshop on computer technology and nursing at Morehead State University. Attending were, from left, Linda Murray and Kay North. Dr. Virginia Saba of Georgetown University, right, conducted the two-day session.

(MSU photo by Ray Bradley)

12-15-87py



Morehead News

Photo

PUBLIC INFORMATION

JUDITH YANCY, DIRECTOR

MOREHEAD STATE UNIVERSITY

UPO BOX 1100

MOREHEAD, KY 40351

606-783-2030

COMPUTER WORKSHOP FOR NURSES

Charlotte Lawson, left, director of nursing at Our Lady of Way Hospital in Martin attended a two day workshop on computer technology and nursing at Morehead State University recently. Discussing program applications with her is Dr. Virginia Saba of Georgetown University who conducted the workshop.

(MSU photo by Ray Bradley)

12-15-87py



Gloyd County Times

Photo

PUBLIC INFORMATION

JUDITH YANCY, DIRECTOR

MOREHEAD STATE UNIVERSITY

UPO BOX 1100

MOREHEAD, KY 40351

606-783-2030

COMPUTER WORKSHOP FOR NURSES

Christy Miller, left, director of nursing at Ridgeway Manor Nursing Home in Owingsville, and Joan Stone of Nortons Hospital in Louisville participated in a computer technology workshop for nurses at Morehead State University recently. Dr. Virginia Saba, standing, Georgetown University faculty member, conducted the two-day session.

(MSU photo by Ray Bradley)

12-15-87py



Bath County News-Observer

News

PUBLIC INFORMATION

JUDITH YANCY, DIRECTOR

MOREHEAD STATE UNIVERSITY

UPO BOX 1100

MOREHEAD, KY 40351

606-783-2030

Dec. 16, 1987

SPECIAL TO THE MOREHEAD NEWS

SALUTE TO THE SEVENTH: A Picture Story

Morehead was the first stop on the recent "Salute to the Seventh District," organized by State Superintendent of Public Instruction Alice McDonald with assistance from the Kentucky Appalachian Foundation, Inc. The event was designed to recognize significant achievements in the school districts within Kentucky's Seventh Congressional District. The civic, business and education leaders accompanying McDonald and state Department of Education staff members were guests at a reception hosted by Morehead State University President C. Nelson Grote at the Holiday Inn.

Cutlines:

- 1---State Superintendent of Public Instruction Alice McDonald, left, exchanges views on the status of education with Dr. Morris L. Norfleet, Kentucky Appalachian Foundation, Inc., president, and his wife Loistene.
- 2---Education again would be the topic as MSU President C. Nelson Grote, left, and Dr. Warren H. Proudfoot, right, visit with the state superintendent. Dr. Proudfoot, chairman of the Rowan County Board of Education, also is president of the Kentucky School Boards Association.

(MSU photos by Ray Bradley)

jy



News

PUBLIC INFORMATION

JUDITH YANCY, DIRECTOR

MOREHEAD STATE UNIVERSITY

UPO BOX 1100

MOREHEAD, KY 40351

606-783-2030

Dec. 18, 1987
FOR IMMEDIATE RELEASE

MOREHEAD, KY.--Morehead State University students Melissa Hieneman, LaVonda Royster and Lori Ann Stuart, all of Greenup, have pledged Delta Zeta social sorority at MSU.

Hieneman, a freshman general studies major, is the daughter of Charles and Linda Hieneman.

Royster is a freshman Social Work major and the daughter of James and Karen Royster.

Stuart, a freshman pre-medicine major, is the daughter of James and Shirley Stuart.

Delta Zeta is one of six social sororities on the MSU campus.

#####

mar

*Greenup News
Times Grader*

News

PUBLIC INFORMATION

JUDITH YANCY, DIRECTOR

MOREHEAD STATE UNIVERSITY

UPO BOX 1100

MOREHEAD, KY 40351

606-783-2030

Dec. 18, 1987
FOR IMMEDIATE RELEASE

MOREHEAD, Ky.--Morehead State University freshman Mary Lou Barker has pledged Delta Zeta social sorority.

The daughter of Cledith and Mary Barker of Morehead, she is a pre-nursing major and joins a pledge class of 34 members.

Delta Zeta is one of six social sororities on the MSU campus.

#####

mar

Morehead News
Christmas Special

News

PUBLIC INFORMATION

JUDITH YANCY, DIRECTOR

MOREHEAD STATE UNIVERSITY

UPO BOX 1100

MOREHEAD, KY 40351

606-783-2030

Dec. 18, 1987
FOR IMMEDIATE RELEASE

MOREHEAD, Ky.--Three Ashland area students at Morehead State University have pledged Delta Zeta social sorority at MSU.

Amy Lott, the daughter of John and Elizabeth Hannah of Flatwoods, is a freshman general studies major.

Mona Reffitt, the daughter of Raymond and Patricia Reffitt of Ashland, is a freshman radio/television major.

Mary Lea Stump, the daughter of William and Mida Stump of Catlettsburg, is a freshman nursing major.

Delta Zeta is one of six social sororities on the MSU campus.

#####

mar

2 Daily Independent

News

PUBLIC INFORMATION

JUDITH YANCY, DIRECTOR

MOREHEAD STATE UNIVERSITY

UPO BOX 1100

MOREHEAD, KY 40351

606-783-2030

Dec. 11, 1987
FOR IMMEDIATE RELEASE

MOREHEAD, Ky.--Three Pike County students have pledged Delta Zeta social sorority at Morehead State University.

Tabitha Elswick, the daughter of Billie Lynn and Fonso Elswick of Meta, is a freshman general studies major and a member of Who's Who Among American High Schools.

Melissa Fields, the daughter of Bruce and Geraldine Fields of Pikeville, is a freshman general studies major.

Sherri Linehan, the daughter of Iva Lee Linehan of Pikeville, is a freshman general studies major.

Delta Zeta is one of six social sororities on the MSU campus.

#####

mar

*Appalachian News-Express
Williamson Daily News*

News

PUBLIC INFORMATION

JUDITH YANCY, DIRECTOR

MOREHEAD STATE UNIVERSITY

UPO BOX 1100

MOREHEAD, KY 40351

606-783-2030

Dec. 11, 1987
FOR IMMEDIATE RELEASE

MOREHEAD, Ky.--Morehead State University sophomore Lisa McGinnis of Huntington, W. Va., has pledged Delta Zeta social sorority.

The daughter of James and Jennie McGinnis, she is a para-legal major and an MSU Alumni Ambassador. She is also a member of the MSU bowling team.

Delta Zeta is one of the six social sororities at Morehead State University.

#####

mar

Herald-Dispatch

News

PUBLIC INFORMATION

JUDITH YANCY, DIRECTOR

MOREHEAD STATE UNIVERSITY

UPO BOX 1100

MOREHEAD, KY 40351

606-783-2030

Dec. 11, 1987
FOR IMMEDIATE RELEASE

MOREHEAD, Ky.--Morehead State University freshman Vicki Lynn Strosnider of Mason, Ohio, has pledged Delta Zeta social sorority at MSU.

The daughter of Glenda and Byron Strosnider, she is a para-legal major and a member of the Ohio Office Education Association.

Delta Zeta is one of six social sororities at Morehead State University.

#####

mar

*Western Star
(Lebanon, OH)*

News

PUBLIC INFORMATION

JUDITH YANCY, DIRECTOR

MOREHEAD STATE UNIVERSITY

UPO BOX 1100

MOREHEAD, KY 40351

606-783-2030

Dec. 11, 1987
FOR IMMEDIATE RELEASE

MOREHEAD, Ky.--Morehead State University freshman Ellen Lyons of Mt. Sterling has pledged Delta Zeta social sorority at MSU.

Lyons, the daughter of Rodney and Barbara Lyons, is a home economics major and a member of Who's Who in American High Schools from Montgomery County High School.

Delta Zeta is one of six social sororities at Morehead State University.

#####

mar

*Mt. Sterling Advocate
Montgomery Times*

News

PUBLIC INFORMATION

JUDITH YANCY, DIRECTOR

MOREHEAD STATE UNIVERSITY

UPO BOX 1100

MOREHEAD, KY 40351

606-783-2030

Dec. 11, 1987
FOR IMMEDIATE RELEASE

MOREHEAD, Ky.--Morehead State University sophomore Julie Binstadt of Cincinnati has pledged Delta Zeta social sorority at MSU.

She is the daughter of Charles Binstadt and an art major.

Delta Zeta is one of six social sororities at Morehead State University.

#####

mar

Western Hills Press

News

PUBLIC INFORMATION

JUDITH YANCY, DIRECTOR

MOREHEAD STATE UNIVERSITY

UPO BOX 1100

MOREHEAD, KY 40351

606-783-2030

Dec. 11, 1987
FOR IMMEDIATE RELEASE

MOREHEAD, Ky.--Morehead State University students Jimalee Perkins and Janie Wingo, both of West Liberty, have pledged Delta Zeta social sorority at MSU.

Perkins is the daughter of James and Sandy Perkins and a general studies major.

Wingo, the daughter of Albert and Ruby Wingo, is a medical technology major.

Delta Zeta is one of six social sororities on the MSU campus.

#####

mar

Licking Valley Courier

News

PUBLIC INFORMATION

JUDITH YANCY, DIRECTOR

MOREHEAD STATE UNIVERSITY

UPO BOX 1100

MOREHEAD, KY 40351

606-783-2030

Dec. 11, 1987
FOR IMMEDIATE RELEASE

MOREHEAD, Ky.--Morehead State University junior Laura Ann Thornton has pledged Delta Zeta sorority at MSU.

The daughter of Sandra and Jerry Chabre of Park Hills, she is a government and history major. In addition, she is a little sister to Tau Kappa Epsilon fraternity and is a resident advisor in her residence hall.

Delta Zeta is one of six social sororities at Morehead State University.

#####

mar

Cincinnati Post

News

PUBLIC INFORMATION

JUDITH YANCY, DIRECTOR

MOREHEAD STATE UNIVERSITY

UPO BOX 1100

MOREHEAD, KY 40351

606-783-2030

Dec. 11, 1987
FOR IMMEDIATE RELEASE

MOREHEAD, Ky.--Morehead State University students Angie Buckner, Carla Hall, Amy McFarland and Melissa Ritchie, all of Carlisle, have pledged Delta Zeta social sorority at MSU.

Buckner, a pre-pharmacy and biology major, is the daughter of Paula Guthrie and is a member of Gamma Beta Phi honor fraternity.

Hall is the daughter of Eugene and Judy Hall and is a nursing major.

McFarland, a data processing major, is the daughter of Robert and Faye McFarland.

Ritchie is a business management major and the daughter of Clifton and Sandra Ritchie.

Delta Zeta is one of six social sororities on the MSU campus.

#####

mar

Carlisle Mercury

News

PUBLIC INFORMATION

JUDITH YANCY, DIRECTOR

MOREHEAD STATE UNIVERSITY

UPO BOX 1100

MOREHEAD, KY 40351

606-783-2030

Dec. 11, 1987
FOR IMMEDIATE RELEASE

MOREHEAD, KY.--Morehead State University freshman Julianne Mattis of Lewisburg has pledged Delta Zeta social sorority at MSU.

The daughter of James and Marjorie Mattis, she is a middle school education major and a member of the Lewisburg Trinity Lutheran Church youth group.

Delta Zeta is one six social sororities on the MSU campus.

####

mar

*Brookville Star
(Brookville, OH)*

News

PUBLIC INFORMATION

JUDITH YANCY, DIRECTOR

MOREHEAD STATE UNIVERSITY

UPO BOX 1100

MOREHEAD, KY 40351

606-783-2030

Dec. 11, 1987
FOR IMMEDIATE RELEASE

MOREHEAD, Ky.--Morehead State University freshman Angela Martino of Tipp City has pledged Delta Zeta social sorority at MSU.

The daughter of Edward and Bonnie Martino, she is a nursing major and a member of the MSU Marching Band and women's softball team.

Delta Zeta is one of six social sororities on the MSU campus.

#####

mar

Tipp Herald

News

PUBLIC INFORMATION

JUDITH YANCY, DIRECTOR

MOREHEAD STATE UNIVERSITY

UPO BOX 1100

MOREHEAD, KY 40351

606-783-2030

Dec. 11, 1987
FOR IMMEDIATE RELEASE

MOREHEAD, Ky.--Morehead State University freshman Shannon Huesman of Loveland has pledged Delta Zeta social sorority at MSU.

The daughter of Candice Huesman, she is a general studies major and joins a pledge class of 34 members.

Delta Zeta is one of six social sororities on the MSU campus.

####

mar

*Clermont Star
(Batavia, OH)*

News

PUBLIC INFORMATION

JUDITH YANCY, DIRECTOR

MOREHEAD STATE UNIVERSITY

UPO BOX 1100

MOREHEAD, KY 40351

606-783-2030

Dec. 11, 1987
FOR IMMEDIATE RELEASE

MOREHEAD, Ky.--Morehead State University freshman Sallie Jo Beam of Portsmouth has pledged Delta Zeta social sorority at MSU.

The daughter of David and Esther Beam, she is an elementary education major and joins a pledge class of 34 members.

Delta Zeta is one of six social sororities on the MSU campus.

#####

mar

Portsmouth Times

News

PUBLIC INFORMATION

JUDITH YANCY, DIRECTOR

MOREHEAD STATE UNIVERSITY

UPO BOX 1100

MOREHEAD, KY 40351

606-783-2030

Dec. 11, 1987
FOR IMMEDIATE RELEASE

MOREHEAD, Ky.--Morehead State University freshman Christine Hipsley of Hamilton has pledged Delta Zeta social sorority at MSU.

The daughter of Wayne and Barbara Hipsley, she is a general studies major and joins a pledge class of 34 members.

Delta Zeta is one of six social sororities on the MSU campus.

#####

mar

*Mid-York Weekly
(Hamilton, NY)*

News

PUBLIC INFORMATION

JUDITH YANCY, DIRECTOR

MOREHEAD STATE UNIVERSITY

UPO BOX 1100

MOREHEAD, KY 40351

606-783-2030

Dec. 11, 1987
FOR IMMEDIATE RELEASE

MOREHEAD, Ky.--Morehead State University freshman Dede Crosthwaite of Frankfort has pledged Delta Zeta social sorority at MSU.

The daughter of Jim and Dean Crosthwaite, she is a history major and joins a pledge class of 34 members.

Delta Zeta is one of six social sororities on the MSU campus.

####

mar

State Journal

News

PUBLIC INFORMATION

JUDITH YANCY, DIRECTOR

MOREHEAD STATE UNIVERSITY

UPO BOX 1100

MOREHEAD, KY 40351

606-783-2030

Dec. 11, 1987
FOR IMMEDIATE RELEASE

MOREHEAD, Ky.--Morehead State University freshman Christi Davis of Grayson has pledged Delta Zeta social sorority at MSU.

The daughter of Jim and Barbara Davis, she is a math and computer programming major and joins a pledge class of 34 members.

Delta Zeta is one of six social sororities on the MSU campus.

#####

mar

Journal-Enquirer

News

PUBLIC INFORMATION

JUDITH YANCY, DIRECTOR

MOREHEAD STATE UNIVERSITY

UPO BOX 1100

MOREHEAD, KY 40351

606-783-2030

Dec. 11, 1987
FOR IMMEDIATE RELEASE

MOREHEAD, KY.--Morehead State University freshman Sheri Walthall of Louisville has pledged Delta Zeta social sorority at MSU.

The daughter of Flora and Robert Walthall, she is a commercial arts major and joins a pledge class of 34 members.

Delta Zeta is one of six social sororities on the MSU campus.

#####

mar

Voice Skyline

News

PUBLIC INFORMATION

JUDITH YANCY, DIRECTOR

MOREHEAD STATE UNIVERSITY

UPO BOX 1100

MOREHEAD, KY 40351

606-783-2030

Dec. 11, 1987
FOR IMMEDIATE RELEASE

MOREHEAD, Ky.--Morehead State University freshman Lisa Sturgeon of Turner's Station has pledged Delta Zeta social sorority at MSU.

The daughter of Edward and Sue Creekmore, she is a psychology major and joins a pledge class of 34 members.

Delta Zeta is one of six social sororities on the MSU campus.

#####

mar

Henry County Local

News

PUBLIC INFORMATION

JUDITH YANCY, DIRECTOR

MOREHEAD STATE UNIVERSITY

UPO BOX 1100

MOREHEAD, KY 40351

606-783-2030

Dec. 11, 1987
FOR IMMEDIATE RELEASE

MOREHEAD, KY.--Morehead State University sophomore Dawn Emberton of Adolphus has pledged Delta Zeta social sorority at MSU.

The daughter of Dorothy Emberton and the late Spencer Emberton, she is a biology major and a residence hall adviser. She joins a pledge class of 34 members.

Delta Zeta is one of six social sororities on the MSU campus.

#####

mar

*Allen County Times
Citizen Times*

News

PUBLIC INFORMATION

JUDITH YANCY, DIRECTOR

MOREHEAD STATE UNIVERSITY

UPO BOX 1100

MOREHEAD, KY 40351

606-783-2030

Dec. 11, 1987
FOR IMMEDIATE RELEASE

MOREHEAD, KY.--Morehead State University sophomore Marlo Johnson of Tutor Key has pledged Delta Zeta social sorority at MSU.

The daughter of Donald and Ina Johnson, she is an English major with an emphasis on creative writing. She joins a pledge class of 34 members.

Delta Zeta is one of six social sororities on the MSU campus.

#####

mar

Paintsville Herald

News

PUBLIC INFORMATION

JUDITH YANCY, DIRECTOR

MOREHEAD STATE UNIVERSITY

UPO BOX 1100

MOREHEAD, KY 40351

606-783-2030

Dec. 19, 1987
FOR IMMEDIATE RELEASE

MOREHEAD, Ky.--Morehead State University offices will close for the Christmas and New Year holidays at 4:30 p.m. Tuesday, Dec. 22, and reopen at 8 a.m. Monday, Jan. 4.

The University was originally scheduled to close at the end of the normal working day on Dec. 23.

MSU President C. Nelson Grote extended the holiday as a way to express his "sincere appreciation for the special contributions" made to the University by faculty and staff during an "outstanding" fall semester.

"I am grateful to all of our faculty and staff for the support they have given to their new president and for the enthusiastic manner in which they have contributed to the great success that we have experienced this year," Dr. Grote said.

#####

jy

News

PUBLIC INFORMATION

JUDITH YANCY, DIRECTOR

MOREHEAD STATE UNIVERSITY

UPO BOX 1100

MOREHEAD, KY 40351

606-783-2030

Dec. 21, 1987
FOR IMMEDIATE RELEASE

MOREHEAD, Ky.--Coming to your neighborhood soon---Morehead State University's Eagle Express!

A specially-designed mobile admissions van, dubbed the Eagle Express, has been provided to MSU's Office of Admissions with assistance from the MSU Alumni Association and MSU Foundation.

Emblazoned with the University's official logo, the white van sports blue and gold trim and over the entrance the phrase "Your door to opportunity" has been painted.

"The Eagle Express is a most distinctive means to create an awareness of Morehead State University as the van travels the highways around the state to visit high school campuses as well as regional fairs and festivals," said MSU President C. Nelson Grote.

"We are indebted to the Alumni Association and Foundation for helping to make it possible," he added.

The Eagle Express, which debuted at the Kentucky Apple Festival in Paintsville earlier this fall, is undergoing interior renovations to make it an attractive and functional recruitment tool, according to Dan Cornett, MSU's associate director of admissions. "There will be a VCR with a stereo system and a walk-thru display area relating to programs and activities available for students at MSU," he explained.

"The Eagle Express will be a unique spot for MSU's admissions counselors to meet with students and high school personnel and provide them with information on the opportunities here," said Tim Rhodes, University Enrollment Services director.

"The van will help us get the name of Morehead State University before more people and let them know that we are a part of their community," he noted.

"When you see the Eagle Express, you will know MSU is on the move, providing assistance to its service region," Rhodes added.

#####

jy

Photo

PUBLIC INFORMATION

JUDITH YANCY, DIRECTOR

MOREHEAD STATE UNIVERSITY

UPO BOX 1100

MOREHEAD, KY 40351

606-783-2030

MSU'S EAGLE EXPRESS

The Eagle Express, Morehead State University's specially-designed mobile admissions van, soon will be rolling down the highways, traveling the state to bring information about the University's programs and services to prospective students. Provided to MSU with assistance from the Alumni Association and the MSU Foundation, the white van is emblazoned with the University's official logo and trimmed in blue and gold. Shown above ready to open "Your door to opportunity" (the entrance) is Tim Rhodes, University Enrollment Services director.

(MSU photo by Ray Bradley)

12-15-87jy



Dec. 21, 1987

SPECIAL TO THE MOREHEAD NEWS

MSU'S OLD-FASHIONED CHRISTMAS DINNER: A Picture Story

MOREHEAD, Ky.--More than 400 people from the campus and community welcomed in the holiday season at an Old-Fashioned Christmas Dinner hosted by Morehead State University President and Mrs. C. Nelson Grote earlier this month. Bathed in the glow of candlelight, Adron Doran University Center's Crager Room was transformed into a holiday fantasyland with pine garlands, red bows, twinkling lights and a 16-foot Christmas tree of poinsettias. Rounding out the evening of festive fellowship was music of the season performed by local musicians and an old-fashioned carol sing.

Cutlines:

- 1---Exchanging warm wishes for a joyous holiday season are Lucretia Stetler and Mrs. Grote.
- 2---Appropriately garbed in old-fashioned dresses in keeping with the evening's theme, these young ladies escorted the dinner guests to their tables. They are, from left, Mindy Clark, Rachel Craft, Kelly O'Connell and January Price.
- 3---As guests dined on Cornish game hen, wild rice with mandarin oranges and a bouquettiere of vegetables, pianist David Flannery provided a musical backdrop.
- 4---Old friends took time out from the hustle and bustle to share in the true spirit of the holidays. Caught by the photographer were, from left, Dr. and Mrs. Frederick Mueller, Hazel Nollau, Dr. Rodger D. Carlson and George Bradley.
- 5---Dr. Grote extends hearty greetings of the season to Harold White and his table party which included Mr. and Mrs. E. C. Razor, Mr. and Mrs. Waverly Jones and Mrs. White.
- 6---Obviously enjoying themselves were, from left, Jack Fultz, Andrea Cornett and Dan Cornett.
- 7---Captured by the roving photographer were, from left, Dr. Robert Newton with John and Sandra VanHoose.
- 8---MSU's Food Services estimates that 447 dinners were served that evening. Here Shirley Smith prepares one more plate to tempt the palate of a dinner goer.

(MSU photos by Ray Bradley)

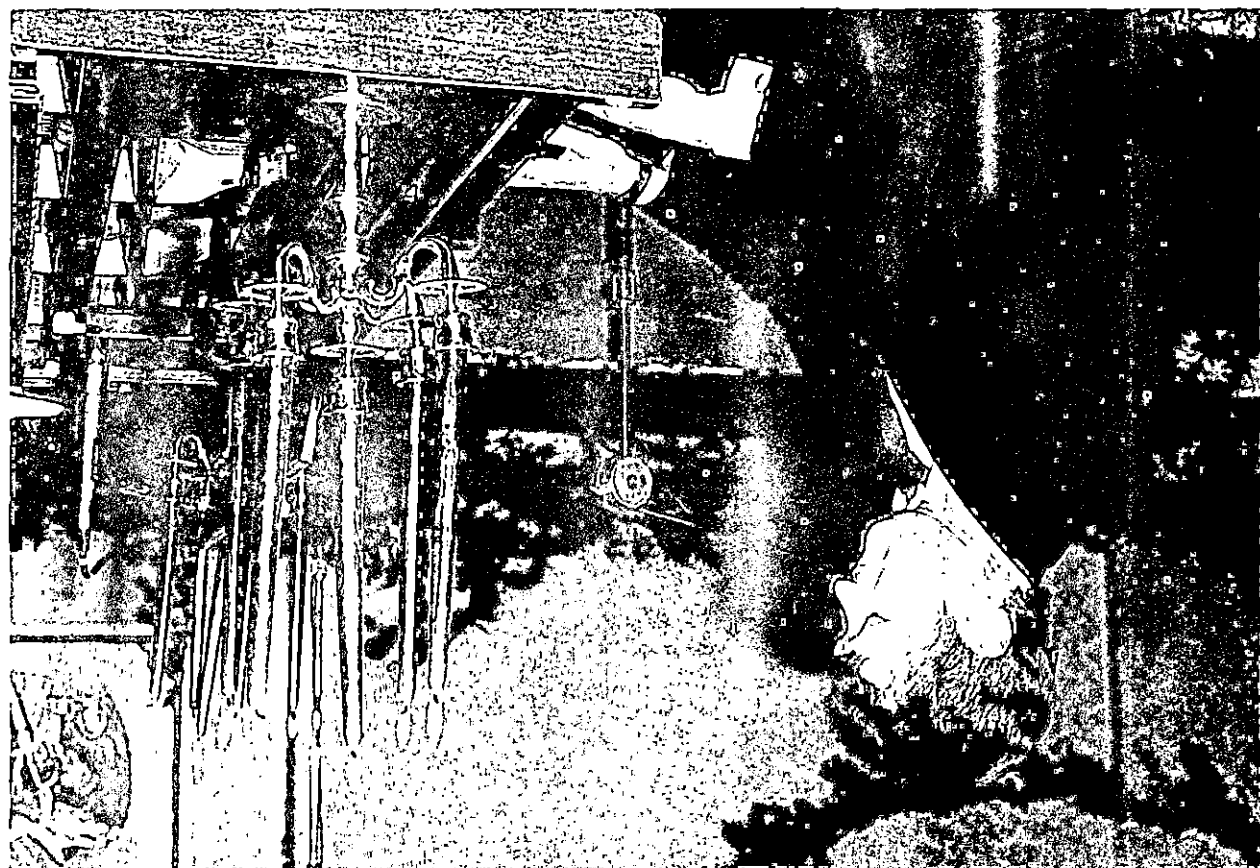
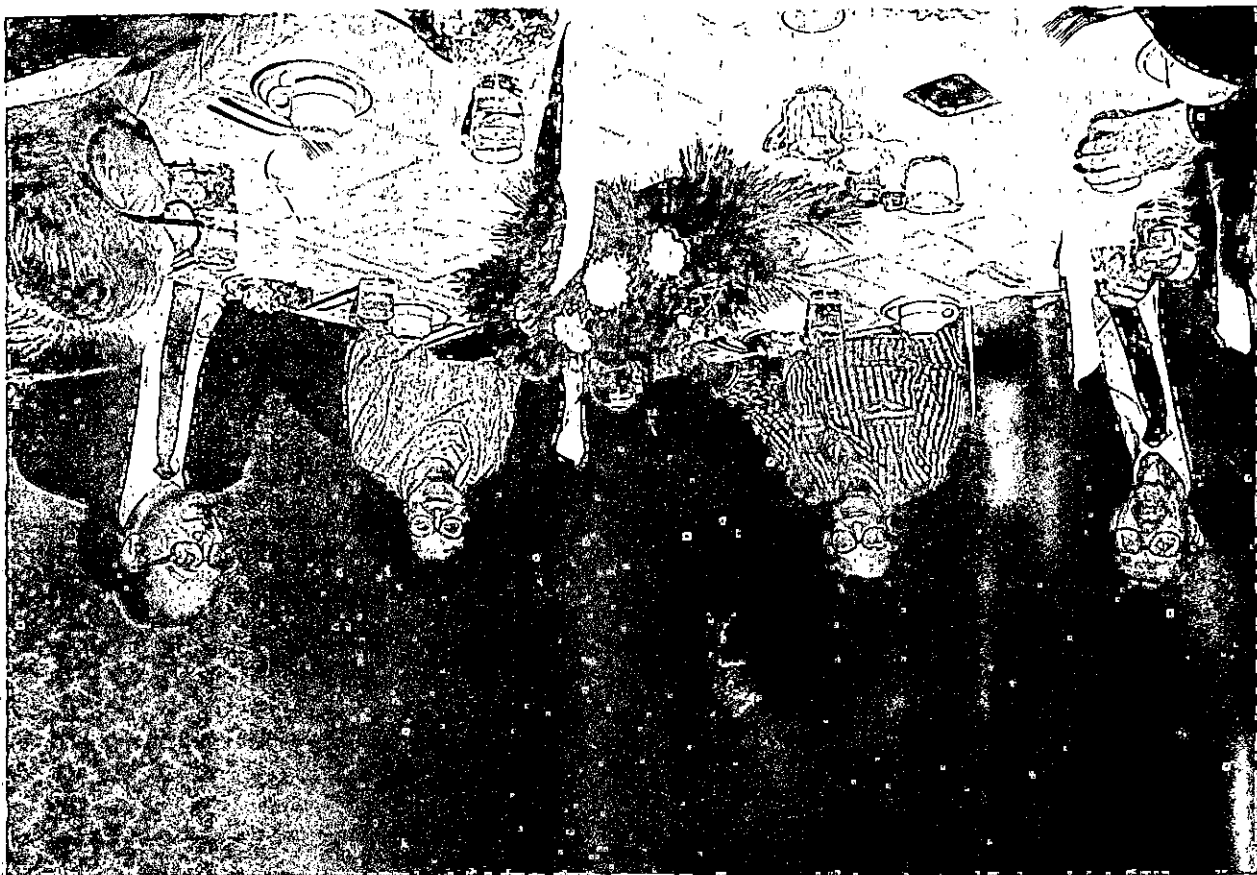
#####



1



2







8



7

News

PUBLIC INFORMATION

JUDITH YANCY, DIRECTOR

MOREHEAD STATE UNIVERSITY

UPO BOX 1100

MOREHEAD, KY 40351

606-783-2030

Dec. 22, 1987
FOR IMMEDIATE RELEASE

MOREHEAD, Ky.--Classes are scheduled to begin in February for a Nursing Assistant/Health Aide training program being co-sponsored by Rowan State Vocational-Technical School and Morehead State University's Job Training Center.

The course is designed to train older workers (age 55 or over) to perform nursing assistant and aide level functions in nursing homes, hospitals, and private homes.

"We are looking forward to participating in this program," said Clifford Wells, Rowan State Vocational-Technical School principal. "The maturity level of the older worker leads itself to creating an ideal learning situation. We believe there is no better way to utilize this valuable segment of our labor force than providing this necessary training," he continued.

Recruitment and job placement of the participants will be conducted by MSU's Job Training Center. The instruction will be provided by Rowan State Vocational-Technical School with specific instruction and curriculum organization directed by a registered nurse.

"We are very fortunate to be involved in this joint venture," said Jacquelyn H. Scott, MSU's Job Training Center coordinator. "We can better use the resources of both institutions by working together," she added.

The training program will consist of 10 weeks of instruction with a two-week practicum at Morehead's Life Care Center.

Funded by the TENCO Private Industry Council, the program is free to qualified residents of Bath, Boyd, Bracken, Fleming, Greenup, Lewis, Mason, Montgomery, Robertson and Rowan Counties, who are at least 55 years of age and unemployed.

Additional information is available from area Kentucky Department of Employment Services offices or Scott at (606) 783-2370.

#####

py

News

PUBLIC INFORMATION

JUDITH YANCY, DIRECTOR

MOREHEAD STATE UNIVERSITY

UPO BOX 1100

MOREHEAD, KY 40351

606-783-2030

Dec. 22, 1987
FOR IMMEDIATE RELEASE

MOREHEAD, Ky.--Morehead State University will offer 10 evening classes at the undergraduate level this spring in West Liberty for area students.

Primarily general introductory level courses, the classes will include speech, English composition and literature, business, mathematics and sociology.

Registration information night for the regional campus courses will be Monday, Jan. 11, from 5 to 7 p.m. at the MSU-Morgan Center on KY 7, where the classes will meet.

"Several MSU officials will be here at the Center to provide academic advising assistance, to discuss financial aid opportunities and to explain admission procedures to those considering enrolling for the first time and anyone else who has questions," said Jonell Tobin, Center director.

"We also encourage area high school seniors to come by that evening to learn more about the opportunities MSU offers them through academic programs and special services," Tobin added. "We really invite anyone interested in taking courses from MSU to stop by during the informational session."

The spring schedule for the MSU-Morgan Center includes:

ACCT 201, Principles of Accounting I, Mondays

COR 201, Sociology of Corrections, Tuesdays

ENG 101, Composition I, Wednesdays

ENG 102, Composition II, Thursdays

ENG 202, Introduction to Literature, Mondays

JOUR 110, Introduction to Mass Communications, Mondays

(MORE)

Morgan Classes

2-2-2-2-2

MATH 135, Mathematics for Technical Students, Tuesdays

SOC 201, Sociology of Corrections, Tuesdays

SOC 374, American Minority Relations, Wednesdays

SPCH 370, Business and Professional Speech, Thursdays

The MSU-Morgan Center classes will meet from 5:30 to 8 p.m., beginning with Tuesday night classes on Jan. 19.

The cost per credit hour for undergraduate students taking classes at regional campuses is \$45. Mail-in registration is now under way and will be accepted postmarked through Jan. 12.

Additional information on courses or registration procedures is available by calling Tobin locally at (606) 743-1500 or MSU's Office of Graduate and Special Academic Programs toll-free at 1-800-262-2044, extension 2039, beginning Jan. 4.

#####

jy

News

PUBLIC INFORMATION

JUDITH YANCY, DIRECTOR

MOREHEAD STATE UNIVERSITY

UPO BOX 1100

MOREHEAD, KY 40351

606-783-2030

Dec. 22, 1987
FOR IMMEDIATE RELEASE

MOREHEAD, Ky.--Morehead State University will offer 12 evening classes at Maysville Community College for graduate and undergraduate students during the spring semester.

Registration information night for the regional campus offerings will be Monday, Jan. 11, from 5 to 7 p.m. at MCC, according to Dr. James Gotsick, MSU's dean of graduate and special academic programs.

The spring off-campus schedule includes:

ACCT 384, Intermediate Accounting I, Mondays

ACCT 483, Auditing, Tuesdays

EDEL 627, Reading in the Elementary School, Mondays

EDEL 630, Curriculum Construction, Thursdays

EDF 610, Advanced Human Growth and Development, Wednesdays

EDSP 230, Education and Exceptional Children, Tuesdays, 3 to 5:30 p.m.

EDUC 582, Discipline and Classroom Management, Tuesdays

HEC 450, Fashion Merchandising Techniques, Tuesdays

MKT 351, Sales Management, Wednesdays

NUR 251, Pharmacology, Mondays, 4 to 6:30 p.m.

SCI 490, Science for the Elementary Teacher, Mondays

SPCH 370, Business and Professional Speech, Mondays and Wednesdays, 5 to 6:15 p.m.

Except where noted, regional campus classes will meet from 6 to 8:30 p.m., beginning with Tuesday night classes on Jan. 19.

(MORE)

Maysville Classes
2-2-2-2-2

The cost per credit hour for out-of-state as well as in-state students taking classes at the University's regional campuses is \$66 at the graduate level and \$45 at the undergraduate level. Mail-in registration is currently under way and will be accepted postmarked through Jan. 12.

Specific information on courses or registration procedures is available by calling the regional coordinator, David Kraemer, locally at (606) 759-7141 or by calling MSU's Office of Graduate and Special Academic Programs toll-free at 1-800-262-2044, extension 2039, in Kentucky or 1-800-354-2090, extension 2039, from adjacent states, starting Jan. 4.

#####

jy

News

PUBLIC INFORMATION

JUDITH YANCY, DIRECTOR

MOREHEAD STATE UNIVERSITY

UPO BOX 1100

MOREHEAD, KY 40351

606-783-2030

Dec. 22, 1987
FOR IMMEDIATE RELEASE

MOREHEAD, KY.--Morehead State University will offer nearly 50 evening classes in Ashland for graduate and undergraduate students during the spring semester.

Registration information night for the regional campus classes will be Monday, Jan. 11, from 5 to 7 p.m. at Paul Blazer High School, where all classes will meet, according to Dr. James Gotsick, MSU's dean of graduate and special academic programs.

The spring off-campus schedule includes:

ACCT 506, Theory of Accounts, Tuesdays

ACCT 611, Accounting Analysis for Decision Making, Tuesdays

ART 300, Elementary Materials and Methods, Tuesdays

BIOL 553, Environmental Education, Fridays, 6 p.m.-9p.m. (Lab required)

BIOL 553L, Environmental Education Lab, Saturdays, 9 a.m.-3 p.m.
(Lab will meet for five Saturdays, beginning January 23)

ECON 604, Survey of Economic Theory, Mondays

EDAD 628, School Law, Tuesdays

EDAD 678, Internship, Tuesdays, 5 p.m.-6 p.m.

EDEL 301, Media Strategies, Thursdays, 3 p.m.-5:30 p.m.

EDEL 321, Teaching of Arithmetic, Mondays
(Admission to Teacher Education Program required)

EDEL 627, Reading in the Elementary School, Mondays

EDEM 330, Foundations of Reading, Tuesdays, 3:30 p.m.-6 p.m.

EDF 600, Research Methods in Education, Wednesdays

EDGC 666A, Techniques of Counseling, Thursdays

EDGC 666B, Techniques of Counseling, Thursdays

EDGC 666C, Techniques of Counseling, Thursdays

EDSE 633, Effective Classroom Instruction, Tuesdays

EDSP 601, Survey of Exceptional Children, Thursdays

ENG 503, Teaching Writing, Mondays

(MORE)

Ashland Classes
2-2-2-2-2

FIN 360, Business Finance, Thursdays
FIN 560, Financial Markets, Wednesdays
GEO 502, Geographic Factors and Concepts, Tuesdays
HEC 370, Residential Interior Design, Studio I, Mondays
HLTH 508, Principles of General School Safety, Wednesdays
IET 390, Principles of Industrial Education, to be announced
(Permission required)
IET 394, Student Teaching in Vocational Industrial Education, to be announced
IET 395, Special Problems in Vocational Industrial Education, to be announced
IET 399, Special Class, Methods of Instruction in Vocational Education,
to be announced
IET 422, Industrial Safety Standards and Enforcement, Mondays
JOUR 482, Public Relations Practices, Thursdays
MATH 675, Selected Topics, Number Theory, Tuesdays
MIN 101, Introduction to Mining and Reclamation, Wednesdays
MIN 403, Blasting and Explosives, Mondays
MKT 650, Marketing Administration, Mondays
MNGT 339, Cooperative Study III, to be announced
MNGT 411, Labor Relations, Mondays
MNGT 472, Business Policies and Problems, Wednesdays
MNGT 476, Special Problems in Management, to be announced
MNGT 602, Survey of Quantitative Analysis for Business, Wednesdays
MNGT 612, Organizational Theory, Thursdays
NUR 251, Pharmacology, Tuesdays, 4 p.m.-6:30 p.m.
PSY 590, Abnormal Psychology, Tuesdays
R-TV 562, Broadcast Criticism, Thursdays
REC 625, Community/School Recreation, Tuesdays
SCI 490, Science for the Elementary Teacher, Wednesdays
SCI 690, Advanced Science for the Elementary School Teacher, Tuesdays
SPCH 370, Business and Professional Speech, Tuesdays
VOC 685, Principles and Philosophy of Vocational Education, Wednesdays

Except where noted, regional campus classes will meet from 6 to 8:30 p.m.,
beginning with Tuesday night classes on Jan. 19.

The cost per credit hour for out-of-state as well as in-state students taking
classes at the University's regional campuses is \$66 at the graduate level and \$45
at the undergraduate level. Mail-in registration is currently under way and will
be accepted postmarked through Jan. 12.

(MORE)

Ashland Classes
3-3-3-3-3

Specific information on courses and registration may be obtained by calling Dr. Robert Goodpaster, director of the MSU-Ashland Regional Center, locally at 327-1777.

Information also may be obtained by calling MSU's Office of Graduate and Special Academic Programs toll-free at 1-800-262-2044, extension 2039 in Kentucky or 1-800-354-2090, extension 2039, from adjacent states, starting Jan. 4.

#####

jy

News

PUBLIC INFORMATION

JUDITH YANCY, DIRECTOR

MOREHEAD STATE UNIVERSITY

UPO BOX 1100

MOREHEAD, KY 40351

606-783-2030

Dec. 22, 1987
FOR IMMEDIATE RELEASE

MOREHEAD, KY.--Morehead State University will offer more than 15 graduate level evening classes this spring at Pikeville College.

Registration information night for the regional campus offerings is scheduled from 5 to 7 p.m. on Monday, Jan. 11, at the college, according to Dr. James Gotsick, MSU's dean of graduate and special academic programs.

The spring off-campus schedule includes:

BIOL 606, Biology of the Vertebrates, Tuesdays, 6 p.m.-7:05 p.m.
(Lab required)

BIOL 606L, Biology of the Vertebrates Lab, Tuesdays, 7:15 p.m.-8:30 p.m.

EDAD 628, School Law, Thursdays

EDAD 660, Supervision, Wednesdays

EDEL 630, Curriculum Construction, Thursdays

EDEL 680, History and Philosophy of Education, Thursdays

EDF 600, Research Methods in Education, Tuesdays

EDGC 580, Measurement Principles and Techniques, Wednesdays

EDGC 666A, Techniques of Counseling, Mondays

EDGC 666B, Techniques of Counseling, Mondays

EDGC 666C, Techniques of Counseling, Mondays

EDSE 634, Secondary School Curriculum, Tuesdays

FIN 660, Financial Management, Mondays

GEO 600, Political Geography, Tuesdays

HLTH 508, Principles of General School Safety, Mondays

(MORE)

Pikeville Classes
2-2-2-2-2

MNGT 612, Organizational Theory, Thursdays

PSY 589, Psychology of Learning, Wednesdays

The regional campus classes will meet from 6 to 8:30 p.m. beginning with Tuesday night classes on Jan. 19. Mail-in registration is now under way and will be accepted postmarked through Jan. 12.

The cost per credit hour for in-state and out-of-state graduate students taking classes at regional campuses is \$66.

Specific information on courses or registration procedures is available locally by calling the regional coordinator, Charles Francis, at (606) 432-9320 or MSU's Office of Graduate and Special Academic Programs toll-free at 1-800-262-2044, extension 2039, starting Jan. 4.

#####

jy

News

PUBLIC INFORMATION

JUDITH YANCY, DIRECTOR

MOREHEAD STATE UNIVERSITY

UPO BOX 1100

MOREHEAD, KY 40351

606-783-2030

Dec. 22, 1987
FOR IMMEDIATE RELEASE

MOREHEAD, KY.--Morehead State University will offer five evening classes this spring for graduate students in the Whitesburg area.

Registration information night for the regional campus offerings will be Monday, Jan. 11, from 5 to 7 p.m. at West Whitesburg Elementary School, where the classes will meet, according to Dr. James Gotsick, MSU's dean of graduate and special academic programs.

The spring off-campus class schedule includes:

EDEL 630, Curriculum Construction, Mondays

EDSP 601, Survey of Exceptional Children, Wednesdays

HLTH 518, Use and Abuse of Drugs, Thursdays

REC 585, Programs and Materials for Therapeutic Recreation, Thursdays

SOC 560, Appalachian Culture, Tuesdays

Regional campus classes will meet from 6 to 8:30 p.m., beginning with Tuesday night classes on Jan. 19.

The cost per credit hour for out-of-state as well as in-state graduate students taking classes at regional campuses is \$66. Mail-in registration is currently under way and will be accepted postmarked through Jan. 12.

Specific information on courses or registration procedures is available locally by calling the regional coordinator, Truman Halcomb, at (606) 633-4455 or MSU's Office of Graduate and Special Academic Programs toll-free at 1-800-262-2044, extension 2039, starting Jan. 4.

#####

News

PUBLIC INFORMATION

JUDITH YANCY, DIRECTOR

MOREHEAD STATE UNIVERSITY

UPO BOX 1100

MOREHEAD, KY 40351

606-783-2030

Dec. 22, 1987
FOR IMMEDIATE RELEASE

MOREHEAD, KY.--Morehead State University will offer four evening classes in Jackson this spring for area graduate students.

Registration information night for the regional campus offerings will be Monday, Jan. 11, from 5 to 7 p.m. at Lees College, according to Dr. James Gotsick, dean of MSU's graduate and special academic programs.

The spring off-campus class schedule includes:

EDF 610, Advanced Human Growth and Development, Wednesdays

EDSE 683, The American Secondary School, Thursdays

HLTH 518, Use and Abuse of Drugs, Mondays

PHED 604, History and Principles of Physical Education, Wednesdays

The regional campus classes will meet from 6 to 8:30 p.m. at Lees College, beginning with Tuesday night classes on Jan. 19.

The cost per credit hour for out-of-state as well as in-state students taking classes at the University's regional campuses is \$66 at the graduate level and \$45 at the undergraduate level. Mail-in registration is currently under way and will be accepted postmarked through Jan. 12.

Specific information on classes and the registration procedure is available locally by calling the regional coordinator, Virgil Lykins, at (606) 666-7521 or from MSU's Office of Graduate and Special Academic Programs toll-free at 1-800-262-2044, extension 2039, starting Jan. 4.

#####

jy

News

PUBLIC INFORMATION

JUDITH YANCY, DIRECTOR

MOREHEAD STATE UNIVERSITY

UPO BOX 1100

MOREHEAD, KY 40351

606-783-2030

Dec. 22, 1987
FOR IMMEDIATE RELEASE

MOREHEAD, Ky.--Morehead State University will offer more than 30 evening classes at Prestonsburg Community College this spring for graduate and undergraduate students.

Registration information night for the regional campus offerings will be Monday, Jan. 11, from 5 to 7 p.m. at PCC, according to Dr. James Gotsick, MSU's dean of graduate and special academic programs.

Courses to be offered at PCC include:

ACCT 528, Governmental Accounting, Tuesdays
BIOL 336, Pathophysiology, Tuesdays, 4 to 8 p.m.
ECON 350, Microeconomics, Wednesdays
EDAD 678, Internship, Wednesdays, 5 to 6 p.m.
EDAD 691, The School and the Public, Wednesdays
EDAD 695, The Principalship, Thursdays (Was Elementary School Principal)
EDAH 640, Principles of Adult and Higher Education, Tuesdays
EDEL 323, Language Arts for the Elementary School, Wednesdays
EDEL 627, Reading in the Elementary School, Tuesdays
EDEL 680, History and Philosophy of Education, Mondays
EDF 610, Advanced Human Growth and Development, Thursdays
EDGC 656, Principles of Guidance, Wednesdays
EDGC 667A, Group Procedures, Mondays
EDGC 667B, Group Procedures, Mondays
EDGC 667C, Group Procedures, Mondays
EDSP 350, Characteristics of Individuals with Mental Retardation and Orthopedic Handicaps, Mondays
EDSP 604, Resource Concepts for the Handicapped, Wednesdays
ENG 544, American Folklore, Tuesdays (Was Folk Literature)
GOVT 490, Civil Law and Procedures, Tuesdays
GOVT 491, Criminal Law and Procedures, Thursdays
HEC 327, Maternal, Infant, and Child Nutrition, Thursdays

(MORE)

Prestonsburg Classes
2-2-2-2-2

HLTH 300, Health in the Elementary School, Thursdays
HLTH 508, Principles of General School Safety, Thursdays
IET 390, Principles of Industrial Education, TBA
(Restricted Enrollment)
IET 394, Student Teaching in Vocational Industrial Education, TBA
IET 395, Special Problems in Vocational Industrial Education, TBA
IET 399, Special Class, Methods of Instruction in Vocational Education, TBA
MATH 575, Selected Topics, Devel. Math. Thought 1600, Thursdays
MIN 476, Special Problems, Saturdays, 9:30 a.m. to 12 p.m.
MNGT 602, Survey of Quantitative Analysis for Business, Wednesdays
NUR 251, Pharmacology, Mondays 4 to 6:30 p.m.
PHED 300, Physical Education in the Elementary School, Wednesdays

Except where noted, regional campus classes will meet from 6 to 8:30 p.m., beginning with Tuesday night classes, Jan. 19.

The cost per credit hour for out-of-state as well as in-state students taking classes at the University's regional campuses is \$66 at the graduate level and \$45 at the undergraduate level. Mail-in registration is currently under way and will be accepted postmarked through Jan. 12.

Specific information on courses or registration procedures is available locally by calling the regional coordinator, James Ratcliff, at (606) 886-3863 or by calling MSU's Office of Graduate and Special Academic Programs toll-free within Kentucky at 1-800-262-2044, extension 2039, starting Jan. 4.

#####

jy

News

PUBLIC INFORMATION

JUDITH YANCY, DIRECTOR

MOREHEAD STATE UNIVERSITY

UPO BOX 1100

MOREHEAD, KY 40351

606-783-2030

Dec. 28, 1987
FOR IMMEDIATE RELEASE

MOREHEAD, Ky.--Morehead State University will offer an undergraduate English course, ENG 102: Composition II, this spring at Elliott County High School.

The class will meet from 6 to 8:30 p.m. Mondays, beginning Jan. 25. Students may register at the first class meeting or by mail-in registrations which will be accepted postmarked through Jan. 12.

Additional information on the course or registration procedure is available by calling MSU's Office of Graduate and Special Academic Programs toll-free at 1-800-262-2044, Ext. 2039.

#####

News

PUBLIC INFORMATION

JUDITH YANCY, DIRECTOR

MOREHEAD STATE UNIVERSITY

UPO BOX 1100

MOREHEAD, KY 40351

606-783-2030

Dec. 28, 1987
FOR IMMEDIATE RELEASE

MOREHEAD, Ky.--Morehead State University will offer a graduate level education course, EDSE 634: Secondary School Curriculum, this spring at Belfry High School.

The class will meet from 6 to 8:30 p.m. Tuesdays, beginning Jan. 19. Students may register at the first class session or by mail-in registrations which will be accepted postmarked through Jan. 12.

Additional information on the course or registration procedure is available by calling MSU's Office of Graduate and Special Academic Programs toll-free at 1-800-262-2044, ext. 2039.

#####

News

PUBLIC INFORMATION

JUDITH YANCY, DIRECTOR

MOREHEAD STATE UNIVERSITY

UPO BOX 1100

MOREHEAD, KY 40351

606-783-2030

Dec. 28, 1987
FOR IMMEDIATE RELEASE

MOREHEAD, Ky.--Morehead State University will offer a graduate level course, EDEL 630: Curriculum Construction, this spring in Inez.

The class will be taught from 6 to 8:30 p.m. Mondays, beginning Jan. 25, at Sheldon Clark High School. Students may register at the first class session or by mail-in registrations which will be accepted postmarked through Jan. 12.

Additional information on the course or registration procedures is available by calling MSU's Office of Graduate and Special Academic Programs toll-free at 1-800-262-2044, ext. 2039.

#####