

MOREHEAD

NORMAL

MOREHEAD,
KY. ❧ ❧

SCHOOL,

*"Believe me, the Ark of the
Covenant of American ideals rests
to-day upon the Appalachian
mountain range of the South."*

Thos. Dixon, Jr.



ANNOUNCEMENTS
for 1903 AND 1904.

Officers


CHRISTIAN WOMAN'S BOARD OF MISSIONS.

National Headquarters, 152 East Market Street,
Indianapolis, Ind.

MRS. N. E. ATKINSON, 152 E. Market St., President.
MRS. EFFIE CUNNINGHAM, 152 E. Market St. Vice-President.
MRS. ANNIE B. GRAY, 1133 Capitol Ave., N., Rec. Secretary
MRS. HELEN E. MOSES, 152 E. Market St., Cor. Secretary.
MARY J. JUDSON, 152 E. Market St., Treasurer.
MATTIE POUNDS, 152 E. Market St., Superintendent Y. P. D.

STATE OFFICERS.

MRS. A. M. HARRISON, Lexington, President.
MRS. ELIZABETH SARGENT, Hopkinsville, First Vice-President.
MRS. S. K. YANCEY, Lexington, Cor. Sec.
MRS. J. A. STUCKY, Lexington, Rec. Sec.
MRS. O. L. BRADLEY, Lexington; Treasurer.
MRS. M. S. WALDEN, Danville, Supt. Young People's Work.

Morehead	9	Normal
School		Morehead Ky
Announcements for 1903-1904.		



Normal School Press,
Morehead, Ky.
1903.

Calendar.

First Term—Begins Monday, September 7, 1903.

Thanksgiving Day—Thursday, November 26, 1903.

1904.

Second Term—Begins January 4.

Patriotic Entertainment—February 22.

Baccalaureate Sermon—May 22.

Commencement—May 25.

Historical.

The Morehead Normal School was founded in 1887, with Mrs. Phebe E. Button and F. C. Button as teachers, and with one pupil in attendance the first day. Each succeeding year has brought to the school a large measure of success. The liberality of Gen. Wm. T. Withers, of Lexington, Ky., made the school possible; the generosity of Hon. T. F. Hargis, of Louisville, Ky., provided for the first school-house, and the grounds for all the buildings; a gift from Robert Hodson and wife, of Oquawka, Ill., became the basis of a fund for the erection of a boarding hall. For thirteen years it had been supported by the Kentucky Christian Missionary Convention. On July 31, 1900, it passed under the control of the Christian Woman's Board of Missions. Under the new management the buildings have been repaired and enlarged, the number of teachers has been increased, the courses of study have been strengthened, and a new epoch in its his history has begun.

Location. Morehead, Kentucky, is a growing town of about eleven hundred inhabitants, located on the C. & O. Railroad. It is the county seat of Rowan county, once

Local Advisory Board.

HIRAM BRADLEY, Chairman.

M. B. MARK,
D. G. COMBS,
J. G. WHITT,
J. M. CAREY,

G. A. NICKELL,
G. B. CAYWOOD,
W. A. YOUNG,
W. H. DANIELS,

C. A. PROCTOR.

Faculty.

—
FRANK C. BUTTON, Principal,
Professor of Sacred History.

—
ERRETT WIER McDIARMID,
Professor of Latin and Mathematics.

—
R. B. NEAL,
Supt. of Extension and Industrial Departments.

—
MAGDALENA STUKEY,
Professor of English Literature and German.

—
MARY McCULLOUGH,
Primary Teacher.

—
MRS. E. W. McDIARMID,
Music.

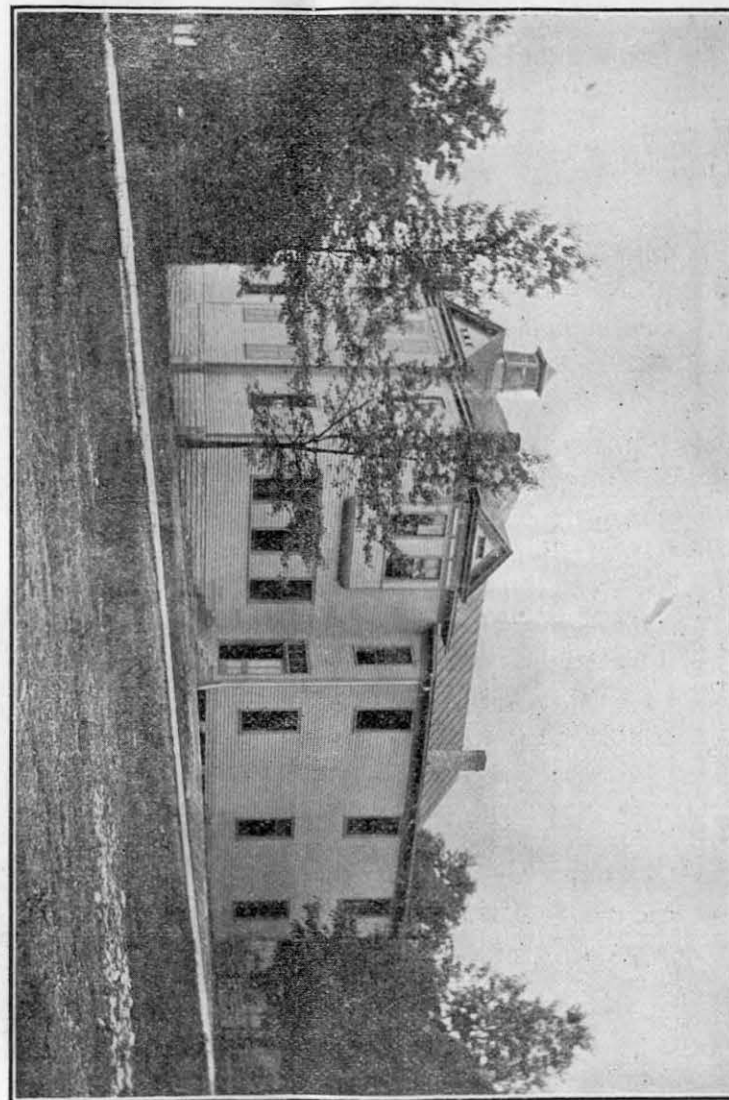
—
IRVIN DAVIS,
Principal Business Department.

—
MINNIE ADAMS,
Teacher of Short-Hand and Type Writing.

—
J. B. DICKSON,
Lecturer on Sacred History.

—
MISS LICCIE BEAZLEY,
Matron.

SCHOOL BUILDING.



94 Botten 2-92

Paired

—The—

Mountaineer

Press

JOB WORK A Specialty

*From an Envelope to a Book, a Letter
Head to a Magazine, a Tract to a
Newspaper.*

A. B. WADE, Prop., Morehead, Ky.



Clayton Hardware Co.,

DEALERS IN

HARDWARE AND TINWARE

HEADQUARTERS FOR

COOK AND HEATING STOVES.



**How to Teach is One Question
To Learn to Teach is Another**

To learn to buy School Supplies, Stationery, Writing Tablets. Writing Fluids, Pens, Fancy and Toilet Articles of the Very best Quality, at the Lowest Prices, call at the

MOREHEAD - DRUG - COMPANY'S

UP-TO-DATE STORE

ON FAIRBANK AVENUE, NEAR THE POST OFFICE

Our Drugs are Best, because Freshest and Highest Quality. Our Prescription Department, our Specialty.

JOHN P'SIMER, Manager.



The "Ads" in this Catalog are to Advertise the Business of Morehead and Vicinity—If you want to Advertise Yourself have

ELLIS

Make your PICTURE. The only Photographic Artist in Rowan County

HE DOES RETOUCHING---THATS ART

Don't believe any one but an Artist can retouch a Negative

Call at His Gallery on Railroad Street and see the finest Pictures ever made in Morehead.



BOORMAN, ALBERT,	Morehead.
BOORMAN, LENA,	Morehead.
BOORMAN, HATTIE,	Morehead.
BRADLEY, WILLIE,	Morehead.
BRADLEY, ARTHUR,	Morehead.
BRADLEY, KIRBY,	Morehead.
BRADLEY, MAY,	Morehead.
BRAMMELL, ELLIOTT,	Pactolus.
BEAIRE, MARY,	Ft. Gay, W. Va.
BARBOUR, NANNIE,	Sandy Hook.
COOPER, NELLIE,	Morehead.
COOPER, MILES,	Vanceburg.
COHEN, MICHAEL,	Morehead.
COHEN, HARRY,	Morehead.
COHEN, ROSA,	Morehead.
COHEN, DAVIS,	Morehead.
CAVENS, LEONARD,	Morehead.
CAVENS, ANNA,	Morehead.
CLARKE, LOTTIE BELLE,	Rowan Co.
CLARKE, PAULINE,	Olive Hill.
CLARKE, VERA,	Morehead.
CLAYTON, ALMA,	Morehead.
CLAYTON, EULA,	Morehead.
CLAYTON, CARL,	Morehead.
CLAYTON, MYRTLE,	Morehead.
COCKRAN, FLOYDE,	Salt Lick.
CRUM, EDWARD,	Stark.
CAREY, JOSH.	Farmer.
CAREY, LENA,	Morehead.
CAUDILL, BERTHA,	Morehead.
CAUDILL, GILBERT,	Morehead.
CAUDILL, CORNELIUS,	Elliottsville.
CAUDILL, JOSEPH,	Elliottsville.
CAUDILL, DAVID,	Elliottsville.
CROSTHWAITE, NELLIE,	Yale.
CORNETT, MAY,	Carter County.
CAVENS, ROY,	Morehead.

Expenses.	Primary Course, per month.....	\$1 00
	Intermediate Course, per month.....	1 50
	Advance Course, per month	2 00
	Shorthand, per month	3 75
	Rooms furnished and heated	FREE
	Table Board, per week	2 00

To Prospective Students. It is strongly urged that all who contemplate entering school do so on or before the opening day of the term. With enlarged facilities and an increasing corps of teachers, the Morehead Normal School again presents its claims to your attention. The present year is the best in its history. The prospects are bright for thoroughly successful work. Everything possible will be done for the student's pleasure and profit. We have no iron-clad regulations. We expect our students to conduct themselves like ladies and gentlemen. We invite all to visit the school and examine our work. A cordial welcome will be given to all new students.

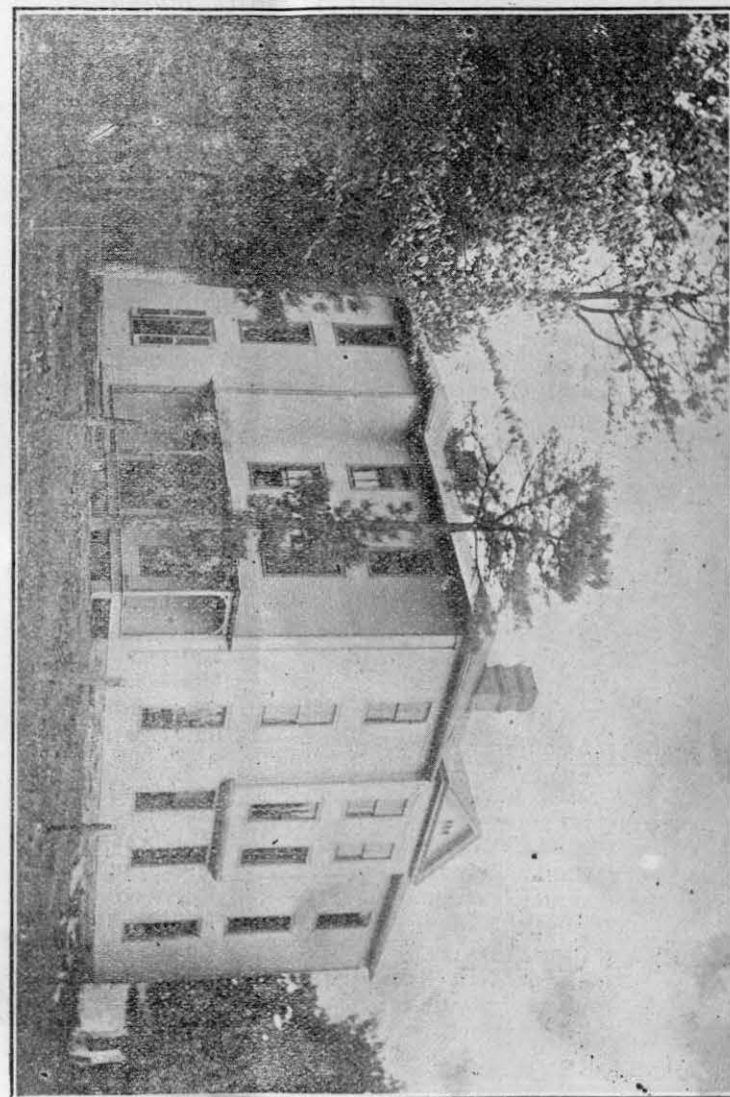
For further information, address,

F. C. BUTTON,
MOREHEAD, KY.

Students Enrolled.

ALLEN, GLENNA,	Morehead.
ALLEN, DAISY,	Morehead.
ALLEN, WILLIE,	Morehead.
ANGLIN, CORBIE,	Morehead.
ANGLIN, FERNA,	Morehead.
AKERS, CUTE,	Morehead.
ALLEY, JOSEPH,	Morehead.
ALLEY, C.	Yale.
ADAMS, VIVIAN,	Morehead.
ADAMS, CELIA,	Morehead.
ADAMS, STEWART,	Soldier.
ARMSTRONG, YORKIE,	Olive Hill.
BUTTON, FRANK,	Morehead.
BUTTON, HATTIE,	Morehead.
BUTTON, PHEBE,	Morehead.
BROWNE, JAMES,	Morehead.
BROWNE, R. S.	Lawton.
BROWN, RUSSEL,	Morehead.
BROWN, FLOSSIE,	Morehead.
BRYAN, VIRGIL,	Morehead.
BRYAN, ELERY,	Morehead.
BRYAN, LILY,	Morehead.
BASFORD, FRED,	Rockville.
BLAIR, MAUDE,	Morehead.
BLAIR, NORA,	Salt Lick.
BLAIR, PEARL,	Salt Lick.
BLAIR, LUSTER,	Blair's Mills.
BLAIR, ARTHUR,	Blair's Mills.
BLAIR, FRANK,	Blair's Mills.
BENTLY, RAY,	Livingston.
BOORMAN, ALICE,	Morehead.

HODSON HALL—Girls' Dormitory.



THE BARGAIN HOUSE

The Bargain House—the only place in town
that you can buy School Books.

Be sure you are right, then go right
ahead to THE BARGAIN HOUSE and ask to see
our Clothing, Hats, Shoes, Etc., Etc.

SUITS Made to Order. We Guarantee A

FIT

Our Millinery Department is Unex-
celled. We carry a full Line of Mens'
and Boys' Clothing.

STATIONERY, Pencils, and Tablets.

We sell The John Holland FOUNTAIN PEN.

Next To P. O. LOUIS P. SIMER Corner
R. R. St.

STATEMENT OF THE CONDITION OF

The Bank of Morehead, Kentucky,

At The Close of Business June 30th, 1903.

RESOURCES.

Loans.....	\$36,674.83.
Real Estate.....	300 00.
Furniture and Fixtures.....	1,347.40.
Overdrafts, Secured.....	1,081.55.
Due From Banks.....	11,794.32.
Cash on Hand.....	5,584.49.
Expense Account.....	1,016.80.

\$57,799.39.

LIABILITIES.

Capital Stock.....	\$15,000.00.
Surplus.....	750.00.
Undivided Profits.....	1,803.06.
Deposits.....	40,246.33.

\$57,779.39.

COMPARATIVE STATEMENT OF DEPOSITS

July 1st, 1901.....	\$27,574 07.
June 30th, 1902....	31,247.96.
December 31, 1902	36,875.84.
June 30th, 1903 ..	40,246.33.

Your account, however small,
will be appreciated.
Our facilities for handling large
and small accounts are unex-
celled.

M. PAXTON DAVIS,
Cashier.

The City Drug Store,

C. E. BISHOP, Prop.

Drugs,
Paints,
Fancy



Medicines,
Oils,
and

Toilet Articles.

Prescriptions Carefully
Compounded.

Telephones:
Store, 22, Residence, 17

Morehead, Kentucky.

PLAIN FACES MADE PRETTY AND PRETTY FACES MADE
BEAUTIFUL, AS YOU CHOOSE.

I am now prepared to make a better grade of work than ever. My gallery has been fully equipped with new back grounds etc. I make a specialty of Childrens' Pictures & GUARANTEE satisfaction to older ones I carry a full line of the Latest Mouldings for Frames; and make Enlargements from any kind of Photo—in CRAYON, WATER COLORS and PASTEL. The ONLY FIRST-CLASS GALLERY between Ashland and Mt. Sterling. All work Guaranteed.

J. C. MORGAN, Morehead, Ky.

DR. J. F. WOODWARD,

The DENTIST.

The Right Kind of DENTISTRY

At the Right Kind of PRICES.

Morehead, - - Kentucky

over Lenora Deposit Bank.

LIVERY, FEED & SALE STABLE.

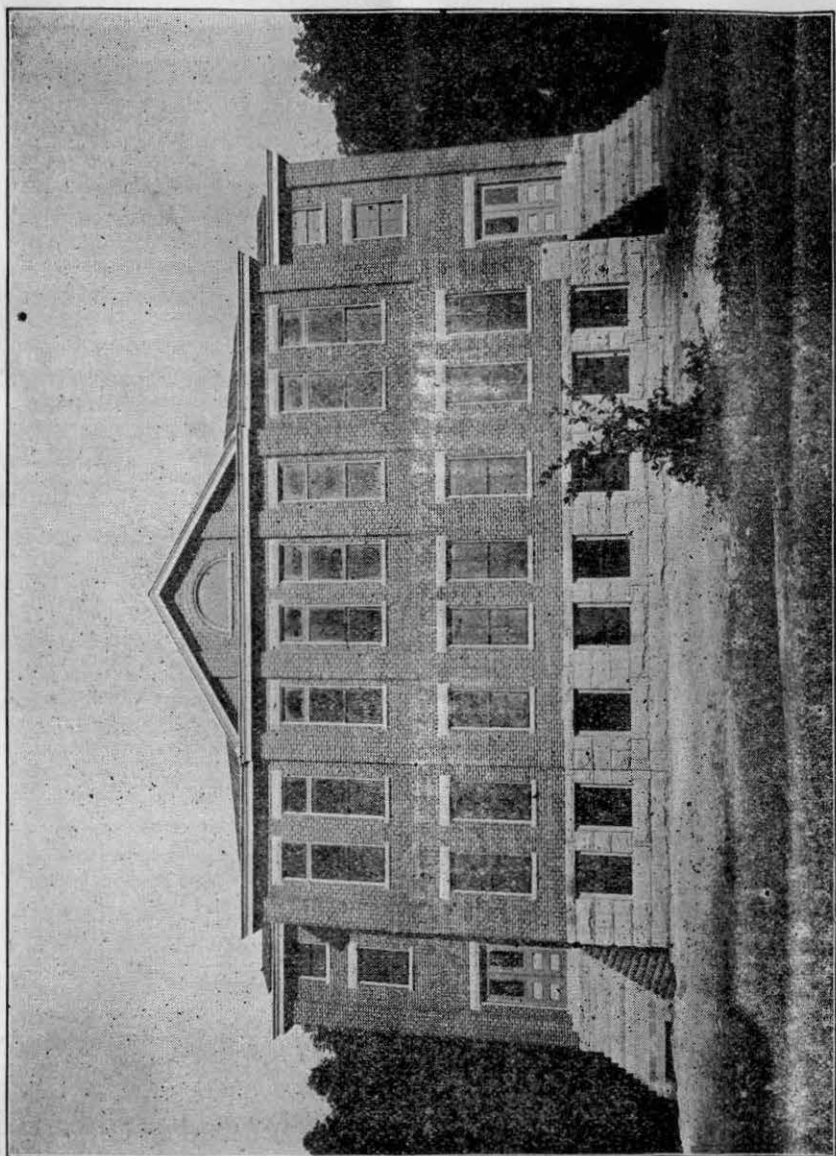
My Wagons are all new and are the latest improved.

My Horses are always in the best of condition. I employ none but expert Drivers, who know all the roads in Eastern Kentucky.

IMPLEMENT STORE.

I have the only Implement store in Morehead—carry Wagons, Buggies, Mowers Rakes, Plows, Etc., all of which are the best brands.

Main Street **F. P. BLAIR,** Morehead Ky.



Morehead Normal School.

20

RILEY, MYRTLE,	Morehead.
ROYCE, HENRY,	Morehead.
RAMEY, LAURA,	Carter.
RAMEY, ELMER,	Grayson.
ROBBINS, MERLE,	Morehead.
ROBBINS, MRS. I. H. (Music)	Morehead.
ROBERTS, GROVER,	Charlotte Furnace.
ROBERTS, EDDIE,	Charlotte Furnace.
RICHARDS, J. B.	Olive Hill.
RUPERT, GEORGE,	Grayson.
ROBINSON, DAMA,	Morehead.
ROBINSON, ESSIE,	Morehead.
ROBINSON, WM.	Morehead.
ROBINSON, FRANK,	Morehead.
RIDDLE, WM.	Paragon.
RICE, BERTHA,	Carter County.
REID, AMELIA,	Grayson.
RAYBOURNE, E. W.	Carter County.
RAYBOURNE, GEO.	Carter County.
REDWINE, ANNA,	Soldier.
SANDIDGE, LAURA,	Shelby City.
SHUMATE, CLARA,	Soldier.
SHUMATE, CHARLIE,	Morehead.
SHUMATE, LIZZIE,	Morehead.
SHUMATE, CHES.	Morehead.
SEXTON, BESSE,	Morehead.
SEXTON, EVA,	Morehead.
SHARPE, HARRY,	Berea.
SHARPE, ANDREW,	Berea.
SHARPE, ROBERT,	Berea.
SHAY, JESSIE,	Soldier.
STROTHER, PEARL,	Kilgore.
STROTHER, BEL,	Kilgore.
STRONG, W. E.	Paragon.
STEWART, LOTTIE,	Morehead.
SCOTT, THEO.	OLIVE HILL.
SWIFT, CHRIS.	Morehead.
SORRELLE, MARGUERITE,	Morehead.

SALYERS, HERBERT,	Morehead.
SCHOOLER, LILLIAN,	Maysville.
THOMASON, GLENN,	Portsmouth.
TRUMBO, MARY,	Morehead.
TRUMBO, ALLIE,	Morehead.
TRUMBO, LUTHER,	Morehead.
TRUMBO, LACY,	Morehead.
TUSSEY, WM.	Morehead.
TUSSEY, HARRY,	Morehead.
TUSSEY, ANNA,	Morehead.
VINCENT, FRANK,	Soldier.
WILSON, GLENMORE,	Morehead.
WILSON, FLORA,	Morehead.
WILLIAMS, EFFIE,	Morehead.
WILLIAMS, OLLIE,	Morehead.
WILLIAMS, PEARL,	Yale.
WASHBURN, E. T.	Berea.
WORD, ETHEL,	Morehead.
WORD, BEULAH,	Morehead.
WORD, HORACE,	Morehead.
WORD, JAMES,	Morehead.
WRIGHT, JAMES,	Charlotte Furnace.
WITHROW, SAMUEL,	Morehead.
WITHROW, SAMUEL,	Morehead.
WILSON, LUCY,	TUDELL, W. Va.
WRIGHT, BELLE,	Brady.
WHITE, MINNIE,	Elliottsville.
WILBURN, BELLE,	Farmer.
WILMER, EDNA,	Rowan County.
YOUNG, ELIZABETH,	Morehead.
YOUNG, LENORA,	Morehead.

SPECIAL STUDENTS.

German.....	JAMES ELLIS.
Bookkeeping.....	ALEX. T. STEWART.
Shorthand.....	CHAS. DURHAM.
" ".....	HARLAN BLAIR.

RECAPITULATION.

Boarders.....	167.
Number enrolled.....	310.
Number of counties represented.....	19.
Number of States represented.....	3.

Graduates

—
1902.

VIRGIL GAINES BRYAN,	ANNA LEEDS KNAPP,
LENA BLAINE CAREY,	FLORENCE EVANS,
ALICE WHITT,	MAUD TIPPETT,
EZRA PROCTOR.	

McROBERTS, JUDA,	Muses' Mills.
MAYNARD, LIZZIE,	Tudell, W. Va.
MOREFIELD, W. H.	Paragon.
MOCABEE, MABEL,	Grayson.
MOCABEE, NELLIE,	Elliottsville.
MOCABEE, LENA,	Grayson.
MORRIS, BESSIE,	Willard.
MORRIS, WM.	Willard.
NICKELL, EMMA,	Morehead.
NICKELL, CLELA,	Morehead.
NICKELL, GEORGE,	Morehead.
NICKELL, JAMES,	Morehead.
NOLIN, MATTIE,	Morehead.
NOLIN, DIXIE,	Morehead.
OSBORNE, BUFORD,	Morehead.
OAKLEY, MARVIN,	Paragon.
O'ROARK, ROSA,	Elliottsville.
PHELPS, CLAUDE,	Rockville.
PROCTOR, EFFIE,	Morehead.
PROCTOR, ETTA,	Morehead.
PROCTOR, HERBERT,	Morehead.
PROCTOR, BERT,	Morehead.
PROCTOR, FAITH,	Morehead.
PROCTOR, ALLIE,	Morehead.
P'SIMER, LETTIE.	Morehead.
PERRY, CORA,	Morehead.
PRATHER, THOS.	Morehead.
QUALLS, DANIEL,	Olive Hill.
QUALLS, ERNEST,	Olive Hill.
QUALLS, CHESTER,	Olive Hill.
QUALLS, ANDREW,	Olive Hill.
QUALLS, NORA,	Olive Hill.
REEVES, ANDREW,	Morehead.
REEVES, NETTIE,	Morehead.
RAINE, LIZZIE,	Morehead.
RAINE, FREDRICA,	Morehead.
RILEY, CHAS.	Morehead.

CUSHMAN, GEO.	Morehead.
CUSHMAN, ALBERT,	Morehead.
CUSHMAN, THEODORE,	Morehead.
CUSHMAN, NANCY,	Morehead.
DAY, TONY,	Morehead.
DAY, WM.	Morehead.
DAY, OLIVE,	Morehead.
DAY, EDGAR,	Morehead.
DUNCAN, GRANVILLE,	Stanford.
DENHAM, ANNA,	Williamsburg.
DAVIS, ALLEN,	Rockville.
DAVIS, ERVIN,	Morehead.
DAVIS, FRED,	Rockville.
DICKENS, C. F.	Grange City.
DEANE, OLLIE,	Olive Hill.
DUVALL, DIXIE,	Greene.
EVANS, BLANCHE,	Morehead.
EVANS, HAZEL,	Morehead.
EVANS, WILLIE,	Morehead.
EVANS, MAMIE,	Morehead.
EVANS, FLORENCE,	Morehead.
EVANS, TINA,	Morehead.
EVANS, ROY,	Morehead.
EVANS, HERNDON,	Morehead.
EVANS, PAUL,	Morehead.
EATON, MARY,	Soldier.
EASTERLY, CLARENCE,	Blair's Mills.
FITZPATRICK, BESSIE,	Gates.
FITZPATRICK, DAVID,	Gates.
FURGESON, H. D.	Carter.
FRALEY, PEACH,	Morehead.
FRALEY, WICK,	Morehead.
FLANNERY, WILLIE,	Stark.
GAYHART, WILLIE,	Morehead.
GAYHART, JOSIE,	Ceredo, W. Va.
GOODAN, EDWARD,	Morehead.
GOODAN, ANNA,	Morehead.

GOODAN, MARY,	Soldier.
GAUNCE, W. F.	Soldier.
GAUZE, CORA,	Soldier.
GAUZE, STELLA,	Soldier.
GOODMAN, WM.	Stark.
GILBERT, ARCHIE,	Grayson.
GLASS, CLARENCE,	Stark.
GRIZZEL, MAUDE,	Charlotte Furnace.
GILBERT, HALLIE,	Pactolus.
GILLIAM, FERNA,	Blaze.
GILLIAM, LOTTIE,	Blaze.
HARRISON, KATHLEEN,	Morehead.
HARRISON, GEORGE,	Morehead.
HARRISON, THOS.	Morehead.
HOLCOMB, EVERETT,	Grayson.
HOLCOMB, EARL,	Grayson.
HUGHES, W. L.	Minor.
HORSELEY, EMMA,	De Everett.
HAGERMAN, WILLIE,	Farmers.
HAVENS, FRANK,	Morehead.
HAVENS, WILLIE,	Morehead.
HUFFMAN, CLYDE,	Charlotte Furnace.
HUFFMAN, RUBY,	Charlotte Furnace.
HALL, DON C.	Crocker's Landing, Wis.
HOGGE, LESTER,	Elliottsville.
HOGGE, PEARL,	Morehead.
HAIGHT, ARCHIE,	Grayson.
HAIGHT, EDNA,	Grayson.
INGRAM, VOLNEY,	Farmers.
JONES, BETTY,	Grayson.
JACOBS, VIOLA.	Soldier.
JOHNSON, H. H.	Leadenham.
JOHNSON, LEE,	Leadenham.
JOHNSON, HARLIN,	Hilda.
JOHNSON, SAMUEL,	Leadenham.
JOHNSON, WM.	Morehead.
JOHNSON, IRVIN,	Yale.

JOHNSON, MAUDE,	Gates.
KELLEY, J. N.	Ibex.
KEGLEY, H. J.	Stark.
KEFFER, ROSE,	Pactolus.
KEATON, AMY,	Charlotte Furnace.
KENNARD, R. T.	Olive Hill.
LAWRENCE, OTTIE,	Grayson.
LEWIS, LUCY,	Grayson.
LEWIS, SALLIE,	Grayson.
LIPSITZ, FRANK,	Morehead.
LIPSITZ, LOUIE,	Morehead.
LIPSITZ, ANNA,	Morehead.
LYTTLETON, JOE,	Morehead.
LYTTLETON, OLLIE,	Morehead.
LYTTLETON, GENEVA,	Morehead.
LYTTLETON, FLORENCE,	Pactolus.
LYTTLETON, LAURA,	Pactolus.
LEWIS, OLLIE,	Brushy Fork.
MILLER, NELLIE,	Morehead.
MILLER, VIVIAN,	Morehead.
MILLER, EDITH,	Morehead.
MYERS, GILBERT,	Freestone.
MARTIN, BLANCHE,	Morehead.
MAGEE, MAY,	Livingston.
MARK, JESSIE,	Morehead.
MARK, CHESTER,	Morehead.
MARK, CHAS.	Morehead.
MARK, ISAAC,	Morehead.
MARTT, MYRTIE,	Elliottsville.
MAXEY, ELMER.	Morehead.
MAXEY, INA,	Morehead.
MAXEY, ERNEST,	Morehead.
MABRY, ISAAC,	Ledingham.
MABRY, CHAS.	Ledingham.
MABRY, JOHN,	Ledingham.
MCANESPY, HERMAN,	Farmers.
MABRY, ROBERT,	Leodenham.

noted for its lawlessness, but now one of the most law-abiding counties in Eastern Kentucky. The town is easy of access by rail and stage.

**Situa-
tion.** The situation of the school, on a great through line of traffic, puts pupils attending it in touch with the great world, and at the same time affords facilities for instruction at less cost than in large towns.

**Pur-
pose.** The Morehead Normal School is a school for teachers. It gives them that technical education which fits them for their vocation. Its courses meet all the requirements of the County and State examinations. Its aim is to fill every teacher with enthusiasm for work and to inspire them with higher ideals of life. It seeks to make honorable men and women of its students and to prepare them for useful lives.

**Meth-
ods.** Text books are used, but the student's attention is directed mainly to the study itself. All work is made fresh and interesting. Daily recitations are required of each student who thus comes in close contact

with the teachers. Lectures are given by the teachers from time to time, and the school is drilled daily in Sacred History. Special instruction is given in Reading, Music, Parliamentary Law, Physiology, Physical Culture and Bible Study. The work of each student is discussed in the monthly Faculty meeting, and methods of helping each one advance in the work are considered. Every legitimate means is employed to keep the interest of the student aroused.

