

FINE OF \$1.00 TO \$100 FOR CUTTING  
TEARING OR MUTILATING BOOKS  
NEEDLE PINS OR PERIODICALS  
BELOW TO PUBLIC LIBRARIES  
See Article 42-090

# The Morehead News

Coming Soon!

A new Morehead News format  
with the easiest-to-read  
most modern type face

Over 18,000 Readers

This, and every edition of The  
Morehead News has over  
18,000 readers

VOLUME NUMBER EIGHTY-TWO

MOREHEAD KENTUCKY - THURSDAY MORNING, OCTOBER 21, 1965

NUMBER FORTY-TWO

## Water Ban Removed On Morehead Laundrymats; Situation Remains Critical

Morehead has ample water this week with laundries, car wash businesses and laundrymats allowed to re-open Monday after being closed for about six days, by order of the municipally owned utility plant board.

Storage tanks at Morehead State College filled over the weekend, and the utility plant board gave the 'green' signal for large users to resume business. But, the virtual certainty of continuing and progressing shortages, or rationing of purified water, remains. Major concern is expressed about March as consumption increases and Morehead College opens two new dormitories.

It is conclusive that the 500 gallons the pumping and purification facilities owned by Morehead State College are not adequate to supply both the college and the city.

Chief threat is a major fire. Morehead had one fire during the week - at the Dairy Mart on West Main Street. This was caused by an electric cooking unit and extinguished by chemicals from fire truck tanks.

Laundrymats in nearby towns reported 'good business' from Morehead last week.

Owner of a coin laundry at Olive Hill said he was staying open seven days a week 24 hours a day. "I do have one problem, though," he commented. "My old customers complained last week they couldn't get inside the buildings because it was crowded with Morehead people."

Meanwhile, owners of coin operated laundries and/or commercial laundries in Morehead have employed legal counsel and announced "we're going to court" the next time a cease business order gives "unless everybody else is stopped from using water ... or rationed."

One advantage is that the pumping station can fill in whole, or part, the three storage reservoirs over the weekend when many Morehead College students leave the campus for their homes.

Outside a major fire, the big concern is that the pumping, or purification equipment might break down. The machinery has been operating around the clock for several months.

A representative of a metropolitan newspaper in Morehead Tuesday interviewed officials who are handling, or concerned, with the problem told The Morehead News: "I haven't seen anything like this in my life ... I interviewed officials who should be acquainted with, and working on, the problem and most of them try to tell me what they say are the facts but don't want to be quoted."

"He mentioned 'secrecy' ... 'local politics' ... 'it's almost unbelievable' ... and, 'how can you write a factual story about anything when the people in authority give no answers for quotation.'"

Warnings of the water shortage were first published almost two years ago. In the meantime, few steps have been taken as a fight waged over re-negotiating with Morehead State College or 'going to the river'.

During the two year interval, a federal grant has been all but out of the question, although the possibility was brought up continually at council and Utility Plant Board meetings. However, the present Congress has passed a measure authorizing such grants. This legislation has not been 'funded' in the terms of official Washington, meaning no appropriation has been made. However, the appropriation or 'funding' is expected to be enacted within a few days.

Meanwhile, street-corner bitterness and misrepresentations are paramount, and the water issue is expected to bring out a record vote at the Nov. 2 general election.

The problem - what is Morehead going to do for many future months regardless of whether negotiations are re-opened with the college, or the move continues for the city's own plant?

"Royal Gambit" Scheduled  
"Royal Gambit," a Little Theatre production, will be presented at Morehead State College October 25, 26, 28, 29 and 30. Presented by the Division of Fine Arts, the performance will begin at 8:00 p.m. in the Little Theatre in the Combs Classroom Building. Admission is \$1.00.  
Corwin Georges, a Junior  
-Continued next page



THEY CAME BY CAR, TRAIN, BUS AND PLANE. An estimated 9,000 attended homecoming at Morehead State College. Mr. and Mrs. James E. 'Jim' Noon flew from Washington, landing at the new Rowan County airport, Noon graduated at MSC in 1936; his wife, the former Edith Hayes, attended New Morehead State College homecomings in the past 26 years.  
-Photo by Martin Hoffman, Jr.

### Announce Promotion Of Dr. Hunter Black

Announcement was made this week that Dr. J. Hunter Black has been appointed Chief of Medicine at St. Claire Consultation Clinic. He replaces Dr. Herbert Hudnut who accepted a position as Assistant Professor of Medicine at University of Rochester Medical School.

Dr. Black is a specialist in Internal Medicine with a sub-specialty in Endocrinology, and a Chemistry Instructor in Medicine [one day a week] at University of Kentucky Medical Center.

Dr. Warren Proudfoot is Director of St. Claire Consultation Clinic.

### Election Officers Named

Rowan County's election Commission today released the names of those selected to serve as precinct election officers at the Nov. 2 general election. They are -

- 1. Courthouse-Margaret Jayne, Oscar Patrick, Masde Hogge, William Caudill.
- 2. Lower Farmers - Emmitt McClurg, Rufus Plannery, Delmore Budgett, Eddy Ellington.
- 3. Upper Farmers - Leonard Crosshwaite, Kenneth Robinson, Elvis Oakley, Daisy Evans.
- 4. Newtown - Dottie Scagg, Harlan Felts, Frank Corneite, Travis [Zora] Trent.
- 5. Morehead - Mrs. Ray Moore, Leonard Pettit, Thelma Shelton, Elijah Caudill.
- 6. Brushy - Ray Black, Wilbur Hardin, Mae Garman, Delmore Cooper.
- 7. Morehead - Gertrude Trent, Ralph Early, Mrs. Homer Gregory, Larry Jackson.
- 8. Morehead - Mary Barber, Elmer Sparks, Verste Hamm, Iner Sturgill.
- 9. Clearfield - Christine Lewis, Ezra Baldrige, Raymond Murphy, Bill Lambert.
- 10. N. Morehead - Ted Green, Beatrice Landreth, J.A. Shackelford. [One more to be selected].
- 11. Morehead - Lucille Walters, Ezra Baldrige, Emmit Caskey.

-Continued next page

## Unemployment Parents Program Proposed For County And This Area

Kentucky has renewed its request for federal funds and approval of a 20-county expansion of the work experience and training program for unemployed persons in Eastern Kentucky, State Economic Security Commissioner C. Leslie Dawson said today.

If approved, the request would extend the Title V Economic Opportunity program to the remainder of the 39-county area of Appalachia identified two years ago by the department.

The expansion would include an estimated 5,120 fathers or step-fathers for such benefits as basic education, varied work experience, and vocational training. Dawson said. The request involves \$13.2 million in funds, all of which are Federal, and would extend a year from January 1, 1964.

Kentucky has received about \$16 million for the work experience program already. Dawson said, since it was brought under Title V in January of 1964. The renewed request by the Economic Security Department includes these counties: Lawrence, Rockcastle, McCreary, Clinton, Lee, Wayne, Johnson, Estill, Powell, Russell, Casey, Wayne, Cumberland, Boone, Bath, Pulaski, Carter, Adair, Rowan and Lewis.

Presently affected are Mountain, Wayne, Wayne, Breathitt, Martin, Knott, Knox, Jackson, Montee, Clay, Elliott, Morgan, Boone, Hancock, Harlan, and Bell counties.

"This request is vitally important to the State for many reasons," Dawson said, "the least of which is the fact that 45,000 families in these 20 counties, four families out of seven, are living on annual incomes of less than the \$3,000 figure established as the threshold of poverty."

Here are some of the benefits of the program: The main emphasis is placed upon preparing the parent for permanent regular employment, this is done by basic adult education, intensive personal counseling, high school equivalency courses, and a variety of vocational training and public works projects.

Re-establishment of orderly work habits, which is important to persons who have been unemployed for long periods of time. A regular care furnished under the State Medical Care Program, which assures the health of the children and parents. An average of \$15 to each family per month.

To be eligible for the program a father or step-father must be under 65 and unemployed for 90 days. He must be looking for work, and willing to accept a fair job offer.

Factors used in the selection are based on the basis of need. Factors considered range from the income level and amount of unemployment to the percentage of income in the county which depends upon public assistance, unemployment insurance, and social security.

Clell Leedy, 53, native of Elliott County, graduate of Morehead State College, and widely known throughout this part of Kentucky was one of the seven miners who perished Sunday when trapped by underground fires at a Clay field mine.

Leedy attended MSC in the mid-'50s when he was an athlete. After leaving college, Leedy joined one of the area's leading manufacturing firms, a highly mechanized coal mining operation.

He held a policy, and high paid, position with the Clarksburg mining company, primarily directing the "cutting" and "path" of the veins.

"I don't believe it, I don't believe it, I have to stay here and see for myself," Leedy's wife cried. A few minutes later rescue workers brought her husband's lifeless body to the surface, along with three miners.

Leedy was voted the most popular male sophomore student at MSC.

Election of Rowan County ASC Community Committee will be held November 22. Election of Community Committees will be held in five polling places - Brushy #6, Dry Creek Voting House, Elliottville #4, Farmers #2 Pine Grove Voting House. The incumbent Community Committees will select six or more eligible farmers to place on the ballot and determine if they are eligible and willing to serve. If a farmer wishes

to have his name placed on the ballot he may do so by petition. This must be done by having six or more eligible voters sign a petition. Each petition will be returned to the County Office by November 1, 1965. If found eligible to serve his name will be placed on the ballot. All names will be placed in alphabetical order.

The present County Committee may also make additional nominations as it considers desirable.

Community Committees from each community are to be active farmers who are best qualified to represent various types of agriculture in the community. Community Committees elected November 22nd will be a delegate to County Conventions to be held November 26th.

The County Convention will be held in the Rowan County ASC Office to select County Committees to administer farm programs in Rowan County under the direction of the



BENEFITS TO ROWAN ... Morehead, and Rowan County, citizens heard at the Junior Chamber of Commerce meeting this week that local benefits from the state bond issue will be over \$30 million. ... a small part of the cost to Rowan Counties ... and the revenue proposal can be directed without additional taxes. Joyce President Ronald Barr, left, presents certificates to the speakers: Billy Joe Hall, Executive Assistant to Highway Commissioner Henry Ward; Finance Commissioner Felix Joyner; and Morehead State College President Adron Doran.

## Bond Issue Means Over \$30 Million For Rowan

### Monday Is Political Ad Deadline

The Morehead News, in keeping with its custom for many years, will not accept any political advertising for its next issue [last before the Nov. 2 general election] unless copy is available by 5 p.m. Monday.

Any political advertising, including county and races, and bond issues, will be rejected after the above deadline.

The Morehead plant publishes several other newspapers, plus quantity contract printing. Delay in any department results in hardship for all, the Publisher explained.

### 'Flag' Football Program Starts

Morehead's 'flag football' program is in full swing this week. The Recreation Association and sponsoring Junior Chamber of Commerce plan to establish two leagues with a play-off at the end of the split season.

Rowan Counties were told Friday at the Junior Chamber of Commerce meeting [open to the public] that:

- Rowan probably stands to gain more [dollars and cents] according to population, than any other county through passage of the \$176 million bond issue on the November ballot.

- Passage of the issue insures there will be no new taxes because amortization of the bonds will be about \$9 1/2 million a year, and the projected economy (tax collections on existing formulas) will be many times this amount.

The about \$1.6 million set aside [on the balance sheet] for capitol construction at Morehead State College will give the institution an additional borrowing potential of \$6 million. . . . In other words, MSC can add about \$8 million more in buildings.

- Rowan County will get between \$20 and \$21 million for the Interstate Highway. This is nine-for-one federal matching money.

One of the most expensive purchases on 1-64 will be at Morehead - a distance of about 2.6 miles from West Main Street to the Glenns Fraley farm. Cost is estimated at \$2,186,000 and will be defrayed on 50-50 matching funds.

The above was recited by three speakers: Billy Joe Hall, native Moreheadian, Finance Commissioner Assistant to Highway Commissioner Henry Ward, Kentucky Finance Commissioner Felix Joyner; and Morehead State College President Adron Doran.

Hall spelled out that more money would be available for rural and secondary [so-called-two-tier] programs because Appalachia programs provide 70 federal to 30 state dollars. Hall explained Appalachia corridors do not pass through Rowan, but money earmarked for them will be diverted to other counties like Rowan, because of the federal participation.

In one way or another, each of the speakers said they didn't see how anybody could possibly vote against the bond issue if they knew the true facts.

Actually, Kentucky will obtain about \$800 million when the \$176 million is matched with federal appropriations. Besides highways and education, the bond issue provides funds for many facets such as health care, research etc.

The speakers pointed out that almost every neighboring state had approved to bond issues to take advantage of federal funds. Virginia, long a state that veered from borrowing money, is on the verge of a \$200 million bond issue.

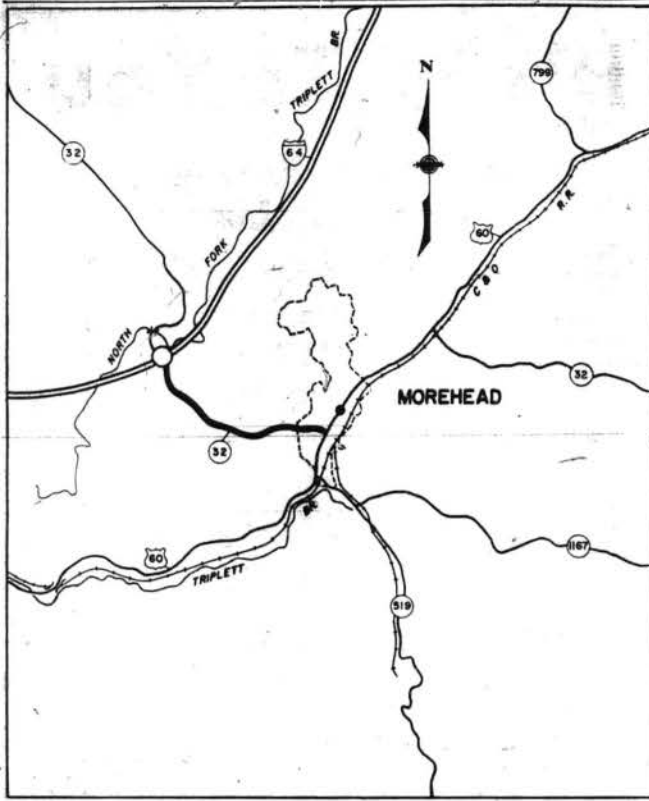
## Community ASC Election Held in 5 Precincts

Election of Rowan County ASC Community Committee will be held November 22. Election of Community Committees will be held in five polling places - Brushy #6, Dry Creek Voting House, Elliottville #4, Farmers #2 Pine Grove Voting House. The incumbent Community Committees will select six or more eligible farmers to place on the ballot and determine if they are eligible and willing to serve. If a farmer wishes

to have his name placed on the ballot he may do so by petition. This must be done by having six or more eligible voters sign a petition. Each petition will be returned to the County Office by November 1, 1965. If found eligible to serve his name will be placed on the ballot. All names will be placed in alphabetical order.

Community Committees from each community are to be active farmers who are best qualified to represent various types of agriculture in the community. Community Committees elected November 22nd will be a delegate to County Conventions to be held November 26th.

The County Convention will be held in the Rowan County ASC Office to select County Committees to administer farm programs in Rowan County under the direction of the



HERE IS THE EVIDENCE ON A BLACK LINE . . . When the 1st Interstate hearing was held at Morehead, almost four years ago, the publisher of The Morehead News testified that the interchange from near the Glennis Frady farm to West Main Street should be four-lane. Each side of the highway (road) is owned by the State of Kentucky. State Police and Governor's Press Conferred; the publisher was judged this map by Highway Commissioner Henry Ford and Executive Assistant Billy Joe Hall. It shows a four-lane interchange starting

on Ky. 32 (Flemingsburg Road) and extending 2.6 miles to near the Pine Crest Baptist Home. Ford and Hall said the cost will be among the highest of any interchange in Kentucky — \$2,186,000. This is not built on nine-for-one money like the Interstate itself, but 50-50 matching federal funds. Expediting this interchange and Interstate requires passage of the \$176 million bond issue on the November ballot. This newspaper editorially stated, "No thinking Rowan Counties can vote against the bond issue because we get over \$30 million, and no new taxes."

# Breathitt Places Bond Issue Facts On The Line

I want Kentucky to get \$4.5 million in Federal matching funds to put with \$4.5 million of the proposed state bond issue to carry out a new capital construction program worth more than \$9 million to our state parks system.

Do you want this?

I want Kentucky to get \$6 million in Federal matching funds to put with \$2.5 million in bond money to have a total of \$8.5 million for educational, preventive and research programs in mental illness and retardation.

Do you want this?

If you do want these things, if you do want to put up \$176 million in bonds to get more than \$600 million in new and better roads, in new and better educational facilities, and in expansion of other state services, then you should vote "YES" for the bond issue on November 2.

I have pointed out in preceding columns that \$139 million in bonds will buy Kentucky 736 million worth of roads, and that \$21,950,000 in bonds will provide for \$95,385,000 worth of new and improved educational facilities.

It is what would remain of the bond issue and of matching funds that I consider today, of those amounts that are earmarked for parks and for health and welfare, for agriculture and for airports, for corrections and other departments.

The bond issue will make possible the construction of complete vacation resorts at Barley Lake and the Barren River Reservoir. Facilities at all existing parks and shrines can be expanded and several new park sites will become available for development within two years.

This parks program will enable Kentucky to retain its leadership in state park resort development and continue to chalk up annual increases in its tourist and travel industry.

Kentucky's tourist business in 1964 amounted to \$346 million, of which \$238 million was spent by travelers from other states. Small lakes development and additions to the forest fire protection system will receive a total of \$1,100,000 from the issue. Construction of small lakes to provide flood protection and water for municipal, agricultural and recreational uses will account for \$1 million of that, and forest fire protection for the remainder.

The \$3 million total in mental health funds would be used for grants to localities for construction of six community mental health centers and a State hospital for care of the severely retarded.

The \$1,600,000 would go to county health centers; \$450,000 to child welfare centers and \$250,000 to the Hazelwood Tuberculosis Hospital at Louisville for a new central-heating and air-conditioning system. The health center funds would be used for new construction and additions, and the child welfare funds for new construction.

The \$505,000 earmarked for the Department of Aeronautics in the bond issue proposal will be matched by \$1,500,000 in Federal and other funds to provide a total of \$2,005,000 to be expended for new airports and airstrips and for making improvements at existing facilities over the state.

By receiving a total of \$1 million in bond money and Federal funds, the Department of Agriculture would be enabled to build a modern animal disease diagnostic laboratory and two combination livestock shows and sales pavilions. One of these would be at Murray State College and the other at the state fairgrounds at Louisville.

Bond money totalling \$2.9 million would be allotted to the Department of Corrections for the con-

struction of these projects. Two farm barracks complexes, one at the State Reformatory at LaGrange and the other at the State Penitentiary at Eddyville, two forestry camps for selected inmates from the State's penal institutions, and renovation of both the reception center and the dormitory at the reformatory.

The Kentucky State Police services require adequate post facilities and equipment. The Department of Public Safety now has units in 16 locations. Barracks buildings in five of the places are rented. Bond funds alone amounting to \$300,000 would be used to build permanent barracks in three communities.

All of these facilities are needed for the health and well-being and future prosperity of Kentucky and her citizens. They can be obtained most economically and most feasibly with passage of the bond issue November 2.

# Area Home Economists In Meeting

Home Economics teachers from Rowan County were among the representatives from a seven-county area who attended a regional Home Economics Education meeting Friday and Saturday at Morehead State College.

This was one in a series of six meetings called by Miss Mary Lois Williams, State Director of Home Economics, Department of Education, Frankfort. The purpose of the meetings was to help local home economics teachers get a better understanding of the Occupational Training provisions of the 1963 Vocational Education Act. This phase of the program enables public schools to provide instruction for training in occupations using home economics knowledge and skills.

Attending from Rowan County were Mrs. Ottielma Baldwin and Miss Jean Cline, of Rowan County High School, and Mrs. Virginia Rice, of Breckinridge Training School.

Friday afternoon, district meetings were held. Teachers from this county are members of the Morehead District of Home Economics Teachers.

Miss Cline is serving as president of the Morehead District this year. Mrs. Baldwin is chairman of the publicity committee, and Mrs. Rice is serving on the program of work committee for the Morehead District.

October 24-30 will be "National Cleaner Air Week." If you can spare the time, please do your part by cleaning some air.

was farm placement interviewer with the State Department of Economic Security and came to the cooperative from the Farmers Deposit Bank, Flemingsburg, where he served as bookkeeper.

## Fall Foliage In This Area Is Beautiful

By Joe J. Mauk

As a result of last week's frosts the forest foliage began to take on its usual hue of colors which the autumn in a flow of visitors from the Blue Grass region and the populated areas to the north, has resulted in the forest foliage changes from their summer green to an array of colors a continued flow of people over the mountain roads and to the various recreation areas start. The people come to enjoy the beauty of the forest in full color and take advantage of the last warm sunny days for an outdoor picnic. This flow of visitors will continue until the fall colors disappear or winter weather sets in. Our national forest recreation areas will be kept open in operation to take care of these forest visitors until about November 2. The Rowan area will be closed early part of November, when freezing weather sets in, due to the running water facilities at the site. However, the picnic area at Morehead Triangle Tower will remain open for use year round. The Clear Creek picnic area will be closed about November 2; however the camping area will remain open for hunting, camping and care for any limited picnic use. Normally the use of the larger picnic areas after that date will not justify the required maintenance and upkeep.

Our timber management crew has completed the field marking boundary of approximately 820 acres located on the headwaters of Clear Creek in Bath County Forester Ronald Hevener estimates that the boundary will contain about two million, three hundred and fifty thousand board feet of sawtimber, when the volumes have been summinked. The timber will be offered for sale early in January. A formal advertisement will appear

## Morehead Investors

—From preceding page

fits have brought profits, Mr. Jackson pointed out.

The idea of the plan primarily centers around limitations of the small investor to diversify his stock purchases. He is also limited for current information such as supplied by the National Association.

**Election Officers**

—From preceding page

John Barker.

12. Pine Grove - Brenda Blanton, Lonnie Sparks, Juanita Cooper, Betty Brown.

13. Morehead - Frankie Calvert, Hubert Allen, Henry Cox, Elva Barker.

in the classified section of this newspaper.

Edward Kay Elam, who has been employed here on the District as a Forest Worker for the past three years, has resigned. He plans to enter into the sawmill business with his father.

To date about 50 boys have been assigned to the Job Corps Conservation Center at Frenchburg. These boys have been assigned to look trail construction work in the Rock bridge area. In addition to their project assignment they will spend a certain number of hours each week in elementary classroom training. Both their work project and elementary training assignments will be based on aptitude and indicated skills. The camp will have 100 boys when their full complement is received. The camp is being operated by the Cumberland National Forest in cooperation with the Office of Economic Opportunity. Youngsters interested in the Job Corps should make application to the local state employment office.

## Proudfoot Praises Rowan Health Center

The St. Claire Hospital Auxiliary held its regular monthly meeting Monday evening, at the Medical Center. The Auxiliary President, Mrs. Margaret Sue Morris, presided and Mrs. Helen Holbrook gave the opening prayer.

Dr. Warren Proudfoot and Dr. Kenneth Walsh, discussed the work of the Rowan County Health Center and its help to residents of Rowan County.

Dr. Proudfoot and Dr. Walsh stressed the importance of the Health Tax bill in maintaining the effectiveness of the Center.

Mrs. Marjorie Gabbard, Rowan County Home Demonstration Agent, presented ideas for articles that Auxiliary members could make for the Christmas Bazaar and how they could be utilized in home decorations during the holidays. The date for the Christmas Bazaar has been set for Saturday, December 4th, with full details to be announced later.

The business section of the meeting was devoted to plans offered by Mrs. Merle Allen for a nursing scholarship to be provided by the Auxiliary. It was voted upon and approved that the Auxiliary would establish a three- (3) year nursing scholarship, to become effective September, 1966.

The next meeting of the St. Claire Hospital Auxiliary will be held Monday, November 8th at the Medical Center.

**He Served You Well...**

**Royal Gambit**

—From preceding page

from Clarksville, Ohio, majoring in speech and drama, plays the role of Henry VIII. He is the son of Mr. and Mrs. Corwin Geogals, Clarksville, O.

The play portrays through Henry VIII an acceptance of our modern age developed through the physical and moral tragedy of his life. The historic affairs of his six wives transcends history in the play and Henry VIII represents a type of modern man.

Other members of the cast are: Norman Watts, Simpsonville; Phyllis Miles, Lexington; Jen Bohannon, Waddy; Patricia Spangal, Berea, Ohio; Sarah Buchanan, Indianapolis, Indiana, and Carrie Willey, Paintsville.

Jerry Banghart, Professor of Drama is directing the play and Judith Dosson, Pataskala, Ohio, is playing as assistant director. Bill Watts, Professor of Speech and Drama is technical director.


—Pd. Pol. Adr.

# It's Up To You!

These Men Will See To It That Morehead Goes To The River For Water For Its Own Water System

FOR MAYOR

Vote For



ELDON T. EVANS

For Councilman

Progressive Party



Herman Brown

For Councilman

Vote For



Lloyd (Smiley) Peifrey

For Councilman

He Will Again A Friend To All In Time Of Need

## W. C. Flannery

For Rowan County Judge

The Peoples Choice

—Pd. Pol. Adr.

# It's Up To You!

**Complete Ambulance Service**  
**Oxygen Equipped**  
**"Equipped To Serve You"**  
Member of Kentucky Funeral Director's Burial Association  
--Authorized To Service--  
**Burial Insurance Contracts Issued By**  
**COMMONWEALTH LIFE INSURANCE CO.**  
**LANE FUNERAL HOME**  
Phone 784-4134 - Morehead, Ky.

**3 Big Features 3**  
**Money Back Guarantee**  
This three "biggest of all time" feature is for ADULTS ONLY. The admission price is only \$1. After you see one-half of *Rope of Flesh* (not counting the other two features) if you're not satisfied just walk to the box office and get your money back.  
Words, pictures... nothing can adequately describe what Pleasant Valley is offering these three nights - Fri., Sat., Sun., - Oct. 22, 23, 24.

**EVE PRODUCTIONS INC. presents**  
**Rope of FLESH**  
More Shocking than "Rope of Flesh" - BAWDIE from "Flesh and Blood" - BARTENDER from "God's Little Acre" - The outstanding EXPOSE of adult-teen LUST and SAVAGERY - VOLUPTUOUS scenes and VIBRANT poses - all caught in the members COULDS of genuine PERVERSITY and RAW SENSATIONS - **THE NATURAL** - starring HALL HOPPER with extensive color film segments from "The Seven Years Itch" - "The Seven Years Itch" - "The Seven Years Itch" - LORNA MANTLAND

**Second Feature...**  
**BOY, OH BOY! WHAT YOU CAN SEE THRU HIS...**  
**X-Ray Specs!**  
**TICKLED Pink**  
STARRING TOMMY HOLDEN and JUNE PARR with JERRY ANDERSON and JERRY ANDERSON  
THE BROWN BRIGADE of gal gal gal GILLES

**3rd Feature...**  
**BLOND BAIT**  
Girls... Sex... Everything... the third big smash hit to top level entertainment like the other two. The biggest dollar value in the history of our theatre.  
Come Early  
**Friday, Saturday, Sunday**  
Oct. 22, 23, 24  
**First Feature - 7 pm**  
**Pleasant Valley Drive-In**  
East of Olive Hill on U. S. 60

**M'head Students Doing Teaching In Rowan**

Thirty-six Morehead State College students are doing their student teaching at Breckinridge this semester. They are among 164 Morehead students at 42 student teaching centers throughout the state. Dr. Lawrence Griesinger, Director of Student Teaching at Morehead, said the students will do four weeks of student teaching and return to Morehead for four weeks of on-campus work. The students will then return for four more weeks of student teaching and will complete the semester with the remaining four weeks on campus.

"We are greatly pleased with the student teaching centers throughout the state," said Dr. Griesinger, "as they provide excellent opportunities for our youngsters to prepare for the teaching profession." The Morehead State College students who will do their training at Breckinridge are: Barbara Applegate, James Allen, Forrest Cope, Dale Dummitt, Ira Frazier, Sadie Whitaker, Ted Pass, Bill Fraley, Robert James, Edward Taylor, Richard Jones, Danny Young, Robert Johnson, Nilda Oglio, June Burke, Lance Murphy, George Burgess, and Nancy Mauk.

Others doing their training at Breckinridge are: David Littleton, Colleen Dummitt, Voloes Frazier, Carol Sherry Gray, Stephen Mullins, Judith Ellis, Cora Crabtree, Lora Young, Sharron Conley, Maria Reed, Mildred Stanley, Phyllis Wisecup, George Mays, John R. Hall, Barbara Ranvier, Brenda Wells, and Marcia Smith. Other Morehead State students with nearby student teaching assignments are: Clearfield: Barbara Ranvier. Rowan County High: Manuel Periera, William Higginbottom, Nita Simons, Margaret Mingo, Ann White, and Marcia Smith. Paducah: Jonnie Blair, Elizabeth Flashner, Beverly Yelding, William Combs and Steve Young. Tilton Hogge School:

Dottie West. Elliottville: Charles Adkins and Samuel Snyder. Farmers: Wendell Rivers and John R. Hall.

**Device May Curb State Forest Fires**

The State Division of Forestry will face the fall fire season with a new weapon in its arsenal of fire-fighting equipment. State Fire Control Chief Maynard Marcum has announced that a forecast of fire weather for Kentucky, Indiana and Ohio has been obtained with the U.S. Weather Bureau at Cincinnati by the U.S. Forest Service. Marcum said the Cincinnati station will provide area forecasts to the division each afternoon for both the eastern and western sections of the state.

"We are hoping to cut the size of forest fires during the fall season from an average 25 acres to 15," Marcum said. The division of forestry in the State Natural Resources Department, operates ten weather stations in nine forest districts across the state. Marcum said these stations will feed weather information to the Cincinnati office where it will be correlated and fed back to the division. "This will enable us to move our equipment into a potential fire area and set up our defenses before a fire breaks out," Marcum said. "We previously received forecasts from Asheville, N.C.," Marcum said, "but feel this new station, being closer to Kentucky, will be a greater advantage for the division in planning our suppression forces to cope with predicted problems in fire occurrence and suppression."

**"I Don't Like The Catholic Church BECAUSE..."**

Ask many non-Catholics to finish this sentence in 25 words or less, and their answers might surprise you. Some of them, no doubt, would attribute their opposition to doctrinal differences. They might be critical of some or all of the seven Sacraments accepted by Catholics. Others might not like the Church's ritual and devotions, or even the Catholic attitude on social questions. But none of these is the dominant reason for the opposition of some people... and the unwillingness of others to inquire into the truth of Catholicism. The great stumbling-block is the unwillingness of many people to believe that priests and Bishops and a Pope... all men like themselves... are vested with divine authority to speak for God. They refuse to believe that another human being has the authority to forgive sin, even though Christ told the Apostles: "Whose sins you shall forgive, they are forgiven them; whose sins you shall retain, they are retained." They reject the idea that God delegated any of His powers to mere men, even though Christ gave Peter the keys "to bind or loose on earth," and promised the disciples: "He that heareth you, heareth me." Those who reject the discipline of the Church will contend, at times, that God would not have delegated His powers to any but the spiritually perfect... and there are no such people in contradiction of this, Christ clearly did appoint deputies to teach His gospel and... though He did not make them personally immune to temptation and sin... He guaranteed them against success in the teaching of His gospel. It is quite possible that a perfectly sincere person... after fully investigating the Catholic religion... might not in good conscience be convinced that he should become a Catholic. But if it is true... as claimed since the time of Peter... that the Catholic Church is Christ's true Church, those seeking religious truth should not be deterred by personal objections to some aspect of Catholicism which may become acceptable to them upon investigation. "What Do You Find Wrong With The Catholic Church?" is the title of a frank and highly interesting pamphlet which discusses freely why more than 550 million people throughout the world gladly accept the discipline of the Church, and why many others reject it. Upon request we will mail you a free copy. Nobody will call on you. Just ask for Pamphlet KC-54.

**FREE - Mail Coupon Today**  
**KNIGHTS OF COLUMBUS**  
**RELIGIOUS INFORMATION BUREAU**  
187 S. 2nd St. St. Louis, Mo. 63103  
Please send me your free Pamphlet entitled "What do you find wrong WITH THE CATHOLIC CHURCH?" KC-54  
NAME \_\_\_\_\_  
ADDRESS \_\_\_\_\_  
CITY \_\_\_\_\_ STATE \_\_\_\_\_

**It's Up To You**

**This Is Why We Are Pledged To Go To The River**

This is an exact photograph copy of a letter from the consulting engineers who have made recent water surveys for the City of Morehead and Morehead State College.

**MEMBERS AMERICAN WATER WORKS ASSOCIATION**  
**MEMBERS WATER POLLUTION CONTROL FEDERATION**  
ESTABLISHED 1914  
**HOWARD K. BELL** (1914-1961)  
**HOWARD K. BELL**  
JAMES E. LACY  
W. RAY FOSTER, JR.  
G. L. SUTTON  
G. L. SUTTON  
L. GREGORY  
MEMBERS CONSULTING ENGINEERS COUNCIL  
**MEMBERS AMERICAN PUBLIC WORKS ASSOCIATION**  
PHONE 256-3800  
AREA CODE 606  
WATER SUPPLY AND PURIFICATION  
SEWAGE COLLECTION & TREATMENT  
INDUSTRIAL WASTE TREATMENT  
SOLID WASTE DISPOSAL-ORLANDO  
SPILLING POOLS  
POLLUTION-CONTROL-EQUIPMENT  
OPERATION SUPERVISION

**HOWARD K. BELL**  
**CONSULTING ENGINEERS, INC.**  
853 SOUTH LINGSTONE STREET  
LEXINGTON, KENTUCKY 40501  
REPLY TO P. O. BOX 548  
March 25, 1965

Mr. Clint Johnson, Superintendent  
Morehead Utility Plant Board  
Morehead, Kentucky

Dear Clint:

In my discussion yesterday with you and Mayor Evans I pointed out certain factors that in my opinion favored the City of Morehead providing their own water supply and treatment facilities rather than to continue the purchase of water from Morehead State College.

You are aware that we made a study of the College water facilities and sources of supply but at the direction of the state officials the needs were projected for only 15 years in the future. We subsequently prepared plans for the expansion of the College water treatment plant to a capacity of 1400 gpm which was estimated to serve the college and the City for the next 15 years. The water supply in Triplet Creek and the raw water storage reservoir was estimated to be adequate to supply only the present 500 gpm treatment plant during an extremely dry summer season. Although we reported on the need for an additional raw water supply, the planning of the dam and reservoir was authorized. It therefore appears that had the College continued with the construction of the planned plant additions a shortage in actual raw water supply could have developed in an unusually dry year.

Subsequent to the College study a water supply study for the City was made. By this time the plans for Cave Run Dam on Locking River had progressed far enough to provide reasonable assurance of an adequate water supply from the Locking River. The City authorized planning for treatment facilities and a transmission line and reservoir. The treatment plant with hammer sump would be a 2000 gpm plant with a capacity of 1400 gpm which is estimated to serve the City for the next 15 years. The transmission line is sited to deliver 4.5 mgd in the future without a booster pump or 6.0 mgd with a booster pump. The treatment plant is designed so that it can be readily expanded as needed in the future. You will note that the planned plant for the City was sited on the basis that the College would continue to provide its own water supply. The City plant could serve the College needs when and if those needs exceed the present College supply capacity. In such case it is possible that the City plant might have to be expanded ahead of the estimated 25 years, but this is dependent upon the rate of growth of the College and the City.

Comparison of the two plans shows that the College plan is based on treatment plant expansion to serve the increased needs for the next 15 years but no provisions was made for an increased source of supply which is needed during that period. A study of impoundment possibilities indicated that it was not financially feasible to provide impoundments of water to supply the needs for more than the next 15 years. In other words, if the College plan was expanded and a new dam and reservoir were provided, they would serve the needs of the college and the City for about 15 years after which time it would be necessary to resort to the river supply.

The City plan provides for the immediate needs with facilities that will allow almost unlimited future expansion at minimum cost. One factor which I think is extremely important is the matter of industrial development as it is affected by the availability of an adequate water supply. This is an important factor in attracting industry and as long as the supply is barely adequate for existing needs the likelihood of interesting new industries is remote. With an ample water supply and reserve treatment capacity which the City can furnish, the industrial possibilities are brightened considerably.

I have attempted to make this analysis as objective as possible since we have served as consultants to both the State and the City.

Yours very truly,  
**HOWARD K. BELL, CONSULTING ENGINEERS, INC.**

By **J. Wiley Finney**  
JWF:jac

**If This Is What You Want**  
**Vote For**  
**The Progressive Party**  
FOR COUNCILMAN  
William (Billy) Litton - Herman Brown - Lloyd Pelfrey

**It's Up To You**



THE PUBLISHER'S PEN

Morehead Seems To Be Using Penicillin More Than PH Water

The doctor says, "go to bed and get some rest"...

The two weeks cold or "semi-cold-semi-flu" bug...

Until Monday Penicillin was more plentiful...

This wave of what a layman terms "new and worst type of cold" hit northern Kentucky...

Anyway, we've blown a million of those germs on the paper...

FAVORABLE - Our contacts with people [not germs] during the week from all parts of the county indicate...

BY EMPHASIS - The Morehead News will accept no political advertising for the next issue after 5 p.m.

TALENT NEEDED - Morehead can properly be proud of "The Messiah" rendered for several years.

WE HOPE TO ATTEND - Perhaps the closest friend Morehead's Steve Hamilton has...

SAD FOR MOREHEADIANS - One of the most popular students of the Morehead State University...

ANOTHER TRAFFIC FATALITY - Our long time friend, Edward T. [Ted] Bassett will probably be scaming this issue to see what this community...

PREDICTION - Rowan County will cast more than 5,000 votes in the Nov. 2 election.

HERE'S THE ANSWER - Replying to several telephone calls City Attorney Tom Burns advises he knows of no ordinance against digging water wells in the City of Morehead.

CLOSING OUT A GERM INFESTED WEEK - Fortunately Friday's fire at the Dairy Mart required no water, except the chemical solution carried in the fire trucks.

It does seem that penalties at the wrong times, called back touchdowns, and little but big misfortunes, have hit Morehead.

Harry Sparks branded on a speech at Morehead...

Meeting Will Set Leaf Auction Dates

Dates and times for auction sales of the 1965 burley tobacco crop will be set at a meeting of the Burley Sales Committee...

The meeting was announced by Reynolds Bell, president of the Burley Tobacco Growers Cooperative Association.

Paria, Ky., chairman of the sales committee, Bell, a Lexington warehouseman, is president of the Burley Auction Warehouse Association.

He succeeded Albert C. Clay, Mt. Sterling, Ky., who recently retired as warehouse association president and became its board chairman.

The Burley Sales Committee's membership represents all segments of the burley tobacco industry...

Health Tax Issues In Rowan Are Recited

Proposals of the proposed 100 on each \$100 assessment [maximum] for examinations for such diseases as cancer in women or diabetes at little cost...

Jaycees Seeking Strength

"Morehead Jaycees in an effort to obtain new members to help carry out the Jaycee program in Morehead have designated October as membership month.

1. The purpose of this tax is to provide funds for the operation of the Rowan County Health Department.

2. We already pay large amounts in taxes [the state share of the property tax and the 3% sales tax] which do not come back into the county for our people's benefit.

3. If we raised our health department money through the public health tax, then we would be guaranteed of becoming a Foundation County.

4. The amount the tax would cost the average taxpayer is quite small—less than 1 cent per day per family, or, less than 1 dollar per year per person.

5. If we were a Foundation County, the State would see that we had enough money for the local health department to be able to hire three nurses to help meet the public health needs of this people of this county.

6. If we were a Foundation County, we could plan and carry out a good school health program where we could see that every child got good health supervision, yearly physical exams where indicated, tuberculosis tests to be sure they don't get tuberculosis unknowingly.

7. People keep saying they don't like Frankfort or Washington trying to run this county. Here is the chance to either put up or shut up.

8. If there were money for the health department...

WOMEN'S MEDICAL NEWS

The biggest dental problem for people aged 30 is not tooth decay, it is gum disorders, according to dental authorities.

CHILD'S MEDICAL RECORD IMPORTANT

Do you know your child's blood type, Rh factor, drug sensitivity, shot record? Such medical information can be vitally important to the life of a child.

To help parents keep such medical information handy, the association has developed a 16-page purple-size booklet convenient for taking on trips or when visiting a physician in an emergency.

There is record of childhood diseases, immunizations, surgical operations, and serious injuries, sensitivity to drugs, dental examinations, height and weight.

FEW DROP-OUTS IN THIS TEST Can a poor woman, unable to read, learn to take the oral contraceptive pill correctly? And is she likely to stick with this method...

He Served You Well...

He Will Again A Friend To All In Time Of Need W. C. Flannery For Rowan County Judge

He Will Again A Friend To All In Time Of Need W. C. Flannery For Rowan County Judge

He Will Again A Friend To All In Time Of Need W. C. Flannery For Rowan County Judge

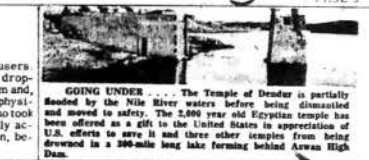
He Will Again A Friend To All In Time Of Need W. C. Flannery For Rowan County Judge

He Will Again A Friend To All In Time Of Need W. C. Flannery For Rowan County Judge

He Will Again A Friend To All In Time Of Need W. C. Flannery For Rowan County Judge

He Will Again A Friend To All In Time Of Need W. C. Flannery For Rowan County Judge

He Will Again A Friend To All In Time Of Need W. C. Flannery For Rowan County Judge



GOING UNDER... The Temple of Dendur is partially flooded by the Nile River waters before being dismantled and moved to safety.



for every home, reddy has the perfect yard light

The only problem — which isn't! They're all so beautifully designed, so perfect for giving your home and yard that just-right touch of decoration.

So see your dealer soon. Ask him to show you the new and exciting styles of electric yard lights.



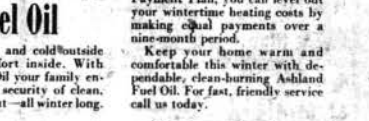
Cozy Comfort... all winter long with Dependable Ashland Fuel Oil



Your Ashland Oil Distributor is genuinely interested in your home heating comfort. He will make prompt delivery even during the coldest weather.

Snow and cold outside... cozy comfort inside. With Ashland Fuel Oil your family enjoys the warm security of clean, safe, reliable heat—all winter long.

ASHLAND OIL & REFINING COMPANY RUSSELL MEADOWS & WILBERT CRAGER, Agents



Rowan Street, P. O. Box 358 Morehead, Kentucky Phone: 784-5422

# WANT ADS

**Classified Advertising Rates**

No Classified Ads Accepted After 12 Noon Tuesday

Per word first insertion 5¢  
 Per word each subsequent insertion of same ad without any change 3¢  
 Minimum charge (first insertion) \$1.00  
 Minimum charge (each subsequent insertion) 60¢  
 Display Classified Advertising, per inch 20¢

Entered as Second Class Mailing Matter at Post Office - Morehead, Ky

**CATTLE FOR SALE**  
 13 head Black Angus. One registered bull, 3-year-old, from R.H. Best herd, Sharpburg, Ky., 3 heifers with calves by side; three 4-year-old cows with calves by side. A nice herd of cattle, easy to handle, pretty and fat. Reasonable price. See Cecil Landreth or phone 784-4653, Morehead, Ky. c-42

**FOR RENT**  
 Six-room house on Dry Creek Road near Lee Clay plant. Hot and cold water. If interested call 784-7715 Saturday or Sunday, W.D. Schryver. c-42

**FOR SALE**  
 Croley combination radio and automatic record player. Walnut cabinet, fine furniture. Stack of records included. \$30. See Ray Lewis on Christy Creek. p-43

**WANTED**  
 Manager trainee. Fast growing small loan company has opening for man between ages of 21 and 35. High school education required. For prompts interview contact Empire Finance Company, 347 1/2 East Main Street, Morehead, Ky. c-42

**FOR RENT**  
 Five-room house with bath, full size basement. See Call W.F. Thomas, phone 784-4337. c-44

**1966 GMC PICKUP - \$1788**  
 FULL PRICE Includes heater, defroster, dual headlights, turn signals, spare tire, 6 cyl., 155 HP engine, oil filter, dual speed electric windshield wipers and washers, seat belts, back-up lights, 6 1/2 foot Fenderside bed, front coil springs, leaf springs rear, shock absorbers front and rear. See Dick Stone, Stone Pontiac-Buick, GMC, US 60 East, Morehead, Ky. Phone 784-4937. c-42

**APARTMENTS FOR RENT**  
 Completely furnished apartments and rooms. Morehead Camp Motel, 1 mile East US 60. Phone 784-7128. c-42

**USED CARS**

- '63 Chevy II Convertible
- '58 Ford 4 Door
- '60 Corvair 5 Door Sedan
- '59 Chevrolet 2 Door
- '57 Ford 2 Door

**USED TRUCKS**

- '59 Chevrolet Tractor
- '54 Chevrolet Pickup
- '61 Chevrolet Pickup
- '62 Chevrolet Corvan

**Midland Trail Garage**

Pioneers in Rowan County Transportation

## POLITICAL ANNOUNCEMENTS

### General Election DEMOCRAT PARTY REPUBLICAN PARTY

**For State Representative (7th District)**  
 SHERMAN R. ARNETT  
 For County Attorney  
 JAMES E. CLAY  
 For County Judge  
 W. C. FLANNERY  
 For Sheriff  
 For Sheriff  
 JOHN T. GREEN  
 For County Court Clerk  
 OTTIE W. ELLAM  
 For Tax Commissioner  
 JUANITA WILSON  
 For Coroner  
 HAROLD WYNHIER  
 For Jailer  
 BELVA BRANTHAM  
 For Magistrate (District 2)  
 FORREST L. MAY  
 For Magistrate (District 3)  
 HARVE WYNHIER  
 For Magistrate (District 4)  
 CHARLES O. WADDELL

**FOR RENT OR SALE**  
 Three-bedroom brick with large fireplace, plenty cabinet space, carpet. On a large lot just 1/4 mile north of Morehead on Flemingburg Road. C. Roger Lewis, 784-4168, for complete details and price.

**VACUUM CLEANER**  
 Electrolux, all new attachments. Take over \$ payments of \$5.00 each. Will deliver for cash. Phone 784-5096. c-42

**APARTMENT FOR RENT**  
 Condo. H. M. Meadows, phone 784-5287, or James Inou, phone 784-3926. c-42

**Real Estate**

Buy, Sell or Mortgage

See Our Sales List For A HOME

**BUSINESS PROPERTY**

**FARM**

Licensed and Bonded Real Estate Broker

Authorized Mortgage Loan Broker for The Prudential Insurance Company of America.

Phone 784-5305  
 Morehead, Kentucky c-42

**TERMITE TROUBLE?**

See or Call  
**CHESTER KISER**  
**CONSTRUCTION CO.**  
 Phone 784-5109 & 784-5442  
 Agents for  
**State Termite Control and Chemical Co. Inc.**

**FOR SALE**

On Railroad St. extended, back of the Free Will Baptist Church and Cowden Manufacturing Co.

**3 Bedroom Brick Veneer**

Wall to wall carpeting, 1 1/2 ceramic baths, built-in kitchen, carport attached, forced air heat. Lot size 75 ft. by 100ft. Street and driveway black-topped.

**Terms Up To 20 Years To Pay**

**BOONE HOLLAN, JR. BUILDER**

Phone 784-7169 Morehead

**PIANO TUNING**  
 Piano tuning and re-pairing. Free estimates. Also small pianos for sale on service truck. Terms. James C. Watch, Piano Tuner, 853 Meadow Lane, Lexington, Ky. c-43

**DOG LOST**  
 Small female beagle, 18 months old, Brown, black with white tipped tail. Lost Sunday, 6 miles from Morehead on Flemingburg Road. Harry Gaudin, phone 784-4398 after 5 p.m. or before 8 a.m. Reward \$100. c-42

**CARD OF THANKS**  
 We take this means to express our sincere thanks to the many friends and neighbors for their sympathy and numerous acts of kindness at the time of death of our loved one, David Edward Quisenberry. Especially do we thank the teachers of the Grade School for their thoughtfulness; Stucky Funeral Home for the many things they did to make it as easy as possible for us; Rev. John Cebley, the pianist and the singers; Rev. Ted Greene for his comforting words; the cast members who were his dearest friends; and all others who assisted us in any way during our bereavement. ---The Quisenberry Family. c-42

**TRUCK FOR SALE**  
 Ford C-600. Replaced by larger unit. Spring Grove Dairy. c-42

**NURSING CARE**  
 Trained Graduate Practical Nurse wants bed patients to meet at my home. Mrs. Perry, phone 784-7720. c-42

**FOR RENT**  
 Furnished 4-bedroom house at 432 Second Street. Phone 784-5387. c-42

**Notice Of Bids**

The Rowan County Board of Education will accept bids on Building Insurance until 4:00 P.M. on November 1, 1965.

General specifications, bid forms and schedule of values may be obtained at the Superintendent's office, Clifford N. Cassady, Supp. Rowan County Schools c-43

**Executrix's Notice**

I, Zada Caskey, Executrix of the estate of Lester Caskey, deceased, are requested to prove their claims as required under the Statute and file same with the undersigned at once.

Zada Caskey  
 Executrix of the estate of Lester Caskey  
 Lester Hogge,  
 Attorney c-44

**Perk, pop, zzzzzzzzzzzz, such useful little sounds! Find ELECTRIC APPLIANCES SMALL... in the YELLOW PAGES.** Where your fingers do the walking.

**FOR SALE**  
 Building lot on Railroad Street across from C&O parking lot. \$5,700. Call Jack Landreth, phone 784-4635. c-42

**HOUSE FOR RENT**  
 4 1/2 rooms with bath. Located 458 East Main Street. Available Nov. 1. Call 784-4684 or 784-4610. c-42

**PIANO WANTED**  
 We are interested in buying a good, used upright or grand piano. Phone 784-5253. c-42

**FOR SALE**  
 1954 Buick Super engine and transmission. Call 784-5924. p-43

**FOR SALE**  
 Building lot on Railroad Street across from C&O parking lot. \$5,700. Call Jack Landreth, phone 784-4635. c-42

**FREE Will Get Free Parking**

Again this year, during the Eastern Kentucky Education Association Convention, November 11, and 12, the City of Ashland, through the efforts and coordination of the Board of Directors of the E.K.E.A., the visiting teachers and professional people will be given "free parking" during these two days.

They can pick up their decals at their automobiles at the Morehead or Eastern College display areas.

**John Green**  
 For Sheriff

**Why?**

WHY is there a water shortage when the city is using 666,000 gallons LESS each month than a year ago?

WHY are people being told that they will get more Water November 3rd if the Citizen's ticket is elected?

It will take 12 months for the College to build an additional plant that will meet the needs of the city and college for 5 years. DO THE PEOPLE KNOW that the contract to build a CITY OWNED PLANT WILL TAKE 14 MONTHS (Bell Engineering report). This will give an endless supply of water.

HAVE THE PEOPLE BEEN TOLD that there is ONLY TWO MONTHS DIFFERENCE in time?

**Get The Facts**

Only 4 Have Committed Themselves To Go To The River--Then

The City Can Own - Not Rent.

**Vote For**  
 The Progressive Ticket

MAYOR  
 Eldon T. Evans

FOR COUNCIL  
 William (Billy) Litton - Lloyd Pelfrey - Herman Brown

**Women For Water**

**SIGHT-SEEING QUIZ**

Can You Name The Spot?

Check a name for the number of the spot on the map. The name of the spot is in the margin. Answer to Quiz: 1. Morehead, Ky. 2. Morehead, Ky. 3. Morehead, Ky. 4. Morehead, Ky. 5. Morehead, Ky. 6. Morehead, Ky. 7. Morehead, Ky. 8. Morehead, Ky. 9. Morehead, Ky. 10. Morehead, Ky. 11. Morehead, Ky. 12. Morehead, Ky. 13. Morehead, Ky. 14. Morehead, Ky. 15. Morehead, Ky. 16. Morehead, Ky. 17. Morehead, Ky. 18. Morehead, Ky. 19. Morehead, Ky. 20. Morehead, Ky.

# Claig Sprout . . .

And His Friend, TIMOTHY TUGMUTTON . . . Sez

DEAR MISTER EDITOR: Timothy and me, have been doing a lot of figuring on this State Bond Issue and concluded as follows—

1. The money required to pay interest and debt will be nine-and-one-half-million per annum and the LBJ and EYB economy is a-going up.

2. If we don't borrow that 176-million-dollars we lose four times as much in federal moneys. 3. Somebody was smart enough down to Frankfort to restrict the use of the bond money so it could only be spent for roads and buildings, etcetera, so it looks like a bunch of high salaried drones can't get it.

4. Ohio, West Virginia, Tennessee and even Virginia (lover boy G. Washington's state) are borrowing money.

5. If you can borrow \$176 million and get back \$300 million that is good business.

6. If you can borrow \$176 million and get back \$300 million that is good business in this four lane roads and space age.

7. So, irregardless and Timothy hereby do something seldom we have done before — we endorse the said bond issue and think it is good business in this four lane roads and space age.

One thing more, Mister Editor: 1. and Timothy, want to go on record as saying that anybody who makes a false statement to get on relief and commodities should be sent to the federal penitentiary at Atlanta.

There is a certain man in our time, splitting distance who is getting commodities and medicare who has his farm paid for, 30 head of cattle and money in three different banks besides some hid probably under his house in a coffee can.

Ed Doolittle and Clem Webster practical took over the session at the country store Saturday night.

Ed started at the top by announcing the U.S. Supreme Court had made a bad mistake when they come out here a little while back with the ruling that the States has got to set up legisla-

tures on the one-man and one-vote plan.

Ed reported he had given it a couple of months and was decided it was going to get too complicated and cost a heap of money.

First off, said Ed, in the Great Society it was "1 but one step from there to voting the tombstones in the family cemetery plot. A heap of them that was done and gone, claimed Ed, was better qualified to vote than some we got now, and it would be logic in the Great Society for kin folks to honor the memory of them that has gone by casting a vote for em. He figured the Supreme Court would then come out with a ruling along the lines of one-family-and-five-tombstones. Farthermore, allowed Ed, when we got this new ruling it wouldn't be more'n a couple months till the Government would furnish perpetual care for all voting graveyards.

The Great Society, said Ed, gives special attention to anything that could vote.

He was of the opinion that now, since we was taking care of everybody from birth to the funeral home, it would be good to extend it to the graveyard and in line the hereafter. Farthermore, claimed Ed, the Democrats has fixed it so's you can't take it with you on account of it is gone afore you see it, therefore the graveyards was due extra consideration.

Clem was defending the Great Society and this new ruling by the Court. He reported he was always reading in the papers during ever election where some rural counties and places like Chicago was already getting a big tombstone vote. He said he could see collecting reading a few year ago where they was a election in a county in North Carolina and 46 percent of the total vote checked out.

He said he could see collecting reading a few year ago where they was a election in a county in North Carolina and 46 percent of the total vote checked out.

He said he could see collecting reading a few year ago where they was a election in a county in North Carolina and 46 percent of the total vote checked out.

He said he could see collecting reading a few year ago where they was a election in a county in North Carolina and 46 percent of the total vote checked out.

He said he could see collecting reading a few year ago where they was a election in a county in North Carolina and 46 percent of the total vote checked out.

He said he could see collecting reading a few year ago where they was a election in a county in North Carolina and 46 percent of the total vote checked out.

He said he could see collecting reading a few year ago where they was a election in a county in North Carolina and 46 percent of the total vote checked out.

He said he could see collecting reading a few year ago where they was a election in a county in North Carolina and 46 percent of the total vote checked out.

He said he could see collecting reading a few year ago where they was a election in a county in North Carolina and 46 percent of the total vote checked out.

He said he could see collecting reading a few year ago where they was a election in a county in North Carolina and 46 percent of the total vote checked out.

# Medical Society Endorses Rowan Health Tax Issue

Medical Society Endorses Rowan Health Tax Issue

The 100 on each \$100 assessment for a health tax to preserve the Rowan County Health Center, and allied services, has received endorsement of the Rowan County Medical Society.

All physicians of the Association, was just trying to get a argument out of Clem. I don't know nothing about dividing up our state legislatures in the proper portions and don't believe Ed does. I always figured arguing over politics was a heap like drinking liquor. They was a few men that can do it in moderation but the big majority don't know when to quit.

Yours truly, Claig Sprout

socialism were present when the vote was taken. The tax is held mandatory if the Health Center survives since it was able to keep open this year only through a grant of approximately \$3,500 from Northeast Kentucky Hospital Foundation, Inc., the money actually coming from reserves in the consultation clinic fund. It was pointed out at the time that further subsidization of this nature is impossible.

ITEM: Some food rich in vitamin C is needed every day because the body is unable to store this essential nutrient. Breakfast is a good time to get your daily requirements of vitamin C. This can be obtained by eating vitamin C foods such as tomatoes and tomato juice, strawberries, cantaloupes, orange or grapefruit juice.

# Ford Certifies M'head Trainee

Johnie N. Dickerson of Rowan Motors, Morehead, Ky., has been certified as a graduate of the retail selling course conducted by instructors from Ford's

Atlanta Marketing Institute in Paintsville. Certification of course completion was announced by L. C. Brock, director of the Ford Institute.

# 10 BIGGEST PUMPKINS WIN!

# Firestone Giant PUMPKIN GROWING CONTEST

Official Weigh-in Saturday October 30 Starting at 4:00 P.M.

BE A WINNER! Bring your pumpkin to our store now... 10 BIG PRIZES FREE GIFT For everyone who brings in a pumpkin

GRAND PRIZE WINNERS WILL BE ANNOUNCED SATURDAY, Oct. 30 at 6 p.m. you need not be present to be a winner

All Pumpkins Must Be At Our Store Before Noon, Oct. 23

CONTEST RULES: All contestants must bring pumpkins to our store before Saturday, October 23, at 12 noon. Pumpkins will be judged by weight and the 10 heaviest pumpkins will be declared winners. Winners will be publicly announced Saturday, October 30, at 6 p.m. Contestants need not be present. Pumpkins not claimed by owners after normal hours will be donated to local charity.

DON'T MISS THE FUN AND EXCITEMENT! If you don't enter the contest... come in anyway and watch our judges weigh them in for prize awards.

Morehead Home And Auto 1014 1/2 Hwy. 401 Morehead, Ky. Your Farm The Service Headquarters

# YOU CAN USE OUR CHECKS ... AND HAVE THEM, TOO!



You can use our checks to pay bills, make purchases and gifts of money—in person or by mail—and later have the same checks (automatically returned when they're canceled) as handy, easy-to-file receipts. All that work, service and safety for you... almost no effort on your part! Open a checking account here NOW!

PEOPLES BANK OF MOREHEAD

Revival Oct. 25th - 31st Kenneth Yoder Plymouth, Ind. Evangelist Services At 7 p.m. Everyone Welcome W. D. SCHRYVER, Pastor At The Church Of God Railroad St. Morehead, Ky.

October 22 is your LAST DAY to sign up! WIN! Warm-up jacket, helmet or regulation-size PPKK football, or handsome PPKK trophy if you compete only with boys your own age. It's free! It's fun! It's easy! FREE instruction book on punting, passing, kicking... also, an attractive PPKK tie-dye pin when you register! Bring them when you sign up! Get them before they're gone!

BOYS 8 through 13 enter our free PUNT, PASS & KICK competition! Sponsored by Rowan Motor Sales and The Morehead Jaycees

Morehead area boys from 8 through 13 can put their football skills against thousands of other boys throughout the nation in the 12th annual Punt, Pass & Kick competition which will culminate with a trip to Washington, D. C., and to an appearance at the National Football League Play-Off Bowl game for the top 12 winners. Sponsored nationally by the Ford Dealers of America and the National Football League, the Punt, Pass & Kick competition... Morehead boys will be tested for their ability to punt, pass and place-kick on the same day as regions of other boys all over the country. For 8-9 and 10-year old, warm-up jackets, helmets and footballs will be given as first, second and third prizes for each age group. Boys 11, 12 and 13 will receive gold, silver and bronze trophies. There will be 18 prizes in all. Scores throughout the country then will be compared to determine the 12 top winners in each of the 12 Ford zones -- a total of 5, 170 zone winners. Zone winners will meet in 37 Ford District competitions at which 222 district champions will win trophies. The 222 winners also will receive trophies. All 222 district champions will compete for area championships to be held in the 14 NFL-city areas. The 42 eastern NFL-area champions will compete in Dallas, Texas, on Saturday, December 11, to decide the six eastern division champions (one for each age group). The 62 eastern NFL-area champions will compete in Los Angeles, California, on Saturday, December 18, to determine the six western division champions (one for each age group). The six eastern NFL division champions, and the six western division champions, accompanied by their mothers and fathers, will go on a "Tour of Champions" to Washington, D. C. They will travel to Miami, Florida, site of the annual NFL Play-Off Bowl game, for half-time competition to determine the six National PPKK champions. Ronald Hall, Jaycee President pointed out that PPKK involves no body contact, there is no charge for entering and no special equipment is needed. Registration will be open until October 22, he said, with the Physical Education Department at both Rowan County and Breckinridge Training School as registration headquarters. "In 1964, PPKK's fourth year, 601, 459 boys entered the competition," he said, "a program which has received the commendation of the President's Council on Youth Fitness. Entrants will be judged on distance and accuracy of their punting, passing and kicking. Points will be awarded for each foot of distance the ball travels on the fly, and points will be subtracted for each foot the ball lands to the right or left of of center line. The Morehead competition will be held at Rowan County Athletic Field on Saturday, October 23, beginning at 8:00 A.M. The scores will be played off on the day of competition. Ties for top spot in zone and district standings also will be played off during special contests. District winners will receive trophies. Area winners will be for the top 12 division championships. The six national winners receive handsome PPKK championship trophies. The other six receive national runner-up trophies. All 12 finalists go on the "Tour of Champions."

Tonight Friday Saturday "SHENANDOAH" A Great Movie!

Two Mighty Armies Trampled Its Valley... A Fighting Family Challenged Them Both! JAMES STEWART SHENANDOAH

Starting Sunday She "borrows" his Apartment... then steals his Heart! SANDRA DEE BOBBY DARIN DONALD O'CONNOR That Funny Feeling

Starting Wed. Oct. 29th Big Halloween Midnight Show - Sat. Oct. 30th Show Starts 11 p.m. - All Seats 80¢

# To The Citizens Of Morehead

We, the undersigned, respectfully ask your support for the four candidates committed in favor of Morehead's owning and operating its own water system, with raw water coming from the Licking River.

FOR MAYOR Eldon T. Evans

FOR COUNCILMAN William H. (Billy) Litton - - Lloyd (Smiley) Pelefrey Herman Brown

We intend to do all in our power to assure their election, and we urge every citizen to use his vote and influence on their behalf.

Robert C. Allen George C. Hill Paul J. Reynolds

# SOCIETY

Phone 784-7739

Mr. and Mrs. Theodore Hall of New Castle, Ind. were guests Sunday and Monday at the home of Mr. and Mrs. Cecil Putvis, W.D. Reddick.

Weekend visitors at the home of Mr. and Mrs. Howard Jones were Mr. and Mrs. Lonnie Coffee and Mr. and Mrs. Calvin Shook and family of Burdine; Miss Marie Adams, Farmers; Mrs. Maude Lybarger, Shelby, O.; Mrs. Lilly Schmid, Highland, Ind.; Herbert Schmid, Chicago; and Mr. and Mrs. Bobby Jones, Franklin.

Dr. C. C. Mayhall and son, Crestor, were at funeral services last Saturday in Lexington for Dr. Mayhall's cousin, Dr. W.D. Reddick.

The Women's Missionary Union met Monday evening at the First Baptist Church with Mrs. W.M. Whitaker presiding.

Mrs. Roger Toysaler left Saturday by plane from Cincinnati to return to her home in Sarasota, Fla. after a two-week visit with her mother, Mrs. J.C. Barber Sr.

Mr. and Mrs. Larry Botts of Lexington visited over the weekend with their parents, Mr. and Mrs. Bruce Botts and Mr. and Mrs. Woodrow Hall.

Mrs. Allan Hamilton and children, David and Tammy are visiting this week with Mrs. Joe Greenhill in Louisa.

Dr. Norman Tant spent Friday and Saturday in Bowling Green and Sunday in Huntington. He was guest speaker at Audio Visual Aids regional meeting at Western State College.

A stork shower honoring Mrs. Eula Fannin was given Saturday at the home of Mrs. Earl White with Mrs. Johnny Hamm as co-hostess. Thirty guests attended.

The Morehead Day Homemakers Club met Oct. 12 at the home of Mrs. Neli Wheeler for a potluck dinner. Those attending were Mrs. Louise McCarty, Mrs. Irene Reynolds, Mrs. Bonnie Thompson, Mrs. Shirley Hybert, Mrs. Iva Caudill, Mrs. Ica Caldwell, Mrs. Martha McBrayer, Mrs. Laura Barber, Mrs. Nora Purvis and Mrs. Marjorie Gabbard.

Guests last weekend of Mr. and Mrs. Woodrow Barber were Col. William E. Barber of Springfield, Va.; Mrs. Elsie G. Bradshaw and Mrs. Eloise Riffe, Oak Hill, O.; and Miss Janie Barber, Lexington. Mrs. Habet Barber of West Liberty spent last week at the Barbers home.

The Senior Girl Scout Troop, sponsored by the Women's Medical Auxiliary, held an organizational meeting Thursday at the home of Debbie Dee Williams. Mrs. Sally Welsh is leader and Miss Gwen Richter is assistant. Those present were Betty Amburgey, Sheila Gage, Bobby Hough, Paty Abner and Judy Fannin.

A meeting of the Brownie Mothers was held Thursday night at the Morehead Christian Church. The leaders are Mrs. Steve Hamilton and Mrs. Watkins Martindale.

Dr. and Mrs. J.K. Smith attended the Morehead Medical Center game in Clarksville, Tenn. Saturday.

Mrs. Allen Lake and Mrs. W.H. Proudfoot of the Morehead Presbyterian Church attended a meeting of the Transylvania Presbytery at Danville last Thursday.

Ken and Leslie Smith spent from Friday to Sunday at the home of Mrs. James A. Davis in Grayson.

Mrs. J.H. Jones returned Wednesday to her home in Bowling Green after spending the past three weeks with her daughter, Mrs. Ethel J. Moore.

Weekend guests of Mr. and Mrs. George Evans were Mr. and Mrs. Charles Glendon and children Tommy, Susie, Sandy and Lida of White Sulphur, W. Va.

Weekend guests of Mr. and Mrs. Elton Johnson were Mr. and Mrs. Charles Riggs and children, Rodney and Linda of Blainchester, O. Judy and Nancy Smith were their Sunday visitors.

J. Phil Smith and sons, Lester and Len of Jackson were guests last week of Mr. and Mrs. Lester Hogg.

Mr. and Mrs. Jim Cross and son, Scotty of Ashland spent the weekend with her parents, Mr. and Mrs. Warban Gullett. Mrs. Cross and son remained for a longer visit.

Miss Diane Claypool and Miss Yurberg who attend the University of Tennessee in Knoxville, spent the weekend with Mrs. Naomi Claypool.

Father Lawrence of Lexington was guest speaker Sunday at the Episcopal Church. Later a covered dish dinner was served to the members of the church at the home of Mrs. Louis Nellie. The minister Rev. John Thompson and Mrs. Thompson of Harrodsburg were also guests at the dinner.

The A.A.U.W. met Tuesday in the College Home Economics Department for a covered dish dinner. Mrs. Octavia Graves presided at the meeting.

Sunday guests of Mrs. G.A. Sheets were Mr. and Mrs. Robert L. Sheets of Huntington, W. Va.

Mrs. Charles Brooks returned from a visit with her son and family, Mr. and Mrs. Clyde M. Watson Jr. and children in Bensleyville, Pa.

Mrs. Jewell Hertze and children, Robin and Virginia; Mrs. Evelyn Reed, daughter, Joan; Mrs. Bill and Jim Gary and son, Jimmy, all of Lexington spent the weekend with Mrs. W.T. Garey and visited W.T. Garey who is a patient at St. Claire Medical Center.

Mr. and Mrs. Hugh Suters of Bowling Green, Ind. were guests of Mr. and Mrs. DeWard Evans of Barnera from Monday to Wednesday.

Guests of Mrs. R. H. Hayes on Thursday were Mr. and Mrs. Orville Hayes of Maysville. Her visit Saturday were Mr. and Mrs. Leslie Ison of Sandy Hook.

Mrs. Ward Williams, Miss Mae Blair and Mrs. Marvin Gales attended the installation of officers of the Olive Hill O.E.S. Chapter Monday night. Mrs. Gales installed the new officers.

Mr. and Mrs. Roscoe Hutchinson visited Friday with Mr. and Mrs. Jim Hutchinson in Sandy Hook. They had as the guests Saturday Mr. and Mrs. Bennie Adkins of Fairborn, O.



Mr. and Mrs. Gary Alan Keller

## Miss Waggoner Is Married In Ohio

The First Lutheran Church in Shelby, O. was the scene of the wedding Oct. 2 of Miss Janet Kras Waggoner, daughter of Mrs. Lillian Fugate of Shelby, formerly of Morehead, and Gary Alan Keller, son of Mr. and Mrs. Lyle Warren Keller, Shelby by Route 2, Rev. James L. Lumadue performed the double ring ceremony.

The bride, given in marriage by her stepfather, Paul Fugate, wore a gown of white satin with long tapered sleeves, scoop neckline and fitted bodice. The skirt fell into a full chapel train which was accented with a modified waltz train. A circular open pillbox adorned with Alencon lace and pearls held her bouquet of white lilies. She carried a cascade arrangement of white lilies.

Arch Williams spent Sunday night in Kenova, W. Va. with his mother, Mrs. Della Mae Henry.

Mrs. Jerry Brown, Mrs. Joe Cummings and Jack Sanders of Cynthia were guests last weekend of Mrs. Geneva Maude and Mr. and Mrs. John E. Allen Jr.

Guests from Thursday to Saturday of Mr. and Mrs. John Taylor were Mrs. Howard Congden and children, Holly and Craig; and Mrs. R.V. Thompson and children, Tommy, Margaret, Ann and Dickey of Peer, Mich. They also visited with Miss Carolyn Congden who is a student at Morehead State College.

Ronald Hart spent Friday and Saturday in Shelby with his parents, Mr. and Mrs. O.L. Hart.

The Sileam Church of God Unity Workers met Oct. 13 at Mrs. Earnie Lewis' home for the regular session. Mrs. Minnie Hill presided. At the close of the meeting the hostess served refreshments to Mrs. Hill, Mrs. Virginia Colliver, Mrs. Hazel Caudill, Mrs. Linnie Poust, Mrs. Bertha Hall, Mrs. Grace Gilkinson, Mrs. Jewell Reynolds, Martha Hill, Shirley Razor and Mary Hill.

Those attending the church's Senior Class annual picnic recently were: Polly McClurg, Janis McClurg, Mary Williams, Bonnie Oswley, Betty Alfrey, Clara Ferguson, Gladys Markwell, Sue Bowen, Shirley Razor, Hazel Lykins, Linda Lykins, Donna Lykins, Gary Bowen, Rosie Ferguson, Pruda Shay, Grace Gilkinson, Mary Hill, Martha Hill, Corbie Alfrey, Ray Ferguson, Thomas Ferguson, Eugene Ferguson, Gary Ferguson, Wendell Perry, Ivan Markwell, Gary Bowen, Larry Lykins, Bobby Lykins, Kenneth Lykins, David Lykins, Jerry Lykins, Robert Shay, Walker Gilkinson, Michael Hill and Earl Bartram. Mrs. Maude Ferguson and son, Carlie of Muncie, Ind. were guests.

About seventy members were present for the occasion. Visitors were: Carrie Proctor, Clearwater, Fla.; LaVera Sayre, Mr. and Mrs. Virgil Cross and Constance Cross, Vinson, O.; Mr. and Mrs. Bob Carr, Rosalie Blackburn, Marcelene Thompson and Edith Callihan, Russell; Anna Stamp and Emma Spurlock, West Liberty; Doris West, Greenup; Hattie Terrill and Eunice Harper, Scott Shores; and Leige LeMaster, Rush.

Mr. and Mrs. Glen Bock cook spent the weekend at Greenbo Lake State Park. Their daughter and family, Mr. and Mrs. Lawrence Adams and sons, Brian and Larry of Hamilton, O. were here recently for the weekend.

Mr. and Mrs. B.F. Penix returned Saturday from a visit with Mr. and Mrs. George Goff in Inager, W. Va. They also spent some time in Pikeville and were Monday visitors in Lexington.

Mr. and Mrs. Mort Roberts had as their weekend guests Mr. and Mrs. Gene Reynolds and children of Louisville, Mr. and Mrs. Harmon Thomas and sons of Seymour, Ind. and Bill Roberts, Glenville, W. Va. They left Saturday for a two-week visit with the Reynolds and Thomas families.

Ward Williams returned home Thursday from Huntington, W. Va. where he had been a patient in the VA Hospital.

Mrs. Leo Oppenheimer had as her guests last weekend her son and family, Dr. and Mrs. Leo D. Oppenheimer and children of South Ft. Mitchell, and Mrs. and Mr. George Davenport, Covington.

The Clearfield Homemakers Club will meet Monday evening at 7:30 at the home of Mrs. Ethel Black, Morgan Port, for the October lesson.

Leach, associate matriarch; Earl Leach, associate pastor; Lena Coleman, secretary; Elsie Lee Corbett, treasurer; Thelma Bumgardner, conductress; Pearl Patton, associate secretary; Lois Spurlock, chaplain; Mae Blair, marshal; Sharon Spurlock, organist; Joyce Lyone, Adm. Ruth Litton, Ruth Dora Williams, Barber; Bobbie Godsey, Martha Virginia Montgomery, Electra; Edith Marsh, warden; and C.O. Leach, sentinel.

Mr. and Mrs. Walter Young and children of Barbourville, W. Va. spent the weekend with her parents, Mr. and Mrs. Holly Ainsinger who returned home with them Sunday for a few days' visit.

Mrs. Ottiliana Baldwin and Miss Jean Cline, Rowan County High School home economics teachers, were among representatives attending a meeting Monday evening in Lexington on discussion the extended vocational program.

A going-away party honoring Larry Sorrell who will leave today (Thursday) for service in the Army, was given Saturday evening at the home of Mr. and Mrs. Joe White.

Refreshments were served to Bobby Caudill, Freddy Skaggs, LeRoy Caudill, Mike Jenkins, Junior Hall, Danny Collins, Ronnie Lambert, Jack Barber, Mickey White, Mac Hart, Pvt. Charles Cooper, Charles Early, Mike Lambert and Mr. White. Mrs. White was assisted by Mrs. Earley, Mrs. Lambert and Mrs. Myrtle Wheeler.

The Golden Anniversary of the Morehead Chapter, Order of Eastern Star, was observed and installation of officers was conducted at the regular meeting Oct. 13.

Officers installed are: Dortha Gales, worthy matron; Elwood Bangsar, worthy patron; Judith

Danny Crase, Alan Salver and Gail Kelsey spent Sunday with Mr. and Mrs. Charles Crase in Batavia, O.

A meeting of the Central-Eastern Kentucky Alumnae Chapter of Sigma Alpha Iota, national musical fraternity for women, was held Saturday afternoon at the home of Mrs. Christine Westcott in Lexington. Morehead officers of the group are Mrs. Violet Slippy, president; Mrs. Glenn Fulbright, recording secretary; Mrs. Palmer Hall, corresponding secretary; and Miss Patricia Bartlett, treasurer.

Mr. and Mrs. Robert McKee were Wednesday visitors in Dayton and Oxford, O.

Mr. and Mrs. Forrest Harlow of Jeffersonville, Ind., former Morehead residents, visited Monday with Mrs. H.G. Vencil, Flemingburg Road.

Mr. and Mrs. Clarence McKee and son and Bobby Decker visited last week, Thursday to Sunday, with Mr. and Mrs. Carl McKee and family in Adamsville, Tenn.

**FOR THE FAMILY**  
MANAGER

**ITEM:** That old-fashioned wooden coat rack in the attic or one you'll find in a second-hand store — can be beautified with a coat of enamel. With its bright shiny surface, it can be used as a silent visit in a bedroom or as a unique towel pole in the bathroom.

**ITEM:** High gloss enamel is best for painting areas that require frequent washing. Enamel dries to a smooth finish and can be washed often without losing its brilliant gloss and color.

**ITEM:** A study of breakfast habits of school children showed that those who ate a poor breakfast, or none at all, were inclined toward a later morning drowsiness and lack of ability to concentrate. This can be corrected by eating a good breakfast to get going.

## ENDORSED

Unanimously By Rowan County Farm Bureau  
This Means So Much To Rowan County

The Rowan County Farm Bureau has joined almost every forward thinking and progressive organization, and thinking citizen of Rowan County in endorsing the...

### HEALTH TAX ISSUE

Which Will Be In The November Ballot

The Farm Bureau recognizes that this 10¢ tax on each \$100 assessment will cost the average Rowan County only \$1 per year... that without this revenue our Rowan County Health Department cannot survive... that the greatest services rendered by the Health Department are to rural people who need them the most... and that we are on the verge of expansion and great improvements in health care for our children and our people.

If you study the very little cost... the very great returns... the record that many times this amount comes back to us in State and Federal matching funds, we know you will...

## VOTE YES!

On The Health Tax At The Nov. 2 Election

This Advertisement Paid For By A Citizen Interested In The Progress Of The People of Rowan County.

**He Served You Well...**

**He Will Again**  
A Friend To All In Time Of Need

**W.C. Flannery**

For **Rowan County Judge**

**The Peoples Choice**  
—M. Pat. Adv.



### Price Up For Flue Cured Leaf

Under the 1965 Acreage-Poundage Program Flue-cured growers in the Georgia-Florida area, where regular season sales have been completed in the 28-market belt, sold less tobacco than a year ago but received almost \$11 million more, at the same time, less tobacco went into the Government loan program, as compared with last activity a year earlier.

ASCS today summarized the situation for tobacco programs by types, from available reports.

Flue-cured -- the Secretary of Agriculture is required to announce the amount of the 1965 marketing quota on an acreage-poundage basis by Dec. 1, 1965.

Burley, fire-cured, dark air-cured, and sun-cured -- marketing quotas on an acreage-allotment basis

must be announced by Feb. 1, 1966. [These quotas were approved for the next three crops in grower referendums held in Feb. 1964 and Feb. 1965]. Under the new acreage-poundage law enacted April 16, 1965, if the Secretary determines that the new quotas would result in a more effective program, he can also announce acreage-poundage quotas for these kinds of tobacco. If this were done, a special referendum -- a separate one for each kind of tobacco -- would then be held within 45 days to determine whether growers favored marketing quotas on an acreage-poundage basis for the next 3 marketing years [1966-68]. If the growers two-thirds of the growers voting were in favor, acreage-poundage quotas would be placed into effect, otherwise the old acreage allotment program would be continued.

Leaves in what a husband does about leaves on the lawn -- if he isn't ben-



**St. Claire Hospital**  
784-4161

#### ADMISSIONS

Oct. 13 - Mrs. Joe Hodges, Morehead, Lodema Sorrell, Wellington, Mrs. Joe Branham, Morehead, Mrs. Buddy Muse, Morehead; Mrs. Ted Jent, Farmers, William Henry Helterbrand, Morehead.

Oct. 14 - Joseph M. Stanper, Morehead, Rosie Parrish, Jacobs, Ruby Burchett, Olive Hill; Karen Lewis, Sandy Hook.

Oct. 15 - Elmer Jennings, Sandy Hook; Mrs. Charlie Cole, Soldier.

Oct. 16 - Mrs. John Back, Olive Hill, Mrs. Lodis Bradley, Morehead.

Oct. 17 - David Kidd, Morehead, Wade Hatton, Morehead, Mrs. Gerald Paynter, Olive Hill; Beth Newton, Morehead.

Oct. 18 - Jimmy Blythe, Morehead, Ethel Porter, Morehead, Mrs. Eliza A. Steagall, Salt Lick; Ruth Zadel, Morehead; Paulette Mabry, Ault; Mrs. Vernon Groves, Clearfield; Mrs. Elvin Clevenger, West Liberty; Eldon Leo Caudill, Morehead.

Oct. 19 - Mrs. Delmis Lewis, Morehead; Mrs. Kenneth Gilliam, Morehead; Mrs. Marjorie Keaton, Olive Hill; Mrs. Sheridan Harris, Soldier.

#### BIRTHS

Oct. 13 - Mr. and Mrs. Joe Hodges, daughter, Mr. and Mrs. Ted Jent, son; Mr. and Mrs. Buddy Muse, daughter; Mr. and Mrs. Joe Branham; son.

Oct. 15 - Mr. and Mrs. Charlie Cole, daughter.

Oct. 17 - Mr. and Mrs. Gerald Paynter, daughter; Mr. and Mrs. Lodis Bradley, son.

Oct. 18 - Mr. and Mrs. Jimmy Blythe, daughter.

Oct. 19 - Mr. and Mrs. Kenneth Gilliam, son; Mr. and Mrs. Delmis Lewis, son; Mr. and Mrs. Elvin Clevenger, daughter; Mr. and Mrs. Vernon Groves, daughter; Mr. and Mrs. Sheridan Harris, daughter.

Read your BIBLE daily and GO TO CHURCH SUNDAY

#### DISMISSALS

Oct. 13 - Donald Horton.

Oct. 14 - Lou Alma Perry, Betty Gambill, Mike Vaughan, Dwight Pierce.

Oct. 15 - Willie Messner, Earnest Simmons, Hazel Hall, Mrs. Buddy Muse and daughter, Mrs. Joseph Hodges and daughter, Mrs. Suzanne Johnson and daughter.

Oct. 16 - Lucy Conley, Mrs. Joe Branham and son, Mrs. Ted Jent and son, Joe Stamper.

Oct. 17 - Mrs. William Moccabee and son, Karen Lewis, Mrs. John Back, Joseph Layne, Carolita Thomas.

Oct. 18 - Mrs. Charlie Cole and daughter, Ruby Burchett, Wm. C. Moore.

Oct. 19 - Mrs. Eliza Steagall, Paulette Mabry, Ruth Zadel.



Heart of Singapore's commercial activity in this square, known as Raffles Place, the gathering spot for visitors. Tours of this Southeast Asia metropolis usually begin from the white building on the right.

### Alfalfa Treatment Important

By Adrian M. Razor, County Extension Agent

Fertilizer applied on anywhere between now and the first freeze will do much to help Alfalfa withstand winter kill and also help to able it to stand attacks by disease and insects. Leaching of plant food applied now will not amount to much and at the same time it will strengthen the young plant. Like tobacco, alfalfa responds to good fertilizer treatment and some growers are getting 5 and 6 tons on good land well treated.

**TOBACCO BEDS**

There is still time to plow and prepare those beds this fall for spring sowing. Either burn gas or treat chemically for a bed that you can sow anytime you wish with a few days of sunshine come spring. Not only this but you can also be sure that your insect and disease troubles will be much less than in spring plowed beds.

**RESIDUE**

Most of our tobacco insects and disease winter over in crop residue left on the ground. If you want to break the cycle of insects and especially destroy all suckers and other crop residue this fall.



**LUCKY, LUCKY YOU . . . Mrs. Bertha IGA Foodliner in Morehead. The keys are being handed her by Co-Manager Hubert Allen.**

### Proper Preparation of Leaf For Sale 'Must'

Proper preparation of them out.

1. Take tobacco down burlap to the market. It is ready to be stripped. Otherwise, leaf will darken and bring a lower price.
2. Take tobacco down burlap, bright leaf, red leaf and tips. Support prices will be higher and graders can do better with your crop. Mixed grades will bring less on the market floor.
3. Stripping rooms should have adequate light, a good stripping table and some heating facilities. Wall presses are very desirable.
4. Sort leaves into the five basic groups, flying lug, bright leaf, red leaf and tips. Support prices will be higher and graders can do better with your crop. Mixed grades will bring less on the market floor.
5. Press tobacco lightly. Too-heavy pressing cakes the leaf and buyers will usually pass it up.

**HALLOWEEN TRICK and TREAT YOUR V STORE**

Halloween PARADE VALUES! HARRY POTTER COSTUMES

**94¢**

CLARK JUNIOR BARS BITE SIZE SPOOK FLEISERS **54¢**

DU PONT SPONGES **47¢**

DU PONT DU CO CEMENT **39¢** Size **22¢**

WRIGLEY'S GUM **33¢**

GLYCERINE & ROSEWATER LOTION **99¢** 12 OZ. SIZE **58¢**

6 PC. ALUMINUM CANISTER SET **\$2.99**

HALO HAIR SPRAY **1.48** Size **68¢**

Pierce's **5¢ & 10¢ Store**

## Saturday Is The Big Day!

Main Drawing For Prizes At...  
**Monarch Supply Store**  
Will Be Oct. 23rd At 2 p.m.

It is not necessary to be present to win a prize.

1st Prize: Kelvinator 10-ft Refrigerator OR Kelvinator Automatic Washer OR Blackstone Conventional Washer

2nd Prize: McGulloch Chain Saw

3rd Prize: Sunbeam Sweeper & Cleaner

4th Prize: Sunbeam Hair Dryer

5th Prize: 22 Rifle

Other Prizes:

- Black & Decker Drill
- Tractor Seat
- Tractor Tool Box
- 50 ft. Plastic Hose
- Tackle Box
- Spinning Reel
- Hedge Shears
- 1 pr. Pruners
- Food Packing Set
- 1 lot of Rose Dust
- 1 lot of Weed Killer
- 2-5 lb. Cans Grease
- Enough Sherwin Williams Paint to do one room (your choice)
- 5 prizes of 1-gal. Farm & Ranch White Paint

On Saturday, October 23, starting at 9 A. M. a drawing will be held in our store every hour, on the hour (9-10-11-12- and 1 O'clock). It is necessary to be present to win one of these prizes at the hourly drawing, following is a list of hourly drawing prizes:

**FREE**  
Coffee-Doughnuts  
Gifts For All

G. E. Electric Iron  
Pyrex Coffee Warming Set  
Food Packing Set  
Magnolite Skillet  
Beverage Cooler

**SPECIALS Oct. 18th Through Oct. 23rd**

Aluminum Storm Doors . . . . . \$19.95	66" Double Drain Sink & Cabinet . . . . . \$95.00
9' x 12' Gold Seal Rugs . . . . . \$8.95	Electric Hand Mixer . . . . . \$6.97
21-gal. Galvanized Garbage Pails . . . . . \$1.98	Black & Decker Drill, 1/4" . . . . . \$6.98
Shallow Well Electric Pump . . . . . \$79.95	25% Discount on All Corning Ware

ASK FOR YOUR FREE DRAWING TICKETS

## Monarch Supply Store

Main St. Morehead, Ky.

**He Served You Well...**

**He Will Again**  
A Friend To All  
In Time Of Need

**W. C. Flannery**  
For  
**Rowan County Judge**  
The Peoples Choice

### After Curing, Tobacco Stalks Need Protection

Protect those tobacco stalks after stripping work is finished, says George D. Corder, University of Kentucky Cooperative Extension service soils specialist.

The estimated 175,000 tons of such stalks in Kentucky is worth about \$2 million in fertilizer content alone.

The UK station says that 61 percent of the nitrogen, 38 percent of the phosphorus 83 percent of the potassium and 41 percent of the organic matter can be lost from stalks left exposed to winter rains.

"Keep the stalks under shelter" until they are spread on lawns or fields, Corder urges.

Stalks can be spread in the fall and winter months with little resultant loss of nutrients and organic matter.



### RAMBLIN' THRU WILLBA

## This Great Society Is On Way And There's No Chance To Stop It

By Glenn Hollen

We got this pamphlet from a good reader in Knott County—a good doctor. We read it and the best we could get out of it was that it will be the aim of the believers in the United Nations to spread the Great Society all over the world. Not just us here in the United States.

Utopia will enjoy this Great Society.

A conference of Nations was held in Geneva and all their dumb heads together they came up with the solution to a great problem which will endorse the world as members of the Great Society. Several big nations and a lot of little nations met. They drew up plans to be presented to the UN for a vote. Since the small nations outnumbered the large nations and because of the Civil Rights Laws which gives everyone an equal right in voting, the plans drawn up were approved unanimously for presenting to the UN. The UN is made up of more small pore nations than large rich nations and the plans for a Great Society all over the world will easily be voted in up there.

A small pore country's vote will just as good as a large wealthy country's vote.

If this world wide Great Society comes into being, it will work a bit of hardship upon the United States but we don't care. We want to see everybody all over the world enjoy the comforts of a Great Society State. According to the way we read the plans, little nations would be built up at the expense of rich nations' enterprises. A big steel company of the US would set up a steel plant with a pore country of the world. The pore country would pay about 3 1/2% interest upon the money investment. The steel mill and then when the mill began operation and production, the kind hearted Big Steel Mill would receive payment, for money and equipment invested, in products produced by this new steel industry.

The big mill would have to sell the products of the small mill until their money on the project was got back. This would cut down production of the big mill and would start bringing down the big mill to a size equal to the small mill in the little pore nation. Several mills set up by the big mill in several pore countries and the repayment being made in merchandise produced by the small mill of the pore countries would soon whittle all big mills down to an equal status with the mills of the pore countries.

In no time the Great Society would be worldwide.

Candy manufacturers and all other type of manufacturers would have to do likewise unto the small nations of worldwide Pore-dom. Family Pill plants will be established for the little nations by the big Drug Companies of the world. The Great Society shall be proclaimed worldwide!

Chester Deaton told me, and Chester most usually tells the truth, that Ted Edmonds told him that the President had sent him a baler and he baled his Food Stamps up every night and fetched them to the Bank in Jackson every morning. He baled them in his coal truck and he goes to the Breathitt mines to get him a load of coal.

Chester also said Ted had on a plumb good garb of clothes and Ted was accused of borrowing these good clothes from Fay Holton.

Since the coal haulers of the Breathitt Mines have made it unlawful to lie upon or within the vicinity of the Breathitt Mines, it is presumed to be true that Ted Edmonds is hauling his Food Stamps and hauling them to the bank in his Coal truck.

Yet Chester Deaton, Bill Alexander, Orville Bennet and other Coal Haulers are a demanding investigation into whether Mr. Edmonds is telling the truth and into the whereabouts of Mr. Edmonds a getting so many good clothes.

We've got to say that Coal Haulers in general always tell the truth—nearly.

**Station Conley In Arctic Region**  
Fireman Apprentice Ralph L. Conley, USN, son of Mr. and Mrs. Wilson Conley of Route 4, Morehead, is serving aboard the Navy icebreaker USS Edisto, currently conducting oceanographic studies in Arctic Circle, prior to her return to Boston in mid-October and a new branch of the searervices.

**Monuments Granite and Marble First Class Material at A Reasonable Price Erected on Concrete Foundation, Dayton Porter Phone 784-5327**

**MOORE'S DRY WALL Remodeling and Building RALPH MOORE 128 Branham Ave. Phone 784-5155**

**For Sale Fleming County Property 254.5 Acres**  
Grade "A" Dairy Farm of 254 acres, dairy barn 72' x 60' with milk par, attached, 42' x 60' tobacco barn with 12' x 24' stripping room, 30' x 72' tobacco barn, 30' x 48' tobacco barn, 1965 tobacco barn 2.64 acres, three large ponds, one with concrete water trough below, 150 acres tractor land and rest in forest, poplar, oak and other woods. Over 100 acres excellent grass, 16,000 gallon cistern at dairy barn.

**House And Lot**  
2.02 acres of land with 7 room modern house, large utility room and full bath, forced air gas furnace, 16,000 gal. cistern, concrete front porch, stainless steel and cabinets in kitchen. Small pond and plenty of space for milk cows.

**47 1/2 Acres**  
25 acres orchard grain and alfalfa hay, 34' x 48' tobacco barn, 1965 tobacco barn - 64 acre. Never failing spring for water.

The above property offered for sale by owner at Fairport, Ky.

**Gilmer Rigdon, Jr.**  
Route 1, Wallingford, Ky.  
Phone 845-2131, Flemingsburg, Ky.



**Station Beannon In Rhode Island**  
Aviation Structural Mechanic Third Class Maurice A. Brannan, USN, son of Mr. and Mrs. W. H. Brannan of Morehead, is serving with Air Anti-Submarine Squadron 21 at Naval Air Station, Quonset Point, R.I.

**FISHIN' TIPS**

WHEN A BASS STRIKES HE ALWAYS CARRIES THE PONY TO ANOTHER AREA BEFORE HE SWALLOWED IT. IF YOU WAIT FOR HIS SECOND BITE YOU'LL GET HIM FOR SURE.

**Jerry's RESTAURANT**  
E. Main St. at College Boulevard Morehead, Ky.

**SELL where the action is!**

FARMERS STOCK YARDS FLEMINGSBURG, KENTUCKY

2nd. SPECIAL FEEDER CATTLE SALE

Tuesday, Oct. 26 AT 7 P.M.

Steers And Heifers 30 to 1,000 lbs.  
Sale Open To All Consignors, Enclosing and Weighing Beginning At 7:00 A.M. Sale Day.  
If you have good quality Feeders, be there with them—we'll have the buyers.

**That final touch makes the difference!**

A house becomes a home because of a lot of little things. Like having proper lighting, for example.

Most of us have trouble imagining exactly where we'll want lights and electrical outlets in our home. That's why the Gold Medallion standards are so helpful to most homeowners. These standards were developed by experts to give you a check list of the features you'll want in your home.

That's why Gold Medallion has adequate lighting inside and outside. And that's why a Gold Medallion is a "worth more" home, both today and tomorrow!

**GOLD MEDALLION**

Whether you build or remodel, it will pay you to consider making yours a Gold Medallion Home. It's your best assurance of getting full value for every dollar you spend. Call us for complete details. No obligation, of course.

Remember! Free \$75 Bonus on Gold Medallion Homes!

**Fleming-Mason Rural Electric Cooperative Corp.**  
Flemingsburg, Ky.



### the more of these we have



### the more of these we need

Your vote on November 2nd can help pass the Kentucky Bond Issue which will raise the money we need for new highways, schools, parks, hospitals. Passing the Bond Issue, which amounts to \$176 million, will enable us to get a total of \$685 million in Federal Matching Funds and money from other sources, so that we can meet the needs of our state while keeping Kentucky taxes low. The Kentucky Better Roads Council.

**Let's not miss the boat!**  
The \$126 million of highway money provided by the Kentucky Bond Issue will expire on 10/31/66. If we don't pass the bond issue by then, we will miss the boat. Other surrounding states have already passed bond issues and are getting the money. We must pass the Kentucky Bond Issue if we are to get our fair share of federal money.

**Vote X YES Kentucky Bond Issue, Nov. 2**

**Cutlass Supreme: Just out! Brand-new hardtop from Oldsmobile!**

"Brand new" means Cutlass Supreme—the luxurious four-door hardtop that just joined the '66 lineup at your Oldsmobile Dealer's. Longer. Wider. Smarter. Smoother. More posh, more powerful than any Cutlass before it! Sound like the classy new Supreme might change your ideas about low-priced cars? You can bet on it! At your Dealer's... LOOK TO OLDS FOR THE NEW!

**STEP OUT FRONT IN '66**  
... in a Rocket Action Car!

TORONADO • BIRD • DELTA 88 • DYNAMIC 88 • VENTURA 88 • CUTLASS • F-40 • VISTA • COUPE • STATIONER • 4-4-2

**OLDSMOBILE**

CHEAP CHEVROLET CO., FLEMINGSBURG, KY.

THE 1966 RIDE! CHEVROLET OLD MOBILES ARE HERE! SEE THEM... DRIVE THEM AT THE OLD SMOBILE DEALERSHIP NEAREST YOU!

## Kentucky Rifleman Proclaimed 'Best'

Kentucky's fittest rifleman has been officially designated an honorary member of the Kentucky Long Rifle Club by proclamation of Governor Edward T. Breathitt.

The proclamation was read at dedication ceremonies recently for a new museum at Perryville Battlefield State Park where the team gave an exhibition shoot.

The proclamation noted that Kentuckians have long been expert marksmen with the long rifle and that the Commonwealth wished to encourage the riflemen to

## Mining Compact Proposed

Governor Edward T. Breathitt toured reclaimed strip mine areas in Pennsylvania last week and proposed an interstate mining compact to regulate strip mining.

Accompanied by members of the State Strip Mining and Reclamation Commission, Breathitt made the Pennsylvania trip at the invitation of Governor William Scranton of that state.

In addition to strip mining, the compact proposed by Breathitt would set up rules controlling stone quarries, gravel pits, deep-mine washers and other types of mining operations.

The compact would define mining as "the breaking of the surface... [or] extraction or removal of minerals, ores or other mineral matter, [and] preparation, washing, cleaning or other treatment" of such materials.

The compact document at this point is only a draft, prepared by the staff of the Council of State Governments. But Breathitt said he hopes the final version can be presented to the 1966 Legislature for Kentucky's enactment.

The compact is to be reviewed section by section at a conference November 3 and 4 in St. Louis. Representatives from all 50 states have been invited.

Breathitt, who is chairman of the natural resources committee of the National Governor's Conference, said he will call a committee meeting to coincide with the St. Louis Conference.

The governor wants the committee to start work on a broad national compact encompassing soil, water, timber and air conservation.

October 17-31 has been designated "National Thrift Week," perhaps, the economy could rather easily recover if everybody were thrifty for one week during the year, but practicing thrift for 52 weeks would completely wreck the economy.



**ELECTED**... New officers for the year were elected at the annual Farm Bureau meeting on Friday night, October 15. Pictured above they are: Leland Hall, president; Prude Carey, secretary; E. B. Slaus, Lowell Murray, Glenn Friley, Cecil Landreth, Millie Perkins and Jeff Crisp, Board of Directors; and Robert Lacy, vice president. A member of the board of directors not pictured above is Bela Brankham.

## Kentucky Teacher Opening In France

An opportunity to work and live in France is offered to any Kentucky French teacher between the ages of 20 and 36, reports the State Department of

Education.

Dr. George Brodsch, executive director of the International Center of the University of Louisville, has arranged the program for the summer of 1966.

The program will cost about \$550 to \$600 for nine weeks in Europe, including jet travel from Louisville to Paris and back.

The teachers will meet in Louisville June 15 for a two-day orientation, then leave for Paris, where they will work in clerical jobs for six weeks, and be on their own for travel the remaining three weeks.

The deadline for application is November 15.

The International Center also has programs for high school and college students between the ages 16-22 to study and travel in Europe.

## Garvice Kincaid, Once News Carrier Honored

Garvice D. Kincaid, former newspaper carrier and now president of Kentucky Central Life Insurance Company, was today named to the "Newspaper-Hall of Fame," along with Governor Carl E. Sanders of Georgia and Earl Wilson, nationally-known newspaper columnist.

The award, given annually to former carriers of newspapers who have achieved success in adult life, were presented by the International Newspaper Circulation Managers Association.

The announcement was made by George W. Hicks, chairman of the association's Hall of Fame Committee and circulation director of the Columbus, Ohio, Dispatch and the Columbus Citizen-Journal.

Kincaid, who has been a prominent businessman and lawyer in Lexington, Kentucky, for nearly three decades, was a home delivery newspaper boy for more than eight years for the Richmond, Kentucky, Daily Register. He carried this newspaper from 1923, when he entered the sixth grade at age 11, until 1932, when he finished his second year of college.

**MINORITY REPORT** - "Decline in Morality Said Treat to U.S." - Headline in the Little Rock Arkansas Democrat. It fervently hoped that only a small minority hold this opinion.

the safe way TO SEND MONEY



the easy way TO PAY BILLS

Battson Drugs Inc.

Main St. Morehead, Ky. George Dozier, Pharmacist



From Mrs. Honeycutt, Fresno, California: "A letter which appeared in the Fresno Guide, September 6, was very interesting to me. This letter was from Ethel Drury, Las Vegas, Nevada, and pertained to the way we amused ourselves in the days of long ago. She tells of the County Fair at Durango, Colo., at which the visiting tribes of Indians were a memorable feature. One chief in particular was a notable character at the Fair.

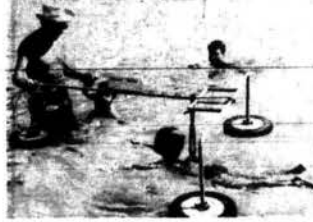
"For many years, I had in my possession, a picture of 'Buckskin Charley', hand-painted on buckskin. It was truly a work of art. I still have a clipping from the St. Louis Post-Dispatch, June 1930 or 27, telling of the death of 'Buckskin Charley' at the age of 96. The clipping tells how after the 'Buckskin Massacre', with all the white men killed, a band of friendly Indians, led by 'Buckskin Charley', rescued the women and children.

"Mrs. Drury used to borrow from neighbors and friends. She speaks of the 'Elin Dismore series.' I would love to acquire some of these books. My grandchildren would enjoy them as much as my children and I did. I would also like the chance to read again, 'The Lucky Sixpence'."



A GHOST! WHERE!

Don't let the ghost of insecurity haunt you. Regular deposits of 10% of your earnings into an insured Savings Account can guarantee a comfortable retirement income. Save regularly at the Citizens Bank.



**SWIMMING TEACHER**... French swimming instructor M. Edmond of Lyon, demonstrates his "swimming instructor" for youngsters. Kept about by three inflated tire-like plotters, he claims it gives the student a good sense of security.

## Rowan County Public Health Tax Referendum

Are you in favor of establishing a Public Health taxing district for Rowan County which shall have the authority to impose a special ad valorem tax for the maintenance and operation of the Rowan County Health Department, provided that such special tax shall not exceed ten cents on each one hundred dollars of the assessed valuation of all property in the district?

Yes

No

I, Otis W. Eam, Clerk of the Rowan County Court, certify that the above health tax referendum question will appear on the voting machines and paper ballots for the November 2, 1966 general election in Rowan County.

## Olive Hill Dry Cleaning And Laundry

Never Any Water Shortage!  
Open 7 Days A Week  
Parking Side And Rear

8 lbs. Dry Cleaning-----\$1.50

Revolutionized pressing & ironing center. Do a professional-job the first time. Trained Attendants to show you how. Equivalent of 45 washers to serve you.

- FRONT LOADERS----- 9 lbs. 20¢
- TOP LOADERS----- 42 lbs. 20¢
- DOUBLE LOADERS----- 18 lbs. 35¢
- COMMERCIAL WASHER----- 35 lbs. 50¢

- Special Washer for Dyeing & Tinting
- Plenty of Dryers----- 10 Min.----- 10¢
- Large Extractor----- 25 lbs.----- 10¢
- Small Extractors----- 15 lbs.----- 5¢

By Using Extractors You Save 50% On Drying  
23 Inch Color TV And Lounge

-Also Kiddie Carrol  
Location Olive Hill on the right as you come into town

He Served You Well...

20 NICE LOTS!

4 TRACTS OF LAND!

This Spacious Old Southern Mansion was Built by John Magowan in Year 1859

**LOCATION:** JUST EAST OF MT. STERLING, KENTUCKY ON THE OLD OWINGSVILLE ROAD!

**Lots No. 1 through 20 are 100' Front and 150' to 200' DEPT.** All Lots and Tracts are on Hard-top Road. These are Excellent Building Sites, with city water, gas and electricity.

TRACT A - 2.99 Acres with the Above Described FINE OLD HOUSE.  
TRACT B - 4.82 Acres, Unimproved.  
TRACT C - 6.88 Acres, Unimproved.  
TRACT D - 6.93 Acres, Unimproved. All tracts are all good Blue Grass Land with shade trees.

**Owners: Hubert Hale - Ova Little**

THIS SALE CONDUCTED BY **BROWN & MORTON, REAL ESTATE BROKERS**

East Main St. MT. STERLING, KENTUCKY GEORGE SCOTT JR., Auctioneer

## Lumber Wanted

By Ray L. White & Sons Lumber Company

Three Miles Of Morehead On U.S. 60

Poplar, Ash, Walnut, Basswood, White Oak, Red Oak, Chestnut Oak, Cucumber, Hickory, Beech, Water Birch, Mountain Birch, Maple, Sycamore, Hackberry, Gum, Cherry, Elm & Buckeye.

Load Lumber For Fork-Lift Unloading, Cut All Lumber 1 1/8" Random Width And Length, Yield Open Monday Thru Friday And Until 12:00 On Saturday.

P.O. Box 280

Phone 784-4223

## Home For Sale



Our special for this week is a 1 1/2 story, 7 room frame home - 4 bed-rooms - den - 2 porches and carpet. Lot size approximately 1/2 acre on a black top street. A handout water supply. Nice big lawn for children to play. Good location in a nice neighborhood. Immediate possession. This property will qualify for most any kind of a loan. Price reduced for quick sale.

**H. H. LACY, Realtor**

Phone 784-5750 Morehead, Ky.

## Congratulations

To The

**Monarch Supply Store**

On Their

**20th Anniversary**  
Of Serving Rowan And  
Surrounding Counties.

**The Sherwin-Williams Company**

Sherwin-Williams

products

meet every

painting need

What do you plan to paint: interior or exterior surfaces... floors... walls... woodwork... furniture... toys... tools... bric-a-brac? We have the high quality Sherwin-Williams paints and painting accessories you will need to get the results you want on any painting project.

On these pages is a partial listing of the many Sherwin-Williams paints, varnishes, painting tools and related items we can provide to help you. We have many, many more available. Visit our store... tell us about your painting plans. We will gladly give you our best recommendations on how to prepare the surface to be painted, what type of paint to use and how to apply it for best results.



**Do You Have A Painting Problem**

A Sherwin-Williams Representative Will Be In Our Store All Day Saturday, Oct. 23

**Monarch Supply Store**

Main St. Morehead, Ky.

## Eagles Improved, Although Defeated

Morehead State College was virtually eliminated from the Ohio Valley Conference championship race Saturday as Austin Peay defeated the Eagles 26-21 in Clarksville, Tenn.

The Gavs retained their share of the OVC lead by winning their fifth consecutive game, and their fourth conference win. Middle Tennessee, Morehead's opponent this week, shares first place with the Gavs with a 2-0 conference record. Morehead is 1-2 in OVC action.

Morehead Coach Guy Penny was pleased with his charges against Austin Peay although the Eagles did come out on the short end of the score.

"Our over-all play was much improved over our past performances," Penny said. "Austin Peay has the strength to win the conference, and I thought our boys gave a fine effort in their bid for an upset."

"I was very pleased with the passing performance of quarterback Mike Gottfried and with the receiving of

end Rico King and halfback Joe Cox," Penny said. "King and Cox are coming along strong and are giving us the help we need in our passing game."

King set a Morehead record as he caught 10 passes for 203 yards and Cox caught six passes for 36 yards against the Gavs. Gottfried completed 20 of 41 passes for 296 yards and boosted his passing credentials for the season to 59 completions in 129 attempts and 867 yards.

Gottfried is the finest passing quarterback in the conference," Penny said. "He should be a strong All-OVC candidate if his play continues to be as good as it has been in the first half of the season."

Last year he passed for 744 yards and has already surpassed that mark this season with 867 yards.

"Our over-all defense against Austin Peay was improved, although we had several lapses," Penny said. "Everytime we had a lapse, the Gavs took advantage of it and scored."

was very pleased with the goal line stand we made, and the determination the defense displayed," Penny added.

"Our offensive game was improved, but we still have not matured as an offensive running threat," Penny said.

The Eagles will be playing an "under-dog" role again this week as the Middle Tennessee Blue Raiders invade Eagleland.

"Middle Tennessee is as strong as any small college team in the country," Penny said. "The Blue Raiders have won five straight games and have rolled up 133 points while limiting their opposition to only 45."

Their most impressive victory was the 30-7 penalty game Chattanooga last Saturday," Penny added.

"It will take our best effort, both offensively and defensively, for us to stay in the game Saturday," Penny said. "Our rushing game will have to mature for us to have a balanced attack which is necessary,

## Harold Mynhier Cites Qualifications

One of the important types that you will cast Tuesday Nov. 2 is that for Coroner.

Although the remuneration is not great, the office is very important in case of mass tragedy, or death.

I have had a wide range of experience in this field, having worked for both funeral homes in Morehead.

However, I am not obligated to either funeral home and will guarantee every person absolute freedom in selecting the ambulance or funeral home of their choice. Further, I will be on call, and available, any hour of the night or day. Your influence and vote will be appreciated, and I will justify your confidence with courteous, efficient service.

Respectfully,  
Harold Mynhier  
-pd. pol. ad.



Harold Mynhier

... nominee for Coroner

"I think they're a little bit nuts," said Eisenhower

concerning the Johnson Administration's domestic programs. Many consider that the understatement of the year to date.

## RCHS Has Plans For Homecoming

A full evening's program is planned by the Alumni Association of Rowan County High School for annual Homecoming Friday, Oct. 29.

The Alumni Association will meet and elect officers (Room 15-B) at 7 o'clock. Fleming County meets a tough RCHS football team in the homecoming game at 8 o'clock.

The third annual Homecoming Dance follows at 10:30 in the RCHS cafeteria.

## McClurg Is In Fleet Maneuvers

Airman Apprentice Harold C. McClurg, USN, son of Mr. and Mrs. Fred C. McClurg of Morehead, is participating in a U.S. First Fleet Training Exercise "Ragweed" while serving aboard the anti-submarine warfare support aircraft carrier USS Yorktown.

Under the overall command of the First Fleet Commander, Vice Admiral Lawson P. Ramage, exercise began Oct. 1.

## They Wouldn't Let You (The People & Taxpayers) Decide

In June Councilman Austin Riddle introduced the following Motion before the City Council

It has, in the past, been the policy of City Council to submit by informal referendum controversial questions, or issues, particularly when such decisions affect the financial and public services interests of the citizens of Morehead. Specifically, such referendums have been submitted to our people on fluoridation of our water; and even on a rate increase, and channel changes, on the television cable.

The people, under our democratic form of government, have the right to make the decision - emphatically so, since they are the ones who will pay the bill.

The existing critical purified water crisis in Morehead is the most important decision any Council, in our over 100 year history, has made. As a member of this Council, for one, want to know the feeling and desire of the people, and if we can call an informal referendum on such minor matters as fluoridation and the T-V cable certainly we owe it to the people of Morehead to permit them an opportunity to vote on this. Not only does water rationing appear mandatory in the almost immediate future, but a rate increase for water of 100 to 300 percent is inevitable despite all those complicated, almost not understandable, formulas of debt and bond re-financing; a recall of existing outstanding bonds with penalty and at higher interest rates; re-mortgaging a Utility System that has paid its debt down to about \$708,000 plus considerable expansion of service, and retirement, from reserves, of some bonds that would not have to comprehend procedures to more than \$2 1/4 million; and many other pencil and computing machine devices, including a sewage tax, per student, at Morehead State College without even consulting the President, or Board of Regents, of the college, which is the life-blood of this community and is a tax-free institution.

The Council has been deadlocked on this crucial issue, 3-3, for more than a year; and 18 months have elapsed since this problem was brought to the attention of this Council and the public. In view of the existing crisis; the vast amount of money involved which our people must pay off for the next 40 years at interest rates that will total far more than the principal, or money borrowed; plus the undisputed fact that

if these bonds are issued the Utility Plant Board will have no reserve funds for expansion and improvement; or even mandatory procedures such as re-locating the utility lines along the Morehead-Flemingsburg road when Interstate 64 is built - I move that in true, honorable and democratic processes of government that a referendum ballot be enclosed with each water and / or gas bill to consumers residing within the City limits, that is mailed on, or about, July 1, 1965. This informal referendum should serve, as it has in the past, a helpful guide and expression to members of this Council of the true wishes, and desire, of the consumers and taxpayers on this critical matter. Included with this motion is that the referendum ballot should read:

Are you in favor of renegotiating with Morehead State College for purified water, or are you in favor of the City constructing its own purification plant and pumping station at Farmers, Ky.

- ... Renegotiate with Morehead State College.
- ... City building its own plant and pump-station on Licking River at Farmers, Ky.

(IMPORTANT - Do not return this ballot when you mail or pay your water, or gas, bill. It MUST be returned to the City Clerk in the enclosed stamped, addressed envelope.)

Citizens of Morehead have contacted me in person, by telephone, and otherwise, stating that if they were not allowed the opportunity to express their views at a public, properly publicized, public hearing, or through a referendum as proposed in this motion it is their intention to employ legal Counsel, and immediately take legal action in the courts to protect their interests and investments in their homes, and businesses. As a member of Council make this motion, and want to be placed on official record that I am convinced it is only fair, honorable, proper and just that the taxpayers and consumers of city-owned utilities be given the opportunity to state, or vote, their convictions on this all-important matter that is a crisis today and will vitally affect our community in other generations.

The Motion was seconded by Councilmen Dr. N. C. Marsh and Wilbert Cramer.

The People Who Oppose The Ticket Below, Including  
The Present Mayor Did Not Want You, The  
People, To Have Any Voice Or A Vote.

**VOTE FOR PROGRESS - Vote For An End To This Secrecy, And  
Withholding The Truth From The People**

-For Mayor-  
**William H. Layne**

-For Council-

★ Wilbert Cramer

★ Austin Riddle

★ Prof. William Caudill

★ Dr. N. C. Marsh

★ Dr. Everett D. Blair

★ John Paul Kegley

**BEN FRANKLIN**

**McBrayer's, Inc.**  
Main St. Morehead, Ky.

Men's Yellow Cotton  
**WORK GLOVES**  
Reg. 69¢ **37¢**

**Chocolate Bridge Mix**  
Reg. 69¢ lb. **44¢** lb.

**Candy Bars**  
24 Kinds to Pick From **3¢** A Bar

We have the largest selection of Halloween Costumes & Accessories around. Free loot bag with each Costume at McBrayer's

**Eagles To Open Basketball Practice Under Bob Wright**

Morehead State College will open its 1965-66 basketball practice Friday with two new faces at the helm.  
The two new faces are head coach Bob Wright, who replaces Bob Laughlin, the Eagle mentor for the past 11 years, and Lake Kelly, whom Wright brought back to Morehead from Loyola of New Orleans. Kelly served on the Morehead basketball staff in 1963 after his graduation from Florida State University.

This will be Wright's first coaching assignment in the college ranks after a very successful high school career. He spent his last six years building a power at Ashland High School and made Ashland one of the most respected basketball teams in Kentucky each year. While at Ashland, Wright composed a record of 166 wins and 29 defeats and won the state championship in 1961.

The Eagles finished fifth in the Ohio Valley Conference last year with a 6-8 conference record and were 13-10 for the season. Wright will be greeted with a host of players from the 1964-65 squad but will be without the services of the graduated Harold Sergeant, whom Wright coached in high school, and Henry

Akin, who did not return to Morehead this semester. The leading returning candidates will be 5-11 guard Tom Castle, 6-7 forward Sam Hall, 6-7 forward Bob Kohler and 6-5 forward Bruce King. All of these Eagles have lettered and will be counted on by Wright to carry the load this year. Others who will be seeking positions are: 6-4 David Turner, 6-6 Don DeClere,

6-1 Howard Smith, 6-4 John Waggoner, 6-0 Jim Sand-foss, 6-6 Charles Adams, 5-10 Wayne Martin, 6-5 Larry Jordan and 5-10 Mike Tarry.  
The Eagles will spend the first two or three weeks working strictly on fundamentals and conditioning. "We will have to devote a great deal of time to fundamentals," Wright said. "Coach Kelly and I do

not know who can pass, shoot or play any phase of this game."  
"As far as our predictions for the season, we only hope we can win at least half of our games," Wright said. "We will have a better idea of what to expect from the boys after we finish the fundamental practices, and we hope they will be able to catch on to our system before we play in the conference tournament in Louisville," Wright added.  
The Eagles will open their season December 1 against Cumberland College at Morehead.

**Save Two Percent On Your Taxes**

The tax books of Rowan County are now open at the office of the sheriff, in the courthouse.  
A two percent discount is allowed on all taxes paid before November 1. Don't overlook this - pay today - and save this 2 percent.

**10c SAVE 10c - SAVE 10c 10c**

**SAVE 10c**

THIS COUPON WORTH 10c ON A PURCHASE OF A SIX-BOTTLE CARTON OF 12 OZ. MOUNTAIN DEW.

Present this coupon plus usual bottle deposit or bottle exchange to your dealer who displays Mountain Dew. Offer expires Nov. 30, 1965.

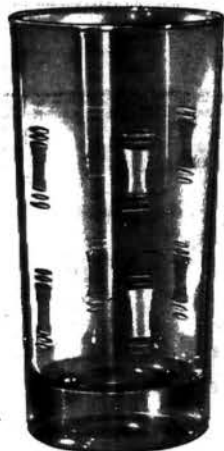
Mr. Dealer: Cut your salesmen will redeem this coupon for 10c. Offer limited to inventory served by the Pepsi-Cola Bottling Company of Ripley, Ohio, Inc. (Cash value 1/20 of 1c.)

**10c SAVE 10c - SAVE 10c 10c**

**SAVE 10c**



**FREE**



**Genuine Crystal CUT GLASS**  
one glass with 7 gallon gasoline purchase

Here's another quality premium offer by your Good Neighbor Ashland Oil Dealer. You get one 12-ounce, crystal cut glass FREE with every purchase of 7 gallons of Ashland Vitalized Gasoline. These heavy-base beverage glasses will add to the attractiveness of your table setting. And they're ideal for use when entertaining. Start now to collect a complete set of glasses at Good Neighbor Ashland Oil Dealers displaying the "FREE CUT GLASS" sign.

Offer expires November 30, 1965



ASHLAND OIL & REFINING COMPANY

**JEST HOLLER FER A BOTTLE!**



COZIN WILLY SEZ:

Sho' 'nuff, cozins... jest give a holler fer a bottle of thet dee-lish-ush, ole country-style MOUNTAIN, DEW at yore fav'rit store! You'll love it!



**Mountain Dew**

IT'S DEE-LISH-USH!

Bottled under the authority of The Tip Corp. of America

**New McCulloch Mac 10 series makes all other lightweights out of date and up to 25% overweight**

MAC-10, world's lightest direct drive chain saw... 10 1/2 lbs. \* MAC 2-10, world's lightest automatic oiling chain saw... 10 1/2 lbs. \* with all the features of the big timber McCullochs including removable cast-iron cylinder.

\*Engines silent only, less bar and chain.

MAC 1-10 10 1/2 lbs.



They're Here Now

MAC 2-10 10 1/2 lbs. self oiling



**Monarch Supply Store**  
Morehead Kentucky



**Mortgage Loans**

Ready to Buy? Stop In and Get Facts and Figures About Our Mortgage Plan. Fast Service -- Convenient (and Money-Saving) Terms.

**FIRST FEDERAL Savings And Loan Association Of Morehead**

MAIN STREET MOREHEAD, KY.

Open 9:30 AM to 5:00 PM 7 DAYS A WEEK

**Bond Issue Gets Doctors Endorsement**

The board of trustees of the Appalachian Regional Hospital has endorsed the \$176 million bond issue, which is on Kentucky's November ballot, and urged that the trustees and personnel of ARH "vigorously support" the issue.

ARH, a non profit corporation, operates 10 community hospitals in Eastern Kentucky, Virginia and West Virginia. It has more than 1,300 employees in Kentucky.

Garvick D. Kincaid of Lexington, chairman of the board, told the organization's 20 trustees that "Kentucky desperately needs fund to match federal grants for highways and other purposes such as hospital care." He said the bond issue would provide money for matching.

**M'head Recruiter Has New Office**

The U.S. Army Recruiting Station formerly located in the Army Reserve Center at Morehead has moved to the C. Roger Lewis Building, according to an announcement from Sgt. Thomas L. Jones, U.S. Army area recruiter. The move provides a central location for the recruiting activity.

Also of interest to the many military families in the Morehead area, is the military insurance act providing up to 10,000 dollars coverage at a cost of 2.00 per month, for all servicemen. The bill has passed both houses of congress and is now awaiting the president's signature for enactment into law.

**Birthdays in October**

IT'S TIME TO REVENUE YOUR DRIVERS LICENSE

**Health Brochure Prepared**

Rowan County's Department of Health will shortly release a detailed brochure reciting health services in Rowan County... recommendations... past history... and future planning and policy.

A review of the publication, including the necessity for the 10¢ health tax on the November ballot reader.

"The various areas in which your health department should be serving you are outlined in the pamphlet 'Serving the Community'."

Many of these services are not available through the Rowan County Health Department, or are very limited. The reasons... lack of funds, lack of sufficient trained personnel, lack of adequate facilities and/or equipment.

"To wisely spend the public health dollars, we must be able to set long-term plans and goals tailored to meet the specific needs of the people of Rowan County. At present we cannot do this. Unpredictable local financing makes rational planning of public health services impossible. Consequently, the health department is forced to jump from crisis to crisis rather than being able to provide adequate public health services in an orderly manner which, in the long run, will raise the general health level of the community."

"One way in which to provide a definite planned source of local funds, the method we are here to discuss now, is through the public health tax. On November 2, the voters of this county will be asked to approve a special property tax in the amount of 10¢ per \$100.00 of assessed value for the exclusive use of the Rowan County Health Department. The rate asked is a maximum rate. The rate in practice is not that high. This rate will set up a way for us to conduct the business of the health department and also to care for the

eventuality that local assessment does not increase.

"One extremely important reason for asking the passage of this local tax to ensure that this county will be able to become a foundation county. When we become a foundation county, that is when we meet the standards of local financing of health services in accordance with the Public Health Foundation Program, we become eligible to receive State and Federal funds for health department use on a 2-3 to 1 matching basis. Presently, because we are not a foundation county, the State is obligated only to provide 60¢ per capita (about 1 to 1 matching fund) for the health department."

"To give an example as to what this means in terms of dollars and cents to this county, consider our fiscal year 1966 budget. By Jack 30, 1965 we had been able to raise only \$7500 in local funds. The contributors were the Fiscal Court (\$6000.00), the City of Morehead (\$1500.00), the Board of Education (\$0.00). We did not meet the foundation local share -- \$11,000. Consequently, when it came time to get our State and Federal matching funds, they totaled \$10,894.76, thus giving a total budget of \$18,396.76 -- practically the same amount as for the past two years. In August, a group of physicians in town who realized the importance of a strong public health program donated \$3500.00 to the health department to help us meet the local foundation share."

"This brought total contributions to \$11,416.25 (since the United Fund also contributed \$416.25), enough to meet the local share. When we notified the State Health Department that we had enough money to meet the local share, they increased the State and Federal matching funds to \$22,552.01 thus giving a total budget of \$33,768.26. This money was sufficient to provide funds for the hiring of two additional public health nurses, a bag-making machine, a janitor, and provided for increasing the operating and drug and dental budgets. Of the \$33,768.26 required to operate the health center less than one fourth [\$7,500] was the local share."

Today's lesson in physics: Space is the only kind of nothing into which something can be put. Class dismissed.

**NOW! A WHOLE NEW SERIES OF ULTRA-LUXURIOUS CHEVROLETS**

**'66 CAPRICE**  
BY CHEVROLET



Caprice Custom Coupe -- with exclusive formal roof line that comes on no other Chevrolet



Caprice Custom Sedan -- with superb new body by Fisher elegance inside and out



Caprice Custom Wagon -- with line new look of hardwood paneling on sides and tailgate

Everything it takes to create a distinguished luxury car has gone into these new Caprices.

Beneath the formal styling elegance that sets the Custom Coupe apart, for instance, you'll find thick wall-to-wall carpeting, comfort-contoured seats and the look of hand-rubbed walnut on the instrument panel, glove compartment and inside door panels. You can order a finely instrumented console, together with new Strato-bucket front seats.

In the Caprice Sedan, a new Strato-bucket seat is available with bucket-type contours separated by a fold-down

armrest. And in the equally opulent Custom Wagons, offered in 2- or 3-seat models, you can even order carpeting for the cargo area.

Each model rides super Jet-smooth. And for incomparably smooth power, you can specify Chevrolet's advanced Turbo-Jet V8 in either a 396- or 427-cubic-inch version.

The price of it all? Somewhat more than you're used to paying for a Chevrolet. But less, as your dealer will happily confirm -- than the select class of fine cars these new Caprices invite comparison with in every detail.

See the new '66 Chevrolet, Chevelle, Chevy II, Corvair & Corvette at your Chevrolet dealer's

**MIDLAND TRAIL GARAGE**

E. MAIN STREET MOREHEAD, KY. PHONE 784-5136

**"You Know The Facts"**

More than a year ago all members of the City Council voted for the city to build its own water system and go to Licking River for water, providing we could get a substantial Federal grant. We have waited for more than a year and until this day, October 16, 1965 no Federal grant has been obtained, and we are properly informed that as of October 16, 1965 there is no money available for this type grant.

Therefore, it is necessary that we make immediate plans to obtain sufficient purified water at a reasonable price as quickly as possible.

We the members of the Citizens Party for Mayor and Council, have stated before and we wish to state again, that we are in favor of obtaining purified water from any source where we can obtain it, at reasonable rates and sufficient quantity, without any undue waste of time.

**William H. Layne, Mayor**  
**Dr. N. C. Marsh**  
**Wilburt Crager**  
**Austin Riddle**  
**Dr. E. D. Blair**  
**John Paul Kegley**  
(Members of the Citizens Ticket)

**This Is No Time For Palaver And Delay**

**It Is A Time For Action**



**Cheaps MOBILE HOMES**  
FLEMINGBURG, KENTUCKY  
Open 6 Days A Week And After 7:00 PM On Sundays

**WHY PAY RENT?**  
BUY A NEW HOME TODAY!  
You can't realize how nice and how much room there is in a mobile home till you visit Cheaps' big big lot in Flemingburg.

Completely furnished from towels in the bath room to a deep freeze. Priced from \$2796 to \$10,500.

43

**Logs Wanted**

**Ray L. White & Sons Lumber Company**

Three Miles East Of Morehead On U.S. 60

Poplar, Oak, Hickory, Gum, Pine, Hemlock, Soft Maple, Hard Maple, Water birch, Basswood, Hackberry, Ash, Sycamore, Beech, Buckeye, Cucumber, Mountain Birch, Elm, Walnut, Cherry, Cedar.

Cut all logs to 8' to 16' Logs measured with 1/4" Kerf International Rule. Yard opened Monday thru Friday until twelve noon on Saturday.

P.O. Box # 280

Phone: 784-4123

POLICY SPEECH ON THIS AND AREA COUNTIES

Development Possibilities In Area Are Emphasized

Leslie A. Henderson, Olive Hill, called for cooperation and community development to implement programs available under recent Congressional appropriations.

Sketching area organization, Henderson said - "Our council has an open-ended membership - that is to say, any citizen in the area is invited to participate and make a contribution. We call our policy-making group, 'The Governing Body'."

Pointing out that the Area Council, home-based at Crayson, had two policy meetings during September, Henderson emphasized the following components under practice or consideration:

reading - \$119,000. \* - Neighborhood Youth Corps - \$725,000 \* - Commodity distribution project - \$425,000. \* - Small business development center. \* - Senior citizens program. \* - Supplement to program development grant. \* - Several other in drafting stage.

speech - "Strongly encouraged each county to develop a comprehensive 'Overall Development Program'."

"The Kentucky development committee membership take a more active supporting role in encouraging strong county development associations."

and support the county development associations and/or area development councils.

"Let us all make a united effort to keep our councils people oriented and centered and an organizational structure belonging to the people - working on the wants, desires, and needs of the people and above all, let the councils remain the organizational structure through which all development tools made available through federal, and state legislation may be applied to the development of our total resources."

TIGER TALK FREEDOM PARTY



NORMAN TANT For City Council

This is the Emblem and Name to look for in the City Council election. Vote the "Tiger" ticket and be assured of an end to secrecy in City affairs.

Dr. Kenneth Welsh Gains Recognition

Dr. Kenneth Welsh, the County Health Officer, was chosen by the Public Health Service to be one of their two representatives from Region III (the southeastern states plus Puerto Rico) to the annual meeting of the American Public Health Association at Chicago now underway.

Cave Run Money Is Appropriated

The \$3 million that U.S. engineers estimate they can spend in the next year (until July 1, 1966) on Cave Run Reservoir has been given final Senate approval and sent to the President for signature, Senator John Sherman advised this newspaper today.

Over 200 In Rowan May Qualify

The Air Force has given Recruiters within the Morehead Area a list containing over 200 airman skills in which it will accept re-enlistments for those who have breaks in service for 90 days or longer but a Friday or Saturday break in service, the list will open or reopen the opportunity to re-enlist in grade separated.

from HISTORY'S SCRAPBOOK

San Houston of Virginia was elected first president of the Republic of Texas, October 22, 1822. The Metropolitan Opera House opened in New York City, October 22, 1852.

That a baby sucks his thumb is nothing to worry about, as it won't dissolve and he can't swallow it.

He Served You Well...

He Will Again A Friend To All In Time Of Need

W. C. Flannery For Rowan County Judge The Peoples Choice

2nd MORTGAGE LOANS DEBT CONSOLIDATION SERVICE

YOUR HOME DOES NOT HAVE TO BE PAID FOR EXAMPLE: PAYM'T. NOW \$100.00 PAY ONLY ONE PAYM'T. \$77.00 TOTAL \$155.00

MID-SOUTH MORTGAGE CO. Offices in Greenup Motel Bldg. Phone 473-7001 Greenup, Kentucky

SUNDAY'S SERMON

October is the month of autumn leaves and before October is ended most of us come to the realization that we are fast approaching the end of another year, or the beginning of a New Year.

RCHS Homecoming Events

The Rowan County Alumni Association announces the following schedule of events for the MHS-RCHS Homecoming on October 29.

- 7:00 P.M. - Alumni Association meeting and election of officers for 1965-66. Room 14-B, Rowan Co. High School. 8:00 P.M. - Football game, RCHS vs. Fleming County Homecoming Queen to be crowned at half-time. 10:30 P.M. - Third Annual Homecoming Dance in the RCHS cafeteria, featuring the "Mar-Tels."



YOU CAN'T TRACK DOWN A BETTER DEAL - - HURRY ON IN TO

Christy Creek Sales Co.

Table listing car models and prices: 2-60 Corvairs ea. \$595, 61 T-Bird Full Power \$1095, 61 Corvair \$695 Wagon \$795, 62 Corvair 4 Speed \$895, 60 Ford V-8 \$595, 63 Corvair \$995, 62 Ford V-8 \$750, 64 Corvair 4 Speed \$1350, 62 Mercury \$995, 63 Chevy V-8 \$1195, 61 Tempest \$695, 62 Buick V-6 \$895, 61 Rambler Wagon \$495, 59 Olds \$500, 2-60 Olds ea. \$695, 2-61 Conv. ea. \$1095, 60 Pontiac Bonn. \$750, 65 Ford Truck F-600 \$3000, 60 Pontiac Conv. \$750, 15 Other Late Model To Choose From, 64 Ford 4-1/2 Engine 4-in. Floor \$2150

BEST DEALS MOBILE HOMES - USED CARS Near State Police Barracks - Ky. 32

VOTE YES

Vote For Kentucky - Vote For Rowan County

November 2 is a real challenge to all Kentuckians.

The \$176,000,000 Bond Issue will be before the electorate. We cannot afford to shirk our responsibility in bringing to our State money that will be used for expanding our Colleges and University, new libraries, county health centers, and highways.

For the \$176,000,000 Kentuckians put up, three times this amount will be provided in Federal Matching Funds. Thus, the total exceeds \$600,000,000 that our State will get.

This will require no new taxes because there is no question but the rising economy will amortize the bonds on the present tax structure.

Tell your friends to vote YES! We want our State to rank with other States. This is the "Key" to our Educational Future. WE MUST NOT STAY BEHIND.

It is to your interest . . . to the interest of your community . . . your county . . . to Kentucky . . . to vote YES!

J. C. Wells & Sons And The J. C. Wells Family



- Campbell's Tomato Soup ..... 9 88¢  
10 oz. can
- Campbell's Vegetable Soup ..... 7 88¢  
8 oz. can



# DAYS!



**FILL YOUR CART WITH SAVINGS!**

Every department throughout our store has waiting for you, many added values during this outstanding "IGA Red Letter Day" week. Be prepared to stock up on quality foods the entire family will enjoy. Tender TableRite meats, fresh fruit and vegetables, tasty dairy and bakery products, flavorful frozen foods, and a wide selection of canned and packaged foods are at your fingertips when shopping at your friendly IGA. Visit us today... you'll be glad you did.

- HUNT'S TOMATO SAUCE ..... 8 For 88¢
- HEINZ CATSUP ..... 4 For 88¢
- HUNT'S TOMATO JUICE ..... 3 For 88¢
- IGA PIE CRUST MIX ..... 6 For 88¢
- VANITY FAIR FACIAL TISSUE ..... 4 For 88¢
- RYRIETMANN COOKIES ..... 3 For 88¢
- KRAFT MACARONI DINNER ..... 5 For 88¢
- KRAFT PIZZA ..... 2 For 88¢

- IGA RAISIN BREAD ..... 29¢
- Buffy TOMATOES ..... 6 For 88¢

# SAVE

- IGA Saltine Crackers ..... 2 For 29¢
- IGA Apple Sauce ..... 8 For 88¢
- Hunt's Peaches ..... 4 For 88¢
- IGA Sour Pitted Cherries ..... 5 For 88¢
- IGA Cake Mixes ..... 4 For 88¢
- Farm Brand Jellies ..... 4 For 88¢



**TABLERITE LOIN END...**

## Pork Roast

lb. **49¢**



*...served with tasty IGA Applesauce!*

CENTER CUT PORK CHOPS lb. **69¢**

FOLGER'S INSTANT COFFEE 10 oz. Jar **\$1.19**

- HUNT'S APRICOTS ..... 4 For 88¢
- FURINA DOG FOOD ..... \$2.69
- JO-BO DOG FOOD ..... 12 For 88¢
- IGA LIQUID DETERGENT ..... 2 For 88¢

WHITE GOLD SUGAR 10-lb. Bag **88¢**

**IGA FOOD MAGIC!**

**PORK SOUFFLE**

In saucepan over low heat melt 1/4 cup butter and blend in 1/4 cup flour. Let cool 3-4 minutes, then blend in one cup scalded milk, stirring constantly to assure smooth consistency. Using left over Roast, blend in 1 1/2 cups minced cooked pork and season to taste with salt, pepper, Accent and pinch of sage. Quickly stir in 4 beaten egg yolts. Carefully fold in 4 egg whites beaten to stiff peak stage. Pour into 1 1/2 qt. souffle dish or casserole. Set in pan containing 2" hot water and place in 350° F. oven. Bake 50 to 60 minutes or until firm to touch and brown on top. Serve at once.

**DAIRY SAVINGS**

- KRAFT Velveeta 2-lb. pkg. **88¢**
- TABLERITE DRY MILK ..... 12 qt. **88¢**
- MARTELLA WHITE FLOUR ..... 5-lb. Bag **49¢**
- IGA PEANUT BUTTER ..... 18 oz. **49¢**

TABLE FRESH WINESAP

**8 Apples**

Allen's **IGA** **29¢**

**FOODLINER**

- Grapefruit ..... 6 For 49¢
- Pumpkins ..... 39¢
- Cabbage ..... 7¢

STORE HOURS  
8-6 Mon. - Thurs.  
8-8 Fri. & Sat.

**CAR WINNER!**  
Mrs. Bertha Oakes  
113 Knapp Ave.  
Morehead, Ky.  
See picture on another page of this paper