

Over 18,000 Readers  
This, and every edition of The  
Morehead News has over  
18,000 readers

# The Morehead News

Coming Soon!  
A new Morehead News format,  
with the latest-to-read  
most modern type face

VOLUME NUMBER EIGHTY-TWO

MOREHEAD, KENTUCKY - THURSDAY MORNING, OCTOBER 28, 1965

NUMBER FORTY-THREE



**VIE FOR ROYAL CROWN** . . . These 16 beauties have been nominated for Homecoming Queen at Rowan County High School. The Winner will be crowned at half-time of Friday's football game between the Vikings and Fleming County High. Front, from left: Diane James, Carol DeHart,

Sally Macmanus, Marlana Moore, Kathy Kidd. Rear: Carolyn Bentley, Hope Asper, Debbie Miller, Lana Boyd, Karen Johnson, Kathy Orclerc. RCHS held its first Homecoming in 1963 and this will be the 3rd consecutive observance. Coronation (and the football game) will be on the RCHS field.

## Political Control At Stake

About the only thing that democrats and republicans are agreed on for Rowan County's Tuesday election is that the vote will be big, probably a record in the City of Morehead.

Republicans claim they will retain control of the courthouse.

Democrats are confident of winning them all.

Based on registration, democrats could make a clean sweep, but that hasn't happened in the county's 105 year history.

Old records indicate that republicans might have been in complete authority back some 75 or 80 years ago, but the all-important county policy positions, the day-by-day backbone of either party, are generally divided between the two major parties.

Democrats are assured of the County Attorney and Tax Commissioner in the courthouse . . . and the State Representative, Senator, Commonwealth Attorney and Circuit Judge at the district level.

Republicans have the hold-over Circuit Clerk. All the others are up for grab in the general election.

Tuesday's vote has been marked by little bitterness, and practically no mud-slinging, unless it be in the Mayor and Morehead Council races.

There's the choice voters will have -

County Judge - incumbent democrat W.C. Flannery vs. Orvis Caldwell, republican, present member of the Fiscal Court.

County Attorney - Democrat James E. Jimmy Clay will replace republican Austin Alfrey who did not seek reelection after serving two terms. Clay was assured the office when his GOP opponent, Claude Croswell, withdrew two weeks ago. The new County Attorney is a brother of the late Richard Dick Clay who held the office two terms (eight years).

Butcher, and Mrs. Elam's election. Vernon Alfrey retired from seeking office, but not from active leadership in the republican party.

Sheriff - Now held by republican C. E. Lewis, who was elected in 1962.

Democratic nominee is John F. Brown, seeking to follow in the footsteps of his brother, Sam Green, who was shot and killed almost four years ago, (Dec. 31) only six hours before his term was to expire.

The republican nominee, Joe McBrayer, is also a recognized voice-garner. Both parties rate this an "important" political fight leading to county or organizational leadership.

Tax Commissioner - The democrats have this one sewed up. Incumbent Mrs. Juanita Wilson is assured of her third term. She had neither primary or general election opposition.

Mrs. Wilson led both tickets in the county election four years ago.

Coroner - Jim Jones, democrat, did not seek reelection. Harold Myhrer is the democratic nominee in Tuesday's election. He has a tough opponent in a young man and newcomer - Jimmy Caskey.

Incumbent republican Elmer Plank did not file for reelection after serving two terms. The democratic nominee is Al Belva G. Brannan; the republican nominee is Luke Plank. Both are from the same general area of the county - North Fork of Triplett. Republicans think they will hold this office - democrats say Brannan is in. This has been a 'house to house visit' battle.

Republicans have been in control of the Fiscal Court (three to one) for the past four years and some juicy "in-fighting" has developed. Democrats are trying to recapture the throne.

Both parties do not receive much pay for the offices among the county's Fiscal Court has charge of all county roads, tax levies, and expenditures.

Democrats re-districted the Magistrate/divisions under a Supreme and State court ruling, making them almost equal in population. Republicans have been outspokenly critical of the re-districting. This is the first time voting will be by the new districts, and veteran political observers are agreed the new alignments are more favorable to the democrats since a ballot

## Jerry Brewer Is Claimed At Age 75

Jerry Brewer, a prominent Morehead citizen, died Tuesday after an extended illness.

Mr. Brewer, who resided at Farmers after moving from the Paragon (near Morgan County) area several years ago, was 75 years of age, being born in Wolfe County, Nov. 7, 1890.

Funeral services were conducted Monday afternoon at 1 o'clock at Lane Funeral Home with Rev. Otis Flannery officiating. Interment was in Forest Lawn cemetery.

Mr. Brewer leaves his wife, the former Myrtle Link.

There are four surviving -

Logan's Infant Son Is Claimed

Gravestone rites were conducted Monday afternoon for the infant son of Logan and Pearl (Easton) Logan.

The child, died at birth at the home on Rock Fork.

## Water? Women Want Some Action; Possible Grants Detailed

The "hope" for a federal grant, upwards of \$50 percent, (\$750,000 to \$1 million) for Morehead's own water system were "bright" or "dim and long away" depending on how one interpreted the information at hand today.

A group, later termed "Women for Water" Friday secured upwards of 300 signatures on telegrams to Senators John Sherman Cooper and Thurston Morton, and 7th District Congressman Carl D. Perkins, pleading for "financial help" from Washington.

Morton and Cooper did not reply.

Perkins sent two telegrams to Morehead news media, and followed with letters to signers of the telegram.

Perkins advised this newspaper by telephone today what his telegrams implied - federal programs with "applier" benefits could provide grants to Morehead, but none have been correlated, and "no can say" whether there will be federal grants for this purpose of what governmental division may be in charge.

He also said, "no one knows at this stage when, and if such funds might be available."

In answering the telegram the Congressman said "Money Could Be Available"

"Three new programs" have been enacted which "could" provide such a grant to Morehead. He pledged his full support and offered some advice on expediting the filing of applications.

Perkins' telegram to The Morehead News, dated Friday, reads:

"Received telegram from citizens of your community. It will be a pleasure to work with all interested parties to make sure that Morehead has an adequate water supply.

## Laundrymats, Car Washes, City Water Wells Hit By KHD Order

The Kentucky Department of Health today "spelled out in writing" some mandatory regulations that the Morehead Municipal Plant Board must observe, and enforce, during the water crisis that has already hit, and is expected to become progressively worse.

The communication was directed to Clint Johnson, Superintendent of the municipally owned system, at his [own] request. Johnson told the Morehead News he intended to follow the "stringent order" until otherwise advised.

Here are the three salient "with teeth" mandates -

Further extensions, additions or service connections to the city water supply system are not permitted by the State Board of Health . . . no further connections may be made until the city has awarded contracts for the construction of its own water system. [This means no new buildings, residential or commercial, in Morehead, or suburbs until contract for the system has been let, making the "time element" all the more important.]

Where [water] wells are installed and are to be used as auxiliary supplies in connection with the city water supply, the city must immediately sever water connections to all such wells, [exceptions and/or interpretations appear in the complete text below.]

During periods of water shortage . . . all business establishments using large volumes of water, not directly affecting the public's health and well-being, such as car washing and laundromats, must be turned off first. [An order closing establishments two weeks ago has been rescinded.]

The complete instruction sent to the Morehead Utility Plant Board Manager over the signature of Nick G. Johnson, Director of Sanitary Engineering Program, Division of Environmental Health, reads:

In clarifying the intent of our memorandum of April 2, 1965, this is to specifically place the City of Morehead on notice that further extensions, additions or service connections to the city water supply system are not permitted by the State Department of Health. This restriction was to become effective by August 1965 as covered in the aforementioned memorandum. Since that time, the State Department of Health, through Mr. Ralph C. Pickard, copies of which went to all responsible officials concerned with the matter. However, if the meaning of this order has been misunderstood, and water service connections have been made before and/or after August 1, 1965, the city may install water meters to these services. No further connections must be made until a city has awarded contracts for the construction of its own water plant.

In answer to your question relative to car washing establishments, laundromats and car washes and others who are contemplating in drilling their own wells, the following requirements must be met:

1. Where such wells are installed and are to be used as auxiliary supplies in connection with the city water supply, the city must immediately sever its water connections to all such outlets. The law prohibits cross-connections between public water supplies and private water systems. The city must immediately disconnect all such connections to the city water service must be made and the water meter removed until such time as the private well is permanently discontinued.

## Warning Is To Cast Vote 'Early'

Folks who follow, and participate in Rowan politics, have one bit of advice for Tuesday's general election, particularly in the City of Morehead.

It is - vote early!

Although polls will be open 12 hours - 6 a.m. until 6 p.m. - "traffic jams" are expected in the Morehead precincts because of a bitterly fought city election and also the every-four-year ballot for county officials.

Morehead voting machines are expected to have their "biggest endurance" test since they were installed.

Election officers have attended "school" this week to aid voters. Efforts will be made to speed up the voting because long lines are expected.

The State Bond issue and the Rowan Health Tax Bond also appear on the face of the machine. Voters will find this in the extreme right column.

Both bond issues have strong support with many precinct volunteers. Courthouse officials are agreed there'll be more workers at the polls in Rowan County Tuesday than perhaps in history.

Estimates of as high as 6,000 total vote have been made for Tuesday's election.

Employers are required to permit workers enough "off" time to cast their ballots.

## Avert Major Robbery At Morehead Store

Two Louisville negroes are being held in the Rowan County jail awaiting action of the November grand jury following a bold attempt to loot Clayton's Men's Store on Main Street, across from the Courthouse, in Morehead.

The "minor" "wide open" attempted burglary was around 7 o'clock Friday afternoon when two negroes entered the store.

Callis Coyle said this is what happened:

Two colored men backed a 1953 International panel truck to the rear store entrance and forced the door with a crow bar.

Mr. and Mrs. Rex Earle, who operate the adjoining Campus Restaurant, drove into the rear parking lot. Noting the truck and the men, they called the police.

Earle approached the entrance and saw the men.

Three aspirants for Council - William (Billy) Litton, Herman Brown and Lloyd Pfeiffer - are running in this election.

Their slogan is "Vote for Four And No More."

Three incumbent members of Council who previously filed with Evans have withdrawn. They are Robert Allen, Paul R. Reynolds and George Hill.

Continued next page

## Bond Issue Aided By Dems And GOP

Rowan County democrats and republicans are expected, as always, to go at each other "tooth and nail" in Tuesday's general election with concern of the courthouse, political nerve center, at stake.

But, there's one question on the Nov. 2 ballot that those who vote under the

## Eagles Almost Pull Upset; Lose On Safety

A safety spelled the difference between a win or tie and a loss for Morehead State College Saturday as Ohio Valley Conference leader Middle Tennessee defeated the Eagles 30-28.

The safety occurred in the second quarter with Middle Tennessee leading 14-6. The Eagles had the ball on their own 21 yard line and reserve quarterback Larry Chinn retreated to the end zone and intentionally grounded a pass. As a result of the infraction, Middle Tennessee was awarded a safety.

The Eagles trailed 30-6 in the third quarter, but came back strong. With 5:04 left in the third quarter, Dennis Brown scored from the two and, from that point on, it looked like an upset was in the making.

The Eagles scored twice in the fourth quarter on passes of 30 and 27 yards from quarterback Mike Gottfried to end Rico King and halfback Tommy Gray. The last score came with 1:27 remaining. The Eagles attempted an off-side kick which was recovered by the Blue Raiders who stalled out the remaining time.

"Our play was very spotty, but I was proud of the come-back bid our boys made," said Morehead Coach Guy Penny. "You can't give a team like Middle Tennessee a 30-6 lead and then let them scare them the way we did in the fourth quarter. Middle Tennessee is a fine football team," Penny added.

"Mike Gottfried did an outstanding job of throwing the football Saturday," Penny said. "His accuracy of 12 of 24 for 173 yards, two touchdowns, and one interception was outstanding."

Boiled down, the status of a federal grant, subsidy, or loan, amounts to a vote.

When the City filed a year ago no money was available.

Last week Congress funded the three programs Perkins mentioned, but none specifically spell out if money will be available for water systems as at Morehead, but all three have clauses and escalator (variable) provisions which could provide grants, or loans, if the administering agency (Commerce etc) adopted this in the policy procedure, or criteria.

The controversy of whether to negotiate with Morehead State College for a supply for the City and suburbs, or the City build its own plant, pumping from Licking River (about eight or nine miles) is the 'big' issue in Tuesday's municipal election.

## Water —

—From preceding page

losing information regarding application for a grant of \$750,000 to construct a water system at Morehead, Ky. This application is being reviewed by the Economic Development Administration but cannot be acted upon until policy and criteria for public works grants have been established. Mayor Chinn will be kept informed of any further information needed to support the application.

Boiled down, the status of a federal grant, subsidy, or loan, amounts to a vote.

When the City filed a year ago no money was available.

Last week Congress funded the three programs Perkins mentioned, but none specifically spell out if money will be available for water systems as at Morehead, but all three have clauses and escalator (variable) provisions which could provide grants, or loans, if the administering agency (Commerce etc) adopted this in the policy procedure, or criteria.

The controversy of whether to negotiate with Morehead State College for a supply for the City and suburbs, or the City build its own plant, pumping from Licking River (about eight or nine miles) is the 'big' issue in Tuesday's municipal election.

## Same Policy Decisions

Regardless of who is elected Mayor, or to the Council, they still face the same major decisions: [1] Opening negotiations with the college, or going to the river; and [2] If negotiations are dropped with MSC, should the City proceed with the borrowing of an estimated \$1 1/2 million for the river water, or wait until the federal programs are correlated in hope of a considerably federal grant?

Meanwhile, Morehead faces further water shortages, particularly in early spring when MSC opens two new dormitories and consumption rises with warmer weather. Further possible problems are: [1] Breakdown in the machinery, operating around the clock; and [2] A major fire or rate increases (possible cancellation of policies) by underwriters.

In effect, the situation is little changed than almost two years ago when the warpage was first sounded, except that the federal government has adopted the three new programs, with appropriations that could be set up to provide funds for such applications Morehead seeks.

## Political —

—From preceding page

in the City of Morehead 'will count more' than when rural sections were virtually assured of three of the Magistrates.

This is the way they'll line up Tuesday:

District 1 - Democrat Clyde Linton vs. Republican U. Wilford.

District 2 - Upper Farmers; 3. Lower Farmers; 7. W. Morehead; and 11. North-west Morehead.

District 3 - Harvie Myhler, democrat vs. Alvin Perkins, republican. [District composed of 4, 5, 6, 8, 9, 10, 12, 13, 14, 15, 16, 17, 18, 19, 20, 21, 22, 23, 24, 25, 26, 27, 28, 29, 30, 31, 32, 33, 34, 35, 36, 37, 38, 39, 40, 41, 42, 43, 44, 45, 46, 47, 48, 49, 50, 51, 52, 53, 54, 55, 56, 57, 58, 59, 60, 61, 62, 63, 64, 65, 66, 67, 68, 69, 70, 71, 72, 73, 74, 75, 76, 77, 78, 79, 80, 81, 82, 83, 84, 85, 86, 87, 88, 89, 90, 91, 92, 93, 94, 95, 96, 97, 98, 99, 100, 101, 102, 103, 104, 105, 106, 107, 108, 109, 110, 111, 112, 113, 114, 115, 116, 117, 118, 119, 120, 121, 122, 123, 124, 125, 126, 127, 128, 129, 130, 131, 132, 133, 134, 135, 136, 137, 138, 139, 140, 141, 142, 143, 144, 145, 146, 147, 148, 149, 150, 151, 152, 153, 154, 155, 156, 157, 158, 159, 160, 161, 162, 163, 164, 165, 166, 167, 168, 169, 170, 171, 172, 173, 174, 175, 176, 177, 178, 179, 180, 181, 182, 183, 184, 185, 186, 187, 188, 189, 190, 191, 192, 193, 194, 195, 196, 197, 198, 199, 200, 201, 202, 203, 204, 205, 206, 207, 208, 209, 210, 211, 212, 213, 214, 215, 216, 217, 218, 219, 220, 221, 222, 223, 224, 225, 226, 227, 228, 229, 230, 231, 232, 233, 234, 235, 236, 237, 238, 239, 240, 241, 242, 243, 244, 245, 246, 247, 248, 249, 250, 251, 252, 253, 254, 255, 256, 257, 258, 259, 260, 261, 262, 263, 264, 265, 266, 267, 268, 269, 270, 271, 272, 273, 274, 275, 276, 277, 278, 279, 280, 281, 282, 283, 284, 285, 286, 287, 288, 289, 290, 291, 292, 293, 294, 295, 296, 297, 298, 299, 300, 301, 302, 303, 304, 305, 306, 307, 308, 309, 310, 311, 312, 313, 314, 315, 316, 317, 318, 319, 320, 321, 322, 323, 324, 325, 326, 327, 328, 329, 330, 331, 332, 333, 334, 335, 336, 337, 338, 339, 340, 341, 342, 343, 344, 345, 346, 347, 348, 349, 350, 351, 352, 353, 354, 355, 356, 357, 358, 359, 360, 361, 362, 363, 364, 365, 366, 367, 368, 369, 370, 371, 372, 373, 374, 375, 376, 377, 378, 379, 380, 381, 382, 383, 384, 385, 386, 387, 388, 389, 390, 391, 392, 393, 394, 395, 396, 397, 398, 399, 400, 401, 402, 403, 404, 405, 406, 407, 408, 409, 410, 411, 412, 413, 414, 415, 416, 417, 418, 419, 420, 421, 422, 423, 424, 425, 426, 427, 428, 429, 430, 431, 432, 433, 434, 435, 436, 437, 438, 439, 440, 441, 442, 443, 444, 445, 446, 447, 448, 449, 450, 451, 452, 453, 454, 455, 456, 457, 458, 459, 460, 461, 462, 463, 464, 465, 466, 467, 468, 469, 470, 471, 472, 473, 474, 475, 476, 477, 478, 479, 480, 481, 482, 483, 484, 485, 486, 487, 488, 489, 490, 491, 492, 493, 494, 495, 496, 497, 498, 499, 500, 501, 502, 503, 504, 505, 506, 507, 508, 509, 510, 511, 512, 513, 514, 515, 516, 517, 518, 519, 520, 521, 522, 523, 524, 525, 526, 527, 528, 529, 530, 531, 532, 533, 534, 535, 536, 537, 538, 539, 540, 541, 542, 543, 544, 545, 546, 547, 548, 549, 550, 551, 552, 553, 554, 555, 556, 557, 558, 559, 560, 561, 562, 563, 564, 565, 566, 567, 568, 569, 570, 571, 572, 573, 574, 575, 576, 577, 578, 579, 580, 581, 582, 583, 584, 585, 586, 587, 588, 589, 590, 591, 592, 593, 594, 595, 596, 597, 598, 599, 600, 601, 602, 603, 604, 605, 606, 607, 608, 609, 610, 611, 612, 613, 614, 615, 616, 617, 618, 619, 620, 621, 622, 623, 624, 625, 626, 627, 628, 629, 630, 631, 632, 633, 634, 635, 636, 637, 638, 639, 640, 641, 642, 643, 644, 645, 646, 647, 648, 649, 650, 651, 652, 653, 654, 655, 656, 657, 658, 659, 660, 661, 662, 663, 664, 665, 666, 667, 668, 669, 670, 671, 672, 673, 674, 675, 676, 677, 678, 679, 680, 681, 682, 683, 684, 685, 686, 687, 688, 689, 690, 691, 692, 693, 694, 695, 696, 697, 698, 699, 700, 701, 702, 703, 704, 705, 706, 707, 708, 709, 710, 711, 712, 713, 714, 715, 716, 717, 718, 719, 720, 721, 722, 723, 724, 725, 726, 727, 728, 729, 730, 731, 732, 733, 734, 735, 736, 737, 738, 739, 740, 741, 742, 743, 744, 745, 746, 747, 748, 749, 750, 751, 752, 753, 754, 755, 756, 757, 758, 759, 760, 761, 762, 763, 764, 765, 766, 767, 768, 769, 770, 771, 772, 773, 774, 775, 776, 777, 778, 779, 780, 781, 782, 783, 784, 785, 786, 787, 788, 789, 790, 791, 792, 793, 794, 795, 796, 797, 798, 799, 800, 801, 802, 803, 804, 805, 806, 807, 808, 809, 810, 811, 812, 813, 814, 815, 816, 817, 818, 819, 820, 821, 822, 823, 824, 825, 826, 827, 828, 829, 830, 831, 832, 833, 834, 835, 836, 837, 838, 839, 840, 841, 842, 843, 844, 845, 846, 847, 848, 849, 850, 851, 852, 853, 854, 855, 856, 857, 858, 859, 860, 861, 862, 863, 864, 865, 866, 867, 868, 869, 870, 871, 872, 873, 874, 875, 876, 877, 878, 879, 880, 881, 882, 883, 884, 885, 886, 887, 888, 889, 890, 891, 892, 893, 894, 895, 896, 897, 898, 899, 900, 901, 902, 903, 904, 905, 906, 907, 908, 909, 910, 911, 912, 913, 914, 915, 916, 917, 918, 919, 920, 921, 922, 923, 924, 925, 926, 927, 928, 929, 930, 931, 932, 933, 934, 935, 936, 937, 938, 939, 940, 941, 942, 943, 944, 945, 946, 947, 948, 949, 950, 951, 952, 953, 954, 955, 956, 957, 958, 959, 960, 961, 962, 963, 964, 965, 966, 967, 968, 969, 970, 971, 972, 973, 974, 975, 976, 977, 978, 979, 980, 981, 982, 983, 984, 985, 986, 987, 988, 989, 990, 991, 992, 993, 994, 995, 996, 997, 998, 999, 1000]

## Top Lever No Good In City Races

How does a voter pull the levers in Morehead's "sizzling and getting hotter" City [Mayor and Council] election Tuesday.

The answer is that you can't vote the straight Citizens or Progressive tickets - or the Tiger ticket headed by Norman Tant - by depressing the one [at top] lever.

County Clerk Ottis W. Elam said the machines are set "so the voter must pull the lever opposite each name - Mayor or Council."

City voters are permitted to ballot for six councilmen. The machines provide one safeguard against spoiling the ballot - no more than six levers can be pulled - but if a person makes a mistake, or changes his mind, he can turn back one of the levers and press another.

The Court of Appeals upheld this week that County Clerk's have the option of deciding how the machines should be set in voting like levers, and also arrangement of names on the Face of the machines.

Surveys have shown that more than 80 percent of the voters ignore the top [full ticket] levers anyhow - even when voting for a straight ticket in locking off citizen pulls all the levers instead of the top one under the party emblem.

## Robbery —

—From preceding page

trance calling, "Mr. Clayton," thinking the store owner was probably inside. The two men almost ran over Mrs. Earls in making their escape, leaving the petty thief stuck.

The robbery of the City resulted in a dragnet and road block.

The two were apprehended an hour later on Brady Curve [U.S. 60] at the west Morehead city limits.

He said their clothes were torn and covered with mud and briars. Coyle thought they had first taken to the [Tipton] creek valley and finally chased hitch-hiking a ride on the highway.

The truck bore Jefferson County [Louisville] license plates.

Arrested were: LaVance Wilson, 29, and Larry Alexander, 23, both of Louisville. They denied knowledge of the robbery, or truck, and said they were hitch-hiking. Meanwhile, State Police are checking ownership of the truck and if the two have police records.

Mrs. Earls said the two who fled were negroes [Morehead has practically no colored population].

Already loaded in the truck were 39 men's suits, a rack of sport jackets, several boxes of shirts and women's merchandise. Coyle thought they would have needed only 10 more minutes to drive off with several thousand dollars worth of clothes and "the robbery might have been successful if the Earls' maid's character was the rear parking space."

Making the arrests were: State Troopers Marvin Jennings and Carl Shue, and Morehead City Police Ed Hall, Carl Johnson, Bill Bowman, Russell Kirk and Frasier Dail.

Wilson and Alexander waived examining trial and were placed in Rowan County jail for failure to execute the \$3,000 [each] appearance bonds set by city court.

## Limited Authority

On Public Dances

The City of Danville has no power to prohibit public dances arbitrarily and neither does any other city, the Court of Appeals ruled Friday.

The decision was a victory for A.C. Sumner, dance promoter who tried unsuccessfully three times to obtain a city license it also reversed Boyle Circuit Court.

## City Vote —

—From preceding page

However, the three are actively supporting the Progressive Ticket.

William H. Layne is the candidate for Mayor on The Citizens Ticket. Layne held the office four terms, but did not seek reelection in 1961.

The Citizens Ticket has a full slate of six candidates - the number to be elected. Three are incumbents - Dr. N.C. Marsh, Austin Riddle and Wilbert Crager. The others on this ticket are John Paul Kegley, William N. Caudill and Dr. Everett Blair.

Dr. Norman Tant is running for Council on the Freedom Party label. Tant changed the emblem to a "fighting Tiger" and has been outspokenly critical of the "what he calls 'mistake upon mistake' at City Hall."

Tant has conducted a long, and energetic, campaign. Three weeks ago "Citizens" appeared about "normal" from a community interest standpoint.

But, the "water cut-off, plus a drive by a group of 'Women For Water' has focused abhorrent interest on the balloting."

It is almost certain that a record vote will be cast in city precincts.

County Clerk Ottis W. Elam said voting machines are connected so that election officers can "cut off" that part concerning the city election.

For example, in almost all city precincts there are registered voters who reside outside the corporate limits. They will be ineligible to vote in the Mayor and Council races. This poses a problem for election officers in locking off the city ballot when an ineligible voter enters the booth.

The County Clerk also said the voting machines have been set so it is impossible to pull the "top" lever and vote a straight "Progressive" or "Citizens" ticket. In other words, city voters will pull the lever opposite the name of their choice for Mayor, and can depress six levers to vote a straight Citizens or Progressive ticket.

Others named to the



PUNT, PASS, KICK WINNERS . . . These are the 'luck and best' winners of the punt, pass and kick contest sponsored by the Morehead Junior Chamber of Commerce and Rowan Motor Sales, winning out over 125 entries. This picture was taken as they were served refreshments and awarded prizes following competition Monday afternoon. Champions in the six divisions are: Eight-year-olds - 1. Chuck Adams; 2. Jimmy Morrison; 3. Paul Buchanan; 3. Martin Greenman. 10-year-olds - 1. Phil Pratt; 2. Bobby Wells; 3. Winford Adkins. 12-year-olds - 1. Scott Fraley; 2. Teddy Greene; 3. Lenny Morrison. 13-year-olds - 1. Mike Abner; 2. Jim Tom Holbrook; 3. Stephen Martin. The Contest may become an annual event at Morehead.

## Appoint Mrs. Doran To State Position

Mrs. Adron Doran, wife of Morehead State College President Adron Doran, has been named to the Kentucky Commission on Children and Youth by Governor Edward T. Breathitt, Jr.

Governor Breathitt appointed four Kentuckians to posts on the Commission Tuesday in Frankfort.

Others named to the

Commission were: Milburn Maupin, Louisville, principal of the Jackson Junior High School; the Reverend Joseph Browne, Covington, assistant director of Catholic Social Service and the Reverend Charles Tachau, Louisville, former juvenile court judge.

LeRoy Stevens, Louisville, was reappointed to the Commission.

Mrs. Doran, immediate past-president of the Kentucky Federation of Women's Clubs, calls the appointment a high honor to serve with such distinguished Kentuckians.

She added, "I sincerely hope that I can make a worthwhile contribution to the Commission and will look forward to continuing the outstanding work which has already been done in this area."

TOO BAD - "Man Inured When Horse Falls on Him." -- Headline. He was? Well, well.

## Bond Issue —

—From preceding page

Representative Sherman Arnett delivered the speech urging democratic precinct workers to slate 'yes' votes.

He said Rowan County will immediately get over \$30 million and there will be no new taxes. The democratic candidates apparently agreed.

The Republicans had their "meet, eat, greet, mingle, and speak" election rally Saturday, also at the RCIS cafeteria. The principal speaker was Howes Meade said: "I'm for the bond issue . . . all Republicans should be for it because we must have this [Federal] matching money in Kentucky to keep progress with other States."

Meade pointed out, as have the democrats, that passage of the bond issue is insurance against new taxes, and he chided:

"After all, the democrats will get to spend only a small part because as sure as the Lord made little green apples, the next governor of Kentucky will be a republican, and we'll have the say-so."

That brought the house down with cheers.

Seasoned Rowan political observers thought "this is about the first time that both parties, and the candidates, are agreed on endorsing a bond issue."

LBJ Recovering But Still Weak

President Johnson attended services at a little white church in his home town at Johnson City, Sunday and heard an earnest prayer for his rapid recovery. It was his first public appearance since his Oct. 8 operations.

Johnson was restless during the service, whispering to Mrs. Johnson, twisting around to see who was in pews behind.

## Rowan County PUBLIC SPEAKINGS

The 18 speakers listed below, plus scores of other progressive and forward thinking Rowan Countians, have volunteered their services to speak - answer questions from the floor - truthfully equalize our people with the importance of passing the State Bond Issue. Be sure to attend the speaking in your neighborhood. Some speakings will have music or entertainment.

FARMERS SCHOOL	7:00 P. M.	THURS., OCT. 28
ELLIOTTVILLE SCHOOL	7:00 P. M.	THURS., OCT. 28
HALDEMAN SCHOOL	7:00 P. M.	FRI., OCT. 29
TILDON HOGGE SCHOOL	7:00 P. M.	FRI., OCT. 29
MT. PISGAH CHURCH	7:00 P. M.	FRI., OCT. 29
CLEARFIELD SCHOOL	FUN NITE	SAT., OCT. 30

## --- Speakers Include ---

• SHERMAN ARNETT	• CLIFFORD CASSADY	• ALPHA M. HUTCHINSON
• RAY BAILEY	• W. E. CRUTCHER	• MICHAEL KELLER
• ERNEST BINION	• BERT DEAR	• ROBERT LACY
• REV. CHARLES BROOKS	• DR. C. NELSON GROTE	• G. ROGER LEWIS
• JOHN BUTCHER	• LELAND HALL	• EUGENE WHITE
• WILLIS CARTER	• RONALD HART	• TOMMY WHITE

## It Means So Much To Rowan County

Rowan County will get over \$30 million in immediate benefits, probably more based on population than any county in Kentucky . . . there will be not one dime new taxes; in fact this is the one vote that will avoid new taxes as the speakers will explain . . . endorsed at both the Democratic and Republican rallies in Rowan County . . . endorsed by education, labor, industry, Farm Bureau and all farm organizations . . . Morehead Chamber of Commerce . . . Morehead Junior Chamber of Commerce . . . Education . . . Ministers . . . Retail Merchants . . . In fact, every group. Work, help make Rowan the bonner (percentage-wise vote) on election day! IT MEANS SO MUCH TO YOU AND TO ALL OF US. There is no hidden cost or taxes!

VOTE YES! TUESDAY, NOV. 2 BOND ISSUE!

## He Will Again

A Friend To All In Time Of Need

W. C. Flannery For Rowan County Judge

The Peoples Choice



Here  
Is

# THE TRUTH OF THE MATTER

In 1949 it became apparent that the obsolete water system at Morehead could not supply Morehead State College and the City with an adequate supply of purified water, meeting Public Health Standards.

The City Council instructed William H. Layne, who was then Mayor, to contact bonding and investment companies in an effort to borrow adequate money to rebuild the system and provide an impoundage reservoir. In turn, Richard G. Howes, Investment Broker, Carew Tower, Cincinnati, O., was engaged as Fiscal Agent in an effort to issue bonds for an adequate municipally owned water system, meeting Public Health requirements.

Mr. Howes, in turn, contacted other investment companies . . . surveyed the debts and revenues . . . and reported to Council that it was impossible to sell the necessary bonds because

the City of Morehead at that time lacked the bonding potential.

Dr. William Jesse Baird was President of Morehead State College at the time. Several meetings were held between the Mayor, Council, Dr. Baird and the Board of Regents.

President Baird appealed to the then Governor of Kentucky - Earle C. Clements. The Governor ordered an investigation, and then called his Cabinet together. They voted, in view of the evidence that the City of Morehead could not finance its own water system, that the State appropriate, from the Governor's Emergency and other funds, the money.

In 1950 the State of Kentucky constructed the plant, and also Evans Branch Reservoir with storage of 125 million gallons. A contract was entered into between the College, the City, and the Commonwealth of Kentucky. [Lawrence W. Wetherby

then Governor] whereby the City would pay the college 20¢ per thousand gallons for PH water. This was later raised to 21¢ when the City requested [after a referendum] that the water be fluoridated.

This arrangement proved satisfactory to both the City and the College for about 13 years.

In November, 1963 - almost two years ago - Morehead State College President Adron Doran requested a meeting with the present Mayor and City Council. At that meeting - almost two years ago - he read the findings of an exhaustive survey which showed that the existing pumping and purification facilities were being used around the clock and were inadequate to supply both a rapidly growing college enrollment and also a rapidly growing and expanding City, and its suburbs.

President Doran stated in writing: [1] That the 500 gallon capacity per minute of the system was

adequate to supply an enrollment of 7,000 to 8,000 students but inadequate for both the College and City. [2] The City should proceed immediately with its own system; or [3] If the City desired to continue to purchase water from the college, the City would necessarily have to meet its share of the revenue bonds the college would have to issue, and pay off, to expand the facilities.

The President of the College declared then that an emergency existed, and haste was mandatory. That was almost two years ago. Subsequently, warning on top of warning has been issued . . . the State Board of Health made a factual survey and reported the same thing . . . the Fanus Research came up with the same report . . . the Board of Regents of Morehead State College went on record urging to City to do something that the consumption was increasing and the matter was extremely critical.

## Why?

Hasn't the Mayor, the Councilmen who voted with him, and the Morehead Municipal Plant Board done anything to solve the water crisis when they were officially notified of it almost two years ago . . . and have been warned, warned, warned, warned and re-warned every month since November, 1963?

## Why?

The official records of the Board of City Council of Morehead, Ky., dated Friday, March 27, 1964 (19 months ago) read: " . . . Moved by (Councilman) Hill, seconded by (Councilman) Marsh that the City make application for a grant and loan from the Federal government through its Accelerated Works Program for a 75% grant to construct a water plant and system. Roll call as follows: N. C. Marsh - aye; Robert Allen - aye; Austin Riddle - aye; Wilbert Crager - aye; George Hill aye." Now, here is the BIG WHY? When application was filed with the Regional Office at Atlanta (Accelerated Works Program) the Mayor and some of the members of the Municipal Plant Board were advised there was no money for such a grant. They were subsequently - not once but several times - told by official sources at Washington no such funds were available . . . yet, this was all kept hidden; the public was never told about this; and members of the Council whose names are listed below were never advised that the application for the grant was 'nothing but apiece of cake'.

**BIG MISNOMER - THE GUARDED SECRET** while you were being told that the Mayor was working to get water for our people. This was the biggest 'STALL' and 'SECRET' in Morehead's history . . . and if you have any doubt about this all you have to do is to contact the Atlanta Regional Office, or any member of the United States Senate or the House of Representatives. The plain truth is there wasn't any money under the Accelerated Public Works Program when the application was filed, nor has there been any since. They knew this, but they never told you - the people. Why?

## Why?

About two months ago the Mayor was invited to attend a meeting held in the Auditorium of the Kentucky Power Company at Ashland at which the Fanus Research Report was to be made public, including the findings about Morehead and Rowan County. The Mayor didn't attend, but some citizens, interested in our community, did. And the unbiased Fanus Report was highly critical of the tactics and delay by the Municipal Plant Board and stated the City couldn't complete its own water system from Licking River until 1970. (The Fanus Report was paid for by the Kentucky Department of Commerce; required months of research; and conducted by the Fact-Finding Organization that is considered the best in the nation).

Now, Here  
Is The Big  
'Why'  
And 'Lie'

## Why?

Were the people told their water bill would be raised only a small percent when actually YOUR WATER BILL would have been increased from three to six times under a hodge-podge, semi-concealed plan whereby your gas and sewage bills would be increased to cover up the deficit?

Only six months ago a member supporting the present Mayor, and apparently speaking for the Mayor, said in a public Council meeting: "I've lived in Morehead all my life, and we've never had any shortage of water, and there isn't any now?"

## Why?

Kentucky Revised Statutes (Consult any Attorney) state that the Morehead Municipal Plant Board must publish, properly itemized, a Financial Statement not later than 60 days after the end of the Fiscal Year. This would be before Sept. 30, 1965. Repeated requests have been made to an official of the Morehead Municipal Plant Board for the publication of this statement. The law states that the members are guilty of non-feasance (non-compliance) and removal from office for failure to publish this statement by September 30. The audit was completed by the CPA, but why, why, why, have they refused to let you - the taxpayer - the utility consumer - know what is in that statement, and where your money went?

## Why?

There are so many 'why's' and 'not understandable' practices and procedures by the majority of the present City Administration that space does not permit them all . . . for example, why was Urban Renewal, which could mean so much to Morehead, dropped after Bill Layne left the Mayor's office? . . . Why have the people cried to get even minor street repairs? . . . why was money denied the Rowan County Health Department when the Mayor knew adequate funds were in the treasury? . . . why has the City fallen further behind every year? . . . why did the three members of the Council who voted with the Mayor on the water and sewer issues, quit the race in the midst of this crisis, desert the Mayor, the issues and their names will not even be on the ballot?

## Why?

On January 1, 1964 when the new Council took office the present Mayor stated that the Municipal Plant Board was making so much money and had accumulated great surpluses which were in the Citizens Bank at Morehead and the Peoples Bank of Morehead. He recommended these big surpluses be withdrawn from the banks and put in interest bearing securities. Subsequently, part of this money was withdrawn to pay off some of the long term, but not due for many years, bonds on the existing municipally owned utility system. We have said that there is no necessity to increase the water rate if the City pays 35¢ a thousand gallons because the Morehead Municipal Plant Board is making enough profit to cover the additional cost.

## Why?

The first requisite for Morehead to operate its own plant, and pump water from Licking River, is approval of the Kentucky Public Service Commission. Yet, in almost two years, no such application has been made. If such a public hearing had been held the truth of the matter would have had to come to light long ago.

## Why?

Has the important widening and straightening of Triplett Creek through Morehead been ignored . . . apparently forgotten . . . by the Mayor? More than a year ago the U. S. Congress approved legislation, with appropriation, authorizing the U. S. Army Corps of Engineers to spend up to one million dollars for the Morehead Project. (The widening and straightening estimate was \$549,000). Here is one project that wouldn't cost Morehead a dime. Yet, it like most everything else is in the Mayor's 'do nothing' file. Plans for this project which means so much to Morehead has been formulated when William H. Layne was Mayor, and apparently dropped when the present Mayor took office. What if another 27 people lost their lives and Morehead was practically destroyed by a flash flood that can now be averted at 100 percent federal expense. Plans and specifications for the widening and straightening of Triplett Creek were completed, and approved, more than four years ago when William H. Layne was Mayor.

## Why?

Did the Mayor, and his supporters on the Council, refuse to let the people decide what was the best course to follow when Councilman Austin Riddle asked for a referendum on the water crisis? This was seconded by Councilman Marsh. The vote was three-to-three but the Mayor untied it by refusing a referendum to the people. ~~even though such referendums had been called with the Mayor's approval on such a minor problem as the T-V Cable?~~

## Why?

Several months ago the Kentucky Department of Health lowered the rating of the Morehead Municipal Water System from 'Excellent to Provisional' (probationary). But, this was kept secret until almost all the Doctors in Morehead appeared in person at the Council meeting and Dr. Kenneth Welsh read the report. When Dr. Welsh finished the actual report, the Mayor tried to dismiss the meeting without any questions or discussions. The Kentucky Department of Health, after waiting one-and-one-half years, has issued an order that 'no new taps' be placed on the system.

## Why?

Was it necessary for a group of citizens, alarmed and disillusioned over this nearly two years of 'do nothing' to send telegrams last week to Congressman Perkins and Senators Morton and Cooper asking for help. The truth of the matter is that the Mayor knew all the time that no federal programs had been coordinated, or finalized, for a water grant for Morehead.

cent of all the water pumped and purified by the college . . . the truth of the matter is that on the biggest day of the year (Homecoming Eve with the annual Candlelight Dinner, Concert etc) there was not a drop of water in any dormitory or building on the Morehead College campus.

It is deplorable . . . a shame . . . that an attempt has been made through misrepresentations to drive a rift between the town and the college . . . to create dissension with the institution that is the economic, educational and cultural lifeblood of our city and area.

The water crisis is serious . . . but, perhaps even more lamentable are the tactics that have been used against the President, his wife, and the personnel of Morehead State College.

Restore Confidence, Respectability, Progress  
By Voting For The Citizens Ticket

----- FOR COUNCIL -----

For Mayor -  
William H. Layne

Austin Riddle  
John Paul Kegley  
Dr. N. C. Marsh

William M. Caudill  
Dr. Everett Blair  
Wilbert Crager

**Scout Training Meets Tonight**

Jess Richards, district scout representative, will hold a training meeting Thursday [tonight] at 7:30 at the Church of God.

All den mothers and pack committee members in Rowan County have been urged to attend.

**He Served You Well...****He Will Again**

A Friend To All In Time Of Need  
**W. C. Flannery**  
For  
**Rowan County Judge**

The Peoples Choice

--Pd. Pol. Ad.

**Kentucky Tobacco Markets Will Open November 29**

The tobacco auction market in Kentucky and seven other states of the light burley belt will open Monday, Nov. 29, the Burley Sales Committee ruled in a meeting at Lexington Monday.

The committee decreed 15 selling days before Christmas.

The committee, which sets all sales policies for the entire burley belt, also voted to resume sales after Christmas Jan. 3. Warehouses close for the season when they run out of tobacco.

Sales will be allowed for four hours daily at markets selling on a basket basis and 3 1/2 hours a day on those selling by poundage.

The committee's usual unanimous vote on sales dates and times was missing this year, however, when two Tennessee members objected to the different sales hours for the two types of markets.

J. C. Dean, Knoxville, and Matt Jennings, Nashville, suggested both types of markets be allowed to sell four hours a day. They said any other hours were discriminatory, but their proposal was defeated by an 8-2 committee vote.

The committee then approved dates and times

suggested by W.G. Vann, Greenville, Tenn. That vote also was 8-2, with Dean and Jennings voting negative.

Markets selling on a basket basis will be limited to 1,440 baskets per day for each set of buyers. Those on a poundage basis will be limited to 340,200 pounds a day for each set of buyers.

Reynolds Bell, committee chairman, and a poll of warehousemen, tobacco companies and tobacco associations showed a slight preference for opening the market Nov. 22.

Fifty-three warehousemen voted for that opening date with 3 1/2 sales hours a day; 27 warehousemen, six tobacco companies and three associations asked for Nov. 29 with 3 1/2 sales hours daily, and 39 warehousemen and one tobacco company wanted Nov. 29 and four hours a day.

"We'd like to open on the 22nd and try to keep an orderly market," Ancil Harndon of Danville said. "If we wait to the 29th, we may have a serious jam," William Goodwin of Bowling Green added.

E.J. O'Brien, board chairman of the Burley Leaf Tobacco Dealers Association, urged the com-

mittee to "set a date late enough to encourage growers to let tobacco hang and cure."

O'Brien recommended the Nov. 29 opening date.

The committee also set Nov. 19-ten days before sales open as the earliest date tobacco may be delivered to sales floors and weighed.

**Johnson To Judge 'Top' Dog Trials**

Clim Johnson, Superintendent of the Morehead Utility Plant Board, has been named [and accepted] as one of the two judges for the national Wimeraser (quail, pheasant, etc.) Dog Championship Trials and also the National Futurity of the same breed.

He, and John L. "Shag" Stanforth of Hillsboro, O., were chosen to judge the championship and Futurity at Fayetteville, O. starting Nov. 3.

The national championship, and Futurity, are alternately held in New York, California and Ohio.

About 40 of the finest [all blue ribbon winners] Wimeraser's from throughout the United States will compete for the championship, and 30 in the Futurity.

**Musetta's Waltz**

IN MUSETTA'S WALTZ, Adriana Martino sings one of the most familiar arias in the La Scala Opera Company's world-famed production of Puccini's romantic "La Boheme," which will be presented here by Warner Bros. for four genuine performances in Technicolor and newly-developed highest fidelity sound at the Trail Theatre on Nov. 2-4.

**10c****SAVE 10c****SAVE 10c****10c****SAVE 10c**

THIS COUPON WORTH 10c ON A PURCHASE OF A SIX-BOTTLE CARTON OF 12 OZ. MOUNTAIN DEW.

Present this coupon plus usual bottle deposit or bottle exchange to your dealer who displays Mountain Dew. Offer expires Nov. 30, 1965.

Mr. Dealer: Our customers will redeem this coupon for 10c. Offer limited to territory served by the Pepsi-Cola Bottling Company of Ripley, Ohio, Inc. (Cash value 1/30 of 1c.)

**SAVE 10c****10c****SAVE 10c****SAVE 10c****10c**

## How Long Can The City Pay 2/3 Of The College Water Bill ?

July 16, 1964 the College gave these figures to City Council and Utility Plant Board. This is the last report the college has given.

1963 College paid on Bonds and Interest	\$17,247.50
Water Plant Operating and Maintenance Costs	\$21,000.00
Total Cost of Water to College	\$38,247.50
City paid for Water	\$29,000.00
Actual cost to College	\$ 9,247.50

**Water Users, Check**

With The Utility Plant Board!

**THE FACTS ARE THERE**

Vote For  
**Progressive Ticket**

**MAYOR**

**Eldon T. Evans**

**FOR COUNCIL**

**William Litton**      **Lloyd Pelfrey**  
**Herman Brown**

Women For Water

Vote For 4 And No More

These 4 have committed themselves  
to go to the river.

**JEST HOLLER FER A BOTTLE!****COZIN WILLY SEZ:**

Sho' 'nuff, cozins... jest give a holler fer a bottle of thet dee-lish-ush, ole country-style MOUNTAIN DEW at yore fav'rit store! You'll love it!

**Mountain Dew****IT'S DEE-LISH-USH!**

Bottled under the authority of The Tip Corp. of America





# WANT ADS

## Classified Advertising Rates

No Classified Ads Accepted After 12 Noon Tuesday  
 For world first insertion \$4  
 For each subsequent insertion of 100 words or less \$2  
 Minimum charge (first insertion) \$1.00  
 Minimum charge (each subsequent insertion) 60¢  
 Display Classified Advertising, per inch \$10.00

Entered as Second Class Mailing Matter at Post Office, Morehead, Ky.

**FOR RENT**  
 5 1/2 room brick home, use of MSC campus. Mrs. Robert Needham, 214 Hargis Ave. C-41

**FOR SALE**  
 22 Acres with barn, 45 tobacco, orchard, two wells, large pond, spring, 3-bedroom block home (newly remodeled and re-decorated), full basement, central heating, modern plumbing, 1 1/2 baths, new 2-car carport. About 8 miles from city limits on Hwy. 10. W.G. Satter, Morehead, phone 784-5901. C-42

**MIDLAND TRAIL HOTEL**  
 Lease and furnishings for sale. Due to owner's obligation to fulfill position in Florida. For further information phone Charles E. Blair at 784-4149. C-43

**FOR SALE**  
 Good used house trailer. Price \$495. Morehead Camp Mobile Home Park, phone 784-4759. C-44

**FOR RENT**  
 Nice 3-room cottage, 10 minutes from Morehead. Barn, other outbuildings. Call or write: V.A. Johnson, 721 Campbell Ave., Portsmouth, Ohio, phone 353-1725. C-45

**SMALL PIANO**  
 Assume small monthly payments on like-new piano. Free delivery. Free tuning, matching bench. Ten year warranty to new owner. May be seen in yard at local area. For details write Credit Manager, P.O. Box 7044, Lexington, Ky. C-46

**FOR RENT**  
 1 furnished 3-bedroom house at 22 Second Street. Phone 784-5901. C-47

1966 GMC PICKUP—\$1795 FULL PRICE  
 Includes heater, defroster, dual headlights, turn signals, spare tire, 6 cyl., 155 HP engine, oil filter, dual speed electric windshield wipers and washers, seat belts, back-up lights, 6 1/2 foot Fender-side bed, front coil springs, leaf springs rear, shock absorbers front and rear. See Dick Stone, Stone Pontiac-Buick, GMC, 150 East, Morehead, Ky. Phone 784-4937. C-48

**FOR SALE**  
 1960 National 3-bedroom mobile home. Phone 784-5908. C-49

**APARTMENTS FOR RENT**  
 Completely furnished apartments and rooms. Morehead. 4 1/2 mile East US 60. Phone 784-4758. C-50

**HOUSE FOR RENT**  
 4 1/2 room with bath. Located 458 East Main Street. Available Nov. 1. Call 784-4484 or 784-4640. C-51

**PIANO WANTED**  
 We are interested in buying a good, used upright or grand piano. Phone 784-5255. C-52

**FOR SALE**  
 1954 Buick Super engine and transmission. Call 784-5924. C-53

**NEED A GOOD, USED MOBILE HOME?**  
 Brown's Auto Sales in Grayson, Ky. has several, both one and two bedrooms. See them at Brown's Auto Sales or call 474-5444 (night 674-6488). C-54

**MOVING AND STORAGE**  
 For Complete Local and Long Distance Moving Service, Packing And Storage... Call 784-5903 C-55

**BLAIR TRANSFER & STORAGE**  
 —Agents For Greyhound Van Lines— 613 W. Main — Morehead, Ky. C-56

**FARM FOR SALE**  
 48 Acres: 5-room modern house, basement, combination barn and shop, 100 acres, 1 acre tobacco base, tobacco and stock barns, milk house, well, water system, The Melvin Edwards farm near Sherry. Phone 784-9623 or 784-5901. C-57

**FOR SALE**  
 Creek gravel and topsoil. Boone Hollan, phone 784-7169. C-58

## POLITICAL ANNOUNCEMENTS

General Election  
**DEMOCRAT PARTY**  
**REPUBLICAN PARTY**



For State Representative (7th District)

SHERMAN B. ARNETT

For County Attorney

JAMES E. CLAY

For County Judge

W. C. PLANNERY

For Sheriff

JOHN T. GREEN

For County Court Clerk

OTIS W. ELAM

For Tax Commissioner

JUANITA WILSON

For Sheriff

HAROLD MYNHER

For Sheriff

BELVA BRANHAM

For Magistrate (District 1)

FORREST L. MAY

For Magistrate (District 2)

HARVEY MYNHER

For Magistrate (District 3)

CHARLES O. WADDELL

For Magistrate (District 4)

TRUCK FOR SALE

Ford C-600. Replaced by larger unit. Spring Grove Dairy. C-59

**FOR RENT**

If you want to rent a trailer, see Clayton Adams, Clearfield Road, Morehead. C-60

**DOZER WORK**

Call Douglas Forman, business phone 784-4167 or residence 784-4022. C-61

**WELL DRILLING**

Water well drilling. Call J. B. Bohan, phone 784-7121. C-62

**MUSICAL INSTRUMENTS**

Guitars, amplifiers, Big variety Gibson, Fender, Martin, others. Headquarters Baldwin Music Company. 2100 East Main St., Ashland, Ky. C-63

**Livestock For Sale**

Top Quality dairy calves delivered direct to you on approval. These calves are by registered bulls. We guarantee them to be healthy on arrival. You must be 15 or more. Delivered prices:

Three week old calves:

Holstein heifer ... \$35.00

Guernsey heifer ... \$35.00

Price on 8 to 10 week old calves ready for dry feed:

Holstein heifer \$48.50

Guernsey heifer \$45.00

Available Anytime

Call or write ...

Bill Nolan

Bondell, Wisconsin

Phone 758-4741. C-64

**Notice Of Bids**

The Rowan County Board of Education will accept bids on Building Insurance until 4:00 P.M. on November 1, 1965.

General specifications, bid forms and schedule of values may be obtained at the Superintendent's office. Clifford N. Casady, Supt. Rowan County Schools. C-65

**Executrix's Notice**

All persons having claims against the estate of Lester Cankey, deceased, are requested to provide their claims as required under the Statute and file same with the undersigned at once.

Zada Cankey

Executrix of the estate of Lester Cankey

Lester Cankey

Attorney C-66

**ORGAN FOR SALE**

You may assume monthly payments of \$18.00 on a slightly used spinet organ with one year guarantee and matching bench. For further information please write Credit Manager, P.O. Box 193, Lexington, Ky. C-67

**LOST**—bright carpet colors—restore them with Blue Lustre. Rent electric shampooer \$1. Pierce's 52 & 106 E. 4th C-68

**PIANO FOR SALE**  
 You may assume monthly payments of \$15.56 on a slightly used spinet piano with lifetime guarantee and matching bench. For further information, please write Credit Manager, P.O. Box 23, Versailles, Ky. C-69

**FOR COUNTY JUDGE**  
 OTIS CALDWELL  
 For Sheriff  
 JOE McBRAYER  
 For County Court Clerk  
 C. E. LEWIS  
 For Coroner  
 JIMMIE CASKEY  
 For Jailor  
 LUKE PLANK  
 For Magistrate (District 1)  
 VIRGIL WESBOTT  
 For Magistrate (District 2)  
 ALVIN PERKINS  
 For Magistrate (District 3)  
 LIGON A. KESLER

**FOR SALE**  
 Building room and lot on Railroad Street across from C&O parking lot. \$5,700. Call Jack Landreth, phone 784-4635. C-70

**WANTED**  
 Manager trainee. Fast growing small loan company has opening for man. No age limit. High school education required. For prompt interview contact Empire Finance Company, 347 1/2 East Main St., Morehead, Ky. C-71

**FOR SALE**  
 Choice building lot in Sherrill Forest, 100 ft. front. Call 784-7433. C-72

**FOR SALE**  
 Modern house, 7 acres land, 2 fish ponds. On Highway 60 and C&O Railroad, 4 miles west of Morehead. Dr. D. Day Sr., phone 784-4232. C-73

**APARTMENT FOR RENT**  
 Three rooms with private bath, private entrance. Mrs. H. Morrison, 129 Sun Street. C-74

**CARD OF THANKS**  
 I take this means to express my sincere thanks to the many friends and neighbors for their sympathy and numerous acts of kindness at the time of death of my loved one, Faye Johnson. Especially do I thank the Lane Funeral Home; Rev. Ted Greene; Mr. and Mrs. Ray Lamb; sent flowers; and all others who assisted in any way during my bereavement. Husband, Doug Johnson. C-75

**FOR RENT**  
 Two-bedroom cottage apartment. Furnished. \$55.00 per month. See Larry Fannin. C-76

**FOR RENT**  
 Four-room house with bath. On East Main Street. Call 784-4823. C-77

**WOMEN**  
 Start now for Big Christmas savings as an Avon representative. Write Mrs. Lois M. Leonard, Box 1269, Ashland, Ky. or call 324-3165. C-78

**HOUSE FOR RENT**  
 4 1/2 room with bath. Located 458 East Main Street. Available Nov. 1. Call 784-4484 or 784-4640. C-79

**FOR SALE**  
 1954 Buick Super engine and transmission. Call 784-5924. C-80

**NEED A GOOD, USED MOBILE HOME?**  
 Brown's Auto Sales in Grayson, Ky. has several, both one and two bedrooms. See them at Brown's Auto Sales or call 474-5444 (night 674-6488). C-81

**MOVING AND STORAGE**  
 For Complete Local and Long Distance Moving Service, Packing And Storage... Call 784-5903 C-82

**BLAIR TRANSFER & STORAGE**  
 —Agents For Greyhound Van Lines— 613 W. Main — Morehead, Ky. C-83

**FARM FOR SALE**  
 48 Acres: 5-room modern house, basement, combination barn and shop, 100 acres, 1 acre tobacco base, tobacco and stock barns, milk house, well, water system, The Melvin Edwards farm near Sherry. Phone 784-9623 or 784-5901. C-84

**FOR SALE**  
 Creek gravel and topsoil. Boone Hollan, phone 784-7169. C-85

**HOUSE FOR RENT**  
 Four rooms and bath. Call 784-4374. C-86

**Will sacrifice this small piano for balance due or take over payments. Good credit only. Can be seen locally. Write Credit Dept., P.O. Box 7076, Lexington, Ky. C-87**

**New Attempt At Space Fall**  
 America's first attempt to join two spacecraft in orbit failed this week when the Agena rocket apparently exploded six minutes and eight seconds after launch from Cape Kennedy, Fla. The remnants fell into the South Atlantic.

**Astronauts Walter M. Schirra Jr. and Thomas P. Stafford** were sealed in the Gemini 6 spacecraft at the time, awaiting their launch at the Cape. They were to have followed the Agena 101 minutes later to begin the space chase toward rendezvous and docking.

**What can I do for Rowan County...** When I started traveling over the district I was surprised to find many people I knew well, but didn't know that I was 'Ma' and 'Pa' Kesler's son... and that I was raised where the tobacco warehouses now stand.

**Most voters know that I have worked with engineers on highways, railroads, buildings; and pipe lines since World War II...** and, during the winter, I write tickets at the Morehead Tobacco Warehouses.

**I received my education at Rowan County High School and had 3 1/2 years at Morehead State College. Again, I say that I want to be your Magistrate and serve my people. Remember, on Tuesday that I need you to help me, so I can help you.**

Ligon A. Kesler  
 —Pd. Pol. Adv.

## Ligon A. Kesler Wants To Serve You As Magistrate

**What can I do for Rowan County...** When I started traveling over the district I was surprised to find many people I knew well, but didn't know that I was 'Ma' and 'Pa' Kesler's son... and that I was raised where the tobacco warehouses now stand.

**Most voters know that I have worked with engineers on highways, railroads, buildings; and pipe lines since World War II...** and, during the winter, I write tickets at the Morehead Tobacco Warehouses.

**I received my education at Rowan County High School and had 3 1/2 years at Morehead State College. Again, I say that I want to be your Magistrate and serve my people. Remember, on Tuesday that I need you to help me, so I can help you.**

**Ligon A. Kesler**  
 —Pd. Pol. Adv.

**SAVE WITH STONE—SAVE WITH STONE—**  
**The Finest Selection Of Used Cars Anywhere Are At STONE**

**4-1965 Buick Electra 225**  
 Custom, 4-door hardtop - loaded with power equipment. These are factory official cars - all have been driven less than 3,000 miles 24 - 24 factory warranty in full force - never been titled. You can save over \$1,200 from original list.

**1964 Buick Wildcat**  
 3-door hardtop, automatic, power steering, power brakes and many more luxury items. Guaranteed one owner... come see the cheapest '64 anywhere.

**1965 Buick Electra**  
 4-door, automatic, power steering, power brakes, radio, heater factory air conditioner. Guaranteed one local owner. Sold and serviced by us... for those who appreciate the best.

**1965 Pontiac Bonneville**  
 Convertible, automatic, power steering, power brakes, leather upholstery, 8-way power seat. Guaranteed one local owner. Come see, drive and buy at Stone.

**1962 Corvair Monza**  
 4-speed... new premium tires... guaranteed one owner.

**Many More To Choose From Priced From \$95**

**We Have The Following New Cars In Stock... Come Get The Highest Trade Anywhere.**

**2 - 1966 Pontiac Catalina**  
 2-door - one sedan, one hardtop coupe... get our deal.

**1 - 1966 Pontiac Lemans**  
 4-door hardtop with air conditioner.

**1 - 1966 Buick Skylark**  
 4-door hardtop... luxury at a small price.

**1 - 1966 Buick Electra 225**  
 Custom - 4-door hardtop... has all the options, including factory air conditioner.

**"SAVE WITH STONE"**  
**STONE PONTIAC-BUICK-GMC, INC.**  
 Phone 784-4937

**Used Cars U.S. 60 East — Morehead, Ky.**  
**Cars Also Shown By Appointment**  
**SAVE WITH STONE—SAVE WITH STONE—**

**USED CARS**  
 '63 Chevy II Convertible  
 '58 Ford 4 Door  
 '60 Corvair 4 Door Sedan  
 '59 Chevrolet 2 Door  
 '57 Ford 2 Door

**USED TRUCKS**  
 '59 Chevrolet Truck  
 '54 Chevrolet Pickup  
 '61 Chevrolet Pickup  
 '62 Chevrolet Corvan

**Midland Trail Garage**  
 'Pioneers in Rowan County Transportation'

**Public Legal Sale**  
 To satisfy a debtor's lien, a 1959 Ford Thunderbird, serial number 189V158259, will be sold to the highest bidder at Rowan Motor Sales, West Main St., Morehead, Ky. on Thursday, Nov. 4, 1965 at 11:00 a.m. [EST]. C-43

**AMBITIOUS YOUNG MAN**  
 We need two people to add to our service department one mechanic/trainee and one body shop helper. We would prefer a local person between the ages of 20 and 30, high school or some experience. Would consider an experienced person for either job. If selected you will join one of the fastest growing dealerships in Eastern Kentucky that offers a real opportunity for those who apply themselves. If you are interested, please see Dick Stearns, Pontiac-Buick-GMC, Inc., Morehead, Ky. C-43

**WOMEN**  
 Start now for Big Christmas savings as an Avon representative. Write Mrs. Lois M. Leonard, Box 1269, Ashland, Ky. or call 324-3165. C-78

# For A Progressive Rowan County ...

Be Sure To Go To The Polls Next Tuesday, And ...

Polls Open 6:00 a.m.

Polls Close 6:00 p.m.

## Vote Democratic

General Election

Next Tuesday

The Qualified Ticket That Will  
Work For The Welfare of Rowan County

### REPRESENTATIVE



**Sherman R. Arnett**

School teacher ... farmer ... administrator ... religious and civic leader. He will make one of the best State Representatives in Kentucky.

### COUNTY JUDGE



**W.C. Flannery**

Farmer ... businessman ... the incumbent with a proved record. Under his leadership Rowan County is in the best financial condition in its 109 year history.

### COUNTY ATTORNEY



**James E. Clay**

Qualified by training and experience ... friendly, cooperative and aware of your problems ... a friend to folks in every walk of life.

### SHERIFF



**John T. Green**

Qualified by business experience, sound judgement and maturity. The Democrats proudly offer this outstanding nominee for Sheriff.

### COUNTY COURT CLERK



**Ottist W. Elam**

Needs no introduction as here is one of Kentucky's most efficient, courteous and 'liked by everybody' County Court Clerk's.

### TAX COMMISSIONER



**Juanita Wilson**

So strong in her own right she had no opposition for re-election ... she is ever aware and cognizant of the interest, and problems, of our people.

### JAILER



**Belva Branham**

A successful farmer and community leader. A man whose honesty, integrity and warm feeling for his fellow man can't be questioned.

### CORONER



**Harold Mynhier**

Has worked for both Morehead Funeral Homes, but is not obligated to either. Bears highest qualifications and experience for this position.

### MAGISTRATE



**Clyde Litton**

Long a leader in the Farm Bureau, farm organization and community and civic work. He will make an outstanding member of the Fiscal Court.

### MAGISTRATE



**Forrest L. May**

Farm and milk distributor. Has educational background, with experience to properly budget and get the most done with the taxpayer's dollar.

### MAGISTRATE



**Harvie Mynhier**

Recognized as a 'good' farmer and a progressive citizen. Particularly interested in improving Rowan County's rural road system.

### MAGISTRATE



**Charles O. Waddell**

A teacher and farmer, who knows Rowan County's financial, educational and rural road problems. A man who gets the job done.

## SOCIETY

Mr. and Mrs. Jack Phillips of Haviland, Kansas arrived last Tuesday for a visit with Mrs. E.D. Patton.

Weekend guests of Mr. and Mrs. Wathan O'Leary were Mr. and Mrs. Delmar Johnson and children, John David, Marcia and Melinda of Hanover, Ind.

Mrs. Wales Adkins and daughter, Nancy of Omar, W. Va., and Miss Sharon Adkins of Washington spent the weekend visiting Mr. and Mrs. Clay Lewis and Mr. and Mrs. C.E. Lewis.

Mrs. Tina Caudill Hazellett of Ashland spent the weekend with her aunt, Mrs. J.L. Nickell, and Miss Elizabeth Nickell. Mrs. Hazellett recently returned from a month's vacation with her son, and his wife, Dr. and Mrs. Claude Hazellett in Germany.

Mr. and Mrs. Robert Pedgree and children, Terry and Sandy of Flint, Mich. were weekend guests of Mr. and Mrs. Steve Hamilton and family.

The Haldeman P.T.A. met Tuesday night with Dr. Kenneth Welch as the guest speaker. Rev. Charles Brooks also talked on the Bond Issue.

Mrs. Mary Harvey of Bethel, O., was the guest of Mrs. Elsie Cline from Monday to Wednesday. Other guests of Mrs. Cline's at dinner on Wednesday were Mrs. Mayme Wiley, Mrs. Stella Patton, Miss Ethel Patton and Mrs. Carrie Proctor who left Tuesday for her home in Clearwater, Fla. after spending the weekend with Mrs. Cline.

Mrs. Della Mae Henry of Kenova W. Va. spent the weekend with Mr. and Mrs. J.A. Williams and family.

Jim Williams, Steven Calvert and Drew Lane spent Saturday in Lexington.

Mr. and Mrs. James F. Hardyman and children, Jennifer and Frank Jr. of Mayville were weekend guests of her mother, Mrs. J.M. Garrard.

Roger Wilson who attends the University of Kentucky, spent the weekend with his parents, Mr. and Mrs. R.L. Wilson, Ward Oates Drive.

Mr. and Mrs. Larry Fannin were in Danville over the weekend to attend homecoming events at Centre College.

Mrs. Monroe Wicker returned home Sunday after spending ten days with Mr. and Mrs. Terry Wicker in Fairborn, O.

Guests last weekend of Mrs. Marjorie Gabbard were Mrs. Beulah Hampton Owsley and daughter, Mary Jane of Louisville; Mrs. Mae Briscoe Burns and daughter, Ann, Frankfort, and Mr. and Mrs. Charles Bruen Winchester. Her visitors on Sunday were Mr. and Mrs. William Lindsay of Frankfort and Joyce Flannery.

Dr. and Mrs. George Wyatt and family of Cambridge, O. were weekend guests of Dr. and Mrs. Adron Doran and Dr. Wyatt's sister, Mrs. George Burgess of Burgin, and family.

Guests last weekend of Mr. and Mrs. John Greene were Mr. and Mrs. Warren Sheer and Mrs. and Mr. C.C. Boggs and children, Clark and Cathy, all of Columbus, O.

Mrs. Lassie Copley and Mrs. Rebecca Blankenship of Wartfield spent last Friday and Saturday with Mrs. Callie Caudill.

Staff Sgt. Reese Hunt returned to Morehead last Friday from Okinawa and will spend his leave with his family and his parents Mr. and Mrs. George Hunt. He will later report to a camp in Delaware, accompanied by his family.

Mr. and Mrs. Raymond Peluso and children, Reneta and Ray and Mrs. Raymond Peluso Sr. of New Castle, Pa. spent last weekend with Mrs. Martha Withrow.

Mr. and Mrs. Bob Mayo and children, Rebecca and Robbie of Lebanon were weekend guests of Mr. and Mrs. Paul Qualey.

Mr. and Mrs. Randall Wells and family of Cincinnati spent Saturday and Sunday with her parents, Mr. and Mrs. J.A. Shackelford.

Miss Janie Barber who is attending the University of Kentucky, spent Friday and Saturday with her parents, Mr. and Mrs. V. Woodrow Barber. She will spend a Sunday visitor at the Barber home.

Mr. and Mrs. Orville Hayes of Mayville spent Thursday with his mother, Mrs. R.H. Hayes. Mrs. Roy Foster of Lick Fork was the Saturday guest of Mrs. Hayes.

Ward Williams entered the Veterans Hospital in Huntington Friday and will be home Saturday.

Mr. and Mrs. James C. Howard Jr. and Mrs. James C. Howard Sr. of Atlanta, Ga. spent the weekend with Rev. and Mrs. John Howard at their home on Wilson Ave.

Mr. and Mrs. John B. Messer and Miss Nancy Caudill spent Sunday with Mr. and Mrs. Mike Roberts in Mr. Sterling.

Mr. and Mrs. Charles Wollert and daughter, Deborah Ann of Louisville were guests from Thursday to Sunday of her parents, Mr. and Mrs. D.E. Bayless.

Mr. and Mrs. Larry Ball of Louisville spent the weekend with their parents, Mr. and Mrs. F.E. Moorefield and Mr. and Mrs. Franklin Ball.

Mr. and Mrs. James McKenzie and children, Denise and Timmy of Muncie, Ind. were guests Thursday and Friday of his sister, Mrs. F.E. Moorefield and Mr. Moorefield.

Mr. and Mrs. Haskell McKenzie and daughter, Janie of Muncie, Ind. spent the weekend visiting relatives here.

Mr. and Mrs. Marvin Wilson Jr. and family of Dayton, O. spent the weekend with her parents, Mr. and Mrs. Marvin Wilson Sr.

Mr. and Mrs. Glenn Jordan of Dayton, O. spent Saturday and Sunday with her sister, Mrs. Stella Bristol.

Mr. and Mrs. William Lindsay of Frankfort spent the weekend with her mother, Mrs. C.U. Walz.

Mr. and Mrs. J.H. Pelphrey Jr. and daughter, Sue Lorraine spent Saturday night and Sunday with her parents, Mr. and Mrs. J.H. Pelphrey in Paducah.

The regular meeting of the Farmers Rebekah Lodge will be this Thursday evening beginning at 7:30. Following the business period, a Halloween party will be held and refreshments will be served.

The Lower Licking Homemakers Club met Oct. 20 at the home of Mrs. Geneva Moore for the current lesson, "Community Development," which was presented by Mrs. Ella Mae Ramey.

Others present were Mrs. Alma Orcler, Mrs. Judy Stevens, Mrs. Ina Moore and two guests, Mrs. Opal Swim and Mrs. Ina Caldwell.

The Morehead Woman's Club Education Department met Oct. 12 at the home of Mrs. Mary Alice Jayne with Miss Mildred Maggard, Mrs. Wilma Groce and Mrs. Hazel Martin serving as co-hostesses.

Other members attending were Mrs. Jean Mack, Mrs. Helen Northcutt, Mrs. Bruce McGee, Mrs. Elaine Kirk, Mrs. Sibbie Playforth, Mrs. Shirley Hamilton, Mrs. Ingrid Teubner, Mrs. Nell Mahoney, Mrs. Catherine Bach, Mrs. Lucille Evans, Mrs. Joyce Hart, Mrs. Nancy Chappin, Mrs. Betty Thompson, Mrs. Pearl Lowe and Mrs. Elizabeth Layne.

Lewis Kenney who is attending Murray State College, spent the weekend with his mother, Mrs. Howard Chancellor, and Mr. Chancellor.

Meeting Thursday afternoon at Mrs. Dorothy J. Murray's home, members of the Smile Homemakers Club studied the current lesson, "Community Development," and an alternate lesson on knitting.

Those attending were Mrs. Dorothy Deborn, Mrs. Addie Murray, Mrs. Jean Haney, Mrs. Beatrice Lewis, Mrs. Goldie Lewis and a guest, Mrs. McFarland.

Mr. and Mrs. A.J. Rather and daughter, Janie spent the weekend with Mrs. Rather. They also visited Mrs. Anna C. Manning who is confined to a hospital there.

Dr. and Mrs. C.C. Mayhall had as their visitor Friday and Saturday her brother, Bob Waggoner of Nashville, Tenn.

Mr. and Mrs. Cecil Purvis of Tuesday in Dayton, O. with her brother, Jesse Lyons who is ill and confined to a hospital. Mrs. Purvis' sister, Mrs. Arlie Caudill of Mr. Sterling, accompanied them.

Relatives visiting last week with Mr. and Mrs. Purvis were Mr. and Mrs. Holly Kinsinger were Mr. and Mrs. Bob Miller and son, Bobby of Cincinnati, and Mr. Fry Erika of Hollywood, Fla., and Mr. and Mrs. Gell Miller, Madison, W. Va.

### He Served You Well...

W. C. Flannery

For Rowan County Judge

The Peoples Choice

A Friend To All In Time Of Need

W. C. Flannery

Rowan County Judge

The Peoples Choice



Mr. and Mrs. Gary Curtis Pennington

### Miss Coffey Weds Mr. Gary Pennington

The First Baptist Church of Morehead was the scene of the wedding Oct. 16 of Miss Carolyn Sue Coffey, daughter of Mr. and Mrs. John C. Coffey of Lyons Avenue, and Gary Curtis Pennington, son of Mr. and Mrs. Curtis Pennington, Morehead Route 3.

Rev. Kenneth Cole performed the double ring ceremony. Given in marriage by her father, the bride wore a floor length gown of tiered tulle with a fitted bodice and long tapered sleeves. Her bouquet consisted of pink roses. Miss Mary Olive Anderson, the bridesmaid, wore a pink velvet dress and carried a bouquet of pink roses.

The flower girl, Joanne Coffey, daughter of the bride, wore a pink velvet dress. The bridesmaid, Miss Mary Olive Anderson, wore a pink velvet dress and carried a bouquet of pink roses.

Weekend guests of Mr. and Mrs. Cecil Purvis were Mr. and Mrs. Cecil Purvis and his brother, Charlie Purvis and grandson, Mike Brown of Dayton, O.

Weekend guests of Mr. and Mrs. Cecil Purvis were Mr. and Mrs. Cecil Purvis and his brother, Charlie Purvis and grandson, Mike Brown of Dayton, O.

Jimmie Ray Crosthwaite of Frankfort visited over

the weekend with his parents, Mr. and Mrs. C.R. Crosthwaite.

Sunday guests of Mr. and Mrs. Roscoe Hutchinson were Mr. and Mrs. D.C. Adkins of Elkfork who were enroute to Christiansburg, O. to visit their son, Benjie Adkins and family.

"Bill For The Future" will be the theme of the regular meeting of the Rowan County Women's Club Tuesday, Nov. 9, at 7:30 p.m. in the Health Center on West Sun Street.

The Civic Department will have charge of the program which will include a panel discussion of "Progress In Our Town and Plans For The Future." Various civic leaders will participate.

Department members who will serve as hostesses for the session are: Mrs. David Abner, Mrs. Arch Williams, Mrs. Garland Shoemaker, Mrs. S.M. Spoor, Mrs. D. Day Strickland, Mrs. Delmer Reynolds and Mrs. D. Day Jr.

Mr. and Mrs. Roy Hutchinson recently received word their son-in-law, Donald Stratton, serving with the U.S. Army in South Vietnam, has been promoted to the rank of Major. Mr. Stratton and children are making their home in Clarksville, Tenn.

Mr. Curtis Holton of Morehead visited last week with her daughter and family, Mr. and Mrs. Michael Keller and daughters.

Mr. and Mrs. Boone Caudill attended a State Bankers meeting in Louisville from Sunday to Wednesday.

William "Billy" Hollis who is stationed in Fort Knox, spent the weekend with his family, Mr. and Mrs. Sherman Conn.

Mr. and Mrs. W.H. Rice and Mr. and Mrs. Alvin McGary returned Thursday from Troy, Ala. where they attended a meeting of the Southeastern Regional Association of Physical Plant Administrators of Universities and Colleges.

Mr. and Mrs. Andrew Offutt and family spent the weekend in Louisville, guests of his mother, Mrs. Helen S. Offutt.

### Republican Meet-The-Candidates Night Highly Successful

Two hundred fifty-three attended the Republican Meet-the-Candidates Rally at the Rowan County Cafeteria Saturday, October 23 at 6:00 P.M.

The program opened with a prayer by Rev. Cecil Ison, followed by the pledge to the flag led by Mary Alice Jayne.

Master of ceremonies William H. Layne presented Ida Sheets, past President of the Rowan County Republican Women's Club and commended her Club for winning the highest award in the state for membership.

Corene Castle, Rowan County Republican Club President was commended for organization and training of precinct captains and helpers to work on the precinct level.

Mrs. Castle introduced the officers of the Republican Women's Club. All members of the Rowan County Republican Committee were acknowledged.

All Republican workers were thanked for their interest and hard work.

The candidates were introduced and each made short comments.

Door prizes were donated by interested local business men.

Winners were: Tom Early, Carrie Martin, Gladys Cooper, Ronnie Caskey, Delmore Cooper, Richard Goodman, Kenneth Fultz, and Phillip Ellington.

Windell Howes Meade, the speaker of the evening, was introduced by Rowan County Attorney Austin Alfrey. Mr. Meade, attorney serving Johnson and Fayette counties, spoke on Supporting a Blue Ribbon Ticket and asked the group the privilege of returning to speak at the Rowan County Republican Victory Banquet.

The annual Halloween carnival sponsored by the Farmers P.T.A. will be this Thursday evening, beginning at 6:30, in the school gymnasium. The public is invited.

Mrs. W. J. Sample and Mrs. Adron Doran were guests at the regular meeting of the College Younger Woman's Club on Oct. 19.

Mr. and Mrs. Taylor Trumbo of Fort Thomas were guests last week of their cousin, Mrs. John H. Eppinger. Back US 60.

Dr. and Mrs. George DeMuth and family of Ann Arbor, Mich. visited over the weekend with her brother, Randy C. Wells, and Mrs. Wells and her grandmother, Mrs. Margaret Wells. They spent some time Sunday at Carter Cave State Park.

Representing the First Baptist Church of Morehead, Mrs. Ray Lytle, Mrs. Nancy Reynolds, Mrs. Clyde Smith, Mrs. Arbie Young, Mrs. Emily Young and Mrs. C.C. Mayhall attended a meeting Thursday of the Broken Association W.M.U. in Foxport.

SEASONAL - Overhead: "It's about time for me to go on the lawn mower and get my overcoat out of lock."

Headquarters Pattern No. 579: Color for Girl. Effective trends are underlined in cultural designs and finished with an edging of tulle in the pleated skirt. Use one piece pattern. No. 579 contains three month's work.

Headquarters Pattern No. 579: Color for Girl. Effective trends are underlined in cultural designs and finished with an edging of tulle in the pleated skirt. Use one piece pattern. No. 579 contains three month's work.

Headquarters Pattern No. 579: Color for Girl. Effective trends are underlined in cultural designs and finished with an edging of tulle in the pleated skirt. Use one piece pattern. No. 579 contains three month's work.

Headquarters Pattern No. 579: Color for Girl. Effective trends are underlined in cultural designs and finished with an edging of tulle in the pleated skirt. Use one piece pattern. No. 579 contains three month's work.

Headquarters Pattern No. 579: Color for Girl. Effective trends are underlined in cultural designs and finished with an edging of tulle in the pleated skirt. Use one piece pattern. No. 579 contains three month's work.

Headquarters Pattern No. 579: Color for Girl. Effective trends are underlined in cultural designs and finished with an edging of tulle in the pleated skirt. Use one piece pattern. No. 579 contains three month's work.

Headquarters Pattern No. 579: Color for Girl. Effective trends are underlined in cultural designs and finished with an edging of tulle in the pleated skirt. Use one piece pattern. No. 579 contains three month's work.

Headquarters Pattern No. 579: Color for Girl. Effective trends are underlined in cultural designs and finished with an edging of tulle in the pleated skirt. Use one piece pattern. No. 579 contains three month's work.

Headquarters Pattern No. 579: Color for Girl. Effective trends are underlined in cultural designs and finished with an edging of tulle in the pleated skirt. Use one piece pattern. No. 579 contains three month's work.

Headquarters Pattern No. 579: Color for Girl. Effective trends are underlined in cultural designs and finished with an edging of tulle in the pleated skirt. Use one piece pattern. No. 579 contains three month's work.

Headquarters Pattern No. 579: Color for Girl. Effective trends are underlined in cultural designs and finished with an edging of tulle in the pleated skirt. Use one piece pattern. No. 579 contains three month's work.

Headquarters Pattern No. 579: Color for Girl. Effective trends are underlined in cultural designs and finished with an edging of tulle in the pleated skirt. Use one piece pattern. No. 579 contains three month's work.

Headquarters Pattern No. 579: Color for Girl. Effective trends are underlined in cultural designs and finished with an edging of tulle in the pleated skirt. Use one piece pattern. No. 579 contains three month's work.

Headquarters Pattern No. 579: Color for Girl. Effective trends are underlined in cultural designs and finished with an edging of tulle in the pleated skirt. Use one piece pattern. No. 579 contains three month's work.

Headquarters Pattern No. 579: Color for Girl. Effective trends are underlined in cultural designs and finished with an edging of tulle in the pleated skirt. Use one piece pattern. No. 579 contains three month's work.

Headquarters Pattern No. 579: Color for Girl. Effective trends are underlined in cultural designs and finished with an edging of tulle in the pleated skirt. Use one piece pattern. No. 579 contains three month's work.

Headquarters Pattern No. 579: Color for Girl. Effective trends are underlined in cultural designs and finished with an edging of tulle in the pleated skirt. Use one piece pattern. No. 579 contains three month's work.

THIS WEEK'S AUDIOLANE PATTERNS

The Total Look

Colored Girl

Colorful Pattern No. 579: Color for Girl. Effective trends are underlined in cultural designs and finished with an edging of tulle in the pleated skirt. Use one piece pattern. No. 579 contains three month's work.

Colorful Pattern No. 579: Color for Girl. Effective trends are underlined in cultural designs and finished with an edging of tulle in the pleated skirt. Use one piece pattern. No. 579 contains three month's work.

Colorful Pattern No. 579: Color for Girl. Effective trends are underlined in cultural designs and finished with an edging of tulle in the pleated skirt. Use one piece pattern. No. 579 contains three month's work.

Colorful Pattern No. 579: Color for Girl. Effective trends are underlined in cultural designs and finished with an edging of tulle in the pleated skirt. Use one piece pattern. No. 579 contains three month's work.

Colorful Pattern No. 579: Color for Girl. Effective trends are underlined in cultural designs and finished with an edging of tulle in the pleated skirt. Use one piece pattern. No. 579 contains three month's work.

Colorful Pattern No. 579: Color for Girl. Effective trends are underlined in cultural designs and finished with an edging of tulle in the pleated skirt. Use one piece pattern. No. 579 contains three month's work.

Colorful Pattern No. 579: Color for Girl. Effective trends are underlined in cultural designs and finished with an edging of tulle in the pleated skirt. Use one piece pattern. No. 579 contains three month's work.

Colorful Pattern No. 579: Color for Girl. Effective trends are underlined in cultural designs and finished with an edging of tulle in the pleated skirt. Use one piece pattern. No. 579 contains three month's work.

Colorful Pattern No. 579: Color for Girl. Effective trends are underlined in cultural designs and finished with an edging of tulle in the pleated skirt. Use one piece pattern. No. 579 contains three month's work.

Colorful Pattern No. 579: Color for Girl. Effective trends are underlined in cultural designs and finished with an edging of tulle in the pleated skirt. Use one piece pattern. No. 579 contains three month's work.

Colorful Pattern No. 579: Color for Girl. Effective trends are underlined in cultural designs and finished with an edging of tulle in the pleated skirt. Use one piece pattern. No. 579 contains three month's work.

Colorful Pattern No. 579: Color for Girl. Effective trends are underlined in cultural designs and finished with an edging of tulle in the pleated skirt. Use one piece pattern. No. 579 contains three month's work.

Colorful Pattern No. 579: Color for Girl. Effective trends are underlined in cultural designs and finished with an edging of tulle in the pleated skirt. Use one piece pattern. No. 579 contains three month's work.

Colorful Pattern No. 579: Color for Girl. Effective trends are underlined in cultural designs and finished with an edging of tulle in the pleated skirt. Use one piece pattern. No. 579 contains three month's work.

Colorful Pattern No. 579: Color for Girl. Effective trends are underlined in cultural designs and finished with an edging of tulle in the pleated skirt. Use one piece pattern. No. 579 contains three month's work.



## Rowan Speeches Are Scheduled In Support Of State Bond Issue

Eighteen Rowan Counties, from all professions, are taking to the "oratorical" campaign trail this week in support of the \$175 million state bond issue.

Five speakers have been scheduled as follows:

Tonight (Thursday) 7:00 p.m. - Farmers School (a Nite), and Elliottville School.

Friday, 7:00 p.m. - Tilden Hodge School and Mt. Pleasant Church.

Saturday, 8:00 p.m. - Clearfield School (Fun Nite).

Speakers include administrators, bankers, realtors, business men, Ministers, farmers etc.

The 18 listed speakers are: Sherman Arnet, Ray Bailey, Ernest Brooks, Charles Brink, John Burchey, Willis Carter, Clifford Cassidy, W. E. Crutcher, Bert Dean, C. Nelson Grose, Leland Hill, Ronald Hart, Alpha M. Hutchinson, Michael Keller, Hobart Lacy, C. Roger Lewis, Eugene White, W. J. Sample and Tommy White.

Other members of the Bond Issue Steering Committee in Rowan County include: Curt Z. Bruce, Otto P. Carr, J. Roger Caudill, Roy Corbett, W. T. Garay, Lujah M. Hodge, Harry Mayhew, W. H. Rice, John Rogers, William Whitaker, May Williams, Glenn W. Lane and R. C. Powell.

Co-chairmen are Alpha M. Hutchinson, a banker, and republican, and W. E. Crutcher, publisher, a democrat.

Crutcher and Hutchinson said "We can't find any reason... not one... why any informed Rowan Countyman can vote against the State Bond issue."

"Rowan will get, based on population, more than any other county in Kentucky, including \$21 million for the Interstate, \$2,186,000 for a four lane interchange (2.6 miles) from Morehead to the Pine Creek

## Chamber And Jaycees For 'Yes' Votes

Morehead's Senior and Junior Chamber of Commerce will convey the same message to Rowan County voters for Tuesday's election, but in a different manner.

Senior Chamber President Michael Keller said cards will be distributed over the weekend in Morehead and immediate area, urging citizens to vote for the State Bond issue.

Jaycee President Ronald Hart said volunteers of his organization will be at each of Rowan's voting precincts Tuesday also urging "Yes" votes.

Keller and Hart commented, "Surely, no informed citizen will vote against this bond issue."

It means more than \$30 million to Rowan County, plus other benefits and, in studied analysis, a guarantee against new taxes to meet matching federal money and grants - some nine-for-one.

The Senior Chamber and Jaycees have also endorsed the 10¢ (maximum) Rowan County Health tax "to save our health center and public health services at a cost of less than \$1 a year to the average citizen."

The growth should not be removed until the alfalfa down stage is upon them. Morehead is planning to carry its alfalfa down stage in the winter. More information will be given later as to spring treatment.

WELCOME TO NEW AGENT

WELCOME TO MR. AND MRS. Robert Wolfe and their girls!!! Bob will assume his duties on November 1st as one of our co-workers and we hope that everybody will get acquainted with him. He comes to us from Blairsville, West Virginia, where he has been doing advanced study after having been Extension Agent in Pike County.

The co-chairmen predicted the issue "will carry solidly" in Rowan County, but added: "Wouldn't it be something if this is the banner (percentage-wise) county in all of Kentucky? That would make it so much easier for us to get more from Frankfort, and from the federal matching programs - a community boost to Morehead State College."

Speakers are expected to detail this at Rowan appearances, listed above. Crutcher, publisher, also is answered from the floor.

It became an "open secret" Saturday evening that this proponents of the bond issue are also supporting the 10¢ (maximum) Rowan health tax because "we must have this to save our health center, and the cost is less than \$1 a person each year."

The State Bond issue has the endorsement of almost every Rowan organized

## Assistant Agent Is On The Job

By Adrian M. Razor [Rowan Extension Agent]

The Alfalfa Weevil caused extensive damage to hay crops in Kentucky this past spring. I saw one figure that estimated conservatively a 3 million dollar damage from this insect. Dr. Chapman of the Entomology Department at the University of Kentucky says we can help lessen damage from this insect by some fall practices. They are as follows:

1. Applying insecticide in the fall is not recommended because of the lack of an approved fall treatment. Many new insecticides have been tried in the fall but each has failed to perform satisfactorily. It is illegal to use Heptachlor or Dieldrin at anytime on alfalfa.

2. Removing alfalfa as thoroughly as possible by grazing, cutting, or burning after plans have been killed by a freeze appears to destroy the eggs of the weevil. This results in a darkened appearance of the alfalfa in the spring and may reduce the need for one or more sprays on the first cutting.

The growth should not be removed until the alfalfa down stage is upon them. Morehead is planning to carry its alfalfa down stage in the winter. More information will be given later as to spring treatment.

WELCOME TO NEW AGENT

WELCOME TO MR. AND MRS. Robert Wolfe and their girls!!! Bob will assume his duties on November 1st as one of our co-workers and we hope that everybody will get acquainted with him. He comes to us from Blairsville, West Virginia, where he has been doing advanced study after having been Extension Agent in Pike County.

The co-chairmen predicted the issue "will carry solidly" in Rowan County, but added: "Wouldn't it be something if this is the banner (percentage-wise) county in all of Kentucky? That would make it so much easier for us to get more from Frankfort, and from the federal matching programs - a community boost to Morehead State College."

Speakers are expected to detail this at Rowan appearances, listed above. Crutcher, publisher, also is answered from the floor.

It became an "open secret" Saturday evening that this proponents of the bond issue are also supporting the 10¢ (maximum) Rowan health tax because "we must have this to save our health center, and the cost is less than \$1 a person each year."

The State Bond issue has the endorsement of almost every Rowan organized

## What Are The Facts In The Water Crisis?

PLAN IS PUT INTO EFFECT

An error was made when the present water filtration plant was built, in not building it larger, but it was an honest error. Who in Morehead, either at the College or in the City, would have dared to guess - and cost good borrowed money on it - that the College's enrollment would rise from less than 500 students to more than 4,600 in 5 years and that the City would move more than double in size during the same time?

Two Years Of Doing Nothing

The College notified the City Officials two years ago that a water shortage was developing. Nothing was done. A year ago the College presented the City with a plan that would safeguard both parties, after a series of meetings on the problem.

The summer, at City Council's request, President Doran came down to City Hall and read over and explained the College's plan to Council and the citizens who were present at a special meeting called for the purpose of discussing the water situation. I was present along with many other citizens and businessmen of Morehead, having read a notice of the meeting in the Morehead News. According to the plan, which the Mayor and City Council agreed was the same one submitted to them a year ago, the College was in position to increase the size of the present filtration and pumping facilities to three (3) times its present capacity and that the work could have been completed in no more than a year. The College would borrow the money, finance the expansion and charge the City ONLY enough additional for water to meet the debt incurred by the College for the City's needs. The City will not have to put up a single dollar, will not have to go in debt a single dime for the expansion.

This means that the College can and will be ready, able and willing to supply over two million (2,000,000) gallons of water a day instead of the present 700,000 gallons. An Engineering Report was cited to show that Triplett Creek and the College's Lake could supply enough raw water for this expansion, even during a drought. Two million gallons of water a day should take care of the College enrollment of 5,000 students plus meeting the needs of a city of 12,000 people. And when such sizes are reached the City will have had time to reduce its present debt and will have a water income from the expansion building its own water purification system without having to crucify the average citizen with higher water bills for many years.

No Need To Increase Rates

The maximum increase in the cost of water to the City under the College Plan would be 14¢ per 1,000 gallons of water. The City would pay for 1,000 gallons can be absorbed by the Utility Plant Board for users of up to 8,000 gallons of water a month if City Council will lower the Sewer Tax to 65¢ and adjust the water rates to cover the added 14¢ per 1,000 gallons cost. THIS WOULD IN NO WAY ENDANGER THE CITY'S CREDIT OR CRIMP THE UTILITY PLANT BOARD'S REVENUE. THE CITY WOULD PROVIDE THE CITIZENS WITH SOUND AND SATISFACTORY SERVICES.

The Utility Plant Board will have to relocate the water and gas lines in the Flemingburg road within one or two years at a cost to the City of close to \$100,000. The Highway Department wants it done next year. If I borrow up to the limit now the City will have the Flemingburg road widened for the lines were laid in the highway right of way and now the Flemingburg Road is soon to be widened to four lanes and the City will own it. (The State Highway Department revealed October 15 their plans were completed.) This situation bothers me with respect to laying out a huge water line, which has a normal life expectancy of 75-100 years, from Farmers to Morehead in the highway right of way. U.S. 60 undoubtedly will be widened long before the water line is half worn out. Short-sighted engineering will once more cost us a great sum of money if the River Plan, as designed, is put into effect.

Time Is Important

Based upon the number of customers and the water income when the Sewer Tax was originally set, it was necessary to levy a 95¢ tax. The tax does not have to be as high now due to the tremendous growth in the number of customers and the present water income.

Users will have an increase under either plan, but their increase will be much higher under the River Plan than if the City contracts with the College. In addition, the College Plan can be completed in one year. The River Plan will require over two years under the most favorable circumstances, and could take three or four years to set up bond sales, advertise them, sell them, advertise for bids for construction, etc. Such a delay probably will bankrupt some businesses dependent on water. Meanwhile all of us run the risk of being burned out of house and home - a worse fate than an unnecessary one to three years if the River Plan is put into effect.

THE ABOVE IS A COLD, FACTUAL STATEMENT OF THE CHOICES BEFORE YOU. If someone tells you the figures are wrong, ask them for their qualifications and how much factual investigation they have done. ALSO ASK THEM IF THEY OR THEIR BUDDIES OR KINFOLK, OWN SOME SUBDIVISION-TYPE LAND BETWEEN BRADY CREEK, AND FARMERS!

PUT AN X ON YOUR TICKET. WORK, VOTE FOR NORMAN TANT. HE IS THE ONLY CANDIDATE WITH A RECORD OF INFORMING THE PUBLIC OF THE FACTS OF CITY GOVERNMENT!

FREEDOM PARTY

NORMAN TANT For City Council

THE CITY CAN OBTAIN AN ADEQUATE SUPPLY OF WATER FROM THE COLLEGE AND SELL IT TO YOU WITHOUT ANY INCREASE IN THE TOTAL MONTHLY AMOUNT YOU NOW PAY AS SHOWN ABOVE. YOUR TOTAL BILL FOR UP TO 8,000 GALLONS OF WATER PER MONTH DOES NOT HAVE TO BE INCREASED, UNLESS THE RIVER

## Do, We The Women Without Water

... have the right to speak?

In the last issue of The Morehead News there was an advertisement signed 'Women For Water.'

We, the Women Without Water, are paying for this advertising space to tell the people the truth.

-----THE TRUTH IS-----

1. The present Mayor of Morehead has 'dilly-daddled' around for almost two years when he was repeatedly warned that a water shortage was imminent.

2. President Doran, and the Board of Regents of Morehead State College tried to help us every way they could.

3. Some of the 'Women For Water' evidently know little, or nothing of the facts, and have become 'personal' in their criticism of the institution, and its leadership that is the very life blood of our community.

4. Three members of Council - Dr. N. C. Marsh, Wilbert Crager, and Austin Riddle - tried every way they could to get water for us without any increase in rates.

5. We support the above incumbent members of Council, their three running mates, Dr. Everett Blair, John Paul Kegley, and William Caudill, and Honorable William H. Layne who will be a 'Get Things Done' Mayor for our people, instead of sitting around like a bump on a pickle, and burping like a frog on a log.

6. We are convinced that Mayor William H. Layne and the members of his ticket will 'keep the people informed' including 'We, Women Without Water.'

7. We are further convinced (as proved by the past record) that Mayor William H. Layne and the nominees for Council on his ticket will immediately start reversing the feeling that some people (Maybe they're selfish or jealous) are trying to build up against Morehead State College, its Board of Regents, its President, the President's wife, the faculty, the administrative personnel, the employees and perhaps even the 4,655 students.

8. We, the Women of Morehead Without Water, respectfully call on every citizen to go to the polls next Tuesday and help clean up this mess. Return City Government to the people.

We Want Water! - Not Hot Air!  
No More 'Secret' Meetings!  
No More 'Stalling Around' For Two Years!

## This Has Been A 'Black Week' In Morehead's History

Our heart is heavy in prefacing this column. During the past week scurrilous statements have been disseminated in our community about the President (and the President's wife) of Morehead State College... the Superintendent of the Water system (W. H. Rice)... the Board of Regents... and, of course, many others.

It will take years for our community to recover.

Telephone calls have come to this desk from the highest place in Franklin... from Washington... from members of the MSC Regents. All agree to know what is going on.

The misrepresentations are libelous... and if we printed the documented "gossip" this newspaper, under Kentucky law, would be equally guilty. For almost two years the Morehead News has editorially warned, in black type, of the inevitable water crisis, at long last... when the water ran out... folks asked to what we have been writing for 22 months.

Basically, voters should go to the polls Tuesday and cast their ballot on: (1) How soon can we get an adequate and guaranteed supply of water? - the time required for Morehead State College to expand its plant... the time required for the city to construct its own system; and (2) The cost - it is cheaper on the consumer to negotiate with the college or go to the river? Everything else is irrelevant.

Morehead will get an adequate water supply, one way or the other, sooner or later. But, during our lifetimes the Morehead community will suffer from the revolting developments of the past few days. That is lamentably inevitable... as certain as the article we headlined in November of 1963 that a shortage of water was a certainty unless remedial steps were taken.

We sort of have an idea that some of the advertisements in this issue are more interesting than anything we write, and since our ever-increasing staff has been working around the clock the balance of this column will be in capsule form.

We could digress at length about the State Bond issue and the benefits, without new taxes, accruing to Rowan County. Emphatically condensed, no thinking Rowan County will vote against it. Per capita, Rowan receives more than any Kentucky county... and it just might be that Rowan will return the state's record breaking "Yes" percentage-wise majority.

The Health Tax proposal costs, on the average, less than \$1 per person a year. Without it, we will probably lose our health center, and allied services. This is a "must" vote if we are to continue as progressive as we most like to say we are.

The Rowan Board of Education has cleared, and graveled, its parking lot at the old (2nd Street) Morehead High location. It will be used (for free) by Morehead State College students. So many mistakes have been made the past two weeks in the other (and wrong) direction that this one of commendable cooperation.

The water shortage is everywhere in this issue by the State Board of Health concerning water rationing in Morehead is strong, particularly as to laundry, linens, car washes and the digging of wells. Permit us to clarify. There will be no new residences, or commercial buildings, for many months, maybe years. Fella in the Haideman - Hayes area should be about 100% for the State Bond issue. It provides funds for air pollution research and enforcement.

The Eagles can lose more close ones than any football team in MSC history. But, we predict here they'll regain the home title from Eastern.

State Police records indicate the stretch of road from U.S. 60 to Clearfield bridge is the most dangerous in Rowan County... and, the curve on Ky. 32, near Pine Creek, the scene of more fatalities.

Presently raging in Rowan - the flu virus that takes two weeks to shake off... and plagued Khruchoy bugs.

Overheard in a local restaurant: "No wonder Morehead has a water shortage. This coffee is weaker than brackish water."

One of the co-owners of Morehead Tobacco Warehouse... died during the week. Morehead President Adron Doran conducted the funeral at Lakeside.

While an "Castro" Doran - a prophet is without honor in his own community... they assassinated Abraham Lincoln and John F. Kennedy... and crucified the Jesus Christ.

An early frost is the reason foliage was not so beautiful in these parts this fall. [More on this next issue].

Main Street Improvement - the home at Hargis and Main which we know as the Walter Swife-Harian Blair-Pierre Blair place is being torn down.

Morehead's Chamber of Commerce is planning early, and properly, for this year's Christmas decorations... and, you'd be surprised the list of accomplishment.

Morehead's Jaycees will record this year. Chief of Police Callie Coyle says vandals will be treated harshly over Halloween - in short, thrown into the calaboose. He urges that trick and treaters make their visits Saturday evening since Halloween falls on the Sabbath.

Final advice in closing an around-the-clock work week - be sure to vote Saturday... cast your ballot for the candidate and/or candidates that you truly believe will be the best for Morehead and for Rowan County.

There is so much we could write and document, but we to best that it be unsaid until after Tuesday's election.

But, be sure and vote. The ballot is your greatest heritage.

In the meantime, the editorial columns of this newspaper will support Morehead State College, and its leadership... as they have (under present ownership) Adron Doran's predecessors.

## Safety Is Discussed By Morehead PTA

James Farley, state highway patrol officer, was present at the meeting of the Morehead Grade School Parent Teachers Association Tuesday night in the school gymnasium. He also advised a safety film.

LOOK ONLY - It's all right for you to watch the (Reya-Seki) comet that can be seen in the eastern sky an hour or so before sunrise, but don't stand too close to it.

cursed plans for the annual Fun Night to be held November 5, at the school. Parents were urged by Walt White, principal, to cooperate with teachers and committees in helping make the annual fund raising night a success.



**FUTURE BROADWAY POTENTIAL...** These students at Breckinridge Training School have lead roles in "Thunder on Sycamore Street" to be presented at Breck Auditorium next Friday and Saturday evenings (Nov. 5, 6). From left: Dennis Scifres, Eddie Holbrook, George Burgess, Sally Simpson. Reservations may be placed by phoning 784-4181, extension 316. The speech and Drama Department is in charge of the two performance production.

## Proudfoot Reviews Health Tax

The Optimist Club of Morehead heard Dr. Warren Proudfoot discuss the proposed health tax which will appear on the Nov. 2 ballot in Rowan County. Dr. Proudfoot told the audience of 30 Optimists and guests that passage of the small tax "was a must, if Rowan County is to keep up with the other counties of Kentucky."

The Morehead surgeon told the group that there was no organized opposition to the health tax which will be used to continue and improve the Rowan County Health Center.

Also appearing on the program and answering questions was Dr. Kenneth Welch. Both Dr. Proudfoot and Dr. Welch are members of the Optimist Club.

Presented awards at Tuesday's meeting were Alvin McGary and Ray

## Jaycees Have Business Meet Tonight

Morehead Jaycees will hold their regular business meeting this evening at Kentucky Cabin Inn. Starting at 6:30.

Business will include the Bond issue and the Jaycee participation in Get Out to Vote. Ival Bryant, Governmental Affairs Chairman, states that a number of activities is planned to remind people to exercise their right to vote.

Hornback McGary was given a pin for perfect attendance during the first year of the club's operation while Hornback was awarded a past-president's pin for service as the club's first president. Dr. C. Nelson Grote, president, made the presentation.

Guests at Tuesday's meeting were F. E. "Bud" Crawford, Canteen Company, Ashland and Ed Houlihan, Taylor Publishing Co., Lexington.

## State RECC Honor Goes To Pelfrey

I. E. Pelfrey, RFD 1, Morehead was given special recognition, and a citation, at the 19th annual meeting of Kentucky Rural Electric Cooperatives in Louisville.

Pelfrey was one of the original incorporators (charter members) of the Grayson RECC which serves a part of Rowan County, and most area counties to the east.

He is also a member of the Board of Directors and has been Secretary since the Grayson RECC was founded more than 15 years ago.

A former Judge of Rowan County, Mr. Pelfrey who resides on Christy Creek (Ky. 32) is a Director of the Citizens Bank. The Kentucky RECC pointed to his 16 year record providing electricity in rural areas as "one of the most dedicated in the Commonwealth."

# POWERFUL!



Every drop of Ashland Vitalized Gasoline is packed with instant energy. You climb hills with power to spare. Pass other cars with confidence and safety. To get all the power that's hidden under your hood—switch to Ashland Vitalized Gasoline. Both Ashland A-Plus and Ashland Regular are Vitalized. Fill up today at your Good Neighbor Ashland Oil Dealer's.



**ASHLAND OIL & REFINING COMPANY**

## Morehead Will Host Workshop On 'Piano' Wednesday, Nov. 3

A workshop for piano teachers in the Morehead region will be held on the Morehead State College campus next Wednesday, [Nov. 3].

Dr. Robert Pace, Educational Director of the National Piano Foundation and Head of Piano Instruction at Teacher's College, Columbia University, will conduct the day-long workshop.

The nationally known educator will discuss approaches to the teaching of musicianship, including sight reading, improvisation, ear training, harmonization and repertoire. Dr. Pace will appear at Morehead under the joint auspices of Morehead State College and the National Piano Foundation.

The Foundation was organized by the National

## Wescott Is Candidate For Magistrate

To the voters of Magisterial District No. 2:

Your vote, and influence is solicited in Tuesday's election and I pledge, if elected -

- Honest, fair and courteous treatment for everyone.

- Diligent attention to this important office.

- Cooperation with programs that are for the best interest of our people.

- A close safeguard of your money - no new taxes are necessary.

I respectfully ask you to inquire of anyone who knows me as to my integrity and ability to make you a good Magistrate working for my district and the entire county.

I thank you,  
Virgil Wescott.  
- Pd. Pol. Adv.

## Polls Open Tuesday For Full 12 Hours

Somebody inadvertently "goofed" in wording notices to officers who will serve at the precincts Tuesday in Rowan County.

The information recited "polls open at 6 a.m. - close 5 p.m."

Actually, the voting places will be open a full 12 hours - 6 in the morning until 6 in the evening.

Voting machine tabulations are expected to be complete by 7 o'clock. Counting of over 200 absentee [paper] ballots requires more time. Unless a race is close, and decided by absentee, all the winners should be known within an hour after the polls close.

## Clay Wins Election, Golf Tournament

This has been a big month for Rowan County Attorney-elect James E. [Jimmy] Clay.

His opponent withdrew insuring the Morehead lawyer of election for a four year term.

This week he won the club championship golf tournament at Sunnybrook Course east of Morehead. Bill Bradley finished second in the championship flight.

Ricky Bradley captured the 1st flight with Jim Caudill the runner-up. Flight 2 went to Oscar Calvert. Second place was captured by Wes Caudill.

## State Sues Pike County Magistrate

Atty. Gen. Robert Matthews filed suit in Friday to recover \$12,900 the state auditor claims is owed the state by Pike County Magistrate Taylor Justice.

State Auditor Henry Carter's office said an audit showed that amount owed, mainly in fines collected but not reported. Justice denies any money is owed.



Charles D. Waddell  
For  
Magistrate  
(District 4)

As a candidate for Magistrate I have no "big talk" to make. I have no "big promises" to make. But, if elected I will make you a better, conscientious Magistrate. I have no car, and may be unable to see all of you personally. But, I am interested in the welfare of the people of Rowan County. I may not make you the "best" Magistrate, but I will make you a "good" one. Anything that you can do for me will be appreciated.

## Announcing The Opening

## Rhonda's Restaurant

1019 W. Main St.

(Formerly Forman's Grocery)

Friday, Oct. 29, 1965

Home Cooking - Including  
Custom Decorating For All  
Occasions.

MELVA SARGENT, Owner  
(Former Owner of The Campus Restaurant)

OPAL MILLER, Cashier



PUT ON YOUR BRAKES - STOP IN AND SEE US NOW!

## BEST DEALS IN

## MOBILE HOMES AND USED CARS Christy Creek Sales Co.

Located on U. S. 32 - Near State Police Barracks

Phone 784-7525

Experienced  
Qualified  
Efficient  
Courteous

The County Clerk is perhaps the most important office in county government as it is this office that preserves the record of all property owned by the citizen of the county, records registrations on all cars, records all real estate chattel mortgages, keeps the record of fiscal court proceedings, custody of all voter registrations and many other matters of vital concern to every citizen.

Mrs. Ottis (White) Elam is a candidate for this most important office on the basis of her outstanding record of public service. She has had over 14 years experience in clerical work which, coupled with her training, thoroughly qualifies her for the performance of all the technical and intricate duties of this office.

During the past few years, Mrs. Elam has been commended many times for the careful and efficient manner in which she has conducted the affairs of the Clerk's office and in addition has inaugurated many changes in the keeping of the records of the office that has added to the efficiency of the office.

During the years Mrs. Elam has served as Clerk she has served all the people with courtesy and promptness.

A vote of Ottis (White) Elam on November 2nd is a vote for the continuation of the same courteous, efficient, impartial and prompt service that she has rendered in the past.

Ottis (White) Elam  
For  
Rowan County Court Clerk

Be Sure To Vote Next Tuesday



## St. Claire Hospital

224-4141

## ADMISSIONS

Oct. 20-Cynthia Dillon, Morehead.

Oct. 21-Alice Elliott, Sandy Hook; Mrs. Claude Howard, Salt Lick; Frank Christian, Morehead; Jasper Fannin, Sandy Hook.

Oct. 22-Mrs. John Back, Olive Hill; Clarence Hughes, Dayton, O.; Joseph Layne, Olive Hill.

Oct. 23-Sim Owens, Clearfield, Mrs. Buster Fultz, Salt Lick.

Oct. 24-Mrs. Paul R. Rose, Olive Hill; Virginia Back, Olive Hill; Virginia Lawton, Jean Redwin, Newcomb; Roy Duncan, Olive Hill; Clayton Henley, Olive Hill; Corlis Burton, Hager.

Oct. 26-James Flannery, Olive Hill; Eileen Duncan, Olive Hill; Cleonie Patterson, Frenchburg.

## DISMISSALS

Oct. 20-Mrs. Lodis Bradley and son, Mrs. Gerald Paynter and daughter, Mrs. Jimmy Bythe and daughter.

Oct. 21-Beth Newton, Marjorie Keaton, Henry

## Hearing Set On Constitution

A public hearing for consideration and discussion of the report of the Local Government Committee of the Constitution Revision Assembly has been called by Charles S. Adams, Covington.

Chairman Adams said the hearing will be held at 10 a.m., November 4, in the House Chamber at the State Capitol.

## He Served You Well...

The Morehead News

Frequency of issue - weekly.

Location of known office of publication -

Main St., Morehead, Ky.

Publisher: W. E. Crutcher - Morehead, Ky.

Editor: W. E. Crutcher

Owner: Morehead News, Inc.

All stock in said company being owned by W. E. Crutcher - Morehead, Ky.

Known bondholders, Mortgagees, and other security holders owning or holding 1 percent or more of total amount of bonds, mortgages or other securities - None.

Average No. Copies Each Issue During Preceding 12 Months: 1,100

Total No. Copies: 4,185 4,204

Paid circulation: 3,920 3,539

Sales otherwise: 640 640

Free distribution: 25 25

Total No. Copies: 4,185 4,204

distributed

I certify that the above statements made by me are correct and complete. W. E. Crutcher, Publisher.

He Will Again

A Friend To All

In Time Of Need

W. C. Flannery

For

Rowan County

Judge

The Peoples Choice

-Pd. Pol. Adv.

## BIG 11 X 14 PORTRAIT OF YOUR CHILD

ONLY  
98¢

Plus 50¢ For  
Wrapping,  
Handling  
And Insurance

A Complete  
Selection Of  
Proofs To  
Choose From

CHILDREN'S GROUP  
PICTURES  
TAKEN AT 98¢ PER  
CHILD

Satisfaction Guaranteed  
Or Your Money Back

## LAYNE'S DEPARTMENT STORE

Morehead

Kentucky

Thursday, Friday, Saturday

Oct. 28, 29, 30.

Hours: 10 A.M. To 5 P.M.  
Friday 10 A.M. To 8 P.M.



## Matthews Advises 'Hickorystick' May Be Best For Erring Children

The old-fashioned hickory stick is still a good legal way to discipline school children, Kentucky Atty. Gen. Robert Matthews told 500 truancy officers in Louisville this week.

But a spokesman for the truancy officers-or, pupil personnel workers, as they are now called-stressed helping pupils rather than punishing them.

Matthews said public school authorities have broad powers to prescribe corporal punishment. But he added:

"Consideration should

be given to the age, size, sex and physical strength of the pupil to be punished, and the instrument used should be suitable and proper for the occasion.

"A smart whacking on the palm of the hand with a ruler still is an acceptable and legal means of discipline of recalcitrant pupils."

Mark C. Roser, pupil personnel supervisor for the Gary, Ind., public schools, said, "We have the right to punishment [of children] but we don't use it. We're therapeutic

people. "The welfare of the child should be uppermost in our minds," Roser said.

"How do we protect battered children from their parents (who hit them)? How do we help children who are hungry? How do we identify the emotionally disturbed child who shouldn't be in the regular classroom?"

Matthews spoke at a four-day meeting of the International Association of Pupil Personnel Workers.

The attorney general told the group that school boards have the power to prohibit pupils from growing beards or having long hair. He said a study in one high school showed that three out of five long-haired pupils had discipline problems and low grades.

"I'm not saying," said Matthews, "that long hair, ipeco facto, means low grades. But long hair does seem to indicate that the boy's mind is not on his school work."

Matthews asserted that there is "nothing more important" in schools than proper discipline so that teaching and learning can go on.

He said it is legal for a teacher to search a pupil's pockets or purse and confiscate cigarette lighters, knives or key chains with

cigarette lighters attached. This can be done only if the teacher "acts with reasonable judgment and for good cause, without malice and for the welfare of the child, as well as for the school," Matthews said.

**SEE THE WORLD'S LIGHTEST DIRECT DRIVE CHAIN SAW.**



**McCulloch MAC 1-10**

The greatest lightweight of 'em all is here. 10 1/2 lb. of fuel-weight, dependable, easy-handle! McCulloch. It's built for cutting jobs you've got around the farm, cabin or right at home. Complete with 12" cutting bar, finger-primed, weatherproof ignition, big capacity gas and oil tank and the new, streamlined design that won't hang up in heavy brush or thick weeds.

\*Always wear eye, ear, head and shoe.

**Monarch Supply Store**

Phone 784-5796  
Morehead, Ky.

## Policy Statement

of  
**W.C. Flannery**

Nominee For  
**County Judge**



In this, the last issue of The Morehead News, before Tuesday's general election, I want to place in writing my policy and plans for the future and review my record as your County Judge. . . for it is on that record, and my experience, and determination to serve you even better that I seek your vote and support.

\*\*\*\*\*

I believe that I have served you well . . . made you a good and courteous public servant, for the past four years. I will again.

\*\*\*\*\*

This office has an annual Trial Commissioner's salary of \$1,200. I have set aside every dollar of that \$1,200 salary to St. Claire Medical Center at Morehead. We have a great hospital . . . a fine Consultation Clinic . . . and I am glad to support it with my heart and the above amount.

\*\*\*\*\*

As County Judge I have been a strong, and outspoken supporter of the Rowan County Health Center which means so much to all of us, particularly our fine folks in rural sections, and the underprivileged, supervised by Dr. Kenneth Welsh, the record will show that I, as County Judge, recommended we increase our contribution. This, we did.

\*\*\*\*\*

The record shows that I have likewise been a staunch supporter for the Rowan County Library. Its facilities need to be expanded during the next four years with more books, and improved (more often) methods to distribute these books, and other material, to all our people.

\*\*\*\*\*

The record shows that during my administration the courthouse and jail were completely renovated. . . there were no new taxes . . . we lived within our budget and income. Few administrations in Rowan County's 109 year history has such a record.

\*\*\*\*\*

The newspapers recently factually reported that the felony crime rate in Rowan County is the lowest in modern history. It has dropped so much, all to the credit of our people, that Circuit Court sessions are short with few criminal cases.

\*\*\*\*\*

I have attended many area, state and national meetings in the interest of our people. I believe that I have made a good impression as the official representative of Rowan County. More such trips, and work, will be required during the next four years as millions of dollars in federal funds (Appalachia and Economic Development) have been made available. We are in competition with other states, and counties, for this money, and you need strong leadership, and experience, to receive our fair share. One of my aims during the early part of my next administration are trade schools, on which I have already made contact, that will give training and gainful employment to 300 to 400 of our people. I intend to shortly go to Washington on this matter, and also expediting the Rowan County rural water system.

\*\*\*\*\*

I have renovated, and installed, as a Memorial to our forefathers, the Old County Bell on the courthouse lawn. Lest we forget our heritage, it still stands and rings for those who have gone before us.

\*\*\*\*\*

The world is getting smaller . . . more complex. An education is no longer a luxury - it is mandatory. Paved roads are no longer an exception . . . they are a must. Isolation is no longer a virtue . . . it is an economic and cultural sin.

\*\*\*\*\*

The record will show that I spearheaded, in fact founded, the Rowan County airport. A relative, and I, contributed the land for this modern, paved airport. During my next term I expect the runway to be extended from its present 3,000 feet to over a mile.

\*\*\*\*\*

Space does not permit me to detail other achievements during my four years as County Judge. But, on that record, and my experience and desire to serve my people, I abide, with confidence, in your decision at the polls next Tuesday.

Be assured that between now and election day I will continue to conduct a dignified campaign. Sometimes, smears and mud-slinging are used in the final days of a political campaign. I have never resorted to such tactics or rumors.

Your support, confidence and continuing good will encourages me to make a maximum contribution to our county and our fine people who are 'on the move'.

Respectfully, Your Friend  
**W.C. Flannery**

### Rowan County Public Health Tax Referendum

Are you in favor of establishing a Public Health taxing district for Rowan County which shall have the authority to impose a special ad valorem tax for the maintenance and operation of the Rowan County Health Department, provided that such special tax shall not exceed ten cents on each one hundred dollars of the assessed valuation of all property in the district?

Yes

☐

No

☐

I, Otis W. Elam, Clerk of the Rowan County Court, certify that the above health tax referendum question will appear on the voting machines and paper ballots for the November 2, 1965 general election in Rowan County.

### Last Published Statement

OF

**C.E. Lewis**

Candidate For Rowan County

**Court Clerk**

General Election Tuesday, Nov. 2, 1965



When I am elected to serve you as Rowan County Court Clerk, I hereby offer the following as my platform:

I pledge to keep the office of County Court Clerk open from 9 P. M. to 4 P. M. daily, 6 days a week. The office will not be closed during noon hour.

✓ ✓ ✓

I pledge to extend the utmost courtesy to all who come into my office and render unto them the best and friendliest service that I can give.

✓ ✓ ✓

I pledge to employ good, mature, well qualified, friendly deputies to assist me in giving our patrons the best service they have ever had in this office.

✓ ✓ ✓

I pledge to diligently perform the duties of the Office of County Court Clerk and keep all records in a businesslike manner. Any Deed, Mortgage, Lease or document of any kind will be indexed on the same day it is received.

✓ ✓ ✓

Any and all monies collected will be certified to the Rowan County Treasurer immediately and any monies collected, in excess of that allowed the County Court Clerk by law, will immediately be turned over to the Rowan County Treasurer.

✓ ✓ ✓

I also explicitly pledge not to "pad" my payroll so as to reduce excess fees which should go to the Rowan County Treasurer.

✓ ✓ ✓

Your support and influence is sincerely appreciated.

Respectfully,  
**C.E. (Curt) Lewis**

## To The Voters Of Magisterial District No. 1

(No. 1, Courthouse; No. 6, Industry, and No. 10, North Morehead Precincts)

If you elect me Magistrate of District Number 1, I pledge to administer the office in an honest and efficient manner, making myself available to all persons who might have business with the Magistrate's office.

I pledge that I will have an interest in the taxpayers of Rowan County and to keep our taxes at the lowest possible rate . . . and see that the money is wisely spent.

U. Wilford Waltz

## REAL ESTATE FOR SALE



22 acres located about 8 miles from Morehead on a blacktop road. 7 rooms, 1 1/2 bath, concrete block, 2 story home with basement, 2 porches, airport, 4 closets. Has hardwood and pine floors. Coal furnace heat. Water supply of 2 wells, pond and spring. This property also has a barn and .45 acre tobacco base. Tobacco may be irrigated from pond if necessary. Some timber, small orchard. Has power line away from foot of hill. Immediate possession.

### Nice Farm

Nice 60 acre tract of land located about 10 miles from town. Tract faces 156 on the left and 142 on the right. 799 on the side. There is a well and some timber. Why not look at this real estate for an investment or small industrial site? Contact and see large tract available.

H.H. Lacy, Realtor

Phone 784-6750 Morehead, Ky.

## Ott Caldwell Points To Past Record Of Services



Ott Caldwell

Unquestionably the most important office to be voted on at Tuesday's election is that for County Judge. I am sure you will agree that more consideration should be given to this office, and the nominees, than any other because . . .

The County Judge is the titular head of the judicial family of the county, and most civil and criminal cases pass through his office or over his desk. The County Judge is by title, and virtue of office, the chief public officer of Rowan County. The image he creates is the image many have of the county and its citizenry.

The County Judge presides over the Fiscal Court, which spends all your county tax dollars, and is the policy programming agency of county government.

Law enforcement can never be effective on our highways and the criminal element controlled . . . or the different executive branches correlated without a capable, honest, qualified and dependable County Judge.

Many other policy procedures must clear the County Judge's office such as school taxes and appropriations. Referendums . . . probing of wills . . . judgment on continuously increasing domestic difficulties that require consideration and understanding.

Additionally, the County Judge is head of the road department . . . is the liaison with the Governor . . . with State government with Washington . . . with the many federal programs which are increasing in number and dollars that can be obtained for our county and our people.

I believe that I know the problems of Rowan County. I know that I am cognizant of many things that need to be done, and can be accomplished under proper leadership, and honesty, in the office of the County Judge.

Since I offer myself for . . .

... seeks Judgeship this office, the most important on Tuesday's ballot, you should acquaint yourself with my past conduct . . . my ability . . . my adult lifetime dealings with, and treatment, of my fellow man.

You, the voters . . . citizens and taxpayers . . . are the ones who will make the decision Tuesday whether I am the best qualified man to lead our people at the county level.

In condensed form, here are the salient facts about my life.

I was born and reared on Lower Licking in Rowan County, and have resided in Rowan County all my life.

I am 39 years of age and in excellent health to be on the job day or night looking out for your interests.

Was educated in the grade schools and the Farmers High School.

I am self-employed, being an earth-moving contractor by trade. I also own and operate a farm in Rowan County.

My wife is the former Ciella Prater, daughter of Clayton Prater whom most of you favorably know. My mother was a sister to the late beloved Rev. Bill Moore, and family.

We were married in 1947 . . . have three sons, two in school at Farmers Consolidated, and the other three years of age.

In 1947 . . . have three sons, two in school at Farmers Consolidated, and the other three years of age.

Since I offer myself for . . .

ber of the Fiscal Court of Rowan County. You will agree this is very important not only because of the experience qualifying me for County Judge, but also my voting record. My record on the Fiscal Court is open to your close inspection. I can say heretofore it has never been attacked. In fact, I am extremely proud of my voting record during those eight years, and also that every act and every vote was an unselfish one and for the best interests of our county and our people.

I worked in fact spearheaded physical improvements to the courthouse and county jail. Much remains to be done, but a good start has been made, and I intend to follow through with this program if elected.

My eight years experience on the Fiscal Court convinces me that Rowan County needs no taxes. We have lived within our income . . . carefully budgeted and spent your money and have a surplus.

My record as a member of the Fiscal Court, as a citizen . . . as a father is emphatically portrayed in my strong support of education at all levels . . . grade school . . . Rowan County high schools . . . and Morehead State College with which our town and county is blessed.

The record will show that I made the motion on the Fiscal Court to appropriate \$3,500 for care of indigent Rowan County patients at St. Luke Medical Center. I am a strong supporter of this hospital, and health care in our county. I am also proud of our advancements in recent years in this vital field.

My record as a member of the Fiscal Court will continue the support of our hospital and health facilities.

As a member of the Fiscal Court I worked and voted for additional money to help finance . . . in fact save . . . the Rowan County Department of Health.

Space does not permit me to recite the countless hours I have effectively spent in procuring better roads in Rowan County. Persons versed in county governmental affairs will tell you that I am about the "strongest person ever" for road and highway improvements. I am justly proud of my work in this field, as borne out by the record.

I am staunchly . . . and proved so . . . for honesty and sobriety. Repeated offenders of our laws must be punished and this can only be done with an honest, unselfish County Judge who seeks no personal gain or remuneration.

I could spend much more space on such matters as my past support of the Rowan County library . . . my punctuality, attendance and interest in Fiscal Court matters . . . my long church attendance . . . record the manner in which I have treated and reared my family . . . what my associates and friends and neighbors say about me, and my conduct and qualifications.

I respectfully invite you to inquire of anyone about me . . . my desire to serve you . . . and serve you in a manner that will be helpful to our county and people.

Your consideration to Tuesday's election will be appreciated. I re-emphasize that I know that you will find me the kind of County Judge that you will be proud of, and who will honestly and unceasingly work for your interests.

Respectfully,  
Ott Caldwell  
Pd. pol. adv.

Rowan Counties  
Purchase Bonds  
Series E and H savings Bonds sales in Rowan county during September were \$6,045 bringing the year's sales to \$78,282 or 111.5% of the County's annual goal of \$70,260.

For Kentucky, sales for the month totaled \$4,264,791 while cumulative sales reached \$39,495,454 or 73.1% of the \$54,000,000 annual goal.

## RAMBLING THRU WILBURIA

### DAR Women Are Behind The Times Trying To Set Feminine Styles

By Cleonie Hollen

There were women of the DAR should have not been so foggy minded and let the party girls wear their striped pants and flared skirts. But these women blazed off their steam and caused the manufacturers to withdraw production and stopped the sale of all these flag looking feminine wares in the stores. Really these women would have looked patriotic wearing these red, white, and blue girdles and probably a lot of young men—and some old ones—would have saluted the clothes line whenever they passed a clothes line. Something new can take place and there's always somebody . . .

Now over yonder in one of them far away countries the city officials have passed an ordinance whereby women can't wear bikini bathing suits if the top of the bikini is more than one inch below the center point. No doubt the city officials done this for their own selfish interests. We bet everyone of them rushed out and bought them a ruler and are sitting right beside them swimming in the pool already to measure some doubtful bikinis and see if they can catch some offenders. We don't guess the ordinance allows any tolerance—one inch and no more.

Anderson Kose chews a lot of tobacco. He was driving his truck the other day and he got about to spit. He stuck his head out the truck window to expectorate and he run out of the big road and hit a bank party hard. The job nearly caused Anderson to swallow his cud of tobacco and he bruised up his passengers. Right smartly Forrest Fletcher was riding in the back of the truck and he got the worst bruising of any of them. His nose and jaw was cracked and several of his teeth got knocked out.

Forest Fletcher's wife had been hit like that. She didn't seem to mind his teeth getting knocked out because she claimed they weren't much account nowadays and she had

## Corrections Department Included

"The Department of Corrections needs the \$2.9 million allotted to it" in the \$176 million state bond issue to be voted on November 2 to "carry out six vital projects," Commissioner Joseph G. Cannon declared in a statement here this week.

Some \$1.5 million of the departmental total would be used to construct two farm barracks complexes, one costing \$800,000 at the State Penitentiary at Eddyville.

These barracks, Cannon said, "would eliminate the custodial problems involved in housing farm workers inside the main institution. They would also relieve overcrowded conditions, permit more effective and economical use of prison labor, and contribute to rehabilitation."

The next largest portion of the allotment, \$1 million, would be used for a thorough physical renovation of the dormitories at the reformatory.

Cannon said that a report citing the need for this indicates "that a program of severe austerity over a period of many years has brought about general deterioration of the total physical plant."

"It is mandatory," he added, "that various structural and mechanical deficiencies be remedied immediately to protect the public funds that were initially invested in capital construction."

Mr. and Mrs. E.M. Hogge and son, Roe and Mrs. Walter Caudill returned Sunday from Washington, D.C. where they visited the latter's daughter and husband, Mr. and Mrs. G.S. Collins and accompanied them on a ten-day vacation in the Virgin Islands.

been trying to get him to go and have them pulled for a long time.

TRAIL  
MOREHEAD, KY.

Tonight  
Friday  
Saturday  
It's The 'Shiek' Himself



Double Monster Show\*  
Sat. Oct. 30 at 11 p.m.

ALL SEATS  
80c



Sunday, Monday, Tuesday



AN ENTERTAINMENT EVENT  
OF MAJOR IMPORTANCE!

FOR THE FIRST TIME  
AN ACTUAL PERFORMANCE!  
Through breathtaking new techniques in film making and highest fidelity sound.



TECHNICOLOR®  
Premiere Performances 4 Times  
only—November 3 and 4, 1965

Enclosed is undated check or money order for \$5.  
Please send no self-addressed, stamped envelope—large.  
Please send me . . . tickets for Nov. 3—Nov. 4

NAME . . .  
ADDRESS . . .  
CITY . . . State . . . ZIP . . .

THEATRE PRICE SCALE MATINEE \$2.00—EVENING \$2.00

TRAIL  
MOREHEAD, KY.

NO RESERVED SEATS  
TICKETS BY MAIL OR  
BOX OFFICE

## VOTE FOR PROGRESS...

### VOTE FOR QUALIFIED CITIZENS

Who Have No Selfish Motives . . . No Personal Axes To Grind  
Men Whose Only Interest Is Contributing Their Services To Morehead

And A Better, Happier Way Of Life For Our People

### Our Complete Platform . . .

The complete platform of these men, running as a team, will appear in this newspaper, and through other media, between now and the November election. The documented, irrefutable proof of the impending water shortage . . . its cause the cost . . . and the truth of the matter will be in your possession.

### You Have The Right To Know . . .

Since you, the citizens of Morehead are paying the bill you are entitled to the facts . . . the truth. The water crisis is only one of the vital issues, so important to all of us. These men consented to serve for one reason and one only . . . that of helping Morehead to grow, and prosper.

For Mayor . . .  
William H. Layne

For Morehead Councilmen



Dr. Everett D. Blair



John Paul Kegley



Prof. William M. Caudill



Dr. N.C. Marsh



Wilbert Crager



Austin Riddle

**IGA** *Stock Up! Save Now!*

**HALLOWEEN VALUES**

*"Bewitching Buys"*  
...for the lady who pushes the cart

It is no "trick" to "treat" yourself to the many exciting values at your IGA food store. We are featuring Halloween favorites in every department that will please the children and be enjoyed by the adults. Assorted cold meats and hot dogs—fresh fruits and vegetables, delicious bakery and candy treats—plus dairy foods galore. So, if your plans call for a special party menu, be sure you stop in at IGA... the one-stop-shop... where selections... savings... and friendliness excel.

IGA **TABLERITE** quart jar **49¢**



SANDWICH TREAT **SPAM** 12 oz. can **49¢**



MUCHMORE LIQUID Detergent **29¢**  
HAWAIIAN Punch **3 For \$1**  
VANITY FAIR Paper Towels **29¢**  
PACIFIC ISLE SLICED Pineapple **19¢**

*Treats for Trick or Treaters!*

IGA Pure **Apple Cider** Gallon Jug **69¢**

IGA Candy **29¢** ea. pkg.  
CANDY CORN, REG. PKG. PURE  
POPS or KIDDIE PAK

BIG SHOT Chocolate Syrup 12 oz. **59¢**  
IGA OL' FASHION Cookies 4-29¢ Variety **4 For \$1**  
BREAST O' CHICKEN Chunk Tuna 6 oz. can **3 For 89¢**  
GOLD MEDAL Flour 5-lb. bag **53¢**  
IGA Instant Coffee 10-oz. jar **99¢**  
PUFFS Facial Tissue 400's **2 For 49¢**  
IGA Freezer Wrap 50 ft. roll **49¢**  
IGA Fabric Softener 1 qt. **49¢**  
BETTY CROCKER Frosting Mix Fluffy White **33¢**  
IGA FRESH PACK Dill Pickles 1 qt. jar **39¢**  
HI-C Orange Drink 46 oz. **3 For 89¢**  
WELCH'S Grape Jelly 20-oz. **41¢**

*Meaty Tenders!*



IGA **DO-NUTS**  
Plain-Cinnamon - Sugared  
Doz. Box **19¢**

**SAVINGS AT YOUR FINGERTIPS!**

TABLERITE WHOLE **Fryers** **25¢** lb.  
cut-up lb. 29¢



Rome Beauty All-Purpose

**Apples** 4-lb. Bag **29¢**

Bananas 10¢ lb. Carrots 10¢ lb.  
Oranges 49¢ lb. Onions 19¢ lb.

**DAIRY BUYS!**

IGA TABLERITE **Cheese Spread**

2-1/2 lb. pkg **79¢**



GRADE "A" LARGE Eggs **49¢**  
TABLERITE Biscuits 6 For **39¢**  
BLUE BONNET Margarine 1-lb. **27¢**

**MIRACLE WHIP**

Qt. Jar **49¢**

IGA **SLICED CHEESE** 8-oz. pkg. **29¢**

Van Camp **Pork & Beans** No. 2 can **2 For 29¢**  
Betty Crocker **Cake Mix** Asst. Flavors **3 For \$1**

FRYER **Breasts** 59¢ lb.  
FRYER **Legs & Thighs** 45¢ lb.  
FRYER **Backs** 10¢ lb.  
TABLERITE Luncheon Meats 55¢  
TABLERITE Weiners 55¢  
MUCHMORE SLICED Bacon 69¢ lb.

**FROZEN FOODS**

**YOUR CHOICE-IGA DINNERS**

3 11 oz. pkgs **\$1**



IGA FROZEN **Broccoli Spears** 19¢  
IGA FROZEN **Waffles** 10¢  
MORTONS FROZEN **Pumpkin Pies** 3 For **\$1**  
BLUE WATER FROZEN **Perch Fillet** 99¢  
BOSTON BONNE FROZEN **Perch Fillets** 19¢

**Allen's IGA FOODLINER**

STORE HOURS  
8-6 Mon. - Thurs.  
8-8 Fri. & Sat.



**IGA**

Stock Up! Save Now!

**HALLOWEEN VALUES**

*"Bewitching Buys"*

...for the lady who pushes the cart

It is no "trick" to "treat" yourself to the many exciting values at your IGA food store. We are featuring Halloween favorites in every department that will please the children and be enjoyed by the adults. Assorted cold meats and hot dogs—fresh fruits and vegetables, delicious bakery and candy treats—plus dairy foods galore.

So, if your plans call for a special party menu, be sure you stop in at IGA... the one-stop-shop... where selections... savings... and friendliness excel.

IGA **TABLERITE** quart jar **49¢**



SANDWICH TREAT **SPAM** 12 oz. can **49¢**



MUCHMORE LIQUID Detergent **29¢**

HAWAIIAN Punch **3 For \$1**

VANITY FAIR Paper Towels **29¢**

PACIFIC ISLE SLICED Pineapple **19¢**

*Treats for Trick or Treaters!*

IGA Pure **Apple Cider** Gallon Jug **69¢**

IGA Candy **for Halloween** ea. pkg. **29¢**

CANDY CORN, REG. PKG., PURE POPS or KIDIE PAK

BIG SHOT **Chocolate Syrup** 12 oz. **59¢**

IGA OIL FASHION **Cookies** 4-29¢ Varieties **4 For \$1**

BREAST OF CHICKEN **Chunk Tuna** 6 oz. can **3 For 89¢**

GOLD MEDAL **Flour** 5-15 lb. bag **53¢**

IGA **Instant Coffee** 10-oz. jar **99¢**

PUFFS **Facial Tissue** 400's **2 For 49¢**

IGA **Freezer Wrap** 50 ft. roll **49¢**

IGA **Fabric Softener** Qt. **49¢**

BETTY CROCKER **Frosting Mix** Fluffy White **33¢**

IGA FRESH PACK **Dill Pickles** Qt. jar **39¢**

HI-C **Orange Drink** 48 oz. **3 For 89¢**

WELCH'S **Grape Jelly** 20-oz. **41¢**

Rome Beauty All-Purpose

**Apples** 4-lb. Bag **29¢**

Bananas 1 lb. **10¢** Carrots 1 lb. **10¢**

Oranges 1 lb. **49¢** Onions 1 lb. **19¢**

**DAIRY BUYS!**

IGA **TABLERITE** **Cheese Spread**

2-1/2 lb. pkg **79¢**



GRADE "A" LARGE **Eggs** Doz. **49¢**

TABLERITE **Biscuits** 6 For **39¢**

BLUE BONNET **Margarine** 1-lb. can **27¢**

**MIRACLE WHIP**

Qt. Jar **49¢**

IGA **SLICED CHEESE** 8-oz. pkg. **29¢**

*Meaty! Tender!*



IGA **DO-NUTS** Plain-Cinnamon - Sugared Doz. Box **19¢**

TABLERITE **WHOLE**

**Fryers** 1 lb. **25¢** cut-up 1 lb. **29¢**



FRYER **Breasts** 1 lb. **59¢**

FRYER **Legs & Thighs** 1 lb. **45¢**

FRYER **Backs** 1 lb. **10¢**

TABLERITE **Luncheon Meats** Bologna Pickle Loaf 1-lb. pkg. **55¢**

TABLERITE **Weiners** Large Trick or Treat bag FREE with each pkg. 1-lb. pkg. **55¢**

MUCHMORE SLICED **Bacon** 1-lb. pkg. **69¢**

**FROZEN FOODS**



**YOUR CHOICE-IGA DINNERS**

BEEF, FRIED CHICKEN, TURKEY, SALS STEAK, SWISS STEAK, BEANS & WEINERS **3 For \$1**

IGA FROZEN **Broccoli Spears** 10-oz. pkg. **19¢**

IGA FROZEN **Waffles** 10-oz. pkg. **10¢**

MORTONS FROZEN **Pumpkin Pies** 3 For **\$1**

BLUE WATER FROZEN **Perch Fillet** 2-lb. pkg. **99¢**

BOSTON NONNE FROZEN **Perch Fillets** 1-lb. pkg. **19¢**

Van Camp **Pork & Beans** No. 2 can **2 For 29¢**

Betty Crocker **Cake Mix** Asst. Flavors **3 For \$1**

**Allen's IGA FOODLINER**

STORE HOURS  
8-6 Mon. - Thurs.  
8-8 Fri. & Sat.

# The Morehead News

Morehead, Ky., Thursday Morning, October 28, 1965

## Bond Issue Importance Is Stressed By Breathitt

By Gov. E. T. Breathitt  
The two best things about the State Bond Issue to be voted on Tuesday, November 2 is that it will build a lot of needed highways and buildings and will not cause any new taxes.

The bond issue is for \$176 million. With Federal and other matching funds it will provide Kentucky with a grand total of more than \$660 million to use in the construction of new and needed roads and buildings. Kentucky will be able to retire these bonds from continued economic growth alone, without new or higher taxes.

Briefly, the debt incurred by the sale of the bonds would require \$9.5 million annually for repayments. This includes principal and interest. Broken down, the general fund portion of \$137 million in bonds for capital construction other than roads would require \$2.5 million, and the road fund portion of \$139 million would require \$7 million. These computations are based on an overall interest rate of 3 1/4 percent, a period of 30 years in which to retire the bonds, and equal payments on the debt.

The total cost, including financing charges, such as fiscal agents and legal fees, therefore, would be 30 times \$9.5 million, or \$285 million. The total amount that will be received from the bond issue, I point out again, is more than \$660 million.

million when Federal and other matching funds are added. I recall that in my message to the Legislature in March, 1964, when the bond issue bill was submitted, I said that "an additional bond issue of \$176 million in no way approaches the point of endangering the State's strong financial position. Big financial institutions in the past have shown an eagerness to obtain Kentucky's bonds and will do it again this time."

This statement is still true. Though the bonds will not all be sold at one time, the annual cost of their retirement, leveling off at \$9.5 million, is backed up by the state's annual income from tax sources. This income last year totaled more than \$390 million. Without new or higher taxes, the state's income last year increased more than nine percent over the previous year. We estimate these increases will continue to prosper and grow. By 1970, our income from revenue will exceed \$500 million annually—and without any new taxes.

In five years, after the \$176 million bonds are all sold, the state's expenditure for debt service will be \$9.5 million more than it is today. In these five years, if the bond issue is passed, the state's income from current tax sources, at the present tax rates, will be \$120 million

more than it is today and will continue to rise by more than four percent each year.

This means that the percentage of the state's income which would be dedicated to repayment of debt seven years from now would be less than it is today.

What these raw statistics do not reveal is that the investment which this bond issue represents will assist in the growth of the state's economy to such an extent that the annual requirements of our education, health and welfare programs can be met with less burden to the taxpayer.

Taxpayers of Kentucky in the last nine years have approved a total of \$340,000,000 in general obligation bonds. They have voted in three elections their approval of this method of producing money to get matching funds for needed improvements. These bonds are presently being retired on schedule, and without impairment to the state's credit standing.

**BEST WAY** — "One way to solve the over-population problem would be to crop the state's wings," says a woman columnist. That would be working from the wrong end. The best thing to do would be to take the bow and arrow away from Dan Cupid.

## Play For Breck Is Selected

The Thespian Club at Breckinridge Training School will present "Underdog" on Sycamore Street November 5 and 6 in the Breckinridge Auditorium. It is the first drama produced for the school year and curtain time is set for 7:30 p.m.

The script was written by Reginald Rose, author of "Twelve Angry Men," "Dime," and "The Remarkable Incident at Carson Corners."

Thunder on Sycamore Street deals with a conflict in tolerance and understanding in today's world. Joseph Blake, who has served a brief prison term, has moved into a home on Sycamore Street.

All the neighbors are afraid to associate with the Blake and strictly forbid their children to be social with the Blake child. As a result the neighbors decide to form a mob and force the Blake to leave Sycamore Street.

The cast and technical crews involve 35 Breckinridge students. Students playing leading roles are Jane Litton, Sally Jackson, Terry Holbrook, George Burgess, Charlie Blair and Vern Whitaker.

## School Sanitation Criticized

A few Kentucky children are getting their space-age education in something less than space-age facilities.

According to a survey by the U.S. Office of Education, approximately 104,400 Kentucky pupils are enrolled at school buildings where sanitary facilities do not meet applicable health requirements.

About 35,500 Kentucky youngsters go to classes in schools where toilets are located in outdoor privies.

More than 30 per cent of the state's school students -- 183,000 youngsters -- are enrolled in schools where hot water is not available at most hand washing lavatories.

About 14,500 children are getting their 3 R's in schools where no water is piped into the building.

The U.S. Office surveyed 18,000 school plans across the country to compile its report on the condition of school buildings for the year 1964-65.

The report showed that about 30 per cent of the nation's school students are attending classes in buildings where there are more than 30 pupils in a room.

An additional 185,000 school rooms would enable school officials to cease using some 31,000 makeshift rooms, 32,000 rooms in non-permanent school buildings and 15,000 rooms in such non-school buildings as churches, vacant stores and warehouses.

"School facilities must, about all, serve the main objective of the educational program -- learning," said the report. "If the facilities are inadequate, they assume an unwarranted importance by consuming attention which should be devoted to the program they house."

Nationwide, local school officials reported that about 1.3 million youngsters are housed in 7,000 buildings with structural deterioration. About 3.2 million students attend classes in masonry buildings which have combustible stairways.

Although the large majority of American youngsters are going to school

## Bobby Richardson Is Morehead Speaker

Bobby Richardson, all-star second baseman for the New York Yankees and a noted authority on human relations, will speak at the 8th annual Human Relations Conference on the Morehead State College campus, Monday, November 1.

Selected high school students from over 50 high schools in Kentucky, West Virginia and Ohio will attend the annual event co-sponsored by the National Conference of Christians and Jews and Morehead State College.

Richardson will deliver the keynote address at 10:30 a.m. in the gymnasium to an expected crowd of over 4,000, including most of the Morehead State College student body.

Appearing as guest consultants for the day-long conference are Mrs. Virginia Coffey, Seven Hills Neighborhood House, Cincinnati; Richard Horchler, National Negro College Director, NCCJ, Chicago; Raymond LeRoux, Director, Kentucky Region of the NCCJ, Louisville; James Clay, Assistant Director of the Human Relations Commission in Louisville; Malcolm Chander, Director of the Southern Ohio Region of the NCCJ, Cincinnati; John Arey, Assistant Director of the Ohio Region of the NCCJ, Columbus; and Ethel Moore and M.K. Thomas, co-sponsors of the Morehead State College Cosmopolitan Club.

Dr. Adron Doran, President of Morehead State College, describes the conference as providing an opportunity for students of all races, creeds and walks of life to discuss the kinds of relations which should exist among human beings, to promote a greater understanding of various

problems and to develop a keener insight into the solution of the problems.

Following the keynote address, a briefing and organization session will be held followed by an address by Horchler on "Progress in Human Relations."

Discussion group sessions are scheduled for the afternoon beginning at 2:00 in the Doran Student House. Mrs. Coffey will summarize the conference at 4:00 and a banquet is scheduled for 5:30.

Monroe Wicker, Director of School Relations at Morehead State College, is coordinator of the conference and calls the event "one of the most worthwhile and stimulating conferences we hold each year."

High schools attending the conference are Breckinridge Training School, Louisville; Central, Lexington; Dunbar, Franklin County; Greenup, Louisville; Holy Rosary Academy, Louisville; Jewish Community Center, Lexington; Inez, Lexington; Lafayette, Huntington High School, Huntington, W. Va.; Lexington Catholic, Erlanger; Lloyd, Montgomery County; M.C. Napier, Morgan County; Louisville Presentation Academy, Princeton, Rowan County; Raceland, Saleraville, Louisville; Seneca, Whitesburg, Belmont, Ohio; Dawson-Bryant, Ohio; Hughes, Cincinnati; Mt. Orab, Ohio; Purcell High School, Cincinnati; Taft High School, Cincinnati; and Taft High School, Hamilton, Ohio.

## "DROP-BY" BANKING



That pretty well describes the speed and ease of our popular DRIVE IN TELLER WINDOW service! No parking problem, no standing in line... just stay right in your car. Drive in, drive up, drive off... in any weather! Drop by and

Start drive-in banking here SOON!

## PEOPLES BANK OF MOREHEAD



Choose from a large selection of money, stocks or bonds. From BARKER MONUMENT COMPANY. Located just east of Olive Hill on US 60. "Where you see what you are buying" when you want the best you want Georgia granite. We cut our own stones and are equipped to cut and set stones already set in cemetery.

Jim Barker, Owner Phone 286-4374. Hours: Mon.-Thurs. 9:00 A.M. - 5:30 P.M. Mar. available on order.

Most of you knew my late Brother, Sam Green, who served as Sheriff and Judge of Rowan County.

It is my intention to render you the same kind of law enforcement, and consideration of your problems, as did my brother.

## This Is My Pledge To Rowan County's Voter.....

As the final election campaign draws to a close I would like to review the promises I have made in this campaign. These are the only promises I have made, and if you agree with them I will appreciate your support.

\* I will try to make Rowan County as good a sheriff as it has ever had by:

Enforcing the laws fairly, honestly and impartially. Working to keep to a minimum the number of law violations. Being available at all times to do my duty and to do it fully. Offering courteous, fulltime service in the sheriff's office. Treating every person the same, regardless of his station in life.

\* I will show due respect to Rowan County's voters by not trying to become their "political boss." I do not want to be a politician; I only want to be your sheriff the next four years.

--IF YOU AGREE WITH THESE PRINCIPLES--

—Vote For—

**John Green**  
For Sheriff

## Lumber Wanted

By Ray L. White & Sons Lumber Company

Three Miles Of Morehead On U.S. 60

Poplar, Ash, Walnut, Basswood, White Oak, Red Oak, Chestnut Oak, Cucumber, Hickory, Beech, Water Birch, Mountain Birch, Maple, Sycamore, Hackberry, Gum, Cherry, Elm & Buckeye.

Load Lumber For Fork-Lift Unloading, Cut All Lumber 1 1/8" Random Width And Length. Yard Open Monday Thru Friday And Until 12:00 On Saturday.

P.O. Box 280

Phone 784-4723

## WOULDN'T YOU FEEL SAFER AT NIGHT WITH A BEDSIDE EXTENSION PHONE?



With night sounds and all, it's comforting to have a phone only a reach away in case of a real emergency. Besides, you won't want to leave a cozy bed to answer a

call? It's especially nice if you have a bright little STARLITE® phone with a dial that glows gently in the dark. Phone or visit our Business Office for details.

**GENERAL TELEPHONE**

America's Largest Independent Telephone System

## Tiger Talk FREEDOM PARTY



**Norman Tant**  
For City Council

The Tiger Scores against most of you remember the ridiculous laws with which the Mayor and City Council acted to repair most of the worst holes in the streets after the publication last April of a picture of a "bad driver" which had graced Wilson Avenue for nearly a year. A couple of weeks ago, in TIGER TALK, I called attention to the straight telephone line maintained at City expense in the Secret Session back room in City Hall, while the City Clerk and the Police Department had to share a telephone to conduct all of the City's business and police affairs. Last week City Council voted to have this phone moved from the back room to the City Clerk's office. Now you will be able to call the police to get assistance even if someone is carrying on some other type of city business over the phone with the City Clerk.

### Common Sense Needed

Morehead needs some liberal doses of common sense during this difficult time more than at almost any other period in its history. We need to get back to using sound, reasonable, prudent business practices in all areas of our City Government. We need to base every decision on straight facts. We need to carry on all City business in an open, above-board manner, with regular reports made to the public who do not find it possible to attend Council meetings. We need men with experience in public affairs and sound business judgment who have the nerve to take a position in the interest of the entire body of citizens, uncolored by personal interests, and stand by it.

The record I made while I served on City Council proves that I have most -- if not all -- of these qualifications. That record can be found in the files of the ROWAN COUNTY NEWS [now MOREHEAD NEWS] in the minutes of City Council for 1960-61. I am proud of the fact that I am probably the only councilman in the history of Morehead who was honored while still in office for his work in straightening out and improving the business affairs of the city. A Resolution was passed which, after several complimentary "whereas" statements, reads as follows: "Whereas, Councilman

## 'Apple Day' Boosts Sale Of Fruit

Apple pies -- fried or baked, apple cider, apple butter, caramel apples -- you could take your pick in Paintsville early this month at Johnson county's Apple Day.

This apple promotion program was carried out on Oct. 2 for the third year through the co-

operation of apple growers, community organizations and the businessmen, reports Miss Sue Thomas, Extension home demonstration agent in Johnson county.

The day opened with a parade and the Apple Queen beauty contest, viewed by some 3,000 people. Sharing attention with the beauty contestants were consumed ladies who made apple butter in copper kettles.

Plenty of apple delicacies were available for sampling. The county Homemakers Clubs and other community organizations provided apple pies. The county 4-H Clubs kept children -- and grown-ups -- well supplied with caramel apples throughout the day. Apple cider was made on the street by Future Farmers of America boys.

Most of the crowd took part in the apple auction, which gave apple growers a chance to display their products, Miss Thomas continues. A square dance, with live music, ended the Apple Day festivities.

After a third successful Apple Day, most of Johnson county agrees that apples are well worth promoting -- and eating, Miss Thomas concludes.

## Lambs Can Mean Profit For Farmers

Kentucky farmers can consider finishing western feeder lambs during the winter for a good profit with smart management.

Dr. Hudson Glimp, UK Cooperative Extension Service sheep specialist, says: "Some western Kentucky producers made as high as \$10 per head with feeder lambs in 1964. They utilized Kentucky's farm system which includes (1) good bluegrass in the fall, (2) corn fields that need to be cleaned out, (3) and a small grain cover crop for winter grazing. Lambs can be so finished with small investment in extra grain."

Best lambs are 60-pound animals, he says. Lighter lambs will utilize roughage more efficiently than heavier ones. Bring lambs along slowly, aiming at a 100-pound market weight in February. Shear lambs, drench them and vaccinate against enterotoxemia shortly after they arrive at the farm. Feed trace-mineralized salt free choice after the first week, plus 30 grams aureomycin per ton in any supplemental ration given.

"Such feeder lambs offer an excellent opportunity for a short-term, low-labor enterprise for the farm," Dr. Glimp says.

## Bedding Factor In Raising Swine

Proper Bedding Big Factor In Good Swine Production

Bedding in swine pens is a very important factor in proper farrowing, nursing and finishing stages, says Dr. John Robertson, UK Cooperative Extension Service swine specialist.

Price and availability of bedding, plus absorptive capacity, are important. Wheat straw is good; 45 pounds of it will absorb 100 pounds of liquid. Thirty-five pounds of oat straw will absorb 100 pounds of liquid, 35 pounds

of sawdust, 100 pounds of liquid, and 35 to 40 pounds of wood shavings, 100 pounds of liquid.

Corn cobs are good bedding but their absorptive capacity is not definitely known.

Avoid extremely coarse or dusty bedding, or bedding that swine can easily shove or kick out of the pen.

NOTHING EXTRA - As a person can get along all right even better in many cases without an appendix, tonsils or gall bladder, it is wondered why these organs are included as standard equipment.

## Save Two Percent On Your Taxes

The tax books of Rowan County are now open at the office of the sheriff, in the courthouse.

All taxes percent discount is allowed on all taxes paid before November 1. Don't overlook this - pay today - and save this 2 percent.

## Introducing the tuned car. 1966 Buick.



What makes a car a car is styling, performance, ride and handling. Only when they're all tuned together is the car a Buick. Like this 1966 Skyhawk Gran Sport pictured above. Wouldn't you really rather have a Buick?

There's an authorized Buick dealer near you. See his Double-Checked used cars, too.

**STONE PONTIAC-BUICK-GMC, INC., W. Main Street**



## Plan Now for Winter Comfort

Install a new heating unit and  
an Ashland Metered Gas System...NOW!

Enjoy the cozy comfort of an Empire Circulating Heater. A four-speed blower distributes heat evenly, quietly. Quality features include temperature control, automatic safety pilot and lifetime combustion chamber. The modern design and popular radiant front styling of the Empire Circulating Heater add to the appearance of any room. Whatever type unit you select, you can count on an Ashland Metered Gas System to give you dependable heat... plus all the advantages of gas for hot water, cooking and clothes drying. Now is the best time to install an Ashland Metered Gas System. When cold weather comes you'll enjoy the comfort and convenience of gas -- even if you live beyond the city gas mains.

For many details, mail this coupon to the back page nearest you.

Please send me more information about an Ashland Metered Gas System.

Name \_\_\_\_\_

Address \_\_\_\_\_

City \_\_\_\_\_ State \_\_\_\_\_

Phone \_\_\_\_\_

Directions to home \_\_\_\_\_

### Central Heating System

A central, warm-air heating system automatically provides clean, even heat to every room. Operation is trouble-free and economical.



### Empire Floor Furnace

This 70,000 BTU capacity floor furnace is ideal for many homes. Provides an even flow of clean, beautiful heat at low operating cost. It operates quietly -- has an extra heavy combustion chamber. Empire's thermostat control system lets you set the temperature you want and forget it!

We offer the finest home heating equipment and applications. (Only 10% down and up to 24 months to pay!)

Ashland LP Gas -- the modern energy fuel!

ASHLAND OIL & REFINING COMPANY

U. S. 60 East-Box D,  
Morehead, Kentucky  
Phone: 784-5168



**Buzzzzzzzzzz,**  
busy, busy people find  
FLORISTS fast in the  
YELLOW PAGES.

Where your fingers  
do the walking.



Vote For

**Luke Plank**

For

**Jailer**

Rowan  
County

Mr. Plank is the 'qualified nominee' for this office. . . he has had eight years experience.

\*\*\*\*\*

Luke Plank is 49 years of age, born, reared and lived all his life in Rowan County. He knows the problems of our people . . . is able bodied to do a good job . . . married with 11 children.

\*\*\*\*\*

If you are interested in the courthouse, the jail, the courthouse lawn, and the county's property, which belongs to you [the voters and taxpayers] then you will vote for Luke Plank. He will conduct your business in the same economical, yet friendly, fashion that he has personally conducted himself all his life.

**Luke Plank**

Will Make The Best Jailer  
Rowan County Ever Had

Vote For Luke Plank

"The Friendly Candidate"

## All I Ask...

### CHECK

- ✓ My Honesty
- ✓ My Integrity
- ✓ My Qualifications
- ✓ My Past Record as a Citizen
- ✓ How I Pay my Bills
- ✓ How I meet My obligations
- ✓ The Courtesy, and Consideration,
- ✓ I have always shown for My Fellow Man.

### Inquire

of my neighbors, asks rates or anyone who know the

Vote  
Your Conscience

If this is the kind of public Official you want

Vote For

**JIMMIE  
CASKEY**  
For  
**CORONER**





## For And About Teenagers



**THE WEEK'S LETTER:** "I am 12 years old and my mother will not let me wear nylons to church or to school. What do you think about that? All the girls in my class wear them and they call me a baby when I don't. It hurts!"

**OUR REPLY:** The girl of twelve years who thinks she must wear nylons all the time is the one who is really the "baby." She is trying to act and look like a grown-up, which she is not. Some girls who wish to wear them all the time have no more reason for wanting to do so than "everybody else does." This is equally wrong. If some

## Limestone Standards Changed

Changes in standards for agricultural limestone in Kentucky will take effect Jan. 1, 1966, Kentucky farmers were notified recently.

George D. Corder, U.K. Cooperative Extension Service soils specialist, says:

The new requirement is that agricultural limestone must have at least 80 percent neutralizing value [calcium and magnesium carbonate content] and must be ground fine enough that 80 percent will pass through a 10-mesh screen, and 40 percent of the same mass through a 60-mesh screen.

The state Department of Agriculture will enforce the new regulations to comply with the Kentucky Limestone statute. The state ASCS office will require the new standards for co-sharing with farmers in use of limestone.

"Agricultural limestone that meets the new standards should give Kentucky farmers quicker crop response and larger returns on limestone and fertilizer investments," Corder said.

"Limiting acid soils [the reason for using agricultural limestone] with more coarsely ground materials reduces soil acidity very slowly, perhaps never fast enough to make plant nutrients available to crops, or to remove the toxic elements from the soil solution. The toxic elements are toxic elements are aluminum and manganese, which come in to the soil solution in sufficient amounts in acid soils to be harmful to crops."

Ample amounts of the new-standard limestone applied to acid soils should bring quicker reduction in soil acidity and more benefits from applied fertilizers, Corder says.

## Claig Sprout . . .

And His Friend, TIMOTHY TAGMUTTON . . . Sez

DEAR MISTER EDITOR:

Me and Claig have some election predictions -

1. Tuesday's county races will be won by neither the Democrat or the Republican.

2. Every candidate who meets defeat will say he was sold down the river and traded off.

3. Most winning candidates will get too much joy juice Tuesday night.

4. Most losing candidates will get too much joy juice Tuesday night.

5. Most losing candidates will congratulate their victorious opponents but they don't really mean it.

6. It will take both winning and losing candidates the next four years to pay off the money they borrowed, or mortgaged their home and barn and farm, to make the race.

7. The bond issue will pass. There's too many people who know that we're a-going to get \$600 million federal dollars for them \$176 million state dollars and that's too good a bargain to pass up.

The bond issue reminds me and Claig of the fellow who run a department store at the county seat. He always advertised, Mister Editor, in your paper that he sold everything below cost. Me and Claig went in to his store one day and ask him how he could sell everything for less than it cost him and still stay in business. He replied, "It's because I have such a large volume."

When you speak these days about millions of dollars it's not like it used to be. People don't consider it much money unless it's billions and I reckon that LBJ will soon be talking into trillions or decillions.

They ain't nothing in this world, including rabbits, that can multiply as fast as workers in one of them Queerens agencies. I was reading some figures yesterday on how fast they were growing in Washington. That price said when Congress set up the Department of Health, Education and Welfare 13 years ago they was hiring 40,264 workers and spending \$1.9 billion a year. Now they was using 85,702 workers and spending \$7.8 billion a year.

I mentioned this matter on account of we now got another new agency started called Urban Affairs or somepup. Senator Harry Byrd claims this agency will also set a new record in 13 year for growing, figures by 1978 it'll be hiring 250,000 workers and spending \$225 billion a year.

President Johnson said it was "very fitting" that we have this new department at this time. It could be like some of the clothes wimmin was wearing this season, more fitting than proper.

And them folks running the anti-poverty department ain't doing too bad. I was reading in the papers last week where these Appalachia doctors in Washington has hired 2,152 college graduates at a cost of \$17,000 a month to "study the culture of poverty." Me and you know,

Mister Editor, that poverty ain't got no more culture than a bulldog has got hair. But they ain't spending nothing but money and they have took to making money out of scrap metal so I reckon it don't make much difference.

And I was reading a interesting item on this new "hazardous to health" label they was going to require on cigarette packs.

The folks that manufactures cigarettes has made a survey and come up with the figures that only 7 percent of cigarette smokers will ever see the label and 2 percent of that 7 percent won't know what "hazardous" means.

I'm a pipe smoker, Mister Editor, and ain't got no feelings one way or the other about this label law for cigarettes, but this label business is going out of hand, sorter like the packaging business. The Department of Agriculture reported last week that for ever \$20 spent on groceries, about \$1.75 went for boxes, wrappers and things like that.

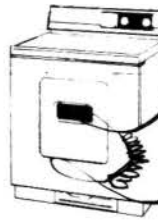
It was packed in a Cleveland heart doctor has come out with what he says is proof that eating mustard is bad for the heart. And another heart expert has allowed as how charcoal steak was mighty hard on the heart. If we got to putting labels on everything that is bad for the health, people was going to be scared to eat anything. And, individual, it was already beginning to look like the only way a feller could escape heart trouble was to starve to death.

Yours truly,  
Timothy Tagmutton

OH, YES! - "The more you walk, the longer you will live," asserts a physician. Maybe so, if you walk where no motor vehicle can be driven, skidded, caromed, catapulted or ricocheted.

Trade at Home for Your own sale and community program

we can't tell you some of the things electricity dries best



they're unmentionable!

Flameless electric drying is clean and safe. Delicate things like slips and nightgowns come out in perfect shape . . . never any yellowing. And now's the perfect time to buy a new electric dryer. See your dealer about one soon — and get a new electric blanket free!



Buy your electric dryer now — get an automatic electric blanket FREE!



When your dealer delivers your new electric dryer, he'll send you a certificate of purchase and installation. Then we will send you a new electric blanket. This beautiful 72" x 84" thermal electric blanket in beautiful Arduque Gold.

**KU KENTUCKY UTILITIES COMPANY**  
an investor-owned electric company

60 FIRST CLASS ELECTRICALLY  
FURNISHES CLOTHES DRYING  
PAID WATER HEATING  
CLEAN COOKING

SYMBOL OF SERVICE

THE MEASURE OF A MAN!



He's growing — is your Savings Account? Make sure he'll have full measure of opportunity, with the educational advantages a young man deserves.

**4% FIRST FEDERAL**  
Savings And Loan Association Of Morehead

MAIN STREET MOREHEAD, KY.  
— OPEN SIX DAYS A WEEK —

He'll Serve You Well...

**He Will Again A Friend To All In Time Of Need**  
**W. C. Flannery**  
For **Rowan County Judge**  
The Peoples Choice

—Pd. Pol. Adv.



**How your "Yes" vote for the Kentucky Bond Issue will help you and help keep Kentucky taxes low**

If the Kentucky Bond Issue is passed on November 2nd it will enable our state to take advantage of \$655 million in Federal Matching Funds and money from other sources, so that we can meet the needs of our state while keeping Kentucky taxes low. It will enable us to build the primary and secondary roads we need as well as the new Appalachian and Interstate systems. We will be able to provide new facilities at our schools, colleges and universities to meet the demand for better education and job training. We can provide much needed public health facilities, new parks, community libraries, child welfare centers. So let's not miss the boat. This Bond Issue will benefit all of our state, and it requires no increase in taxes. The Kentucky Better Roads Council.

**Vote X YES**  
**Kentucky Bond Issue, Nov. 2**

**Logs Wanted**

**Ray L. White & Sons Lumber Company**

Three Miles East Of Morehead On U.S. 60

Poplar, Oak, Hickory, Gum, Pine, Hemlock, Soft Maple, Hard Maple, Water birch, Basswood, Hackberry, Ash, Sycamore, Beech, Buckeye, Cucumber, Mountain Birch, Elm, Walnut, Cherry, Cedar.

Cut all logs to 8' to 16' Logs measured with 1/4" Kerf International Rule. Yard opened Monday thru Friday Until twelve noon on Saturday.

P.O. Box # 280

Phone: 784-4123

**Monuments**  
Granite and Marble  
First Class  
Material at A  
Reasonable  
Price  
Erected on Con-  
crete Foundation.  
**Dayton Porter**  
Phone 784-5322

**FISHIN' TIPS**  
  
WHEN A CRAPPIE STRIKES LET  
HIM RUN AT LEAST 5 SECONDS  
BEFORE HEAVILY SETTING HOOK

**Jerry's**  
RESTAURANT  
E. Main St. at  
College Boulevard  
Morehead, Ky.

**TERMITE**  
**TROUBLE?**  
See or Call  
**CHESTER KISER**  
**CONSTRUCTION CO.**  
Phone 784-5109  
& 784-5442  
Agents for  
State Termite  
Control and  
Chemical Co. Inc.

the safe way  
TO  
SEND  
MONEY

**AMERICAN**  
**EXPRESS**  
**Money**  
**Orders**  
SOLD HERE

the easy way  
TO  
PAY  
BILLS  
**Battson Drugs**  
Inc.  
Main St.  
Morehead, Ky.  
George Dozier,  
Pharmacist

He Served  
You Well...

He Will Again  
A Friend To All  
In Time Of Need  
**W. C. Flannery**  
For  
**Rowan County**  
**Judge**  
The Peoples Choice  
-PE. PH. AD-

## Famed Authors On MSC Campus

Wilma and James Stokely, two of the most honored authors in the South, are on the Morehead State College campus today participating in the Morehead Visiting Authors Series.

The two will lecture on "The World of Thomas Wolfe" at 3:00 p.m. Wednesday, October 27, in the Little Theatre and on "Literature of the Southern Appalachians" at 7:00 p.m. Thursday in the Baird Music Hall.

The husband and wife team, with six books to their credit, will be available to students and faculty members for individual or group discussions during the two-day period.

Wilma Dykeman Stokely has published *The Tall Woman* and *The Far Family* which will be released in February, and received the Thomas Wolfe Memorial Award for her book *The French Broad*.

Three books, *Seeds of Southern Change*, *Neither Black Nor White* and *We Dissent*, were written jointly and two received the Sidney Hillman Foundation Award for Neither

Black Nor White. Mr. and Mrs. Stokely have published in *Atlantic*, *Harper's*, *Current History*, *New York Times* magazine, *The Nation* and *The New Republic*.

Mrs. Stokely is one of the authors of the Ford Foundation's survey, *The Southern Appalachian Region*.

James Still, Associate Professor of English and Writer in Residence at Morehead State College, is coordinator of the Visiting Authors Series which has already featured the noted poet, Robert Francis. Other outstanding poets and authors will be on the Morehead campus throughout the school year.

As everybody knows, anything can happen these days -- anything at all! For example, recently demonstrators in Indonesia burned the Indonesia Communist Party headquarters building, and their march to the U.S. Embassy and shouted, "Long Live America!"

## EKEA Meet Will Be In Ashland

The 42nd. annual convention of the Eastern Kentucky Education Association will be held in Ashland, Nov. 11 and 12.

Featured speakers include Betty Furness, former Powers Model and movie actress and Dr. Dean F. Berkley, Indiana University lecturer and communications expert.

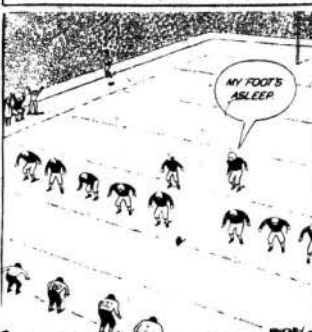
Richard VanHoose, Superintendent of the Jefferson County Schools and president of the Kentucky Education Association, and Verne Horne, Public Relations Director of the KEA, will also appear on the two-day program.

Ten convention will open with a general session on Thursday evening at 8:00 in the Paramount Theatre. Music will be provided by the EKEA high school chorus, directed by Eleanor Hinkle, Hazel Kitchem, President of EKEA, Stone, Ky., will preside. VanHoose will bring greetings from KEA, followed by Dr. Berkley's address, "Who Knew Not Moses."

The second general session is scheduled for Friday morning at 9:30. The Raceland and Russell concert bands will perform followed by Miss Furness's address, "Betty Furness on the Record." Horne will conclude the session, speaking on "Educational Legislation."

Twenty-one departmental meetings will be held on Friday afternoon at various locations in Ashland. Other officers of EKEA are: president-elect, William Eldon, Carleburg; vice-president, Calvin Martin, Garrett and secretary-treasurer, Monroe Wicker, Morehead State College. Members of the Board of Directors are Miss Kitchem, Eldon, Woodrow Allen, Prestonsburg; Nelson Allen, Russell; Arnold Roberts, Russell; Claude Farley, Pikeville; Thomas McCoy, Carleburg and Fred Johnson, Raceland.

## HALF-PAST TEEN



KEEP THAT SMILE: How Put a good part of that raise in an insured Savings Account at the Citizens Bank. It's a real pleasure to see your savings grow and grow.

**THE**  
**Citizens**  
**BANK**  
MEMBER F.D.I.C. "GROW WITH US"

**MOORE'S**  
**DRY WALL**  
Remodeling and Building  
**RALPH MOORE**  
128 Branham Ave. Phone 784-5155

Complete Ambulance Service  
Oxygen Equipped  
"Equipped To Serve You"  
Member of Kentucky Funeral Director's  
Burial Association  
--Authorized To Service--  
Burial Insurance Contracts Issued By  
**COMMONWEALTH LIFE INSURANCE CO.**  
**LANE FUNERAL HOME**  
Phone 784-4134 - Morehead, Ky.

**FOR SALE**  
On Railroad St. extended, back of the Free Will Baptist Church and Cowden Manufacturing Co.  
**3 Bedroom Brick Veneer**  
Wall to wall carpeting, 1 1/2 ceramic baths, built in kitchen, carpet attached, forced air heat. Lot size 75 ft. by 100ft. Street and driveway black-topped.  
**Terms Up To 20 Years To Pay**  
**BOONE HOLLAN, JR. BUILDER**  
Phone 784-7169 Morehead



**Make Sure You Have—**  
**BLUE CROSS** **BLUE SHIELD**

One out of three families will have a hospital case this year... one out of seven will have someone who requires surgery. You and your family need the dependable protection of Blue Cross and Blue Shield to help you meet the cost of necessary hospital and surgical-medical care.

IF YOU ARE NOT A BLUE CROSS AND BLUE SHIELD MEMBER, APPLY NOW IF YOU ARE 64 YEARS OF AGE OR UNDER, AND NEITHER APPLICANT NOR SPOUSE IS EMPLOYED WHERE THERE ARE 10 OR MORE EMPLOYEES.

**MAIL THIS HANDY COUPON TODAY**

BLUE CROSS AND BLUE SHIELD Mo-16  
3101 Bardstown Road • Louisville, Kentucky 40305

Please send me, without obligation, information and an application for Blue Cross and Blue Shield.

NAME \_\_\_\_\_  
ADDRESS \_\_\_\_\_  
CITY \_\_\_\_\_ STATE \_\_\_\_\_

**FARM BUREAU MEMBERS - LIFE YOUR FARM BUREAU AGENT**

IMPORTANT MESSAGE TO ALL BLUE CROSS AND BLUE SHIELD MEMBERS: ABOUT CONTINUED PROTECTION FROM CERTAIN WHO WILL NOT BE EXCLUDED FROM THE

IF YOU ARE NOT A BLUE CROSS AND BLUE SHIELD MEMBER, I wish to continue Blue Cross and Blue Shield on:

Home of Dependent \_\_\_\_\_  
Who becomes 19 years of age \_\_\_\_\_ month \_\_\_\_\_ day \_\_\_\_\_ year

Please mail me an application so there will be no interruption of protection. Certificate No. \_\_\_\_\_

Subscriber's Name \_\_\_\_\_  
Address \_\_\_\_\_  
City \_\_\_\_\_ Kentucky Zip Code \_\_\_\_\_

## Congressmen Solidly For Bond Issue

Every Kentucky congressman, including Carl D. Perkins of this district, has come out in support of the \$176 million bond issue to be voted on next Tuesday.

The endorsement of the issue includes Kentucky's two Republican Senators, John Sherman Cooper and Thurston Morton. One of the first to come out in support of the program was Republican Representative Tim Lee Carter of the Kentucky Fifth District.

The six Democratic congressmen joined in their declaration of support in a signed joint letter in which they cautioned that failure to approve the bond issue will mean that "our state will be deprived of substantial federal monies to aid our state programs."

The letter, signed by all six, also said that passage of the bond issue means that the Commonwealth would get "about four dollars of federal money for each Kentucky state tax dollar."

## TEST-DRIVE FAIRLANE '66 THE TOTALLY CHANGED CAR

New high performance-up to 390-cu.in. V-8.  
New features-like a doubly convenient "his and hers" transmission.  
New convenience-like a dual-action wagon tailgate.



Most models ever! Thirteen in all—including totally new sports luxury XL's, high performance GT's, elegantly painted Squire wagons, convertibles!

Most performance ever! Standard in the new Fairlane GT, 390-cubic-inch V-8 • Bucket seats, dual exhausts, GT stripes • Console-mounted shift lever • All new Sport Shift Cruise-O-Mat (on GT, A models)—a "his and hers" transmission—use it as automatic or manual.

Most luxury ever! Standard in the new Fairlane XL: Rich carpeting, wall-to-wall • Con-toured bucket seats, all vinyl trim, air-padded dash and visors • Automatic courtesy lights in the doors • and more!

Most conversions ever! New Magic Doorgate (standard on all Ford Fairlane wagons)—it's a door and a tailgate! • New "reversible" ignition key—works either side up • Keyless door locking • Foot-operated parking brake • New 7 item standard safety package

Try Fairlane '66—at your Ford Dealer's new!

**Chap's MOBILE HOMES**  
Own a Modern Home for as low as \$2795.00 and on Small Monthly Rent Payments  
Eastern Kentucky's Largest Mobile Home Display  
**FLEMINGSBURG, KENTUCKY**

**ROWAN MOTOR SALES**  
117 West Main St. Morehead, Ky.





NAME OF  
CANDIDATE



For City Council

1

1

1

1

1

1

10

© 2000 Blackwell Science Ltd

"We just have to keep on establishing a public health system," says Rasmussen, adding which, "that have the authority to impose a system of reforms on the stakeholders and operators of the state county health departments, provided that such system shall not exceed 18 months or such one has not been approved by the citizens' vote."

County of Rowan

State of Kentucky  
J. Orlan W. Egan, Clerk of the  
Boyle County Court do hereby  
certify that this is a true and  
correct facsimile of the official voting  
machine ballot to be voted in  
Number 5, Rodburn precinct  
at the November 2, 1969 general  
election in Boyle  
County.

Signed:

Orlino W. Klam  
 Clerk  
 Fresno County Court







NAME OF CANDIDATE



REPUBLICAN PARTY  
General Election  
November 1, 1988

**For Details**  
 Contact: Mr. J.  
 (Circle 10 on Reader Service Card)

1

# SAMPLE BALLOT

County of Rowan  
State of Kentucky

128

I, Orlan W. Egan, Clerk of the Rowan County Court do hereby certify that this is a true and correct transcript of the official voting machines ballot to be voted in Number 2, Lower Farmers; and Number 3, Upper Farmers precincts at the November 2, 1965 general election in Rowan County.

W. Elam  
Clark  
Loyan County Court

**House of**  
**CAMERON**


 DEMOCRATIC PARTY
 REPUBLICAN PARTY

"As you are keen on establishing a public health service in Ramon county, which shall have the authority to impose a special ad valorem tax for the maintenance and operation of the Ramon county health department, provided that each special tax levied or voted by voters on such tax has been sufficient to the actual valuation of all property in the district."

County of Rowan :ss  
State of Kentucky  
I, Ottis W. Elam, Clerk of the Rowan County Court do hereby certify that this is a true and correct transcript of the official voting certificate made by the clerk of the Rowan County Court on the 11th day of November, 1985 general election in Rowan County.

Signed: Ottis W. Elam  
Clerk  
Rowan County Court

# SAMPLE BALLOT

NAME OF  
CANDIDATE



**For City Council**

1

1

1

1

1

10

1

1

1

10



Name of CANDIDATE	Age	Sex	Religion	Education	Occupation	Political Party	Address	City	State	Zip
[Handwritten Name]	[Handwritten Age]	[Handwritten Sex]	[Handwritten Religion]	[Handwritten Education]	[Handwritten Occupation]	[Handwritten Party]	[Handwritten Address]	[Handwritten City]	[Handwritten State]	[Handwritten Zip]

**Author's address:**

WAGGELL

00110000

1



1

Counts of Women

1. Otis W. Elam, Clerk of the Florence County Court do hereby certify that this is a true and correct facsimile of the official voting machine ballot to be voted in November 3, 1905, and Number 12, Pine Grove precincts at the November 3, 1905 general election in Florence County.

Signed: Orlan W. Elam  
 Clerk  
 Reeves County Court

# SAMPLE BALLOT