

News

PUBLIC INFORMATION

JUDITH YANCY, DIRECTOR

MOREHEAD STATE UNIVERSITY

UPO BOX 1100

MOREHEAD, KY 40351

606-783-2030

Sept. 1, 1986
FOR IMMEDIATE RELEASE

MOREHEAD, Ky.--More than 50 commercial and educational exhibits will be featured at the fourth annual Kentucky Logging Show on Saturday and Sunday, Sept. 20-21 in Morehead.

Co-sponsored by the Kentucky Forest Product Industries Association (KFIA) and Morehead State University, the show will be held at the Derrickson Agricultural Complex, located three miles north of Morehead on Ky. 377.

The latest in saw and pallet mill equipment, tires, rolling stock, mill supplies and other forest products will be displayed, demonstrated and sold. Educational displays will highlight the research, conservation and service aspects of forestry.

Manufacturers of logging equipment and forest product suppliers from nine states and Canada will be on hand to show their latest wares, according to Harry Ryan, KFIA executive director.

Firms from Kentucky, West Virginia, Ohio, Alabama, Indiana, Tennessee, Arkansas, Missouri, and Mississippi as well as from Ontario, Canada, will be represented.

Other logging show activities will include lumberjack contests, horse and mule pulls and tall timber topping demonstrations.

The exhibits will be open from 9 a.m. to 5 p.m. both days. Admission will be \$3 for adults and \$1 for school age children which covers a full day's activities on the showgrounds. Free parking will be available.

Additional information is available from Ryan, KFIA, 310 Kings Daughters Drive #7, Frankfort, KY 40601. Telephone: 502-875-3136.

####

jy

News

PUBLIC INFORMATION

JUDITH YANCY, DIRECTOR

MOREHEAD STATE UNIVERSITY

UPO BOX 1100

MOREHEAD, KY 40351

606-783-2030

Sept. 4, 1986
FOR IMMEDIATE RELEASE

MOREHEAD, Ky.--Morehead State University has added an additional course to its schedule of fall offerings in Ashland, launching an effort to meet the demand for upper division level courses in the region.

The course, PHED 300, Physical Education in Elementary Schools, will be offered on Tuesdays from 6 to 8:45 p.m., beginning Sept. 9, at the Ashland Board of Education central office.

Students may register at the first class meeting or in advance by contacting MSU's regional coordinator for the Ashland area, Ray McCann at (606)329-9777.

In addition, registration is still open for two "weekend college" courses offered by Morehead State's Department of Business and Economics at Ashland Community College, according to Dr. William Whitaker, department chair.

Beginning Oct. 4, MNGT 463, Law and Ethics in Business, will be offered from 6 to 9 p.m. on Fridays and from 9 a.m. to 4 p.m. on Saturdays through Nov. 1.

MNGT 306, Production Management, will be offered on the same weekend class schedule from Nov. 8 through Dec. 13.

Students may register at the first class meeting or in advance by contacting McCann. Effective this fall, all out-of-state students taking classes at MSU's regional centers are eligible for in-state tuition rates. The cost per credit hour for undergraduate students is \$43.

####

jy

Photo

PUBLIC INFORMATION

JUDITH CASTO, DIRECTOR

MOREHEAD STATE UNIVERSITY

UPO BOX 1100

MOREHEAD, KY 40351

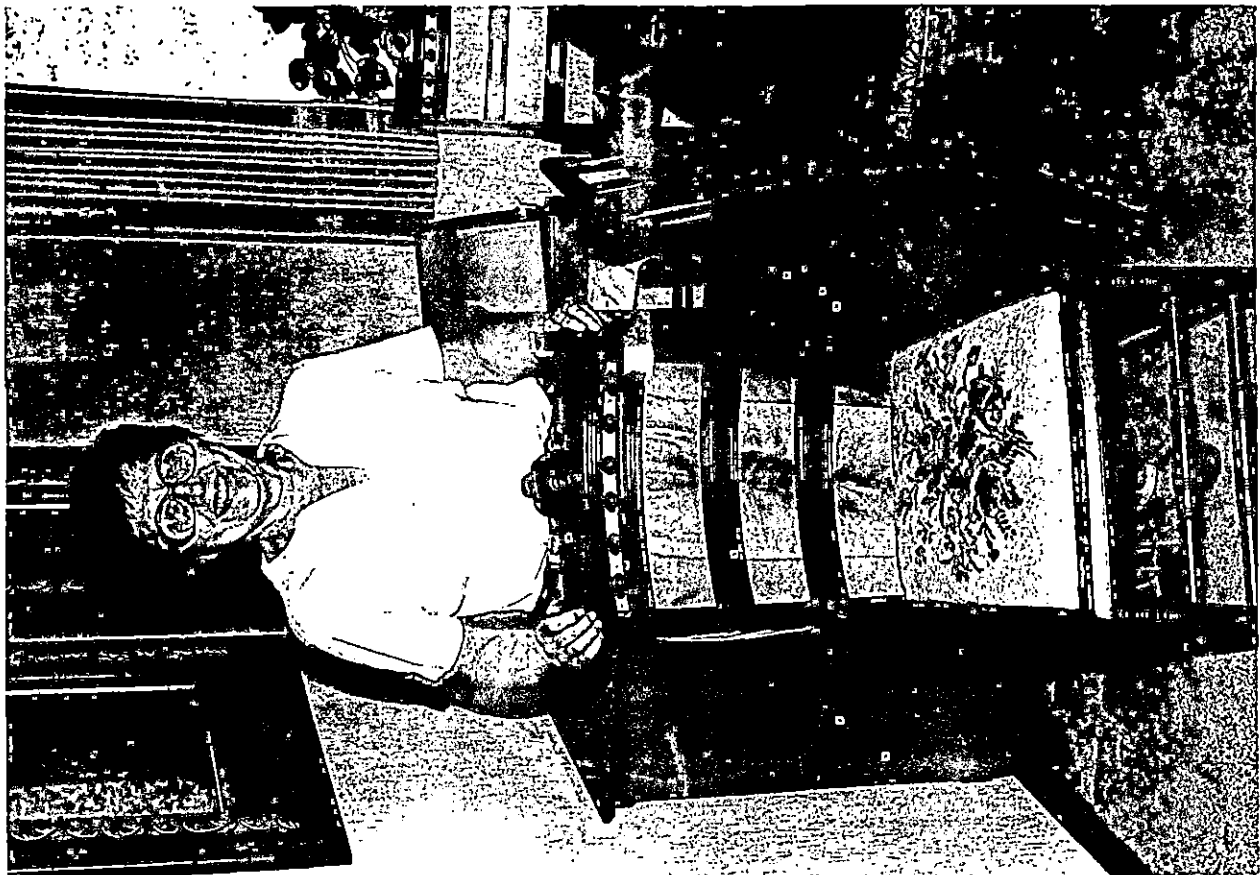
606-783-2030

RETIREMENT MEANS TIME FOR HOBBIES

Retired from Morehead State University's Camden-Carroll Library, where she had been acquisitions librarian since 1975, Betty W. Morrison of Morehead now has time for her favorite hobbies--needlepointing and refinishing furniture. Morrison, who joined MSU's staff in 1970, shows off a chair she not only refinished but also needlepointed the cushion. She retired from the library in June.

(MSU photo by Ray Bradley)

by



News

PUBLIC INFORMATION

JUDITH YANCY, DIRECTOR

MOREHEAD STATE UNIVERSITY

UPO BOX 1100

MOREHEAD, KY 40351

606-783-2030

Sept. 4, 1986
FOR IMMEDIATE RELEASE

MOREHEAD, Ky.--Morehead State University will offer three additional courses this fall at Maysville Community College, launching an effort to meet a demand in the region for upper division level courses.

The classes will begin the week of Sept. 8 and students may register at the first class meeting or in advance by contacting Dave Kraemer at the college at (606) 759-7141.

The new additions are:

MNGT 411, Labor Relations, Mondays, 6-8:45 p.m.

FIN 360, Business Finance, Wednesdays, 6-8:45 p.m.

PHED 300, Physical Education in the Elementary School, Mondays, 6-8:45 p.m.

Effective this fall, all out-of-state students taking classes at MSU's regional centers are eligible for in-state tuition rates. The cost per credit hour for an undergraduate class is \$43.

####

jy

Photo

PUBLIC INFORMATION

JUDITH CASTO, DIRECTOR

MOREHEAD STATE UNIVERSITY

UPO BOX 110

MOREHEAD, KY 40351

606-783-2030

RECEPTION FOR MSU NEWCOMERS

New Morehead State University faculty and staff women and wives of new employees will be welcomed to campus with a reception Sunday, Sept. 14, from 2 to 4 p.m. at the President's home hosted by the MSU Woman's Club and Mrs. A.D. Albright.

Addressing invitations for the event are, front from left, Elaine Frazier, Cheri Anderson, Brenda Brunk and Mrs. Albright. Back row, from left, Frances Wolfe, Lake Cooper, Belva Sammons and Peggy Reeves.

(MSU photo by Ray Bradley)

9-5-86jy



Sept. 5, 1986
Special to The Kentucky Publishing Company

1984 KENTUCKY LOGGING SHOW REVISITED: A Picture Story

While essentially a showcase for the state's forest products industry with displays and demonstrations of the latest in logging equipment and forest product supplies, the Kentucky Logging Show also offers a variety of competitive events and family-oriented entertainment.

Here's a look at the 1984 Logging Show held at Morehead State University's Derrickson Agricultural Complex. Many of these scenes will be repeated this year.

Cutlines

1--Young Jeremy Prater isn't quite sure what to make of his ride on these famous oxen from Maysville, who have appeared in several movies and who will make another appearance at this year's show. Helping Jeremy keep his seat is his grandfather Teddy Martin of Jeffersonville.

2--Demonstrating his technique as a chain saw sculptor is Jim Eckert of Bryan Equipment, Cincinnati, who will be at the DAC again this year.

3--Troy Gilbert of Vanceburg concentrates intently while competing in the two-person crosscut division of the Lumberjack competition.

4--The lumberjack contests are open to women as well as men. Here Barbara Weaver and Thelma Cox of London demonstrate their skill at crosscut.

5--Morehead's own Richard White practices his stance for the axe throwing competition.

6--Horizontal chop competitors need a highly defined sense of balance, a keen eye and steady hands, in addition to strength as demonstrated by Danny Jones of Lexington.

(MORE)

Logging Show
2-2-2-2-2-2-2

7--Choking logs in preparation for the skidder competition is Jimmy Johnson of Brownstown, Ind.

8--"Excuse my dust" might be the appropriate phrase as this contestant races through the skidder course, dodging pylons.

9--This unidentified competitor gives some last minute words of encouragement to his mule team just before they demonstrate their prowess in the mule pulling contest.

####

(MSU photos by Ray Bradley)

jy

News

PUBLIC INFORMATION

JUDITH YANCY, DIRECTOR

MOREHEAD STATE UNIVERSITY

UPO BOX 1100

MOREHEAD, KY 40351

606-783-2030

Sept. 6, 1986
FOR IMMEDIATE RELEASE

MOREHEAD, Ky.--Morehead State University, in conjunction with the Kentucky Mountain Study Group, will offer several American Institute of Banking (AIB) courses in the area this fall.

Registration for the courses will be held on the first night of class. The fee is \$140 per student, which includes AIB membership and textbook. The courses may be taken for AIB credit, but not for college credit.

Maysville will be the site for two of the classes.

"Analyzing Financial Statements" will meet on Mondays, 6 - 8:30 p.m., at Maysville Community College.

The three credit course deals with interpreting and evaluating financial reports of businesses. The instructor will be Dr. Bernard Davis, MSU professor of finance, and the first class meeting will be Sept. 15.

"Marketing for Bankers," also to be held at Maysville Community College, will deal with such aspects as marketing in the organization and consumer motivation and buying behavior.

The class, also worth three credits, will be taught by Dr. Bill B. Pierce, MSU professor of marketing, and will meet on Tuesdays, 6 - 8:30 p.m., beginning Sept. 16.

Two other classes will be offered in Morehead on MSU's campus.

"Accounting Principles I," a three credit course emphasizing current accounting practices, will meet on Thursdays, 6 - 8:30 p.m., in Combs Building Room 311. The instructor will be John M. Alcorn, MSU associate professor of accounting, and the first class meeting will be Sept. 11.

"Introduction to Commercial Lending," will emphasize the role of commercial lending in the banking industry and in the economy as a whole and will be taught by Keith McCormick, local attorney. It will meet Monday, 6 - 8:30 p.m., beginning Sept. 15 in Combs Building Room 311.

The purpose of the AIB classes is to increase an awareness of the responsibility that the financial community has in economic development and give it the knowledge to be able to fulfill that responsibility, according to Alcorn, AIB campus coordinator.

####

srt

News

PUBLIC INFORMATION

JUDITH YANCY, DIRECTOR

MOREHEAD STATE UNIVERSITY

UPO BOX 1100

MOREHEAD, KY 40351

606-783-2030

Sept. 6, 1986
FOR IMMEDIATE RELEASE

MOREHEAD, Ky.--Morehead State University's ROTC Cadet Chain of Command for the 1986-87 school year has been announced by Lt. Col. Alan R. Baldwin, chair of MSU's Department of Military Science.

The Cadet Chain of Command, composed of ROTC students, is responsible for the majority of ROTC activities on MSU's campus, including field training exercises, publication of a bimonthly cadet newspaper and a cadet yearbook, physical readiness training, preparing for ROTC advanced camp and the military ball.

Promotions to new ranks and positions were assigned on the basis of grade point average, leadership performance and military knowledge demonstrated at ROTC Advanced Camp, physical stamina, strength, and general merit, Baldwin said.

Some students received Distinguished Military Student (D.M.S.) honors for possessing outstanding qualities in all categories.

Those ROTC students who were promoted to new ranks and positions include:

*Keith A. Allinder of Forest Park, Ohio, Cadet First Lieutenant, Executive Officer HHC.

*Samuel J. Arnett of Catlettsburg, Cadet First Lieutenant, Platoon Leader, B Company.

*David T. Arnold of Morehead, Cadet First Lieutenant, Executive Officer, B Company.

*Dawn A. Barnhart of Hillsboro, Ohio, Cadet Captain, Battalion S-1/Adjutant.

*Terry G. Barrett of Isom, Cadet First Lieutenant, Executive Officer, A Company.

*Thomas D. Brown of Corbin, Cadet First Lieutenant, Platoon Leader, A Company.

*Sarah R. Curran of Mt. Sterling, Cadet Captain, Assistant Battalion S-5, D.M.S.

(MORE)

D

D

D

D

D

D

D

D

D

D

D

ROTC
2-2-2-2-2-2

- * Ricky D. Davenport of **Concord**, Cadet Captain, Commander HHC, D.M.S.
- *Kenneth B. Day of **West Liberty**, Cadet Captain, Commander, A Company.
- *Theodore S. Eldridge of **Morehead**, Cadet Captain, Battalion S-2.
- *Frederick A. Francis of **Bardstown**, Cadet Major, Battalion Executive Officer, D.M.S.
- *Elliott D. Gollihue of **Ashland**, Cadet First Lieutenant, Platoon Leader, B Company.
- *Joel C. Hardin of **Clayhole**, Cadet First Lieutenant, Assistant Battalion S-4.

*Billy M. Ison of **Sandy Hook**, Cadet Captain, Assistant Battalion S-3, D.M.S.

*Jackie W. Luttrell of **Letcher**, Cadet Major, Battalion S-3.

*Michael D. Mann of **Jerusalem, Ohio**, Cadet Lieutenant Colonel, Battalion
Commander, D.M.S.

*Angela G. Portman of **Louisville**, Cadet Major, Battalion S-5, D.M.S.

*Phillip R. Row of **Pikeville**, Cadet First Lieutenant, Assistant Battalion S-2.

*Steven D. Sexton of **Pikeville**, Cadet Captain, Commander B Company, D.M.S.

*Mark S. Shelton of **Ashland**, Cadet First Lieutenant, Assistant Battalion S-1.

* William S. Simpson of **Cox's Creek**, Cadet First Lieutenant, Platoon Leader,
A Company.

*Kelly L. Thomas of **Tollesboro**, Cadet Captain, Battalion S-4, D.M.S.

*Christopher H. Walker of **Franklin Furnace, Ohio**, Cadet Captain, Assistant
Battalion S-3.

####

MO

D

D

D

D

D

D

D

D

D

D

D

Photo

PUBLIC INFORMATION

JUDITH CASTO, DIRECTOR

MOREHEAD STATE UNIVERSITY

UPO BOX 1100

MOREHEAD, KY 40351

606-783-2030

MSU ROTC STUDENTS RECEIVE RECOGNITION

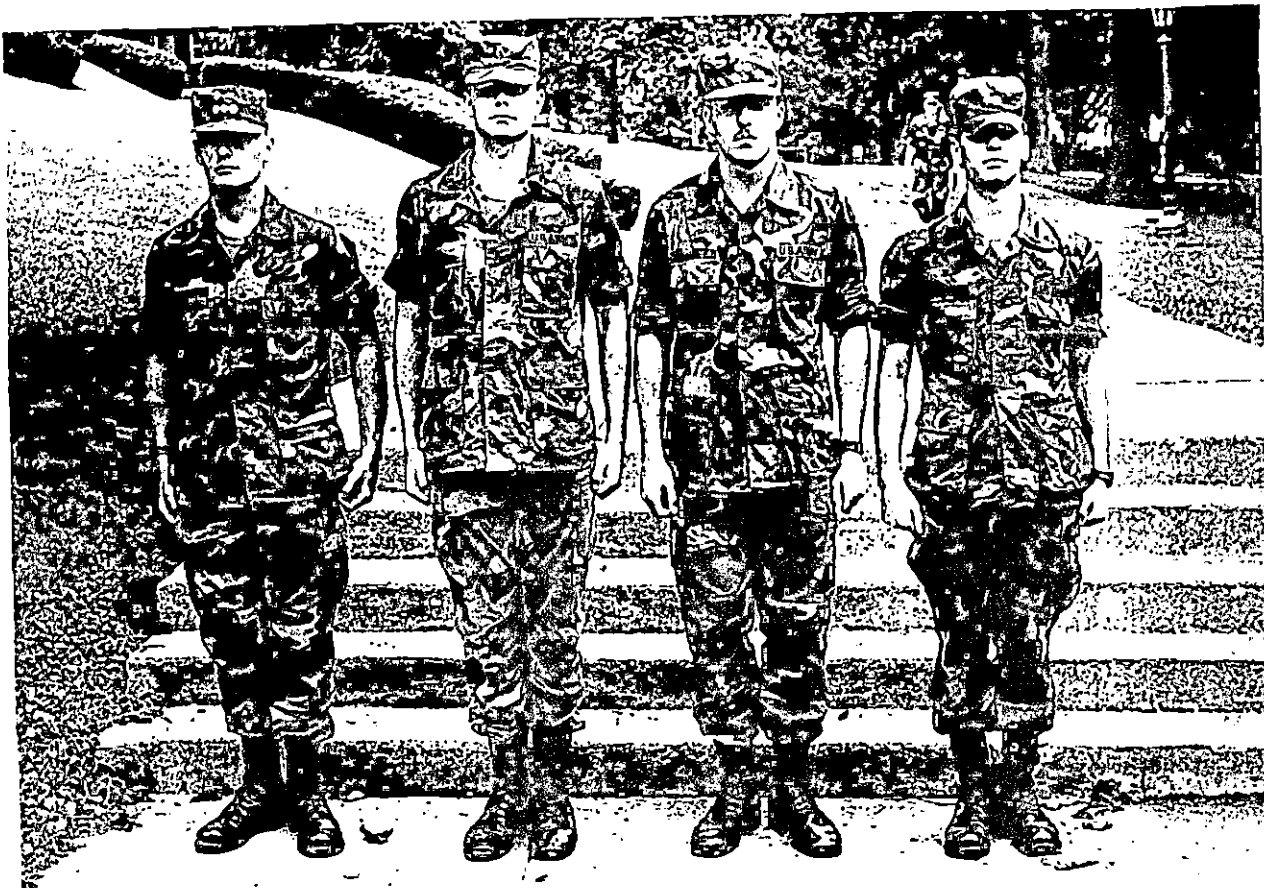
Among 23 students recently promoted in Morehead State University's ROTC Program were, from left, Steve Sexton, Pikeville radio-television major; Jack Luttrell, Letcher university studies major; Terry Barrett, Isom education major and Phil Rowe, Pikeville history major. Sexton was promoted to the rank of Cadet Captain. Luttrell's new rank is Cadet Major. Barrett will be a Cadet First Lieutenant and Rowe was promoted to Cadet First Lieutenant.

(MSU photo by Ray Bradley)

####

9-5-86mo

Pikeville, Mtn. Eagle



Photo

PUBLIC INFORMATION

JUDITH CASTO, DIRECTOR

MOREHEAD STATE UNIVERSITY

UPO BOX 1100

MOREHEAD, KY 40351

606-783-2030

MSU ROTC STUDENTS RECEIVE RECOGNITION

Among 23 students recently promoted in Morehead State University's ROTC Program were, from left, Dawn Barnhart, Hillsboro, Ohio, psychology major; Mike Mann, Jérusalem, Ohio, business major; Chris Walker, Franklin Furnace, Ohio, industrial technology major; and Keith Allinder, Forest Park, Ohio, chemistry major. Barnhart was promoted to the rank of Cadet Captain, Mann's new rank is Cadet Lieutenant Colonel, Walker will be a Cadet Captain and Allinder was promoted to Cadet First Lieutenant. Mann was designated as a Distinguished Military Student.

(MSU photo by Ray Bradley)

####

9-5-86mo

*Dayton News, Hillsboro Press Gazette, Scioto Voice,
Monroe Beacon*



Photo

PUBLIC INFORMATION

JUDITH CASTO, DIRECTOR

MOREHEAD STATE UNIVERSITY

UPO BOX 1100

MOREHEAD, KY 40351

606-783-2030

MSU ROTC STUDENTS RECEIVE RECOGNITION

Among 23 students recently promoted in Morehead State University's ROTC Program was Mike Mann, Jerusalem, Ohio, senior. Mann was promoted to the rank of Cadet Lieutenant Colonel and was designated Distinguished Military Student.

(MSU photo by Ray Bradley)

####

9-5-86mo.

Morehead Beacon



Photo

PUBLIC INFORMATION

JUDITH CASTO, DIRECTOR

MOREHEAD STATE UNIVERSITY

UPO BOX 1100

MOREHEAD, KY 40351

606-783-2030

MSU ROTC STUDENTS RECEIVE RECOGNITION

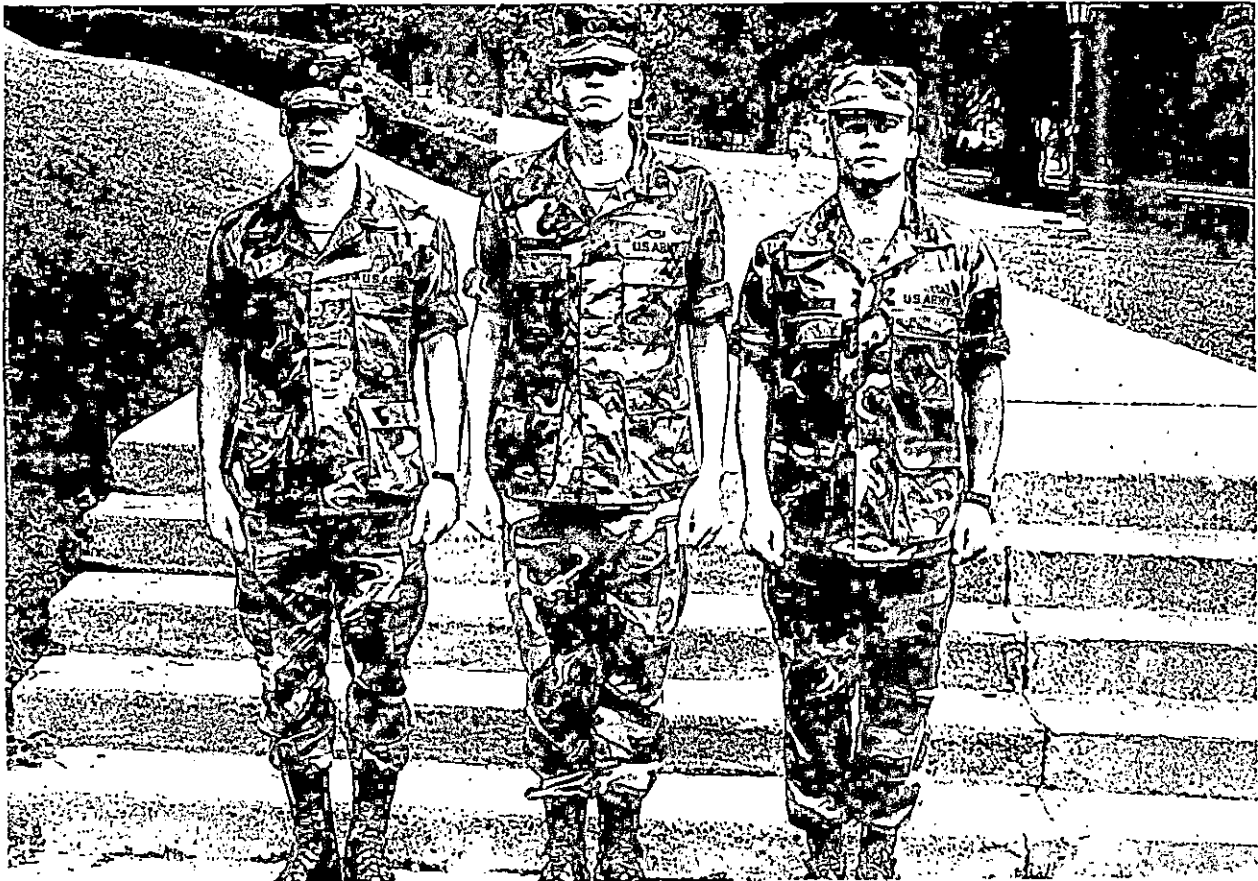
Among 23 students recently promoted in Morehead State University's ROTC Program were, from left, Jay Arnett, Catlettsburg math major; Elliott Gollihue, Ashland geography major and Mark Shelton, Ashland history major. Arnett and Gollihue were promoted to the rank of Cadet First Lieutenant and to the position of Platoon Leaders, B Company. Shelton was promoted to Cadet First Lieutenant and to the position of Assistant Battalion S-1.

(MSU photo by Ray Bradley)

####

9-5-86mo

TDI



Photo

PUBLIC INFORMATION

JUDITH CASTO, DIRECTOR

MOREHEAD STATE UNIVERSITY

UPO BOX 1100

MOREHEAD, KY 40351

606-783-2030

MSU ROTC STUDENTS RECEIVE RECOGNITION

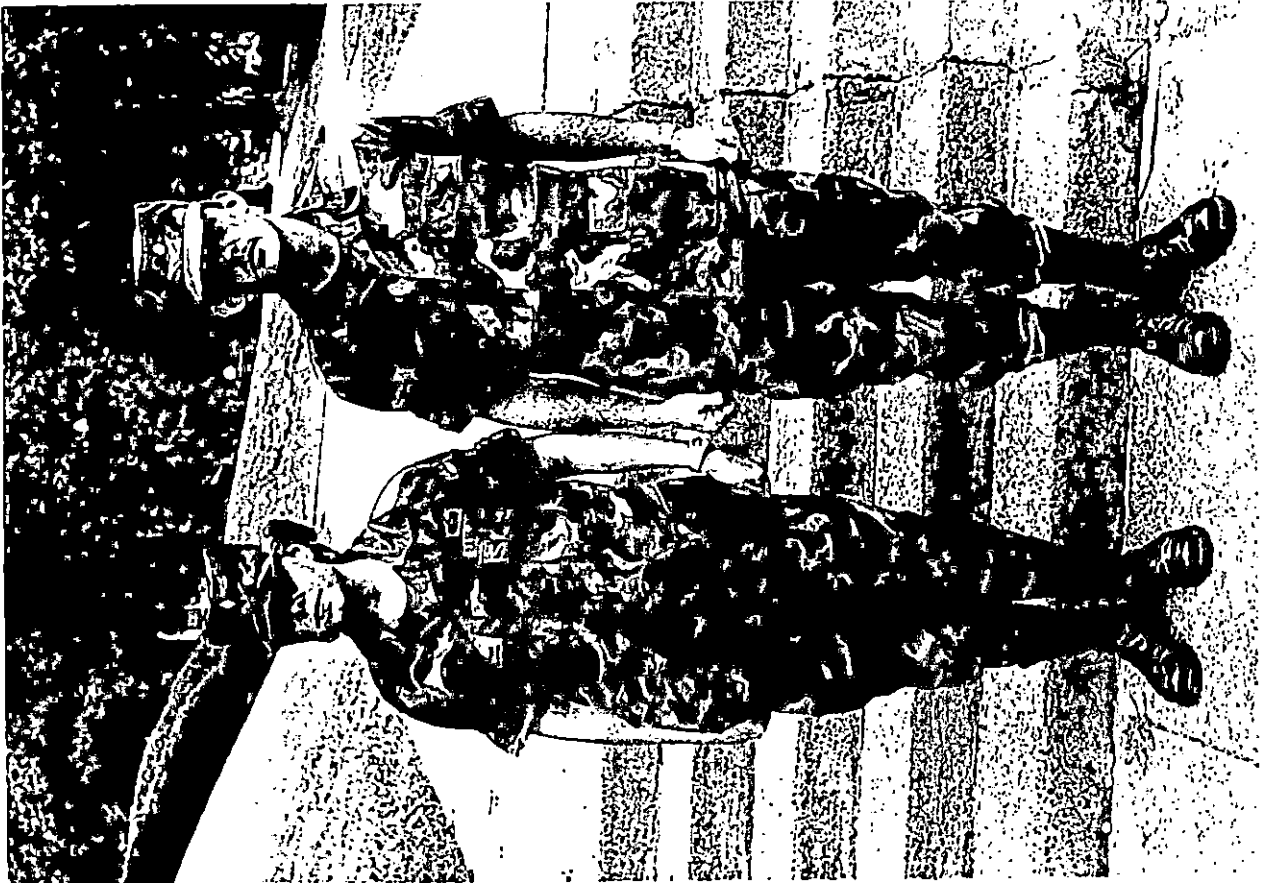
Among 23 students recently promoted in Morehead State University's ROTC Program were, from left, Angie Portman, Louisville french major and Scott Simpson, Cox's Creek music major. Portman was promoted to the rank of Cadet Major and Simpson's new rank is Cadet First Lieutenant. Portman was designated Distinguished Military Student.

(MSU photo by Ray Bradley)

####

9-5-86mo

Courier Journal, Ky. Standard



Photo

PUBLIC INFORMATION

JUDITH CASTO, DIRECTOR

MOREHEAD STATE UNIVERSITY

UPO BOX 1100

MOREHEAD, KY 40351

606-783-2030

MSU ROTC STUDENTS RECEIVE RECOGNITION

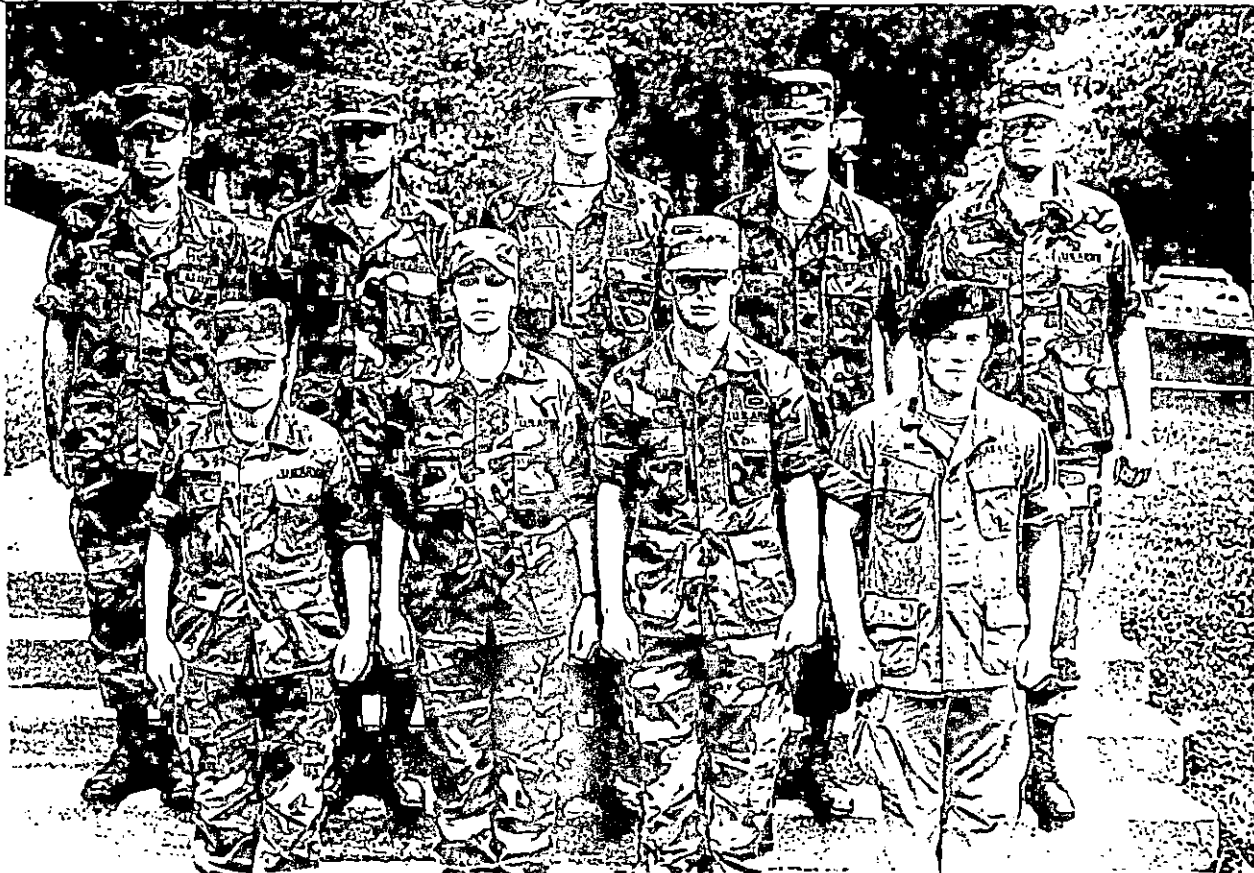
These students were among 23 in MSU's ROTC Program who received promotions this fall. They are, front row, from left, Kelly Thomas of Tollesboro, Cadet First Lieutenant; Renee Curran of Mt. Sterling, Cadet Captain; Ricky Davenport of Concord, Cadet Captain; and Ken Day of West Liberty, Cadet Captain. Back row, from left, David Arnold of Morehead, Cadet First Lieutenant; Mitch Ison of Sandy Hook, Cadet Captain; Ted Eldridge of Morehead, Cadet Captain; Joel Hardin of Clayhole, Cadet First Lieutenant and Thomas Brown of Corbin, Cadet First Lieutenant. Designated as Distinguished Military Students were Thomas, Curran, Davenport and Ison.

(MSU photo by Ray Bradley)

####

9-5-86mo

*Lewis Co., Mt. Sterling; Elliott Co., M-News, Jackson
Times, Times Tribune*



Sept. 6, 1986

**Morehead State University Art Gallery Exhibition Schedule for 1986-87
academic year.**

Gallery located in Claypool-Young Art Building. Open Monday through Friday from 8 a.m. to 4 p.m. and on Saturdays from 8:30 a.m. to 4:30 p.m. when classes are in session.

1. Sept. 17 - Oct. 10 Donald Schmidlapp - Landscape Paintings
Sheldon Tapley - Landscape Pastels
2. Oct. 15 - Nov. 14 Elizabeth Peak - Monoprints and Etching
Opening reception Oct. 15.
Studio talk and demonstration and lecture Oct. 16.
3. Nov. 19 - Dec. 19 Faculty Show (7 Studio Faculty Members)
4. Jan. 19 - Feb. 15 Contemporary Photo Exhibition
Butler/Laufer Collection
5. Feb. 19 - March 6 Thomas Cornell - Painting, Drawing, and Prints
From Maine National Reputation
6. March 16 - 27 3rd Annual Regional High School Art Exhibition
March 25, High School Art Day
7. April 1 - 16 MSU Honors Exhibition
8. April 21 - May 15 MSU Seniors' Exhibition

For Additional Information Contact:

Thomas Sternal, M.F.A.
Chair, Department of Art
Morehead State University
Morehead, KY 40351
Phone: 606-783-2193

News

PUBLIC INFORMATION

JUDITH YANCY, DIRECTOR

MOREHEAD STATE UNIVERSITY

UPO BOX 1100

MOREHEAD, KY 40351

606-783-2030

Sept. 6, 1986
FOR IMMEDIATE RELEASE

MOREHEAD, Ky.--Morehead State University, in conjunction with the Kentucky Mountain Study Group, will offer several American Institute of Banking (AIB) courses in Pikeville and Prestonsburg this fall.

Registration for the courses will be held on the first night of class. The fee is \$140 per student, which includes AIB membership and textbook. The courses may be taken for AIB credit, but not for college credit.

"Principles of Banking," a course dealing with aspects such as banking history and economic environment, will meet on Thursdays, 6- 8:30 p.m., in the conference room of Pikeville National Bank. The first class meeting will be Sept. 18.

"Selling Bank Services," a one credit seminar on cultivating a positive attitude toward selling, will meet Monday, 6 - 8:30 p.m., in Room 6 on the first floor of First National Bank of Pikeville, beginning Sept. 29. The instructor will be Butch Bradley, marketing director of First Commonwealth Bank in Prestonsburg.

"Accounting Principles I," a three credit course emphasizing current accounting practices, will meet on Tuesdays, 6 - 8:30 p.m., in the conference room of Pikeville National Bank. The instructor will be William Bottoms and the first class meeting will be Sept. 16.

One class will be offered in Prestonsburg.

"Economics," a three credit course emphasizing contemporary economic theory and practice, will meet on Mondays, 6:30 -8:30 p.m., in the Floyd County Library. The instructor will be Dr. Green R. Miller, MSU associate professor of economics.

The purpose of the AIB classes is to increase an awareness of the responsibility that the financial community has in economic development and give it the knowledge to be able to fulfill that responsibility, according to John M. Alcorn, MSU associate professor of accounting, and campus AIB coordinator.

####

srt

News

PUBLIC INFORMATION

JUDITH YANCY, DIRECTOR

MOREHEAD STATE UNIVERSITY

UPO BOX 1100

MOREHEAD, KY 40351

606-783-2030

Sept. 6, 1986
FOR IMMEDIATE RELEASE

MOREHEAD, Ky.--Dr. William A. Rodgers, professor of information sciences at Morehead State University, has been named to the American Arbitration Association's Panel of Arbitrators.

As a member of the panel, Dr. Rodgers is eligible to arbitrate for parties involved in disputes in his field of expertise. Dr. Rodgers was selected for the panel for his knowledge in computers and reputation for impartiality, according to Robert Coulson, AAA president.

Based in New York City, AAA is an international organization dedicated to resolving disputes of all kinds through arbitration, mediation and other voluntary methods.

When AAA is chosen to resolve a dispute, several panelists' names are submitted to the parties who choose an arbitrator from the list. That specialist carefully reviews the dispute and makes a decision regarding settlement of the disagreement.

Formerly director of management information systems at Villanova University, Dr. Rodgers has been on MSU's faculty since 1982.

Author of several computer manuals, as well as more than 30 articles in professional journals in his field, Dr. Rodgers earned the B.A. degree from Westfield (Mass.) State College, the M.S. degree from the University of Bridgeport, Conn., and the Ed.D. degree from the University of Virginia.

####

mo

Tips

PUBLIC INFORMATION

JUDITH YANCY, DIRECTOR

MOREHEAD STATE UNIVERSITY

UPO BOX 1100

MOREHEAD, KY 40351

606-783-2030

THIS WEEK AT MOREHEAD STATE UNIVERSITY
(Sept. 7 - 13)

Sunday, Sept. 7

1 P.M. WESTERN FUN SHOW at the Derrickson Agricultural Complex. For more information, please call 783-2280.

Monday, Sept. 8

8:30 A.M. COMPREHENSIVE TEST OF BASIC SKILLS (CTBS) RETESTING at MSU's Assessment and Evaluation Center, Room 501 A, Ginger Hall; also Sept. 9. For more information, please call 783-2526.

Tuesday, Sept. 9

7 P.M. MSU VOLLEYBALL: Lady Eagles vs. Xavier University at Wetherby Gymnasium. For more information, please call 783-2500.

Wednesday, Sept. 10

8 A.M. AND 1 P.M. CTBS INITIAL EXAM at MSU's Assessment and Evaluation Center, Room 501 A, Ginger Hall; through Sept. 12. For more information, please call 783-2526.

Friday, Sept. 12

4 P.M. MSU SOCCER: Eagles vs. Georgetown College at MSU's soccer field. For more information, please call 783-2500.

Saturday, Sept. 13

10:30 A.M. MSU CROSS COUNTRY: MSU Invitational at the University Golf Course. For more information, please call 783-2500.

7 P.M. MSU FOOTBALL - COMMUNITY DAY: Eagles vs. James Madison University at Jayne Stadium. For more information, please call 783-2500.

####

Media Advisory

PUBLIC INFORMATION

JUDITH YANCY, DIRECTOR

MOREHEAD STATE UNIVERSITY

UPO BOX 1100

MOREHEAD, KY 40351

606-783-2030

CORRECTION

In a Tip Sheet for the week of Sept. 7 - 13, the location of the MSU-James Madison football game was incorrect. The game will be played at Rowan County Senior High School's Viking football stadium.

9-9-86jy

News

PUBLIC INFORMATION

JUDITH YANCY, DIRECTOR

MOREHEAD STATE UNIVERSITY

UPO BOX 1100

MOREHEAD, KY 40351

606-783-2030

Sept. 8, 1986
FOR IMMEDIATE RELEASE

MOREHEAD, Ky.--Two of Kentucky's hottest musical groups will appear at the 1986 Kentucky Logging Show to be held in Morehead on Saturday and Sunday, Sept. 20-21.

The Greg Austin Band of Lexington and Louisville's Custom Deluxe will perform in concert at 8 p.m. Saturday, Sept. 20, on the showgrounds at Derrickson Agricultural Complex, three miles north of Morehead on Ky. 377.

A showcase for the state's forest product industries, the Logging Show is co-sponsored by the Kentucky Forest Industries Association (KFIA) and Morehead State University.

Tickets for the concert will be available from the Morehead Tourism Commission and at the front desk of MSU's Adron Doran University Center or may be purchased at the showgrounds. Tickets will be sold at \$5 each for the general public, \$2 each for children 12 and under and \$2 each to MSU students with valid I.D. cards.

On tour, the Greg Austin Band has played to sell-out crowds in New York and record-breaking crowds at Philly's Saloon in Philadelphia. Critics have described the band as "probably the best known unknown band in country music."

In addition to Saturday night's country music concert, the logging show will feature two full days of events ranging from lumberjack contests, a skidder and knuckle boom loader competition, displays of the latest in logging equipment and tall timber topping demonstrations by Dennis Butler, holder of several world speed climbing records.

"We like to think of it as a family-oriented event," said Harry Ryan, KFIA executive director. "Morehead's Kentucky Harvest and Hardwood Festival is scheduled for the same weekend, featuring a variety of events from an arts and crafts fair and various contests to a parade and hot air balloon rides," Ryan added. "Between the two events, there's a little something for everybody."

Admission to the Logging Show will be \$3 for adults and \$1 for school age children and includes a full day's activities. Free parking for show events also will be available.

Additional information on the show or the concert may be obtained from Ryan, KFIA, 310 Kings Daughters Drive #7, Frankfort, KY 40601. Telephone: 502 875-3136.

####



PUBLIC INFORMATION

UPO BOX 1100
MOREHEAD, KENTUCKY 40351
TELEPHONE 606-783-2030

Sept. 8, 1986

Gazette Editor
The Chronicle of Higher Education
Suite 700
1255 Twenty-Third St., N.W.
Washington, DC 20037

Please consider the following for inclusion in the Gazette Section of the Chronicle of Higher Education:

Dr. Larry W. Jones, provost and vice president for academic affairs at Bloomsburg (Pa.) University, to dean, College of Professional Studies, Morehead (Ky.) State University.

Dr. John C. Philley, chair, Department of Physical Sciences at Morehead (Ky.) State University, to dean, College of Arts and Sciences.

Dr. James E. Gotsick, professor of psychology at Morehead (Ky.) State University, to director, Graduate and Special Academic Programs.

Dr. Stephen Taylor, director of academic assessment and professor of education at Morehead (Ky.) State University to executive director, Academic Support Services.

Dr. William R. Falls, professor of science and director of Center for Science Education at Morehead (Ky.) State University to chair, Department of Physical Sciences.

Sincerely,

A handwritten signature in cursive script that reads 'Judith D. Yancy'.

Judith D. Yancy
Director

JY/kb

News

PUBLIC INFORMATION

JUDITH YANCY, DIRECTOR

MOREHEAD STATE UNIVERSITY

UPO BOX 1100

MOREHEAD, KY 40351

606-783-2030

Sept. 9, 1986
FOR IMMEDIATE RELEASE

MOREHEAD, Ky.--Pulitzer prize-winning journalist Harrison Salisbury will speak at Morehead State University's Button Auditorium at 10:20 a.m. Wednesday, Sept. 17.

"The Tri-Partite World and The Third World" will be the topic for his lecture which opens the 1986-87 Concert and Lecture Series of Arts in Morehead (AIM).

Salisbury also is MSU's 1986 William Exelbirt Distinguished Lecturer, a continuing lectureship series funded by MSU's Foundation.

Season ticket holders for the AIM Series and MSU students with valid I.D. cards will be admitted free. General admission tickets will be available at \$5 for adults and \$2.50 for youth age 18 and younger.

Known for his "on the spot" reporting experience and the ability to share that knowledge from the lecture platform, Salisbury was associated with The New York Times for 26 years as a correspondent and editor, specializing in the affairs of Communist countries. An extensive traveler in China, he recounted his most recent journey along the Great Wall in a book entitled The Long March: The Untold Story. He has had several other books published, including his memoirs, A Journey for Our Times.

Currently Mr. Salisbury serves as associate editor and editor of the Op-Ed Page of The New York Times. He has won all the leading awards for journalism, including the Pulitzer Prize for foreign correspondence.

####

mo

Media Advisory

PUBLIC INFORMATION

JUDITH YANCY, DIRECTOR

MOREHEAD STATE UNIVERSITY

UPO BOX 1100

MOREHEAD, KY 40351

606-783-2030

NOT FOR PUBLICATION OR BROADCAST

EVENT: 1986 Kentucky Logging Show

DATE: Sept. 20-21

PLACE: Derrickson Agricultural
Complex, three miles
north of Morehead on KY
377

SPONSOR: Kentucky Forest Industries
Association and MSU

EVENT: Kentucky Harvest and
Hardwood Festival

DATE: Sept. 19-21

PLACE: Downtown Morehead &
Trademore Shopping
Center

SPONSOR: Morehead Recreation,
Tourism & Convention
Commission

On Friday, Sept. 19, at 1 p.m., there will be a media preview of the logging show at Derrickson Agricultural Complex. KFIA officials will be on hand, there will be some equipment displays, demonstrations and many of the exhibitors will be setting up.

The Harvest and Hardwood Festival will be in full swing--making it possible to capture some of the flavor of both events.

NOTE: The "pole cutting" opening the logging show is at 9 a.m. Saturday, Sept. 20. Both shows continue throughout the weekend providing good feature material for both print and broadcast.

9-9-86jy

News

PUBLIC INFORMATION

JUDITH YANCY, DIRECTOR

MOREHEAD STATE UNIVERSITY

UPO BOX 1100

MOREHEAD, KY 40351

606-783-2030

Sept. 10, 1986
FOR IMMEDIATE RELEASE

Morehead State University is observing "Community Night" on Saturday, Sept. 13, and all of the citizens of Morehead and Rowan County are invited.

Included in MSU's annual salute to its neighbors will be a public reception for President and Mrs. A. D. Albright, a mass performance by church choirs in the Morehead area and special ticket prices for the MSU-James Madison football game at 7:30 p.m. at the Rowan County Senior High School field.

The Morehead and Rowan County Chamber of Commerce is sponsoring the Albright reception from 5:30 p.m. to 7 p.m. in the RCSHS Cafeteria.

"The Chamber board proposed the reception as a means of providing local residents with an opportunity to greet these two fine individuals who are serving MSU during such a vital period," said Ann Sternal, chamber executive secretary.

Members of church choirs in the Morehead area have been invited to sing the National Anthem during the pre-game ceremonies at about 7:15 p.m. Noel Weaver, choir director for the Morehead United Methodist Church, will conduct the group. Participants are asked to report to the RCSHS band room at 6:15 p.m. for a rehearsal.

(more)

MSU Community Night

2-2-2-2-2

Tickets for the football game have been reduced to \$2 and community organizations who assist in selling them will receive a commission on each sale. Interested groups are asked to contact David Brunk, MSU's assistant director of athletics, at 783-2088 for details.

No reserved seats will be sold in order for MSU to accommodate its season ticket patrons who already have purchased box seats and other reserved seats at Jayne Stadium.

Students and other persons 18 and younger will be admitted at the gate for \$1, according to Brunk.

"We feel the special prices and the commission arrangement certainly are in keeping with the spirit of Community Night and we look forward to a large and enthusiastic crowd," Brunk added.

Moving the game site from MSU to RCSHS involved several changes and President Albright and MSU Athletic Director G. E. Moran expressed the University's appreciation for the "splendid cooperation" of RCSHS Principal Marvin Moore and his staff, Coach Ken Howard, Band Director Tim Kennedy and other persons connected with the Rowan County schools.

#####

9-8-86kk



PUBLIC INFORMATION
JUDITH YANCY, DIRECTOR

MOREHEAD STATE UNIVERSITY

UPO BOX 1100

MOREHEAD, KY 40351

606-783-2030

SUBJECT: Prestonsburg Classes

RELEASE DATE: NOW through 6 p.m. Sept. 15

TIME: 30 sec. (less)

ANNOUNCER:

MOREHEAD STATE UNIVERSITY HAS EXTENDED REGISTRATION FOR FOUR UPPER DIVISION LEVEL EVENING CLASSES OFFERED THIS FALL AT PRESTONSBURG COMMUNITY COLLEGE. ENROLLMENT IS STILL OPEN IN CONTROLLERSHIP, BUSINESS FINANCE, INTRODUCTION TO PARALEGALISM AND LITERATURE AND MATERIALS FOR CHILDREN. FOR MORE INFORMATION CONTACT MSU'S LOCAL COORDINATOR JAMES RATCLIFF AT PCC, 886-3863.

9-10-86jy

News

PUBLIC INFORMATION

JUDITH YANCY, DIRECTOR

MOREHEAD STATE UNIVERSITY

UPO BOX 1100

MOREHEAD, KY 40351

606-783-2030

Sept. 10, 1986
FOR IMMEDIATE RELEASE

MOREHEAD, Ky.--In an effort to meet a demand in the region for upper division level courses, Morehead State University will offer two additional courses this fall at Lees College.

Both courses are requirements for specific four-year degree programs at MSU, according to Dr. Alban Wheeler, MSU's director of undergraduate regional programs.

The classes begin the week of Sept. 15 and students may register at the first class meeting.

The new additions are:

SWK 230, Social Work Values and Policy (required for MSU's B.S.W. degree program), 6 to 8:45 p.m., Mondays.

PHED 300, Physical Education in the Elementary School (required in MSU's elementary education degree program), 6 to 8:45 p.m., Tuesdays.

Additional information on these classes and the registration process is available locally by calling Fred Landrum at Lees College, 666-7521.

####

jy

News

PUBLIC INFORMATION

JUDITH YANCY, DIRECTOR

MOREHEAD STATE UNIVERSITY

UPO BOX 1100

MOREHEAD, KY 40351

606-783-2030

Sept. 10, 1986
FOR IMMEDIATE RELEASE

MOREHEAD, Ky.--Registration is still open for three upper division level courses offered by Morehead State University this fall at Maysville Community College.

The classes are:

MNGT 411, Labor Relations, Mondays, 6 - 8:45 p.m.

FIN 360, Business Finance, Wednesdays, 6 - 8:45 p.m.

PHED 300, Physical Education in the Elementary School, Mondays, 6 -8:45 p.m.

Students may register at the class meetings Monday, Sept. 15, and Wednesday, Sept. 17, or in advance by contacting David Kraemer at Maysville Community College, (606) 759-7141.

Effective this fall, all out-of-state students taking classes at MSU's regional centers are eligible for in-state tuition rates. The cost per credit hour for an undergraduate class is \$43.

####

jy

Photo

PUBLIC INFORMATION
JUDITH YANCY, DIRECTOR

MOREHEAD STATE UNIVERSITY

UPO BOX 1100

MOREHEAD, KY 40351

606-783-2030

PHI DELTA KAPPA ELECTS OFFICERS

Newly-elected officers of Morehead State University's chapter of Phi Delta Kappa are, front row from left, Sue Wells, programs vice president; Patty Watts, treasurer; Barbara Russell, research representative, and Judy Ramey, foundation representative. Back row, Wayne Morella, membership vice president; Roger Jones, newsletter editor, and Larry Griesinger, president. Phi Delta Kappa is an international professional fraternity for educators.

(MSU photo by Ray Bradley)

9-10-86mo



News

PUBLIC INFORMATION

JUDITH YANCY, DIRECTOR

MOREHEAD STATE UNIVERSITY

UPO BOX 1100

MOREHEAD, KY 40351

606-783-2030

Sept. 10, 1986
FOR IMMEDIATE RELEASE

MOREHEAD, Ky.--A PBS documentary on adult illiteracy, "A Chance to Learn," to be shown this month by KET contains footage from several Eastern Kentucky locations, including Rowan County, and the Cora Wilson Moonlight School on Morehead State University's campus.

A camera crew from WQED-TV of Pittsburgh spent several days in the region late last spring, filming some of the old schools where adults were taught reading in special evening classes and talking to residents around the region.

KET will air the hour long show, produced by WQED, at 8 p.m. Wednesday, Sept. 17. The program which deals with illiteracy as a nationwide problem will be followed by a KET production on teaching adults to read.

The productions are part of Project Literacy U.S. (PLUS).

####

jy

News

PUBLIC INFORMATION

JUDITH YANCY, DIRECTOR

MOREHEAD STATE UNIVERSITY

UPO BOX 1100

MOREHEAD, KY 40351

606-783-2030

FOR IMMEDIATE RELEASE
Sept. 10, 1986

MOREHEAD, Ky. --- William T. Strong, senior radiologic technology student at Morehead State University, was recently initiated into Phi Kappa Phi, an interdisciplinary honor society which recognizes excellence in all academic fields.

Strong is the son of Manuel and Daphne Strong of Jackson.

To be eligible for election to membership, seniors must be in the academic top 10 percent of their class and juniors must be in the academic top 5 percent of their class. Alumni and faculty who have "achieved scholarly distinction" are eligible also, according to Margaret D. Patton, MSU associate professor of sociology.

Patton founded Chapter 148 of Phi Kappa Phi on MSU's campus in 1972.

####

9-5-86srt

PSA

PUBLIC INFORMATION

JUDITH YANCY, DIRECTOR

MOREHEAD STATE UNIVERSITY

UPO BOX 1100

MOREHEAD, KY 40351

606-783-2030

SUBJECT: Community Night

RELEASE DATE: NOW through Sept. 13

TIME: 30 sec

ANNOUNCER:

MOREHEAD STATE UNIVERSITY INVITES YOU TO COMMUNITY NIGHT, THE ANNUAL SALUTE TO HER NEIGHBORS. SCHEDULED SATURDAY, THE EVENT INCLUDES A PUBLIC RECEPTION FOR PRESIDENT AND MRS. ALBRIGHT, A MASS PERFORMANCE BY AREA CHURCH CHOIRS AND SPECIAL TICKET PRICES FOR THE MSU-JAMES MADISON FOOTBALL GAME. THE RECEPTION, HOSTED BY THE CHAMBER OF COMMERCE, WILL BE AT THE ROWAN COUNTY HIGH SCHOOL CAFETERIA FROM 5:30 TO 7 P.M. THE CHOIRS WILL PERFORM AT PRE-GAME CEREMONIES FOLLOWING AT VIKING STADIUM. THAT'S THIS SATURDAY..COMMUNITY NIGHT..MSU SALUTES YOU..HER NEIGHBORS.

News

PUBLIC INFORMATION

JUDITH YANCY, DIRECTOR

MOREHEAD STATE UNIVERSITY

UPO BOX 1100

MOREHEAD, KY 40351

606-783-2030

Sept. 11, 1986
FOR IMMEDIATE RELEASE

MOREHEAD, Ky.--Instead of a traditional ribbon cutting, the 1986 Kentucky Logging Show will open with a "pole cutting" at 9 a.m. Saturday, Sept. 20.

"We expect to have several state and local officials on hand for the opening ceremonies, which call for cutting the pole with a chain saw," said Harry Ryan, executive director of the Kentucky Forest Industries Association (KFIA).

The two-day event, sponsored by KFIA and Morehead State University, will be held at Derrickson Agricultural Complex, three miles north of Morehead on Ky. 377.

Spotlighting the state's forest products industry, the show will feature displays and demonstrations of logging equipment, exhibits of forest products, lumberjack and logging skills contests, horse and mule pull competitions and other entertainment.

Manufacturers and suppliers from nine states and Canada will display their latest wares from 9 a.m. to 5 p.m. Saturday and Sunday.

Other events on Saturday include the skidder contest at 10 a.m., the open lumberjack competition at 12:30 p.m., the horse pulling contest at 3 p.m. and a concert featuring The Greg Austin Band and Custom Deluxe at 8 p.m.

Sunday's activities include the knuckleboom loader contest at 10 a.m., the Kentucky lumberjack competition at 12:30 p.m. and the mule pulling competition at 3 p.m.

Tall timber topper Dennis Butler of Oregon will demonstrate his skills, which have earned him several speed climbing championships and record titles, on both days.

Chain saw sculpturing, country music performances, hot dogs, barbecue sandwiches and sorghum cooked-down while you wait round out the attractions.

(MORE)

Ky. Logging Show
2-2-2-2-2-2-2-2-2

"This is the fourth year that KFIA has sponsored this show and each year it just gets bigger and better," said Ryan. "We think those people attending the 1986 show will be in for a real treat," he added.

Under way at the same time of the Logging Show will be the Kentucky Harvest and Hardwood Festival with arts and crafts fair, a quilt and afghan display, an antique show, hot air balloon rides, demonstrations of the Kentucky long rifle and other events. The festival will be held in downtown Morehead and at Trademore Center.

Admission to the Logging Show is \$3 for adults and \$1 for school age children. The admission covers a full day's activities on the show grounds. Free parking will be available.

Tickets for Saturday's concert will be \$5 for adults, \$2 for children 12 and under and \$2 for MSU students. They may be purchased in advance from the Morehead Tourism Commission, The Music Machine at Trademore, or the Information Desk at MSU's Adron Doran University Center. They will also be available at the showgrounds.

Additional information on the Kentucky Logging Show is available from Ryan, KFIA, 310 Kings Daughters Drive #7, Frankfort, KY 40601. Telephone: 502-875-3136.

####

jy

Audio

PUBLIC INFORMATION

JUDITH YANCY, DIRECTOR

MOREHEAD STATE UNIVERSITY

UPO BOX 1100

MOREHEAD, KY 40351

606-783-2030

SUBJECT: Generic Promo

RELEASE DATE: NOW until further notice

TIME: 15 sec.

ANNOUNCER:

MOREHEAD STATE UNIVERSITY ---YOUR UNIVERSITY OF THE
MOUNTAINS SERVING THE PEOPLE OF EASTERN KENTUCKY SINCE
1922 WITH AFFORDABLE QUALITY PROGRAMS BOTH AT THE
TWO-YEAR AND FOUR-YEAR LEVEL. FOR MORE INFORMATION,
CALL TOLL FREE 1-800-262-7474.

9-12-86jy

Media Advisory

PUBLIC INFORMATION

JUDITH YANCY, DIRECTOR

MOREHEAD STATE UNIVERSITY

UPO BOX 1100

MOREHEAD, KY 40351

606-783-2030

Sept. 12, 1986

What you have in your possession is a news feature produced by Morehead State University's Office of Public Information.

We will be producing these from time to time on various campus-related topics, programs and people. The time will vary from 3 minutes to 3½ minutes, but you are free to edit these to fit your needs.

This particular feature deals with MSU's community involvement through its work with the upcoming Kentucky Logging Show and the Kentucky Harvest and Hardwood Festival. It is dated--others may or may not be--and is dead after Saturday, Sept. 20.

The out cue is "This is Thom Yancy for Morehead State University, your "University of the Mountains."

If you would like to receive other news features, please take a moment and call us at 606-783-2030. If you don't call we will assume you are not interested and won't clutter up your mail box with an unsolicited tape.

jy

News

PUBLIC INFORMATION

JUDITH YANCY, DIRECTOR

MOREHEAD STATE UNIVERSITY

UPO BOX 1100

MOREHEAD, KY 40351

606-783-2030

Sept. 13, 1986
FOR IMMEDIATE RELEASE

MOREHEAD, Ky.--Morehead State University's Division of Academic Affairs recently announced the following administrative appointments for the 1986-87 academic year.

Dr. John C. Philley, dean, College of Arts and Sciences;

Dr. James E. Gotsick, director, Graduate and Special Academic Programs;

Dr. Stephen Taylor, executive director, Academic Support Services;

Dr. William R. Falls, chair, Department of Physical Sciences.

"These appointments from within our own faculty and staff ranks are indicative of the high degree of talent we have at MSU," said Dr. Roberta Anderson, vice president for academic affairs. "These gentlemen are representative of the many highly qualified educators and administrators who serve Morehead State," she added.

Dr. Philley, formerly chair of the Department of Physical Sciences, has been on the faculty at MSU since 1960. A professor of geoscience, he earned his B.S. degree from Milsaps College and both the M.S. and Ph.D. degrees from the University of Tennessee.

Currently serving as the president of the Geological Society of Kentucky, Dr. Philley also has served on the society's board of directors. Active in several scientific and professional organizations, he is a former president of the Kentucky Academy of Science and is recognized by the Association of Professional Geological Scientists as a Certified Professional Geologist. He also has published numerous articles, reviews and guidebooks in his field.

(MORE)

personnel
2-2-2-2-2

In his new role Dr. Gotsick will be responsible for graduate, honors and international studies programs. A member of the faculty since 1969, the professor of psychology earned the B.S. and M.Ed. degrees from Pennsylvania State University and his doctorate from Syracuse University.

The recipient of MSU's 1986 Distinguished Researcher Award, Dr. Gotsick is the author or co-author of several articles which have appeared in professional publications and has presented numerous papers at scientific meetings. He also has received several research grants.

Dr. Taylor, a member of the faculty and administrative staff since 1973, will be responsible for academic advising, general studies and TRIO programs, the Office of Research, Grants and Contracts, Office of Extended Campus Programs and the Office of In-Service Education.

A professor of education, he served as acting vice-president for student development in 1984. He also has taught and coached in the public school systems in Florida, Michigan, West Virginia and Ohio. He earned the B.A. degree from Glennville (W.Va.) State College; the M.A. degree from Stetson University and the Ph.D. from Florida State University.

A former research fellow with the Atomic Energy Commission, Dr. Falls has been at MSU since 1961, where he has served as chair of the former Department of Science Education and as coordinator of the Center for Science Education.

The author of several lab manuals, he is co-author of "Physical Science: Principles and Applications" which is now in its fourth edition. He earned his B.S. degree from Rio Grande (Ohio) College, M.A. degree from Marshall University and the Ed.D. degree from Indiana University. He also taught in the Ironton (Ohio) and New Boston (Ohio) school systems.

####

jy

Tips

PUBLIC INFORMATION

JUDITH YANCY, DIRECTOR

MOREHEAD STATE UNIVERSITY

UPO BOX 1100

MOREHEAD, KY 40351

606-783-2030

THIS WEEK AT MOREHEAD STATE UNIVERSITY
(Sept. 21 - 27)

Sunday, Sept. 21

ALL DAY HARVEST AND HARDWOOD FESTIVAL in downtown Morehead and at Trademore Shopping Center. For more information, please call 783-6621.

ALL DAY KENTUCKY LOGGING SHOW at the Derrickson Agricultural Complex. For more information, please call (502)875-3136.

Monday, Sept. 22

ALL DAY BLOODMOBILE in Button Drill Room; also Sept. 23.

4 P.M. SOCCER: Eagles vs. the University of Kentucky at MSU's soccer field. For more information, please call 783-2500.

7 P.M. VOLLEYBALL: Lady Eagles vs. Thomas More College in Wetherby Gymnasium. For more information, please call 783-2500.

Thursday, Sept. 25

8:15 P.M. VOCAL RECITAL: Fred Horn will perform at the First Baptist Church. For more information, please call 783-2473.

Friday, Sept. 26

PARENTS WEEKEND; THROUGH SEPT. 28

8 P.M. PARENTS WEEKEND TALENT SHOW in Button Auditorium. For more information, please call 783-2071.

Saturday, Sept. 27

PARENTS WEEKEND ACTIVITIES:

8 - 10 A.M. REGISTRATION on the third floor of the Adron Doran University Center.

9 - 10 A.M. COMPLIMENTARY CONTINENTAL BREAKFAST in the Crager Room of the Adron Doran University Center.

10 A.M. MSU PARENTS ASSOCIATION MEETING in the Crager Room of the Adron Doran University Center.

NOON GOLF TOURNAMENT at the MSU Golf Course, U.S. 60 East.

4 - 6 P.M. FISH FRY at MSU's soccer field

News

PUBLIC INFORMATION

JUDITH YANCY, DIRECTOR

MOREHEAD STATE UNIVERSITY

UPO BOX 1100

MOREHEAD, KY 40351

606-783-2030

Sept. 13, 1986
FOR IMMEDIATE RELEASE

MOREHEAD, Ky.--The Eastern Kentucky Health Science Information Network (EKHSIN), based in and administered by the Camden-Carroll Library at Morehead State University, is enrolling new members for the coming year.

Members of the EKHSIN network share the services of a professional librarian who provides library consultation, cataloguing, reference and interlibrary loan services. In addition, the library consultant assists libraries in meeting the standards of the Joint Commission on Accreditation of Hospitals (JCAH).

"Our services allow small hospitals easy access to a professional librarian and extensive library resources which would otherwise be impossible," said Bet Ison, network librarian.

The EKHSIN is a consortium currently composed of five hospitals: Highlands Regional Medical Center at Prestonsburg, Humana Hospital of Louisa, Methodist Hospital of Kentucky at Pikeville, Our Lady of the Way Hospital at Martin and Williamson Appalachian Regional Hospital at South Williamson.

"Hospitals not only receive information from Morehead State University but have access to materials housed in the other members' libraries," said Ison.

The EKHSIN Network began in 1978 as a byproduct of a grant from the University of Kentucky Medical Center. The relationship is still in effect today, but EKHSIN is now self-supporting.

Additional information and details on how to become a member are available from Ison at (606) 784-4301 or the Camden-Carroll Library at (606) 783-2143.

####

Tips

PUBLIC INFORMATION

JUDITH YANCY, DIRECTOR

MOREHEAD STATE UNIVERSITY

UPO BOX 1100

MOREHEAD, KY 40351

606-783-2030

THIS WEEK AT MOREHEAD STATE UNIVERSITY
(Sept. 14 - 20)

Monday, Sept. 15

4 P.M. SOCCER: MSU vs. Eastern Kentucky University at MSU's soccer field.

For more information, please call 783-2500.

Wednesday, Sept. 17

10:20 A.M. ARTS IN MOREHEAD (AIM) - EXELBIRT LECTURE: Journalist Harrison

Salisbury will speak in Button Auditorium. For more information, please call

783-2788.

DONALD SCHMIDLAPP AND SHELDON TAPLEY EXHIBIT: Landscape paintings and pastels, respectively, in the main gallery of the Claypool-Young Art Building, 8 a.m. - 4 p.m., Monday - Friday; through Oct. 10. For more information, please call 783-2766.

Thursday, Sept. 18

8:30 A.M. - 3:30 P.M. CONTINUING EDUCATION FOR NURSES: "Cardiovascular Nursing Update" in the Eagle Room of the Adron Doran University Center. For more information, please call 783-2635.

Friday, Sept. 19

HARVEST AND HARDWOOD FESTIVAL in downtown Morehead and at the Trademore Shopping Center; through Sept. 21. For more information, please call 784-6221.

Saturday, Sept. 20

ALL DAY KENTUCKY LOGGING SHOW at the Derrickson Agricultural Complex; through Sept. 21. For more information, please call 502-875-3136.

News

PUBLIC INFORMATION

JUDITH YANCY, DIRECTOR

MOREHEAD STATE UNIVERSITY

UPO BOX 1100

MOREHEAD, KY 40351

606-783-2030

Sept. 15, 1986
FOR IMMEDIATE RELEASE

MOREHEAD, Ky.--"I love this university and I want to help it maintain and achieve even greater excellence for the future in Kentucky and the nation."

This was the reason George T. Young, professor emeritus, gave in establishing a \$15,000 endowment to fund two memorial awards at Morehead State University.

The Edwa Peters Young Memorial Award, named for his mother, is given to an outstanding music student. The Allie W. Young Memorial Award, honoring the professor's cousin, is earmarked for an outstanding history major. The two awards, given annually since 1979, will now be funded from the income from the principal at \$500 each year.

"Morehead has been good to me and I wanted to do something to show my appreciation," the professor said.

Young made his gift to the MSU Foundation, Inc., earlier this year. "For me as one of Professor Young's former students, this is one of the most gratifying endowment gifts we have received," said Bill Redwine, director of development.

"Professor Young has expressed his love for Morehead State University in a very positive way," said Don Young, director of alumni relations, and a former student of Professor Young's while in high school. "He is a legend on the MSU campus and is loved by all those who have had the opportunity to work with him," the alumni director said.

Young came to Morehead in 1932 as a math teacher at the Robert T. Breckinridge Training School. He later began teaching part-time at the university and became a full-time university faculty member in 1965.

"I have taught thousands of students and more than 1,000 student teachers in my career," said Young.

(MORE)

Young
2-2-2-2-2-2-2

Since his retirement in 1979, he has not taught a class on campus; however, he still teaches a class he originated--History 544. It's known as "the only class in Kentucky taught on wheels," because he takes the students on a tour of the state's historical places in a university bus. An avid collector of Kentucky memorabilia, he developed the text for the course.

Originally from Owingsville, Young received his undergraduate degree from Centre College and a master's degree from Columbia University. He received an honorary doctorate of political science from Morehead State University in 1979.

An accomplished musician, Young's love of music and skill at the piano began at an early age. From his first radio performance when he was in the eighth grade, he has continued to perform for an audience. While in the military during World War II, he considered his keyboard talent to be a morale builder for servicemen and today is still requested to perform at MSU's annual Founders Day celebration.

"I've taught at Morehead State University for 54 years," Young said. "It's the only job I've ever had.

"I came here when the school consisted of only seven buildings and I've watched it grow all these years," Young continued. "This gift is my hope for its continued growth so that it may continue to serve the young people in this area."

According to Redwine, plans are currently underway to establish a memorial scholarship for theatre or drama majors. The Melody Trosper Memorial Scholarship is being organized by her former classmates. Additional information is available from MSU's Office of Development at (606) 783-2033.

####

py

Photo

PUBLIC INFORMATION

JUDITH CASTO, DIRECTOR

MOREHEAD STATE UNIVERSITY

UPO BOX 1100

MOREHEAD, KY 40351

606-783-2030

MSU RECEIVES ENDOWMENT

The Morehead State University Foundation, Inc., has received an endowment of \$15,000 from a former faculty member. George T. Young, left, professor emeritus, presented the agreement to Bill Redwine, right, director of development. With them is Don Young, director of alumni relations. Redwine and Young are former students of the professor of history.

(MSU photo by Ray Bradley)

9-3-86py



Photo

PUBLIC INFORMATION

JUDITH YANCY, DIRECTOR

MOREHEAD STATE UNIVERSITY

UPO BOX 1100

MOREHEAD, KY 40351

606-783-2030

MSU MILITARY SCIENCE HONOREES

Faculty members in Morehead State University's Department of Military Science have been honored by the U.S. Army for outstanding service. Making the presentations was Lt. Col. Alan Baldwin, department chair, to Maj. Gerald L. Adams, (left) Capt. Scott Arnold and Capt. Roger Cline. Honored for his service as battalion executive officer and assistant professor at MSU. Adams received his second Meritorious Service Medal (MSM). Arnold received the MSM award for work in his last assignment as commander of the Ft. Sheridan Field Office, 1st Region, U.S. Army Criminal Investigation command. In recognition of his work as an MSU instructor and recruiter, Cline received the Army Achievement Medal.

(MSU photo by Ray Bradley)

9-15-86mo



News

PUBLIC INFORMATION

JUDITH YANCY, DIRECTOR

MOREHEAD STATE UNIVERSITY

UPO BOX 1100

MOREHEAD, KY 40351

606-783-2030

Sept. 15, 1986

FOR IMMEDIATE RELEASE

MOREHEAD, Ky.--Dr. Stuart S. Sprague, Morehead State University professor of history, is the author of a new history of 49 Eastern Kentucky counties from pioneer days to the present.

"Eastern Kentucky: A Pictorial History" is described by Dr. Sprague as a "fresh look at a region that is all too often seen as just a series of stereotypes. The volume is a visual feast with nearly 500 photographs taken primarily between 1884 and 1940 which record the region's rich heritage," the Kentucky historian explained.

Pike County is one of the counties prominently featured in this volume published by Donning Publishing Company, Norfolk, Va.

Among the highlights are the Pikeville flood of 1977, bird's eye views of Pikeville from the 1880's, 1924 and with the cut-off as well as vintage 1930 shots of the airport, Scott Avenue, Main Street and Division Street. Coal camp photographs included are Coleman circa 1915 and Bulan and Virgie in 1940. Other highlights are photos of a coal breaker at an unidentified mine in 1938, the Burdine Colored School in 1921 and construction of the county's first railroad.

Many of the photographs are either from his own postcard collection or the Clayton collection of circa 1915 candids. Dr. Sprague also gathered additional photographs from the National Archives and Library of Congress in Washington and eight Kentucky repositories.

"Eastern Kentucky" is the second pictorial history compiled by Dr. Sprague. His first, also published by Donning, was "Frankfort: A Pictorial History."

A noted Kentucky and Appalachian scholar, Dr. Sprague has been teaching at MSU since 1968. Receiving both his B.A. and M.A.T. degrees from Yale University, he earned his doctorate from New York University.

Information on how to obtain copies of "Eastern Kentucky" is available by writing the author, UPO 846, Morehead State University, Morehead, KY 40351.

####

jy

App. News Express

News

PUBLIC INFORMATION

JUDITH YANCY, DIRECTOR

MOREHEAD STATE UNIVERSITY

UPO BOX 1100

MOREHEAD, KY 40351

606-783-2030

Sept. 15, 1986
FOR IMMEDIATE RELEASE

MOREHEAD, Ky.--Dr. Stuart S. Sprague, Morehead State University professor of history, is the author of a new history of 49 Eastern Kentucky counties from pioneer days to the present.

"Eastern Kentucky: A Pictorial History" is described by Dr. Sprague as a "fresh look at a region that is all too often seen as just a series of stereotypes. The volume is a visual feast with nearly 500 photographs taken primarily between 1884 and 1940 which record the region's rich heritage," the Kentucky historian explained.

Madison County is prominently featured in the volume published by Donning Publishing Company, Norfolk, Va.

Photographs of Berea College include an early view of Boone Tavern complete with horse and carriage, a double page class picture of faculty and staff, the Berea College Band circa 1911 and a view from the president's old residence.

Eastern Kentucky University is featured with views of the 1930 marching band, the Jackson-Clay Country Club, the Keen Johnson Student Union, the inauguration of President Robert Martin in 1960 and the hog rifle being turned over to Martin by Dr. Adron Doran, MSU's president.

Other photographs depicting Richmond's past include the old colored school, a view of downtown circa 1900, the Glyndon Hotel, the courthouse in the 1930s, the post office and a midcentury street scene photograph from Begley's Drug Store up toward the Glyndon.

Many of the photographs are either from his own postcard collection or the Clayton collection of circa 1915 candids. Dr. Sprague also gathered additional photographs from the National Archives and Library of Congress in Washington and eight Kentucky repositories.

"Eastern Kentucky" is the second pictorial history compiled by Dr. Sprague. His first, also published by Donning, was "Frankfort: A Pictorial History."

A noted Kentucky and Appalachian scholar, Dr. Sprague has been teaching at MSU since 1968. Receiving both his B.A. and M.A.T. degrees from Yale University, he earned his doctorate from New York University.

Information on how to obtain copies of "Eastern Kentucky" is available by writing the author, UPO 846, Morehead State University, Morehead, KY 40351.

M. Daily Reister

News

PUBLIC INFORMATION

JUDITH YANCY, DIRECTOR

MOREHEAD STATE UNIVERSITY

UPO BOX 1100

MOREHEAD, KY 40351

606-783-2030

Sept. 19, 1986
FOR IMMEDIATE RELEASE

MOREHEAD, Ky.--Dr. Stuart S. Sprague, Morehead State University professor of history, is the author of a new history of 49 Eastern Kentucky counties from pioneer days to the present.

"Eastern Kentucky: A Pictorial History" is described by Dr. Sprague as a "fresh look at a region that is all too often seen as just a series of stereotypes. The volume is a visual feast with nearly 500 photographs taken primarily between 1884 and 1940 which record the region's rich heritage," the Kentucky historian explained.

Fleming County is one of the counties prominently featured in the volume published by Donning Publishing Company, Norfolk, Va.

From the 1984 dedication of the Franklin Sousley monument to postcard views of the Christian Church and the Fleming County Farmer's Bank in the first decade of the century, Fleming County is well represented.

Also included are photographs of the old courthouse and the just completed Flemingsburg High School in 1941.

Many of the photographs are either from his own postcard collection or the Clayton collection of circa 1915 candids. Dr. Sprague also gathered additional photographs from the National Archives and Library of Congress in Washington and eight Kentucky repositories.

"Eastern Kentucky" is the second pictorial history compiled by Dr. Sprague. His first, also published by Donning, was "Frankfort: A Pictorial History."

A noted Kentucky and Appalachian scholar, Dr. Sprague has been teaching at MSU since 1968. Receiving both his B.A. and M.A.T. degrees from Yale University, he earned his doctorate from New York University.

Information on how to obtain copies of "Eastern Kentucky" is available by writing the author, UPO 846, Morehead State University, Morehead, KY 40351.

###

jy

Flemingsburg Gazette

News

PUBLIC INFORMATION

JUDITH YANCY, DIRECTOR

MOREHEAD STATE UNIVERSITY

UPO BOX 1100

MOREHEAD, KY 40351

606-783-2030

Sept. 19, 1986
FOR IMMEDIATE RELEASE

MOREHEAD, Ky.--Dr. Stuart S. Sprague, Morehead State University professor of history, is the author of a new history of 49 Eastern Kentucky counties from pioneer days to the present.

"Eastern Kentucky: A Pictorial History" is described by Dr. Sprague as a "fresh look at a region that is all too often seen as just a series of stereotypes. The volume is a visual feast with nearly 500 photographs taken primarily between 1884 and 1940 which record the region's rich heritage," the Kentucky historian explained.

Knott County is one of the many counties featured in the volume published by Donning Publishing Company, Norfolk, Va.

Many of the photographs depicting the county's early days are from the archives of Alice Lloyd College and include one of Hindman in which most of the buildings are wooden.

Other photographs include, the settlement school run by W.C.T.U., the 1926 Hindman High School girls' basketball team and the saddlebag library service making its rounds in the 1930s.

Work related photographs ranges from Elkhorn Clear Creek miners posing in the fall of 1944 and two logging views from circa 1914--Mouth of Ball Splash Dam and logs branded "M" being pulled on flanged wheeled cars by animal power.

Many of the photographs are either from his own postcard collection or the Clayton collection of circa 1915 candids. Dr. Sprague also gathered additional photographs from the National Archives and Library of Congress in Washington and eight Kentucky repositories.

"Eastern Kentucky" is the second pictorial history compiled by Dr. Sprague. His first, also published by Donning, was "Frankfort: A Pictorial History."

A noted Kentucky and Appalachian scholar, Dr. Sprague has been teaching at MSU since 1968. Receiving both his B.A. and M.A.T. degrees from Yale University, he earned his doctorate from New York University.

Information on how to obtain copies of "Eastern Kentucky" is available by writing the author, UPO 846, Morehead State University, Morehead, KY 40351.

####

jy

Worshlesome Creek Times

News

PUBLIC INFORMATION

JUDITH YANCY, DIRECTOR

MOREHEAD STATE UNIVERSITY

UPO BOX 1100

MOREHEAD, KY 40351

606-783-2030

Sept. 19 1986
FOR IMMEDIATE RELEASE

MOREHEAD, Ky.--Dr. Stuart S. Sprague, Morehead State University professor of history, is the author of a new history of 49 Eastern Kentucky counties from pioneer days to the present.

"Eastern Kentucky: A Pictorial History" is described by Dr. Sprague as a "fresh look at a region that is all too often seen as just a series of stereotypes. The volume is a visual feast with nearly 500 photographs taken primarily between 1884 and 1940 which record the region's rich heritage," the Kentucky historian explained.

Garrard County is featured in the volume which was published by Donning Publishing Company, Norfolk, Va.

In fact the oldest photograph in the book is a Civil War view of the covered bridge linking Camp Nelson and Garrard County. Other vintage photographs include views of "Pleasant Retreat," Gov. William Owsley's home and Camp Dick Robinson. The Bradley Kincaid birthplace, Lancaster Public High School in 1913 and the courthouse circle also are featured.

Many of the photographs are either from his own postcard collection or the Clayton collection of circa 1915 candids. Dr. Sprague also gathered additional photographs from the National Archives and Library of Congress in Washington and eight Kentucky repositories.

"Eastern Kentucky" is the second pictorial history compiled by Dr. Sprague. His first, also published by Donning, was "Frankfort: A Pictorial History."

A noted Kentucky and Appalachian scholar, Dr. Sprague has been teaching at MSU since 1968. Receiving both his B.A. and M.A.T. degrees from Yale University, he earned his doctorate from New York University.

Information on how to obtain copies of "Eastern Kentucky" is available by writing the author, UPO 846, Morehead State University, Morehead, KY 40351.

####

jy

Central Record

News

PUBLIC INFORMATION

JUDITH YANCY, DIRECTOR

MOREHEAD STATE UNIVERSITY

UPO BOX 1100

MOREHEAD, KY 40351

606-783-2030

Sept. 19, 1986

FOR IMMEDIATE RELEASE

MOREHEAD, Ky.--Dr. Stuart S. Sprague, Morehead State University professor of history, is the author of a new history of 49 Eastern Kentucky counties from pioneer days to the present.

"Eastern Kentucky: A Pictorial History" is described by Dr. Sprague as a "fresh look at a region that is all too often seen as just a series of stereotypes. The volume is a visual feast with nearly 500 photographs taken primarily between 1884 and 1940 which record the region's rich heritage," the Kentucky historian explained.

Greenup County is prominently featured in the volume published by Donning Publishing Company, Norfolk, Va.

Among the highlights are a turn of the century view of East Main Street and a photograph of the sternwheeler "Emily." The narrative includes an account of the retreat from Cumberland Gap to Greenup during the Civil War.

Photographs from the 1930s of bridge building, the second Greenup courthouse, the Russell yards during World War II National Mines Service plant in 1977 and Doug Adams' print "The Last Leave Home" also are featured.

Many of the photographs are either from his own postcard collection or the Clayton collection of circa 1915 candid. Dr. Sprague also gathered additional photographs from the National Archives and Library of Congress in Washington and eight Kentucky repositories.

"Eastern Kentucky" is the second pictorial history compiled by Dr. Sprague. His first, also published by Donning, was "Frankfort: A Pictorial History."

A noted Kentucky and Appalachian scholar, Dr. Sprague has been teaching at MSU since 1968. Receiving both his B.A. and M.A.T. degrees from Yale University, he earned his doctorate from New York University.

Information on how to obtain copies of "Eastern Kentucky" is available by writing the author, UPO 846, Morehead State University, Morehead, KY 40351.

####

jy

Greenup Co. News

News

PUBLIC INFORMATION

JUDITH YANCY, DIRECTOR

MOREHEAD STATE UNIVERSITY

UPO BOX 1100

MOREHEAD, KY 40351

606-783-2030

Sept. 19, 1986
FOR IMMEDIATE RELEASE

MOREHEAD, Ky.--Dr. Stuart S. Sprague, Morehead State University professor of history, is the author of a new history of 49 Eastern Kentucky counties from pioneer days to the present.

"Eastern Kentucky: A Pictorial History" is described by Dr. Sprague as a "fresh look at a region that is all too often seen as just a series of stereotypes. The volume is a visual feast with nearly 500 photographs taken primarily between 1884 and 1940 which record the region's rich heritage," the Kentucky historian explained.

Lee County is one of the counties prominently featured in the volume published by Donning Publishing Company, Norfolk, Va.

Two early Beattyville views--a photograph of a "mucky" main street circa 1881 and a photograph of the Beattyville Lincoln club during the 1896 Free Silver Campaign--are among the book's highlights. Also included is a postcard view of Beattyville, the courthouse, a pre-1907 shot of St. Thomas Episcopal Church with Bishops Burton and Abbott, and a photograph taken by T. H. Jones circa 1903 of the Swenn-Day Lumber Yard.

Many of the photographs are either from his own postcard collection or the Clayton collection of circa 1915 candid. Dr. Sprague also gathered additional photographs from the National Archives and Library of Congress in Washington and eight Kentucky repositories.

"Eastern Kentucky" is the second pictorial history compiled by Dr. Sprague. His first, also published by Donning, was "Frankfort: A Pictorial History."

A noted Kentucky and Appalachian scholar, Dr. Sprague has been teaching at MSU since 1968. Receiving both his B.A. and M.A.T. degrees from Yale University, he earned his doctorate from New York University.

Information on how to obtain copies of "Eastern Kentucky" is available by writing the author, UPO 846, Morehead State University, Morehead, KY 40351.

####

JY

Beattyville Enterprise

News

PUBLIC INFORMATION

JUDITH YANCY, DIRECTOR

MOREHEAD STATE UNIVERSITY

UPO BOX 1100

MOREHEAD, KY 40351

606-783-2030

Sept. 19, 1986
FOR IMMEDIATE RELEASE

MOREHEAD, Ky.--Dr. Stuart S. Sprague, Morehead State University professor of history, is the author of a new history of 49 Eastern Kentucky counties from pioneer days to the present.

"Eastern Kentucky: A Pictorial History" is described by Dr. Sprague as a "fresh look at a region that is all too often seen as just a series of stereotypes. The volume is a visual feast with nearly 500 photographs taken primarily between 1884 and 1940 which record the region's rich heritage," the Kentucky historian explained.

Rockcastle County is one of the counties prominently featured in the volume published by Donning Publishing Company, Norfolk, Va.

Among the books highlights are photographs of a Brodhead sassafras mill circa 1915, shots of the Renfro Valley Barn Dance, a 1930s view of the construction of the Conway-Brodhead Road, downtown Mount Vernon in 1949 and a postcard view of the Brodhead log cabin camp.

Many of the photographs are either from his own postcard collection or the Clayton collection of circa 1915 candids. Dr. Sprague also gathered additional photographs from the National Archives and Library of Congress in Washington and eight Kentucky repositories.

"Eastern Kentucky" is the second pictorial history compiled by Dr. Sprague. His first, also published by Donning, was "Frankfort: A Pictorial History."

A noted Kentucky and Appalachian scholar, Dr. Sprague has been teaching at MSU since 1968. Receiving both his B.A. and M.A.T. degrees from Yale University, he earned his doctorate from New York University.

Information on how to obtain copies of "Eastern Kentucky" is available by writing the author, UPO 846, Morehead State University, Morehead, KY 40351.

###

jy

Citizens Newsweek

News

PUBLIC INFORMATION

JUDITH YANCY, DIRECTOR

MOREHEAD STATE UNIVERSITY

UPO BOX 1100

MOREHEAD, KY 40351

606-783-2030

Sept. 19, 1986
FOR IMMEDIATE RELEASE

MOREHEAD, Ky.--Dr. Stuart S. Sprague, Morehead State University professor of history, is the author of a new history of 49 Eastern Kentucky counties from pioneer days to the present.

"Eastern Kentucky: A Pictorial History" is described by Dr. Sprague as a "fresh look at a region that is all too often seen as just a series of stereotypes. The volume is a visual feast with nearly 500 photographs taken primarily between 1884 and 1940 which record the region's rich heritage," the Kentucky historian explained.

Lincoln County is one of the counties prominently featured in the volume published by Donning Publishing Company, Norfolk, Va.

Highlights include photographs of Bright's Inn and the William Whitley house along the Wilderness Road Hall's Gap circa 1947, the Crab Orchard Springs Hotel, the courthouse and a shot of the 1930s construction of Waynesburg High School's gymnasium.

Many of the photographs are either from his own postcard collection or the Clayton collection of circa 1915 candids. Dr. Sprague also gathered additional photographs from the National Archives and Library of Congress in Washington and eight Kentucky repositories.

"Eastern Kentucky" is the second pictorial history compiled by Dr. Sprague. His first, also published by Donning, was "Frankfort: A Pictorial History."

A noted Kentucky and Appalachian scholar, Dr. Sprague has been teaching at MSU since 1968. Receiving both his B.A. and M.A.T. degrees from Yale University, he earned his doctorate from New York University.

Information on how to obtain copies of "Eastern Kentucky" is available by writing the author, UPO 846, Morehead State University, Morehead, KY 40351.

####

jy

Criterion Journal

News

PUBLIC INFORMATION

JUDITH YANCY, DIRECTOR

MOREHEAD STATE UNIVERSITY

UPO BOX 1100

MOREHEAD, KY 40351

606-783-2030

Sept. 19, 1986
FOR IMMEDIATE RELEASE

MOREHEAD, Ky.--Dr. Stuart S. Sprague, Morehead State University professor of history, is the author of a new history of 49 Eastern Kentucky counties from pioneer days to the present.

"Eastern Kentucky: A Pictorial History" is described by Dr. Sprague as a "fresh look at a region that is all too often seen as just a series of stereotypes. The volume is a visual feast with nearly 500 photographs taken primarily between 1884 and 1940 which record the region's rich heritage," the Kentucky historian explained.

McCreary County is prominently featured in the volume published by Donning Publishing Company, Norfolk, Va.

Among the highlights include a vintage 1915 photograph of a train coming into Whitley City, a town of sawed timber buildings, and W. S. Roberts General Merchandise Store is clearly visible.

Many of the photographs are either from his own postcard collection or the Clayton collection of circa 1915 candids. Dr. Sprague also gathered additional photographs from the National Archives and Library of Congress in Washington and eight Kentucky repositories.

"Eastern Kentucky" is the second pictorial history compiled by Dr. Sprague. His first, also published by Donning, was "Frankfort: A Pictorial History."

A noted Kentucky and Appalachian scholar, Dr. Sprague has been teaching at MSU since 1968. Receiving both his B.A. and M.A.T. degrees from Yale University, he earned his doctorate from New York University.

Information on how to obtain copies of "Eastern Kentucky" is available by writing the author, UPO 846, Morehead State University, Morehead, KY 40351.

####

jy

McCreary County Record

News

PUBLIC INFORMATION

JUDITH YANCY, DIRECTOR

MOREHEAD STATE UNIVERSITY

UPO BOX 1100

MOREHEAD, KY 40351

606-783-2030

Sept. 19, 1986
FOR IMMEDIATE RELEASE

MOREHEAD, Ky.--Dr. Stuart S. Sprague, Morehead State University professor of history, is the author of a new history of 49 Eastern Kentucky counties from pioneer days to the present.

"Eastern Kentucky: A Pictorial History" is described by Dr. Sprague as a "fresh look at a region that is all too often seen as just a series of stereotypes. The volume is a visual feast with nearly 500 photographs taken primarily between 1884 and 1940 which record the region's rich heritage," the Kentucky historian explained.

Cumberland County is one of the counties featured in the volume published by Donning Publishing Company, Norfolk, Va.

Among the highlights are an 1865 map of the Cumberland River Oil and Salt Company which pinpoints the location of earlier wells, views of the reconstructed high school at Burkeville in the 1930s, the almost completed gymnasium at Marrowbone Consolidated School and the Alpine Motel and Restaurant.

Many of the photographs are either from his own postcard collection or the Clayton collection of circa 1915 candid. Dr. Sprague also gathered additional photographs from the National Archives and Library of Congress in Washington and eight Kentucky repositories.

"Eastern Kentucky" is the second pictorial history compiled by Dr. Sprague. His first, also published by Donning, was "Frankfort: A Pictorial History."

A noted Kentucky and Appalachian scholar, Dr. Sprague has been teaching at MSU since 1968. Receiving both his B.A. and M.A.T. degrees from Yale University, he earned his doctorate from New York University.

Information on how to obtain copies of "Eastern Kentucky" is available by writing the author, UPO 846, Morehead State University, Morehead, KY 40351.

####

jy

Cumberland Co. News

News

PUBLIC INFORMATION

JUDITH YANCY, DIRECTOR

MOREHEAD STATE UNIVERSITY

UPO BOX 1100

MOREHEAD, KY 40351

606-783-2030

Sept. 15, 1986
FOR IMMEDIATE RELEASE

MOREHEAD, Ky.--Dr. Stuart S. Sprague, Morehead State University professor of history, is the author of a new history of 49 Eastern Kentucky counties from pioneer days to the present.

"Eastern Kentucky: A Pictorial History" is described by Dr. Sprague as a "fresh look at a region that is all too often seen as just a series of stereotypes. The volume is a visual feast with nearly 500 photographs taken primarily between 1884 and 1940 which record the region's rich heritage," the Kentucky historian explained.

Lewis County is one of the counties featured in the volume published by Donning Publishing Company, Norfolk, Va.

Among the highlights is a post Civil War map of the Ohio River Petroleum Company during an era when the county was overrun by oil speculators. Also included is a view of Glen Springs from an 1892 pamphlet. The woodcut is based on a photograph of which a copy is owned by Eastern Kentucky University. The volume contains a 1930s view of the Lewis County Courthouse taken by a W.P.A. photographer.

Many of the photographs are either from his own postcard collection or the Clayton collection of circa 1915 candid. Dr. Sprague also gathered additional photographs from the National Archives and Library of Congress in Washington and eight Kentucky repositories.

"Eastern Kentucky" is the second pictorial history compiled by Dr. Sprague. His first, also published by Donning, was "Frankfort: A Pictorial History."

A noted Kentucky and Appalachian scholar, Dr. Sprague has been teaching at MSU since 1968. Receiving both his B.A. and M.A.T. degrees from Yale University, he earned his doctorate from New York University.

Information on how to obtain copies of "Eastern Kentucky" is available by writing the author, UPO 846, Morehead State University, Morehead, KY 40351.

####

jy

Lewis Co. Herald

Photo

PUBLIC INFORMATION

JUDITH YANCY, DIRECTOR

MOREHEAD STATE UNIVERSITY

UPO BOX 1100

MOREHEAD, KY 40351

606-783-2030

MOREHEAD STATE UNIVERSITY CADETS DEMONSTRATE SKILLS

Morehead State University cadets recently demonstrated waterborne techniques at Cave Run Lake. Participating in the exercises were, from left, Anthony Horning of Crestline, Ohio, Tracy Holbrook of Mayking, Scot Simpson of Cox's Creek and Jackie Taylor of Frenchburg.

(MSU photo by Ray Bradley)

9-15-86mo

Ky Standard, OH Messenger - Menifee News



Photo

PUBLIC INFORMATION

JUDITH YANCY, DIRECTOR

MOREHEAD STATE UNIVERSITY

UPO BOX 1100

MOREHEAD, KY 40351

606-783-2030

MOREHEAD STATE UNIVERSITY CADETS DEMONSTRATE SKILLS

Morehead State University ROTC cadets recently demonstrated waterborne techniques at Cave Run Lake. Thomas Davis of Mt. Sterling launches the canoe as Susan Adams of Neon and Ernest Franks of Sandy Hook prepare for the ride.

(MSU photo by Ray Bradley)

9-15-86mo

Mt. Sterling Advocate



Photo

PUBLIC INFORMATION

JUDITH YANCY, DIRECTOR

MOREHEAD STATE UNIVERSITY

UPO BOX 1100

MOREHEAD, KY 40351

606-783-2030

MOREHEAD STATE UNIVERSITY CADETS DEMONSTRATE SKILLS

Morehead State University ROTC cadets recently demonstrated waterborne techniques at Cave Run Lake. Participating in the exercises were, front, Scott Davis of Mt. Sterling and Ernest Franks of Sandy Hook.

(MSU photo by Ray Bradley)

9-15-86mo

Mt. Sterling, Elliott Co.



Photo

PUBLIC INFORMATION

JUDITH YANCY, DIRECTOR

MOREHEAD STATE UNIVERSITY

UPO BOX 1100

MOREHEAD, KY 40351

606-783-2030

MOREHEAD STATE UNIVERSITY CADETS DEMONSTRATE SKILLS

Morehead State University ROTC cadets recently demonstrated waterborne techniques at Cave Run Lake. Participating in the exercises were William Dyer of Vanceburg and Tracy Holbrook of Mayking.

(MSU photo by Ray Bradley)

9-15-86mo

Mountain Eagle, Lewis Co.



Photo

PUBLIC INFORMATION

JUDITH YANCY, DIRECTOR

MOREHEAD STATE UNIVERSITY

UPO BOX 1100

MOREHEAD, KY 40351

606-783-2030

MOREHEAD STATE UNIVERSITY CADETS DEMONSTRATE SKILLS

Morehead State University ROTC cadets recently demonstrated waterborne techniques at Cave Run Lake. Steve Sexton of Pikeville displays his rowing skills while Angela Portman of Louisville waits her turn.

(MSU photo by Ray Bradley)

9-15-86mo

Capp. News Express



News

PUBLIC INFORMATION

JUDITH YANCY, DIRECTOR

MOREHEAD STATE UNIVERSITY

UPO BOX 1100

MOREHEAD, KY 40351

606-783-2030

Sept. 15, 1986
FOR IMMEDIATE RELEASE

MOREHEAD, Ky.--Morehead State University's Department of Nursing and Allied Health Sciences will offer a workshop for nurses on chest tube management from 3:30 p.m. to 7 p.m. Wednesday, Sept. 24, at Mary Chiles Hospital, Mt. Sterling.

Karen Butterfield, registered nurse, will conduct the one-day workshop which will provide information on life-threatening chest injuries and their treatment, as well as, chest tube insertion and drainage, according to Pauline Ramey, coordinator of Nursing and Allied Health Education.

"This session will familiarize participants with the assessment of chest injuries and also the subsequent care of the patient with a chest tube," Ramey said.

Specific topics to be discussed include equipment necessary for chest tube insertion and major elements involved in caring for the patient with a chest tube.

Registered nurses and licensed practical nurses will receive two contact hours credit from MSU for participating in the workshop, which is approved by the Kentucky Board of Nursing. Nurses will be asked to furnish their nursing licenses and Social Security number in order to receive continuing education credit.

The fee for this workshop is \$5. Additional information is available by calling (606) 783-2635 or 783-2632.

####

djp

News

PUBLIC INFORMATION

JUDITH YANCY, DIRECTOR

MOREHEAD STATE UNIVERSITY

UPO BOX 1100

MOREHEAD, KY 40351

606-783-2030

Sept. 16, 1986
FOR IMMEDIATE RELEASE

MOREHEAD, Ky.--Morehead State University will hold its annual Parents Weekend Sept. 26-28.

"Parents Weekend '86 is designed to give parents of MSU students the opportunity to visit and share campus life with their son or daughter," according to Suzette Redwine, coordinator of University Center programs and special events.

Weekend activities will begin with a talent show Friday, Sept. 26, at 8 p.m. in Button Auditorium. The show will feature performances by parents, students, faculty and staff. Cash prizes will be awarded. Tickets are \$1 and proceeds will be contributed to the Student Emergency Loan Fund.

Parents Weekend registration will be 8-10 a.m. Saturday, Sept. 27, in Adron Doran University Center. A complimentary continental breakfast will be served from 9 to 10 a.m. in the Crager Room, ADUC.

The MSU Parents Association will meet in the Crager Room immediately after breakfast. New officers for the advisory committee will be elected and installed.

Afternoon activities will begin with a golf tournament at the MSU Golf Course. Those participating in the tournament are asked to preregister for the event.

The MSU Eagles will host the Kentucky State University Thoroughbreds at Jayne Stadium Saturday, Sept. 27, at 7 p.m. A fish fry will precede the game from 4-6 p.m. on the soccer field. Tickets for the fish fry will be available for \$4 at the field.

After the game an ice cream social and dance will be held on the soccer field.

On Sunday, Sept. 28, the MSU Black Gospel Ensemble will conduct a campus-wide church service at 11 a.m. in Breck Auditorium. That afternoon, residence halls will hold open house and various student organizations will host receptions.

Visiting parents may stay in a resident hall with their son or daughter or may reserve a space in Waterfield Hall for the weekend.

Additional information about Parents Weekend '86 may be obtained by calling Redwine at (606) 783-2071.

####

jy

Photo

PUBLIC INFORMATION

JUDITH YANCY, DIRECTOR

MOREHEAD STATE UNIVERSITY

UPO BOX 1100

MOREHEAD, KY 40351

606-783-2030

Sept. 17, 1986
Special to the Morehead News

MSU COMMUNITY NIGHT: A Picture Story

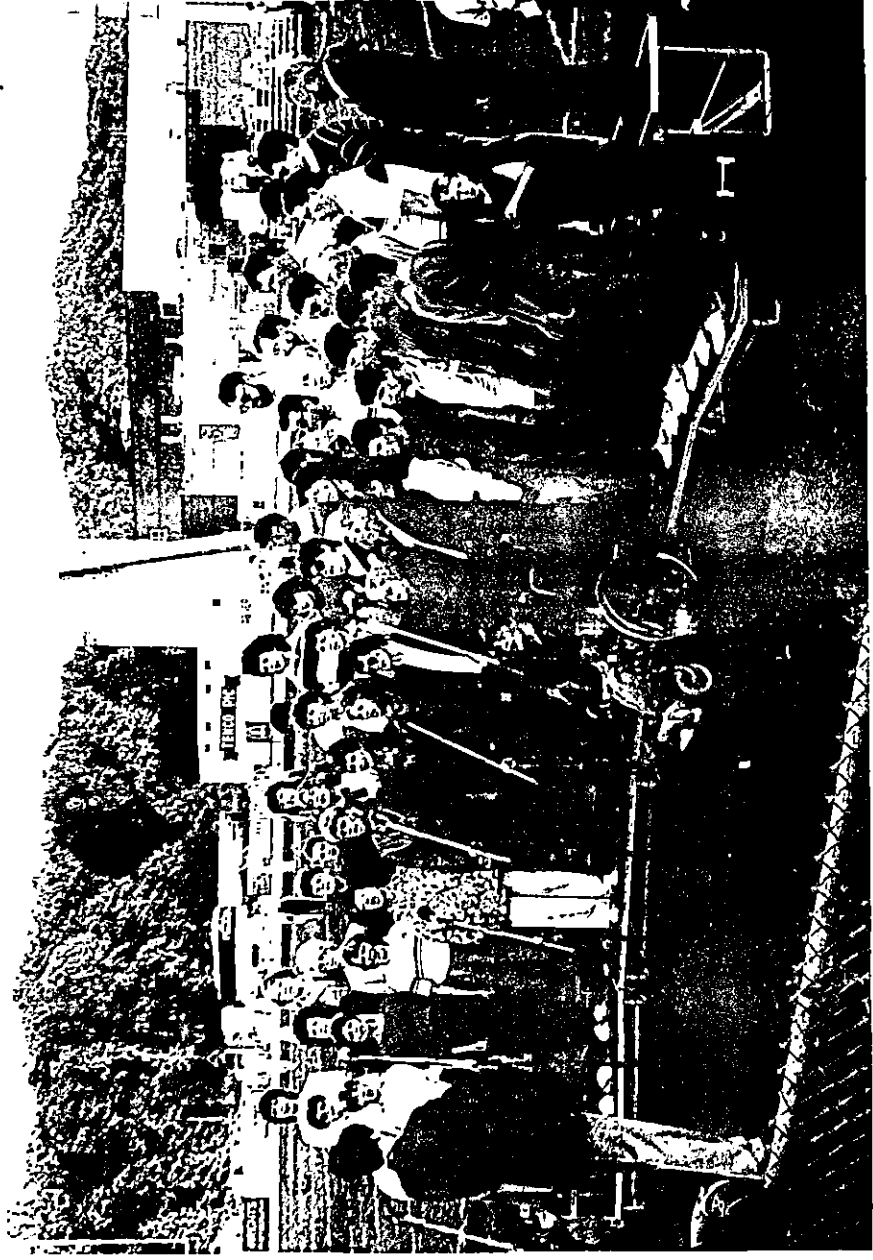
Saluting its neighbors in Rowan County, Morehead State University observed "Community Night" at its first home football game last Saturday. Playing at Rowan County High School's Viking Stadium, the Eagles emerged victorious over James Madison University, 27-24, winning their second game of the season before a crowd of 4,000 fans. Prior to the game, the Morehead-Rowan County Chamber of Commerce hosted a reception to introduce MSU President and Mrs. A.D. Albright to the community.

Cutlines:

- 1--Among the residents welcoming Dr. and Mrs. Albright, at left, to Morehead were Mayor John W. Holbrook and Mrs. Holbrook.
- 2--Flanked by MSU Eagle Athletic Fund Director Randy Stacy, back to camera at left, and Elmer Anderson, executive vice president of the MSU Foundation, Terry Jacobs of Cincinnati, Foundation president, engages in pre-game conversation with MSU Athletic Director G. E. Moran.
- 3--Sharing a moment of laughter with Dr. Albright is Carla Blevins, wife of State Rep. Walter Blevins, while her husband holds their daughter Kristen.
- 4--Pre-game ceremonies had a definite "community" flavor as members of area church choirs banded together to sing the National Anthem under the direction of Noel Weaver.
- 5--Helicoptering into the stadium, U.S. Congressman Chris Perkins presented the game ball to umpire George Lusby of Georgetown as part of the special Community Night activities.
- 6--Savoring the previous week's win over Marshall University, the owner of this van demonstrated his support of the Eagles with this banner.

####







News

PUBLIC INFORMATION

JUDITH YANCY, DIRECTOR

MOREHEAD STATE UNIVERSITY

UPO BOX 1100

MOREHEAD, KY 40351

606-783-2030

Sept. 17, 1986
FOR IMMEDIATE RELEASE

MOREHEAD, Ky.--Carolyn D. Taylor, assistant professor of home economics at Morehead State University, has been appointed chair of the Department of Home Economics.

Her appointment, effective with the fall semester, was announced by Dr. Charles Derrickson, dean of the College of Applied Sciences and Technology.

A member of MSU's faculty since 1974, Taylor has served as director of the University's former Home Management Laboratory. Her previous experience includes teaching home economics in public schools in West Virginia, Michigan and Florida.

A native of Pennsboro, W.Va., she earned a bachelor's degree from Glenville State College and both her master's and Ed.S. degrees from Morehead State University. Active in professional home economics organizations at the national, state and local level, she is past president of the Rowan County Home Economists.

She is married to Dr. Stephen S. Taylor, executive director of MSU's Academic Support Services. They have two children: Stephen Jr. and Michelle.

####

PY

News

PUBLIC INFORMATION

JUDITH YANCY, DIRECTOR

MOREHEAD STATE UNIVERSITY

UPO BOX 1100

MOREHEAD, KY 40351

606-783-2030

Sept. 17, 1986
FOR IMMEDIATE RELEASE

MOREHEAD, Ky.--Morehead State University's Department of Nursing and Allied Health Sciences has been notified that all of its May 1986 two-year nursing program graduates passed their national licensure examination.

"We've achieved high passage rates before on the National Council Licensure Examination (NCLEX) for registered nurses, but never a 100 percent rate," said Betty Porter, department chair. "This truly is a first for our department and the faculty is ecstatic," she added.

The NCLEX is a comprehensive two-day examination covering what nursing professionals believe is necessary for a nurse to know in order to be a good and safe practitioner, according to Porter.

"I think this demonstrates that our faculty instruction is of high quality and that the program itself is sound and most definitely meeting the region's needs," Porter added.

Commending the department for its "hard work and dedication which resulted in achieving this level of excellence," MSU President A.D. Albright said, "The Nursing Program serves as a source of pride for the entire institution."

The 22 MSU graduates who are now registered nurses are: Morehead--Paula Barnette, Diana Grace and Vickie Kinder; Paris--Janet Becraft; Grahn--Patty Carroll; Louisa--Betty Caudill and Teresa Wheeler; Grayson--Marquetta Flaughner and Anita Waggoner; Jeremiah--Cindy Hatton and Robin Jolly; Sandy Hook--Katie Howard and Kim Lewis (Green); Olive Hill--Donna Jordan; Jeffersonville--Elisa Keeton; Campton--Patricia Lane; Garrison--Kelly Liles; Vanceburg--Charlene McKee; Hillsboro--Linda Rose; Ironton, Ohio--Cathy Schwab; Mariba--Kim Smallwood; Salt Lick--Wendy Whitt.

####

srt

News

PUBLIC INFORMATION

JUDITH YANCY, DIRECTOR

MOREHEAD STATE UNIVERSITY

UPO BOX 1100

MOREHEAD, KY 40351

606-783-2030

Sept. 17, 1986
FOR IMMEDIATE RELEASE

MOREHEAD, Ky.--Louisville native Donna Cecil, a Morehead State University graduate, has received the prestigious Army ROTC Top 5 Percent Fellowship award in recognition of her scholastic achievements.

The award is given solely to those Army ROTC graduates with regular Army commissions, who were in the top 5 percent of their graduating class.

Following a minimum of four years of active service, the award provides for a full scholarship for graduate study in a program and graduate school of the recipient's choice and also includes active duty pay while in graduate school.

An honor student, Cecil received a B.A. degree in mathematics from MSU. She served as commander of a 231-member cadet battalion, led the drill team, and served on the ushering color guard for campus athletic events.

Cecil received a three-year Army ROTC scholarship while attending MSU. She was a member of the military science honorary Scabbard and Blade, Gamma Beta Phi scholastic honorary and Kappa Delta sorority.

Last year Cecil was accepted into the U.S. Army's Aviation Branch, an honor given to only 10 women nationwide who were in collegiate ROTC programs. She is currently attending Rotary Wing Officer Flight School in Ft. Rucker, Ala.

Captain Fred R. Soward, assistant professor of military science at MSU notified Cecil of her award. "We feel really good about this. Her award is a great honor for the Department of Military Science and the University," he said.

####

mo

News

PUBLIC INFORMATION

JUDITH YANCY, DIRECTOR

MOREHEAD STATE UNIVERSITY

UPO BOX 1100

MOREHEAD, KY 40351

606-783-2030

Sept. 19, 1986
FOR IMMEDIATE RELEASE

MOREHEAD, Ky.--"There is not likely to be a summit meeting between the United States and Russia this year," Pulitzer prize-winning journalist Harrison Salisbury told an audience in Button Auditorium on Morehead State University's campus Wednesday (Sept. 17).

"If there is one next year, there will be no substantial achievements," Salisbury said. "The conditions are not the same as they were 15 years ago when President Nixon and Dr. Kissinger were discussing the opening of China and detente.

Salisbury's lecture opened the 1986-87 Concert and Lecture Series of Arts in Morehead, sponsored by Morehead State University and the Rowan County Arts Council.

He was the 1986 Wilhelm Exelbirt Distinguished Lecturer, a continuing lectureship series funded by MSU's Foundation.

Recognized for his expertise in the affairs of Communist countries, Salisbury stated that conditions between China and Russia were improving. "Both countries are showing quiet diplomacy and reduced tension; however, there will never be the close intimate relationship they shared before."

During a portion of his talk, Salisbury related the hardships encountered by the Communist Chinese in their epic movement over 6,000 miles across mainland China. He recently spent six months in China, traveling the path the Chinese took more than 50 years ago. He told of his discussions with persons who participated in the trek that started with 86,000 persons and was completed by less than 10,000, spanning a year's time. His views of the trek are discussed in his recent book entitled "The Long March: The Untold Story."

(MORE)

Salisbury
2-2-2-2-2

"Presently, they are the third ranking power in some respects in the world, but not economically," Salisbury continued. "They are trying to slow down their population growth and modernize their country."

Salisbury stated the United States and China should keep relations on a friendly basis. "It's to China's advantage to remain in contact with the United States and it's to the United States' advantage to remain in touch with China," he said. "The Chinese people need the technology we can give them and we need the backing a population of that size would afford."

A journalist, traveler, historian and scholar, Salisbury has won all the leading awards in journalism. Currently he is an associate editor and editor of the Op-Ed Page of the New York Times, where he has been employed almost half a century.

####

py

Photo

PUBLIC INFORMATION

JUDITH YANCY, DIRECTOR

MOREHEAD STATE UNIVERSITY

UPO BOX 1100

MOREHEAD, KY 40351

606-783-2030

PRIZE-WINNING JOURNALIST SPEAKS AT MSU

Lecturing at Morehead State University, Pulitzer Prize-winning journalist Harrison Salisbury told the audience that a summit meeting between the United States and Russia this year was unlikely. On the other hand, he noted that relations between China and Russia were improving. Salisbury opened Arts in Morehead's 1986-87 Concert and Lecture Series. He also was designated as the 1986 Wilhelm Exelbirt Distinguished Lecturer.

(MSU photo by Kevin Goldy)

9-18-86jy



News

PUBLIC INFORMATION

JUDITH YANCY, DIRECTOR

MOREHEAD STATE UNIVERSITY

UPO BOX 1100

MOREHEAD, KY 40351

606-783-2030

Sept. 19, 1986
FOR IMMEDIATE RELEASE

MOREHEAD, Ky.--Dennis Rahim Watson, executive director of the National Black Youth Leadership Council, will speak Thursday, Sept. 25, at 7 p.m. in Breckinridge Auditorium at Morehead State University.

Sponsored by MSU's Counseling Center through its Office of Minority Affairs, the lecture, entitled "Survival Skills in the 1980s," is free and open to the public. A reception will follow.

Watson is an educator, lecturer, entertainer and author of three books: "Words for Lovers, Friends and Enemies," "Survival into the 80s," and a forthcoming book, "Black Love in the Afternoon."

Described as a cross between Jesse Jackson and Bill Cosby, Watson is known at more than 200 colleges and universities as "Dr. Feel Good" because of his upbeat lecture presentations.

Watson was educated at Fordham University, Pace University and New York University. He has received more than 20 awards for leadership and community service including two Presidential Citations and the 1984 National Black Leadership Roundtable Avon Youth Award.

He was named Outstanding Young Man of America in 1982 and 1985 and has been cited in the Congressional Record on two occasions.

Additional information is available from Jerry Gore, MSU's director of minority student affairs at (606) 783-2123.

####

py

Photo

PUBLIC INFORMATION

JUDITH YANCY, DIRECTOR

MOREHEAD STATE UNIVERSITY

UPO BOX 1100

MOREHEAD, KY 40351

606-783-2030

PAST PRESIDENT HONORED

Dr. Katherine D. Herzog, associate professor of education at Morehead State University, was honored recently for her outstanding leadership as president of MSU's Alpha Nu Chapter of Phi Delta Kappa during the 1985-86 academic year. Presenting her with a plaque in recognition of her efforts is the chapter's current president, Dr. Larry Griesinger, professor of education. Phi Delta Kappa is an international professional fraternity for educators.

(MSU photo by Ray Bradley)

9-19-86jy



News

PUBLIC INFORMATION

JUDITH YANCY, DIRECTOR

MOREHEAD STATE UNIVERSITY

UPO BOX 1100

MOREHEAD, KY 40351

606-783-2030

Sept. 20, 1986
FOR IMMEDIATE RELEASE

MOREHEAD, Ky.--Morehead State University theatre students will present "The Thread That Runs So True," an adaptation of Jesse Stuart's book by the same name, on Oct. 9, 10 and 11, during MSU's Homecoming activities.

"The play centers on Stuart's early years as a teacher," said Dr. Travis Lockhart, assistant professor of theatre and coordinator of MSU's theatre program. "He began teaching at age 18 in Greenup County.

"In the play he brings an educational experience to teenagers who have not had an opportunity to achieve because of their work on the farm," he added. "When you see the play you will appreciate the pride and talent that was in rural Kentucky in the 20s," said Dr. Lockhart.

The play will begin at 8 o'clock each evening in Button Auditorium. Tickets are available at the door at \$4 for adults; \$2 for non-MSU students and children, and free to MSU students with valid I.D. cards. Additional information is available by calling the Theatre Box Office at (606) 783-2710.

Additional performances are being sponsored by the Jesse Stuart Foundation, Inc., in the area often depicted in Stuart's works. Performances will be held at the Paramount Arts Center in Ashland on Friday, Oct. 17, beginning at 7:30 p.m., and on Oct. 18, a Saturday matinee will begin at 2 p.m. Tickets are \$10 and \$7.50, and all seats are reserved. Additional information is available by calling the Center at (606) 324-3175.

The Department of Communications is sponsoring a reception following the Oct. 17 performance. MSU President and Mrs. A.D. Albright will serve as hosts.

####

py

News

PUBLIC INFORMATION

JUDITH YANCY, DIRECTOR

MOREHEAD STATE UNIVERSITY

UPO BOX 1100

MOREHEAD, KY 40351

606-783-2030

Sept. 20, 1986
FOR IMMEDIATE RELEASE

MOREHEAD, Ky.--Morehead State University's Department of Art is displaying the works of three artists in a two-dimensional, color collection of landscapes and abstracts in the gallery at Claypool-Young Art Building.

Paintings by Don Schmidlapp, Winona State University professor of art, are displayed on the gallery's upper level. A landscape artist, Schmidlapp works in oils.

The balcony level of the gallery contains pastel landscapes by Sheldon Tapley, assistant professor of art at Centre College. Tapley's works have been displayed in numerous exhibitions, including National Drawing '85 at Trenton State College, where he won the Purchase Award.

Acrylic works by James A. Eisentrager, University of Nebraska professor of art, are featured on the gallery's lower level. On display for the past three weeks, the exhibit has been continued because of its popularity.

The show is "particularly colorful," according to Thomas Sternal, chair of MSU's Department of Art. He considers the works typical of each artist. "All three artists are very sensitive to color," Sternal said.

The works will be on display until Saturday, Oct. 11. Gallery hours are 8 a.m. - 4 p.m. on weekdays and 9 a.m. - 4 p.m. on Saturdays. There is no admission fee.

####

mo

Photo

PUBLIC INFORMATION

JUDITH YANCY, DIRECTOR

MOREHEAD STATE UNIVERSITY

UPO BOX 1100

MOREHEAD, KY 40351

606-783-2030

Sept. 22, 1986
FOR IMMEDIATE RELEASE

MSU EAGLES FLY HIGH: A Picture Story

With Morehead State University's Eagles clinching a heart-stopping victory over Wichita State Saturday, 36-35, in the final seconds of the game, Morehead residents turned out Sunday afternoon to greet the team on its return. Escorted in from the I-64 interchange by more than 120 cars filled with exuberant fans and the sirens of police escort, the team finally landed at Jayne Stadium for an impromptu rally which drew nearly 500 townspeople, students, MSU faculty and staff. Business marquees along Ky. 32 proclaimed congratulations to the players and in town one marquee summed it up with "That's right 3 & 0."

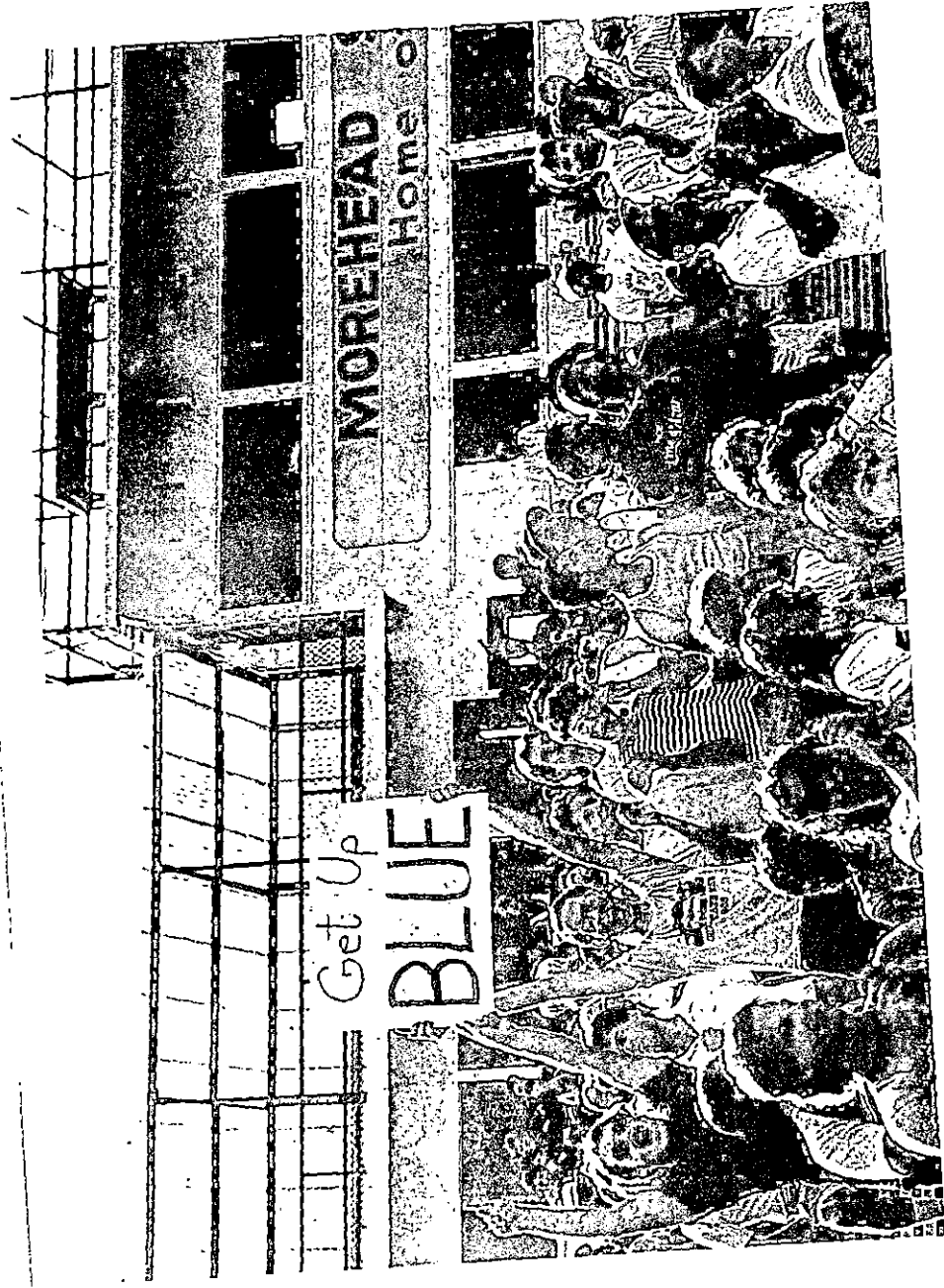
Cutlines:

- 1--It was a very happy crowd that converged on the buses bringing home MSU's Eagles from a victorious road trip to Kansas City.
- 2--MSU President A.D. Albright congratulated head coach Bill Baldrige and told the nearly 500 fans in the stand that the "M" on his shirt stood for "Marvelous!" Dr. Albright also reminded the crowd that "MSU is on the upswing and this is just another example of it."
- 3--Cheering for their Eagles, fans waved hastily made placards congratulating the team.

(MSU photos)

9-22-86jy





Photo

PUBLIC INFORMATION

JUDITH YANCY, DIRECTOR

MOREHEAD STATE UNIVERSITY

UPO BOX 1100

MOREHEAD, KY 40351

606-783-2030

Sept. 22, 1986
FOR IMMEDIATE RELEASE

1986 KENTUCKY LOGGING SHOW: A Picture Story

Drawing more than 8,000 people to Morehead State University's Derrickson Agricultural Complex Saturday and Sunday, Sept. 20-21, the 1986 Kentucky Logging Show offered something for everyone: Family-style entertainment, competitive events, demonstrations of heavy equipment and exhibits of the latest in forest product technology and supplies.

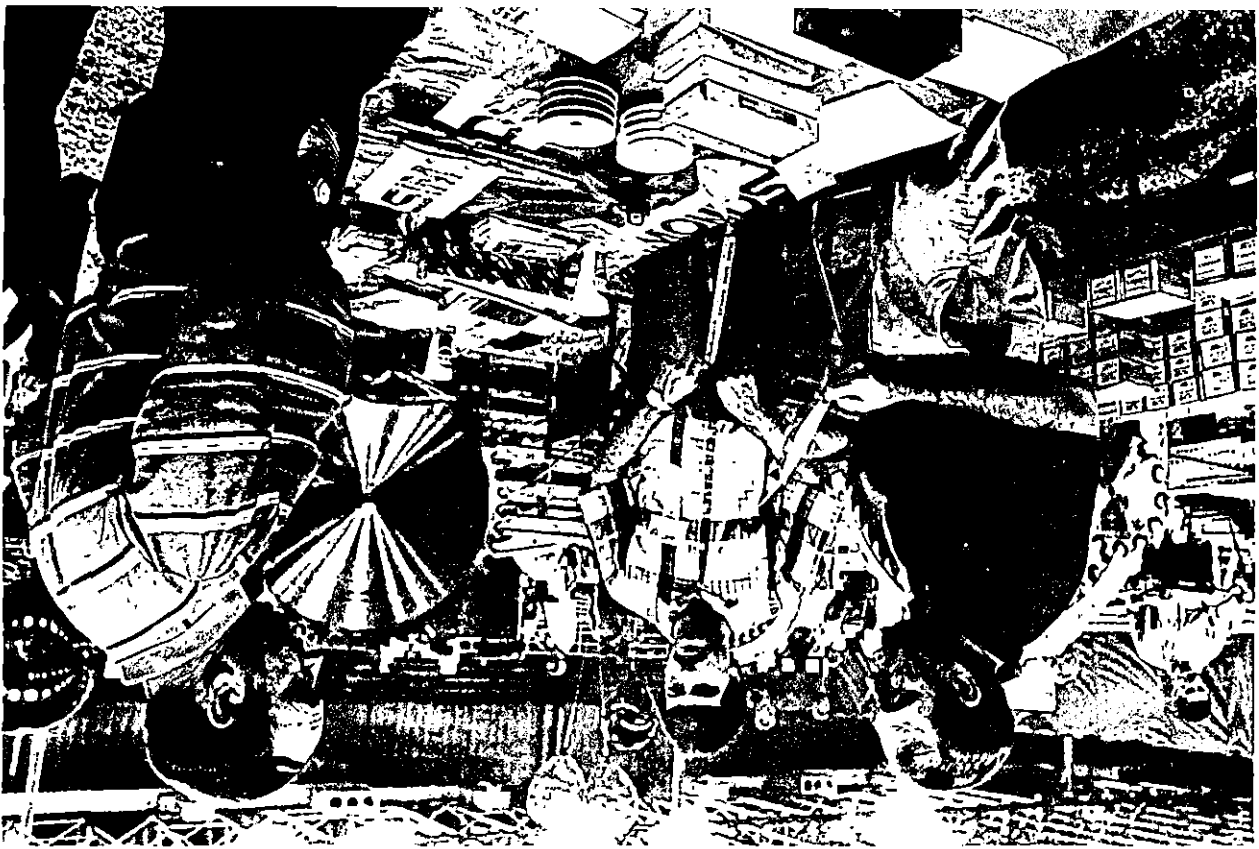
Cutlines:

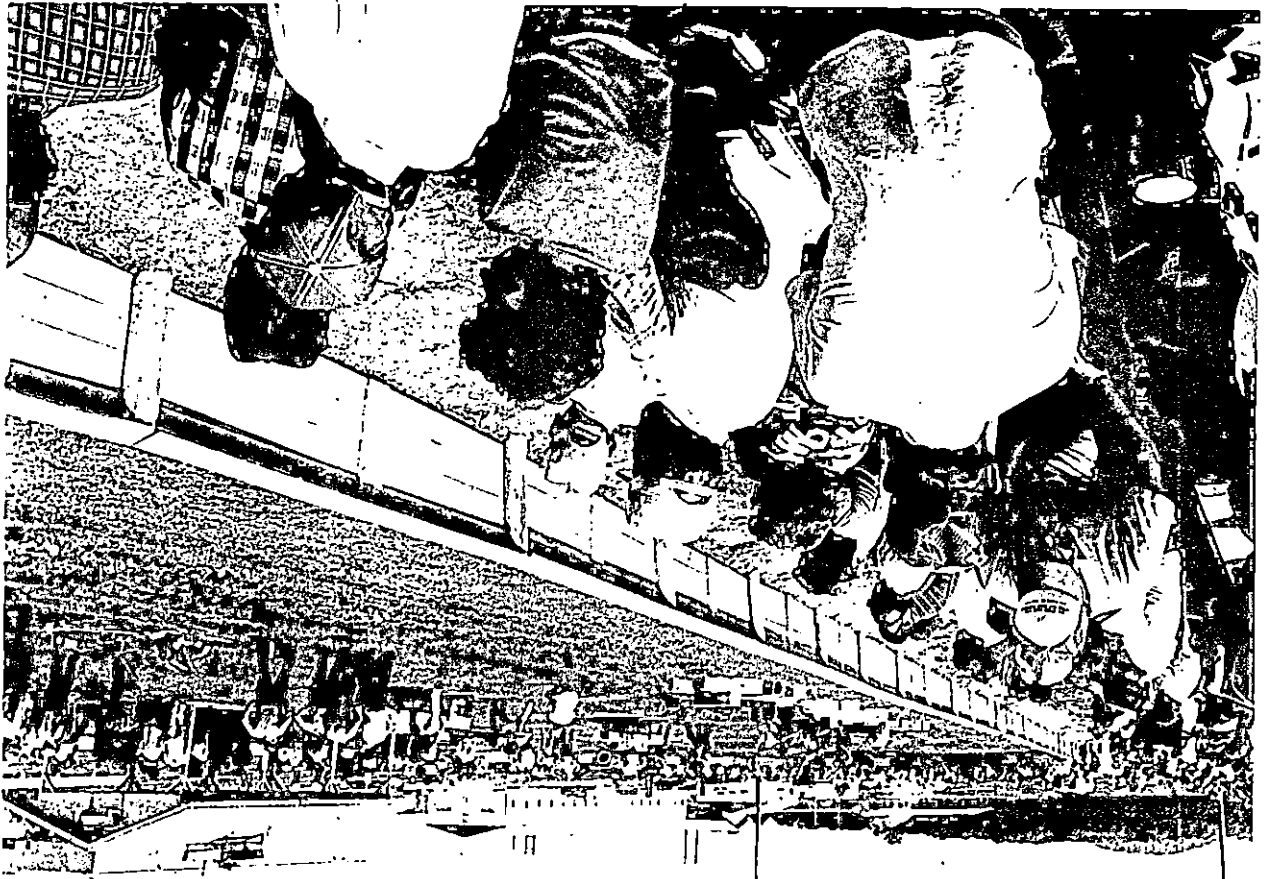
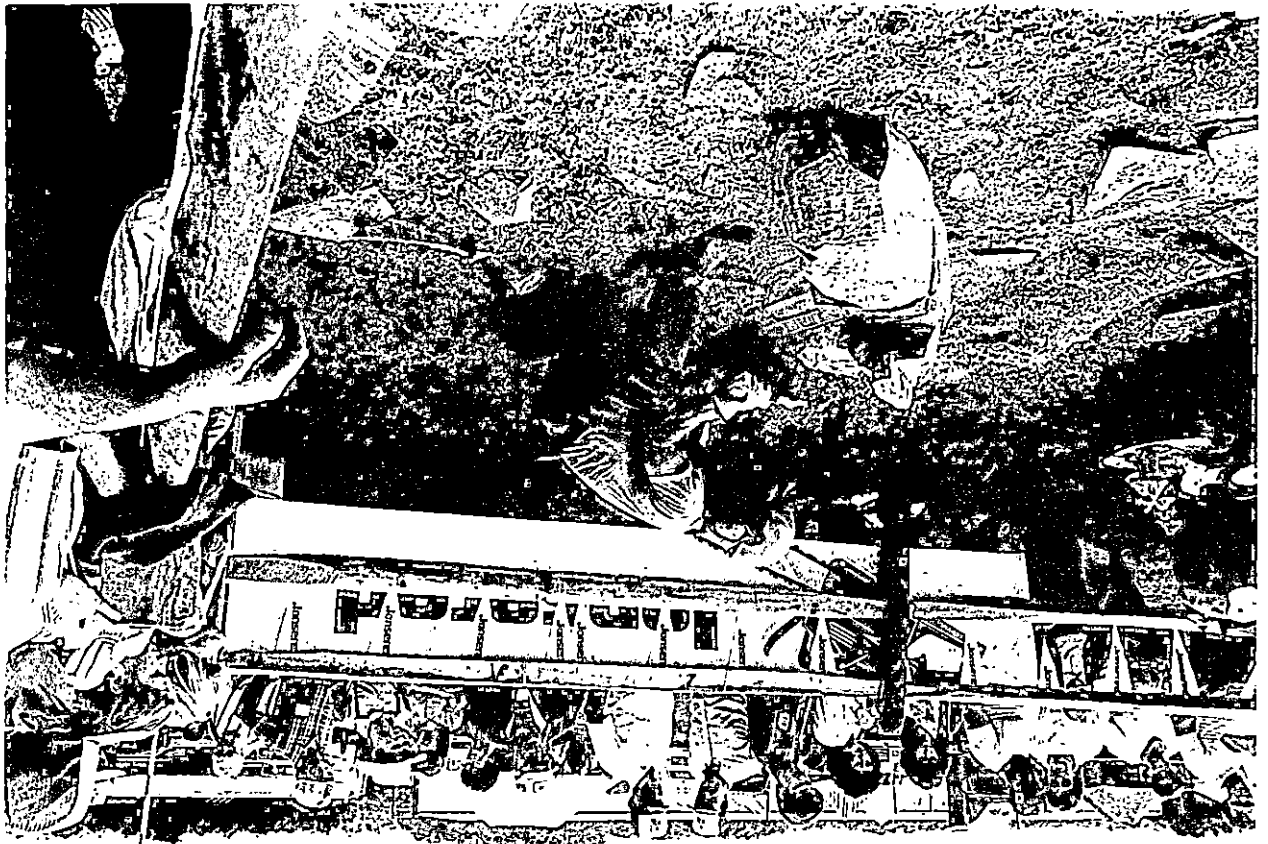
- 1--Rather than a traditional "ribbon cutting" to open the Kentucky Logging Show, officials wielded chain saws. Cutting the pole were, from left, State Rep. Walter Blevins, Jack Robinson, president of the Kentucky Forest Industries Association (KFIA) and MSU President A.D. Albright. MSU and the KFIA co-sponsored the two-day event which spotlighted the state's forest product industries.
- 2--Billy Joe Kerr of Campbellsville shows the intense concentration that has made him Kentucky Lumberjack Champion for three years straight.
- 3--Tall timber topper Dennis Butler of Grants Pass, Ore., was just one of several attractions at the two-day show.
- 4--More than 60 exhibitors from nine states and Canada displayed their products to prospective buyers and folks just interested in the industry. According to Harry Ryan of Morehead, KFIA executive director, the 1986 show, the association's fourth, was the largest for the Morehead site.
- 5--Spectators jammed the outdoor arena stands to watch the lumberjack contests. Two overall champions emerged from the contests: Paul Cogar of Webster Springs, W.Va., Open Champion, and--for the third year in a row--Billy Joe Kerr of Campbellsville, Kentucky Champion.
- 6--The artistry of chain saw sculpturing was another crowd-pleasing attraction.

(MSU photos)

9-22-86jy







News

PUBLIC INFORMATION

JUDITH YANCY, DIRECTOR

MOREHEAD STATE UNIVERSITY

UPO BOX 1100

MOREHEAD, KY 40351

606-783-2030

Sept. 22, 1986
FOR IMMEDIATE RELEASE

MOREHEAD, Ky.--Morehead State University's Department of Nursing and Allied Health Sciences will offer a two evening workshop for nurses on caring for children Wednesday and Thursday, Oct. 1-2.

Beginning with registration at 4 p.m. Monday, the workshop will be held both evenings in Adron Doran University Center.

Janice Brumagen and Shelby Shires, MSU assistant professors of nursing, will conduct the workshop which focuses on health care for the child and the family.

"The sessions for this workshop will feature specific nursing care principles for children," said Pauline Ramey, coordinator of Nursing and Allied Health Education.

Specific topics to be discussed include growth and development patterns, resources for planning nursing care and family relationships in illness and wellness.

Registered nurses will receive eight contact hours credit from MSU for participating in the workshop, which is approved by the Kentucky Board of Nursing. Nurses will be asked to furnish their nursing licenses and Social Security numbers in order to receive continuing education credit.

The fee for this workshop is \$48 which includes refreshments on arrival, breaks and handouts. Additional information is available by calling (606) 783-2632.

####

djp

Media Advisory

PUBLIC INFORMATION

JUDITH YANCY, DIRECTOR

MOREHEAD STATE UNIVERSITY

UPO BOX 1100

MOREHEAD, KY 40351

606-783-2030

Sept. 22, 1986

EVENT: News Conference
TOPIC: MSU Fall Enrollment
DAY: Thursday, Sept. 25
TIME: 9 a.m.
LOCATION: President's Conference Room
Howell-McDowell Administration Bldg.



PUBLIC INFORMATION
JUDITH YANCY, DIRECTOR

MOREHEAD STATE UNIVERSITY

UPO BOX 1100

MOREHEAD, KY 40351

606-783-2030

SUBJECT: MSU ADDS CLASS
RELEASE DATE: Now thru Sept. 30
TIME: 30 secs.

ANNOUNCER:

MOREHEAD STATE UNIVERSITY HAS OPENED REGISTRATION FOR ANOTHER UPPER DIVISION COURSE, LEARNING THEORIES IN THE CLASSROOM, TO BE OFFERED THIS FALL AT PRESTONSBURG COMMUNITY COLLEGE....A REQUIREMENT FOR SECONDARY EDUCATION MAJORS, IT WILL BE TAUGHT TUESDAYS FROM 3 TO 5:30 P.M. AT PCC...BEGINNING SEPT. 30. STUDENTS MAY REGISTER AT FIRST CLASS MEETING OR IN ADVANCE BY CALLING JAMES RATCLIFF AT PCC, 886-3863.

####

9-23-86jy

News

PUBLIC INFORMATION

JUDITH YANCY, DIRECTOR

MOREHEAD STATE UNIVERSITY

UPO BOX 1100

MOREHEAD, KY 40351

606-783-2030

Sept. 23, 1986
FOR IMMEDIATE RELEASE

MOREHEAD, Ky.--Morehead State University freshman Jennifer Bitner will play Edith Hanks in MSU's season opening theatre production of "The Thread That Runs So True," an adaptation of Jesse Stuart's book by the same name.

Bitner, an English major, is the daughter of Mr. and Mrs. Robert Bitner of Middletown, Pa. She also is a member of MSU's Honors Program.

The performance of this play is MSU's contribution to the 80th birthday celebration honoring the late Eastern Kentucky author.

Performances are scheduled at 8 o'clock nightly in Button Auditorium, Oct. 9-11. Ticket information is available by calling the Kibbey Theatre Box Office at (606) 783-2170.

Additional performances, sponsored by the Jesse Stuart Foundation, will be held at the Paramount Arts Center in Ashland Friday, Oct. 17, at 7:30 p.m., and Saturday, Oct. 18, at 2 p.m. Additional details are available by calling the Center at (606) 324-3175.

###

srt

Press Journal

News

PUBLIC INFORMATION

JUDITH YANCY, DIRECTOR

MOREHEAD STATE UNIVERSITY

UPO BOX 1100

MOREHEAD, KY 40351

606-783-2030

Sept. 23, 1986
FOR IMMEDIATE RELEASE

MOREHEAD, Ky.--Morehead State University graduate student Tracy Miller will play Sally Walden in MSU's season opening theatre production of "The Thread That Runs So True," an adaptation of Jesse Stuart's book by the same name.

Miller, an art major, is the daughter of Elmer and Dorothy Miller of Wheeling, W.Va. She also is a member of Chi Omega sorority and the Morehead Arts Student League.

The performance of this play is MSU's contribution to the 80th birthday celebration honoring the late Eastern Kentucky author.

Performances are scheduled at 8 o'clock nightly in Button Auditorium, Oct. 9-11. Ticket information is available by calling the Kibbey Theatre Box Office at (606) 783-2170.

Additional performances, sponsored by the Jesse Stuart Foundation, will be held at the Paramount Arts Center in Ashland Friday, Oct. 17, at 7:30 p.m., and Saturday, Oct. 18, at 2 p.m. Additional details are available by calling the Center at (606) 324-3175.

###

srt

News Register

News

PUBLIC INFORMATION

JUDITH YANCY, DIRECTOR

MOREHEAD STATE UNIVERSITY

UPO BOX 1100

MOREHEAD, KY 40351

606-783-2030

Sept. 23, 1986
FOR IMMEDIATE RELEASE

MOREHEAD, Ky.--Morehead State University sophomore Carolee Gabel will play Minnie Frome and Eleanor in MSU's season opening theatre production of "The Thread That Runs So True," an adaptation of Jesse Stuart's book by the same name.

Gabel, a communications major, is the daughter of Mr. and Mrs. John M. Gabel of Wallkill, N.Y. She also is a member of MSU's Honors Program and writes for Inscape, MSU's literary magazine.

The performance of this play is MSU's contribution to the 80th birthday celebration honoring the late Eastern Kentucky author.

Performances are scheduled at 8 o'clock nightly in Button Auditorium, Oct. 9-11. Ticket information is available by calling the Kibbey Theatre Box Office at (606) 783-2170.

Additional performances, sponsored by the Jesse Stuart Foundation, will be held at the Paramount Arts Center in Ashland Friday, Oct. 17, at 7:30 p.m., and Saturday, Oct. 18, at 2 p.m. Additional details are available by calling the Center at (606) 324-3175.

####

srt

Wallkill Valley Times

News

PUBLIC INFORMATION

JUDITH YANCY, DIRECTOR

MOREHEAD STATE UNIVERSITY

UPO BOX 1100

MOREHEAD, KY 40351

606-783-2030

Sept. 23, 1986
FOR IMMEDIATE RELEASE

MOREHEAD, Ky.--Morehead State University junior Ralph E. Wall will play John Conway in MSU's season opening theatre production of "The Thread That Runs So True," an adaptation of Jesse Stuart's book by the same name.

Wall, a theatre major, is the son of the Rev. Lynn T. Wall of Cedar Island, N.C. He also is a member of the MSU Players.

The performance of this play is MSU's contribution to the 80th birthday celebration honoring the late Eastern Kentucky author.

Performances are scheduled at 8 o'clock nightly in Button Auditorium, Oct. 9-11. Ticket information is available by calling the Kibbey Theatre Box Office at (606) 783-2170.

Additional performances, sponsored by the Jesse Stuart Foundation, will be held at the Paramount Arts Center in Ashland Friday, Oct. 17, at 7:30 p.m., and Saturday, Oct. 18, at 2 p.m. Additional details are available by calling the Center at (606) 324-3175.

####

Carteret Co. News; Times
~~Advocate~~

News

PUBLIC INFORMATION

JUDITH YANCY, DIRECTOR

MOREHEAD STATE UNIVERSITY

UPO BOX 1100

MOREHEAD, KY 40351

606-783-2030

Sept. 25, 1986
FOR IMMEDIATE RELEASE

MOREHEAD, Ky.--Union City, Ohio, resident Antionette C. Marshall will play Xenia Potters in Morehead State University's season opening theatre production of "The Thread That Runs So True," an adaptation of Jesse Stuart's book by the same name.

Marshall, a junior biology major, is the daughter of Mr. and Mrs. Gerald Marshall. She is also a member of the MSU PLayers.

The performance of this play is MSU's contribution to the 80th birthday celebration honoring the late Eastern Kentucky author.

Performances are scheduled at 8 o'clock nightly in Button Auditorium, Oct. 9-11. Ticket information is available by calling the Kibbey Theatre Box Office at (606) 783-2170.

Additional performances, sponsored by the Jesse Stuart Foundation, will be held at the Paramount Arts Center in Ashland Friday, Oct. 17, at 7:30 p.m., and Saturday, Oct. 18, at 2 p.m. Additional details are available by calling the Center at (606) 324-3175.

###

mo

Advocate

News

PUBLIC INFORMATION

JUDITH YANCY, DIRECTOR

MOREHEAD STATE UNIVERSITY

UPO BOX 1100

MOREHEAD, KY 40351

606-783-2030

Sept, 25, 1985
FOR IMMEDIATE RELEASE

MOREHEAD, Ky.--Harrison, Ohio, resident Maria Rosen will play Mrs. Woods in Morehead State University's season opening theatre production of "The Thread That Runs So True," an adaptation of Jesse Stuart's book by the same name.

Rosen, a junior theatre major, is the daughter of Mr. and Mrs. Edward C. Rosen. She is also a member of MSU's Jazz Vocal Ensemble, the MSU Players, and Theta Alpha Phi, a national honor theatre fraternity.

The performance of this play is MSU's contribution to the 80th birthday celebration honoring the late Eastern Kentucky author.

Performances are scheduled at 8 o'clock nightly in Button Auditorium, Oct. 9-11. Ticket information is available by calling the Kibbey Theatre Box Office at (606) 783-2170.

Additional performances, sponsored by the Jesse Stuart Foundation, will be held at the Paramount Arts Center in Ashland Friday, Oct. 17, at 7:30 p.m., and Saturday, Oct. 18, at 2 p.m. Additional details are available by calling the Center at (606) 324-3175.

####

mo

The Record

News

PUBLIC INFORMATION

JUDITH YANCY, DIRECTOR

MOREHEAD STATE UNIVERSITY

UPO BOX 1100

MOREHEAD, KY 40351

606-783-2030

Sept. 25, 1986
FOR IMMEDIATE RELEASE

MOREHEAD, Ky.--Geneva, Ohio, resident Karen O'Baker will play Nancy Cochran in Morehead State University's season opening theatre production of "The Thread That Runs So True," an adaptation of Jesse Stuart's book by the same name.

O'Baker, a junior theatre major, is the daughter of Mr. and Mrs. Robert O'Baker. She is a member of the MSU Chamber Singers, the MSU Players, and Theta Alpha Phi, a national honor fraternity. O'Baker will also serve as props mistress for the production.

The performance of this play is MSU's contribution to the 80th birthday celebration honoring the late Eastern Kentucky author.

Performances are scheduled at 8 o'clock nightly in Button Auditorium, Oct. 9-11. Ticket information is available by calling the Kibbey Theatre Box Office at (606) 783-2170.

Additional performances, sponsored by the Jesse Stuart Foundation, will be held at the Paramount Arts Center in Ashland Friday, Oct. 17, at 7:30 p.m., and Saturday, Oct. 18, at 2 p.m. Additional details are available by calling the Center at (606) 324-3175.

###

mo

Ashtabula Star Beacon

News

PUBLIC INFORMATION

JUDITH YANCY, DIRECTOR

MOREHEAD STATE UNIVERSITY

UPO BOX 1100

MOREHEAD, KY 40351

606-783-2030

Sept. 25, 1986
FOR IMMEDIATE RELEASE

MOREHEAD, Ky.--Garrard County resident Bruce Petrie will play Guy Hawkins in Morehead State University's season opening theatre production of "The Thread That Runs So True," an adaptation of Jesse Stuart's book by the same name.

Petrie, a senior English major, is the son of Judith Petrie and Douglas Petrie of Lancaster. This is his debut on the MSU stage.

The performance of this play is MSU's contribution to the 80th birthday celebration honoring the late Eastern Kentucky author.

Performances are scheduled at 8 o'clock nightly in Button Auditorium, Oct. 9-11. Ticket information is available by calling the Kibbey Theatre Box Office at (606) 783-2170.

Additional performances, sponsored by the Jesse Stuart Foundation, will be held at the Paramount Arts Center in Ashland Friday, Oct. 17, at 7:30 p.m., and Saturday, Oct. 18, at 2 p.m. Additional details are available by calling the Center at (606) 324-3175.

###

mo

Central Record

News

PUBLIC INFORMATION

JUDITH YANCY, DIRECTOR

MOREHEAD STATE UNIVERSITY

UPO BOX 1100

MOREHEAD, KY 40351

606-783-2030

Sept. 23, 1986
FOR IMMEDIATE RELEASE

MOREHEAD, Ky.--Boone County resident Kara Boshears will play Jenny Jarvis in Morehead State University's season opening theatre production of "The Thread That Runs So True," an adaptation of Jesse Stuart's book by the same name.

Boshears, MSU sophomore majoring in speech and theatre, is the daughter of Mr. and Mrs. Bob Boshears of Florence. She is a member of Kappa Delta sorority.

The performance of this play is MSU's contribution to the 80th birthday celebration honoring the late Eastern Kentucky author.

Performances are scheduled at 8 o'clock nightly in Button Auditorium, Oct. 9-11. Ticket information is available by calling the Kibbey Theatre Box Office at (606) 783-2170.

Additional performances, sponsored by the Jesse Stuart Foundation, will be held at the Paramount Arts Center in Ashland Friday, Oct. 17, at 7:30 p.m., and Saturday, Oct. 18, at 2 p.m. Additional details are available by calling the Center at (606) 324-3175.

####

mo

Boone Co. Recorder

News

PUBLIC INFORMATION

JUDITH YANCY, DIRECTOR

MOREHEAD STATE UNIVERSITY

UPO BOX 1100

MOREHEAD, KY 40351

606-783-2030

Sept. 23, 1986
FOR IMMEDIATE RELEASE

MOREHEAD, Ky.--Knott County resident Kelvin Amburgey will play Uncle Amos Batson and serve as assistant stage manager in Morehead State University's season opening theatre production of "The Thread That Runs So True," an adaptation of Jesse Stuart's book by the same name.

Amburgey, MSU senior majoring in theatre, is the son of Mrs. Jewell Amburgey of Littcarr. He also is a member of the MSU Players and Theta Alpha Phi, a national honor theatre fraternity.

The performance of this play is MSU's contribution to the 80th birthday celebration honoring the late Eastern Kentucky author.

Performances are scheduled at 8 o'clock nightly in Button Auditorium, Oct. 9-11. Ticket information is available by calling the Kibbey Theatre Box Office at (606) 783-2170.

Additional performances, sponsored by the Jesse Stuart Foundation, will be held at the Paramount Arts Center in Ashland Friday, Oct. 17, at 7:30 p.m., and Saturday, Oct. 18, at 2 p.m. Additional details are available by calling the Center at (606) 324-3175.

####

Troublesome Creek Times

News

PUBLIC INFORMATION

JUDITH YANCY, DIRECTOR

MOREHEAD STATE UNIVERSITY

UPO BOX 1100

MOREHEAD, KY 40351

606-783-2030

Sept. 23, 1986
FOR IMMEDIATE RELEASE

MOREHEAD, Ky.--Montgomery County resident Teresa Montgomery will play Leonora in Morehead State University's season opening theatre production of "The Thread That Runs So True," an adaptation of Jesse Stuart's book by the same name.

Montgomery, MSU senior majoring in journalism, is the daughter of Oakley and Anna Montgomery of Mt. Sterling. She also is a member of Delta Gamma sorority and is a Sigma Phi Epsilon Goldenheart.

The performance of this play is MSU's contribution to the 80th birthday celebration honoring the late Eastern Kentucky author.

Performances are scheduled at 8 o'clock nightly in Button Auditorium, Oct. 9-11. Ticket information is available by calling the Kibbey Theatre Box Office at (606) 783-2170.

Additional performances, sponsored by the Jesse Stuart Foundation, will be held at the Paramount Arts Center in Ashland Friday, Oct. 17, at 7:30 p.m., and Saturday, Oct. 18, at 2 p.m. Additional details are available by calling the Center at (606) 324-3175.

####

srt

Mt. Sterling Advocate

News

PUBLIC INFORMATION

JUDITH YANCY, DIRECTOR

MOREHEAD STATE UNIVERSITY

UPO BOX 1100

MOREHEAD, KY 40351

606-783-2030

Sept. 23, 1986
FOR IMMEDIATE RELEASE

MOREHEAD, Ky.--Carter County resident Van Wilburn will play Budge Waters in Morehead State University's season opening theatre production of "The Thread That Runs So True," an adaptation of Jesse Stuart's book by the same name.

Wilburn, MSU sophomore majoring in speech and theatre, is the son of Glen and Arlene Wilburn of Grahn. He also is a member of the MSU Players.

The performance of this play is MSU's contribution to the 80th birthday celebration honoring the late Eastern Kentucky author.

Performances are scheduled at 8 o'clock nightly in Button Auditorium, Oct. 9-11. Ticket information is available by calling the Kibbey Theatre Box Office at (606) 783-2170.

Additional performances, sponsored by the Jesse Stuart Foundation, will be held at the Paramount Arts Center in Ashland Friday, Oct. 17, at 7:30 p.m., and Saturday, Oct. 18, at 2 p.m. Additional details are available by calling the Center at (606) 324-3175.

###

srt

Olive Hill Times

News

PUBLIC INFORMATION

JUDITH YANCY, DIRECTOR

MOREHEAD STATE UNIVERSITY

UPO BOX 1100

MOREHEAD, KY 40351

606-783-2030

Sept. 23, 1986
FOR IMMEDIATE RELEASE

MOREHEAD, Ky.--Boyd County residents Danielle Deal and Carl Curnutte will play Eva and Burt Eastham, respectively, in Morehead State University's season opening theatre production of "The Thread That Runs So True," an adaptation of Jesse Stuart's book by the same name.

Deal, MSU sophomore majoring in history, is the daughter of Daniel and Janet Deal. This is her first role in an MSU Theatre production.

Curnutte, MSU junior majoring in theatre and history, is the son of Mr. and Mrs. Carl Curnutte Jr. He has appeared in three MSU plays.

The performance of this play is MSU's contribution to the 80th birthday celebration honoring the late Eastern Kentucky author.

Performances are scheduled at 8 o'clock nightly in Button Auditorium, Oct. 9-11. Ticket information is available by calling the Kibbey Theatre Box Office at (606) 783-2170.

Additional performances, sponsored by the Jesse Stuart Foundation, will be held at the Paramount Arts Center in Ashland Friday, Oct. 17, at 7:30 p.m., and Saturday, Oct. 18, at 2 p.m. Additional details are available by calling the Center at (606) 324-3175.

####

mo

TDI

News

PUBLIC INFORMATION

JUDITH YANCY, DIRECTOR

MOREHEAD STATE UNIVERSITY

UPO BOX 1100

MOREHEAD, KY 40351

606-783-2030

Sept. 23, 1986
FOR IMMEDIATE RELEASE

MOREHEAD, Ky.--Kenton County resident Blaine Holtkamp will play Snookie Baylor in Morehead State University's season opening theatre production of "The Thread That Runs So True," an adaptation of Jesse Stuart's book by the same name.

Holtkamp, MSU junior majoring in radio/television, is the son of Mr. and Mrs. Robert C. Holtkamp of Independence. He is a member of Delta Tau Delta fraternity and has appeared in three previous MSU Theatre productions.

The performance of this play is MSU's contribution to the 80th birthday celebration honoring the late Eastern Kentucky author.

Performances are scheduled at 8 o'clock nightly in Button Auditorium, Oct. 9-11. Ticket information is available by calling the Kibbey Theatre Box Office at (606) 783-2170.

Additional performances, sponsored by the Jesse Stuart Foundation, will be held at the Paramount Arts Center in Ashland Friday, Oct. 17, at 7:30 p.m., and Saturday, Oct. 18, at 2 p.m. Additional details are available by calling the Center at (606) 324-3175.

####

mo

Kenton Co. News

News

PUBLIC INFORMATION

JUDITH YANCY, DIRECTOR

MOREHEAD STATE UNIVERSITY

UPO BOX 1100

MOREHEAD, KY 40351

606-783-2030

Sept. 23, 1986
FOR IMMEDIATE RELEASE

MOREHEAD, Ky.--Rowan County residents Rondell Meeks, John Burchett and Mike Breeze will play Jesse Stuart, Ova and Don, respectively, in Morehead State University's opening theatre production of "The Thread That Runs So True," an adaptation of Jesse Stuart's book by the same name.

Meeks, a speech/organizational communication major, is the son of Alice and Richard Meeks of Morehead. He is also a member of MSU's individual events team and appeared in last year's production of "Greater Tuna."

Burchett, a speech/theatre and English major, is the son of Bonnie and John Paul Burchett of Morehead. He is also a member of the MSU speech team.

Breeze, a radio/television major, is the son of Larry and Peggy Breeze of Morehead. He has appeared in three previous MSU Theatre productions.

The performance of this play is MSU's contribution to the 80th birthday celebration honoring the late Eastern Kentucky author.

Performances are scheduled at 8 o'clock nightly in Button Auditorium, Oct. 9-11. Ticket information is available by calling the Kibbey Theatre Box Office at (606) 783-2170.

Additional performances, sponsored by the Jesse Stuart Foundation, will be held at the Paramount Arts Center in Ashland Friday, Oct. 17, at 7:30 p.m., and Saturday, Oct. 18, at 2 p.m. Additional details are available by calling the Center at (606) 324-3175.

###

mo

cm-News

News

PUBLIC INFORMATION

JUDITH YANCY, DIRECTOR

MOREHEAD STATE UNIVERSITY

UPO BOX 1100

MOREHEAD, KY 40351

606-783-2030

Sept. 23, 1986
FOR IMMEDIATE RELEASE

MOREHEAD, Ky.--Bracken County resident Edward E. Figgins will serve as costume designer and narrator for Morehead State University's season opening theatre production of "The Thread That Runs So True," an adaptation of Jesse Stuart's book by the same name.

Figgins, a theatre major, is the son of Robert E. Figgins of Brooksville. He is also a member of the MSU Players and Theta Alpha Phi, a national honor theatre fraternity.

The performance of this play is MSU's contribution to the 80th birthday celebration honoring the late Eastern Kentucky author.

Performances are scheduled at 8 o'clock nightly in Button Auditorium, Oct. 9-11. Ticket information is available by calling the Kibbey Theatre Box Office at (606) 783-2170.

Additional performances, sponsored by the Jesse Stuart Foundation, will be held at the Paramount Arts Center in Ashland Friday, Oct. 17, at 7:30 p.m., and Saturday, Oct. 18, at 2 p.m. Additional details are available by calling the Center at (606) 324-3175.

####

mo

Bracken Co. News

News

PUBLIC INFORMATION

JUDITH YANCY, DIRECTOR

MOREHEAD STATE UNIVERSITY

UPO BOX 1100

MOREHEAD, KY 40351

606-783-2030

Sept. 25, 1986
FOR IMMEDIATE RELEASE

MOREHEAD, Ky.--Harrison County residents Tara L. Lail, Julie F. Jones and Kelli D. Whitt Callahan have been cast in Morehead State University's season opening theatre production of "The Thread That Runs So True," an adaptation of Jesse Stuart's book by the same name.

Lail, a speech/theatre and radio/television major, will play Robin Baylor. She is the daughter of Linda and Jerry Lail of Cynthiana, and a member of the MSU Players and Theta Alpha Phi, a national honor theatre fraternity.

Jones, a speech/theatre and radio/television major, will play Naomi Dean Norris. She is the daughter of Mrs. Florieta F. Jones of Cynthiana, and a member of Theta Alpha Phi and Delta Gamma sorority.

Callahan, a speech/theatre major, will play Aunt Effie. She is the daughter of Mrs. Gayle Callahan-Jones and a member of the MSU Players and Delta Gamma sorority.

The performance of this play is MSU's contribution to the 80th birthday celebration honoring the late Eastern Kentucky author.

Performances are scheduled at 8 o'clock nightly in Button Auditorium, Oct. 9-11. Ticket information is available by calling the Kibbey Theatre Box Office at (606) 783-2170.

Additional performances, sponsored by the Jesse Stuart Foundation, will be held at the Paramount Arts Center in Ashland Friday, Oct. 17, at 7:30 p.m., and Saturday, Oct. 18, at 2 p.m. Additional details are available by calling the Center at (606) 324-3175.

####

mo

Cynthiana Democrat

News

PUBLIC INFORMATION

JUDITH YANCY, DIRECTOR

MOREHEAD STATE UNIVERSITY

UPO BOX 1100

MOREHEAD, KY 40351

606-783-2030

Sept. 25, 1986
FOR IMMEDIATE RELEASE

MOREHEAD, Ky.--Letcher County resident Barry Amburgey will play Bill Coffee in Morehead State University's season opening theatre production of "The Thread That Runs So True," an adaptation of Jesse Stuart's book by the same name.

Amburgey, a senior speech/theatre major, is the son of Laverne Amburgey of Isom. He is a member of the MSU Players and Theta Alpha Phi, a national honor theatre fraternity.

The performance of this play is MSU's contribution to the 80th birthday celebration honoring the late Eastern Kentucky author.

Performances are scheduled at 8 o'clock nightly in Button Auditorium, Oct. 9-11. Ticket information is available by calling the Kibbey Theatre Box Office at (606) 783-2170.

Additional performances, sponsored by the Jesse Stuart Foundation, will be held at the Paramount Arts Center in Ashland Friday, Oct. 17, at 7:30 p.m., and Saturday, Oct. 18, at 2 p.m. Additional details are available by calling the Center at (606) 324-3175.

###

mo

Mtn. Eagle

News

PUBLIC INFORMATION

JUDITH YANCY, DIRECTOR

MOREHEAD STATE UNIVERSITY

UPO BOX 1100

MOREHEAD, KY 40351

606-783-2030

Sept. 25, 1986
FOR IMMEDIATE RELEASE

MOREHEAD, Ky.--Pendleton County resident Jeffrey C. Caswell will be the stage manager for Morehead State University's season opening theatre production of "The Thread That Runs So True," an adaptation of Jesse Stuart's book by the same name.

Caswell, a senior theatre major, is the son of Lana and Larry Caswell of Falmouth. He has appeared in three previous MSU theatre productions.

The performance of this play is MSU's contribution to the 80th birthday celebration honoring the late Eastern Kentucky author.

Performances are scheduled at 8 o'clock nightly in Button Auditorium, Oct. 9-11. Ticket information is available by calling the Kibbey Theatre Box Office at (606) 783-2170.

Additional performances, sponsored by the Jesse Stuart Foundation, will be held at the Paramount Arts Center in Ashland Friday, Oct. 17, at 7:30 p.m., and Saturday, Oct. 18, at 2 p.m. Additional details are available by calling the Center at (606) 324-3175.

####

mo

Falmouth Outlook

News

PUBLIC INFORMATION

JUDITH YANCY, DIRECTOR

MOREHEAD STATE UNIVERSITY

UPO BOX 1100

MOREHEAD, KY 40351

606-783-2030

Sept. 25, 1986
FOR IMMEDIATE RELEASE

MOREHEAD, Ky.--Morgan County resident Belinda C. Stambough will play Bertha Conway in Morehead State University's season opening theatre production of "The Thread That Runs So True," an adaptation of Jesse Stuart's book by the same name.

Stambough, a speech communications graduate student, is the daughter of Mr. and Mrs. Carl J. Stambough of West Liberty. She appeared in last year's MSU theatre production of "The Elephant Man."

The performance of this play is MSU's contribution to the 80th birthday celebration honoring the late Eastern Kentucky author.

Performances are scheduled at 8 o'clock nightly in Button Auditorium, Oct. 9-11. Ticket information is available by calling the Kibbey Theatre Box Office at (606) 783-2170.

Additional performances, sponsored by the Jesse Stuart Foundation, will be held at the Paramount Arts Center in Ashland Friday, Oct. 17, at 7:30 p.m., and Saturday, Oct. 18, at 2 p.m. Additional details are available by calling the Center at (606) 324-3175.

####

mo

Licking Valley Courier

News

PUBLIC INFORMATION

JUDITH YANCY, DIRECTOR

MOREHEAD STATE UNIVERSITY

UPO BOX 1100

MOREHEAD, KY 40351

606-783-2030

Sept. 25, 1986
FOR IMMEDIATE RELEASE

MOREHEAD, Ky.--Floyd County residents Doug Salisbury and Tracee Buchanan will take part in Morehead State University's production of "The Thread That Runs So True," an adaptation of Jesse Stuart's book by the same name.

Salisbury, a communications graduate student, will serve as lighting designer. He is the son of Fred and Myra Salisbury of Wheelwright, and a member of the MSU Players and Theta Alpha Phi, a national honor theatre fraternity.

Buchanan, a senior communications major, will play Celeste. She is the daughter of Mr. and Mrs. Ellis Buchanan of Prestonsburg, and a member of Theta Alpha Phi and Alpha Epsilon Rho, a national honor organization for broadcasters.

The performance of this play is MSU's contribution to the 80th birthday celebration honoring the late Eastern Kentucky author.

Performances are scheduled at 8 o'clock nightly in Button Auditorium, Oct. 9-11. Ticket information is available by calling the Kibbey Theatre Box Office at (606) 783-2170.

Additional performances, sponsored by the Jesse Stuart Foundation, will be held at the Paramount Arts Center in Ashland Friday, Oct. 17, at 7:30 p.m., and Saturday, Oct. 18, at 2 p.m. Additional details are available by calling the Center at (606) 324-3175.

###

mo

Floyd Co. Times

News

PUBLIC INFORMATION

JUDITH YANCY, DIRECTOR

MOREHEAD STATE UNIVERSITY

UPO BOX 1100

MOREHEAD, KY 40351

606-783-2030

Sept. 25, 1986
FOR IMMEDIATE RELEASE

MOREHEAD, Ky.--Pike County residents Darin Blackburn and Lori Hawkins will play Billy and Vaida, respectively, in Morehead State University's season opening theatre production of "The Thread That Runs So True," an adaptation of Jesse Stuart's book by the same name.

Blackburn, a freshman majoring in theatre, is the son of Phyllis Blackburn of Elkhorn City. He also is a member of the speech team.

Hawkins, a freshman majoring in communications, is the daughter of Mr. and Mrs. Bill Hawkins of Elkhorn City. She also is a member of the speech team.

The performance of this play is MSU's contribution to the 80th birthday celebration honoring the late Eastern Kentucky author.

Performances are scheduled at 8 o'clock nightly in Button Auditorium, Oct. 9-11. Ticket information is available by calling the Kibbey Theatre Box Office at (606) 783-2170.

Additional performances, sponsored by the Jesse Stuart Foundation, will be held at the Paramount Arts Center in Ashland Friday, Oct. 17, at 7:30 p.m., and Saturday, Oct. 18, at 2 p.m. Additional details are available by calling the Center at (606) 324-3175.

###

mo

App. News Express

News

PUBLIC INFORMATION

JUDITH YANCY, DIRECTOR

MOREHEAD STATE UNIVERSITY

UPO BOX 1100

MOREHEAD, KY 40351

606-783-2030

Sept. 23, 1986
FOR IMMEDIATE RELEASE

MOREHEAD, Ky.--D. Michael Mincey, a Morehead State University staff member since 1975, has been appointed vice president for student development, effective immediately.

MSU President A.D. Albright said that Mincey, 39, would hold the position until a national search is conducted for a permanent appointee. Mincey succeeds Dr. Gary Grace who resigned last month to accept a position at the University of Wisconsin at Parkside.

"We are pleased to be able to select an experienced and capable young administrator from within the institution for this important assignment," Dr. Albright stated. "We have full confidence in his ability to handle this position."

A three-time graduate of MSU, Mincey formerly served as assistant to the vice president for academic support services. Before joining the MSU staff, Mincey was a teacher and coach in the public schools of Fleming County and Tifton, Ga.

"I am excited about this new opportunity to serve MSU and I am glad to be a part of an institution on the upswing," said Mincey, a native of Waycross, Ga., who was a four-year letterman on the MSU football squad.

The new vice president is married to the former Kathryn Crusie of Lyndon, Ohio, a member of the MSU English faculty. They have three children. He is the son of Mrs. Sarah Mincey of Waycross and the late Paul Mincey and is a graduate of Ware County High School.

####

News

PUBLIC INFORMATION

JUDITH YANCY, DIRECTOR

MOREHEAD STATE UNIVERSITY

UPO BOX 1100

MOREHEAD, KY 40351

606-783-2030

Sept. 23, 1986
FOR IMMEDIATE RELEASE

MOREHEAD, Ky.--Morehead State University has opened registration for another upper division education class to be offered this fall at the Prestonsburg Community College, beginning Tuesday, Sept. 30.

The course, EDF 311, Learning Theories in the Classroom, will be taught Tuesdays from 3 to 5:30 p.m. at PCC. The class is a degree requirement for secondary education majors at MSU.

Students may register at the first class session or in advance by contacting MSU's local coordinator James Ratcliff at PCC (606) 886-3863.

####

jy

Photo

PUBLIC INFORMATION

JUDITH YANCY, DIRECTOR

MOREHEAD STATE UNIVERSITY

UPO BOX 1100

MOREHEAD, KY 40351

606-783-2030

MSU SIG EP RECEIVES HONOR

The 1986 J. Edward Zollinger Leadership Award was recently presented to Stan Jordon, Morehead State University sophomore from Madisonville. The \$100 Education Foundation Scholarship was awarded to MSU's Chapter of Sigma Phi Epsilon, one of seven chapters in District 12, in honor of Gregory C. Tanner, the fraternity's "Outstanding Senior" in the district for 1986. Jordon's chapter brothers chose him to receive the award based on leadership potential displayed his sophomore year. Pictured from left are Randy Loos of Sunman, Ind., MSU chapter president; Stan Jordon; Mike Mincey, MSU vice president for student development; and Clyde James, MSU coordinator of greek affairs and student organizations.

(MSU photo by Ray Bradley)

9-24-86mo



News

PUBLIC INFORMATION

JUDITH YANCY, DIRECTOR

MOREHEAD STATE UNIVERSITY

UPO BOX 1100

MOREHEAD, KY 40351

606-783-2030

Sept. 24, 1986
FOR IMMEDIATE RELEASE

MOREHEAD, Ky.--Inscape, Morehead State University's student literary magazine, is sponsoring a contest for student writers.

First place awards of \$100 each and second place awards of \$50 each will be given to winners of both the Poetry Division and the Short Story, Play or Essay Division.

Winning entries will appear in the Spring 1987 issue and all entries will be considered for publication. The awards are funded in part by the University's Honors Program and the Department of English, Foreign Languages and Philosophy.

The competition is open to all MSU students, whether full-time or part-time, according to Dr. Marc Glasser, MSU professor of English and magazine faculty sponsor.

"In fact, we really would like to have some entries from MSU students attending classes off-campus at our regional centers," Dr. Glasser said. "There's no limit to the number of entries a student may submit.

"We are looking for well-written, fresh, exciting and thought-provoking manuscripts," Dr. Glasser added.

Entries must be received no later than Oct. 31 and may be sent to Dr. Glasser, UPO 1274, Morehead State University, Morehead, KY 40351. Additional information is available by calling Dr. Glasser, (606) 783-2201.

####

jy

Photo

PUBLIC INFORMATION

JUDITH YANCY, DIRECTOR

MOREHEAD STATE UNIVERSITY

UPO BOX 1100

MOREHEAD, KY 40351

606-783-2030

Sept. 25, 1986
FOR IMMEDIATE RELEASE

1986 KENTUCKY LOGGING SHOW: A Picture Story

The 1986 Kentucky Logging Show, held in Morehead Sept. 20-21, was termed "a great success," by Harry Ryan, Kentucky Forest Industries Association executive director. KFIA and Morehead State University were co-sponsors of the event which drew an estimated 8,000 people and more than 60 exhibitors from 17 states and Canada.

The fourth annual show spotlighting the state's forest products industries was "our largest Morehead show as far as exhibitors and attendance equaled that of any previous show," he said.

Ryan said he appreciated the involvement of the University--"especially all the students who assisted."

Cutlines:

- 1--For the third year in a row, Billy Joe Kerr of Campbellsville, third from left, gained the highly-sought title of "Kentucky Lumberjack Champion." Congratulating Kerr on his title is C.J. Lohr, forest products utilization officer, Kentucky Division of Forestry. With them is the state champion's brother John Kerr, left, who placed second overall and Jim Spangler of Jackson, right, who finished third overall in the lumberjack events.
- 2--These gentlemen check out the choking process for one of several logging skidders demonstrated during the show.
- 3--One of the many attractions enjoyed by spectators featured the Kentucky Air National Guard performing a bucket drop demonstration.
- 4--Mule power takes over as this team participates in the mule pulling contest, one of several competitions held during the show. The driver is Sandlin Gray of Manchester, followed by Gary Shive of Summer Shade.

(MSU photos by Ray Bradley, Kevin Goldy and Jeff Colquhoun)

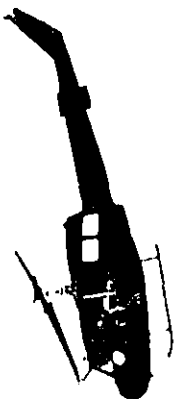
9-24-86jy

1

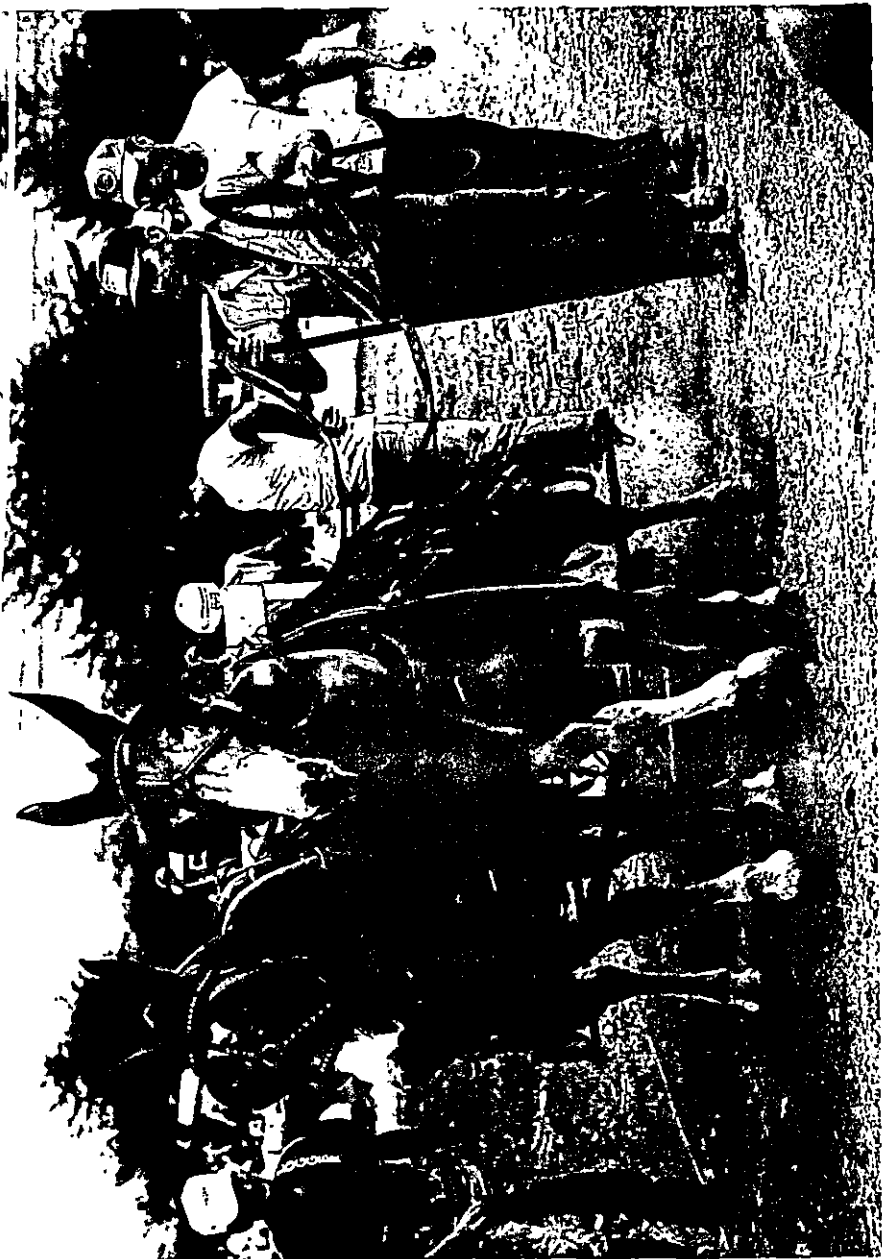


2





3



4

News

PUBLIC INFORMATION

JUDITH YANCY, DIRECTOR

MOREHEAD STATE UNIVERSITY

UPO BOX 1100

MOREHEAD, KY 40351

606-783-2030

Sept. 25, 1986
FOR IMMEDIATE RELEASE

MOREHEAD, Ky.--Self esteem and job hunting skills were gained by two participants in an Older Workers Training Program sponsored by Morehead State University earlier this year.

Martha McCoy of Morehead and Eva Taul of Mt. Sterling participated in a four week course designed to help older workers be competitive in the job market. Participants were trained in communications, stress management and work attitudes.

"It was a morale booster for me," said McCoy, who has been employed since July in retail sales at Kids Port USA in Morehead. "Most older people withdraw and feel there is nothing in life for them," she continued. "This program addresses those feelings as well as how to communicate with others." A former employee of Hecks, Inc., McCoy holds a part-time position on the custodial staff of Morehead Clinic.

A member of the catering staff at the Mt. Sterling Country Club, Taul speaks highly of the instruction she received during the program. "I enjoyed the opportunity to meet with others," she said. "The instructors were very cooperative and friendly, and we learned about the business world including how to write a resume and job interviewing." A former nurse's aide, she credits the program for her present position.

"With older Americans becoming more and more active today, we feel that they can--with proper training--be part of a productive work force," said Jacquelyn Scott, MSU's Job Training Program director. "Some businesses like to hire older persons because they are so dependable," she continued.

Funded by TEN-CO Private Industry Council, classes for two sessions of the Older Workers Training Program will begin in October, with two additional sessions scheduled for March. According to Scott, satellite classes will be held at Mt. Sterling as well as on MSU's campus. Participants will again receive training at area medical facilities and in retail sales.

The Older Workers Training Program is free to eligible participants. Anyone interested in the program and living in the counties of Bath, Rowan, Montgomery or Fleming, who is age 55 or older and unemployed, may contact Scott at (606) 783-2379 or the Department of Employment Services.

####

Photo

PUBLIC INFORMATION

JUDITH YANCY, DIRECTOR

MOREHEAD STATE UNIVERSITY

UPO BOX 1100

MOREHEAD, KY 40351

606-783-2030

PASSING OF THE GAVEL

The Morehead State University Alumni Association held installation ceremonies for its new officers. Immediate Past President David Bolt of Morehead, left, passed the gavel to the new President William L. Phelps of Versailles. Phelps is the assistant to the director of the Legislative Research Commission in Frankfort.

(MSU photo by Ray Bradley)

9-26-86py

Versailles, 4/1-News



Photo

PUBLIC INFORMATION

JUDITH YANCY, DIRECTOR

MOREHEAD STATE UNIVERSITY

UPO BOX 1100

MOREHEAD, KY 40351

606-783-2030

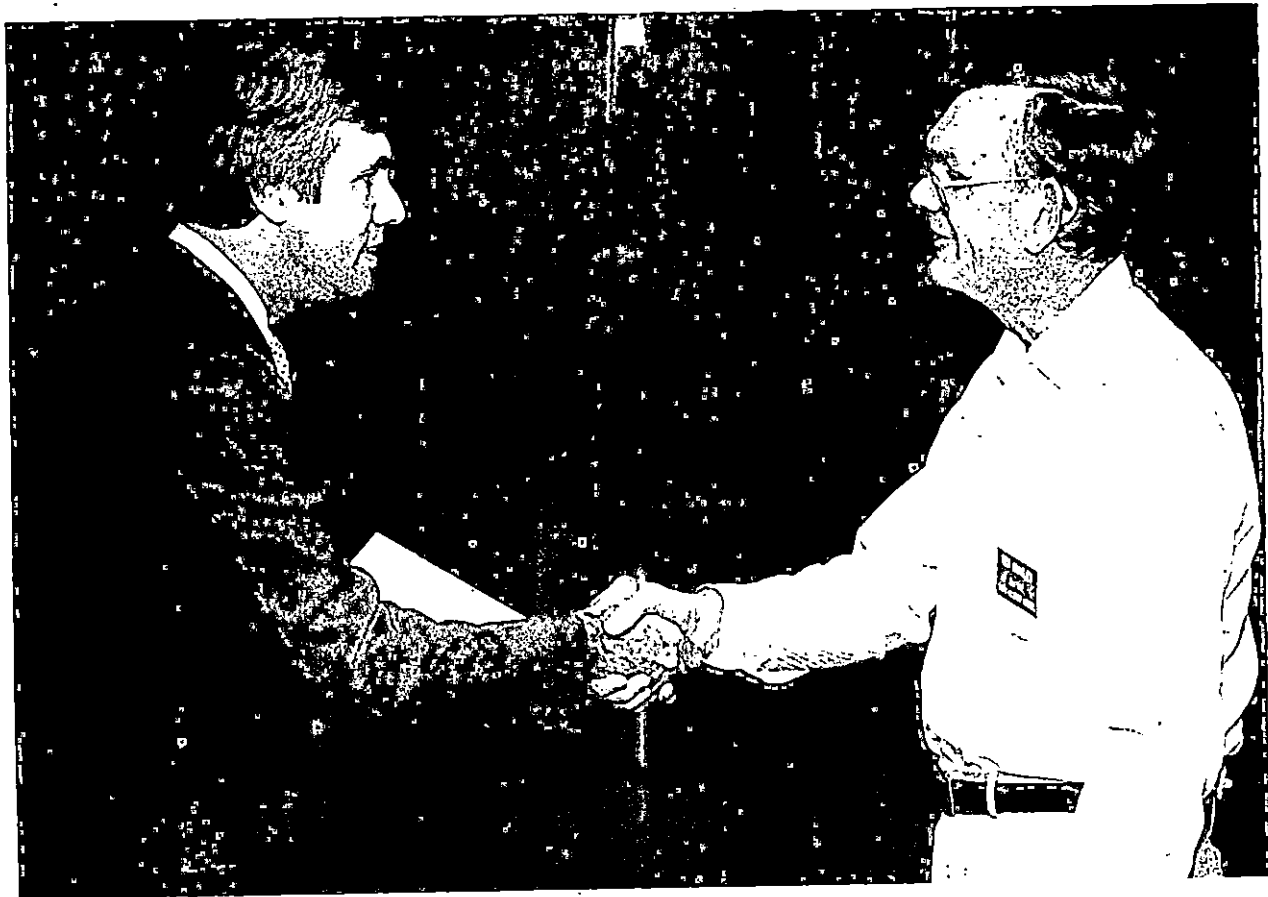
MSU ALUMNI OFFICERS ARE INSTALLED

The Morehead State University Alumni Association held installation ceremonies for its new officers. President William L. Phelps of Versailles, left, congratulates Second Vice President Ted Coakley of Harrison, Ohio, on his position. Coakley is a business supervisor for the Cincinnati School System.

(MSU photo by Ray Bradley)

9-26-86py

*Harrison Record, Clermont Courier,
Clermont Sun, Queen City Sub Press*



Photo

PUBLIC INFORMATION

JUDITH YANCY, DIRECTOR

MOREHEAD STATE UNIVERSITY

UPO BOX 1100

MOREHEAD, KY 40351

606-783-2030

MSU ALUMNI OFFICERS ARE INSTALLED

The Morehead State University Alumni Association held installation ceremonies for its new officers. President William L. Phelps of Versailles administered the oath of office to First Vice President Lisa Browning of Owingsville. Officers of the Association serve a two year term.

(MSU photo by Ray Bradley)

9-26-86py

Bath Co, Menifee



Photo

PUBLIC INFORMATION

JUDITH YANCY, DIRECTOR

MOREHEAD STATE UNIVERSITY

UPO BOX 1100

MOREHEAD, KY 40351

606-783-2030

MSU ALUMNI PRESIDENT INSTALLED

The Morehead State University Alumni Association recently installed its 1986 officers. President A.D. Albright, left, congratulates Alumni Association President William L. Phelps of Versailles after administering the charge of the presidency. Phelps, who assumed the position on July 1, will serve a two-year term. Lisa Browning of Owingsville was installed as first vice president and Ted Coakley of Harrison, Ohio, as second vice president.

(MSU photo by Ray Bradley)

9-26-86py

Versailles, N.Y. News



Photo

PUBLIC INFORMATION

JUDITH YANCY, DIRECTOR

MOREHEAD STATE UNIVERSITY

UPO BOX 1100

MOREHEAD, KY 40351

606-783-2030

MSU ALUMNI OFFICERS INSTALLED

The Morehead State University Alumni Association recently held installation ceremonies for its new officers. Don Young, left, MSU alumni director and executive vice president for the Association administered the oath of office to the new president, William L. Phelps of Versailles. Phelps, an assistant to the director of the Legislative Research Commission in Frankfort, will serve a two year term.

(MSU photo by Ray Bradley)

9-26-86py

Frankfort



Photo

PUBLIC INFORMATION

JUDITH YANCY, DIRECTOR

MOREHEAD STATE UNIVERSITY

UPO BOX 1100

MOREHEAD, KY 40351

606-783-2030

MSU REPRESENTED AT NATIONAL MEETING

Four Morehead State University students were representatives of the Beta Omicron Chapter at the national Kappa Omicron Phi Conclave in Louisville. Attending were, from left, Margaret Ann Barrett, Leesburg, Ohio, senior majoring in vocational home economics education; Sally Maxey, Flemingsburg senior majoring in vocational home economics education; Kelly Casey, Louisville senior majoring in clothing and textiles, and Judy Stewart, Langley senior majoring in vocational home economics education. Stewart gave the "Welcome to Kentucky" and Barrett and Maxey participated in the emblem ceremony.

(MSU photo by Ray Bradley)

9-26-86py

*Trail Blazer,
Flemingsburg, Leesburg, Langley*



Photo

PUBLIC INFORMATION

JUDITH YANCY, DIRECTOR

MOREHEAD STATE UNIVERSITY

UPO BOX 1100

MOREHEAD, KY 40351

606-783-2030

MSU ALUMNI CHAPTER ORGANIZED

Morehead State University's Alumni Association held chartering ceremonies for its new Ohio Valley Chapter at Southern State Community College in Hillsboro, Ohio. Among the 40 persons attending were, from left, Dr. William Whitaker, MSU's Department of Business and Economics chair; Gordon Dailey of Sardinia and Greg Cumberland of Georgetown.

(MSU photo by Pauline Young)

9-26-86py

*4 Mt. Drab, Ripley,
Hillsboro, W. Union*



Photo

PUBLIC INFORMATION

JUDITH YANCY, DIRECTOR

MOREHEAD STATE UNIVERSITY

UPO BOX 1100

MOREHEAD, KY 40351

606-783-2030

MSU ALUMNI CHAPTER CHARTERED

Morehead State University's Alumni Association held chartering ceremonies for its new Ohio Valley Chapter at Southern State Community College in Hillsboro, Ohio. Lisa Browning of Owingsville, center, Alumni Association first vice president, discussed campus activities with Sherrill Callahan of Mt. Orab and Chester and Pauline Greene of Georgetown.

(MSU photo by Pauline Young)

9-25-86py

*West Union, Georgetown,
Boh Co.*



Photo

PUBLIC INFORMATION

JUDITH YANCY, DIRECTOR

MOREHEAD STATE UNIVERSITY

UPO BOX 1100

MOREHEAD, KY 40351

606-783-2030

MSU ALUMNI CHAPTER ORGANIZED

Morehead State University's Alumni Association held chartering ceremonies for its new Ohio Valley Chapter at Southern State Community College in Hillsboro, Ohio. Some 40 persons attended the meeting including MSU representatives Dr. Alban Wheeler, undergraduate regional programs director; Dr. William Whitaker, Department of Business and Economics chair, and Don Young, alumni relations director. The chapter is composed of alumni from Adams, Brown, Highland and surrounding counties.

(MSU photo by Pauline Young)

9-26-86py

*W. News, Manchester, Mt. Orab,
W. Union, Bethel, Civic Sub Press*



Photo

PUBLIC INFORMATION

JUDITH YANCY, DIRECTOR

MOREHEAD STATE UNIVERSITY

UPO BOX 1100

MOREHEAD, KY 40351

606-783-2030

MSU ALUMNI CHAPTER ORGANIZED

Morehead State University's Alumni Association held chartering ceremonies for its new Ohio Valley Chapter at Southern State Community College in Hillsboro, Ohio. Among the 40 persons attending the meeting were, from left, Nathaniel and Mary Ann Grubb of West Union; Janie Richmond Kirker of West Union; Wendell Rivers of Manchester and, with back to camera, Don Young, alumni relations director. The chapter is composed of graduates from Adams, Brown, Highland and surrounding counties.

(MSU photo by Pauline Young)

9-26-86py

####

*Mt. Drab, W. Union,
Manchester, Ripley*



Photo

PUBLIC INFORMATION

JUDITH YANCY, DIRECTOR

MOREHEAD STATE UNIVERSITY

UPO BOX 1100

MOREHEAD, KY 40351

606-783-2030

MSU ALUMNI CHAPTER ORGANIZED

Morehead State University's Alumni Association held chartering ceremonies for its new Ohio Valley Chapter at Southern State Community College in Hillsboro, Ohio. Among the 40 persons attending were, from left, Pauline Greene of Georgetown, Sharon Whitaker of Morehead, Becky Fields Foster of Winchester, Dr. Alban Wheeler of Morehead, and Jeff Foster of Winchester. Dr. Wheeler, MSU's undergraduate regional programs director, discussed the university's new two-plus-two program with the group.

(MSU photo by Pauline Young)

9-26-86py

*Manchester, Greenfield
Georgetown*

####



Photo

PUBLIC INFORMATION

JUDITH YANCY, DIRECTOR

MOREHEAD STATE UNIVERSITY

UPO BOX 1100

MOREHEAD, KY 40351

606-783-2030

MSU ALUMNI CHAPTER CHARTERED

Morehead State University's Alumni Association held chartering ceremonies for its new Ohio Valley Chapter at Southern State Community College in Hillsboro, Ohio. Alumni Association First Vice President Lisa Browning of Owingsville, left, presented Chapter President Patricia Dorton Price of West Union with the group's official charter. Price is the career development counselor for Ohio Valley Local Schools. The chapter is composed of graduates from Adams, Brown, Highland and surrounding counties.

(MSU photo by Pauline Young)

9-25-86py

*Manchester Signal Peoples Defender
Linc-Sub press, Hillsboro, Greenfield Times,
Borgetown News Democrat, Brown Co. Press,
Ridley-Bee, Bethel Journal, m-news*



News

PUBLIC INFORMATION

JUDITH YANCY, DIRECTOR

MOREHEAD STATE UNIVERSITY

UPO BOX 1100

MOREHEAD, KY 40351

606-783-2030

CORRECTION

In a release dated for use Sept. 23, 1986, regarding three recent MSU administrative and fiscal services appointments, there were several inaccuracies. Here is the corrected version.

Sept. 26, 1986
FOR IMMEDIATE RELEASE

MOREHEAD, Ky.--Morehead State University's Division of Administrative and Fiscal Services has announced the following administrative personnel appointments:

Jack G. Jones, acting director of personnel services;
William J. Riley, assistant director of personnel services;
Norma F. Northern, Affirmative Action officer.

"Mr. Jones and Ms. Northern over the years have consistently demonstrated their administrative talents as part of our MSU family," said Porter Dailey, vice president for administrative and fiscal services. "Bill Riley, although new to our staff, brings with him a solid background in personnel work and we welcome him."

Formerly grants officer for the University, Jones has been on the staff since 1976. He has held various administrative posts including budget and management analyst and payroll office supervisor elsewhere. He is a former head of MSU's Department of Military Science.

A native of Pulaski County, Jones earned his B.S. degree from Auburn University.

Riley was employee relations specialist with Blue Cross and Blue Shield of Florida prior to accepting the MSU post. He also was personnel manager for A.O. Smith Corporation in Mt. Sterling for 10 years. He holds a B.A. degree from the University of Dayton.

Riley is a past president of the Bluegrass Personnel Association and a past president of Mt. Sterling's Rotary Club. He and his wife, the former Catherine Bray, are the parents of five children.

Currently MSU's director of budgets and management information systems, Northern will also be responsible for monitoring the University's Affirmative Action program. A member of the staff since 1983, she is a graduate of the University of Missouri at Columbia. Her past experience includes business manager for the Lexington Public Library and state and federal grants coordinator for the Lexington-Fayette Urban County Government.

####

News

PUBLIC INFORMATION

JUDITH YANCY, DIRECTOR

MOREHEAD STATE UNIVERSITY

UPO BOX 1100

MOREHEAD, KY 40351

606-783-2030

Sept. 26, 1986
FOR IMMEDIATE RELEASE

MOREHEAD, Ky.--Cast members have been announced for Morehead State University Theatre's first production of the 1986-87 season, "The Thread That Runs So True," an adaptation of Jesse Stuart's book by the same name.

With performances scheduled Oct. 9-11, the production also is MSU's contribution to the 80th birthday anniversary celebration honoring the late Eastern Kentucky author.

"The play centers on Stuart's early years as a teacher," said Dr. Travis Lockhart, assistant professor of theatre and coordinator of MSU's theatre program. "He began teaching at age 18 in Greenup County."

Performances are scheduled for 8 o'clock nightly in Button Auditorium. Tickets are available at the door at \$4 for adults; \$2 for non-MSU students and children, and free to MSU students with valid I.D. cards. Additional information is available by calling the Theatre Box Office at (606) 783-2710.

The cast members are Barry Amburgey, Isom senior; Kelvin Amburgey, Littcar senior; Octavia A. Biggs, Lebanon Junction senior; Jennifer Bitner, Middletown, Pa., freshman; Darin Blackburn, Elkhorn City freshman; Kara Boshears, Florence sophomore; Mike Breeze, Morehead sophomore; Tracee Buchanan, Prestonsburg senior; John Burchett, Morehead sophomore;

Kelli D. Whitt Callahan, Cynthiana sophomore; Jeffrey C. Caswell, Falmouth senior; Carl Curnutte, Ashland junior; Danielle Deal, Ashland sophomore; Edward E. Figgins, Brooksville senior; Carolee Gabel, Wallkill, N.Y., sophomore; Lori Hawkins, Elkhorn City freshman; Blaine Holtkamp, Independence junior; Julie F. Jones, Cynthiana junior; Tara L. Lail, Cynthiana junior; Antoinette C. Marshall, Union City, Ohio, junior; Rondell Meeks, Morehead sophomore; Tracy Miller, Wheeling, W.Va., graduate student;

(MORE)

MSU Theatre
2-2-2-2-2-2

Teresa Montgomery, Mt. Sterling senior; Karen O'Baker, Geneva, Ohio, junior; Bruce Petrie, Lancaster senior; Maria Rosen, Harrison, Ohio, junior; Belinda C. Stambough, West Liberty graduate student; Ralph E. Wall, Cedar Island, N.C., junior; and Van Wilburn, Grahn sophomore.

Lockhart will direct the play along with assistant directors Curnutte and O'Baker. Assistant stage manager is Kelvin Amburgey and lighting director is Dave Salisbury, Wheelwright graduate student. Scene designer is Kenneth Brown, technical director for MSU theatre, and Figgins is costume designer.

Additional performances, sponsored by the Jesse Stuart Foundation will be held at the Paramount Arts Center in Ashland Friday, Oct. 17, at 7:30 p.m., and Saturday, Oct. 18, at 2 p.m. Tickets are \$10 and \$7.50, and all seats are reserved. Additional information is available by calling the Center at (606) 324-3175.

MSU's Department of Communications will sponsor a reception following the Oct. 17 performance, with the President and Mrs. A.D. Albright serving as hosts.

A special preview performance of one act of the play will be presented at Greenbo State Park Sept. 28 at 2 p.m., according to Lockhart.

####

srt

News

PUBLIC INFORMATION

JUDITH YANCY, DIRECTOR

MOREHEAD STATE UNIVERSITY

UPO BOX 1100

MOREHEAD, KY 40351

606-783-2030

Sept. 27, 1986
FOR IMMEDIATE RELEASE

MOREHEAD, Ky.--More than 100 high school bands have been invited to participate in Morehead State University's first Blue and Gold Tournament of Champions Marching Band Contest on Saturday, Oct. 18.

The invitational marching band competition will begin at 11 a.m. in Jayne Stadium.

Nearly 3,000 high school musicians, flag corps, rifle teams and dancers will compete for trophies awarded on the basis of musicianship, marching and general effect.

The top scoring Eastern Kentucky band will receive the MSU Regents Award. The Governor's Award will be presented to the highest scoring band from Kentucky and the competition's grand champion band will receive the President's Award.

"For the audience, the contest will provide an exciting spectacle of sound and color comparable to the pageantry of a Broadway musical," said Richard B. Miles, MSU bands director.

In addition to the high school bands, MSU's Marching Band will present an exhibition performance at the close of the event.

Tickets for the event will be available at the gate at \$4 each.

####

mo

News

PUBLIC INFORMATION

JUDITH YANCY, DIRECTOR

MOREHEAD STATE UNIVERSITY

UPO BOX 1100

MOREHEAD, KY 40351

606-783-2030

Sept. 27, 1986
FOR IMMEDIATE RELEASE

MOREHEAD, Ky.--Tony award-winning actress Phyllis Frelich will appear at Morehead State University at 10:20 a.m. Wednesday, Oct. 8, in Button Auditorium as part of Arts in Morehead's 1986-87 Concert and Lecture Series. Her lecture, entitled "Hear the Silence," will be given in sign language with the aid of a translator.

According to Dr. Glenn C. Rogers, series committee chairman, the lecture will include Frelich's insights to the world of the deaf and a question and answer session.

Admission will be by AIM season membership or by general admission tickets available at the door at \$5 for adults and \$3 youth age 18 or younger. MSU students with valid I.D. cards will be admitted free. Season tickets for the AIM series will also be sold at the door.

Founding member of the National Theatre for the Deaf, Frelich won the 1980 Tony Award as best actress for her role as the defiant deaf student in the Broadway production of "Children Of A Lesser God."

Last year she starred opposite Richard Dreyfuss in "The Hands of It's Enemy" and had the lead role of NBC's national television premiere of "Love is Never Silent."

AIM is a joint effort of Morehead State and the Morehead-Rowan County Arts Council.

####

mo

Tips

PUBLIC INFORMATION

JUDITH YANCY, DIRECTOR

MOREHEAD STATE UNIVERSITY

UPO BOX 1100

MOREHEAD, KY 40351

606-783-2030

THIS WEEK AT MOREHEAD STATE UNIVERSITY
(Sept. 28 - Oct. 4)

Sunday, Sept. 28

11 A.M. PARENTS WEEKEND: Campus-wide worship service in Breckinridge Hall Auditorium. For more information, please call 783-2071.

AFTERNOON PARENTS WEEKEND: Campus organizations open house throughout campus. For more information, please call 783-2071.

Monday, Sept. 29

COMMUNITY EDUCATION CLASSES BEGIN

Wednesday, Oct. 1

3:30 P.M. CONTINUING EDUCATION FOR NURSES in East Room A of the Adron Doran University Center; also Oct. 2. For more information please call 783-2635.

7 P.M. VOLLEYBALL: Lady Eagles vs. Marshall University in MSU's Wetherby Gymnasium. For more information, please call 783-2500.

Saturday, Oct. 4

ALL DAY FUTURE HOMEMAKERS OF AMERICA HERO DAY in the Lloyd Cassity Building. For more information, please call 783-2538.

9 A.M. 5TH ANNUAL CLUB OF HEARTS WALKATHON, beginning at MSU's Academic-Athletic Center.

####

News

PUBLIC INFORMATION

JUDITH YANCY, DIRECTOR

MOREHEAD STATE UNIVERSITY

UPO BOX 1100

MOREHEAD, KY 40351

606-783-2030

Sept. 29, 1986
FOR IMMEDIATE RELEASE

MOREHEAD, Ky.--Career information meetings on Morehead State University's Older Workers Program have been scheduled.

Sessions will be held as follows:

Tuesday, Sept. 30, 11 a.m., Mt. Sterling Public Library

Thursday, Oct. 2, 10 a.m., community meeting room, Bath County Courthouse Annex

Tuesday, Oct. 7, 10 a.m., Fleming County Library.

Funded by TEN-CO Private Industry Council, the Older Workers Program is designed to help workers--those 55 years or older--to become more competitive in the job market through training in communications, stress management and work attitudes.

The program is free to eligible participants living in Bath, Rowan, Montgomery or Fleming Counties. Additional information is available by calling Jacquelyn Scott, MSU's Job Training Program director, at (606) 783-2379.

###

News

PUBLIC INFORMATION

JUDITH YANCY, DIRECTOR

MOREHEAD STATE UNIVERSITY

UPO BOX 1100

MOREHEAD, KY 40351

606-783-2030

MOREHEAD, Ky. --- Morehead State University sophomore Jill L. Brookbank recently was elected as a sophomore representative to the Student Congress of MSU's Student Government Association.

Brookbank, a business administration major, is the daughter of Donald Brookbank of Georgetown, Ohio.

All representatives are required to maintain a cumulative grade point average of at least 2.0 and are required to be on full-time status and in good social standing.

"The role of a Student Congress member is very important as any one of the representatives could be instrumental in passing a bill that would affect the whole campus," said Steve Strathmann, Williamsburg, Ohio, junior and SGA vice president.

####

9-29-86srt

Georgetown News Democrat

News

PUBLIC INFORMATION

JUDITH YANCY, DIRECTOR

MOREHEAD STATE UNIVERSITY

UPO BOX 1100

MOREHEAD, KY 40351

606-783-2030

MOREHEAD, Ky. --- Morehead State University freshman Gretchen S. Veigel recently was elected as a freshman representative to the Student Congress of MSU's Student Government Association.

Veigel, an agricultural science major, is the daughter of Ralph Veigel of Napoleon, Ohio.

All representatives are required to maintain a cumulative grade point average of at least 2.0 and are required to be on full-time status and in good social standing.

"The role of a Student Congress member is very important as any one of the representatives could be instrumental in passing a bill that would affect the whole campus," said Steve Strathmann, Williamsburg, Ohio, junior and SGA vice president.

####

9-29-86srt

Northwest Courier

News

PUBLIC INFORMATION

JUDITH YANCY, DIRECTOR

MOREHEAD STATE UNIVERSITY

UPO BOX 1100

MOREHEAD, KY 40351

606-783-2030

MOREHEAD, Ky. --- Morehead State University senior Karen L. Schroer recently was elected as a senior representative to the Student Congress of MSU's Student Government Association.

Schroer, a biology major, is the daughter of William Schroer of Batavia, Ohio.

All representatives are required to maintain a cumulative grade point average of at least 2.0 and are required to be on full-time status and in good social standing.

"The role of a Student Congress member is very important as any one of the representatives could be instrumental in passing a bill that would affect the whole campus," said Steve Strathmann, Williamsburg, Ohio, junior and SGA vice president.

####

9-29-86srt

Clermont Sun

News

PUBLIC INFORMATION

JUDITH YANCY, DIRECTOR

MOREHEAD STATE UNIVERSITY

UPO BOX 1100

MOREHEAD, KY 40351

606-783-2030

MOREHEAD, Ky. --- Morehead State University sophomore Sherri Timberlake recently was elected as a sophomore representative to the Student Congress of MSU's Student Government Association.

Timberlake, a radio-television major, is the daughter of Thelma Moore of South Shore.

All representatives are required to maintain a cumulative grade point average of at least 2.0 and are required to be on full-time status and in good social standing.

"The role of a Student Congress member is very important as any one of the representatives could be instrumental in passing a bill that would affect the whole campus," said Steve Strathmann, Williamsburg, Ohio, junior and SGA vice president.

####

9-29-86srt

Greenup News

News

MOREHEAD STATE UNIVERSITY

UPO BOX 1100

MOREHEAD, KY 40351

PUBLIC INFORMATION

JUDITH YANCY, DIRECTOR

606-783-2030

MOREHEAD, Ky. --- Morehead State University freshman Terri Goss recently was elected as a freshman representative to the Student Congress of MSU's Student Government Association.

Goss, a home economics major, is the daughter of Jesse Goss of Inez.

All representatives are required to maintain a cumulative grade point average of at least 2.0 and are required to be on full-time status and in good social standing.

"The role of a Student Congress member is very important as any one of the representatives could be instrumental in passing a bill that would affect the whole campus," said Steve Strathmann, Williamsburg, Ohio, junior and SGA vice president.

####

9-29-86srt

The Martin Countian

News

PUBLIC INFORMATION

JUDITH YANCY, DIRECTOR

MOREHEAD STATE UNIVERSITY

UPO BOX 1100

MOREHEAD, KY 40351

606-783-2030

MOREHEAD, Ky. --- Morehead State University junior William R. (Rick) Martin recently was elected as a junior representative to the Student Congress of MSU's Student Government Association.

Martin, a business administration major, is the son of Charles S. Martin of Worthington.

All representatives are required to maintain a cumulative grade point average of at least 2.0 and are required to be on full-time status and in good social standing.

"The role of a Student Congress member is very important as any one of the representatives could be instrumental in passing a bill that would affect the whole campus," said Steve Strathmann, Williamsburg, Ohio, junior and SGA vice president.

####

9-29-86srt

Greenup News

News

MOREHEAD STATE UNIVERSITY

UPO BOX 1100

MOREHEAD, KY 40351

PUBLIC INFORMATION

JUDITH YANCY, DIRECTOR

606-783-2030

MOREHEAD, Ky. --- Morehead State University senior Danny Haney recently was elected as a senior representative to the Student Congress of MSU's Student Government Association.

Haney, a business administration major, is the son of Danny Haney, Sr. of Malone.

All representatives are required to maintain a cumulative grade point average of at least 2.0 and are required to be on full-time status and in good social standing.

"The role of a Student Congress member is very important as any one of the representatives could be instrumental in passing a bill that would affect the whole campus," said Steve Strathmann, Williamsburg, Ohio, junior and SGA vice president.

####

9-29-86srt

Licking Valley
~~Greenup News~~

News

PUBLIC INFORMATION

JUDITH YANCY, DIRECTOR

MOREHEAD STATE UNIVERSITY

UPO BOX 1100

MOREHEAD, KY 40351

606-783-2030

MOREHEAD, Ky. --- Morehead State University senior Tommy Fern recently was elected as a senior representative to the Student Congress of MSU's Student Government Association.

Fern, a business administration major, is the son of Tom G. Fern of Flemingsburg.

All representatives are required to maintain a cumulative grade point average of at least 2.0 and are required to be on full-time status and in good social standing.

"The role of a Student Congress member is very important as any one of the representatives could be instrumental in passing a bill that would affect the whole campus," said Steve Strathmann, Williamsburg, Ohio, junior and SGA vice president.

####

9-29-86srt

Flemingsburg Gazette

News

PUBLIC INFORMATION

JUDITH YANCY, DIRECTOR

MOREHEAD STATE UNIVERSITY

UPO BOX 1100

MOREHEAD, KY 40351

606-783-2030

MOREHEAD, Ky. --- Morehead State University junior Melissa S. Gardner recently was elected as a junior representative to the Student Congress of MSU's Student Government Association.

Gardner, a business administration major, is the daughter of Connie Gardner of Richmond.

All representatives are required to maintain a cumulative grade point average of at least 2.0 and are required to be on full-time status and in good social standing.

"The role of a Student Congress member is very important as any one of the representatives could be instrumental in passing a bill that would affect the whole campus," said Steve Strathmann, Williamsburg, Ohio, junior and SGA vice president.

####

9-29-86srt

Richmond Register

News

PUBLIC INFORMATION

JUDITH YANCY, DIRECTOR

MOREHEAD STATE UNIVERSITY

UPO BOX 4100

MOREHEAD, KY 40351

606-783-2030

MOREHEAD, Ky. --- Morehead State University sophomore Darick H. Brown recently was elected as a sophomore representative to the Student Congress of MSU's Student Government Association.

Brown, a journalism major, is the son of Norma Brown of West Liberty.

All representatives are required to maintain a cumulative grade point average of at least 2.0 and are required to be on full-time status and in good social standing.

"The role of a Student Congress member is very important as any one of the representatives could be instrumental in passing a bill that would affect the whole campus," said Steve Strathmann, Williamsburg, Ohio, junior and SGA vice president.

####

9-29-86srt

Elliott Co. News

News

PUBLIC INFORMATION

JUDITH YANCY, DIRECTOR

MOREHEAD STATE UNIVERSITY

UPO BOX 1100

MOREHEAD, KY 40351

606-783-2030

MOREHEAD, Ky. --- Morehead State University freshman Jim Tom Trent recently was elected as a freshman representative to the Student Congress of MSU's Student Government Association.

Trent, a pre-law major, is the son of Ted Trent of Clearfield.

All representatives are required to maintain a cumulative grade point average of at least 2.0 and are required to be on full-time status and in good social standing.

"The role of a Student Congress member is very important as any one of the representatives could be instrumental in passing a bill that would affect the whole campus," said Steve Strathmann, Williamsburg, Ohio, junior and SGA vice president.

####

9-29-86srt

nl-News

News

PUBLIC INFORMATION

JUDITH YANCY, DIRECTOR

MOREHEAD STATE UNIVERSITY

UPO BOX 1100

MOREHEAD, KY 40351

606-783-2030

MOREHEAD, Ky. --- Morehead State University sophomore Beverly Houston recently was elected as a sophomore representative to the Student Congress of MSU's Student Government Association.

Houston is the daughter of James Paul Houston of Hager Hill.

All representatives are required to maintain a cumulative grade point average of at least 2.0 and are required to be on full-time status and in good social standing.

"The role of a Student Congress member is very important as any one of the representatives could be instrumental in passing a bill that would affect the whole campus," said Steve Strathmann, Williamsburg, Ohio, junior and SGA vice president.

####

9-29-86srt

Paintsville Herald

News

PUBLIC INFORMATION

JUDITH YANCY, DIRECTOR

MOREHEAD STATE UNIVERSITY

UPO BOX 1100

MOREHEAD, KY 40351

606-783-2030

MOREHEAD, Ky. --- Three Louisa residents were recently elected as representatives to the Student Congress of Morehead State University's Student Government Association.

Reva Ford, junior physical education major, was elected as a married student representative. She is the daughter of Betty Schneider.

Annetta S. Ratliff, freshman business administration major, was elected as a freshman representative. She is the daughter of Lonnie Ratliff.

Ruby Riffe, freshman business administration major, was also elected as a married student representative. She is the daughter of Ruth Perry.

All representatives are required to maintain a cumulative grade point average of at least 2.0 and are required to be on full-time status and in good social standing.

"The role of a Student Congress member is very important as any one of the representatives could be instrumental in passing a bill that would affect the whole campus," said Steve Strathmann, Williamsburg, Ohio, junior and SGA vice president.

####

9-30-86srt

Big Sandy News

News

PUBLIC INFORMATION

JUDITH YANCY, DIRECTOR

MOREHEAD STATE UNIVERSITY

UPO BOX 1100

MOREHEAD, KY 40351

606-783-2030

MOREHEAD, Ky. --- Four Morehead residents were recently elected as representatives to the Student Congress of Morehead State University's Student Government Association.

Beverly Brickey, freshman clothing and textiles major, was elected as a freshman representative. She is the daughter of Bill Brickey.

Keith E. Flora, sophomore math and computer programming major, was elected as a commuter representative. He is the son of Ben Flora, MSU professor of mathematics.

Tammy Jo Willey Kerney, senior business administration major, was elected as a senior representative. She is the daughter of Gary Willey.

Todd Pratt, sophomore business administration major, was also elected as a commuter representative. He is the son of Hiram G. Pratt.

All representatives are required to maintain a cumulative grade point average of at least 2.0 and are required to be on full-time status and in good social standing.

"The role of a Student Congress member is very important as any one of the representatives could be instrumental in passing a bill that would affect the whole campus," said Steve Strathmann, Williamsburg, Ohio, junior and SGA vice president.

####

9-30-86srt

M-News

News

PUBLIC INFORMATION

JUDITH YANCY, DIRECTOR

MOREHEAD STATE UNIVERSITY

UPO BOX 1100

MOREHEAD, KY 40351

606-783-2030

MOREHEAD, Ky. --- Morehead State University junior Michelle Beasley recently was elected as a junior representative to the Student Congress of MSU's Student Government Association.

Beasley, a learning and behavior disorders major, is the daughter of Daniel Beasley of Mt. Sterling.

All representatives are required to maintain a cumulative grade point average of at least 2.0 and are required to be on full-time status and in good social standing.

"The role of a Student Congress member is very important as any one of the representatives could be instrumental in passing a bill that would affect the whole campus," said Steve Strathmann, Williamsburg, Ohio, junior and SGA vice president.

####

9-29-86srt

Mt. Sterling Advocate

News

PUBLIC INFORMATION

JUDITH YANCY, DIRECTOR

MOREHEAD STATE UNIVERSITY

UPO BOX 1100

MOREHEAD, KY 40351

606-783-2030

MOREHEAD, Ky. --- Two Garrison residents recently were elected representatives to the Student Congress of Morehead State University's Student Government Association.

Ada and Jeri Miracle, daughters of Gene Miracle of Garrison, were elected sophomore and senior representatives, respectively.

All representatives are required to maintain a cumulative grade point average of at least 2.0 and are required to be on full-time status and in good social standing.

"The role of a Student Congress member is very important as any one of the representatives could be instrumental in passing a bill that would affect the whole campus," said Steve Strathmann, Williamsburg, Ohio, junior and SGA vice president.

####

9-29-86srt

Lewis Co. Herald

News

PUBLIC INFORMATION

JUDITH YANCY, DIRECTOR

MOREHEAD STATE UNIVERSITY

UPO BOX 1100

MOREHEAD, KY 40351

606-783-2030

MOREHEAD, Ky. --- Morehead State University junior Mike Webb recently was elected as a junior representative to the Student Congress of MSU's Student Government Association.

Webb, a pre-veterinary medicine major, is the son of Alice Webb of Lovely.

All representatives are required to maintain a cumulative grade point average of at least 2.0 and are required to be on full-time status and in good social standing.

"The role of a Student Congress member is very important as any one of the representatives could be very instrumental in passing a bill that would affect the whole campus," said Steve Strathmann, Williamsburg, Ohio, junior and SGA vice president.

####

9-29-86srt

The Martin Courier

Photo

PUBLIC INFORMATION

JUDITH YANCY, DIRECTOR

MOREHEAD STATE UNIVERSITY

UPO BOX 1100

MOREHEAD, KY 40351

606-783-2030

UP, UP AND AWAY

Tossing out game footballs signaling the start of the first game to be played on Jayne Stadium's new field of Omniturf at Morehead State University were, from left, MSU Athletic Director G.E. Moran, Cincinnati broadcast executive Terry Jacobs, MSU President A.D. Albright and head coach Bill Baldrige. The artificial turf was a gift underwritten by Jacobs, who heads Jacor Communications. Playing Kentucky State's Thorobreds, on Sept. 27, the MSU Eagles emerged victorious by a score of 33 to 10.

(MSU photo by Kevin Goldy)

9-29-86jy

*Cincy Sub. Press, TDI, Winchester, Harlan,
app. News Express*



Photo

PUBLIC INFORMATION

JUDITH YANCY, DIRECTOR

MOREHEAD STATE UNIVERSITY

UPO BOX 1100

MOREHEAD, KY 40351

606-783-2030

A GRAND OPENING AT MSU

Cutting the ribbon symbolic of the official opening at Morehead State University's new Athletic Training Room Saturday night were, from left, MSU President A.D. Albright, the university's head athletic trainer Keith Webster, Cincinnati businessman Terry Jacobs and MSU Athletic Director G.E. Moran. Jacobs, head of Jacor Communications, funded construction of the new addition.

(MSU photo by Kevin Goldy)

9-29-86jy

Cincinnati Sub. Press



Photo

PUBLIC INFORMATION

JUDITH YANCY, DIRECTOR

MOREHEAD STATE UNIVERSITY

UPO BOX 1100

MOREHEAD, KY 40351

606-783-2030

PARENTS WEEKEND AT MSU

More than 700 parents visited Morehead State University for Parents Weekend (Sept. 26-28). For Hillsboro, Ohio, freshman Bill Fife, it was a family affair. Sharing a moment of family togetherness were, from left, his father Robert, Bill himself, his sister Beth, his grandmother Ethel Holsapple and his mother Peg.

(MSU photo by Ray Bradley)

9-29-86py

Hillsboro Press-Gazette



Photo

PUBLIC INFORMATION

JUDITH YANCY, DIRECTOR

MOREHEAD STATE UNIVERSITY

UPO BOX 1100

MOREHEAD, KY 40351

606-783-2030

PARENTS WEEKEND AT MSU

More than 700 parents visited Morehead State University for Parents Weekend (Sept. 26-28). Among those attending the festivities were, from left, Martha, Kristy and Clint Davis of Ft. Mitchell. Kristy is a freshman music major.

(MSU photo by Ray Bradley)

9-29-86py

Kentucky Enquirer



Photo

PUBLIC INFORMATION

JUDITH YANCY, DIRECTOR

MOREHEAD STATE UNIVERSITY

UPO BOX 1100

MOREHEAD, KY 40351

606-783-2030

PARENTS WEEKEND AT MSU

More than 700 parents visited Morehead State University for Parents Weekend (Sept. 26-28). Among those attending a fish fry--one of several activities scheduled for parents--were, from left, Teresa, Tracy, Nancy and Dan Allinder of Forest Park, Ohio. Tracy is a junior secretarial studies major.

(MSU photo by Ray Bradley)

9-29-86py

Dayton News



Photo

PUBLIC INFORMATION

JUDITH YANCY, DIRECTOR

MOREHEAD STATE UNIVERSITY

UPO BOX 1100

MOREHEAD, KY 40351

606-783-2030

PARENTS WEEKEND AT MSU

More than 700 parents visited Morehead State University for Parents Weekend (Sept. 26-28). Among those attending a fish fry--one of several activities scheduled for parents--were, from left, Doug, David and Linda Crowe of Georgetown. David is a sophomore broadcasting technology major.

(MSU photo by Ray Bradley)

9-29-86py

Georgetown



Photo

PUBLIC INFORMATION

JUDITH YANCY, DIRECTOR

MOREHEAD STATE UNIVERSITY

UPO BOX 1100

MOREHEAD, KY 40351

606-783-2030

THUMBS UP FOR MSU

With Morehead State University's football team 4-0, students are looking for different ways to show their appreciation. Displaying their sentiments during Parents Weekend (Sept. 26-28) were, from left, Teresa Creech, Greenup freshman and Alicia Stafford, Cleveland, Ohio, senior. The Eagles next home game will be Oct. 11 against Austin Peay, which is during Homecoming weekend.

(MSU photo by Ray Bradley)

9-29-86py

Greenup News



Photo

PUBLIC INFORMATION

JUDITH YANCY, DIRECTOR

MOREHEAD STATE UNIVERSITY

UPO BOX 1100

MOREHEAD, KY 40351

606-783-2030

PARENTS WEEKEND AT MSU

More than 700 parents visited Morehead State University for Parents Weekend (Sept. 26-28). Among those attending a fish fry--one of several activities scheduled for parents--were, from left, Pat, Charles and Nawana Cole of Charleston, W. Va. Pat is a freshman business management major.

(MSU photo by Ray Bradley)

9-29-86py

Charleston Gazette



Photo

PUBLIC INFORMATION

JUDITH YANCY, DIRECTOR

MOREHEAD STATE UNIVERSITY

UPO BOX 1100

MOREHEAD, KY 40351

606-783-2030

PARENTS WEEKEND AT MSU

More than 700 parents visited Morehead State University for Parents Weekend (Sept. 26-28). Among those attending a fish fry--one of several activities scheduled for parents--were, from left, Julie and John Goodfellow of Springfield, Ohio. John is a sophomore radio/television major.

(MSU photo by Ray Bradley)

9-29-86py

News-Sun



Photo

PUBLIC INFORMATION

JUDITH YANCY, DIRECTOR

MOREHEAD STATE UNIVERSITY

UPO BOX 1100

MOREHEAD, KY 40351

606-783-2030

PARENTS WEEKEND AT MSU

More than 700 parents visited Morehead State University for Parents Weekend (Sept. 26-28). Among those attending a fish fry--one of several activities scheduled for parents--were, from left, Bob Krey and his daughter Kelly of Burlington. Kelly is a freshman elementary education major.

(MSU photo by Ray Bradley)

9-30-86py

Boone Co. Recorder



Photo

PUBLIC INFORMATION

JUDITH YANCY, DIRECTOR

MOREHEAD STATE UNIVERSITY

UPO BOX 1100

MOREHEAD, KY 40351

606-783-2030

PARENTS WEEKEND AT MSU

More than 700 parents visited Morehead State University for Parents Weekend (Sept. 26-28). Registering for the festivities were, from left, Margret and Leonard Stamey of Cincinnati. Serving as hostess for the occasion was MSU Student Alumni Ambassador Shelia Donovan, a Dayton, Ohio, sophomore.

(MSU photo by Kevin L. Goldy)

9-30-86py

Queen City Sub. Press



Photo

PUBLIC INFORMATION

JUDITH YANCY, DIRECTOR

MOREHEAD STATE UNIVERSITY

UPO BOX 1100

MOREHEAD, KY 40351

606-783-2030

PARENTS WEEKEND AT MSU

More than 700 parents visited Morehead State University for Parents Weekend (Sept. 26-28). During the festivities, Paris senior Keith Herndon introduced his father Robert to MSU President and Mrs. A.D. Albright.

(MSU photo by Kevin Goldy)

9-30-86py

Bourbon Co. Citizen



Photo

PUBLIC INFORMATION

JUDITH YANCY, DIRECTOR

MOREHEAD STATE UNIVERSITY

UPO BOX 1100

MOREHEAD, KY 40351

606-783-2030

PARENTS WEEKEND AT MSU

More than 700 parents visited Morehead State University for Parents Weekend (Sept. 26-28). During the weekend's activities, MSU President A.D. Albright, left, found an opportunity to chat with Nancy and Lowell MacKenzie of Columbus, Ohio.

(MSU photo by Kevin Goldy)

9-30-86py

The Booster



Photo

PUBLIC INFORMATION

JUDITH YANCY, DIRECTOR

MOREHEAD STATE UNIVERSITY

UPO BOX 1100

MOREHEAD, KY 40351

606-783-2030

PARENTS WEEEKEND AT MSU

More than 700 parents visited Morehead State University for Parents Weekend (Sept. 26-28). Taking a break in the activities were, from left, David Yowler, Suzanne Smith, and her parents Gerald and Sharon Smith from Hebron. Suzanne is a freshman at MSU.

(MSU photo by Ray Bradley)

9-30-86py

Boone Co. Recorder



Photo

PUBLIC INFORMATION

JUDITH YANCY, DIRECTOR

MOREHEAD STATE UNIVERSITY

UPO BOX 1100

MOREHEAD, KY 40351

606-783-2030

PARENTS WEEKEND AT MSU

More than 700 parents visited Morehead State University for Parents Weekend (Sept. 26-28). Attending the activities were, from left, Dee and Tom Ratliff from Franklin, Ohio, who found time to visit with MSU President A.D. Albright. The Ratliff's son Mike is a freshman music major at MSU.

(MSU photo by Kevin Goldy)

9-30-86py

Western Star



Photo

PUBLIC INFORMATION

JUDITH YANCY, DIRECTOR

MOREHEAD STATE UNIVERSITY

UPO BOX 1100

MOREHEAD, KY 40351

606-783-2030

RETURN TO MSU

Morehead State University students have returned to campus for the Fall '86 semester. Susan Barker, Morehead clothing and textiles major, begins the semester moving into her residence hall. She is a member of Delta Gamma sorority.

(MSU photo by Carlos Cassady)

9-29-86mo

M. News



Photo

PUBLIC INFORMATION

JUDITH YANCY, DIRECTOR

MOREHEAD STATE UNIVERSITY

UPO BOX 1100

MOREHEAD, KY 40351

606-783-2030

MSU STUDENTS BEGIN FALL SEMESTER

Morehead State University students have returned to campus for the Fall '86 semester. Beverly Houston, Paintsville sophomore, recruited help moving into a residence hall from her father, Jim Houston.

(MSU photo by Carlos Cassady)

9-29-86mo

Paintsville Herald



Photo

PUBLIC INFORMATION

JUDITH YANCY, DIRECTOR

MOREHEAD STATE UNIVERSITY

UPO BOX 1100

MOREHEAD, KY 40351

606-783-2030

MSU STUDENTS BEGIN FALL SEMESTER

Morehead State University students have returned to campus for the Fall '86 semester. Moving day was to be shared with a friend for Kim Mahaffey, left, Mays Lick junior, and Melody Cooper, Germantown junior.

(MSU photo by Carlos Cassady)

9-29-86mo

Ledger-Independent



Photo

PUBLIC INFORMATION

JUDITH YANCY, DIRECTOR

MOREHEAD STATE UNIVERSITY

UPO BOX 1100

MOREHEAD, KY 40351

606-783-2000

MSU STUDENTS BEGIN FALL SEMESTER

Morehead State University students have returned to campus for the Fall '86 semester. Julie Hawkins, Frankfort elementary education major, enjoys the last rays of summer sun between her classes at the University.

(MSU photo by Carlos Cassady)

9-29-86mo

State Journal



Photo

PUBLIC INFORMATION

JUDITH YANCY, DIRECTOR

MOREHEAD STATE UNIVERSITY

UPO BOX 1100

MOREHEAD, KY 40351

606-783-2030

STUDENTS RETURN TO MSU

Morehead State University students have returned to campus for the Fall '86 semester. Here Darryl Grimes, Sharpsburg business major, displays the art of unpacking as he moves into his residence hall.

(MSU photo by Carlos Cassady)

9-29-86mo

Bath Co. News Outlook



Photo

PUBLIC INFORMATION

JUDITH YANCY, DIRECTOR

MOREHEAD STATE UNIVERSITY

UPO BOX 1100

MOREHEAD, KY 40351

606-783-2030

STUDENTS RETURN TO MSU

Morehead State University students have returned to campus for the Fall '86 semester. After settling into their residence hall, Renae Stepp, left, and Christine Slone, right, both of Inez, exchange addresses with Mike Miller of Batavia, Ohio. Both girls are members of Kappa Delta sorority.

(MSU photo by Carlos Cassady)

9-29-86mo

The Martin Courier



Photo

PUBLIC INFORMATION

JUDITH YANCY, DIRECTOR

MOREHEAD STATE UNIVERSITY

UPO BOX 1100

MOREHEAD, KY 40351

606-783-2000

MSU STUDENTS BEGIN FALL SEMESTER

Morehead State University students have returned to campus for the Fall '86 semester. Looks as if Rick Porter, Owingsville industrial education major, packed lightly for his junior year at MSU.

(MSU photo by Carlos Cassady)

9-29-86mo

Bath Co. News Outlook



Photo

PUBLIC INFORMATION

JUDITH YANCY, DIRECTOR

MOREHEAD STATE UNIVERSITY

UPO BOX 1100

MOREHEAD, KY 40351

606-783-2030

MSU STUDENTS BEGIN FALL SEMESTER

Morehead State University students have returned to campus for the Fall '86 semester. Shelly Hamilton, Carlisle freshman, received help moving into a residence hall from her mother.

(MSU photo by Carlos Cassady)

9-29-86mo

Carlisle Mercury



News

PUBLIC INFORMATION

JUDITH YANCY, DIRECTOR

MOREHEAD STATE UNIVERSITY

UPO BOX 1100

MOREHEAD, KY 40351

606-783-2030

Sept. 29, 1986
FOR IMMEDIATE RELEASE

MOREHEAD, Ky.--Morehead State University's Student Alumni Ambassadors organization has elected officers for the 1986-87 school year.

Elected were: Melissa Susan Gardner, Richmond junior, president; Lenay Stober, Corbin senior, vice president and Michelle D. Carroll, Flemingsburg junior, secretary.

Gardner, daughter of Rex and Connie Gardner, is a business administration in management major. She is treasurer of Blue Key National Honor Fraternity, and a member of the Student Government Association, Library Committee, Board of Regents Long Range Planning Committee, Student Life and Student Discipline.

Stober, daughter of Larry and Sandra Stober, is a business administration/data processing major, with a minor in Spanish. She is the state secretary for the Baptist Student Union.

Carroll, daughter of Marvin and Anna J. Carroll, is an accounting major. She is a member of Phi Kappa Phi and the Accounting Club.

The Ambassadors organization is jointly sponsored by the Alumni Association and the University. Members of the service organization are selected for their high achievement in academics and leadership according to Don Young, MSU director of alumni relations and advisor for the group.

####

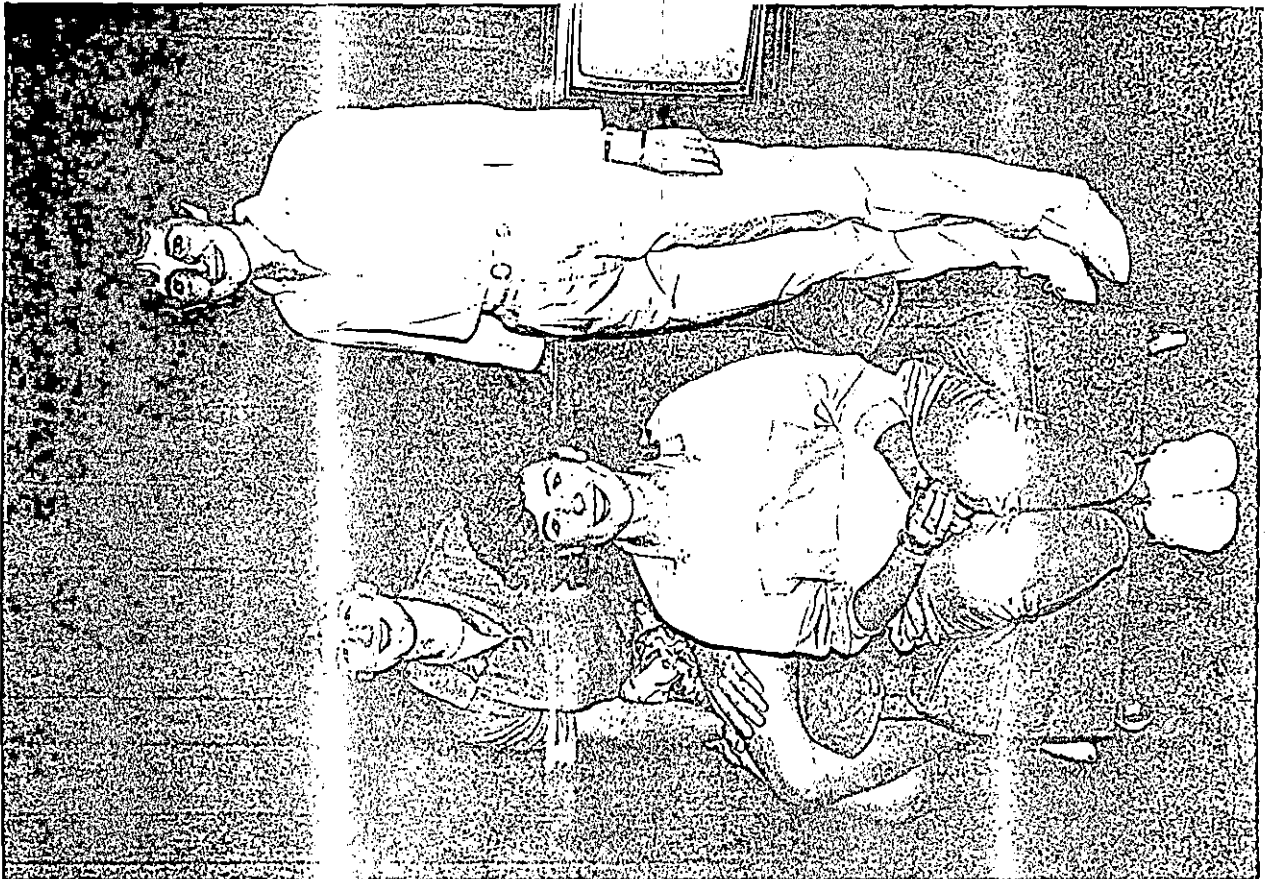
py

MSU AMBASSADORS ELECT OFFICERS

Morehead State University's Student Alumni Ambassadors has elected officers for the 1986-87 school year. Elected were, from left, Lenay Stober of Corbin, vice president; Melissa S. Gardner of Richmond, president, and Michelle Carroll of Flemingsburg, secretary. Ambassadors are selected for their high achievement in academics and leadership.

(MSU photo by Pauline Young)

9-26-86py



News

PUBLIC INFORMATION

JUDITH YANCY, DIRECTOR

MOREHEAD STATE UNIVERSITY

UPO BOX 1100

MOREHEAD, KY 40351

606-783-2030

Sept. 30, 1986
FOR IMMEDIATE RELEASE

MOREHEAD, Ky.--You're stranded on a desert tropical island. Food and water are in abundant supply, and you have a record player. But you've been allowed only 10 records. Which 10 discs would you pick?

This is the question host John McNally poses each week to celebrity guests during the new National Public Radio series on WMKY-FM 90--Castaway's Choice. The hour-long program premieres on WMKY-FM 90, public radio from Morehead State University, on Thursday, Oct. 2, at 7 p.m.

"Major figures from the worlds of arts, business, public affairs, sports, and entertainment have been attracted to this opportunity to share their private and often surprising tastes with the public," said McNally, a veteran on-air personality.

October's "castaway" celebrities are comedienne/puppeteer Shari Lewis, musicologist Nicolas Slonimsky, writer/comedian/pianist Steve Allen, actor Ed Asner, and comedian/director David Steinberg.

The musical selections run the gamut from Bach to the Beatles, from Brahms to Broadway. "The answers depend on the individual," explained McNally, who is based in California. "Some come up with eclectic choices--some classical, some popular. What I do is try and get people to be honest about what they would take along, not what they would like the world to think they would take. It is somewhat of a dilemma for them, but you end up with a portrait of an individual. It's fascinating to hear the reasoning behind their choices."

"Music triggers memories," he added, "and that's what makes each program so special."

Additional information on WMKY's programming or on how to become a WMKY supporter, is available by calling (606) 783-2001.

####

News

PUBLIC INFORMATION

JUDITH YANCY, DIRECTOR

MOREHEAD STATE UNIVERSITY

UPO BOX 1100

MOREHEAD, KY 40351

606-783-2030

Sept. 30, 1986
SPECIAL TO THE LOUISVILLE DEFENDER

MOREHEAD, Ky.--Intensified recruitment, scholarships and grants aimed at the minority student, special programming and peer support are integral parts of Morehead State University's desegregation efforts.

"For Morehead State University, desegregation is no longer merely a mandate, but a full-fledged commitment to our minority students," said MSU President A.D. Albright.

"Perhaps our minority student enrollment is the best indicator of the University's commitment to the black student," said Norma Northern, MSU affirmative action officer.

"Our records show that in the Fall 1985 Semester, the number of black students accepted who actually enrolled increased by 28.4 percent over the previous fall," Northern noted.

"Encouraging a student to enroll is only part of our commitment," said Jerry Gore, who assumed the full-time post of minority student affairs director at MSU in July 1985.

"We work hard at offering programming to meet those students' cultural needs in numerous ways," said Gore.

Last year Shirley Chisholm, former congresswoman from New York, was the keynote speaker for MSU's Black History Month and Yolanda King, daughter of the late Martin Luther King, spoke at a convocation during Black Awareness Week.

In addition to bringing nationally-recognized role models to campus as guest speakers, the Office of Minority Affairs also attempts to bring back successful MSU alumni to talk about their experiences.

(MORE)

desegregation
2-2-2-2-2-2-2

One special program that Gore believes to be highly successful for minority students is a "Big Brother/Big Sister Peer Counseling Program" which offers students support from their classmates.

The University offers students involvement through such groups as the Black Coalition, the Black Gospel Ensemble (a gospel choir), several greek-affiliated associations and a coeducational organization "The Brotherhood," designed to foster understanding among all races.

Other programs being developed include a "Minority Student Weekend," which will bring those students and their parents to the campus to learn first hand about the opportunities for minorities.

Another valuable recruitment tool has been the establishment of the Lena Coleman Memorial Association, a group of parents and alumni who have volunteered to assist in identifying and recruiting black students.

"We believe the black students at MSU have a wide variety of opportunities to expand their horizons and prepare themselves to be leaders when they graduate," Gore said.

A native of Maysville with three degrees from Morehead State, Gore is listed in "Who's Who in American Colleges and Universities" and has earned the designation from the Jaycees as an Outstanding Young Man of America.

Another highly-visible black in administrative circles is Dr. Broadus Jackson, who serves as chair of the Department of Geography, Government and History and is chairperson of MSU's Affirmative Action Committee.

Dr. Jackson came to MSU from the University of Maryland-Princess Anne, where he was chairman of the Social Science Division. He previously was at Jackson (Miss.) State University, where he organized and chaired the Department of History and Government and employed the school's first white full-time faculty member.

(MORE)

desegregation
3-3-3-3-3-3-3

He earned his B.A. degree from Fisk University and the M.A. and Ph.D. degrees from Indiana University. A frequent guest lecturer, he was the first known Afro-American to lecture on the University of Mississippi campus.

####

jy

Photo

PUBLIC INFORMATION

JUDITH YANCY, DIRECTOR

MOREHEAD STATE UNIVERSITY

UPO BOX 1100

MOREHEAD, KY 40351

606-783-2030

MSU BLACK HISTORY SPEAKER

Former U.S. Congresswoman Shirley Chisholm of New York, the keynote speaker of Morehead State University's Black History Month last year, is typical of the high-caliber programming for minority students.

(MSU photo)

9-30-86jy



Photo

PUBLIC INFORMATION

JUDITH YANCY, DIRECTOR

MOREHEAD STATE UNIVERSITY

UPO BOX 1100

MOREHEAD, KY 40351

606-783-2030

MSU HONORS DR. KING

The solemnity of the occasion is reflected in the faces of these Morehead State University students preparing for a candlelight march around campus in memory of slain civil rights leader Dr. Martin Luther King Jr.

(MSU photo)

9-30-86jy

