



The Morehead Independent Official Organ of Rowan County

Published each Thursday morning at Morehead, Kentucky by the INDEPENDENT PUBLISHING CO.

Office and Plant—Corner Carey Avenue and Railroad Street—Telephone 235

Entered as second class matter February 27, 1934, at the postoffice at Morehead, Kentucky, under Act of March 8, 1879.

WILLIAM J. SAMPLE, Editor and Publisher WILLIAM E. CRUTCHER, Associate Editor

SUBSCRIPTION RATES

One Year in Kentucky...\$1.50 Six Months in Kentucky...75 One Year Out of State...\$2.00

ADVERTISING RATES MADE KNOWN UPON APPLICATION



Thursday Morning, December 16, 1937.

A LESSON IN VICTORY

Missouri's Kansas City is not unused to celebrating achievement in traffic control.

Proud as they were of that distinction, Kansas City's citizens recently celebrated what to them was an even greater accomplishment.

It was an up-hill struggle, a fight against odds shaped by mounting automobile registration and mileage, and a growing city.

Two lessons are to be gained from Kansas City's record. The first is that traffic safety is not a matter of luck, but rather the logical result of a long-term, intelligently planned, effectively administered program.

The second lesson is that any city that wants to do what Kansas City does, can do it.

THE HEART OF FIRE PREVENTION

"The heart of fire prevention activity is the application of intelligent business planning, through adequate and comprehensive laws or codes which establish standards for community welfare," says T. Alfred Finerman of the National Board of Fire Underwriters.

"As labor-saving mechanical appliances and their way into our homes, and as industrial processes are constantly changing as a result of scientific research, we need first a building code for every town or city, and second, a constant study and revision of that code as a safeguard to the new living and working conditions."

"Surveys of the building code situation in thousands of American communities, running in size from hamlets to metropolises, show that, in spite of the progress made in the past, an amazing amount of educational and planning work needs to be done.

"Business and industry, as Mr. Nyström pointed out, are favorably disposed toward the principle of collective bargaining, but fear the evils that have attached themselves to the collective bargaining movement. Interne strife within the ranks of

labor itself, unauthorized strikes, an avalanche of petty grievances and red tape, are a few of the ailments. Often employers are forced to contribute so much of their time in solving these petty ailments that there is little opportunity left to get new business, or earn enough money to pay taxes and meet payroll.

Collective bargaining is an established American institution. It gives labor a tremendous power over the welfare of the entire nation, a power which, as Mr. Nyström observes, if wisely used can build a better world, but if misdirected can lead to destruction.

On the basis of experiments in which members of the CCC were human guinea pigs, a group of physicians in the United States is openly waging a campaign for mass inoculation in an attempt to eradicate pneumonia. In view of the fact that prophylactic and therapeutic beliefs and practices are continually being overturned in favor of newer theories, so severe a step as universal inoculation must appear unwelcome from a medical point of view.

In one of the long dark passages of the famous Mammoth Cave of Kentucky, several hundred feet under the surface of the earth and a mile or two from the entrance, stands two stone hills, tragic monuments to a medical theory of the last century. Some doctors of that day thought that consumption of the lungs could be cured if the patients lived in subterranean depths, where the temperature never changes, winter or summer. A colony of sufferers was established in the cave, and there victims of the experiment remained, literally entombed until the ill-starred venture was abandoned and the survivors removed.

It is almost axiomatic in medicine that what is considered the best condition or treatment to effect organic or functional health today may be abandoned tomorrow. Even the fact that a theory is prevalent or accepted in the medical world should in no case lead to its incorporation in the laws of a democratic state, for the scientific method is still a civil religion. Certainly the pneumonia prophylaxis, which is hardly removed from the realm of the speculative, is not ready for universal acceptance.

It there is anything worse than a public hanging in the courthouse square it is difficult to know what it is. In Covington a hanging is to take place December 17. The county judge and the sheriff have undertaken to prevent "a public spectacle." The judge has decreed that the hanging be semi-private and an opinion from the attorney general limits the number of those who will attend to 50 persons.

In places where there have been hangings of this kind they always have been attended by large crowds. Public hangings are staged at dawn, these "circus crowds" remain up all night, usually being in fine fettle for some accidents on the road on the trips back home.

mass execution by electrocution such as can be administered at Edwytville does away with such performances which contribute to community excitement when indignation is running at high pitch from a crime, rather than assuaging it. Such executions can be made public to the extent that it is possible for those interested to be represented, yet they can not be made spectacles.

BUT MEDICAL THEORIES CHANGE

On the basis of experiments in which members of the CCC were human guinea pigs, a group of physicians in the United States is openly waging a campaign for mass inoculation in an attempt to eradicate pneumonia.

In one of the long dark passages of the famous Mammoth Cave of Kentucky, several hundred feet under the surface of the earth and a mile or two from the entrance, stands two stone hills, tragic monuments to a medical theory of the last century.

Some doctors of that day thought that consumption of the lungs could be cured if the patients lived in subterranean depths, where the temperature never changes, winter or summer.

It is almost axiomatic in medicine that what is considered the best condition or treatment to effect organic or functional health today may be abandoned tomorrow.

Even the fact that a theory is prevalent or accepted in the medical world should in no case lead to its incorporation in the laws of a democratic state.

Certainly the pneumonia prophylaxis, which is hardly removed from the realm of the speculative, is not ready for universal acceptance.

HANGING NO CARNIVAL

It there is anything worse than a public hanging in the courthouse square it is difficult to know what it is.

In Covington a hanging is to take place December 17. The county judge and the sheriff have undertaken to prevent "a public spectacle."

Such performances which contribute to community excitement when indignation is running at high pitch from a crime, rather than assuaging it.

Such executions can be made public to the extent that it is possible for those interested to be represented, yet they can not be made spectacles.

COOPERATION AT ITS BEST

Last October, the money paid to the bulk of the dairy farmers in the New York milk shed was the highest for any month, with a single exception, since February, 1931. It marked the highest October return since 1930.

The increased return is the result of one thing—collective bargaining under the recent New York law which recognizes and approves marketing co-operatives.

The dairy farmers of New York have long been fortunate, in that they are served by one of the pioneer cooperatives—The Dairymen's League.

The League was a moving spirit in getting the New York marketing law passed, and has been a leader in efficient cooperative bargaining with distributors.

Backed loyally, and with a steadily growing membership, it is a fine example of the cooperative movement at its best.

TWO-WAY SAVINGS

Any sound investment and savings program must serve two purposes: First, it must provide financial protection for the wage earner's dependents, preferably in a form that will assure a monthly income for a stated length of time, or life.

Second, it must provide for the wage earner's old age, in the event that he lives beyond productive years. Mathematically, the chances that a man now aged 35 and in good health will live to the age of 65, are 68 out of 100.

One-sided future planning, which minimizes or eliminates either of these possibilities, may turn out to be tragic. Millions of foresighted Americans have assured the completion of a two-sided investment plan, principally through life insurance.

During the first nine months of this year, the American people obtained financial security to the tune of almost \$7,000,000,000.

Sunday School Lesson Comments

Lesson For December 19

THE BIRTH OF JESUS

LESSON TEXT—Luke 2:8-20. GOLDEN TEXT—"Unto you is born a day in the city of David a Saviour, which is Christ the Lord.—LUKE 1:11.

PRIMARY TOPIC—When Jesus Came. JUNIOR TOPIC—When Jesus Came.

INTERMEDIATE AND SENIOR TOPIC—The Birth of Our Saviour.

YOUNG PEOPLE AND ADULT TOPIC—God's Gift of a Saviour.

Few indeed are the stories that will bear re-reading or the books that are worth re-reading. Rare is the song that we care to hear again. How significant then that we come to the observance of Christmas each year with hearts full of delight in the story that we have heard so often. We listen with attentive souls, and to listen with attentive souls, and to listen with attentive souls, and to listen with attentive souls.

The birth of our Lord as the incarnate Saviour of men is still far from our minds. In the year 1937. The glad tidings of his coming still color the thinking and living of a world that has gone far from the things that are true and good, and that are true and good, and that are true and good.

And while on the subject of liquor and liquor control in all phases, the conductor of this pillar had a long talk with John Kirtle, speaker of the house in 1936 and due to be speaker again in the coming term which starts January 4.

The first seven verses of our chapter relate the coming of Mary with Joseph to God's appointed place. The birth of our Lord as the incarnate Saviour of men is still far from our minds.

I. "Unto You Is Born a Saviour" (vv. 8-14). Christ was a great teacher, one whom the common people heard gladly. He was a man who had authority, and not as a scribe.—Mark 1:22. He was a man who had authority, and not as a scribe.—Mark 1:22.

II. "Let Us Go . . . and See" (vv. 15-18). Their fear changed to assurance by the words of the angel, the shepherds at once "go" and "see." They found the babe as they heard today do likewise.

III. "When They Had Seen . . . They Made Known" (vv. 17-20). Mary the mother of Jesus has a special reason to ponder these things in her heart. But the shepherds returned, glorifying and praising God for all that they had heard and seen.

IV. "The Redeemed of the Lord say so."—Ps. 107:2. When we have given thanks to the Lord Jesus we must not simply rejoice in the satisfaction and peace that has come to our own souls. We are to give thanks to the Lord Jesus in that spirit do we truly keep Christmas.

To every one that sees these things in the heart, the shepherds, or profeeder—whether a reader in the midst of the clamor of the great city or in the quiet of a small country town where the old or young, whether well or on a sickbed, whether alone, far from their friends or in the bosom of your family, the writer of these lines extends in the name of Christ a most hearty and fervent wish for a blessed Christmas.

Many Bath county farmers are having their dairy stock tested for T. B.

Kentucky tobacco farmers who are not satisfied with the prices of their weed on the market could wait until they feel that prices will be better and still get money on their crops. . . . An amendment to the farm bill was offered by Senator Mills Logan of Kentucky and the Senate passed the amendment which would permit farmers to withhold surplus barley and fire cured tobacco from the market and procure Government loans on any portion of the crop withheld. . . . Of course you will note that the farmer could do this. . . . and please note that the Senate passed only the amendment. Next it must pass the bill itself.

The United States Senate has confirmed the appointment of Congressman Fred Vinson of the Eighth Kentucky District as Associate Justice of the United States Court of Appeals. . . . The appointment was made some weeks ago and the confirmation was fully expected. . . . Now the business of getting another congressman to represent the Eighth District is foremost in the minds of the good folk of that area.

Right off hand the column would say that Joe Bates of Greenup is a most likely choice. . . . Joe would like the post. . . . Several others. . . . This conductor has talked with a few Eastern Kentucky citizens on this subject and found that there would be at least one other given consideration by the people. . . . Although William J. Fields, former Governor and ex-congressman from that district has made no overtures toward running for the office, it is believed that he would not be a bit backward about accepting the nomination were it offered to him. . . . Governor Chandler declared to the Legislative Council that he did not feel that the State, at this time, could spare the money for an increase in the scholastic per capita or for teachers' retirement. . . . He pointed out that the school children were now getting \$12.00 per child, which is one of the highest per capita in the United States. . . . An increase now would have to be cut later, declared the Governor. . . . The Governor also said that there had been some criticism because the per capita had fallen a few cents short of \$12.00 during the last two years. . . . This is the fault of the school officials. They estimated the number of children and we based our appropriation on their figure. . . . The actual number was more than their estimate. . . . The appropriation this year will be approximately \$1,000,000 more than last if the school population figures are correct. . . . "And furthermore the Governor took a stand against the freeing of toll bridges at present. The revenues from the bridges are sufficient to pay for the bridges under the toll bridge act and I believe that it is best to leave the bridges alone for the time being," was the statement of the Governor. . . . Henry Ward, representative from Paducah, has been barnstorming over the State talking to representatives and senators seeking their sympathy in a bill to free the bridges.

Advertisement for 'THE BROWN HOTEL' in Louisville. Text: 'TRY THIS RECIPE FOR A MERRY CHRISTMAS! YOU'LL FIND it much easier, quicker and less expensive, we believe, if you do our Christmas shopping right in your own home town or country. So, for less taxes to yourself, we say—do your shopping at home. . . . However, if you find that you must come to Louisville, we'll be glad to see you again at the Brown and we'll try to give you a useful, refreshing and happy visit.'

Large advertisement for Chevrolet cars. Text: 'CHECK CHEVROLET'S LOW DELIVERED PRICES... model by model'. Includes a list of features: '85-H.P. VALVE-IN-HEAD ENGINE', 'PERFECTED HYDRAULIC BRAKES', 'GENUINE KNEE-ACTION', 'ALL-SILENT, ALL-STEEL BODIES', 'FISHER NO DRAFT VENTILATION', 'TIPTOE-MATIC CLUTCH'. Also includes a testimonial: 'RESULT: You'll be AHEAD with a CHEVROLET!'.

Advertisement for Midland Trail Garage. Text: 'Midland Trail Garage Morehead Kentucky'. Includes a small image of a car.

### December 13 Date Of Winter Concert

Keith P. Davis Directs College Group In Initial Concert Of School Year

The first concert of the winter season was given Monday, December 13, at 7:30 p. m., in the college auditorium.

Mr. Keith Davis directed the variety concert with its made up of the College Orchestra, String Quartet, Training School Girls Glee Club, violin solos, and a vocal solo. The program was as follows:

- I. 1. Dark Eyes—Horlick
2. The Old Refrain—Kreiser and Kreiser
3. Apple Blossoms—Jacobs and Kreiser
- Vocal by Marion Louise Oppenheimer
4. Ching Chang—Brooks

- II. 1. Echoes—E. H. Horton
2. Will You Remember—Romberg
- Training School Girls Glee Club
- III. 1. The Mill—Roff Pochon
2. Praludium—Bach
3. A Dream—Haydn
4. Scherzo—Beethoven
- IV. 1. A Hope Carol—Smith
2. Whistle, Mary, Whistle—Folk Song
- V. 1. Bolero—Ravel
2. (a) Tales From the Vienna Woods—Strauss
- (b) Nocturne—Chopin
- Violin solos by Keith Davis
3. Children's Toy Symphony—College Orchestra

#### HOLIDAY MATERIAL MAY SPREAD MOTH

Christmas trees and other evergreen materials such as boughs and ropings used for Christmas decoration are now moving out of the New England section which is known to be infested with the

gypsy moth. Much of this material will find its way into Kentucky where there is a real danger that the moth, a serious menace to shade and ornamental trees, may become established.

The moth passes the winter in the egg stage on the twigs of such materials as boughs and ropings. Such materials are inspected before they leave the infested area but that is no guarantee that they are free of gypsy moth eggs, since these small egg masses may be overlooked by the inspector.

As a safeguard against the establishment of this pest in the State all evergreen material used in Christmas decorations whose origin is beyond the state boundary line should be burned promptly when removed from the house, says a statement by Prof. W. A. Price, head of the department of entomology at the University of Kentucky Agricultural Experiment Station. Do not throw it on the dump or otherwise discard it. If eggs are on it they will

#### AMONG THE COUNTY AGENTS

C. D. Lucas, Jr., a Breckinridge county 4-H club member, made a profit of \$45 on his calf.

Wesley Phillips, Taylor county, raised his corn yield by liming and phosphating the land.

Lawrence county farmers have built a large number of poultry and brooder houses.

More manure was spread in Adair county than formerly, and there are still large unused deposits in the area.

Nine-tenths of an acre of sugar cane brought G. H. Masters, Estill county, \$150 for the sorghum it made.

Two bulls have been bought by Rockcastle county farmers to head high-grade Jersey herds.

Several truckloads of turkeys by farmers of Wallace county disappeared in Madison county.

Fleming county farmers have spent \$121,000 for phosphate on 3,750 acres of land.

George Wray, Clinton county, bought a purebred Duroc boar to use in improving his own and his neighbor's herds.

Strawberry patches in Crittenden county are in good condition, indicating a large crop in 1938.

#### USES COMBINE TO HARVEST LESPEDEZA

Earl F. Wright, a Breckinridge county farmer, bought a combine machine to harvest lespezeza, and did custom harvesting over the county for 1 cent a pound for lespezeza seed plus \$1 an acre. County Agent Will B. Ray says that the machine is so practical and successful he believes that ultimately all lespezeza seed will be harvested in this manner.

The combine works best in fields where the yield runs 300 pounds or more of seed to the acre. The better the seed yield the better it does the harvesting job.

hatch next spring and in all probability the moth will have established itself in that area.

#### AUTO LOANS

\$10.00 to \$1,000 ANY YEAR MAKE OR MODEL.

1. No. Endorsers
  2. Payments Reduced
  3. Mortgages Refinanced
  4. Used Car Sales Financed
  5. First and Second Mortgages
  6. Car is Only Security
  7. Car Does Not Have to be Paid For to Get Additional Cash.
  8. Loans Made in 15 Minutes
- Guaranty Finance Co., Inc.  
252 East Main St.  
Lexington, Ky.—Phone 652

#### Still Coughing?

No matter how many medicines you have tried for your cough, chest cold, or bronchial irritation, you can get relief now with Creomulsion. Serious trouble may be brewing and you cannot afford to take a chance with any remedy less potent than Creomulsion, which goes right to the seat of the trouble and aids nature to soothe and heal the inflamed mucous membranes and to loosen and expel the germ-laden phlegm. But other remedies have failed, don't be discouraged, try Creomulsion. Your druggist is authorized to refund your money if you are not thoroughly satisfied with the benefits obtained from the very first bottle. Creomulsion is one word—two, and it has no hyphen in it. Ask for it plainly and read the name on the bottle is Creomulsion, and you'll get the genuine product and the relief you want. (Adv.)

### Holtzclaw Speaks To Assembly On U. S. Constitution

Declares Federal Constitution "Still Living Despite The Various Interpretations"

Dr. J. B. Holtzclaw, head of the Morehead State Teachers College History and Political Science Department, was the assembly speaker yesterday morning, talking for his subject "The Living Constitution."

Parts of his address are given below:

"One hundred and fifty years ago on the seventh day of September of this year, thirty-nine distinguished men—all that remained of the fifty-five who first assembled in the month of May—came to bring the Constitution to the Convention to an end. On that day, those thirty-nine men, somewhat brain-weary from four months of arduous debating and deliberation during an exceedingly torrid summer, signed their names to the document we call the Constitution of the United States, and began their journeys homeward to take the fight for ratification.

"But even so, our anxiety over the fate of the Constitution in the present age and during the present crisis, bids us again look to the present rather than the past. For while a well meaning orator may be pouring out protusive glittering generalities in his service to the great men of that day, he can well imagine that all the whily and realistic and somewhat perturbed listeners are pondering these important questions of the day: What is this thing we call the Constitution? What does it mean to us in 1937? Does it mean the same in all respects as it meant one hundred and fifty years ago? Could the Founding Fathers have been so infatigable as to make a fundamental law that would always apply in the same way to all times and all conditions? Why then all this controversy over the Constitution and its meaning? Who knows and who can tell us whether the Constitution is being violated or whether it is after all adequate to meet the needs of the hour?"

"... The document as written in 1789, together with the twenty-one amendments, can be read leisurely in a half-hour. The real Constitution as practiced—the living Constitution—would contain volumes.

"... If the Constitution has meant one thing under Jefferson and another under Lincoln, then it has meant one thing to Chief Justice Marshall and another under Chief Justice Taney. If the Constitution meant one thing under Taft and another under Franklin Roosevelt, then it has meant one thing under Chief Justice White and still another under Chief Justice Hughes.

"... Toward the close of the meeting Ben Franklin rose and said to the members of the convention: 'Often during the course of this session I have looked at that landscape behind the president without being able to tell whether it shows a rising or setting sun.' Now at length I have the happiness to know that it is a rising and not a setting sun!"

#### CIVIL SERVICE EXAMS

The United States Civil Service Commission has announced an open competitive examination for the positions of assistant fisheries statistical and marketing agent, \$1,800 a year, and junior fisheries statistical and marketing agent, \$1,620 a year, in the Bureau of Fisheries, Department of Commerce. Certain education, and experience in fishery work are required.

Full information may be obtained from Flora Cooper at the post office in Morehead.

#### A. F. ELLINGTON

DENTIST

Phone 26 ——— Morehead

#### Dr. L. A. Wise

Optometrist

Hurt Building

FRIDAYS ONLY

#### 666

checks COLDS

and FEVER—

first day

Liquid, Tablets, Headache, 30

Salve, Nose Drops, minutes

Try "Rab-Mo-Tem"—World's Best

Liniment

#### Lane Funeral Home

Funeral Directors

Ambulance Service

Phone: 91 (Day)—174 (Night)

## FOR SPECIALS Dec., 17 and 18

WE ASK YOU TO COMPARE THESE PRICES. ON EVERY ITEM YOU'LL FIND THAT THEY ARE DECIDEDLY LOWER... THOUGH THE QUALITY IS WITHOUT DOUBT THE FINEST. CUT YOUR FOOD BUDGET. SHOP AT HALDEMAN STORE AND SAVE!

SPECIAL—DECEMBER 17th & 18th	
PORK LOIN	lb. 22c
Center cut chops 26c lb.	
PORK BUTTS	lb. 20c
Sheep Casing Frankfurters	lb. 23c
CARTON EGGS	dozen 26c
LOOSE EGGS	dozen 25c
STAR HAMS	lb. 26c
LINK SAUSAGE	lb. 20c
COUNTRY STYLE SAUSAGE	lb. 21c
SLICED BACON 1/2 lb. package	18c
PRINT LARD	2 lbs. 25c
HOG BRAINS	lb. 10c
LOIN STEAK	lb. 32c
ROUND STEAK	lb. 30c
RIB ROAST	lb. 28c

#### WEEK END SPECIAL DECEMBER 16th, 17th & 18th

USCO Baking Powder	7c
Navy Beans	6 lbs. 25c
Del Monte Fruit Cocktail	2 1/2 gal. 27c
Del Monte Peaches, halves, 2 1/2 gal.	2 for 35c
None-Such Mince Meat 9 oz.	2 for 25c
Sunny Boy Pumpkin No. 2 1/2 can	9c
Grapefruit Juice, Del Monte, 2 gal.	2 for 25c
Standard Tomatoes, No. 2 can, 3 for	20c
Royal Puddings, Van. Choc., B'scotch 5c	
Ensign Brand Walnuts	lb. 19c
Soft-Shell Almonds	lb. 25c
Cranberry Sauce, 17 oz. can, 2 for	25c
Del Monte Early Garden Peas, 2 gal.	2 for 27c
Excell Soda Crackers	2 lbs. 18c
Pioneer Fig Bars	lb. 14c
U. S. P. Pears, 20 ounce glass jar	23c
USP Whole Peeled Apricots, 20 oz. jar	23c
Yellow Corn Meal, USCO, 5 lb. sack	15c
USCO Large Oats regular	17c
USCO Large Oats quick	17c
Rockwood Cocoa No. 2. can	17c
Special Blend Coffee	lb. 18c
Dromedary Pitted Dates, 7 1/4 oz., 2 for	25c
Raisins, Ideal-Not-a-Seed, 15 oz. pkg.	9c
Glace Cherries cellophane wrapped 3 oz.	13c
Swansdown Cake Flour	pkg. 23c
Duff's Spice Cake Mix	can 23c
Union Flour	24 1/2 lbs. 93c
Heinz Cooked Macaroni, 17 oz can 2 for	25c
Heinz Assorted Soups	2 for 25c
McCormick's Ground Cloves	8c
McCormick's Ground Cinnamon	8c
House of Lord's Tea 10c size	2 for 19c
House of Lord's Tea	1/4 lb. 22c
House of Lord's Tea	1/2 lb. 41c
Octagon Laundry Soap	6 for 25c
Octagon Toilet Soap	2 for 9c
Octagon Scouring Cleanser,	2 for 9c
Octagon Soap Powder small	2 for 9c
Octagon Soap powder large	2 for 29c
Octagon Soap Chips small	2 for 19c
Octagon Soap Chips large	2 for 35c
Super Suds small	9c
Super Suds large	2 for 35c
Granulated Octagon Soap	2 for 35c
Palmolive Soap	2 for 11c
Concentrated Super Suds	2 for 35c
Bon Bons, Hardie Bros.	1 lb. box 20c
Bon Bons, Hardie Bros.	1/2 lb. box 10c
Weaver Costello Pan American Mix lb.	25c
Pan American Mix	1/2 lb. box 13c
5 lb. Box Chocolates, Weaver Costello,	98c
5 lb. Box Chocolates, Hardie Bros.,	98c
Juvenile Cookies	3 for 14c

### THE UNITED SUPPLY CO.

HALDEMAN STORE — HALDEMAN, KENTUCKY



### That are Distinctive

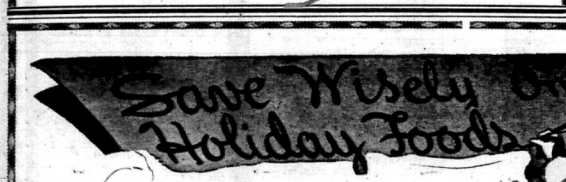
Skuller's has a beautiful collection of timepieces for both men and women that will make perfect Christmas gifts for the more discriminating. The collection has pocket watches, strap watches and also the more ornamental designs for cases, etc.

If you want to give something for the home what more appreciative gift could there be than silverware from Skuller's. Many distinctive patterns at a wide range of prices.

Should you desire to give rings you will find a selection at Skuller's to suit anyone.

# SKULLER'S

LEXINGTON'S LEADING JEWELERS



Remember, it's what your money buys and not how much you save that determines true economy. You can get the best foods and delicacies here—things that you can be proud to serve to the most distinguished guest—yet our prices are low considering the high quality and enjoyment your money brings.

Everything from cranberries to nuts to make your Christmas table a delightful one. You can be a perfect hostess and serve our foods with the complete knowledge that your guests are getting the very best possible

## I. G. A. GROCERY

GLENNIS FRALEY, Mgr. PHONE 44

# TOYS GIFTS TOYS

## Surplus factory Stock TO BE SOLD AT

In The New  
**CAUDILL BLDG.**  
ACROSS STREET FROM  
AMOS 'N' ANDY

In The New  
**CAUDILL BLDG.**  
ACROSS STREET FROM  
AMOS 'N' ANDY

# PUBLIC SALE

THESE TOYS AND GIFTS WILL BE SACRIFICED AT LESS THAN FACTORY COSTS, AND MUST BE SOLD BEFORE CHRISTMAS, BECAUSE THIS STORE ROOM WAS RENTED FOR THE SOLE PURPOSE OF UNLOADING THIS HOLIDAY MERCHANDISE, AND WE MUST VACATE THIS STORE IMMEDIATELY AFTER CHRISTMAS

Regular \$5.00 <b>FITTED CASES</b> \$2.98 Other cases up to \$39.50	Regular \$2.00 <b>END TABLES</b> \$1.29	<b>WAGONS</b> 1/2 price 17c to \$5.95	\$19.50 to \$25.00 <b>FITTED BAGS</b> \$11.95 Others 1/2 Price	Child Size <b>FURNITURE</b> 1/2 price	Regular \$1.00 and \$1.50 <b>TABLE and RADIO LAMPS</b> 67c Others up to \$3.95
--	---	---	---	---	---

Regular \$7.00 <b>STEAMER TRUNKS</b> \$4.98 Others as low as 25c	<b>FLOOR SETS</b> <b>ASH TRAYS</b> \$2.95 Others as low as 49c	Regular \$1.00 22-inch <b>MAMA DOLLS</b> 49c Others \$3.98 and as low as 10c Regular \$10.00	<b>INLAD TABLES</b> AND CHAIR SET \$4.95 Others as low as 98c
---	---	--	--

**We Have The Following Toys & Gifts**

And Many Others Too Numerous To Mention

- Black Boards
- Electric Clocks
- Electric Lamps
- Radio Lamps
- Dresser Lamps
- Rocking Chairs
- Arm Chairs
- Padded Chairs
- Fitted Bags
- Over Night Bags
- Dressers
- Chests
- Cradles
- Sewing Boxes
- Kiddie Cars
- All Kinds Dolls
- Smoking Stands
- Smoking Floor Stands
- Floor Smokers
- Baby Cribs
- Chairs
- Bingo Sets
- Boat Sets
- Irons
- Printing Sets

- Cowboy Suits
- Doll Crib
- Bags
- Velocipedes
- Fitted Dresser Sets
- Tool Sets
- Mules

- Trucks
- Automobiles
- Cats
- Dogs
- Ash Trays
- Jolly Kitchen Sets

- Pianos
- Teddy Bears
- Teeter Totters
- Tree Lights
- All Kinds Games
- Air Planes
- Taxi Cabs
- Tennis Rackets
- Pool Tables
- Autos
- Fire Wagons
- Checkers
- Drums
- Bazookas
- Gargles
- Green Trees
- Dressed Dolls
- Cowboy Dolls
- Rabbit Dolls
- Cases
- Trains
- Cedar Chests
- Soldier Sets
- Motorcycles
- Many others too numerous to mention.

**WE HAVE GIFTS FOR GROWN-UPS AS WELL AS FOR CHILDREN**

Regular 10c <b>TOYS-GIFTS</b> 5c	Regular 25c <b>TOYS-GIFTS</b> 10c	Regular \$2.00 <b>TOYS-GIFTS</b> 98c Others at \$1.37	Regular 25c and 50c <b>TOYS</b> 17c
--	---	--	---

<b>POOL TABLES</b> \$14.98 Others as low as 98c	Regular \$9.00 <b>DELUXE TRICYCLES</b> \$5.95 Others as low as \$2.30	<b>SLEDS</b> \$1.95 Others \$2.95 to \$3.95	Regular \$22.00 <b>FIRE CHIEF AUTO TRUCKS</b> \$14.95 With ladders, bell, lights.
---	--	---	--

ALL GIFTS AND TOYS SUBJECT TO PRIOR SALE—FIRST COME—FIRST SERVED—WHEN OUR STOCK IS GONE, WE ARE THRU. THEN WE SAY, "A MERRY CHRISTMAS WITH A HAPPY AND PROSPEROUS NEW YEAR TO YOU ALL"

## TOY & GIFT Store Liquidating In New Caudill Building

ACROSS THE STREET FROM AMOS 'N' ANDY

**Worst Weather In Years Experienced**

(Continued from page 1.)  
dules. The Covington tobacco market reported no interference from the weather.

Clearing the road by temperatures above freezing was reported from Paducah, Hopkinsville, Mayfield, Hickman and Henderson in the Western portion of the State.

Weather observers at Henderson, however, forecast that falling temperatures would give paving another ice glaze during the night.

The Ohio River was sufficiently clear for slow traffic although gorges formed at dams 35 and 36 where passage way was maintained by chopping the ice. The stream was three-quarters full of floating ice at Covington.

Hundreds of minor automobile accidents were reported throughout the State and numerous fires kept firemen busy.

Three deaths were indirectly attributed to the freeze-up. Reports from all sections of the State reflected the serious and hazardous conditions.

For the first time in years the city of Morehead was without its daily newspaper as two inches of snow which turned into a hard glaze halted all highway traffic in the section.

Added to the dangers was fire. Breaking out in the heating plant of the Brookville High School a blaze caused \$500 damage to the interior of the brick structure. Firemen were impeded in their efforts to reach and extinguish the flames by the cold and ice.

Steady rain and milder weather reduced the hazards in Pulaski County where previously the roads were encrusted with ice. Bus transportation was paralyzed.

Schools were open but the attendance was far below normal. Telephone service was partially disrupted in Harlan County when wires fell to earth the weight of sleet covering them. Evans and Hall High Schools were closed when the 730 students of the schools were unable to reach them.

**Horton-Reynolds Make KIAC Team**

(Continued from page 1.)  
bowlville, and the "gem" of the local office.

Their opinions coincided closely at all positions and left very few nominations for honorable mention when the second team was completed.

To begin with, let's look at the ends.

Bob Hatton weighs 214 pounds, is 6-foot-3 and a senior. He was the star performer, offensively and defensively, on Eastern's excellent line. He is a proficient pass receiver, hard tackler and a hard worker.

Ralph Emerson was more than a wingman for the University of Louisville, it was his punting as much as his pass receiving and tackling that clinched for him a position on the first mythical eleven. He weighs 180 and exceeds 6 feet by an inch. A regular on the Cardinal team 3 seasons, Ralph earned a spot with the all-star select last season.

Ed Kubala's untiring efforts at Danville produced this year one of the best teams Centre has seen in several years, and because of the team work he generated all players appeared about on a par but as a tackle Leo Gruszkowski did have a bit of an edge. His work on the defense was extraordinary. He played in every contest and was relieved only when the heat of the fight had subsided.

Pete Gudauskas served a 2-fold purpose at Murray, kicking goals as well as covering the territory assigned to him as a tackle in the most approved manner. He is second to no athlete in Kentucky in the stern stuff of which linemen are made.

Joe Cook is rated as the very best guard in the State by all writers who saw him perform in Western, and because no other guard received quite so many votes as Joe or Buck Horton, Morehead, center and captain, the latter was placed at the other guard niche. Buck's greatest virtue was his defensive effort, which quality him for consideration as guard.

C. W. Harlin received just one vote more than Caple to land the pivot placement. The outstanding lineman among the Racehorses, this athlete is a stone wall on defense, an accurate passer and a quick thinker.

Jimmy German quarterbacked the smart Colonels of Centre in workmanlike manner and in addition contributed his share of yardage. He never failed to get his man when patting at the safety position. He fought through the entire U. of L. game with a bruised hip. He weighs 175 pounds and just an inch and 6 feet.

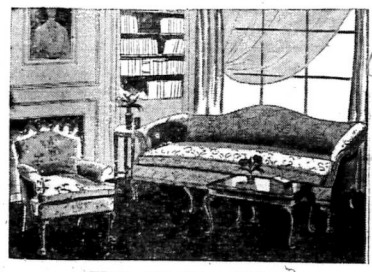
Ralph Struthers, the Pennsylvanian punting in his second varsity season at Union, applied his 195 pounds to opposing lines with devastating results and his claim to a top rung in the backfield is unquestioned.

Dean Robinson and Henry Cooper of Western are far above the average and received just 2 votes less than Hatton and Emerson. Fred Schlemmer is separated from the first team only by a bit of seasoning.

# Add to the Joy of Giving with FINER GIFTS

FROM  
**Wheeler's**  
KENTUCKY'S FINEST FURNITURE STORE

**GIFTS FROM \$2 TO \$5**  
BOOK ENDS, METAL OR POTTERY, UNUSUAL DESIGNS  
POLISHED BRASS HANGING IVY BOWLS  
CHROMIUM CANDY BOWLS  
FIRESIDE BASKET OF PINE CONES  
COPPER ASH TRAYS  
IMPORTED FIRESIDE FIBER BASKETS  
CHILDREN'S NURSERY LAMPS  
IMPORTED ENGLISH LAMPS  
SAMSON BRIDGE TABLES  
BOUDOIR LAMPS  
CHROMIUM BATH STOOLS

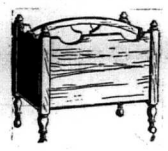


THE HOME GIFT

Give something for the home and your gift is one that all can appreciate. Whether you choose a modest end table or a complete ensemble for a room, you will find interesting variety here—authentically styled, finely crafted furniture pieces that unmistakably reflect your good taste. And the prices are no higher than you'd pay for furniture of mediocre designing.

**GIFTS FROM \$5 TO \$10**  
COMBINATION DECORATED FIRESCREEN AND CARD TABLE  
ELECTRIC CLOCKS  
HAMMERED ALUMINUM SERVING TRAYS  
BRASS AND IRONS METAL FIRE SCREENS  
DECORATED FIRE SCREENS  
COFFEE TABLES  
MAHOGANY END TABLES  
CANDLEWICK BED SPREADS  
BOUDOIR CHAIRS  
OCCASIONAL CHAIRS

**Magazine Baskets**



Magazine Baskets choice of many styles and finishes... 2<sup>79</sup>

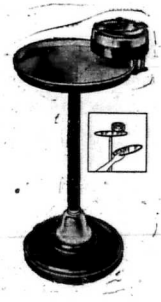
**SPINET DESK**

Spinet desk, beautiful walnut finish, a gift that is sure to be appreciated. Price is only... 9<sup>75</sup>

**MIRRORS**

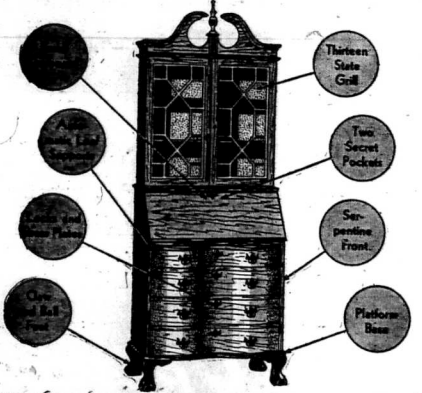
Plate Glass Mirrors, copper sealed, 30-inch size, antique gold frame. Price only... 9<sup>85</sup>

**Serva-Tray METAL SMOKERS**



Makes a very practical gift. Brown or black, chromium trim. Exactly as illustrated. Ash receiver and tray... 3<sup>95</sup>

**THIS STUNNING Governor Winthrop Secretary**



Will grace your living room for only 39<sup>50</sup>

Note the authentic Governor Winthrop features on this fine secretary. You will be excited when you inspect this secretary on our floor. Furnished in mellow hand-rubbed mahogany or walnut finishes. SEE IT TODAY!

**Cocktail Smokers**

Cocktail Smokers, brown or black, chromium trim. Price only... 2<sup>19</sup>

**GIFT HASSOCKS**

Gift Hassocks—They are smart and cheerful. Every home needs one or more. Prices start at... 1<sup>79</sup>

**TABLE LAMPS**



Table lamps with metal base, indirect lighting, complete with parchment shade... 5<sup>95</sup>

**LANE CEDAR CHESTS**

One of the largest selections of Lane Cedar Chests in Central Kentucky from which to choose. Prices start at... 27<sup>90</sup>

**BISSELL'S**



**Charm**

Modernly designed... distinctive color that adds charm to every home. So smartly styled you'll take pride in showing your friends its superb beauty and efficiency. Choice of two finishes. \$6<sup>95</sup>

"CHARM" has the BISSELL "HALO" Double Brush Control—exclusive Bissell feature — and SELF-CLEANING BRUSH.

# Wheeler's

KENTUCKY'S FINEST FURNITURE STORE

Lexington

Kentucky

### 'Create Your Own Utopia,' Advises Paula Lecler In Her Lyceum Address

"Poets are chronic Utopians, but you would create a Utopia, create it in yourself!" Philosophy indeed is manifest in that statement by Paula Lecler, one of the greatest women journalists in the world, as she lectured to Morehead College students and faculty Thursday evening.

The noted foreign news correspondent is a gracious person. She has perfect poise, expressive hands and smiling, alert eyes. Her voice is modulated, her vocabulary extensive and her grammar above reproach. Her sympathetic personality has won for her friends from all over the globe.

Paula Lecler's literary talent is inborn. She "lisped in numbers" as early as she can remember, she was writing verse—and done yet. She never took a journalism course in her life, nor was she ever on the staff of a school paper. She did not start at the bottom and build up, so to speak. She began her news career as a correspondent for seven years.

Her greatest thrill in life is meeting people. She is sometimes a wee bit nervous, she admitted. In fact, she once stumbled into the august presence of Haile Selassie when he was emperor of Ethiopia.

Asked if she would care to change her profession, Miss Lecler exclaimed, "Oh, no, while it is the most dangerous work in the world, I wouldn't have any other!" —Evelyn Miles, Reporter.

Paula Lecler is one of the most vivacious speakers that has ever spoken at Morehead College. This international correspondent and lecturer is "human" and solicitous. She is sympathetic with "flunkie" reporters as she is with down-trodden nations. This woman who turned from writing poetry to tabling front page news, has seven years of experience which money could not buy. She says there is no other career she would trade for her own, which is the yet. She never took a journalism course in her life, nor was she ever on the staff of a school paper.

Her most horrible experience is the nine days spent in a jail cell in Spain, where for nineteen hours she was not permitted to have a drink of water. The greatest thrill comes to Miss Lecler when she meets people, dining with Gandhi, staying with Selassie's daughter, talking to Queen Marie, being granted an interview by Generalissimo Chiang Kai-Shek — these are what she calls thrills.

### Mrs. Myrtis Hall Speaks On Women's Banquet Program

Prominent Louisville Lawyer's Topic Is "Achievements Of Women"

The American Association of University Women's December program was in charge of Mrs. Myrtis Hall who secured as her speaker Mrs. Anna Settle, prominent lawyer of Louisville, and state chairman of the committee of economic and social status of women.

The meeting opened with a turkey dinner in the faculty dining room. Mesdames H. A. Babl and W. H. Vaughan were guests. Following the dinner an address was given in the lobby of Fields hall on "The Achievements of Women."

College seniors and several people from down-town were present.

Mrs. Settle traced the work of women as they progressed from participation in only seven occupations to the present. Today according to Mrs. Settle, over 500 occupations are open to women.

The next meeting of the organization is scheduled for January 9 at which time Messrs. Amy Irene Moore and Edna Neal are to speak.

### ERNESTINE TROEMEL TO TALK AT FLORIDA FORUM

At the National Women's Aquatic Forum which opens December 20 and 21 at Fort Lauderdale, Fla., near Miami, Miss Ernestine Troemel will speak on "Safety Tests" December 23.

Topics of interest are: Fundamental technique for beginners, teaching of swimming and diving, start and turns, tips on coaching of advanced students, and ear infections are related to swimming and diving.

### CARTER IS ELECTED COURT TEAM CAPTAIN

Lawrence Carter was elected captain of the Morehead State Teachers College Eagle basketball team yesterday evening by his team-mates with James Ishmael as alternate.

The Eagles went through a lively workout yesterday in preparation for their coming matches with Transy and Holbrook next week and Ellis Johnson and Len Miller expressed themselves as "feeling much better as to the success of their charges" after the poor showing made last week against Holbrook.



'Twas the night before Christmas . . . When all through the house . . . Not a creature was stirring . . .

But there'll be more hustle and bustle in your home the next morning . . . glorious Christmas Day . . . if Santa Claus leaves presents that are from Bruce's. Hundreds of people in this section have been able to fill Santa's bag to overflowing for every member of the family by shopping at Bruce's. They have been pleasantly surprised how far a dollar will go towards purchasing quality gifts at this modern store.

HOLDING THE LEAD AS ONE OF EASTERN KENTUCKY'S MOST COMPLETE CHRISTMAS SHOPPING STORES

Bruce's continue to hold the lead as one of Eastern Kentucky's shopping centers. Anticipating a record holiday business a few weeks ago the floor space in Bruce's was doubled. You will find thousands of select gift offerings to choose from. Whether it's for Him or Her . . . Mother of Father . . . Sister or Brother . . . we have the very thing to meet your needs.

**PASTEURIZED DAIRY PRODUCTS**  
Fresh from  
**THE SPRING GROVE DAIRY**  
Phone 15-F-3  
Delivered At Your Home Daily Or At The Following Stores:  
Brown's Grocery      Allen's Meat Market  
Caudill's Grocery      Clearfield Supply Company

**A Tip To Troubled Christmas Shoppers**  
IMPORTED RUM For Your Christmas Egg Nog.  
CHAMPAGNES For Your Christmas and New Year's Parties  
DOMESTIC AND IMPORTED WINES—½ pints, pints, 5th, gallon  
Brandies, Blended and Straight Whiskeys, Gins, Bonded Whiskeys (old time popular brands), and Imported Scotch Whiskeys  
May we help you make your selection from our fine stock. We know that we have the very thing you want.  
**MOREHEAD DISPENSARY**  
221 Main Street      Morehead, Ky.

## ELECTRICAL APPLIANCES

are the Most Useful Christmas Gifts

Practical . . . Economical . . . Convenient . . . Handsome . . . Worth Having . . . Pleasant Reminders of Your Thoughtfulness . . . Sure to Please . . . Highest Quality Materials and Workmanship Assure Good Service . . . Here Are Suggestions at Prices to Fit Your Purse:

Iron	Curling Iron
Clock	Chime Clock
Urn Set	Dish Washer
Vibrators	Room Heater
Hot Plate	Chafing Dish
Percolator	Cigar Lighter
Coffee Urn	Coffee Maker
Hair Dryer	Sun Ray Lamp
Heat Lamp	Sandwich Grill
Waffle Iron	Ironing Machine
Wall Lamp	Vacuum Cleaner
Table Lamp	Toaster Tray Set
Floor Lamp	Washing Machine
Light Bulbs	Automatic Baggs
Food Mixer	Automatic Roaster
Table Stove	Automatic Toaster
Egg Cooker	Automatic Water Heater
Heating Pad	Christmas Tree Lighting Set

Remember, the early shopper gets his choice of the most attractive items and avoids that last-minute scramble. So don't delay buying. Come in today.

See Gifts Displayed by Your Local Dealer or at Our Local Office

\*Decorate Your "Dearway" Entrances with Festoons of Colored Electric Lights for Christmas

Your electrical servant,  
**REDDY KILOWATT**

# The Christmas Store

The wooden soldiers are standing at attention, the Toyland Flier is pulling into the station and Toyland's loveliest dolls are gay as gay can be, for Bruce's Toyland has that Holiday atmosphere. Thousands upon thousands of Santa's finest toy creations are eagerly awaiting to gladden the hearts of Morehead boys and girls.

Prices in our toy department won't spoil your enjoyment of Christmas, for we've done a shrewd bargaining job with Toyland's finest factories and are passing our savings along to our customers. Honestly, there's no department where it pleases us quite as much to give exceptional values as in our giant Toyland.

## Open Evenings UNTIL CHRISTMAS

To better serve your needs this store will be open until 9 o'clock each evening from now until Christmas. It is true that many thousand gifts have already been taken out by pleased Christmas shoppers, but when one toy leaves our racks another new one takes its place. We knew that you expected to have your best Christmas in years this season and for that reason we purchased double the amount of gifts and toys that we have carried before. Rest assured that you will find the very thing you want at Bruce's. You need go no further for you could look all day long and every minute see something new in this store which is filled to the ceiling with the latest and finest gift creations.

# Bruce's 5-10 & \$1 Store

**KENTUCKY POWER & LIGHT COMPANY**  
INCORPORATED  
E. E. CURTIS, Manager

### Eagles Have Tough Time Subduing Fast Manchester Team

Carter Str As Morehead Casers Turn On Power To Win 31-28

In a dimly lit, exceptionally small Manchester, Ohio, gymnasium, Morehead's sluggish Eagles were hard put to conquer the fast-traveling Alford Holbrook Dinos, 31 to 28, in a rather slown game that marked the opening of the Blue and Gold's 1937-38 basketball wars.

The blast that was supposed to send the lid to the sky and the Eagles rolling to an easy victory turned out to be only a puff, and the proud Blue and Gold were forced to turn on all power to overcome a 17 to 11 half-time lead.

Games, Holbrook's flashy forward, tallied four times from the field and twice from the free throw line in the first period, and five times by the gratis route while flipping in one from the floor in the second to lead all scorers with seventeen points. It was his stellar performance that actually spelled defeat for the Moreheadians.

Schomber and Dibert combined with Games in the opening half to

give the Dinosurs a commanding lead at intermission.

The Eagles, led by Carbide Carter, began to find the hoop early in the second frame, and with fewer minutes remaining had pulled into a seven point lead. However, this was not to be for long. Games sank three free throws in a row, and Roush tallied one by the same route to cut the Eagles lead to its three-point victory margin.

Carter, while not the highest scorer of the games, was the Eagles' chosen and the best man on the floor. "Carbide" tallied eight points by the same route and limited his man to a goose egg for the evening.

### Breck Basketeers Tounce Leopards 18-6 Wednesday

Fans Have High Hopes For Successful Season; Second Third Team Used

The Breck Eaglets trounced Haldean's Leopards here Wednesday night to the tune of 37 to 19. The Breckinridge Junior High team also triumphed over Haldean's Junior High by chalking up an 18 to 6 victory.

These games herald the opening of the 1937-38 season and Breck fans have high hopes that it will be a successful one for them.

The high school game was rather rough, both teams having quite a few fouls. Coach Bob Laughlin played his second and third teams for a large part of the game and Haldean scored the greater number of their points against the third team.

The Junior High game was rather laughable. All the Breck men (7) were, with the exception of two or three, under five feet tall but they showed up very well against the larger Haldean team.

The Eaglets play their next game Tuesday night, December 14, when they meet Ewing on the home floor. Ewing usually has a strong team so this game should be very interesting. The time, place and admission are the same: College Gym, 7:00 p. m. Admission 15c and 25c. Don't forget to come.

### "Mellerdrammer" Reviewed

The mellerdrammer, "Curse You, Jack Dalton," was not marked by brilliant acting. With the exception of Margaret Roberson, the actors were too self-conscious. Miss Roberson did a praiseworthy piece of acting, making her character stand out "head and shoulders" above the others. The reason for the mediocrity of the play is not known, unless the players had a limited amount of time in which to prepare for the opening curtain.

The audience was enthusiastic, at least, applauding the hero, booing the villain. The heroine might have been hampered by anglic lines, which would not allow her to speak naturally. Marie Miller handled her role, as feminine villain, only moderately. All in all, the play was all right, but it could have been better.



# From BISHOPS The Store Of Smart Selections

FOR HER COMPACTS FOR HIM

To see a woman's eyes sparkle give her a wonderful kit of lotions, powders and creams!

THESE SETS BY CARA NOME COTY, GEMEY YARDLEY



\$2.50 TO \$10.75



If she likes to attend smart parties and dances, then she will appreciate these lovely compacts and evening bags.

BEAUTIFUL EVENING BAGS STYLED BY LANGOIS \$3.25 - \$6.00 - \$10.00

Beautiful compacts by Cara Nome, Yardley and Hudnut \$1.00 TO \$5.50

A beautiful military set is appreciated by any man and is a gift that he will use every day in the year. A smart shopper can always well afford to give him a military set.



GENUINE LEATHER

\$2.50 TO \$10.00

## SYROCOWOOD NOVELTIES

"These Are Something New" Book Ends Ash Trays Pipe Holders Whisk Brooms An inexpensive and well-chosen gift.

50c TO \$1.50

## LEATHER GOODS

STYLED BY WILSON So they must be the best Bill Folds Card Cases Key Cases Bill Fold Sets Pocket Secretaries

\$1.00 TO \$5.00

## WOOD NOVELTIES

Products of California's Redwood Forests Nut Bowls Bon Bon Boxes Cookie Jars Trays Ice Buckets An appropriate gift that will be appreciated

\$1.25 TO \$3.00

## New Charmingly Designed Lamps...

"FOR HOME LOVERS" COLONIAL LAMP Novelty Colonial Model of Maple and Decorated China. With 10 inch decorated parchment shade. Always an Ideal Gift. \$1.50 CRYSTAL and CHROMIUM BOUDOIR LAMP \$1.25 and \$1.50

## IT'S YOUR TREAT

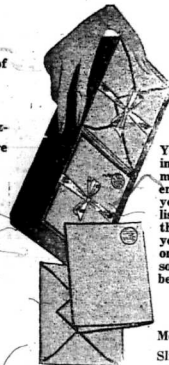
For the Holiday sweet tooth give a box of tempting, flavory candy.

They're pure, delicious and make an appetizing gift that everybody likes... And they're good for everybody.

In attractive Christmas boxes. Half pounds to three pounds

They're Jonston's and Gales Chocolates. There is none better

50c TO \$3.00



You'll find styles in this assortment to suit every personality on your Christmas list! The paper is the fine quality you love to write on, in exquisitely soft tints... all beautifully boxed

Monogrammed at Slight Extra Cost

\$1

A LASTING GIFT THAT WILL KEEP MEMORIES OF PLEASANT MOMENTS GIVE A...

## KODAK

A good Kodak is an ideal gift that will be appreciated by any member of the family. Give one this Christmas and your gift will bring years of pleasure to the receiver.

\$1.95 TO \$7.50



ONE Gift THAT TOPS THEM ALL

90 PROOF

Glenmore 100 Proof Kentucky Whisky

You don't have to worry about size or color, whether "he's already got one," or whether "somebody else thought of the same thing" - for if there's anything better than one bottle of Glenmore, it's two bottles. It's the whiskey of a lifetime, produced by men who've spent their lifetimes making it - a total of nearly 800 years of whiskey-making skill.

Glenmore Distillers Co., Incorporated Louisville - Owensboro, Kentucky

Glenmore 100 Proof Kentucky Whisky

Now 30 Months Old  
100 Proof Kentucky Whisky  
O-L-D B-O-T-T-S  
Sold Exclusively in Rowan County by  
THE MOREHEAD DISPENSARY  
Main Street Next to Postoffice

LET'S MAKE CHRISTMAS MERRY IN KENTUCKY!

JUST among ourselves, let's remember that for thousands of our own Kentuckians this year, "Merry Christmas" will depend on Christmas trade... You can help make a Merry Christmas for Kentuckians this year by shopping first among home folks, in your own locality. If you can't find what you want, try a neighboring Kentucky town or city. Don't take your business outside the State. Too many Merry Christmases depend on it at home!

THE BROWN HOTEL  
"Louisville's Largest and Finest"  
Harold E. Harer, Manager

# The C. E. Bishop Drug Co.

Morehead

Kentucky

"A Gift from Bishops will be Appreciated Throughout the Year"

# Society News

TELEPHONE '83 OR 235

**Mrs. H. A. Babb Entertains**  
Mrs. H. A. Babb entertained with three tables of bridge. Mrs. J. T. Manuel won high score prize, and Mrs. Andrew Price won guest prize.

The guest list included: Mesdames R. S. Hoke, Andrew Price, J. T. Manuel, C. B. Daugherty, Len Miller, Ellis Johnson, Earl King Sewff, John L. Sullivan, W. C. Winehand, Lester Hodge, W. H. Vaughan and W. B. Jackson.

**Mr. and Mrs. M. E. George Have Christmas Carol Party**  
Mr. and Mrs. M. E. George entertained with a Christmas Carol party Wednesday night for the faculty members of the M. S. T. C. in the Baptist Church. Rev. Gabriel Banks told a Christmas story and Mr. Keith Davis played a violin solo.

**Mrs. C. U. Waltz Entertains**  
Mrs. C. U. Waltz entertained with two tables of bridge at her home on Second Street Saturday afternoon. The guests were: Mesdames R. S. Hoke, Andrew Price, J. T. Manuel, Lester Blair, Ernest Jayne, Howard Holtzclaw and R. S. Braden.

**Women's Council Meets**  
The Women's Council of the Christian Church met at the home of Mrs. Murvel Croley with Mrs. Ernest Jayne assisting Mrs. Croley with the entertaining. The following officers were elected for the coming year: Mrs. Hartley Battson, President; Mrs. E. D. Patton, Vice-President; Mrs. Lester Hodge, Secretary, and Mrs. N. E. Kennard, Treasurer.

**Mr. and Mrs. Dudley Caudill Have Moved from their home on Main Street to Elizabeth Ave.**  
Mr. Billy Reed, of West Liberty, visited Mr. and Mrs. Dub Bell Sunday.

**William Earl Clay, the small son of Mr. and Mrs. Jim Clay, has**

been ill with Bronchitis for the past week. He is improving.

**Mr. and Mrs. C. E. Nickell and son, Leo, shopped in Lexington Saturday.**

**Mrs. Virgil Wolford visited and shopped in Lexington Saturday.**

**Mr. and Mrs. Earl May had as their Sunday dinner guests Misses Katherine Daniels and Leslie Caudill.**

**Mrs. S. E. Funk, of Newark, Ohio, will arrive Saturday to spend the Christmas holidays with her parents, Mr. and Mrs. A. T. Tatum.**

**Mr. Milton Caudill, who is attending the Riverside Military Institute in Lexington will arrive in Lexington Tuesday where he will visit for a few days before coming here for the Christmas holidays.**

**Mrs. Roy Cornett and daughter, Margaret Sue, spent the week-end in Lexington visiting Mr. and Mrs. Walter Hogge and family.**

**Mrs. Margaret Stuart, a teacher in the Haldeman school, fell yesterday and broke her arm.**

**Mr. and Mrs. Bill Lindsay, Jr. of Greenup, were the Sunday guests of Mrs. C. U. Waltz.**

**Mr. and Mrs. Harlus Catron and son, Floyd Chandler, returned home Sunday from a visit in Russell.**

**Mr. J. T. Daugherty will arrive here this week from Georgia to spend the Christmas holidays with his parents Mr. and Mrs. C. B. Daugherty.**

**Mrs. Margaret and Frances Penix and Virginia Lee Nickell shopped in Lexington Saturday.**

**Misses Elizabeth Rome and Martha Fife shopped in Lexington Saturday.**

**Messrs. V. D. Flood and Dan Pate were in Louisville Thursday on business.**

**Dr. A. Y. Lloyd, who is head of the Old Age Pension Department in Frankfort, stopped here Monday morning on his way to Washington.**

**Mr. Paul Joy Reynolds was a Saturday visitor in Lexington.**

**Rev. and Mrs. G. H. Fern shopped in Maysville Saturday.**

**Mrs. Ellis Johnson, of Ashland, is spending the holidays with Mr. and Mrs. Ray Vencill.**

**Mesdames Ernest Jayne and Hartley Battson shopped in Lexington Monday.**

**Mrs. E. T. Davis, of Maysville, visited Mr. and Mrs. Frank Havens over the week-end.**

**Mr. and Mrs. W. B. Davis, of Mary, Ky., are visiting Mr. and Mrs. Tennyson Redwine this week.**

**Mr. Henry Glover returned home Friday from Louisville where he has been taking treatments for sinus trouble.**

**Mrs. Mert Ridge returned home from the St. Joseph Hospital Monday.**

**FRIDAY & SATURDAY DECEMBER 17 & 18**  
**Borneo**  
OSA JOHNSON

**SUNDAY & MONDAY DECEMBER 19 & 20**  
**Sophie Lang**  
Goes West

**TUESDAY DECEMBER 21**  
**ZANE GIRD**  
**Forlorn River**

**MOOREHEAD This Week . . .**  
(Continued from page 1.)  
We certainly are not immune to depressions, but it seems that Moorehead feels them less than any other place.  
Turning to Haldeman, however, we find a more disheartening picture, with reports that employment has been cut far below normal.

**TABB THEATRE**  
**MT. STERLING, KY**  
**SATURDAY, DECEMBER 18**  
**ONE MAN JUSTICE**  
Charles Starret—Barbara Weeks  
Also Serial: "Dick Tracy"  
**SUNDAY, DECEMBER 19**  
**I LIVE MY LIFE**  
Joan Crawford—Brian Aherne  
Also serial: "Jungle Menace"  
**MONDAY, DECEMBER 20**  
**SPRINGTIME IN THE ROCKIES**  
Gene Autry

**COZY Theatre**  
**FRIDAY & SATURDAY DECEMBER 17 & 18**  
**Borneo**  
OSA JOHNSON

**SUNDAY & MONDAY DECEMBER 19 & 20**  
**Sophie Lang**  
Goes West

**TUESDAY DECEMBER 21**  
**ZANE GIRD**  
**Forlorn River**

**TRIMBLE THEATRE**  
**MT. STERLING, KY.**  
**THURSDAY**  
**LIVE, LOVE AND LEARN**  
Robert Montgomery  
—Kosmofid Russell

**FRIDAY**  
**SHE ASKED FOR IT**  
William Garzan—Orlen Howard

**SATURDAY**  
**IBRAID KID**  
Rex Bell  
Also serial: Secret Agent No. 9

**SUNDAY AND MONDAY DEAD END**  
Sylvia Sidney—Joel McCrea  
Also Feature in "The Sailor"

**TUESDAY**  
**NAVY BLUE AND GOLD**  
Robert Young—James Stewart  
Florence Rice

**WEDNESDAY**  
**THE LAST GANGSTER**  
Edward G. Robinson—James Stewart

**MOOREHEAD This Week . . .**  
(Continued from page 1.)  
We certainly are not immune to depressions, but it seems that Moorehead feels them less than any other place.  
Turning to Haldeman, however, we find a more disheartening picture, with reports that employment has been cut far below normal.

**Now at N. E. KENNARD HARDWARE CO.**

**PHILCO**  
AUTOMATIC TUNING  
IN A SUPERB TABLE MODEL

**PHILCO 7T\* \$65.00**

Less Audit

An immediate essential! Case-Control Automatic Tuning, Electro-Dynamic Speaker, Filter Foreign Tuning System, Automatic Volume Control, Push-Button Audio System, 3 Tuning Ranges, Smart Platinum Walnut Cabinet with Ebonized Inlay.

**LOOK! A PHILCO CHAIRSIDE MODEL**  
WITH PHILCO AUTOMATIC TUNING

**PHILCO 7CS\* Arm-chair comfort . . . plus all the advantages of Philco's major 1937 advancement!**

- Case-Control Automatic Tuning
- Philco Foreign Tuning System
- 3-Piece Tone Control
- Automatic Volume Control
- Electro-Dynamic Speaker
- 3 Tuning Ranges
- Many other Philco features

**\$89.95**

**COME IN! SEE HEAR and TUNE A 1938 PHILCO TODAY**

**FIREWORKS**  
WE HAVE A LARGE STOCK OF FIREWORKS OF ALL KINDS AND PRICES.  
**U. W. WALTZ STORE**  
Rodburn, Kentucky

**GOOD USED CARS**

1937 DODGE SPORT COUPE  
1934 PLYMOUTH SEDAN  
1935 FORD DELUXE COACH  
1933 FORD COACH  
1933 PLYMOUTH COACH

**MIDLAND TRAIL GARAGE**  
MOREHEAD KENTUCKY

**NOTICE**  
To Delinquent Taxpayers

All persons owing taxes for years prior to 1937 for School, County and State are warned to pay the tax, interest and penalty to the County Clerk before January 1, 1938.

**W. E. PROCTOR**  
COUNTY ATTORNEY

**NO WONDER THEY'RE CALLING PHILCO THE GREATEST BUY OF ALL TIME!**

**PHILCO 7T\*** \$65.00  
Less Audit

An immediate essential! Case-Control Automatic Tuning, Electro-Dynamic Speaker, Filter Foreign Tuning System, Automatic Volume Control, Push-Button Audio System, 3 Tuning Ranges, Smart Platinum Walnut Cabinet with Ebonized Inlay.

**PHILCO 7CS\*** Arm-chair comfort . . . plus all the advantages of Philco's major 1937 advancement!

- Case-Control Automatic Tuning
- Philco Foreign Tuning System
- 3-Piece Tone Control
- Automatic Volume Control
- Electro-Dynamic Speaker
- 3 Tuning Ranges
- Many other Philco features

**\$89.95**

**PHILCO 7EX\***

- Philco Inland Control Panel
- Case-Control Automatic Tuning
- Philco Foreign Tuning System
- 3-Piece Tone Control
- Automatic Volume Control
- Electro-Dynamic Speaker
- 3 Tuning Ranges
- Many other Philco features

**ONLY \$79.95** (Less Audit)

**PHILCO 116XX\*** \$200.00

- Inland Control Panel
- High-Fidelity Audio System
- Philco Automatic Tuning
- Controlbalanced Magnetics Tuning
- Philco Foreign Tuning System
- 3 Spread-Band Tuning Ranges
- Inland Control Panel
- Controlbalanced Magnetics Tuning
- Two Tone Controls
- 15 Philco High-Fidelity Tubes

**SMALL DOWN PAYMENT Big Trade-in Allowance**

\*Trade only with Philco High-Fidelity Audit in lowest possible foreign reception.

**GARAGE & RADIO REPAIR SHOP**

Our years of experience qualifies us to do all kinds of high class Radio set servicing efficiently and promptly. We also maintain a first class Auto Repair Shop.

All work guaranteed. Located on Highway 60 at entrance to Thomas Addition.

**ELLINGTON'S GARAGE**  
MOREHEAD, KENTUCKY

**HOW'S BUSINESS AMONG HOME FOLKS?**

AFTER all, when you do business in your home town or your home State, you help both yourself and your neighbor—because you help to keep your money at home, where it has a better chance to come back to you. . . . So shop at home, this year. If, by taking this advice, you refrain from coming to "The Brown"—we'll miss you, of course. But still we say: For a merrier Christmas, let's do our shopping at home!

**THE BROWN HOTEL**  
"Louisville's Largest and Finest"  
Herold E. Harter, Manager

**DECIDE!** You Will Give All Useful Gifts This Christmas and Come to Us As That Is

**ALL WE HAVE NO FOOLISHNESS—WE WILL SAVE YOU \$s**

**MEN'S HANDMADE GIFT TIES**  
NEW PATTERNS  
49c  
Beautiful striped figures. Dots and solid shades. Silk lined. Buy him several.

**HOUSE SLIPPERS**  
98c  
Women's warm felt Julies, high cut back, hand turned leather soles; colors: grey, wine, brown, and blue.

**ATTRACTIVE CHENILLE BATH MAT SETS**  
2 DESIGNS  
\$1.25 set  
Heavy quality, fast colors. 18x30 mat and lid cover to match

**Women's Crepe or Satin PRINCESS SLIPS**  
SIZES 36 TO 44  
98c  
Soft French crepe and shimmering panne satin, lace trimmed and tailored.

**16-RIB—OILSKIN UMBRELLAS**  
PRINTED  
\$1.98  
Umbrellas make the perfect gift; an Oil-silk makes it more than welcome. Novelty handles.

**70X80 BLANKETS**  
SOFT FLUFFY  
\$1.98  
Solid colors, rose peach green or blue. Taffeta binding.

**THE BIG STORE**  
For Old Santa Claus  
Railroad Street Phone 234  
The Place To Save

**ROOMS OR BOARD**  
\$1.00 Day  
**MEALS—25c**  
**BARBER SHOP**  
In Connection  
Two Barbers  
Ready to serve you  
J. F. Johnson, Prop.

**PHILCO**  
AUTOMATIC TUNING  
IN A SUPERB TABLE MODEL

**PHILCO 7T\* \$65.00**

Less Audit

An immediate essential! Case-Control Automatic Tuning, Electro-Dynamic Speaker, Filter Foreign Tuning System, Automatic Volume Control, Push-Button Audio System, 3 Tuning Ranges, Smart Platinum Walnut Cabinet with Ebonized Inlay.

**LOOK! A PHILCO CHAIRSIDE MODEL**  
WITH PHILCO AUTOMATIC TUNING

**PHILCO 7CS\* Arm-chair comfort . . . plus all the advantages of Philco's major 1937 advancement!**

- Case-Control Automatic Tuning
- Philco Foreign Tuning System
- 3-Piece Tone Control
- Automatic Volume Control
- Electro-Dynamic Speaker
- 3 Tuning Ranges
- Many other Philco features

**\$89.95**

**COME IN! SEE HEAR and TUNE A 1938 PHILCO TODAY**

**NO SQUAT NO STOOP NO SQUINT**

**PHILCO 116XX\*** \$200.00

- Inland Control Panel
- High-Fidelity Audio System
- Philco Automatic Tuning
- Controlbalanced Magnetics Tuning
- Philco Foreign Tuning System
- 3 Spread-Band Tuning Ranges
- Inland Control Panel
- Controlbalanced Magnetics Tuning
- Two Tone Controls
- 15 Philco High-Fidelity Tubes

**SMALL DOWN PAYMENT Big Trade-in Allowance**

\*Trade only with Philco High-Fidelity Audit in lowest possible foreign reception.

**N. E. Kennard Hardware Company**