

## Local Trivia

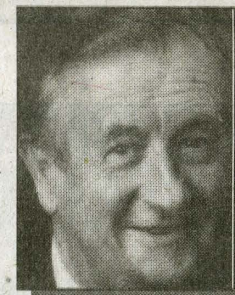
### Early History

■ The tour begins at the Kentucky Folk Art Center and continues along First Street, which was at one time Morehead's Main Street.

# History

THE MOREHEAD NEWS, MARCH 23, 2007

## About the Author



Dr. Jack Ellis is a retired Morehead State University Library director and a retired minister.

# Morehead Memories:

## People & Places

### Now and then: a photo tour of Morehead

By JACK ELLIS

Special to The Morehead News

*"And he saith unto them, whose is this image and superscription?" (Matthew 22:20)*

Confucius the ancient Oriental sage once said: "One picture is worth a thousand words." (If that is true, you can multiply each of these photos by 1,000 for the length of this article.) But the old Chinese philosopher was onto something, because a visual image is a powerful "memory maker". E.g. old photographs can not only bring to our conscious mind scenes long forgotten but can, under certain conditions, enable us to "conjure up" images we may never have seen. Therefore, many communities have their historical walks, such as Boston's historical walk through downtown, and Jamestown's walk through that restored village in Virginia.

Many of you may not know that Morehead has "A Walk Through Our History". This writer was privileged recently to host a tour group from Morehead's Sister City Ballymena, Ireland

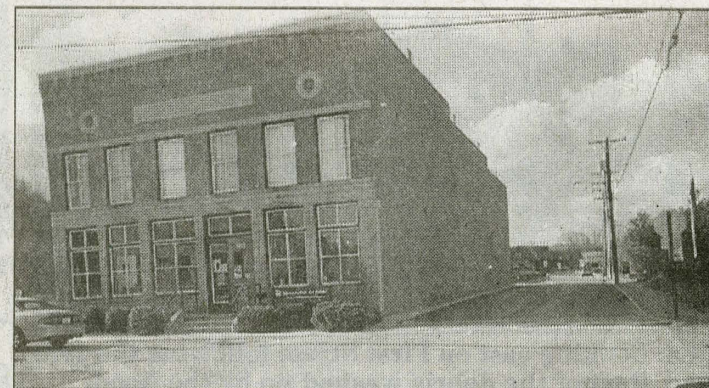
on one of those walks. The tour begins at the Kentucky Folk Art Center and continues along First Street, which was at one time Morehead's Main Street. It continues along First Street past the old freight and passenger depots to the Moonlight School Museum. The tour then continues to Main Street past the old courthouse to the university and back down Main Street and South Wilson Avenue, returning to the Folk Art Center.

The very interesting tour touches about twelve main points of interest and could be developed to include others. But on this tour you can only show what is there "now" and tell about what was there "then".

This column today takes the reader on a "walking tour" of historic Morehead using photos depicting what is there "now" and depicting what was there "then". This is done by using photos of specific sites in our community of what is there now and the earliest photos I can find of what was there then.



Then: The Morehead Grocery Company was established in 1904 by F.M. Tolliver, C.G. Clayton, and D.B. Caudill. It did extensive business throughout the surrounding counties. It had the first elevator (freight) in Morehead. Notice the unpaved street and the house across the railroad tracks. The house washed off in the 1939 flood. From left, Booker Mullins, employee; Jim Nickles, teamster; Bert Tolliver, president; "Pud" Goodin, employee. Front: Charlie Dillon.



Now: Kentucky Folk Art Center, First Street and South Wilson, 2007.

More photos on C-2

See HISTORY on C-2



Service You  
Can Trust!

**Mike's Home Improvement  
& Repair** Insured



Residential or Commercial  
FREE ESTIMATES!

Carpentry Small Backhoe Work  
Decks Vinyl Siding  
Remodeling Metal Roofing  
Flooring/Ceiling Pressure Washing

NEW CONSTRUCTION

**Mike Gilliam - Owner**

606-784-3627 • 606-462-7131

We've stayed  
**close** to our roots ...



## Local Trivia

### Early History

■ Another example of a historic story-poem is by local author Mary Stewart (now lives in Morgan County), is entitled Rasmah And My Education. It is a tribute to Jason Hemphill, a beloved black man who lived and died at Haldeman.

D Section

# History

The Morehead News Friday, August 17, 2007

About the Author



Dr. Jack Ellis is a retired Morehead State University Library director and a retired minister.

# Morehead Memories:

People & Places

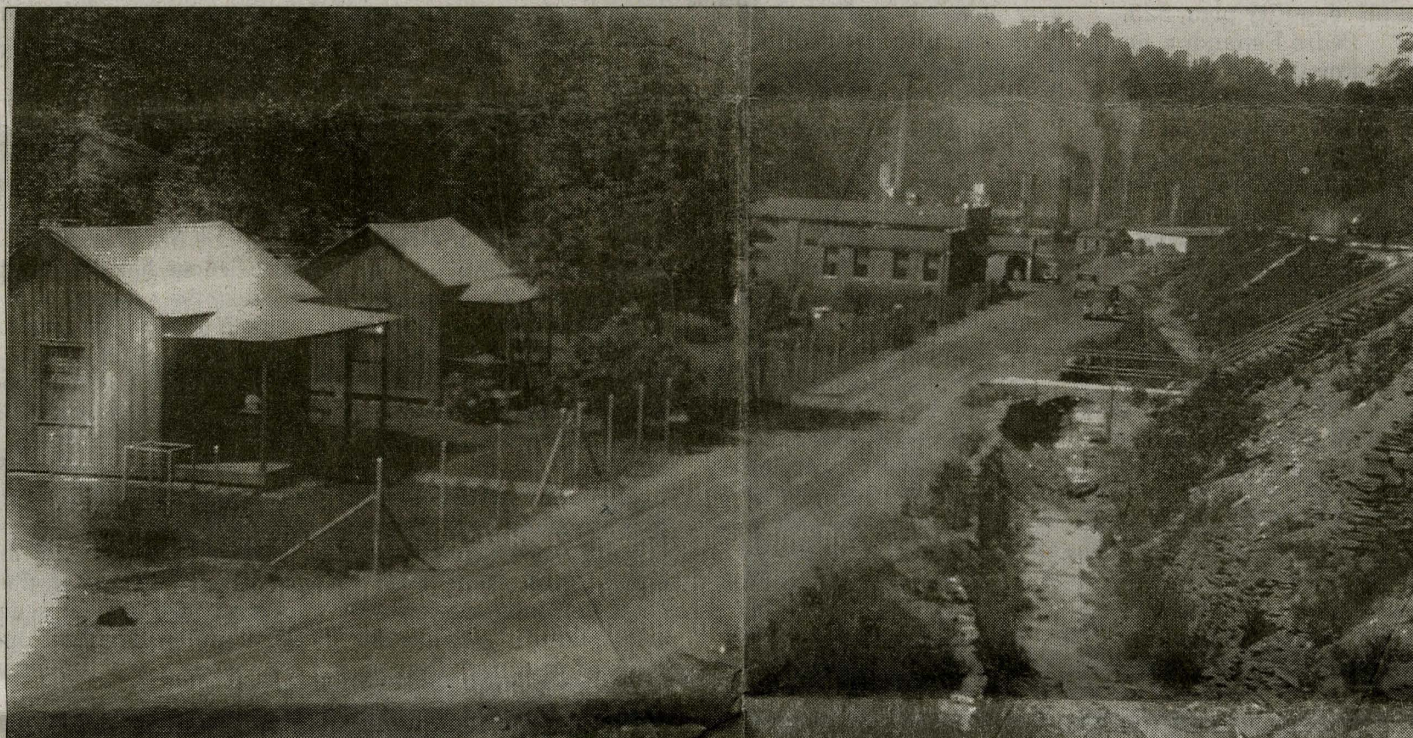
*The past in poetry and photos*

By JACK ELLIS  
Special to The Morehead News

*"Ask now of the days that are past." (Deuteronomy 4:32)*

The reason this writer continues writing this column is because I believe it is important to each of us to keep alive our memories of the past, even though life is always thrusting us forward. Time passes, changes occur, and we must change in order to stay alive and keep on growing. But even as we continue to grow and change, we need to hold tight to our heritage.

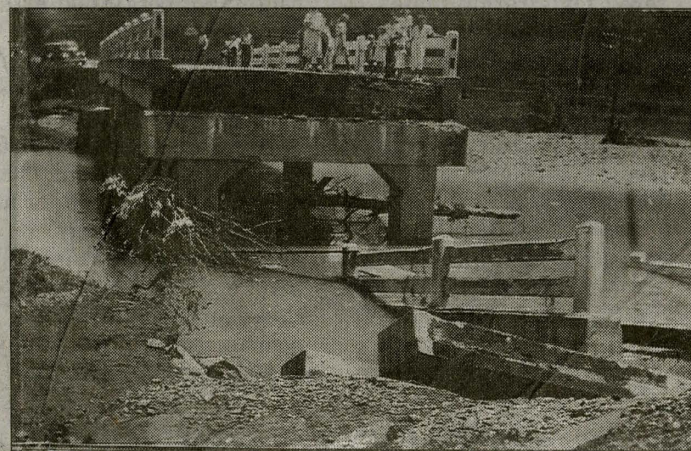
There are those who only want to live in the present. Their only concern with the past is how to escape it. Also, their only concern with the future is how to avoid it. But there can be no profitable present without powerful memories of the past. Also, there can be no hopeful future without a meaningful past. Every moment we enjoy in the present is a link between our past and our future. Those out off from their past



Haldeman—where many of Rowan's early settlers lived. This view of Main Street in Haldeman shows housing for many key employees with the KY Fire Brick Company in the background, 1930s.



Former slave Jason Hemphill was brought to Haldeman by the Becker family and worked for them. He died in 1954 at age 104 in Rowan County. Photo: Vernita and Russell Becker family.



## An Old Dishpan

By GRACE HOUGHENS

The old battered dish pan  
Held the dishes every day.  
A job without a "future"  
I "nearly" heard it say.

Now that old pan was aluminum  
So it joined a million more,  
To help defend our country,  
And guard our peaceful shore.



soon sink into spiritual stagnation, depression, and oblivion.

This column "Morehead Memories" is NOT just an exercise in nostalgia, but allows the reader to look proudly at our past, and at the same time look hopefully toward the future, realizing that hope is made up of memories of yesterday along with our expectations of tomorrow. Remembering our heritage gives new meaning to our today along with greater expectations of tomorrow.

Ordinarily one does not associate poetry with history. But many historical tragedies, triumphs, and tribulations are recorded in poetry. Also, poetry is considered by many as the emotional language of the soul. It can run the gamut of human experiences, from the deepest sorrow or sadness to the ridiculous and sublime. From somber to frivolous, from profound to flighty, from grave to hilarious. In other words, historical poetry can cover the whole gamut of human emotions, as it evokes our own images of the past.

Over the years, this writer has collected many poems. Some are classics by well-known poets; others were written by local authors: e.g. My People by B.R. Oney. Bob Oney grew up in the Haldeman-Little Perry area of Rowan County. He moved away when he left for the army in the

Homes were destroyed and 25 lives lost in the tragic flood of 1939.

1950s but his heart is still in Rowan County. That is evident by his nostalgic narrative "My People".

#### MY PEOPLE

By Bob Oney

They were descendants of those who had left the British Isles and Continental Europe during the seventeenth and eighteenth centuries, to arrive in our Atlantic ports, and move on to and through Virginia and the Carolinas, and on west through the mountain gaps, eventually following the Big Sandy and Licking Valleys into these foothills of the Appalachians. These descendants bore marks of that hard journey that encompassed three major wars and untitled skirmishes with the native population of which some were visibly blood relatives. Some words used by Chaucer were to be heard among them. A few were illiterate, more semi literate. Their surnames were Tackett, Purvis, Stamper, Sparks, Reeder, Oney, May, Fraley, Skaggs, Sturgill, Parker, Brooks, Messer, Turner, Hall, and White. They accounted for twenty-four households that nourished around one hundred and forty souls. They inhabited the agrarian community of Little Perry, Hayes Precinct, Rowan County, Kentucky, at the beginning of World War II.

Having recently come through the Great Depression, and a variety of troubles earlier in the century and at the close of the previous one, most of the elders were to live and see that war disrupt and change their long, accustomed way of life. No less than fifteen of their young men were inducted into military service, many seeing combat action. At the war's end in late 1945, most of these young men, upon returning home, moved permanently to northern cities for employment. This seemed to hasten the trend that nearly depopulated that community of its capable young. Today, but few of those original families are represented in Little Perry. Subsistence farming there is now non-existent.

Poems that tell a story are very much a part of history. The following poem is by Ed Mabry, a young Rowan County teenager in 1939. It is his account of the Rowan County Flood. This poem expresses deep emotion and dramatic insight into the tragedy of The Flood of 1939.

#### Rowan County Flood

By Ed Mabry

Twass in the hills of old Kentucky, in the year of thirty-nine.

There was an awful flood, it was a distressful time.

This bridge on US 60 East of Morehead was destroyed by the fury of the flood of 1939.

Read about early Rowan County and Morehead, "The City of the Hills" in one of Jack D. Ellis' Books

*Kentucky Memories: Reflections of Rowan County.*

450 pp; 200 photos; c. 2005. \$35.00 + \$4.00 S&H

*Morehead Memories: True Stories From Eastern Kentucky.*

592 pp; 100 photographs; c. 2001.

\$35.00 + \$4.00 S&H

*Patriots and Heroes: Eastern Ky. Soldiers of WWII.*

412 pp; 85 photographs; c. 2003.

\$35.00 + \$4.00 S&H

*Alpha M. Hutchinson: The Biography of A Man and His Community.*

160 pp; 65 photographs, c. 2003.

\$15.00 + \$4.00 S&H

Signed copies from

Jack D. Ellis, 552 W. Sun Street, Morehead, KY 40351

(606) 784-7473

Available locally at the Coffee Tree Bookstore; MSU Bookstore; Folk Art Center; St. Claire Gift Shop; Mustard Seed; and Baldwin & Assoc.

Also Available From:

Jesse Stuart Foundation

1645 Winchester Avenue. P.O. Box 669, Ashland, KY 41105

(606) 326-1667, (fax) 325-2519

E-Mail: jsf@jsfbooks.com; Website: JSFBOOKS.COM

fast.

You could see the lightening flashing, you could hear the thunder roar.

While the water it was slashing, through many a home and store.

There were many people walking on the streets of Morehead,

While others they were sleeping snugly in their beds.

It came all unexpected, many people had to die.

That was a terrible flood, that fell on the fourth of July.

The storm could not be conquered, for hours it did last.

Many people they were struggling, while the water was raising

From the little town of Haldeman, through Morehead and Blue-stone.

Many people they were suffering, and left without a home.

The storm in all its fury swept across the mountain tops.

It filled the valleys with water, and destroyed many crops.

It washed away 25 bodies, and covered them in the mud.

I'm tellin' all you people, that was a terrible flood.

Another example of a historic story-poem is by local author Mary Stewart (now lives in Morgan County), is entitled Ras-

You wouldn't know it now.  
That plain old battered thing.  
For it is bright and shiny.  
Out on a bomber's wing.

If it could talk, I'm sure  
We'd hear a thrilling story.  
To rise from lowly dishes,  
To fly on wings of glory.

Giving pans is lots of fun;  
Let's help all we can.  
For when a plane flies over,  
"There goes my old dish pan."

Many people think recycling in our culture is something new—but it began in dramatic fashion during WW II as this humorous poem says (1944).

mah And My Education. It is a moving tribute to Jason Hemphill, a beloved black man who lived and died at Haldeman. Jason had a very positive influence upon the lives of many of the young people in Haldeman. His memory is still revered today. A portion of that poem is as follows:

"I watched Rasmah as he knelt in the spring garden and touched the rich earth. I followed him, because he would name the flowers and trees and cared about what a child thought.

"He wanted me to be special, to learn early to name trees and flowers; to sing 'Swing Low, Sweet Chariot,' to practice soul-thinking and silence. I asked him if I could be a 'heathern,' too, repeating what I had heard and wanted to be like him.\*

\*Entire poem published in Mary Stewart's Circle a Blue Moon, and in Jack Ellis' Kentucky Memories. Used with permission.

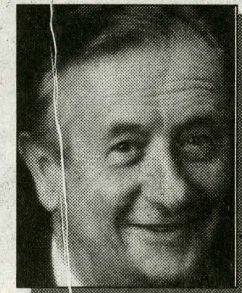
[www.themoreheadnews.com](http://www.themoreheadnews.com)



**Local Trivia****Early History**

■ W.E. "Snoop" Crutcher, former editor and publisher of The Rowan County (and Morehead) News predicted in the 1950s: "Morehead will one day become the economic, educational, recreational, medical and cultural center of eastern Kentucky."

# History

**About the Author**

Dr. Jack Ellis is a retired Morehead State University Library director and a retired minister.

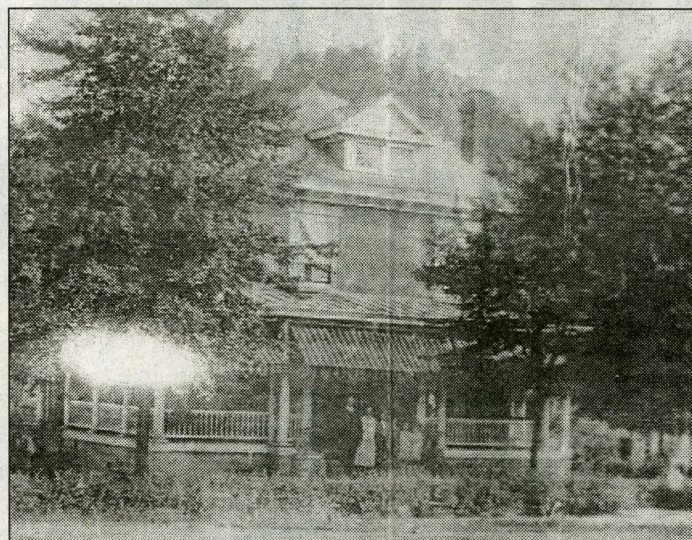
## Morehead Memories:

## People & Places

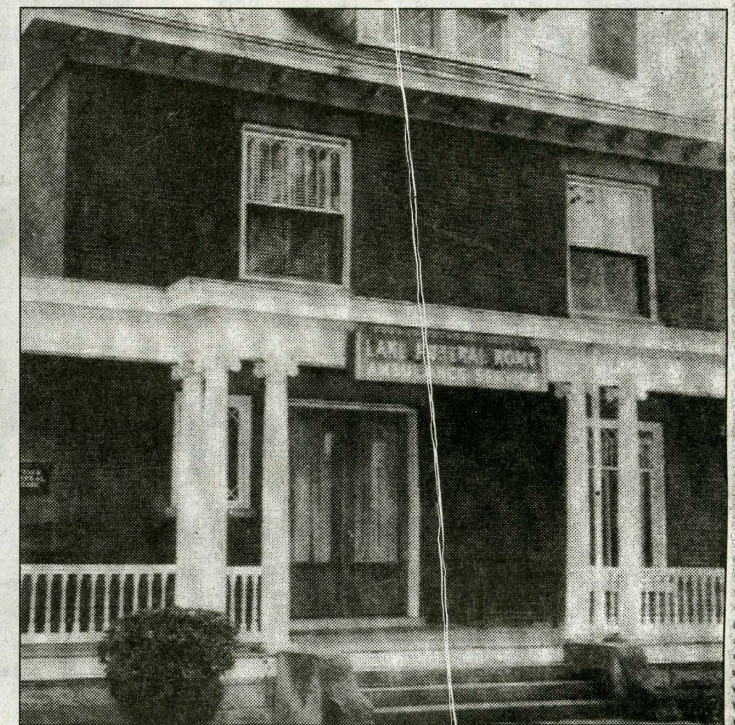
### *Now and then: a photo tour of Morehead, II*



**Now:** The corner of Carey Ave. and Main Street is the site of the Whittaker Bank.



**Then:** This stately residence was located in Morehead at the corner of Main Street and Carey Ave. It was the home of W.A. "Bill" Young. Mr. Young was vice president of the Morehead and West Liberty railroad that went bankrupt in 1906.



**Then:** This residence at the corner of Carey Ave. and Main Street was also the site of Lane's Funeral Home until 1980 when it became the site of the Morehead National Bank.

**By JACK ELLIS**

Special to The Morehead News

*"I stir up your minds by way of pure remembrance."*  
(2 Peter 3:1)

This article is a continuation of the historic walk through the streets of Morehead. As one walks through the city there are

many memories that can be brought to mind with old photographs of bygone buildings and businesses. Then by comparing photos of what is there now with what was there then, one can readily realize how the town has grown and matured.

W.E. "Snoop" Crutcher, the former editor and publisher of The Rowan Coun-

ty (and Morehead) News often prophetically predicted in the 1950s: "Morehead will one day become the economic, educational, recreational, medical, and cultural center of eastern Kentucky." That vision is rapidly reaching a reality through the cooperative efforts of the city council, fiscal court, Morehead State University, St. Claire Re-

gional Medical Center, civic, business, and professional community along with solid citizens' support. Everyone working together for what is best for Morehead and Rowan County can build a bright future for our county beyond even the most optimistic predictions. But the key is cooperation.

As we continue this his-

toric photography tour of now and then through our community, let us remember hopefully. Also let us recognize expectations of tomorrow. Remembering our past is not just an exer-

cise in nostalgia, but to remember hopefully gives new meaning for Morehead Tomorrow and a brighter vision for the future of Rowan County.

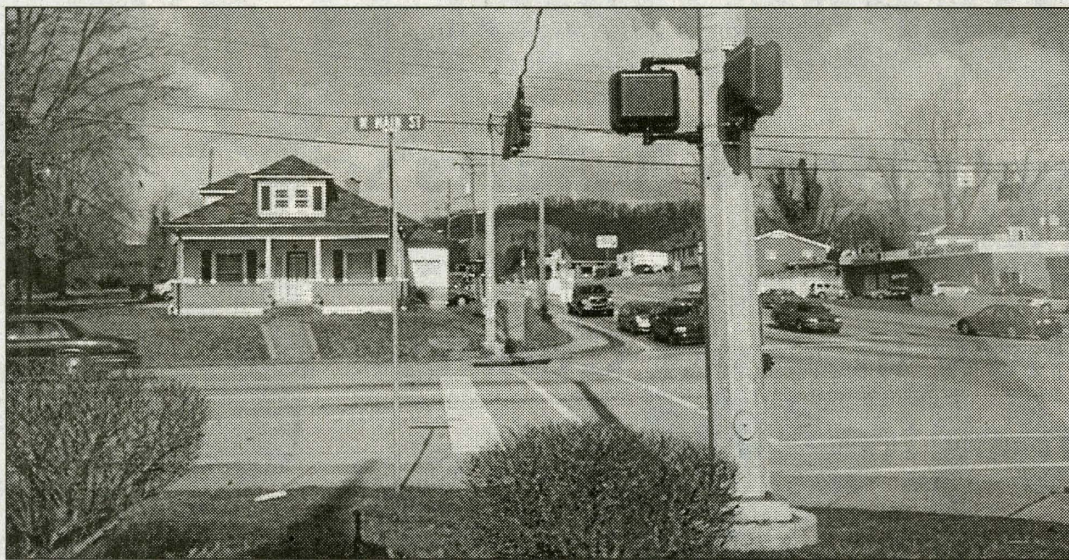




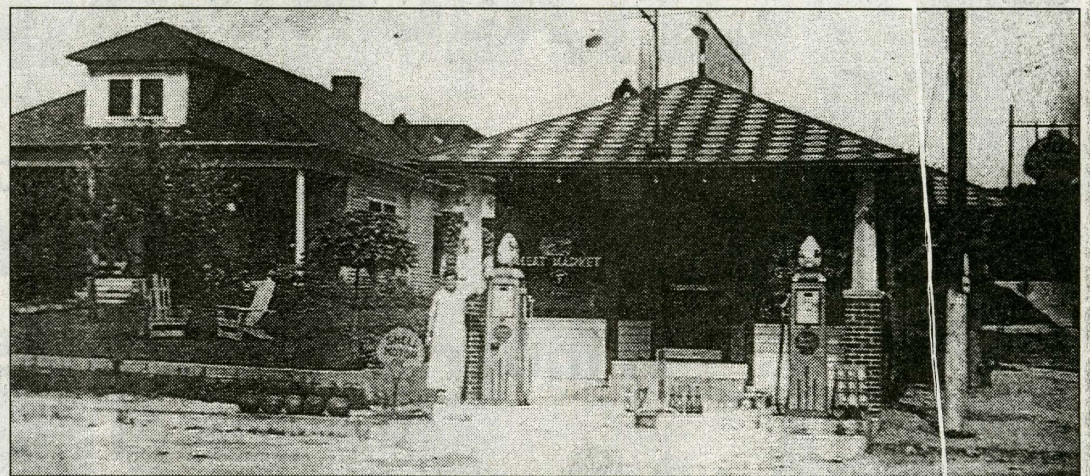
**Now:** Corner Hargis at Main Street, from left, First Federal Savings and Loan and Dr. Mayo's optometry office.



**Then:** North side of Main Street at Hargis was a Standard Oil service station and Maytag agency owned by Woody Hinton. The center, white building was once a hospital. The old Midland Trail Hotel is in the background. It was built by John Cecil in the 1930s.



**Now:** W. Main at Rt. 32 looking out toward the interstate is a private residence and busy 5-lane highway.



**Then:** Millard Brown Store and home, located at the corner of US 60 and Rt. 32. Mr. Brown is standing in front of his business that also was a Shell gas station..

*More photos on D-6*



**Now:** Looking west on First Street at the freight station.



**Then:** Looking west on Railroad Street (then) at the same scene in the 1890s.



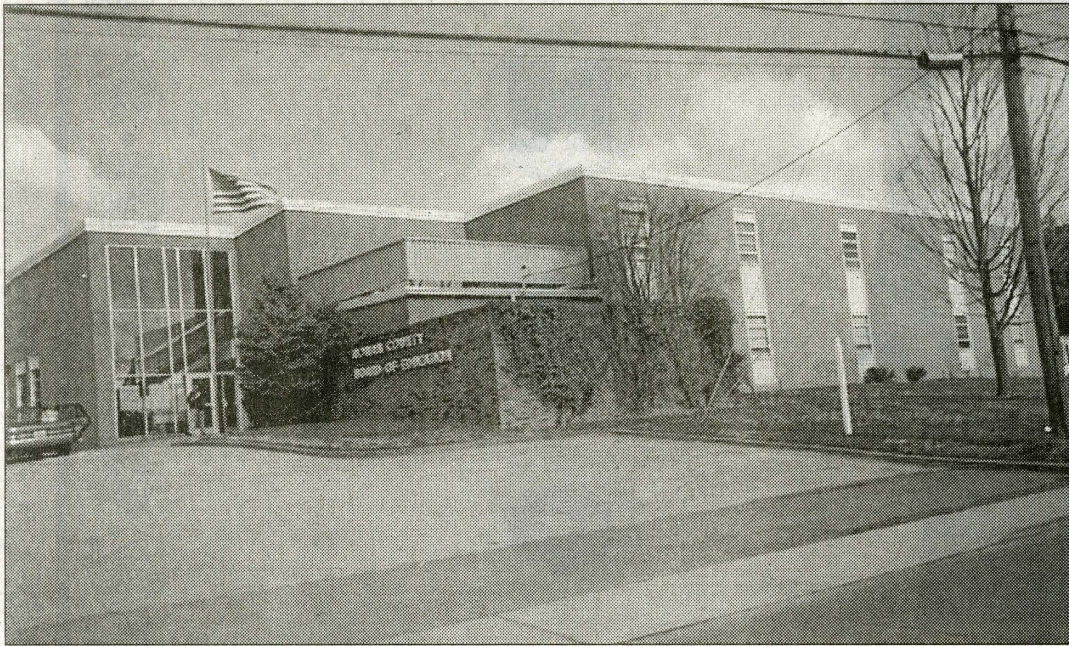
## Morehead Memories photo tour part II



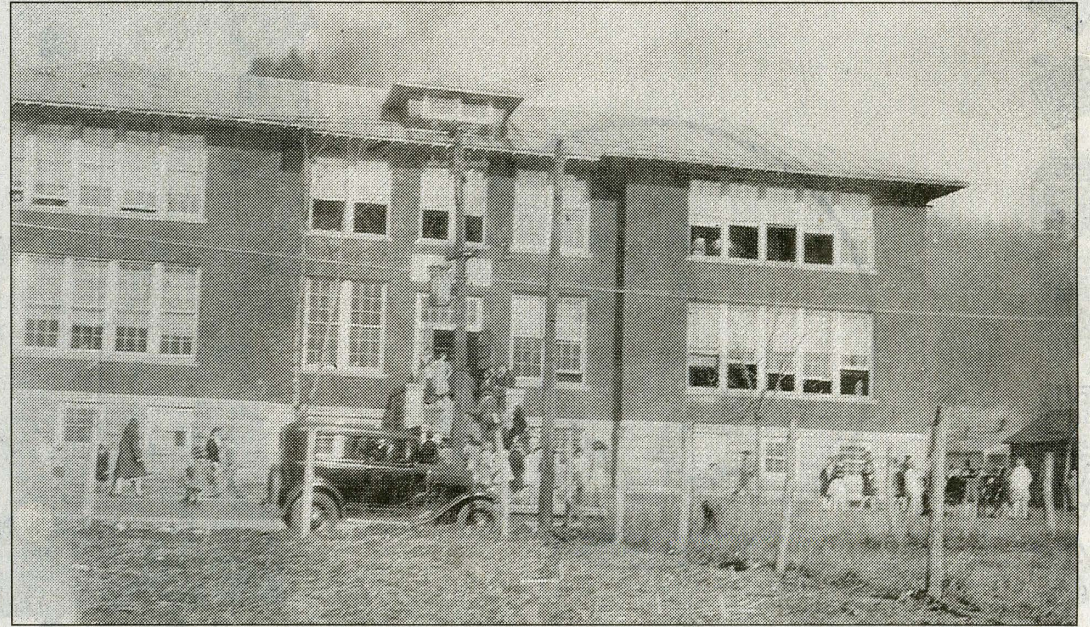
Now: Looking east on Main Street at Larry Fannin Motor Sales, one sees a large inventory of automobiles.



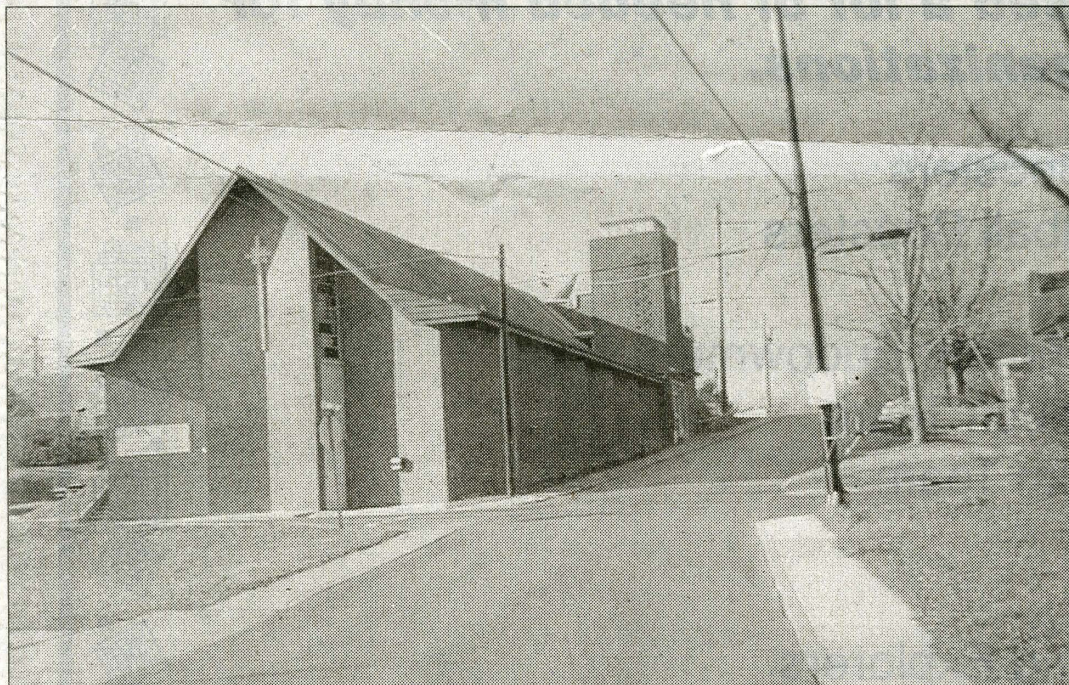
Then: Fannin Motor Sales on East Main Street had a much smaller inventory in the 1960s.



Now: Rowan County's beautiful Board of Education building located on East Second Street.



Then: Morehead High School opened in 1925. Total cost of construction and equipment was \$30,000 (paid for by a bond issue). It was a 12-grade school located on Second Street (present site of School Administration Building.)



Now: On North Hargis Ave. between Sun Street and Second Street is a Medical Outreach Center that was once the sanctuary for the First Church of God.



Then: This building faced Sun Street parallel with North Hargis Ave. It was the home of Morehead's First Church of God, 1900-1948, and then was replaced with a new sanctuary, which now houses the Medical Outreach Center.



*Take A Stroll Down...*

# MEMORY LANE

*Photos From  
Rowan County's Past*



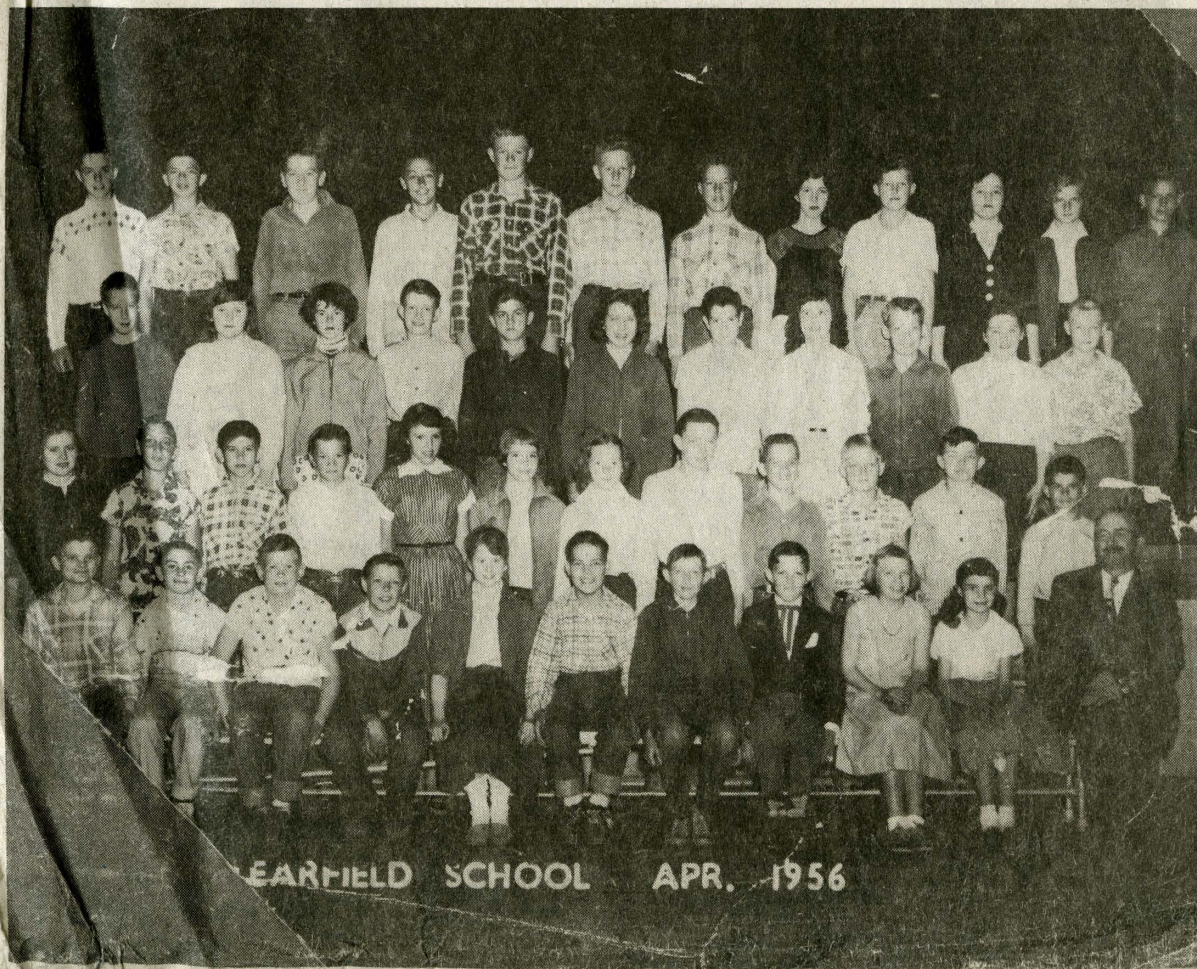
Robert Caudill, Dorothy Caudill and Virginia Caudill Vinsin with their father, Dudley Caudill, former cashier at Peoples Bank of Morehead. It was taken in 1929.



David Whisman, on left, Polly Burton, Shrilda Whisman and Frances Whisman in a photo taken on Aug. 6, 1950.



Leeanna Hamilton and sister Angena Hamilton Tussock, grandmothers of Cly Thomas and brother a sister of Arthur Thomas. Sent in by Naomi Moore, wife of Arthur Thomas. Taken sometime in the 1930s.



EARFIELD SCHOOL APR. 1956





## Remembering our past

Go back in time with this special section of *The Morehead News* that we've named Memory Lane.

The photographs that appear on these 14 pages depict the lives of Rowan County families and some of the events that played such a role in the future of our county.

Pictures date back as far as 1879 and 1892 and travel forward as far as the 1970s.

Among the features represented are: the company store at Haldeman in 1910, Luther Price in front of his store in 1956, the Joe Fisher family in 1906, as well as dozens of other Rowan County families.

More than 80 photographs were submitted by our readers.

We hope you enjoy this trip to yesteryear.



## Brought To You By:

Caskey's Inc.

F&D Tire

Morehead Electric

MSU

Caudill Tire

Frederick & May Lumber

All Seasons

Holbrook Drug

Morehead National Bank

C. Roger Lewis Agency

A&L Mobile Homes

SealMaster

Greentree Forest  
Products

Cutters Roadhouse

Lee's Famous Recipe

Golden Rule Vinyl

LUV Homes

Greenhill Equipment

Domino's Pizza

Stucky's Beauty Salon

Slone's Market

Morehead Financial

Coffee Tree Books &

Fuzzy Duck Coffee Shop

Fidelity Credit

Smith's Furniture

Big 4 Lumber

High Energy Yamaha

Uniform Shop





The Company Store at Haldeman taken around 1910. Not everyone is identified. From left are — Gullett, — Gullett, Nan Hayes, Lou Hayes, Dell Hayes, Jim Williamson, T.W. Parker. Children on railroad tracks are Lovelace children.



Miss Neal's Second Grade at Breckinridge Training School taken around 1946. From left are, back row, Joan, Shirley R. Mobley, unidentified, Joyce R. Gullett, Betty Lou Braham, Judy, unidentified, Amelia Meachum, Mary Ann Anderson, Shirley D. Stewart, middle row, Mary Evelyn Cales, Donald Blair, Betty Jean Green, Ann Ball, Jenny Ball, Joyce Pettit, front row, Gloria A. Coleman, Bonnie Crostwaite, Gail Crostwaite, Sue Lancaster, Phylis Bluer and Richard.



ZZLY



GRIZZLY



GRIZZLY

Size Does Matter. Just Ask The Grizzly.



Leaner and meaner this season, the Grizzly once again rules the lair with the biggest, most powerful engine in the industry. • "ATV of the Year" (4-Wheel ATV Action Magazine) • Exclusive, fully automatic Ultramatic transmission • Dual-range drive system with reverse • Hand-



GRIZZLY





Arthur Thomas, Leber Sparks and Naomi Thomas taken at Morehead in 1974.



James R. (Jim) and Alice Porter taken at the 50th wedding anniversary celebration at their home one mile west of Elliottville on May 7, 1971.



This is the second grade at Haldeman Elementary School 1930-31.



Nancy Luvicia Catron Hamm, great-great-grandmother of Galen Patrick Withrow. Original photo made in 1908.

# CASKEY'S, INC.

CASKEY'S JEWELRY 784-2782

CASKEY'S GUN & PAWN 784-4242

CASKEY'S ANTIQUES 783-0001

2500 US 60 East • Morehead, KY • Phone 784-2782

Open Monday - Saturday 8 am - 5 pm



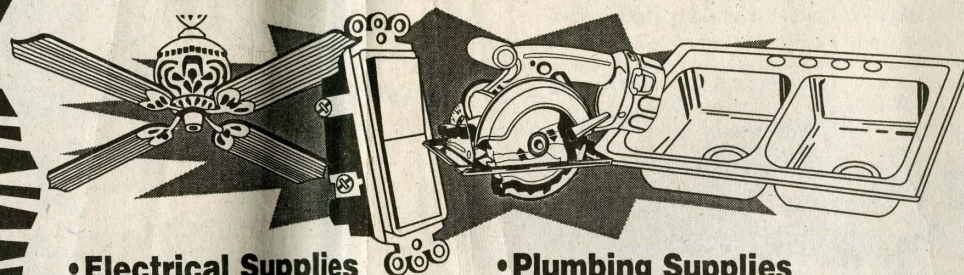
LAY-A-WAY



## Your Home Source

for all your

Commercial ~ Residential ~ Industrial Supplies



- Electrical Supplies
- Hand/Power Tools
- Water Heaters
- Vented or Ventless Gas Fireplaces
- Wall Heaters
- Exhaust Fans
- Ceiling Fans
- Indoor/Outdoor Lighting

- Plumbing Supplies
- Kitchen/Bath Faucets
- Single/Double Wall Pipe
- Bath Vanities
- Whirlpools/Garden Tubs
- Medicine Cabinets
- Motors & Pumps
- Control Panels & Starters

Take Advantage Of Our

**FULL SERVICE**

Motor Repair  
& Machine Shop!



A single source for custom welding & machining service. We can fabricate shafts of all sizes.

Complete rebuilding & repairing of all makes of electric motors, starters, controls, pumps, generators etc.

We offer you the advantages of purchasing quality reconditioned/rebuilt equipment and motors for less.

## MOREHEAD ELECTRIC

We Specialize in  
Quality Service & Customer Satisfaction

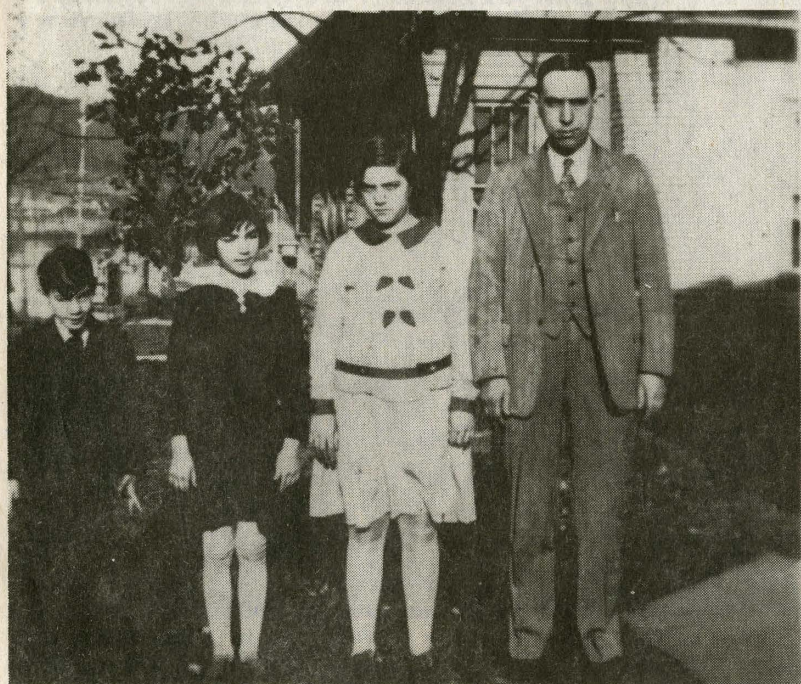
**1(800) 836-5795**

4910 Flemingsburg Road, Morehead, Ky.





Jim and Alice Porter at their 50th wedding anniversary celebration with their children on the farm near Elliottville. From left are Glennis, Maxine, Kenneth, Trella, Christeen, Kaye. Jim and Alice Porter are buried in Lee Cemetery. All children are still living. Kenny and Chris live near Morehead.



Robert Caudill, Dorothy Caudill and Virginia Caudill Vinsin with their father, Dudley Caudill, former cashier at Peoples Bank of Morehead. It was taken in 1929.



David Whisman, on left, Polly Burton, Shrilda Whisman and Frances Whisman in a photo taken on Aug. 6, 1950.



Glenn R. (Glenn) Porter taken in 1943. Porter was in the Army Air Corps and served in the United States, Burma, Okinawa, Japan. Retired from American Airlines Engineering after 35 years. He lives in Tulsa, Okla. today. He graduated from Morehead High School and was attending Morehead State Teachers College when he joined the Army in 1942.



Leeanna Hamilton Thomas and sister Angelina Hamilton Tussey, grandmother of Clyde Thomas and brother and sister of Arthur Thomas. Sent in by Naomi Moore, wife of Arthur Thomas. Taken sometime in the 1930s.



The Porter Family on the front porch of their home at Elliottville in 1950. From left are baby David Porter, Maxine and Bernard Clemons, Trella and Glen Roe, front, Raymond Boyd with baby Lana, Glenn and Margaret Porter, Jim and Alice Porter, Kenny, Ronnie and Minnie Porter.

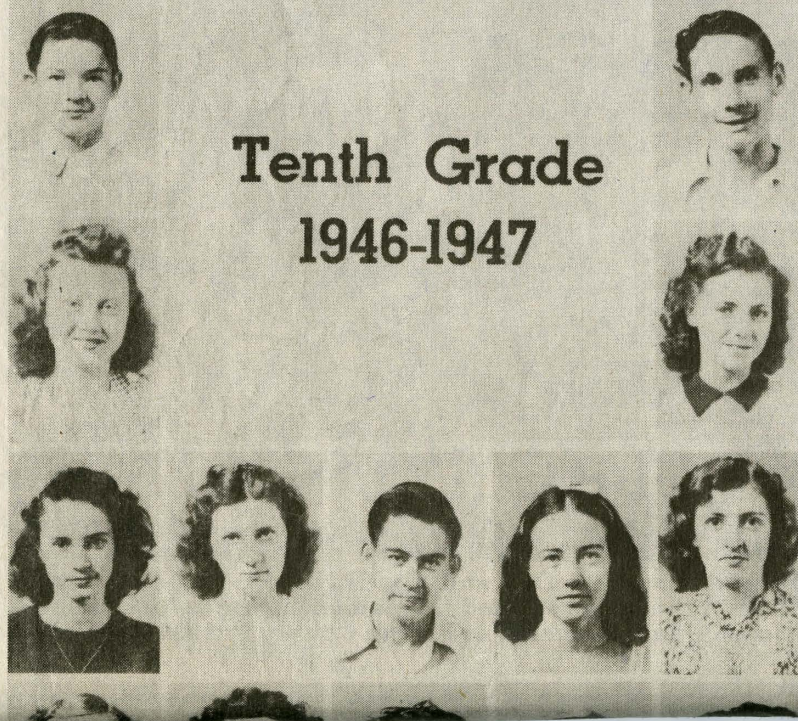


Driving in a Model "T" Ford Touring Car were Dan and Alta Hayes Parker, in the front seat. Two persons are unidentified in the back seat and the person sitting behind the driver is Nola Mae Parker, Dan's sister. Dan was sheriff of Rowan County in 1930-40. He was judge in 1941.





Will May Fannin, Roy B. Vencill, Will Fannin and Andrew Johnson traveled around the area in the summer of 1914 thrashing wheat and oats.



**Tenth Grade  
1946-1947**



This picture was taken around May 1940. From left are Minty Creech Dean, Rebecca Wynn Creech and Zoan Thomas Dean, all of Hayes Crossing, and Birdie Creech Binion and Rosa Creech Callahan, both of Lawton. The girl in front is Olive Mae Creech of Lawton.



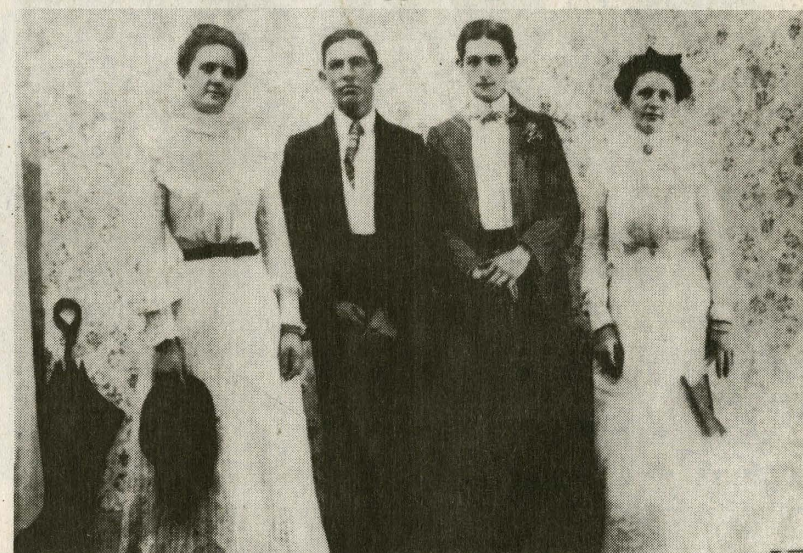
Mildred and Alpha Hutchinson had this photo taken in 1945.



Alex Coleman and James Thomas taken in 1941.



This photo was taken in 1947 when Luther Price worked for Red Rose Dairy. From left are Anna Price, Luther Price, Poe Price, Betty Price and Carol Price. In front are David Price and Donna Ruggles, a granddaughter.



These are the Hall siblings of Farmers in 1902. From left are: Edna V. Hall, William Asa Hall, Harvey Albert Hall and Cannie Dashie Hall. They were the children of Marion Lee and Eliza Belle Myers Hall.

# NO PAYMENTS

# 'TIL APRIL

**BRIDGESTONE**  
**Firestone**  
 123456789  
 JOHN D. PUBLIC

**DAYTON**  
 Performance

PASSENGER

PASSENGER

WINTER TIRE

PASSENGER





This is the Haldeman High School 10th grade in 1946. They are: Elizabeth Sparks, Charles Bowen, Edna Evans, Fred Sparks, Wilma Turner, Clarence Horton Jr., JoAnn Hicks, Iva Fay Wilson, Hilda Faye Waggoner, Chloris BoCook, Lloyd Dean, Ruby Lyons, Hildreth Stinson, Evelyn Lyons, Henrietta Binion, Wilma Brown, Gwyneth Hogge and Ruth Evans.



This picture was taken in 1944 of newlyweds Dora Hutchinson and Ward Williams. She was a teacher in Elliott and Rowan counties. He was a librarian at Morehead High School. Together they owned and operated Southern Belle Photography Studio.



This picture of Willie Frank and Parthenia Thomas and sons Bill, Norman and Edward was taken in the early 1920s.



**4 for  
\$99<sup>00</sup>**

155/80R13

45,000  
mile  
limited  
treadwear  
warranty\*

**NEW! LIGHT TRUCK**

**DAYTON**  
TIMBERLINE  
A/T

**\$57<sup>95</sup>**

225/70R14

205/75R15 \$59.95  
215/75R15 \$62.95  
235/75R15 \$69.95  
31X10.50R15 \$89.95

On/Off  
Road  
Traction



**\$49<sup>99</sup>**

175/70SR13

175/65SR14 BLK \$53.99  
185/75R14 WS \$59.99  
185/70R14 BLK \$56.99  
185/65R14 BLK \$56.99  
195/75R14 WS \$62.99  
195/70R14 BLK \$59.99  
205/70R14 WS \$65.99  
205/75R14 WS \$66.99  
215/70R14 WS \$69.99  
195/65R15 BLK \$64.99  
205/65R15 BLK \$66.99

70,000  
mile  
limited  
treadwear  
warranty\*

**NEW! LIGHT TRUCK**

**DAYTON**  
TIMBERLINE  
H/T

**\$59<sup>95</sup>**

235/75R15

235/70R16 \$69.95  
255/70R16 \$74.95  
245/75R16 \$73.95

50,000  
mile  
limited  
treadwear  
warranty\*



**PINNED  
FOR  
STUDS**



**\$29<sup>95</sup>**

185/80QR13

184/75QR14  
195/75QR14  
205/75QR15  
235/75QR15

Other sizes available.



**\$31<sup>95</sup>**

175/70R13

185/70R14 \$38.95  
195/70R14 \$39.95  
205/70R14 \$45.95  
205/70R15 \$47.95  
215/70R15 \$49.95  
205/65R15 \$52.95

60,000  
mile  
limited  
treadwear  
warranty\*

**LIGHT TRUCK**

**Firestone**  
ATX

**\$69<sup>95</sup>**

235/75R15 OWL

Call For Other Sizes  
and Prices.

Original  
Equipment  
Tire

Tread design may vary.



**WE INSTALL QUALITY NAPA PARTS**



**60 MONTH  
BATTERY**

For most cars and trucks.  
Installation extra.  
Coupon Expires 2/28/99.



**\$10<sup>00</sup>  
OFF**

**OIL, LUBE & FILTER**

Drain & refill oil up to 5 qts. of  
a major brand. Includes a new  
oil filter & chassis lube. Most  
cars & light trucks. PLUS...  
we'll top off all fluids!  
Coupon Expires 2/28/99.



**\$15<sup>95</sup>**

**BRAKE  
INSPECTION**



We know a lot is riding on  
your brakes, so stop by our  
service department and let us  
inspect your entire brake sys-  
tem. Coupon Expires 2/28/99.

**FREE!**

**ALIGNMENT**

**\$29<sup>95</sup>**

Coupon Expires 2/28/99.

**THRUST ALIGNMENT**  
Align rear wheels with  
front wheels. Cost of  
shims and installation  
extra where required

**\$49<sup>95</sup>**

Coupon Expires  
2/28/99.

**4 WHEEL  
ALIGNMENT**  
Align front  
and rear  
wheels with adjustable  
rear wheels.



**CREDIT YOUR WAY— FOR THE TIRES YOU NEED TODAY!†**

**- NO PAYMENT FOR 90 DAYS**

**- NO INTEREST!**

†If you do not achieve guaranteed mileage, your tire retailer will replace your tires on a prorated basis. Actual treadlife may vary. All warranties apply only to original owner on originally installed vehicle. See retailer for details, restrictions and copy of each limited warranty. Specific product offerings and tread designs may vary.  
†Credit terms made available by Credit First National Association. No payment for 90 days on qualifying purchases. No interest due on qualifying purchases if paid in full within 90 days. Interest at a fixed rate (21.84% APR) variable rate (19.30% APR as of October 1, 1997, APR may vary) will be imposed from the date of purchase if not paid in full within 90 days. Minimum finance charge \$0.50.

**Caudill TIRE**  
AUTO SERVICE CENTER

**784-7569 or 1-800-456-5343**

**1022 East Main Street, Morehead**

**TIRE WORLD**

**FLEMINGSBURG**

**Route 2**

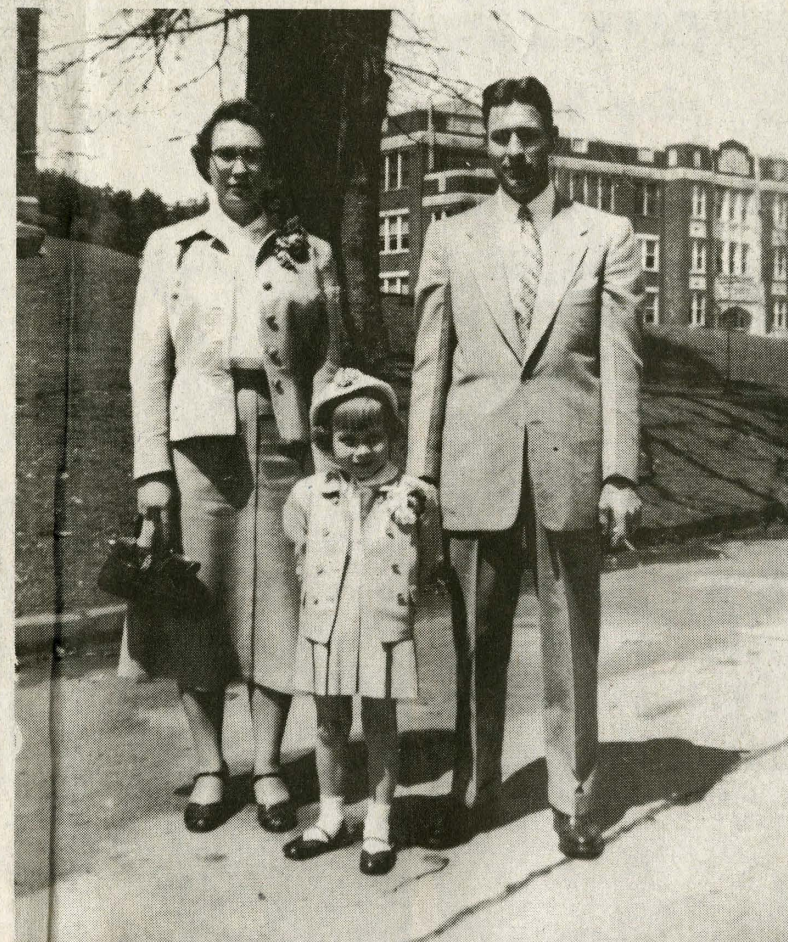
**849-8473**

**1-888-950-4888**

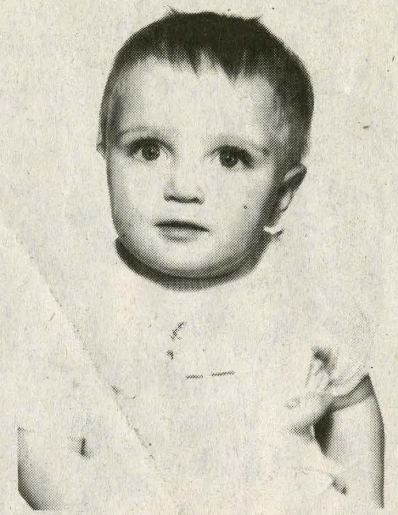




The Roscoe Hutchinson family — Roscoe Jr., Clifford, Dortha, dad, mom, Dora, Curt and Alpha — moved from Morgan County in 1923. Mr. and Mrs. Hutchinson were married almost 70 years at her death. Five of their six children celebrated 50 years or more of marriage to the same spouses. Dora's husband, Ward Williams, died after 27 years of marriage. This was taken in 1956.



Alpha and Mildred Hutchinson with daughter Susan taken in April 1947.



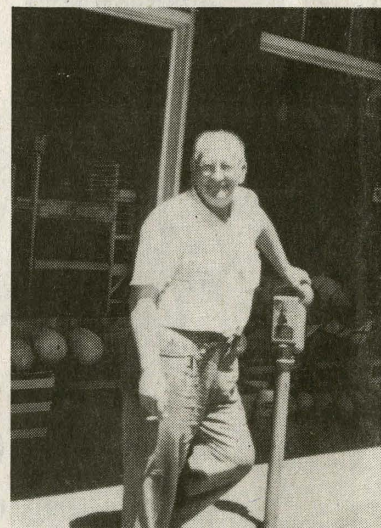
Randall Martin Forman at Clearfield School when he was one year and one day old.



Marvin and Marie Adkins stood by his cattle truck at Elliottville in 1941.



These are the great-grandchildren of Mr. and Mrs. Roscoe Hutchinson Sr. They are Lora Tucker, Suzy Tucker, Cheri Lynn Tucker and Ronald Tucker Jr. They are the children



This photo of Luther Price was taken in 1956 in front his store, the Home Cash Store on Fairbanks Avenue.



Dortha Hutchinson Cales was the owner-operator of Dortha's Beauty Shop from 1960-1965 in the Caudill Building on Main Street above Vi's Jewelry Store.



John Thomas, James, Arthur (little boy), Reba and Junior Coleman. The photo was sent in by Naomi Thomas of Prestonsburg, the wife of Arthur Thomas who passed away June 11, 1997 in Lexington.



# C. ROG LEWIS AG

Serving More  
Rowan Co



Mary Alice Hamm, grand-  
mother of Evelyn Hamm  
Withrow. Taken in 1947.



A snapshot of Dortha  
Hutchinson Cales and her  
husband, EMIC Marvin  
Cales was taken when he  
served with the Navy Sea  
Bees during World War II.



Marvin Cales with a  
"catch" from the Licking  
River near Farmers in  
1943.



*All Seasons  
Flowers, Gifts  
and  
Bridal Registry*

134 East Main Street  
Morehead, Kentucky 40351

Downtown Between Star Bank  
and  
Morehead National Bank

**606-784-4933**  
**1-800-406-9237**

Fine Collectibles  
and  
Interior Accessories

**"Artistry With Flowers"**

# FREDERICK & MAY LUMBER CO.

*Serving Morgan  
and Rowan County  
For 53 Years*

## Frederick & May Lumber Co.

919 Prestonsburg Street  
West Liberty, Kentucky

**743-3136**





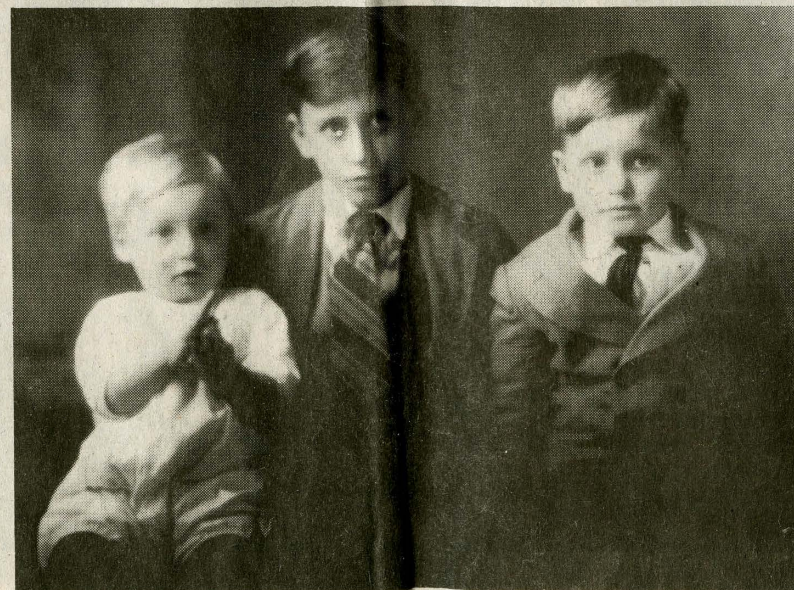
From left, Mildred Hutchinson, Susie Halbleib, Dr. C. Louise Caudill and Alpha Hutchinson in Holland in 1976.



From left, back row, Delmer Ray Withrow, M.L. Withrow, second row, Ronald Gordon Withrow, Hubert Franklin Withrow, front, Marjorie Evelyn Withrow, children of Milford Lewis Withrow and Evelyn Hamm Withrow. Taken in 1940 in Floyd County.



Joe Fisher, daughter Alma, wife Izzie, daughter Ruby, lived on Clear Fork in Rowan County. Photo taken around 1906.



Theodore Franklin Hamm, Willie Irvin Hamm, Harlan Thomas Hamm, sons of Melvin and Nancy Catron Hamm. Original photo made in 1926 at Morehead.



Ernest Whisman and Shrilda Burton Whisman taken in 1950 at Island Fork.

## CREATIVE TOUCH FLOWERS & GIFTS

*Don't Forget...*

♥ VALENTINES DAY  
WILL BE

**SUNDAY, FEB. 14<sup>TH</sup>**  
(We Will Be Open & Delivering)

We are still located at:  
743 West Main St., Morehead, KY  
784-1004

*We Will Be Moving This Spring To A New  
Location On The By-Pass.*

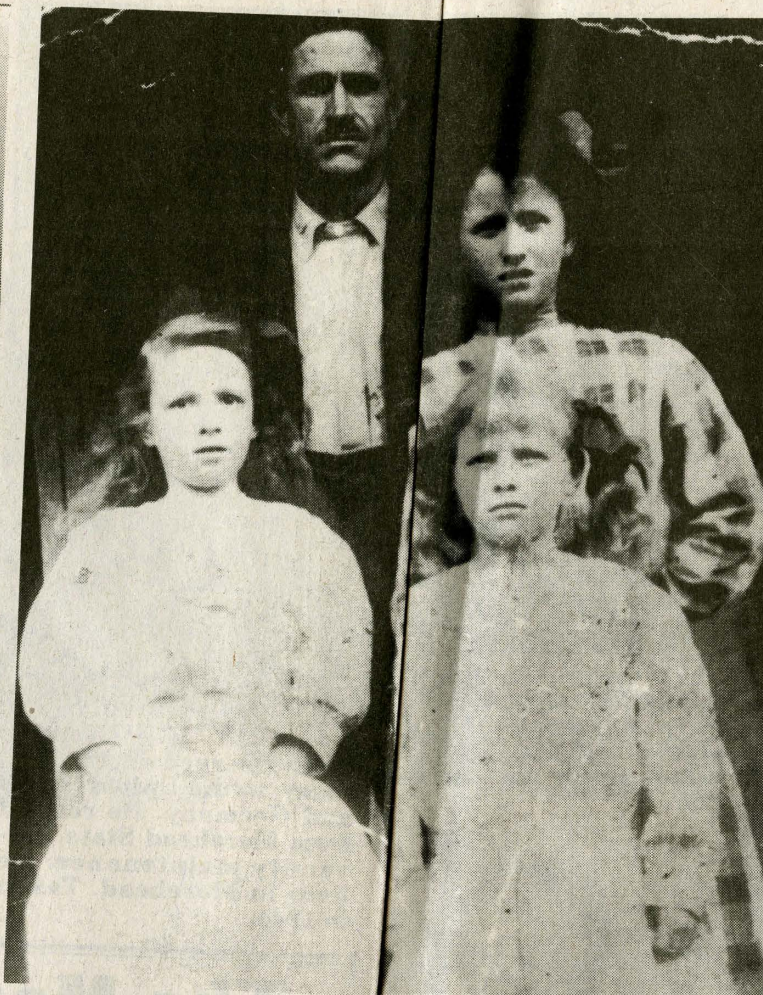




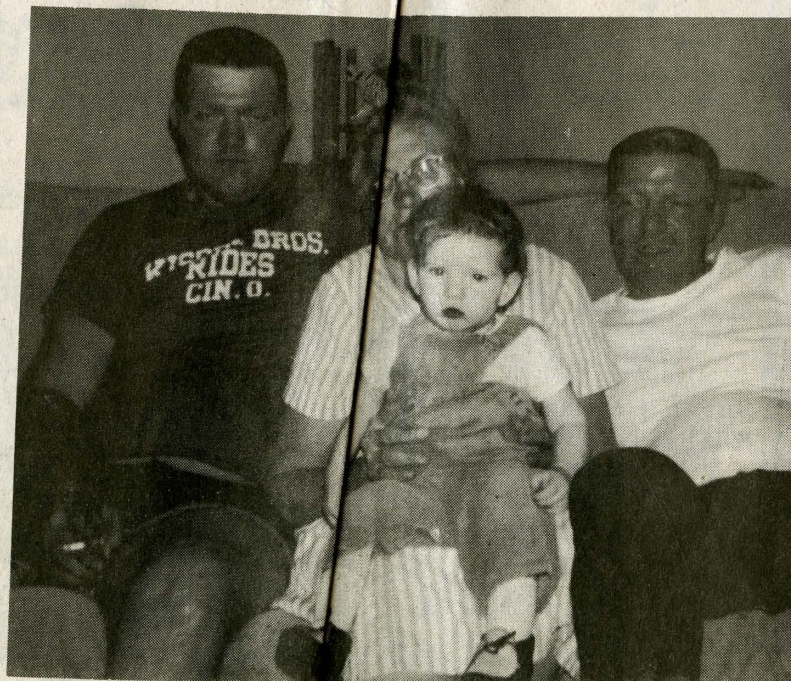
This photo depicts the home of Marion and Belle Hall in Farmers in 1905. From left to right: Fannie Mae Mynhier Hall holding daughter Margorie Burnett Hall, Belle and Marion Hall and Willie Prater.



Susan J. Hutchinson Neff and Robert D. Neff posed for this photograph in December 1967.



This is a picture of Thornton Parker and his children, Virgie, Minnie "Peach," Nola Mae and Una Parker. Thornton was the grandfather of Rh Ann Blevins of Morehead and Nola Mae is her mother.



Hattie Sparks, her son Arthur Thomas, her grandson Arthur A. Thomas and great-granddaughter Condair Thomas. All have passed away but Condair now is a mother. Taken in Morehead in 1974.



John Martin Catron, Floyd Buchanan Catron who was the great-great-grandfather of Galen Patrick Withrow of Morehead, and Henry Meyers Catron, sons of William Henry and Elizabeth Annie Catron.



Clara Hamm, Evelyn Hamm and Sylvia Hamm. Taken at Combs Studio in Morehead in 1916. Clara was the daughter of Mary Alice Hamm. Evelyn and Sylvia were the daughters of Melvin and Nancy Hamm.





Mary Evelyn Cales taken around 1956 in front of the Camden-Johnson Library steps at Morehead State College. She is the daughter of Dortha Hutchinson and Marvin Cales. She married Ronald Tucker and then Bill Banks. She worked at St. Claire Medical Center for over 25 years.



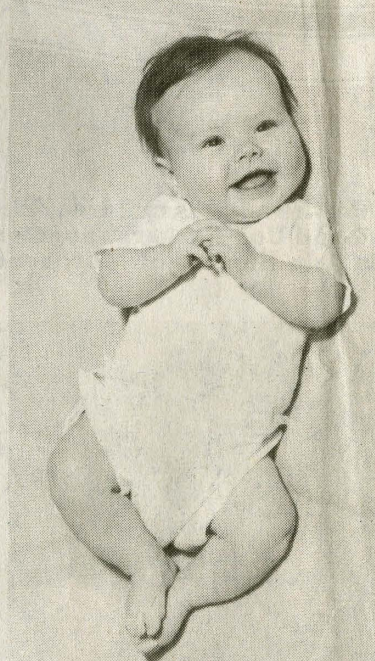
Christopher Columbus Hamm II, father of Melvin Luther Hamm. Original photo taken in 1892 at Rock Fork in Rowan County.



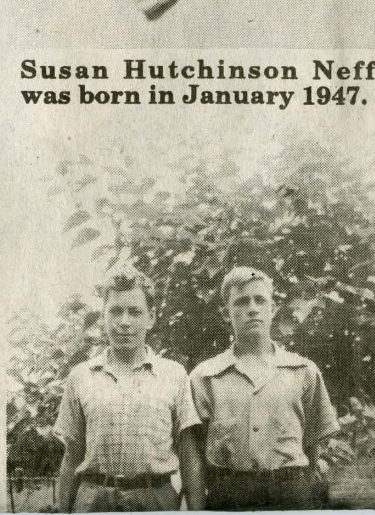
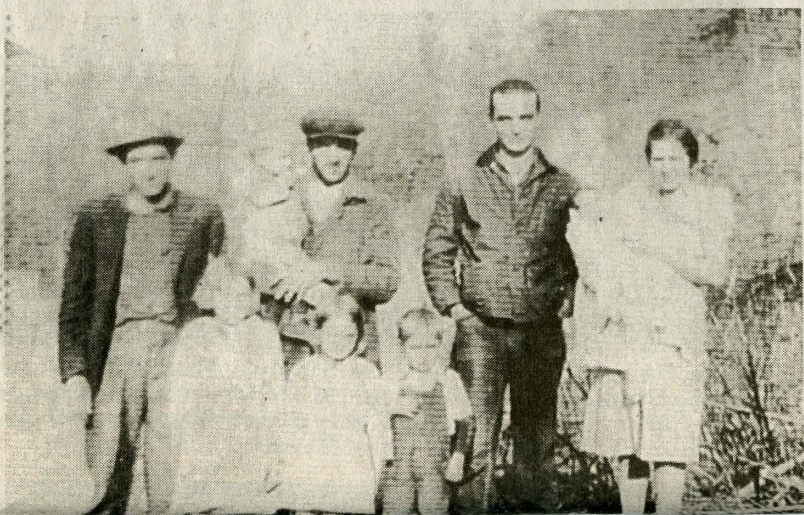
Kenneth R. (Kenny) Porter served in the U.S. Army, in the United States and Germany. He retired from Morehead State University maintenance. He lives in Morehead. Taken in 1944.



Dora Hutchinson, Lyda Williams and Dortha Hutchinson taken around 1932 at the tile plant at Clearfield. This was a favorite place to walk on a Sunday afternoon.



Susan Hutchinson Neff was born in January 1947.



## The Morehead Uniform Shop

(Next To Long John Silvers) Flemingsburg Road, Morehead, KY • (606) 784-3304

### Hottest Uniform Fashions

• MEDICAL • PROFESSIONAL • RESTAURANT ETC.  
**ACCESSORIES**

Littman Stethoscopes • Name Pins • Blood Pressure Cuffs, Etc.  
Scrubs • Lab Coats • Nurse Mate • Crest • Landau

We Also Carry Cherokee & Rocker Shoes

*Must Check Out The New Denim Scrubs*

**GUARANTEED  
LOWEST PRICES**  
Find It Cheaper, We  
Will Meet Or Beat Any  
Competitors Ad

**Great New Selections Weekly**

**20% Off**  
**All Print**  
**Tunics &**  
**Lab Jackets**

No Uniform Shop In  
The Tri-State Area Has  
Lower Prices Than  
**THE MOREHEAD  
UNIFORM SHOP**

*The Morehead Uniform Shop Is Not Affiliated With Any Other Uniform Shop In Kentucky*



Woodrow Whisman, left back, Ernest Whisman, holding son, Woodrow Whisman, Frank Whisman, Shrilda Whisman holding daughter Frances Whisman now Hamm, front, Juanita Whisman, now Sweeney, Ina Mae Whisman, now Plank, and Glenn Whisman, all of Island Fork, taken in 1941.



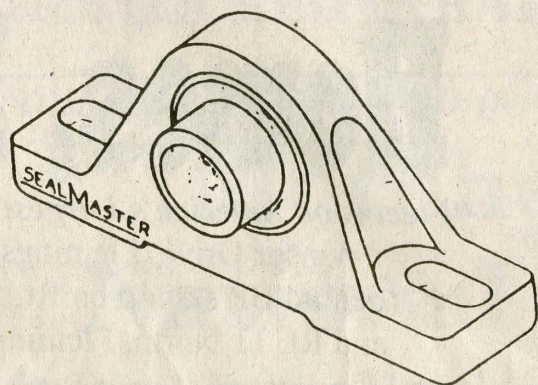
This is a family picture of Clyde and Mary Holbrook and their children, Doris Jean, Gerta and Clinton. It was taken in the early forties, probably about 1941. The family lived at Sharkey. Clyde was a farmer and Mary a school teacher.

William Catron and Theodore Teddy Hamm, from left. Taken in 1937 at Morehead.



This photo of Edith Marie Vencill was taken in October 1912. She was the daughter of R.B. and Bertha Wells Vencill.

# SEALMASTER



EMERSON POWER TRANSMISSION PRIDE IN MOTION

## ATTENTION LOGGERS GREENTREE FOREST PRODUCTS, INC.



Located on Highway 1013 in  
Fleming Co., 8 miles North  
of Morehead  
**IS PAYING TOP  
PRICES FOR  
HARDWOOD SAW LOGS!**  
**INTERNATIONAL SCALE USED**

**Also  
Buying  
Tie-Logs!**

**We Are Buying The  
Following:  
SAW LOGS**

**Red Oak • Chestnut Oak  
Poplar • Maple • Cherry • Ash  
Timber Land & Standing Timber**

If you are looking for a year-round market for  
your saw logs, give us a try.

We will do our best to satisfy you!  
For more information and a current  
price list, please call:

**LOG BUYERS**

Mike Vice

Barry Hamm

606-876-5551 Office

606-876-5551 Office

606-784-2578 Home

606-845-0129 Home





Evelyn Hamm Withrow, Elisha Ferguson Withrow and Milford Lewis Withrow. Taken on Feb. 24, 1930 at Christy Creek.



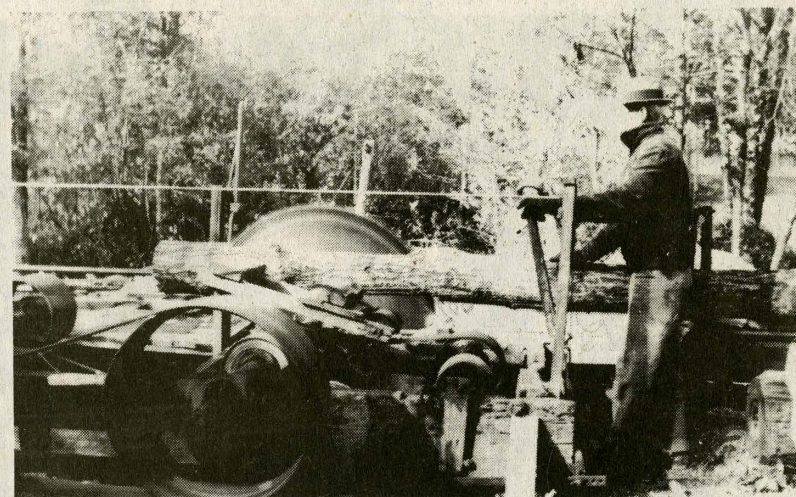
This picture was taken in 1921. It depicts the post office and grocery store in Elliottville. The people on the porch are Lula Adkins, Bess Swank Adkins, Berca Adkins, Myrtle Adkins and Sarah Adkins.



James Whisman, son, and Woodrow Whisman posed for



In August 1926 are, front row: Lillian Basford, Edna Mae Basford and Beth Eula Basford of Hillsboro. Second row: Bill Gray of Owingsville, the Rev. Frank Shields of Mt. Sterling, Robert Basford of Farmers, Jim Basford and wife Arizona Dickerson Basford and Jack Mcallister of Oregon.



Herbert Bowman worked with his sawmill on Clack Mountain in 1940.

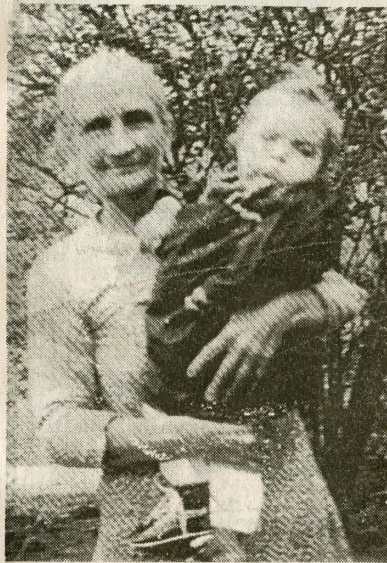


William Rhoden Hamm and Clara Hamm Lancaster, children of Christopher Columbus and Mary Alice Hamm. Original photo made in 1922.





Elizabeth Hamm Whisman taken in 1942 at Island Fork.



Elizabeth Whisman and granddaughter Lorene Whisman taken in 1943 at Island Fork.

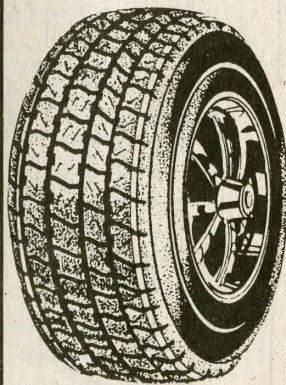


This photograph of Russell Reynolds was taken on his 66th birthday on Feb. 5, 1976 at Lane Funeral Home. He preached over 3,000 funerals and performed over 3,000 wedding ceremonies.



Woodrow Whisman, in back, Juanita Whisman Sweeney, Frances Whisman Hamm, Glenn Whisman, Ina Mae Whisman Plank Stacy, Howard Cadle Whisman, front, David Whisman, James Whisman, Bonnie Whisman Mason, Shrida Whisman and Jackie Ernest Whisman.

## MULTI-MILE F & D TIRE & AUTO CENTER



"A GREAT PLACE  
TO BUY TIRES"

Multi-Mile Tire

THE  
GUARANTEE

### EXPERT REPAIR SERVICE

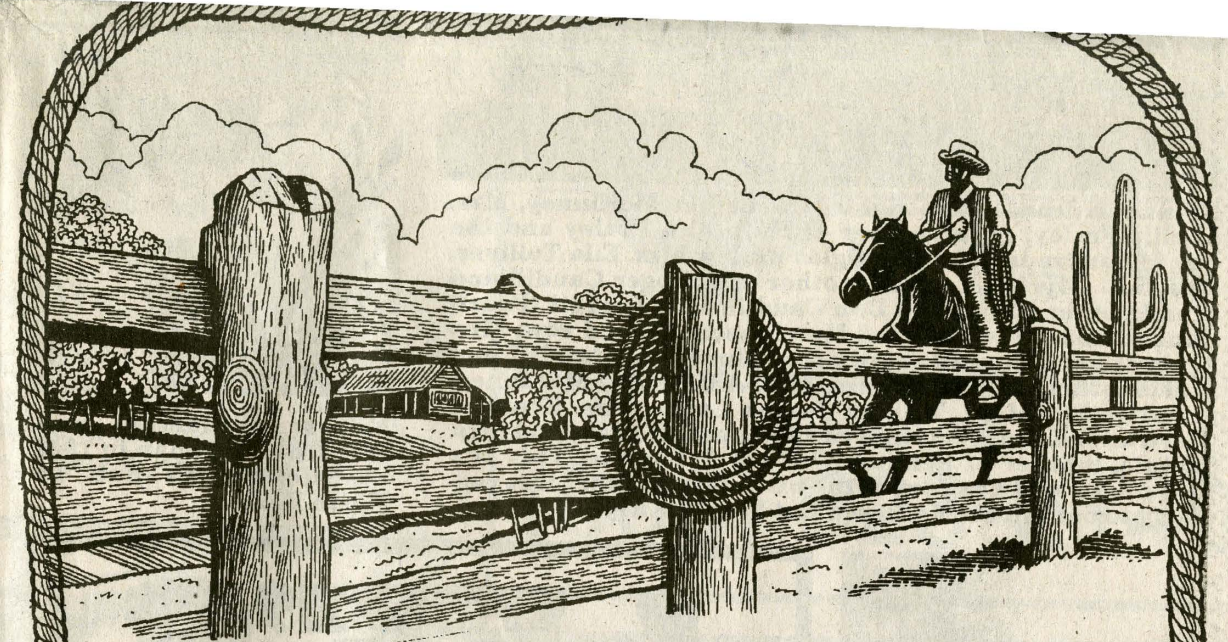
- ALIGNMENT
- BRAKE REPAIR
- SHOCKS
- OIL & LUBE
- MUFFLERS
- CUSTOM EXHAUST SYSTEMS
- TUNE-UPS
- ELECTRONIC WHEEL BALANCE
- BATTERIES

121 BRADLEY AVE. • MOREHEAD

784-6691



K  
E  
Y  
S  
T  
O  
N  
E  
M  
A  
G  
S



ROUND UP YOUR FRIENDS  
AND COME ON DOWN TO...

# CUTTERS ROAD HOUSE

TEXAS STYLE FOOD & SPIRITS

CUTTERS COMBOS

SADDLE UP

LITTLE COMBOS

12 and Under

PIES, CHICKEN & SEAFOOD

SALADS & SUCH

LUNCH IN A HURRY

AVAILABLE 11 AM - 3 PM  
Monday - Friday

140 TRADEMORE CENTER  
MOREHEAD, KY 40351

606/783-1153

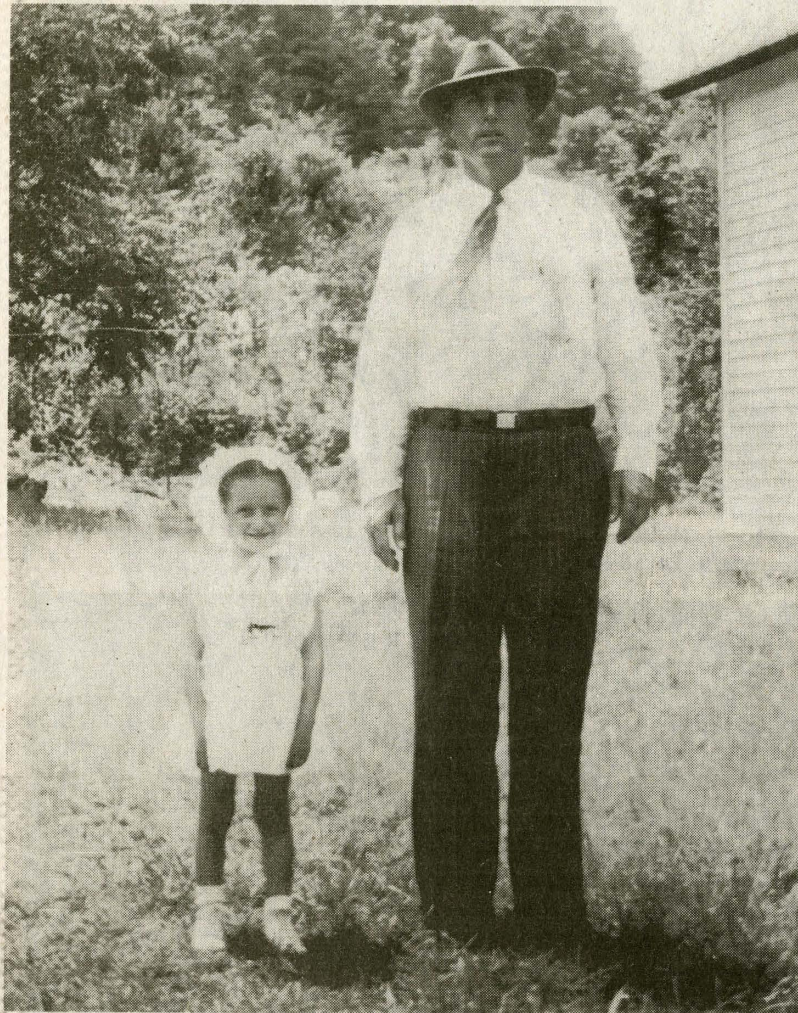
Carry Out Available

BURGERS & SANDWICHES

HEARTY BEEF

BEVERAGES

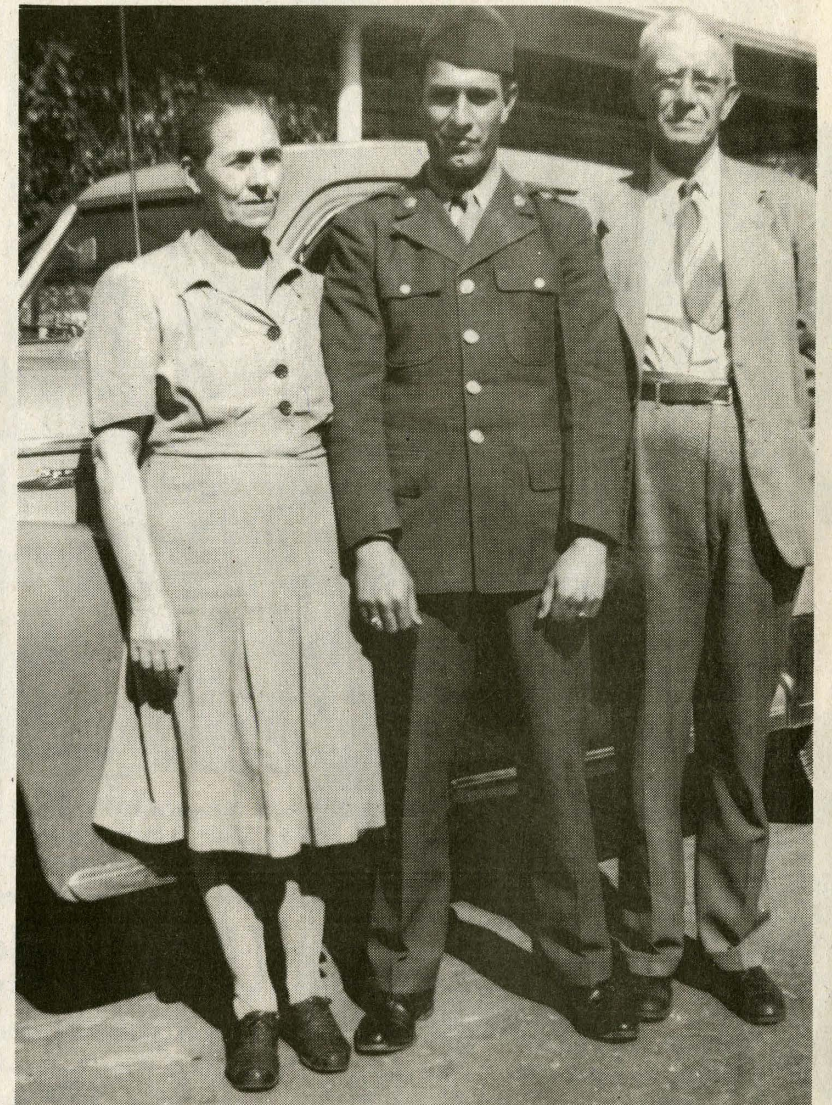




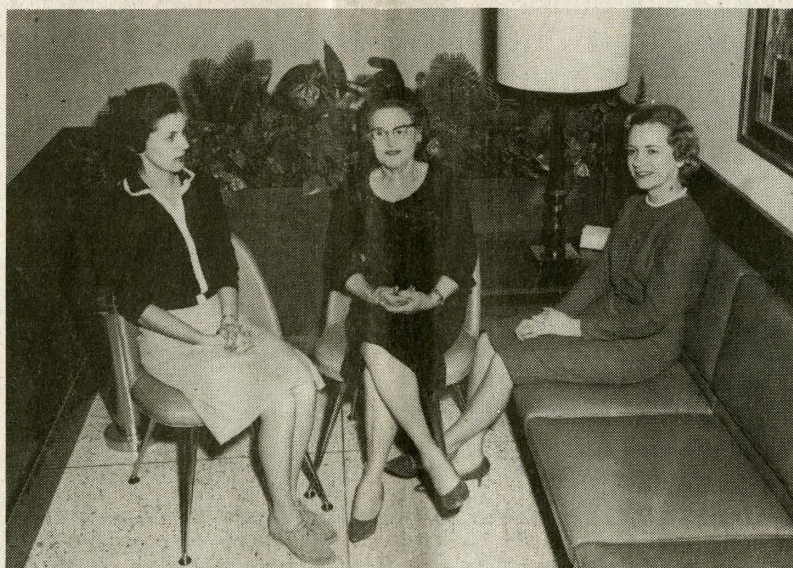
This photo of Marvin Adkins and Dorothy Louise Adkins, taken in Elliottville.



From left, Evelyn Hamm, Clona Catron, baby Lena Hamm, Sylvia Hamm and Willie Hamm. Taken in 1919 in Morehead.



Alpha Hutchinson of Morehead with his mother and father, Marinda and Roscoe Hutchinson taken in August 1943.



From left are Ruth E. Litton, Ruby M. Wood and Jean C. Wells, cashiers at the Citizens Bank in 1962.



This picture was taken at the Zoan Thomas Dean funeral Dec. 23, 1942 at Hayes Crossing. Left row, front to back: Bess Dean Conley, Dess Dean Kegley, Lucille Dean Jones, Irene Dean Jones and Nell Dean Puckett. Right row, front to back: Russell Dean, Bert T. Dean, Paul Dean, John Dean, Clell Dean and Harve Dean, father.



Front row from left to right: Mrs. Esther McKinney, Mrs. Lucille Fraley, grandmother of Ruth Ann Fraley and the boy in her lap is Robert Douglas Fraley; Mrs. Ella Tolliver, Mrs. C.P. (Myrtle) Caudill, mother of J. Roger Caudill and grandmother of Jim and Don Caudill; Mrs. Everett (Pearl) Randall, mother of Mildred Hutchinson. Second row: Mrs. Alvin (Lucy) Caudill, mother of Murvel C. Caudill and grandmother of Pam Hardin; Mrs. A.B. (Kate) McKinney, grandmother of Dr. William Joseph Layne; Mrs. Kennard (Gertrude) Kenney, mother of Lewis and Harlan; and Mrs. Sample, mother of Senator William J. Sample. This is a 1943 photo and was part of the birthday club that met regularly to eat. All are deceased but Mrs. Kenney.

Ernest Whisman and Woodrow Whisman in 1946 at Buckner Branch on North Fork.



This photo was taken in 1950 at Rock Fork during a baptism. From left are Willie Caudill, Ernest Whisman and Luther Bradley looking on.



Pictured are Loranza and Nola Parker Skaggs. They were married in 1923.

## LEE'S Famous Recipe Chicken

### 2-Piece Snack

(Includes leg, thigh and a biscuit)

**\$1<sup>99</sup>**

Buy up to 6 at this price, with this coupon. Not valid with any other promotional offer or coupon. Expires 2-28-99

### 5-Piece Dark

(Legs and thighs only)

**\$2<sup>99</sup>**

Buy up to 6 at this price, with this coupon. Not valid with any other promotional offer or coupon. Expires 2-28-99

### 3-Piece Meal

(Includes leg, thigh, wing, coleslaw, whipped potatoes & gravy and a biscuit)

**\$3<sup>99</sup>**

Buy up to 6 at this price, with this coupon. Not valid with any other promotional offer or coupon. Expires 2-28-99

### 16-Piece Meal

(Includes 16 pieces of mixed chicken, 4 large sides and 8 biscuits)

**\$19<sup>99</sup>**

Buy up to 6 at this price, with this coupon. Not valid with any other promotional offer or coupon. Expires 2-28-99

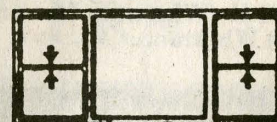
411 Fraley Drive • Morehead, KY  
784-3314

## SPECIALS

### HIGH QUALITY WINDOWS, DOORS, SIDING & VINYL FENCE AT REASONABLE PRICES

1. Solid Vinyl Tilt-In Replacement Windows For Easy Cleaning.
2. Available In 3 Colors - White, Brown & Beige.

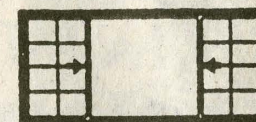
3. 7/8" Double-Pane Insulated Glass
4. Free Estimates-Lifetime Warranty.
5. We Also Have Bow, Bay & Casement Windows.



Picture Windows with Double Hung Flankers



Double Hung

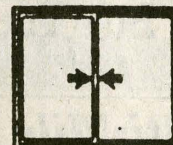


Three Lite Glider With Optional Colonial Muntins

**Heavy Duty 24 Gauge Steel 9-Lite \$149.95**

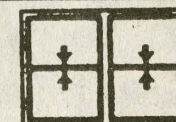
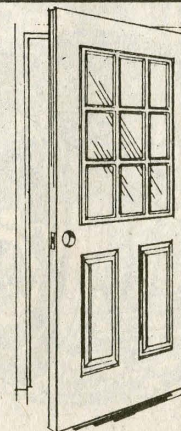
**We Build Windows Of All Types And Shapes To Your Specification And Do Our Own Professional Installation**

**NEW**  
Picnic Tables & Park Benches  
Built From Vinyl 2x6's  
(Will Last A Lifetime!)



Glider

**Save On Heating & Cooling Bills With Replacement Windows & Doors**



2 Mullied Double Hung

**Free Professional Advice To Help You Get The Most For Your Money When You Remodel Your Home**

**Quick Service On Special Height Trailer Doors or Doublewide Trailers**

**Double 4 White Vinyl Siding Fairfield Comparable To Alcoa Products. Has Lifetime Warranty, Retail \$64.95 - Special Sale \$45.95! Get More For Less!**

**WE SPECIALIZE IN  
REPLACEMENT WINDOWS**



**Golden Rule Vinyl Building Products, Co.**

Follow 32 North, turn right on 1013 at Browning Orchard Sign, go to end of 1013 turn left (559), go 1 mile, turn left at G.R. Sign, 500 yards on left

**606-845-8400 OR 1-800-737-0456 ASK FOR ALVIN**





Sisters Ruth Ann Skaggs Blevins and Brenda Fern Skaggs Sparks are pictured at their home. They are the daughters of Loranza D. and Nola Parker Skaggs.



This photo of the Asa and Fannie Hall family was taken in 1927 in Farmers. First row, sitting: Bertha Hall and James Russell Hall. Second row, standing: Dorothy Hall, Third row: Ruth Hall, Christene Hall, Fannie Mynhier Hall, Asa Hall Belle Myers Hall, Margorie Hall. The only sibling who isn't pictured is Orville Timothy Hall.



This picture of students at Bull Fork school was taken about 1940. The school was a room room facility located at the foot of Sugar Loaf Mountain near Sharkey. Mary Holbrook was the teacher and photographer. The students are listed from left to right. Front row: Chester Paul Caudill, Clinton Holbrook, Fred Pence, Acie Eldridge, Gayle Pence. Second row: Carma Jean Eldridge, Gerta Holbrook, Doris Jean Holbrook, Mary Jewell Caudill, Delphia Eldridge, Martha Alice Curtis, Susie Pence. Third row: Cynthia Pence, Ann Eldridge, Georgia Pence, Charles Eldridge and Ivan Markwell.



Zora Hall Burton and Melvin Burton in 1973 on Island Fork.



Sitting from left are Susan Hutchinson, Patricia Hutchinson, David R. Hutchinson and Bobbie Jo Hutchinson. Standing is Mary Evelyn Cales (now Banks). The picture was taken in 1955.

*America's Number 1 Retailer*





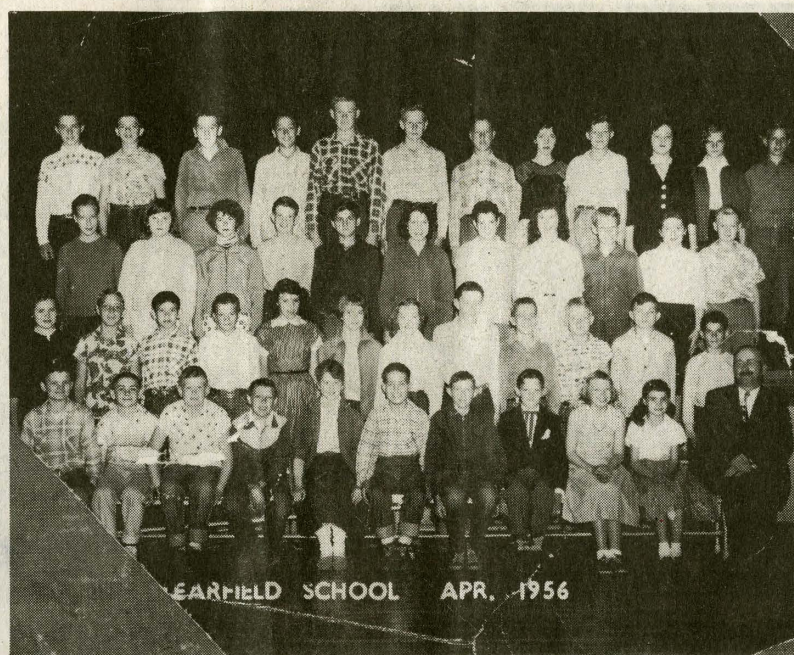
Oscar Levi Weldon Hamm, son of Christopher Columbus and Mary Alice Hamm and wife of Gracie Ruggles Hamm, daughter of Robert and Lulea Ruggles. Taken in November 1918 at Soldier in Carter County.



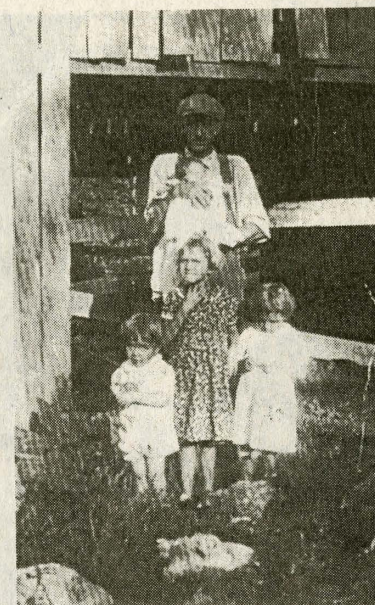
Martha Ann Heflin Hamm, great-great-grandmother of Hubert Franklin Withrow of Morehead. Original photo taken in 1879.



Shrilda Burton Whisman and Mary Burton Creamer taken on July 9, 1950 at Island Fork.



This photograph was taken in April 1956 at Clearfield School and includes the seventh grade class. Back row, left to right: Donald Moore, Denford Jennings, Evert Jennings, Roger Wagner, Cecil Workman, Donald Jones, Gene McClain, Pat Moore, Richard Phillips, Deloris Baldrige, Janet Lewis, Dean Johnson. Third row, left to right: Sharon Gardner, Kathleen Mabry, Linda Hunter, Ralph Webb, Menzil Brown, Eva Ison, Billy Hunter, Marie Kidd, Billy Hanes, Judith Baldrige, Cecil Baldrige. Second row: Shirley Trent, Leroy Caudill, Lional Workman, Franklin Mabry, Barbara Murphy, Diana Emmins, Linda Alfrey, Billy Lowe, Gerald Foster, Olen Riggsby, Wayne Black, Otis Lewis. Front row: Ted Trent, Larry Johnson, Mack Hall, Carl Stidam, Geniva Black, Bufford Owens, Billy Bowman, Jerry Collens, Laxie Ramey, Faye Ramey and teacher Ira Skaggs.



This photo was made in 1938 at Buckner Hollow at North Fork. Back row is Ernest Whisman with son Woodrow Whisman. In front is his son Glenn Whisman, Ina Mae Whisman, and Juanita Whisman, who married a Sweeney.



James Whisman, son, and Woodrow Whisman posed for this photo taken in 1950 on Island Fork Road.

## FIDELITY CREDIT



**SEE US FOR ALL YOUR  
LOAN Needs!**

897 Flemingsburg Road, Morehead, KY 40351  
780-0186

*We Enjoyed Serving You  
In '98 And Look Forward  
To Serving You Again In  
'99! Stop In Today!*





The Donahue sisters, Zeallia and Gladys, are pictured in 1946. They are the daughters of the late Bert and Cora Donahue.



From left are Evelyn Hamm Withrow, Lena Wilson Boyd, Melvin Luther Hamm, Sylvia Hamm Lewis and Frieda Jewell Hamm Ruggin. Photograph was taken in 1952 at Morehead.



Leo Williams is pictured in 1956.

## MEMORY LANE

## COFFEE TREE BOOKS AND THE FUZZY DUCK COFFEE SHOP

240 Morehead Plaza • Morehead, KY

## TOGETHER AGAIN!



AFTER MANY YEARS OF WORKING TOGETHER AT ANOTHER COMPANY, THE TEAM OF BRENDA WALLACE, MURVIL MCCLURG AND LUCIA MCCLURG WAS REUNITED IN NOVEMBER 1998 WHEN BRENDA JOINED THE STAFF AT MOREHEAD FINANCIAL. WITH A COMBINED EXPERIENCE OF 47 YEARS IN THE LENDING BUSINESS OUR TEAM HAS THE KNOWLEDGE AND EXPERIENCE TO HANDLE YOUR LENDING NEEDS. IF YOU LIKE DEALING WITH A LOCALLY OWNED AND OPERATED COMPANY THEN GIVE US A TRY!

**MOREHEAD FINANCIAL**  
419 FLEMINGSBURG RD.  
MOREHEAD, KY 40351  
(606)780-4255

LOANS STARTING AT \$250

**SLONE'S**  
SIGNATURE  
**MARKETS®**

*the fresh way to shop*

West Main Street  
Morehead, KY

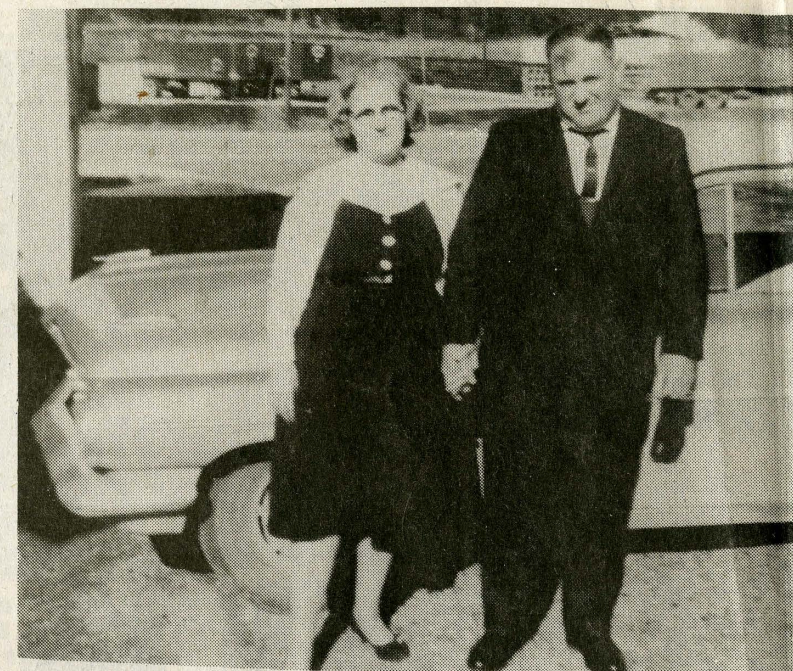




Callie Snipes is pictured in 1965 with his two grandsons, Jimmy and Wayne Hoffman, at Frank Ginter's house in Clearfield. The Hoffman boys are the sons of Christine Snipes Hoffman, now of Batavia, Ohio.



John, Leo and Jack Williams are pictured in this 1945 photograph. They are the children of Dick and Clara Williams.



Callie Snipes and wife Geneva Evelyn Cole Snipes are pictured in 1961 at one of the old Lee Clay company houses where they lived. Callie worked for Lee Clay for 28 years until the company went out of business.



GRIZZLY

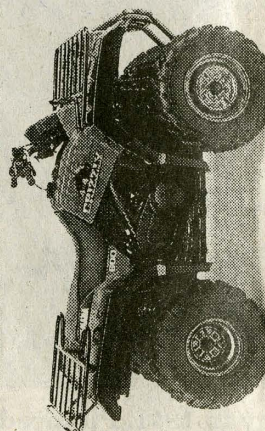


GRIZZLY

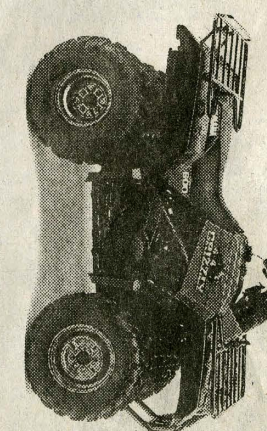


GRIZZLY

**Size Does Matter. Just Ask The Grizzly.**



GRIZZLY



GRIZZLY

Leaner and meaner this season, the Grizzly once again rules the lair with the biggest, most powerful engine in the industry. • "ATV of the Year" (4-Wheel ATV Action Magazine) • Exclusive, fully automatic Ultramatic transmission • Dual-range drive system with reverse • Handle-bar-mounted, push-button On-Command™ 2WD/4WD • Long travel suspension and



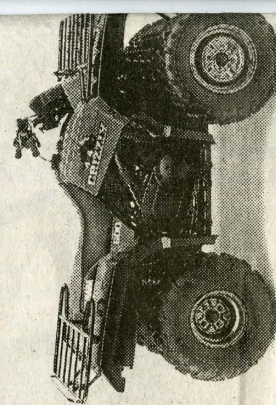
From left are Tina Caudill, Nelson Caudill, Nina Caudill and Sabra Caudill, the children of Tilden and Rebecca Caudill.



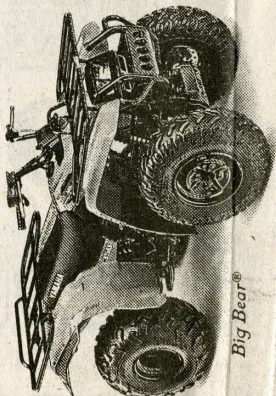
Stonewall Jackson is pictured with an Indian friend.



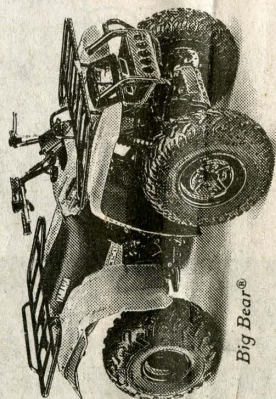
Chef Gammage and Parnell Martindale are pictured beside Allie Young Hall on the campus of what is now Morehead State University in 1932. Parnell had a football workshop under Gammage, worked in the flower garden and was on kitchen duty for three years.



GRIZZLY



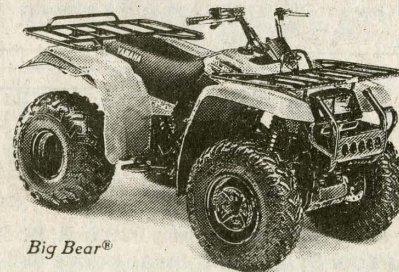
Big Bear®



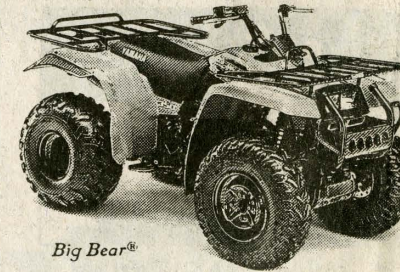
Big Bear®



Big Bear®



Big Bear®



Big Bear®

Pound towing capacity • 10.6" of ground clearance • New for '99 aluminum wheels • Huge 5 gallon fuel tank.

ATVs with engine sizes of 90cc or greater are recommended for use only by those age 16 and older • Yamaha recommends that all ATV riders take an approved training course. For safety and training information, see your dealer or call the ATV Safety Institute at 1-800-887-2887. • ATVs can be hazardous to operate. For your safety: Always avoid paved surfaces. Never ride on public roads. Always wear a helmet, eye protection and protective clothing; never carry passengers; never engage in stunt riding; riding and alcohol/drugs don't mix; avoid excessive speed; and be particularly careful on difficult terrain.

## THERE'S A NEW BIG BEAR IN TOWN



Big Bear®



Introducing an all-new Big Bear. • Torquey 350cc four-stroke power plant based on Big Bear 4x4 delivers class-leading performance. • Five-speed transmission with automatic clutch, super-low first gear, and reverse • New long-travel suspension offers smoother, plusher ride • 9.6" of ground clearance • Rugged front and rear racks have a combined cargo capacity over 265 pounds • Super-tight turning radius and light steering.

ATVs with engine sizes of 90cc or greater are recommended for use only by those age 16 and older • Yamaha recommends that all ATV riders take an approved training course. For safety and training information, see your dealer or call the ATV Safety Institute at 1-800-887-2887. • ATVs can be hazardous to operate. For your safety: Always avoid paved surfaces. Never ride on public roads. Always wear a helmet, eye protection and protective clothing; never carry passengers; never engage in stunt riding; riding and alcohol/drugs don't mix; avoid excessive speed; and be particularly careful on difficult terrain.

★ FINANCING AVAILABLE ★

## High Energy Yamaha

Highway 519 Between West Liberty & Morehead.

Look For The Big Tan & Green Building,

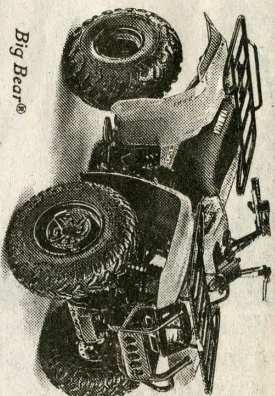
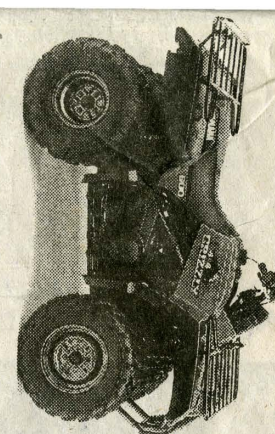
Open Tuesday - Saturday

743-YAMA (9262)

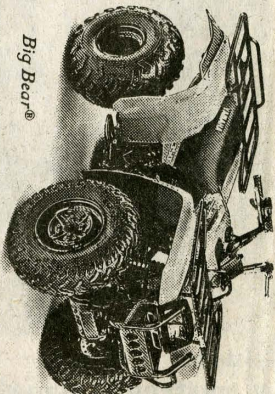
For The Ride Of Your Life!

# YAMAHA

GRIZZLY



Big Bear®



Big Bear®



# VOTEMOBILE

YOUR VOTE IS YOUR VOICE-

*Let it be heard!*

**VOTE**  
*Primary*  
**AUG. 5**

SPONSORED BY  
**KENTUCKY FARM  
BUREAU**

IN HONOR OF  
**CITIZENSHIP-LEADERSHIP  
DEMOCRACY**

**FREE**  
*To all*  
**OVER 21**

COURTESY OF  
HREAUX BAILLARD CO.  
DODGE TRUCK DEALERS  
Louisville, Ky.

Vote ROUTE VAN Vote



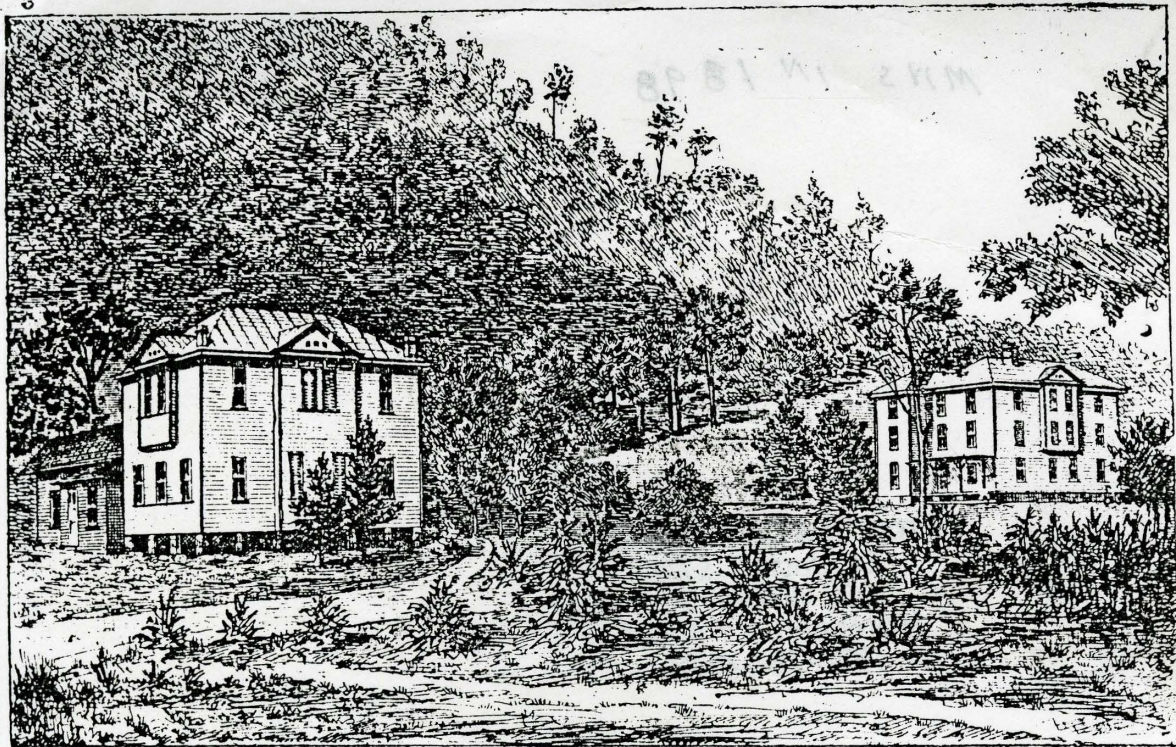
KY FARM BUREAU VOTEMOBILE  
IN ROWAN COUNTY DURING  
THE 1951 ELECTION.

From The Collection Of:  
Dr. Jack D. Ellis  
552 W. Sun St.  
Morehead, KY 40351  
606-784-7473

100

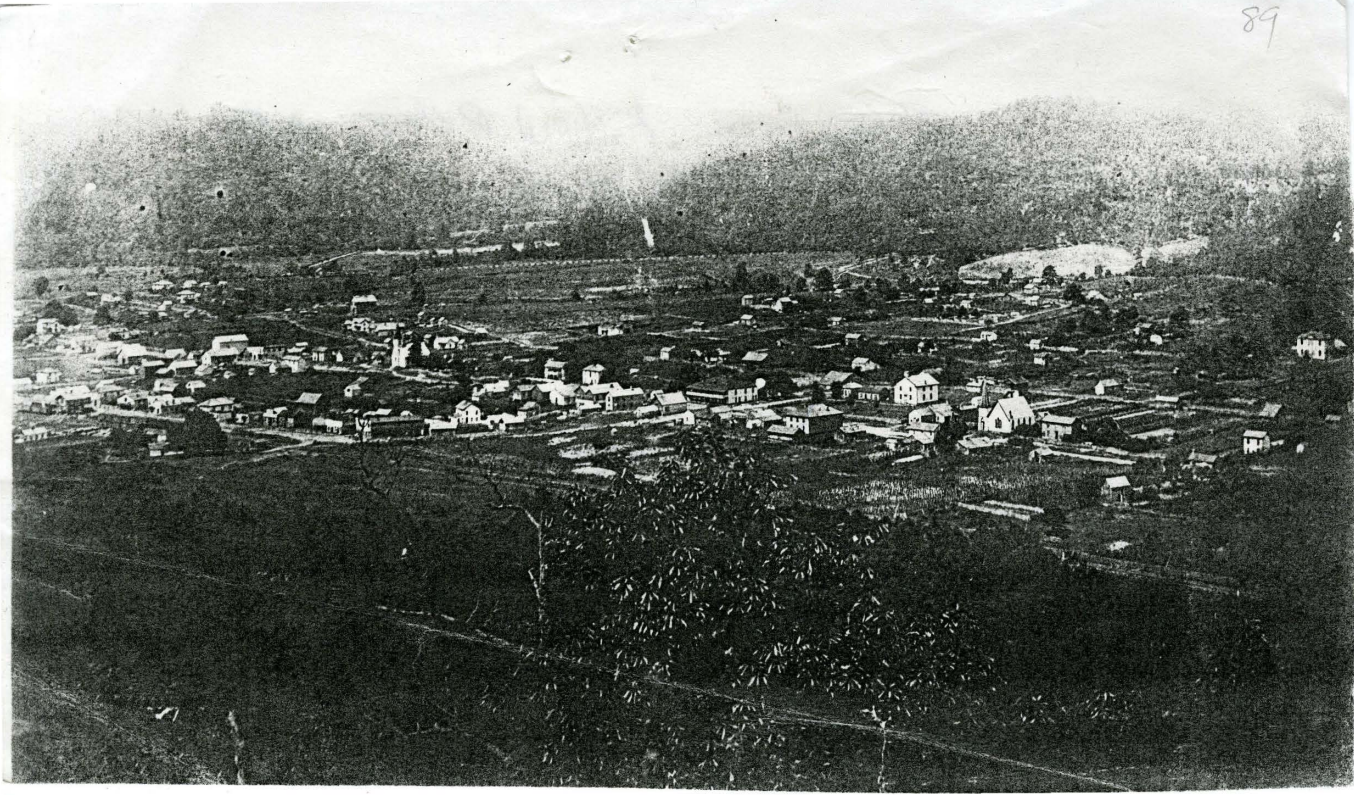
3 col





THE MOREHEAD NORMAL SCHOOL.







EARLIEST KNOWN PHOTO OF  
MOREHEAD

MOREHEAD - 1882

JUST AFTER RR BUILT

From The Collection Of:  
Dr. Jack D. Ellis  
552 W. Sun St.  
Morehead, KY 40351  
606-784-7473







SURVEYING USGO  
Through ROUTE n Cech  
1924

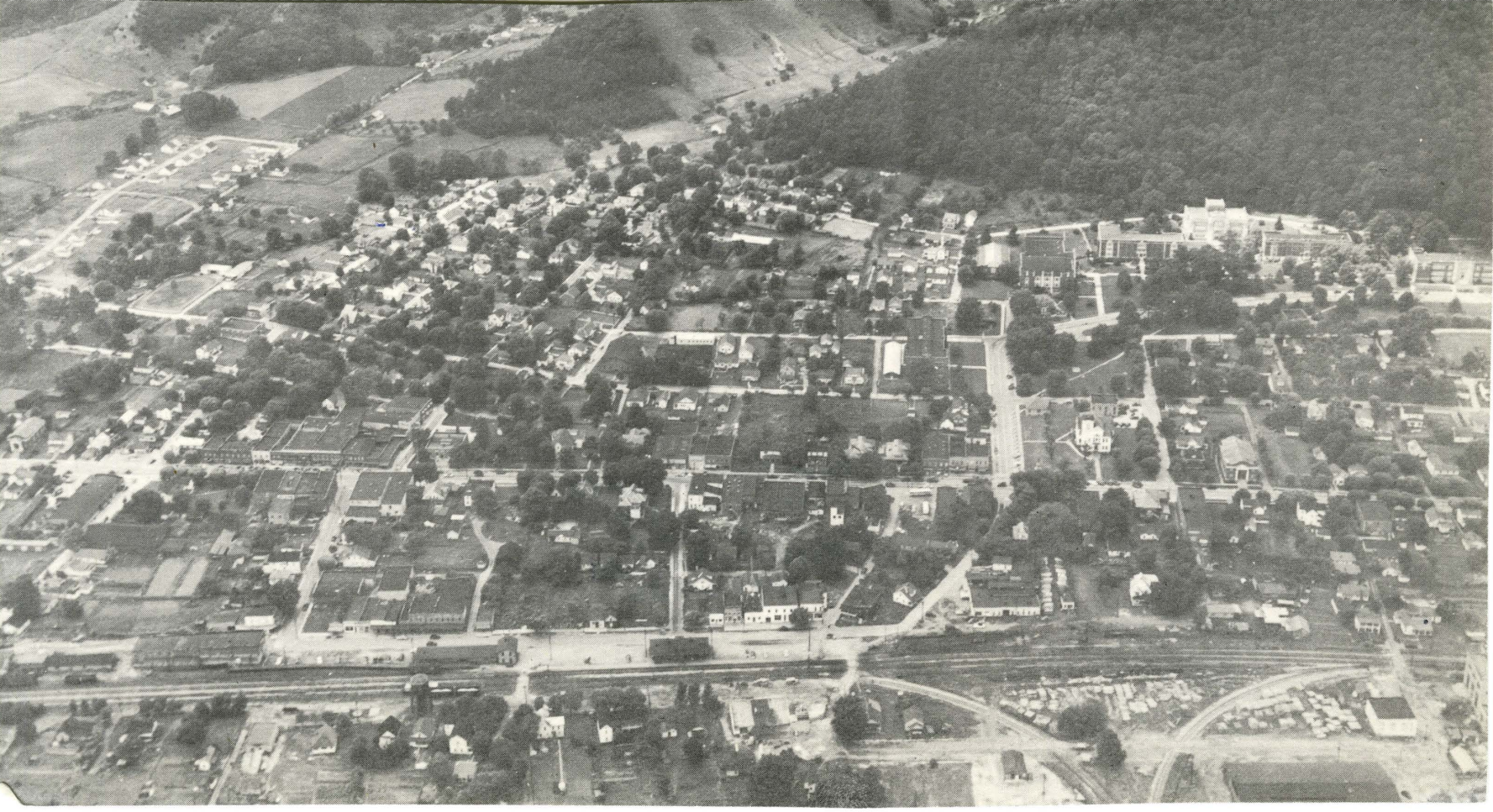
From The Collection Of:  
Dr. Jack D. Ellis  
552 W. Sun St.  
Morehead, KY 40351  
606-784-7473





The Morehead Eagles really go for the 1959 Chevrolet, pictured at the  
**MIDLAND TRAIL GARAGE** in Morehead, Kentucky



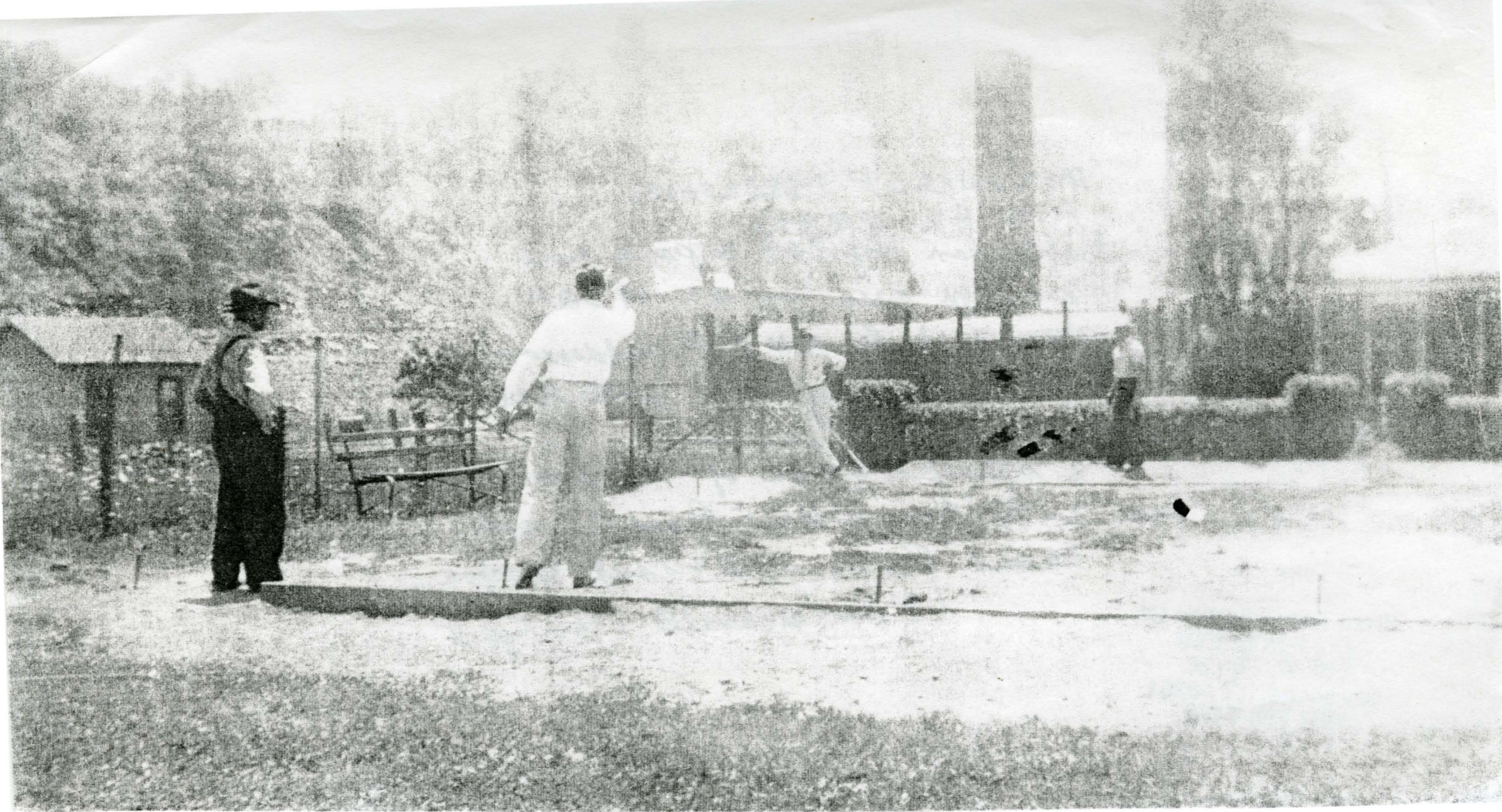




MOREHEAD PIER VIEW  
1942-1950 ~ 7

From The Collection Of:  
Dr. Jack D. Ellis  
552 W. Sun St.  
Morehead, KY 40351  
606-784-7473







MEMORIES OF HORSESHOES

AND HALDEMAN.

Haldeman Ky had a park and  
recreation area in ~~the~~ 1930's

sponsored by the L. P. Haldeman

Brick Company. This photo taken

in June 1938 shows men in

a spirited game of horseshoes. The men

are: (L-R) Ann Wilson, Russ Vincent,  
Ernest Fisher and Frank Kessler.

(Photo: Auanella Eldridge)

From The Collection Of:  
Dr. Jack D. Ellis  
552 W. Sun St.  
Morehead, KY 40351  
606-784-7473







LAME FUNERAL HOME

19307402

MILN ST.  
MOREHEAD 107

From The Collection Of:  
Dr. Jack D. Ellis  
552 W. Sun St.  
Morehead, KY 40351  
606-784-7473







The photographic arts  
were encouraged during  
the depression by the  
Farm Security Administration.  
They employed photographers  
to record the history of  
the era on film. Such as  
this photo mixing sorghum  
in Kentucky. 1930's  
photo by Merion Post  
Welcott.

From  
Dr.  
502 W. Sun St.  
Morehead, KY 40351  
606-784-7473







Palmer House - Univ St. - Morehead, Ky  
C. 1950

**From The Collection Of:  
Dr. Jack D. Ellis  
552 W. Sun St.  
Morehead, KY 40351  
606-784-7473**







Palmer House - Univ. St.  
Morehead, Ky C. 1950

Mr + Mrs John Palmer's  
Home on College Street  
won 3<sup>rd</sup> prize in  
the 1949 Christmas  
decoration contest.  
(now the Palmer  
Development  
House at MSU)

From The Collection Of:  
Dr. Jack D. Ellis  
552 W. Sun St.  
Morehead, KY 40351  
606-784-7473





## WEDDING RECEPTION-JUNE 10, 1951

This reception held at the home of Bill and Gladys Powell immediately followed the marriage of Olive Fouch and Don Lee which had taken place earlier at the First Church of God. The house is on West Main Street, near First Freewill Baptist Church. Shown waiting for the newlyweds are (bottom row, left to right) unidentified, Frankie Calvert, Millard F. Moore, Hilda Moore, Jack VanHook, Luvanna Moore, Eva Adkins, children sitting on the wall unidentified. (Standing above the wall) Sue and Bobby Stamper, Ora Waltz, Mrs. Lee (groom's Mother), Nell Fair, Vella Jayne, Martha Jane Waltz, Blanche Waltz, Gladys Powell, Jewell Battson. Photo courtesy of Art Stewart.





Presidential Limo in front of the White House  
WASH DC. 19902

COURTESY DON COX  
SECRET SERVICE AGENT

From The Collection Of:  
Dr. Jack D. Ellis  
552 W. Sun St.  
Morehead, KY 40351  
606-784-7473

Presidential motorcade preparing to  
depart the White House - 19902

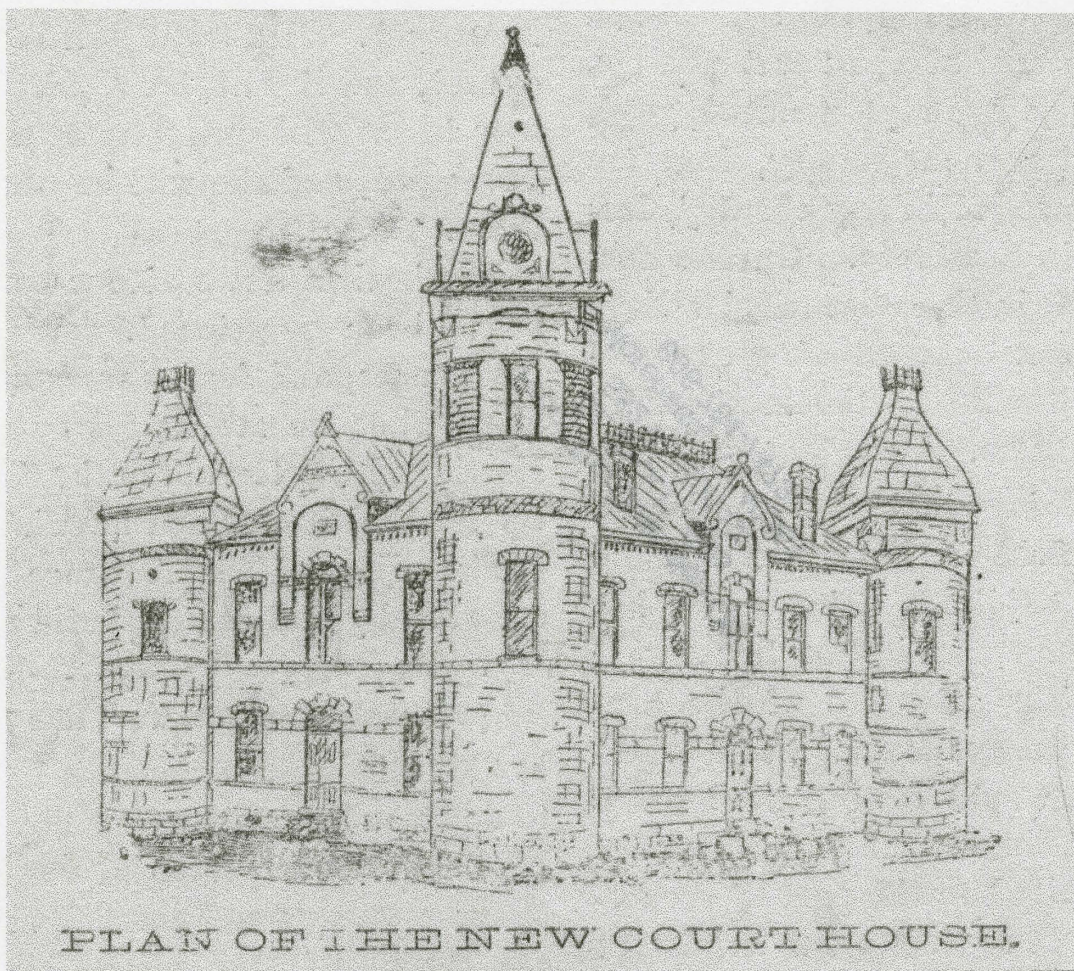
Given me by

Secret Service Agent

DON COX - NSU GRAD.

From The Collection Of:  
Dr. Jack D. Ellis  
552 W. Sun St.  
Morehead, KY 40351  
606-784-7473

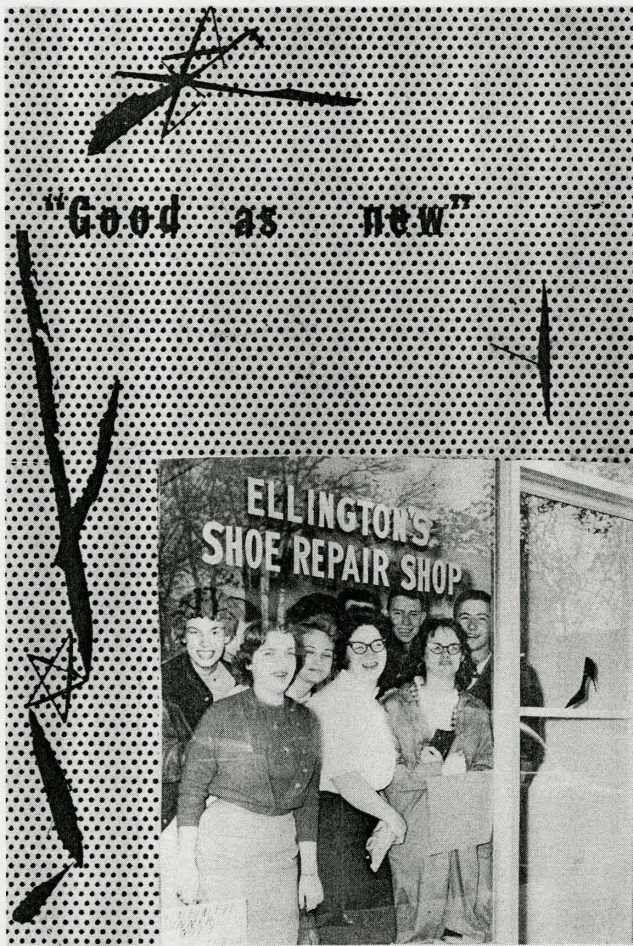




PLAN OF THE NEW COURT HOUSE.

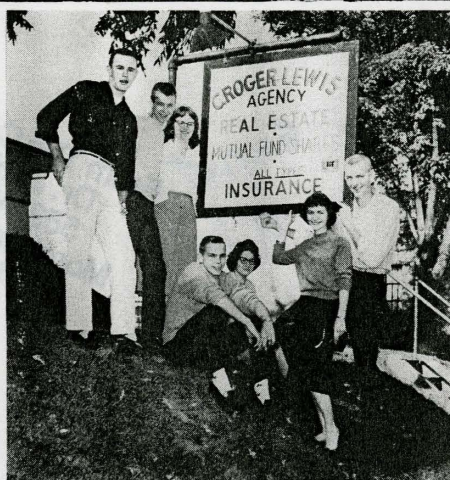
(Row 44)  
1898





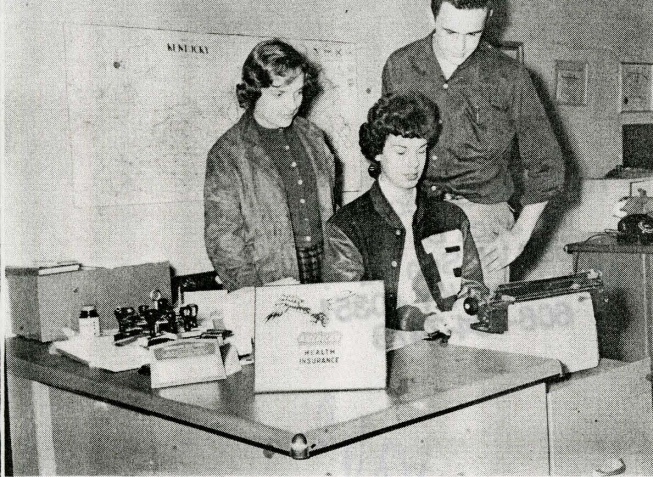
q  
u  
a  
l  
i  
t  
y  
goods  
at  
**GOLDE'S**

**FRALEY**  
**FURNITURE**



**"C"**  
**ROGER**  
**LEWIS**





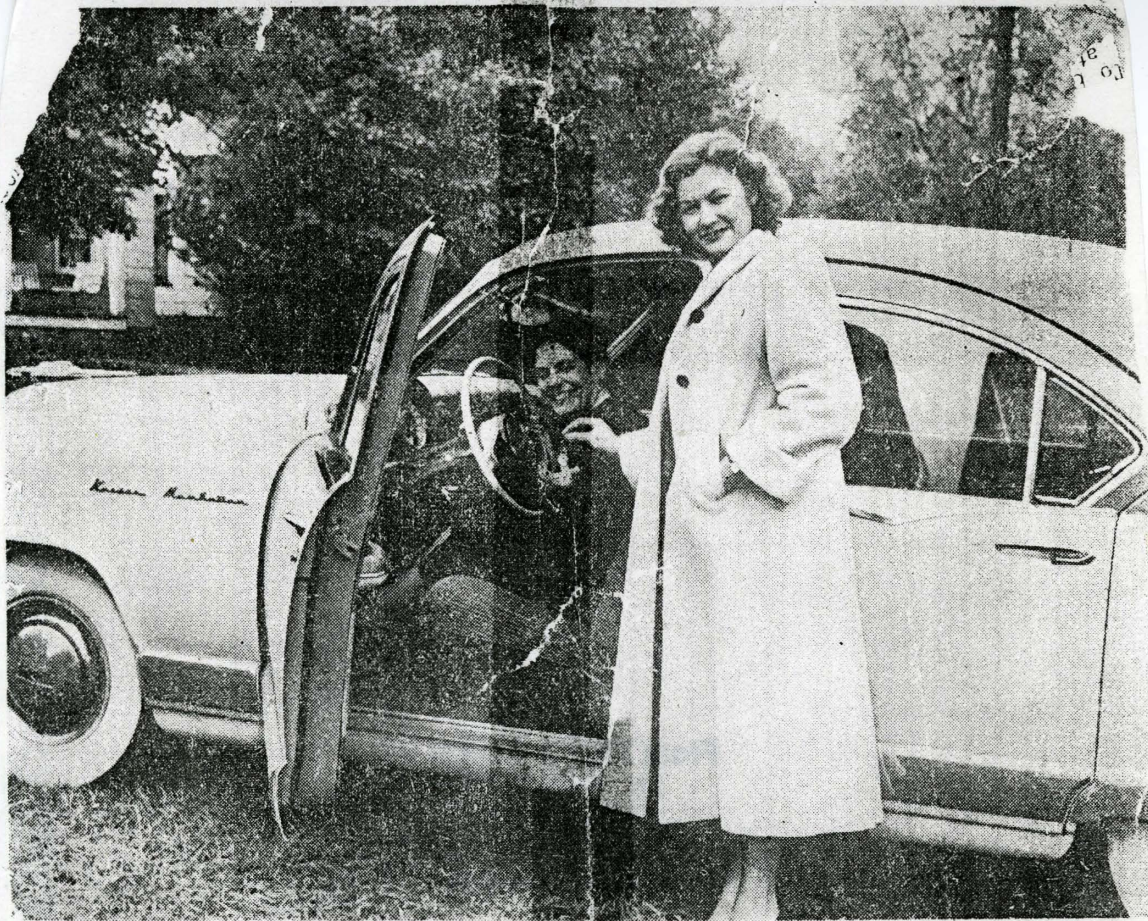
**AMERICAN**

**HEALTH**

**INSURANCE**

**HAROLD BELLAMY , agent**





—Photo by Art Stewart

**NEW CAR FOR MRS. PATRICK**—Brenda Hollis, Master of Ceremonies of the WLW radio show, "Sounds of the Century" is shown presenting the keys to a new Kaiser Manhattan which Mrs. Patrick won last week by correctly identifying the mystery sound as a stoker furnace. Presentation took place in front of Mrs. Patrick's home, 1234 1/2 Street, in Morehead Saturday afternoon. She is the second person to win one of the new cars.



End Evening

19502

New found to drive

From The Collection Of:  
Dr. Jack D. Ellis  
552 W. Sun St.  
Morehead, KY 40351  
606-784-7473





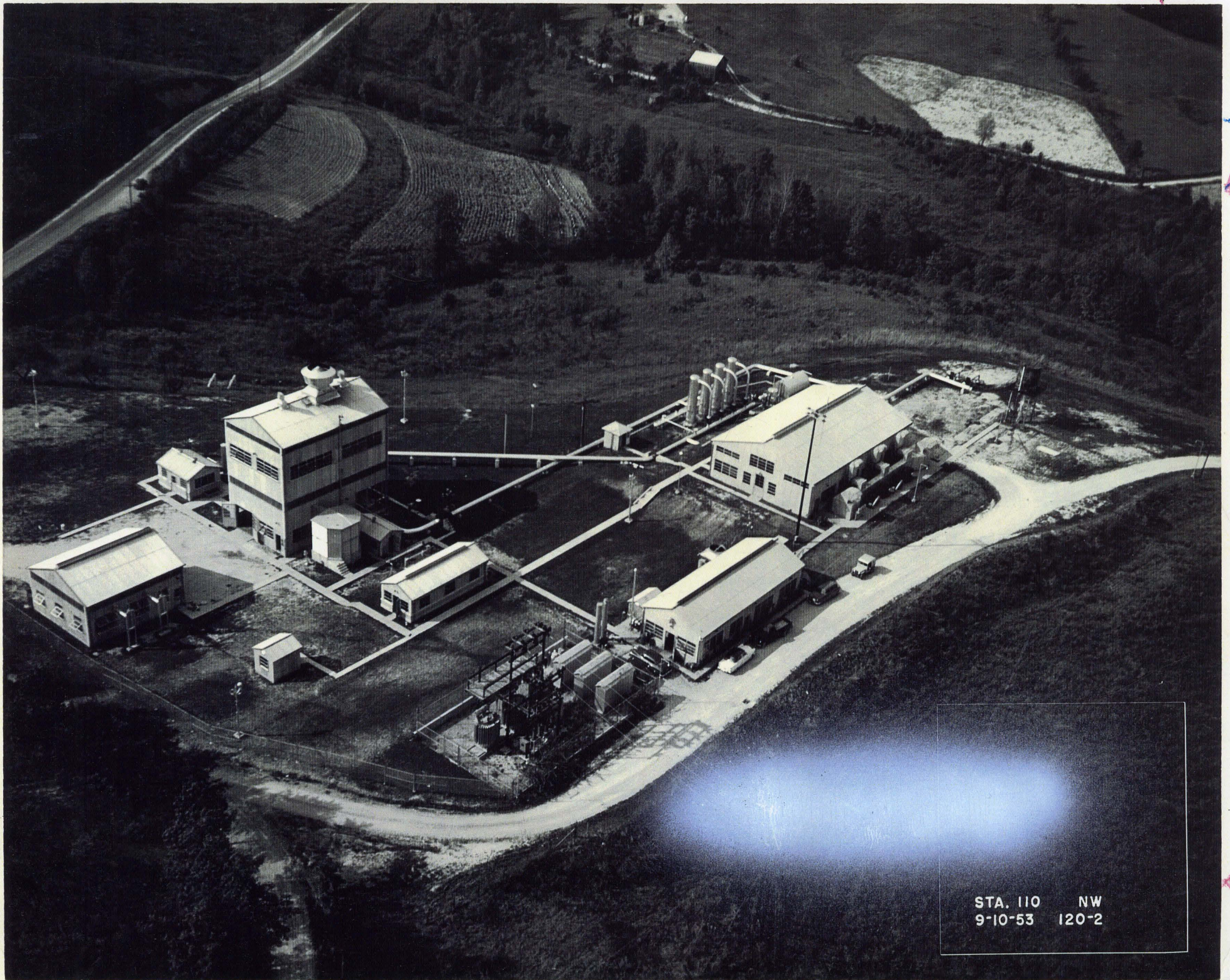


CLIMBING TOWER ON  
HILL ACROSS THE DAM  
MOREHEAD KY

Photo: A Stewart

From The Collection Of:  
Dr. Jack D. Ellis  
552 W. Sun St.  
Morehead, KY 40351  
606-784-1478





STA. 110 NW  
9-10-53 120-2



TGT Plant  
Cranston, KY

19505

From The Collection Of:  
Dr. Jack D. Ellis  
552 W. Sun St.  
Morehead, KY 40351  
606-784-7473





**Community  
Trust Bank<sup>®</sup>**

FDIC Insured

Flemingsburg, Kentucky

**1998**





Greenbriar Coal Mine, Muses Mills, 1921

JANUARY

December 1997						
S	M	T	W	T	F	S
	1	2	3	4	5	6
7	8	9	10	11	12	13
14	15	16	17	18	19	20
21	22	23	24	25	26	27
28	29	30	31			

February						
S	M	T	W	T	F	S
1	2	3	4	5	6	7
8	9	10	11	12	13	14
15	16	17	18	19	20	21
22	23	24	25	26	27	28

Sunday	Monday	Tuesday	Wednesday	Thursday	Friday	Saturday
				1 New Year's Day Bank Closed	2	3
4	5 ☾	6	7	8	9	10
11	12 ○	13	14	15	16	17
18	19 Martin Luther King's Birthday - Bank Closed	20 ☾	21	22	23	24
25	26	27	28 ●	29	30	31



Community  
Trust Bank<sup>®</sup>  
FDIC Insured

Ashland  
606-329-6000

Mt. Sterling  
606-498-5332

Campbellsville  
502-465-6651

Pikeville  
606-432-1414

Flemingburg  
606-845-3551

Versailles  
606-879-5400

Lexington  
606-389-5350

Whitesburg  
606-633-0161

Middlesboro  
606-248-9600

Williamsburg  
606-549-5000





Downtown Flemingsburg, Late 1930's

January						
S	M	T	W	T	F	S
				1	2	3
4	5	6	7	8	9	10
11	12	13	14	15	16	17
18	19	20	21	22	23	24
25	26	27	28	29	30	31

FEBRUARY

March						
S	M	T	W	T	F	S
1	2	3	4	5	6	7
8	9	10	11	12	13	14
15	16	17	18	19	20	21
22	23	24	25	26	27	28
29	30	31				

Sunday	Monday	Tuesday	Wednesday	Thursday	Friday	Saturday
1	2	3	4	5	6	7
8	9	10	11	12 Lincoln's Birthday	13	14 Valentine's Day
15	16 President's Day Observed	17	18	19	20	21
22 Washington's Birthday	23	24	25	26	27	28



Community  
Trust Bank®  
FDIC Insured

Ashland 606-329-6000	Campbellsville 502-465-6651	Flemingburg 606-845-3551	Lexington 606-389-5350	Middlesboro 606-248-9600
Mt. Sterling 606-498-5332	Pikeville 606-432-1414	Versailles 606-879-5400	Whitesburg 606-633-0161	Williamsburg 606-549-5000





Poplar Plains Post Office and Hardware Store

# MARCH

February						
S	M	T	W	T	F	S
1	2	3	4	5	6	7
8	9	10	11	12	13	14
15	16	17	18	19	20	21
22	23	24	25	26	27	28

April						
S	M	T	W	T	F	S
			1	2	3	4
5	6	7	8	9	10	11
12	13	14	15	16	17	18
19	20	21	22	23	24	25
26	27	28	29	30		

Sunday	Monday	Tuesday	Wednesday	Thursday	Friday	Saturday
1	2	3	4	5	6	7
8	9	10	11	12	13	14
15	16	17 St. Patrick's Day	18	19	20 Spring Begins	21
22	23	24	25	26	27	28
29	30	31				





Downtown Flemingsburg, 1920's

April						
S	M	T	W	T	F	S
			1	2	3	4
5	6	7	8	9	10	11
12	13	14	15	16	17	18
19	20	21	22	23	24	25
26	27	28	29	30		

MAY

June						
S	M	T	W	T	F	S
	1	2	3	4	5	6
7	8	9	10	11	12	13
14	15	16	17	18	19	20
21	22	23	24	25	26	27
28	29	30				

Sunday	Monday	Tuesday	Wednesday	Thursday	Friday	Saturday
					1	2
3	4	5	6	7	8	9
10	11	12	13	14	15	16
Mother's Day						
17	18	19	20	21	22	23
24	25	26	27	28	29	30
31	Memorial Day Bank Closed					





Ewing Deposit Bank, Early 1900's

May						
S	M	T	W	T	F	S
					1	2
3	4	5	6	7	8	9
10	11	12	13	14	15	16
17	18	19	20	21	22	23
24	25	26	27	28	29	30
31						

JUNE

July						
S	M	T	W	T	F	S
			1	2	3	4
5	6	7	8	9	10	11
12	13	14	15	16	17	18
19	20	21	22	23	24	25
26	27	28	29	30	31	

Sunday	Monday	Tuesday	Wednesday	Thursday	Friday	Saturday
	1	2	3	4	5	6
7	8	9	10	11	12	13
14 Flag Day	15	16	17	18	19	20
21 Father's Day Summer Begins	22	23	24	25	26	27
28	29	30				





Dedication

June						
S	M	T	W	T	F	S
	1	2	3	4	5	6
7	8	9	10	11	12	13
14	15	16	17	18	19	20
21	22	23	24	25	26	27
28	29	30				

JULY

August						
S	M	T	W	T	F	S
						1
2	3	4	5	6	7	8
9	10	11	12	13	14	15
16	17	18	19	20	21	22
23	24	25	26	27	28	29
30	31					

Sunday	Monday	Tuesday	Wednesday	Thursday	Friday	Saturday
			1	2	3	4 Independence Day Bank Closed
5	6	7	8	9	10	11
12	13	14	15	16	17	18
19	20	21	22	23	24	25
26	27	28	29	30	31	





Take me out to the ball game!!

July						
S	M	T	W	T	F	S
			1	2	3	4
5	6	7	8	9	10	11
12	13	14	15	16	17	18
19	20	21	22	23	24	25
26	27	28	29	30	31	

# AUGUST

September						
S	M	T	W	T	F	S
		1	2	3	4	5
6	7	8	9	10	11	12
13	14	15	16	17	18	19
20	21	22	23	24	25	26
27	28	29	30			

Sunday	Monday	Tuesday	Wednesday	Thursday	Friday	Saturday
						1
2	3	4	5	6	7	8
9	10	11	12	13	14	15
16	17	18	19	20	21	22
23	24	25	26	27	28	29
30	31					





Flour Mill, Sapp, Kentucky (now Battle Run), 1901

August						
S	M	T	W	T	F	S
						1
2	3	4	5	6	7	8
9	10	11	12	13	14	15
16	17	18	19	20	21	22
23	24	25	26	27	28	29
30	31					

SEPTEMBER

October						
S	M	T	W	T	F	S
				1	2	3
4	5	6	7	8	9	10
11	12	13	14	15	16	17
18	19	20	21	22	23	24
25	26	27	28	29	30	31

Sunday	Monday	Tuesday	Wednesday	Thursday	Friday	Saturday
		1	2	3	4	5
6	7 Labor Day Bank Closed	8	9	10	11	12
13	14	15	16	17	18	19
20	21 First Day of Rosh Hashanah	22 Autumn Begins	23	24	25	26
27	28	29	30 Yom Kippur			



Community  
Trust Bank®  
FDIC Insured

Ashland  
606-329-6000  
Mt. Sterling  
606-498-5332

Campbellsville  
502-465-6651  
Pikeville  
606-432-1414

Flemingburg  
606-845-3551  
Versailles  
606-879-5400

Lexington  
606-389-5350  
Whitesburg  
606-633-0161

Middlesboro  
606-248-9600  
Williamsburg  
606-549-5000





Fleming County High School Football Team, 1922

OCTOBER

September						
S	M	T	W	T	F	S
		1	2	3	4	5
6	7	8	9	10	11	12
13	14	15	16	17	18	19
20	21	22	23	24	25	26
27	28	29	30			

November						
S	M	T	W	T	F	S
1	2	3	4	5	6	7
8	9	10	11	12	13	14
15	16	17	18	19	20	21
22	23	24	25	26	27	28
29	30					

Sunday	Monday	Tuesday	Wednesday	Thursday	Friday	Saturday
				1	2	3
4	5	6	7	8	9	10
11	12 Columbus Day	13	14	15	16	17
18	19	20	21	22	23	24
25 Daylight Saving Time Ends	26	27	28	29	30	31 Halloween





Harry Andrews, Undertaker, Flemingsburg

# NOVEMBER

October						
S	M	T	W	T	F	S
				1	2	3
4	5	6	7	8	9	10
11	12	13	14	15	16	17
18	19	20	21	22	23	24
25	26	27	28	29	30	31

December						
S	M	T	W	T	F	S
1	2	3	4	5	6	7
8	9	10	11	12	13	14
15	16	17	18	19	20	21
22	23	24	25	26	27	28
29	30					

Sunday	Monday	Tuesday	Wednesday	Thursday	Friday	Saturday
1	2	3 Election Day	4	5	6	7
8	9	10	11 Veteran's Day	12	13	14
15	16	17	18	19	20	21
22	23	24	25	26 Thanksgiving Day Bank Closed	27	28
29	30					





John W. Spencer and his Cadillac Touring Car, Ewing, Kentucky, 1904

# DECEMBER

November						
S	M	T	W	T	F	S
1	2	3	4	5	6	7
8	9	10	11	12	13	14
15	16	17	18	19	20	21
22	23	24	25	26	27	28
29	30					

January 1999						
S	M	T	W	T	F	S
					1	2
3	4	5	6	7	8	9
10	11	12	13	14	15	16
17	18	19	20	21	22	23
24	25	26	27	28	29	30
31						

Sunday	Monday	Tuesday	Wednesday	Thursday	Friday	Saturday
		1	2	3	4	5
6	7	8	9	10	11	12
13	14 First Day of Hanukkah	15	16	17	18	19
20	21 Winter Begins	22	23	24	25 Christmas Day Bank Closed	26
27	28	29	30	31 New Year's Eve		



## Thank you!

This year's calendar is a terrific success, thanks to everyone who entered the contest! We appreciate your sharing photos of times and event gone by. We are a reflection of our strong heritage. Here's more information about this year's calendar photos...

- Cover** Hillsboro Band, 1909 or 1910, from left Jim Campbell, Charles Lyons, Claude Fawns, Demaree Todd, Artie McRoberts, Leslie Crawford, Chas. Payne, John Busby Sorrell, Clem Campbell and Bob Davis – Submitted by Verlyn James, **3rd Place**
- January** Greenbriar Coal Mine, Muses Mills, 1921, front, from left, Otis Meadows, Dan Holland, Shay Hinton, Oney Muse, Allie Compton, Chesney Evans, Ardrey Muse, Lloyd Compton; back, Russell McRoberts and Reecie Compton – Submitted by Patricia Newsome, daughter of Lloyd Compton **4th Place**
- February** Downtown Flemingsburg in 1938 or 1939 – Submitted by Katherine Sellers, **4th Place**
- March** Poplar Plains Post Office and Hardware Store – Submitted by Lois Hinton, **4th Place**
- April** Downtown Flemingsburg, time frame 1920-1930 – Submitted by Wayne Craft, **4th Place**
- May** May 10, 1907, C.F.&S. Railroad, train wreck, on a trestle over a ravine near Flemings Creek, south east of Flemingsburg – Submitted by Brenda E. Jolley, **4th Place**

- June** Ewing Deposit Bank, Early 1900's – Submitted by Nancy Howe Donovan, **4th Place**
- July** Dedication, from left, Stockton Bower, Richard Hinton, Herd Shrou, Reed Moran, Doug Boone, Calvin Hazelbrigg, Drue Stephens, Maurice Carpenter – Submitted by Herd Shrou, **4th Place**
- August** Play Ball!!! First row, from left, Woody Todd, Moody Emmons, Don Cameron, Wilbur Hamilton, Clarence Price (Coach), E.R. Kelley, B.F. Smitle, Clyde Throckmorton, Billy Marshall Standing, from left, Bud Hammonds, Buck Crawford, Day Shanklin, Duley McIntire, "Happy" Chandler, Gib Clark, John Shanklin, Herd Shrou, Stinger Gibson – Submitted by Betty Wood, **4th Place**
- September** Flour Mill built in Sapp, Kentucky, Flemings County (now Battle Run), 1901 – Front left, John Dodge, Robert Watkins, Jim McCall, M.O. McCall, Willie Hysong, John W. Spencer and John Cooper; in the Phaeton, Mrs Cooper, Mrs. John W. Spencer and Susie Dodge  
Submitted by Gary W. Jolley, **4th Place**
- October** Fleming County High School Football Team, 1922 – Submitted by Robert Graham, **2nd Place**
- November** Harry Andrews, Undertaker, Flemingsburg – Submitted by Phyllis Stamm, **1st Place**
- December** John W. Spencer and his Cadillac Touring Car, Ewing, Kentucky, 1904 – Submitted by Mildred B. Emmons, **4th Place**