

THE OVERHEAD INDEPENDENT

"ONE OF KENTUCKY'S GREATER WEEKLIES"
MOREREAD, KENTUCKY, THURSDAY, OCTOBER 28, 1937

Volume IV. Number 43

Morehead Observes Eleventh Homecoming Saturday; 3,000 Persons Expected For Event

Morehead Stores To Close During Grid Tilt

A gala program is scheduled at the Morehead State Teachers College Saturday as the institution prepares to welcome between three and four thousand homecomers.

Red Cross Plans Membership Drive

Effort being made for largest enrollment in history of Kentucky.

SUNDAY SHOWS STARTED

Sunday shows at the College Theatre will start on Sunday, November 7.

Bogus Collectors Hit By Government

Criminal prosecution by the Department of Justice of bogus collectors of funds in connection with the Social Security Act's old-age insurance program has been announced today.

JOIN THE Roll Call Is Now On!

Election Returns To Be Broadcast By Independent

Returns of Rowan County's election Tuesday will be broadcast over loud-speakers from the courthouse throughout the counting of the ballots.

Morehead Vikings Victors By 7 To 0

Green And White Scores Win Over Boyd County High School.

College View Has Modern Equipment

A modern filling station and tourist home has been opened at the intersection of the highway and College Boulevard.

Transylvania Holds Morehead To 7-6 Victory In Important KICAC Struggle

Stanley kicked out of bounds on the Morehead 31.

Bad Punting And Penalties Hurt Chances Of Eagle Team

Gaining a distinct advantage in punting and securing the breaks on the Transylvania College.

First Quarter

Transylvania won the toss and elected to take the north end of the field with the wind at their backs and Morehead received.

Ballots As Shown In Today's Paper Are Official Ones

Many Withdrawals Cause Changes For November 2 General Election.

Bob Day Opens Place On East Main And College Boulevard

A modern filling station and tourist home has been opened at the intersection of the highway and College Boulevard.

Bob Day Opens Place On East Main And College Boulevard

A modern filling station and tourist home has been opened at the intersection of the highway and College Boulevard.

College View Has Modern Equipment

A modern filling station and tourist home has been opened at the intersection of the highway and College Boulevard.

OPEN HOUSE PLANNED FOR SCIENCE BUILDING

An open house in the Science Building at the Morehead State Teachers College will be held between the hours of 8 a. m. and noon Saturday.

GUESTS AT GRID TILT

A number of prominent educators and business men of Eastern Kentucky will be guests of President H. A. Babb at the Morehead-Eastern homecoming game here Saturday.

Eastern - Morehead Game Saturday Is Held A "Natural"

Both Teams Are Undeafed, Having Annexed 5 Consecutive Victories

BLUE AND GOLD CLUB CRIPPLED FOR MATCH

Transylvania College not only lowered Morehead's prestige here Saturday by the favored Eagles to a 7-6 victory, but didn't help the teachers chance any for their homecoming game with Eastern Saturday.

Frank Robertson Also Hurt His Shoulder

Whether Radjunas, Adams, Robertson, Hammond, Rose and Woback will play Saturday is a question.

College View Has Modern Equipment

A modern filling station and tourist home has been opened at the intersection of the highway and College Boulevard.

Bob Day Opens Place On East Main And College Boulevard

A modern filling station and tourist home has been opened at the intersection of the highway and College Boulevard.

College View Has Modern Equipment

A modern filling station and tourist home has been opened at the intersection of the highway and College Boulevard.

OPEN HOUSE PLANNED FOR SCIENCE BUILDING

An open house in the Science Building at the Morehead State Teachers College will be held between the hours of 8 a. m. and noon Saturday.

Heaviest Bidding In History Of Rowan County Is Anticipated In Tuesday's General Election

Clarence Cobb Discusses New Set-Up For Rowan Farmers

Better Leases For Landlord - Tenants Government's Aim

The Farm Security Administration of the U. S. Department of Agriculture will stress better leasing arrangements between landlord and tenants in the interest of both parties to the contract and as an aid to the success of its program.

Girl, 14 Years Old, Weds Divorced Man, 31

Rowan County went on record this week with another child marriage. A license to wed was granted from the Clerk's office after Mr. and Mrs. Frank Little, of Morehead, appeared before a deputy clerk and gave their consent of the marriage of their daughter, Opal Mae, 14 years old, to Emmett Caskey, 31.

Jennings Out Of Legislative Race

That much became certain Friday as J. T. Jennings, the Republican nominee, withdrew.

Many Withdraw In Municipal Election

John Cecil Is Only Person Opposing Peoples Ticket.

Freshmen To Meet Kentucky Friday

The Morehead College Freshmen, probably not as potent this year as they have been in past years, will meet the University of Kentucky's Kittens at the Friday afternoon.

VAUGHAN TO PRESIDE AT SCHOOL MEETING

Dr. William H. Vaughan, Dean of the Morehead State Teachers College, will preside at the meeting of the Commission on the Education of the Association of Colleges and Secondary Schools which will be in session at Lexington Friday and Saturday.

Possibility Held That Heavily Populated Precincts Will Have Trouble Voting All Persons Because Of Four Ballots

Barring inclement weather Rowan County is expected to cast the largest vote in its history at the polls Tuesday.

Concern Has Expressed That There May Be Difficulty In Voting All Who Wish To Cast Ballots In The Heavily Populated Precincts, Principally In Morehead, Because There Are So Many Ballots

In three large Morehead precincts there are 16 and 17 voters will be handed 4 ballots. This means that the Clerk and Opposite judge must sign their names 4 times in addition to placing the voters name, residence and registration number on the stub that remains in the book.

Morehead Man Withdraws Giving Z. Taylor Young Representative Post

Z. Taylor Young will be the next Representative from Bath and Rowan Counties.

John Cecil Is Only Person Opposing Peoples Ticket

Withdrawal of five candidates for City Commission and LeGrange Jayne from the Mayor's race left the Peoples Ticket opposed by only one candidate.

WOMAN'S CLUB TO MEET NOVEMBER 16

The Rowan County Woman's Club postponed its meeting from November 2 to November 16, according to an announcement made today.

KAPITOLS KOMENTOS

James W. Martin, Commissioner of Revenue is a most diligent collector. He has caused to be filed in the Franklin Circuit Court eight suits to collect amounts he says are due on the basis of gross receipts tax. All were against automobile sales agencies.

The Morehead Independent

Official Organ of Rowan County

Published each Thursday morning at, Morehead, Kentucky

INDEPENDENT PUBLISHING CO.

Office and Plant—Corner Carey Avenue and Railroad Street—Telephone 235

Entered as second class matter February 27, 1934, at the postoffice at Morehead, Kentucky, under Act of March 8, 1879.

WILLIAM J. SAMPLE, Editor and Publisher

WILLIAM E. CRUTCHER, Associate Editor

SUBSCRIPTION RATES

One Year in Kentucky \$1.50
Six Months in Kentucky \$1.00
One Year Out of State \$2.00

ADVERTISING RATES MADE KNOWN UPON APPLICATION



KENTUCKY PRESS ASSOCIATION

Thursday Morning, October 28, 1937.

ROOSEVELT'S SPEECH INTERNATIONAL EVENT

President Roosevelt's speech on world affairs, in which he castigated dictatorships and proposed a virtual quarantine of belligerent powers...

Mr. Roosevelt's effect is as simple as it is revolutionary. He said that it might be necessary to place a towering commercial wall around the nations which are responsible for today's war scares and war prospects.

The President did not mention any country by name. But it was obvious that he was referring to three powers: Japan, Italy, Germany.

The world effect of such a declaration of potential policy would have been nowhere near so great had it come from the head of any other country.

The President's attitude, roughly described, is that we could not escape being involved in a major war, that we must therefore cooperate to prevent war.

The strength of an alliance between the democracies and the U. S. S. R. is impossible to exaggerate.

The President's address has already achieved results. Japan has started a campaign to justify its country's role in China.

Summing up, a vision of the democracies is designed to achieve two ends. One, to maintain peace. Second, if that fails, to make sure that the ensuing war will be swift and ruinous to the dictatorships.

IT IS YOUR DUTY TO VOTE

It is the duty of every registered voter in Rowan County to go to the polls and cast his ballot next Tuesday.

Most important of the offices to be decided are those of our official county family: A County Judge, Commonwealth Attorney, County Court Clerk...

The decision of the people at the polls on Tuesday shall decide who shall direct the destinies of the county for the next four years.

Any political prejudices or petty differences should be forgotten by the voter, especially in these times when we live under the guidance of men that we install in office at this election and it is the duty of every citizen to weigh the merits of each candidate before he votes.

The fact that Rowan County is, for the last few years, showing more interest in elections is a true barometer that our people are becoming more conscious of government.

In addition to our county officers, voters will cast ballots on 2 Constitutional Amendments of far reaching effect. Unfortunately these amendments have not been publicized as much as they should have and the majority of voters do not know their content.

One of the most important ballots will be that of electing members of the Board of Education. Three members will be elected on November 2...

JOHN BROWN'S PAY CHECK

According to an article by Frank R. Kent, current slackening of government borrowing is a curious phenomenon. Instead of borrowing directly from the banks or the people through the issuance of bonds, the government has now adopted a policy of spending the funds supposedly placed in trust with the government by the people...

The public treasury has simply become a vast and seemingly bottomless grab-bag. Politicians seeking to perpetuate themselves in office gleefully pay the treasury for money and more money—money that is spent on everything from out-houses to cash registers.

What will become of John Brown's hard earned savings if such a policy is continued for long? What do you think?

THE GENTLEMAN WITH THE SCYTHE

Millions of Americans are providing for old age through life insurance. But how many of these millions will live to enjoy the fruits of their frugality?

Cold statistics would undoubtedly give a rather chilling answer. Yet, behind the statistics lie almost unbelievable tales of personal need by individuals who scrupulously heeded the dictates of modern business and social life, but just as scrupulously ignored the warning twinges of failing health.

Over 70,000 persons died of tuberculosis in the United States last year. Most of these deaths could have been avoided, if the victim had but "played balk with nature and the medical profession. The prick of a needle (Tuberculin Test), the snap of an X-ray camera, both of which would have required only a few moments of time, and the gentleman with the scythe would have been sent on his way—alone.

Life insurance—and good health—are vital to the peace of mind of every breadwinner. Don't allow yourself to be "caught short" on either.

THREATENING THE COURT

News dispatches of October 4 commenting on the reconvincing of the Supreme Court, said: "As the Court meets, it is the growing conviction in Washington that the . . . attempt to enlarge the Court will be held in abeyance until the first judgment of the new term indicate the trend of its constitutional interpretations."

Many patriotic citizens of the United States never dreamed they would live to see the day when political factions would openly seek to sway the opinions of our highest tribunal by propaganda, innuendo and actual threats.

THEY'LL GET YOU IF YOU DON'T WATCH OUT!



SUNDAY SCHOOL LESSON

LESSON FOR OCTOBER 31

THE MORAL ISSUE IN THE DRINK PROBLEM

LESSON TEXT--Romans 13:12-14; 1 Corinthians 6:9-11; Galatians 5:16-24.

GOLDEN TEXT--Walk in the Spirit, and ye shall not fulfill the lust of the flesh--Galatians 5:16.

PRIMARY TOPIC--My Neighbors.

JUNIOR TOPIC--The Greatest Blessing.

INTERMEDIATE AND SENIOR TOPIC--The moral issue in the Drink Problem.

The title for our lesson is well chosen--"The Moral Issue in the Drink Problem."

First, let it be clear there is an issue. Those who have business, social, or political connections with the liquor traffic would like to have us believe that the repeal of prohibition settled the matter once for all.

In the second place, many would have us think that the matter of drunkenness is a social, political, or even a physical problem, with only moral implications whatever.

Drunkness is a Work of Darkness (Rom. 13:12-14).

Just as there are darkness and daylight in the physical universe, so there are two contrasting spiritual realms, of darkness and light.

Men "loved darkness rather than light" because their deeds were evil," according to the Lord Jesus. (See John 3:19). This spiritual realm of darkness is directed by "rulers of darkness of this world" (Eph. 6:12), and its purpose is "spiritual wickedness, in the works of darkness."

Lightness (1 Cor. 13:13).

Drunkness is a work of darkness. It separates man from God and makes him fear the glorious light of his countenance.

POLITICAL ANNOUNCEMENTS

We are authorized to announce the following party nominees to be voted on in the General Election on Tuesday, Nov. 2, 1937.

DEMOCRAT For Representative Z. Taylor Young For County Judge Dave C. Caudill For County Court Clerk J. M. Butcher For Sheriff Dan Parker For Jailer Alby Hardin For Tax Commissioner Luther Fruey For Coroner Lon M. Davis For Magistrate (District 1) Jim Rigby For Magistrate (District 2) Henry Cox

REPUBLICAN For Representative J. T. Jennings For County Judge I. E. Peltrey For County Court Clerk Vernon Alfrey For Sheriff B. F. McBrayer For Jailer Marvin R. Adkins For Coroner Lester Caskey For Magistrate (District 1) Arthur Barber For Magistrate (District 2) Herbert Moore

The answer to our problem, not in reformation, not in education, not in culture (desirable and useful though we recognize these things to be), but being "washed," "sanctified," and "justified" in the name of the Lord Jesus and in the Spirit of God.

Drunkness is a Work of the Flesh (Gal. 5:16-24). The flesh--that is our bodies ruled over by self-will as opposed to God's will--is revealed in the Scriptures to be thoroughly bad, and in opposition to God.

Drunkness is a Work of Darkness (Rom. 13:12-14). Just as there are darkness and daylight in the physical universe, so there are two contrasting spiritual realms, of darkness and light.

Men "loved darkness rather than light" because their deeds were evil," according to the Lord Jesus. (See John 3:19). This spiritual realm of darkness is directed by "rulers of darkness of this world" (Eph. 6:12), and its purpose is "spiritual wickedness, in the works of darkness."

Lightness (1 Cor. 13:13).

Drunkness is a work of darkness. It separates man from God and makes him fear the glorious light of his countenance.

Drunkness is a work of darkness. It separates man from God and makes him fear the glorious light of his countenance.

Drunkness is a work of darkness. It separates man from God and makes him fear the glorious light of his countenance.

lusts is crucified (v. 24). How shall we have the Holy Spirit and his power in our lives? By taking the Lord Jesus Christ as personal Saviour. While the brewers give themselves to teaching men to drink let us be even more diligent in rescuing them from drink by winning them to Jesus Christ.

Municipal Announcements

PEOPLES TICKET FOR MAYOR WARREN C. LAPPIN FOR POLICE JUDGE R. LEE STEWART FOR COUNCIL MEMBERS N. E. KINNARD BILL HUDGINS FRANK HAVENS S. P. CAUDILL E. D. FAISON AUSTIN RIDDLE

Board of Education Announcements

We are authorized to announce the following as candidates for the Rowan County Board of Education: J. L. BOGGS HENDRIX T. CALIVER J. B. FRALEY V. D. "MIKE" FLOOD J. W. "BILL" CORNETTE ANDY WILLIAMS



You've GOT TO KNOW YOUR STUFF The man on an exacting job knows when it takes to get best results--and experienced Glenmore men have spent their lifetime perfecting full-flavored Glenmore Straight Bourbon. That's why it's the whiskey of a lifetime!



MEET HUDSON FOR 1938



3 BRILLIANT NEW CARS Built to Excel in Style, Performance, Long Life

Here are three greater new Hudsons . . . Hudson Terraplane, Hudson Six and Hudson Eight . . . magnificently styled for 1938. They ride and drive with the smooth brilliance found only in recognized performance champions.

PRICES START DOWN CLOSE TO THE LOWEST

Don't miss Hudson's "HOBBY LOBBY," over Columbia network every Wednesday evening: 7:15 P. M., 9:30 P. M., 11:30 P. M., 1:30 P. M.

CALVERT'S SERVICE STATION Morehead Kentucky

KENTUCKY FARM NEWS

Dr. H. H. Smith, Harlan county, is expecting to sell a 4-acre crop of Irish Cobler potatoes this month. The yield approximates 200 bushels per acre. H. N. Holbrook has sold 3,800 pounds from a third of an acre.

Seldon Chaney, Powell county, threshed 30 bushels per acre of winter oats from a 7 1/2-acre river bottom field. In the fall of 1936 this field grew only 20 bushels of corn per acre. Chaney applied limestone and phosphate and in the spring obtained a satisfactory stand of lespedeza and red-top.

With the results that he put in 30 acres, at the rate of 10 pounds per acre. Bracken county's second most profitable farm business, sheep raising, has been threatened by losses from dogs. Many men have practically abandoned sheep raising. A protective association is planned to provide insurance against loss.

In Shelby county, tractor and terracing equipment owned by the Farm Bureau Cooperative Association has been in constant use since May in building ponds, a water conservation measure. A former CCC superintendent has been employed to direct the work.

GEMS FOR YOUR SCRAPBOOK

"Example" "I have ever deemed it more honorable and more profitable, too, to set a good example than to follow a bad one."—Thomas Jefferson.

Independent ads get results.

January Floods Reveal Strength of Red Cross

Aid Given 1,062,000 Persons Through Set-Up By Agency

The efficiency and scope of Red Cross disaster work is shown in a recent report on Red Cross relief measures during the unparalleled Ohio-Mississippi Valley flood of this year.

At the height of the emergency Red Cross relief offices were established in 152 inundated counties and in 146 counties where refugees were cared for, the report stated. Eight regional headquarters offices controlled the 328 county offices, and were in turn supervised by the National Red Cross in Washington, D. C.

A statistical summary of persons aided by the organization indicates that the floods constituted the greatest peace-time emergency ever faced by the nation. The Red Cross aided some form of assistance to 1,062,000 men, women and children. From January to August hundreds of trained workers helped by thousands of volunteers administered to the sufferers.

A Red Cross rescue fleet of 1400 boats was organized, according to the report. Emergency hospitals established totaled 900 and 3500 nurses were assigned to flood duty. In more than 1,000 refugee centers the victims of the floods were sheltered, clothed and fed. Through the Red Cross medical-health program and the work of public health specialists was kept to normal for the time of year in all inundated areas.

Because of his disaster experience the Red Cross was directed by the President of the United States, who is also president of the Red Cross, to coordinate the efforts of all federal flood relief groups. Government and Red Cross officials met daily at the Red Cross headquarters building in Washington to plan relief measures and prevent duplication of effort.

Red Cross Replaces Farm Family Losses

The Red Cross gave agricultural rehabilitation to 16,116 farm families following the severe eastern floods of last winter. Types of aid included feed, seed, livestock, farm tools and machinery and other items essential to agricultural productivity.

In addition to occupational assistance, rural families have aided by the flood waters were reelected, clothed, fed and sheltered by the Red Cross. Where it was necessary the Red Cross repaired and rebuilt out-buildings, barns and other structures. Medical and nursing care were provided and homes refurbished.

Red Cross agricultural rehabilitation benefited nearly three times as many families as received all other types of Red Cross occupational rehabilitation combined.

Last year the Red Cross introduced an accident check list to 7,000,000 American homes. The list told how hazards in the home might be eliminated and the work of inspection was done by householders themselves. A like program of home accident prevention is being conducted this year.

HOME ECONOMICS CLUB ORGANIZED

Beginning Tuesday, October 12, there was a new club organized at the Morehead Public School. Miss Mary Alice Calvert is the sponsor of the club. We think we are going to call this new club "The Home Economics Club."

The girls who are charter members are Lydia Hogue, Elizabeth Ingram, Katherine Ingram, Millie Lowe and Fay Hogue. We have planned to have a meeting of the club twice a week, which will be on Tuesday and Thursday from 1:00 to 1:30 p. m.

We are going to have a program every second and fourth Thursday, which will be planned by some of the members of the club. The program committee will entertain the club and serve refreshment.

SMUTS CONTROLLED BY SEED TREATMENT

Smuts that often cause heavy losses to growers of wheat, barley and other grains can be almost perfectly controlled by the treating of seed with chemicals, according to Prof. E. J. Kinney of the University of Kentucky College of Agriculture, who has written a circular giving directions for seed treatment.

The treatment costs so little, he says, that it is cheap insurance against the possibility of heavy loss. He would treat all small grain seed sown, even though there is no evidence of smut.

COUNTRY BUSINESS GOOD IN WEST

Daily average sales in small towns and rural areas for August showed a marked increase in the Far West with a gain of about 12 per cent over August 1936.

An increase of 2 per cent was recorded for the Middle West and practically no change for the Eastern and Southern areas.

As compared with sales for July of this year less than seasonal increases were shown in all four regions. The relative increases in unadjusted aggregate sales ranged from 10 per cent for the Far West to 2 per cent for the south.

Independent Classified Ads pay.

old methods of treating seeds with lime and formaldehyde have given way to the use of chemicals in fine dust form, according to the circular, and in most of the important grain regions the dusts are used now almost exclusively.

WIDE RANGE OF U. S. PRODUCTS ASKED FOR

Inquiries from world merchants for the purchase of a diverse variety of American merchandise ranging from heavy industrial machinery to egg beaters and including artificial finger nails have been forwarded to the Louisville District Office of the Department of Commerce this week by American trade envoys stationed abroad.

Automobile trailers, paints and varnishes, sun lamps, assorted confectionery, galvanized fencing, meat grinders, toilet sets, lamps and parts for gas street lamps, leather handbags and billfolds, spraying machines for cleaning building exteriors, packing-house equipment, scientific and medical books, sporting goods, perfume bottles, toys and games, and clothing for men, women, and children are included among the articles inquired for from abroad.

BRONCHIAL COUGHS Need Creomulsion

Just a common cough, a chest cold, or a bronchial irritation of today may lead to serious trouble tomorrow. They may be relieved now with Creomulsion, an emulsified creosote that is pleasant to take. Creomulsion is a medicinal combination designed to aid nature in soothing and healing infected mucous membranes by silencing irritation and inflammation and by aiding in loosening and expelling the germ-laden phlegm.

The Medical Profession has for many years recognized the beneficial effect of Beechwood Creosote in the treatment of coughs, chest colds, and bronchial irritations. A special process was worked out by a chemist, for blending Creosote with other ingredients and now in Creomulsion you

AMONG THE COUNTY AGENTS

Alfalfa was widely sown in Clinton county, with many farmers sowing their first acreages of this legume.

Coke stoves are at a premium in Clark county, where more farmers than ever before used fire in curing tobacco.

Hybrid corn will outyield common varieties 50 per cent on the farms of W. T. Strong and Welby Miller in Taylor county.

Four new marl beds have been opened in Hardin county, and a reduction made in the price of crushing limestone.

Alfalfa growing, pasture and meadow management and hybrid corn were discussed on farm tours in Larue county.

Alfalfa from northern-grown Grimm seed is attracting attention in Lincoln county.

Rockcastle county alfalfa demonstrations include the use of Grimm seed, lime and phosphate and inoculation of seed.

It is thought that one field of

hybrid corn in Metcalfe county will produce 100 bushels to the acre.

Bath county farmers are sowing vetch for the first time, to use as a cover and green manure crop.

PASTURE MORE PIGS RETURN BIG PROFIT

Pasture helped Homer Morgan, a Metcalfe farmer, make a profit of \$130 on a litter of 11 pigs which weighed 2,314 pounds when 165 days old, according to County Agent R. R. Rankin. An acre of rape in which the pig ran for several weeks saved at least 50 bushels of corn, Mr. Morgan thinks.

The pigs received crushed wheat and tankage in a self-feeder, and at times corn, shorts and milk. They were kept gaining from birth to market size, and topped the market by 50 cents a hundred pounds the day they were sold.

Independent Classified Ads pay.

A VOTE FOR ALBY Hardin Democratic Nominee For Jailer IS A BALLOT FOR THE BEST INTERESTS OF ROWAN COUNTY

ELECT ALBY HARDIN and the Democratic Ticket

R. M. "Dick" CLAY Democratic Nominee For COUNTY Attorney PLEDGES THAT IF HE IS ELECTED HE WILL

Red Cross Replaces Farm Family Losses The Red Cross gave agricultural rehabilitation to 16,116 farm families following the severe eastern floods of last winter.

NOVEMBER Week of SALES Pogue's has ONLY ONE Store-wide Sale a Season—and it IS a SALE! Six Selling Days—Monday to Saturday, November 1st to 6th

Transy Game

(Continued from Page 1)

Moore's pass was grounded. Moore kicked out of bounds on Morehead's 3 yard line. Stanley's kick was grounded on Morehead's 37 yard line where Transy took over the ball.

Murphy picked up 3 yards. Hainline slashed through the center of the line for 8 yards as the quarter ended with Transyavia having possession of the ball on the Eagles 23.

Second Quarter
Moore's pass was incomplete. Another pass by Moore was batted down but on the play the Eagles were penalized 5 yards for offside. Hainline gained 1. Moore's pass was incomplete and Morehead took the ball on their own 16 yard line.

Anderson gained 3 yards. Fair's kick was short, going out of bounds on the Morehead 30. Hainline picked up 3 but was off as Higgins lost 3 yards on the next play. Moore's pass was incomplete. Moore passed to Murphy but Murphy was stopped at the line of scrimmage and the Eagles took over the ball on their own 30.

Anderson slashed through for 3 yards. Anderson picked up 11 yards on the next play for the first down on the 44. Stanley gained 1 yard and Reynolds picked up 6. Reynolds gained 4 for first down on Transyavia's 45, marking the first time the Eagles had been in Pioneer territory. Reynolds added 3 more yards and Wyant went off tackle for 3 more. Fair's punt was blocked and Fair recovered but the Pioneers took possession of the ball on their own 42.

Moore's pass was incomplete. Moore's pass was caught by Higgins for a gain of 9 yards. Rentz lost 2 yards. Moore kicked out of bounds on the Morehead 28. Wyant gained 4 and Reynolds 2. Reynolds picked up 6 for first down on the Morehead 40. Wyant's pass did not find a receiver. Wyant's pass was intercepted by Moore who returned to the Morehead 47. Moore failed to gain and on the next play picked up 7 yards. Rentz lost a yard as the first half ended.

Third Quarter
Wyant kicked to Moore on the 20 and he returned to the Transy 30 yard line. Moore hit the line and was stopped for no gain. Hainline picked up three yards. Moore kicked to Stanley on the 40 and he returned to the Transyavia 11 yard line. Wyant, attempting to skirt end, was thrown for a 2 yard loss. Reynolds picked up 1 yard. Wyant was stopped at

the line of scrimmage. Wyant's pass was batted down. Moore picked up 2. Hainline was stopped at the line of scrimmage. Moore kicked to Stanley on the Morehead 15 and he was downed in his tracks. Reynolds was stopped at the line of scrimmage. Wyant's pass was batted down. Wyant's second pass failed to find a receiver. Stanley kicked out of bounds on Transyavia's 5 inch line. Moore kicked to Morehead's 30 and Stanley returned it to the 21.

Reynolds was stopped for no gain. Wyant hit the line for 8 yards. On the next play Morehead was penalized 5 yards for offside. Reynolds picked up. Wyant's pass was grounded in the end zone and Transyavia took the ball on their own 20.

Moore was thrown for a 2 yard loss. Hainline gained 2. Moore kicked to midfield with no return being made. Wyant was thrown for a 5 yard loss. Fair, attempting to punt, fumbled and Transyavia took the ball on Morehead's 33 as the third period ended.

Hainline gained 9 yards to Morehead's 24. Hainline picked up a first down on Morehead's 12 yard line. Hainline picked up 1. Higgins lost a yard. On a lateral Moore to Rentz Transy gained 4 yards down to the 8. Rentz was stopped at the line of scrimmage and the Eagles took the ball at that point.

Stanley kicked to Moore on Morehead 49 and he returned to the 41. Morehead was penalized 5 yards for offside. Hainline was stopped at the line of scrimmage but made four yards on the next play. Hainline picked up 2 yards. Rentz fumbled but recovered for a yard loss. Two passes from Moore were incomplete and Morehead took the ball on its own 29. Reynolds in two plays gained 8 yards. On the next play Reynolds broke off tackle and settled behind good interference for a run of 63 yards and a touchdown. Vinson's kick for the extra point was good.

Moore took Vinson's kick-off on his 10 and returned to the 30. Two passes were no good. Hainline gained 5 yards. Moore kicked to Morehead's 28 without any return being made on the ball. Anderson gained 1. Morehead was penalized 5 yards for offside. Stanley lost 1 yard. On the next play Morehead was penalized 5 more yards for too much time setting them back to the 17 yard line. Fair's kick was blocked by Braddy, a substitute end, picked up the ball and ran for a touchdown. Lacy's kick for the extra point was short. Murphy kicked to Fair on More-

head's 15 and he returned to the 32. Wyant entered the game, took the pass from center and did not attempt to gain as only 30 seconds of the play remained. Morehead was penalized 15 yards on the next play for holding. Wyant again took the pass from center and did not try to gain as the game ended.

Crop Reduction Is Made In AAA Plans

Tobacco, Potato and Corn Crops Will Be Smaller Next Year

The AAA made a 2,000,000-acre reduction today in the cotton crop goal for next year.

Approving the 1938 Agricultural Conservation program, Secretary Wallace fixed its "goal" so far as cotton is concerned at 29,000,000 to 29,000,000 acres. The goal previously had been placed at 29,000,000 to 31,000,000 acres. Secretary Wallace also ordered an increase of from 2 cents to 2 1/2 cents per pound, on the normal-yield-per-acre basis, to cotton farmers participating in the 1938 AAA soil conservation program.

Officials of the Agricultural Adjustment Administration said the change was decided upon because of the unusually large cotton crop this year.

Authorities estimated that the reduction in the acreage, which would mean about 680,000 bales less cotton, if yields next year were normal.

In view of the Government forecast of a 17,500,000-bale crop this year, AAA representatives said, the reduction was necessary to keep acreage "more in line with needs."

Officials fixed a potato-planting goal for next year of 3,100,000 to 3,300,000 acres, compared with a 1928-1937 annual average of 3,246,000 acres.

Individual goals will be established only on commercial potato farms which have three acres or more of potatoes and which are in important commercial-producing counties. Federal payments will range from 4 to 6 cents a bushel, depending on the producing area.

The national goals and rates of payment established for other major crops were as previously announced:

Corn, 92,000,000 to 96,000,000 acres, 10 cents a bushel.

Corn, 92,000,000 to 96,000,000 acres, 10 cents a bushel.

Rice, 85,000 to 875,000 acres, 0.125 cents a pound.

Tobacco, fire-cured 850,000 to 900,000 acres, 10 cents a pound; burley 480,000 to 500,000 acres, 0.5 cents a pound; fire-cured and dark air-cured, 170,000 to 180,000 acres, 1.7 cents a pound; cigar filler and binder 85,000 to 90,000 acres, 0.8 cents a pound; Georgia-Florida type 82, 2,200 acres to 3,000 acres, 2.0 cents a pound.

Peanuts 1,500,000 to 1,600,000 acres, 0.2 cents a pound.

Olive Branch Seen At Labor Sessions

American Federation of Labor And C. I. O. Hold Peace Conference

However much they may differ as to the policies that should be pursued by organized labor in America, there is one matter in which William Green, president of the American Federation of Labor, and John L. Lewis, head of the Committee for Industrial Organization and president of the United Mine Workers of America, thoroughly agree. That matter is support of the American Red Cross.

In a recent statement President Green said: "The importance of the activities of the American Red Cross can not be too strongly emphasized. Its aims and purposes in time of need are highly commendable and deserving of the support of all classes of people, and, in particular, those who would be least able to meet the emergencies with which they are sometimes confronted. The record of the Red Cross is one of accomplishment and I bespeak the co-operation of all in the continuance of its work. Both as an individual and as president of the American Federation of Labor I command the Red Cross and ask for active support of it during the annual roll call."

And President Lewis added his indorsement of the Red Cross and the roll call in the following statement: "The American Red Cross is a most meritorious organization and one which deserves the support of all Americans. Its activities and its aims meet a great need of the American people. I strongly urge that it receive the unequalled support of all during the roll call for members this year."

President Edward A. O'Neal, of the American Farm Bureau Federation, asserts that "the magnificent work of the Red Cross" during the Ohio valley floods of the past winter "is reason enough



SEEKS PLACE AS MAGISTRATE

HENRY COX

In Magisterial District Number 3, Democrats have nominated Henry Cox, Mr. Cox, who has spent almost his entire life in the county is well known throughout the District in which he seeks election.



CANDIDATE FOR CORONER

LON M. DAVIS

Democrats nominated Lon M. Davis of Morehead as their candidate for Coroner. Mr. Davis has waged an active campaign since the primary.



NOMINEE FOR MAGISTRATE

JIM RIGBY

The nominee for District 1 for Magistrate on the Democratic ticket is Jim Rigby of Clearfork. Mr. Rigby won over two opponents in the largest of the county's four Magisterial districts.



NOMINEE FOR TAX COMMISSIONER

LUTHER FRALEY

The name of Luther Fraley of Morehead will appear on the Democratic ballot for Tax Commissioner in Tuesday's election. Mr. Fraley led the ticket in the August primary.

for farm people to feel grateful to the Red Cross, which has eased almost unbearable burdens for millions of people."

"It is eternally now. I am in the midst of it. It is about me in the sunshine; I am in it, as the butterfly in the light laden air." Richard Jeffries.

Rowan County Needs And Deserves A Business Administration

TAXPAYERS OF ROWAN COUNTY CAN INSURE THEMSELVES OF THE PROPER HANDLING OF THE COUNTY'S MONEY BY ELECTING

Qualified

Capable

Honest

Experienced



DAVE C. CAUDILL

CAUDILL FOR COUNTY JUDGE

It is to your interest and the best interest of Rowan County to vote for Dave C. Caudill

Dave C. Caudill was born and raised in Rowan County and has spent his life in this county. He knows the needs and wants of Rowan County and there is no man in this county that is better qualified to help the people than he is.

For 30 years he has been an officer of the Peoples Bank of Morehead; for 16 years he has served as Treasurer of Rowan County. He has proved himself to be an honest and qualified man in business and he can operate Rowan County within the next four years so that much of the heavy indebtedness is paid off and the county is placed on a cash basis. Rowan County has no citizen who can better qualify to handle the taxpayers money than Dave C. Caudill. The people are fortunate that a citizen possessing these qualifications is available to handle the affairs of this county.

Dave C. Caudill has proved himself an honest, upright and conscientious individual. He has always been a leader in civic and community affairs and has always done everything possible for the advancement and well being of Rowan County.

HIS PAST RECORD SPEAKS FOR ITSELF...

IT IS ON THE RECORD THAT HE MADE FROM 1930 TO 1934 THAT

DAN PARKER Sheriff

During his previous four years as Sheriff, Dan Parker served the people of Rowan County faithfully, sincerely and honestly. His record is his platform in Tuesday's election. If you approve of fair law enforcement and a public servant who has proved he is capable and on the job 24 hours a day it is to your best interests to cast your ballot Tuesday for Dan Parker, who has been tried and not been found wanting.

President Of Fair Gives Resume Of This Year's Event

Work of Schools Given High Praise By Robert Bishop

By Robert Bishop, President

On October the 8th and 9th we held the seventh annual School and Agricultural Fair of Rowan County. Thursday afternoon many people brought their entries, and when we closed Thursday night we had entered more exhibits than any previous Thursday-evening-the-Fair had ever brought us.

Friday morning brought many more exhibitors with their entries, and by eleven o'clock we had received over 1,050 exhibits, the largest number ever to be entered in our Fair.

At 10:30 the most colorful part of the Fair got under way—the Big Parade, led by the Morehead State Teachers College Band. More than 2,300 school children marched in the parade. Three schools led for the prize given to the school having the most children in the parade, based on the census, by having 100 per cent attendance. This is a splendid example of what can be done by special effort. The many attractive floats and banners made the parade very colorful.

At one o'clock the judging of the exhibits had been completed, and the ribbons awarded. The quality of entries this year was unusually high. The Home Department and the newly added Flower Department made most attractive displays.

These two departments exceeded any previous years in the number of exhibits. The School Department showed an array of work of much higher quality, and agricultural products, aided this year by favorable weather conditions, also showed a marked increase in quality.

The change in the location of all but the Agricultural Department, by which the school buildings were used for departmentalizing the Fair more definitely, relieved the congestion both of the Fair products and the crowds which frequented the displays.

On Friday night we held our first Amateur Hour. The large attendance and the many contestants in this event showed the people's interest, and it seems certain that this will become a regular and important part of our Fair every year.

On Saturday morning, in spite of the bad weather, large numbers visited the exhibits. At one o'clock we began the important work of awarding the premium money which, this year, amounted to over three hundred dollars.

From the many favorable reports received by the Fair Association, this year's fair was one of the most successful we have ever held. The credit goes to many people, including the teachers, pupils, department heads and helpers, the contributors, and advertisers.

The 1937 Fair is now over, but we look forward to a "bigger and better" fair in 1938. The Rowan County Fair will continue to grow in proportion to the interests and efforts of our citizens.

GINGERBREAD BAVARIAN—"QUICK TRICK" DESSERT

When something new appears

on the desert horizon, and when it has been tested and highly appraised for its taste, eye and budget appeal, then you know that that recipe was just made for you. Gingerbread Bavarian is one of those made-for-you delectables; for in addition to answering the above descriptions, it comes to you with two quick-trick ideas which enable you to make this dessert in a surprisingly short time.

But just what is a Gingerbread Bavarian? It's just an imposing structure of spicy, tanged gingerbread topped with a firm, shimmering layer of Bavarian cream. But quick-trick number one is this: the gingerbread is made from a make when you wish and bake later refrigerator mix and it is baked in a spring form pan. When cool, the gingerbread is topped with a slightly thickened Bavarian mixture. Then this double-decker creation is chilled thoroughly. You'll be interested to know that the setting of Bavarian cream and gelatin mixtures can be speeded up considerably by the use of chipped ice—which is quick trick number two.

- 1/2 cup sugar
- 1 1/2 cups flour
- 1/2 teaspoon soda
- 2 teaspoons baking powder
- 1/2 teaspoon salt
- 1 teaspoon cinnamon
- 1 teaspoon ginger
- 1/2 teaspoon nutmeg
- 1 egg, beaten
- 1/2 cup molasses
- 1/2 cup sour milk
- 1 package lemon-flavored gelatin
- 1 cup boiling water
- 2/3 cup finely chipped ice
- 1 cup whipping cream (whipped)

Cream butter, add sugar slowly and beat well. Mix and sift together the dry ingredients and blend into the creamed mixture thoroughly. Store in refrigerator.

When ready to bake simply remove the mix from the refrigerator and break up with a pastry blender. Then combine the beaten egg, molasses and sour milk which the recipe calls for and add to cake mixture. Beat thoroughly and pour in greased spring-form pan. Bake in a moderate oven 350 degrees for approximately 25-40 minutes. Remove from pan to cool, then replace in pan. Meanwhile, dissolve gelatin in boiling water, then add chipped ice. Chill until mixture just begins to thicken and then fold in whipped cream. Pour this Bavarian mixture over cool gingerbread.

GEMS FOR YOUR SCRAPBOOK

"Labor" "There is nothing truly valuable which can be purchased without pain and labor."—Addison.

"Nature is inexhaustible and untiring labor is a god which rejuvenates her."—Voltaire.

"If little labour, little are our gains. Man's fortunes are according to his pains."—Robert Herrick.

"Labor is discovered to be the conqueror, enriching and building up nations more surely than the proudest battles."—William Ellery Channing.

"Wealth gotten by vanity shall be diminished; but he that gathereth by labor shall increase."—Proverbs 13:11.

Schools Visited By Health Officers

Physical Examinations, Inoculations and Vaccinations Are Given

About twenty or more rural schools have been visited by the health department during the past few weeks. Children in these schools were given physical examinations, inoculations against typhoid fever, diphtheria and vaccinated against smallpox. Three visits were made to each school and in some schools four visits.

At the beginning of the school visits, each teacher was given an outline of the plans of Health Education and Public Health Service, in which they have given their hearty cooperation. The health staff has depended much on the teachers in having the school children in the school room when they made their regular visits.

Every child, in each school visited, who has not had the smallpox vaccination, was given the vaccination this year, with the exception of one school. The patrons of this school not realizing they were violating a health rule and that all children and teachers should be vaccinated. The Morehead Breckinridge Training School was visited last week. One hundred and eighty students were given the physical examination. A record of the defects of these school children will be made and sent to the parent of each child.

VARIETY HELPS IN THE SCHOOL LUNCH

In the school lunch box, sandwiches are the "old standby," be-

cause so much substantial food can be included in small space. The sandwich spread may be varied by including the following: meat or meat substitutes; lettuce, cabbage, carrots and celery combinations; sweet fillings, such as jelly and marmalades, and fruit fillings, suggests the home economics department of the University of Kentucky.

Different kinds of bread will make the sandwich more tempting; whole wheat, white, rye, nut and raisin, and Boston brown breads are frequently used. For the school lunch, a juicy fruit or vegetable is always welcome; the fruits may be raw or canned, or in the form of salads. If a dessert is included it should be simple; possibilities are baked custard, chocolate puddings, cakes and cookies, fruit tapiocas, fruit jellies. The puddings and custards can be packed easily in small jars with lids. A drink such as milk or hot cocoa should be included unless it can be obtained at school.

Suggested menus are: tomato and lettuce sandwich, pimento sandwich, ham sandwich, mixed vegetable salad, chocolate marshmallow pudding and a pear. Nut bread sandwich, sweet sandwich or ham sandwich, deviled eggs, baked custard. Chicken salad sandwich, lettuce sandwich on whole wheat bread, hearts of celery wrapped in oil paper, and apples.

Mrs. Ellington Discusses Attendance

Mrs. A. F. Ellington

1. The problem of attendance comes to be a problem when the attention and interest of the child can be stimulated to such an extent by his school environment that he has the urge to attend school regularly.

2. The factors involved in such stimulation of interest are: a. The school home, which should have comfortable seating, good lighting, proper ventilation, sufficient playground space and the neatest and attractive in appearance.

b. The social group of class mates, who must be trained to work and play in harmony thereby developing proper social adjustment and social efficiency and intelligence.

c. The teacher and school officials, who must be kind, understanding, observing, quick to detect failure to make an adjustment, who will be able to give the child real problems to solve based upon existing interests which will transfer to a new situation of learning.

a. An active P. T. A. b. School Clubs. c. Group competition. d. Prizes. e. Praise. f. Achievement awards. g. Attendance banners, charts, etc. h. In conclusion, since the classroom teacher is nearest to the child upon her falls the responsibility to work out a satisfactory relationship between the child, school and parents; when this is done the problems which affect attendance will in most instances be eliminated.

3. In addition to the above vital factors which will develop attention and interest, which in turn will stimulate the urge in the pupil to attend school regularly, the following devices are of value in promoting attendance:

APPLE CROP FININGS PROBLEM OF STORAGE

Many Kentucky farmers, as well as commercial fruit growers, have the problem of storing at least a part of the big apple crop this year. This usually means keeping the apples cool rather than warm a month or more.

In many instances the apple crop is so large that it probably would pay to spend money on a storage place. The problem is to cool the storage at night and then to close it to hold the cool air during the warm part of the day. This means providing ventilation to let the warm air out and the cool air in and then insulation that will hold the cool air.

Cells without furnaces often can be used. Cells with dirt floors usually have about the right amount of humidity, but concrete floors may require sprinkling at frequent intervals. Unless the humidity is about right the apples lose their crispness and tend to shrivel.

Ventilated crates or baskets are preferred to tight boxes as storage containers. The use of bins that hold several bushels is not recommended.

RIGHT AND WRONG

Conscience is that faculty which perceives right and wrong in actions, approves or disapproves them, anticipates their consequences under the moral administration of God, and is thus either the cause of peace or of disquietude of mind.

DRIVE UP TO THE BROWN THIS WEEK-END!

HERE'S AN IDEA for a little vacation which will cost you almost nothing and will pay you handsomely in fun, amusement and greater rest! Start in time to get here for dinner and supper dancing in the Bluegrass Room—the smartest, gayest spot in this part of the country! Then a good sleep—(how about breakfast in bed?)—a lazy Sunday morning and a leisurely drive home. It will put new life into you for weeks! Try it!

THE BROWN HOTEL
"Louisville's Largest and Finest"
Harold E. Finzer, Manager

RADIO REPAIRING

• • •

Complete stock of batteries, tubes and radio supplies.

• • •

Any and all makes and models.

• • •

PERRY'S RADIO SERVICE

• • •

RUSSEL PERRY, MGR. MOREHEAD, KY.

Let's Get At The Truth!

THE PURPOSE OF THIS STATEMENT IS TO GIVE YOU, AS VOTERS AND CITIZENS, THE TRUE FACTS REGARDING THE MOST IMPORTANT QUESTION BEFORE THE VOTERS THE PRESENT BOARD AND SUPT. CORNETTE HAVE KEPT FAITH WITH THE TAXPAYERS, SCHOOL CHILDREN, AND TEACHERS OF ROWAN COUNTY.

HERE ARE A FEW OF THE LAUDABLE AND INDISPUTABLE ACCOMPLISHMENTS OF SUPT. CORNETTE'S ADMINISTRATION

1. The records since Supt. Cornette took office in July, 1934, are in perfect condition and have always met full approval of auditors from the State Department of Education.
2. No new indebtedness has been incurred during the administration of Roy Cornette, and more than \$9,500.00 has been paid by him on old debts incurred prior to his administration.
3. Three modern school buildings are now being constructed by the Board in conjunction with the W. P. A., and four new rural school buildings have been constructed and paid for by the present administration without any new taxes or debts. This building program was made possible through persistent effort and strict economy on the part of the present Board and Supt. Roy Cornette.
4. The STATE LAW provides that no school shall operate with less than 50 pupils in the school census. Through the special efforts of Supt. Cornette and

- the present Board SPECIAL PERMITS have been obtained during the past three years to operate 20 RURAL SCHOOLS having less than 50 census pupils, in order that NO RURAL SCHOOL BE CLOSED OR CONSOLIDATED. This should be sufficient evidence to show that the present Board and Supt. Cornette do not and have never wished to close or move any rural school.
5. EVERY PENNY that has been spent by the present administration has gone for the improvement of educational opportunities as provided for in their annual budget approved by the Rowan Fiscal Court and the State Department of Education; and EVERY PENNY of this expenditure CAN BE EASILY AND ACCURATELY ACCOUNTED FOR by looking at the records of the County Superintendent. ALL INTERESTED PERSONS ARE URGED TO INSPECT ANY AND ALL RECORDS, IN THE OFFICE OF THE BOARD OF EDUCATION, PERTAINING TO THESE MATTERS.

VOTE TO KEEP THE MAN WHO HAS GIVEN YOU BETTER SCHOOLS, BETTER BUILDINGS, AND A SOUND FINANCIAL ADMINISTRATION WITH RECORDS TO BE PROUD OF; WHO HAS RAISED TEACHERS' SALARIES \$30.00 IN THE PAST THREE YEARS, AND WHO HAS INCURRED NO DEBTS NOR ASK FOR NEW TAXES. YOU CAN DO THIS BY SUPPORTING

J. B. Fraley

"Hen" Tolliver

J. L. Boggess

FOR MEMBERS OF THE ROWAN COUNTY BOARD OF EDUCATION

VOTE THE DEMOCRAT TICKET

AT THE GENERAL ELECTION ON
TUES., NOVEMBER 2nd

DEMOCRATIC TICKET

FOR REPRESENTATIVE
Z. Taylor Young

FOR COUNTY JUDGE
Dave C. Caudill

FOR COUNTY ATTORNEY
R. M. "Dick" Clay

FOR COUNTY CLERK
John M. Butcher

FOR JAILER
Alby Hardin

FOR SHERIFF
Dan Parker

FOR TAX COMMISSIONER
Luther Fraley

FOR CORONER
Lon M. Davis

GIVE ROWAN COUNTY A DEMOCRATIC ADMINISTRATION SO IT CAN CO-OPERATE WITH DEMOCRATIC FEDERAL AND STATE ADMINISTRATIONS TO BRING YOU BETTER SCHOOLS, MORE ROADS AND FINANCIAL ASSISTANCE, WHICH ROWAN COUNTY DESERVES AND NEEDS.

Democratic Campaign Committee

Paid Political Advertising.

GOLDE'S NEW COATS STARTLE smart Shoppers

Sale of \$9.95 to \$24.95 Samples

Coats In The Years Smartest Styles

73. COATS WE EXPECT A SELL OUT SAVE \$5 to \$15.00

SALE OF FUR TRIMMED

Coats

Many famous fabrics are here for your selection... new weaves that are soft, flattering, long wearing. The furs include the finest: Persian Lamb, Dye Fox, Skunk, Wolf, Caracul. Try on one of these coats and realize instantly their incomparable beauty. Priced from

\$9.95



\$16.95

We invite comparison. Compare these coats—the cloth, the furs, linings and inter-linings with any you have seen and be convinced that you save one-third here.

Children's Coats



SENSATIONAL VALUES IN CHILDREN'S COATS

that they will wear and wear! Sport styles and fur trimmed. **\$4.95**

Compare these coats to any \$6.95 coats—You'll see the value we offer—

FOR THE MISS JUNIOR. FOR THOSE WHO HAVE OUTGROWN CHILDREN'S CLOTHES AND NOT BIG ENOUGH FOR GROWN SIZES—THESE SPORT COATS WILL MAKE HER HEART BEAT FAST.

7.95

Even pockets are following different fashion forms for Fall, as you'll note in this very casual sports coat. Full sleeves continue in vogue, with the width at the top carried down to the elbow. Narrow, notch lapels rolling romantically to the waist and a full length flared skirt are further identification of the 1937 Fall "swagger" model as shown by the new advanced fashion forecasts in Paris, New York and Hollywood.



LOOK AT THESE COATS

The new 3 way coat. Can be worn with the fur collar up closely about the face of back on the shoulders as pictured on the right—

Or—wear it without the fur as pictured on the left—



\$16.95

Comes in Polo Cloth, Broadcloth, Camel Hair or in Nubs. Colors: Rust, brown, Green, tan, grey, or black.

Sizes: 16 to 20.



FOOTBALL Colors That's it!

These swaggering new SPORTS COATS

Very specially priced

to save you

1-3



IT'S A CLOTH COAT WITH FUR SLEEVES AND FUR COLLAR

24.95

\$9.95 to \$19.95

If your heart has been set on this most important fashion we believe these are among the most beautiful you'll find anywhere near this price, manipulated for the utmost flattery. Three styles for misses, two styles for women and little women, all hand finished.

FUR LIKE

Coats

Caracul, Caracul in sleek black or greys—

Sizes 12-14-16

\$9.95



ANOTHER NEW ARRIVAL

More new sleeveless Barrell Sweaters.

98¢



SYNOPSIS—Charles Stewart Parnell, "uncrowned king" of Ireland...



CLAIROL, the amazing shampoo-dint, has been used and praised by millions of American women who want young-looking hair...

Naturally... with CLAIROL BEVERLY KING, Consultant... Send FREE Booklet, Advice, Analysis...

of Ireland," he was vindicated of the charge of complicity in the Dublin Phoenix Park murders before a House of Commons commission...

CHAPTER TEN WILLIE'S REVENGE

Three grimly silent persons sat in the carriage that drove away from Eltham for Gladstone's reception, each immersed with his own sorrowful thoughts...

"Drive to the Irish Party offices," Parnell instructed the coachman. He got out in front of the House of Commons...



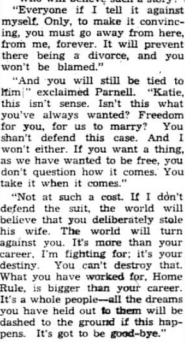
tion would prove embarrassing to the Liberal Party leader. He ordered the letter delivered at once and the answer brought to him at the House of Commons...

together to get Charles to the house to use him for your own ends. If I say that against myself, who'll the Court believe...



and succeeded. If you like—and that when you came for your reward and failed, you turned to this suit as a revenge?"

lie that I am going to defend the suit. And my defense means... that I can't see you again. You've got to be cleared at all costs...



He took her by the shoulder. "None of that will happen, Katie. We shall not defend the case. For better or worse this thing has happened. It means a fight, but I've never been afraid of a fight..."

Supt. Cornette from the State Board of Education. The new school code adopted in 1934 provides that no school shall be operated having less than 50 pupils in the census of that district...

DISTILLING SEASON OPEN IN SCOTLAND

The new distilling season has just opened in Scotland and orders are reported so abnormally heavy for 1937-38 deliveries that distilleries must operate to full capacity...

"Lives of great men all remind us We can make our lives sublime, And departing, leave behind us Footprints on the sands of time" —Longfellow.

AUTO LOANS

- \$10.00 to \$1,000 ANY YEAR-OLD IN MODEL 1. No Endorsement 2. Payments Reduced 3. Mortgages Refinanced 4. Used Car Sales Financed 5. First and Second Mortgages 6. Car is Only Security 7. Car Does Not Have to be Paid For to Get Additional Cash. 8. Loans Made in 15 Minutes. Guaranty Finance Co., Inc. 252 East Main St. Lexington, Ky.—Phone 682

WEL-KUM-INN THE HOME OF RED TOP BEER AND GOOD EATS Opposite the Court House

PASTEURIZED DAIRY PRODUCTS Fresh from THE SPRING GROVE DAIRY Phone 15-F-3 Delivered At Your Home Daily Or At The Following Stores: Brown's Grocery Allen's Meat Market Caudill's Grocery Clearfield Supply Company

CADILLAC LA SALLE "EVERYTHING IN USED CARS" Dixie McKinley DISTRIBUTOR Lexington, Ky. Phone 8080

FOR THAT FAMOUS JUMBO BREAD ALSO MARY JANE BREAD Midland Baking Co.

"What will you go to stop it?" "You'll see." Katie ordered the coachman to drive to the hotel at which Willie lived. She told a page boy to announce to Willie that two ladies were calling, adding that they were expected.

Shiny on different as it's beautiful, for this bigger-looking, better-looking low-priced car. MODERN MODE STYLING PERFECTED HYDRAULIC BRAKES GENUINE KNEE-ACTION ALL-SILENT ALL-STEEL BODIES VALVE-IN-HEAD ENGINE FISHER NO DRAFT VENTILATION CHEVROLET THE CAR THAT IS COMPLETE FOR 27 YEARS THE SYMBOL OF SAVINGS

"You'll be ahead with a CHEVROLET!" You'll be ahead in style—beauty—smartness—with this bigger-looking, better-looking low-priced car. "You'll be ahead with a Chevrolet!" That's the enthusiastic verdict of more and more people as they see, drive and compare the new 1938 cars. And we believe it will be your verdict, too, when you consider all the exclusive extra values this beautiful new Chevrolet brings to you. You'll be ahead in style—comfort—safety. And you'll also be ahead in all-round economy, for Chevrolet's famous Valve-in-Head Engine uses less gas and oil, and operates with a minimum of upkeep. See your nearest Chevrolet dealer today for a thorough demonstration of Chevrolet superiority. CHEVROLET MOTOR DIVISION, General Motors Sales Corporation, DETROIT, MICHIGAN. General Motors International Plan—monthly payments to suit your purse. A General Motors Value.

Officers To Serve At November 2 Election Are Selected By Commissioners

Election officers who will serve at the November 2 election in Rowan County are: Morehead, No. 1: E. W. McKinney, Clerk; C. B. Lane, Sheriff; Roy Patrick and C. P. Caudill, Judges. Farmers No. 2: Ollie Swin, Clerk; Roy Moore, Sheriff; Allie Razon and J. A. Basford, Judges. Piery, No. 3: Lloyd Brown, Clerk; D. B. Smedley, Sheriff; Arthur Hall and Ray Staton, Judges. Elliottville, No. 4: O. J. Carter, Clerk; James Linnville, Sheriff; William Wagner and Russell Jones, Judges. Fine Grove, No. 5: Russell Gillison, Clerk; Harry Bate, Sheriff; William Blevins and Allard Hall, Judges. Brushy, No. 6: Sam Lytton, Clerk; Paris Jackson, Sheriff; W. A. Caudill and Sant Harris, Judges. Morehead, No. 7: K. H. Fannin, Clerk; J. B. Rose, Sheriff; Hollie Faulkner and Gilbert Jones, Judges. Halldeman, No. 8: L. P. Sturgill, Clerk; Zeke Hinton, Sheriff; Clester Stinson and Ad Gearhart, Judges. Wagner, No. 9: Carl Nickell, Clerk; Willis Cox, Sheriff; Clarence Perkins and Davis Kidd, Judges. Morehead, No. 10: J. W. Helwig, Clerk; Alf Caskey, Sheriff; Drew Evans, Jr., and J. L. Brown, Judges. Farmers, No. 11: Harry Stamper, Clerk; Joe Peed, Sheriff; Ass. Hall and Charlie Stevens, Judges. Cranston, No. 12: Mrs. Nola Davis, Clerk; James Blevins, Sheriff; Wm. DeBorde and O. T. Martin, Judges. Dry Creek, No. 13: Cletis McKinzie, Clerk; Hick McKenzie, Sheriff; J. D. Johnson and Mrs. Lon Ellis, Judges. McKenzie, No. 14: Ed Cornwell, Clerk; Robert Eddle, Sheriff; Mart Jones and Jack Terrell, Judges. Plank, No. 15: Henry Williams, Clerk; C. H. McClurg, Sheriff; Allie Plank and Jack Clark, Judges. Hayes, No. 16: Mrs. Mabel Kelley, Clerk; Milford Caudill, Sheriff; James Stevens and David Sealey, Judges. Scroggs, No. 17: Leslie Ward, Clerk; Lee Kidd, Sheriff; James Boyd and Charles Waddell, Judges. Morehead, No. 18: Mae Carter, Clerk; Claude Kesler, Sheriff; Randall Roberts and Oscar Cornette, Judges. Morehead, No. 19: Clyde Bruce, Clerk; Eldon Evans, Sheriff; S. Bradley and Allie Young, Jr., Judges. Brushy, No. 20: Frank Netherly, Clerk; Charles Egan, Sheriff; George Peifrey and Hart Richardson, Judges.

CIVIL SERVICE EXAMS
The United States Civil Service Commission has announced competitive examinations as follows: Engineering draftsmen, various grades—for work on ships—\$1,620 to \$2,600 a year. Optional branches are: Ship piping, marine engine boilers, electrical (ship), and hulls. Purchasing officer, \$3,200 a year; assistant purchasing officer, \$2,600 a year; junior purchasing officer, \$2,000 a year; Procurement Division, Treasury Department. Full information may be obtained from Flora Cooper.

New Set-Up Made In Welfare Department
To meet the growing needs, Governor A. B. Chandler has just announced a new setup in the administration of the Department of Welfare with the appointment of a Deputy and an Assistant Commissioner, together with the directors of new divisions. Arch Bennett, Henderson, was named Deputy Commissioner. He will be responsible to the Commissioner for the administration of Staff Services, of the division of fiscal control and management, and of institutions. Norman Braden was promoted from the position as Director of Probation and Parole to that of Assistant Commissioner. He will be responsible for the distribution of federal surplus commodities and the Civilian Conservation Corps certification program. B. T. Brewer, with eighteen years experience with the Department of Welfare, becomes Director of the Division of Corrections and Charles D. McCrea has been promoted to the position as Director of Fiscal Control and Clerical Management. Dr. Spafford Ackery, Medical Director and Head of the Department of Psychiatry at the University of Louisville, and Medical Director of the Society of Mental Hygiene, has been offered the post in charge of the Division of Hospitals and Mental Hygiene. The Governor and the Commissioner at the beginning of the administration saw the urgent need of creating this important division, with a psychiatrist of recognized ability to it. Ralph C. Wyatt has been made Chief Engineer of the Department in charge of the new building program and Col. James H. Graham, Dean of the College of Engineering, University of Kentucky, will continue as technical advisor to the Department of Welfare in the Building Program.

"Let your light so shine before men, that they may see your good works, and glorify your Father which is in heaven."—Matthew 5:16.

A RECORD OF SERVICE

Four years ago you elected me to the office of

COUNTY COURT CLERK

and I am deeply appreciative of the confidence you reposed in me. I have done my utmost to discharge the duties of the office in a courteous, efficient manner and in asking for your support in my campaign for re-election, I wish to say that this policy of friendly service will be continued.

You are always more than welcome to make the County Clerk's office your headquarters and I want you to feel at home, remembering that I am your servant. I have always considered it a great privilege to be placed in close daily contact with practically all of the people of the county and to greet you with a smile and handshake, and I hope to be privileged to continue to serve you as your County Clerk.

If I have served you well and faithfully, I ask that you demonstrate your continued faith in me by giving me your support at the polls on November 2.

Sincerely,

Vernon Alfrey

MARVIN ADKINS



FOR JAILER

Pledges that if he is honored by being elected at the November 2 General Election that he will do everything in his power to make you an obedient and Honest Public Servant. He will keep the county's property in shape and in a clean and livable manner.

FD. POL. ADV.

Independent Classified Ads pay.

CHECK THESE GREATER FOOD VALUES

THURSDAY FRIDAY SATURDAY

Buy your week's supply of groceries at USCO Stores where you always get quality at definite savings especially when you get the benefit of free delivery to your door in a prompt courteous way. Every day more thrifty shoppers are depending on USCO Stores for good foods at low prices. You can find extra good buys during this weekend sale of quality groceries.

- Baking Powder** 10-oz. can 7c
USCO—FOR BETTER BAKING
- Nestle's Chocolates** lb. 28c
DELICIOUS CANDY
- Lima Beans** 2 lb. 15c
CALIFORNIA—TRY THEM
- Hershey's Kisses** lb. 25c
MILK CHOCOLATE
- USCO Catsup** 14-oz. bottle 12c
FROM RED RIPE TOMATOES
- Quaker Farina** pkg. 9c
POPULAR BREAKFAST FOOD
- Puffed Rice** pkg. 10c
GOOD WITH FRESH FRUIT
- Rockwood Cocoa** 2-lb. can 17c
FOR CANDY, CAKE ICINGS, ETC.
- Heinz Baked Beans** 2 18-oz. cans 25c
- Premium Flake Crackers** Pound Box 19c
- Tomatoes** 3 No. 2 20c
STANDARD SOLID PACK
- Kidney Beans** 2 No. 2 19c
JOAN OF ARC
- Coffee** MAXWELL HOUSE lb. 30c
GOOD TO THE LAST DROP
- Prunes** 2 lb. 15c
DEL MONTE 40-50%
- Pink Salmon** 1-lb. can 13c
MAKE SOME CROQUETTES
- Instant Postum** 4-oz. can 25c
FOR YOUR NERVES
- Freezing Mix** pkg. 9c
JELLO FOR TASTY DESSERTS
- Cake Flour** 5-lb. bag 37c
HENKEL'S VELVET
- Duff's Cake Mix** can 23c
FOR DEVIL'S FOOD CAKE
- Bab-O-Cleaner** can 12c
CLEANS BATH TUBS, ETC.
- Ammonia** qt. bottle 12c
COLUMBIA
- Keinz Pickle** 24-oz. jar 21c
FRESH CUCUMBER
- Corned Beef** can 21c
SWIFF'S DELICIOUS
- Laundry Soap** 6 bar 25c
USCO—YELLOW
- Peas** STANDARD PACK 2 No. 2 cans 19c
- Toilet Soap** 12 cake 49c
USCO—GREEN
- Soap Chips** 22-oz. pkg. 17c
USCO—WHITE
- Floating Soap** 12 cakes 29c
USCO—WHITE
- Black Pepper** 1/4-lb. pkg. 8c
McCORMICK'S BEE BRAND
- Tumeric Powder** 1/2-lb. can 8c
McCORMICK'S BEE BRAND
- Stuffed Olives** jar 10c
THEY'RE GOOD
- Sweet Relish** quart jar 29c
USCO EXTRA FLAVOR
- Wesson Oil** pint can 25c
FOR BETTER COOKING
- Mayonnaise** 8-oz. jar 14c
USCO TASTY FLAVOR
- USCO Flour** 24-lb. sack 69c
ALL PURPOSE FAMILY FLOUR
- Union Flour** 24-lb. sack 99c
FOR BETTER BAKING RESULTS
- Peanut Brittle** 2 lb. 25c
EVERYONE LIKES IT
- Chocolate Drops** lb. 15c
GEM—THEY'RE GOOD
- Kisses** PEANUT BUTTER FOR THE KIDDIES lb. 10c
- Fresh Produce**
- Oranges 216s** doz. 27c
FLORIDA SWEET—JUICY
- Grapefruit 80s** each 5c
FULL OF JUICE
- Apples** 10 lb. 23c
U. S. NO. 1 STAYMEN WINESAP BU. 98c
- Cocoanuts** 2 for 13c
DELICIOUS—MEATY
- Figs** CALIFORNIA STRING lb. 20c
- Lettuce** 2 heads 13c
ICEBERG—CRISP
- Onions** 10 lb. bag 30c
YELLOW
- Pears** lb. 8c
FANCY—D'ANJOU—OREGON
- Sweet Potatoes** 8 lb. 25c
U. S. NO. 1 MARYLAND GOLDEN
- Mixed Nuts** lb. 26c
FANCY USCO BRAND NEW CROP
- Cider** gal. 43c
FRESH PURE APPLE

- Choice Meats**
- Pork Butts** lb. 25c
GOOD WITH KRAUT
 - Pork Loins** WHOLE, HALF OR END CUTS lb. 29c
TENDER CENTER CUT CHOPS—L.B. 32c
 - Berliner** lb. 26c
SQUARE—FOR SANDWICHES
 - Boiled Ham** lb. 51c
SQUARE—LEAN
 - Bologna** lb. 20c
VICKING LONG
 - Swiss Cheese** lb. 32c
SANDWICH CUT
 - Loin Steak** lb. 38c
TENDER—JUICY
 - Pork Sausage** lb. 31c
LINK OR COUNTRY STYLE
 - Round Steak** lb. 35c
POPULAR BEEF CUT
 - Rib Roast** lb. 33c
FOR THAT BIG MEAL

- Chocolate Treats** lb. 20c
N. B. C. TASTY CHOCOLATE CAKES
- Spaghettii** 1-lb. pkg. 9c
USCO
 - Granulated Soap** 24-oz. pkg. 17c
USCO—FOR THE LAUNDRY
 - Shoe Polish** can 9c
2 IN 1 BLACK OR TAN
 - Trout** lb. 14c
FRESH SEA
 - Oysters** pint 29c
STANDARD CHESAPEAKE BAY

- Nov. 1-2-3 Mon., Tues., Wed. Specials**
- Slips** SEAMPRUFE \$1.95
A SIZE FOR EVERY FIGURE—Perfect Fit
 - Towels** KITCHEN 37c
PRINTED—STOCK UP NOW 2 FOR 59c
 - Sweaters** WOOL each 98c
BOYS AND MEN'S POPULAR SHIRTS
 - Pajamas** Suit \$1.39
MEN'S POPULAR STYLED PAJAMAS
 - Jackets** WOOL \$5.39
MEN'S AND BOYS' SPADE FOR WARMTH
 - Knickers** BOYS \$1.00
BUY YOUR BOY A NEW PAIR FOR SCHOOL
 - Flashlights** \$1.35
BLACK AND CHROME FOR CAR OR HOME
 - Syrus of Figs** 47c
CALIFORNIA—KEEP KIDDIES HEALTHY
 - Zerone** ANTI-FREEZE gal. \$1.00
Don't Wait Any Longer—Buy Yours Now
 - Noxzema** FOR TENDER SKINS 9c

THE UNITED SUPPLY COMPANY
HALDEMAN STORE, HALDEMAN, KY.

TROUBLE IN CHINA HURTS U. S. PAINT MANUFACTURERS

Several extensive paint and varnish manufacturers and dealers may be vitally concerned in developments in the undeclared warfare between China and Japan.

Reports to the Louisville Office of the Commerce Department say that American paint and varnish manufacturers and others employing tung oil in their processes are showing considerable concern in recent developments in China which have almost entirely cut off our supplies of this essential drying oil.

American manufacturers now use well over 100,000,000 pounds of tung oil per annum, and with the exception of some 2,000,000 pounds being produced on southern United States plantations, all of this oil comes from China.

As a result of the unusually heavy importation of tung oil into the United States during June, July and August, stocks on hand at present are somewhat heavier than usual.

United States consumption of Chinese tung oil was approximately 119,000,000 pounds in 1936 and cost American industrialists more than \$20,000,000.

GROCERY SALES A LITTLE AHEAD SO FAR IN YEAR

Sales declined seasonally from July to August, the decrease being about 2 per cent. Daily average sales for the first eight months of the year were about 2 per cent above the corresponding period of 1936.

FEED TURKEYS WELL ADVISES DR. MARTIN

Farmers who want turkeys at Thanksgiving and Christmas should not try to economize on feed now, according to Dr. J. Himes Martin, head of the poultry department of the University of Kentucky College of Agriculture.

Prevaling high feed prices during the summer months may have caused turkey growers to not feed well, but now that falling feed prices are easing the situation a little, growing turkeys should be kept on full feed, Dr. Martin said.

The older a turkey gets, the more grain it consumes, not only in pounds per day but also in proportion to the mash. Young turkeys may be fed a third grain and two-thirds mash; those five or six months old should have two-thirds grain and one-third mash.

A simple, cheap mash formula is as follows: Mixed wheat feed, 200 pounds; ground yellow corn, 100 pounds; ground oats or barley, 100 pounds; meat and bone scrap, 100 pounds; salt, 5 pounds. If the oats cannot be ground very fine, they should not be ground at all but rather used whole.

Young turkeys may be shifted from cracked corn to shelled corn after they are about 18 weeks old. The new crop of wheat and barley is not in shape for feeding in the grain mixture.

"By experience we find out a shorter way by a long wandering Learning teacheth more in a year than experience in twenty."—Roger Ascham.

DRY FALL INCREASES NEED FOR RYE, WHEAT

A shortage of grazing as a result of a dry fall in much of the state brings a statement from Richard C. Miller of the University of Kentucky College of Agriculture, urging the sowing of larger acreages of rye, wheat and other crops that can be pastured by sheep.

Dry weather in September affected permanent and temporary pastures alike and many pastures will go into the winter in condition to furnish relatively little feed. Likewise, small grains sown early in many instances have not done well.

BLOSSOM TOPHEAVY

So big was the blossom on the 12-foot sunflower stalk in County Commissioner John E. Davidson's yard at Kipton, Ohio, that it fell off of its own weight.

Consecutive No. 000

OFFICIAL SCHOOL BALLOT

(Vote For Three Only) For Members Board of Education

- J. W. CORNETT
A. J. WILLIAMS
V. D. FLOOD
J. B. FRALEY
HENDRIX "HEN" TOLLIVER
J. L. BOGESS

The importance and profitability of sheep in Kentucky warrants giving them more attention, Mr. Miller believes. If ewes are to lamb a high percentage of strong, active lambs and supply them with the milk necessary to grow them out to a profitable early market, then care should be taken to feed properly.

The flock that goes into the winter in good condition will require less feed during the winter season than will the flock that has not received feed or grazing enough to condition them properly, he points out.

Independent Classified Ads pay.

Consecutive No. 000

OFFICIAL BALLOT

For Attorney General
For Representative
For County Judge
For County Attorney
For County Court Clerk
For Sheriff
For Jailer
For Tax Commissioner
For Coroner
For Magistrate (District No. 1)
For Constable (District No. 1)
For Magistrate (District No. 2)
For Constable (District No. 2)
For Magistrate (District No. 3)
For Constable (District No. 3)
For Magistrate (District No. 4)
For Constable (District No. 4)

- HUBERT MEREDITH
Z. TAYLOR YOUNG
DAVE C. CAUDILL
RICHARD M. CLAY
J. M. BUTCHER
DAN PARKER
ALBY HARDIN
LUTHER FRALEY
LON M. DAVIS
JIM RIGSBY
S. B. BRANHAM
BALLARD FOREMAN
HENRY COX
J. T. EVANS
AUSTIN RIDDLE

Consecutive No. 000

NAME OF VOTER
RESIDENCE OF VOTER
REG NO.

OFFICIAL BALLOT

Constitutional Amendment No. 20

Are you in favor of an Act to Amend Section Two Hundred and Fifty-Six of the Constitution of the Commonwealth of Kentucky prescribing the mode of Amendment of Said Constitution?

YES
NO

DEMOCRATIC PARTY
REPUBLICAN PARTY

- For Attorney General
For Representative
For County Judge
For County Attorney
For County Court Clerk
For Sheriff
For Jailer
For Tax Commissioner
For Coroner
For Magistrate (District No. 1)
For Constable (District No. 1)
For Magistrate (District No. 2)
For Constable (District No. 2)
For Magistrate (District No. 3)
For Constable (District No. 3)
For Magistrate (District No. 4)
For Constable (District No. 4)

Consecutive No. 000

NAME OF VOTER
RESIDENCE OF VOTER
REG NO.

OFFICIAL BALLOT

Constitutional Amendment Number 19

Are you in favor of an Act proposing an amendment to the Constitution to be submitted to the electorate, which amendment authorizes the General Assembly to reorganize government within the territorial confines of counties under powers and limitations therein set out; to be known as the Garnett-Mayer Act?

YES
NO

I. C. V. Alfrey, Clerk of the Rowan County Court do hereby certify that the foregoing is a true and correct facsimile of the Official Ballot of Amendment Number 19 to be voted on at the General Election on Tuesday, November 2, in Rowan County.

(Signed) C. V. ALFREY
Clerk, Rowan County Court

Consecutive No. 000

NAME OF VOTER
RESIDENCE OF VOTER
REG NO.

OFFICIAL BALLOT

CITY OF MOREHEAD

Peoples Ticket
Citizens Ticket

For Mayor
For Mayor

For Police Judge
For Police Judge

For City Council
For City Council

- WARREN C. LAPPIN
LEE STEWART
N. E. KENNARD
W. H. HUDGINS
FRANK HAVENS
S. P. CAUDILL
E. D. PATTON
AUSTIN RIDDLE

I. C. V. Alfrey, Clerk of the Rowan County Court do hereby certify that the foregoing is a true and correct facsimile of the official ballot in the City of Morehead election to be voted on at the General Election on Tuesday, November 2, 1937.

(Signed) C. V. ALFREY
Clerk, Rowan County Court

Consecutive No. 000

NAME OF VOTER
RESIDENCE OF VOTER
REG NO.

OFFICIAL BALLOT

For Constable (District No. 2)
HARRY MCKENZIE

I. C. V. Alfrey, Clerk of the Rowan County Court do hereby certify that the foregoing is a true and correct facsimile of the official ballot to be voted on in Rowan County at the General Election on Tuesday, November 2, 1937.

(Signed) C. V. ALFREY
Clerk, Rowan County Court

STOP AND GO IS HARD ON YOUR ENGINE UNLESS YOUR OIL IS ESPECIALLY MADE FOR IT! GOLDEN SHELL 25¢ PLUS TAX NO FINER OIL AT ANY PRICE! \$3,000,000... 3 years research to produce this new-type fast-flowing tough-bodied motor oil for today's Stop-and-go driving.

MIDLAND Trail GARAGE MOREHEAD KENTUCKY

MR. MAY ADDRESSES MOREHEAD HIGH CLUB

The Hi-Y is a national club of boys and girls... Mr. May will start a "first aid" course for these boys.

The Hi-Y is a national club of boys and the aim of the club is to inculcate clean living, clean speech, clean sports and clean scholarship...

Mrs. A. F. Ellington, Principal of the school, is the regular club sponsor. The Girl Reserve Club, a similar club for girls, is sponsored by Miss Grace Crosswhite.

Independent ads get results.

At 200 Carey Ave. ROOMS OR BOARD \$3.00 Day

MEALS—25c

BARBER SHOP

In Connection with Two Barbers Ready to serve you J. F. Johnson, Prop.

PURINA LAYING CHOWS are stepped up for MORE EGGS and EXTRA PROFITS! Image of a hen.

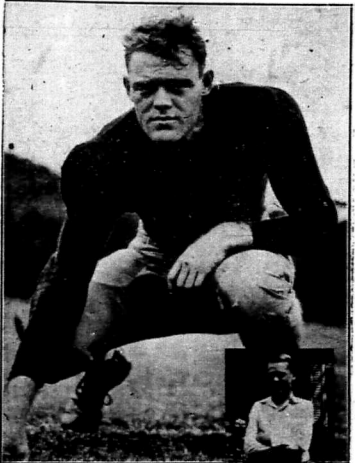
REGAL STORE MOREHEAD, KENTUCKY

Now 30 Months Old 100 Proof Kentucky Whisky O-L-D B-O-T-T-S THE MOREHEAD DISPENSARY

WINES California Wines Now Available in Half Pints, Pints, Fifths and Gallons. \$2.50 Per Gallon TAX PAID THE MOREHEAD DISPENSARY



CURT'S TRANSFER Phone 279 Day & Night Service



Ats & Saturday Evening Post

Yes, they're both Larry Kelley, Yale's gridiron leader and All-American end in 1936 is shown at the height of his colorful career and as he appeared when he was twelve years old.

Larry Kelley, Yale football captain in 1936, confesses that in his junior year, at college, after "one taste of glory had knocked me for a loop... I learned that football fame is a pretty small thing in life and that All-American honors are often a matter of headline bullhoo."

Kelley, writing his life story with George Trevor in the first of two articles beginning in this week's Saturday Evening Post, all so reveals that he made up his mind to specialize in catching passes when he went out for high school football at Williamsport, Pennsylvania.

Yet, in his first year on the high school team, Larry dropped every pass but one that came his way, and, after making his only successful catch of the season he fell headlong with no tackler near him.

Kelley shows how the wisecrack "built-up of All-American Football Jester Kelley" was made by a teammate. Even speaking of his birthday, May 30, 1915: "It's an easy date to remember, though it's not so pleasant to see everybody going to cemeteries on your birthday."

"Well, I won't be down there playing this year, but they always said I talked a good game, so at least I can keep on trying to do that."

"My first tackle in the Bowl was probably the best I ever made during my whole football career. Beginner's luck!"

"The gals can sure throw a mean ball on a man when they get the chance! That's why I never answered my fan mail."

PERCENTAGE OF ATTENDANCE First Month CONSOLIDATED SCHOOLS

Table with 2 columns: School Name and Percentage. Includes Austin, Harold Palfrey, Mary Alice Calvert, Nellie T. Cassidy, Naomi Hodge, Letha Porter, Norma Powers, Resuliah Hall, Ellen Huddins, Margaret Stewart, Grace Crosswhite, George Evans, Thelma Allen, Murvel Blair, Wynona Burrows, Ella Mae Boggess, Elizabeth Layne, Hildreth Maggard, Nellie M. Cassidy, Sibbie Caskey, Nellie T. Cassidy, Clara Bruce, Lona Fraley, Henrietta Mame, Beulah Williams, Orville Carter, Grace Lewis, Beulah Cline, Mayme Blair, Mabel Hackney, Ruth Henry, Virginia Caudill, Evalyn Stinson.

High School Percentage: Morehead 97.8, Farmers 97.7, Haldeman 96.8, Elliottville 95.

NATURE'S LOVELINESS Who can explain the secret pathos of Nature's loveliness? It is touched of melancholy inherited from our mother Eve. It is an unconscious memory of the lost Paradise. It is the sense that even if we should find another Eden, we would not be fit to enjoy it perfectly nor stay in it forever. —Henry Van Dyke.

Attendance For 2nd Month of Year Tabulated

Table with 2 columns: School Name and Attendance. Includes McKenzie, Bradley, Diney, Poplar Grove, Clearfield, New Home, Perkins, Open Fork, Lower Lack Fork, Bluestone, Carey, Minor, Seas Branch, Sand Gap, Oak Grove, Bardsdale, Charity, Alfrey, Bardsdale, Old House Creek, Craney, Mt. Hope, Slate, Dry Creek, Upper Lack Fork, Rock Fork, Clearfork, Johnson, Moore, Little Brushy, Sharkey, Bull Fork, Gearhart, Big Brushy, Holly, Little Perry, Clark, Cranston, Adams-Davis, Pond Lick, Glenwood, Tamey, Walz, Hardeman, Three Lick, Pine Grove, Island Fork.

NEED WILD LIFE IN KENTUCKY...

According to the Biologists, the real foes of the farm are not the creatures often called "vermin," Rodents and insects; and that if food is to be raised, the farmer must encourage and restore their natural destroyers.

Very important researches—the first ever made on a large scale—were conducted recently by Biologists of the School of Forestry and Conservation of the University of Michigan, into the Food Habits of the Summer Fur-Bearers (Bulletin No. 1). Stomach contents and feces were examined at all seasons over a period of two years—1700 of the Skunk, 300 of the Red Fox, 500 of the coon, 374 of the mink, and lesser numbers of the others. The results here given, in percentages of classes of foods eaten, the word "birds" always including poultry.

Wesley: Rodents, 63 per cent; Insects, 7 percent; birds, 9 percent; Red fox: Rodents, 65 percent (about half meadow mice, half rabbits); insects, 7 per cent; Birds, nearly 6 per cent; Fruit, 11 per cent; Bird-eggs, 1 per cent. Mink: Rodents, 57 per cent (meadow mice and muskrat); insects, 2 per cent; birds, 3 per cent; fish, crawfish and frogs, 36 per cent. Skunk: Rodents, 10 per cent; insects, 57 per cent; birds, 2 per cent; wild fruits and grain, 29 per cent. Opossum: Rodents, 23 per cent; insects, 16 per cent; birds, 24 per cent; fruits 30 percent. Raccoon: Rodents, 11 per cent; insects, 5 per cent; birds, nearly one-half of one per cent; crawfish, 59 per cent; fruit and grain, 33 per cent.

Evidently the weasel is nature's chief provision for keeping down rodents, with the red fox next. The surprise is to find so few birds in the rations of these two, which have been charged with living largely upon birds. We see that the weasel eats only 9 per cent birds, and the red fox only 6 per cent, while mink and skunk follow with only 5 per cent and 2 percent; the Opossum being the only one in the list whose bird

Dr. L. A. Wise Optometrist Hurt Building FRIDAYS ONLY

A. F. Ellington DENTIST Phone 26 — — — Morehead Lane Funeral Home Funeral Directors Ambulance Service Phone: 91 (Day)—174 (Night)

percentage amounts to as much as a quarter of its diet.

The fox tests were made largely in two state forests, where a game bird, the ruffed grouse, was plentiful. It was estimated that each fox ate during the year two Grouse, "not an undue recompense for its extensive destruction of rodent pests" says the bulletin, "and every bird hunter should send every bird hunter should

As to weasel and mink, their rations on henhouses must be far less frequent than we had imagined. But because, when they do occur, they are very bad—for either they kill large numbers of fowls just to suck the blood and brains—they can hardly be recommended as farm protectors, as neither can the opossum. The raccoon is seen to be harmless to fowls, though of no special value otherwise. But because he is now almost exterminated, he should be spared.

The above figures give the year-round food record of the skunk. But its summer winter rations were found to differ widely, the insect percentage rising to above 80 in the summer, with the rest chiefly fruit and grain, when the rodent percentage seems to have been concentrated into the frozen winter months when grubbs can not be dug. For this reason, it is a fine resident under the barn in winter.

Other important rodent destroyers are the mousing hawks, owls and snakes, the red-shoulder and the red-tail hawks leading, with about 90 per cent of their food rodents. The only two hawks that kill poultry are Cooper's and the Sharp-shinned, both no larger than pigeons, flying low, and slightly only under cover, while the mousing hawks are much larger, fly high, and slight in the open, and are the ones to be sought in the cruel pole trap. The Great Horned Owl is the poultry-eater among the mousers and raters. Every farmer knows how valuable is the black snake in this respect. But alas, he has the evil habit, which he shares with the eating many young birds in the nest.

But the cow-snake and the king-snake are safe residents under the barn.

POLES TO MAKE FISH MEAL TO FEED HOGS

The factory will utilize fish waste and have a capacity of 80 tons of meal and an equal volume of fish oil per month. Fish meal is used in Poland as hog, cattle and poultry feed.

Independent ads get results.

AMONG THE COUNTY AGENTS

To cut down expenses and to protect his flock, Everett Rice, Boyd county, had his chickens culled and 125 pullets vaccinated.

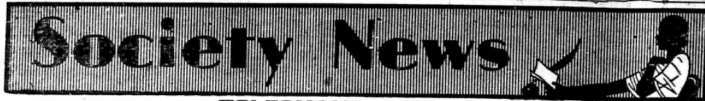
A canning record has been set by eight Garrard county home-makers, who had a half acre of tomatoes each. Five Hopkins county farmers harvested 20,000 bushels of peaches, selling them for a profit of \$1 a bushel.

Harlan county, is seeding 15 acres to grass. Five Ohio county farmers are raising western eggs on the Ohio market.

666 checks COLDS and FEVER first day Liquid, Tablets Headache, 30 Salve, Nose Drops minutes! Try "Rub-My-Tism"—World's Best Liniment

ELECT A MAN THAT IS QUALIFIED By Voting For LESTER Caskey As Your Coroner He Will Serve You in an Honest and Conscientious Manner. He Will Heed the Call of Duty 24 Hours in the Day. PD. POL. ADV.

USED CARS WITH AN O. K. THAT COUNTS 1934 Ford Tudor 1932 DeSoto Coupe 1935 Chevrolet Pick-Up 1934 International Pick-Up 1931 Chevrolet Pick-Up These Cars have been completely reconditioned and are ready for many miles of Care-Free service. The Prices are Right. Midland Trail Garage MOREHEAD KENTUCKY



TELEPHONE 83 OR 235

DISCOVERIES

The place first visioned is not always found... By something of its glamor leads the way...

Tea For

Mrs. W. S. Lindsay, Jr. was the guest of honor at a tea Saturday afternoon given by Mrs. Walter Shroat at her home in Sharpsburg...

Thursday Afternoon

Bridge, Club Meets The Thursday Afternoon Bridge Club met at the home of Mrs. Wood Hinton High score was won by Mrs. Wood Hinton and second was won by Mrs. Clark Layne...

Return To

Morehead Mr. and Mrs. Warren Fletcher will move to Morehead from Mt. Sterling where they were transferred from here...

Celebrates 5th

Birthday Anniversary Charles Henry Jennings, son of Edige and Mrs. C. E. Jennings, celebrated his 5th birthday at his home on East Main Street Saturday afternoon...

Entertains With

Dinner Sunday Mrs. Hartley Battson entertained Sunday with a dinner. The house was beautifully decorated with cut flowers...

Leola Caudill attended the Kentucky-Manhattan game at Lexington Saturday...

Lexington Saturday Miss Virginia Conroy spent the week-end in Mt. Sterling...

TO THE VOTERS OF ROWAN COUNTY: There have been rumors that I will not accept the offer of the County Superintendent of Rowan County when it is offered to me...

THELMA ALLEN MARRIAGES County Court Clerk C. V. Alfrey issued the following licenses to marry during the week...

County Court Clerk C. V. Alfrey issued the following licenses to marry during the week...

County Court Clerk C. V. Alfrey issued the following licenses to marry during the week...

County Court Clerk C. V. Alfrey issued the following licenses to marry during the week...

County Court Clerk C. V. Alfrey issued the following licenses to marry during the week...

County Court Clerk C. V. Alfrey issued the following licenses to marry during the week...

County Court Clerk C. V. Alfrey issued the following licenses to marry during the week...

County Court Clerk C. V. Alfrey issued the following licenses to marry during the week...

County Court Clerk C. V. Alfrey issued the following licenses to marry during the week...

County Court Clerk C. V. Alfrey issued the following licenses to marry during the week...

County Court Clerk C. V. Alfrey issued the following licenses to marry during the week...

County Court Clerk C. V. Alfrey issued the following licenses to marry during the week...

County Court Clerk C. V. Alfrey issued the following licenses to marry during the week...

County Court Clerk C. V. Alfrey issued the following licenses to marry during the week...

County Court Clerk C. V. Alfrey issued the following licenses to marry during the week...

County Court Clerk C. V. Alfrey issued the following licenses to marry during the week...

Lester Pottenbaugh, 23, single, laborer and Katherine Wade, 21, single, both of Sharkey, Ky. Woodrow Evans, 21, single, laborer, of Edston and Gladys Parrish, 18, single, of Jacobs, Ky.

EDITOR OF CENTURY AGO BOASTED SPEEDY TRAVEL Boasting of the speed our modern transportation methods allow is nothing new. Our great-grandfathers were doing it 100 years ago.

In a copy of the Michigan Statesman published at White Pigeon, Michigan in 1834, the editor does a bit of complacent boasting...

"Language is the only instrument of science, and words are but the signs of ideas," Samuel Johnson.

"The heavens declare the glory of God; and the firmament showeth his handiwork. Day unto day uttereth speech, and night unto night sheweth knowledge. There is no speech or language, where their voice is not heard." Psalms 19: 1-3.

"Language is the amber in which a thousand precious and subtle thoughts have been safely imbedded and preserved." R. C. Woodford.

"Language is the only instrument of science, and words are but the signs of ideas," Samuel Johnson.

"The heavens declare the glory of God; and the firmament showeth his handiwork. Day unto day uttereth speech, and night unto night sheweth knowledge. There is no speech or language, where their voice is not heard." Psalms 19: 1-3.

"Language is the amber in which a thousand precious and subtle thoughts have been safely imbedded and preserved." R. C. Woodford.

"Language is the only instrument of science, and words are but the signs of ideas," Samuel Johnson.

"The heavens declare the glory of God; and the firmament showeth his handiwork. Day unto day uttereth speech, and night unto night sheweth knowledge. There is no speech or language, where their voice is not heard." Psalms 19: 1-3.

"Language is the amber in which a thousand precious and subtle thoughts have been safely imbedded and preserved." R. C. Woodford.

"Language is the only instrument of science, and words are but the signs of ideas," Samuel Johnson.

"The heavens declare the glory of God; and the firmament showeth his handiwork. Day unto day uttereth speech, and night unto night sheweth knowledge. There is no speech or language, where their voice is not heard." Psalms 19: 1-3.

"Language is the amber in which a thousand precious and subtle thoughts have been safely imbedded and preserved." R. C. Woodford.

"Language is the only instrument of science, and words are but the signs of ideas," Samuel Johnson.

"The heavens declare the glory of God; and the firmament showeth his handiwork. Day unto day uttereth speech, and night unto night sheweth knowledge. There is no speech or language, where their voice is not heard." Psalms 19: 1-3.

"Language is the amber in which a thousand precious and subtle thoughts have been safely imbedded and preserved." R. C. Woodford.

"Language is the only instrument of science, and words are but the signs of ideas," Samuel Johnson.

"The heavens declare the glory of God; and the firmament showeth his handiwork. Day unto day uttereth speech, and night unto night sheweth knowledge. There is no speech or language, where their voice is not heard." Psalms 19: 1-3.

GEMS FOR YOUR SCRAPBOOK

"Language is a city to the building of which every human being has brought a stone."—Emerson. "Every language" is a temple, in which the soul of those who speak it is enshrined.—Holmes.

"A spiritual understanding of the Scriptures restores their original tongue in the language of Spirit, that primordial standard of Truth."—Mary Baker Eddy.

"Language is the only instrument of science, and words are but the signs of ideas," Samuel Johnson.

"The heavens declare the glory of God; and the firmament showeth his handiwork. Day unto day uttereth speech, and night unto night sheweth knowledge. There is no speech or language, where their voice is not heard." Psalms 19: 1-3.

"Language is the amber in which a thousand precious and subtle thoughts have been safely imbedded and preserved." R. C. Woodford.

"Language is the only instrument of science, and words are but the signs of ideas," Samuel Johnson.

"The heavens declare the glory of God; and the firmament showeth his handiwork. Day unto day uttereth speech, and night unto night sheweth knowledge. There is no speech or language, where their voice is not heard." Psalms 19: 1-3.

"Language is the amber in which a thousand precious and subtle thoughts have been safely imbedded and preserved." R. C. Woodford.

"Language is the only instrument of science, and words are but the signs of ideas," Samuel Johnson.

"The heavens declare the glory of God; and the firmament showeth his handiwork. Day unto day uttereth speech, and night unto night sheweth knowledge. There is no speech or language, where their voice is not heard." Psalms 19: 1-3.

"Language is the amber in which a thousand precious and subtle thoughts have been safely imbedded and preserved." R. C. Woodford.

"Language is the only instrument of science, and words are but the signs of ideas," Samuel Johnson.

"The heavens declare the glory of God; and the firmament showeth his handiwork. Day unto day uttereth speech, and night unto night sheweth knowledge. There is no speech or language, where their voice is not heard." Psalms 19: 1-3.

"Language is the amber in which a thousand precious and subtle thoughts have been safely imbedded and preserved." R. C. Woodford.

"Language is the only instrument of science, and words are but the signs of ideas," Samuel Johnson.

"The heavens declare the glory of God; and the firmament showeth his handiwork. Day unto day uttereth speech, and night unto night sheweth knowledge. There is no speech or language, where their voice is not heard." Psalms 19: 1-3.

"Language is the amber in which a thousand precious and subtle thoughts have been safely imbedded and preserved." R. C. Woodford.

"Language is the only instrument of science, and words are but the signs of ideas," Samuel Johnson.

"The heavens declare the glory of God; and the firmament showeth his handiwork. Day unto day uttereth speech, and night unto night sheweth knowledge. There is no speech or language, where their voice is not heard." Psalms 19: 1-3.

"Language is the amber in which a thousand precious and subtle thoughts have been safely imbedded and preserved." R. C. Woodford.

TRIBBLE THEATRE MT. STERLING, KY.

THURSDAY AND FRIDAY Sonia Henie—Tyron Power THEN HERE

SATURDAY Johnny Mack Brown GUNS IN THE DARK ALSO A MIDNIGHT SHOW Eddie Cantor—Gene Lang

SUNDAY ALI BABA GOES TO TOWN Eddie Cantor—Gene Lang

MONDAY YODELIN' KID FROM IOWA Gene Lang—Gene Lang

TUESDAY Irene Dunne—Cary Grant THE AVENUE SOUTH

WEDNESDAY Cedric Hardwicke—Lionel Barrymore KING SOLOMON'S MINES

THURSDAY AND FRIDAY Sonia Henie—Tyron Power THEN HERE

SATURDAY Johnny Mack Brown GUNS IN THE DARK ALSO A MIDNIGHT SHOW Eddie Cantor—Gene Lang

SUNDAY ALI BABA GOES TO TOWN Eddie Cantor—Gene Lang

MONDAY YODELIN' KID FROM IOWA Gene Lang—Gene Lang

TUESDAY Irene Dunne—Cary Grant THE AVENUE SOUTH

WEDNESDAY Cedric Hardwicke—Lionel Barrymore KING SOLOMON'S MINES

DIXIE Theatre

OLIVE HILL, KY. THURSDAY, OCTOBER 28

Oh, Doctor

Edw. E. Horion—Dorane Leighton

FRIDAY & SATURDAY

OCTOBER 29 & 30

THE MARX BROTHERS

A Day at the Races

Anyone desiring a monthly calendar from the Dixie Theatre, Olive Hill, may have one by writing the Theatre.

COLLEGE THEATRE

Friday, October 29

PAUL MUNI

THE LIFE OF EMILE ZOLA

SHORT SUBJECTS

COLOR CARTOON

SPORTS REEL

UNIVERSAL NEWS

Coming Next Week

Life Of The Party

Cozy Theatre

WEDS. & THURS. OCTOBER 27 & 28

Topper

Constance Bennett—Cary Grant

FRIDAY & SATURDAY

OCTOBER 29 & 30

Born Reckless

Brian Donlevy—Rochelle Hudson

SUNDAY & MONDAY

OCTOBER 31 & NOVEMBER 1

Mountain Music

Bob Burns — Martha Raye

HERE is The TRUTH!

WE, AS CANDIDATES FOR THE ROWAN COUNTY BOARD OF EDUCATION, DO RESPECTFULLY SOLICIT YOUR VOTE AND INFLUENCE AT THE NOVEMBER 2 ELECTION ON THE FOLLOWING PLATFORM OF TRUTHS AND FACTS:

- 1. We are against the consolidation of the rural schools of Rowan County and if we are elected we will see that this pledge is carried out. Those who are opposing us say they are also against Consolidation, but let's look at the record. ON APRIL 1, 1934, WHICH WAS REGULAR MEETING DATE OF THE BOARD OF EDUCATION, THE PRESENT ADMINISTRATION PASSED A RULING ABOLISHING A LARGE NUMBER OF THE RURAL SCHOOLS AND CONSOLIDATED THEM. It is a matter of public record that the present Superintendent of Schools advocated and attempted to force on the people this Consolidation. It was only through a rapidly-rising spread of condemnation and public sentiment plus a ruling of the State Superintendent that prevented this Consolidation. WHY IS IT TODAY THAT THE SAME PERSON DOES A RIGHT ABOUT FACE AND TELLS YOU HE IS OPPOSED TO CONSOLIDATION? Let's don't get only at the truth, but state the truth. The records don't lie and the records showing an attempt to abolish these rural schools are for the public to see. 2. Likewise, we can all remember that many attempts have been made to remove the sub-district trustees. We are opposed to removing these trustees, believing that they have a very vital interest in their school which is educating their sons and daughters and the children of their neighbors. We believe that they should have a voice in the operation of their school and if elected we shall oppose any movement to do away with the sub-district trustees. 3. Reports have been falsely circulated that if we are elected we will be for some person, other than Thelma

- Allen for County Superintendent. If we are elected we shall install Miss Allen as your Superintendent of Schools and no other person. We know that Miss Allen, a College graduate, has proved herself through her work as a capable person to handle this office. A vote for us is a ballot for Miss Thelma Allen as your Superintendent. 4. We feel that we are experienced and capable of handling the affairs of the School System of Rowan County. Both Andy Williams and Billy Cornett have served 8 years on the Board of Education. Mr. Flood was, for four years, a trustee in the Morehead Consolidated School System. Our records in the past are open for your inspection. 5. We pledge ourselves to work unceasingly for the welfare of the schools of Rowan county, to build up the system, to improve the standing, to educate the children of Rowan County so that this county will be second to none in the state in educational matters. 6. FINANCES. We believe that with the state paying a per capita tax of \$12, where at one time it was only \$7, the teachers of the county are underpaid and should be drawing much larger salaries than they are at present receiving. It is our aim to administer the finances of the county board as to save all needless expense, and to devote that saving to the increase of teachers salaries, so that Rowan County may obtain and pay for the services of the best teachers and build the best schools possible, without increasing their debt. 7. We will, if elected, do our utmost to raise the standards of the high schools of the county, with the ultimate aim in view of establishing four year high schools at the earliest moment that the enrollment in the various 8. We pledge ourselves to oppose the building up of a FAMILY rule. By that we mean that we will make it our business to see that the jobs and positions in the schools will not be centered in a few large families but that they will be divided so that every citizen who is capable will be given an opportunity. 9. If elected, we will welcome any progressive suggestions, even from the poorest and humblest citizen, but we will not be coerced or dictated to by any Politician or by any clique.

CONSIDER THE REAL TRUTH AND IF YOU ARE IN FAVOR OF AN IMPROVED ROWAN COUNTY SCHOOL SYSTEM VOTE FOR A. J. "ANDY" Williams J. W. "BILLIE" Cornett V. D. "MIKE" Flood For Members Rowan County Board of Education