

News

PUBLIC INFORMATION

JUDITH YANCY, DIRECTOR

MOREHEAD STATE UNIVERSITY

UPO BOX 1100

MOREHEAD, KY 40351

606-783-2030

Jan. 1, 1986
FOR IMMEDIATE RELEASE

MOREHEAD, Ky.--Former Secretary of Defense Robert McNamara will discuss President Reagan's Strategic Defense Initiative (Star Wars) and the world's nuclear future on the Jan. 9 edition of Common Ground, a radio series aired each Thursday at 4 p.m. on WMKY FM 90.3, public radio from Morehead State University.

In an exclusive interview with Common Ground, McNamara said the 50,000 warheads held by the United States and the Soviet Union "have brought instability, risk, and a world that I don't want to pass on to my children."

McNamara said he agrees with the President's assertion that nuclear wars can never be won and must never be fought. In reference to the present form of the Strategic Defense Initiative, McNamara said the President is attacking the right problem with the wrong solution.

McNamara lays the groundwork for his alternative SDI on Common Ground.

Robert McNamara, former president of the World Bank, serves as chairman of the Overseas Development Council and a trustee of the Ford Foundation. The Brookings Institution, and the Urban Institute. He is the recipient of the Presidential Medal of Freedom with Distinction, The Albert Einstein Peace Prize, and the Franklin D. Roosevelt Freedom from Want Medal.

Common Ground, a series on world affairs, is produced and fully funded by the Stanley Foundation, which encourages the study, research, and discussion of international issues.

News

PUBLIC INFORMATION

JUDITH YANCY, DIRECTOR

MOREHEAD STATE UNIVERSITY

UPO BOX 1100

MOREHEAD, KY 40351

606-783-2030

Jan. 5, 1986
FOR IMMEDIATE RELEASE

MOREHEAD, Ky.--An exhibit of works by Takeshi Takahara, internationally recognized printmaker, will be on display in the gallery of Claypool-Young Art Building at Morehead State University Jan. 15 through Feb. 18.

In addition, the artist, associate professor of printmaking at the University of Michigan-Ann Arbor, will be on campus Wednesday, Jan. 29, to meet with students, demonstrate techniques and lecture, according to Tom Sternal, chair of MSU's Department of Art.

On Jan. 29, he will conduct two student presentations: a color intaglio demonstration at 10 a.m. in Claypool-Young 314 and a slide-illustrated gallery talk at 2 p.m. in Room 305. He also will present a lecture on papermaking at 7:30 p.m. in Claypool-Young 111. Open to the public, it will be followed by a reception.

"We would like to encourage art students and faculty from other schools to join us for the sessions with this master printmaker," said Sternal. Additional information may be obtained by calling MSU's Department of Art, (606) 783-2766.

A native of Japan, Takahara studied under Leonard Baskin at Smith College and earned both a master's and an M.F.A. degree from the University of Iowa under Mauricio Lasansky.

His work has been displayed in more than 90 single and group exhibits here and abroad and has won numerous awards for excellence in juried shows.

###

Takeshi Takahara
2-2-2-2-2-2

Exhibitions:

International Exhibitions:

- 1973 "Premio Biella Print Invitational" Biella, Italy. Participated at the opening and traveled in Europe for three weeks.
- 1974 "Second International Graphic Annual" Art and Science Center, Nashua, New Hampshire.
- 1975 "11th International Biennial of Graphic Arts" Museum of Modern Art, Ljubljana, Yugoslavia. Participated at the opening and traveled Greece, Italy and France.
- 1976 "3rd International Graphic Annual," Lehigh University, Bethlehem, Pennsylvania.
- "Northwest International Small Format Print Exhibition," Davidson Galleries, Seattle, Washington. Received Cash Award.
- "Internationale Grafik Biennale, 1976 Invitational," Frechen, West Germany. Participated at the opening and traveled in Germany, Holland, Italy and England.
- "Premio Biella International Invitational," Biella, Italy.
- 1977 "Exhibition of Graphical Art from Asian Countries," Invitational. Organized by Volkshochschule Leverkusen, West Germany.
- "International 'Self Portrait' 77," Invitational Art Core Gallery, Kyoto, Japan. Traveled through Osaka, Nagoya, Japan.
- 1978 "14th International Modern Asian Art Competitive Exhibition" Tokyo Public Museum of Art, Tokyo, Japan. Received Award: "Shinjin-sho."
- "28th Nippon Hangain ten," Tokyo Public Museum of Art, Tokyo, Japan. Received Award: "shorei-sho."
- "Traveling Exhibition of the selected works of Taiwan," Invitational, Organized by Asian Modern Art Association.

(more)

Takeshi Takahara
3-3-3-3-3-3

- 1980 "6th Internationale Grafik Biennale Frechen '80,"
Frechen, West Germany.
- "56th Annual International Competition," The Print
Club, Philadelphia, Pennsylvania.
- 1982 "58th Annual International Competition," The Print
Club, Philadelphia, Pennsylvania.
- 1983 "7th Internationale Grafik Ausstellung Frechen,"
Frechen, West Germany.
- 1984 "8th British International Print Biennale,"
Invitational, Braford, England, April - July.
- "International Invitational Exhibition,"
Southampton Art Gallery, Southampton, England,
July 21 - September 2.
- 1985 "Invitational Print Exhibition," Peacock Printmaking
art Artspace Galleries, Aberdeen, Scotland,
February 3-22.
- "Invitational Solo Exhibition," American Embassy in
Belgrade, Yugoslavia and tour to Zujlab.

National Exhibitions:

- 1972 "National Invitational Print and Drawing Show,"
Albion College, Albion, Michigan. Received Purchase
Award.
- 1974 "National Prints and Drawings Competition," University
of Colorado, Boulder, Colorado. Received Purchase
Prize.
- 1975 "National Invitational Print Show," Hope College,
Holland, MI. Received Purchase Award.
- "5th National Prints and Drawings Exhibition,"
Minot State College, North Dakota, Honorable
Mention.
- "3rd Hawaii National Print Exhibition," Honolulu
Academy of Art, Hawaii.
- "Color Print U.S.A. National Print Show," Texas
Tech University, Lubbock, Texas.
- 1976 "National Prints Exhibition," State University College,
Fredonia, N.Y.
- "Western Annual Exhibition of Works of Art on Paper,"
Western Illinois University, Macomb, Ill.

(more)

Takeshi Takahara

4-4-4-4-4-4

- 1976 "Village Center National Print Competition," Florida Technological University, Orlando, Florida.
- 1977 "First National Invitational Drawing Exhibition," Emporia State College, Emporia, Kansas. Received Purchase Prize.
- "7th National Drawing and Print Exhibition," Minot State College, North Dakota.
- "Kansas Second National-Small Painting, Drawing and Print Exhibition," Kansas State College, Fort Hays, Kansas.
- "16th Bradley National Print and Drawing Exhibition," Bradley University, Peoria, Ill.
- "7-State Painting, Printmaking, Drawing Competition," University of Wisconsin, Platteville, Wisconsin.
- "4th Annual Midwestern Printmaking and Drawing Competition," Tulsa City County Library, Tulsa, Oklahoma.
- 1978 "8th Annual Anderson Winter Show," Anderson Fine Arts Center, Anderson, Indiana.
- "12th National Print Exhibition," Silvermine Guild of Artists, Inc., New Caanan, Conn.
- "National Invitational Drawing Exhibition," Emporia State University, University Art Gallery, Emporia, Kansas.
- "Trenton State College National Print Exhibition," Trenton State College, Holman Hall Art Gallery, Trenton, N.J.
- "Color Print U.S.A.," Texas Tech. University, Lubbock, Texas.
- 1979 "13th Dulin National Print and Drawing Competition," Dulin Gallery of Art, Knoxville, Tenn.
- "Printmaking Today" Invitational, Rockford Council Art Center, Rockford, Ill.
- "Boston Printmakers 32nd National Exhibition," DeCordova Museum, Lincoln, Mass. Received Paper Award.

(more)

- 1980 "10th Annual Anderson Winter Show," Anderson Fine Arts Center, Anderson, Indiana.
"4th Annual 7 State Competition," University of Wisconsin, Platteville, Wisconsin.
- 1982 "6th North Carolina Print and Drawing Society Exhibition," Spirit Square Arts Center, Charlotte, North Carolina.
- 1985 "Traveling Exhibition," University of Washington, Seattle, Washington; Notre Dame, Indiana; Cranbrook, Bloomfield Hills, Michigan; University of Michigan, Ann Arbor, Michigan.
"National Invitational Print Exhibition," Hope College, October, 1985.
- 1972 "Seventh Michiana Show," South Bend Museum, Indiana. Received First Prize.
- 1974 "8th Michiana Show," South Bend Art Museum, Indiana.
- 1975 "The Selected Works at the Governor's Residence and at The Governor's Office at the State Capital," Lansing, Michigan.
- 1976 "The Selected Drawing Group Exhibition," Invitational, Grand Rapids Art Museum, Grand Rapids, Michigan. Purchase Award.
- 1977 "Annual Festival '77;" Competitive Exhibition, Grand Rapids, Michigan. Received County Purchase Award.
- 1979 "Hackley Regional Competition," Hackley Art Museum, Muskegon, Michigan. Received Top Prize Award.
"Festival '79," Grand Rapids County Building, Grand Rapids, Michigan.
- 1980 "Michigan Artists '80/'81," Kalamazoo Institute of Arts, Kalamazoo, Michigan.
- 1982 "Festival '82," Grand Rapids County Building, Grand Rapids, Michigan. Received City Purchase Award.
- 1984 "Surfaces and Structures," Paperwork Invitational, Birmingham Bloomfield Art Association, Birmingham, MI. in January and traveling to Slusser Gallery, School of Art, University of Michigan in February, and The Ella Sharp Museum in Jackson, Michigan, during March.

(more)

Takeshi Takahara
6-6-6-6-6-6

- 1984 "Annual Ann Arbor Art Competition," 2nd Prize.
- 1985 "One Man Exhibition," University of Michigan,
Museum of Art, Ann Arbor, Michigan, June.
- "One Man Show," Northwestern Michigan College,
Traverse City, Michigan, fall, 1985.

Solo and Group Exhibitions:

- 1971 "One-Man Show," Manitou Gallery, Grand Valley State
College, Allendale, Michigan.
- 1972 "Iowa Print Group Show," Grand Valley State and six
other Michigan Institutions: Hope College, Saginaw
Valley, Western Michigan University, Lake Superior
State College, Northern Michigan University, Henry
Ford Community College, and Interlochen Arts
Academy.
- 1973 "One-Man Show," Blanden Museum, Fort Dodge, Iowa.
- 1974 "Four-Man Show," University of Nebraska, Omaha,
Nebraska.
- 1975 "Four-Man Show," Adrian College, Adrian, MI.
- " " "One-Man Show," Northwestern College, Traverse City,
Michigan.
- 1976 "Two-Man Show," Muskegon Community College, Muskegon,
MI.
- "Selection of Drawings," Invitational Group Exhibition,
Grand Rapids Art Museum, Grand Rapids, MI.
- "One-Man Exhibition," Hope College, Holland, MI.
- 1977 "One-Man Exhibition," Hamline University, St. Paul,
Minn.
- 1978 "One-Man Exhibition," Central Michigan University,
Mt. Pleasant, Michigan.
- "One-Man Exhibition," St. Joseph Art Center, St.
Joseph, MI.
- 1979 "University of Iowa Prints," Metropolitan Gallery,
Cedar Falls, Iowa.
- "Faculty Show," Campus Center Gallery, Grand Valley
State College, Allendale, Michigan.

(more)

Takeshi Takahara
7-7-7-7-7-7

- 1979 "Printmaking Today," Invitational Group Show,
Rockford Council Art Center, Rockford, Ill.
- "One-Man Exhibition," University of Southern Maine,
Gorham, Maine.
- "Faculty Show," Gallery Louisa, Grand Rapids, Michigan.
- 1980 "Two-Man Show," Muskegon Community College, Muskegon,
MI.
- "Two-Man Exhibition," Fountain Street Church, Grand
Rapids, Michigan.
- "The Contemporary Approach to Arts and Crafts of
Printmaking," Four-Man Show, Race Street Contemporary
Institute of Art, Grand Rapids, Michigan.
- 1981 "One-Man Show," Adrian College, Adrian, Michigan.
- "One-Man Show," Campus Center Gallery, Grand Valley
State College, Allendale, Michigan.
- 1982 "Invitational Group Show," San Jose Institute for
Contemporary Art, San Jose, California.
- "One-Man Show," Art Emporium, Shelbyville, MI.
- "Invitational Drawing Show," Muskegon Community College,
Muskegon, MI.
- "One-Man Exhibition," John Baughman Gallery, Grand
Rapids, MI.
- "Faculty Show," Slusser Gallery, School of Art,
University of Michigan.
- 1983 "Group Exhibition," Art Emporium, Shelbyville, Michigan.
- 1984 "New Faculty Show," Slusser Gallery, School of Art,
University of Michigan, Ann Arbor. February.
- "Surfaces and Structures," Invitational Traveling
Paper Show, BBAA, Slusser Gallery, School of Art,
U-M, Ann Arbor and Ella Sharp Museum, Jackson,
Michigan. January through March.
- 1985 "One-Man Exhibition," The University of Michigan Museum
of Art, Ann Arbor, Michigan, June 1985.
- "One-Man Exhibition," Northwestern Michigan College,
Traverse City, Michigan.
- "National Invitational Print Exhibition," Hope College,
Holland, Michigan, October 1985.

####

News

PUBLIC INFORMATION

JUDITH YANCY, DIRECTOR

MOREHEAD STATE UNIVERSITY

UPO BOX 1100

MOREHEAD, KY 40351

606-783-2030

Jan. 5, 1986
FOR IMMEDIATE RELEASE

MOREHEAD, Ky.--Arts in Morehead (AIM) will present international award-winning cellist Carter Brey at 8 p.m. Thursday, Jan. 16, in Duncan Recital Hall on Morehead State University's campus.

Admission will be by season membership in AIM's 1985-86 Concert and Lecture Series or by general admission tickets available at the door for \$5 each. MSU students with valid I.D. cards will be admitted free.

Winner of the first Rostropovich International Cello Competition, the American cellist also has won the Young Concert Artists International Auditions, a Michaels Award, the Gregor Piatigorsky Prize and an Avery Fisher Career Grant.

He has performed with a number of the country's major symphonies. His Kennedy Center recital debut brought him a standing ovation led by Rostropovich himself. A subsequent solo appearance with the National Symphony Orchestra elicited this from the Washington Post's music critic:

"Carter Brey's solo performance in the Schumann Cello Concerto with a highlight well worth the price of admission by itself."

Brey also is a member of the Rogeri Trio, the tiro-in-residence at Oberlin College Conservatory of Music. This past fall he appeared on the Distinguished Artists Series at the 92nd Street "Y" in New York City.

AIM's Concert and Lecture Series is a cooperative effort of Morehead State University and the Morehead-Rowan County Arts Council.

####

News

PUBLIC INFORMATION

JUDITH YANCY, DIRECTOR

MOREHEAD STATE UNIVERSITY

UPO BOX 1100

MOREHEAD, KY 40351

606-783-2030

Jan. 5, 1986
FOR IMMEDIATE RELEASE

By KENN JOHNSON
MSU Staff Writer

MOREHEAD, Ky.--As Ken Hackett bends to drink from the faucet at the men's room sink his tailfeathers point upward and he drops his large beaked head on one of his size-30 feet.

Hackett is the Morehead State University Eagle mascot and the feathers, head and feet are part of the costume he is wearing for an MSU basketball game. Taking a brief break, he gulps mouthfuls of cool water to replace the five or so pounds of sweat he will lose before the night is finished.

Revitalized, he hoists the massive Eagle head over his own regular-size blond one and is transformed from an exhausted sophomore into an energized, strutting, 6-foot-5-inch Eagle. As he heads back to the MSU Academic-Athletic Center's basketball arena, he takes a practice leap in the air and shadowboxes with a passing equipment manager.

At courtside the Cincinnati native goes into his act. He swipes a soft drink from a wide-eyed child, pretends to chug it and then after an appropriate pause, explodes with an exaggerated, make-believe belch. The child shakes with the giggles and the child's mother clasps her hands together in glee.

"I make up things as I go," Hackett said. "It works better if I don't plan things too much."

(more)

mascot
2-2-2-2-2-2

But he does have a few sure-fire gags to rely on. One of the most popular is an invisible dog he walks on a visible leash. When the MSU pep band breaks into a rousing fight song, Hackett drops to one knee--Al Jolson style--to pantomime along.

"The older ladies and the little kids like me best," Hackett said. "Sometimes I'll dance in the aisle with one of the women or sit on their laps and get a kiss. The kids are always curious about which part of the head I see through."

Although this is his first year as the MSU Eagle, he has mascotting in his blood. For several summers he has honed his skills as a clown in the role of Scooby-Doo at Kings Island Amusement Park. This summer, he attended the National Cheerleader Camp at the University of Tennessee.

"There were about 50 mascots at the camp from places like Purdue, Louisville and Mississippi. They taught us how to fall and tumble and exaggerate every movement. They'd turn on a videotape camera, hand us a leaf or something and tell us to create a routine on the spot," he said.

The camp's instructors stressed to the participants that a professional mascot never lets the audience see what he looks like.

"We're not supposed to remove our heads unless we are bleeding to death or something like that," Hackett explained.

A member of the MSU swim team and a well-built 6-foot-2-inch all-around athlete in high school, Hackett said that keeping in top physical shape is imperative for his position as the Eagle.

"The large, floppy feet are a problem too because you have to learn to use different muscles to walk," he said.

(more)

mascot
3-3-3-3-3-3

Hackett's biggest fans are his family.

"Dad was a little skeptical at first since he had been a major swimming star in college and felt a little funny about his son running around in a mascot suit," Hackett said. "But after they came down during football season and saw me, Dad said he thought I was very good and he was very proud of me."

####

kj

BIRD BUDDY

MOREHEAD, Ky.--Three-year-old Jon Grubb, son of Jeff and Debbie Grubb, directors of Morehead State University's Cooper Hall, gets to soar with MSU's Eagle mascot Ken Hackett of Cincinnati.

(MSU Photo by Scott Randle)

###



TAKING A BREAK

MOREHEAD, Ky.--Ken Hackett, the Morehead State University Eagle mascot enjoys a short rest outside the MSU Academic-Athletic Complex during a recent basketball game. The energetic Hackett says he often loses as much as ten pounds per game as a result of his crowd-pleasing showmanship.

(MSU photo by Scott Randle)

###



BEFORE THE GAME

MOREHEAD, Ky.--Ken Hackett, the Morehead State University Eagle mascot, joins other Eagle cheerleaders in the Pledge of Allegiance before the start of an MSU basketball game. From left, the cheerleaders are Rich Pinson of Elkhorn City, El'Dora Carter of Olive Hill, Buddy Logan of Ashland, Angie McClure of Chesapeake, Ohio, and Mike Ebright of Carroll, Ohio.

(MSU Photo by Scott Randle)

###



EAGER EAGLE

MOREHEAD, Ky.--Ken Hackett, Morehead State University's Eagle mascot, chases down a loose ball during a break at a recent basketball game. The sophomore from Cincinnati is also a member of the MSU swim team.

(MSU photo by Scott Randle)

####



News

PUBLIC INFORMATION

JUDITH YANCY, DIRECTOR

MOREHEAD STATE UNIVERSITY

UPO BOX 1100

MOREHEAD, KY 40351

606-783-2030

Jan. 7, 1986
FOR IMMEDIATE RELEASE

MOREHEAD, Ky.--Morehead State University's Academy of Arts will conduct registration Jan. 13 through Jan. 24.

Classes in music, dance, theatre, creative writing and visual arts will be offered at MSU in regional centers in Eastern Kentucky. Individualized instruction is available.

A complete list of courses and information on the registration process is available by writing the Academy of Arts, Baird Music Hall 103, Morehead State University, Morehead, KY 40351, or by calling (606) 783-2483.

###

News

PUBLIC INFORMATION

JUDITH YANCY, DIRECTOR

MOREHEAD STATE UNIVERSITY

UPO BOX 1100

MOREHEAD, KY 40351

606-783-2030

Jan. 7, 1986
FOR IMMEDIATE RELEASE

MOREHEAD, Ky.--Morehead State University will conduct registration for the spring semester Monday and Tuesday, Jan. 13-14, from 8 a.m. to 5:30 p.m. both days. In addition to these hours, part-time students may register between 5 and 6 p.m.

Undergraduate students who did not pre-register will need their trial schedules approved by their academic advisers before entering the registration area, according to MSU Registrar Gene Ranvier.

The process will begin in Wetherby Gymnasium and students will register by an alphabetical system based on their last name. Schedule adjustments for students who registered in advance also will be processed at this time.

Classes at Morehead State will begin at 8 a.m. Wednesday, Jan. 15.

Registration for MSU's off-campus classes will be conducted at the regional centers as follows:

Wednesday, Jan. 15, 5-7 p.m. at Pikeville, Ashland and Whitesburg;

Thursday, Jan. 16, 5-7 p.m. at Prestonsburg, Jackson and Maysville.

Off-campus classes will begin meeting on Tuesday, Jan. 21.

Information on off-campus offerings may be obtained by calling MSU's Office of Graduate and Special Academic Program toll-free at 1-800-262-2044.

###

jy

News

PUBLIC INFORMATION

JUDITH YANCY, DIRECTOR

MOREHEAD STATE UNIVERSITY

UPO BOX 1100

MOREHEAD, KY 40351

606-783-2030

Jan. 7, 1986

SPECIAL TO THE BATH COUNTY NEWS-OUTLOOK

By KENN JOHNSON
MSU Staff Writer

MOREHEAD, Ky.--"I grew up near the Alps and wanted to go to a college located in a similar mountainous terrain," said Sigmund Bachmann, a native of Rueschlikon, Switzerland, explaining one of his reasons for deciding to enroll at Morehead State University in 1981.

Bachmann graduated from MSU in December but will be a student teacher at Bath County High School during the spring semester to qualify for a Kentucky secondary teaching certificate.

"The Daniel Boone National Forest may not be the Alps, but this is very lovely country and reminds me of home," said Bachmann, who will teach horticulture and animal feeding to Bath County sophomores and freshmen.

"Our family lived in a very urban area--Kentucky is more than twice the size of Switzerland and there is very little area for agriculture in Switzerland. But my brother, three sisters and I were able to spend our summers on a farm. When I was very young, I decided I wanted to study agriculture even though my father wanted me to follow his profession and be an architect," Bachmann said.

Bachmann decided he wanted to study abroad and with the help of his parents compiled a list of universities in several countries.

"The United States and New Zealand were my favorites, but my father convinced me to come to America," he said. "We took a lot of time to investigate schools that had good reputations for agriculture and that were located in a wooded, rural area."

(more)

His final two choices were the University of Arkansas and MSU.

"MSU answered my inquiries immediately and provided me with the most exciting prospects for an education in animal science," Bachmann explained.

He has participated in the work-study program at MSU's Derrickson Agricultural Complex where included with his studies were the duties of tending chickens, hogs, cattle and sheep. He also earned a 3.92 grade point average.

Dr. Charles Derrickson, MSU's dean of applied sciences and technology, said that Bachmann "has been quite an asset to the MSU student body.

"He learned a great deal while he was a student at the University and I am sure he will be a great spokesman for MSU no matter where he goes in the world,"

Dr. Derrickson said.

Recently, Dr. Derrickson helped Bachmann rearrange his airline reservation for the young man's annual Christmas trip to Switzerland so Bachmann could serve as a student speaker at the December commencement exercises.

"I've gone home each year, but only my father was able to visit me here," Bachmann said. "He was very impressed with the school and said that I had made a wise decision."

Bachmann intends to stay in the United States when his Bath County assignment has been completed.

"My wish is to be a farm manager in a rural area like this," he said.

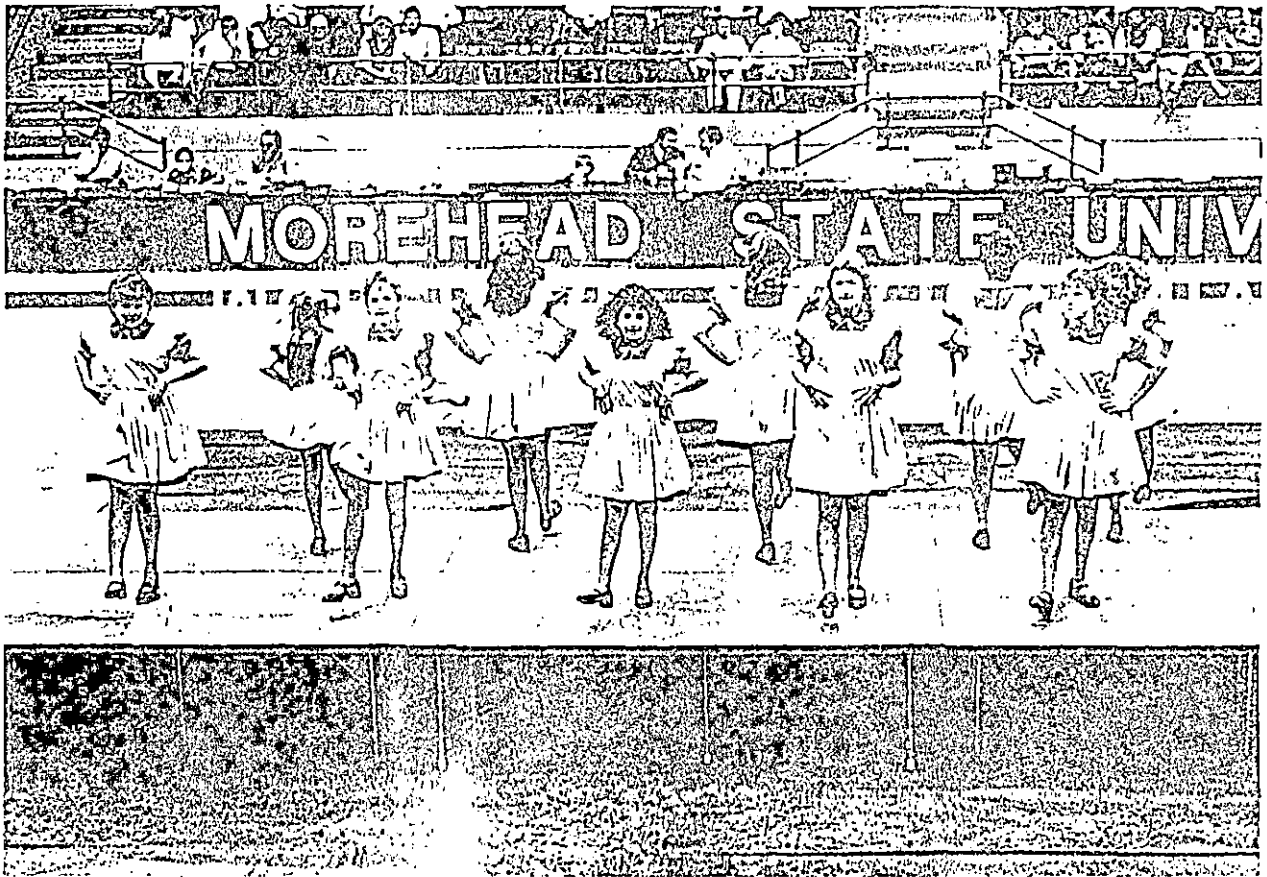
CLOGGERS ENTERTAIN BASKETBALL FANS

MOREHEAD, Ky.--The Rowan County Middle School Cloggers provided half-time entertainment for last Saturday's basketball game between Morehead State University and Clinch Valley College. Scottie McKee and Shirley Blair serve as the group's instructor and director respectively. Cloggers facing the camera are, from left, Robin Clark, Karla Bowling, Krystal Bowling, Veronica Riley and Trina Plank.

###

1-7-86jy

Daily Independent
1-7-86



BOYD COUNTY MUSICIANS AT MSU

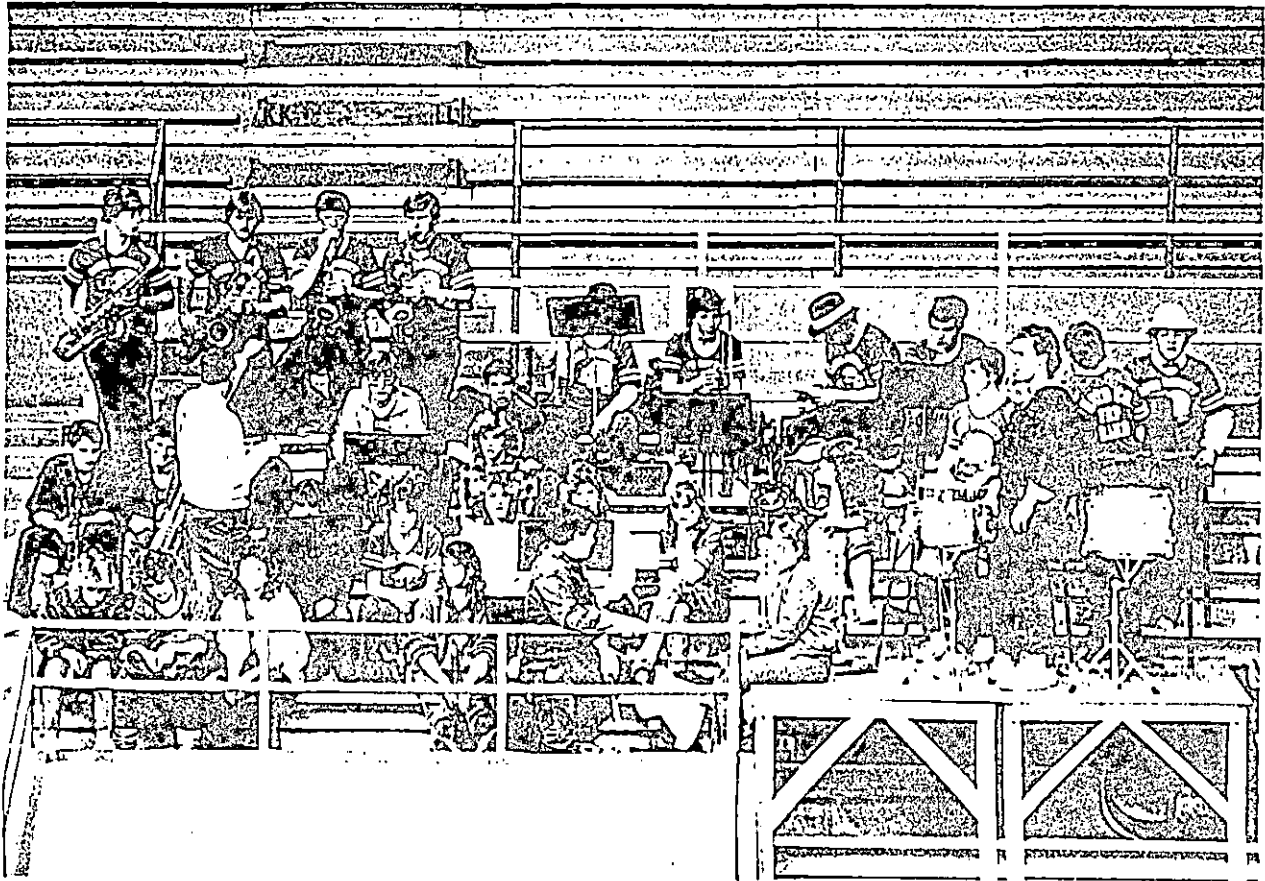
MOREHEAD, Ky.--Boyd County High School's pep band provided some extra special spirit for the recent Morehead State University Eagles and Clinch Valley college basketball game at MSU's Academic-Athletic Center Saturday, Jan. 4. Directing the band was Roger Horton.

(MSU Photo by Ray Bradley)

###

1-7-86jy

Morehead News
1-7-86



Jan. 8, 1986
FOR IMMEDIATE RELEASE

HIGHER EDUCATION RALLY: MSU PICTURE STORY

"We in Kentucky are too proud a people not to have a better education system. Believe me, we are going to have." That's what Robert T. McCowan, vice chairman of the board of Ashland Oil, Inc., recently promised the more than 525 people who jammed the 384-seat Ashland Community College auditorium. The overflow crowd was there to show the 1986 General Assembly that there is grass roots support for increased funds for higher education. The rally, sponsored by the Kentucky Advocates for Higher Education, was one of eight held that evening across the state featuring leaders from business, education and politics who voiced support for higher education and encouraged the audience to do likewise. A motorcade of buses, vans and cars brought some 200 Morehead State University supporters to join their colleagues at the rally. The message repeated throughout the evening was that a sound education system from kindergarten to graduate school is vital if Kentucky is to compete in the 21st Century.

Cutlines:

- 1--Thom Yancy, right, MSU's program coordinator for radio and television, handed out "Support Higher Education" stickers to those entering the ACC for the rally.
- 2--U.S. Congressman Chris Perkins urged the crowd to "go out and proselytize for higher education." He told the audience that the plight of higher education in Kentucky was similar to the nation's, but that the funding level "has got to be increased if we are to have the skills for the 21st Century."
- 3--Our young people must have the opportunity to realize their potential," McCowan said. "Let's unlock it with education and give everyone the opportunity to do more than ever dreamed of."
- 4--Repeatedly the crowd showed their enthusiasm and support of the various speakers with loud applause. Reacting in the foreground is Dr. Ron Dobler, chair of MSU's Department of English, Foreign Languages and Philosophy.
- 5--Greenup County Board of Education Chairman James Stuart told the audience never to be satisfied with their education system. "If we make it the best, we must make it better because our children deserve the best."

1



2

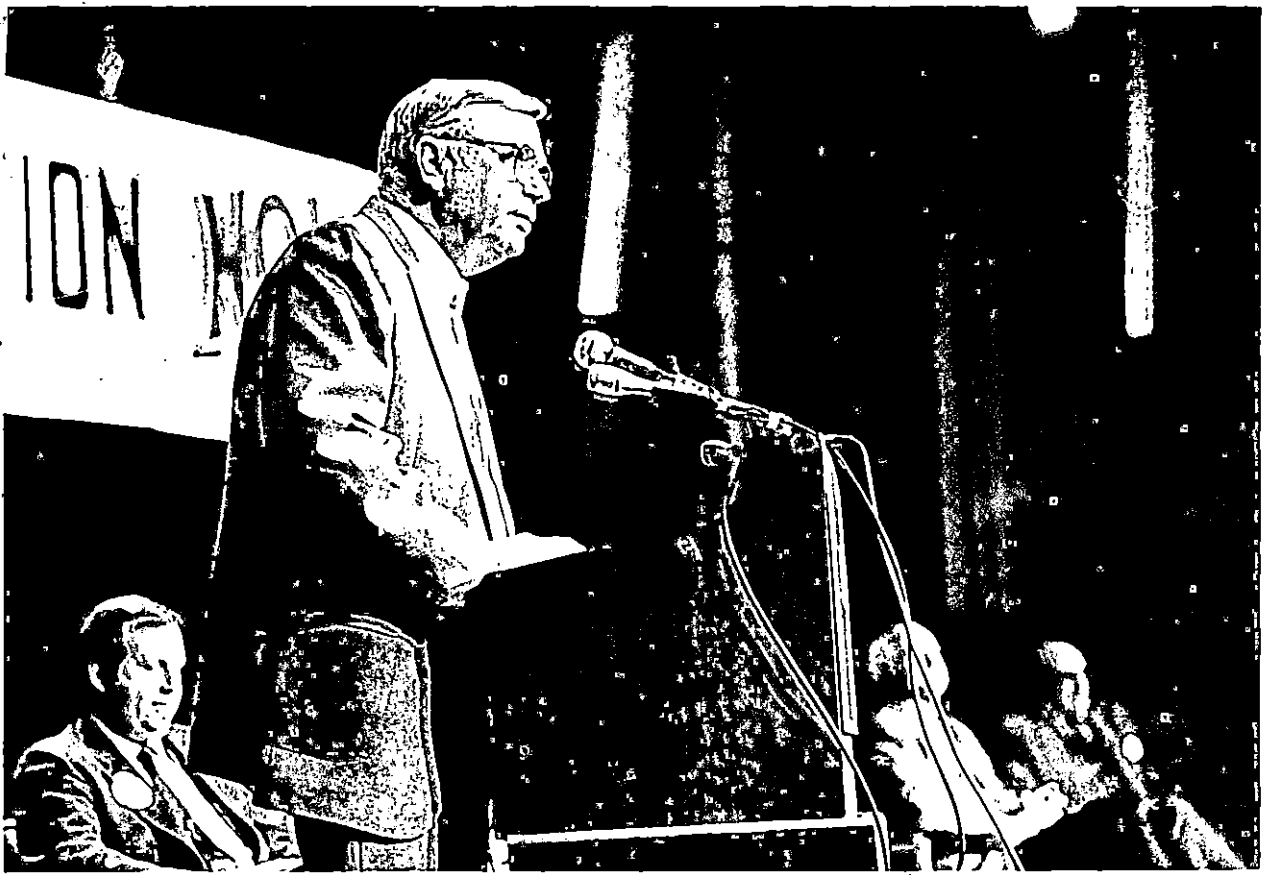




7



3



5

Licking Valley +
Frontier Tribune

News

PUBLIC INFORMATION

JUDITH YANCY, DIRECTOR

MOREHEAD STATE UNIVERSITY

UPO BOX 1100

MOREHEAD, KY 40351

606-783-2030

Jan. 8, 1986
FOR IMMEDIATE RELEASE

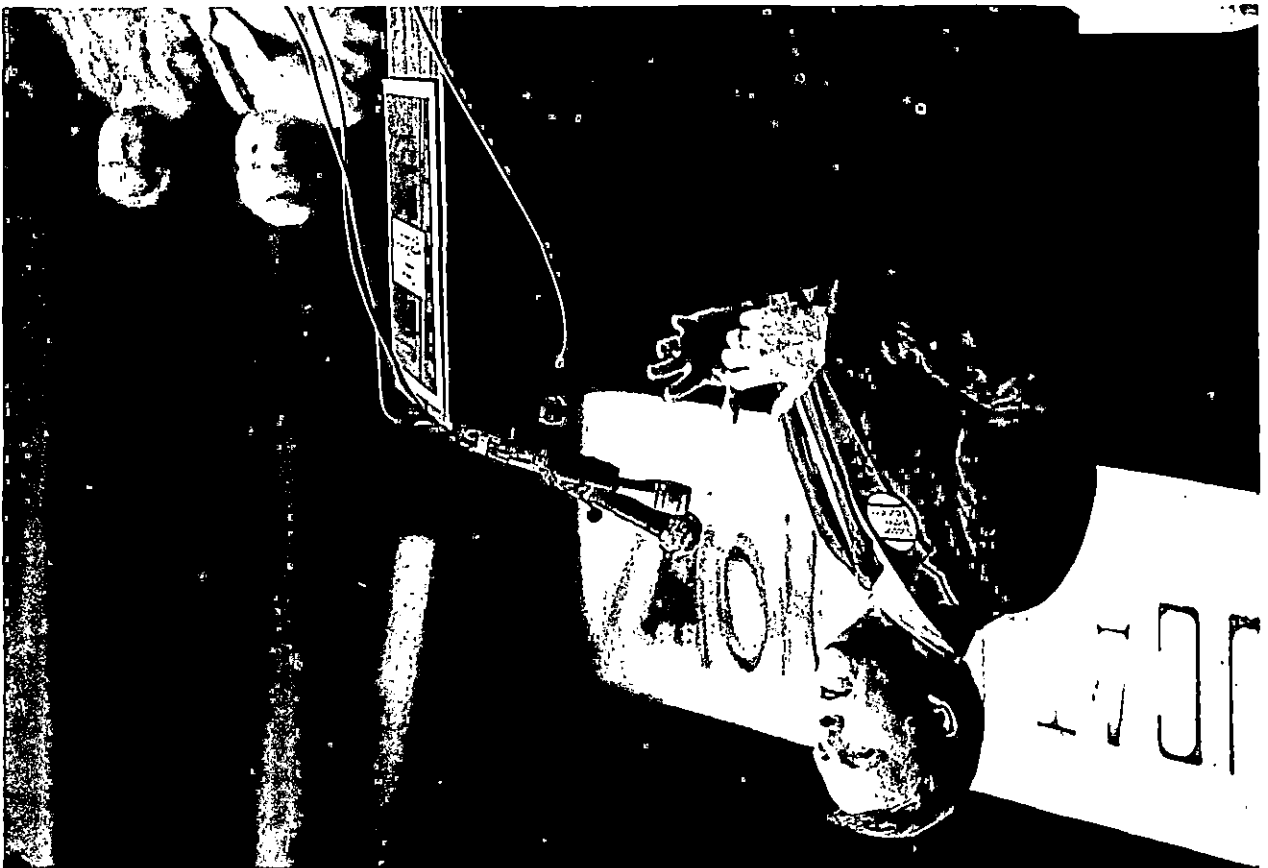
HIGHER EDUCATION RALLY: MSU PICTURE STORY

"We in Kentucky are too proud a people not to have a better education system. Believe me, we are going to have." That's what Robert T. McCowan, vice chairman of the board of Ashland Oil, Inc., recently promised the more than 525 people who jammed the 384-seat Ashland Community College auditorium. The overflow crowd was there to show the 1986 General Assembly that there is grass roots support for increased funds for higher education. The rally, sponsored by the Kentucky Advocates for Higher Education, was one of eight held that evening across the state featuring leaders from business, education and politics who voiced support for higher education and encouraged the audience to do likewise. A motorcade of buses, vans and cars brought some 200 Morehead State University supporters to join their colleagues at the rally. The message repeated throughout the evening was that a sound education system from kindergarten to graduate school is vital if Kentucky is to compete in the 21st Century.

Cutlines:

- 1--Thom Yancy, right, MSU's program coordinator for radio and television, handed out "Support Higher Education" stickers to those entering the ACC for the rally.
- 2--U.S. Congressman Chris Perkins urged the crowd to "go out and proselytize for higher education." He told the audience that the plight of higher education in Kentucky was similar to the nation's, but that the funding level "has got to be increased if we are to have the skills for the 21st Century."
- 3--Our young people must have the opportunity to realize their potential," McCowan said. "Let's unlock it with education and give everyone the opportunity to do more than ever dreamed of."
- 4--Repeatedly the crowd showed their enthusiasm and support of the various speakers with loud applause. Reacting in the foreground is Dr. Ron Dobler, chair of MSU's Department of English, Foreign Languages and Philosophy.
- 5--"Your presence here tonight shows there is as much or more enthusiasm for higher education in Kentucky as in any other state," said Morgan County native Dan Lacy, rally moderator. Lacy is director of public relations at Ashland Oil, Inc., and president of the Morehead State University Foundation, Inc.

Perkins, A.



5

News

PUBLIC INFORMATION

JUDITH YANCY, DIRECTOR

MOREHEAD STATE UNIVERSITY

UPO BOX 1100

MOREHEAD, KY 40351

606-783-2030

Jan. 9, 1986

FOR IMMEDIATE RELEASE

SPECIAL TO THE MOREHEAD NEWS

HIGHER EDUCATION RALLY: MSU PICTURE STORY

Among the approximately 525 Kentuckians who jammed the 384-seat Ashland Community College auditorium Monday night in support of higher education were more than 200 Morehead State University supporters who traveled to the rally in buses, vans and cars. One of eight held across the state, the rally was designed to show the 1986 General Assembly that there is grass roots support for increased funding for higher education. The overflow crowd heard leaders from education, business and political sectors stress repeatedly that a sound education system from kindergarten to graduate school is important if Kentucky is to compete in the 21st Century.

Cutlines

- 1--Those entering the ACC building received "Support Higher Education" stickers to wear during the rally. Handing out the stickers was Thom Yancy, MSU's program coordinator for radio and television.
- 2--"We are too proud a people not to have a better education system. Believe me, we are going to have it," promised Robert T. McCowan, vice chairman of the board of Ashland Oil, Inc.
- 3--State Representative Walter Blevins (71st District) was among several Eastern Kentucky legislators showing their support by attending the rally.
- 4--U.S. Congressman Chris Perkins urged the crowd to "go out and proselytize for higher education". He told the audience that the plight of higher education in Kentucky was similar to the nation's, but that the funding level "has got to be increased if we are to have the skills for the 21st Century."
- 5--Repeatedly the crowd showed their enthusiasm and support of the various speakers with their applause. In the foreground is Dr. Ron Dobler, chair of MSU's Department of English, Foreign Languages and Philosophy.



3



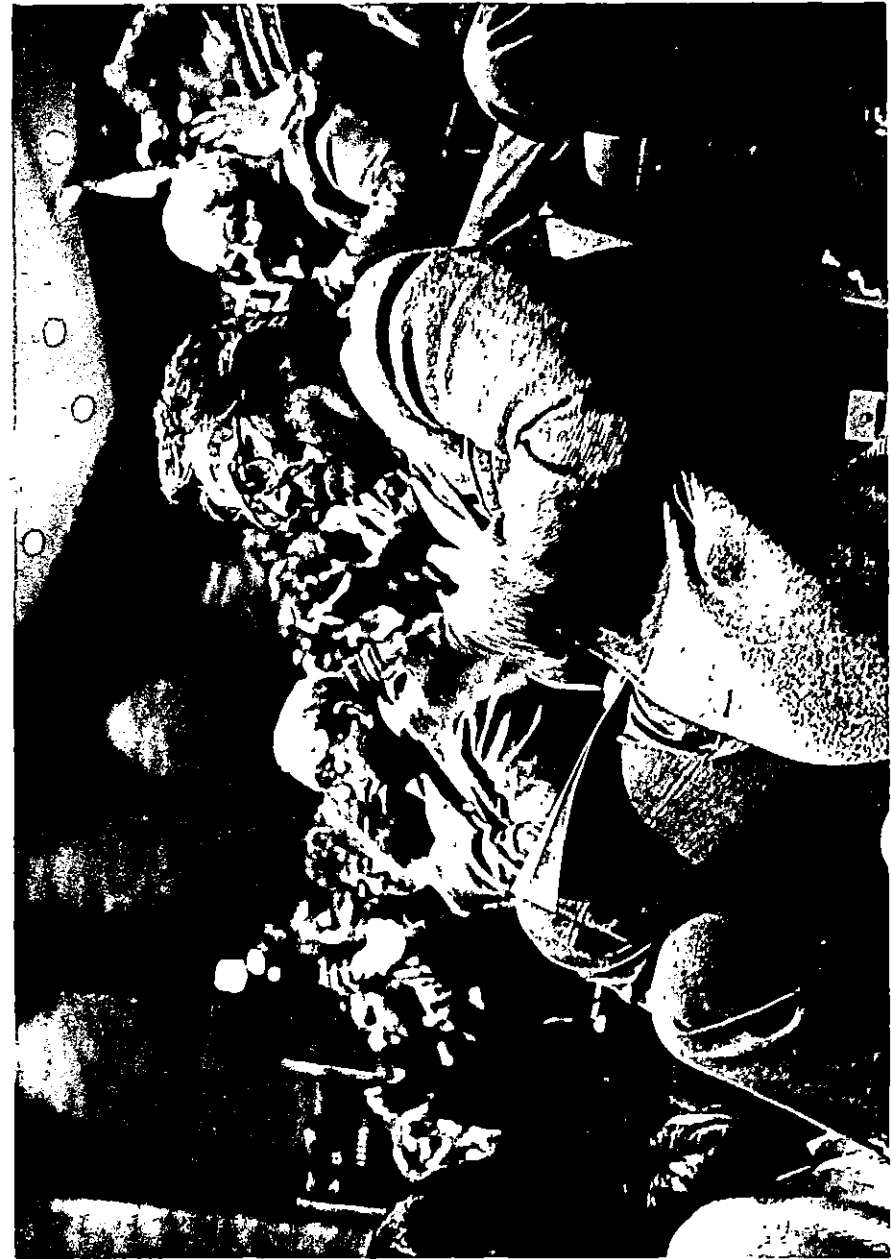
2



4



5



News

PUBLIC INFORMATION

JUDITH YANCY, DIRECTOR

MOREHEAD STATE UNIVERSITY

UPO BOX 1100

MOREHEAD, KY 40351

606-783-2030

Jan. 10, 1986
FOR IMMEDIATE RELEASE

MOREHEAD, Ky.--Registration for Morehead State University's Adult Fitness Program will be conducted Monday through Friday, Jan. 13-17, in Academic-Athletic Center 156.

The sessions, offered by MSU's Department of Health, Physical Education and Recreation in cooperation with the Morehead Clinic, will be taught from 4:30 to 5:30 p.m. on Mondays, Wednesdays and Fridays during the spring semester.

Anyone interested in participating may register in person or by calling (606) 783-2120, according to Dr. Michael Brown, MSU associate professor of HPER.

"There are a limited number of spaces in the program, so I'd advise you register as soon as possible," Dr. Brown said.

The \$150 fee not only includes the sessions but various physical examinations, blood tests, stress tests, special body fat percentage tests and individualized fitness programs.

###

News

PUBLIC INFORMATION

JUDITH YANCY, DIRECTOR

MOREHEAD STATE UNIVERSITY

UPO BOX 1100

MOREHEAD, KY 40351

606-783-2030

Jan. 10, 1986
FOR IMMEDIATE RELEASE

MOREHEAD, Ky.--Judith A. Flavell, a 1985 Morehead State University graduate, has been appointed to the post of director of promotion and development at WMKY, public radio from Morehead State University.

Flavell will coordinate advertising, public information and fund-raising efforts for the 50,000-watt station. She also serves as editor of WMKY's monthly program guide.

A native of Vine Grove, Flavell holds a Bachelor of Arts degree in journalism and served as editor-in-chief of MSU's yearbook, the Raconteur, in 1984-85. During her senior year, she also worked as a promotion assistant at WMKY under the intern and workshop programs. She will begin work on her Master of Business Administration degree this spring.

Her husband, John, a free lance photographer, is attending MSU in pursuit of a second degree. The Flavells reside in Morehead.

####

jf



News

PUBLIC INFORMATION

JUDITH YANCY, DIRECTOR

MOREHEAD STATE UNIVERSITY

UPO BOX 1100

MOREHEAD, KY 40351

606-783-2030

Jan. 10, 1986
FOR IMMEDIATE RELEASE

MOREHEAD, Ky.--A candlelight memorial march, a one-man play and a film will highlight Morehead State University's celebration of Dr. Martin Luther King Jr.'s birthday, Wednesday, Jan. 15.

Jerry Gore, MSU's director of minority affairs, said the formal celebration will begin at 5:30 p.m. in front of Camden-Carroll Library with a brief ceremony honoring Dr. King.

Following the ceremony, a candlelight memorial march will proceed from the library to Breckinridge Auditorium where a play, "Dr. King's Dream," will be presented by the Mixed Blood Theatre of Minneapolis. Curtain time is 7 p.m.

"We would like to encourage everyone in Rowan County, Morehead and the University community to participate in this memorial to a great man," said Gore. "Dr. King stood not only for black people but for all people," he added.

The play depicts the life and career of Dr. King and features Warren C. Bowles, a member of the Mixed Blood Theatre Company since 1977. Bowles was the first black actor to portray the title role in "Cyrano De Bergerac" in a major performance. Bowles has performed in similar one-man productions concerning the lives of Paul Robeson and Jackie Robinson.

(more)

Dr. King
2-2-2-2-2

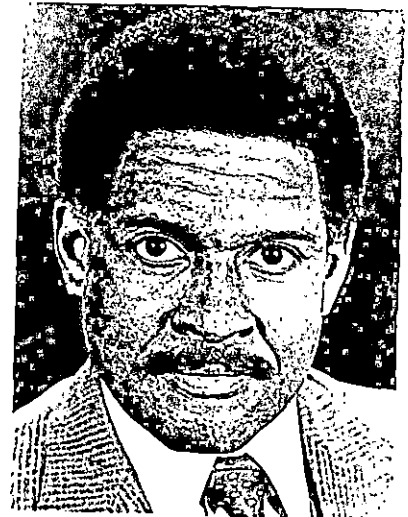
The play addresses pivotal events in Dr. King's life including the Montgomery bus boycott, the demonstrations in Selma and Birmingham, the 1962 march on Washington and Dr. King's stirring "I Have a Dream" speech.

A film, "Dr. Martin Luther King," will be shown from 10 a.m. until 4 p.m. Wednesday in Adron Doran University Center, East Room B. The film will be repeated at 7 p.m. Thursday, Jan. 16, in the Claypool-Young Auditorium.

All of the activities are free and open to the public. Candles will be available for the march, according to Gore.

####

kj



WARREN C. BOWLES

Tips

PUBLIC INFORMATION

JUDITH YANCY, DIRECTOR

MOREHEAD STATE UNIVERSITY

UPO BOX 1100

MOREHEAD, KY 40351

606-783-2030

THIS WEEK AT MOREHEAD STATE UNIVERSITY
(Jan. 12 - 18)

Monday, Jan. 13

REGISTRATION FOR SPRING '86 CLASSES; ALSO THE 14TH

PRINT SHOW TAKESHI TAKAHARA in Claypool-Young Art Gallery, Mon. - Fri.,
8 a.m. - 4 p.m.; through Feb. 8. For more information, please call 783-2766.

Tuesday, Jan. 14

8:15 P.M. GRADUATE FRENCH HORN RECITAL: Bruce Gabbard will perform in
Duncan Recital Hall. For more information, please call 783-2473.

Wednesday, Jan. 15

CLASSES BEGIN

5:30 P.M. MARTIN LUTHER KING JR. CANDLELIGHT MEMORIAL MARCH, beginning
in front of the Camden Carroll Library. For more information, please call
783-2123.

7 P.M. MINORITY STUDENT AFFAIRS PLAY: "Dr. King's Dream" will be
performed by the Mixed Blood Theatre of Minneapolis, Minn. For more
information, please call 783-2123.

Thursday, Jan. 16

8 P.M. AIM CONCERT AND LECTURE SERIES: Cellist Carter Brey will perform
in Duncan Recital Hall. For more information, please call 783-2788.

(more)

THIS WEEK AT MOREHEAD STATE UNIVERSITY

2-2-2-2-2-2-2

Saturday, Jan. 18

5 P.M. MSU BASKETBALL (WOMEN'S): Lady Eagles vs. Middle Tennessee State University in MSU's Academic-Athletic Center. For more information, please call 783-2500.

7:30 P.M. MSU BASKETBALL (MEN'S): Eagles vs. Middle Tennessee State University in MSU's Academic-Athletic Center. For more information, please call 783-2500.

####

srt

News

PUBLIC INFORMATION

JUDITH YANCY, DIRECTOR

MOREHEAD STATE UNIVERSITY

UPO BOX 1100

MOREHEAD, KY 40351

606-783-2030

Jan. 13, 1986
FOR IMMEDIATE RELEASE

MOREHEAD, Ky.--Morehead State University will be closed Monday, Jan. 20, in observance of the national holiday honoring the late Dr. Martin Luther King Jr.

Offices will reopen and classes resume at 8 a.m. Tuesday, Jan. 21.

###

News

PUBLIC INFORMATION

JUDITH YANCY, DIRECTOR

MOREHEAD STATE UNIVERSITY

UPO BOX 1100

MOREHEAD, KY 40351

606-783-2030

Jan. 13, 1986
FOR IMMEDIATE RELEASE

MOREHEAD, Ky.--Morehead State University's Department of Music will sponsor a guest recital by three Eastern Kentucky University (EKU) faculty members at 8:15 p.m. Tuesday, Jan. 21, at Duncan Recital Hall.

The guest artists will be Joan Lorna Boewe, Perry Smith and Roe van Boskirk.

Boewe, a soprano, is an associate professor of music at EKU. In 1956 she received a Fulbright grant for study at the Hochschule fur Musik in Munich, Germany. She spent 15 years in Germany performing in more than 50 operatic roles at many of Germany's major opera houses.

Smith, a tenor, has been an EKU music instructor for two years. He has sung with the Indianapolis Opera Company and Richmond Opera productions of "Traviata," "La Boheme," "Madame Butterfly" and "Barber of Seville."

Roe van Boskirk, a member of EKU's piano faculty, is a well-known accompanist who has performed extensively throughout Kentucky.

The recital is free and open to the public.

####

kj



News

PUBLIC INFORMATION

JUDITH YANCY, DIRECTOR

MOREHEAD STATE UNIVERSITY

UPO BOX 1100

MOREHEAD, KY 40351

606-783-2030

Jan. 13, 1986
FOR IMMEDIATE RELEASE

MOREHEAD, Ky.--Arts in Morehead (AIM) has announced a change in the location of the Thursday, Jan. 16, concert by Carter Brey, internationally acclaimed cellist.

Originally scheduled for Duncan Recital Hall on Morehead State University's campus, the performance has been moved to the First Baptist Church of Morehead, according to Elizabeth Paxson, AIM's performing arts chairman. Performance time is 8 p.m.

Admission will be by season membership in AIM's 1985-86 Concert and Lecture Series or by general admission tickets available at the door at \$5 each. MSU students with valid I.D. cards will be admitted free.

Winner of numerous awards for his virtuosity, Brey has performed with many of the country's major orchestras under such conductors as Claudio Abbado and Sergiu Comissiona.

His accompanist for Thursday's concert will be pianist Edmund Battersby, a Juilliard School graduate and an award-winner in his own right. Battersby currently is professor of piano at Montclair State College.

AIM is a cooperative effort between Morehead State and the Morehead-Rowan County Arts Council, Inc.

###

News

PUBLIC INFORMATION

JUDITH YANCY, DIRECTOR

MOREHEAD STATE UNIVERSITY

UPO BOX 1100

MOREHEAD, KY 40351

606-783-2030

January 14, 1986
FOR IMMEDIATE RELEASE

MOREHEAD, Ky. --- Judy Stewart of Langley has been elected president of Morehead State University's division of the Student National Education Association.

Stewart, a senior vocational home economics education major, is the daughter of Mr. and Mrs. Frank Stewart. She is a member of Kappa Omicron Phi and the Student Home Economics Association.

###

drh

News

PUBLIC INFORMATION

JUDITH YANCY, DIRECTOR

MOREHEAD STATE UNIVERSITY

UPO BOX 1100

MOREHEAD, KY 40351

606-783-2030

Jan. 15, 1986
FOR IMMEDIATE RELEASE

MOREHEAD, KY.--Fredrick A. Francis of Bardstown has been awarded a two-year Army ROTC Scholarship at Morehead State University.

According to Lt. Col. Alan R. Baldwin, professor of military science, the scholarship will pay all tuition, fees, books and supplies, plus a \$100 monthly living allowance for the next two years.

The MSU junior will be commissioned as a second lieutenant in the United State Army upon graduation and completion of ROTC.

He is the son of Mr. and Mrs. Fred L. Francis.

###

News

PUBLIC INFORMATION

JUDITH CASTO, DIRECTOR

MOREHEAD STATE UNIVERSITY

UPO BOX 1100

MOREHEAD, KY 40351

606-783-2030

Jan. 16, 1986
FOR IMMEDIATE RELEASE

MOREHEAD, Ky.--A brochure and a poster have earned Morehead State University top honors in print media competition sponsored by District III of the Council for the Advancement and Support of Education (CASE).

"View," a full-color magazine on MSU programs and campus life, was one of three publications selected from 200 entries for a Grand Award, the top honor, in the Admissions and Recruitment Category. A poster created for the 1985-86 Arts in Morehead (AIM) series received an Excellence Award (second highest honor) in the Design and Print Category.

Both pieces were created by the publications staff of MSU's Office of Public Information, according to Judith Yancy, public information director. Mary Bragg, MSU's publications editor, also has been invited to make a presentation at the upcoming CASE District III Conference in Atlanta, where the winning entries will be displayed.

"We are extremely proud of this recognition, especially since we were competing with some very powerful institutions," Yancy said. "Ms. Bragg, and others who worked on these publications deserve to be commended for their efforts."

In addition to the publications awards, MSU also received an honorable mention from CASE for its alumni giving program. Morehead State was the only public university in Kentucky to be a finalist in the CASE/U.S. Steel Alumni Giving Competition, according to William H. Redwine, MSU's development director.

CASE District III includes public and private educational institutions in Kentucky, Virginia, Tennessee, North Carolina, South Carolina, Mississippi, Alabama, Georgia and Florida.

####

News

PUBLIC INFORMATION

JUDITH YANCY, DIRECTOR

MOREHEAD STATE UNIVERSITY

UPO BOX 1100

MOREHEAD, KY 40351

606-783-2030

Jan. 17, 1986
FOR IMMEDIATE RELEASE

MOREHEAD, Ky.--Dr. John C. Philley, chair of Morehead State University's Department of Physical Sciences, has been elected as the 1986 president of the Geological Society of Kentucky.

Philley, a member of MSU's faculty since 1960, previously served on the Geological Society of Kentucky's Board of Directors. He was president of the Kentucky Academy of Science in 1980 and helped organize the Kentucky Academy of Science Conference held on MSU's campus last November.

A native of Indianola, Miss., he received his doctorate from the University of Tennessee. He has published numerous articles, reviews, guidebooks and maps in his field of study.

####

drh

Photo

PUBLIC INFORMATION

JUDITH YANCY, DIRECTOR

MOREHEAD STATE UNIVERSITY

UPO BOX 1100

MOREHEAD, KY 40351

606-783-2030

Jan. 18, 1986

CUTLINE: NO STORY

MSU STUDENTS HONOR DR. KING'S MEMORY

"Dr. King is not dead, but lives in every heart here," Morehead State University students were reminded during a memorial program for Dr. Martin Luther King Jr., which preceded a candlelight march across MSU's campus. Lynn Boyd, left, Mt. Sterling junior, and Renee Warfield, Louisville junior, were among the nearly 80 MSU students, faculty and staff who gathered outside Camden-Carroll Library to pay tribute to the civil rights leader's memory on his birthday.

(MSU photo by Scott Randle)

*Mt. Sterling, Louisville
Boyd*



Photo

PUBLIC INFORMATION

JUDITH YANCY, DIRECTOR

MOREHEAD STATE UNIVERSITY

UPO BOX 1100

MOREHEAD, KY 40351

606-783-2030

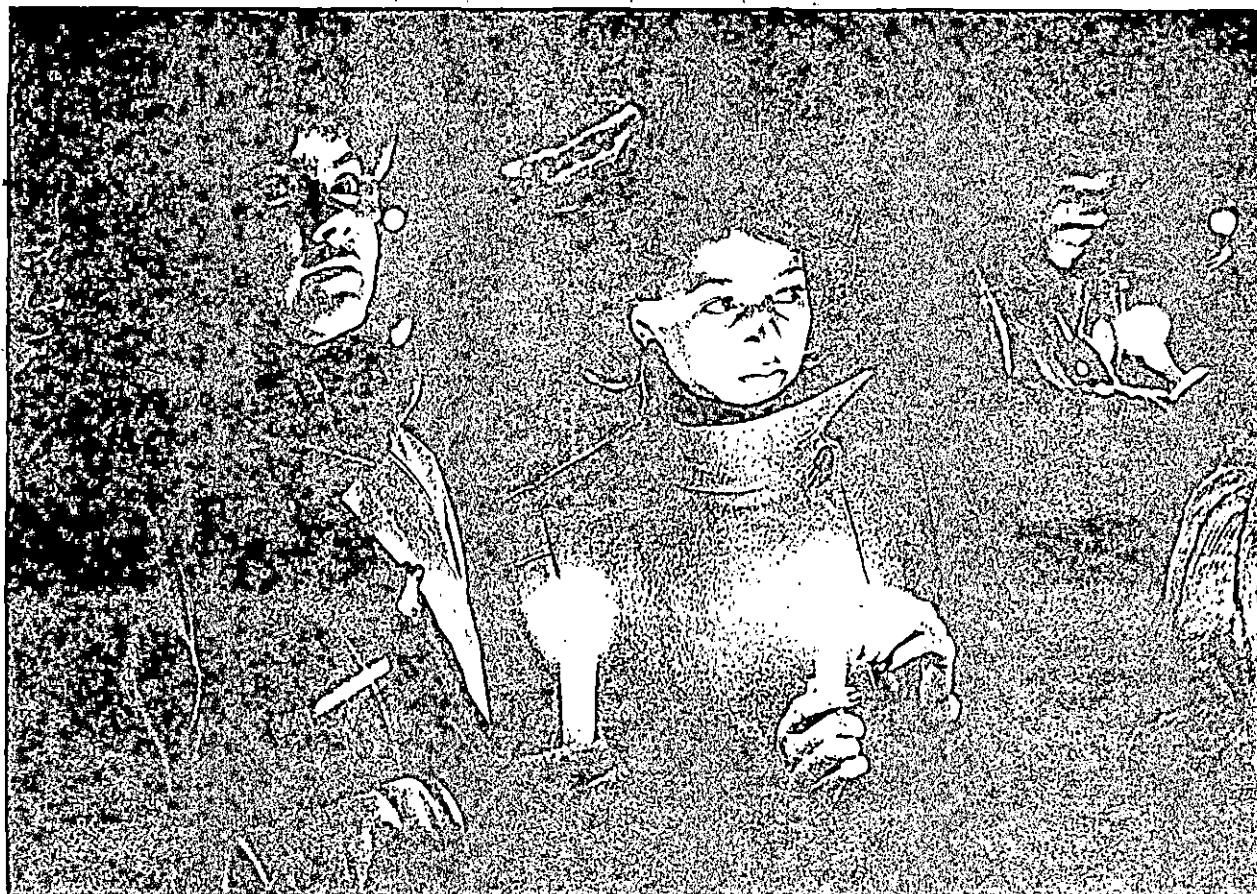
Jan. 18, 1986

CUTLINE: NO STORY

MSU STUDENTS PAY TRIBUTE TO DR. KING

Reflected in the glow of flickering candles, the faces of these Morehead State University students also reflect the mood of the moment as nearly 80 members of the campus community--blacks and whites--joined together to pay tribute to the memory of Dr. Martin Luther King Jr. on his birthday. "Dr. King is not dead, but lives on in every heart here," they were reminded during the program which preceded a candlelight march across MSU's campus. Shown in the foreground are, from left, Anna Spotts, Lexington sophomore, and Yvette Zimmerman, Hillsboro, Ohio, senior.

(MSU photo by Scott Randle)



News

PUBLIC INFORMATION

JUDITH YANCY, DIRECTOR

MOREHEAD STATE UNIVERSITY

UPO BOX 1100

MOREHEAD, KY 40351

606-783-2030

January 18, 1986
FOR IMMEDIATE RELEASE

MOREHEAD, Ky. --- Eleven students from Johnson County were named to the Morehead State University Dean's List for the 1985 Fall Semester.

To be named to the list, a student must be enrolled on a full-time basis and achieve at least a 3.4 grade point average on a 4.0 scale.

The Dean's List includes:

DORA D. AUXIER, PAINTSVILLE.
JUDITH ELAINE CARR, MOREHEAD.
CATHY JANE DANIELS, CLEARFIELD.
FRANCES JEWELL HONEYCUT, VAN LEAR.
DEBRA PAIGE JOHNSON, HAGER HILL.
ANGELA C. OSBORNE, STAMBAUGH.
FRANK M PATRICK, PAINTSVILLE.
CLYDE E RATLIFF, PAINTSVILLE.
WANDA K SALYER, FUGET.
VALORIE J WHITE, REDBUSH.
MARLENE D WILLIAMS, PAINTSVILLE.

####

Similar releases were sent to the hometown papers of each of the 841 students involved.
1-18-86

Tips

PUBLIC INFORMATION

JUDITH YANCY, DIRECTOR

MOREHEAD STATE UNIVERSITY

UPO BOX 1100

MOREHEAD, KY 40351

606-783-2030

THIS WEEK AT MOREHEAD STATE UNIVERSITY
(Jan. 19 - 25)

Monday, Jan. 20

MARTIN LUTHER KING'S BIRTHDAY OBSERVANCE: No classes or office hours.

5 P.M. MSU BASKETBALL (WOMEN'S): Lady Eagles vs. Tennessee Tech. University in MSU's Academic-Athletic Center. For more information, please call 783-2500.

7:30 P.M. MSU BASKETBALL (MEN'S): Eagles vs. Tennessee Tech. University in MSU's Academic-Athletic Center. For more information, please call 783-2500.

Tuesday, Jan. 21

ALL DAY BLOODMOBILE in Button Drill Room; also Jan. 22.

8:15 P.M. GUEST RECITAL: Tenor Perry Darden Smith, soprano Joan-Lorna Boewe and pianist Rowe Van Boskirk, all from Eastern Kentucky University, will perform in the First Baptist Church. For more information, please call 783-2473.

Wednesday, Jan. 22

8:20 A.M. BUSINESS SERVICES WORKSHOP in East Room A of the Adron Doran University Center; also Jan. 23 and 24. For more information, please call 783-2119.

4-7 P.M. ITALIAN DINNER in Adron Doran University Center and Alumni Cafeterias. For more information, please call 783-2071.

7:30 P.M. MSU BASKETBALL (WOMEN'S): Lady Eagles vs. Marshall University

News

PUBLIC INFORMATION

JUDITH YANCY, DIRECTOR

MOREHEAD STATE UNIVERSITY

UPO BOX 1100

MOREHEAD, KY 40351

606-783-2030

Jan. 19, 1986
FOR IMMEDIATE RELEASE

MOREHEAD, Ky.--Jim Akers, a Hardin County native, has been named sheep specialist for Morehead State University's Appalachian Sheep Project.

Funded by an Appalachian Regional Commission grant, the project to develop a sheep industry program in Eastern Kentucky is a service of the University's Department of Agriculture and Natural Resources in cooperation with the Appalachian Development Center.

"We are extremely excited about this project, because sheep production is a most viable alternative industry for our region as farm land usage for tobacco declines," said Dr. Charles M. Derrickson, dean of MSU's College of Applied Sciences and Technology.

"We believe Jim--a sheep producer himself--will be a great help in assisting interested farmers in the region with establishing their programs," the dean added.

"Sheep production can boost farm income with a minimal investment by using existing farm resources," said Akers, who holds a B.S. degree in animal science from the University of Kentucky. "Most of the labor involved comes in the winter months after tobacco has been stripped and before the spring activities begin," he added.

According to Akers, sheep production can be operated separately or in combination with cattle farming. "Contrary to legend, the two have somewhat complementary grazing habits, preferring different types of forage. In fact, grazing sheep and cattle together can improve

(more)

Akers
2-2-2-2-2

overall pasture utilization as well as per acre profit," he said.

Akers, who will conduct an extensive training program for participants, also will be "on-call" to help new producers through all phases of sheep production.

The project calls for selected farmers to receive small starter flocks, repaying the program later from subsequent lamb crops.

"I invite any farmer--or anyone else--interested in sheep production to call me at the Appalachian Development Center," said Akers. "We also will hold local county meetings around the region, the details of which will be announced later," he added.

Akers may be reached at MSU by calling (606) 783-2077 weekdays from 8 a.m. to 4:30 p.m.

###

jy



Photo

PUBLIC INFORMATION

JUDITH YANCY, DIRECTOR

MOREHEAD STATE UNIVERSITY

UPO BOX 1100

MOREHEAD, KY 40351

606-783-2030

January 21, 1986

MSU SPRING REGISTRATION

Students at Morehead State University recently began the spring semester with the ever-popular process of registration. From left, sophomore Linda McGlone and freshman Lerinda Hanshaw, both of Olive Hill, discuss possibilities for classes.

####

(MSU Photo by Scott Randle)

Olive Hill Times

1-22-86

1-16-86srt



Photo

PUBLIC INFORMATION

JUDITH YANCY, DIRECTOR

MOREHEAD STATE UNIVERSITY

UPO BOX 1100

MOREHEAD, KY 40351

606-783-2030

January 21, 1986

MSU SPRING REGISTRATION

Students at Morehead State University recently began the spring semester with the ever-popular process of registration. From left, senior Joe Elam and sophomore Sheri Elam, both of Morehead, wait to pay their fees with sophomore Ed Boone of Winchester.

###

(MSU Photo by Scott Randle)

1-16-86srt

*Morehead News
Winchester Sun*



Photo

PUBLIC INFORMATION

JUDITH YANCY, DIRECTOR

MOREHEAD STATE UNIVERSITY

UPO BOX 1100

MOREHEAD, KY 40351

606-783-2030

January 21, 1986

MSU SPRING REGISTRATION

Students at Morehead State University recently began the spring semester with the ever-popular process of registration. From

left, junior Kelly Cooksey and senior Edie Queen, both of Ashland, discuss their schedules.

####

(MSU Photo by Scott Randle)

1-16-86srt

The Daily Independent



Photo

PUBLIC INFORMATION

JUDITH YANCY, DIRECTOR

MOREHEAD STATE UNIVERSITY

UPO BOX 1100

MOREHEAD, KY 40351

606-783-2030

January 21, 1986

MSU SPRING REGISTRATION

Students at Morehead State University recently began the spring semester with the ever-popular process of registration. From left, junior Kelly Cooksey and senior Edie Queen, both of Ashland, discuss their schedules.

####

(MSU Photo by Scott Randle)

1-16-86srt

The Daily Independent



Photo

PUBLIC INFORMATION

JUDITH YANCY, DIRECTOR

MOREHEAD STATE UNIVERSITY

UPO BOX 1100

MOREHEAD, KY 40351

606-783-2030

January 21, 1986

MSU SPRING REGISTRATION

Students at Morehead State University recently began the spring semester with the ever-popular process of registration. From left, senior Ann Morford of Mt. Olivet and freshman Kolly Harris of Morehead discuss their schedules with Barbara Barker, MSU instructor of radiologic technology.

###

(MSU Photo by Scott Randle)

1-16-86srt

*Robertson Co. Review
Morehead News*



Photo

PUBLIC INFORMATION

JUDITH YANCY, DIRECTOR

MOREHEAD STATE UNIVERSITY

UPO BOX 1100

MOREHEAD, KY 40351

606-783-2030

January 21, 1986

MSU SPRING REGISTRATION

Students at Morehead State University recently began the spring semester with the ever-popular process of registration. From left, sophomore Linda McGlone and freshman Lerinda Hanshaw, both of Olive Hill, discuss possibilities for classes.

####

(MSU Photo by Scott Randle)

Olive Hill Times
1-22-86

1-16-86srt



Photo

PUBLIC INFORMATION

JUDITH YANCY, DIRECTOR

MOREHEAD STATE UNIVERSITY

UPO BOX 1100

MOREHEAD, KY 40351

606-783-2030

January 21, 1986

MSU SPRING REGISTRATION

Students at Morehead State University recently began the spring semester with the ever-popular process of registration. From left, freshmen Melinda Carey of Ironton, Ohio and Amy Dullagham of Bellevue discuss their schedules.

####

(MSU Photo by Scott Randle)

1-16-86srt

*Melinda Carey
Campbell Co. Recorder*



Photo

PUBLIC INFORMATION

JUDITH YANCY, DIRECTOR

MOREHEAD STATE UNIVERSITY

UPO BOX 1100

MOREHEAD, KY 40351

606-783-2030

January 21, 1986

MSU SPRING REGISTRATION

Students at Morehead State University recently began the spring semester with the ever-popular process of registration. From left, sophomore Pam Byrd of Alexandria and freshman Jeff Carroll of Olive Hill stop to get their student I.D.'s made.

####

(MSU Photo by Scott Randle)

1-17-86srt

*Olive Hill Times
The Campbell Co. Recorder*



Photo

PUBLIC INFORMATION

JUDITH YANCY, DIRECTOR

MOREHEAD STATE UNIVERSITY

UPO BOX 1100

MOREHEAD, KY 40351

606-783-2030

January 21, 1986

MSU SPRING REGISTRATION

Students at Morehead State University recently began the spring semester with the ever-popular process of registration. From left, senior Jamie Davis of Hillsboro and junior Allison Armstrong of Catlettsburg discuss their schedules.

###

1-17-86srt

*The Daily Independent
Flemingsburg
Gazette*



Photo

PUBLIC INFORMATION

JUDITH YANCY, DIRECTOR

MOREHEAD STATE UNIVERSITY

UPO BOX 1100

MOREHEAD, KY 40351

606-783-2030

January 21, 1986

MSU SPRING REGISTRATION

Students at Morehead State University recently began the spring semester with the ever-popular process of registration. From left, freshmen Cindi Deaton of Lawrenceburg and Beth Davis of Cold Springs receive some help from special services counselor Belva Sammons.

####

(MSU Photo by Scott Randle)

1-21-86srt

*Campbell Co. Recorder
Anderson News*



Photo

PUBLIC INFORMATION

JUDITH YANCY, DIRECTOR

MOREHEAD STATE UNIVERSITY

UPO BOX 1100

MOREHEAD, KY 40351

606-783-2030

January 21, 1986

MSU SPRING REGISTRATION

Students at Morehead State University recently began the spring semester with the ever-popular process of registration. From left, freshman Scott Worthington of Bellbrook, Ohio, sophomore Eugene Cunningham of Mt. Sterling and Sheila Donovan of Bellbrook, Ohio, stop to have their student I.D.'s validated.

####

(MSU Photo by Scott Randle)

1-21-86srt

*Mt. Sterling Advocate
Fairborn Herald*



Photo

PUBLIC INFORMATION

JUDITH YANCY, DIRECTOR

MOREHEAD STATE UNIVERSITY

UPO BOX 1100

MOREHEAD, KY 40351

606-783-2030

January 21, 1986

MSU SPRING REGISTRATION

Students at Morehead State University recently began the spring semester with the ever-popular process of registration. From left, sophomore Lillie Dyer of West Liberty receives some help from senior Jeff Caswell of Falmouth.

####

(MSU Photo by Scott Randle)

1-21-86srt

*Elliott Co. News
Ky. Post (Covington)*



Photo

PUBLIC INFORMATION

JUDITH YANCY, DIRECTOR

MOREHEAD STATE UNIVERSITY

UPO BOX 1100

MOREHEAD, KY 40351

606-783-2030

January 21, 1986

MSU SPRING REGISTRATION

Students at Morehead State University recently began the spring semester with the ever-popular process of registration. From left, senior Edie Queen of Ashland, junior Kelly Cooksey also of Ashland and sophomore Debbie Crouch of Mt. Sterling stop to make some schedule changes.

####

(MSU Photo by Scott Randle)

1-21-86srt

*The Daily Independent
Mt. Sterling Advocate*



Photo

PUBLIC INFORMATION

JUDITH YANCY, DIRECTOR

MOREHEAD STATE UNIVERSITY

UPO BOX 1100

MOREHEAD, KY 40351

606-783-2030

January 23, 1984

STUDENT ORIENTATION AT MSU

Tina Ballinger of Virgie, left, and Connie Oaks of Mt. Sterling concentrated on the Skills Assessment Test during spring semester orientation at Morehead State University. The test is given to all incoming undergraduate students at MSU.

(MSU Photo by Scott Randle)

###

1-22-86 drh

*Mt. Sterling Advocate
Appalachian News-
Express*



Photo

PUBLIC INFORMATION

JUDITH YANCY, DIRECTOR

MOREHEAD STATE UNIVERSITY

UPO BOX 1100

MOREHEAD, KY 40351

606-783-2030

January 21, 1986

MSU SPRING REGISTRATION

Students at Morehead State University recently began the spring semester with the ever-popular process of registration. From left, freshman Tammie Barns of Springfield, Ohio and sophomore Tim Bandy of Salyersville receive help from some MSU staff members.

####

(MSU Photo by Scott Randle)

1-17-86srt

*News-Sun (Springfield)
Salyersville independent*



Photo

PUBLIC INFORMATION

JUDITH YANCY, DIRECTOR

MOREHEAD STATE UNIVERSITY

UPO BOX 1100

MOREHEAD, KY 40351

606-783-2030

January 21, 1986

MSU SPRING REGISTRATION

Students at Morehead State University recently began the spring semester with the ever-popular process of registration. From left, junior Kim Bentley of Rush discusses classes with junior Vickie Tyree of Tiffin, Ohio.

###

(MSU Photo by Scott Randle)

1-16-86srt

*Advertiser - Tribune
(Tiffin OH)
The Daily Independent*



Photo

PUBLIC INFORMATION

JUDITH YANCY, DIRECTOR

MOREHEAD STATE UNIVERSITY

UPO BOX 1100

MOREHEAD, KY 40351

606-783-2030

January 21, 1986

MSU SPRING REGISTRATION

Students at Morehead State University recently began the spring semester with the ever-popular process of registration. From left, freshmen Kevin Lane of Wellington and Kurt Ledford of Pomeroyton stop to ask a few questions.

####

(MSU Photo by Scott Randle)

1-16-86srt

*Bath County News-Outlook
Mt. Sterling Advocate*



Photo

PUBLIC INFORMATION

JUDITH YANCY, DIRECTOR

MOREHEAD STATE UNIVERSITY

UPO BOX 1100

MOREHEAD, KY 40351

606-783-2030

January 21, 1986

MSU SPRING REGISTRATION

Students at Morehead State University recently began the spring semester with the ever-popular process of registration. From left, junior Craig Adams of Ironton, Ohio, senior Duane Osborne of Morehead and freshman Beth Beckham of Taylor Mill wait to take care of some scheduling problems.

####

(MSU Photo by Scott Randle)

1-16-86srt

*Morehead News
Covington Ky. Post
Ironton Tribune*



Photo

PUBLIC INFORMATION

JUDITH YANCY, DIRECTOR

MOREHEAD STATE UNIVERSITY

UPO BOX 1100

MOREHEAD, KY 40351

606-783-2030

January 21, 1986

MSU SPRING REGISTRATION

Students at Morehead State University recently began the spring semester with the ever-popular process of registration. Graduate student Teresa Barhorst of Mayking stops to ask a few questions.

####

(MSU Photo by Scott Randle)

1-17-86srt

mountain eagle



Photo

PUBLIC INFORMATION

JUDITH YANCY, DIRECTOR

MOREHEAD STATE UNIVERSITY

UPO BOX 1100

MOREHEAD, KY 40351

606-783-2030

January 21, 1986

MSU SPRING REGISTRATION

Students at Morehead State University recently began the spring semester with the ever-popular process of registration. Junior Kelvin Amburgey of Littcarr stops to have his student I.D. validated.

####

(MSU Photo by Scott Randle)

1-16-86srt

Troublesome Creek Jones



Photo

PUBLIC INFORMATION

JUDITH YANCY, DIRECTOR

MOREHEAD STATE UNIVERSITY

UPO BOX 1100

MOREHEAD, KY 40351

606-783-2030

January 21, 1986

MSU SPRING REGISTRATION

Students at Morehead State University recently began the spring semester with the ever-popular process of registration. Graduate student Teresa Ruby of Portsmouth, Ohio stops to have her fees assessed.

####

(MSU Photo by Scott Randle)

1-16-86srt

The Daily News



Photo

PUBLIC INFORMATION

JUDITH YANCY, DIRECTOR

MOREHEAD STATE UNIVERSITY

UPO BOX 4100

MOREHEAD, KY 40351

606-783-2030

January 21, 1986

MSU SPRING REGISTRATION

Students at Morehead State University recently began the spring semester with the ever-popular process of registration. Senior Tony Quillen of Greenup stops to work out some scheduling problems.

####

(MSU Photo by Scott Randle)

1-16-86srt

Greenup News



Photo

PUBLIC INFORMATION

JUDITH YANCY, DIRECTOR

MOREHEAD STATE UNIVERSITY

UPO BOX 1100

MOREHEAD, KY 40351

606-783-2030

January 21, 1986

MSU SPRING REGISTRATION

Students at Morehead State University recently began the spring semester with the ever-popular process of registration. From left, sophomore Rick Caudill of Whitesburg and senior Ray Bradley of Soldier stop to ask a few questions.

####

(MSU Photo by Scott Randle)

1-16-86srt

Mountain Eagle



Photo

PUBLIC INFORMATION

JUDITH YANCY, DIRECTOR

MOREHEAD STATE UNIVERSITY

UPO BOX 1100

MOREHEAD, KY 40351

606-783-2030

January 21, 1986

MSU SPRING REGISTRATION

Students at Morehead State University recently began the spring semester with the ever-popular process of registration. From left, sophomore Doug Binion and senior Beck Prather, both of Morehead, stop to ask a few questions.

####

(MSU Photo by Scott Randle)

1-16-86srt

Morehead News



Photo

PUBLIC INFORMATION

JUDITH YANCY, DIRECTOR

MOREHEAD STATE UNIVERSITY

UPO BOX 1100

MOREHEAD, KY 40351

606-783-2030

January 21, 1986

MSU SPRING REGISTRATION

Students at Morehead State University recently began the spring semester with the ever-popular process of registration. Freshman Kendrick Blanton of Ashland stops to have his dorm fee assessed before continuing.

####

(MSU Photo by Scott Randle)

1-16-86srt

The Daily Independent



Photo

PUBLIC INFORMATION

JUDITH YANCY, DIRECTOR

MOREHEAD STATE UNIVERSITY

UPO BOX 1100

MOREHEAD, KY 40351

606-783-2030

January 23, 1986

MSU SPRING REGISTRATION

Students at Morehead State University recently began the spring semester with the ever-popular process of registration. From left, sophomore Teresa Carty of Salyersville and Missy Carpenter of Middletown, Ohio, try to work out their schedules.

(MSU Photo by Scott Randle)

###

1-22-86 srt

*Salyersville
Independent*

*The Journal in
Middletown, OH*



Photo

PUBLIC INFORMATION

JUDITH YANCY, DIRECTOR

MOREHEAD STATE UNIVERSITY

UPO BOX 1100

MOREHEAD, KY 40351

606-783-2030

January 21, 1986

MSU SPRING REGISTRATION

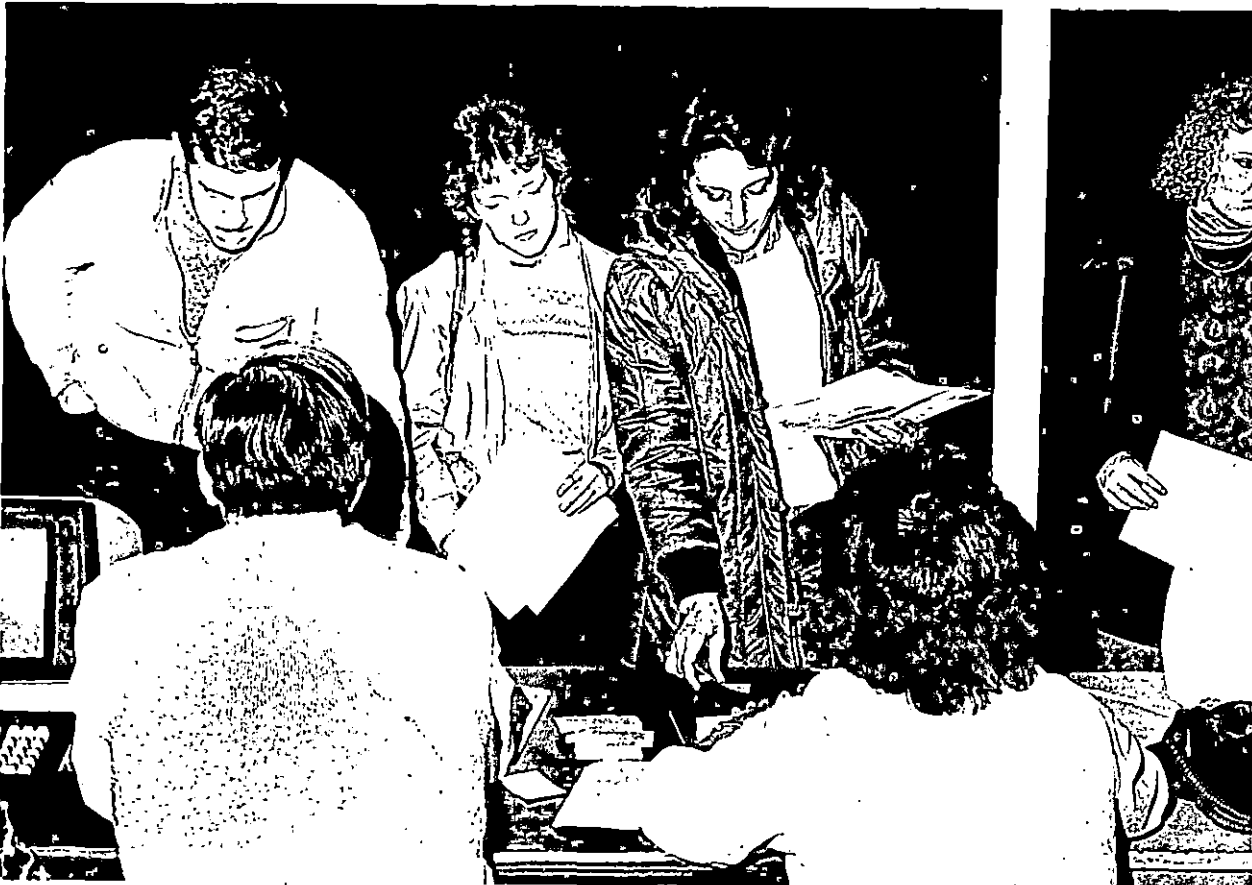
Students at Morehead State University recently began the spring semester with the ever-popular process of registration. From left, junior Richard Case of Lawrenceburg and freshmen Linda Turner and Wilma Center, both of Hazelgreen stop to ask a few questions.

####

(MSU Photo by Scott Randle)

1-17-86srt

Canyton (Wolfe Co. News)



Photo

PUBLIC INFORMATION

JUDITH YANCY, DIRECTOR

MOREHEAD STATE UNIVERSITY

UPO BOX 1100

MOREHEAD, KY 40351

606-783-2030

January 21, 1986

MSU SPRING REGISTRATION

Students at Morehead State University recently began the spring semester with the ever-popular process of registration. Senior Lori Cyrus of Louisa stops to have her student I.D. validated.

####

(MSU Photo by Scott Randle)

1-21-86srt

Big Sandy News



Photo

PUBLIC INFORMATION

JUDITH YANCY, DIRECTOR

MOREHEAD STATE UNIVERSITY

UPO BOX 1100

MOREHEAD, KY 40351

606-783-2030

January 21, 1986

MSU SPRING REGISTRATION

Students at Morehead State University recently began the spring semester with the ever-popular process of registration. From left, sophomore Tim Rose of Worthington and freshmen Rodney Gorden and Sonny Green, both of Russellville, stop to ask a few questions.

####

(MSU Photo by Scott Randle)

1-21-86srt

*Logan Leadey/News Democrat
Russellville*



Photo

PUBLIC INFORMATION

JUDITH YANCY, DIRECTOR

MOREHEAD STATE UNIVERSITY

UPO BOX 1100

MOREHEAD, KY 40351

606-783-2030

January 21, 1986

MSU SPRING REGISTRATION

Students at Morehead State University recently began the spring semester with the ever-popular process of registration. Freshman Karen Dillon of Old Town waits to have her student I.D. made.

####

(MSU Photo by Scott Randle)

1-21-86srt

Greenup News



Photo

PUBLIC INFORMATION

JUDITH YANCY, DIRECTOR

MOREHEAD STATE UNIVERSITY

UPO BOX 1100

MOREHEAD, KY 40351

606-783-2030

January 21, 1986

MSU SPRING REGISTRATION

Students at Morehead State University recently began the spring semester with the ever-popular process of registration. Junior Linda Denton of Owingsville stops to ask a few questions.

####

(MSU Photo by Scott Randle)

1-17-86srt

Bath Co. News-Outlook



Photo

PUBLIC INFORMATION

JUDITH YANCY, DIRECTOR

MOREHEAD STATE UNIVERSITY

UPO BOX 1100

MOREHEAD, KY 40351

606-783-2030

January 21, 1986

MSU SPRING REGISTRATION

Students at Morehead State University recently began the spring semester with the ever-popular process of registration. Sophomore Cathy Roseberry of Butler tries to work out her schedule.

####

(MSU Photo by Scott Randle)

1-17-86srt

*Ky. Post in
Covington*



Photo

PUBLIC INFORMATION

JUDITH YANCY, DIRECTOR

MOREHEAD STATE UNIVERSITY

UPO BOX 1100

MOREHEAD, KY 40351

606-783-2030

January 21, 1986

MSU SPRING REGISTRATION

Students at Morehead State University recently began the spring semester with the ever-popular process of registration. Sophomore Cindy Collier of Greenup makes her way through the sometimes slow registration line.

###

(MSU Photo by Scott Randle)

1-17-86srt

Greenup News



Photo

PUBLIC INFORMATION

JUDITH YANCY, DIRECTOR

MOREHEAD STATE UNIVERSITY

UPO BOX 1100

MOREHEAD, KY 40351

606-783-2030

January 21, 1986

MSU SPRING REGISTRATION

Students at Morehead State University recently began the spring semester with the ever-popular process of registration. Graduate student Ronnie Barrett of Booneville asks some questions about his schedule.

####

(MSU Photo by Scott Randle)

1-17-86srt

*Booneville
Sentinel*



Photo

PUBLIC INFORMATION

JUDITH YANCY, DIRECTOR

MOREHEAD STATE UNIVERSITY

UPO BOX 1100

MOREHEAD, KY 40351

606-783-2030

January 21, 1986

MSU SPRING REGISTRATION

Students at Morehead State University recently began the spring semester with the ever-popular process of registration. Junior Ramona Back of Mt. Sterling stops to make a few schedule changes.

####

(MSU Photo by Scott Randle)

1-17-86srt

Mt. Sterling Advocate



Photo

PUBLIC INFORMATION

JUDITH YANCY, DIRECTOR

MOREHEAD STATE UNIVERSITY

UPO BOX 1100

MOREHEAD, KY 40351

606-783-2030

January 21, 1986

MSU SPRING REGISTRATION

Students at Morehead State University recently began the spring semester with the ever-popular process of registration. Freshman Jamie Baker of Silver Grove stops to have her fees assessed.

####

(MSU Photo by Scott Randle)

1-17-86srt

The Campbell Co. Recorder



Photo

PUBLIC INFORMATION

JUDITH YANCY, DIRECTOR

MOREHEAD STATE UNIVERSITY

UPO BOX 1100

MOREHEAD, KY 40351

606-783-2030

January 21, 1986

MSU SPRING REGISTRATION

Students at Morehead State University recently began the spring semester with the ever-popular process of registration. From left, junior Tom Rodgers of Carlisle, senior Jeff Ray of Owingsville and Charles Porter of Ashland share a few laughs while making student I.D.'s.

####

(MSU Photo by Scott Randle)

1-17-86srt

*Carlisle Mercury
Daily Independent
Bath Co. News-Outlook*



Photo

PUBLIC INFORMATION

JUDITH YANCY, DIRECTOR

MOREHEAD STATE UNIVERSITY

UPO BOX 1100

MOREHEAD, KY 40351

606-783-2030

January 23, 1986

STUDENT ORIENTATION AT MSU

Robin Lands of Haldeman concentrated on the Skills Assessment Test during spring semester orientation at Morehead State University. The test is given to all incoming undergraduate students at MSU.

(MSU Photo by Scott Randle)

###

1-22-86drh

Morehead News



Photo

PUBLIC INFORMATION

JUDITH YANCY, DIRECTOR

MOREHEAD STATE UNIVERSITY

UPO BOX 1100

MOREHEAD, KY 40351

606-783-2030

January 23, 1986

STUDENT ORIENTATION AT MSU

Martina Henson of Paris concentrated on the Skills Assessment Test during spring semester orientation at Morehead State University. The test is given to all incoming undergraduate students at MSU.

(MSU Photo by Scott Randle)

###

1-22-86drh

*Citizen-Advertiser
in Paris*



Photo

PUBLIC INFORMATION

JUDITH YANCY, DIRECTOR

MOREHEAD STATE UNIVERSITY

UPO BOX 1100

MOREHEAD, KY 40351

606-783-2030

January 23, 1986

STUDENT ORIENTATION AT MSU

Kim DeZarn of Dry Ridge concentrated on the Skills Assessment Test during spring semester orientation at Morehead State University.

The test is given to all incoming undergraduate students at MSU.

(MSU Photo by Scott Randle)

###

Grant Co. News

1-22-86drh



Photo

PUBLIC INFORMATION

JUDITH YANCY, DIRECTOR

MOREHEAD STATE UNIVERSITY

UPO BOX 1100

MOREHEAD, KY 40351

606-783-2030

January 23, 1986

STUDENT ORIENTATION AT MSU

Mike Brown of Raceland participated in Morehead State University's orientation for incoming undergraduate students. Brown took the Skills Assessment Test as part of orientation and recieved the results from Kelly Holdren, MSU admissions counselor.

(MSU Photo by Scott Randle)

###

Russell Co. News

1-22-86drh



Photo

PUBLIC INFORMATION

JUDITH YANCY, DIRECTOR

MOREHEAD STATE UNIVERSITY

UPO BOX 1100

MOREHEAD, KY 40351

606-783-2030

January 23, 1986

STUDENT ORIENTATION AT MSU

Jodie Schmidt of Alexandria participated in Morehead State University's orientation for incoming undergraduate students. Schmidt took the Skills Assessment Test as part of orientation and recieved the results from Kelly Holdren, MSU admissions counselor.

(MSU Photo by Scott Randle)

The Campbell Co. Recorder

###

1-22-86drh



Photo

PUBLIC INFORMATION

JUDITH YANCY, DIRECTOR

MOREHEAD STATE UNIVERSITY

UPO BOX 1100

MOREHEAD, KY 40351

606-783-2030

January 21, 1986

MSU SPRING REGISTRATION

Students at Morehead State University recently began the spring semester with the ever-popular process of registration. From left, sophomore Missi Collins of Morehead and sophomore Anne Bradley of Cincinnati, Ohio try to work out their schedules.

####

(MSU Photo by Scott Randle)

1-16-86srt

Queen City Suburban Press



Photo

PUBLIC INFORMATION

JUDITH YANCY, DIRECTOR

MOREHEAD STATE UNIVERSITY

UPO BOX 1100

MOREHEAD, KY 40351

606-783-2030

January 21, 1986

MSU SPRING REGISTRATION

Students at Morehead State University recently began the spring semester with the ever-popular process of registration. From left, Tom Scott, MSU coordinator of speech, talks with senior Tom Jones of Farmers about scheduling classes.

####

(MSU Photo by Scott Randle)

1-16-86srt

Morehead News



Photo

PUBLIC INFORMATION

JUDITH YANCY, DIRECTOR

MOREHEAD STATE UNIVERSITY

UPO BOX 1100

MOREHEAD, KY 40351

606-783-2030

January 21, 1986

MSU SPRING REGISTRATION

Students at Morehead State University recently began the spring semester with the ever-popular process of registration. Junior Sherry Bush of Grayson discusses classes with Charles Porter of Ashland.

####

(MSU Photo by Scott Randle)

1-16-86srt

*Journal-Enquirer
Grayson*



Photo

PUBLIC INFORMATION

JUDITH YANCY, DIRECTOR

MOREHEAD STATE UNIVERSITY

UPO BOX 1100

MOREHEAD, KY 40351

606-783-2030

January 21, 1986

MSU SPRING REGISTRATION

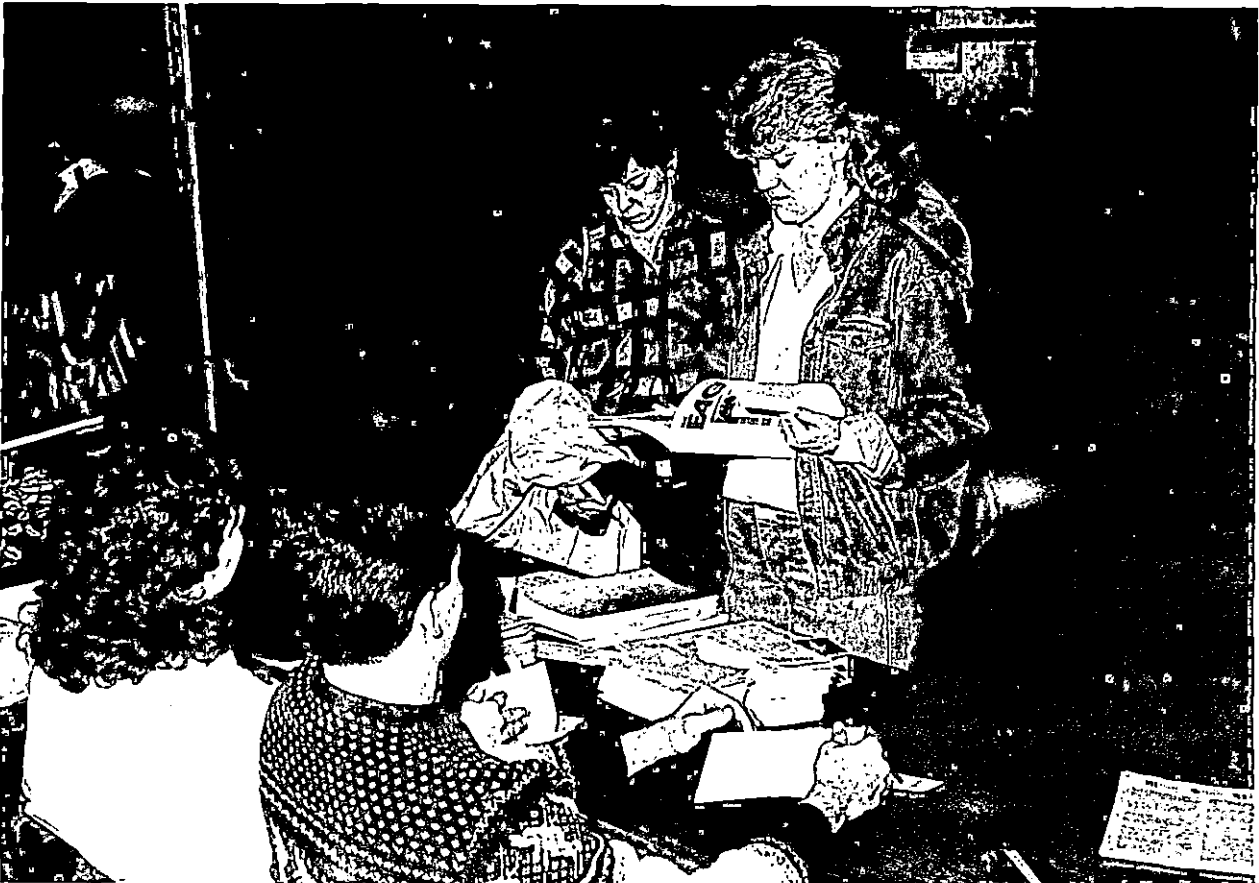
Students at Morehead State University recently began the spring semester with the ever-popular process of registration. From left, sophomores Kim Grace and Lori Crowe, both of Alexandria, stop to ask a few questions.

###

(MSU Photo by Scott Randle)

1-16-86srt

The Campbell Co. Recorder



Photo

PUBLIC INFORMATION

JUDITH YANCY, DIRECTOR

MOREHEAD STATE UNIVERSITY

UPO BOX 1100

MOREHEAD, KY 40351

606-783-2030

January 21, 1986

MSU SPRING REGISTRATION

Students at Morehead State University recently began the spring semester with the ever-popular process of registration. Junior Aurora Conn of West Liberty waits for her student I.D. card to be finished.

####

(MSU Photo by Scott Randle)

1-16-86srt

Elliott Co. News



Photo

PUBLIC INFORMATION

JUDITH YANCY, DIRECTOR

MOREHEAD STATE UNIVERSITY

UPO BOX 1100

MOREHEAD, KY 40351

606-783-2030

January 21, 1986

MSU SPRING REGISTRATION

Students at Morehead State University recently began the spring semester with the ever-popular process of registration. Freshman Melissa Blankenship of New Richmond, Ohio stops to ask a few questions.

####

(MSU Photo by Scott Randle)

1-17-86srt

Clermont Sun



Photo

PUBLIC INFORMATION

JUDITH YANCY, DIRECTOR

MOREHEAD STATE UNIVERSITY

UPO BOX 1100

MOREHEAD, KY 40351

606-783-2030

January 23, 1986

STUDENT ORIENTATION AT MSU

Morehead State University incoming students began the 1986 spring semester by taking part in orientation. Connie Oaks of Mt. Sterling received the Skills Assessment Test from Kelly Holdren, MSU admissions counselor, as part of orientation.

(MSU Photo by Scott Randle)

###

Mt. Sterling Advocate

1-22-86drh



Photo

PUBLIC INFORMATION

JUDITH YANCY, DIRECTOR

MOREHEAD STATE UNIVERSITY

UPO BOX 1100

MOREHEAD, KY 40351

606-783-2030

January 21, 1986

MSU SPRING REGISTRATION

Students at Morehead State University recently began the spring semester with the ever-popular process of registration. From left, Bill Whitaker, MSU professor of finance helps freshman William Doyle of Flemingsburg plan his schedule.

####

(MSU Photo by Scott Randle)

1-21-86srt

Flemingsburg Gazette



Photo

PUBLIC INFORMATION

JUDITH YANCY, DIRECTOR

MOREHEAD STATE UNIVERSITY

UPO BOX 1100

MOREHEAD, KY 40351

606-783-2030

January 21, 1986

MSU SPRING REGISTRATION

Students at Morehead State University recently began the spring semester with the ever-popular process of registration. Freshman Jody Denney of Lawrenceburg stops to have his student I.D. made.

####

(MSU Photo by Scott Randle)

1-21-86srt

Anderson News



Photo

PUBLIC INFORMATION

JUDITH YANCY, DIRECTOR

MOREHEAD STATE UNIVERSITY

UPO BOX 1100

MOREHEAD, KY 40351

606-783-2030

January 21, 1986

MSU SPRING REGISTRATION

Students at Morehead State University recently began the spring semester with the ever-popular process of registration. From left, junior Richard Case of Lawrenceburg and freshmen Linda Turner and Wilma Center, both of Hazelgreen, stop to ask a few questions.

####

(MSU Photo by Scott Randle)

1-21-86srt

Wolfe Co. News



Photo

PUBLIC INFORMATION

JUDITH YANCY, DIRECTOR

MOREHEAD STATE UNIVERSITY

UPO BOX 1100

MOREHEAD, KY 40351

606-783-2030

January 21, 1986

MSU SPRING REGISTRATION

Students at Morehead State University recently began the spring semester with the ever-popular process of registration. From left, freshman Mike Brown of Raceland discusses his schedule with Peggy Osborne, MSU assistant professor of marketing, business and economics and freshman Dane Conley also of Raceland.

(MSU Photo by Scott Randle)

####

Russell Co. News

1-21-86srt



Photo

PUBLIC INFORMATION

JUDITH YANCY, DIRECTOR

MOREHEAD STATE UNIVERSITY

UPO BOX 1100

MOREHEAD, KY 40351

606-783-2030

January 23, 1986

STUDENT ORIENTATION AT MSU

Morehead State University incoming students began the spring semester by taking the Skills Assessment Test during orientation. Among those taking the test were, from left: Wade Ellis of Georgetown, Ohio; Roy Adkins of Sandy Hook; and Paul Brown of Morehead.

(MSU Photo by Scott Randle)

1-22-86drh

###

*Georgetown News
Democrat
Morehead News
Elliott Co. News*



Photo

PUBLIC INFORMATION

JUDITH YANCY, DIRECTOR

MOREHEAD STATE UNIVERSITY

UPO BOX 1100

MOREHEAD, KY 40351

606-783-2030

January 21, 1986

MSU SPRING REGISTRATION

Students at Morehead State University recently began the spring semester with the ever-popular process of registration. From left, sophomore Cheryl Lawson of Fern Creek, sophomore Leanna Hall of Viper and senior Ben Iden of Bloomingburg, Ohio make some schedule changes.

####

(MSU Photo by Scott Randle)

1-21-86srt

*The Courier-Journal
Herald-Voice (Hazard)
Record Herald (Washington
Ohio)*



Photo

PUBLIC INFORMATION

JUDITH YANCY, DIRECTOR

MOREHEAD STATE UNIVERSITY

UPO BOX 1100

MOREHEAD, KY 40351

606-783-2030

January 21, 1986

MSU SPRING REGISTRATION

Students at Morehead State University recently began the spring semester with the ever-popular process of registration. From left, freshman Sandra Cornet of Blanchester, Ohio, junior September Cardiff of Williamstown and sophomore Tom Cardiff of Johns Island, S.C. wait to have their schedules checked:

###

(MSU Photo by Scott Randle)

1-16-86srt

New-Journal (Wilmington OH)
Grant Co. News
The Journal (Charleston S.C.)



Photo

PUBLIC INFORMATION

JUDITH YANCY, DIRECTOR

MOREHEAD STATE UNIVERSITY

UPO BOX 1100

MOREHEAD, KY 40351

606-783-2030

January 21, 1986

MSU SPRING REGISTRATION

Students at Morehead State University recently began the spring semester with the ever-popular process of registration. From left, sophomore Wayne Campbell of Clarksville, Ind., and senior Donna Cecil of Louisville stop to pick up their financial aid checks.

####

(MSU Photo by Scott Randle)

1-17-86srt

*The Clark Co. Journal
(clvd.)*



Photo

PUBLIC INFORMATION

JUDITH YANCY, DIRECTOR

MOREHEAD STATE UNIVERSITY

UPO BOX 1100

MOREHEAD, KY 40351

606-783-2030

January 21, 1986

MSU SPRING REGISTRATION

Students at Morehead State University recently began the spring semester with the ever-popular process of registration. From left, freshman Lana Duncan and junior Stacy Duncan, both of Goshen, Ohio, stop to talk about their schedules.

####

(MSU Photo by Scott Randle)

1-21-86srt

Queen Suburban Press



Photo

PUBLIC INFORMATION

JUDITH YANCY, DIRECTOR

MOREHEAD STATE UNIVERSITY

UPO BOX-1100

MOREHEAD, KY 40351

606-783-2030

January 21, 1986

MSU SPRING REGISTRATION

Students at Morehead State University recently began the spring semester with the ever-popular process of registration. From left, freshman Theresa Brattain of St. Paul, Ind. discusses her schedule with Betty Tapp, MSU assistant professor of nursing.

(MSU Photo by Scott Randle)

1-21-86srt

Greensburg News



Photo

PUBLIC INFORMATION

JUDITH YANCY, DIRECTOR

MOREHEAD STATE UNIVERSITY

UPO BOX 1100

MOREHEAD, KY 40351

606-783-2030

January 21, 1986

MSU SPRING REGISTRATION

Students at Morehead State University recently began the spring semester with the ever-popular process of registration. Junior John Flavell of Radcliffe stops to pick up information for his work-study.

####

(MSU Photo by Scott Randle)

1-21-86srt

*News Enterprise
(Elizabethtown)*



Photo

PUBLIC INFORMATION

JUDITH YANCY, DIRECTOR

MOREHEAD STATE UNIVERSITY

UPO BOX 1100

MOREHEAD, KY 40351

606-783-2030

January 21, 1986

MSU SPRING REGISTRATION

Students at Morehead State University recently began the spring semester with the ever-popular process of registration. Senior Steve Corder of St. Petersburg, Fla. receives some help from MSU staff member Doris Wells.

####

(MSU Photo by Scott Randle)

1-21-86srt

St. Petersburg Independent



Photo

PUBLIC INFORMATION

JUDITH YANCY, DIRECTOR

MOREHEAD STATE UNIVERSITY

UPO BOX 1100

MOREHEAD, KY 40351

606-783-2030

January 21, 1986

MSU SPRING REGISTRATION

Students at Morehead State University recently began the spring semester with the ever-popular process of registration. From left, junior Sherry Goodner of Olive Hill discusses her schedule with Bruce Mattingly, associate professor of psychology and freshman Nicole Davis of Toledo, Ohio.

###

(MSU Photo by Scott Randle)

1-21-86srt

*The Blade
(Toledo, OH)*



Photo

PUBLIC INFORMATION

JUDITH YANCY, DIRECTOR

MOREHEAD STATE UNIVERSITY

UPO BOX 1100

MOREHEAD, KY 40351

606-783-2030

January 21, 1986

MSU SPRING REGISTRATION

Students at Morehead State University recently began the spring semester with the ever-popular process of registration. Graduate student and MSU assistant baseball coach Dave Emrhein of Maple Hts., Ohio makes a few quick changes on his schedule.

###

(MSU Photo by Scott Randle)

1-21-86srt

San newspapers (Cleveland)



Photo

PUBLIC INFORMATION

JUDITH YANCY, DIRECTOR

MOREHEAD STATE UNIVERSITY

UPO BOX 1100

MOREHEAD, KY 40351

606-783-2030

January 21, 1986

MSU. SPRING REGISTRATION

Students at Morehead State University recently began the spring semester with the ever-popular process of registration. Junior Kady Berger of Newburg, Ind., stops to pay a fee.

####

(MSU Photo by Scott Randle)

1-17-86srt

The Newburgh Register



Photo

PUBLIC INFORMATION

JUDITH YANCY, DIRECTOR

MOREHEAD STATE UNIVERSITY

UPO BOX 1100

MOREHEAD, KY 40351

606-783-2030

January 21, 1986

MSU SPRING REGISTRATION

Students at Morehead State University recently began the spring semester with the ever-popular process of registration. From left, freshmen Marty Seithers and Mark Connely, both of Carlisle, receive help from MSU staff members.

(MSU Photo by Scott Randle)

###

Carlisle Mercury

✓ 1-22-86 srt



News

PUBLIC INFORMATION

JUDITH YANCY, DIRECTOR

MOREHEAD STATE UNIVERSITY

UPO BOX 1100

MOREHEAD, KY 40351

606-783-2030

Jan. 21, 1986
FOR IMMEDIATE RELEASE

MOREHEAD, Ky.--David A. Farmer of Harlan County, has been named news and public affairs director at WMKY FM 90, public radio from Morehead State University.

Farmer will be responsible for WMKY's news programs, including regular newscasts, feature material, and public affairs segments, according to WMKY General Manager Larry Netherton. "Mr. Farmer is a solid broadcast journalist who also is familiar with Eastern Kentucky and the region served by WMKY," Netherton said. "Under Dave's leadership, we hope to strengthen our reporting of business and economic issues and their impact on our area," he added.

Farmer noted that he would also increase coverage of cultural and arts events in the region.

A native of Wallins Creek, Farmer holds a Bachelor of University Studies degree from Morehead State University with course work in broadcasting, journalism, and electronics. He is currently pursuing a masters degree in communications.

Most recently, Farmer worked as a news anchor for The Maryland News Network. He also has been news assistant at WMKY, assistant news director at WMST in Mt. Sterling, and announcer for WMOR in Morehead and WFSR in Harlan.

His wife, Sharon Crouch-Farmer, also an MSU graduate, is currently senior writer/editor for Martin-Marietta Corporation in Maryland.

####

jf



News

PUBLIC INFORMATION

JUDITH YANCY, DIRECTOR

MOREHEAD STATE UNIVERSITY

UPO BOX 1100

MOREHEAD, KY 40351

606-783-2030

Jan. 21, 1986
FOR IMMEDIATE RELEASE

MOREHEAD, Ky.--The once bare walls of the Department of Public Advocacy for Rowan, Elliott and Morgan counties have become an exciting exhibit of art by Morehead State University students.

Eleven pieces of art have transformed the department--also known as the public defender's office--into a gallery displaying some of the MSU Department of Art's most recent selections, according to Patricia Van Houten, advocacy department director.

"We are very pleased with the quality of work made available to us by the Art Department for display," said Van Houten. "The exhibit is not only a pleasant diversion for our clients, but also for our office staff."

The unusual display of art was the joint concept of Van Houten and Robert Franzini, MSU associate professor of art.

"Patricia has always been a great supporter of the local art scene," Franzini explained. "During a discussion recently, she happened to mention how drab her office was and I told her about the great amount of exceptional art we had at the University. The idea for the exhibition sprang from this discussion."

The exhibition will continue for at least six months on a long-term loan from the University. Pieces represented include woodcuts, stone lithographs, etchings, aquatints and examples of color print making. The works were done by current and former MSU students.

(more)

art work
2-2-2-2-2

Franzini said he selected 30 works for Van Houten's appraisal. The pieces include landscapes, still lifes and abstracts.

"We wanted regional subject matter," Van Houten said. "That had a great influence on our selections. We are very happy to have the opportunity to help expose some fine art works to people who would not normally get a chance to view them."

Both Franzini and Van Houten are enthusiastic about the possibility of similar exhibits at other businesses and government offices.

"I really hope people take advantage of these student works," Van Houten said. "It is a good way for the community to benefit from the University art program."

Van Houten said she hoped the public would visit the department's offices located on Christy Creek. just to view the exhibit.

###

kj

CUTLINE WITH STORY

PUBLIC ADVOCACY OFFICE DISPLAY MSU ART

MOREHEAD, Ky.--Patricia Van Houten, director of the Department of Public Advocacy for Rowan, Elliott and Morgan counties, holds an animated discussion with Robert Franzini, Morehead State University associate professor of art, over the placement of art work by MSU students. The University's Department of Art has placed works by 11 current and former students on long term loan with her department. Visitors are encouraged to stop by the office, located on Christy Creek, to view the exhibit.

(MSU photo by Scott Randle)

###

1-21-86kj



Photo

PUBLIC INFORMATION

JUDITH YANCY, DIRECTOR

MOREHEAD STATE UNIVERSITY

UPO BOX 1100

MOREHEAD, KY 40351

606-783-2030

HAPPY LANDINGS FOR MSU ROTC CADETS

Two Morehead State University students, members of the University's Army Reserve Officers Training Program, were up in the air during MSU's semester break. Joseph E. Hamer, left, Montclair, N.J., senior, and Kenneth B. Day, West Liberty sophomore, spent three weeks in class at the U.S. Army Airborne School, Fort Benning, Ga. They graduated Jan. 16 after successfully completing five parachute landings. Hamer is a May candidate for a bachelor's degree in communications and will be commissioned as a second lieutenant as well. Day is majoring in geology.

(MSU photo by Scott Randle)

1-23-86

###

*M-News, Statement, West Liberty, Triall
Blayer, Montclair, N.J., Gallegosville
Pisaville, Military Science*

1-23-86



News

PUBLIC INFORMATION

JUDITH YANCY, DIRECTOR

MOREHEAD STATE UNIVERSITY

UPO BOX 1100

MOREHEAD, KY 40351

606-783-2030

MOREHEAD, Ky. --- Veronique Amber Elkins, daughter of Mr. and Mrs. R. Percy Elkins, has pledged Delta Zeta sorority at Morehead State University.

Elkins, a sophomore majoring in corporate psychology, is also a member of MSU's soccer team, Army ROTC and Psi Chi National Honor Society for Psychology.

####

srt

Similar releases were sent to the hometown papers of the 20 students involved.

1-23-86

News

PUBLIC INFORMATION

JUDITH YANCY, DIRECTOR

MOREHEAD STATE UNIVERSITY

UPO BOX 1100

MOREHEAD, KY 40351

606-783-2030

January 23, 1986
FOR IMMEDIATE RELEASE

MOREHEAD, Ky. --- Morehead State University's Student Council for Exceptional Children has elected officers for the 1985-86 school year.

Elected were:

*President -- Janet Janszen, West Chester, Ohio, senior, daughter of Bob and Connie Janszen.

*State and Local President-elect -- Robin Werner, Portsmouth, Ohio, sophomore, daughter of Mr. and Mrs. Charles Werner.

*Secretary -- June Howard House, Salyersville sophomore, daughter of Mearl and Lovella Howard.

*Treasurer -- Merrell Workman, Salyersville sophomore, son of Winford and Margaret Workman.

*Historian -- Paige Duvall, Grayson senior, daughter of Mrs. Sue Duvall.

MSU's student chapter of the Council for Exceptional Children is designed to advance the training of special education teachers. Membership is open to all students interested in exceptional children.

###

drh

News

PUBLIC INFORMATION

JUDITH YANCY, DIRECTOR

MOREHEAD STATE UNIVERSITY

UPO BOX 1100

MOREHEAD, KY 40351

606-783-2030

MOREHEAD, Ky. --- Jeffrey Scott Marshall, son of Bob Marshall and Barbara Etter of Dayton, Ohio, has pledged Delta Tau Delta fraternity at Morehead State University.

Marshall, a sophomore majoring in journalism, is also recording secretary of his pledge class.

####

srt

Similar releases were sent
to the hometown papers of
the 11 students involved.
1-23-86

News

PUBLIC INFORMATION

JUDITH YANCY, DIRECTOR

MOREHEAD STATE UNIVERSITY

UPO BOX 1100

MOREHEAD, KY 40351

606-783-2030

CORRECTION: A Jan. 23 release mailed to you recently concerning new officers of Lambda Chi Alpha national fraternity contained out-of-date information. Please substitute the following release.

January 24, 1986
FOR IMMEDIATE RELEASE

MOREHEAD, Ky. --- Morehead State University's chapter of Lambda Chi Alpha, a national fraternity, has elected officers for the 1985-86 school year.

Elected were:

- *President -- William Dennis McKay, Maysville senior.
- *Vice president -- Eric Evans, Morehead senior.
- *Secretary and Interfraternity Council Representative -- Sheridan Martin, Drift freshman.
- *Treasurer -- Brad Vickers, Georgetown sophomore.
- *Alumni Relations -- Scott W. Gross, Ashland sophomore.
- *Fraternity Educator -- Randy Crouch, Olympia graduate student.
- *Ritualist -- Ronnie Rice, Lexington senior.
- *Rush Chairman -- Jim Wright, Jenkins graduate student.
- *Scholarship Education -- Scott Morrison, Georgetown sophomore.
- *Social Chairman -- Larry Robinson, Lost Creek graduate student.

###

drh

News

PUBLIC INFORMATION

JUDITH YANCY, DIRECTOR

MOREHEAD STATE UNIVERSITY

UPO BOX 1100

MOREHEAD, KY 40351

606-783-2030

MOREHEAD, Ky. --- Suzanne Barker, daughter of Mr. and Mrs. C.G. Barker of Ashland, has pledged Chi Omega sorority at Morehead State University.

Barker, a junior majoring in special education, is also a member of the Student Council for Exceptional Children.

####

srt

Similar releases were sent to the hometown papers of each of the 22 students involved.
I-24-86

Photo

PUBLIC INFORMATION

JUDITH YANCY, DIRECTOR

MOREHEAD STATE UNIVERSITY

UPO BOX 1100

MOREHEAD, KY 40351

606-783-2030

Jan. 24, 1986

PINT 42 FOR MSU STAFFER

Taking a very casual attitude to donating his 42nd pint of blood last week when the Red Cross Bloodmobile was on the Morehead State University campus is Clyde I. James, MSU coordinator of greek affairs and student organizations. Apparently, donating blood was so old hat to him that James brought a little paperwork along to keep busy. Red Cross worker Sherry Singer of Proctorville, Ohio, is shown with him.

(MSU photo by Scott Randall)

jy



1-24-86

morehead news

Photo

PUBLIC INFORMATION

JUDITH YANCY, DIRECTOR

MOREHEAD STATE UNIVERSITY

UPO BOX 1100

MOREHEAD, KY 40351

606-783-2030

Jan. 24, 1986

KCS CHEERLEADERS VISIT MSU

Morehead State University's varsity cheerleaders conducted a special clinic recently for these cheerleaders, their teachers and sponsors from Kingdom Come Settlement School, Whitesburg. Participants included, front row from left, Jennifer Jones, Rhonda Combs, Tressany Adams (mascot), and Roberta Fraize; second row, Reneva Bradley, teacher; Rhonda Todd, Susie Bradley, Melissa Jones, Lynn Caudill, Sue Frazier, sponsor, and Brenda Adams, sponsor/teacher. The group also saw Whitesburg native Tiffany Bates, MSU Lady Eagles guard, in action against Middle Tennessee State University.

(MSU photo by Ray Bradley)

The Mountain Eagle



News

PUBLIC INFORMATION

JUDITH YANCY, DIRECTOR

MOREHEAD STATE UNIVERSITY

UPO BOX 1100

MOREHEAD, KY 40351

606-783-2030

MOREHEAD, Ky.--Perry James Roy, son of Mr. and Mrs. James Roy of Shepherdsville, has pledged Sigma Phi Epsilon fraternity at Morehead State University.

He is a freshman majoring in biology.

###

srt

Similar releases were sent
to the hometown papers of the
3 students involved.
1-24-86

News

PUBLIC INFORMATION

JUDITH YANCY, DIRECTOR

MOREHEAD STATE UNIVERSITY

UPO BOX 1100

MOREHEAD, KY 40351

606-783-2030

Jan. 25, 1986
FOR IMMEDIATE RELEASE

MOREHEAD, Ky.--Genealogists tracking 19th Century ancestors who left Kentucky for Indiana or Ohio may find their task a little easier now.

A newly-published volume by Dr. Stuart S. Sprague, Morehead State University professor of history, offers clues to more than 10,000 of those migrant Kentuckians.

The second in a series of four volumes, "Kentuckians in Ohio and Indiana" is designed as a genealogical research tool, drawing its information from published county histories and atlases, rather than conventional record sources.

Dr. Sprague's first volume in the series, "Kentuckians in Missouri," was well received and a third, "Kentuckians in Illinois," is being planned.

According to the MSU historian and Kentucky history authority, prior to the Civil War nearly one-third of all native-born Kentuckians lived outside the state, migrating primarily to Ohio, Indiana, Missouri and Illinois. They also left little evidence behind of their existence, making it difficult for today's roots tracers to track them.

Arranged in tabular form by county of origin, the entries provide some of all of the following data: name of the Kentucky migrant, birthdate, names of parents and their dates and places of birth (where possible) and date of migration.

(more)

Sprague
2-2-2-2-2-2

"These are basically reference volumes," Dr. Sprague said of the publications. "It is even possible to trace the migrant's brothers and sisters with this approach as well," he added.

The 302-paged, clothbound volume was published by the Genealogical Publishing Company, Inc., of Baltimore, Md., earlier this month.

Dr. Sprague, who received the University's 1985 Distinguished Researcher Award, joined the faculty in 1968. He holds bachelor's and master's degrees from Yale University and the doctorate from New York University.

He has written numerous articles for professional journals and magazines on Appalachian history and is considered to be one of the pioneers in this field. A charter member of the Society of Historians of the Early American Republic, Dr. Sprague also is active in the Southern Historical Society and the Kentucky Historical Society.

###

News

PUBLIC INFORMATION

JUDITH YANCY, DIRECTOR

MOREHEAD STATE UNIVERSITY

UPO BOX 1100

MOREHEAD, KY 40351

606-783-2030

MOREHEAD, Ky. --- Richard D. White, son of Mrs. Noel S. White of Ironton, Ohio, has pledged Lambda Chi Alpha fraternity at Morehead State University.

White, a freshman majoring in para-legal studies, is also floor representative of Regents Hall.

####

srt

Releases similar to this one were sent to the hometown papers of each of the 10 pledges.

1-25-86

News

PUBLIC INFORMATION

JUDITH YANCY, DIRECTOR

MOREHEAD STATE UNIVERSITY

UPO BOX 1100

MOREHEAD, KY 40351

606-783-2030

Jan. 25, 1986
FOR IMMEDIATE RELEASE

MOREHEAD, Ky.--Morehead State University's nine-member speech team was sweepstakes winner, taking the first place team trophy, at a speech tournament held at Ohio State University recently.

In addition, Kevin Cockrell, Jeffersonville sophomore, was named best overall speaker in the tournament. Three other MSU students, Vonda Ramey, Morehead junior; Margaret Holt, Radcliff junior, and Lisa Shemwell, Winchester junior, were rated second, fourth and fifth best overall tournament speakers.

MSU was one of 15 college and university teams from four states taking part in the forensics competition, according to Phil Martin, MSU instructor of speech and forensics director.

Individual wins included:

Cockrell, first place in persuasive speaking and dramatic duo interpretation; second place, prose interpretation, third in dramatic duo interpretation and fifth in extemporaneous speaking. He is a speech major.

Ramey, second place in dramatic duo interpretation, informative speaking and rhetorical criticism; third in sales speaking and fifth in poetry interpretation. She is a business and speech major.

Holt, second place in after dinner speaking; third in rhetorical criticism, and fifth in extemporaneous speaking. She is a radio/television major.

(more)

speech
2-2-2-2-2-2

Shemwell, third in rhetorical criticism; fifth in persuasive speaking and sixth in informative speaking. She is a journalism major.

Bob Stafford, Vanceburg senior majoring in business and speech, third in dramatic duo and after dinner speaking, and sixth in rhetorical criticism.

John Burchett, Morehead freshman and pre dentistry major, first in novice poetry interpretation and first in dramatic duo.

Rondell Meeks, Morehead freshman majoring in theatre, second place in dramatic duo and sixth in novice impromptu speaking.

Jeff Ray, Owingsville senior and radio/television major, first in after dinner speaking.

Also earning sweepstakes points for the team win was Morehead freshman Mike Breeze, a radio/television major.

###

jy

News

PUBLIC INFORMATION

JUDITH YANCY, DIRECTOR

MOREHEAD STATE UNIVERSITY

UPO BOX 1100

MOREHEAD, KY 40351

606-783-2030

Jan. 26, 1986
FOR IMMEDIATE RELEASE

MOREHEAD, Ky.--Caroline S. Garrett has been named guest curator for Morehead State University's Folk Art Museum.

"Ms. Garrett will assist the University in developing public awareness of the Folk Art Museum and its offerings," said Tom Sternal, chair of MSU's Department of Art.

"She also will be developing educational outreach programs for the region's elementary and secondary schools to foster an appreciation of the area's rich arts and crafts culture," Sternal added.

"The museum has an excellent collection of arts and crafts which reflects the region's heritage," said Garrett, who assumed the post earlier this month.

A native of Virginia, she earned the B.F.A. degree from Virginia Commonwealth University, the M.F.A. degree from Cranbrook Academy of Art and her M.A. degree from Ohio State University.

A visiting artist at Camberwell School of Art and Crafts in London, England, on an annual basis since 1980, she also has taught in the Columbus, Ohio, elementary schools and Winona State University.

Last year, she established a private press, entitled The Knot Press, with the publication of a fairytale, "In-Whan and the Peachtree," which she wrote and designed. The volume was printed by Rod A. Mills and illustrated by Naoko Matsubara.

###

jy



Photo

PUBLIC INFORMATION

JUDITH YANCY, DIRECTOR

MOREHEAD STATE UNIVERSITY

UPO BOX 1100

MOREHEAD, KY 40351

606-783-2030

January 27, 1986

BLOODMOBILE AT MSU

The Red Cross Bloodmobile recently stopped at Morehead State University and several students took time out from their studies to donate blood. Barton Stevens, Grayson junior, enjoys the break while making his contribution.

(MSU Photo by Scott Randle)

Grayson, Ky

1-28-86

###

1-23-86drh



Photo

PUBLIC INFORMATION

JUDITH YANCY, DIRECTOR

MOREHEAD STATE UNIVERSITY

UPO BOX 1100

MOREHEAD, KY 40351

606-783-2030

January 27, 1986

BLOODMOBILE AT MSU

The Red Cross Bloodmobile recently stopped at Morehead State University and several students took time out from their studies to donate blood. Robin Werner, Portsmouth, Ohio, sophomore, relaxes as a Red Cross worker checks her blood pressure.

(MSU Photo by Scott Randle)

###

Portsmouth, OH
1-28-86

1-23-86drh



Photo

PUBLIC INFORMATION

JUDITH YANCY, DIRECTOR

MOREHEAD STATE UNIVERSITY

UPO BOX 1100

MOREHEAD, KY 40351

606-783-2030

January 27, 1986

BLOODMOBILE AT MSU

The Red Cross Bloodmobile recently stopped at Morehead State University and several students took time out from their studies to donate blood. Cindi Deaton, Lawrenceburg freshman, relaxes while making her contribution.

(MSU Photo by Scott Randle)

###

Lawrenceburg 1-28-86

1-23-86drh



Photo

PUBLIC INFORMATION

JUDITH YANCY, DIRECTOR

MOREHEAD STATE UNIVERSITY

UPO BOX 1100

MOREHEAD, KY 40351

606-783-2030

January 27, 1986

BLOODMOBILE AT MSU

The Red Cross Bloodmobile recently stopped at Morehead State University and several students took time out from their studies to donate blood. Sister Mary Jean Francis of Morehead's St. Claire Medical Center checks the blood pressure of Sandra Bowden Ouladi, Booneville senior.

(MSU Photo by Scott Randle)

Booneville 1-28-86

###

1-23-86drh



Photo

PUBLIC INFORMATION

JUDITH YANCY, DIRECTOR

MOREHEAD STATE UNIVERSITY

UPO BOX 1100

MOREHEAD, KY 40351

606-783-2030

January 27, 1986

BLOODMOBILE AT MSU

The Red Cross Bloodmobile recently stopped at Morehead State University and several students took time out from their studies to donate blood. Sherry Singer, Red Cross worker, checks the pulse of Karen Roark, Pineville freshman, following Roark's contribution.

(MSU Photo by Scott Randle)

###

Pineville 1-28-86

1-23-86drh



News

PUBLIC INFORMATION

JUDITH YANCY, DIRECTOR

MOREHEAD STATE UNIVERSITY

UPO BOX 1100

MOREHEAD, KY 40351

606-783-2030

Jan. 27, 1986
FOR IMMEDIATE RELEASE

MOREHEAD, Ky.--WMKY-FM 90.3, public radio from Morehead State University, will air a series of special programs in honor of Black History Month celebrated during February nationwide.

Highlighting the celebration will be "A Jazz Jubilee," a collection of programs on America's unique art form, produced by National Public Radio.

Scheduled for Sundays at 4 p.m., "A Jazz Jubilee" will be launched by a WMKY-produced look at local black musicians with Joe Hansen on Feb. 2. The NPR series begins Feb. 9 and will feature legendary jazz artist Jon Hendricks with an audio history of jazz featuring such greats as Louie Armstrong, Duke Ellington, Count Basie, Thelonius Monk and Miles Davis.

The series also includes "American Women in Jazz," three hour-long programs devoted to some of American's most outstanding women musicians, which will air Saturdays at 6 p.m. over WMKY.

NPR's "Jazz Jubilee" also includes "The Basie Dozen," a series of five minute interviews with musicians who played in Count Basie's band. Backed by vintage recordings, the series will air weekdays between 7:30 and 8 a.m. over WMKY's "New Day" show.

In addition to "A Jazz Jubilee," WMKY's programming for Black History Month will include "Voices of the Civil Rights Movement," the story of the movement told through the words of civil rights activists, freedom songs and field recordings done during that era.

(more)

jazz
2-2-2-2-2-2

The series, seven programs from the Smithsonian Institution, recounts the experiences of the southern-based movement that ushered in a new era in the black American struggle for justice and equality. The special will air Fridays at 6:30 p.m. through March 21 on WMKY.

Finally, a special broadcast from Indiana entitled Echoes of the People's Lincoln, will air in February in honor of President's Month. Aired Fridays at 12:30 p.m., the show will feature the songs of the era that were once part of everyday American life, but have been stored in museum archives.

Additional information on WMKY's programming or on how to become a WMKY subscriber may be obtained from Judy Flavell at (606) 783-2001.

###

jf

Photo

PUBLIC INFORMATION

JUDITH YANCY, DIRECTOR

MOREHEAD STATE UNIVERSITY

UPO BOX 1100

MOREHEAD, KY 40351

606-783-2030

January 27, 1986

BLOODMOBILE AT MSU

The Red Cross Bloodmobile recently stopped at Morehead State University and several students took time out from their studies to donate blood. Ann Romans, Henderson sophomore, relaxes while making her contribution.

(MSU Photo by Scott Randle)

###

1-23-86drh

Henderson 1-28-86



News

PUBLIC INFORMATION

JUDITH YANCY, DIRECTOR

MOREHEAD STATE UNIVERSITY

UPO BOX 1100

MOREHEAD, KY 40351

606-783-2030

MOREHEAD, Ky. --- Chris Gilkerson, son of Max and Mary Gilkerson of Flemingsburg, has pledged Alpha Xi Omega fraternity at Morehead State University.

He is a sophomore majoring in radio-television.

####

srt

Similar releases were sent to the hometown papers of each of the 6 students involved.
1-27-86

News

PUBLIC INFORMATION

JUDITH YANCY, DIRECTOR

MOREHEAD STATE UNIVERSITY

UPO BOX 1100

MOREHEAD, KY 40351

606-783-2030

Jan. 28, 1986
FOR IMMEDIATE RELEASE

MOREHEAD, Ky.--A series of county meetings for persons interested in participating in Morehead State University's sheep industry development program will be held in February.

"The meetings are designed to provide interested farmers with specific information on the program and sheep production in general," said Jim Akers, MSU sheep specialist.

The meetings will be held at 7 p.m. and are scheduled as follows:

*Lewis County, Feb. 4, Lewis County Courtroom

*Fleming County, Feb. 5, Kentucky Utilities Building

*Bath County, Feb. 6, Farm Bureau Office

*Rowan County, Feb. 10, Veterinary Technician Building, MSU's Derrickson

Agriculture Complex

*Carter County, Feb. 11, County Extension Office

*Menifee County, Feb. 12, Clark RECC Building

*Morgan County, Feb. 13, County Office Building

*Elliott County, Feb. 17, Elliott County Courthouse

"Sheep production looks very promising for Eastern Kentucky right now and we want to help farmers get started on the right foot," said Akers.

Under the program, sheep farmers will receive their initial flock from MSU and will repay the program with an equal number of ewe lambs they produce over a three-year period. In addition to the sheep, farmers will receive on-site assistance and training programs from Morehead State.

"We'll show farmers the most practical way to raise their sheep," Akers explained. "Anyone interested in the program should attend one of our initial meetings or call me at the Appalachian Development Center (606) 783-2077."

###

News

PUBLIC INFORMATION

JUDITH YANCY, DIRECTOR

MOREHEAD STATE UNIVERSITY

UPO BOX 1100

MOREHEAD, KY 40351

606-783-2030

MOREHEAD, Ky. --- Debbie Arnett, daughter of Jerry and Gwennie Arnett of Salyersville, has pledged Kappa Delta sorority at Morehead State University.

She is a freshman at MSU.

####

srt

Similar releases were sent to the hometown papers of each of the 22 students involved.
1-28-86

News

PUBLIC INFORMATION

JUDITH YANCY, DIRECTOR

MOREHEAD STATE UNIVERSITY

UPO BOX 1100

MOREHEAD, KY 40351

606-783-2030

Jan. 30, 1986
SPECIAL TO THE MOREHEAD NEWS

MOREHEAD, Ky.--Local residents and MSU faculty, staff, students and alumni are invited to join the "Capital College Caravan" to Frankfort on Wednesday, Feb. 5.

The Morehead contingent plans to join thousands of other citizens from throughout the state for a rally on behalf of higher education at 5 p.m. in the Frankfort Civic Center.

A motorcade of buses, vans and cars will leave from MSU's Academic-Athletic Center parking lot at 2:30 p.m., according to Gary Blake, president of the Chamber of Commerce, and Keith Kappes, MSU's rally coordinator.

"We encourage the friends of MSU and higher education to develop car and van pools to join those already committed to the trek," Blake and Kappes said. "MSU's Alumni Association and Student Association have chartered buses but we will need vans and cars, as well."

"The MSU cheerleaders and the Eagle mascot, along with the Pep Band, will be going to perform along with their counterparts from the other seven public institutions," they said.

An added attraction will be a free drawing for a \$20,000 customized van which is traveling the state to promote the rally. The van will be on display Monday at 3:30 p.m. at the Adron Doran University Center. The van will be awarded to a person attending the Frankfort rally.

(more)

Special
2-2-2-2-2-2

In addition, there will be an "After the Rally Rally" at the Lexington Hilton from 8 p.m. to 9:30 p.m., featuring food and a cash bar, for the Morehead delegation. That activity will be hosted by the Alumni Association.

"This is an opportunity for the University and this community to get together for fun and to help a good cause," Blake and Kappes added. "It will be a demonstration of citizenship as we show the legislators that there is broad-based citizen support for increased higher education funding."

##

News

PUBLIC INFORMATION

JUDITH YANCY, DIRECTOR

MOREHEAD STATE UNIVERSITY

UPO BOX 1100

MOREHEAD, KY 40351

606-783-2030

January 30, 1986
FOR IMMEDIATE RELEASE

MOREHEAD, Ky. --- Dr. Charles H. King Jr. of Atlanta, Urban Crisis Center director, will be the keynote speaker for the Black History Month observance in February at Morehead State University.

The month-long observance, based on the theme "The Afro-American Experience: International Connection," also will feature an address by former U.S. Rep. Shirley Chisholm, a performance of "Voices in the Rain," by Jomandi Productions, and several other speakers.

Sponsors for the Black History Month events include MSU's Office of Minority Student Affairs, Office of Student Activities and Organizations, and Arts in Morehead (AIM) with assistance from the Southern Arts Foundation.

"The campus observance includes a wide variety of programs all designed to heighten the awareness of both black and white students of the black experience," said Jerry Gore, minority student affairs director at MSU.

Dr. King, author of "Fire in My Bones," is scheduled to speak at 8 p.m. Monday, Feb. 3, in Breckinridge Auditorium. The event is free and open to the public.

On Friday, Feb. 7, Tina Fabrique will be heard in concert at 8 p.m. in Button Auditorium, presenting a mixture of jazz, blues and "Top 40" songs.

(more)

"Voices in the Rain," a musical drama recreating the history of black Americans through personal stories and vignettes, will be presented at 8 p.m. Wednesday, Feb. 12, in Breckinridge Auditorium.

Jomandi Productions, a black-owned professional theatre company, has toured since 1976 performing in New York, Philadelphia, Houston and abroad. Jomandi's MSU performance is sponsored in part by AIM with assistance from the Southern Arts Foundation.

Admission to "Voices in the Rain" will be \$5 for the general public, \$2.50 for AIM season ticket holders and \$2.50 for non-MSU students aged 18 or younger. MSU students with valid I.D. cards will be admitted free.

MSU alumnus Wayne Miller, an account executive with the Cincinnati Enquirer and co-chairman of the United Negro College Fund, will speak at 7 p.m. Thursday, Feb. 18, in Breckinridge Auditorium. His topic will be "The Value of a Well-Rounded Education."

On Wednesday, Feb. 19, at 7 p.m. in Claypool-Young 111, Dr. Strider will present a slide series, "Research for Preserving Black History."

Presented under the auspices of AIM, Shirley Chisholm will speak at 8 p.m. Thursday, Feb. 20, in Button Auditorium. She holds the Purington Chair at Mount Holyoke College and is a frequent lecturer on education, women's issues and civil rights.

Admission will be by valid I.D. card for MSU students, AIM Concert and Lecture Series season ticket or single admission tickets at \$5 each for adults and \$2.50 each for students 18 and under.

Black History Month
3-3-3-3-3-3

"Academic Excellence through Positive Thinking" will be the topic for a talk by Dr. Betty Sue Griffith, professor of education at the University of Oregon, slated for 7 p.m. Tuesday, Feb. 25, in Claypool-Young 111.

The final event will be the appearance of the Mary Wong Comedy Team on Wednesday, Feb. 26, at 8 p.m. in the University Center Grill. The group's style is described as a "cross between Eddie Murphy and Monty Python."

All events are open to the public and with the exception of "Voices in the Rain" and Ms. Chisholm are free.

####

jy



Tina Fabrique

603276



Mary Wong Comedy Team

Media Advisory

PUBLIC INFORMATION

JUDITH YANCY, DIRECTOR

MOREHEAD STATE UNIVERSITY

UPO BOX 1100

MOREHEAD, KY 40351

606-783-2030

Jan. 30, 1986

EVENT: News Conference

WHO: Kentucky Advocates for Higher Education

WHY: Capital College Caravan update and display van to be given away
at Higher Education Rally Wednesday in Frankfort

WHEN: Monday, Feb. 3, 1986

TIME: 3:30 p.m.

WHEN: In front of ADUC

Photo

PUBLIC INFORMATION

JUDITH YANCY, DIRECTOR

MOREHEAD STATE UNIVERSITY

UPO BOX 1100

MOREHEAD, KY 40351

606-783-2030

MSU PANHELLENIC COUNCIL ELECTS NEW LEADER

Kelli Abner, left, Morehead senior and 1985 president of Morehead State University's Panhellenic Council, passes the gavel of leadership to newly elected 1986 president Lisa Adkins, right, Sandy Hook senior. Abner is an elementary education major and a member of the Chi Omega sorority. Adkins is a French major and a member of the Sigma Sigma Sigma sorority. The council consists of representatives from all MSU sororities.

(MSU Photo by Scott Randle)

*Elliott Co, M. News
C. James*

1-30-86drh

###

1-31-86



Photo

PUBLIC INFORMATION

JUDITH YANCY, DIRECTOR

MOREHEAD STATE UNIVERSITY

UPO BOX 1100

MOREHEAD, KY 40351

606-783-2030

MSU STUDENT RECEIVES REAL ESTATE SCHOLARSHIP

Beverly McCormick, Morehead State University assistant professor of real estate, presents Darryl Grimes, Sharpsburg junior, with a Harwood Scholarship from the Real Estate Educators Association. Grimes, the son of Shirley and Elaine Grimes, is one of 36 students across the nation receiving the scholarship funded by Dr. Bruce Harwood, author and real estate expert. The international association awards scholarships of \$300 each to full-time students showing academic ability and planning to pursue a real estate career.

(MSU Photo by Scott Randle)

1-29-86 drh

###

*Mt. Sterling, Flemingburg, Carlisle,
Olivia Hill, Grayson, Bath Co,
Neil Blayer, Statement
4 copies to the Council*

1-30-86



Photo

PUBLIC INFORMATION

JUDITH YANCY, DIRECTOR

MOREHEAD STATE UNIVERSITY

UPO BOX 1100

MOREHEAD, KY 40351

606-783-2030

MSU SORORITY WINS AWARD

On behalf of Morehead State University's Sigma Sigma Sigma (Tri-Sigma) sorority, Leesburg, Ohio, sophomore Angie Shaffer, right, accepts the Pledge Scholarship Award for the 1985 fall semester. Presenting the award is Sandy Hook senior Lisa Adkins, left, 1986 president of the Panhellenic Council. The council presents the award each semester to the sorority pledge class achieving the highest collective grade point average. Shaffer is the president of Tri-Sigma's pledge class and Adkins is a member of that sorority.

(MSU Photo by Scott Randle)

1-30-86drh

###

Highland Co, Oh.
1-31-86



Alia
Copy to Kappa. Reinforce
2 photos sent

Photo

PUBLIC INFORMATION

JUDITH YANCY, DIRECTOR

MOREHEAD STATE UNIVERSITY

UPO BOX 1100

MOREHEAD, KY 40351

606-783-2030

MSU SORORITY WINS AWARD

Jamie Lester, right, South Point, Ohio, junior, accepts Morehead State University's Panhellenic Scholarship Award for the 1985 fall semester on behalf of the Chi Omega sorority. Presenting the award is Lisa Adkins, left, Sandy Hook senior and 1986 president of the Panhellenic Council. The council presents the award each semester to the sorority achieving the highest collective grade point average. Lester is president of Chi Omega and Adkins is a member of Sigma Sigma Sigma.

(MSU Photo by Scott Randle)

1-30-86drh

###

Lawrence Co., Oh
1-31-86



News

PUBLIC INFORMATION

JUDITH YANCY, DIRECTOR

MOREHEAD STATE UNIVERSITY

UPO BOX 1100

MOREHEAD, KY 40351

606-783-2030

Jan. 31, 1986
FOR IMMEDIATE RELEASE

MOREHEAD, Ky.--Morehead State University's varsity cheerleading squad finished in the top 20 in a national competition conducted by the Universal Cheerleaders Association.

MSU's 10-member squad was ranked 14th out of nearly 80 squads, including several from the Ohio Valley Conference, according to Myron Doan, MSU assistant to the vice president for student development and squad adviser.

This was MSU's first time as an UCA competition participant, Doan noted. A plaque recognizing the achievement will be placed in the Academic-Athletic Center, he added.

Each squad entering the competition submitted a videotape which included a cheer, a side liner and a fight song routine. Approximately 150 cheerleading teams competed in the three divisions of competition--1A, 1AA, and 2--based on the division play of the school's football team.

MSU's winning cheerleader squad included Stephanie Dunaway and Gina Brown, Morehead seniors; Missi Collins, Morehead sophomore; El'Dora Carter, Olive Hill sophomore; Angie McClure, Chesapeake, Ohio, sophomore; Buddy Logan and Steve Cyrus, Ashland seniors, Mike Ebright, Carroll, Ohio, senior and squad captain; Scot Stober, Bethel, Ohio, senior, and Rich Pinson, Elkhorn City sophomore.

###

Photo

PUBLIC INFORMATION

JUDITH YANCY, DIRECTOR

MOREHEAD STATE UNIVERSITY

UPO BOX 1100

MOREHEAD, KY 40351

606-783-2030

MSU CHEERLEADERS IN TOP 20

Morehead State University's varsity cheerleaders placed in the top 20 in national competition conducted by the Universal Cheerleaders Association. Members of the winning team were, front row from left, Stephanie Dunaway, Morehead senior; Missi Collins, Morehead sophomore; Gina Brown, Morehead senior; second row, El'Dora Carter, Olive Hill sophomore; Angie McClure, Chesapeake, Ohio, sophomore; Buddy Logan, Ashland senior; third row, Mike Ebright, Carroll, Ohio, senior and team captain; Scot Stober, Bethel, Ohio, senior; Rick Pinson, Elkhorn City sophomore, and back row, Myron Doan, team adviser and assistant to the vice president for student development at MSU, and Steve Cyrus, Ashland senior.



News

PUBLIC INFORMATION

JUDITH YANCY, DIRECTOR

MOREHEAD STATE UNIVERSITY

UPO BOX 1100

MOREHEAD, KY 40351

606-783-2030

Jan. 31, 1986
FOR IMMEDIATE RELEASE

MOREHEAD, Ky.--The Maria Benitez Spanish Dance Company will perform at Morehead State University on Wednesday, Feb. 5, at 8 p.m. in Button Auditorium as part of the Arts in Morehead (AIM) 1985-86 Concert and Lecture Series.

Admission will be by season membership tickets or general admission tickets available at the door at \$5 each. MSU students with valid I.D. cards will be admitted free. Students age 18 and under may purchase tickets at half price.

Acclaimed by critics from Los Angeles to New York and in Europe, the Maria Benitez Dance Company has toured for more than a decade with performances of flamenco and Spanish dance.

Rehearsals before a tour are held in Madrid where some of Spain's most respected choreographers create both traditional and innovative works, helping the company to maintain its authenticity.

Critics have labeled Benitez herself as "electrifying" and "imperiously seductive," as well as "a living legend." She began training at age 10 in ballet initially and then went to Spain to study Spanish dance, touring as a performer with national Spanish dance companies and small flamenco troupes.

Recognized not only as a performer, but also as a choreographer for opera, she has taught at the Boston Conservatory of Music, the Verde Valley School in Arizona, the University of Utah and the Institute of American Indian Arts in Santa Fe, New Mexico, where the company is headquartered.

(more)

Dance Company
2-2-2-2-2-2

Benitez is the recipient of the New Mexico Governor's Award for Excellence in the Field of Dance and the Classical Spanish Dance Award given by the Cultural Institute of Puerto Rico in New York City.

This performance by the dance company has been made possible in part by a grant from the National Endowment for the Arts through the Southern Arts Federation of which the Kentucky Arts Council is a member.

AIM's Concert and Lecture Series is a cooperative effort of Morehead State and the Morehead-Rowan County Arts Council, Inc.

###

jy

News

PUBLIC INFORMATION

JUDITH YANCY, DIRECTOR

MOREHEAD STATE UNIVERSITY

UPO BOX 1100

MOREHEAD, KY 40351

606-783-2030

Jan. 31, 1986
FOR IMMEDIATE RELEASE

MOREHEAD, Ky.--Morehead State University's Planetarium will present eight showings of the program "Comet Halley: Once in a Lifetime" during February and the first week in March.

Showings are scheduled for 4:10 p.m. on the following Tuesdays, Feb. 11, 18, 25 and March 4, and at 7:30 p.m. on the following Thursdays, Feb. 13, 20, 27 and March 6.

The 50-minute presentation which looks at the history, mythology and science of the famous comet is free and open to the public, but reservations are required. Reservations may be made by calling (606) 783-2914.

The University Planetarium is located in Lappin Hall 212.

According to Dr. John C. Philley, chair of MSU's Department of Physical Sciences, due to the large volume of requests already received for group programs, the planetarium will not be able to offer additional sessions for special groups this semester.

###

Media Advisory

PUBLIC INFORMATION

JUDITH YANCY, DIRECTOR

MOREHEAD STATE UNIVERSITY

UPO BOX 1100

MOREHEAD, KY 40351

606-783-2030

RE: Black History Month

February is Black History Month and as part of Morehead State University's programming for the observance two prominent black leaders will speak on campus.

**DR. CHARLES J. KING JR., director of the Urban Crisis Center,
at 8 p.m. Monday, Feb. 3, Breck Auditorium.

**FORMER U.S. CONGRESSWOMAN SHIRLEY CHISHOLM at 8 p.m., Thursday,
Feb. 20, Button Auditorium.

###

jy