

News

PUBLIC INFORMATION

JUDITH CASTO, DIRECTOR

MOREHEAD STATE UNIVERSITY

UPO BOX 1100

MOREHEAD, KY 40351

606-783-2030

Oct. 1, 1985

FOR IMMEDIATE RELEASE

MOREHEAD, Ky. -- Dr. Mark Littmann, science educator, planetarium director, NASA consultant and author, will launch the Arts in Morehead (AIM) 1985-86 Concert and Lecture Series with a program on Halley's Comet on Monday, Oct. 7.

Littmann's slide-illustrated discussion of the phenomenon is scheduled for 8 p.m. in Button Auditorium on the campus of Morehead State University.

"Halley's Comet was last seen in 1910. This time it will be visible now through March, for a period of six months," said Dr. Glenn C. Rogers, MSU professor of English and chairman of the series committee.

Littmann also will be the 1985 Wilhelm Exelbirt Distinguished Lecturer, a continuing lectureship funded by the MSU Foundation, and his talk will be free to the public, according to Rogers.

Head of Salt Lake City, Utah's Hansen Planetarium for nearly two decades, Littmann is co-author of the book "Comet Halley: Once in a Lifetime." During his tenure there, Hansen's programs attracted the highest per capita attendance for its size. Littmann also developed the largest "star show" distribution and astronomy education publications program in the field. His star programs are used by planetariums throughout the world.

A graduate of Massachusetts Institute of Technology with a bachelor's degree in chemistry and literature, Littmann received his master's degree from Hollins College and Ph.D. degree from Northwestern University.

- more -

Arts in Morehead
2-2-2-2-2-2

He has received numerous honors from his peers, including the International Planetarium Society's 1982 Service Award.

AIM is a cooperative effort of Morehead State and the Morehead-Rowan County Arts Council. Season subscriptions to the full series of 10 programs will be available at the door on Oct. 7. Programs for the year include such speakers as former U.S. Secretary of Education Terrell Bell and NPR Radio host Bob Edwards, classical and jazz concerts and the National Shakespeare Company with "Othello," as well as a Cole Porter musical revue.

Additional information on the series may be obtained by calling (606) 783-2788 or writing AIM, P.O. Box 250, Morehead, Ky. 40351.

#####

emj

News

PUBLIC INFORMATION

JUDITH CASTO, DIRECTOR

MOREHEAD STATE UNIVERSITY

UPO BOX 1100

MOREHEAD, KY 40351

606-783-2030

Oct. 1, 1985
FOR IMMEDIATE RELEASE

MOREHEAD, Ky.--The Morehead State University Cosmopolitan Club has elected officers for the 1985-86 academic year.

The new officers are: Prince Dimkpa of Nigeria, president; Teresa Barhorst, Mayking, vice-president; Aini Raja Yaacob, Malaysia, secretary; J. Bala Alkali, Nigeria, treasurer; Robin Rene Werner, Portsmouth, Ohio, social chairman; Azad Rafat, Iraq, publicity chairman; and Joseph Hamer, Mont Clair, N.J., Ngozi Oparaocha, Nigeria, and Edwin Jomiji, Malaysia, members-at-large.

The faculty advisers for the Cosmopolitan Club are Dr. M.K. Thomas, MSU professor of English; Dr. Lindsey Back, MSU professor of political science, and Dr. Perry LeRoy, MSU international student adviser.

The club plans many activities this year. Among these will be intercultural lectures, shows, fashions, tours, displays, picnics, sports, and the International Banquet. The club invites participation from the university and area residents according to Dr. LeRoy.

"This year the community will have the opportunity of joining the host family program. All interested community and campus residents are welcome to attend club meetings.," LeRoy said.

###

News

PUBLIC INFORMATION

JUDITH CASTO, DIRECTOR

MOREHEAD STATE UNIVERSITY

UPO BOX 1100

MOREHEAD, KY 40351

606-783-2030

Oct. 1, 1985
FOR IMMEDIATE RELEASE

MOREHEAD, Ky.--The third annual Hardwood Lumber Grading Short Course, offered through the Business Development program of Morehead State University's Appalachian Development Center, will be held Dec. 2-6 at the University.

The course begins at 9 a.m. Monday, Dec. 2, and continues through noon Friday, Dec. 6. Instructors for the class, taught by National Hardwood Lumber Association rules, include Rick Bradley of Homer Gregory & Co., Morehead; John Shelly of University of Kentucky Department of Forestry; and Jack Grace of the Kentucky Division of Forestry.

Co-sponsors with ADC are the East Kentucky Small Business Development Center, the Small Business Administration, the University of Kentucky Department of Forestry, the Kentucky Division of Forestry, and the Kentucky Forest Industries Association.

Certificates will be awarded upon completion. The cost is \$75 per student. Low cost housing is available in the University residence halls.

Additional information is available from Wilson Grier, Appalachian Development Center, Morehead State University, Morehead, KY 40351. Phone (606) 783-2077.

###

ADC

News

PUBLIC INFORMATION

JUDITH CASTO, DIRECTOR

MOREHEAD STATE UNIVERSITY

UPO BOX 1100

MOREHEAD, KY 40351

606-783-2030

Oct. 1, 1985
FOR IMMEDIATE RELEASE

MOREHEAD, Ky. -- Morehead State University's Department of Nursing and Allied Health will offer a workshop on the care of dying patients for nurses and support personnel at 8:30 a.m. Saturday, Oct. 11, at Morgan County Appalachian Regional Hospital, West Liberty.

The workshop is the first of nine scheduled for 1985-86 on death and dying, according to Pauline Ramey, MSU coordinator of continuing education for nurses.

The workshop, which will explore current sociological, psychological and nursing perspectives concerning death, is open to registered nurses, ministers, social workers and other persons involved with the care of dying patients and their families, Ramey said.

Specific topics will include counseling techniques, methods of communication, intervention for children associated with a dying person, the nurse's role and the effect of the care-giver's attitude on care.

Dr. William Weikel, MSU professor of education; Ellie Reser, associate chaplain, St. Claire Medical Center; Geri Hall, education coordinator, Pathways Inc.; and Ramey will conduct the workshop which is partially funded by the U.S. Department of Health and Human Services.

The workshop is approved by the Kentucky Board of Nursing and six contact hours will be awarded to participants.

The fee is \$10. Additional information is available by calling (606) 783-2635 or 783-2632.

###

kj

News

PUBLIC INFORMATION

JUDITH CASTO, DIRECTOR

MOREHEAD STATE UNIVERSITY

UPO BOX 1100

MOREHEAD, KY 40351

606-783-2030

Oct. 2, 1985
FOR IMMEDIATE RELEASE

MOREHEAD, Ky.--Dr. Gary Cox, deputy executive director of the Kentucky Council on Higher Education, will speak at a dinner meeting of the Morehead State University Chapter of Phi Delta Kappa on Monday, Oct. 14 at 7 p.m.

Dr. Cox will discuss the "Five Year Plan for Higher Education in Kentucky" and its implications for Morehead State University. Dr. John Duncan, MSU professor of education, will moderate the program and there will be a question and answer period.

Dinner will be served at 6 p.m. in the Red Room of the Adron Doran University Center. Reservations for the \$6.50 per plate dinner may be made through Friday noon, Oct. 11 by calling Helen Williams, 783-2828.

The program will begin at 7 p.m. also in the Red Room. Visitors are welcome and may attend only the program portion if they so desire.

####

News

PUBLIC INFORMATION

JUDITH CASTO, DIRECTOR

MOREHEAD STATE UNIVERSITY

UPO BOX 1100

MOREHEAD, KY 40351

606-783-2030

Oct. 4, 1985
FOR IMMEDIATE RELEASE

MOREHEAD, Ky.--Morehead State University's Department of Physical Sciences will present "Comet Halley: Once in a Lifetime" eight times in October at the University planetarium, Lappin Hall Room 212.

The 45-minute planetarium presentation will be shown at 7:30 p.m. Tuesdays, Oct. 8, 15, 22 and 29. The program also will be presented at 4:10 p.m. Thursdays, Oct. 10, 17, 24, and 31.

The program was produced by Starmaster Corporation, Salt Lake City, Utah, and Universe Planetarium/Space Theater, Science Museum of Virginia, Richmond, Va., according to Dr. John C. Philley, MSU Department of Physical Sciences chair.

Halley's Comet, named for English scientist Edward Halley, has been observed and recorded on all but one of its visits to earth since 240 B.C., Philley said.

The program is open to the community. No one will be seated after the show has begun.

Reservations and additional information may be obtained by calling (606) 783-2914.

###

kj

News

PUBLIC INFORMATION

JUDITH CASTO, DIRECTOR

MOREHEAD STATE UNIVERSITY

UPO BOX 1100

MOREHEAD, KY 40351

606-783-2030

Oct. 4, 1985
FOR IMMEDIATE RELEASE

MOREHEAD, Ky.--Morehead State University will offer a two-week study tour in England Dec. 26-Jan. 9.

MSU, in conjunction with the Cooperative Center for Study in Britain and the Kentucky Institute for European Studies, will sponsor courses in theater, business and nursing to be taught between the fall and spring semesters, according to Dr. Kent Freeland, MSU professor of education.

CCSB and KIES programs are open to full- and part-time students. Applications for the December-January tour must be received by Nov. 1, Freeland said.

Two summer tours are also planned. A Summer I session is scheduled for June 9-July 10 and the Summer II tour for July 7-Aug. 11, according to Freeland.

The Summer I program will be based in the homes of families in various British cities while Summer II courses are set for King's College in London, he said.

Summer courses will include history, business, geography, government, nursing, education, sociology, journalism, economics, home economics, humanities, psychology, music, art, communications, horticulture, literature, science education and theater, he said.

Eight MSU faculty members will conduct courses for this year's tours, Freeland said.

More information on tours and applications may be obtained from Freeland by calling (606) 783-2006 or from Dr. Charles Holt at (606) 783-2590.

###

News

PUBLIC INFORMATION

JUDITH CASTO, DIRECTOR

MOREHEAD STATE UNIVERSITY

UPO BOX 1100

MOREHEAD, KY 40351

606-783-2030

Oct. 4, 1985
FOR IMMEDIATE RELEASE

MOREHEAD, Ky.--Dr. William Bigham, Morehead State University professor of music, has been named president of the Kentucky Music Educators Association (KMEA) for the 1985-87 term.

"The purpose of the KMEA is to assess the needs and advance the cause of music education in the state," Bigham said. "Our biggest concern right now is funding."

Many local school districts in the state have decreased the number of music teachers and the amount of money spent on music programs due to budget cuts, he explained.

The KMEA is an organization of music teachers and students in training to become music teachers who work primarily in formal school settings, he said.

Bigham will serve as president until July 1, 1987. He was president-elect the past two years.

"As president, my major function will be to prepare for the annual in-service conference which is a four-day affair dedicated to improving the teaching skills of the state's music educators," Bigham said. "The conference will be held Feb. 5-8 in Lexington."

The KMEA, a state association of the Music Educators National Conference, sponsors music festivals and all-state band, chorus and orchestra competitions for high school musicians. The organization also publishes the "Bluegrass Music News," a journal of music education offered four times a year.

(more)

Bigham
2-2-2-2-2-2

Bigham earned a B.A. degree from Murray State University, an M.A. from the University of Miami and a Ph.D. from Florida State University. He came to MSU in 1965 and was chair of the Department of Music from 1980-85.

He has published several articles and reviews on music and is a former president of the Morehead Optimist Club.

A native of Paris, Tenn., Bigham is married to the former Wanda Durrett of Barlow. They have three children: Janet, William and Julia.

####

kj

News

PUBLIC INFORMATION

JUDITH CASTO, DIRECTOR

MOREHEAD STATE UNIVERSITY

UPO BOX 1100

MOREHEAD, KY 40351

606-783-2030

Oct. 4, 1985
FOR IMMEDIATE RELEASE

MOREHEAD, Ky.--Members of the 1985-86 President's Student Advisory Council at Morehead State University have been chosen.

Composed of 10 students representing various campus organizations and constituencies, the Council meets twice a month with MSU President Herb. F. Reinhard and members of the executive committee of the President's Cabinet to discuss issues, problems and questions which are important to both groups.

The purpose of the President's Student Advisory Council is to provide information to the President from various student organizations and constituencies. It also allows the President to channel information directly to students through these representatives, according to Richard Baxter, executive assistant to the president.

Selected to serve on the President's Advisory Council this year were:

*Kelli Abner of Morehead, Panhellenic Council president.

*Connie Bentley of Vanceburg, married student representative.

*Prince Dimkpa of Nigeria, international student representative.

*Ben Iden of Bloomingburg, Ohio, Student Association president.

*Donald Krauth of Louisville, Interfraternity Council president.

*James Nathan Mathews of Olive Hill, non-traditional student representative.

*Kimberly Dianne Moore of Ashland, graduate student representative.

*Deborah J. Powell of Irvine, Trail Blazer editor.

*Donna Reynolds of Printer, Residence Hall Association president.

*Angela Tutt of Louisville, Black Coalition president.

###

drh

News

PUBLIC INFORMATION

JUDITH CASTO, DIRECTOR

MOREHEAD STATE UNIVERSITY

UPO BOX 1100

MOREHEAD, KY 40351

606-783-2030

Oct. 4, 1985
FOR IMMEDIATE RELEASE

MOREHEAD, Ky.--WMKY FM 90.3, Public Radio from Morehead State University, will present a series of six mysteries from Cape Cod Radio Mystery Theater at 11 p.m. Sundays from Oct. 6 to Nov. 10.

Cape Cod Radio Mystery Theater, a radio theater group founded in 1983, uses current broadcast technology to present mystery "thrillers" in the tradition of "Inner Sanctum" and other classic radio series, according to Judy Flavell, WMKY's acting director of promotion and development.

"We do not think of radio as an old dramatic medium, but as a new one," said Steven Thomas Oney, Mystery Theatre's writer and producer. "We believe that the potential of radio as a medium for suspense has not yet been fully explored."

Cape Cod was chosen as the setting for most of the stories because "it has just about everything you need for a really good mystery--the ocean, the dunes, the fog and foghorns, and graveyards that date back to the days of the Puritans," Oney explained.

The programs will include "The Hypnotist," "The Call on Line One," "The Curse of the Whale's Tooth," "The Legacy of Euriiah Pillar," "The Automatic Murders" and "The Case of the Murdered Miser."

####

kj

News

PUBLIC INFORMATION

JUDITH CASTO, DIRECTOR

MOREHEAD STATE UNIVERSITY

UPO BOX 1100

MOREHEAD, KY 40351

606-783-2030

Oct. 4, 1985
FOR IMMEDIATE RELEASE

MOREHEAD, Ky.--Academic programs at Morehead State University will be enriched by more than \$100,000 as a result of the sale Saturday, Sept. 28, of three University-owned houses.

The houses were declared surplus property last spring by MSU's Board of Regents.

Pending approval of the sale by the Kentucky Cabinet of Finance and Administration's Division of Real Estate, the University stands to net approximately \$105,000, according to Porter Dailey, MSU vice president for administrative and fiscal services.

"That's after deducting the auctioneer's fee and the cost of appraisal," the vice president said.

The money realized has been earmarked as the first deposit into the University's newly-created "Fund for Excellence," an endowed fund dedicated to enhancement of academic programming at the institution. Recommended by MSU President Herb. F. Reinhard to the Board of Regents, it was established at the Regent's Aug. 23 meeting.

The high bids were \$37,300 by E.J. Music of Morehead for 133 College View Court; \$42,000 by Tom Carew of Morehead for 340 N. Wilson Ave., and \$33,500 by Frontier Housing for 649 N. Wilson Ave.

###

News

PUBLIC INFORMATION

JUDITH CASTO, DIRECTOR

MOREHEAD STATE UNIVERSITY

UPO BOX 1100

MOREHEAD, KY 40351

606-783-2030

Oct. 6, 1985
FOR IMMEDIATE RELEASE

MOREHEAD, Ky.--Morehead State University's Department of Music will present a guest alumni recital featuring Jane Zopff, harpist, at 8:15 p.m. Thursday, Oct. 10, in the Duncan Recital Hall.

Zopff's program will include the Handel Concerto in B-flat for harp and other works by Salzedo, Naderman and Tournier.

Zopff, who received a Bachelor of Music Education degree from MSU in 1978, is a master's degree candidate at the University of Cincinnati College-Conservatory of Music.

Zopff of Lebanon, Ohio, has performed with the Louisville Orchestra, Cincinnati Ballet Orchestra, the American Wind Symphony in Pittsburgh, Pa., and the American Institute of Musical Studies in Graz, Austria. She also has played for several touring Broadway musical companies.

####

kdm

Tips

PUBLIC INFORMATION

JUDITH CASTO, DIRECTOR

MOREHEAD STATE UNIVERSITY

UPO BOX 1100

MOREHEAD, KY 40351

606-783-2030

THIS WEEK AT MOREHEAD STATE UNIVERSITY
(Oct. 6 - Oct. 12)

Sunday, Oct. 6

3 P.M. SENIOR VOCAL RECITAL: Claudia McCall will perform in Duncan Recital Hall. For more information, please call 783-2473.

Monday, Oct. 7

8 P.M. AIM CONCERT AND LECTURE SERIES: Mark Littmann will lecture on Halley's Comet in Button Auditorium. For more information, please call 783-2788.

Tuesday, Oct. 8

8 A.M.-NOON CENSUS MATERIAL WORKSHOP in the Eagle Room of the Adron Doran University Center; also 1-4 p.m. For more information, please call 783-2160.

4 P.M. WOMEN'S SOCCER: MSU vs. University of Kentucky at MSU's soccer field. For more information, please call 783-2500.

Wednesday, Oct. 9

8:30 A.M.-4 P.M. BEGINNING TEACHER INTERNSHIP TRAINING PROGRAM in the Eagle Room of the Adron Doran University Center. For more information, please call 783-2894.

4 P.M. MEN'S SOCCER: MSU vs. Bellarmine College at MSU's soccer field. For more information, please call 783-2500.

(more)

THIS WEEK AT MOREHEAD STATE UNIVERSITY
2-2-2-2-2-2

Thursday, Oct. 10

8:15 P.M. GUEST HARP RECITAL: Jane Zopff will perform in Duncan Recital Hall. For more information, please call 783-2473.

Friday, Oct. 11

7 AND 10 P.M. VOLLEYBALL: Mid-season OVC Tournament in MSU's Academic-Athletic Center; also Oct. 12, 1 p.m. For more information, please call 783-2500.

Saturday, Oct. 12

1:30 P.M. FOOTBALL: MSU Eagles vs. Austin Peay State University at MSU's Jayne Stadium. For more information, please call 783-2500.

###

srt

News

PUBLIC INFORMATION

JUDITH CASTO, DIRECTOR

MOREHEAD STATE UNIVERSITY

UPO BOX 1100

MOREHEAD, KY 40351

606-783-2030

Oct. 6, 1985
FOR IMMEDIATE RELEASE

MOREHEAD, Ky.--Morehead State University Theatre's first production of the 1985-86 season "Greater Tuna" will open a seven-night run at 8 p.m. Friday, Oct. 11, in Kibbey Theatre.

Performances of the comedy about the political foibles of a fictitious small town in Texas are scheduled at 8 p.m. Saturday, Oct. 12, and Wednesday through Friday, Oct. 15-18.

A special performance has been scheduled at 7 p.m. Saturday, Oct. 19, as part of MSU's Homecoming activities, according to Dr. Travis Lockhart, MSU Theatre coordinator.

The cast members are Greg Leslie, Louisville senior; Edward Figgins, Brooksville senior; Bill Nichols, Elizabethtown graduate student; Connie Roberts, Martha senior; Van Wilburn, Olive Hill freshman; Tavia Biggs, Lebanon Junction senior; Robert Stafford, Vanceburg senior; Kelvin Amburgey, Littcarr junior; Barry Amburgey, Isom junior; Julie Jones, Cynthiana sophomore; Chris Marshall, Union City, Ohio, senior; Tracee Buchanan, Prestonsburg junior; Rondell Meeks, Morehead freshman; Angie Portman, Louisville junior, and Tara Lail, Cynthiana sophomore.

Reserved seat tickets are available at \$4 for adults, \$2 for non-MSU students, and free to MSU students with valid I.D. cards. Season tickets are \$10 and are good for four MSU productions during 1985-86. Reservations may be made by calling the Kibbey Box Office, (606) 783-2170.

####

tb

News

PUBLIC INFORMATION

JUDITH CASTO, DIRECTOR

MOREHEAD STATE UNIVERSITY

UPO BOX 1100

MOREHEAD, KY 40351

606-783-2030

Oct. 7, 1985
FOR IMMEDIATE RELEASE

MOREHEAD, Ky.--Applications for the Spring 1986 class are still being accepted for Morehead State University's two-year degree program in nursing.

The application deadline has been extended to Dec. 1, according to Dr. Betty Porter, chair of MSU's Department of Nursing and Allied Health Sciences.

Enrollment is limited to 40 students. Admission criteria include an ACT composite score of at least 17 and a B average for students entering from high school or a 2.5 grade point average for those entering from college.

Accredited by the National League for Nursing, MSU's associate degree in nursing program combines classroom lecture with clinical experience, Porter said. Clinical training is provided at St. Claire Medical Center and the Life Care Center in Morehead, the Mary Chiles Hospital in Mt. Sterling and Our Lady of Bellefonte, Ashland.

Students completing the two-year degree program are eligible to take the state licensure examination to become registered nurses.

Additional information on the program and applications may be obtained by calling Janice Brumagen, program coordinator, at (606) 783-2621 or Porter at (606) 783-2632.

###

News

PUBLIC INFORMATION

JUDITH CASTO, DIRECTOR

MOREHEAD STATE UNIVERSITY

UPO BOX 1100

MOREHEAD, KY 40351

606-783-2030

Oct. 7, 1985
FOR IMMEDIATE RELEASE

MOREHEAD, Ky.--Morehead State University and the Jesse Stuart Foundation will sponsor bus tours to Jesse Stuart's Greenup County home Friday and Saturday, Oct. 18-19.

"The tours to Jesse Stuart's W-Hollow home provide a unique opportunity to visit the noted author's homeplace, his gravesite and the places mentioned in his famous writings," Dr. James M. Gifford, the foundation's executive director, said.

"The tours will be particularly informative and exciting because they will be conducted by members of the Stuart family," he added.

A bus will depart at 7:45 a.m. each day from MSU's Appalachian Development Center. In Ashland, a bus will depart at 9 a.m. from the Highlands Museum on Bath Avenue and a third tour will begin at 9:45 a.m. at Jesse Stuart Lodge in Greenbo State Park. The Morehead bus will return to the departure site at 5:30 p.m. The other buses will return to Ashland at 4:30 p.m.

The tour will cost \$15 and include transportation, tour guides and lunch at the Jesse Stuart Lodge. A limited number of reservations are available.

Additional information on the tours and reservations may be obtained by calling Gifford at (606) 329-5932.

###

kj

News

PUBLIC INFORMATION

JUDITH CASTO, DIRECTOR

MOREHEAD STATE UNIVERSITY

UPO BOX 1100

MOREHEAD, KY 40351

606-783-2030

Oct. 7, 1985
FOR IMMEDIATE RELEASE

MOREHEAD, Ky. --- Morehead State University graduate student, Denise R. Hurd of Cumberland, has recently been honored by the National Speech Communication Association, as well as, MSU's literary magazine, Inscape.

A graduate of Cumberland High School and Berea College, Denise is the daughter of Donald R. and Helen E. "Sue" Hurd and the granddaughter of Worley and Gussie Ison, also of Cumberland, and Edna and Lawrence Tout of Mt. Sterling.

Denise was chosen as recipient of a complimentary membership in the Speech Communication Association. This membership is given each year to a deserving graduate or undergraduate student on the basis of grades and the recommendations of university faculty members.

The Fall 1985 edition of MSU's Inscape magazine will include the poem, "To Be at Home," which Denise wrote while attending Cumberland High School. The poem, chosen from nearly 300 submissions, will be published in late October.

While working toward a master's degree in journalism and speech, Denise has maintained a 3.8 grade point average at MSU. She is a graduate assistant with the MSU Office of Public Information and expects to receive her degree in May 1986.

###

drh

10/4/85

mt. Sterling

the city news

Abolition Weekly Enterprise

News

PUBLIC INFORMATION

JUDITH CASTO, DIRECTOR

MOREHEAD STATE UNIVERSITY

UPO BOX 1100

MOREHEAD, KY 40351

606-783-2030

Oct. 8, 1985
FOR IMMEDIATE RELEASE

MOREHEAD, Ky.--Morehead State University's Home Economics Department will hold a school appliances sale from 9 a.m. to 4:30 p.m. Wednesday and Thursday, Oct. 9-10, in Lloyd Cassity 316.

The appliances, loaned to MSU by the Kentucky Association of Electrical Cooperatives, have been used in the teaching program for one year, according to Jane C. Ellington, assistant professor of home economics.

Available to be purchased are three 30-inch self-cleaning ranges, two 40-inch self-cleaning ranges, five 19 cubic foot refrigerator/freezers, one each washer and dryer, four portable dishwashers and five microwave ovens. All are nationally-recognized brand names.

Persons interested in purchasing any of these may stop by the Department of Home Economics or call Ellington at (606) 783-2968 on the days of the sale.

###

News

PUBLIC INFORMATION

JUDITH CASTO, DIRECTOR

MOREHEAD STATE UNIVERSITY

UPO BOX 1100

MOREHEAD, KY 40351

606-783-2030

Oct. 8, 1985
FOR IMMEDIATE RELEASE

MOREHEAD, Ky. --- Morehead State University's Department of Nursing and Allied Health will offer a workshop on spiritual needs of patients for nurses and other health care personnel at 9 a.m. Thursday, Oct. 17, in East Room A, Adron Doran University Center.

The spiritual needs of patients often are as important as the physical needs during illness and hospitalization, according to Pauline Ramey, MSU coordinator of continuing education for nursing.

Specific topics will include techniques for administering spiritual care, the effects of different religious beliefs on care, and materials and resources available for spiritual care.

Sister M. Steven and Ellie Reser, chaplain and associate chaplain, respectively, of the St. Claire Medical Center, will conduct the one-day program.

Registered nurses will receive six contact hours for participating in the workshop which is approved by the Kentucky Board of Nursing.

The fee is \$30. The pre-registration deadline is Oct. 15. Participants will be allowed to register at the workshop.

Additional information is available by calling (606) 783-2635 or 783-2632.

###

kj

News

PUBLIC INFORMATION

JUDITH CASTO, DIRECTOR

MOREHEAD STATE UNIVERSITY

UPO BOX 1100

MOREHEAD, KY 40351

606-783-2030

Oct. 9, 1985
FOR IMMEDIATE RELEASE

MOREHEAD, Ky.--Homecoming 1985 at Morehead State University will feature a festive four-day schedule Thursday through Sunday, Oct. 17-20.

Homecoming planners have increased the number of events oriented toward students this year, according to Lisa Browning of Owingsville, MSU Alumni Association Homecoming Committee chair.

"The new schedule will bring more excitement than ever to Homecoming this year. There is something for everyone," Browning said.

MSU's Homecoming 1985 will begin Thursday with Blue and Gold Day. The campus community will be encouraged to wear the school colors for the day's activities, which will include a parade, pep rally, bonfire and street dance.

The MSU marching band and cheerleaders will lead a student parade through campus at 7:30 p.m. Thursday to the maintenance parking lot behind the Rowan County Court House where they will join the Eagle football team and Coach Bill Baldrige for the bonfire and rally. A street dance will be held after the pep rally on University Boulevard near the Laughlin Health Building.

A candlelight buffet dinner and concert will highlight the Homecoming celebration Friday. The dinner will be served from 6:30 to 8 p.m. at the University Center and will include the presentation of alumni awards. Pop recording artist Howard Jones will perform at the Homecoming concert at 9 p.m. at Academic Athletic Center.

(more)

homecoming
2-2-2-2-2-2

Saturday's celebration will begin with registration of alumni at the University Center and a continental breakfast hosted by President and Mrs. Herb. F. Reinhard. Both activities will be held from 9 to 10:30 a.m.

Pre-game festivities will start at noon with a chili tailgate party at the east veranda of the Academic Athletic Center. Next, the MSU marching band will perform at 1:15 p.m. at Jayne Stadium where the Eagles will play their 1985 Homecoming football game against Akron at 1:30 p.m. The Homecoming Queen will be crowned at half-time of the game.

A special MSU Theatre performance of the comedy "Greater Tuna" will be presented at 7 p.m. at Kibbey Theatre. From 9 p.m. until midnight, the Homecoming dance will be held in the Crager Room, University Center.

A golf scramble is scheduled for 10 a.m. Sunday at the MSU Golf Course and a brunch will be served from 11 a.m. to 2 p.m. at the University Center cafeteria. During brunch, the MSU classes of 1935, 1945, 1955, 1965 and 1975 will hold reunions at the center.

Tickets for the buffet, Homecoming dance and brunch may be obtained by calling Alumni Relations at (606) 783-2080. Football game tickets are available at the MSU Office of Athletics, (606) 783-2088.

Theater reservations may be made by calling the Kibbey Box Office at (606) 783-2170. Concert tickets may be obtained by calling the Student Association at (606) 783-2298.

####

kj

Media Advisory

PUBLIC INFORMATION

JUDITH CASTO, DIRECTOR

MOREHEAD STATE UNIVERSITY

UPO BOX 1100

MOREHEAD, KY 40351

606-783-2030

EVENT: MSU Theatre Media Night
DATE: Thursday, Oct. 10, 1985
TIME: 8 p.m.
PLACE: Kibbey Theatre

RESERVATIONS ARE NECESSARY

MSU Theatre cordially invites you to attend "Media Night" for its opening production of the year, "Greater Tuna," a comedy focusing on the political foibles in a small town in Texas.

If you plan to attend, we ask that you call the Theatre Box Office at (606) 783-2170 to reserve your ticket(s). Box office is staffed weekdays from 1 to 5 p.m.

If you prefer to review the production on opening night, Oct. 11, we will be glad to provide you with a reserved seat for that evening instead. Just call the Box Office between 1 and 5 p.m. and identify yourself and the paper, radio station or television station you represent.

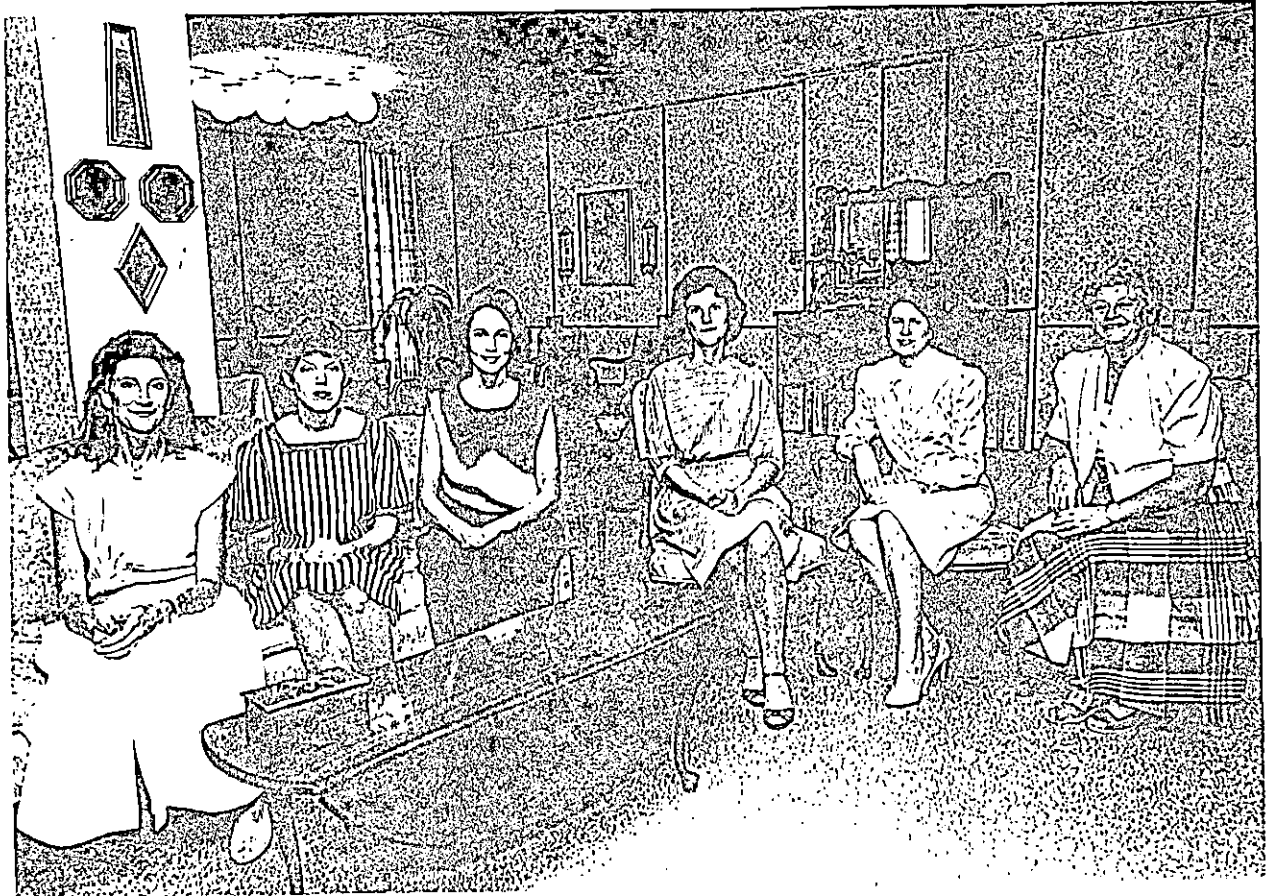
9-30-85

MSU WOMAN'S CLUB TO MEET

Ancient Egyptian textiles will be the discussion topic for a Morehead State University Woman's Club meeting Thursday, Oct. 17, at 7:30 p.m. in the Patti Bolin Room, Lloyd Cassity Building. Speaker for the slide-illustrated program will be Nettie Adams. Executive officers of the organization are, from left, Peggy Reeves, first vice president; Brenda Baxter, recording secretary, B. Gail Wilson, president; Peg Cornett, past president; Ruth Ann Harney, corresponding secretary, and Nell Mahaney, treasurer. Not pictured are Janet Bignon, second vice president, and Janie Baldrige, parliamentarian.

###

10-10-85



Morehead News

News

PUBLIC INFORMATION

JUDITH CASTO, DIRECTOR

MOREHEAD STATE UNIVERSITY

UPO BOX 1100

MOREHEAD, KY 40351

606-783-2030

Oct. 10, 1985
FOR IMMEDIATE RELEASE

MOREHEAD, Ky.--"The Job Training Programs currently being offered through Morehead State University's Appalachian Development Center (ADC) are the most innovative that have been developed to date in our service delivery area," said Jacquelyn Scott, Job Training Program Coordinator.

"These offerings have enabled people to have an opportunity to receive quality training and a good chance for employment that would not have been possible otherwise," she continued. "They are given the tools necessary to enter the job market, with placement assistance from ADC, at wage levels above minimum wage, and this represents a chance for success far above what the untrained individual could possibly expect," she added.

Currently under way are courses in Computerized Office Procedures, Nanny/Child Care Specialist, Medical Records Assistant, and Pharmacy Technician. The Nanny Program and Pharmacy Program each run five months. The Computerized Office Procedures Program and Medical Records Assistant Program are offered in eight week blocks of training. Included in each of these programs are classroom training, on hands experience, and placement service. Up to 80 percent of graduating students have experienced success in finding gainful employment, depending upon the course of study undertaken, according to Scott.

(more)

JTP
2-2-2-2-2-2

According to Scott, many students lose their fear of University and return for more advanced study, resulting in even more qualified employment positions. "In many instances, we have served as an orientation to college life and have helped remove apprehensions felt by some students, students who probably would never have attended college if it weren't for this program," she said.

Information concerning upcoming programs and requirements for entry into the training is available from Scott at the Appalachian Development Center, Morehead State University, Morehead, Ky., 40351, or by calling 606-783-2077.

###

cw

News

PUBLIC INFORMATION

JUDITH CASTO, DIRECTOR

MOREHEAD STATE UNIVERSITY

UPO BOX 1100

MOREHEAD, KY 40351

606-783-2030

MOREHEAD, Ky. --- Eleven Morehead State University students were recently elected as finalists in the competition for the title of MSU Homecoming Queen.

The 1985 Homecoming Queen will be crowned during half-time ceremonies of the MSU - University of Akron football game Saturday, Oct. 19, which begins at 1:30 p.m.

Finalists are:

- *Lisa Adkins, of West Liberty, representing Sigma Sigma Sigma sorority
- *Leigh A. Blakely, of Morehead, representing Sigma Phi Epsilon fraternity
- *Melissa Leigh Collins, of Morehead, representing Chi Omega sorority
- *Vivian C. Flora, of Morehead, representing Theta Chi fraternity
- *Ammie Jo Glimp, of Danville, representing Sigma Alpha Epsilon fraternity
- *Rhonda Grant, of Danville, representing Alumni Tower
- *Molly Large, of Ironton, Ohio, representing Regents Hall
- *Lesli Lee, of Mt. Sterling, representing Delta Tau Delta fraternity
- *Melisa Ann Schunk, of Harrison, Ohio, representing Nunn Hall
- *Meg Trowbridge, of Somerset, Ohio, representing Delta Gamma sorority
- *Teresa (Shelly) M. Webb, of Mt. Sterling, representing Delta Zeta sorority

####

srt

Morehead News
10-11-85

News

PUBLIC INFORMATION

JUDITH CASTO, DIRECTOR

MOREHEAD STATE UNIVERSITY

UPO BOX 1100

MOREHEAD, KY 40351

606-783-2030

MOREHEAD, Ky. --- Meg Trowdrige, Morehead State University junior majoring in radio-television, is one of 11 finalists in the competition for the title of MSU Homecoming Queen.

The 1985 Homecoming Queen will be crowned during half-time ceremonies of the MSU - University of Akron football game Saturday Oct. 19, which begins at 1:30 p.m.

Trowbridge, the daughter of Mr. and Mrs. Lee Kaffenberger of Somerset, Ohio, is representing Delta Gamma sorority. She is a fraternity educator in her sorority.

####

srt

Representative copy of release sent to hometown newspapers for each of the 11 Homecoming queen finalists.
10/11/85

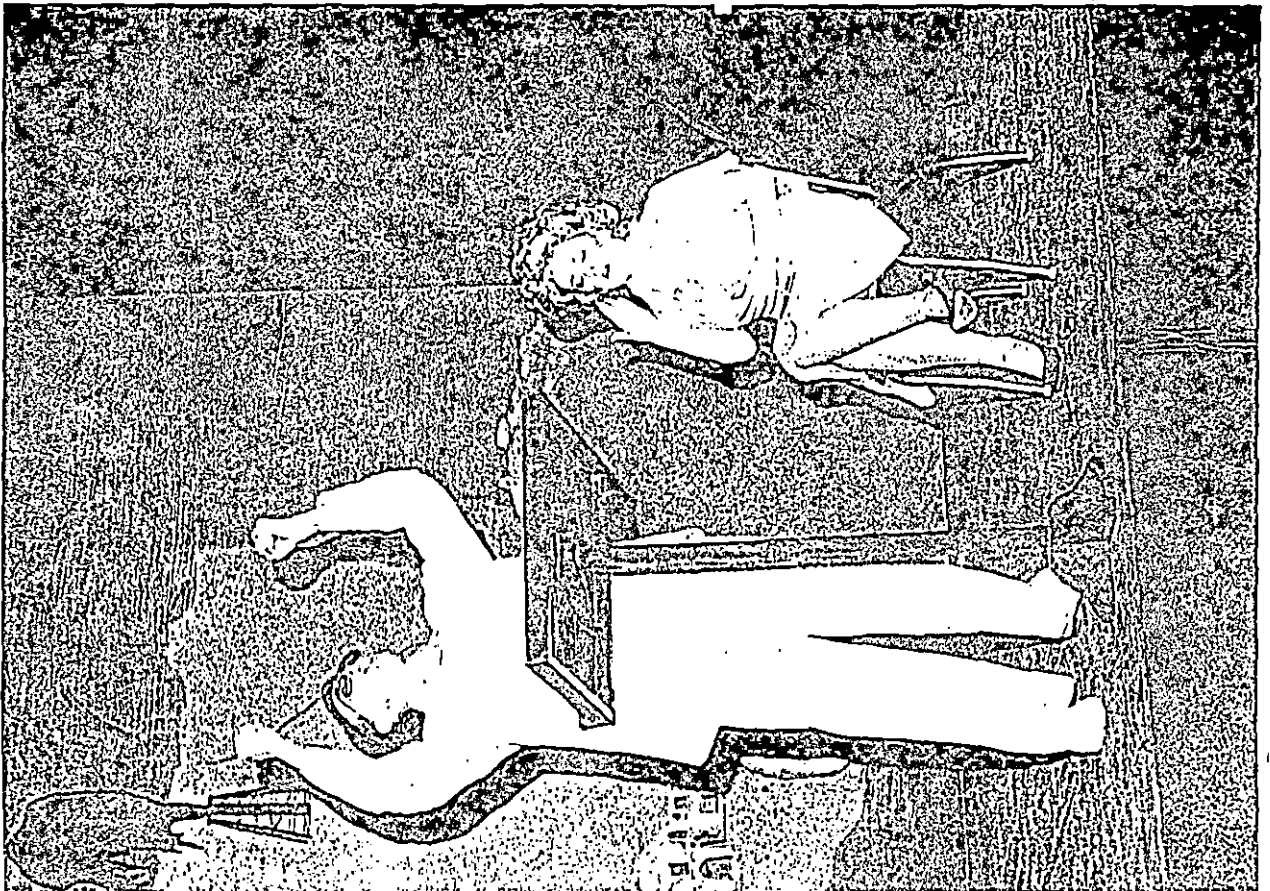
MSU THEATRE SEASON OPENS

MOREHEAD, KY. -- Rondell Meeks of Morehead and Tara Lail of Cynthiana put the final rehearsal touches on the Morehead State University Theatre's season-opening production of "Greater Tuna." The comedy is scheduled for a seven-night run beginning at 8 p.m. Saturday, Oct. 12, in Kibbey Theatre. Other performances are scheduled Tuesday through Friday, Oct. 15-18. A special Homecoming performance will be presented at 7 p.m. Saturday, Oct. 19.

#####

(MSU photo by Ray Bradley)

kj



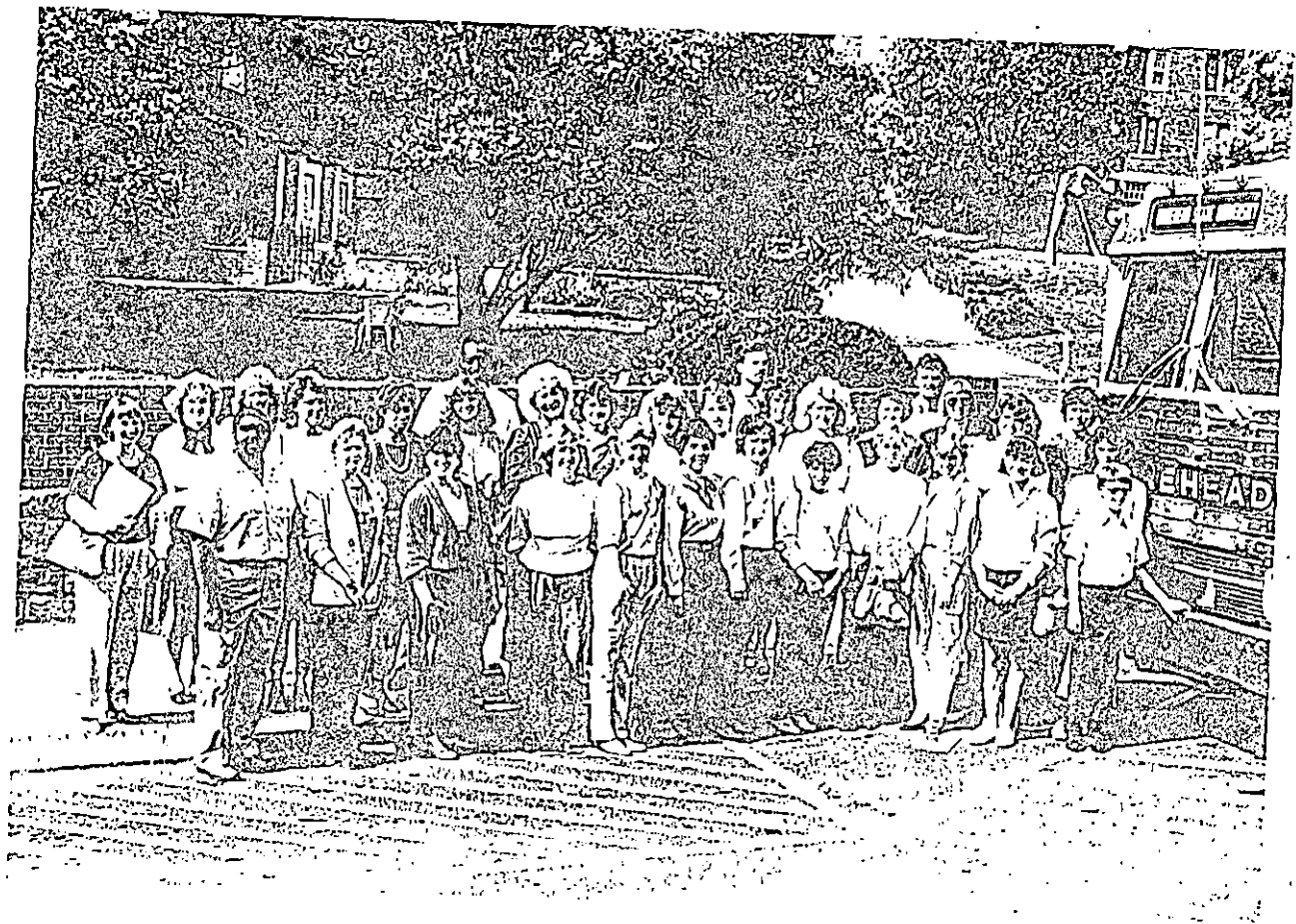
*Regional Weeklies,
Daily Star, Maysville
10-16-85*

MSU STUDENTS TOUR HOME SHOW

Students from Morehead State University's Department of Home Economics last week left the classroom and books behind for a first-hand look at the Lexington Home Decorating and Remodeling Show and a tour of Lexington's Victorian Square. The field trip provided the students with an opportunity to see many of the latest trends in home decorating and remodeling, according to Carolyn Taylor, MSU assistant professor of home economics.

(MSU photo by Ray Bradley)

10-11-85



Morehead News
Carolyn Taylor (2)

News

PUBLIC INFORMATION

JUDITH CASTO, DIRECTOR

MOREHEAD STATE UNIVERSITY

UPO BOX 1100

MOREHEAD, KY 40351

606-783-2030

Oct. 11, 1985
FOR IMMEDIATE RELEASE

MOREHEAD, Ky.--Arts in Morehead (AIM) will present the New York Trumpet Ensemble in concert at 8 p.m. Wednesday, Oct. 16, at the United Methodist Church as part of the 1985-86 Concert and Lecture Series programming.

"This is the first time we have been able to offer one of the concert performances out in the community and we hope it will draw more residents from the region," said Elizabeth Paxson, AIM's performing arts chairman.

"The church was selected because of its excellent organ," she noted.

Tickets will be sold at the door for \$7 for adults or \$3 for youth under 18 years of age. Morehead State University students with valid I.D. cards will be admitted without charge. A discount will be available to student and senior citizens groups.

Season tickets also will be available that evening for the remaining nine events on the new series, Paxson said. Season tickets are \$25 for individual membership or \$40 for family membership.

Founded in 1973, the New York Trumpet Ensemble performs and records Baroque works written for multiple trumpets. Considered the only professional ensemble of its kind in the world, the group has appeared at Carnegie Hall and Portugal's Maderia Bach Festival and records for international record companies as well as on U.S. classical labels. The group is directed by noted trumpet soloist Edward Carroll, a graduate of Juilliard School of Music.

(more)

AIM

2-2-2-2-2-2

The ensemble's performances have been described as spectacular, sensitive and exhilarating by music critics across the country.

Additional information on upcoming programs may be obtained by writing Arts in Morehead, P.O. Box 250, Morehead, KY 40351. AIM is a cooperative effort of Morehead State University and the Morehead-Rowan County Arts Council, Inc.

###



Credit: Kenn Duncan, 1984

New York Trumpet Ensemble

EDWARD CARROLL, Director

1860 Broadway
New York, New York 10023
(212) 765-5901

MELVIN
KAPLAN
INCORPORATED

115 College Street
Burlington, Vermont 05401
(802) 658-2592

News

PUBLIC INFORMATION

JUDITH CASTO, DIRECTOR

MOREHEAD STATE UNIVERSITY

UPO BOX 1100

MOREHEAD, KY 40351

606-783-2030

Oct. 11, 1985
FOR IMMEDIATE RELEASE

MOREHEAD, Ky.--Morehead State University's Department of Music is looking for former members of the marching band who would like to appear in the University's Alumni Band during Homecoming, Saturday, Oct. 19.

The band will make its debut during the Homecoming football game between MSU's Eagles and the University of Akron, according to Richard Miles, MSU director of bands. Game time is 1:30 p.m. and a special pre-game band show is scheduled at 1 p.m. in Jayne Stadium.

"The Alumni Band is a great way for alumni to renew friendships, bring back memories of the gold old days and add to the festivities surrounding Homecoming," Miles said.

Anyone who played in the band in previous years and is interested in participating in the Alumni Band may contact Miles at (606) 783-2485.

####

News

PUBLIC INFORMATION

JUDITH CASTO, DIRECTOR

MOREHEAD STATE UNIVERSITY

UPO BOX 1100

MOREHEAD, KY 40351

606-783-2030

Oct. 11, 1985
FOR IMMEDIATE RELEASE

MOREHEAD, Ky.--Morehead State University's Appalachian Development Center (ADC) will sponsor its "Pride in the Region" essay contest in conjunction with the eighth annual "Great Clean-Up" scheduled for Saturday, April 12.

"The broad purpose of the contest is to stimulate talk, thought, and further study of the benefits of a clean, litter-free community," said Shirley Hamilton, ADC assistant director for human services. Hamilton along with Carolyn Horn, special projects coordinator, is spearheading the program to involve various community, county, and University groups and individuals in this clean-up effort for the community and county.

The essay contest will feature three entry divisions. Essays of 250 words are sought from students in the 4th and 5th grades; 350 words for middle grades, and 500 words for high school students. Entries may be submitted up to April 1, with judging by Morehead State University's Literary Society, Inscape.

Suggested topics for student works include exploring reasons why the annual litter campaign, "The Great Clean-up," is a worthwhile project for any community; describing the beauty of favorite picnic, fishing, and camping sites, emphasizing the need for care in preserving their beauty; and identifying our natural resources and suggesting ways to preserve them.

(more)

"Great Clean-up"
2-2-2-2-2-2

Essays submitted should be in ink on regular notebook paper or typed. The top three essays in each division will be awarded cash prizes of \$25, \$20, and \$10, for first, second, and third places respectively.

Groups or individuals may register for the cleanup campaign or obtain more information about the essay contest by contacting Hamilton or Carolyn Horn at ADC, Morehead State University, Morehead, KY 40351. Telephone: (606) 783-2077.

###

cw

News

PUBLIC INFORMATION

JUDITH CASTO, DIRECTOR

MOREHEAD STATE UNIVERSITY

UPO BOX 1100

MOREHEAD, KY 40351

606-783-2030

Oct. 11, 1985
FOR IMMEDIATE RELEASE

MOREHEAD, Ky.--Morehead State University's Department of Agriculture and Natural Resources will offer a horticulture lighting seminar at 6 p.m. Monday, Oct. 28, at Reed Hall Room 429.

Christos C. Mpelkas, plant physiologist and manager of horticulture lighting Technology, GTE Productions Corp., will conduct the seminar, according to Martha Norris, MSU associate professor of agriculture.

"The program will deal with the important photochemical processes of plants and the development of growth lamps to maintain normal growth responses," Norris said.

The seminar also will include a presentation of comparative light study experiments, she said.

The seminar is open to the community.

Additional information may be obtained by calling Norris at (606) 783-2669.

###

kj

News

PUBLIC INFORMATION

JUDITH CASTO, DIRECTOR

MOREHEAD STATE UNIVERSITY

UPO BOX 1100

MOREHEAD, KY 40351

606-783-2030

Oct. 12, 1985
FOR IMMEDIATE RELEASE

MOREHEAD, Ky.--The Morehead State University Art Students League (MASL) will exhibit works by its members Oct. 21 through Nov. 3 in the Alternative Gallery, Claypool-Young Art Building.

The exhibit may be viewed weekdays from 8 a.m. to 4 p.m.

A public reception honoring the exhibitors will be held Tuesday, Oct. 22, from 6:30 to 9 p.m. at the gallery.

###

News

PUBLIC INFORMATION

JUDITH CASTO, DIRECTOR

MOREHEAD STATE UNIVERSITY

UPO BOX 1100

MOREHEAD, KY 40351

606-783-2030

Oct. 12, 1985
FOR IMMEDIATE RELEASE

MOREHEAD, Ky.--"Kentucky Life in Rowan County," a 60-minute documentary produced by WLEX-TV, will be rebroadcast by MSU-TV Channel 12 at 6 p.m. Thursday, Oct. 17.

First aired by WLEX at 7 p.m. Saturday, Sept. 28, the program takes a look at life in Rowan County and highlights several Morehead State University programs. Also featured are scenes from the recent Kentucky Harvest and Hardwood Festival.

####

News

PUBLIC INFORMATION

JUDITH CASTO, DIRECTOR

MOREHEAD STATE UNIVERSITY

UPO BOX 1100

MOREHEAD, KY 40351

606-783-2030

Oct. 13, 1985
FOR IMMEDIATE RELEASE

MOREHEAD, Ky.--Morehead State University Theatre's 1985-86 season will feature a comedy, a musical, a Tony award-winning drama, and a collection of short plays by one of the 20th Century's great playwrights, Edward Albee.

"Each play represents diversity in style and appeal, but all of them have one thing in common, past success as entertainment," Dr. Travis Lockhart, MSU Theatre coordinator.

The season opened on Oct. 11 with the comedy, "Greater Tuna." The play is a satirical look at small town life and politics. The show will be repeated Oct. 15-18 at 8 p.m. in MSU's Kibbey Theatre. Also, a special homecoming performance will be held on Oct. 19 at 7 p.m.

The season will continue with "Three by Albee: American Dream/Zoo Story/Sandbox" on Nov. 19-23, produced in conjunction with the MSU Players, the student theatre group. Each of the three short plays will be directed by a different student director.

The scene will shift to Victorian London for "The Elephant Man." The play, written by Bernard Pomerance, recounts the life of John Merrick, a hideously deformed man with a beautifully formed spirit. "The Elephant Man" won the Tony for best play of the 1979-80 Broadway season. The story was adapted to a movie that earned eight Academy Award nominations. The play will run Feb. 27-28 and March 1 in MSU's Button Auditorium.

(more)

MSU Theatre
2-2-2-2-2-2

The last production will be the musical, "The Fantastiks."
Written by Tom Jones and Harvey Schmidt, the musical includes such
tunes as "Try to Remember." "The Fantastiks" will run April 18-19
and 22-26.

Reserved seat tickets are available at \$4 for adults, \$2 for
non-MSU students and free to MSU students with valid I.D. cards.
Information on supporting memberships for MSU Theatre on the patron
or benefactor level may be obtained by writing the coordinator,
UPO 934, Morehead State University, Morehead, KY 40351. Season
tickets are \$10 and are available through the box office. Reservations
may be made by calling the Kibbey Box Office, (606) 783-2170.

####

tb

Tips

PUBLIC INFORMATION

JUDITH CASTO, DIRECTOR

MOREHEAD STATE UNIVERSITY

UPO BOX 1100

MOREHEAD, KY 40351

606-783-2030

THIS WEEK AT MOREHEAD STATE UNIVERSITY
(Oct. 13 - Oct. 19)

Tuesday, Oct. 15

8 P.M. MSU THEATRE will perform the comedy "Greater Tuna" in Kibbey Theatre through Oct. 18. Also, a special Homecoming performance will be held Oct. 19 at 7 p.m. For more information, please call 783-2167.

Wednesday, Oct. 16

4 P.M. MEN'S SOCCER: MSU vs. Eastern Kentucky University at Breathitt Sports Center. For more information, please call 783-2500.

8 P.M. AIM CONCERT AND LECTURE SERIES: New York Trumpet Ensemble at the United Methodist Church of Morehead. For more information, please call 783-2788.

Thursday, Oct. 17

8 A.M. CONTINUING EDUCATION WORKSHOP FOR NURSES: "Spiritual Concerns" in East Room A of the Adron Doran University Center. For more information, please call 783-2635.

HOMECOMING: Blue and Gold Day. Wear blue and gold clothing.

HOMECOMING: Pep rally-bonfire at Laughlin Health Building parking lot; time to be announced. Street dance following. For more information, please call 783-2080.

8:15 P.M. SENIOR FLUTE RECITAL: Valerie Warwick will perform in Duncan Recital Hall. For more information, please call 783-2473.

Friday, Oct. 18

THIS WEEK AT MOREHEAD STATE UNIVERSITY
2-2-2-2-2-2

9 P.M. HOMECOMING CONCERT: Howard Jones will perform in MSU's Academic-Athletic Center. For more information, please call 783-2298.

Saturday, Oct. 19

9-10:30 A.M. HOMECOMING REGISTRATION in the Adron Doran University Center. For more information, please call 783-2080.

9-10:30 A.M. HOMECOMING: Continental Breakfast at the home of President and Mrs. Reinhard. For more information, please call 783-2080.

10:45 A.M. WOMEN'S CROSS COUNTRY: MSU vs. West Virginia State University at the MSU Golf Course. For more information, please call 783-2500.

11:30 A.M. MEN'S CROSS COUNTRY: MSU vs. West Virginia State University at the MSU Golf Course. For more information, please call 783-1500.

NOON-1 P.M. HOMECOMING: Chili Tailgate Party at the Academic-Athletic Center. For more information, please call 783-2080.

1:15 P.M. HOMECOMING: Pre-game show by the MSU band at Jayne Stadium. For more information, please call 783-2080.

1:30 P.M. HOMECOMING GAME: MSU Eagles vs. University of Akron at MSU's Jayne Stadium. For more information, please call 783-2500.

9 P.M.-MIDNIGHT HOMECOMING DANCE in the Crager Room of the Adron Doran University Center. For more information, please call 783-2080.

####

News

PUBLIC INFORMATION

JUDITH CASTO, DIRECTOR

MOREHEAD STATE UNIVERSITY

UPO BOX 1100

MOREHEAD, KY 40351

606-783-2030

Oct. 14, 1985
FOR IMMEDIATE RELEASE

MOREHEAD, Ky. --- Members of the Morehead State University Concert Choir have been announced for the 1985-86 school year by James Ross Beane, MSU associate professor of music and coordinator of the choral program.

The 43-member choir includes Alexandria resident Kay Sinning. An MSU sophomore, Sinning is the daughter of Mr. and Mrs. Charles Sinning.

The MSU Concert Choir will perform Monday, Nov. 4, at 8:15 p.m. in the Duncan Recital Hall, as part of the 26th annual Choral Festival sponsored by MSU's Department of Music.

More information on MSU's choral programs or the festival is available from MSU's Department of Music. The telephone number is (606) 783-2473.

###

drh

REPRESENTATIVE COPY OF RELEASE SENT TO
HOMETOWN PAPERS OF THE 43 MEMBERS OF THE
CONCERT CHOIR FOR 1985-86. 10-10-85

News

PUBLIC INFORMATION

JUDITH CASTO, DIRECTOR

MOREHEAD STATE UNIVERSITY

UPO BOX 1100

MOREHEAD, KY 40351

606-783-2030

Oct. 14, 1985
FOR IMMEDIATE RELEASE

MOREHEAD, Ky.--A litter-free county is the goal of the eighth annual "Great Clean-up" campaign for Morehead and Rowan County, according to Shirley Hamilton, assistant director of human services at Morehead State University's Appalachian Development Center (ADC).

The event, scheduled for Saturday, April 12, with a rain date of April 19, is co-sponsored by ADC, Morehead, and Rowan County. Volunteers--either individuals or groups--may register in advance at ADC or on the actual "Clean-up" day.

In addition to the clean-up campaign, ADC again is sponsoring the "Pride in the Region" essay contest for three levels of area students, 4th and 5th grades; the middle grades; and high school level. The essays, intended to highlight the benefits of a clean, litter-free community, will be judged by Morehead State University's Literary Society, Inscape.

The three top essays will be printed in The Morehead News, and cash prizes will be presented for the top three essays in each division. According to Hamilton, ADC is also interested in other learning activities assigned by the classroom teachers to make students more aware of the problems of litter and garbage disposal.

(more)

"Great Clean-up"
2-2-2-2-2-2

Carolyn Horn, special projects coordinator for the campaign, is assisting in the effort of identifying areas in the county--dump sites and other sites where litter is a problem. Work crews will be assigned to these trouble spots. According to Horn, free trash bags will be provided to volunteers, as will rakes and shovels.

Several MSU groups, including the Environmental Studies Club, will assist in the "Great Clean-Up." "This is a total community and University cooperative project," said Hamilton. "School children, neighborhood groups, scout groups, MSU students and staff all work together to clean up our city and county. Last year, in excess of 1,000 bags of litter and a great quantity of discarded appliances, etc., were collected," Hamilton added.

According to Horn, area residents who are aware of dump sites in need of attention should contact ADC at 783-2077. Senior citizens who need help in cleaning should also contact ADC to request a free pick-up during the campaign.

"The most important thing at this point is to have groups or individuals who are interested in participating to call us or come by ADC to pre-register," said Hamilton.

Cash prizes will be awarded to those who collect the most litter. City and county trucks will provide free pickup and there will be free dumping at the landfill. Community contacts--residents who will coordinate the cleanup effort in each neighborhood--will be named for each area of the community and county.

More information is available from Hamilton or Horn, ADC, Morehead State University, Morehead, Kentucky 40351. Telephone: (606) 783-2077.

###

News

PUBLIC INFORMATION

JUDITH CASTO, DIRECTOR

MOREHEAD STATE UNIVERSITY

UPO BOX 1100

MOREHEAD, KY 40351

606-783-2030

Oct. 14, 1985
FOR IMMEDIATE RELEASE

MOREHEAD, Ky.--For the first time in many years, Morehead State University will hold its Homecoming dance on Saturday night. The change of nights is part of a major revision of the Homecoming schedule this year, according to Don Young, MSU director of alumni relations.

"A survey of alumni, faculty, staff and students indicated a need for more time between Homecoming events. The new schedule also will allow the alumni to participate in more activities," Young explained.

Homecoming 1985 activities are scheduled Thursday through Saturday, Oct. 17-20.

According to Young, the Saturday dance was switched to Friday several years ago due to conflicts with other Homecoming activities. Since the switch, many student groups have expressed the wish that the dance be returned to its traditional Saturday night slot following the afternoon football game, he said.

Other schedule changes include moving the Homecoming concert from Thursday to Friday and holding class reunions Sunday instead of Saturday.

(more)

homecoming
2-2-2-2-2+2

Another new feature of this year's Homecoming will be the combination of a pep rally, bonfire and torchlight parade which will kick off the festivities at 7:30 p.m. Thursday. The MSU marching band and cheerleaders will lead a student procession through campus to the maintenance parking lot behind the Rowan County Court House where they will join the Eagle football team and Coach Bill Baldrige for a bonfire and rally. A street dance will be held after the pep rally on University Boulevard near the Laughlin Health Building.

A candlelight buffet dinner and the concert will highlight the Homecoming celebration Friday. The dinner will be served from 6:30 to 8 p.m. at the University Center and will include the presentation of alumni awards. Recording artist Howard Jones will perform in concert at 9 p.m. at Academic-Athletic Center.

On Saturday, alumni registration and a continental breakfast will be held from 9 to 10:30 a.m. Alumni will register at the University Center and the breakfast will be hosted by President and Mrs. Herb. F. Reinhard at their home.

A chili tailgate party will be held at noon Saturday at the Academic-Athletic Center followed by a pre-game performance of the MSU marching band at 1:15 p.m. at Jayne Stadium.

The Eagles meet Akron at 1:30 p.m. for the 1985 Homecoming game. Half-time ceremonies will feature the crowning of the Homecoming queen.

(more)

homecoming
3-3-3-3-3-3

A special MSU Theatre performance of the comedy "Greater Tuna" will be presented at 7 p.m. at Kibbey Theatre. The Homecoming dance will be held from 9 p.m. until midnight in the Crager Room, University Center.

A golf scramble is scheduled for 10 a.m. Sunday at the MSU Golf Course and a brunch will be served from 11 a.m. to 2 p.m. at the University Center cafeteria. During brunch, the MSU classes of 1935, 1945, 1955, 1965 and 1975 will hold reunions at the center.

Concert information may be obtained by calling the Student Association at (606) 783-2298. Theatre reservations may be made by calling the Kibbey Box Office at (606) 783-2170.

Tickets for the buffet, Homecoming dance and football game will be available at the event sites. Additional information concerning Homecoming activities may be obtained by calling Alumni Relations at (606) 783-2080.

####

kj

News

PUBLIC INFORMATION

JUDITH CASTO, DIRECTOR

MOREHEAD STATE UNIVERSITY

UPO BOX 1100

MOREHEAD, KY 40351

606-783-2030

Oct. 14, 1985
FOR IMMEDIATE RELEASE

MOREHEAD, Ky.--Morehead State University's golf course will be closed on Saturday, Oct. 19 and Oct. 26, until 1 p.m., according to Jim Wells, manager.

"We will be holding cross country meets both mornings at the course," he said, "but we will be open for afternoon play."

###

News

PUBLIC INFORMATION

JUDITH CASTO, DIRECTOR

MOREHEAD STATE UNIVERSITY

UPO BOX 1100

MOREHEAD, KY 40351

606-783-2030

Oct. 15, 1985
FOR IMMEDIATE RELEASE

MOREHEAD, Ky.--Morehead State University will host five open house receptions for prospective students in 1985-86, according to Albert Bowen, MSU director of admissions.

"The purpose of the open house receptions will be to introduce the students to MSU and to answer their questions," Bowen said.

The receptions will be held on Saturdays from 9 a.m. to 1 p.m. The dates are Nov. 2 and 23, March 1 and 22, and April 19.

Each open house will include welcoming remarks by MSU administration and faculty representatives, a campus bus tour, and a luncheon. Faculty members will be available to answer questions concerning specific areas of study, Bowen said.

Additional information concerning MSU open house receptions may be obtained by calling 1-800-262-7474 (in-state) or 1-800-354-2090 (out-of-state).

####

kj

News

PUBLIC INFORMATION

JUDITH CASTO, DIRECTOR

MOREHEAD STATE UNIVERSITY

UPO BOX 1100

MOREHEAD, KY 40351

606-783-2030

Oct. 15, 1985
FOR IMMEDIATE RELEASE

MOREHEAD, Ky.--Ten years after she should have graduated from high school, Pamela Moore found herself without a diploma and stuck in a factory job which required a "tiny little brain and a whole lot of brawn."

"I finally just decided I wanted out," said the 30-year-old Moore who lives in Morehead with her husband, Murlyn, and two school-age children.

After much soul searching-- plus some gentle nudging from Murlyn-- Moore did get out of her factory job and into a program which would help her earn a high school equivalency certificate.

In the fall of 1984, Moore became one of 210 Eastern Kentuckians to participate in a pilot project designed to prepare adults for the General Education Development, or GED, exam through television study courses. The project, now out of the pilot stage and into statewide promotion, is sponsored by Kentucky Educational Television in association with Morehead State University.

The KET-GED Study at Home Program provides participants, like Moore, with study-guides and other materials which will help them prepare for the televised coursework. Each study-guide lesson contains a preview section to be read before the program is aired and a review section for reinforcement afterward.

Moore and the other students in the program are adults seeking to recover lost ground by earning the equivalent of the high school diploma that eluded them when they were younger.

(more)

KET-GED
2-2-2-2-2-2

"I was the typical rebellious child back in the 1970s," Moore said explaining her personal reasons for failing to complete her high school education at the traditional age.

"I got into the TV program because I wanted to get a better job and because I sought a better opinion of myself," Moore said. The reaction from my kids was so positive that I couldn't have quit if I had wanted to."

"My husband is quite proud of me and he really egged me on," she added. "If there was something I had to do, like wash the dishes, he or the kids would do them and tell me to study."

KET first produced GED preparatory courses for television about ten years ago, according to Sharon Jackson, MSU coordinator of student services and project director for the KET-GED program.

"KET had no idea how many people were taking advantage of their courses," Jackson explained. "Some people carry on very well on their own, and others do not. MSU's approach is to provide the personal support and guidance that is missing in most educational television courses. We provide contact and information throughout the year to reinforce the feeling of support and concern."

Following the success of last year's pilot program-- 86 of 101 participants who took the GED exam passed it --the promotion for a statewide program began Sept. 1 with radio, television and newspaper advertisements.

"On the morning of Sept. 2, we came to the office and found 70 calls on our answering machine concerning the program," Jackson said. "The phone has been ringing like gangbusters in here ever since."

(more)

KET-GED
3-3-3-3-3

People offer various reasons for choosing the KET-GED program instead of a traditional adult education course, she said.

"They have problems with transportation, child care, work schedules, urban and rural isolation, and sometimes it is just too time consuming and expensive to travel 35 miles or so to a class," she explained. "And privacy is important because there are a lot of successful people who don't want their friends and business associates to know that they don't have a high school diploma."

"But we are not in conflict with established adult education programs," Jackson added. "We are supplementary and we refer people to those programs and they do the same for us."

Callers to the MSU project headquarters are mailed information on the program along with an application to be returned with a \$15 fee. Students take a pre-test for evaluation purposes and then receive their initial study-guide.

Televised classes begin Thursday, Oct. 15, with math studies. The network will offer social studies instruction in February and writing skills will be taught in March and April.

Two lessons are scheduled per week and each lesson will be shown three times. The first will be presented at 10:30 a.m. and 6 p.m. Tuesdays and at 4 p.m. Saturdays. The second class will air at 10:30 a.m. and 6 p.m. Thursdays and 4:30 p.m. Saturdays.

"In mid-April, we will send the students a GED practice test," Jackson said. "We can predict from that if they will pass the real exam."

When the students have completed the program, they receive a certificate which permits them to take the GED exam at no cost, she said.

(more)

KET-GED
4-4-4-4-4-4

"The certificate is worth \$10 since that is what the exam normally costs," she said. "Subtract that from the original \$15 fee and it means the student will spend only \$5 for about \$350 worth of services."

The interest in the program has been so much greater than expected -- 1511 persons were enrolled between Sept. 2 and Sept. 18-- that she has been forced to add six temporary workers to handle the overload, Jackson said.

One of the new workers is Pamela Moore, now the proud owner of a high school equivalency certificate.

"This program was a perfect opportunity for someone like me with a house, a husband, kids and very little time," Moore said. With high school finally behind her, the one-time dissatisfied Moore has a new goal.

"I scored in the top 25 percent in the nation on my college entrance exams," she said. "I want to go to college."

Additional information on the KET-GED Study at Home Program may be obtained by calling 1-800-KET-4-GED.

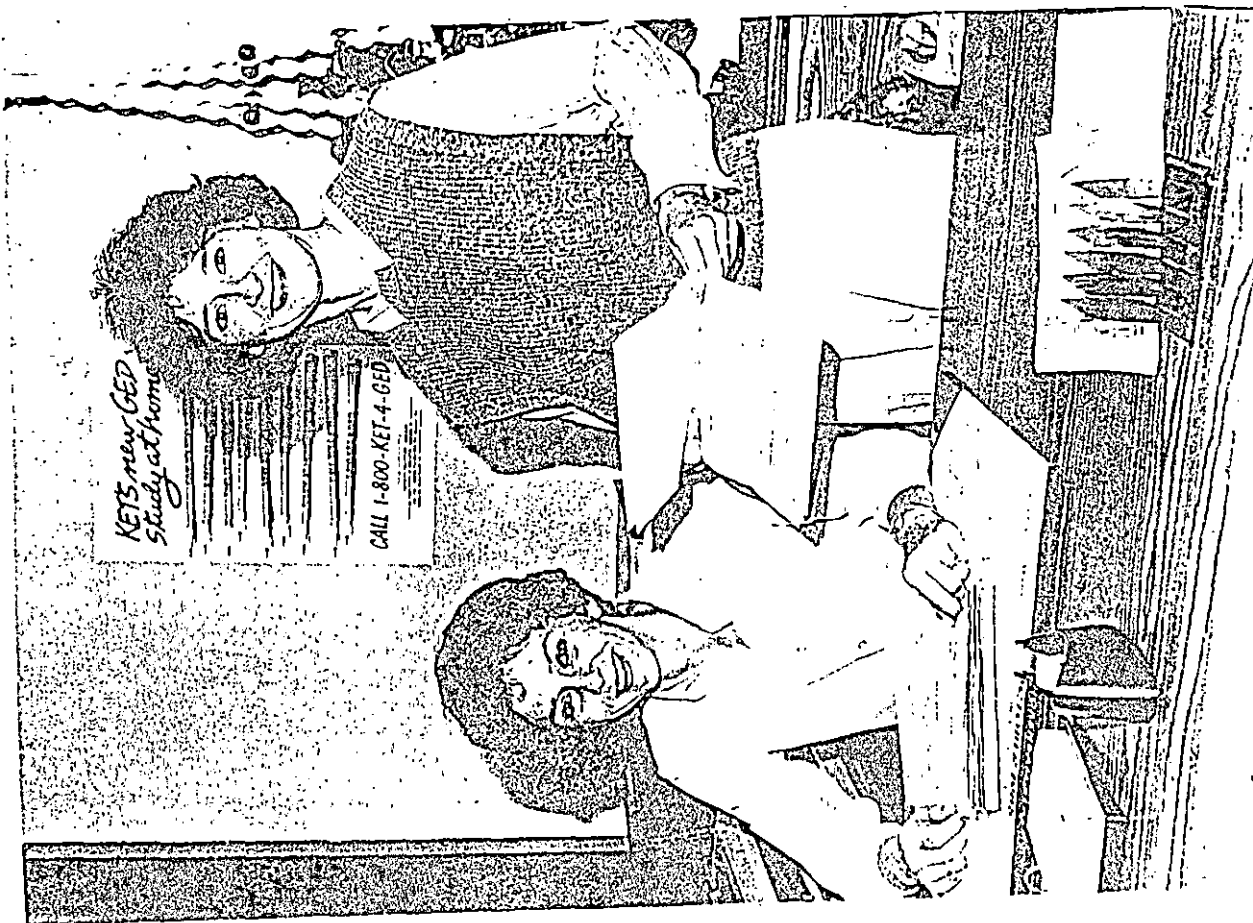
####

MSU PROMOTES TV HOME STUDY

MOREHEAD, KY.-- Morehead State University and Kentucky Educational Television are offering a Study at Home program designed to prepare adults for the General Education Development (GED) exam through a series of televised courses. Sharon Jackson, standing, MSU coordinator of student services and the project director, is shown here with Pamela Moore of Morehead, a member of the project staff. Moore, one of the project's first participants, has completed the program and earned a high school equivalency certificate.

(MSU Photo by Ray Bradley)

kj



MSU PARENT'S GOLF TOURNAMENT

MOREHEAD, Ky.--Morehead State University recently held a "Best Ball" Golf Tournament as part of the Parents Weekend activities, Sept. 21 and 22. Among those participating were, from left, William Schroer, MSU parent of Batavia, Ohio, Don Fogus, MSU director of Appalachian Development Center, Karen Schroer, MSU student and Sonny Allen, retired MSU Assistant Director of Athletics.

###

(MSU photo by Ray Bradley)

10-14-85drh



MSU PARENT'S GOLF TOURNAMENT

MOREHEAD, Ky. ---- Morehead State University recently held a "Best Ball" Golf Tournament as part of the Parents Weekend activities, Sept. 21 and 22. Among those participating were, from left, Eddie and Glenn Grimes, father and brother of Kim Grimes of Sharpsburg, Sonny Moran, MSU Director of Athletics, and Charles Whalen, father of MSU student Stacey Whalen of Cincinnati, Ohio.

; (MSU Photo by Ray Bradley)

..###

10-14-85drh



MSU PARENT'S GOLF TOURNAMENT

MOREHEAD, Ky. --- Morehead State University recently held a "Best Ball" Golf Tournament as part of the Parents weekend activities, Sept. 21 and 22. Among those participating were, from left, Kenny White, MSU Associate Director of Housing, Barney Davis, MSU Department Chair of Business and Economics, his son Chris Davis and Orville G. Morrison, MSU parent of Pikeville.

(MSU Photo by Ray Bradley)

####

10-14-85drh



MSU PARENT'S GOLF TOURNAMENT

MOREHEAD, Ky. --- Morehead State University was recently host to more than 500 parents during Parents Weekend. Many of the families enjoying the activities took part in the "Best Ball" Golf Tournament. MSU alumni, faculty and staff joined the families in the tournament. Tying for first place with another group were, from left, Kim Hill, MSU alumnus, Kent Hill, MSU graduate student, Johnny Duvall, and Myron Hill, all from Paris.

(MSU photo by Ray Bradley)

###

10-14-85drh



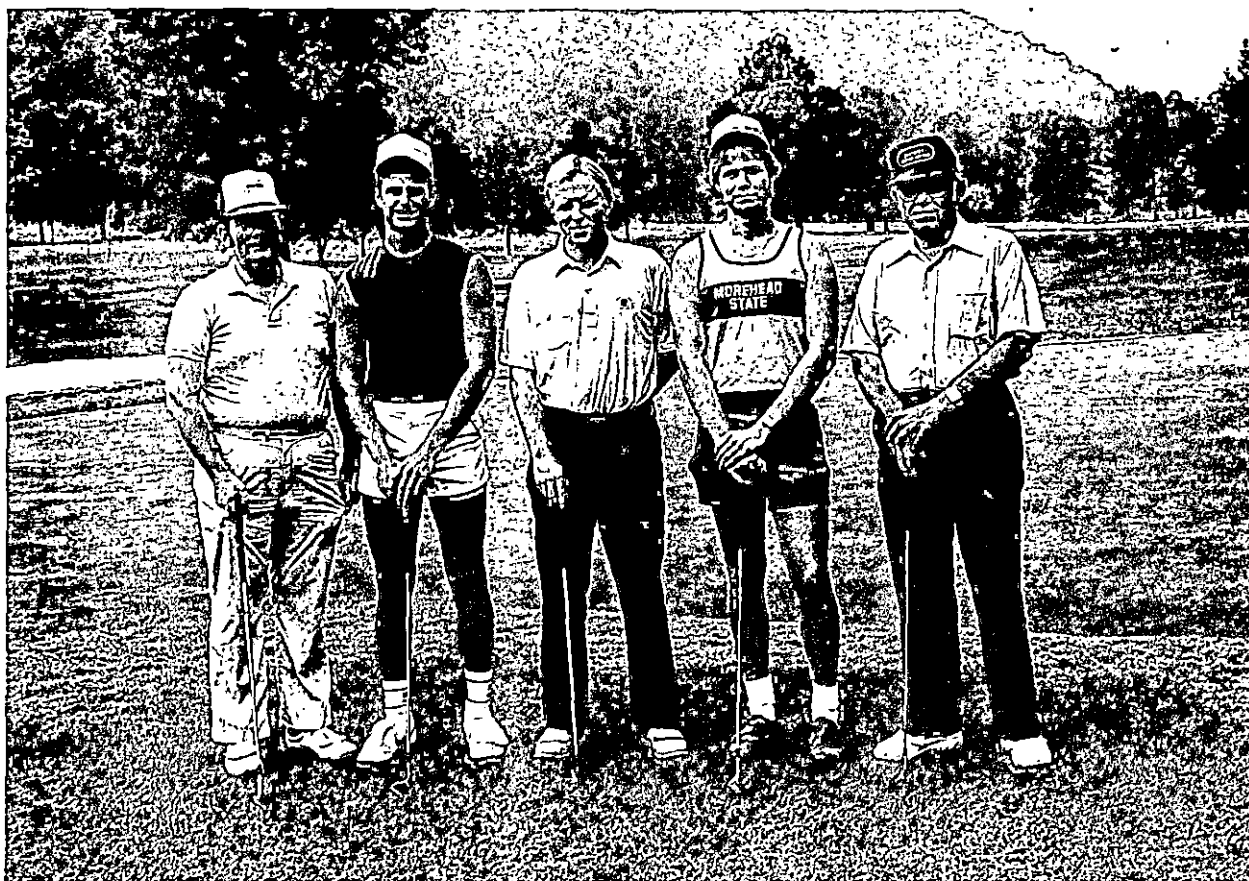
MSU PARENT'S GOLF TOURNAMENT

MOREHEAD, Ky. --- Morehead State University recently held a "Best Ball" Golf Tournament as part of the Parent's Weekend activities, Sept. 21 and 22. Among those participating were, from left, Rodney Griffen, MSU student, his father, Ron Neikirk, both of Somerset, Joe Planck, MSU Physical Plant Director, Roger Simpson, MSU student and his father, Raymond Simpson, also of Somerset.

(MSU photo by Ray Bradley)

####

10-14-85drh



MSU PARENT'S GOLF TOURNAMENT

MOREHEAD, Ky. --- Morehead State University recently held a "Best Ball" Golf Tournament as part of the Parents Weekend activities, Sept. 21 and 22. Among those participating were, from left, Jack Upchurch, MSU athletic facilities coordinator, Don Young, MSU director of alumni relations, Talmadge McPeck of Flatwoods, and John McIntyre, McPeck's guest.

(MSU photo by Ray Bradley)

###

10-14-85drh



MSU PARENT'S GOLF TOURNAMENT

MOREHEAD, Ky. --- Morehead State University recently held a "Best Ball" Golf Tournament as part of the Parents Weekend activities, Sept. 21 and 22. Among those participating were, from left, Ronald Perkins, MSU parent of Louisville, his son, Kevin Perkins, Don Miller, MSU Professor of Education and Jerry Dickerson, MSU parent of Corbin.

(MSU photo by Ray Bradley)

####

10-14-85drh



MSU PARENT'S GOLF TOURNAMENT

MOREHEAD, Ky. --- Morehead State University recently held a "Best Ball" Golf Tournament as part of the Parents Weekend activities, Sept. 21 and 22. Among those participating were, from left, Don Brown, Jeanine Hildebrant, Betty Hildebrant, and Brian Hildebrant, all from Leesburg, Ohio.

(MSU photo by Ray Bradley)

###

10-14-85drh



MSU PARENT'S GOLF TOURNAMENT

MOREHEAD, Ky. --- Morehead State University recently held a "Best Ball" Golf Tournament as part of the Parents Weekend activities, Sept. 21 and 22. Among those participating were, from left, Cully Harlow, MSU student, his father, Robert Harlow of Mt. Washington, and Dick Teubner, sports and special events director for WMKY Radio.

(MSU photo by Ray Bradley)

###

10-14-85drh



MOREHEAD, Ky. --- Morehead State University recently held a "Best Ball" Golf Tournament as part of the Parents Weekend activities, Sept. 21 and 22. Among those participating were, from left, Charles Dupler, his son, Steve Dupler, MSU student from Lancaster, Ohio, Bill Redwine, MSU director of development, and Ben Iden, MSU student association president from Bloomingburg, Ohio.

(MSU photo by Ray Bradley)

###

10-14-85drh



MSU PARENT'S GOLF TOURNAMENT

MOREHEAD, Ky. --- Morehead State University was recently host to more than 500 parents during Parents Weekend. Many of the families enjoying the activities took part in the "Best Ball" Golf Tournament. MSU alumni faculty and staff joined the families in the tournament. Tying for first place with another group were, from left, Doug Hale of London, Mo Kosikowski of St. Clairsville, Ohio, Wayne Martin, MSU head basketball coach, and Kathy Goins, MSU alumna of Frankfort.

(MSU photo by Ray Bradley)

###

10-14-85drh



News

PUBLIC INFORMATION

JUDITH CASTO, DIRECTOR

MOREHEAD STATE UNIVERSITY

UPO BOX 1100

MOREHEAD, KY 40351

606-783-2030

Oct. 16, 1985
FOR IMMEDIATE RELEASE

MOREHEAD, Ky.--Morehead State University's Department of Art will present an exhibit of computer art in the gallery of the Claypool-Young Art Building beginning Monday, Oct. 21, and continuing through Friday, Nov. 15.

The exhibit will include 70 to 90 multi-media works of art by 25 internationally known artists who used computer technology to create them.

The curator of the exhibit, Jacqueline R. Lipsky, called the works, "sophisticated drawings of asthetic value as well as technical and scientific value."

The exhibit will be free and open to the public weekdays from 8 a.m. til 4 p.m.

###

kdm

News

PUBLIC INFORMATION

JUDITH CASTO, DIRECTOR

MOREHEAD STATE UNIVERSITY

UPO BOX 1100

MOREHEAD, KY 40351

606-783-2030

Oct. 16, 1985
FOR IMMEDIATE RELEASE

MOREHEAD, Ky.--Marsha Gayle Butler, Catlettsburg sophomore majoring in music education, has been named one of two drum majors for Morehead State University's Marching Band, according to Richard Miles, MSU bands director.

"Marsha is an outstanding leader and is extremely dedicated to the band," Miles said.

A flute player, she is the daughter of Paul and Ann Butler and a graduate of Boyd County High School. At MSU she is active in Jazz Band II, Concert Band, Sigma Alpha Iota women's music fraternity and the Honors Program. She also is vocalist with New Creation.

The band practices two hours a day, five days a week, to perfect musical selections and precision routines and performs at all home football games, area high school marching band competitions and community parades.

###

emj

News

PUBLIC INFORMATION

JUDITH CASTO, DIRECTOR

MOREHEAD STATE UNIVERSITY

UPO BOX 1100

MOREHEAD, KY 40351

606-783-2030

Oct. 16, 1985
FOR IMMEDIATE RELEASE

MOREHEAD, Ky.--Ginger Lee Martin, Portsmouth, Ohio, senior music education major, has been selected for a fourth year as drum major and field commander for Morehead State University's Marching Band, according to Richard Miles, MSU bands director.

"A dedicated band student, Ginger is an incredibly talented student," Miles said.

A clarinet player, she is the oldest of two daughters of Charles William and Rosalee Greene. Martin is active in several MSU music ensembles, including two jazz ensembles, the Symphony Band, and Concert Choir. She is also a member of the Maysville Orchestra. She also is a member of the flag corps.

Band members practice two hours a day, five days a week, to perfect musical selections and precision routines. The band appears at all home football games, area high school marching competitions and parades.

####

emj

News

PUBLIC INFORMATION

JUDITH CASTO, DIRECTOR

MOREHEAD STATE UNIVERSITY

UPO BOX 1100

MOREHEAD, KY 40351

606-783-2030

Oct. 16, 1985
FOR IMMEDIATE RELEASE

MOREHEAD, Ky.--Lisa Browning of Owingsville has been named Morehead State University's Alumni Executive Council Member of the Year, according to Dave Bolt, president of the MSU Alumni Association.

Browning was chosen by other council members for her outstanding volunteer work on behalf of MSU, Bolt said.

The award will be presented at the MSU Homecoming candlelight buffet dinner to be held from 6:30 to 8 p.m. Friday, Oct. 18, at the University Center cafeteria. Tickets for the buffet will be available at the door.

Browning, a 1979 MSU graduate, is the current Homecoming Committee chair. For previous volunteer efforts, she received the 1978 Sue Bell Simpson Award and the Outstanding Chi Omega Alumni Award twice, 1981 and 1982.

####

kj

News

PUBLIC INFORMATION

JUDITH CASTO, DIRECTOR

MOREHEAD STATE UNIVERSITY

UPO BOX 1100

MOREHEAD, KY 40351

606-783-2030

Oct. 17, 1985
FOR IMMEDIATE RELEASE

MOREHEAD, Ky.--Eric Hickman, son of Carrie Hickman of Louisville, has been chosen as a Morehead State University Student Alumni Association Ambassador for the 1985-86 school year.

Eric, a senior at MSU, was chosen through interviews and on basis of academic achievement.

All SAA Ambassadors are required to maintain a 2.5 grade point average.

The SAAA was formed last year as a joint venture between the MSU president's office and the alumni association. Ambassadors serve as hosts and greeters for many university functions throughout the year.

"The SAA's main goal is to eventually become a tie between the students and the alumni. We would like to show the students that campus involvement doesn't have to end at graduation," said Julie Grannis, vice president, SAAA.

####

tb

News

PUBLIC INFORMATION

JUDITH CASTO, DIRECTOR

MOREHEAD STATE UNIVERSITY

UPO BOX 1100

MOREHEAD, KY 40351

606-783-2030

Oct. 17, 1985

FOR IMMEDIATE RELEASE

MOREHEAD, Ky. --- Lenay Lee Stober, daughter of Larry and Sandra Stober of Somerset, has been chosen as a Morehead State University Student Alumni Association Ambassador for the 1985-86 school year.

Lenay, a junior at MSU, was chosen through interviews and on basis of academic achievement.

All SAA Ambassadors are required to maintain a 2.5 grade point average.

The SAAA was formed last year as a joint venture between the MSU president's office and the alumni association. Ambassadors serve as hosts and greeters for many university functions throughout the year.

"The SAAA's main goal is to eventually become a tie between the students and the alumni. We would like to show the students that campus involvement doesn't have to end with graduation," said Julie Grannis, vice president, SAAA.

#####

tb

News

PUBLIC INFORMATION

JUDITH CASTO, DIRECTOR

MOREHEAD STATE UNIVERSITY

UPO BOX 1100

MOREHEAD, KY 40351

606-783-2030

Oct. 17, 1985
FOR IMMEDIATE RELEASE

MOREHEAD, Ky. --- Four area students have been chosen as Morehead State University Student Alumni Association Ambassadors for the 1985-86 school year.

Flemingsburg residents chosen were Julie Grannis, daughter of JoAnn Grannis; Leslie Carpenter, daughter of Gerald Carpenter; and Michelle Carroll, daughter of Marvin and Anna Jean Carroll. Also chosen was Tyson Cummings, son of Mr. and Mrs. James Cummings of Ewing.

SAA Ambassadors are chosen through interviews and on basis of academic achievement. All SAA Ambassadors are required to maintain a 2.5 grade point average.

The SAAA was formed last year as a joint venture between the MSU president's office and the alumni association. Ambassadors serve as hosts and greeters for many university functions throughout the year.

"The SAAA's main goal is to eventually become a tie between the students and the alumni. We would like to show the students that campus involvement doesn't have to end at graduation," said Julie Grannis, vice president, SAAA.

#####

tb

A RELEASE LIKE THIS ONE WAS SENT TO THE
HOMETOWN MEDIA OF EACH OF THE 23
STUDENTS INVOLVED.

News

PUBLIC INFORMATION

JUDITH CASTO, DIRECTOR

MOREHEAD STATE UNIVERSITY

UPO BOX 1100

MOREHEAD, KY 40351

606-783-2030

Oct. 17, 1985
FOR IMMEDIATE RELEASE

MOREHEAD, Ky.--Grammy award-winning conductor Robert Page will be the guest conductor for the second of two concerts in Morehead State University's 26th annual Choral Festival to be held Monday and Tuesday, Nov. 4-5, at Duncan Recital Hall.

Page, assistant conductor of the Cleveland Symphony Orchestra, will conduct a festival chorus of 250 high school students at 8:15 p.m. Tuesday, Nov. 5. A concert featuring MSU choir members and music faculty will open the festival at 8:15 p.m. Monday, Nov. 4.

Page won Grammys for choral direction in 1967, 1974 and 1975, according to James Ross Beane, festival manager and MSU associate professor of music.

"Page is one of the most distinguished choral directors in the nation," Beane said. "Unlike many conductors who normally restrict their work to professionals, he is able to conduct high school students in a very effective manner." This will be his ninth appearance as guest conductor for the MSU festival.

A former director of choral activities at Temple University, Page chaired Carnegie-Mellon University's Department of Music from 1975 to 1980. He is co-chair of the National Endowment for the Arts Choral Panel and serves on the Association of Professional Vocal Ensembles board of directors.

(more)

Robert Page
2-2-2-2-2-2

Page has been guest conductor for several metropolitan orchestras including those in Philadelphia, Pittsburgh, Denver, New Orleans, Toledo and Los Angeles. He trained the Chicago Lyric Operal Chorus for the premiere of Penderecki's opera "Paradise Lost."

Page conducts the Cleveland Orchestra's Key Concerts for children ages five to nine and produces Cleveland Public Hall concerts featuring high school students. He has worked with student choirs in Pennsylvania, Iowa, Ohio, New York, New Jersey, North Carolina, Virginia and Kentucky.

The festival concerts are free and open to the public.

Additional information on the festival may be obtained by calling (606) 783-2480.

###

kj

Media Advisory

PUBLIC INFORMATION

JUDITH CASTO, DIRECTOR

MOREHEAD STATE UNIVERSITY

UPO BOX 1100

MOREHEAD, KY 40351

606-783-2030

****CORRECTION****

In a news release on Grammy Award-winning conductor Robert Page, dated for release Oct. 17, the time of the Tuesday, Nov. 5, concert is incorrect. The 250-voice festival chorus will perform at 7 p.m. in Duncan Recital Hall, not 8:15 p.m.

###

News

PUBLIC INFORMATION

JUDITH CASTO, DIRECTOR

MOREHEAD STATE UNIVERSITY

UPO BOX 1100

MOREHEAD, KY 40351

606-783-2030

Oct. 18, 1985
FOR IMMEDIATE RELEASE

MOREHEAD, Ky.--Dr. Jerry F. Howell of Morehead State University has been named Kentucky Conservationist of the Year by the Kentucky Conservation Council.

The Council made the announcement honoring Howell at its recent 45th annual meeting at Kentucky State University.

Howell is MSU Department of Biological and Environmental Sciences chair and holds rank of professor.

As head of the project and review committee of the Kentucky Chapter of the Nature Conservancy, Howell has helped procure land valued at approximately \$4 million for conversation purposes.

"My goal is to keep as much of Kentucky's land as possible in its natural state," Howell said. "Examples of our recent successes are the acquisitions of Murphy's Pond near Murray and a large tract of land in the Bad Branch area of Letcher County."

From 1974 to 1981, Howell wrote "Our Fragile Earth," a series of environmental articles published in 58 Kentucky newspapers. He also has published articles on the fish of the Big Sandy River basin.

Howell earned bachelor's degrees in forestry and wildlife management from North Carolina State University, a master's degree in zoology from Eastern Kentucky University and a doctorate in zoology from the University of Tennessee.

(more)

Howell
2-2-2-2-2-2

Howell, an MSU faculty member since 1972, is active in the Sierra Club, the Audubon Society, the American Fisheries Society and the National Association for Environmental Education.

He is married to the former Lois Taylor of McCreary County.

###

kj



News

PUBLIC INFORMATION

JUDITH CASTO, DIRECTOR

MOREHEAD STATE UNIVERSITY

UPO BOX 1100

MOREHEAD, KY 40351

606-783-2030

Oct. 18, 1985
FOR IMMEDIATE RELEASE

MOREHEAD, Ky.--Three Morehead State University students have been elected to office in the Black Alliance, a regional collegiate student organization.

The MSU students are: senior Joseph Hamer of Montclair, N.J.; sophomore Angela Marie Tutt of Louisville; and senior Kim M. Wallace of Detroit, Mich.

Elections were held during the recent third annual Black Alliance Conference, hosted by the University's Black Coalition, which was attended by approximately 40 students.

###

enj

News

PUBLIC INFORMATION

JUDITH CASTO, DIRECTOR

MOREHEAD STATE UNIVERSITY

UPO BOX 1100

MOREHEAD, KY 40351

606-783-2030

Oct. 18, 1985
FOR IMMEDIATE RELEASE

MOREHEAD, Ky.--Three Morehead State University students have been elected to office in the Black Alliance, a regional collegiate student organization.

The MSU students are: senior Joseph Hamer of Montclair, N.J.; sophomore Angela Marie Tutt of Louisville; and senior Kim M. Wallace of Detroit, Mich.

Elections were held during the recent third annual Black Alliance Conference, hosted by the University's Black Coalition, which was attended by approximately 40 students.

###

emj

News

PUBLIC INFORMATION

JUDITH CASTO, DIRECTOR

MOREHEAD STATE UNIVERSITY

UPO BOX 1100

MOREHEAD, KY 40351

606-783-2030

Oct. 18, 1985
FOR IMMEDIATE RELEASE

MOREHEAD, Ky.--Angela Marie Tutt, Morehead State University sophomore from Louisville, has been elected president of the Black Alliance, a regional collegiate student organization.

The daughter of Henry C. Tutt and Shirley J. Hawkins, Tutt is active in the Black Gospel Ensemble, Alpha Phi Alpha sister organization and the Alpha Angel social organization.

She was elected to the office during the recent third annual Black Alliance Conference, hosted by the University's Black Coalition, which was attended by approximately 40 students.

###

emj

News

PUBLIC INFORMATION

JUDITH CASTO, DIRECTOR

MOREHEAD STATE UNIVERSITY

UPO BOX 1100

MOREHEAD, KY 40351

606-783-2030

Oct. 18, 1985
FOR IMMEDIATE RELEASE

MOREHEAD, Ky.--Kim M. Wallace, Morehead State University senior from Detroit, Mich., has been elected corresponding secretary of the Black Alliance, a regional collegiate student organization.

Wallace, daughter of Ms. Francine Wallace, is a secondary education major. She is active in the Big Brother-Big Sister organization and secretary of the Black Coalition.

She was elected to the office during the recent third annual Black Alliance Conference, hosted by the University's Black Coalition, which was attended by approximately 40 students.

###

emj

News

PUBLIC INFORMATION

JUDITH CASTO, DIRECTOR

MOREHEAD STATE UNIVERSITY

UPO BOX 1100

MOREHEAD, KY 40351

606-783-2030

Oct. 18, 1985
FOR IMMEDIATE RELEASE

MOREHEAD, Ky.--Joseph E. Hamer, Morehead State University senior from Montclair, N.J., has been re-elected historian of the Black Alliance, a regional collegiate student organization.

Hamer, son of Catherine Hamer, is a communication and pre-law major. He is active in the MSU Black Coalition, ROTC, and Omega Psi Phi fraternity.

He was elected to the office during the recent third annual Black Alliance Conference, hosted by the University's Black Coalition, which was attended by approximately 40 students.

###

emj

News

PUBLIC INFORMATION

JUDITH CASTO, DIRECTOR

MOREHEAD STATE UNIVERSITY

UPO BOX 1100

MOREHEAD, KY 40351

606-783-2030

Oct. 18, 1985
FOR IMMEDIATE RELEASE

MOREHEAD, Ky.--Morehead State University's Department of Music will present the Musica Camerata in concert in the Duncan Recital Hall on Tuesday, Oct. 22 at 8:15 p.m.

The program will include classical, romantic and contemporary music by Mozart, Hindemith and Dvorak.

Members of the faculty ensemble include Dr. William Bigham, professor, clarinet; Leo Blair, associate professor, violin/viola; Suanne Blair, assistant professor, cello; and Lucretia Stetler, assistant professor, piano.

The concert is free and open to the public.

###

kdm

News

PUBLIC INFORMATION

JUDITH CASTO, DIRECTOR

MOREHEAD STATE UNIVERSITY

UPO BOX 1100

MOREHEAD, KY 40351

606-783-2030

Oct. 18, 1985
FOR IMMEDIATE RELEASE

MOREHEAD, Ky.--Morehead State University will join with other universities and colleges in an observance of National Collegiate Alcohol Awareness Week Oct. 21-27.

The campus-wide observance is co-sponsored by MSU's Division of Student Development and the Office of Safety and Security.

"Several special programs have been designed to assist students in making responsible decisions about alcohol," said Susette Redwine, University Center programs and special events coordinator.

On Wednesday, Oct. 23, from 4:30 to 7 p.m., University Center Grill will be the location for "Happy Hour" activities with "mocktails," hors d'oeuvres, music and a Monopoly tournament. "We hope to create a lounge-type atmosphere while showing students you can have fun without drinking," Redwine said.

Also scheduled on Saturday, Oct. 26, in the parking lot of Academic-Athletic Center from 1 to 4 p.m., the Office of Safety and Security will monitor an alcohol intake and motor skills impairment driving demonstration with participants testing their driving skills before and after drinking.

(more)

alcohol awareness
2-2-2-2-2-2

The four-part driving test will include lane changing, accident avoidance, simulated highway driving, and parallel parking.

"We will also take handwriting samples before and after," said Roger Holbrook, shift supervisor, Office of Safety and Security.

"We want to encourage spectators at the skills test," Holbrook said.

MSU-TV Productions will videotape the demonstration so that it may be used as an educational tool in residence life programming, Redwine said.

###

News

PUBLIC INFORMATION

JUDITH CASTO, DIRECTOR

MOREHEAD STATE UNIVERSITY

UPO BOX 1100

MOREHEAD, KY 40351

606-783-2030

Oct. 18, 1985
FOR IMMEDIATE RELEASE

MOREHEAD, Ky.--Terrel H. Bell, former U.S. secretary of Education, will be the speaker for the third program in the Arts in Morehead (AIM) 1985-86 Concert and Lecture Series on Thursday, Oct. 24.

Dr. Bell's appearance will be a major event of MSU's observance of National Higher Education Week Oct. 19-26. He is scheduled to speak at 8 p.m. in Breckinridge Auditorium.

As U.S. Secretary of Education, Bell chartered the National Commission of Excellence in Education, which produced the report "A Nation at Risk." He is currently a professor of educational administration at the University of Utah.

Prior to his presidential appointment as head of the Department of Education, Bell was Commissioner and Chief Executive Officer of the Utah System of Higher Education. He also served as Commissioner of Education for the U.S. Department of Health, Education and Welfare.

Bell received a bachelor's degree from Southern Idaho College of Education, a master's degree from the University of Idaho and a doctorate in educational administration from the University of Utah.

He is the author of "Active Parent Concern" and other books on education.

(more)

Terrel Bell
2-2-2-2-2-2

AIM is a cooperative effort of Morehead State University and the Morehead-Rowan County Arts Council. Other programs for the year will feature National Public Radio's "Morning Edition" host Bob Edwards, classical and jazz concerts, a National Shakespeare Company production of "Othello," and a Cole Porter musical revue.

Season subscription tickets to all events are \$25 for individual and \$40 for family, according to Dr. Glenn C. Rogers, MSU professor of English and series committee chair.

Supporting membership subscriptions in which a portion of the ticket price is tax deductible also are available, Rogers said. Supporting member categories are Contributor, \$50; Patron, \$75 and Benefactor, \$125.

Tickets are \$5 at the door. MSU students presenting University identification are admitted free. Additional information on tickets may be obtained by calling Rogers at (606) 783-2788.

###

kj



News

PUBLIC INFORMATION

JUDITH CASTO, DIRECTOR

MOREHEAD STATE UNIVERSITY

UPO BOX 1100

MOREHEAD, KY 40351

606-783-2030

Oct. 18, 1985
FOR IMMEDIATE RELEASE

MOREHEAD, Ky.--The Northeast Kentucky Beef Improvement Federation (NKBIF) re-elected Rick Johnson of Catlettsburg to a second term as president at its recent annual meeting, conducted at the Vet-Tech building on Morehead State University's farm.

NKBIF is a non-profit organization conceived and organized by area beef producers to improve the productivity of Eastern Kentucky beef herds. The federation is currently conducting its 2nd annual Bull Performance Testing Project, and is accepting consignments of registered or recorded percentage bulls through the weigh-in deadline of Nov. 2.

Following the tests, a sale will be conducted for qualifying bulls, which, according to Johnson, will allow purebred producers to showcase the success of their breeding programs, while affording commercial producers a rare opportunity to select superior sires to add to their herds.

"We are pleased with the progress we have made in testing the bulls," Johnson said, citing overall improvement in techniques since the program's inception. "It has been a cooperative effort by all the NKBIF members to help one another conduct the testing program. We have all benefited from comparing our management and feeding practices," Johnson added.

(more)

NKBIF
2-2-2-2-2-2

Other officers elected at the meeting were Lloyd Beckley of Pryse, vice-president, and Phil Kenkel, agri-business specialist at MSU's Appalachian Development Center, secretary-treasurer. Their terms, like that of Johnson, will run one year.

"We'd like to encourage more purebred producers from the area to register their bulls for the program, preferably before Nov. 2," said Kenkel, adding that bulls may be consigned up to and including the weigh-in deadline.

Additional information may be obtained by writing NKBIF, c/o Appalachian Development Center, Morehead State University, Morehead, KY 40351, or by calling Kenkel, (606) 783-2077.

####

cw

Tips

PUBLIC INFORMATION

JUDITH CASTO, DIRECTOR

MOREHEAD STATE UNIVERSITY

UPO BOX 1100

MOREHEAD, KY 40351

606-783-2030

THIS WEEK AT MOREHEAD STATE UNIVERSITY
(Oct. 20 - 26)

Sunday, Oct. 20

10 A.M. HOMECOMING: Golf Scramble at the MSU Golf Course.

For more information, please call 783-2080.

11-2 P.M. HOMECOMING: Brunch in the Adron Doran University Center Cafeteria. Tickets are required. For more information, please call 783-2080.

Monday, Oct. 21

COMPUTER ART EXHIBIT at the MSU Art Gallery in the Claypool-Young Art Building; 8 a.m. - 4 p.m., Mon.-Fri., through Nov. 16. For more information, please call 783-2766.

STUDENT ART EXHIBIT: The Morehead Art Student League (MASL) will display art work in the Alternative Gallery of the Claypool-Young Art Building; 8 a.m.-4 p.m., Mon.-Fri., through Nov. 3. Public reception honoring exhibitors will be held Oct. 22 from 6:30 - 9 p.m. For more information, please call 783-2766.

7 P.M. VOLLEYBALL: MSU vs. Northern Kentucky University at Breathitt Sports Center. For more information, please call 783-2500.

(more)

THIS WEEK AT MOREHEAD STATE UNIVERSITY
2-2-2-2-2-2

Tuesday, Oct. 22

8 A.M. CRITICAL AND ANALYTICAL THINKING SKILLS CONFERENCE
in the Eagle Room of the Adron Doran University Center. For more
information, please call 783-2894.

7 P.M. VOLLEYBALL: MSU vs. Thomas More College at Wetherby
Gymnasium. For more information, please call 783-2500.

Thursday, Oct. 24

8 P.M. AIM CONCERT AND LECTURE SERIES: Terrel Bell will
lecture in Breckinridge Auditorium. For more information, please
call 783-2788.

8:15 P.M. SENIOR VOCAL RECITAL: Terry M. Cain will perform
in Duncan Recital Hall. For more information, please call 783-2473.

Saturday, Oct. 26

8 P.M.-MIDNIGHT UNDERTAKER'S BALL in the Crager Room of the
Adron Doran University Center. For more information, please call
783-2268.

10 A.M. WOMEN'S CROSS COUNTRY: OVC Championship at the MSU
Golf Course. For more information, please call 783-2500.

10:45 A.M. MEN'S CROSS COUNTRY: OVC Championship at the MSU
Golf Course. For more information, please call 783-2500.

###

News

PUBLIC INFORMATION

JUDITH CASTO, DIRECTOR

MOREHEAD STATE UNIVERSITY

UPO BOX 1100

MOREHEAD, KY 40351

606-783-2030

Oct. 21, 1985

MSU HOMECOMING: A Picture Story

More than 400 alumni--some from as far as Texas--returned to Morehead State University's campus this past weekend for Homecoming 1985. "With students, faculty and staff combined with alumni, we probably had more than 1,500 people involved overall," said Don Young, MSU alumni relations director.

For returning alumni, friendships were renewed through informal parties at Greek houses, the candlelight buffet, a continental breakfast, the traditional football game and dance. Class reunions and a golf outing rounded out the activities.

For students there was the pep rally and bonfire, the Howard Jones concert, various spirited competitions and the election of a homecoming queen. Winners of the banner/pyramid contest were: Delta Zeta Sorority, first; Chi Omega, second, and Sigma Nu, third. Residence hall decorating winners were Mignon Hall and Cartmell Hall.

Melissa Collins of Morehead, daughter of Mr. & Mrs. Zane Collins, was crown Homecoming Queen for 1985 by MSU President Herb. F. Reinhard, Jr. during half-time ceremonies and was presented roses on behalf of the Alumni Association by Mrs. Reinhard, as well as a silver bowl from the Student Association by SA President Ben Iden. Collins, a sophomore majoring in elementary education, is a varsity cheerleader and a member of Chi Omega Sorority and Sigma Alpha Epsilon Little Sister.

(more)

Cutlines

- 1 & 2--Thursday's pep rally and bonfire sparked much enthusiasm among MSU students who also competed to see who could show the most school spirit. "Zap the Zips" was the message of the winning banner produced by Delta Zeta Sorority.

- 3--Lisa Browning of Owingsville was presented MSU's Alumni Executive Council Member of the Year Award by Association President Dave Bolt. She was selected by council members for her outstanding efforts as a volunteer.

- 4--Returning grads had the opportunity to visit over coffee Saturday morning at the home of President and Mrs. Herb. F. Reinhard. Reminiscing about the campus are, from left, Pruda Caudill Gray and husband Chester Gray of Louisville, and Melvin Vaughn and wife Virginia Johnson Vaughn of Norfolk, Va.

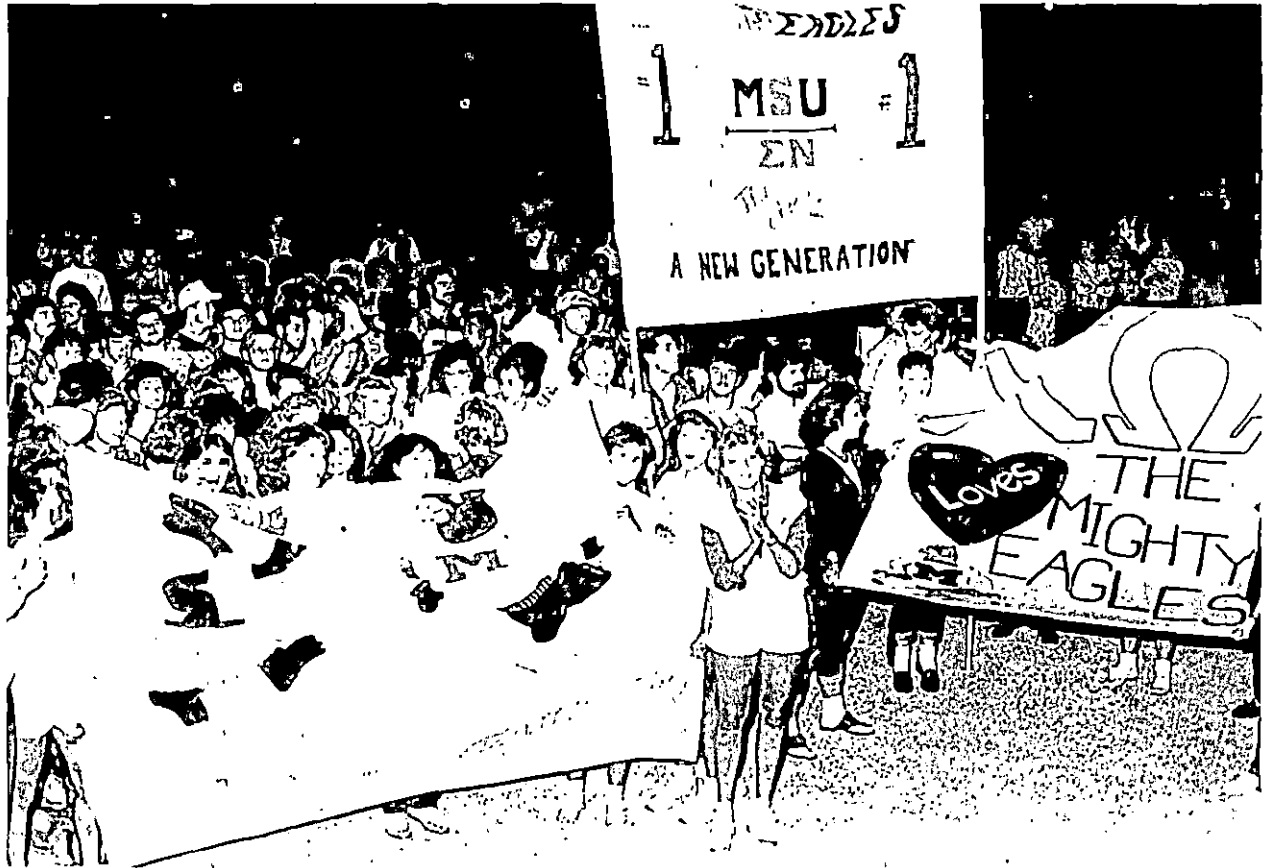
- 5--Wearing blue and gold painter's caps with MSU emblems, more than two dozen former MSU music students "banded" together to form an Alumni Band which played in the stands during the football game.

- 6--Caught by the camera at the moment the name of MSU's 1985 Homecoming Queen was first announced were Queen Melissa Collins and her father Zane Collins.

- 7--President Reinhard places Queen's crown on the head of Melissa Collins, MSU's 1985 Homecoming Queen.

(MSU photos)

####



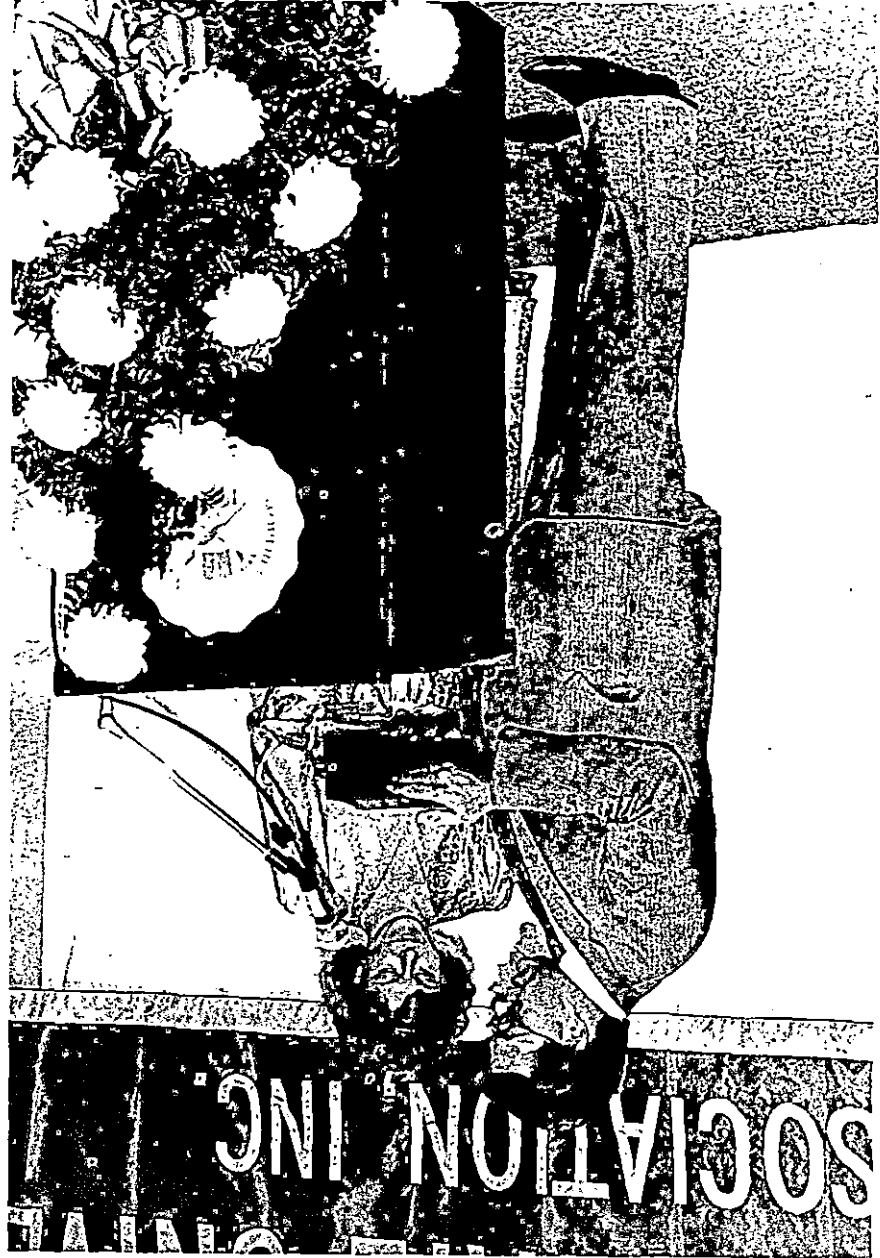
2



1



4



3



9



5



News

MOREHEAD STATE UNIVERSITY

UPO BOX 1100

MOREHEAD, KY 40351

PUBLIC INFORMATION

JUDITH CASTO, DIRECTOR

606-783-2030

*****PLEASE NOTE THIS IS A CORRECTED VERSION OF A NEWS RELEASE
DISTRIBUTED FOR USE OCT. 21. PLEASE DESTROY THE ORIGINAL
MATERIAL.*****

Oct. 21, 1985
FOR IMMEDIATE RELEASE

MOREHEAD, Ky.--Jacquelyn Scott has been named coordinator of Morehead State University's Job Training Program (JTP), according to Dr. Robert L. Morasky, dean of graduate and special academic programs.

Scott had been JTP acting coordinator before she assumed the position of coordinator last month.

Funded through grants from TEN-CO Private Industry Council under the Job Training Partnership Act, JTP offers short-term, intensive skill training for adults 18 years or older who need an employable skill or who need to upgrade their current skills.

Scott will coordinate programs which provide training for the positions of pharmacy technician, medical records assistant and nanny/child-care specialist, as well as clerical and microcomputer training in computerized office procedures.

Scott came to MSU in 1981 as a JTP trainer and counselor. She earned a bachelor's degree from Abilene Christian University and is working on a master's degree in adult education/counseling.

She is an advisory board member of "Family Circle" a support group for families and an Outstanding Young Women of America honoree.

###

kj

News

PUBLIC INFORMATION

JUDITH CASTO, DIRECTOR

MOREHEAD STATE UNIVERSITY

UPO BOX 1100

MOREHEAD, KY 40351

606-783-2030

Oct. 21, 1985
FOR IMMEDIATE RELEASE

MOREHEAD, Ky.--Jacquelyn Scott has been named coordinator of Morehead State University's Job Training Program (JTP), according to Dr. Robert L. Morasky, dean of graduate and special academic programs.

Scott had been JTP acting coordinator before she assumed the position of coordinator last month.

Funded through grants from TEN-CO Private Industry Council under the Job Training Partnership Act, JTP offers short-term, intensive skill training for adults 18 years or older who need an employable skill or who need to upgrade their current skills.

Scott will coordinate programs which provide training for the positions of pharmacy technician, medical records assistant and nanny/child-care specialist, as well as clerical and microcomputer training in computerized office procedures.

Scott came to MSU in 1981 as a JTP trainer and counselor. She earned a bachelor's degree from Abilene Christian University and a master's degree from MSU.

She is an advisory board member of "Family Circle" magazine and an Outstanding Young Women of America honoree.

Scott and her husband, Tom, are Henderson, Tenn., natives. They have two children, Todd and Cliff.

###

kj



News

PUBLIC INFORMATION

JUDITH CASTO, DIRECTOR

MOREHEAD STATE UNIVERSITY

UPO BOX 1100

MOREHEAD, KY 40351

606-783-2030

Oct. 21, 1985
FOR IMMEDIATE RELEASE

MOREHEAD, Ky.--Peter McNeill, tourism/industrial development specialist at Morehead State University's Appalachian Development Center is the recipient of the 1985 Tom Wallace Farm Forestry Award for the Northeastern District of Kentucky.

The award, given to selected individuals on the basis of conservation of natural resources, particularly timberlands, is the result of competition sponsored by the Louisville Courier Journal.

"Quite naturally, I am honored to have been selected as this year's award recipient," said McNeill, after receiving the honor from Pat Cleary, district management assistant, Kentucky Department of Natural Resources, Division of Forestry. Cleary, who initially placed McNeill's name in nomination, is the district forester for Fleming County.

According to Cleary, the recognition represents the culmination of 25 years of outstanding work in forestry. McNeill has planted approximately 100,000 trees over this period and has conducted marketing and management practices as prescribed by the Kentucky Division of Forestry. A state judging committee selected McNeill as the 1985 winner and he received a plaque denoting his achievement on Oct. 9.

###

cw

News

PUBLIC INFORMATION

JUDITH CASTO, DIRECTOR

MOREHEAD STATE UNIVERSITY

UPO BOX 1100

MOREHEAD, KY 40351

606-783-2030

Oct. 21, 1985
FOR IMMEDIATE RELEASE

MOREHEAD, Ky.--Milford Kuhn, coordinator of Morehead State University's Academy of Arts, has been named 1985 Man of the Year by the Morehead Optimists Club for his work in establishing the academy.

Kuhn, MSU associate professor of music, received the award recently at the club's fall banquet at Adron Doran University Center.

According to former club president Bill Layne, the award had not been given since 1983. "The honoree must make a contribution to the community and to the youth of the community," he said.

In making the presentation to Kuhn, Johnson Duncan, MSU professor emeritus of music, said that Kuhn had moved ahead "with a concept and plan by which he insisted MSU could become a constant and continuing center for arts in Eastern Kentucky."

Kuhn expressed surprise at being named the recipient, saying, "It was a well kept secret and really an honor."

Established in 1983, the Academy of the Arts provides professional training in art, music and dance at a nominal cost to individuals of all ages. Training centers have been set up in Mt. Sterling, Ashland and southeastern Ohio as well as in Morehead. New regional centers are planned for Montgomery County, Jackson and other communities.

(more)

Kuhn
2-2-2-2-2

A native of Houston, Texas, Kuhn graduated from Houston Baptist College and later earned a Masters of Music degree at the University of Miami. Kuhn has also done doctoral work at the University of Maryland.

A French horn player, Kuhn has played in several symphony orchestras across the United States including the Houston Symphony, the Austin Symphony, the Ft. Lauderdale Symphony and the American Symphony.

Kuhn has worked on all levels as a teacher, from elementary school through college, teaching not only French horn but also band, theory, jazz, music education and conducting. Before coming to MSU, Kuhn was the head of Adirondack College's Music Department.

###

kdm

News

PUBLIC INFORMATION

JUDITH CASTO, DIRECTOR

MOREHEAD STATE UNIVERSITY

UPO BOX 1100

MOREHEAD, KY 40351

606-783-2030

Oct. 22, 1985
FOR IMMEDIATE RELEASE

MOREHEAD, Ky.--Registration for training in Computerized Office Procedures and Medical Records Assistant has been extended through Monday, Oct. 28, according to Jacquelyn Scott, Job Training Program coordinator at Morehead State University's Appalachian Development Center.

The programs, which run eight weeks each, offer intensive skill training in the classroom and with employers. "Our graduates are given quality training and an opportunity for employment that would be very difficult to achieve otherwise," said Scott.

The course in Computerized Office Procedures features training in microcomputers, clerical skills, proofreading, editing, spelling, and grammar, with special emphasis in bookkeeping.

According to Scott, the course offers 48 hours hands-on experience with the IBM PC Computer in addition to 48 hours of typing. "The Computerized Office Procedures program is designed to enhance basic typing skills using the IBM PC," she said.

The Medical Records Assistant program offers training with special emphasis on new coding used in hospitals, clinics, and insurance companies.

Anyone over 18 who lives in the TENCO service area--Bath, Boyd, Bracken, Fleming, Greenup, Lewis, Montgomery, Mason, Robertson, and Rowan Counties--and is certified by the Kentucky Department of Employment Services is eligible to apply for these programs. Applicants must possess basic typing skills.

(more)

Job Training Program
2-2-2-2-2-2

More information concerning these and other Job Training Program courses, is available from Scott at the Appalachian Development Center, Morehead State University, Morehead, KY 40351. Phone: (606) 783-2077. Information is also available from the Kentucky Department for Employment Services.

###

cw

News

PUBLIC INFORMATION

JUDITH CASTO, DIRECTOR

MOREHEAD STATE UNIVERSITY

UPO BOX 1100

MOREHEAD, KY 40351

606-783-2030

Oct. 23, 1985
FOR IMMEDIATE RELEASE

MOREHEAD, Ky.--The Noal F. Oney Memorial Scholarship has been established at Morehead State University by friends and family of the MSU alumnus, who died July 31, 1985.

The scholarship, earmarked for theatre students, is expected to be awarded for the first time in the Fall 1986 Semester, according to William H. Redwine, director of development.

Contributions to the scholarship fund are encouraged and may be made to the MSU Foundation, Redwine said. "Anyone interested in contributing to the fund may call me at (606) 783-2033," he added.

Oney, who graduated from MSU in August 1964, was a speech and theatre major. He was the son of the late Ernest and Eva Oney of Soldier and a graduate of Olive Hill High School.

While a student at Morehead State, he worked as a sales clerk at Layne's Men Store. He appeared in several MSU Theatre productions including "King of Hearts," "Our Town," and "The Miser." He was a Covington Key Player with the Morehead Players and served as vice president of the group. He was active in theatre in South Pasadena, Calif., where he owned his own business.

Oney Memorial Scholarship recipients may be either undergraduate or graduate theatre majors, speech and theatre majors or theatre minors, but must be recommended as showing promise or excellence by the theatre faculty. A minimum grade point average of 2.5 will be required.

###

News

PUBLIC INFORMATION

JUDITH CASTO, DIRECTOR

MOREHEAD STATE UNIVERSITY

UPO BOX 1100

MOREHEAD, KY 40351

606-783-2030

Oct. 23, 1985
FOR IMMEDIATE RELEASE

MOREHEAD, Ky.--Terry M. Cain, Paris senior majoring in music at Morehead State University, will present his recital Thursday, Oct. 24, at 8:15 p.m. in Duncan Recital Hall.

The son of the Rev. and Mrs. Ben N. Cain, he will be accompanied by Marla K. Sowers, Maysville graduate student. Cain's program will include vocal pieces set to the works of such composers as Purcell, Brahms, Vivaldi and Gershwin.

Cain is a member of the MSU Chamber Singers and Theta Alpha Phi theatre honor society. He has appeared in such shows as "Brigadoon," "Deathtrap," and "Creation of the World and Other Business."

####

kdm

News

PUBLIC INFORMATION

JUDITH CASTO, DIRECTOR

MOREHEAD STATE UNIVERSITY

UPO BOX 1100

MOREHEAD, KY 40351

606-783-2030

Oct. 24, 1985
FOR IMMEDIATE RELEASE

MOREHEAD, Ky.--Myron Doan, a Morehead State University staff member since 1973, has been named acting assistant to the vice president for student development.

Doan's appointment was announced by Dr. Gary Grace, MSU vice president for student development, who said:

"The Division of Student Development and the students of Morehead State University are extremely fortunate to have someone as talented and as dedicated as Mr. Doan."

As judicial officer for the division, Doan will be responsible for student discipline, Dr. Grace said.

"I have always had great interest in working with students and this position will offer an excellent opportunity to continue to do so," Doan said.

Doan earned bachelor's and master's degrees from MSU and has been a radio and television instructor. He formerly was assistant manager of WMKY Radio.

Currently, he is adviser and district vice president of the local chapter of Tau Kappa Epsilon fraternity. He is active in the Alpha Epsilon Rho Broadcasting fraternity, the Gamma Beta Phi Society, Phi Kappa Phi and is adviser to MSU's cheerleaders.

As a member of the MSU Alumni Executive Committee, Doan serves as Student Relations Committee chair.

Doan is a member of the First Christian Church and is the son of Mary Doan of Falmouth.

###



News

PUBLIC INFORMATION

JUDITH CASTO, DIRECTOR

MOREHEAD STATE UNIVERSITY

UPO BOX 1100

MOREHEAD, KY 40351

606-783-2030

****NOTE: "Handicapped Awareness Day" offers an excellent opportunity for an unusual feature. If you are interested in developing coverage, please contact this office.****

Oct. 24, 1985
FOR IMMEDIATE RELEASE

MOREHEAD, Ky.--The Student Council for Exceptional Children Chapter at Morehead State University will conduct a "Handicapped Awareness Day" on Tuesday, Oct. 29.

"This year is the 10th anniversary of the passage of the congressional legislation known as the 'Education for All Handicapped Children Act,'" said Robin Werner, Portsmouth, Ohio, sophomore. Werner is the student coordinator for MSU's Handicapped Awareness Day.

"As one way to heighten awareness of the handicapped's problems, we will have administrators, faculty and students assuming a handicap for the day," Werner said. "Some will spend time in a wheelchair or on a walker, while others will simulate blindness," she explained.

In addition, nationally recognized advocate of the handicapped Bonnie Consolo will speak at 7 p.m. in the Crager Room, Adron Doran University Center. Born without arms, Consolo has appeared as a spokesperson for the handicapped in films and on television as well as lecturing nationwide. Her talk will be open to the public.

###

News

PUBLIC INFORMATION

JUDITH CASTO, DIRECTOR

MOREHEAD STATE UNIVERSITY

UPO BOX 1100

MOREHEAD, KY 40351

606-783-2030

Oct. 24, 1985
FOR IMMEDIATE RELEASE

MOREHEAD, Ky.--Morehead State University will implement the first phase of its newly-approved Bachelor of Science in Nursing degree program with the Fall 1986 semester.

The Council on Higher Education at its Oct. 8 meeting approved establishing a new academic program at Morehead State leading to a four-year degree in nursing, according to Dr. Roberta Anderson, MSU vice president for academic affairs.

"A generic baccalaureate degree with R.N. track has been developed to meet the needs of nurses in Eastern Kentucky," Dr. Anderson said. "It's a program that is long overdue for our region," she added.

Vice President Anderson commended the nursing faculty and Dr. Charles Derrickson, dean of the College of Applied Sciences and Technology for their efforts in developing the program. "A great deal of work has gone into its development," she said.

"Morehead State has offered a two-year associate nursing degree since 1971, but today the profession is encouraging its members to strengthen their education to meet the demands of our ever-changing society," Dr. Derrickson noted.

The phase to be launched next fall is the R.N. track, according to Dr. Betty Porter, chair of MSU's Department of Nursing and Allied Health. "This means registered nurses with two-year degrees or diplomas may enter the program then at the junior level," she said.

(more)

nursing
2-2-2-2-2-2

In the Fall of 1987, the first students will be accepted into the generic (straight four-year) track. "Those students will enter as sophomores after having spent the previous year taking 34 hours of general requirements," Dr. Anderson said.

"We know that there are some students who have been taking general course requirements for two years waiting for this program to be developed and approved," she said. "This is indicative of the interest out in the region," she added.

Participants in the new program will have a choice of seven nursing specialties: Coronary and Intensive Care; Operating and Recovery Room; Trauma; Community-Mental Health; Children; Childbearing Family, and Adult.

MSU's two-year nursing degree, which has produced more than 500 graduates, will enroll its final class in the Spring of 1986.

"We feel that we've met that need and now as the national trend in nursing education is toward a four-year degree, we join with our sister institutions to meet the new need," Dr. Anderson said.

Additional information on the new degree program may be obtained by calling MSU's Department of Nursing and Allied Health, (606) 783-2632.

###

News

PUBLIC INFORMATION

JUDITH CASTO, DIRECTOR

MOREHEAD STATE UNIVERSITY

UPO BOX 1100

MOREHEAD, KY 40351

606-783-2030

Oct. 24, 1985
FOR IMMEDIATE RELEASE

MOREHEAD, Ky.--Janet S. Allen, a native of Fulton, has been named purchasing officer at Morehead State University. She assumed the post Oct. 1.

Allen will be responsible for overseeing purchasing practices of the university to ensure efficiency and economy and for compliance with state and federal regulations, according to Michael Walters, MSU director of business services.

Allen, formerly director of purchasing at Vanderbilt University, fills a vacancy created by the retirement of Robert W. Stokes from the position. Stokes had been an MSU employee for 36 years.

"I know it is difficult to follow someone like Bob Stokes," Allen said, "but we will strive to provide the best service possible to the University."

Allen said she hoped to visit each University department to familiarize herself with their purchasing needs.

Her previous experience also includes senior buyer at the University of Louisville and manager of purchasing for the University of Louisville Hospital.

Allen holds bachelor's and master's degrees from Murray State University. She is a member of the National Association of Educational Buyers and the National Association of Purchasing Management.

She is the daughter of Mrs. J. Ward Johnson of Fulton.

###



News

PUBLIC INFORMATION

JUDITH CASTO, DIRECTOR

MOREHEAD STATE UNIVERSITY

UPO BOX 1100

MOREHEAD, KY 40351

606-783-2030

Oct. 24, 1985
FOR IMMEDIATE RELEASE

MOREHEAD, Ky.--The Kentucky Academy of Science will hold its 72nd annual meeting at Morehead State University Friday and Saturday, Nov. 8-9, according to Dr. John C. Philley, MSU Department of Physical Sciences chair.

Approximately 200 representatives of Kentucky's educational institutions and industrial community are expected to attend, Philley said.

Dr. James R. Durig, director of the South Carolina Experimental Program to Stimulate Competitive Research (EPSCor), will be the speaker at the general session to be held at 3:30 p.m. Friday, Nov. 8, in the Claypool-Young Art Building auditorium.

Dr. Leonard Peters, associate director of research at University of Kentucky, will be a guest at the general session. Peters is project director of planning for Kentucky's EPSCor, Philley said.

Harry Snyder, executive director of the Kentucky Council on Higher Education, will be the banquet speaker at 7 p.m. Friday in the Cragger Room, Adron Doran University Center.

The two-day meeting will open at 9:30 a.m. Friday with a community college faculty meeting in the Riggle Room at the University Center. Registration will be held from noon to 4 p.m. Friday in the Claypool-Young Art Building lobby.

(more)

Academy meetings
2-2-2-2-2-2

Sectional meetings of the various of academic disciplines will be held from 1 to 3 p.m. Friday at sites to be announced. More than 150 technical reports are scheduled to be presented at the sectional meetings, Philley said.

MSU President and Mrs. Herb. F. Reinhard will host a reception at their home from 5:30 to 6:30 p.m. and he will make opening remarks at the banquet.

Registration will continue on Saturday from 7:30 to 10 a.m. The business meeting will be held from 9:15 to 10:15 a.m. in Claypool-Young auditorium. Sectional meetings are scheduled throughout Saturday.

Information concerning the meeting and banquet may be obtained by calling Philley at (606) 783-2913.

####

kj

News

PUBLIC INFORMATION

JUDITH CASTO, DIRECTOR

MOREHEAD STATE UNIVERSITY

UPO BOX 1100

MOREHEAD, KY 40351

606-783-2030

Oct. 24, 1985
FOR IMMEDIATE RELEASE

MOREHEAD, Ky.--Morehead State University's Department of Nursing and Allied Health Sciences will offer a workshop for registered nurses on physical examination techniques Monday through Wednesday, Nov. 18-20, beginning with registration at 8:30 a.m. Monday.

Larry S. Kelly, a member of the Eastern Kentucky University nursing faculty, will conduct the workshop.

The workshop will provide information on techniques of physical assessment of adults, according to Pauline Ramey, MSU coordinator of continuing education for nursing.

Specific topics will include inspection, palpitation, percussion and auscultation.

Participants will practice in pairs and are asked to wear clothing suitable for examinations of the upper chest, abdomen, back and lower extremities from feet to mid-thigh. Halter tops or bathing suit tops may be worn.

Participants are also asked to bring a stethoscope with bell and diaphragm and an ophthalmoscope.

The pre-registration deadline is Nov. 13. Enrollment will be limited to 20 persons.

Nurses will receive 18 contact hours credit from MSU for participation in the workshop, which is approved by the Kentucky Board of Nursing.

The fee is \$90. Additional information may be obtained by calling (606) 783-2635 or 783-2632.

###

kj

News

PUBLIC INFORMATION

JUDITH CASTO, DIRECTOR

MOREHEAD STATE UNIVERSITY

UPO BOX 1100

MOREHEAD, KY 40351

606-783-2030

Oct. 25, 1985
FOR IMMEDIATE RELEASE

MOREHEAD, Ky.--Speaking at Morehead State University recently, former U.S. Secretary of Education Terrel H. Bell called for a commitment to education and a respect for teachers and learning on the part of Americans.

"We need to realize that our prime resource is our intelligence--not timber, not oil, not minerals," Dr. Bell told his audience. "We need to realize that commitment to education is our best investment."

Dr. Bell's appearance, a highlight of MSU's observance of National Higher Education Week (Oct. 19-26), was part of the Arts in Morehead (AIM) Concert and Lecture Series programming.

As secretary of education, Dr. Bell chartered the National Commission on Excellence in Education which produced the report "Nation at Risk."

Noting that the report had created a renaissance in education nationwide, Dr. Bell cautioned his listeners that serious problems still existed. "We need to do a better job of educating teenage youth--that's an area needing attention," he said. As for the teaching profession itself, Dr. Bell noted that in 1983 more than half of those students entering college to become teachers had scored in the bottom half of college entrance exams.

(more)

Bell
2-2-2-2-2-2

"This means our teachers are coming from the bottom half. We must attract stronger and better candidates to the profession," he continued. "We're just not competitive in the human market place for teachers."

He later said that Japanese youngsters scramble to become teachers, because teacher's salaries there are 30 percent higher than the national government's career civil service level and that the society has a reverence and respect for teachers. "We don't respect teachers here," he said.

Commending MSU for its long tradition of producing teachers, Dr. Bell said that campuses like Morehead State had a significant impact on their regions. "It's institutions like Morehead State University that make America great," he commented.

"A college campus is a very sacred place. It's where truth and ideas prevail over bigotry and ignorance," he added, noting that much of the nation's problems were caused by ignorance.

Dr. Bell also told the nearly 150 people attending his lecture that education should be the responsibility of the state. "Education should be to state government what national defense is to the federal government," he said, praising Governor Martha Layne Collins for her commitment to education in Kentucky. "The prime responsibility for funding and setting standards rests with the government," he said.

###

News

PUBLIC INFORMATION

JUDITH CASTO, DIRECTOR

MOREHEAD STATE UNIVERSITY

UPO BOX 1100

MOREHEAD, KY 40351

606-783-2030

Oct. 25, 1985
FOR IMMEDIATE RELEASE

MOREHEAD, Ky.--Peggy A. Overly, a native of Ewing, has been named minority student recruiter for Morehead State University's Office of Admissions.

Overly will be responsible for providing information on the University's programs and services to prospective students and minority students in particular.

"Minority student recruitment is one of the most pressing issues in higher education today. I welcome the opportunity and challenge to be part of the MSU admission team," Overly said.

According to Overly, the post will require extensive travel as MSU continues to broaden its base of service to the region's minorities.

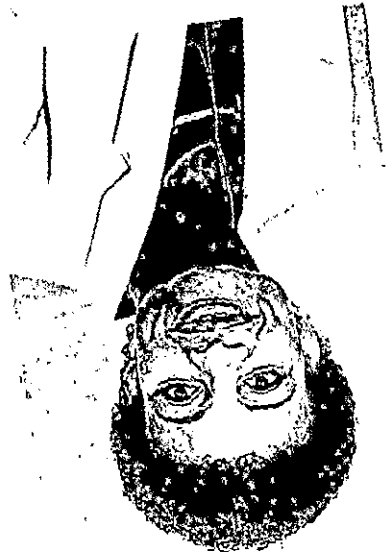
Overly holds three academic degrees from MSU: an associate degree in fashion merchandising, a bachelor's in clothing and textiles, and a master's in adult and higher education.

She received an Outstanding Young Woman of America award in 1984 and was twice president of MSU's Black Gospel Ensemble. She also was included in Who's Who Among Students in American Colleges and Universities.

Overly, the daughter of Mrs. Mildred Jackson of Ewing, has a son Tjuan, and a daughter, Ranai.

###

kj



News

PUBLIC INFORMATION

JUDITH CASTO, DIRECTOR

MOREHEAD STATE UNIVERSITY

UPO BOX 1100

MOREHEAD, KY 40351

606-783-2030

Oct. 25, 1985
FOR IMMEDIATE RELEASE

MOREHEAD, Ky.--A Morehead State University assistant professor of nursing has been elected chair of the Kentucky Nursing Continuing Education Network.

Pauline Ramey, MSU's coordinator of continuing education for nurses, was chosen earlier this month to direct the network's activities to promote continuing education opportunities for nurses throughout the state.

The committee, sanctioned by the Kentucky Board of Nurses and the Kentucky Nurses Association, will be involved in developing and supporting continuing education planning committees at the local level.

A member of MSU's Department of Nursing and Allied Health faculty since 1973, Ramey earned the B.S.N. degree from Indiana University and the master's degree from Morehead State. She also is an education specialist in adult and continuing education.

Ramey chairs the department's Regional Advisory Committee and the Continuing Education Committee of MSU's College of Applied Sciences and Technology.

###

News

PUBLIC INFORMATION

JUDITH CASTO, DIRECTOR

MOREHEAD STATE UNIVERSITY

UPO BOX 1100

MOREHEAD, KY 40351

606-783-2030

Oct. 26, 1985
FOR IMMEDIATE RELEASE

MOREHEAD, Ky.--Three Morehead State University students have been selected to participate in the Kentucky Legislative Intern Program.

They are: Cindy Susan Hammond of Olive Hill, Kimberly Sue May of Pikeville and Allen Scott Black of Morehead.

The three are among 17 students who were selected from 22 colleges and universities around the state to serve as interns during the 1986 Kentucky General Assembly, according to Dr. Jack Bizzel, MSU professor of government and campus coordinator of the program.

Hammond, daughter of Mr. and Mrs. Roy Hammond, is a senior para-legal student and is active in the Gamma Beta Phi Honor Society, Phi Alpha Delta, Alpha Lambda Pi and the Lexington Paralegal Association.

May, daughter of Mr. and Mrs. Ronald W. May, is a junior government/philosophy major. She is Kappa Delta sorority member, Student Association secretary and governor of the Kentucky Intercollegiate Student Legislature.

Black, son of Mr. and Mrs. Billy Ray Black, is a senior government/history major. He is active in Sigma Nu fraternity, a member of Student Congress, Blue Key Honor Society, Phi Kappa Phi Honor Society and the Undergraduate Curriculum Committee.

Interns spend five months learning about state government from the people who work in it and take an active part in one of the most exciting phases of government--a session of the Kentucky General Assembly, Dr. Bizzel said.

(more)

legislative interns
2-2-2-2-2-2

During the session, interns work with legislative committees, attending meetings, arranging hearings and doing research that will become legislation. After the session, they concentrate on academic work in seminars that examine the legislative process and problems of state government.

To qualify for the program a student must be at least a junior by January 1986, have an overall grade point average of 2.8 or better and have been active in campus activities.

The 1986 program will run from late December 1985 to early May 1986.

###

srt

MSU STUDENTS TO BE LEGISLATIVE INTERNS

Three Morehead State University students have been selected to participate in the Kentucky Legislative Intern Program. They are, from left, Cindy Susan Hammond of Olive Hill, Allen Scott Black of Morehead and Kimberly Sue May of Pikeville. With them is MSU's campus coordinator of the program Dr. Jack Bizzel, professor of government.

(MSU photo by Ray Bradley)

###

10/24/85



News

PUBLIC INFORMATION

JUDITH CASTO, DIRECTOR

MOREHEAD STATE UNIVERSITY

UPO BOX 1100

MOREHEAD, KY 40351

606-783-2030

Oct. 28, 1985
FOR IMMEDIATE RELEASE

MOREHEAD, Ky.--Morehead State University's Department of Nursing and Allied Health Sciences will offer a seminar on clinical education in radiologic technology from 8 a.m. to 4 p.m. Friday, Nov. 15, in East Room A, Adron Doran University Center.

C. William Mulkey, education consultant and the chair of the Radiologic Science Department at Midlands Technical College, Columbia, S.C., will conduct the seminar.

The seminar is open to radiologic clinical instructors and related health faculty members, according to Pauline Ramey, MSU coordinator of continuing education for nursing.

Topics will include instruction strategies, the role of clinical instructors, and management and implementation of clinical policies and regulations.

The pre-registration deadline is Nov. 13. The fee is \$30.

Participants will receive six contact hours credit from MSU. Registered or licensed technologist also may receive contact hours credit from the American Society of Radiologic Technologists and the Kentucky Radiation Operators Certification Program.

Participants will need a state radiation operators license and a Social Security number to receive contact hours credit.

Additional information may be obtained by calling (606) 783-2635 or 783-2632.

####

kj

ALUMNI RETURN TO MSU CAMPUS

MOREHEAD, Ky.--Among the Morehead State University alumni who returned to campus to reminisce about the "good old days" during Homecoming Weekend 1985 (Oct. 18-20) were, from left, Wallace Fannin of Morehead, 'Class of '34; Lawrence Fraley of Middletown, Ohio, Class of '31; James Maggard of Lexington, Class of '34; Oakley Wooton of Fairfield, Ohio, Class of '35; Hubert Counts of Olive Hill, Class of '30, and Lus "Junior" Oxley of Middletown, Md., Class of '35.

(MSU photo by Ray Bradley)

####



*McNees
Olive Hill Times
Cincy Sub. Press*

News

PUBLIC INFORMATION

JUDITH CASTO, DIRECTOR

MOREHEAD STATE UNIVERSITY

UPO BOX 1100

MOREHEAD, KY 40351

606-783-2030

Oct. 28, 1985

FOR IMMEDIATE RELEASE

MOREHEAD, Ky. --- The Morehead State University Alumni Band, consisting of 28 former music students, performed as a special spirit band during MSU's Homecoming football game, Oct. 19.

Lebanon resident Kenton Cooper was among those performing. Cooper, a 1974 graduate, is the son of Mr. and Mrs. Bruce Cooper and a former music education major.

###

drh

News

PUBLIC INFORMATION

JUDITH CASTO, DIRECTOR

MOREHEAD STATE UNIVERSITY

UPO BOX 1100

MOREHEAD, KY 40351

606-783-2030

Oct. 28, 1985
FOR IMMEDIATE RELEASE

MOREHEAD, Ky. --- The Morehead State University Alumni Band, consisting of 28 former music students, performed as a special spirit band during MSU's Homecoming football game, Oct. 19.

Olive Hill resident Greg Collinsworth was among those performing. Collinsworth graduated from MSU in 1972.

###

drh

News

PUBLIC INFORMATION

JUDITH CASTO, DIRECTOR

MOREHEAD STATE UNIVERSITY

UPO BOX 1100

MOREHEAD, KY 40351

606-783-2030

Oct. 28, 1985
FOR IMMEDIATE RELEASE

MOREHEAD, Ky. --- The Morehead State University Alumni Band, consisting of 28 former music students, performed as a special spirit band during MSU's Homecoming football game, Oct. 19.

Among those performing was Erlanger resident James Poe. Poe, a 1972 graduate, is the son of Mr. and Mrs. L. B. Poe.

###

drh

News

PUBLIC INFORMATION

JUDITH CASTO, DIRECTOR

MOREHEAD STATE UNIVERSITY

UPO BOX 1100

MOREHEAD, KY 40351

606-783-2030

Oct. 28, 1985

FOR IMMEDIATE RELEASE

MOREHEAD, Ky. --- The Morehead State University Alumni Band, consisting of 28 former music students, performed as a special spirit band during MSU's Homecoming football game, Oct. 19.

Georgetown residents performing were:

*Tom Fullington, 1964 graduate.

*John Roberts, 1984 graduate.

###

drh

News

PUBLIC INFORMATION

JUDITH CASTO, DIRECTOR

MOREHEAD STATE UNIVERSITY

UPO BOX 1100

MOREHEAD, KY 40351

606-783-2030

Oct. 28, 1985

FOR IMMEDIATE RELEASE

MOREHEAD, Ky. --- The Morehead State University Alumni Band, consisting of 28 former music students, performed as a special spirit band during MSU's Homecoming football game, Oct. 19.

West Liberty resident Lee Armstrong was among those performing. Armstrong, a 1977 graduate, is the current director of music at the West Liberty Christian Church.

###

drh

News

PUBLIC INFORMATION

JUDITH CASTO, DIRECTOR

MOREHEAD STATE UNIVERSITY

UPO BOX 1100

MOREHEAD, KY 40351

606-783-2030

Oct. 28, 1985
FOR IMMEDIATE RELEASE

MOREHEAD, Ky. --- The Morehead State University Alumni Band, consisting of 28 former music students, performed as a special spirit band during MSU's Homecoming football game, Oct. 19.

Flemingsburg resident Anna Lou McNeill was among those performing. McNeill, a 1964 graduate and former music major, is the wife of Peter T. McNeill.

###

drh

News

PUBLIC INFORMATION

JUDITH CASTO, DIRECTOR

MOREHEAD STATE UNIVERSITY

UPO BOX 1100

MOREHEAD, KY 40351

606-783-2030

Oct. 28, 1985
FOR IMMEDIATE RELEASE

MOREHEAD, Ky. --- The Morehead State University Alumni Band, consisting of 28 former music students, performed as a special spirit band during MSU's Homecoming football game, Oct. 19.

Hazard resident Nan Gilbert was among those performing. Gilbert, a 1980 graduate, received her master's degree from MSU in 1982.

###

drh

News

PUBLIC INFORMATION

JUDITH CASTO, DIRECTOR

MOREHEAD STATE UNIVERSITY

UPO BOX 1100

MOREHEAD, KY 40351

606-783-2030

Oct. 28, 1985
FOR IMMEDIATE RELEASE

MOREHEAD, Ky. --- The Morehead State University Alumni Band, consisting of 28 former music students, performed as a special spirit band during MSU's Homecoming football game, Oct. 19.

Among those performing were Winchester residents Barbara Eborg and Ransom Holbrook.

Eborg, a 1979 graduate, is employed at the University of Kentucky and is the daughter of Mr. and Mrs. Paul Eborg.

Holbrook, a 1981 graduate originally from Whitesburg, is a band director in Wolfe County.

###

drh

News

PUBLIC INFORMATION

JUDITH CASTO, DIRECTOR

MOREHEAD STATE UNIVERSITY

UPO BOX 1100

MOREHEAD, KY 40351

606-783-2030

Oct. 28, 1985

FOR IMMEDIATE RELEASE

MOREHEAD, Ky. --- The Morehead State University Alumni Band, consisting of 28 former music students, performed as a special spirit band during MSU's Homecoming football game, Oct. 19.

Morehead residents performing were:

*Dan Black, 1985 graduate.

*Tim Black, 1984 graduate.

*Christopher Gallaher, 1962 graduate and current chair of MSU's Department of Music.

*Linda Swearingen-Gallaher, 1963 graduate and current Rowan County teacher.

###

drh

News

PUBLIC INFORMATION

JUDITH CASTO, DIRECTOR

MOREHEAD STATE UNIVERSITY

UPO BOX 1100

MOREHEAD, KY 40351

606-783-2030

Oct. 28, 1985
FOR IMMEDIATE RELEASE

MOREHEAD, Ky. --- The Morehead State University Alumni Band, consisting of 28 former music students, performed as a special spirit band during MSU's Homecoming football game, Oct. 19.

Ashland residents performing were:

*Charles M. Irwin, 1979 graduate.

*Ed Moon, 1964 graduate.

###

drh

News

PUBLIC INFORMATION

JUDITH YANCY, DIRECTOR

MOREHEAD STATE UNIVERSITY

UPO BOX 1100

MOREHEAD, KY 40351

606-783-2030

Oct. 29, 1985
FOR IMMEDIATE RELEASE

MOREHEAD, Ky.--Morehead State University's marching band has been invited to perform at halftime of the Indianapolis Colts and New England Patriots football game, Sunday, Dec. 1, in the 64,000-seat Hoosier Dome.

MSU Band Director Richard Miles said the invitation provides the Eagle band an opportunity to enhance the University's image in the Midwest.

"We are striving to be ambassadors for MSU," he said. "MSU is one of the best music schools in the nation and we want everybody to know it."

For the nine-minute Hoosier Dome show, the band will perform three selections from the current football season's repertoire.

"We'll pick the best opener, concert piece and closer," Miles said.

The 1985 Eagle band has added a visual arts unit and features twirlers Molly Large of Kitts Hill, Ohio, and Melisa Schunk of Harrison, Ohio.

"We use visual art to make a statement," Miles explained. "Too many college bands use movement for the sake of movement. They just fake it by moving their feet a lot, but we have acquired specially-arranged music which is coordinated with our original visual display to make our performance meaningful."

(more)

Miles/band
2-2-2-2-2-2

Miles, who formerly directed the award-winning Lafayette (Ind.) High School band, said he has attempted to combine the best of high school and college styles.

"High school bands are usually much better than college bands because they spend more time at it. But high school bands are often too artsy for football fans who want to be entertained," he said.

"We have tried to include the artistic aspects, but still believe it is more important to entertain and support the athletic teams. We do the classics, but the pop classics which everybody recognizes without knowing exactly what the name of the piece is," he added.

According to Miles, the students "run" the band -- doing everything from keeping track of the equipment to arranging the music.

Chip Lewis of Russell arranged the piece "Ecstasy" for Homecoming. Field commander Ginger Martin of Portsmouth, Ohio, and podium conductor Marsha Butler of Catlettsburg coordinate the visual units, control the musical elements and give all the commands on the field, he said.

Miles admits he is pleasantly surprised at the level of enthusiasm he has encountered among his college band students compared to their high school counterparts.

"These students at MSU are amazing," he said. "They really want to have fun and play and just make music. Those Indianapolis pro football fans are going to see a very powerful, exciting show on Dec. 1."

####

kj

News

PUBLIC INFORMATION

JUDITH CASTO, DIRECTOR

MOREHEAD STATE UNIVERSITY

UPO BOX 1100

MOREHEAD, KY 40351

606-783-2030

Oct. 29, 1985
FOR IMMEDIATE RELEASE

MOREHEAD, Ky.--Two new trainers have been appointed to the Job Training Program staff at Morehead State University.

They are Lydia Jones and Connie Kibbey, who assumed their posts Oct. 1, according to Jacquelyn Scott, JTP coordinator.

Jones will work in job development for JTP's medical records technician and pharmacy technician programs, while Kibbey will be involved with the nanny/childcare and computerized office procedure programs, Scott said.

"The addition of these two full-time people will make it possible for us to work that much closer with our students in developing curriculum," Scott said.

Kibbey, a former market research analyst for Central Bank and Trust of Lexington, earned bachelor's and master's degrees from MSU, where she was the 1980 Outstanding Student in English and in the former School of Humanities. She is a member of the Kentucky Association for Counseling and Development. Her parents are Sam and Edith Kibbey of Catlettsburg.

Jones formerly was with the YWCA in Memphis, Tenn., as an after-school program director and assistant day camp director. She received her bachelor's degree from Memphis State University, where she was a member of Sigma Gamma Rho sorority. She has been active in the Memphis Association on Young People and the American Red Cross.

(more)

trainers
2-2-2-2-2-2

Funded through grants from TEN-CO Private Industry Council under the Job Training Partnership Act, JTP offers short-term, intensive training for adults 18 or older who need an employable skill or who seek to upgrade current skills. It is housed in the Appalachian Development Center.

###

kj

Media Advisory

PUBLIC INFORMATION

JUDITH YANCY, DIRECTOR

MOREHEAD STATE UNIVERSITY

UPO BOX 1100

MOREHEAD, KY 40351

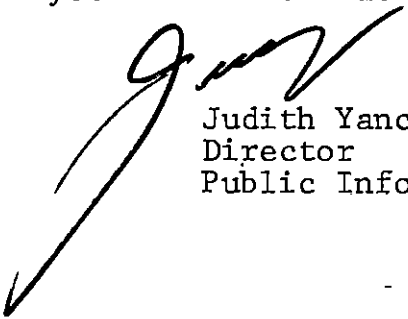
606-783-2030

Oct. 30, 1985

RE: MSU Board of Regents agenda for Nov. 4 meeting

Attached are copies of the agenda for the upcoming board meeting. As far as can be determined at this time, the meeting is purely a routine session.

Please advise this office, if you intend to send a representative.



Judith Yancy
Director
Public Information

BOARD OF REGENTS MEETING
MOREHEAD STATE UNIVERSITY
Morehead, Kentucky
Monday, November 4, 1985
Riggle Room, 6:00 p.m.

AGENDA

- I. CALL TO ORDER
Chairman Robert M. Duncan
- II. INVOCATION
Regent John R. Duncan
- III. ROLL CALL
Secretary Carol Johnson
- IV. ACTION ON MINUTES OF MEETING HELD AUGUST 23, 1985
- V. REPORT OF THE PRESIDENT
- VI. REPORT OF COMMITTEE ON ADMINISTRATIVE AND FISCAL SERVICES
 - A. Personnel Actions (Exhibit VI-A)
 - B. 1984-85 Audit (Exhibit VI-B)
 - C. 1985-86 Audit (Exhibit VI-C)
 - D. 1986-88 Biennial Budget Request (Exhibit VI-D)
 - E. Personnel Policy Manual Adjustments and Additions
(Exhibit VI-E)
 - F. Quarterly Financial Report
(Exhibit VI-F)
 - G. Contract for Legal Services (Exhibit VI-G)

H. Discussion and Action on Ed Mabry Litigation

I. Easement - Rowan Water (Exhibit VI-I)

VII. REPORT OF COMMITTEE ON ACADEMIC AFFAIRS

A. 1985 Winter Graduates (Exhibit VII-A)

VIII. OTHER BUSINESS

A. Additional Meeting Dates

IX. ADJOURNMENT

News

PUBLIC INFORMATION

JUDITH CASTO, DIRECTOR

MOREHEAD STATE UNIVERSITY

UPO BOX 1100

MOREHEAD, KY 40351

606-783-2030

Oct. 30, 1985
FOR IMMEDIATE RELEASE

MOREHEAD, Ky.--The editorial staff of Inscape, Morehead State University's literary magazine, will sponsor a Fine Arts Showcase on Nov. 6, at 7 p.m. in the Eagle Room of the Adron Doran University Center.

According to Dr. Marc Glasser, MSU professor of English and Inscape faculty adviser, the Fine Arts Showcase will focus on the humanities at MSU.

Formerly conducted as a poetry reading, the event has been broadened to include musical and dramatic performances and art exhibits, as well as poetry reading and story-telling, Glasser said.

"The Fine Arts Showcase will provide a relaxed atmosphere for faculty and students to get together," Dr. Glasser said. He went on to say that "the Inscape staff's purpose in holding the event is to draw together as many of the humanities as possible."

Anyone, MSU student, faculty or not, is eligible to perform in the showcase, but performances must be arranged through Dr. Glasser.

Admission is free and refreshments will be served. The program is scheduled from 7 to 10 p.m., and attendance will be come-and-go during that time.

More information on the Fine Arts Showcase or Inscape is available from Dr. Glasser at 783-2201.

###

drh

News

PUBLIC INFORMATION

JUDITH YANCY, DIRECTOR

MOREHEAD STATE UNIVERSITY

UPO BOX 1100

MOREHEAD, KY 40351

606-783-2030

Oct. 30, 1985
FOR IMMEDIATE RELEASE

MOREHEAD, Ky.--Morehead State University has implemented a new admissions application which eliminates the need for students to file separately for institutionally-funded scholarship awards.

Students applying for admission to MSU may complete a new section on the application to be considered for scholarships awarded by the University.

"This means students applying for admission will automatically be screened for scholarship award potential," said Al Bowen, MSU's director of admissions. "They will not have to file a separate form for university-funded scholarship awards," he added.

Bowen urged students to file for admission prior to March 15, if interested in scholarship awards. "That's the date we begin making the decisions on the awards. It's a good idea to apply early to make sure everything is in order before the deadline," he said.

Both Bowen and Ronald Walke, MSU director of student financial aid, cautioned students not to confuse University-funded scholarship awards with financial aid programs sponsored by the government, such as federal and state loans, grants and work-study programs.

"Students must file a separate financial aid application for these," Walke said. Applications for the federally-controlled programs should be filed with the Office of Student Financial Aid by April 1, according to Walke.

(more)

admissions application
2-2-2-2-2-2

"We really think the new institutional scholarship/admissions application will really simplify things for students," Bowen said.

In the past, students have filled out two separate forms, each with its own deadline: one to be admitted and one for university-funded scholarship consideration. "This resulted often in confusion," Bowen said.

"The new form not only streamlines this process, but also insures that all applicants are considered for MSU scholarship programs. We have even developed a computerized tracking system for the awards process to be certain that top academic students don't miss out on an award opportunity, Bowen added.

Additional information on MSU's new admissions procedure may be obtained by calling toll-free in Kentucky, 1-800-262-7474 or out-of-state toll-free 1-800-354-2090.

Information on student financial aid programs may be obtained by calling (606) 783-2011.

###

News

PUBLIC INFORMATION

JUDITH CASTO, DIRECTOR

MOREHEAD STATE UNIVERSITY

UPO BOX 1100

MOREHEAD, KY 40351

606-783-2030

Oct. 30, 1985
FOR IMMEDIATE RELEASE

MOREHEAD, Ky. --- Morehead State University's new Show Choir will make its debut at the Portsmouth East High School Select Choir Festival on Saturday, Nov. 2, in Sciotoville, Ohio.

The choir was organized this fall under the direction of Vasile Venetozzi, MSU associate professor of music, and members were selected by audition.

"Show choirs perform a variety of music styles, including pop, rock, Broadway show tunes, and some vocal jazz," Venetozzi said. "The emphasis is on body movement that reflects and enhances the music."

Venetozzi, the ensemble director, attended Duke University's Brightleaf Show Choir Workshop this summer to prepare for her role as director of the new ensemble. While there she studied with choreographers and choral directors from Walt Disney Productions and King Attractions of Cincinnati.

Members are:

*Daniel Imes, Ashland senior majoring in music, son of Mr. and Mrs. A. R. Imes Jr.

*Cheri Carnes, Beaver Creek, Ohio, freshman majoring in music, daughter of Mr. and Mrs. Charles Carnes.

*Les Caskey, Clearfield freshman majoring in music, son of Mr. and Mrs. L. J. Caskey.

*Scott Simpson, Cox's Creek junior majoring in music, son of Mr. and Mrs. Bernie Simpson.

(more)

Show Choir
2-2-2-2-2-2-2-2

*Jennifer West, Fayetteville, Ohio, freshman majoring in music, daughter of Mr. and Mrs. William A. West.

*Janice Black, Frankfort senior majoring in business, daughter of Mr. and Mrs. Jack Black.

*Louanna Fillmore, Friendship, Ohio, junior majoring in music, daughter of Mr. and Mrs. Sam Fillmore.

*Tavia Biggs, Lebanon Junction junior majoring in theatre, daughter of Mr. and Mrs. Dana R. Biggs.

*Denny Giles, Louisville freshman.

*Christopher Burns, Morehead sophomore majoring in law, son of Dr. and Mrs. Robert Burns.

*Tony Hall, Mt. Sterling freshman majoring in business, son of Mr. and Mrs. David Haynes.

*Melody Hood, Mt. Sterling sophomore majoring in music, daughter of Dr. and Mrs. W. T. Hood.

*Robin Werner, Portsmouth, Ohio, sophomore majoring in special education, daughter of Mr. and Mrs. Charles Werner.

*Brian Workman, Wheelersburg, Ohio, freshman majoring in music, son of Mr. and Mrs. Bob Workman.

###

drh

MSU'S SHOW CHOIR DEBUT

MOREHEAD, Ky. --- Morehead State University's new Show Choir will make its debut at the Portsmouth East High School Select Choir Festival on Saturday, Nov. 2, in Sciotoville, Ohio. The choir members were selected by audition this fall under the direction of Vasile Venetozzi, MSU associate professor of music. The members are: front row from left, Melody Hood, Mt. Sterling sophomore; Scott Simpson, Cox's Creek junior; Jennifer West, Fayetteville, Ohio, freshman; Cheri Carnes, Beavercreek, Ohio, freshman; Louanna Fillmore, Friendship, Ohio, junior; Denny Gile, Louisville freshman; Janice Black, Frankfort senior; second row, Brian Workman, Wheelersburg, Ohio, freshman; Tony Hall, Mt. Sterling freshman; Tavia Biggs, Lebanon Junction junior; Daniel Imes, Ashland senior; Les Caskey, Clearfield freshman; back row, Robin Werner, Portsmouth, Ohio, sophomore, and Christopher Burns, Morehead sophomore.

(MSU photo by Ray Bradley)

###

10-25-85drh



News

PUBLIC INFORMATION

JUDITH YANCY, DIRECTOR

MOREHEAD STATE UNIVERSITY

UPO BOX 1100

MOREHEAD, KY 40351

606-783-2030

Oct. 31, 1985
FOR IMMEDIATE RELEASE

MOREHEAD, Ky.--"Weekend Edition," a new National Public Radio (NPR) Saturday morning newsmagazine, will premiere at 8 a.m. Saturday, Nov. 2, on WMKY-FM 90.3, public radio from Morehead State University.

Scott Simon, an Emmy award winner and NPR correspondent, will host the program which will air at that time each week.

Simon has frequently hosted NPR's other newsmagazines, "Morning Edition" and "All Things Considered." Formerly chief of NPR's Chicago bureau, he has won a 1979 Major Armstrong Award for his coverage of the American Nazi Party and a 1978 Unity Award in Media for his political reporting. Simon received an Emmy in 1982 for "The Patterson Project," a public television documentary on the effects of budget cuts on New Jersey residents.

According to Simon, "Weekend Edition," will focus on the subjects of home, family and personal relationships.

"Weekends are when people turn their attention to these subjects," Simon said. "The program will tell stories. It will be fun and it will look ahead."

###

kj

News

PUBLIC INFORMATION

JUDITH YANCY, DIRECTOR

MOREHEAD STATE UNIVERSITY

UPO BOX 1100

MOREHEAD, KY 40351

606-783-2030

Oct. 31, 1985
FOR IMMEDIATE RELEASE

MOREHEAD, Ky.--The number of Morehead State University teacher trainees entering the science and math fields has tripled in recent years.

According to Dr. William Falls, MSU coordinator of the Center for Science Education, the increased interest in math and science is due partially to the Science and Math teachers Incentive-Loan Program sponsored by the Kentucky Higher Education Assistance Authority. The program offers loans which do not have to be paid back if the recipient teaches math or science in Kentucky for a specified amount of time.

Loans to \$2,500 a year are provided for students who meet the program's rigid academic requirements.

"For each year the participant teaches math or science in Kentucky, one year's loan and interest is forgiven," Dr. Falls explained.

"The loan program -- plus an attractive job market -- has gone a long way in alleviating a shortage of science and math teachers in Kentucky on the secondary level," Dr. Falls said.

The program, which began in 1981, also provides loans to secondary teachers who return to school for certification in math and science.

(more)

Falls
2-2-2-2-2-2

"We are seeking the very best students and teachers who, in the past, were going to industry instead of education," Dr. Falls said. "The program has been very successful in altering that trend."

The program is limited to Kentucky residents, he said.

###

kj

STAFF SGT. FUGATE RECOGNIZED

MOREHEAD, Ky.--Staff Sgt. Michael Fugate, right, supply sergeant in Morehead State University's Department of Military Science, recently received the Army Achievement Award for his performance last spring at mini-camp at Fort Knox, which was held to prepare MSU's Army ROTC students for summer advanced camp at Fort Lewis, Wash. Presenting Fugate with his award is Lt. Col. Alan Baldwin, chair of MSU's Department of Military Science. Fugate has been at MSU since June 1982.

(MSU photo by Scott Randle)

Morehead News, Trail Blazer,
Raconteur, Bath Co., Mt. Sterling,
Grayson, Louisville Defender,
Baldwin-Military Science.
11/1/85

10-31-85



News

PUBLIC INFORMATION

JUDITH CASTO, DIRECTOR

MOREHEAD STATE UNIVERSITY

UPO BOX 1100

MOREHEAD, KY 40351

606-783-2030

Oct. 31, 1985
FOR IMMEDIATE RELEASE

MOREHEAD, Ky.--Approximately 250 high school choral students and their teachers are expected to attend Morehead State University's 26th annual Choral Festival hosted by the Department of Music and scheduled for Monday and Tuesday, Nov. 4-5.

Highlighting the two days of intensive choral work will be two special concerts and workshops with Robert Page, assistant conductor of the Cleveland Symphony Orchestra.

The first concert is scheduled Monday, Nov. 4, at 8:15 p.m. in Duncan Recital Hall and will feature MSU choral groups performing works by such composers as Poulenc, Toch, Berger and Bernstein with flute, bassoon, violin and cello accompaniment.

Music faculty members participating will include Dr. Frederick Mueller, professor; Leo Blair and Jay Flippin, associate professors, and Lucretia Stetler and Suanne Blair, assistant professors.

On Tuesday, Nov. 5, at 7 p.m. in Duncan Recital Hall, the festival chorus, composed of high school students from Kentucky, Ohio and Virginia, will perform under the direction of guest conductor Page.

The program will feature works by Handel, Purcell, Nelson and other composers.

"The festival provides high school students, their teachers and MSU students with an opportunity to work with a professional choral director of national stature," said James Ross Beane, MSU associate professor of music and festival manager.

High school students participating were chosen by audition, Beane noted.

###

News

PUBLIC INFORMATION

JUDITH YANCY, DIRECTOR

MOREHEAD STATE UNIVERSITY

UPO BOX 1100

MOREHEAD, KY 40351

606-783-2030

Oct. 31, 1985
FOR IMMEDIATE RELEASE

MOREHEAD, Ky.--Morehead State University's Fall Elderhostel programs have drawn participants from as far as California and Hawaii.

MSU's Fall Elderhostels are scheduled Nov. 3-8 at Carter Caves Resort Park and Nov. 10-15 at Greenbo Lake State Resort Park.

"MSU's programs are unusual in the aspect that Appalachian history is taught in the heart of Appalachia," said George Eyster, director of MSU Extended Campus Programs.

The Carter Caves program will include "Appalachian Heritage and History " led by James Gifford, executive director of the Jesse Stuart Foundation and MSU associate professor of history; Carter Caves naturalist John Tierney will conduct "Carter Caves and Environs"; and "Traditional Music, Song and Dance" will be led by George and Roda Jackson of Morehead, and Mervil and Meta Whitt of Fairborn, Ohio, noted experts in Appalachian music and customs.

The program at Greenbo has attracted Jesse Stuart enthusiasts from the northwestern states of Oregon and Washington. Gifford will lead the section on "The Works and Region of Poet Laureate Jesse Stuart." "Jesse Stuart's Life: A Family Perspective" will be led by the late writer's brother, James, and other family members. "Appalachian Song, Dance and Lifestyle" will be jointly led by the Jacksons and the Whitts.

(more)

elderhostel
2-2-2-2-2-2

Elderhostel has been a part of MSU's Extended Campus Programs since 1979, Eyster said. Elderhostel is an international organization that offers academic programs at over 4,000 educational institutions worldwide.

Elderhostel programs are patterned after the youth hostels of Europe and attract over 100,000 participants each year. The programs are tailored to the unique aspects of the locations and provide inexpensive lodging, meals and academic opportunities for interested people over 60 years of age.

Additional information on Elderhostel is available from George Eyster, Extended Campus Programs, Ginger Hall, Morehead State University, Morehead, KY 40351. Telephone: (606) 783-2542.

####

tb

News

PUBLIC INFORMATION

JUDITH YANCY, DIRECTOR

MOREHEAD STATE UNIVERSITY

UPO BOX 1100

MOREHEAD, KY 40351

606-783-2030

Oct. 31, 1985
FOR IMMEDIATE RELEASE

MOREHEAD, Ky.--Morehead State University will welcome prospective students to its campus Saturday, Nov. 2, for an open house reception.

"The purpose of the open house will be to introduce the students to MSU and to answer their questions," Al Bowen, MSU director of admissions, said.

The open house will begin with coffee and doughnuts at 8:30 a.m. in Adron Doran University Center. The reception will include welcoming remarks by MSU administration and faculty representatives and faculty members will be available to answer questions on specific areas of study. Bus and walking tours of the campus will be conducted from 11:15 a.m. to 12:15 p.m. when a luncheon will be served.

Saturday's open house is the first of five scheduled for 1985-86. The other receptions also will be held on Saturdays. The dates are Nov. 23, March 1 and 22, and April 19.

Additional information concerning upcoming MSU open houses may be obtained by calling 1-800-262-7474 (in-state) or 1-800-354-2090 (out-of-state).

####

kj