

Treasurer's Report and Settlement With Rowan Fiscal Court for Period July 1st, 1934 to June 30, 1935 both dates inclusive

ROAD FUND

Total receipts \$ 7,835.49
Total disbursements 7,793.69
Actual cash balance at close of fiscal year 1934-35 \$41.80

ROAD AND BRIDGE SINKING FUND INTEREST AND PRINCIPAL ACCOUNTS

Total receipts \$ 23,153.07
Total disbursements 12,312.50
Actual cash balance at close of fiscal year 1934-35 \$10,840.57

ROAD AND BRIDGE SINKING FUND INTEREST AND PRINCIPAL ACCOUNTS

Total receipts \$ 5,312.50
Bonds 7,000.00
Total disbursements \$ 12,312.50

GENERAL FUND

Total receipts \$ 24,912.77
Total disbursements 23,781.98
Actual cash balance at close of fiscal year 1934-35 \$-130.81

Signed: D. C. CAUDILL, Treasurer
Certified Correct June 10th, 1937
By T. W. KISSICK, Special Commissioner

Approved: July 10th, 1937 CHAS. E. JENNINGS, Judge
Rowan County Court
Attest: C. V. ALFREY, Clerk

Treasurer's Report and Settlement With Rowan Fiscal Court for Period July 1st, 1935 to June 30, 1936 both dates inclusive

ROAD FUND

Total receipts \$15,522.30
Total disbursements 15,522.30
Balance \$ 000.00

ROAD AND BRIDGE SINKING FUND INTEREST AND PRINCIPAL ACCOUNT

Total receipts \$24,244.90
Total disbursements 15,082.50
Balance \$ 9,162.40

ROAD AND BRIDGE SINKING FUND INTEREST AND PRINCIPAL ACCOUNT

Total receipts \$24,244.90
Total disbursements 15,082.50
Balance \$ 9,162.40

GENERAL FUND

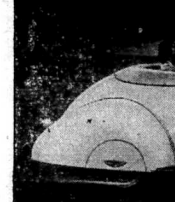
Total receipts \$33,199.63
Actual disbursements 31,820.31
Actual cash balance at end of fiscal year 1935-36 \$ 1,379.32

Signed: D. C. CAUDILL, Treasurer
Certified Correct June 10th, 1937
By T. W. KISSICK, Special Commissioner

Approved: July 10th, 1937 CHAS. E. JENNINGS, Judge
Rowan County Court
Attest: C. V. ALFREY, Clerk

THERE IS SOMETHING NEW IN AUTOMOBILE PERFORMANCE! LET US SHOW YOU

No.1 Performance



The Bachelor... he loves to GO
With lots of power and pep... and so
His car takes second place to none...
Stock car performer Number One



HUDSON No.1 CAR AT THE MODERATE PRICE FIELD
TERRAPLANE No.1 CAR AT THE LOW PRICE FIELD

CALVERT'S SERVICE STATION Morehead Kentucky

WHITE SPRAY!



Count Theo Rossi, Italy's leading motor boat sportsman and vermouth king...



The Gold Cup of the American Power Boat Assn - America's most famous motorboat trophy

Fifteen Speed Boats Expected in Great International Gold Cup Race On Labor Day

By LATTIMER SHAW
The United States will be invaded this summer and the invasion will sound like a regular battle, machine guns and all. It will be a sports invasion. The noise of it will come from the roar of high speed engines...

Cincinnati Swings To Eastern Sector

Reds Leave For Long Trip Against Leading League Clubs

The Reds are in the east for their third swing through that section of the National League. They departed from their home Crosley Field after their Monday night game against the Cubs...

Philadelphia Will Follow The Bees, opening its series with a night contest on July 30.

Philadelphia will follow the Bees, opening its series with a night contest on July 30. That contest will be marked by a pre-game feature never before scheduled for Crosley Field.

Simple Treatment Brings Field Back

Tracing, coupled with applications of lime and superphosphate, turned a 50-acre idle field in Logan county, Ky., from a liability into an asset in one year.

NOTICE

Morehead, Kentucky
June 24, 1937
Notice is hereby given that Murvel C. Crosley is no longer connected with the Drew Evans Tie Company...

been placed in a regular rotation which will build up additional resistance against soil losses.
Farmers of the Bald Knob district in Franklin county are buying bluegrass seed cooperatively.

Report of the Condition of the Peoples Bank of Sandy Hook, Ky.

At the Close of Business on June 30, 1937

Table with columns for ASSETS and LIABILITIES AND CAPITAL. Assets include Demand deposits, Loans and discounts, etc. Liabilities include Deposits of individuals, etc.

TOTAL LIABILITIES EXCLUDING CAPITAL ACCOUNT \$130,595.57

Capital stock and capital notes and debentures \$ 15,000.00
Surplus 3,000.00
Undivided profits 4,268.83
Total capital accounts 22,268.83

State of Kentucky, County of Rowan
Sworn to and subscribed before me this 12th day of July, 1937, and I hereby certify that I am not an officer or director of this bank.

D. CAUDILL, Notary Public.

Large advertisement for Chesapeake and Ohio Lines. Features a man in a suit and a train. Text includes 'TRAINS GIVE EMPLOYMENT', 'Ask Your Neighbor', and 'The Railroad With a Heart'.

Drew Evans Tie Co. By DREW EVANS.

59 Candidates To Appear On Ballots

(Continued from Page 1) 11, McKenzie 13, Piercy 3; Harry Stevens; Ray Stator; Ballard Foreman. For Magistrate (District 3) composed of Precincts Elliottville 4, Lewis 17, Haldeman 8, Hayes 16; Henry Cox; J. W. Sparks. For Magistrate (District 4) composed of Precincts Pine Grove 5 and Plank 15; Cranston 12; Brushy 6 and 20; J. T. Evans (no opposition). For Constable (District 1): S. B. Brannham (no opposition). For Constable (District 2): Kelly Dyer (no opposition). No Democratic candidates for constable in Districts 2 and 4. REPUBLICANS For Representative: J. T. Jennings, Morehead (no opposition). For County Judge: J. D. Johnson, I. E. Peltrey. For County Attorney: J. H. Powers (no opposition). For County Clerk: Vernon Alfrey; Luther Bradley. For Sheriff: Bert Proctor; B. F. McBrayer.

For Jailer: D. G. White; Marvin Adkins; Sam Stamper. For Tax Commissioner: J. A. Lewis (no opposition). For Coroner: Lester Caskey; J. L. Brown. For Magistrate (District 1): B. J. Stidham; Arthur Barber. For Magistrate (District 2): Smith Robinson; A. J. Ramey; Richard Maze; Herbert Moore. For Magistrate (District 3): Tom Eldridge; Lee Day. For Magistrate (District 4): E. F. Reed. For Constable (District 1): John McKinney; C. G. Fleming. For Constable (District 2): John R. Williams; Lloyd Roberts. For Constable (District 3): St. Claire Bowen; Eddie Johnson. No candidate on Republican ticket from District 4. The constable districts are divided the same as the Magisterial districts.

Over \$2,000 Given To Rowan Needy

(Continued from Page 1) few months, has been the tremendous increase in the number of denials. This has been due to the fact that the most needy cases were selected and given preference, during the early months of this program, thereby preventing actual starvation in many instances. This proportion of denials is expected to increase during the next few months. It is the policy of the Division to investigate each applicant thoroughly and to make grants only to those persons legally eligible for such assistance, thereby preventing an unfair burden of the tax payers of the state. The money apportioned is only sufficient for the most needy old people in the state. It seems quite evident that many thousands of people who were not eligible, but hoped that only a superficial check would be made and therefore, they would receive assistance without regard to their eligibility. At the Kentucky Jersey Cattle Club sale, held in Fayette county, 48 purebred heifers, cows and bulls were sold. Independent Ads Get Results.

MOREHEAD This Week

(Continued from Page One) Republican, who will oppose each other in November for County Attorney.

ELECTION RETURNS: The Independent will stage a free election party in Morehead Saturday night, August 7, with every one interested invited to participate. There won't be anything to eat or drink, but there will be a world of worth-while information regarding the candidates passed out.

Loud speakers are to be installed in the courthouse yard, hallways and in the Circuit Court room. As each precinct is counted an accurate and official report will be made, with all totals and majorities to that point. In addition a large sign will be placed in the Circuit Court room, showing the vote in each precinct as rapidly as they are counted. Between reports from the precincts there will be interspersed comments on the election.

In view of the spirited race for Representative from Bath and Rowan Counties, the Independent will give complete returns at regular intervals from both counties. Our Bath county friends are invited also, as results of the local races in that county will be broadcast. The loud speakers will be on throughout the count.

Vernon Alfrey, who seeks re-election as County Clerk, has made two races. In both cases his name was first on the ballot. Yesterday in the drawing for places he was fortunate again in securing top place.

ADVOCATES PASTURE CHANGES FOR STOCK

Animal rotation is as essential as crop rotation; that is, animals should not be raised year after year on the same land, any more than the same crop should be grown continuously, is an idea advanced by Dr. F. E. Hull, animal pathologist at the Agricultural Experiment Station of the University of Kentucky.

To help hold diseases and pests in check, Dr. Hull would change pasture, lots and ranges at least every two years. The land should either be cultivated for two years or other kinds of stock run on it he says. Few diseases and parasites of animals pass from one species to another. This makes it feasible to follow cattle with sheep, hogs and horses, or so to rotate the kind of stock that none remain on the same land more than two years at a time. Especially is it wise to have clean pasture for young animals, it is pointed out. Mares, sows and ewes should be treated for parasites in the fall. As soon as the foals, pigs or lambs are born the young and their mothers should be placed in fields that have not been used by the same species of animal for the past two years. Manure is the principal carrier of the eggs and larvae of internal parasites. When manure is spread in fields used by stock, it should be plowed under promptly to destroy the eggs and larvae according to this Kentucky scientist.

THE FARM AND HOME

A little cream improves the taste of cottage cheese, although it is not necessary. Salt may be added to suit the taste, either when it is worked or when it is eaten. Usually about a level teaspoonful to the pound is enough. A 16-pound young turkey tom has eaten approximately 64 lbs of feed, and an 8-pound gapon about the same amount. Hence it is more profitable to produce turkeys than capons if the death rate is low in both cases. Lespedeza is perhaps the most productive legume that can be grown in Kentucky without soil treatment, and yet applications of lime and phosphate usually increase hay and pasture sufficiently to pay the cost of treatment in a short time. Estimating acreage by the number of plants set where tobacco is checked, as in western Kentucky, is considered satisfactory, provided the correct number of plants per acre is used in the calculation. The child's daily ration should include at least a pint of milk

and preferably a quart; butter at every meal; cereal, bread or potato at every meal; at least two vegetables other than potatoes; fruit, eggs or meat or both, and a little sweets at end of meal. If washing in cold water does clothing, moisten the spots with kerosene, let stand a short time and then wash with soap and water. Alcohol or ether will dissolve the "green coloring" matter when the material cannot be washed.

CIVIL SERVICE EXAMS ARE ANNOUNCED

The United States Civil Service Commission has announced open competitive examinations for the positions named below: Junior agricultural engineer, \$2,000 a year; Soil Conservation Service, and Bureau of Agricultural Engineering. Chief of library service division, \$5,600 a year; specialist in public libraries, \$3,600 a year; and specialist in school libraries, \$3,800 a year; Office of Education, Interior Department.

For positions in the apportioned service at Washington, D. C., applicants must show legal or voting residence in the State or Territory claimed for at least 1 year next preceding the closing date for receipt of applications. All States except Iowa, Maryland, Massachusetts, Missouri, Nebraska, North Dakota, South Dakota, Utah, Vermont, Virginia, Washington, and the District of Columbia, have received less than their quota of appointments in the apportioned departmental service at Washington, D. C. Full information may be obtained from Flora Cooper at the post office in this city.

The United States Civil Service Commission has announced the following examinations, applications to be filed by July 19, if received from states other than Arizona, California, Colorado, Idaho, Montana, Nevada, New Mexico, Oregon, Utah, Washington, Wyoming. In these states applications are to be filed by July 22.

Department of Justice, Bureau of Prisons, Chief of Probation and Parole Service, \$5,600 a year; Supervisor of Probation, \$4,600 a year; Assistant Supervisor of

Probation, \$3,800 a year.

HOMEMAKERS' CLUBS SELECT PROJECTS

Programs of work for homemakers' clubs during 1937-38 have been formed in many counties by local leaders in cooperation with state supervisors, according to Miss Myrtle Weldon of the University of Kentucky College of Agriculture, state leader of home demonstration agents. These programs will be launched in September.

Thirteen counties selected some phase of clothing as a major project, Miss Weldon reports. Foodstuffs with home demonstration and nutrition will receive the

primary interest of club members in 20 counties, including subjects such as improving the health of the family through better nutrition, meal planning, feeding the family from the farm, etc. Thirteen counties asked for special projects in child care and training and in parent education, while 28 counties selected home improvement work.

More than 40 counties have requested fall and spring meetings on style trends, as a means of bringing last year's wardrobe up-to-date and as a guide to better selection of clothing. Other special meetings will deal with landscape gardening, meat curing and cutting, gardens, home accounts, canning and similar subjects.

Buy WIM at drug store or send 5c to WIM Dept. Get rid of itching fungus (rash) WIM has NEVER FAILED TO ERADICATE COMPLETELY the deepest seated fungus skin infection. ATHLETE'S FOOT

At 208 Carey Ave. ROOMS OR BOARD \$1.00 Day MEALS—25c BARBER SHOP In Connection Two Barbers Ready to serve you J. F. Johnson, Prop.

ON THE STAGE At The Morehead Courthouse SATURDAY ONLY—7:30 Bert Layne Nationally Known Old Time Fiddler and His HILL BILLIES OF THE AIR The Famous CALLAHAN BROS And Their CABIN BOYS Singing — Comedy — Yodeling Admission 25c and 15c

VOTE FOR TAYLOR FOR REPRESENTATIVE MOREHEAD DISTRICT FOR Democratic Primary Saturday, Aug. 7 More Roads - Better Schools

Maybe only God can make a tree but-



Henry Cox Gives Platform For Magistrate From District No. 3

TO THE VOTERS OF MAGISTRAL DISTRICT NO. 3:

Henry Cox, of Haldeman, Kentucky, Magisterial District No. 3 and to the Democratic voters of precincts No. 4, Hogtown, 17, Lewis, 16 Hayes, and 8 Haldeman:

As I have been urged by a large number of voters of these precincts, I have decided to announce my candidacy for the Democratic nomination for Magistrate in the above precincts. I was born in the Hogtown precinct and I have spent my entire life of 46 years in this Magisterial District. I have never held an elective office before or have I asked the voters to support me in any race.

If the Democrats of my Magisterial District will nominate me to this office and the voters will elect me in November, I promise that as a member of the Rowan County Fiscal Court that I will constantly endeavor to operate the county as a business should be operated and to do all in my power to reduce the debt which hangs over all the heads of the voters and citizens of Rowan County. Furthermore, I shall do all in my power to make relief to the taxpayers as quickly as it possibly can be done.

Due to the fact that it is only a very short time until the primary, I perhaps shall not be able to see and talk with every voter but I assure you that I shall certainly appreciate anything that you may do in my behalf in hope that by your vote you will see that I am the man for the office.

Respectfully yours,
HENRY COX

Pol. Adv.

if

YOU WANT GOOD
USED CARS
HERE THEY ARE

1935 Plymouth Coupe
1934 Studebaker Coupe
1930 Chevrolet Sedan
1929 Ford Coach
1931 Chevrolet Coupe

MIDLAND TRAIL GARAGE
Morehead Kentucky

GRAIN BINS MAY NEED CLEANING, FUMIGATING

Bins for storing grain should be thoroughly cleaned before a new crop is harvested and housed, as many insects may have survived in neglected corners, according to the entomology department of the University of Kentucky College of Agriculture.

The granary should be swept with a broom, and the sweepings burned. After sweeping, scrubbing with lye water is advised, using one pound of lye to one gallon of water. The lye solution is poured down into the cracks and crevices of the floor. As an additional precaution kerosene may be sprayed on the sides and floor, but this involves some danger from fire. If old bags are to be used, they should first be turned wrong side out, shaken well or brushed or dipped in boiling water.

If grain is infested and it is necessary to fumigate, the first thing to do is to make the crib or bin air tight on the bottom and up the sides as far as the grain extends. This may be done by lining or covering the bin with heavy wrapping paper, gluing together the overlapping ends. Fumigating gas is liable to pass out any crevice before the insects have been killed.

One pound of commercial carbon disulfide is sufficient for 100 cubic feet of space in the bin. This and evaporates into a gas that is highly combustible and may even explode, so fire in any form should be kept away. As the gas is heavier than air and settles to the bottom of the bin, the liquid is best applied in pans on top of the grain or else poured out on gunny sacks.

A blanket, carpet or similar covering should be thrown over the train, and fumigation permitted to go on for 24 hours. If the grain is to be used for food, 48 hours of fumigation is desirable. Afterwards, though ventilation is necessary, especially if the grain is to be used for planting. If barrels were used for fumigation of peas, beans or small amounts of grain, a piece of burlap may be tied over the top of the barrel inverted to permit the gas to escape. Best results with carbon disulfide may be obtained at a temperature of 75 to 90 degrees, when the temperature is lower than 60, fumigation should not be attempted.

KENTUCKY FARM NEWS

Potatoes are outstanding in weight and quality in Waller county, where many farmers have grown potatoes weighing one pound. Planting from one-half to two to the row, many report as many as six U. S. No. 1 certified seed.

High praise on the quality of their eggs has been received by Grayson county farmers, who shipped a case to New York to see how they would grade. The eggs brought 25c cents a dozen, top price for the day.

The Cave City Utopia club in Warren county has made a survey of four communities in regard to the water supply and sewage disposal in farm homes. They intend to hold demonstrations later of improved systems.

H. T. Bugz, Carlisle county, has a plant bed partly devoted to locust seed. Three years ago he followed the same practice and planted an acre with locust seedlings. Results have been excellent, as the trees are sturdy and fast-growing.

The ton-litter swine project has attracted many Metcalfe county farmers, most of whom apparently will reach or even exceed the goal. Several farmers are grinding small grains for feed.

Archie Jewell, Hart county, has found that using both limestone and phosphate on fields to be seeded to red clover and orchard grass brings better results than when only limestone is used. However, on limestone treated fields growth exceeds that on untreated fields.

JOHNSON FARMERS TO GROW STRAWBERRIES

With forty acres of commercial berries marketed this year, definite plans have been made for the development of strawberry production in Johnson county. At least 100 acres will be set next year, farmers signing up to turn under cowpeas and rye in preparation for setting one to three acres each. At least 30 to 40 club boys also will have a quarter-acre or more each.

The market opened this year at \$3.00 a crate, most of the berries going to Ashland, Huntington and Charleston. Ben Niles, secretary of the Kentucky State Horticultural Society, and W. W. Magill, extension field agent for the State College of Agriculture, assist County Agent Justice L. Pidecock and farmers in formulating plans for the development of the industry.

Marshall county homemakers, who have been studying new ways of making and using cheese, now find that their family will eat it daily.

A GREAT 3-DAY GROCERY SALE

THURSDAY FRIDAY SATURDAY

Food for hot weather eating. Take yourself out of the hot kitchen by planning sensible and easy to prepare meals. Here are some values that urge you to stock now. Take advantage of this opportunity. Drive over to Haldeman store and shop--today. There is plenty of parking space--free.

Choice Meats

FRESH SKINNED HAMS FOR THAT WEEK-END PICNIC	Whole or Shank Half lb. 29c	Butt Half lb. 31c SLICED--L.B. 42c
DRY HOLSTEIN POPULAR SANDWICH CUP	lb. 35c	VEAL STEAK TENDER--LEAN
PEPPERONI FOR ANOTHER LUNCHEON	lb. 45c	STEWING VEAL ECONOMICAL MEAL
SALAMI IN BEEF CASINGS	lb. 39c	LOIN STEAK BLENDED MEAT
LONGHORN CHEESE POPULAR OLD CUT	lb. 21c	ROUND STEAK TENDER--JUICY
MINCED HAM POPULAR OLD CUT	lb. 20c	CHUCK ROAST GOVERNMENT IMPROVED MEAT
FRANKFURTERS WELLSBORN BRAND	lb. 25c	PLATE BOIL ECONOMICAL CUT
VEAL ROAST GOOD WITH BROWNED POTATOES	lb. 25c	VEAL CHOPS FINE QUALITY

HEINZ SPAGHETTI COOKED IN TOMATO SAUCE WITH ONIONS	2 1/2 lb. cans 25c	USCO Catsup MADE FROM RED PEPPERS	4 oz. bottle 12c
HEINZ BAKED BEANS EASY TO PREPARE	2 1/2 lb. cans 25c	Tomatoes STANDARD GOLD PACE	2 No. 21 cans 23c
ARGO TUNA FISH A QUICK LUNCHEON	lb. 15c	Baxter's Corn WHOLE KERNEL--GOLDEN DELICIOUS	No. 2 cans 13c
SLICED PEACHES YELLOW CRISP IN THICK STRIP	Del Monte 2 No. 21 cans 35c	Canned Soups CROCK'S BRAND	2 No. 1 cans 25c
Spinach No. 2 can 9c	Sardines No. 1 can 19c	Prunes, 40-50's CASA TUTT BRAND	1 lb. 8c
Kidney Beans CAN OF ARGO 19c	Tapoca No. 1 pkg. 12c	GERTS VERY HOT SOAP	8 oz. bottle 22c
USCO Coffee FRESH ROASTED 19c	Cake Flour KEMBLE'S VALUE 26c	USCO Mustard EXTRA PEPPERY	qt. jar 10c
Instant Potatoes HEALTHY DINING 39c	Chocolate ROCKWOOD 9c	Mason Jars QUANUM	doz. 7c
Peas BLACK SMOOT 19c	Baking Powder DAVIS 19c	Mason Jars EUREKA	doz. 6c
Salada Tea BROWN LABEL BLEND 37c	Post Toasties POSTER'S CORNALS 9c	Shoe Polish SOPHISTICATED WHITE	1 lb. 11c
Salada Tea BROWN LABEL BLEND 37c	Grape Nuts POSTER'S CORNALS 11c	Octagon Soap FOR THE LAUNDRY	10 for 39c
Salada Tea BROWN LABEL BLEND 37c	Creamant Rolls DAVIS 18c	Toilet Soap OCTAGON	3 for 14c
Salada Tea BROWN LABEL BLEND 37c	Jer Kings MILK--SWEETENED 4c	Cleaner OCTAGON	1 lb. 19c

Soap Powder OCTAGON Large, 1 lb. 2 pkts. 9c	DEL MONTE PEARS JUICY BLENDED 19c
Soap Chips OCTAGON 2 large pkts. 37c	GRAPEFRUIT JUICE FOR WARM WEATHER REFRESHERS 9c
Soap Chips OCTAGON 3 small pkts. 25c	TOMATO JUICE ARMOUR'S BLEND IS FOR YOUR HEALTH 9c
Super Suds OCTAGON Large 17c, 2 small pkts. 17c	MARSHMALLOW DELIGHTS R. B. C. DELICIOUS CAKES 19c
Granulated Soap OCTAGON 2 large pkts. 39c	

Fresh Produce

Oranges CALIFORNIA VALENCIA 14c	Honeydews SWEET JUICY 19c
Lemons CALIFORNIA LARGE 36c	Onions NEW JERSEY YELLOW U. S. NO. 1 11c
Apples NEW TRANSPARENT U. S. NO. 1 19c	Peppers KAMPERS LARGE GREEN 19c
Cantaloupes JUMBO--VINE RIPENED 27c	Potatoes U. S. NO. 1 NEW COBBLER 25c
Cucumbers FANCY LARGE GREEN 25c	Watermelons U. S. NO. 1 WATSON--28 LBS. AVERAGE 45c

MON., TUES., WED. **EXTRAORDINARY SALE** MON., TUES., WED. 19th, 20th, 21st 19th, 20th, 21st

MEN'S SHIRTS and SHORTS
LONG WEARING--ROOBY

Willow Clothes Baskets STURDILY CONSTRUCTED 98c	Kotax SOFT ABSORBENT 2 1/2 39c
Mattress Covers FULL SIZE \$1.69	Dover Inners AUTOMATIC ELECTRIC IRONS \$3.24
Aluminum Dinner Pails OVAL SHAPED \$1.43	Sun Goggles VARIOUS STYLES 21c, 33c, 59c
Work Gloves LEATHER PALM AND KNIT WRIST 59c	Pad Locks PROTECT YOUR PROPERTY 43c
Briar Pipes EASY ACES 21c	Knives and Forks 6 X KNIVES AND 6 FORKS--GREEN HANDLES 93c

THE UNITED SUPPLY COMPANY
HALDEMAN STORE, HALDEMAN, KY.

Commissioner's Sale

THE COMMONWEALTH OF KENTUCKY
ROWAN CIRCUIT COURT
First National Bank
of Georgetown, Ky.

Plaintiff
Versus NOTICE OF SALE
Franklin Sweet and
Mrs. Franklin Sweet
George Shoemate and
Mrs. George Shoemate

Defendants
By virtue of a judgment and order of sale the Rowan Circuit Court rendered on the June Term thereof 1937, in the above cause, for the sum of Two thousand (\$2,000.00) Dollars with interest at the rate of 6% per annum from the 10th day of August 1936, until paid and its cost therein I shall proceed to offer for sale at the Court House door in the City of Morehead, Kentucky, to the highest and best bidder, at public auction on the 2nd day of August 1937, at 10 o'clock, A. M., the following described property, to-wit:

That certain tract of land lying in Rowan County, Kentucky, located on the flat known as Tarr Flat and on the waters of Swim Branch, Branch and on the Phelps lot and more particularly described as follows: as a survey made by S. S. Cassity on July 27, 1916, beginning with a black oak marked "X" starting on the northeast side of said Phelps lot, same a corner to the land of J. B. Moore, thence S. 45° E. 57 1/2 poles to a stake (original white oak), thence S. 36 1/4° E. 20 poles to a stake (original white oak), thence S. 36 1/4° E. 20 poles to a stake (original white oak), thence S. 22 3/4° E. 20 poles to a set stone on the north side of said Phelps lot, same the most northerly course of a tract of 50.7 acres sold by J. M. Cassity to Jim Ingle, thence with the line of said tract North 73 1/2° E. course crossing the Bailey Branch at 240 poles, in all 300 poles, to the set stone in the line and corner to a 30 acre tract sold by J. M. Carey and wife to Warren Patton, thence with 4 lines of said tract reversed N. 38 W. 46 poles to a set stone by flat rock near old haul road, N. 32 E. 65 1/2 poles to a large sweet gum or Swain Branch, same the upper corner on the branch of said Patton's 30 acre tract, thence down the branch, S. 80 E. 18.8 poles to a set stone, thence S. 87 1/2° E. 9.8 poles to a set stone on the S. side of Branch in Patton's old line, and with the same up the hill N. 21 1/2° E. 75 poles to a hole set on one half-way between a small oak and spotted oak, North 72° E. 20 poles to a set stone between 2 small black oak pointers near the paint line of P. J. Young tract; thence running slight to the left of said pointed line at irregular distances in perpendicular therefrom N. 86 1/2° W. 164 poles to a stake situated N. 4° E. 4 1/2 poles to a stake at the pointer or a dogwood; thence with a line of J. B. Messer S. 55 1/2° W. 187 poles to 2 pines and a black oak snag and set stone (at corner) S. 55 1/2° W. 147 1/2 poles to the beginning, containing 503 acres be the same more or less and being the same tract of land and being designated as tract No. 3 in the deed of Charles Derossit and Nora Derossit, his wife, to the grantor herein of Scott County, Kentucky, of date March 26, 1932, and of record in the office of the Clerk of the Rowan County Court of Rowan County, Kentucky, recorded in Deed Book No. 48 at page 423 of the Rowan County records.

On sufficient reason to reduce the sum of money so ordered to be made. For the purchase price the purchaser must execute bond with approved securities, bearing legal interest from the day of sale, until paid, and having the force and effect of a judgment. Bidders will be prepared to comply promptly with these terms.

NELLE PROCTOR
Master Commissioner
Rowan Circuit Court

The Carlisle County Wool Growers' Association sold 29,662 pounds of wool, service most of the counties in the Purchase.

Dr. L. A. Wise
Optometrist
Hurt Building
FRIDAYS ONLY

A. F. Ellington
DENTIST

Office Closed Every Thursday
During June, July and August

Phone 26 — Morehead

KENTUCKY BABY CHICKS

Dr. L. A. Wise
Optometrist
Hurt Building
FRIDAYS ONLY

A. F. Ellington
DENTIST

Office Closed Every Thursday
During June, July and August

Phone 26 — Morehead

KENTUCKY BABY CHICKS

Dr. L. A. Wise
Optometrist
Hurt Building
FRIDAYS ONLY

A. F. Ellington
DENTIST

Office Closed Every Thursday
During June, July and August

Phone 26 — Morehead

KENTUCKY BABY CHICKS

Dr. L. A. Wise
Optometrist
Hurt Building
FRIDAYS ONLY

A. F. Ellington
DENTIST

Office Closed Every Thursday
During June, July and August

Phone 26 — Morehead

KENTUCKY BABY CHICKS

Dr. L. A. Wise
Optometrist
Hurt Building
FRIDAYS ONLY

A. F. Ellington
DENTIST

Office Closed Every Thursday
During June, July and August

LETTERS To The Editor

(Continued from Page 2)
their property in a full face value of any money they receive.

The sureties on the present County Treasurer's bond legally liable for any money they receive I wish to invite the citizens and taxpayers of Rowan County to go to the County Clerk's office and there inspect the bond together with the affidavits of the sureties thereon which was the subject of so much concern in the "report of the Grand Jury."

The Grand Jury, positively, had no more authority in this matter than any other or every other taxpayer in Rowan County. The law provides how official bonds are to be taken, approved, corrected, increased, decreased, canceled and renewed; it never requested to increase the Treasurer's bond. I was not requested to sign the bondmen for the satisfaction of the Grand Jury. I was not requested to cause the Treasurer to give additional surety.

Every bond that I have taken for any official who handles public funds has been good, and is, and will be good so long as they are strictly bonded for the duties they will come and Grand Jurors may go, but for the balance of all roads I shall continue to execute the duties of my office as I was sworn to do, and as I executed bond to do, and as I promised the people of this county that I would do.

From this "report of the Grand Jury" one is led to believe that the larger part of the Grand Jury must have been in the field on jobs on the Rural Highway Program and didn't want to go to the mines and Pine Grove to work, they shouldn't have been there, they should have been at the road with a tractor and a grader.

This "report of the Grand Jury" intimated that under the present system of road building in Rowan County would not have a complete repair job and resurfacing in 8 years for a period of 8 years. I wish to say that the County does have a good road system in eight years that will be twenty-eight years, for that matter, I believe that every thoughtful and intelligent citizen of this county realizes full well that the money that is to be expended on road building is spent at the discretion of a political ward-heeler whose only interest is the manipulation of elections in this county, that we will get little value for the money spent. It is the best interest of those who would be political manipulators that the road money be spent in patching and piece work so that their ward-healers could give their hangers-on a job in their front door-wards. Is this that the Grand Jury? I do not believe that a Grand Jury whose first interest is the welfare of the county would make such a recommendation.

The stand of the County Judge and the Fiscal Court was discussed in a truthful and straightforward manner in both local papers two weeks ago, we have nothing to add to that statement. Our position was explained fully and clearly.

The Rowan Fiscal Court and County Judge is ready and willing to consider any fair and reasonable proposition submitted to us upon anything. However, I can and do inform all and sundry in advance that if your propositions are based upon your own personal gain or for the benefit of any group or clique of members or the wishes of politicians hoping to gain votes with public funds then you need not bother about appearing before the Fiscal Court.

We are trying to represent all the people just as fairly and squarely as we can with what we have to work with. Those Grand Jurors insisted that the Fiscal Court needed to confer with a committee of good citizens and men experienced in road repair and construction. If they had gone far enough in their resistance and made a fair report they would have said that this had been done for they would have found that we had already done so. We had conferred with some of the best citizens and most competent road men in Rowan County, men thoroughly experienced in road construction and repair. I also wish to take exception to the statement of the Grand Jury that road maintenance setting idle and rusting. No county owned machinery that we know about has been idle during the present administration except while waiting for repairs or awaiting funds to operate with.

I wish to agree with the statement of the Grand Jury that the WPA is doing a splendid work in this county. I am at a loss, however, to understand how this Grand Jury could know anything whatever about the WPA office or

its affairs since the Grand Jury was not even inside that office, nor did they see any WPA engineers before them, and did not mention or visit the seven most important projects being worked on by the county at this time, including the three stone consolidated school buildings located at Haldeman, Elmwood and Farmington, four good road projects. The Grand Jury, of course, did not mention the fact that the hard work and improvement of approximately 1,300 miles of road at a cost of \$2,097,400.

With the exception of Crittenden, agreements have been reached with all of the counties in the first state road district. These agreements in this section cover the improvement of approximately 1,300 miles of road at a cost of \$228,300.

In the second "District" agreements have been reached with all counties except Hopkins, Logan, Ohio and Todd. The plans call for 472 miles of road work. According to Rural Highway, Engineered Dave Phelps, a large percentage of this work will be done on gravel surfacing. This work in the district will be at a cost of \$243,000.

An extensive "Black Top" program covering 30 miles of high type road has been planned in the entirety of Jefferson County. This program was listed at \$102,000.

Agreements are complete will all except Hardin, Meade, Washington and Taylor counties in the Fourth District. A mileage of 1,596 is planned at a cost of \$332,500.

Kenton and Carroll counties in the Fifth District were the only ones with whom an agreement was not reached. The agreements reached showed plans for 353 miles at a cost of \$152,200.

Another large "Black Top" program was set up for the sixth district where agreement were reached with all except Henry and Owen counties. The mileage is 654 and the cost was to be \$240,200.

Each of the eight counties in the seventh district reached agreements with the Rural Highway Division and agreed on a program which will embrace 443 miles at a cost of \$239,500. This was the only district which agreed 100 per cent on the program.

Lewis, Mason, Rowan and Wolfe are the only counties remaining in the eighth district which have not concluded agreements covering the expenditure of the rural highway funds. The program in the remaining counties show a total of 878 miles of road work at a cost of \$280,000.

In the ninth district agreements are complete in all counties except Clay, Leslie and Russell. This program covers 1,359 miles of road work at a total cost of \$281,200.

Commissioner Williams and Engineer Phelps who worked with the fiscal courts and who reached the agreements are still working with the thirteen counties with which agreements have not yet been reached. When these agreements are made, and Commissioner Williams expects them to be completed in the near future, the entirety of the appropriation for the State's rural program will be accounted for and the program will be the largest and by far the most definite ever undertaken.

Stars Voice Records Well On Film Tract
Sound engineers at Paramount studios declare that Marsha Hunt, who has an important role in "Murder Goes to College," which comes to the Cozy Theatre on Sunday, has one of the best recording talents in the business.

State Has 51,840 Operating Trucks

Questionnaires Being Mailed Out By Kentucky Highway Department

Questionnaires seeking data of vital importance to the future road building programs in the State of Kentucky are now being mailed to every truck, bus and tractor truck owner in the Commonwealth by the Highway Planning Survey Division of the Highway Department. The Division is cooperating with the United States Bureau of Public Roads in gathering this valuable information concerning travel on Kentucky highways.

The information sought is of such concern to the success of the planning survey that both the state and government officials are interested in an early return of the questionnaire. It has been received. The success of the survey will depend largely upon the interest shown by the truck owners. Already 50 per cent of the owners of passenger vehicles in each county have received their questionnaires and returns are being received daily at the Survey Office in Frankfort.

There are 51,840 truck owners in the state, including the fleet owners. Owners of fleets, which consist of five or more units will receive a special questionnaire later, according to J. G. Stuart, Financial Manager of the Survey.

The purposes of the vehicle questionnaire is to obtain the exact status of the vehicle owner, whether it is within or without the corporate limits of a city or town, and to obtain data on mileage and gas consumption. The possession of this information makes possible a classification of ownership into groups of rural and urban areas.

Mr. Stuart pointed out that it was not necessary for those receiving the questionnaire to either sign or pay postage on them. After filling out the five questions the card will be returned to the survey office if dropped in a mail box.

The questions asked are: 1. Residence of owner; (a) In what county do you live? (b) If you live in the corporate limits of a city or town, give its name. (c) If you live outside the corporate limits of a city or town, so state. Please answer the following questions on the basis of total yearly driving, regardless of change of cars: (a) Total miles driven last year. (b) Miles driven in Kentucky last year. 3. Average miles per gallon of gasoline.

The answers to 2 and 3 are based on (a) estimates—(b) actual records— 5. Occupation of owner.

107 Counties Have Approved Program

Rural Road Projects In Rowan Are Still Held Up

Report Says
The Division of Rural Highways has completed agreements with the fiscal courts in 107 of the Commonwealth's 120 counties covering work for the 1937-1938 rural highway program according to an announcement today by Cecil T. Williams, Rural Highway Commissioner.

proprietor represents the administrative savings and the unneeded balances in the various counties.

The total mileage in the programs in the 107 counties where agreements have been reached is listed at 7,271 and the total funds obligated is \$2,097,400.

With the exception of Crittenden, agreements have been reached with all of the counties in the first state road district. These agreements in this section cover the improvement of approximately 1,300 miles of road at a cost of \$228,300.

In the second "District" agreements have been reached with all counties except Hopkins, Logan, Ohio and Todd. The plans call for 472 miles of road work. According to Rural Highway, Engineered Dave Phelps, a large percentage of this work will be done on gravel surfacing. This work in the district will be at a cost of \$243,000.

An extensive "Black Top" program covering 30 miles of high type road has been planned in the entirety of Jefferson County. This program was listed at \$102,000.

Agreements are complete will all except Hardin, Meade, Washington and Taylor counties in the Fourth District. A mileage of 1,596 is planned at a cost of \$332,500.

Kenton and Carroll counties in the Fifth District were the only ones with whom an agreement was not reached. The agreements reached showed plans for 353 miles at a cost of \$152,200.

Another large "Black Top" program was set up for the sixth district where agreement were reached with all except Henry and Owen counties. The mileage is 654 and the cost was to be \$240,200.

Each of the eight counties in the seventh district reached agreements with the Rural Highway Division and agreed on a program which will embrace 443 miles at a cost of \$239,500. This was the only district which agreed 100 per cent on the program.

Lewis, Mason, Rowan and Wolfe are the only counties remaining in the eighth district which have not concluded agreements covering the expenditure of the rural highway funds. The program in the remaining counties show a total of 878 miles of road work at a cost of \$280,000.

In the ninth district agreements are complete in all counties except Clay, Leslie and Russell. This program covers 1,359 miles of road work at a total cost of \$281,200.

voices on the screen. Her high or low tones register equally perfectly.

In dialog for "Murder Goes to College," a comedy-mystery in which she is featured with Lynn Overman and Roscoe Karns, she spoke in such subdued tones that she could scarcely be heard half a dozen feet from the microphone. Yet her voice registered clearly and distinctly on the sound track.

Miss Hunt recently took up the study of intonation and articulation and the result is reflected in her work before the camera and under the "micro."

AMONG THE COUNTY AGENTS

E. E. Evans, Knox county, sold 200 broilers for a \$40 profit, which paid for a model brooder house. Crittenden county farmers have shipped 2,500 crates of U. S. No. 1 berries that brought premium prices.

Approximately 7,500 pounds of wool were pooled by Meade county by farmers, 2,000 pounds more than the 1935 figure. Montgomery county 4-H club members are fattening their baby beavers on pasture to avoid grain costs at present.

The Boone County Wool Pool has handled the sale of 11,000 fleeces.

CIVIL SERVICE EXAMS ANNOUNCED

The United States Civil Service Commission has announced open competitive examinations for the following positions: Senior motion picture director, \$3,800 a year; motion picture specialist, \$3,200 a year; and junior motion picture specialist, \$2,600 a year; Forest Service, Department of Agriculture, and Social Security Board.

Assistant clerk - stenographer, \$1,620 a year (for the blind, experience in the use of Braille and Braille machines). Office of

Education, Department of the Interior. All states except Utah, Maryland, Massachusetts, Missouri, Nebraska, North Dakota, South Dakota, Utah, Vermont, Virginia, and Washington, and the District of Columbia, have received less than their quota of appointments in the apportioned departmental service at Washington, D. C. Full information may be obtained from Flora Cooper Secretary of the U. S. Civil Service Board of Examiners, at the post office or postmaster in this city.

STELLA CROSTHWAITE, Treasurer
Rowan County Fiscal Court.

NOTICE To Holders of County Warrants

All persons holding warrants against the Rowan County Fiscal Court issued during the Fiscal year from July 1, 1936 to June 30, 1937, inclusive, and countersigned by the County Treasurer are now directed and requested to present same for payment to the Peoples Bank of Morehead not later than July 30, 1937. Interest on said warrants was stopped July 1, 1937.

This 9th day of July, 1937.

STELLA CROSTHWAITE, Treasurer
Rowan County Fiscal Court.

Recording....

Every week recording the happenings, the business, the interesting and constructive features of a live and growing community. Breathing the life of progress and typifying the work and thoughts of the people it serves. That, briefly is the goal that the Independent has achieved.

Printing

There is nothing that speaks more forcibly than printed words which have that degree of neatness and stability found in fine printing. The Independent Publishing Company has a complete job printing department where every form of fine industrial printing is done.

Independent Publishing Company

Phone 235 Morehead, Ky.

Publishers of

The Morehead Independent

