

News

PUBLIC INFORMATION

DANNY R. WRIGHT, DIRECTOR

MOREHEAD STATE UNIVERSITY

UPO BOX 1100

MOREHEAD, KY 40351

606-783-2030

MOREHEAD, Ky. --- Thirty-five young purebred bulls were weighed, measured, vaccinated and enrolled into an all new bull performance testing program which began last week at Morehead State University's Derrickson Agricultural Complex.

Beef producers from seven counties were on hand as the Northeast Kentucky Beef Improvement Federation (NKBIF) began its first major project, an on-farm bull test done in cooperation with MSU's Department of Agriculture and Natural Resources.

"We're very impressed with the quality of the bulls enrolled," said Dr. Andrew Boston, head of the department. "And, of course, with the numbers. We'll all learn something from this project. Beef producers in the region will see firsthand just how much quality-tested bulls can improve their herds."

The bulls will be re-weighed and frame-scored in March, prior to the NKBIF sale. MSU is compiling the statistics and advising with on-farm feeding programs.

"This is a cooperative effort," said Phil Kenkel, agribusiness specialist in MSU's Appalachian Development Center. "NKBIF is a member operated, non-profit organization, and the turnout for the test is evidence that the interest is real."

(more)

Bulls
2-2-2-2

At the end of the test period, results will be tabulated and awards will go to those producers whose bulls show the largest gains. The sale, to be held at MSU next March, will be widely advertised and buyers are expected from several states.

For information on the program, contact Phil Kenkel, Appalachian Development Center, Morehead State University, Morehead, KY 40351 or phone (606) 783-2077.

###

11-1-84gb

News

PUBLIC INFORMATION

DANNY R. WRIGHT, DIRECTOR

MOREHEAD STATE UNIVERSITY

UPO BOX 1100

MOREHEAD, KY 40351

606-783-2030

MOREHEAD, Ky. --- Garry Barker, communications coordinator for Morehead State University's Appalachian Development Center, is one of 20 authors who will be featured in the third annual Kentucky Book Fair Nov. 17 in Frankfort.

Barker's book of short stories, "Fire On The Mountain," was published last year by Kentucke Imprints. His novel, "Copperhead Summer," will be released later this year.

Featured authors at the 1984 Kentucky Book Fair include James J. Kilpatrick, Stephen Birmingham, James Grady, LeRoi Jones, Wilma Dykeman, John Egerton, Harry Caudill, Ed McClanahan and John Ed Pearce. Books are sold at a 20 percent discount from 10 a.m. to 5 p.m. in the lobby of the Kentucky Department for Library and Archives. The Book Fair is sponsored by the Frankfort State Journal and the Kentucky Book Fair Committee.

An authors' reception will be held Friday evening, Nov. 16, at the residence of Lt. Gov. Steven Beshear.

Barker's "Fire On The Mountain" was called "a portrait gallery of Appalachia" by the "Roanoke Times." Barker is a book reviewer for the "Louisville Courier-Journal" and "Lexington Herald-Leader," a member of the National Book Critics Circle and acting chairman of the Appalachian Writers Association.

###

11-1-84gb

News

PUBLIC INFORMATION

DANNY R. WRIGHT, DIRECTOR

MOREHEAD STATE UNIVERSITY

UPO BOX 1100

MOREHEAD, KY 40351

606-783-2030

MOREHEAD, Ky. --- Morehead State University student Bradley Hinds, a senior geology major, was recently awarded a \$400 scholarship from the Eastern Kentucky Section of the Society of Petroleum Engineers.

Hinds is the son of Mr. and Mrs. Don M. Hinds of Means and a graduate of Menifee County High School. Hinds and wife Savannah now reside in Morehead.

Each year a MSU student receives this scholarship, with the criteria for the award requiring the recipients to be an MSU student from an eastern Kentucky county, have a major in geology with interests in oil and gas and have high academic status.

###

11-1-84dth

News

PUBLIC INFORMATION

DANNY R. WRIGHT, DIRECTOR

MOREHEAD STATE UNIVERSITY

UPO BOX 1100

MOREHEAD, KY 40351

606-783-2030

MOREHEAD, Ky. --- Writing entries from Kentucky students in grades 9-12 are being sought for the annual Kentucky Council of Teachers of English Student Writing Contest. Winners of the contest will have their works published in the spring, 1985, issue of the "Kentucky English Bulletin."

Dr. Frances Helphinstine, professor of English at Morehead State University, coordinator of the contest and associate editor of the "Kentucky English Bulletin," encourages all high school students to submit short stories, drama, poetry, essays and vignettes. Analyses and explications of works published in high school textbooks are also welcome. All entries must be approved by the student's English teacher.

All manuscripts should be typed, double-spaced, on unlined 8½ inch by 11 inch paper. Titles should be centered on the first page and placed in the upper right corner of the following pages. A 3 inch by 5 inch index card with the student author's name, the students' English teacher, grade, school and principal should be included with the entry.

All quotations and adaptations from other works must be documented. The maximum amount of words for manuscripts is 800-900 words. Students whose works are published in the "Kentucky English Bulletin" will receive certificates from their English teachers on Awards Day.

The deadline for entering the contest is Jan. 15, 1985. All entries must be sent to Dr. Frances Helphinstine, UPO 1244, Morehead State University, Morehead, KY 40351. For further information, contact Dr. Helphinstine at (606) 783-2778.

News

PUBLIC INFORMATION

DANNY R. WRIGHT, DIRECTOR

MOREHEAD STATE UNIVERSITY

UPO BOX 1100

MOREHEAD, KY 40351

606-783-2030

MOREHEAD, Ky. --- The Asolo State Theater Company of Florida is the second presentation in the Arts in Morehead (AIM) series with a production of Mark Medoff's "Children Of a Lesser God" in Morehead State University's Button Auditorium Thursday, Nov. 15, at 8 p.m.

"Children Of a Lesser God," the Tony Award winning play of 1980, is an extraordinary and touching love story between a speech therapist and a young deaf woman who refuses to speak. An affirmation of the human spirit, the play provides a rare insight into the aspirations, frustrations and joys of some 20 million Americans who have hearing impairments and the difficulties they face in a world of sound they don't hear.

The drama's primary characters are speech therapist James Leeds, who finds himself falling in love with resident Sarah Norman, a young woman who refuses to lipread or to speak. Conversation between the two is possible only through a graceful and dynamic flutter of hands called signing and facial expressions that are more telling than words. James pursues Sarah through an affecting and often amusing courtship, and eventually they marry. Through poignant and engaging scenes of listening to music, ordering at a restaurant and adjusting to marriage, Medoff introduces us to Sarah's world; one she calls "a silence full of sounds" and one she maintains is just as rich as the world of sound.

In communicating the speech of the deaf, the actors in "Children Of a Lesser God" must be skilled professionals and also adept in American Sign or English Sign Language. Three Asolo actors are either totally deaf or seriously hearing-impaired.

(more)

"Children" was first produced at New Mexico State University, where Medoff is head of the drama department. The production later played in Los Angeles Mark Taper Forum and opened in New York in 1980 to enthusiastic audiences and critical acclaim. The Broadway production won accolades for its stars Phyllis Frelich and John Rubenstein, bringing them Tony Awards for their performances. "Variety" called the drama "an extraordinary play...illuminating, interesting and moving;" "The New York Times" deemed it "the find of the season, a play unlike any other...always engaging...warmly, winningly personal."

The Asolo State Theater has just celebrated its 25th Anniversary Season of performing its unique brand of repertory throughout the nation. That hallmark of achievement marks Asolo as a recognized power in the American Theater. In its hometown of Sarasota, Fla., Asolo performs in one of the most exquisite theaters in the world, the Ringling Museums' 18th century Italian court playhouse. That building has housed over 250 productions in 25 years, ranging from world premieres to the classics, and has displayed the incredible talents of more than 2,250 actors, directors, playwrights, designers, artisans and technicians, while training over 250 young actors for the theater of today and tomorrow.

Asolo's cast members for the drama include many players from the Broadway and national productions of Children. This production will be directed by Lucy Martin, who played in the Broadway cast and has been affiliated with numerous productions of the show.

A dramatic workshop, including members of the Asolo cast, is scheduled for Nov. 15 from 1 p.m. - 2:30 p.m. in the Button Drill Room. Tickets for the performance are available at the door. The cost is \$6, adult, and \$2.50 for students under 18. For more information, call (606) 783-2483.

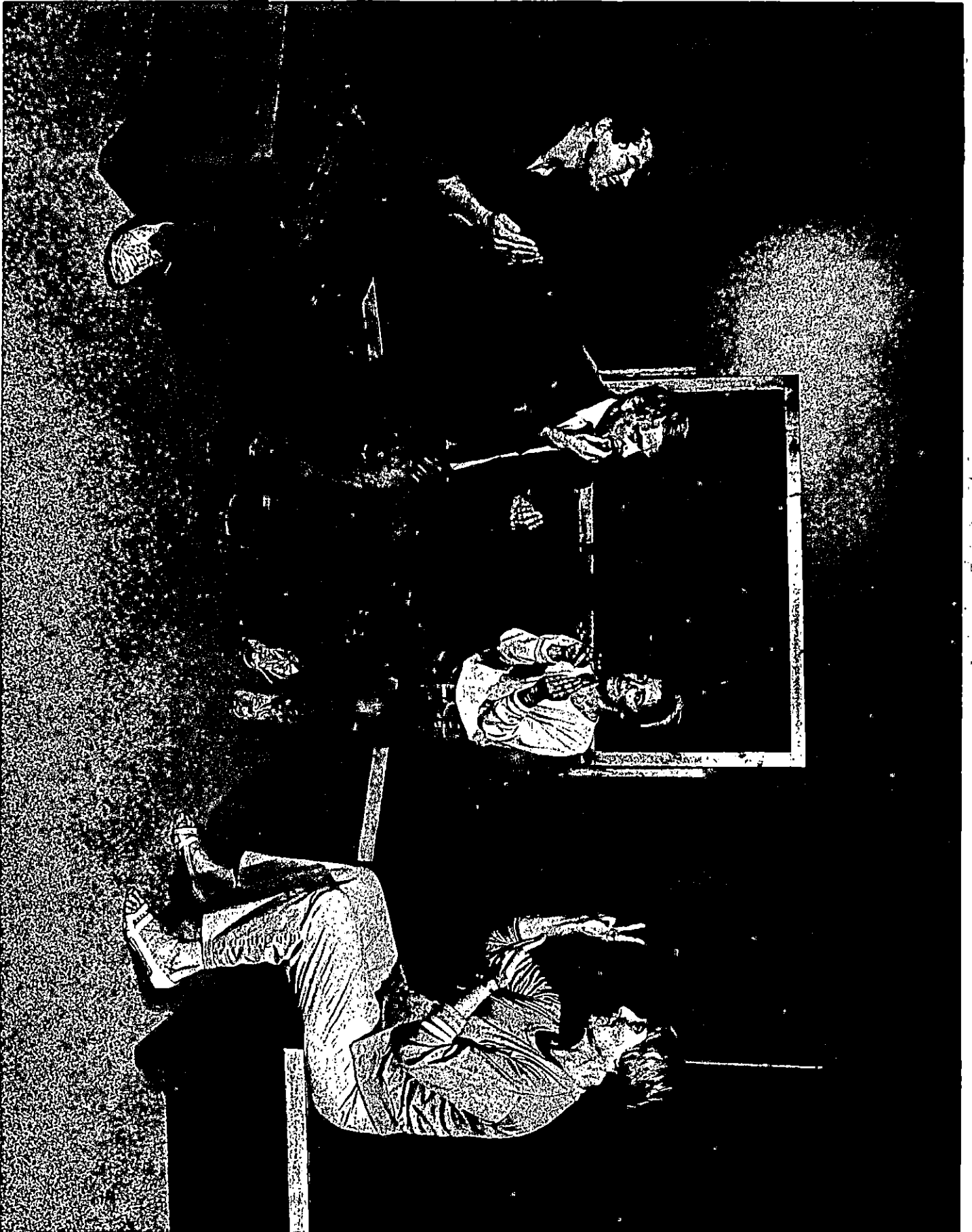
####

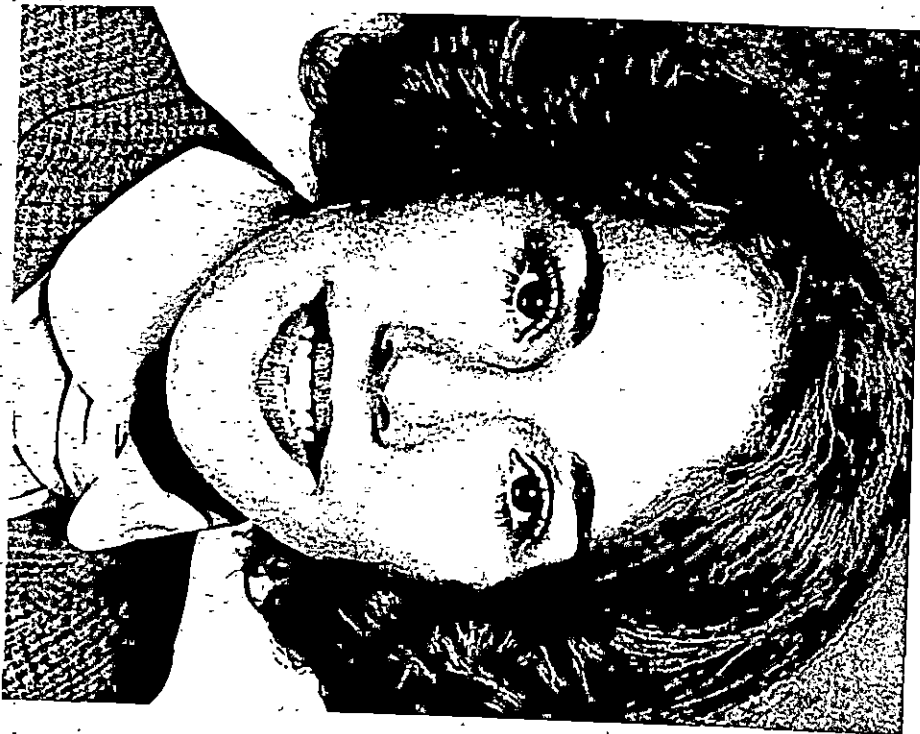


copy story
12-22
88-11-11
Sund - 11











News

PUBLIC INFORMATION

DANNY R. WRIGHT, DIRECTOR

MOREHEAD STATE UNIVERSITY

UPO BOX 1100

MOREHEAD, KY 40351

606-783-2030

FOR CROSS & CRESCENT

Dr. Herb. F. Reinhard Jr. was recently named president of Morehead State University in Morehead, Ky. Brother Reinhard came to MSU from Slippery Rock University in Slippery Rock, Pa., where he had been president since 1979. Prior to that post, he held administrative positions with Florida A & M, University of Tennessee, Western Carolina University, and Auburn University. Brother Reinhard is married to Nancy Warren and has three sons, Herb. III, Don and Mark, all members of Lambda Chi Alpha Fraternity, and one daughter, Ann.

###

11-2-84vja

News

PUBLIC INFORMATION

DANNY R. WRIGHT, DIRECTOR

MOREHEAD STATE UNIVERSITY

UPO BOX 1100

MOREHEAD, KY 40351

606-783-2030

FOR CASELINEWS

Danny R. Wright has been named the director of public information at Morehead State University in Kentucky. He was formerly the coordinator of news services.

As part of a restructuring of the university's administration, the former news services' office now includes photographic services and university publications.

###

11-2-84



News

PUBLIC INFORMATION

DANNY R. WRIGHT, DIRECTOR

MOREHEAD STATE UNIVERSITY

UPO BOX 1100

MOREHEAD, KY 40351

606-783-2030

MOREHEAD, Ky. --- Kevin Cockrell, a freshman speech student at Morehead State University, contributed sweepstakes points for the MSU Speech Team at the Miami University Rosebowl Speech Torunament in Oxford, Ohio, recently.

Cockrell, the son of Maxine Dougherty of Jeffersonville, helped the speech team bring home the third-place trophy from the tournament.

###

11-2-84srt

News

PUBLIC INFORMATION

DANNY R. WRIGHT, DIRECTOR

MOREHEAD STATE UNIVERSITY

UPO BOX 1100

MOREHEAD, KY 40351

606-783-2030

MOREHEAD, Ky. --- Jeff Spradling, a junior journalism student at Morehead State University, contributed sweepstakes points for the MSU Speech Team at the Miami University Rosebowl Speech Tournament in Oxford, Ohio, recently.

Spradling, the son of Willa Spradling of Wellington, helped the speech team bring home the third-place trophy from the tournament.

###

11-2-84srt

News

PUBLIC INFORMATION

DANNY R. WRIGHT, DIRECTOR

MOREHEAD STATE UNIVERSITY

UPO BOX 1100

MOREHEAD, KY 40351

606-783-2030

MOREHEAD, Ky. --- Bob Stafford, a junior business student at Morehead State University, won third place in Epi-dictic speaking (a speech to praise or blame) at the Miami University Rosebowl Speech Tournament in Oxford, Ohio, recently. Stafford also won sixth place in Duo Interpretation with his partner, Tara Lail.

Stafford, the son of Robert Stafford of Vanceburg, helped MSU's Speech Team bring home the third-place trophy from the tournament.

###

11-2-84srt

News

PUBLIC INFORMATION

DANNY R. WRIGHT, DIRECTOR

MOREHEAD STATE UNIVERSITY

UPO BOX 1100

MOREHEAD, KY 40351

606-783-2030

MOREHEAD, Ky. --- Brian Waddle, a freshman speech student at Morehead State University, won first place in After Dinner Speaking (a humorous speech which contains a serious point) at the Miami University Rosebowl Speech Tournament in Oxford, Ohio, recently.

Waddle, the son of Travis F. Waddle of Shepardsville, helped MSU's Speech Team bring home the third-place trophy from the tournament.

###

11-2-84srt

News

PUBLIC INFORMATION

DANNY R. WRIGHT, DIRECTOR

MOREHEAD STATE UNIVERSITY

UPO BOX 1100

MOREHEAD, KY 40351

606-783-2030

MOREHEAD, Ky. --- Lisa Shemwell, a sophomore journalism student at Morehead State University, won third place in Rhetorical Criticism at the Miami University Rosebowl Speech Tournament in Oxford, Ohio, recently.

Shemwell, the daughter of Bobby Shemwell of Winchester, helped MSU's Speech Team bring home the third-place trophy from the tournament.

####

11-2-84srt

News

PUBLIC INFORMATION

DANNY R. WRIGHT, DIRECTOR

MOREHEAD STATE UNIVERSITY

UPO BOX 1100

MOREHEAD, KY 40351

606-783-2030

MOREHEAD, Ky. --- Vonda Ramey, a sophomore speech student at Morehead State University, won first place in Informative Speaking at the Miami University Rosebowl Speech Tournament in Oxford, Ohio, recently.

Ramey, the daughter of Herbert Ramey, of Morehead, helped MSU's Speech Team bring home the third-place trophy from the tournament.

####

11-2-84srt

News

PUBLIC INFORMATION

DANNY R. WRIGHT, DIRECTOR

MOREHEAD STATE UNIVERSITY

UPO BOX 1100

MOREHEAD, KY 40351

606-783-2030

MOREHEAD, Ky. --- Julie Jones, a freshman speech-theatre student and Tara Lail, a freshman radio-television student at Morehead State University, both placed in individual events at the Miami University Rosebowl Speech Tournament in Oxford, Ohio, recently.

Jones won first place in Duo Interpretation with her partner Brian Waddle. Their cutting comes from the play "Where Are You Going Hollis J.?" Lail won sixth place in Duo Interpretation with her partner Bob Stafford. Their cutting comes from the play "Farewell to Love."

Jones, the daughter of George Jones and Lail, the daughter of Linda Lail, both of Cynthiana, helped MSU's Speech Team bring home the third-place trophy from the tournament.

###

11-2-84srt

News

PUBLIC INFORMATION

DANNY R. WRIGHT, DIRECTOR

MOREHEAD STATE UNIVERSITY

UPO BOX 1100

MOREHEAD, KY 40351

606-783-2030

MOREHEAD, Ky. --- Margaret Holt, a sophomore radio-television student at Morehead State University, won third place in Epi-dictic speaking (a speech to praise or blame) at the Miami University Rosebowl Speech Tournament in Oxford, Ohio, recently.

Holt, the daughter of J. Holt of Radcliff, helped MSU's Speech Team bring home the third-place trophy from the tournament.

###

11-5-84srt

News

PUBLIC INFORMATION

DANNY R. WRIGHT, DIRECTOR

MOREHEAD STATE UNIVERSITY

UPO BOX 1100

MOREHEAD, KY 40351

606-783-2030

MOREHEAD, Ky. --- Gwyn Taylor, a senior chemistry-biology student at Morehead State University, contributed sweepstakes points for the MSU Speech Team at the Miami University Rosebowl Speech Tournament in Oxford, Ohio, recently.

Taylor, the daughter of James A. Taylor of Jeffersontown, helped the speech team bring home the third-place trophy from the tournament.

####

11-2-84srt

News

PUBLIC INFORMATION

DANNY R. WRIGHT, DIRECTOR

MOREHEAD STATE UNIVERSITY

UPO BOX 1100

MOREHEAD, KY 40351

606-783-2030

FOR LEXINGTON HERALD-LEADER BUSINESS MONDAY

Morehead State University: Columbus E. (Kai) Norris and Dr. Roger W. Barbour have been named to the university's Alumni Hall of Fame. Norris is owner of Howell's Motor Freight, Inc., in his hometown of Roanoke, Va. The trucking firm is valued at \$6 million. Dr. Barbour, a Morehead native and Lexington resident, is a nationally known zoologist and retired professor at the University of Kentucky.

####

11-2-84vja

News

PUBLIC INFORMATION

DANNY R. WRIGHT, DIRECTOR

MOREHEAD STATE UNIVERSITY

UPO BOX 1100

MOREHEAD, KY 40351

606-783-2030

FOR LOUISVILLE COURIER-JOURNAL BUSINESS FILE

Columbus E. (Kai) Norris and Dr. Roger W. Barbour have been named to the Morehead State University Alumni Hall of Fame. Norris is owner of Howell's Motor Freight, Inc., a \$6 million trucking firm, in his hometown of Roanoke, Va. Dr. Barbour, a Morehead native living in Lexington, is a nationally known zoologist and retired professor at the University of Kentucky.

####

11-2-84vja

AIRBORNE CADETS --- Several Morehead State University students recently graduated from U.S. Army Airborne School at Ft. Benning, Ga. Kneeling left to right are Robert Simpson, Darryl Jackson and Kevin Hayes. Standing left to right are Robert Pestona, Donna Cecil and Steven Hogan. This paratrooper training is not a requirement of MSU U.S. Army ROTC, but is a voluntary school that offers physical and mental challenges. Students interested in the ROTC challenge should contact the MSU Department of Military Science at 783-2050.

###

11-2-84drw

*See 11-2-84
3
TB*



MSU CADETS --- Freshmen and sophomores of Morehead State University's military science program recently traveled to Cave Run Lake for training. They conducted a backpacking trip into the Zilpo Area and learned how to navigate a one-rope bridge and basic canoeing. The next morning began with a C-Ration breakfast and then a trip to the spillway area where the cadets rappelled. Students interested in accepting the ROTC challenge should contact the MSU ROTC department at 783-2050.

*See
11-2-84
y*
✓
TB

####

11-2-84drw



ROTC AT MSU --- Morehead State University student, Steve Hogan, is shown here in his recent participation in an ROTC waterborne exercise at Cave Run Lake. Steve, the son of Mr. and Mrs. Paul E. Hogan of Hebron, is a senior at MSU and in the U.S. Army ROTC program. Steve is a distinguished military student, the commander of the MSU Raider Company and a graduate of the U.S. Army Airborne School at Ft. Benning, Ga. He will graduate this spring with a bachelors degree in business administration and will be commissioned a second lieutenant in the U.S. Army. Steve is a training officer in the U.S. Army Reserve 100th Division at Mt. Sterling.

*Sevin
10-2-84*

###

11-2-84drw

Boone County Recorder



CHORISTERS --- Se Layne, left, and Suzanne Burchett of Rowan County Senior High School, look over music with Bucky Hall of Harrison County High School. The choristers joined more than 250 high school students from Kentucky, Ohio and West Virginia at Morehead State University's 25th Annual Choral Festival last week. The two-day event included performances by high school and MSU choristers.

###

11-2-84drw

Jewell
11-2-84
M-N, Harrison Co.



MSU CHORAL FESTIVAL --- More than 250 high school students from Kentucky, Ohio and West Virginia joined Morehead State University choristers for MSU's two-day 25th Annual Choral Festival last week. From left to right, Amy Walters and Susan Fossett, both of Rowan County Senior High School, join Ann Beane, MSU instructor of music, and Chris Milan and Joanthan McGuire, both of Paintsville High School, in examining music for the choristers performances.

Seen 7-83

####

11-2-84drw

~~M-N, Paintsville Herald~~



News

PUBLIC INFORMATION

DANNY R. WRIGHT, DIRECTOR

MOREHEAD STATE UNIVERSITY

UPO BOX 1100

MOREHEAD, KY 40351

606-783-2030

MOREHEAD, Ky. --- Starting in the fall of 1985, new students will need more than a high school diploma to be admitted to Morehead State University.

As a result of new admissions standards approved recently by its Board of Regents, MSU will evaluate prospective students on a combination of high school grade point averages and scores on the ACT (American College Test), which is required of all students entering Kentucky's public universities.

However, in keeping with the University's tradition of providing opportunity to students who desire a college education, the new admissions policy also includes the establishment of a summer program in basic skills for applicants falling below the new requirements. Students who successfully complete the summer program would be eligible for admission in the fall term.

"Adoption of higher admissions standards and implementation of the University Enrichment Program will enhance the academic quality of the University while keeping alive the spirit of higher education opportunity for the citizens of Eastern Kentucky," MSU President Herb. F. Reinhard said.

He continued:

"These academic standards, while potentially affecting about five percent of the incoming class, are very, very fair to young people. It is our intention to slowly raise the standards over the next few years and to continue the University Enrichment Program to provide opportunities for as many students as possible to reach the expected level of academic achievement."

(more)

The University Enrichment Program, also starting in 1985, would consist of eight weeks of intensive instruction in reading, mathematics and communications skills. The new summer program will be separate from MSU's regular summer school.

"Experience has shown us that students on the bottom of the scale in terms of grades and ACT scores run the highest risk of failing in college because they cannot compete with their better prepared classmates," said Dr. William Whitaker, acting vice president for academic affairs. "The University Enrichment Program should allow most of those students with academic deficiencies to have a much better chance of success as regular students."

Dr. Whitaker said the summer program would be available to those students who exhibit the attitude and academic potential to overcome their questionable grades and ACT performance.

In recommending the new policy to the Board of Regents, President Reinhard stated that the University has an obligation to continually raise academic standards if its graduates are to be competitive in "a world of rapidly-expanding technology."

"Students must understand before they arrive on campus that we have a strong faculty which will challenge them to expand their academic horizons and that greater expectations require a higher level of pre-college preparation," Dr. Reinhard stated.

The new admissions standards will be applied to all applicants, ending a policy of separate requirements for in-state and out-of-state residents. Traditionally, Kentucky students applying to MSU have been admitted on the basis of having a high school diploma or its equivalent.

Details on the new admissions standards will be forwarded to high school guidance counselors immediately, Dr. Reinhard said.

News

PUBLIC INFORMATION

DANNY R. WRIGHT, DIRECTOR

MOREHEAD STATE UNIVERSITY

UPO BOX 1100

MOREHEAD, KY 40351

606-783-2030

MOREHEAD, Ky. --- A discussion of "Teachers' Rights" with Lexington attorney Arthur Brooks headlines the Nov. 10 meeting of the Morehead State University chapter of Phi Delta Kappa. Brooks, an attorney with Brooks, Cauffman and Fitzpatrick in Lexington, will lecture and answer questions about the rights of elementary, secondary and higher education teachers.

The program will open with a dinner at 6:15 p.m. and Brooks will speak at 7:30 p.m., both in the Red Room of MSU's Adron Doran University Center. The meeting is open to the public, and the price of the dinner is \$4.75. For reservations, which should be made by Nov. 8, call Helen Williams at (606) 783-2828.

Phi Delta Kappa, the international fraternity for men and women in education, promotes all forms of public education. All teachers are encouraged to attend the session.

####

11-5-84lrp

News

PUBLIC INFORMATION

DANNY R. WRIGHT, DIRECTOR

MOREHEAD STATE UNIVERSITY

UPO BOX 1100

MOREHEAD, KY 40351

606-783-2030

MOREHEAD, Ky. --- The spring crowning of Miss Morehead State University begins Friday, Nov. 9, when the Interfraternity and Panhellenic Councils will sponsor the preliminary talent competition of the scholarship pageant in Button Auditorium.

There will be 28 women participating in the talent competition and private interviews. Judging of these events will be of the same type used in the Miss America Pageant. Of the group, 12 will be selected to continue on to the Miss MSU Scholarship Pageant on March 28, 1985.

The preliminary talent program begins at 9 p.m. The event is open to the public and tickets are \$1 for general admission and students.

###

11-7-84lrp

News

PUBLIC INFORMATION

DANNY R. WRIGHT, DIRECTOR

MOREHEAD STATE UNIVERSITY

UPO BOX 1100

MOREHEAD, KY 40351

606-783-2030

MOREHEAD, Ky. --- Morehead State University's Jazz Ensemble I will perform Tuesday, Nov. 13, in the Duncan Recital Hall.

The seventeen-piece group will have soloists performing such songs as Duke Ellington's "Don't Get Around Much Anymore," John Coltrane's "Lazybird," and "Milestones," a Miles Davis piece.

The Jazz Ensemble I will perform under the direction of David L. Anderson, MSU assistant professor of music.

The 8:15 p.m. concert is free and open to the public.

###

11-7-84mbm

News

PUBLIC INFORMATION

DANNY R. WRIGHT, DIRECTOR

MOREHEAD STATE UNIVERSITY

UPO BOX 1100

MOREHEAD, KY 40351

606-783-2030

(Special to The Morehead News)

Eagle fans attending the MSU-Eastern football game this Saturday at Richmond are invited to a postgame party.

The MSU Alumni Association and the Eagle Athletic Fund are co-sponsoring the event at 5 p.m. at the Sheraton Inn at Exit 104 on I-75 at Athens-Boonesboro Road.

All Eagle supporters are invited, according to Don Young, executive vice president of the Alumni Association.

#####

News

PUBLIC INFORMATION

DANNY R. WRIGHT, DIRECTOR

MOREHEAD STATE UNIVERSITY

UPO BOX 1100

MOREHEAD, KY 40351

606-783-2030

MOREHEAD, Ky. --- The life and works of the late author Jesse Stuart and Appalachian folk music and song are the subjects of a Nov. 11-16 Winter Elderhostel at Carter Caves State Resort Park.

Sponsored by Morehead State University and the Kentucky Department of Parks, the upcoming second annual elderhostel has received national attention, said George W. Eyster, director of MSU's Office of Continuing Education.

"This is the first time we have had an elderhostel dealing with the life and works of the late Poet Laureate Jesse Stuart and this has sparked a lot of interest nationwide," Eyster said. "Also, this particular program is unique because MSU and the parks department are working together to develop out-of-season occupancy for the park."

Eyster explained that universities often host programs in which a large number of people must be housed on campus. Because most programs are offered during the academic year, there is little housing available. Eyster and the parks department said they see hosting events such as the elderhostel at a park as a perfect solution. MSU can present week-long programs and the park can house participants because the academic year is generally the park's out-of-season period.

Registration for the elderhostel was conducted nationwide in August. Forty adults representing 11 states were chosen to participate. An elderhostel scheduled for February will repeat the courses being taught in November. Registration will be announced this month.

(more)

Elderhostel
2-2-2-2-2-2-2

Instructors for the elderhostel will be Dr. James M. Gifford, assistant director for Appalachian studies at MSU's Appalachian Development Center; Rodi and George Jackson, Morehead residents skilled in Appalachian music and dance; Meta and Mervil Whitt, singers from southeastern Ohio and collectors of early American musical instruments; and James Stuart, brother of the late Jesse Stuart.

Fran Curci, commissioner of the Kentucky Department of Parks, and Wendell Combs, head of the Kentucky Tourism Cabinet, are planning a press conference for Nov. 15 at the park.

For information on the elderhostel, contact Eyster at (606) 783-2542.

####

11-7-84vja

News

PUBLIC INFORMATION

DANNY R. WRIGHT, DIRECTOR

MOREHEAD STATE UNIVERSITY

UPO BOX 1100

MOREHEAD, KY 40351

606-783-2030

MOREHEAD, Ky. --- The Morehead State University Associate Degree Nursing Program is extending the deadline for its spring, 1985, class applications to Dec. 10.

Admission to the nursing program is based on a minimum composite score of 17 on the American College Test (ACT). Preferred subscores in the ACT are 20 in natural sciences, 17 in social sciences, 16 in mathematics and 18 in English.

All applicants must have graduated in the upper third of their high school senior class and must have maintained a "B" average. College preparatory classes assist in admittance to the program also.

Students who previously attended a college or university must have a GPA of at least 2.5. For this GPA to be considered, a minimum of nine semester hours of college credit in nursing-related classes must have been earned, with three of these hours a biological or natural science class. The admission of applicants who have not completed nine hours will be based on high school credentials and midterm college grades if currently enrolled in an institution of higher education.

For more information, contact Janice Brumagen, coordinator for the program, at (606) 783-2631 or Dr. Betty Porter, head of Nursing and Allied Health Sciences at (606) 783-2632.

####

11-7-84lrp

News

PUBLIC INFORMATION

DANNY R. WRIGHT, DIRECTOR

MOREHEAD STATE UNIVERSITY

UPO BOX 1100

MOREHEAD, KY 40351

606-783-2030

MOREHEAD, Ky. --- A hands-on computer workshop about the Kentucky Economic Information System will be featured at the Nov. 13 meeting of the Central/Eastern Kentucky Online Users Group.

Margaret Adams, manager of the Kentucky Economic Information System, will conduct the presentation at the 1:30 p.m. meeting at Morehead State University. The Kentucky Economic Information System, a computerized data base, contains research information about Kentucky's economy, most of it from 1951 to the present.

The workshop is open to the public and is on the Fifth Floor of MSU's Camden-Carroll Library. For more information, call Helen Williams at (606) 783-2828.

###

11-7-84lrp

News

PUBLIC INFORMATION

DANNY R. WRIGHT, DIRECTOR

MOREHEAD STATE UNIVERSITY

UPO BOX 1100

MOREHEAD, KY 40351

606-783-2030

MOREHEAD, Ky. --- "Morehead has the privilege of possessing one of the finest job training programs in the country," said a former student in the program.

Mary Jane Rowely, a recent graduate of Morehead State University's Job Training Partnership Act (JTPA) class in account clerk/data entry, wrote to express her feelings about the training she received.

"JTPA not only prepares you with skills," she added, "but gives a whole new dimension of the role women play in today's complex job market."

The JTPA classes, offered through MSU's Appalachian Development Center, provide six- to eight-week intensive training in data processing, tourism/retail sales, and restaurant management. A new project is a six-month pharmacy technician class.

"The future is made of computers," wrote data processing graduate Sherri Hartgrove. "And with the help of this program, my future outlook is great!"

"When I finished the restaurant management program," reports Georgetta Sorrell, "I was offered an assistant manager position with Hardee's."

JTPA graduates move quickly into employment, according to ADC Assistant Director for Human Services Shirley Hamilton.

"Over 90 percent of our recent graduates were immediately offered jobs related to their training," said Hamilton. "We combine classroom work, on-the-job experience and personal development courses to help prepare our students to be effective employees."

(more)

JTPA
2-2-2-2

MSU's JTPA program is funded through the TENCO Private Industry Council. Training Supervisor Alice Mark and Trainer Jackie Scott supervise the program and teach classes. Part of every class is assistance with resume preparation, practice job interviews, and assistance with job placement.

"JTPA training is primarily for the unemployed or underemployed," said Hamilton. "The classes are short, frequently offered, and geared toward employment. The pharmacy technician program is new, and the tourism/retail sales class is an exciting opportunity for students to move into hotel management or other travel industry professions." Three recent graduates now work in the Lexington Marriott hotel.

Information on JTPA classes is available from the Kentucky Department for Employment Services or the Appalachian Development Center, Morehead State University, Morehead, KY 40351, or phone (606) 783-2077.

####

11-7-84gb

Tips

PUBLIC INFORMATION

DANNY R. WRIGHT, DIRECTOR

MOREHEAD STATE UNIVERSITY

UPO BOX 1100

MOREHEAD, KY 40351

606-783-2030

THIS WEEK AT MOREHEAD STATE UNIVERSITY
(Nov. 11 - Nov. 17)

MONDAY, NOV. 12

8 P.M. MSU PLAYERS: "Deathtrap," in Kibbey Theatre. Also Nov. 13, 14, 16 and 17.

TUESDAY, NOV. 13

7 P.M. VOLLEYBALL: Lady Eagles vs. Miami University of Ohio. The match is in Wetherby Gymnasium; free and open to the public.

8:15 P.M. CONCERT: MSU Jazz Ensemble I at Duncan Recital Hall. The concert is free and open to the public.

THURSDAY, NOV. 15

7 P.M. RECITAL: MSU graduate student Bret Roth will give a trumpet performance in Duncan Recital Hall. The recital is free and open to the public.

8 P.M. THE ASOLO STATE THEATRE at Florida will present "Children of a Lesser God" in Button Auditorium, part of Arts in Morehead series. Tickets are \$6 for adults and \$2.50 for students, 18 and under. For more information, contact AIM at (606) 783-2483.

9:30 P.M. DANCE: Program Council is sponsoring a Can Dance in Button Auditorium. Admission to the dance is a can of food, which will be donated to the United Way Food Shelter of Morehead.

FRIDAY, NOV. 16

~~THRU NOV. 18: KENTUCKY MUSIC EDUCATORS ASSOCIATION All District Band will be rehearsing~~

and performing in Baird Music Hall. Northeast Kentucky junior high band and senior high band

Tips
2-2-2-2-2

SATURDAY, NOV. 17

1:30 P.M. FOOTBALL: Eagles vs. Youngstown State University at Jayne Stadium.

Reserved seats are \$4 and general admission is \$3.

#####

11-7-84srt

News

PUBLIC INFORMATION

DANNY R. WRIGHT, DIRECTOR

MOREHEAD STATE UNIVERSITY

UPO BOX 1100

MOREHEAD, KY 40351

606-783-2030

MOREHEAD, Ky. --- Except for the Small Business Development Center in its Appalachian Development Center, Morehead State University will observe the Thanksgiving holiday by canceling classes and closing offices beginning at noon Wednesday, Nov. 21.

The SBDC will observe normal office hours, 8 a.m. to 4:30 p.m., except for Thursday, Nov. 22, when it, too, will close.

Normal office hours and classes will resume at 8 a.m., Monday, Nov. 26.

####

11-8-84drw

News

PUBLIC INFORMATION

DANNY R. WRIGHT, DIRECTOR

MOREHEAD STATE UNIVERSITY

UPO BOX 1100

MOREHEAD, KY 40351

606-783-2030

MOREHEAD, Ky. --- When Morehead State University Student Association President Mike Fox was first a student at MSU, he suffered from culture-shock.

"At West Carter High School, I was a big fish in a small pond.' At MSU I suddenly became a small fish in a big pond," said the Olive Hill native.

Though well-known and active in high school, Mike's transition to MSU was bumpy. He began a major in pre-medicine, nurturing a career dream he had carried since the age of five. Because of his outstanding test scores and high school academic record, he was placed in several hard courses.

The intense academic schedule forced him to study during most of his free time. The addition of money problems--he was determined to finance his own education--took its toll. After only three semesters, tired and broke, he left school.

Mike took a job as a welder's helper on pipeline construction. The 1½-years he spent on the traveling job introduced him to worlds he hadn't seen in Eastern Kentucky or in college life.

On his first job, in Wyoming, the hardened construction crew treated him with animosity and resentment because he was a college student. Mike, a tee-totaler, remembers how he gained the hard-drinking hard haters respect.

(more)

Mike Fox
2-2-2-2-2

"We were all at the only decent bar in town and I left my drink on the table while I went to the bathroom. When I got back, I took a drink and realized that something alcoholic had been put in it. I looked over at the bar and the guy who did it was laughing at me. He had put whiskey in my coke and was laughing," said Mike. "That made me really mad. I spit the mouthful in his face. There was a big fight, but the next day some of the guys came up and said they respected me if I believed in something so much I would fight for it. The guy that did it even apologized."

Mike soon realized that he couldn't depend on such seasonable work as pipeline construction. He also had promised his mother he'd go back to school after working a year.

"After that first year, I told Mom I wanted to save more money by working through the season. She cried because she was afraid I would never go back," said Mike.

True to his word, and after a few more months of the work, Mike returned to MSU the following spring. He remembered his first school experience--all work, worrying and studying.

"My Mom was my best friend so I talked it over with her. She said maybe it was because I didn't do anything. She suggested taking a look at fraternities," he said.

"I thought all fraternities emphasized drinking, but I went around and talked to each one anyway. The TKE's (Tau Kappa Epsilon) had the worst reputation so I wasn't considering them," Mike said. "I took a look at all the others."

His choices were being narrowed when a chance visit with several TKE's occurred on the front porch of their fraternity house.

(more)

Mike Fox
3-3-3-3-3

"I went up, introduced myself and started to ask them really tough questions about their fraternity. The five guys that were there handled themselves well. They didn't put on an act, but," he said, "they weren't what I expected. Then they invited me and my roommate to a basketball game..."

Following the groups' family-type attendance at the basketball game, Mike's interest in the TKE's grew. That interest was the beginning of his intense involvement at MSU. Still, the difficulty of his first three semesters lingered in his memory. Mike decided to change his major.

"I'm the only psychology major going into pre-law that I know of on campus," Mike said.

Despite the unusual mix, he believes they go well together. He constantly applies his knowledge of people, and why they do the things they do, to his law-oriented student government position.

When Mike first considered running for SA president, he talked to all types of students. He noticed that the association poorly represented the total range of students. He ran on the platform that everyone should have their say. The students agreed. Mike was elected with the conviction that changes needed to be made.

Nearly halfway through his year-long term, filled with committee meetings, contacting administrators and student development offices, he sees how limited individual capabilities are. He works at least 35 hours a week, despite getting paid for only 14 hours through an institutional workship.

"I try to delegate my authority, so I spend a lot of time checking to make sure everybody is working together," he said.

(more)



Mike Fox
4-4-4-4-4

In setting goals for the year, Mike, now a second-semester junior, is aware he's also limited by time. He is trying to accomplish such things as restructuring of open house hours, establishing an endowment fund, beginning a fraternity row, setting concert dates--the list is long and the year is short.

"My mind is on the Student Association and what I have to get done most of the time," he said.

No matter whether he has the time to accomplish all his goals, Mike is determined to do his best.

"I know what it is," he said, "...it's pride!" If he has any thoughts of big fish in little ponds, he doesn't mention them.

####

11-9-84mbm

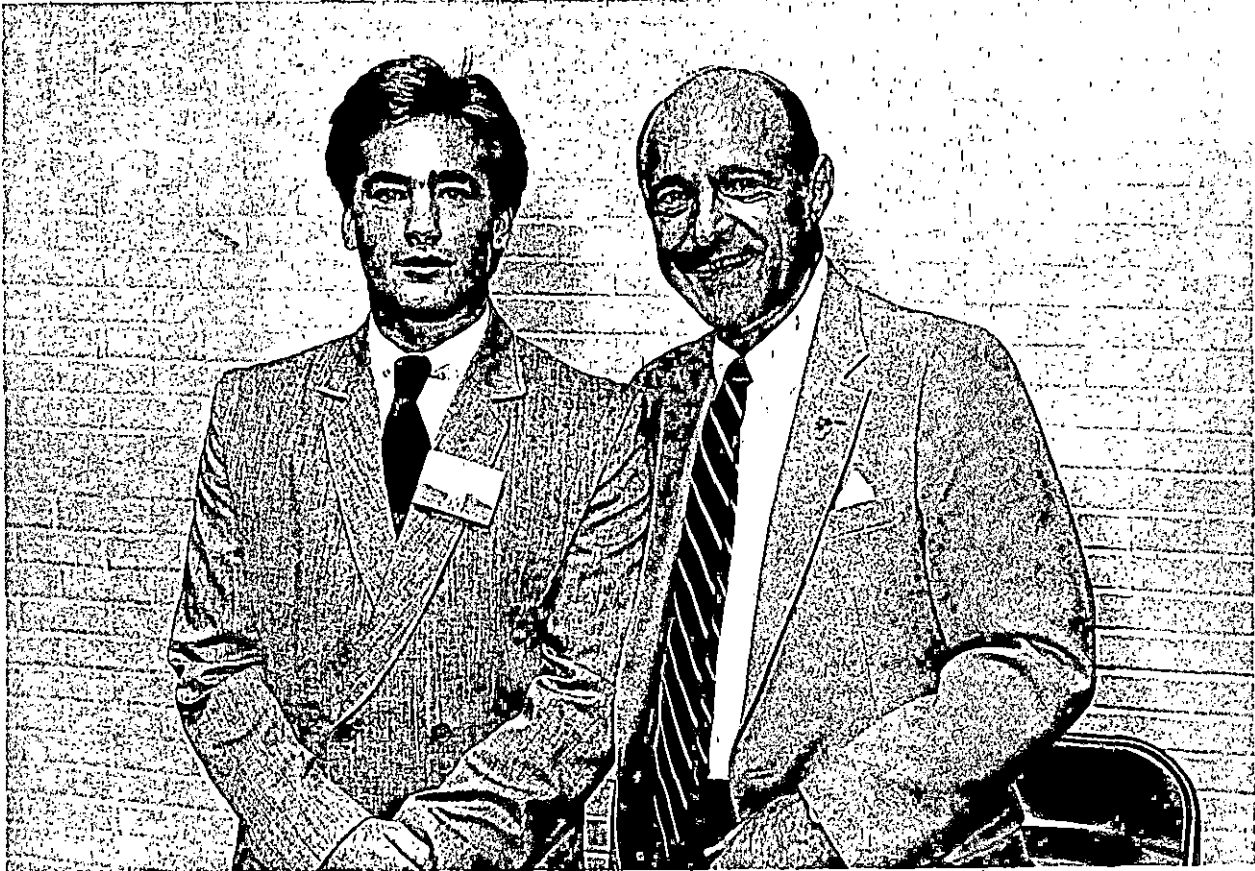
PRESIDENTS TWO --- Mike Fox, left, Morehead State University Student Association president, strikes a noble pose with MSU President Herb. F. Reinhard. Mike is a native of Olive Hill.

###

11-9-84drw

See 64
11-9-84

Journal-Enquirer, Olive Hill Times



TOUR DIRECTOR --- Mike Fox, right, Morehead State University Student Association president, discusses robotics equipment with Robert Reed, a Morehead businessman and visitor to the MSU campus during the recent Business and Industry Day.

###

*Journal-Enquirer
11-9-84*

11-9-84drw

Journal-Enquirer, Olive Hill Times



MSU REGENT --- Mike Fox, Morehead State University Student Association president, takes the oath of office in becoming a member of MSU's Board of Regents. Carol Johnson, Board secretary, administers the oath.

###

Sept 11-9-84

11-9-84drw

Journal-Enquirer, Olive Hill Times



DEDICATION --- Mike Fox, Morehead State University Student Association president, welcomes members of the Interfraternity Council and Panhellenic Council to thier new office space, the residence in the background.

###

See 11-9-84

11-9-84drw

Journal-Enquirer, Olive Hill Times



HOMECOMING QUEEN PROTECTOR --- Mike Fox, Morehead State University Student Association president, protects Homecoming Queen Mona Sabie from rain during Homecoming 1984 ceremonies. Mike is from Olive Hill.

###

11-9-84drw

Journal-Enquirer

Journal-Enquirer, Olive Hill Times



News

PUBLIC INFORMATION

DANNY R. WRIGHT, DIRECTOR

MOREHEAD STATE UNIVERSITY

UPO BOX 1100

MOREHEAD, KY 40351

606-783-2030

MOREHEAD, Ky. --- The Morehead State University Chamber Singers will assist in a re-creation of England's 16th yuletide festivities during a Madrigal Christmas Feaste concert on Dec. 4 and 5 in the Adron Doran University Center Crager Room.

Dressed in authentic costumes of the time period, the choir, directed by James Ross Beane, associate professor of music, will perform madrigal seasonal music as celebrants enjoy plum pudding, a wassail toast and other holiday repast.

Madrigal is the blending of voices unaccompanied by musical instruments. Its origin is in Italy, madrigal singing became popular in England during the 16th century when lords and ladies would sing following lavish dinners.

The dinner costs \$7.50 per person and starts at 6:45 p.m. Trumpets will herald the entrance of each course. The menu features wassail bowl, roast beef, golden glow potatoes, peas with mushrooms, compound salad and plum pudding with lemon sauce.

Tickets to participate in the centuries-old tradition are available after Nov. 26 from the ADUC information desk or by writing Madrigal Christmas Feaste, UPO Box 819, MSU, Morehead, KY 40351, or phone (606) 783-2090. Include number of tickets and evening desired, with your name, address and telephone number. Checks should be made out to MSU/Madrigal Christmas Feaste. For information, call (606) 783-2090.

###

11-9-84vja

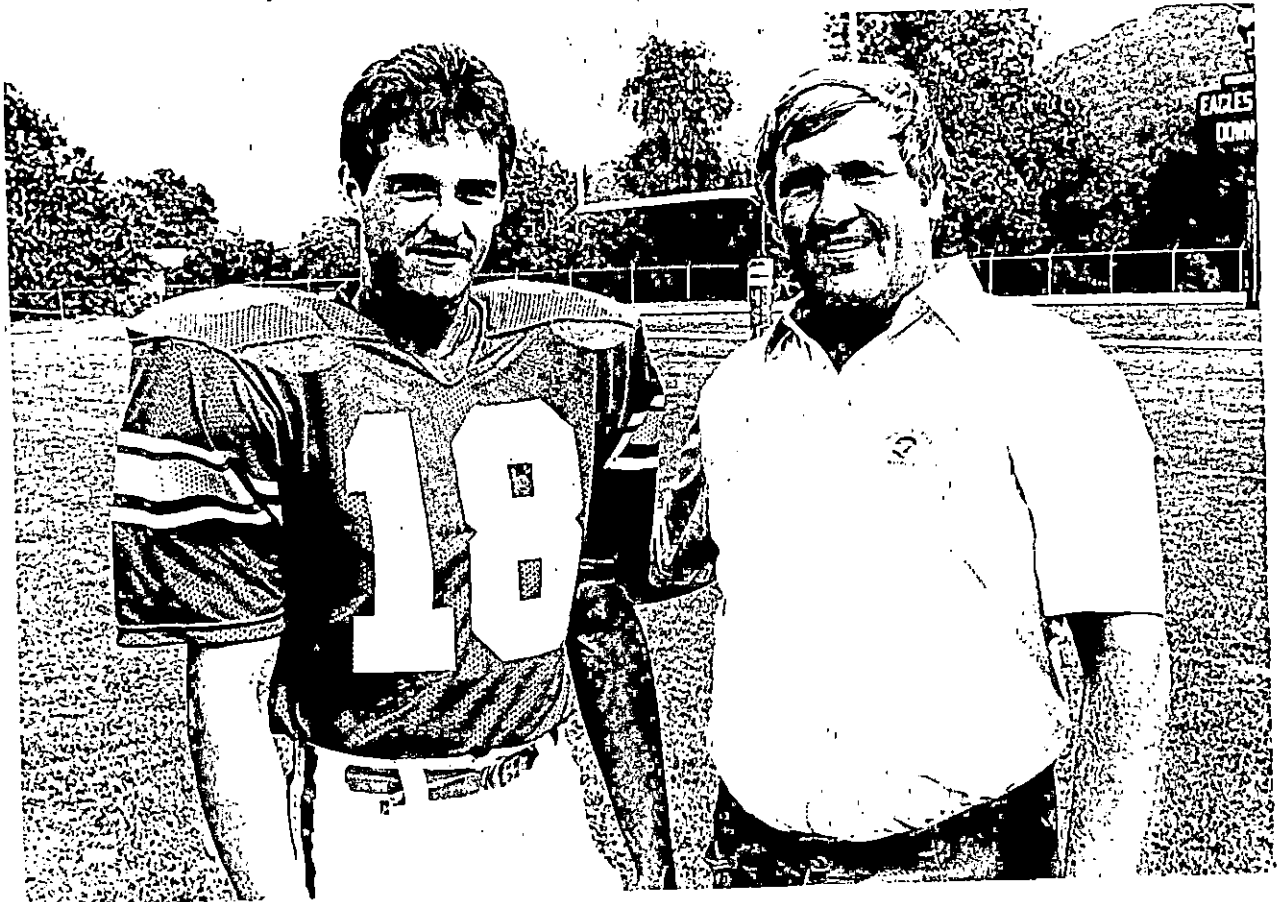
BATH COUNTY CORNERBACK --- John Lyons, a Bath County native, is a corner-
back for the Morehead State University Eagles. With him is
Head Coach Bill Baldrige.

####

11-9-84drw

*John Lyons
11-9-84*

*Bath Co. News-Outlook
Bill*



PROFESSIONAL ADVICE --- Kaye Ratliff of Owingsville advises Morehead State University basketball player Roland Chadwick between classes and practices. Kaye is acting as a social worker/counselor to the team as part of a social work practicum.

*See
11-9-84*

###

11-9-84drw

Bath Co. News-Outlook



BASEBALL EAGLES --- Anthony Miller, left, and Brad Baber, right, both Bath County natives, discuss baseball with Morehead State University Baseball Coach Steve Hamilton. Miller and Baber are members of the MSU baseball Eagles.

*sent
11-9-84*

###

11-9-84drw

Bath Co. News-Outlook



News

PUBLIC INFORMATION

DANNY R. WRIGHT, DIRECTOR

MOREHEAD STATE UNIVERSITY

UPO BOX 1100

MOREHEAD, KY 40351

606-783-2030

MOREHEAD, Ky. --- Dr. Tanis Bryan, an authority on special education and learning disabilities, will speak in two sessions Thursday, Nov. 15, at Morehead State University.

The first session, from 1:30 p.m. to 4 p.m. in the Eagle Room of the Adron Doran University Center, will feature a question-and-answer discussion with Dr. Bryan. An informal meeting, participants may talk personally about special education with Dr. Bryan and may come and go at will.

Dr. Bryan's topic for the evening session, at 7 p.m. in the Riggle Room of ADUC, will be "What Do We Really Know?" The lecture centers around current special education information and the trends for changes in the field.

A professor of special education at the University of Illinois, Dr. Bryan directs the Research Institute for Learning Disabilities. She has co-authored two books, "Exceptional Children," and "Understanding Learning Disabilities," with her husband, James Bryan.

Dr. Bryan's presentations, sponsored by the WHAS Crusade for Children Fund Drive, are open to the public and free of charge.

###

11-12-841rp

News

PUBLIC INFORMATION

DANNY R. WRIGHT, DIRECTOR

MOREHEAD STATE UNIVERSITY

UPO BOX 1100

MOREHEAD, KY 40351

606-783-2030

MOREHEAD, Ky. --- Morehead State University President Herb. F. Reinhard will present certificates to graduates of job training classes in MSU's Appalachian Development Center Wednesday, Nov. 21.

The graduation, with MSU Director of Personnel Services Ron Moss as speaker, is set for 10 a.m. in the Patti Bolin Room of the Lloyd Cassity Building.

The classes are sponsored by the Job Training Partnership Act (JTPA) and the TEN-CO Private Industry Council, and offered through the Human Services program of the Appalachian Development Center. Alice Mark is the training supervisor, assisted by Jackie Scott. Short-term courses are offered in data entry, tourism/retail sales, food service management and pharmacy technician.

For information on new classes, call Mark or Scott at (606) 783-2077.

####

11-13-84gb

News

PUBLIC INFORMATION

DANNY R. WRIGHT, DIRECTOR

MOREHEAD STATE UNIVERSITY

UPO BOX 1100

MOREHEAD, KY 40351

606-783-2030

MOREHEAD, Ky. --- Morehead State University's ninth annual Appalachian Celebration will be June 24-29, 1985, in Morehead, Ky.

Traditional mountain music, dance, food and crafts will be featured during the weeklong Celebration while well-known Appalachian authors and scholars gather for workshops and meetings.

Scholar-in-Residence Cratis D. Williams of Boone, N.C., will lecture throughout the week. The Jesse Stuart Symposium, the meeting of the Kentucky Heritage Quilt Society and bus tours of Eastern Kentucky add to the week of learning and recreation. Low cost housing is offered in MSU residence halls.

Since 1978, MSU's Appalachian Development Center has sponsored the Celebration as a tribute to the colorful mountain heritage and culture.

For complete information, contact the Appalachian Development Center, Morehead State University, Morehead, KY 40351, or phone (606) 783-2077.

####

11-13-84gb

News

PUBLIC INFORMATION

DANNY R. WRIGHT, DIRECTOR

MOREHEAD STATE UNIVERSITY

UPO BOX 1100

MOREHEAD, KY 40351

606-783-2030

MOREHEAD, Ky. --- Morehead State University President Herb. F. Reinhard has been reappointed as chairperson of the Committee on Governance of the American Association of State Colleges and Universities (AASCU).

The appointment was announced by President Aubrey Lucas of the University of Southern Mississippi, chairman-elect of AASCU, and will take effect during the AASCU annual meeting next week in Washington, D.C.

The AASCU Committee on Governance is a 17-member panel of university and college presidents and chancellors representing 365 institutions. It was formed during the 1983-84 academic year.

"I have personally found the work of our Committee on Governance to be most interesting and satisfying and I believe the progress we have made this first year will certainly serve to benefit all of our member institutions in the future," Dr. Reinhard said in accepting the appointment for 1984-85.

The Committee on Governance studies local and national governing approaches for higher education institutions and then submits recommendations to the total AASCU membership.

Among the 17 institutions represented on the committee are the University of North Carolina, Ball State University, the Oregon State System of Higher Education, the University of South Carolina and Valdosta State College.

####

11-13-84drw

News

PUBLIC INFORMATION

DANNY R. WRIGHT, DIRECTOR

MOREHEAD STATE UNIVERSITY

UPO BOX 1100

MOREHEAD, KY 40351

606-783-2030

MOREHEAD, Ky. --- Dick Teubner, a Texas resident, became sports and special events director at WMKY, public radio from Morehead State University, on Nov. 15, Station Manager Larry Netherton has announced.

Tuebner, a 1983 graduate of Southwest Texas State University, has more than 18 years experience in radio as general manager, program director, sales manager, sports director, salesman and announcer in several midwest and Texas markets.

"I've had a 20-year love affair with play-by-play sports and radio overall," he said. "I particularly look forward to the challenge presented at MSU to do baseball play-by-play again, as well as football and basketball."

Teubner has done play-by-play broadcasts of major sports at St. Mary's College and at Winona State College, both in Minnesota, and at the University of Illinois. Most recently he was the football and basketball voice of Southwest Texas State University in San Marcos, Tex.

In addition to play-by-play for WMKY and the Eagle Sports Network, WMKY's new sports director will handle daily sportscasts and sports reporting, assist with news and public affairs, and coordinate and anchor special events coverage.

Teubner and wife Gail have two sons.

###

11-14-84srt

News

PUBLIC INFORMATION

DANNY R. WRIGHT, DIRECTOR

MOREHEAD STATE UNIVERSITY

UPO BOX 1100

MOREHEAD, KY 40351

606-783-2030

MOREHEAD, Ky. --- Many students at Morehead State University have been giving up their Saturdays for a little performing and a lot of hard work and practice.

The hard-working students are members of a group that has been known, as least once, as "The Big Blue Band from Daniel Boone Land"--- the MSU Marching Band. The band earned that name when they marched in the 1972 inauguration parade of President Richard Nixon. Most of the band members' experience doesn't go back that far.

Miles Threlkeld, a senior from Shelbyville, does remember his first experience with the marching band as an MSU freshman.

"It was a lot bigger then, but the quality still hasn't changed," Threlkeld said.

Freshmen make up the largest part of the band, according to Band Director Eugene C. Norden.

"We encourage area high school seniors to join the band so they can immediately become part of a group. We also encourage non-music majors as a means of keeping an on-going interest in music," said Norden, MSU assistant professor of music.

A french horn player in the band, Threlkeld had never been in a marching band before coming to MSU. As a music education major, he feels the band has been valuable in preparing him for directing a high school band, a personal ambition.

(more)

One of the biggest pet-peeves of Threlkeld and other band members is practicing in the rain. But like the proverbial mail, the practice times go on. On non-performing weeks, the students work from 4:20 p.m. to 5:30 p.m., Monday through Thursday. On performing weeks, the practice is every day, plus Saturday mornings.

The 115 members put more time in than they can possibly get credit for. For actual college credit, they do receive one semester credit hour.

For Norden and his band, the practice time pays off with the satisfaction of a good performance. The band plays at all home games--six this season. They also go to some away games and host a summer band camp.

"The marching band does approximately 10 Saturday performances during the fall," said Norden.

The hard work for the members of the band also takes cooperation from its five sections: the drum majors, wind players, percussion, color guard and twirlers.

"It's complex and it takes effort and coordination from the various parts of the band," added Norden.

While Threlkeld admits that marching band takes a lot of extra time, he knows when he leaves he'll miss the friends he has made.

"Although I like the performing, I also feel that the people in the band are good people and I'll miss them," he said.

Threlkeld and his marching band friends give up a lot of Saturdays, but they, and their listeners, know it's worth it.

###

"BIG BLUE BAND" --- Kelly Treadway provides the sounding brass and Keith Nance provides a booming bass drum as the Morehead State University Marching Band performs at halftime during a football game. Kelly is a social work student and Keith is a music education student at MSU.

###

11-14-84drw

See 11-16-84 List 1, 3, M-N,



"BIG BLUE BAND" --- Kelly Treadway provides the sounding brass and Keith Nance provides a booming bass drum as the Morehead State University Marching Band performs at halftime during a football game. Kelly is a social work student and Keith is a music education student at MSU.

*Sent
11-14-84
3*

###

11-14-84drw

List 1, 3, M-N,



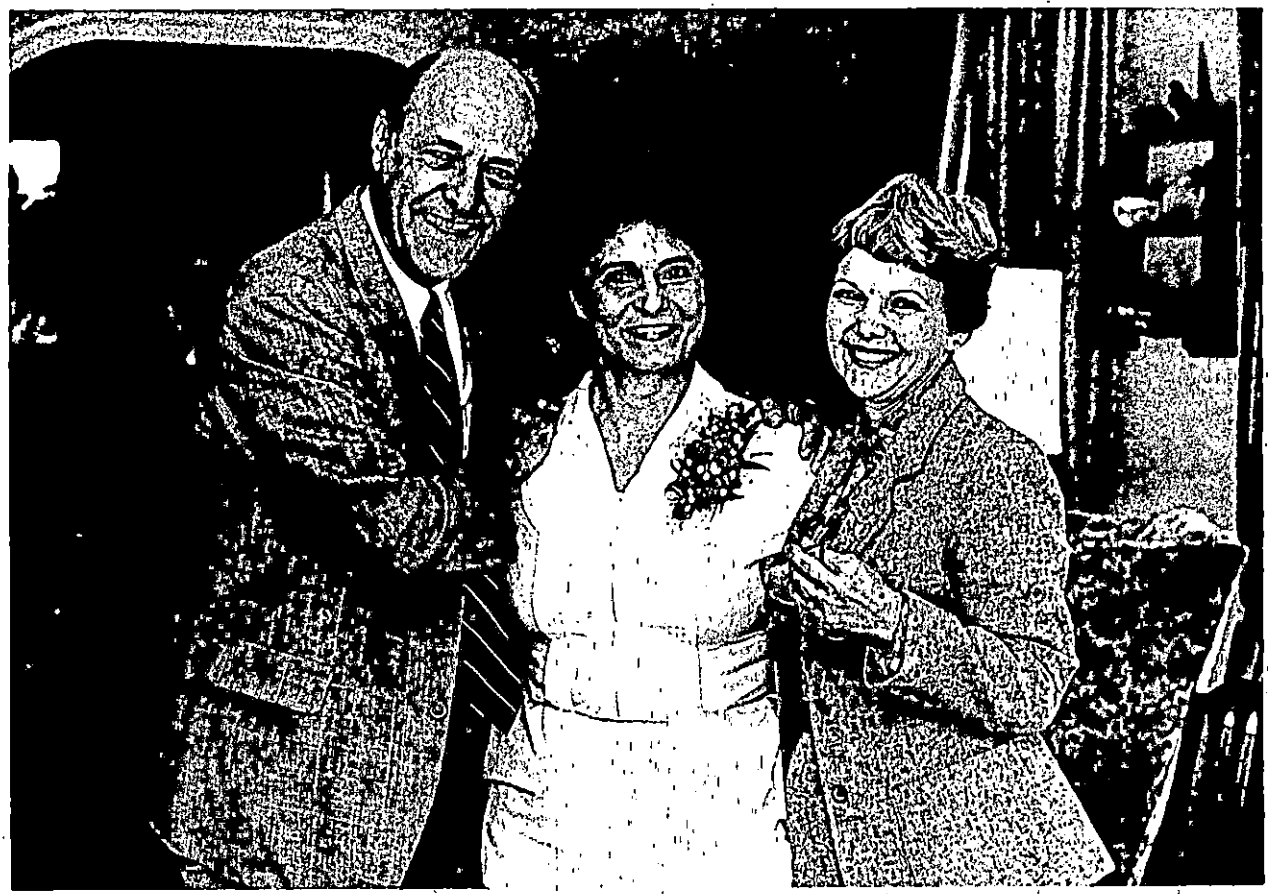
HONORABLE RETIREMENT --- Jean Wells, center, receives well wishes from Morehead State University President and Mrs. Herb. F. Reinhard at a reception held recently in her honor. She is retiring as manager of MSU's Adron Doran University Center Cafeteria after 25 years at the University. Jean's retirement is effective Jan. 31, 1985.

###

*Jewell
11-14-84*

11-14-84drw

M-N, file



Tips

PUBLIC INFORMATION

DANNY R. WRIGHT, DIRECTOR

MOREHEAD STATE UNIVERSITY

UPO BOX 1100

MOREHEAD, KY 40351

606-783-2030

THIS WEEK AT MOREHEAD STATE UNIVERSITY
(Nov. 18 - Nov. 24)

MONDAY, Nov. 19

3-6 P.M. ARMY ROTC Turkey Shoot and rifle range at Button Auditorium. MSU students, family members and faculty are invited to participate.

Rifles and ammunition will be provided by ROTC with a \$1 charge.

TUESDAY, Nov. 20

7:30 P.M. BASKETBALL: Exhibition Game vs. Marathon Oil at the Academic-Athletic Center. The game is free and open to the public.

WEDNESDAY, Nov. 21

10 A.M. JTPA GRADUATION: Members of the Job Training Partnership Act program in MSU's Appalachian Development Center will hold commencement ceremonies in the Patti Bolin Room of the Lloyd Cassity Building. Info at 783-2077.

NOON THANKSGIVING HOLIDAY begins. No classes or office hours
until 8 a.m. Nov. 26:

News

PUBLIC INFORMATION

DANNY R. WRIGHT, DIRECTOR

MOREHEAD STATE UNIVERSITY

UPO BOX 1100

MOREHEAD, KY 40351

606-783-2030

MOREHEAD, Ky. --- Morehead Art Students League (MASL) will host a double opening reception for the Alternative and Student Sales Galleries Monday, Nov. 19, at Morehead State University.

The Alternative Gallery features works from students of various schools as well as local professional artists. The premiere exhibit, work by MSU students, will run through the end of December. The Student Sales Gallery offers exhibitions of prints, paintings, drawings, photographs, ceramics and fiber work done by MSU students. These works will be for sale.

The double reception will be from 8 p.m. to 10 p.m. in MSU's Claypool-Young Art Building, and is open to the public. Refreshments will be served.

Both galleries are on the first floor of the Claypool-Young Art Building and are open Monday through Friday from 8 a.m. to 4 p.m.

###

11-15-84lrp

News

PUBLIC INFORMATION

DANNY R. WRIGHT, DIRECTOR

MOREHEAD STATE UNIVERSITY

UPO BOX 1100

MOREHEAD, KY 40351

606-783-2030

MOREHEAD, Ky. --- Delegates from Eastern Kentucky Area Development Districts (ADD) will meet Nov. 27 to explore further development cooperation with Morehead State University.

The meeting, hosted by MSU's Appalachian Development Center (ADC), will be from 9:30 a.m. to 3:30 p.m. in the Red Room of the Adron Doran University Center. The keynote speaker will be MSU President Herb. F. Reinhard.

According to Dr. Donald L. Fogus, director of ADC, the Area Development Districts are the primary structure for coordinating federal assistance to cities and counties.

"We have worked closely with the Gateway ADD and the Buffalo Trace ADD," said Fogus. "For example, our Business Development staff prepared the business plan and loan application for Mattox Enterprises in Fleming County; the Buffalo Trace ADD then made the loan which helped develop the pepper growing program which involves over 50 farmers. This is the type of cooperation we hope can be developed even more fully."

Peter T. McNeill, the ADC tourism/industrial development specialist, is coordinating the Nov. 27 meeting.

For information, contact McNeill at the Appalachian Development Center, Morehead State University, Morehead, KY 40351, or phone (606) 783-2077.

###

11-15-84gb

News

PUBLIC INFORMATION

DANNY R. WRIGHT, DIRECTOR

MOREHEAD STATE UNIVERSITY

UPO BOX 1100

MOREHEAD, KY 40351

606-783-2030

MOREHEAD, Ky. --- Morehead State University President Herb. F. Reinhard has appointed Dr. G. Gary Grace, director of residence life at Miami University in Oxford, Ohio, as MSU's vice president for student development.

Effective Jan. 1, Dr. Grace will be responsible for MSU's student financial aid, student housing, student organizations and activities, student health services, counseling services, intramural athletics, and career planning and placement. He succeeds Dr. Steve Taylor who has served as acting vice president since August.

"We are pleased to have such an outstanding individual accept this important assignment at the University," Dr. Reinhard said. "Dr. Grace has a rich background of training and experience in student personnel administration and is coming to us from a very successful tenure at a fine institution. We proudly welcome him to the MSU community."

The 35-year-old native of Evansville, Ind., was selected through a national search process and was among four persons invited to the campus for interviews by a screening committee consisting of students and faculty and staff members.

As director of student life at Miami, Dr. Grace has been responsible for the operation of a student development program for residence halls housing 7,800 students. He supervised 63 full-time and graduate-level staff members and a budget of more than \$1 million.

(more)

Grace Appointment
2-2-2-2-2-2-2-2-2-2

Dr. Grace earned a doctorate in higher education at Florida State University where he served as an assistant to the vice president for university relations. He received a master's degree in counseling psychology and a bachelor's degree in mathematics and psychology, both from Illinois State University.

Dr. Grace was the director of residential programs and counseling services and acting dean of students at Illinois Wesleyan University. In more than 10 years of professional experience in higher education, he has served on 19 committees at Miami, Florida State and Illinois Wesleyan.

MSU's newest vice president is a member of the American College Personnel Association, the National Association of Student Personnel Administrators, Omicron Delta Kappa and Phi Delta Kappa.

He is married to the former Claudia Alleman of Waukegan, Ill.

####

11-15-84drw

MOREHEAD, Ky. --- Morehead State University President Herb. F. Reinhard has appointed Dr. G. Gary Grace, director of residence life at Miami University in Oxford, Ohio, as MSU's vice president for student development.

Effective Jan. 1, Dr. Grace will be responsible for MSU's student financial aid, student housing, student organizations and activities, student health services, counseling services, intramural athletics, and career planning and placement. He succeeds Dr. Steve Taylor who has served as acting vice president since August.

"We are pleased to have such an outstanding individual accept this important assignment at the University," Dr. Reinhard said.

"Dr. Grace has a rich background of training and experience in student personnel administration and is coming to us from a very successful tenure at a fine institution. We proudly welcome him to the MSU community."

The 35-year-old native of Evansville, Ind., was selected through a national search process and was among four persons invited to the campus for interviews by a screening committee consisting of students and faculty and staff members.

As director of student life at Miami, Dr. Grace has been responsible for the operation of a student development program for residence halls housing 7,800 students. He supervised 63 full-time and graduate-level staff members.

(more)

Grace Appointment
2-2-2-2-2-2-2-2

Dr. Grace earned a doctorate in higher education at Florida State University where he served as an assistant to the vice president for university relations. He received a master's degree in counseling psychology and a bachelor's degree in mathematics and psychology, both from Illinois State University.

Dr. Grace was the director of residential programs and counseling services and acting dean of students at Illinois Wesleyan University. In more than 10 years of professional experience in higher education, he has served on 19 committees at Miami, Florida State and Illinois Wesleyan.

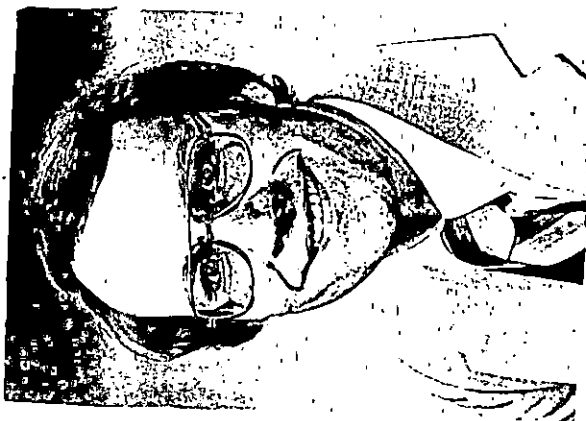
MSU's newest vice president is a member of the American College Personnel Association, the National Association of Student Personnel Administrators, Omicron Delta Kappa and Phi Delta Kappa.

He is married to the former Claudia Alleman of Waukegan, Ill.

####

11-15-84drw

Editor's Note: Dr. Grace is the son of Mr. and Mrs. Gordon Grace of Decatur.



Tips

PUBLIC INFORMATION

DANNY R. WRIGHT, DIRECTOR

MOREHEAD STATE UNIVERSITY

UPO BOX 1100

MOREHEAD, KY 40351

606-783-2030

THIS WEEK AT MOREHEAD STATE UNIVERSITY
(Nov. 25 - Dec. 1)

MONDAY, Nov. 26

8 A.M. THANKSGIVING holiday ends. Classes resume.

TUESDAY, Nov. 27

ALL DAY The Bloodmobile will be in Button Drill Room through Nov. 28 to receive blood donations.

9:30 A.M. - 3:30 P.M. DELEGATES from Eastern Kentucky Area Development Districts (ADD) will meet to explore further development cooperation with MSU's Appalachian Development Center. The meeting will be in the Red Room of ADUC and the keynote speaker will be MSU President Herb. F. Reinhard. For more information, call 783-2077.

8:15 P.M. CONCERT: MSU Faculty Chamber Ensemble at Duncan Recital Hall. The concert is free and open to the public. For more information, call 783-2473.

THURSDAY, Nov. 29

7:30 P.M. MSU TALENT SHOW: A student talent showcase sponsored by Phi Mu Alpha in Button Auditorium. Tickets for the show are \$2.

SATURDAY, Dec. 1

News

PUBLIC INFORMATION

DANNY R. WRIGHT, DIRECTOR

MOREHEAD STATE UNIVERSITY

UPO BOX 1100

MOREHEAD, KY 40351

606-783-2030

MOREHEAD, Ky. --- Morehead State University will have 16 representatives in the Lexington Singers when the group presents a Christmas concert in early December at Lexington's University of Kentucky Center for the Arts.

James Ross Beane, associate professor of music, will conduct the singers while Jay Flippin, associate professor of music, will conduct and accompany the group. Instructors of Music Anne Beane and JoAnne Keenan will be soprano soloist and mezzo-soprano, respectively. Robert Pritchard, associate professor of music, will play the flute and Dr. William Bigham, professor of music, will play the clarinet. Leo Blair and Suanne Blair, assistant professors of music, will play the violin and cello, respectively. Milford Kuhn, associate professor of music and Director of the Academy of Arts, will play the horn.

Representing MSU alumni will be Raleigh Kincaid, baritone soloist and chorus members Kimberly Brown, Bobbie Clay, Dinah Hawkins, Betty Fraley-Marinaro, Chris Blakeman and Terry Wood.

Tickets for the 2 p.m., Dec. 2, concert are \$7 for adults and \$4 for students and those over 60 years of age. For more information, contact JoAnne Keenan at (606) 783-2470 or James Beane at (606) 783-2480.

###

11-20-84lrp

News

PUBLIC INFORMATION

DANNY R. WRIGHT, DIRECTOR

MOREHEAD STATE UNIVERSITY

UPO BOX 1100

MOREHEAD, KY 40351

606-783-2030

MOREHEAD, Ky. --- Morehead State University's Camden-Carroll Library is displaying a selection of Christmas crafts until Friday, Dec. 7.

Works displayed in the exhibit include quilting, piecing, stuffing and examples of patchwork techniques made by participants in a recent Academy of Arts workshop.

The Christmas crafts exhibit, in the Third Floor Gallery of CCL, will be shown free of charge during the usual library hours. For more information on the display or future workshops, contact Sue Fannin at (606) 783-2473, or Milford Kuhn at (606) 783-2483, or Linda Lowe at (606) 783-2827.

###

11-20-84lrp

News

PUBLIC INFORMATION

DANNY R. WRIGHT, DIRECTOR

MOREHEAD STATE UNIVERSITY

UPO BOX 1100

MOREHEAD, KY 40351

606-783-2030

MOREHEAD, Ky. --- "Happiness of Fall" is the theme of the 1984 Fall Floral Design Show scheduled Monday, Dec. 3, at Morehead State University.

The show will be supervised by Martha Norris, assistant professor of agriculture, and will feature displays by students in MSU's floral design class.

The 3 p.m. to 7:30 p.m. display of floral design is in MSU's Adron Doran University Center. The show is free and open to the public.

###

11-20-84lrp

News

PUBLIC INFORMATION

DANNY R. WRIGHT, DIRECTOR

MOREHEAD STATE UNIVERSITY

UPO BOX 1100

MOREHEAD, KY 40351

606-783-2030

MOREHEAD, Ky. --- Morehead State University's semi-annual International Banquet is scheduled Friday, Nov. 30, at 6:30 p.m. at the Baptist Student Center.

Hosted by the Cosmopolitan Club, the dinner features food, personal attire and entertainment from the native lands of MSU's international students. The meal price is \$4 and potluck also is welcome.

Additional information is available from Dr. Perry LeRoy, Dr. Lindsey Back or Dr. M. K. Thomas of the MSU faculty.

#####

11-21-84kk

Tips

PUBLIC INFORMATION

DANNY R. WRIGHT, DIRECTOR

MOREHEAD STATE UNIVERSITY

UPO BOX 1100

MOREHEAD, KY 40351

606-783-2030

THIS WEEK AT MOREHEAD STATE UNIVERSITY
(Dec. 2 - Dec. 8)

SUNDAY, Dec. 2

8:15 P.M. CONCERT: MSU's Jazz Vocal Ensemble will perform in Duncan Recital Hall. The concert is free and open to the public. For more information call 783-2473.

MONDAY, Dec. 3

3 P.M. MSU's DEPARTMENT OF AGRICULTURE will present a floral design show at the Adron Doran University Center. The show is free and open to the public. For more information call 783-2662.

TUESDAY, Dec. 4

6:45 P.M. FEASTE/CONCERT: The Madrigal Christmas Feaste Concert will be held in the Crager Room of the Adron Doran University Center. For ticket information call 783-2090.

8:15 P.M. CONCERT: MSU's Jazz Ensemble II will perform in Duncan Recital Hall. The concert is free and open to the public. For more information call 783-2473.

WEDNESDAY, Dec. 5

6:45 P.M. FEASTE/CONCERT: The Madrigal Christmas Feaste Concert will be held in the Crager Room of the Adron Doran University Center. For ticket information call 783-2090.

8:15 P.M. CONCERT: MSU's Trombone Choir will perform in Duncan Recital Hall. The concert is free and open to the public. For more information call 783-2473.

THIS WEEK
2-2-2-2-2-2

FRIDAY, Dec. 7

READING DAY, no classes.

8 P.M. ACADEMY OF ARTS HONORS RECITAL in Duncan Recital Hall. The recital is free and open to the public. For more information call 783-2473.

SATURDAY, Dec. 8

8 A.M. ACT and GRE Examinations in Ginger Hall. For more information call 783-2528.

7:30 P.M. BASKETBALL: Eagles vs. Tenn Wesleyan in MSU's Academic Athletic Center. General admission tickets are \$3 and reserved seats tickets are \$5. MSU students are admitted free with a valid student ID. For more information call 783-2088.

#####

11-28-84srt

MSU ALUMNI ORGANIZE --- The Johnson County Chapter of the Morehead State University Alumni Association was organized last week at The Carriage House and six officers were elected. From left are William Duke, vice president; Emogene Burton, president; Janee Owen, program chairperson; Eileen Ramey, greeter; Howard Ramey, greeter; and Dennis Dorton, secretary-treasurer. MSU President and Mrs. Herb Reinhard and Patty Burchett, newest member of the Board of Regents, were guests of honor at a reception sponsored by the alumni chapter.

11-28-84kk

*Seen
12-4-84*

Paintsville Herald

MOREHEAD STATEMENT



Robert A. Nelson: Printmaking Exhibit
A Review by Robert Franzini, MSU Associate Professor of Art

MOREHEAD, Ky. --- During the past two decades American printmaking has undergone a renaissance. Some contemporary artists have rediscovered media such as hand lithography and the monotype and have employed them in the creation of original works of graphic art. One such artist is Robert A. Nelson, a nationally known printmaker and educator, whose work is on exhibition in the art gallery of the Claypool-Young Art Building at Morehead State University.

Nelson is a master of the graphic media. His large scale monotypes and lithographs delight the eye with rich color, tactile detail, and dynamic design. An exceptionally skilled draftsman, Nelson utilizes illustrational techniques and flat color fields in his work. The overall effect is one of almost superhuman technical brilliance.

Nelson's images by-pass the political, social and religious events of our own time. Each image presents a human or animal hero in either a nostalgic historical setting or a blackly humorous situation in the imagined future. In this pan-historic world, logic is set aside. The hero-human, cat, dog, rat, bird, etc. appears in a setting suggesting evil, struggle, sexual involvement, on tintype portraiture, and is colorfully embellished with surreal or popular symbols.

Almost all the characters in Nelson's fantastic world are presented to us in an illustrational manner, though in a piece called "Medusa" we witness the intrusion of the artist's sensibility in his rendering of

(more)

Review
2-2-2-2-2

the female nude. The greenish hair, the red-white-and-blue snake design on her ankle, the cracked pedestal and the title suggest a character in a narrative. This combination of sensibility and narrative embellishment suggests the expression of a personal mythology.

Nelson seems to have direct and free access to his imagination. He has conjured up series of large-scale prints such as "The Zoo Revolt," "The Wizard of Ozz" and "The Vampire Series." The pieces are visually entertaining, chock full of detail and other graphic wonder, and are occasions for virtuoso graphic performances and bombastic fantasy.

On the lower level of the gallery Nelson presents a group of small drawings. In these more intimate scenes, Hercules, Hector and engaging rodents do battle in a timeless void. Human and animal characters are often humorously grouped or intertwined. In these pieces Nelson displays a good deal of black humor. Here is a world of creatures who are continually struggling with one another.

The sources of Nelson's work appear to be popular writing and film. Science fiction, the supernatural and the concept of the superhero, all contemporary themes of popular culture, provide Nelson with ideas and themes for his work. His virtuoso ability as printmaker and draftsman enables him to transform these imaginary beings, creatures and worlds from thought and feeling into visual reality.

Nelson's exhibition will run through Dec. 15. Gallery hours are 8 a.m. to 4 p.m. weekdays.

###

11-28-84dth

News

PUBLIC INFORMATION

DANNY R. WRIGHT, DIRECTOR

MOREHEAD STATE UNIVERSITY

UPO BOX 1100

MOREHEAD, KY 40351

606-783-2030

MOREHEAD, Ky. --- Graduate students planning to attend spring 1985 courses offered by Morehead State University at 10 regional locations will find registration easier with a new mail-in registration plan this fall.

An added benefit for graduate students attending off-campus classes is a toll-free telephone line connecting students with advisors.

The toll-free line for students inside Kentucky is 1-800-262-2044. Students outside the state should call 1-800-354-2090. Both lines are open from 8 a.m. to 4:30 p.m. Monday through Friday.

To participate in mail-in registration, a student must write for a form from the MSU Graduate Office at 201 Ginger Hall, Morehead, KY 40351, Attn: Terry Stewart. Forms must be completed and returned by Nov. 16. A bill for tuition and fees will be mailed to the student by Dec. 10. Forms returned after Nov. 16 must include full-tuition payment.

Tuition payment should be made by Jan. 11. A \$25 late fee will be assessed to students paying between Jan. 12 and 18.

Tuition costs for Kentucky graduate students is \$487 per full-time semester, or \$55 each credit-hour. Undergraduate students taking courses full-time will pay \$445, or \$38 per hour.

Non-resident students, full-time graduate, will pay \$1,400 for the semester, or \$156 per hour. Undergraduate students, non-resident, will pay \$1,275 for full-time, or \$107 per hour.

MSU off-campus graduate courses for spring, 1985, will be taught at 10 regional centers.

(more)

Mail-in Registration
2-2-2-2-2-2

Twenty-three graduate classes will be taught at Ashland Community College. For information about classes at the college, contact Ray McCann, Ashland Board of Education, Ashland, KY 41101, or call (606) 329-9777.

Lees Junior College in Jackson is offering 11 MSU graduate classes for the upcoming semester. For information, contact Loretta Lykins at LJC, Jackson, KY 41339, or call (606) 666-7521.

Three graduate classes will be offered at Maysville Community College. For information, write David Kraemer, Maysville Community College, Maysville, KY 41056, or call (606) 759-7141.

In Pikeville, contact Charles Francis, Appalachian Graduate Consortium, Pikeville, KY 41501, or call (606) 432-9212 about the 16 graduate courses offered there.

Nineteen classes will be offered for graduates at Prestonsburg Community College. For information, contact James Ratcliff, PCC, Prestonsburg, KY 41653, or call (606) 886-3863.

Whitesburg will host six classes. For information, contact Bernard Watts, Letcher County Board of Education, Whitesburg, KY 41858, or call (606) 633-4426.

For information on graduate courses taught in Mt. Sterling, West Liberty, Salyersville and Paintsville, as well as information on the graduate program and mail-in registration, contact Terry Stewart at the MSU Graduate Office, 201 Ginger Hall, Morehead, KY 40351, or call (606) 783-2002.

####

10-29-84vja

News

PUBLIC INFORMATION

DANNY R. WRIGHT, DIRECTOR

MOREHEAD STATE UNIVERSITY

UPO BOX 1100

MOREHEAD, KY 40351

606-783-2030

MOREHEAD, Ky. --- Morehead State University President Herb. F. Reinhard has become the first person to twice gain membership on the Presidents' Commission of the National Collegiate Athletic Association (NCAA).

Effective Jan. 1, Dr. Reinhard will become the Division I-AA Central Region representative on the Commission. He was appointed to replace Dr. J.C. Powell, president of Eastern Kentucky University, who is retiring Dec. 31.

"I am delighted to have this new opportunity to serve as a member of the NCAA Presidents' Commission and to join my colleagues in addressing the major issues facing intercollegiate athletics and the NCAA," Dr. Reinhard stated.

He was elected to membership earlier this year while serving as president of Slippery Rock University in Pennsylvania and also was chosen as chairperson of the Division II representatives.

Upon assuming the MSU presidency on July 1, he was required to relinquish his seat because Morehead State University is a Division I institution in the NCAA membership classification system.

The Presidents' Commission was created to provide institutional chief executives with greater involvement in NCAA policy-making activities.

####

11-30-84kk

News

PUBLIC INFORMATION

DANNY R. WRIGHT, DIRECTOR

MOREHEAD STATE UNIVERSITY

UPO BOX 1100

MOREHEAD, KY 40351

606-783-2030

MOREHEAD, Ky. --- Trumpeteers, costumed performers and a boar's head and wassail toast are all part of a renaissance England Madrigal Christmas Feaste Dec. 4 and 5 at Morehead State University.

The yuletide celebration features the MSU Chamber Singers under the direction of James Ross Beane, associate professor of music. The singers will perform madrigals and other seasonal music.

Thom Yancy, radio-television program coordinator and instructor, will serve as the "Lord of Misrule." The director is Travis Lockhart, assistant professor and coordinator of MSU's theatre program.

The dinner costs \$7.50 per person and begins at 6:45 p.m. Trumpets will herald the entrance of each course, which includes a traditional wassail bowl, roast beef, golden glow potatoes, peas with mushrooms, compound salad and plum pudding with lemon sauce.

Tickets are available from the Adron Doran University Center information desk. The Madrigal Feaste is in the Crager Room of ADUC. For information, call (606) 783-2090.

###

11-30-84vja

Media Advisory

PUBLIC INFORMATION

DANNY R. WRIGHT, DIRECTOR

MOREHEAD STATE UNIVERSITY

UPO BOX 1100

MOREHEAD, KY 40351

606-783-2030

DATE: Nov. 30, 1984
TO: News Media
FROM: Danny R. Wright, Director, Office of Public Information
RE: Board of Regents Meeting

The Morehead State University Board of Regents will meet Saturday, Dec. 8, at 4 p.m., in the Private Dining Room of the Carter Caves State Resort Park Lodge.

If your organization is planning to cover the meeting, please contact our Office of Public Information, (606) 783-2030, so that we can prepare sufficient copies of the agenda and related documents.

Your cooperation is appreciated.

wlj

News

PUBLIC INFORMATION

DANNY R. WRIGHT, DIRECTOR

MOREHEAD STATE UNIVERSITY

UPO BOX 1100

MOREHEAD, KY 40351

606-783-2030

MOREHEAD, Ky. --- Dr. Robert A. Nelson of the Millersville (Pa.) State University art department will present a printmaking exhibition Nov. 7 - Dec. 15 in the Claypool-Young gallery at Morehead State University.

The exhibition consists of monoprints, lithographs, etchings and pencil and pen drawings.

Nelson describes his work as the presentation of a hero, human or animal set either in the historic 18th or 19th centuries or projections of the 21st or 22nd centuries.

The artist will be on campus Nov. 26 and 27 to conduct art courses. On Nov. 26, Nelson will host a drawing demonstration from 11 a.m. to 2 p.m. in ADUC. At 3 p.m., he will conduct a question/answer session in the gallery's drawing studio.

On Nov. 27, Nelson will present a monotype demonstration in the gallery's print studio. At 7:30 p.m., he will deliver a formal slide lecture.

All classes are free and open to the public. Gallery hours are from 8 a.m. to 4 p.m. weekdays. For more information, contact the MSU Department of Art, at (606) 783-2766.

###

10-31-84vja